



**Large 3-Topping  
Pizza, Breadsticks &  
2-Liter for \$26.99**

901 E 7th St. | Wayne | 402-375-2540

**MIDWEST LAND  
COMPANY IS NOW**

**PC PEOPLES  
COMPANY**  
INTEGRATED LAND SOLUTIONS

**FULL SERVICE  
LAND TRANSACTION PLATFORM**

PeoplesCompany.com | 402.375.3385



**WE HAVE WHAT YOU NEED FOR THAT  
PERFECT VALENTINE'S DAY GIFT!**

- \*Stanley & Yeti Drinkware
- \*Geometry Towels
- \*Sherpani Bags
- \*Hallmark Cards
- \*Grills
- \*Power Tools & Accessories
- \*Stuffed Animals
- \*Seasonings & Rubs
- \*Toys
- \*Valentine's Candy

**NEED HELP  
FINANCING YOUR  
"HOME SWEET  
HOME"?**

Visit our team to  
get started today!



**Elkhorn Valley  
BANK**  
AND TRUST

411 E 7th St  
402-375-2525  
www.EVB.bank  
Member FDIC



# morning shopper

**Presorted Standard  
ECRWSS  
U.S. Postage Paid  
morning shopper**

A publication of The Wayne Herald • 402.375.2600 • 114 Main • Wayne, NE 68787 • Tuesday, February 11, 2025 • Vol. 91 No. 6

♥ **HAPPY**  
*Valentine's* DAY ♥

**Cookie sales have started!**

Order online or find booth using  
the Cookie Finder tool

[www.GirlScoutsNebraska.org/Cookies](http://www.GirlScoutsNebraska.org/Cookies)



**girl scouts**

Sponsored by:

**GROSSENBURG**  
IMPLEMENT INCORPORATED

1819 Chiefs Way | Wayne, NE | 402.375.3325

EVENT FUNDED IN PART BY A GRANT FROM THE DIXON COUNTY CONVENTION AND VISITORS BUREAU

## **DIXON COUNTY 1ST ANNUAL BANQUET**



Dixon County Pheasants Forever is  
back! Join us for an evening of fun.  
Ribeye dinner, live & silent auction,  
games & more! Help us get youth  
involved in hunting & preserving  
habitats.

**Saturday, February 15, 2025**

**Ponca State Park**

**Social Hour: 5:00**

**Dinner: 6:30**

**Auction: 7:00**

\*For more information, contact:

Cory Nelson 712-212-1655

Blake McAfee 712-899-7252



## **Flight Risk R**

**Thursday - 7pm | Friday - 7pm | Saturday 2pm & 7pm | Sunday - 2pm**

**Feb 13 - Feb 16**

**ADMISSION IS JUST \$5!**

(Box office opens 1 hour before each show)

Ad Courtesy of **The Hippie Chicken**



**MAJESTIC  
THEATRE**

**(Non-Profit)**

310 Main Street • Wayne

402-833-1833

[www.majesticonmain.org](http://www.majesticonmain.org)







## SERVICES

**SMALL ENGINE REPAIR.** General repair. Welding. Stump grinding. ALSO: have several used snowblowers. Call 402-375-2471. tfn

## MISCELLANEOUS

\*\*\*

MAKE MONEY from stuff you don't want any more! Did you just read this ad? Then so did hundreds of other people! Snap ads are cheap and effective, call the Wayne Herald--Morning Shopper today @ 402-375-2600 and start making money from your old stuff today!

## SERVICES

**DOES YOUR** basement or crawl space need some attention? Call Thrasher Foundation Repair! A permanent solution for waterproofing, failing foundations, sinking concrete and nasty crawl spaces. FREE Inspection & Same Day Estimate. \$250 off ANY project with code GET250. Call 1-855-605-1034. MB

**CHOOSE EARTHLINK** Fiber Internet for speeds up to 5 Gigs, no data caps, no throttling. Prices starting at \$54.95. Plus, a \$100 gift card when you make the switch. Call 1-866-670-2364. MB

## FOR SALE

**GIFT GIVING** and baking are easy with Tupperware. Contact Clara Osten, your local consultant for over 30 years. 402-518-8030 or 585-4323. Leave a message. tfn

## HELP WANTED

**LOOKING FOR** a motivated leader to join a growing construction company. Must be able to lead a team in one of the following trades: metal buildings, wood framing or concrete. Driver's license required. \$30/hour. Apply online at [www.praestcontracting.com](http://www.praestcontracting.com) 5/29

## MISCELLANEOUS

**JODIE** Not sure how many characters I can fit into one advertisement, but here goes nothing. I wanted to ask you a very important and timely question. Seeing as it is Valentine's Day, will you ma

**JODIE (CONTINUED)** ke dinner tonight or will I? Because I kind of wanted to finish Breaking Bad. Anyway, let me know. - Love, Alex

**RUTENBECK GRAIN VACS** for rent. Call or text Mic. 402-369-6736. tfn

**FOR RENT:** Nice 1, 2, 3, and 4 bedroom apartments. All new heat pumps and central air. No parties. Call 402-369-0771. tfn

**FOR RENT:** In Wayne: Eastview Village- 2-bedroom apartment available, income based Rental assistance available. Sunnyview- 1 bedroom available, Rent 420.00.

In Wakefield- One 1-bedroom and one 3-bedroom, Rent based on income, rental assistance if available. Call 402-375-3374 to see or apply. This institution is an

equal opportunity provider. Esta institución es un Proveedor de igualdad de oportunidades.



## JUST STARTING OUT IN FARMING?



We have experienced Ag lenders throughout northeast Nebraska and Iowa to assist you with all your farm financing needs.

F&M Bank - banking that feels right.

Gretna . Sioux City . South Sioux City . Wayne . West Point  
800.235.5331 [fmbankne.bank](http://fmbankne.bank) Member FDIC

**F&M**  
**Bank**



Recycling • Refuse • Roll-offs

- Residential Trash & Recycling
- Commercial Trash & Recycling
- Recycling
- Roll-Offs
- Portable Restrooms
- Demolition
- Industrial Waste Removal

Wayne  
Wakefield  
Laurel  
Pender

[S2rolloffs.com](http://S2rolloffs.com) • 439 N Main St. • Fremont • 402.727.6806

**Herman**  
**CHIROPRACTIC**

Headaches • Sciatica • Low Back Pain  
Athletic Injuries • Industrial Injuries  
Smoking Cessation • Prenatal Care  
Colic • Ear Infection • Bed Wetting

~ Same Day Service ~  
~ New Patients Welcome ~

BCBS, Medicare, Medicaid, Midlands Choice, UHC, Workmans Comp, Coventry and most other insurances accepted

Chiropractic Care • Massage Therapy • Acupuncture  
Orthotics • Health Products

1302 W. 7th Street  
Wayne, Nebraska  
(402) 375-3450



[www.hermanchiro.com](http://www.hermanchiro.com)

309 Main Street  
Pender, Nebraska  
(402) 385-0183

## NEW MANAGEMENT, SAME GREAT SERVICE



**EZ KITCHENS**

Norfolk's oldest Kitchen & Bath Design Store

1200 S 7th St. Norfolk, NE

402.371.8998 • [ezkitchensinc.com](http://ezkitchensinc.com)

## PC CATTLE FEEDLOT FOR SALE

CUMING COUNTY, NE | 170 ACRES M/L

Peoples Company is proud to present 170 acres m/l of feedlot in Cuming County, Nebraska.

- + 2,800 head permitted capacity.
- + 10 feeding pens available.
- + Approximatley 120 acres of cropland included.



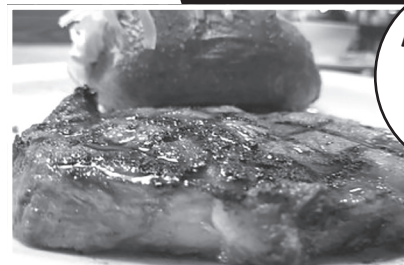
CONTACT JERRY LEWIS | 402.380.8323

**PC PEOPLES**  
COMPANY  
INTEGRATED LAND SOLUTIONS

[PeoplesCompany.com](http://PeoplesCompany.com)  
Listing #18111



Have you been in to see us recently??



We would love to see you!

1106 S. Main St. • Emerson  
402.695.0180  
[www.winnebago casinos.com](http://www.winnebago casinos.com)

The Iron Horse Casino is owned and operated by the Winnebago Tribe of Nebraska. The Iron Horse Casino reserves the right to substitute or change promotion without notice. Must be present to win. Must be legal age. See Casino for details.



# Happy Valentine's Day

## Two Blooms & A Bud

922 Avenue E | Wisner, NE

Call to  
order!

402.529.3801



### EZGO

New & Used  
E-Z-GO gas &  
electric golf cars



Financing  
available

Large selection.  
Trade-ins welcome.

Call or stop in today  
SD & NE's largest  
E-Z-GO dealer!

Your complete golf car center!

## MR. Golf Car, Inc.

822 8th St. • Springfield, SD • 605-369-2625 • [www.mrgolfcar.net](http://www.mrgolfcar.net)

## Valentine's Day SWEET HEART DINNER SPECIAL



### GOURMET DINNER FOR 2



Each meal comes with:  
1 dozen roses  
1 bottle of wine  
& a treat for him & her

### SEAFOOD PLATTER

6oz. Lobster Tail, 2lbs. Crab legs, 3  
Shrimp skewers, choice of two sides,  
dinner salad, and dessert

\$139.99

### ALFREDO PLATE

Alfredo sauce over a bed of fettuccine  
noodles topped with your choice of 12  
shrimp or 8 oz. chicken, served with a  
dinner salad, garlic bread, and dessert

\$79.99

Side choices: Mashed Potato, Baked Potato, Rice Pilaf,  
Steamed California Mixed Vegetables, Steam Broccoli

### STEAK AND MORE STEAK

32oz. Tomahawk for him, 16oz.  
Cowboy cut for her with a choice  
of two sides, dinner salad, and  
dessert.....\$240.00

\$240.00

### SURF AND TURF

12oz. Ribeye with 6oz. Lobster Tail  
or 2lbs. Crab legs, choice of two  
sides, dinner salad, and dessert

\$149.99

Limited number of tables

Offer available Feb 13-15

Reserve your table today!

605-469-6562



Tuesdays thru Fridays 10:30-5:30  
Saturdays 11-4  
Closed Sunday & Monday



Sweeten your Valentine's Day at  
4th St. Sweets with  
Fine chocolates, Gifts & Fudge.  
Pre-order Chocolate Dipped Strawberries  
via Facebook Messenger. @4thStSweets  
6 for \$12  
1 dozen for \$24



103 N 4th Street ~ Norfolk, NE 68701  
402-370-2541

# Pizza Hut

Share one of our heart-shaped pizzas  
with your Valentine this week!



901 E 7th Street | Wayne | 402-375-2540

Dine-In, Carry-Out or Delivery





**George Phelps**

Wayne, NE

CFP, CLU, ChFC

Office:  
1200 Crescent Dr. | Wayne, NE

## Securities & Life Insurance Broker

Free Financial Counseling

Website: [georgephelps.com](http://georgephelps.com)

Email: [GPhelps@D.H.Hill.com](mailto:GPhelps@D.H.Hill.com)

Talk/text 402-369-1818



## SUNNYHILL VILLA APARTMENTS

900 Sunnyview Drive • Wayne

ALL AGES 18+ & OVER

WELCOME!

1 BEDROOM APARTMENTS AVAILABLE

for Immediate Occupancy  
SECURITY DEPOSITS ONLY \$250

Rent Based on Income.

Rental Assistance Available  
for those who qualify!

Call Mary for details

402-375-5013

TDD 1-800-833-7352

Managed by RWI Property Management, Inc.

Equal Housing Opportunity

"This institution is an  
Equal Opportunity Provider"



## BARGHOLZ AUCTION CALENDAR

**FOR ALL YOUR SALE NEEDS CONTACT  
RANDY BARGHOLZ 402-375-3258  
[www.bargholzauction.com](http://www.bargholzauction.com)**

## NEW LISTING

216 S Elm Street | COLERIDGE | NEW PRICE \$195,000



### Motivated Sellers!

Three bedroom, two bathroom, fully remodeled! Two-car attached garage, large lot! Everything is NEW inside and out. L-2400535

To discuss real estate opportunities, please contact your local FNC representatives:



**Wendi Schutte**  
Broker  
(402) 518-0115

**Office: 402-256-9320**

103 West 2nd Street

PO Box 368

Laurel, Nebraska

Connect with us!



**Steve Schutte**  
AFM/Agent  
(402) 518-0111



[www.FarmersNational.com/Laurel](http://www.FarmersNational.com/Laurel)

Real Estate Sales • Farm and Ranch Management  
Energy Management • Appraisals • Insurance • Consultations  
Forestry Management • Hunting Lease Network • FNC Ag Stock

**“With the help of Faith Regional,  
I became a Lung Hero.”**

- Rita

For years, Rita struggled with shortness of breath and continuous coughing. She is thankful for our pulmonology services and the treatment she receives for her COPD and asthma that makes everyday activities feel possible again.

Learn more about our Pulmonology services at [frpsclinics.org](http://frpsclinics.org).

Scan the **QR CODE** with your cell phone camera to hear Rita's full story.



**MARJORIE VICTOR TURNS  
90  
ON FEBRUARY 16TH!**

Please help us  
shower her with  
wishes & stuff  
her mailbox with  
cards!

Marjorie Victor  
7929 Medicine Hat Rd  
Lincoln, NE 68505

2019 Nissan Titan Crew Cab XD SL 87K 4x4, V8, Flatbed .....	Coming soon
1999 Ford F150 Supercab XLT 169K 5.4L V8, gold, 4x4 .....	Coming soon
2012 Ford F250 Supercab XL 155K 6.2L V8, flat bed, grill guard, white .....	Coming soon
2011 Ford F350 Crew Cab Lariat 83K 6.2 V8, Black, 4x4 .....	Coming soon
2015 Ford F250 Crew Cab Lariat 69K 4x4, Diesel, Leather .....	\$41,500.00
2020 Ford Expedition Platinum 49K Grill guard, new tires, pano sunroof, burgandy .....	\$39,500.00
2020 Ford F350 Supercab XL 69K 6.2 V8, White .....	\$30,995.00
2019 Ford F150 Crew Cab XLT 36K 5.0 V8, White, new Tires, full bumper.....	\$29,500.00
2019 Ford F150 Supercrew STX 68K 5.0 V8, Flatbed, blue, new tires .....	\$27,500.00
2020 Ford F150 Crew Cab XLT 71K white & Gray, 3.5L EcoBoost .....	\$25,999.00
2015 Ford F150 Supercab XLT 68K Aluminum flatbed, good rubber, ecoboost, blue .....	\$22,500.00
2011 Ford F250 Crew Cab XL 149K 4x4, 8' Flatbed, 6.2 V8 .....	\$17,500.00
2005 Ford F250 Crew Cab Lariat 132K 6.0 Diesel, Full Bumper, New rubber, 4x4 .....	\$16,500.00
2000 Ford F150 Supercab XLT 95K 4x4, 5.4 V8, new 8 ft flatbed, gold .....	\$11,995.00
2015 Ford F150 Super Cab XLT 218K 4x4. 5.0 V8, remote start, runs great .....	\$7,500.00
2002 Ford F150 Super Cab Lariat 139K 4x4. 5.4 V8, new tires, dual exhaust, green .....	\$7,500.00
2001 Ford F150 Supercrew XLT 158.5K, 4x4, 5.4L, cloth interior.....	\$5,750.00
2000 Ford Excursion Limited, 213K, 4x2, new rubber, green .....	\$5,500.00
1982 GMC K1500 4x4, 94K Manual, Dual Exhaust, New Tires & wheels .....	\$5,500.00
2003 Ford F150 SuperCab XLT 140K Flatbed, Red, 5.4L V8, floor shift 4x4, 7700 GVWR .....	\$4,500.00
2022 Iron Star Car Trailer 20 foot, Bumper hitch, green .....	\$3,650.00
2019 Maxwell Utility Trailer 83"x14 Foot Bumper Hitch .....	\$3,000.00



Oil Changes • Light Service • Tire Rotation & Repair • Tire Sales  
Ironstar Truck Bed Dealer • Full Bumper Replacements

**402-887-9909**

201 W. 11th Street | Neligh, NE

For pictures and additional information: check out our  
website - [www.hilltopautosalesne.com](http://www.hilltopautosalesne.com)





# THE WAYNE HERALD



## WE ARE HIRING!

Join the Wayne Herald staff as a  
sales representative!

If interested, contact us!

email: [publisher@wayneherald.com](mailto:publisher@wayneherald.com)

or call 402-375-2600 and ask for Kevin

Gather all the hearts throughout the shopper and unscramble them below to  
reveal the secret Valentine's Day message!

Add your answers to our Facebook post or bring in your answers to  
be entered into a drawing for a \$10 Scooter's gift card!

— — — — —

— — — — — !



# Not sure why **BUSINESS IS SLOW?**



**is not just a saying  
in business.**

**Advertise today and let your business be in sight  
and in the minds of your customers.**



## **THE WAYNE HERALD**



*morning* **shopper**

114 Main Street • Wayne • 402-375-2600

[www.thewayneherald.com](http://www.thewayneherald.com)

Kayla - [sales@wayneherald.com](mailto:sales@wayneherald.com) | Carly - [whads@wayneherald.com](mailto:whads@wayneherald.com)





# Providence Medical Center

## Taking Care of Your Heart

**High cholesterol usually causes no signs or symptoms.**

A complete cholesterol test is done to find out whether your cholesterol is high and to estimate your risk of heart attacks and other forms of heart disease and diseases of the blood vessels.



### PMC Annual Cholesterol And Glucose Screening

During the Month of February

Weekdays Monday - Friday

Appointment Times: 7:00am - 10:00am

**\$25 fee**

**Results sent to you by mail**

For Appointments Call 402-375-7953

OR

Click the Cholesterol/Glucose  
Screening Link on the top of our website  
[www.providencemedical.com](http://www.providencemedical.com)

### You Should Get Screened If You...

- Are age 45 and older
- Have diabetes
- Have a family history of diabetes
- Are overweight
- Do not exercise regularly
- Have a family history of high cholesterol or heart attacks
- Eat an unhealthy diet
- Smoke cigarettes
- Have low HDL cholesterol or high triglycerides, high blood pressure

1200 Providence Road, Wayne | [providencemedical.com](http://providencemedical.com)

L-2500162

## LAND FOR SALE

77.40 ± Acres • Cedar County, Nebraska

**Right off of Highway 15 north of Laurel**

-- Easy access --  
-- Nice producing farm --

*For more information on property details, please contact:*

Wendi Schutte, Broker  
Phone: (402) 518-0115  
[www.FarmersNational.com/Laurel](http://www.FarmersNational.com/Laurel)



**Come take  
a tour!**

- Nestled in a residential neighborhood
- Great Food & Engaging Activities
- No Worries About Shoveling Snow & Ice
- No Worries About Grocery Shopping or Cooking
- Guaranteed Warm & Cozy Rooms
- Emergency Pendants with 24/7 staff
- Weekly Housekeeping

[www.facebook.com/kinshippointe](https://www.facebook.com/kinshippointe)  
[www.kinshippointe.com](http://www.kinshippointe.com)  
[kinshippointewayne](https://www.instagram.com/kinshippointewayne)

1500 Vintage Hill Drive  
Wayne, NE 68787  
(402) 375-1500



**Join Us For Our Winter Stay Program!**

## Out of Town Deliveries!

Mondays - Wakefield - Dollar General Parking Lot 5-5:30pm

Tuesdays - Laurel - Dollar General Parking Lot 5-5:30pm

Wednesdays - Pender - Pender Community Parking Lot 5:30-6pm

Weather permitting - deliveries will continue through winter

Download our app and order online  
to receive FREE pizza!

Call 402.375.2540  
by 3pm for delivery between  
5:00-6:00pm



901 E 7th Street | Wayne | 402-375-2540  
Dine-In, Carry-Out or Delivery







# morning shopper

Tuesday, February 11, 2025

SECTION B

Winside Volunteer Fire and Rescue would like to thank Winside and surrounding communities for all the support at the annual pancake and omelet feed.

All proceeds will go to updating equipment.

Winside Fire and Rescue are proud to serve our community and with your support we can continue this with the equipment needed.

Thanks to all who came or showed your support in any way ... it is appreciated!



## KEL Physical Therapy & Wellness

JOIN US!

Low Back Pain & Sciatica Workshop

Thursday, March 6<sup>th</sup> • Noon



Karen Longe PT, DPT

Julie Vilkas, PT, MPT

Private Treatment Rooms

Learn how to get rid of pain NATURALLY

Contact KEL-PT to register

402-999-4564 KEL-PTwell.com

Convenient Downtown Wayne Location

## LEE VALLEY, INC

Annual Winter/Spring Consignment Auction

Thursday, Feb. 20, 2025 • 8:30am

1325 Hwy 75 • Tekamah, NE 68061

Tractors, Tillage, Planting & Spraying, Vehicles & Trailers, Hay & Livestock, Augers & Grain Handling, Construction, Combines & Heads, Antiques, Miscellaneous

Sale Listings & Details at: [www.leevalley.net](http://www.leevalley.net)

Photos & Online Bidding at: [www.equipmentfacts.com](http://www.equipmentfacts.com)

Online Sale Consignments will be accepted until 2/11.

All items received after 2/11 will be sold but not included in online bidding.

402-374-2792 • [www.leevalley.net](http://www.leevalley.net)

Scott Olson: 402-870-1140

Authorized Sudenga Auger Dealer



# LOTS AVAILABLE

[arrowhead-construction.com](http://arrowhead-construction.com)

INTERESTED IN MORE INFORMATION?  
REACH OUT TODAY!

EMAIL [BAACK.SHANE@YAHOO.COM](mailto:BAACK.SHANE@YAHOO.COM)  
(402) 750-1281

LOT 1 - SIDE DAYLIGHT LOT  
LOT 2 - WALKOUT LOT  
LOT 3 - WALKOUT LOT  
LOT 4 - WALKOUT LOT  
LOT 5 - WALKOUT LOT  
LOT 6 - WALKOUT LOT  
LOT 7 - SIDE DAYLIGHT LOT  
LOT 8 - SIDE DAYLIGHT LOT  
LOT 9 - SIDE DAYLIGHT LOT  
LOT 10 - SIDE DAYLIGHT LOT  
LOT 11 - SIDE DAYLIGHT LOT  
LOT 12 - SIDE DAYLIGHT LOT  
LOT 13 - FLAT LOT  
LOT 14 - WALKOUT LOT

LOT 15 - WALKOUT LOT  
LOT 16 - REAR/SIDE DAYLIGHT  
LOT 17 - SIDE DAYLIGHT LOT  
LOT 18 - SIDE DAYLIGHT LOT  
LOT 19 - SIDE DAYLIGHT LOT  
LOT 20 - FLAT LOT  
LOT 21 - FLAT LOT  
LOT 22 - SIDE DAYLIGHT LOT  
LOT 23 - FLAT LOT  
LOT 24 - FLAT LOT  
LOT 25 - FLAT LOT  
LOT 26 - REAR DAYLIGHT LOT  
LOT 27 - REAR DAYLIGHT LOT

SDL - SIDE DAYLIGHT W - WALKOUT F - FLAT RDL - REAR DAYLIGHT R/SDL - REAR/SIDE DAYLIGHT





**FOR RENT**

**FOR RENT:** 2, 3 and 4 bedrooms apartments. Close to campus. All appliances. High efficiency. Central air & heat. No Pets or Parties. Call 712-899-0505. tfn

**FOR RENT:** New 3 bedroom apartment. Available now. No Pets, no smoking. Call 712-212-5844. tfn

**FOR RENT:** 1 bedroom apartment in Wayne. NO Pets. Please call 402-369-2425. tfn

**FOR RENT** Nice and clean one, two and studio apartments in Wayne and Laurel. Call Dawn at 402-518-0652 for more information. tfn.

**SMALL ENGINE REPAIR.** General repair. Welding. Stump grinding. ALSO: have several used snowblowers. Call 402-375-2471. tfn

**RUTENBECK GRAIN VACS** for rent. Call or text Mic. 402-369-6736. tfn

**FOR RENT:** Nice 1, 2, 3, and 4 bedroom apartments. All new heat pumps and central air. No parties. Call 402-369-0771. tfn

**CHOOSE EARTHLINK** Fiber Internet for speeds up to 5 Gigs, no data caps, no throttling. Prices starting at \$54.95. Plus, a \$100 gift card when you make the switch. Call 1-866-670-2364. MB

# Welcome Home



414 East 21st Street  
\$669,000



912 East 4th Street  
\$350,000



614 West 3rd Street  
\$375,000



309 Chapin Street, Winside  
\$65,000



508 Pierce Street, Carroll  
\$160,000



407 Walnut Street  
\$115,000



1007 Aspen Street  
\$320,000



57410 861 Road, Wayne  
\$425,000



720 Logan Street  
\$245,000



402 East 6th Street  
\$175,000



513 Hillcrest Road  
\$229,900



714 Main Street  
\$185,000



WHITE FARMHOUSE  
REALTY, LLC



Trisha Peters  
Broker/Owner  
(402) 518-0675



Marie Janke  
Sales Associate  
(402) 369-2182



Sarah Larson  
Sales Associate  
(402) 369-3421

[www.whitefarmhourealty.com](http://www.whitefarmhourealty.com)



219 Main Street, Wayne • (402) 375-HOME (4663)

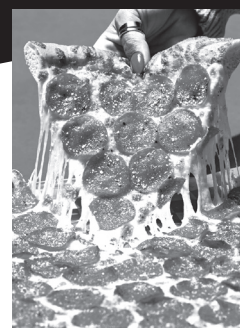


**First Lutheran Church - Allen**  
**ANNUAL SOUP SUPPER**  
**Sunday, Feb. 23 • 4:30 - 7:00 p.m.**  
**You can order from your car!**

**Soup • Sandwiches • Pie**  
(Chili, Oyster, Chicken Noodle, Beef Barley)  
**Dine-In or Curbside**

Free Will Donation **Snow Date — March 2<sup>nd</sup>**  
LOCAL DELIVERY AVAILABLE - CALL 635-2461

**Wakefield Deliveries!**



**Pizza Hut**

Call 402.375.2540

**Starting January 15**  
**Friday, Saturday & Sunday**  
**4:00 - 10:00 pm**

*\$30 minimum order for delivery*



Download our app and order online  
to receive FREE pizza!

901 E 7th Street | Wayne | 402-375-2540  
Dine-In, Carry-Out or Delivery

**WEST POINT LIVESTOCK AUCTION**

"Eastern Nebraska's newest and most modern Livestock Market"

**Thursday, February 13 Weekly/Special Breds/Pairs**

## Market Report: Feb 6, 2025:

We had a very short run of fats for our Thursday, February 6 auction, finding a market that took a step back, sending those top fats out at 205.00. We followed with a good run of weigh cows and bulls gathering a steady market from past weeks. We finished the afternoon with a short run of feeders and bred cows. We will be back on Feb 10th with our next pre-condition auction expecting 2500 with some super sets on the list. If you want to move any stock, please give us a call and we would be more than happy to stop out and visit with you about our upcoming specials.

Weigh cows/ Finish Cattle	152 HD
Drug Free	No Test
Top Fats	203-205
Choice/Select	200-202
2-way Cattle	200-208
Hol/Jer/LH	170-182
Top Cows	130-150
Bulk	110-129
Low Yield	70-109
Bulls	150-179
Young Feeding Cows	130-145

Office: 402-372-2493 • [www.WestPointLivestock.com](http://www.WestPointLivestock.com)

Brian Brester (Mg): 402-750-5821

Martey Stewart: 402-375-8913

Lance Brester: 402-860-8112

Jon Schaben: 712-263-0755





Free Estimates

## THE GUTTER CREW

Seamless Gutters  
& Downspouts  
28 Years of Experience  
Art Sehi 402-776-2563  
PO Box 27 Oakdale, NE 68761  
402-776-2600 • 1-800-867-7492

**TAMMY'S CLEANING**  
*We do it all, give us a call!*  
Tammy J. owner

**402-922-3179** cell

- Weekly •Monthly •Deep Cleans
- One Time Cleans •Spring Cleaning
- Move-Ins & Move-Outs •Organizing

Serving Pender, Wayne, Norfolk,  
Bancroft, Wisner, Emerson

## SUNNYHILL VILLA APARTMENTS

900 Sunnyview Drive • Wayne  
ALL AGES 18+ & OVER  
WELCOME!  
1 BEDROOM APARTMENTS  
AVAILABLE  
for Immediate Occupancy  
SECURITY DEPOSITS ONLY \$250  
Rent Based on Income.  
Rental Assistance Available  
for those who qualify!

Call Mary for details  
**402-375-5013**  
TDD 1-800-833-7352  
Managed by RWI Property Management, Inc.  
Equal Housing Opportunity  
"This institution is an  
Equal Opportunity Provider"

**MARJORIE VICTOR TURNS 90 ON FEBRUARY 16<sup>TH</sup>!**

Please help us  
shower her with  
wishes & stuff  
her mailbox with  
cards!

Marjorie Victor  
7929 Medicine Hat Rd  
Lincoln, NE 68505

## We Specialize in Preventative Dentistry

## Burrows Family Dentistry

Rob Burrows, D.D.S.

617 Pearl Street • Suite 1 • Wayne, NE 68787  
**402-375-1124**

## FOR RENT Hillcrest Colonial Manor

Hillcrest Colonial Manor is now taking applications for an opening for a 1 BR apartment at Hillcrest Colonial Manor at 707 Cedar Ave, Laurel. Those who qualify for subsidy could possibly reduce their rent to 30% of their income. Utilities are paid for and appliances are furnished.

*This is a Section 8 Elderly/Disabled property.  
Those who are 62 and older and/or disabled may apply.  
Laurel, NE*

Please call 402.256.3526  
for an application

## we insure your car. because accidents happen.

## simple human sense

## Northeast Nebraska Insurance Agency

Wayne 375-2696 • Wakefield 287-9150 • Laurel 256-9138 • Pender 385-6500

## Auto-Owners INSURANCE

LIFE • HOME • CAR • BUSINESS

## Edward Jones

> [edwardjones.com](http://edwardjones.com) | Member SIPC

## Your goals are as unique as you.

At Edward Jones, we're in it for the long haul. We'll be with you every step of the way as you celebrate life's biggest milestones. Let us help you work toward them.

Let's talk. Contact us today to learn more.

**Ken Marra, AAMS™**  
Financial Advisor  
611 Valley Drive Suite B  
P O Box 333  
Wayne, NE 68787  
402-375-2354

MKD-8652E-A AECSPAD 24341108

## MOLLIE B & SQUEEZEBOX IN CONCERT

## FEBRUARY 24, 2025

SHOW AT 7:00 PM  
DOORS AT 6:00 PM  
TICKETS \$25

## UPDATED VENUE!

## WAGNER NATIONAL GUARD ARMORY

CONCESSIONS ON SITE!

SPONSORED BY

## FORT RANDALL CASINO

## 605 UNITY TEAM

## WAGNER CHAMBER OF COMMERCE



Looking for a Job?

# WE'RE HIRING



## FT Night - RN/LPN

Every 3rd weekend | Every 3rd holiday  
12 hour shifts | 6pm-6am

## FT Day & Evening- CNA

Every other weekend  
Every other holiday

## FT Day - RN

Every 3rd weekend  
Every 3rd holiday

## FT Director of Nursing

Come join our staff and be a part of a happy and harmonious team!

**GREAT WAGES & BENEFITS**



**PLAINVIEW MANOR**  
& WHISPERING PINES ASSISTED LIVING

City Owned

30 Miles North  
of Norfolk

101 W. Harper Avenue • Plainview, NE • 402-582-3849



Pender  
Community  
Hospital



PENDER  
Medical Clinic

# NOW HIRING!

WITH RETENTION BONUS FOR FT & PT

- **Registered Nurse** (full/part-time)
- **Outpatient Clinic/ Surgery Registered Nurse** (full-time)
- **Respiratory Therapist** (full-time)
- **Nursing Assistant** (full-time and PRN)
- **Radiology Tech** (full-time and part-time)
- **Behavioral Health Tech/Assistant** (full-time)
- **Emergency Preparedness Coordinator/Safety Officer** (full-time)
- **Ambulatory Clinical Pharmacist** (full-time)
- **Care Coordinator/Clinic Health Coach** (full-time)
- **Child Development Program Manager** (full-time)



SCAN  
FOR  
MORE  
INFO!

View more openings online!  
Apply today at [pchne.org](http://pchne.org).

THIS INSTITUTION IS AN EEO/AA EMPLOYER AND PROVIDER,  
PROTECTED VETERANS AND INDIVIDUALS WITH DISABILITIES.

## Employment Opportunity



WSC is accepting applications for the following position.

**Master Electrician:** Start Date will be no earlier than March 17, 2025

This is skilled electrical work at the Contractor's License level, installing, repairing and maintaining electrical and communication wiring, electrical fixtures, equipment and systems in campus buildings and dormitories. A valid Driver's license and a valid State of Nebraska Contractor's Electrician license is required. Minimum annual starting salary is \$ 48,560.

Benefits include Blue Cross Blue Shield Health/Dental, Vision Insurance, Retirement- 8% Employer Contribution, Paid Leave Time-Vacation, Sick, & Bereavement, 13 Paid Holidays, Life Insurance, Long Term Disability, Flexible Spending Accounts, Employee Assistance Programs, and 67 % Tuition Remission available for employee and immediate family members.

For a complete listing of job requirements and application procedures, visit our Website at [www.wsc.edu/hr](http://www.wsc.edu/hr), call **402-375-7403** or email [hr@wsc.edu](mailto:hr@wsc.edu). WSC is an EOE.

## Employment Opportunity

WSC is accepting applications for the following position. WSC offers a competitive salary and an excellent benefits package including health insurance, retirement, tuition assistance (e

## Graduate Program C

Program Coordinator serves as a liaison between students, guiding them through the admissions process and building strong communication skills. Recruitment efforts, use of email, and social media on admissions effectiveness. In addition, with your passion for education and programs, this is your opportunity

For a complete listing of job requirements and application procedures, visit our Website at [www.wsc.edu/hr](http://www.wsc.edu/hr), call **402-375-7403** or email [hr@wsc.edu](mailto:hr@wsc.edu).

# NOW HIRING for 2025 Pool Season

- Lifeguards
- Summer Club Aides

Stop into the  
Wayne CAC to apply  
Questions?

Call Zac 402-375-4803 or  
Terran at 402-369-6427

\*Lifeguard Certification  
Reimbursement available

## We're Hiring an Executive Director!

Associate's in  
Business, Education  
or related field  
required, Bachelor's  
preferred

- Hire, train, schedule, supervise, and evaluate staff
- Manage the day-to-day operations of a large center while providing a safe, healthy and positive learning environment for all children
- Provide leadership to staff, fostering an environment of collaboration and high performance while overseeing educational curriculum and standards, programming and classroom management
- Manage relationships with key stakeholders, including board members, community partners, and families
- Collaborate with bookkeeper on monthly invoices, budgeting and other accounting paperwork
- Maintain child, family records and reports in online management system
- Ensure compliance with all licensing and accreditation requirements

Please send letter of interest, resume, references & credentials to:  
Liesel Powicki, Board President  
Email: [powickil@gmail.com](mailto:powickil@gmail.com)



CHILD DEVELOPMENT CENTER  
+ PRESCHOOL

Formerly known as Rainbow World

# SEEKING R IN WAYNE

Ap  
norfolkwa

•• NEW STA

Sign-on bonus \$7,500.  
CDL preferred. Will provide training.  
Benefits include health, dental, vision, 401k, paid holiday



www.  
Que





the following position.  
s package including health/dental/vision  
nily), paid leave time, and paid holidays.

**ator:** The Graduate  
n contact for prospective  
step of the admissions  
s. Responsibilities include  
data to analyze and report  
easily to combine your skills  
help drive the success of our

ements and application  
t [www.wsc.edu/hr](http://www.wsc.edu/hr),  
[www.wsc.edu](http://www.wsc.edu). WSC is an EOE.



**TE DRIVER**  
**NORFOLK**

t  
ections.com

**WAGE! ••**

y experience & Class B  
istance acquiring CDL.  
vision, 401K, uniforms,  
id time off.

pply online:  
[WasteConnections.com](http://WasteConnections.com)  
Call: (402) 644-8300

# WE ARE HIRING

JOIN OUR TEAM

- Full-time CNA - Days
- Part-time CNA - Evenings

[WWW.WAKEFIELDCARECENTER.COM](http://WWW.WAKEFIELDCARECENTER.COM)



**306 Ash Street  
Wakefield, NE 68784  
402-287-2244**

## Laurel-Concord- Coleridge School

is seeking an outstanding teacher candidate for the following position for the 2025-2026 school year:

### Spanish Teacher

Competitive Salary and Benefits  
Position open until filled.  
Interested candidates should apply online at  
<https://www.lccschool.org/>  
[Menu - LCC District - Employment]  
Inquiries may be directed to:  
Jeremy Christiansen, Superintendent  
[jeremy.christiansen@lccschool.org](mailto:jeremy.christiansen@lccschool.org)

EOE/ADA EMPLOYER

## Employment Opportunity



WSC is accepting applications for the following position.  
WSC offers a competitive salary and an excellent benefits package including health/dental/vision insurance, retirement, tuition assistance (employee/family), paid leave time, and paid holidays.

The **Foundation Financial Manager** is an essential team member within Wayne State College and responsible for managing and performing all financial functions of the Wayne State Foundation. The nature of work includes maintaining all financial records, managing accounts payable, pledges receivable, and cash receipts, preparation of monthly financial statements and quarterly reports, monitoring cash balances, and reconciliation of accounts. The position is also responsible for developing the annual budget and preparing for and managing the Foundation's annual audit of the financial statements. This role requires attention to detail, knowledge of accounting principles, excellent written and oral communication skills, and superior customer service.

If you are ready to join our dynamic and successful team at Wayne State College, this is your opportunity!

For a complete listing of job requirements and application procedures, visit our Website at [www.wsc.edu/hr](http://www.wsc.edu/hr), call **402-375-7403** or email [hr@wsc.edu](mailto:hr@wsc.edu). WSC is an EOE.

## Help Wanted - Parks & Recreation

Summer help needed - Preference given to individuals who can work 40 hrs during the week and once a month for 2-3 hrs on Sat and Sun mornings.

### Job Duties:

- Operating push mowers & zero turn mowers
- Weed eating parks & city buildings
- Operating skid loaders/tool cats
- Washing vehicles & Equipment
- Operating pickups with dump boxes
- Watering flowers & picking up trash in parks

### To Apply:

Applications are available at Wayne City Hall.  
M-F | 7:30a-4:30p | 306 Pearl Street.  
Please write: attn: Lowell | Contact Lowell for any questions 402.375.1300

### Physical Demands:

This work requires occasional exertions of up to 25 pounds of force. Standing for long periods of time and working summer conditions outside.

### Expectations of Applicant:

- Valid driver's license, must be 18 years of age or older
- Must be willing to work outside 40 hrs/week
- Good communication skills and works well with others



## NorthStar Services in Wayne

**\*NOW HIRING PART TIME DIRECT SUPPORT PROFESSIONALS**

**Starting Wage — \$15.00 per hour**

**ALL SHIFTS AVAILABLE (mornings, evening, weekend, and overnight shifts available)**

As an organization, we support persons with developmental disabilities to access and participate in their community, develop social networks and teach life skills, so people are successful in their homes, community and with employment opportunities

We are looking for dependable, self-motivated, organized persons with the ability to positively interact with persons with disabilities. All applicants must be 18 years of age, have a valid driver's license, the ability to lift 45 lbs., and be able to read, write and comprehend the English language.

Applicants should have good interpersonal skills and the ability to work with a wide variety of people.

All positions must be available to work some holidays.

Positions will be opened until filled.

Applicants are **REQUIRED** to attend job training, and pass background checks. All required training is paid for by NorthStar.

**NorthStar does not hire temporary or seasonal help.**

Interested parties can pick up an application and apply at:



**NorthStar Services**  
209 South Main Street,  
Wayne, NE 68787

Or apply on-line at: [www.northstarservices.net](http://www.northstarservices.net)







# Notice of Vacancy

## Street Department - Street Maintenance Worker I for the City of Wayne, Nebraska

Wage rate \$20.11 to \$27.03 per hour, plus excellent fringe benefits including group health and accident insurance, life insurance, retirement plan, and vacation and sick leave. Experience desired in concrete placement. Duties will also include operating and maintaining dump trucks, snowplows, tractors, loaders, and chainsaws. Requires valid Nebraska driver's license and Class B CDL (CDL can be obtained after hiring). Salary commensurate with experience. Applications available by writing to the Personnel Manager or phoning 402-375-1733. Send completed applications with references to Personnel Office, 306 Pearl Street, PO Box 8, Wayne NE 68787. Applications for this position will be accepted until 4:00 PM, Friday, February 28, 2025.

City of Wayne is EEO/AAE

# NOW

# hiring



ARE you a landscaper?  
Confident & Independent?  
Work with us to deliver high quality results!

**Full-Time Landscaper/Foreman**  
Hourly wages + overtime/paid vacation, simple retirement plan, health insurance, extra paid winter time off.  
Landscaping experience is a plus | Fluent in English

**Seasonal Landscaper**  
April-November  
hourly wages + Overtime | Fluent in English

Call to apply: 402-375-4643

# HELP WANTED

## Farmers Cooperative

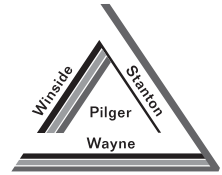
- Pilger & Winside -

Growing cooperative in Northeast Nebraska has a full-time position available. Looking for a dependable long-term employee. Immediate opening for the following position:

### Operations/Truck Driver

*Full Time and/or Seasonal. Operate newer well-kept trucks and equipment while helping in the Grain and Agronomy departments. Experience preferred, but willing to train the right individual. A Commercial Driver's License and a clean driving record required.*

*Farmers Co-op offers competitive wages and outstanding benefit package with includes medical and dental insurance, Co-op Pension Plan, 401(k), paid vacation and holidays, and profit sharing.*



If you are interested in becoming part of our growing cooperative, please submit your application/resume to  
325 W. 1st St. Pilger, NE 68768  
or email Aaron Becker at  
aaron.becker@pilgercoop.com. 402-396-3414

**Farmers Co-op**

# HELP WANTED

## Full or Part Time Days or Nights

LPN - \$27-\$34.50

RN - \$35-\$42.50

**Benefits: (for all positions)**

**Loan Reimbursement up to \$30,000 toward school**

**TOP INSURANCE** BlueCross BlueShield Nebraska

**Mileage Assistance**

**FREE DENTAL PREMIUM | 401K and Roth 401K**



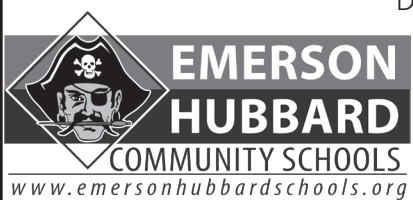
1203 N 13th Street • Norfolk • 402-371-4991  
ktso@vhsmail.com www.HeritageBelAir.com

# Elementary Paraprofessional Wanted

Emerson-Hubbard Community Schools is currently seeking an elementary paraprofessional immediately to join our educational team. We have a full-time position with hours from 7:45 A.M. to 3:45 P.M. for the 9 months of the school year. Single health/dental insurance, sick days, personal days, 7 paid holidays and 3 paid snow days are available according to board policy. All job-related experience will be considered to determine the wage. Starting wage with no experience is \$15.30/Hour.

For more information on this position:

contact Elementary Principal  
Dustin Nielsen at 402-695-2654 or  
to dnielsen@ehpirates.org  
Applications are on the school  
website at  
**emersonhubbardschools.org**  
or you may contact the  
Superintendent Office  
at 402-695-2621.



# LCC Laurel-Concord-Coleridge School

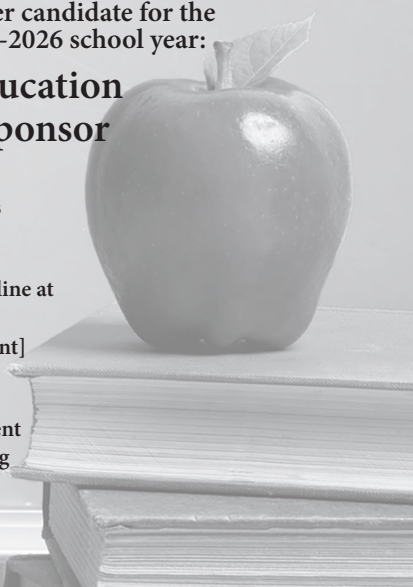
is seeking an outstanding teacher candidate for the following position for the 2025-2026 school year:

## Agricultural Education Teacher/FFA Sponsor

Competitive Salary and Benefits  
Position open until filled.

Interested candidates should apply online at  
**https://www.lccschool.org/**  
[Menu - LCC District - Employment]

Inquiries may be directed to:  
Jeremy Christiansen, Superintendent  
jeremy.christiansen@lccschool.org  
EOE/ADA EMPLOYER



# OFFICE HELP WANTED

Need  
**Computer and Phone Skills**

Send  
applications  
and resumes  
to 114 Main  
Street,  
Wayne, NE  
68787



**HELP WANTED**



Elworth Motor Company in Norfolk is currently seeking a full-time power-sports/motorcycle technician. Competitive pay. Experience required.



Contact Tyler:  
2311 Riverside Blvd  
Norfolk, NE | 402.371.6210  
elworthmoco@gmail.com

*help wanted*



## CUSTODIAN - CITY OF WAYNE

The City of Wayne is accepting applications for a custodian position. This is a part-time position (29 hours per week), with some benefits. Wage rate is \$15.52 - \$20.85 per hour, depending upon qualifications and experience. High school diploma or higher preferred. Requires a valid Nebraska Driver's License. Application and job description are available by writing or phoning the Personnel Manager at 402/375-1733. Wage will be commensurate with experience. Send completed application with references to Personnel Office, 306 Pearl Street, PO Box 8, Wayne NE 68787. Applications will be accepted until position is filled. EOE.



**COME WORK WITH US!**

Postions available:  
• Evening Medication Aide



EOE

**HELP WANTED**

## HELP WANTED

### Shop Help

Oil Changes  
Tire Mounting

### Fredrickson

Oil Co.  
402-375-3535



*We're Hiring* at Your  
**Local Newspaper**

We are looking for a full-time marketing specialist/sales person

If interested:

email publisher@wayneherald.com  
or call 402-375-2600 and ask for Kevin



## PLASTIC BAGS

**RECYCLE RIGHT**

You can recycle most plastic bags at our local grocery stores in the Bag-2-Bag® bins.

See the list of acceptable bags on our website. The Wayne Recycling & Trash Center does not recycle plastic bags.



The Green Path to the Good Life

cityofwayne.org/greenteam (402) 375-1733

**ZERO WASTE**

## TWO RESIDENTIAL PROPERTIES AT

# AUCTION

**FRIDAY, FEBRUARY 21, 2025 3:00 P.M.**  
**501 EAST MOSHER, RANDOLPH NE**

## OPEN HOUSES

**SUNDAY FEBRUARY 16, 1:00-3:00 P.M.**

**AUCTIONEERS NOTE:** Due to repairs being made to both houses the first time for showing will be at the open house Feb 16 1-3 p.m. We will sell both properties from the Randolph location.

### Parcel 1 Randolph Property

**ADDRESS:** 501 East Mosher, Randolph NE

**LEGAL DESCRIPTION:** Lot 7 and West 6' of Lot 6 Block 4 East Addition to Randolph Cedar County NE

**LOT SIZE:** 60'x142' **STARTING BID:** \$55,000

**PROPERTY DESCRIPTION:** Four bedroom, two bath, 1 ½ story vinyl sided house. Many in process improvements to interior including floor coverings, interior paint, 1700 sq feet of living space plus 700 sq foot basement. Newer roof. Gas furnace with Central Air. Fenced Yard. Storage Shed.

**YEAR BUILT:** 1900 **2024 TAXES:** \$729



### Parcel 2 Laurel Property

**ADDRESS:** 402 Cedar Street, Laurel NE

**LEGAL DESCRIPTION:** Lot 1 and the N ½ of Lot 2 Block 16, First Addition to Laurel Cedar Co NE

**LOT SIZE:** 75'x140' **STARTING BID:** \$45,000

**PROPERTY DESCRIPTION:** 2 bedroom one bath ranch style home. 672 sq feet on main floor with 672 square foot with finish that includes a non conforming bedroom and family room. Carport. Forced Air Furnace and Central Air. Interior freshly painted and exterior vinyl sided.

**YEAR BUILT:** 1900 **2024 TAXES:** \$375



**Terms:** \$7000 per parcel due the day of the auction at which time the successful bidder will enter into a written purchase agreement with the seller. Balance of sale price to be paid on or before March 14, 2025. At closing, buyers will receive a title insurance commitment showing merchantable title and warranty deed will be delivered. The cost of title insurance and escrow fee will be equally split between the buyer and seller. 2024 taxes and all previous years' taxes paid by the seller. 2025 taxes to be prorated to the date of closing. Buyers are reminded this is a cash sale, any needed financing should be arranged prior to the bidding. All announcements made day of auction take precedence over any and all printed materials.

**REMAX TOTAL REALTY INC IS AN AGENT OF THE SELLER IN THIS TRANSACTION**  
**ERIC RAMAEKERS, OWNER**



**RE/MAX Total Realty, Inc.**

Rick Grubaugh, Auctioneer, Broker 402-276-1210  
Logan Bronson, Agent 402-562-0932

3809 23rd St | Columbus, NE 68601  
RE/MAX Total Realty is acting as an agent of the seller  
**402-564-5999** [www.rgauctions.net](http://www.rgauctions.net)



## Backhoe - Septic Services

Certified installer for  
Septic, Drain Fields,  
Holding Tanks & Repair

Trenching, Footings,  
Concrete Removal & Demolition  
Dump Truck Services Available

**Ross Lund**

712-898-4499  
402-945-2161



## TAMMY'S CLEANING

*We do it all, give us a call!*

Tammy J. owner

**402-922-3179 cell**

•Weekly •Monthly •Deep Cleans  
•One Time Cleans •Spring Cleaning  
•Move-Ins & Move-Outs •Organizing

Serving Pender, Wayne, Norfolk,  
Bancroft, Wisner, Emerson



## BARGHOLZ AUCTION CALENDAR

**FOR ALL YOUR SALE NEEDS CONTACT  
RANDY BARGHOLZ 402-375-3258  
www.bargholzauction.com**

# Sweetheart of a Deal Event!

♥ **iPhone 16 BOGO**

♥ **\$10 Kids Smartwatch**

♥ **New Internet Pricing**



**VIAERO**  
WIRELESS

Discounted phones require qualifying trade-in, ASP, and activation on qualifying unlimited plans. Exclusions & restrictions may apply. See viaero.com or visit your local store for more information.

## Ag Land Realty, LLC

Real Estate Land Management Auctions  
Selling Real Estate in Agriculture Communities

**Joe Aschoff**  
Broker/Owner

402.360.4435

joeaschoff@aglandrealtyllc.com

www.aglandrealtyllc.com

54564 865 Rd, | Osmond, NE 68765



## For Sale

**Quick Facts:**  
Built in 2015  
1296 Sq Feet



### Listing Price of \$239,900

Nestled on the edge of our community, this single family home is move-in ready and offers quiet living with spacious views. The interior structure is modern with plenty of natural light to showcase an airy style and bright accents.

Find generous counterspace and vaulted ceilings in the dine-in kitchen that boasts a hidden pantry, updated appliances, and a sleek island. Of the 2 bedrooms, the ample master includes a walk-in closet with shelving and an en-suite bath. Visitors will enjoy relaxing in the guest bedroom that resides conveniently adjacent to the main bathroom, before relishing in the outdoors on the 12' x 12' back deck. Walking in from the finished 2-car garage, a laundry area complete with washer/dryer hook-ups and a large sink doubles as a mud room. Moving one floor down, plumbing for a bathroom has been finalized in the unfinished basement, leaving opportunity to customize an entire lower level.

Contact Elise Reese for a showing at 402-375-5266 or ereese@WayneAmerica.org