

Pizza Hut

\$15 large Pizza
3 toppings

Monday-Friday
8pm-close

901 E 7th St. | Wayne | 402-375-2540

MidwestLand COMPANY

206 Main St. | Wayne, NE 68787 | Office: 402-375-3385

Protect your investment
for future generations!

Farm Management – Farm Sales

Call for info: 402.375.3385
www.midwestlandco.com

WEDNESDAYS ARE WSC DAY AT ACE!

WSC Students

receive 10% off when you

show your WSC ID

Must be Ace Rewards Member



READY, SET, SAVE!

call, click, or visit
to learn about our
updated CD special!



Elkhorn Valley
BANK
AND TRUST

411 E 7th St
402-375-2525
www.EVB.bank
Member FDIC

Presorted Standard
ECRWSS
U.S. Postage Paid
morning shopper



morning shopper

A publication of The Wayne Herald • 402.375.2600 • 114 Main • Wayne, NE 68787 • Tuesday, August 27, 2024 • Vol. 90 No. 35

St. Anne's Catholic Church

Hot beef & Pie Fundraiser



Sunday, Sept. 8
11:00 AM - 1:30 PM

Dixon
Community
Center

Serving Hot Beef, Potatoes,
Corn and Homemade Pies

~FREE WILL DONATION~

WAYNE COUNTRY VIEW Please join us for:

When: The last Friday of every
month @ 9:30

August 30th

Coffee & Rolls

811 E 14th St.
Wayne NE 68723



BANANA SPLIT SOCIAL

NATIONAL ASSISTED LIVING WEEK

KINSHIP POINTE WAYNE
SATURDAY, SEPTEMBER 14TH
2:00 – 3:30 PM



THE BURT HEITHOLD BAND

PUBLIC WELCOME
FREE EVENT



Independent Living and Assisted Living
1500 VINTAGE HILL DR. WAYNE

the HIPPIE CHICKEN

20% off
next purchase

@hippiechickn
Scan for our website!

402.833.1500

311 Main Street | Wayne, NE

Valid until 9.30.24
must have coupon



M-W: 10am - 10pm | T-Sat: 10am - 11pm | Sun: 12pm - 9pm

Deadpool & Wolverine R

Thursday - 7 pm | Friday - 7 pm | Saturday - 2pm & 7pm | Sunday - 2pm

Aug 29-Sept 1

ADMISSION IS JUST \$5!

(Box office opens 1 hour before each show)

Ad Courtesy of Edward Jones, Mike Varley

MAJESTIC THEATRE

(Non-Profit)

310 Main Street • Wayne
402-833-1833

www.majesticonmain.org

BARGHOLZ AUCTION CALENDAR

**FOR ALL YOUR SALE NEEDS CONTACT
RANDY BARGHOLZ 402-375-3258
www.bargholzauction.com**

new LISTING



*So Much Potential!
4 Bedroom, 2 Bath
Main Floor Laundry
Updated Kitchen
Grand Staircase
Sunporch & Gazebo
3-Car Garage
Steel Siding*

720 Logan Street
\$255,000

Price
IMPROVEMENTS



514 West 3rd Street \$139,000



714 Main Street \$185,000

SOLD - 721 Pearl Street



WHITE FARMHOUSE
REALTY, LLC



Trisha Peters
Broker/Owner
(402) 518-0675



Marie Janke
Sales Associate
(402) 369-2182

219 Main Street, Wayne
(402) 375-HOME (4663)

www.whitefarmhoureality.com

Edward Jones®

> edwardjones.com | Member SIPC

Compare our CD rates

Bank-issued, FDIC-insured

3-Month	4.90% APY*
6-Month	4.60% APY*
1-Year	4.20% APY*

Call or visit your local financial advisor today



Ken Marra, AAMS™
Financial Advisor

611 Valley Drive Suite B
P O Box 333
Wayne, NE 68787
402-375-2354

*Annual Percentage Yield (APY) effective 08/20/24. CDs offered by Edward Jones are bank-issued and FDIC-insured up to \$250,000 (principal and interest accrued but not yet paid) per depositor, per insured depository institution, for each account ownership category. Please visit www.fdic.gov or contact your financial advisor for additional information. Subject to availability and price change. CD values are subject to interest rate risk such that when interest rates rise, the prices of CDs can decrease. If CDs are sold prior to maturity, the investor can lose principal value. FDIC insurance does not cover losses in market value. Early withdrawal may not be permitted. Yields quoted are net of all commissions. CDs require the distribution of interest and do not allow interest to compound. CDs offered through Edward Jones are issued by banks and thrifts nationwide. All CDs sold by Edward Jones are registered with the Depository Trust Corp. (DTC).

FDI-1867N-A AECSPAD 22969766

FOR SALE

GIFT GIVING and baking are easy with Tupperware. Contact Clara Osten, your local consultant for over 30 years. 402-518-8030 or 585-4323. Leave a message. tfn

HELP WANTED

RETHWISCH FARMS Help Wanted for Seasonal Harvest. Full-time employment opportunity also. Call Jesse Rethwisch for more information. 402-369-0506. 10/10

SERVICES

SMALL ENGINE REPAIR. General repair. Welding. Stump grinding. ALSO: have a few several used riding and push mowers. Call 402-375-2471. tfn

Heithold Family Trucking LLC: Contact us for any trucking need. Hopper bottom, Grain, Side Dump, and Flatbed available. Contact Mike: 402-833-8087 or Jesse: 402-833-8186 for further information. tfn

FOR RENT

GRAIN VAC for rent. Call Chuck Rutenbeck, Wayne at (cell) 402-375-7864.



BEFORE



AFTER

Keep your home safe with concrete repair

Worrying about your uneven or cracked concrete can make owning a home very stressful. By investing in concrete repair, you can fix your driveway, walkways, patio, and more in one easy lift.

THRASHER
FOUNDATION REPAIR

GET A FREE ESTIMATE
855-615-0179

APPLES

DECK & SLAHN ORCHARD

5 mi So. of Winside on Hwy. 35 and 3/4 Mi. So. via county Road 84648 567 Ave., Hoskins

Open Daily
Noon - 6:00 PM

Phone: 402-992-1100
or 402-371-8871



Thank you sincerely for your kind expression of sympathy and thoughtfulness. It is deeply appreciated and will always be remembered by the family of Lois V. Krueger.

SERVICES

SMALL ENGINE REPAIR. General repair. Welding. Stump grinding. ALSO: have a few several used riding and push mowers. Call 402-375-2471. tfn

Heithold Family Trucking LLC: Contact us for any trucking need. Hopper bottom, Grain, Side Dump, and Flatbed available. Contact Mike: 402-833-8087 or Jesse: 402-833-8186 for further information. tfn

WANTED A good comeback. 4 months ago, my coworker looked at my new glasses and said "oh hey, Harry Potter" and everyone in the office laughed. I need to get him back.

DOES YOUR basement or crawl space need some attention? Call Thrasher Foundation Repair! A permanent solution for waterproofing, failing foundations, sinking concrete and nasty crawl spaces. FREE Inspection & Same Day Estimate. \$250 off ANY project with code GET250. Call 1-855-605-1034. MB

CHOOSE EARTHLINK Fiber Internet for speeds up to 5 Gigs, no data caps, no throttling. Prices starting at \$54.95. Plus, a \$100 gift card when you make the switch. Call 1-866-670-2364. MB

MISCELLANEOUS

MAKE MONEY from stuff you don't want any more! Did you just read this ad? Then so did hundreds of other people! Snap ads are cheap and effective, call the Wayne Herald--Morning Shopper today @ 402-375-2600 and start making money from your old stuff today!



It's SIMPLE! It Gets RESULTS! It's VERY COST EFFECTIVE!

Place your snap ad in over 175 Nebraska newspapers for only \$235.00
Call the Wayne Herald today for the details! 402-375-2600.



ALL REAL estate advertised herein is subject to the Federal Fair housing Act which makes it illegal to advertise "any preference, limitation, or discrimination because of race, color, religion, sex, handicap, familial status or national origin, or intention to make any such preference, limitation, or discrimination." State law also forbids discrimination based on these factors. We will not knowingly accept any advertising for real estate which is in violation of the law. All person are hereby informed that all dwellings advertised are available on an equal opportunity basis.

READERS BEWARE! Job opportunities being offered that require cash investment should be investigated before sending money. Contact the Better Business Bureau to learn if the company advertised is on file for any wrong doing. The Wayne Herald/Morning Shopper attempts to protect readers from false offerings, but we are unable to screen all copy submitted.

☆☆☆☆

\$24 for two weeks worth of ads in the Shopper, Herald!

Call for details 402-375-2600

☆☆☆☆

TWO LUCKY VOTERS WILL WIN

\$100



Visit thewayneherald.com EVERY day to vote!



THE WAYNE HERALD

morning shopper

Voting ends September 2, 2024!

You can vote once per category per day

All voting will take place on thewayneherald.com

All registered voters will be eligible to win \$100!

Help us recognize the people, businesses and organizations that show the best of our community!

the HIPPE CHICKEN

402.833.1500
311 Main Street | Wayne, NE
M-W: 10am - 10pm | T-Sat: 10am - 11pm | Sun: 12pm - 9pm

@hippichickn
Scan for our website!

Time To Start Voting!

Voting Runs from August 6 to September 2



402-369-6820 414 Main St. Winside NE

WAYNE COUNTRY CLUB

302 East 21st St. | Wayne, Nebraska 68787 | 402-375-1152
www.waynecountryclub.com



Kyle Schellpeper
PGA Golf Professional



MAIN STREET

Full Service

Major &
Tune-ups . Oil Changes . Engi

24/7 Towing & Rep

614 Main Street

402-3



Fresh & Silk Floral
Gifts & Home
Decor



301 Main Street • Downtown Wayne • 531-519-6770

Store Hours: Monday-Friday 9:00-5:30 • Saturday 10:00-3:00



STATE NATIONAL INSURANCE COMPANY

BRIAN BOWERS & MARY JENKINS
1010 N Main Street, Suite 110
Wayne, NE
402-375-4888



banking that feels right



fmbankne.bank
800.235.5331

FRAHM & SONS

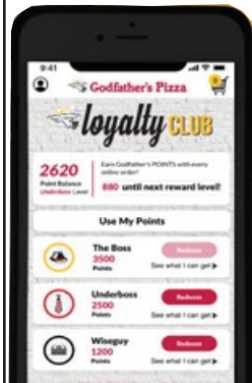
TREE & YARD SERVICES, LLC



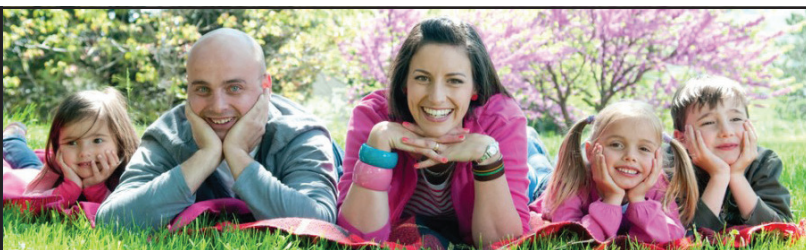
- Family owned
- Fully insured
- Serving Winside & surrounding area
- Bucket Truck Services
- Tree Trimming & Removal
- Storm Clean-Up
- Stump Grinding

SHANE FRAHM

402.851.0524 • POB 246 • WINSIDE, NE



Order
our
star



Please Vote For Us For Best Assisted Living 2024.



Scan the QR code to vote for us
starting August 6th.

402-375-1500 | www.KinshipPointe.com | 1500 Vintage Hill Dr, Wayne, NE 68787

JAEGER

402-3
85142
Winsid



A *Healthy* SMILE IS A *Beautiful* SMILE

Let Us Help You Start Every Morning With A **SMILE!**

FAMILY 1ST DENTAL

402.375.2889 | "Where Your Family Comes First!" | Mitchell Knudsen, DDS



Adult Clothing
Consignment,
Household
Donations, New
Retail Items/
Gifts...Old, New,
and everything in
between!

121 Main St. Wayne, NE

402-833-1810

Open Monday-Saturday 10 am - 5 pm

Johnnys

Pest Control

Call... 402-369-2938



603 Main Street • 402-375-

T GARAGE
 Repair Shop
 Repairs
 Air . Brake Repair . Alignments
Side Assistance
 Wayne, NE 68787
-4420

AUTO ANATOMY
alternatives LLC

 1320 W. 7th Street | Wayne, NE 68787 | 402-833-1117
 Painting - Bodywork
 Glass Repair & Replacement
 Frame & Unibody Straightening

face time
 AESTHETICS
 Licensed Esthetician Jessi Hochstein
 120 W. 3rd St. | Wayne, NE | 402-360-1253
 face-time-aesthetics.square.site for online booking

Larry Korth
 owner
 Cherry St. Creston, NE 68631
402-910-9878
 korthroofing@gmail.com
 Serving Creston, Norfolk, Columbus and
 surrounding areas.
 Exterior Improvements
 Free Insurance Inspections
 Free Estimates Insured
ROOFING LLC

ALLOFIBER.COM/WAYNE

 (531) 519-6050


Campbell's Service LLC
 Contact us for all your
 plumbing, electrical and
 HVAC needs
 108 East 2nd • Laurel
402-256-3572



Godfather's Pizza
 402-833-5077
 Through
 to
 Learning
 S MAIN STREET
 WAYNE, NE

Wayne Community Schools

 "Learning for Life,
 Every Student,
 Every Day"
www.wayneschools.org


Carhart
LUMBER CO.
 105 Main Street | Wayne | 402-375-2110
www.carhartlumber.com


SEEDS
 -0601
 th Ave.
 E 68790
 PIVOT BIO
 MERIDIAN

we treat people like people.
 because, they're people.
 simple human sense
Northeast Nebraska Insurance Agency
 Wayne 375-2696 • Wakefield 287-9150
 Laurel 256-9138 • Pender 385-6500


Wayne
Country View
 Care and Rehabilitation
 402-375-1922 | 811 E. 14th Street | Wayne | waynecountryview.com

Stop in and see us
 for your next fill up!

DAYLIGHT DONUTS

Fastwyre
 Broadband


HAPPY TASTES GOOD
 708 Main St.
 402-375-1404

- Residential Trash & Recycling
 - Commercial Trash & Recycling
 - Recycling
 - Roll-Offs
 - Portable Restrooms
 - Demolition
 - Industrial Waste Removal



Recycling • Refuse • Roll-offs




New Service Areas:
 Wayne
 Wakefield
 Laurel
 Pender

402.727.6806
 S2rolloffs.com

Refind & Refresh

Consignment, Thrift and Upcycling

104 W 2nd Street
 Wayne, NE 68787
 402.518.8227

preloved is reloved

Stop in to refresh your space!



EST. 1998
SCOOTER'S COFFEE



527 EAST 7TH STREET
 WAYNE, NE

PAC N SAVE



GROCERY STORE

1115 West 7th Street • Wayne, NE • 402-375-1202
www.pacnsavegrocery.com

SIDELINES
Bar & Grille

206 MAIN ST 402.287.2957

Providence Community Pharmacy

Friendly Faces

Open Monday-Friday
 9:00am- 6:00pm.

Saturdays
 9:00am- 2:00pm

Convenient Drive-Thru

Curbside Deliveries

803 Providence Rd. Suite 101 | 402-375-8862 | providencecommunitypharmacy.com

24 HOURS EMERGENCY WATER RESTORATION



STANLEY STEEMER

Mon - Sat
 8 AM - 5 PM
 Sunday:
 Emergencies Only!

VISA MasterCard

STANLEY STEEMER
 402-641-9851 • 119 Maple St. • Concord

PRIME STOP

CONVENIENCE STORES

Open 24 hours a day, 7 days a week!



1330 East 7th Street | Wayne
 402-375-1449

WASTE CONNECTIONS OF NEBRASKA
www.NorfolkWasteConnections.com

Serving Northeast Nebraska:

- Trash & Recycling
- Residential, Commercial & Roll-off
- Curbside, Co-mingled Recycling Service

Professional Customer Service
 Safety • Integrity

Call 402-644-8300 • 800-871-5566



WAKEFIELD HEALTH CARE CENTER

306 Ash St.
 Wakefield, NE

Come and take a tour by calling us at
 402-287-2244
 or visit us online at
www.wakefieldcarecenter.com

FOR RENT or Lease at midcity plaza
202 W 2nd street and pearl in Wayne.
Large office area or other uses. Contact
Dawn at 402-518-0658. tfn

FOR RENT: Nice 1, 2, 3, and 4 bed-
room apartments. All new heat pumps
and central air. No parties. Call 402-
369-0771. tfn

FOR SALE

NEW ACREAGE LISTING!

**56287 858th Road - Carroll
\$245,000**

Three-bedroom, two-bathroom home
on almost 8 acres! (5± acres is pasture)
antique barn, a couple of outbuildings,
and a storm shelter. Very well
maintained!

L-2400429



To discuss real estate opportunities, please contact your local FNC representatives:

Office: 402-256-9320

103 West 2nd Street
PO Box 368
Laurel, Nebraska

Connect with us!



Wendi Schutte
Broker
(402) 518-0115



Steve Schutte
AFM/Agent
(402) 518-0111



www.FarmersNational.com/Laurel

Real Estate Sales • Farm and Ranch Management
Energy Management • Appraisals • Insurance • Consultations
Forestry Management • Hunting Lease Network • FNC Ag Stock

NOTICE OF SALE OF CITY-OWNED PROPERTY

The City of Wayne will be accepting sealed offers for the purchase of LOT 19, Southview II Addition, City of Wayne, Wayne County, Nebraska, or better known as 400 Chicago Street. The lot is 13,504 sq ft and zoned R2. The successful bidder must agree that a residential structure will be completed within 24 months from property closing. Closing will likely be in mid-fall 2024. Offers will be received until 2:00 p.m. on Friday, August 30, 2024. Offers may be mailed to the City of Wayne, Attn: Betty McGuire, City Clerk, PO Box 8, Wayne NE 68787; emailed to betty@cityofwayne.org; or, submitted in person at the city offices located at 306 Pearl Street. The City of Wayne reserves the right to reject any and all offers and to waive informalities in the offers submitted and to accept whichever offer is in the best interest of the City, at its sole discretion. Please contact the City Offices at 402-375-1733 for property limitations, zoning requirements, etc.

160 ACRES - WAYNE COUNTY LAND AUCTION

THURSDAY, SEPTEMBER 5, 2024 • 10 A.M.

Sale Location: American Legion Hall Post 252, Winside, Neb.

LEGAL DESCRIPTION

Northwestern Quarter (NW 1/4) Section 21-T25N-R2E,
Wayne, County, Neb.

2023 REAL ESTATE TAXES

\$10,360.28

FSA INFORMATION

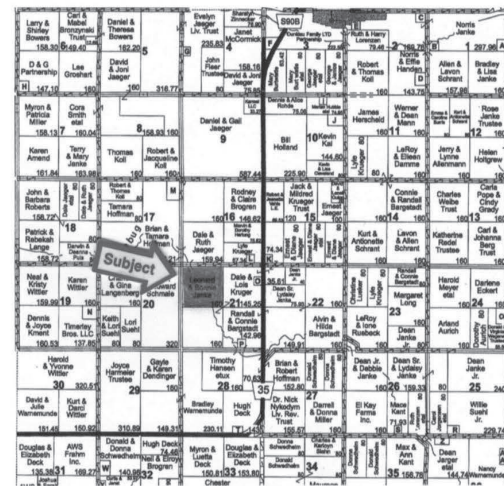
Cropland: 141.50 Acres
Corn Base: 105.10, PLC Yield: 135 bu.
Soybean Base: 36.40, PLC Yield: 47 bu.

TERMS: The successful bidder will enter into a real estate contract immediately upon conclusion of the auction, with a 10% down payment on the day of the auction. The balance will be due on or before October 7, 2024. Landlord possession on date of closing subject to tenant's rights until March 1, 2025. Full possession available March 1, 2025. Seller's agents shall order an owner's policy or title insurance in the amount of the sale price from a title company of their choice. The cost of title insurance will be shared equally by the seller and buyer. Sale is not contingent upon buyer's financing. 2024 real estate taxes will be paid by the seller.

CONDITIONS: This sale is subject to all easements, covenants and restrictions of record. All property is sold "as is - where is" with no warranties or guarantees expressed or implied by sellers or the auctioneers.

DISCLOSURE ACKNOWLEDGEMENT: It is understood the agents involved in the sale of this property are seller's agents and represent the seller as clients with buyers as customers.

ANNOUNCEMENTS: Property information provided herein was obtained from sources deemed reliable, but the auctioneer or seller makes no guarantees as to its accuracy. All prospective bidders are urged to fully inspect the property, its condition and to rely on their own conclusions. All sketches, dimensions and acreage figures in this information are approximate or "more or less." Any announcements made auction day by auctioneer will take precedence over previous material or oral statements. Bidding increments are solely at the discretion of the auctioneer. No absentee or telephone bids will be accepted at the auction without prior approval of the auctioneer. All decisions of the auctioneer are final.



SELLERS:

**LEONARD M.D. JANKE & BONNIE J. JANKE REVOCABLE TRUST
HAROLD S. JANKE TTEE & KRISTEN K. KRAUSE TTEE**

Robertson, Nelson & Schuetze
Real Estate & Auction Service
Tekamah, Neb.

LAND AUCTION
Thurs., Sept. 5
Winside, Neb.

Seller: Leonard M.D. Janke & Bonnie J. Janke
Revocable Trust
Harold S. Janke TTEE & Kristen K. Krause TTEE



Contact:
Jan Schuetze, West Point, Neb., 402-380-0563
Bruce Robertson, Tekamah, Neb., 402-374-2545

**Robertson, Nelson & Schuetze
Real Estate & Auction Service**
402-374-2545

www.srnsauction.com

PLEASE POST



WITH DOUG ALLEN NASH



**AUGUST
30TH
2024**

TICKETS ON SALE NOW!
FORTRANDALLCASINOHOTEL.COM
EVENTBRITE.COM

**\$35 ADVANCE
\$45 AT DOOR**
DOORS @5PM|SHOW @7PM



THE 'CATS ARE BACK!

WSC Volleyball Black & Gold Scrimmage

Sponsored by Wayne Herald

August 28
6:30PM
Rice Auditorium

Fun for the entire family!

SERVING CONTEST
GAMES FOR FANS
RAFFLE PRIZES

Free will donation suggested for admittance with all funds supporting WSC Volleyball!

WSC FOOTBALL vs Missouri S&T

Let's pack the house for the Wildcat's first game of the season!

\$10 GENERAL ADMISSION

\$5 K-12 STUDENTS

\$12 SENIORS

PAC N SAVE TAILGATE STARTS AT 4:30PM

August 29
6:00PM
Memorial Stadium



wscwildcats.com

JOIN CAT CLUB. PURCHASE SEASON TICKETS.

WAYNE
STATE COLLEGE



morning shopper

Tuesday, August 27, 2024

SECTION B

Bressler-Fest Rain location: City Auditorium

4 Sundays of Music in the Park
5:00-7:00 Bressler Park, Wayne

Sunday, Sept. 8th
DANIEL & THE DELIVERANCE
Your Mom's favorite Bluegrass Band!!

Sunday, Sept. 15th
The Flyovers
Modern A Cappella Quintet from Lincoln, NE

Sunday, Sept. 22nd
Reinvented Wheels

Sunday, Sept. 29th
B.J. JAMISON AND THE TWIN RIVER BAND
Bringing Country back, one song at a time. From Ashby NE.

Bressler-Fest Music in the Park series.
Four Sundays after Labor Day.
Enjoy live Music in our historic Bressler Park. Food Vendors, too.

Event funded in part by a grant from
WAYNE COUNTY
Convention & Visitor Bureau
www.waynecountyneb.com
(402) 375-2240

FOOTBALL FRENZY
down, set, guess!

You could win up to \$450! Play every week!

Find out more info on the next 4 pages!

FOR RENT: 5 Bedroom Home, 2 blocks from campus. 607 Hillcrest Rd. No pets. No Smoking. Families preferred. \$1750/mo. Contact Betty Reeg 402-369-0977.

Elkhorn Valley Bank Welcomes Kate Dolen as New Vice President of Business Development

Norfolk, Nebraska - Elkhorn Valley Bank is pleased to announce the appointment of Kate Dolen as the new Vice President of Business Development. In this role, Kate will develop and strengthen client relationships, lead community relations, and enhance customer experience.

Kate brings a diverse background with extensive experience in software development, architecture/engineering, hospitality, and financial services. Her proven track record in leading successful marketing campaigns, executing high-profile events, and building valuable partnerships will be critical as Elkhorn Valley Bank continues its trajectory of growth and innovation.

A native of Hickman, Nebraska, Kate graduated from the University of Nebraska-Lincoln with a bachelor's degree in journalism, specializing in advertising. Last summer, she relocated to Wakefield, Nebraska, and has already established strong ties within our local communities.

"We are thrilled to have Kate join the EVB family," said Aaron Otten, CEO of Elkhorn Valley Bank. "Her expertise and enthusiasm align perfectly with our mission of making a difference in the lives of our customers, co-workers, and communities. We are confident that Kate's contributions will be instrumental in achieving these goals." Elkhorn Valley Bank welcomes Kate to our team and is excited to see the impact of Kate's leadership in this new role.

Elkhorn Valley Bank is committed to providing exceptional banking services while fostering growth within its communities. Focusing on customer-first and community-first principles, EVB offers various financial products and services designed to help individuals and businesses achieve their financial goals. Find a location nearby and learn more about EVB at www.EVB.bank.



Kate Dolen



Hospice

When Rob's wife, Jan, was diagnosed with terminal lung cancer, they turned to the Faith Regional Hospice team for high-quality symptom management and emotional and spiritual support.

"Hospice provided my wife Jan with pain-free care, which was so important with the condition that she had."

— Rob

If you or your loved one are in need of hospice care, talk to your doctor for a referral to Faith Regional Hospice.

Scan the QR code or visit FRHS.ORG to learn more.





Contest Entry Form

JB Mart/Daylight Donuts _____

Ace Hardware & Home _____

Wildcat Lanes _____

F&M Bank _____

Seedsources _____

Quality Foods _____

Hippie Chicken _____

S2, LLC _____

Property Exchange Partners _____

Wayne Country Club _____

Waste Connections _____

Arnies Ford _____

State Farm Insurance _____

Pac N Save _____

Grossenburg _____

Auto Anatomy _____

State National Insurance Co. _____

Tie Breaker . . . Georgia _____ Alabama _____

Name: _____

Street or POB: _____

City/State/Zip: _____

Phone: _____

Entries due by 5pm on Fridays.

Deliver to The Wayne Herald office, 114 Main, Wayne, NE

The contest is open to everyone except employees of the Wayne Herald and their families.

You could win up to
\$450!

Three lucky winners from ALL entries throughout contest will be entered to win BIG at the end of the morning shopper Football Frenzy!

Frenzy Rules

Each of our awesome sponsors on the next few pages will have college football games assigned to them each week.

- Guess the winner of each game on the contest entry form.
- Guess the score for the tie-breaker game
- Send or bring in your forms EACH week by Friday at 5pm
- Only one entry is allowed per person, per week
- Must be cut out of the morning shopper each week. (no copies)

Weekly Winners

1st Place

Play and this could be you!

2nd Place

Play and this could be you!



JACK'S PIZZAS

\$2.99

517 Dearborn | Wayne | 402-375-1540
Open 7 Days a Week | 7:30 AM - 9:00 PM

Clemson vs Georgia
Penn State vs West Virginia
Florida vs Miami FL
Notre Dame vs. Texas A&M
Fresno State vs Michigan
LSU vs USC
Boston College vs FSU
New Mexico vs Arizona
UT Martin vs Kansas State
Idaho vs Oregon
Illinois State vs Iowa

Ohio vs Syracuse
UNLV vs Houston
Virginia Tech vs Vanderbilt
UConn vs Maryland
Chattanooga vs Tennessee
Boise State vs GA Southern
Tiebreaker — SCORE
UTEP 7 vs. NE 27

0%

Ohio vs. Syracuse



Amy Riesberg

Week 1 0/17
All 0/0



\$1 off any
Deli Meal

PLU 426

1115 W 7th St. | Wayne, NE
402.375.1202 | pacnsavegrocery.com

Clemson vs Georgia
Penn State vs West Virginia
Florida vs Miami FL
Notre Dame vs. Texas A&M
Fresno State vs Michigan
LSU vs USC
Boston College vs FSU
New Mexico vs Arizona
UT Martin vs Kansas State
Idaho vs Oregon
Illinois State vs Iowa

Ohio vs Syracuse
UNLV vs Houston
Virginia Tech vs Vanderbilt
UConn vs Maryland
Chattanooga vs Tennessee
Boise State vs GA Southern
Tiebreaker — SCORE
UTEP 13 vs. NE 45

0%

Virginia Tech vs. Vanderbilt



Brent Engels

Week 1 0/17
All 0/0



WASTE CONNECTIONS OF NEBRASKA

Call 402-644-8300 • 800-871-5566

www.NorfolkWasteConnections.com

Clemson vs Georgia
Penn State vs West Virginia
Florida vs Miami FL
Notre Dame vs. Texas A&M
Fresno State vs Michigan
LSU vs USC
Boston College vs FSU
New Mexico vs Arizona
UT Martin vs Kansas State
Idaho vs Oregon
Illinois State vs Iowa

Ohio vs Syracuse
UNLV vs Houston
Virginia Tech vs Vanderbilt
UConn vs Maryland
Chattanooga vs Tennessee
Boise State vs GA Southern
Tiebreaker — SCORE
UTEP 10 vs. NE 34

0%

UNLV vs. Houston



Jaret Harmer

Week 1 0/17
All 0/0



402.727.6806

S2rolloffs.com

Recycling • Refuse • Roll-offs

Clemson vs Georgia
Penn State vs West Virginia
Florida vs Miami FL
Notre Dame vs. Texas A&M
Fresno State vs Michigan
LSU vs USC
Boston College vs FSU
New Mexico vs Arizona
UT Martin vs Kansas State
Idaho vs Oregon
Illinois State vs Iowa

Ohio vs Syracuse
UNLV vs Houston
Virginia Tech vs Vanderbilt
UConn vs Maryland
Chattanooga vs Tennessee
Boise State vs GA Southern
Tiebreaker — SCORE
UTEP 13 vs. NE 24

0%

UConn vs. Maryland



Schuyler Schweers

Week 1 0/17
All 0/0



Painting - Bodywork | Glass Repair & Replacement
Frame & Unibody Straightening

1320 W. 7th Street | Wayne, NE | 402-833-1117

Chattanooga vs. Tennessee



STATE NATIONAL INSURANCE COMPANY

Brian Bowers • Mary Jenkins

1010 N. Main Street • Suite 110
Wayne, NE 68787 • Office: 402-375-4888

Boise State vs. GA Southern



You could win up to
\$450!



Mon-Thu: 5pm-2am
Fri & Sat: 4pm-2am
Sun: 6pm-2am

HAPPY HOUR: 4-6 pm
BOWLING: \$15/hour/lane

1221 Lincoln St, Wayne | 402.375.3390

Clemson vs Georgia
Penn State vs West Virginia
Florida vs Miami FL
Notre Dame vs. Texas A&M
Fresno State vs Michigan
LSU vs USC
Boston College vs FSU
New Mexico vs Arizona
UT Martin vs Kansas State
Idaho vs Oregon
Illinois State vs Iowa

Ohio vs Syracuse
UNLV vs Houston
Virginia Tech vs Vanderbilt
UConn vs Maryland
Chattanooga vs Tennessee
Boise State vs GA Southern
Tiebreaker — SCORE
UTEP 17 vs. NE 52



Week 1 0/17
All 0/0

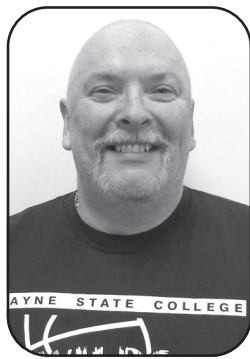
0%

Clemson vs Georgia



"Great & Friendly Service"

603 N. Main Wayne
402-375-9982



Tim Schaefer

Clemson vs Georgia
Penn State vs West Virginia
Florida vs Miami FL
Notre Dame vs. Texas A&M
Fresno State vs Michigan
LSU vs USC
Boston College vs FSU
New Mexico vs Arizona
UT Martin vs Kansas State
Idaho vs Oregon
Illinois State vs Iowa

Ohio vs Syracuse
UNLV vs Houston
Virginia Tech vs Vanderbilt
UConn vs Maryland
Chattanooga vs Tennessee
Boise State vs GA Southern
Tiebreaker — SCORE
UTEP 7 vs. NE 42

Week 1 0/17
All 0/0

0%

Notre Dame vs. Texas A&M



August 31st, One Day Only Sale!
25% Off All Fall Décor



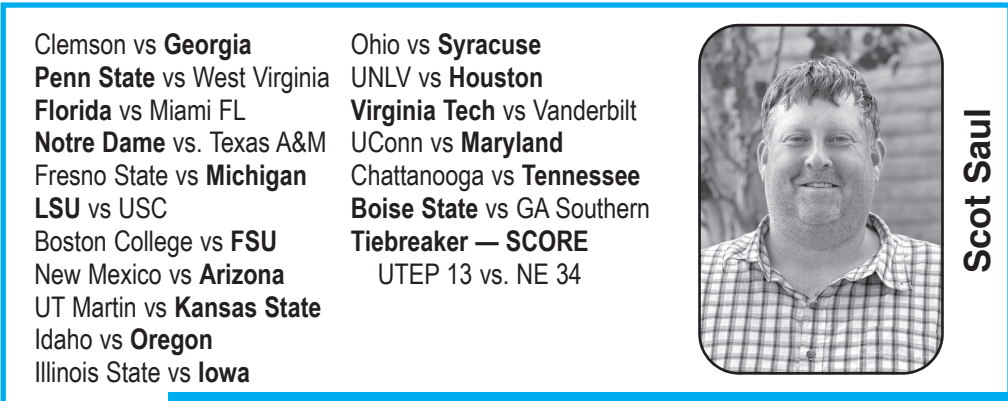
Week 1 0/17
All 0/0

Clemson vs Georgia
Penn State vs West Virginia
Florida vs Miami FL
Notre Dame vs. Texas A&M
Fresno State vs Michigan
LSU vs USC
Boston College vs FSU
New Mexico vs Arizona
UT Martin vs Kansas State
Idaho vs Oregon
Illinois State vs Iowa

Ohio vs Syracuse
UNLV vs Houston
Virginia Tech vs Vanderbilt
UConn vs Maryland
Chattanooga vs Tennessee
Boise State vs GA Southern
Tiebreaker — SCORE
UTEP 13 vs. NE 47

0%

New Mexico vs. Arizona



402.375.4715
1610 Chiefs Way
Wayne, NE

Clemson vs Georgia
Penn State vs West Virginia
Florida vs Miami FL
Notre Dame vs. Texas A&M
Fresno State vs Michigan
LSU vs USC
Boston College vs FSU
New Mexico vs Arizona
UT Martin vs Kansas State
Idaho vs Oregon
Illinois State vs Iowa

Ohio vs Syracuse
UNLV vs Houston
Virginia Tech vs Vanderbilt
UConn vs Maryland
Chattanooga vs Tennessee
Boise State vs GA Southern
Tiebreaker — SCORE
UTEP 6 vs. NE 24



Week 1 0/17
All 0/0

0%

UT Martin vs. Kansas State



ARNIE'S FORD

1-800-467-3780
www.ArniesFord.com

Serving You from 2 Locations • 119 East 3rd Street and 7th & Main

Clemson vs Georgia	Ohio vs Syracuse
Penn State vs West Virginia	UNLV vs Houston
Florida vs Miami FL	Virginia Tech vs Vanderbilt
Notre Dame vs. Texas A&M	UConn vs Maryland
Fresno State vs Michigan	Chattanooga vs Tennessee
LSU vs USC	Boise State vs GA Southern
Boston College vs FSU	Tiebreaker — SCORE
New Mexico vs Arizona	UTEP 14 vs. NE 17
UT Martin vs Kansas State	
Idaho vs Oregon	
Illinois State vs Iowa	0%



Nick Junck

Week 1 0/17
All 0/0

Penn State vs West Virginia



PROPERTY EXCHANGE PARTNERS

200 S Main St - Wayne, NE
402-375-2134

www.propertyexchangepartners.com

Clemson vs Georgia	Ohio vs Syracuse
Penn State vs West Virginia	UNLV vs Houston
Florida vs Miami FL	Virginia Tech vs Vanderbilt
Notre Dame vs. Texas A&M	UConn vs Maryland
Fresno State vs Michigan	Chattanooga vs Tennessee
LSU vs USC	Boise State vs GA Southern
Boston College vs FSU	Tiebreaker — SCORE
New Mexico vs Arizona	UTEP 34 vs. NE 17
UT Martin vs Kansas State	
Idaho vs Oregon	
Illinois State vs Iowa	0%



Allyson Avery

Week 1 0/17
All 0/0

Florida vs Miami FL

the HIPPIE CHICKEN

402.833.1500 | 311 Main Street | Wayne, NE 68787



Clemson vs Georgia	Ohio vs Syracuse
Penn State vs West Virginia	UNLV vs Houston
Florida vs Miami FL	Virginia Tech vs Vanderbilt
Notre Dame vs. Texas A&M	UConn vs Maryland
Fresno State vs Michigan	Chattanooga vs Tennessee
LSU vs USC	Boise State vs GA Southern
Boston College vs FSU	Tiebreaker — SCORE
New Mexico vs Arizona	UTEP 10 vs. NE 24
UT Martin vs Kansas State	
Idaho vs Oregon	
Illinois State vs Iowa	0%



Tommy Burr

Week 1 0/17
All 0/0

LSU vs. USC

WAYNE COUNTRY CLUB

www.waynecountryclub.com
402-375-1152



Kyle Schellpeper,
PGA Golf Professional

Clemson vs Georgia	Ohio vs Syracuse
Penn State vs West Virginia	UNLV vs Houston
Florida vs Miami FL	Virginia Tech vs Vanderbilt
Notre Dame vs. Texas A&M	UConn vs Maryland
Fresno State vs Michigan	Chattanooga vs Tennessee
LSU vs USC	Boise State vs GA Southern
Boston College vs FSU	Tiebreaker — SCORE
New Mexico vs Arizona	UTEP 17 vs. NE 40
UT Martin vs Kansas State	
Idaho vs Oregon	
Illinois State vs Iowa	0%



Kyle Schellpeper

Week 1 0/17
All 0/0

Boston College vs. FSU

GROSSENBURG IMPLEMENT INCORPORATED

402.375.3325 | 1819 Chiefs Way - Wayne
www.grossenburg.com

Clemson vs Georgia	Ohio vs Syracuse
Penn State vs West Virginia	UNLV vs Houston
Florida vs Miami FL	Virginia Tech vs Vanderbilt
Notre Dame vs. Texas A&M	UConn vs Maryland
Fresno State vs Michigan	Chattanooga vs Tennessee
LSU vs USC	Boise State vs GA Southern
Boston College vs FSU	Tiebreaker — SCORE
New Mexico vs Arizona	UTEP 10 vs. NE 35
UT Martin vs Kansas State	
Idaho vs Oregon	
Illinois State vs Iowa	0%



Adam Hanzlic

Week 1 0/17
All 0/0

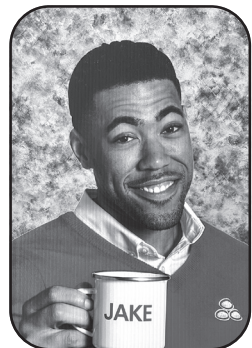
Idaho vs. Oregon

State Farm™

Like a good neighbor, State Farm is there.®

402-375-3470 | 100 Main Street • Wayne

Clemson vs Georgia	Ohio vs Syracuse
Penn State vs West Virginia	UNLV vs Houston
Florida vs Miami FL	Virginia Tech vs Vanderbilt
Notre Dame vs. Texas A&M	UConn vs Maryland
Fresno State vs Michigan	Chattanooga vs Tennessee
LSU vs USC	Boise State vs GA Southern
Boston College vs FSU	Tiebreaker — SCORE
New Mexico vs Arizona	UTEP 17 vs. NE 31
UT Martin vs Kansas State	
Idaho vs Oregon	
Illinois State vs Iowa	0%



Jake from State Farm

Week 1 0/17
All 0/0

Illinois State vs. Iowa

Thank you to the following businesses & individuals who, by their donations, make the Wayne County Fair Barbecue possible!

Diamond+ Level - \$3,000 KTCH/KTCY

Diamond Level - \$1,500

106 KIX/Lite Rock/WJAG
Allo Communication
Bruns Custom Ag LLC/Wilbur-Ellis
Crucible Ag
Elkhorn Valley Bank
F&M Bank
Great Dane Trailers
Grossenburg Implement
Growing Point Solutions
Hansen Farms
Jaeger Seeds
Junkc Farms
Lammers Trailer Repair
Langmeier Enterprises
Law Offices of Amy K. Miller PC, LLO
Lightning Exteriors
McAfee Seeds, LLC
NextEra Energy (Sholes Wind)
Northeast Nebraska Insurance Agency
Providence Medical Center
Robert Woehler & Sons Construction, Inc.
Rollin' Coal Trucking, LLC
Rolling Hills Supply, LLC
Skokan Electric
State Nebraska Bank & Trust
The 4th Jug/The Max
The Seed Source
The Station
The Wayne Herald
TWJ Farms
Wayne America

Platinum Level - \$1,000

104.1 The Wolf
AgriVision Equipment Group
Alpha Media
Anderson Graphics/
Greenview Equipment/Pick Chopping
Farmers Co-op
Home Health
KTIC-The Bull
Otte Construction
Pac N Save
Security Bank
Smokin' Diesel Repair LLC
T&D Anesthesia, LLC
The Dam
The New 94 Rock
TKO Equipment
Unlimited Landscaping
US 92
Wayne State College
White Farmhouse Realty

Gold Sponsors - \$750

BS-Ag & CW Cattle
Carhart Lumber Co
CHS-Dixon
Country Nursery, Inc.
Felt Farms
Frahm & Sons

Greunke Construction
Heritage Homes/Heritage Industries
Matt & Liz Haschke
Roberts Simmentals
S&V Excavation
Schultz Construction
Spahr Trucking
Thriff Warehouse, LLC
Topp Farms, LLC
Wayne Veterinary Clinic

Silver Level - \$500

Tom Hansen CPA
3-D Tools, LLC
Ace Hardware & Home
AKRS Equipment
Anderson Farms
Automated Dairy
Axle Surgeons/JC Rolling LLC
BASF/Xitava
BG Repair
Brokaw Custom Ag
Brokaw Electric, Inc.
Central Valley Ag
CIE-Norfolk
Cobblestone Hotel
Cruise and Associates, Inc.
Dinkel Implement Co.
Dixon Elevator
DMC Farms
DNT Repair
Dreamer's Place Equestrian Ranch
Edward Jones
Ekberg Auto Parts & Ekberg Auto Salvage
F&S Feedlots, Inc.
Farm Credit Services of America
Farmers Pride
Galen & Kathy Wiser
Gerhold Concrete Co.
Hansen Brothers
Hasemann Funeral Home
Helena Agri-Enterprises, LLC
Henderson Hauling LLC
Hoskins Mfg.
Janke Farms
John Williams
K&E Hansen
Kayton International Inc.
Koenig Enterprises
Kool Cow Shades
Krusemark Construction
Law Office of Kate Jorgensen
Leseberg Masonry
Loberg Farms
Midwest Land
Morton Buildings, Inc.
Nebraska Harvest Center
Nelsen Cattle
News Channel Nebraska
Nichols Feedlot LLC
Nichols Seed
Nolte Construction
Norfolk Alignment, Inc.
Pender Veterinary Clinic
Pepsi Cola of Siouxland
Reimers Portable Picnic Tables

Sebade Complete Concrete
Sebade Construction
Sievers Farms
Siouxland Ethanol
Stadium Sports
Titan Machinery
Tom's Body & Paint Shop
Total Graphics
Two Mile Island
Vel's Catering
Vokoc Builder's Resource
Wakefield Dental Practice
Wayne County Bank
Wayne Rentals
Wayside Repair
White Dog Lawn Service
White Dog Pub
Wildcat Bar & Grill
Wyffel Seeds/GO Farms

Bronze Level - \$300

108 Bar and Grill LLC
3-D PowerSports
5 Spurs Ranch, LLC
Ahlberg Cattle
Albers Feed Lots
Allemand Farms
Andrew Lowe Hauling
ASC Lockers, LLC
Aschoff Construction, Inc
Auto Anatomy Alternatives, LLC
Bargholz Auction
Beiermann Electric
Bomgaars
Braun Trucking
Bruns Feedlot, LLC
Burrows Family Dentistry
Christensen Well & Irrigation
CK Shine
Cornhusker Auto Group-Norfolk
Creighton Livestock
Dairy Queen
Dan and Gail Jaeger
David & Eileen Lutt & Families
Dennis Murray Constructions
Diamond 6 Feeders
Discount Furniture
Dohren Truck Repair, Inc.
Dunk Cattle Co.
Ekberg Farms
Elkins Portable Restrooms, LLC
Elworth Motors
Faith Regional Physician Services/Wayne Family Medicine
Fredrickson Oil Company
Gander Foods, LLC/
Godfather's Pizza
Golden Harvest-Heithold
Gubbels Custom Haying
Hefti Trucking
Jimmy Johns (NIX Wayne, LLC)
JMB Contracting
John's Welding
Jorgensen Concrete
Kay Co.

Ken's Trailer Sales & Repair
Klein Electric
Kloth Custom Chopping
Laurel Welding
LG Seeds
Loup River Beef
Lutt Oil & Service
Magnuson Cattle
Magnuson-Hopkins Eyecare PC
Mann Consulting, Inc
Marotz Seed
Meyer Farms
Milo Meyer Construction, Inc
MPM Farms
Nebraska Bank
Northeast Diesel
Nutrient Advisors
NVS Vet Partners LLC
P&R Sales, LLC
Pivot Bio
Prime Stop
Puls Farms
Quality Food LLC
Rainbow Windshield
Rezurrected Rod & Kustom
Ridder Repair
Roy Reed Post 252
Rush Kubota
Rutenbeck Grain Vac Rental
State National Insurance Co.
Steiny's Farm Repair
Suite T Salon
Tangles
The Wayne Greenhouse
Topp Family Farms
Topp Notch Paintless Dent Repair
Wayne Auto Parts
Wildcat Lanes
Wittler Farms
Zach Heating & Cooling
Pieper Law Office

\$100.00

Ken Marra
Webber Hospitality

\$65.00

Donald Sherman

\$50.00

Betty Schroeder
Copy Write Publishing
Denny & Jean Lutt
Weible Transfer

\$35.00

Kelly Whitt

Special Thank You To:

Deb Sievers
Harley & Pam Henderson
Bailey Behmer
Cooper Behmer
Dane Behmer
Aden Sellin
Ethan Behmer

...and to everyone who helped serve, set up and clean up! It's a big job and you all make it so much easier!

Thank you from Prudence Behmer, BBQ Superintendent

WAREHOUSE & INVENTORY

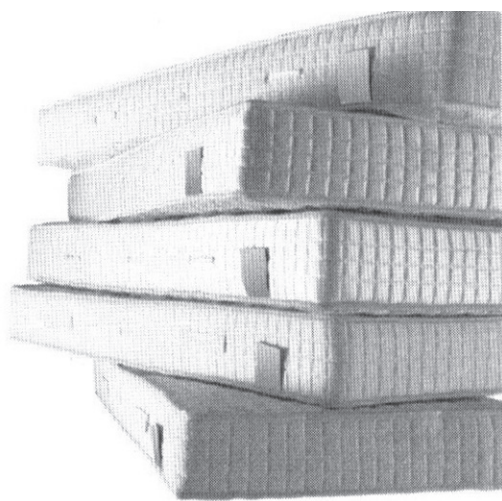
Reduction Sale Continues

•FREE DELIVERY• FREE DELIVERY• FREE DELIVERY• FREE DELIVERY•

2 pc Curved Tan Sofa
WAS \$2279⁹⁵
NOW ONLY
\$1139⁹⁵
(130" long)

As Sarah and I will be retiring at the end of the year, we are trying to reduce as much warehouse inventory as possible. If you are in need of any home furnishings, stop out and take a look! **Our warehouse inventory clearance sale will run through August.**

Jackson Leather Sofa
Redwood, Italian Leather
WAS \$1699⁹⁵
NOW ONLY
\$899⁹⁵



Mattress Sets

Twin	\$239 ⁹⁵ Set
Full	\$299 ⁹⁵ Set
Queen	\$359 ⁹⁵ Set

See all our Bedding SPECIALS!

L A Z B O Y



We have a wide selection of Recliners! La-Z-Boys starting at

\$399⁹⁵



Over 125 Recliners ready to go!

All on sale for our warehouse clearance SALE!

- Recliners
- Power
- Wall-a-Ways

DISCOUNT FURNITURE

SERVING NORTHEAST NEBRASKA SINCE 1934 • OPEN MON.-SAT. 9 AM-5 PM; THURSDAY UNTIL 8 PM
1 1/2 MILES NORTH OF WAYNE • 375-1885 OR 1-855-375-1885 • EASY TERMS, 90 DAYS SAME AS CASH
• FREE DELIVERY & SET-UP

YOUR NEW REAL ESTATE AGENT



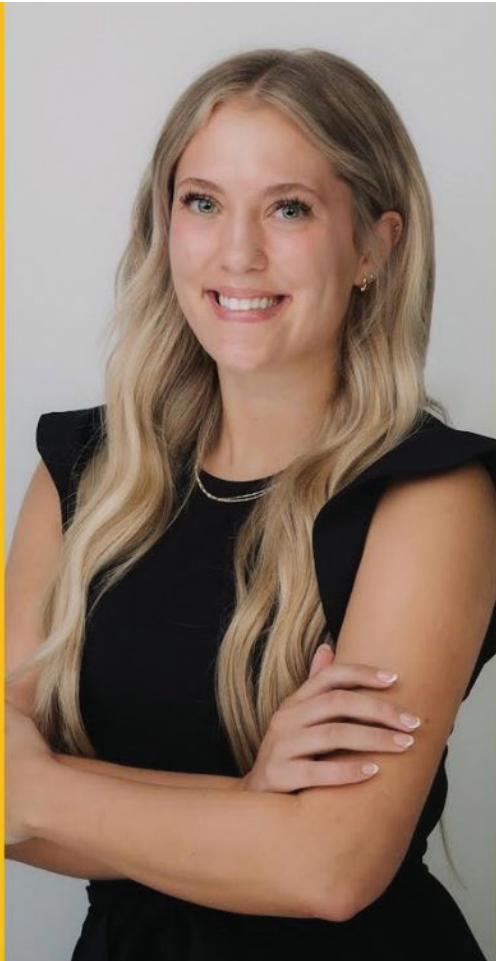
Allyson Avery is a new realtor at Property Exchange Partners in Wayne, Nebraska. Allyson was raised in Wayne and is excited to assist people in the area with their buying or selling process.

Allyson Avery, REALTOR®

402-369-6013 cell

402-375-2143 office

allyoavery@gmail.com



PRICED AT

\$ 500,000

ACREAGE FOR SALE



About Property

Located just minutes from Wayne, this 4.79 acre property features a 1,298 sf open floor plan house with another 933 sf finished in the basement, plus a 1,673 sf barn with loft built in 2019 and a garden shed. Between both levels, there are three bedrooms and two bathrooms. Enjoy the open living/dining/kitchen, or get away in the basement family room. This home is move in ready!

Property Features



3 Bedroom



Open Kitchen



Living Room



2 Bathroom



2-Car Attached



24/7 Security



402-375-2134

CONTACT TODAY



www.propertyexchangepartners.com



Life is full of uncertainty, but the value of a handshake at Blu Roofing is a constant.



Serving Northeast Nebraska

JESSE BRODERSEN, owner | c: 402.741.9344 | e: jesse@blu-roofing.com
www.blu-roofing.com





morning shopper

Tuesday, August 27, 2024

SECTION C



Larry Korth

Owner

109 Cherry St. Creston, NE 68631

402-910-9878

korthroofing@gmail.com

Serving Creston, Norfolk, Columbus and surrounding areas.

EXTERIOR IMPROVEMNETS
FREE INSURANCE INSPECTIONS
FREE ESTIMATES INSURED

KORTH ROOFING LLC

FREE UPGRADE to Class 4 Impact Resistant Shingles
10 Year Workmanship Warranty
Preferred by Insurance Companies



KEL Physical Therapy & Wellness

JOIN US!

Hip & Knee Pain Workshop

Thursday, Sept 12th • Noon

Learn how to get rid of pain NATURALLY

Contact KEL-PT to register

402-999-4564 KEL-PTwell.com

Private Treatment Rooms | Convenient Downtown Wayne Location



Karen Longe PT, DPT

Julie Vilkas, PT, MPT



Recycling • Refuse • Roll-offs

- Residential Trash & Recycling
- Commercial Trash & Recycling
- Recycling
- Roll-Offs
- Portable Restrooms
- Demolition
- Industrial Waste Removal

New Service Areas:
Wayne
Wakefield
Laurel
Pender



S2rolloffs.com • 439 N Main St. Fremont • 402.727.6806



Please help congratulate **Jack & Pat Lutt** on their **50th Wedding Anniversary** **September 14th!**

Best wishes can be sent to the couple at 57230 852 Rd, Wayne, NE 68787



Wayne Family Medicine

We don't just care for you, we care about you.

We believe each person that walks through our doors deserves to have a primary care provider they're comfortable with, to be treated like family, and to have their health needs exceeded.

Whether you need a yearly check-up, chronic care management, or you're under the weather, count on us for primary health care you can trust.

Call (402) 375-2500 to schedule an appointment.

Find out more by visiting frpsclinics.org.



All Day Special
 Small 1-topping Pizza, Side Salad,
 20 oz drink - Only \$12



Pizza Hut®
 901 E 7th Street | Wayne | 402-375-2540
 Dine-In, Carry-Out or Delivery

Estate/Garage Sale

in Belden @ 114 Nebraska Street

August 30 and 31 & September 1 and 2 (Friday, Saturday, Sunday, Monday) from 8:00 a.m.- 6:00 p.m.

Visit the Old Bank Building for a huge garage sale of all kinds of items

Lots of new stuff. Featuring a huge room all at one-half price. This is all part of a 70-year collection of Antiques, Vintage items, Collectibles and lots more in five big rooms filled with treasures and delightful finds. Several sets of clear glass canisters and clear glass storage jars. Just discovered...several boxes of fabric and related sewing items. Lots of craft items. Discover an assortment of dishes—pig dishes, apples dishes, owl dishes; corn dishes, glassware, bakeware, Cookie Jars, a huge collection of Teapots and cups and saucers, Canister sets, Spice Sets, salt and pepper shakers, all kinds of figurines and decorative items.

Come see a huge collection of Campbell's Soup items and a huge Collection of Wilton Baking Items. Lots of household and kitchen items. Cherished Teddies, Boyd's Bears, Precious Moments, Miss Priss, Howard Holt Cats, Temptations dishes, Frankoma dishes. Lots of misc. items: Dolls, miniature shoes, antique miniature lamps, Vintage Jewelry, lawn and garden items, and much more.

**we do the right thing.
 because it's the right
 thing to do.**

simple human sense

Northeast Nebraska Insurance Agency

Wayne 375-2696 • Wakefield 287-9150 • Laurel 256-9138 • Pender 385-6500

Auto-Owners®
INSURANCE

LIFE • HOME • CAR • BUSINESS

FOR RENT

1 BEDROOM house for rent immediately. Pet Friendly. Fridge and Stove included. Ph 712-212-5844 tfn

FOR RENT: Very nice 1 and 2 bedroom apartments for rent in Laurel and Wayne. Call Dawn at (402)518-0658. tfn

FOR RENT OR LEASE at Midcity Plaza 202 W 2nd Street and Pearl in Wayne.

Large office area or other uses. Contact Dawn at 402-518-0658. tfn



Ag Land Realty, LLC
 Real Estate Land Management Auctions
Selling Real Estate in Agriculture Communities

Joe Aschoff
 Broker/Owner

402.360.4435
 joeaschoff@aglandrealtyllc.com
 www.aglandrealtyllc.com
 54564 865 Rd, | Osmond, NE 68765



Uplift Your Expectations

Let our hometown people deliver what you expect from your bank and more.

**FM
& Bank**

Gretna . Sioux City . South Sioux City . Wayne . West Point
 800.235.5331 fmbankne.bank Member FDIC

Doescher Repair



For appliance repairs,
 call or text Donovan
 402.375.8810



Card Shower

91st Birthday, Sept. 3
 Celebrate with
Alvin Anderson

Send greetings to:
 Kinship Pointe #40
 1500 Vintage Hill Dr.
 Wayne, NE 68787

Herman CHIROPRACTIC

Headaches • Sciatica • Low Back Pain
 Athletic Injuries • Industrial Injuries
 Smoking Cessation • Prenatal Care
 Colic • Ear Infection • Bed Wetting

~ Same Day Service ~
 ~ New Patients Welcome ~

BCBS, Medicare, Medicaid, Midlands Choice, UHC, Workmans Comp, Coventry and most other insurances accepted

Chiropractic Care • Massage Therapy • Acupuncture
 Orthotics • Health Products

1302 W. 7th Street
 Wayne, Nebraska
 (402) 375-3450



www.hermanchiro.com

309 Main Street
 Pender, Nebraska
 (402) 385-0183

Happy Birthday



Betty Wittig
 will turn 90 on
August 25th!
 Please help her
 celebrate by filling her
 mailbox with good
 wishes and memories:
 805 Lincoln Street,
 Wayne, NE 68787.

HAPPY BIRTHDAY

HAPPY BIRTHDAY HAPPY BIRTHDAY HAPPY BIRTHDAY

HAPPY BIRTHDAY HAPPY BIRTHDAY HAPPY BIRTHDAY

Bean Walkers
 We Have Several Crews
 Walk pastures with Canadian thistles, etc.

- Any type of farm work
- Put up, tear down fencing (any fence work)
- Cut Cedar trees
- Cover silage piles
- Detasslers
- Over 29 years experience
- 200 mile radius of Wayne

For more info: 712-943-2084
 712-251-3277

A special thank you to Terry Sievers & Zach Harder from Wayne County Dist. 1 for all their help in getting the track ready for all the events at the Wayne County Fair.
 - The Wayne County Ag Society

Free Estimates

THE GUTTER CREW
 Seamless Gutters & Downspouts
 28 Years of Experience
 Art Sehi 402-776-2563
 PO Box 27 Oakdale, NE 68761
 402-776-2600 • 1-800-867-7492

FOR RENT

FOR RENT: 2, 3 and 4 bedrooms apartments. Close to campus. All appliances. High efficiency. Central air & heat. No Pets or Parties. Call 712-899-0505. tfn

Meet our Sales Team!

Let us help your business stand out!
 Call, email or stop in!

Nicole: WHads@wayneherald.com
 Kayla: sales@wayneherald.com
 402.375.2600 | 114 Main Street

THE WAYNE HERALD
 morning shopper



HAIL, WIND OR STORM DAMAGE?

"WE'VE GOT YOU COVERED"

H&H ROOFING
 ROOFING | SIDING | GUTTERS
 (402) 992.8133
 FAMILY OWNED & OPERATED
 602 1/2 W. BENJAMIN AVE., NORFOLK, NE
 LICENSED • BONDED • INSURED




NOW HIRING Feed Truck Driver

- **FULL OR *PART TIME
- *COMPETITIVE WAGES
- *PAID BI-WEEKLY
- **PAID DOUBLE TIME FOR SATURDAYS AND SUNDAYS
- **6 PAID HOLIDAYS PER YEAR
- **PAID TIME OFF
- *CHRISTMAS BONUS
- *YEAR-END BONUS
- *SIMPLE IRA CONTRIBUTIONS
- *AFLAC OPPORTUNITIES
- *CDL REQUIRED



*SERIOUS INQUIRES CONTACT KEVIN @ 402-986-1136

now hiring

SEEKING ROUTE DRIVER IN WAYNE & NORFOLK

Apply at
norfolkwasteconnections.com

•• NEW STARTING WAGE! ••

Sign-on bonus \$7,500. Driving experience & Class B CDL preferred. Will provide assistance acquiring CDL. Benefits include health, dental, vision, 401K, uniforms, paid holidays & paid time off.



Apply online:
www.NorfolkWasteConnections.com
Questions, Call: (402) 644-8300

NorthStar Services in Wayne

***NOW HIRING PART TIME DIRECT SUPPORT PROFESSIONALS**

Starting Wage — \$15.00 per hour

ALL SHIFTS AVAILABLE (mornings, evening, weekend, and overnight shifts available)

As an organization, we support persons with developmental disabilities to access and participate in their community, develop social networks and teach life skills, so people are successful in their homes, community and with employment opportunities

We are looking for dependable, self-motivated, organized persons with the ability to positively interact with persons with disabilities. All applicants must be 18 years of age, have a valid driver's license, the ability to lift 45 lbs., and be able to read, write and comprehend the English language.

Applicants should have good interpersonal skills and the ability to work with a wide variety of people.

All positions must be available to work some holidays.

Positions will be opened until filled.

Applicants are **REQUIRED** to attend job training, and pass background checks. All required training is paid for by NorthStar.

NorthStar does not hire temporary or seasonal help.

Interested parties can pick up an application and apply at:



NorthStar Services
209 South Main Street,
Wayne, NE 68787

Or apply on-line at: www.northstarservices.net

First in food.

MICHAEL FOODS INC. BENEFITS
ADVANCEMENT
GREAT PAY

Electrical Maintenance \$2,000 BONUS!

- Up to \$34/ hour (DOE)
- Set Schedule

Looking for an Electrician with mechanical knowledge to be able to maintain and troubleshoot logic controls and general industrial wiring.

APPLY TODAY!

WWW.MICHAELFOODS.COM



Are you looking for a company that provides you stability and support for long term career growth? Provides excellent benefits? Recognizes employees?

Come See for Yourself At:

Michael Foods
105 N Main Street
Wakefield, NE
402.287.5000
EOE: M/F/V/D

City Administ

City of Wakefield (Pop. 1,500) applications for the position reports to the Mayor and City and phases of municipal gov possess good written and ver organization and people skill

Minimum qualification in public administration of experience in gove requirements may be at the sole discretion exempt position with



NOW WITH SIGN C

- **Outpatient Clinic/ Surgery Registered Nurse (full-time)**
- **Registered Nurse (full-time & part-time)**
- **Registered Nurse, preferred (PRN)**
- **Unit Secretary (part-time)**
- **Licensed Mental Health Therapist (full-time)**



SCAN FOR MORE INFO!



STARTING IMMEDIATELY

Full-time or part-time help
Pay and benefits will depend on experience.

Full time
trucking, planting, spraying, irrigation work, shop maintenance and harvesting.

Part time
trucking or operating a tractor and grain cart.

Call or text: 402.369.2930
for more details and pay/benefits

Harvest Help Wanted Truck driver or grain cart operator

Call
402-640-6248

g!

Resumes may be sent to wakenemayor@gmail.com for consideration.

the second class is accepting administrator. The City Administrator and oversees all departments. Successful candidate must have communication skills as well as good

position include bachelor's degree in related field and a minimum of one year of experience in a related private field. These basic requirements are in favor of comparable experience in the public field. Mayor and Council. This is a full-time position. Salary will be negotiated based on background and experience.

WE ARE HIRING

JOIN OUR TEAM

- Dietary Aid
- PT day & evening shift
- Transportation

WWW.WAKEFIELDHCARECENTER.COM



306 Ash Street
Wakefield, NE 68784
402-287-2244



SEMI DRIVERS

Van Diest Supply Company has immediate opening for a Semi Driver. Must have a Class A CDL License, a minimum of 1-year experience and a clean driving record. Our Drivers are paid **HOURLY** and can earn up to \$24.70 per hour plus bonuses. All late-model equipment. Benefits include Health Care, Life Insurance, Dental, Eye Care, Short & Long-Term Disability, PTO Program, Employee Savings Program, and 401(k) Plan.

Apply in Person

VAN DIEST SUPPLY COMPANY

615 Thorman Street, Wayne, NE 402-375-4396

EOE

Employment Opportunities



WSC is accepting applications for the following positions.

WSC offers a competitive salary and an excellent benefits package including health/dental/vision insurance, retirement, tuition assistance (employee/family), paid leave time and paid holidays.

Office Assistant III (Business Services): This is an advanced classification that performs specialized clerical work of an administrative nature of varied scope and complexity requiring a broad knowledge of standardized policies and procedures, and confidentiality in the disposition of work matters. Work requires significant independent judgment, problem solving, and decision making skills within prescribed limitations. Interprets guidelines to specific situations that are not covered by policies or procedures. Work includes the maintenance of various record systems, the creation of reports involving payroll, employee, student, departmental records, and statistical data. Work also includes composing routine memoranda, correspondence and written materials requiring knowledge of institutional policies and procedures, scheduling meetings, and making travel arrangements. Limited leadership may be exercised over small teams of co-workers or student employees.

Required Qualifications: Graduation from High School or educational equivalent, college coursework in Business Administration or related field, and two years of clerical experience.

Office Assistant II (School of Education and Behavioral Sciences): This is an advanced classification that performs complex clerical and reception work involving common office practices and procedures and requiring knowledge of standardized policies and procedures and confidentiality in the disposition of work matters. Work requires some independent judgment, problem solving, and minor decision making skills based on established policies and guidelines. Performs varied tasks such as maintaining and processing employee or student records and information and reception and clerical support for the office or department. Work includes producing reports and documents from rough draft or verbal instruction; transcribing and distributing meeting minutes; and coordinating appointments, meetings and travel arrangements. Limited leadership may be exercised over small teams of co-workers or student employees.

Library Technician: Performs varied tasks such as responding to inquiries regarding the availability and/or location of library materials, performing search activities to obtain information on bibliographic materials and receiving and recording new incoming library materials. Fall and spring semesters the schedule will be Sunday – Thursday 3 P.M.-12 A.M. In summer and during scheduled mid-semester breaks the schedule will be Monday - Friday 8 A.M.-5 P.M.

For a complete listing of job requirements and application procedures, visit our Website at www.wsc.edu/hr, call 402-375-7403 or email hr@wsc.edu. WSC is an EOE.



HIRING!

POSITIONS FOR FT & PT

- **Speech Therapist** (PRN or part-time)
- **Sleep Services Tech** (PRN)
- **Respiratory Therapist** (PRN)
- **Clinic RN/LPN/CMA** (PRN)
- **Patient Service Representative** (PRN)



more openings online! today at pchne.org.

WSC is an EEO/AA EMPLOYER AND PROVIDER, AND VETERANS AND INDIVIDUALS WITH DISABILITIES.

HELP WANTED

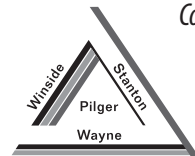
Farmers Cooperative Wayne, Winside & Pilger

Part-time/Seasonal help for harvest

Help with unloading and loading grain trucks.

Help keep grain facilities clean and assist with any maintenance.

Competitive pay and overtime available.



Farmers Co-op

If you are interested in becoming part of our growing cooperative, please submit your application/resume to
325 W. 1st St. Pilger, NE 68768
or call Aaron Becker at 402-396-3414

RANCH HELP WANTED

Open Immediately

Remote Northeast Wyoming Ranch is looking for a

Full-Time Farm/Ranch Employee

Applicant must be self motivated, reliable and responsible with knowledge of haying and farming. Mechanical skills are a must. Farming duties include:

Swathing, baling and raking hay, etc. This is not a cowboy position, but applicant will need to assist in all aspects of cattle work as well. Those duties

include calving heifers, feeding hay, branding and gathering, etc.

Nearest big town is 60+ miles and nearest K-12 school is 30+ miles away.

Housing is provided and on a school bus route.

Please send resume with references by mail or e-mail to:

PeeGee Ranch

1251 Lower Powder River Road | Arvada, Wyoming 82831

pgranch@rangeweb.net | 307-736-2431

COME WORK
WITH US!

Position available:
• Maintenance Tech



HELP
WANTED

EOE

POSITION AVAILABLE

Full Time / Part Time
flexible hours to fit your family routine

Warehouse and Delivery

Position includes unloading and restocking of building materials, reload and delivery locally. Forklift training included. No CDL required.

Clean work environment with local family business.

BUILDER'S RESOURCE

402-375-5386 buildersresource@abbnebraska.com

Looking for
Part time Truck
Driver. Primarily
Grain. Modern
Equipment.

Call

402.380.1540

OFFICE HELP WANTED

Need

Computer and
Phone Skills

Send
applications
and resumes
to 114 Main
Street,
Wayne, NE
68787

now hiring!

FOR RENT

GRAIN VAC for rent. Call Chuck Rutenbeck, Wayne at (cell) 402-375-7864.

FOR RENT: Nice 1, 2, 3, and 4 bedroom apartments. All new heat pumps and central air. No parties. Call 402-369-0771. tfn

FOR RENT or Lease at midcity plaza 202 W 2nd street and pearl in Wayne. Large office area or other uses. Contact Dawn at 402-518-0658. tfn

FOR RENT: 4 bedroom house, 2 bath, 1 block from campus, no pets, no parties, no smoking. 402-375-3657. tfn

We Specialize in Preventative Dentistry



Burrows Family Dentistry

Rob Burrows, D.D.S.

617 Pearl Street • Suite 1 • Wayne, NE 68787
402-375-1124

MR. GOLF CAR, INC.



Large selection New & Used E-Z-GO
Golf Cars & Specialty Vehicles

- Gas or Electric
- Various Colors
- Trade-ins Welcome

Financing available
Call or stop in today!

EZGO

Closed
Saturdays

Your complete golf car center!

822 8th St. • Springfield, SD • 605-369-2625 • www.mrgolfcar.net



Have you been in to see
us recently??



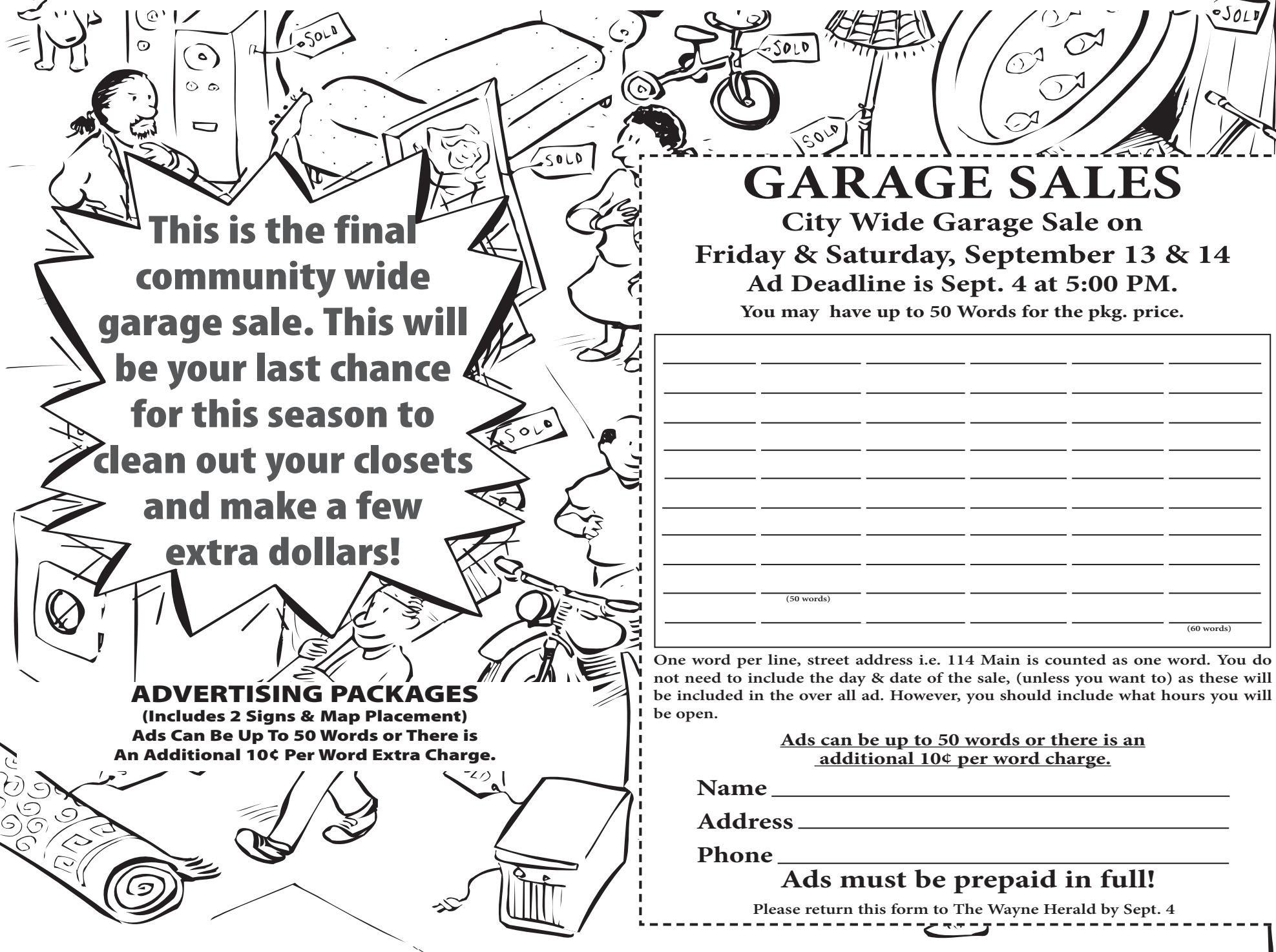
We would
love to
see you!

1106 S. Main St. • Emerson
402.695.0180
www.winnebagocasinos.com

The Iron Horse Casino is owned and operated by the Winnebago Tribe of Nebraska. The Iron Horse Casino reserves the right to substitute or change promotion without notice. Must be present to win. Must be legal age. See Casino for details.

COMMUNITY-WIDE GARAGE SALES

SEPTEMBER 13 - 14



This is the final community wide garage sale. This will be your last chance for this season to clean out your closets and make a few extra dollars!

ADVERTISING PACKAGES
(Includes 2 Signs & Map Placement)
Ads Can Be Up To 50 Words or There is An Additional 10¢ Per Word Extra Charge.

GARAGE SALES

City Wide Garage Sale on
Friday & Saturday, September 13 & 14
Ad Deadline is Sept. 4 at 5:00 PM.
You may have up to 50 Words for the pkg. price.

(50 words)

(60 words)

One word per line, street address i.e. 114 Main is counted as one word. You do not need to include the day & date of the sale, (unless you want to) as these will be included in the over all ad. However, you should include what hours you will be open.

Ads can be up to 50 words or there is an additional 10¢ per word charge.

Name _____

Address _____

Phone _____

Ads must be prepaid in full!

Please return this form to The Wayne Herald by Sept. 4

\$15.95

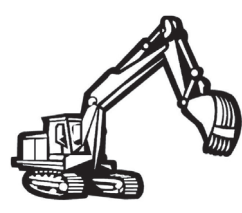
1 Morning Shopper (Sept. 10) and 1 Wayne Herald (Sept. 12)

SNAP AD DEADLINE IS SEPT. 4 BY 5 P.M.

Backhoe - Septic Services

Certified installer for
Septic, Drain Fields,
Holding Tanks & Repair

Trenching, Footings,
Concrete Removal & Demolition
Dump Truck Services Available



Ross Lund

712-898-4499
402-945-2161



GERKIN™

WINDOWS & DOORS

NEW CONSTRUCTION CUSTOM REPLACEMENT



402-375-5386

Mon-Thur 7:30-5:30
Friday 7:30-5
Saturday 8-1

BUILDERS RESOURCE

2 miles west of Wayne on Hwy 35

Now Offering Outpatient Rheumatology Specialist



Meet Dr. Rasha Alqadi, MD

Dr. Alqadi specializes in the diagnosis and treatment of systemic autoimmune diseases and diseases causing **pain, swelling, and stiffness in muscles, bones, joints and ligaments.**

Dr. Alqadi manages a broad range of general and complex rheumatological conditions including **rheumatoid arthritis, lupus, and vasculitis.**

Dr. Alqadi received her medical degree from Al-Quds University in AbuDis, Jersalem. She completed her internal medicine residency at Memorial Hospital of Rhode Island and completed her Rheumatology Fellowship at Roger Williams Medical Center in Boston.

She received board certification in Rheumatology in 2018 and has had training in musculoskeletal ultrasound.



For questions or to schedule
an appointment with
Dr. Alqadi call
402-375-7953



Dr. Rasha Alqadi, MD
Board Certified
Rheumatology Specialist

1200 Providence Road, Wayne, NE | providencemedical.com



FOR SALE BY OWNER

BEAUTIFULLY UPDATED HOME SITTING ON 2 LOTS OVERLOOKING THE WAYNE COUNTRY CLUB

414 E 21st St – Wayne, NE
Total Sq ft: 3708
Asking Price - \$775,000

Call or Text 402-369-0650 to schedule a showing

WEST POINT LIVESTOCK AUCTION

"Eastern Nebraska's newest and most modern Livestock Market"

Thursday August 29 Weekly/Special Breeds/Pairs
Thursday September 5 Weekly/Cuming County Beef In
Schools Benefit 12:30pm

Market Report: Aug. 22, 2024:

Had some good sets of fats in town for our Thursday August 22nd auction, gathering a top of 187.50. We followed with another good run of weigh cows and bulls, finding that market to did take a small step back, sending the bulk of the cows out from 120-137. We finished the afternoon with a short run of feeders and cow/calf pairs. We will be back on Monday September 16th with another good run of calves and yearlings. If you want to move any stock, please give us a call and we would be happy to send one of our team to visit with you about our upcoming specials.

Weigh cows/ Finish Cattle	213 HD
Drug Free	No Test
Top Fats	187.50
Choice/Select	181-187
2-way Cattle	185-190
Hol/Jer/LH	No Test
Top Cows	138-152
Bulk	120-137
Low Yield	100-119
Bulls	140-161
Young	130-160
Feeding Cows	

Office: 402-372-2493 • www.WestPointLivestock.com
Brian Brester (Mg): 402-750-5821 Martey Stewart: 402-375-8913
Jim Schaben Jr.: 712-263-9449 Jon Schaben: 712-263-0755