



# Azle News

YOUR TRUSTED LOCAL NEWS SOURCE SINCE 1966

Wednesday, December 8, 2021 • Volume 70, Number 28 • AzleNews.net • \$1

## District begins process to build new campus

BY DON MUNSCH  
editor@azlenews.net

Azle's new elementary school doesn't have a name yet, but it does have a targeted completion date.

Azle ISD Superintendent Todd Smith said construction will begin late spring on the campus approved by the May 2021 bond. The campus, set to open for students in fall 2023, will be built near FM 730 and South

EDITOR'S NOTE: Second in a two-part series about the Azle ISD's two bond elections in 2021, with this story updating where the district is on constructing the new elementary school and conducting upgrades to campuses, from a bond in May.

Stewart Street and will be the district's sixth elementary school.

The bond also paid for renovations and additions at Eagle Heights, Hoover and Liberty elementary schools. "Some of those are start-

ing as early as this Christmas break," Smith said last month.

The new elementary school was needed because of increased enrollment and overcrowding at campuses. The attendance zone has not

been set, Smith said, noting that the district must provide relief to student capacities at Walnut Creek, Cross Timbers and Silver Creek elementaries. Those will be the primary attendance zone boundaries that will be changed when the new school opens.

Smith was quick to add the new campus will affect each elementary attendance zone, one way or the other. He foresees a realignment of all

elementary attendance zones in effort to achieve balance among all campuses.

The new campus will be designed for 600 to 700 students, Smith said.

May's bond amounted to \$28.3 million for the new elementary school campus and \$18.5 million for renovations at Eagle Heights, Liberty and Hoover elementary campuses.

Each campus will have new voice evacuation fire

alarms across their campuses. Among other renovations are, according to previous reporting in the News:

Eagle Heights: Enlarged library at the center of campus.

Liberty: A larger, centralized library and a larger cafeteria and kitchen. A larger stage for student events also is included.

Hoover: New science lab

SEE BOND, PAGE 5A.

## Christmas on Main Street sparked the holiday spirit

BY JESSICA MCKINNEY  
azlereporter@azlenews.net

This year's Christmas on Main Street on Dec. 4 — themed "Azle Winter Wonderland" — was one of the biggest yet.

SEE CHRISTMAS, PAGE 9A.

The kids were overjoyed to see the Santa Express carrying Jolly St. Nick. Photo by Jessica McKinney

## Lighted boat parade kicked off holiday celebrations



John Walker's boat won first place in the 26-foot and under category during the 2021 Eagle Mountain Lake Parade of Lights. Photo courtesy

BY JESSICA MCKINNEY  
azlereporter@azlenews.net

Families staked out their spots around Eagle Mountain Lake hours ahead of time for the annual Parade of Lights on Nov. 28. They came prepared with blankets and chairs, handwarm-

ers and hot drinks. Kids were laughing and screaming, playing Red Light/Green Light, throwing footballs and light-up Frisbees. As the sky grew dark, there were some complaints about being cold,

SEE EML, PAGE 4A.

## Azle resident makes gesture of appreciation to hospital staff

BY DON MUNSCH  
editor@azlenews.net

Karin Joiner collapsed and cried on the sidewalk outside Texas Health Harris Methodist Hospital Fort Worth. Her husband, Brett, had just been ventilated for COVID-19.

"I was so devastated and so worried sick that Brett wouldn't survive, and it was a Sunday and it was late and there was really nobody around," she said.

Somebody in scrubs — a hospital employee — saw Karin crying on the sidewalk.

"She walked up and she held me until my best friend could get there to the hospital," Karin said.

Even though the employee knew Karin's friends were coming, she wouldn't leave until the friends arrived.

Karin related that story as an example of the people at



Lorraine Franklin, a licensed vocational nurse (LVN) with Texas Rehabilitation Hospital of Fort Worth, tests Brett Joiner's blood sugar. Brett is now a patient at the rehab hospital after being discharged from Texas Health Harris Methodist Hospital Fort Worth.

Pictures courtesy of Texas Health Harris Methodist Hospital Fort Worth

the hospital, who care about the human heart and want to see people get better. For staffers' effort in caring for Brett — who is now in the recovery stage — she wanted to show her appreciation.

The Joiners live in Azle

and own Custom Thread Art in Azle. They moved to Azle in 2011 and have owned the business since 2014.

Brett contracted COVID-19 in late summer and had been at Texas Health Harris Methodist Hospital

Fort Worth since early September. He is now recovering from the disease at Texas Rehabilitation Hospital of Fort Worth, where Brett is now a patient after being

SEE APPRECIATION, PAGE 4A.



INSIDE News 1-10A | Obituaries 5-6A | Sports 1-4B | Classifieds 6-8B

6 992321 00001 0



# Shop with a Cop



Ten students from Cross Timbers Elementary were able to buy Christmas presents for their loved ones while accompanied by Azle police officers on Dec. 5. After an evening of shopping, the kids were escorted back to the police department to wrap their gifts and have dinner with the officers and Cowboy Santa. Photo courtesy

EML, CONTINUED FROM PAGE 1A.

bored and hungry. But their parents told them to just wait.

When the first lighted boat came into view, everyone got quiet and settled down to watch the unique Christmas parade make its way down and across the lake.

The parade has been a holiday tradition on the lake for more than 35 years. It is hosted by Save Eagle Mountain Lake Inc. (SEML), an organization whose mission is "protecting the lake for future generations."

There were 35 entries in this year's parade. (Due to the rain delay, only 29 participated in the parade.) Winners for each category were announced that night at The Lakehouse.

In the 27-foot and up powerboat category, Summer Settle won first place; Ronnie Fretwell won second place; and Christy Tate won third place.

For the 26-foot and under category, the first-place spot went to John Walker; second place was Leon Adams; and third place was Angela Rivera.

Mark Smith was the win-

ner of the sailboat category.

Winner of the Fan Favorite category was Jason Black, and Levi Birmingham's boat and crew won for Best Costume.

"The boaters really took it up a notch this year and (had) some very impressive decorations," said Don Sanderson, president of SEML.

There were some mechanical issues along the parade route, causing it to be "cut a bit short" in some areas along the way.

"We (and I'm sure some viewers) were disappointed," said Sanderson. "We expect that we will have great attendance next year, and we are going to put in safeguards to ensure that the planned route is followed to prevent the challenges we encountered this year."

New this year was a toy drive for Toys for Tots. Donation boxes were set up at various locations around the lake so that spectators could drop a new toy in before they watched the parade.

More than 200 toys and \$1,000 in donations were collected for the program.

# Optimists shop for Lions Club Angel Tree



Members of the Optimist Club of Azle got together on Monday night to shop for Lions Club Angel Tree recipients. The club spent over \$2,800 on gifts for 19 kids. The Azle Lions Club says they still have about 30-40 angels left to adopt for this Christmas. Cards are available at Azle Memorial Library for anyone who would like to help make Christmas special for kids in the community. The deadline to return the new, unwrapped presents has been extended to Dec. 18. Photo courtesy

Like us on Facebook  
@azlenews  
Azle News  
321 Main Street, Azle  
817-270-5300



**GINGERBREAD HOUSE BUILDING**  
**APPLE CIDER & HOT COCOA**  
**COMMUNITY TOURS • HOLIDAY SHOPPING**

## Gingerbread Competition & Holiday Bazaar

Join us at Legacy Oaks of Azle for a holiday celebration! We welcome you to visit and build a gingerbread house, enjoy delicious holiday drinks and treats, shop local vendors for one-of-a-kind gifts, and experience a special holiday tour of our community. Be sure and RSVP so we have the right amount of gingerbread kits.

**THURSDAY, DECEMBER 16th**  
**HOLIDAY BAZAAR: 11 am - 4 pm**  
**GINGERBREAD COMPETITION: 2 pm - 4 pm**  
**RSVP by 12/12/ at 817-270-9630**

**ALL TOURS MUST BE SCHEDULED FOR THIS EVENT | BE SURE TO RSVP**  
*All staff, vendors, and participants of the event are required to wear proper PPE and practice social distancing.*

Special thanks to our sponsors: **CHOICE** Plus Care & Home Health and Hospice

**Legacy Oaks of Azle**  
INDEPENDENT LIVING • ASSISTED LIVING • MEMORY CARE  
1364 Southeast Parkway, Azle, TX 76020  
LegacyOaksAzle.com

**CMVAT** SENIOR LIVING FACILITY ID# 107301

## WE INVITE YOU TO ATTEND OUR CHRISTMAS SERVICES



**CHRISTMAS CANTATA!**  
Sunday, December 19th • 8:30 am & 11 am

*Choirs, Readers, and Chamber Orchestra will present the cantata 'A Thrill of Hope.' All are invited! Come! Enjoy the music and the story of Christmas!*

## Christmas Eve CANDLELIGHT SERVICES

*Bring your family and enjoy an evening of candlelight, carols and communion*  
**5:00 pm, 7:00 pm, and 11 pm**

### JOIN US FOR WORSHIP EVERY SUNDAY!

*Blended Worship 8:30 AM • Contemporary Worship 9:45 AM  
Traditional Worship 11:00 AM • Sunday School & Fellowship 9:45 AM*

**FIRST UNITED METHODIST CHURCH**  
200 Church Street • Azle • 817-444-3323  
www.fumcazle.org • church@fumcazle.org



# Optimists honor November students

BY JESSICA MCKINNEY  
azlereporter@azlenews.net

The Optimist Club of Azle met the morning of Dec. 3 to honor its November Young Texan and Texanne. Azle High School seniors Katelyn Ingram and Steve Duran were recognized by the club for their academic and extracurricular achievements.

Ingram is ranked No. 5 in her senior class with a GPA of 104.75. She has been ac-

cepted at her first-choice college, UCLA, where she plans to study chemistry.

She is one of only two students who passed the certified assistant refrigeration operator (CARO) exam through the high school, an accomplishment she lists among those she is most proud of, as well as being in the Top 10 of her class.

Ingram has been an active member of the Marching Green Pride throughout high

school and is a member of the National Honor Society and Interact Club.

Duran holds a GPA of 102.86 and is ranked No. 14 out of 357 seniors in his class. He is considering attending TCU or UNT after graduation where he will study business.

He works alongside his dad in the family's construction business and is an active member of his church and takes time to work with animals at home.



Principal Randy Cobb (left) with Steve Duran, Katelyn Ingram, Optimist Club president Leon Williams. The AHS seniors were honored at the club's Dec. 3 meeting as the Young Texan and Texanne for November.  
Photo by Jessica McKinney

# Azle seniors honored by Rotary

BY DON MUNSCH  
editor@azlenews.net

Four Azle High School seniors were honored Dec. 2 for their academic and extracurricular achievements by

the Rotary Club of Azle.

The Rotary Club honors four seniors each month. December's honorees were Ashlynn Hobbs, Mackenzie Benton, Chris Lee and Jonathan Robles.

Ashlynn Hobbs is ranked 19 out of 357 students in the senior class and holds a grade point average of 102.53. She told Rotarians that she is considering several colleges, including many from out of

state, such as Brown University in Rhode Island. Brown is an Ivy League school.

Among her activities are National Honor Society, cross-country, track and robotics. Away from school, she enjoys the martial arts, cooking, video games, reading and jewelry making and has taken Japanese lessons, according to her senior information form.

In the form, in a section on something she thought would be of interest, she mentioned her affinity for travel, including a bucket list that she started when she was 8 years old and said she has "been to more countries than states."

Benton holds a GPA of 102.63 and ranks 15th in her class. She has committed to Texas A&M University and

says a career working with animals – such as animal science or a job on a ranch or rodeo – would interest her.

She has been involved in powerlifting, NHS and Fellowship of Christian Athletes, the last of which she joined this year. She notes that her parents have military backgrounds and that she was born on a military base in Spain. Away from school, she enjoys running and reading.

Lee, ranked No. 51 in the class and carrying a 98.88 GPA, is considering several colleges and said business, engineering and nursing are fields that interest him. He played quarterback for the Hornets and was the offensive MVP and a member of the all-district first team. He is proud of earning his NHS

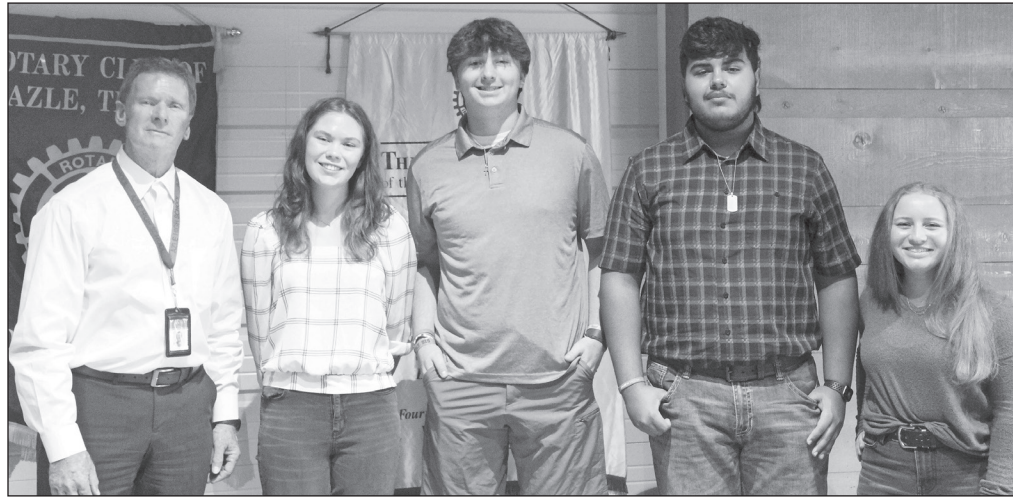
membership, and said he considers himself a strong leader who pushes others to better themselves.

Robles is ranked 31st in the class and has a GPA of 101.46. He is considering a number of schools and lists business and two science fields – chemistry and engineering – as college majors that interest him.

His activities include football and powerlifting, and he has been Academic All-District for three straight years. He belongs to NHS.

He lists painting and watching movies as two of his hobbies.

Robles said that being in NHS and attaining straight A's throughout his high school career are accomplishments he is most proud of during high school.



Azle High principal Randy Cobb, left, with Ashlynn Hobbs, Chris Lee, Jonathan Robles and Mackenzie Benton.  
Photo by Jessica McKinney

Bob's **BASEBALL** Tours

**Field of Dreams Tour** ▶ Home games for Chicago (Cubs/White Sox), Brewers and Twins. Also a visit to the Field of Dreams movie site. Tour begins/ends in Minnesota.  
Aug. 15-21, 2022

**New York/New England Fall Foliage Tour** ▶ Home games for New York (Yankees/Mets) and Red Sox. Guided Tour of NYC, free time in Boston, Trolley Tour in Maine, travel through White Mountain National Forest in New Hampshire & scenic train ride in Vermont. Tour begins/ends in Newark, NJ.  
Sept. 26-Oct. 2, 2022

Tours include deluxe motor coach transportation, additional sightseeing opportunities and quality game tickets/hotels.

Call for a FREE brochure: 507.217.1326

Shop Now For Christmas

**AVON**

GIFTS FOR EVERYONE!

Suzzann Mostert • 817-703-1724  
Wood72@verizon.net

www.youravon.com/smstert

The Return Of

**AZLE WESTERN WEAR**

Now Open

3221 E. Hwy 199, Springtown

Next to Boomtown Furniture

**817-444-2855**

Wed-Sat 10 am - 6 pm

**LAKE WORTH PREMIER EYE CARE**

Dr. Jeffrey R. Crabtree

**Attention Seniors!**

Did you know Medicare will help pay for your eye exam?

Call Today!

www.lakewortheeye.com • 817-439-9455

6921 Foster Dr. Lake Worth, TX 76135

Still Waters Retreat

- Retreats of all kinds
- Overnight Stays
- Family Reunions
- Cabins & Rooms sleep up to 30
- Weekend or Weekday Staycations
- Meeting Room

Set on 39 acres of rolling hills and valleys west of Dallas/Fort Worth. Tours Available.

www.stillwatersretreattexas.com

Springtown, Texas 76082 • 817-220-2681

**HOGLE**

Insurance Group

167 W. Main • 817-444-6389  
www.HogleInsurance.com

Shaye Hogle "Our Best Policy is Personal Service" Hogye Hogle

IRA-SEP-401k Rollover

**3.15%** 60 Month Rate Guarantee **2.15%** 24 Month Rate Guarantee

Home and Auto

Travelers • Germania • Safeco  
Progressive • Met Life • Mercury  
National General • Chubb • Foremost

**Villa del SOL MEXICAN RESTAURANT**

1300 Northwest Pkwy  
Azle, Texas

Sun 11-8 • Tues - Thurs 11-9  
Fri 11-10 • Sat 11-9:30 • Mon Closed

**HAPPY HOUR**  
Tues-Sat 4 - 8 PM

**TAKE OUT ORDERS**  
**817-406-4452**  
**817-406-4800**

**Motley's AUTOMOTIVE & MOTORCYCLES**

FAMILY OWNED AND OPERATED FOR 20 YEARS

State Inspection for Tarrant & Parker Counties

**Automotive**

- Tune-ups
- Diesel
- Suspension
- Computer Diagnostics
- A/C Repair
- Brakes
- Emission Repairs
- Repair & Restore Classic Cars

**Motorcycles & ATVs**

- Maintenance & Repairs

ASE CERTIFIED

UPS PACKAGE DROP OFF STATION

VISA MasterCard DISCOVER

JASPER ENGINES & TRANSMISSIONS

1304 NW Pkwy (Hwy 199)  
817-444-8529  
817-456-0907

www.motleyautomotive.com  
Monday - Friday 8:30 am - 6:00 pm

**Dos Chiles Grandes Cafe**

Two Enchilada Dinners & Two Drinks = \$15

EVERY TUESDAY

- Open 7 Days
- Fast Friendly Service
- Fresh Homemade Food

425 W. Rock Island Ave.  
Hwy 114 • Boyd • 940-433-3322



APPRECIATION CONTINUED FROM PAGE 1A.

discharged last week from Texas Health Fort Worth. Karin expects Brett to be there two to three weeks.

Karin appreciates the care and kindness her husband has received at the hospital, and to show her gratitude, she made and distributed close to 400 insulated tumblers featuring individual and staff members' names with an image of Rosie the Riveter and the slogan "We Can Beat It!"

Karin was effusive in her praise for the hospital staff.

"His care here at Harris has been phenomenal," she said. "The staff – the nurses, the doctors, the techs. Even the housekeeping crew. They have all been wonderful."

**THE FIRST SIGNS OF DISTRESS**

"I was coughing for a couple of weeks real hard," Brett said.

He had been sick two weeks prior to coming to the emergency room on Sept. 7, and he has been hospitalized ever since. Karin did not contract the virus. Brett was discharged from the main hospital and was sent to Texas Health Fort Worth's long-term acute care wing, located inside the hospital, and then last week, he was sent to the rehab hospital.

"They're working on regaining his strength," Karin said.

He used a tracheostomy, but they had it capped, meaning that he was just using regular nasal cannula oxygen. He had the tracheostomy removed last week.

She said the last few months have been difficult but at the same time, "it has been such a blessing," explaining this period has renewed her love and devotion

to Brett. The Joiners have been married 12 ½ years.

"It really puts your priorities in order," she said. "It has renewed my faith in God. It's been a journey. It still is a journey."

She said she has seen "God's blessings and his miracles. There's been something different every single day that I am thankful for to God."

**A SECOND FAMILY**

In intensive care, she visited frequently and she said staff became a second family. The hospital would only allow one visitor.

"They would take time to check on me and ask me if I needed anything," she said. "They would hug me and hold me while I was crying. ... These people are phenomenal."

She said the greeter at the front desk would stop and provide hugs and reassuring words.

"Everybody in this hospital is amazing," Karin said.

She said since Brett was discharged from the main hospital, his former doctors have checked up on him.

When Brett checked in at the hospital, employees at the emergency room showed compassion toward Karin, and that made an impression on her. The employees were always happy and cheerful no matter how they were treated, and Karin told Brett she thought they should do something nice for the people taking care of him.

"I had no idea when we started that we would make this many, but that is OK," she said.

She made tumblers for staff in ICU, respiratory therapists, lab workers and other employees as well as anyone else she could find

a name for in other departments. Staffers love the tumblers, especially the notes inside the tumblers. The notes inform the employee how much Karin appreciates the care for her husband but other patients they see every day as well.

Since Karin and Brett have been away from their business, Karin's mother has stepped in to help at the store, taking over Brett's duties. Other staffers stepped up during this time, including working on tumblers.

Karin credits God for Brett's recovery. She quickly lauds the hospital and becomes emotional thinking about their care for Brett.

"This hospital, it's a community effort at this hospital," she said, noting how she was especially impressed with how ICU staff worked so well as a team.

According to the company website, Custom Thread Art offers "custom embroidery, screen printing, vinyl transfers, bling, and anything and everything promotional. Our passion is to provide companies, schools, sport teams, and individuals with customized products that fit every budget, need, and in some cases desire."

The company specializes in custom embroidery for every occasion, including weddings and birthdays, and other uses, such as school spirit, corporate branding and unique gifts.

**PROVIDING WORDS OF COMFORT**

Noor Qadadat, a hospital screener, received a tumbler as a thank-you for helping Karin through an especially difficult trip to the hospital. Qadadat has worked at the hospital since June.



Karin and Brett Joiner live in Azle and own a business here. Brett has endured months of battling COVID-19 and appears on his way to recovery. Joiner created a way to give thanks to hospital staff during Brett's stay with the hospital. Pictures courtesy of Texas Health Harris Methodist Hospital Fort Worth.

"I supported with words – that's all I could do," she said. "I told her it's going to be OK, be strong (and) there's a lot of miracles that can happen. Just stay strong."

She told Karin that if Brett sees her being strong, he will be strong enough to get over his illness.

"Since then, she started to recognize me as someone who gave her hope that day," she said.

She appreciates receiving the tumbler.

"When you work very hard and you have a passion in helping people, when you get those (gifts), it's a small thing

– (but) it means a lot," Qadadat said. "It means a lot to me because I feel like she appreciated me and I have done at least my job. It gives me a lot of emotions, to be honest. It's really nice of her."

Corey Wilson, chief operating officer of Texas Health Fort Worth, said in an email he thought Karin's tumblers were "a thoughtful, generous acknowledgement of the phenomenal care that all of our team members – from physicians, nurses and respiratory therapists to our hospital's screeners, housekeeping and food services staff – strive to provide every day to our patients, families and

visitors. The kind gesture touched our hearts and is a great reminder that every interaction we have with patients and their loved ones is an opportunity to make what may be a difficult time in their life better."

He said the staff often receives notes, signs or cards of gratitude and recognition from current and former patients or their loved ones.

"We sincerely cherish them all," he said. "These kind messages and gestures reaffirm and refuel our team's passion for health care and serving our community. They are truly heroes each and every day."

**Joshua Experience Big Band**

*Christmas Concert*

**Come Join Us**

**Sunday December 12 • 6 pm**

**Victory Christian Center**

**737 Boyd Rd., Azle**

**LEGAL PUBLIC NOTICES**

**FINAL NOTICE OF CLAIM AND PUBLIC SALE**  
 Property to be sold to satisfy landlord's lien. Seller reserves the right to withdraw property from the sale. Unit items to be sold to the highest bidder.  
**Sale to be ONLINE @ <https://www.storagetreasures.com/>**  
 Location of Units for Public Sale:  
**LONGHORN STATE STORAGE**, 11700 Jacksboro Highway, Fort Worth, Texas 76135.  
**Auction begins on Friday, January 1, 2021 at 9:00 am** for the following tenants: **Safija Hozbo; Tammy Sharp; David Kinnard; Brian Holsey; Jesus Chavez; Keith Whitthuas; Nathaniel Burrows.** all misc. household items.

**FINAL NOTICE OF CLAIM AND PUBLIC SALE**  
 Property to be sold to satisfy landlord's lien. Seller reserves the right to withdraw property from the sale. Unit items to be sold to the highest bidder. **Sale to be ONLINE @ <https://www.storagetreasures.com/>**  
**Location of Units for Public Sale:** LONGHORN STATE STORAGE, 11700 Jacksboro Highway, Fort Worth, TX 76135.  
**Auction begins on Friday, January 1st, 2021 at 9:00 am** for the following tenants: **Safija Hozbo; Tammy Sharp; David Kinnard; Brian Holsey; Jesus Chavez; Keith Whitthuas; Nathaniel Burrows.** All misc. household items.

**NOTICE OF PUBLIC SALE**  
**AZCO CENTERPOINT STORAGE** will hold a public sale to satisfy a landlord's lien. **Sale will be Saturday, December 18, 2021 at 11:400 PM 730 N. Azle, Texas 76020. Sign-In is at 10:00 a.m. and Bidding begins at 10:15 a.m.** Items being sold to satisfy Tenant's rent: **Dalton Winters, A4; Bobby Vasquez, B18; Ruth Christ, 9 & 128:** All Window fan, Heaters, DeWalt Grinder, German Violin, tools, home decor, tires, baby & toddler clothes, men's clothes, wedding dress, etc.

**NOTICE OF PUBLIC SALE**  
 Pursuant to Chapter 59, Texas Property Code, **SANDY BEACH SELF STORAGE**, which is located at 11109 Liberty School Road, Azle, Texas 76020 will hold a public auction of property being sold to satisfy a landlord's lien. **Sale will be at 10:00 a.m. on Saturday, December 18, 2021 at 1109 Liberty School Road, Azle, Texas 76020.** Property will be sold to highest bidder for cash. Deposit for removal and cleanup may be temporarily required. Seller reserves right to not accept any bid and to withdraw property from sale. Property in each space may be sold item-by-item, in batches or by the space. Property being sold includes contents in spaces for the following tenants, with brief description of contents in each space.  
**TENANT'S COMPLETE NAME as shown on rental agreement: Maria Garcia, #58; Samantha Whitehead, #100; Jerry Freeman, #110; Annette Tyler, #59; Jennifer Medford, #128; Richard Hayes, #12; Cory Snell, #44; Darlene Wise, #3; Ruth Christ, #69; Dennis Tichavsky, #92; Cheriba Cook, #96; Kristina Massey, #18; Shonna Fulkerson, #15:** All units have misc. household and tools.

**WAREHOUSE FULL OF ROLLS AND REMNANTS**

**CERAMIC TILE AND WOOD FLOORING**

**for every room in your home! Quality, large selection, and great prices... are still found at**

*"Since 1979"*

**Larry's CARPET**  
 Showroom & Warehouse

**www.LarrysCarpet.com**  
**8305 Jacksboro Hwy.**  
**817-237-7871**



# Obituaries

## Leondra "Sue" Bearden 1949 - 2021

Leondra "Sue" Bearden, 72, loving sister, aunt and friend passed away November 22, 2021.

Sue was born May 11, 1949 in Big Spring Texas to Elvin and Lloydola Bearden. She graduated Big Spring High School and earned a bachelor's degree in Education from the University of North Texas. Sue began her teaching/coaching in Rio Vista, Texas for one year and spent the next 31 years at Azle Junior High School retiring in 2004. Sue was a member of First United Methodist Church of Azle, Texas Retired Teachers Association and the Humane Society of Texas.

She was an avid lover of animals and raised 14 dogs, five cats, four deer, and two pygmy goats.

Sue was preceded in death by her parents.



Survivors include her best friend, Marietta; her brother Mike Bearden and wife Molly; niece Heather and husband Dom; nephew Elvin and wife Megan; nephew Ian; one great niece and two great nephews, numerous cousins, and her adopted Weaver family.

Sue will be missed by her family, friends, and former students.

*The Azle News,  
Dec. 8, 2021 Edition*

## James Daniel Holly 1942 - 2021

James Daniel "J.D." Holly departed this life to be in heaven on Nov. 8, 2021.

He grew up on Ten Mile Bridge Road and wished to have his ashes scattered off the bridge where he loved to fish during his life. His daughter Janaa' Farmer and grandsons Logan James Chapa and John Wyatt Cross carried out his wishes on Nov. 28, 2021 followed by a celebration of his life with his sister-in-law Nancy Holly and his many nieces and nephews.

He attended Lake Worth schools and worked for GTE in Azle for many years. He loved the outdoors and fishing and was a tremendous cook.



He is survived by his wife Melody Winn Holly; daughter Janaa' Farmer and numerous nieces and nephews who loved him dearly and will miss him very much.

*The Azle News,  
Dec. 8, 2021 Edition*

BOND CONTINUED FROM PAGE 1A.



The new elementary school will be built near FM 730 and Stewart Street.  
Photo by Don Munsch

and special education classrooms, and renovated band and music spaces.

Critical priorities now going forward are naming the school and having communications about attendance zones, Smith said.

Growth is happening quickly here.

"The demographers are anticipating 200-250 additional students a year for the next 10 years," said Matt Adams, assistant superintendent of finance and operations.

Azle's newest elementary will be the district's most recent addition since the 1997 bond election, which added Cross Timbers and Forte Junior High School. The current Walnut Creek and Azle elementary schools are replacement campuses.

Just two schools are named after people: Hoover Elementary and Forte Junior High School. Those two schools were named after previous superintendents.

# Spotlight on BUSINESS

## DECEMBER

### Jennifer Stephens TAX SERVICE, INC

- Contactless Services
- Tax Preparation
- Free 2nd Looks for Tax Returns
- Free Consultations
- Business Entity formation: LLC, Inc., Corp., LP, LLP, Trust, Non-For-Profit
- Wide Range of Business Forms

**BRING IN THIS AD TO RECEIVE**  
**\$25 Off**  
TAX SERVICES OR ACCOUNTING FEES

119 Industrial Ave, Azle  
**817-301-8880**  
JenniferStephensTaxService@gmail.com  
WALK-INS WELCOME!



A family-friendly atmosphere keeps customers coming back for generations. The shop currently has clients who are the grandchildren of some of their original customers.

## Azle Paint and Body

Where customers send their friends

When it comes to painting and repairing the bodies of vehicles, quality matters.

The folks at Azle Paint and Body have nearly 100 years of combined experience in the paint and repair fields, ensuring that the job is done right.

A family-friendly atmosphere keeps customers coming back for generations. The shop currently has clients who are the grandchildren of some of their original customers.

Azle Paint and Body originally opened as Houston's Paint and Body in 1974. Eric Chisholm, the current owner, bought the shop in 2016. Eric Chisholm brings over 36 years of experience to customers.

Azle Paint and Body's motto is "Where customers send their friends," and they work hard to keep up that reputation.

The staff strives to ensure high-quality work because they enjoy visiting with their customers-turned-friends around town without worry that those customers are not pleased with the service they received.

Collision repair and painting for automobiles and motorcycles, hail damage repair, and glass replacement are all services Azle

Paint and Body is equipped to perform.

Azle Paint and Body is located at 233 W. Main Street, next door to Brace Chiropractic. The shop is open 8 a.m. to 5 p.m. Monday through Friday, but does take appointments outside of those hours for customers who've made arrangements ahead of time. Call 817-444-5057 to schedule an appointment for your needs.



From left to right, Mike Ramon, owner Eric Chisholm, Michelle McNeil, and Josiah Dutra.

## AZLE PAINT & BODY

"Where Customers Send Friends"

Eric Chisholm, Owner

817-444-5057  
233 W. Main

refund transfer

### PAY NOTHING OUT OF POCKET TODAY

With a refund transfer.

Don't want to pay up front?  
With a Refund Transfer, your tax preparation and related fees can be deducted from your refund after all services are complete. It's easy and convenient. Get a State Refund Transfer at no additional cost when you buy a Federal Refund Transfer.

Refund Advance Begins  
January 4, up to \$3500

H&R BLOCK®

Azle 730 Shopping Center, 828 Boyd Rd., Ste D, Azle TX 76020  
817-270-4586  
Offices open Jan 4, 2022

Refund Transfer (RT) is a tax-refund related deposit product by Axos Bank, Member FDIC. You must meet legal requirements for opening a bank account. RT is a bank deposit, not a loan, and is limited to the size of your refund less applicable laws. You can e-file your return without a RT, a loan or extra fees. Main License No. FRA2, \*2019 HRB TAX GROUP, INC.

## Motley's AUTOMOTIVE & MOTORCYCLES

FAMILY OWNED AND OPERATED FOR 20 YEARS  
State Inspection for Tarrant & Parker Counties

Automotive	Motorcycles
<ul style="list-style-type: none"> <li>• Tune-ups</li> <li>• Diesel</li> <li>• Suspension Computer Diagnostics</li> <li>• A/C Repair</li> <li>• Brakes</li> <li>• Emission Repairs</li> <li>• Repair &amp; Restore Classic Cars</li> </ul>	<ul style="list-style-type: none"> <li>• Maintenance &amp; Repairs</li> <li>• ATVs</li> <li>• Dirt Bike Parts</li> <li>• Accessories</li> <li>• Motorcycle Apparel</li> </ul>

ASE CERTIFIED

UPS PACKAGE DROP OFF STATION

1304 NW Pkwy (Hwy 199)  
www.motleyautomotive.com  
817-444-8529  
817-456-0907  
Monday - Friday  
8:30 am - 6:00 pm



# Obituaries

## David Hancock 1974 - 2021

David Hancock, 47, passed peacefully in his sleep on November 28, 2021.

A Celebration of Life was held at 1 p.m., Friday, December 3, 2021, at Biggers Funeral Home in Fort Worth. A private family burial will be held later at Azleland Memorial Park in Azle.

David was born on June 6th, 1974, in Fort Worth to his parents Loyd and Shirley Hancock. David married the love of his life Samantha Donth in April of 2000.

David attended Azle schools and graduated from Azle High School in 1992. In high school, David excelled not only in his studies, but also in football, his passion at the time. David attended Tarleton State University in Stephenville for a short time after high school.

During David's career, he worked for multiple electric supply businesses and most recently was a quotations manager for Wholesale Electric Supply in Weatherford. From the start, many considered David a close friend or even family. Whether they were high school friends, co-workers, his Call-of-Duty buddies (as David would word them), or the Center for Animal Research and Education (C.A.R.E.) organization, volunteers and visitors, they were drawn to David by his charms, humor, and kindness. David was never shy in sharing his passions and could go on for hours to anybody who would listen,



whether about Star Wars, big cats, or his family.

David will be dearly missed by everyone that knew him. David was a caring husband and father, a loving son and brother, and a supportive friend. David will never be forgotten.

The family ask that memorials be made in David's name to the Center for Animal Research and Education (C.A.R.E.- carerescutexas.com) in Bridgeport or to your favorite charity.

David was preceded in death by his mother Shirley Hancock; his grandparents, Millard and Juanita Hancock and A. N. and Sue McAllister.

David is survived by his wife, Samantha; his sons, Ross, Bazil, Gabe, and David Jr.; his father Loyd Hancock and partner Margaret Maggard of Azle; brothers; John and his wife, Lori of Bridgeport and Matt and his wife, Monica of Azle and numerous nieces and nephews.

*The Azle News, Dec. 8, 2021 Edition*

## Ralph James Ray, Jr. 1955 - 2021

Ralph (Buddy) James Ray, Jr., 66, of Marion, passed away, Tuesday, November 30, 2021 at home.

In lieu of flowers the family asks to donate to diabetes research.

Buddy was born February 25, 1955 in San Antonio, Texas to Ralph James Ray Sr. and Jean Barbara Halfpenny Ray-Laskovich.

Buddy loved to work on the family ranch and was an over the road truck driver for over 30 years. Buddy had a passion for woodworking and constructed beautiful birdhouses which he took to craft shows. Buddy was loved by so many people, was a very special person and will be missed by all that knew him.

He was preceded in death by his parents.

Left to cherish his memory are his two sons, Randy Ray (Olivia), Kevin Ray



(Charlene); siblings Barbara Jean Mueller (Wilbert), Wayne Ray, Frank Johnson (Nancy), Linda Fait (Frank), Kathleen Elaine Beshears (David), Darren Wayne Goedhart (Rosie), Cindy Whitmarsh (Bill), Robin Tolleson, Robert Ray Johnson, Aunt Darlene Wilson (Bill); multiple grandchildren, great grandchildren along with numerous other family members and friends.

*The Azle News, Dec. 8, 2021 Edition*

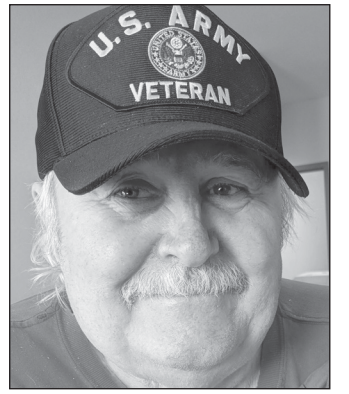
## Jack "Mike" Spradlin 1950 - 2021

Jack Michael "Mike" Spradlin passed away peacefully Friday, December 3, 2021 in Weatherford, Texas.

Born in Portsmouth, Ohio June 26, 1950 to Herman Jackson Spradlin and Marguerite Jean Wood, he resided in the Azle area for the past 35 years. A Vietnam-era veteran in the Army's 101st Airborne Division, Mike served in California and Arizona before returning to Texas to settle and raise a family. Coming from a family of phone men and radio operators, he worked for GTE for the next 23 years, demonstrating a strong work ethic for his family to follow. A servant-leader in his church, Mike loved and honored God through various service to family, friends, neighbors, and strangers.

Mike is preceded in death by his mother and father.

Mike is survived by his



wife of 43 years, Brenda, son Jeff, daughters Tonya and Emily, and grandchildren Brinley, James, and Amayea; by his aunt, Barb Hays, sister Marcie Smith, brother Steve, and many, many close family and friends. He is remembered for his devoted love for his family, care for animals, and tireless service to his neighbors and God.

He is forever loved by all who knew him.

*The Azle News, Dec. 8, 2021 Edition*

## William Harlan Tidwell 1933 - 2021

William Harlan Tidwell, 88, of Azle, went home to be with the Lord, Tuesday, November 30, 2021 in Weatherford.

A celebration of his life will be held at 10 a.m., Monday, December 20, 2021 at Alexander's Midway Funeral Home, Springtown.

He was born August 27, 1933 in Fort Worth to Albert and Ola Pearl (Landers) Tidwell. They both were there to welcome him home, along with his brother, Herbert Tidwell and step-daughter, Danni Laird.

Harlan proudly served in the US Army and was a sheet metal worker by trade. He served as a member of the Sheet Metal Local Apprentice Committee, overseeing schooling and apprenticeships. Harlan also served as President of the Aztec Saddle Club and on the Board of Directors for many years, President of District 28 AASP&RC, President of Aztex Squares, a member of the Aztec Drill Team and often acted as the announcer of the Aztec Rodeos and North Texas High School Rodeo.



He also served as a City Councilman for Sanctuary, Texas, Property Chairman of Azle Christian Church, Deacon for Azle Christian Church and most currently, was a Deacon Emeritus of Azle Christian Church in the 1960's.

He is survived by his loving and devoted wife of 51 years, Eileen Tidwell; daughter, Lita Ann Robey and husband, Peter; sons, William Darren Tidwell and wife, Reisa and Larry Duane Tidwell; grandchildren, Chad, Taylor, Anna, David and Anthony; numerous great grandchildren.

*The Azle News, Dec. 8, 2021 Edition*

**White's Funeral Homes**  
Our family serving your family since 1908

**Bob White, Anita White and Zack Bellenger**

**Full Service Funeral Home**  
**Cremation Services**  
**Pre-Need Plans**

Azle • Springtown • Mineral Wells • Weatherford  
817-444-3211 • www.whitesfuneral.com

**Galbreath-Pickard**  
FUNERAL CHAPEL

817-594-2747 • Fax 817-596-7803

James R. Plowman  
Norma Plowman  
913 N. Elm St.  
Weatherford, TX 76086  
www.galbreathpickard.com  
1-800-593-2747

**Azle News**

321 West Main Street  
Azle, Texas  
Phone: 817.270.3340  
Fax: 817.270.5300

Published every Wednesday at 321 West Main Street, Azle, Texas by Hyde Media, LLC. Periodicals class postage paid at Azle, Texas, 76020. **Postmaster:** Send address changes to: 321 West Main Street, Azle, Texas 76020

USPS No. 546-920

Annual subscription rates: \$40.00 in Parker, Wise, Tarrant counties (\$36.50 65 and older); \$46.50 elsewhere within and outside Texas.

The Azle News does not assume responsibility for errors in advertisements beyond the cost of the advertisement itself. Any erroneous reflection upon the character or reputation of any person or firm appearing in this newspaper will be corrected when called to the attention of the publisher.

The entire content of each issue of The Azle News is protected under the Federal Copyright Act. Reproduction of any portion of any issue is expressly forbidden without the prior written consent of the publisher.

This newspaper is printed on recycled newsprint and is recyclable.

© 2021 Azle News

Like us on Facebook

@azlenews  
AzleNews.net  
817-270-3340

**Azle News**

**... ATTEND THE CHURCH OF YOUR CHOICE THIS SUNDAY**

<p><b>THE ABBEY CHURCH</b> Pastor: Paul Brownback 10400 Jacksboro Highway 817-238-1404 www.TheAbbeyChurch.com</p> <p>Morning Worship..... 10:30 AM Community Groups..... Various Times</p>	<p><b>COMMUNITY BIBLE FELLOWSHIP CHURCH</b> Pastor - Alton Davis 817-521-4510 1405 Reynolds Rd., Azle 817-444-7117 Directions: 730 N. to 1542 .5 mi. right on Cardinal, left on Reynolds</p> <p>Sunday School..... 9:45 AM Morning Worship..... 11:00 AM Sunday Evening..... 6:00 PM Wednesday Evening..... 7:00 PM</p>	<p><b>FIRST UNITED METHODIST CHURCH</b> Pastor: Dr. Richard Reed 200 Church St., Azle 817-444-3323</p> <p>Morn. Worship ..... 8:30, 9:45 &amp; 11 AM Sunday School..... 9:45 &amp; 11 AM Youth (UMYF) ..... 5:00 PM Sun &amp; 6:30 PM Wed</p>	<p><b>LEGACY CHURCH</b> Assembly of God Church, Pastor: Gary D. Veazey Hwy. 199 &amp; Jaybird Lane 817-221-2983</p> <p>Morning Worship..... 9:15 &amp; 11:00 AM Kidz Zone..... 9:15 &amp; 11:00 AM Weds Evening Legacy Group Legacy Youth, Kids All Services..... 7:00 PM</p>	<p><b>THE WORD@LAKESIDE CHURCH OF GOD</b> 9396 FM 1886 Fort Worth, TX 76135 817-237-5500 thewordatlakeside.com</p> <p>Pastors: Brandon and Kelly Bohannon Worship Pastor: Christen Moody Family Life and Young Adult Pastors: Jodie and Mark James, Kids Pastor: Katie Pearson, Student Pastors: Taylor and Sheridan Tomlin, Creative Directors: Logan and Carrie Edwards, Connections Coordinators: Preston and Ashley Larrew</p>
<p><b>ASH CREEK BAPTIST CHURCH</b> Pastor: Dr. G. Wesley Shotwell 300 South Stewart St. 817-444-3219 www.ashcreekbc.org</p> <p>Sunday School..... 9:30 AM Contemporary Worship-TMP ..... 10:45 AM Traditional Worship ..... 10:45 AM Evening Worship..... 6:00 PM Wednesday Youth Refuge..... 6:00 PM Wednesday Evening..... 6:15 PM</p>	<p><b>CORNERSTONE COMMUNITY CHURCH</b> 2233 Hwy 199 E. • Springtown 817-221-LIFE (5433)</p> <p>Sunday Worship Service ..... 10:00 AM Wednesday ..... 7:00 PM</p>	<p><b>HOPE LUTHERAN CHURCH ELCA</b> 4795 E. Hwy 199 - Reno 817-221-HOPE Follow us on Facebook for streaming services</p> <p>Sunday School..... 9:00 AM Traditional Service ..... 10:00 AM</p>	<p><b>SILVER CREEK UNITED METHODIST CHURCH</b> Rev. Sheila Fiorella - Pastor 2200 Church Rd., Azle 817-444-1382 www.silvercreekumc.org Sunday School 9:30 AM • Worship 10:30 AM</p>	<p><b>Family Life and Young Adult Pastors:</b> Jodie and Mark James, <b>Kids Pastor:</b> Katie Pearson, <b>Student Pastors:</b> Taylor and Sheridan Tomlin, <b>Creative Directors:</b> Logan and Carrie Edwards, <b>Connections Coordinators:</b> Preston and Ashley Larrew</p>
<p><b>AZLE CHRISTIAN CHURCH</b> (Disciples of Christ) Senior Minister, Ashley Dargai, Katie Medlin, Worship Minister 117 Church St. • 817-444-3527</p> <p>Sunday School..... 10:00 AM Morning Worship..... 11:00 AM</p>	<p><b>CROSSROADS BAPTIST CHURCH</b> Pastor - Jon Baker Corner FM 730S &amp; FM 1886 817-755-0279 Transportation Available</p> <p>Worship Service..... 10:30 AM Wed. Prayer Service..... 7:00 PM</p>	<p><b>HOLY TRINITY CATHOLIC CHURCH</b> 800 Highcrest Dr. - Azle 817-444-3063</p> <p>Saturday..... 5:00 PM Sunday ..... 9:00 AM Sunday ..... 11 AM (Spanish) Daily Mass (M, T, Th, F) ..... 8:00 AM Wednesday..... 6:30 PM Confessions..... Sat 4 PM Wed 5:30 PM</p>	<p><b>SILVER CREEK BAPTIST CHURCH</b> Pastor: Jay Ditty Minister of Music: David Musick Corner FM 730 S. &amp; Veal Station Rd. Church 817-444-2325 www.silvercreekbc.org</p> <p>Sunday School..... 9:45 AM Morning Worship..... 10:50 AM Evening Worship..... 6:00 PM Wed. Prayer Service..... 7:00 PM</p>	<p><b>Equip Sunday School at the WORD..... 9:30 AM</b> <b>Empower Worship at the WORD ..... 10:45 AM</b> <b>Kids at the WORD..... 10:45 AM</b> <b>PreK at the WORD ..... 10:45 AM</b> <b>Emanate at the WORD</b> <b>(Special Needs Ministry) ..... 10:45 AM</b> <b>Nursery at the WORD ..... 10:45 AM</b> <b>Young Adults at the WORD ..... 6:00 PM</b></p>
<p><b>AZLE FIRST ASSEMBLY of GOD</b> Pastor: Tim Stevens 1020 S.E. Parkway, Azle 817-237-4903</p> <p>Sunday School..... 9:30 AM Morning Worship..... 10:30 AM Wednesday Evening..... 7:00 PM</p>	<p><b>THE EDGE CHURCH - AZLE</b> 1313 S.E. Pkwy, Azle 817-237-4822 Missouri Synod</p> <p>"Love God - Serve Others - Share Jesus" Traditional Worship ..... 9:30 AM Contemporary Worship..... 11:00 AM</p>	<p><b>SOLID ROCK BIBLE CHURCH</b> Pastor - Bill Gay - 817-304-7443</p> <p>Coffee and Donuts ..... 9:00 AM Sunday School..... 9:30 AM Morning Worship..... 10:30 AM Children's Church After Music Service Wed. Prayer Meeting..... 6:30 PM Wed. Bible Study..... 7:00 PM</p>	<p><b>ST. THOMAS THE APOSTLE CATHOLIC CHURCH</b> 5953 Bowman Roberts RD 817-624-2184 Daily Mass - Mon-Fri 8 AM</p> <p>Reconciliation ..... Sat. 2:45 or by appt Weekend Masses ..... Sat. 4:00 PM SUNDAY ..... 8:00 &amp; 10:00 AM Spanish ..... 12:30 PM</p>	<p><b>Wednesdays</b> Adult Bible Class..... 7:00 PM The WORD Students (6th-12th grades). 6:30 PM Awana Kids at the WORD ..... 6:30 PM Life at the WORD Life Groups Various Times</p>

**A church alive is worth the drive! For more information or rates on listing your church, call Johnna at 817-270-3340**



ON FISHING

# TPWD's annual Texas winter rainbow trout stocking has started

The Texas Parks and Wildlife Department (TPWD) plans to stock a total of 352,563 rainbow trout in Texas from Nov. 24 (Wednesday of last week) through March 6, 2022. Because rainbow trout are unable to survive in Texas after the winter, anglers are encouraged to keep up to their daily bag limit of five trout.

The TPWD "Neighborhood Fishin'" program offers some outstanding opportunities to catch rainbow trout for families and new anglers in and around major cities. TPWD manages 18 Neighborhood Fishin' lakes statewide in most major urban centers, including Austin, Dallas-Fort Worth, Houston and San Antonio. These lakes are frequently stocked with rainbow trout during the winter stocking season and offer plenty of amenities

**MICHAEL ACOSTA**  
michael.acosta@att.net

As a licensed professional fishing guide, Michael Acosta shows you how to find them. He has been a licensed guide since 1998.

so that family members of all ages can enjoy a fun and relaxing day fishing.

Consult the stocking schedule for all stocking dates. A couple of the locations near Granbury include the Glen Rose Big Rocks Park and the Cleburne Huln Park stockings, which will start Dec 2 and Dec 12 respectively, at these two locations.

Tailrace fishing is popular during trout season. For anglers interested in going that route, TPWD will stock rainbow trout into the Canyon Tailrace on the Guadalupe River below Canyon

Lake, and the Possum Kingdom Tailrace on the Brazos River below Possum Kingdom Lake. Those locations often have very cool water and provide excellent conditions for trout fishing.

In addition, anglers can fish in a Texas state park for free without a fishing license. Anyone planning a trip to a Texas state park should keep in mind that reserving a day pass in advance is highly recommended. Day passes can be reserved online through the Texas Parks and Wildlife Department website, or over the phone by calling (512) 389-8900.

The good news is it doesn't take a lot of sophisticated fishing equipment to reel in a rainbow trout. They can be caught using simple, light tackle or on hand-tied flies using a fly rod. Salm-



Because rainbow trout are unable to survive in Texas after the winter, anglers are encouraged to keep up to their daily bag limit of five trout. Photo courtesy TPWMD

on eggs and corn are other choices for catching this tasty species.

In Texas, children under 17 fish for free, but a fishing license with the freshwater fishing endorsement is required for adults. An angler

fishing in a community fishing lake, a dock, pier or jetty within a Texas State Park may use no more than two poles. The statewide bag limit is five trout, except on parts of the Guadalupe River where you should consult

the outdoor annual for special limits.

The dates and locations are subject to change due to inclement weather or other unforeseen circumstances. Be sure to check the Trout Stocking Schedule online before you head out.

**FISHING REPORT**

Limits of striped bass are common on Lake Whitney and Possum Kingdom Lake. Look for the birds. Largemouth bass on Possum Kingdom are good to 10 pounds. Look for schooling blacks mid-lake from South D&D to Sandy Beach.

# I'm loving it!

"Badabapapa. I'm loving it!"

Anybody remember that jingle?

It really doesn't matter because it's beside the point. All I'm thinking about today is doing something that puts a smile on your face.

I'm really not talking smile seeking so that you know you will smile when you do it (though that's not necessarily a bad thing).

I'm talking about throwing yourself wholeheartedly into something so much that the smile just shows up.

Here's a story to illustrate:

My favorite son is a middle school theatre teacher in Borger, Texas. Each year he conducts auditions for a one



**BE AMAZING**  
By Gerry Lewis

Azle resident Dr. Gerry Lewis guides explorers to discover their AMAZING. He is an author, musician, and speaker, and a coach-sultant for individuals, churches, and organizations. More at [www.discoveryouramazing.com](http://www.discoveryouramazing.com).

semester class that prepares a one-act play for competition.

He obviously wants his students to do well in the competition (and they have every year), but more than that, he wants them to develop a love for the theatre and have a positive experience of giving their best possible performance—both as cast and crew—regardless of who wins the competition. Over five years at BMS,

he has developed such a positive reputation that this year he had 75 students who auditioned for a class that was limited to 25!

Their competition show was last week and was a 40 minute adaptation of the well-known story of the Three Musketeers. Romance, intrigue, betrayal, lots of sword fighting—all done with students between the ages of twelve and fourteen.

A couple of weeks ago, he told me about one of his lead characters who was just killing it. He had his lines down perfectly, understood the character, nailed the sword fighting—really a top notch job of acting.

There was only one problem.

The kid was having so much fun that he couldn't stop grinning.

He'd be in the middle of a sword fight, confronting his nemesis, kneeling over the body of his long lost love—and the grin would start to show up.

He was just loving every moment of being part of this production.

When joy sneaks up on

you—that's amazing.

It's happened to me many times.

I'm in the middle of an ordinary experience when I realize that I'm grinning.

It's not that everything has gone perfectly. In fact, it is sometimes precisely because everything has NOT gone perfectly.

And yet, right in the middle of the mess, joy shows up and I realize there's no place I'd rather be right now than right here in the messy middle of it all.

It occurs to me that we sometimes miss amazing moments looking for exceptional experiences.

It occurs to me that we sometimes miss amazing

moments looking for ideal circumstances.

In this season leading up to Christmas I can guarantee that we will have circumstances that are less than ideal and experiences that are less than exceptional.

We will have situations that will be messy and inconvenient.

We will not win every contest.

But, as we consider what it means to have God show up right in the middle of the mess—as He demonstrated in a stable in Bethlehem—I hope we get surprised by our own grins.

Badabapapa!  
Be amazing today, my friend.

Offers good thru 01/04/22

## 'Tis the Season for Savings!

**Happy Holidays**

**WIN A TRIP for 4 to Disney World**

Enter to win when you buy...

Yesway Rewards & Allsup's Rewards members receive one entry to win a trip for 4 to Walt Disney World, with each purchase of Coca-Cola brands 20oz, Cheetos, Doritos or Lays chips \$1.99 bags, or an Allsup's Chimichanga (beef or chicken). Sweepstakes ends 1/4/22. No purchase necessary. Terms and conditions apply. See Official Rules at [yesway.com/sweepstakes](http://yesway.com/sweepstakes) for complete details.

20oz      \$1.99 bags      Beef or Chicken

**Red Bull**  
8.4 oz.

**3 for \$5.50**

**STACK & SAVE 10¢ /GAL**

WITH YESWAY AND ALLSUP'S REWARDS

**BUY \$10 GET \$10 in Bitcoin**

Enter Promo Code **ALLSUPS**

\*Limit one use per customer

For Details Visit: [www.Coin.Cloud/ALLSUPS](http://www.Coin.Cloud/ALLSUPS)

**Buy 3**

**STACK & SAVE 15¢ /GAL**

WITH YESWAY AND ALLSUP'S REWARDS

**Rockstar®**  
16oz

**One Dozen Allsup's Tamales**

**\$5.99** per dozen

**Dr Pepper® Combo**

32oz Tallsup and 2 Beef & Bean Burritos

**\$5.49**

**A gift for them, fuel savings for you!**

**For each \$25 gift card purchased, YOU SAVE 5¢ PER GALLON!**

The more you share, the more you save!

**STACK & SAVE 5¢ /GAL**

WITH YESWAY AND ALLSUP'S REWARDS

\*Excludes Yesway/Allsup's, Amazon, Libby's, eBay, wireless, long distance and financial gift cards. Offer expires 01/04/22.

Stack & Save available with Allsup's or Yesway Rewards. Limit 30 gallons on fuel reward redemption. One Vehicle per transaction.



# Are These Facts Really Important? YES!

Many teachers never get teaching out of their systems. We Azle Hornets from the sixties and mid-seventies were privileged to be taught by several of those who were "called" to teach and I'm sure Springtown Porcupines from the same era felt similarly. I would never compare myself to those special individuals who answered that call, but as a retired teacher I do still feel the desire to pass on knowledge which is partially the reason that I get to write this column.

And, more especially as a retired Agriculture teacher I feel the need to continue spreading the word of the hows and whys of Agriculture, which was man's first occupation; in the book of Genesis God put Adam in charge of tending and keeping the Garden of Eden.

When I started this series of articles about the various vegetational areas or ecoregions of Texas I mentioned that most teachers spend a little more time on and probably do a little better job of teaching topics that they have a special interest in.

What? A good teacher doesn't know everything about everything? No, but a good teacher knows where and how to find the answer to the questions and then challenge his/her students to take it from there.

So, for those of y'all who have been wondering why we have spent the last few weeks talking about ecoregions, precipitation, temperature, soil texture, soil pH, fertility, etc. Well, this is a topic that I feel is very important, thus sometimes it's easy for me to get a little



**AG 101**  
By Jack DeShazo

Jack DeShazo has decades of experience in the agriculture field.

carried away while visiting about this material.

Many times when I would start teaching these topics I would load the "yellow dog school bus" with my students and drive North on Farmer Road from Aledo to Azle.

All along Farmer Road is the prairie part of the Cross Timbers & Prairies ecoregion, very few trees except along creeks and branches, and rolling blackland clay textured soil. (A fact about the blackland in portions of the Aledo area is that about 6 to 12 inches below the surface you find a thick layer of rock, you'll spend more time with a rock bar than post hole diggers while digging post holes in that area.)

Now back to the trip, about the time we would get to FM 1886 we would reach a transition zone where the cross timbers part of our ecoregion begins; the lay of the land changes, the soil becomes sandy textured, and the plant species change.

A few of my students who did not buy in couldn't figure out why their teacher would drive them 10 miles just to show them dirt, trees and grass.

At this point let's back up to our original question several columns back; why is cotton grown on the Rolling Plains and not the Piney Woods? Why is rice grown on the Gulf Prairies and not

of the Cross Timbers & Prairies covers over 26,000 square miles in a total of 27 counties along with strips and bits & pieces of 12 other counties.

Other than Azle and Springtown a few other cities and towns found in the Cross Timbers and Prairies are Bowie, Bridgeport, Decatur, Denton, Ft. Worth, Gainesville, Glen Rose, Granbury, Jacksboro, Mineral Wells, Muenster, Nacoma, Stephenville and Weatherford. Texas' portion of our ecoregion is served by the watersheds of the Red, Colorado, Trinity and Brazos

of the Cross Timbers & Prairies covers over 26,000 square miles in a total of 27 counties along with strips and bits & pieces of 12 other counties.

Other than Azle and Springtown a few other cities and towns found in the Cross Timbers and Prairies are Bowie, Bridgeport, Decatur, Denton, Ft. Worth, Gainesville, Glen Rose, Granbury, Jacksboro, Mineral Wells, Muenster, Nacoma, Stephenville and Weatherford. Texas' portion of our ecoregion is served by the watersheds of the Red, Colorado, Trinity and Brazos

of the Cross Timbers & Prairies covers over 26,000 square miles in a total of 27 counties along with strips and bits & pieces of 12 other counties.

Other than Azle and Springtown a few other cities and towns found in the Cross Timbers and Prairies are Bowie, Bridgeport, Decatur, Denton, Ft. Worth, Gainesville, Glen Rose, Granbury, Jacksboro, Mineral Wells, Muenster, Nacoma, Stephenville and Weatherford. Texas' portion of our ecoregion is served by the watersheds of the Red, Colorado, Trinity and Brazos

of the Cross Timbers & Prairies covers over 26,000 square miles in a total of 27 counties along with strips and bits & pieces of 12 other counties.

Other than Azle and Springtown a few other cities and towns found in the Cross Timbers and Prairies are Bowie, Bridgeport, Decatur, Denton, Ft. Worth, Gainesville, Glen Rose, Granbury, Jacksboro, Mineral Wells, Muenster, Nacoma, Stephenville and Weatherford. Texas' portion of our ecoregion is served by the watersheds of the Red, Colorado, Trinity and Brazos

of the Cross Timbers & Prairies covers over 26,000 square miles in a total of 27 counties along with strips and bits & pieces of 12 other counties.

Other than Azle and Springtown a few other cities and towns found in the Cross Timbers and Prairies are Bowie, Bridgeport, Decatur, Denton, Ft. Worth, Gainesville, Glen Rose, Granbury, Jacksboro, Mineral Wells, Muenster, Nacoma, Stephenville and Weatherford. Texas' portion of our ecoregion is served by the watersheds of the Red, Colorado, Trinity and Brazos

of the Cross Timbers & Prairies covers over 26,000 square miles in a total of 27 counties along with strips and bits & pieces of 12 other counties.

Other than Azle and Springtown a few other cities and towns found in the Cross Timbers and Prairies are Bowie, Bridgeport, Decatur, Denton, Ft. Worth, Gainesville, Glen Rose, Granbury, Jacksboro, Mineral Wells, Muenster, Nacoma, Stephenville and Weatherford. Texas' portion of our ecoregion is served by the watersheds of the Red, Colorado, Trinity and Brazos

of the Cross Timbers & Prairies covers over 26,000 square miles in a total of 27 counties along with strips and bits & pieces of 12 other counties.

Other than Azle and Springtown a few other cities and towns found in the Cross Timbers and Prairies are Bowie, Bridgeport, Decatur, Denton, Ft. Worth, Gainesville, Glen Rose, Granbury, Jacksboro, Mineral Wells, Muenster, Nacoma, Stephenville and Weatherford. Texas' portion of our ecoregion is served by the watersheds of the Red, Colorado, Trinity and Brazos

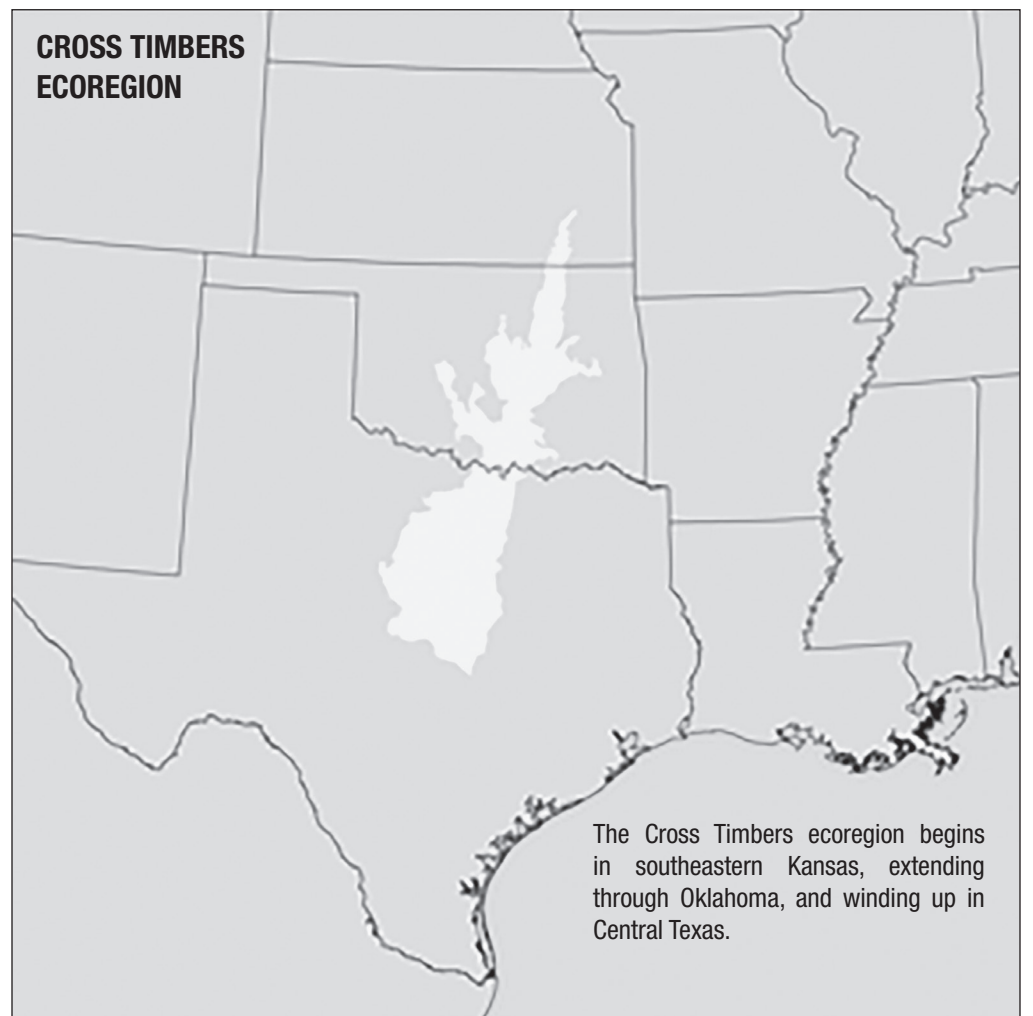
Rivers.

Our part of the Cross Timbers (Parker and Tarrant counties) has a yearly average of 35 inches of precipitation, average temperature of 65 degrees Fahrenheit, 235 frost free days (growing season), 600 to 800 chilling hours (number of hours of 45 degrees temperature or below) which is important for fruit tree production and 135 full sunny days & 232 total days with at least some degree of sunshine.

Additionally, the elevation of our two counties ranges from 420 to 1200 feet above sea level.

One of the things that always caught my interest was the principle of "limiting factors" whereby if only one of these variables was in short supply, overabundant or even the ratios were "out of whack" the plant's growth and production would be affected. Or, more positively, if all of the factors are in correct supply and proportions Agriculture works for us producing our essential food, fiber, timber/lumber and portions of our energy needs. Hmm, sounds pretty important to me!!

'til next time.



## AZLE INSURANCE DIRECTORY

**HOGLE INSURANCE GROUP**  
SHAYE HOGLE 817-444-6389 HOGYE HOGLE

"OUR BEST POLICY IS PERSONAL SERVICE"  
HOGLEINSURANCE.COM

**Amy Kaplan, Agent**  
813 E. Hwy. 199  
Springtown, TX  
817-220-5222  
www.amykaplaninsurance.com

Voted Best Insurance Agency of Parker County 2015  
Voted Best Agent of Parker County 2014, 2015 & 2016  
StateFarm

**Nationwide** | **H**  
is on your side

**Albracht Harwood Insurance Agency Inc.**  
120 S. Main St #4, Springtown, TX 76082  
albrachtharwoodinsurance.com  
**(817) 220-4700**  
2nd Location - Grapevine, TX

**Sorrow Family Insurance**  
Health • Life • Disability • Dental • Final Expense  
Home • Auto • Boat • Motorcycle • Big Rig • Mobile Home

Our Family Helping Yours!

Paying Too Much For Insurance?  
Call For Your Free Quote

Stephanie and Ed

**817-444-1129**  
**682-209-2027**  
www.SorrowFamilyInsurance.com

**BIG SAVINGS**

Dale Mares, AAMS  
817-444-1491  
204 W. Main St.  
Azle  
dalemares@allstate.com

**Allstate**  
You're in good hands.  
Auto Home Life Retirement

Thank you for voting us Best Insurance Agency 2021  
HOME • AUTO • FARM • LIFE

**BURTNETT INSURANCE**

**817-220-7682**

Protecting Texans, Prioritizing customer service

**Germania Insurance**  
AUTHORIZED AGENT

**FOREMOST INSURANCE GROUP**  
**BRISTOL WEST INSURANCE GROUP**  
**DAIRYLAND INSURANCE**  
**PROGRESSIVE** US Assure

Kaye Burtnett & Vanessa Roberson  
905 E. Hwy. 199 Springtown, TX 76082

**HALEY CARTER**  
**State Farm**

**817-444-1100**  
408 Boyd Ct. • Azle  
www.HaleyCarter.com

PEOPLE'S CHOICE AWARDS 5 YEARS IN A ROW!  
VOTED #1 INSURANCE AGENCY IN AZLE

**FARMERS INSURANCE**  
Silva's Insurance Agency  
817-444-4747  
328 W. Main St., Azle

Auto - Home - Life - Business



CHRISTMAS ON MAIN, CONTINUED FROM PAGE 1A.



**BIKE GIVEAWAY**

There were 120 bikes given away, bikes for the tiniest tots all the way up to the tallest teens. Helmets and bike locks from the city of Azle were handed out to each winner as Azle police officers and firefighters rolled the bikes to their new owners.

Hundreds of families spent Saturday afternoon browsing the vendor booths, admiring classic cars at the Lions Club car show and enjoying the children's activities set up inside 404 Main Place.

At 4 p.m., the venue was filled with kids and parents eagerly waiting for the bike giveaway to begin. Once the ticket numbers began to be called out, the excitement of the kids was all that could be heard.

There were 120 bikes given away, bikes for the tiniest tots all the way up to the tallest teens. Helmets and bike locks from the city of Azle were handed out to each winner as Azle police officers and firefighters rolled the bikes to their new owners.

Businesses up and down Main Street were covered with the holiday spirit, with

festive window paintings, lights and snowflakes in abundant display.

Winners of the Main Street Decorating Contest were announced before the festivities began.

**BEST LIGHTED DISPLAY**  
The Murphree Law Office

**MOST SPIRITED DISPLAY**  
Rural Gas

**BEST THEME REPRESENTED DISPLAY**  
Hope's Bazaar

**MOST CREATIVE AND BEST OVERALL DISPLAY**  
Slice Dessert Bar

At the end of the afternoon, vendors began to pack away their merchandise, making room for the parade

SEE **CHRISTMAS**, PAGE 10A.



Boys and girls were excited to ride off on their new bikes after Christmas on Main Street ended.



Each winner received a new helmet and bike lock with their bicycle.

Photos by Jessica McKinney

## Kid Scoop

THE AWARD-WINNING PRINT & ONLINE FAMILY FEATURE

Find Kid Scoop on Facebook

© 2021 by Vicki Whiting, Editor Jeff Schinkel, Graphics Vol. 38, No. 2

### Meet the Peacock

People call them peacocks, but that's the correct name for only the male peafowl. Females are called peahens.

#### Fancy Feathers

Peacocks have long, colorful tail feathers that trail behind them to form a train. To attract females, they lift and spread out the tail feathers like a big fan that can change color and seem to sparkle in the light.

When spread out like a fan, you can see eyespots on the feathers. The colors and eyespots attract females.

**Color By Numbers:**  
1 = dark green 2 = blue  
3 = orange 4 = light green

Peafowl have 11 different calls, but the peacocks are the ones that really yell. They have a loud call that carries for a long distance and sounds like "may-AWE! may-AWE!"

**Peahens: Fewer Colors = Safety!**  
Cut out each part of this paragraph and paste them in the correct order.

hatched, she stays on the ground with them until they can fly into the trees.

her eggs on the ground and sits on them until they hatch. It is safer for her to be a color that

Peahens are mostly brown and tan. This keeps them and their peachicks safe. The peahen lays

blends in with ground colors so she is harder for predators to see. Once the peachicks are

**What's for dinner?**  
Peafowl eat grain, insects, small reptiles, mammals, berries, figs, leaves, seeds, and flowers. This means they are:

Omnivores eat plants and animals.  
 Herbivores eat only plants.  
 Carnivores eat only meat.

**Bird Words**  
Do the math to match each word with its definition.

21 = FOWL 7 = TRAIN  
10 = PARTY 12 = ROOST  
15 = CREST 24 = HATCH

12 + 12 = when a baby bird comes out of its egg  
18 - 6 = where a bird settles to rest for the night  
11 + 4 = a crown of feathers on a peafowl's head  
8 + 2 = a group of peafowl — also called a "pride"  
9 - 2 = long tail feathers of a peacock  
7 + 14 = another word for a bird

**Extra! Extra! The Eyes Have It**  
Look through the newspaper and count all of the eyes you can find. Categorize the eyes. Are some animal eyes? People eyes? Eye decorations? Other? Make a graph to show the kinds of eyes you found in the newspaper.

**Standards Link:** Organize data and display as a graph.

### Kid Scoop Puzzler

Peafowl have sharp eyes. When they see a predator, they make a loud call which alerts other wildlife.

Use your sharp eyes to find where each of these images came from on this Kid Scoop page.

**Standards Link:** Spelling: Spell grade-level words correctly.

### Double Double Word Search

Find the words in the puzzle. How many of them can you find on this page?

OMNIVORES  
FEATHERS  
EYESPOTS  
PEAFOWL  
BLENDS  
ALERTS  
SHARP  
SHEDS  
YEAR  
LOUD  
BODY  
TAIL  
TAN  
FAN

E S A L E R T S F A  
K B T N S P D U O L  
R O A O S D S N W I  
A D T H P D N O A A  
P Y A T E S F E E T  
S R E H T A E F L R  
P N S A E E A Y D B  
P L U P R N M A E G  
S E R O V I N M O E

**Standards Link:** Letter sequencing. Recognize identical words. Skim and scan reading. Recall spelling patterns.

### FROM THE Kid Scoop LESSON LIBRARY

#### Dressing Up

Peacocks aren't the only animals that like to look bright and flashy. Look through the newspaper for some examples of ways people dress up for special occasions.

**Standards Link:** Reading Comprehension: Follow simple written instructions.

### Write On! My Hero

Write about someone who is your hero. Why is this person special to you?

**ANSWERS:**  
1. True  
2. False  
3. True  
4. True  
5. False  
6. False  
7. True  
8. True  
9. False  
10. True

### Kid Scoop Together: Peacock True or False?

Read today's Kid Scoop page and then answer the following True or False questions.

- Only males are called peacocks.  TRUE  FALSE
- Peahens are mostly red and yellow.  TRUE  FALSE
- A crown of feathers on a peafowl's head is called a crest.  TRUE  FALSE
- Peacocks shed their feathers every year.  TRUE  FALSE
- Peacocks only eat plants.  TRUE  FALSE
- Peacocks are tiny birds.  TRUE  FALSE
- A peacock's train can grow to be 5 feet long.  TRUE  FALSE
- Peacocks sleep in trees.  TRUE  FALSE
- Peacocks can't fly.  TRUE  FALSE
- Peacocks fan out their tail feathers to attract females.  TRUE  FALSE





CHRISTMAS, CONTINUED FROM PAGE 1A.

attendees who wanted to stake out the best spots for watching this year's lighted parade.

By 6:30 p.m., the trees at Azle Historical Museum and Azle City Hall were lit and the parade began.

Marching Green Pride led the line of lighted floats down Main Street. Trucks and trailers — and even a bass boat or two — were covered in lights and snow and festive folks shouting Merry Christmas to the crowd.

Finally, instead of a

miniature sleigh, a lighted train carrying Jolly St. Nick came down the street, bringing the children's excitement to its peak as they shouted greetings and "I love you, Santa" as the train passed. There were not eight tiny reindeer, but a herd of lighted Christmas horses and ponies brought up the rear.

The winners of the parade were announced before the start of the parade, each bearing their signs proudly as they made their way down the street that night.

**BEST LIGHTED ENTRY**  
Seth Bathurs

**MOST SPIRITED CHRISTMAS ENTRY**  
Cub Scout Pack 147

**BEST THEME "AZLE WINTER WONDERLAND" ENTRY**  
Adult and Teen Challenge of Azle

**MOST CREATIVE ENTRY**  
Azle 4-H

**BEST OVERALL ENTRY**  
Azle ISD Transportation

Top left: Marching Green Pride led the line of lighted floats down Main Street.

Left: Seth Bathurs won for Best Lighted Entry.

Bottom left: Azle ISD Transportation won for Best Overall Entry.

Bottom: Children got their chance to sit on Santa's lap.



Give the gift of  
**The Azle News**



It's *Christmas*



Give a one year subscription to a friend or family member and receive 3 free months on your subscription!\*

817-270-3340



**Azle News**

\*Gift recipient must not have had a subscription for the last 6 months for you to receive 3 free months. If you don't know, you can call our office at 817-270-3340 to find out.



**OVERSTOCKED Clearance**



**NECTAR Classic**  
Adjustable Base  
**\$1899**

Come see how far your dollar will go at  
**MATTRESS GUYS**  
Open Mon-Fri 10 am - 7 pm Sat 10 am - 6 pm, Sun 11 am - 5 pm  
321 B W. Main St., Azle • 817-752-2002  
499 E. Hwy 199, Springtown • 682-302-9507



# SPORTS

## Azle roundball boys keep rolling after slam dunking Weatherford



Zeb Cross joined the team after the football season ended.

Photo by Jeff Prince

**BY JEFF PRINCE**  
jeff@azlenews.net

After a decade of lackluster results in the win-loss column, the Azle boys basketball program is experiencing a turnaround this season.

On Tuesday, Nov. 30, the 5A Azle Hornets played at home

against the 6A Weatherford Kangaroos and electrified the crowd. The Kangaroos led 13-10 after the first quarter and 25-24 at halftime. Act II, though, belonged to the Hornets. They outscored the Roos in the third and fourth quarters to prevail 57-48.

Hornet sharpshooter Campbell Dotson put on a scoring dis-

play, leading the Hornets with 24 points. Jayden Coffey contributed 11, Jackson Davis tallied eight, and five other players – Devon Brown, Zeb Cross, Gavin Dean, Mason Ford and Jayden Rollins – put points on the scoreboard.

Two nights later, the Hornets faced another 6A team – Richardson Berkner – and lost 72-54.

That hiccup was forgotten quickly. Azle bounced back by notching consecutive victories against Western Hills, Bridgeport and Burleson in early December. The Hornets (9-1) have established themselves as leaders in District 5-5A during the nonconference portion of the schedule.

Next up, Azle plays a tournament in Athens on Friday.

District competition begins Friday, Jan. 14, at home against the Aledo Bearcats.

Azle players have expressed a determination to win the team's first district championship since 2010.

## Azle Lady Hornets abuzz about season

**BY JEFF PRINCE**  
jeff@azlenews.net

This season's Azle Lady Hornets are young, talented and enthusiastic – a coach's dream.

Head coach Mitzi Marquart kept the varsity roster small, with just nine girls. She would rather her talented younger kids earn playing time on junior varsity teams rather than riding the bench in the bigs.

"I don't want kids wasting the year sitting," she said. "I want them to play."

Two of the varsity team's most dynamic players are twin sisters. Juniors Karlee and Kendall Locke were a force on the volleyball team in fall before transitioning to basketball in winter.

"They've played a lot of basketball and do well together," Marquart said.

The rest of the team is still learning to jell but showing rapid improvement.

"They're good kids," the coach said. "They play hard. And it's an adjustment because a lot of them haven't played together until this year."

Only four players are returning with varsity experience — Britany Cato, the Locke sisters and



SEE GIRLS BBALL, PAGE 3B. Mia Carrizales, a senior, is a starting point guard.

Photo by Jeff Prince



# Azle Christian basketball teams on crusade to win



Sophomore Andy Wisniewski's ball-handling skills are impressing his coach.



Camden Logan dominates the basketball court like he does the gridiron.



Joe Shehan and the Lady Crusaders prepare for their season opener.

Photos by Jeff Prince

**BY JEFF PRINCE**  
jeff@azlenews.net

Azle Christian High School's debut as a 1A school in the Texas Association of Private and Parochial Schools (TAPPS) league has been full of ups and downs so far.

For the past decade, the private school's football team had made deep forays into the playoffs in smaller leagues. This year, they were bounced out of the postseason after one game. The team finished 7-4 overall

and 2-2 in district competition.

Football coach Gary Rushing had anticipated a difficult transition after moving up from the Texas Christian Athletic Fellowship league to the bigger and highly competitive TAPPS. "It's going to be tough on all of our sports," Rushing said at the time. "We are looking forward to it, and we are going to rise to the challenge and see what we can do."

The volleyball team finished 3-9 overall and 1-5

in district competition and missed the playoffs.

## NOW COMES BASKETBALL

The boys and girls basketball teams are hoping to fight their way into the playoffs despite the tougher competition.

So far, the boys are 2-1 and playing well. The experienced Crusaders beat a larger 3A team - Coram Deo - in the season opener, 72-38. A week later, the boys struggled against St. Paul's Prep of Arlington. The Crusaders

kept the score close for the first half but lost, 58-40.

The boys are being coached by Ryan Rollins, in his first year at Azle Christian.

"I love being at Azle Christian," he said. "Being at a school that puts Christ first in everything they do is very important to me, and they do that at ACS. The boys work hard and have good attitudes. They are adjusting to me because my style is more intense than what they might be used to, but they are welcoming to it."

Rollins has a solid roster to work with. Four returning varsity players are on the team, including junior Camden Logan, who stands 6 feet, 5 inches.

"He is a great scorer in the post," Rollins said.

Six-foot sophomore Jake Skartvedt is another dependable scorer. He was named player of the game for his strong performance on offense and defense in the win over Coram Deo.

The Crusaders' tall-as-timber roster includes several players taller than 6

feet, including juniors Ryan English and Drew Skartvedt. Freshman Bill Johnson is another tall, sturdy rebounder.

Ty South, a senior, handles the ball well at point guard, and two brothers - junior Noah Rollins and sophomore A.J. Rollins - provide defensive help.

Sophomore Andy Wisniewski is showing "great ball handling skills," the coach said, and sophomore Zach Miles has "a nice outside shot."

SEE ACS BBALL, PAGE 4B.



GIRLS BBALL, CONTINUED FROM PAGE 1B.



Karlee Locke goes high for a rebound.

Photo by Jeff Prince



Kendall Locke was named all-tournament earlier this season.

Photo by Jeff Prince

Summer Finney. Point guard Mia Carrizales, a senior, started on the JV squad last season. The roster includes three sophomores savoring their first taste of varsity competition – Vielka Gonzalez, Brandi Phillips and Landri Seward – plus junior Jessie Heath.

The team’s lack of experience showed early in the season. Half the roster was finishing up their volleyball playoff run and didn’t join the basketball team until the day before the season started. Still rusty, the Lady Hornets lost their first game of the season against Sanger 49-41. Next, they played in a tournament hosted by MacArthur Irving, a powerful 6A team, and lost to that team 42-33. They won the consolation bracket, however, by nailing down three victories. Kendall Locke was named all-tournament for her strong play.

Afterward, the team embarked on a five-game win streak and is 6-3 currently while competing in District 5-5A, which includes Aledo, Brewer, Wichita Falls Rider and other traditionally strong teams. Each game seems to make the girls a little better, and the chemistry is beginning to jell, the coach said.

“We’re kind of getting on a better roadmap, kind of putting more things together, which is what pre-season is for,” Marquart said.

The coach is in her 12th year at Azle. Before coming here, she coached at Cleburne for 10 years and has been coaching for almost 40 years in Texas.

This year’s team is special, she said.

“I love this team,” she said. “They like to compete. They want to win. They play hard. And they’re fun.”

The girls are determined to reach the playoffs.

“That’s a goal they’re working toward,” she said. “They’re wanting to get better every game and get ready for district. They are on a mission.”

The Lady Hornets have made the playoffs with regularity in recent years but haven’t won more than 20 games in a season since 2014.

“I’m really, really excited for them and think they are going to do a good job this year,” she said.

AZLE HORNET GIRLS VARSITY BASKETBALL			
DATE	OPPONENT	LOCATION	TIME
10/30	vs. 5 Teams		8 a.m.
11/02	Decatur/Benbrook	Away	5 p.m.
11/05	Sanger	Away	6:15 p.m.
11/09	Open Date		TBA
11/11	Eaton	Away	TBA
11/12	Eaton	Away	TBA
11/13	Eaton	Away	TBA
11/16	Joshua	Away	6:15 p.m.
11/19	Open Date		TBA
11/22	Springtown	Away	11:15 a.m.
11/23	Northwest	Away	2:30 p.m.
11/30	Weatherford	Away	6:30 p.m.
12/03	Benbrook	Away	7:30 p.m.
12/07	Mansfield High	Home	6:30 p.m.
12/09	Midlothian Heritage	Away	TBA
12/10	Midlothian Heritage	Away	TBA
12/11	Midlothian Heritage	Away	TBA
12/14	Lake Country	Away	6:30 p.m.
12/17	Nolan Catholic	Home	3:30 p.m.
12/20	Stephenville	Home	12:15 p.m.
12/28	Castleberry Tournament	Away	TBA
12/29	Castleberry Tournament	Away	TBA
12/30	Castleberry Tournament	Away	TBA
01/04	Fort Worth Christian	Away	6:30 p.m.
01/07	Wichita Falls High	Away	6:30 p.m.
01/11	Wichita Falls Rider	Away	6:15 p.m.
01/14	Aledo	Home	6:15 p.m.
01/18	Brewer	Away	6:15 p.m.
01/21	Granbury	Home	6:15 p.m.
01/25	Wichita Falls High	Home	6:15 p.m.
01/28	Wichita Falls Rider	Home	6:15 p.m.
02/01	Aledo	Away	6:15 p.m.
02/04	Brewer	Home	6:15 p.m.
02/08	Granbury	Away	6:15 p.m.



ACS BBALL, CONTINUED FROM PAGE 2B.

Rollins designed a schedule to toughen up his team early. "I scheduled mostly large private schools and some smaller public schools to load up our non-district schedule, where we will be battle tested for district," he said.

On Friday, Dec. 3, the boys beat Flower Mound's Temple Christian 46-22 despite struggling on offense.

"We played great defensively all night," Rollins said.

Logan led the team in scoring with 12, followed by sophomores A.J. Rollins and Andy Wisniewski with 11 and eight points, respectively. South provided seven assists, and Skartvedt and Noah Rollins led in rebounds.

"Ryan English played a great game running the offense and came up big defensively several times," the coach said.

The coach worked in the Fort Worth ISD for many years, including the last five at North Side High and J.P. Elder Middle School. Prior to that, he taught at Castleberry ISD and Aledo Christian School.

At Azle Christian, the coach is implementing a

fast-trapping style of defense that relies on players being aggressive and physical. Makes sense. All 10 athletes on his roster played on the football team that went to a playoff game, delaying the start of their basketball season.

"We got a little later start than other teams, but I believe that just makes them tougher," Rollins said. "I really believe after Christmas break, we will be a good team."

**LADY CRUSADERS BRIMMING WITH TALENT**

Azle Christian's Lady Crusaders opened their season against St. Paul's Prep on Tuesday, Nov. 30, and were blown out, 42-8.

Guess who wasn't concerned? Crusaders head coach Joe Shehan. He was happy.

He saw a dogged, skillful team playing like it was a playoff game. None of his players had ever competed on a varsity basketball team, but each showed scrappy persistence. The roster is composed of eight players — three juniors, two sophomores and three freshmen, but no seniors.

Most of the girls played

together on the junior varsity last season, although three players are new to the team.

Despite the Lady Crusaders losing their season opener to St. Paul's Prep by a large margin, they showed a promise that bodes well.

The game "demonstrated that we are a very aggressive team but very raw in our talent," Shehan said. "We've got a lot of learning to do, a lot of growing to do during the season. But that being said, these girls get after it every day in practice. I've got a lot of confidence that by district, we should be performing better."

He envisions the team picking up experience during the four preseason games and coming alive when district competition begins. The Crusaders' first district game is Thursday, Jan. 13, against Faustina.

"I see a pretty good run in district," the coach said.

The team was beset with turnovers in the first game, and Shehan has been working with his players to improve their ball control.

"We addressed that yesterday in practice," the coach said. "And we're working on better passing and better game knowledge."

Eight players on a roster

makes it impossible to run five-on-five scrimmages, but the girls have been concentrating on fundamentals — dribbling, shooting, passing, rebounding.

"My philosophy of coaching has always been, I want to have the most fundamentally sound and the most in-shape team on the court," Shehan said. "We can work on fancy stuff, but if we don't have the sound foundations down, then it's not going to do us any good."

The youthful roster isn't the least bit intimidated by competing in TAPPS, the coach said. The league is tough, and the season will be challenging. Shehan has coached in the TAPPS league previously and knows the competition is solid.

"Our girls are learning," he said. "This year is definitely a growing year and learning year for us. They're going to get some rude awakenings for the first couple of games."

Afterward, he expects them to find a rhythm and "understand what game pace is like at a varsity level," he said.

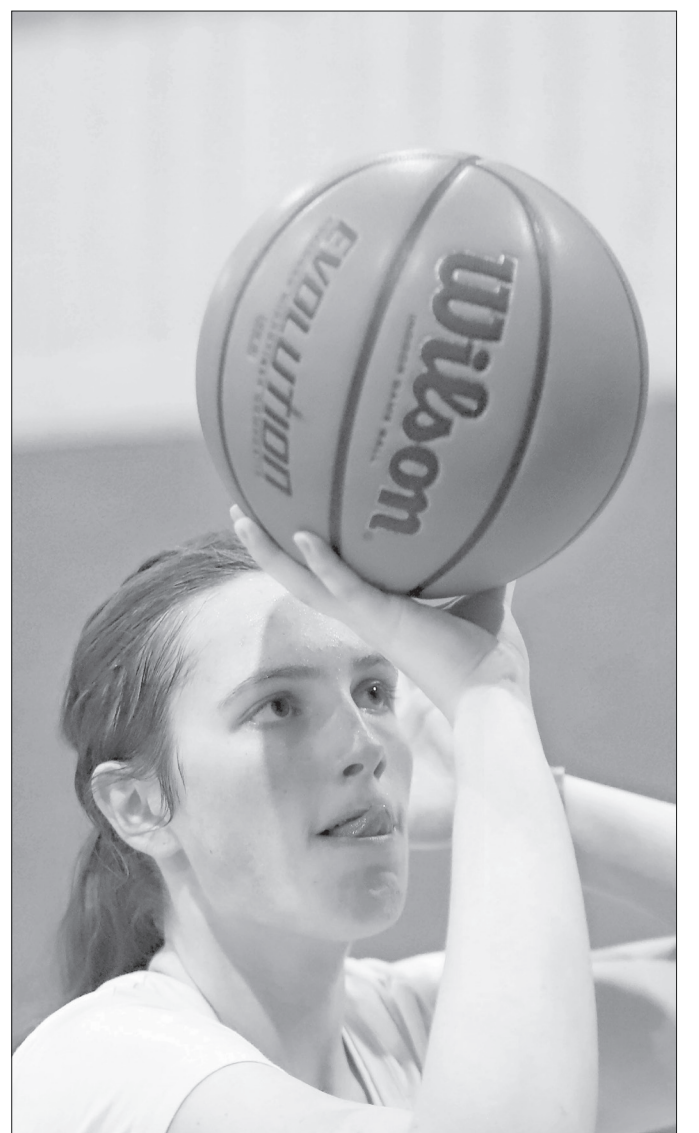
Inexperience doesn't mean the girls have set their goals low.

"My goal each week is to get one day better every day," Shehan said. "My philosophy is, the only easy day was yesterday. We work harder every day, building, building, building. My goals are to limit the other teams being able to penetrate the paint."

Another goal is to have every player on the roster score points in every game.

"We've learned that if we can spread the wealth like that, then we tend to have a lot of success," he said. "I want to see a diversity of scoring. We have some really good scorers on our team."

Laney Geeslin, a junior, was injured during the vol-



Gayle Shehan has a keen eye for the basket. Photo by Jeff Prince



Noah Rollins is a beast on the boards. Photo by Jeff Prince

**Azle School Menu** December 13-17, 2021

**BREAKFAST:** GRADES PK-4th \$1.55, GRADES 5-12th \$1.50, Employees \$1.85 Guests \$1.85  
**LUNCH:** GRADES PK-12th \$2.65, Employees \$3.20 Guests \$3.55, Gold Card Guests \$3.15  
**A La Carte Items:** Milk/Juice 75¢, Bottled water \$1.00, Ice Cream \$1.00

**PreK - 4th**  
**BREAKFAST:** Everyday - Assorted Fruits and Cereal, Juice, White or Chocolate Milk, Graham Crackers, Toast, Mon Golden Sausage Morning Roll Tues Delicious Blueberry Muffin Weds Cocoa Puffs Cereal Bar w/ Graham Crackers Thurs Chicken Biscuit Sandwich Fri Strawberry Toaster Pastry  
**LUNCH:** Everyday - Variety of milk. Your choice of 1 entree & 1 fruit or juice  
 Mon Golden Chicken Corn Dog, Sloppy Joe Sandwich, Green Beans Tues Cheesy Chicken Flour Tacos, Grilled Turkey Ham & Cheese Sandwich, Traditional Spanish Brown Rice Weds Grilled Cheese Dog, Breaded Chicken Patty Sandwich Thurs Chicken Nuggets w/Roll, Classic Pepperoni Pizza, Crispy Tater Tots Fri Golden Chicken Corn Dog, Sunbutter & Jelly Sandwich w/ String Cheese, Peppered Broccoli Florets

**GRADES 5TH - 8TH**  
**BREAKFAST:** Everyday - Assorted Fruits and Cereal, Juice, White or Chocolate Milk, Graham Crackers, Mon Warm Cinnamon Oatmeal Tues Scramble Eggs w/ Toast Weds Homemade Whole Grain Cinnamon Rolls Thurs Fluffy Jumbo Waffles w/ Turkey Bacon Fri Red, White & Blue Berry Yogurt Parfait  
**LUNCH:** Everyday - Variety of milk. Your choice of 1 entree & 1 fruit or juice, rolls, crackers. Variety of burgers.  
 Mon Turkey & Cheese Sandwich, Spicy Chicken Patty Sandwich, Delicious Cheese Pizza, Beefy Nachos w/ Spanish Rice, Cheesy Chicken Quesadilla, Steamed Crinkle Carrots, Crinkle Cut Fries Tues Spicy Chicken Patty Sandwich, Classic Pepperoni Pizza, Vegetable Garden Salad w/Roll, Cheesy Broccoli Baked Potato w/ Biscuit, Orange Chicken w/ Brown Rice, Country Fried Steak Potato Bowl w/Roll Weds Homemade Beef Burrito, Breaded Chicken Patty Sandwich, Spicy Chicken Patty Sandwich, Golden Chicken Corn Dog, Grilled Turkey Ham & Cheese Sandwich, Delicious Cheese Pizza, Pork Sausage Crumble Pizza, BBQ Ranch Chicken Salad w/ Roll, Salisbury Steak w/ Sautéed Onions, Rice & Roll, Beef LoMein w/Egg Roll, Chicken Tender Potato Bowl w/Roll, Classic Refried Beans Thurs Verde Chicken Enchiladas w/ Spanish Rice, Tuna Salad Wrap, Delicious Cheese Pizza, Diced Chicken Alfredo Pizza, Chicken Parmesan w/ Spaghetti, Beef Taco Salad, Chicken Chow Mein w/Egg Roll, Country Fried Steak Potato Bowl w/Roll, Classic Refried Beans Fri Cheesy Chicken Quesadilla, Breaded Chicken Patty Sandwich, Spicy Chicken Patty Sandwich, Golden Chicken Corn Dog, Turkey Sandwich, Turkey Ham Hawaiian Pizza, Beefy Baked Rotini w/ Roll, Chef Salad w/Crackers, Red Thai Veggie Stir Fry w/Brown Rice, Popcorn Chicken Potato Bowl w/Roll, Classic Refried Beans

**HIGH SCHOOL**  
**BREAKFAST:** Everyday - Assorted Fruits and Cereal, Juice, White or Chocolate Milk, Graham Crackers, Egg Scramble w/ Turkey Sausage & Biscuit, Scrambled Eggs w/ Biscuit, Turkey Sausage Patty w/ Biscuit, Hash Brown  
 Mon Egg & Turkey Sausage Breakfast Taco Tues Chicken Biscuit Sandwich Weds Fluffy French Toast Sticks Thurs Pineapple Parfait w/ Graham Crackers Fri Breakfast Sausage Pizza  
**LUNCH:** Everyday - Variety of milk, assorted pizza & salads. Your choice of 1 entree & 1 fruit or juice  
**BALLPARK CLASSICS:** Hamburger, Cheeseburger, Turkey Bacon Cheeseburger, Breaded Chicken Patty Sandwich, Spicy Chicken Patty Sandwich, Golden Chicken Corn Dog

SPONSORED BY

**AZLE AREA CLUBS AND ORGANIZATIONS**

**Texas Health** Harris Methodist Hospital AZLE  
**Volunteers Needed**  
 TexasHealth.org/  
 Volunteer/Our-Process

**RAINBOW INN GIFT SHOP**  
 Inside Hospital 108 Denver Trail  
 Azle 817-444-8651

**ATTIC RERUNS**  
 NOW OPEN! FRI 9-4 SAT 9-1  
 714 SE Pkwy Azle 817-270-3690

**The Finish Line**  
 ADDICTION wants to destroy you & everyone around you.  
 With Jesus there is Victory over addiction.  
**GET BACK IN THE RACE!**  
 Meetings held every Friday from 7:30PM-9:30PM at The Church at Azle 1801 S. Stewart • Azle • 817-401-8513  
 www.ourfinishline.com

Post your clubs or organization meetings here!  
**Only \$100**  
 for 52 weeks of advertising  
 Call Johnna for details: 817-270-3340

**Optimist Club of Azle**  
 Meets every FRIDAY at 6:45 AM  
 Moe's Country Kitchen  
 316 W. Main, Azle

**Good N.E.W.S.**  
 Living at Home Block Nurse Program  
**Volunteer Caregiver Training Classes**  
 Classes open to public at no charge  
**Our Volunteers Make a Difference!**

**Caregiver Volunteer Meeting**  
 1st Monday of Each Month at 6pm  
**817-444-2300**  
 412 Commerce St.

**Faced with a DRINKING Problem?**  
 Perhaps Alcoholics Anonymous can HELP.  
  
 Meetings held every Friday from 7:30PM-9:30PM at The Church at Azle 1801 S. Stewart • Azle • 817-401-8513  
**229 S. Stewart St. • Azle 817-332-3533**

**SERVOLUTION NETWORK**  
 LET'S START A COMMUNITY WIDE REVOLUTION THROUGH SERVING.  
 FOR QUESTIONS CALL:  
**833-4WE-SERV**  
**833-493-7378**  
 VISIT: WWW.SERVOLUTIONNETWORK.COM

**Azle Lodge No. 601**  
**Floor School or Work 7:30 PM THURSDAY NIGHT**  
 Chris Akers - Worshipful Master  
 Rocky Gralla - Secretary  
 Clint Hall - Treasurer

**Rotary Club of Azle**  
  
**MEETS AT NOON THURSDAY**  
 412 Commerce St.  
 (across from Azle Post Office)

**Azle Lion's Club**  
  
 Meets 2nd TUESDAY 6:30 PM  
 412 Commerce, Azle  
 e-clubhouse.org/sites/azle\_tx/  
 Curren McLane - president  
**817-689-0074**

**Azle Boy Scout Troop 243**  
 Meets Mondays 7 PM  
 Azle First Assembly of God  
 1020 Southeast Parkway  
 troop243azle.org

**Eagle Mountain Pregnancy Help Center**  
 10328 Jacksboro Hwy  
 Fort Worth TX 76135  
 817-237-1819  
 www.emphc.org  
 Mon 12-6 PM Thurs 12-6 PM  
 SE HABLA ESPAÑOL

**Hey Parents!**  
**\$40** 12 MONTH, SUBSCRIPTION  
 Don't Miss Out On The ONLY Paper That Prints Your Hometown News On OUR KIDS!!!  
**Azle News 817-270-3340**





# DEVOTIONAL PAGE



This devotional and directory is made possible by these businesses who encourage all of us to attend worship services.

**Azle News**  
AzleNews.net

The Springtown Epigraph  
Springtown-Epigraph.net

**TRINITY SELF STORAGE**  
SECURITY GATE 24 HOUR ACCESS

Office next door at Trinity Commerical Contractors

**RV, Trailer & Boat**

200 Walnut Creek Ave.  
**817-444-8885**

TACLA014745E RRC#11349

**J&E**  
AIR CONDITIONING & HEATING

**817-220-4506**

1825 W. Hwy. 199 | Springtown, TX 76082

Help readers find your Business.

Call **817-270-3340**

**Your Ad Here!**

Call Johnna to reserve this space.  
**817-270-3340**

**Comet CLEANERS**  
"Serving Azle & The Community Since 1986"

113 SPEER ST  
817-444-4920

Thank you for your support!

**Subscribe!**

Pick your subscription:

- \$40 IN-COUNTY Tarrant, Parker & Wise only
- \$36.50 SENIOR CITIZEN 60 Years and Older Tarrant, Parker & Wise only
- \$25 ONLINE
- \$46.50 OUT OF COUNTY

**Azle News**  
The Springtown Epigraph  
Azle News 817-270-3340  
Springtown Epigraph 817-220-7217

**Eagle Crest VILLA**  
A RETIREMENT AND ASSISTED LIVING COMMUNITY

113 Denver Trail • Azle  
817-444-3249 Fax 817-444-3275  
www.eaglecrestvilla.com

STUDIO - 1 bath, 350 sq. ft.  
ONE BEDROOM - 1 bath, 450 sq. ft.  
TWO BEDROOM - 1 bath, 642 sq. ft.

**APOSTOLIC**  
CORNERSTONE APOSTOLIC CHURCH  
1801 FM 730 N., Azle  
817-400-0612

HARVEST TIME APOSTOLIC  
1 Block N. FM 2048 in Keeter  
817-433-8220

**ASSEMBLY OF GOD**  
FIRST ASSEMBLY OF GOD  
1020 S.E. Pkwy, Azle  
817-237-4903

FELLOWSHIP OF LAKE WORTH  
4024 Dakota Trail, Lake Worth  
817-237-9433

NEW BEGINNINGS CHURCH  
810 Goshen Rd, Springtown  
817-523-4462

LEGACY CHURCH  
Hwy. 199 W. at FM 2257, Azle  
817-221-2983 / 817-221-5760

VICTORY CHRISTIAN CENTER  
737 Boyd Rd., Azle  
817-444-LOVE

**BAPTIST**  
ASH CREEK BAPTIST CHURCH  
300 South Stewart, Azle  
817-444-3219

AGNES INDEPENDENT BAPTIST  
350 Agnes N., Springtown  
817-523-7271

BETHEL MISSIONARY BAPTIST  
408 S. Ash St., Springtown  
817-220-4238

AZLE AVENUE BAPTIST  
2901 Azle Ave., Fort Worth  
817-626-5556

BRIAR FIRST BAPTIST  
West of FM 730 N. at sign, Briar  
817-444-3484

CALVARY HEIGHTS BAPTIST  
1 block off Hwy. 199, east of David's Patio, Springtown, 817-221-2241

CENTRAL BAPTIST  
4290 Old Agnes Road  
817-594-5918

CHURCH ON THE HILL  
836 NW Parkway, Azle  
817-444-3752

CHRISTWAY BAPTIST  
7673 West Hwy. 199, Agnes  
817-220-9133 or 817-220-3581

CLEAR FORK BAPTIST  
Corner of FM 730 & Ragle Rd., Weatherford, 817-594-1154

EAGLE MOUNTAIN BAPTIST  
8780 Eagle Mtn. Circle, Azle  
817-237-4135

FIRST BAPTIST CHURCH OF AZLE  
1017 Boyd Road  
817-444-4828

FIRST BAPTIST CASTLE HILLS  
401 Beverly Rd., Azle  
817-797-4706

FIRST BAPTIST LAKE WORTH  
700 Charbonneau Tr., west side of Effie Morris Elementary  
817-237-2624

FIRST BAPTIST LAKESIDE  
8801 Jacksboro Hwy., Lakeside  
817-237-8113

FIRST BAPTIST BRIAR  
6 miles N. of Azle on FM 730  
817-444-3484

FIRST BAPTIST COTTONDALE  
1 block N. of FM 2123, Cottondale  
940-433-5539

FIRST BAPTIST PEASTER  
FM 920 in Peaster  
817-596-8805

FIRST BAPTIST POOLVILLE  
1 block W. of FM 920, Poolville  
817-594-3916

FIRST BAPTIST SPRINGTOWN  
5th & Main Street, Springtown  
817-523-7011

FRIENDSHIP BAPTIST  
801 Friendship Rd., 9½ miles S. of Springtown off Hwy. 51 S.  
817-594-5940 or 817-599-4917

FUNDAMENTAL BAPTIST  
5th & Main in Springtown  
817-523-5477

GRACE BAPTIST  
3 miles N. of Springtown on Hwy. 51 across from Radio Tower

GRACE POINTE CHURCH  
4110 E. Hwy. 199, Springtown  
817-221-5683

HERITAGE BAPTIST CHURCH  
3577 FM 51 N., Weatherford  
817-564-3946

IGLESIA BAUTISTA  
Nueva Jerusalem  
6640 Midway Rd., Springtown  
817-694-0444

INDIAN OAKS PRIMITIVE BAPTIST CHURCH  
3229 Shawnee Trail, Lake Worth  
817-237-8441

LAKE WORTH BAPTIST  
4445 Hodgkins, Lake Worth  
817-237-4163

METROPOLITAN BAPTIST  
6051 Azle Ave., Fort Worth  
817-237-2201

NEW HOPE BAPTIST  
782 New Hope Rd., Reno area  
817-221-2184

NORTHWEST BAPTIST  
5500 Boat Club Rd., Lake Worth  
817-237-6063 or 817-270-8476

SILVER CREEK BAPTIST  
730 S. & Veal Station Rd., Azle  
817-444-2325

NEW BEGINNINGS BAPTIST CHURCH  
3605 Jacksboro Hwy., Azle  
817-707-2741

PLEASANT GROVE BAPTIST  
FM 2048 and CR 4677, Boyd  
940-433-5477

PRIMERA IGLESIA BAUTISTA  
300 S. Stewart, Azle  
817-500-3641

SPRINGTOWN BAPTIST TEMPLE  
201 J. E. Woody Rd., Springtown  
817-523-0376

UNION BAPTIST CHURCH  
3451 Sarra Lane, Springtown  
682-333-1645

WALNUT CREEK BAPTIST  
220 W. Reno Rd. in Reno  
817-221-2110

**BIBLE**  
COMMUNITY BIBLE FELLOWSHIP  
1405 Reynolds Rd., Reno  
817-444-7117

NORTHWEST BIBLE CHURCH  
5025 Jacksboro Hwy., Fort Worth  
817-624-2111

SOLID ROCK BIBLE CHURCH  
591 S. Reno Rd., Springtown  
817-221-3444

**CATHOLIC**  
HOLY TRINITY CATHOLIC  
800 High Crest Dr., Azle  
817-444-3063

**CHRISTIAN**  
THE CHURCH AT AZLE  
1801 S. Stewart, Azle  
817-444-9973

AZLE CHRISTIAN FELLOWSHIP  
35 West Forty Estates., Azle  
817-688-3339

GREATER VISION FELLOWSHIP  
1801 S. Stewart St., Azle  
817-825-0485

THE ABBEY CHURCH  
10400 Jacksboro Hwy., Azle  
817-238-1404

CROSSING FELLOWSHIP  
120 E. Main St., Azle  
817-406-4577

**CHURCH OF CHRIST**  
AZLE CHURCH OF CHRIST  
336 NW Parkway  
817-444-3268

BRIAR CHURCH OF CHRIST  
109 W.N. Woody Rd.  
(½ block west of FM 730 N. in Briar)  
817-444-7102

MIDWAY CHURCH OF CHRIST  
6400 Midway Rd.  
817-221-2107

NEWSOME MOUND ROAD CHURCH OF CHRIST  
1460 Newsome Mound Rd.  
817-677-3290

NORTHWEST CHURCH OF CHRIST  
6059 Azle Ave., Fort Worth  
817-237-1205

POOLVILLE CHURCH OF CHRIST  
West of FM 920 in Poolville  
817-594-4182

SOUTHSIDE CHURCH OF CHRIST  
130 W. Bradshaw Lane, Springtown  
817-221-2799

SPRINGTOWN CHURCH OF CHRIST  
Just west of Hwy. 51 North  
817-523-4419

TRI-COUNTY CHURCH OF CHRIST  
525 Hwy. 199 W., Springtown  
817-538-8209

**CHURCH OF GOD**  
ABUNDANT LIFE CHURCH OF GOD  
4800 East Hwy. 199, Suite 7 Springtown, 817-677-3208

LAKESIDE CHURCH OF GOD THE WORD@LAKESIDE  
9396 Confederate Park Rd. (FM 1886)  
817-237-5500

**DISCIPLES OF CHRIST**  
AZLE CHRISTIAN  
117 Church St., Azle  
817-444-3527

CENTRAL CHRISTIAN  
1602 S. Main St., Weatherford  
817-594-3043

FIRST CHRISTIAN CHURCH  
4th & Main, Paradise

**EPISCOPAL**  
ST. ANNE'S ANGLICAN EPISCOPAL  
6055 Azle Ave., Fort Worth  
817-237-1888

PROVIDENCE REFORMED EPISCOPAL  
405 Bowie Dr., Weatherford  
817-596-7476

ST. ELISABETH EPISCOPAL  
5910 Black Oak Lane, River Oaks  
817-739-0504

**GOSPEL**  
CENTRAL FULL GOSPEL FELLOWSHIP  
3009 Delaware Tr., Lake Worth  
817-237-7919

**JEHOVAH'S WITNESSES**  
KINGDOM HALL OF JEHOVAH'S WITNESSES  
212 Pearson Lane, Azle  
817-221-2242

**LUTHERAN**  
THE EDGE CHURCH - AZLE  
1313 SE Parkway, Azle  
817-237-4822

HOPE LUTHERAN (ELCA)  
4795 Hwy. 199, Reno  
817-221-HOPE

**METHODIST**  
BOYD UNITED METHODIST  
FM 730 North in Boyd  
940-433-3334

FIRST UNITED METHODIST  
200 Church St., Azle  
817-444-3323

LIGHTHOUSE FELLOWSHIP  
7200 Robertson Rd., Fort Worth  
817-237-2758

SILVER CREEK UNITED METHODIST  
2200 Church Rd., Azle  
817-444-1382

FIRST UNITED METHODIST  
Hwy. 51 N & 3rd Street, Springtown  
817-523-7874

GARVIN UNITED METHODIST  
3 miles West of Boyd on C.R. 4699

POOLVILLE UNITED METHODIST  
1 block W. of FM 920 (behind Poolville Post Office)  
817-599-3601

THE CHURCH OF JESUS CHRIST OF LATTER-DAY SAINTS (THE MORMONS)  
THE CHURCH OF JESUS CHRIST OF LATTER-DAY SAINTS  
1010 Timberrooks, Azle  
817-237-5075

**PENTECOSTAL**  
GRACE CHAPEL UNITED PENTECOSTAL CHURCH  
3508 Shawnee Trail, Lake Worth  
817-237-4844

**PRESBYTERIAN**  
GRACE FIRST PRESBYTERIAN  
606 Mockingbird Lane, Weatherford  
817-594-2744

ORTHODOX PRESBYTERIAN CHURCH OF FORT WORTH  
Meeting at Northwest YMCA  
5315 Boat Club Road, Fort Worth  
817-989-9800

**ORTHODOX**  
ARCHANGEL GABRIEL ORTHODOX CHRISTIAN CHURCH  
1157 S. E. Parkway (Jacksboro Highway), Azle  
817-752-8255

**OTHER**  
ALIENTO DE DIOS  
2233 E. Hwy 199, Springtown  
817-521-4694

BETTER LIFE COMMUNITY CHURCH  
3131 E. Hwy 199, Spt  
817-677-2300

CORNERSTONE COMMUNITY CHURCH  
2233 Hwy 199 East, Springtown  
817-221-LIFE (5433)

**FAMILY CHURCH**  
9 miles S. of Springtown on Hwy. 51  
817-599-7655

GRACE FELLOWSHIP CHURCH  
2964 W. Hwy 114, Paradise  
940-969-2427

HILLTOP FAMILY CHURCH  
1227 Old Cottondale Road, Springtown, 817-220-7177

THE HOUSE OF PRAYER  
1356 Reno Rd., Springtown  
817-221-2551

POWERHOUSE OF PRAISE CHURCH  
1649 S.E. Parkway, Azle  
817-319-7364

BRANDED CROSS COWBOY CHURCH  
3282 FM 2048, Boyd 76023  
817-755-7021

SECRET PLACE MINISTRIES  
112 Optimist Rd., Springtown  
682-229-1433

GOSPEL GATHERING FELLOWSHIP  
7315 Silver Creek Rd at Flatrock Rd, Azle  
817-313-1793

LIGHTHOUSE CHURCH  
6409 FM 730 S., Azle  
817-444-4311

LIGHTHOUSE HARBOR CHURCH  
1960 Long Circle, Pelican Bay  
817-444-3547

NEW LIGHTED WAY  
624 Harbor Dr. Circle, Azle  
817-444-1577

NORTHWEST TEMPLE OF PRAISE  
6781 Jacksboro Hwy., Lake Worth  
817-909-5627

PRECIOUS FAITH TEMPLE CHURCH  
8601 Hwy. 199 @ Vance Godbey's

THE HOUSE OF PRAYER  
1356 Reno Rd., Springtown  
817-221-2551

THE RANCH COWBOY COUNTRY CHURCH  
14600 FM 730 North, Azle (Briar)  
817-909-5627

REAL FAMILY FELLOWSHIP  
202 Pearson Lane, Azle  
817-677-5963

SOULS HARBOR  
11701 Jacksboro Hwy., Azle  
817-726-2065

WESTERN HARVEST FELLOWSHIP CENTER  
6577 Old Springtown Rd., Weatherford  
817-523-2855 or 817-995-9087

SHEPHERD'S HEART CHURCH  
14435 FM 730 N • Azle  
817-444-7777

WESTERN STAR COWBOY CHURCH  
790 CR 3696 • Paradise 76073  
817-688-6887

**HILLTOP FAMILY CHURCH**  
1227 Old Cottondale • 817-220-7177

"Caring about what Jesus cares about... You!"

**Joe Rider Propane, Inc.**

PROPANE TANKS

**817-237-3325**

Compliments of  
**Rural Gas Supply**

**PROPANE** 140 W. MAIN ST.  
817-444-4613

"In business since 1946"

*White's Funeral Homes*  
Our family serving your family since 1908

Bob White, Anita White and Zack Bellenger

Full Service Funeral Home  
Cremation Services  
Pre-Need Plans

Azle • Springtown  
Mineral Wells • Weatherford  
817-444-3211 • www.whitesfuneral.com

**Clarks Precision Machine & Tool**  
636 Profit St., Azle, Tx

**45 Years of Quality**

ISO 9001:2001 Compliant Phone 817-444-2533  
Check us out on our web site B.J. Clark  
www.clarksmachine.com bjc@clarksmachine.com

**WHAT'S HAPPENING IN YOUR HOMETOWN?**

Subscribe today to keep up-to-date  
Azle News: 817-270-3340  
Springtown Epigraph: 817-220-7217

Celebrating over 25 years in business

**AZLE CHIROPRACTIC CLINIC**  
817-444-HELP (4357) Rodney Gattin, D.C.  
400 Boyd Court  
www.azlechiropractic.com

Get your business noticed!

**817-270-3340**  
Call Johnna to reserve this space.

Want readers to FIND YOU?

Place your ad here!  
Call **817-270-3340**

Place your ad here today!  
**817-270-3340**  
or 817-220-7217

**TRI-COUNTY Electric Cooperative, Inc.**  
Electric Cooperative, Inc.  
"A Commitment to Service and Savings"

Actively Supporting our Communities!

Call Johnna for details  
**817-270-3340**

**Advertise Here**

Contact us for details.  
**817-270-3340 or 817-220-7217**

**Your Ad Here** Newspaper Advertising Works!

Call Johnna for details TODAY  
**817-270-3340**

**Advertise Your Business With Us**  
and maximise your visibility!

Contact us about advertising solutions.  
**817-270-3340**  
**817-220-7217**





CLASSIFIED

817-270-3340 - Azle - classified@azlenews.net

817-220-7217 - Springtown - shirley@springtown-epigraph.net

Ad Classifications

- 1... Air Condition/Heating
2... Antiques
3... Appliances
4... Appliance Repair
5... Arts/Crafts
6... Asphalt Paving
7... Auctions
8... Autos, Trucks
9... Auto Repair Service
10... Backhoe Service
11... Boats, Motors
12... Bookkeeping
13... Business
14... Campers/Trailers
15... Carports/Patios
16... Equipment Repair
17... Carpet Service
18... Catering
19... Cement Work
20... Demolition
21... Child Care
22... Cosmetics
23... Computers/Services
24... Electrician
25... Equipment & Tool Rental
26... Excavating
27... Exterminating
28... Farm Equipment
29... Fencing
30... Firewood
31... Free Opportunity
32... For Sale
33... Furniture
34... Garage & Estate Sales
35... Garden/Mowing Svc
36... Hauling
37... Hay
38... Health/Fitness
39... Help Wanted
40... Home Improvement
41... House Leveling
42... House Cleaning
43... Hunting
44... Janitorial Service
45... Job Wanted
46... Looking to Buy
47... Lost & Found
48... Maintenance/Repairs
49... Masonry/Stonework
50... Mobile Home Service
51... Motorcycles
52... Movers
53... Musical Instruments
54... Music Lessons
55... Miscellaneous
56... Party Planning/Events
57... Pets/Livestock
58... Piano Service
59... Pool Service
60... Professional Services
61... Personal
62... Plumbing
63... Public Notice
64... Photography
65... Printing
66... Roofing
67... Recycling
68... Storage
69... Sand/Gravel
70... Septic Tanks
71... Sewing/Alterations
72... Sewer Service
73... TV/Radio
74... Tractor Service
75... Upholstery
76... Vacuum Cleaners
77... Wanted
78... Well Drilling
79... Welding
80... Lots/Acreage
81... Business & Commercial Property
82... RV's for Rent
83... Houses for Sale
84... Mobile Homes for Rent
85... Mobile Homes for Sale
86... Mobile Home/RV Lots
87... Rent Furnished
88... Rent Unfurnished
89... Wanted to Rent

RATES

16 Words or Less:

Combo (Azle & Springtown) Only \$10.00 per week!

Over 16 words, add 20 cents per word
Extras such as Bold, Center & Border are available for a small fee

Classified boxed display ads also available for \$9.00 per column inch

(All ads must be paid in advance unless you have previously established credit)

CLASSIFIED AD DEADLINE: MONDAY BY 4:30 P.M.

Most ads require payment in advance, but we do accept VISA, MASTERCARD, DISCOVER OR AMERICAN EXPRESS by phone. Reach more than 8,000 households with combo advertising in the Azle News and the Springtown Epigraph.

Nobody does it better!

006 Asphalt Paving

BYRUM CONSTRUCTION Asphalt Paving
•Driveways •Parking Lots
•Asphalt Repairs & Sealcoating
•Asphalt Millings •Gravel
Bruce Byrum 817-690-2429
Azle, Texas

008 Autos, Trucks

1958 MGA Roadster, MUCH MODIFIED. 302 Boss Ford, 4 speed, Complete Corvette rear suspension, Camaro discs, front. \$14,000/OBO. 817-270-0647.

1978 Chevy Silverado 4x4, \$23,000. 817-948-0691.

1994 Jaguar XJS convertible, 2 plus 2, 6.0 Liter, fully refurbished, \$20,000. Has wire & honeycomb rims with spare parts. 817-677-3149.

014 Campers & Trailers

2012 Sabre Forrest River RV for Sale. Very nice, with 3 slideouts, fireplace, 2 AC units, etc. \$16,500 cash/OBO. Larry 817-319-7874.

019 Cement Work

Kiley Chesney Construction
Dirt & Concrete Work
Driveways • House Slabs • Garages • Add-ons
Small Land Clean-ups • Gravel Driveways
Kiley Chesney, Owner
Springtown, TX • Mobile 817-846-6645
Allan Chesney Concrete
All Types of Concrete Work
Residential - Commercial
Foundations, driveways, sand, gravel, demolition, haul-off, retaining walls
817-271-4541

Concrete Services, Patios, Driveways, Sidewalks, Retaining Walls, Foundations, Stone Walls. Free Estimates. 817-371-8597.

020 Demolition

MCNEELY'S DEMOLITION & CLEAN UP SERVICE
We Create Vacancy
•Tear Down •Barns
•Removal •Houses
•Haul Off •Bobcat
•Mobile Service
Homes •Dirt/Gravel
•Garages Spreading
FREE ESTIMATES
817-996-7887
253 Eagles Way, Springtown

024 Electrician

BULLDAWG ELECTRIC CO.
All types of electrical services and MH hook-ups.
Free Estimates. 817-675-4921
www.bulldawgelectric.com.
TECL#25253.

026 Excavating

REED EXCAVATING
• SITE PREPARATION • GRAVEL ROADS
• LOT CLEARING • PARKING LOTS
• LEVELING • DEMOLITION
• FINAL GRADE • STOCK TANKS
• LAND EROSION
Dump Truck Hauling 817-919-3696

ALL TYPES OF EXCAVATING
Tanks • House Pads • Clearing
HASTY EXCAVATING
Also .. Sand • Top Soil • Gravel
817-523-7248 • 817-239-6215

029 Fencing

BOBBY'S FENCE. All types, Free Estimates, Over 26 years experience. 817-444-3213.
KILEY CHESNEY CONSTRUCTION
All Types Fences - Tractor Work
817-846-6645

030 Firewood

LEON'S TREE SERVICE. Split Oak and Pecan wood. Pickup or delivery. 817-371-8597.

032 For Sale

Used Brother embroidery machine, PE170D, plus extras, \$250/OBO; Teeter inversion table, \$200/OBO. 682-229-8528.

034 Garage & Estate Sales

Estate Sale 12-10 & 12-11 9A-? Bedroom Suite, Dining Table, Four Chairs, Couch, Freezer, Craftsman Lawnmower, Tools, Misc Household items. 913 Rosebud Dr. Azle. Cash Only.

Garage Sale Saturday only 8A-12:30P. 113 Parkwood Court, Azle. Household Items, Furniture, Antiques.

AW Specialties

SHOP LOCAL
All Christmas Stuff is 25% Off
612 Profit St. Azle TX
Tues-Fri, 10A-5P & Sat, 10A-3P

035 Garden/Mowing Service

COWBOY LAWN CARE. Residential, farm, gardens, landscaping, tree trimming. Free Estimates. 817-271-0450.

HOMETOWN LAWN CARE. Best Prices Around. Free Estimates. Call Cody 817-454-6090.

WISE OUTDOOR SOLUTIONS. Fall Clean ups, Underbrush Removal, Tree Trimming, Stump Removal, Animal Burials, Tractor Work. 940-399-9616.

Serving Our Community Since 2007
R&A
• Lawn Care Maintenance
• Landscaping
• Sod Installs
• Tree Trimming
• Custom Christmas Lights
Contact Robert 817-304-3677

STUMP GRINDING
Don't dig it! Grind it!
1 or 100 - We can do it.
\$85 minimum within 5 mi.
817-237-5592

LEON'S TREE SERVICE
Expert take downs
Stump Grinding
Residential/Commercial
Licensed & Insured • Free Estimates
817-371-8597

Chad's Tree Service
FREE ESTIMATES
Trimming • Removals • Stump Grinding
Systemic Feeding • Brush Chipping • Cable Bracing
817-221-2201 • 817-246-5943
Insured for your protection

037 Hay

SPRIGGING
5 COUNTIES:
Jack, Wise, Tarrant, Parker, Montague
COASTAL OR TIFTON
52 years Experience
940-229-1045
or 940-229-1046

039 Help Wanted

Local Builder/Developer looking for experienced Help. Must have a valid driver's license. Knowing how to operate machinery, being mechanically inclined and have carpentry skills are a plus. Send resumes to: tommymileshomes@yahoo.com.

039 Help Wanted

Local Builder/Developer looking for experienced Help. Must have a valid driver's license. Knowing how to operate machinery, being mechanically inclined and have carpentry skills are a plus. Send resumes to: tommymileshomes@yahoo.com.

MAINSTREAM (group home for adults with developmental disabilities) is hiring part-time Direct Contact Staff for 17-hour weekday shifts (2nd & 3rd shifts) or 24-hour weekend shifts. Paid training, starting pay is \$7.75 hourly. Good potential for full-time employment. Call 817-270-2747, Monday-Friday, 9A-3P.

Springtown ISD is accepting applications for Bus Drivers and Monitors. Training available. Contact the Transportation Dept. 817-220-1418.

Local Pool Company is hiring a Pool Technician/Helper. Pay is depending on experience and skills. Call 817-613-8253.

Full-time Office Help needed Mon-Fri, 8:30A-6P. Apply at Motley Automotive, 1304 Northwest Parkway, Azle 817-444-8529.

MOTEL 6. Help wanted for full-time Housekeeping. 817-270-4207.

PLACE AN AD IN THE CLASSIFIEDS TODAY!
817-270-3340

039 Help Wanted

Wise Ready Mix
Now Hiring Class B-CDL Mixer Drivers
• Production & Safety Bonuses Paid Monthly
• Employer Matching Retirement Plan Available
Apply in person at 1349 NW Parkway • Azle

039 Help Wanted

KARL KLEMENT
Body Shop Painter Helper
Assists Body Shop painters and performs other duties as needed throughout the Body Shop. Must be responsible and dependable with a valid driver's license. Monday-Friday work week.
Body Shop Technician
Commission. Must have experience.
Body Shop Porter
Performs duties throughout the Body Shop. Must be responsible, dependable and have a valid TXDL. Monday to Friday work week.
Parts Drivers
Must have valid TXDL with acceptable driving record. Overtime available and room for advancement. Monday-Friday work week.

KLEMENT
Certified Technician
\$2,500 Hiring Bonus
Compensation based on experience and certifications. Must be dependable and responsible with a good work ethic.
Parts Warehouse Associate
Performs duties throughout the parts department. Must be have valid DL and acceptable driving record. Monday through Friday.
Service Porter
Performs duties throughout the service department. Must be responsible, dependable and have a valid TXDL. Monday through Friday.
Service Advisor
\$2,500 Hiring Bonus
Must be committed to customer satisfaction and be honest and dependable. Previous experience preferred, but willing to train the right candidate.

KLEMENT DISTRIBUTION, INC.
(Hershey Ice Cream Distributor)
Route Driver
\$2,500 Hiring Bonus
No CDL required, but must have valid TXDL with acceptable driving record. Monday through Friday. Fun work environment! Promote from within advancement opportunities. Flexible time-off schedules, often 3-day weekends during summer months.

Karl Klement Properties, Inc.
Motorcycle Restoration Tech
Restoring Bultacos. Full or Part time hours available.
Maintenance Helpers
Show us you have what it takes!
On the spot job offers. No experience required.
For consideration of all positions apply to:
Alyssa Jacobs, Assistant H/R Manager
605 N. Business 287, Suite 102, Decatur, Texas
hr@klementford.com
940-627-6362
We offer Benefits, Paid Holidays, Vacation & Training

New Correctional Officer
Pay is \$15.00 per hour.
Please check the web site for Job Qualifications.
Must have HS Diploma or equivalent, be able to pass a drug screen, have a clean background and valid driver's license to be considered for a Correctional Officer.
Apply online at www.mtctrains.com or call 940-567-2272 and ask for the HR Department.
Lindsey State Jail

Advertising Really Works!

HVAC TECHNICIANS & INSTALLERS
Come Join the Quality Team at
A/C & HEAT BY RUSSELL
817-270-8811

Help Wanted continued next page...



**817-270-3340 - AZLE**  
**817-220-7217 - SPRINGTOWN**

Deadline:  
 4:30 PM Monday

# Classifieds

**039 Help Wanted**

### Driver/Light Duty General Laborer

We are a full-service Landscape and Irrigation installation company specializing in large scale projects, typically apartment complexes, commercial, senior living, churches, and student housing around the DFW area.

Minimum Requirements:

1. Must be 25 years of age or older
2. Valid driver's license and good driving record
3. Must be able to communicate clearly and effectively
4. Good work history
5. Physically fit and capable of working in a construction project environment including a predominately fast paced outdoor environment.

The day will start out in Azle, TX and from there travel to, from, and around the DFW area will be required. The day will end back in Azle, TX. Company vehicle will be provided. This position will be driving with the Construction Manager.

Some light duty general laborer duties to be performed while at job sites.  
 Example: Loading/unloading trailers, light maintenance on equipment, organization of supplies, some landscape duties as needed.

The positions starting pay will range from \$15-\$17 an hour depending on qualifications.

Benefits include:

1. Weekly pay
2. Overtime pay
3. Holiday pay (after 90 days)
4. Vacation (after a year)
5. Company vehicle

**Willing to train the right person**

Please email your resume to [shyla@greenworldincusa.com](mailto:shyla@greenworldincusa.com) or call 940-433-2639.

## TEXAS CROSSWORD

by Charley & Guy Orbison  
 Copyright 2021 by Orbison Bros.

**ACROSS**

- 1 Houston space org.
- 5 some Texans have big ones
- 6 TX Barry Corbin film: "The Night the Lights Out in Georgia"
- 7 gusher (out)
- 8 GPS accident avoidance? (2 wds.)
- 17 TXism: "confused \_ goat on astroturf"
- 18 TXism: "a watched pot \_"
- 21 country of Texas (abbr.)
- 22 TX Drew Brees' number as a Saint
- 23 this Tommy lost a coin flip and thus was not on TX Holly's fateful flight
- 24 this gold medalist Mary Lou now lives in Houston
- 29 TXism: " \_ scootin" (dancing)
- 30 a stallion, or a type of poker
- 31 hosp. trauma area
- 32 leading male star of 1945 "San Antonio"
- 34 Nacogdoches' FM KJCS started with this call sign
- 35 this agcy. approved 3 COVID vaccines
- 36 TXism: "a sight for (pleasing) \_"
- 37 snow glider
- 38 TX-based bus company: \_hound
- 39 "red touch \_ feller" (coral snake)
- 41 lion exhibit sounds at the Abilene Zoo
- 42 world distress signal
- 43 " \_ omission"
- 44 this Burleson was first president of Baylor
- 45 TXism: "up \_ snuff"
- 46 Metroplex airport
- 47 be given out
- 48 "Red River Rivalry" month
- 50 increase the bet in poker
- 51 express disgust
- 52 TXism: "take a look \_" (investigate)
- 53 "to \_ is human"

**DOWN**

- 1 home of "Schlitterbahn WaterPark Resort" (2 wds.)
- 2 TX Nolan Ryan, as a baseball pitcher
- 3 Sutton County seat
- 4 TXism: "green \_ -week-old corn" (inexperienced)
- 9 Texas has 563,000 members of one
- 10 camping shelter
- 11 Adam's mate
- 12 Ricky Nelson plane crashed near \_Kalb, TX in 1985
- 13 talked tediously
- 14 TXism: "talked \_ streak" (TXism for 13 down)
- 15 TXism: " \_ me a bill of goods" (lied)
- 16 " \_ the season"
- 19 part of Abilene metro area
- 20 atomizers
- 22 mats to prevent slippage (2 wds.)
- 24 TX Ely who was a TV Tarzan (init.)
- 25 plural of 31-across
- 26 former Cowboy quarterback, Aikman
- 27 "laid \_" (buried)
- 28 Chief " \_ -te-ka gave Houston his Indian name
- 29 part of Wichita Falls metro area
- 30 "can \_ country mile" (good eyes)
- 33 soap ingredient
- 34 Wichita Falls AM before KWFS
- 35 employees/shareholders lost billions in Enron
- 37 TXism: "write \_ he can't read fast"
- 38 TXism for "errand boy"
- 40 " \_ a penny, in for a pound"
- 41 in Haskell County on U.S. 380
- 44 donned after a bath
- 47 this TX James won the Medal of Honor
- 49 66 TX high schools have this mascot

**040 Home Improvement**

**BILL ROSSER PAINTING & REMODELING.** Big Savings: \$100 off any job of \$1,000 or more. Painting, Carpentry, Porch Covers, Decks. FREE ESTIMATES. Call 817-304-9974; 866-374-3559.

**WORKHORSE HANDYMAN SERVICES.** Bathrooms, kitchens, remodels, water & sewer repair, mobile home repair, roof repair and well repair. Quality at a reasonable rate. Call 817-874-6109.

PYRAMID REMODELING. PAINTING: Interior, Exterior, Tape & Bed, Texture, Popcorn Ceilings. FREE ESTIMATES. 817-944-7658.

**BOBBY MCWILLIAMS PAINTING** 817-821-6377. Interior/Exterior Painting Residential & New Homes. 48 years experience.

**041 House leveling**

HOME LEVELING SOLUTIONS. Mobile Holmes, Pier and Beams, Slabs, Sheds, Rotten Wood Replacement. Small Jobs Always Welcome. 940-399-9616.

**046 Looking to Buy**

Local Man Buying Used or Damaged Campers, Motorhomes, Farm Equipment, Trucks and Trailers, Boats, Golf Carts and ATVs. 817-629-7531.

**049 Masonry/Stonework**

**Silva Masonry, L.L.C.** AZLE, TX  
**CONCRETE**  
 COMMERCIAL • RESIDENTIAL  
 Landscape Designs, Outdoor Kitchens  
 Patios, Retaining Walls, Mailboxes

All Types Stone & Brick Work Free  
 New Construction • Remodels Estimates  
**817-308-6512**  
 email [alvarosilva@verizon.net](mailto:alvarosilva@verizon.net)

**052 Movers**

U.S. Army Retired-but not tired! Careful moving-Cheap. Call Big Jim @ 817-237-5151.

**057 Pets/Livestock**

Will pay top dollar for grazing and hay leases. Call 940-389-1936.

**062 Plumbing**

**LANDERS Plumbing Co.**  
 Plumbing Repairs  
 Drains Cleaned  
**817-444-3054**  
**940-233-2862**  
 Don Landers • M-10078

**GRAHAM PLUMBING CO.**

Commercial-Residential  
 Serving Springtown,  
 Azle, Boyd,  
 Weatherford Area  
 M#15899  
**817-220-2469**  
[grahamplumbingco.com](http://grahamplumbingco.com)

**066 Roofing**

**AT HOME ROOFING & METAL BUILDINGS**

**817-304-4224**

Tired of always replacing your roof? Call us for a metal roof quote.

**We'll be here after the storm.**

**Miles Roofing**

- Insurance Claim Specialists;
- Free Estimates

**817-797-3420**

**DIAMOND ROOFING & CONSTRUCTION**

Commercial & Residential

- Roofing
- Metal Roofing
- Carports
- Metal Buildings
- All General Contracting

**417 N. MAIN ST • SPRINGTOWN**  
**817-523-4137**  
 Here Before The Storm, Here Long After.

**068 Storage**

INNERSPACE STORAGE. Hwy 199, Springtown. Now renting all unit sizes, 24-hour access. 817-677-4050.

**STORAGE UNITS**  
 1350 Liberty School Rd  
 5x10 Units \$40/Mo.  
 10x10 Units \$75/Mo.  
**817-246-4646**

**Ash Creek Storage**

Convenient Location  
 Corner of Main St. & Locust • Azle  
**817-444-3292**

**069 Sand/Gravel**

HALL'S SAND, DIRT & GRAVEL  
 Quality Family Business Since 1938  
 CALL Cliff Hall  
**(817) 221-2681**  
 We go the extra mile to ensure you get more for your \$. On House Pads, Driveways, Lot Clearing & Tractor Work, Etc.

**078 Well Drilling**

Need a quality water well at a fair price? Also, pump sales and installation. KELVIN'S PUMP & WELL SERVICE. 817-221-4300.

**079 Welding**

Our Business is Metal Buildings - And We're Good!  
 DESIGN FABRICATION ERECTION  
**Cozart METAL BUILDING SYSTEMS**

Fabrication and erection of quality metal buildings at reasonable prices, any size - any design  
 Office **817-237-2282**  
 Fax 817-237-0904  
 Mark Cozart Jeremy Cozart  
 817-233-6668 817-237-2028

Find it in the Classifieds

Looking for a Storage Facility? Check out this section.

**079 Welding**

owner Rodney Vick  
 817-220-3044  
 fax 817-523-7639  
 cell 817-253-1614

R & E Construction  
 Metal Building Specialist

- Weld Ups/ Bolt Ups
- Pipe Fencing
- Concrete
- Horse Barns
- All Types Fencing
- Metal Roofs

Compare Pricing  
 NO JOB TOO SMALL

**SOLID STEEL SOLUTIONS**

- Metal Buildings
- Steel Components
- Welding Supplies
- Concrete Supplies
- Fabrication Supplies
- Pipe Fencing
- Deer Blinds
- Deer Feeders

Open to the Public

**817-220-0008**  
**www.solidss.com**  
**8894 W Hwy 199 • Springtown**

**WDC WELD-DONE CONSTRUCTION LTD.**

**Metal Building Erectors**

- Pre-engineered Weld-up
- Barns/Shops
- Arenas/Hangars
- Fencing

1220 E. Hwy. 199 • Springtown  
**817-220-2150**  
**www.weld-done.net**

**081 Business/Commercial**

FOR LEASE: 291 Morrow Road, Springtown. 2,200 sf building, east of Springtown with easy access to Hwy 199. 817-657-5682.

FOR LEASE: 3 acres, gravel lot with water and electric, 1 mile east of Springtown, easy access to Hwy 199 (outside city limits). 817-657-5682.

**081 Business/Commercial**

40x50 building For Rent, 3 miles west of Springtown. 817-713-7495.

NOW AVAILABLE: Commercial Storefront/Office Space For Lease. \$1,100/mo. Call Donna Bransom 817-925-8281.

Looking For Industrial Space? Prime location for your business between Azle & Springtown, outside city limits. No certificate of occupancy. Property is completely fenced w/electronic gated entrance. Well equipped & insulated warehouse manufacturing building that meet OSHA standards. 3 phase electric installed & LED lighting. 16 ft ceiling, roll up doors, heat & air and plenty of parking. Large propane tank. ADT prewired for doors. Leasing approximately 5195 sf, \$2,995/mo. on east end of the property. Call Alana Long with Williams Trew 682-321-2151 or [alana.long@williamstrew.com](mailto:alana.long@williamstrew.com).

**TKO Services**

Soft Wash House Wash

Roofs and Shingles  
 Windows  
 Bricks  
 Decks  
 Concrete Cleaning  
 Swimming Pool Area  
 Rock  
 Sidewalk  
 Driveway

**817-550-3745**

**Devin's Handyman Service**

- Carpentry
- Cement
- Rock
- Granite
- Tile
- Painting
- Siding
- Insulation
- Kitchen/ Bath
- Seamless Gutters
- Powerwashing
- Decks

FALL SPECIAL 20% OFF with this ad!

**Call Devin at 817-629-9608**

**Mr. Sweeps** Chimney Cleaning Service

Keep your home safe. Call Parker/Wise County's oldest chimney sweeping company, Mr. Sweeps.

**817-692-5624**  
 ask for Doug  
[www.mrsweepschimneycleaning.com](http://www.mrsweepschimneycleaning.com)

**Special: \$170**  
 Chimney & Dryer Vent Cleaning

**Kevin's Handyman Services**

40 Years Experience

- Carpentry
- Drywall & Painting
- Tile & Laminate Floors
- Doors & Windows
- Decks & Stairs
- Cabinets & Countertops
- No Job Too Small

Springtown and Surrounding Areas  
**231-445-1221**

SELL IT IN THE CLASSIFIEDS!

Advertising Works!



**817-270-3340 - AZLE**  
**817-220-7217 - SPRINGTOWN**

Deadline:  
 4:30 PM Monday

# Classifieds

**082 RV's for Rent**

Nice 1BR RV in adult RV park. Great for older person on limited income. Starts at \$550/mo. All Bills Paid. Heritage RV Park 817-444-3760.

**084 Mobile Homes for Rent**

Pelican Bay: 1524 Partridge, 1-1, stove/fridge, central heat, window unit, \$545/mo. \$400 deposit. Owner/Broker 817-988-9954.

Large 3-2 DW, very nice, fenced yard, CH/A, \$1,700/mo. with approved application. 817-228-2414.

1525 PARTRIDGE, 2-1, \$675/mo. \$400 deposit. Gene Thompson & Associates 817-246-4646 gtax.com.

1BR 1BA mobile home in Briar, 1 year lease, \$650/mo. \$500 deposit, no pets. 940-390-1164.

**086 Mobile Home/RV Lots**

Covered & uncovered spaces and rental units in Adult Park, store rooms, mail service, paved roads. 5 miles south of Azle on FM 730. 817-444-3760.

Beautiful RV Spots available in nice, quiet area near Eagle Mountain Lake. \$350/mo. Call for more information 817-228-2414.

**088 Rent Unfurnished**

2021 Home in Azle. 3BR, 2BA, 2-Car Carport with attached 10x20 Storage. \$1,800/mo. \$1,800 deposit, Credit/Background Check, No Pets. Available September 1st. 817-980-3066.

2-2 house, large kitchen, 2 large baths, 2-Car Carport, appliances, dishwasher, etc. Laundry room, quiet area, close to shopping and Hwy 199, no pets, \$1,300/mo. 817-444-3636.

3-2 Duplex for Rent in Springtown. \$1,000/mo. \$500 deposit, no pets. 817-980-3066.

3-2 brick house in Azle. \$1,400/mo. \$1,400 deposit, no pets. 817-980-3066.

3-2 Duplex. Just refurbished, quiet area, no pets, close to shopping. \$1,300/mo. 817-444-3636.

1 Bedroom House, All Bills Paid, washer/dryer included, 1 person only, no pets, \$875/mo. \$600 security deposit. 7545 Portwood (house in back). Shown by Appointment Only. 817-360-3039.

1916 PELICAN DRIVE N.3-1, \$1195/mo. \$500 deposit; 1513 CORAL CUT OFF, 3-1 \$1195/mo. \$500 deposit; 1912 CORAL ROAD, 2-1 \$1095/mo. \$400 deposit. Gene Thompson & Associates, 817-246-4646, gtax.com.

3.2 Beautiful treed lot, fenced yard, non smoking, available 12-1-21. 417 N. Cedar Street, Springtown \$1350/mo. \$1000 deposit. Please call or text Don Patton 817-692-1996.

2-2 4-PLEX, Newly Remodeled. \$1,050/\$800 security deposit, WBFP, walk-in closets, box windows, large kitchen w/pantry, 1,100 sf. 817-360-3039.

**086 Mobile Home/RV Lots**

**VALLEY ROSE RV PARK**  
 817-583-5372

- Free Cable & WiFi
- Showers
- Playground
- Swimming Pool
- Dog Park
- Security Cameras
- Storage Area
- Manager On-Site
- 40x20 Back-In
- 50x20 Pull-Throughs
- All Concrete Pads & Roads

Spaces Starting at \$450/mo. All Bills Paid  
 1515 E Hwy 199 • Springtown

**POJO RV PARK**

302 Allison Road  
 Springtown, TX 76082  
 817-925-3673

RV Spaces \$400/mo.  
 Includes Utilities & Trash Service  
 Near Pojo Stadium

**Puzzle Solution**

ADAM, LUCI, ABOS, SLIT, KID, ASGRAIS, ANEW, CHRISTMAS, TERESA, KEEP, OHAIR, DISPLACEMENT, SURGE, STANTON, ER, TOAD, EDUARDO, LIGHTS, RAIT, ASP, COULDE, ELISOLDE, GLOUD, ANN, MIT, ANY

**088 Rent Unfurnished**

**Cross Companies Residential Properties**  
 Family-owned, family-run

**STEWART BEND SILVER CREEK RV PARK**  
 DUPLEX HOMES

**Stewart Bend Duplex Homes:** 2 & 3 bedroom units available at \$1,075 & \$1,175. Quiet, clean, non-smoking. CALL or TEXT 817-404-7143.

**Silver Creek RV Park:** Designed for local long-term stays. Best common building in Azle, secluded and quiet, city water/sewer. \$450 with \$75 electricity allotment; ABP in winter. CALL or TEXT 682-499-8616 or email [scrvooffice@gmail.com](mailto:scrvooffice@gmail.com).

**Barton Cottages Tiny Home Community:** COMING FALL 2021! Email [sales.stewartbend@gmail.com](mailto:sales.stewartbend@gmail.com) for information.

**Save a Shelter Animal. Find your forever friend**

**088 Rent Unfurnished**

**GENE THOMPSON & ASSOCIATES HOMES and MOBILE HOMES FOR RENT**  
 gtax.com  
 817-246-4646

**AZLE OAKS APARTMENT**  
 700 JARVIS • AZLE  
 817-444-1712

**1 & 2 Bedroom Unfurnished Accepting Applications**  
 Rent based on income  
 TDD: 800-735-2989  
 This institution is an equal opportunity provider and employer.



**Need to sell your ATV?**  
 Call today and ask about our (\$29.95) 3-MONTH SPECIAL!  
 Azle News 817-270-3340  
 Springtown Epigraph 817-220-7217

TEXAS STATEWIDE CLASSIFIED ADVERTISING NETWORK  
**TexSCAN**

TexSCAN Week of Dec. 5-11, 2021

**ACREAGE**

Hunting/investment/recreational property. Starting at \$650/acre. Trans Pecos region. Also the Hill Country (Edwards, Menard, Coke, Val Verde Counties - free ranging exotics), South Texas (Duval County - whitetail, hogs). Large or small acreage. 30-year fixed rate owner financing, only 5% down. Call toll-free or email for individual prices and terms, [www.ranchenterprisesd.com](http://www.ranchenterprisesd.com), 800-876-9720.

**ANIMAL CARE**

Use Seal N Heal® to seal wounds on dogs & cats with a bitter taste to prevent gnawing, allow healing. At Tractor Supply® ([www.fleaandtick.com](http://www.fleaandtick.com)).

**EVENTS**

Bob's Baseball Tours - Field of Dreams Tour Aug. 15-21, 2022: Home games for Chicago (Cubs/White Sox), Brewers and Twins. Also a visit to the Field of Dreams movie site. Tour begins/ends in Minnesota. New York/New England Fall Foliage Tour Sept. 26-Oct. 2, 2022: Home games for New York (Yankees/Mets) and Red Sox. Guided Tour of NYC, free time in Boston, Trolley Tour in Maine, travel through White Mountain National Forest in New Hampshire & scenic train ride in Vermont. Tour begins/ends in Newark, NJ. Tours include deluxe motor coach transportation, additional sightseeing opportunities and quality game tickets/hotels. Call for a FREE brochure: 507-217-1326.

**AUCTIONS**

2 Day Firearms Auction Live & Online, December 10th at 2 p.m. and December 11th at 10 a.m. 1500+ lots, military, sporting & modern firearms. [www.montroseauction.com](http://www.montroseauction.com), 478-376-4559. GAL2006.

Texas Press Statewide Classified Network  
 221 Participating Texas Newspapers • Regional Ads  
 Start At \$250 • Email [ads@texaspress.com](mailto:ads@texaspress.com)

NOTICE: While most advertisers are reputable, we cannot guarantee products or services advertised. We urge readers to use caution and when in doubt, contact the Texas Attorney General at 800-621-0508 or the Federal Trade Commission at 877-FTC-HELP. The FTC web site is [www.ftc.gov/bizop](http://www.ftc.gov/bizop).

**SUBSCRIPTION SPECIAL**  
 13 Months for the Price of 12  
 Offer Ends Dec 31, 2021



Check one:

\$40.00 IN-COUNTY (Tarrant, Parker & Wise only)

\$36.50 SENIOR CITIZEN (60 years and older; Tarrant, Parker & Wise only)

\$25.00 ONLINE ONLY (View an online replica of the paper without receiving a printed copy)

Applies to New & Renewal Subscriptions, but excludes Out-of-county subscriptions.

Name \_\_\_\_\_

Address \_\_\_\_\_

City \_\_\_\_\_ State \_\_\_\_\_ Zip \_\_\_\_\_

County \_\_\_\_\_ Daytime ph. \_\_\_\_\_

Circle one and Clip and mail with check:

The Azle News or The Springtown Epigraph  
 321 W. Main Street Azle, Texas 76020 P.O. Box 557 Springtown, Texas 76082

**PUBLISHER'S NOTICE**

All real estate advertising in this newspaper is subject to the Fair Housing Act which makes it illegal to advertise "any preference, limitation or discrimination based on race, color, religion, sex, handicap, familial status or national origin, or an intention, to make any such preference, limitation or discrimination." Familial status includes children under the age of 18 living with parents or legal custodians, pregnant women and people securing custody of children under 18.

This newspaper will not knowingly accept any advertising for real estate which is in violation of the law. Our readers are hereby informed that all dwellings advertised in this newspaper are available on an equal opportunity basis. To complain of discrimination call HUD tollfree at 1-800-669-9777. The toll-free telephone number for the hearing impaired is 1-800-927-9275.

**SERVICE Directory**

**Transmissions & Auto Repair**  
**Rainwater's Transmission & Auto Repair**  
 TRANSMISSION • BRAKES A/C • ENGINE SERVICE  
 LOCALLY & FAMILY OWNED!  
 201 E. Hwy. 199, Springtown  
 817-220-1059 • 682-615-7250

**Diesel/Auto Repair**  
**TEXAS Diesel & Auto**  
 SEMIS RVS EQUIPMENT PICKUPS CARS ATVS  
 We Fix Everything!  
 817-968-7867

**Movers**  
**★U.S. ARMY retired - but not tired!★**  
**Member: MOVERS**  
 Courtesy ★ Punctuality ★ Care  
 • VFW • DAV  
 • Sheriff's Assn  
 • American Legion  
 • ET AL  
 • Full Service Moving - Local & Long Range  
 • Gun Safes - Pianos - Auto - Antiques  
 • Packing & Storage - Large or Small  
 Please call Jim at **817-237-5151**

**Trash/Waste Service**  
**ATEX TRASH SERVICE**  
 \$30 per month WEEKLY PICKUP  
 Proudly Serving The Community We Live In  
 817-344-8464 ATEXTRASH.COM

**Exterminators**  
**Tom Samples Pest Control**  
 YOUR COMPLETE PEST CONTROL SERVICE  
 Family owned and operated. Over 50 years of service.  
 Voted Best Pest Control Best of Parker County  
 817-915-2470

**Exterminators**  
 Est: 2003 in Azle TPCL 12509  
**THE BUG STOPS HERE!**  
**Classic Pest Control Operators, Inc.**  
 817.444.0371  
[classiccpc.com](http://classiccpc.com) [facebook.com/classicpcaine](https://facebook.com/classicpcaine)

**Air Conditioning and Heating**  
**J&J AIR CONDITIONING & HEATING**  
 Serving the Springtown, Azle, Weatherford & Fort Worth Area Since 1970  
 Sales • Service • Residential • Commercial  
**SPRINGTOWN 817-220-4506**  
[www.jandec.com](http://www.jandec.com)  
 Texas Air Conditioning Contractor License: TACLA014745E

**Appraisals**  
**PRAYNE Appraisal, LLC**  
**GYNTHIA PAYNE, MNAA, ASA**  
**STACY PAYNE, OFFICE MANAGER**  
 WOMAN OWNED VETERAN OWNED  
 817-771-5562  
[info@payneappraisal-llc.com](mailto:info@payneappraisal-llc.com)  
[www.payneappraisal.net](http://www.payneappraisal.net)