



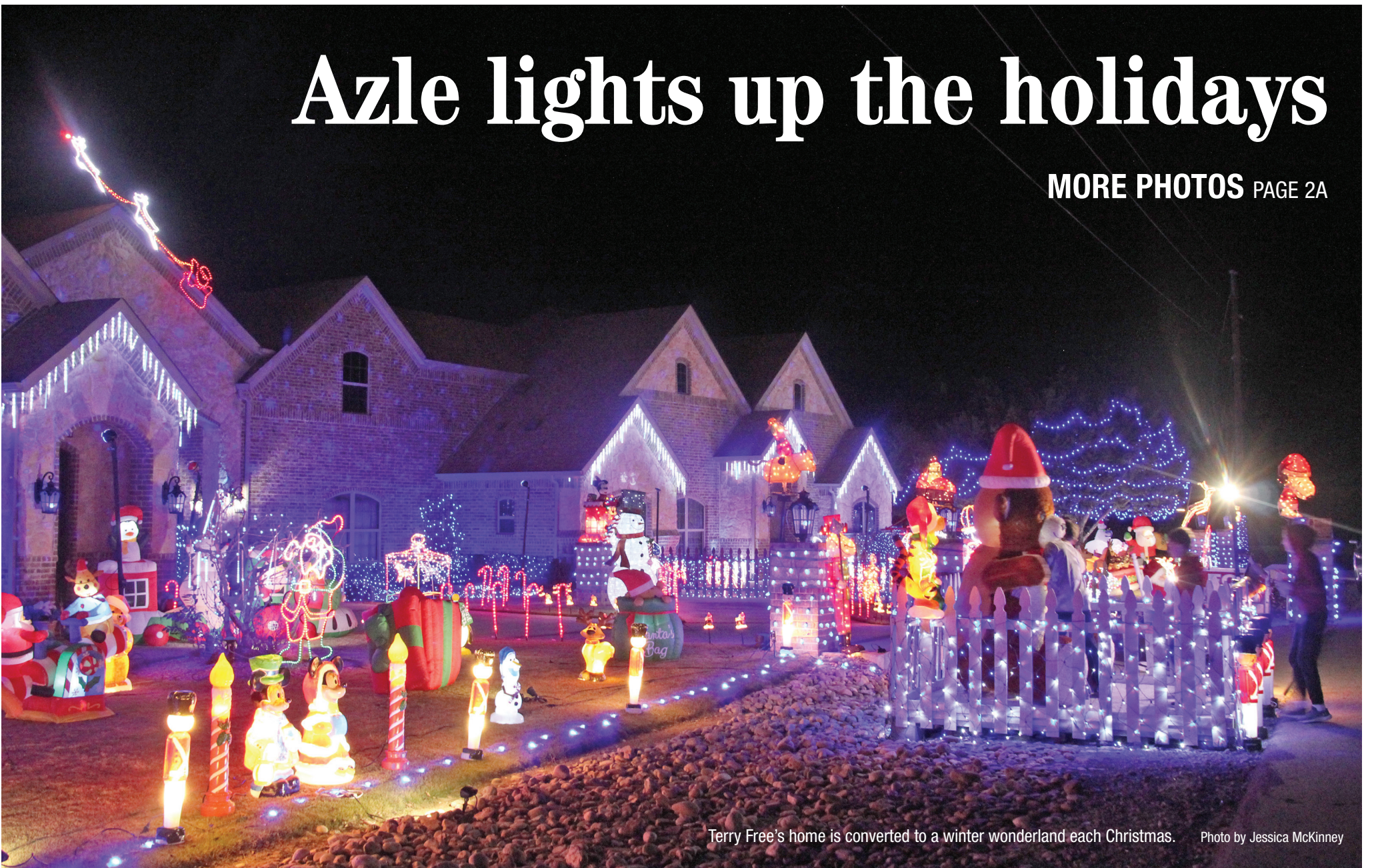
Azle News

YOUR TRUSTED LOCAL NEWS SOURCE SINCE 1966

Wednesday, December 15, 2021 • Volume 70, Number 29 • AzleNews.net • \$1

Azle lights up the holidays

MORE PHOTOS PAGE 2A



Terry Free's home is converted to a winter wonderland each Christmas. Photo by Jessica McKinney

Repairing streets a continuous process



Azle streets employee Jeremiah Johnson uses a skid steer with milling machine attachment on a repair job on Ash Avenue near Park Street, as streets superintendent James Duvall looks on. A hot mix (asphalt) was used on the street. Photo by Don Munsch

BY DON MUNSCH
editor@azlenews.net

Drive around Azle and you will notice streets being repaired or in need of a facelift.

James Duvall, Azle city storm water manager/streets superintendent, said he has approximately five years' worth of streets on a repair list.

Street quality is getting better in Azle, he said.

"Azle has historically faced difficulties in keeping up with the reclamation of city streets due to funding issues," he said in an emailed response to questions. "You

can only do so much work each year with the money that is available. The city of Azle does not have the equipment necessary to do a street reclamation or overlay. The city is dependent on Tarrant County, Precinct 4, and contractors for the Parker County side of the city to reclaim or overlay streets.

"The city has been collecting a ¼ cents sales tax that the citizens voted on and approved, and due to good planning and under the watchful eye of our current council and city management, the budget has vastly improved so that more streets are being fully reclaimed

each year," he said. "The sales tax will come before the citizens again in 2022 for their approval."

Both concrete and asphalt are used for surfacing, Duvall said.

"New subdivisions generally use concrete," he said. "Most of Azle was built with asphalt."

Prioritizing which streets get the most urgent attention centers on the state of the street itself, as Duvall said a "worst is first" guide is the most common method of reclaiming streets everywhere.

"The streets department

SEE REPAIR, PAGE 3A.

Azle fire chief looks ahead to new shift schedule, additional station

BY DON MUNSCH
editor@azlenews.net

Azle will need an additional fire station in the next several years.

In the meantime, fire department officials will tweak something at the current station in an attempt to make the department more appealing with its current and future personnel.

Azle Fire Chief Will Scott discussed new shift schedules for employees and the prospect of an additional

fire station during the 2019-21 report to the Azle City Council last week.

At the Dec. 7 meeting, Scott provided a rundown of the budget for the two fiscal years – 2019-20 and 2020-21 – and discussed calls for service and training, among other areas, in his report.

City growth affects the fire department's ability to meet demands.

"A second fire station will be needed sooner than later,"

SEE FIRE STATION, PAGE 9A.



Ding a Ding a Ding

Choir members sing to a packed auditorium at the annual Sounds of the Season performance of Christmas music Dec. 9 at Azle High School. Songs included "Have Yourself a Merry Little Christmas" and "Ding a Ding a Ding." Girls pictured front row, left to right, are Sadie Byrom and Zoey Thompson. Ashlie Lewis, center. In the back row, left to right, are Erin McMullen, Ravyn Barnes, Emma Black and Breanna Hathorn. Boys pictured front row, left to right, are Justin Roberts and Jhonathan Carmane. Middle row, left to right, Tristan Dorado and Brighten Cloutre. Back row, left to right, Joseph Schmidt and Dane Wells.

Photo by Jeff Prince



INSIDE News 1-12A | Obituaries 6A | Sports 1-4B | Classifieds 6-8B |

6 992321 00001 0

Azle lights up the holidays



Neighborhoods around Azle are showing their Christmas spirits this season. A home on Flat Rock Road (above) and Wapititi Drive (below) have been amazing light gazers of all ages for years.

Photos by Jessica McKinney



ON FISHING

Winter techniques: strolling and dead sticking

Winter season has been slow to arrive this year, but the cooler water temperatures are falling into the 50s and winter patterns will typically be the primary mode for catching fish. There will still be some warmer days that may require a back step or two, but in general the winter season is here.

Avid anglers know that some of the best fishing of the year is in the winter. Winter is the season when striped bass and hybrid striped bass can be caught on a variety of artificial presentations. It is also a great time of the year to look for those lunker bass as well. Many crappie anglers focus on the winter as well. These

MICHAEL ACOSTA
michael.acosta@att.net

As a licensed professional fishing guide, Michael Acosta shows you how to find them. He has been a licensed guide since 1998.

winter presentations usually involve very little movement or really slow movement of your bait to draw a strike. The slow movement I use more than most is called "dead sticking."

The "dead sticking" pattern I am talking about is basically using a jig head with a soft plastic bait of some type that is lowered where baitfish are congregated. You can essentially hold the bait still with very little movement and eventually it will get hit. The colder it gets the less movement you impart on the bait. This is similar to crappie fishing with small jigs, it's just that the jigs are bigger and the predators are bigger.

Another option is to use your trolling motor and slowly drag your bait at the desired depth through the fish. This is called strolling and is typically done using swim baits like sassy shad type baits. You can work more water with this option. My most favorite dead

sticking baits include shad or chartreuse colored five-inch jerk baits. A wide variety of colors will work. I like dying the tail of a shad colored soft plastic with chartreuse dye and threading this bait on a 3/4 ounce jig head. Chartreuse is always a good color to use. Swim baits or sassy shad type tails work well also. The "glow" color swim bait is a favorite among many.

Once you start catching fish with this method, you will be hooked. The more fish you catch the better you will build confidence in this pattern. As with any fishing, there are times you have to be patient. When the bite does come on, look out.

Dead sticking works best when the bait fish are huddled together on those colder days. You are looking for active feeding fish mixed in with the baitfish. Typically the baitfish are relatively lethargic this time of the year, hence the slow presentation. When a predator does swim through a school of baitfish, the baitfish will scatter and your artificial bait will be the easy target left.

All fish are cold blooded as we know and they don't have to eat as often in the winter as they do in other

seasons. This can be true, but when they do feed they tend to gorge themselves. The fish you catch during the winter will be extremely healthy and obese. This is also the best time of the year to catch and release. Survival rates in the cold water are much higher than in the summer.

If the fish are really active and the birds are pointing you right to the fish, try hanging these jigs with soft plastics under the surfacing fish to get those bigger fish to bite. You can also pull out the swim baits or top water baits to get into some of that top water action as well.

Spoons or slabs are also effective in the winter. The key here is to move it slow or move it only once in a while to draw attention to it. Just holding it down there and allowing it to flutter while you move the boat with the trolling motor is effective as well.

These winter techniques are extremely effective. In fact they will out catch live bait most of the time. You might not believe that initially, but once you have seen it work you will forget about that live bait option in the winter.

ROAD REPAIR, CONTINUED FROM PAGE 1A.

ment evaluates the streets throughout Azle each year," he said.

During the evaluation process, Duvall looks for certain elements such as lateral and longitudinal cracking and the number of failures – potholes – that exist in a street.

"I try and figure how much a street in its current state is costing to maintain," he said.

The biggest share of funding roads comes from the 1/4 cent sales tax, Duvall said.

"There is money in the general fund budget for common maintenance issues that come up throughout the year," he said. "The general fund usually pays for items such as pothole repair material."

The time it takes to do a repair job depends on the size of the project, he said, and "hopefully at the same time we can determine what caused the problem. Most issues in Azle are drainage or water related. Water intrusion into the subbase of a street is the main cause of a failure. We call them failures but the average citizen refers to them as 'potholes.'"

The city plans to do a repair job on Ash Avenue.

"The engineer is scheduled to have a completed set of plans ready in January," Duvall said. "I have no idea about a start date. The plans will have to be reviewed and approved by staff and presented to city council for their approval."

Additionally, work will be

done on the thoroughfares of Ferndale, Idlewood and Gladstone, which are Tarrant County streets scheduled for reclamation this fiscal year.

"Arledge and Ethridge are the Parker County streets scheduled to be reclaimed," he said. "The Parker County streets are reclaimed by contractors so the city has to use the formal bidding process." Listed below are streets on Azle's to-do list, over a five-year period and in no particular order. This is a tentative list, as some of these streets might be replaced with others if an issue develops and the city has to deal with it immediately, Duvall said.

AZLE ROAD REPAIR SCHEDULE

- Dunaway
- Lakeview
Denver-Broadway
- Park
Shady - Denver
- Park
North Stewart - Twilight
- Ash
Oak Harbor - Lakeview
- Stribling
- North Stewart
Walnut - Ash
- North Stewart
Pkwy - Walnut
- Commerce
- Roe St
- Dennis
- Dwight
- J.B. Smith
- Calgary

FISHING REPORT

Possum Kingdom Lake striped bass to 13 pounds are excellent under the birds. Lake Whitney striped bass are also good on the upper ends from Lakeside upstream to Kimball Bend. Whitney bird action is also good on the main lake from the State Park to the McCown Valley. Whitney crappies are good to excellent in the river near Kimball Bend.

Spotlight on BUSINESS DECEMBER

refund transfer

PAY NOTHING OUT OF POCKET TODAY
With a refund transfer.

Don't want to pay up front?
With a Refund Transfer, your tax preparation and related fees can be deducted from your refund after all services are complete. It's easy and convenient. Get a State Refund Transfer at no additional cost when you buy a Federal Refund Transfer.

Refund Advance Begins January 4, up to \$3500

H&R BLOCK®

Azle 730 Shopping Center, 828 Boyd Rd., Ste D, Azle TX 76020
817-270-4586
Offices open Jan 4, 2022

Refund Transfer (RT) is a tax-refund related deposit product by Avos Bank, Member FDIC. You must meet legal requirements for opening a bank account. RT is a bank deposit, not a loan, and is limited to the size of your refund less applicable laws. You can e-file your return without a RT, a loan or extra fees. Main License No. FRA2. *2019 HRB TAX Group, Inc.

JENNIFER STEPHENS TAX SERVICE, INC.
119 Industrial Ave.
Inside Sutton Printing Office
(817) 301-8880
JenniferStephensTaxService@gmail.com

Full Service Accounting

- Contactless Services
- Tax Preparation
- Free 2nd Looks for Tax Returns
- Free Consultations

Jennifer Stephens Tax Service, Inc. offers a wide variety of services for your financial needs.

Jennifer Stephens TAX SERVICE, INC

- Contactless Services
- Tax Preparation
- Free 2nd Looks for Tax Returns
- Free Consultations
- Business Entity formation: LLC, Inc., Corp., LP, LLP, Trust, Non-For-Profit
- Wide Range of Business Forms

BRING IN THIS AD TO RECEIVE \$25 Off
TAX SERVICES OR ACCOUNTING FEES

119 Industrial Ave, Azle
817-301-8880
JenniferStephensTaxService@gmail.com
WALK-INS WELCOME!

Motley's AUTOMOTIVE & MOTORCYCLES
FAMILY OWNED AND OPERATED FOR 20 YEARS
State Inspection for Tarrant & Parker Counties

Automotive

- Tune-ups
- Diesel
- Suspension Computer Diagnostics
- A/C Repair
- Brakes
- Emission Repairs
- Repair & Restore Classic Cars

Motorcycles

- Maintenance & Repairs
- ATVs
- Dirt Bike Parts
- Accessories
- Motorcycle Apparel

ASE CERTIFIED

UPS PACKAGE DROP OFF STATION

1304 NW Pkwy (Hwy 199)
www.motleyautomotive.com
817-444-8529
817-456-0907
Monday - Friday
8:30 am - 6:00 pm

Jennifer Stephens Tax Service, Inc.
For all your tax season needs

Jennifer Stephens Tax Service, Inc. is ready to take care of all your income tax and accounting needs both face-to-face and CONTACTLESS.

She offers a wide variety of services including, federal and state taxes, business formations, notary services, legal forms, business entity formation (LLC, Inc., Corp, non-for-profit, trusts,) power of attorney and wills, full service bookkeeping with payroll and record retention, digital records and financial tax advice.

The Jennifer Stephens Tax Service, Inc. office is located at 119 Industrial Ave in Azle (inside the Sutton Printing office) and is available by phone and email. Information can be received thru contactless secure drop mailbox at the office.

Jennifer Stephens is an accountant with more than 30 years of experience in the accounting and tax industry and ERO.

"I don't have customers, I have friends," says Stephens. She offers free consultations and will work up the return for free; nothing is owed until the return is signed and transmitted to the IRS.

"I diligently aspire to provide services within an environment of a "mom and pop" business. I am 'old school' and can customize to a customer's needs," added Stephens.

Let Jennifer Stephens Tax Service, Inc. take care of all your tax and accounting needs.

Tax service rates start at \$50 for franchise or sales tax returns, \$300 for personal tax returns, \$350 for business tax returns, and additional \$50 for state tax returns.

You can call (817) 301-8880 to talk with Jennifer about your needs and arrangements for contactless procedures.

AZLE PAINT & BODY

"Where Customers Send Friends"

Eric Chisholm, Owner

817-444-5057
233 W. Main

Give the gift of a sober ride

BY JESSICA MCKINNEY
azlereporter@azlenews.net

Eat, drink and be merry is the motto of many during the holiday season, but when one festive cocktail turns into one too many, it can end in tragedy.

The Azle Municipal Court is taking part in the Texas Department of Transportation Holiday P.A.S.S. program, offering gift cards that promise a sober ride to friends and loved ones.

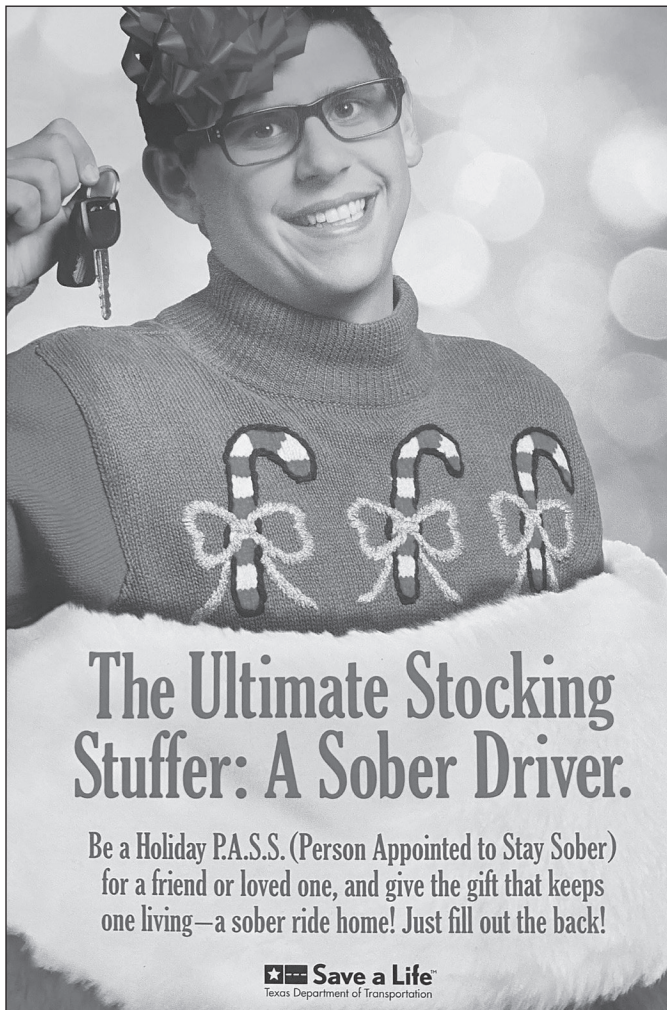
“A Holiday P.A.S.S. is a Person Appointed to Stay Sober,” said Amber Watson, deputy court clerk in Azle. “Anyone can be a holiday P.A.S.S. for a friend or loved one and give the gift that keeps on giving — a sober ride home.”

In 2020, there were 958 DUI-related fatalities in Texas. Nearly 70 of those deaths happened in January, and 88 in December.

The Holiday P.A.S.S. goes along with the municipal court’s efforts to end the streak of daily deaths on Texas roadways.

Parker County had 108 DUI crashes last year, resulting in two deaths. Tarrant County had almost 1,400 DUI crashes and 46 fatalities in 2020.

“On this Nov. 7, Texas (marked) 21 years of daily



deaths on our roadways with more than 75,000 lives lost to preventable fatal crashes,” said Watson. “For the past several years, about 10 people have died every day in crashes in the state. During the height of the pandemic when traffic dropped

nearly 50%, the death rate climbed to more than 11 a day, shocking state transportation leaders.”

To grab a Holiday P.A.S.S. to add to someone’s stocking this Christmas, stop by the Azle Municipal Court inside of city hall at 505 W. Main St.



Wreaths Across America ceremony Dec. 18

BY JESSICA MCKINNEY
azlereporter@azlenews.net

The Azle Composite Squadron, Civil Air Patrol, will be leading a wreath-laying ceremony at 11 a.m. Dec. 18 at Azleland Memorial Park, 850 N. Cardinal Road., Azle, joining more than 1,400 locations for National Wreaths Across America Day. The squadron will place 500 wreaths at the headstones of fallen service members laid to rest at Azleland.

The annual event pro-

motes the mission to “Remember, Honor, Teach, ensuring that the memory of those who served across our country endures.”

“It is important that we take the time to honor those who have served and fought to protect our country and way of life,” said Maj. Brian Kilian of the Azle Composite Squadron. “We must remember there is a price to be paid to enjoy the freedoms we have — may we never take these freedoms for granted.”

Veterans, community

leaders and residents from Azle and surrounding communities are invited to participate in the ceremony.

Wreaths Across America is an extension of the wreath-laying ceremony at Arlington National Cemetery. The ceremony was first started by Morrill Worcester, a Maine businessman, in 1992. The organization helps coordinate wreath-laying ceremonies across the country.

For more information, visit www.WreathsAcrossAmerica.org.

Tom Samples Pest Control
YOUR COMPLETE PEST CONTROL SERVICE
Family owned and operated. Over 50 years of service.
Voted Best Pest Control Best of Parker County
817-915-2470

LAW OFFICE OF BRYAN WEAVER
Serving the community that has served my family for three generations
General Civil Practice
The Lawyer who makes house calls
Evening & Weekend appointments available
We are open, much can be done electronically.
Now is the time to work on your estate plan.
BWeaverlegal.com • 817-901-9255
Principal office in Azle, Texas

Est: 2003 in Azle TPCL 12509
THE BUG STOPS HERE!
Classic Pest Control Operators, Inc.
817.444.0371
classicpc.com facebook.com/classicpcinc

Motley's AUTOMOTIVE & MOTORCYCLES
FAMILY OWNED AND OPERATED FOR 20 YEARS
State Inspection for Tarrant & Parker Counties
Automotive: Tune-ups, Diesel, Suspension, Computer Diagnostics, A/C Repair, Brakes, Emission Repairs, Repair & Restore Classic Cars
Motorcycles & ATVs: Maintenance & Repairs
ASE CERTIFIED
PACKAGE DROP OFF STATION
VISA, MasterCard, DISCOVER, AMERICAN EXPRESS
ASPER ENGINES & TRANSMISSIONS
1304 NW Pkwy (Hwy 199)
817-444-8529
817-456-0907
www.motleyautomotive.com
Monday - Friday 8:30 am - 6:00 pm

TAXPROS
GET UP TO **\$6,000**
FAST CASH REFUND ADVANCE
Refer 8 People GET \$400 CASH
MEMBER OF THE AZLE CHAMBER OF COMMERCE
BRING A FRIEND AND RECEIVE \$100 OFF
MENTION THIS AD, GET 10% OFF
100 Park Place, Ste. 232, Azle TX 76020
682-582-5785

PAYNE Appraisal, LLC
CYNTHIA PAYNE, MNAA, ASA
STACY PAYNE, OFFICE MANAGER
WOMAN OWNED
VETERAN OWNED
817-771-5562
info@payneappraisal-llc.com
www.payneappraisal.net

The Return Of
WESTERN WEAR
Now Open
3221 E. Hwy 199, Springtown
Next to Boomtown Furniture
817-444-2855
Wed-Sat 10 am - 6 pm

AZLE AREA CLUBS AND ORGANIZATIONS

Texas Health Harris Methodist Hospital AZLE
Volunteers Needed
TexasHealth.org/Volunteer/Our-Process
RAINBOW INN GIFT SHOP
Inside Hospital 108 Denver Trail
Azle 817-444-8651
ATTIC RERUNS
NOW OPEN! FRI 9-4 SAT 9-1
714 SE Pkwy Azle 817-270-3690

Good N.E.W.S.
Living at Home Block Nurse Program
Volunteer Caregiver Training Classes
Classes open to public at no charge
Our Volunteers Make a Difference!
Caregiver Volunteer Meeting
1st Monday of Each Month at 6pm
817-444-2300
412 Commerce St.

Rotary Club of Azle
MEETS AT NOON THURSDAY
412 Commerce St.
(across from Azle Post Office)

The Finish Line
Addiction wants to destroy you & everyone around you.
With Jesus there is Victory over addiction.
GET BACK IN THE RACE!
Meetings held every Friday from 7:30pm-9:30pm at The Church at Azle
1801 S. Stewart • Azle • 817-401-8513
www.ourfinishline.com

Faced with a DRINKING Problem?
Perhaps Alcoholics Anonymous can HELP.
Daily meetings at Noon & 6:30 pm
Sunday at 3 pm
229 S. Stewart St. • Azle
817-332-3533

Azle Lion's Club
Meets 2nd TUESDAY 6:30 PM
412 Commerce, Azle
e-clubhouse.org/sites/azle_tk/
Curren McLane - president
817-689-0074

Post your clubs or organization meetings here!
Only \$100
for 52 weeks of advertising
Call Johnna for details:
817-270-3340

SERVOLUTION NETWORK
LET'S START A COMMUNITY WIDE REVOLUTION THROUGH SERVING.
FOR QUESTIONS CALL:
833-4WE-SERV
833-493-7378
VISIT: WWW.SERVOLUTIONNETWORK.COM

Azle Boy Scout Troop 243
Meets Mondays 7 PM
Azle First Assembly of God
1020 Southeast Parkway
troop243azle.org

Optimist Club of Azle
Meets every FRIDAY at 6:45 AM
Moe's Country Kitchen
316 W. Main, Azle

Azle Lodge No. 601
Floor School or Work
7:30 PM THURSDAY NIGHT
Chris Akers - Worshipful Master
Rocky Gralla - Secretary
Clint Hall - Treasurer

Eagle Mountain Pregnancy Help Center
10328 Jacksboro Hwy
Fort Worth TX 76135
817-237-1819
www.emphc.org
Mon 12-6 PM Thurs 12-6 PM
SE HABLA ESPAÑOL

Schocke brings piece of history to Azle

BY JESSICA MCKINNEY
azlereporter@azlenews.net

Azle High School senior Brooke Schocke has a passion that sets her apart from many other high school kids — history.

Schocke has been driven by a desire to help keep the memory of the “Greatest Generation” — those who fought in World War II — alive and well in the minds of all she meets, and she has accomplished just that.

Schocke spoke in front of the Azle ISD Board of Trustees during the Dec. 13 meeting, telling them about her journey of meeting Pearl Harbor survivor Donald Stratton, the bond they formed and her desire to honor him, fellow survivors and those who lost their lives on a ship in Hawaii 80 years ago.

She then announced that

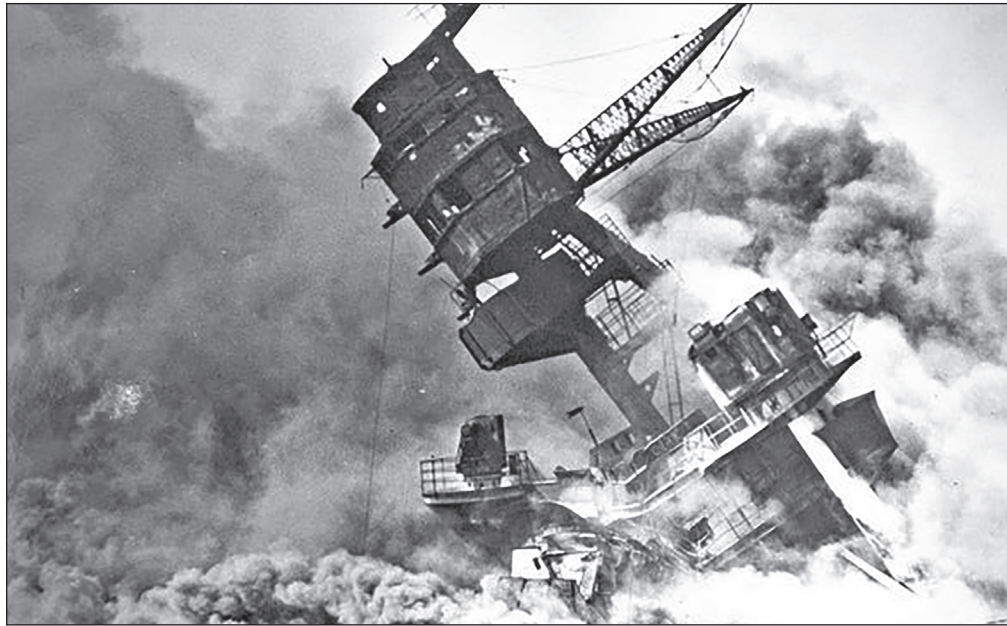
AHS was going to be able to help honor that generation with a very special display.

A piece of the USS Arizona, a battleship that was destroyed on December 7, 1941, during an event that triggered the United States

into war, will be displayed at the AHS campus “so that many generations can appreciate the sacrifice of those brave men,” Schocke said. The display will stand as a reminder of those who paid the ultimate price for their

country.

Principal Randy Cobb carried the piece of the ship — roughly four feet across — and showed it to the members of the school board, each touching the rusted metal with reverence



The USS Arizona during the attack on Pearl Harbor.



Azle High School senior Brooke Schock Photo by Jessica McKinney

and awe.

Schocke was able to attend the 80th Commemoration Ceremony in Honolulu on Dec. 7, held at the memorial site for the USS Arizona. Today, she wears a small piece of the ship, given to her by the late Stratton, and it’s a gift that

she will treasure and carry as a reminder of those she honors above all others.

A display case is being designed and built for the ship’s piece and is expected to be put on display at the high school beginning in January.

Forte Junior High School helps Community Caring Center



Students from Forte Junior High School’s National Junior Honor Society and AVID students donated 1,059 food items (675 pounds) to the Community Caring Center in Azle to help families in need.

Courtesy photo

Azle florist is 100



Dot Lawler, longtime Azle florist and business owner, celebrated her 100th birthday on Dec. 10.

Lawler has been crafting beautiful floral arrangements for the community since the 1960s and has built a reputation for quality through her business.

But more than that, she has been a valued part of the community, supporting students through an annual \$300 scholarship, and continues to be a “prayer warrior,” which she credits for helping her live a long, purposeful life.

SAVE THE DATE

Come-And-Go Reception

CO-SPONSORED BY THE AZLE AREA MINISTERIAL ALLIANCE AND THE AZLE AREA CHAMBER OF COMMERCE

Thursday, January 13, 2022 • 4-6 pm



Rick is officially retiring from the City of Azle effective January 1, 2022, after serving as its Police Chief since March 2015; and Shelia is leaving her post as Executive Director of the Azle Area Chamber of Commerce on January 15, 2022, after serving in that role since March 2016. The Pippins have supported the AAMA over the years in helpful and meaningful ways, and we look forward to this opportunity to thank them.

404 West Main Street, Azle

Christmas Eve



Candlelight Services

Bring your family and enjoy an evening of candlelight, carols and communion

5:00 PM

7:00 PM

11:00 PM

JOIN US FOR WORSHIP EVERY SUNDAY!

Blended Worship 8:30 AM

Contemporary Worship 9:45 AM

Traditional Worship 11:00 AM

Sunday School & Fellowship 9:45 AM



FIRST UNITED METHODIST CHURCH

200 Church Street, Azle, Texas
817-444-3323 • www.fumcazle.org

Church@FUMCazle.org

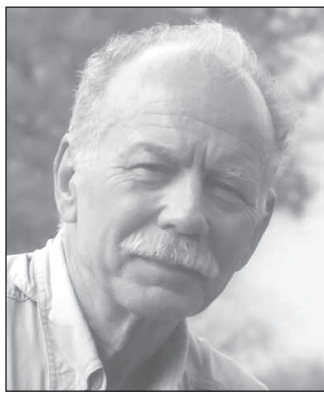
Obituaries

Ronald Franklin Fleming 1937 - 2021

Ronald Franklin Fleming of Boyd, passed away peacefully at home, Monday, Dec. 6, 2021.

He was born Sept. 20, 1937 to Grover Franklin and Helen Evelyn Fleming in Oklahoma City, Oklahoma.

Ron was a long time resident of Tulsa, Oklahoma. He owned and operated Graphis Associates, Inc., House of Heirlooms, and Heartstone Studios. He is a nationally recognized Artist with permanent collections in many museums around the world, such as the Smithsonian Museum, Renwick Gallery in Washington D.C., and The State Department, Geneva, Switzerland, as well as multiple state museums. He also holds the great honor as part of the White House Permanent Collection of American



Craft in Washington D.C. with a piece displayed in the Red Room.

Ron is survived by his son, Randall Fleming and his wife, Kathryn; daughter, Tamara Scott and her husband Brett Scott; son, Todd Fleming; seven grandchildren and six great grandchildren.

The Azle News, Dec. 15, 2021 Edition

Glenda Kay Hoover 1935 - 2021

Glenda Kay Barton Hoover passed from this life on Dec. 9, 2021 at Discovery Village in Fort Worth.

Mrs. Hoover's services will be held at noon on Dec. 16, 2021, Thursday, at Mount Olivet in Fort Worth.

A memorial celebration for both our parents will be held in late Spring 2022. Details will be forthcoming.

She was a life-long reader and loved teaching Literature, so in her honor and in lieu of flowers, please send all donations to the Azle Memorial Library, Attn: Azle Library Trust, 333 W. Main Street, Azle, TX, 76020.

Mrs. Hoover was born on July 31, 1935 to Opal and Carl Barton. She attended North Fort Worth Baptist Church during her childhood years and graduated from Northside High School at 16 years of age.

After meeting Wendal E. Hoover in early 1952, they married in August of that same year and moved to Springtown, Texas, where Mr. Hoover was a teacher. After only 18 months, they moved to Azle, Texas, where they made their home for the next 57 years as Mr. Hoover was Superintendent and Mrs. Hoover was a teacher.

After attending Weatherford College for several years, Glenda earned her Bachelor of Science in Elementary Education from Texas Wesleyan and then went on to teach 4th grade at Walnut Creek Elementary, instructing hundreds of students and influencing many



more.

Glenda gave birth to three children- Lana Kay, Keith Wendal, and Lisa Ann and the entire family were members of Azle Christian Church where she served as diaconate, a Sunday School teacher, Communion service coordinator, Vacation School Director, as well as facilitating many other church functions.

She was a member of the Retired Teachers of Azle and the Azle Garden Club, and was the ultimate hostess, welcoming people from across the town of Azle to her many parties and gatherings. All were made to feel welcome in Glenda's home, no matter their station in life.

She is preceded in death by her husband of 68 years, Wendal, her son, Keith, her parents, and sister, Carlyne.

She leaves behind her children, Lana, Lisa and husband Jim Rogers, daughter-in-law Carol Hoover, seven grandchildren and nine great-grandchildren.

The Azle News, Dec. 15, 2021 Edition

Unrequited Love



DEAR FRANKIE

By Geneva Woodruff

Frankie is a rescue dog and an emotional support animal for Geneva Woodruff. Woodruff is a retired educator.

Dear Frankie,

Harriet is a cocker spaniel and my best friend. We have been meeting up every day at the park for years. On the days, I arrive first, I often chat with Jeffrey, who is a beagle. Recently, I was told Jeffrey had a crush on me. At first, I didn't give it much thought. Then I realized that Jeffrey was always at the gate to greet me whenever our car pulled into the parking lot. I think that Jeffrey's mom and mine haven't helped the situation by saying what an adorable couple we were and what a shame we were fixed. Yesterday they were talking about us having playdates on the weekends. I like Jeffrey well enough for a bit of chat, but I have no interest in our relationship going any further. How can I nip this situation in the bud and let him know how I feel without hurting his feelings?

Cordially, Celeste

Dear Celeste,

You are getting a lot of pushback from all sides. Everyone has an agenda, Jeffrey wants a girlfriend, and your mom and Jeffrey's mom want a happily-ever-after. When some women have children of childbearing age, all they can think about is marriage and grandkids. Even in your case, when they know neither one of you can be a parent.

Forget counting on your moms to get you out of this jam. Actually, they are part of the problem. Perhaps Harriet could speak to Jeffrey and let him know what's what. If she feels uncomfortable speaking to him directly, she might speak to one of his pals and suggest he talk to Jeffrey. From what you tell me, Jeffrey has a lot to offer as a boyfriend. He can carry on a conversation, has a pure-bred pedigree, and comes from a good family. A lot of parents would kill to have him as a dog-in-law. You might discretely ask around the park to see if any of the girls have an eye on him. I would be surprised if there weren't several that would be thrilled to date him. Jeffrey may be so focused on you, Celeste, he doesn't realize that he is a good catch. All it might take to divert his attention is to have someone say to him: "Jeff, Penny the poodle or Ginger the whippet think you are adorable and are dying to get to know you better." If Jeffrey is crestfallen when he learns that you are a no-go, at the very least, he will have learned there are lots of canines in the sea.

Best, Frankie

Dorothy Mae Thornton 1938 - 2021

Dorothy Mae Thornton passed away Sunday, Dec. 12, 2021.

Visitation is Friday, Dec. 17, 2021, from 1 to 2 p.m. at Azle & Lake Worth Funeral Home Chapel. Funeral service will begin at 2 p.m.

Dorothy was born was born on June 11, 1938, in Quanah, Texas to the late Bill and Myrtle Brown.

Dorothy was a wonderful mother, sister, granny and friend. She enjoyed volunteering her time at VFW Post 2137 where she was a lifetime member, past president, and past district president.

Dorothy is reunited with her parents, Bill and Myrtle Brown; husband of forty-six years Dan Thornton; son, Stevie Bob; daughter, Beth;



and brother Gary.

She is survived by her daughters, Anna and husband Mitch, Prissy and Mike; five grandchildren, eight great-grandchildren and one great-great-grandchild and several nieces, nephews and many friends.

The Azle News, Dec. 15, 2021 Edition

White's Funeral Homes
Our family serving your family since 1908

Bob White, Anita White and Zack Bellenger

Full Service Funeral Home
Cremation Services
Pre-Need Plans

Azle • Springtown • Mineral Wells • Weatherford
817-444-3211 • www.whitesfuneral.com

Galbreath-Pickard
FUNERAL CHAPEL

817-594-2747 • Fax 817-596-7803

James R. Plowman
Norma Plowman
913 N. Elm St.
Weatherford, TX 76086
www.galbreathpickard.com
1-800-593-2747

Bob's **BASEBALL** Tours

Field of Dreams Tour ▶ Home games for Chicago (Cubs/White Sox), Aug. 15-21, 2022 Brewers and Twins. Also a visit to the Field of Dreams movie site. Tour begins/ends in Minnesota.

New York/New England Fall Foliage Tour ▶ Home games for New York (Yankees/Mets) and Red Sox. Guided Tour of NYC, free time in Boston, Trolley Tour in Maine, travel through White Mountain National Forest in New Hampshire & scenic train ride in Vermont. Tour begins/ends in Newark, NJ. Sept. 26-Oct. 2, 2022

Tours include deluxe motor coach transportation, additional sightseeing opportunities and quality game tickets/hotels.

Call for a FREE brochure: 507.217.1326

Azle News
817-270-3340
www.azlenews.net

Like us on Facebook
@azlenews

... ATTEND THE CHURCH OF YOUR CHOICE THIS SUNDAY

<p>THE ABBEY CHURCH Pastor: Paul Brownback 10400 Jacksboro Highway 817-238-1404 www.TheAbbeyChurch.com Morning Worship..... 10:30 AM Community Groups..... Various Times</p> <p>ASH CREEK BAPTIST CHURCH Pastor: Dr. G. Wesley Shotwell 300 South Stewart St. 817-444-3219 www.ashcreekbc.org Sunday School..... 9:30 AM Contemporary Worship-TMP..... 10:45 AM Traditional Worship..... 10:45 AM Evening Worship..... 6:00 PM Wednesday Youth Refuge..... 6:00 PM Wednesday Evening..... 6:15 PM</p> <p>AZLE CHRISTIAN CHURCH (Disciples of Christ) Senior Minister, Ashley Dargai, Katie Medlin, Worship Minister 117 Church St. • 817-444-3527 Sunday School..... 10:00 AM Morning Worship..... 11:00 AM</p> <p>AZLE FIRST ASSEMBLY of GOD Pastor: Tim Stevens 1020 S.E. Parkway, Azle 817-237-4903 Sunday School..... 9:30 AM Morning Worship..... 10:30 AM Wednesday Evening..... 7:00 PM</p>	<p>COMMUNITY BIBLE FELLOWSHIP CHURCH Pastor - Alton Davis 817-521-4510 1405 Reynolds Rd., Azle 817-444-7117 Directions: 730 N. to 1542 .5 mi. right on Cardinal, left on Reynolds Sunday School..... 9:45 AM Morning Worship..... 11:00 AM Sunday Evening..... 6:00 PM Wednesday Evening..... 7:00 PM</p> <p>CORNERSTONE COMMUNITY CHURCH 2233 Hwy 199 E. • Springtown 817-221-LIFE (5433) Sunday Worship Service..... 10:00 AM Wednesday..... 7:00 PM</p> <p>CROSSROADS BAPTIST CHURCH Pastor - Jon Baker Corner FM 730S & FM 1886 817-755-0279 Transportation Available Worship Service..... 10:30 AM Wed. Prayer Service..... 7:00 PM</p> <p>THE EDGE CHURCH - AZLE 1313 S.E. Pkwy, Azle 817-237-4822 Missouri Synod "Love God - Serve Others - Share Jesus" Traditional Worship..... 9:30 AM Contemporary Worship..... 11:00 AM</p>	<p>FIRST UNITED METHODIST CHURCH Pastor: Dr. Richard Reed 200 Church St., Azle 817-444-3323 Morn. Worship..... 8:30, 9:45 & 11 AM Sunday School..... 9:45 & 11 AM Youth (UMYF)..... 5:00 PM Sun & 6:30 PM Wed</p> <p>HOPE LUTHERAN CHURCH ELCA 4795 E. Hwy 199 - Reno 817-221-HOPE Follow us on Facebook for streaming services Sunday School..... 9:00 AM Traditional Service..... 10:00 AM</p> <p>HOLY TRINITY CATHOLIC CHURCH 800 Highcrest Dr. - Azle 817-444-3063 Saturday..... 5:00 PM Sunday..... 9:00 AM Sunday..... 11 AM (Spanish) Daily Mass (M, T, Th, F)..... 8:00 AM Wednesdays..... 6:30 PM Confessions..... Sat 4 PM Wed 5:30 PM</p> <p>SOLID ROCK BIBLE CHURCH Pastor - Bill Gay - 817-304-7443 Coffee and Donuts..... 9:00 AM Sunday School..... 9:30 AM Morning Worship..... 10:30 AM Children's Church After Music Service Wed. Prayer Meeting..... 6:30 PM Wed. Bible Study..... 7:00 PM</p>	<p>LEGACY CHURCH Assembly of God Church, Pastor: Gary D. Veazey Hwy. 199 & Jaybird Lane 817-221-2983 Morning Worship..... 9:15 & 11:00 AM Kidz Zone..... 9:15 & 11:00 AM Weds Evening Legacy Group Legacy Youth, Kids All Services..... 7:00 PM</p> <p>SILVER CREEK UNITED METHODIST CHURCH Rev. Sheila Fiorella - Pastor 2200 Church Rd., Azle 817-444-1382 www.silvercreekumc.org Sunday School 9:30 AM • Worship 10:30 AM</p> <p>SILVER CREEK BAPTIST CHURCH Pastor: Jay Ditty Minister of Music: David Musick Corner FM 730 S. & Veal Station Rd. Church 817-444-2325 www.silvercreekbc.org Sunday School..... 9:45 AM Morning Worship..... 10:50 AM Evening Worship..... 6:00 PM Wed. Prayer Service..... 7:00 PM</p> <p>ST. THOMAS THE APOSTLE CATHOLIC CHURCH 5953 Bowman Roberts RD 817-624-2184 Daily Mass - Mon-Fri 8 AM Reconciliation..... Sat. 2:45 or by appt Weekend Masses..... Sat. 4:00 PM SUNDAY..... 8:00 & 10:00 AM Spanish..... 12:30 PM</p>	<p>THE WORD@LAKESIDE CHURCH OF GOD 9396 FM 1886 Fort Worth, TX 76135 817-237-5500 thewordatlakeside.com Pastors: Brandon and Kelly Bohannon Worship Pastor: Christen Moody Family Life and Young Adult Pastors: Jodie and Mark James, Kids Pastor: Katie Pearson, Student Pastors: Taylor and Sheridan Tomlin, Creative Directors: Logan and Carrie Edwards, Connections Coordinators: Preston and Ashley Larrew</p> <p>Equip Sunday School at the WORD..... 9:30 AM Empower Worship at the WORD..... 10:45 AM Kids at the WORD..... 10:45 AM PreK at the WORD..... 10:45 AM Emanate at the WORD (Special Needs Ministry)..... 10:45 AM Nursery at the WORD..... 10:45 AM Young Adults at the WORD..... 6:00 PM</p> <p>Wednesdays Adult Bible Class..... 7:00 PM The WORD Students (6th-12th grades). 6:30 PM Awana Kids at the WORD..... 6:30 PM Life at the WORD Life Groups Various Times</p>
--	---	---	--	--

A church alive is worth the drive! For more information or rates on listing your church, call Johnna at 817-270-3340

Azle Composite Squadron, CAP presents three with Brigadier General Billy Mitchell Award



Maj. Brian Kilian (left) presented Cadets Shrake, Range and King with the Mitchell award during the Nov. 28 meeting of the Azle Composite Squadron. In attendance were Col. William Schroeder, Texas Wing Commander (right), distinguished members of the CAP, and representatives from Rep. Kay Granger's office.
 Courtesy photo

STAFF REPORTS

Tret King, Tristan Range and Shyanne Shrake of the Azle Composite Squadron, Civil Air Patrol (CAP), have been awarded the official cadet rank of Cadet Second Lieutenant, the Brigadier General Billy Mitchell Award. These are the fourth, fifth and sixth Mitchell recipients of the unit and is the first time in the Squadron's history to have three receive the award at the same time.

Distinguished guests from CAP were Texas Wing Commander Colonel William Schroder, Texas Group VI Commander Major Jason Quick and Texas Wing Senior NCO MSgt McDade. In addition, Charlie Crippliver, district director, Justin Allbright, field representative, John Walker, administrative assistant, all part of Congresswoman Kay Granger's office, attended the ceremony, held Nov. 30 at First Baptist Azle.

Cadet King joined CAP in February 2020 with the first Cadet Great Start class of that year.

"I was told [about CAP] by a friend and thought it

could be an enriching experience. It teaches the next generation fundamental values and builds leadership within the cadets. It feels good to reach the halfway point in [the] CAP cadet program, but I have honestly found more joy in achieving things previously that other may see as small," said Cadet King when asked about his time in CAP and achieving this award.

Cadet King has a goal of completing the Pararescue and Survival Orientation course offered as a National Cadet Special activity. King, a homeschooled sophomore, is also working to become a journeyman electrician. To those interested in becoming part of the CAP cadet program, King said, "CAP has helped in developing my ability to lead, organize plans and even my public speaking. But most of all, it has helped me to see and appreciate the uniqueness of the individuals around me."

He encouraged other cadets with this advice: "Don't be afraid to step into the unknown; an individual who dwells in complacency can

never truly experience CAP to its fullest degree. Remember, everyone deserves a certain degree of respect and as a new cadet you should listen carefully to your leaders because they are there to assist and teach you how to thrive within the program."

The parents of Cadet King reflected on his time in CAP by beginning with a story of Cadet King as the youngest of six boys who was the bottom of the pecking order. King's mother, Tina King, said, "CAP has been a very visible avenue for him to shine. He has found his voice and an understanding of authority combined with heart. I am thankful for the senior members who also see his potential and have been marvelously encouraging him. I am very proud of him for this achievement, and I am looking forward to the next three [achievements] and I know they are well within his reach."

Cadet Range joined CAP in 2017 with the Virginia Wing and transferred to the local unit in June 2020, be-

SEE AZLE CAP, PAGE 10A.

News from Azle City Hall

We welcome your comments or suggestions on information you would like to see reported on this page. Please call Azle City Hall, 817-444-2541, or email Administrative Assistant Debbie Clayton at dclayton@cityofazle.org. Until next month.....

CWD Christmas Tree Collection and Recycling

CWD will collect Christmas Trees on your second collection day or your Wednesday brush day. Residents may also drop off their trees to be recycled December 24, 2021 - January 10, 2022 at Azle City Hall, 505 W. Main St. A roll off container will be located on the very last row of the parking lot for residents to use at any time. In order for trees to be recyclable, please remove all ornaments, tinsel, bags and plastic.

Recycle Your Non-working Holiday Lights

After the Christmas season is over, many people toss non-working Christmas lights in the garbage. Christmas lights, like most electronics, are not biodegradable and will not decompose into the earth's soil. If you want to keep your lights from going to a landfill and do your part to look after the earth, recycling your lights is a great way to do it. However, DO NOT put them in the recycle bin as they tangle up recycling machinery.

The City of Azle will provide a drop off location at City Hall, 505 W. Main St. A roll off container will be located on the very last row of the parking lot for residents to use at any time.

CWD HOLIDAY COLLECTION SCHEDULE

Community Waste Disposal residential trash collection will not be impacted.

Holiday Gifts for Golfers

Cross Timbers Golf Course has several gift options sure to bring a smile to that special golfer on your Christmas list. Shop today!

Santa's Special
3 - 45 Minute Lessons
Everyday Price: \$275.00
Holiday Price: \$225.00



Mistletoe Special
6 - 45 Minute Lessons
1 - Nine Hole Playing Lesson
Everyday Price: \$750.00
Holiday Price: \$500.00



Stocking Stuffer
30 Minute Tune-Up
Holiday Price: \$50.00

Cross Timbers Golf Course Pro Shop (817) 444-4940
Junior packages are available upon request
Lessons by PGA Professional's Keith Harris or David Studebaker

Holiday "Safe Shopper" Tips from the Azle Police Department

- Lock your vehicle, and don't leave valuables visible in your car.
- Don't leave your purse/wallet unattended.
- Be extra cautious when using ATM's; preferably use ones in high traffic areas.
- When shopping in the evening, park in a well-lit and heavily traveled area.
- Be aware of your surroundings - strangers approaching, suspicious activity. Don't hesitate to contact the Police if you feel it necessary.
- Have your keys in hand before leaving the store.
- Take a picture of your child with your cell phone so you can give an accurate description in case they get lost.



LEGAL PUBLIC NOTICES

FINAL NOTICE OF CLAIM AND PUBLIC SALE

Property to be sold to satisfy landlord's lien. Seller reserves the right to withdraw property from the sale. Unit items to be sold to the highest bidder.

Sale to be ONLINE @ <https://www.storage-treasures.com/>

Location of Units for Public Sale:

LONGHORN STATE STORAGE, 11700 Jacksboro Highway, Fort Worth, Texas 76135.

Auction begins on Friday, January 1, 2021 at 9:00 am for the following tenants: Safija Hozbo; Tammy Sharp; David Kinnard; Brian Holsey; Jesus Chavez; Keith Whitthuas; Nathaniel Burrows. all misc. household items.

NOTICE OF PUBLIC SALE

AZCO CENTERPOINT STORAGE will hold a public sale to satisfy a landlord's lien. Sale will be Saturday, December 18, 2021 at 11400 FM 730 N. Azle, Texas 76020. Sign-In is at 10:00 a.m. and Bidding begins at 10:15 a.m. Items being sold to satisfy Tenant's rent; Dalton Winters, A4; Bobby Vasquez, B18; Ruth Christ, 9 & 128: All Window fan, Heaters, DeWalt Grinder, German Violin, tools, home decor, tires, baby & toddler clothes, men's clothes, wedding dress, etc.

NOTICE OF PUBLIC SALE

Pursuant to Chapter 59, Texas Property Code, SANDY BEACH SELF STORAGE, which is located at 11109 Liberty School Road, Azle, Texas 76020 will hold a public auction of property being sold to satisfy a landlord's lien. Sale will be at 10:00 a.m. on Saturday, December 18, 2021 at 11109 Liberty School Road, Azle, Texas 76020. Property will be sold to highest bidder for cash. Deposit for removal and cleanup may be temporarily required. Seller reserves right to not accept any bid and to withdraw property from sale. Property in each space may be sold item-by-item, in batches or by the space. Property being sold includes contents in spaces for the following tenants, with brief description of contents in each space.

TENANT'S COMPLETE NAME as shown on rental agreement: Maria Garcia, #58; Samantha Whitehead, #100; Jerry Freeman, #110; Annette Tyler, #59; Jennifer Medford, #128; Richard Hayes, #12; Cory Snell, #44; Darlene Wise, #3; Ruth Christ, #69; Dennis Tichavsky, #92; Cheriba Cook, #96; Kristina Massey, #18; Shonna Fulkerson, #15: All units have misc. household and tools.

NOTICE TO CREDITORS

Notice is hereby given that original Letters Testamentary for the Estate of RUSSELL DOUGLASS STUDER, Deceased, were issued on November 23, 2021, in Cause No. 21P439, pending in the County Court of Parker County, Texas, to: LYNANNE MARIE REED. All persons having claims against this Estate which is currently being administered are required to present them to the undersigned within the time and in the manner prescribed by law.

c/o W. FAYE MURPHREE, Attorney at Law, 337 W. Main Street Azle, TX 76020

Dated the 8th day of DECEMBER, 2021.

W. FAYE MURPHREE, Attorney for LYNANNE MARIE REED

State Bar No.: 00797110

337 W. Main Street Azle, TX 76020

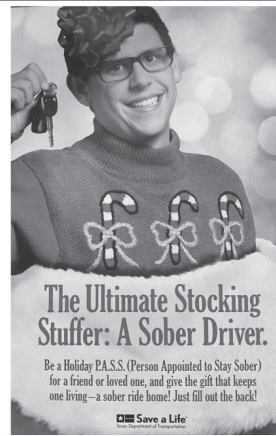
Telephone: (817) 270-0030; Facsimile: (817) 270-0085 fmlaw@earthlink.net

TIM'S TOWING FIRST NOTICE STORAGE LIEN

Year: 2005; Make: Nissan; Model: Titan; VIN #: 1N6AA06A55N540971; License #: 8759172 CA. Towed from 710 Trail Lake Drive, Fort Worth, TX 76123. Impounded at 704 Northwest Parkway, Azle TX 76020. Charges are \$272 for Towing, Storage Charges accrue daily at the rate of \$21.03 per day plus tax, Impound Charge of \$21.03 and a Notification Charge of \$50. TIM'S TOWING (817)441-2166.

Vehicle Storage Facility License #0653457VSF. Direct unresolved complaints regarding the storage of a vehicle to the Texas Department of Licensing and Regulation, P.O. Box 12157, Austin, Texas 78711, 512-463-6599, towing@license.state.tx.us; www.license.state.tx.us".

Azle Municipal Court giving out Holiday P.A.S.S. cards



Azle Municipal Court is handing out Holiday P.A.S.S. (Person Appointed to Stay Sober) cards to encourage sober driving during the holidays. Come by and get your P.A.S.S. card (or several) to give to family and friends...and give the gift that will save a life! TxDOT created the P.A.S.S. campaign in 2012 to encourage everyone to plan ahead and have a Person Appointed to Stay Sober.

Azle Municipal Court is located inside Azle City Hall, 505 W. Main Street.

Sweet Treat

Read Aloud & Craft

FREE Children's Event!
Saturday, December 18 @ 10:30 AM
Azle Memorial Library Community Room

Children ages 4-10 & their families are invited to listen to stories about sweet treats at Christmastime. Then decorate a cookie themed craft! Younger and older siblings also welcome!

Azle Memorial Library | 333 W Main St, Azle TX 76020
817-752-2632 | azlelibrary.org



City of Azle Holiday Schedule

Azle City offices will close Thursday and Friday, December 23 & 24, in observance of Christmas and Friday, December 31, for New Year's Day.

Police and Fire services will be available by calling 817-444-3221, or 911 in case of an emergency. For water or sewer emergencies, please call 817-444-3221.

Azle Memorial Library will close Thursday, Friday and Saturday, December 23 - 25 for Christmas and Friday, December 31 and Saturday, January 1 for New Years.

The City of Azle wishes you and your family a wonderful Holiday Season

Scan for more information | on what's happening in | the City of Azle or visit us | at www.cityofazle.org



Reno P&Z to talk streets, animal dumping and stormwater at upcoming workshops

BY MADELYN EDWARDS
madelyn@azlenews.net

Reno's Planning and Zoning Commission is gearing up for a series of workshops to discuss subdivisions, streets and animals with the goal of making recommendations for the city council's consideration.

One of these workshops, which mainly discussed developments and stormwater pollution prevention, hap-

pened Tuesday and another one is scheduled for 6 p.m. Jan. 11. The commission's recommendations will be considered by the Reno City Council.

The workshops function as training for commission members about the city's processes, ordinances and developer's agreements, Reno Mayor Sam White said, and the workshops are part of the process to update ordinances, particularly re-

lating to subdivisions. White described the Planning and Zoning Commission workshops as a research team.

White said Reno is trying to craft ordinances that are comparable to other cities in Parker County. A problem the city has faced with subdivisions is the impact that construction traffic has on roads. He said construction traffic for subdivisions would break down asphalt roads. This means the city

must pay to fix the roads, which can cost \$100,000 to \$200,000.

"We're going to go in and say, Mr. Developer, we're going to require you to put in concrete streets because studies have proven they're more durable. They hold up six, 10, 15 years, just depends on how they're designed. They hold up a lot longer," White said. "We have other parts of the city we need to address. We

don't need to come back in a brand-new community and put brand-new streets in. We haven't even finished our other streets yet."

Stormwater conversations are also expected to be discussed in workshops, particularly in terms of ensuring developers make responsible design decisions regarding hydrology that doesn't negatively affect other residents, White said.

Another one of the topics to

be addressed by the commission's workshop are domestic animal dumping in Reno. The city has specifically had issues with packs of dogs, including one instance in which the pack killed another dog, White said.

"We have grown to a point that we're having a lot of animals being dumped into Reno, and we've got to start addressing that," he said.

Residents are welcome to attend the workshops.

Hit the brakes! I said hit the brakes!

Communication is an art form. I am convinced that much of what is wrong in the world is not so much from real differences between people, but rather from one person's inability to adequately communicate their thoughts and the other person's inability to understand what is being said to them. Oh, we humans try and communicate, but we are simply not very good at it. Husbands naturally assume their wives know what they want for dinner. Business partners mistakenly imagine they are both on the same page when they are not. Coaches believe they have effectively communicated their red zone football strategy, only to find the play they called resulted in them being short of the goal line.

At a young age I received



FROM MY FRONT PORCH

By Sam Houston

Sam Houston is a newspaper executive, a columnist, author, actor and entertainment promoter.

a first-hand lesson on the importance of communication. We lived in a residence on a small lot and the backyard was a steep hill, sloped toward the house. I was maybe 5 years old and had received a secondhand bike for a present.

I did not know how to ride a bike and it did not come equipped with training wheels. As an alternative to training wheels, my mother and sister walked me and the bike to the back fence, got me in the seat, pointed me to the house and gave me a push. In retrospect, I wonder

what they were thinking. I would like to imagine they felt the grass would be soft if I fell off and it would be easier to coast down the short hill as opposed to trying to pedal and keep my balance at the same time.

On the first "shove off" I traveled about three feet, tipped the bike over and went sprawling in the grass. Of course, those were the days before helmets or elbow pads, but I was fine and simply got back on the bike. Mom would hold me steady and shove me off and I started down the hill again. This

process was repeated eight or nine times, and I continued to fall off the bike while receiving continued instructions and coaching from my family. "Keep your balance" and "just coast down the hill" are the comments I collect hearing.

Finally, on about the tenth try, I managed to somehow figure out my center of gravity and I rode down the hill in an upright position. My first impression, was, "this is really cool," and "I am riding a bike," but in an instant I could detect something was seriously wrong. I could feel myself gaining speed. I glanced up to see a solid brick wall about 50 feet in front of me. Out of nowhere I could hear my mother's voice.

All little boys know their mother's voice and clearly,

she was alarmed. Her tone was high-pitched, and the volume of her message was resounding. She cried out, "Brakes, Sam brakes!" I heard her repeat her message at least twice before the front tire of the bicycle hit the brick wall and I went blank. I had flown over the handlebars with my body striking the side of the house, leaving me a crumpled mass of bicycling failure.

My sister and mother came running to check if I was hurt. I do not remember crying but I do remember being pretty shook up and scared. I can also recall my family laughing very loudly and asking me, "didn't you hear me yell brakes?"

In my memory, I looked at my mom and sister in disbelief as they giggled and asked, "What is a brake?"

You see, they had never explained how to stop the bicycle. They had focused all their attention on my riding down the hill, and absolutely no consideration on how I might stop. Upon calm reflection, one would think stopping should have received greater consideration.

In life there are a whole lot of "brick walls." It is hard to get over them and ever harder to get around them. Amazingly, when we effectively communicate, we can overcome most obstacles. When we don't, we often end up like a bug on a windshield.

Thought for the day: The three fastest ways to communicate; telegraph, telephone, tell a gossip.

Until next time.

HOGLE

Insurance Group
167 W. Main • 817-444-6389
www.HogleInsurance.com

"Our Best Policy is Personal Service"

IRA-SEP-401k Rollover

3.15% 60 Month Rate Guarantee **2.15%** 24 Month Rate Guarantee

Permanent Whole Life Insurance

- Premiums guaranteed, fixed & level for life
- Guaranteed death benefits Guaranteed cash values
- Issue ages 50 to 85
- Issue sizes \$5,000 - \$50,000
- No Medical Exam Required

Shop Now For Christmas

AVON

GIFTS FOR EVERYONE!

Suzzann Mostert • 817-703-1724
Wood72@verizon.net

www.youravon.com/smstert

Subscribe to the Azle News!

817-270-3340

LAKE WORTH
PREMIER EYE CARE

Dr. Jeffrey R. Crabtree

Specializing in Family Eyecare

20% OFF*

Your Eyewear Purchase, with this coupon
Offer expires 12-30-21

*Discounts can not be used with vision insurance

www.lakewortheeye.com • 817-439-9455
6921 Foster Dr. Lake Worth, TX 76135

1300 Northwest Pkwy
Azle, Texas

Sun 11-8 • Tues - Thurs 11-9
Fri 11-10 • Sat 11-9:30 • Mon Closed

HAPPY HOUR
Tues-Sat 4 - 8 PM

TAKE OUT ORDERS
817-406-4452
817-406-4800

Azle News

321 West Main Street, Azle, Texas
Phone: 817.270.3340
Fax: 817.270.5300

Published every Wednesday at 321 West Main Street, Azle, Texas by Hyde Media, LLC. Periodicals class postage paid at Azle, Texas, 76020. **Postmaster:** Send address changes to: 321 West Main Street, Azle, Texas 76020
USPS No. 546-920

Annual subscription rates: \$40.00 in Parker, Wise, Tarrant counties (\$36.50 60and older); \$46.50 elsewhere within and outside Texas.

The Azle News does not assume responsibility for errors in advertisements beyond the cost of the advertisement itself. Any erroneous reflection upon the character or reputation of any person or firm appearing in this newspaper will be corrected when called to the attention of the publisher.

The entire content of each issue of The Azle News is protected under the Federal Copyright Act. Reproduction of any portion of any issue is expressly forbidden without the prior written consent of the publisher.

This newspaper is printed on recycled newsprint and is recyclable.

© 2021 Azle News

Garden on the Go

LONG LIVE TEXANS
PARKER COUNTY

1st SATURDAY

Azle Lions Club
412 Commerce St., Azle

2nd SATURDAY

Agnes Community Center
5406 Agnes Cir, Springtown

3rd SATURDAY

Holy Trinity Catholic Church
800 High Crest Dr., Azle

4th SATURDAY

Azle Christian Church
This location will resume in 2022

OPEN 9 AM TO 11 AM or UNTIL WE SELL OUT!

Each FREE BAG contains
15-19 pieces of fruit and vegetables.

This is open to all community members.
Our goal is to make fresh produce affordable and accessible to all.

Made Possible With Funding Through
Centers For Disease Control And Prevention

Like us on
Facebook
@azlenews

Azle News

Lost and Found

Do you know what is the bestselling book of all time?

Best selling. Most recognized. Most quoted.

Of course, it's the Bible.

I could have said "least applied" but that would be kind of snarky.

Ok, maybe that would be a lot snarky.

Sorry about that.

This post is not about THE BIBLE in general, but about a specific Bible in particular.

About a month ago, I lost my "preaching" Bible.

It's not like I don't have dozens of other ones to choose from.

But this one is the one I have been using on the Sundays that I preach somewhere for over 20 years. It goes all



BE AMAZING

By Gerry Lewis

Azle resident Dr. Gerry Lewis guides explorers to discover their AMAZING. He is an author, musician, and speaker, and a coach-sultant for individuals, churches, and organizations. More at www.discoveryouramazing.com.

the way back to my last few years as a pastor (which ended in 2008).

I bought this particular Bible when my previous preaching Bible (purchased in 1988) apparently got left in the dryer and the print got smaller.

That's got to be it, right?

So, for 20 years, I've been marking this one up. Underlining, circling, highlighting, writing in the margins. And filling it with post-it notes with quotes and ideas and journaled thoughts.

No matter where I may be, I have this Bible filled with the fruit of years of study.

The Friday before Thanksgiving, Mrs. Sweetie and I were heading to the Panhandle to visit our kids and grands. I was scheduled to preach that particular Sunday for a special celebration of the pastor's 20th anniversary at the church, so I had to pack everything necessary for Sunday to make a quick drive back from Amarillo to preach and then head back to spend

Thanksgiving week.

I couldn't find my preaching Bible anywhere.

I looked in every room and every vehicle.

Nothing.

So I grabbed my new Bible (the one with even bigger print) and packed it for the trip. It was incredibly frustrating because my missing Bible contained the notes for what I intended to say at the anniversary celebration.

Between Friday and Sunday, I prayed and thought through what else I might say. The sermon ended up going a completely different direction from my original plan, and I told the church about my lost Bible.

Three different people told

me after the service that they thought God actually hid my Bible from me so I would say what I said on that day. They said the message could not have been more perfect.

Yay, God! (Except for the hiding my Bible part — which I don't believe was actually the case).

It's too late to make a long story short, but I got my Bible back on December 10.

I had to drive to the Tyler area to pick it up from where I had left it when I stayed there for a three-day meeting the first week in November (I had not preached on a Sunday since then).

What a relief!

But here's what I'm thinking about today. If I had never

gotten my Bible back, I would have been sad, but I wouldn't have had to give up preaching or teaching people what I have learned over more than 50 years of following Jesus.

And I wouldn't have stopped learning, because I've still got so much more to learn. The most amazing part of the journey of faith is not in what we've already learned and experienced, but what remains to be discovered as we keep going.

I pray that this Christmas season is a time for renewing our passion for what we can discover next and realizing that God is not — nor has He ever been — lost.

Be amazing today, my friend.

FIRE STATION, CONTINUED FROM PAGE 1A.

Scott said in his presentation. "Capital replacements — the bigger our buildings are and the bigger the complexes (buildings) are being built, the more demands on capital equipment."

A few days after the meeting, Scott discussed the critical needs — a new shift schedule and eventual new station — with the News.

Scott said a couple of locations for a new station have piqued officials' interest.

"Right now, when we start looking at our call volume and everything else, we're looking at the north side of the city," he said. "Where exactly? I don't know where that's going to be."

One of the reasons why the north side would be targeted is because FM 730 is becoming more congested, especially during peak times of travel in the early mornings between 7-9 a.m. and the late afternoon/early evening.

"It's gets difficult to get apparatuses and equipment up north," he said.

The current station lies in the southeast quadrant of town. Scott said the new station would probably require

a 3-acre tract and would be a substation, covering 7,000-10,000 square feet. The current station in Azle has 17,000 square feet. Once the new station is online, fire officials would start assessing what else is needed in the community for fire and EMS response.

A new station would be needed in the next five years, Scott said. The estimated cost for the new station would be \$5.1 million (today's costs).

On the fire personnel shift change, Scott discussed moving from a 24-48 to a 48-96 schedule, or 24 hours on duty and then 48 hours off and 48 hours on duty and then 96 hours off.

The 48-96 model took off on the West Coast several years ago, and it has now transitioned many years later into Texas.

"There are more and more departments that have transitioned to the 48-96," Scott said. "And most of them are medium to small departments that have done that."

Decreased commutes for fire personnel account for one issue making 48-96 appealing. Another factor making

48-96 more popular is the recovery time for fire personnel to work with.

"There's a fatigue factor on 24-48 where they work a 24-hour shift, and they go home and the first day is pretty much recuperating from the fatigue," Scott said. "And so they have pretty much a day to spend with their family and get what needs to be done before they go back to work. So, by going to a 48-96, they still have that day to recoup for that 48 hours, then they have a couple of days for whatever family stuff that they need to do personally and then have a day (to prepare for work the next day)."

When the Azle Fire Department fields calls about openings, prospects will ask about which work shift schedule AFD has, and Scott said when they're informed about AFD being 24-48, the prospects' interest diminishes.

"So for us to be able to bring that on, I don't know if we will be able to recruit more, because there's a huge shortage of paramedics nationally, but it does open our avenues up for those individuals that were interested in that

48-96 schedule to have them consider to test with us," Scott said.

Scott said the shift schedule change — from 24-48 to 48-96 — will occur on Jan. 16. Employee retention is another reason for the shift change. Other factors come into play, such as pay and benefits, Scott said.

"The easiest thing for me to help address some of these things is to transition to the 48-96 and I could do that without any significant budgetary impacts," Scott said.

The city manager and council have discussed in council meetings their interest, over the last few months, in examining addressing salaries and step plans for city employees, Scott said.

He said it's hard to recruit firefighters now because of salaries. Starting pay here for a firefighter/EMT is \$46,319, and starting pay for a firefighter/paramedic is \$53,620. Paramedics have more extensive education than EMTs, Scott said.

He explained a combination of factors can explain why people are not entering the firefighting/EMS profes-

sion: work schedules, job demands — including in relation to pay — and a lack of controlled environment, or people's preference to be in a work place that offers consistency, such as temperatures, sleep schedules and the like.

Azle Fire Department has four positions open now, according to a report in the council agenda packet. Tentative offers have been extended to two applicants. The last three members hired by the fire department have come from outside of Texas. Part of the issue in recruiting in Texas is due to the population growth of the state with fire departments actively expanding, and a lack of new fire fighter/paramedics.

During the meeting, Scott answered council questions about the data and growth issues.

The cost of the department's operation for fire and EMS services budget totaled \$2,930,131 in FY 19-20 and \$3,869,993 in FY 20-21, with an increase occurring because of capital purchases that included a pumper truck, ambulance and emergency response vehicle.

The Azle Fire Department's past two fiscal years were challenging and busy because of the global pandemic that began in March 2020. Call volume has increased 22 percent in the last three years. Over the past two years, the fire department has significantly adapted to how it operates and responds to calls because of the global pandemic. Guidance received on COVID-19 procedures and protocols from experts occurs monthly.

"The Fire Department was fortunate that we were able to maintain minimal staffing while some of our members had to isolate due to exposure of COVID-19," the report in the agenda packet stated. "During peak surges of the pandemic, 60% of the patients we encountered were suspected of COVID-19 exposure. The amount of mutual aid requested to the city has increased by 40.98% compared to prior years. This increase is due to an increased call volume and the global pandemic that caused crews and units to be out of service longer than normal."

AZLE INSURANCE DIRECTORY

HOGLE INSURANCE GROUP

 SHAYE HOGLE 817-444-6389 HOGLE HOGLE
"OUR BEST POLICY IS PERSONAL SERVICE"
HOGLEINSURANCE.COM

Amy Kaplan, Agent
 813 E. Hwy. 199
 Springtown, TX
 817-220-5222
www.amykaplaninsurance.com
 Voted Best Insurance Agency of Parker County 2015
 Voted Best Agent of Parker County 2014, 2015 & 2016

Nationwide | **H**
Albracht Harwood Insurance Agency Inc.
 120 S. Main St #4, Springtown, TX 76082
albrachtharwoodinsurance.com
(817) 220-4700
 2nd Location - Grapevine, TX

Sorrow Family Insurance
 Health • Life • Disability • Dental • Final Expense
 Home • Auto • Boat • Motorcycle • Big Rig • Mobile Home
Our Family Helping Yours!
Paying Too Much For Insurance?
Call For Your Free Quote

 Stephanie and Ed
817-444-1129
682-209-2027

 The Trusted Choice™ www.SorrowFamilyInsurance.com

Dale Mares, AAMS
 817-444-1491
 204 W. Main St.
 Azle
dalemars@allstate.com

 You're in good hands.
 Auto Home Life Retirement

Thank you for voting us Best Insurance Agency 2021
 HOME • AUTO • FARM • LIFE
BURTNETT INSURANCE
817-220-7682
 Protecting Texans, Prioritizing customer service

FARMERS INSURANCE
 Silva's Insurance Agency
 817-444-4747
 328 W. Main St., Azle
Auto - Home - Life - Business

Germania Insurance
 AUTHORIZED AGENT

 FOREMOST INSURANCE GROUP
 BRISTOL WEST INSURANCE GROUP
 DAIRYLAND INSURANCE
 PROGRESSIVE US Assure
 Kaye Burtnett & Vanessa Roberson
905 E. Hwy. 199 Springtown, TX 76082

HALEY CARTER

817-444-1100
 408 Boyd Ct. • Azle
www.HaleyCarter.com
PEOPLE'S CHOICE AWARDS 5 YEARS IN A ROW!
VOTED #1 INSURANCE AGENCY IN AZLE

AZLE CAP, CONTINUED FROM PAGE 7A.

coming an active member in both the CyberPatriot team and Rocketry team. Range said that he was inspired to join CAP for the Aerospace component and the opportunity to get his private pilot's license.

About achieving the Mitchell Award, he said, "It feels great; I was lazy for two years but finally started regularly promoting and now that I am here, I am glad I did it."

Cadet Range, a home-schooled junior, has a goal of entering the U.S. Air Force Academy and serving his country by flying in the military.

Range reflected, "CAP has developed me as a leader and taught me not to be afraid to talk, call drill or lead. To other cadets Range encouraged them to not "stress out about being the best cadet or promoting just for the sake of it. Take your time in CAP and just try to learn and expand your abilities."

To anyone considering joining the cadet program, Range advised, "Even if you don't plan on being a leader or going into the military, CAP teaches you better how to conduct yourself in a professional setting, encourages you to be responsible, and teaches you how to be a better person."

The parents of Cadet

Range, Jane and Remy Range, when asked about their cadet achieving this award, said, "We are so proud and glad, and we never doubted that he would reach his goal."

They further explained, "Tristan was a shy, quiet young man as a new cadet in 2017, at age 12. Over the years, he has found his voice, grown in his leadership skills, and learned a lot, through CAP, that will benefit him for years to come in his military career. He has become a lot more motivated and driven to achieve his goals. He does not let much stand in his way or discourage him."

Both Jane and Remy Range are active contributing senior members in the CAP program. Cadet

Shrake joined CAP in October 2019 with the last Cadet Great Start class of that year. She said while she originally joined with her sister, she had no intentions of staying in the program long.

Shrake said, "After attending several meetings, I was inspired and realized the great benefits that Civil Air Patrol could have in my life." Shrake named drill and marching as her favorite aspects of the program.

In reference to her achievement, Shrake said,

"It didn't feel real at first. When I first joined, I never thought I would be able to make it this far. But after having amazing mentors guide me through this challenge, I was able to reach a goal that few have reached. I am still going to strive to achieve higher goals and challenge my limits."

Cadet Shrake is a home-schooled junior and has plans of becoming a diesel mechanic for Caterpillar or an F-35 inspector for Lockheed Martin.

Shrake said, "When I first joined Civil Air Patrol, I was the timid, shy person who would rather hide in a corner than talk to anyone. But through CAP, I have gained self-confidence and leadership abilities. I have learned basic aerospace knowledge, professionalism, diligence and determination."

She offered advice to other cadets: "Continue to push yourself. Even if you think you can't do it. Never stop striving for your absolute best."

To others contemplating joining CAP, Shrake said, "In my opinion, this is by far the best youth organization for helping anyone gain self-confidence, responsibility, respect for others, and knowledge that could help you in any career you choose."

Cadet Shrake's mother, Julie Shrake, who also serves as a Senior Member in the Azle Unit, said, "She worked hard for this honor. It's not only this accomplishment, but all the others before this one as well that culminated with her receiving the Mitchell Award."

She also commented on the increase in self-confidence, assertiveness and decisiveness that she has seen in her daughter. These new cadet officers along with the Unit's Cadet Commander, Cadet 2nd Lt. Emilou Shrake, are responsible for leading a group of 32 cadets in the unit. These leaders, under the mentorship of the senior members of the unit, will help plan, lead, and teach the cadet programs within the unit.

Col. William Schroder commented on the remarkable growth of the unit since his previous visit and applauded the Squadron for persevering especially over the last 18 months despite national restrictions. He congratulated the cadets on this major achievement but cautioned them not to settle with stopping at this one. He encouraged them to continue to even higher and greater levels.

Unit Commander Major Brian Kilian enthusiastically and proudly swore in the ca-

det officers. He explained to the audience how these three cadets along with the Cadet Commander had been an integral part of improving the cadet program experience.

Kilian said, "These cadets were leaders when we changed how we ran the cadet program. They were each assigned a group of cadets to lead and teach during designated cadet time and did a fantastic job of equipping them to move forward in the program."

Major Kilian went on to comment on Cadet Shrake's maturing from a timid cadet basic to an impressive, confident leader full of self-reflection. He praised her for an essay she wrote and shared with the unit in which she recounted how she learned not to hold herself back from success. He indicated this would now be required reading for all cadets that join the squadron.

Kilian complimented Cadet King for his quiet, measured efforts and steadfast beliefs. He described King as thoughtful and positive and noted King truly cared about his cadets' success. Kilian described Cadet Range as a go-getter who is not afraid of new challenges.

To all the cadets of the unit, he said, "You can all achieve the Mitchell Award. The statistic is 15% of cadets

achieve it, but in TX456, I say you ALL can do it and I am here to help you out."

The Gen. Billy Mitchell Award became part of CAP in 1964. The award honors the late Brigadier General Billy Mitchell, an aviation pioneer and advocate for military airpower. Only about 15% of CAP cadets earn this award. To earn this award, a cadet must complete not only the first eight achievements of the cadet program, but also pass an intensive examination of leadership theory and aerospace topics.

In addition, to achieve this award, a cadet must also possess a positive attitude, be an encouragement to others, display the CAP Core Values, be proficient in informal speaking, be trustworthy in supervising and leading a team of cadets and guide/coach junior cadets.

This award is a noteworthy achievement that earns a recipient eligibility for a variety of scholarships and CAP special activities. The military also looks favorably on Mitchell Award recipients when evaluating AF ROTC and Academy applicants and if they choose to enlist in the Air Force, they enter at the grade of E-3.

MAIN STREET Shop

Azle

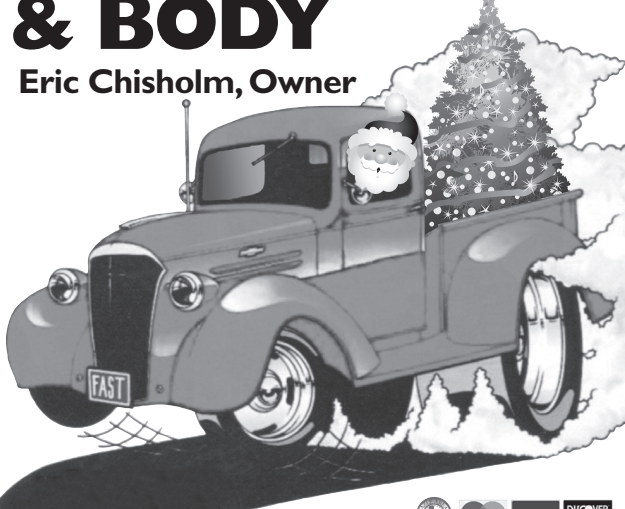
ONLINE SUBSCRIPTION
Save a tree,
subscribe online!



\$25
FOR ONE YEAR

Azle News
817-270-3340
www.azlenews.net

AZLE PAINT & BODY
Eric Chisholm, Owner



233 W. Main • 817-444-5057
Where customers send friends

W. Faye Murphree
D. Brent Murphree
Attorneys and Counselors at Law

- Family Law
- Criminal Law
- Business Law
- Personal Injury
- Wills/Probate



817-270-0030
337 W. MAIN ST. • AZLE
Not Certified by any Texas Board of Legal Specialization

Ash Creek Storage
817-444-3292



Convenient Location
Corner of Main St. & Locust • Azle

404 Main Place
Banquet Hall Rental
(300 max capacity)

Business Events • Weddings
Birthday Parties • Anniversaries
Office/Retail Space for Lease
Booking/Leasing:
Contact Darlene Tucker 817-721-7185

www.404MainPlaceAzle.com
Like us on Facebook 

RURAL GAS SUPPLY
Family owned & operated since 1946

PROPANE & TANKS
For Sale and Lease

In Business Since 1946!



REFILLS AVAILABLE AT OUR LOCATION

140 W. Main St. • Azle
817-444-4613

It's A Wonderful Life

Ok, it's Christmas time, and most of us have seen the Jimmy Stewart and Donna Reed Christmas classic movie "It's A Wonderful Life", most likely those of us who are at least slightly seasoned even have it memorized. I also think most of us will have to admit that even though the entertainment media has worn it out, there is still a great message there.

At this point most of y'all are thinking this is an Agriculture column, why is he talking about some worn out movie? Ok, give me a chance, I'll try to make the connection.

This week's article does involve cows and taking care of them, which makes it an Agricultural column, right? It also involves hurdles that pop up along the way and folks who happen to be in the right spot while we are in the process of trying to make sure those cows' needs are met.

About a year and a half ago I wrote about a couple of people who at different times were there to pitch in and give me a much-welcomed hand in dealing with the things that happen while "doing our agricultural thing." Things such as calling to let me know that we had cows on "the road" late at night and/or early in the morning (it's never in the middle of a nice warm day), getting those cows off of the road even before I could get there, staying to help fix fence when they sure didn't have to, calling at late at night just to say "your cows are making a lot of noise,



AG 101
By Jack DeShazo

Jack DeShazo has decades of experience in the agriculture field.

just wanted to let you know in case there was something going on", or I think one of your cows is across the fence in our pasture but don't worry about it just get her when you can, etc, etc.

I assure you that I do have a couple of points in this article and hopefully they will make sense if you'll just stay with me. This may also be more understandable if I also include the fact that, just as many people do, we have a few cows on a place that is not at "the house", they are 10 miles away, which means that we can't be there every hour of the day to make sure that everything is alright.

Now, many of y'all are probably thinking "this guy is always having problems, he must be a poor manager." Well, I will not claim to be a great manager, admit to being a poor manager or anything in between.

Let me comment on my use of the word manager, an agricultural enterprise whether it be small or large is a business and/or hobby, whichever it is there needs to be the opportunity of a profit being made occasionally or at least some type of positive production coming from that enterprise, so the caretaker does need to be a manager. Also, if there is no chance of that profit or positive outcome the "manager/

caretaker" will most likely lose interest and find something else to do.

Now let me get back to the poor manager statement, if you are involved in Agriculture, things happen. When dealing with livestock, plants, soil, rainfall (too much or too little), freezing temperatures, 100+ degree temperatures, things beyond your control are going to happen and if you will really think about it most of these things listed above are beyond our control.

Livestock can be temperamental, my oldest son asked me a couple of years ago about the two new dents in the side of my truck, my answer was the one on this side was from feeding cows, the one on the other side was from the horses.

Y'all please keep in mind that if livestock can do that to a truck, they can also hurt you. Dry weather may bring on a lack of grass for grazing, cattle have to eat so a source of nutrition has to be added (cubes, cake, hay), this involves equipment which can fail. Fence wire and fence posts break, fence chargers fail, frozen pipes burst, stock tanks freeze so ice has to be broken, stock tanks dry up thus water has to be hauled, sometimes cows get trapped in the mud of the drying up stock tanks

and they have to be rescued/retrieved, sometimes alive and sometimes dead.

My point is that if you are going to be involved in Agriculture things happen, they are not time clock scheduled and they have to be taken care of. A lot of people will say "that sounds difficult, sounds like you might get dirty, sweaty or cold, sounds like you could lose money doing that, why would you do that? Well, a high percentage of people do it because they love it, it's in our blood and maybe even in our genetics. It's a wonderful life!!

Example number one; God puts people in our lives at certain times and places. Last week I found a cow in the mud of a drying up tank, she was not getting out by herself, I was by myself and this was not going to be a one person job. I headed to "the house" to get some help and needed equipment. As I approached the gate leading to the road there stood Robby on the other side of the fence. I had seen him before but hadn't met him. I did know that there was a skid steer on the place, I asked him if it was his, he said yes, he asked if I had a cow missing, I said yes, I've got one in the mud; I asked if he could help me get her out and he said sure.

One and a half hours later thanks to Robby and his skid steer we had a live cow out of the mud, a cow that at today's prices is worth easily \$1500. When offered money for his help his answer was, no, glad to be able to help



Image from Jimmy Stewart and Donna Reed's Christmas classic movie "It's A Wonderful Life."

and let me know if you need help again. A good man!

Example number two, while hauling water to the cows on the place with the drying up stock tank the starter on my truck quit me. After purchasing a new starter I figured out that my once nimble and skinny fingers could no longer reach the engineer designed, ingeniously placed top stud on the old starter to remove it.

My next move was to call my nephew Dustin (nephew not by blood but by honor, if it matters) who spent the next 2-3 hours getting the top stud (did I mention the precise placement of that top stud) out and the new starter in place.

He would not allow money to change hands, only a meal at a local eating establishment accompanied by good conversation was accepted. Please allow me to

also include my friend and mechanic Daryle as another one who has been there at the right time on several occasions, who when asked if I could bring the truck in for a final once over, his answer was "sure, bring it in whenever." Wow, good people!!

Back to my point: God puts people in our paths for a reason, sometimes we may not realize that He has done it or understand it, but He does. In opposition to what we hear on the radio and see on TV, there are tons of good people out there. Even though we may disagree on politics and/or other things I honestly cannot think of many people, actually none, that I couldn't say to them "hey, I need a hand, can you help me" and their answer would be "sure, I'll be there."

IT'S A WONDERFUL LIFE!!!!
'til next time.

Give the gift of
The Azle News



It's
Christmas

Give a one year subscription to a friend or family member and receive 3 free months on your subscription!*

817-270-3340



Azle News

*Gift recipient must not have had a subscription for the last 6 months for you to receive 3 free months. If you don't know, you can call our office at 817-270-3340 to find out.



OVERSTOCKED
Clearance

NECTAR
Classic

Adjustable Base

\$1899



Come see how far your dollar will go at

MATTRESS GUYS

Open Mon-Fri 10 am - 7 pm Sat 10 am - 6 pm, Sun 11 am - 5 pm

321 B W. Main St., Azle • 817-752-2002
499 E. Hwy 199, Springtown • 682-302-9507

Azle's Oak Harbor Christmas parade



Residents of the Oak Harbor neighborhood held their first annual Christmas parade on Dec. 11, featuring decorated cars, trucks and bicycles, a James Bond submarine and a jet-skiing Grinch. Families lined the streets to watch the festive parade and grab candy as the vehicles made their way through the neighborhood. Photos by Jessica McKinney


Kid Scoop

THE AWARD-WINNING PRINT & ONLINE FAMILY FEATURE


Find Kid Scoop on Facebook

© 2021 by Vicki Whiting, Editor Jeff Schinkel, Graphics Vol. 38, No. 2

Kid Scoop Puzzler



Peafowl have sharp eyes. When they see a predator, they make a loud call which alerts other wildlife.



Use your sharp eyes to find where each of these images came from on this Kid Scoop page.

Standards Link: Spelling: Spell grade-level words correctly.

Kid Scoop Together: Peacock True or False?

Read today's Kid Scoop page and then answer the following True or False questions.

- Only males are called peacocks. TRUE FALSE
- Peahens are mostly red and yellow. TRUE FALSE
- A crown of feathers on a peafowl's head is called a crest. TRUE FALSE
- Peacocks shed their feathers every year. TRUE FALSE
- Peacocks only eat plants. TRUE FALSE
- Peacocks are tiny birds. TRUE FALSE
- A peacock's train can grow to be 5 feet long. TRUE FALSE
- Peacocks sleep in trees. TRUE FALSE
- Peacocks can't fly. TRUE FALSE
- Peacocks fan out their tail feathers to attract females. TRUE FALSE

ANSWERS:
1. True 2. False 3. True 4. True 5. True 6. True 7. True 8. False 9. True 10. True

Meet the Peacock

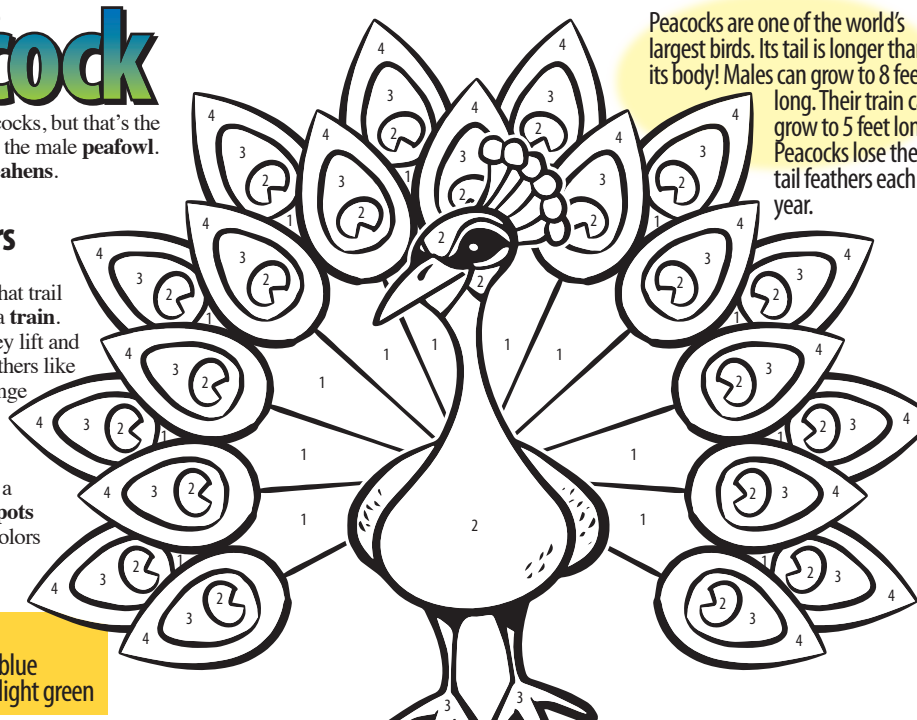
People call them peacocks, but that's the correct name for only the male **peafowl**. Females are called **peahens**.

Fancy Feathers

Peacocks have long, colorful tail feathers that trail behind them to form a **train**. To attract females, they lift and spread out the tail feathers like a big fan that can change color and seem to sparkle in the light.

When spread out like a fan, you can see **eyespot**s on the feathers. The colors and eyespots attract females.

Color By Numbers:
1 = dark green 2 = blue
3 = orange 4 = light green



Peacocks are one of the world's largest birds. Its tail is longer than its body! Males can grow to 8 feet long. Their train can grow to 5 feet long! Peacocks lose their tail feathers each year.

What's for dinner?

Peafowl eat grain, insects, small reptiles, mammals, berries, figs, leaves, seeds, and flowers. This means they are:

Omnivores eat plants and animals.
 Herbivores eat only plants.
 Carnivores eat only meat.

ANSWER: Omnivores

Bird Words

Do the math to match each word with its definition.

21 = FOWL	7 = TRAIN	12 + 12 = when a baby bird comes out of its egg
10 = PARTY	12 = ROOST	
15 = CREST	24 = HATCH	

18 - 6 = where a bird settles to rest for the night

11 + 4 = a crown of feathers on a peafowl's head

8 + 2 = a group of peafowl — also called a "pride"

9 - 2 = long tail feathers of a peacock

7 + 14 = another word for a bird

The Eyes Have It

Look through the newspaper and count all of the eyes you can find. Categorize the eyes. Are some animal eyes? People eyes? Eye decorations? Other? Make a graph to show the kinds of eyes you found in the newspaper.

Standards Link: Organize data and display as a graph.

Double Double Word Search

Find the words in the puzzle. How many of them can you find on this page?

O	M	N	I	V	O	R	E	S
F	E	A	T	H	R	S	P	O
E	Y	E	S	P	O	T	S	
P	E	A	F	O	W	L		
B	L	E	N	D	S			
R	O	A	O	S	D	S	N	W
A	D	T	H	P	D	N	O	A
P	Y	A	T	E	S	F	E	E
S	R	E	H	T	A	E	F	L
P	N	S	A	E	E	A	Y	D
P	L	U	P	R	N	M	A	E
S	E	R	O	V	I	N	M	O

Standards Link: Letter sequencing. Recognize identical words. Skim and scan reading. Recall spelling patterns.

FROM THE Kid Scoop LESSON LIBRARY

Dressing Up

Peacocks aren't the only animals that like to look bright and flashy. Look through the newspaper for some examples of ways people dress up for special occasions.

Standards Link: Reading Comprehension: Follow simple written instructions.

Write On!

My Hero

Write about someone who is your hero. Why is this person special to you?

SPORTS

Wrestlers pinning opponents this season



Coach Tyler Harrison shows Azle wrestlers how to dominate the mat.

Photo by Jeff Prince

BY JEFF PRINCE
jeff@azlenews.net

The boys and girls who don padded headgear and try to pin opponents on a wrestling mat are doing a bang-up job this season.

“We are off to a pretty good start,” said Tyler Harrison, head coach of Azle High School’s boys team.

Over the weekend, the varsity boys won first place at the Eagle Mountain-Saginaw Independent School District wrestling tournament. The Hornets outwrestled 17 other teams and scored 179

points. The second-place team, Lubbock Monterey, finished 40 points behind the Hornets.

The Azle wrestlers who earned first-place medals were Kenneth Riley, Masen Martinez and Elia Ramirez. Second place winners for Azle included Landin Evans, Christian Legan, Hunter Legan, Charles Westrup and Braxton Cates. Billy Spratt earned fourth place.

On Dec. 10-11, the girls wrestlers competed in the Texas Women’s Classic tournament at Lewisville and finished seventh out of 32 teams.

Annabelle Davis won first place in her weight category. Jacy Williams and Mollie Morris earned second places. Hayli Ross placed third.

The success at last weekend’s events had been foreshadowed by earlier triumphs. In the first tournament of the season, Nov. 19, the Azle teams traveled to Eaton High in Haslet for the Talon Tournament. The boys won first place out of 17 teams, and the girls finished second.

At Eaton, Riley, Spratt, Landin Evans, Dominick Evans and Elias Ramirez won first-place medals.

Martinez, Cates, Westrup and Hunter Legan took home hardware, as well.

On the girls’ team, T.J. Bailey and Kaitlynn Kirkland won their weight classes. Others earning medals were Davis, Williams, Pella Lefever, Mia Rodriguez and Jazrine Nieto.

During the first weekend in December, the boys won two of three dual matches, prevailing against Benbrook and Lewisville Hebron. Their loss came against last year’s district champion, Timber Creek.

The Lady Hornets won their

first home tournament on Dec. 4, beating out several tough schools, including Northwest, Lubbock Estacado, Benbrook and Little Elm.

Megan House, the Azle girls coach, said her team isn’t afraid to butt heads with boys at practice.

“We all kind of work together,” she said.

House is in her fifth year at Azle and fourth as wrestling coach. She won’t be surprised if several of her girls qualify for the

SEE WRESTLING, PAGE 3B.

Azle swimmers set school records



Head coach Amy Estes, right, poses with the 200m medley relay team that set a school record: From front to back, Gianna Schroeder, Peighton Berry, Phoebe Mosley and Brooke Nowakowski.

Courtesy photo

BY JEFF PRINCE
jeff@azlenews.net

The Azle High School swim team set two school records at the Texas Interscholastic Swim Coaches Association qualifying meet in Dallas over the weekend.

Six Azle swimmers qualified to compete, and each established personal-best times.

Azle finished ninth of 23 teams.

Phoebe Mosley won first place in the 200m individual medley. In the 100m fly, she took third place and set a new school record. Mosley swam a 1:02.95, eclipsing the school record of 1:05.35 that had been established in 2019.

Peighton Berry won fourth place in the 200m freestyle and seventh place in the 100m freestyle.

In the 200m medley relay, Berry, Mosley, Brooke Nowakowski and Gianna Schroeder set a new school record while placing third. The relay team swam a 2:06.27, besting the school record of 2:14.17 set in 2019.

Brooke Nowakowski placed seventh in the 100m backstroke.

Steven Manley earned eighth place in the 50m freestyle and ninth place in the 100m freestyle.

Kalen McCullough had a strong performance in the 50m freestyle.



Gavin Dean sparks the offense on most nights as the Hornets have racked up 12 wins already.

Photo by Jeff Prince

Azle Hornets shrug off Timber Creek, keep stinging

BY JEFF PRINCE
jeff@azlenews.net

Azle High School’s boys basketball team was 9-1 and feeling pseudo-bulletproof heading into a

home game against Timber Creek on Dec. 7. The Falcons haven’t dominated the court for several years, and the Hornets having

SEE BOYS BBALL, PAGE 4B.

Lady Hornets bouncing with the best

BY JEFF PRINCE
jeff@azlenews.net

Opening the season with two losses wasn't a surprise. Most of this year's Azle Lady Hornets are new to varsity basketball.

The surprise came from how quickly the young team turned things around.

A subsequent five-game win streak included an 49-46 overtime victory at Waco and the dismantling of Springtown 70-19. Two losses followed that win streak, but both defeats came in close games against tough teams.

Last week, Azle went 4-1 at the Midlothian Heritage

tournament and won third place. One of those wins came against district rival Brewer 47-44. Kendall Locke earned all-tournament recognition for the second time this season.

Next up, the Lady Hornets (11-5) play at 3:30 p.m. Friday at home against Nolan Catholic (5-7).



Jessie Heath looks for an open teammate.

Photo by Jeff Prince



Brittany Cato is a hard-nosed rebounder for the Lady Hornets.

Photo by Jeff Prince

Azle Christian boys honing basketball skills

BY JEFF PRINCE
jeff@azlenews.net

The Crusaders of Azle Christian saw their record fall to 2-5 after taking on much larger schools at last weekend's Pantego tournament.

The team dropped all three of its games at the tourney.

"We gave good effort, but we were just outmatched

by their talent in two of the games," said head coach Ryan Rollins. "The third game was close."

Rollins was pleased by his team's effort, saying it bodes well for the upcoming district portion of the schedule when games count toward playoff eligibility.

"I really feel like the boys are finally feeling comfortable with the offense and



Ryan English, a junior, scored 12 points in a recent game.

Photos by Jeff Prince



Jake Skartvedt, a sophomore, listens to head coach Ryan Rollins during a timeout.

defenses I run," he said. "Things seem to really be coming together, even though the record may not show it."

Camden Logan, a junior, is averaging 18 points a game.

"He is big and strong and a force down low," Rollins said.

Others playing strong on offense are sophomores Jake Skartvedt and Andy Wisniewski and junior Ryan English, who scored 12

points in a recent game.

Defensively, junior Noah Rollins is dominating the boards with rebounds.

"We are battling some injuries and sickness, but this week is a big week," Rollins said.

The Crusaders play two home games this week.

Azle Christian takes on Weatherford Express at 6 p.m. Thursday at home, and the Crusaders play Fort Worth Temple Christian at 5 p.m. Friday at home.

WRESTLING, CONTINUED FROM PAGE 1B.

state tournament this season. “This team is very exciting,” she said. “For the first time that I’ve been coaching, we have had a full team plus a couple of extras, so we’re growing a lot more. The talent we have here is just phenomenal.”

A full team means having varsity girls available in every weight class and providing more warm bodies at practice.

“Now, they actually have people to wrestle,” she said.

The girls are neither young nor old collectively.

“They are right smack dab in the middle,” House said. “We’ve got a lot of juniors. A couple of seniors. A couple of sophomores and a few freshmen. We’re kind of equal everywhere.”

The boys are on the older side with an abundance of juniors but have talented youngsters coming up behind them.

“We’ve got a couple of ninth graders that are coming in with many years of experience and (who) made the varsity lineup,” Harrison said. “We’ve got a pretty good mix as far as ages go. We’ve managed to fill out a full varsity lineup, and we’ve got a lot of junior varsity (wrestlers) and a lot of football players coming over. So we’ve got really, really good numbers this year.”

The success is doubly welcome coming on the heels of last year’s COVID-marred season that prompted numerous restrictions and canceled events. This season brings the typical number of qualifying tournaments and postseason matches, “so we’re hoping to bring a lot of kids to represent us at the state tournament,” Harrison said.

To qualify for state, a wrestler must place among the top four athletes in the region in a particular weight category. Several kids from Azle have won state titles over the years, most recently two years ago on the girls team.

“On the boys side, it’s been a while, so we’re looking to get some boys on the podium there this year,” Harrison said.

How will he accomplish that? “Just coming here every day and pushing them and getting them to learn how to work hard and be disciplined and stay focused,” he said. “We’ve got a long season. It takes a lot. But we definitely have a group where I think some of these guys have a shot this year.”

At Azle, the goal is to win championships while making good grades.

Asked about any other goals, House thought a second and said, “Overall, it’s just going out there and kicking butt.”



Megan House, left, is in her fourth year of coaching the Azle girls wrestlers. She is shown instructing Zoe Weaver at practice.

Photo by Jeff Prince

AZLE BOYS AND GIRLS WRESTLING 2021-2022

Date	Time	Opponent	Venue	Team
Nov 4	05:00 PM	VS Green & White Dual	Main Gym	
Nov 10	05:00 PM	@ Varsity Dual Vs Northwest		Varsity Boys & Girls
Nov 13	06:00 AM	@ Battle at the Castle @ Frisco Nelson Middle School		Varsity Boys & Girls
Nov 19	06:00 AM	@ JV Talon Tournament @ Eaton HS		JV Boys & Girls
Nov 20	06:00 AM	@ Lady Cougar Duals @ The Colony HS		JV & Varsity Girls
Nov 20	06:00 AM	@ Talon Tournament @ Eaton HS		JV & Varsity Boys
Dec 2	05:00 PM	@ Quad - Timbercreek, Benbrook, TBA @ Timbercreek		Varsity Boys
Dec 4	06:00 AM	VS The Nest Girls Tournament	Main Gym	Varsity & JV Girls
Dec 6	04:00 PM	VS Varsity Challenge Matches	Wrestling Room	Boys & Girls wrestle offs
Dec 10	06:00 AM	@ EMSISD Tournament		JV Boys
Dec 10	06:00 AM	@ Tx Women's Classic @ Lewisville HS		JV & Varsity Girls
Dec 11	06:00 AM	VS EMSISD Tournament		Varsity Boys
Dec 11	06:00 AM	@ Tx Women's Classic @ Lewisville HS		JV & Varsity Girls
Dec 17	06:00 AM	@ Cabot Bring the Hammer Invitational @ Cabot HS in Arkansas		Varsity Boys & Girls
Dec 18	06:00 AM	VS Cabot Bring the Hammer Invitational @ Cabot HS in Arkansas		Varsity Boys & Girls
Dec 30	05:00 PM	VS Quad Vs Saginaw, Aledo, TBA	Wrestling Room	Girls & Boys
Jan 6	05:00 PM	VS Quad Vs Benbrook, OD Wyatt, Boswell	Main Gym	Varsity Girls
Jan 8	06:00 AM	VS The Nest Boys Tournament	Main Gym	JV & Varsity Boys
Jan 12	05:00 PM	VS JV Boys Dulas @ Keller High School	Main Gym	JV Boys
Jan 15	06:00 AM	@ South Plains Invitational @ Lubbock Monterey HS		Varsity Boys and Girls
Jan 19	05:00 PM	VS Quad - Argyle, Springtown, Brewer	Main Gym	Varsity Boys and Girls
Jan 22	TBD	VS TBA		Varsity Boys and Girls
Jan 25	04:00 PM	VS Varsity Challenge Matches	Wrestling Room	Boys & Girls wrestle offs
Jan 27	05:00 PM	VS Dual Vs Byron Nelson (Senior Night)	Main Gym	Varsity Boys and Girls
Feb 4	06:00 AM	VS District Tournament	Main Gym	Varsity Boys and Girls
Feb 5	06:00 AM	VS District Tournament	Main Gym	Varsity Boys and Girls
Feb 11	06:00 AM	@ Regionals Tournament @ El Paso Bel Air HS		Varsity Boys and Girls
Feb 12	06:00 AM	VS Regionals Tournament @ El Paso Bel Air HS		Varsity Boys and Girls
Feb 18	06:00 AM	@ State Tournament @ Berry Center Cypress, TX		Varsity Boys and Girls
Feb 19	06:00 AM	@ State Tournament @ Berry Center Cypress, TX		Varsity Boys and Girls



Wrestlers listen to instructions from coaches at a recent practice.



The coach provides life lessons verbally and via T-shirt messages.

Photos by Jeff Prince



Football magazine spotlights two Hornets

BY JEFF PRINCE
jeff@azlenews.net

The latest edition of Dave Campbell's Texas Football Rising Recruit Guide arrived in the mail on Monday, and two Azle Hornets received recognition on those glossy pages – Bernock Iya and Jakson LaHue.

Head coach Devon Dorris had not seen the magazine but said he wasn't surprised that two of his senior players were listed among the state's top college recruits.

"Those young men have put some really good tape out there throughout the last couple years, and they've shown to be tremendous football players," he said. "I expect both of them to have an opportunity, obviously, to play at the next level."

The magazine describes LaHue, a 6-foot 5-inch, 285-pound lineman, as an "offensive tackle prospect who is at his best as a run blocker but has the length and wingspan to develop pass protection skills." The magazine notes his ability to "pull and secure blocks at the second level," which

makes him "an intriguing interior line candidate."

LaHue, a top student and all-state academic recipient, was a three-year starter at Azle. He is set to sign a letter of commitment at Mississippi State this week.

Earlier this year, LaHue had indicated a commitment to Virginia Tech. Then, in November, Virginia Tech head coach Justin Fuentes left the program with two games remaining in the season. The school is looking for a head coach currently.

In November, LaHue and Iya earned first-team all-district recognition for their athletic skills.

Campbell's magazine praises Iya, a 6-foot 3-inch, 170-pound cornerback, for his size and physicality.

"He is not shy to contact and plays with an aggressive style," the article said. "He has cover corner ability, free safety range, and he can play everything in between."

Iya plans to play college ball and is considering his options. He will announce his intentions in February, Dorris said.



Jakson LaHue (top) and Bernock Iya (above) are listed among Texas' most exciting college recruits.

Photos by Jeff Prince

BOYS BBALL, CONTINUED FROM PAGE 1A.



Campbell Dotson steals the ball.

Photo by Jeff Prince

been playing like the Dream Team incarnates this season.

Games are played for a reason, though, and the Falcons came out on top in a nailbiter of a game, 57-54.

Good teams know how to shrug off a loss and put themselves back in the win column, and that's what the Hornets did, bouncing back two days later at the Fairfield tournament to whip Eustace, 69-41.

On Friday, Azle toppled Athens, 66-47, then bested Fairfield 104-95 in a game that went into overtime.

The Hornets battled Argyle for the tournament title and came up short, losing

59-36 and finishing in second place.

"We went to the Fairfield tournament for team bonding and to play against some teams with different philosophies and athleticism to better prepare us for district," said assistant coach Terry LaPrade. "The team played hard every game and represented the school and Azle community very well."

The Hornets (12-3) will compete at the Mineral Wells tournament this weekend before taking time off for the holidays. Afterward, they will resume play at 11:30 a.m. Dec. 28 at Everman (4-3).



Azle News
AzleNews.net

DEVOTIONAL PAGE



The Springtown Epigraph
Your trusted news source

This devotional and directory is made possible by these businesses who encourage all of us to attend worship services.

Azle News
AzleNews.net

The Springtown Epigraph
Springtown-Epigraph.net

TRINITY SELF STORAGE
SECURITY GATE 24 HOUR ACCESS

Office next door at Trinity Commerical Contractors

RV, Trailer & Boat

200 Walnut Creek Ave.
817-444-8885

TACLA014745E RRC#11349

J&E
AIR CONDITIONING & HEATING

817-220-4506

1825 W. Hwy. 199 | Springtown, TX 76082

Help readers find your Business.

Call **817-270-3340**

Your Ad Here!

Call Johnna to reserve this space.
817-270-3340

Comet
CLEANERS
"Serving Azle & The Community Since 1986"

113 SPEER ST
817-444-4920

Thank you for your support!

Subscribe!

Pick your subscription:

\$40 IN-COUNTY Tarrant, Parker & Wise only

\$36.50 SENIOR CITIZEN 60 Years and Older Tarrant, Parker & Wise only

\$25 ONLINE

\$46.50 OUT OF COUNTY

Azle News
The Springtown Epigraph
Azle News 817-270-3340
Springtown Epigraph 817-220-7217

Eagle Crest VILLA
A RETIREMENT AND ASSISTED LIVING COMMUNITY

113 Denver Trail • Azle
817-444-3249 Fax 817-444-3275
www.eaglecrestvilla.com

STUDIO - 1 bath, 350 sq. ft.
ONE BEDROOM - 1 bath, 450 sq. ft.
TWO BEDROOM - 1 bath, 642 sq. ft.

APOSTOLIC
CORNERSTONE APOSTOLIC CHURCH
1801 FM 730 N., Azle
817-400-0612

HARVEST TIME APOSTOLIC
1 Block N. FM 2048 in Keeter
817-433-8220

ASSEMBLY OF GOD
FIRST ASSEMBLY OF GOD
1020 S.E. Pkwy, Azle
817-237-4903

FELLOWSHIP OF LAKE WORTH
4024 Dakota Trail, Lake Worth
817-237-9433

NEW BEGINNINGS CHURCH
810 Goshen Rd., Springtown
817-523-4462

LEGACY CHURCH
Hwy. 199 W. at FM 2257, Azle
817-221-2983 / 817-221-5760

VICTORY CHRISTIAN CENTER
737 Boyd Rd., Azle
817-444-LOVE

BAPTIST
ASH CREEK BAPTIST CHURCH
300 South Stewart, Azle
817-444-3219

AGNES INDEPENDENT BAPTIST
350 Agnes N., Springtown
817-523-7271

BETHEL MISSIONARY BAPTIST
408 S. Ash St., Springtown
817-220-4238

AZLE AVENUE BAPTIST
2901 Azle Ave., Fort Worth
817-626-5556

BRIAR FIRST BAPTIST
West of FM 730 N. at sign, Briar
817-444-3484

CALVARY HEIGHTS BAPTIST
1 block off Hwy. 199, east of David's Patio, Springtown, 817-221-2241

CENTRAL BAPTIST
4290 Old Agnes Road
817-594-5918

CHURCH ON THE HILL
836 NW Parkway, Azle
817-444-3752

CHRISTWAY BAPTIST
7673 West Hwy. 199, Agnes
817-220-9133 or 817-220-3581

CLEAR FORK BAPTIST
Corner of FM 730 & Ragle Rd., Weatherford, 817-594-1154

EAGLE MOUNTAIN BAPTIST
8780 Eagle Mtn. Circle, Azle
817-237-4135

FIRST BAPTIST CHURCH OF AZLE
1017 Boyd Road
817-444-4828

FIRST BAPTIST CASTLE HILLS
401 Beverly Rd., Azle
817-797-4706

FIRST BAPTIST LAKE WORTH
700 Charbonneau Tr., west side of Effie Morris Elementary
817-237-2624

FIRST BAPTIST LAKESIDE
8801 Jacksboro Hwy., Lakeside
817-237-8113

FIRST BAPTIST BRIAR
6 miles N. of Azle on FM 730
817-444-3484

FIRST BAPTIST COTTONDALE
1 block N. of FM 2123, Cottondale
940-433-5539

FIRST BAPTIST PEASTER
FM 920 in Peaster
817-596-8805

FIRST BAPTIST POOLVILLE
1 block W. of FM 920, Poolville
817-594-3916

FIRST BAPTIST SPRINGTOWN
5th & Main Street, Springtown
817-523-7011

FRIENDSHIP BAPTIST
801 Friendship Rd., 9½ miles S. of Springtown off Hwy. 51 S.
817-594-5940 or 817-599-4917

FUNDAMENTAL BAPTIST
5th & Main in Springtown
817-523-5477

BIBLE
COMMUNITY BIBLE FELLOWSHIP
1405 Reynolds Rd., Reno
817-444-7117

NORTHWEST BIBLE CHURCH
5025 Jacksboro Hwy., Fort Worth
817-624-2111

SOLID ROCK BIBLE CHURCH
591 S. Reno Rd., Springtown
817-221-3444

CATHOLIC
HOLY TRINITY CATHOLIC
800 High Crest Dr., Azle
817-444-3063

CHRISTIAN
THE CHURCH AT AZLE
1801 S. Stewart, Azle
817-444-9973

AZLE CHRISTIAN FELLOWSHIP
35 West Forty Estates., Azle
817-688-3339

GREATER VISION FELLOWSHIP
1801 S. Stewart St., Azle
817-825-0485

THE ABBEY CHURCH
10400 Jacksboro Hwy., Azle
817-238-1404

CROSSING FELLOWSHIP
120 E. Main St., Azle
817-406-4577

CHURCH OF CHRIST
AZLE CHURCH OF CHRIST
336 NW Parkway
817-444-3268

BRIAR CHURCH OF CHRIST
109 W.N. Woody Rd.
(½ block west of FM 730 N. in Briar)
817-444-7102

HILLTOP FAMILY CHURCH
1227 Old Cottondale • 817-220-7177

"Caring about what Jesus cares about... You!"

Joe Rider Propane, Inc.

PROPANE TANKS

817-237-3325

MIDWAY CHURCH OF CHRIST
6400 Midway Rd.
817-221-2107

NEWSOME MOUND ROAD CHURCH OF CHRIST
1460 Newsome Mound Rd.
817-677-3290

NORTHWEST CHURCH OF CHRIST
6059 Azle Ave., Fort Worth
817-237-1205

POOLVILLE CHURCH OF CHRIST
West of FM 920 in Poolville
817-594-4182

SOUTHSIDE CHURCH OF CHRIST
130 W. Bradshaw Lane, Springtown
817-221-2799

SPRINGTOWN CHURCH OF CHRIST
Just west of Hwy. 51 North
817-523-4419

TRI-COUNTY CHURCH OF CHRIST
525 Hwy. 199 W., Springtown
817-538-8209

CHURCH OF GOD
ABUNDANT LIFE CHURCH OF GOD
4800 East Hwy. 199, Suite 7 Springtown, 817-677-3208

LAKESIDE CHURCH OF GOD THE WORD@LAKESIDE
9396 Confederate Park Rd. (FM 1886)
817-237-5500

DISCIPLES OF CHRIST
AZLE CHRISTIAN
117 Church St., Azle
817-444-3527

CENTRAL CHRISTIAN
1602 S. Main St., Weatherford
817-594-3043

FIRST CHRISTIAN CHURCH
4th & Main, Paradise

EPISCOPAL
ST. ANNE'S ANGLICAN EPISCOPAL
6055 Azle Ave., Fort Worth
817-237-1888

PROVIDENCE REFORMED EPISCOPAL
405 Bowie Dr., Weatherford
817-596-7476

ST. ELISABETH EPISCOPAL
5910 Black Oak Lane, River Oaks
817-739-0504

GOSPEL
CENTRAL FULL GOSPEL FELLOWSHIP
3009 Delaware Tr., Lake Worth
817-237-7919

JEHOVAH'S WITNESSES
KINGDOM HALL OF JEHOVAH'S WITNESSES
212 Pearson Lane, Azle
817-221-2242

LUTHERAN
THE EDGE CHURCH - AZLE
1313 SE Parkway, Azle
817-237-4822

HOPE LUTHERAN (ELCA)
4795 Hwy. 199, Reno
817-221-HOPE

METHODIST
BOYD UNITED METHODIST
FM 730 North in Boyd
940-433-3334

FIRST UNITED METHODIST
200 Church St., Azle
817-444-3323

LIGHTHOUSE FELLOWSHIP
7200 Robertson Rd., Fort Worth
817-237-2758

SILVER CREEK UNITED METHODIST
2200 Church Rd., Azle
817-444-1382

FIRST UNITED METHODIST
Hwy. 51 N & 3rd Street, Springtown
817-523-7874

GARVIN UNITED METHODIST
3 miles West of Boyd on C.R. 4699

POOLVILLE UNITED METHODIST
1 block W. of FM 920 (behind Poolville Post Office)
817-599-3601

THE CHURCH OF JESUS CHRIST OF LATTER-DAY SAINTS (THE MORMONS)
THE CHURCH OF JESUS CHRIST OF LATTER-DAY SAINTS
1010 Timberbrooks, Azle
817-237-5075

PENTECOSTAL
GRACE CHAPEL UNITED PENTECOSTAL CHURCH
3508 Shawnee Trail, Lake Worth
817-237-4844

PRESBYTERIAN
GRACE FIRST PRESBYTERIAN
606 Mockingbird Lane, Weatherford
817-594-2744

ORTHODOX PRESBYTERIAN CHURCH OF FORT WORTH
Meeting at Northwest YMCA
5315 Boat Club Road, Fort Worth
817-989-9800

ORTHODOX
ARCHANGEL GABRIEL ORTHODOX CHRISTIAN CHURCH
1157 S. E. Parkway (Jacksboro Highway), Azle
817-752-8255

OTHER
ALIENTO DE DIOS
2233 E. Hwy 199, Springtown
817-521-4694

BETTER LIFE COMMUNITY CHURCH
3131 E. Hwy 199, Spt
817-677-2300

CORNERSTONE COMMUNITY CHURCH
2233 Hwy 199 East, Springtown
817-221-LIFE (5433)

FAMILY CHURCH
9 miles S. of Springtown on Hwy. 51
817-599-7655

GRACE FELLOWSHIP CHURCH
2964 W. Hwy 114, Paradise
940-969-2427

HILLTOP FAMILY CHURCH
1227 Old Cottondale Road, Springtown, 817-220-7177

THE HOUSE OF PRAYER
1356 Reno Rd., Springtown
817-221-2551

POWERHOUSE OF PRAISE CHURCH
1649 S.E. Parkway, Azle
817-319-7364

BRANDED CROSS COWBOY CHURCH
3282 FM 2048, Boyd 76023
817-755-7021

SECRET PLACE MINISTRIES
112 Optimist Rd., Springtown
682-229-1433

GOSPEL GATHERING FELLOWSHIP
7315 Silver Creek Rd at Flatrock Rd, Azle
817-313-1793

LIGHTHOUSE CHURCH
6409 FM 730 S., Azle
817-444-4311

LIGHTHOUSE HARBOR CHURCH
1960 Long Circle, Pelican Bay
817-444-3547

NEW LIGHTED WAY
624 Harbor Dr. Circle, Azle
817-444-1577

NORTHWEST TEMPLE OF PRAISE
6781 Jacksboro Hwy., Lake Worth
817-909-5627

PRECIOUS FAITH TEMPLE CHURCH
8601 Hwy. 199 @ Vance Godbey's

THE HOUSE OF PRAYER
1356 Reno Rd., Springtown
817-221-2551

THE RANCH COWBOY COUNTRY CHURCH
14600 FM 730 North, Azle (Briar)
817-909-5627

REAL FAMILY FELLOWSHIP
202 Pearson Lane, Azle
817-677-5963

SOULS HARBOR
11701 Jacksboro Hwy., Azle
817-726-2065

WESTERN HARVEST FELLOWSHIP CENTER
6577 Old Springtown Rd., Weatherford
817-523-2855 or 817-995-9087

SHEPHERD'S HEART CHURCH
14435 FM 730 N • Azle
817-444-7777

WESTERN STAR COWBOY CHURCH
790 CR 3696 • Paradise 76073
817-688-6887

Compliments of
Rural Gas Supply

PROPANE 140 W. MAIN ST.
817-444-4613

"In business since 1946"

White's Funeral Homes
Our family serving your family since 1908

Bob White, Anita White and Zack Bellenger

Full Service Funeral Home
Cremation Services
Pre-Need Plans

Azle • Springtown
Mineral Wells • Weatherford
817-444-3211 • www.whitesfuneral.com

Clarks Precision Machine & Tool
CPMT 636 Profit St., Azle, Tx

45 Years of Quality

ISO 9001:2001 Compliant Phone 817-444-2533
Check us out on our web site B.J. Clark
www.clarksmachine.com bjc@clarksmachine.com

WHAT'S HAPPENING IN YOUR HOMETOWN?

Subscribe today to keep up-to-date
Azle News: 817-270-3340
Springtown Epigraph: 817-220-7217

Celebrating over 25 years in business

AZLE CHIROPRACTIC CLINIC

817-444-HELP (4357) Rodney Gattin, D.C.
400 Boyd Court

www.azlechiropractic.com

Get your business noticed!

817-270-3340
Call Johnna to reserve this space.

Want readers to FIND YOU?

Place your ad here!
Call **817-270-3340**

Place your ad here today!

817-270-3340
or 817-220-7217

TRI-COUNTY Electric Cooperative, Inc.
Electric Cooperative, Inc.
"A Commitment to Service and Savings"

Actively Supporting our Communities!

Double your impact with Print & Online Advertising!

Call Johnna for details
817-270-3340

Advertise Here

Contact us for details.
817-270-3340 or 817-220-7217

Your Ad Here

Newspaper Advertising Works!

Call Johnna for details TODAY
817-270-3340

Advertise Your Business With Us
and maximise your visibility!

Contact us about advertising solutions.

817-270-3340
817-220-7217

CLASSIFIED

817-270-3340 - Azle - classified@azlenews.net

817-220-7217 - Springtown - shirley@springtown-epigraph.net

Ad Classifications

- | | | | |
|------------------------------|---------------------------------|-------------------------------|--|
| 1... Air Condition/Heating | 24..... Electrician | 46..... Looking to Buy | 69..... Sand/Gravel |
| 2..... Antiques | 25..... Equipment & Tool Rental | 47..... Lost & Found | 70..... Septic Tanks |
| 3..... Appliances | 26..... Excavating | 48... Maintenance/Repairs | 71..... Sewing/Alterations |
| 4..... Appliance Repair | 27..... Exterminating | 49..... Masonry/Stonework | 72..... Sewer Service |
| 5..... Arts/Crafts | 28..... Farm Equipment | 50... Mobile Home Service | 73..... TV/Radio |
| 6..... Asphalt Paving | 29..... Fencing | 51..... Motorcycles | 74..... Tractor Service |
| 7..... Auctions | 30..... Firewood | 52..... Movers | 75..... Upholstery |
| 8..... Autos, Trucks | 31..... Free For Sale | 53..... Musical Instruments | 76..... Vacuum Cleaners |
| 9..... Auto Repair Service | 32..... Furniture | 54..... Music Lessons | 77..... Wanted |
| 10..... Backhoe Service | 33..... Garage & Estate Sales | 55..... Miscellaneous | 78..... Well Drilling |
| 11..... Boats, Motors | 34..... Garden/Mowing Svc | 56 Party Planning/Events | 79..... Welding |
| 12..... Bookkeeping | 35..... Hauling | 57..... Pets/Livestock | 80..... Lots/Acreage |
| 13..... Business Opportunity | 36..... Hay | 58..... Piano Service | 81..... Business & Commercial Property |
| 14..... Campers/Trailers | 37..... Health/Fitness | 59..... Pool Service | 82..... RV's for Rent |
| 15..... Carports/Patios | 38..... Help Wanted | 60..... Professional Services | 83..... Houses for Sale |
| 16..... Equipment Repair | 39..... Home Improvement | 61..... Personal | 84..... Mobile Homes for Rent |
| 17..... Carpet Service | 40..... House Leveling | 62..... Plumbing | 85..... Mobile Homes for Sale |
| 18..... Catering | 41..... House Cleaning | 63..... Public Notice | 86..... Mobile Home/RV Lots |
| 19..... Cement Work | 42..... Hunting | 64..... Photography | 87..... Rent Furnished |
| 20..... Demolition | 43..... Janitorial Service | 65..... Printing | 88..... Rent Unfurnished |
| 21..... Child Care | 44..... Job Wanted | 66..... Roofing | 89..... Wanted to Rent |
| 22..... Cosmetics | | 67..... Recycling | |
| 23..... Computers/Services | | 68..... Storage | |

RATES

16 Words or Less:

**Combo (Azle & Springtown)
Only \$10.00 per week!**

Over 16 words, add 20 cents per word
Extras such as Bold, Center & Border are available for a small fee

Classified boxed display ads also available for \$9.00 per column inch

(All ads must be paid in advance unless you have previously established credit)

**CLASSIFIED
AD DEADLINE:
MONDAY BY 4:30 P.M.**

Most ads require payment in advance, but we do accept VISA, MASTERCARD, DISCOVER OR AMERICAN EXPRESS by phone.



Reach more than 8,000 households with combo advertising in the Azle News and the Springtown Epigraph.

Nobody does it better!

006 Asphalt Paving

BYRUM CONSTRUCTION
Asphalt Paving
•Driveways •Parking Lots
•Asphalt Repairs & Sealcoating
•Asphalt Millings •Gravel
Bruce Byrum
Azle, Texas **817-690-2429**

019 Cement Work

Allen Chesney Concrete
All Types of Concrete Work
Residential - Commercial
Foundations, driveways, sand, gravel, demolition, haul-off, retaining walls
817-271-4541

035 Garden/Mowing Service

HOMETOWN LAWN CARE. Best Prices Around. Free Estimates. Call Cody 817-454-6090.

039 Help Wanted

MOTEL 6. Help wanted for full-time Housekeeping. 817-270-4207.

039 Help Wanted

KARL KLEMENT
Construction Helper needed for small job. Must be reliable. 817-489-8147 ask for Bud.

008 Autos, Trucks

1958 MGA Roadster, MUCH MODIFIED. 302 Boss Ford, 4 speed, Complete Corvette rear suspension, Camaro discs, front. \$14,000/OBO. 817-270-0647.

1978 Chevy Silverado 4x4, \$23,000. 817-948-0691.

1994 Jaguar XJS convertible, 2 plus 2, 6.0 Liter, fully refurbished, \$20,000. Has wire & honeycomb rims with spare parts. 817-677-3149.

020 Demolition

MCNEELY'S DEMOLITION & CLEAN UP SERVICE
We Create Vacancy

- Tear Down
- Removal
- Haul Off
- Mobile Homes
- Garages
- Barns
- Houses
- Bobcat Service
- Dirt/Gravel Spreading

FREE ESTIMATES
817-996-7887
253 Eagles Way, Springtown

024 Electrician

BULLDAWG ELECTRIC CO.
All types of electrical services and MH hook-ups.
Free Estimates. 817-675-4921
www.bulldawgelectric.com.
TECL#25253.

026 Excavating

ALL TYPES OF EXCAVATING
Tanks • House Pads • Clearing
HASTY EXCAVATING
Also .. Sand • Top Soil • Gravel
817-523-7248 • 817-239-6215

STUMP GRINDING

Don't dig it! Grind it!
1 or 100 - We can do it.
\$85 minimum within 5 mi.
817-237-5592

LEON'S TREE SERVICE

Expert take downs
Stump Grinding
Residential/Commercial
Licensed & Insured • Free Estimates
817-371-8597

Chad's Tree Service
FREE ESTIMATES
Trimming • Removals • Stump Grinding
Systemic Feeding • Brush Chipping • Cable Bracing
817-221-2201 • 817-246-5943
Insured for your protection

Eagle Crest
A RETIREMENT AND ASSISTED LIVING COMMUNITY
Now Hiring - New Pay Scale
Personal Care Attendant
Full-time, 2P-10P & 10P-6A
Shifts, Health, Dental, Life Ins & 401K
Apply in person at 113 Denver Trail, Azle.

009 Auto Repair Service

Rainwater's Transmission & Auto Repair
TRANSMISSION • BRAKES
A/C • ENGINE SERVICE
LOCALLY & FAMILY OWNED!
201 E. Hwy. 199, Springtown
682-615-7250

037 Hay

SPRIGGING
5 COUNTIES:
Jack, Wise, Tarrant, Parker, Montague
COASTAL OR TIFTON
52 years Experience
940-229-1045 or 940-229-1046

039 Help Wanted

Wise Ready Mix
Now Hiring Class B-CDL Mixer Drivers
• Production & Safety Bonuses Paid Monthly
• Employer Matching Retirement Plan Available
Apply in person at 1349 NW Parkway • Azle

039 Help Wanted

MAINSTREAM (group home for adults with developmental disabilities) is hiring part-time Direct Contact Staff for 17-hour weekday shifts (2nd & 3rd shifts) or 24-hour weekend shifts. Paid training, starting pay is \$7.75 hourly. Good potential for full-time employment. Call 817-270-2747, Monday-Friday, 9A-3P.

WANTED

Property Maintenance Labor/Person
Gene Thompson & Associates
817-246-4646

014 Campers & Trailers

2012 Sabre Forrest River RV for Sale. Very nice, with 3 slideouts, fireplace, 2 AC units, etc. \$16,500 cash/OBO. Larry 817-319-7874.

026 Excavating

REED EXCAVATING
• SITE PREPARATION
• LOT CLEARING
• LEVELING
• FINAL GRADE
• LAND EROSION
• GRAVEL ROADS
• PARKING LOTS
• DEMOLITION
• STOCK TANKS
Dump Truck Hauling **817-919-3696**

029 Fencing

BOBBY'S FENCE. All types, Free Estimates, Over 26 years experience. 817-444-3213.

KILEY CHESNEY CONSTRUCTION
All Types Fences - Tractor Work
817-846-6645

030 Firewood

LEON'S TREE SERVICE. Split Oak and Pecan wood. Pickup or delivery. 817-371-8597.

035 Garden/Mowing Service

COWBOY LAWN CARE. Residential, farm, gardens, landscaping, tree trimming. Free Estimates. 817-271-0450.

019 Cement Work

Kiley Chesney Construction
Dirt & Concrete Work
Driveways • House Slabs • Garages • Add-ons
Small Land Clean-ups • Gravel Driveways
Kiley Chesney, Owner
Springtown, TX • Mobile **817-846-6645**

HVAC TECHNICIANS & INSTALLERS
Come Join the Quality Team at
A/C & HEAT BY RUSSELL
817-270-8811

New Correctional Officer
Pay is \$15.00 per hour.
Please check the web site for Job Qualifications.
Must have HS Diploma or equivalent, be able to pass a drug screen, have a clean background and valid driver's license to be considered for a Correctional Officer.
Apply online at www.mtctrains.com or call 940-567-2272 and ask for the HR Department.
Lindsey State Jail

Help Wanted Continued next page...

817-270-3340 - AZLE
817-220-7217 - SPRINGTOWN

Deadline:
 4:30 PM Monday

Classifieds

039 Help Wanted

Driver/Light Duty General Laborer

We are a full-service Landscape and Irrigation installation company specializing in large scale projects, typically apartment complexes, commercial, senior living, churches, and student housing around the DFW area.

Minimum Requirements:

1. Must be 25 years of age or older
2. Valid driver's license and good driving record
3. Must be able to communicate clearly and effectively
4. Good work history
5. Physically fit and capable of working in a construction project environment including a predominately fast paced outdoor environment.

The day will start out in Azle, TX and from there travel to, from, and around the DFW area will be required. The day will end back in Azle, TX. Company vehicle will be provided. This position will be driving with the Construction Manager.

Some light duty general laborer duties to be performed while at job sites.
 Example: Loading/unloading trailers, light maintenance on equipment, organization of supplies, some landscape duties as needed.

The positions starting pay will range from \$15-\$17 an hour depending on qualifications.

Benefits include:

1. Weekly pay
2. Overtime pay
3. Holiday pay (after 90 days)
4. Vacation (after a year)
5. Company vehicle

Willing to train the right person

Please email your resume to shyla@greenworldincusa.com or call 940-433-2639.

TEXAS CROSSWORD

by Charley & Guy Orbison
 Copyright 2021 by Orbison Bros.

ACROSS

- 1 Oldham County seat
- 5 Fort Worth's "Carter Museum of Western Art"
- 6 TXism: "never sign anything in the glow of a ___ light"
- 7 TXism: "I'll ___ a monkey's uncle"
- 8 Yuki was LBJ's favorite ___ dog
- 9 the "B" of LBJ
- 15 in McLennan County on highway 164
- 16 Mexican general who lost at San Jacinto (2 wds.)
- 19 "the man" south of the border
- 21 group of Boy or Girl Scouts
- 22 TXism: "___ any better, the sheriff wouldn't allow it"
- 27 Slavic person
- 28 "___ dust, ashes to ashes"
- 29 TXism: "so green he could ___ a lettuce patch" (rookie)
- 30 speaker to produce high-pitched sounds
- 32 TX Tanya (init.)
- 33 TXism: "parental plagues"
- 36 actress Drake in "Son of Belle Starr" was known as this (3 wds.)
- 37 fed. mortgage ins.
- 38 TXism: "numerous as ___ dead worm"

DOWN

- 1 TX ___ Cibiurn
- 2 Tex-Mex prison mafia: "EI ___"
- 3 peanuts
- 4 Dallas' first elected female mayor
- 8 TXism: "sidekicks"
- 9 TX Isaac Ellwood was known as this (3 wds.)
- 10 TXism: "he's got the morals of ___ alley cat"
- 39 Gov. Ann wore a blue one to her inaugural gala (2 wds.)
- 41 a John Wayne line (3 wds.)
- 44 TXism: "___ chocked full of glee" (happy)
- 45 TXism: "mad as a wet ___"
- 46 Academy Award statue likely named for a Texan
- 47 Sault Marie, MI
- 48 politically "in the bag" (2 wds.)
- 51 TXism: "___ to" (similar)
- 52 Heston played title role in "EI ___"
- 53 to Tyler from Waco
- 54 TX convenience: "Stop ___"
- 11 TXism: "hightail ___" (flee)
- 12 Roy Bedichek wrote "Adventures With a Texas ___"
- 13 TXism: "still wet behind the ___"
- 14 TXism: "___ slinging drunk"
- 15 TXism: "___ old range cow"
- 16 TXism: "sticks out like a ___ thumb"
- 17 "___ time" (won't fool me again)
- 18 TXism: "later" (2 wds.)
- 20 newspaper Abilene Reporter-___
- 22 Gov. Hogg's daughter (init.)
- 23 TXism: "hissey ___"
- 24 TXism: "neon light ___" (inspiration)
- 25 Scarborough Faire recreates six ___ century England
- 26 few TX lotto players ___ jackpot
- 28 this Lottie was a famous TX gambler
- 31 short horn blast
- 34 TXism: "ain't ___ a clue"
- 35 a name before ExxonMobil
- 37 toxic vapors, e.g.
- 40 satisfy fully
- 42 Fort Worth univer.
- 43 Sam Houston's horse
- 49 moving pictures taken with your smart phone
- 50 TXism: "cash ___ the barrel head"

040 Home Improvement

BILL ROSSER PAINTING & REMODELING. Big Savings: \$100 off any job of \$1,000 or more. Painting, Carpentry, Porch Covers, Decks. FREE ESTIMATES. Call 817-304-9974; 866-374-3559.

WORKHORSE HANDYMAN SERVICES. Bathrooms, kitchens, remodels, water & sewer repair, mobile home repair, roof repair and well repair. Quality at a reasonable rate. Call 817-874-6109.

040 Home Improvement

Mr. Sweeps
 Chimney Cleaning Service

Keep your home safe. Call Parker/Wise County's oldest chimney sweeping company, Mr. Sweeps.

817-692-5624
 ask for Doug
www.mrsweepschimneycleaning.com

Special: \$170
 Chimney & Dryer Vent Cleaning

052 Movers

U.S. Army Retired-but not tired! Careful moving-Cheap. Call Big Jim @ 817-237-5151.

057 Pets/Livestock

Will pay top dollar for grazing and hay leases. Call 940-389-1936.

066 Roofing

DIAMOND ROOFING & CONSTRUCTION

Commercial & Residential

- Roofing
- Metal Roofing
- Carports
- Metal Buildings
- All General Contracting

417 N. MAIN ST • SPRINGTOWN
817-523-4137
 Here Before The Storm. Here Long After.

FOR LEASE: 3 acres, gravel lot with water and electric, 1 mile east of Springtown, easy access to Hwy 199 (outside city limits). 817-657-5682.

082 RV's for Rent

Nice 1BR RV in adult RV park. Great for older person on limited income. Starts at \$550/mo. All Bills Paid. Heritage RV Park 817-444-3760.

084 Mobile Homes for Rent

Pelican Bay: 1524 Partridge, 1-1, stove/fridge, central heat, window unit, \$545/mo. \$400 deposit. Owner/Broker 817-988-9954.

062 Plumbing

Looking for a small Chihuahua, male or female. Please call 682-288-7962.

GRAHAM PLUMBING CO.

Commercial-Residential Serving Springtown, Azle, Boyd, Weatherford Area M#15899
817-220-2469
grahamplumbingco.com

068 Storage

INNERSPACE STORAGE. Hwy 199, Springtown. Now renting all unit sizes, 24-hour access. 817-677-4050.

STORAGE UNITS
 1350 Liberty School Rd
 5x10 Units \$40/Mo.
 10x10 Units \$75/mo.
817-246-4646

079 Welding

owner Rodney Vick
 817-220-3044
 fax 817-523-7639
 cell 817-253-1614

R & E Construction
 Metal Building Specialist

- Weld Ups/ Bolt Ups
- Pipe Fencing
- Concrete
- Horse Barns
- All Types Fencing
- Metal Roofs

Compare Pricing
NO JOB TOO SMALL

Large 3-2 DW, very nice, fenced yard, CH/A, \$1,700/mo. with approved application. 817-228-2414.

1525 PARTRIDGE, 2-1, \$675/mo. \$400 deposit. Gene Thompson & Associates 817-246-4646 gtatx.com.

1BR 1BA mobile home in Briar, 1 year lease, \$650/mo. \$500 deposit, no pets. 940-390-1164.

086 Mobile Home/RV Lots
 Covered & uncovered spaces and rental units in Adult Park, store rooms, mail service, paved roads. 5 miles south of Azle on FM 730. 817-444-3760.

TKO Services
 Soft Wash House Wash

817-550-3745

LANDERS Plumbing Co.

Plumbing Repairs
 Drains Cleaned

817-444-3054
940-233-2862
 Don Landers • M-10078

069 Sand/Gravel

HALL'S SAND, DIRT & GRAVEL
 Quality Family Business Since 1938

CALL Cliff Hall
(817) 221-2681

We go the extra mile to ensure you get more for your \$. On House Pads, Driveways, Lot Clearing & Tractor Work, Etc.

Devin's Handyman Service

- Carpentry
- Cement
- Rock
- Granite
- Tile
- Painting
- Siding
- Insulation
- Kitchen/Bath
- Seamless Gutters
- Powerwashing
- Decks

FALL SPECIAL 20% OFF with this ad!

Call Devin at 817-629-9608

066 Roofing

Miles Roofing
 • Insurance Claim Specialists;
 • Free Estimates
817-797-3420

078 Well Drilling

Need a quality water well at a fair price? Also, pump sales and installation. KELVIN'S PUMP & WELL SERVICE. 817-221-4300.

SOLID STEEL SOLUTIONS

- Metal Buildings
- Steel Components
- Welding Supplies
- Concrete Supplies
- Fabrication Supplies
- Pipe Fencing
- Deer Blinds
- Deer Feeders

Open to the Public

817-220-0008
www.solidss.com
8894 W Hwy 199 • Springtown

Kevin's Handyman Services

40 Years Experience

- Carpentry
- Drywall & Painting
- Tile & Laminate Floors
- Doors & Windows
- Decks & Stairs
- Cabinets & Countertops
- No Job Too Small

Springtown and Surrounding Areas
231-445-1221

041 House Leveling

HOME LEVELING SOLUTIONS. Mobile Holmes, Pier and Beams, Slabs, Sheds, Rotten Wood Replacement. Small Jobs Always Welcome. 940-399-9616.

046 Looking to Buy

Local Man Buying Used or Damaged Campers, Motorhomes, Farm Equipment, Trucks and Trailers, Boats, Golf Carts and ATVs. 817-629-7531.

AT HOME ROOFING & METAL BUILDINGS

817-304-4224

Tired of always replacing your roof? Call us for a metal roof quote.

We'll be here after the storm.

Find it in the classifieds

079 Welding

Our Business is Metal Buildings - And We're Good!

DESIGN FABRICATION ERECTION

Cozart METAL BUILDING SYSTEMS

Fabrication and erection of quality metal buildings at reasonable prices, any size - any design

Office **817-237-2282**
 Fax 817-237-0904

Mark Cozart Jeremy Cozart
 817-233-6668 817-237-2028

049 Masonry/Stonework

Silva Masonry, L.L.C.
 AZLE, TX
CONCRETE
 COMMERCIAL • RESIDENTIAL
 Landscape Designs, Outdoor Kitchens, Patios, Retaining Walls, Mailboxes

All Types Stone & Brick Work Free New Construction • Remodels Estimates

817-308-6512
 email alvarosilva@verizon.net

WDC WELD-DONE CONSTRUCTION LTD.

Metal Building Erectors

- Pre-engineered Weld-up
- Barns/Shops
- Arenas/Hangars
- Fencing

1220 E. Hwy. 199 • Springtown
817-220-2150
www.weld-done.net

081 Business/Commercial

40x50 building For Rent, 3 miles west of Springtown. 817-713-7495.

NOW AVAILABLE: Commercial Storefront/Office Space For Lease. \$1,100/mo. Call Donna Bransom 817-925-8281.

FOR LEASE: 291 Morrow Road, Springtown. 2,200 sf building, east of Springtown with easy access to Hwy 199. 817-657-5682.

GARAGE SALE

16 words for only \$10.
 A great way to raise extra money!
 Call today for more info.
 Azle News 817-270-3340
 Springtown Epigraph
 817-220-7217

Advertising Works!

817-270-3340 - AZLE
817-220-7217 - SPRINGTOWN

Deadline:
 4:30 PM Monday

Classifieds

086 Mobile Home/RV Lots

VALLEY ROSE RV PARK
817-583-5372

- Free Cable & WiFi
- Showers
- Playground
- Swimming Pool
- Dog Park
- Security Cameras
- Storage Area
- Manager On-Site
- 40x20 Back-In
- 50x20 Pull-Throughs
- All Concrete Pads & Roads

Spaces Starting at \$450/mo. All Bills Paid
 1515 E Hwy 199 • Springtown



Support Your Local Businesses Shop Locally!

PUBLISHER'S NOTICE

All real estate advertising in this newspaper is subject to the Fair Housing Act which makes it illegal to advertise "any preference, limitation or discrimination based on race, color, religion, sex, handicap, familial status or national origin, or an intention, to make any such preference, limitation or discrimination." Familial status includes children under the age of 18 living with parents or legal custodians, pregnant women and people securing custody of children under 18.

This newspaper will not knowingly accept any advertising for real estate which is in violation of the law. Our readers are hereby informed that all dwellings advertised in this newspaper are available on an equal opportunity basis. To complain of discrimination call HUD tollfree at 1-800-669-9777. The toll-free telephone number for the hearing impaired is 1-800-927-9275.

TEXAS STATEWIDE CLASSIFIED ADVERTISING NETWORK

TexSCAN

TexSCAN Week of Dec. 12-18, 2021

ACREAGE
 Hunting/investment/recreational property. Starting at \$650/acre. Trans Pecos region. Also the Hill Country (Edwards, Menard, Coke, Val Verde Counties - free ranging exotics), South Texas (Duval County - whitetail, hogs). Large or small acreage. 30-year fixed rate owner financing, only 5% down. Call toll-free or email for individual prices and terms, www.ranchenterprisesld.com, 800-876-9720.

ANIMAL CARE
 Happy Jack® LiquiVect® is recognized safe & effective against hook & round worms in dogs by the USCVM. At Tractor Supply® (www.fleaabeacon.com)

EVENTS
 Bob's Baseball Tours - Field of Dreams Tour Aug. 15-21, 2022. Home games for Chicago (Cubs/White Sox), Brewers and Twins. Also a visit to the Field of Dreams movie site. Tour begins/ends in Minnesota. New York/New England Fall Foliage Tour Sept. 26-Oct. 2, 2022: Home games for New York (Yankees/Mets) and Red Sox. Guided Tour of NYC, free time in Boston, Trolley Tour in Maine, travel through White Mountain National Forest in New Hampshire & scenic train ride in Vermont. Tour begins/ends in Newark, NJ. Tours include deluxe motor coach transportation, additional sightseeing opportunities and quality game tickets/hotels. Call for a FREE brochure: 507-217-1326.

GENERATORS
 GENERAC Standby Generators provide backup power during utility power outages, so your home and family stay safe and comfortable. Prepare now. Free 7-year extended warranty (\$695 value!). Request a free quote today! Call for additional terms and conditions. 1-855-704-8579.

MEDICAL
 Portable Oxygen Concentrator May Be Covered by Medicare! Reclaim independence and mobility with the compact design and long-lasting battery of Inogen One. Free information kit! Call 866-747-9983.

Life Alert. One press of a button sends help FAST, 24/7! At home and on the go. Mobile Pendant with GPS. FREE First Aid Kit (with subscription). CALL 844-831-1525. FREE Brochure.

DENTAL INSURANCE from Physicians Mutual Insurance Company. Coverage for 350 plus procedures. Real dental insurance - NOT just a discount plan. Do not wait! Call now! Get your FREE Dental Information Kit with all the details! 1-855-901-0467 www.dental50plus.com/txpress #6258

WANTED
 BUYING Early Texas Art, www.texaspaintings.com. Fine Arts of Texas, Inc., San Antonio, Texas. Call 210-408-7778.

Need Extra Cash - I Buy RVs & Mobile Homes - Travel Trailers, 5th Wheels, Goosenecks, Bumper Pulls. In Any Area. Any Condition - Old/New, Dirty or Clean! I PAY CASH. No Title - No Problem, we can apply for one. ANR Enterprises, 956-466-7001.

FREON WANTED: We pay \$\$\$ for cylinders and cans. R12 R500 R11 R113 R114. Convenient. Certified Professionals. Call 312-291-9169 or visit RefrigerantFinders.com.

Texas Press Statewide Classified Network
 221 Participating Texas Newspapers • Regional Ads
 Start At \$250 • Email ads@texaspress.com

NOTICE: While most advertisers are reputable, we cannot guarantee products or services advertised. We urge readers to use caution and when in doubt, contact the Texas Attorney General at 800-621-0508 or the Federal Trade Commission at 877-FTC-HELP. The FTC web site is www.ftc.gov/bizop.

088 Rent Unfurnished

2021 Home in Azle. 3BR, 2BA, 2-Car Carport with attached 10x20 Storage. \$1,800/mo. \$1,800 deposit, Credit/Background Check, No Pets. Available September 1st. 817-980-3066.

2-2 house, large kitchen, 2 large baths, 2-Car Carport, appliances, dishwasher, etc. Laundry room, quiet area, close to shopping and Hwy 199, no pets, \$1,300/mo. 817-444-3636.

3-2 Duplex for Rent in Springtown. \$1,000/mo. \$500 deposit, no pets. 817-980-3066.

3-2 brick house in Azle. \$1,400/mo. \$1,400 deposit, no pets. 817-980-3066.

3-2 Duplex. Just refurbished, quiet area, no pets, close to shopping. \$1,300/mo. 817-444-3636.

1 Bedroom House, All Bills Paid, washer/dryer included, 1 person only, no pets, \$875/mo. \$600 security deposit. 7545 Portwood (house in back). Shown by Appointment Only. 817-360-3039.

1916 PELICAN DR. N. 3-1 \$1,195 MO. \$500 DEP. 1513 CORAL CUT OFF 3-1 \$1,195 MO. \$500 DEP. 1912 CORAL RD, 2-1 \$1,095 MO. \$400 DEP. Gene Thompson & Associates 817-246-4646 gtatx.com

3-2-1 brick, Spt. no pets, non-smoking, \$1250/mo \$1250 deposite 817-832-2003.

088 Rent Unfurnished

Cross Companies Residential Properties
 Family-owned, family-run

STEWART BEND | **SILVER CREEK** | **RV PARK**
 DUPLEX HOMES

Stewart Bend Duplex Homes: 2 & 3 bedroom units available at \$1,075 & \$1,175. Quiet, clean, non-smoking. CALL or TEXT 817-404-7143.

Silver Creek RV Park: Designed for local long-term stays. Best common building in Azle, secluded and quiet, city water/sewer. \$450 with \$75 electricity allotment; ABP in winter. CALL or TEXT 682-499-8616 or email scrvooffice@gmail.com.

Barton Cottages Tiny Home Community: COMING FALL 2021! Email sales.stewartbend@gmail.com for information.

GENE THOMPSON & ASSOCIATES
 HOMES AND MOBILE HOMES FOR RENT
 gtatx.com
 817-246-4646

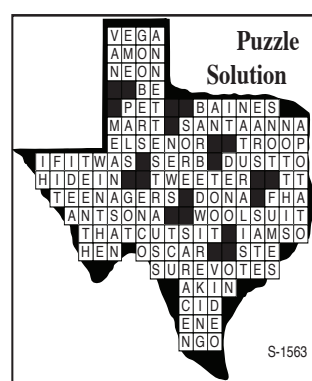
AZLE OAKS APARTMENT
 700 JARVIS • AZLE
 817-444-1712

1 & 2 Bedroom Unfurnished
 Accepting Applications
 Rent based on income
 TDD: 800-735-2989



Time For Some Beach Fun!
 Earn some vacation cash in the classifieds. 16 words for only \$10! Get started today.
 Azle News 817-270-3340
 Springtown Epigraph 817-220-7217

Puzzle Solution



16 words for only \$10 a week.

A great way to raise extra money!

Call today for more info.
 Azle News 817-270-3340 or
 Springtown Epigraph 817-220-7217

Looking for a New Vehicle?

OR

Want to Sell Your Old One? Check out the Classifieds for Our...

3 Month Special

Private Party & Dealer Vehicle Ads - Autos, Boats, Jet Skis, RV's, Tractors, Campers, Motorcycles, Trailers, etc.

ONLY \$29⁹⁵

Your ad gets the pertinent info, a picture, a border and runs in the Azle News and Springtown Epigraph Classifieds for 3 months!
 Call for more info. Azle News 817-270-3340
 Springtown Epigraph 817-220-7217

Makes a Great Christmas Gift



1 YEAR SUBSCRIPTION OFFER

Check one:

\$40 IN-COUNTY
 Tarrant, Parker & Wise only

\$46.50 OUT-OF-COUNTY
 Texas and elsewhere

\$36.50 SENIOR CITIZEN
 60 years and older
 Tarrant, Parker & Wise only

Clip and mail with check to:

The Azle News
 321 W. MAIN STREET • AZLE, TEXAS 76020
 OR
The Springtown Epigraph
 PO Box 557 • SPRINGTOWN, TEXAS 76082

\$25 ONLINE ONLY
 View online replica of paper
 No printed copy delivered

Name _____
 Address _____
 City _____
 State _____ Zip _____
 County _____ Daytime phone _____