



Azle News

YOUR TRUSTED LOCAL NEWS SOURCE SINCE 1966

Wednesday, January 12, 2022 • Volume 70, Number 33 • AzleNews.net • \$1



Cars of people waiting for their turn at the test site along Church Street in Azle.

Photo by Jessica McKinney

COVID testing sites in high demand

BY JESSICA MCKINNEY
azlereporter@azlenews.net

The anticipated uptick in positive coronavirus cases has come, and area residents are spending a lot of time in line at free COVID-19 testing sites across North Texas.

High demand has caused several sites to close early for the day when they run out of tests.

"In Azle, we have been doing approximately 200

tests per site," said Chet Vayani, CEO of Be Well Primary Care, which operates the two standalone testing sites in Azle.

"There have been instances where we ran out of rapid tests for a few hours and we (were) able to acquire more rapid test kits."

The Azle sites are located at Ash Creek Park at 605 Southeast Pkwy., and in front of the Azle ISD administration building at

300 Roe St.

The Heritage Park drive-through COVID-19 testing site at 317 Santa Fe Drive in Weatherford ran out of tests at 10 a.m. — two hours after the site opened — on Jan. 10.

The Parker County Office of Emergency Services (OES) said in a Facebook post Monday morning that "200 tests are being done per day" at Heritage Park.

SEE TESTING, PAGE 3A.

Azle ISD keeping eye on rise of COVID-19 cases

BY DON MUNSCH
editor@azlenews.net

Azle ISD officials are monitoring the recent surge in COVID-19 cases to determine their next steps.

Students returned to class on Jan. 5, and staff returned two days earlier, on Jan. 3. The latest surge has been fueled by the Omicron variant.

The Texas Education Agency in the last week updated its public health guidelines. The last time TEA

updated public health guidelines for school districts was mid-September, said Azle ISD Superintendent Todd Smith. At the monthly superintendent meeting Jan. 5 at Education Service Center 11, TEA Commissioner Mike Morath spoke. Staffing concerns from the recent surge were a hot topic among everyone, as well as updated guidance on required isolation.

In an update to staffers only for its public health

guidance, TEA dictates that similar to students, school systems must exclude staffers from attending school in person if they are actively ill with COVID-19, suspected of being sick with COVID-19 or have received a positive test result for COVID-19.

Based on the recent updates from the Centers for Disease Control and Prevention, staffers may return when: If symp-

SEE AISD COVID, PAGE 4A.

Former educator remembered for kindness, care for others

BY DON MUNSCH
editor@azlenews.net

Fred Weir could be identified by his distinct laugh, Justin Berg said.

A deep laugh.

"You knew when you heard it," Berg, president of Azle Rotary Club, told the Azle Rotary Club at its Jan. 6 meeting.

Weir, a former Azle ISD educator, died Jan. 2. He was 88. He will be remembered for his effect on the Azle community, including his role in education.

He was a charter member of the Rotary and served two terms as president, 1991-92 and 1992-93.

Weir began his education career in 1956 as head basketball coach at Ranger Junior College, and then worked for several school districts before coming to Azle ISD in 1971, according to information provided by Azle ISD. He would

spend the next 24 years in Azle before retiring, serving as a coach, athletic director, vice principal and principal. He was a vice principal at Azle High School and later became principal of Walnut Creek Elementary School. In 1987 he opened Silver Creek Elementary School as principal. He served 39 years in education.

Weir earned a bachelor's degree from the University of Texas and his master's degree from North Texas State University. He served in the United States Air Force Reserves, achieving the rank of lieutenant colonel.

"Although Mr. Weir retired shortly after I started teaching at Azle HS, he later became a friend and mentor," Azle ISD Superintendent Todd Smith said in an email.

While Smith served as principal at Walnut Creek Elementary, Weir would

routinely stop by to visit the campus, and Smith enjoyed hearing his stories about being principal of Walnut Creek, coaching at Azle High School and playing football for the University of Texas. He also had a passion and love of traveling, Smith said.

"Mr. Weir was a fine, honest, hardworking man," Smith said. "He definitely touched the lives of many throughout his long career in Azle ISD. Several of the Walnut Creek 'veteran' teachers would share stories of working with Mr. Weir prior to him leaving Walnut Creek to open up Silver Creek Elementary. He was respected and very well thought of by all."

Smith said that after Weir retired, Weir remained active in the Azle community.

"He will be missed, but we are thankful for the impact he

SEE WEIR, PAGE 6A.



Azle High School C.O.O.L. adviser Kacie Suratt relaxes in her classroom/office at AHS. In her role, she advises students about the myriad aspects of college life as well as other post-high school options.

Photo by Don Munsch

AHS grad has C.O.O.L. job at high school campus

BY DON MUNSCH
editor@azlenews.net

Azle High School students can spend ample time sifting through a maze of admission and scholarship applications, promotional material and

financial assistance opportunities trying to determine which college or university is the best fit.

Kacie Suratt is here to help them. And she can help those students prepare for after-high school life that would

not include attending college.

Suratt works as the College Offers Opportunities for Life (C.O.O.L.) Program college adviser at AHS, now in her second year in the role.

SEE C.O.O.L., PAGE 5A.



INSIDE News 1-10A | Obituaries 6A | Sports 1-4B | Classifieds 6-8B |

Chamber of Commerce names new executive director

BY JESSICA MCKINNEY
azlereporter@azlenews.net

The Azle Area Chamber of Commerce will be under new leadership beginning later this month.

Jennifer Herrington, a longtime Azle resident, will be taking over as executive director from Shelia Pippins, who has been in that role since 2016.

"I have lived in Azle my entire life, except for when I attended college at the University of North Texas in Denton, and I lived in north Fort Worth," Herrington said.

Herrington graduated

from Azle High School in 1997. In 2005, she graduated from UNT with a bachelor's degree in business management. She worked for nine years with Purple Care, which allowed her to "be a part of the community as a business representative."

"I am very excited to have Jennifer Herrington take my place as executive director of the Azle Area Chamber of Commerce," said Pippins, whose last day is Jan. 15.

"I know she will do an excellent job leading this chamber into the future. Jennifer is a hometown girl with a deep love for this chamber and this community. She

wants to see this chamber continue to grow, and I know she will do everything possible to make that happen."

Herrington has been a Chamber Ambassador and served on the Chamber's Board of Directors in 2021, which gave her the opportunity to meet so many of her chamber friends, she said.

Herrington thinks an active Chamber and director is a "crucial part of growing the community, and that it is the Chamber's role to partner with the businesses in Azle to take part in community events and to help see those businesses succeed and grow.

"Together we can all make a great team and get our names out there," she said. "Those active members get to extend their network of customers and friends. It's all in who you know."

During her first year as executive director, Herrington wants to "maintain, not change" the elements that have been working so well for the Chamber and its members, ensuring that the transition is as smooth as possible.

"(Herrington's) Azle roots, chamber involvement, local business experience, high-level abilities, professionalism and enthusiasm

give us great confidence in her ability to successfully lead the chamber," said Kim Ware, president of the Chamber's Board of Directors, in a letter to members.

"Shelia Pippins, the Chamber's executive director since 2016, decided to transition her post because of her husband's retirement from the city of Azle and her desire to be with him wherever that might take them next. Shelia has done an exceptional job. Under her leadership, the Azle Chamber has seen dramatic improvement, increased participation and consistent momentum."



Jennifer Herrington

2021 Year in Review Part 2: August through December

BY JESSICA MCKINNEY
azlereporter@azlenews.net

AUGUST

Dr. Ray Lea, former AISD superintendent, was appointed to fill the vacancy on the school district's Board of Trustees following the departure of Shannon Hart.

Texas Health Resources hospital system implemented a mandatory COVID-19 vaccine policy for employees.

Azle Lions Club was able to donate 340 backpacks to Azle ISD students in need after the annual Back the Pack fundraiser.

Parker County Sheriff's Department named Clayton Strong as a suspect in the murder of a local woman at her home; he was later

tracked to Mexico, where he is awaiting extradition.

The Azle community mourned the loss of AHS football player Jack Schwantz and his father after a plane crash.

Azle ISD placed another two bond propositions on the ballot for November in an attempt to bring improvements to the high school.

SEPTEMBER

Azle residents won a national pool championship in Las Vegas.

Azle celebrated its 13th annual Sting Fling event, bringing large crowds to Main Street for food, fun and shopping.

Ash Creek Baptist Church, the oldest church in Azle celebrated 150 years of history.

City of Azle announced new plans for city parks, including new restrooms and plans for a splash pad.

The Azle community mourned the loss of former firefighter Eddy Wood after a battle with cancer.

OCTOBER

A 37-year-old man was arrested by Parker County Sheriff's deputies after allegedly shooting and killing his mother in her home.

Construction on Servolution Network's new Dream Center was completed.

Future Hope and Healing Center received a \$10,000 donation to help in the organization's fight against domestic violence.

City of Reno voted to remove Chief Tony Simmons

from the police department. Azle Police Chief Rick Pippins left the department after serving the community since 2015.

NOVEMBER

Azle Education Foundation distributed more than \$52,000 in grants to teachers.

Optimist Club of Azle recognized 20 Azle ISD students for their academic achievements at annual Youth Appreciation Banquet.

AISD Proposition A was approved by voters in the November election, bringing some needed improvements to the high school cafeteria and classrooms.

Azle Rotary Club distributed dictionaries to third

graders across the school district.

The 40th annual Azle Lake Run drew hundreds of participants from across North Texas.

City of Azle announced Sid Fuller would lead the police department as interim chief until a permanent candidate is selected.

City of Reno announced the hiring of Scott Elsner as police chief.

AISD students helped donate thousands of pounds of food to Community Caring Center.

DECEMBER

AHS student Brooke Schocke told members of the school board that the high school would be receiving a piece of the USS Arizona to

keep on display.

Three members of the Azle Composite Squadron, Civil Air Patrol, earned the Billy Mitchell Award and were honored by local leaders.

AHS teacher Lisa Helm was named the Outdoor Adventures 2022 Educator of the Year.

Annual Lord's Acre event raises nearly \$12,000 for four local nonprofit organizations.

AISD announced a partnership with Tarleton State University that guarantees acceptance to the top 33% of students.



CHECK OUT
THE **NEW**
AZLE NEWS.
COMING SOON

SAVE THE DATE

Come-And-Go Reception

CO-SPONSORED BY THE AZLE AREA MINISTERIAL ALLIANCE
AND THE AZLE AREA CHAMBER OF COMMERCE

Thursday, January 13, 2022 • 4-6 pm



Rick is officially retiring from the City of Azle effective January 1, 2022, after serving as its Police Chief since March 2015; and Shelia is leaving her post as Executive Director of the Azle Area Chamber of Commerce on January 15, 2022, after serving in that role since March 2016. The Pippins have supported the AAMA over the years in helpful and meaningful ways, and we look forward to this opportunity to thank them.

404 West Main Street, Azle

It's not that complicated

Have you ever noticed that we tend to way over-complicate things?

It's almost like we imagine the most difficult and complicated scenario and try to figure out what we would do in that case rather than simply doing the simplest thing in the situation directly in front of us.

Here's an example from the Bible (note that I'm paraphrasing here).

Dude asks Jesus a question: "What is the greatest commandment?"

Jesus: "Interesting question. What do you think?"

Dude: "Love God with all your heart, soul, mind, and strength. Love your neighbor as yourself."



BE AMAZING

By Gerry Lewis

Azle resident Dr. Gerry Lewis guides explorers to discover their AMAZING. He is an author, musician, and speaker, and a coach-sultant for individuals, churches, and organizations. More at www.discoveryouramazing.com.

Jesus: "Good answer. If you can pull it off, you're in good shape."

Dude: "So, who is my neighbor? Who am I required to love?"

Jesus then goes on to tell a story that we know as "The Good Samaritan" where He essentially says to start with the person you see who needs to be loved and work your way out from there. Instead of over-complicating things and trying to figure

out how far love extends, just love those in front of you and do what's best for them.

It's not that complicated. This morning, I read my hymn text for today. It's a great missionary hymn written by Charles H. Gabriel in 1890 for a specific missionary emphasis and offering on Easter Sunday at the Grace Methodist Episcopal Church in San Francisco.

The third verse stuck out

for me this morning:

"Let us pray that grace may everywhere abound, 'Send the light! Send the light!' And a Christlike spirit everywhere be found, 'Send the light! Send the light!'"

As is my practice most mornings, I started looking for a photo so that I could make a graphic of those words to post on social media.

In thinking about the words "grace" and "Christlike," I was reminded of the once-popular phrase "What would Jesus do" that adorned t-shirts, plaques, jewelry and coffee mugs in the late 20th century.

An unexpected photo grabbed my attention. A kid in a soccer uniform was on

the field. A man—either a coach or a referee—was kneeling down and tying the kid's shoe.

It hit me right then. Could a Christlike spirit be revealed in something as simple as bending down to tie a kid's shoe?

I doubt that's what Charles Gabriel had in mind—and certainly shoe tying does not make a person a follower or imitator of Jesus. There's much more to following Jesus than that.

But could a person who is a follower of Jesus demonstrate abounding grace by noticing simple needs and responding to them?

The question is not whether Jesus went around look-

ing for shoes to tie. There's certainly no evidence in the New Testament of that.

The question is—knowing what the New Testament does reveal about the character of Jesus—would Jesus give attention to a kid who needed help because he kept tripping over his untied shoelaces?

I know what my answer to that question is.

The amazing Christlike life to which we are called is not that complicated. Start with the simple needs in front of you by responding in love.

Then work your way out from there.

Be amazing today, my friend.

TESTING, CONTINUED FROM PAGE 1A.



The line of cars waiting for COVID-19 testing at the Ash Creek Park site was wrapped around the BJ Clark Building first thing Monday morning. Photo by Jessica McKinney

Parker County OES opened the site again Tuesday morning at 8 a.m. and will continue to offer free testing from 8 a.m. to 3 p.m. Monday-Wednesday each week through Feb. 23, "or as long as there are tests available."

Local pharmacies like Trophy RX, CVS and Walgreens are still offering COVID testing, but most require appointments.

There are many Tarrant County testing sites available throughout the week for drive-through and walk-in testing, including:

- Northwest Public Health Center, 3800 Adam Grubb, Lake Worth; Monday-Friday, 8 a.m. to 4:30 p.m. (closed for lunch noon to 1 p.m.)
- Splash Dayz, 8905 Clifford St., White Settlement; Daily 9 a.m. to 7

p.m. (appointment encouraged; sign up at www.Texas.fulgentgenetics.com/appointment)

- Tarrant County College Trinity River Campus, 300 Trinity Campus Circle, Fort Worth; Monday-Thursday 10 a.m. to 5 p.m. (registration required at www.mycovidappointment.com)
- TEXRail North Side Station, 3001 Decatur Ave., Fort Worth; Monday-Friday

8 a.m. to 5 p.m.

For a complete list of testing sites across Tarrant County, visit <https://www.tarrantcounty.com/en/public-health/disease-control--prevention/COVID-19/covid-19-testing-in-tarrant-county.html>.

As of Jan. 11, there were 2,007 active cases in Parker County, 44,525 active cases in Tarrant County, and 1,143 active cases in Wise County.

SENIOR SPOTLIGHT

A New Year!

JACKIE "JJ" JOY

Here we are in a new year and looking forward to great things. For one, the Azle Adult Activity Center (Senior Center) is open and serving meals five days a week. We are a safe place to meet and enjoy visiting with your friends.

Keeping you safe and healthy is a priority so you will find our tables are spaced apart and with only four chairs to a table. They are washed and sanitized daily as well. Masks are recommended, but not required. There are also hands-free hand sanitizing stations available. Furthermore, our building is cleaned and sanitized daily.

Nutritious meals

are provided Monday through Friday by Meals On Wheels, Inc., Tarrant County. Options are available for the entrée each day so please call by 9:30 the morning before you plan to come to place your order.

There are a variety of activities available including dominoes, Bible study, bridge and other games. Special guests are invited in to provide education and information important to older adults.

For more information or to place an order, call 817-444-0070 or come by our location at 601 Southeast Parkway, in Ash Creek Park Monday through Friday. We open at 9 a.m.

AZLE ADULT ACTIVITY CENTER
601 Southeast Parkway, Ash Creek Park
817-444-0070



HOGLE

Insurance Group
167 W. Main • 817-444-6389
www.HogleInsurance.com
"Our Best Policy is Personal Service"



IRA-SEP-401k Rollover

3.15% 60 Month Rate Guarantee **2.50%** 36 Month Rate Guarantee

Hogle Insurance Group is an authorized agent for

National Farm Life

located in Fort Worth, Texas.

Term Life, Whole Life and Premier Choice.

LAKE WORTH PREMIER EYE CARE

Dr. Jeffrey R. Crabtree

Attention Seniors!

Did you know Medicare will help pay for your eye exam?



Call Today!

www.lakewortheye.com • 817-439-9455
6921 Foster Dr. Lake Worth, TX 76135

Dos Chiles Grandes Cafe

Two Enchilada Dinners & Two Drinks = \$15

EVERY TUESDAY

- Open 7 Days
- Fast Friendly Service
- Fresh Homemade Food

425 W. Rock Island Ave.
Hwy 114 • Boyd • 940-433-3322





Azle News

Subscribe Today 817-270-3340
Keep up with the news that impacts your life every day!

www.nbt.bank 817.759.9001



The National Bank of Texas

where everyone is treated like family



Member FDIC

Even though winter has really just arrived, spring is on the way

For those of y'all who don't know me and even those who do and I just haven't taken the time to tell you, here's a news flash: I do not like cold weather!



AG 101
By Jack DeShazo

Jack DeShazo has decades of experience in the agriculture field.

After about the first three days of cold weather, usually in November, I have had my fill of winter and am ready for summer again. Now in August, I may have been singing a different tune but most assuredly that was due to my brain being fried by the 100+ degree weather; I would have admitted to or said nearly anything to make it to cooler weather.

But when I start looking like the Michelin Man while wearing three, four or five layers of clothing, I've had enough - bring on spring and some 60-70 degree temperatures.

Now, I know that y'all who are of northern descent are probably laughing and making fun of the sissy North Texas boy. Well, go right ahead, but personally I would rather sweat than shiver. And I really do realize that our winters are basically mild compared to those of the cold "north country," which on my map starts just North of the Red River and includes a portion of the Rolling Plains and High Plains of the Texas Panhandle.

I have probably chased this rabbit enough, so let's get on with the main topic of this article. There are many agricultural essentials that need to happen during the cold weather of winter. So, let's go ahead and visit about some those important things of cold weather.

First the constant freezing

and thawing of the soil tends to decrease soil compaction in the first four inches of the topsoil, more especially in clay type soils.

Porosity, which is the rate that water is able to move through the soil, is also increased by the freezing and thawing of the soil. Insect population, both beneficial and detrimental, is also affected by cold weather. Wintertime precipitation is obviously beneficial to the soil; my Dad used to refer to this as "seasoning for the soil," getting it prepared for another growing season.

Let's look at another benefit of the winter season: planning and preparing for the coming growing season, this is my favorite part of winter. Of course, if you are planning on growing cool season plants such as wheat, rye, oats, barley, triticale, ryegrass, clover and/or vetch, the planning and preparation should have been done in the summer months before planting in September and October, depending on the rain.

Wintertime is more of a lax period for tractor and equipment use, so it's a good time for equipment maintenance and repair. This is also the time for collecting your soil samples and sending them in for analysis. This is the main time of year for soil preparation, if you are not getting your soil ready to get the seed, sprigs or transplanted plants into the ground now, then you are about to be late.

Planning for fertilization and weed and insect control are also important items to be considering this time of year. Choosing the plants and the specific varieties of the plants to be used are very important areas of cogitation. In our area we are looking at the cool season plants that we mentioned previously which are mainly used for Wintertime livestock grazing and a little hay or grain crop production.

Some of the main warm season plants that are found producing in our tri-county corners area are garden plants, ornamental plants, berry vines, grapevines, fruit trees, pecan trees, peanuts, watermelons, cantaloupes, some alfalfa, sudan, hybrids, various varieties of bermudagrass and other pasture grasses both introduced and native.

While considering plant and variety selection let's briefly review some plant terms. Life cycle refers to the period of time that the plant is expected to live. Annuals are planted at the beginning of the growing season and will be dead by the end of that same growing season. Biennials take two years to complete their growth cycle while perennials are expected to return to the same root system and plant for at least three years, hopefully for a much longer duration than this. Obviously with perennials returning to the same plant year after year, if the proper steps are

taken to take care of them, then time spent for planting every year is saved. Origin refers to the region in which a plant was originally found or developed. Introduced plants are currently being or were imported to the U.S. or Texas from other areas of the world.

Native plants are those that are growing and producing in or near the original area where they developed and/or were found. Improved plants are those that have been hybridized with the intention of producing a plant that will outperform either of its parent plants. For example, Triticale is an improved plant that was produced from the crossbreeding of wheat and rye. Coastal bermudagrass is probably the most common improved plant in our area; it was hybridized and produced at the USDA-ARS Coastal Plains Experiment Station in Tifton, Georgia. It's the result of crossing "Tift" bermudagrass and a bermudagrass native to Africa.

Next week we will visit a little more about introduced and native plants along with their advantages and disadvantages. Until our next gathering let me leave you with the following thoughts.

The good part about this time of year is that by the time we have reached the serious cold weather of January, warmer weather and the spring growing season are only a calendar page or two away, so it's time to be getting ready.

The bad part about this time of year is that the spring growing season is only a calendar page or two away and if you are not getting ready NOW, you are behind.

'til next time.

AIKD COVID, CONTINUED FROM PAGE 1A.

tomatic, there are at least five days that have passed since symptom onset, the individual is fever free for 24 hours without the use of fever-suppressing medications and other symptoms have improved. For those people with no symptoms, at least five days must have passed after the day they tested positive. A fever is 100 degrees or higher.

Additionally, staffers who meet the close contact threshold with a COVID-19 positive person and are in one of the following groups do not need to stay home:

- Someone age 18 or older who has received all recommended vaccine doses, including boosters and additional primary shots for some immunocompromised people.
- Someone who was confirmed COVID-19 positive within the last 90 days and has fully recovered.

For the staff who meet the close contact threshold with a COVID-19 positive individual who are not in one of the above groups, it is recommended that the school system require that staffers remain off campus during the stay-at-home period, but this would be a local employment policy decision. If these staffers continue to work on campus, rapid testing must be performed periodically for five days post-exposure, with testing on the fifth day recommended, TEA officials said.

Changes were made in

response to CDC isolation changes announced in late December. The new CDC five-day isolation period, followed by five days of wearing a mask, has been a pretty hot topic, especially given the fact the district cannot require students to wear masks, Smith said in an email.

"Staffing is a big concern," Smith said Jan. 6. "This was a challenge at times last year and is already becoming a challenge just being back in school for two days. At this time, we do not necessarily have a threshold of confirmed cases, percentages, etc., in which we would shut down school. Obviously if we are not able to adequately staff, not only classrooms, but other areas such as bus drivers, food service workers, and custodial, we would have to make some tough decisions."

Smith said at this time TEA does not have a way to allow school districts to go completely virtual without having to make up the in-person time missed. For students who have tested positive and having to quarantine because of exposure or experiencing COVID symptoms, the district does offer remote conferencing. This is available to all students up to 10 days, not to exceed 20 in a school year.

"This is really the only 'virtual' option TEA has allowed up to this point," he said.

Mr Jim's Pizza
It's the Crust!

Follow us on f

2 MEDIUM PIZZAS Original
\$9.99 2 Medium Original™
2 Topping/Specialty/Premier Pizzas
MUST BUY 2 PIZZAS

AWZLE | 416 Commerce St., Ste 3 | 817-612-0074
SPRINGTOWN | 417 E. Hwy 199 #7 | 817-523-2255

BIG DEALS

SAVE 25¢ PER GALLON

when you sign up for our FREE rewards program today!

AHORRE 25¢ POR GALÓN

cuando se registre en nuestro programa de recompensas gratis!

yesway.com/rewards

allsups.com/rewards

Offers good thru 01/31/22

Buy 2 for \$4.22

Red Bull®
8.4oz

STACK & SAVE 10¢ /GAL

BUY 2

Rowdy Energy
16oz

STACK & SAVE 10¢ /GAL

Buy 2

Twix®, M&M's® or Snickers®
Share Size

STACK & SAVE 6¢ /GAL

Buy 2 for \$4

Rockstar® or Mtn Dew Rise®
16oz

\$1 Allsup's save on Chimi

ONLY WITH rewards

SCAN TO DOWNLOAD THE FREE APP

ESCANEAR PARA DESCARGAR LA APLICACIÓN GRATUITA

OR TEXT JOIN TO 82295 TO REGISTER

O ENVÍA EL TEXTO "JOIN" A 82295 PARA REGISTRARSE

\$4.99 COMBO

Beef & Bean Burrito, Allsup's Tostadas (4oz) and 32oz Tallsup

ONLY WITH rewards

*Limit 30 gal. per fuel reward redemption. One vehicle per transaction. One time use.
**Limite de 30 gal. por canje de fuel reward. Un vehiculo por transacción. Un solo uso.

Stack & Save available with Allsup's Rewards or Yesway Rewards. Limit 30 gallons on fuel reward redemption. One Vehicle per transaction.

C.O.O.L., CONTINUED FROM PAGE 1A.

C.O.O.L. is now in its 10th year. A 2008 AHS grad, Suratt previously taught algebra II and PALs at the school.

"I'm a helper – I like helping people," she said. "And I feel like this position has just like opened up so many doors for me to be able to help people."

She said she loves working with students in this capacity and getting to know them in a different way, and "seeing them grow from when I had them as sophomores to seniors is great." Plus, she said, taking students on tours to colleges has been an "awesome" experience, including seeing how a couple of students went from being unsure about whether they wanted to attend college early in the year to now being fired up about what they're going to do after high school.

As described on the C.O.O.L. website, the C.O.O.L. College Adviser Program is funded by a private grant through the Azle Education Foundation. The program functions as a way to provide and promote college access. Suratt acts as an advocate by "encouraging, respecting, inspiring and assisting students in establishing and achieving their academic goals and objectives beyond high school," the website stated. She will help students make informed choices about college by teaching appropriate decision-making skills and will work to increase student enrollment and retention in college and create a college-going atmosphere within the

district and community.

The C.O.O.L. program is especially helpful for first-generation college students or those students who need support to help them get to college or trade school or whatever their post-secondary plans are, Suratt said. The C.O.O.L. program keeps track of students after they graduate from high school, which entails checking in with students to ensure they're doing well, attending class and are on track to graduate. AHS's C.O.O.L. program helps all students, regardless of whether they are first-generation students.

Preparing students for the next phase of life

During a recent interview in her AHS office/classroom, Suratt said students ask about everything relative to attending college, including, for example, understanding the transition from a credit in high school to an hour of credit in college. In college, three hours – one semester class – translates to one credit.

"A lot of them come in just asking what is college and how is scheduling (conducted)," she said. "They come in asking how to apply, asking about filing for financial aid, looking for scholarships, making sure that the tests they've taken are appropriate for their school. Most colleges and universities this year and last year have been test optional, meaning they're not requiring SAT or ACT scores."

Students who don't turn

in test scores to colleges and universities are evaluated under a holistic review for the most part, Suratt said. Some schools offer automatic admission to students who finish high school in the top 25% of the class, while others require a different percentage.

"Each school is different," Suratt said. "But with the test scores, depending on how they do on the SAT or the ACT, they might not need the TSI test, which is like the college placement test for Texas."

The Texas Success Initiative Assessment determines college coursework readiness in the areas of reading, writing and math. Not all students are required to take the test, as exemptions are allowed, such as college admission scores, as Suratt mentioned. More information can be found here: tea.texas.gov/academics/college-career-and-military-prep/the-tsia-texas-success-initiative-assessment.

On scholarship availability, students can find a page dedicated to financial aid (Free Application for Federal Student Aid, scholarships, etc.) at <https://www.azleisd.net/domain/2408>. More information on FAFSA can be found here: <https://tea.texas.gov/academics/college-career-and-military-prep/financial-aid-requirement>.

"Once they're juniors, we do start getting a few of the more localized (scholarships)," she said, noting the Tri-County Electric Cooperative scholarship that's

available to sophomores and juniors. Students can start applying for any scholarships at any age, but each scholarship has criteria and deadlines that students must meet in order to apply for each particular scholarship, Suratt said.

As far as college applications, most applications open in July or August of the year before, Suratt said. Students must be knowledgeable about deadlines about applications, as some schools have earlier deadlines – Texas and Texas A&M had their application deadline for seniors on Dec. 1. Other schools have deadlines in February and March, and some schools have rolling deadlines, which means they will keep accepting students until they hit their maximum.

Suratt said she advises students on the importance of essays and their applications, including advising on a "brag sheet" that includes accomplishments and awards that will help make students more appealing to colleges. Letters of recommendation also go "very far" in helping students' overall application, she said.

Oftentimes, students approach Suratt either knowing which school they want to attend or having no idea at all about a school of choice. When students have a definite idea about their preferred school, Suratt will ask the students about their choice and what they want to major in.

"There are some kids that have these dream schools, but whatever they want to study isn't offered at that

school," she said. "So that's a really tough discussion."

Touring campuses

In the C.O.O. L. program, Suratt has taken students on tours to colleges, with students visiting Tarleton State, Midwestern State and Texas Woman's University so far this year. In the spring, she is planning on taking students to University of North Texas, Texas Wesleyan University and Abilene Christian University.

"I feel like exposure and actually getting on the campuses help the kids decide if that's for them or not," she said.

Suratt can advise students on attending tech and trade schools. As far as the military, she is less comfortable with providing information on joining the service because of the complexity and details involved with it.

"So, if a student is interested in military, I've got a stack of cards from recruiters and I try to hook them up with a recruiter," she said.

AHS counselors have been conducting meetings with seniors, checking with them to ensure they have a plan to graduate and to find out what their plans are for next year, Suratt said. At the end of the school year, students fill out a form explaining what their next step is after graduation; if they are going to college, the high school wants to know where to send transcripts.

Counselors work on ensuring students are meeting graduation requirements, among many other duties.

They meet with students to discuss their schedules, plans after high school and any concerns about academic, emotional or social problems, Suratt said later in email.

She said counselors can also mediate conflicts and help students improve their relationships with their teachers. They also refer students and families to other mental health resources, and the "list goes on and on," as far as other duties, Suratt said.

Suratt's other duties

Suratt said she has had conversations with some students who should prepare themselves for not getting accepted into their top-choice school. She advises them to look at some other schools that they would consider attending.

She also she informs them about financial aid availability, especially to those schools that carry a high price tag, and the implications of paying back student loans. She has conversations with students about college life and its expectations, such as turning in late work – most professors and instructors don't accept late work – and communicating with instructors. Students can discover a wealth of information about a school by looking online.

Suratt also helps students by reading their essays.

"I think last week I read 10, 15 different college essays and helped students edit and everything," she said in December. "So, some of these kids put in hours and hours and hours of work."

Spotlight on **BUSINESS** **JANUARY**

ICTR
IT'S CLOSING TIME REALTY
SERVING PARKER & TARRANT COUNTIES
OUR AGENTS ARE READY TO HELP YOU FIND YOUR NEW HOME!

 **Tim Kay**
817-217-6993

 **Mel Lopez**
817-614-4805

 **Annie Sovereign**
817-875-8028

1355 NW Pkwy, Ste #102 • Azle



Clockwise from left: Zach, Gary, Rae, Sandra and Kathy have decades of combined tax experience that helps them better serve the Azle area.

Reliable Year-Round Tax Service

Reliable's experts have almost 100 years of experience

Details matter – especially when it comes to filing your income tax return.

No matter how big or small the task, the seasoned professionals at Reliable Year-Round Tax Services take pride in ensuring their customers receive exactly what they need to succeed.

"We offer big-city services with small-town charm, because we take things personally," says Kathy Diffie, tax professional and notary public. "Our customers deserve exceptional service."

Whether it's your personal tax return or the preparation, filing, franchise tax and consultation related to your business tax return, Reliable Year-Round Tax Service is there to help. The professional team is trained to handle your taxes properly, saving you time and unnecessary stress.

The company will meet or beat any price on tax returns. It offers an exceptional rate for personal 1040s, 1065, 990, 1120, and 1120s, as well as electronic filing. Reliable offers 50% off to military and first responders.

Reliable can also help with bookkeeping, payroll, audit services, and can fulfill your notary needs.

The friendly but professional staff has a combined 100 years' experience in tax filing, and includes Diffie; Sandra Williams, tax specialist; Vanessa Hitt, qualified QuickBooks and bookkeeping; Rae Sellers, E.A. QuickBooks Pro advisor who can also provide help with any IRS issues; and Gary Widener and Connie Jones, tax specialists.

Reliable Year-Round Tax Service is located at 1355 Northwest Parkway, Suite 102. From Azle, take Hwy. 199 west. At the Kerry Lane crossover, make a U-turn and you will find Reliable Year-Round Tax Service just east of Orchard Lane.

Business hours are 9 a.m. to 7 p.m. Monday through Friday, and from 9 a.m. to 5 p.m. on Saturdays; clients are seen after-hours by appointment only.

Filing deadlines are quickly approaching, so call 817-220-2574 to set up your appointment with Reliable Year-Round Tax Service today.

It's Tax Time!

50% off 

For First Responders, Veterans, Military

Full Services For You:
1040 • 1120 • 1120S • 1065 • 941
Filing • Consultation
Preparation • Extensions
Tax Professional • Notary Public
Personal & Business
Extensions Filed at No Charge

 **Reliable Year-Round TAX SERVICES**

Our Prices Won't Be Beat!
1355 NW Parkway, Ste. 104
817-270-2574

New Customer Special

\$1,000 off
Material & Installation
with Minimum Purchase of \$2,000

Offering the most extensive local flooring options!



Natural Stone • Glass Tile
Free Estimates • Financing Available

 **Texas Designer Flooring**

www.TexasDesignerFlooring.com
817-752-2065
500B N. Stewart Suite 1, Azle

Jennifer Stephens TAX SERVICE, INC

- Contactless Services
- Tax Preparation
- Free 2nd Looks for Tax Returns
- Free Consultations
- Business Entity formation: LLC, Inc., Corp., LP, LLP, Trust, Non-For-Profit
- Wide Range of Business Forms

BRING IN THIS AD TO RECEIVE
\$25 Off
TAX SERVICES OR ACCOUNTING FEES

119 Industrial Ave, Azle
817-301-8880
JenniferStephensTaxService@gmail.com
WALK-INS WELCOME!

Obituaries

Kenneth Brown 1936 - 2022

Kenneth "Grandpa" Brown went home to Jesus on Friday, Jan. 7, 2022 at age 85.

Services were held at 10 a.m. Tuesday, Jan. 11, 2022 at Ash Creek Baptist Church. Visitation was from 6 to 8 p.m. Monday, Jan. 10, 2022 at White's Azle Funeral Home. Interment was at 2 p.m. Tuesday, Jan. 11, 2022 at Acton Cemetery.



Brown.

Kenneth was born to Jake and Leona Brown on Feb. 22, 1936. Music was always prevalent in the Brown's home and even had a Brown Family Gospel quartet that travelled all over the Southern part of the US attending Southern Gospel Conventions.

Kenneth met his wife of 55 years, Patsy Carlene Durant, at a Gospel 'singing' in Granbury and were married a year later on November 19, 1966. Kenneth and Pat both brought children to the marriage. Kenneth had a son and daughter, Kenneth Brown Jr. and Denise Robertson. Pat had three sons, Danny Thomas, Randy Thomas and Kenneth Thomas. After a year of marriage, they together had another son, Jake

As an active member of Ash Creek Baptist Church in Azle one of Kenneth's proudest moments was when he was ordained as a Deacon. He continued to serve in that role until his passing.

Kenneth spent over 40 years working in the furniture moving business before retiring after another 16 years as an Azle ISD bus driver.

Many of his friends also know him as Coach Brown as he often volunteered to coach his son's sports teams.

In addition to the aforementioned family members, Kenneth survived by 21 grandchildren and 21 great-grandchildren.

The Azle News,
Jan. 12, 2022 Edition

Candidate filing opens Jan. 18

BY JESSICA MCKINNEY
azlereporter@azlenews.net

Residents wishing to run for an elected office in their local community will get their chance beginning Jan. 18.

The candidate filing window for the May 7 election will be open from Jan. 18 to Feb. 18.

The cities of Azle, Reno and Pelican Bay, the town of Lakeside and Azle Independent School District's Board of Trustees all have positions up for election in May. Council members serve for a term of two years. School board members serve three-year terms.

Council places 1, 2 and 5 in Azle are up for election, as are places 1, 3 and 5 in Reno. Other elections in May: Pelican Bay mayor and places 1 and 2; places 1, 3 and 5 in Lakeside; and places 4, 5, 6 and 7 for AISD.

QUALIFICATIONS

To qualify for eligibility for a city office, a candidate must:

- be a U.S. citizen

- be 18 years of age or older on the first day of the term to be filled at election
- not have been determined by a final judgment of a court exercising probate jurisdiction to be (a) totally mentally incapacitated; or (b) partially mentally incapacitated without the right to vote
- not have been finally convicted of a felony from which the person has not been pardoned or otherwise released from the resulting disabilities
- have lived continuously in

the state for 12 months and in the city or district for six months immediately preceding the filing deadline

- be a registered voter in the territory from which the office is elected as of the date of the filing deadline

Eligibility requirements to be a candidate for AISD board of trustees are:

- must be a U.S. citizen
- must be 18 years of age or older.
- must live in the district for 12 months

WEIR, CONTINUED FROM PAGE 1A.

made making a difference for Azle ISD students, staff, and families over the course of his career in Azle ISD," Smith said.

Janet Hargrove remembers Weir as a loving husband, father, friend and educator. Hargrove said her husband Gene and Weir worked together as football coaches. She said the two men met in the middle 1960s when they were coaching against each other in Central Texas. Weir and Gene would coach together in Andrews and Azle.

"We've just been friends ... well, we've actually been family since then," Janet said about moving here to Azle long ago.

Both men would wind up being principals in Azle.

"Our lives have just been side by side forever," she said. Gene, 84, died last August.

Weir was "very kind" and "a people person," Janet said. "He loved the kids," she said. "He enjoyed working in the school districts. Very competitive. You put him on that football field - you got a battle going. I would think anyone that you talked to that had worked for him would sing his praises."

He was a good family man who would help anybody and had for years anonymously, Janet said.

Nancy Cooper, who worked with Weir at Walnut Creek Elementary when she was a PE and office aide, said Weir never met a stranger.

"He would make friends

with everybody, he knew everybody," she said. "There was never a stranger. He enjoyed being around people."

She remembered him for his patience and understanding. She and husband Michael and Weir and his wife, Talana, would travel frequently, every year. "We'd take turns on where we were going to go," she said, noting on the fifth year they would go to Hawaii.

"We traveled all over Europe, Mexico, just all over,"

she said.

Fred Weir was well-liked, including by teachers at Walnut Creek, Nancy Cooper said.

Michael and Fred Weir were good friends, and Michael recalls going with Fred Weir when Rotary Club members delivered Christmas baskets once a year to needy people.

"He was a really good guy, really generous," Michael said. "He was always helping people."

ESTATE SALE LOG HOMES

PAY ONLY THE BALANCE OWED!
JUST RELEASED: AMERICAN LOG HOMES is assisting estate & account settlement on houses

LOG HOME KITS

selling for BALANCE OWED with FREE DELIVERY

Model #101, Carolina, \$40,840	BALANCE OWED \$17,000
Model #203, Georgia, \$49,500	BALANCE OWED \$19,950
Model #305, Biloxi, \$36,825	BALANCE OWED \$14,500
Model #403, Augusta, \$42,450	BALANCE OWED \$16,500

NEW HOMES: Serious Inquiries only **Call: 704 368-4528**

- Never been manufactured
- **NO TIME LIMIT FOR DELIVERY**
- Comes with complete building blueprints and Construction Manual

* Windows, Doors and Roofing not included

Before Calling View House Plans at
www.americanloghomesandcabins.com

Galbreath-Pickard

FUNERAL CHAPEL

817-594-2747 • Fax 817-596-7803

James R. Plowman
Norma Plowman
913 N. Elm St.
Weatherford, TX 76086
www.galbreathpickard.com
1-800-593-2747

White's Funeral Homes

Our family serving your family since 1908

Bob White,
Anita White
and Zack Bellenger

Full Service
Funeral Home

Cremation
Services

Pre-Need
Plans

Azle • Springtown • Mineral Wells • Weatherford
817-444-3211 • www.whitesfuneral.com

Azle News

Published every Wednesday at 321 West Main Street, Azle, Texas by Hyde Media, LLC. Periodicals class postage paid at Azle, Texas, 76020. **Postmaster:** Send address changes to: 321 West Main Street, Azle, Texas 76020

USPS No. 546-920

Annual subscription rates: \$40.00 in Parker, Wise, Tarrant counties (\$36.50 65 and older); \$46.50 elsewhere within and outside Texas.

The Azle News does not assume responsibility for errors in advertisements beyond the cost of the advertisement itself. Any erroneous reflection upon the character or reputation of any person or firm appearing in this newspaper will be corrected when called to the attention of the publisher.

The entire content of each issue of The Azle News is protected under the Federal Copyright Act. Reproduction of any portion of any issue is expressly forbidden without the prior written consent of the publisher.

321 West Main Street
Azle, Texas
Phone: 817.270.3340
Fax: 817.270.5300

This newspaper is printed on recycled newsprint and is recyclable.

© 2022 Azle News

Villa del Sol

MEXICAN RESTAURANT

1300 Northwest Pkwy
Azle, Texas

Sun 11-8 • Tues - Thurs 11-9
Fri 11-10 • Sat 11-9:30 • Mon Closed

HAPPY HOUR
Tues-Sat 4 - 8 PM

TAKE OUT ORDERS
817-406-4452
817-406-4800

Motley's AUTOMOTIVE & MOTORCYCLES

FAMILY OWNED AND OPERATED FOR 20 YEARS
State Inspection for Tarrant & Parker Counties

Automotive

- Tune-ups
- Diesel
- Suspension
- Computer Diagnostics
- A/C Repair
- Brakes
- Emission Repairs
- Repair & Restore Classic Cars

Motorcycles & ATVs

- Maintenance & Repairs

ASE CERTIFIED

PACKAGE DROP OFF STATION

VISA, MasterCard, DISCOVER, AMERICAN EXPRESS

JASPER
ENGINES & TRANSMISSIONS

1304 NW Pkwy (Hwy 199)
817-444-8529
817-456-0907
www.motleyautomotive.com
Monday - Friday 8:30 am - 6:00 pm

... ATTEND THE CHURCH OF YOUR CHOICE THIS SUNDAY

<p>THE ABBEY CHURCH Pastor: Paul Brownback 10400 Jacksboro Highway 817-238-1404 www.TheAbbeyChurch.com</p> <p>Morning Worship.....10:30 AM Community Groups.....Various Times</p> <p>ASH CREEK BAPTIST CHURCH Pastor: Dr. G. Wesley Shotwell 300 South Stewart St. 817-444-3219 www.ashcreekbc.org</p> <p>Sunday School.....9:30 AM Contemporary Worship-TMP.....10:45 AM Traditional Worship.....10:45 AM Evening Worship.....6:00 PM Wednesday Youth Refuge.....6:00 PM Wednesday Evening.....6:15 PM</p> <p>AZLE CHRISTIAN CHURCH (Disciples of Christ) Senior Minister, Ashley Dargai, Katie Medlin, Worship Minister 117 Church St. • 817-444-3527</p> <p>Sunday School.....10:00 AM Morning Worship.....11:00 AM</p> <p>AZLE FIRST ASSEMBLY OF GOD Pastor: Tim Stevens 1020 S.E. Parkway, Azle 817-237-4903</p> <p>Sunday School.....9:30 AM Morning Worship.....10:30 AM Wednesday Evening.....7:00 PM</p>	<p>COMMUNITY BIBLE FELLOWSHIP CHURCH Pastor - Alton Davis 817-521-4510 1405 Reynolds Rd., Azle 817-444-7117 Directions: 730 N. to 1542 .5 mi. right on Cardinal, left on Reynolds</p> <p>Sunday School.....9:45 AM Morning Worship.....11:00 AM Sunday Evening.....6:00 PM Wednesday Evening.....7:00 PM</p> <p>CORNERSTONE COMMUNITY CHURCH 2233 Hwy 199 E. • Springtown 817-221-LIFE (5433) 817-755-0279</p> <p>Sunday Worship Service.....10:00 AM Wednesday.....7:00 PM</p> <p>CROSSROADS BAPTIST CHURCH Pastor - Jon Baker Corner FM 730S & FM 1886 817-755-0279 Transportation Available</p> <p>Worship Service.....10:30 AM Wed. Prayer Service.....7:00 PM</p> <p>THE EDGE CHURCH - AZLE 1313 S.E. Pkwy, Azle 817-237-4822 Missouri Synod</p> <p>"Love God - Serve Others - Share Jesus" Traditional Worship.....9:30 AM Contemporary Worship.....11:00 AM</p>	<p>FIRST UNITED METHODIST CHURCH Pastor: Dr. Richard Reed 200 Church St., Azle 817-444-3323</p> <p>Morn. Worship.....8:30, 9:45 & 11 AM Sunday School.....9:45 & 11 AM Youth (UMYF).....5:00 PM Sun & 6:30 PM Wed</p> <p>HOLY TRINITY CATHOLIC CHURCH 800 Highcrest Dr. - Azle 817-444-3063</p> <p>Saturday.....5:00 PM Sunday.....9:00 AM Sunday.....11 AM (Spanish) Daily Mass (M, T, Th, F).....8:00 AM Wednesday Mass Religious ED.....6:30 PM Confessions.....Sat 4 PM</p> <p>HOPE LUTHERAN CHURCH ELCA 4795 E. Hwy 199 - Reno 817-221-HOPE Follow us on Facebook for streaming services</p> <p>Sunday School.....9:00 AM Traditional Service.....10:00 AM</p> <p>SOLID ROCK BIBLE CHURCH 591 S. Reno Rd., Springtown, Texas 76082 Pastor - Bill Gay - 817-304-7443</p> <p>Coffee and Donuts.....9:00 AM Sunday School.....9:30 AM Morning Worship.....10:30 AM Children's Church After Music Service Wed. Prayer Meeting.....6:30 PM Wed. Bible Study.....7:00 PM</p>	<p>LEGACY CHURCH Assembly of God Church Pastor: Gary D. Veazey Hwy. 199 & Jaybird Lane 817-221-2983</p> <p>Morning Worship.....9:15 & 11:00 AM Kidz Zone.....9:15 & 11:00 AM Weds Evening Legacy Group Legacy Youth, Kids All Services.....7:00 PM</p> <p>SILVER CREEK UNITED METHODIST CHURCH Rev. Sheila Fiorella - Pastor 2200 Church Rd., Azle 817-444-1382 www.silvercreekumc.org</p> <p>Sunday School 9:30 AM • Worship 10:30 AM</p> <p>SILVER CREEK BAPTIST CHURCH Pastor: Jay Ditty Minister of Music: David Musick Corner FM 730 S. & Veal Station Rd. Church 817-444-2325 www.silvercreekbc.org</p> <p>Sunday School.....9:45 AM Morning Worship.....10:50 AM Evening Worship.....6:00 PM Wed. Prayer Service.....7:00 PM</p>	<p>THE WORD@LAKESIDE CHURCH OF GOD 9396 FM 1886 Fort Worth, TX 76135 817-237-5500 thewordatlakeside.com</p> <p>Pastors: Brandon and Kelly Bohannon Worship Pastor: Christen Moody Family Life and Young Adult Pastors: Jodie and Mark James, Kids Pastor: Katie Pearson, Student Pastors: Taylor and Sheridan Tomlin, Creative Directors: Logan and Carrie Edwards, Connections Coordinators: Preston and Ashley Larrew</p> <p>Equip Sunday School at the WORD 9:30 AM Empower Worship at the WORD . 10:45 AM Kids at the WORD.....10:45 AM PreK at the WORD.....10:45 AM Emanate at the WORD (Special Needs Ministry).....10:45 AM Nursery at the WORD.....10:45 AM Young Adults at the WORD.....6:00 PM</p> <p>Wednesdays Adult Bible Class.....7:00 PM The WORD Students (6th-12th grades) 6:30 PM Awana Kids at the WORD.....6:30 PM Life at the WORD Life Groups Various Times</p>
---	--	---	---	--

A church alive is worth the drive! For more information or rates on listing your church, call Johnna at 817-270-3340

BOOK REVIEW

'Law of the Land' can be music to a cowpoke's ears

BY TERRI SCHLICHENMEYER

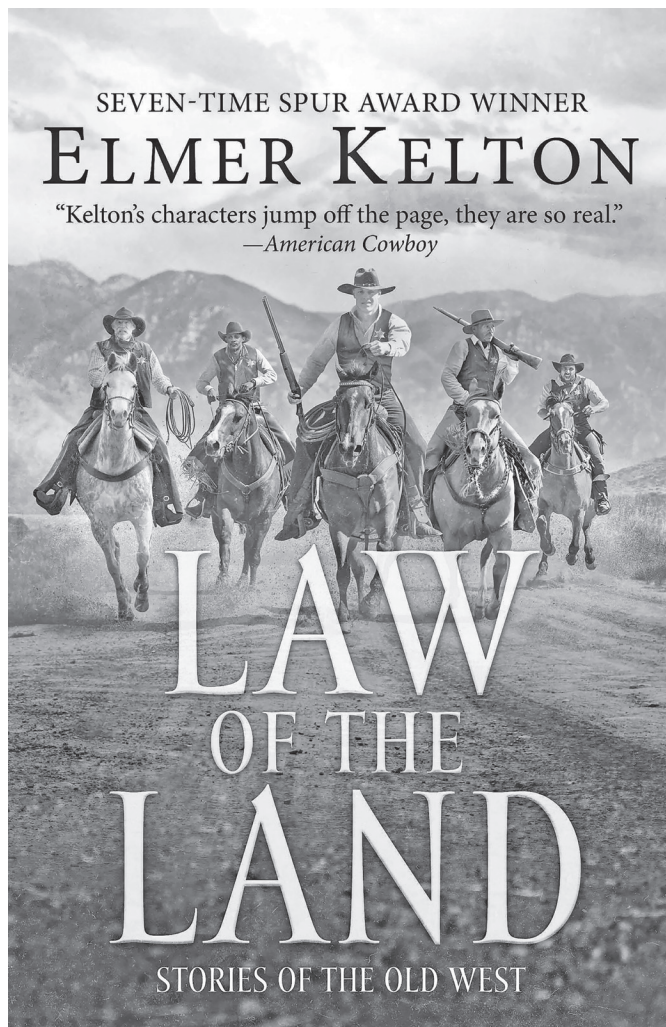
Drums or hooves? Here's the answer: nothing's better than the pound of a horse's hooves, as heard from a saddle. They can sound like a dance, a drumstick skittering over a snare drum. A lively trot reminds you of bongos; a good run, like a bass kick. It's music to a cowpoke's ears and in the short-story collection, "Law of the Land" by Elmer Kelton, you'll find a treat for your eyes.

There aren't a lot of things a lawman likes better than crossing a name off a Wanted list and Fitz Battles was about to do that. Giles Pritchard was an outlaw and to Fitz, that made Pritchard just plumb worthless. Problem was, Pritchard had help and in "The Fugitive Book," that meant more no-good outlaws for Fitz to eliminate.

All Grant Caudell wanted was his money back, now that he'd caught up with "Slack" Vincent. Vincent had tricked Caudell out of his money and without it, Caudell would lose his family's farm. The problem was, the sheriff had the outlaw locked up and in "Jailbreak," Vincent was about to hang — unless there was a little more trickery...

Old George Simmons never wanted trouble. He just wanted to cook for the Slash R cowboys and be unbothered. So in "Biscuits for a Bandit," an outlaw rider learns that it's best not to rile the camp cookie.

Everybody knew that the Apache One-Ear was ferocious. Lieutenant Monte Fowler already lost many soldiers to One-Ear's band in a massacre the likes of which Fowler wasn't eager to repeat. But One-Ear was still out there causing trouble, and in "Apache Pa-



"Law of the Land: Stories of the Old West" by Elmer Kelton c.2021, Forge Books \$27.99 / \$37.99 Canada 306 pages

trl," Fowler's the only man who can lead G Troop to stop him.

A "pretty little girl" like Rachel should never've been brought to Texas. She should've stayed back East but it was already too late: the Comanches were outside their door. Her husband, Matthew, was ready to fight but in "The Last Indian Fight in Kerr County," Rachel had a few ideas up her pretty little sleeve.

Zero and a hundred. In "Law of the Land," that's what you can expect: zero political correctness, one hundred percent old-school, classic western tales.

And yet, there's something else that's interesting for readers to look for here...

In many of the sixteen short stories inside this book, there's a fiendish twist

at the end, as if the late author Elmer Kelton consulted with the late Rod Serling on each tale's crafting. Many are so Twilight-Zone-ish, in fact, that they almost don't seem entirely like westerns.

And yet — they are. There are cowpokes and sheriffs in these tales, purdy gals, worn saddles and beloved horses, outlaws and rifles and bloodthirsty killers. Readers are taken across arroyos, through mountain passes and inside corrals. The shoot-outs you expect are here. So are the white-hatted heroes.

Despite the lack of modern PC-ness, the twists in these tales may bring old-fashioned westerns to a new audience. For sure, if you're already an oater fan, getting "Law of the Land" would behoove you.

It seems that life itself is one big lost-and-found department

Have you ever been to a big stadium or an airport and realized you have misplaced something? Upon being directed to the "lost and found," one pours through dozens of items that have become separated from their owners. With any luck, the item that went missing might be found.

As we start the new year, I have had the chance to reflect on how our lives are like a perpetual "lost and found" for it seems with almost every loss, something new comes into our lives.

I adore babies. It is hard for me to keep my hands off a sweet, innocent little child. I want to hug and hold on every single one of them. They are so uninhibited, and their eyes are like sponges soaking up the world around them. It is fascinating to see them "find their toes" or watch them learn to crawl, and then walk. They have no cares, no fears and no thoughts of judgment or hate. Their world is what immediately surrounds them: their parents and family. How nice it would be to live one's entire life in the security and tranquility of constant attention, afternoon naps, and exploration of all the world has to offer.

Eventually all this innocence is lost. Children learn, grow and develop, and want to expand their wings and



MY FRONT PORCH

By Sam Houston

Sam Houston is a newspaper executive, a columnist, author, actor and entertainment promoter.

explore more of the world around them. While some would decry the loss of childhood innocence, without the loss, there would no "found" in the freedom of receiving that first driver's license, a first job, or a first apartment. There must be the loss of what we once enjoyed and treasured to get to the next step in life. Something in our life is lost, but then something is found to replace it. There is perpetual evolution.

For many of us, the happiest times of our lives are when we start our own family and having children of our own. The struggles and fears of pregnancy, the apprehension of labor, the lack of sleep and worry of dealing with a newborn are all minimized because of the joy of seeing our child brought into the world. We provide for our children, instruct them, teach them and mentor their development. Then one day we lose the child because it has grown up and the child goes away to school, or they marry, or perhaps they simply move away from the confines of their parents' home. No matter the cause of the

break, when a child starts behaving like an adult, a little something is lost for a parent. The joy of seeing the "adult child" prosper and witnessing the person they have become is the joy that is found.

We become comfortable with the present and want the inevitability of change to be pushed off for as long as we can. But change is always around the corner. Change is surely coming to our city and our state as we continue to grow. There will be changes in our jobs, in our relationships, and change in our life as we react to the inevitability and uncertainty of the future.

As 2021 disappears around the bend I cannot help but wonder what we will "find" in 2022, and the joys it will bring. No doubt there will be times when we look back on the loss with despair, but hopefully the uncertain future brings us joy and success that we cannot even begin to imagine.

Thought for the day: The best way to predict the future is to be part of creating it.

Until next time.

Azle School Menu January 17-21, 2022

BREAKFAST: GRADES PK-4th \$1.55, GRADES 5-12th \$1.50, Employees \$1.85
LUNCH: GRADES PK-12th \$2.65, Employees \$3.20, Guests \$3.55, Gold Card Guests \$3.15
A La Carte Items: Milk/Juice 75¢, Bottled water \$1.00, Ice Cream \$1.00

PreK - 4th

BREAKFAST: Everyday - Assorted Fruits and Cereal, Juice, White or Chocolate Milk, Graham Crackers, Toast,
 Mon Blueberry Muffin Tues Cocoa Puffs Cereal w/ Graham Crackers Weds Turkey Sausage Breakfast Pizza
 Thurs Strawberry Toaster Pastry Fri Mini Cinnamon Rolls

LUNCH: Everyday - Variety of milk. Your choice of 1 entree & 1 fruit or juice
 Mon Chicken Nugget Potato Bowl w/Roll, Beef Finger Potato Bowl w/Roll, Fresh Baby Carrots, Sweet Diced Peaches Tues Classic Meatball Sub, Chicken Alfredo w/Breadstick, Peppered Broccoli Florets, Carrots & Celery, Raw, Mixed Tropical Fruit Weds Sloppy Joe Sandwich, Turkey Hot Dog, Crispy Tater Tots, Fresh Orange Slices Thurs Grande Cheesy Chicken Nachos, Grande Beefy Nachos, Seasoned Mexican Black Beans, Unsweetened Applesauce Fri Classic Pepperoni Pizza, Fish Nuggets w/Roll, Fresh, Vegetable, Carrots & Celery, Raw, Fresh Banana

GRADES 5TH - 8TH

BREAKFAST: Everyday - Assorted Fruits and Cereal, Juice, White or Chocolate Milk, Graham Crackers,
 Mon Egg & Turkey Sausage Breakfast Taco Tues Chicken Biscuit Sandwich Weds Fluffy French Toast Sticks
 Thurs Pineapple Parfait w/ Graham Crackers Fri Breakfast Sausage Pizza

LUNCH: Everyday - Variety of milk. Your choice of 1 entree & 1 fruit or juice, rolls, crackers. Variety of burgers.
 Mon No school Tues Turkey & Cheese Sandwich, Grilled Cheeseburger, Spicy Chicken Patty Sandwich, Cheese Pizza, Turkey Hot Dog, Country Fried Steak Potato Bowl w/Roll, Steamed Crinkle Carrots, Crinkle Cut Fries, Fresh Orange Weds Turkey & Cheese Sandwich, Spicy Chicken Patty Sandwich, Classic Pepperoni Pizza, Golden Chicken Corn Dog, Chicken Tenders w/Roll, Crinkle Cut Fries, Steamed Corn, Fresh Apple Thurs Turkey Ham & Cheese Sandwich, Grilled Cheeseburger, Spicy Chicken Patty Sandwich, Veggie Pizza, Roasted Orange Chicken w/ Brown Rice, Cheesy Chicken Burrito, Peppered Broccoli Florets, Crinkle Cut Fries, Juicy Mandarin Oranges Fri Chicken Salad Wrap, Grilled Cheeseburger, Spicy Chicken Patty Sandwich, Pepperoni & Jalapeno Pizza, Meatloaf Mashed Potato Bowl w/Biscuit, Chicken Tenders w/Roll, Crinkle Cut Fries, Vegetarian Baked Beans, 100% Apple Juice Cup, Sweet Diced Peaches

HIGH SCHOOL

BREAKFAST: Everyday - Assorted Fruits and Cereal, Juice, White or Chocolate Milk, Graham Crackers, Egg Scramble w/
 Turkey Sausage & Biscuit, Scrambled Eggs w/ Biscuit, Turkey Sausage Patty w/ Biscuit, Hash Brown
 Mon Egg & Turkey Sausage Breakfast Taco Tues Chicken Biscuit Sandwich Weds Fluffy French Toast Sticks
 Thurs Pineapple Parfait w/ Graham Crackers Fri Breakfast Sausage Pizza

LUNCH: Everyday - Variety of milk, assorted pizza & salads. Your choice of 1 entree & 1 fruit or juice
BALLPARK CLASSICS: Hamburger, Cheeseburger, Turkey Bacon Cheeseburger, Breaded Chicken Patty Sandwich, Spicy Chicken Patty Sandwich, Golden Chicken Corn Dog
 Mon No school Tues Homemade Beef & Bean Burrito, Crispy Popcorn Chicken Wrap, Delicious Cheese Pizza, Classic Pepperoni Pizza, Large Spaghetti Meat sauce, Chicken Caesar Salad w/Crackers, Crispy Pung Pao Chicken w/Brown Rice, Chicken Nugget Potato Bowl w/Roll, Cilantro Lime Rice, Fresh Salsa, Peppered Broccoli Florets, Fresh Orange, Fruit Cocktail Weds Cheesy Chicken Flour Tacos, Turkey Ham & Cheese Jalapeno Cheddar Wrap, Veggie Pizza, Pork Sausage Crumble Pizza, Chef Salad w/Crackers, Tater Tot Casserole w/ Biscuit, Red Thai Veggie Stir Fry w/Brown Rice, Beef Dipper Potato Bowl w/Biscuit, Classic Refried Beans, Seasoned Green Peas, Fresh Salsa, Fresh Apple, Juicy Pineapple Tidbits Thurs Mozzarella Chicken Quesadilla, Southwest Chicken Wrap, Delicious Cheese Pizza, Classic Pepperoni Pizza, Salisbury Steak w/ Sauteed Onions, Rice & Roll, Vegetable Garden Salad, Chili Garlic Popcorn Chicken w/Rice, Popcorn Chicken Potato Bowl w/Roll, Classic Refried Beans, Steamed Corn, Fresh Salsa, Fresh Banana, Canned Halved Pears Fri Grande Beefy Nachos, Classic Refried Beans, Steamed Corn, Fresh Salsa, Fresh Orange, Juicy Mandarin Oranges, Breaded Chicken Patty Sandwich, Spicy Chicken Patty Sandwich, Golden Chicken Corn Dog, Crispy Popcorn Chicken Ranch Wrap, Delicious Cheese Pizza, Veggie Pizza, Beef Taco Salad, Frito Chili Pie, Teriyaki Beef & Broccoli w/Brown Rice, Country Fried Steak Potato Bowl w/Roll

SPONSORED BY

Azle Dental Care,
 "Complete Dental Care for the Entire Family"
 www.SmileGreat.com
 Brooke Porter, D.D.S., 912 Boyd Rd., Azle • 817-444-1763

AZLE AREA CLUBS AND ORGANIZATIONS

Texas Health
 Harris Methodist Hospital
 AZLE

Volunteers Needed
 TexasHealth.org/
 Volunteer/Our-Process

RAINBOW INN GIFT SHOP
 Inside Hospital 108 Denver Trail
 Azle 817-444-8651

ATTIC RERUNS
 NOW OPEN! FRI 9-4 SAT 9-1
 714 SE Pkwy Azle 817-270-3690

The Finish Line
 ADDICTION wants to destroy you & everyone around you.
 With Jesus there is Victory over addiction.
GET BACK IN THE RACE!
 Meetings held every Friday from 7:30PM-9:30PM at The Church at Azle 1801 S. Stewart • Azle • 817-401-8513
 www.ourfinishline.com

Faced with a DRINKING Problem?
 Perhaps Alcoholics Anonymous can HELP.

Daily meetings at Noon & 6:30 pm
 Sunday at 3 pm
 229 S. Stewart St. • Azle
 817-332-3533

Post your clubs or organization meetings here!
Only \$100
 for 52 weeks of advertising
 Call Johnna for details:
 817-270-3340

SERVOLUTION NETWORK
 LET'S START A COMMUNITY WIDE REVOLUTION THROUGH SERVING.
 FOR QUESTIONS CALL:
 833-4WE-SERV
 833-493-7378
 VISIT: WWW.SERVOLUTIONNETWORK.COM

Optimist Club of Azle
 Meets every FRIDAY at 6:45 AM
 Moe's Country Kitchen
 316 W. Main, Azle

Good N.E.W.S.
 Living at Home Block Nurse Program

Volunteer Caregiver Training Classes
 Classes open to public at no charge

Caregiver Volunteer Meeting
 1st Monday of Each Month at 6pm
 817-444-2300
 412 Commerce St.

Our Volunteers Make a Difference!

Rotary Club of Azle

MEETS AT NOON THURSDAY
 412 Commerce St.
 (across from Azle Post Office)

Azle Lion's Club

Meets 2nd TUESDAY 6:30 PM
 412 Commerce, Azle
 e-clubhouse.org/sites/azle_tk/
 Curren McLane - president
 817-689-0074

Azle Boy Scout Troop 243
 Meets Mondays 7 PM
 Azle First Assembly of God
 1020 Southeast Parkway
 troop243azle.org

Azle Lodge No. 601
 Floor School or Work 7:30 PM
THURSDAY NIGHT
 Chris Akers - Worshipful Master
 Rocky Gralla - Secretary
 Clint Hall - Treasurer

Eagle Mountain Pregnancy Help Center

10328 Jacksboro Hwy
 Fort Worth TX 76135
 817-237-1819
 www.emphc.org
 Mon 12-6 pm Thurs 12-6 pm
 SE HABLA ESPAÑOL

ON FISHING

Each fishing trip a new lesson

The one thing that is sure when it comes to hunting or fishing is that you never know what to expect. Some days will be repeats, but there is always something new or different.



ON FISHING

By Michael Acosta

As a licensed professional fishing guide, Michael Acosta shows you how to find them. He has been a licensed guide since 1998. michael.acosta@att.net

We are having the warmest December that I can remember. Water temperatures are rebounding into the 60s and even warmer in the back of the creeks.

I even saw folks swimming in the canal near my house on Christmas Eve. I also know of some folks using their pool on Christmas. The water I'm sure was a bit cool, but that didn't seem to bother them too much.

I always talk about keeping your mind open. Don't get fixated on a certain pattern, as that may be your downfall for the day. With these extremely warm days, the baitfish will move shallow and so will the predators. Typically this time of the year, most of the bait is deeper especially on those coldest days but that has not been the case. Migration of the striped bass, which I typically chase, have been more in the main lake than up in the river. That may change with the upcoming cool fronts, but the point here is that you may need to move around more to locate the fish.

The slower presentation that is typically used this time of the year has not been

dominant yet. Downriggers and trollers are sacking up the fish, as the fish are still willing to chase. Umbrella rigs are a popular choice on many lakes and for many different species and folks are filling the boat with fish using these rigs.

Schools of largemouth bass can be found pushing bait to the surface especially midlake on Possum Kingdom Lake. The gulls are here and they are actively working schools of feeding fish on Lake Whitney and Possum Kingdom, which of course helps the anglers.

Another possible hazard on these warm, calm days is a lot of fog early. Finding the working birds using your hearing may be good option. A GPS to navigate in dense fog on the bigger lakes is recommended for safety. You need to watch out for other boats as well. Keep your horn handy.

We also have been without rain for a while and the lakes are relatively clear. Best color options are typically white or shad colors. As a striped bass angler a white swimbait with some chartreuse is a great choice right now. If we do get some

heavy rain, the darker colors maybe a better choice in murky/stained water

The nicer weather has its advantages for being comfortable on the lake or out in the field. Some of these 80-degree plus days may require some sun block so you don't get burned. You can also get wind burn when it's cold, but enjoying the heat in the end of December is a better choice for many.

I am still waiting on the colder weather as I am sure it will come. Meanwhile you might as well enjoy wearing shorts and T-shirts while you can! See you on the water!

FISHING REPORT

On other reservoirs, Possum Kingdom Lake striped bass to 13 pounds are possible on jigs worked from the Peanut Patch to around Costello Island. Lake Whitney striped bass continue to be caught in numbers north of the Katy Bridge to Steel Creek. Downrigging jigs and umbrella rigs are putting numbers in the boat. Some good crappie catches continue to be reported near Kimball Bend on small minnows and jigs.



I would like to wish everyone a Happy New Year and would like to take a moment and thank everyone for your support and bookings. Here's to a great new year. Stay humbled and blessed. Courtesy photo

GET READY FOR WINTER!
Heating Tuneups \$55
 COMMERCIAL & RESIDENTIAL

11345 FM 730N
Azle 817-696-6421
 Owner Kenny Bates 817-361-3695

NEED EXTRA CASH !!! ???
I BUY RVs & MOBILE HOMES
 Travel Trailers • 5th Wheels
 Goosenecks • Bumper Pulls
 In Any Area!!! Any Condition!!!
 Old/New !!! Dirty or Clean !!!
I PAY CASH 956-466-7001
 No Title – No Problem – We Can Apply For One
 ANR Enterprises

44th Annual CATTLEMAN BULL & FEMALE SALE
January 22, 2022 • 12:00 Noon
El Campo Livestock Auction, El Campo, TX
EXPECTING 100 BULLS
 Also selling a group of select females
 FOR INFORMATION:
cattlemansale@gmail.com
 Adrian Knight TX Lic #11102 Kelly Conley TX Lic #9558
903-452-7591 903-850-3449

AZLE INSURANCE DIRECTORY

Nationwide is on your side |
Albracht Harwood Insurance Agency Inc.
 120 S. Main St #4, Springtown, TX 76082
 albrachtharwoodinsurance.com
(817) 220-4700
 2nd Location - Grapevine, TX

HOGLE INSURANCE GROUP
817-444-6389

"OUR BEST POLICY IS PERSONAL SERVICE"
HOGLEINSURANCE.COM

Amy Kaplan, Agent
 813 E. Hwy. 199
 Springtown, TX
 817-220-5222
 www.amykaplaninsurance.com
 Voted Best Insurance Agency of Parker County 2015
 Voted Best Agent of Parker County 2014, 2015 & 2016

Sorrow Family Insurance
 Health • Life • Disability • Dental • Final Expense
 Home • Auto • Boat • Motorcycle • Big Rig • Mobile Home
 Our Family Helping Yours!
Paying Too Much For Insurance?
Call For Your Free Quote

817-444-1129
682-209-2027
 www.SorrowFamilyInsurance.com

+ =
BIG SAVINGS

Dale Mares, AAMS
 817-444-1491
 204 W. Main St.
 Azle
 dalemares@allstate.com
 You're in good hands.
 Auto Home Life Retirement

Thank you for voting us
 Best Insurance Agency 2021
 HOME • AUTO • FARM • LIFE
BURTNETT INSURANCE
817-220-7682
 Protecting Texans, Prioritizing customer service

FARMERS INSURANCE
 Silva's Insurance Agency
817-444-4747
 328 W. Main St., Azle
 Auto - Home - Life - Business

Germania INSURANCE
 AUTHORIZED AGENT

 FOREMOST INSURANCE GROUP
 BRISTOL WEST INSURANCE GROUP
 DAIRYLAND INSURANCE
 PROGRESSIVE US Assure

905 E. Hwy. 199 Springtown, TX 76082

HALEY CARTER

817-444-1100
 408 Boyd Ct. • Azle
 www.HaleyCarter.com
 PEOPLE'S CHOICE AWARDS 5 YEARS IN A ROW!
VOTED #1 INSURANCE AGENCY IN AZLE

WE'LL ALWAYS HAVE DIRK NOWITZKI

North Texas legend ensconced in the hearts of former sports editor, lovely bride

BY RICK MAUCH
Special to the Azle News

On Jan. 5 at the American Airlines Center the Dallas Mavericks honored one of the greatest athletes in DFW history by retiring the number 41. That was the number worn by Dirk Nowitzki.

Some would argue that Dirk was the greatest athlete ever to put on a uniform in this part of the world. Without question he deserves to be mentioned in the same breath as Emmitt Smith, Troy Aikman, Roger Staubach, Nolan Ryan, Mike Modano, Lee Trevino (had to include a golfer, my favorite sport), et al.

And there is certainly no doubt that Dirk had the most magical championship run of any professional athlete in DFW history. To some, the 2011 Mavericks might have caught lightning in a bottle, but it was Nowitzki who positioned that bottle for the perfect strike.

That title run was special to many in the area, particularly me. It was at the start of that postseason that I met my wife, the lovely Mrs. Junell.

It was while I was in a performance of "To Kill a Mockingbird" at Weatherford College that we met (yes, I played Atticus). A fellow actor introduced us.

When Junell showed up for a second performance ... well, I'm a good actor, but twice in four days? It was all the encouragement I needed to ask if she'd go out with

me if I asked — I did and she did, and the rest, as they say, is history, just like the history Dirk and his teammates made that memorable season.

Several of our first dates were watching the Mavericks parade through the playoffs. I recall when the Mavs blew a 2-0 lead against Portland with back-to-back road losses, prompting Bob Sturm of my favorite radio station, The Ticket, to tweet, "The Mavericks are now behind in the series 2-2."

Of course, the Mavericks came back to win that series four games to two. Then came the sweep of the two-time defending champion Los Angeles Lakers, including the Mother's Day Massacre victory, which drew a nice hug and kiss from my future bride as we couldn't believe our eyes.

A 4-1 series victory over a younger and very talented Oklahoma City Thunder squad was next. For the life of me, I will never understand how the Thunder couldn't manage at least one title with that lineup, but it was certainly not to be that season as Dirk and the Mavs were determined to get back to the title round.

It was after that series Junell got me a gift, a Western Conference champions T-shirt. I still wear it sometimes, but it's one of those special gifts that you don't bring out too often because you don't want anything to happen to it. Likewise for the shirts we both got after the NBA Finals.

And the NBA Finals that season,

oh my, how exciting that was. The underdog Mavs going up against what some said was the greatest super team ever assembled, the Miami Heat and legendary LeBron James.

Ironically, it was the Heat, pre-Lebron, of course, who gave the Mavericks their most disappointing moment in team history when they overcame a 2-0 deficit to win 4-2 in the 2006 NBA Finals.

And while I relished the Mavericks having a chance to erase that memory by beating this version of the Heat in the Finals, I must admit deep inside I thought the Mavericks' 2011 run was soon to be over. Not Junell. In her always calm fashion she said, "Don't worry. We have Dirk."

We all know what happened next. Dirk led a comeback from a 15-point fourth-quarter deficit to win Game 2 in Miami, then took control of the series' final three games after the Heat took a 2-1 lead in Dallas.

Following the clinching victory in Game 6, she smiled and said to me, "See? Told you nothing to worry about."

Junell and I were married Nov. 26 of that same year. While there were some other exciting sports moments, such as the Texas Rangers returning to the World Series in the fall of 2011 — we were at Game 6 against Detroit at The Ballpark to clinch that return trip — none have equaled what Dirk and the Mavs accomplished in 2011.

It's been a great 10-plus years of



marriage for us, with what seems like many more to come. Unlike Dirk and the Mavericks, we've been able to keep that magic going.

But in the words of another one

of my favorites, Humphrey Bogart, "We'll always have 2011." At least, I'm sure he'd have said that had he also been there.

Thanks for the memories, Dirk.

Rick Mauch was the sports editor at the Hood County News from 2004-14 and again from 2015-16. He was also the entertainment critic and a features writer during that time.

AZLE ARTS POPCORN PLAYERS PRESENTS

The Southern-Fried Wedding Comedy That Started it All!
A JONES HOPE WOOTEN COMEDY



\$15 Adults • \$12 Seniors/Students • \$10 Sunday Matinee

January 28-30 • February 4-6, 2022

Friday and Saturday 7:30 pm, Sunday 2:30 pm

TicketsToTheCity.com Call 817-238-PLAY for reservations

1012 Southeast Parkway, Azle

Azle cheer team catapulting toward state contest

BY JEFF PRINCE
jeff@azlenews.net

Jake Mobley faced a dilemma going into his freshman year at Azle High: Would he stick with band or try out for Hornet Muscle, the co-ed cheer squad?

Doing both would be difficult.

Being an Azle cheerleader requires commitment to schoolwork and cheer practice. Azle's co-ed cheer squad is among the most decorated in Texas, including two gold and three silver medals since 2016. Making the varsity squad requires making sacrifices.

"One of the biggest sacrifices I've made for cheer was quitting band," Mobley said. "I knew doing the two of them at the same time would have been too much."

Now a junior, Mobley feels like he made the right choice.

"I've come to realize that cheer is what keeps me happy," he said. "Although it takes up most of my free time, I know that without cheer in my life, every single day would be very boring."

Boredom isn't an issue this time of year for cheerleaders. Winter is competition season.

The UIL state contest will be held this week in Fort Worth, and the national contest is Feb. 12-13 in Orlando, Fla.

Hornet cheerleaders have been preparing for battle physically and mentally.

"Going into competition season, it's very important as a team that we maintain a close bond and that we continue to treat each other like family," Mobley said. "I feel the best thing I can do to put Azle cheer in the right position to bring home a championship is to pour my all into every single practice."

Judges examine three sections of a team's routine – band chant, crowd leading and fight song.

During band chant, teams dance and use props such as flags and megaphones to fire up the crowd.

In crowd leading, teams respond to situational calls that could require them to do an offense or defense cheer.

For the fight song, the Hornets dance to Azle High's traditional fight song and end with stunts and tumbling.

All three elements must be included in a routine that can last no longer than three minutes.

How will the squad fare this year?

Cheer coach Haley Hopkins is quick to respond.

"We hope to make this our third state championship," she said. "Our goal for this year is to push ourselves, grow as a team and leave everything we have on the mat."

Making things more difficult is that the team hasn't competed much during the past two years because of COVID-19 restrictions. That means only a handful of seniors have much experience under the glare of lights and judges at a state or national contest.

This year's varsity team has 21 girls and eight boys.

Katy Conwell, a senior and team captain, began cheering at 5 and has continued ever since. The demands haven't been easy, but they are worthwhile, she said.

"Being a cheerleader is definitely a time commitment," she said. "We have practices three days a week after school, and I'm involved in so many other things that also take up time outside of school, like work and powerlifting, so it teaches me time management."

Another benefit for Conwell is becoming a school leader and meeting new people. The transition "allowed me to come out of my comfort zone and become more outgoing," she said.

Being a captain added responsibilities that she welcomed, such as helping younger girls prepare for



SEE CHEER, PAGE 3B. Hornet Muscle members help catch high-flying cheerleaders.

Photo by Jeff Prince

Azle wrestlers pin down championship trophy

BY JEFF PRINCE
jeff@azlenews.net

Two giants stood toe-to-toe on the wrestling mat Jan. 8 at the Nest Invitational Boys Invitational Tournament held in the main gym at Azle High School.

They crouched in position, hands up, knees bent, while waiting for the referee's whistle to blow.

On one side was Billy Spratt, Azle's big guy. Spratt, a junior, plays linebacker for the Hornet football squad. The gridiron guys lost their first playoff game, and Spratt switched to the wrestling team in mid-November.

On the other side was Kyle Rose, a senior wrestling in the 220-pound category for Springtown.

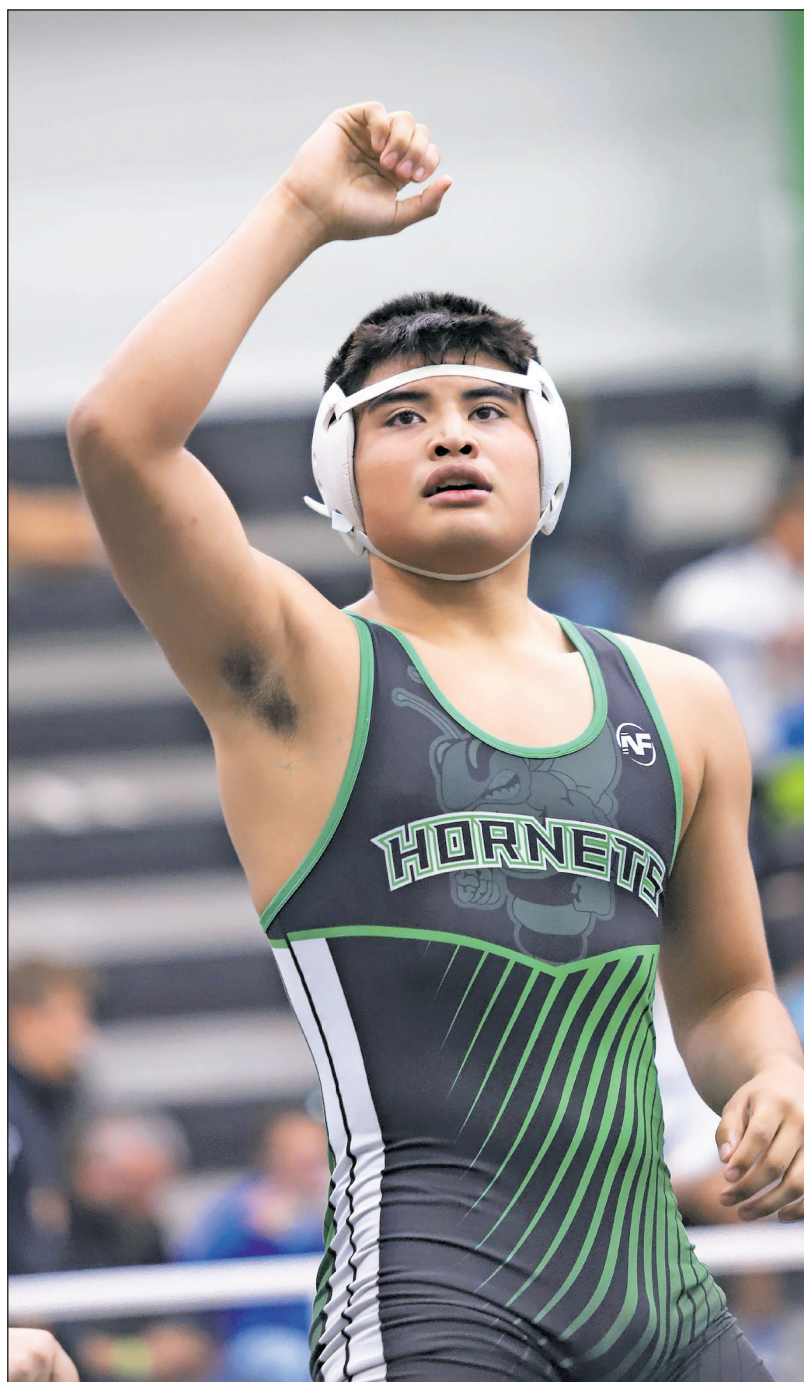
Both appeared fixated on beating the other.

The battle that commenced was epic and grueling, stretching out several minutes. Rose appeared to dominate early in the match but used up valuable strength in an all-out effort to pin Spratt, who managed to escape.

Then, Spratt turned on his afterburners, dropped Rose and pinned him to take the win and a first-place medal.

Spratt's big victory wasn't an anomaly. His teammates dominated the meet, and Azle won a team championship. Eight wrestlers won first places in their weight categories. Winners included Spratt, Landin Evans, Masen Martinez, Hunter Legan, Jackson Berg, Braxon Cates, Dominick Evans and Elias Ramirez.

Kenneth Riley and Lane Williams earned second-place medals.



Elias Ramirez was one of eight Azle wrestlers to win first-place medals over the weekend.

Photo by Jeff Prince



Logan Malewiski keeps his spirits high after a knee injury cost him his senior year of sports.

Photo by Jeff Prince

Knee injury inspires rather than dejects Azle Christian athlete

BY JEFF PRINCE
jeff@azlenews.net

Azle Christian basketball players were taking practice shots in the gym before a recent game. Standing underneath the basket, retrieving balls and tossing them back to the players was senior Logan Malewiski.

Fetching the balls wasn't easy. A long, thick brace kept Malewiski's right leg straight and stiff, and he required a crutch to move around.

For the past few years, Malewiski had been one of the private school's top athletes. He was expected to dominate the football field, basketball court and baseball diamond once again this year, but the senior injured his knee playing football.

Doctors gave him the bad news after inspecting ligaments that had been torn and strained by dislocating his kneecap.

"They said I'm out for the rest

SEE MALEWISKI, PAGE 2B.

Azle's Adam Ruelas walks to beat of own drum

BY JEFF PRINCE
jeff@azlenews.net

A nursing career beckons for Adam Ruelas once the junior graduates from Azle High School in 2023.

Nursing wasn't his first choice. "I was planning on being an engineer, but I'm not very good at math," he said.

Instead of forcing things, he followed his instincts and adapted.

The same goes with music. Years ago, his uncle gave him a saxophone, and Ruelas watched YouTube videos to try to teach himself to play. The lessons didn't stick.

"I couldn't do it," he said.

Then, Ruelas' music teacher at Azle Junior High suggested he try trumpet.

"I'm thankful he did because trumpet fits my personality," Ruelas said. "I'm kind of like a loud person, and trumpet is pretty loud."

Now, the junior trumpeter blows his horn in Azle High's marching, jazz and concert bands when he isn't making noise on another loud instrument – his new favorite – the drums.

"I like the drums more because I get to improvise more and do more of what I want," he said. "Whereas with trumpet and lead jazz, I have

to play what's written. But they're both really fun."

Both instruments provide him with more than musical notes. They offer escape from the everyday routine and an avenue for communication.

"Music has always been one of those things where I can just express myself in different ways," he said. "It's nice."

He imagines one day he will have a family of his own and instill his children with the music bug. He understands first-hand how much satisfaction can come from relationships forged through music. He has made lasting friendships in band.

"It's a really good experience to be able to bond with everyone," he said.

He doesn't envision playing music as a career, but he expects to play music forever.

"Whenever I'm stressed or anything, I can always just go play my trumpet or go play the drums," he said. "It's like a nice getaway from life, sometimes. Playing drums and trumpet will just be one of those things that I always know how to do, and I'll have one laying around my house and occasionally pick it up and play a few notes."



Adam Ruelas prefers drums over trumpet but enjoys both instruments.

Photo by Jeff Prince

District basketball competition arrives for Azle Christian girls



Laney Geeslin, a junior on a team without any seniors, has become the team general this season.

Photo by Jeff Prince

BY JEFF PRINCE
jeff@azlenews.net

Azle Christian High School's basketball girls played their first game in weeks last Friday.

A coaching change just before the season began meant some of the team's non-district games had to be scrapped or rescheduled. The cold and flu season – along with a pandemic – took a toll, as well.

For those reasons, the Lady Crusaders have logged just three games in a season that began six weeks ago.

On Friday, Azle Christian traveled to Flower Mound to challenge Temple Christian in a final warmup before district competition begins.

The Temple Christian game "went well, considering," said coach Joe Shehan, but the Lady Crusaders lost

the game, 53-14.

The girls hadn't played a game since Dec. 17, and some of the girls were recovering from illnesses.

Utility player Maybry McClure suffered an injury while working with a show cow and missed the game against Temple. Her teammates worked hard to fill the void. They scored 10 points in the first half and held Temple to 20.

"We held their top player, who averages 17.5 points a game, to only four points in the first half and 12 points overall," Shehan said.

But the "wheels really fell off" in the second half, he said.

Laney Geeslin led the Crusaders in scoring in the first half with five points, and Savannah Faughn sank a basket and blocked a couple of shots. But illness forced

Laney Geeslin to sit out the second half, and Savannah Faughn was sidelined in the fourth quarter after taking an elbow in the gut.

"We just could not find the basket the entire fourth quarter," the coach said.

Elle Henderson, a freshman, delivered a "break-out performance," the coach said, scoring four points and looking "really good driving the ball through the lane."

Gayle Shehan, who has evolved into the team's defensive specialist, led the team with eight rebounds and four blocked shots.

The coach is looking forward to a batch of upcoming districts contests that will stretch into February.

"Going into district, I think we have a very steep uphill battle given the strength of Irving Faustina and our cross-county rival

Victory Baptist," he said. "We are going to have to look for opportunities to exploit our opponents' weaknesses and work tirelessly on our strengths."

Shehan said he believes in the girls he is coaching this season, which is his first as head coach at Azle Christian.

"They are beginning to jell on the court and are showing real signs of periodic genius," he said. "Laney Geeslin is fighting very nicely into her role as the point guard and general of the team. Azle Christian will see improvement every game from these ladies, and we will be successful meeting our goals each week."

Azle Christian (0-3) plays its district opener at 5 p.m. Jan. 13 at home against Faustina Academy.

MALEWISKI, CONTINUED FROM PAGE 1B.

of the sports this year," Malewiski said.

The injury came in the fourth quarter of Azle Christian's first playoff game. Malewiski went out for a pass, caught the ball and was tackled, just like he'd done 100 other times. On this play, however, he landed awkwardly.

Prior to the injury, his senior year had been spectacular. The team plays six-man football, which puts a premium on kicking extra points and field goals. Malewiski was adept at both, kicking three field goals in one game this season and knocking home 10 consecutive PATs in another game.

He had planned to seek a kicking scholarship at a college.

Now, he is uncertain whether that is possible. He is considering a career in sports medicine, something he had never thought about prior to his injury.

"I want to help out people that have the same problem I'm having during their senior year, too," he said. "It's studying the human body and how it works."

For years, he had envisioned becoming a marine biologist.

"But then, I talked to my mom and dad about (sports medicine), and they liked the idea, so they're on board with me now," he said.

Making lemonade out of lemons is admirable, but that doesn't mean Malewiski hasn't endured tearful moments.

"I did at first," he said.

He went from anticipating breakout seasons in basketball and baseball to sitting on the bench with his leg braced, watching his friends have all the fun.

"It's just an eye-opener,"

he said. "It's just a different perspective on what God wanted me to do and what I thought I wanted to do."

Head coach Ryan Rollins appreciates the assistance he has received from his former player. Malewiski is doing a "great job" helping him lead the team, he said.

"I know it's hard for him not being able to play, but he's always positive and encouraging to the team," Rollins said. "You can see how bad he misses it, but he never complains. He has energy that we need even if he's not physically on the court."

Wrapping so much of his identify into sports left Malewiski feeling vulnerable and incomplete after his injury. He learned to adapt by helping others.

"I still do me - just without the sports, even though that was me," he said. "I'm just helping around our practices, picking up balls and just playing with friends still."

Sitting at the end of the bench watching games is difficult, but "it's fun to cheer on all my friends and my brothers," he said.

Helping coach the team gives Malewiski a sense of purpose.

"It's opening my eyes just to see how much younger kids can help and how kids my age can go out there and do whatever older people can do," he said.

Rollins appreciates the help, and he admires the courage and resilience that Malewiski displays daily.

"I never see him down, and I never hear him complain or ask why me," Rollins said. "He just deals with it. Whatever college that decides to offer him will get one good kicker and a better person."

**"It's just an eye-opener," he said.
"It's just a different perspective on what God wanted me to do and what I thought I wanted to do."**

- LOGAN MALEWISKI

Lady Hornets sting Wichita Falls in hoops district opener

BY JEFF PRINCE
jeff@azlenews.net

District openers don't go much better than this.

On Friday, the Azle Lady Hornets were enjoying a four-game win streak when they traveled to Wichita Falls High School to play their first district basketball game of the season.

Make it a five-game win streak.

Azle's smothering defense prevented the Lady Coyotes from scoring any points in two quarters and AHS allowed just eight points in all in a 57-8 victory.

Kendall Locke shot 80% from the field and led the Lady Hornets in scoring with 16 points, and she also notched six steals. Her twin sister, Karlee, scored eight points and had four rebounds and four steals on defense.

Landri Seward scored 12 points, and Brittany Cato scored 10. Cato added four rebounds and a blocked shot.

Other Lady Hornets putting points on the scoreboard were Mia Carrizales, Summer Finney and Jessie Heath.

Azle (18-6) plays at 6:15 p.m. Jan. 14 at home against Aledo (6-10).



Summer Finney and the Azle Lady Hornets will play district rival Aledo at home on Friday.

Photo by Jeff Prince

CHEER, CONTINUED FROM PAGE 1B.

the pressure-packed contests.

"I really have an important role to be able to lead my team into the right mindset since we haven't completed at state in two years, and a lot of my teammates haven't ever competed at state or nationals before," she said. "I feel like I will be able to help uplift them and show them what it's really like to hit the mat and give it our all."

One of those younger girls competing for the first time is sophomore Melani Rushing, who joined the cheer squad at Azle Junior High and is in her fourth year of shaking pom-poms.

"I just really enjoyed everything about it," she said. "For this being my first time competing at state and nationals, I'm going to help encourage and uplift the rest of the team and leave my all out on the mat."

Azle cheer will compete at the UIL state contest on Jan. 13 at the Fort Worth Convention Center, 1201 Houston St. in downtown Fort Worth.



Top row left to right: Maddie Thompson, Samantha Davis, Stevie Pfeifer and Arie-Ana DeMoss. Bottom row left to right: Tommy Evans, Gunnar Tomlinson, Camden Rushing and Jake Mobley.



Samantha Davis gets a bird's-eye view.



Avery Maldonado and Ava Edelman prove cheerleaders forge good friendships.

Photos by Jeff Prince

Crusaders to determine how they fare against the best

BY JEFF PRINCE
jeff@azlenews.net

District competition begins Jan. 14, and Azle Christian High School's basketball boys are about to find out how they stand up against some tough teams in the TAPPS league.

First up? Faustina Academy – last year's state runner-up.

The scary news is, nine of Faustina's players from last season returned to the team.

The scarier news?

All five starters returned this season.

"It's a tough game," Azle Christian head coach Ryan Rollins said of that matchup.

The coach scheduled a tough non-district portion of the season to challenge his team. The Crusaders struggled early and endured a five-game losing streak in December. This month, they have won more than they lost and are beginning to peak at the right time.

"I'm excited to see where we stack up against the

best," Ryan said. "I feel we are playing well right now, so we are ready to go."

Last week, Azle Christian beat Bryson 54-42 with the help of Ty South's 17 points.

"This kid is so unselfish and could care less about personal stats," Rollins said. "He just wants a win."

Teammate Andy Wisniewski notched nine points and Drew Skartvedt finished with seven.

On Friday, the Crusaders defeated Flower Mound Temple Christian 56-32 in a

stellar defensive game.

Camden Logan scored 19 points, Jake Skartvedt ended with nine, and Zach Miles notched seven.

Azle Christian (7-8) takes on Faustina Academy of Irving at 7 p.m. Friday at home.

Ty South's 17 points led the Crusaders in scoring against Bryson.

Photo by Jeff Prince



Azle hoopsters hurtle toward district opener



Gavin Dean set a single-game scoring record for Azle against Fairfield in December. Photo by Jeff Prince

BY JEFF PRINCE
jeff@azlenews.net

Talk about a momentum swing. Azle High School's basketball boys slapped an exclamation point on the non-district portion of their schedule.

Last week, the Hornets bounced back from a one-point loss to Fort Worth Trimble Tech by breaking Burkburnett's heart, 79-76. Then, in the season's final non-loop game on Friday, Azle demolished Graham,

59-24.

Azle has grown resilient since the season began in November and currently boasts the best record among District 5-5A schools, heading into the district opener.

Last season, the team finished 12-12 and lost its first playoff game. More than 10 years have passed since the Hornets have won a district title.

One of this year's team leaders, Gavin Dean, said early in the season that the Hornets wanted to set a

school record for most wins this season. The team is still working on that one, but Dean set his own school record.

On Dec. 10, the shooting guard scored 47 points against Fairfield to set the Azle ISD single-game scoring record. The Hornets won that game 104-95.

Azle (17-6) is scheduled to play its boys district opener at 8 p.m. Jan. 14 at home against Aledo (6-12).

AZLE

Game Faces



Lady Hornet Vielka Gonzales



Lady Hornet Landri Seward



Lady Hornet Mia Carrizales

Photos by Jeff Prince



Azle News
AzleNews.net

DEVOTIONAL PAGE



The Springtown Epigraph
Your trusted news source

This devotional and directory is made possible by these businesses who encourage all of us to attend worship services.

Azle News
AzleNews.net

The Springtown Epigraph
Springtown-Epigraph.net

TRINITY SELF STORAGE
SECURITY GATE 24 HOUR ACCESS

Office next door at Trinity Commerical Contractors

RV, Trailer & Boat

200 Walnut Creek Ave.
817-444-8885

TACLA014745E RRC#11349

J&E
AIR CONDITIONING & HEATING

817-220-4506

1825 W. Hwy. 199 | Springtown, TX 76082

Help readers find your Business.

Call **817-270-3340**

Your Ad Here!

Call Johnna to reserve this space.
817-270-3340

Comet CLEANERS
"Serving Azle & The Community Since 1986"

113 SPEER ST
817-444-4920

Thank you for your support!

Subscribe!

Pick your subscription:

- \$40 IN-COUNTY Tarrant, Parker & Wise only
- \$36.50 SENIOR CITIZEN 60 Years and Older Tarrant, Parker & Wise only
- \$25 ONLINE
- \$46.50 OUT OF COUNTY

Azle News
The Springtown Epigraph
Azle News 817-270-3340
Springtown Epigraph 817-220-7217

Eagle Crest VILLA
A RETIREMENT AND ASSISTED LIVING COMMUNITY

113 Denver Trail • Azle
817-444-3249 Fax 817-444-3275
www.eaglecrestvilla.com

STUDIO - 1 bath, 350 sq. ft.
ONE BEDROOM - 1 bath, 450 sq. ft.
TWO BEDROOM - 1 bath, 642 sq. ft.

APOSTOLIC
CORNERSTONE APOSTOLIC CHURCH
1801 FM 730 N., Azle
817-400-0612

HARVEST TIME APOSTOLIC
1 Block N. FM 2048 in Keeter
817-433-8220

ASSEMBLY OF GOD
FIRST ASSEMBLY OF GOD
1020 S.E. Pkwy, Azle
817-237-4903

FELLOWSHIP OF LAKE WORTH
4024 Dakota Trail, Lake Worth
817-237-9433

NEW BEGINNINGS CHURCH
810 Goshen Rd., Springtown
817-523-4462

LEGACY CHURCH
Hwy. 199 W. at FM 2257, Azle
817-221-2983 / 817-221-5760

VICTORY CHRISTIAN CENTER
737 Boyd Rd., Azle
817-444-LOVE

BAPTIST
ASH CREEK BAPTIST CHURCH
300 South Stewart, Azle
817-444-3219

AGNES INDEPENDENT BAPTIST
350 Agnes N., Springtown
817-523-7271

BETHEL MISSIONARY BAPTIST
408 S. Ash St., Springtown
817-220-4238

AZLE AVENUE BAPTIST
2901 Azle Ave., Fort Worth
817-626-5556

BRIAR FIRST BAPTIST
West of FM 730 N. at sign, Briar
940-444-3484

CALVARY HEIGHTS BAPTIST
1 block off Hwy. 199, east of David's Patio, Springtown, 817-221-2241

CENTRAL BAPTIST
4290 Old Agnes Road
817-594-5918

CHURCH ON THE HILL
836 NW Parkway, Azle
817-444-3752

CHRISTWAY BAPTIST
7673 West Hwy. 199, Agnes
817-220-9133 or 817-220-3581

CLEAR FORK BAPTIST
Corner of FM 730 & Ragle Rd., Weatherford, 817-594-1154

EAGLE MOUNTAIN BAPTIST
8780 Eagle Mtn. Circle, Azle
817-237-4135

FIRST BAPTIST CHURCH OF AZLE
1017 Boyd Road
817-444-4828

FIRST BAPTIST CASTLE HILLS
401 Beverly Rd., Azle
817-797-4706

FIRST BAPTIST LAKE WORTH
700 Charbonneau Tr., west side of Effie Morris Elementary
817-237-2624

FIRST BAPTIST LAKESIDE
8801 Jacksboro Hwy., Lakeside
817-237-8113

FIRST BAPTIST BRIAR
6 miles N. of Azle on FM 730
817-444-3484

FIRST BAPTIST COTTONDALE
1 block N. of FM 2123, Cottondale
940-433-5539

FIRST BAPTIST PEASTER
FM 920 in Peaster
817-596-8805

FIRST BAPTIST POOLVILLE
1 block W. of FM 920, Poolville
817-594-3916

FIRST BAPTIST SPRINGTOWN
5th & Main Street, Springtown
817-523-7011

FRIENDSHIP BAPTIST
801 Friendship Rd., 9½ miles S. of Springtown off Hwy. 51 S.
817-594-5940 or 817-599-4917

FUNDAMENTAL BAPTIST
5th & Main in Springtown
817-523-5477

GRACE BAPTIST
3 miles N. of Springtown on Hwy. 51 across from Radio Tower

GRACE POINTE CHURCH
4110 E. Hwy. 199, Springtown
817-221-5683

HERITAGE BAPTIST CHURCH
3577 FM 51 N., Weatherford
817-564-3946

IGLESIA BAUTISTA
Nueva Jerusalem
6640 Midway Rd., Springtown
817-694-0444

INDIAN OAKS PRIMITIVE BAPTIST CHURCH
3229 Shawnee Trail, Lake Worth
817-237-8441

LAKE WORTH BAPTIST
4445 Hodgkins, Lake Worth
817-237-4163

METROPOLITAN BAPTIST
6051 Azle Ave., Fort Worth
817-237-2201

NEW HOPE BAPTIST
782 New Hope Rd., Reno area
817-221-2184

NORTHWEST BAPTIST
5500 Boat Club Rd., Lake Worth
817-237-6063 or 817-270-8476

SILVER CREEK BAPTIST
730 S. & Veal Station Rd., Azle
817-444-2325

NEW BEGINNINGS BAPTIST CHURCH
3605 Jacksboro Hwy., Azle
817-707-2741

PLEASANT GROVE BAPTIST
FM 2048 and CR 4677, Boyd
940-433-5477

PRIMERA IGLESIA BAUTISTA
300 S. Stewart, Azle
817-500-3641

SPRINGTOWN BAPTIST TEMPLE
201 J. E. Woody Rd., Springtown
817-523-0376

UNION BAPTIST CHURCH
3451 Sarra Lane, Springtown
682-333-1645

WALNUT CREEK BAPTIST
220 W. Reno Rd. in Reno
817-221-2110

BIBLE
COMMUNITY BIBLE FELLOWSHIP
1405 Reynolds Rd., Reno
817-444-7117

NORTHWEST BIBLE CHURCH
5025 Jacksboro Hwy., Fort Worth
817-624-2111

SOLID ROCK BIBLE CHURCH
591 S. Reno Rd., Springtown
817-221-3444

CATHOLIC
HOLY TRINITY CATHOLIC
800 High Crest Dr., Azle
817-444-3063

CHRISTIAN
THE CHURCH AT AZLE
1801 S. Stewart, Azle
817-444-9973

AZLE CHRISTIAN FELLOWSHIP
35 West Forty Estates., Azle
817-688-3339

GREATER VISION FELLOWSHIP
1801 S. Stewart St., Azle
817-825-0485

THE ABBEY CHURCH
10400 Jacksboro Hwy., Azle
817-238-1404

CROSSING FELLOWSHIP
120 E. Main St., Azle
817-406-4577

CHURCH OF CHRIST
AZLE CHURCH OF CHRIST
336 NW Parkway
817-444-3268

BRIAR CHURCH OF CHRIST
109 W.N. Woody Rd.
(½ block west of FM 730 N. in Briar)
817-444-7102

MIDWAY CHURCH OF CHRIST
6400 Midway Rd.
817-221-2107

NEWSOME MOUND ROAD CHURCH OF CHRIST
1460 Newsome Mound Rd.
817-677-3290

NORTHWEST CHURCH OF CHRIST
6059 Azle Ave., Fort Worth
817-237-1205

POOLVILLE CHURCH OF CHRIST
West of FM 920 in Poolville
817-594-4182

SOUTHSIDE CHURCH OF CHRIST
130 W. Bradshaw Lane, Springtown
817-221-2799

SPRINGTOWN CHURCH OF CHRIST
Just west of Hwy. 51 North
817-523-4419

TRI-COUNTY CHURCH OF CHRIST
525 Hwy. 199 W., Springtown
817-980-8156

CHURCH OF GOD
ABUNDANT LIFE CHURCH OF GOD
4800 East Hwy. 199, Suite 7 Springtown, 817-677-3208

LAKESIDE CHURCH OF GOD THE WORD@LAKESIDE
9396 Confederate Park Rd. (FM 1886)
817-237-5500

DISCIPLES OF CHRIST
AZLE CHRISTIAN
117 Church St., Azle
817-444-3527

CENTRAL CHRISTIAN
1602 S. Main St., Weatherford
817-594-3043

FIRST CHRISTIAN CHURCH
4th & Main, Paradise

EPISCOPAL
ST. ANNE'S ANGLICAN EPISCOPAL
6055 Azle Ave., Fort Worth
817-237-1888

PROVIDENCE REFORMED EPISCOPAL
405 Bowie Dr., Weatherford
817-596-7476

ST. ELISABETH EPISCOPAL
5910 Black Oak Lane, River Oaks
817-739-0504

GOSPEL
CENTRAL FULL GOSPEL FELLOWSHIP
3009 Delaware Tr., Lake Worth
817-237-7919

JEHOVAH'S WITNESSES
KINGDOM HALL OF JEHOVAH'S WITNESSES
212 Pearson Lane, Azle
817-221-2242

LUTHERAN
THE EDGE CHURCH - AZLE
1313 SE Parkway, Azle
817-237-4822

HOPE LUTHERAN (ELCA)
4795 Hwy. 199, Reno
817-221-HOPE

METHODIST
BOYD UNITED METHODIST
FM 730 North in Boyd
940-433-3334

FIRST UNITED METHODIST
200 Church St., Azle
817-444-3323

LIGHTHOUSE FELLOWSHIP
7200 Robertson Rd., Fort Worth
817-237-2758

SILVER CREEK UNITED METHODIST
2200 Church Rd., Azle
817-444-1382

FIRST UNITED METHODIST
Hwy. 51 N & 3rd Street, Springtown
817-523-7874

GARVIN UNITED METHODIST
3 miles West of Boyd on C.R. 4699

POOLVILLE UNITED METHODIST
1 block W. of FM 920 (behind Poolville Post Office)
817-599-3601

HILLTOP FAMILY CHURCH
1227 Old Cottondale • 817-220-7177

"Caring about what Jesus cares about... You!"

Joe Rider Propane, Inc.

PROPANE TANKS

817-237-3325

THE CHURCH OF JESUS CHRIST OF LATTER-DAY SAINTS (THE MORMONS)
THE CHURCH OF JESUS CHRIST OF LATTER-DAY SAINTS
1010 Timberrooks, Azle
817-237-5075

PENTECOSTAL
GRACE CHAPEL UNITED PENTECOSTAL CHURCH
3508 Shawnee Trail, Lake Worth
817-237-4844

PRESBYTERIAN
GRACE FIRST PRESBYTERIAN
606 Mockingbird Lane, Weatherford
817-594-2744

ORTHODOX PRESBYTERIAN CHURCH OF FORT WORTH
Meeting at Northwest YMCA
5315 Boat Club Road, Fort Worth
817-989-9800

ORTHODOX
ARCHANGEL GABRIEL ORTHODOX CHRISTIAN CHURCH
1157 S. E. Parkway (Jacksboro Highway), Azle
817-752-8255

OTHER
ALIENTO DE DIOS
2233 E. Hwy 199, Springtown
817-521-4694

BETTER LIFE COMMUNITY CHURCH
3131 E. Hwy 199, Spt
817-677-2300

CORNERSTONE COMMUNITY CHURCH
2233 Hwy 199 East, Springtown
817-221-LIFE (5433)

FAMILY CHURCH
9 miles S. of Springtown on Hwy. 51
817-599-7655

GRACE FELLOWSHIP CHURCH
2964 W. Hwy 114, Paradise
940-969-2427

HILLTOP FAMILY CHURCH
1227 Old Cottondale Road, Springtown, 817-220-7177

THE HOUSE OF PRAYER
1356 Reno Rd., Springtown
817-221-2551

POWERHOUSE OF PRAISE CHURCH
1649 S.E. Parkway, Azle
817-319-7364

BRANDED CROSS COWBOY CHURCH
3282 FM 2048, Boyd 76023
817-755-7021

SECRET PLACE MINISTRIES
112 Optimist Rd., Springtown
682-229-1433

GOSPEL GATHERING FELLOWSHIP
7315 Silver Creek Rd at Flatrock Rd, Azle
817-313-1793

LIGHTHOUSE CHURCH
6409 FM 730 S., Azle
817-444-4311

LIGHTHOUSE HARBOR CHURCH
1960 Long Circle, Pelican Bay
817-444-3547

NEW LIGHTED WAY
624 Harbor Dr. Circle, Azle
817-444-1577

NORTHWEST TEMPLE OF PRAISE
6781 Jacksboro Hwy., Lake Worth
817-909-5627

PRECIOUS FAITH TEMPLE CHURCH
8601 Hwy. 199 @ Vance Godbey's

THE HOUSE OF PRAYER
1356 Reno Rd., Springtown
817-221-2551

THE RANCH COWBOY COUNTRY CHURCH
14600 FM 730 North, Azle (Briar)
817-909-5627

REAL FAMILY FELLOWSHIP
202 Pearson Lane, Azle
817-677-5963

SOULS HARBOR
11701 Jacksboro Hwy., Azle
817-726-2065

WESTERN HARVEST FELLOWSHIP CENTER
6577 Old Springtown Rd., Weatherford
817-523-2855 or 817-995-9087

SHEPHERD'S HEART CHURCH
14435 FM 730 N • Azle
817-444-7777

WESTERN STAR COWBOY CHURCH
790 CR 3696 • Paradise 76073
817-688-6887

Compliments of
Rural Gas Supply

PROPANE 140 W. MAIN ST.
817-444-4613

"In business since 1946"

White's Funeral Homes
Our family serving your family since 1908

Bob White, Anita White and Zack Bellenger

Full Service Funeral Home
Cremation Services
Pre-Need Plans

Azle • Springtown
Mineral Wells • Weatherford
817-444-3211 • www.whitesfuneral.com

Clarks Precision Machine & Tool
CPMT
636 Profit St., Azle, Tx

45 Years of Quality

ISO 9001:2001 Compliant Phone 817-444-2533
Check us out on our web site B.J. Clark
www.clarksmachine.com bjc@clarksmachine.com

WHAT'S HAPPENING IN YOUR HOMETOWN?

Subscribe today to keep up-to-date
Azle News: 817-270-3340
Springtown Epigraph: 817-220-7217

Celebrating over 25 years in business

AZLE CHIROPRACTIC CLINIC
817-444-HELP (4357) Rodney Gattin, D.C.
400 Boyd Court
www.azlechiropractic.com

Get your business noticed!

817-270-3340
Call Johnna to reserve this space.

Want readers to FIND YOU?

Place your ad here!
Call **817-270-3340**

Place your ad here today!
817-270-3340
or 817-220-7217

TRI-COUNTY Electric Cooperative, Inc.
Electric Cooperative, Inc.
"A Commitment to Service and Savings"

Actively Supporting our Communities!

Call Johnna for details
817-270-3340

Advertise Here

Contact us for details.
817-270-3340 or 817-220-7217

Your Ad Here Newspaper Advertising Works!

Call Johnna for details TODAY
817-270-3340

Advertise Your Business With Us and maximise your visibility!

Contact us about advertising solutions.
817-270-3340
817-220-7217

CLASSIFIED

817-270-3340 - Azle - classified@azlenews.net

817-220-7217 - Springtown - shirley@springtown-epigraph.net

Ad Classifications

- | | | | |
|----------------------------|---------------------------------|-------------------------------|--|
| 1... Air Condition/Heating | 24..... Electrician | 46..... Looking to Buy | 69..... Sand/Gravel |
| 2..... Antiques | 25..... Equipment & Tool Rental | 47..... Lost & Found | 70..... Septic Tanks |
| 3..... Appliances | 26..... Excavating | 48..... Maintenance/Repairs | 71..... Sewing/Alterations |
| 4..... Appliance Repair | 27..... Exterminating | 49..... Masonry/Stonework | 72..... Sewer Service |
| 5..... Arts/Crafts | 28..... Farm Equipment | 50..... Mobile Home Service | 73..... TV/Radio |
| 6..... Asphalt Paving | 29..... Fencing | 51..... Motorcycles | 74..... Tractor Service |
| 7..... Auctions | 30..... Firewood | 52..... Movers | 75..... Upholstery |
| 8..... Autos, Trucks | 31..... Free | 53..... Musical Instruments | 76..... Vacuum Cleaners |
| 9..... Auto Repair Service | 32..... For Sale | 54..... Music Lessons | 77..... Wanted |
| 10..... Backhoe Service | 33..... Furniture | 55..... Miscellaneous | 78..... Well Drilling |
| 11..... Boats, Motors | 34..... Garage & Estate Sales | 56 Party Planning/Events | 79..... Welding |
| 12..... Bookkeeping | 35 ... Garden/Mowing Svc | 57..... Pets/Livestock | 80..... Lots/Acreage |
| 13..... Business | 36..... Hauling | 58..... Piano Service | 81..... Business & Commercial Property |
| Opportunity | 37..... Hay | 59..... Pool Service | 82..... RV's for Rent |
| 14..... Campers/Trailers | 38..... Health/Fitness | 60..... Professional Services | 83..... Houses for Sale |
| 15..... Carports/Patios | 39..... Help Wanted | 61..... Personal | 84..... Mobile Homes for Rent |
| 16..... Equipment Repair | 40 Home Improvement | 62..... Plumbing | 85..... Mobile Homes for Sale |
| 17..... Carpet Service | 41 House Leveling | 63..... Public Notice | 86..... Mobile Home/RV Lots |
| 18 Catering | 42 House Cleaning | 64..... Photography | 87..... Rent Furnished |
| 19..... Cement Work | 43..... Hunting | 65..... Printing | 88..... Rent Unfurnished |
| 20..... Demolition | 44..... Janitorial Service | 66..... Roofing | 89..... Wanted to Rent |
| 21..... Child Care | 45..... Job Wanted | 67..... Recycling | |
| 22..... Cosmetics | | 68..... Storage | |
| 23..... Computers/Services | | | |

RATES

16 Words or Less:

**Combo (Azle & Springtown)
Only \$10.00 per week!**

Over 16 words, add 20 cents per word
Extras such as Bold, Center & Border are available for a small fee

Classified boxed display ads also available for \$9.00 per column inch

(All ads must be paid in advance unless you have previously established credit)

CLASSIFIED AD DEADLINE: MONDAY BY 4:30 P.M.

Most ads require payment in advance, but we do accept VISA, MASTERCARD, DISCOVER OR AMERICAN EXPRESS by phone.



Reach more than 8,000 households with combo advertising in the Azle News and the Springtown Epigraph.

Nobody does it better!

006 Asphalt Paving

BYRUM CONSTRUCTION
Asphalt Paving
• Driveways • Parking Lots
• Asphalt Repairs & Sealcoating
• Asphalt Millings • Gravel
Bruce Byrum
Azle, Texas 817-690-2429

PLACE AN AD IN
THE CLASSIFIEDS
TODAY!
817-270-3340

007 Auctions

AUCTION

Decatur, TEXAS

Saturday January 15th – 11 am

Wise County Fairgrounds Women's Building
3101 S. FM 51

High End Collectibles and Very Desirable "Colt" and "Winchester" Firearms Including An Extremely Rare Authentic Antique Deluxe 1855 "Colt" Revolving Rifle 44 Cal. An Extremely Rare Authentic Antique Deluxe 1886 "Winchester" Rifle 45-90 Cal. A Rare Antique 1873 "Winchester" Saddle Ring Carbine 44-40 Cal. A Rare Antique "Colt" Lightning Rifle 32 Cal. A Rare Antique 1887 "Winchester" Shotgun 12 Gauge. A Rare Antique 1895 "Winchester" Take Down Rifle 30.06 Cal. A Rare Antique 1892 "Winchester" Rifle 44-40 Cal. An Antique Highly Engraved "Colt" Single Action Pistol 45 Cal. An Antique Highly Engraved 1911 "Colt" Pistol with Ivory Grips and Silver Inlaid Longhorns 9MM. An Antique 1849 "Colt" Pocket Pistol 41 Cal. An Antique "Colt" "Bisley" Frontier Six Shooter Pistol 44-40 Cal. An Outstanding Antique Tiger Oak Curved Glass Side by Side Secretary with Beveled Mirror and Paw Feet. An Antique Tiger Oak Highchair that Converts To A Stroller. A "Frederic Remington" Bronze Statue "Wicked Pony" on Marble Base. An Antique Oak "Sonora" Phonograph. A Fantastic Antique 1880's Oak "Cylinder Roll Desk". A Rarely Seen "Lawn Jockey". An Antique Oak Lawyers Stack Bookcase. An Antique "Mills" 5¢ Slot Machine - Works Great! Two Rarely Seen "Carl Kauba" Bronze Statues "War" And "Peace" On Marble Bases. Antique Gold and Silver Coins. Morgan And Peace Silver Dollars. Leaded Glass Lamps, Diamond Jewelry, Cut Crystal and Many More Items Including Items That Are Antique, Not So Old, New and Reproductions. Something for Everyone. Viewing 8 am Day of Sale. **Bring Cash, Check or Credit Card. 405-412-4183** Announcements Made Day of Sale Supersede All Other Advertisements.
NO BUYER'S PREMIUM!
Auctioneer Michael Mears Texas License #12703
Visit Our Website For A Partial Listing And Pictures At:
www.michaelmearsauction.com

008 Autos, Trucks

1994 Jaguar XJS convertible, 2 plus 2, 6.0 Liter, fully refurbished, \$20,000. Has wire & honeycomb rims with spare parts. 817-677-3149.

014 Campers & Trailers

2012 Sabre Forrest River RV for Sale. Very nice, with 3 slideouts, fireplace, 2 AC units, etc. \$16,500 cash/OBO. Larry 817-319-7874.

019 Cement Work

All Types of Concrete Work
Residential - Commercial
Foundations, driveways, sand, gravel, demolition, haul-off, retaining walls
817-271-4541

Concrete Services, Patios, Driveways, Sidewalks, Retaining Walls, Foundations, Stone Walls. Free Estimates. 817-371-8597.

Kiley Chesney Construction

Dirt & Concrete Work
• Driveways • House Slabs • Garages • Add-ons
• Small Land Clean-ups • Gravel Driveways
Kiley Chesney, Owner
Springtown, TX • Mobile 817-846-6645

020 Demolition

MCNEELY'S DEMOLITION & CLEAN UP SERVICE

We Create Vacancy

- Tear Down
- Removal
- Haul Off
- Mobile Service
- Homes
- Garages
- Barns
- Houses
- Bobcat
- Dirt/Gravel
- Spreading

FREE ESTIMATES
817-996-7887
253 Eagles Way, Springtown

024 Electrician

BULLDAWG ELECTRIC CO.
All types of electrical services and MH hook-ups.
Free Estimates. 817-675-4921
www.bulldawgelectric.com.
TECL#25253.

026 Excavating

ALL TYPES OF EXCAVATING
Tanks • House Pads • Clearing
HASTY EXCAVATING
Also ..
Sand • Top Soil • Gravel
817-523-7248 • 817-239-6215

REED EXCAVATING

• SITE PREPARATION
• LOT CLEARING
• LEVELING
• FINAL GRADE
• LAND EROSION
• GRAVEL ROADS
• PARKING LOTS
• DEMOLITION
• STOCK TANKS
Dump Truck Hauling 817-919-3696

029 Fencing

BOBBY'S FENCE. All types, Free Estimates, Over 26 years experience. 817-444-3213.

KILEY CHESNEY
CONSTRUCTION
All Types Fences - Tractor Work
817-846-6645

030 Firewood

LEON'S TREE SERVICE. Split Oak and Pecan wood. Pickup or delivery. 817-371-8597.

034 Garage & Estate

Ninja's Estate Sales. 20 years experience, have pictures of sale,s before and after setting it up, call 817-255-0309 Have different options, call for prices.

Recycle, Reuse, Repurpose

**AW SPECIALTIES
& SURPLUS**
Your Local Resale Shop
Put your \$ where your ♥ is
BUY LOCAL
612 Profit St. Azle TX
817-944-0800
Open Tues-Fri 10A-5P & Sat 10A-3P

035 Garden/Mowing

WISE OUTDOOR SOLUTIONS.
Fall Clean ups, Underbrush Removal, Tree Trimming, Stump Removal, Animal Burials, Tractor Work. 940-399-9616.

STUMP GRINDING

Don't dig it! Grind it!
1 or 100 - We can do it.
\$85 minimum within 5 mi.
817-237-5592

LEON'S TREE SERVICE

Expert take downs
Stump Grinding
Residential/Commercial
Licensed & Insured • Free Estimates
817-371-8597

Chad's Tree Service

Trimming • Removals • Stump Grinding
Systemic Feeding • Brush Chipping • Cable Bracing
817-221-2201 • 817-246-5943

Insured for your protection

037 Hay

Large bales Coastal hay. Poolville, \$45; Springtown, \$50. Mike 817-925-3673.

SPRIGGING

5 COUNTIES:
Jack, Wise, Tarrant,
Parker, Montague
COASTAL OR
TIFTON
52 years Experience
940-229-1045
or 940-229-1046

Advertising Works!

039 Help Wanted

Local Builder/Developer looking for experienced Help. Must have a valid driver's license. Knowing how to operate machinery, being mechanically inclined and have carpentry skills are a plus. Send resumes to: tommymileshomes@yahoo.com.

Local Pool Company is hiring a Pool Technician/Helper. Pay is depending on experience and skills. Call 817-613-8253.

MOTEL 6. Help wanted for full-time Housekeeping. 817-270-4207.

Full-time Office Help needed M-F at local house and building moving company. Must be computer literate and have good customer service background. Highway over-sized load permitting experience is a plus. No felonies and must have transportation. Apply at Just Right House Movers, LLC, 14400 FM 730 N., Azle. 817-444-6516.

MAINSTREAM (group home for adults with developmental disabilities) is hiring part-time Direct Contact Staff for 17-hour weekday shifts (2nd & 3rd shifts) or 24-hour weekend shifts. Paid training, starting pay is \$7.75 hourly. Good potential for full-time employment. Call 817-270-2747, Monday-Friday, 9A-3P.

Springtown ISD is accepting applications for Bus Drivers and Monitors. Training available. Contact the Transportation Dept. 817-220-1418.

GARAGE SALE

16 words for
only \$10

A great way to raise
extra money!

Call today for more info.
Azle News
817-270-3340
Springtown Epigraph
817-220-7217

039 Help Wanted

conducted or funded by USDA. Persons with disabilities who require alternative means of communication (e.g. Braille, large print, audiotape, American Sign Language, etc.), should contact the Agency (State or local) where they applied for benefits. Individuals who are deaf, hard of hearing or have speech disabilities may contact USDA through the Federal Relay Service at (800) 877-8339. Additionally, program information may be made available in languages other than English.

To file a program complaint of discrimination, complete the USDA Program Discrimination Complaint Form, (AD-3027) found online at: How to File a Complaint, and at any USDA office, or write a letter addressed to USDA and provide in the letter all of the information requested in the form. To request a copy of the complaint form, call (866) 632-9992. Submit your completed form or letter to USDA by:

mail: U.S. Department of Agriculture

Office of the Assistant Secretary for Civil Rights

1400 Independence Avenue, SW Washington, D.C. 20250-9410;

fax: (202) 690-7442; or

email: program.intake@usda.gov.

This institution is an equal opportunity provider.

039 Help Wanted

Eagle Crest
A RETIREMENT AND ASSISTED LIVING COMMUNITY

Now Hiring NEW PAY SCALE Personal Care Attendant

FULL TIME 10P-6A
Shifts, Health, Dental,
Life Ins. & 401k
Apply in person at 113
Denver Trail, Azle

NOW HIRING

FOR ALL POSITIONS
• Dishwasher
• Line Cooks
• Servers
Competitive Pay • Apply in Person
301 Martin Ave, Springtown

HOME IMPROVEMENT



Check out
the Home
Improvement
Specialists in the
Classifieds for
help with your
next project!

HVAC TECHNICIANS & INSTALLERS

Come Join the
Quality Team at
A/C & HEAT BY RUSSELL
817-270-8811

Come Be a Part of TTI

Now Hiring For Full-Time Warehouse

- Pay Rates \$15.25+ per hour
- Openings on 1st & 2nd Shift
- Distribution center is located at Beach St & Meacham Blvd in Fort Worth
- Salary Reviews @ 90 and 360 days
- Shift Premium for 2nd shift
- Air-Conditioned Warehouse!
- Great Benefit Package
- Tuition Reimbursement
- On-Site Gym

Apply Today @ www.tti.com/careers

Application must be made for each position that interests you!

• Background/Drug Screen Required • HS Diploma or GED Required

817-270-3340 - AZLE
817-220-7217 - SPRINGTOWN

Deadline:
 4:30 PM Monday

Classifieds

039 Help Wanted

New Correctional Officer
 Pay is \$15.00 per hour.
 Please check the web site for Job Qualifications.

Must have HS Diploma or equivalent, be able to pass a drug screen, have a clean background and valid driver's license to be considered for a Correctional Officer.

Apply online at www.mtctrains.com or call 940-567-2272 and ask for the HR Department.
 Lindsey State Jail

066 Roofing

DIAMOND ROOFING & CONSTRUCTION

Commercial & Residential
 • Roofing
 • Metal Roofing
 • Carports
 • Metal Buildings
 • All General Contracting

417 N. MAIN ST • SPRINGTOWN
817-523-4137

Here Before The Storm, Here Long After.

079 Welding

SOLID STEEL SOLUTIONS

• Metal Buildings
 • Steel Components
 • Welding Supplies
 • Concrete Supplies

• Fabrication Supplies
 • Pipe Fencing
 • Deer Blinds
 • Deer Feeders

8894 W Hwy 199 • Springtown
817-220-0008
www.SolidSS.com **Open to the Public**

040 Home Improvement

BILL ROSSER PAINTING & REMODELING. Big Savings: \$100 off any job of \$1,000 or more. Painting, Carpentry, Porch Covers, Decks. FREE ESTIMATES. Call 817-304-9974; 866-374-3559.

BOBBY MCWILLIAMS PAINTING 817-821-6377. Interior/Exterior Painting Residential & New Homes. 48 years experience.

Sanders Painting, Interior/Exterior Painting, Drywall Repairs, Powerwashing, Odd jobs. Free Estimates 817-565-8864

046 Looking to Buy

Local Man Buying Used or Damaged Campers, Motorhomes, Farm Equipment, Trucks and Trailers, Boats, Golf Carts and ATVs. 817-629-7531.

066 Roofing

Miles Roofing
 • Insurance Claim Specialists;
 • Free Estimates
817-797-3420

079 Welding

WDC
 WELD-DONE CONSTRUCTION LTD.

Metal Building Erectors
 • Pre-engineered Weld-up
 • Barns/Shops
 • Arenas/Hangars
 • Fencing

1220 E. Hwy. 199 • Springtown
817-220-2150
www.weld-done.net

081 Business/Commercial

2-1 house, just refurbished, shaded yard, close to shopping, restaurants & Hwy 199 \$1200/mo

1161 SE Pkwy Azle 1700 SF \$1000/mo , 1169 SE Pkwy Azle 930SF \$ 750/mo Bryants Co Real Estate 817-220-2021

Mr. Sweeps
 Chimney Cleaning Service

Keep your home safe.
 Call Parker/Wise County's oldest chimney sweeping company, Mr. Sweeps.

817-692-5624
 ask for Doug
www.mrsweepschimneycleaning.com

Special: \$170
 Chimney & Dryer Vent Cleaning

049 Masonry/Stonework

Silva Masonry, L.L.C.
 AZLE, TX
CONCRETE
 COMMERCIAL • RESIDENTIAL

Landscape Designs, Outdoor Kitchens
 Patios, Retaining Walls, Mailboxes

All Types Stone & Brick Work Free
 New Construction • Remodels Estimates
817-308-6512
 email alvarogsilva@verizon.net

AT HOME
 ROOFING & METAL BUILDINGS

817-304-4224

Tired of always replacing your roof?
 Call us for a metal roof quote.

We'll be here after the storm.

Cozart METAL BUILDING SYSTEMS

Fabrication and erection of quality metal buildings at reasonable prices, any size - any design

Office **817-237-2282**
 Fax 817-237-0904
 Mark Cozart Jeremy Cozart
 817-233-6668 817-237-2028

082 RV's for Rent

Nice 1BR RV in adult RV park. Great for older person on limited income. Starts at \$550/mo. All Bills Paid. Heritage RV Park 817-444-3760.

GARAGE SALE
 16 words or less is only \$10.

Need a way to make extra money? Advertise in the classifieds!

Call us today for more information
 817-270-3340 Azle News or 817-220-7217 Springtown Epigraph

084 Mobile Homes for Rent

Large 3-2 DW, very nice, fenced yard, CH/A, \$1,700/mo. with approved application. 817-228-2414.

1525 PARTRIDGE, 2-1, \$675/mo. \$400 deposit. Gene Thompson & Associates 817-246-4646 gtax.com.

1525 PARTRIDGE 2-1 \$675 MO. \$400 DEP Gene Thompson & Associates 817-246-4646 gtax.com

086 Mobile Home/RV Lots

Beautiful RV Spots available in nice, quiet area near Eagle Mountain Lake. \$350/mo. Call for more information 817-228-2414.

088 Rent Unfurnished

Kevin's Handyman Services
 40 Years Experience

- Carpentry
- Drywall & Painting
- Tile & Laminate Floors
- Doors & Windows
- Decks & Stairs
- Cabinets & Countertops
- No Job Too Small

Springtown and Surrounding Areas
231-445-1221

052 Movers

U.S. Army Retired-but not tired! Careful moving-Cheap.
 Call Big Jim @ 817-237-5151.

057 Pets/Livestock

Will pay top dollar for grazing and hay leases. Call 940-389-1936.

Beefmaster Bulls, vergin and experienced 817-988-7557

Free to good home, two 7 year old female Cocker Spaniels. Up to date on shots and come with all supplies. Call 817-691-7014 for more information.

068 Storage

STORAGE UNITS
 1350 Liberty School Rd
 5x10 Units \$40/Mo.
 10x10 Units \$75/mo.
817-246-4646

SELL IT IN THE CLASSIFIEDS!

062 Plumbing

GRAHAM PLUMBING CO.

Commercial-Residential Serving Springtown, Azle, Boyd, Weatherford Area
 M#15899
817-220-2469
grahamplumbingco.com

PLUMBING by RICHARD
 RESIDENTIAL REPAIRS
 LICENSE #M15853

Water Heaters • Faucets • Slab Leaks
 Drains Cleared • 46 Years Experience

Credit Cards Accepted
 Serving Azle
817-907-0472

Ash Creek Storage
 Convenient Location
 Corner of Main St. & Locust • Azle
817-444-3292

INNERSPACE STORAGE. Hwy 199, Springtown. Now renting all unit sizes, 24-hour access. 817-677-4050.

069 Sand/Gravel

HALL'S SAND, DIRT & GRAVEL
 Quality Family Business Since 1938

CALL Cliff Hall
(817) 221-2681

We go the extra mile to ensure you get more for your \$.
 On House Pads, Driveways, Lot Clearing & Tractor Work, Etc.

PUBLISHER'S NOTICE

All real estate advertising in this newspaper is subject to the Fair Housing Act which makes it illegal to advertise "any preference, limitation or discrimination based on race, color, religion, sex, handicap, familial status or national origin, or an intention, to make any such preference, limitation or discrimination." Familial status includes children under the age of 18 living with parents or legal custodians, pregnant women and people securing custody of children under 18.

This newspaper will not knowingly accept any advertising for real estate which is in violation of the law. Our readers are hereby informed that all dwellings advertised in this newspaper are available on an equal opportunity basis. To complain of discrimination call HUD tollfree at 1-800-669-9777. The toll-free telephone number for the hearing impaired is 1-800-927-9275.

078 Well Drilling

Need a quality water well at a fair price? Also, pump sales and installation. KELVIN'S PUMP & WELL SERVICE. 817-221-4300.

079 Welding

owner Rodney Vick
 817-220-3044
 fax 817-523-7639
 cell 817-253-1614

R & E Construction
 Metal Building Specialist

- Weld Ups/ Bolt Ups
- Pipe Fencing
- Concrete
- Horse Barns
- All Types Fencing
- Metal Roofs

Compare Pricing
NO JOB TOO SMALL

081 Business/Commercial

NOW AVAILABLE: Commercial Storefront/Office Space For Lease. \$1,100/mo. Call Donna Bransom 817-925-8281.

40x50 building For Rent, 3 miles west of Springtown. 817-713-7495.

FOR LEASE: 3 acres, gravel lot with water and electric, 1 mile east of Springtown, easy access to Hwy 199 (outside city limits). 817-657-5682.

FOR LEASE: 291 Morrow Road, Springtown. 2,200 sf building, east of Springtown with easy access to Hwy 199. 817-657-5682.

Cross Companies Residential Properties
 Family-owned, family-run

STEWART BEND | **SILVER CREEK** | **RV PARK**
 DUPLEX HOMES

Stewart Bend Duplex Homes: 2 & 3 bedroom units available at \$1,075 & \$1,175. Quiet, clean, non-smoking. CALL or TEXT 817-404-7143.

Silver Creek RV Park: Designed for local long-term stays. Best common building in Azle, secluded and quiet, city water/sewer. \$450 with \$75 electricity allotment; ABP in winter. CALL or TEXT 682-499-8616 or email scrvooffice@gmail.com.

Barton Cottages Tiny Home Community: COMING FALL 2021! Email sales.stewartbend@gmail.com for information.

TKO Services
 Soft Wash House Wash

Roofs and Shingles
 Bricks Windows
 Decks Concrete
 Swimming Pool Area Rock Sidewalk Driveway

817-550-3745

Devin's Handyman Service

- Carpentry
- Cement
- Rock
- Granite
- Tile
- Painting
- Siding
- Insulation
- Kitchen/Bath
- Roof & Gutters
- Powerwashing
- Decks

WINTER SPECIAL
 20% OFF with this ad!

Call Devin at 817-629-9608

LANDERS Plumbing Co.

Plumbing Repairs
 Drains Cleaned

817-444-3054
940-233-2862
 Don Landers • M-10078

041 House leveling

HOME LEVELING SOLUTIONS. Mobile Holmes, Pier and Beams, Slabs, Sheds, Rotten Wood Replacement. Small Jobs Always Welcome. 940-399-9616.

043 Hunting

Hunting lease year around, Deer, Hog, Turkey, and Dove's 940-229-1045

Advertising Works!

AZLE OAKS APARTMENT
 700 JARVIS • AZLE
817-444-1712

1 & 2 Bedroom Unfurnished
 Accepting Applications
 Rent based on income

TDD: **800-735-2989**

This institution is an equal opportunity provider and employer.

VACATION TIME?
 Raise some extra money through the Community Classifieds to help fund your trip. **16 words for only \$10**

What a good deal!
Azle News
 817-270-3340 &
Springtown Epigraph
 817-220-7217
 Hometown Papers!

3-2 Duplex for Rent in Springtown. \$1,000/mo. \$500 deposit, no pets. 817-980-3066.

3-2 brick house in Azle. \$1,400/mo. \$1,400 deposit, no pets. 817-980-3066.

Small Studio Apartment \$600/mo \$600/deposit. Deposit negotiable, no pets. 817-545-7145

3-2 Duplex, just refurbished, quiet area, no pets, close to shopping \$1300/mo. 817-444-3636

Last Puzzle Solution

PLAT LANE ATIDE TICAN NAP SUEW SO MATIS FEAT TITSOBAD TOTTERIES ANI BOLL LEAN RAISE EARNING RR LOTS BINGUAL BARNERS THE PGA NOTISY DORSETT SHAMS ALL BLT ASS

S-1567

817-270-3340 - AZLE
817-220-7217 - SPRINGTOWN

Deadline:
 4:30 PM Monday

Classifieds

TEXAS CROSSWORD

by Charley & Guy Orbison
Copyright 2022 by Orbison Bros.

ACROSS

1 subdivision map

5 TX Don Henley sang the lead on "Life in the Fast Lane"

6 Ted Cruz assistant

7 TXism: "dance to that tune" (agree)

8 Mexican "siesta"

9 TXism: "want ___ I could spit"

16 TXism: "a whole ___" (lot of)

18 in Texas, drawings and scratch-offs

21 TX Linda Ellerbee's "And ___ It Goes"

22 welcome rugs

23 enjoy barbecue, e.g.

24 cut ___ (divide in equal parts)

30 ___ is fair play"

34 ___ Fehrenbach book: "Lone Star: A History of Texas and Texans" (1968)

35 a false god, e.g. (2 wds.)

36 ___ and mean"

37 ___ the roof"

39 TXism: "trust ___ always cut the cards"

43 he starred in "King Creole" with TX-born Carolyn Jones

44 receiving for work

45 he married TX-born Dale Evans (init.)

46 TXism: "___ of breathing room" (spacious)

DOWN

1 Cross ___ TX

2 nonreligious

3 "he is a nuisance"

4 early TX Roy Orbison band: "___ Kings"

9 birth state of Austin resident and actor Chris Klein (abbr.)

10 TXism: "sticks like stink ___"

11 TXism: "take a ___ at it" (try)

12 director Preminger

13 Davy Crockett: "___ you're right, then go ahead"

14 TX "Cowpokes" artist, Ace (init.)

15 TX Tanya Tucker's "Texas When I ___"

17 TXism: "___ a maggot" (bad taste)

19 black widow spider ___ mate

20 anxiety and worry state where TX

24 Holly died (abbr.)

25 dir. from Crockett to Mount Pleasant

26 bees' casa

27 one can improve ___ hand in poker

28 country singer, Morgan

29 star of 1945 film "San Antonio," Errol

31 lake "La Sal del ___"

32 apprehend

33 book: "Sam Houston: The ___ Texan"

38 TX blues pianist ___ Joe Hunter

40 TXism: "too ___ for his britches" (aloof)

41 TXism: "mosey ___ to the trough" (join in)

42 sends out

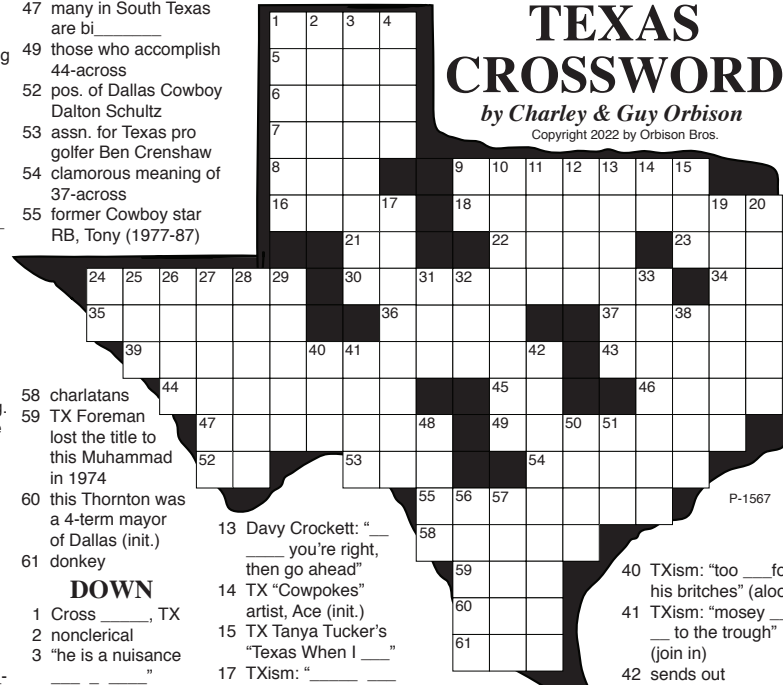
48 British boys

50 small European deer (plural)


51 "___ wit" (foolish person)

56 TX-born Evelyn Keyes was Suellen ___ in "Gone With the Wind"

57 in Crosby County on U.S. 82 and 62



MOVING?



Raise some extra money through the Classifieds with a Moving Sale.

16 words for only \$10.

Azle News
 817-270-3340 &
Springtown Epigraph
 817-220-7217

Your
Hometown Papers!



KARL KLEMENT

Body Shop Painter Helper

Assists Body Shop painters and performs other duties as needed throughout the Body Shop. Must be responsible and dependable with a valid driver's license. Monday-Friday work week.

Body Shop Technician

Commission. Must have experience.

Body Shop Porter

Performs duties throughout the Body Shop. Must be responsible, dependable and have a valid TXDL. Monday to Friday work week.

Parts Drivers

Must have valid TXDL with acceptable driving record. Overtime available and room for advancement. Monday-Friday work week.

Service Advisor

Seeking to hire an *Experienced Service Advisor*. Must be committed to customer satisfaction and be honest and dependable. Monday through Friday. No weekends!

TEXAS STATEWIDE CLASSIFIED ADVERTISING NETWORK

TexSCAN

LOG HOMES

Log Homes—Pay only the balance owed. Just Released: American Log Homes is assisting estate & account settlement on houses. Log Home kits selling for balance owed, free delivery. Model #101 Carolina, bal. \$17,000; Model #203 Georgia, bal. \$19,950; Model #305 Biloxi, bal. \$14,500; Model #403 Augusta, bal. \$16,500. View plans at www.americanloghomesandcabins.com; 704-368-4528.

MEDICAL

Portable Oxygen Concentrator May Be Covered by Medicare! Reclaim independence and mobility with the compact design and long-lasting battery of Inogen One. Free information kit! Call 866-747-9983.

Life Alert. One press of a button sends help FAST, 24/7! At home and on the go. Mobile Pendant with GPS. FREE First Aid Kit (with subscription.) CALL 844-831-1525. FREE Brochure.

DENTAL INSURANCE from Physicians Mutual Insurance Company. Coverage for 350 plus procedures. Real dental insurance - NOT just a discount plan. Do not wait! Call now! Get your FREE Dental Information Kit with all the details! 1-855-901-0467 www.dental50plus.com/txpress #6258

WANTED

Need Extra Cash - I Buy RVs & Mobile Homes -Travel Trailers, 5th Wheels, Goosenecks, Bumper Pulls. In Any Area, Any Condition - Old/New, Dirty or Clean! I PAY CASH. No Title - No Problem, we can apply for one. ANR Enterprises, 956-466-7001.

ACREAGE

Hunting/investment/recreational property. Starting at \$650/acre. Trans Pecos region. Also the Hill Country (Edwards, Menard, Coke, Val Verde Counties - free ranging exotics), South Texas (Duval County - whitetail, hogs). Large or small acreage. 30-year fixed rate owner financing, only 5% down. Call toll-free or email for individual prices and terms. www.ranchenterprisesltd.com, 800-876-9720.

AUCTION

44th Annual Cattleman Bull & Female Sale - Jan. 22, Noon. Expecting 100 bulls. Also selling a group of select females. El Campo Livestock Auction, El Campo, TX. Info: cattlemansale@gmail.com; Adrian Knight TX Lic. #11102, call 903-452-7591; Kelly Conley TX Lic. #9558, call 903-850-3449.

GENERATORS


GENERAC Standby Generators provide backup power during utility power outages, so your home and family stay safe and comfortable. Prepare now. Free 7-year extended warranty (\$695 value!). Request a free quote today! Call for additional terms and conditions. 855-704-8579.

MAINTENANCE

Eliminate gutter cleaning forever! LeafFilter, the most advanced debris-blocking gutter protection. Schedule a FREE LeafFilter estimate today. 15% off and 0% financing for those who qualify. PLUS Senior & Military Discounts. Call 1-855-815-5722.

Texas Press Statewide Classified Advertising Network
 221 Participating Texas Newspapers • Regional Ads
 Start At \$250 • Email ads@texaspress.com


NOTICE: While most advertisers are reputable, we cannot guarantee products or services advertised. We urge readers to use caution and when in doubt, contact the Texas Attorney General at 800-621-0508 or the Federal Trade Commission at 877-FTC-HELP. The FTC web site is www.ftc.gov/bizop.



Raise some extra money through the Classifieds. Have a Yard Sale. 16 words for only \$10

Azle News
 817-270-3340 &
Springtown Epigraph
 817-220-7217

Your
Hometown Papers!



Service Porter/Make-Ready Associate

Performs duties throughout the service department. Must be responsible, dependable and have a valid TXDL. Monday through Friday.

Service Advisor

\$2,500 Hiring Bonus

Must be committed to customer satisfaction and be honest and dependable. Previous experience preferred, but willing to train the right candidate.

Klement Distribution, Inc.
 (Hershey Ice Cream Distributor)

Route Driver

\$2,500 Hiring Bonus

No CDL required, but must have valid TXDL with acceptable driving record. Monday through Friday. Fun work environment! Promote from within advancement opportunities. Flexible time-off schedules, often 3-day weekends during summer months.

Karl Klement Properties, Inc.

Motorcycle Restoration Tech

Restoring Bultacos. Full or Part time hours available.

Maintenance Helpers

Show us you have what it takes! On the spot job offers. No experience required.

For consideration of all positions apply to:
Alyssa Jacobs, Assistant H/R Manager
 605 N. Business 287, Suite 102, Decatur, Texas
hr@klementford.com
 940-627-6362

We offer Benefits, Paid Holidays, Vacation & Training

SERVICE DIRECTORY

Home Repair

AFFORDABLE HOUSE LEVELING

FLOOR LEVELING • CRAWL SPACE REPAIR
 PIER & BEAM • SLAB
 BRICK AND CONCRETE REPAIR

FREE ESTIMATES

682-262-0393

Transmissions & Auto Repair

Rainwater's

Transmission & Auto Repair

TRANSMISSION • BRAKES
 A/C • ENGINE SERVICE

201 E. Hwy. 199, Springtown
682-615-7250

LOCALLY & FAMILY OWNED!

Diesel/Auto Repair

TEXAS

SEMIS
 RVS
 EQUIPMENT
 PICKUPS
 CARS
 ATVS

Diesel & Auto
We Fix Everything!

817-968-7867

Movers

★ **U.S. ARMY retired - but not tired!** ★

Member:

- VFW • DAV
- Sheriff's Assn
- American Legion
- ET AL

MOVERS
 Courtesy • Punctuality • Care

- Full Service Moving - Local & Long Range
- Gun Safes - Pianos - Auto - Antiques
- Packing & Storage - Large or Small

Please call Jim at **817-237-5151**

Trash/Waste Service



ATEX TRASH SERVICE

\$30 per month WEEKLY PICKUP

Proudly Serving The Community We Live In

817-344-8464 **ATEXTRASH.COM**

Exterminators

Tom Samples Pest Control

YOUR COMPLETE PEST CONTROL SERVICE

Family owned and operated. Over 50 years of service.

Voted Best Pest Control
 Best of Parker County

817-915-2470

Exterminators

Est: 2003 in Azle 1PCL 12509

THE BUG STOPS HERE!



Classic Pest Control Operators, Inc.

817.444.0371

classicpc.com facebook.com/classicpcinc

Air Conditioning and Heating



J&J AIR CONDITIONING & HEATING

Serving the Springtown, Azle, Weatherford & Fort Worth Area Since 1970

Sales • Service • Residential • Commercial
SPRINGTOWN 817-220-4506
www.jandec.com

Texas Air Conditioning Contractor License: TACLA014745E

Appraisals



PAYNE Appraisal, LLC

CYNTHIA PAYNE, MNAA, ASA
STACY PAYNE, OFFICE MANAGER
 WOMAN OWNED
 VETERAN OWNED

817-771-5562
info@payneappraisal-llc.com
www.payneappraisal.net