



Azle News

YOUR TRUSTED LOCAL NEWS SOURCE SINCE 1966

Wednesday, March 16, 2022 • Volume 70, Number 42 • AzleNews.net • \$1



Curren McLane has been the Azle Memorial Library director since 2009. She has been with the library since 2008. Photo by Jim Stevens

Librarian ‘truly’ loves her job

BY DON MUNSCH
editor@azlenews.net

Read any good books lately?

Curren McLane’s job puts her front and center of those who love the written word.

McLane is the director of Azle Memorial Library. Patrons asking for recom-

mendations on books is a standard question librarians receive on a daily basis, she said.

“I’m constantly reading at least one to two books – always,” McLane said. “And I like to do a mixture of non-fiction and fiction. It’s not required to be a reader to work in libraries, but it sure

helps. And I’m glad to say that everyone on our staff is a reader. It certainly not only enriches your personal life but it certainly helps your professional life as well, knowing what’s out there.”

She tries to make an effort to know a lot about authors and books, and while she can’t read everything,

she tries to be as up to date as she can be.

NEVER DREAMS GOING TO WORK

Born in Colorado Springs, McLane moved around the country as a child, as her father was a pastor. She lived

SEE **MCLANE**, PAGE 3A.

WORKING IN AZLE:

Curren McLane, director of Azle Memorial Library

EDITOR’S NOTE: Third in an ongoing series of stories about the jobs of people in the community, from those who work in the public sector – city and schools, for example – to those employed in the private sector. The stories seek to explore various careers and what education and experience they require, as well as reveal what a typical day is like in the job, and what people love most about their jobs.

Higher gas costs forcing some changes



BY DON MUNSCH
editor@azlenews.net

Surging gas prices are forcing people to dig deeper into their wallets.

But businesses and other entities that serve the public,

such as school districts and cities, also have to cope with higher bills.

Myriad factors, based on a range of news sources sought for this story, explain the rise in gas prices: Russia’s invasion of Ukraine,

which has rattled markets; consumer demand, with the pandemic’s effect on mobility playing a role as people have returned to work places and schools, thus trigger-

SEE **GAS PRICES**, PAGE 4A.

Serving up smiles

BY JESSICA MCKINNEY
azlereporter@azlenews.net

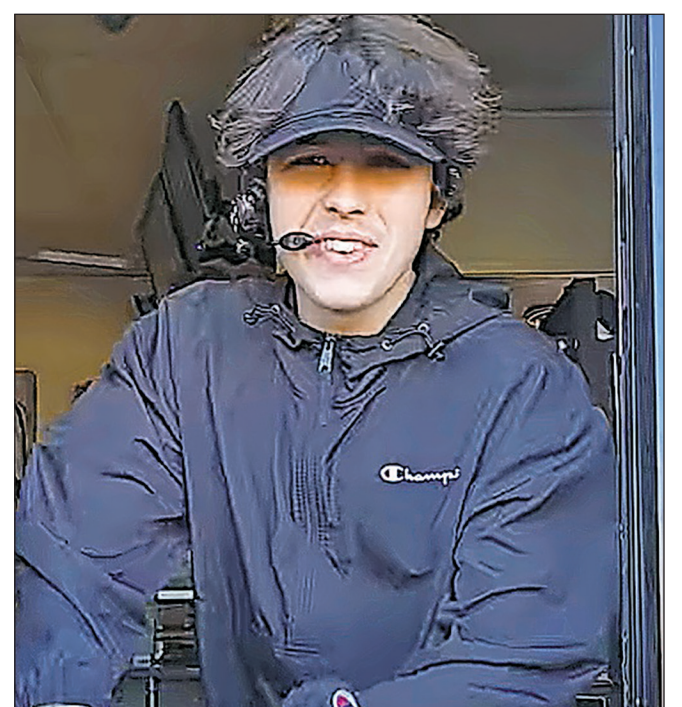
Kameron Crow lives life by the motto “make every day a good day,” and he spreads that message to Azle while working the drive-through window at Taco Bell.

Kameron is a junior at Azle High School. He started his first job at Taco Bell last summer and has gained a lot of notice on social media as someone who is positive and upbeat, and always trying to make sure people leave with a smile.

“When I’m at work, I do my best to make people laugh and I always upsell,” he said.

“Most of the time they think it’s funny and buy even if they don’t want to, which always makes my (general manager) happy.”

The Azle Taco Bell has gotten a lot of positive at-



Kameron Crow working the drive-through window at Taco Bell. Photo courtesy

Jennifer Burrows Lut-

SEE **SMILES**, PAGE 5A.



Call about our NEW LOWER RATES
No community fees or long-term contracts

Staff available 24 hours a day
for your peace of mind

Locally owned in
Azle and operated
for over 20 years

3 home-cooked
meals daily included

Eagle Crest VILLA
SENIOR LIVING

113 Denver Trail • Azle
817-444-3249
www.eaglecrestvilla.com



INSIDE News 1-14A | Obituaries 6A | Sports 1-2B | Classifieds 4-6B |



The Dallas Zoo transferred over a million pounds of herbivore manure to Silver Creek Materials in 2021 for composting.

Photo courtesy

'Zoo Poo' helping to cut down landfill waste

BY JESSICA MCKINNEY
azlereporter@azlenews.net

The Dallas Zoo has found a way to meet one of its major goals in cutting down on landfill waste.

To do that, zoo officials are partnering with a local company to convert tons of animal manure into rich compost each year. They hope to divert 90% of the zoo's waste by 2030 as a part of its commitment to sustainability.

"Each year, herbivorous animals like elephants, giraffes and okapi produce more than two million pounds of manure," said Gregg Hudson, president and chief executive officer of Dallas Zoo.

"The Dallas Zoo is committed to conservation and sustainability as we work to create a better world for animals, and we are thrilled

to partner with Silver Creek Materials to make an even bigger impact."

Before making the decision to use that waste for compost, the Dallas Zoo was sending all of its waste to the McCommas Bluff Landfill in Dallas.

Silver Creek Materials is a Fort Worth recycling, composting and mining company roughly 10 miles outside of Azle that has been operating for nearly 40 years.

The company's founder, Robert Dow, announced in February that his company would be partnering with the zoo to turn the tons of animal waste into an organic compost called Zoo Poo.

"Silver Creek Materials has been committed to recycling for nearly 40 years, and this partnership with the Dallas Zoo deepens that promise to our environment," Dow said.

In 2021, the zoo sent 524.14 tons — more than a million pounds — of manure to Silver Creek Materials for compost. According to the Dallas Zoo, that accounts for about 50 percent of the zoo's total herbivore manure.

A press release announcing the partnership says that the manure "with its mixture of hay and bedding material, creates an impeccable composted blend for potted plants, growing gardens and landscape."

The Zoo Poo will be available to purchase in the Dallas Zoo gift shop, local specialty stores and Silver Creek Materials. Silver Creek is located at 2251 Silver Creek Road, Fort Worth.

Silver Creek has begun responding to requests for mail orders and has shipped out six bags to customers in Stillwater, Minnesota, and Overland Park, Kansas.



Zoo Poo is available to purchase either in one-cubic-foot bags or by the yard at Silver Creek Materials.

Photo courtesy



SALES & INSTALLATION

Honesty & Quality Are Our Best Reference!
Family Owned & Operated

Wood • Tile • Vinyl Plank • Carpet • Shower
12 Months No Interest Financing Available W.A.C.

2597 W. Hwy 199, Springtown • 817-668-6363

Open Mon.-Fri. 8:30 AM - 5 PM Sat. 9 AM - 2 PM

www.springtownfloors.com • SpringtownFloors@yahoo.com

21ST ANNIVERSARY

COWTOWN GOES GREEN

PRESENTED BY CAVENDER'S



SATURDAY, MARCH 19 ★ 10AM-8PM

SPECTACULAR WESTERN PARADE,
COWTOWN KIDS RODEO, LIVE MUSIC,
FAMILY EVENTS & MORE!

CAVENDER'S



Weekly

PUBLIC IMPROVEMENT DISTRICT #11

FOR MORE INFORMATION VISIT FORTWORTHSTOCKYARDS.COM

@STOCKYARDSSTATION
@FWSYSTATION

Fort Worth
STOCKYARDS
NATIONAL HISTORIC DISTRICT

131 E. EXCHANGE AVENUE
FORT WORTH, TX 76164
©2022 STOCKYARDS HERITAGE DEVELOPMENT CO.

GAS PRICES, CONTINUED FROM PAGE 1A.

ing more need for gas; and a number of energy business factors, such as lagging oil production. Gas prices hit a 14-year high and hit an all-time record for average price per gallon, \$4.33, for regular unleaded, according to AAA. Some places in Azle have hit the \$4 or more amount.

Some experts say high gas prices could remain for several months.

Matt Adams, assistant superintendent of finance and operations for Azle ISD, said the district is preparing for the rise in gas price by increasing money in its budget, to the tune of about \$100,000 for the rest of the year. The school board will decide on a budget amendment to increase its fuel account at its meeting March 21.

“What we’re doing is asking the board to approve moving it from one account to another,” Adams said, noting that a budget allocation account is where the money comes from.

“It’s something that you factor into the budget just for things like this,” he said.

He thinks the district should be able to cover gas costs for the remainder of the school year. But if gas

goes up substantially – \$2 more a gallon to \$6 a gallon – then the budget situation could change.

The district has its own storage tanks for gas. They are located by the bus barn. As those tanks decrease in volume, the district will seek bids.

“We have three or four vendors that we reach out to get pricing and then get delivery of fuel,” Adams said.

AISD operates 55 buses a day and has 65 to 70 in its fleet, which includes activity buses. The district has approximately 100 vehicles in the district, and those include vehicles for such areas as maintenance and CTE.

As far as next year, the district will have to look at allocating more money to fuel, because of not knowing what prices are going to do, Adams said. He said the district should be able to cover those expenses as well, especially with the growth the district is seeing.

CITY LESS AFFECTED

At this point, City Hall administration in Azle does not anticipate needing to change operations. The city has 71 vehicles, which is inclusive of fire and police vehicles.

“We are monitoring (fuel cost increases),” said Renita Bishop, city finance director. “Right now, we may be OK. We might have to ask for a small increase.”

The city budgeted \$211,000 for the whole year for gas for vehicles. The city has spent just a little over \$73,000, she said.

Bishop doesn’t yet know how next year’s budgets will be affected by gas increases.

“We usually start the budget process in April, and when we start it, we’ll just look to see where we’re at and kind of see where they’re anticipating the increase will be,” she said.

What money is used for vehicles depends on the department, Bishop said. Police and fire vehicles’ gas is paid from the general fund, the golf course vehicles gas comes from the enterprise fund and then water and sewer vehicles are paid for by the utility fund, which is an enterprise fund.

“We’ll be fine,” Bishop said. “One of the unique things with the city of Azle is our sales tax has done really well with the pandemic, as more people have stayed home and spent money inside the city instead of going to the Metroplex.”

Assistant City Manager Lawrence Bryant said he suspects city department heads will probably project increases in fuel for their budgets next year.

“From the time that they start working on their budgets until the time the budget is actually adopted by the city council is about a four- or five-month process,” he said. “The deeper we get into that, I think the better idea we’ll have where the price of gas is going. We’ll have a pretty good idea of what, if any, increases we need to project, what those need to be.”

Bryant said it’s hard to know what will happen, but gas prices spiked in the latter part of the first decade in this century.

“We did the same thing back then,” he said. “The police department and the fire department will try to idle their vehicle as little as possible.... If that can be reduced, then every little bit helps.”

Bishop said the city budgets very conservatively, and that’s one reason rising fuel costs won’t impact the city as much as far as the budget. Department heads will budget so that if there are moderate spikes in the

price of fuel, it’s usually not a heavy impact to the budget, Bryant said.

“At least for the year we’re in now, I think we’ll be fine,” he said. “There may be a need to adjust a budget here and there. But overall, I think we’ll be pretty close to OK – I think we’ll be pretty OK. And then we’ll have a better idea of where we’re heading for next year. This has only been going on for a couple of weeks. So, the further we get into the summer, I think we’ll have a better idea of where things are going and what we need to do to stay on top of fuel purchases.”

Bishop said she didn’t expect the city to have to increase that much money for fuel purchases, and she didn’t expect every department to need an increase.

DELIVERY INCREASES FOR MR. JIM’S

At least one business in town is acclimating itself to the higher prices for fuel.

Bradley Gibson, owner/operator of Mr. Jim’s Pizza in Azle, said that last week was the first time that he had to bump up the amount of delivery fees. Deliveries are a big part of his business operations, although the loca-

tion has carryout available.

“Because we can’t work for free, that’s what we have to do,” he said about delivery increases. “We do that to compensate for the gas reimbursement for our drivers.”

He said he had to increase the delivery charge by almost double – from \$1 to \$1.75 – so that drivers get fairly compensated on their gas reimbursement. All the delivery zones are in Azle. Hourly pay will remain the same at his restaurant.

Gibson said his location has a propane tank outside that used to cost a little over \$200 to fill, but it now costs \$585 to fill up completely.

“So that’s another reason we’ve had to raise the cost on food,” he said. The gas is for the oven.

He said he was on the phone with the corporate office last week trying to find out how the company dealt with the problem in 2008, the last time gas prices soared to \$4 a gallon. The company responded that the Mr. Jim’s locations have to bump up the delivery fees so that drivers can be paid more per trip. Gibson said he will monitor gas prices and adjust delivery fees to match the gas prices.

Azle News
 Published every Wednesday at 321 West Main Street, Azle, Texas by Hyde Media, LLC. Periodicals class postage paid at Azle, Texas, 76020. **Postmaster:** Send address changes to: 321 West Main Street, Azle, Texas 76020
USPS No. 546-920
Annual subscription rates: \$40.00 in Parker, Wise, Tarrant counties (\$36.50 65 and older); \$46.50 elsewhere within and outside Texas.
 The Azle News does not assume responsibility for errors in advertisements beyond the cost of the advertisement itself. Any erroneous reflection upon the character or reputation of any person or firm appearing in this newspaper will be corrected when called to the attention of the publisher.
 The entire content of each issue of **The Azle News** is protected under the Federal Copyright Act. Reproduction of any portion of any issue is expressly forbidden without the prior written consent of the publisher.
 © 2022 Azle News

Free Admission – Plants – Concessions – Kids Activities
15th annual South Texas HOME and GARDEN SHOW
SATURDAY, MARCH 19
 9 AM - 5 PM
 Floresville Event Center, 600 Hwy 97 W, Floresville
 65+ VENDORS!

GET READY FOR WINTER!
Heating Tuneups \$55
COMMERCIAL & RESIDENTIAL
Southwestern COMFORT Air & Heat
11345 FM 730N
Azle 817-696-6421
 Owner Kenny Bates 817-361-3695

Kid Scoop THE AWARD-WINNING PRINT & ONLINE FAMILY FEATURE
 Find Kid Scoop on Facebook
 © 2022 by Vicki Whiting, Editor Jeff Schinkel, Graphics Vol. 38, No. 15

RIDDLES: ANCIENT FUN

The Riddle of the Sphinx
 Throughout history, heroes in tales must solve riddles to save others or travel to certain places. In one Greek myth, the hero must solve the riddle posed by the Sphinx guarding the city of Thebes.
 The Sphinx was a mythical creature with the body of a lion, the head of a human and the wings of an eagle. And as the guardian of Thebes, it ate the people who could not answer this tricky riddle!
Can YOU answer it?
 “What animal walks on four legs in the morning, two legs at noon, and three legs at night?”
 Think about it. Then, circle every other letter to reveal the answer.
A B C U Y M J A S N V B W E L I K N C G B
A H
 How can this be? Hold this page up to a mirror for the explanation.
 26 zru0t lls no nro wsrq sw esidp dte srs wv nrsW sw sp6 blo ni zps0 owt no llxsw sw flub6 ns (blitz pni0llsw 6) ps0 blritf 6 bsrn

No, the OTHER Sphinx!
 Sphinxes appear in the art and legends of both ancient Greece and ancient Egypt. Ancient Egyptians made many large statues of sphinxes. The largest and most famous Egyptian sphinx was carved near the the pyramids of Giza in about 2500 B.C. Do the math to see how big it is.
 _____ feet long
 99 + 99 + 42
 _____ feet high
 22 + 22 + 22

World’s Oldest Riddle
 Riddles have been entertaining and challenging people for at least 4,000 years! The oldest riddle that was written down is from Ancient Sumeria, where Iraq is today. It was written about 1900 B.C.
 Ancient Sumeria is also the civilization with the oldest surviving writing system that we know of!
 Here’s the world’s oldest riddle. Can you figure out the answer?
 “There is a house. One enters it blind and comes out seeing. What is it?”
ANSWER: A schoolhouse! Clever, right? And a reminder of the importance of school!

Kid Scoop Puzzler
REBUS: A PICTURE RIDDLE
 A rebus is a word or a phrase spelled out in pictures and letters. One of the most famous is: U
 Can you figure out what these rebuses say?

Double Double Word Search
 Find the words in the puzzle. How many of them can you find on this page?
 MYTHICAL REMINDER ANCIENT RIDDLE OLDEST ANSWER SPHINX HEROES SOLVE TALES REBUS WALKS BEING HUMAN LION
 L A C I H T Y M C O R I T N H E R O E S E B O N T S E D L O D E S N E L K T U L N I P N D I A L D V I N H D R L C U A E M G I R E W S N A W E R N S U B E R A M R S X H U M A N A H
 Standards Link: Letter sequencing. Recognize identical words. Skim and scan reading. Recall spelling patterns.

Kid Scoop Together: Make a Riddle
 Make a riddle and challenge friends and family to solve it. Start with the answer to your riddle. Then make a list of things that describe the way your “answer” looks, smells, sounds or behaves. Write statements that describe several little things about your answer. Share the statements and then end with “Who and I?” or “What am I?”
 Here’s an example: Start with an answer to your riddle: **DOOR**
 Write 3-4 statements describing a door:
 I let people in and out. I can creek or be silent. With a strong breeze, I can startle with a loud bang!
Write some riddles for each of these topics:

King Odin’s Riddles
Odin’s Riddle #1
 Thirty white horses on a red hill, first they champ, then they stamp, then they stand still. King Heidrek, guess my riddle.

Odin’s Riddle #2
 Who is that great one who grasps the earth, swallowing wood and water? Bad weather he dreads, wind, but no man, and picks a fight with the sun. King Heidrek, guess my riddle.

Use King Odin’s Secret Code to solve the riddles.

 ★ = E ◻ = O
 ◻ = F ◻ = S
 ◉ = G ⚡ = T
 ◻ = H ◉ = V

Riddle Poetry
 Look through the newspaper for words that start with each letter in the word, RIDDLE. Cut out the words and then make a little poem using words that describe riddles and start with each of the letters in RIDDLE.
R _____
I _____
D _____
D _____
L _____
E _____
 Standards Link: Language Arts: Understand that poetry has multiple forms.

FROM THE Kid Scoop LESSON LIBRARY
Make a Rebus!
 Cut pictures out of the newspaper and arrange them to create a word or a short message, such as “I love you” or “Do you see me?” Can a family member figure it out?
 Standards Link: Visual Arts: Understand that art can convey feelings or ideas.
Write On!
Sweet Talk
 Have you ever sweet talked someone into helping you with a chore or into simply doing it for you? How did you do it?
 Standards Link: Reading/Writing: Draw evidence from informational text.



Green (center) is pictured with her son Craig and daughter-in-law Brenda. Photo courtesy

Green given recognition from Lions Club

Mary Green, a 22-year member of the Azle Lions Club, was recognized by the Past District Governor's Association for District 2-E2 for all that she has done with the organization. Green was presented with the Albert and Viola Brown Humanitarian Award on March 12. Green has been a Guiding Lion, Zone Chair, Region Chair, Pin Trader for District 2-E2 and is a past president of the Texas Pin Trader Association. She was selected from candidates from across the district to be presented with this award, named for its first recipients.

A piece of history coming to AHS

BY JESSICA MCKINNEY
azlereporter@azlenews.net

Azle High School student Brooke Schocke, has worked for two years to bring a reminder from "a date which will live in infamy" to Azle. In two weeks, that moment will be here.

At 6 p.m. March 30 at Azle High School, Schocke will present a piece of the USS Arizona battleship, a casualty of the attack on Pearl Harbor on Dec. 7, 1941, to the Azle community. The piece will remain on display at the high school.

"This is the first piece to be on permanent display at a public high school in Texas," Rob Schocke, Brooke's father, said in a Facebook post.

The community is welcome to attend the event to commemorate this moment in history.



Brooke Schocke with a piece of the USS Arizona, to be put on display at Azle High School. Photo courtesy

SMILES, CONTINUED FROM PAGE 1A.

actions with Kameron. "As a business owner myself, I was blown away by his energy, good attitude and sense of humor," Luttrull said.

"It was very refreshing to have an interaction with someone like Kameron. Af-

ter I had posted about Kameron, several other people started commenting with their funny interactions with him."

Kameron's plans for after graduation include going to college, though he's not decided yet on where or what

he will study. In the meantime, he will enjoy the work he's doing.

To anyone considering working in the fast-food industry, Kameron says to "make the most of it ... to have fun."

CORRECTION

In the March 9 edition of Azle News, the photo of Tom Muir and Michelle Stevens was erroneously credited to Jim Stevens. The photo credit goes to Steve Stutsman.

Spotlight on

MARCH

BUSINESS

AZCO Storage

STORAGE SIZES

- 5x10 \$70
- 10x10 \$90
- 10x20 \$100

11400 FM 730 N.
Azle • 817-444-7066

Mon - Fri 9a - 5p • Sat 9a - 4p

JENNIFER STEPHENS TAX SERVICE, INC.

119 Industrial Ave.
Inside Sutton Printing Office

(817) 301-8880

JenniferStephensTaxService@gmail.com

Full Service Accounting

- Contactless Services
- Tax Preparation
- Free 2nd Looks for Tax Returns
- Free Consultations

Jennifer Stephens TAX SERVICE, INC

- Contactless Services
- Tax Preparation
- Free 2nd Looks for Tax Returns
- Free Consultations
- Business Entity formation: LLC, Inc., Corp., LP, LLP, Trust, Non-For-Profit
- Wide Range of Business Forms

BRING IN THIS AD TO RECEIVE

\$25 Off

TAX SERVICES OR ACCOUNTING FEES

119 Industrial Ave, Azle
817-301-8880

JenniferStephensTaxService@gmail.com
WALK-INS WELCOME!

UNCLE JAY'S

Grub Shack

BARBECUE & CATFISH

Dine In • Take Out • Drive Thru

- Pork
- BBQ
- Brisket
- Burrito
- Links
- Fries
- Chicken Strips
- Cole Slaw
- Catfish
- Potato Salad
- BBQ
- Baked Beans
- Tacos
- & More!

LUNCH SPECIAL 11-2 PM

BUY A PORK SANDWICH, GET A

FREE

Side of Baked Beans or Coleslaw

Meat as tender as Mother's love!

817-500-7316

1704 Boyd Rd., Azle TX
Inside Quickway/Exxon

@unclejaysfamoussbbq

Jennifer Stephens Tax Service, Inc.

For all your tax season needs

Jennifer Stephens Tax Service, Inc. is ready to take care of all your income tax and accounting needs both face-to-face and CONTACTLESS.

She offers a variety of services, including federal and state taxes, business formations (LLC, Inc., Corp, Non-for-Profit, Trusts), legal forms, power of attorney and wills, full-service accounting/bookkeeping, digital record retention, and financial tax advice.

Jennifer Stephens Tax Service, Inc. is located at 119 Industrial Ave. in Azle, inside the Sutton Printing office, and is available by phone and email. Information can be received through contactless secure drop mailbox at the office.

Jennifer Stephens is an accountant with more than 30 years of experience in the accounting and tax industry and ERO.

"I don't have customers, I have friends," says Stephens. She offers free consultations and will work up the return for free; nothing is owed until the return is signed and transmitted to the IRS.

"I diligently aspire to provide services within an environment of a 'Mom and Pop' business. I am 'old school' and can customize to a customer's needs," added Stephens.

Let Jennifer Stephens Tax Service, Inc. take care of all your tax and accounting needs.

Tax service rates start at \$50 for franchise or sales tax returns, \$300 for personal tax returns, \$350 for all business tax returns, with an additional \$50 for any state return. This month, file an extension at no charge.

You can call 817-301-8880 to speak with Jennifer about your needs and arrangements for contactless procedures.

STACEY'S MOBILE NOTARY SERVICES

Tarrant • Parker • Wise

STACEY RODGERS

- Notary Public
- Loan Signing Agent
- Field Inspection
- I-9 Authorization
- Title Transfer

817-550-1624

www.smnotaryservice.com

staceysmobilenotary@gmail.com

Obituaries

Sylvia Driskill 1940 - 2022

Sylvia Driskill passed away on Feb. 21, 2022.

Online service is Saturday, April 2, 2022 at: <https://www.gatheringus.com/memorial/sylvia-driskill/8810>

She was born in 1940 to Leona Coomer (nee Younger) and George Coomer. She was a loving mother to Darla (Scott) Auer, Dane (Laura Belarbi) Driskill, and Lance (Sharon Folliard) Driskill; adoring grandmother to Sean Auer, Ryan (Shelby) Auer, Cameron Driskill, and Teagan Driskill.

She is survived by her dear sister, Delena Doyle of Azle, Texas and many nieces and nephews. Her dear



brother was the late Derald Coomer. She is survived by her former spouse and loving family member Travis Driskill.

The Azle News, March 16, 2022 Edition

Michael Paul Miller 1967 - 2022

Michael Paul Miller, 54, passed away Tuesday, March 8, 2022 in Weatherford.

He was born April 24, 1967, in Fort Worth to Robert and Bonnie (Howeth) Miller. Micheal was a fireman for the City of Azle for many years. He was quite a computer buff. Michael loved spending time with his grandson.

Michael was preceded in death by his parents; brothers, Kenny and Kevin Miller and grandparents William and Francis Howeth.

He is survived by his son, Justin Miller and his wife Christina; daughter, Jessyca



Miller; brother, Timothy and his wife Shonnah; grandson Kace Miller and nephew, Austin Miller.

The Azle News, March 16, 2022 Edition

Can humanity be healed?

BE AMAZING By Gerry Lewis



Azle resident Dr. Gerry Lewis guides explorers to discover their AMAZING. He is an author, musician, and speaker, and a coach-sultant for individuals, churches, and organizations. More at www.discoveryouramazing.com.

What might be possible if ... ?

That's a good question. More accurately, it's a good question starter. As a professional certified coach, I know that the best questions cannot be answered with a simple "yes" or "no."

Questions that can be answered that way—what we refer to as close-ended—don't require deep thinking, reflection on reality, or imagining possibilities.

In fact, close-ended questions often are not really questions. They are ways of affirming the opinion or supporting the agenda of the questioner.

"Do you think gasoline is too expensive right now?"

"Do you think property taxes have gotten out of control?"

Those questions—by their very nature—cut off the possibility of dialogue and learning.

Conversely, open-ended questions invite something that we so often miss: Conversation.

Let me start over with my initial question starter.

What might be possible if we saw every hungry person as a person who is hungry?

What might be possible if we saw every homeless person as a person who is homeless?

What might be possible if we saw every politician as a person who has political aspirations?

What might be possible if we saw every drug addict or alcoholic as a person with a substance abuse problem?

I could completely fill out the rest of my space today with other examples, but the bottom line is how we see people with whom we have differences.

What might be possible if we saw each one - first and foremost - as a person?

And if we are persons of

faith, what might be possible if we saw every person as a person created in the image of God?

That's not a new or novel concept, but sometimes we need a reminder.

This morning I heard a Muslim imam from Sudan tell his own story of a personal awakening when coming to the U.S. His father was hospitalized with a serious illness and had three different physicians working together on his care.

One of the physicians was Muslim, one was Jewish and the third was Christian.

Here's what he said this morning: "If three doctors of three different faiths can work together to heal a man, could not three religious leaders of three different faiths work together to heal humanity?"

Wow! Let that sink in for a minute.

And just so you don't think I'm saying that all faiths are the same, let me be clear. I am not.

But what might be possible (there's that question starter again) if faiths could maintain their unique and deeply held beliefs, worship in their own unique and special ways, and still work together to make the world a better place through addressing common problems like hunger, religious freedom, human trafficking, racism and terrorism?

In the past two days, I've heard Muslim, Jewish and Evangelical Christian leaders affirm that it is not simply possible; it is necessary.

What might be possible if we decided to listen and learn with humility and compassion?

What might be possible if we decided to love our neighbors even if they are not like us?

That, my friend, would be amazing.

Geneva Juanita Pruitt 1927 - 2022

Geneva Pruitt, 94, made the wonderful cross into Heaven, Monday, March 7, 2022.

Service was at 11 a.m., Friday, March 11, 2022 at Ash Creek Baptist Church. Interment: Ash Creek Cemetery. Visitation was 10 a.m., Friday prior to the service

She was a loving mother, grandmother, and great-grandmother. Geneva was born May 1, 1927 in Big Spring, Texas to Roy and Hattie Lee Curry. She attended Ash Creek Baptist Church and the Ruth Class where she was a member for 65 years. She was a resident of Azle since 1953 and retired from Mitchell's Department Store in 1992.

Geneva was preceded in death by her husband of 62 years, Wayne Pruitt, her parents, two brothers and two sisters.

She is survived by her



children, Judy Stanford, Jean Ratliff (Robert), and Morris Pruitt (Carolynn); sisters, Dolores McMillin (Oran), Sharon Blake, Beverly Sparks (Roland); Grandchildren, Nathan Pruitt (Lynsey), Tiffany Pruett (Wes), Lindsey Brown (Noal), Kyle Ratliff (Jennifer), Aaron Pruitt (Rebecca, Fiancée); nine great-grandchildren and many nieces and nephews.

The Azle News, March 16, 2022 Edition

Galbreath-Pickard
FUNERAL CHAPEL

817-594-2747 • Fax 817-596-7803

James R. Plowman
Norma Plowman
913 N. Elm St.
Weatherford, TX 76086
www.galbreathpickard.com
1-800-593-2747

Ms. Fairy Dogmother

Ann Coffey
Private Dog Training
817-668-6229
ann@msfairydogmother.net
www.msfairydogmother.net

It's never too late to have the dog of your dreams!

White's Funeral Homes
Our family serving your family since 1908

Bob White, Anita White and Zack Bellenger

Full Service Funeral Home
Cremation Services
Pre-Need Plans

Azle • Springtown • Mineral Wells • Weatherford
817-444-3211 • www.whitesfuneral.com

HE WANTS YOUR MONEY
'WE'VE GOT YOUR SIX'

Tactical Taxes Etc.

510 W Main St, Ste. A
Azle • 817-744-0519

AIR DUCT CLEANING

- Clean All Supply Vents
- Sanitize
- Return Vents

Call Today For Your Appointment
817-444-8025

... ATTEND THE CHURCH OF YOUR CHOICE THIS SUNDAY

<p>THE ABBEY CHURCH Pastor: Paul Brownback 10400 Jacksboro Highway 817-238-1404 www.TheAbbeyChurch.com Morning Worship.....10:30 AM Community Groups.....Various Times</p> <p>ASH CREEK BAPTIST CHURCH Pastor: Dr. G. Wesley Shotwell 300 South Stewart St. 817-444-3219 www.ashcreekbc.org Sunday School.....9:30 AM Contemporary Worship-TMP.....10:45 AM Traditional Worship.....10:45 AM Evening Worship.....6:00 PM Wednesday Youth Refuge.....6:00 PM Wednesday Evening.....6:15 PM</p> <p>AZLE CHRISTIAN CHURCH (Disciples of Christ) Senior Minister, Ashley Dargai, Katie Medlin, Worship Minister 117 Church St. • 817-444-3527 Sunday School.....10:00 AM Morning Worship.....11:00 AM</p> <p>AZLE FIRST ASSEMBLY OF GOD Pastor: Tim Stevens 1020 S.E. Parkway, Azle 817-237-4903 Sunday School.....9:30 AM Morning Worship.....10:30 AM Wednesday Evening.....7:00 PM</p>	<p>COMMUNITY BIBLE FELLOWSHIP CHURCH Pastor - Alton Davis 817-521-4510 1405 Reynolds Rd., Azle 817-444-7117 Directions: 730 N. to 1542 .5 mi. right on Cardinal, left on Reynolds Sunday School.....9:45 AM Morning Worship.....11:00 AM Sunday Evening.....6:00 PM Wednesday Evening.....7:00 PM</p> <p>CORNERSTONE COMMUNITY CHURCH 2233 Hwy 199 E. • Springtown 817-221-LIFE (5433) Sunday Worship Service.....10:00 AM Wednesday.....7:00 PM</p> <p>CROSSROADS BAPTIST CHURCH Pastor - Jon Baker Corner FM 730S & FM 1886 817-755-0279 Transportation Available Worship Service.....10:30 AM Wed. Prayer Service.....7:00 PM</p> <p>THE EDGE CHURCH - AZLE 1313 S.E. Pkwy, Azle 817-237-4822 Missouri Synod "Love God - Serve Others - Share Jesus" Traditional Worship.....9:30 AM Contemporary Worship.....11:00 AM</p>	<p>FIRST UNITED METHODIST CHURCH Pastor: Dr. Richard Reed 200 Church St., Azle 817-444-3323 Morn. Worship.....8:30, 9:45 & 11 AM Sunday School.....9:45 & 11 AM Youth (UMYF).....5:00 PM Sun & 6:30 PM Wed</p> <p>HOLY TRINITY CATHOLIC CHURCH 800 Highcrest Dr. - Azle 817-444-3063 Saturday.....5:00 PM Sunday.....9:00 AM Sunday.....11 AM (Spanish) Daily Mass (M, T, Th, F).....8:00 AM Wednesday Mass Religious ED.....6:30 PM Confessions.....Sat 4 PM</p> <p>HOPE LUTHERAN CHURCH ELCA 4795 E. Hwy 199 - Reno 817-221-HOPE Follow us on Facebook for streaming services Sunday School.....9:00 AM Traditional Service.....10:00 AM</p> <p>SOLID ROCK BIBLE CHURCH 591 S. Reno Rd., Springtown, Texas 76082 Pastor - Bill Gay - 817-304-7443 Coffee and Donuts.....9:00 AM Sunday School.....9:30 AM Morning Worship.....10:30 AM Children's Church After Music Service Wed. Prayer Meeting.....6:30 PM Wed. Bible Study.....7:00 PM</p>	<p>LEGACY CHURCH Assembly of God Church Pastor: Gary D. Veazey Hwy. 199 & Jaybird Lane 817-221-2983 Morning Worship.....9:15 & 11:00 AM Kidz Zone.....9:15 & 11:00 AM Weds Evening Legacy Group Legacy Youth, Kids All Services.....7:00 PM</p> <p>SILVER CREEK UNITED METHODIST CHURCH Rev. Sheila Fiorella - Pastor 2200 Church Rd., Azle 817-444-1382 www.silvercreekumc.org Sunday School 9:30 AM • Worship 10:30 AM</p> <p>SILVER CREEK BAPTIST CHURCH Pastor: Jay Ditty Minister of Music: David Musick Corner FM 730 S. & Veal Station Rd. Church 817-444-2325 www.silvercreekbc.org Sunday School.....9:45 AM Morning Worship.....10:50 AM Evening Worship.....6:00 PM Wed. Prayer Service.....7:00 PM</p>	<p>THE WORD@LAKESIDE CHURCH OF GOD 9396 FM 1886 Fort Worth, TX 76135 817-237-5500 thewordatlakeside.com Pastors: Brandon and Kelly Bohannon Worship Pastor: Christen Moody Family Life and Young Adult Pastors: Jodie and Mark James, Kids Pastor: Katie Pearson, Student Pastors: Taylor and Sheridan Tomlin, Creative Directors: Logan and Carrie Edwards, Connections Coordinators: Preston and Ashley Larrew</p> <p>Equip Sunday School at the WORD 9:30 AM Empower Worship at the WORD . 10:45 AM Kids at the WORD.....10:45 AM PreK at the WORD.....10:45 AM Emanate at the WORD (Special Needs Ministry).....10:45 AM Nursery at the WORD.....10:45 AM Young Adults at the WORD.....6:00 PM</p> <p>Wednesdays Adult Bible Class.....7:00 PM The WORD Students (6th-12th grades) 6:30 PM Awana Kids at the WORD.....6:30 PM Life at the WORD Life Groups Various Times</p>
---	---	---	---	--

A church alive is worth the drive! For more information or rates on listing your church, call Johnna at 817-270-3340

Popcorn Players presents 'On Golden Pond'

BY JESSICA MCKINNEY
azlereporter@azlenews.net

The Azle Arts Association is gearing up for its next production of the season, Ernest Thompson's "On Golden Pond."

The play centers on the Thayers, a couple who have been married for almost 50 years. Every year, they spend the summer at their home on Golden Pond. This year, they are visited by their daughter, her future husband and his teenage son.

"On Golden Pond" is a heartwarming and funny story about family, the generation gap and the difficulties of a long marriage.

Opening night is March 25 with additional performances on March 26-27, and April 1-3.

The cast of characters includes Norman Thayer Jr. (Steve Sandfort), Ethel Thayer (Rozanne Gann), Charlie Martin (Chris Pidgeon), Chelsea Thayer Wayne (Carol Braden), Billy Ray (Trey Thornton) and

Bill Ray (Jerry Hall). Scott Nurmela is directing the performance.

Online reservations for performances are encouraged. Tickets can be purchased online at www.AzleArts.org. Adult tickets are \$15. Students, military and seniors are \$12. Sunday matinee performances are \$10.

Friday and Saturday performances begin at 7:30 p.m. Sunday matinees are at 2:30 p.m.



Popcorn Players Jerry Hall (left) and Steve Sandfort rehearse for the upcoming performances of "On Golden Pond." Opening night is 7:30 p.m. on March 25. Photo courtesy

Ronald McDonald House scholarship applications open for HS seniors

STAFF REPORTS

Ronald McDonald House Charities of Greater North Texas announced the opening of applications for its Scholarship Program, which grants more than \$60,000 to 30 local high school seniors each year. Funded by North Texas McDonald's owner/operators and donations from the community, the annual scholarships recognize students for their outstanding academic achievements and community involvement.

Applications are open online at rmhcntx.org/scholarships and must be submitted by April 1, 2022. All students can apply regardless of race, color, creed, religion, sexual orientation, gender, disability, or national origin. To qualify for an RMHC Scholarship, students must:

- be a high school senior
- be younger than 21 years old
- be eligible to attend a two- or four- year college or uni-

versity with a full course of study

- be a legal U.S. resident
- live in the geographic areas of the RMHC of Greater North Texas Chapter
- and submit a complete application and all required documentation by the deadline.

"Our hope with this scholarship is to help students focus on their academics and college experience without having to worry about finances," said Cliff Johnson Sr., local McDonald's owner/operator and chairman of the RMHCNTX board. "As local business owners, we understand the importance of higher education and we are proud to help students achieve their dreams."

Since the Scholarship Program was founded in 1988, more than \$2.5 million has been awarded to over 1,536 North Texas high school seniors. For more information and to apply, visit rmhcntx.org/scholarships.

Angela Harrison Farmers Insurance Agency open for business



The Azle Area Chamber of Commerce hosted a ribbon cutting for Angela Harrison Agency on Tuesday, March 8, in its new office located at 1355 Northwest Pkwy. Ste. 103, Azle, TX 76020. With Farmers Insurance, she offers insurance coverage options for auto, home, renters, business insurance and more in Azle. Call today for a quote (817) 612-5131.

AZLE INSURANCE DIRECTORY



Albracht Harwood Insurance Agency Inc.

120 S. Main St #4, Springtown, TX 76082
albrachtharwoodinsurance.com
(817) 220-4700
2nd Location - Grapevine, TX

Amy Kaplan, Agent
813 E. Hwy. 199
Springtown, TX
817-220-5222
www.amykaplaninsurance.com

The BEST of Parker County 2015, 2016, 2017, 2018, 2019, 2020, 2021

Voted Best Insurance Agency of Parker County 2015
Voted Best Agent of Parker County 2014, 2015 & 2016

Sorrow Family Insurance
Health • Life • Disability • Dental • Final Expense
Home • Auto • Boat • Motorcycle • Big Rig • Mobile Home

Our Family Helping Yours!

Paying Too Much For Insurance?

Call For Your Free Quote

Stephanie and Ed

817-444-1129
682-209-2027
www.SorrowFamilyInsurance.com

Independent Insurance Agent
The Trusted Choice

HOGLE INSURANCE GROUP

SHAYE HOGLE 817-444-6389 **HOGLE HOGLE**

"OUR BEST POLICY IS PERSONAL SERVICE"

HOGLEINSURANCE.COM

Thank you for voting us Best Insurance Agency 2021

HOME • AUTO • FARM • LIFE

BURTNETT INSURANCE

817-220-7682

Protecting Texans, Prioritizing customer service

Germania INSURANCE
AUTHORIZED AGENT

FOREMOST INSURANCE GROUP
BRISTOL WEST INSURANCE GROUP
DAIRYLAND INSURANCE
PROGRESSIVE US Assure

Kaye Burtnett & Vanessa Roberson

905 E. Hwy. 199 Springtown, TX 76082

HALEY CARTER
State Farm

The BEST of AZLE 2014, 2015, 2016

817-444-1100
408 Boyd Ct. • Azle
www.HaleyCarter.com

PEOPLE'S CHOICE AWARDS 5 YEARS IN A ROW!
VOTED #1 INSURANCE AGENCY IN AZLE

Dale Mares, AAMS

BIG SAVINGS

MARES INSURANCE GROUP INC
208 W. MAIN, AZLE • 817-444-1491
dalemars@allstate.com

Insurance and coverages subject to terms, qualifications and availability. Allstate Vehicle and Property Insurance Co. Allstate Fire and Casualty Insurance Co. Northbrook, Illinois 2010 Allstate Insurance Co.

Allstate
You're in good hands.
Se habla español.

Nine accused of sex trafficking at center

NINE ACCUSED OF SEX TRAFFICKING AT CENTER

Nine employees at a Bastrop County facility that cares for young victims of sex trafficking have been accused of trafficking those same girls, according to the Austin American-Statesman.

One employee of the state-contracted Refuge Ranch has been arrested on an undisclosed charge and more arrests are anticipated, according to Tara Olah, a director with the Texas Department of Family and Protective Services.

The facility employed more than three dozen employees to provide 24-7 care for the girls. According to Olah, DFPS received multiple phone calls in January to the statewide intake hotline that "alleged sexual and physical abuse, sexual exploitation, neglectful supervision and medical neglect" at Refuge Ranch, according to the Statesman.

"This is appalling and is a disregard of these children," U.S. District Judge Janis Jack, who presided at a hearing Thursday evening, told state staff, including Family and Protective Services



CAPITOL HIGHLIGHTS

By Gary Borders

Gary Borders is a veteran award-winning Texas journalist. He published a number of community newspapers in Texas during a 30-year span, including in Longview, Fort Stockton, Nacogdoches and Cedar Park. gborders@texaspress.com.

Commissioner Jaime Masters and contract monitors. "And we had to wait for eight calls to come in before we took already trafficked children out of this situation. This is a system that remains broken."

Jack pointed out it took almost six weeks and several phone calls before the girls were removed from the facility. The Texas Rangers have been called in to investigate.

Refuge Ranch opened in 2018 on 50 acres in Bastrop County and is designed to house girls ages 11 to 19. The state ordered the shelter to close on Friday.

TASK FORCE TO ADDRESS TEACHER SHORTAGES

At the behest of Gov. Greg Abbott, a task force has been created by the Texas Education Agency to address

staffing shortages facing the state's public schools.

"Teachers play a critical role in the development and long-term success of our students," Abbott said. "This task force should work diligently to ensure that best practices and resources for recruitment and retention are provided to districts to ensure the learning environment of Texas students is not interrupted by the absence of a qualified teacher."

The Teacher Vacancy Task Force is intended to ensure Texas schools are equipped to deal with these challenges, relying heavily on the input of current and former teachers. More than two dozen superintendents, administrators and teachers have been appointed to the task force.

The state has long endured a shortage of certified teachers that has been exacerbated by the pandemic. A survey

of more than 900 teachers last year by the Charles Butt Foundation revealed 68% of those surveyed were seriously considering leaving the profession.

DROUGHT CONDITIONS STABLE IN FEBRUARY

Precipitation in February was close to normal, but Andrew Weinberg with the Texas Water Development Board predicts the entire state will be in drought conditions by the end of spring.

According to the U.S. Drought Monitor, only a few counties in Texas, mainly in far south Texas and along the Gulf Coast, are not considered to be in drought conditions.

The most severe drought is occurring in the Texas Panhandle, through the Great Plains and into the Big Bend area.

PANEL REVIEWS ROLLING PINES WILDFIRE

An independent panel reviewing a prescribed fire that got out of control at Bastrop State Park recommends requiring more personnel present and smaller burns at the park.

The Rolling Pines wildfire

in January involved nearly 800 acres and forced about 150 households to temporarily evacuate. No private property damage was reported. The Texas Parks and Wildlife Department two days later formed the panel to investigate why the fire got out of control.

The panel also recommended that bulldozers be required to be on site during prescribed burns, which are intended to lessen the risk of large-scale fires such as the Bastrop County Complex Fire in 2011, which destroyed nearly 1,700 homes and scorched almost 35,000 acres.

Members of the panel included fire experts from across the United States.

KAUFMAN WOMAN ARRESTED FOR TIMBER THEFT

A Kaufman woman has been arrested for timber theft in Hopkins County, according to the Texas A&M Forest Service.

Frances Charline Cole, 51, was charged with hiring a logging company to harvest timber on 42 acres on which she had entered into a real estate agreement but never

actually bought.

A timber deed filed with the county clerk indicates she was paid \$8,000 for the timber. However, the logger returned to cut the tract and discovered she had backed out of buying the land.

"Essentially, the logger paid her for timber that wasn't hers, that she had no rights to sell," said Jonathon Keller, Texas A&M Forest Service Law Enforcement Investigator.

NEW COVID-19 CASES RISE, BUT DEATHS, HOSPITALIZATIONS DROP

The number of new COVID-19 cases in the past week in Texas rose to 31,965, up about 5,000 compared to the previous week, according to the Coronavirus Resource Center at Johns Hopkins University. However, the number of new deaths reported dropped to 678, down about a third from the previous week.

The number of lab-confirmed COVID-19 hospitalizations in Texas dropped to 2,008, down 29% from the previous week, according to the Texas Department of State Health Services.

SHOP



Main Street

AZLE

404 Main Place
Banquet Hall Rental
 (300 max capacity)
 Business Events • Weddings
 Birthday Parties • Anniversaries
 Office/Retail Space for Lease
 Booking/Leasing:
 Contact Darlene Tucker 817-721-7185
www.404MainPlaceAzle.com
 Like us on Facebook

Ash Creek Storage
817-444-3292

 Convenient Location
 Corner of Main St. & Locust • Azle

AUDITS
PRIOR YEARS
FUTURE YEARS
 'WE'VE GOT YOUR SIX'
Tactical Taxes Etc.
15% OFF MILITARY
 510 W Main St, Ste. A Azle • 817-744-0519
 Monday-Friday 9 AM - 9 PM • Sat 10 AM - 8 PM • Sun NOON-6 PM
 Refer 5 Clients who process with us, and receive next years 2022 Return Filing FREE!

RURAL GAS SUPPLY
 Family owned & operated since 1946
PROPANE & TANKS
 For Sale and Lease
 In Business Since 1946!

REFILLS AVAILABLE AT OUR LOCATION
140 W. Main St. • Azle
817-444-4613

W. Faye Murphree
D. Brent Murphree
Attorneys and Counselors at Law

- Family Law
- Criminal Law
- Business Law
- Personal Injury
- Wills/Probate

817-270-0030
337 W. MAIN ST. • AZLE
 Not Certified by any Texas Board of Legal Specialization

AZLE PAINT & BODY
 Eric Chisholm, Owner

233 W. Main • 817-444-5057
Where customers send friends

More than just a pharmacy.
Because We Care

Laura's HealthMart PHARMACY
Pharmacy 817-406-4546
Fax 817-406-4550
 Hours: Mon-Fri 8:30 AM - 6 PM,
 Sat 9 AM - 1 PM, Closed Sun.
232 W. Main St, Azle • lauraspharmacy.com

- Essential Oils
- Homeopathic & herbal products
- Accepting Most Insurance
- Convenient Drive-Thru
- FREE Deliveries In Azle City Limits
- Most Prescriptions filled within 15 minutes.

BOOK REVIEW

This Brighton Beach Memoir-ish tale is warm as a sidewalk knish

BY TERRI SCHLICHENMEYER

You never thought that you could tell a joke.

Oh, you'd start off right, tucking in all the funny motions and voices. You'd do the build-up like it was meant to be, and you'd pause at all the right places but much as you tried, the punchline never arrived, or it did and it was delivered wrong. Ugh. Maybe you should try writing better jokes. Just remember, as in the new memoir, "What's So Funny?" by David Sipress, some jokes write themselves.

Friday nights at Gino's on Lexington Avenue were the best of times.

New Yorker cartoonist David Sipress remembers them for their sophistication, for the celebrity-spotting opportunities, for his mother's elegant dresses and pearls, and because his father, Nat, was an important man on those evenings about town.

Nat Sipress was born in the early 1900s and immigrated

with most of his family from Ukraine as a boy, to escape prosecution for their Jewish faith. The family landed first in Brooklyn, where life was a struggle; shortly afterward, they moved to Williamsburg and Nat left home, cutting most ties with his siblings. Why, his son can only guess; Nat was silent on the subject of his life in Ukraine and his earliest boyhood.

And yet, he was open and mostly affable about many other things. The staff at Gino's apparently loved him. He gave Christmas the same weight as Hanukkah in the household, and he didn't lose control the afternoon when Sipress tossed his toys out their apartment window. He urged Sipress to go to college, was proud when he chose to major in Russian history, and urged his son to stick with it, even though Sipress knew his heart was in cartooning. It was then that Nat spoke his displeasure in a time-honored fatherly way: by cutting Sipress loose for a

while. But it was done with love. As were Sipress' mother's constant queries about Sipress' happy childhood. As were his father's weekly visits to the legacy he'd leave his children, and the surprises Sipress would find when his sister died....

So there you are, sitting anywhere but New York City. So why would you want to read the memoirs of a Jewish kid from Manhattan, circa the 1950s?

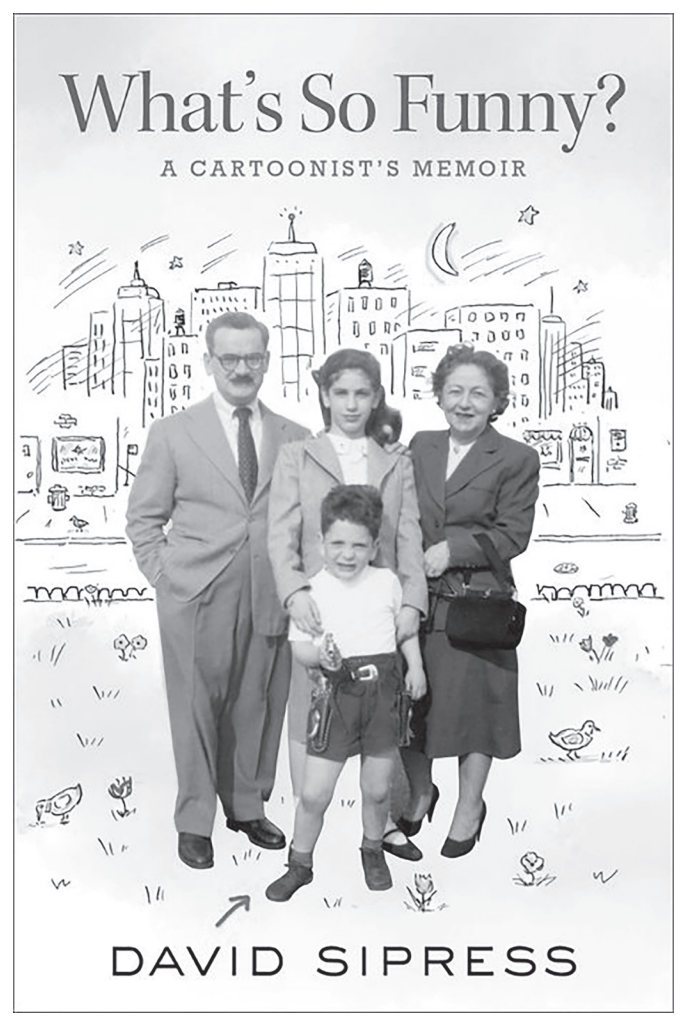
Because this Brighton Beach Memoir-ish tale is warm as a sidewalk knish, filled with author David Sipress' stories of innocent years, a quaintly overprotective mother, and memories of a New York that you'll never see again. Former children, especially those who grew up in the Eisenhower years, will recognize their own kidhood in this book; anyone who was a young adult in the 1960s will identify with memories of father-son clashes and

long-haired hippies. Most delightfully, it's all wrapped around Sipress' story of his career and his own marriage, punctuated by his cartoons.

It seems trite to say that you'll laugh at this book and you'll cry, but you will. It's like the best kind of college reunion, with a casual after-gathering in the lounge. Indeed, read "What's So Funny?" and you'll know what is.



David Sipress photo by Nina Subin



"What's So Funny? A Cartoonist's Memoir" by David Sipress c.2022, Mariner Books \$27.99 336 pages

TACO TIME MEXICAN GRILL

www.mytacotime.com

Kwik Stop Azle • 12555 FM 730 S 817-270-5430	Kwik Stop Boyd • 213 E. Rock Island Ave. 940-433-2466
Kwik Stop Bridgeport • 1206 Hovey St. 940-683-4190	Kwik Stop Centerpoint • 11652 FM 730 N 817-444-3947
Kwik Stop Springtown #1 • 432 TX-199 817-523-4422	Springtown #2 • 529 N Main St. 817-523-2888

Plate Menu ALL PLATES COME WITH A 24 oz. DRINK

QUESADILLA PLATE w/Rice & Beans 7.99 QUESADILLA 5.49	TORTA PLATE Rice & Beans or Fries 8.49 TORTA 6.49	GORDITA PLATE w/Rice & Beans 8.49 GORDITA 2.99
COMBO PLATE w/1 tostada, 1 taco & 1 bean burrito 7.49	TOSTADA PLATE w/Rice & Beans 8.49 TOSTADA 2.99	SOPE PLATE w/Rice & Beans 8.49 SOPE 2.99

TAMALES AVAILABLE ALL LOCATIONS • PRICES MAY VARY

Taco Plate Plate Comes w/Rice, Beans & 24 oz Drink Chicken SINGLE 1.99 PLATE 8.49 Beef SINGLE 1.99 PLATE 8.49 BURGERS Hamburger 3.99 6.49 Meal Cheeseburger 4.49 6.99 Meal	Burrito Special BEAN BURRITO 1.69 Bean & cheese COMBO BURRITO 2.99 Meat, Cheese & Beans REGULAR BURRITO 3.99 Meat, Cheese & Pico de Gallo SUPER BURRITO 3.99 Meat, Cheese, Lettuce, Pico de Gallo, Sour Cream & Sauteed Onions EL GORDO BURRITO 6.49 Meat, Rice, Beans, Lettuce, Cilantro, Cheese, Sour Cream & Sauteed Onions, Pico de Gallo Choice of Meat: BEEF CHICKEN BARBACOA AL-PASTOR CHICHARRON CARNITAS
--	---

Breakfast Burritos 2.79 Sausage, Egg & Cheese Bacon, Egg & Cheese Chorizo, Potato & Egg Potato, Egg & Cheese	Biscuits Chicken Biscuit 1.79 • Sausage 1.69 Bacon 1.69 • Sausage & Egg 2.29 Sausage & Cheese 1.99 Sausage, Egg & Cheese 2.69 Sausage, Egg, Cheese & Bacon 2.99	Family Specials 12 TACOS 1 Pint Of Rice & 1 Pint Of Beans 24.99 10 TACOS SPECIAL 17.99	FISH BASKET 2 pcs. Fish, Fries, Texas Toast, 24 oz Drink 8.99 FISH TACO PLATE 8.49 NACHOS Regular 4.99 Super 5.99
---	---	--	---

CALL IN YOUR ORDER TODAY!

J & E Air Conditioning & Heating Inc.

1825 W Highway 199
Springtown, TX 76082

Check us out on:

Licensed & Insured in the State of Texas:
TX Lic.# TACLA01475E

FOR IMMEDIATE SERVICE, CALL: 817-220-4506

Annual Clay Shoot 2022

We are Looking for Sponsors & Teams

Are you interested in sponsoring the Azle Area Chamber of Commerce Annual Clay Shoot 2022?

SPONSORSHIPS \$250 to \$5,000

How about participating with a team?

TEAM PRICES \$500 members • \$525 non-members.

Call 817-444-1112 for more info

March 25, 2022
Fossil Pointe Sporting Grounds, Decatur, Texas

Azle News

817-270-3340 • www.azlenews.net

<p>IN-COUNTY \$40 FOR ONE YEAR</p>	<p>SENIOR \$36⁵⁰ FOR ONE YEAR</p>	<p>ONLINE \$25 FOR ONE YEAR</p>	<p>817-270-3340 www.azlenews.net</p>
---	---	--	--

Just one question, Dad... how did you hold your temper?

The trace of spring in the air causes me to think of days as a young man, spent fishing during the spring spawn. I would mark the calendar waiting for early spring to arrive so I could go “drown some worms.” My mind recollects those many occasions sitting patiently in a boat waiting for a bite, and the exhilaration of “getting into” a run of sand bass or crappie. These are memories that make my heart warm, bring a smile to my face and make me anxious for this spring to get here so I can do it all over again.

I learned to fish when I was very young. My dad was a busy man and, frankly, we did not have a close father-son relationship. He was a wonderful role model, hard-working and a good provider but he simply did not have in his DNA to be “close” in his personal relationships. While I have always been a blabbermouth, Dad was so quiet Grandma said they did not think he could speak until he was 17. Being distant was just his way. I knew he cared about me, but we were never going to have the sort of relationship that some fathers and sons experience. I think that was OK with both of us.

The one exception to our usual interaction was when we went fishing. Something about being in the great outdoors and being alone together made my dad open to the point he would talk my ears off. He spoke about work, my sisters, the grandparents and even Mom. It wasn't truly a conversation because he did not ask questions or solicit responses from me; he simply spoke. In the environment of “fish-



MY FRONT PORCH

By Sam Houston

Sam Houston is a newspaper executive, a columnist, author, actor and entertainment promoter.

ing,” he shared with me some of his feelings and gave me a sense of what was going on within him.

I still remember the very first time he took me fishing. He very methodically showed me what to do and how to do it. I was maybe 7 or 8 years old, and I did not follow his instructions very well. I would get my line caught up in a tree limb or on something in the water. He never growled or scolded me, but he solved the problem and would counsel me on what I needed to change to not have the same problem again. I caught my first fish that day and ate it that night. Those are some of my best memories of my father.

When my son was about five, I decided to take him on his first fishing trip. I was determined to show my son the skills my father had taught me and for him to enjoy the experience. When we arrived at the lake, I opened the tackle box and started to bait the hooks, all the while explaining what my son should do and how he should do it. We had been blessed with a beautiful day and a good spot to fish, and I felt positive this was going to be a great first fishing experience.

Goodness gracious! The next two hours were the kind of torture no one should have to experience. In some ways, it was worse than a toothache. I do not think I managed to put my

line in the water the entire time. If my son wasn't playing in the worms, he had his line snagged. Just as I would solve one problem, my son would have his line backlashed, or would need to use the bathroom. I was troubleshooting one problem after the other, but it was to no avail because the issues and problems kept coming. Finally, when my son brought me his fishing pole, which was hopelessly snagged, I stopped dead in my tracks. Thinking about my first fishing experience, I looked toward the heavens and said out loud, “My goodness, Dad, I now know I must have created these very same problems for you. How is it you kept your cool and never lost your patience with me? God bless you!”

Well, Dad never answered from Heaven, but I like to think he heard me and gave me a little smile and grunt of satisfaction. I think he would have liked that I made the effort to introduce my son to something we had shared. I was using my dad's tackle box that day; the same one we used on my first day fishing.

Guess sometimes we do have to “pay for our raising” and remember, patience is always a virtue.

Thought for the day: Many men go fishing all their lives without knowing it is not fish they are after.

Until next time...

News From Azle City Hall

We welcome your comments or suggestions on information you would like to see reported on this page. Please call Azle City Hall, 817-444-2541, or email Administrative Assistant Debbie Clayton at dclayton@cityofazle.org. Until next month.....

Stormwater Utility Fee

In 2000, the Azle City Council adopted an ordinance which established the Stormwater Utility Fee (SFU). Residential account holders over the age of 65 qualify for an exemption. If you are being billed for “SFU” charges on your utility bill, you can have this fee removed from your account by supplying documentation that establishes your date of birth. Please bring this documentation to City Hall, 505 W. Main St, Utility Billing Dept; fax a copy to 817-444-7319, Attn: Utility Billing; or include it with your next payment.

The Stormwater Utility Fee is based on the concept that every property in a watershed contributes stormwater runoff and should support the operation, maintenance, and rehabilitation of stormwater drainage systems in the City. The fee is applied to all residential and commercial properties located within the city limits.

If you have questions regarding the City's stormwater management plan, contact Stormwater Manager Jimmy Duvall at 817-444-4511; and if you have questions about the fee, contact Utility Billing at 817-444-2541.



THURSDAY NIGHT SCRAMBLE Begins April 14, 2022

9-Hole Super Scramble every Thursday through end of October.

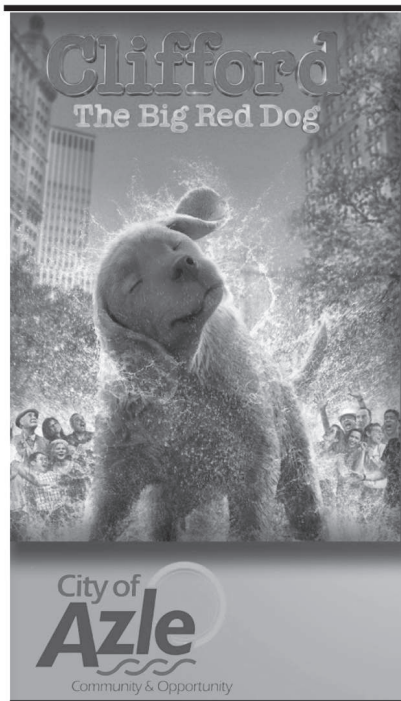
5:00 pm Start / Sign-up by 3:00pm
Late entries will be put on a waiting list.

Groups and scramble format will be chosen by a blind draw (A, B, C) according to the number of players present and their current handicap.

- \$30 - Non-Pass Holders
- \$15 - Annual Pass Holders
- \$5 Optional Skins Pot!
- \$10 Optional Players Pool!

Call 817-444-4940 or stop by the Golf Shop for more information and to Sign Up!

Cross Timbers Golf Course 1181 S. Stewart Street



Grab the family and blankets and head to Central Park, 263 West Main Street on March 19 to enjoy a **free family movie** for all ages.

Special Events will be featuring the “Clifford the Big Red Dog” movie which will begin approximately 10 minutes after dusk. Movie will be shown at the Central Park amphitheater.



Azle School Menu March 21-25, 2022

BREAKFAST: GRADES PK-4th \$1.55 GRADES 5-12th \$1.50 Employees \$1.85 Guests \$1.85	LUNCH: GRADES PK-12th \$2.65 Employees \$3.20 Guests \$3.55 Gold Card Guests \$3.15	A La Carte Items • Milk/Juice 75¢ • Bottled water \$1.00 • Ice Cream \$1.00
---	---	---

PreK - 4th

BREAKFAST: Everyday - Assorted Fruits and Cereal, Juice, White or Chocolate Milk, Graham Crackers, Toast,
Mon Cocoa Puffs Cereal w/ Graham Crackers **Tues** Warm Breakfast on a Stick **Weds** Golden Mini French Toast
Thurs Egg & Turkey Sausage Biscuit Sandwich **Fri** Golden Banana Bread Slice

LUNCH: Everyday - Variety of milk. Your choice of 1 entree & 1 fruit or juice
Mon Cheese Quesadilla, Cheesy Chicken Flour Tacos, Fresh Salsa, Seasoned Mexican Black Beans **Tues** Breaded Chicken Patty Sandwich, Chicken Parmesan w/ Spaghetti **Weds** Chicken Nuggets w/Onion Rings, Chicken Nugget Potato Bowl w/Roll, Steamed Corn **Thurs** Mini Corn Dogs, Fish Nuggets w/Roll, Smiley Fries **Fri** Cheese Pizza, Pepperoni Pizza, Steamed Crinkle Carrots, Fresh Carrots & Celery

GRADES 5TH - 8TH

BREAKFAST: Everyday - Assorted Fruits and Cereal, Juice, White or Chocolate Milk, Graham Crackers,
Mon Warm Cinnamon Oatmeal **Tues** Scramble Eggs w/ Toast **Weds** Whole Grain Cinnamon Rolls
Thurs Fluffy Jumbo Waffles w/ Turkey Bacon **Fri** Red, White & Blue Berry Yogurt Parfait

LUNCH: Everyday - Variety of milk. Your choice of 1 entree & 1 fruit or juice, rolls, crackers. Variety of burgers.
Mon Turkey Taco Nachos w/ Spanish Rice, Beefy Nachos w/ Spanish Rice, Chicken Nachos w/ Spanish Rice, Cheesy Nachos w/ Spanish Rice, Spicy Chicken Patty Sandwich, Cheeseburger, Breaded Chicken Patty Sandwich, Hamburger, Pepperoni & Jalapeno Pizza, Pepperoni Pizza **Tues** Crispy Turkey Tacos w/ Spanish Rice, Chicken Fajita Tacos w/ Spanish Rice, Beef Tacos w/ Spanish Rice, Spicy Chicken Patty Sandwich, Cheeseburger, Breaded Chicken Patty Sandwich, Hamburger, Pepperoni Pizza **Weds** Turkey Ham Hawaiian Pizza **Weds** Beef & Cheese Fajita, Seasoned Chicken Fajitas w/Flour Tortilla, Spicy Chicken Patty Sandwich, Cheeseburger, Breaded Chicken Patty Sandwich, Hamburger, Pepperoni Pizza, Pork Sausage Crumble Pizza **Thurs** Beef & Bean Burrito, Cheesy Chicken Burrito, Spicy Chicken Patty Sandwich, Cheeseburger, Breaded Chicken Patty Sandwich, Hamburger **Fri** Beef Enchiladas, Verde Cheese Enchiladas, Cheese Enchiladas, Spicy Chicken Patty Sandwich, Cheeseburger, Breaded Chicken Patty Sandwich, Hamburger, Cheese Pizza, Meat Lover's Pizza, Cilantro Lime Rice, Crispy Straight Cut Fries, Seasoned Mexican Black Beans

HIGH SCHOOL

BREAKFAST: Everyday: Fruit • Cereal • Juice • Milk/Chocolate Milk • Graham Crackers
Egg Scramble w/ Turkey Sausage & Biscuit • Scrambled Eggs w/ Biscuit • Turkey Sausage Patty w/ Biscuit • Hash Brown
Mon Fluffy Banana Muffin w/ String Cheese **Tues** Egg, Turkey Sausage & Cheese Tornado **Weds** Blueberry Muffin w/ String Cheese
Thurs Cinnamon & Sugar Donut Holes **Fri** Egg, Turkey Sausage & Cheese Tornado

LUNCH: Everyday: Milk • Pizza • Salad. Your choice of 1 entree & 1 fruit or juice BALLPARK CLASSICS: Ham/Cheeseburger Breaded Chicken Patty Sandwich • Spicy Chicken Patty Sandwich • Golden Chicken Corn Dog
Mon Bean & Cheese Tacos, Beefy Tacos, Chicken & Cheese Taco, Crispy Popcorn Chicken Wrap, Cheese Pizza, Pepperoni Pizza, Savory Alfredo Meatballs w/ Penne, Creamy Garlic Chicken Penne, Sweet & Sour Chicken w/Brown Rice, Crispy Kung Pao Chicken w/Brown Rice, Chicken Nugget Potato Bowl w/Roll, Cilantro Lime Rice **Tues** Beefy Nachos, Homemade Cheesy Nachos, Chicken Nachos, Diced Chicken Teriyaki Wrap, Veggie Pizza, Pepperoni Pizza, Down Home Chicken & Waffles, Breakfast for Lunch - Eggs, Pancakes & Sausage, Chili Garlic Popcorn Chicken w/Rice, Crispy Orange Chicken w/Brown Rice, Country Fried Steak Potato Bowl w/Roll **Weds** Beef Burrito, Chicken Burrito, Bean & Cheese Burrito, Cheesy Turkey Melt, Cheese Pizza, Pork Sausage Crumble Pizza, Creamy Macaroni & Cheese w/ Chicken Nuggets, Creamy Macaroni & Cheese w/ Beef Fingers, Sweet & Sour Chicken w/Rice & Egg Roll, Chicken Fried Rice w/Egg Roll, Chicken Tender Potato Bowl w/Roll **Thurs** Beef Enchiladas, Verde Chicken Enchiladas, Cheese Enchiladas, Crispy Popcorn Chicken Wrap, Cheese Pizza, Pepperoni Pizza, BBQ Fajita Chicken Sandwich, Pulled Pork BBQ Sandwich, Teriyaki Meatballs & Broccoli w/ Brown Rice & Egg Roll, Chicken Teriyaki w/Rice & Egg Roll, Chicken Nugget Potato Bowl w/Roll **Fri** Beef & Cheese Fajita, Grande Chicken Fajita, Cheesy Chicken Salad Wrap, Veggie Pizza, Classic Pepperoni Pizza, Chicken Jambalaya w/ Rice, Beefy Macaroni Marinara w/ Roll, General Tso Meatballs w/ Seasoned Rice, General Tso's Chicken w/Fried Rice, Country Fried Steak Potato Bowl w/Roll

SPONSORED BY

City Job Opportunities

The City of Azle invites qualified applicants to apply for the following positions:

- Utility Billing Specialist
- Full Time Police Dispatcher
- Police Officer
- Firefighter / EMT
- Firefighter / Paramedic

Further information and an on-line City application can be found at <https://www.cityofazle.org/jobs.aspx>

The City of Azle is an Equal Opportunity Employer

Azle Memorial Library News and Free Events

333 W. Main St. 817-444-7216

Discover more about the Library at www.azlelibrary.org
LIKE us on Facebook: www.facebook.com/azlelibrary

Azle Memorial Library has something for everyone:

Regular Programs:

- ◆ Storytime on Wednesdays & Thursdays for Toddlers and Preschoolers
- ◆ LEGO Club on third Wednesday of each month at 4:30 PM. For kids & families of all ages. LEGOS provided by the library.
- ◆ Main Street Book Club for Adults on third Tuesday of every month at 6 PM. Upcoming titles listed at azlelibrary.org or in the monthly newsletter.

Upcoming Events:

- ◆ Teen Bad Art Night, March 31 at 6 pm. Teens (Ages 13-17) are invited to come and create the best worst piece of art. Snacks will be provided!
- ◆ Wildflower Photography 101 with Jim Stevens, April 2 at 10:30 am. Adults and older teens are invited to come learn the basics and tips & tricks for cameras or cell phones. Free and open to photography novices and experts.

Scan for more information on what's happening in the City of Azle or visit us at www.cityofazle.org.



Azle Dental Care,

"Complete Dental Care for the Entire Family"

www.SmileGreat.com

Brooke Porter, D.D.S., 912 Boyd Rd., Azle • 817-444-1763

Information gleaned from solunar tables can be helpful in both fishing, hunting

I get questions on how the lunar cycle impacts hunting and fishing. I have discussed these astronomical effects many times before, but this is a good time to revisit those details. Spring is approaching and the impact on the wildlife is greatest in the spring and in the fall.

How are these charts derived to determine peak hunting and fishing times? Most of us realize that there can be a definite impact due to the moon and/or sun, but there are other conditions such as weather that can override it all. However, this is good information to have in your pocket. Hopefully, this will be helpful to those of you who are interested.

First, I must start with some technical jargon that is important in understanding the effects of light on the creatures of this world.

Photoperiodism is the behavioral response of a living body to changes of duration in daily, seasonal, or yearly periods of light and darkness. The most drastic changes in the photoperiod occur in the spring and fall, but smaller differences are detected throughout the year. Animals and fish detect these differences, and this information is transmitted to their pituitary gland. The responses from these changes trigger sexual responses such as reproduction and development of eggs, which in



ON FISHING By Michael Acosta

As a licensed professional fishing guide, Michael Acosta shows you how to find them. He has been a licensed guide since 1998. michael.acosta@att.net

turn trigger movement and feeding.

For example, practical applications of photoperiodism are common in poultry management. The amount of daylight influences laying, fertility, and the body weight of the fowl. This is all great information, but how does this all apply to us when we go hunting or fishing?

It's no secret that feeding movements of fish and

game are generally better at dusk or dawn (sunrise and sunset). Moon rise and set is not so obvious because they can occur at midday or midnight. Trophy fish are most likely caught during a full moon or new (dark) moon peak and three to five days thereafter.

The four time periods that are used to pick good fishing/hunting times in any solunar table are the moon positions

as it relates to where you're located on the earth. Major feeding times are defined as the Moon Transit time (moon is straight overhead). The second major feeding time is 12 ½ hours later, when the moon is above the opposite side of the world. The minor feeding times are the moonrise and moonset times.

Basically, if you're lucky enough to be able to plan your trips, the ideal time is to plan to go at the peak of the full or new moon. You then need to be on your big fish hole or favorite hunting location during the daily rise and set of the sun and the moon (90-minute period surrounding these events).

These moon charts are available in most magazines, newspapers and several places on the net. I have a watch that I wear that has some of this information.

How can you use this information with a major weather event? We all know weather has a big impact as well. Right before a cold front hits, if the moon is "in phase" you can have a better chance for a great day fishing or hunting. This type of scenario can really get the fish and game moving and feeding. If you have a string of bad weather when the fishing/hunting has been poor, your best chance for a successful fish or hunt may

be during these peak times.

Hopefully you can use this information to your advantage. There is a lot of truth to these solunar phases. Most of us fish/hunt when we can and cannot always go during these peak times — but it is still good to know when the predicted times occur.

Tournament dates may or may not be scheduled during full and new moons, but it is to your advantage to know when the major and minor peaks are for that day. Log your data and see if there is any difference over time. I've said it before, nothing is guaranteed. Just spend as much of your time doing what you enjoy.



Plan your trip around the peak of the full or new moon and optimum feeding times for your favorite fishing hole. Photo by Michael Acosta

FISHING REPORT

On other reservoirs, Lake Whitney striped bass limits are still good on soft plastics fished from Cedron Creek to Bear Creek. Sand bass spawn is on in the river above Whitney. Whitney crappies are still good on minnows and small jigs fished in the river near Kimball Bend. Possum Kingdom Lake is boasting on sand bass, largemouth to 15 pounds, large blue cats and striped bass to 13 pounds fished mainly on the upper ends. If you don't mind traveling a bit, Lake O.H. Ivie out west is reporting numerous huge largemouth bass catches.

WAREHOUSE FULL OF ROLLS AND REMNANTS

CERAMIC TILE AND WOOD FLOORING

◆TILE◆
◆WOOD FLOOR◆
◆LAMINATE◆

Larry's CARPET

for every room in your home! Quality, large selection, and great prices... are still found at

"Since 1979"

Larry's CARPET

Showroom & Warehouse

www.LarrysCarpet.com

8305 Jacksboro Hwy.

817-237-7871

Attention Men and Women over 65 years old...

Do You Want To Learn How To Stay Out Of Nursing Homes FOREVER?

Without Risking Your Health, Safety, Or Independence?

By Balance Expert Dr. Robert Moss

Do you feel guilty that your spouse is forced to be with you all the time because of your dizziness/loss of balance? Do you feel that your dizziness/loss of balance is always there no matter what you do? Do you feel that you are handicapped by your dizziness/loss of balance? Does your spouse stay with you in the shower so that you do not fall?

If you answer yes to any of these questions, **please read further...**

CDC Reports: Falls Are The Leading Cause of Injuries In Seniors

If you have ever seen the Life Alert commercials then you have a picture in your mind of an elderly lady laying on the floor desperately trying to get up only to discover she is not able to.

Whether she is just weak, has broken a hip or caused some other serious injury this is a major concern for our elderly patients.

Working with seniors over many years it has become apparent that the greatest common fear is the fear of falling and not being able to get back up. This is not unreasonable as **1/3 of all adults over 65** will fall this year and each fall is potentially life changing.

Falling should not be your lifestyle

Falls often lead to hospitalizations, serious injury or the need for assisted living of some sort. In the most severe cases a fall can lead to death.

If the fall, injury, and hospitalization isn't bad enough, frequent falls lead to loss of independence, limits in your daily activities, and increase your reliance on friends and family members to complete basic everyday tasks.

With the right information and the right guidance many falls can be prevented, keeping you out of the hospital and Nursing Homes. Here is what one of my patients had to say:

HELP!
I'VE FALLEN
AND I CAN'T GET UP!

When I came to Moss, I had trouble walking due to no balance. I was not able to get in and out of a car, I was not able to do my activities. After my therapy I am able to walk and continue with my shopping and light house work. I can do this all un-assisted thanks to my therapy.

- Evelyn Tinney

If you are embarrassed or reluctant to use a cane or walker because it makes you "look old" or if you feel like a burden to those around you because you need to hold on to someone when you walk or ask them to run your errands... MOSS Rehabilitation Center has prepared a FREE Report for you "The Top 8 Secrets To Improve Your Balance And Prevent Falls".

To get the guide Simply call this special number 817-220-MOSS (6677) to request the FREE Report OR if you want the report right now, please visit www.springtownphysicaltherapy.com/balance-report and you can download it instantly.

Mostly pasture plants

Well, it looks like we received our once annual snowfall for the Parker/Tarrant/Wise county area in early February. Even though it takes an average of 10 inches of snowfall to equal one inch of rain, the amount of moisture added to the soil from our 2-3 inches of snow plus sleet and rain was appreciated. If you had not realized it, our soils had gotten fairly dry. We had not received any sizeable amount of precipitation since last October.

The rain, snow and sleet that falls today definitely has an effect on soil and plant growing conditions today, tomorrow and next week but also two to three months down the line. So even though we did get some precipitation last week we are still lacking moisture from above, which is setting up a pattern of dry weather leading into the spring. This is not a good thing agriculturally speaking.

And, while we are talking about snow here are a couple of trivial snow facts:

(1) Snow tends to add nitrogen, a major nutrient required by plants, to the soil and (2) Snow insulates the soil and plants from the colder air temperatures, which in the northern reaches of our country is very important when snow stays on the ground for prolonged periods of time.

Now let's change gears and get back to a topic that we started visiting about a few weeks ago, classifications of plants. These are in addition to the taxonomic classification system. Part of this will be review work. We started with the growth cycle of plants, which relates to the amount of time that a plant grows from the same root system, beginning with the original seed or plant part to its own production of



AG 101 By Jack DeShazo

Jack DeShazo has decades of experience in the agriculture field.

a seed.

Most folks think of the fleshy part of the product of a plant as being the fruit, but technically the seed is considered the fruit, just some of them are surrounded by flesh such as peaches, apples, pears, apricots, etc. The growth cycle classifications are perennial (three or more years from the same root system) biennial (two years) or annual (one growing season).

A second classification is the growing season, which obviously is the time of year that the plant does the majority of its growing and producing, with the categories being warm season and cool season. Grazing value is a way of describing a pasture plant based on its palatability, nutritive value, volume of production, longevity, and distribution value to specific livestock and/or wildlife as a food product. The choices based on this classification are Good, Fair, Poor and Poison.

Pasture plants can also be characterized as Decreasers, Increaseers or Invaders, based on the plants' reactions to grazing pressure by livestock and/or wildlife. Decreasers are the higher quality grazing plants that are the first to decrease under grazing pressure. Next in line right behind the Increaseers are the Decreasers.

And last but not least comes the Invaders, which are basically worthless as a plant for grazing value and because of that they will take over a pasture under heavy grazing pressure as

the Decreasers and Increaseers disappear. Cedars and mesquites are probably the two most common Invaders in our area.

This is why it is so important to be able to identify the plants in your pasture and pay careful attention to the grazing pressure and conditions of your pasture plants as a pasture is being used. A couple of weeks ago I also mentioned Improved plants, which are ones that have been hybridized or crossbred, just as in livestock where different breeds are crossbred to develop a breed or variety that will perform better than either of its parents.

Now this gets us to the source of plants that classes them as Introduced, which means they have been brought into a climate that is not their native area or Native where they are growing in an area in which they have always been found growing and producing.

Native plants naturally perform better in their native habitat. It's similar to me, a 65-year native Texas product (in fact my Azle roots go back to the 1880s) moving to Minnesota and trying to find my comfort zone.

At this point I'm just about out of space, so the next time that we visit we will finish this plant discussion including the advantages and disadvantages of Improved, Introduced and Native plants along with several species and varieties of plants that are well suited to our area.

'til next time.

Final Notice and Public Explanation of a Proposed Activity in a 100-Year Floodplain

To: All interested Agencies, Groups and Individuals

This is to give notice that the City of Reno has conducted an evaluation as required by Executive Order 11988, in accordance with HUD regulations at 24 CFR 55.20 Subpart C Procedures for Making Determinations on Floodplain Management Protection. The activity is funded under the HUD CDBG Program under **7220390**.

Project Location:

All work will occur in the City of Reno, Parker County, Texas in the following locations:

Water Improvements:

- Well Site #1 - Southwest side of Scenic Wood Dr. (32.97361, -97.57005)
- Well Site #2 - Southwest corner of Parsonage St. and W. Reno Rd. (32.94392, -97.58062)
- Well Site #4 - Southwest corner of E. Browser Cr. and W. Reno Rd. (32.93899, -97.56695)
- Well Site #5 - Southeast corner of Bill B St. and Rhonda B Rd. (32.92238, -97.55314)
- Well Site #6 - Northside of Rhonda B Rd. (32.92151, -97.54686)
- Well Site #7 - Eastside of Ladybird Ln. (32.96907, -97.57355)
- Miller Rd Water Line - On Miller Rd. from Ladybird Ln to N. Cardinal Rd.

Description of the Proposed Project:

Water Improvements:

Install: a 6-inch water line along Miller Rd; Disinfection systems at all 7 well sites to switch from chlorine to chloramines; an additional booster pump at Well Site #1; and Reconfigure the booster pumps at Well Site #5. The ground disturbance depths for the well sites (boosters and disinfection) would be less than 2ft, and the waterline will be about 4ft deep.

Well Site #1:

- Install disinfection building to switch from chlorine to chloramines
- Add booster pump to site

Well Site #2

- Install disinfection building to switch from chlorine to chloramines

Well Site #3

- Install disinfection building to switch from chlorine to chloramines

Well Site #4

- Install disinfection building to switch from chlorine to chloramines

Well Site #5

- Install disinfection building to switch from chlorine to chloramines
- Reconfigure booster pump from series to parallel

Well Site #6

- Install disinfection building to switch from chlorine to chloramines

Well Site #7

- Install disinfection building to switch from chlorine to chloramines

Miller Rd Water Line

- Increase the 4-inch water line along Miller Rd to a 6-inch water line

Floodplain:

According to FEMA floodplain map #48367C0200E (effective date 9/26/08), a portion of the project is located within a 100-year floodplain (Zone AE):

- Well Site #6 - Northside of Rhonda B Rd. (32.92151, -97.54686).

Area of Disturbance: 10'x10' or 0.0023 acres

Natural Values of Floodplain: The natural resources of the floodplain include water, biological, and societal resources. The proposed project will have minimal impacts to the floodplain as the project involves minimal ground disturbance within the floodplain.

The **City of Reno** has considered the following alternatives and mitigation measures to be taken to minimize adverse impacts and to restore and preserve natural and beneficial values. Below are the alternatives considered and reasons for non-selection:

1. Abandon Well #6 and Construct a new one outside the floodplain. - The costs associated with this would exceed available funds and there is insufficient time to construct a new well in a new location. (not viable)

2. Obtain a Letter of Map Amendment (LOMA) or Letter of Map Revision (LOMR). - The locations in concern are in areas unlikely to qualify for a LOMA and there is insufficient time to apply for a LOMA. (not viable)

3. Other infrastructure considered. - While there is other infrastructure in the City that needs to be addressed, the City concluded that the chosen infrastructure in this project was the highest priority. (not viable)

4. No Action or Alternative Actions that Serve the Same Purpose. - If this project is not completed, the water system will continue to be inadequate, which could pose a health threat to the community. (not viable).

Mitigation measures to be taken to minimize adverse impacts and to restore and preserve natural and beneficial values:

1. Preserving Property: Project designs should, to the best extent possible, incorporate measures to reduce the risk of damage to the new infrastructure via a flood.
2. Preserving Natural Values and Minimizing Impacts: After construction is completed, disturbed area will need to be immediately re-vegetated with native grasses. Only native plants are to be used in the floodplain and on the site.
3. Deposition and excavation of materials will need to be performed in such a manner that erosion and sedimentation will be controlled.
4. Precautions will need to be taken in handling of fuels or other hazardous materials to prevent discharge or spillage resulting in lower groundwater quality.
5. Erosion control measures such as hay bales or silt screen barriers will need to be implemented and maintained during construction as required.
6. The project engineer will need to incorporate best management practices into the specifications and plans.

Date of any final or conditional LOMR's or LOMA's from FEMA: None requested.

The **City of Reno** will ensure applicable state and local floodplain protection procedures are followed. The **City of Reno** has reevaluated the alternatives to building in the floodplain and has determined that it has no practicable alternative. Environmental files that document compliance with steps 3 through 6 of Executive Order 11988, are available for public inspection, review and copying upon request at the times and location delineated in the last paragraph of this notice for receipt of comments.

There are three primary purposes for this notice. First, people who may be affected by activities in floodplains and those who have an interest in the protection of the natural environment should be given an opportunity to express their concerns and provide information about these areas. Second, an adequate public notice program can be an important public educational tool. The dissemination of information and request for public comment about floodplains can facilitate and enhance Federal efforts to reduce the risks and impacts associated with the occupancy and modification of these special areas. Third, as a matter of fairness, when the Federal government determines it will participate in actions taking place in floodplains, it must inform those who may be put at greater or continued risk.

Written comments must be received by the **City of Reno** at the following address on or before **March 25, 2022** a minimum 7 calendar day comment period will begin the day after the publication and end on the 8th day after the publication: **City of Reno, 195 W. Reno Road, Reno, TX 76020 and 817-221-2500**, Attention: **Scott Passmore, City Administrator**. A full description of the project may also be reviewed from 9:00 am to 5:00 pm from the previously mentioned address or at <https://tinyurl.com/yckr7au8>, Comments may also be submitted via email at todd@texasenvironmentals.com.

Date: March 16, 2022

PUBLIC NOTICE

Brief Explanatory Statements of Proposed Constitutional Amendments Special Election, May 7, 2022

Proposition Number 1 (SJR 2)

SJR 2 proposes a constitutional amendment authorizing the legislature to provide for the reduction of the amount of a limitation on the total amount of property taxes that may be imposed for general elementary and secondary public school purposes on the residence homestead of a person who is elderly or disabled in order to reflect any statutory reduction in the maximum compressed rate of the maintenance and operations taxes imposed for those purposes on the person's homestead from the preceding tax year.

The proposed amendment will appear on the ballot as follows: **"The constitutional amendment authorizing the legislature to provide for the reduction of the amount of a limitation on the total amount of ad valorem taxes that may be imposed for general elementary and secondary public school purposes on the residence homestead of a person who is elderly or disabled to reflect any statutory reduction from the preceding tax year in the maximum compressed rate of the maintenance and operations taxes imposed for those purposes on the homestead."**

Proposition Number 2 (SJR 2)

SJR 2 proposes a constitutional amendment increasing the amount of the residence homestead exemption from property taxes for public school purposes from \$25,000 to \$40,000.

The proposed amendment will appear on the ballot as follows: **"The constitutional amendment increasing the amount of the residence homestead exemption from ad valorem taxation for public school purposes from \$25,000 to \$40,000."**

AISD Showcase 2022

Right: Showcase attendees were invited to try creating different crafts at tables scattered around the hallways of Azle High School during this year's Showcase.

Below: Azle ISD students created 3-D models of the Earth's layers using paper-mache, styrofoam, paint, and found materials.

Below right: Students are able to get hands-on with different mediums in art classes, including trying out their skills with ceramics, and showed off their final pieces at the Azle ISD Showcase.

Bottom left: Courtney from Eagle Heights Elementary was proud of her Alamo model, which was among the many dioramas and models on display during the March 10 Showcase.

Bottom right: Students built tin men while learning about surface area in math class and had their creations on display at the March 10 Showcase, which was open to the community.



Photos by Jessica McKinney

Tom Samples Pest Control
 YOUR COMPLETE PEST CONTROL SERVICE
 Family owned and operated. Over 50 years of service.
 Voted Best Pest Control Best of Parker County
817-915-2470

HOGLE
 Insurance Group
 167 W. Main • 817-444-6389
 www.HogleInsurance.com
 "Our Best Policy is Personal Service"
3.15% 60 Month Rate Guarantee **2.50%** 36 Month Rate Guarantee
Permanent Whole Life Insurance
 • Premiums guaranteed, fixed & level for life
 • Guaranteed death benefits Guaranteed cash values
 • Issue ages 50 to 85
 • Issue sizes \$5,000 - \$50,000
 • No Medical Exam Required

LAKE WORTH PREMIER EYE CARE
 Dr. Jeffrey R. Crabtree
Backup Glasses Special
 Attention Contact Lens Wearers!
 Purchase a year's supply of contact lenses, get a pair of backup glasses (frame AND lenses)
\$99 ONLY
 Select Frame Styles • Progressive Lenses \$149
 6921 Foster Dr. Lake Worth, TX 76135
 www.lakewortheeye.com
817-439-9455

Motley's AUTOMOTIVE & MOTORCYCLES
 FAMILY OWNED AND OPERATED FOR 20 YEARS
 State Inspection for Tarrant & Parker Counties
Automotive
 • Tune-ups
 • Diesel
 • Suspension
 • Computer Diagnostics
 • A/C Repair
 • Brakes
 • Emission Repairs
 • Repair & Restore Classic Cars
Motorcycles & ATVs
 • Maintenance & Repairs
ASE CERTIFIED
ups PACKAGE DROP OFF STATION
 VISA MasterCard DISCOVER AMERICAN EXPRESS
JASPER ENGINES & TRANSMISSIONS
 1304 NW Pkwy (Hwy 199)
817-444-8529
817-456-0907
 www.motleyautomotive.com
 Monday - Friday 8:30 am - 6:00 pm

Villa del SOL MEXICAN RESTAURANT
 1300 Northwest Pkwy Azle, Texas
 Sun 11-8 • Tues - Thurs 11-9
 Fri 11-10 • Sat 11-9:30 • Mon Closed
HAPPY HOUR
Tues-Sat 4 - 8 PM
TAKE OUT ORDERS
817-406-4452
817-406-4800

JIM STEVENS PHOTOGRAPHY
 • Professional Executive Portraits
 • Commercial Photography
 • Drone Photography
 • Food Photography
713-725-5620

Azle News

AJH choirs earn top marks at UIL

One choir makes history

BY JESSICA MCKINNEY
azlereporter@azlenews.net

Azle Junior High choir teacher Jeffrey Moss experienced a career “first” following last week’s UIL choir competitions.

The Non-Varsity Treble Choir (Beginning Girls Choir) received a “First Division” in the sight-reading portion of the competition.

“In Azle Junior High’s history, there has never been a Non-Varsity Treble Choir that has received a ‘First Division,’” Moss said.

“This is a first for the school. Subsequently, I shared with my students that in my 13-year career as a choir teacher, I have never had a NV Treble Choir receive a ‘First Division.’ It was a big day for this begin-

ner choir at Azle JH.”

The UIL choir competition is the biggest one of the year.

“It is the equivalent of the STAAR test for choir, if you will,” said Moss.

In addition to the Non-Varsity Treble Choir, Moss had two other choirs from AJH competing — the Non-Varsity Tenor/Bass Choir (Beginning Boys) and Varsity Treble Choir (Advanced Girls).

Each choir competes in two parts — the concert portion where the choir performs three songs, and a sight-reading portion where the choir sings a piece of music they have not seen before.

Six judges give a rating of one (superior) through five for each part of the com-



The Non-Varsity Treble Choir won First Division in sight-reading at last week’s UIL competition, a first in AJH history. All photos courtesy

petition. If a choir receives at least two ones from the judges, then they receive a “First Division” and they receive a trophy or plaque. A choir that receives “First Division” for both parts of the

competition wins a “Sweepstakes.”

The AJH Non-Varsity Tenor/Bass Choir also earned a First Division in sight-reading.

The Varsity Treble Choir

earned straight ones from all judges — the highest possible score that can be given — and received a Sweepstakes at the UIL competition.

Moss said that he is “very

proud” of all his choir students.

“They represented our school and choir program very well at this annual competition,” he said.



The Varsity Treble Choir swept up all ones at the competition, earning a Sweepstakes award.



The Non-Varsity Tenor/Bass Choir earned First Division in sight reading at the UIL competition.

Go ahead & smile!

PREVENTATIVE • RESTORATIVE • COSMETIC

Crowns & Bridges • Whitening • Dentures • Dental Veneers
Implant Restoration • Cosmetic Dentistry • Pediatric Dentistry & More...

Dr. Joseph McCreary, III
FAMILY & COSMETIC DENTISTRY

Family dentistry for all ages. Serving the Azle, Texas area
209 Roe Street, Azle TX 76020 • 817-444-3209

Garden on the Go

1st SATURDAY: Azle Lions Club, 412 Commerce St., Azle

2nd SATURDAY: Agnes Community Center, 5406 Agnes Cir., Springtown

3rd SATURDAY: Holy Trinity Catholic Church, 800 High Crest Dr., Azle

4th SATURDAY: Azle Christian Church, 117 Church St., Azle

OPEN 9 AM TO 11 AM or UNTIL WE SELL OUT!

Each \$5 BAG contains 15-19 pieces of fruit and vegetables.

This is open to all community members.
Our goal is to make fresh produce affordable and accessible to all.

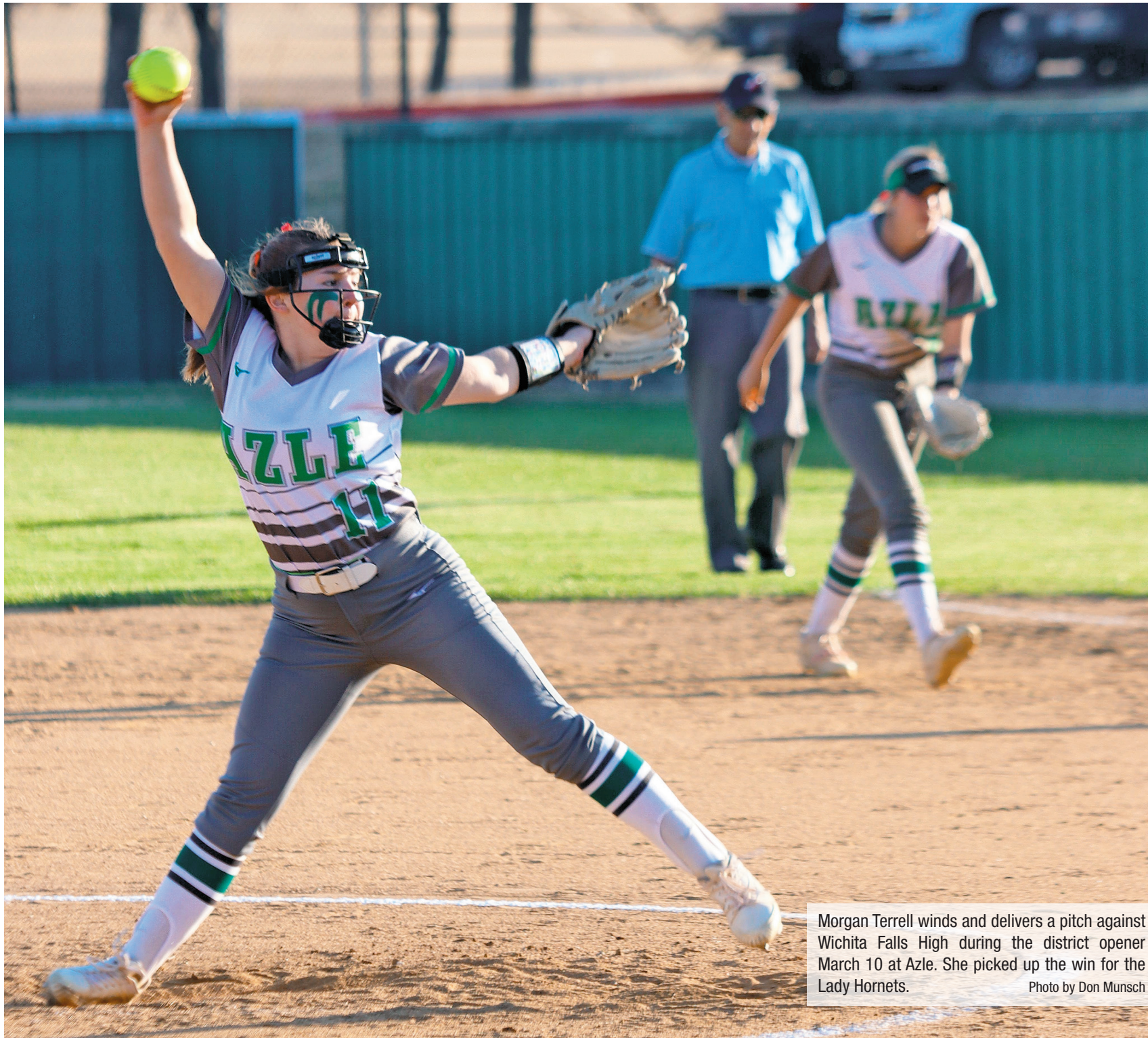
Made Possible With Funding Through Centers For Disease Control And Prevention

AZLE AREA CLUBS AND ORGANIZATIONS

<p>Texas Health Harris Methodist Hospital AZLE</p> <p>Volunteers Needed TexasHealth.org/ Volunteer/Our-Process</p> <p>RAINBOW INN GIFT SHOP Inside Hospital 108 Denver Trail Azle 817-444-8651</p> <p>ATTIC RERUNS NOW OPEN! FRI 9-4 SAT 9-1 714 SE Pkwy Azle 817-270-3690</p>	<p>Good N.E.W.S. Living at Home Block Nurse Program</p> <p>Volunteer Caregiver Training Classes Classes open to public at no charge</p> <p>Caregiver Volunteer Meeting 1st Monday of Each Month at 6pm 817-444-2300 412 Commerce St.</p>	<p>Rotary Club of Azle</p> <p>MEETS AT NOON THURSDAY 412 Commerce St. (across from Azle Post Office)</p>	<p>The Finish Line</p> <p>Addiction wants to destroy you & everyone around you.</p> <p>With Jesus there is Victory over addiction.</p> <p>GET BACK IN THE RACE!</p> <p>Meetings held every Friday from 7:30PM-9:30PM at The Church at Azle 1801 S. Stewart • Azle • 817-401-8513 www.ourfinishline.com</p>	<p>Faced with a DRINKING Problem? Perhaps Alcoholics Anonymous can HELP.</p> <p>Daily meetings at Noon & 6:30 pm Sunday at 3 pm 229 S. Stewart St. • Azle 817-332-3533</p>	<p>Azle Lion's Club</p> <p>Meets 2nd TUESDAY 6:30 PM 412 Commerce, Azle e-clubhouse.org/sites/azle_tk/ Curren McLane - president 817-689-0074</p>
<p>Post your clubs or organization meetings here!</p> <p>Only \$100 for 52 weeks of advertising</p> <p>Call Johnna for details: 817-270-3340</p>	<p>SERVOLUTION NETWORK</p> <p>LET'S START A COMMUNITY WIDE REVOLUTION THROUGH SERVING.</p> <p>FOR QUESTIONS CALL: 833-4WE-SERV 833-493-7378</p> <p>VISIT: WWW.SERVOLUTIONNETWORK.COM</p>	<p>Azle Boy Scout Troop 243 Meets Mondays 7 PM Azle First Assembly Parkway troop243azle.org</p>	<p>Optimist Club of Azle</p> <p>Meets every FRIDAY at 6:45 AM Moe's Country Kitchen 316 W. Main, Azle</p>	<p>Azle Lodge No. 601</p> <p>Floor School or Work 7:30 PM THURSDAY NIGHT</p> <p>Chris Akers - Worshipful Master Rocky Gralla - Secretary Clint Hall - Treasurer</p>	<p>Eagle Mountain Pregnancy Help Center</p> <p>10328 Jacksboro Hwy Fort Worth TX 76135 817-237-1819 www.emphc.org Mon 11-5 pm Thurs 11-5 pm SE HABLA ESPAÑOL</p>

SPORTS

Lady Hornets win district opener in run-rule fashion



**BY DON MUNSCH
AND JEFF PRINCE**
editor@azlenews.net
jeff@azlenews.net

The Azle High School Lady Hornets softball team hit the ball well and also took advantage of some Wichita Falls High School errors in earning a district-opening victory, 13-2, March 10 in Azle.

The game ended on the 10-run mercy rule after WFHS failed to score at least two runs in the top of the fifth. The Lady Hornets did their damage by scoring six runs in the first inning and seven more in the third.

“The girls came out ready to play today,” said AHS head softball coach Macy Pruitt. “We’ve been working on adjusting to a little slower pitching all week. I think overall, we made a really good adjustment. We scored 13 runs. Every single person in the dugout contributed to today’s win, and it’s a great win to start district.”

Morgan Terrell notched the victory for the Lady Hornets, as she pitched four innings from the circle. She surrendered a run in the first inning on a fielder’s choice RBI. The Azle offense took over after that.

“She got ahead of the batters, like we’ve been working on, getting strikes early,” Pruitt said. “And then Casey (Morrison) came in and

Morgan Terrell winds and delivers a pitch against Wichita Falls High during the district opener March 10 at Azle. She picked up the win for the Lady Hornets.

Photo by Don Munsch

SEE **SOFTBALL**, PAGE 2C.

AHS powerlifters head to state, with mostly big-stage newbies

BY DON MUNSCH
editor@azlenews.net

Azle High School’s girls powerlifting team will have seven lifters journey south to Corpus Christi this week for the state powerlifting competition.

The team won first place overall at the regional meet on March 3 at AHS. Seven girls qualified for state: Trinity Thornton, Mackenzie Benton, Riley McKelvain, Breton Estes, Skyleer Arel-

lano, Tatum Humphries and Emily Lewis.

“I thought they did really well,” said AHS powerlifting coach Tanner Street. “A lot of them hit personal records. When adversity hit, they didn’t get down on themselves.”

He said he was especially proud of McKelvain, who would have gone to state last year but she broke her back in a select volleyball tour-

SEE **POWERLIFTING**, PAGE 2C.



Members of the Azle High School powerlifting team relax one morning last week. Shown here are Mackenzie Benton, Breton Estes, Trinity Thornton and Skyleer Arellano. Powerlifters who qualified for state and not shown here are Riley McKelvain, Emily Lewis and Tatum Humphries.

Photo by Don Munsch



YOUNG HORNETS EXCEL

Ivan Perez, shown smashing a hit earlier this month, and the Azle Hornets have been sparkling on the diamond. The Hornets have compiled an 8-1 record so far this season on the strength of stout pitching and stingy defense. The roster is stocked with young players after the Hornets lost seven starters from last year. Head coach Stephen Smith predicted his athletes would excel, and they haven’t disappointed. Earlier this month, the Hornets beat Kennedale 6-0, walloped Everman 16-2 and shut out Lake Worth 16-0. District competition begins April 12 against Aledo. The Hornets play next at 7 p.m. March 22 at home against Wichita Falls High School.

Photo by Jeff Prince

Azle golf boys grab championship trophy



The Azle Hornet golf team won a team title on March 12 at the Southern Oaks Golf Course in Burleson.

Courtesy photo

BY JEFF PRINCE
jeff@azlenews.net

Azle head golf coach Brad Averitte - known for his post-round pep talks with the boys golf team - was rendered speechless after a tournament on March 12 at the Southern Oaks Golf Course in Burleson.

The Hornets had just won the championship, beating out tough teams such as Burleson, Burleson Centennial, Colleyville Heritage, Ennis, Weatherford, Mansfield Legacy and Midlothian.

"The guys asked me after the round for 'post-round words of wisdom,' because I always have some advice to share or ideas on the round," he said. "I told them that I had no words. They left

me speechless. They shot a 328 together on Saturday's round and came back to beat some quality schools. We'd have to do some digging to find the last time Azle Boys were in the 320s as a team."

Jason Merrill won an individual championship after what his coach described as an "incredible round."

Merrill "had a hot putter," Averitte said. "His mid-iron game was on point, as well."

Merrill made three birdies and lipped out an eagle putt on the ninth hole.

"He was a little nervous going into 18 because he was 1 under par," the coach said. "He got in some trouble on his approach but hit a nice recovery shot to about eight feet for par. I thought it was going in, but it turned

left on him just before the cup."

Averitte, who has been the golf coach for the past three years, said the lowest team round during his first two seasons was a 360. This year, the team has scored a 342 and a 328.

"Two of the lowest scores in quite a while," Averitte said.

Merrill shot a 72 to win the individual trophy. The last time a Hornet golfer shot a round under 80 was in 2018. Merrill has shot under 80 twice this season.

The district tournament is March 28-29 at Cross Timbers Golf Course in Azle. The Hornets will face stiff competition. Last year, Aledo won the district title

and has returned its entire starting team. Second-place finisher Granbury returned most of its starting team, as well.

"It is going to be a challenge, but we hope to have a good showing," Averitte said. "If the putts are rolling in, we could surprise."

The five golfers who nabbed the team title at Southern Oaks include juniors Merrill, Caden Gonzalez and Dylan Lindsey, freshman Jake Williams and senior Isaac Riley.

The team will play a district preview on March 22 at Cross Timbers before the district tourney begins the following weekend.

Regionals will be held in mid-April in Lubbock.

SOFTBALL, CONTINUED FROM PAGE 1C.



Azle pitcher Morgan Terrell, right, had a good day at the plate with three hits during the Lady Hornets' 13-2 victory over Wichita Falls High.

Photo by Don Munsch

closed out. She did a great job, too."

The Lady Hornets tied the game at 1 in the bottom after Kaylee Parrish got hit by a pitch with the bases loaded. Torrie Johnson then gave Azle a 2-1 lead after a groundout sent a runner home from third. The Lady Hornets struck for four more runs in the inning and another run, which would have been the seventh in the inning, was disallowed after a runner interference call was made after umpires conferred on a grounder in the infield.

Terrell struck out the side in the second and then struck out the first two batters in the third. The Lady Coyotes would score a run in the inning before the Lady Hornets put seven runs on the board in the next half inning. For Azle, Terrell and Avery Jones each went 3-for-3 at the plate.

Pruit said her team had to get ready for Wichita Falls Rider, which she expected to be a tough battle. She hoped that the district opener would provide some momentum.

The Lady Hornets have a lot of youth on the varsity squad this year. The roster includes three seniors and three juniors, and the rest are sophomores and freshman.

"We are a very talented team that is young and hungry," the coach said. "The great thing about being young is, we are already so talented, but there is room for growth. Once everything starts clicking together, these girls will be unstoppable and very hard to beat."

The team is hoping to win its first district championship since 2016.

In early March, Azle beat Burkburnett 6-4, Wolfforth

Frenship 8-6 and Lovejoy 11-8. The team lost games to Brock 3-2, Lewisville 10-2, and Eaton 3-1.

In the Lovejoy game, four batters had two hits apiece for Azle: Alyssa Holland, Abigail Garner, Kalle Vasquez and Allison Smith. Garner led the team with three runs batted in. Holland, Vasquez and Smith each had two RBIs. In the Burkburnett game, Holland led the team with two RBIs.

Players to watch this season include Garner, a returning varsity starter with pop in her bat and speed on the bases.

"She will be a huge contributor to producing runs," Pruit said.

Holland is a talented defensive player who can handle multiple positions. She is "consistent at the plate and smart on the base paths," Pruit said.

Parrish is a "dynamic player capable of making the extraordinary plays on defense as well as driving the ball with power at the plate," the coach said.

Raegen Williams is an elite defensive outfielder with speed to burn on the base paths.

Pitching sensation Terrell displays "unshakable consistency in the circle" and is "able to find the strike zone and allow our defense to make plays behind her," Pruit said.

Brandie Phillips is a hard-working outfielder able to shut down one side of the field and "is tough at the plate with plenty of speed to leg out hits," she said.

And Smith is expected to provide runs and power in the middle of the lineup.

Azle is scheduled to play a home game at noon Friday against Wichita Falls Rider at Jim Bob Nation Softball Field.

POWERLIFTING, CONTINUED FROM PAGE 1C.

ment, so she didn't get to compete. In overcoming adversity, Arellano has had something not go her way in her two previous regional meets, but she finally got over the hump March 3, Street said. He also said Estes seems to never miss a lift, and gets stronger every week.

All of the girls except Benton are first-time state qualifiers. Street said there would be 150 to 300 lifters competing at state in AHS's classification.

"For state, we're hoping to bring home some medals," Street said. "As long as we can go nine for nine (not missing a single attempt on a lift) and PR on all of our lifts, I'll be happy."

The lifters were staying in the weekly routine as they prepared for state, which amounts to lifts Monday through Thursday and a stretch day on Friday.

"It will be a little bit of a change of pace with the state meet being at the end of spring break, so we'll come up with a time for them to make a lift or I'll send them workouts to complete on their own if they're not able to come up

here," he said.

Thornton, Estes, Arellano and Benton talked one day at practice last week about regionals and going to state. Estes said going to state was "pretty exciting, because it's been like a boulder in my way since freshman year. So, it's pretty exciting that I get past the regionals and know I'm actually moving on to this part of my life, and I love it."

At state, Benton said she needs to handle stress and mental aspects of the sport.

"Because I have a tendency to do that," she said.

Arellano agreed with Benton that the competition is more of a mental than physical battle.

"Yeah, just getting (bad thoughts) out of my head and telling myself that I can do this, I've done this before, things like that," Arellano said.

Each of the girls was excited about heading to state.

"I'm just ready to go, and I'm going to see how well I do the first time at state," Arellano said.

Street earned the 2022 Region 6-5A Coach of the Year Award.

Kenzie Kearns signed with Hastings College



Azle High School senior Kenzie Kearns has signed a letter of commitment to study and wrestle at Hastings College. The four-year college is based in Hastings, Nebraska. Kearns discovered wrestling as a freshman at Azle High School, and the sport became her passion. Azle wrestling head coach Megan House said Kearns is a "joy to have on the team, and I'm going to be sad to see her go." Photo by Jeff Prince



DEVOTIONAL PAGE



This devotional and directory is made possible by these businesses who encourage all of us to attend worship services.

Azle News
AzleNews.net

The Springtown Epigraph
Springtown-Epigraph.net

TRINITY SELF STORAGE
SECURITY GATE 24 HOUR ACCESS

Office next door at Trinity Commercial Contractors

RV, Trailer & Boat

200 Walnut Creek Ave.
817-444-8885

TACLA014745E RRC#11349

J&E
AIR CONDITIONING & HEATING

817-220-4506

1825 W. Hwy. 199 | Springtown, TX 76082

Help readers find your Business.
Call 817-270-3340

Your Ad Here!

Call Johnna to reserve this space.
817-270-3340

Comet CLEANERS
"Serving Azle & The Community Since 1986"

113 SPEER ST
817-444-4920

Thank you for your support!

Subscribe!

Pick your subscription:

- \$40 IN-COUNTY Tarrant, Parker & Wise only
- \$36.50 SENIOR CITIZEN 60 Years and Older Tarrant, Parker & Wise only
- \$25 ONLINE
- \$46.50 OUT OF COUNTY

Azle News
The Springtown Epigraph
Azle News 817-270-3340
Springtown Epigraph 817-220-7217

Eagle Crest VILLA
A RETIREMENT AND ASSISTED LIVING COMMUNITY

113 Denver Trail • Azle
817-444-3249 Fax 817-444-3275
www.eaglecrestvilla.com

STUDIO - 1 bath, 350 sq. ft.
ONE BEDROOM - 1 bath, 450 sq. ft.
TWO BEDROOM - 1 bath, 642 sq. ft.

APOSTOLIC
CORNERSTONE APOSTOLIC CHURCH
1801 FM 730 N., Azle
817-400-0612

HARVEST TIME APOSTOLIC
1 Block N. FM 2048 in Keeter
817-433-8220

ASSEMBLY OF GOD
FIRST ASSEMBLY OF GOD
1020 S.E. Pkwy, Azle
817-237-4903

FELLOWSHIP OF LAKE WORTH
4024 Dakota Trail, Lake Worth
817-237-9433

NEW BEGINNINGS CHURCH
810 Goshen Rd, Springtown
817-523-4462

LEGACY CHURCH
Hwy. 199 W. at FM 2257, Azle
817-221-2983 / 817-221-5760

VICTORY CHRISTIAN CENTER
737 Boyd Rd., Azle
817-444-LOVE

BAPTIST
ASH CREEK BAPTIST CHURCH
300 South Stewart, Azle
817-444-3219

AGNES INDEPENDENT BAPTIST
350 Agnes N., Springtown
817-523-7271

BETHEL MISSIONARY BAPTIST
408 S. Ash St., Springtown
817-220-4238

AZLE AVENUE BAPTIST
2901 Azle Ave., Fort Worth
817-626-5556

BRIAR FIRST BAPTIST
West of FM 730 N. at sign, Briar
817-444-3484

CALVARY HEIGHTS BAPTIST
1 block off Hwy. 199, east of David's Patio, Springtown, 817-221-2241

CENTRAL BAPTIST
4290 Old Agnes Road
817-594-5918

CHURCH ON THE HILL
836 NW Parkway, Azle
817-444-3752

CHRISTWAY BAPTIST
7673 West Hwy. 199, Agnes
817-220-9133 or 817-220-3581

CLEAR FORK BAPTIST
Corner of FM 730 & Ragle Rd., Weatherford, 817-594-1154

EAGLE MOUNTAIN BAPTIST
8780 Eagle Mtn. Circle, Azle
817-237-4135

FIRST BAPTIST CHURCH OF AZLE
1017 Boyd Road
817-444-4828

FIRST BAPTIST CASTLE HILLS
401 Beverly Rd., Azle
817-797-4706

FIRST BAPTIST LAKE WORTH
700 Charbonneau Tr., west side of Effie Morris Elementary
817-237-2624

FIRST BAPTIST LAKESIDE
8801 Jacksboro Hwy., Lakeside
817-237-8113

FIRST BAPTIST BRIAR
6 miles N. of Azle on FM 730
817-444-3484

FIRST BAPTIST COTTONDALE
1 block N. of FM 2123, Cottondale
940-433-5539

FIRST BAPTIST PEASTER
FM 920 in Peaster
817-596-8805

FIRST BAPTIST POOLVILLE
1 block W. of FM 920, Poolville
817-594-3916

FIRST BAPTIST SPRINGTOWN
5th & Main Street, Springtown
817-523-7011

FRIENDSHIP BAPTIST
801 Friendship Rd., 9½ miles S. of Springtown off Hwy. 51 S.
817-594-5940 or 817-599-4917

FUNDAMENTAL BAPTIST
5th & Main in Springtown
817-523-5477

GRACE BAPTIST
3 miles N. of Springtown on Hwy. 51 across from Radio Tower

GRACE POINTE CHURCH
4110 E. Hwy. 199, Springtown
817-221-5683

HERITAGE BAPTIST CHURCH
3577 FM 51 N., Weatherford
817-564-3946

IGLESIA BAUTISTA
Nueva Jerusalem
6640 Midway Rd., Springtown
817-694-0444

INDIAN OAKS PRIMITIVE BAPTIST CHURCH
3229 Shawnee Trail, Lake Worth
817-237-8441

LAKE WORTH BAPTIST
4445 Hodgkins, Lake Worth
817-237-4163

METROPOLITAN BAPTIST
6051 Azle Ave., Fort Worth
817-237-2201

NEW HOPE BAPTIST
782 New Hope Rd., Reno area
817-221-2184

NORTHWEST BAPTIST
5500 Boat Club Rd., Lake Worth
817-237-6063 or 817-270-8476

SILVER CREEK BAPTIST
730 S. & Veal Station Rd., Azle
817-444-2325

NEW BEGINNINGS BAPTIST CHURCH
3605 Jacksboro Hwy., Azle
817-707-2741

PLEASANT GROVE BAPTIST
FM 2048 and CR 4677, Boyd
940-433-5477

PRIMERA IGLESIA BAUTISTA
300 S. Stewart, Azle
817-500-3641

SPRINGTOWN BAPTIST TEMPLE
201 J. E. Woody Rd., Springtown
817-523-0376

UNION BAPTIST CHURCH
3451 Sarra Lane, Springtown
682-333-1645

WALNUT CREEK BAPTIST
220 W. Reno Rd. in Reno
817-221-2110

BIBLE COMMUNITY BIBLE FELLOWSHIP
1405 Reynolds Rd., Reno
817-444-7117

NORTHWEST BIBLE CHURCH
5025 Jacksboro Hwy., Fort Worth
817-624-2111

SOLID ROCK BIBLE CHURCH
591 S. Reno Rd., Springtown
817-221-3444

CATHOLIC
HOLY TRINITY CATHOLIC
800 High Crest Dr., Azle
817-444-3063

CHRISTIAN
THE CHURCH AT AZLE
1801 S. Stewart, Azle
817-444-9973

AZLE CHRISTIAN FELLOWSHIP
35 West Forty Estates., Azle
817-688-3339

GREATER VISION FELLOWSHIP
1801 S. Stewart St., Azle
817-825-0485

THE ABBEY CHURCH
10400 Jacksboro Hwy., Azle
817-238-1404

CROSSING FELLOWSHIP
120 E. Main St., Azle
817-406-4577

CHURCH OF CHRIST
AZLE CHURCH OF CHRIST
336 NW Parkway
817-444-3268

BRIAR CHURCH OF CHRIST
109 W.N. Woody Rd.
(½ block west of FM 730 N. in Briar)
817-444-7102

MIDWAY CHURCH OF CHRIST
6400 Midway Rd.
817-221-2107

NEWSOME MOUND ROAD CHURCH OF CHRIST
1460 Newsome Mound Rd.
817-677-3290

NORTHWEST CHURCH OF CHRIST
6059 Azle Ave., Fort Worth
817-237-1205

POOLVILLE CHURCH OF CHRIST
West of FM 920 in Poolville
817-594-4182

SOUTHSIDE CHURCH OF CHRIST
130 W. Bradshaw Lane, Springtown
817-221-2799

SPRINGTOWN CHURCH OF CHRIST
Just west of Hwy. 51 North
817-523-4419

TRI-COUNTY CHURCH OF CHRIST
525 Hwy. 199 W., Springtown
817-980-8156

CHURCH OF GOD
ABUNDANT LIFE CHURCH OF GOD
4800 East Hwy. 199, Suite 7 Springtown, 817-677-3208

LAKESIDE CHURCH OF GOD THE WORD@LAKESIDE
9396 Confederate Park Rd. (FM 1886)
817-237-5500

DISCIPLES OF CHRIST
AZLE CHRISTIAN
117 Church St., Azle
817-444-3527

CENTRAL CHRISTIAN
1602 S. Main St., Weatherford
817-594-3043

FIRST CHRISTIAN CHURCH
4th & Main, Paradise

EPISCOPAL
ST. ANNE'S ANGLICAN EPISCOPAL
6055 Azle Ave., Fort Worth
817-237-1888

PROVIDENCE REFORMED EPISCOPAL
405 Bowie Dr., Weatherford
817-596-7476

ST. ELISABETH EPISCOPAL
5910 Black Oak Lane, River Oaks
817-739-0504

GOSPEL
CENTRAL FULL GOSPEL FELLOWSHIP
3009 Delaware Tr., Lake Worth
817-237-7919

JEHOVAH'S WITNESSES
KINGDOM HALL OF JEHOVAH'S WITNESSES
212 Pearson Lane, Azle
817-221-2242

LUTHERAN
THE EDGE CHURCH - AZLE
1313 SE Parkway, Azle
817-237-4822

HOPE LUTHERAN (ELCA)
4795 Hwy. 199, Reno
817-221-HOPE

METHODIST
BOYD UNITED METHODIST
FM 730 North in Boyd
940-433-3334

FIRST UNITED METHODIST
200 Church St., Azle
817-444-3323

LIGHTHOUSE FELLOWSHIP
7200 Robertson Rd., Fort Worth
817-237-2758

SILVER CREEK UNITED METHODIST
2200 Church Rd., Azle
817-444-1382

FIRST UNITED METHODIST
Hwy. 51 N & 3rd Street, Springtown
817-523-7874

GARVIN UNITED METHODIST
3 miles West of Boyd on C.R. 4699

POOLVILLE UNITED METHODIST
1 block W. of FM 920 (behind Poolville Post Office)
817-599-3601

HILLTOP FAMILY CHURCH
1227 Old Cottondale • 817-220-7177

"Caring about what Jesus cares about... You!"

Joe Rider Propane, Inc.

PROPANE TANKS

817-237-3325

White's Funeral Homes
Our family serving your family since 1908

Bob White, Anita White and Zack Bellenger

Full Service Funeral Home
Cremation Services
Pre-Need Plans

Azle • Springtown
Mineral Wells • Weatherford
817-444-3211 • www.whitesfuneral.com

THE CHURCH OF JESUS CHRIST OF LATTER-DAY SAINTS (THE MORMONS)
THE CHURCH OF JESUS CHRIST OF LATTER-DAY SAINTS
1010 Timberbrooks, Azle
817-237-5075

PENTECOSTAL
GRACE CHAPEL UNITED PENTECOSTAL CHURCH
3508 Shawnee Trail, Lake Worth
817-237-4844

PRESBYTERIAN
GRACE FIRST PRESBYTERIAN
606 Mockingbird Lane, Weatherford
817-594-2744

ORTHODOX PRESBYTERIAN CHURCH OF FORT WORTH
Meeting at Northwest YMCA
5315 Boat Club Road, Fort Worth
817-989-9800

ORTHODOX
ARCHANGEL GABRIEL ORTHODOX CHRISTIAN CHURCH
1157 S. E. Parkway (Jacksboro Highway), Azle
817-752-8255

OTHER
ALIENTO DE DIOS
2233 E. Hwy 199, Springtown
817-521-4694

BETTER LIFE COMMUNITY CHURCH
3131 E. Hwy 199, Spt
817-677-2300

CORNERSTONE COMMUNITY CHURCH
2233 Hwy 199 East, Springtown
817-221-LIFE (5433)

FAMILY CHURCH
9 miles S. of Springtown on Hwy. 51
817-599-7655

GRACE FELLOWSHIP CHURCH
2964 W. Hwy 114, Paradise
940-969-2427

HILLTOP FAMILY CHURCH
1227 Old Cottondale Road, Springtown, 817-220-7177

THE HOUSE OF PRAYER
1356 Reno Rd., Springtown
817-221-2551

POWERHOUSE OF PRAISE CHURCH
1649 S.E. Parkway, Azle
817-319-7364

BRANDED CROSS COWBOY CHURCH
3282 FM 2048, Boyd 76023
817-755-7021

SECRET PLACE MINISTRIES
112 Optimist Rd., Springtown
682-229-1433

GOSPEL GATHERING FELLOWSHIP
7315 Silver Creek Rd at Flatrock Rd, Azle
817-313-1793

LIGHTHOUSE CHURCH
6409 FM 730 S., Azle
817-444-4311

LIGHTHOUSE HARBOR CHURCH
1960 Long Circle, Pelican Bay
817-444-3547

NEW LIGHTED WAY
624 Harbor Dr. Circle, Azle
817-444-1577

NORTHWEST TEMPLE OF PRAISE
6781 Jacksboro Hwy., Lake Worth
817-909-5627

PRECIOUS FAITH TEMPLE CHURCH
8601 Hwy. 199 @ Vance Godbey's

THE HOUSE OF PRAYER
1356 Reno Rd., Springtown
817-221-2551

THE RANCH COWBOY COUNTRY CHURCH
14600 FM 730 North, Azle (Briar)
817-909-5627

REAL FAMILY FELLOWSHIP
202 Pearson Lane, Azle
817-677-5963

SOULS HARBOR
11701 Jacksboro Hwy., Azle
817-726-2065

WESTERN HARVEST FELLOWSHIP CENTER
6577 Old Springtown Rd., Weatherford
817-523-2855 or 817-995-9087

SHEPHERD'S HEART CHURCH
14435 FM 730 N • Azle
817-444-7777

WESTERN STAR COWBOY CHURCH
790 CR 3696 • Paradise 76073
817-688-6887

Get your business noticed!
817-270-3340
Call Johnna to reserve this space.

Want readers to FIND YOU?
Place your ad here!
Call 817-270-3340

Place your ad here today!
817-270-3340
or 817-220-7217

TRI-COUNTY Electric Cooperative, Inc.
Electric Cooperative, Inc.
"A Commitment to Service and Savings"

Actively Supporting our Communities!

Keller 817-444-3201 | Granbury 817-220-3333 | Azle 817-220-3333 | Seymour 817-220-3333

Double your impact with Print & Online Advertising!

Call Johnna for details
817-270-3340

Advertise Here

Contact us for details.
817-270-3340 or 817-220-7217

Your Ad Here

Newspaper Advertising Works!

Call Johnna for details TODAY
817-270-3340

Clarks Precision Machine & Tool
636 Profit St., Azle, Tx

45 Years of Quality

ISO 9001:2001 Compliant Phone 817-444-2533
Check us out on our web site B.J. Clark
www.clarksmachine.com bjc@clarksmachine.com

WHAT'S HAPPENING IN YOUR HOMETOWN?

Subscribe today to keep up-to-date
Azle News: 817-270-3340
Springtown Epigraph: 817-220-7217

Celebrating over 25 years in business

AZLE CHIROPRACTIC CLINIC
817-444-HELP (4357) Rodney Gatlin, D.C.
400 Boyd Court
www.azlechiropractic.com

Get your business noticed!
817-270-3340
Call Johnna to reserve this space.

Want readers to FIND YOU?
Place your ad here!
Call 817-270-3340

Place your ad here today!
817-270-3340
or 817-220-7217

TRI-COUNTY Electric Cooperative, Inc.
Electric Cooperative, Inc.
"A Commitment to Service and Savings"

Actively Supporting our Communities!

Keller 817-444-3201 | Granbury 817-220-3333 | Azle 817-220-3333 | Seymour 817-220-3333

Double your impact with Print & Online Advertising!

Call Johnna for details
817-270-3340

Advertise Here

Contact us for details.
817-270-3340 or 817-220-7217

Your Ad Here

Newspaper Advertising Works!

Call Johnna for details TODAY
817-270-3340

Advertise Your Business With Us and maximise your visibility!

Contact us about advertising solutions.
817-270-3340
817-220-7217



CLASSIFIED

817-270-3340 - Azle - classified@azlenews.net

817-220-7217 - Springtown - shirley@springtown-epigraph.net

Ad Classifications

- 1... Air Condition/Heating 24..... Electrician 46..... Looking to Buy 69..... Sand/Gravel
2..... Antiques 25..... Equipment & 47..... Lost & Found 70..... Septic Tanks
3..... Appliances 26..... Excavating 48..... Maintenance/Repairs 71..... Sewing/Alterations
4..... Appliance Repair 27..... Exterminating 49..... Masonry/Stonework 72..... Sewer Service
5..... Arts/Crafts 28..... Farm Equipment 50..... Mobile Home Service 73..... TV/Radio
6..... Asphalt Paving 29..... Fencing 51..... Motorcycles 74..... Tractor Service
7..... Auctions 30..... Firewood 52..... Movers 75..... Upholstery
8..... Autos, Trucks 31..... Free 53..... Musical Instruments 76..... Vacuum Cleaners
9..... Auto Repair Service 32..... For Sale 54..... Music Lessons 77..... Wanted
10..... Backhoe Service 33..... Furniture 55..... Miscellaneous 78..... Well Drilling
11..... Boats, Motors 34..... Garage & 56 Party Planning/Events 79..... Welding
12..... Bookkeeping 35..... Estate Sales 57..... Pets/Livestock 80..... Lots/Acreage
13..... Business 36..... Garden/Mowing Svc 58..... Piano Service 81..... Business &
Opportunity 37..... Hauling 59..... Pool Service 82..... Commercial Property
14..... Campers/Trailers 38..... Hay 60..... Professional 83..... RV's for Rent
15..... Carports/Patios 39..... Health/Fitness 61..... Personal 84..... Houses for Sale
16..... Equipment Repair 40..... Home Improvement 62..... Plumbing 85..... Mobile Homes
17..... Carpet Service 41..... House Leveling 63..... Public Notice 86..... Mobile Homes
18..... Catering 42..... House Cleaning 64..... Photography 87..... Rent Furnished
19..... Cement Work 43..... Hunting 65..... Printing 88..... Rent Unfurnished
20..... Demolition 44..... Janitorial Service 66..... Roofing 89..... Wanted to Rent
21..... Child Care 45..... Job Wanted 67..... Recycling
22..... Cosmetics 68..... Storage
23..... Computers/Services

RATES

16 Words or Less:

Combo (Azle & Springtown) Only \$10.00 per week!

Over 16 words, add 20 cents per word Extras such as Bold, Center & Border are available for a small fee

Classified boxed display ads also available for \$9.00 per column inch

(All ads must be paid in advance unless you have previously established credit)

CLASSIFIED AD DEADLINE: MONDAY BY 4:30 P.M.

Most ads require payment in advance, but we do accept VISA, MASTERCARD, DISCOVER OR AMERICAN EXPRESS by phone.



Reach more than 8,000 households with combo advertising in the Azle News and the Springtown Epigraph.

Nobody does it better!

006 Asphalt Paving BYRUM CONSTRUCTION Asphalt Paving Driveways • Parking Lots Asphalt Repairs & Sealcoating Asphalt Millings • Gravel Bruce Byrum Azle, Texas 817-690-2429

026 Excavating REED EXCAVATING SITE PREPARATION • GRAVEL ROADS LOT CLEARING • PARKING LOTS LEVELING • DEMOLITION FINAL GRADE • STOCK TANKS LAND EROSION Dump Truck Hauling 817-919-3696

035 Garden/Mowing Service WISE OUTDOOR SOLUTIONS. Fall Clean ups, Underbrush Removal, Tree Trimming, Stump Removal, Animal Burials, Tractor Work. 940-399-1677.

039 Help Wanted Sewing Machine Operator. Experienced only, part-time. Apply at Werry Theory - 12000 FM 730 N, Ste. C in Azle. 817-444-5424. Flexible hours.

039 Help Wanted

KARL KLEMENT Ford

Body Shop Painter Helper Assists Body Shop painters and performs other duties as needed throughout the Body Shop. Must be responsible and dependable with a valid driver's license. Monday-Friday work week.

Body Shop Technician Commission. Must have experience.

Body Shop Porter Performs duties throughout the Body Shop. Must be responsible, dependable and have a valid TXDL. Monday to Friday work week.

Parts Drivers Must have valid TXDL with acceptable driving record. Overtime available and room for advancement. Monday-Friday work week.

Service Advisor Seeking to hire an Experienced Service Advisor. Must be committed to customer satisfaction and be honest and dependable. Monday through Friday. No weekends!

KLEMENT Jeep RAM CHRYSLER DODGE

Service Porter/Make-Ready Associate Performs duties throughout the service department. Must be responsible, dependable and have a valid TXDL. Monday through Friday.

Service Advisor \$2,500 Hiring Bonus Must be committed to customer satisfaction and be honest and dependable. Previous experience preferred, but willing to train the right candidate.

Klement Distribution, Inc. (Hershey Ice Cream Distributor)

Route Driver \$2,500 Hiring Bonus No CDL required, but must have valid TXDL with acceptable driving record. Monday through Friday. Fun work environment! Promote from within advancement opportunities. Flexible time-off schedules, often 3-day weekends during summer months.

Karl Klement Properties, Inc.

Motorcycle Restoration Tech Restoring Bultacos. Full or Part time hours available. Maintenance Helpers Show us you have what it takes! On the spot job offers. No experience required.

For consideration of all positions apply to: Alyssa Jacobs, Assistant H/R Manager 605 N. Business 287, Suite 102, Decatur, Texas hr@klementford.com 940-627-6362 We offer Benefits, Paid Holidays, Vacation & Training

Correctional Officers • Assistant Foodservice Manager Academic Instructors • Assistant Maintenance Supervisor - Plumber • Lieutenant • Classification Officer - Intake • Vocational Instructor • Recruiting Sergeant • Commissary Worker New Correctional Officer Pay is \$15.00 per hour. PLEASE CHECK THE WEBSITE FOR JOB QUALIFICATIONS. Must have HS Diploma or equivalent, be able to pass a drug screen, have a clean background and valid driver's license to be considered for a Correctional Officer. EOE Apply online at www.mtctrains.com or call 940-567-2272 and ask for the HR Department. Minority/Female/Veteran/Disabled LINDSEY STATE JAIL

009 Auto Repair Service Rainwater's Transmission & Auto Repair TRANSMISSION • BRAKES A/C • ENGINE SERVICE LOCALLY & FAMILY OWNED! 201 E. Hwy. 199, Springtown 682-615-7250

026 Excavating REED EXCAVATING SITE PREPARATION • GRAVEL ROADS LOT CLEARING • PARKING LOTS LEVELING • DEMOLITION FINAL GRADE • STOCK TANKS LAND EROSION Dump Truck Hauling 817-919-3696

LEON'S TREE SERVICE Expert take downs Stump Grinding Residential/Commercial Licensed & Insured • Free Estimates 817-371-8597

Older family fixing up farm property. Need 1 person for 1-2 days a week \$15 hr negotiable to help maintain gardens, repair barns, general maintenance. Located on Flat Rock Rd Azle. There's always something to do! Text 801-574-5057

Experienced Mig Welder with Flux-core experience needed in Weatherford please call 817-594-1290 or Text 817-629-3025

014 Campers & Trailers 2013 Coachmen Catalina 29RKS, Delux Trailer, Slideout, Queen, Recliners, Sofa Bed, Large bath, TV, Nice \$22k/OBO 940-557-5777.

026 Excavating ALL TYPES OF EXCAVATING Tanks • House Pads • Clearing HASTY EXCAVATING Also .. Sand • Top Soil • Gravel 817-523-7248 • 817-239-6215

STUMP GRINDING Don't dig it! Grind it! 1 or 100 - We can do it. \$85 minimum within 5 mi. 817-237-5592

Eagle Remediation is currently hiring Class A&B CDL Drivers. 5-6 day work week with rotating Saturday schedule. Eagle performs activities such as underground tank removals, demolition, soil excavation, site restoration and waste management. Must pass physical, drug screening and background check. Full time Employees receive benefits, including vacation, health, vision, dental insurance & 401K. Please call 214-884-2096 to set up an interview. Located at 3131 E. Hwy 199, Springtown, TX 76082

Service Advisor Seeking to hire an Experienced Service Advisor. Must be committed to customer satisfaction and be honest and dependable. Monday through Friday. No weekends!

019 Cement Work Kiley Chesney Construction Dirt & Concrete Work Driveways • House Slabs • Garages • Add-ons Small Land Clean-ups • Gravel Driveways Kiley Chesney, Owner Springtown, TX • Mobile 817-846-6645

029 Fencing BOBBY'S FENCE. All types, Free Estimates, Over 26 years experience. 817-444-3213.

IRRIGATION REPAIR Residential/Commercial License# LI007825 \$85 Service Call

WANTED Property Maintenance Labor/Person Gene Thompson & Associates 817-246-4646

Service Porter/Make-Ready Associate Performs duties throughout the service department. Must be responsible, dependable and have a valid TXDL. Monday through Friday.

Allen Chesney Concrete All Types of Concrete Work Residential - Commercial Foundations, driveways, sand, gravel, demolition, haul-off, retaining walls 817-271-4541

030 Firewood LEON'S TREE SERVICE. Split Oak and Pecan wood. Pickup or delivery. 817-371-8597.

OUTDOOR SCENE 682-553-1560

Gene Thompson & Associates 817-246-4646

Service Advisor \$2,500 Hiring Bonus Must be committed to customer satisfaction and be honest and dependable. Previous experience preferred, but willing to train the right candidate.

Concrete Services, Patios, Driveways, Sidewalks, Retaining Walls, Foundations, Stone Walls. Free Estimates. 817-371-8597.

032 For Sale For Sale, Bugundy chair and Ottoman \$100, Whirlpool Upright Freezer \$200, Powerlift Recliner \$300. 817-454-3798.

Chad's Tree Service FREE ESTIMATES Trimming • Removals • Stump Grinding Systemic Feeding • Brush Chipping • Cable Bracing 817-221-2201 • 817-246-5943 Insured for your protection

Klement Distribution, Inc. (Hershey Ice Cream Distributor)

020 Demolition MCNEELY'S DEMOLITION & CLEAN UP SERVICE We Create Vacancy •Tear Down •Barns •Removal •Houses •Haul Off •Bobcat •Mobile Service Homes •Dirt/Gravel •Garages Spreading FREE ESTIMATES 817-996-7887 253 Eagles Way, Springtown

Free 60x20 Building to be moved, located between Azle and Springtown. 817-980-3066.

039 Help Wanted Looking for mature people to work with small animals. Must have reliable transportation. Call for more information 817-926-3300.

039 Help Wanted Eagle Crest VILLA SENIOR LIVING COMMUNITY NOW HIRING Activity/Marketing Director Full-time, Mon-Fri 8 AM - 5 PM. Some weekends required. Pay based on experience. Company benefits: PTO, Medical, Dental and Life Insurance. Must be a self-starter, fun, energetic and a team-player. Please apply in person 113 Denver Trl. Azle.

Route Driver \$2,500 Hiring Bonus No CDL required, but must have valid TXDL with acceptable driving record. Monday through Friday. Fun work environment! Promote from within advancement opportunities. Flexible time-off schedules, often 3-day weekends during summer months.

024 Electrician BULLDAWG ELECTRIC CO. All types of electrical services and MH hook-ups. Free Estimates. 817-675-4921 www.bulldawgelectric.com. TECL#25253.

Electric Front Loading Washer and Regular Dryer \$550 for both, good condition 817-946-5837.

Auto Techs and Transmission Rebuilders and R&R Men, Top Pay for Top Skills. Call or come by 201 E. Hwy 199, Springtown, 682-615-7250. Rainwater Transmission & Auto Repair.

Now Hiring COOK Full and Part Time for 11:00 AM - 7:30 PM shift Excellent pay and benefits Medical, Dental, Vision, Life Come and apply in person Interview on the spot! 113 Denver Trail Azle Texas 76200 www.eaglecrestvilla.com

Motorcycle Restoration Tech Restoring Bultacos. Full or Part time hours available. Maintenance Helpers Show us you have what it takes! On the spot job offers. No experience required.

024 Electrician BULLDAWG ELECTRIC CO. All types of electrical services and MH hook-ups. Free Estimates. 817-675-4921 www.bulldawgelectric.com. TECL#25253.

Church Sale Friday-Saturday 8am-4pm 1356 S Reno Rd, Reno. Last weekend cancelled due to weather

MAINSTREAM (group home for adults with developmental disabilities) is hiring part-time Direct Contact Staff for 17-hour weekday shifts (2nd & 3rd shifts) or 24-hour weekend shifts. Paid training, starting pay is \$7.75 hourly. Good potential for full-time employment. Call 817-270-2747, Monday-Friday, 9A-3P.

Now Hiring COOK Full and Part Time for 11:00 AM - 7:30 PM shift Excellent pay and benefits Medical, Dental, Vision, Life Come and apply in person Interview on the spot! 113 Denver Trail Azle Texas 76200 www.eaglecrestvilla.com

For consideration of all positions apply to: Alyssa Jacobs, Assistant H/R Manager 605 N. Business 287, Suite 102, Decatur, Texas hr@klementford.com 940-627-6362 We offer Benefits, Paid Holidays, Vacation & Training

817-270-3340 - AZLE
817-220-7217 - SPRINGTOWN

Deadline:
 4:30 PM Monday

Classifieds

039 Help Wanted

HVAC TECHNICIANS & INSTALLERS

Come Join the Quality Team at



A/C & HEAT BY RUSSELL
817-270-8811

066 Roofing

DIAMOND ROOFING & CONSTRUCTION



Commercial & Residential

- Roofing
- Metal Roofing
- Carports
- Metal Buildings
- All General Contracting

417 N. MAIN ST • SPRINGTOWN
817-523-4137

Here Before The Storm. Here Long After.



086 Mobile Home/RV Lots

Beautiful RV Spots available in nice, quiet area near Eagle Mountain Lake. \$350/mo. Call for more information 817-228-2414.

088 Rent Unfurnished

AZLE OAKS APARTMENT
 700 JARVIS • AZLE
 817-444-1712

1 & 2 Bedroom Unfurnished
 Accepting Applications
 Rent based on income

TDD: 800-735-2989

This institution is an equal opportunity provider and employer.

POJO RV PARK

302 Allison Road
 Springtown, TX 76082
817-925-3673

30x60 RV Spaces
\$380/mo.
 Includes electricity, water, sewer & trash

NEAR POJO STADIUM

Wise Ready Mix

Now Hiring Class B-CDL Mixer Drivers

- Production & Safety
- Bonuses Paid Monthly
- Employer Matching Retirement Plan Available

Apply in person at
 1349 NW Parkway • Azle

049 Masonry/Stonework

Silva Masonry, L.L.C.
 AZLE, TX

CONCRETE COMMERCIAL • RESIDENTIAL

Landscape Designs, Outdoor Kitchens
 Patios, Retaining Walls, Mailboxes

All Types Stone & Brick Work Free
 New Construction • Remodels Estimates

817-308-6512
 email alvarogsilva@verizon.net

Miles Roofing

- Insurance Claim Specialists;
- Free Estimates

817-797-3420

079 Welding

WDC
 WELD-DONE CONSTRUCTION LTD.

Metal Building Erectors

- Pre-engineered Weld-up
- Barns/Shops
- Arenas/Hangars
- Fencing

1220 E. Hwy. 199 • Springtown
817-220-2150
 www.weld-done.net

★ **Star RV Park** ★

3195 E Hwy 199, Springtown, TX 76082
 Halfway between Springtown & Azle at Monticello Dr.

\$400 A Month
 Laundry • WiFi • Utilities

Larry Brawley
817-319-7874

040 Home Improvement

BILL ROSSER PAINTING & REMODELING. Big Savings: \$100 off any job of \$1,000 or more. Painting, Carpentry, Porch Covers, Decks. FREE ESTIMATES. Call 817-304-9974; 866-374-3559.

052 Movers

U.S. Army Retired-but not tired! Careful moving-Cheap.
 Call Big Jim @ 817-237-5151.

AT HOME ROOFING & METAL BUILDINGS

817-304-4224

Tired of always replacing your roof? Call us for a metal roof quote.

We'll be here after the storm.

Our Business is Metal Buildings - And We're Good!

DESIGN FABRICATION ERECTION

Cozart METAL BUILDING SYSTEMS

Fabrication and erection of quality metal buildings at reasonable prices, any size - any design

Office **817-237-2282**
 Fax 817-237-0904

Mark Cozart Jeremy Cozart
 817-233-6668 817-237-2028

088 Rent Unfurnished

2021 Home in Azle. 3BR, 2BA, 2-Car Carport with attached 10x20 Storage. \$1,600/mo. \$1,600 deposit, Credit/Background Check, No Pets. Available March 1st. 817-980-3066.

088 Rent Unfurnished

FOR RENT

1 bdrm Spt for rent
\$800 mo
\$800 dep

NO PETS
940-229-1045
or 940-229-1046

PYRAMID REMODELING. PAINTING: Interior, Exterior, Tape & Bed, Texture, Popcorn Ceilings. FREE ESTIMATES. 817-944-7658.

057 Pets/Livestock

Will pay top dollar for grazing and hay leases. Call 940-389-1936.

068 Storage

INNERSPACE STORAGE. Hwy 199, Springtown. Now renting all unit sizes, 24-hour access. 817-677-4050.

081 Business/Commercial

40x50 building For Rent, 3 miles west of Springtown. 817-713-7495.

3-2 Duplex for Rent in Springtown. \$1,200/mo. \$600 deposit, no pets. Available Feb 1st 817-980-3066.

PUBLISHER'S NOTICE

All real estate advertising in this newspaper is subject to the Fair Housing Act which makes it illegal to advertise "any preference, limitation or discrimination based on race, color, religion, sex, handicap, familial status or national origin, or an intention, to make any such preference, limitation or discrimination." Familial status includes children under the age of 18 living with parents or legal custodians, pregnant women and people securing custody of children under 18.

This newspaper will not knowingly accept any advertising for real estate which is in violation of the law. Our readers are hereby informed that all dwellings advertised in this newspaper are available on an equal opportunity basis. To complain of discrimination call HUD tollfree at 1-800-669-9777. The toll-free telephone number for the hearing impaired is 1-800-927-9275.

BOBBY MCWILLIAMS PAINTING 817-821-6377. Interior/Exterior Painting Residential & New Homes. 48 years experience.

062 Plumbing

LANDERS Plumbing Co.

Plumbing Repairs
 Drains Cleaned

817-444-3054
940-233-2862
 Don Landers • M-10078

STORAGE UNITS
 1350 LIBERTY SCHOOL RD, AZLE

5X10 \$45/MONTH \$20/DEPOSIT
 10X10 \$70/MONTH \$30/DEPOSIT

Rent 5 months in advance & Get 6th Month FREE
817-246-4646

PARKWAY CENTER
 Hwy 199 Frontage
 Near Hospital

1161 SE Pkwy Azle 1700 SF \$1200/mo,
 1169 SE Pkwy Azle 1000SF \$800/mo
817-220-2021

1-1 No pets, non-smoker, \$600mo. 817-296-6169

3-2 Duplex, just refurbished, quiet area, no pets, close to shopping \$1300/mo. 817-444-3636

Studio Apartment for rent suitable for 1 adult, no pets. \$500mo \$500dep utilities included. 817-565-7145 Ask for Bob.

3-2 DW on 1 acre, Azle Schools, \$1350mo, \$1350dep, no pets. 817-980-3066.

3-2 DW on 1 acre in Briar, Azle Schools, \$1200mo \$1200dep, no pets. 817-980-3066.

2BR 2BA in Springtown, \$950mo, \$950 Dep
817-220-4095.

Kevin's Handyman Services
 40 Years Experience

- Carpentry
- Drywall & Painting
- Tile & Laminate Floors
- Doors & Windows
- Decks & Stairs
- Cabinets & Countertops
- No Job Too Small

Springtown and Surrounding Areas
231-445-1221

GRAHAM PLUMBING CO.



Commercial-Residential
 Serving Springtown, Azle, Boyd, Weatherford Area
 M#15899
817-220-2469
 grahamplumbingco.com

069 Sand/Gravel


HALL'S SAND, DIRT & GRAVEL

Quality Family Business Since 1938

CALL Cliff Hall
(817) 221-2681

We go the extra mile to ensure you get more for your \$.
 On House Pads, Driveways, Lot Clearing & Tractor Work, Etc.

Rescue your Ballerina from the local Shelter and give her a Furever Home



Shelter animals have lots of unconditional love to share with their new best friends. Feel the Love - Adopt

079 Welding

owner Rodney Vick
 817-220-3044
 fax 817-523-7639
 cell 817-253-1614

R & E Construction

Metal Building Specialist

- Weld Ups/ Bolt Ups
- Pipe Fencing
- Concrete
- Horse Barns
- All Types Fencing
- Metal Roofs

Compare Pricing
NO JOB TOO SMALL

Azle Creek Apartments
 519 W. Main St. • Azle

1 Bed/1 Bath \$750/mo.
All Bills Paid

2 Bed/1 Bath \$925/mo.
All Bills Paid

817-598-0663
 or visit us online at aaapropertiesonline.com
 FIND US ON FACEBOOK!

AAA PROPERTIES, L.C.
 Quality Rentals
 1510 Santa Fe Dr, Ste 100 Weatherford, TX 76086

TKO Services
 Soft Wash House Wash



Eve's
 Roofs and Shingles
 Bricks
 Windows
 Decks
 Concrete Cleaning
 Swimming Pool Area
 Rock
 Sidewalk
 Driveway

817-550-3745

GENE THOMPSON & ASSOCIATES HOMES and MOBILE HOMES FOR RENT
 gtax.com
817-246-4646

Find a Job in the Classifieds!
 Azle News
 Springtown Epigraph



046 Looking to Buy

IBUY

- Used/Damaged Campers
- Motorhomes
- Farm Equipment
- Trucks And Trailers
- Horse Trailers
- Boats • Golf Carts
- ATVs • Misc.

817-629-7531

062 Plumbing

PLUMBING by RICHARD
 RESIDENTIAL REPAIRS
 License #M15853

Credit Cards Accepted
 Serving Azle
817-907-0472

SOLID STEEL SOLUTIONS

- Metal Buildings
- Steel Components
- Welding Supplies
- Concrete Supplies
- Fabrication Supplies
- Pipe Fencing
- Deer Blinds
- Deer Feeders

8894 W Hwy 199 • Springtown
817-220-0008
www.SolidSS.com **Open to the Public**

Eagle Lake Garden APARTMENTS

- Are now taking applications on a first come first serve basis.
- Will have rental assistance available for eligible households.

EQUAL HOUSING OPPORTUNITY

1300 VILLAGE GARDEN
 AZLE, TX
817-444-6532
800-735-2988

PLACE AN AD IN THE CLASSIFIEDS TODAY!
817-270-3340

SELL IT IN THE CLASSIFIEDS!

Rent unfurnished
 continued on next page...

817-270-3340 - AZLE
817-220-7217 - SPRINGTOWN

Deadline:
 4:30 PM Monday

Classifieds

088 Rent Unfurnished

Cross Companies Residential Properties

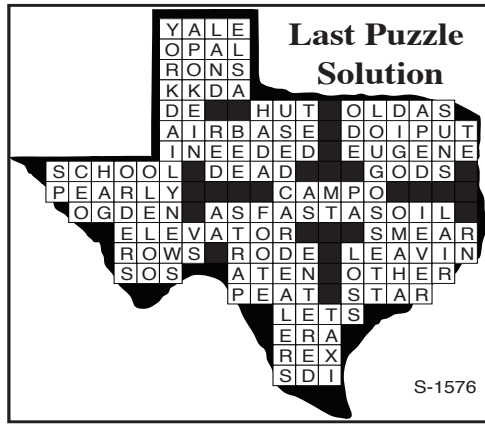
Family-owned, family-run



Stewart Bend Duplex Homes: 2 & 3 bedroom units available at \$1,075 & \$1,175. Quiet, clean, non-smoking. CALL or TEXT 817-404-7143.

Silver Creek RV Park: Designed for local long-term stays. Best common building in Azle, secluded and quiet, city water/sewer. \$450 with \$75 electricity allotment; ABP in winter. CALL or TEXT 682-499-8616 or email scrvooffice@gmail.com.

Barton Cottages Tiny Home Community: COMING FALL 2021! Email sales.stewartbend@gmail.com for information.



Need a new Landscaper?
 Find one in the Community Classifieds!

Azle News
 817-270-3340
Springtown Epigraph
 817-220-7217



TexSCAN Week of
 March 13-19, 2022

EVENT

South Texas Home and Garden Show, Saturday, March 19, 9 a.m.-5 p.m. 15th annual. Free Admission - Plants - Concessions - Kids Activities. Floresville Event Center, 600 Hwy 97 W, Floresville.

ACREAGE

Hunting/investment/recreational property. Starting at \$650/acre. Trans Pecos region. Also the Hill Country (Edwards, Menard, Coke, Val Verde Counties - free ranging exotics), South Texas (Duval County - whitetail, hogs). Large or small acreage. 30-year fixed rate owner financing, only 5% down. Call toll-free or email for individual prices and terms, www.ranchenterprisesltd.com, 800-876-9720.

PETS & LIVESTOCK

Use **Happy Jack®** Paracide® shampoo to treat fleas & ticks on dogs & cats. Relieve secondary dermatitis. At Tractor Supply® (www.fleabeacon.com)

GENERATORS

GENERAC Standby Generators provide backup power during utility power outages, so your home and family stay safe and comfortable. Prepare now. Free 7-year extended warranty (\$695 value!). Request a free quote today! Call for additional terms and conditions. 855-704-8579.

WANTED

FREON WANTED: We buy old refrigerants: R11, R12, R113 & more! Quick, local pickup & dropoff available. Call 312-625-5322, RefrigerantFinders.com ¡Te pagamos por tu refrigerante!

ARROWHEADS

Indian Arrowheads Wanted - Point Type: Clovis, Yuma, Firstview & Eden. Must be old, authentic & unbroken. Absolute TOP DOLLAR paid - up to 5 figures for one point. I am a very serious high-end collector. Call 979-218-3351.

AUCTION

Karnes City Auction Special Sale - Sat., March 19 @ Noon, Regular Saturday Sale to follow. 200+ head: Hereford, Tiger Stripe, Santa Gertrudis, Brangus, Brahman, Young Bred Cows & Pairs, Heifers & Bulls. Call Josh 830-623-2855, 1918 Hwy 80, Karnes City, TX. Pictures: www.karnescityauction.com/special-sales

Texas Press Statewide Classified Network
 221 Participating Texas Newspapers • Regional Ads
 Start At \$250 • Email ads@texaspress.com

NOTICE: While most advertisers are reputable, we cannot guarantee products or services advertised. We urge readers to use caution and when in doubt, contact the Texas Attorney General at 800-621-0508 or the Federal Trade Commission at 877-FTC-HELP. The FTC web site is www.ftc.gov/bizop.

PLACE YOUR AD ONLINE:
azlenews.net
springtown-epigraph.net
 OVER THE PHONE:
 817-270-3340
 817-220-7217
 or EMAIL:
classified@azlenews.net



Check out our Home Improvement Section to find a Remodeling Specialist in the classifieds.

ACROSS

1 TX George W. got a B.A. from here

5 gem found in Texas

6 TX Tarzan Ely, et al

7 a Dallas FM radio

8 the fleur-de-lis once flew over Texas

9 TX-based eatery: "Pizza ____"

12 TXism: "____ dirt" (elderly)

17 what USAF has in Abilene (2 wds.)

20 TX Charley Pride's "Where ____ Her Memory?"

22 TX Willie Nelson's "Last Thing ____ the First Thing This Morning"

23 TX Roddenberry's full first name

24 TXism: "____ marm" (teacher)

29 TX Dan Jenkins novel: "____ solid perfect"

30 title of TX George Jones tribute album: "____ Country"

31 TXism: "____ gates" (heaven)

32 in Wharton County: El ____

36 UT has collection of poet ____ Nash

37 TXism: "____ from a gusher" (quickly)

43 it gets you up in Reunion Tower

45 TXism for a bad defeat

TEXAS CROSSWORD
 by Charley & Guy Orbison
 Copyright 2022 by Orbison Bros.

47 braided hair: corn ____

48 TXism: "been ____ hard and put up wet"

50 TX Guy Clark's "She's Crazy for ____"

51 help needed signal

52 TXism: "wouldn't touch it with ____-foot pole"

53 TXism: "six of one, half a dozen of the ____"

54 ____ moss

55 Lone ____ State

12 TX Benson film: "____ to Billie Joe"

13 actor in "Return to Lonesome Dove" (2 wds.)

14 Yo Lo ____ Creek

15 imitated

16 TXism: "working between ____" (night work)

18 ____ River

19 quilting or spelling

21 Cowboy Dalton Schultz pos. (abbr.)

24 George W. HUD sec., Preston (init.)

25 bidness "big dog"

26 nickname of country singer Merle

38 leather strip

39 TX writer Horton

40 in Morris County on U.S. 67

41 TXism: "beats anything ____ saw"

42 lion's den

44 flag-burning case: Texas ____ Johnson

46 nurse (abbr.)

49 Cowboy Bob Lilly ____ the NFL Hall of Fame in '80

50 Dak Prescott sack is a ____ of yards

57 airport transport

Advertise in the Classifieds and raise some extra money for your next trip to the beach.

16 words or less is only \$10.
 Call us for more info.

817-270-3340 Azle or 817-220-7217 Springtown