



# Azle News

YOUR TRUSTED LOCAL NEWS SOURCE SINCE 1966

Wednesday, July 27, 2022 • Volume 71, Number 9 • AzleNews.net • \$1

## Suspect released on \$5K bond

BY JESSICA MCKINNEY  
azlereporter@azlenews.net

An Azle man arrested on a hit-and-run charge was released on a \$5,000 bond following his arrest last week.

Ryan Ellis Collier, 46, is a

suspect in the May hit-and-run death of Amber Linehan Lemke. He was charged with accident involving death.

Azle Police Chief Ben Hall said in an email that Collier was on parole but that his parole was not revoked.

The case remains active and there are outstanding investigative leads and pending forensic returns, so the department is not releasing additional information at this time.

"Many officers knew the victim," Hall said. "They were

diligent and focused on finding the suspect and did great work. It was a patrol and CID joint effort. I am proud to be part of this department and work like this is part of (the reason) why."

Collier has multiple felony

convictions in Parker County, including theft of a firearm and engaging in organized criminal activity, as well as a misdemeanor conviction for assault of a family or household member impeding breath or circulation.



Ryan Ellis Collier

## Back on the road after recovery

BY JESSICA MCKINNEY  
azlereporter@azlenews.net

A little over a year ago, Amy Tong feared that her traveling days were behind her. She had spent roughly four months in the hospital, from December through April, while doctors — and her body — fought for her to survive COVID-19.

Tong and her son Austin had a trip to Italy planned for 2020, which had to be cancelled because of the pandemic, and hoped to reschedule for the following summer, but her COVID battle changed those plans.

But since her release from the hospital, Tong, an instructional technology specialist at Azle ISD, has been recovering and gaining back strength, and she and her son and father Bill Nutt were able to begin traveling again this year.

"In March 2022, I gave travel my first little test with a cruise to the Bahamas, Turks and Caicos, Do-

minican Republic and Key West," Tong said. "I was curious about my confidence with my health and my endurance. I'm still experiencing long COVID issues with breathing and numbness in my feet."

Tong said that it "all went very well, and people were safe and cautious. I even got to swim with a sea turtle."

Over the summer, Tong and her travel partners (Austin and Bill) went on a three-and-a-half-week trip to Norway and England. They took a cruise up the coast of Norway and into the Arctic Circle.

"Seeing the Midnight Sun was amazing and strange," Tong said. "Norway is a beautiful country with fjords and waterfalls everywhere."

The last four days of their trip were spent in London, which is a place they've visited before, but Tong says she doesn't think she will ever tire of visiting.

The most memorable part of their summer ad-



Amy Tong traveled back to England this year, one of her favorite places. Here she is standing in front of the Parliament building in London.

Courtesy photo

venture was reaching North Cape at the top of Norway, which Tong called a "great achievement."

"It was surreal to see the Midnight Sun," she said. "We would go outside at 2 a.m. and it looked like it does at 4 p.m. here."

But the best part, she said, was spending time out in the world again with her son and dad.

Tong said that she felt "very safe" regarding her and her family's health while traveling this year, even on the cruise ships.

"Everyone was masking and hand-washing," she said. "We had to test negative before going on the ship. There were excellent cleaning protocols in place."

SEE TONG, PAGE 2A.

## Council gives guidance on lot, dwelling sizes

BY DON MUNSCH  
don@azlenews.net

Azle City Councilmembers sounded off about minimum lot sizes and minimum dwelling sizes at their July 19 meeting.

Council held a public hearing on amendments to the City of Azle Zoning Ordinance pertaining to minimum lot sizes and minimum dwelling unit requirements for all single-family residential districts. The zoning ordinance contains the zoning districts for each single-family residential districts, and that comprises the development standards such as lot sizes, setbacks, house sizes, etc., according to information in the council's agenda packet.

"This is an ordinance that's been in the works

about three or four months," said David Hawkins, director of planning and development for the city.

During discussions at the Feb. 8 joint Azle City Council and Planning & Zoning Commission meeting on the Comprehensive Master Plan Update, direction was given to city staff to proceed forward with possible amendments to the single-family zoning districts, specifically on minimum lot sizes and minimum house size requirements within each district. A discussion was held on June 16, and on July 7, the P&Z Commission made a recommendation to approve amendments to the SF districts.

The council agenda pack-

SEE COUNCIL, PAGE 3A.



Azle Grove housing development, located across Azle Elementary School near North Ash Street and Lakeview Drive, was the site of some clearcutting in Azle.

Photo by Don Munsch

## Wildlife and water drainage affected by clearcutting in Azle

BY DON MUNSCH  
don@azlenews.net

Azle City Councilmembers on July 19 heard about how the city's growth is affecting the environment.

Colt Hamilton discussed the effects of development on the community. He was

invited to speak by councilmember Stacy Peek. Hamilton holds a degree in wildlife management and is a certified wildlife biologist. He has worked with Texas Parks and Wildlife Department and other wildlife organizations. He will be a biology teacher at Azle Junior

High School this year. Peek said she and Hamilton have had discussions about clearcutting and environmental concerns about wildlife and habitat and she said she was alarmed by what she learned. She wanted to have Hamilton speak to council, explaining that

as the city grows and leaders make plans, they need to know "what we potentially could be up against."

Hamilton prefaced his statements by saying his presentation's material would not be guaranteed to happen,

SEE CLEARCUTTING, PAGE 3A.



INSIDE News 1-8A | Obituaries 6A | Sports 1-4B | Classifieds 6-8B |

6 99232100001 0



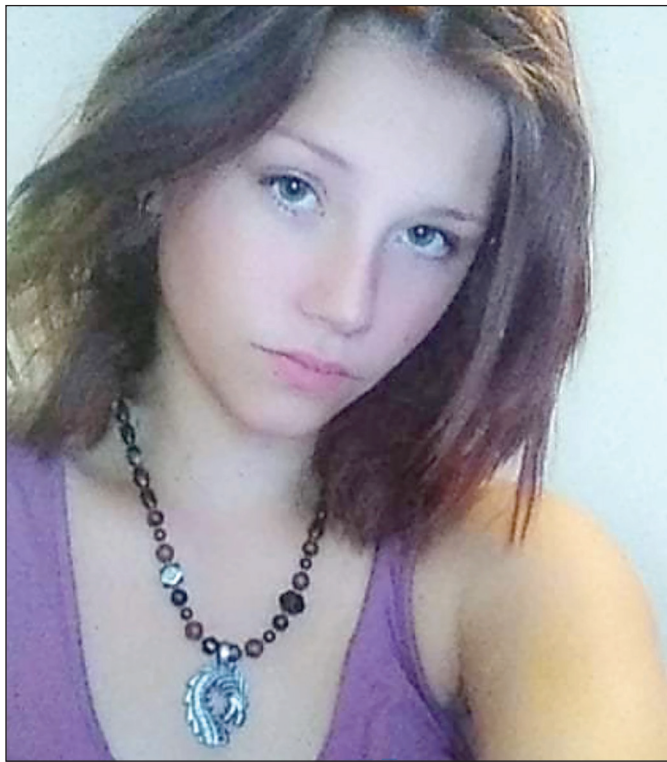
# Investigators seek help in missing girl case

**FROM STAFF REPORTS**

Parker County Sheriff's Criminal Investigations Division seeks the public's assistance in finding a missing teen girl. She was last seen Saturday.

Carmalita Jene "Carman" Peters, 14, texted her father that she was walking to Dollar General on Highway 51 North in Parker County around 8 p.m. Saturday, according to a news release from the sheriff's office. She is classified as a runaway because of reports from her family that she may have run off to be with friends.

Sheriff's investigators think Carman was picked up from the Dollar General and was given a ride to Shady Grove Park in Azle, around 9:30 p.m., Saturday. She was last seen around 11:30 p.m. Saturday at the park with friends. Carman was last known to be wearing a black shirt, black shorts and black running shoes. She has shoulder-length, cropped dark brown hair with a purple tint. She has brown eyes and is approximately 6-feet



Carmalita Jene "Carman" Peters

tall, weighing about 160 pounds, the release stated.

Anyone with information should contact the Parker County Sheriff's Office at 817-594-8845. You may remain anonymous by contacting Parker County Crime Stoppers at 817-599-5555.

Crime Stoppers will pay up to a \$1,000 reward for information leading to the safe recovery of Carman.

People may also submit an anonymous tip online by logging onto [www.parker-countysheriff.net](http://www.parker-countysheriff.net) under the tip411 link.

## Ministerial Alliance to hold blood drive

Azle Area Ministerial Alliance will hold a Carter BloodCare community blood drive from 3:30-6:30 p.m. Aug. 1 at the First Unit-

ed Methodist Church at 200 Church St. in Azle.

People may sign up by accessing [ww3.greatpartners.org/donor/schedules/drive\\_](http://ww3.greatpartners.org/donor/schedules/drive_)

schedule/127874.

For more information, call Colleen Horan at Carter BloodCare at 817-412-5372.

# BE a blessing

It was July 28, 1982. I had just finished my second year of college and was home for the summer in Andrews, Texas.

The First Baptist Church of Seminole — just 28 miles away — was having revival services with a different guest preacher and soloist each night. I happened to be the guest soloist that night. I can't remember the first couple of songs I sang before the sermon, but after the sermon I was to sing one more.

I also can't remember what I had planned to sing, but when I sat down at the piano I had the overwhelming sense — unlike any such sense I had ever experienced at the ripe old age of 20 — that I was supposed to sing a particular song by Keith Green.

For anyone unfamiliar with that name, he was an amazing Christian artist whose songs powerfully influenced the lives of many people (particularly in my age group) in that time period.

The song was "Make My Life A Prayer to You," from which came the title of his 1978 album, "No Compromise."

Some of the lyrics: *Make my life a prayer to You I wanna do what you want me to No empty words and no white lies*



**BE AMAZING**  
By Gerry Lewis

Azle resident Dr. Gerry Lewis guides explorers to discover their AMAZING. He is an author, musician, and speaker, and a coach-sultant for individuals, churches, and organizations. More at [www.discoveryouramazing.com](http://www.discoveryouramazing.com).

*No token prayers no compromise  
I wanna shine the light You gave  
Through Your Son You sent to save us  
From ourselves and our despair  
It comforts me to know You're really there  
I wanna thank you now  
For being patient with me  
Oh it's so hard to see  
When my eyes are on me ...*

The next day I learned that Keith Green and 10 other people had been killed in a plane crash the day I had sung his song.

I've sung that song many times in many places in the past 40 years and I always remember those circumstances. I've also sung it many times alone and made it my own prayer: "Thank you, Lord, for being patient with me. Help me not be so focused on me. Help me shine Your light."

This morning I thought of another song from the same album. Some of the lyrics from "Asleep in the Light" often refocus me:

*Bless me, Lord. Bless me, Lord  
You know it's all I ever hear  
No one aches, no one hurts*

*No one even sheds one tear  
But He cries, He weeps, He bleeds  
And He cares for your needs  
And you just lay back and keep soaking it in  
Ouch!*

So what triggered that memory this morning? I read Zechariah 8:13.

"Just as you, Judah and Israel, have been a curse among the nations, so I will save you, and YOU WILL BE A BLESSING. Do not be afraid, but let your hands be strong." (emphasis mine)

The original context of this is obviously a message to a particular group of people, but I see in it a principle that is always true: Our blessings are never simply for our own benefit or enjoyment. They are for the transformation of our identity.

Any way God blesses us is for the purpose that we see ourselves as a blessing God gives to the world. When we are amazed by God and determine to join Him in His amazing activity in the world, we will be conduits — not reservoirs — of His blessing.

Be a blessing and be amazing today, my friend.




For those closest to you,  
our emergency care is close by.

When accidents or emergencies happen, we're prepared with the advanced care and compassion you need - right here in Azle. Our emergency department is open 24 hours a day and is located just down the road. As part of one of the largest health systems in North Texas, we're here for you and your family to provide the care you need, close to home.

Texas Health is right there with you.

If you are experiencing an emergency, call 9-1-1.

 108 Denver Trail | Azle, TX 76020

 For more information, visit [TexasHealth.org/Azle](http://TexasHealth.org/Azle) or call 817-444-8600





**CLEARCUTTING**, CONTINUED FROM PAGE 1A.

but his presentation is based on studies on events that have happened in other places. His presentation included information on old growth trees and clearcutting's effect on wildlife, which would include insects and reptiles. With the elimination of trees, water drainage is going to go somewhere and that affects the environment in various ways.

Fragmentation becomes another factor from clearcutting, as, for example, it can lead to wildlife moving into an area populated by humans. Animals will move

away from their former home and start competing for resources in a new habitat, and that can be deadly for many animals during a drought, Hamilton said. Inbreeding also can be harmful to animals where diversity is lacking.

Hamilton thinks growth is going to happen and it's needed, but the city needs to forge an identity that includes the rural component while not being an urban setting where buildings are stacked side by side.

"So, let's try to kind of mix and have a harmonic

relationship with both of them," he said.

In other developments, council approved, among other action:

- Appointing Joseph McCreary III to the Special Events Advisory Board Place 7.

- A request from the Azle Area Chamber of Commerce for street closures, traffic control, security, use of Azle Memorial Library parking lot and waiver of fees and permits for the annual Sting Fling Festival, held this year on Sept. 10. Chamber President Kim Ware and Cham-

ber Executive Director Jennifer Herrington spoke to council. Ware said Sting Fling organizers want to use the Azle Memorial Library parking lot and that Main Street be closed from Stewart Street to Industrial Street. The street closure must be coordinated with the Texas Department of Transportation by the Azle Police Department. Sting Fling offers a number of activities and includes a parade, but it will not have live music this year. The library will be closed that day.

- Authorizing the City Manager to execute an agreement with the Azle Independent School District (AISD) to provide school resource officers for the 2022-23 school year. Estimated costs did rise, as the expense for providing the program for 10 months is \$461,486.99, an increase of \$22,228.25 (5%). These costs include salaries, benefits, equipment (vehicle, fuel, uniforms, etc.) and training for each of these officers. The program has a sergeant and four officers. AISD has

agreed to pay \$395,000 toward the program, an increase of \$15,000 (3.9%) from the current year. The AISD board approved the agreement on June 20. For the future, AISD, with a police chief and an officer now, will be pursuing expanding its own police department. It will be adding six officers in FY 2022-23 to work with APD's SROs who will essentially be phased out over the next two to three years and absorbed into APD to perform regular duties, the agenda packet info stated.

**COUNCIL**, CONTINUED FROM PAGE 1A.

et stated city staff has provided a benchmark of cities within the DFW area that are comparable to the city of Azle to get a better understanding of where the trend is for lot sizes and house sizes in the SF districts. City staff contacted nine cities to find out what their trends are and find out information about lot sizes and dwelling units, Hawkins told council. Most cities still have a minimum lot size requirement of comparable size with the city of Azle but not as many different SF districts. There are a few cities that have eliminated the minimum house size requirements in all SF districts in response to concerns of potential violations to the U.S. Fair Housing Act of 1968, the packet stated.

Here are the P&Z recommendations:

1. The SF-1 Zoning District minimum lot size shall be increased from 10,000 to 20,000 square feet.
2. The SF-3 Zoning District minimum lot size shall be increased from 7,500 to 10,000 square feet.
3. The E-2, E-3, SF-2, and SF-4 Zoning Districts shall be designated as "Legacy Districts."
4. The SF-3.5 Zoning District shall be removed.

5. The minimum dwelling unit size requirement shall be removed from all SF zoning districts.

Hawkins discussed numerous aspects of the draft ordinance, including how certain kind of rooms are required in homes, such as bathrooms, kitchens and living rooms.

During the hearing, resident Jim Kirk, among his remarks, said his recommendation was that E-1 should be one acre, 43,560 square feet, with a minimum house size of 2,200 feet. SF-1 should be a half-acre, 21,780 square feet, with a minimum house size of 1,800 square feet, he said, and SF-3 should be 1/4 acre, 10,890 square feet with the minimum house size of 1,400 square feet.

No one else spoke during the hearing.

Councilmembers then took turns giving opinions and asking questions, including about the sizes of homes and the lots they would fit on and plats and their length of existence.

The city is about 85% built out, Hawkins said. Some of that remaining 15% of land is undevelopable, he said, noting some of it is in a flood plain and some is commercial-based. And then some of the land inside the

city is institutional, meaning it is controlled by the school district or someone else.

"I don't know exactly how much residential land is left," Hawkins said.

He said there exists some predominant large vacant land on South Stewart Street.

Council gave direction to staff on these parameters on zones and lot acreage: SF-3, move to one-third acre; SF-1, move to one-half; and E-1, move to one acre.

Councilmembers tabled this discussion to their next meeting on Aug. 2, when they will continue from where they left off from the previous meeting.

In other developments, City Manager Tom Muir told council said he thought "maybe" the splash pad and restroom at Central Park could open within the next 30 days, prefacing his statement that he was reluctant to give a date. Construction began last winter.

**RECOMMENDATIONS MADE BY THE P&Z COMMISSION:**

Source: City of Azle  
 • **Increase Lot Sizes:** The SF-1 zoning is proposed to be increased from 10,000 to 20,000 square feet and the SF-3 is proposed to be increased from 7,500 square

feet to 10,000. This would be applicable to any new plat or residential development upon adoption of this ordinance. Any existing lot that does not meet this new minimum lot size requirement, they would become nonconforming but would still be able to continue the residential land use.

- **Reduce number of SF Zoning Districts:** The city of Azle currently has nine SF districts. Amendments include the removal of the SF-3.5 district, which is currently not being utilized on the Zoning Map. The E-1, SF-1, SF-3, and SF-5 districts would remain and serve as the current active SF zoning districts. The E-2, E-3, SF-2, and SF-4 districts would become "Legacy Districts." Ultimately, there would be a "1-acre," "1/2-acre" and "1/4-acre" SF zoning districts with the smallest lot being 10,000 square

feet except for SF-5 (6,000 square feet) which is for HUD-Code Manufactured Homes.

- **Legacy Districts:** The E-2, E-3, SF-2, and SF-4 districts are proposed to be designated as "Legacy Districts" in lieu of removing them from the Zoning Ordinance which would make most of these properties under these zoning districts non-conforming. These zoning districts will still remain on the Zoning Map. These "Legacy Districts" will essentially become locked and preserved under those current standards and are not intended to be added to or expanded. No additional rezoning applications will be considered for rezoning to these districts but any property under a "Legacy District" may still be considered for rezoning to a non-legacy district. Larger properties under this designation may

be allowed to subdivide provided they meet the minimum lot size for that district. Any subdividing of property in the SF-2 and SF-3 "Legacy Districts" will have a minimum lot size of 10,000 square feet.

- **Removing Minimum Dwelling Unit Sizes:** With the proposed removal of any minimum dwelling unit size requirement for the SF districts, the minimum house requirement would fall back to the adopted 2018 International Residential Building Code (IRC) under Section R304.1 Minimum area: Habitable rooms shall have a floor area of not less than 70 square feet (6.5 m2). Exception: Kitchens. Each house has a minimum requirement to provide a living area, bathroom and kitchen and would be required to comply with minimum habitable room requirement.

**LEGAL PUBLIC NOTICES**

**NOTICE OF PUBLIC SALE**

To satisfy a landlord's lien. Sale to be held at Azle Southeast Storage, 1004 Southeast Parkway; Azle, TX at 10:30am 8-11-2022 Property to be sold to the highest bidder for CASH. Property includes contents of the following tenant: Tim Gibson: Household items

---

**NOTICE OF PUBLIC SALE**

**ITEMS BEING SOLD TO SATISFY TENANTS RENT:** 21 Ashlee Shank, 37Richard Carter, 59Rebecca Mitchell, 139Allen Collins, 141Kaylah Wieck, 158/159Brandon Plymale: Tools, Metal Too 1 Chest, Mobil Air Compressors, Heaters, Portable A/C, Yard Tools, 100 Gallon Water Tank, Wardrobe racks, Tattoo Equip., Golf Clubs W/Bag, Nice Hall Table, Custom Dining Table, Couch/Loveseat, Decor Pillows, ECT.

---

**NOTICE OF PUBLIC SALE**

**A-Z STORAGE 817-237-7972**

A-Z STORAGE wishing to avail themselves of the provisions of Texas Revised Civil Statutes Article 523b and Texas Property Code, Ch. 59, Self-Service Storage Facility Liens Article 44, hereby gives Notice of Sale under said act to wit: On Sat., August 20, 2022, at A-Z Storage, 5824 Azle Ave., Lake Worth, TX, between the hours of 10AM - 12NOON of that day, A-Z Storage will conduct a sale to the highest bidder for the contents of units: 30 rented by Jean Carlos Huertas consisting of misc., sports, 103 rented by Curtis Farris consisting of household, boxes. At A-Z Storage, 5824 Azle Ave. at NW Loop 820, Lake Worth, TX. 817-237-7972 This sale is being held to satisfy a landlord's lien. The Public is invited to attend. Dated this 21th day of July, 2022. Void if lien satisfied in full before date of sale. Mailing address only: A-Z STORAGE, PO BOX 136369, FORT WORTH TX 76136.

*Go ahead & smile!*



**PREVENTATIVE • RESTORATIVE • COSMETIC**

Crowns & Bridges • Whitening • Dentures • Dental Veneers  
 Implant Restoration • Cosmetic Dentistry • Pediatric Dentistry & More...

**Dr. Joseph McCreary, III**  
**FAMILY & COSMETIC DENTISTRY**

*Family dentistry for all ages. Serving the Azle, Texas area*

**209 Roe Street, Azle TX 76020 • 817-444-3209**

**AZLE AREA CLUBS AND ORGANIZATIONS**

<p><b>Texas Health</b> Harris Methodist Hospital AZLE</p> <p><b>Volunteers Needed</b> TexasHealth.org/ Volunteer/Our-Process</p> <p><b>RAINBOW INN GIFT SHOP</b> Inside Hospital 108 Denver Trail Azle 817-444-8651</p> <p><b>ATTIC RERUNS</b> NOW OPEN! FRI 9-4 SAT 9-1 714 SE Pkwy Azle 817-270-3690</p>	<p><b>Good N.E.W.S.</b> Living at Home Block Nurse Program</p> <p><b>Volunteer Caregiver Training Classes</b> Classes open to public at no charge</p> <p><b>Caregiver Volunteer Meeting</b> 1st Monday of Each Month at 6pm <b>817-444-2300</b> 412 Commerce St.</p>	<p><b>Rotary Club of Azle</b></p> <p><b>MEETS AT NOON THURSDAY</b> 412 Commerce St. (across from Azle Post Office)</p>	<p><b>The Finish Line</b></p> <p>Addiction wants to destroy you &amp; everyone around you.</p> <p><b>With Jesus there is Victory over addiction.</b></p> <p><b>GET BACK IN THE RACE!</b></p> <p>Meetings held every Friday from 7:30pm-9:30pm at The Church at Azle 1801 S. Stewart • Azle • 817-401-8513 www.ourfinishline.com</p>	<p><b>Faced with a DRINKING Problem?</b> Perhaps Alcoholics Anonymous can HELP.</p> <p><b>Daily meetings at Noon &amp; 6:30 pm</b> Sunday at 3 pm</p> <p><b>229 S. Stewart St. • Azle</b> <b>817-332-3533</b></p>	<p><b>Azle Lion's Club</b></p> <p>Meets 2nd TUESDAY 6:30 PM 412 Commerce, Azle e-clubhouse.org/sites/azle_tx/ Curren McLane - president <b>817-689-0074</b></p>
<p>Post your clubs or organization meetings here!</p> <p><b>Only \$100</b> for 52 weeks of advertising</p> <p>Call Johnna for details: <b>817-270-3340</b></p>	<p><b>SERVOLUTION NETWORK</b></p> <p>LET'S START A COMMUNITY WIDE REVOLUTION THROUGH SERVING.</p> <p>FOR QUESTIONS CALL: <b>833-4WE-SERV</b> <b>833-493-7378</b></p> <p>VISIT: WWW.SERVOLUTIONNETWORK.COM</p>	<p><b>Azle Boy Scout Troop 243</b></p> <p>Meets Mondays 7 PM Azle First Assembly of God 1020 Southeast Parkway troop243azle.org</p>	<p><b>Optimist Club of Azle</b></p> <p>Meets every FRIDAY at 6:45 AM Moe's Country Kitchen 316 W. Main, Azle</p>	<p><b>Azle Lodge No. 601</b></p> <p><b>Floor School or Work 7:30 PM THURSDAY NIGHT</b></p> <p>Chris Akers - Worshipful Master Rocky Gralla - Secretary Clint Hall - Treasurer</p>	<p><b>Eagle Mountain Pregnancy Help Center</b></p> <p>10328 Jacksboro Hwy Fort Worth TX 76135 817-237-1819 www.emphc.org Mon 12-6 PM Thurs 12-6 PM SE HABLA ESPAÑOL</p>



# Yoga classes offered in August

## SENIOR SPOTLIGHT

BY JACKIE "JJ" JOY  
Special to the Azle News

The Azle Adult Activity Center, located at 601 Southeast Parkway in Ash Creek Park, is a great place to escape the heat. Hot, nutritious meals are prepared in the kitchen of Meals On Wheels Inc. of Tarrant County and served Monday through Friday for a suggested donation of \$2 each. Please call 817-444-0070 by 9:30 a.m. the day before you would like to eat to reserve a meal. You will be able to choose Menu A or Menu B giving you choice of entrée.

Ever want to learn the basics of yoga? Starting in August we will be offering a virtual MasterClass

with Donna Farhi teaching "Yoga Foundations." The class is scheduled for Wednesdays at 10:30 a.m. and will be for 45 minutes. There is no need to sign up ahead of time but if you want to eat with us that day, please call by 9:30 on Tuesday morning.

Our new Bridge Class has been a wonderful success. Meeting on Thursday mornings at 10:00, instructors teach the foundations of the game. As students progress, they are invited to join the games at 9 a.m. on Friday mornings.

Sharon Johnson continues to lead Bible study at 10 a.m. Tuesdays. Current-

ly the study is in Revelation chapters 2 and 3, looking at the seven churches and how each relates to the Christian walk. Everyone is welcome for this time of learning and open discussion.

Anyone who has not seen our center is welcome to come for a tour and to see the benefits of being a part of this wonderful group of "seasoned" adults. You will learn some of the history and our goals for the future. Or you can call anytime during our operation hours of 9 a.m. to 1:30 p.m. for information. We look forward to meeting you.

# City announces redesigned app

BY DON MUNSCH  
don@azlenews.net

Azle city leaders last week announced the release of the city's new redesigned mobile app as part of the city's efforts to further enhance communication with the community and its visitors.

The mobile app is free and available now at the App Store or through the Google Play Store by searching "City of Azle," according to a news release.

"We released the first app in March of 2017 utilizing CivicMobile, a product of our website provider CivicPlus," said Susie Hiles, assistant to the city manager in Azle, in an email response to questions. "With the increased use of mobile devices as the preferred method of engagement for our citizens, we felt it was time to develop an app that would allow our citizens the ability to access our website at their fingertips anywhere, anytime. It also provided 24/7 mobile access for city administrators allowing them

to quickly make changes or address website issues from any device or location. The app integrates directly with our website so it always delivers the most current information from the city."

The mobile app puts city information right at people's fingertips and allows residents to stay up to date with news and events, search for jobs, report a concern, find information on parks and recreation, view Azle City Council agendas, pay utility bills and much more, the news release stated. The city currently contracts with CivicPlus for the development, hosting and maintenance of the city's website. The city "worked hand in hand" with CivicPlus to develop and design the mobile app, the release stated.

"Early in 2021, CivicPlus contacted us to advise that due to mandated restrictions and changes from Apple, CivicPlus had to discontinue offering CivicEngage mobile apps on December 31, 2021," Hiles said. "So we began coordinating with CivicPlus to design a fully



customized mobile app. The newly designed mobile app continues to integrate directly with the website, bringing the most current information delivered from the city website right into the hands of our residents, or anyone looking to find out information about the city of Azle." For more information on the city, access [www.cityofazle.org](http://www.cityofazle.org).

## DOS CHILES MEXICAN RESTAURANT

**Two Enchilada Dinners & Two Drinks = \$19**

**EVERY TUESDAY**

- Open 7 Days
- Fast Friendly Service
- Fresh Homemade Food

**425 W. Rock Island Ave.  
Hwy 114, Boyd • 940-433-3322**

## REDEMPTION BARBELL

116 S Stewart St Building 12, Azle, TX 76020  
**(817) 991-3360**

Follow us on Facebook! SCAN ME

## DUSTIN HAYWOOD POINT BLANK POWERWASHING LLC

**MOBILE POWER WASHING  
SPRINGTOWN TX 76082  
817-751-5731**

**GET READY FOR SUMMER!**

**A/C TUNEUP \$55  
NOW HIRING!**

**COMMERCIAL & RESIDENTIAL**

*Southwestern COMFORT* **11345 FM 730N  
Azle 817-696-6421**  
Air & Heat Owner Kenny Bates 817-361-3695

### Azle News

Published every Wednesday at 321 West Main Street, Azle, Texas by Hyde Media, LLC. Periodicals class postage paid at Azle, Texas, 76020. **Postmaster:** Send address changes to: 321 West Main Street, Azle, Texas 76020

**USPS No. 546-920**

**Annual subscription rates:** \$40.00 in Parker, Wise, Tarrant counties (\$36.50 65 and older); \$46.50 elsewhere within and outside Texas.

*The Azle News does not assume responsibility for errors in advertisements beyond the cost of the advertisement itself. Any erroneous reflection upon the character or reputation of any person or firm appearing in this newspaper will be corrected when called to the attention of the publisher.*

The entire content of each issue of **The Azle News** is protected under the Federal Copyright Act. Reproduction of any portion of any issue is expressly forbidden without the prior written consent of the publisher.

321 West Main Street  
Azle, Texas  
Phone: 817.270.3340  
Fax: 817.270.5300

This newspaper is printed on recycled newsprint and is recyclable.  
© 2022 Azle News

# AZLE INSURANCE DIRECTORY

**Nationwide** is on your side | **H**

**Albracht Harwood Insurance Agency Inc.**

120 S. Main St #4, Springtown, TX 76082  
albrachtharwoodinsurance.com  
**(817) 220-4700**  
2nd Location - Grapevine, TX

**Amy Kaplan, Agent**  
813 E. Hwy. 199  
Springtown, TX  
817-220-5222  
www.amykaplaninsurance.com

**The BEST of Parker County** 2015, 2016, 2017, 2018, 2019, 2020, 2021

Voted Best Insurance Agency of Parker County 2015  
Voted Best Agent of Parker County 2014, 2015 & 2016

**State Farm**

## Sorrow Family Insurance

Health • Life • Disability • Dental • Final Expense  
Home • Auto • Boat • Motorcycle • Big Rig • Mobile Home

*Our Family Helping Yours!*

**Paying Too Much For Insurance?**

**Call For Your Free Quote**

Stephanie and Ed

**817-444-1129  
682-209-2027**

**Independent Insurance Agent**  
The Trusted Choice

[www.SorrowFamilyInsurance.com](http://www.SorrowFamilyInsurance.com)

**HOGLE INSURANCE GROUP**

SHAYE HOGLE 817-444-6389 HOGLE HOGLE

**"OUR BEST POLICY IS PERSONAL SERVICE"**

[HOGLEINSURANCE.COM](http://HOGLEINSURANCE.COM)

Thank you for voting us Best Insurance Agency 2021

HOME • AUTO • FARM • LIFE

## BURTNETT INSURANCE

**817-220-7682**

Protecting Texans, Prioritizing customer service

**Dale Mares, AAMS**

**BIG SAVINGS**

**MARES INSURANCE GROUP INC**  
208 W. MAIN, AZLE • 817-444-1491  
dalemares@allstate.com

Insurance and coverages subject to terms, qualifications and availability. Allstate Vehicle and Property Insurance Co. Allstate Fire and Casualty Insurance Co. Northbrook, Illinois 2010 Allstate Insurance Co.

**Allstate**  
You're in good hands.  
Se habla español.

**Germania INSURANCE**  
AUTHORIZED AGENT

**FOREMOST INSURANCE GROUP**  
**BRISTOL WEST INSURANCE GROUP**  
**DAIRYLAND INSURANCE**  
**PROGRESSIVE** US Assure

Kaye Burtnett & Vanessa Roberson

**905 E. Hwy. 199 Springtown, TX 76082**

**HALEY CARTER**  
**State Farm**

**2014 2015 2016**  
**The BEST of AZLE**

**817-444-1100**  
408 Boyd Ct. • Azle  
[www.HaleyCarter.com](http://www.HaleyCarter.com)

**PEOPLE'S CHOICE AWARDS 5 YEARS IN A ROW!  
VOTED #1 INSURANCE AGENCY IN AZLE**



# You are welcome here

My wife, Daniele, and I love the Azle community. Except for four years in Germany, I have lived in the Azle area since 1985, with Daniele moving here in 1988. I was recently asked by a Fort Worth friend what makes Azle so special to me.



## HOPE MATTERS

By David Shaffer

Dr. David Shaffer and his wife, Daniele, are Azle-area residents. David is director of Son Shine Ministries (equipfamilies.org) and chair of the Azle Area Chamber of Commerce Ambassadors (azlechamber.com). david@equipfamilies.org | 817-444-3777

Azle is like a good friend, and any long-term relationship includes ups and downs and some challenging things that simply need to be accepted. Though my focus is on the positives, everything can be improved. The overall bond, however, is encouraging and affirming.

The standout for this community is its people. I have always been impressed with the talents, capabilities, vision and care displayed by our residents.

Our schools and district are led by committed and gifted teachers, administrators and staff who genuinely care about the students and their families.

Our churches and ministries are shepherded by well-trained and caring people

who know and support one another.

Our local government and the city's team bring top-tier talent to their efforts, loving where they live and working to make it better.

Our first responders and health care workers consistently step up, sacrificially serving with heart, skill and professionalism.

Our hometown media delivers quality reporting on things that matter in our community and beyond.

The Azle Area Chamber of Commerce creates a hub for our hardworking businesses and organizations, with more than 300 members and monthly luncheons regularly exceeding 100 people.

Service organizations and nonprofits act with kindness.

Francis of Assisi wrote, "For it is in giving that we receive," and generosity abounds in Azle.

The location of Azle on the border of beautiful Eagle Mountain Lake and the constant improvements enhance the area.

The various ongoing activities – including sports, music, drama, clubs, special events, religious training, counseling and more – have given many opportunities to build friendships, strengthen ourselves and our families, and provide hope and help to those in need.

Another standout in our area is the care of our aging population. With regular engagement, excellent living options and loving assistance, Azle is a wonderful

place to grow old.

The "secret sauce" is found in the close relationships that are formed, and there is a reason that works here. Simply put, the people of Azle are welcoming.

It is often difficult to find one's footing when moving into a small town. Even after years, people may still feel like outsiders since they were not born and raised in their current location. That is not the case here. You are a part of Azle today.

It may seem that I have painted a Norman Rockwell version of our city. But, of course, Azle is not a perfect place. It does not pretend to be. My experience may not have been your experience. There will always be things that need to improve.

Azle is a continuing work in progress, filled with imperfect but caring and amazing people, the vast majority of whom love this community and are glad you have decided to call this home as well.

You are welcome here!

# \$4,000 raised for homeless veterans



Peggy Crutsinger celebrates a successful fundraiser for Operation Texas Strong. Courtesy photo

BY JESSICA MCKINNEY  
azlereporter@azlenews.net

Operation Texas Strong held a fundraiser on July 23 at the Hidden Acre Ranch in Hudson Oaks to raise money to help with its mission: housing homeless veterans in Texas.

With the help of generous donors and attendees, they raised \$4,000. The money will help with moving donated RVs, making repairs and getting veterans settled into a place they can call home.

Bobby and Peggy

Crutsinger began Operation Texas Strong in 2021. They wanted to do what they could to help get homeless veterans off the street. They do this by collecting donated RVs, making any necessary repairs, and moving them to wherever they are needed.

To date, Operation Texas Strong has been able to give 97 RVs to veterans.

For more information about supporting their mission, call 940-452-6052, or email [peggycrutsinger@rocketmail.com](mailto:peggycrutsinger@rocketmail.com).

**Anne Land Real Estate**  
*Land is my name, and real estate is my game.*

**Anne Land**  
817-247-5991 Cell  
817-220-0633 Office

904 E. Hwy 199,  
Springtown TX  
[www.AnneLandRealEstate.com](http://www.AnneLandRealEstate.com)

**Crossroad Buildings**

**What can we build for you?**

- Portable or Built on Site
- We Finance
- Barns, Sheds, Cabins
- Free Delivery/Setup

**Call or Text Bruce 817-819-1817**

**25 ACRES & NEW 1,200 sf HUNTING COTTAGE SHELL**

★★ Only \$239,900 ★★

Beautiful 25 to 100+ acre hunting & recreational tracts - perfect for wildlife spectators, hunters, & nature enthusiasts. Prime location in Brady, the heart of Texas. High speed internet!

**Call (877) 333-7390 x31**  
[www.RanchesAtBuckRidgeTexas.com](http://www.RanchesAtBuckRidgeTexas.com)

\*Cottage Shell offer exclusive to Lone Star Land Partners customers only through builder selected by LSLP. Price is for a completed, dried-in, 1,200 sf shell to be built on 25 acres at The Ranches at Buck Ridge. Shell price subject to change without notice. An ERD.

# Spotlight on BUSINESS JULY

**TPG**

**THE PALAVICINI GROUP**  
*Specializing in Residential & Commercial Makeready & Restorations*

**Interior Services:**

- Demo & Renos
- Plumbing Fixture Repair & Installation
- Sheetrock Repair/Replacement
- Interior Painting
- Door/Hardware Repair & Replacement

**Family Owned & Operated**

**GET FREE CONSULTATION**  
**682-302-5501**  
Se Habla Español  
Email: [info@tpg1.net](mailto:info@tpg1.net)  
[www.tpg1.net](http://www.tpg1.net)

Alicia Motley and Mike Motley will make sure your vehicle is road-ready, whether it's in need of repair or routine maintenance.

**Motley's** AUTOMOTIVE & MOTORCYCLES

FAMILY OWNED AND OPERATED FOR 20 YEARS  
State Inspection for Tarrant & Parker Counties

**Automotive**

- Tune-ups
- Diesel
- Suspension Computer Diagnostics
- A/C Repair
- Brakes
- Emission Repairs
- Repair & Restore Classic Cars

**Motorcycles & ATVs**

- Maintenance & Repairs
- Dirt Bike Parts

**ASE CERTIFIED**

**PACKAGE DROP OFF STATION** UPS

**JASPER** ENGINES & TRANSMISSIONS

**1304 NW Pkwy (Hwy 199)**  
[www.motleyautomotive.com](http://www.motleyautomotive.com)  
**817-444-8529**  
**817-456-0907**  
Monday - Friday  
8:30 am - 6:00 pm

**MAKE THE RIGHT MOOOVE!**

**GET \$500 OFF!**  
ALL NEW MOBILE HOMES  
(Mention this Advertisement)

**COWTOWN**  
— HOME CENTER —  
**817-200-7010**  
[CowtownHomeCenter.com](http://CowtownHomeCenter.com)

9000 Jacksboro Hwy.  
Fort Worth

## Tune up your car with Motley Automotive

Azle, Springtown-area residents have put their trust in Motley for over two decades

For anyone in the Azle area that needs help solving a problem or keeping up with maintenance on their vehicle, Motley Automotive is here to help.

If your vehicle spent a lot of time on the road then it's important to make sure it gets the routine maintenance it needs to avoid any unwelcome surprises.

The folks at Motley have been in the area for 21 years and bring a wealth of knowledge and experience.

Mike Motley says, "If it's got wheels and tires and nuts and bolts, we can fix it."

Brake checks and repairs, oil changes, radiators, timing belts and chains, sensors, front end work, shocks, struts, head gaskets, motor swaps and window motors are just a few of the long list of services they perform.

Motley Automotive will also run a diagnostic troubleshooting procedure to discover what any pesky "check engine" light or other dashboard warning means for your

car. They'll also update your car's internal computer if needed, which can help your vehicle run much more smoothly.

If you're in need of help, Motley will pick up your vehicle, repair or maintain it, and bring it to your home or office. Customers can also drop their cars off and pick them up.

Motley offers more than just automotive maintenance and repair for their customers.

The company is also an authorized UPS Shipping Outlet. They sell packing materials, boxes, bubble wrap and peanuts, and will take drop-offs, such as a return from a company that has a prepaid label or a package with a label you print off from your computer.

Motley Automotive is located at 1304 Northwest Parkway, west of Azle. They're open from 8:30 a.m. to 6:00 p.m. Monday-Friday.

Give them a call at 817-444-8529 or 817-444-1566. You can also check out their website at [motleyautomotive.com](http://motleyautomotive.com).

**STRONG**  
CONSTRUCTION & HAIL CLAIMS

**SERVICES**

- Residential and Commercial Roofing
- Kitchen and Bathroom Remodeling
- Outdoor stair wells, fences and carpentry
- Door and window installation
- Plumbing
- Hardwood and Tile Flooring
- New custom construction
- Hail & insurance claims
- Post and beam farm homes
- Outdoor kitchen, deck trellis, fire pit & waterfalls

**866-222-2311**  
Nelson Bran, Project Manager  
[www.strongconstr.com](http://www.strongconstr.com)



# Obituaries

## Eulan Wilson Abbott 1938 - 2022

Eulan (Bill) Wilson Abbott, Sr. 83, went home to be with the Lord on Monday, July 18, 2022.

Funeral was at 10 a.m. Friday, July 22, 2022, at The Word at Lakeside Church of God, 9396 Confederate Park Road, Fort Worth, Texas 76135. Visitation was from 6 to 8 p.m. Thursday, at Greenwood Funeral Home, 3100 White Settlement Rd., Fort Worth, Texas 76107.

Bill was born Sept. 29, 1938, in Eustace, Texas to Fred Ervin and Lucille (Kirkpatrick) Abbott. He graduated from C.F. Brewer High School in 1958. Bill worked for Motheral Printing Company from 1958 to 2005.

He was very involved in all five of his children's activities in school through PTA, athletics booster and band boosters for the White Settlement ISD. He was a member of the Lakeside Church of God for 65 years where he was Sunday School Superintendent for 48 years, Pastor's Council member, greeter and Prayer



Warriors leader.

Bill was preceded in death by his parents; wife, Myra Jo (Hanson) Abbott; daughter, Cheryl Lynn (Abbott) Little; and two brothers, Varrel Abbott and Ivan Abbott.

Survivors include his brother, Royce Dean Abbott and wife, Gloria; sons, Eulan Wilson Abbott, Jr., and wife, Darla and Dennis Keith Abbott; daughters, Jo Elaine James and husband, Mark, Sr., and Carol Gwen Hatfield and husband, Robert (Bob); 17 grandchildren; 10 great-grandchildren and one on the way; and numerous nieces and nephews.

*The Azle News, July 27, 2022 Edition*

## John William Hall 1937 - 2022

John William Hall, 84, went home to be with his Lord and Savior, Thursday, July 21, 2022 in Springtown.

Funeral was 10 a.m., Tuesday, July 26 at Alexander's Midway, Springtown. Visitation: 6-8 p.m., Monday at the funeral home. Burial: New Hope Cemetery, Boyd.

John was born Aug. 4, 1937 in Reno to Ray Dillard and Dela (Sisk) Hall. He was a life long member of the Springtown Community. John was a deacon of New Hope Baptist Church. In 1955 he married the love of his life, Bette Haugen, they were married for 65 years and had four children together. They opened their hearts and home to many teenagers and children in need. Later in life they adopted four of their own grandchildren. John was a giving man with a big heart.

He was preceded in death by both parents, his wife, Bette (Haugen) Hall, son,



Johnny Joe Hall, son-in-law, Mike Lesko, grandson, Joshua Hall, brother, Jack Hall, and sister, Dorothy Wrinkle.

Survivors: Son, Ray Hall and wife, Paula; daughters, Lyni Weaver and Robin Smith and husband, Brad; sister, Bonnie Henry and husband, Bill; 19 grandchildren; 26 great-grandchildren; one great great grandchild and extended family and friends.

*The Azle News, July 27, 2022 Edition*

## Lisa Snow Sebastian 1955 - 2022

Lisa Snow Sebastian departed this life on July 22, 2022.

Lisa was born on June 28, 1955, in Galax, Virginia, to Charles Nelson and Coral Wise Snow. Lisa had a wonderful life and was a beautiful person inside and out.

Lisa attended the University of North Texas after high school. Shortly after college, Lisa relocated to California and became the lead auditor at Zody's, a retail clothing business. She then returned to Fort Worth and became the office manager at Mervyn's, before meeting the love of her life, Gary Sebastian.

Lisa was smart, beautiful, magnetic, and kind, and she could make a friend anywhere, whether it was a human or an animal. She also had the best sense of humor. Most of all, she loved her husband, Gary, and her dogs, Tipper (who passed recently) and Dinghy, but she also dearly loved her extended family, as well as cooking, plants, antiques and unique, special knick-knacks that she had all over her house. She was creative, curious and adventurous and loved traveling, especially boating in the Northwest aboard the "True Love", playing games and having a great laugh.



She had many friends and admirers and will be sorely missed by all who loved her.

Lisa is preceded in death by her parents.

Survivors: Husband, Gary Sebastian; Dog, Dinghy; Stepmother, Janet Shingleton Snow; Sister, Tanya Snow Gower and husband, Robby; Step-daughters, Brandy Sebastian, and husband, David Garcia, and Stacey Sebastian; Step-granddaughter, Sunny Aloha Sebastian; Nephews and nieces, Brady ("Beeb") Gower, Breck Gower Leftwich, and husband, Chase, and Blake Gower, and wife, Kristin Lafferty Gower; Great-nieces, Barrett Ivy and Bobbi Blair Leftwich; and many loving friends, the closest of which are Kitty Hawk Tunmire, Mitzi Laye and Kathy Jordan Bellinger.

*The Azle News, July 27, 2022 Edition*

## Robert Andrew Crow 1954 - 2022

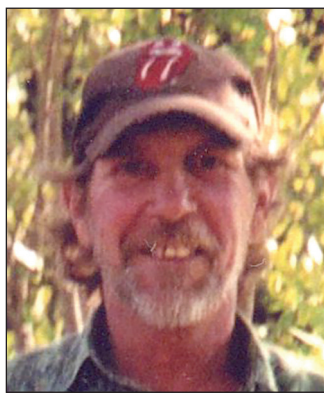
Andy Crow, age 67, passed away peacefully on July 14, 2022 in Galveston, Texas.

Graveside service is pending.

Andy was born Dec. 23, 1954 in Fort Worth to Bruce and Margaret Crow who preceded him in death.

Andy was a lifetime resident of Parker County. He was a carpenter and cabinet maker.

Survivors include his brother Mike and wife Laurie; niece Hannah Crow as



well as numerous cousins and friends.

*The Azle News, July 27, 2022 Edition*

## Donald Dale Fitzgibbon 1942 - 2022

Donald Dale Fitzgibbon, 79, passed away, Friday, July 5, 2022 in Fort Worth. He was born Dec. 4, 1942, in Salinas, California to Harry and Opal Mae (Cogburn) Fitzgibbon. They both preceded him in death.

Donald is survived by his wife of 60 years, Eunice

A. (Susmann) Fitzgibbon; daughter, Dawn Davidson; sons, Tim Fitzgibbon and Peter Fitzgibbon; three sisters; eight grandchildren; two great-grandchildren; and extended family and friends.

*The Azle News, July 27, 2022 Edition*

### White's Funeral Homes

*Our family serving your family since 1908*

*Bob White, Anita White and Zack Bellenger*

**Full Service Funeral Home**  
Cremation Services  
Pre-Need Plans

Azle • Springtown • Mineral Wells • Weatherford  
817-444-3211 • www.whitesfuneral.com

**Full Service Mechanic**  
**SMART START CONTRACT SHOP**  
We install & service alcohol breathalyzers.

**704 NW Pkwy, Azle**  
Open Mon-Fri 9 AM - PM, Sat 9 AM - 3 PM  
@burrowsauto

**817-270-3230 • 817-270-3240**

### AIR DUCT CLEANING

- Clean All Supply Vents
- Sanitize
- Return Vents

**Call Today For Your Appointment**  
**817-444-8025**

### Galbreath-Pickard

FUNERAL CHAPEL

**817-594-2747 • Fax 817-596-7803**

James R. Plowman  
Norma Plowman  
913 N. Elm St.  
Weatherford, TX 76086  
www.galbreathpickard.com  
**1-800-593-2747**

### ... ATTEND THE CHURCH OF YOUR CHOICE THIS SUNDAY

<p><b>THE ABBEY CHURCH</b> Pastor: Paul Brownback 10400 Jacksboro Highway <b>817-238-1404</b> www.TheAbbeyChurch.com Morning Worship.....10:30 AM Community Groups.....Various Times</p> <p><b>ASH CREEK BAPTIST CHURCH</b> Pastor: Dr. G. Wesley Shotwell 300 South Stewart St. <b>817-444-3219</b> www.ashcreekbc.org Sunday School.....9:30 AM Contemporary Worship-TMP.....10:45 AM Traditional Worship.....10:45 AM Evening Worship.....6:00 PM Wednesday Youth Refuge.....6:00 PM Wednesday Evening.....6:15 PM</p> <p><b>AZLE CHRISTIAN CHURCH</b> (Disciples of Christ) Senior Minister, Ashley Dargai, Katie Medlin, Worship Minister 117 Church St. • <b>817-444-3527</b> Sunday School.....10:00 AM Morning Worship.....11:00 AM</p> <p><b>AZLE FIRST ASSEMBLY OF GOD</b> Pastor: Tim Stevens 1020 S.E. Parkway, Azle <b>817-237-4903</b> Sunday School.....9:30 AM Morning Worship.....10:30 AM Wednesday Evening.....7:00 PM</p>	<p><b>COMMUNITY BIBLE FELLOWSHIP CHURCH</b> Pastor - Alton Davis 817-521-4510 1405 Reynolds Rd., Azle <b>817-444-7117</b> Directions: 730 N. to 1542 .5 mi. right on Cardinal, left on Reynolds Sunday School.....9:45 AM Morning Worship.....11:00 AM Sunday Evening.....6:00 PM Wednesday Evening.....7:00 PM</p> <p><b>CORNERSTONE COMMUNITY CHURCH</b> 2233 Hwy 199 E. • Springtown <b>817-221-LIFE (5433)</b> 817-755-0279 Sunday Worship Service .....10:00 AM Wednesday .....7:00 PM</p> <p><b>CROSSROADS BAPTIST CHURCH</b> Pastor - Jon Baker Corner FM 730S &amp; FM 1886 <b>817-755-0279</b> Transportation Available Worship Service.....10:30 AM Wed. Prayer Service.....7:00 PM</p> <p><b>THE EDGE CHURCH - AZLE</b> 1313 S.E. Pkwy, Azle <b>817-237-4822</b> Missouri Synod "Love God - Serve Others - Share Jesus" Traditional Worship.....9:30 AM Contemporary Worship.....11:00 AM</p>	<p><b>FIRST UNITED METHODIST CHURCH</b> Pastor: Dr. Richard Reed 200 Church St., Azle <b>817-444-3323</b> Morn. Worship.....8:30, 9:45 &amp; 11 AM Sunday School.....9:45 &amp; 11 AM Youth (UMYF).....5:00 PM Sun &amp; 6:30 PM Wed</p> <p><b>HOLY TRINITY CATHOLIC CHURCH</b> 800 Highcrest Dr. - Azle <b>817-444-3063</b> Saturday.....5:00 PM Sunday.....9:00 AM Sunday.....11 AM (Spanish) Daily Mass (M, T, Th, F).....8:00 AM Wednesday Mass Religious ED.....6:30 PM Confessions.....Sat 4 PM</p> <p><b>HOPE LUTHERAN CHURCH ELCA</b> 4795 E. Hwy 199 - Reno <b>817-221-HOPE</b> Follow us on Facebook for streaming services Sunday School.....9:00 AM Traditional Service.....10:00 AM</p> <p><b>SOLID ROCK BIBLE CHURCH</b> 591 S. Reno Rd., Springtown, Texas 76082 Pastor - Bill Gay - <b>817-304-7443</b> Coffee and Donuts.....9:00 AM Sunday School.....9:30 AM Morning Worship.....10:30 AM Children's Church After Music Service Wed. Prayer Meeting.....6:30 PM Wed. Bible Study.....7:00 PM</p>	<p><b>LEGACY CHURCH</b> Assembly of God Church Pastor: Gary D. Veazey Hwy. 199 &amp; Jaybird Lane <b>817-221-2983</b> Morning Worship.....9:15 &amp; 11:00 AM Kidz Zone.....9:15 &amp; 11:00 AM Weds Evening Legacy Group Legacy Youth, Kids All Services.....7:00 PM</p> <p><b>SILVER CREEK UNITED METHODIST CHURCH</b> Rev. Sheila Fiorella - Pastor 2200 Church Rd., Azle <b>817-444-1382</b> www.silvercreekumc.org Sunday School 9:30 AM • Worship 10:30 AM</p> <p><b>SILVER CREEK BAPTIST CHURCH</b> Pastor: Jay Ditty Minister of Music: David Musick Corner FM 730 S. &amp; Veal Station Rd. Church <b>817-444-2325</b> www.silvercreekbc.org Sunday School.....9:45 AM Morning Worship.....10:50 AM Evening Worship.....6:00 PM Wed. Prayer Service.....7:00 PM</p>	<p><b>THE WORD@LAKESIDE CHURCH OF GOD</b> 9396 FM 1886 Fort Worth, TX 76135 <b>817-237-5500</b> thewordatlakeside.com Pastors: Brandon and Kelly Bohannon Worship Pastor: Christen Moody Family Life and Young Adult Pastors: Jodie and Mark James, Kids Pastor: Katie Pearson, Student Pastors: Taylor and Sheridan Tomlin, Creative Directors: Logan and Carrie Edwards, Connections Coordinators: Preston and Ashley Larrew</p> <p>Equip Sunday School at the WORD 9:30 AM Empower Worship at the WORD . 10:45 AM Kids at the WORD.....10:45 AM PreK at the WORD.....10:45 AM Emanate at the WORD (Special Needs Ministry).....10:45 AM Nursery at the WORD.....10:45 AM Young Adults at the WORD.....6:00 PM</p> <p style="text-align: center;"><b>Wednesdays</b></p> <p>Adult Bible Class.....7:00 PM The WORD Students (6th-12th grades) 6:30 PM Awana Kids at the WORD.....6:30 PM Life at the WORD Life Groups Various Times</p>
---	--	---	--	--

**A church alive is worth the drive! For more information or rates on listing your church, call Johnna at 817-270-3340**



TONG, CONTINUED FROM PAGE 1A.

Tong has always enjoyed exploring new places and began traveling internationally in high school.

"I went on a trip to France and England with French Club," Tong said. "I love learning about history and other cultures and travel is the best way to do it."

Many people might be hesitant to get back out and travel to different countries while there are still widespread cases of coronavirus. Tong agrees that the decision to go is a personal one.

"If you are going to be nervous the whole time, you won't enjoy your trip," she said. "You have to find the right balance for yourself. Travel is so important to me and after what I went through, (as) you see how precious your time on earth is. ... I don't ever want to stop traveling and I'm glad we can try to live somewhat normally again."

Tong said she has taken precautions to protect herself against re-infection and has been fully vaccinated and received two booster shots, and she still wears a mask and washes her hands frequently.

Their next planned trip will be in the Caribbean. On her travel bucket list is Antarctica.

"It is expensive and challenging, so that will take some planning," she said.

They also want to explore



Amy Tong (left) and her son Austin stood at North Cape, the northernmost point of Norway, during their summer travels. Courtesy photo

more of Europe someday.

"I love that I am able to travel with my son and share the world with him," she said.

Tong has started a blog to document her travels, and it can be found at tongtravels.blogspot.com.

# Student exchange organization looking for host families

BY DON MUNSCH  
don@azlenews.net

Shana Wentzell can definitely attest to the positive experiences that being a host family to exchange students can provide.

"It changes your life," she said, noting that once a family finishes hosting a student, those people can't wait to host again, dreaming of the next time they can have a student from a different country. "It's a very fun program, and it just gives so much to families."

She hopes others can have those same experiences, and her organization needs host families in preparation for the upcoming school year. She has had more than 500 exchange students in her home over the last two decades, and some of those students were not just there during the academic year but also two-week programs in which there were four students at a time.

Wentzell, executive director of nonprofit United Cultural Exchange U.S., said 19 families are needed for homes in the Metroplex. Azle ISD caps its exchange students at three, and is now full, whereas Springtown does not have

a maximum, Wentzell said.

UCEUS has placed 21 families so far. Wentzell has contacted churches and other entities to find people who can be host families. In explaining why her organization has had difficulty finding families, she thinks many people in this area may not know much about her program. She said one way she approaches finding host families is that people want to give back to the community, and being a host family is away to give back to the global community.

"These kids are scholarship kids, and they really worked hard to be accepted into this program," she said. "I just think it's not as familiar a thing (hosting families) as much as in California, where I came from."

She advises people that students come with their own spending money and they are not a cash burden on families. Families provide breakfast and dinner, while the students pay for their own lunches and snacks. Students also handle providing their own health coverage.

People who host students will broaden their horizons and introduce American culture to others, Wentzell

said. Host families can introduce a different culture into their family, too.

"These are leaders," she said about the exchange students. "When we pick them, they've been chosen because of certain things they've done in their own schools, awards they have gotten. We have chosen them to come here to share their culture, as well."

Relationships are formed between the students and families, and an impact can be made on the family, school and community.

"When mine would leave, I would just bawl my eyes out," Wentzell said. "I still talk to mine, (including) the ones I hosted 20 years ago."

Host families can select the student for their homes, and they can pick the student based on shared interests. Host families also can introduce the students to activities the families enjoy, and those activities might be new to the students. Host families are vetted before they are allowed to accept students into their homes. Vetting can take from a few days to a week.

People interested in the program may contact Wentzell at shana@uceus.com or 817-217-6618.

## Attention: Springtown And Azle Back Pain Sufferers

### FREE Report Exposes Back Pain Myths and Dangerous Treatments...

"Due To Limited Supply not everyone will qualify to receive this FREE report... Take the qualification quiz at the end of this article to find out if YOU are eligible."



By Local Health Expert Dr. Robert Moss PT, ScD, OCS, FAAOMPT

**SPRINGTOWN, TX** - If you or a loved one suffer from back pain, then reading this may be the most important thing you do this year. It may unlock the agonizing mystery of your back pain and show you a way to get back the life you deserve...

- A life where you can get a restful night's sleep without tossing and turning trying to find a position that doesn't hurt
- A life where you can walk in the grocery store without the embarrassment of hanging on the cart because of your back pain
- A life where you can play with your kids or grandkids without worrying about your back "going out" and having to take a handful of dangerous pills
- A life where you can do and enjoy all the things you see so many others doing and enjoying but your bad back has kept you watching from the sidelines.

#### Basically a life without the curse of back pain.

This report exposes common myths about back pain that other "medical professionals" don't want you to know...How pain medications, muscle relaxers and back surgery don't work and can leave you with crippling side effects.

#### Here's What You Will Learn Inside This Eye Opening Reports:

The ONE Everyday Activity Back Pain Sufferers are Doing WRONG which Blocks Healing and Actually Makes Back Pain WORSE...

The 3 Most Common Causes of Lower Back Pain and Sciatica

The shocking truth about lower back surgeries.

What the drug companies don't want you to know about pain relievers that can actually hurt you.

Why your insurance company prefers that you stay sick and injured all the time.

A 100% Natural, Safe Solution Exists - and How You Can Access It!

#### You Qualify To Receive This Report FREE Of Charge,

If You Pass This "Qualification Quiz":

- Are you between the ages of 35-70?
- Do you currently have or have had back pain in the last 6 months?
- Is your back pain affecting your daily activities?
- Are you open minded and willing to take action to end your back pain?

Due to the limited number of reports, we ask that only those who answered yes to the questions above request this report. Please don't take one from someone who really needs the help.

**If you passed the qualifications quiz above and would like your free copy, call**

**817-220-6677**



**September 10, 2022**



**Registration and Check In 8:00-9:30 am**  
**RACE SITE ON MAIN STREET**

Azle Memorial Library Entrance

We encourage early registration to ensure a spot. Event day entries will only be accepted if race spots are still open.

**All Activities Start at 10:00 am.**

#### Costume Contests Any Breed:

- Best Dog Costume
- Best Dog & Owner Costume

Followed by Races:

#### Wannabe Wiener Racer

Any breed less than 25 lbs. and limited to 10 entries

#### Wiener Dog Races

Dachshund breed only





# Back in the traces

OK, hopefully I'm "back in the traces." For those of you who don't know, we have been in the process of moving; moving from a place that my entire lifetime was spent on in addition to the years that my parents were on the "home place" – that's a lot of moving to get done. I would like to express my appreciation to the Azle News and Springtown Epigraph for having the patience with me to allow me the time to get this done and still have a spot for me to write in as we finish our move. If someone would have told me last winter that it would take anyone more than one-third of a year to pack up and move from one place to another, I would have laughed out loud. Well, it has and I'm not laughing out loud.

I wanted to revisit the original purpose(s) for my writing the Agriculture 101 column. But while we're reviewing let's first consider a little agricultural history. If you know the origin of the phrase "back in the traces" that I used in the first sentence, raise your hand. If you don't know then let's do



## AG 101

By Jack DeShazo

Jack DeShazo has decades of experience in the agriculture field.

something about that.

Traces refers to the equipment used with draft or work animals. With horses and mules that were used for plowing, pulling up tree stumps, pulling wagons, etc. the trace chains or tugs as they were sometimes known as were attached to the hames which were in turn secured to the collar around the draft animal's neck.

The traces/tugs then ran along each side of the work animal's sides and were attached to the singletree behind the animal and ultimately hooked to the plow, wagon, etc. In case there were two animals providing the source of power each animal had a singletree behind it and then the singletrees attached to a double-tree and then attached to the work. So, long story short, if the work animal was in "the traces" he or she was ready for work.

Now I would like to re-

view the reasons for writing this column. Less than 2% of the people in the United States are involved in the production of agricultural products. These are the agricultural products that help to feed, clothe, provide shelter, and produce energy for a high percentage of our citizens in addition to much of the world.

We are all consumers of these essential products, so it is important that as many people as possible have some knowledge and understanding of the workings of agriculture. I am attempting to pass along that knowledge with this column. Writing this column also gives me the opportunity to sneak in some personal thoughts every now and then. I know that someone who writes for a newspaper is supposed to be unbiased, but I'm not. Obviously, I am an amateur writer who has spent a lifetime involved in several

phases of agriculture and also served as a high school agricultural science teacher/FFA adviser for 34 years. I am not unbiased when it comes to agriculture and old-fashioned ideals.

So, I want this week's column to prime your thoughts about the importance of agriculture to our lives, nation and world.

Every type of product is influenced by so many things. Just one example would be the way that the U.S. economy and our citizens' lives have been affected by one tiny automobile part that is produced by China. Supply and demand rules our lives when it comes to prices, quality and availability; and sadly enough there are many times when that supply and demand have intentionally influenced humans to their benefit.

Agriculture probably has less of this intentional influence than most businesses/industries, at least primary influence. Some of agriculture's influence factors cannot be manipulated by humans — such as drought. Without precipitation seed germination is affected, if

it does germinate the plant growth is limited and thus quantity and quality of the fruit decreases.

Droughty conditions also contribute to grass fires. This year anyone who lives in or produces agricultural products in Texas has had to deal with lack of rain and its effect on crops along with grass fires. My first week back I just wanted to try and get people started thinking about the importance of agriculture and how many outside influences there are in producing our products. We'll continue this topic next time.

### PERSONAL THOUGHTS

Now for the personal thoughts that I promised you. What has happened to the state of Texas and even more to the state of humans? I was driving down Highway 287 Monday and spotted smoke along the road, just doing what I was trained to do by the example set for me as "kid." I turned around at the closest crossover and went back to help. As I got back to the smoke, of course there was a fire. It hadn't gotten big yet but was moving in

that direction. I'm sure not "tooting my own horn," but myself and one other man stopped to try to put out the fire. Neither one of us was very well prepared. His fire extinguisher didn't work, and all I had in the back of my truck for firefighting equipment was a shovel and hoe (where was my five-gallon bucket of water and wet tow sack). Luckily enough the fire department showed up and snuffed out the fire before it got bigger and out of hand.

Here's my question and concern: There were easily 100 vehicles that passed by in those five minutes, and two of us stopped to help. That's not the Texas that I grew up in and I don't care for what has become of it. What has happened to the "pitch in and make a hand" way of life that we once had? Instead, we've got people speeding by not even noticing what's happening or they just slow down to look and wonder and/or just point while going on about "their" business. To quote my folks and the other people I grew up around, "make a hand!" Folks, we have work to do. Until next time.

# Do different brands of TVs report different news?

Dear Frankie,

I asked the dogs at the park if their families were upset as mine about the spike in Omicron cases and the recommendation from the doctor to wear masks. Lily asked, "Where did you hear that?"

I said, "I heard it on the evening news."

She said, "That's weird,



## DEAR FRANKIE

By Geneva Woodruff

Frankie is a rescue dog and an emotional support animal for Geneva Woodruff. Woodruff is a retired educator.

"We watch the news every night at our house, and I never saw any doctor talk about wearing a mask."

I asked her, "What kind of TV do you have?"

She said, "We have a Samsung; how about you?" she

asked.

I said, "We have a Sony." We figured we don't get the same news because we have different brands of TVs.

Are we right, Frankie?

Signed, Archie

Dear Archie,

I can understand why you might think the news programs are determined by the

brand of your family's TVs. It's a good guess; but not the reason.

There are many nightly news programs, and not all of them report the news or recommend how humans should respond to Omicron in the same way. If you think about it, it's like the TV ads for dog food. Not all dog food

companies see the nutritional needs of dogs in the same way and therefore they make the kind of food they think is the healthiest for a dog.

Similarly, viewers like your family and Lily's family watch the programs and buy the food they think is best for them.

Best, Frankie

# Azle Arts Popcorn Players Presents

MALE  
ORDER

Brides

July

22-24, 29-31

Friday and

Saturday 7:30 PM

Sunday 2:30 PM

\$15 Adults

\$12 Seniors/Students

\$10 Sunday Matinee

WRITTEN BY  
BILLY ST. JOHN

Directed by Emily Ball

1012 SE Pkwy, Azle 817-238-PLAY

FOR RESERVATIONS: AZLEARTS.ORG



# SPORTS

## Azle drum battery begins three-week camp with a bang

BY JEFF PRINCE  
jeff@azlenews.net

Blisters had formed on Brendon Devillier's fingers, and his hands felt shaky, like when a weightlifter's arms become noodles after too much work.

"It's like a feeling of weakness," Devillier said, looking at his hands.

July 25 was Day One of a three-week band camp, and Devillier, an Azle High School student, was out of practice. He could have practiced more during the early part of summer and kept his hands in shape, but he was enjoying his vacation.

Now, he was paying for his lack of practice.

Devillier, a junior, joined band in fifth grade and has stuck with it ever since. He tried marimba in seventh grade but moved to quads in eighth grade. Quads include four types of drums combined into one big instrument. Quads can weigh 60 pounds or more and are carried with the help of shoulder straps.

Devillier tried vibraphone in his freshman year but decided to return to quads this year.

"I don't know why I chose the heaviest, most difficult instrument, but I guess I did," he said.

He was feeling every one of those pounds while prac-



The drum battery shakes off the rust at summer camp.

Photo by Jeff Prince

SEE DRUM CAMP, PAGE 4B.

## Lady Hornet roundballers sizzle this summer

BY JEFF PRINCE  
jeff@azlenews.net

The girls who compete on the Azle High School basketball team aren't willing to be one-upped by this summer's record-setting temperatures.

The girls are creating their own heat on hardwood courts across the state.

In July, four Lady Hornets played on an elite club All-Star team that won a tournament in San Antonio and a national championship in Orlando, Florida. The players on the Team Explosion championship roster included Brittany Cato, Summer Finney, Karlee Locke and Kendall Locke.

Another club team, the



Brittany Cato, Karlee Locke, Summer Finney and Kendall Locke played for a summer All-Star team that won a national championship.

Photo by Jeff Prince

SEE BASKETBALL, PAGE 3B.

## Azle's new youth baseball-softball league eyeing fall start



A large crowd of parents and kids turned out to ask questions about the new baseball and softball association.

Photo by Jeff Prince

BY JEFF PRINCE  
jeff@azlenews.net

A group of parents and young kids – about 50 people in all – met on Sunday, July 25, at Shady Grove

Park to discuss the establishment of a new baseball and softball youth association.

The new group is called Azle Youth Sports Baseball and Softball, or AYSBS.

Afterward, the league founders considered the meeting a home run.

"The city is very much rallying around what we are

SEE LEAGUE, PAGE 3B.

**LAKE WORTH**  
PREMIER EYE CARE

Dr. Jeffrey R. Crabtree

Specializing in Family Eyecare

**20% OFF\***

Your Eyewear Purchase, with this coupon  
Offer expires 08-31-22

\*Discounts can not be used with vision insurance

www.lakewortheeye.com • 817-439-9455  
6921 Foster Dr. Lake Worth, TX 76135

**Mr. Jim's Pizza**  
It's the Crust!

Follow us on f

**2 MEDIUM PIZZAS** Original

**\$9.99** 2 Medium Original™  
2 Topping/Specialty/Premier Pizzas  
MUST BUY 2 PIZZAS

WGD  
www.godaddy.com

416 Commerce St., Ste 3, Azle • 817-612-0074

**HOGLE**  
Insurance Group  
167 W. Main • 817-444-6389  
www.HogleInsurance.com

Shaye Hogle  
"Our Best Policy is Personal Service"

Hogy Hogle

**4.50%** 60 Month Rate Guarantee  
**3.65%** 36 Month Rate Guarantee  
\*10,000 Minimum Deposit

**Life Insurance**  
NO MEDICAL EXAM UP TO \$250,000.00  
Term and Permanent Policies  
Guaranteed Premiums and Death Benefit  
Company based in Fort Worth, Texas

**JIM STEVENS**  
PHOTOGRAPHY

PROFESSIONAL BUSINESS PORTRAITS  
COMMERCIAL PHOTOGRAPHY  
DRONE PHOTOGRAPHY  
PHOTOGRAPHY LESSONS OFFERED

**713-725-5620**

**Northwest**  
Physical Therapy  
FREE CONSULTATIONS

Over 24 years of Experience!

- Sports, Stroke, Back and Neck Rehab
- Post Operation
- Balance Training
- Joint Replacement
- Return to Work

408 Central Dr., Azle  
817-444-8827  
Next to the Drive-thru of PNC Bank  
azlenwpt.com

1300 Northwest Pkwy, Azle, Texas  
Sun 11-8 • Tues - Thurs 11-9  
Fri 11-10 • Sat 11-9:30  
MON CLOSED

**Villa del SOL**  
MEXICAN RESTAURANT

HAPPY HOUR  
Tues-Sat  
4 - 8 PM

TAKE OUT ORDERS  
817-406-4452  
817-406-4800



# Athletic performance camp helps girls with various sports



A group of girls listens to coach Monte Sparkman's post-practice speech.

Photos by Jeff Prince

BY JEFF PRINCE  
jeff@azlenews.net

Zigzagging down a soccer field requires the ability to both zig and zag with speed and precision.

Performance camp, held weekday mornings at Azle High School in summer, helps athletes with everything from A to Z.

On July 21, strength and conditioning coach Monte Sparkman led about three dozen high school girls through a near two-hour session that included various running drills and weightlifting. Varsity players from the softball, wrestling, volleyball, powerlifting, soccer and other teams were there voluntarily to work up a good sweat.

Madi Yunger, a senior on the soccer team, would follow the performance camp with soccer practice and sweat even more.

Performance camp has helped her become better at soccer, she said.

"It helps with your speed and changing directions, to not have the defense get the ball," she said.

In 2021, Sparkman became the school's first strength and conditioning coach. He brought an overall approach to training designed to improve performance and conditioning while reducing the impact of injuries.

"Overall, it makes you stronger at any sport," said Trinity Thornton, who excels on the powerlifting and soccer teams.

During a recent session, the group exercised in the large indoor facility, focusing on running drills that spotlighted quick cuts. The

room isn't air-conditioned, and the 100-degree temperatures outworked the electric fans.

It was hot. After a while, the group moved to the weight room to pump iron. The girls rely on high-tech gadgetry to record weights, repetitions, bar speed and other factors to monitor their improvements over the weeks.

"It tracks if we go up or down," Yunger said. "I've gotten a little faster. The weights help, too, to keep your legs strong."

Sparkman moved the kids to an air-conditioned gymnasium to finish the day's session. He instructed the girls to walk and run intermittently up and down the bleachers when he blew a whistle.

Jacy Williams, a senior wrestler, said she benefits from the camp in different ways. The drill that teaches quick cuts while running at full speed might not help her specifically in wrestling, but it does help her, she said.

"We don't really do a lot of change in direction (in wrestling), but it helps you adapt to what you need to do and how you need to defend what they're doing," she said. "It helps you have quicker reflexes, and it also helps with your speed."

Williams had attended a wrestling workout session from 7:30 to 8:30 a.m. and taken a half hour break before enduring performance camp from 9 to 10:45. She was covered in sweat afterward but happy about it.

"It's good for me to be staying in shape because I'm going to be do-



Madi Yunger runs around cones to work on high-speed direction changes.

ing a lower weight class" in the upcoming wrestling season, she said. She plans to compete in the 100-pound weight class, a slightly lower weight than before.

"I'm not weighing that right now," she said.

As a freshman, when she first began wrestling, Williams won half of her fights. As a sophomore, she won 75 percent and received the team's Most Improved Wrestler Award. As a junior, she won more than 30 matches and blossomed into a team leader.

She hopes to make her senior year the best yet.

A three-week string of 100-degree temperatures hasn't made things easy. Yunger and Thornton were about to take a break in the shade before heading to soccer practice.

They weren't sure what to expect.

"I think we're in one of the gyms today because it's 100-million degrees outside right now," Yunger said. "We are probably just going to end up scrimmaging inside."

Thornton isn't a fan of the sunny century mark but knows her coaches will keep her well-being in mind.

"It is brutal, but they work with us," she said. "They give us water breaks."

Over the summer, a girl or two had thrown up from overexertion, but nobody had fainted from the heat, Yunger said.

The girls appreciate how the coaches herd everyone indoors at times.

"They've been letting us come into the gyms with the air conditioning, which has been nice," Thornton said. "They obviously don't want us to overheat or anything."



Jacy Williams works with a medicine ball for upper body strength.



**BASKETBALL, CONTINUED FROM PAGE 1B.**

DFW Hawks, won a tournament in Austin with two Lady Hornets on the roster - Cheryl Grubbs and Myah Garcia.

Grubbs won MVP honors at that tourney.

Also in July, the Hawks won the San Antonio Texas Shootout with two Lady Hornets playing - Landri Seward and Vielka Gonzalez.

"We have many other players working on their game this summer," said Mitzi Marquart, head coach at Azle High. "The commitment and work ethic shows how much our young ladies love the game of basketball. We are excited to watch them grow and proud of their success. For sure, we are all looking forward to this coming season."



From left, Myah Garcia and Cheryl Grubbs helped the DFW Hawks win a tournament, and Grubbs won MVP honors.



From left, Landri Seward and Vielka Gonzalez helped the Hawks win the Texas Shootout tourney in San Antonio. Courtesy photos

**YOUTH LEAGUE, CONTINUED FROM PAGE 1B.**



From left, Hope Winter, Justin Baisden and Chad Latta speak to parents at the inaugural meeting between parents and the Azle Youth Softball and Baseball Association board members.

Photo by Jeff Prince

doing and absolutely loving it," said Justin Baisden, president of the group.

Until last year, Baisden was a board member at the longstanding Azle Baseball and Softball Association. He has spent 14 years coaching in youth leagues. Baisden, his wife, Tiffany Baisden, along with Hope Winter and Randy Swatworth, had all served on the ABSA board before disembarking and establishing the AYSBS.

Justin Baisden said he left the ABSA after disagreements on how to keep the most talented older athletes from leaving to compete with private select clubs.

ABSA is "very much a rec mentality, which is fantastic," Baisden said. "I'm there, too, with my rec thinking, but I also wanted to provide something for the more elite kids with a select and elite program along with the rec program, where we could accommodate everybody and keep everybody here in Azle."

Baisden said he tried to sway a majority of ABSA board members to establish an elite program but "stepped away" after his effort stalled. Once he left the ABSA, he was inundated with requests from other parents to create a new league with a select program and a heavier emphasis on public trans-

parency and parental involvement, he said.

"That's really what drew me to it, is the people calling me and saying, 'We need to do something like what you were trying to do over there at ABSA,'" Baisden said. "People rallied and got me on board, and here we are."

The Baisdens, along with Swatworth, Winter, Jonathan Jones, Kyle Gathright and Chad Latta, are the inaugural board members at AYSBS.

There is no animosity between AYSBS and ABSA, Baisden said.

"I love a lot of people on that board," he said. "They are very close friends of mine. They are very good people. We have our group that thinks our way, and we are trying to accommodate something for everybody so that we don't lose these select kids that are going out to wherever to go play. We want to keep them here. We can provide that."

Rebekah Stepan, whose daughter has previously played in the ABSA, plans to register her in the new league this season.

Last season, her daughter "went to the World Series with our team, and we got no support from our ABSA organization at all," she said. "If it wasn't for the coaches,

we would not have been able to afford to go down there or afford to stay."

She heard about the new league from her daughter's All-Star coach.

"I figured I'd stop by and check it out," she said. "It's exactly what we're looking for. They are going to listen to the parents. They listened to the coaches. They are ready to put the kids first."

Her children had played in the ABSA for more than 10 years, she said.

The ABSA is a nonprofit that relies on volunteers. ABSA serves more than 600 players in rec ball, and many of them do leave for select leagues after they become older, said Amira Cook, softball commissioner.

"They want more competition, and we just don't have the volunteer power to do it," Cook said. "Plus, I think it's a space and time issue. Our games and schedules were booked to the max last year with just the rec games that we had."

She doesn't recall any parents ever asking board members to establish an elite program. She understands that some parents have shown interest in the new league, and she said there is room in a fast-growing Azle for both groups.

"It's something different," she said. "People are attracted to new things. That's OK if they want to go see what it's about."

ABSA, though, believes in its mission of providing a solid league for kids wanting to learn the game.

"You have to be able to provide a program that's a ground floor for people," she said. "I've got kids that sign up for the first time that are 12 and 14 years old, never picked up a ball in their life. They can't jump into a competitive league. That's a danger to them."

Derrick Nelson, an Azle city councilman, attended the meeting and said he would be registering his two daughters in the new league. He likes AYSBS's vision for the city, he said.

"I'm going to try and work with them, hopefully with the city of Azle, to maximize the opportunities for the kids to play," he said. "We have resources. We just need to maximize them, and then, we could look into growing those resources - meaning the fields and everything. I'm excited about this new league."

His daughters had played in the ABSA previously.

"Our coaches already said they were going to move to the new league," Nelson said. "A lot of

people, we're all just going to switch to this new league because we trust the board. We all know these guys personally."

Nelson didn't have any complaints about the ABSA but said he has heard negative feedback from others.

"I think that's ultimately what led to this new league," he said.

The AYSBS will seek to establish new teams and entice independent select teams to join their league. The AYSBS hopes to compete against teams in nearby cities such as White Settlement, Springtown, Saginaw, Lake Worth, Benbrook, Aledo and others.

Currently, many athletes switch to more competitive leagues to try to gain interest from college recruiters.

"They take off, and they go select," Baisden said. "They are leaving the town of Azle and playing the select leagues that are all over the place. We're trying to create a culture where they want to stay here and be involved with this all the way through. To have a place for the select players to play and have a place for the rec players to play and be able to keep everything involved here at Azle."



# Azle Baseball and Softball Association registration ends Aug. 6



**FROM STAFF REPORTS**

Fall registration is open for youth baseball and softball. The Azle Baseball and Softball Association offers leagues for children ages 3-14. The nonprofit group is run by volunteers and promotes the ideals of good sportsmanship and citizenship through organized games and fellowship. For baseball and softball registration, late fees begin Aug. 1, and the last day to register is Aug. 6. People may register at absatx.com or scan the attached QR code. Home games are played at Stinger Field.

Scan this QR code to register a child in the Azle Baseball and Softball Association.

**BAND CAMP, CONTINUED FROM PAGE 1B.**

ting with a dozen other members of the drum battery at Azle High School's parking lot on a morning that was already approaching 100 degrees.

How does one prepare to carry such a heavy instrument around while marching in the Texas summer heat?

"You show up to band camp and you die," he said. "That's about it."

**STRANGE ENCOUNTERS**

Guiding the drum battery through its first day of summer camp was Marching Green Pride percussion director Michael Strange.

He spent the morning with the drum battery outside, instructing them on how to walk in tight formation in a straight line with synchronized steps while playing instruments.

The drumline's front ensemble, which includes keyboards, marimbas, vibraphone, xylophone and piano, were practicing inside the air-conditioned building.

Strange made sure the students in the parking lot took frequent water breaks. They too would spend their afternoon session inside the air-conditioned building.

Motivating the kids hasn't been difficult, despite this summer's blazing temperatures, he said.

"All these students signed up to be in marching band," he said. "They all chose to be here spending their summer break doing this."



From left, Hayden Jones, Brendon Devillier, and Johnny Boyer endure record heat to practice their steps at band practice.

Photo by Jeff Prince

By August, the marching band day night football games. "Today is just tracking," Strange said. "We can't learn drill until Au-

gust. It's a UIL rule. So, we're just working on technique, getting our feet moving and playing, and then working on the music inside with the A/C in the afternoon. Afternoon gets a little too hot to be out here."

THE AWARD-WINNING PRINT & ONLINE FAMILY FEATURE

Find Kid Scoop on Facebook

© 2022 by Vicki Whiting, Editor Jeff Schinkel, Graphics Vol. 38, No. 35

## Clams and Shellfish

**Seashells you find on the beach were once homes to small, soft-bodied creatures called mollusks. Hard shells protect the soft bodies inside. When the mollusk dies, its shell washes up on shore.**

**Mammoth Mollusk**  
The giant clam can weigh 440 pounds (200kg) or more! When healthy, they can live up to 100 years.

Long ago, people thought giant clams could eat people. The truth is that a clam moves its shell way too slowly to trap a person inside. Circle every other letter to see what giant clams eat.

**ADDLRAKNWKBTOJYN P L**

**Mollusks and Their Shells**

Do the math to label each of these shells.

3 + 3 + 4 = Clam	15 + 6 + 7 = Triton
17 + 2 + 3 = Oyster	11 + 11 + 7 = Whelk
15 + 5 + 7 = Periwinkle	3 + 6 + 6 = Cowrie
9 + 2 + 2 = Cone	14 + 1 + 6 = Nautilus

Standards Link: Life Science: Animals have unique structures that aid in survival.

Mollusks with shells keep them their whole lives. But not all mollusks have shells. Unscramble the letters to discover a familiar mollusk that doesn't have a shell.

**USTOPCO**

**How to Build a Shell**

A few days after baby mollusks hatch from tiny eggs, they start building their shells, layer after layer.

They mix salt and minerals from the sea with other ingredients from their own bodies to build their shells.

When a mollusk grows, it needs a bigger shell. That's no problem! A mollusk adds to its shell every day.

Scientists can tell the age of a mollusk by counting a shell's rings!

**Finders Keepers**

When a mollusk dies, its soft body disappears but its shell remains. Sometimes other animals, like hermit crabs, move in. Other empty shells wash up on the beach.

**Pretty Irritating**

When a bit of sand gets inside an oyster shell, it scratches and bothers the oyster. To protect itself, the oyster covers the sand with the minerals it uses to make its shell. Over time, it forms something that humans use for jewelry. Unscramble the letters to find out what it is.

**LEPRA**

Extra! Extra!

Even and Odd

Look through the newspaper and circle all even numbers in red. Circle the odd numbers in blue. Make a graph to show how many of each you found.

Standards Link: Math: Identify even and odd numbers.

### Kid Scoop Puzzler

How many clam shells can you find? Have a friend try, too. Who found the most?

---

### Double Double Word Search

Find the words in the puzzle. How many of them can you find on this page?

PLANKTON	J M P R C L R A E P
MOLLUSK	K S U L L O M V D L
PEARL	L T H S A W N N J A
SHELL	B O R E M V A E B N
CLAM	R E Y A L S U Y O K
SHORE	I N A S P L H I R T
BEACH	N Z T C T M Y O C O
RINGS	G Y K U H E T L R N
LAYER	S G I A N T R V B E
TRAP	
GIANT	
SEA	
OYSTER	
CONE	
SAND	

Standards Link: Letter sequencing. Recognize identical words. Skim and scan reading. Recall spelling patterns.

### Kid Scoop Together

## How Many Seashell Facts Do You Know?

Read each statement and choose. Then check your answer by doing the math. A true statement will have a math problem that adds up to an even number. If the math problem adds up to an odd number, that statement is false.

1. Seashells were the first money! A small white shell called a cowrie was once used as money worldwide.  
 TRUE  FALSE  
**6 + 10 + 4 =**
2. The ancient Greeks used crushed seashells to clean their teeth.  
 TRUE  FALSE  
**9 + 9 + 4 =**
3. A giant clam can kill people.  
 TRUE  FALSE  
**7 + 3 + 9 =**
4. A shell's color is determined by the food the animal eats and things in the water where it lives.  
 TRUE  FALSE  
**6 + 10 + 4 =**
5. Conch shells have been used as trumpets by people for thousands of years.  
 TRUE  FALSE  
**8 + 8 + 8 =**
6. The official name of a shell collector is a "conchologist."  
 TRUE  FALSE  
**14 + 2 + 2 =**
7. Clams have no eyes, ears, or noses, so they cannot see, hear, or smell.  
 TRUE  FALSE  
**16 + 7 + 3 =**
8. The giant clam can live more than 100 years.  
 TRUE  FALSE  
**13 + 13 + 2 =**
9. Giant clams can snap their shells closed very quickly.  
 TRUE  FALSE  
**11 + 1 + 1 =**

Standards Link: Math: Calculate sums and differences up to 30.





# DEVOTIONAL PAGE



This devotional and directory is made possible by these businesses who encourage all of us to attend worship services.

**Azle News**  
AzleNews.net

The Springtown Epigraph  
Springtown-Epigraph.net

**TRINITY SELF STORAGE**  
SECURITY GATE 24 HOUR ACCESS

Office next door at Trinity Commerical Contractors

**RV, Trailer & Boat**

200 Walnut Creek Ave.  
**817-444-8885**

TACLA014745E RRC#11349

**J&E**  
AIR CONDITIONING & HEATING

**817-220-4506**

1825 W. Hwy. 199 | Springtown, TX 76082

Help readers find your Business.

Call **817-270-3340**

**Your Ad Here!**

Call Johnna to reserve this space.  
**817-270-3340**

**Comet**  
CLEANERS

"Serving Azle & The Community Since 1986"

113 SPEER ST  
817-444-4920

Thank you for your support!

**Subscribe!**

Pick your subscription:

\$40 IN-COUNTY Tarrant, Parker & Wise only

\$36.50 SENIOR CITIZEN 60 Years and Older Tarrant, Parker & Wise only

\$25 ONLINE

\$46.50 OUT OF COUNTY

**Azle News**  
The Springtown Epigraph  
Azle News 817-270-3340  
Springtown Epigraph 817-220-7217

**Eagle Crest VILLA**  
A RETIREMENT AND ASSISTED LIVING COMMUNITY

113 Denver Trail • Azle  
817-444-3249 Fax 817-444-3275  
www.eaglecrestvilla.com

STUDIO - 1 bath, 350 sq. ft.  
ONE BEDROOM - 1 bath, 450 sq. ft.  
TWO BEDROOM - 1 bath, 642 sq. ft.

**APOSTOLIC**  
CORNERSTONE APOSTOLIC CHURCH  
1801 FM 730 N., Azle  
817-400-0612

**HARVEST TIME APOSTOLIC**  
1 Block N. FM 2048 in Keeter  
817-433-8220

**ASSEMBLY OF GOD**  
FIRST ASSEMBLY OF GOD  
1020 S.E. Pkwy, Azle  
817-237-4903

**FELLOWSHIP OF LAKE WORTH**  
4024 Dakota Trail, Lake Worth  
817-237-9433

**NEW BEGINNINGS CHURCH**  
810 Goshen Rd, Springtown  
817-523-4462

**LEGACY CHURCH**  
Hwy. 199 W. at FM 2257, Azle  
817-221-2983 / 817-221-5760

**VICTORY CHRISTIAN CENTER**  
737 Boyd Rd., Azle  
817-444-LOVE

**BAPTIST**  
ASH CREEK BAPTIST CHURCH  
300 South Stewart, Azle  
817-444-3219

**AGNES INDEPENDENT BAPTIST**  
350 Agnes N., Springtown  
817-523-7271

**BETHEL MISSIONARY BAPTIST**  
408 S. Ash St., Springtown  
817-220-4238

**AZLE AVENUE BAPTIST**  
2901 Azle Ave., Fort Worth  
817-626-5556

**BRIAR FIRST BAPTIST**  
West of FM 730 N. at sign, Briar  
817-444-3484

**CALVARY HEIGHTS BAPTIST**  
1 block off Hwy. 199, east of David's Patio, Springtown, 817-221-2241

**CENTRAL BAPTIST**  
4290 Old Agnes Road  
817-594-5918

**CHURCH ON THE HILL**  
836 NW Parkway, Azle  
817-444-3752

**CHRISTWAY BAPTIST**  
7673 West Hwy. 199, Agnes  
817-220-9133 or 817-220-3581

**CLEAR FORK BAPTIST**  
Corner of FM 730 & Ragle Rd., Weatherford, 817-594-1154

**EAGLE MOUNTAIN BAPTIST**  
8780 Eagle Mtn. Circle, Azle  
817-237-4135

**FIRST BAPTIST CHURCH OF AZLE**  
1017 Boyd Road  
817-444-4828

**FIRST BAPTIST CASTLE HILLS**  
401 Beverly Rd., Azle  
817-797-4706

**FIRST BAPTIST LAKE WORTH**  
700 Charbonneau Tr., west side of Effie Morris Elementary  
817-237-2624

**FIRST BAPTIST LAKESIDE**  
8801 Jacksboro Hwy., Lakeside  
817-237-8113

**FIRST BAPTIST BRIAR**  
6 miles N. of Azle on FM 730  
817-444-3484

**FIRST BAPTIST COTTONDALE**  
1 block N. of FM 2123, Cottondale  
940-433-5539

**FIRST BAPTIST PEASTER**  
FM 920 in Peaster  
817-596-8805

**FIRST BAPTIST POOLVILLE**  
1 block W. of FM 920, Poolville  
817-594-3916

**FIRST BAPTIST SPRINGTOWN**  
5th & Main Street, Springtown  
817-523-7011

**FRIENDSHIP BAPTIST**  
801 Friendship Rd., 9½ miles S. of Springtown off Hwy. 51 S.  
817-594-5940 or 817-599-4917

**FUNDAMENTAL BAPTIST**  
5th & Main in Springtown  
817-523-5477

**GRACE BAPTIST**  
3 miles N. of Springtown on Hwy. 51 across from Radio Tower

**GRACE POINTE CHURCH**  
4110 E. Hwy. 199, Springtown  
817-221-5683

**HERITAGE BAPTIST CHURCH**  
3577 FM 51 N., Weatherford  
817-564-3946

**IGLESIA BAUTISTA**  
Nueva Jerusalem  
6640 Midway Rd., Springtown  
817-694-0444

**INDIAN OAKS PRIMITIVE BAPTIST CHURCH**  
3229 Shawnee Trail, Lake Worth  
817-237-8441

**LAKE WORTH BAPTIST**  
4445 Hodgkins, Lake Worth  
817-237-4163

**METROPOLITAN BAPTIST**  
6051 Azle Ave., Fort Worth  
817-237-2201

**NEW HOPE BAPTIST**  
782 New Hope Rd., Reno area  
817-221-2184

**NORTHWEST BAPTIST**  
5500 Boat Club Rd., Lake Worth  
817-237-6063 or 817-270-8476

**SILVER CREEK BAPTIST**  
730 S. & Veal Station Rd., Azle  
817-444-2325

**NEW BEGINNINGS BAPTIST CHURCH**  
3605 Jacksboro Hwy., Azle  
817-707-2741

**PLEASANT GROVE BAPTIST**  
FM 2048 and CR 4677, Boyd  
940-433-5477

**PRIMERA IGLESIA BAUTISTA**  
300 S. Stewart, Azle  
817-500-3641

**SPRINGTOWN BAPTIST TEMPLE**  
201 J. E. Woody Rd., Springtown  
817-523-0376

**UNION BAPTIST CHURCH**  
3451 Sarra Lane, Springtown  
682-333-1645

**WALNUT CREEK BAPTIST**  
220 W. Reno Rd. in Reno  
817-221-2110

**BIBLE COMMUNITY BIBLE FELLOWSHIP**  
1405 Reynolds Rd., Reno  
817-521-4510

**NORTHWEST BIBLE CHURCH**  
5025 Jacksboro Hwy., Fort Worth  
817-624-2111

**SOLID ROCK BIBLE CHURCH**  
591 S. Reno Rd., Springtown  
817-221-3444

**CATHOLIC**  
HOLY TRINITY CATHOLIC  
800 High Crest Dr., Azle  
817-444-3063

**CHRISTIAN**  
THE CHURCH AT AZLE  
1801 S. Stewart, Azle  
817-444-9973

**AZLE CHRISTIAN FELLOWSHIP**  
35 West Forty Estates., Azle  
817-688-3339

**GREATER VISION FELLOWSHIP**  
1801 S. Stewart St., Azle  
817-825-0485

**THE ABBEY CHURCH**  
10400 Jacksboro Hwy., Azle  
817-238-1404

**CROSSING FELLOWSHIP**  
120 E. Main St., Azle  
817-406-4577

**CHURCH OF CHRIST**  
AZLE CHURCH OF CHRIST  
336 NW Parkway  
817-444-3268

**BRIAR CHURCH OF CHRIST**  
109 W.N. Woody Rd.  
(½ block west of FM 730 N. in Briar)  
817-444-7102

**MIDWAY CHURCH OF CHRIST**  
6400 Midway Rd.  
817-221-2107

**NEWSOME MOUND ROAD CHURCH OF CHRIST**  
1460 Newsome Mound Rd.  
817-677-3290

**NORTHWEST CHURCH OF CHRIST**  
6059 Azle Ave., Fort Worth  
817-237-1205

**POOLVILLE CHURCH OF CHRIST**  
West of FM 920 in Poolville  
817-594-4182

**SOUTHSIDE CHURCH OF CHRIST**  
130 W. Bradshaw Lane, Springtown  
817-221-2799

**SPRINGTOWN CHURCH OF CHRIST**  
Just west of Hwy. 51 North  
817-523-4419

**TRI-COUNTY CHURCH OF CHRIST**  
525 Hwy. 199 W., Springtown  
817-980-8156

**CHURCH OF GOD**  
ABUNDANT LIFE CHURCH OF GOD  
4800 East Hwy. 199, Suite 7  
Springtown, 817-677-3208

**LAKESIDE CHURCH OF GOD THE WORD@LAKESIDE**  
9396 Confederate Park Rd. (FM 1886)  
817-237-5500

**DISCIPLES OF CHRIST**  
AZLE CHRISTIAN  
117 Church St., Azle  
817-444-3527

**CENTRAL CHRISTIAN**  
1602 S. Main St., Weatherford  
817-594-3043

**FIRST CHRISTIAN CHURCH**  
4th & Main, Paradise

**EPISCOPAL**  
ST. ANNE'S ANGLICAN EPISCOPAL  
6055 Azle Ave., Fort Worth  
817-237-1888

**PROVIDENCE REFORMED EPISCOPAL**  
405 Bowie Dr., Weatherford  
817-596-7476

**ST. ELISABETH EPISCOPAL**  
5910 Black Oak Lane, River Oaks  
817-739-0504

**GOSPEL**  
CENTRAL FULL GOSPEL FELLOWSHIP  
3009 Delaware Tr., Lake Worth  
817-237-7919

**JEHOVAH'S WITNESSES**  
KINGDOM HALL OF JEHOVAH'S WITNESSES  
212 Pearson Lane, Azle  
817-221-2242

**LUTHERAN**  
THE EDGE CHURCH - AZLE  
1313 SE Parkway, Azle  
817-237-4822

**HOPE LUTHERAN (ELCA)**  
4795 Hwy. 199, Reno  
817-221-HOPE

**METHODIST**  
BOYD UNITED METHODIST  
FM 730 North in Boyd  
940-433-3334

**FIRST UNITED METHODIST**  
200 Church St., Azle  
817-444-3323

**LIGHTHOUSE FELLOWSHIP**  
7200 Robertson Rd., Fort Worth  
817-237-2758

**SILVER CREEK UNITED METHODIST**  
2200 Church Rd., Azle  
817-444-1382

**FIRST UNITED METHODIST**  
Hwy. 51 N & 3rd Street, Springtown  
817-523-7874

**GARVIN UNITED METHODIST**  
3 miles West of Boyd on C.R. 4699

**POOLVILLE UNITED METHODIST**  
1 block W. of FM 920 (behind Poolville Post Office)  
817-599-3601

**HILLTOP FAMILY CHURCH**  
1227 Old Cottondale • 817-220-7177

"Caring about what Jesus cares about... You!"

**Joe Rider Propane, Inc.**

**PROPANE TANKS**

**817-237-3325**

**White's Funeral Homes**  
Our family serving your family since 1908

Bob White, Anita White and Zack Bellenger

Full Service Funeral Home  
Cremation Services  
Pre-Need Plans

Azle • Springtown  
Mineral Wells • Weatherford  
817-444-3211 • www.whitesfuneral.com

**THE CHURCH OF JESUS CHRIST OF LATTER-DAY SAINTS (THE MORMONS)**  
THE CHURCH OF JESUS CHRIST OF LATTER-DAY SAINTS  
1010 Timberrooks, Azle  
817-237-5075

**PENTECOSTAL**  
GRACE CHAPEL UNITED PENTECOSTAL CHURCH  
3508 Shawnee Trail, Lake Worth  
817-237-4844

**PRESBYTERIAN**  
GRACE FIRST PRESBYTERIAN  
606 Mockingbird Lane, Weatherford  
817-594-2744

**ORTHODOX PRESBYTERIAN CHURCH OF FORT WORTH**  
Meeting at Northwest YMCA  
5315 Boat Club Road, Fort Worth  
817-989-9800

**ORTHODOX**  
ARCHANGEL GABRIEL ORTHODOX CHRISTIAN CHURCH  
1157 S. E. Parkway (Jacksboro Highway), Azle  
817-752-8255

**OTHER**  
ALIENTO DE DIOS  
2233 E. Hwy 199, Springtown  
817-521-4694

**BETTER LIFE COMMUNITY CHURCH**  
3131 E. Hwy 199, Spt  
817-677-2300

**CORNERSTONE COMMUNITY CHURCH**  
2233 Hwy 199 East, Springtown  
817-221-LIFE (5433)

**FAMILY CHURCH**  
9 miles S. of Springtown on Hwy. 51  
817-599-7655

**GRACE FELLOWSHIP CHURCH**  
2964 W. Hwy 114, Paradise  
940-969-2427

**HILLTOP FAMILY CHURCH**  
1227 Old Cottondale Road, Springtown, 817-220-7177

**THE HOUSE OF PRAYER**  
1356 Reno Rd., Springtown  
817-221-2551

**POWERHOUSE OF PRAISE CHURCH**  
1649 S.E. Parkway, Azle  
817-319-7364

**BRANDED CROSS COWBOY CHURCH**  
3282 FM 2048, Boyd 76023  
817-755-7021

**SECRET PLACE MINISTRIES**  
112 Optimist Rd., Springtown  
682-229-1433

**GOSPEL GATHERING FELLOWSHIP**  
7315 Silver Creek Rd at Flatrock Rd, Azle  
817-313-1793

**LIGHTHOUSE CHURCH**  
6409 FM 730 S., Azle  
817-444-4311

**LIGHTHOUSE HARBOR CHURCH**  
1960 Long Circle, Pelican Bay  
817-444-3547

**NEW LIGHTED WAY**  
624 Harbor Dr. Circle, Azle  
817-444-1577

**NORTHWEST TEMPLE OF PRAISE**  
6781 Jacksboro Hwy., Lake Worth  
817-909-5627

**PRECIOUS FAITH TEMPLE CHURCH**  
8601 Hwy. 199 @ Vance Godbey's

**THE HOUSE OF PRAYER**  
1356 Reno Rd., Springtown  
817-221-2551

**THE RANCH COWBOY COUNTRY CHURCH**  
14600 FM 730 North, Azle (Briar)  
817-909-5627

**REAL FAMILY FELLOWSHIP**  
202 Pearson Lane, Azle  
817-677-5963

**SOULS HARBOR**  
11701 Jacksboro Hwy., Azle  
817-726-2065

**WESTERN HARVEST FELLOWSHIP CENTER**  
6577 Old Springtown Rd., Weatherford  
817-523-2855 or 817-995-9087

**SHEPHERD'S HEART CHURCH**  
14435 FM 730 N • Azle  
817-444-7777

**WESTERN STAR COWBOY CHURCH**  
790 CR 3696 • Paradise 76073  
817-688-6887

Compliments of  
**Rural Gas Supply**

**PROPANE** 140 W. MAIN ST.  
817-444-4613

"In business since 1946"

**White's Funeral Homes**  
Our family serving your family since 1908

Bob White, Anita White and Zack Bellenger

Full Service Funeral Home  
Cremation Services  
Pre-Need Plans

Azle • Springtown  
Mineral Wells • Weatherford  
817-444-3211 • www.whitesfuneral.com

**Clarks Precision Machine & Tool**  
636 Profit St., Azle, Tx

**45 Years of Quality**

ISO 9001:2001 Compliant Phone 817-444-2533  
Check us out on our web site B.J. Clark  
www.clarksmachine.com bjc@clarksmachine.com

**WHAT'S HAPPENING IN YOUR HOMETOWN?**

Subscribe today to keep up-to-date  
Azle News: 817-270-3340  
Springtown Epigraph: 817-220-7217

Celebrating over 25 years in business

**AZLE CHIROPRACTIC CLINIC**

817-444-HELP (4357) Rodney Gattin, D.C.  
400 Boyd Court

www.azlechiropractic.com

Get your business noticed!

**817-270-3340**  
Call Johnna to reserve this space.

Want readers to FIND YOU?

Place your ad here!  
Call **817-270-3340**

Place your ad here today!

**817-270-3340**  
or 817-220-7217

**TRI-COUNTY Electric Cooperative, Inc.**  
Electric Cooperative, Inc.  
"A Commitment to Service and Savings"

Actively Supporting our Communities!

Call Johnna for details  
**817-270-3340**

**Advertise Here**

Contact us for details.  
**817-270-3340 or 817-220-7217**

**Your Ad Here** Newspaper Advertising Works!

Call Johnna for details TODAY  
**817-270-3340**

**Advertise Your Business With Us**  
and maximise your visibility!

Contact us about advertising solutions.  
**817-270-3340**  
**817-220-7217**





CLASSIFIED

817-270-3340 - Azle - classified@azlenews.net

817-220-7217 - Springtown - shirley@springtown-epigraph.net

Ad Classifications

- 1... Air Condition/Heating 24..... Electrician 46..... Looking to Buy 69..... Sand/Gravel
2..... Antiques 25..... Equipment & 47..... Lost & Found 70..... Septic Tanks
3..... Appliances 26..... Tool Rental 48..... Maintenance/Repairs 71..... Sewing/Alterations
4..... Appliance Repair 27..... Excavating 49..... Masonry/Stonework 72..... Sewer Service
5..... Arts/Crafts 28..... Exterminating 50..... Mobile Home Service 73..... TV/Radio
6..... Asphalt Paving 29..... Farm Equipment 51..... Motorcycles 74..... Tractor Service
7..... Auctions 30..... Fencing 52..... Movers 75..... Upholstery
8..... Autos, Trucks 31..... Firewood 53..... Musical Instruments 76..... Vacuum Cleaners
9..... Auto Repair Service 32..... Free 54..... Music Lessons 77..... Wanted
10..... Backhoe Service 33..... For Sale 55..... Miscellaneous 78..... Well Drilling
11..... Boats, Motors 34..... Furniture 56..... Party Planning/Events 79..... Welding
12..... Bookkeeping 35..... Garage & 57..... Pets/Livestock 80..... Lots/Acreage
13..... Business 36..... Estate Sales 58..... Piano Service 81..... Business &
Opportunity 37..... Garden/Mowing Svc 59..... Pool Service 82..... Commercial Property
14..... Campers/Trailers 38..... Hauling 60..... Professional 83..... RV's for Rent
15..... Carports/Patios 39..... Hay 61..... Personal 84..... Houses for Sale
16..... Equipment Repair 40..... Health/Fitness 62..... Plumbing 85..... Mobile Homes
17..... Carpet Service 41..... Help Wanted 63..... Public Notice 86..... Mobile Homes
18..... Catering 42..... Home Improvement 64..... Photography 87..... for Rent
19..... Cement Work 43..... House Leveling 65..... Printing 88..... Mobile Home/RV Lots
20..... Demolition 44..... House Cleaning 66..... Roofing 89..... Rent Furnished
21..... Child Care 45..... Hunting 67..... Recycling
22..... Cosmetics 46..... Janitorial Service 68..... Recycling
23..... Computers/Services 47..... Job Wanted 69..... Storage

RATES

16 Words or Less:

Combo (Azle & Springtown) Only \$10.00 per week!

Over 16 words, add 20 cents per word Extras such as Bold, Center & Border are available for a small fee

Classified boxed display ads also available for \$9.00 per column inch

(All ads must be paid in advance unless you have previously established credit)

CLASSIFIED AD DEADLINE: MONDAY BY 4:30 P.M.

Most ads require payment in advance, but we do accept VISA, MASTERCARD, DISCOVER OR AMERICAN EXPRESS by phone.



Reach more than 8,000 households with combo advertising in the Azle News and the Springtown Epigraph.

Nobody does it better!

006 Asphalt Paving

BYRUM CONSTRUCTION Asphalt Paving • Driveways • Parking Lots • Asphalt Repairs & Sealcoating • Asphalt Millings • Gravel Bruce Byrum Azle, Texas 817-690-2429

008 Autos, Trucks



For Sale 93 Chrysler LaBaron Convertible, Teal color, 93K original miles. Needs minor work. \$1795 OBO. 817-444-7021.

014 Campers & Trailers



2017 Dutchman Voltage Excellent condition, 3 slide outs, sleeps 8. 5th Wheel Toy Hauler. \$67000.00 Call or text 817-437-2287

019 Cement Work

Allen Chesney Concrete All Types of Concrete Work Residential - Commercial Foundations, driveways, sand, gravel, demolition, haul-off, retaining walls 817-271-4541

Concrete Services, Patios, Driveways, Sidewalks, Retaining Walls, Foundations, Stone Walls. Free Estimates. 817-371-8597.

Kiley Chesney Construction Dirt & Concrete Work Driveways • House Slabs • Garages • Add-ons Small Land Clean-ups • Gravel Driveways Kiley Chesney, Owner Springtown, TX • Mobile 817-846-6645

020 Demolition

MCNEELY'S DEMOLITION & CLEAN UP SERVICE We Create Vacancy

- Tear Down •Barns •Removal •Houses •Haul Off •Bobcat •Mobile Service •Homes •Dirt/Gravel •Garages Spreading

FREE ESTIMATES 817-996-7887 253 Eagles Way, Springtown

024 Electrician

BULLDAWG ELECTRIC CO. All types of electrical services and MH hook-ups. Free Estimates. 817-675-4921 www.bulldawgelectric.com. TECL#25253.

024 Electrician

E-Conn Electric Service, Remodel, New Construction Insured/BBB Accredited 817-615-7164 Customer Satisfaction is our Goal! C/C ACCEPTED TECL20470

026 Excavating

REED EXCAVATING • SITE PREPARATION • LOT CLEARING • LEVELING • FINAL GRADE • LAND EROSION • GRAVEL ROADS • PARKING LOTS • DEMOLITION • STOCK TANKS Dump Truck Hauling 817-919-3696

ALL TYPES OF EXCAVATING Tanks • House Pads • Clearing HASTY EXCAVATING Also .. Sand • Top Soil • Gravel 817-523-7248 • 817-239-6215

029 Fencing

BOBBY'S FENCE. All types, Free Estimates, Over 26 years experience. 817-444-3213.

KILEY CHESNEY CONSTRUCTION All Types Fences - Tractor Work 817-846-6645

032 For Sale

Wurlitzer Spinet Piano, French Provincial, excellent condition. \$250.00. Call 817-876-2661.

Wants to sell ALL garage sale items at once, \$125.00, Nice things. 817-996-4553.

034 Garage & Estate Sales

Moving Sale 413 Scooner Dr, Azle Sat & Sun 8am-1pm Household items, knick-knacks, outside items.

CUSTOMER APPRECIATION WEEK 7/26-8/02 AW SPECIALTIES 612 PROFIT ST. AZLE TX Tues-Fri 10 am - 5 pm AZLE RESALE SHOP

035 Garden/Mowing Service

Need your lawn mowed, trimmed or cleaned up? Need your trees trimmed or cut? Any job big or small give Scooter a call. Free Estimates. 817-766-3834.

COWBOY LAWN CARE. Residential, farm, gardens, landscaping, tree trimming. Free Estimates. 817-271-0450. Spring Specials.

Wise Outdoor Solutions Pasture mowing 15 acres or less, Finish mowing, Lawn Service. 940-399-1677

KINWAY IRRIGATION SYSTEM REPAIR 817-810-8575.

035 Garden/Mowing Service

IRRIGATION REPAIR Residential/Commercial License# LI007825 \$85 Service Call OUTDOOR SCENE 682-553-1560

Ruben's YARD SERVICE Tree Service • Stump Grinding Yard Clean-Up 940-730-0916

STUMP GRINDING Don't dig it! Grind it! 1 or 100 - We can do it. \$85 minimum within 5 mi. 817-237-5592

LEON'S TREE SERVICE Expert take downs Stump Grinding Residential/Commercial Licensed & Insured • Free Estimates 817-371-8597

YARD SERVICES BOBCAT WORK SAND INSTALLATION FENCING STUMP GRINDING 817-371-8597

Chad's Tree Service Trimming • Removals • Stump Grinding Systemic Feeding • Brush Chipping • Cable Bracing 817-221-2201 • 817-246-5943 817-800-6059 CELL FREE ESTIMATES Insured for your protection

039 Help Wanted

Looking for mature people to work with small animals. Must have reliable transportation. Call for more information 817-926-3300.

Springtown ISD is accepting applications for Bus Drivers and Monitors. Training available. Contact the Transportation Dept. 817-220-1418.

www.azlenews.net www.springtown-epigraph.net

039 Help Wanted

MAINSTREAM group homes are hiring for FT/PT direct care staff. Weekday 3:30pm-8:30am shifts as well as 24-hour weekend shifts. Work 2 days a week, get paid to sleep, and have a full-time job! Paid training, benefits, bonuses, and OT opportunities. Start \$9.00/hr with quick advancement possible. Call 817-270-2747, Monday-Friday, 9am-3pm.

TK's Pools is hiring laborers. Call 817-677-2494.

Azle Chiropractic is seeking a P/T position for a Chiropractic Assistant, apply at office, 400 Boyd Court, Azle. 817-444-4357.

NS Repair Services is looking to hire a couple more heavy equipment mechanics. Super busy and lots of work. Start immediately here in Azle. Pay based on knowledge and experience. We have an empty truck and a brand new shop that are ready and waiting. Call Niel at 817-412-0621, Jimmie at 817-412-0622.

J&E Air Conditioning Now Hiring! Service Tech, Installers and Helpers. Competitive wages and benefits. Contact our office 817-220-4506 for more information.

WANTED Property Maintenance Labor/Person Gene Thompson & Associates 817-246-4646

Wise Ready Mix

Now Hiring Class B-CDL Mixer Drivers

- Production & Safety Bonuses Paid Monthly • Employer Matching Retirement Plan Available Apply in person at 1349 NW Parkway • Azle

039 Help Wanted

Help Wanted in Aurora/Alvord Area

• Mechanic • Welder • Equipment Operators Competitive pay, some benefits. M-F day shift only. Overtime weekly. For information call 214-802-5157

039 Help Wanted

KARL KLEMENT Body Shop Porter Performs duties throughout the Body Shop. Must be responsible, dependable and have a valid TXDL. Monday to Friday work week. Parts Drivers/ Warehouse Associates Must have valid TXDL with acceptable driving record. Overtime available and room for advancement. Monday-Friday work week.

Lube Tech Experience a plus, but willing to train the right candidates. Must have a valid TXDL with acceptable driving record. Must be responsible and dependable. Monday-Friday work week.

Wholesale Sales Associate \*\*Sign-on Bonus\*\* Looking for fulltime wholesale sales associates. Experience is a PLUS! Ford Certified preferred but NOT REQUIRED. Apply in person @ 605 N Business 287 Ste 102, Decatur, TX 76234.

Parts/Service Counter Sales \*\*Sign-on Bonus\*\* Experience highly preferred, but will train the right candidate. Must have excellent customer service skills and ability to work well in a process driven environment.

KLEMENT Chrysler Dodge Jeep RAM No Positions Available at This Time

KLEMENT DISTRIBUTION, INC. (Hershey Ice Cream Distributor) No Positions Available at This Time

Karl Klement Properties, Inc. Administrative Assistant Ideal candidate will possess an administrative background as well as strong customer service skills; however willing to train the right candidate. Must be dependable, proficient in MS Word and Excel, multi-tasker, and able to thrive in a fast paced environment.

Facilities Manager Must be customer service oriented, have a clean driving record and be able to pass pre-employment screening. Experience a plus, but will train the right person!

For consideration of all positions apply in person: 605 N. Business 287, Suite 102, Decatur, Texas OR CALL Human Resources Dept: Jodi Pettis, Alyssa Jacobs, or Lynn Mallwitz @ 940-627-6362 FOR MORE INFORMATION

Lindsey State Jail Current Openings

Correctional Officers • Assistant Foodservice Manager • Testing Clerk Recruiting Sgt. • Chaplain • Education Counselor Assistant Maintenance Supervisor - Lock Tech PLEASE CHECK THE WEBSITE FOR JOB QUALIFICATIONS. Must have HS Diploma or equivalent, be able to pass a drug screen, have a clean background and valid driver's license to be considered for a Correctional Officer. EOE Starting June 9th 2022. A New Correctional Officer Pay Increase will be as follows - Starting pay will be \$18.00 dollars per hour. After six months there will be a pay increase to \$19.00 per hour and at one year there will be another pay increase to \$20.00 per hour. Apply online at www.mtctrains.com or call 940-567-2272 and ask for the HR Department. Minority/Female/Veteran/Disabled LINDSEY STATE JAIL

Rescue your Ballerina from the Shelter and give her a Forever Home

Help wanted continued on next page...



**817-270-3340 - AZLE**  
**817-220-7217 - SPRINGTOWN**

Deadline:  
 4:30 PM Monday

# Classifieds

**039 Help Wanted**



**KLEMENT OF MUENSTER**  
**NOW HIRING FOR Growing Service Department!**

**Multiple Positions Open:**  
 AUTOMOTIVE TECHNICIAN  
 SERVICE WRITER  
 TECHNICIAN'S ASSISTANT  
 PORTER • PARTS DRIVER

**WILL TRAIN!**  
 Monday -Friday 8:00 AM - 5:30 PM  
 401K - Paid Vacation - Benefits  
 Apply in person at  
 1005 E. Division, Muenster, TX

EOE

**Hiring Route Drivers for Our Growing Company!**  
**\*\*\$1,000.00 Hiring Bonus\*\***

Seeking Route Drivers that are hardworking, enthusiastic, with a strong motivation for success! Interpersonal and customer service skills are strongly recommended. Must have a valid TX DL with an acceptable driving record

Join our team at Klement Distribution, Inc. delivering Hershey's Ice Cream! Not only will you be putting smiles on people's faces, you will earn a great income for yourself!

As a Route Driver you will unload, stock and rotate products, collect and deposit client payments and move on to your next stop, always ensuring that our customers are satisfied!

We offer:

- Competitive salary
- Paid training, vacation and holidays
- Promote from within advancement opportunities!
- Monday through Friday work-week; NO WEEKENDS!

Real ingredients, real ice cream, real smiles! **Apply Now!**

Contact Alyssa Jacobs at 940-627-6362 or submit resume to Alyssa.Jacobs@klementford.com



**040 Home Improvement**

**BILL ROSSER PAINTING & REMODELING.** Big Savings: \$100 off any job of \$1,000 or more. Painting, Carpentry, Porch Covers, Decks. FREE ESTIMATES. Call 817-304-9974; 866-374-3559.

**PYRAMID REMODELING.** PAINTING: Interior, Exterior, Tape & Bed, Texture, Popcorn Ceilings. FREE ESTIMATES. 817-944-7658.

**BOBBY MCWILLIAMS PAINTING** 817-821-6377. Interior/Exterior Painting Residential & New Homes. 50 years experience.

**Kevin's Handyman Services**  
 40 Years Experience



- Carpentry
- Drywall & Painting
- Tile & Laminate Floors
- Doors & Windows
- Decks & Stairs
- Cabinets & Countertops
- No Job Too Small

Springtown and Surrounding Areas  
 231-445-1221

**TKO Services**  
**Soft Wash House Wash**



Eve's  
 Bricks  
 Swimming Pool Area  
 Windows  
 Decks  
 Rock  
 Concrete Cleaning  
 Sidewalk  
 Driveway

**817-550-3745**

**052 Movers**

U.S. Army Retired-but not tired! Careful moving-Cheap. Call Big Jim @ 817-237-5151.

**057 Pets/Livestock**

Will pay top dollar for grazing and hay leases. Call 940-389-1936.

AKC French Bulldog Puppies, born May 8th, 2022. Parents on site, vet checked, all shots complete. \$1,400 817-880-5873.

**HORSE SALE**  
 August 5, 2022  
 Tack Sale Begins at 6:00 PM  
 Horses Follow  
 Stephenville Cattle Co.  
 Highway 281 North • Stephenville, TX  
 Troy 254-967-1950 • Barn 254-968-4844

**062 Plumbing**

**GRAHAM PLUMBING CO.**



**Commercial-Residential**  
 Serving Springtown, Azle, Boyd, Weatherford Area  
 M#15899  
 817-220-2469  
 grahamplumbingco.com

**LANDERS Plumbing Co.**

**Plumbing Repairs**  
**Drains Cleaned**  
 817-444-3054  
 940-233-2862  
 Don Landers • M-10078

**066 Roofing**

**AT HOME ROOFING & METAL BUILDINGS**

817-304-4224

Tired of always replacing your roof? Call us for a metal roof quote.

**We'll be here after the storm.**

**Miles Roofing**  
 • Insurance Claim Specialists;  
 • Free Estimates  
 817-797-3420

**DIAMOND ROOFING & CONSTRUCTION**



**Commercial & Residential**  
 • Roofing  
 • Metal Roofing  
 • Carports  
 • Metal Buildings  
 • All General Contracting

417 N. MAIN ST • SPRINGTOWN  
 817-523-4137  
 Here Before The Storm, Here Long After.

**EXPERIENCED ROOFING SPECIALIST**  
 FREE ROOF INSPECTIONS  
 Insurance Claims, Licensed Local Business 34 Yrs  
**ECE CONSTRUCTION LLC**  
 cell 817-615-7164 | office 817-831-2600

Save a Shelter Animal. Find your forever friend



**068 Storage**

INNERSPACE STORAGE. Hwy 199, Springtown. Now renting all unit sizes, 24-hour access. 682-842-1414.

**STORAGE UNITS**  
 1350 Liberty School Rd  
 5x10 Units \$45/mo.  
 10x10 Units \$70/mo.  
**817-246-4646**

**Ash Creek Storage**  
 Convenient Location  
 Corner of Main St. & Locust • Azle  
**817-444-3292**

**069 Sand/Gravel**

HALL'S SAND, DIRT & GRAVEL  
 Quality Family Business Since 1938  
 CALL Cliff Hall  
**(817) 221-2681**  
 We go the extra mile to ensure you get more for your \$. On House Pads, Driveways, Lot Clearing & Tractor Work, Etc.

**079 Welding**

Our Business is Metal Buildings - And We're Good!  
 DESIGN FABRICATION ERECTION  
**Cozart METAL BUILDING SYSTEMS**  
 Fabrication and erection of quality metal buildings at reasonable prices, any size - any design  
 Office 817-237-2282 Fax 817-237-0904  
 Mark Cozart Jeremy Cozart  
 817-233-6668 817-237-2028

**WDC WELD-DONE CONSTRUCTION LTD.**

**Metal Building Erectors**  
 • Pre-engineered Weld-up  
 • Barns/Shops  
 • Arenas/Hangars  
 • Fencing  
 1220 E. Hwy. 199 • Springtown  
 817-220-2150  
 www.weld-done.net

**GARAGE SALE**

16 words for only \$10.  
 A great way to raise extra money!  
 Call today for more info.  
 Azle News 817-270-3340  
 Springtown Epigraph  
 817-220-7217



**Need to sell your ATV?**  
 Call today and ask about our (\$29.95) 3-MONTH SPECIAL!  
 Azle News 817-270-3340  
 Springtown Epigraph  
 817-220-7217

**PUBLISHER'S NOTICE**

All real estate advertising in this newspaper is subject to the Fair Housing Act which makes it illegal to advertise "any preference, limitation or discrimination based on race, color, religion, sex, handicap, familial status or national origin, or an intention, to make any such preference, limitation or discrimination." Familial status includes children under the age of 18 living with parents or legal custodians, pregnant women and people securing custody of children under 18.

This newspaper will not knowingly accept any advertising for real estate which is in violation of the law. Our readers are hereby informed that all dwellings advertised in this newspaper are available on an equal opportunity basis. To complain of discrimination call HUD tollfree at 1-800-669-9777. The toll-free telephone number for the hearing impaired is 1-800-927-9275.

**087 Rent Furnished**

Fully furnished studio w/ private entrance & full kitchenette for 1 person, for rent in Springtown TX. Located in a cul-de-sac w/ lush, large trees & covered front patio deck: \$960/month. All utilities included: Noreen: 562/760-1100

**079 Welding**

owner Rodney Vick  
 817-220-3044  
 fax 817-523-7639  
 cell 817-253-1614

**R & E Construction**  
 Metal Building Specialist

- Weld Ups/ Bolt Ups
- Pipe Fencing
- Concrete
- Horse Barns
- All Types Fencing
- Metal Roofs

Compare Pricing  
**NO JOB TOO SMALL**

**SOLID STEEL SOLUTIONS**

- Metal Buildings
- Steel Components
- Welding Supplies
- Concrete Supplies
- Fabrication Supplies
- Pipe Fencing
- Deer Blinds
- Deer Feeders

8894 W Hwy 199 • Springtown  
 817-220-0008  
 www.SolidSS.com **Open to the Public**

**081 Business/Commercial**

40x50 building For Rent, 3 miles west of Springtown. 817-713-7495.

**088 Rent Unfurnished**

3-2 Duplex for Rent in Springtown. \$1,200/mo. \$600 deposit, no pets. 817-980-3066.

**082 RV's for Rent**

Nice 1BR RV in adult RV park. Great for older person on limited income. Starts at \$550/mo. All Bills Paid. Heritage RV Park 817-444-3760.

1833 PELICAN DR. N. 2-2-1 \$1,295 MO. \$1,000 DEP. Gene Thompson & Associates 817-246-4646 gtax.com

**086 Mobile Home/RV Lo**

**POJO RV PARK**  
 302 Allison Road  
 Springtown, TX 76082  
**817-925-3673**  
**30x60 RV Spaces Available**  
 One small inside pet allowed  
 NEAR POJO STADIUM

3-2 Single wide on one acre in Springtown for \$1000 per month and \$1000 deposit, no pets allowed. 817-980-3066

**GENE THOMPSON & ASSOCIATES HOMES and MOBILE HOMES FOR RENT**  
 gtax.com  
**817-246-4646**

**Hidden Meadow MOBILE HOME COMMUNITY**  
 Community Location: 6501 W. Hwy 199, Springtown

Brand New 3/2 Single Wide Mobile Homes, many to choose from - 1216 S.F. For Rent or Rent to Own Programs Available \$1600/mo

**Contact Michael Ocampo for info 318-819-1901**  
 To apply: www.Turbotenant.com  
 Enter Property Address: 6517 W. Hwy 199 or property ID: 916548

Rent unfurnished continued on next page...



**817-270-3340 - AZLE**  
**817-220-7217 - SPRINGTOWN**

Deadline:  
 4:30 PM Monday

# Classifieds

**088 Rent Unfurnished**

## Cross Companies Residential Properties

Family-owned, family-run

**STEWART BEND** | **SILVER CREEK** | **RV PARK**  
 DUPLEX HOMES

**Stewart Bend Duplex Homes:** 2 & 3 bedroom units available at \$1,225 & \$1,325. Quiet, clean, non-smoking. CALL 817-401-1796.

**Silver Creek RV Park:** Designed for local long-term stays. Best common building in Azle, secluded and quiet, city water/sewer. \$475 with \$75 electricity allotment; ABP in winter. CALL or TEXT 682-499-8616 or email [scrvice@gmail.com](mailto:scrvice@gmail.com).

**Barton Cottages Tiny Home Community:** COMING SUMMER 2022! Email [BartonCottages@gmail.com](mailto:BartonCottages@gmail.com)

### Last Puzzle Solution

S-1592

### Puzzle Solution

S-1595

TEXAS STATEWIDE CLASSIFIED ADVERTISING NETWORK

# TexSCAN

TexSCAN Week of July 24-30, 2022

**ACREAGE**  
 Own your piece of Texas TODAY! Prices starting at \$650/acre. Trans Pecos region. Also the Hill Country (Edwards, Menard, Coke, Val Verde Counties - free ranging exotics), South Texas (Duval County - whitetail, hogs). Large acreage or small. 30 year fixed rate owner financing, only 5% down. Call toll free or email for individual prices and terms. [www.ranchenterprisesltd.com](http://www.ranchenterprisesltd.com), 800-876-9720.

**ADOPTION**  
 California family has sunlit nursery awaiting newborn. Secure future, devoted grandparents, best education, gentle pet. Generous living expenses. Andrew/Erin 747-788-0260 or attorney 310-663-3467.

**AUCTIONS**  
**101-Acre Commercial/Industrial Property** - Aug. 30 - 3050 Hwy 16N, De Leon, TX (5 Miles North of Intersection - Hwy 6 & Hwy 16). ExxonMobil directs immediate sale. Low minimum bid: \$50,000. 1,367' frontage on Hwy 16. [FineAndCompany.com](http://FineAndCompany.com), 312-278-0600.  
**Commercial/Industrial Land** - Aug. 30 - Real Estate to be sold Absolute, Regardless of Price. ExxonMobil directs immediate sale: 3.7 Acres South of Marilyn St., Conroe, TX; 38,147 SF, 577 W. Santa Fe St., Conroe, TX; 5.37 Acres, Mc Farland Rd., League City, TX. [FineAndCompany.com](http://FineAndCompany.com), 312-278-0600.

**DOG, PETS OR LIVESTOCK**  
 Use Happy Jack® Kennel Dip as an area spray to control lyme disease ticks, fleas, stable flies, & mosquitoes where they breed. At Tractor Supply® ([www.happyjackinc.com](http://www.happyjackinc.com)).

**REAL ESTATE**  
**25 Acres & New 1,200 SF Hunting Cottage Shell**, only \$239,900. Beautiful 25 to 100+ acre hunting & recreational tracts - perfect for wildlife spectators, hunters & nature enthusiasts. Prime location in Brady, the Heart of Texas. High-speed internet! Call 877-333-7390 x31, [www.RanchesAtBuckRidgeTexas.com](http://www.RanchesAtBuckRidgeTexas.com).

**GENERATORS**  
 Prepare for power outages today with a GENERAC home standby generator. 50 Money Down + Low Monthly Payment Options. Request a FREE Quote. Call now before the next power outage: 1-855-704-8579.

**MEDICAL**  
**Portable Oxygen Concentrator** May Be Covered by Medicare! Reclaim independence and mobility with the compact design and long-lasting battery of Inogen One. Free information kit! Call 866-747-9983.

**DENTAL INSURANCE** from Physicians Mutual Insurance Company. Coverage for 350 plus procedures. Real dental insurance - NOT just a discount plan. Do not wait! Call now! Get your FREE Dental Information Kit with all the details! 1-855-901-0467 [www.dental50plus.com](http://www.dental50plus.com) txpress #6258

**WANTED**  
**FREEON WANTED:** Certified buyer looking to buy R11, R12, and R500 and more. Call Joe at 312-625-5322.

**Texas Press Statewide Classified Network**  
 221 Participating Texas Newspapers • Regional Ads  
 Start At \$250 • Email [ads@texaspress.com](mailto:ads@texaspress.com)

NOTICE: While most advertisers are reputable, we cannot guarantee products or services advertised. We urge readers to use caution and when in doubt, contact the Texas Attorney General at 800-621-0508 or the Federal Trade Commission at 877-FTC-HELP. The FTC web site is [www.ftc.gov/bizop](http://www.ftc.gov/bizop).

### AZLE OAKS APARTMENT

700 JARVIS • AZLE  
 817-444-1712

**1 & 2 Bedroom Unfurnished**  
 Accepting Applications  
 Rent based on income  
 TDD: 800-735-2989

This institution is an equal opportunity provider and employer.



### HOME IMPROVEMENT

Check out the Home Improvement Specialists in the Classifieds for help with your next project!

Raise some extra money through the Classifieds. Have a Yard Sale. 16 words for only \$10  
 Azle News 817-270-3340 & Springtown Epigraph 817-220-7217  
 Hometown Papers!

**SELL IT IN THE CLASSIFIEDS!**

## TEXAS CROSSWORD

by Charley & Guy Orbison  
 Copyright 2022 by Orbison Bros.

**ACROSS**

- ace of spades, e.g.
- "Kick \_\_\_\_ Traditional Tribe of Texas"
- "night," informally
- Cowboys Jason Garrett was 2016 Coach of the \_\_\_\_ state fair mo.
- Amtrak train that runs across Texas: "Sunset \_\_\_\_"
- a brother of George W. and Jeb Bush
- TXism: "light \_\_\_\_ egg shell"
- UT opponent in the "Red River Shootout" in Fort Worth: "\_\_\_\_ Carter Museum of American Art"
- shoemaker in the Alamo City
- Corpus Christi mayor Joe (2017-21)
- Texas armadillos generally have \_\_\_\_ of armor
- TX Sissy Spacek played this Loretta in a 1960 film (init.)
- crying sound
- old wise person
- \_\_\_\_ Pass, TX
- TXism: "weak \_\_\_\_ kitten"
- TXism: "\_\_\_\_ by a lawyer" (finalize)
- TXism: "don't cross the river ' \_\_\_\_ come to it"
- Joan Crawford was born in Texas as Lucille Fay \_\_\_\_ Sueur
- British goodbye (hyph.)
- fishermen with rods?
- TXism: "hard \_\_\_\_ enamel"
- 365 days (abbr.)
- cowboy song: "whoopie ti-yi-\_\_\_\_, get along little doggies . . ."
- "Lake O' The \_\_\_\_"
- a motorcycle is a two-\_\_\_\_ vehicle
- \_\_\_\_ Dame University
- "he's \_\_\_\_ it" (involved)
- "\_\_\_\_ Mercies" film was written by TX Horton Foote
- "Gig ' \_\_\_\_ Aggies!"
- law enforcement agcy. in Texas
- first governor of Galveston (2 wds.)
- Jewish prayer shawl
- "\_\_\_\_ Mission" in El Paso
- board game manufacturer (abbr.)
- appellate court in Texas (abbr.)
- TXism: "\_\_\_\_ an arm and a leg"
- fried quickly in a little hot fat
- TX Duvall was Olive \_\_\_\_ in "Popeye"
- female deer
- TX Don Henley sang this hit
- the seed has been \_\_\_\_
- kitchen floor surface
- dir. from Coleman to Comanche
- TXism: "a fine \_\_\_\_ you do"
- TX-born actor Hawke

P-1595

# SERVICE DIRECTORY

ADVERTISE in the Service Directory! Call Johnna at 817-270-3340 for details to include your business here.

### Movers

★ U.S. ARMY retired - but not tired! ★

Member: VFW • DAV • Sheriff's Assn • American Legion • ET AL

## MOVERS

Courtesy ★ Punctuality ★ Care

- Full Service Moving - Local & Long Range
- Gun Safes - Pianos - Auto - Antiques
- Packing & Storage - Large or Small

Please call Jim at **817-237-5151**

### Transmissions & Auto Repair

## Rainwater's

### Transmission & Auto Repair

TRANSMISSION • BRAKES  
 A/C • ENGINE SERVICE

201 E. Hwy. 199, Springtown  
**682-615-7250**

LOCALLY & FAMILY OWNED!

### Diesel/Auto Repair

TEXAS SEMIS RVS EQUIPMENT PICKUPS CARS ATVS

Diesel & Auto  
 We Fix Everything!

**817-968-7867**

### Air Conditioning and Heating

## J & J

### AIR CONDITIONING & HEATING

Serving the Springtown, Azle, Weatherford & Fort Worth Area Since 1970  
 Sales • Service • Residential • Commercial  
**SPRINGTOWN 817-220-4506**  
[www.jandeac.com](http://www.jandeac.com)

Texas Air Conditioning Contractor License: TACLA014745E

### Trash/Waste Service

## ATEX TRASH SERVICE

\$35 per month WEEKLY PICKUP

Proudly Serving The Community We Live In

**817-344-8464** [ATEXTRASH.COM](http://ATEXTRASH.COM)

### Exterminators

## Tom Samples Pest Control

YOUR COMPLETE PEST CONTROL SERVICE

Family owned and operated. Over 50 years of service.

Voted Best Pest Control Best of Parker County

**817-915-2470**