

Royal selfie



PHOTO BY JEFF PRINCE
Azle High School seniors Kayla Cockerline and Adam Ruelas snap a selfie after being crowned AHS Homecoming Queen and King at halftime of the Azle-Brewer football game Friday night at Hornet Stadium. The Hornets beat Brewer for their first victory of the season. See Diversions inside for more about the game and Homecoming, including pictures.

SEE **HOMECOMING** DIVERSIONS 1B

Good Neighbors Blitz hitting new milestones

FIRST ANNUAL LOVE YOUR CITY GALA IN OCTOBER

BY JESSICA MCKINNEY
azlereporter@azlenews.net

The Good Neighbors fall blitz is set for Oct. 14-15. The event will hit a milestone when it completes its 200th home renovation that weekend.

The Good Neighbors program helps revitalize the

homes of veterans, elderly, disabled and economically disadvantaged neighbors. This can include projects like repairing and replacing roofs, porches, and floors, and fixing plumbing and electrical issues. Blitzes are done twice a year — spring and fall — and typically work with 10 to 15 homes for

each event. As part of a 380 Agreement with Servolution Network — the organizer of the Good Neighbors blitz — the city of Azle selects four homes within the city limits to be included in the bi-annual blitzes and reimburses the organization \$35,000 a year toward the cost of the repairs to those homes.

For information on how to volunteer for the Good Neighbors Blitz, or to donate materials, visit www.servolutionnetwork.com.

SERVOLUTION GALA OCT. 22

Servolution will be holding its first annual Love Your City Gala at 6:30 p.m. Oct. 22 at 404 Main Place in Azle.

Seats are limited, so purchasing tickets online before the event is required.

Tickets are \$50 each and can be purchased through www.loveyourcitygala.com.

The gala will feature a musical performance by Branded, dinner provided by Caitlyn's Catering and both live and silent auctions.

Auction items will include vacation packages, autographed sports and entertainment memorabilia, jewelry and designer handbags, artwork and more.

The purpose of the event is to raise awareness of the different programs that Servolution provides, give clarity and transparency of the programs and to raise money to support those programs, and to recognize community partners.

Servolution's community outreach programs include the Good Neighbor's Blitz, Fig Leaf Boutique and Pay It Forward.

Game wardens ready for upcoming hunting season

BY JESSICA MCKINNEY
azlereporter@azlenews.net

White-tailed deer season is about to start, with bow hunting opening on Oct. 1 and rifle on Nov. 5. While hunters are preparing their gear and deciding on the best spots to hunt this season, Texas game wardens are also getting ready to ensure a fun, safe season for all.

Texas game wardens are part of the Texas Parks and Wildlife Department. More than 550 game wardens serve across the 254 counties in

Texas. There are five game wardens covering Tarrant County and one for Parker County.

Tarrant County Game Warden Angel Miller said that one of the biggest concerns that wardens face during hunting season, especially in a populated county like Tarrant, is people knowing where they can and cannot hunt.

"Do you have permission; do you have enough property?" Miller said. "Because Tarrant County does have a city ordinance that basically

says if you don't have a certain amount of acreage, you can't discharge a bow, and if you don't have 50 acres, you can't discharge a rifle."

Miller said game wardens don't enforce those ordinances but rather "just kind of make sure you're being safe and you're not trespassing on another person's property."

But Tarrant County law enforcement could get involved, so it's important for hunters to make sure they are aware of the laws where they are

SEE **WARDEN**, PAGE 2A.



COURTESY PHOTO
Tarrant County Game Warden Angel Miller enjoys hunting, and wants to ensure that it is something future generations can continue to take part in for many years to come.



EXPERIENCE THE DIFFERENCE

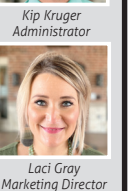
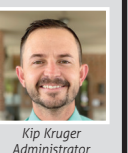
Azle Manor

HEALTH CARE & REHAB

Accepting Medicare, Medicaid, Private Pay, United Healthcare, Blue Cross Blue Shield, Care N Care & More

721 Dunaway Lane • Azle, TX 76020 • 817-444-2536

LOCALLY OWNED AND SERVING THE COMMUNITY FOR OVER 48 YEARS



VOLUME 71, NUMBER 18

Local, zone(s) 2 sections, 24 pages

INSIDE

News - 1-5A, 7-10A | Obituaries - 6A | Diversions - 1-4B | Classifieds 12-14B

HALL OF

FAME 5-8B

WARDEN

FROM PAGE 1

hunting and make sure they are in a place where they have permission to hunt.

Another concern of game wardens is making sure that every hunter born after Sept. 1, 1971, has completed hunter education. The most common citation given during hunting season is for people not having hunter education.

"We're getting to the point where, you know, pretty much everyone needs to have it," said Miller.

Another challenge game wardens and hunters will encounter this season is the new electronic tagging system.

"Beginning with the 2022-23 license year, Texas residents will have the option to purchase a Digital Super Combo that authorizes digital tagging of harvested deer, turkey and oversized red drum," according to the TPWD website. "The digital license option is available through online purchase online. A digital license holder will not receive a printed license or tags and must understand and abide by the following requirements."

Hunters are required to have their hunting license with them while hunting, and

license info can be found on the TPWD Outdoor Annual app or the My Texas Hunt Harvest app.

Digital tagging must be completed through the MTHH app.

"We're going to have a little bit of a grace period depending on what's going on because we're learning it and the hunters are learning it," Miller said of the new digital tagging system.

Bag limits are established by county. In Tarrant and Parker counties, the bag limit is four deer, no more than two of them being bucks and no more than two antlerless deer.

The reason behind bag limits is to ensure that the deer population does not become depleted.

"We don't have a lot of areas left for deer to roam and live and all of that," said Miller. "So, we don't want to kill our buck population and then now all we have is does and they can't reproduce. The whole point of these bag limits and laws that we enforce is to make sure that we have these populations for future generations and to make sure that hunting is still something that people want to get involved with."

"If we never let deer get bigger than a six point ... some of our trophy hunters who do want to put that big ol' buck

on the wall, they're not going to be interested in it," she said. "They're not going to put the money into buying a hunting license, which helps fund all of our outdoor activities in Texas. So, it's kind of like that cycle of hunting not only helps with deer populations, but it encourages other outdoor activities because of the funding that hunters spend on doing it."

For landowners, another concern during hunting season is trespassers who come onto their property without permission to hunt.

"The best thing [for property owners] would be to contact your local game warden and say, hey, I found this feeder or game camera, whatever it is, on my property; it's not mine and I don't want people hunting on here and I do want them to be prosecuted to the fullest extent of the law," Miller said. "Then the game wardens can come in, set up our own cameras, kind of see who is coming on the property."

If someone is found to be trespassing on property with the intent to hunt deer, it is a felony.

For more information on hunting laws and regulations and hunter education courses in Texas, visit www.tpwd.texas.gov/.

BOOK REVIEW

True crime: mysteries solved or theories unraveled?

TERRI SCHLICHENMEYER
Special to the Azle News

You think you know who dun it.

Sometimes, murder mysteries are like that: you get a few pages in, and the killer is obvious to anyone with eyes. And then sometimes, there's a sense of the unsettled and unfinished left to a story - especially if it's true - and those are the best kinds of books. With that in mind, here are two great true crime books for you to read this fall.

It had been a beautiful early-fall day that September 1934, a great day for a leisurely stroll along the shores of Lake Erie, to watch the water and the area's wildlife, to ponder life's little mysteries. Surely, however, the lower half of a female body was the wrong kind of surprise for the beach-walker who stumbled upon a crime scene but the "Lady of the Lake," as the woman was quickly referred to, was just the beginning.

Over the course of the next 48 months, a dozen more, similar bodies would be found throughout the city of Cleveland, Ohio. Each corpse was drained of blood, and all were dismembered, as if a surgeon was practicing his art. Investigators could tell that some of the women died in the most gruesome manner.

Understandably, every single person in the entire city was horrified and the mayor of Cleveland called for help from the best person one could then imagine: Eliot Ness, who came large to the city after a suc-

cessful takedown of Al Capone in Chicago.

Readers can almost imagine Ness, stalking like a boss into Ohio.

Could the "Untouchables" take down another criminal - this time, a killer?

Find out in "American Demon" by Daniel Stashower.

And speaking of Chicago, if you love a good true crime book, reach back a century ago and reach for "Nothing But the Night" by Greg King and Penny Wilson. It's the tale of a most gruesome murder that shocked America for its scandal.

Indeed, Nathan Leopold and Richard Loeb both had splendid futures ahead of them: they were educated, privileged, and their families were relatively well-off, even on the cusp of the Great Depression. They could have been leaders but no, they murdered 14-year-old Bobby Franks, and they did it just for kicks.

Immediately after the senseless murder happened in 1924, scads of rumors, misinformation and half-beliefs circled through every conversation about the boys, about their lawyer, and about the depravity of their crime. People couldn't stop talking about it.

And King and Wilson say today that none of that is true.

In this book, readers learn the real story of Leopold, Lowe, Clarence Darrow, and the "Crime of the Century," and it's a story that'll chill you even



PHOTO BY TERRI SCHLICHENMEYER
"American Demon: Eliot Ness and the Hunt for America's Jack the Ripper" by Daniel Stashower

c.2022, Minotaur Books, \$29.99, 342 pages

"Nothing but the Night" by Greg King and Penny Wilson

c.2022, St. Martin's Press, \$29.99, 352 pages

now...
If these are not absolutely the perfect books for your true crime-reading pleasure, then be sure to throw yourself at the mercy of your favorite bookseller or librarian. They'll know exactly what you want, what will interest you, and what will chill you on a chilly night.
Librarians and booksellers are like that. They've dun it all.



PHOTO COURTESY
While hunters are preparing their gear and deciding on the best spots to hunt this season, Texas game wardens are also getting ready to ensure a fun, safe season for all.

USATODAY ONE OF THE "BIGGEST SUMMER MOVIES" OF 2021!

NO ORDINARY LOVE

THE AZLE MEMORIAL LIBRARY IS PROUD TO HOST

FILM SCREENING & PANEL DISCUSSION

Tuesday, October 11, 2022 | 6:30 PM to 8:30 PM
Azle Memorial Library Community Room

Join us for a FREE screening of the award winning film, No Ordinary Love. Then stay for a Q&A Talkback with Executive Producer, Tracy Rector, and Executive Director of Future Hope and Healing Center, Sally Daniels, to discuss the film and domestic violence, which affects 1 in 3 women in their lifetime.

Please note, subject matter of movie and discussion topics will be related to issues of domestic violence. Caution is advised for language and violence. All adults welcome. Parents may bring older teens with them as a way to approach this important topic. (Not appropriate for younger children.)

POWERFUL! EYEOPENING - FT. WORTH FILM COMMISSION
INTENSE THRILLER - CINEMA FILE
GRIPPING - GUY AT THE MOVIES
COMPELLING - KWMR RADIO AUSTIN
PODCAST

Azle Memorial Library | 333 W Main St. Azle, TX 76020
817-752-2682 | azlelibrary.org

AHS ALUMNA
EX. PRODUCER
TRACY RECTOR

Help Us Honor Our Local Veterans

We're running a special section in November to honor our local veterans.

HURRY! Deadline to submit is Monday, October 3rd.
SUBMIT YOUR VETERAN AT OUR WEBSITE:
www.azlenews.net

INCLUDE NAME OF VETERAN, BRANCH OF SERVICE, YEARS SERVED. IF YOU SUBMITTED A PHOTO FOR LAST YEAR'S VETERANS SECTION WE WILL INCLUDE IT IN THIS YEAR'S SPECIAL SECTION.
OR EMAIL JOHNNA@AZLENEWS.NET

Azle News **The Springtown Epigraph**

New FM 730 shopping strip coming to Azle

BY DON MUNSCHE
don@azlenews.net

Azle City Council last week approved the city executing a 380 Agreement that will help clear the way for a shopping strip to be built on FM 730, just south of Capriccio's restaurant.

The decision came after council met in an executive session. The property is located in the 1000 block of Boyd Road.

The performance agreement for Hornets Plaza LLC requires the developer to meet some stipulations in order to receive funding from the Municipal Development District, said David Hawkins, director of planning and development for the city of Azle. The MDD amount is \$219,765, and the conditions the developer has to meet is that he has to make a minimum of a \$2.8 million investment with a minimum of an 8,500-square-foot building. The negotiations have been completed, and the city attorney is finalizing the legal agreement document itself to codify it, Hawkins said.

Hawkins explained in an email that the 380 Agreement is named after Chapter 380 of the Texas Local Government Code that allows municipalities to offer incentives designed to promote economic development such as commercial and retail projects. Specifically, Hawkins said, it provides for offering loans and grants of city funds or



RENDERING PROVIDED BY CITY OF AZLE

Rendering of the proposed shopping strip on 730N.

services at little or no cost to promote state and local economic development and to stimulate business and commercial activity.

In this case, it is being funded by the Azle MDD Fund that is generated by a portion of the local sales and use tax in Azle to be used for economic development purposes.

In an interview, Hawkins explained expectations. "They have to build within two years or 24 months," Hawkins said. "And they have to submit a building permit within 10 days following execution (of this agreement)."

So, essentially, by the end of this month, the developer has to have a building permit, Hawkins said.

"Now they already have plans approved for the infrastructure - the parking lot, the drainage, the fire lanes, all that stuff," he said. "The site work can start any minute."

The owner and developer is Ylber Korca of Hornets Plaza LLC, and he also owns the Capriccio's restaurant lo-

cated next door.

Potential businesses coming to the shopping strip include retail and office. It will have an endcap with a drive-through lane.

"He has been in conversation with several tenants with that drive-through," Hawkins said.

The shell building will have to be constructed for the businesses, and Korca thinks he can get that construction done in 12 months and have merchants in there by then, Hawkins said.

Hawkins is excited about the project.

"This is one last remaining (pieces of) vacant land that we have on FM 730 north. It's ripe for infill type development, so he's actually addressing the parking issue with Capriccio's restaurant next door, or lack of" with the multi-tenant building, Hawkins said. "Obviously, it will increase opportunities and sales tax revenue. That's what we're hoping to get out of it. Plus, it's a really nice-looking building."

Lighthouse Roofing



PHOTO COURTESY AZLE AREA CHAMBER OF COMMERCE

Azle Area Chamber of Commerce hosted a Ribbon Cutting for Lighthouse Residential Roofing, LLC on Sept. 20. Larry and Holly Hinkle of Lighthouse Residential Roofing, LLC have been in the business since 1986 and want to guide you through your roofing needs. Visit their website at <https://www.lighthouseroofingtexas.com/> or call at (682) 239-8314.

Letter to the Editor We're one penny away

On Aug. 15, the Azle ISD School Board raised the school bond tax (Interest & Sinking or I&S) rate for the fourth year in row. In the last four years, the Azle ISD school board has increased the bond tax rate by 73%, from 0.159 per \$100 of home value in 2018 to 0.2741 per \$100 this year. However, actual bond payments for the 2022-2023 budget year are set to be \$6.5 million, which is less

than in 2018-2019. The board has, for the last four years, increased the bond tax rate regardless of if there were new bonds or if bonds were paid off. Why ever would they do this? Well, I don't know, but I do know that the I&S tax rate before the "Penny Swap" election was 0.2890. You know how some people said they would "never" raise the I&S tax rate back up? Well, here we are four years later,

and they are only one penny away. Fortunately, state mandated Maintenance and Operations tax rate reductions have kept the overall rate slightly lower, but with the bond tax increases and the property values rising, the average taxpayer will pay \$667 more in Azle ISD school taxes this year.
Tom Kisner
Azle

Ministerial Alliance to hold blood drive

FROM STAFF REPORTS

People wanting to donate blood at the next Azle Area Ministerial Alliance blood drive can receive a gift and become aware of two forms of cancer.

The Azle Area Ministerial Alliance will have a blood

drive from 3:30-6:30 p.m. Oct. 3 at First Baptist Azle, 1017 Boyd Road.

To thank donors, they will receive two pairs of socks from AAMA partner Carter BloodCare - one for breast cancer awareness and one for childhood cancer awareness.

To make an appointment, access Carter BloodCare - Donor Portal (greatpartners.org) online. On the day of donation, donors must bring a photo ID. Also on the day of the drive, donors may fill out a QuickScreen questionnaire online.

The BIGGEST Mistake Low Back Pain Sufferers Make



By Local Health Expert Dr. Robert Moss PT, ScD, OCS, FAAOMPT

If you or someone you know has back pain then this article is for you.

This is something very close to my heart as I have suffered with lower back pain through the years. My Dad and brother have also suffered with lower back pain which became so bad they both underwent dangerous surgery to try and fix their problem.

They live in San Antonio (where I grew up) and I felt guilty that I was not able to help them, but hopefully my 23+ years of experience can help you.

Fortunately my dad did okay after his surgery. I can't say the same for my brother, but that is a story for another day.

Over the years I have discovered some things that are not taught in physical therapy school. One of the major awakenings is that as humans we have a tendency to procrastinate and not handle issues when they first come up, I am no different.

However when it comes to health issues this is definitely the wrong approach. When you start to experience back or leg pain (also called sciatica) most people tend to ignore the pain and pretend it will go away on their own.

This is what I call the **Biggest mistake**. By ignoring your pain you are potentially setting yourself up for larger and more costly problems in the long run. The faster you address the problem the greater chance of success which leads to your ability to return to normal life.

A **second mistake** I frequently see is that people with back pain try to alter their symptoms by taking dangerous medications, having injections or surgery. Don't get me wrong there is a time and place for injections and possibly surgery but not at the onset.

Most people don't exhaust all of their conservative care options before trying more risky options.

Even taking over the counter medications is a form of "altering" their pain.

It is one thing to take some tylenol or ibuprofen to reduce some pain and inflammation while getting to the root cause of the pain and doing something about it vs only taking medications. Just because the pain reduces doesn't mean the problem has been taken care of.

We frequently see people in the clinic who have had back pain for months, and were sent to see a pain management specialist who did a series of injections. Maybe they got some relief but it wasn't permanent. Then they wind up in our office to help.

This is backwards. Injections have the great chance of working when combined WITH physical therapy at the same time, not as an either or situation.

So what do the most successful people do when they have back pain? They address their problem.

I call it the 3 D's Principle to handle any problem in life - Don't Ignore it, Don't Mask It, Do Something About It.

If you feel you would really enjoy helping yourself find relief from that annoying, nagging lower back pain, get off the pain pills and avoid surgery then I have something for you.

Act now - call the office NOW 817-220-6677 to request my 100% FREE Report Top 10 Burning Questions for Back Pain and Sciatica. Or if you want the report right now, please visit www.springtownphysicaltherapy.com/back-pain-report or scan the QR code and you can download it instantly.

PS. No one will ask for any money for anything when you call 817-220-6677 to request your free report which is perfect for those who are suffering with lower back pain and sciatica.

The author, Dr. Robert Moss PT, ScD is the owner of MOSS Rehabilitation Center in Springtown, TX. He is happy to help you with your back pain and sciatica problems either by phone 817-220-MOSS (6677) or email robert@springtownphysical



Azle School Menu Oct 3 - Oct 7, 2022

<p>BREAKFAST: PreK-4th Grade, 7-12th Grade \$1.55 5-6th Grade FREE 2nd Meal \$2.00 Visitors/Employees \$2.75</p>	<p>LUNCH: PreK-4th Grade \$2.55 5-6th Grade \$2.75 7-12th Grade \$2.55 2nd Meal \$3.20 Visitors & Employees \$3.75</p>
---	---

PreK - 4th

BREAKFAST: Everyday - Assorted Fruits and Cereal, Juice, White or Chocolate Milk, Graham Crackers, Toast
 Mon Chocolate Croissant Roll, pear cup **Tues** Breakfast Taco, orange **Weds** Cereal Bars, Strawberry Banana Applesauce
Thurs Blueberry Muffins, peach cup **Fri** Kolache, apple

LUNCH: Everyday - Variety of milk. Your choice of 1 entree & 1 fruit or juice
 Mon Chicken Nuggets w/roll OR Fish Sticks w/roll, Mashed potatoes w/ gravy, green beans, peach cup **Tues** Chicken Crisпитos OR Bean & Cheese Burrito, Spanish Rice, Beans, Apples **Weds** Orange Chicken w/ Fried Rice OR Ham & Cheese Sandwich, Steamed Broccoli, Oranges **Thurs** Cheeseburger OR Hamburger, Crinkle Fries, Baked Beans, Pineapples **Fri** Cheese or Pepperoni Pizza, Chicken Caesar Salad w/roll, corn, applesauce

GRADES 5TH - 8TH

BREAKFAST: Everyday - Assorted Fruits and Cereal, Juice, White or Chocolate Milk, Yogurt w/Granola
 Mon Sausage Croissant, Apple **Tues** Breakfast Taco, Orange **Weds** Breakfast Bowl, Pineapple
Thurs Breakfast on a Stick, Pears **Fri** Donuts, banana

LUNCH: Everyday: Variety of milk. Your choice of 1 entree & 1 fruit or juice, rolls, crackers • Salad bar offered daily
 Mon Chicken Nuggets w/roll OR Fish Sticks w/roll, Mashed potatoes w/ gravy, green beans, peach cup **Tues** Chicken Crisпитos OR Bean & Cheese Burrito, Spanish Rice, Beans, Apples **Weds** Orange Chicken w/ Fried Rice OR Ham & Cheese Sandwich, Steamed Broccoli, Oranges **Thurs** Cheeseburgers OR Hamburgers, Crinkle Fries, Baked Beans, Pineapples **Fri** Cheese or Pepperoni Pizza, Chicken Caesar Salad w/roll, corn, applesauce

HIGH SCHOOL

BREAKFAST: Everyday - Assorted Fruits and Cereal, Juice, White or Chocolate Milk, Yogurt w/Granola
 Mon Sausage Egg Croissant, Yogurt w/ Granola, Apples **Tues** Breakfast Taco, Yogurt w/ Granola, Oranges **Weds** Breakfast Bowl, Yogurt w/ Granola, Pineapple **Thurs** Breakfast on a Stick, Yogurt w/ Granola, Pears **Fri** Donut, Yogurt w/ Granola, Bananas

LUNCH: • Everyday: 1% unflavored or non fat chocolate milk & juice offered daily at breakfast and lunch.
Salad Bar • Fruit of the day subject to change due to deliveries and shortages. • Fruit, hot and cold veggies
 Mon Steak Fingers w/gravy, Sausage Link w/mac n cheese, Cheese Enchiladas, Beef Burrito, Orange Chicken w/fried rice, Cheese Pizza, Pepperoni Pizza, Cheeseburger/Burger, Crisпитos **Tues** Chicken Nuggets, Mini Corndogs, Beef or Chicken Nachos, Taco Salad, General Tso's Chickie w/lo Mein, Chicken Alfredo, Cheese Pizza, Boneless chicken Wings, Hot Dogs **Weds** Mac n Cheese, Fish Sticks, Beef or Chicken Tacos, Chicken Egg Rolls w/ fried Rice, Meatball Sub, Pepperoni Pizza, Spicy Chicken Sandwich, Popcorn chicken **Thurs** Chicken Sandwich, Chicken & Waffles, Quesadilla, Crisпитos, Teriyaki chicken w/lo mein, Max Sticks w/marinara, Cheese Pizza, Corndog, Grilled Chicken Sandwich **Fri** Cheeseburger, Burger, Totchos, w/rice, Bean Burrito, Sweet n Sour Chicken w/fried rice, Chicken Bacon Wrap, Nachos w/rice, Bean Burrito, Sweet n Sour Chicken w/fried rice, Chicken Bacon Wrap, Nachos

SPONSORED BY

Don't Miss Out On The ONLY Paper That Prints Your Hometown News On OUR KIDS!!!

Hey Parents!

\$40

12 MONTH SUBSCRIPTION

Azle News 817-270-3340

Azle News

COO
SAM HOUSTON
Hyde Media Group

Publisher
KIM WARE
publisher@azlenews.net

Editor
DON MUNSCHE
editor@azlenews.net

USPS No. 546-920 | 321 West Main Street, Azle, Texas 817-270-3340 | www.azlenews.net
 The AZLE NEWS is published every Wednesday at 321 West Main Street, Azle, Texas by Hyde Media, LLC
 Periodicals class postage paid at Azle, Texas, 76020. Postmaster: Send address changes to 321 West Main Street, Azle, Texas 76020

The Azle News does not assume responsibility for errors in advertisements beyond the cost of the advertisement itself. Any erroneous reflection upon the character or reputation of any person or firm appearing in this newspaper will be corrected when called to the attention of the publisher. The entire content of each issue of the Azle News is protected under the Federal Copyright Act. Reproduction of any portion of any issue is expressly forbidden without the prior written consent of the publisher. The AZLE NEWS is an award-winning member of the Texas Press Association.

Annual Subscription Rates:

In-County \$40.00 Parker, Wise and Tarrant counties	Senior Citizens \$36.50 60 and older	Out of County \$46.50 Outside of Parker, Wise and Tarrant counties	Online \$25.00 View the paper online
---	--	--	--

OUR MISSION: The Azle News shall provide news and insights to our readers through the independent and impartial presentation of information that educates, enriches and entertains. We are proud to be a community newspaper committed to the people we serve.

A circle of true friends

On my way to a conference for pastors and ministry leaders several years ago, something triggered my allergies to the point where I was sneezing, and my eyes were bloodshot. At the next pit stop, I noticed my eyes in the bathroom mirror, and they were bothersomely red. Oddly enough, I had never used eye drops, but I found Visine Extra Strength in the giant gas station and thought I would give it a try. Alone in my hotel room right before the conference's first session, I applied the drops, or more accurately, stream of Visine, failing to read the instructions.

I love a good conference—the opportunity to hear insightful speakers on important topics and to break into smaller groups to discuss related issues. This, however, was not one of those well organized, thought-provoking gatherings. In fact, the first words the host said were, "Our agenda is . . . there is no agenda!"

For my personality type, this is tantamount to announcing, "This will be one of the worst conferences you will ever attend, David." Thankfully, no one could hear what my mind was silently saying very loudly.

Soon after the host's disaster declaration, my reckless Visine application began to manifest itself. The excess dosage caused my eyes to



HOPE MATTERS

By David Shaffer

Dr. David Shaffer and his wife, Daniele, are Azle-area residents. David is director of Son Shine Ministries (equipfamilies.org) and chair of the Azle Area Chamber of Commerce Ambassadors (azlechamber.com). david@equipfamilies.org | 817-444-3777

constrict so much that my tear ducts went into overdrive, necessitating the near-constant wiping of my eyes. As the first presenter spoke, people began noticing my "crying." They assumed I was identifying with the speaker and was deeply touched by the topic, giving me knowing nods from across the room. Suddenly, the older man next to me—whom I did not know—began rubbing my back!

At the break, several people came and verbalized their appreciation of what was happening with me. When I finally made it to a pod of my close friends, they immediately asked, "What's going on?" adding, "We can't imagine your tears are from this first session." I shared my foolish and potentially dangerous "over-squeeze" of Visine, and my "supportive" friends broke into laughter. This initially caused a corporate gasp to fill the room until people saw that I was laughing along with the others.

Eventually my eyes settled, and the uncontrolled and misunderstood tears

stopped. The conference, though not structured to my tastes, of course, yielded some beneficial moments and provided time for reflection. It made me think how important it is to have friends who know me well enough that they would question me when things seemed out of sync.

In our world, people can often be misread. Having a core group of friends who transparently know you and who ask the hard questions provides great strength, stability and support. C. S. Lewis astutely pointed out that "The next best thing to being wise oneself is to live in a circle of those who are."

Seventeenth-century French author François de La Rochefoucauld identified that "a true friend is the greatest of all blessings." I thank God for the close family and friends he has given me, and my hope for you is that you are also blessed with a circle of true friends in this special community with whom you can cry, laugh and, even under the right circumstances, do both.

PCSO arrests two men after roadway pursuits near Springtown, Azle

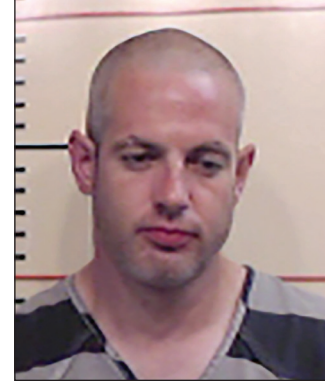
FROM STAFF REPORTS

Parker County Sheriff's deputies arrested two men following two separate pursuits last week, the sheriff's office stated in a news release.

Parker County Sheriff Russ Authier said the first incident occurred shortly after 1 a.m. Sept. 22 in the 1700 block of Holbrook Road in Springtown, where deputies attempted to conduct a traffic stop for defective equipment/non-functioning headlights on a 2013 black Ford F150 truck hauling a trailer containing construction tools and supplies, according to the release.

When deputies initiated the stop by activating their lights and siren, the driver fled, ignoring the signals and commands to stop. The driver further led deputies in a 15-mile pursuit with speeds exceeding 100 miles per hour, the release stated, while wood pallets flew off of the trailer onto the road.

The driver continued eastbound on State Highway 199 into Tarrant County and eventually came to a stop in the 12000 block of Jacksboro Highway. The driver was identified as Charles William Ferris III, 42, of Fort Worth. He was medically evaluated and cleared before he was taken into cus-



Scott Henry Bradley



Charles William Ferris III

tody and charged with evading arrest detention with vehicle. Additional charges are pending the investigation.

The second incident occurred before 5 a.m. Sept. 22 in the 100 block of Gunnison Court in Azle.

A deputy attempted a traffic stop on a 2006 Suzuki motorcycle that had no license plate. The driver immediately fled at a high rate of speed when the deputy initiated his lights and siren. The driver led deputies on Northwest Parkway to Tarrant County on Interstate 820 to Interstate 20, then turned and led deputies and assisting agencies back into Parker County.

During the pursuit, the driver drove into oncoming traffic heading east in the

2000 block of westbound Fort Worth Highway. Law enforcement officers surrounded the motorcycle at the intersection of Fort Worth Highway and Farm-to-Market Road 730. The driver stopped and was taken into custody. He was identified as Scott Henry Bradley, 33, of Azle.

Deputies found suspected methamphetamine, a small amount of marijuana and drug paraphernalia in Bradley's backpack, the release stated. He was charged with evading arrest detention with vehicle. He was also arrested on an outstanding misdemeanor warrant out of Arlington for criminal trespass. Additional charges are pending the ongoing investigation.

Ms. Fairy Dogmother
It's never too late to have the dog of your dreams!

- Private Dog Training
- Custom Pet Sitting

www.msfairydogmother.net
ann@msfairydogmother.net

Ann Coffey @ 817-668-6229



AIR DUCT CLEANING

- Clean All Supply Vents
- Sanitize
- Return Vents

TRW
Heating and Air

Call Today For Your Appointment
817-444-8025

Anne Land Real Estate
Land is my name, and real estate is my game.

Anne Land
817-247-5991 Cell
817-220-0633 Office


904 E. Hwy 199,
Springtown TX
www.AnneLandRealEstate.com



FREEDOM FROM ADDICTION
Christian based 12 step program that provides a 'how to' with Biblical principles which is the key to finding and maintaining lasting freedom from addiction. Child care provided.

Questions or additional information call Greg 817-851-8648

Crossing Fellowship Community Church
120 E. Main St., Azle, TX 76020
Tuesdays 7:00-8:15 pm



ESTATE SALE LOG HOMES
PAY ONLY THE BALANCE OWED!

JUST RELEASED: AMERICAN LOG HOMES is assisting estate & account settlement on houses

LOG HOME KITS
selling for **BALANCE OWED** with **FREE DELIVERY**

Model #101, Carolina, \$40,840	BALANCE OWED \$17,000
Model #203, Georgia, \$49,500	BALANCE OWED \$19,950
Model #305, Biloxi, \$36,825	BALANCE OWED \$14,500
Model #403, Augusta, \$42,450	BALANCE OWED \$16,500

NEW HOMES: Serious Inquiries only **Call: 704 368-4528**

- Never been manufactured
- **NO TIME LIMIT FOR DELIVERY**
- Comes with complete building blueprints and Construction Manual

* Windows, Doors and Roofing not included

Before Calling View House Plans at
www.americanloghomesandcabins.com



Springtown Dance
SPRINGTOWN
SENIOR CENTER


1071 North Main Street
COME JOIN US!
\$5.00 PERSON
September 29th
The Roustabouts

Thursday Dances 7p-9:30p
Saturday Dances 7p-10p

Full Service Mechanic SMART START CONTRACT SHOP
We install & service alcohol breathalyzers.

704 NW Pkwy, Azle
Open Mon-Fri 9 AM - PM, Sat 9 AM - 3 PM
@burrowsauto

817-270-3230 • 817-270-3240



AZLE AREA CLUBS AND ORGANIZATIONS

Texas Health
Harris Methodist Hospital
AZLE

Volunteers Needed
TexasHealth.org/
Volunteer/Our-Process

RAINBOW INN GIFT SHOP
Inside Hospital 108 Denver Trail
Azle 817-444-8651

ATTIC RERUNS
NOW OPEN! FRI 9-4 SAT 9-1
714 SE Pkwy Azle 817-270-3690


Good N.E.W.S.
Living at Home Block Nurse Program

Volunteer Caregiver Training Classes
Classes open to public at no charge

Caregiver Volunteer Meeting
1st Monday of Each Month at 6pm
817-444-2300
412 Commerce St.

Rotary Club of Azle

MEETS AT NOON THURSDAY
412 Commerce St.
(across from Azle Post Office)



The Finish Line
Addiction wants to destroy you & everyone around you.

With Jesus there is Victory over addiction.

GET BACK IN THE RACE!
Meetings held every Friday from 7:30pm-9:30pm at The Church at Azle
1801 S. Stewart • Azle • 817-401-8513
www.ourfinishline.com




Faced with a DRINKING Problem?
Perhaps Alcoholics Anonymous can HELP.

Daily meetings at Noon & 6:30 pm
Sunday at 3 pm
229 S. Stewart St. • Azle
817-332-3533



Azle Lion's Club

Meets 2nd **TUESDAY** 6:30 PM
412 Commerce, Azle
e-clubhouse.org/sites/azle_tk/
Jamie Westbrook - president
817-550-7625



AZLE AREA MINISTERIAL ALLIANCE
UNITED IN CHRIST

Christian Leaders partnering together with one voice to impact our culture for Christ. We celebrate unity amidst diversity as we pastor our community.

Luncheon meetings
11:45 a.m. - 1 p.m. 2nd Tues of each month; location varies.
See www.azlema.com or email director@azlema.com for additional information.


SERVOLUTION NETWORK
LET'S START A COMMUNITY WIDE REVOLUTION THROUGH SERVING.

FOR QUESTIONS CALL:
833-4WE-SERV
833-493-7378

VISIT: WWW.SERVOLUTIONNETWORK.COM



Azle Boy Scout Troop 243
Meets Mondays 7 PM
Azle First Assembly of God
1020 Southeast Parkway
troop243azle.org




Optimist Club of Azle

Meets every **FRIDAY** at 6:45 AM
Moe's Country Kitchen
316 W. Main, Azle




Azle Lodge No. 601

Floor School or Work
7:30 PM THURSDAY NIGHT
Wayne Wood - Worshipful Master
Rocky Gralla - Secretary
Clint Hall - Treasurer



Eagle Mountain Pregnancy Help Center

10328 Jacksboro Hwy
Fort Worth TX 76135
817-237-1819
www.emphc.org
Mon 12-6 PM Thurs 12-6 PM
SE HABLA ESPAÑOL



As one goes through life, some things simply do not make sense

Life should make sense, shouldn't it? Looking around at our world and the people in it, the above exclamation becomes problematic. I acknowledge the possibility I could be suffering from some sort of personality disorder where my brain seeks facts to link together to create a reasonable, responsible chain of thought. Is this abnormal? I am not referring to being obsessive-compulsive and having the need for all things to be in order, but rather having actions and words be consistent with one another. It seems like such should be the norm, but in reality, it is anything but normal. Here is a partial list of some things that don't make sense. What do we call small purses, pocketbooks? They are neither a pocket, nor does



FROM MY FRONT PORCH

By Sam Houston

Sam Houston is a syndicated columnist and newspaper executive. He is also an author, actor, playwright and entertainment producer/promoter.

their use necessitate they fit in a pocket. Without question, they are not books. How come Hawaii has an interstate highway? Why do we describe mounting a horse as "horseback riding"? Is there anywhere else to sit on the animal? People say they are "down" for some activity, or they say they are "up" for the activity. Both expressions mean precisely the same thing. Why do we check the refrigerator looking for a snack and find nothing, and then return to check the same refrigerator 30 minutes later

seeking a different result? Why is it the bottle of propane connected to the backyard grill runs out of fuel, precisely 10 minutes before the steak is finished cooking? Is a "restroom" really a place where we "rest"? How is it that any two individual clothes hangers are always drawn to tangle in each other, when neither has any magnetic qualities? How does one sock seemingly disappear in thin air from the time of being placed into the washing machine to coming out of the dryer? Why is cereal identified as

breakfast food? Is it against the rules to eat corn flakes for lunch or dinner? These are all questions that challenge the soul. My latest aggravation are politicians who criticize authority figures but never suggest a solution to the problem they complain of. It is easy to promote "lower taxes" but why don't they provide concrete suggestions with specifics on how they are going to make it happen? Is it because they have no idea and are only attempting to gather political support by blaming, criticizing and telling people what they want to hear? Yelling "lower taxes" sounds appealing to almost everyone. The difficult part is figuring how budget cuts are going to be made to lower taxes and still operate

an efficient governmental agency. Those are the kinds of suggestions I don't hear, and I wish I did because then maybe we would start solving problems rather than talking about them ad infinitum. There are lots of "go-to" political positions for politicians. They declare they are going to end "waste" in government, be more "transparent" and be "your voice" because those in power have "lost touch." Carefully analyze those type of comments. You will see they are hollow representations designed to motivate the listener to blame or hate, and fail to explain a plan for governing. What is missing is how the speaker will make things better. It is easy to spout tired old political rhetoric as opposed to finding solutions to problems, especially when

the solutions require more sort of sacrifice on the part of the voters. Some things in life don't make sense and I guess they never will. If I could ever figure out what happens to that one sock that gets lost in the dryer, I could become a millionaire. When it comes to politics and casting your vote, stop and listen to what candidates say and let yourself hear. Demand that it makes sense or do not give them your vote. Don't let them sway you with broad, non-specific rhetoric. We need more than talk, we need action. Doesn't that make sense? Thought for the day: When you want to help people, you tell them the truth. When you want to help yourself, you tell them what they want to hear.

The Tale of the Full Gospel Preacher

I have two words for you today. These two words bring a smile to my face every time. These two words are part of my heritage as someone who has spent 45 years in "church work" (particularly in small Baptist churches). These two words are "potluck meal." Whether you call it a "covered dish luncheon" or "dinner on the ground" or something else, it's a glorious and near-gluttonous expression of the amazings of being part of a family of faith. I know that this concept is not unique to church groups. Other groups have similar meals and I've been to some



BE AMAZING

By Gerry Lewis

Azle resident Dr. Gerry Lewis guides explorers to discover their AMAZING. He is an author, musician, and speaker, and a coach-sultant for individuals, churches, and organizations. More at www.discoveryouramazing.com.

of them. But in my humble-but-expert opinion, nobody does potluck like a bunch of church ladies. And besides that, there is the added spiritual benefit of knowing that—if you actually eat the meal on church property—all the fat, calories, and cholesterol have been prayed out of it. (I'm pretty sure that's in the Bible somewhere. I believe it is in 2 Opinions chapter 46)

The other thing I have learned by spending 45 years as either a member of the church staff or the invited guest preacher is that I have a solemn duty to make every cook feel loved and appreciated by sampling every dish. I mean, do you have any idea how devastating it can be to the spiritual health of someone whose banana pudding was skipped by the "man of God?"

Another benefit of the church potluck is that there are so many opportunities to make my cardiologist happy. She told me I needed to eat less red meat, so I had two pieces of fried chicken. She told me I should eat more fruit. I had a serving of peach, pineapple, cherry cobbler. Three different fruits in one dish! So why am I writing about church potlucks today? Because I had two of them yesterday. That's right. Two in one day. That's why they call me the FULL gospel preacher (it only took me 338 words to get to the headline pun). Yesterday morning, I was

part of the celebration of 122 years of ministry for the First Baptist Church of Newark, TX where I've been serving as interim pastor since February. Last night I was part of the celebration of 20 years of ministry for Harvest Baptist Association where I've been serving as Executive Director/Lead Strategist since 2008. There's something uniquely amazing about sharing a meal with people who are with you on your faith journey. The food feeds our bodies and the conversation feeds our spirits. And the blessings are heightened by the fact that we each made our loving

contribution to the feast. Whether it was a precious family recipe handed down for generations or a plastic container of potato salad we picked up from the grocery store, there was a sense that the meal is about more than food. It's about family. And for some people, the family with which they choose to share life's journey is more affirming and welcoming than the family into which they were born. Maybe what the world needs is fewer political rallies and more potlucks. Just a thought. Be amazing today, my friend.

Spotlight on

BUSINESS

SEPTEMBER

Crystal

Mobile Auto Glass

20+ Years Experience

Insurance Claims Welcome

- Auto Glass
- Heavy Equipment

\$20 Chip Repair in Shop by Appointment

817-554-8584

817-585-0859

2531 E. Hwy 199

Springtown



No matter what you're in the mood for, you'll find it at Moe's Country Kitchen.

Moe's Country Kitchen

Your local home away from home

Moe's Country Kitchen prides themselves on great customer service and amazing food. At Moe's, you'll enjoy delicious home cooking at affordable prices. They have breakfast specials starting at \$6.59 until 11 a.m. each day. Get your morning started with pancakes or waffles. They also have custom omelets available. Or try Moe's Famous Scramblers—it's sure to hit the spot! Moe's Country Kitchen has been voted "Best Breakfast" in Azle 6 years in a row! And you're in luck—breakfast is served all day! The lunch specials start at \$8.99 and their famous chicken fried steak is always on the menu. We have nightly steak specials as well starting at 4 p.m. You can also grab lunch from the "Sandwich Shop" where you'll find cold, deli style sandwiches or hot sandwiches like a grilled cheese on sourdough paired with their hand breaded onion rings.

No matter what you're in the mood for, you'll find it at Moe's Country Kitchen. They offer military discounts and a special menu for seniors. There's also a kids menu for the little ones. Moe's Country Kitchen cares about the community and they are blessed to serve local customers and give them great food and customer service. They are open Monday through Saturday from 6 a.m. to 9 p.m. and Sunday from 6 a.m. to 3 p.m. You can also reserve a room for large gatherings. Just give them a call for availability at (817) 444-1400. Moe's Country Kitchen is located at 316 W. Main Street in Azle, just across the street from Azle News. If you're hungry, stop by Moe's Country Kitchen and get your belly filled with delicious home style cooking. And don't forget to top it off with a homemade dessert. You'll be glad you did!

Daily Lunch & Dinner Specials

Breakfast Served All Day

MOE'S COUNTRY KITCHEN

OF AZLE

Daily Lunch Specials

CALL-INS WELCOME

316 W. Main St. Azle

817-444-1400

Mon-Sat 6 AM - 9 PM • Sun 6 AM - 3 PM

15% Off

Any Residential or Small Business Service

If you mention this ad when you call to schedule an appointment

CLEANING

Residential Carpet • Tile and Grout Rugs • Air Ducts • Dryer Vents Upholstery • Concrete Polishing

FULL SERVICE 24/7 RESTORATION

Water • Fire/Smoke Damage Mold Remediation

COMMERCIAL CONTRACTING

Floor Demolition • Concrete Polishing VCT Refinishing • Framing • Painting

PurEmerald

FLOOR CARE

2699 Azle Hwy.,

Weatherford TX 76085

817-938-3006

8 am - 5 pm Weekends on Request

LONE STAR ANTIQUE & Craft Mall

OPEN

There's nothing wrong with a little junk in the trunk.

- Collectibles • Junque
- Boutique • Unique Shabby Chic
- Jewelry • Classic Antiques

John Chamlee, New Owner

102 Manor Dr., Azle

817-683-9046

Open Tue - Fri 10 am - 5 pm,
Sat & Sun 10 am - 3 pm

OBITUARIES

Susan Cross 1944 - 2022

Susan Kay Cross, 78, passed away on Sept. 19, 2022, at home.

A memorial service for Susan will be held on Monday, Oct. 3, 2022, at 6:30 p.m. at The Meeting Place at Ash Creek Baptist Church located at 301 S. Stewart St., Azle, Texas 76020.

In lieu of flowers, the family asks that you consider making a memorial donation to the Beyond Building Fund of Ash Creek Baptist Church.

She was born in San Angelo, Texas, and graduated from San Angelo Central High school in 1962. Susan then graduated from Baylor University in 1966 and began a career as a teacher. While starting her career in the Fort Worth ISD, she later taught in the Azle ISD for 27 years, the majority of those years as a third-grade teacher at Liberty Elementary School until retirement in 2007. After retirement, she worked as a receptionist for the Azle Manor and Ash Creek Baptist Church. Susan enjoyed spending time with friends and family and especially



enjoyed discussing movies and television. However, even more than the plots of her favorite programs, she was keenly interested in the adventures of her grandchildren.

She is preceded in death by her father, Luther Cummings; mother, Vera Cummings; and brother, Kent Cummings.

Susan is survived by her dear friend, Irma Reus; son, Matt Cross; daughter-in-law, D'Jahn Cross; and grandchildren, Julia, Corrine, and Ethan Cross.

The Azle News, Sept. 28, 2022 Edition

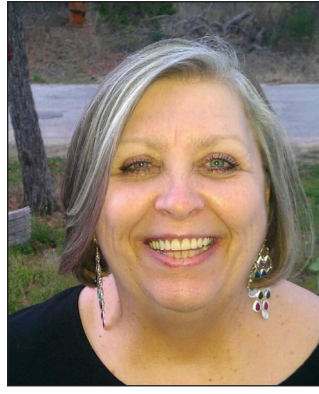
Cheryle (Shari) Markgraf 1955 - 2022

Cheryle JoAnne Markgraf, 67, was called to be with our Lord on Sept. 25, 2022.

Funeral services will begin with visitation at 9 a.m. at Hilltop Family Church, 1227 Old Cottondale Rd., Springtown, followed by a graveside service at Azleland Memorial Park located at 850 N Cardinal Rd, Azle.

Preceded in death by daughter Jessica Markgraf Walsh, and parents Sterling Edward Blade and Thelma Juanita Blade.

Cheryle is survived by her husband Michael Markgraf, who started their journey of love 45 years ago, and her children. Shawn Markgraf (Denise), Brandy Chazarretta (Pete), and Candice Bohannon (Tim); seven grandchildren:



Ashley, Austin, Riley, Jesse, Jacob, Caleb, and Audrey, as well as two great-grandchildren: Luna and Rose.

Cheryle had an amazing relationship with God and she attended Hilltop Family Church in Springtown.

The Azle News, Sept. 28, 2022 Edition

Suzie Craig Martin 1939 - 2022

Suzie Craig Martin, beloved wife, mother, Mimi, aunt, friend, mentor, volunteer, passed away September 25, 2022.

Funeral Service was at 1 p.m. Wednesday, September 28, 2022 in Biggers Funeral Chapel with a visitation at noon prior to the service. Interment: Ash Creek Cemetery.

Suzie was born June 12, 1939 in Mansfield, TX. In 1957 she married her husband, Coy Martin, they were married 65 years and they resided in Azle. Suzie was a retired legal secretary after many years with a Fort Worth firm. After her retirement, she worked countless hours serving in various capacities within Ash Creek Baptist Church: committee member, VBS volunteer, greeter, Sunday school teacher, benevolent committee member, trustee. Suzie was a Godly woman. She loved the Lord, her church and her family.

She had a servant's heart, was a prayer warrior. She participated in mission trips, food drives, Operation Christmas Child, tended to homebound friends, mentored an elementary school student, sponsored a Peruvian child many years through World Vision, delivered Meals on Wheels, transported friends to various appointments, prepared meals to grieving families.



Suzie was a talented painter and had an eye for creativity. She enjoyed traveling, hiking, fishing with Coy, and visiting and entertaining with her friends and family.

Survivors: Husband, Coy Martin; son, Steve Martin (Kelly); daughter, Carla Strawn (Don); granddaughters, Allison Strawn (Tyler Brenner), Jennifer Cates (Garrett), and many sisters and brothers-in-law, cousins, nieces and nephews.

The family wishes to express our sincere gratitude to the staff of Legacy Oaks for their loving care of Suzie, and Solaris Hospice for their gentle compassion and care provided to Suzie. A special thanks to Alicia and Judy for their tireless care provided to Suzie.

The Azle News, Sept. 28, 2022 Edition

Robert L. "Bob" Edwards 1947 - 2022

Robert L. "Bob" Edwards, 74, passed away Thursday, September 22, 2022 in Fort Worth.

Visitation: is from 1:30 to 3:00 p.m. Saturday, Oct. 1, 2022 By the Word Church, 200 W.N. Woody, Azle, 76020. Memorial Service is at 3 p.m. Saturday, Oct. 1, 2022 at By The Word Church.

Bob was born in Berryville, Arkansas Dec. 4, 1947 to Robert and Idella Pinkley Edwards.

He honorably and proudly served in the United States Air Force. Bob loved golf, fishing and traveling.

He was preceded in death by his parents.

Survivors include his children, grandchildren and siblings.

Bob will be missed by all that knew him.



The Azle News, Sept. 28, 2022 Edition

To place an obituary
Call
817-270-3340

Galbreath-Pickard
FUNERAL CHAPEL

817-594-2747 • Fax 817-596-7803

James R. Plowman
Norma Plowman
913 N. Elm St.
Weatherford, TX 76086
www.galbreathpickard.com
1-800-593-2747

To place an obituary
Call 817-270-3340 or email us at:
info@azlenews.net

GET READY FOR SUMMER!
A/C TUNEUP \$55
NOW HIRING!
COMMERCIAL & RESIDENTIAL

Southwestern
COMFORT
Air & Heat

11345 FM 730N
Azle 817-696-6421
Owner Kenny Bates 817-361-3695

White's Funeral Homes
Our family serving your family since 1908

Bob White,
Anita White
and Zack Bellenger

Full Service
Funeral Home
Cremation
Services
Pre-Need
Plans

Azle • Springtown • Mineral Wells • Weatherford
817-444-3211 • www.whitesfuneral.com

THE SHACK @AZLE
It's really a healthy bar!

416 commerce st, suite 5
Azle • 817-406-4345
Hours: Mon-Fri 6 am - 5 pm
Sat 9 am - 2 pm, Sun Closed

Check in and save \$1.00

DOS CHILES
MEXICAN RESTAURANT

Two Enchilada Dinners & Two Drinks = \$19
EVERY TUESDAY

- Open 7 Days
- Fast Friendly Service
- Fresh Homemade Food

425 W. Rock Island Ave.
Hwy 114, Boyd • 940-433-3322

... ATTEND THE CHURCH OF YOUR CHOICE THIS SUNDAY

<p>THE ABBEY CHURCH Pastor: Paul Brownback 10400 Jacksboro Highway 817-238-1404 www.TheAbbeyChurch.com</p> <p>Morning Worship.....10:30 AM Community Groups.....Various Times</p> <p>ASH CREEK BAPTIST CHURCH Pastor: Dr. G. Wesley Shotwell 300 South Stewart St. 817-444-3219 www.ashcreekbc.org</p> <p>Sunday School.....9:30 AM Contemporary Worship-TMP.....10:45 AM Traditional Worship.....10:45 AM Evening Worship.....6:00 PM Wednesday Youth Refuge.....6:00 PM Wednesday Evening.....6:15 PM</p> <p>AZLE CHRISTIAN CHURCH (Disciples of Christ) Senior Minister, Ashley Dargai, Katie Medlin, Worship Minister 117 Church St. • 817-444-3527</p> <p>Sunday School.....10:00 AM Morning Worship.....11:00 AM</p> <p>AZLE FIRST ASSEMBLY OF GOD Pastor: Tim Stevens 1020 S.E. Parkway, Azle 817-237-4903</p> <p>Sunday School.....9:30 AM Morning Worship.....10:30 AM Wednesday Evening.....7:00 PM</p>	<p>COMMUNITY BIBLE FELLOWSHIP CHURCH Pastor - Alton Davis 817-521-4510 1405 Reynolds Rd., Azle 817-444-7117 Directions: 730 N. to 1542 .5 mi. right on Cardinal, left on Reynolds</p> <p>Sunday School.....9:45 AM Morning Worship.....11:00 AM Sunday Evening.....6:00 PM Wednesday Evening.....7:00 PM</p> <p>CORNERSTONE COMMUNITY CHURCH 2233 Hwy 199 E. • Springtown 817-221-LIFE (5433)</p> <p>Sunday Worship Service.....10:00 AM Wednesday.....7:00 PM</p> <p>CROSSROADS BAPTIST CHURCH Pastor - Jon Baker Corner FM 730S & FM 1886 817-755-0279 Transportation Available</p> <p>Worship Service.....10:30 AM Wed. Prayer Service.....7:00 PM</p> <p>THE EDGE CHURCH - AZLE 1313 S.E. Pkwy, Azle 817-237-4822 Missouri Synod</p> <p>"Love God - Serve Others - Share Jesus" Traditional Worship.....9:30 AM Contemporary Worship.....11:00 AM</p>	<p>FIRST UNITED METHODIST CHURCH Pastors: Rev. Todd & Jenn Pick 200 Church St., Azle 817-444-3323</p> <p>Morn. Worship.....8:30, 9:45 & 11 AM Sunday School.....9:45 & 11 AM Youth (UMYF).....5:00 PM Sun & 6:30 PM Wed</p> <p>HOLY TRINITY CATHOLIC CHURCH 800 Highcrest Dr. - Azle 817-444-3063</p> <p>Saturday.....5:00 PM Sunday.....9:00 AM Sunday.....11 AM (Spanish) Daily Mass (M, T, Th, F).....8:00 AM Wednesday Mass Religious ED.....6:30 PM Confessions.....Sat 4 PM</p> <p>HOPE LUTHERAN CHURCH ELCA 4795 E. Hwy 199 - Reno 817-221-HOPE Follow us on Facebook for streaming services</p> <p>Sunday School.....9:00 AM Traditional Service.....10:00 AM</p> <p>SOLID ROCK BIBLE CHURCH 591 S. Reno Rd., Springtown, Texas 76082 Pastor - Bill Gay - 817-304-7443</p> <p>Coffee and Donuts.....9:00 AM Sunday School.....9:30 AM Morning Worship.....10:30 AM Children's Church After Music Service Wed. Prayer Meeting.....6:30 PM Wed. Bible Study.....7:00 PM</p>	<p>LEGACY CHURCH Assembly of God Church Pastor: Gary D. Veazey Hwy. 199 & Jaybird Lane 817-221-2983</p> <p>Morning Worship.....9:15 & 11:00 AM Kidz Zone.....9:15 & 11:00 AM Weds Evening Legacy Group Legacy Youth, Kids All Services.....7:00 PM</p> <p>SILVER CREEK UNITED METHODIST CHURCH Rev. Sheila Fiorella - Pastor 2200 Church Rd., Azle 817-444-1382 www.silvercreekumc.org</p> <p>Sunday School 9:30 am • Worship 10:30 am</p> <p>SILVER CREEK BAPTIST CHURCH Pastor: Jay Ditty Minister of Music: David Musick Corner FM 730 S. & Veal Station Rd. Church 817-444-2325 www.silvercreekbc.org</p> <p>Sunday School.....9:45 AM Morning Worship.....10:50 AM Evening Worship.....6:00 PM Wed. Prayer Service.....7:00 PM</p>	<p>THE WORD@LAKESIDE CHURCH OF GOD 9396 FM 1886 Fort Worth, TX 76135 817-237-5500 thewordatlakeside.com</p> <p>Pastors: Brandon and Kelly Bohannon Worship Pastor: Christen Moody Family Life and Young Adult Pastors: Jodie and Mark James, Kids Pastor: Katie Pearson, Student Pastors: Taylor and Sheridan Tomlin, Creative Directors: Logan and Carrie Edwards, Connections Coordinators: Preston and Ashley Larrew</p> <p>Equip Sunday School at the WORD.....9:30 AM Empower Worship at the WORD.....10:45 AM Kids at the WORD.....10:45 AM PreK at the WORD.....10:45 AM Emanate at the WORD (Special Needs Ministry).....10:45 AM Nursery at the WORD.....10:45 AM Young Adults at the WORD.....6:00 PM Wednesdays Adult Bible Class.....7:00 PM The WORD Students (6th-12th grades).....6:30 PM Awana Kids at the WORD.....6:30 PM Life at the WORD Life Groups Various Times</p>
---	---	---	---	--

A church alive is worth the drive! For more information or rates on listing your church, call Johnna at 817-270-3340

ON FISHING

Observing boat traffic can help you make better fishing decisions

We anglers have to consider and process a lot of information when trying to locate and catch fish — such as the weather, depth, temperature etc. It's fairly routine to avid anglers, but do we always consider everything that we need to?

How many of us consider the impact of other boaters on the water? Many of us striped bass anglers know the impact that can occur on surface feeding fish, but what about the impact elsewhere? As our area grows, us anglers are forced to share our public waters with many different kinds of watercraft. This kind of boat activity should be considered not just for anglers but for other boaters trying to find a safe time to enjoy the waters.

On summer weekends this can have more of an impact to your fishing than you are aware of. Even if your graph tells you that the fish are there, it may be time to move as the fish may be shut down by all the activity. Some days it may not matter. If the fish are extremely active, the bite may be on despite any and all traffic. More often than not, this traffic will upset the bite.

I like fishing as many spots early as possible before the recreational boaters crawl out of bed. However, it is not just the recreational boaters that can turn off the bite. It can also be affected by other anglers' curiosity and getting too close, or a rude boater jumping from hole to hole and running too close. Some tournament anglers forget about courtesy on the water, and some anglers just don't realize that they are upsetting the fishing.

At times, I will have folks coming in close to where I am fishing. I generally don't mind if they come in on their trolling motor. Some trollers using their big motors should try to avoid other



ON FISHING
By Michael Acosta

As a licensed professional fishing guide, Michael Acosta shows you how to find them. He has been a licensed guide since 1998. michael.acosta@att.net

anglers. There are restrictions to maintaining a safe distance from other boaters. Besides affecting the fishing, large wakes can be disruptive. Some of the larger craft on the water can create wakes big enough to swamp some smaller craft.

A little simple courtesy and keeping your safe distances from other boaters goes a long way. It keeps you safe and it allows all of us to enjoy our public waters.

Keep a mental note of where most of the recreational boaters are located. They will generally be in the same areas on most weekends. You may be able to fish these locations early before they get there, or you may just want to avoid those areas all together.

Black bass anglers can move shallow or work structure along the shoreline during certain times of the day. This will usually keep you away from the recreational boaters but may not keep you away from the incoming

waves/wakes from the main lake. Other times when the fish are out deeper on humps or other structure, you may be even more prone to more interfaces with other boaters. This is usually the case with local white bass/striped bass anglers fishing deeper waters a large part of the year.

I have found on occasion that during a busy recreational boater day on the lake, the bait fish will be driven and congregated into less-traveled sloughs and shallows to avoid the boating traffic. Using this knowledge, you can make an educated guess on the location of baitfish.

If you don't mind fishing in the cold, winter fishing for striped bass is one of the best times of the year and you generally will not have to worry about recreational boaters except for an isolated dedicated skier in a wet suit.

With a little planning, fishing a congested lake on a weekend can be successful and safe. Enjoy your time on the water when you can.

FISHING REPORT

Fall fishing is improving on all our area lakes. Water temperatures had cooled and then rebounded some with the warmer days. Water temperatures are in the low 80s, and will start to fall again slowly on most local reservoirs.

Lake Granbury largemouth bass are good in the shallows and on main lake points early. Soft plastics and crankbaits are still producing. Crappie limits are common on small jigs and minnow fished near bridge piers and submerged timber mid-lake. Small striped bass and white bass are schooling early and can be caught on most any shad imitation bait. Keeper striped bass are best on live shad fished on the lower ends. Catfish action continues to be best in the evenings on cut bait on many areas of the lake.

LEGAL PUBLIC NOTICES

NOTICE TO CREDITORS

Estate of James Elbert Williams, Deceased

Notice is hereby given that original Letters Testamentary for the Estate of James Elbert Williams, Deceased, were issued to Christie Gonzalez on August 24, 2022, in Cause No. 22P314, County Court, Parker County, Texas, which is still pending, and that Christie Gonzalez now holds such letters. All persons having claims against said estate are required to present the same within the time and in the manner prescribed by law. Claims should be billed to Christie Gonzalez, Executrix, at the Ruelas Law Firm, PLLC, 1020 Fort Worth Highway, Suite 500, Weatherford, Texas 76086, care of Jennifer Ruelas.

THE STATE OF TEXAS
CITATION BY PUBLICATION
CAUSE NO. 18P281

In the Matter of the Estate of Mattie Jane Craig, Deceased TO ALL UNKNOWN OR MISSING HEIRS OF THE ESTATE OF MATTIE JANE CRAIG, DECEASED Lonnie Craig in the above-numbered and entitled estate filed an Application to Determine Heirship and for Independent Administration and Letters Of Administration on 10/04/2018 in the Estate of Mattie Jane Craig, Deceased, requesting that the Court determine who are the heirs and only heirs of Mattie Jane Craig, Deceased, and their respective shares and interest in such estate, and appointing Lonnie Craig to serve as the Independent Administration of said estate and Determined Heirship. The court may act on said application at any call of the docket on or after 10:00 o'clock A.M. on the first Monday next after the expiration of 10 days from the date of publication of this citation, at the Parker County Court, One Courthouse Square, Weatherford, TX 76086 in Parker County, Texas. All persons interested in this case are hereby cited to appear before said Honorable Court by filing a written contest or answer to said Application before the above stated time and date should you desire to do so. TO ensure its consideration, you or your attorney must file any contest, objection, intervention, or response in writing with the County Clerk of Parker County, Texas On or before the above noted date and time. Given under my hand and the seal of said Court of Parker County, Texas at the office of the Parker County Clerk, on this 22nd day of September, 2022.

LILA DEAKLE County Clerk, Parker County Texas By Sharon Hall, Deputy Clerk. Applicant's Attorney: Deborah McGregor Cascino. 107 N Alamo ST, Weatherford TX 76086.

NOTICE TO CREDITORS

Notice is hereby given that original Letters of Administration for the Estate of RICHARD WALTER ROBERTS, DECEASED, were issued on September 14, 2022, in Cause No. 22P274, pending in the County Court of Parker County, Texas, to: TAMMY C. BRINKMAN. All persons having claims against this Estate which is currently being administered are required to present them to the undersigned within the time and in the manner prescribed by law.

c/o: W. Faye Murphree, Attorney at Law. 337 W. Main Street Azle, TX 76020.
DATED the 22 day of September, 2022. State Bar No.: 00792710. 337 W. Main Street, Azle, TX 76020. Telephone: (817) 270-0030; Facsimile: (817) 270-0085 fmlaw@earthlink.net

PUBLIC NOTICE OF TEST OF AUTOMATIC TABULATING EQUIPMENT

Notice is hereby given that the automatic tabulating equipment that will be used in the General Election held on November 8, 2022 will be tested on October 5, 2022 at 9:00 a.m. at Parker County Courthouse Annex, 1112 Santa Fe Drive, to ascertain that it will accurately count the votes cast for all offices and on all measures.

Jenise 'Crickett' Miller
Parker County Elections Administrator

AVISO PUBLICO DE PROBAR EL EQUIPO PARA TABULAR AUTOMATICAMENTE

Por lo presente se da aviso que el equipo para tabular automáticamente que se usará en la Elección general celebradas el 8 de noviembre de 2022 se probará el d de octubre de 2022 a las 9:00 am en el anexo de la corte del condado del Parker, 1112 Santa Fe Dr, para determinar si el equipo contará con exactitud los votos para todos los puestos oficiales y sobre todos los proyectos de ley.

Jenise 'Crickett' Miller
Firma del/dela Oficial

AZLE INSURANCE DIRECTORY



Albracht Harwood Insurance Agency Inc.

120 S. Main St #4, Springtown, TX 76082
albrachtharwoodinsurance.com
(817) 220-4700
2nd Location - Grapevine, TX



Amy Kaplan, Agent
813 E. Hwy. 199
Springtown, TX
817-220-5222

www.amykaplaninsurance.com

Voted Best Insurance Agency of Parker County 2015
Voted Best Agent of Parker County 2014, 2015 & 2016



Sorrow Family Insurance

Health • Life • Disability • Dental • Final Expense
Home • Auto • Boat • Motorcycle • Big Rig • Mobile Home

Our Family Helping Yours!

Paying Too Much For Insurance?

Call For Your Free Quote



Stephanie and Ed

817-444-1129
682-209-2027

www.SorrowFamilyInsurance.com



SHAYNE HOGLE 817-444-6389 HOGLE HOGLE

"OUR BEST POLICY IS PERSONAL SERVICE"

HOGLEINSURANCE.COM

Thank you for voting us Best Insurance Agency 2021



817-220-7682

Protecting Texans, Prioritizing customer service



905 E. Hwy. 199 Springtown, TX 76082



HALEY CARTER
817-444-1100
408 Boyd Ct. • Azle
www.HaleyCarter.com

PEOPLE'S CHOICE AWARDS 5 YEARS IN A ROW!
VOTED #1 INSURANCE AGENCY IN AZLE



BIG SAVINGS

MARES INSURANCE GROUP INC
208 W. MAIN, AZLE • 817-444-1491
dalemares@allstate.com

Allstate logo and text: Insurance and coverages subject to terms, qualifications and availability. Allstate Vehicle and Property Insurance Co. Allstate Fire and Casualty Insurance Co. Northbrook, Illinois 2010 Allstate Insurance Co. Se habla español.

Speaker opposes drive to end tenure; cartels designated as terrorist organizations

SPEAKER OPPOSES DRIVE TO END TENURE

House Speaker Dade Phelan, R-Beaumont, said Friday he opposes a push by Lt. Gov. Dan Patrick to end tenure for new professors at the state's public universities and to revoke it for faculty who teach critical race theory, the Austin American-Statesman reported.

Phelan, speaking at the Texas Tribune Festival, said the feedback he has gotten indicates ending tenure would make it more difficult for universities to recruit professors. That includes those with conservative viewpoints, who benefit from tenure's protection against being fired for openly sharing their ideology.

Brian McCall, chancellor of the Texas State University system and a former Republican member of the Texas House, said eliminating tenure would "put the state at such a disadvantage," the Statesman reported.

"Tenure exists for a reason, and that is to get thought out," McCall said. "We're not running Vacation Bible School. We're teaching physics and various things that

are science and not subject to certain opinions."

Critical race theory is a college-level approach to studying racism in society. It is not taught in Texas public schools below the college level.

CARTELS DESIGNATED AS TERRORIST ORGANIZATIONS

Amidst a growing national fentanyl crisis, Gov. Greg Abbott issued an executive order designating Mexican drug cartels as terrorist organizations.

"Fentanyl is a clandestine killer, and Texans are falling victim to the Mexican cartels that are producing it," said Governor Abbott. "Cartels are terrorists, and it's time we treated them that way."

The Biden administration recently awarded nearly \$1.5 billion to support efforts to address the opioid crisis and support individual recovery efforts. The Texas Health and



CAPITAL HIGHLIGHTS

By Gary Borders

Gary Borders is a veteran award-winning Texas journalist. He published a number of community newspapers in Texas during a 30-year span, including in Longview, Fort Stockton, Nacogdoches and Cedar Park. gborders@texaspress.com.

Human Services Commission is receiving nearly \$53 million as a result.

Fentanyl is the leading cause of death for Americans ages 18 to 45, according to the Centers for Disease Control.

DEADLINE NEARS TO REGISTER TO VOTE

Eligible Texans have until Oct. 11 to register to vote in the Nov. 8 general election. The secretary of state's office is running a "VoteReady" campaign to educate Texans about the ID requirements for voting in Texas, as well as ID requirements for those eligible to vote by mail.

"I want to ensure that all Texans are informed, prepared and ready to make their voices heard," said Secretary John Scott.

The race for governor highlights the ballot, but voters have plenty of other choices to make down the ballot. For

more information, go to votetexas.gov. Early voting runs from Oct. 24 to Nov. 4.

FIRE CREWS SENT FROM TEXAS TO OREGON

With no active wildfires reported in the state as of Sunday, thanks to recent rainfall, a Texas A&M Forest Service wildfire handcrew has been dispatched to the Cedar Creek Fire in Oregon. The 20-person crew is working in the Willamette National Forest on a fire that thus far has consumed more than 112,000 acres.

"Mobilizing the handcrew to out-of-state incidents provides an opportunity for qualified personnel and trainees to gain unique experiences," said Crockett Pegoda of the TFS. "In Texas, we were fortunate to receive support from other states this year. It's great that we can reciprocate that support."

There are 94 large fires burning across the United States with more than 15,000 wildland firefighters and support personnel committed to these incidents, according to the National Interagency Fire Center. Nearly three dozen TFS firefighters are responding to wildfires in

California, Montana, Oregon and Washington.

LIFE EXPECTANCIES DIP DURING COVID-19

A new CDC report indicates Texas had one of the largest dips in life expectancy, the San Antonio Express-News reported. Unsurprisingly, with more than 1 million COVID-related deaths to date, every state in the U.S. saw a decline in life expectancy in 2020, when the pandemic began.

In Texas, life expectancy dropped from 78.6 years in 2019 to 76.5 years in 2020. The decline in Texas was larger among men at 2.4 years than women at 1.7 years. The state ranked eighth in decline in life expectancy.

The Express-News interviewed Dr. Fred Campbell, an associate professor of internal medicine at the Long School of Medicine at UT Health San Antonio. He said it was a complex issue but that "accessibility and affordability of the state's healthcare system is primarily to blame."

"They died from the pandemic, and they died from self-abuse, and they died from a lot of other medical conditions that were not tak-

en care of properly," he said. "...When you have to make that decision about affording to go to the doctor and affording to feed your family, that's what happens."

COVID-19 CASES STILL WANING

The number of new COVID-19 cases reported in Texas during the past week dropped to 25,081 with 151 deaths, according to the Coronavirus Resource Center at Johns Hopkins University. The Texas Department of State Health Services reported 1,910 lab-confirmed COVID-19 hospitalizations as of Sunday, down slightly from the previous week.

TCEQ EXPANDS LEAD TESTING IN SCHOOLS

A new online portal will help schools and child-care facilities test their drinking water for lead, according to the Texas Commission on Environmental Quality.

The free statewide program "trains participants to collect samples, tests their drinking water for lead, and helps them take action to reduce lead in drinking water," according to the agency's news release.

SUBSCRIBE TODAY

Azle News
817-270-3340
www.azlenews.net

LAKE WORTH PREMIER EYE CARE

Dr. Jeffrey R. Crabtree

Backup Glasses Special

Attention Contact Lens Wearers!
Purchase a year's supply of contact lenses, get a pair of backup glasses (frame AND lenses)

\$99 ONLY

Select Frame Styles • Progressive Lenses \$149

6921 Foster Dr. Lake Worth, TX 76135
www.lakewortheye.com
817-439-9455

HOGLE Insurance Group

167 W. Main • 817-444-6389
www.HogleInsurance.com

Shaye Hogle "Our Best Policy is Personal Service" Hogye Hogle

4.65% 60 Month Rate Guarantee **4.0%** 36 Month Rate Guarantee
*\$10,000 Minimum Deposit

Life Insurance
NO MEDICAL EXAM UP TO \$250,000.00
Term and Permanent Policies
Guaranteed Premiums and Death Benefit
Company based in Fort Worth, Texas

Kid Scoop THE AWARD-WINNING PRINT & ONLINE FAMILY FEATURE

Find Kid Scoop on Facebook

© 2022 by Vicki Whiting, Editor Jeff Schinkel, Graphics Vol. 38, No. 44

What is Media Literacy?

Knowing the difference between news that really happened and news that is a made-up story is important. Today, information comes from all directions. It shows up in print, online, on the radio, on billboards ... all kinds of places!

Reading carefully and knowing the difference between real and false is called Media Literacy. Check out your media literacy skills with today's Kid Scoop page!

True news or not?

Today, you get information from lots of different places – the Internet, TV, newspapers, magazines, radio, and more. Some of it is true, and some of it is not. When something isn't real, we say it is "fake," "false," or "made up."

Clearly, our article about a fairy finding a leprechaun's gold is not true. It is made up and just for fun. But sometimes, it's not so easy to tell the difference between real (true) news and stories that are false.

True Clues

Here are three ways you can check to see if something you read is true or made up. Ask a librarian or another trusted adult to help you when you go online.

Answer the following questions when you read or hear a news item.

1. Does it say if it is fiction or if it is news?
Sometimes an exaggerated story is meant to poke fun. This is called **satire**.
 YES NO

2. Look at the source.
Notice where the news came from. In this case, it is from "Fairy Land News." Is that a real news reporting source?
 YES NO

3. Look at the byline.
The byline tells you the name of the person who supposedly wrote the article. Is Normen Gnome a real person?
 YES NO

What other clues tell you this is not a real article?

Caution! This article is not real news! It is just for fun!

Fairy Finds Leprechaun Gold
By Normen Gnome

FAIRYWOOD GLEN – Frida Fairy discovered what is believed to be a local leprechaun's gold hidden inside of a log in Fairywood Glen.

"I saw a little glow coming from inside the log," reported Frida. "So I walked up to investigate."

Frida said that it appeared a squirrel had chewed a hole in the bag of gold, causing several coins to fall out. She said it was the glowing coins that caught her attention.

"It's a leprechaun tradition, whoever finds the gold gets to keep it," said Shamus O'Clover, lawyer for the Fairywood Glen Leprechaun League.

What will Frida do with her new-found treasure? "First, I am going to have a party for all my friends!" exclaimed Frida.

"I'd also like to take a vacation to Candy Land," Frida added. "I've always wanted to see Rock Candy Mountain."

Friday Fairy and her lucky find.

Kid Scoop Puzzler

Prove it, Pinocchio!

It was easy to tell when Pinocchio wasn't telling the truth because his nose grew whenever he fibbed. But it's not always that easy. Sometimes you need **proof** to tell the difference between what is TRUE and what is FALSE.

Look closely at this picture to see which of Pinocchio's statements are TRUE and which are FALSE. Cross out the false statements. Circle the true ones.

My water bottle leaked!
I'm not wearing a hat right now!
My backpack is wet!
My backpack has pockets!
I'm not wearing a hat and bow tie.
Now there's a puddle on the floor!
I have over 300 big books in my backpack!

Kid Scoop Together

Three Bears Fact and Opinion

Read each of the following statements by the characters in *The Three Bears*. Decide if the character is sharing a **FACT** or an **OPINION**. Have a family member check your work and discuss your answers.

- "This porridge is not too hot nor too cold," said Goldilocks. "It's just right!"
 FACT OPINION
- "My chair is broken!" cried Baby Bear.
 FACT OPINION
- Mama Bear said, "It's a lovely day for a walk in the forest."
 FACT OPINION
- Papa Bear growled, "Someone has been sitting in my chair!"
 FACT OPINION
- "I'm getting sleepy," said Goldilocks after eating Baby Bear's bowl of porridge.
 FACT OPINION
- "This chair is too soft," said Goldilocks.
 FACT OPINION
- Baby Bear shouted, "Someone has been sleeping in my bed. And they're still here!"
 FACT OPINION
- "Going into unfamiliar places can be dangerous," said Goldilocks.
 FACT OPINION

Double Double Word Search

Find the words in the puzzle. How many of them can you find on this page?

ARTICLE
ATTENTION
BYLINE
COINS
FACT
FALSE
FUN
GOLD
LITERACY
MEDIA
NEWS
OPINION
PRINT
REAL
TRUE

G M M E G R E A L Y
E O E W N F E P R A
L A L D P I R M T W
I R N D I I L T X X
T T R O N A E Y R E
E I S T I N Y M B S
R C N G T N T J L
A L I R Z I C U A
C E O J U J P A F
Y N C N E W S I O F

Standards Link: Letter sequencing. Recognize identical words. Skim and scan reading. Recall spelling patterns.

FROM THE Kid Scoop LESSON LIBRARY

Media Gets Attention

Media is created to get people's attention. These people are the media's **audience**. Look through today's newspaper. What audience do you think the publisher of this paper is trying to reach?

Standards Link: Reading Comprehension: Analyze intention in written text.

Write On!

My Newspaper

Imagine you are publishing your very own newspaper. What would you call it? What stories would be on the front page today?

Fairy Tale Facts

Knowing the difference between a **FACT** and an **OPINION** is another skill that helps you decide if a news article is true or made up.

Two of the Three Little Pigs are sharing **opinions**, and one is making a statement of **fact**.

Do the math to find out which pig is sharing a fact. Odd-numbered answers are opinion, and even-numbered answers are fact. Circle the opinions in red crayon. Circle the facts in green.

Standards Link: Language Arts: Distinguish between fact and opinion.

17 + 4 = My little yellow straw house was the coolest house in Storybook Land!

13 + 6 = Houses made of sticks are my favorite because they're easy to build!

21 + 3 = My brick house is the only one still standing!

Ad Facts and Opinions

Find an advertisement you like in today's newspaper. Circle the **facts** in green. Cross out the **opinions**. What does the ad say if you read only the facts?

Standards Link: Language Arts: Distinguish between fact and opinion.

Our House food pantry receives \$500 donation from Atmos Energy

BY MADELYN EDWARDS
madelyn@azlenews.net

Atmos Energy Corporation Public Affairs Manager Pam Hughes Pak visited the Reno City Council meeting last week bearing a gift.

She carried an oversized check to the front of the council's boardroom during the meeting, as well as a practical, normal-sized check, in the amount of \$500 for Reno's Our House food pantry.

Our House founder Scott Passmore, who is also the city administrator, accepted the donation and posed for a photo with Hughes Pak and the big check.

Atmos Energy has an initiative called "Fueling Safe and Thriving Communities" to give back to the communities that the company serves, according to Atmos Energy's website.

Hughes Pak said one of the priorities of this initiative is feeding the hungry, and the company will donate to food pantries and programs, like Meals on Wheels, that help older adults and disabled individuals, to achieve that goal.

"We know that it's a real struggle when a bag of chicken that used to cost \$16 is \$32, and gas prices have doubled in a year," she said. "We want to do what we can to prepare for this winter and make sure everybody is going to be OK."

Passmore said that Atmos Energy donates every year to Our House.

"They're good people," he said.

The \$500 will go toward

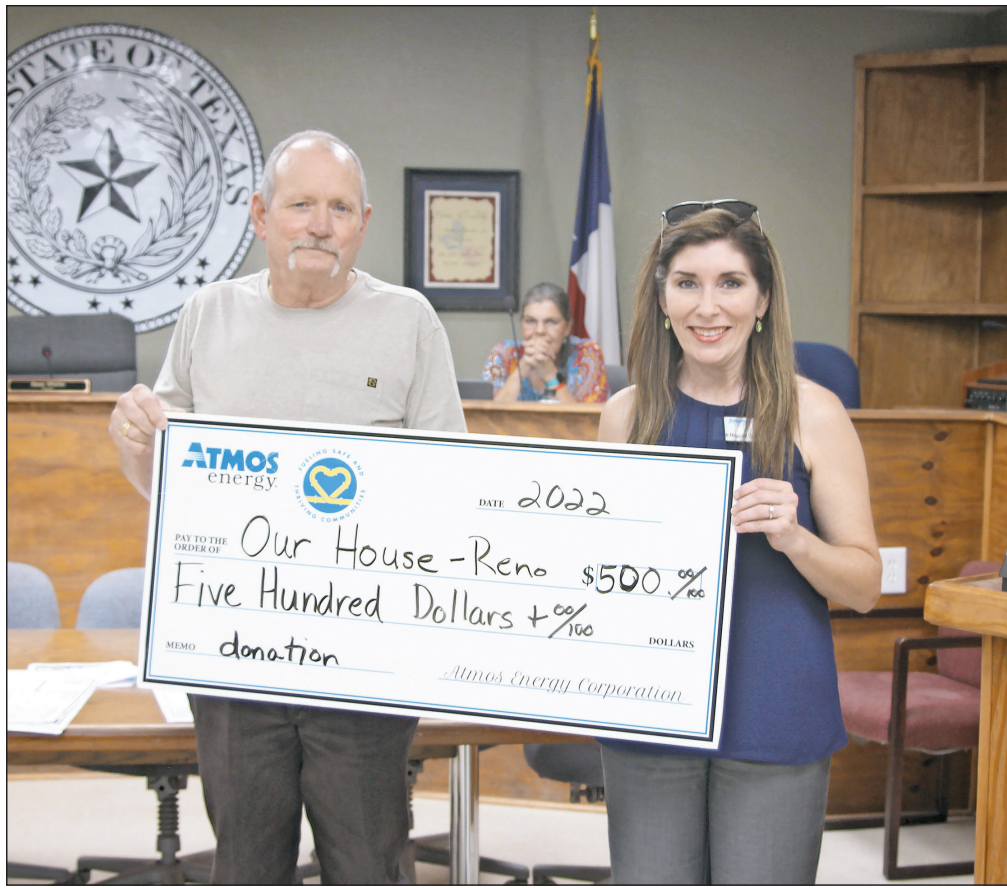


PHOTO BY MADELYN EDWARDS

Reno's Our House food pantry received a \$500 donation from Atmos Energy Corporation. Our House founder and Reno City Administrator Scott Passmore accepted the check from Atmos Energy Corporation Public Affairs Manager Pam Hughes Pak at the Reno City Council meeting on Sept. 19.

food and electricity costs, Passmore said. Because of the food pantry's use of freezers to keep certain foods cold, Our House generates a high electric bill. The food pantry volunteers don't use air conditioning when they work there, and Passmore noted that even using an exhaust fan costs \$150 per month.

"My electricity bill was \$951 last month," Passmore said. "So, I shut a cooler down."

Atmos Energy isn't the only organization that donates to Our House. Passmore listed a few of them, including the Bridgeport Police Department, that help especially around the holidays.

"It does help, every little bit," Passmore said.

Our House started when Passmore started passing out loaves of bread from the Salvation Army at Reno City Hall. Around 2016-17,

Our House became a 501(c)(3) nonprofit. The Epigraph reported last year that Our House spends \$2,700 a month on average on food, plenty of which is paid for by Passmore and his wife.

The food pantry is open on Thursday evenings from 5-7 p.m. at 1530 E. Reno Road, and the Tarrant Area Food Bank's mobile pantry comes to Our House on the second Tuesday of the month at 4 p.m.

National Night Out event strives to educate public

BY DON MUNSCHE
don@azlenews.net

Azle residents can drop by Central Park on Oct. 4 to meet people who protect the community during National Night Out.

The program will be held from 6 to 8 p.m. and mostly centered at the theater area, said Azle Police Department Lt. Dora Scudder, who's overseeing the event, which includes Azle police along with Azle Fire Department personnel. At the event, the public has a chance to ask questions about police and fire safety. This National Night Out includes free food and refreshments and will have a bounce house.

"Really, it's more of an informational event, so we will have a representative out of the Timberlake neighborhood," Scudder said. "We will have an area set up for our police department. We will have one of our patrol units. We will have TRWD, who's bringing one of their boats as a presentation. We will also have the fire department. We will have the (municipal) courts doing a presentation on traffic safety."

There also will be a company providing child safety kits, which will be DNA kits, that can help when there's a missing child and the DNA can be put into a database

for a missing child or a child abduction. Those kits are free.

Scudder, who has been at APS a little over five years and will be overseeing the event for the first time, said residents at National Night Out have in the past expressed concerns on everything from suspicious activity at a house to information about homeless people in the community.

"It just varies," Scudder said about resident concerns. "But it's an event that gives us a lot of information about things we're not aware of and it's simply just because of people that are scared to reach out. An event like this, it is just them talking to us in a normal conversation and then expressing their concerns and just getting information from us."

She said National Night Out has been effective in creating better relations between police and the public, noting residents are willing to speak to police and have one-on-one conversations.

Police are excited to have people visit at the event, she said.

"I'm excited to be (supervising) the event," she said. "This is something I've always been passionate about."

Street supervisor: Department faced challenges, moving forward with projects

BY DON MUNSCH
don@azlenews.net

Motorists along Ash Street can see upgrades continuing on the street.

Jimmy Duvall, storm water manager and street superintendent for the city of Azle, gave a report on stormwater and streets for the city at the Sept. 20 council meeting. This report included the Ash Street project.

He announced that concrete began being poured on portions of Ash Street two weeks ago that included the street and culvert box. He said the Ash Street project should be finished in February.

"With no inclement weather, we're making pretty good progress," he said.

He told council this year had been a "very challenging, to say the least" for his department, as he said his department went more

than 90 days with just two employees.

The city held two city-wide cleanups and started its second year for the "cease the grease" campaign in which people could bring their fried turkey grease to the city during the holidays.

"We collected over 30 gallons, so for the second year, I guess, that's pretty good," he said. "We take it back to Denton and turn it into diesel. That's pretty neat. We have a company come and do it and do it for free, so that's a good program for us."

Duvall discussed other activities in the last year, as well as work in the city, such as the two-inch overlay on Sandy Beach, which covered 11,944 square feet. The city completed 153,000 square feet of new streets this year, Duvall said.

"I'm working with the county, and we're doing a new process hopefully to elimi-



PHOTO BY DON MUNSCH
Box culverts are being created along Ash Street.



PHOTO BY DON MUNSCH
Concrete has begun to be poured on portions of Ash Street. This portion is near Lake Ridge Drive.

nate some of the cracking that everybody sees, because in our city, we just don't have curb and gutter and anytime you have channels, (there's) nothing to hold the street together, so we get a lot of cracking," he said.

The new process is called micro-compaction, and crews try to crack the street while there's still dirt and "we're packing the tar out of it," he said.

Duvall said the downtown area will see overlay projects on several streets and some other neighborhoods, such as Westlake Woods, Westlake Point and North Broadway, will receive overlaying.

Duvall talked about some new equipment that arrived in the last year, such as the pothole repair machine.



PHOTO BY DON MUNSCH
The city completed 153,000 square feet of new streets this year.

2022 LakeFest

SATURDAY OCT 1
FREE EVENT

92.1 HANK FM
REAL COUNTRY
921HankFM.com

1-10PM LAKE GRANBURY CONFERENCE CENTER

BENEFITING MISSION GRANBURY DETAILS AT 921HANKFM.COM



Azle football victory makes homecoming one to remember

Hornets defeat district rival Brewer Bears 54-0

BY JEFF PRINCE
jeff@azlenews.net

Homecoming is a fitting time for a big victory, with decades worth of alumni gathered to celebrate being a Hornet in A-Town.

Azle football coach Devon Dorris and his team met the challenge last Friday night, knocking off district rival Brewer 54-0 in a game filled with excitement and big plays.

Tyler Akers supplied more than his share of fireworks, catching an 80-yard touchdown pass from Jay Jones for the first score of the game and adding a 92-yard TD catch in the second quarter.

The Hornet defense was nearly immovable, as evidenced by the shutout score. Early in the game, Brewer faced fourth-and-one on its own 30-yard-line. The Bears gambled, ran the ball and made the first down. It would be one of the few times that the Hornet defense didn't stomp on the Bears.

On the next play, Azle sacked the Bears' quarterback. On the play after that, Garrin Graves intercepted a pass.

The victory was Azle's first of the season.

"Our players have continued to improve each week," Dorris said. "We are still working daily to be the best version of us. It was nice to see a positive result on the scoreboard after the game."

Jones ended the game with 229 yards passing and two touchdowns. Vance Guthrie led the Hornets in rushing with 63 yards.

On defense, Denim Fields, Braden Love and Drew Dorris led in tackles.

Azle kicker Braden Forsythe went six-for-six on extra point attempts.

Next up, the Hornets hit the road to play Northwest in another district clash.

UP NEXT

Northwest High School
Sept 30th



PHOTO BY JIM STEVENS

Kayla Cockerline expresses joy upon the announcement that she had been voted homecoming queen.

"Every district game is important, and this one is no different," the coach said. "We will look to have a great week of preparation and control what we can control — the Hornets."

FLAG FUN

Each time the Azle Hornets pushed the ball across the goal line, the flag runners did their thing.

Four flag runners — all of them seniors — carry flags that spell out A-Z-L-E and

run the length of the field to celebrate scores.

"Our general purpose is to keep the flag upright so everyone else can see and then keep it tight — a good formation," said Riley Russell.

The poles are long and somewhat heavy, and they must be carried in a certain way to ensure the flags fly properly and the poles are aligned vertically and spaced properly.

"Once you get the hang of it, it's pretty easy," said

Casey Morrison.

She dreamed of being a flag runner for years.

"I remember when I was little, and I came to the football games, I thought that it would be cool to do that," she said. "It just looked fun."

The captain of the flag runners is Lindsey-Kay Reichert, who doubles as a star on the rodeo team. She sees similarities between the two.

"It's really fun," Reichert said. "You get that team atmosphere again like you

do at the rodeo. You get to cheer everybody on. I love it."

DRUM FUN

Two drum majors with the Marching Green Pride were nominated for the homecoming court, which created an opportunity for Nathan Quick, senior, and Jocelyn Olund, sophomore. They served as the band's sole drum majors for the first half of the homecoming game, while senior drum

majors Adam Ruelas and Kayla Cockerline prepared for the announcement of the king and queen, as they were nominees.

Working as a drum major provides a bird's-eye view of the crowd from high atop a platform.

"Oh, my gosh, I love it," Quick said early in the game. "I love being up here in the

SEE HOMECOMING, PAGE 2A.



PHOTO BY JEFF PRINCE

From left, Riley Russell, Casey Morrison, Lindsey-Kay Reichert and Tatum Humphries earned the right to serve as flag runners this season.

HOMECOMING

FROM PAGE 1

first and second quarters. It's so exhilarating."

Olund was able to wrangle a drum major slot at such a young age thanks to a successful audition, she said.

"I had a lot of luck in my audition, and I tried really hard," she said. "It was nerve-racking."

KING AND QUEEN

Halftime began with a performance by the Brewer Bears marching band, followed by introductions of Azle's homecoming court.

Once the nominees for king and queen had been introduced, they stood on the field in front of a packed stadium and waited to see who would win the honors. The announcer's voice boomed over the microphone, asking for a drum roll before announcing the new homecoming king.

A snare drum played, the Emerald Dazzlers shook their pom poms, and the members of the band chanted, "Adam! Adam! Adam!"

Then, the announcer said, "Adam Ruelas!"

A moment later, the announcer asked for another drum roll to announce the queen.

"Kayla Cockerline!"

Azle's drum majors had won both crowns.

Students vote for the king and queen, and the marching band has more than 200 members. That's a lot of votes.

"It just shows the power of the band," Cockerline said. "Band is such a passionate community. We all love each other so much. It shows how much they are willing to pull together and do something like this for us."

When she isn't serving as a drum major, Cockerline plays clarinet in concert band and is a member of the National Honor Society

"I'm really happy right now," she said. "This is awesome. This is really cool."



PHOTOS BY JEFF PRINCE

From left, Nathan Quick, Adam Ruelas, Kayla Cockerline and Jocelyn Olund worked as a team to keep the band in time during homecoming.



From left, Jocelyn Olund and Nathan Quick take over as drum majors while Adam Ruelas and Kayla Cockerline were being introduced on the homecoming court.



Tyler Akers scored touchdowns on passes of 80 and 92 yards against Brewer.



Azle cheerleader Kaelynn De Moss goes tall with a little help from her friends.

Azle Christian Crusaders keep winning football games

BY JEFF PRINCE
jeff@azlenews.net

The latest team to be knocked off by Azle Christian's football squad was Perrin-Whitt, a solid team playing in front of its homecoming crowd on Sept. 23.

The Pirates played hard, but they faced a Crusaders team that appears to be on a mission to go all the way this season.

"Perrin is a really good team," said Azle Christian head coach Clayton Sanders. "It was their homecoming, so the atmosphere was pretty electric - so much so, a few of the game lights and scoreboard blew out midway through the second quarter."

The teams persevered despite the blown bulbs, and the game turned into something the coach described as a "defensive slugfest."

Azle Christian scored with one second remaining before

halftime to take a 20-18 lead.

The second half was a back-and-forth affair, with the Pirates scoring late in the game to go up 31-26.

Three minutes remained on the clock when Azle Christian's offense took the field, but it turned the ball over on downs. The Crusaders defense would need to force a turnover or a three-and-punt situation to have a chance at winning.

Sure enough, the defense stopped the Pirates on downs to give the Crusaders offense a chance to win the game.

Azle Christian put together a finishing drive and scored with 43 seconds left in the game to take the lead. The defense made another stand and forced a turnover, allowing the offense to take a couple of kneels to run out the clock.

"Perrin-Whitt played very hard, but we played a little harder," Sanders said.

Final score: Azle Christian 33, Perrin-Whitt 31.

Running back Camden Logan carried the ball 28 times for 282 yards and scored four touchdowns. On defense, he made 10 tackles.

Next up, the Crusaders (4-1) play at 7 p.m. Friday at home against Nazarene Christian (3-2).

"I expect it to be another close game," Sanders said. "We built our schedule to challenge us to get ready for district play. Although our district is small, it is loaded with extremely talented teams. We've been battle tested now three times and came out on top on the last two. I am of the philosophy that all of those close games will help us this week and in the future. Every year, every team is different. This year, we are built to go the distance. That's 100% our identity."



PHOTO BY JEFF PRINCE
Camden Logan and Gage Anderson helped the Crusaders win another close game.

Football Contest

WEEK 6

Spencer Norris was the only contestant who guessed correctly the winners of 10 of 11 games in this week's football contest. Norris won first prize of \$20. Kyle Gathright, a frequent winner this year, came in second by guessing the winners of nine games correctly. He earned second place and \$10. Determining the third-place winner was more difficult. Seven contestants guessed the winners of eight games, and determining the winner required relying on the tiebreaker game of TCU vs. SMU, which was won by TCU 42-34 for a total of 78 points. Eddy Swanzy picked the highest number of tiebreaker points at 68, and he won third place and \$5.

Azle vs. Northwest



AZLE HORNET VARSITY FOOTBALL SCHEDULE 2022			
DATE	OPPONENT	LOCATION	SCORE
8/26	Frisco Reedy	HOME	69-27 L
9/01	Grapevine	at GRAPEVINE	58-14 L
9/09	Denton Ryan	Home	63-14 L
9/16	Aledo	at ALEDO	55-20 L
9/23	Brewer	HOME	54-0 W
9/30	Northwest	at NORTHWEST	
10/07	OPEN	OPEN	
10/14	Saginaw	HOME	
10/21	The Colony	at THE COLONY	
10/28	South Hills	HOME	
11/05	Burl Centennial	at BURL CENTENNIAL	

Players Of The Week

OFFENSIVE

DEFENSIVE

SPECIAL TEAMS



Tyler Akers



Braden Love



Elias Ramirez

DONNA BRANSOM
Owner/Realtor
Cell: 817-925-8281
Office: 817-444-5100
donna@bransomrealestate.net
www.bransomrealestate.net
200 W. Main St., Azle

Results you can count on.

• Business Cards • Invoices • Banners • Magnets
• Envelopes • Color Copies • Letterheads
www.suttonprintingco.com
119 Industrial Ave. Azle, Next to Dollar General
817-444-2222

Azle News
Where Your Hometown Team goes for Hometown News and Sports
321 W. Main St. • Azle
817-270-3340
www.AzleNews.net

A Proud Supporter of All Our Azle Hornets!

Pinnacle Bank
MEMBER FDIC
THE WAY BANKING SHOULD BE

Care for Feline and Canine

EAGLE MOUNTAIN VETERINARY CLINIC

HOURS: M-F 8:00-5:30, Closed for Lunch 12:00-1:30 • Sat 8:00-12:00
Dr. Dustin Fields • 729 Boyd Road • Azle • 817-444-3289

AZLE DENTAL CARE

Go Big Green!
SCORE • SCORE • SCORE

Brooke Porter, D.D.S.
912 Boyd Rd. 817-444-1763
www.SmileGreat.com

Sports roundup

Roundup: Azle High cross-country runner takes first in Lewisville meet

BY DON MUNSCHE
don@azlenews.net

Azle High School senior **Barak Geary** placed first overall in the Rick McNeill Invitational Sept. 22 at Lake Park in Lewisville.

Both AHS boys and girls teams finished in second place.

AHS BOYS' RESULTS:

Geary grabbed first with a time of 17:29.40. Teammate and fellow AHS senior **Austin Gatewood** finished eighth with a time of 18:20.49. AHS junior **Jose Neri** finished 24th with a time of 19:03.11 and behind him at 25 for Azle was sophomore **Parker Huffaker** with a time of 19:03.72. Other AHS finishers: 35. **Connor Lawson**, 19:45.10. 42. **Juan Rios**, 20:12.21. 44. **Ryner Boenisch**, 20:16.96.

AHS GIRLS' RESULTS:

10. **Berkley Huffaker**, 22:25.53. 12. **Mckenzee Roberts**, 22:34.31. 15. **Reese Jeter**, 22:55.09. 20. **Audrina Montoya**, 23:16.45. 22. **Azucena Neri**, 23:40.03. 25. **Yasmeen Tejeda**, 24:09.64. 29. **Pella LaFever**, 24:32.23. 35. **Brooke Maples**, 24:58.80. "We go to Decatur on Saturday and hope to run fast there as we get closer to district," Azle cross-country coach **Keith Boenisch** said in an email. "District will be very close. We could be second, third or fourth in the varsity races and only the top three advance."

AZLE RODEO

Azle's rodeo team put on another good show at the weekly North Texas High School Rodeo Association Arena in Saginaw on Sept. 23-25.

Hevenli Scribner won the Poles competition, and **Laurel Allred** earned sixth place.

In the Walk-Up Goats competition, Scribner earned sixth place and **Caitlyn**



PHOTO BY JOH PHOTOGRAPHY
Hevenli Scribner wins poles

Colley won ninth.

In Goat Tying, **Allred** placed eighth.

Kasen Scarlato and **Jesus Leyva** excelled at Team Roping Heading, with **Scarlato** earning fourth and **Leyva** eighth. In Team Roping Heeling, **Leyva** earned fourth and **Scarlato** took eighth place.

Lindsey-Kay Reichert took second place in Barrels, and **Allred** finished in eighth.

In Chute Dogging, **Wyatt Allison** won third place, **Scarlato** earned fifth and **J.W. Gilbreath** took seventh place.

AZLE HIGH VOLLEYBALL

After a tough loss against **Saginaw** on Sept. 23, Azle coach **Elizabeth Snyder** met with her team and had a fairly intense conversation with her players. But she could find something to celebrate, too, after the game - hugs from her three children.

"It brings you back to life; it's a realization," she said about her kids.

She said she thought her players weren't "100% us" and that some discipline was lacking in certain junctures in the game against **Saginaw**. "And it caught us off

guard," she said. "And when you're playing a team that's pretty similar to you, you gotta stay disciplined and stick to your game, and we just kinda lost our game for a (while) and then came back into it a little late."

She said the team can learn from the mistakes and get mentally tougher and that they have to "uplift each other 100% of the time."

The **Lady Hornets** dropped the district match 3-1: 21-25, 25-21, 21-25, 23-25. **Kendall Locke** led Azle with 14 kills. **Makenna Dillow** led the **Lady Hornets** with 38 digs. Two Azle players were in double figures with assists: **Taylor Fischer** with 25 and **Makynna Hinkle** with 23.

Azle, currently tied for third in district with a 2-2 record and a 19-17 record overall, plays **Aledo** (3-1, 22-14) Tuesday.

AZLE CHRISTIAN VOLLEYBALL

The Azle Christian **Lady Crusaders** won their second district game of the season, sweeping **Eagle Christian** 3-0 on the road on Sept. 22.

The victory came on the heels of a district loss in a close 3-2 contest against **Waxahachie Prep** during the

previous week.

The **Crusaders** are 2-1 in district competition heading into Thursday's home game against **Cornerstone**, another district rival. The game starts at 6.

TENNIS PREVAILS

On Sept. 20, the Azle tennis team beat **Saginaw** 14-5 to win its second district match in a row.

The previous week, Azle tennis had beaten **Northwest** 12-7.

The victory over **Saginaw** keeps the **Hornets** in the hunt for a playoff berth with one regular season match remaining - **Brewer** on Oct. 3.

JUNIOR HIGH SCHOOL VOLLEYBALL

The eighth grade **A Azle Junior High Lady Hornets** took on **Wilkie** in a hard-fought game that went to three sets with the **Hornets** coming up short at the end, said coach **Kari Crosby**. The **Hornets** lost the first set, but their serve receive improved tremendously in the second set with **Rachel Harder** taking the majority of the passes. **Olivia Bridges** and **Ellie Bennett** were both great under pressure serving and



PHOTO BY JEFF PRINCE
Brent Burgess

helped the girls secure the win in that set. The coaches definitely see improvement each week and look forward to getting back into the gym to work.

For the eighth grade **B** team at **AJH**, the team played its best last night against **Wilkie** but came up short, coach **Misty Merck** said. The team is really starting to gel and players are improving each game. The highlights of the game include **Taylor Merrill's** serves and **Stephanie Solis's** sets. Both girls have elevated their play

in the past couple of games. "I am proud of their effort last night and looking forward to seeing what they can do against **Mineral Wells** this week," **Merck** said.

SEVENTH GRADE A TEAM GAME

The Azle **Lady Hornets** took on **Wilkie Middle School** on Sept. 22. Top servers were **Madison Holleman** and **Bailey Seward**. Top players were **Finley Hard** and **Rylie Brekel**, said coach **Kendra Longbrake**.

Jeff Prince contributed to this story.

STATEMENT OF OWNERSHIP MANAGEMENT AND CIRCULATION (All Periodicals Except Requester Publications)

Publication title: The Azle News.....Publication No.: 546-920
Date of filing: 9/29/22Issue Frequency: Weekly
No. of issues published annually: 52
Annual subscription price: \$40.00
Complete Mailing Address of Known Office of Publication: 321 West Main Street, Azle, Texas 76020
Contact person: Kim Dorado • Telephone: (817) 270-3340
Complete mailing address of Headquarters of General Business Offices of Publisher: 321 West Main St., Azle, Texas 76020
Full names and complete mailing address of Publisher, Editor and Managing Editor: Kim Ware, 321 West Main St., Azle, Texas 76020; Don Munsch, 321 West Main St., Azle, Texas 76020
Owner (name and address of corporation and names and addresses of stockholders owning or holding 1 percent or more of total amount of stock): Hyde Media Group, LLC, 827 W. Pearl Street, Granbury, Texas 76048
Known Bondholders, Mortgagees, and Other Security Holders Owning or Holding 1 percent or more of total amount of bonds, mortgages or other securities: Roberts Publishing Co., 394 NE 1250, Andrews, Texas 79714 • Publication title: The Azle News • Issue date for circulation data below: 9/21/22

Extent and nature of circulation	Average No. Copies Each Issue during preceding 12 months	Actual No. Copies of Single Issue published nearest to filing date
15. a) Total Number of Copies (net press run)	2,869	2,800
b) Paid circulation (by mail and outside the mail)		
1. Mailed Outside-County Paid subscriptions stated on Form 3541 (include paid distribution above nominal rate, advertiser's proof copies, and exchange copies)	183	169
2. Mailed In-County Subscriptions stated on PS Form 3541 (include paid distribution above nominal rate, advertiser's proof copies and exchange copies)	959	912
3. Paid distribution outside the mails including sales through dealers and carriers, street vendors, counter sales and other paid distribution outside USPS	584	555
4. Paid distribution by Other classes mailed through the USPS	—	—
c) Total Paid Distribution	1,717	1,636
d) Free or Nominal Rate Distribution by Mail and Outside the Mail		
1. Free or nominal rate Outside-County copies included on PS Form 3541	16	30
2. Free or nominal rate In-County copies included on PS Form 3541	17	82
3. Free or nominal rate copies mailed at other classes through the USPS	—	—
4. Free or nominal rate distribution outside the mail (carriers or other means)	43	33
e) Total Free or nominal rate Distribution	71	145
f) Total Distribution	1,786	1,781
g) Copies Not Distributed	1,083	1,019
h) Total	2,869	2,800
i) Percent Paid and/or Requested Circulation	96%	92%
16. Electronic Copy Circulation		
a) Paid Electronic Copies	251	249
b) Total Paid Print Copies + Paid Electronic Copies	1,932	1,885
c) Total Print Distribution + Paid Electronic Copies	2,038	2,030
e) Percent Paid (Both Print & Electronic Copies)	95%	93%

I certify that 50% of all my distributed copies (electronic and print) are paid above a nominal price.

Publication of Statement of Ownership: If the publication is a general publication, publication of this statement is required. Will be printed in the September 28, 2022 issue of this publication.
Signature and title of editor, publisher, business manager, or owner:

Kim Ware, publisher. Date: 09/28/22

I certify that all information furnished on this form is true and complete. I understand that anyone who furnishes false or misleading information on this form or who omits material or information on the form may be subject to criminal sanctions (including fines and imprisonment) and/or civil sanctions (including civil penalties).



PHOTO BY JEFF PRINCE
Jacelynn Hammond



PHOTO BY JIM STEVENS
Azle High libero Makenna Dillow, above, prepares to serve the ball against Saginaw.



PHOTO BY JIM STEVENS
Cameryn Hoskins and Brittany Cato attempt to block the ball during the game.

Azle's best inducted into Athletic Hall of Fame

Jim Bob Nation, Don Hood and Stephanie Parker were honored for their outstanding contributions



BY JEFF PRINCE
jeff@azlenews.net

Azle ISD annually inducts a small group of former athletes into its Hall of Fame, and the most recent honorees received their awards on Sept. 24 to much fanfare.

Jim Bob Nation (Class of 1935), Don Hood (head football coach at Azle High School 1958-1961) and Stephanie Parker (Class of 2007) were honored with speeches and plaques that will hang with the rest of the best. Nation was honored posthumously, and many of his relatives were in attendance.

"It's a huge honor to be alongside all the people that I admire on the (Hall of Fame) board," Parker said.

She grew up in Azle and played sports consistently.

"I remember looking up to a lot of those people on that board," Parker said. "I remember watching some of them play and hoping one day as a kid that I could grow up to be like them. It's really cool to be sitting alongside people of that stature. It's really an honor."

One of Parker's best sports was softball, and she remembers playing at Jim Bob Nation Field of Dreams.

"I remember seeing that



PHOTOS BY JEFF PRINCE
Hall of Fame alumni gather for the annual induction of the new honorees.



PHOTOS BY JEFF PRINCE
Azle ISD Athletic Director Becky Spurlock praised the hard work of the Azle High School culinary students, who prepared a large spread for the alumni.

name all the time," she said. "It's kind of cool to see where that name came from. I know who Jim Bob Nation is now."

She indicated that her time at Azle ISD spent playing sports helped her in many ways after high school.

"Sports teaches you how to be a leader, and you learn work ethic, determination and what to do when you face adversity," she said.

"Sports teaches you a lot."

CULINARY BLISS

The Hall of Fame reception was preceded by a luncheon prepared by Azle High School culinary students. They prepared a large spread of food that included fruits, a variety of meats, sliders, brownies, peanut butter truffles, banana pudding and deep fried-Oreos.

"I'm just really proud of

them," culinary arts teacher Samantha Baker said about the students.

Freshman student Ryder Isaacson-Townsend and his culinary compadres had arrived at 8 a.m. Saturday to prepare food for the 2 p.m. luncheon.

"It was kind of hard, I'm not going to lie to you," he said. "We were on our feet most of the time. People in the back washing dishes for

multiple hours. It was pretty hard to get all this stuff down here. In the end, it was worth it."

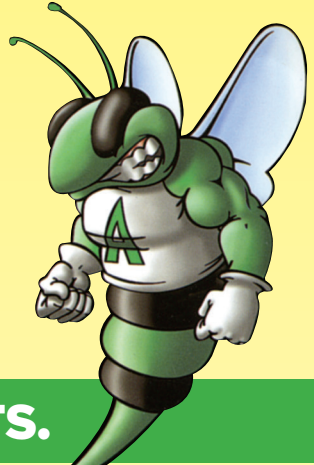
After the crowd moved to the gymnasium for the speeches, the kids began cleaning up their mess - and preparing to-go boxes.

"We will clean all this up, and they will take leftovers home, which they've been looking forward to," Baker said.



Congratulations

TO THE AZLE ISD 2022 ATHLETIC HALL OF FAME INDUCTEES!



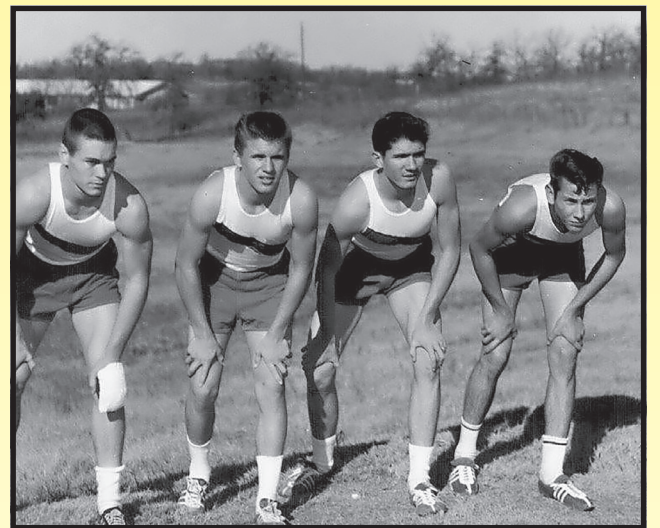
IT'S AN HONOR TO CELEBRATE YOUR ACHIEVEMENTS.



Jim Bob Nation



Stephanie Parker



Don Hood

WE ARE AZLE

Azle Independent School District
300 Roe Street • Azle
817-444-3235 • www.azleisd.net



Don Hood



Don W. Hood began his coaching career in Azle after graduating from Abilene Christian College and became head coach in 1958. He never had a losing season.

From 1958 to 1961, Hood's record was 30-10-2. The Hornets went from being known as "Easy Azle" to a hard-nosed disciplined squad that achieved its first playoff victory and won its first district titles in 1959, 1960 and 1961. The 1960



PHOTO BY JEFF PRINCE
Don Hood with his Azle Hall of Fame plaque.



PHOTO BY JEFF PRINCE
Don Hood and his family at his induction into the Hall of Fame.

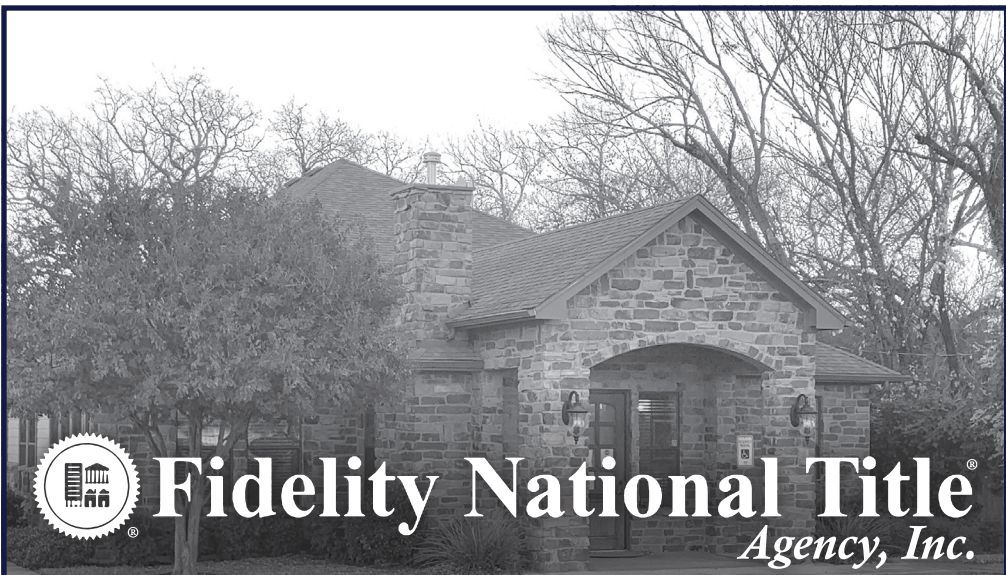
team was Azle's first to go undefeated in the regular season and the team scored 367 points while allowing just 87.

Hood also led the Hornets to success in cross-country and track and field. In 1958, the boys cross-country team won the state champion-

ship, becoming Azle's first team to earn a state title. The cross-country team was comprised mostly of football players who competed on Friday nights and got up early to race on Saturday mornings.

After leaving Azle in 1961, Hood focused his career on


track and field. At the collegiate level, he guided Abilene Christian University to eight NCAA Division II national championships and two NAIA championships during 11 seasons. In all, Don Hood coached 108 NCAA All-America athletes and 51 NAIA All-America athletes.




Fidelity National Title Agency, Inc.

Katie Thomas, Escrow Officer Branch Manager
224 W. Main St. • Azle, Texas 76020
817-270-0948 • Fax 817-270-0543
Attorneys: Rector & Eargle, PC

Congratulations Azle 2022 Hall of Fame Inductees!



Care for Feline and Canine



HOURS: M-F 8-5:30, Closed for Lunch 12-1:30 • Sat 8-12
Dr. Dustin Fields • 729 Boyd Road • Azle
817-444-3289



Ride with the #1 car insurer in TEXAS.

Haley Carter, Agent
408 Boyd Ct.,
Azle, TX 76020
Bus: 817-444-1100
haley@haleycarter.com

With competitive rates and personal service, it's no wonder more drivers trust State Farm®.

Like a good neighbor, State Farm is there.
CALL FOR A QUOTE 24/7



State Farm Mutual Automobile Insurance Company
Bloomington, IL



WE MAKE YOUR VISIT TO THE DENTIST A FUN EXPERIENCE!

- We treat every member of the family.
- Nitrous Oxide & Anti Anxiety medication available without excessive fees!
- Dental Implants from start to finish!
- The Latest High Tech equipment for comfortable, efficient & detailed exams.



JOE S. MCCREARY, D.D.S.

209 Roe Street, Azle
817-444-3209



Stephanie Parker



ing collegiate volleyball, where she was a two-year captain for the Southwestern Oklahoma State Bulldogs volleyball team. She graduated magna cum laude from SWOSU with a bachelor's degree in exercise science, and then, she continued her post graduate studies at the University of Texas Medical Branch, where she earned her doctorate.

Dr. Stephanie Parker, who received a doctorate of physical therapy in 2016, has been excelling in athletics since she could walk. She first picked up a baseball bat at 4 and had added basketball and volleyball to her repertoire by the third grade. She became AISD's first recorded female pole vaulter in the eighth grade. Some of Parker's accolades include:

Azle High School's most steals and rebounds in a single women's basketball game; first-team All-District and local MVP in volleyball and basketball; selected for the Chicken Express All-Star Basketball Classic; and voted Azle High School's Most Athletic for her performance in volleyball, basketball and softball.

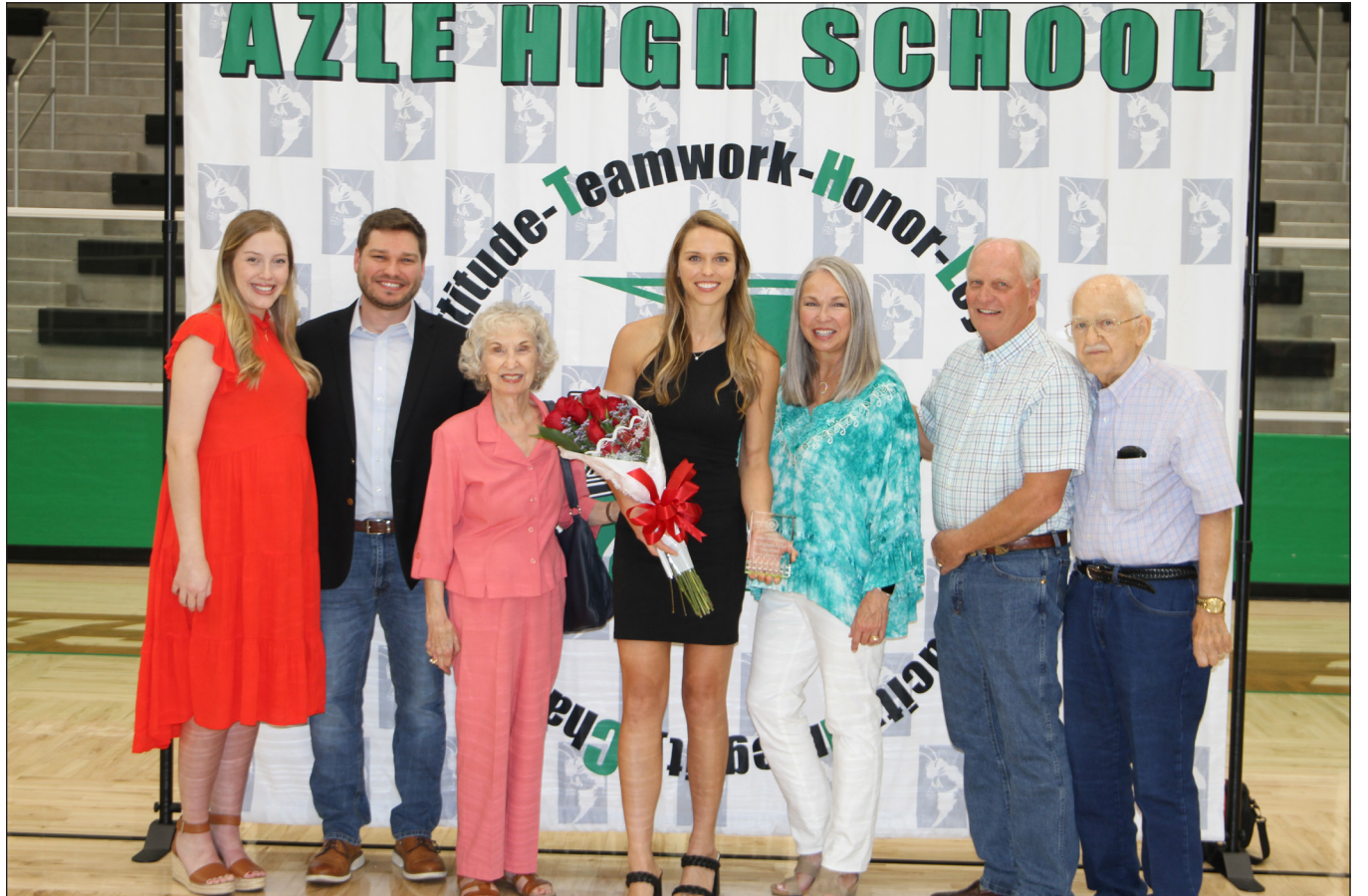
In addition to being athletic, Parker achieved many academic awards and graduated 12th overall in her class of more than 350 students in 2007.

Parker continued her athletic and academic ventures well past high school, play-

Parker has continued pursuing her athletic instinct by becoming an avid hiker, photographer and competitive dodgeball player. She has been invited to the USA Women's Dodgeball Combine two years in a row and won the women's one-on-one tournament at a national level. She continues to compete in the dodgeball foam division, and her competitive team has taken two gold medals at various USA tournaments in 2022.

Parker continues to seek out adventure and push her body to the limits. She has completed some of the most challenging and notable hikes in the country, including Oahu's Stairway to Heaven, Kauai's Na Pali Coast and Utah's Angel's Landing and The Narrows. She has day-hiked rim to rim at the Grand Canyon and summited the highest peak in Southern California.

Parker specializes in orthopedics and sports physical therapy and enjoys sharing her knowledge and love of human movement with others. Her passion for athletics continues to radiate in all that she does.



PHOTOS BY JEFF PRINCE

Dr. Stephanie Parker's family gathered to honor her induction into the Azle Hall of Fame.



Dr. Stephanie Parker was presented with roses.



Dr. Stephanie Parker with her plaque from the Azle ISD Athletic Hall of Fame.

A/C & HEAT BY RUSSELL

Authorized Dealer: Rheem • Comfortmaker • Amana

SERVICING ALL BRANDS

SALES • SERVICE • INSTALLATION

Residential & Commercial

Time for your HEATER TUNE UP!

817-270-8811 office
817-239-8710 cell

Russell Reed, Owner
TACILBO17933C

at HOME ROOFING & METAL BUILDINGS

TODD HUSE • 817-304-4224

RESIDENTIAL AND COMMERCIAL

ALL TYPES OF ROOFING

Experts in Metal, Composition & Repairs

- Free Estimates
- Insurance Claims Assistance
- Emergency Storm Repairs
- 24-Hour Assistance
- 3-Year Labor Guarantee
- Local References

WE'LL BE HERE AFTER THE STORM.

PAUL S. CRABTREE, CPA, PLLC

CRABTREE

TAX, ACCOUNTING & BUSINESS ADVISORY

OFFICE HOURS:
Mon - Fri 8:30 AM - 5:00 PM
Saturday by appointment only.

A Member of the American Institute of Certified Public Accountants

Paul Crabtree, CPA, PLLC

2nd floor of the BBVA Compass Bank Building
150 Industrial Ave. Suite 201 Azle

BRACE

CHIROPRACTIC & WELLNESS CENTER, L.L.C.

Dr. Jessica Brace, D.C., C.C.S.P.

Dr. Matt Mishio, D.C.

Azle ISD Hall of Fame Inductee

In your honor, we celebrate all your achievements and inspiration to so many in our community.

Congratulations

JIM BOB NATION

Hours: Mon. 9am-12pm & 2pm-6pm • Tues. 9am-12pm & 2pm-5pm
Wed. 9am-12pm & 2pm-7pm • Thurs. 9am-12pm & 2pm-6pm • Fri. 8am-1pm

www.bracechiropractic.com

237 W. Main St. • Azle • 817-444-2170

UPS • FedEx

Sutton PRINTING

Digital & Gloss Full Color Business Cards
Gloss Full Color Post Cards
Copy Paper • Yard Signs • Full Color Banners

250 Digital Business Cards ONLY \$29.99

119 Industrial Ave. Azle, Next to Dollar General
817-444-2222

418 E Hwy 199 Springtown
817-220-2101

GET QUOTES SuttonPrinting@aol.com



Jim Bob Nation

Jim Bob Nation graduated from Azle High School in 1935 after establishing himself as a star athlete in every sport. Baseball, though, was his true love. Nation had a relative living in Long Beach, California, near Compton College. The university was seeking baseball players, and Nation's uncle invited him to move in while playing baseball at Compton. Nation played four years against some of California's best players, including Jackie Robinson. Nation, a pitcher, said he struck out Robinson once, but Robinson hit a home run off him during his next at-bat.

Nation led Compton in batting and pitching, and the team won its conference three of four years with Nation.

In 1940, Nation was invited to begin his professional baseball career with the New York Yankees. Nation played with Yankees minor league teams and did well until the Japanese attack at Pearl Harbor changed the world. Nation enlisted in the Army Air Corps while sports leagues paused activities during World War II.

Nation returned home after the war, suffered an injury while working at the family farm and gave up professional sports.

Instead, he became a leading proponent of local youth sports, helping establish a baseball league for kids with the Azle Lions Club. Nation helped with pee-wee football, announced the high school football games, worked as a volunteer fire-



fighter and attended most every Lions Club meeting. He loved working with the kids at batting practice and showing them how to pitch.

Nation said his main ambition was to teach kids good sportsmanship.



Nation was honored posthumously, and many of his relatives were in attendance.



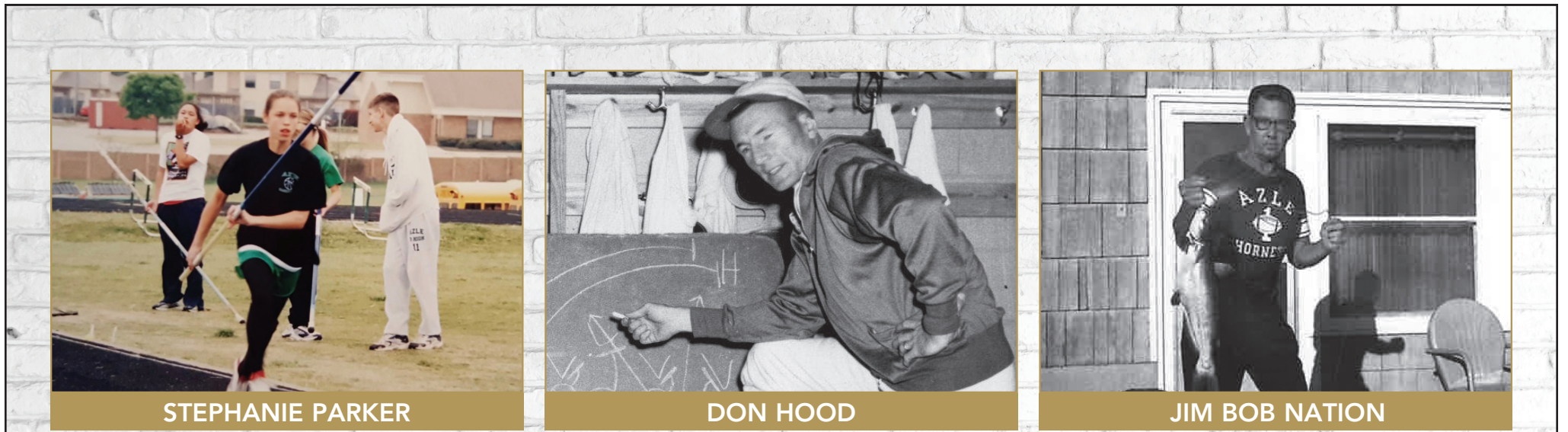
PHOTO BY JEFF PRINCE
Jim Bob Nation's family was there to accept his award posthumously. From left: Marcus Merrell, Nancy Jay, Kay Nation, Charles Nation, Landon Adams, Misty Adams, Mishay Adams, and Matthew Adams.

Wood Floors
Ceramic Tile

Warehouses full of ROLLS and REMNANTS for every room in your home! Quality, large selection, and great prices ... are still found at ...

Larry's CARPET
SHOWROOM & WAREHOUSE
www.LarrysCarpet.com "Since 1979"
8305 Jacksboro Hwy. • 817-237-7871

VISA MasterCard



CONGRATULATIONS TO THE 2022 HALL OF FAME INDUCTEES!

AZLE 316 N.W. PARKWAY
pinnbanktx.com • 817.444.2504



Pinnacle Bank
THE WAY BANKING SHOULD BE

Congratulations to

AZLE ATHLETIC HALL OF FAME INDUCTEES

Stephanie Parker • Don Hood • Jim Bob Nations

AZLE DENTAL CARE

Proudly Helping Azle Smile for over 20 Years!

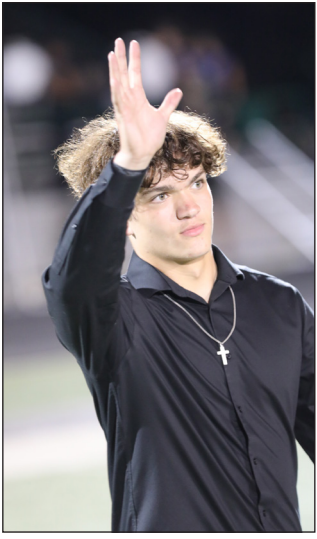
Brooke Porter, D.D.S. & Associates
912 Boyd Road • 817-444-1763

www.SmileGreat.com



Azle High School Homecoming

COURT PHOTOS BY JIM STEVENS



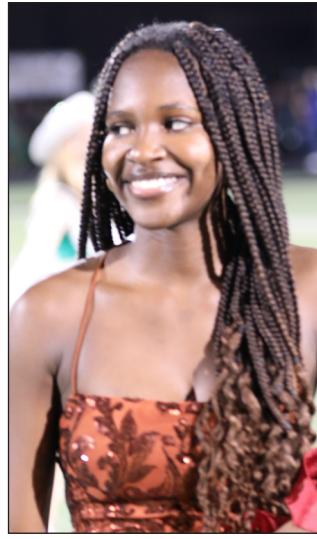
Freshman Prince
Andrew Stewart



Freshman Princess
Addison Dorris



Sophomore Prince
Ethan Bartlett



Sophomore Princess
Keren Iya



Junior Prince
Easton Hill



Junior Princess
Shree Patel



PHOTO BY JEFF PRINCE
The crowd stands for the national anthem.



PHOTO BY JEFF PRINCE
Azle High School cheerleaders line up for a portrait.

Ace of Azle

505 N. Stewart, Azle • 817-270-5600

Azle Dental Care

Brooke Porter, D.D.S.
912 Boyd Road, Azle • 817-444-1763

Azle Manor

721 Dunaway Lane, Azle • 817-444-2536

Azle News

321 W. Main St., Azle • 817-270-3340

Comet Cleaners

113 Speer, Azle • 817-444-4920

Eagle Crest Villa

113 Denver Trail, Azle • 817-444-3249

Haley Carter

State Farm Insurance

408 Boyd Ct., Azle • 817-444-1100

JBI Electrical Systems, Inc.

5631 Stratum, Fort Worth • 817-589-1545

Joe McCreary, D.D.S.

209 Roe Street, Azle • 817-444-3209

Joe Rider Propane

7808 Jacksboro Hwy.
Ft Worth • 817-237-3325

Ladybug Quilt Fabric

519 N. Stewart St., Azle • 817-455-8983

Pinnacle Bank

316 N.W. Parkway, Azle • 817-444-2504

Margaret Cantu Salon Galleria

601 W. Main St., Azle • 817-691-2147

Rural Gas Supply

140 W. Main St., Azle • 817-444-4613

Sutton Printing

119 Industrial Ave., Azle • 817-444-2222

Texas Designer Flooring

500B N. Stewart Ste. 1, Azle • 817-752-2065
TexasDesignerFlooring.com

The National Bank of Texas

405 Commerce St., Azle • 817-444-4235

The merchants on this page support our youth in all their activities.
Support them by shopping at home – every chance you get.

FOOTBALL CONTEST

• 2022 •

1st PLACE \$20 **2nd PLACE \$10** **3rd PLACE \$5**

Winners can pick up their checks at the Azle News office after Thursday.

• OFFICIAL RULES •

There are 11 games listed in advertisements on this page. To enter, pick the winner and write the name of that team in the appropriate blank on the official entry form.

Mail or deliver the form to: Azle News at 321 W. Main St., Azle, Texas 76020, by **1:00 PM FRIDAY**.

(Limit one entry per person).

Entries will be tabulated weekly and the results published in that week's issue of the Azle News. The first place winner each week will receive \$20, the second place winner \$10 and the third place winner \$5. The tie breaker will be used to determine placings. In case of a tie, the money will be divided equally.

To pick the tie breaker, predict the total number of points in the selected game and enter in the appropriate space on the official entry form. All entries become the property of the Azle News. Please write clearly and be sure to enter your pick in the correct blank. Second tiebreaker decided by whoever picks Azle and Springtown games correctly.

AZLE OFFICIAL ENTRY FORM

Deadline for entries 1 p.m. Friday!

1. _____
 2. _____
 3. _____
 4. _____
 5. _____
 6. _____
 7. _____
 8. _____
 9. _____
 10. _____
 11. _____

Tie Breaker: 9 Score _____

Name: _____

Address: _____

City: _____

Phone: _____

No photocopies please!

GO BIG GREEN!
SCORE • SCORE • SCORE

Brooke Porter, DDS
 912 Boyd Road • 817-444-1763
SmileGreat.com

10. Jacksonville Jaguars at Philadelphia Eagles

AZLE DENTAL CARE



Fast • Efficient • Affordable!

PLUMBING DOUBLE SERVICES

2. Connally at Springtown

- Drain Cleaning
- House Re-pipes
- Video Drain Inspection
- Water Heater Changeouts
- Commode Repair and Replacement
- Total Service Plumbing

817-444-3100
 708 Northwest Pkwy, Azle
 www.DoubleLPlumbingService.com

TRINITY HOME GROUP

JPR
 EXCELLENCE EXPECTATIONS

6. West Virginia at Texas

Specializing in
Residential, Farm and Ranch
817.941.6454
 thetrinityhomegroup.com
 344 NW Parkway, Azle TX 76020



3. The Colony at Aledo

MrJims.Pizza
It's the Crust!

NOW OPEN


2 MEDIUM 2 TOPPING PIZZA \$9.99

Only one offer/coupon per item. Not valid with third-party delivery services. Offer good at participating stores only. Delivery charge and minimum may apply. Customer responsible for all applicable taxes.

USE THIS CODE WHEN ORDERING ONLINE **WGD**

Open Sun - Thurs 10:30 am - 9 pm,
 Fri-Sat 10:30 am - 10 pm
416 Commerce St., Suite 3, Azle
817-612-0074
 www.mrjims.pizza

Go ahead & smile!



PREVENTATIVE • RESTORATIVE • COSMETIC

Crowns & Bridges • Whitening • Dentures
 Dental Veneers • Implant Restoration
 Cosmetic Dentistry • Pediatric Dentistry & More...

Dr. Joseph McCreary, III
FAMILY & COSMETIC DENTISTRY

11. Chicago Bears at New York Giants
Family dentistry for all ages.
Serving the Azle, Texas area
209 Roe Street, Azle TX 76020
817-444-3209

TACO TIME MEXICAN GRILL

Biscuits 1. Azle at Northwest

Bacon	\$1.99
Sausage.....	\$1.89
Sausage & Cheese.....	\$2.29
Sausage & Egg.....	\$2.29
Sausage & Bacon.....	\$2.29
Sausage, Egg & Cheese.....	\$2.99
Sausage, Egg, Cheese & Bacon.....	\$3.29

Burritos

Sausage, Egg & Cheese.....	\$2.99
Bacon, Egg & Cheese.....	\$2.99
Chorizo, Potato & Egg.....	\$2.99
Potato, Egg & Cheese.....	\$2.99

12555 FM 730 S. • 817-270-5430
11652 FM 730 N. • 817-444-3947
 Mon - Sat Breakfast: 5:30am - 10:00am
 Lunch & Dinner: 10:00am - 7:30pm

BREAKFAST Breakfast Burritos, Tacos, Biscuits

1 Year Subscription

Azle News

Name _____
 Address _____
 City _____
 State _____
 Zip _____
 Phone _____

9. Washington Commanders at Dallas Cowboys

<input type="checkbox"/> \$40.00	<input type="checkbox"/> \$46.50
IN-COUNTY	OUT-OF-COUNTY
Tarrant, Parker & Wise only	Texas and elsewhere
<input type="checkbox"/> \$36.50	<input type="checkbox"/> \$25.00
SENIOR CITIZEN	ONLINE ONLY
60 years and older	Azle News
Tarrant, Parker & Wise only	

Clip and mail w/payment check to:
 321 W. Main Street,
 Azle, TX 76020

Local Delivery • Metro Delivery • UPS

Sutton PRINTING

119 Industrial Ave.
 Next to Dollar General
817-444-2222
 418 E Hwy 199 • Springtown
817-220-2101

Digital & Gloss Full Color Business Cards
 Gloss Full • Color Post Cards
 Yard Signs • Copy Paper
 Full Color Banners

5. Carter Riverside at Lake Worth

250 Digital Business Cards ONLY \$29.99

GET QUOTES
SuttonPrinting@aol.com


PAUL S. CRABTREE, CPA, PLLC

CRABTREE

4. Saginaw at Brewer

Tax, Accounting & Business Advisory

Office Hours:
 Mon - Fri
 8:30 AM - 5:00 PM
 Saturday by appointment only.



Paul Crabtree, CPA, PLLC

A MEMBER OF THE AMERICAN INSTITUTE OF CERTIFIED PUBLIC ACCOUNTANTS

2nd floor of the
 BBVA Compass Bank Building
150 Industrial Ave.
Suite 201, Azle

Whether you're starting a business or have been in business for years...

Reliable Year-Round TAX SERVICES

- Tax Preparation 1040, 1065, 1120, 1120S, and 941
- Filing Consultation
- Payroll
- Tax Professional
- Tax Extensions
- Free Professional Notary Public

7. Texas Tech at Kansas State

1355 NW Pkwy, Ste. 104
817-270-2574

WE'RE TEXAS IN A BANK



Sharing your community, your values and your dreams.

8. Oklahoma State at Baylor

Pinnacle Bank

AZLE 316 N.W. PARKWAY
 817.444.2504 • pinnbanktx.com

Azle News DEVOTIONAL PAGE The Springtown Epigraph

Azle News
AzleNews.net

The Springtown Epigraph
Springtown-Epigraph.net

TRINITY SELF STORAGE
SECURITY GATE 24 HOUR ACCESS

Office next door at Trinity Commerical Contractors

RV, Trailer & Boat

200 Walnut Creek Ave.
817-444-8885

TACLA014745E RRC#11349

J&E
AIR CONDITIONING & HEATING

817-220-4506

1825 W. Hwy. 199 | Springtown, TX 76082

Help readers find your Business.

Call **817-270-3340**

Your Ad Here!

Call Johnna to reserve this space.
817-270-3340

Comet CLEANERS
"Serving Azle & The Community Since 1986"

113 SPEER ST
817-444-4920

Thank you for your support!

Subscribe!

Pick your subscription:

- \$40 IN-COUNTY Tarrant, Parker & Wise only
- \$36.50 SENIOR CITIZEN 60 Years and Older Tarrant, Parker & Wise only
- \$25 ONLINE
- \$46.50 OUT OF COUNTY

Azle News
The Springtown Epigraph
Azle News 817-270-3340
Springtown Epigraph 817-220-7217

Eagle Crest VILLA
A RETIREMENT AND ASSISTED LIVING COMMUNITY

113 Denver Trail • Azle
817-444-3249 Fax 817-444-3275
www.eaglecrestvilla.com

STUDIO - 1 bath, 350 sq. ft.
ONE BEDROOM - 1 bath, 450 sq. ft.
TWO BEDROOM - 1 bath, 642 sq. ft.

This devotional and directory is made possible by these businesses who encourage all of us to attend worship services.

APOSTOLIC
CORNERSTONE APOSTOLIC CHURCH
1801 FM 730 N., Azle
817-400-0612
HARVEST TIME APOSTOLIC
1 Block N. FM 2048 in Keeter
817-433-8220
ASSEMBLY OF GOD
FIRST ASSEMBLY OF GOD
1020 S.E. Pkwy, Azle
817-237-4903
FELLOWSHIP OF LAKE WORTH
4024 Dakota Trail, Lake Worth
817-237-9433
NEW BEGINNINGS CHURCH
810 Goshen Rd, Springtown
817-523-4462
LEGACY CHURCH
Hwy. 199 W. at FM 2257, Azle
817-221-2983 / 817-221-5760
VICTORY CHRISTIAN CENTER
737 Boyd Rd., Azle
817-444-LOVE
BAPTIST
ASH CREEK BAPTIST CHURCH
300 South Stewart, Azle
817-444-3219
AGNES INDEPENDENT BAPTIST
350 Agnes N., Springtown
817-523-7271
BETHEL MISSIONARY BAPTIST
408 S. Ash St., Springtown
817-220-4238
AZLE AVENUE BAPTIST
2901 Azle Ave., Fort Worth
817-626-5556
BRIAR FIRST BAPTIST
West of FM 730 N. at sign, Briar
817-444-3484
CALVARY HEIGHTS BAPTIST
1 block off Hwy. 199, east of David's Patio, Springtown, 817-221-2241
CENTRAL BAPTIST
4290 Old Agnes Road
817-594-5918
CHURCH ON THE HILL
836 NW Parkway, Azle
817-444-3752
CHRISTWAY BAPTIST
7673 West Hwy. 199, Agnes
817-220-9133 or 817-220-3581
CLEAR FORK BAPTIST
Corner of FM 730 & Ragle Rd., Weatherford, 817-594-1154
EAGLE MOUNTAIN BAPTIST
8780 Eagle Mtn. Circle, Azle
817-237-4135
FIRST BAPTIST CHURCH OF AZLE
1017 Boyd Road
817-444-4828
FIRST BAPTIST CASTLE HILLS
401 Beverly Rd., Azle
817-797-4706
FIRST BAPTIST LAKE WORTH
700 Charbonneau Tr., west side of Effie Morris Elementary
817-237-2624
FIRST BAPTIST LAKESIDE
8801 Jacksboro Hwy., Lakeside
817-237-8113
FIRST BAPTIST BRIAR
6 miles N. of Azle on FM 730
817-444-3484
FIRST BAPTIST COTTONDALE
1 block N. of FM 2123, Cottondale
940-433-5539
FIRST BAPTIST PEASTER
FM 920 in Peaster
817-596-8805
FIRST BAPTIST POOLVILLE
1 block W. of FM 920, Poolville
817-594-3916
FIRST BAPTIST SPRINGTOWN
5th & Main Street, Springtown
817-523-7011
FRIENDSHIP BAPTIST
801 Friendship Rd., 9½ miles S. of Springtown off Hwy. 51 S.
817-594-5940 or 817-599-4917
FUNDAMENTAL BAPTIST
5th & Main in Springtown
817-523-5477

GRACE BAPTIST
3 miles N. of Springtown on Hwy. 51 across from Radio Tower

GRACE POINTE CHURCH
4110 E. Hwy. 199, Springtown
817-221-5683

HERITAGE BAPTIST CHURCH
3577 FM 51 N., Weatherford
817-564-3946

IGLESIA BAUTISTA
Nueva Jerusalem
6640 Midway Rd., Springtown
817-694-0444

INDIAN OAKS PRIMITIVE BAPTIST CHURCH
3229 Shawnee Trail, Lake Worth
817-237-8441

LAKE WORTH BAPTIST
4445 Hodgkins, Lake Worth
817-237-4163

METROPOLITAN BAPTIST
6051 Azle Ave., Fort Worth
817-237-2201

NEW HOPE BAPTIST
782 New Hope Rd., Reno area
817-221-2184

NORTHWEST BAPTIST
5500 Boat Club Rd., Lake Worth
817-237-6063 or 817-270-8476

SILVER CREEK BAPTIST
730 S. & Veal Station Rd., Azle
817-444-2325

NEW BEGINNINGS BAPTIST CHURCH
3605 Jacksboro Hwy., Azle
817-707-2741

PLEASANT GROVE BAPTIST
FM 2048 and CR 4677, Boyd
940-433-5477

PRIMERA IGLESIA BAUTISTA
300 S. Stewart, Azle
817-500-3641

SPRINGTOWN BAPTIST TEMPLE
201 J. E. Woody Rd., Springtown
817-523-0376

UNION BAPTIST CHURCH
3451 Sarra Lane, Springtown
682-333-1645

WALNUT CREEK BAPTIST
220 W. Reno Rd. in Reno
817-221-2110

BIBLE COMMUNITY BIBLE FELLOWSHIP
1405 Reynolds Rd., Reno
817-521-4510

NORTHWEST BIBLE CHURCH
5025 Jacksboro Hwy., Fort Worth
817-624-2111

SOLID ROCK BIBLE CHURCH
591 S. Reno Rd., Springtown
817-221-3444

CATHOLIC
HOLY TRINITY CATHOLIC
800 High Crest Dr., Azle
817-444-3063

CHRISTIAN
THE CHURCH AT AZLE
1801 S. Stewart, Azle
817-444-9973

AZLE CHRISTIAN FELLOWSHIP
35 West Forty Estates., Azle
817-688-3339

GREATER VISION FELLOWSHIP
1801 S. Stewart St., Azle
817-825-0485

THE ABBEY CHURCH
10400 Jacksboro Hwy., Azle
817-238-1404

CROSSING FELLOWSHIP
120 E. Main St., Azle
817-406-4577

CHURCH OF CHRIST
AZLE CHURCH OF CHRIST
336 NW Parkway
817-444-3268
BRIAR CHURCH OF CHRIST
109 W.N. Woody Rd.
(½ block west of FM 730 N. in Briar)
817-444-7102

MIDWAY CHURCH OF CHRIST
6400 Midway Rd.
817-221-2107

NEWSOME MOUND ROAD CHURCH OF CHRIST
1460 Newsome Mound Rd.
817-677-3290

NORTHWEST CHURCH OF CHRIST
6059 Azle Ave., Fort Worth
817-237-1205

POOLVILLE CHURCH OF CHRIST
West of FM 920 in Poolville
817-594-4182

SOUTHSIDE CHURCH OF CHRIST
130 W. Bradshaw Lane, Springtown
817-221-2799

SPRINGTOWN CHURCH OF CHRIST
Just west of Hwy. 51 North
817-523-4419

TRI-COUNTY CHURCH OF CHRIST
525 Hwy. 199 W., Springtown
817-980-8156

CHURCH OF GOD
ABUNDANT LIFE CHURCH OF GOD
4800 East Hwy. 199, Suite 7
Springtown, 817-677-3208

LAKESIDE CHURCH OF GOD THE WORD@LAKESIDE
9396 Confederate Park Rd.
(FM 1886)
817-237-5500

DISCIPLES OF CHRIST
AZLE CHRISTIAN
117 Church St., Azle
817-444-3527

CENTRAL CHRISTIAN
1602 S. Main St., Weatherford
817-594-3043

FIRST CHRISTIAN CHURCH
4th & Main, Paradise

EPISCOPAL
ST. ANNE'S ANGLICAN EPISCOPAL
6055 Azle Ave., Fort Worth
817-237-1888

PROVIDENCE REFORMED EPISCOPAL
405 Bowie Dr., Weatherford
817-596-7476

ST. ELISABETH EPISCOPAL
5910 Black Oak Lane, River Oaks
817-739-0504

GOSPEL
CENTRAL FULL GOSPEL FELLOWSHIP
3009 Delaware Tr., Lake Worth
817-237-7919

JEHOVAH'S WITNESSES
KINGDOM HALL OF JEHOVAH'S WITNESSES
212 Pearson Lane, Azle
817-221-2242

LUTHERAN
THE EDGE CHURCH - AZLE
1313 SE Parkway, Azle
817-237-4822

HOPE LUTHERAN (ELCA)
4795 Hwy. 199, Reno
817-221-HOPE

METHODIST
BOYD UNITED METHODIST
FM 730 North in Boyd
940-433-3334

FIRST UNITED METHODIST
200 Church St., Azle
817-444-3323

LIGHTHOUSE FELLOWSHIP
7200 Robertson Rd., Fort Worth
817-237-2758

SILVER CREEK UNITED METHODIST
2200 Church Rd., Azle
817-444-1382

FIRST UNITED METHODIST
Hwy. 51 N & 3rd Street, Springtown
817-523-7874

GARVIN UNITED METHODIST
3 miles West of Boyd on C.R. 4699

POOLVILLE UNITED METHODIST
1 block W. of FM 920
(behind Poolville Post Office)
817-599-3601

THE CHURCH OF JESUS CHRIST OF LATTER-DAY SAINTS (THE MORMONS)
THE CHURCH OF JESUS CHRIST OF LATTER-DAY SAINTS
1010 Timberbrooks, Azle
817-237-5075

PENTECOSTAL
GRACE CHAPEL UNITED PENTECOSTAL CHURCH
3508 Shawnee Trail, Lake Worth
817-237-4844

PRESBYTERIAN
GRACE FIRST PRESBYTERIAN
606 Mockingbird Lane, Weatherford
817-594-2744

ORTHODOX PRESBYTERIAN CHURCH OF FORT WORTH
Meeting at Northwest YMCA
5315 Boat Club Road, Fort Worth
817-989-9800

ORTHODOX
ARCHANGEL GABRIEL ORTHODOX CHRISTIAN CHURCH
1157 S. E. Parkway (Jacksboro Highway), Azle
817-752-8255

OTHER
ALIENTO DE DIOS
2233 E. Hwy 199, Springtown
817-521-4694

BETTER LIFE COMMUNITY CHURCH
3131 E. Hwy 199, Spt
817-677-2300

CORNERSTONE COMMUNITY CHURCH
2233 Hwy 199 East, Springtown
817-221-LIFE (5433)

FAMILY CHURCH
9 miles S. of Springtown on Hwy. 51
817-599-7655

GRACE FELLOWSHIP CHURCH
2964 W. Hwy 114, Paradise
940-969-2427

HILLTOP FAMILY CHURCH
1227 Old Cottondale Road, Springtown, 817-220-7177

THE HOUSE OF PRAYER
1356 Reno Rd., Springtown
817-221-2551

POWERHOUSE OF PRAISE CHURCH
1649 S.E. Parkway, Azle
817-319-7364

BRANDED CROSS COWBOY CHURCH
3282 FM 2048, Boyd 76023
817-755-7021

SECRET PLACE MINISTRIES
112 Optimist Rd., Springtown
682-229-1433

GOSPEL GATHERING FELLOWSHIP
7315 Silver Creek Rd at Flatrock Rd, Azle
817-313-1793

LIGHTHOUSE CHURCH
6409 FM 730 S., Azle
817-444-4311

LIGHTHOUSE HARBOR CHURCH
1960 Long Circle, Pelican Bay
817-444-3547

NEW LIGHTED WAY
624 Harbor Dr. Circle, Azle
817-444-1577

NORTHWEST TEMPLE OF PRAISE
6781 Jacksboro Hwy., Lake Worth
817-909-5627

PRECIOUS FAITH TEMPLE CHURCH
8601 Hwy. 199 @ Vance Godbey's

THE HOUSE OF PRAYER
1356 Reno Rd., Springtown
817-221-2551

THE RANCH COWBOY COUNTRY CHURCH
14600 FM 730 North, Azle (Briar)
817-909-5627

REAL FAMILY FELLOWSHIP
202 Pearson Lane, Azle
817-677-5963

SOULS HARBOR
11701 Jacksboro Hwy., Azle
817-726-2065

WESTERN HARVEST FELLOWSHIP CENTER
6577 Old Springtown Rd., Weatherford
817-523-2855 or 817-995-9087

SHEPHERD'S HEART CHURCH
14435 FM 730 N • Azle
817-444-7777

WESTERN STAR COWBOY CHURCH
790 CR 3696 • Paradise 76073
817-688-6887

HILLTOP FAMILY CHURCH
1227 Old Cottondale • 817-220-7177

"Caring about what Jesus cares about... You!"

Compliments of
Rural Gas Supply
PROPANE 140 W. MAIN ST.
817-444-4613
"In business since 1946"

Joe Rider Propane, Inc.

PROPANE TANKS

817-237-3325

White's Funeral Homes
Our family serving your family since 1908

Bob White, Anita White and Zack Bellenger

Full Service Funeral Home
Cremation Services
Pre-Need Plans

Azle • Springtown
Mineral Wells • Weatherford
817-444-3211 • www.whitesfuneral.com

Clarks Precision Machine & Tool
636 Profit St., Azle, Tx

45 Years of Quality

ISO 9001:2001 Compliant Phone 817-444-2533
Check us out on our web site B.J. Clark
www.clarksmachine.com bjc@clarksmachine.com

WHAT'S HAPPENING IN YOUR HOMETOWN?

Subscribe today to keep up-to-date
Azle News: 817-270-3340
Springtown Epigraph: 817-220-7217

Celebrating over 25 years in business

AZLE CHIROPRACTIC CLINIC
817-444-HELP (4357) Rodney Gattin, D.C.
400 Boyd Court
www.azlechiropractic.com

Get your business noticed!

817-270-3340
Call Johnna to reserve this space.

Want readers to FIND YOU?

Place your ad here!
Call **817-270-3340**
or 817-220-7217

TRI-COUNTY Electric Cooperative, Inc.
Electric Cooperative, Inc.
"A Commitment to Service and Savings"

Actively Supporting our Communities!

Call Johnna for details
817-270-3340

Advertise Here

Contact us for details.
817-270-3340 or 817-220-7217

Your Ad Here Newspaper Advertising Works!

Call Johnna for details TODAY
817-270-3340

Advertise Your Business With Us
and maximise your visibility!

Contact us about advertising solutions.
817-270-3340
817-220-7217

CLASSIFIED

817-270-3340 - Azle - classified@azlenews.net

817-220-7217 - Springtown - shirley@springtown-epigraph.net

Ad Classifications

- | | | | |
|----------------------------|---------------------------------|-------------------------------|--|
| 1... Air Condition/Heating | 24..... Electrician | 46..... Looking to Buy | 69..... Sand/Gravel |
| 2..... Antiques | 25..... Equipment & Tool Rental | 47..... Lost & Found | 70..... Septic Tanks |
| 3..... Appliances | 26..... Excavating | 48... Maintenance/Repairs | 71..... Sewing/Alterations |
| 4..... Appliance Repair | 27..... Exterminating | 49... Masonry/Stonework | 72..... Sewer Service |
| 5..... Arts/Crafts | 28..... Farm Equipment | 50... Mobile Home Service | 73..... TV/Radio |
| 6..... Asphalt Paving | 29..... Fencing | 51..... Motorcycles | 74..... Tractor Service |
| 7..... Auctions | 30..... Firewood | 52..... Movers | 75..... Upholstery |
| 8..... Autos, Trucks | 31..... Free For Sale | 53... Musical Instruments | 76..... Vacuum Cleaners |
| 9..... Auto Repair Service | 32..... Furniture | 54..... Music Lessons | 77..... Wanted |
| 10..... Backhoe Service | 33..... Garage & Estate Sales | 55..... Miscellaneous | 78..... Well Drilling |
| 11..... Boats, Motors | 34..... Garden/Mowing Svc | 56 Party Planning/Events | 79..... Welding |
| 12..... Bookkeeping | 35..... Hauling | 57..... Pets/Livestock | 80..... Lots/Acreage |
| 13..... Business | 36..... Hay | 58..... Piano Service | 81..... Business & Commercial Property |
| 14..... Campers/Trailers | 37..... Health/Fitness | 59..... Pool Service | 82..... RV's for Rent |
| 15..... Carports/Patios | 38..... Help Wanted | 60..... Professional Services | 83..... Houses for Sale |
| 16..... Equipment Repair | 39..... Home Improvement | 61..... Personal | 84..... Mobile Homes for Rent |
| 17..... Carpet Service | 40..... House Leveling | 62..... Plumbing | 85..... Mobile Homes for Sale |
| 18..... Catering | 41..... House Cleaning | 63..... Public Notice | 86..... Mobile Home/RV Lots |
| 19..... Cement Work | 42..... Hunting | 64..... Photography | 87..... Rent Furnished |
| 20..... Demolition | 43..... Janitorial Service | 65..... Printing | 88..... Rent Unfurnished |
| 21..... Child Care | 44..... Job Wanted | 66..... Roofing | 89..... Wanted to Rent |
| 22..... Cosmetics | | 67..... Recycling | |
| 23... Computers/Services | | 68..... Storage | |

RATES

16 Words or Less:

Combo (Azle & Springtown) Only \$10.00 per week!

Over 16 words, add 20 cents per word
Extras such as Bold, Center & Border are available for a small fee

Classified boxed display ads also available for \$9.00 per column inch

(All ads must be paid in advance unless you have previously established credit)

CLASSIFIED AD DEADLINE: 1:00 PM FRIDAY

Most ads require payment in advance, but we do accept VISA, MASTERCARD, DISCOVER OR AMERICAN EXPRESS by phone.



Reach more than 8,000 households with combo advertising in the Azle News and the Springtown Epigraph.

Nobody does it better!


006 Asphalt Paving
BYRUM CONSTRUCTION
Asphalt Paving
•Driveways •Parking Lots
•Asphalt Repairs & Sealcoating
•Asphalt Millings •Gravel
Bruce Byrum
Azle, Texas 817-690-2429

024 Electrician
BULLDAWG ELECTRIC CO.
All types of electrical services and MH hook-ups.
Free Estimates. 817-675-4921
www.bulldawgelectric.com.
TECL#25253.

035 Garden/Mowing Service
Need your lawn mowed, trimmed or cleaned up? Need your trees trimmed or cut? Any job big or small give Scooter a call. Free Estimates. 817-766-3834.

039 Help Wanted
Springtown ISD is accepting applications for Bus Drivers and Monitors. Training available. Contact the Transportation Dept. 817-220-1418.

039 Help Wanted

008 Autos, Trucks

Chevy Silverado, Year 2015, 8 cylinders, new tires, runs perfect, toolbox on the bed, bull bars on the front. 172 k miles, asking \$ 15,500
Cel 817-703-1261

E-Conn Electric
Service, Remodel, New Construction
Insured/BBB Accredited
817-615-7164
Customer Satisfaction is our Goal!
C/C ACCEPTED TECL20470

MAINSTREAM group homes are hiring for FT/PT direct care staff. Weekday 3:30pm-8:30am shifts as well as 24-hour weekend shifts. Work 2 days a week, get paid to sleep, and have a full-time job! Paid training, benefits, bonuses, and OT opportunities. Start \$9.00/hr with quick advancement possible. Call 817-270-2747, Monday-Friday, 9am-3pm.

J&E Air Conditioning Now Hiring! Service Tech, Installers and Helpers. Competitive wages and benefits. Contact our office 817-220-4506 for more information.

NOW HIRING SCHOOL CUSTODIANS SPRINGTOWN INDEPENDENT SCHOOL DISTRICT FT/PT COMPETITIVE PAY & FLEXIBLE HOURS
INQUIRE @ (817) 262-3162 OR (817) 999-6465

Project Coordinator/ Administrative Assistant needed
Part time +/- 30 hours a week
Pay rate \$12-14 hour
Excel skills a must
Located in Boyd
Email: shyla@greenworldincusa.com or call 940-433-2639 for more information

026 Excavating
REED EXCAVATING
• SITE PREPARATION • GRAVEL ROADS
• LOT CLEARING • PARKING LOTS
• LEVELING • DEMOLITION
• FINAL GRADE • STOCK TANKS
• LAND EROSION
Dump Truck Hauling 817-919-3696

035 Garden/Mowing Service
COWBOY LAWN CARE.
Residential, farm, gardens, landscaping, tree trimming. Free Estimates. 817-271-0450. Spring Specials.

ALL TYPES OF EXCAVATING
Tanks • House Pads • Clearing
HASTY EXCAVATING
Also ..
Sand • Top Soil • Gravel
817-523-7248 • 817-239-6215

IRRIGATION REPAIR
Residential/Commercial
License# LI007825
\$85 Service Call

Help Wanted in Aurora/Alvord Area
• Mechanic
• Welder
• Equipment Operators
Competitive pay, some benefits. M-F day shift only. Overtime weekly.
For information call 214-802-5157

029 Fencing
BOBBY'S FENCE. All types, Free Estimates, Over 26 years experience. 817-444-3213.
KILEY CHESNEY CONSTRUCTION
All Types Fences - Tractor Work
817-846-6645

OUTDOOR SCENE
682-553-1560

030 Firewood
LEON'S TREE SERVICE. Split Oak and Pecan wood. Pickup or delivery. 817-371-8597.

STUMP GRINDING
Don't dig it! Grind it!
1 or 100 - We can do it.
\$85 minimum within 5 mi.
817-237-5592

032 For Sale
Must Sell, like new leather couch, adjustable beds, motorized chair, walker with wheels & seat. Call 682-216-1074.

LEON'S TREE SERVICE
Expert take downs
Stump Grinding
Residential/Commercial
Licensed & Insured • Free Estimates
817-371-8597

WANTED
Property Maintenance Labor/Person
Gene Thompson & Associates
817-246-4646

019 Cement Work
Allen Chesney Concrete
All Types of Concrete Work
Residential - Commercial
Foundations, driveways, sand, gravel, demolition, haul-off, retaining walls
817-271-4541

Concrete Services, Patios, Driveways, Sidewalks, Retaining Walls, Foundations, Stone Walls. Free Estimates. 817-371-8597.

Kiley Chesney Construction
Dirt & Concrete Work
Driveways • House Slabs • Garages • Add-ons
Small Land Clean-ups • Gravel Driveways
Kiley Chesney, Owner
Springtown, TX • Mobile 817-846-6645

FOR SALE-BY OWNER
\$500K-5 Acres, 357 CR 4783 Boyd, TX 76023.
Has 3 Mobil Home rentals, plus 2 more great building sites, fenced, with water well, needs repairs.
Great investment, pays for itself. 2 miles from stores and gas, Boyd School District.
Text 817-228-2763, call after 5.

YARD SERVICES
SKID STEER
SOD INSTALLATION
FENCING
STUMP GRINDING
817-371-8597


Need to sell your ATV?
Call today and ask about our (\$29.95) 3-MONTH SPECIAL!
Azle News 817-270-3340
Springtown Epigraph
817-220-7217

034 Garage & Estate Sales
Multi family sale! Tools, baby items, clothes, teacher/classroom items. Friday 9/30 & Saturday 10/01 8am to 4pm. 324 Woodard Lane

Ruben's YARD SERVICE
Tree Service • Stump Grinding
Yard Clean-Up
940-730-0916

MCNEELY'S DEMOLITION & CLEAN UP SERVICE
We Create Vacancy
•Tear Down •Barns
•Removal •Houses
•Haul Off •Bobcat
•Mobile Service
Homes •Dirt/Gravel
•Garages Spreading
FREE ESTIMATES
817-996-7887
253 Eagles Way, Springtown

Garage Sale
1232 Edgewater Dr, Azle. Flat screen TV, sounding bar, electric leather recline. Too much to list.
Sept, 29-Oct, 1 8am-4:30pm.

Large Estate Sale, Friday-Sunday Sept. 30 - Oct 2, 9am-5pm.
13221 Cheatham Ct, Fort Worth 76244. 2004 Saturn low miles, Custom Billy Cook Western Barrel Saddle, jewelry, huge kitchen, washer & dryer, refrigerator, tools, king and trendal bed, dresser, Hooker dresser & side table, designer hand bags, woman,s clothing, dining table & chairs, sofas & much more.

 **Chad's Tree Service**
Trimming • Removals • Stump Grinding
Systemic Feeding • Brush Chipping • Cable Bracing
817-221-2201 • 817-246-5943
817-800-6059 CELL
Insured for your protection **FREE ESTIMATES**

 Save a Shelter Animal. Find your furever Friend


KARL KLEMENT
Body Shop Porter
Performs duties throughout the Body Shop. Must be responsible, dependable and have a valid TXDL. Monday to Friday work week.
Parts Drivers/ Warehouse Associates
Must have valid TXDL with acceptable driving record. Overtime available and room for advancement. Monday-Friday work week.
Lube Tech
Experience a plus, but willing to train the right candidates. Must have a valid TXDL with acceptable driving record. Must be responsible and dependable. Monday-Friday work week.
Wholesale Sales Associate
Sign-on Bonus
Looking for fulltime wholesale sales associates. Experience is a PLUS! Ford Certified preferred but NOT REQUIRED. Apply in person @ 605 N Business 287 Ste 102, Decatur, TX 76234.
Parts/Service Counter Sales
Sign-on Bonus
Experience highly preferred, but will train the right candidate. Must have excellent customer service skills and ability to work well in a process driven environment.


KLEMENT DISTRIBUTION, INC.
(Hershey Ice Cream Distributor)
No Positions Available at This Time

Karl Klement Properties, Inc.
Administrative Assistant
Ideal candidate will possess an administrative background as well as strong customer service skills; however willing to train the right candidate. Must be dependable, proficient in MS Word and Excel, multi-tasker, and able to thrive in a fast paced environment.

Facilities Manager
Must be customer service oriented, have a clean driving record and be able to pass pre-employment screening. Experience a plus, but will train the right person!

For consideration of all positions apply in person:
605 N. Business 287, Suite 102, Decatur, Texas
OR CALL Human Resources Dept:
Jodi Pettis, Alyssa Jacobs, or Lynn Mallwitz
@ 940-627-6362
FOR MORE INFORMATION


KLEMENT OF MUENSTER
NOW HIRING FOR Growing Service Department!
Multiple Positions Open:
AUTOMOTIVE TECHNICIAN
SERVICE WRITER
TECHNICIAN'S ASSISTANT
PORTER • PARTS DRIVER
WILL TRAIN!
Monday -Friday 8:00 AM - 5:30 PM
401K - Paid Vacation - Benefits
Apply in person at
1005 E. Division, Muenster, TX
EOE

817-270-3340 - AZLE
817-220-7217 - SPRINGTOWN

Deadline:
1:00 PM FRIDAY

Classifieds

039 Help Wanted

Hiring Route Drivers for Our Growing Company!
****\$1,000.00 Hiring Bonus****

Seeking Route Drivers that are hardworking, enthusiastic, with a strong motivation for success! Interpersonal and customer service skills are strongly recommended. Must have a valid TX DL with an acceptable driving record

Join our team at Klement Distribution, Inc. delivering **Hershey's Ice Cream!** Not only will you be putting smiles on people's faces, you will earn a great income for yourself!


As a Route Driver you will unload, stock and rotate products, collect and deposit client payments and move on to your next stop, always ensuring that our customers are satisfied!

We offer:

- Competitive salary
- Paid training, vacation and holidays
- Promote from within advancement opportunities!
- Monday through Friday work-week; NO WEEKENDS!

Real ingredients, real ice cream, real smiles! **Apply Now!**

Contact Alyssa Jacobs at 940-627-6362 or submit resume to Alyssa.Jacobs@klementford.com



046 Looking to Buy

LOCAL BUYER JIMMY D

- Used/Damaged Campers
- Motorhomes
- Farm Equipment
- Trucks And Trailers
- Horse Trailers
- Boats
- Golf Carts
- Propane Tanks
- Fork Lifts
- Heavy Equipment
- ATVs • Misc.

817-629-7531

066 Roofing

EXPERIENCED ROOFING SPECIALIST

FREE ROOF INSPECTIONS

Insurance Claims, Licensed Local Business 34 Yrs

ECE CONSTRUCTION LLC

cell 817-615-7164 | office 817-831-2600

081 Business/Commercial

40x50 building For Rent, 3 miles west of Springtown. 817-713-7495.

082 RV's for Rent

Nice 1BR RV in adult RV park. Great for older person on limited income. Starts at \$550/mo. All Bills Paid. Heritage RV Park 817-444-3760.

084 Mobile Homes for Rent

Pelican Bay: 1524 Partridge, 1-1, stove/fridge, central heat, window unit, \$585/mo. \$400 deposit. Owner/Broker 817-988-9954.

Nice 2-2 SW, quiet area, Azle ISD, fenced yard. Qualified Tenants Wanted. 817-228-2414.

086 Mobile Home/RV Lots

Beautiful RV Spots available in nice, quiet area near Eagle Mountain Lake. \$400/mo. plus electric. Call for more information 817-228-2414.

POJO RV PARK

302 Allison Road Springtown, TX 76082
817-925-3673

30x60 RV Spaces Available

One small inside pet allowed

NEAR POJO STADIUM

088 Rent Unfurnished

3-2 Duplex for Rent in Springtown. \$1,200/mo. \$600 deposit, no pets. 817-980-3066.

2BR 2BA in Springtown. \$950/mo \$950 security. 817-220-4095.

1833 PELICAN DR. N.
2-2-1 \$1,295 MO. \$1,000 DEP.
1920 PELICAN DR. N.
3-2-1 \$1,595.MO \$1,000 DEP.
Gene Thompson & Associates
817-246-4646 gtax.com

APT. - 2 bed, 1 bath, carport, lakeview, CA & heat, \$950 incl. bills. 817-237-7972 ask for Daria

Lindsey State Jail Current Openings

Correctional Officers • Assistant Foodservice Manager
Recruiting Sgt. • Education Counselor
Education Clerk • Academic Instructor

PLEASE CHECK THE WEBSITE FOR JOB QUALIFICATIONS.

A New Correctional Officer Pay Increase will be as follows - Starting pay will be \$18.00 dollars per hour. After Six months' there will be a pay increase to \$19.00 per hour and at one year there will be another pay increase to \$20.00 per hour. Must have HS Diploma or equivalent, be able to pass a drug screen, have a clean background, and valid driver's license to be considered for a Correctional Officer. **Apply online at www.mtctrains.com or call 940-567-2272 and ask for the HR Department. Management & Training Corporation is an Equal Opportunity Employer: Minority/Female/Veteran/Disabled**

Part Time Grounds Keeper

Applicants must pass background check and drug screen.
30 hours a week. Must be able to lift 50 pounds. Wage \$12-\$15 per hour.

FORT WORTH BOAT CLUB
10000 Boat Club Rd, Fort Worth TX 76179
817-236-8393 Ext. 3

ADS STEEL SERVICE
Now Hiring!

Experienced Fitter & Shop Labor, Competitive Wages, Health Insurance, Paid Holidays and Vacations
817-763-8223

Or apply in person at
7461 W. Vickery Blvd.,
Ft. Worth, TX 76116



040 Home Improvement

BILL ROSSER PAINTING & REMODELING. Big Savings: \$100 off any job of \$1,000 or more. Painting, Carpentry, Porch Covers, Decks. FREE ESTIMATES. Call 817-304-9974; 866-374-3559.

WORKHORSE HANDYMAN SERVICES. Bathrooms, kitchens, remodels, water & sewer repair, mobile home repair, roof repair and well repair.
Quality at a reasonable rate. Call 817-874-6109.

040 Home Improvement

Kevin's Handyman Services

40 Years Experience

- Carpentry
- Drywall & Painting
- Tile & Laminate Floors
- Doors & Windows
- Decks & Stairs
- Cabinets & Countertops
- No Job Too Small

Springtown and Surrounding Areas
231-445-1221

Devin's Handyman Service

- Carpentry
- Cement
- Rock
- Granite
- Tile
- Painting
- Siding
- Insulation
- Kitchen/Bath
- Seamless Gutters
- Powerwashing
- Decks

FALL SPECIAL 20% OFF with this ad!

Call Devin at 817-629-9608



Save a Shelter Animal. Find your forever Friend



049 Masonry/Stonework

Silva Masonry, LLC AZLE, TX
CONCRETE
COMMERCIAL • RESIDENTIAL

Landscape Designs, Outdoor Kitchens
Patios, Retaining Walls, Mailboxes

All Types Stone & Brick Work Free
New Construction • Remodels Estimates

817-308-6512
email alvarogsilva@verizon.net

052 Movers

U.S. Army Retired-but not tired!
Careful moving-Cheap.
Call Big Jim @ 817-237-5151.

057 Pets/Livestock

Will pay top dollar for grazing and hay leases. Call 940-389-1936.

HORSE SALE
October 7, 2022

Tack Sale Begins at 6:00 PM
Horses Follow
Stephenville Cattle Co.
Highway 281 North • Stephenville, TX
Troy 254-967-1950 • Barn 254-968-4844

062 Plumbing

GRAHAM PLUMBING CO.



Commercial-Residential
Serving Springtown, Azle, Boyd, Weatherford Area
M#15899
817-220-2469
grahamplumbingco.com

LANDERS Plumbing Co.
940-233-2862
M-10078

066 Roofing

AT HOME ROOFING & METAL BUILDINGS

817-304-4224

Tired of always replacing your roof?
Call us for a metal roof quote.
We'll be here after the storm.

Miles Roofing

- Insurance Claim Specialists;
- Free Estimates

817-797-3420

068 Storage

INNERSPACE STORAGE. Hwy 199, Springtown. Now renting all unit sizes, 24-hour access. 682-842-1414.

STORAGE UNITS
1350 Liberty School Rd
5x10 Units \$45/mo.
10x10 Units \$70/mo.
817-246-4646

Find a Job in the Classifieds!
Azle News
Springtown Epigraph



Ash Creek Storage

Convenient Location

Corner of Main St. & Locust • Azle
817-444-3292

069 Sand/Gravel

HALL'S SAND, DIRT & GRAVEL
Quality Family Business Since 1938

CALL Cliff Hall
(817) 221-2681

We go the extra mile to ensure you get more for your \$.
On House Pads, Driveways, Lot Clearing & Tractor Work, Etc.

079 Welding

Our Business is Metal Buildings - And We're Good!

DESIGN FABRICATION ERECTION

Cozart METAL BUILDING SYSTEMS

Fabrication and erection of quality metal buildings at reasonable prices, any size - any design

Office **817-237-2282**
Fax 817-237-0904
Mark Cozart Jeremy Cozart
817-233-6668 817-237-2028

079 Welding

owner Rodney Vick
817-220-3044
fax 817-523-7639
cell 817-253-1614

R & E Construction

Metal Building Specialist

- Weld Ups/ Bolt Ups
- Pipe Fencing
- Concrete
- Horse Barns
- All Types Fencing
- Metal Roofs

Compare Pricing
NO JOB TOO SMALL

WDC WELD-DONE CONSTRUCTION LTD.

Metal Building Erectors

- Pre-engineered Weld-up
- Barns/Shops
- Arenas/Hangars
- Fencing

1220 E. Hwy. 199 • Springtown
817-220-2150
www.weld-done.net

AZLE OAKS APARTMENT

700 JARVIS • AZLE
817-444-1712

1 & 2 Bedroom Unfurnished

Accepting Applications
Rent based on income

TDD: **800-735-2989**

This institution is an equal opportunity provider and employer.

GENE THOMPSON & ASSOCIATES

HOMES and MOBILE HOMES FOR RENT
gtax.com
817-246-4646

Continued next page...

PUBLISHER'S NOTICE

All real estate advertising in this newspaper is subject to the Fair Housing Act which makes it illegal to advertise "any preference, limitation or discrimination based on race, color, religion, sex, handicap, familial status or national origin, or an intention, to make any such preference, limitation or discrimination." Familial status includes children under the age of 18 living with parents or legal custodians, pregnant women and people securing custody of children under 18.

This newspaper will not knowingly accept any advertising for real estate which is in violation of the law. Our readers are hereby informed that all dwellings advertised in this newspaper are available on an equal opportunity basis. To complain of discrimination call HUD tollfree at 1-800-669-9777. The toll-free telephone number for the hearing impaired is 1-800-927-9275.

SOLID STEEL SOLUTIONS

- Metal Buildings
- Steel Components
- Welding Supplies
- Concrete Supplies
- Fabrication Supplies
- Pipe Fencing
- Deer Blinds
- Deer Feeders

8894 W Hwy 199 • Springtown
817-220-0008
www.SolidSS.com

Open to the Public



Find that Perfect Vehicle for you and your buddy in the Classifieds.

OR

You can Sell your Auto in the same section.
Call 817-270-3340 for more info on our

3-Month Special Only \$29.95



Advertising Works!

817-270-3340 - AZLE
817-220-7217 - SPRINGTOWN

Deadline:
 1:00 PM FRIDAY

Classifieds

088 Rent Unfurnished

Cross Companies Residential Properties

Family-owned, family-run

STEWART BEND | **SILVER CREEK** | **RV PARK**
 DUPLEX HOMES

Stewart Bend Duplex Homes: 2 & 3 bedroom units available at \$1,225 & \$1,325. Quiet, clean, non-smoking. CALL 817-401-1796.

Silver Creek RV Park: Designed for local long-term stays. Best common building in Azle, secluded and quiet, city water/sewer. \$475 with \$75 electricity allotment; ABP in winter. CALL or TEXT 682-499-8616 or email scrvooffice@gmail.com.

Barton Cottages Tiny Home Community: COMING SUMMER 2022! Email BartonCottages@gmail.com



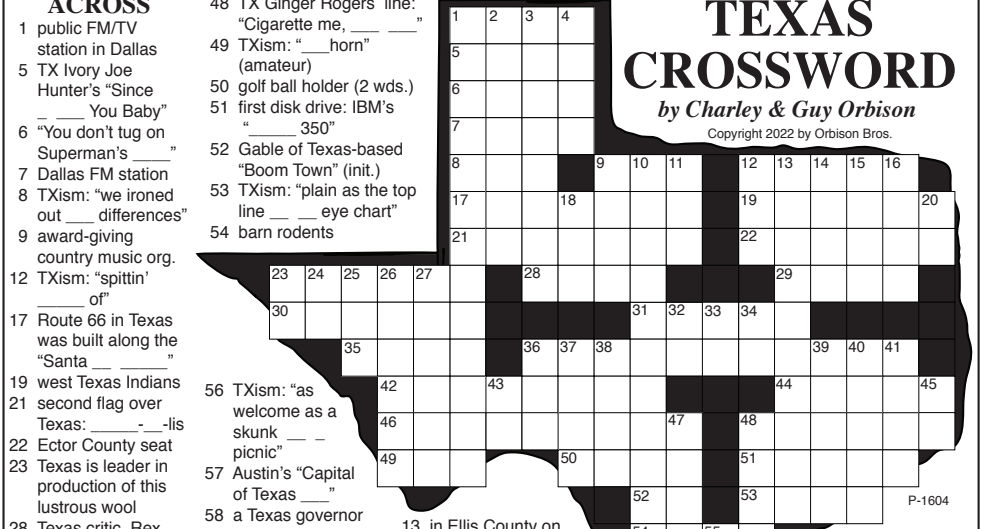
Don't Break The Poor Little Piggy!

Find the money you need in our Classified Section today!

16 words for \$10

TEXAS CROSSWORD

by Charley & Guy Orbison
 Copyright 2022 by Orbison Bros.



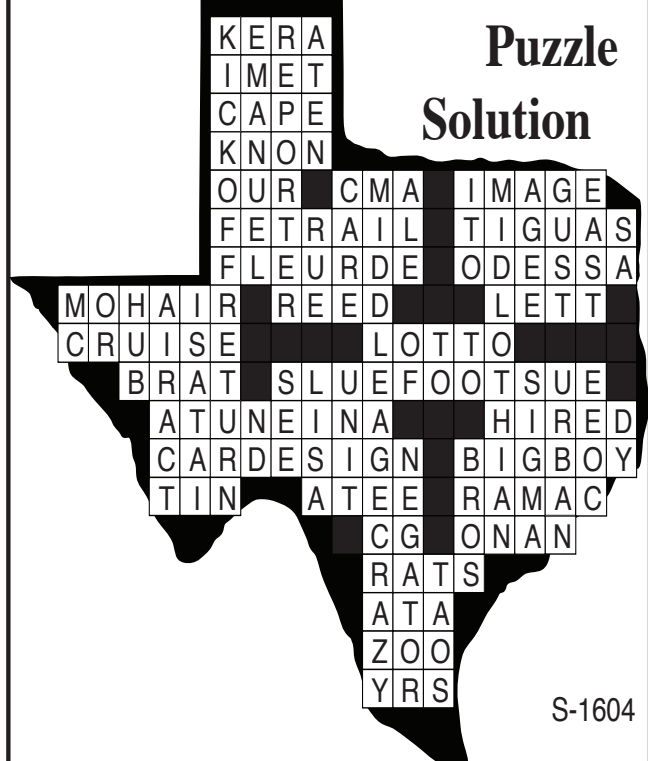
ACROSS

- public FM/TV station in Dallas
- TX Ivory Joe Hunter's "Since You Baby"
- "You don't tug on Superman's _____"
- Dallas FM station
- TXism: "we ironed out _____ differences"
- award-giving country music org.
- TXism: "spittin' _____ of"
- Route 66 in Texas was built along the "Santa _____"
- west Texas Indians second flag over Texas: _____-lis
- Ector County seat
- Texas is leader in production of this lustrous wool
- Texas critic, Rex
- Cowboy assistant coach, Leon
- this Tom starred with TX Zellweger in "Jerry Maguire"
- Texas millionaire maker
- Texas hill country food: _____wurst
- TX Pecos Bill sweet-heart (3 wds.)
- TXism: "can't carry _____ bucket" (bad singer)
- TX Clay Allison was a _____ gun
- TX Carroll Shelby did this (2 wds.)

DOWN

- first chance for a Cowboy or Texan TD? (2 wds.)
- Dallas Jewish group
- paper: "Abilene _____-News"
- _____gallon hat
- TX Bruce McGill's first film: "Handle with _____" (1977)
- mid-life crisis film made in TX (3 wds.)
- bitter beer
- O.J.'s judge, Lance
- TX Ginger Rogers line: "Cigarette me, _____"
- TXism: "_____horn" (amateur)
- golf ball holder (2 wds.)
- first disk drive: IBM's "_____350"
- Gable of Texas-based "Boom Town" (init.)
- TXism: "plain as the top line _____ eye chart"
- barn rodents
- in Ellis County on U.S. 287
- former Cowboy RB, Tommie
- rush of wind
- _____Bernard, TX
- "you'll _____ the day you did that"
- "Alamo City" initials
- Ranger film: "Lone Wolf _____Quade"
- TXism: "got knocked down a peg _____ two"
- "baby moon," a _____ cap back in the day
- TX counties must comply with the "Clean _____"
- TXism: "sort _____"
- TXism: "fair _____ middlin'"
- TX Audie film: "_____Hell and Back"
- TX Nash's "I Can _____ Clearly Now"
- TX Whelchel of "Facts of Life"
- AC _____
- UT frat. "_____Nu"
- Texas film "_____Cowboy" (1980)
- national equality commission (abbr.)
- Louis L'Amour birth state (abbr.)
- dysprosium symbol one who uses "not"
- Texas Crossword partnership: "Orbison _____"
- ski destination for some Texans

Puzzle Solution



S-1604

TEXAS STATEWIDE CLASSIFIED ADVERTISING NETWORK

TexSCAN

TexSCAN Week of Sept. 25-Oct. 1, 2022

ACREAGE

Own your piece of Texas TODAY! Prices starting at \$650/acre. Trans Pecos region. Also the Hill Country (Edwards, Menard, Coke, Val Verde Counties - free ranging exotics), South Texas (Duval County - whitetail, hogs). Large acreage or small. 30 year fixed rate owner financing, only 5% down. Call toll free or email for individual prices and terms. www.ranchenterprisesltd.com, 800-876-9720.

LOG HOMES

Log Homes - Pay only the balance owed. Just Released: American Log Homes is assisting estate & account settlement on houses. Log Home kits selling for balance owed, free delivery. Model #101 Carolina, bal. \$17,000; Model #203 Georgia, bal. \$19,950; Model #305 Biloxi, bal. \$14,500; Model #403 Augusta, bal. \$16,500. View plans at www.americanloghomesandcabins.com; 704-368-4528.

GENERATORS

Prepare for power outages today with a GENERAC home standby generator. \$0 Money Down + Low Monthly Payment Options. Request a FREE Quote. Call now before the next power outage: 1-855-704-8579.

MEDICAL

Portable Oxygen Concentrator May Be Covered by Medicare! Reclaim independence and mobility with the compact design and long-lasting battery of Inogen One. Free information kit! Call 866-747-9983.

DENTAL INSURANCE

from Physicians Mutual Insurance Company. Coverage for 350 plus procedures. Real dental insurance - NOT just a discount plan. Do not wait! Call now! Get your FREE Dental Information Kit with all the details! 1-855-901-0467 [#6258](http://www.dental50plus.com/txpress)

WANTED

FREON WANTED: Certified buyer looking to buy R11, R12, and R500 and more. Call Joe at 312-625-5322.

3-Month Special

Want To Sell Your Auto, Boat, Trailer Motorcycle, RV, Tractor Or Other Vehicle?

ONLY \$29.95 and your ad gets a border, picture and runs for 3 months!



Call the Azle News 817-270-3340 or Springtown Epigraph 817-220-7217 for more info.

Texas Press Statewide Classified Network

221 Participating Texas Newspapers • Regional Ads
 Start At \$250 • Email ads@texaspress.com

NOTICE: While most advertisers are reputable, we cannot guarantee products or services advertised. We urge readers to use caution and when in doubt, contact the Texas Attorney General at 800-621-0508 or the Federal Trade Commission at 877-FTC-HELP. The FTC web site is www.ftc.gov/bizop.

PLACE AN AD IN THE CLASSIFIEDS TODAY!

817-270-3340

Rescue your Ballerina from the Shelter and give her a Forever Home



SERVICE DIRECTORY

ADVERTISE in the Service Directory! Call Johnna at 817-270-3340 for details to include your business here.

Movers

★U.S. ARMY retired - but not tired!★
MOVERS
 Courtesy ★ Punctuality ★ Care

Member:
 • VFW • DAV
 • Sheriff's Assn
 • American Legion
 • ET AL

• Full Service Moving - Local & Long Range
 • Gun Safes - Pianos - Auto - Antiques
 • Packing & Storage - Large or Small

Please call Jim at **817-237-5151**

Transmissions & Auto Repair

Rainwater's

Transmission & Auto Repair

Transmission • Brakes • A/C • Engine Service
 Specializing in 1940-2020 transmissions

201 E. Hwy. 199, Springtown **682-615-7250**
 LOCALLY & FAMILY OWNED! **817-766-3852**
 Accepting all credit cards

Diesel/Auto Repair

TEXAS

Diesel & Auto

We Fix Everything!

817-968-7867

SEMIS
 RVS
 EQUIPMENT
 PICKUPS
 CARS
 ATVS

Air Conditioning and Heating

J&J

AIR CONDITIONING & HEATING

Serving the Springtown, Azle, Weatherford & Fort Worth Area Since 1970
 Sales • Service • Residential • Commercial
SPRINGTOWN 817-220-4506
www.jandeac.com

Texas Air Conditioning Contractor License: TACLA014745E

Trash/Waste Service

ATEX

TRASH SERVICE

\$35 per month WEEKLY PICKUP
 Proudly Serving The Community We Live In

817-344-8464 **ATEXTRASH.COM**

Exterminators

Tom Samples

Pest Control

YOUR COMPLETE PEST CONTROL SERVICE

Family owned and operated. Over 70 years of service.

Voted Best Pest Control
 Best of Parker County

817-915-2470