



Serving the Community

New program fosters interaction between public, first responders

BY DON MUNSCHE
don@azlenews.net

Residents wanting to become acquainted with area police and fire personnel

can do so over a refreshing beverage. Coffee with First Responders recently started

SEE **COFFEE**, PAGE 13A.

PHOTO BY KIM WARE

Azle Police Chief Ben Hall, right, inside the Azle McDonald's location, shakes hands with Richard Pruett during a recent Coffee with First Responders event. First responders are looking to hold the program at other venues in the community.

News throws down the gauntlet Fill CCC's shelves

BY CARLA NOAH STUTSMAN

With the cost of food and utilities rising and fuel prices finally easing a little, families everywhere are focused on meeting their basic needs while putting off large purchases and anything extra.

What if your "family" doubled in size during the COVID-19 pandemic and you also faced increasing operating costs?

That's the situation at Azle's Community Caring Center, where more than 1,000 families are being served each month - up from 450 per month in 2019.

The once fully-stocked shelves are becoming bare. In an effort to jump start donations of both cash and food ahead of the holiday season, the Azle News has challenged five area entities to fill the shelves at the CCC. As part of the challenge, each entity is asked to challenge one additional entity. As the challenge grows, with each challenged entity challenging another, the burden will be borne by many, rather than few.

During the Azle Chamber of Commerce's monthly luncheon Tuesday, Azle News Publisher Kim Ware challenged Azle's First Responders, Pinnacle Bank, Brace Chiropractic & Wellness, Azle Dental Care and Debbie Bunero CPA to

lead the charge to fill the CCC's shelves.

Each entity will, in turn, challenge another, and so on. Donations of food and/or money may be dropped off at any challenged entity's place of business, at the Azle News office, or at the Community Caring Center.

Ware says she has faith in the Azle community to step up to this challenge.

"Over the years, I've seen the people in this community come together time and again to support families and individuals whose needs were greater than their own. That's just who we are as a community. I have no doubt we'll rise to this challenge for the Community Caring Center so it can continue to be a blessing in the lives of those less fortunate," Ware said.

Food items specifically needed to help fill the CCC's shelves include peanut butter, canned tuna, canned chicken, beans (dried or canned), macaroni and cheese, Ramen noodles, soups (any kind), cereal and jelly.

Monetary donations are also welcome. In fact, a donation of \$25 can feed a family of two for an entire week, or it can fund a Christmas Box, including a ham, for one household. The CCC also has the ability to purchase large quantities of food for as little as 10 cents to 14 cents per pound through the Tarrant Area Food Bank.

Please make your check payable to the Community Caring Center.

The winner of the Fill The Shelves Challenge will receive a free ad in the Azle News.

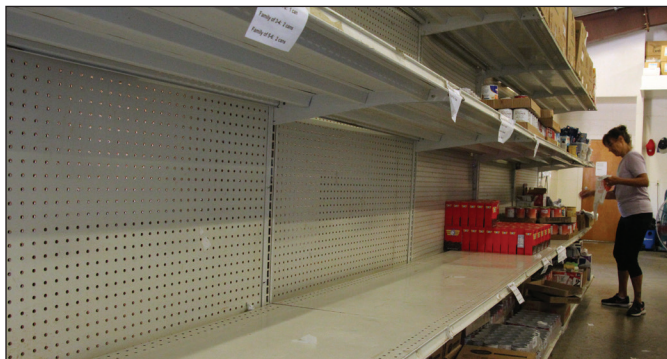


PHOTO BY JESSICA MCKINNEY

The Community Caring Center is in need of food donations for their empty shelves.

Pregnancy help center ready to open renovated building

BY DON MUNSCHE

don@azlenews.net

Eagle Mountain Pregnancy Help Center officials hope to move back into the center soon, in the few days, after renovating its facility at 10328 Jacksboro Hwy.

Renovations, which began in early September, were expected to be finished this week and move-in date should occur in the next week, said center Board President Karen Ogea. The center will hold a grand re-opening and ribbon-cutting from 4:30-6:30 p.m. Nov. 15. Tours will be given and people can learn about services at the center.

A local resident owns the building and donated its use to the center 23 years ago, Ogea said.

"And in that 23 years, we've served a great number of clients and families in need, but it is an old house," Ogea said, explaining why renovations were needed.

The house originally had two bedrooms, two bathrooms, a small kitchen, small den, small dining area and a one-car garage, Ogea said.

"So we have converted that space into a reception area, a counseling room, a classroom (and) a supply room, which is now going to be called our heartbeat boutique," she said.



PHOTO BY DON MUNSCHE

Clinton Weaver, standing, and son Cliff Weaver work on a sink inside the center last week.

She added that a patio was closed to make a children's play area. The renovation has consisted of removing and repairing part of the structure, such as the walls and the plumbing. Old car-

pet was removed, and new flooring was installed. The center's interior was painted, and new canned lights were installed. The building also

SEE **CENTER**, PAGE 5A.



Make The Move!

Call about our new move-in specials and to schedule your complimentary lunch & tour today!

113 Denver Trail, Azle • www.eaglecrestvilla.com



817-444-3249

Azle native returns home for movie screening, domestic violence awareness

BY DON MUNSCH
don@azlenews.net

Domestic violence transcends all socioeconomic and demographic backgrounds and is prevalent not only nationally but across the globe.

But Tracy Rector said there exist three professions that seem to produce the most abusers. Rector was a victim of domestic violence, and although Rector was not married to someone in one of those professions, her husband worked in a field in which one might not expect to find a domestic violence abuser.

Rector is executive producer of "No Ordinary Love," a feature film that explores domestic violence in two women's lives: one married to a police officer and one married to a pastor. Rector, a 1978 Azle High School graduate, was once married to a pastor, and she left the mar-

riage because of domestic violence.

A free screening and panel discussion about "No Ordinary Love," which was shot in the Fort Worth/Metroplex area, will be held from 6:30-8:30 p.m. Oct. 11 at Azle Memorial Library. A panel discussion will be held after the film. Rector's mother Janie was instrumental in getting the library built and given to the city. Janie and Andy Rector, Tracy's brother, live in Azle.

A 'HARD AND DIFFICULT' MARRIAGE

Rector was married to a minister for 23 years and said she had "no idea" she was in an abusive marriage for many years.

"I just knew it was hard and difficult, so I finally came to the conclusion that I couldn't live like that anymore," she said in an interview with the News, explaining that she



COURTESY PHOTO

In a scene from "No Ordinary Love," the police officer's family enjoys time together.



COURTESY PHOTO

"No Ordinary Love" director Chyna Robinson, left, and executive producer Tracy Rector stop for a moment on set during a long night of filming.

didn't know until later that she didn't understand the nuances of abuse. She said the abuse was not physical in the sense that she had to go the emergency room, but there was some physical abuse in the sense that it involved ownership of her body.

"Which is very typical in an abusive situation - abusers take the agency away from the victim very quickly," she said.

She added that for women of faith, it's a difficult situation to be in because they take their marriage vows seriously. Plus, she said, the first person the victim will talk to will be a pastor. But if that clergy member is not trained with how to deal with domestic violence, one of the first options he or she will

be to recommend the couple attend couples counseling, which won't fix an abusive relationship, Rector said. The victim hearing messages of "divorce is not an option" and that she and her husband "just need to figure it out" also doesn't help.

In the movie, the story centers on two women who try to solve the problem of being in abusive relationships. One abuser is a police officer - there's a high incidence of domestic violence among police officer families, Rector said - and the other abuser is a minister. Besides police officers, the other top professions for abusers are surgeons and airline pilots, Rector said, explaining those three professions include people who have power and

authority with people's lives in their hands.

As Rector was married to a prominent pastor, she wanted to ensure the film showed how domestic abuse can happen in those homes.

"Something we're very proud of is that the film is deemed very authentic to what we know about this issue currently - it is a not Hollywood version of domestic violence," she said. "We deal with over 20 different intersections of domestic violence in the film."

Domestic violence intersects with mental health and other areas, she said, and domestic violence still plagues society because of culture, such as how boys and girls are raised and what their expectations are and what the

world expects from them. She said domestic violence awareness is rather new, as the first domestic violence shelter started in 1974 in St. Paul, Minnesota.

"So up until that point, it was a private issue, and no one wanted to deal with it outside the home," Rector said, adding that helping women in domestic violence situations started as a grassroots effort, such as buying a house and providing a safe place for women.

FINDING HER CALL

After high school, Rector attended Texas Tech University and received her degree in public relations and advertising. She was a board

SEE VIOLENCE, PAGE 3A.

EXPLORE YOUR LIBRARY



EXPAND YOUR WORLD

2022 AZLE LIBRARY TRUST GALA
BENEFITING THE AZLE MEMORIAL LIBRARY

Please Join Us!

SATURDAY, OCTOBER 15, 2022 • 6:15 P.M.

The Orchard Event Venue

1421 NORTHWEST PARKWAY • AZLE, TEXAS

Reception • Dinner • Dancing

SILENT AUCTION • LIVE AUCTION

Heritage Oak Leaves Available for Purchase

For ticket or sponsor information contact
Debra Jenkins 817-832-3663
or debrajenkinsrealtor@gmail.com

VIOLENCE

FROM PAGE 2A

member for SafeHaven of Tarrant County and her experience as a survivor of domestic violence drove her passion to raise awareness through film. October is Domestic Violence Awareness Month.

"From doing that work (on the SafeHaven board), I learned a lot more about areas dealing with the issue of domestic violence," Rector said.

She learned that women who died at the hands of their perpetrators had not reached out to SafeHaven for services "almost every single time."

"They didn't call the hotline, they didn't go to the shelter, they didn't end up asking for help with counselors or legal services," she said, adding that from analyzing that information, she knew there was a serious lack of awareness. "Either women don't realize that these services are available to them or they're not aware of the imminent danger that they're in."

Rector mulled over ideas about how she could create awareness, and filmmaking popped into her head. She wanted to make a feature film, not a documentary, and she thought people could be entertained by a movie but also in the process they are learning about domestic violence and raising awareness that way.

The film was shot and then released last summer, in 2021, and received favorable reviews. The film is available in some streaming services, such as Amazon Prime Video. Even though the film is not in as wide release as Rector had hoped, she discovered another way to promote the movie.

"I created a program that I call PROJECT #RaiseAwareness," she said, noting that the movie is on a DVD and Rector wrote a guidebook that goes with it. The film is offered to domestic violence agencies, communities, college campuses

and others, and it is sold as a program to college campuses as a Title IX program because they are required by law to provide educational opportunities for their students, not just on sexual assault but also dating violence and domestic violence. The highest risk of being in abusive relationship exists for people who are in that traditional college age group - 18 to 24.

"I really wanted to target that group," Rector said. "They need to know what healthy relationships look like and what unhealthy ones look like so they don't get caught into a long-term relationship of abuse." She said that emphasis on prevention programs would be beneficial, but they cost money and it is hard to obtain.

Her program also is available to domestic violence agencies to use it as a domestic violence awareness month program. When the program is sold, its rights are being sold for organizations and groups to show in a public setting as an educational tool, so it has to come with a Q&A session afterward.

A Q&A session hosted by Rector along with Sally Daniels, executive director of Future Hope and Healing Center, will be held after the movie on Oct. 11. FHHC serves the surrounding Azle community by offering victims of domestic violence temporary accommodations, assistance with living expenses and counseling, all at no charge, a news release stated. Rector produced the film along with the Fort Worth writer and director Chyna Robinson.

Rector said several national domestic violence experts saw the film and provided feedback, and one issue they agree on is that it answers the question of "Why doesn't she just leave?"

"That's typically the first thing people say when they don't understand what the issue is about - the nuances, the complexity, the dangerous situation these victims are in," Rector said.

She noted that when a victim does decide to leave the

relationship, it's the most dangerous time in that relationship. The first 30 days after a victim leaves is the most dangerous time, but the danger continues for up to 90 days. More women who are killed by their intimate partner die in the first 30 days after leaving the relationship, but the danger continues for up to 90 days.

The community is invited to this event with parents being encouraged to bring their older teens and young adult children. The film is not rated, but warnings are given for language and violence. The film and discussion afterward will serve as a conversation starter for parents to talk with their children about dating violence.

Azle Library Director Curren McLane said the library is excited about showing the film and having the discussion.

"We're thrilled to offer the Azle community an opportunity to see this impactful film," said McLane in a news release. "We'll be following the screening with a professionally led discussion about domestic violence as part of the Azle Memorial Library's ongoing effort to bring impactful and educational events to the area."

Rector said that she hopes people who watch the movie become more aware of the issue of domestic violence in an authentic way, that they will know how to listen to friend or a family member who comes to them and speaks about their abusive relationship and that they will know how to speak up if they see an abusive situation from a family member or friend. Plus, they can learn how to find resources for how to help someone in a domestic violence situation.

"I'm very excited to share this film with the Azle community - that's my hometown - and I think it's important to be able to share this message with that community," Rector said.

For more information about the movie, access ordinarylovemovie.com.

LETTERS TO THE EDITOR

District responds to reader's letter

Editor's note: This letter is in response to a letter from Tom Kisner published in the Sept. 21 edition of the News.

It is important Azle News readers have all facts. The figures in the letter mentioned are accurate; however, it is missing several key factors.

The current tax rate of \$1.21 is over one cent less than last year and over 10 cents lower than the 2018-2019 tax rate. The M&O compression rate correlates directly to property values - as a school district's values increase, the M&O compresses.

I&S funds can only be for

bond debt obligations. In 2021, voters approved \$71 million in bond funds. Bond literature and ballot language stated a .054 cents increase in May and .0235 cents in November. This accounts for .078 cents.

AIISD is transitioning from a September 1 - August 31 budget cycle to a July 1 - June 30 cycle, starting July 1, 2023. Bond payments are twice a year, in February and August. The August payment that would be our second payment in the September 1 budget will now become the first payment in the July 1 budget. The letter also failed to mention this

year's budget includes a pre-payment toward the 2014 bond, which is an estimated savings of over \$500,000 in interest.

The 2018 voter-approved tax ratification election (TRE) or "Penny Swap" has allowed AIISD to maximize the state's funding formula for the betterment of student safety and teacher salaries.

Azle ISD remains one of the lowest tax rates in the DFW area and the AIISD Board of Trustees remains committed to being good stewards of AIISD tax dollars.

*Superintendent
Todd Smith, Azle ISD*

Times, styles have changed in our schools

As a high school substitute teacher for 23 years, hairstyles, dress styles and learning styles have changed tremendously as I looked about the classroom. Boys with shoulder- to waist-length hair and short pants. Girls with very long hair, raggy pants and navels showing.

But as I looked back about my classrooms in the 1940s and 50s, wow, there's no comparison. The boys had "burrs," flattops and short, neat haircuts. The girls had mostly neck-length hair and knee-length dresses and wore no pants whatsoever.

Not only has dress changed, but the method of learning has changed. I

remember as a high school student, when the bell rang, we changed classrooms with no noise, no cellphones and no tardies. We sat down at our assigned desks with book, paper, ink pen and sharpened pencil. Roll was called: "Present, sir or ma'am." No talking or walking around. And we usually had a library book just in case we finished our work early. The teachers stood in front or the classroom and taught. (That hasn't changed. Perhaps it has gotten better.)

Speaking of libraries, boy, have they changed. Walking onto a school library now and you see mostly tables and chairs. Bookshelves are

getting thinner and thinner and with fewer and fewer books. Must be the result of cell phones and computers.

School parking lots are full of cars, pickups and Jeeps. I have heard that some schools have drug dogs patrolling those parking areas. When I was a kid, there were two or three student cars and the rest were teachers'.

Even though dress, style and learning methods have changed, students are still friendly, nice and want to learn. Times change and us old folks get older, we change, too. In fact, we change a lot, day by day.

Bobby Sloan, Azle

<h1 style="text-align: center;">AZLE AREA CLUBS AND ORGANIZATIONS</h1>		
<p>Texas Health Harris Methodist Hospital AZLE</p> <p>Volunteers Needed TexasHealth.org/ Volunteer/Our-Process</p> <p>RAINBOW INN GIFT SHOP Inside Hospital 108 Denver Trail Azle 817-444-8651</p> <p>ATTIC RERUNS NOW OPEN! FRI 9-4 SAT 9-1 714 SE Pkwy Azle 817-270-3690</p>	<p>Good N.E.W.S. Living at Home Block Nurse Program</p> <p>Volunteer Caregiver Training Classes Classes open to public at no charge</p> <p>Our Volunteers Make a Difference!</p> <p>Caregiver Volunteer Meeting 1st Monday of Each Month at 6pm 817-444-2300 412 Commerce St.</p>	<p>Rotary Club of Azle</p> <p>MEETS AT NOON THURSDAY 412 Commerce St. (across from Azle Post Office)</p>
<p>The Finish Line Addiction wants to destroy you & everyone around you.</p> <p><i>With Jesus there is Victory over addiction.</i></p> <p>GET BACK IN THE RACE!</p> <p>Meetings held every Friday from 7:30PM-9:30PM at The Church at Azle 1801 S. Stewart • Azle • 817-401-8513 www.ourfinishline.com</p>	<p>Faced with a DRINKING Problem? Perhaps Alcoholics Anonymous can HELP.</p> <p>Daily meetings at Noon & 6:30 pm Sunday at 3 pm</p> <p>229 S. Stewart St. • Azle 817-332-3533</p>	<p>Azle Lion's Club</p> <p>Meets 2nd TUESDAY 6:30 PM 412 Commerce, Azle e-clubhouse.org/sites/azle_tk/ Jamie Westbook - president 817-550-7625</p>
<p>AZLE AREA MINISTERIAL ALLIANCE UNITED IN CHRIST</p> <p>Christian Leaders partnering together with one voice to impact our culture for Christ. We celebrate unity amidst diversity as we pastor our community.</p> <p>Luncheon meetings 11:45 a.m. - 1 p.m. 2nd Tues of each month; location varies. See www.azlema.com or email director@azlema.com for additional information.</p>	<p>SERVOLUTION NETWORK</p> <p>LET'S START A COMMUNITY WIDE REVOLUTION THROUGH SERVING.</p> <p>FOR QUESTIONS CALL: 833-4WE-SERV 833-493-7378</p> <p>VISIT: WWW.SERVOLUTIONNETWORK.COM</p>	<p>Azle Boy Scout Troop 243 Meets Mondays 7 PM Azle First Assembly of God 1020 Southeast Parkway troop243azle.org</p>
<p>Optimist Club of Azle</p> <p>Meets every FRIDAY at 6:45 AM Moe's Country Kitchen 316 W. Main, Azle</p>	<p>Azle Lodge No. 601</p> <p>Floor School or Work 7:30 PM THURSDAY NIGHT</p> <p>Wayne Wood - Worshipful Master Rocky Gralla - Secretary Clint Hall - Treasurer</p>	<p>Eagle Mountain Pregnancy Help Center</p> <p>10328 Jacksboro Hwy Fort Worth TX 76135 817-237-1819 www.emphc.org Mon 12-6 PM Thurs 12-6 PM SE HABLA ESPAÑOL</p>

HELP FEED AZLE FAMILIES

Like many of you, we too are feeling the strain of rising costs of our most basic expenses - fuel, utilities, and food. As our operating costs continue to increase, so are the number of families needing our assistance. CCC is now serving over 1,000 families each month, up from 450 families in 2019! Your donations will ease the strain on our annual budget and allow us to purchase items needed to fill our shelves! Here's a look at how your donation will be used:

Keeping our pantry shelves fully stocked is challenging. Our partnership with Tarrant Area Food Bank, gives CCC the ability to purchase large quantities of food for as little as \$0.10 to \$0.14 per pound, so your dollar goes a long way. \$25 feeds a family of two for one week!

At the beginning of 2022, CCC added a Hygiene Corner to our Free Shop. Help us continue to supply our families with shampoo, soap, toothpaste, feminine hygiene products, and laundry detergent. \$25 will supply a month's worth of hygiene products for one household!

In 2019, we provided 125 holiday meals to families in need through our Annual Christmas Boxes. As CCC has grown, so has this program. Based on the higher demand for food this year, we anticipate needing 750 boxes. \$25 will provide one Christmas Box, including a ham, for one household!

CCC supports Azle ISD students by funding the Weekend Backpack Program, giving students simple, ready-to-eat meals and snacks each Friday. During the 2021-22 school year, we provided over 4,500 backpacks. \$25 will purchase six backpacks to ease the food insecurity of 6 students!

\$100 will help secure our inventory in all four categories! Please consider making a special donation this fall as part of the Community Caring Center's 2022 Donation Roundup!

For your convenience, there are multiple ways to donate online at www.communitycaringcenter.com or mail a check to the Community Caring Center 317 Commerce Street, Azle TX 76020.

If you have additional questions about the services we provide or would like to tour our facilities, please feel free to contact our Executive Director, Kristie Cooper at (817) 270-2962. With your help we can continue to make a difference for so many in our community. Please donate today!

Community Caring Center Uniting to Serve

317 Commerce Street, Azle TX 76020

www.communitycaringcenter.com

Kristie Cooper (817) 270-2962

With your help we can continue to make a difference for so many in our community. Please donate today!

Reno PD's Ray Cannon to be school resource officer at Reno Elementary

BY MADELYN EDWARDS
madelyn@azlenews.net

There's a new sheriff in town at Reno Elementary School.

Reno Police Officer Ray Cannon is serving as the new school resource officer at the elementary school.

This news comes after Reno City Council approved an interlocal agreement last week with Springtown ISD to have a school resource officer at the school. Reno city attorney Dottie Palumbo said the council could authorize the agreement, provided that SISD signs it first and the council has a chance to review the general order and make objections if necessary.

Reno Police Deputy Chief Nathan Stringer said during the meeting that the general order is a national standard general order that most police departments adopt to have a school resource officer program, and the general order would become the city's policy to govern school resource officers.

After the meeting, Stringer said one of the department's part-time officers will serve as the school resource officer at Reno Elementary School. Springtown ISD will pay for that officer to work for four hours per day during the school week.

"Springtown Police Department traditionally had been coming to Reno Elementary, but it makes more sense for a Reno school to have a Reno officer," Stringer said.

Stringer said a school resource officer's job is to make sure students and staff are safe and that the school building is secure. School resource officers are also expected to develop and implement educational programs

for students.

Reno Elementary School announced the school resource officer news on Facebook last week. The post detailed Cannon's experience, which includes previous work at the Colleyville Police Department as a community services officer, public information officer and shift supervisor.

"Officer Ray Cannon comes to us with 23 years of law enforcement experience and holds a master peace officers license," the Reno Elementary Facebook post stated. "He is a certified mental health officer, police instructor, crime prevention officer and hostage/crisis negotiator."

Cannon also worked at the Southlake Police Department and was a team leader of the North Tarrant Regional SWAT Hostage Negotiations Unit, according to the post. He serves on the board of directors for the Texas Association of Hostage Negotiators as Region 8 vice president.

"We feel very fortunate at Reno Elementary to have our very own resource officer," the Facebook post noted. "Already, officer Cannon is proving to be a great asset to our school!"

Increasing security at SISD schools is what people in the community wanted, SISD Superintendent Mike Kelley said.

"With the Reno Police Department housed directly across the street from Reno Elementary, I think the parents of students there have always felt a little safer than most," Kelley said. "During our meetings with community members this summer, there was consensus that an increased security presence on all campuses was desirable. We decided to pursue an opportunity to have one SRO on-site at Reno



PHOTO COURTESY RENO ELEMENTARY FACEBOOK PAGE
Reno Police Officer Ray Cannon is serving as the new school resource officer at the elementary school.

Elementary, and also added an additional SRO to share among the campuses in the city of Springtown."

Kelley added that Springtown Police Department will continue to serve schools in Springtown's city limits.

The need for a police officer at Reno Elementary speaks to the fact that some elementary schools in the U.S. have been the targets of violence, including the mass shooting at Robb Elementary School in Uvalde earlier this year.

"If we'd have had this conversation 20 years ago, we wouldn't have been talking about putting an SRO in an elementary school because somebody going in and shooting an elementary school up was kind of unheard of," Stringer said. "But now, with everything that's happened in our country over the last couple of years, the necessity to put SROs in elementary schools has become kind of forefront."

Reno keeps tax rate the same, passes 2022-23 budget

BY MADELYN EDWARDS
madelyn@azlenews.net

Reno residents will pay city property taxes at the same rate as last year, but keeping the tax rate the same wasn't exactly an easy feat for the city.

"It's hard to maintain that," Mayor Sam White said after a budget workshop on Sept. 15.

Last week, Reno City Council passed the 2022-23 budget and set the tax rate at \$0.468166 per \$100 valuation.

This year's budget is expected to bring in more tax revenue than last year. At the council meeting on Sept. 19, White read a statement during the meeting that said the budget will raise more total property taxes than last year's budget by \$246,667.08, which equates to a 29.88% increase. Of the increase, \$48,792.12 is tax revenue from new properties added to the tax roll this year, he said.

However, Reno's budget this year can be defined by gains as well as cuts.

The city has a 24-hour police force this year - a significant change from last year's police department rebuild - but the department's budget was cut by about \$105,000. This means none of the police will be getting raises this fiscal year, and a new vehicle and radio costs were also cut from the police department's budget, City Administrator Scott Passmore said after the Sept. 19 council meeting.

"Maybe three months down the road once we get all of our tax money in, we can assess and see what

we've got, and then see if we can afford to give them a little bit of a bump," Passmore said.

After the Sept. 15 budget workshop, White said inflation has impacted the city's budget, and it's difficult to generate income because of the lack of commercial property in the city.

"Inflation has hit us hard," White said. "It's very hard to balance the budget when you have minimum income. Our income level is not there yet because we don't have valuation."

He added, "Citizens are going to have to realize that we're going to have to let some commercial come in. They want to keep it rural, but development is all around us and cost of living is going up. We've got to keep up with other cities and in order to do that is let some of the growth come in. Manage it, but let it come in."

Briar-Reno Fire Department, which is funded in part by the city of Reno, also had to hold off on getting a vehicle right away in the new fiscal year. After the workshop on Sept. 15, Chief Moses Druxman said the department needs another command vehicle, which includes radios and gear, so that the department can have another staffer on call besides the chief.

"I agreed with the council that over the next few months if money starts coming in, maybe we can work something out," Druxman said.

Despite that cut, the fire department also took a significant step forward in staffing. Briar-Reno Fire Department will be able

to employ two full-time staffers per shift and have a total of seven full-time employees, Druxman said. This will allow the department more capacity to cover service calls, but according to National Fire Protection Association standards, the department should have four full-timers per shift based on call volume.

"We're still at 50% capacity of where we should be, but at least we're somewhere," Druxman said. "We're going in the right direction."

Overall, Passmore struck a positive tone about the budget.

"I feel really good about this budget this year, better than I have of any of the other ones," Passmore said at the Sept. 19 council meeting. "This is the first time in 16 years that the general fund is not borrowing from the water fund."

Instead of using the water fund for general fund costs, the money will go toward water infrastructure needs, Passmore said.

As a whole, the public works department took in multiple gains this year, including another vehicle. The water department staff received 5% raises across the board, Public Works Director Chris Albright said after the Sept. 15 budget workshop. Additional funds were allocated to the streets and water department for repairs and improvements.

The city is also expecting to receive about \$1.2 million in grant funds to spend on water infrastructure needs.

"It'll be good for the city," Passmore said.

AZLE INSURANCE DIRECTORY

Nationwide
is on your side

Albracht Harwood Insurance Agency Inc.
120 S. Main St #4, Springtown, TX 76082
albrachtharwoodinsurance.com
(817) 220-4700
2nd Location - Grapevine, TX

Amy Kaplan, Agent
813 E. Hwy. 199
Springtown, TX
817-220-5222
www.amykaplaninsurance.com

The BEST of Parker County 2013, 2015, 2016

Voted Best Insurance Agency of Parker County 2015
Voted Best Agent of Parker County 2014, 2015 & 2016

State Farm

Sorrow Family Insurance
Health • Life • Disability • Dental • Final Expense
Home • Auto • Boat • Motorcycle • Big Rig • Mobile Home

Our Family Helping Yours!

Paying Too Much For Insurance?

Call For Your Free Quote

Stephanie and Ed

817-444-1129
682-209-2027
www.SorrowFamilyInsurance.com

Independent Insurance Agent
The Trusted Choice

HOGLE INSURANCE GROUP

SHAYE HOGLE 817-444-6389 **HOGLE HOGLE**

"OUR BEST POLICY IS PERSONAL SERVICE"

HOGLEINSURANCE.COM

Thank you for voting us Best Insurance Agency 2021

HOME • AUTO • FARM • LIFE

BURTNETT INSURANCE

817-220-7682

Protecting Texans, Prioritizing customer service

Germania Insurance AUTHORIZED AGENT

FOREMOST INSURANCE GROUP
BRISTOL WEST INSURANCE GROUP
DAIRYLAND INSURANCE
PROGRESSIVE US Assure

Kaye Burtnett & Vanessa Roberson

905 E. Hwy. 199 Springtown, TX 76082

HALEY CARTER
State Farm

817-444-1100
408 Boyd Ct. • Azle
www.HaleyCarter.com

The BEST of AZLE 2014, 2015, 2016

PEOPLE'S CHOICE AWARDS 5 YEARS IN A ROW!
VOTED #1 INSURANCE AGENCY IN AZLE

OUR MISSION: The Azle News shall provide news and insights to our readers through the independent and impartial presentation of information that educates, enriches and entertains. We are proud to be a community newspaper committed to the people we serve.

CENTER

FROM PAGE 1

will have new furniture and décor.

"So, it's a whole new center - inside and out," Ogea said. "They've painted the exterior."

The owner of the building requested that the exterior be green in color, and it will now have a darker shade of green. The building will have a new door and new security.

"It's just a beautiful, beautiful center," Ogea said. "Very welcoming and inviting."

Ogea said the center no longer has file cabinets full of paperwork, as the paperwork has been replaced by an electronic platform.

"So that has freed up a lot of space for us to use for more client interaction," she said.

The center has hired a bilingual staff member and the center expects to hire a new executive director to lead the ministry soon, Ogea said. Three people work at the center, with the new director making four. The center has an office assistant, Ginger Thomas; a bilingual transla-

tor, Joanne Stull; and assistant director, Ember McAlpin, who is the acting executive director until a new one is hired. She will continue to serve as an assistant director after a new executive director is found.

Paying for the renovations came from "generous donations over the years," Ogea said. She declined to say how much the renovations cost. By renovating the building, she said the center wanted to show gratitude to the owner of the building for the years and use of the building and that they want to keep it maintained to show appreciation.

"Not only that, it's beautifying the area and it creates a more welcoming and warm environment," she said.

The center's operations had to be temporarily relocated to two rooms at First Baptist Lakeside's Family Life Center. The church's space for operations are not necessarily private or conducive for some of the service offered to clients, Ogea said, so once services go back to the building, clients will have full access to the center and services.

Ogea said her center wants



Joanne Stull and Ember McAlpin stand near supplies set up on the second floor of First Baptist Lakeside's Family Life Center.



PHOTOS BY DON MUNSCHE

Ray Topete and Danny Tyler assembled chairs at the center last week.

to educate the public about its services and its goal in the next couple of months is to have 40 brand new clients. The center offers free classes for life skills, Christian education and parenting. They are offered to men and women. Clients can earn points from the classes they need for during pregnancy and post-birth.

Center staff stay with families during their journey.

"We want to promote their health and well-being and provide them with whatever services we have at our disposal," she said.

The number of women the center sees each month varies, and clients come from the area, including Springtown, Azle, Sansom Park, Saginaw and White Settlement. Referrals can be made to adoption agencies that the center is familiar

with and have met.

"We are considering the services of a mobile sonogram that can be available so that our clients can come and hear their child's heartbeat - see it, watch it, listen to it," she said. "And that usually has a beautiful impact on their decision-making."

The center is not a medical facility or clinic of any kind, Ogea said, as the center is a faith-based, donor-funded ministry. Medical advice is not given. Clients can receive a self-administering pregnancy test that they can decipher.

Ogea said the center has an opening on its board, and anyone interested may contact Ogea at boardpresident@emphc.org. The center's website is emphc.org, and the center accepts volunteers for a variety of duties. A grant writing specialist, on a voluntary basis, also is being sought.

Like us on Facebook @azlenews

Azle News

AzleNews.net

1300 Northwest Pkwy, Azle, Texas

Sun 11-8 • Tues - Thurs 11-9
Fri 11-10 • Sat 11-9:30
MON CLOSED

Villa del SOL MEXICAN RESTAURANT

HAPPY HOUR
Tues-Sat 4 - 8 PM

TAKE OUT ORDERS
817-406-4452
817-406-4800

MIMI COFFEY FOR STATE REPRESENTATIVE

Hello Fellow District 99 Residents, My name is Mimi Coffey and I am running to be your State Representative. I have spent most of my entire life in District 99. I have raised my 4 children here. As a defense attorney of 27 years, I am used to fighting uphill battles and negotiating. I will fight hard for the needs of our northwest Tarrant County residents. Our property taxes are too high. Women's reproductive rights have been taken away. Our public schools are in a crisis with a shortage of teachers. It is getting harder for the majority of northwest Texans to make ends meet with rising costs. As a small business owner of 22 years, I know what it takes to run a successful business and take care of your people. The pandemic has taught us that to survive we must embrace change. I am ready to serve both Democrats and Republicans alike. District 99 is military and defense industry heavy. I understand and respect this as my father served in the Army and retired from Lockheed-Martin (General Dynamics). I have the utmost respect for our incumbent representative and if elected, plan to continue his tradition of excellent service to the community. I invite you to visit my website, mimicoffeyfordistrict99.com for more information. I'm asking for your vote so that we can put PEOPLE OVER POLITICS. Feel free to text or call me direct at 817-205-4861.

Political ad paid for by the Mimi Coffey for District 99 Campaign

MIMI COFFEY

Azle's 22nd Annual GREAT CANDY ROUNDUP

Tuesday, Nov 1st • 3pm - 6pm • Sponsored by Azle Dental Care

Kids wear your costumes one more time & get dough back for your Halloween candy.* Plus, Dr. Porter will donate an additional dollar to the Azle Community Caring Center.

*For each pound of Halloween candy you bring into Azle Dental Care, you will receive one dollar.

DROP YOUR CANDY OFF AT
Azle Dental Care 912 Boyd Rd, across from Subway
Call 817-444-1763 for more details.

REGISTER TO WIN A \$100 GIFT CARD

Need not be present to win. Drawing held 11-01-22 at 6:15 pm. Winner notified by phone 11-02-22. *Cash back is for kids only. Limit of up to ten pounds for each child. Collected candy will be donated to Azle Community Caring Center.

OBITUARIES

Jimmie Jack Prentice 1941 - 2022

Jimmie Jack Prentice, 81, of Azle, Texas, passed away on September 27, 2022 at Harris Methodist Hospital in Azle, Texas.

He was born to Hildegarde Ruby Prentice and James Warren Prentice on September 5, 1941 in Snohomish, Washington. Jim graduated from Cubberly High School in Palo Alto, California in 1959 and received both a Bachelors from the University of Texas at Arlington and a Master's degree from Dallas Baptist University while working full time at Boeing Aircraft.

Jim served his country in the U.S. Navy for 21 years doing "sea duty" rotations in Hawaii, the Philippines, Adak Alaska, Thailand and Midway Island. He spent 20 years working as a Manufacturing Engineer before making a career change to Trade Show Decorator. He retired in 2017 at the age of 76.

Jim was an avid gardener and loved to work on projects around the house and yard. He achieved the title of Master Gardener as well as Master Composter and was taking college courses related to horticulture until the time of his death.

Jim was a very active member of Inglewood United Methodist Church in Grand Prairie for 23 years and has been a fixture at Azle First United Methodist Church since 2001. Jim was an accomplished tenor in several choirs until cancer treatment took his voice.

He married Margaret Pauline (Peggy) on August 6,



1971, who survives him. He is also survived by his brother Alby Prentice and wife Sharon, brother-in-law John Mulligan, son Justin Prentice, daughter Nyenna Prentice, daughter Melinda Bolles and husband John, grandchildren Molly, Harley and Jacob Bolles, as well as a host of nieces, nephews and their families and his beloved canine companion Scout. Jim was predeceased by parents Hildegarde and James Prentice, brother Warren Prentice and wife Scharalot, sister Ruby Harmon and husband Juan, and sister Cathy Mulligan.

The memorial service will be held on Wednesday October 5 at 11 a.m. at Azle First United Methodist Church.

The family has asked that donations be made to the United Methodist Committee on Relief (UMCOR) in lieu of flowers.

Jim was a loving father, grandfather and husband, a devoted friend and a faithful servant of God. He will be sorely missed.

The Azle News, October 5, 2022 Edition

Daniel Edward Admire 1959 - 2022

Daniel (Danny) Edward Admire 63, of Decatur, passed away Saturday October 1, 2022, in Decatur. A memorial service will be held at 12 p.m. on October 6, 2022, at First Baptist Church-Castle Hills in Azle, TX.

Danny was born January 27, 1959, to Lawrence (Larry) Admire and Patricia (Pat) Admire, in Fort Worth. He drove trucks for thirty-five years. He was a devoted husband, father, son, brother, and friend to many.

He is survived by his father and stepmother Larry and Jarvis Admire of Azle; wife of thirty-seven years, Kimberly Admire of Decatur; daughter, Kristina Admire of Denton; son and wife, Dustin and Ashley Admire of San Antonio; daughter, Kayleigh Admire of Lavon; brother and wife,



Phillip and Terrie Admire of Azle; seven grandchildren, and countless cousins, nieces, and nephews.

Danny is preceded in death by his grandmother, Zula Arnold, mother Pat Stilley, stepmother Francis Admire, sister Debra (Debbie) Admire, and brother Larry (Tiger) Admire.

The Azle News, October 5, 2022 Edition

Windell Laneta Maynes 1934 - 2022

Windell Laneta Maynes, 87, went home to be with her Lord, Thursday, September 29, 2022.

Memorial Service is at 11 a.m. Friday, October 7, 2022 at First Baptist Church of Lakeside.

Laneta was born on November 1, 1934 to Harve and Thelma Adams. They both preceded her in death along with her sister, Winona Springer. Laneta was a devoted wife to Norman Maynes for 62 years who also preceded her in death.

Survivors include her son, Jerry Brandon Maynes and wife, Cathy; daughter, Cynthia Ann Hoecker and husband Don; grandchildren, Christopher Hoecker,



Daniel Maynes, Rachel Ruiz and Joseph Maynes; two great grandchildren; and numerous nieces and nephews.

The Azle News, October 5, 2022 Edition

Jeffery Dean Fuller 1972 - 2022

Jeffery Dean Fuller, 49, passed into the loving arms of his Lord and Savior on Sunday, September 25, 2022 in Weatherford.

He was born December 15, 1972 in Fort Worth to Lonnie Dean and Cynthia Kay (Williams) Fuller. Jeffery was a Christian man who loved the Lord. He was a lineman for Oncor for 30 years. He enjoyed golf, fishing and listening to Alan Jackson. Most of all Jeffery loved spending time with his family.

Jeffery is survived by his daughter, Alexis Messner and her husband Michael; son Andrew Fuller; father, Lonnie Fuller; mother, Cynthia Moores; brother, Steve Kirkbride and his wife Karen; sister, Crystal



Fuller and, granddaughter Kenzleigh, numerous nieces, nephews, and extended family and friends.

He was a loving son, brother, father, and grandfather who will be dearly missed.

The Azle News, October 5, 2022 Edition

Jessie Lee Steel 1942 - 2022

Jessie Lee Steel, 80, passed away Monday September 26, 2022 in Azle.

A private family service will be held at a later date. He was born August 16, 1942 in Fort Worth to Clois and Edith (Fletcher) Steel who preceded him in death along with his wife, Joyce (Lambert) Steel; daughters, Vicky Spiker and Julie Cokenour; brother, Gene Steel.

Jessie is survived by daughters, Jessie Brown and husband Doug, Rhonda Taylor and husband Troy Brannan, Cindy Delarosa and husband Rudy; sisters, Darcus Wright and husband Harold Ray, Brenda Ferguson and husband Gary; brothers, Jimmie Steel and wife Sarah and Gary Steel and wife Fran; grandchildren, Andrew Cokenour and wife Misty, Trisha Hughes and husband Cam-



eron, Cody Spiker, Barry Taylor, Amy Delarosa, and Ashley Flores and husband Ozzy; son in law, Larry Spiker; sister in law, Sue Steel and numerous great grandchildren, extended family and friends.

Jessie was loved by all who knew him and will be dearly missed.

The Azle News, October 5, 2022 Edition

To place an obituary
Call
817-270-3340

White's Funeral Homes
Our family serving your family since 1908

Bob White, Anita White and Zack Bellenger

Full Service Funeral Home
Cremation Services
Pre-Need Plans

Azle • Springtown • Mineral Wells • Weatherford
817-444-3211 • www.whitesfuneral.com

Personalize It!
Tees • Hoodies • Tumblers • Blankets
Just about anything... personalized

Stick Around
1801 SE Parkway, Suite A, Azle
info@stickaroundgifts.com
682-250-3470

AIR DUCT CLEANING

- Clean All Supply Vents
- Sanitize
- Return Vents

Call Today For Your Appointment
817-444-8025

Galbreath-Pickard
FUNERAL CHAPEL

817-594-2747 • Fax 817-596-7803

James R. Plowman
Norma Plowman
913 N. Elm St.
Weatherford, TX 76086
www.galbreathpickard.com
1-800-593-2747

... ATTEND THE CHURCH OF YOUR CHOICE THIS SUNDAY

<p>THE ABBEY CHURCH Pastor: Paul Brownback 10400 Jacksboro Highway 817-238-1404 www.TheAbbeyChurch.com</p> <p>Morning Worship..... 10:30 AM Community Groups..... Various Times</p> <p>ASH CREEK BAPTIST CHURCH Pastor: Dr. G. Wesley Shotwell 300 South Stewart St. 817-444-3219 www.ashcreekbc.org</p> <p>Sunday School..... 9:30 AM Contemporary Worship-TMP..... 10:45 AM Traditional Worship..... 10:45 AM Evening Worship..... 6:00 PM Wednesday Youth Refuge..... 6:00 PM Wednesday Evening..... 6:15 PM</p> <p>AZLE CHRISTIAN CHURCH (Disciples of Christ) Senior Minister, Ashley Dargai, Katie Medlin, Worship Minister 117 Church St. • 817-444-3527</p> <p>Sunday School..... 10:00 AM Morning Worship..... 11:00 AM</p> <p>AZLE FIRST ASSEMBLY OF GOD Pastor: Tim Stevens 1020 S.E. Parkway, Azle 817-237-4903</p> <p>Sunday School..... 9:30 AM Morning Worship..... 10:30 AM Wednesday Evening..... 7:00 PM</p>	<p>COMMUNITY BIBLE FELLOWSHIP CHURCH Pastor - Alton Davis 817-521-4510 1405 Reynolds Rd., Azle 817-444-7117 Directions: 730 N. to 1542 .5 mi. right on Cardinal, left on Reynolds</p> <p>Sunday School..... 9:45 AM Morning Worship..... 11:00 AM Sunday Evening..... 6:00 PM Wednesday Evening..... 7:00 PM</p> <p>CORNERSTONE COMMUNITY CHURCH 2233 Hwy 199 E. • Springtown 817-221-LIFE (5433)</p> <p>Sunday Worship Service..... 10:00 AM Wednesday..... 7:00 PM</p> <p>CROSSROADS BAPTIST CHURCH Pastor - Jon Baker Corner FM 730S & FM 1886 817-755-0279 Transportation Available</p> <p>Worship Service..... 10:30 AM Wed. Prayer Service..... 7:00 PM</p> <p>THE EDGE CHURCH - AZLE 1313 S.E. Pkwy, Azle 817-237-4822 Missouri Synod</p> <p>"Love God - Serve Others - Share Jesus" Traditional Worship..... 9:30 AM Contemporary Worship..... 11:00 AM</p>	<p>FIRST UNITED METHODIST CHURCH Pastors: Rev. Todd & Jenn Pick 200 Church St., Azle 817-444-3323</p> <p>Morn. Worship..... 8:30, 9:45 & 11 AM Sunday School..... 9:45 & 11 AM Youth (UMYF)..... 5:00 PM Sun & 6:30 PM Wed</p> <p>HOLY TRINITY CATHOLIC CHURCH 800 Highcrest Dr. - Azle 817-444-3063</p> <p>Saturday..... 5:00 PM Sunday..... 9:00 AM Sunday..... 11 AM (Spanish) Daily Mass (M, T, Th, F)..... 8:00 AM Wednesday Mass Religious ED..... 6:30 PM Confessions..... Sat 4 PM</p> <p>HOPE LUTHERAN CHURCH ELCA 4795 E. Hwy 199 - Reno 817-221-HOPE Follow us on Facebook for streaming services</p> <p>Sunday School..... 9:00 AM Traditional Service..... 10:00 AM</p> <p>SOLID ROCK BIBLE CHURCH 591 S. Reno Rd., Springtown, Texas 76082 Pastor - Bill Gay - 817-304-7443</p> <p>Coffee and Donuts..... 9:00 AM Sunday School..... 9:30 AM Morning Worship..... 10:30 AM Children's Church After Music Service Wed. Prayer Meeting..... 6:30 PM Wed. Bible Study..... 7:00 PM</p>	<p>LEGACY CHURCH Assembly of God Church Pastor: Gary D. Veazey Hwy. 199 & Jaybird Lane 817-221-2983</p> <p>Morning Worship..... 9:15 & 11:00 AM Kidz Zone..... 9:15 & 11:00 AM Weds Evening Legacy Group Legacy Youth, Kids All Services..... 7:00 PM</p> <p>SILVER CREEK UNITED METHODIST CHURCH Rev. Sheila Fiorella - Pastor 2200 Church Rd., Azle 817-444-1382 www.silvercreekumc.org</p> <p>Sunday School 9:30 AM • Worship 10:30 AM</p> <p>SILVER CREEK BAPTIST CHURCH Pastor: Jay Ditty Minister of Music: David Musick Corner FM 730 S. & Veal Station Rd. Church 817-444-2325 www.silvercreekbc.org</p> <p>Sunday School..... 9:45 AM Morning Worship..... 10:50 AM Evening Worship..... 6:00 PM Wed. Prayer Service..... 7:00 PM</p>	<p>THE WORD@LAKESIDE CHURCH OF GOD 9396 FM 1886 Fort Worth, TX 76135 817-237-5500 thewordatlakeside.com</p> <p>Pastors: Brandon and Kelly Bohannon Worship Pastor: Christen Moody Family Life and Young Adult Pastors: Jodie and Mark James, Kids Pastor: Katie Pearson, Student Pastors: Taylor and Sheridan Tomlin, Creative Directors: Logan and Carrie Edwards, Connections Coordinators: Preston and Ashley Larrew</p> <p>Equip Sunday School at the WORD..... 9:30 AM Empower Worship at the WORD..... 10:45 AM Kids at the WORD..... 10:45 AM PreK at the WORD..... 10:45 AM Emanate at the WORD (Special Needs Ministry)..... 10:45 AM Nursery at the WORD..... 10:45 AM Young Adults at the WORD..... 6:00 PM Wednesdays Adult Bible Class..... 7:00 PM The WORD Students (6th-12th grades)..... 6:30 PM Awana Kids at the WORD..... 6:30 PM Life at the WORD Life Groups Various Times</p>
--	---	---	--	--

A church alive is worth the drive! For more information or rates on listing your church, call Johnna at 817-270-3340

SENIOR SPOTLIGHT

BY JACKIE "JJ" JOY
Special to the Azle News

Seniors heading to State Fair

The Azle Adult Activity Center tries to bring fun, nutritious meals, and information to "seasoned adults." This month we are excited to let you know we are planning two special events.

On Oct. 20, we will be carpooling to the Meals On Wheels Inc. of Tarrant County office in Haltom City and then boarding a bus and going to the State Fair of Texas. Anyone 60 or older wanting to go is welcome to sign up. Thursdays are "Senior Day," and the entry cost is only \$5 each. Please don't hesitate, as time is short and we must notify the MOW office on Oct. 10, of how many to expect. For further information, just call 817-444-0070.

The next big announcement is for women wishing to get a free mammogram. The Moncrief Cancer Institute mobile unit will be in our parking lot on Oct.

26 from 8:30 a.m. to 3 p.m. for screenings. For scheduling your appointment, call 817-288-9970 or go to moncrief.com/screening. We are located at 601 Southeast Parkway in Ash Creek Park.

There are three ways to see the October menu of our wonderfully nutritious meals that are offered Monday through Friday. You can call us at 817-319-0950, go to the city's website at www.cityofazle.org or come by to see us. All meals follow the nutritional guidelines set forth by the Older Americans Act of America. They are offered for a suggested donation of \$2 and must be ordered by 9:30 the morning before you want to eat.

Everyone is welcome to come see us and see what we have to offer. We open at 9 a.m. and no appointment is needed. We hope to see you soon.

Democratic groups hold meeting this weekend

FROM STAFF REPORTS

Candidates for State Board of Education and the 2nd Court of Appeals in the Nov. 8 general election will speak at the meeting of the Parker County Active Democrats at 6:30 p.m. Oct. 10 at Weatherford College. Luis Miguel Sifuentes, a former teacher and human resources professional, is

the Democratic candidate for SBOE from District 11. Delonia Watson, an attorney with three decades of experience in appellate advocacy, is the Democratic candidate for justice, 2nd Court of Appeals, Place 3. The meeting will be in the Strain Room of Weatherford College's Doss Student Center. Visitors are welcome. Information at

parkercountydemocrats.org. Also, a short film about the lynching of four Black youths on the Parker County Courthouse square in 1864 will be screened at the Parker County Texas Democratic Women's meeting at 2 p.m. Oct. 9 at Mount Pleasant School, 213 Raymond George Way in Weatherford. Representatives of the Parker

County Peace Coalition will offer tours of the restored schoolhouse after the film. The building was the only public school for Black students in the city until the 1960s. The PCTDW business meeting will follow the screening. Visitors are welcome. For information, contact PCTDW President Marti Fagley, mflagley@aol.com.

Parker County Appraisal Review Board accepts applications

FROM STAFF REPORTS

Applications are being accepted for Parker County residents interested in serving on the Appraisal Review Board.

The Appraisal Review Board is a group of private citizens authorized to hear appeals and determine protests for ad valorem tax purposes. The board is a separate authoritative body and are not employees of the Parker County Appraisal District. Appraisal

Review Board members are appointed by the Local Administrative District Judge of Parker County for two-year terms.

To be eligible for appointment, an applicant must have been a Parker County resident for two years and never have been employed by or been an officer or director of the Parker County Appraisal District. There are other eligibility restrictions provided in Texas Property Tax Code Section 6.412.

Appraisal Review Board service is a full-time commitment during April, May, June and July. The board also meets periodically throughout the remainder of the year to carry out supplemental duties. Per diem compensation is generally \$100 per half-day session.

People interested in serving may fill out applications for potential Appraisal Review Board members and will be accepted by the Parker County Taxpayer

Liaison Officer on behalf of the Local Administrative District Judge. Member applications can be found online at www.parkercad.org under the downloads and forms menu. Submit completed applications by email to tlo@parkercad.org, or hand-deliver or mail them to the Parker County Appraisal District, Attention Taxpayer Liaison Officer at 1108 Santa Fe Drive, Weatherford, TX 76086.

Spotlight on BUSINESS

OCTOBER

Southwestern
COMFORT
Air & Heat

Heating Tuneups
\$55

11345 FM730N, Azle
817-696-6421
Kenny Bates, Owner
817-361-3695



When the craving for authentic Mexican dishes hits, Chuy's can serve all of your needs, whether it's a sit-down meal with friends or family, private parties, catering, and meals to go.

Daily Specials
ALL DAY

Monday
Carne Guisada \$9.05

Tuesday
Chicken Enchilada Dinner \$8.20
Cheese Enchilada Dinner \$7.99
Taco Dinner \$8.20
Carne Guisada \$9.05

Wednesday
Chicken Enchilada Dinner \$8.20
Cheese Enchilada Dinner \$7.99

Thursday
Taco Dinner \$8.20
Meat Enchilada Dinner \$8.20

Friday
Fajitas \$13.29
Chicken Enchilada Dinner \$8.20

CHUY'S 1833 FM 730 N,
Azle, Texas
817-752-2019
We Cater!
Mon-Fri 11 AM - 8:30 PM
Sat 8 AM - 8:30 PM
Sun 9 AM - 3 PM

MTX
ROOFING & CONSTRUCTION
Your Hometown Roofer

No matter what your roof needs may be, from minor repairs up to replacement. With years of experience and a dedicated team that take pride in their workmanship, you can't go wrong for such an affordable price.

RESIDENTIAL ROOFING
STORM RESTORATION
GUTTERS • ROOF REPAIR

682-290-6017
brandymtxroof@gmail.com
MTXROOFING.COM

Chuy's Mexican Restaurant #8

A family legacy comes to Azle

Chuy's Mexican Restaurant originated in Fort Worth in 1982 and has been gradually adding new restaurants around DFW, including its newest location in Azle.

Owner Ignacio Adame has been working in the family business for over 35 years and works alongside Gina Adame, general manager, who has been in the restaurant industry for 25 years.

"We are a small family-owned restaurant, and we are excited to be here in Azle," Adame said. "We appreciate everyone's support."

Chuy's serves breakfast all day and offers daily specials throughout the week. Tortillas are homemade and fresh every day. Be sure to check out the lunch menu

for today's special!

When the craving for authentic Mexican dishes hits, Chuy's can serve all of your needs, whether it's a sit-down meal with friends or family, private parties, catering, and meals to go.

For tacos to enchiladas, fajitas to flautas, you'll have a hard time picking your favorite Chuy's dish.

Chuy's is located at 1833 FM 730 N in Azle, next to Cornerstone Church. They are open Monday through Friday, 11 a.m. to 8:30 p.m., Saturday 8 a.m. to 8:30 p.m., and Sunday 8 a.m. to 3 p.m. For to-go orders, call 817-752-2019.

Present this ad to receive a sopapilla and a scoop of ice cream!

ON THE SQUARE GUNS & AMMO

101A N Main St in Springtown
• ON THE SQUARE •
shop.OnTheSquareGunsAndAmmo.com

Layaway For Xmas!

Come in For All Your Firearm and Ammo Needs!

Open Tues-Fri 10 am - 6 pm,
Sat 9 am - 4 pm, Closed Sun & Mon
817-538-7557



OCTOBER IS Breast Cancer Awareness MONTH



**Strong Construction
AND HAIL CLAIMS**
866-222-2311
Nelson Bran, Project Manager
Text: 626-695-0605
brannelson@yahoo.com
www.strongconstr.com
Springtown, Texas
*God, work & family: these things are
indivisible and transparent in all we do.*



**TRIPLE M STORM
SHELTERS, LLC**
817-925-9004
817-475-2286
info@triplemstormshelters.com
www.TripleMStormShelters.com



TEXAS
**SEMIS
RVS
EQUIPMENT
PICKUPS
CARS
ATVS**
*Diezel & Auto
We Fix Everything!*
817-968-7867



**Call us to
get your own great
smile started!**
www.SmileGreat.com
912 Boyd Rd • 817-444-1763



HOGLE
Insurance Group
167 W. Main
817-444-6389
www.HogleInsurance.com
"Our Best Policy is Personal Service"



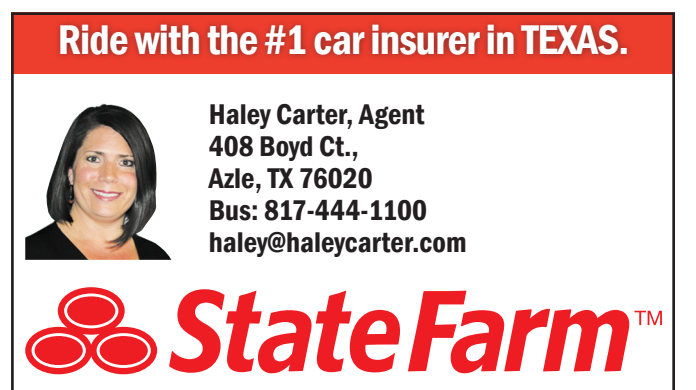
Motley's **AUTOMOTIVE &
MOTORCYCLES**
FAMILY OWNED AND OPERATED FOR 21 YEARS
State Inspection for Tarrant & Parker Counties
1304 NW Pkwy (Hwy 199) www.motleyautomotive.com
817-444-8529 • 817-456-0907
Monday - Friday 8:30 am - 6:00 pm



**AZLE AREA
CHAMBER OF COMMERCE**
350 Members and growing!
404 W. Main, Suite 102 • 817-444-1112
Monday - Thursday 8 am - 5 pm, Friday 8 am - 4 pm
www.azlechamber.com
PROMOTING BUSINESS AND COMMUNITY



**JIM STEVENS
PHOTOGRAPHY**
PROFESSIONAL
BUSINESS PORTRAITS
COMMERCIAL PHOTOGRAPHY
DRONE PHOTOGRAPHY
FOOD PHOTOGRAPHY
713-725-5620



Ride with the #1 car insurer in TEXAS.
Haley Carter, Agent
408 Boyd Ct.,
Azle, TX 76020
Bus: 817-444-1100
haley@haleycarter.com



**ACE
TIRE SERVICE**
Cars • Trucks
Trailers • Mowers
Farm /Construction
Equipment
GREAT QUALITY SERVICE IN TWO LOCATIONS
2613 E. 1st St. • Fort Worth
1010 Hwy. 199 E. • Springtown
817-220-7815



**Debbie
CPA
Bunero
ACCOUNTANT**
Cell: 817-307-2828
Fax: 888-908-5987
Proud to be a member of the
Azle Area Chamber of Commerce
OfficeOf.BuneroCPA@gmail.com
252 West Main Street,
Suite E, Azle



ATEX TRASH SERVICE
Taking care of the
community that we live in
Tim 817-344-8464
P.O. Box 528, Azle, TX 76098
atextrash.com



Protect your world
Auto • Home • Life • Retirement
Mares Insurance Group, Inc.
817-444-1491
208 W. Main St., Azle
Call me today to
discuss your options.
Allstate
You're in good hands.
AUTO • HOME • LIFE • RETIREMENT



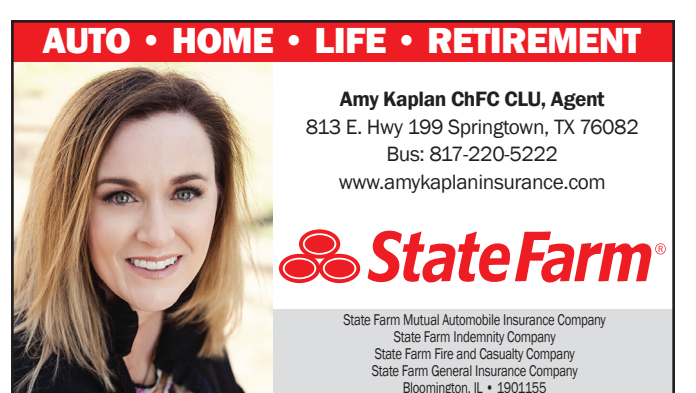
Subscribe Today!
\$40.00
In-County
\$36.50
Senior Citizen
\$25.00
Online Only
817-270-3340 817-220-7217



**STARLA
KARLIS
REALTOR®**
817-845-3822
starla.karlis@winansbhg.com
1227 W. Magnolia Ave,
Ste 150, Fort Worth
NorthStar-Team.com



S. Grace Neal
Attorney at Law
NEAL LEGAL, P.C.
1005-A Southeast Pkwy, Azle, Texas 76020
Social Security Disability • Modifications • Divorces
Enforcements • Custody • Child Support • Adoptions
Tel: 817-237-4099 • Fax: 817-237-5462 • sgneal@neallegal.com



AUTO • HOME • LIFE • RETIREMENT
Amy Kaplan ChFC CLU, Agent
813 E. Hwy 199 Springtown, TX 76082
Bus: 817-220-5222
www.amykaplaninsurance.com
State Farm Mutual Automobile Insurance Company
State Farm Indemnity Company
State Farm Fire and Casualty Company
State Farm General Insurance Company
Bloomington, IL • 1901155

CERT class to begin this week

FROM STAFF REPORTS

The 2022 Fall Basic Community Emergency Response Team class begins this week and continues for two more weeks, according to a news release from the Parker County Office of Emergency Services.

The Basic CERT course is a free, 30-hour course. To receive a certificate, both classroom and hands-on training must be completed.

The class will be held at the Parker County Office of Emergency Services facility located at 215 Trinity St., Weatherford (on the north side of the Weatherford Farmer's Market).

"Parker County restarted the CERT program in late 2006," said Kit Marshall, Emergency Management officer with Parker County Office of Emergency Services, in an email. "The course is offered twice a year; one in the fall and one in the spring. The Basic CERT course is for anyone over 18 who is interested in learning more about

personal preparedness and how to help in the event of a disaster. What they learn is applicable at home, in the workplace, while shopping, on vacation, etc. It's about how to take care of yourself, your family and others before first responders arrive. CPR/AED and Stop the Bleed have been added to the training to increase individual knowledge and skills."

Marshall added that the Basic CERT course is a national FEMA curriculum that is utilized by all jurisdictions across the country that are interested in starting a team. This allows CERT teams to work together when the need arises, Marshall said.

Those who are interested in signing up for this course should respond to davidinelson@uwmail.com. Paperwork will be completed during the first class. Interested individuals should bring pen and paper. The book and other training supplies will be provided.

FALL SCHEDULE

Thursday 6:30-9:30 p.m.
Saturday 9 a.m.-5 p.m.
Oct. 13 6:30-9:30 p.m.
Oct. 15 9 a.m.-5 p.m.
Oct. 20 6:30-9:30 p.m.
Oct. 22 9 a.m.-5 p.m.

TOPICS COVERED

Disaster Preparedness

- Community preparedness
- Hazards and their potential impact
- Home and workplace preparedness
- Reducing the impact of hazards
- Protection for disaster workers

Fire Safety and Utility Controls

- Fire chemistry
- Reducing fire hazards in the home and workplace
- Hazardous materials
- How to size-up a situation
- Fire suppression safety/how to use a fire extinguisher

Disaster Medical Operations, part 1

- Treating life-threatening conditions
- Triage

Disaster Medical Operations, part 2

- Public health considerations
- Functions of disaster medical operations
- Establishing medical treatment areas
- Conducting head-to-toe assessments
- Treating burns
- Wound care
- Treating fractures, dislocations, sprains, and strains
- Nasal injuries
- Treating cold-related/heat-related injuries
- Bites and stings

Light Search and Rescue

- Safety during search and rescue operations
- Conducting interior and exterior search operations
- Conducting rescue operations

CERT Organization/Incident Command

- Incident command/mobilization
- Span of control
- Documentation

Disaster Psychology

- Disaster Trauma
- Team Well-Being
- Working with Survivors' Trauma

CERT and Terrorism

- What is terrorism?
- Terrorist targets/ weapons
- CBRNE indicators
- Preparing at home, work, and in your neighborhood

CPR/AED

- Stop the Bleed
- Wrap up, Final Exam, and Disaster Exercise

Court: Paxton can't prosecute election crimes

STATE SENDS RESOURCES TO FLORIDA

Texas has deployed state resources to Florida to assist in response and recovery efforts in the aftermath of the devastation caused last week by Hurricane Ian, one of the most powerful storms to hit the United States in the past decade.

"Texans understand the urgency of hurricane disaster response and recovery efforts, and our state is swiftly sending more support and resources to Florida as they continue responding to Hurricane Ian," Gov. Greg Abbott said.

The Texas Division of Emergency Personnel has sent more than 80 people to Florida, including nearly two dozen firefighters. In addition, more than 1,000 workers from Texas electricity providers were deployed to Florida to assist in restoring power.

COURT: PAXTON CAN'T PROSECUTE ELECTION CRIMES

The Texas Court of Criminal Appeals stuck with an earlier ruling that Attorney General Ken Paxton does not have the power on



CAPITAL HIGHLIGHTS

By Gary Borders

Gary Borders is a veteran award-winning Texas journalist. He published a number of community newspapers in Texas during a 30-year span, including in Longview, Fort Stockton, Nacogdoches and Cedar Park. gborders@texaspress.com.

his own to investigate and prosecute suspected election crimes. The Austin American-Statesman reported the court turned down Paxton's request to reverse a December ruling which struck down a 1985 law giving the attorney general that authority.

That ruling by the court, which consists of all Republicans, said the 1985 law violated the state's separation of powers doctrine, since it gave the attorney general's office, which is in the executive branch, prosecution authority reserved for members of the judicial branch - district and county attorneys.

Paxton sharply criticized the ruling, the Statesman reported.

"The CCA's shameful decision means local DAs with radical liberal views have the sole power to prosecute election fraud in TX - which they

will never do. The timing is no accident - this is devastating for the integrity of our upcoming elections," Paxton said on Twitter.

COVID-19 CASES CONTINUE TO DROP

The number of new COVID-19 cases reported in Texas during the past week was again down slightly, with 22,006 new cases reported along with 123 deaths, according to the Coronavirus Resource Center at Johns Hopkins University. The Texas Department of State Health Services reported 1,654 lab-confirmed COVID-19 hospitalizations as of Sunday, down slightly from the previous week.

Since the pandemic began in early 2020, the state has reported nearly 8 million confirmed cases and 90,885 deaths. Just under 64% of the state's population is fully

vaccinated.

WILDFIRES ONCE AGAIN ON THE RISE IN STATE

Dry weather and low humidity have once again increased the prevalence of wildfires in multiple areas of the state, after a rainy respite in mid-to-late August. However, the rain has largely left the state once again.

Texas A&M Forest Service firefighters responded to nearly 80 wildfires in the past week, with two still active Sunday in Young and Angelina counties. Both were nearly completely contained.

"The 2022 fire season has been significant for the state of Texas, as state and local firefighters have responded to more than 9,800 wildfires," said Wes Moorehead, Texas A&M Forest Service Fire Chief. "The state received beneficial rainfall mid- to late-August, which helped to significantly slow the operational tempo for wildland firefighters. However, the benefits of that moisture have started to wane, and we are, once again, observing dry conditions across the state that are resulting in increased wildfire activity."

Nine out of 10 wildfires in

the state are caused by human activity. Residents are urged to wait on conducting any outdoor burning until conditions improve, even if your county is not under a burn ban. A total of 95 Texas counties are still under a burn ban.

NEW CABLE BARRIER SAVING LIVES

Motorists on Texas highways likely have noticed the addition of cable barriers along medians that prevent vehicles from veering into opposite lanes of traffic. Those barriers are saving lives, according to the Texas Department of Transportation.

A review of four TxDOT districts where 130 miles of new cable barriers were installed - in Lufkin, Pharr, Waco and Fort Worth - showed the barriers have been hit and repaired 242 times since 2019.

"I'm going to assume that each of those 242 strikes was a potential fatality had that cable barrier not been there," Commissioner Laura Ryan said.

The agency has completed 88 "Road to Safety" projects in the state, with 120 more now under construction. The

efforts seem to have had a beneficial effect, with 84 fewer traffic fatalities reported in Texas from January to August. The state also saw a 9% drop in distracted driving deaths, and an 18% decrease in work zone fatalities.

PUC EXPANDS WEATHER PREP RULES

The Public Utility Commission has expanded weather preparation rules for electricity generators and transmission utilities in hopes of ensuring the reliability of the power grid during summer and winter severe weather events.

"Reliability drives every decision we make when it comes to grid operations," said Public Utility Commission Chairman Peter Lake. "The grid has to be ready for any weather condition, from extreme heat to extreme cold."

Under the new rules, the state is divided into 10 geographically distinct areas in which minimum and maximum temperatures are set under which power generators must prove their ability to continue operating.

The temperature standards go into effect next year.

LEGAL PUBLIC NOTICES

TIM'S TOWING SECOND NOTICE STORAGE LIEN

The following vehicle and/or property will be disposed of within applicable laws of the state of Texas if not reclaimed within 30 days : Year 2003 Make SUZUKI vin #JSAAM44A53215817 lic# NONE Towed from 470 DENVER TRL AZLE TX 76020 Impounded at 704 NW PARKWAY ST AZLE TX 76020 Charges are \$272 for towing, storage charges accrue daily at the rate of \$21.03 per day plus tax, impound charge of \$21.03 and a notification charge of \$50. Tim's Towing (817)523-1098 Vehicle Storage Facility License #0653457VSF . Direct unresolved complaints regarding the storage of a vehicle to the Texas Department of Licensing and Regulation, P.O. Box 12157, Austin, Texas 78711, 512-463-6599, towing@license.state.tx.us; <http://www.license.state.tx.us>"

NOTICE OF PUBLIC SALE

To satisfy a landlord's lien. Sale to be held at Azle Southeast Storage, 1004 Southeast Parkway, Azle, TX at 10:30am 10-21-2022 Property to be sold to the highest bidder for CASH. Property includes contents of the following tenant: Andrew Thompson, : Household items,, Curtis Marker: Household Items.

NOTICE OF PUBLIC SALE

Sandy Beach Self Storage Auction to be held on October 8th, 10 AM at 11109 Liberty School Rd. Azle. For units #139 Dean Schmachtenberger. #126 Sierra Lozano and #135 Michael Hopp. All misc items.

Notice of Public Sale

Public boat sale to satisfy storage lien. Up for bids LEGALLY BELONGING TO: James Charles Montgomery TX# 6673HB, VIN# CL YC02770673 1973 30' Columbia The Sale Will Be Held on November 13, 2022. 1:00PM, West Bay Marina, 6925 Liberty School Tap Rd. Azle, TX 76020. (817)444-1622. Terms are cash/cashier's check at time of sale.

NOTICE OF PUBLIC SALE

Notice is hereby given that the following will be sold to satisfy a landlord's lien, pursuant to Chapter 59: Self-Service Storage Facility Liens of the Texas Property Code; bidding to take place at lockerfox.com on the 22nd day of October, 2022 at 11:00AM. The following customers containing household and other goods will be sold. 10 Federal Self Storage, 9220 Oak Grove Rd, Fort Worth, TX 76140. Montell Ashford - Ashford LLC, Andre Cairo, Oscar Gonzalez, Christie L Campbell, Marian Jenkins, Elbert Black-Guthrie, Amanda Wubs - Wubs Demolition And Remodeling

NOTICE OF PUBLIC SALE

Notice is hereby given that the following will be sold to satisfy a landlord's lien, pursuant to Chapter 59: Self-Service Storage Facility Liens of the Texas Property Code; bidding to take place at lockerfox.com on the 22nd day of October, 2022 at 11:00AM. The following customers containing household and other goods will be sold. 10 Federal Self Storage, 6129 Vega Dr, Fort Worth, TX 76133. Gustavo Ramos, Shawmeon Torres, Angela Smith, Angela Smith, Florence M Orta, Shakiriana Jefferson, Cathy Johnson, Shelia Young, Beverly Hemphill, Jomarie Deason, Ron Parker, Evelyn Brandon, Carol McDonald, Christopher Tankersley, Leslie Ayers

NOTICE OF PUBLIC SALE

Notice is hereby given that the following will be sold to satisfy a landlord's lien, pursuant to Chapter 59: Self-Service Storage Facility Liens of the Texas Property Code; bidding to take place at lockerfox.com on the 22nd day of October, 2022 at 11:00AM. The following customers containing household and other goods will be sold. 10 Federal Self Storage, 2920 Avenue F Street, Arlington, TX 76011. Ann Clem, Cynamon Gates, Dawn Ridgeway, Cecilia Baker, Gloria J Turner, Chastity Smith, Carole Sturm, Jessie Foots, Steven Kimberling

Azle School Menu Oct 12 - Oct 14, 2022

BREAKFAST:
PreK-4th Grade, 7-12th Grade \$1.55
5-6th Grade FREE
2nd Meal \$2.00
Visitors/Employees \$2.75

LUNCH:
PreK-4th Grade \$2.55
5-6th Grade \$2.75
7-12th Grade \$2.55
2nd Meal \$3.20
Visitors & Employees \$3.75

PreK - 4th

BREAKFAST: Everyday - Assorted Fruits and Cereal, Juice, White or Chocolate Milk, Graham Crackers, Toast
Mon No school Tues No school Weds Sausage Biscuit, Orange Craisins
Thurs Breakfast on a Stick, Strawberry Banana Applesauce Fri Mini Maple Waffles, apple

LUNCH: Everyday - Variety of milk. Your choice of 1 entree & 1 fruit or juice
Mon No school Tues No school Weds Sweet & Sour Chicken w/ Lo Mein Noodles OR Chicken Egg Rolls, Stir Fried Vegetables, Applesauce
Thurs Grilled Chicken Sandwich, Hotdogs, Smile Fries, Baked Beans, Orange Fri Max Sticks w/ marinera, Meatball Subs, Chicken Bacon Ranch Wrap, Corn, Peaches

GRADES 5TH - 8TH

BREAKFAST: Everyday - Assorted Fruits and Cereal, Juice, White or Chocolate Milk, Yogurt w/Granola
Mon No school Tues No school Weds Cinnamon Roll, peach cup
Thurs Chicken Biscuit, banana Fri Breakfast on a Stick, apple

LUNCH: Everyday: Variety of milk. Your choice of 1 entree & 1 fruit or juice, crackers • Salad bar offered daily
Mon No school Tues No school Weds Sweet & Sour Chicken w/ Lo Mein Noodles OR Chicken Egg Rolls, Stir Fried Vegetables, Applesauce
Thurs Grilled Chicken Sandwich, Hotdogs, Smile Fries, Baked Beans, Orange Fri Max Sticks w/ marinera, Meatball Subs, Chicken Bacon Ranch Wrap, Corn, Peaches

HIGH SCHOOL

BREAKFAST: Everyday - Assorted Fruits and Cereal, Juice, White or Chocolate Milk, Yogurt w/Granola
Mon No school Tues No school Weds Cinnamon Roll, Assorted Cereal, Yogurt w/ Granola, Peaches Thurs Chicken Biscuit, Assorted Cereal, Yogurt w/ Granola, Bananas Fri Breakfast on a Stick, Assorted Cereal, Yogurt w/ Granola, Apples

LUNCH: • Everyday: 1% unflavored or non fat chocolate milk & juice offered daily at breakfast and lunch.
Salad Bar • Fruit of the day subject to change due to deliveries and shortages. • Fruit, hot and cold veggies
Mon No school Tues No school Weds Mac n Cheese, Fish Sticks, Beef or Chicken Tacos, Chicken Egg Rolls w/fried Rice, Meatball Sub, Pepperoni Pizza, Spicy Chicken Sandwich, Popcorn chicken Thurs Chicken Sandwich, Chicken & Waffles, Quesadilla, Crispos Teriyaki chicken w/lo mien, Max Sticks w/marinera, Cheese Pizza, Corndog, Grilled Chicken Sandwich Fri Cheeseburger, Burger, Totchos w/rice, Bean Burrito, Sweet n Sour Chicken w/fried rice , Chicken Bacon Wrap, Nachos

SPONSORED BY

Azle Dental Care,

"Complete Dental Care for the Entire Family"

www.SmileGreat.com

Brooke Porter, D.D.S., 912 Boyd Rd., Azle • 817-444-1763

Agriculture: It's A Good Life

"No race can prosper 'til it learns there is as much dignity in tilling a field as in writing a poem." Booker T. Washington



AG 101
By Jack DeShazo

Jack DeShazo has decades of experience in the agriculture field.

The last time that we talked I threw some information your way dealing with supply and demand and how these two factors dictate the prices of just about everything. However, there are other factors that also influence prices.

The political and financial conditions of nations and regions that produce and export agricultural products has an effect on the pricing of those goods as it also does with the nations that import those products. Ukraine and the war with Russia is a prime example of this. Ukraine, the world's fifth largest exporter of wheat, fourth largest exporter of corn and third largest exporter of rapeseed has obviously had their production and export of these and other agricultural products interrupted by the fighting. Of course, this also has an affect on the nations that import

from Ukraine. Again, there's the old supply and demand rule and it's influence on worldwide prices. Now let's go back to the discussion of the weather and it's excess or lack thereof and it's effect on quality and quantity of agricultural products. Hurricane Ian and it's devastation in Florida, the Carolinas and Virginia basically completely wiped out at least a year's worth of production and in many cases a lifetime of investments, some of those agriculturalists will not recover and will be out of business. On the opposite end of the spectrum let's consider the results of not enough rainfall as much of the Southwest, Central and Western U.S.A. has experienced for at least the past 12 months. One example would be the current

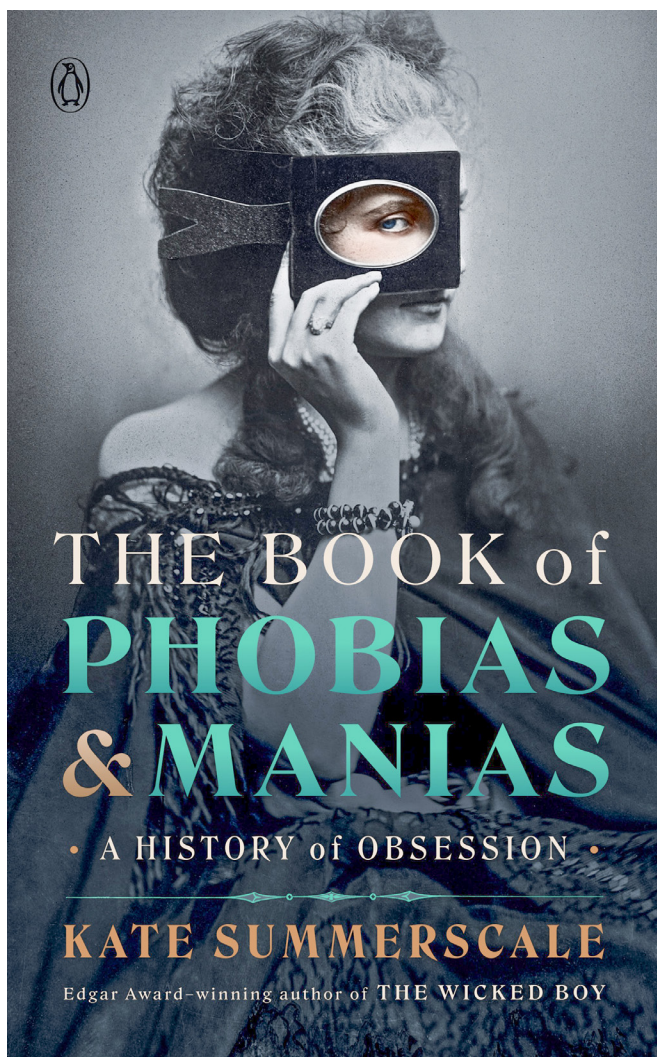
West Texas (a prime cotton producing area) cotton crop, 100% of the non-irrigated and at least 15-20% of the irrigated cotton was judged to be a loss and plowed up. Let's also briefly talk about a crop that hits a lot closer to home, hay. Usually in our area depending on the timing of the rainfall, fertilizer availability, application, etc. we would expect at least two cuttings of hay and sometimes when everything hits just right a third and maybe even a fourth cutting. This year unless the limited rain fell at the right time many folks were lucky to get a first and maybe second cutting with some happy to get only one cutting. Of course, this has an effect on supply which in turn affects price. Good quality four feet X six feet round bales nor-

mally sell in the \$60 to \$90 ballpark. This year livestock raisers and feeders are looking at \$150+ per roll. I visited with a man a couple of weeks ago who raises cattle in South Texas below San Antonio who said 4'X5' rolls of hay in that area were selling for \$200. Many people are buying and hauling baled corn stalks out of Iowa and Kansas to feed their cattle just to try and survive until better times. I visited with one of my former agricultural Science students yesterday, he is a Regional Director and Director of Renewable Fuels for a financial company in Iowa that does business on the global level. He quoted prices to me comparing the prices of agricultural commodities from a year ago to yesterday's prices, many of which are used in milling and mixing livestock feeds. Here are the results: soybean meal up 23.8%, corn up 25.6%, cottonseed meal up 24.5%, grain sorghum up 24% and oats down 32.3%; no wonder the price of livestock feeds are up. *Just because the price of oats is down

doesn't mean that you can feed only oats; a BALANCED ration should be fed, oats are a good source of nutrition, but are not completely balanced. As we all know prices on crude oil based products are UP, from a year ago *without taxes added crude oil is up 9.4%, gasoline up 11.5% and heating oil up 41.5%. Many commercial fertilizers are crude oil based, prices on fertilizer are between two and three times higher than last year. Fat cattle which have been fed in a feedlot for 5-6 months weighing 1200-1300 pounds ready for processing are up 20% (these are not breeding cows that are going through the sale barn because of lack of hay or high feed prices), hogs ready for processing are down 3.26% and meat chickens are up 11%.

All of this being said this is not a sob story for agriculturalists, everyone is going through this, just differing degrees. My point is to emphasize that agriculturalists, more especially the ones involved in the production end of Agriculture are independent, usually self-employed business people just like mechanics, hardware store owners, convenience store owners, etc. Most of them cannot absorb these spikes in expenses for a prolonged period of time and continue to stay in business. There are some production agriculturalists that will occasionally think how much easier life would be without fences to fix, cows to feed, hay to be baled, fertilizer applied, worrying when it's going to rain, etc. But those that do consider it usually don't do it for very long. Agriculture is not easy, but it is a way of life that's hard to beat. Plus the nation and the world are depending on them to keep on keepin' on!

P.S. If you have a Bermudagrass hay patch/field and you were blessed to get enough rain to make a cutting of hay, don't wait too long. As the nighttime temperatures begin to fall the Bermuda stops growing. 'til next time.



BOOK REVIEW

Don't go into the attic (until you have read this book)

TERRI SCHLICHENMEYER

Do you run or scream in fear? Maybe both. When you see whatever it is that scares you to the point that you're a babbling puddle of mess, it's no longer a fight-or-flight thing - it's just plain flight. Even if you're normally big and brave, fearless to the end, read "The Book of Phobias and Manias" by Kate Summerscale. See what other scary things are out there... More than 235 years ago, Benjamin Rush, one of our Founding Fathers, started a fad for naming the things that colonial humans feared and focused on. Then, Rush officially named 18 phobias, including fears of ghosts and rats; and 26 manias. Over the years, according to Summerscale, other fears and focuses have been added to Rush's list but the

fact remains that manias and phobias are mostly cultural constructs that indicate how we consider ourselves, what attracts us and what repels us. Even at times when a "phobia" isn't really a phobia, this is serious stuff: roughly 10 percent of women and five percent of men have a phobia, and one in eight of them will receive help for it. If you don't have a phobia, fear not: research shows that you can get one through conditioning, or by exposure to someone with a heavy-duty phobia of their own. Mania is a little trickier, Summerscale says, because today's medicine has categorized such things as hoarding, obsessive-compulsive disorder, addiction, and so on. Still, she lists some: The Count on Sesame Street had arithmomania. Tulipomania is said to have once made

folks extremely wealthy. And klazomania might make you scream. Germophobes suffer from mysophobia but probably not from ablutophobia, the latter of which would have been a problem during a pandemic. John Wayne Gacy likely single-handedly boosted the number of coulrophobes. George Orwell's musophobia caused a minor (but violent) battle, and Alfred Hitchcock admitted to one rather unique fear. Homophobia, it should be noted, is not a real phobia. And you won't believe how 1930s scientists cruelly induced a baby to have doraphobia. Don't reach behind that cabinet without looking first. Don't go into the attic at night. Don't touch that! And whatever you do, don't miss "The Book of Phobias & Manias."

There's sometimes a fine line between humor and horror, and author Kate Summerscale walks it with authenticity and a delightful delivery that'll make you want more. Here, you'll learn about all those things that make you cringe, recoil, or wrinkle your nose in disgust, why they make you jumpy, and how you can be braver. You'll get clues to solve the mystery of your newest obsession. You'll see that you're not alone, that you might have a historical partner with skin-crawling terror. And you'll feel better about the things that make you want to run: at least you're not afraid of this or that or that, either. "The Book of Phobias & Manias" is a serious book, seriously fun, and good for anyone age 15 and up. Look for it. It'll make you scream in delight.

The Book of Phobias & Manias: A History of Obsession" by Kate Summerscale c.2022, Penguin, \$20.00, 256 pages

LAW OFFICE OF BRYAN WEAVER
Serving the community that has served my family for three generations
General Civil Practice
The Lawyer who makes house calls
Evening & Weekend appointments available
We are open, much can be done electronically.
Now is the time to work on your estate plan.
BWeaverlegal.com • 817-901-9255
Principal office in Azle, Texas

Tom Samples Pest Control
YOUR COMPLETE PEST CONTROL SERVICE
Family owned and operated. Over 70 years of service.
Voted Best Pest Control Best of Parker County
817-915-2470

Prepare for power outages today
WITH A HOME STANDBY GENERATOR
FREE 7-Year Extended Warranty* A \$695 Value!
\$0 MONEY DOWN + LOW MONTHLY PAYMENT OPTIONS
REQUEST A FREE QUOTE
CALL NOW BEFORE THE NEXT POWER OUTAGE
(855) 704-8579

STACEY'S MOBILE NOTARY SERVICES
Tarrant • Parker • Wise
ACCREDITED BUSINESS
817-550-1624
www.smnotaryservice.com
staceysmobilenotary@gmail.com

Ms. Fairy Dogmother
It's never too late to have the dog of your dreams!
• Private Dog Training
• Custom Pet Sitting
www.msfairyydogmother.net
ann@msfairyydogmother.net
Ann Coffey @ 817-668-6229

THE SHACK @AZLE
It's really a healthy bar!
416 commerce st. suite 5
Azle • 817-406-4345
Hours: Mon-Fri 6 am - 5 pm
Sat 9 am - 2 pm, Sun Closed
Check in and save \$1.00

PUBLIC AUCTION
ONSITE & ONLINE
Thursday, Oct. 13 • Starts @ 9:17 AM
MAYES COUNTY FAIRGROUNDS • 2150 NE 1st St., Pryor, OK
For info & photos, visit chuppsauction.com
Classic Cars, Guns, Tractor, Trailers, 4-Wheelers, Riding Mowers, Old Scooters, Porcelain Signs, Gas Pump, Gas Station Memorabilia, Traeger Grill, Bowling Lane, Skee Ball, School Bell, Power Tools, Carnival Rides/Games, Rockola Juke Box Heads, New Household Lights/Chandeliers, Knives, Coins, Signs, Building Supplies/Materials & Lots More!! **OWNERS: Clay & Micki Larremore**
Live Onsite & Online Bidding on Lots 1-124 Start @ 12:29 PM
Running 2-3 Rings All Day!

Anne Land Real Estate
Land is my name, and real estate is my game.
Anne Land
817-247-5991 Cell
817-220-0633 Office
904 E. Hwy 199, Springtown TX
www.AnneLandRealEstate.com

Full Service Mechanic SMART START CONTRACT SHOP
We install & service alcohol breathalyzers.
704 NW Pkwy, Azle
Open Mon-Fri 9 AM - PM, Sat 9 AM - 3 PM
@burrowsauto
817-270-3230 • 817-270-3240

ONLINE SUBSCRIPTION
\$25 FOR ONE YEAR
Azle News
817-270-3340
www.azlenews.net

I was looking at you while you are looking at me

This past weekend, I struck up a conversation with a musician playing at one of the local establishments.

He told me he was originally from North Dakota and had moved to Texas to work in the horse business. In a few sentences, he mentioned a horse he had started to work with in North Dakota that had gone on to a successful career in the cutting pen. I grinned and told him I was familiar with the horse.

He smiled at me and asked me how and I told him that 20 years ago the man who owned the horse had lived just around the corner from me. Once more, the adage of "the world is a small place" proved to be true. Amazing how coincidences in life keep happening.

Reminded me of a story my mother told me. When she was 4 or 5 years old, she went



FROM MY FRONT PORCH

By Sam Houston

Sam Houston is a syndicated columnist and newspaper executive. He is also an author, actor, playwright and entertainment producer/promoter.

with her father to conduct some business with another farmer. She jumped onto the buckboard, which was drawn by an old gray mare, and made a long trip — to what her was an unknown location. When the two arrived, her father told her to sit in the wagon and to not get off. He then proceeded to go in the farmer's house and conduct his business.

My mother sat in the wagon for a few moments but could hear the barking of a dog coming from a wooden barn just a stone's throw away. The dog kept barking and my

mom's curiosity got the best of her. Instead of obeying her father, she jumped down and walked to the barn, thinking she could look through one of the knotholes in the wooden siding and see what the dog looked like. Once she got a look, she would get back in the wagon and her dad would never know the difference.

Mom jumped down from the wagon and eased over to the barn. As she got to the wooden sidewall, she stretched up on her tip toes to look through one of the openings. Much to her surprise, just as she looked

through the hole in the wall, another eye was looking back at her through the same hole! Mom screamed with shock and ran back to the wagon, almost shaking with fear wondering what had looked back at her. Her father came out of the farmer's house looking to see what had happened and asked, "why did you scream?" Mom told me she muttered something about thinking she saw a snake, and her dad shrugged his shoulders and went back inside to finish his business.

Years later, Mom attended her 50-year high school reunion. Her high school was in the heart of farm country and her graduating class had only 26 students. Some of the other small schools in the county had closed over the years due to small class sizes, and currently, there was only one consolidated county school.

Some of the schools that had been closed held their class reunions at the same time and place as the school Mom had attended, mainly because of the small number of people involved. I think all told, there were perhaps 40 people at her consolidated reunion, including the spouses.

As the night went on, the graduates regaled each other with stories of their youth. A person Mom had not gone to school with, and did not know, sat across the table. That woman began telling a story how as a little girl she was in the barn with her dog when a farmer came to visit her dad. She said she had gone to look through a peephole in the barn's sidewall to see who had come to visit, but just as she did, another eye was looking at her through the same peephole! Mom started asking

where the woman lived, and they both got a big laugh that some 65 years after the incident had happened, the two had found each other. They laughed and talked about how scared they were and questioned what the odds were that two people would look through the same knothole at the same time and then find each other so many years later. What an amazing coincidence.

I bet there have been some amazing coincidences in your life too. Makes a fella think the world is small, and humans all over have similar experiences and memories. It makes me feel like we are all part of the "big picture" and that is a good thing.

Thought for the day: Perhaps coincidence is God's way of being anonymous.

Until next time.

It's a wonderful life

I am composing today's post using talk-to-text while driving on Highway 287 from Amarillo to Azle.

I thought about submitting it without corrections just for the laughs that would be generated by the craziness of talk-to-text. But I thought it might be too difficult to read.

I chose "it's a wonderful life" as the title of today's post not because I'm already thinking about Christmas—unlike the stores that are already displaying Christmas decorations—but because I'm really thinking about how wonderful my life indeed is.

In a few days I will celebrate the eighth anniversary of when I got a new name.

Grandpa!
On October 8, 2014, my



BE AMAZING

By Gerry Lewis

Azle resident Dr. Gerry Lewis guides explorers to discover their AMAZING. He is an author, musician, and speaker, and a coach-sultant for individuals, churches, and organizations. More at www.discoveryouramazing.com.

first grandchild was born. On that day, I went stark-raving stupid and have never recovered.

Every time I find out that someone has just become a grandparent for the first time I let them know that this is indeed the best gig ever!

Now that I have four grandchildren I am convinced that the joy only increases with each subsequent birth. (Especially since they don't

live at my house and I'm not in charge of raising them).

Mrs. Sweetie and I just spent the weekend in Amarillo with our grandchildren and their parents (of whom we are also quite fond).

In three days, we attended one birthday party, six soccer games, and one Sunday morning worship service that included the baptism of that little girl that gave me a new name eight years ago.

We also celebrated the birthday of our favorite daughter-in-law, though the grandchildren activities didn't allow time for another party.

It's a wonderful life. I readily acknowledged that not everyone's family experience is the same as mine. So I'm thinking today as I drive this highway about life experiences I've had on this very road over the past 38 years.

About 1982 is my first memory of Highway 287 from Amarillo to Fort Worth. I drove my car loaded with college friends to attend a Baptist Student Union convention.

While I don't remember much about the convention itself, I do remember the trip

with friends—laughing together and eating brownies that one of the girls made as we made our way to a gathering of several thousand Christian college students.

Another early trip was in 1984 as I traveled with my girlfriend (the future Mrs. Sweetie) and her parents to meet her older brother and family in the DFW area. I remember stopping in Childress to eat at K-Bob's. I think about that almost every time I pass through Childress (as I will in about 10 minutes).

Both of her parents and the brother that I met for the first time on that trip are now in heaven and I miss all of them.

With her parents living in the Panhandle and us in Azle, and then our kids going to

college, getting married, and settling in the Panhandle, there have been hundreds of trips up and down 287.

Those trips haven't all been easy or pleasant. We've had blown tires, breakdowns, hail storms, blizzards, and a couple of times we almost ran out of gas.

But we're still here and we're still driving. That means that God has been with us on every trip.

And if you're still standing, He's brought you through as well.

It's an amazing, wonderful life.

Be amazing today, my friend.

Kid Scoop.com

THE AWARD-WINNING PRINT & ONLINE FAMILY FEATURE

Find Kid Scoop on Facebook

© 2022 by Vicki Whiting, Editor Jeff Schinkel, Graphics Vol. 38, No. 45

This interview really stinks!

Skunks Tell All!

What if you could ask a skunk any question you wanted? What would you ask? Kid Scoop spoke with skunk authority P.U. Stenchmuck to learn about these smelly creatures from a safe distance.

We skunks are shy and gentle creatures. Yet the sight of a skunk is a fearful sight to many animals!

That's because skunks have a powerful and stinky weapon right under our tails—a VERY stinky spray!

However, we only use this weapon when threatened. Even then, we do everything possible to avoid sending the final stinky spray.

We hiss and stamp our feet. If this doesn't work, we raise our tail over our head as a threat.

If those warnings don't work, well, LOOK OUT!

How many kinds of skunks are there?

There are three kinds of skunks. Do the math problems to match the name of each kind of skunk with its description.

STRIPED SKUNK 17 + 4 + 2 =	15. It has a broad, hairless muzzle, like that of a pig. The back and tail are white.	
SPOTTED SKUNK 21 - 11 =	10. The smallest of all skunks, it has a dot in the middle of its forehead. The stripes go in lots of different and wiggly directions.	
HOG-NOSED SKUNK 7 + 6 + 2 =	23. The face is black except for one white stripe that runs from the nose to the shoulders. At the shoulders, the stripe splits in two parts, one running down each side of the body.	

Standards Link: Life Science: There is variation among individuals of one kind within a population.

Extra! Extra! Black & White and Read All Over

Select a page of the newspaper. Find all of the words you can read, and if you know what they mean, circle them in red.

Standards Link: Reading Comprehension: Use context to understand meaning.

Skunk's Answer Grid

To find each answer, start at the compass square each time and follow the directions.

Q: How far can skunks spray?
A: Start at compass. Go 1 square north, then 1 square west.

Q: Do skunks ever run out of stinky spray?
A: Start at compass. Go 3 squares north, then 1 square west, then 1 square north.

Q: Where is the skunk's secret weapon?
A: Start at compass. Go 3 squares north. Next, go 1 square east. Then go 1 square south.

Q: What color is the musk skunks spray?
A: Start at compass. Go 4 squares north. Then go 1 square west. Next, go 1 square south.

Q: What are baby skunks called?
A: Start at compass, go 2 squares north.

Q: What is another name for a skunk?
A: Start at compass and go 1 square north. Next, go 1 square west. Then go 2 squares north and then 1 east.

Q: A skunk is about the same size as a _____.
A: From compass, go 2 squares north. Then, go 1 east and 1 south.

Standards Link: Social Science: Students use map skills to find the absolute locations of places.

Kid Scoop Puzzler

No need to hide! Lots of animals have bodies that blend into the world around them. This is called *camouflage*. But the bold black and white markings on a skunk make them easy to spot. They don't need to hide. Other animals know to leave them alone.

Find the differences between the two pictures.

Standards Link: Investigation: Find similarities and differences in common objects.

Kid Scoop Together: Proof It!

Oops! Someone put some of the capital letters in the wrong places. Read the article below. Circle the mistakes and underline the letters that should be capitalized.

Chi Ca Go

an Ojibwa legend Tells the story of a Hunter and his wife who lived on the Shores of lake michigan.

one day, the hunter's wife caught a Beaver by the Tail and called to her husband to come and kill it before it could escape. but the hunter refused. He had already killed many beaver in his Traps and said if he killed Another one, The others would all run away.

she let the beaver go but she was very Angry and that Night, When her husband had gone to sleep, she ran away.

the next morning the Hunter saw her Tracks in the snow and feeling badly about their quarrel, decided to follow them. as he followed the tracks, They gradually changed and became the tracks of a Skunk. the trail ended in a Marsh where there were many skunks.

he turned and went home but called the Place, "The Place of the Skunk" and it is where chicago now stands.

Double Double Word Search

Find the words in the puzzle. How many of them can you find on this page?

SKUNKS	T	A	C	E	L	O	P	W	S	S
SMELLY	S	S	N	O	P	A	E	W	K	K
STINKER	G	E	P	U	M	S	C	U	K	R
PUTRID	N	P	U	Y	T	P	N	C	R	E
COMPASS	I	I	T	L	N	K	A	K	U	K
MUSTY	K	R	R	L	S	L	T	S	O	N
DISTANCE	R	T	I	E	B	S	S	T	S	I
WEAPON	A	S	D	M	W	H	I	T	E	T
SOUR	M	Y	T	S	U	M	D	E	L	S
POLECAT										
BLACK										
MARKINGS										
WHITE										
WEST										
STRIPES										

Standards Link: Letter sequencing. Recognize identical words. Skim and scan reading. Recall spelling patterns.

FROM THE Kid Scoop LESSON LIBRARY

Stinky Words

Make a list of words that describe how things smell – for example: odor, putrid, musty, sour. Using one page of the newspaper, have students find and circle the letters that spell five of the smelly words.

Standards Link: Vocabulary: Understand and explain synonyms. Reading Comprehension: Follow multiple step directions.

Write On!

If I Were an Animal

Which kind of animal are you most like? Why? If you were an animal, what kind would you be and why?

Azle News DEVOTIONAL PAGE The Springtown Epigraph

Azle News
AzleNews.net

The Springtown Epigraph
Springtown-Epigraph.net

TRINITY SELF STORAGE
SECURITY GATE 24 HOUR ACCESS

Office next door at Trinity Commerical Contractors

RV, Trailer & Boat

200 Walnut Creek Ave.
817-444-8885

TACLA014745E RRC#11349

J&E
AIR CONDITIONING & HEATING

817-220-4506

1825 W. Hwy. 199 | Springtown, TX 76082

Help readers find your Business.

Call **817-270-3340**

Your Ad Here!

Call Johnna to reserve this space.
817-270-3340

Comet CLEANERS
"Serving Azle & The Community Since 1986"

113 SPEER ST
817-444-4920

Thank you for your support!

Subscribe!

Pick your subscription:

\$40 IN-COUNTY Tarrant, Parker & Wise only

\$36.50 SENIOR CITIZEN 60 Years and Older Tarrant, Parker & Wise only

\$25 ONLINE

\$46.50 OUT OF COUNTY

Azle News
The Springtown Epigraph
Azle News 817-270-3340
Springtown Epigraph 817-220-7217

Eagle Crest VILLA
A RETIREMENT AND ASSISTED LIVING COMMUNITY

113 Denver Trail • Azle
817-444-3249 Fax 817-444-3275
www.eaglecrestvilla.com

STUDIO - 1 bath, 350 sq. ft.
ONE BEDROOM - 1 bath, 450 sq. ft.
TWO BEDROOM - 1 bath, 642 sq. ft.

This devotional and directory is made possible by these businesses who encourage all of us to attend worship services.

- APOSTOLIC**
CORNERSTONE APOSTOLIC CHURCH
1801 FM 730 N., Azle
817-400-0612
- HARVEST TIME APOSTOLIC
1 Block N. FM 2048 in Keeter
817-433-8220
- ASSEMBLY OF GOD**
FIRST ASSEMBLY OF GOD
1020 S.E. Pkwy, Azle
817-237-4903
- FELLOWSHIP OF LAKE WORTH
4024 Dakota Trail, Lake Worth
817-237-9433
- NEW BEGINNINGS CHURCH
810 Goshen Rd, Springtown
817-523-4462
- LEGACY CHURCH
Hwy. 199 W. at FM 2257, Azle
817-221-2983 / 817-221-5760
- VICTORY CHRISTIAN CENTER
737 Boyd Rd., Azle
817-444-LOVE
- BAPTIST**
ASH CREEK BAPTIST CHURCH
300 South Stewart, Azle
817-444-3219
- AGNES INDEPENDENT BAPTIST
350 Agnes N., Springtown
817-523-7271
- BETHEL MISSIONARY BAPTIST
408 S. Ash St., Springtown
817-220-4238
- AZLE AVENUE BAPTIST
2901 Azle Ave., Fort Worth
817-626-5556
- BRIAR FIRST BAPTIST
West of FM 730 N. at sign, Briar
817-444-3484
- CALVARY HEIGHTS BAPTIST
1 block off Hwy. 199, east of David's Patio, Springtown, 817-221-2241
- CENTRAL BAPTIST
4290 Old Agnes Road
817-594-5918
- CHURCH ON THE HILL
836 NW Parkway, Azle
817-444-3752
- CHRISTWAY BAPTIST
7673 West Hwy. 199, Agnes
817-220-9133 or 817-220-3581
- CLEAR FORK BAPTIST
Corner of FM 730 & Ragle Rd., Weatherford, 817-594-1154
- EAGLE MOUNTAIN BAPTIST
8780 Eagle Mtn. Circle, Azle
817-237-4135
- FIRST BAPTIST CHURCH OF AZLE
1017 Boyd Road
817-444-4828
- FIRST BAPTIST CASTLE HILLS
401 Beverly Rd., Azle
817-797-4706
- FIRST BAPTIST LAKE WORTH
700 Charbonneau Tr., west side of Effie Morris Elementary
817-237-2624
- FIRST BAPTIST LAKESIDE
8801 Jacksboro Hwy., Lakeside
817-237-8113
- FIRST BAPTIST BRIAR
6 miles N. of Azle on FM 730
817-444-3484
- FIRST BAPTIST COTTONDALE
1 block N. of FM 2123, Cottondale
940-433-5539
- FIRST BAPTIST PEASTER
FM 920 in Peaster
817-596-8805
- FIRST BAPTIST POOLVILLE
1 block W. of FM 920, Poolville
817-594-3916
- FIRST BAPTIST SPRINGTOWN
5th & Main Street, Springtown
817-523-7011
- FRIENDSHIP BAPTIST
801 Friendship Rd., 9½ miles S. of Springtown off Hwy. 51 S.
817-594-5940 or 817-599-4917
- FUNDAMENTAL BAPTIST
5th & Main in Springtown
817-523-5477
- GRACE BAPTIST
3 miles N. of Springtown on Hwy. 51 across from Radio Tower
- GRACE POINTE CHURCH
4110 E. Hwy. 199, Springtown
817-221-5683
- HERITAGE BAPTIST CHURCH
3577 FM 51 N., Weatherford
817-564-3946
- IGLESIA BAUTISTA
Nueva Jerusalem
6640 Midway Rd., Springtown
817-694-0444
- INDIAN OAKS PRIMITIVE BAPTIST CHURCH
3229 Shawnee Trail, Lake Worth
817-237-8441
- LAKE WORTH BAPTIST
4445 Hodgkins, Lake Worth
817-237-4163
- METROPOLITAN BAPTIST
6051 Azle Ave., Fort Worth
817-237-2201
- NEW HOPE BAPTIST
782 New Hope Rd., Reno area
817-221-2184
- NORTHWEST BAPTIST
5500 Boat Club Rd., Lake Worth
817-237-6063 or 817-270-8476
- SILVER CREEK BAPTIST
730 S. & Veal Station Rd., Azle
817-444-2325
- NEW BEGINNINGS BAPTIST CHURCH
3605 Jacksboro Hwy., Azle
817-707-2741
- PLEASANT GROVE BAPTIST
FM 2048 and CR 4677, Boyd
940-433-5477
- PRIMERA IGLESIA BAUTISTA
300 S. Stewart, Azle
817-500-3641
- SPRINGTOWN BAPTIST TEMPLE
201 J. E. Woody Rd., Springtown
817-523-0376
- UNION BAPTIST CHURCH
3451 Sarra Lane, Springtown
682-333-1645
- WALNUT CREEK BAPTIST
220 W. Reno Rd. in Reno
817-221-2110
- BIBLE**
COMMUNITY BIBLE FELLOWSHIP
1405 Reynolds Rd., Reno
817-521-4510
- NORTHWEST BIBLE CHURCH
5025 Jacksboro Hwy., Fort Worth
817-624-2111
- SOLID ROCK BIBLE CHURCH
591 S. Reno Rd., Springtown
817-221-3444
- CATHOLIC**
HOLY TRINITY CATHOLIC
800 High Crest Dr., Azle
817-444-3063
- CHRISTIAN**
THE CHURCH AT AZLE
1801 S. Stewart, Azle
817-444-9973
- AZLE CHRISTIAN FELLOWSHIP
35 West Forty Estates., Azle
817-688-3339
- GREATER VISION FELLOWSHIP
1801 S. Stewart St., Azle
817-825-0485
- THE ABBEY CHURCH
10400 Jacksboro Hwy., Azle
817-238-1404
- CROSSING FELLOWSHIP
120 E. Main St., Azle
817-406-4577
- CHURCH OF CHRIST**
AZLE CHURCH OF CHRIST
336 NW Parkway
817-444-3268
- BRIAR CHURCH OF CHRIST
109 W.N. Woody Rd.
(½ block west of FM 730 N. in Briar)
817-444-7102
- MIDWAY CHURCH OF CHRIST
6400 Midway Rd.
817-221-2107
- NEWSOME MOUND ROAD CHURCH OF CHRIST
1460 Newsome Mound Rd.
817-677-3290
- NORTHWEST CHURCH OF CHRIST
6059 Azle Ave., Fort Worth
817-237-1205
- POOLVILLE CHURCH OF CHRIST
West of FM 920 in Poolville
817-594-4182
- SOUTHSIDE CHURCH OF CHRIST
130 W. Bradshaw Lane, Springtown
817-221-2799
- SPRINGTOWN CHURCH OF CHRIST
Just west of Hwy. 51 North
817-523-4419
- TRI-COUNTY CHURCH OF CHRIST
525 Hwy. 199 W., Springtown
817-980-8156
- CHURCH OF GOD**
ABUNDANT LIFE CHURCH OF GOD
4800 East Hwy. 199, Suite 7 Springtown, 817-677-3208
- LAKESIDE CHURCH OF GOD THE WORD@LAKESIDE
9396 Confederate Park Rd. (FM 1886)
817-237-5500
- DISCIPLES OF CHRIST**
AZLE CHRISTIAN
117 Church St., Azle
817-444-3527
- CENTRAL CHRISTIAN
1602 S. Main St., Weatherford
817-594-3043
- FIRST CHRISTIAN CHURCH
4th & Main, Paradise
- EPISCOPAL**
ST. ANNE'S ANGLICAN EPISCOPAL
6055 Azle Ave., Fort Worth
817-237-1888
- PROVIDENCE REFORMED EPISCOPAL
405 Bowie Dr., Weatherford
817-596-7476
- ST. ELISABETH EPISCOPAL
5910 Black Oak Lane, River Oaks
817-739-0504
- GOSPEL**
CENTRAL FULL GOSPEL FELLOWSHIP
3009 Delaware Tr., Lake Worth
817-237-7919
- JEHOVAH'S WITNESSES**
KINGDOM HALL OF JEHOVAH'S WITNESSES
212 Pearson Lane, Azle
817-221-2242
- LUTHERAN**
THE EDGE CHURCH - AZLE
1313 SE Parkway, Azle
817-237-4822
- HOPE LUTHERAN (ELCA)
4795 Hwy. 199, Reno
817-221-HOPE
- METHODIST**
BOYD UNITED METHODIST
FM 730 North in Boyd
940-433-5334
- FIRST UNITED METHODIST
200 Church St., Azle
817-444-3323
- LIGHTHOUSE FELLOWSHIP
7200 Robertson Rd., Fort Worth
817-237-2758
- SILVER CREEK UNITED METHODIST
2200 Church Rd., Azle
817-444-1382
- FIRST UNITED METHODIST
Hwy. 51 N & 3rd Street, Springtown
817-523-7874
- GARVIN UNITED METHODIST
3 miles West of Boyd on C.R. 4699
- POOLVILLE UNITED METHODIST
1 block W. of FM 920 (behind Poolville Post Office)
817-599-3601
- THE CHURCH OF JESUS CHRIST OF LATTER-DAY SAINTS (THE MORMONS)
THE CHURCH OF JESUS CHRIST OF LATTER-DAY SAINTS
1010 Timberbrooks, Azle
817-237-5075
- PENTECOSTAL**
GRACE CHAPEL UNITED PENTECOSTAL CHURCH
3508 Shawnee Trail, Lake Worth
817-237-4844
- PRESBYTERIAN**
GRACE FIRST PRESBYTERIAN
606 Mockingbird Lane, Weatherford
817-594-2744
- ORTHODOX PRESBYTERIAN CHURCH OF FORT WORTH
Meeting at Northwest YMCA
5315 Boat Club Road, Fort Worth
817-989-9800
- ORTHODOX**
ARCHANGEL GABRIEL ORTHODOX CHRISTIAN CHURCH
1157 S. E. Parkway (Jacksboro Highway), Azle
817-752-8255
- OTHER**
ALIENTO DE DIOS
2233 E. Hwy 199, Springtown
817-521-4694
- BETTER LIFE COMMUNITY CHURCH
3131 E. Hwy 199, Spt
817-677-2300
- CORNERSTONE COMMUNITY CHURCH
2233 Hwy 199 East, Springtown
817-221-LIFE (5433)
- FAMILY CHURCH
9 miles S. of Springtown on Hwy. 51
817-599-7655
- GRACE FELLOWSHIP CHURCH
2964 W. Hwy 114, Paradise
940-969-2427
- HILLTOP FAMILY CHURCH
1227 Old Cottondale Road, Springtown, 817-220-7177
- THE HOUSE OF PRAYER
1356 Reno Rd., Springtown
817-221-2551
- POWERHOUSE OF PRAISE CHURCH
1649 S.E. Parkway, Azle
817-319-7364
- BRANDED CROSS COWBOY CHURCH
3282 FM 2048, Boyd 76023
817-755-7021
- SECRET PLACE MINISTRIES
112 Optimist Rd., Springtown
682-229-1433
- GOSPEL GATHERING FELLOWSHIP
7315 Silver Creek Rd at Flatrock Rd, Azle
817-313-1793
- LIGHTHOUSE CHURCH
6409 FM 730 S., Azle
817-444-4311
- LIGHTHOUSE HARBOR CHURCH
1960 Long Circle, Pelican Bay
817-444-3547
- NEW LIGHTED WAY
624 Harbor Dr. Circle, Azle
817-444-1577
- NORTHWEST TEMPLE OF PRAISE
6781 Jacksboro Hwy., Lake Worth
817-909-5627
- PRECIOUS FAITH TEMPLE CHURCH
8601 Hwy. 199 @ Vance Godbey's
- THE HOUSE OF PRAYER
1356 Reno Rd., Springtown
817-221-2551
- THE RANCH COWBOY COUNTRY CHURCH
14600 FM 730 North, Azle (Briar)
817-909-5627
- REAL FAMILY FELLOWSHIP
202 Pearson Lane, Azle
817-677-5963
- SOULS HARBOR
11701 Jacksboro Hwy., Azle
817-726-2065
- WESTERN HARVEST FELLOWSHIP CENTER
6577 Old Springtown Rd., Weatherford
817-523-2855 or 817-995-9087
- SHEPHERD'S HEART CHURCH
14435 FM 730 N • Azle
817-444-7777
- WESTERN STAR COWBOY CHURCH
790 CR 3696 • Paradise 76073
817-688-6887

HILLTOP FAMILY CHURCH
1227 Old Cottondale • 817-220-7177

"Caring about what Jesus cares about... You!"

Compliments of
Rural Gas Supply
PROPANE 140 W. MAIN ST.
817-444-4613
"In business since 1946"

Joe Rider Propane, Inc.

PROPANE TANKS

817-237-3325

White's Funeral Homes
Our family serving your family since 1908

Bob White, Anita White and Zack Bellenger

Full Service Funeral Home
Cremation Services
Pre-Need Plans

Azle • Springtown
Mineral Wells • Weatherford
817-444-3211 • www.whitesfuneral.com

Clarks Precision Machine & Tool
CPMT 636 Profit St., Azle, Tx

45 Years of Quality

ISO 9001:2001 Compliant Phone 817-444-2533
Check us out on our web site B.J. Clark
www.clarksmachine.com bjc@clarksmachine.com

WHAT'S HAPPENING IN YOUR HOMETOWN?

Subscribe today to keep up-to-date
Azle News: 817-270-3340
Springtown Epigraph: 817-220-7217

Celebrating over 25 years in business

AZLE CHIROPRACTIC CLINIC
817-444-HELP (4357) Rodney Gattin, D.C.
400 Boyd Court
www.azlechiropractic.com

Get your business noticed!
817-270-3340
Call Johnna to reserve this space.

Want readers to FIND YOU?
Place your ad here!
Call **817-270-3340**

Place your ad here today!
817-270-3340
or 817-220-7217

TRI-COUNTY Electric Cooperative, Inc.
Electric Cooperative, Inc.
"A Commitment to Service and Savings"

Actively Supporting our Communities!

Keller • Granbury • Azle • Seymour
817-444-3201 | www.tricountytx.com | Facebook: @TECECTexas

Double your impact with Print & Online Advertising!
Call Johnna for details
817-270-3340

Advertise Here

Contact us for details.
817-270-3340 or 817-220-7217

Your Ad Here Newspaper Advertising Works!

Call Johnna for details TODAY
817-270-3340

Advertise Your Business With Us and maximise your visibility!

Contact us about advertising solutions.

817-270-3340
817-220-7217

School program seeks more business partners

BY DON MUNSCH
don@azlenews.net

Azle ISD's Community Based Vocational Instruction program wants to spread its reach into the community.

CBVI offers opportunities for special needs students and prepares them for the world of employment as they receive real-world work experience with Azle businesses. The program involves students who are 18 and older and are on an individual education plan.

At the Azle ISD's Transition Center, educators prepare students to expand independence, provide pre-vocational skills, expand self-advocacy skills as well as social and community integration, said transition teacher Amy Worthy, who is in her first year in Azle ISD and in her first year as a transition teacher.

"The individuals are working on daily living skills, they're working on community-based learning," Worthy said, describing CBVI. "They are working on vocational training, trying to get them ready for a life after school and community integration."

Thirteen students are in-

involved in the program, with a morning and an afternoon class, said Worthy, who is in her 13th year in special education and has taught in the Eagle Mountain-Saginaw and Hurst Euleless Bedford school districts.

Students can be placed in a range of jobs and students in the CBVI program have a range of skills, as there are some students who are focused on home living skills to those students who are currently employed.

"We go out into the community, and we are given opportunities to have hands-on learning," Worthy said.

She said students can go to Azle Café and complete some duties, such as cleaning and bussing tables, and get a chance to use their social skills. Students also help at Custom Thread by stocking shelves, rolling T-shirts and bags, pricing and labeling items.

"A wide variety of skills learned there," she said.

Students help at The Porch, where they sort clothes' sizes and hang clothes, and students help at Slice, where they bag pecans and other items and price/label various items.

"They've been given the opportunity to learn how to use the scanner and the pricing of things and make change," she said.

Students who participate in the program receive direct supervision of a trained Azle ISD job coach during each visit. Worthy and an aide go with the students on visits and job coach them at the site, and students learn hands-on opportunities to learn and master skills. Before CBVI begins, students receive instructions for expectations on the job site, Worthy said.

Worthy said the program is looking for businesses interested in being program partners.

"It's win-win because we are able to help them, but they are also giving us those opportunities to practice those skills," Worthy said about these partnerships. "And it's just heartwarming as well as being able to see our students in action and how much they can provide for the community."

Any businesses interested in a partnership may contact Worthy at 817-773-2164 or amy.worthy@azleisd.net.



COURTESY PHOTO AISD

These students participate in the Azle school district's Community Based Vocational Instruction program. Students receive opportunities to work in a number of businesses in the community.

Kyrstin Daniels - State Farm



The Azle Area Chamber of Commerce hosted a ribbon cutting for Kyrstin Daniels - State Farm on Tuesday, Sept. 27. She has deep roots in Azle and is proud to provide insurance services to Azle and the surrounding communities. Her office is at 107 W. Main St., Azle.

COFFEE

FROM PAGE 1

in Azle, with meetings held at Starbucks and McDonald's. A meeting at Legacy Oaks of Azle senior living center will be held today, Oct. 5.

"It's kind of on a basis when people reach out to us if they want to hold the event," said Azle Police Department Lt. Dora Scudder.

Starbucks held the event as part of its grand opening, Scudder said, and McDonald's wants to do the program quarterly, or four times a year. The event exists as a community outreach program, Scudder said.

Scudder said she likes the results of the first events.

"We talk to people wanting to have a normal conversation with us and how our department works and get a

little bit information as far as what type of resources we have," she said.

One person inquired about homeless outreach programs and another asked about law enforcement, including women in police and how that functions and the hardship police officers encounter. And then some people ask about situations in the community, such as monitoring speeders in a particular area.

"It's kind of just a person-by-person basis," Scudder said.

People wanting to hold an event for their organization or group may contact Scudder or Lt. Kevin Rogers at the APD at 817-444-3221. The Starbucks location in Azle held an event in the morning and evening, which allowed first responders from two shifts to attend, Scudder said.

LAKE WORTH PREMIER EYE CARE
Dr. Jeffrey R. Crabtree

Specializing in Family Eyecare
20% OFF*
Your Eyewear Purchase, with this coupon
Offer expires 10-31-22
*Discounts can not be used with vision insurance

www.lakewortheeye.com • 817-439-9455
6921 Foster Dr. Lake Worth, TX 76135

NOW OPEN

POP POP BURGER

Open Mon-Thurs 10:30 AM - 7 PM,
Fri-Sat 10:30 AM - 8 PM,
Closed Sun

4895 E. Hwy 199, Reno
682-310-0079

HOGLE
Insurance Group
167 W. Main • 817-444-6389
www.HogleInsurance.com

Shaye Hogle "Our Best Policy Is Personal Service" Hogye Hogle

4.65% 60 Month Rate Guarantee **4.0%** 36 Month Rate Guarantee
*\$10,000 Minimum Deposit

Life Insurance
NO MEDICAL EXAM UP TO \$250,000.00
Term and Permanent Policies
Guaranteed Premiums and Death Benefit
Company based in Fort Worth, Texas

Northwest Physical Therapy
FREE CONSULTATIONS

Over 24 years of Experience!

- Sports, Stroke, Back and Neck Rehab
- Post Operation
- Balance Training
- Joint Replacement
- Return to Work

408 Central Dr., Azle
817-444-8827
Next to the Drive-thru of PNC Bank
azlenwpt.com

JIM STEVENS PHOTOGRAPHY

PROFESSIONAL BUSINESS PORTRAITS
COMMERCIAL PHOTOGRAPHY
DRONE PHOTOGRAPHY
FAMILY PORTRAITS
PHOTOGRAPHY LESSONS OFFERED

713-725-5620

Motley's AUTOMOTIVE & MOTORCYCLES

FAMILY OWNED AND OPERATED FOR 22 YEARS
State Inspection for Tarrant & Parker Counties

Automotive

- Tune-ups
- Diesel
- Suspension
- Computer Diagnostics
- A/C Repair
- Brakes
- Emission Repairs
- Repair & Restore Classic Cars

Motorcycles & ATVs

- Maintenance & Repairs

ASE CERTIFIED

UPS PACKAGE DROP OFF STATION

VISA MasterCard DISCOVER AMERICAN EXPRESS

JASPER ENGINES & TRANSMISSIONS

1304 NW Pkwy (Hwy 199)
817-444-8529
817-456-0907
www.motleyautomotive.com
Monday - Friday 8:30 am - 6:00 pm

Azle band earns second place at Golden Triangle Classic in Denton



PHOTOS COURTESY OF NATE CAIN
Violet Isom adds flute to the mix.



Lane Autrey lays down a trumpet line.

BY JEFF PRINCE
jeff@azlenews.net

Less than one point separated the Marching Green Pride from grand champion Lucas Lovejoy at the Golden Triangle Classic marching band competition on Sept. 24 in Denton.

It was the first competition of the season, and Azle took first place in division, first place in general effect and second overall.

"We feel like the group had a great first outing," said band director Aaron Martin, who shared gratitude with parents and staff for helping make the trip successful.

Birdville finished three points behind Azle for third place. Springtown finished in ninth place.

Azle's band will continue working on its show in the coming weeks and performing at halftimes during foot-

ball games.

"They are very excited to continue the process of learning and perfecting the show," Martin said. "We will be learn-

ing the last two parts of the show in the next couple of weeks and look forward to our next contest in Midland on Oct. 8."

The Bands of America West Texas Regional Championship is Oct. 8 at Astound Broadband Stadium in Midland.



From left, Johnny Boyer, Thomas Riley, Matt Cain and Donald Bewley celebrate at the Greater Triangle Classic.



Gracie Cazares and the Colorguard add a splash of color.

Take care of yourself so you can get back to what you love.

Make your breast health a priority.

With so many things to do and so many places to be, it's easy to forget about taking care of yourself. And your annual mammogram is part of that care. Which is why at Texas Health, we've made getting your mammogram easier than ever, with 17 locations across North Texas and appointments that typically last less than 30 minutes. Get in, get out and get back to what you love.

Texas Health is right there with you.

Schedule your mammogram today
817-720-9218 | [TexasHealth.org/BreastCare](https://www.texashealth.org/BreastCare)



Doctors on the medical staffs practice independently and are not employees or agents of Texas Health hospitals or Texas Health Resources. © 2022 Texas Health Resources

USA TODAY ONE OF THE "BIGGEST SUMMER MOVIES" OF 2021!

THE AZLE MEMORIAL LIBRARY IS PROUD TO HOST

FILM SCREENING & PANEL DISCUSSION

Tuesday, October 11, 2022 | 6:30 PM to 8:30 PM
Azle Memorial Library Community Room

Join us for a FREE screening of the award winning film, No Ordinary Love. Then stay for a Q&A Talkback with Executive Producer, Tracy Rector, and Executive Director of Future Hope and Healing Center, Sally Daniels, to discuss the film and domestic violence, which affects 1 in 3 women in their lifetime.

Please note, subject matter of movie and discussion topics will be related to issues of domestic violence. Caution is advised for language and violence. All adults welcome. Parents may bring older teens with them as a way to approach this important topic, (Not appropriate for younger children.)

POWERFUL! EYEOPENING - FT. WORTH FILM COMMISSION
INTENSE THRILLER - CINEMA FILE
GRIPPING - GUY AT THE MOVIES PODCAST
COMPELLING - KWMR RADIO AUSTIN

Azle Memorial Library | 333 W Main St. Azle, TX 76020
817-752-2682 | azlelibrary.org

AHS ALUMNA EX. PRODUCER TRACY RECTOR



Choir students gearing up for first show of year

A passion for music

BY DON MUNSCH
don@azlenews.net

Azle High School junior Alan Hard first became involved in singing by performing at church.

His mother leads worship at his church, and after he watched her on stage, it inspired him to start singing. He found he had a talent for the craft.

"And then I started helping lead worship for my church, and so that's I guess where I found my passion for music," said Hard, who attends Merge Community Church in Azle.

Now he and a classmate, Kameron Weger, celebrate being recognized for their effort at a regional competition. Hard, Weger and Michaela Moore, senior and a choir president, talked about the upcoming year for AHS choir members. The choir will have its first show on Oct. 25, followed by a winter program in December and then a spring program in May.

Moore, a soprano, has been singing since the second grade and been in AHS choir throughout her time in high school. Hard has been singing since seventh grade



PHOTOS BY DON MUNSCH

Azle High School choir students Sydney Meredith and Nevaeh Wooten, top row; Madeleine Boivin, Alec Gable and Alan Hard, middle row; and Makayla Adam and Jack Horton.



Azle High School choir students Jordan Stogsdill, Natalie Wasek, Lucy Vinson, and Madison Hamilton, top row. Bottom row are Sidney Shepherd, Abigail Evans and Britney Branson.



Azle High School choir students Abigail Garner, Michaela Moore and Caitlin Sanders.

and Weger has been singing since kindergarten. Hard and Weger are tenors.

Hard and Weger advanced past the first round of All-State auditions; there are four rounds, and this was an All-Region competition.

"I made it past the first round last year and then I dropped out because school was stressful, but now I'm wanting to continue on because I only got a couple of years left," Weger said.

Moore said it takes a lot of hard work to accomplish what Hard and Weger did. At least 15 students participated in the competition from AHS, and just two made it.

"But we're just happy that everyone is trying," Moore said.

Moore said she has always had a passion for music and wants to major in music in college. She is considering Texas Tech, Texas A&M and UT Arlington. She would like to teach music or something within the music realm to help people realize the importance of music. She was inspired by a second grade choir teacher who inquired whether she wanted to be in a musical. She's been active in music ever since. Moore's sister took choir at AHS, and Moore followed suit.

AHS choir director Brent McCartney has been an inspiration to Moore since she has been at AHS. She called him "everyone's second parent."

"He's like so helpful with everything," she said. "If you're shy to sing in front of somebody, he's the person that you can't be shy around."

She said he emits warmth and joy that encourages people. Moore also noted that she had a middle school choir teacher, Jeff Moss, at Azle Junior High School, who inspired her. She counts "And We Are the Dreamers of Dreams," which students will perform at the fall show, as one of her favorite songs.

Weger got started in music watching his grandfather sing on a worship team. Weger has always enjoyed singing.

"I loved making up little songs and everything," he said, heaping praise on

McCartney and saying he is "one of the greatest people I've ever met. He's just kind and funny and he truly cares, and he is the reason this choir is as good as it is. He's amazing."

During a break in a Chorale class last week, McCartney discussed preparations for the fall concert and said there will be six to eight songs in the concert.

AHS has 135 students in the choir program, and depending on absences, McCartney expects to have roughly that many perform in the first concert. He said what's special about 5A schools and Azle High School is that the arts programs allow a sharing of talents, meaning there are actors who are in both theater and choir, for instance.

"Those kiddoes really get to intersperse and cross over with each other," he said. "Larger districts tend not to be as sharing with their students because there are just so many of them that they're like, 'oh, if you'd rather go dance, then go dance.' Well, sometimes a kid wants to do both (activities)."

It can be harder to navigate those 6A waters than at 5A schools in general, he said.

The Chorale is the premiere ensemble of the choirs at Azle High and the rest of the choirs are leading up to this one, so the younger choirs, the junior varsity, are where students learn to sight read and learn the notes, and some actually learn how to sing in those choirs, McCartney said.

For the winter concert on Dec. 16, McCartney doesn't have the selections yet, but the concert ends every year with the Carol of the Bells. The spring contest on May 8 doesn't have a theme, and students will repeat two of the three songs that were performed for the UIL choir competition, and McCartney will sometimes ask students about their favorite songs from choir that can be included in the concert.

Besides the three concerts,

SEE CHOIR, PAGE 3B.

Azle Christian football hopes to flood Panther Creek on Friday

BY JEFF PRINCE
jeff@azlenews.net

The Azle Christian Crusaders will be eager to hit the road for Valera, Texas, on Friday.

Waiting on the other end will be the Panther Creek Panthers, whom the Crusaders hope to defeat to climb back on the winning track.

On Sept. 20, the Crusaders' three-game win streak came to end when they fell to Nazarene Christian Academy, 46-40. The game started out well, with Azle Christian building a 14-6 lead in the first quarter and a 21-6 lead at halftime.

The Crusaders remained in the lead, 33-28, as the fourth quarter began, but Nazarene began chipping away.

Crusaders head coach Clayton Sanders expected the game to "come down to the final seconds, and it did."

Nazarene scored 18 points in the final period to come from behind.

Afterward, Sanders expressed pride in his team.

"I'm proud of how hard the team played and fought through a lot of uncontrolla-

ble adversity," he said. "Not taking anything away from Nazarene — they are a really good team — but we have to look in the mirror and realize we beat ourselves."

The team will learn through self-reflection, he said.

"The fantastic thing about football is there are so many teachable moments wrapped up in a season," he said.

"Although difficult, this game is one of those hard moments where we expect to come out better on the other side. No matter what, God loves us when we win, and God loves us when we don't. Therein lies the ultimate victory, and if this team just learns only that, well, that's infinite success."

On the injury front, the team lost Andy Wisniewski to a broken collarbone in the second quarter. He is expected to miss four to six weeks. Bill Johnson will be returning to the field after recovering from a previous ankle injury.

"We are excited to have him back as he will help us up front on both sides," the coach said.

Friday's game against Panther Creek should be an-



PHOTO BY JEFF PRINCE

At a pre-game pep rally, Camden Logan and Drew Skartvedt made an announcement about the upcoming game. Logan is the team's top running back and scorer, and tight end/defensive end Skartvedt is ranked in the Top 20 in the United States for deep snapping.

other tough one.

"Panther Creek has an impressive winning tradition and several state champi-

onships they've laid claim to over the years," Sanders said. "However, our approach has always been to

respect our opponent but focus on us. Work on us. Improve on us. Invest in us." Azle Christian (4-2) is set

to play Panther Creek (2-4) starting at 10 a.m. Saturday in Valera.

Azle Bye Week



AZLE HORNET VARSITY FOOTBALL SCHEDULE 2022			
DATE	OPPONENT	LOCATION	SCORE
8/26	Frisco Reedy	HOME	69-27 L
9/01	Grapevine	at GRAPEVINE	58-14 L
9/09	Denton Ryan	Home	63-14 L
9/16	Aledo	at ALEDO	55-20 L
9/23	Brewer	HOME	54-0 W
9/30	Northwest	at NORTHWEST	58-7 L
10/07	OPEN	OPEN	
10/14	Saginaw	HOME	
10/21	The Colony	at THE COLONY	
10/28	South Hills	HOME	
11/05	Burl Centennial	at BURL CENTENNIAL	

Players Of The Week

OFFENSIVE

DEFENSIVE

SPECIAL TEAMS



Gavin Green



Denim Fields



Adan Sandoval

DONNA BRANSOM
Owner/Realtor
Cell: 817-925-8281
Office: 817-444-5100
donna@bransomrealestate.net
www.bransomrealestate.net
200 W. Main St., Azle

Results you can count on.

Sutton PRINTING

- Business Cards • Invoices • Banners • Magnets
- Envelopes • Color Copies • Letterheads

www.suttonprintingco.com
119 Industrial Ave. Azle, Next to Dollar General
817-444-2222

Azle News
Where Your Hometown Team goes for Hometown News and Sports
321 W. Main St. • Azle
817-270-3340
www.AzleNews.net

A Proud Supporter of All Our Azle Hornets!

Pinnacle Bank
MEMBER FDIC
THE WAY BANKING SHOULD BE

Care for Feline and Canine

EAGLE MOUNTAIN VETERINARY CLINIC

HOURS: M-F 8:00-5:30, Closed for Lunch 12:00-1:30 • Sat 8:00-12:00
Dr. Dustin Fields • 729 Boyd Road • Azle • 817-444-3289

AZLE DENTAL CARE

Go Big Green!
SCORE • SCORE • SCORE

Brooke Porter, D.D.S.
912 Boyd Rd. 817-444-1763
www.SmileGreat.com

SPORTS Roundup

FROM STAFF REPORTS

AZLE HORNETS FOOTBALL

The Hornets headed to Justin Sept. 30 to take on Northwest but ran into trouble early. After taking an early lead, Azle fell behind by a touchdown in the first quarter, 14-7, and could never get back on track against the tough Texans.

Azle turnovers, including an interception and four fumbles, made it difficult for the Hornets to make a comeback.

Final score: Northwest 58, Azle 7.

Quarterback Jay Jones threw for 230 yards. Canaan Kaznowski and Hagen Hughes ran for more than 50 yards apiece. Gavin Green had nine receptions for 111 yards. Denim Fields led the team in tackling, and Drew Dorris made a tackle for a loss.

Azle (1-5) will be off this week for a bye and will resume play on Oct. 14 at home against Saginaw (0-6).

AZLE VOLLEYBALL

The Azle Lady Hornets began the week on Sept. 27 with a 3-0 loss to Aledo, but the team righted its ship by beating Brewer Friday in straight sets, 3-0, at Brewer. The Lady Hornets are now 3-3 in district with the second half of loop play beginning Friday at Granbury, a team Azle beat in the first go-round.

Against Aledo, the Lady Hornets played well in spurts but made more unforced errors than normal, Azle head coach Elizabeth Snyder said.

"And when you play a good team like Aledo, you can't afford to have them," she said.

The Hornet defense was "pretty strong," and the block had some success, but the team didn't connect well with the ball hitting-wise, the coach said. Snyder said the team would work on that offensive skill.

After the Brewer game, she had faith the team would resume playing well again after three straight losses. Last week, the players had a good time during the game at Brewer, and it was exciting to see that spirit in the team, Snyder said.

Azle (20-18) will play at 5:30 p.m. Friday at Granbury.

AZLE CROSS-COUNTRY TRACK

Azle High School senior runner **Barak Geary** had another strong showing in an area cross-country meet, finishing seventh at The Reunion Run Saturday in Decatur.

Geary's time was 16:36.68. Second overall for Azle was sophomore **Parker Huffaker**, who finished at 17:30.60, good for 29th. Senior **Austin Gatewood** finished 44th at 17:54.97. Other finishers: 55. **Jose Neri**, 18:09.26. 68. **Connor Lawson**, 18:41.74. 72. **Ryner Boenisch**, 18:47.90. 95. **Juan Rios**, 19:34.17. Overall, Azle boys finished seventh as a team.

On the girls' side, Azle's highest finisher was freshman **Berkley Huffaker**,

who came in 12th with a time of 20:11.48. The next-highest finisher was sophomore **Mckenzee Roberts**, who was 27th overall at 20:46.79. Finishing three spots behind her was freshman **Reese Jeter** at 20:53.52. Other finishers for AHS were: 41. **Azucena Neri**, 21:39.83. 42. **Yasmeen Tejeda**, 21:41.07. 47. **Pella LeFever**, 22:11.94. 53. **Audrina Montoya**, 22:22.13. The girls finished sixth as a team.

"Everyone ran their fastest times of the year, and we competed really well against some very large 6A schools," said Azle cross-country coach Keith Boenisch in an email. "It will be a very close district meet, so this Friday's race on the district course is a good scouting trip since we have so many freshmen who have not ran it before. Hopefully we can learn the nuances of the course on Friday, so we minimize mistakes at district."

The Friday meet is at Brewer Central Park, and the district meet follows on Oct. 14, also at Brewer Central Park.

AZLE CHRISTIAN VOLLEYBALL

The Lady Crusaders travel to Irving this week after being off the previous week. Azle Christian will play at 6 p.m. Thursday at Stonegate Christian, a district opponent. Azle Christian has won three of its last four games.

AZLE JUNIOR HIGH FOOTBALL

On Sept. 27, the Azle Junior High seventh-grade white team beat Fort Worth Willkie Middle School 14-0, and the seventh-grade green team won 62-34.

The eighth-grade white team lost to Willkie 28-6, and the eighth-grade green team lost 20-14.

FORTE JUNIOR HIGH FOOTBALL

On Sept. 27, the eighth-grade team beat Lake Worth 28-14 on the road for the second win in a row. Final score: 28-14.

Brayden Ford threw for 224 yards with touchdown strikes of 2 and 46 yards to Brayden Combs and 70 yards to Joseph Cano. Combs added a rushing touchdown.

Forte kicked off to the Bullfrogs to start the game and forced a fumble on the first play from scrimmage. The Hornets' first offensive play saw Ford hit Cano on a 34-yard pass to set up a first-and-goal, leading to Combs' first TD reception a few plays later.

Lake Worth came back with an eight-play 96-yard touchdown drive of their own but failed to convert the two-point conversion to make the score 8-6. Forte answered with a four-play 52-yard drive capped by Ford's 46-yard toss to Combs.

Lake Worth's next drive went only four plays before Roman Fraser's interception put Forte back on offense. Six plays later, Combs had his third TD on a 15-yard run to cap a 43-yard drive. The Bullfrogs punted from midfield on their next series, and Ford needed only two plays

to hit Cano on a 70-yard strike to make the score 28-6 before halftime.

The victory for Forte evens their record on the season at 2-2.

Hosting the seventh-grade game, Forte defeated Lake Worth 28-6.

Aaron Stapleton rushed for three TDs while Treven Tittle tossed a TD pass to Corbin Myers to complete the Hornets' scoring on the night.

FORTE JUNIOR HIGH VOLLEYBALL

The seventh-grade Green Team started the first set underestimating the Lady Hawks, making it a pure serving game. In the second set, the Green started working together and fighting for the set. Shayla Soto stepped up for her team by getting a block and two kills at the net. Forte lost 25-12 and 25-18.

The seventh-grade White Team began its game sluggishly against the Lady Hawks but came on on fire in the second set. The third set proved to be a struggle, and Forte lost two-out-of-three games: 19-25, 25-14 and 7-15.

The eighth-grade Green Team won 25-21 and 25-13 and brought a lot of energy to the court. Destoney Roper led the team in serves and put 13 points on the board in the first set. Charlie Fair had an highlight-reel kill in the second set that helped energize Forte.

The eighth-grade White Team started strong but ended up losing against the Lady Hawks. Forte showed much improvement over the previous week, putting points on the board with hard serves. Sherilyn Dacy led the team in serves, and Natalia Davis had hard hits from the front and back. Final score: 19-25 and 22-25.

AZLE JUNIOR HIGH VOLLEYBALL

On Sept. 29, the seventh-grade A-Team Lady Hornets took on the Mineral Wells Lady Rams. The Hornets lost the first set 19-25, won the second set 25-14, and lost the third set 12-15.

"The girls played hard but came up short," said coach Kendra Longbrake.

Player of the game award went to Abbie Yochum, who "had some great passes and hits," the coach said.

Longbrake complimented all the players for their efforts and said she is proud of how hard her team works and the growth they have made this year.

The seventh-grade B-Team defeated Mineral Wells 25-19 and 25-12. Clara Strew and Addison Ackerman were the leading servers.

"Great job, last night winning against Mineral Wells in two games," coach Neosha Beach said to her team. "I am so proud of your team effort."

The eighth-grade B-Team volleyball girls played well but fell to Mineral Wells in two sets. Players of the game were Taylor Merrill for her "great blocking" and Gracie Hennessy for her "awesome sets," said coach Misty Merck.



PHOTO BY JEFF PRINCE

Jacelynn Hammond gets a dig to help the Lady Crusaders notch another victory.



PHOTO BY DON MUNSCHE

Azle volleyball player Shree Patel (20) reaches to block a shot during the Lady Hornets' game against Brewer last week. Azle won the game in three sets to pull its district record to 3-3 on the season.

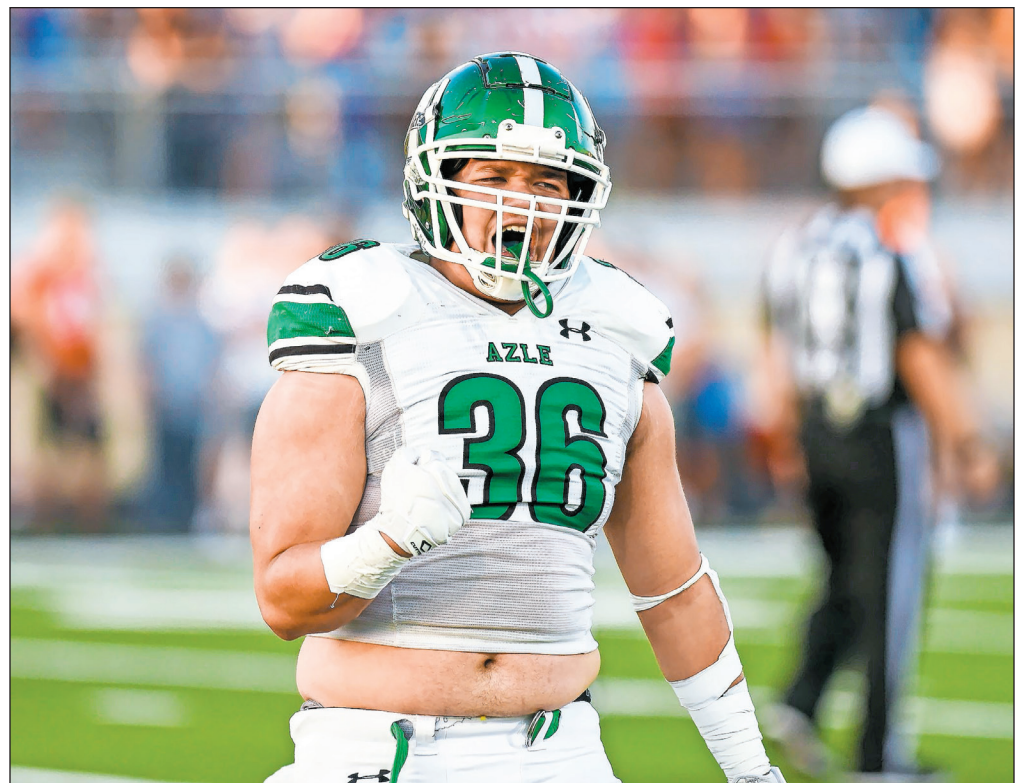


PHOTO BY RICHARD SPRAGGENS

Abraham Arguelles and the Azle Hornets will try to pummel their way back into the win column on Oct. 14 after enjoying a bye this week.

CHOIR

FROM PAGE 1B

there is another competition throughout the year: UIL Solo and Ensemble. Students sing solo and are evaluated by a judge. For students who make a first division on a class one solo, they are invited to perform at the state Solo and Ensemble contest

in late May.

Coming back from the pandemic, choral music was the most dangerous fine arts activity for students because of how they breathe when they perform, McCartney said, and he noticed that the students who were not able to continue singing suffered mentally and emotionally because of it. This group and the group last spring began to revel in rehears-

ing because it is emotionally satisfying to sing, and they didn't know that until it was taken away from them for a prolonged period, McCartney said.

"So, it's a joy and beauty for me to watch kids smile for the first time since they were a freshman in this environment because there's no bigger joy than making a chord that actually tunes and gives this sense of joy,

feeling and (happiness)," he said. "Still to this day, and I started teaching in '95, it's never gotten boring for me. It's always exciting to see students flash that smile and have that sense of accomplishment when they get off the risers from UIL competition and they see the big sweepstakes trophy. That look on their face - that never gets old."

Football Contest WEEK 7

Five contestants guessed with precise accuracy the winners to 10 of 11 games in this week's contest. We relied on the tiebreaker game between the Dallas Cowboys and Washington Commanders to determine the contest winners. The Cowboys won 25-10 for a total of 35 points. The contestant who guessed closest to the tiebreaker score was Keith Rose, with 41. He wins first place and \$20. Coming in second place was Kyle Gathright, who guessed 42 points. He wins second place and \$10. Third place and \$5 goes to Margaret Swanzy, who guessed 48 points.

First-year varsity player focused on game, set, match

BY JEFF PRINCE
jeff@azlenews.net

Earning a spot on the varsity roster was important to Azle High School student Nolan Garcia, now in his junior season, and he needed to become more serious about the sport to make the cut.

"The talent was always there," said Hayden Huff, Azle head tennis coach. "I just didn't feel he was really taking it very seriously last year. This year, he really wanted varsity and has been taking practice more seriously, and he has been very coachable. When you put those two things together, the sky is the limit."

She recalled discussing with assistant coach Jared Ewing about which players to move up this season.

"When we were deciding who was going to come up to varsity, we almost didn't move (Garcia) up," she said. "I'm really glad that we did because he has really stepped it up. We have thrown him into mixed doubles, and he has been playing well. Then, we put him in boys doubles, and they've been winning. He has been winning his singles at No. 6 every week. He has been a vitally important part of us getting our points this year."

Those points are helping Azle fight for a playoff berth.

On Sept. 27, in the second-to-last match of the season, the Hornets battled district leader Aledo and lost 16-3. The score was a marked im-

provement over last season's clash with the Bearcats, which Azle lost 19-0 in rapid fashion.

This year, Azle took five matches to the third-set tiebreaker.

"I was very happy with our improvement," she said. "Overall, everyone played well."

Garcia lost his singles match against Aledo. It was just the second time this year he has lost a singles match to a district opponent. He lost his doubles match, as well, while paired up with Royce Baker.

After losing in doubles, he was disappointed but remained upbeat about what lay ahead.

"We did OK," he said. "I could have definitely played better, but it was a good match."

In previous years, Garcia wasn't so intent on winning. This year, everything changed when he began to focus harder on becoming better on the tennis court, he said.

"I started to take it seriously," he said. "When I started to get better, I wanted to get better and better. When I made varsity this year, that's when it was like, 'OK, I really need to try so I can get good.' I wanted to move higher and higher on the ladder."

Where the ladder will lead, he isn't certain. Garcia, though, plans to keep swinging a racket, at least through his senior year.

"It keeps me active, and it's something that I really like



PHOTOS BY JEFF PRINCE

Nolan Garcia is a junior playing on the varsity tennis team for the first time this season.



doing," he said. "Hitting the ball really hard is fun."

While playing against Aledo, Garcia received encouragement from family members who turn out regularly to cheer for him.

"Way to go, Nolan!" yelled older sister Emma Garcia, who graduated from Azle High in 2018.

Emma, who attends UNT in Denton, has been watching her brother play tennis since he was in junior high. She considers herself one of his biggest fans.

"I'm home from college now, so whenever I can, I always come and support him because I just love seeing how much he improves," she said. "Just him growing up is really cool to see, especially in high school. I really love to watch him play."

Their sister, Elli Garcia, is a senior at Azle and plays in the marching band along with Nolan. All three siblings wore the proud uniform of the Marching Green Pride, and they are bonded through blood, band and sports.

"As they have gotten older, we've all gotten a lot closer," Emma said. "That's been really nice."

Nolan Garcia takes a swing while playing against Aledo on Sept. 27.



2,000 digs

PHOTO BY DON MUNSCHE

On Sept. 27, Azle Lady Hornet Makenna Dillow, holding the sign, reached a career milestone of 2,000 digs, setting a school record for career digs and most digs in a single season, currently at 926 for the season. She is shown here with her Azle teammates.

FOOTBALL CONTEST

• 2022 •

1st PLACE \$20 **2nd PLACE \$10** **3rd PLACE \$5**

Winners can pick up their checks at the Azle News office after Thursday.

• OFFICIAL RULES •

There are 11 games listed in advertisements on this page. To enter, pick the winner and write the name of that team in the appropriate blank on the official entry form.

Mail or deliver the form to: Azle News at 321 W. Main St., Azle, Texas 76020, by **1:00 PM FRIDAY**.

(Limit one entry per person).

Entries will be tabulated weekly and the results published in that week's issue of the Azle News. The first place winner each week will receive \$20, the second place winner \$10 and the third place winner \$5. The tie breaker will be used to determine placings. In case of a tie, the money will be divided equally.

To pick the tie breaker, predict the total number of points in the selected game and enter in the appropriate space on the official entry form. All entries become the property of the Azle News. Please write clearly and be sure to enter your pick in the correct blank. Second tiebreaker decided by whoever picks Azle and Springtown games correctly.

AZLE OFFICIAL ENTRY FORM

Deadline for entries 1 p.m. Friday!

1. _____
2. _____
3. _____
4. _____
5. _____
6. _____
7. _____
8. _____
9. _____
10. _____
11. _____

Tie Breaker: 5 Score _____

Name: _____

Address: _____

City: _____

Phone: _____

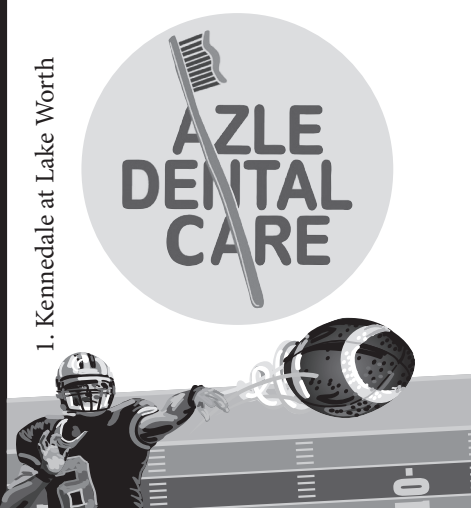
No photocopies please!

GO BIG GREEN!
SCORE • SCORE • SCORE

Brooke Porter, DDS
912 Boyd Road • 817-444-1763
SmileGreat.com

1. Kennedale at Lake Worth

AZLE DENTAL CARE



Fast • Efficient • Affordable!

PLUMBING DOUBLE SERVICES

3. Bowie at Arlington

- Drain Cleaning
- House Re-pipes
- Video Drain Inspection
- Water Heater Changeouts
- Commode Repair and Replacement
- Total Service Plumbing

817-444-3100
708 Northwest Pkwy, Azle
www.DoubleLPlumbingService.com

TRINITY HOME GROUP

10. Tennessee Titans at Washington Commanders

Specializing in Residential, Farm and Ranch
817.941.6454
thetrinityhomegroup.com
344 NW Parkway, Azle TX 76020



6. TCU at Kansas

MrJims.Pizza
It's the Crust!

NOW OPEN

15% Off YOUR ENTIRE ORDER

Only one offer/coupon per item. Not valid with third-party delivery services. Offer good at participating stores only. Delivery charge and minimum may apply. Customer responsible for all applicable taxes.

USE THIS CODE WHEN ORDERING ONLINE **T41**

Open Sun - Thurs 10:30 am - 9 pm,
Fri-Sat 10:30 am - 10 pm
416 Commerce St., Suite 3, Azle
817-612-0074
www.mrjims.pizza

Go ahead & smile!

PREVENTATIVE • RESTORATIVE • COSMETIC

Crowns & Bridges • Whitening • Dentures
Dental Veneers • Implant Restoration
Cosmetic Dentistry • Pediatric Dentistry & More...

Dr. Joseph McCreary, III
FAMILY & COSMETIC DENTISTRY

5. Peaster at Whitesboro
Family dentistry for all ages.
Serving the Azle, Texas area
209 Roe Street, Azle TX 76020
817-444-3209

TACO TIME MEXICAN GRILL

Taco Plate \$8.99
3 Chicken or Beef Tacos, Rice, Beans & 24 oz. Drink

Daily Special \$17.99
10 Tacos • Chicken or Beef

Gordita Plate \$8.99
2 Chicken or Beef Gorditas, Rice & Beans with 24 oz. drink

12555 FM 730 S. • 817-270-5430
11652 FM 730 N. • 817-444-3947
Mon - Sat Breakfast: 5:30am - 10:00am
Lunch & Dinner: 10:00am - 7:30pm

BREAKFAST
Breakfast Burritos • Tacos • Biscuits

1 Year Subscription

Azle News

Name _____
Address _____
City _____
State _____
Zip _____
Phone _____

8. Abilene Christian at Stephen F. Austin

<input type="checkbox"/> \$40.00 IN-COUNTY Tarrant, Parker & Wise only	<input type="checkbox"/> \$46.50 OUT-OF-COUNTY Texas and elsewhere
<input type="checkbox"/> \$36.50 SENIOR CITIZEN 60 years and older Tarrant, Parker & Wise only	<input type="checkbox"/> \$25.00 ONLINE ONLY Azle News

Clip and mail w/payment check to:
321 W. Main Street,
Azle, TX 76020

Local Delivery • Metro Delivery • UPS

Sutton PRINTING

119 Industrial Ave.
Next to Dollar General
817-444-2222
418 E Hwy 199 • Springtown
817-220-2101

Digital & Gloss Full Color Business Cards
Gloss Full • Color Post Cards
Yard Signs • Copy Paper
Full Color Banners

250 Digital Business Cards ONLY \$29.99

GET QUOTES
SuttonPrinting@aol.com

4. Alpine at Crane

PAUL S. CRABTREE, CPA, PLLC

CRABTREE

Tax, Accounting & Business Advisory

Office Hours:
Mon - Fri
8:30 AM - 5:00 PM
Saturday by appointment only.

A MEMBER OF THE AMERICAN INSTITUTE OF CERTIFIED PUBLIC ACCOUNTANTS

2nd floor of the BBVA Compass Bank Building
150 Industrial Ave.
Suite 201, Azle

9. Dallas Cowboys at Los Angeles Rams

Whether you're starting a business or have been in business for years...

Reliable Year-Round TAX SERVICES

- Tax Preparation 1040, 1065, 1120, 1120S, and 941
- Filing Consultation
- Payroll
- Tax Professional
- Tax Extensions
- Free Professional Notary Public

1355 NW Pkwy, Ste. 104
817-270-2574

2. Burkburnett at Decatur

WE'RE **TEXAS** IN A BANK

Sharing your community, your values and your dreams.

11. Philadelphia Eagles at Arizona Cardinals

Pinnacle Bank

AZLE 316 N.W. PARKWAY
817.444.2504 • pinnbanktx.com

CLASSIFIED

817-270-3340 - Azle - classified@azlenews.net

817-220-7217 - Springtown - shirley@springtown-epigraph.net

Ad Classifications

- | | | | |
|----------------------------|---------------------------------|-------------------------------|--|
| 1... Air Condition/Heating | 24..... Electrician | 46..... Looking to Buy | 69..... Sand/Gravel |
| 2..... Antiques | 25..... Equipment & Tool Rental | 47..... Lost & Found | 70..... Septic Tanks |
| 3..... Appliances | 26..... Excavating | 48... Maintenance/Repairs | 71..... Sewing/Alterations |
| 4..... Appliance Repair | 27..... Exterminating | 49..... Masonry/Stonework | 72..... Sewer Service |
| 5..... Arts/Crafts | 28..... Farm Equipment | 50... Mobile Home Service | 73..... TV/Radio |
| 6..... Asphalt Paving | 29..... Fencing | 51..... Motorcycles | 74..... Tractor Service |
| 7..... Auctions | 30..... Firewood | 52..... Movers | 75..... Upholstery |
| 8..... Autos, Trucks | 31..... Free | 53..... Musical Instruments | 76..... Vacuum Cleaners |
| 9..... Auto Repair Service | 32..... For Sale | 54..... Music Lessons | 77..... Wanted |
| 10..... Backhoe Service | 33..... Furniture | 55..... Miscellaneous | 78..... Well Drilling |
| 11..... Boats, Motors | 34..... Garage & Estate Sales | 56 Party Planning/Events | 79..... Welding |
| 12..... Bookkeeping | 35 ... Garden/Mowing Svc | 57..... Pets/Livestock | 80..... Lots/Acreage |
| 13..... Business | 36..... Hauling | 58..... Piano Service | 81..... Business & Commercial Property |
| 14..... Campers/Trailers | 37..... Hay | 59..... Pool Service | 82..... RV's for Rent |
| 15..... Carports/Patios | 38..... Health/Fitness | 60..... Professional Services | 83..... Houses for Sale |
| 16..... Equipment Repair | 39..... Help Wanted | 61..... Personal | 84..... Mobile Homes for Rent |
| 17..... Carpet Service | 40 ... Home Improvement | 62..... Plumbing | 85..... Mobile Homes for Sale |
| 18..... Catering | 41..... House Leveling | 63..... Public Notice | 86..... Mobile Home/RV Lots |
| 19..... Cement Work | 42..... House Cleaning | 64..... Photography | 87..... Rent Furnished |
| 20..... Demolition | 43..... Hunting | 65..... Printing | 88..... Rent Unfurnished |
| 21..... Child Care | 44..... Janitorial Service | 66..... Roofing | 89..... Wanted to Rent |
| 22..... Cosmetics | 45..... Job Wanted | 67..... Recycling | |
| 23..... Computers/Services | | 68..... Storage | |

RATES

16 Words or Less:

Combo (Azle & Springtown) Only \$10.00 per week!

Over 16 words, add 20 cents per word
Extras such as Bold, Center & Border are available for a small fee

Classified boxed display ads also available for \$9.00 per column inch

(All ads must be paid in advance unless you have previously established credit)

CLASSIFIED AD DEADLINE: 1:00 PM FRIDAY

Most ads require payment in advance, but we do accept VISA, MASTERCARD, DISCOVER OR AMERICAN EXPRESS by phone.



Reach more than 8,000 households with combo advertising in the Azle News and the Springtown Epigraph.

Nobody does it better!

006 Asphalt Paving

BYRUM CONSTRUCTION
Asphalt Paving
• Driveways • Parking Lots
• Asphalt Repairs & Sealcoating
• Asphalt Millings • Gravel
Bruce Byrum
Azle, Texas 817-690-2429

008 Autos, Trucks



Chevy Silverado, Year 2015, 8 cylinders, new tires, runs perfect, toolbox on the bed, bull bars on the front. 172 k miles, asking \$ 15,500
Cel 817-703-1261

020 Demolition

MCNEELY'S DEMOLITION & CLEAN UP SERVICE
We Create Vacancy

- Tear Down
- Removal
- Haul Off
- Mobile Homes
- Garages
- Barns
- Houses
- Bobcat Service
- Dirt/Gravel Spreading

FREE ESTIMATES
817-996-7887
253 Eagles Way, Springtown

Advertising Works!

030 Firewood

LEON'S TREE SERVICE. Split Oak and Pecan wood. Pickup or delivery. 817-371-8597.

032 For Sale

Must Sell, like new leather couch, adjustable beds, motorized chair, walker with wheels & seat. Call 682-216-1074.

FOR SALE-BY OWNER

\$500K-5 Acres, 357 CR 4783 Boyd, TX 76023.
Has 3 Mobil Home rentals, plus 2 more great building sites, fenced, with water well, needs repairs.
Great investment, pays for itself. 2 miles from stores and gas, Boyd School District.
Text 817-228-2763, call after 5.

House for Sale

3-2-2 on one third of an acre on HWY 199.
Updated everything, 3189 HWY 199 E \$189,000. 817-812-6077



New 7 ft Marston Caternia Pool Table. Teflon coated cloth and accessories. MSRP \$3699. Sale for \$2300 including free delivery and installation. Call 817-444-7021.

034 Garage & Estate Sales

3 Family Yard Sale. Furniture, tools, house decor, & misc. 280 Deer Butte, Weatherford.
Friday 8am-2pm, Saturday 8am-12pm.

Estate Sale
Sat. Oct 8th 8am-4pm, Sun Oct 9th 9am-3pm. 1189 Deer Track Rd, Weatherford 76085, near Dove Ridge Winery. See photos on our FB page: K&K Estate Sales of Mineral Wells.

Huge Sale

5645 Sabatheny Rd, 76085. Friday-Sunday 8am-5pm. 20 new generators, 5 storm doors, 20 bath faucets, 5 new side shaft motors, 7.5 HP to 12 HP. Saxophone, xylophone, guitar and amp. 25 new Mowen Trim Kits for tub & shower. 600 records 78-33.5 45 RPM. 2 lawn mowers, 1 Dewalt Pressure Washer, 400 pocket knives. Thousands of new smalls. 817-412-0125.

Estate Sale

302 Jennings Lane
Friday and Saturday 8-3
Lots of Tools, Clothes and Household items.

Huge/Huge/Sale

290 Thomas Len Rd off 730 South, watch for signs. Thursday-Sunday. Vintage & collectible items, Carnival glass & lamps. 70's California Raisins, silverware, house ware, clothing, toys, bedding. Too much to list. Come early, lots of shade.

Yard Sale

350 Horseshoe, Springtown. Wednesday-Saturday
Oct 5th-8th, 9am-6pm. Furniture, tools, clothes, fishing gear, blankets, shoes, safety glasses, and much, much more. Come on out, thank you.

Multi Family Garage Sale

Friday-Saturday 8am-4pm.
730 S to Veal Station Rd. Right on Veal Station to Comer Ln. Last house on the right.

2 family garage sale

Lots of Christmas & misc.
Oct 6th-8th. 324 Driftwood Ct. in Timberlake Estates.

5 Family Yard Sale

Lots of everything. Friday-Sun 157 P.R. 3797, Springtown. 817-353-1503.

035 Garden/Mowing Service

Need your lawn mowed, trimmed or cleaned up? Need your trees trimmed or cut? Any job big or small give Scooter a call. Free Estimates. 817-766-3834.

COWBOY LAWN CARE.

Residential, farm, gardens, landscaping, tree trimming. Free Estimates. 817-271-0450. Spring Specials.

KINWAY IRRIGATION SYSTEM REPAIR

817-810-8575.

IRRIGATION REPAIR

Residential/Commercial
License# LI007825
\$85 Service Call

OUTDOOR SCENE

682-553-1560

LEON'S TREE SERVICE
Expert take downs
Stump Grinding
Residential/Commercial
Licensed & Insured • Free Estimates
817-371-8597

035 Garden/Mowing Service

Chad's Tree Service
Trimming • Removals • Stump Grinding
Systemic Feeding • Brush Chipping • Cable Bracing
817-221-2201 • 817-246-5943
817-800-6059 CELL
Insured for your protection

STUMP GRINDING
Don't dig it! Grind it!
1 or 100 - We can do it.
\$85 minimum within 5 mi.
817-237-5592

YARD SERVICES
SKID STEER
SOD INSTALLATION
FENCING
STUMP GRINDING
817-371-8597

Ruben's YARD SERVICE
Tree Service • Stump Grinding
Yard Clean-Up
940-730-0916

039 Help Wanted
WANTED
Property Maintenance
Labor/Person
Gene Thompson & Associates
817-246-4646

Help Wanted in Aurora/Alvord Area
• Mechanic
• Welder
• Equipment Operators
Competitive pay, some benefits. M-F day shift only. Overtime weekly.
For information call 214-802-5157

009 Auto Repair Service

Rainwater's Transmission & Auto Repair
Transmission • Brakes • A/C • Engine Service
Specializing in 1940-2020 transmissions
201 E. Hwy. 199, Springtown
LOCALLY & FAMILY OWNED!
Accepting all credit cards
862-615-7250
817-766-3852

014 Campers & Trailers



2017 Dutchman Voltage Excellent condition, 3 slide outs, sleeps 8. 5th Wheel Toy Hauler. \$67000.00
Call or text 817-437-2287

017 Carpet Service

Alexander Carpet Care
INSURED
817-914-2822
CARPET CLEANING

019 Cement Work

Allen Chesney Concrete
All Types of Concrete Work
Residential - Commercial
Foundations, driveways, sand, gravel, demolition, haul-off, retaining walls
817-271-4541

Concrete Services, Patios, Driveways, Sidewalks, Retaining Walls, Foundations, Stone Walls. Free Estimates. 817-371-8597.

Kiley Chesney Construction
Dirt & Concrete Work
Driveways • House Slabs • Garages • Add-ons
Small Land Clean-ups • Gravel Driveways
Kiley Chesney, Owner
Springtown, TX • Mobile 817-846-6645

SELL IT IN THE CLASSIFIEDS!

024 Electrician

BULLDAWG ELECTRIC CO.
All types of electrical services and MH hook-ups.
Free Estimates. 817-675-4921
www.bulldawgelectric.com.
TECL#25253.

E-Conn Electric
Service, Remodel, New Construction
Insured/BBB Accredited
817-615-7164
Customer Satisfaction is our Goal!
C/C ACCEPTED TECL20470

026 Excavating

HASTY EXCAVATING
ALL TYPES OF EXCAVATING
Tanks • House Pads • Clearing
Also ..
Sand • Top Soil • Gravel
817-523-7248 • 817-239-6215

REED EXCAVATING

• SITE PREPARATION
• LOT CLEARING
• LEVELING
• FINAL GRADE
• LAND EROSION
• GRAVEL ROADS
• PARKING LOTS
• DEMOLITION
• STOCK TANKS
Dump Truck Hauling 817-919-3696

029 Fencing

BOBBY'S FENCE. All types, Free Estimates, Over 26 years experience. 817-444-3213.

KILEY CHESNEY

CONSTRUCTION
All Types Fences - Tractor Work
817-846-6645

034 Garage & Estate Sales

Downsizing/Moving Sale
Tools, power & hand, vintage glassware, misc. Sat Oct. 8th, 8am-2pm. 1120 Carpenter St., Azle.

KEEP THIS DATE-OCTOBER

8, 10:00-5:00. 408 Skipper Ln, Harbor Parc, Azle 817-703-1724.
Huge wreath show, over 100 wreaths to be sold, half price
Avon, kids crafts, garage sale.

Big Yard Sale

Halloween Costumes, baby clothes, camping gear, Jeep parts, etc. 1654 CR 4790, Boyd 76023. Oct 7-8, 8:30-5

Yard Sale

Fall and Christmas decorations plus much more. 330 FM 2048, Boyd. Oct 7-8 8am-5pm.

Ashwood Park Community Yard Sale

October 7-8-9
Park & Ash, Azle

2nd Annual Yard Sale of the Century.

213 Private Rd 4931, Springtown. If we don't have it, you don't need it.
Friday & Saturday 8am-4pm.

PUBLISHER'S NOTICE

All real estate advertising in this newspaper is subject to the Fair Housing Act which makes it illegal to advertise "any preference, limitation or discrimination based on race, color, religion, sex, handicap, familial status or national origin, or an intention, to make any such preference, limitation or discrimination." Familial status includes children under the age of 18 living with parents or legal custodians, pregnant women and people securing custody of children under 18.

This newspaper will not knowingly accept any advertising for real estate which is in violation of the law. Our readers are hereby informed that all dwellings advertised in this newspaper are available on an equal opportunity basis. To complain of discrimination call HUD tollfree at 1-800-669-9777. The toll-free telephone number for the hearing impaired is 1-800-927-9275.

PLACE AN AD IN THE CLASSIFIEDS TODAY!
817-270-3340

Help wanted continued on next page...


Hiring: Oil & Gas workover rig hands and CDL tank truck drivers
Competitive pay, immediate openings
940-393-6655

817-270-3340 - AZLE
817-220-7217 - SPRINGTOWN

Deadline:
 1:00 PM FRIDAY

Classifieds

039 Help Wanted



KARL KLEMENT

Body Shop Porter
 Performs duties throughout the Body Shop. Must be responsible, dependable and have a valid TXDL. Monday to Friday work week.

Parts Drivers/ Warehouse Associates
 Must have valid TXDL with acceptable driving record. Overtime available and room for advancement. Monday-Friday work week.

Lube Tech
 Experience a plus, but willing to train the right candidates. Must have a valid TXDL with acceptable driving record. Must be responsible and dependable. Monday-Friday work week.

Wholesale Sales Associate
Sign-on Bonus
 Looking for fulltime wholesale sales associates. Experience is a PLUS! Ford Certified preferred but NOT REQUIRED. Apply in person @ 605 N Business 287 Ste 102, Decatur, TX 76234.

Parts/Service Counter Sales
Sign-on Bonus
 Experience highly preferred, but will train the right candidate. Must have excellent customer service skills and ability to work well in a process driven environment.



No Positions Available at This Time

KLEMENT DISTRIBUTION, INC.
 (Hershey Ice Cream Distributor)

No Positions Available at This Time

Karl Klement Properties, Inc.

Administrative Assistant
 Ideal candidate will possess an administrative background as well as strong customer service skills; however willing to train the right candidate. Must be dependable, proficient in MS Word and Excel, multi-tasker, and able to thrive in a fast paced environment.

Facilities Manager
 Must be customer service oriented, have a clean driving record and be able to pass pre-employment screening. Experience a plus, but will train the right person!

For consideration of all positions apply in person:
605 N. Business 287, Suite 102, Decatur, Texas
OR CALL Human Resources Dept:
Jodi Pettis, Alyssa Jacobs, or Lynn Mallwitz
@ 940-627-6362
FOR MORE INFORMATION

Hiring Route Drivers for Our Growing Company!
****\$1,000.00 Hiring Bonus****

Seeking Route Drivers that are hardworking, enthusiastic, with a strong motivation for success! Interpersonal and customer service skills are strongly recommended. Must have a valid TX DL with an acceptable driving record

Join our team at Klement Distribution, Inc. delivering Hershey's Ice Cream! Not only will you be putting smiles on people's faces, you will earn a great income for yourself!


As a Route Driver you will unload, stock and rotate products, collect and deposit client payments and move on to your next stop, always ensuring that our customers are satisfied!

We offer:

- Competitive salary
- Paid training, vacation and holidays
- Promote from within advancement opportunities!
- Monday through Friday work-week; NO WEEKENDS!

Real ingredients, real ice cream, real smiles! **Apply Now!**

Contact Alyssa Jacobs at 940-627-6362 or submit resume to Alyssa.Jacobs@klementford.com



Lindsey State Jail Current Openings

Correctional Officers • Assistant Foodservice Manager
Recruiting Sgt. • Education Counselor
Education Clerk • Academic Instructor

PLEASE CHECK THE WEBSITE FOR JOB QUALIFICATIONS.
 A New Correctional Officer Pay Increase will be as follows - Starting pay will be \$18.00 dollars per hour. After Six months' there will be a pay increase to \$19.00 per hour and at one year there will be another pay increase to \$20.00 per hour. Must have HS Diploma or equivalent, be able to pass a drug screen, have a clean background, and valid driver's license to be considered for a Correctional Officer. **Apply online at www.mtctrains.com or call 940-567-2272 and ask for the HR Department. Management & Training Corporation is an Equal Opportunity Employer: Minority/Female/Veteran/Disabled**



Save a Shelter Animal.
Find your forever Friend

039 Help Wanted

Part Time Grounds Keeper

Applicants must pass background check and drug screen. 30 hours a week. Must be able to lift 50 pounds. Wage \$12-\$15 per hour.

FORT WORTH BOAT CLUB
 10000 Boat Club Rd, Fort Worth TX 76179
817-236-8393 Ext. 3

ADS STEEL SERVICE

Now Hiring!
 Experienced Fitter & Shop Labor, Competitive Wages, Health Insurance, Paid Holidays and Vacations
 817-763-8223



Or apply in person at
 7461 W. Vickery Blvd.,
 Ft. Worth, TX 76116



KLEMENT OF MUENSTER

NOW HIRING FOR Growing Service Department!

Multiple Positions Open:
AUTOMOTIVE TECHNICIAN
SERVICE WRITER
TECHNICIAN'S ASSISTANT
PORTER • PARTS DRIVER

WILL TRAIN!
Monday -Friday 8:00 AM - 5:30 PM
401K - Paid Vacation - Benefits
Apply in person at
1005 E. Division, Muenster, TX

EOE

040 Home Improvement

BILL ROSSER PAINTING & REMODELING. Big Savings: \$100 off any job of \$1,000 or more. Painting, Carpentry, Porch Covers, Decks. FREE ESTIMATES. Call 817-304-9974; 866-374-3559.

WORKHORSE HANDYMAN SERVICES. Bathrooms, kitchens, remodels, water & sewer repair, mobile home repair, roof repair and well repair. **Quality at a reasonable rate. Call 817-874-6109.**

PYRAMID REMODELING. PAINTING: Interior, Exterior, Tape & Bed, Texture, Popcorn Ceilings. FREE ESTIMATES. 817-944-7658.

BOBBY MCWILLIAMS PAINTING 817-821-6377. Interior/Exterior Painting Residential & New Homes. 50 years experience.



Kevin's Handyman Services

40 Years Experience

- Carpentry
- Drywall & Painting
- Tile & Laminate Floors
- Doors & Windows
- Decks & Stairs
- Cabinets & Countertops
- No Job Too Small

Springtown and Surrounding Areas
231-445-1221

Devin's Handyman Service

- Carpentry
- Cement
- Rock
- Granite
- Tile
- Painting
- Siding
- Insulation
- Kitchen/ Bath
- Seamless Gutters
- Powerwashing
- Decks

FALL SPECIAL 20% OFF with this ad!



Call Devin at 817-629-9608

057 Pets/Livestock

Will pay top dollar for grazing and hay leases. Call 940-389-1936.

HORSE SALE
October 7, 2022
Tack Sale Begins at 6:00 PM
Horses Follow
Stephenville Cattle Co.
 Highway 281 North • Stephenville, TX
 Troy 254-967-1950 • Barn 254-968-4844

062 Plumbing

GRAHAM PLUMBING CO.



Commercial-Residential
Serving Springtown,
Azle, Boyd,
Weatherford Area
 M#15899
817-220-2469
 grahamplumbingco.com

LANDERS Plumbing Co.

940-233-2862
 M-10078

066 Roofing

Miles Roofing

- Insurance Claim Specialists;
- Free Estimates

817-797-3420



At Home ROOFING & METAL BUILDINGS

817-304-4224

Tired of always replacing your roof? Call us for a metal roof quote.

We'll be here after the storm.

EXPERIENCED ROOFING SPECIALIST

FREE ROOF INSPECTIONS
Insurance Claims, Licensed Local Business 34 Yrs

ECE CONSTRUCTION LLC

cell 817-615-7164 | office 817-831-2600

DIAMOND ROOFING & CONSTRUCTION



417 N. MAIN ST • SPRINGTOWN
817-523-4137
 Here Before The Storm, Here Long After.

Commercial & Residential

- Roofing
- Metal Roofing
- Carports
- Metal Buildings
- All General Contracting

Master Seal
 BBB ACCREDITED BUSINESS

068 Storage

INNERSPACE STORAGE. Hwy 199, Springtown. Now renting all unit sizes, 24-hour access. 682-842-1414.

068 Storage

STORAGE UNITS

1350 Liberty School Rd
 5x10 Units \$45/mo.
 10x10 Units \$70/mo.
817-246-4646

069 Sand/Gravel



HALLS SAND, DIRT & GRAVEL
 Quality Family Business Since 1938
 CALL Cliff Hall
(817) 221-2681
 We go the extra mile to ensure you get more for your \$. On House Pads, Driveways, Lot Clearing & Tractor Work, Etc.

079 Welding

Our Business is Metal Buildings - And We're Good!
DESIGN FABRICATION ERECTION

Cozart METAL BUILDING SYSTEMS

Fabrication and erection of quality metal buildings at reasonable prices, any size - any design
817-237-2282
 Fax 817-237-0904
 Mark Cozart Jeremy Cozart
 817-233-6668 817-237-2028

owner Rodney Vick
 817-220-3044
 fax 817-523-7639
 cell 817-253-1614



R & E Construction

Metal Building Specialist

- Weld Ups/ Bolt Ups
- Pipe Fencing
- Concrete
- Horse Barns
- All Types Fencing
- Metal Roofs

Compare Pricing
NO JOB TOO SMALL

www.azlenews.net
www.springtown-epigraph.net

Rescue your Ballerina from the Shelter and give her a Forever Home



Ash Creek Storage

Convenient Location
 Corner of Main St. & Locust • Azle
817-444-3292

817-270-3340 - AZLE
817-220-7217 - SPRINGTOWN

Deadline:
 1:00 PM FRIDAY

Classifieds

079 **Welding**



SOLID STEEL SOLUTIONS

- Metal Buildings
- Steel Components
- Welding Supplies
- Concrete Supplies
- Fabrication Supplies
- Pipe Fencing
- Deer Blinds
- Deer Feeders

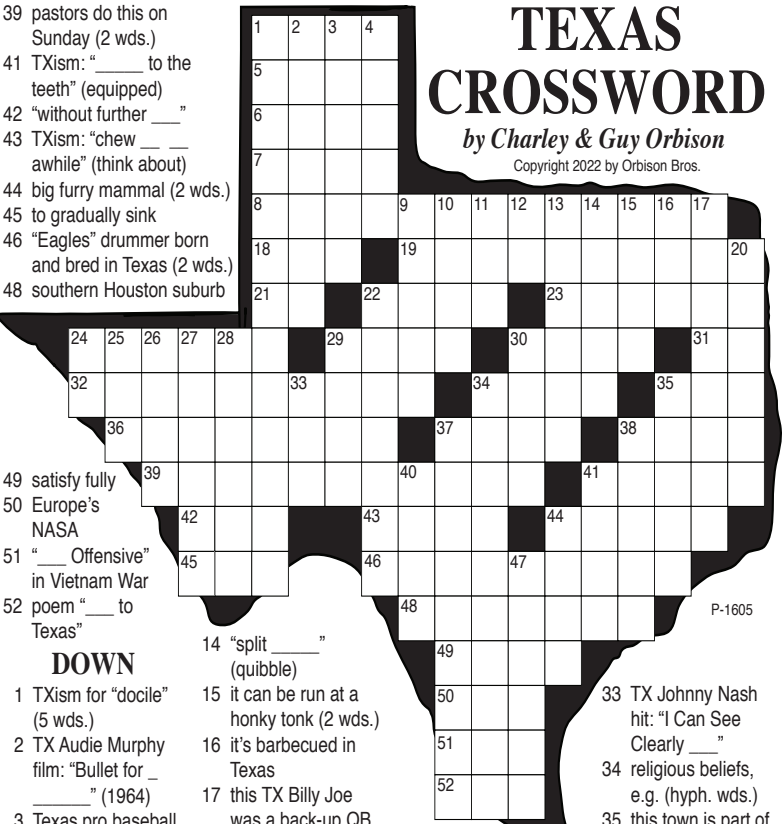
8894 W Hwy 199 • Springtown
817-220-0008
www.SolidSS.com **Open to the Public**



Need to sell your ATV?
Call today and ask about our \$29.95 3-MONTH SPECIAL!

Azle News 817-270-3340
 Springtown Epigraph 817-220-7217

TEXAS CROSSWORD
 by Charley & Guy Orbison
 Copyright 2022 by Orbison Bros.



ACROSS

- road coatings
- TXism: "blind as ___"
- horse hair
- wood, TX on U.S. 80
- first female to fly solo across the Atlantic (2 wds.)
- saving those lost in a remote location (abbr. for 3 wds.)
- formation of new and distinct species
- TXism: "frisky as ___ unsaddled horse"
- off the base without permission (abbr.)
- small Texas mountain range: "Sierra ___"
- Texas horsemint blooms in ___ colors
- TX Trini sang "If ___ a Hammer"
- this Adderly helped Cowboys win first Super Bowl in 1972
- Texas actress Darnell (init.)
- in Atascosa County on U.S. 281
- animal skins
- "Billy the ___"
- TXism: "between you, me, and the ___"
- short for picture-taking devices
- TXism: "___ his pallbearers the slip" (recovered)
- pastors do this on Sunday (2 wds.)
- TXism: "___ to the teeth" (equipped)
- "without further ___"
- TXism: "chew ___ awhile" (think about)
- big furry mammal (2 wds.)
- to gradually sink
- "Eagles" drummer born and bred in Texas (2 wds.)
- southern Houston suburb
- satisfy fully
- Europe's NASA
- TXism: "___ Offensive" in Vietnam War
- poem "___ to Texas"
- "split ___" (quibble)
- it can be run at a honky tonk (2 wds.)
- it's barbecued in Texas
- this TX Billy Joe was a back-up QB for six NFL teams
- made a head bid at a cattle auction
- car modified for extra power (3 wds.)
- Texas actress, Prentiss (init.)
- TXism: "he's ___ hat and no cattle"
- Texas ___ has a star of five points
- TXism for "docile" (5 wds.)
- Audie Murphy film: "Bullet for ___" (1964)
- Texas pro baseball player
- Superman: "Man of ___"
- TXism: "I declare" (2 wds.)
- TXism: "two peas in ___"
- snakelike Gulf fish
- summer necessity in Texas (abbr.)
- people on horses
- TX Johnny Nash hit: "I Can See Clearly ___"
- religious beliefs, e.g. (hyph. wds.)
- this town is part of the Iowa Park ISD
- TXism: "useless as speaking ___ a redneck"
- actress Garson who died in Texas
- winter precipitation
- competent
- poker stake
- TX Howard Hughes left a big one

DOWN

- TXism for "docile" (5 wds.)
- Audie Murphy film: "Bullet for ___" (1964)
- Texas pro baseball player
- Superman: "Man of ___"
- TXism: "I declare" (2 wds.)
- TXism: "two peas in ___"
- snakelike Gulf fish
- summer necessity in Texas (abbr.)
- people on horses
- TXism for "docile" (5 wds.)
- Audie Murphy film: "Bullet for ___" (1964)
- Texas pro baseball player
- Superman: "Man of ___"
- TXism: "I declare" (2 wds.)
- TXism: "two peas in ___"
- snakelike Gulf fish
- summer necessity in Texas (abbr.)
- people on horses

WDC
 WELD-DONE CONSTRUCTION LTD.

Metal Building Erectors

- Pre-engineered Weld-up
- Barns/Shops
- Arenas/Hangars
- Fencing

1220 E. Hwy. 199 • Springtown
 817-220-2150
 www.weld-done.net

088 **Rent Unfurnished**

Cross Companies Residential Properties

Family-owned, family-run

STEWART BEND **SILVER CREEK** | RV PARK
 DUPLEX HOMES

Stewart Bend Duplex Homes: 2 & 3 bedroom units available at \$1,225 & \$1,325. Quiet, clean, non-smoking. CALL 817-401-1796.

Silver Creek RV Park: Designed for local long-term stays. Best common building in Azle, secluded and quiet, city water/sewer. \$475 with \$75 electricity allotment; ABP in winter. CALL or TEXT 682-499-8616 or email scrvoffice@gmail.com.

Barton Cottages Tiny Home Community: COMING SUMMER 2022! Email BartonCottages@gmail.com

081 Business/Commercial

40x50 building For Rent, 3 miles west of Springtown. 817-713-7495.

082 RV's for Rent

Nice 1BR RV in adult RV park. Great for older person on limited income. Starts at \$550/mo. All Bills Paid. Heritage RV Park 817-444-3760.

084 Mobile Homes for Rent

Pelican Bay: 1524 Partridge, 1-1, stove/fridge, central heat, window unit, \$585/mo. \$400 deposit. Owner/Broker 817-988-9954.

Nice 2-2 SW, quiet area, Azle ISD, fenced yard. Qualified Tenants Wanted. 817-228-2414.

3-1.5 Mobil home near Boyd in Country \$1,200/mo, \$1,200/dep. Call for more info 817-996-9786 or 817-683-1440.

1801 CORAL RD
 2-1 \$845 MO. \$500 DEP.
 Gene Thompson & Associates
 817-246-4646 gtatx.com

086 Mobile Home/RV Lots
 Beautiful RV Spots available in nice, quiet area near Eagle Mountain Lake. \$400/mo. plus electric. Call for more

POJO RV PARK
 302 Allison Road
 Springtown, TX 76082
817-925-3673
30x60 RV Spaces Available
 One small inside pet allowed
 NEAR POJO STADIUM

information 817-228-2414.

088 Rent Unfurnished

3-2 Duplex for Rent in Springtown. \$1,200/mo. \$600 deposit, no pets. 817-980-3066.

APT. - 2 bed, 1 bath, carport, lakeview, CA & heat, \$950 incl. bills. 817-237-7972 ask for Darlia

1807 PELICAN OVAL
 2-1-1 \$1,195 MO. \$1,000 DEP.
 1833 PELICAN DR
 2-2-1 \$1,245 MO. \$1,000 DEP.
 1920 PELICAN DR. N.
 3-2-1 \$1,595.MO \$1,000 DEP.
 Gene Thompson & Associates
 817-246-4646 gtatx.com

AZLE OAKS APARTMENT
 700 JARVIS • AZLE
 817-444-1712

1 & 2 Bedroom Unfurnished

Accepting Applications
 Rent based on income

TDD: 800-735-2989

GENE THOMPSON & ASSOCIATES HOMES AND MOBILE HOMES FOR RENT
 gtatx.com
 817-246-4646

Spring Garden and Spring Garden V Apartments of Springtown

NOW ACCEPTING APPLICATIONS FOR Disabled, Low Income and Senior Tenants, 62 years of age or older, handicapped/disabled regardless of age

1,2,3 Bedroom Duplex Amenities Include
 Ceramic Tile, Ceiling Fans, Washer/Dryer Connections, Stove, Refrigerator and Dishwasher
Must Meet Housing Qualifications

Spring Garden.....817-523-7555
 Spring Garden V....817-220-5585

This institution is an equal opportunity provider and employer.

Need To Fill The Piggy Bank?



Put Your Ad in Our Classified Section Today!

The Azle News
 817-270-3340
 321 W. Main St. Azle

The Springtown Epigraph
 817-220-7217
 109 East First St. Springtown

THANKS FOR SHOPPING & DINING LOCALLY!

TEXAS STATEWIDE CLASSIFIED ADVERTISING NETWORK

TexSCAN

TexSCAN Week of Oct. 2-8, 2022

GENERATORS
 Prepare for power outages today with a GENERAC home standby generator. 50 Money Down + Low Monthly Payment Options. Request a FREE Quote. Call now before the next power outage: 1-855-704-8579.

ACREAGE
AFFORDABLE LAND. We have some of the best in Texas. Hill Country - Edwards, McCulloch, Schleicher, Coke, Val Verde counties, free ranging exotics. South Texas - Kinney, Duval, Live Oak counties - whitetail, hogs, Trans Pecos, Terrell, Val Verde - whitetail, javelina, quail, 30 year fixed rate financing, 5% down. www.ranchenterprisesltd.com, 800-876-9720.

AUCTION
PUBLIC AUCTION, Thurs., Oct. 13, starts at 9:17 a.m. Mayes County Fairgrounds, 2150 NE 1st St., Pryor, OK. Classic Cars, Guns, Tractor, Trailers, 4-Wheelers, Riding Mowers, Old Scooters, Porcelain Signs, Gas Pump, Gas Station Memorabilia, Traeger Grill, Bowling Lane, Skee Ball, School Bell, Power Tools, Carnival Rides/Games, Rockola Juke Box Heads and more. Live Onsite & Online Bidding on Lots 1-124 Start at 12:29 p.m. For info & photos, visit chuppsauction.com. (918) 630-0495.

MEDICAL
Portable Oxygen Concentrator May Be Covered by Medicare! Reclaim independence and mobility with the compact design and long-lasting battery of Inogen One. Free information kit! Call 866-747-9983.

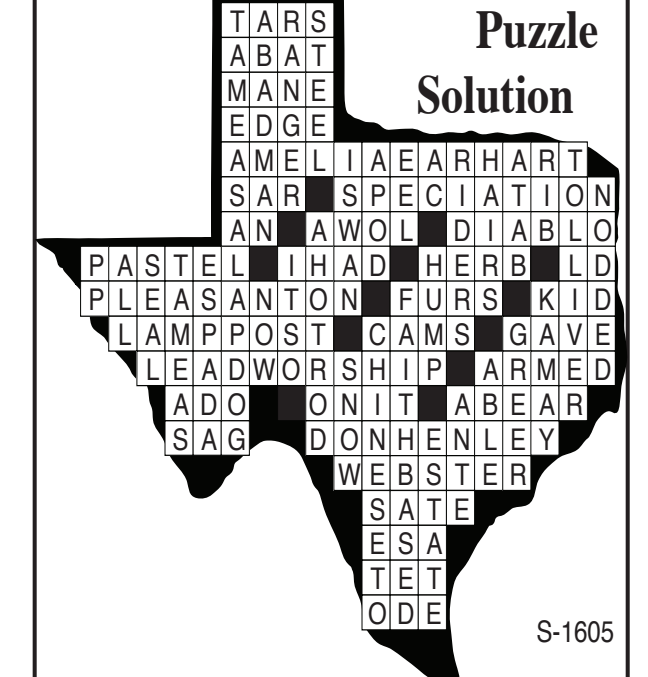
DENTAL INSURANCE from Physicians Mutual Insurance Company. Coverage for 350 plus procedures. Real dental insurance - NOT just a discount plan. Do not wait! Call now! Get your FREE Dental Information Kit with all the details! 1-855-901-0467 www.dental50plus.com/txpress #6258

WANTED
FREON WANTED: Certified buyer looking to buy R11, R12, and R500 and more. Call Joe at 312-625-5322.

Texas Press Statewide Classified Network
 221 Participating Texas Newspapers • Regional Ads
 Start At \$250 • Email ads@texaspress.com

NOTICE: While most advertisers are reputable, we cannot guarantee products or services advertised. We urge readers to use caution and when in doubt, contact the Texas Attorney General at 800-621-0508 or the Federal Trade Commission at 877-FTC-HELP. The FTC web site is www.ftc.gov/bizop.

Puzzle Solution



S-1605

SUBSCRIPTION SPECIAL

Check one:

\$40.00 IN-COUNTY Tarrant, Parker & Wise only

\$36.50 SENIOR CITIZEN 60 years and older Tarrant, Parker & Wise only

\$25.00 ONLINE ONLY View an online replica of the paper without receiving a printed copy

Applies to New & Renewal Subscriptions, but excludes Out-of-county subscriptions.

Name _____

Address _____

City _____ State _____ Zip _____

County _____ Daytime ph. _____

Circle one and Clip and mail with check:

The Azle News or The Springtown Epigraph
 321 W. Main Street Azle, Texas 76020 P.O. Box 557 Springtown, Texas 76082



NEED A HANDYMAN?

Check out the Home Improvement Section of your hometown paper for possibilities.