

**MAIN STREET**  
*Wine Crawl*  
**AZLE**  
OCTOBER 20, 2022  
5:30-9:00 PM  
ADULTS ONLY  
@MAINSTREETAZLEWINECRAWL

# Facility planning committee continues to meet

BY DON MUNSCH  
don@azlenews.net

Azle ISD Superintendent Todd Smith wants the community to know the AISD Long Range Facilities Planning Committee intends to take a thorough look at district needs in deciding what would be in the next bond issue.

Participants approach the matter in a certain manner – assessment of needs comes before deciding monetary considerations. The group's next meeting is Oct. 24 at Azle High School. Meetings began in May and are scheduled to continue into the first part of 2023. The district presented a two-proposition bond pack-

age last November, with one proposition passing and one failing. The approved proposition, costing \$24 million, pays for cafeteria expansion, science labs renovation and expansion and welding shop instruction expansion. The failed measure, \$25.8 million, would have paid for expanding and renovation of fine arts facilities, renovating and

expanding locker rooms and better equipping of the athletic training areas, according to the AISD website. "We get them together, meet for a handful of times, and then it's always been kind of geared towards getting ready for a bond," Smith said about the ongoing committee meetings. "Ultimately,

that committee is still who would make the recommendations for the bond, but my direction now with the (committee) is taking a step back. Because some of the criticism is it's kind of a rushed process and it's a lot of information for a community to take in." He said these people are parents, grandparents and

taxpayers, and they are looking for a recommendation for the district. He said he wants the committee to take a step back and examine the big picture of what they want Azle ISD to look like in the future. "With that, I'm meaning what are we comfortable with our campus sizes being,"

SEE AISD | PAGE 2A

# Improved homes, improved lives



PHOTO BY DON MUNSCH  
A home renovated during the Good Neighbor Blitz gets a new roof.

# Blitz helps residents with home upgrades

BY DON MUNSCH  
don@azlenews.net

Calvin and Pam Hodges have an improved house to call home. The Azle couple's home on Crestview Place received renovations this past weekend courtesy of the Fall Good Neighbors Blitz, which is headed up by the Servolution Network. The 12th Blitz, Oct.

14-15, involves volunteers and companies coming together to revitalize 15 homes in six communities for veteran, elderly, disabled and economically disadvantaged neighbors, organizers stated in a news release. "It's a blessing that has ... I can't put it into words," Calvin said about the work performed on his home. "It's so awesome what they've

done for us, what they do for everybody. How many houses are y'all working on this weekend?" He heard from a Servolution official standing nearby that it was 15 homes. The last Blitz included a house across the street, and that is how organizers found out about the Hodges' home. Calvin put in an application and eventually his house

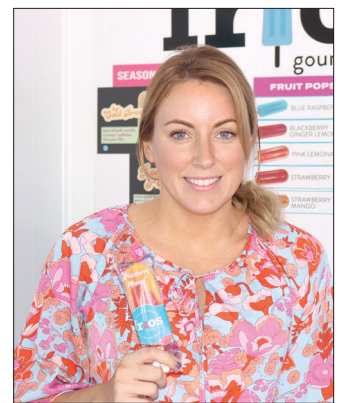
was selected. Both Calvin and Pam are disabled, and they have lived in the home 10 years. He said they previously redid the interior from floor to ceiling, in every room. "But we kinda ran out gas before we got to the outside," he said. About 30 volunteers

SEE IMPROVED, PAGE 11A.

# Azle business owner appears in television show

BY DON MUNSCH  
don@azlenews.net

Leesa Wolf laughs when asked to let the News know if she gets an agent one day. The request, made in jest, occurred during a recent interview in which she discussed being an extra on the set of the television show "Yellowstone," which is filming in Fort Worth. Wolf - who watches the show, which stars Kevin Costner - was asked to be an extra and to have her company vehicle from Frios Gourmet Pops business in Azle for the shoot last week. Wolf's business is an Army veteran- and woman-owned business, and Wolf and her husband are active in the community. Last summer, her business - located at 241 W. Main St.



Leesa Wolf

- served a production crew when it was filming "1883" in the Stockyards. Both "1883" and "Yellowstone" have had some of the same production companies and the same distributor. Wolf was not on set

SEE SHOW, PAGE 2A.

# Legacy Oaks resident turns 100



COURTESY PHOTO  
Mary L. McMahon, a resident at Legacy Oaks of Azle, just celebrated her 100th birthday.  
SEE STORY | PAGE 2



## Experience Carefree Living!

Call about our new move-in specials and to schedule your complimentary lunch & tour today!

**Eagle Crest**  
VILLA  
SENIOR LIVING COMMUNITY  
113 Denver Trail, Azle  
eaglecrestvilla.com  
817-444-3249



**SHOW** FROM PAGE 1  
for "1883."

(last year) and sent it to L.A. and said 'hey, thank you guys so much for your business' and they called me back last week - literally on a Friday afternoon - and

said, 'hey, we're filming this Friday and we want your truck in the show,'" she said one day last week. "So, they're going to have the truck in the show and then

they want me to be an extra, I guess, running the truck." The truck was in a scene that was shot on Friday night. Because of a non-disclosure agreement, she can't describe what the scene entails, but she had a good time and would love to do it again. The crew enjoyed her popsicles.

"It was pretty cool, and it took us about three hours for us to get everything done," she said Monday. "It was just awesome. The crew was really awesome. They fed us amazing food. I felt like royalty. They treat their people really well, for sure."

She was not sure when the scene will air. The new season begins Nov. 15.

Wolf has never acted or been an extra before.

She was "super excited" to be on the show and was grateful for the opportunity.

"And it just started by handing out popsicles," she said, referring to her time with the previous crew on "1883."

Will this lead to an acting career for Wolf?

"I don't think so," she said, laughing. "I doubt it. Who knows?"

She laughed some more and mused that she would have to find someone to run the store if an acting career pans out.

**Azle man injured, Watauga man dies in two-vehicle crash**

**FROM STAFF REPORTS**

An Azle man was injured and a Watauga man died after an accident Oct. 14 north of Weatherford.

Juan F. Zurita Jr., 33, of Azle, was transported to a Fort Worth area hospital with undisclosed injuries, while the driver of the other vehicle, Jeffery K. Stephens, 50, of Watauga died at the scene, according to a news release from the Texas Department of Public Safety.

DPS troopers investigated a two-vehicle crash at 3:35 p.m. Friday on Farm-to-Market 730 north of Weatherford.

The preliminary investigation showed a 2002 Ford Explorer, driven by Stephens, was traveling south on FM 730. For an undetermined reason, his vehicle left the roadway and traveled into the barrow ditch, overcorrected and skidded sideways into the northbound lane of travel where it was struck in the passenger side by a 2008 Toyota Tundra, driven by Zurita.

No additional information is available, the DPS reported stated.



PHOTO BY DON MUNSCHE  
Leesa Wolf stands by her van that was used in an episode of "Yellowstone" in Fort Worth. Wolf was not sure when the episode would air. The new season of the show begins Nov. 15.

**RnR Event Center**



COURTESY PHOTO  
On Tuesday, October 13, the Azle Area Chamber of Commerce Ambassadors hosted a ribbon cutting for RnR Event Center at 3605 E Highway 199, Springtown, Tx 76082. The facility was newly renovated in 2020 to host weddings, corporate events, birthdays and other special occasions.

**HELP FEED AZLE FAMILIES**

Like many of you, we too are feeling the strain of rising costs of our most basic expenses - fuel, utilities, and food. As our operating costs continue to increase, so are the number of families needing our assistance. CCC is now serving over 1,000 families each month, up from 450 families in 2019! Your donations will ease the strain on our annual budget and allow us to purchase items needed to fill our shelves! Here's a look at how your donation will be used:

Keeping our pantry shelves fully stocked is challenging. Our partnership with Tarrant Area Food Bank, gives CCC the ability to purchase large quantities of food for as little as \$0.10 to \$0.14 per pound, so your dollar goes a long way. \$25 feeds a family of two for one week!

At the beginning of 2022, CCC added a Hygiene Corner to our Free Shop. Help us continue to supply our families with shampoo, soap, toothpaste, feminine hygiene products, and laundry detergent. \$25 will supply a month's worth of hygiene products for one household!

In 2019, we provided 125 holiday meals to families in need through our Annual Christmas Boxes. As CCC has grown, so has this program. Based on the higher demand for food this year, we anticipate needing 750 boxes. \$25 will provide one Christmas Box, including a ham, for one household!

CCC supports Azle ISD students by funding the Weekend Backpack Program, giving students simple, ready-to-eat meals and snacks each Friday. During the 2021-22 school year, we provided over 4,500 backpacks. \$25 will purchase six backpacks to ease the food insecurity of 6 students!

\$100 will help secure our inventory in all four categories! Please consider making a special donation this fall as part of the Community Caring Center's 2022 Donation Roundup!

For your convenience, there are multiple ways to donate online at [www.communitycaringcenter.com](http://www.communitycaringcenter.com) or mail a check to the Community Caring Center 317 Commerce Street, Azle TX 76020.

If you have additional questions about the services we provide or would like to tour our facilities, please feel free to contact our Executive Director, Kristie Cooper at (817) 270-2962. With your help we can continue to make a difference for so many in our community. Please donate today!



**317 Commerce Street, Azle TX 76020**

[www.communitycaringcenter.com](http://www.communitycaringcenter.com)

**Kristie Cooper (817) 270-2962**

With your help we can continue to make a difference for so many in our community. Please donate today!



Hello Fellow District 99 Residents, My name is Mimi Coffey and I am running to be your State Representative. I have spent most of my entire life in District 99. I have raised my 4 children here. As a defense attorney of 27 years, I am used to fighting uphill battles and negotiating. I will fight hard for the needs of our northwest Tarrant County residents. Our property taxes are too high. Women's reproductive rights have been taken away. Our public schools are in a crisis with a shortage of teachers. It is getting harder for the majority of northwest Texans to make ends meet with rising costs. As a small business owner of 22 years, I know what it takes to run a successful business and take care of your people. The pandemic has taught us that to survive we must embrace change. I am ready to serve both Democrats and Republicans alike. District 99 is military and defense industry heavy. I understand and respect this as my father served in the Army and retired from Lockheed-Martin (General Dynamics). I have the utmost respect for our incumbent representative and if elected, plan to continue his tradition of excellent service to the community. I invite you to visit my website, [mimicoffeyfordistrict99.com](http://mimicoffeyfordistrict99.com) for more information. I'm asking for your vote so that we can put PEOPLE OVER POLITICS. Feel free to text or call me direct at 817-205-4861.

Political ad paid for by the Mimi Coffey for District 99 Campaign

MIMI COFFEY

**Azle's 22nd Annual GREAT CANDY ROUNDUP**

**Tuesday, Nov 1st • 3pm - 6pm • Sponsored by Azle Dental Care**

Kids wear your costumes one more time & get dough back for your Halloween candy.\* Plus, Dr. Porter will donate an additional dollar to the Azle Community Caring Center.

\*For each pound of Halloween candy you bring into Azle Dental Care, you will receive one dollar.

**REGISTER TO WIN A \$100 GIFT CARD**



Need not be present to win. Drawing held 11-01-22 at 6:15 pm. Winner notified by phone 11-02-22. \*Cash back is for kids only. Limit of up to ten pounds for each child. Collected candy will be donated to Azle Community Caring Center.

**DROP YOUR CANDY OFF AT**

**Azle Dental Care 912 Boyd Rd, across from Subway**

**Call 817-444-1763 for more details.**



# Early voting begins Oct. 24; EPA sued over pollution from Texas coal plants

## EARLY VOTING BEGINS OCT. 24

Early voting in the Nov. 8 general election begins Oct. 24 and runs through Nov. 4. Applications for voting by mail must be received by Oct. 28, according to the secretary of state's office.

Texans are eligible to vote by mail if they are 65 or older; sick or disabled; are expected to give birth within three weeks of Election Day; will be absent from the county where they vote during early voting and on Election Day; or are in jail but otherwise eligible.

If voting by mail, Texans are urged to carefully read the instructions before putting their ballot in the mail. More than 12% of mail-in ballots were rejected in the March primary for not complying with tighter voting regulations enacted in the last legislative session, according to kut.org.

Meanwhile, the latest poll shows the race between Gov. Greg Abbott and Beto O'Rourke has tightened since the Sept. 30 debate between the two, the Corpus Christi Caller Times reported. The latest poll by Marist College shows Abbott's lead has dropped to 4 percentage



## CAPITAL HIGHLIGHTS

By Gary Borders

Gary Borders is a veteran award-winning Texas journalist. He published a number of community newspapers in Texas during a 30-year span, including in Longview, Fort Stockton, Nacogdoches and Cedar Park. gborders@texaspress.com.

points.

As the race hits the home stretch, O'Rourke reports having slightly more cash on hand in the latest three-month reporting period, which ended Sept. 29. He also outraised Abbott by a slight margin during the same period.

## EPA SUED OVER POLLUTION FROM TEXAS COAL PLANTS

The U.S. Environmental Protection Agency has been sued by two national environmental advocacy groups for allegedly failing to ensure eight Texas coal-fired power plants are meeting approved emission standards.

The Austin American-Statesman reported the suit was filed last week after the EPA missed a deadline to stop the Texas Commission on Environmental Quality from exempting the coal plants from regulations limiting particulate matter emissions.

An attorney with one of the groups, the Environmental Integrity Project, said the groups have been challenging the TCEQ exemptions since 2010.

"Essentially, Texas has these emission limits for particulate matter," Clark-Leach told the American-Statesman. "Particulate matter is soot, it's the black stuff you see coming out of smokestacks. It's a bad idea if you've got people living nearby to emit in excess of those limits."

The EPA's website says that exposure to particulate matter can be harmful and is linked to lung and heart issues. Since being exempted by TCEQ in 2010, the plants have increased emissions as much as 33-fold. However, four of the plants have in recent years either switched to natural gas or shut down completely.

## DROUGHT CONDITIONS EXPECTED TO RETURN

A warmer and drier September and the continued presence of La Nina conditions mean drought conditions are likely to return to the parts of Texas that got some relief in August, according to Dr. Mark Wentzel, a hydrologist with the Texas Water Development Board.

At the end of September, drought conditions covered 61% of the state, Wentzel wrote, which was down 15 percentage points from the end of August.

However, the National Weather Service expects a third straight fall and winter of La Niña conditions, meaning below-average rain and above-average temperatures across Texas during the fall and early winter. Those conditions are expected to dissipate early next year, hopefully bringing drought relief and possibly complete recovery by the end of next spring.

## AVIAN FLU SHOWS UP IN BACKYARD POULTRY FLOCK

The highly contagious avian influenza was recently detected in a backyard poultry flock in Dallas County, prompting health experts

to recommend owners of domestic birds to limit all unnecessary contact with wild birds. The virus is easily transmitted not just by actual contact but through contaminated equipment, clothing and even shoes of caretakers.

Symptoms include diarrhea, incoordination, lethargy, coughing, sneezing and sudden death, according to the Texas Parks and Wildlife Department.

Game bird hunters are urged to wear gloves when disposing of carcasses, and disinfecting tools with a bleach solution. Those who find birds who have signs consistent with avian influenza should contact their local TPWD biologist, whose contact information can be found on the agency's website.

## NEW ERCOT CHIEF VOWS GRID STABILITY

The new CEO of the Electric Reliability Council of Texas said at a press conference last week that one of his main duties is convincing Texans they can stop worrying about the electric grid.

"The key is going to be continued reliable execution," Pablo Vegas said. "Achieving reliable operations over ex-

treme weather conditions, that's how you continue to build trust."

He made the comments at a press conference held jointly with Peter Lake, chair of the Public Utility Commission. Both Lake and Vegas said improvements and operational changes made since the February 2021 freeze have made the grid much more reliable.

They pointed out there were no systemic outages during one of the hottest summers on record, which spurred a record demand for power, the Austin American-Statesman reported.

"We continue to be tested, (and) we continue to pass those tests," Vegas said.

## COVID-19 CASES DROP SLIGHTLY

The number of COVID-19 cases reported in the past week in Texas by the Coronavirus Resource Center at Johns Hopkins University decreased slightly to 13,442, with 92 deaths reported. Texas Department of State Health Services reported 1,147 lab-confirmed COVID-19 hospitalizations across the state, also a slight drop from the previous week.

## AISD

FROM PAGE 1

he said. "So, our elementary campuses, we've kind of been building our elementary campuses with a capacity of about 600. What are we comfortable with our high school? I think we're a little soon to be talking about two high schools. But are we OK

with going 6A? Are we going to say, we're going to stop at a 5A? What number do we look at and say, we're not doing anything more to that high school? Because we can continue to add on. I mean, we can have a high school of whatever size we want to have. Our capacity of the high school after all of bond is (finished), I think, is around 2,500. That reaches our capacity. Our high school is OK

for our 10-year forecast."

Larger picture considered, the committee - which consists of parents, teachers and staff, each of whom is an Azle ISD taxpayer - will decide what kind of programs, fine arts opportunities and course offerings the district would offer, and what kind of building arrangements those need. Plus, Smith said, committee members will explore whether grade configurations need

to be changed to maximize buildings for more space. Additionally, what should the district look like in 10 years is something leaders need to consider and then how everything can be paid for.

Bond elections can be held in May and November, and Smith said he wants to ensure the process moves slowly. Reverberations from failed bond propositions concerning the stadium continue to

linger in AISD, Smith said.

"I don't want to continue to put something out for the sake of putting it out," Smith said, explaining he wants the entire community involved in the process. But he also worries about waiting too long to address the district's facility issues because the district has continued to play catch-up.

Smith said about 25 to 30 people attend the commit-

tee meetings, although the committee has more than 40 members. Smith appreciates the feedback that has come from the meetings thus far. The last part of a meeting includes a tour of the campus.

Another committee meeting at the high school will be in November. The first meeting at AHS will focus on CTE programs and fine arts and the second meeting will center on athletics.

## Azle School Menu

Oct 24 - Oct 28, 2022

**BREAKFAST:**  
PreK-4th Grade  
7-12th Grade \$1.55  
5-8th Grade FREE  
2nd Meal \$2.00  
Visitors/Employees \$2.75

**LUNCH:**  
PreK-4th Grade \$2.55  
5-8th Grade \$2.75  
7-12th Grade \$2.55  
2nd Meal \$3.20  
Visitors & Employees \$3.75



### PreK - 4th

**BREAKFAST: Everyday - Assorted Fruits and Cereal, Juice, White or Chocolate Milk, Graham Crackers, Toast**

Mon French Toast, Strawberry Banana Applesauce, Tues Apple Frudel, orange Weds Sausage Biscuit, Orange Craisins  
Thurs Breakfast on a Stick, pear cup Fri Mini Maple Waffles, apple

**LUNCH: Everyday - Variety of milk. Your choice of 1 entree & 1 fruit or juice**

Mon Steak Fingers w/roll or Mac & Cheese w/roll, mashed potatoes w/gravy, Steamed Broccoli, pears Tues Chicken Nachos, Crunchy Beef Tacos, Spanish rice, beans, pineapple Weds Sweet & Sour Chicken w/ Lo Mein Noodles OR Chicken Egg Rolls, Stir Fried Vegetables, Applesauce Thurs Grilled Chicken Sandwich, Hotdogs, Smile Fries, Baked Beans, Orange Fri Max Sticks w/ marinera, Meatball Subs, Chicken Bacon Wrap, corn, peaches

### GRADES 5TH - 8TH

**BREAKFAST: Everyday - Assorted Fruits and Cereal, Juice, White or Chocolate Milk, Yogurt w/Granola**

Mon Breakfast Pizza, Strawberry Banana applesauce Tues Bacon Egg Biscuit, orange Weds Cinnamon Roll, peach cup  
Thurs Chicken Biscuit, banana Fri Breakfast on a Stick, apple

**LUNCH: Everyday: Variety of milk. Your choice of 1 entree & 1 fruit or juice, rolls, crackers • Salad bar offered daily**

Mon Steak Fingers w/roll or Mac & Cheese w/roll, mashed potatoes w/gravy, Steamed Broccoli, pears Tues Chicken Nachos, Crunchy Beef Tacos, Spanish rice, beans, pineapple Weds Sweet & Sour Chicken w/ Lo Mein Noodles OR Chicken Egg Rolls, Stir Fried Vegetables, Applesauce Thurs Grilled Chicken Sandwich, Hotdogs, Smile Fries, Baked Beans Fri Max Sticks w/ marinera, Meatball Subs, Chicken Bacon Ranch Wrap, Corn, Peaches

### HIGH SCHOOL

**BREAKFAST: Everyday - Assorted Fruits and Cereal, Juice, White or Chocolate Milk, Yogurt w/Granola**

Mon Breakfast Pizza, Yogurt w/ Granola Tues Bacon Egg Biscuit, Yogurt w/ Granola Weds Cinnamon Roll, Yogurt w/ Granola  
Thurs Chicken Biscuit, Yogurt w/ Granola Fri Breakfast on a Stick, Yogurt w/ Granola

**LUNCH: • Everyday: 1% unflavored or non fat chocolate milk & juice offered daily at breakfast and lunch.**

Salad Bar • Fruit of the day subject to change due to deliveries and shortages. • Fruit, hot and cold veggies

Mon Steak Fingers w/gravy, Sausage Link w/mac n cheese, Cheese Enchiladas, Beef Burrito, Orange Chicken w/fried rice, Cheese Pizza, Pepperoni Pizza, Cheeseburger/Burger, Crispos Tues Chicken Nuggets, Mini Corndogs, Beef or Chicken Nachos, Taco Salad, General Tso's Chicken w/lo Mein, Chicken Alfredo, Cheese Pizza, Boneless chicken Wings, Hot Dogs Weds Mac n Cheese, Fish Sticks, Beef or Chicken Tacos, Chicken Egg Rolls w/fried Rice, Meatball Sub, Pepperoni Pizza, Spicy Chicken Sandwich, Popcorn chicken Thurs Chicken Sandwich, Chicken & Waffles, Quesadilla, Crispos Teriyaki chicken w/lo mien, Max Sticks w/marinera, Cheese Pizza, Corndog, Grilled Chicken Sandwich Fri Cheeseburger, Burger, Totchos w/rice, Bean Burrito, Sweet n Sour Chicken w/fried rice, Chicken Bacon Wrap, Nachos

SPONSORED BY



## Azle Dental Care,

"Complete Dental Care for the Entire Family"

www.SmileGreat.com

Brooke Porter, D.D.S., 912 Boyd Rd., Azle • 817-444-1763



## LEGAL PUBLIC NOTICES

### NOTICE OF PUBLIC SALE A-Z STORAGE 817-237-7972

A-Z STORAGE wishing to avail themselves of the provisions of Texas Revised Civil Statutes Article 523b and Texas Property Code, Ch. 59, Self-Service Storage Facility Liens Article 44, hereby gives Notice of Sale under said act to wit: On Sat., October 29, 2022, at A-Z Storage, 5824 Azle Ave., Lake Worth, TX, between the hours of 10AM - 12NOON of that day, A-Z Storage will conduct a sale to the highest bidder for the contents of units: 90 rented by Justin Stecher consisting of misc., At A-Z Storage, 5824 Azle Ave. at NW Loop 820, Lake Worth, TX. 817-237-7972 This sale is being held to satisfy a landlord's lien. The Public is invited to attend. Dated this 28th day of September, 2022. Void if lien satisfied in full before date of sale. Mailing address only: A-Z STORAGE, PO BOX 136369, FORT WORTH TX 76136.

### NOTICE OF PUBLIC SALE

Pursuant to Chapter 59, Texas Property Code, KENNY'S MINI WAREHOUSE, which is located at 10201 JACKSBORO HWY, FORT WORTH, TX 76135, will hold a public auction of property being sold to satisfy a landlord's lien. Sale will be at 10:00 am, End At 1:00 pm on October 22, 2022 at 10201 JACKSBORO HWY, FORT WORTH, TX, 76135. For more information call Art 817-238-8309 cell#817-988-5719. Property will be sold to highest bidder for cash. Seller reserves the right to not accept any bid and to withdraw property from sale. Property in each space will be sold by the space. Property being sold includes contents in spaces of following tenants: TENANT'S NAME Humberto Nevarez D-149 Kirk Stoppelman D-180 Trevor Davis G-235 Amanda Kattelman F-276 Household items. VOID IF LIEN IS SATISFIED IN FULL BEFORE SALE. All payments and notices should be mailed to 10201 Jacksboro Hwy, Fort Worth, TX, 76135.

Shady Lane RV Park proposes to register a 50-foot self-support tower. The site location is 12334 Farm to Market Rd 730 N, Azle, TX 76020 or at coordinates 32-57-16.0 N, 97-32-35.4 W. The FCC ASR, Form 854 file number is A1224610. Interested persons may review the application (www.fcc.gov/asr/applications) by entering the file number. Environmental concerns may be raised by filing a Request for Environmental Review (www.fcc.gov/asr/environmentalrequest). The mailing address to file a paper copy is: FCC Requests for Environmental Review, Attn: Ramon Williams, 445 12th Street SW, Washington, DC 20554.

TB RV Park proposes to register a 55-foot self-support tower. The site location is 8150 Peden Rd, Azle, TX 76020 or at coordinates 32-57-10.0 N, 97-32-31.7 W. The FCC ASR, Form 854 file number is A1224612. Interested persons may review the application (www.fcc.gov/asr/applications) by entering the file number. Environmental concerns may be raised by filing a Request for Environmental Review (www.fcc.gov/asr/environmentalrequest). The mailing address to file a paper copy is: FCC Requests for Environmental Review, Attn: Ramon Williams, 445 12th Street SW, Washington, DC 20554.

### Request for Qualifications

Notice is hereby given that the City of Azle is requesting qualifications from qualified planning and engineering firms to provide services related to creating a new comprehensive plan. All submissions must be clearly marked "RFQ 2023-001 Comprehensive Plan Services" and returned to: City of Azle, Purchasing Department, 505 W Main St, Azle, TX 76020, prior to 10:00am local time on Tuesday, November 8, 2022. Interested parties may receive a copy of the Request for Qualifications from the City's website at www.cityofazle.org. For additional information, please contact Joanna Ash/Purchasing Agent at 817.444.7003 or by email at jash@cityofazle.org.

### NOTICE OF PUBLIC SALE

To satisfy a landlord's lien. Sale to be held at Azle Southeast Storage, 1004 Southeast Parkway, Azle, TX at 10:30am 11-4-2022 Property to be sold to the highest bidder for CASH. Property includes contents of the following tenants Vanessa Meurer: Household items



COO  
SAM HOUSTON  
Hyde Media Group

Publisher  
KIM WARE  
publisher@azlenews.net

Editor  
DON MUNSCHE  
editor@azlenews.net

USPS No. 546-920 | 321 West Main Street, Azle, Texas 817-270-3340 | www.azlenews.net  
The AZLE NEWS is published every Wednesday at 321 West Main Street, Azle, Texas by Hyde Media, LLC  
Periodicals class postage paid at Azle, Texas, 76020. Postmaster: Send address changes to 321 West Main Street, Azle, Texas 76020

The Azle News does not assume responsibility for errors in advertisements beyond the cost of the advertisement itself. Any erroneous reflection upon the character or reputation of any person or firm appearing in this newspaper will be corrected when called to the attention of the publisher. The entire content of each issue of the Azle News is protected under the Federal Copyright Act. Reproduction of any portion of any issue is expressly forbidden without the prior written consent of the publisher. The AZLE NEWS is an award-winning member of the Texas Press Association.

### Annual Subscription Rates:

In-County \$40.00 Senior Citizens \$36.50 Out of County \$46.50 Online \$25.00  
Parker, Wise and Tarrant counties 60 and older Outside of Parker, Wise and Tarrant counties View the paper online

**OUR MISSION:** The Azle News shall provide news and insights to our readers through the independent and impartial presentation of information that educates, enriches and entertains. We are proud to be a community newspaper committed to the people we serve.



# Movie helps spread the word about domestic violence

BY DON MUNSCH  
don@azlenews.net

The man cleaned his handgun while talking with his wife.

And then the man does something with a handgun that was meant as a not-so-subtle message to his wife. No, he doesn't shoot his wife, but he increases her worry and terror level.

The description above comes from "No Ordinary Love," a film about domestic violence that was screened Oct. 11 at Azle Memorial Library. Tracy Rector, a 1978 Azle High School graduate, was the executive producer of the movie, whose story centers on two women victimized by domestic violence. Rector, a survivor of domestic violence, attended the screening and moderated a Q&A with the public afterward. October is Domestic Violence Awareness Month.

"No Ordinary Love," filmed in the Fort Worth and Metroplex area, depicts how two men - a police officer and a pastor - abuse their wives through their words and actions. Azle Police Department and Azle ISD representatives and Sally Daniels of Future Hope & Healing Center in the Azle area also shared their views during the Q&A. FHHC helps people who are victims

of domestic violence.

"It is one of the most frequent calls that police officers get," Rector said about domestic violence in the Q&A. "It is the most asked about situation with 9-1-1. When you call 9-1-1, most of the calls are domestic abuse. It happens in every neighborhood, in every community, in every city and state in this country and in every country around the world. It's horrific what these numbers are."

She told attendees that the top reason that women die when they're pregnant is because of domestic violence.

"Now that takes your breath away," she said.

She also said the No. 1 cause of death for Black women between 15 and 45 is domestic violence. One in three women in Tarrant County will be a victim or encounter domestic abuse in their lifetime. For the rest of the country, it is one in four women.

"Those aren't good numbers - we need to improve the numbers," she said.

Rector formerly served on the board of SafeHaven of Tarrant County, and she said police and domestic violence agencies need involvement from other community partners to help solve the problem of domestic violence. She discussed how she got involved

in making "No Ordinary Love" and ensuring that it was an accurate reflection of what happens in domestic abuse situations. She also wanted to ensure that the movie contained spiritual abuse, which Rector said happened to her in her marriage. She eventually divorced that man, a pastor.

Rector said the greatest accolade she receives comes from survivors who said the film is realistic as well as from domestic violence experts who said the movie reflects authenticity and is not a Hollywood version of domestic violence.

"To me, that's the greatest compliment because that's what my goal was," she said.

APD Chief Ben Hall discussed how abuse starts in a relationship - "in so many subtle, small, controlling ways" - and how it builds up over years. Abusers try to separate their significant other from their support systems to maintain control. Hall talked about how his department handles domestic abuse situations.

Among the issues discussed in the Q&A session, Rector said society needs to stop blaming victims and focus on asking why men abuse women and that offenders, who are generally men, need to be called out. She said the purpose of educating the



PHOTO BY DON MUNSCH  
Tracy Rector, left, executive producer for the film "No Ordinary Love," speaks after the screening of the movie Oct. 11 at Azle Memorial Library. To her left is Sally Daniels, executive director of Future Hope & Healing Center.

public is to save people's lives, and she encouraged people to support domestic violence agencies, including financially.

For more information on SafeHaven of Tarrant County, access safehavenc.org. For more information on FHHC, access futurehopeandheal-

ingcenter.org. Copies of "No Ordinary Love" eventually will be made available for rental at Azle Memorial Library.

**More than just a pharmacy.**

*Because We Care*

**Laura's Pharmacy**  
• Drive Thru Service  
• Compounding  
• Nutrition  
DELIVERY AVAILABLE  
817-406-4546

**Laura's HealthMart PHARMACY**

Pharmacy 817-406-4546  
Fax 817-406-4550  
Hours: Mon-Fri 8:30 AM - 6 PM,  
Sat 9 AM - 1 PM, Closed Sun.

232 W. Main St, Azle • laurapharmacy.com

- **now**
- Essential Oils
- Homeopathic & herbal products
- Accepting Most Insurance
- Convenient Drive-Thru
- FREE Deliveries In Azle City Limits
- Most Prescriptions filled within 15 minutes.

**Ash Creek Storage**

**817-444-3292**

**Convenient Location**

**Corner of Main St. & Locust • Azle**

**ONLINE SUBSCRIPTION**

Save a tree, subscribe online!

**\$25 FOR ONE YEAR**

**Azle News**

817-270-3340  
www.azlenews.net

**RURAL GAS SUPPLY**  
Family owned & operated since 1946

**PROPANE & TANKS**  
For Sale and Lease

*In Business Since 1946!*

**REFILLS AVAILABLE AT OUR LOCATION**

**140 W. Main St. • Azle**  
**817-444-4613**

**W. Faye Murphree**  
**D. Brent Murphree**  
*Attorneys and Counselors at Law*

- Family Law
- Criminal Law
- Business Law
- Personal Injury
- Wills/Probate

**817-270-0030**

337 W. MAIN ST. • AZLE  
Not Certified by any Texas Board of Legal Specialization

**AZLE PAINT & BODY**  
Eric Chisholm, Owner

**233 W. Main • 817-444-5057**  
Where customers send friends



# Legacy Oaks resident turns 100

## FROM STAFF REPORTS

A resident at Legacy Oaks of Azle just celebrated her 100th birthday, and the senior assisted living center recognized her on the special day.

Mary L. McMahon was surrounded by family, friends and community staff members as she celebrated her birthday on Sept. 25.

She was born in Oklahoma City and was married to Eugene A. McMahon for 42 years. They have one son, Stacey McMahon; two grand-

children, Jessica and Allan; and one great-grandchild, Georgia Laine.

Mary collected stamps for 50 years, worked on genealogy hobbies and also enjoyed crosswords and puzzles, according to a news release from Legacy Oaks. These days, she loves reading books and watching Western movies.

During her working years, Mary was a statistical typist, clerk, cashier and stenographer.

Mary's advice to have longevity is "clean living, keep

happy thoughts, and always be in a good mood," the release stated. Out of her 100 years of life, Mary is most amazed by the space age.

"Mary is a great addition to Legacy Oaks of Azle," said shares Independent Living Activities Director Katie Davis. "She is always smiling and friendly to everyone."

The community is located at 1364 Southeast Pkwy in Azle. More information about Legacy Oaks of Azle can be found at <https://www.civitaseniorliving.com/legacy-oaks-of-azle/>.

# Where do you stand on pumpkin spice? Yes or no?



## FROM MY FRONT PORCH

By Sam Houston

Sam Houston is a syndicated columnist and newspaper executive. He is also an author, actor, playwright and entertainment producer/promoter.

Seems like only a couple of weeks ago I'd walk out of the front door of the newspaper and jump in my car, and the steering wheel would be too hot to touch. Once the car was started, I would turn the air conditioning on full blast, and then roll down the windows to let some of the hot air, which had previously been trapped, escape. Such was my routine for what seems like a great many months.

This past weekend I made a trip to visit a friend who resides north of Denton. I left early in the morning and as I departed, I never paid much attention to the day's weather forecast. After all, for months the weatherman had recited the same tired old lines, "hot and miserable" followed by "hot and miserable." Why would I check now?

When I arrived about 8 a.m., it was a little overcast and the wind was blowing about 15 mph. My chosen attire for the day was shorts and a T-shirt. When the car door opened and I stepped out, I released an audible gasp. The temperature was only 54 degrees and with the wind factored in, it was cool!

Remember cool? It is that temperature that exists when it is not 105. I could not believe it! It was livable outside! Where did this phenomenon come from? Somewhere in the dark recesses of my memory bank I could remember cool days,

but they had been so long ago I was not sure. Could this refreshing feeling indicate the seasons are changing and summer may be headed out the door?

There are other telltale signs of fall. There have been advertisements for people attempting to sell firewood. Municipalities all over the state are having community events with names like Oktoberfest or Harvest Moon. I am seeing Halloween items in the stores, and heaven forbid, even some Christmas items. Is the long, hot, miserable summer finally leaving us?

I must admit I was not sure if Mother Nature had looked at the calendar, seen it was October and decided it was time to act, or if perhaps I was being taken in and the heat would reappear in a day or so. Then something happened that told me without a doubt, fall was here. When I walked through the grocery store, I saw a multitude of pumpkin spice flavored products on the shelves, ranging from coffee creamers to baked goods. The appearance of pumpkin spice is the ultimate signal of the change of seasons.

Pumpkin is one of my favorite pies and I have always

enjoyed the spicy cinnamon flavor associated with the fall. The flavor lets my taste buds know the heat — which I have complained about for weeks on end — is finally on the way out the door. No longer will the air conditioner be running non-stop. I can turn off the ceiling fans, which have run non-stop since late April, and I can look forward to having a fire in the outdoor fireplace on my deck. I can picture myself enjoying a cup of coffee while sitting around the fire, flavoring it with pumpkin spice, and wrapping a blanket around me while I enjoy the absence of mosquitoes and the incessant heat.

I know I am ready for the fall and winter to get here so I can enjoy all the good things associated with cooler weather. Besides, the sooner it happens the sooner I can start complaining and wondering when spring is going to get here, and it will finally warm up. The circle of life continues.

Thought for the day: Fall is the time when the world explodes with its last beauty, as if nature had been saving up all year for the last show of the season.

Until next time.



COURTESY PHOTO  
Mary L. McMahon at her 100th birthday celebration.

# Spotlight on BUSINESS OCTOBER

**ON THE SQUARE GUNS & AMMO**

101A N Main St in Springtown  
• ON THE SQUARE •  
[shop.OnTheSquareGunsAndAmmo.com](http://shop.OnTheSquareGunsAndAmmo.com)

**Layaway For Xmas!**

**Come in For All Your Firearm and Ammo Needs!**

Open Tues-Fri 10 am - 6 pm,  
Sat 9 am - 4 pm, Closed Sun & Mon

**817-538-7557**



**MTX ROOFING & CONSTRUCTION**  
*Your Hometown Roofer*

No matter what your roof needs may be, from minor repairs up to replacement. With years of experience and a dedicated team that take pride in their workmanship, you can't go wrong for such an affordable price.

**RESIDENTIAL ROOFING  
STORM RESTORATION  
GUTTERS • ROOF REPAIR**

**682-290-6017**  
[brandymtxroof@gmail.com](mailto:brandymtxroof@gmail.com)  
[MTXROOFING.COM](http://MTXROOFING.COM)

**Daily Specials ALL DAY**

**Monday**  
Carne Guisada \$9.05

**Tuesday**  
Chicken Enchilada Dinner \$8.20  
Cheese Enchilada Dinner \$7.99  
Taco Dinner \$8.20  
Carne Guisada \$9.05

**Wednesday**  
Chicken Enchilada Dinner \$8.20  
Cheese Enchilada Dinner \$7.99

**Thursday**  
Taco Dinner \$8.20  
Meat Enchilada Dinner \$8.20

**Friday**  
Fajitas \$13.29  
Chicken Enchilada Dinner \$8.20

**1833 FM 730 N, Azle, Texas**  
**817-752-2019**  
**We Cater!**

Mon-Fri 11 AM - 8:30 PM  
Sat 8 AM - 8:30 PM  
Sun 9 AM - 3 PM

# MTX Roofing & Construction

## Your Hometown Roofer

MTX Roofing & Construction is a woman-owned, family-oriented business focused on residential roofing, storm restoration, roof repairs and gutters.

Owner Brandy Mitchell is HAAG certified and opened MTX Roofing & Construction in May 2020.

"We love to be involved with our community every chance we get," said Mitchell. "We are your hometown roofer! We make the roofing process so simple you will wish you called us sooner!"

A new roof can increase your home's value, increase its energy efficiency, and protect the air quality inside your home.

Do you know how old your roof is? Most major insurance companies won't cover a roof that's more than 20 years old, so consider replacing your roof before then! Why should you choose MTX?

They believe that "educating homeowners on the highest caliber products for their homes begins with being honest and transparent."

MTX Roofing & Construction is on a mission to set a higher standard for the roofing industry. They are constantly learning new techniques to offer the best quality for their clients.

MTX Roofing offers complimentary inspections that include a damage report and estimate if needed.

For appointments and information, call 682-290-6017.

You can also request a quote online at [www.MTXRoofing.com](http://www.MTXRoofing.com).

MTX Roofing & Construction is located next to Kingdom Kutz at 12258 FM 730 S. They are open Monday through Friday 9 a.m. to 5 p.m.

**Southwestern COMFORT Air & Heat**

**Heating Tuneups \$55**

**11345 FM730N, Azle**  
**817-696-6421**  
**Kenny Bates, owner**  
**817-361-3695**



# OBITUARIES

## Kathryn Worthen 1935-2022

Kathryn Anne Worthen, 86, passed away Saturday morning, October 15, 2022.

Graveside service is at 2 p.m. Friday, October 28, 2022 in Azleland Cemetery.

Viewing is from 6 p.m. to 8 p.m. Thursday, October 27, 2022 at White's Azle Funeral Home.

Kathryn was born November 20, 1935 in Bowie, Texas to Walter G. and Louise R. Hoeldtke.

A longtime resident of Azle, she was active in AISD PTA for many years, as well as an election official for Parker County. She volunteered often in support of the Azle Optimist Club. Kathryn also worked at C&W Electronics since 1963, which she and Paul owned.

Kathryn was preceded in death by her parents; and her spouse of 52 yrs. Paul L. Worthen.

She is survived by son,



Mark Worthen and wife, Suzanne of Stephenville; son, Jeff Worthen and wife, Elizabeth Jane of Houston; daughter, Cindy Eubank and husband, Larry of Keller; son, Karl Worthen and wife, Pam of Dallas; eight grandchildren; eight great-grandsons; one great-granddaughter; and sister, Genevieve Lockley of Georgetown, Texas.

*The Azle News, Oct. 19, 2022 Edition*

## Myrna Jo Sisk 1955-2022

Myrna Jo Sisk, 67, passed away Monday, October 17, 2022 in Fort Worth.

Service is Friday, October 21, 2022 at White's Funeral Home, Azle.

Visitation is 6 to 8 p.m. Thursday, October 20, 2022 at White's Funeral Home.

Burial is at Jaybird Cemetery.

Myrna was born September 20, 1955 in Gainesville to Joseph Paul and Dixie Darlene Nichols Young.

She loved the Lord and spending time in the word daily. Myrna enjoyed camping and fishing with family, playing Bingo with her daughters and sister. She loved to play games with family and volunteering her daughters to put on a concert in the living room. She mostly enjoyed the company of her kids and grandbabies.

She was preceded in death by her parents; brother, Bobby Young; and son, David William Sisk.

Survivors include her hus-



band of 48 years, Roy Sisk; son, Ray Sisk and wife, Ann, daughters, Deanna Hall and husband, Jerry, Ashley Cobb and husband, Michael, Bobbi Edwards and husband, Colby; grandchildren Brittany, Taylor, Blake, Tyler, Samantha, Joshua, Blair and Wyatt; great-grandchildren, Serenity, Ezekiel, Sophia, Kayson and Scarlett; sister, Terrie Nunnally; numerous nieces and nephews.

*The Azle News, Oct. 19, 2022 Edition*



COURTESY PHOTO  
The Tucker House is the 1889 historic home of V.J. and Emma Tucker.

# Free tour coming to Weatherford historic sites

BY DON MUNSCH  
don@azlenews.net

A free tour around Veal's Station in Weatherford is set for 2-5 p.m. Oct. 23.

The tour starts at the Tucker House, the 1889 historic home of V.J. and Emma Tucker, at 6245 Tucker Drive, where people may pick up a map. From there, people can follow their map and guide themselves to other historic sites featured in the book "Around Veal's Station." These sites include Veal's Station Cemetery, the William and Elisabeth Woody Homestead (the oldest permanent homestead in Parker County), the Joe C. and Clota Woody Dairy Barn, and the Dobbs-Woody-Engberg Log Cabin.

An historical marker exists for Tucker House, said Laurie Chance Smith, in an email. She wrote "Around Veal's Station." The Tucker House was built by V.J. Tucker, the son of Moses and Martha Tucker, who

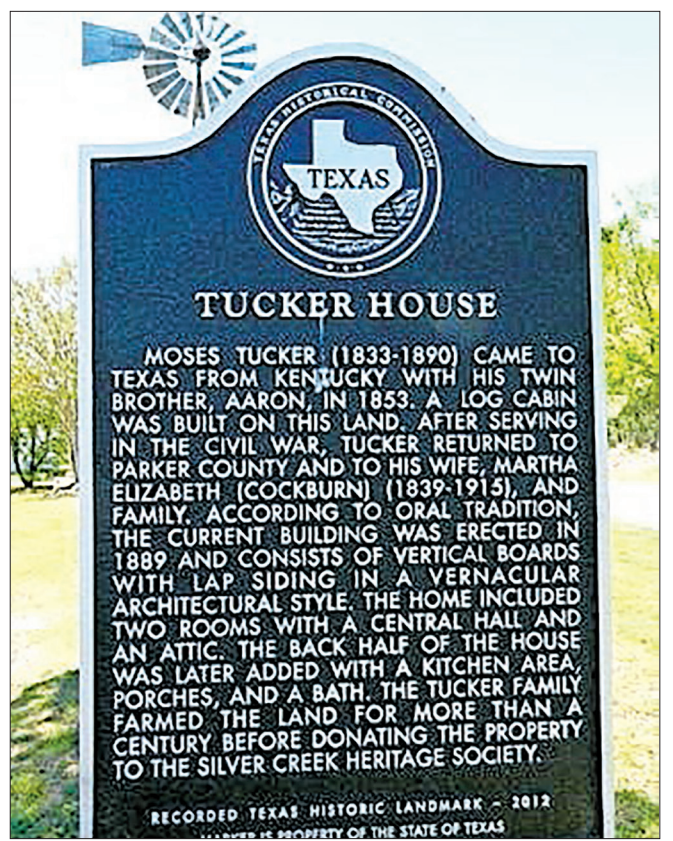
were among the very earliest settlers in Parker County. They arrived in 1851, four years before the county was formed, Smith said.

Also, an historical marker exists for Veal's Station Cemetery, where there are approximately 740 burials, Smith said.

"The loved ones interred at Veal's Station Cemetery include Parker County's earliest pioneers, elected officials, veterans, community servants, and countless innovators and visionaries," Smith wrote in her book.

Maps will be distributed at Tucker House from 2 p.m. until 3:30 p.m. Oct. 23. People should arrive early so they can complete their tour by 5 p.m. Docents will be available to provide guidance and historical information and to answer questions.

Organizers encourage visitors to wear comfortable shoes because of the uneven terrain. "Around Veal's Station" is available for purchase at the Azle News.



COURTESY PHOTO  
A historical marker for the Tucker House.

## LAW OFFICE OF BRYAN WEAVER

Serving the community that has served my family for three generations

### General Civil Practice

The Lawyer who makes house calls

Evening & Weekend appointments available  
We are open, much can be done electronically.  
Now is the time to work on your estate plan.

BWeaverlegal.com • 817-901-9255

Principal office in Azle, Texas

## NEED EXTRA CASH!!!!???

### I BUY RVs & MOBILE HOMES

Travel Trailers • 5th Wheels  
Goosenecks • Bumper Pulls

Anywhere in Texas!!! Any Condition!!!  
Old/New !!! Dirty or Clean !!!

I PAY CASH 956-466-7001

No Title - No Problem - We Can Apply For One  
ANR Enterprises

## White's Funeral Homes

Our family serving your family since 1908



Bob White,  
Anita White  
and Zack Bellenger

Full Service  
Funeral Home  
Cremation  
Services  
Pre-Need  
Plans

Azle • Springtown • Mineral Wells • Weatherford  
817-444-3211 • www.whitesfuneral.com

**Galbreath-Pickard**  
FUNERAL CHAPEL

817-594-2747 • Fax 817-596-7803

James R. Plowman  
Norma Plowman  
913 N. Elm St.  
Weatherford, TX 76086  
www.galbreathpickard.com  
1-800-593-2747

## ... ATTEND THE CHURCH OF YOUR CHOICE THIS SUNDAY

<p><b>THE ABBEY CHURCH</b> Pastor: Paul Brownback 10400 Jacksboro Highway 817-238-1404 www.TheAbbeyChurch.com Morning Worship.....10:30 AM Community Groups.....Various Times</p> <p><b>ASH CREEK BAPTIST CHURCH</b> Pastor: Dr. G. Wesley Shotwell 300 South Stewart St. • 817-444-3219 www.ashcreekbc.org Sunday School.....9:30 AM Contemporary Worship-TMP.....10:45 AM Traditional Worship.....10:45 AM Evening Worship.....6:00 PM Wednesday Youth Refuge.....6:00 PM Wednesday Evening.....6:15 PM</p> <p><b>AZLE CHRISTIAN CHURCH</b> (Disciples of Christ) Senior Minister, Ashley Dargai, Katie Medlin, Worship Minister 117 Church St. • 817-444-3527 Sunday School.....10:00 AM Morning Worship.....11:00 AM</p> <p><b>AZLE FIRST ASSEMBLY OF GOD</b> Pastor: Tim Stevens 1020 S.E. Parkway, Azle 817-237-4903 Sunday School.....9:30 AM Morning Worship.....10:30 AM Wednesday Evening.....7:00 PM</p>	<p><b>COMMUNITY BIBLE FELLOWSHIP CHURCH</b> Pastor - Alton Davis 817-521-4510 1405 Reynolds Rd., Azle 817-444-7117 Directions: 730 N. to 1542 .5 mi. right on Cardinal, left on Reynolds Sunday School.....9:45 AM Morning Worship.....11:00 AM Sunday Evening.....6:00 PM Wednesday Evening.....7:00 PM</p> <p><b>CORNERSTONE COMMUNITY CHURCH</b> 2233 Hwy 199 E. • Springtown 817-221-LIFE (5433) Sunday Worship Service.....10:00 AM Wednesday.....7:00 PM</p> <p><b>CROSSROADS BAPTIST CHURCH</b> Pastor - Jon Baker Corner FM 730S &amp; FM 1886 817-755-0279 Transportation Available Worship Service.....10:30 AM Wed. Prayer Service.....7:00 PM</p> <p><b>THE EDGE CHURCH - AZLE</b> 1313 S.E. Pkwy, Azle 817-237-4822 Missouri Synod "Love God - Serve Others - Share Jesus" Traditional Worship.....9:30 AM Contemporary Worship.....11:00 AM</p>	<p><b>FIRST UNITED METHODIST CHURCH</b> Pastors: Rev. Todd &amp; Jenn Pick 200 Church St., Azle 817-444-3323 Morn. Worship.....8:30, 9:45 &amp; 11 AM Sunday School.....9:45 &amp; 11 AM Youth (UMYF).....5:00 PM Sun &amp; 6:30 PM Wed</p> <p><b>HOLY TRINITY CATHOLIC CHURCH</b> 800 Highcrest Dr. - Azle 817-444-3063 Saturday.....5:00 PM Sunday.....9:00 AM Sunday.....11 AM (Spanish) Daily Mass (M, T, Th, F).....8:00 AM Wednesday Mass Religious ED.....6:30 PM Confessions.....Sat 4 PM</p> <p><b>HOPE LUTHERAN CHURCH ELCA</b> 4795 E. Hwy 199 - Reno 817-221-HOPE Follow us on Facebook for streaming services Sunday School.....9:00 AM Traditional Service.....10:00 AM</p> <p><b>SOLID ROCK BIBLE CHURCH</b> 591 S. Reno Rd., Springtown, Texas 76082 Pastor - Bill Gay - 817-304-7443 Coffee and Donuts.....9:00 AM Sunday School.....9:30 AM Morning Worship.....10:30 AM Children's Church After Music Service Wed. Prayer Meeting.....6:30 PM Wed. Bible Study.....7:00 PM</p>	<p><b>LEGACY CHURCH</b> Assembly of God Church Pastor: Gary D. Veazey Hwy. 199 &amp; Jaybird Lane 817-221-2983 Morning Worship.....9:15 &amp; 11:00 AM Kidz Zone.....9:15 &amp; 11:00 AM Weds Evening Legacy Group Legacy Youth, Kids All Services.....7:00 PM</p> <p><b>SILVER CREEK UNITED METHODIST CHURCH</b> Rev. Sheila Fiorella - Pastor 2200 Church Rd., Azle 817-444-1382 www.silvercreekumc.org Sunday School 9:30 AM • Worship 10:30 AM</p> <p><b>SILVER CREEK BAPTIST CHURCH</b> Pastor: Jay Ditty Minister of Music: David Musick Corner FM 730 S. &amp; Veal Station Rd. Church 817-444-2325 www.silvercreekbc.org Sunday School.....9:45 AM Morning Worship.....10:50 AM Evening Worship.....6:00 PM Wed. Prayer Service.....7:00 PM</p>	<p><b>THE WORD@LAKESIDE CHURCH OF GOD</b> 9396 FM 1886 Fort Worth, TX 76135 817-237-5500 thewordatlakeside.com Pastors: Brandon and Kelly Bohannon Worship Pastor: Christen Moody Family Life and Young Adult Pastors: Jodie and Mark James, Kids Pastor: Katie Pearson, Student Pastors: Taylor and Sheridan Tomlin, Creative Directors: Logan and Carrie Edwards, Connections Coordinators: Preston and Ashley Larrew</p> <p>Equip Sunday School at the WORD.....9:30 AM Empower Worship at the WORD.....10:45 AM Kids at the WORD.....10:45 AM PreK at the WORD.....10:45 AM Emanate at the WORD (Special Needs Ministry).....10:45 AM Nursery at the WORD.....10:45 AM Young Adults at the WORD.....6:00 PM Wednesdays Adult Bible Class.....7:00 PM The WORD Students (6th-12th grades).....6:30 PM Awana Kids at the WORD.....6:30 PM Life at the WORD Life Groups Various Times</p>
---	---	---	---	--

A church alive is worth the drive! For more information or rates on listing your church, call Johnna at 817-270-3340



# Azle News DEVOTIONAL PAGE The Springtown Epigraph

**Azle News**  
AzleNews.net

The Springtown Epigraph  
Springtown-Epigraph.net

**TRINITY SELF STORAGE**  
SECURITY GATE 24 HOUR ACCESS

Office next door at Trinity Commerical Contractors  
RV, Trailer & Boat

200 Walnut Creek Ave.  
817-444-8885

TACLA014745E RRC#11349

**J&E**  
AIR CONDITIONING & HEATING

817-220-4506

Rheem

1825 W. Hwy. 199 | Springtown, TX 76082

Help readers find your Business.  
Call 817-270-3340

**Your Ad Here!**

Call Jessica to reserve this space.  
817-270-3340

**Comet CLEANERS**  
"Serving Azle & The Community Since 1986"

113 SPEER ST  
817-444-4920

Thank you for your support!

**Subscribe!**

Pick your subscription:

- \$40 IN-COUNTY Tarrant, Parker & Wise only
- \$36.50 SENIOR CITIZEN 60 Years and Older Tarrant, Parker & Wise only
- \$25 ONLINE
- \$46.50 OUT OF COUNTY

**Azle News**  
The Springtown Epigraph  
Azle News 817-270-3340  
Springtown Epigraph 817-220-7217

**Eagle Crest VILLA**  
A RETIREMENT AND ASSISTED LIVING COMMUNITY

113 Denver Trail • Azle  
817-444-3249 Fax 817-444-3275  
www.eaglecrestvilla.com

STUDIO - 1 bath, 350 sq. ft.  
ONE BEDROOM - 1 bath, 450 sq. ft.  
TWO BEDROOM - 1 bath, 642 sq. ft.

This devotional and directory is made possible by these businesses who encourage all of us to attend worship services.

**APOSTOLIC**  
CORNERSTONE APOSTOLIC CHURCH  
1801 FM 730 N., Azle  
817-400-0612  
HARVEST TIME APOSTOLIC  
1 Block N. FM 2048 in Keeter  
817-433-8220  
ASSEMBLY OF GOD  
FIRST ASSEMBLY OF GOD  
1020 S.E. Pkwy, Azle  
817-237-4903  
FELLOWSHIP OF LAKE WORTH  
4024 Dakota Trail, Lake Worth  
817-237-9433  
NEW BEGINNINGS CHURCH  
810 Goshen Rd, Springtown  
817-523-4462  
LEGACY CHURCH  
Hwy. 199 W. at FM 2257, Azle  
817-221-2983 / 817-221-5760  
VICTORY CHRISTIAN CENTER  
737 Boyd Rd., Azle  
817-444-LOVE  
**BAPTIST**  
ASH CREEK BAPTIST CHURCH  
300 South Stewart, Azle  
817-444-3219  
AGNES INDEPENDENT BAPTIST  
350 Agnes N., Springtown  
817-523-7271  
BETHEL MISSIONARY BAPTIST  
408 S. Ash St., Springtown  
817-220-4238  
AZLE AVENUE BAPTIST  
2901 Azle Ave., Fort Worth  
817-626-5556  
BRIAR FIRST BAPTIST  
West of FM 730 N. at sign, Briar  
817-444-3484  
CALVARY HEIGHTS BAPTIST  
1 block off Hwy. 199, east of David's Patio, Springtown, 817-221-2241  
CENTRAL BAPTIST  
4290 Old Agnes Road  
817-594-5918  
CHURCH ON THE HILL  
836 NW Parkway, Azle  
817-444-3752  
CHRISTWAY BAPTIST  
7673 West Hwy. 199, Agnes  
817-220-9133 or 817-220-3581  
CLEAR FORK BAPTIST  
Corner of FM 730 & Ragle Rd., Weatherford, 817-594-1154  
EAGLE MOUNTAIN BAPTIST  
8780 Eagle Mtn. Circle, Azle  
817-237-4135  
FIRST BAPTIST CHURCH OF AZLE  
1017 Boyd Road  
817-444-4828  
FIRST BAPTIST CASTLE HILLS  
401 Beverly Rd., Azle  
817-797-4706  
FIRST BAPTIST LAKE WORTH  
700 Charbonneau Tr., west side of Effie Morris Elementary  
817-237-2624  
FIRST BAPTIST LAKESIDE  
8801 Jacksboro Hwy., Lakeside  
817-237-8113  
FIRST BAPTIST BRIAR  
6 miles N. of Azle on FM 730  
817-444-3484  
FIRST BAPTIST COTTONDALE  
1 block N. of FM 2123, Cottondale  
940-433-5539  
FIRST BAPTIST PEASTER  
FM 920 in Peaster  
817-596-8805  
FIRST BAPTIST POOLVILLE  
1 block W. of FM 920, Poolville  
817-594-3916  
FIRST BAPTIST SPRINGTOWN  
5th & Main Street, Springtown  
817-523-7011  
FRIENDSHIP BAPTIST  
801 Friendship Rd., 9½ miles S. of Springtown off Hwy. 51 S.  
817-594-5940 or 817-599-4917  
FUNDAMENTAL BAPTIST  
5th & Main in Springtown  
817-523-5477

**GRACE BAPTIST**  
3 miles N. of Springtown on Hwy. 51 across from Radio Tower  
**GRACE POINTE CHURCH**  
4110 E. Hwy. 199, Springtown  
817-221-5683  
**HERITAGE BAPTIST CHURCH**  
3577 FM 51 N., Weatherford  
817-564-3946  
**IGLESIA BAUTISTA**  
Nueva Jerusalem  
6640 Midway Rd., Springtown  
817-694-0444  
**INDIAN OAKS PRIMITIVE BAPTIST CHURCH**  
3229 Shawnee Trail, Lake Worth  
817-237-8441  
**LAKE WORTH BAPTIST**  
4445 Hodgkins, Lake Worth  
817-237-4163  
**METROPOLITAN BAPTIST**  
6051 Azle Ave., Fort Worth  
817-237-2201  
**NEW HOPE BAPTIST**  
782 New Hope Rd., Reno area  
817-221-2184  
**NORTHWEST BAPTIST**  
5500 Boat Club Rd., Lake Worth  
817-237-6063 or 817-270-8476  
**SILVER CREEK BAPTIST**  
730 S. & Veal Station Rd., Azle  
817-444-2325  
**NEW BEGINNINGS BAPTIST CHURCH**  
3605 Jacksboro Hwy., Azle  
817-707-2741  
**PLEASANT GROVE BAPTIST**  
FM 2048 and CR 4677, Boyd  
940-433-5477  
**PRIMERA IGLESIA BAUTISTA**  
300 S. Stewart, Azle  
817-500-3641  
**SPRINGTOWN BAPTIST TEMPLE**  
201 J. E. Woody Rd., Springtown  
817-523-0376  
**UNION BAPTIST CHURCH**  
3451 Sarra Lane, Springtown  
682-333-1645  
**WALNUT CREEK BAPTIST**  
220 W. Reno Rd. in Reno  
817-221-2110  
**BIBLE COMMUNITY BIBLE FELLOWSHIP**  
1405 Reynolds Rd., Reno  
817-521-4510  
**NORTHWEST BIBLE CHURCH**  
5025 Jacksboro Hwy., Fort Worth  
817-624-2111  
**SOLID ROCK BIBLE CHURCH**  
591 S. Reno Rd., Springtown  
817-221-3444  
**CATHOLIC**  
HOLY TRINITY CATHOLIC  
800 High Crest Dr., Azle  
817-444-3063  
**CHRISTIAN**  
THE CHURCH AT AZLE  
1801 S. Stewart, Azle  
817-444-9973  
**AZLE CHRISTIAN FELLOWSHIP**  
35 West Forty Estates., Azle  
817-688-3339  
**GREATER VISION FELLOWSHIP**  
1801 S. Stewart St., Azle  
817-825-0485  
**THE ABBEY CHURCH**  
10400 Jacksboro Hwy., Azle  
817-238-1404  
**CROSSING FELLOWSHIP**  
120 E. Main St., Azle  
817-406-4577  
**CHURCH OF CHRIST**  
AZLE CHURCH OF CHRIST  
336 NW Parkway  
817-444-3268  
BRIAR CHURCH OF CHRIST  
109 W.N. Woody Rd.  
(½ block west of FM 730 N. in Briar)  
817-444-7102

**MIDWAY CHURCH OF CHRIST**  
6400 Midway Rd.  
817-221-2107  
**NEWSOME MOUND ROAD CHURCH OF CHRIST**  
1460 Newsome Mound Rd.  
817-677-3290  
**NORTHWEST CHURCH OF CHRIST**  
6059 Azle Ave., Fort Worth  
817-237-1205  
**POOLVILLE CHURCH OF CHRIST**  
West of FM 920 in Poolville  
817-594-4182  
**SOUTHSIDE CHURCH OF CHRIST**  
130 W. Bradshaw Lane, Springtown  
817-221-2799  
**SPRINGTOWN CHURCH OF CHRIST**  
Just west of Hwy. 51 North  
817-523-4419  
**TRI-COUNTY CHURCH OF CHRIST**  
525 Hwy. 199 W., Springtown  
817-980-8156  
**CHURCH OF GOD**  
ABUNDANT LIFE CHURCH OF GOD  
4800 East Hwy. 199, Suite 7  
Springtown, 817-677-3208  
LAKESIDE CHURCH OF GOD  
THE WORD@LAKESIDE  
9396 Confederate Park Rd.  
(FM 1886)  
817-237-5500  
**DISCIPLES OF CHRIST**  
AZLE CHRISTIAN  
117 Church St., Azle  
817-444-3527  
CENTRAL CHRISTIAN  
1602 S. Main St., Weatherford  
817-594-3043  
FIRST CHRISTIAN CHURCH  
4th & Main, Paradise  
**EPISCOPAL**  
ST. ANNE'S ANGLICAN EPISCOPAL  
6055 Azle Ave., Fort Worth  
817-237-1888  
PROVIDENCE REFORMED EPISCOPAL  
405 Bowie Dr., Weatherford  
817-596-7476  
ST. ELISABETH EPISCOPAL  
5910 Black Oak Lane, River Oaks  
817-739-0504  
**GOSPEL**  
CENTRAL FULL GOSPEL FELLOWSHIP  
3009 Delaware Tr., Lake Worth  
817-237-7919  
**JEHOVAH'S WITNESSES**  
KINGDOM HALL OF JEHOVAH'S WITNESSES  
212 Pearson Lane, Azle  
817-221-2242  
**LUTHERAN**  
THE EDGE CHURCH - AZLE  
1313 SE Parkway, Azle  
817-237-4822  
HOPE LUTHERAN (ELCA)  
4795 Hwy. 199, Reno  
817-221-HOPE  
**METHODIST**  
BOYD UNITED METHODIST  
FM 730 North in Boyd  
940-433-3334  
FIRST UNITED METHODIST  
200 Church St., Azle  
817-444-3323  
LIGHTHOUSE FELLOWSHIP  
7200 Robertson Rd., Fort Worth  
817-237-2758  
SILVER CREEK UNITED METHODIST  
2200 Church Rd., Azle  
817-444-1382  
FIRST UNITED METHODIST  
Hwy. 51 N & 3rd Street, Springtown  
817-523-7874  
GARVIN UNITED METHODIST  
3 miles West of Boyd on C.R. 4699  
POOLVILLE UNITED METHODIST  
1 block W. of FM 920  
(behind Poolville Post Office)  
817-599-3601

**THE CHURCH OF JESUS CHRIST OF LATTER-DAY SAINTS (THE MORMONS)**  
THE CHURCH OF JESUS CHRIST OF LATTER-DAY SAINTS  
1010 Timberbrooks, Azle  
817-237-5075  
**PENTECOSTAL**  
GRACE CHAPEL UNITED PENTECOSTAL CHURCH  
3508 Shawnee Trail, Lake Worth  
817-237-4844  
**PRESBYTERIAN**  
GRACE FIRST PRESBYTERIAN  
606 Mockingbird Lane, Weatherford  
817-594-2744  
ORTHODOX PRESBYTERIAN CHURCH OF FORT WORTH  
Meeting at Northwest YMCA  
5315 Boat Club Road, Fort Worth  
817-989-9800  
**ORTHODOX**  
ARCHANGEL GABRIEL ORTHODOX CHRISTIAN CHURCH  
1157 S. E. Parkway (Jacksboro Highway), Azle  
817-752-8255  
**OTHER**  
ALIENTO DE DIOS  
2233 E. Hwy 199, Springtown  
817-521-4694  
BETTER LIFE COMMUNITY CHURCH  
3131 E. Hwy 199, Spt  
817-677-2300  
CORNERSTONE COMMUNITY CHURCH  
2233 Hwy 199 East, Springtown  
817-221-LIFE (5433)  
FAMILY CHURCH  
9 miles S. of Springtown on Hwy. 51  
817-599-7655  
GRACE FELLOWSHIP CHURCH  
2964 W. Hwy 114, Paradise  
940-969-2427  
HILLTOP FAMILY CHURCH  
1227 Old Cottondale Road, Springtown, 817-220-7177  
THE HOUSE OF PRAYER  
1356 Reno Rd., Springtown  
817-221-2551  
POWERHOUSE OF PRAISE CHURCH  
1649 S.E. Parkway, Azle  
817-319-7364  
BRANDED CROSS COWBOY CHURCH  
3282 FM 2048, Boyd 76023  
817-755-7021  
SECRET PLACE MINISTRIES  
112 Optimist Rd., Springtown  
682-229-1433  
GOSPEL GATHERING FELLOWSHIP  
7315 Silver Creek Rd at Flatrock Rd, Azle  
817-313-1793  
LIGHTHOUSE CHURCH  
6409 FM 730 S., Azle  
817-444-4311  
LIGHTHOUSE HARBOR CHURCH  
1960 Long Circle, Pelican Bay  
817-444-3547  
NEW LIGHTED WAY  
624 Harbor Dr. Circle, Azle  
817-444-1577  
NORTHWEST TEMPLE OF PRAISE  
6781 Jacksboro Hwy., Lake Worth  
817-909-5627  
PRECIOUS FAITH TEMPLE CHURCH  
8601 Hwy. 199 @ Vance Godbey's  
THE HOUSE OF PRAYER  
1356 Reno Rd., Springtown  
817-221-2551  
THE RANCH COWBOY COUNTRY CHURCH  
14600 FM 730 North, Azle (Briar)  
817-909-5627  
REAL FAMILY FELLOWSHIP  
202 Pearson Lane, Azle  
817-677-5963  
SOULS HARBOR  
11701 Jacksboro Hwy., Azle  
817-726-2065  
WESTERN HARVEST FELLOWSHIP CENTER  
6577 Old Springtown Rd., Weatherford  
817-523-2855 or 817-995-9087  
SHEPHERD'S HEART CHURCH  
14435 FM 730 N • Azle  
817-444-7777  
WESTERN STAR COWBOY CHURCH  
790 CR 3696 • Paradise 76073  
817-688-6887

**HILLTOP FAMILY CHURCH**  
1227 Old Cottondale • 817-220-7177  
"Caring about what Jesus cares about... You!"

Compliments of  
**Rural Gas Supply**  
PROPANE 140 W. MAIN ST.  
817-444-4613  
"In business since 1946"

**Joe Rider Propane, Inc.**  
PROPANE TANKS  
817-237-3325

White's Funeral Homes  
Our family serving your family since 1908

Bob White, Anita White and Zack Bellenger  
Full Service Funeral Home  
Cremation Services  
Pre-Need Plans

Azle • Springtown  
Mineral Wells • Weatherford  
817-444-3211 • www.whitesfuneral.com

Clarks Precision Machine & Tool  
636 Profit St., Azle, Tx  
45 Years of Quality  
ISO 9001:2001 Compliant Phone 817-444-2533  
Check us out on our web site B.J. Clark  
www.clarksmachine.com bjc@clarksmachine.com

WHAT'S HAPPENING IN YOUR HOMETOWN?  
Subscribe today to keep up-to-date  
Azle News: 817-270-3340  
Springtown Epigraph: 817-220-7217

Celebrating over 25 years in business  
AZLE CHIROPRACTIC CLINIC  
817-444-HELP (4357) Rodney Gattin, D.C.  
400 Boyd Court  
www.azlechiropractic.com

Get your business noticed!  
817-270-3340  
Call Johanna to reserve this space.

Want readers to FIND YOU?  
Place your ad here!  
Call 817-270-3340  
Place your ad here today!  
817-270-3340  
or 817-220-7217

TRI-COUNTY Electric Cooperative, Inc.  
Actively Supporting our Communities!  
Call Jessica for details  
817-270-3340

Double your impact with Print & Online Advertising!  
Call Jessica for details  
817-270-3340

Advertise Here  
Contact us for details.  
817-270-3340 or 817-220-7217

Your Ad Here Newspaper Advertising Works!  
Call Jessica for details TODAY  
817-270-3340

Advertise Your Business With Us and maximize your visibility!  
Contact us about advertising solutions.  
817-270-3340  
817-220-7217



# Comedy seems to be good 'Match' for students

BY DON MUNSCHE  
don@azlenews.net

Anyone who enjoys theater should be familiar with "Matchmaker, Matchmaker," a song from "Fiddler on the Roof."

A matchmaker of a different sort will be presented in the first Azle High School theatrical production of the year this week. "The Matchmaker" will be presented at 7 p.m. Thursday through Saturday, with a 2 p.m. matinee Saturday.

This matchmaker is Dolly Levi, who aspires to bring together couples in 1890 New York. The play was written by Thornton Wilder.

"If you've seen 'Hello, Dolly,' that is based on 'The Matchmaker,'" said Bailey Brewer, theater director at AHS, describing the story as centered on a "crazy, kooky lady" (Dolly Levi) who attempts to find love for a man, Horace Vandergelder. "She keeps setting him (up) with girls that aren't good enough, and in the end, we find out that she just wants to be with him. She also sets up these two other couples in the mix, and they go on adventures."

So, do Horace and Dolly end up together? See the show and find out.

In an interview with the News in late September, actors described the play as wild and chaotic at times, but it is a funny comedy. Brewer said the play is fun to direct. She starred in "Hello, Dolly" in high school and she played Minnie Fay, Irene Molloy's assistant.

"It's a more mature show for them to do in the sense that the characters are a lot more mature than what they're used to playing," Brewer said. "And it's from the 1800s, but they seem to be having a blast with it. Like yesterday, half of our rehearsal was spent laughing." Students standing nearby laughed in agreement. She said she's a firm believer that if the kids are having fun, then the audience will respond.

Trey Thornton plays Horace and Alexis Scoggins plays Dolly. During auditions, students didn't try out for specific characters. Instead, they just performed some readings and Brewer selected the roles for the actors. Thornton seems to be suited for his character.

"This is my fourth time playing an old grumpy man," he said, rattling off roles he's had before, such as Andrew Carnes in "Oklahoma!" "So, it's kind of like I'm coming back to my roots, because I was typecasted for a while. But I'm good at it, and I like being angry on stage. Because I'm not an angry person. Even my mom was kind of perplexed when she saw me on stage being all grumpy. So, it's fun to just delve into the contrast to my actual charac-

ter, the character on stage."

Scoggins said playing Dolly is "a step out of her comfort zone," explaining that while she always has been one to romanticize about love, she has never been able to play that trait on stage.

"And I've also always been in the ensemble, so this is my first time with the lead, big role, so I'm really excited," she said, adding it's fun to gaslight Trey's character. She said in one of their supporting roles together, they were a couple, with Trey playing an old man and she was a witty old woman, in "The Importance of Being Earnest." The actors think their experiences together should help their performances in this production, as there is a comfort level that already exists, although it's been four years since they have acted together.

"He's been getting bigger and bigger roles, while I've always kind of been in the background," Scoggins said, explaining that she has been working in the costume department.

"So, it's fun for us to finally be on stage and in the limelight together and share it," Scoggins said.

Kameron Weger plays Cornelius Hackl, and Weger describes his character as "very quirky and just very awkward. He's a clerk for a store, but he's never done anything besides that. But he's now middle age and has never, like, spoken to a woman. So he's very awkward." Another actor reminds Weger that Cornelius is not yet middle age, that he is still in his 30s.

"He finally gets a taste of the outside world and is very overwhelmed by it, because he is just not used to that kind of interaction," Weger said, noting that Cornelius keeps to himself and doesn't have any spare time as Horace, a merchant, makes him work six days a week. "But he gets this taste of adventure and is very awakened by it."

Ali O'Neil plays Irene Molloy, a "very assertive woman who knows what she wants," O'Neil said.

"And she's trying to break out of this kind of traditional role of a woman in society," she said. "She owns a hat shop, but she doesn't enjoy her work there. She just kind of wants to go out and be able to experience things."

O'Neil said she's trying to marry Horace because of his money, but she ends up meeting Cornelius. Meeting him pushes her out of comfort zone that she's been wanting to go on her whole life.

Other actors discussed their roles, as Makayla Dorris plays Minnie Fay, a woman who is reserved and a "little ditsy" and who sometimes talks before she thinks. The



PHOTO BY DON MUNSCHE  
Trey Thornton, left, and Alexis Scoggins get ready to rehearse for "The Matchmaker," a play to be performed at Azle High School from Thursday through Saturday this week.



PHOTO BY DON MUNSCHE  
Kameron Weger, Jett Lee and Zoey Thompson rehearse lines for their roles in "The Matchmaker," to be performed this week at Azle High School.

character is "cute," and she reminds Dorris of a mouse, sort of like Minnie Mouse. She said she is "absolutely" fun to play.

Jett Lee plays Barnaby Tucker, a young, naive character.

"To him, Cornelius is a like a Superman, and even when he hears about stuff that is even necessarily true, it's still, like, 'oh, wow - you did

all this," Lee said.

Lee said he uses a playful voice with a high-pitched tone because while he is working for a hard-as-nails employer, he's still "very innocent and full of life."

"Overall, he's like a really fun character to play," Lee said. "Because once he starts feeling comfortable or excited in a scene, he can oftentimes be really blunt

or silly or forget who he is and what's going on and that can really lead to some silly mishaps. I'm really excited to play him and I hope a lot of people come see the show — with me in it, especially, you know?" (He was teasing on that part.)

The theater department will perform "The Wizard of Oz" for its musical this year, as soon as the rights are ap-

proved. The show will be performed in January. Students will perform a One-Act Play in the spring, but the production has not been selected, Brewer said.

For more information about "The Matchmaker," including ticket information, access AHS Theatre Presents "The Matchmaker" October 20-22 at azleisd.net.

## AZLE AREA CLUBS AND ORGANIZATIONS

**Texas Health**  
Harris Methodist Hospital  
AZLE  
**Volunteers Needed**  
TexasHealth.org/  
Volunteer/Our-Process  
**RAINBOW INN GIFT SHOP**  
Inside Hospital 108 Denver Trail  
Azle 817-444-8651  
**ATTIC RERUNS**  
**NOW OPEN! FRI 9-4 SAT 9-1**  
714 SE Pkwy Azle 817-270-3690

**Good N.E.W.S.**  
Living at Home Block Nurse Program  
**Volunteer Caregiver Training Classes**  
Classes open to public at no charge  
**Our Volunteers Make a Difference!**  
**Caregiver Volunteer Meeting**  
1st Monday of Each Month at 6pm  
**817-444-2300**  
**412 Commerce St.**

**Rotary Club of Azle**  
**MEETS AT NOON THURSDAY**  
412 Commerce St.  
(across from Azle Post Office)

**The Finish Line**  
Addiction wants to destroy you & everyone around you.  
**With Jesus there is Victory over addiction.**  
**GET BACK IN THE RACE!**  
Meetings held every Friday from 7:30pm-9:30pm at The Church at Azle  
1801 S. Stewart • Azle • 817-401-8513  
www.ourfinishline.com

**Faced with a DRINKING Problem?**  
Perhaps Alcoholics Anonymous can HELP.  
**Daily meetings at Noon & 6:30 pm**  
**Sunday at 3 pm**  
**229 S. Stewart St. • Azle**  
**817-332-3533**

**Azle Lion's Club**  
Meets 2nd TUESDAY 6:30 PM  
412 Commerce, Azle  
e-clubhouse.org/sites/azle\_tk/  
Jamie Westbrook - president  
**817-550-7625**

**AZLE AREA MINISTERIAL ALLIANCE**  
UNITED IN CHRIST  
Christian Leaders partnering together with one voice to impact our culture for Christ. We celebrate unity amidst diversity as we pastor our community.  
**Luncheon meetings**  
**11:45 a.m. - 1 p.m. 2nd Tues of each month; location varies.**  
See [www.azlema.com](http://www.azlema.com) or email [director@azlema.com](mailto:director@azlema.com) for additional information.

**SERVOLUTION NETWORK**  
LET'S START A COMMUNITY WIDE REVOLUTION THROUGH SERVING.  
**FOR QUESTIONS CALL:**  
**833-4WE-SERV**  
**833-493-7378**  
VISIT: [WWW.SERVOLUTIONNETWORK.COM](http://WWW.SERVOLUTIONNETWORK.COM)

**Azle Boy Scout Troop 243**  
Meets Mondays 7 PM  
Azle First Assembly of God  
1020 Southeast Parkway  
[troop243azle.org](http://troop243azle.org)

**Optimist Club of Azle**  
Meets every **FRIDAY at 6:45 AM**  
**Moe's Country Kitchen**  
316 W. Main, Azle

**Azle Lodge No. 601**  
**Floor School or Work**  
**7:30 PM THURSDAY NIGHT**  
Wayne Wood - Worshipful Master  
Rocky Gralla - Secretary  
Clint Hall - Treasurer

**Eagle Mountain Pregnancy Help Center**  
10328 Jacksboro Hwy  
Fort Worth TX 76135  
817-237-1819  
[www.emphc.org](http://www.emphc.org)  
Mon 12-6 PM Thurs 12-6 PM  
**SE HABLA ESPAÑOL**



ON FISHING

# Popular Squaw Creek Park has reopened for boating, fishing enthusiasts

Squaw Creek Park reopened October 1 after the last closure that was associated with COVID concerns. This fantastic fishery requires a reservation for boating, but is also available without reservation for bank fishing.



**ON FISHING**  
By Michael Acosta

As a licensed professional fishing guide, Michael Acosta shows you how to find them. He has been a licensed guide since 1998. michael.acosta@att.net

I understand that the popularity of the lake is drawing numerous anglers right now. I would suggest calling early for reservations. A maximum of 150 boats are allowed on the water each day.

Squaw Creek Park is owned and operated by Luminant and is part of the Comanche Peak Nuclear Power Plant in Somervell County. The lake provides cooling water for the power plant and is a popular location for bass and catfish anglers.

The park is scheduled to be open from October to March. The park's standard hours of operation are 6:30 a.m. through 4 p.m. Thursday through Sunday for bank and boat fishing. Boats must be off the water by 3:30 p.m. The park is closed on

Thanksgiving, Christmas Eve, Christmas Day and New Year's Day.

Changes to the schedule may occur for a variety of reasons (e.g., weather, lake conditions or other reasons). It is best to call prior to going to make sure the park is open.

Reservations for boats and kayaks are required. The cost to access the park is \$30 per boat with up to four folks (in the same vehicle). Additional individuals will be charged \$5 additional per person. The fee for kayaks is \$10. No reservations are required for bank fishing, and the fee is \$5 per person. Bank fishing is free for kids 12 and under and seniors over 80.

Please consult all the rules and requirements at [Luminant.com/squaw-creek-park/](http://Luminant.com/squaw-creek-park/). Park rules are enforced.

Since the reopening, many anglers are reporting catches of largemouth bass weighing up to 7 pounds. Some are boasting of catches of up to 100 fish per day. Channel catfish are also good on prepared/cut baits on many areas of the lake.

Tilapia are an invasive species that have been flourishing in this power plant lake. This invasive species is great eating, and there is no limit. You are not allowed to return an invasive species back into the lake. Tilapia will be the subject of a future article for sure.

Caution is advised while navigating the lake, as many areas have standing timber, especially on the upper ends.

## FISHING REPORT

Lake Granbury water temperatures are in the middle 70s. The lake is almost three feet low and falling slowly. Pray for some rain and runoff. Be careful navigating the lake, as many hazards are present due to lower water levels. One hazard identified earlier in the week was a tree in the river channel between markers 21 and 22.

The best action continues to be crappie fished near submerged structures. Crappie are good on small minnows or small jigs fished using light line. Largemouth bass are good to 6 pounds on crankbaits and soft plastics later in the day. Some good topwater action is good early and late near main lake points. Catfish continue to be best at night on cut shad on many areas of the lake. Sand bass have been schooling with small stripers near DeCordova and Indian Harbor. Jiggling slabs and mepps spinners will put fish in the boat. Keeper-sized striped bass are slow to fair on live shad fished near channel ledges from Blue Water Shores to DeCordova subdivision.

On other reservoirs, Lake Whitney striped bass continue to be good on live bait fished near McCown and the Island. Whitney is about 7.5 feet low and falling. Call to verify access before going. Most ramps are still open.

One more recommendation for those coming to the lake: get there early. It may take quite a bit of time to get all the boats launched once the park is opened. There is usu-

ally a line of boats waiting to get on the water.

So if you get a chance, go check out Squaw Creek. It will be busy throughout the winter due to the warm water

(bass and bass anglers love the warm water). Park office phone numbers are 817-573-7053 or 817-279-1657. The address is 2300 Coates Road, Granbury, Texas.

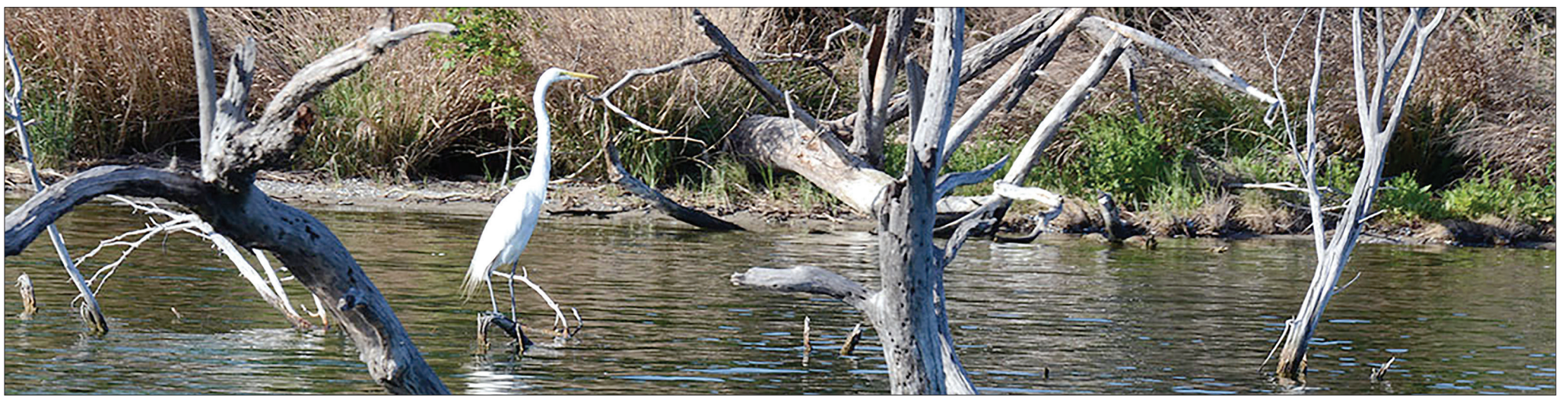


PHOTO COURTESY LUMINANT  
Squaw Creek Park

# Emergency preparedness event to be held in Weatherford

**FROM STAFF REPORTS**

Area residents wanting to learn how to prepare for emergencies may attend a free, family-friendly event from 10 a.m. to 2 p.m. Saturday at The Church of Jesus Christ of Latter-day Saints, 2251 Bethel Road in Weatherford.

A free flu vaccination clinic will be held 9 a.m. to noon. Weatherford Fire, Police and EMS, American Red Cross, Parker County's CERT and Hospital District, Carter Blood Care, Civil Air Patrol, Texas A&M Extension, food storage, 72-hour kits, home security, water purification,

off-grid cooking, binder child ID and much more will be featured at the event.

For more information, email Naomi Smith at [nbs.smith18@gmail.com](mailto:nbs.smith18@gmail.com) or Wendell Shumway at [wshumway2017@yahoo.com](mailto:wshumway2017@yahoo.com).

**Edward Jones**

> [edwardjones.com](http://edwardjones.com) | Member SIPC

**Compare our CD Rates**

Bank-issued, FDIC-insured

3-month	6-month	1-year
<b>3.30</b> % APY*	<b>3.85</b> % APY*	<b>4.10</b> % APY*
Minimum deposit \$1000	Minimum deposit \$1000	Minimum deposit \$1000

Call or visit your local financial advisor today.



**Aaron Cole**  
Financial Advisor  
1341 Southeast Parkway Ste 101  
Azle, TX 76020  
817-238-0089

\* Annual Percentage Yield (APY) effective 10/13/2022. CDs offered by Edward Jones are bank-issued and FDIC-insured up to \$250,000 (principal and interest accrued but not yet paid) per depositor, per insured depository institution, for each account ownership category. Please visit [www.fdic.gov](http://www.fdic.gov) or contact your financial advisor for additional information. Subject to availability and price change. CD values are subject to interest rate risk such that when interest rates rise, the prices of CDs can decrease. If CDs are sold prior to maturity, the investor can lose principal value. FDIC insurance does not cover losses in market value. Early withdrawal may not be permitted. Yields quoted are net of all commissions. CDs require the distribution of interest and do not allow interest to compound. CDs offered through Edward Jones are issued by banks and thrifts nationwide. All CDs sold by Edward Jones are registered with the Depository Trust Corp. (DTC).

FDI-1867K-A © 2022 EDWARD D. JONES & CO., L.P. ALL RIGHTS RESERVED.

**Ms. Fairy Dogmother**  
It's never too late to have the dog of your dreams!

- Private Dog Training
- Custom Pet Sitting

[www.msfairyydogmother.net](http://www.msfairyydogmother.net)  
[ann@msfairyydogmother.net](mailto:ann@msfairyydogmother.net)

**Ann Coffey @ 817-668-6229**

**Full Service Mechanic SMART START CONTRACT SHOP**  
We install & service alcohol breathalyzers.

**704 NW Pkwy, Azle**  
Open Mon-Fri 9 AM - PM, Sat 9 AM - 3 PM  
@burrowsauto

**817-270-3230 • 817-270-3240**

**LAKE WORTH PREMIER EYE CARE**

**Dr. Jeffrey R. Crabtree**

**Backup Glasses Special**  
Attention Contact Lens Wearers!  
Purchase a year's supply of contact lenses, get a pair of backup glasses (frame AND lenses)

**\$99 ONLY** Select Frame Styles • Progressive Lenses \$149

6921 Foster Dr. [www.lakewortheye.com](http://www.lakewortheye.com)  
Lake Worth, TX 76135 **817-439-9455**

**NOW OPEN**

**POP POP BURGER**

4895 E. Hwy 199, Reno  
**682-310-0079**  
Open Mon-Thurs 10:30 am - 7 pm,  
Fri-Sat 10:30 am - 8 pm, Closed Sun.

**ANNA'S TAQUERIA**  
Breakfast Food Truck  
5:00 am - 2:00 pm

**THE SHACK @AZLE**  
*It's really a healthy bar!*

416 commerce st, suite 5  
Azle • 817-406-4345  
Hours: Mon-Fri 6 am - 5 pm  
Sat 9 am - 2 pm, Sun Closed

Check in and save \$1.00

**HOGLE Insurance Group**  
167 W. Main • 817-444-6389  
[www.HogleInsurance.com](http://www.HogleInsurance.com)

Shaye Hogle "Our Best Policy is Personal Service" Hogy Hogle

**4.65%** 60 Month Rate Guarantee **4.0%** 36 Month Rate Guarantee  
\*10,000 Minimum Deposit

**Life Insurance**  
NO MEDICAL EXAM UP TO \$250,000.00  
Term and Permanent Policies  
Guaranteed Premiums and Death Benefit  
Company based in Fort Worth, Texas



# When a few minutes changes everything



**BE AMAZING**  
By Gerry Lewis

Azle resident Dr. Gerry Lewis guides explorers to discover their AMAZING. He is an author, musician, and speaker, and a coach-sultant for individuals, churches, and organizations. More at [www.discoveryouramazing.com](http://www.discoveryouramazing.com).

"I may cry."  
The bald dude with the big old beard unexpectedly spoke those words while standing in my open front door last Wednesday.

Just about three minutes earlier, he spoke my name and I turned to see him standing on my front porch through the door I left open when I came in with my hands full.

"Gerry?"  
He obviously knew me, but I didn't recognize the 40-year-old man who stood there. The last time I saw him he was 13 and lived a couple of doors away. He moved to Oklahoma with his mother when his parents divorced.

He told me who he was and that he just wanted to drop by and say hi.

I invited him in and went to the back of the house to get Mrs. Sweetie. I told her we had a visitor who wanted to see her, but I wanted her to see if she could figure out who it was.

When we returned to the living room, he was still standing in the open doorway and he spoke those words: "I may cry."

And then he leaned over to my wife and said, "I just wanted to come and say thank you for leading me to the Lord in your front yard all those years ago."

He went on to tell us about his life—the "hellion" years and then getting his life together, getting married, having a child, and traveling "all over" on mission trips with his church. He said it all started next to the oak tree in our front yard.

We spent about 30 minutes reminiscing and celebrating the goodness and grace of God in his life.

It was such a special and serendipitous interruption in the middle of a busy afternoon.

After he left to go back to his family (who had no idea where he had wandered off to), Sweetie asked me if I had any recollection of that event more than 25 years ago.

Because she didn't. It's not that she's losing her memory. But that moment in our front yard didn't change her life. It was just a few minutes with a kid from the neighborhood in the middle of an exceptional day where she shared her faith in an exceptional way.

It was his life that was changed. It started in that moment, took awhile to gain traction, had some fits and starts along the way, and will continue to be challenged and tested as long as he lives.

Just like every person of faith. But the trajectory was changed for eternity.

No fanfare or fireworks except in the unseen realm where the angels rejoiced.

Jesus said, "In the same way, there is more joy in heaven over one lost sinner who repents and returns to God than over 99 others who are righteous and haven't strayed away! ... In the same way, there is joy in the presence of God's angels when even one sinner repents." (Luke 15:7,10).

I'm convinced that the most significant moments in life happen in the middle of ordinary days. We really can't plan for them or control them. We can only prepare our hearts to experience them when they come.

Be amazing today, my friend.

## NOTICE OF GENERAL ELECTION (AVISO DE ELECCION GENERAL)

To the registered voters of the County of Parker, Texas.  
(A los votantes registrados del Condado de Parker, Texas.)

Notice is hereby given that the polling places listed below will be open from 7:00 am to 7:00 pm, November 8, 2022, for voting in a general election to elect Members of Congress, Members of the Legislature, and state, district, county and precinct officers.

(Notifíquese por la presente, que las casillas electorales citadas abajo se abrirán desde las 7:00 a.m. hasta las 7:00 p.m. el 8 de noviembre de 2022 para votar en la Elección General para elegir electores Miembros del Congreso, Miembros de la Legislatura, y oficiales del estado, distrito, condado y del precinct.)

The following Entities will have Elections as well:

**General Elections:** Brock ISD, Granbury ISD, Poolville ISD

**Special Elections:** Brock ISD, ESD 1

(Las siguientes entidades también tendrán elecciones)

**Elección general:** Brock ISD, Granbury ISD, Poolville ISD

**Elección especial:** Brock ISD, ESD 1)

### Elección Day Polling Locations (Lugares De Votación En El Día De Las Elecciones)

Voting on Election Day, November 8, 2022, shall be conducted between the hours of 7:00 a.m. to 7:00 p.m. registered voters can vote at any of the following polling places:

(La votación en el día de la elección, será el 8 de noviembre de 2022, y se llevará a cabo entre las 7:00 a.m. y las 7:00 p.m. Los votantes registrados pueden votar en cualquiera de los siguientes lugares de votación:)

Polling Site	Address	Location
Silver Creek United Methodist Church	2200 Church Rd, Azle 76020	Fellowship Hall
Azle City Hall	505 W Main St, Azle 76020	Community Room
Reno City Hall	195 W Reno Rd, Azle 76020	Community Center
Springtown Senior Center	1070 N Main St, Springtown 76082	Community Room
Legacy Church	3591 E Highway 199, Springtown 76082	Lobby
Parker County North East Annex	1020 E Hwy 199, Springtown 76082	Court Room
Friendship Baptist Church	801 Friendship Rd, Weatherford 76085	Gym
Agnes Baptist Church	350 Agnes North, Springtown 76082	Foyer
Harburger Hill Community	701 Narrow St, Weatherford 76086	Large Room
Trinity Lutheran Church	1500 Ball St, Weatherford 76086	Fellowship Hall
Poolville Methodist Church	230 North Church, Poolville 76487	Fellowship Hall
Peaster ISD Rock Gym	8512 FM RD 920, Peaster 76088	Back Room of Gym
Whitt Fire Department	4312 N FM RD 52, Whitt 76490	Training Room
Bethesda United Methodist Church	6657 FM RD 113 N, Weatherford 76088	Johnson Room
Calvary Baptist Church	1900 N Main St, Weatherford 76085	Fellowship Hall
Shady Grove Baptist Church	2470 W Lambert Rd, Weatherford 76088	Fellowship Hall
Union Baptist Church	3451 Sarra Ln, Springtown 76082	Fellowship Hall
Victory Baptist Church	1304 Fort Worth Hwy, Weatherford 76086	Youth Building
Cherry Park Community Center	300 S. Alamo St., Weatherford TX 76086	Main Room
Grace First Presbyterian Church	606 Mockingbird Ln, Weatherford 76086	Great Hall
Santa Fe Drive Baptist Church	1502 Santa Fe Dr, Weatherford 76086	Family Life Center
Weatherford College	225 College Park Dr, Weatherford 76086	Allene Strain Room
Millsap Community Center	102 Fannin St, Millsap 76066	Community Room
Harmony Baptist Church	242 Harmony Rd, Weatherford 76087	Fellowship Hall
Tin Top Community Center	101 Old Tin Top Rd, Weatherford 76087	Community Room
Parker County PCT Barn # 3	1111 FM RD 1189, Brock 76087	Break Room
First Baptist Church Dennis	7600 FM RD 1189, Dennis 76087	Old Fellowship Hall
Spring Creek Baptist Church	100 Spring Creek Rd, Weatherford 76087	Gym
Greenwood Fire Department	1418 Greenwood Cut-Off Rd, Weatherford 76087	Training Room
Morningstar Amenity Center	128 Heather Wind Ln, Aledo 76008	Amenity Center
Hudson Oaks Public Safety Bldg.	150 Oakridge Dr., Hudson Oaks, 76087	Training Room
First Baptist Willow Park	601 Ranch House Rd, Willow Park 76087	Welcome Center
Bear Creek Community Church	18600 Hwy 377, Cresson 76035	Classroom - 3rd on left
City of Aledo Community Center	104 Robinson Ct, Aledo 76008	Banquet Room
Aledo ISD Admin Building	1008 Bailey Ranch Rd, Aledo 76008	Louden Room
New Faith Baptist	3303 West FM RD 5, Annetta 76008	Fellowship Hall
Parker County PCT Barn # 4	1320 Airport Rd, Aledo 76008	Break Room
Lakeshore Drive Baptist Church	200 S. Lakeshore Dr., Hudson Oaks 76087	Foyer

### Early Voting by personal appearance will be conducted at:

(La votación anticipada en persona se llevará a cabo en:)

#### Main Voting Site

Parker County Courthouse Annex • 1112 Santa Fe Dr, Weatherford, 76086 • Annex Kitchen

#### Branch Voting Sites

**Springtown Senior Center**  
Community Room  
1070 N Main St  
Springtown, Texas 76082

**Peaster ISD Old Rock Gym**  
Back Room  
8512 FM 920  
Peaster, Texas 76088

**Aledo ISD Admin Building**  
Louden Room  
1008 Bailey Ranch Rd  
Aledo, Texas 76008

**Hudson Oaks Public Safety Bldg**  
Training Room  
150 Hudson Oaks Dr.  
Hudson Oaks, TX

**Azle City Hall**  
Community Room  
505 W Main St  
Azle, Texas 76020

**PCT 3 County Barn**  
Break Room  
1111 FM RD 1189  
Brock, 76087

#### Early Voting Hours and Days

Monday October 24, 2022 <i>Lunes 24 de octubre de 2022</i>	8:00AM-5:00PM	Sunday October 30, 2022 <i>Domingo 30 de octubre de 2022</i>	10:00AM-4:00PM
Tuesday October 25, 2022 <i>Martes 25 de octubre de 2022</i>	8:00AM-5:00PM	Monday October 31, 2022 <i>Lunes 31 de octubre de 2022</i>	7:00AM-7:00PM
Wednesday October 26, 2022 <i>Miercoles 26 de octubre de 2022</i>	8:00AM-5:00PM	Tuesday November 1, 2022 <i>Martes 1 de noviembre de 2022</i>	7:00AM-7:00PM
Thursday October 27, 2022 <i>Jueves 27 de octubre de 2022</i>	8:00AM-5:00PM	Wednesday November 2, 2022 <i>Miercoles 2 de noviembre de 2022</i>	7:00AM-7:00PM
Friday October 28, 2022 <i>Viernes 28 de octubre de 2022</i>	8:00AM-5:00PM	Thursday November 3, 2022 <i>Jueves 3 de noviembre de 2022</i>	7:00AM-7:00PM
Saturday October 29, 2022 <i>Sabado 29 de octubre de 2022</i>	7:00AM-7:00PM	Friday November 4, 2022 <i>Viernes 4 de noviembre de 2022</i>	7:00AM-7:00PM

Applications for ballot by mail shall be mailed:

(Las solicitudes para boletas de votación adelantada por correo deberán enviarse a:)

Jenise Miller, Early Voting Clerk  
PO Box 639, Weatherford, TX 76086

Email: [j.hasenjaeger@parkercountytx.com](mailto:j.hasenjaeger@parkercountytx.com) or [elections@parkercountytx.com](mailto:elections@parkercountytx.com) • Fax: 817-598-6183

Applications for ballots by mail must be received no later than the close of business on: October 28, 2022. (Las solicitudes para boletas de votación adelantada por correo deberán recibirse para el fin de las horas de negocio el: 28 de octubre de 2022).

**Note: If ABBM is faxed or emailed or if an FPCA is faxed; the original application must be received within 4 business days.**

(Si ABBM se envía por fax o correo electrónico o si se envía por fax una FPCA; La solicitud original debe ser recibida dentro de los 4 días hábiles.)

## Personalize It!

Tees • Hoodies • Tumblers • Blankets  
Just about anything... personalized



GIFTS

1801 SE Parkway, Suite A, Azle

[StickAroundGifts.com](http://StickAroundGifts.com)

682-250-3470 • 817-507-6190

## Fall Farm Equipment CONSIGNMENT AUCTION

Saturday October 22, 2022 • 9 am  
WISE COUNTY FAIR GROUNDS

1 mile s. of Hwy 287 on Hwy 51, Decatur, TX 76234

Selling good clean Farm & Industrial Equipment  
Auction will double in size by sale day

### GET YOUR ITEMS IN EARLY

Not just another Antique Sale! Will start unloading  
equipment Thursday October 13th at 2:00 pm

CONSIGN EARLY TO BE INCLUDED IN ADVERTISEMENTS

Organized by the Chisholm Trail Antique Farm  
Equipment Club Edge & TA Branch 112

### NO BUYERS PREMIUM

For Consignment Information:

Pat Vaught, President 817-372-7249

Bill Schmidt, Vice President 817-504-2995

Heugatter Auction Services, LLC, Allen Heugatter, TX#12304 • [www.ahauctions.net](http://www.ahauctions.net)

## ANTIQUE TRACTOR SHOW

May 20th, 2023 • Raindate June 3rd



# IMPROVED

FROM PAGE 1A

helped at the home. Pam said she was "beyond thrilled" about the renovations.

"They thought of other things that I didn't even think about doing," she said, noting a bridge built over the bar ditch. The house was built in 1960.

"We're just thrilled to get everything done because we're just not able to do it," Pam said. "There's God's hand definitely in all of this. We wish we were able to help do things."

At the Crestview house, site captain Nick Hightower discussed the cleanup around the house and other renovations, which included painting. A bridge was constructed over a bar ditch for the residents to be able to walk to the mailbox.

Jim Shinsky, site captain at a house on Turpin Drive in Azle, said Friday crews fixed the porch and put on a new roof. General cleanup and tree trimming were also performed at the home. About 40 people were there on Friday at the home that is occupied by a woman.

"It's amazing," Shinsky said. "Like every time we

need something, God puts the right people in our paths. It's awesome to watch."

Shinsky has worked on several Blitz projects, and said the more people work on these homes, the more people God lines up to help.

"I used to be real stressed out because I was trying to do everything on my own," he said. "And now, I don't do anything on my own. I let God deal with everything. If I need something, I left him know, and the next thing you know, there's people here to do it. It's unreal."

Kilian Ward volunteered at the site, helping build a ramp for the individual at the residence.

"It's fun. I enjoy it, love it," he said about working on the project, as he additionally commented on the nice day that greeted crews and volunteers.

Jason Malewiski, executive director of Servolution Network, said with this Good Neighbors Blitz, the organization will have hit home number 200 in its history.

"I think we live in the best community I've ever been a part of in my whole life," he said.

He said about 130 people volunteered on Friday and about 150 people on Saturday.



PHOTO BY DON MUNSCH

Volunteers gather at the home of Calvin and Pam Hodges.



PHOTOS BY DON MUNSCH

David Swafford saws wooden panels that he placed on a well, below.



# CHARLIE GEREN IS WORKING FOR YOU!

- ✓ FULLY FUNDED SCHOOLS
- ✓ STOP THE CRIME WAVE
- ✓ SUBSTANTIAL PROPERTY TAX CUT
- ✓ SECURE THE BORDER

## TEXAS MOVING FORWARD

America and the world face serious problems. Texas is helping solve them. We are number one in exports by producing food and energy the world desperately needs.

### BUT WE CAN DO MORE.

**CHARLIE GEREN**  
 REPUBLICAN  
**STATE REPRESENTATIVE**

**EARLY VOTING OCT. 24 – NOV. 4  
ELECTION DAY NOV. 8**

Political Ad by Charlie Geren Campaign

**1300 Northwest Pkwy, Azle, Texas**  
 Sun 11-8 • Tues - Thurs 11-9  
 Fri 11-10 • Sat 11-9:30  
 MON CLOSED

**Villa del SOL**  
 MEXICAN RESTAURANT

**HAPPY HOUR**  
 Tues-Sat 4 - 8 PM

**TAKE OUT ORDERS**  
**817-406-4452**  
**817-406-4800**



# Gala brings big donations for library

BY JESSICA MCKINNEY  
jessica@azlenews.net

Many library supporters in Azle came together for dinner, dancing and donating at the Azle Library Trust's bi-annual fundraising gala on Oct. 15 at The Orchard Event Venue.

Debra Jenkins, this year's event chair, said that she thinks that donors helped raise nearly \$100,000 to benefit the Azle Memorial Library. The proceeds will be used to help enhance the library's collections of books for all ages, including e-books and audiobooks, plus provide funds for the summer and winter reading programs, children's programs and

digital resources for library patrons.

The operating expenses of the library are funded through the city, but the additional money raised by the Azle Library Trust allows library director Curren McLane and staff to take library offerings up to the next level with special programs and resources, as well as a varied reading selection for every reader.

"If anyone missed the gala and would like to support the library, they could certainly stop by the library and make a donation or purchase a leaf on Heritage Oak (inside the library) in honor or memory of someone," said Jenkins.



PHOTO BY JIM STEVENS

Fundraising from the Library Trust Gala auction goes to special programs and resources, as well as a varied reading selection.



PHOTO BY JIM STEVENS

Councilwoman Randa Good and husband Ronnie Goode check out art items for the silent auction.



PHOTO BY JIM STEVENS

Attendees enjoyed a buffet meal.



PHOTO BY JIM STEVENS

Andy Meadows and his Big Band performed at the gala.

Take care of yourself so you can get back to what you love.

### Make your breast health a priority.

With so many things to do and so many places to be, it's easy to forget about taking care of yourself. And your annual mammogram is part of that care. Which is why at Texas Health, we've made getting your mammogram easier than ever, with 17 locations across North Texas and appointments that typically last less than 30 minutes. Get in, get out and get back to what you love.

Texas Health is right there with you.

Schedule your mammogram today  
817-720-9218 | [TexasHealth.org/BreastCare](https://www.texashealth.org/breastcare)



Doctors on the medical staffs practice independently and are not employees or agents of Texas Health hospitals or Texas Health Resources. © 2022 Texas Health Resources

**RE-ELECT JUDGE**  
**CHRISTOPHER "CHRIS" GREGORY**  
REPUBLICAN  
**JUSTICE OF THE PEACE PRECINCT 4**  
**14 YEAR POLICE VETERAN**  
**WWW.CHRISGREGORY4JP.COM**

Political Ad Paid For by Christopher "Chris" Gregory Campaign.





## Azle rodeo gallops to top of team standings



PHOTO BY JO H PHOTOGRAPHY  
Wyatt Allison has improved during his second year of chute dogging.

BY JEFF PRINCE  
jeff@azlenews.net

Azle is stampeding the North Texas High School Rodeo Association's team standings this season. After winning 490 points at the Oct. 7-9 competition, the Azle rodeo team found

itself in first place in team standings for the first time in years. Last season, Azle fought week in and week out in an attempt to overtake Decatur in the team standings but couldn't get 'er done, finishing in second place. Two years ago, Azle's rodeo team finished in 23rd place

out of 87 teams. A combination of experienced returning members and new faces has Azle fielding one of its best and largest squads in recent memory. The roster includes 32 members after dipping to less than a dozen in 2020. "The team has grown over the past couple of years,"

said team sponsor Kristy Scribner. "Honestly, I don't think everyone knew we even had a rodeo team. We have been trying to post on social media as much as we can, and the publication in the Azle News helps, too. We have several returning members who continue to excel in their events, so this has helped us

move into the number one position." Nabbing the top spot has been a dream in the making. Holding that position will take renewed focus. "It is early in the season, but we are hoping to finish out the season in the top spot," Scribner said. Her daughter, Hevenli

Scribner, is doing her part. She earned the All-Around Cowgirl title at the Oct. 7-9 rodeo at NTHSRA Arena in Saginaw. Other members who are winning regularly include J.W. Gilbreath and Wyatt Allison, both in their second

SEE RODEO | PAGE 2B

## AHS runners headed to Lubbock

BY DON MUNSCH  
don@azlenews.net

Azle High School's boys and girls cross-country teams punched their tickets to regionals with their performances at the District 5-5A meet Oct. 14 at Central Park in White Settlement. The girls finished second overall and had three top 10 finishers. The boys finished third overall and had two top 10 finishers. Runners will compete Oct. 25 at Mae Simmons Park in Lubbock. "The girls ran phenomenal — we're super happy," said AHS cross-country Keith Boenisch. "They ran great. We beat who we needed to beat. They beat everybody last week, and they turned around it and did it again. The boys did not run as good today as they did last week, so it got to be very, very close, but we're on the winning end, so we're not going to complain. But they made it a little too close than it should have been." As far as the coach's thoughts on individual performances, on the boys side, Barak Geary finished third and Austin Gatewood finished 10th, and Boenisch praised their efforts. And on the girls' side, he called it a "team effort — everybody ran good." Geary qualified for state last year, and Boenisch said it will be tougher this year but he has a chance to return to Round Rock. "Honestly, the three girls that we had in the top 10, they've got a chance but they got to get a whole lot faster and they may not be possible

*Boys, girls cross-country teams qualify for regionals*



PHOTO BY DON MUNSCH  
Jose Neri runs toward the finish line at the district meet.

SEE CROSS | PAGE 3B



# RODEO

FROM PAGE 1B

year of competing in chute dogging and other events. "They have really started out the season strong this year," Kristy Scribner said. "They have both been pretty consistent in their events." Other standout point-earners include:

- **Lindsey-Kay Reichert**, a senior who competes in barrel racing and poles. Reichert has been a three-year qualifier for the NTHSRA finals and won barrels at several rodeos last year.
- **Kasen Scarlato**, a junior, and his team roping partner, sophomore Jesus Leyva, compete in heading and heeling and in chute dogging. Scarlato has been to the finals two years in a row, and Leyva made finals as a rookie last year.
- **Caitlyn Colley**, junior, competes in walk-up goats and qualified for finals in her first year of competing. She has added new events this year.
- **River Cassel**, junior, is a chute dogger who qualified for finals last year and continues to improve at every rodeo.
- **Laurel Allred**, junior, par-



PHOTO BY JO H PHOTOGRAPHY  
**Hevenli Scribner earned second place in poles at the Oct. 7-9 rodeo.**

ticipates in multiple events, including barrels, poles, goats and walk-up goats. The two-time qualifier for the finals NTHSRA placed in one event or more at every rodeo

last year and added loads of points to the team's total. **Hevenli Scribner**, sophomore, is another multi-event standout. She won the Rookie Cowgirl title last year. Her

goal this year is to capture the All-Around Cowgirl title. Kristy Scribner is enjoying watching the team compete each weekend and thinks they are a special bunch.

"We will continue to practice when we can and cheer each other on at every rodeo," she said. "Our end goal is to get as many qualified for the finals as we can. Of course,

**Results from the Oct. 7-9 rodeo:**

**WALK-UP GOATS**

- Laurel Allred, first place
- Hevenli Scribner, sixth
- Caitlyn Colley, ninth
- Molly Rodda, 10th

**GOATS**

- Laurel Allred, fourth

**BARRELS**

- Lindsey-Kay Reichert, second
- Hevenli Scribner, third

**CHUTE DOGGING**

- Wyatt Allison, second
- River Cassel, fourth
- J.W. Gilbreath, seventh

**POLES**

- Hevenli Scribner, second

winning High Point Team would be even better." The team has nailed down the top spot for now, but the rodeo season is long, stretching from September to April.

# Azle vs. The Colony



AZLE HORNET VARSITY FOOTBALL SCHEDULE 2022			
DATE	OPPONENT	LOCATION	SCORE
8/26	Frisco Reedy	HOME	69-27 L
9/01	Grapevine	at GRAPEVINE	58-14 L
9/09	Denton Ryan	Home	63-14 L
9/16	Aledo	at ALEDO	55-20 L
9/23	Brewer	HOME	54-0 W
9/30	Northwest	at NORTHWEST	58-7 L
10/07	OPEN	OPEN	
10/14	Saginaw	HOME	28-21 W
10/21	The Colony	at THE COLONY	
10/28	South Hills	HOME	
11/05	Burl Centennial	at BURL CENTENNIAL	

# Players Of The Week

OFFENSIVE      DEFENSIVE      SPECIAL TEAMS



Vance Guthrie



Jacob Martin



Braden Forsythe

**DONNA BRANSOM**  
 Owner/Realtor  
 Cell: 817-925-8281  
 Office: 817-444-5100  
 donna@bransomrealestate.net  
 www.bransomrealestate.net  
 200 W. Main St., Azle

Results you can count on.

• Business Cards • Invoices • Banners • Magnets  
 • Envelopes • Color Copies • Letterheads  
 www.suttonprintingco.com  
 119 Industrial Ave. Azle, Next to Dollar General  
**817-444-2222**

**Azle News**  
 Where Your Hometown Team goes for Hometown News and Sports  
 321 W. Main St. • Azle  
 817-270-3340  
 www.AzleNews.net

**A Proud Supporter of All Our Azle Hornets!**

**Pinnacle Bank**  
 MEMBER FDIC  
 THE WAY BANKING SHOULD BE

**Care for Feline and Canine**

**EAGLE MOUNTAIN VETERINARY CLINIC**

HOURS: M-F 8:00-5:30, Closed for Lunch 12:00-1:30 • Sat 8:00-12:00  
 Dr. Dustin Fields • 729 Boyd Road • Azle • 817-444-3289

**AZLE DENTAL CARE**

**Go Big Green!**  
 SCORE • SCORE • SCORE

Brooke Porter, D.D.S.  
 912 Boyd Rd. 817-444-1763  
 www.SmileGreat.com



# Azle volleyball wins, loses big games

**BY JEFF PRINCE**  
jeff@azlenews.net

Azle's Lady Hornets experienced highs and lows on the volleyball court in recent days.

On Oct. 14, Azle met the undefeated and undisputed leader of District 5-5A volleyball, the big, bad Northwest Texans. Azle lost 25-14, 25-16, 25-11.

The loss ended a three-game win streak for the Lady

Hornets, who played a long and brutal volleyball match versus district rival Wichita Falls Rider on Oct. 11. Azle came out on top after five sets: 24-26, 25-21, 25-23, 18-25, 15-13.

That victory moved Azle into third place in District 5-5A and gave the team a shot of confidence heading into the Northwest game.

"It's a big win for us to solidify going to playoffs," said Makenna Dillow, the team's

libero. "It's crazy because we never beat Rider two times in a row. That's a good milestone for our team."

Three days later, however, Azle stumbled against Northwest and dropped to fourth place. That loss doesn't dim the Hornets' hopes for the rest of the season. Azle controls its destiny. Still remaining on the schedule are games against Saginaw and Aledo, both teams looking to lock down



PHOTOS BY JEFF PRINCE  
**Teammates congratulate Makenna Dillow on another well-played set against Rider.**



PHOTOS BY JEFF PRINCE  
**Taylor Fischer goes for a dig under the watchful eye of coach Elizabeth Snyder.**

playoff spots. Azle hopes to knock them out.

"We've grown a lot since we've played them last," she said. "I feel very confident in our team. We all want to win. We all have the same goal at the end of the day."

Dillow was her usual blur of activity against Rider. So far this season, she has nailed more than 1,000 digs and surpassed 2,000 digs in her career.

"It was a great win," she said. "We pushed through, believed in ourselves and worked together even through the hard times."

Earlier in the week, senior Taylor Fischer reached 500 assists for the season. Against Rider, she came close to making 50 assists in one game. She ran around the court with ferocity and dove headfirst for balls numerous times, landing on the hardwood court with a whack but without flinching. She wore no elbow pads but never hesitated to go airborne to reach balls.

"I'm trying really hard to get those stats up there," she said. "It was definitely exciting."

She earns an assist each

time she sets up a pass for a teammate to make a kill shot. Reaching 500 assists in one season felt good.

"That's really cool just knowing that I can help my hitters get their kills," she said.

Does Fischer ever dream of making kill shots rather than setting up passes?

"I did want to at first, but then I realized not every hitter touches the ball every time," she said. "Being a setter really helps bring the team together. It's pretty cool."

## CROSS

FROM PAGE 1B

this year, but they're gamblers and I wouldn't ever count them out," the coach said. "They ran really good there in September, so we'll work really hard in these next 10 days and see what happens."

Runners talked about their performances at the district meet.

"I was going for either second or third, and honestly, I'm more just excited to get to go region, excited to have another shot at state," Geary said.

His goals are to qualify for state and then obtain a per-

sonal record so "I look good to colleges."

"I started out pretty good," Gatewood said. "I think I did great at the finish, and that's really what drove me to do it, because if I didn't pass those four people at the end, we probably wouldn't be all going to Lubbock. So, it would only be just Geary. But I think I did OK. I think I did what I was supposed to. I did my job and now we're all happy about it."

"We've worked a long way to get there, and I'm really happy that we finished in the top 10," Reese Jeter said.

Berkley Huffaker said it was "pretty cool" to finish in the top 10, and preparation

was key.

"It's exciting," Mckenzie Roberts said about the top 10. "I was really hoping that I would be able to make it last year, and with how good our team is coming into the season, I knew that was going to be the expectation for me and them, and we worked hard all season and we came out and did our jobs. So I'm really excited for all of us."

The girls said they don't know what to expect in Lubbock.

"We've done the course before, but I don't know who's going to be there - I don't really know anything," Jeter said. "So, I'm just in it for the long run, I guess."

"In it to win," Huffaker said.

Roberts said she has to keep working to get to state.

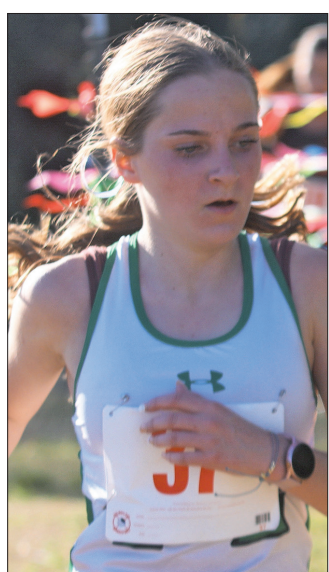
5-5A District meet finishes and times:  
Boys: 3. **Barak Geary**, 17:07.39. 10. **Austin Gatewood**, 18:16.99. 17. **Parker Huffaker**, 18:41.62. 28. **Jose Neri**, 19:11.67. 35. **Connor Lawson**, 20:02.29. 36. **Ryner Boenisch**, 20:11.28. 38. **Juan Rios**, 20:24.74.

Girls: 7. **Berkley Huffaker**, 21:43.97. 9. **Mckenzie Roberts**, 21:57.28. 10. **Reese Jeter**, 21:58.12. 12. **Audrina Montoya**, 22:30.57. 17. **Yasmeen Tejeda**, 22:57.04. 18. **Pella LaFever**, 22:59.41. 29. **Azucena Neri**, 23:31.65.

## Football Contest WEEK 9

Three near-perfect prognosticators guessed the correct winners to 10 of 11 games in the football contest this week. Congratulations to Eddy and Margaret Swanzy and Kyle Gathright. To determine the contest winner, we relied on the tiebreaker game Louisiana Tech vs. UNT, won by the good guys 47-27 for a total of 74 points. However, Eddy Swanzy and Gathright both picked 68 points for the tiebreaker and were closest, so they tied for first place and split the \$20 first prize and \$10 second prize, walking away with a cool \$15 apiece. Margaret Swanzy took third place and \$5.

PHOTOS BY DON MUNSCHE



**Berkley Huffaker**



**Parker Huffaker**



**Mckenzie Roberts**



**Barak Geary**



# SPORTS Roundup

**FROM STAFF REPORTS**

**AZLE CHRISTIAN SCHOOL FOOTBALL**

The Azle Christian Crusaders were prepared to play Ranger on Oct. 14 at home and celebrate homecoming at halftime by naming a new king and queen. Instead, their opponent, Ranger, forfeited the game, and the homecoming festivities have been rescheduled to Friday, Oct. 28, when they play Plano Prestonwood at home.

The Crusaders are expected to take a bye this week, although head coach Clayton Sanders is trying to schedule a game for Friday to make up for the forfeit.

**AZLE CHRISTIAN VOLLEYBALL**

On Oct. 11, the Lady Crusaders were swept by Waxahachie Prep's volleyball team despite three close sets: 25-19, 25-23, 25-23.

Next up, Azle Christian (3-3 in district) plays at 5 p.m. Monday, Oct. 24, at Victory Baptist Academy (5-1) in Weatherford.

**FORTE JUNIOR HIGH FOOTBALL**

Led by quarterback Brayden Ford completing 7-11 passes for 160 yards and three touchdowns, Forte's eighth grade Green Team returned home after consecutive road games with a 38-14 win over the Bulldogs of Chisholm Trail. The win evened their season record at 3-3.

Although the Bulldogs took the early lead with the game's opening drive, Forte needed just one play from scrimmage to get on the board when Ford hit Joseph Cano on a 43-yard pass for their first score. The Bulldogs' second series stalled after five plays, leaving the Hornets with good field position on their own 31. Ford hit Brayden Combs for a 39-yard gain on the series' first play, and three plays later capped the 69-yard drive hitting Combs again on a five-yard touchdown toss. The ensuing two-point conversion made the score 14-8.

The Bulldogs went four-and-out on their next drive, leaving Forte near midfield.

Ford hit Jensen Jutson for 20 yards and Combs with a 22-yard TD pass to make the score 22-8. The Bulldogs' last drive of the half ended on a pick-six by Ford, unfortunately called back on a penalty before he crossed the goal line as time expired.

The Hornets started the second half with the ball and continued to dominate, with Jace Jones accounting for 40 yards on the ground, including an eight-yard TD. The Bulldogs made a decent penetration into Hornets territory on their subsequent drive, but an 80-yard pick-six interception by Taylor Holden ended their rally as the third quarter drew to a close.

As Chisholm Trail only brought one team to play, Forte's White Team saw action on both sides of the ball in the final quarter. The Bulldogs managed a touchdown late to bookend the scoring on the day, resulting in the final 38-14 score.

Combs led the Forte receiving corps with four catches for 76 yards, while Cano caught two for 62. Jace Jones led the ground game with 40 yards on five carries.



PHOTO BY JEFF PRINCE

Bayleigh Lynn and the Azle Christian Lady Crusaders are making a playoff push on the volleyball court.

Forte's seventh-grade squad saw similar success on the road against the Bulldogs. Aaron Stapleton rushed for three touchdowns, and Cooper Johnson added another as the Hornets cruised to a 30-8 victory. The win evened their record at 3-3.

**FORTE JUNIOR HIGH VOLLEYBALL**

On Oct. 13, the seventh-grade Green Team played Mineral Wells and came out on fire during the first set but came up short 25-20, 25-15.

"As a whole, the team has shown great improvement and has finally found their groove," said coach Jason Jones.

The seventh grade White Team struggled to get a rhythm going against Mineral Wells. The girls kept things interesting but couldn't overcome a big deficit. A great backrow effort led by Lauri Wolfe in the second set helped keep them in the game, but struggles at the serving line proved costly.

The eighth grade Green Time showed a fighting spirit while beating Mineral Wells

25-21, 25-13 after overcoming a slow start. Charli Fair enjoyed a big night with her serves and a big block. Rylie Russell showed hustle as the new setter and has improved in a short amount of time. Chloe Wimbish was aggressive attacking the ball in both sets.

The eighth grade White Team played a close first set against the Rams but lost 19-25, 12-25.

The back row girls showed excellent passing to their setter.

"Jaeane Wright stepped up after being moved to the front row this week and had some hard hits and outstanding serves," Jones said.

Communication was the team's biggest weakness during the loss, the coach said.

**AZLE JUNIOR HIGH VOLLEYBALL**

The seventh grade A Team Hornets took on the Springtown Porcupines but came up short in both sets. "The girls worked hard and played as a team," said Kendra Longbrake.

Player of the game went to Finley Hard and Kimberly Licerio, who "both passed and served great," the coach

said. The eighth grade B Team faced a tough Springtown team and dropped the game in two sets: 14-25, 13-25.

"The girls worked hard and had some shining moments," said coach Misty Merck.

Taylor Merrill served six in a row in set one, and Ashlynn O'Neil played solid in the second set with accurate passes and four aces.

"The team is competing and getting better every day," the coach said.

The eighth grade A Team also took on a skilled Springtown team and lost in two sets, 25-7 and 25-12.

"The girls had not seen that level of play yet, but stepped up to the challenge and improved as the play continued," said coach Kari Crosby. "We had solid passing from Valeria Macias and Rachel Harder, who both are starting to take command of the back row. Our setter, Kenzie Arellano, played exceptionally well as she is starting to read the hitters more and beginning to pick up some of those tough tips.

Although we didn't take the win, the effort and grit of the players against a tough team like this is awesome to see."



PHOTO BY JEFF PRINCE

From left, Camden Logan and the Azle Christian football team are on bye this week.

**Tom Samples Pest Control**  
 YOUR COMPLETE PEST CONTROL SERVICE  
 Family owned and operated. Over 70 years of service.  
 Voted Best Pest Control Best of Parker County  
**817-915-2470**

**Anne Land Real Estate**  
 Land is my name, and real estate is my game.  
**Anne Land**  
 817-247-5991 Cell  
 817-220-0633 Office  
 904 E. Hwy 199, Springtown TX  
 www.AnneLandRealEstate.com

**STACEY'S MOBILE NOTARY SERVICES**  
 Tarrant • Parker • Wise  
**817-550-1624**  
 www.smnotaryservice.com  
 staceysmobilenotary@gmail.com

**JIM STEVENS PHOTOGRAPHY**  
 PROFESSIONAL BUSINESS PORTRAITS  
 COMMERCIAL PHOTOGRAPHY  
 DRONE PHOTOGRAPHY  
 FAMILY PORTRAITS  
 PHOTOGRAPHY LESSONS OFFERED  
**713-725-5620**

**Northwest Physical Therapy**  
 FREE CONSULTATIONS  
 Over 24 years of Experience!  
 • Sports, Stroke, Back and Neck Rehab  
 • Post Operation  
 • Balance Training  
 • Joint Replacement  
 • Return to Work  
**408 Central Dr., Azle**  
**817-444-8827**  
 Next to the Drive-thru of PNC Bank  
 azlenwpt.com

**Motley's AUTOMOTIVE & MOTORCYCLES**  
 FAMILY OWNED AND OPERATED FOR 22 YEARS  
 State Inspection for Tarrant & Parker Counties  
**Automotive**  
 • Tune-ups  
 • Diesel  
 • Suspension  
 • Computer Diagnostics  
 • A/C Repair  
 • Brakes  
 • Emission Repairs  
 • Repair & Restore Classic Cars  
**Motorcycles & ATVs**  
 • Maintenance & Repairs  
**PACKAGE DROP OFF STATION**  
 ASE CERTIFIED  
**1304 NW Pkwy (Hwy 199)**  
**817-444-8529**  
**817-456-0907**  
 www.motleyautomotive.com  
 Monday - Friday 8:30 am - 6:00 pm





PHOTO BY RICHARD SPRAGGENS

Jay Jones handing the ball to Vance Guthrie proved to be a formidable combination against Saginaw.

# Azle football improves district record before facing The Colony

BY JEFF PRINCE  
jeff@azlenews.net

The Azle Hornets kept their playoff pulses beating heartily after knocking off Saginaw 28-21 Oct. 14 at Hornet Stadium.

A strong performance by the Hornet defense helped secure the victory, which was crucial to keeping Azle's playoff hopes alive.

"I'm really pleased with our defensive front seven," said head coach Devon Dorris. "We played really well versus the run."

The game was a nail-biter, with neither team scoring in the first quarter, and Saginaw taking a 13-7 lead into halftime. One of Saginaw's first-half touchdowns was a pick-six interception.

"We could not get out of our own way early," Dorris said.

Seeing his team rebound in the second half was gratifying.

"It was the first time we responded to adversity in a positive way and still found a way to win," he said.

Jacob Martin led Azle in tackles, including two tackles for losses. Other Hornets who made tackles for losses were Denim Fields, Braden Love and Josue Montelongo.

While the defense locked down the game, the offense players made plenty of impact. Tyler Landon excelled at wide receiver with two huge third-down catches to keep drives alive. Jay Jones threw for 226 yards and two TDs. Vance Guthrie rushed for 161 yards on 25 carries.

Kicker Braden Forsythe was a perfect four-for-four on point-after attempts.

The victory leaves three games remaining in the regular season, each against a team that is currently higher than Azle in the district standings.

First up is The Colony on the road.

"They are a physical running offense and like to take shots deep, so we will need to be disciplined against the run and be ready for the play actions and RPO looks," Dorris said. "Offensively, we need to eliminate our own turnovers."

Azle (2-3 in district, 2-5 overall) plays at 7 p.m. Friday at The Colony (2-4 in district, 2-6 overall).



PHOTO BY JEFF PRINCE

Braden Crews and the Azle Hornets will hit the road to take on The Colony on Friday.

**Nationwide**  
is on your side

**Albracht Harwood Insurance Agency Inc.**  
120 S. Main St #4, Springtown, TX 76082  
albrachtharwoodinsurance.com  
**(817) 220-4700**  
2nd Location - Grapevine, TX

# AZLE INSURANCE DIRECTORY

**HOGLE INSURANCE GROUP**

SHAYE HOGLE 817-444-6389 HOGYE HOGLE

"OUR BEST POLICY IS PERSONAL SERVICE"

**HOGLEINSURANCE.COM**

Thank you for voting us Best Insurance Agency 2021

HOME • AUTO • FARM • LIFE

**BURTNETT INSURANCE**

817-220-7682

Protecting Texans, Prioritizing customer service

**Amy Kaplan** ChFC, CLU, Agent  
813 E. Hwy 199, Springtown, TX  
**817-220-5222**  
amykaplaninsurance.com

**State Farm**

Best Insurance Agent Best Agency

**Dale Mares, AAMS**

**MARES INSURANCE GROUP INC**  
208 W. MAIN, AZLE • 817-444-1491  
dalemares@allstate.com

**Allstate**  
You're in good hands.  
Se habla español.

**Germania INSURANCE**  
AUTHORIZED AGENT

**FOREMOST INSURANCE GROUP**  
**BRISTOL WEST INSURANCE GROUP**  
**PROGRESSIVE** US Assure

**Dairyland INSURANCE**

Kaye Burtnett & Vanessa Roberson

905 E. Hwy. 199 Springtown, TX 76082

**HALEY CARTER**

**State Farm**

2014 2015 2016  
**The BEST of AZLE**

**817-444-1100**  
408 Boyd Ct. • Azle  
www.HaleyCarter.com

PEOPLE'S CHOICE AWARDS 5 YEARS IN A ROW!  
VOTED #1 INSURANCE AGENCY IN AZLE



# Azle tennis wins bi-district championship

BY JEFF PRINCE  
jeff@azlenews.net

Heading into the Oct. 14 team tennis area championship matchup, Azle's coach knew the Hornets faced a formidable foe.

"Colleyville Heritage will be the toughest team that we have ever played against," head coach Hayden Huff said.

The Hornets fell to Colleyville 19-0, ending their fall team tennis season.

Still, the team did something unique.

Azle tennis made school history by winning a bi-district championship after knocking off Arlington Heights on Oct. 11 at TCU in Fort Worth. Azle beat the Yellowjackets in the first playoff tournament of the season, coming out on top 10-9. The contest came down to the final two matches in the third-set super tiebreaker. Azle led 9-8 and needed to win at least one of its final two matches to claim the championship. Azle lost one of those matches, but Kristina Birkeland clinched a victory to nail down the trophy.

Head coach Hayden Huff didn't tell Birkeland the score total prior to her game, figuring she might remain more focused by not knowing how much was at stake. Birkeland won the first set and lost the second set. Whomever won the third-set tiebreaker would prevail.

"She was able to turn things around and won the third-set tie break 10-5," Huff said. "Her match got us to 10."

Knocking off Arlington Heights was the first playoff team victory since Hayden Huff took over as head coach last year.

"This is the first bi-district championship win for Azle team tennis ever," Huff said. "I am really proud of every-

one on the team."

In 2021, Huff and assistant coach Jared Ewing were hired to lead and improve the team. They arrived to find a team that "knew the basics but did not know how to be consistent or any type of strategy," Huff said.

The players lacked confidence but were eager to learn, she said.

"Our players are hard workers and practice hard," she said. "All of them have improved immensely in the past year."

In 2021, Azle played Arlington Heights in the pre-season and lost. Beating that team a year later in the playoffs was proof that Azle's team had grown.

"It was huge that we were

able to win," the coach said. "Each win has given the team more confidence."

Losing to Colleyville Heritage at area didn't dim Huff's positive outlook.

"I am really proud of this team and how hard they have worked," she said. "We did the best that team tennis has ever done in high school history. They put in the time and effort for the past year. The hard work paid off. Some of my players were already talking to me about what they want to work on in offseason so that they can continue to get better. I look forward to working on things and seeing how well we can do in the spring."

Spring tennis begins in January.



PHOTO BY JEFF PRINCE

Jacob Sparks and the Azle Hornets tennis team ended the fall season as bi-district champs.



COURTESY PHOTO

The Azle Hornets earned the school's first bi-district team tennis championship.

## Kid Scoop

THE AWARD-WINNING PRINT & ONLINE FAMILY FEATURE

Find Kid Scoop on Facebook

© 2022 by Vicki Whiting, Editor Jeff Schinkel, Graphics Vol. 38, No. 47

### Kid Scoop Puzzler

How do you learn more about Dracula?

Use the code to solve this riddle.

A	B	C	F	G	H	I
J	L	M	N	O	S	U

### Kid Scoop Together:

#### THE BUBBLY, BAFFLING BALLOON EXPERIMENT

Can you inflate a balloon with liquid? What do you think?

Try this experiment with a lab assistant (a parent) and see what happens.

**STUFF YOU'LL NEED:**

- plastic bottle
- balloon
- 1 cup vinegar
- 1 tsp baking soda

### STEMSational HALLOWEEN SCIENCE

#### MONSTER MOLD

Double, double, toil and trouble, Fire burn, and cauldron bubble. Come into the laboratory, Where we'll make science tell the story!

**STUFF YOU'LL NEED:**

- canning jars with lids
- water in a spray bottle
- bread, cheese, apple cut into one-inch cubes

**THE EXPERIMENT**

- Spray each piece of food with a little water.
- Place each piece of food in a separate jar, screw on the lid and write the food type and date on the top.
- Place the jars in different locations—in sunlight, a dark place (inside a paper bag would work), a cool place (in your refrigerator) and one in a warm place.
- Examine the jars everyday, observe the changes and record how quickly food gets moldy.

**The Science**

Unlike plants, molds don't grow from seeds. They grow from spores that float in the air. These spores multiply on damp food and the chemical they produce will make the food rot.

Don't open your jars as more spores are forming and could be released into the air. Molds can make people sick.

**Standards Link:** Science Investigation: Conduct simple experiments.

### SPOOKY GLOW-IN-THE-DARK BUBBLES

**STUFF YOU'LL NEED:**

- bowl of water
- highlighters
- bubble solution
- black light

Have a parent help you open the highlighter pen. Pull out the felt and place it in a small amount of water. Let it soak for a few minutes and then discard the felt. Add a small amount of bubble solution to the bowl. Your mixture should be half highlighter water and half bubble solution.

Turn on your black light and blow bubbles. Describe what happens:

The phosphorescent chemicals in the highlighter ink are made visible by the ultraviolet in a black light.

Only two of the jack o'lanterns below are exactly the same. Can you find them? If you get stuck, do the math. The two even-numbered pumpkins are the matching pair.

2+3	9+2	6+4	4+3	9-2
5+4	6-3	4+9	13-6	11-2
1+2	14-7	6+6		
9+8	16-3	8+5		
3+8	19-4	3+2		

**Extra! Extra! Halloween Hunt**

Look through the newspaper to find:

- a pumpkin
- a ghost
- a skeleton
- a costume
- a spider
- a black cat
- a spooky house

**Standards Link:** Research: use the newspaper to locate information.

### Double Double Word Search

Find the words in the puzzle. How many of them can you find on this page?

M	N	O	T	E	L	K	S	S	
T	N	E	M	I	R	E	P	X	E
S	M	P	E	O	A	U	K	E	L
R	O	M	T	W	M	M	O	N	B
E	L	A	S	P	O	R	E	S	B
D	D	D	K	C	A	L	B	G	U
I	S	I	S	C	T	E	L	R	B
P	N	M	A	S	A	O	H	A	R
S	D	E	E	S	W	J	O	T	H

**Standards Link:** Letter sequencing. Recognize identical words. Skim and scan reading. Recall spelling patterns.

### FROM THE Kid Scoop LESSON LIBRARY

#### Science News

Look through the newspaper for science-related articles. Which science does the article relate to? For example, a weather story relates to the science of meteorology.

**Standards Link:** Reading Comprehension: Use reading skills and strategies to interpret informational text.

### Write On!

#### Halloween Humor

If you were a scientist and could invent something extraordinary, what would it be?

**Standards Link:** Science Investigation: Conduct simple experiments.



# FOOTBALL CONTEST

## • 2022 •

**1st PLACE \$20** **2nd PLACE \$10** **3rd PLACE \$5**

Winners can pick up their checks at the Azle News office after Thursday.

### • OFFICIAL RULES •

There are 11 games listed in advertisements on this page. To enter, pick the winner and write the name of that team in the appropriate blank on the official entry form.

Mail or deliver the form to: Azle News at 321 W. Main St., Azle, Texas 76020, by **1:00 PM FRIDAY**.

(Limit one entry per person).

Entries will be tabulated weekly and the results published in that week's issue of the Azle News. The first place winner each week will receive \$20, the second place winner \$10 and the third place winner \$5. The tie breaker will be used to determine placings. In case of a tie, the money will be divided equally.

To pick the tie breaker, predict the total number of points in the selected game and enter in the appropriate space on the official entry form. All entries become the property of the Azle News. Please write clearly and be sure to enter your pick in the correct blank. Second tiebreaker decided by whoever picks Azle and Springtown games correctly.

### AZLE OFFICIAL ENTRY FORM

Deadline for entries 1 p.m. Friday!

1. \_\_\_\_\_  
 2. \_\_\_\_\_  
 3. \_\_\_\_\_  
 4. \_\_\_\_\_  
 5. \_\_\_\_\_  
 6. \_\_\_\_\_  
 7. \_\_\_\_\_  
 8. \_\_\_\_\_  
 9. \_\_\_\_\_  
 10. \_\_\_\_\_  
 11. \_\_\_\_\_

Tie Breaker: 4 Score \_\_\_\_\_

Name: \_\_\_\_\_

Address: \_\_\_\_\_

City: \_\_\_\_\_

Phone: \_\_\_\_\_

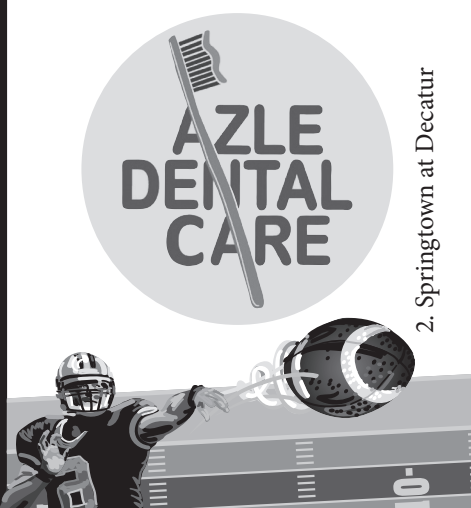
No photocopies please!

**GO BIG GREEN!**  
**SCORE • SCORE • SCORE**

Brooke Porter, DDS  
 912 Boyd Road • 817-444-1763  
 SmileGreat.com

**AZLE DENTAL CARE**

2. Springtown at Decatur



Fast • Efficient • Affordable!

**PLUMBING DOUBLE SERVICES**

7. Texas A&M at South Carolina

- Drain Cleaning
- House Re-pipes
- Video Drain Inspection
- Water Heater Changeouts
- Commode Repair and Replacement
- Total Service Plumbing

817-444-3100  
 708 Northwest Pkwy, Azle  
 www.DoubleLPlumbingService.com

**TRINITY HOME GROUP**

10. NY Giants at Jacksonville Jaguars

Specializing in  
**Residential, Farm and Ranch**

817.941.6454  
 thetrinityhomegroup.com  
 344 NW Parkway, Azle TX 76020



3. Benbrook at Ferris

**MrJims.Pizza**  
 It's the Crust!

**NOW OPEN**

**2 MEDIUM 2 TOPPING PIZZA \$9.99**

Only one offer/coupon per item. Not valid with third-party delivery services. Offer good at participating stores only. Delivery charge and minimum may apply. Customer responsible for all applicable taxes.

USE THIS CODE WHEN ORDERING ONLINE **WGD**

Open Sun - Thurs 10:30 am - 9 pm,  
 Fri-Sat 10:30 am - 10 pm  
**416 Commerce St., Suite 3, Azle**  
**817-612-0074**  
 www.mrjims.pizza

Go ahead & smile!

**PREVENTATIVE • RESTORATIVE • COSMETIC**

Crowns & Bridges • Whitening • Dentures  
 Dental Veneers • Implant Restoration  
 Cosmetic Dentistry • Pediatric Dentistry & More...

6. Kansas State at TCU

**Dr. Joseph McCreary, III**  
 FAMILY & COSMETIC DENTISTRY

Family dentistry for all ages.  
 Serving the Azle, Texas area  
**209 Roe Street, Azle TX 76020**  
**817-444-3209**

**TACO TIME MEXICAN GRILL**

**Biscuits**

1. Azle at The Colony \$1.99  
 Sausage \$1.89  
 Sausage & Cheese \$2.29  
 Sausage & Egg \$2.29  
 Sausage & Bacon \$2.29  
 Sausage, Egg & Cheese \$2.99  
 Sausage, Egg, Cheese & Bacon \$3.29

**Burritos**

Sausage, Egg & Cheese \$2.99  
 Bacon, Egg & Cheese \$2.99  
 Chorizo, Potato & Egg \$2.99  
 Potato, Egg & Cheese \$2.99

12555 FM 730 S. • 817-270-5430  
 11652 FM 730 N. • 817-444-3947  
 Mon - Sat Breakfast: 5:30am - 10:00am  
 Lunch & Dinner: 10:00am - 7:30pm

**BREAKFAST Breakfast Burritos, Tacos, Biscuits**

**1 Year Subscription**

**Azle News**

Name \_\_\_\_\_  
 Address \_\_\_\_\_  
 City \_\_\_\_\_  
 State \_\_\_\_\_  
 Zip \_\_\_\_\_  
 Phone \_\_\_\_\_

9. Detroit Lions at Dallas Cowboys

**\$40.00**  **\$46.50**  
**IN-COUNTY** **OUT-OF-COUNTY**  
 Tarrant, Parker & Wise only Texas and elsewhere

**\$36.50**  **\$25.00**  
**SENIOR CITIZEN** **ONLINE ONLY**  
 60 years and older Azle News  
 Tarrant, Parker & Wise only

**Clip and mail w/payment check to:**  
 321 W. Main Street,  
 Azle, TX 76020

Local Delivery • Metro Delivery • UPS

**Sutton PRINTING**

119 Industrial Ave.  
 Next to Dollar General  
**817-444-2222**  
 418 E Hwy 199 • Springtown  
**817-220-2101**

Digital & Gloss Full Color Business Cards  
 Gloss Full • Color Post Cards  
 Yard Signs • Copy Paper  
 Full Color Banners

**250 Digital Business Cards ONLY \$29.99**

GET QUOTES  
 SuttonPrinting@aol.com

8. West Virginia at Texas Tech

**PAUL S. CRABTREE, CPA, PLLC**

**CRABTREE**

**Tax, Accounting & Business Advisory**

Office Hours:  
 Mon - Fri  
 8:30 AM - 5:00 PM  
 Saturday by appointment only.

Paul Crabtree, CPA, PLLC

A MEMBER OF THE AMERICAN INSTITUTE OF CERTIFIED PUBLIC ACCOUNTANTS

11. Green Bay Packers at Washington Commanders

2nd floor of the  
 BBVA Compass Bank Building  
**150 Industrial Ave.**  
**Suite 201, Azle**

Whether you're starting a business or have been in business for years...

**Reliable Year-Round TAX SERVICES**

- Tax Preparation 1040, 1065, 1120, 1120S, and 941
- Filing Consultation
- Payroll
- Tax Professional
- Tax Extensions
- Free Professional Notary Public

4. Lamar at Arlington

1355 NW Pkwy, Ste. 104  
**817-270-2574**

WE'RE **TEXAS** IN A BANK

Sharing your community, your values and your dreams.

**Pinnacle Bank**

5. Weatherford at Boswell  
 AZLE 316 N.W. PARKWAY  
 817.444.2504 • pinnbanktx.com



## CLASSIFIED

817-270-3340 - Azle - classified@azlenews.net

817-220-7217 - Springtown - shirley@springtown-epigraph.net

### Ad Classifications

- |                            |                                 |                               |  |
|----------------------------|---------------------------------|-------------------------------|--|
| 1... Air Condition/Heating | 24..... Electrician             | 46..... Looking to Buy        | 69..... Sand/Gravel                    |
| 2..... Antiques            | 25..... Equipment & Tool Rental | 47..... Lost & Found          | 70..... Septic Tanks                   |
| 3..... Appliances          | 26..... Excavating              | 48... Maintenance/Repairs     | 71..... Sewing/Alterations             |
| 4..... Appliance Repair    | 27..... Exterminating           | 49..... Masonry/Stonework     | 72..... Sewer Service                  |
| 5..... Arts/Crafts         | 28..... Farm Equipment          | 50... Mobile Home Service     | 73..... TV/Radio                       |
| 6..... Asphalt Paving      | 29..... Fencing                 | 51..... Motorcycles           | 74..... Tractor Service                |
| 7..... Auctions            | 30..... Firewood                | 52..... Movers                | 75..... Upholstery                     |
| 8..... Autos, Trucks       | 31..... Free                    | 53..... Musical Instruments   | 76..... Vacuum Cleaners                |
| 9..... Auto Repair Service | 32..... For Sale                | 54..... Music Lessons         | 77..... Wanted                         |
| 10..... Backhoe Service    | 33..... Furniture               | 55..... Miscellaneous         | 78..... Well Drilling                  |
| 11..... Boats, Motors      | 34..... Garage & Estate Sales   | 56 Party Planning/Events      | 79..... Welding                        |
| 12..... Bookkeeping        | 35 ...Garden/Mowing Svc         | 57..... Pets/Livestock        | 80..... Lots/Acreage                   |
| 13..... Business           | 36..... Hauling                 | 58..... Piano Service         | 81..... Business & Commercial Property |
| Opportunity                | 37..... Hay                     | 59..... Pool Service          | 82..... RV's for Rent                  |
| 14..... Campers/Trailers   | 38..... Health/Fitness          | 60..... Professional Services | 83..... Houses for Sale                |
| 15..... Carports/Patios    | 39..... Help Wanted             | 61..... Personal              | 84..... Mobile Homes for Rent          |
| 16..... Equipment Repair   | 40 ....Home Improvement         | 62..... Plumbing              | 85..... Mobile Homes for Sale          |
| 17..... Carpet Service     | 41 .....House Leveling          | 63..... Public Notice         |  |
| 18..... Catering           | 42..... House Cleaning          | 64..... Photography           |  |
| 19..... Cement Work        | 43..... Hunting                 | 65..... Printing              |  |
| 20..... Demolition         | 44..... Janitorial Service      | 66..... Roofing               |  |
| 21..... Child Care         | 45..... Job Wanted              | 67..... Recycling             |  |
| 22..... Cosmetics          |                                 | 68..... Storage               |  |
| 23..... Computers/Services |                                 |                               |  |

### RATES

16 Words or Less:

Combo (Azle & Springtown) Only \$10.00 per week!

Over 16 words, add 20 cents per word

Extras such as Bold, Center & Border are available for a small fee

Classified boxed display ads also available for \$9.00 per column inch

(All ads must be paid in advance unless you have previously established credit)

**CLASSIFIED AD DEADLINE: 1:00 PM FRIDAY**

Most ads require payment in advance, but we do accept VISA, MASTERCARD, DISCOVER OR AMERICAN EXPRESS by phone.



Reach more than 8,000 households with combo advertising in the Azle News and the Springtown Epigraph.

*Nobody does it better!*

### 006 Asphalt Paving

**BYRUM CONSTRUCTION**  
Asphalt Paving  
•Driveways •Parking Lots  
•Asphalt Repairs & Sealcoating  
•Asphalt Millings •Gravel  
Bruce Byrum  
Azle, Texas 817-690-2429

### 008 Autos, Trucks



Chevy Silverado, Year 2015, 8 cylinders, new tires, runs perfect, toolbox on the bed, bull bars on the front. 172 k miles, asking \$ 15,500  
Cel 817-703-1261

### 020 Demolition

**MCNEELY'S DEMOLITION & CLEAN UP SERVICE**  
*We Create Vacancy*

- Tear Down •Barns
- Removal •Houses
- Haul Off •Bobcat
- Mobile Service
- Homes •Dirt/Gravel
- Garages Spreading

FREE ESTIMATES  
817-996-7887  
253 Eagles Way, Springtown

Advertising Works!

### 032 For Sale

65 Dune Buggy \$400, Hayloft \$2 each, landscape brick \$2 each, cement table w/benches \$150 call Bud 817-489-8147.

Console Piano & bench, comes with lot of music \$700, power lift recliner w/massage \$400 call 817-454-3798.

For Sale By Owner  
4-1.5-2 Home on 4.96 Acres with water wells and 199 Frontage. \$420,000. 817-444-3084



New 7 ft Marston Caternia Pool Table. Teflon coated cloth and accessories. MSRP \$3699. Sale for \$2300 including free delivery and installation. Call 817-444-7021.

### 034 Garage & Estate Sales

Community Sale & Swap meet West Bay Marina & Rv Park Multi family sale, kitchen equipment, furniture, tools, boat stuff, cars, decor 6925 LIBERTY SCHOOL TAP RD AZLE, TEXAS 76020 Oct 21st, 22nd & 23rd Friday, Saturday & Sunday.

Garage Sale  
151 Buzz Hollow, Azle. Too much too list, lots of items \$1 or less. Oct 20-21 8am-4pm, Oct 22 8am- Noon.

Annual Garage Sale  
Treasures for everyone, rock bottom prices. Sat-Sun 8-3. 149 Rhoades St, Azle.

### 035 Garden/Mowing Service

**Chad's Tree Service**  
Trimming • Removals • Stump Grinding  
Systemic Feeding • Brush Chipping • Cable Bracing  
817-221-2201 • 817-246-5943  
817-800-6059 CELL  
Insured for your protection

### IRRIGATION REPAIR

Residential/Commercial  
License# LI007825  
\$85 Service Call

### OUTDOOR SCENE

682-553-1560

### LEON'S TREE SERVICE

Expert take downs  
Stump Grinding  
Residential/Commercial  
Licensed & Insured • Free Estimates  
817-371-8597

### YARD SERVICES

SKID STEER  
SOD INSTALLATION  
FENCING  
STUMP GRINDING  
817-371-8597

### STUMP GRINDING

Don't dig it! Grind it!  
1 or 100 - We can do it.  
\$85 minimum within 5 mi.  
817-237-5592

### 039 Help Wanted

Springtown ISD is accepting applications for Bus Drivers and Monitors. Training available. Contact the Transportation Dept. 817-220-1418.

### MAINSTREAM group homes are hiring for FT/PT direct care staff.

Weekday 3:30pm-8:30am shifts as well as 24-hour weekend shifts. Work 2 days a week, get paid to sleep, and have a full-time job! Paid training, benefits, bonuses, and OT opportunities. Start \$9.00/hr with quick advancement possible. Call 817-270-2747, Monday-Friday, 9am-3pm.

### HANDYMAN/GENERAL MAINTENANCE needed in Springtown, TX

Starting at 13.00 hourly. Call 817-349-3064 for interview.

### Azle ISD is currently accepting applications for a Licensed Electrician in the Maintenance Department.

Prefer a minimum of 3+ yrs. experience. Apply online at www.azleisd.net

### Hiring: Oil & Gas workover rig hands and CDL tank truck drivers

Competitive pay, immediate openings  
940-393-6655

### Painter helper needed. Must be reliable, honest and have transportation.

Pay based on experience. BOBBY MCWILLIAMS PAINTING 817-821-6377.

### Azle ISD is currently accepting applications for a Licensed Plumber in the Maintenance Department.

Prefer a minimum of 3+ yrs. experience. Apply online at www.azleisd.net

### 039 Help Wanted

**Help Wanted in Aurora/Alvord Area**  
• Mechanic  
• Welder  
• Equipment Operators  
Competitive pay, some benefits. M-F day shift only. Overtime weekly.  
For information call 214-802-5157

### 039 Help Wanted

**KARL KLEMENT**  
Body Shop Porter  
Performs duties throughout the Body Shop. Must be responsible, dependable and have a valid TXDL. Monday to Friday work week.

### Parts Driver/Warehouse Associate

Growing Parts Department with advancement opportunities. TXDL and approved driving record required. Monday-Friday work week

### Body Collision Technician

Competitive Salary with a full Benefits Package! MON-FRI, Paid Vacation/Training/Holidays

### Service Technicians

HIRING BONUS available for all skill levels! Seeking ALL LEVEL of Service Technicians; Lube Tech's to Master! Be part of our GROWING TEAM and advance within our Service Department as we offer a Competitive Salary with a full line of Benefits, including 401K. Mon-Fri, 5-day work week with paid vacation, training & holidays! Up To \$5,000 Hiring Bonus for Skilled Technicians!

### KLEMENT DISTRIBUTION, INC. (Hershey Ice Cream Distributor)

**Route Driver**  
No CDL required, but must have valid TXDL with acceptable driving record. Monday through Friday with Flexible time-off schedules, often 3-day weekends during summer months. Fun work environment! Promote from within advancement opportunities.  
Full Benefits package - including 401K  
\*\*\$1,000 Sign-on Bonus\*\*

### Karl Klement Properties, Inc.

No Positions Available at this Time

### For consideration of all positions apply in person:

605 N. Business 287, Suite 102, Decatur, Texas  
OR CALL Human Resources Dept:  
Jodi Pettis or Lara Lancaster  
@ 940-627-6362 | hr.info@klementford.com  
FOR MORE INFORMATION

### 009 Auto Repair Service

**Rainwater's Transmission & Auto Repair**  
Transmission • Brakes • A/C • Engine Service  
Specializing in 1940-2020 transmissions

201 E. Hwy. 199, Springtown  
LOCALLY & FAMILY OWNED!  
Accepting all credit cards

682-615-7250  
817-766-3852

### 014 Campers & Trailers



2017 Dutchman Voltage Excellent condition, 3 slide outs, sleeps 8. 5th Wheel Toy Hauler. \$67000.00 Call or text 817-437-2287

### 017 Carpet Service

**Alexander Carpet Care**  
INSURED  
817-914-2822  
CARPET CLEANING

### 019 Cement Work

Allen Chesney Concrete  
All Types of Concrete Work  
Residential - Commercial  
Foundations, driveways, sand, gravel, demolition, haul-off, retaining walls  
817-271-4541

### Concrete Services, Patios, Driveways, Sidewalks, Retaining Walls, Foundations, Stone Walls. Free Estimates. 817-371-8597.

### Kiley Chesney Construction

Dirt & Concrete Work  
Driveways • House Slabs • Garages • Add-ons  
Small Land Clean-ups • Gravel Driveways  
Kiley Chesney, Owner  
Springtown, TX • Mobile 817-846-6645

### 024 Electrician

BULLDAGW ELECTRIC CO.  
All types of electrical services and MH hook-ups.  
Free Estimates. 817-675-4921  
www.bulldawgelectric.com.  
TECL#25253.

### 026 Excavating

ALL TYPES OF EXCAVATING  
Tanks • House Pads • Clearing  
**HASTY EXCAVATING**  
Also ..  
Sand • Top Soil • Gravel  
817-523-7248 • 817-239-6215

### REED EXCAVATING

• SITE PREPARATION • GRAVEL ROADS  
• LOT CLEARING • PARKING LOTS  
• LEVELING • DEMOLITION  
• FINAL GRADE • STOCK TANKS  
• LAND EROSION  
Dump Truck Hauling 817-919-3696

### 029 Fencing

BOBBY'S FENCE. All types, Free Estimates, Over 26 years experience. 817-444-3213.

### KILEY CHESNEY CONSTRUCTION

All Types Fences - Tractor Work  
817-846-6645

### 034 Garage & Estate Sales

Garage Sale  
Friday 10-21 and Saturday 10-22 8am-4pm. Tools, garden tools, vintage fireplace surrounds, electrical parts, lumber. 121 Brush Creek Dr, Azle.

Garage Sale, Sat, Oct 22, 8 am-1 pm. 351 Meadow Brook Ct. Springtown. Lots of miscellaneous items. Storage building clean out.

Friday Oct 21 8AM-4PM, Saturday Oct 22 8am-2pm. 147 Williamsburg Ln, Springtown. Men's/woman's/girl's Clothing, men's jackets, assorted crystal glassware, much more.

### 035 Garden/Mowing Service

COWBOY LAWN CARE. Residential, farm, gardens, landscaping, tree trimming. Free Estimates. 817-271-0450. Spring Specials.

McDowell Lawn Service  
Mowing, edging, flower beds, fertilizer, tree trimming, residential or business. Weekly or bi-weekly. 817-437-9100

Advertising Works!

Help wanted continued on next page...

### WANTED

Property Maintenance Labor/Person  
Gene Thompson & Associates  
817-246-4646



**817-270-3340 - AZLE**  
**817-220-7217 - SPRINGTOWN**

Deadline:  
 1:00 PM FRIDAY

# Classifieds

**039 Help Wanted**

**Lindsey State Jail Current Openings**  
**Correctional Officers • Assistant Foodservice Manager**  
**Recruiting Sgt. • Education Counselor**  
**Education Clerk • Academic Instructor**

PLEASE CHECK THE WEBSITE FOR JOB QUALIFICATIONS.  
 A New Correctional Officer Pay Increase will be as follows - Starting pay will be \$18.00 dollars per hour. After Six months' there will be a pay increase to \$19.00 per hour and at one year there will be another pay increase to \$20.00 per hour.  
 Must have HS Diploma or equivalent, be able to pass a drug screen, have a clean background, and valid driver's license to be considered for a Correctional Officer.  
**Apply online at [www.mtctrains.com](http://www.mtctrains.com) or call 940-567-2272 and ask for the HR Department. Management & Training Corporation is an Equal Opportunity Employer: Minority/Female/Veteran/Disabled**

**066 Roofing**

**EXPERIENCED ROOFING SPECIALIST**  
**FREE ROOF INSPECTIONS**  
*Insurance Claims, Licensed Local Business 34 Yrs*  
**ECE CONSTRUCTION LLC**  
 cell 817-615-7164 | office 817-831-2600

**GARAGE SALE**

16 words for only \$10.  
 A great way to raise extra money!  
 Call today for more info.  
 Azle News 817-270-3340  
 Springtown Epigraph  
 817-220-7217

**PUBLISHER'S NOTICE**

All real estate advertising in this newspaper is subject to the Fair Housing Act which makes it illegal to advertise "any preference, limitation or discrimination based on race, color, religion, sex, handicap, familial status or national origin, or an intention, to make any such preference, limitation or discrimination." Familial status includes children under the age of 18 living with parents or legal custodians, pregnant women and people securing custody of children under 18.

This newspaper will not knowingly accept any advertising for real estate which is in violation of the law. Our readers are hereby informed that all dwellings advertised in this newspaper are available on an equal opportunity basis. To complain of discrimination call HUD tollfree at 1-800-669-9777. The toll-free telephone number for the hearing impaired is 1-800-927-9275.

**Part Time Grounds Keeper**

Applicants must pass background check and drug screen.  
 30 hours a week. Must be able to lift 50 pounds. Wage \$12-\$15 per hour.

**FORT WORTH BOAT CLUB**  
 10000 Boat Club Rd, Fort Worth TX 76179  
**817-236-8393 Ext. 3**

**068 Storage**

INNERSPACE STORAGE. Hwy 199, Springtown. Now renting all unit sizes, 24-hour access. 682-842-1414.

**STORAGE UNITS**  
 1350 Liberty School Rd  
 5x10 Units \$45/mo.  
 10x10 Units \$70/mo.  
**817-246-4646**

**079 Welding**

**SOLID STEEL SOLUTIONS**

- Metal Buildings
- Steel Components
- Welding Supplies
- Concrete Supplies
- Fabrication Supplies
- Pipe Fencing
- Deer Blinds
- Deer Feeders

**8894 W Hwy 199 • Springtown**  
**817-220-0008**  
**www.SolidSS.com** **Open to the Public**

**040 Home Improvement**

**BILL ROSSER PAINTING & REMODELING.** Big Savings: \$100 off any job of \$1,000 or more. Painting, Carpentry, Porch Covers, Decks. FREE ESTIMATES. Call 817-304-9974; 866-374-3559.

PYRAMID REMODELING. PAINTING: Interior, Exterior, Tape & Bed, Texture, Popcorn Ceilings. FREE ESTIMATES. 817-944-7658.

**062 Plumbing**

**GRAHAM PLUMBING CO.**



**Commercial-Residential Serving Springtown, Azle, Boyd, Weatherford Area**  
 M#15899  
**817-220-2469**  
[grahamplumbingco.com](http://grahamplumbingco.com)

**069 Sand/Gravel**

HALL'S SAND, DIRT & GRAVEL  
 Quality Family Business Since 1938  
 CALL Cliff Hall  
**(817) 221-2681**  
 We go the extra mile to ensure you get more for your \$.  
 On House Pads, Driveways, Lot Clearing & Tractor Work, Etc.

**BOBBY MCWILLIAMS PAINTING** 817-821-6377.  
 Interior/Exterior Painting Residential & New Homes. 50 years experience.

**Kevin's Handyman Services**

40 Years Experience

- Carpentry
- Drywall & Painting
- Tile & Laminate Floors
- Doors & Windows
- Decks & Stairs
- Cabinets & Countertops
- No Job Too Small

Springtown and Surrounding Areas  
**231-445-1221**

**066 Roofing**

**AT HOME ROOFING & METAL BUILDINGS**

**817-304-4224**

Tired of always replacing your roof?  
 Call us for a metal roof quote.  
**We'll be here after the storm.**

**079 Welding**

owner Rodney Vick  
 817-220-3044  
 fax 817-523-7639  
 cell 817-253-1614

**R & E Construction**

**Metal Building Specialist**

- Weld Ups/ Bolt Ups
- Pipe Fencing
- Concrete
- Horse Barns
- All Types Fencing
- Metal Roofs

Compare Pricing  
**NO JOB TOO SMALL**

*Our Business is Metal Buildings - And We're Good!*

DESIGN FABRICATION ERECTION

**Cozart METAL BUILDING SYSTEMS**

Fabrication and erection of quality metal buildings at reasonable prices, any size - any design

Office **817-237-2282**  
 Fax 817-237-0904  
 Mark Cozart Jeremy Cozart  
 817-233-6668 817-237-2028

**WDC WELD-DONE CONSTRUCTION LTD.**

**Metal Building Erectors**

- Pre-engineered Weld-up
- Barns/Shops
- Arenas/Hangars
- Fencing

1220 E. Hwy. 199 • Springtown  
**817-220-2150**  
**www.weld-done.net**

**Devin's Handyman Service**

- Carpentry
- Cement
- Rock
- Granite
- Tile
- Painting
- Siding
- Insulation
- Kitchen/Bath
- Seamless Gutters
- Powerwashing
- Decks

**FALL SPECIAL 20% OFF with this ad!**

**Call Devin at 817-629-9608**

**049 Masonry/Stonework**

**Silva Masonry, L.L.C.**  
**CONCRETE COMMERCIAL • RESIDENTIAL**  
 Landscape Designs, Outdoor Kitchens  
 Patios, Retaining Walls, Mailboxes  
 All Types Stone & Brick Work Free New Construction • Remodels Estimates  
**817-308-6512**  
 email [alvarogsilva@verizon.net](mailto:alvarogsilva@verizon.net)

**066 Roofing**

**Miles Roofing**

- Insurance Claim Specialists;
- Free Estimates

**817-797-3420**

**DIAMOND ROOFING & CONSTRUCTION**

**417 N. MAIN ST • SPRINGTOWN**  
**817-523-4137**  
 Here Before The Storm. Here Long After.

**Commercial & Residential**

- Roofing
- Metal Roofing
- Carports
- Metal Buildings
- All General Contracting

Master Estimate BBB ACCREDITED BUSINESS

**052 Movers**

U.S. Army Retired-but not tired!  
 Careful moving-Cheap.  
 Call Big Jim @ 817-237-5151.

**057 Pets/Livestock**

Will pay top dollar for grazing and hay leases. Call 940-389-1936.

**062 Plumbing**

**LANDERS Plumbing Co.**  
**940-233-2862**

PLACE AN AD IN THE CLASSIFIEDS TODAY!  
**817-270-3340**

**Need to sell your ATV?**  
 Call today and ask about our (\$29.95) 3-MONTH SPECIAL!  
 Azle News 817-270-3340  
 Springtown Epigraph  
 817-220-7217

**081 Business/Commercial**

40x50 building For Rent, 3 miles west of Springtown.  
 817-713-7495.

**082 RV's for Rent**

Nice 1BR RV in adult RV park. Great for older person on limited income. Starts at \$550/mo. All Bills Paid. Heritage RV Park 817-444-3760.

**084 Mobile Homes for Rent**

Pelican Bay: 1524 Partridge, 1-1, stove/fridge, central heat, window unit, \$585/mo. \$400 deposit. Owner/Broker 817-988-9954.

Nice 2-2 SW, quiet area, Azle ISD, fenced yard. Qualified Tenants Wanted. 817-228-2414.

**086 Mobile Home/RV Lots**

Beautiful RV Spots available in nice, quiet area near Eagle Mountain Lake. \$400/mo. plus electric. Call for more information 817-228-2414.

1 RV spot available between Lakeworth and Azle. For more information call or text Jan 682-239-4159.

**POJO RV PARK**

302 Allison Road Springtown, TX 76082  
**817-925-3673**  
**30x60 RV Spaces Available**  
*One small inside pet allowed*  
**NEAR POJO STADIUM**

**088 Rent Unfurnished**

3-2 Duplex for Rent in Springtown. \$1,200/mo. \$600 deposit, no pets. 817-980-3066.

1807 PELICAN OVAL  
 2-1-1 \$1,195 MO. \$1,000 DEP.  
 1916 PELICAN DR. N.  
 3-1-1 \$1,345 MO. \$1,000 DEP.  
 1920 PELICAN DR. N.  
 3-2-1 \$1,595.MO \$1,000 DEP.  
 Gene Thompson & Associates  
 817-246-4646 gtax.com

**AZLE OAKS APARTMENT**  
 700 JARVIS • AZLE  
 817-444-1712

**1 & 2 Bedroom Unfurnished**  
 Accepting Applications  
 Rent based on income  
 TDD: 800-735-2989  
 This institution is an equal opportunity provider and employer.

**GENE THOMPSON & ASSOCIATES HOMES AND MOBILE HOMES FOR RENT**  
 gtax.com  
**817-246-4646**

**088 Rent Unfurnished**

**FOR RENT**

**1 Bdrm Springtown FOR RENT**  
**Water • Furnished NO PETS**  
**940-229-1045**  
**or 940-229-1046**

**Only \$29.95**



**Need to sell your horse trailer? Call today and ask about our 3-MONTH SPECIAL!**  
 Azle News 817-270-3340  
 Springtown Epigraph  
 817-220-7217

**Cross Companies Residential Properties**

Family-owned, family-run

**STEWART BEND** **SILVER CREEK** **RV PARK**  
 DUPLEX HOMES

**Stewart Bend Duplex Homes: 2 & 3** bedroom units available at \$1,225 & \$1,325. Quiet, clean, non-smoking. CALL 817-401-1796.

**Silver Creek RV Park:** Designed for local long-term stays. Best common building in Azle, secluded and quiet, city water/sewer. \$475 with \$75 electricity allotment; ABP in winter. CALL or TEXT 682-499-8616 or email [scrvooffice@gmail.com](mailto:scrvooffice@gmail.com).

**Barton Cottages Tiny Home Community:** COMING SUMMER 2022! Email [BartonCottages@gmail.com](mailto:BartonCottages@gmail.com)

**3 Month Special**



Private Party & Dealer Vehicle Ads  
 Autos, RV's, Tractors, Campers, Motorcycles, Trailers, etc.

**ONLY \$29.95** and your ad gets the pertinent info, a picture, a border and runs in the Azle News and Springtown Epigraph Classifieds for 3 months!

**Want To Sell Your Boat, Auto, Trailer, Motorcycle, RV Or Other Vehicle?**  
 Call for more info. Azle News 817-270-3340  
 Springtown Epigraph 817-220-7217

Save a Shelter Animal. Find your forever friend



**817-270-3340 - AZLE**  
**817-220-7217 - SPRINGTOWN**

Deadline:  
 1:00 PM FRIDAY

# Classifieds



**TexSCAN Week of**  
**Oct. 16-22, 2022**

**AGREACE**  
**AFFORDABLE LAND.** We have some of the best in Texas. Hill Country - Edwards, McCulloch, Schleicher, Coke, Val Verde counties, free ranging exotics. South Texas - Kinney, Duval, Live Oak counties - whitetail, hogs. Trans Pecos, Terrell, Val Verde - whitetail, javelina, quail. 30 year fixed rate financing. 5% down. www.ranchenterprisesltd.com, 800-876-9720.

**LOG HOMES**  
**Log Homes** - Pay only the balance owed. Just Released: American Log Homes is assisting estate & account settlement on houses. Log Home kits selling for balance owed, free delivery. Model #101 Carolina, bal. \$17,000; Model #203 Georgia, bal. \$19,950; Model #305 Biloxi, bal. \$14,500; Model #403 Augusta, bal. \$16,500. View plans at www.americanloghomesandcabins.com; 704-368-4528.

**Texas Press Statewide Classified Network**  
 221 Participating Texas Newspapers • Regional Ads  
 Start At \$250 • Email ads@texaspress.com

NOTICE: While most advertisers are reputable, we cannot guarantee products or services advertised. We urge readers to use caution and when in doubt, contact the Texas Attorney General at 800-621-0508 or the Federal Trade Commission at 877-FTC-HELP. The FTC web site is www.ftc.gov/bizop.

**GENERATORS**  
 Prepare for power outages today with a GENERAC home standby generator. \$0 Money Down + Low Monthly Payment Options. Request a FREE Quote. Call now before the next power outage: 1-855-704-8579.

**MEDICAL**  
**Portable Oxygen Concentrator** May Be Covered by Medicare! Reclaim independence and mobility with the compact design and long-lasting battery of Inogen One. Free information kit! Call 866-747-9983.

**DENTAL INSURANCE** from Physicians Mutual Insurance Company. Coverage for 350 plus procedures. Real dental insurance - NOT just a discount plan. Do not wait! Call now! Get your FREE Dental Information Kit with all the details! 1-855-901-0467 www.dental50plus.com/txpress #6258

**WANTED**  
**Need Extra Cash** - 1 Buy RVs & Mobile Homes - Travel Trailers, 5th Wheels, Goosenecks, Bumper Pulls. In Any Area. Any Condition - Old/New, Dirty or Clean! I PAY CASH. No Title - No Problem, we can apply for one. We go anywhere in Texas. ANR Enterprises, 956-466-7001.



**Raise some extra money through the Classifieds. Have a Yard Sale. 16 words for only \$10**  
**Azle News**  
 817-270-3340 &  
**Springtown Epigraph**  
 817-220-7217  
**Hometown Papers!**

**Puzzle Solution**

S-1607



**TEXAS CROSSWORD**  
 by Charley & Guy Orbison  
 Copyright 2022 by Orbison Bros.

**ACROSS**

- festive Texas party
- Kuwait's ruler
- XIT once covered \_\_\_\_\_ counties
- TXism: "como \_\_\_\_" (How are you?)
- Mary's Univer. is in San Antonio
- western State is in Wichita Falls
- TXism: "fire and fall \_\_\_\_" (retreat)
- now a ghost town in NE Oldham County
- TX Johnny Horton's "North to \_\_\_\_"
- Sam Houston was \_\_\_\_\_ by a Cherokee chief
- Texas war cry: "Remember \_\_\_\_"
- TXism: "that's a fine how do \_\_\_\_"
- Aggie kisses his/her \_\_\_\_\_ after a score
- a transport to DFW
- Dallas mayor at time of JFK assassination, Earle
- TXism: "that's a fine how do \_\_\_\_"
- military color
- TXism: "pull the fire" (rescue)
- TXism: "if you \_\_\_\_\_ gotta pay the band"
- film: "The Great Texas Dynamite \_\_\_\_\_"
- San Antonio pianist Samaro

**DOWN**

- Houston Museum of Fine \_\_\_\_\_
- state seal has "a star of five \_\_\_\_\_"
- a \_\_\_\_\_ of smoke
- "One \_\_\_\_\_, one Ranger"
- TXism: "mad as \_\_\_\_\_-eyed cow"
- TXism: "not a lick"
- this treaty led to destruction of missiles in Texas
- TXism: "shootin' \_\_\_\_\_"
- Brazos: "arms of \_\_\_\_\_"
- concealed
- Cowboy scores \_\_\_\_\_
- TXism: "\_\_\_\_ boose" (jail)
- Reservoir means "friendship"
- belly button fuzz
- Burnet \_\_\_\_\_ codes are 512 and 737
- Elm \_\_\_\_\_, TX
- TX Tanya's "Can \_\_\_\_\_?"
- the traffic light was invented by TX Henry "\_\_\_\_" Garrett
- TXism: "eating out of the same feed \_\_\_\_\_" (associated)
- TXism: "\_\_\_\_ to shuck" (big chore)
- former head coach at Texas A&M and Alabama (2 wds.)
- TXism: "\_\_\_\_ buster"
- TXism: "tax wrangler"
- TX Claire Chennault was adviser to Chiang \_\_\_\_\_-shek
- "in the year of our Lord" (abbr.)
- Mrs. Connally (init.)
- \_\_\_\_ Ridge North, TX
- Gov. Hubbard (init.)
- TXism: "\_\_\_\_ muffs" (cow chips)
- a base that dissolves in water
- TXism: "\_\_\_\_" (lie)
- TX Ginger Rogers 1933 film: "Flying Down \_\_\_\_\_"
- "Bevo's" sch.
- TXism: "that'll \_\_\_\_\_ nicely"
- Santa \_\_\_\_\_, TX
- TXism: "spin \_\_\_\_\_" (lie)
- TX Ginger Rogers 1933 film: "Flying Down \_\_\_\_\_"
- TXism: "as hard as finding a horse \_\_\_\_\_ in heaven"
- TXism: "lend a \_\_\_\_\_"
- Ted Cruz's time on the job (abbr.)
- Rangers' or Astros' headwear
- former Cowboy star, Emmitt (init.)
- should not be taken by a Texas athlete
- TXism: "\_\_\_\_ in the neck" (annoying)
- wagering numbers at Texas race tracks

**Need a New Best Friend?**

**Find Your New Swim Buddy in the Classifieds**

**1 YEAR SUBSCRIPTION OFFERS**

Name \_\_\_\_\_

Address \_\_\_\_\_

City \_\_\_\_\_ State \_\_\_\_\_ Zip \_\_\_\_\_

County \_\_\_\_\_ Daytime ph. \_\_\_\_\_

Clip and mail with check to:

**The Azle News**

321 W. Main Street • Azle, Texas 76020

Or for Azle News online subscription, visit our website:  
[www.AzleNews.net](http://www.AzleNews.net)

**The Springtown Epigraph**

P.O.Box 557 • Springtown, Texas 76082

Or for Springtown Epigraph online subscription, visit our website:  
[www.Springtown-Epigraph.net](http://www.Springtown-Epigraph.net)

1 Year Subscription

Check one:

**\$40.00**  
**IN-COUNTY**  
 Tarrant, Parker & Wise only

**\$46.50**  
**OUT-OF-COUNTY**  
 Texas and elsewhere

**\$36.50**  
**SENIOR CITIZEN**  
 60 years and older  
 Tarrant, Parker & Wise only

**\$25.00**  
**ONLINE ONLY**  
 Anywhere in the world



**Read Your Hometown Newspaper and See What You've Been Missing!**