

MONUMENT

Gateway UnawEEP Fire opposes national monument

By REGAN TUTTLE, *Editor*

A board member of the Gateway-UnawEEP Fire District (GUFED) contacted the San Miguel Basin Forum last week regarding a potential national monument along the Dolores River. Then, board member Dean Rickman sent a letter of opposition with an explanation of why the district cannot support a national monument in the local area.

“Please know that, of all the area’s emergency response teams and residents, the GUFED and the clients, neighbors, visitors, and territory that we respond to will be hit the earliest, hardest, and most frequently for any and all additional services this new monument will demand from our limited resources,” the letter, drafted on GUFED letterhead stated.

“We know the GUFED will need to add apparatus and personnel in order to improve the safety of our region and be able to respond to the growing numbers of tourists to the area,” the letter continued. “The additional personnel, training, grant funding, and equipment upgrades will take years to plan, manage, and build. They will cost millions of dollars to implement and millions more to maintain. To ignore these obvious projects and commitments would be dangerous and irresponsible.”

Rickman — who signed the letter, along with board chair Lisa Casto, Fire Chief Galen Daugherty, and other board members Mike Hoerter and Patrick Pipes — also sent a detailed breakdown of the initial and ongoing costs that the GUFED is projected to face, should the monument be designated.

The GUFED is a volunteer district with limited help. Only two paid staff members are on call daily in a team of five.

Additionally, it covers more than 800 square miles, the size of Rhode Island. EMS calls make up 90 percent of the district’s annual calls, with the rest being fire-related. Already, the EMS calls are for mostly nonresidents, 80 percent. With the nearest hospital 70 miles away, transports are already challenging for the small organization.

Most of the district has no cell service, and huge sections have no emergency radio coverage at all.

Additionally, Highway 141 is in less-than-good shape.

Furthermore, the data states that the rural district area features unique issues: steep cliffs that drop off from the road, drunk driving

Cont. on Pg. 4

ARTS AND ENTERTAINMENT

Peter and Wendy come to Nucla

SPECIAL TO THE FORUM

When Captain Hook sends his right-hand man Smee on a quest to capture Peter Pan, it’s seemingly business as usual ... at first. Little does Hook realize what fantastic adventures await him and his pirate posse in their search for the elusive Peter Pan in the upcoming show, Peter and Wendy, this Friday and Saturday.

The local cast features Journey Bentler as Peter Pan and Rynn Reams as Peter’s Shadow. Playing the Lost Boys are Presley Bachman

and Elsa Romaine. Ellixis Tooker is Wendy Darling; Emily Johnson is Michael Darling. Mr. Darling and Smee are played by Missoula Children’s Theatre (MCT) Tour Actors Kelson Bauman and Raegan Branch. The notorious Captain Hook is Anton Pierce, with a pirate crew of Grace Johnson and Hank Londberg. Damara O’Connell is Tiger Lily and Michael Kus and Audrey Martinez are the Neverlanders.

The MCT residency in Nucla is brought to you by the West End Theatre Creative (WETC) with support from the Vestal House, West End Pay It Forward Trust, Telluride Foundation, West End

Public Schools, Montrose West Recreation, Ruth Phippeny and many private donors. MCT is the nation’s largest touring children’s theater. They have been touring extensively for nearly 50 years, bringing theater from Montana to communities in the U.S. and as far away as Japan. This year alone, MCT will visit nearly 1,100 communities.

Megan Caruso spearheaded the initiative to bring MCT to the West End more than three years ago. Previous area MCT productions include Frog Prince and Secret Garden. MCT provides a week-long immersive theater program

Cont. on Pg. 5

COMMUNITY

Callanetics, Tai Chi and yoga happen in Nucla shop

By REGAN TUTTLE, *Editor*

There’s more than quilting and crafts happening at the space inside Art at the Apothecary at 480 Main St. in Nucla. In fact, movement and exercise classes are taking place too.

Terri Jamison is teaching Tai Chi on Wednesdays at 6 p.m. The classes do not require exercise mats — just comfortable clothing and footwear. Tai Chi is only suitable for adults, so children should not attend. All abilities are welcome; there are no levels, and no aerobic work happens in the class. No soreness will follow the practice as a result.

Behavioral health worker Kristen White told the Forum she recommends Jamison’s classes.

“Terri is very kind, caring and compassionate about her community,” White said. “Also, having worked with many chronic pain patients over the years, I recommend Tai Chi for anyone that wants to move more with low impact in order to reduce pain. Any movement, even if it’s just five minutes a day, is an improvement.”

“If you’re breathing, you can do Tai Chi,” Jamison added on her flyer.

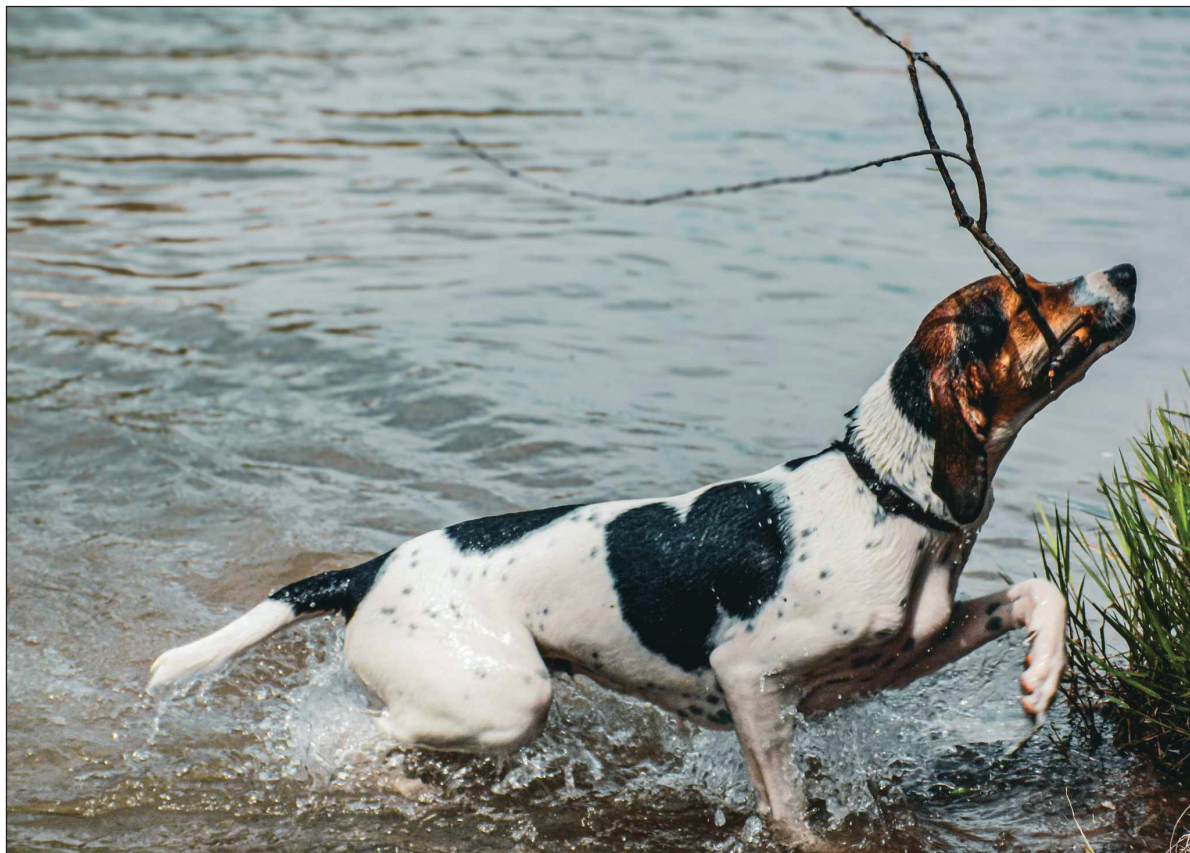
And, Shirley Miller is leading exercise classes for the public. Called “Callanetics,” it’s about toning the muscles and strengthening the core. While no children may attend, those over age 18 are welcome to come and practice. Miller’s classes are Thursdays at 6 p.m. and last one hour. Preregistration is required, since space is limited. Miller suggests bringing an exercise/yoga mat and water, and showing up in comfortable clothes. She said all should check in with their primary care provider to ensure the class, or any form of exercise, is safe for them.

Additionally, Marla Hagle is teaching yoga and pilates on Friday mornings at 11 a.m. Classes are a blend of beginner, intermediate and advanced work, and participants are invited to move at their own pace. The yoga-pilates fusion is suitable for ages 8 and older. Exercise mats are required, and water is recommended. Space is limited, so pre-registration is also suggested for Hagle’s classes.

Anyone who’d like to sign up for any of the movement classes at Art at the Apothecary should call or text Cassandra Farmer at 970-209-0385. They are \$5 per class, or six for \$25.

Farmer told the Forum that while no other classes are on the schedule at this time, quilting classes will

Cont. on Pg. 4



The taste of summer

Sadie May takes a late July swim in the Naturita ponds. (Photo courtesy of Scenic Shots by Kristen)

HEALTH CARE

\$1.5M available through opioid settlement for local region

By REGAN TUTTLE, *Editor*

The Southwest Colorado Opioid Regional Council (SWCOPC) has been working to support local communities with funds, a plan and various resources. Montrose County Commissioner Sue Hansen, a member of SWCOPC, told the Forum the funds, which total \$787,665,251 nationally, are due to a settlement. The Forum asked if the settlement was due to overprescribing of prescription opioids in the past and the negative effects that’s had on society in the last few decades.

“The settlement funds are indeed from distributors and drug companies in response to the opioid epi-

demic in the past,” she said in a July interview.

She added the settlement process was lengthy, but the monies are intended to help. Those allocating funds in the settlement are Allergan, CVS, Johnson & Johnson, Kroger, Mallinckrodt, McKinsey, Publicis, Teva, Walgreens, Walmart and other distributors.

The state has been divided into regions for distribution of funds.

“Attorney General Phil Weiser was a strong advocate of the regional approach across the state,” she said. “We have 19 regional councils.”

Mesa County, for example, is the only county in the Mesa County region. The West End is part of Region 14, made up of Delta, Mon-

trose, Gunnison, Hinsdale, San Miguel and Ouray counties. Each county can appoint two representatives on the voting council.

“I came to be on the board during the initial settlement discussions and have served since then as treasurer and secretary,” Hansen said. “Montrose County is the fiscal agent for the settlement funds.”

Liz Smith, Gunnison County Commissioner, is the chairperson for Region 14, and Carol Friedrich, Ouray County Human Services Director, is the vice chair. There is also a non-voting group, made up of local experts in the field, and they attend meetings regularly.

Hansen said Region 14 is esti-

Cont. on Pg. 3

NORWOOD CHAMBER NEWS

Celebrating Norwood Ranger District, Hi-Country Motorsports and Norwood's historical society

By CHERYL JERABEK

The Norwood Chamber of Commerce of Wright's Mesa is bringing local communities a series of columns spotlighting current business members from A-Z.

This month, the chamber acknowledges the Grand Mesa, Uncompahgre and Gunnison (GMUG) National Forest Service, specifically the Norwood Ranger District. Situated in the heart of some of the most breathtaking landscapes in the Colorado Rockies, Norwood is surrounded by the majestic GMUG National Forest. Established in 1905, the ranger district is located at 1150 Forest St. It serves as a steward of the land, ensuring the conservation and sustainable use of natural treasures.

The three GMUG forests combined cover almost 3 million acres of USFS land, stretching across the central and southern Rocky Mountains, south of the Colorado River and west of the Continental Divide. Visitors and local outdoor enthusiasts continue to be attracted to the natural wonders surrounding Norwood, which keeps GMUG staff busy.

"In addition, we are very involved in the community," said Bernice White, assistant manager for the Norwood Ranger District in the U.S. Forest Service office.

Additionally, Hi-Country Motorsports, a family-owned and operated business, is dedicated to making outdoor living easier and more enjoyable for the local community and visitors alike. With a reputation built on experience, fair prices and a friendly atmosphere, the full-service dealership offers a comprehensive range of products and services that cater to the adventurous spirit of Norwood and the surrounding area.

Located at 1395 Grand Ave., Hi-Country Motorsports is owned

and operated by local resident Mike Grafmyer. It is one of western Colorado's only full-service dealers, authorized to sell Arctic Cat and Polaris vehicles. It offers an impressive selection of snowmobiles, ATVs and other outdoor equipment. The business' goal is simple yet significant: "to provide quality products and exceptional service at an affordable price." This commitment to excellence has cemented Hi-Country's reputation as a trusted partner for those seeking reliable and high-performance outdoor gear, and as an important member of the Norwood community.

Finally, nestled in the quaint and cozy historical log cabin in the heart of Norwood, the Norwood Historical Society is dedicated to preserving the town's rich heritage. Established in 1996 and functioning under the leadership of Barbara Youngblood, the society aims to offer a glimpse into life from the 1880s through the early 1900s.

The log cabin museum houses a diverse collection of artifacts, photographs and personal stories that paint a vivid picture of Norwood's past. It works to preserve the histories of mining, ranching and other industries in the Wright's Mesa area. From everyday household items to unique family heirlooms, the exhibits provide a heartfelt connection to Norwood's early days.

"Our mission is to preserve and share Norwood's history," said Youngblood. "Through displays of items, we hope to show what life here might have been like many years ago."

The Norwood Chamber of Commerce of Wright's Mesa has monthly membership meetings the second Tuesday of each month at varying local locations from 5:30 to 6:30 p.m.

LETTER TO THE EDITOR

Thank you

Dear Editor,

On behalf of the San Miguel Basin Fair and Rodeo, we'd like to thank District 3 Commissioner Kris Holstrom's unwavering service to the communities in the West End. Kris supports our ranching and agricultural heritage and is a respectful listener. We wish her the best as she looks to her future and the community she represented in her years as our county commissioner. Thanks, Kris!

Janet Kask
SAN MIGUEL COUNTY

Please help

Dear Editor,

Please help the Town of Nucla welcome our new Animal Control and Code Enforcement Officer, Ms. Brooke Smith. Brooke has a good background in animal control and

has successfully completed several National Animal Control Association (NACA) and Animal Control Officer (ACO) certification courses. She is available to take complaints or answer any questions you may have regarding harboring animals within the town. Brooke can be reached at 970-428-7351. She will begin her code enforcement duties as soon as she has completed the Code Officer Safety Specialist training program. The Nucla Town Board of Trustees will determine which town codes and ordinances she will focus on enforcing first. Our intent is to clean up our rights-of-way, as well as require residents to remove junk and trash from the view of our streets. Please let this letter serve as notice to all residents of Nucla of the board's intent. For more information on codes, all may visit www.townof-nucla.colorado.gov.

Melissa Lampshire, Town Clerk
NUCLA

History: Rimrocker Historical Society Naturita and the San Miguel by Mrs. E. A. Tuller

By JANE THOMPSON, *Rimrocker Historical Society*

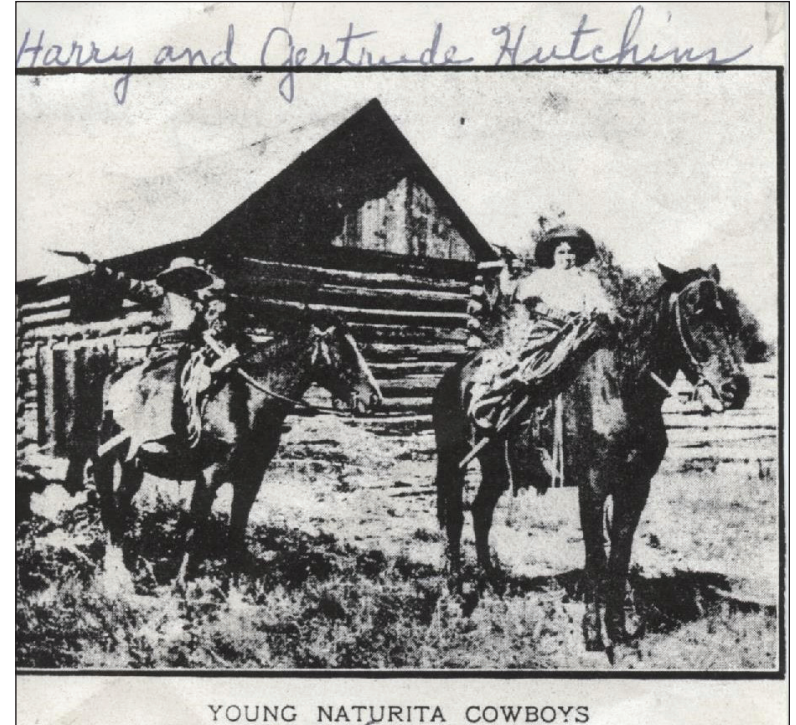
Last week I shared an article written by Sir Tom Swain about Paradox Valley. Also in that file was an article about Naturita, written by Mrs. E. A. Tuller. I have been trying to figure out where these articles came from but haven't been able to find them in any newspapers or determine when they were written. There is one more article that was in the file about the La Sal Mining District that I will share next week.

Mrs. E. A. Tuller was Miss Lettie or Letta Hutchins before she married. She was the daughter of Mr. A. L. Hutchins from Iowa who settled as a rancher in Naturita. Mrs. Tuller had come earlier and taught in Telluride and at the Tomboy school for 10 years. She married Tuller in May of 1899 in Iowa and he returned to Colorado with her. Mr. Tuller died in his sleep in October of 1906 at the age of 59, during a cattle roundup with the Ray Bros., A. R. Payson and John Blake. Mrs. Tuller stayed in Naturita and continued to raise stock and teach.

Naturita and the San Miguel, by Mrs. E. A. Tuller:

"What is now Naturita at one time formed a part of the Uncompahgre reservation. As the Indians were crowded south and westward to make room for the civilization which the pale-faced brother brings with his advent, the land along the San Miguel river became the property of a placer company and was held and worked for the shining metal for a number of years.

The first cabin at Naturita was built by Mr. Payson in 1881 on what is now known as the Blake ranch, and is still standing. The following year Mr. Blake and family came and located the ranch which they still own. These were the times that "a sheepskin for a window and blanket for a door" did service, it being impossible to get lumber enough to make a door. A little later the Golden family came, then the Warners, others following and increasing the settlement, until today nearly all the land along the river that can be watered is cultivated. Where sagebrush was king, alfalfa reigns supreme, and as accessories for the comfort of the inhabitants are orchards of apples, pears, peaches, cherries, plums, and a great variety



Harry and Gertrude Hutchins ready to ride in 1905.

(Photo courtesy of Rimrocker Historical Society)

of the small fruits. The branches of the trees bend under the weight of fruit until they have to be robbed of their burden before maturity or the trees would be broken and ruined.

We not only boast of our exceptional fruitage, but the quality is unsurpassed. The remoteness from a railroad and market makes commercial orchards unpractical at present. All bearing orchards produce more than the owners need for their consumption, so the latecomers — whose orchards are too young to bear — can supply themselves with plenty of fruit. All kinds of vegetables are grown in prodigious sizes and quantities. While the fruit and vegetables are indispensable additions to the ranchman's larder, he must look to the cattle industry to fill his coffers and remunerate him for his isolated life.

While there are larger companies, nearly every resident has some cattle. The Tabeguache range is comparatively small and is now stocked as much as it should be for the cattle to do well. The Ray herd is the largest on the range. The cattle are principally Herefords and Shorthorns. The adjoining range on the northwest is controlled and used by C. E. Wetzel, whose cattle can scarcely be said to graze on a thousand hills, yet they outnumber all others in this section, and have aided Mr. Wetzel in building

a very comfortable ranch home about 15 miles down the river from Naturita. This ranch is a model of neatness. In the orchard, which supplies an abundance of fruit, are almond trees that bore some nuts of excellent quality. The California seedless grapes flourish there. By harnessing the San Miguel, water is pumped to a mesa 60 feet above the river and waters 60 acres of fine alfalfa land. Who can say but that in the future these arid mesas may not be made to blossom and furnish an abundance of nutritious food.

With an elevation of 5,500 feet, we have an exceptionally fine and healthful climate. There are some very warm days in summer, but the nights and mornings are always cool. The winters are usually mild with light snow falls, which do not remain long when Old Sol sheds his rays upon it. The air is very dry and invigorating. Most of the inhabitants use the river water for domestic purposes.

Civilization has driven nearly all the deer and bear from this section. If one could find game he must wander back into the mountains."

Mrs. Tuller certainly bragged about life in Naturita just as Mr. Swain shared the good life in Paradox Valley. Perhaps this was a brochure or booklet to talk about the wonderful places to settle in western Montrose County.

West End
EQUIPMENT RENTALS

120 East Main Street - Naturita, Colorado | Propane Sales
(970) 865-2408 • westendequipmentrentals.com | Now Available

Looking to Place a Classified?

And have
thousands
of people see it?

Place an Ad in the
**San Miguel
Basin Forum**
Call (970) 864-7425

PUBLIC LANDS

GMUG to host public field trips

SPECIAL TO THE FORUM

The Grand Mesa, Uncompahgre and Gunnison (GMUG) National Forests will host its annual Public Field Trips for the Spruce Beetle Epidemic and Aspen Decline Management Response (SBEADMR) project and the Taylor Park Vegetation Management Project (Taylor Park) on Aug. 8 and Aug. 27.

All interested members of the public are invited to attend this year's field trips. Both field trips will involve hiking on moderate terrain.

These field trips provide an opportunity for interested individuals to participate in discussions and engage with GMUG staff, adaptive management group members and science teams on topics including the implementation timeline, temporary roads, treatment unit prescriptions and resource concerns relevant to Taylor Park and SBEADMR.

The SBEADMR field trip is scheduled for Aug. 8. Attendees will tour the Lone Craver timber sale, an active operation, as well as the upcoming East Beaver timber sale, both located on the Norwood Ranger District. Participants need to bring a sack lunch, water and any necessities for a day outdoors. Participants will be able to caravan/carpool from the Montrose Public Lands Office or the Norwood Ranger District office. Groups will leave at 8 a.m. and return by 4:30 p.m. Please RSVP by Aug. 1 to Carlyn Perovich at carlyn.perovich@usda.gov. For questions, please contact David Casey, acting GMUG Timber Program Manager at david.casey2@usda.gov.

The Taylor Park field trip, co-hosted with Western Colorado University, will be held on Aug. 27. The tour will visit different spots in Taylor Canyon, including Lottis Creek. Participants need to bring a sack lunch, water and any necessities for a day outdoors. Vans will

leave Western's University Center parking lot at 9 a.m. and return at 3 p.m. Contact Courtney King, the coordinator of Taylor Park Adaptive Management Group, at courtney.king@western.edu for questions and to RSVP by Aug. 12.

SBEADMR vegetation management project information can be found at: <https://cfri.colostate.edu/projects/sbeadmr/>.

More information on each project may be found online. For the Taylor Park vegetation management project, please visit <https://www.centerforpubliclands.org/cpl/taylor-park>.

For information and updates on current fire restrictions, conditions, and recreation opportunities on the Grand Mesa, Uncompahgre and Gunnison National Forests, visit the forest website at <https://www.fs.usda.gov/gmug>. Connect with GMUG on social media on X (Twitter) at x.com/gmug_nf and on Facebook at <https://www.facebook.com/GMUG.NF/>.

Opioid settlement

Cont. from Pg. 1

ated to receive \$7.3 million until 2038.

"Currently we have \$1.5 million available for distribution," Hansen said. "We can also apply for grants through the Attorney General's office that can add to our total amount available."

There's a two-year plan in place for Region 10, and under that plan are five categories with percentages of funding to be allocated: prevention and education (24 percent), treatment (22 percent), harm reduction (24 percent), criminal justice (6 percent) and recovery (24 percent). Recently, Tri-County Health Network announced a counseling program that included six sessions of

support related to substance abuse, and that's part of SWCORC's work.

"The two-year plan is flexible, so if other issues come up that need to be addressed we can submit changes," Hansen said.

Hansen said SWCORC and its work are important.

"It is important for Montrose County, because drug use and overuse affects our communities in numerous ways," she said, "and while opioid use and mis-use is not our largest issue, these funds can be used for programs to help alleviate and treat the addictions."

The plan does list specific strategies, like education in schools, mental health first-aid, and family resources. Childcare support

and transportation are included in the plans for treatment. For harm reduction, Narcan and fentanyl test strips are part of the plan, as is the tracking of hot spots and places where there are gaps in support. Restorative practices and diversions are mentioned in the justice piece. Follow-up approaches are being developed in the recovery aspect of the plan, so that those moving from treatment to recovery are not forgotten.

The plan says it will use data-driven, evidenced approaches and rely on best practices for rural communities.

To learn more about the SWCORC, the public may visit swcorc.com/.

BACK-TO-SCHOOL SPECIAL

SPORTS PHYSICALS
SCHOOL PHYSICALS
IMMUNIZATIONS UPDATES

\$50 now through Aug. 30, 2024
(If paid at time of service)

VFC (vaccines for children) program

Call now to schedule your appointment



Basin Clinic

421 Adams Street, Naturita, Colorado
(970) 865-2665

Monday through Friday
8 a.m. to 5 p.m.

Carol Scott PA-c
Mary Kus, FNP

Tiffany Ordóñez, MD – Medical Director

(EEOIC patients please schedule with our MD)

For help with medical situations after hours, call 865-2665 and follow prompts.

San Miguel Basin Forum

PO Box 724 · Nucla, Colorado 81424

Owner and Editor: Regan Tuttle · regantuttle@gmail.com · 970-864-7425

Advertising Manager: Tanner Nelson

Design Team: Rick Bickhart & Tori Sheets

Sam's Service
Phillips 66

Your Service Station

- Offering Phillips 66 Proclean Fuel 24-7 with Credit Card
- Convenience Store
- Brand name Tires & Service
- Lube-Oil Service
- Computer Diagnostics
- Light Mechanical

James Keeton

1685 Grand Ave, Norwood, CO • 970-327-4447



Bachman Law, LLC

Estate & Medicaid Planning, Probate, LLC Formation, & Real Estate Transactions

140 E. Main Street
PO Box 158
Naturita, CO 81422

Sara Bachman

-Attorney at Law-

970.865.2440
sara@bachmanlawllc.com
www.bachmanlawcolorado.com

606 MAIN ST
NUCLA, CO 81424
OFFICE 9708642158
CELL 9704281666

DAVID JOHNSON
OWNER

HUNTEM TIRE SERVICE AND REPAIR

LOCAL AFFORDABLE GREAT SERVICE



Looking to Place a Classified?

And have thousands of people see it?

Place an Ad in the San Miguel Basin Forum
Call (970) 864-7425

Uranium Price July 22, 2024 – \$83.50



We Meet Your Tire Needs

We Appreciate & Thank You for Your Business



We are looking forward to serving you.
Great Tires - Great Deals
29492 Hwy 97, Nucla, CO
(970) 864-2287



Upper Cut Carpentry LTD.

CUSTOM HOMES AND REMODELS


Tryllen Richards - Owner

970-296-4870

upcutcarp@gmail.com

Also on Facebook

Retail Cannabis 21+ years old
Keep it SIMPLE!
NORWOOD LOCATION
 OPEN MON - SAT
 11am - 7pm Everyday
FARM FRESH FLOWER
 GROWN IN
 NORWOOD, CO



970.728.1834 · 1630 Grand Ave · Norwood, Co. 81423

Vista Realty, Inc.
 Discover The Undiscovered
970-865-2525

We are always available to help you with your REAL ESTATE needs!

We advertise on the following websites:
 Zillow, Realtor.com, Homes.com, Trulia, and Homes and Land

212 East Main Street
 Naturita, Colorado 81422

Office: 970-865-2525
 Debbie: 970-428-2364
 Michele: 970-417-5103




WILLIAMS CONSTRUCTION
 EXCAVATING CONTRACTOR

Aggregate & Redi Mix Supplier

Call for a Quote or to Schedule a Delivery
SATURDAY DELIVERIES AVAILABLE

(970) 729-1085 (970) 327-4218



PARADOX BICYCLE RECYCLE

BICYCLE OUTPOST & SERVICE SALOON

205 E Main St. Naturita, Colorado
 970-275-8310 · paradoxycle@gmail.com

HIGHMARK ELECTRIC

Highmark Electric is hiring an **Experienced Electrician** to start immediately.

Excellent pay for excellent work and work ethic.

Contact Caleb Fourney at highmarkelectric.caleb@gmail.com or call 970-708-8883



Moving right along

Construction continues at the Nucla school parking lot, which is estimated to be complete by mid-October. (Photo by Rusty Scott)

Gateway-Unawweep Fire

Cont. from Pg. 1

issues, stray cows, wandering elk, large, heavy trucks, plus speeding — all of this with limited law enforcement on the route. The data also states there is no real shoulder on the road, and no safe place for stopping, or for cyclists to travel so that vehicles can avoid them or pass.

Moreover, the letter states that Highway 141 is a “sanctioned, federal, main regional corridor for transporting hazardous materials, heavy hauling, and oversized loads” in and throughout the Four Corners area.

Representatives of the GUFJ reiterated in the letter and attached spreadsheets with estimates that it would take millions of dollars to fix

the issues at hand. Those include staffing, fire stations, equipment, water access, law enforcement, road repairs and more.

“We have been saving lives and property in our district for decades,” the group letter of opposition states. “We know these costs and projects are real and need to be addressed.”

Nucla shop

Cont. from Pg. 1

resume in the fall. Still, the “Finish it Friday” sessions are ongoing at the Main Street space, happening on the first Friday of every month from 10 a.m. to 4 p.m. The public is welcome to come, bring their quilt-

ing or other sewing and art projects, use the space and make headway on what they’re working on. Cost is \$10 to spend the day.

In other news for Art at the Apothecary, 9-year-old Grace Johnson won the quilt that was raffled during the 2024 Water Days

celebration on June 29. The quilt was American-flag themed with red, white and blue tones.

The raffle that the Nuclear Quilters held was to build support for supplies needed for future classes held for the studio.

EMERGENCY CALL BOXES INSTALLED IN MESA COUNTY

NNTC has a total of 6 Emergency phones installed along Highway 141 with plans on still adding more!

Gateway-Unawweep Fire Department is currently working with CDOT to provide signage along the Highway in Mesa County for each Emergency 911 Phone Box.

NNTC is providing this complimentary service within our service area to help Montrose and Mesa County First Responders to get to accident and fire scenes quicker.

Look for these RED Boxes next time you drive Highway 141 towards Grand Junction.



Looking to Place a Classified?

And have thousands of people see it?

Place an Ad in the **San Miguel Basin Forum**

Call (970) 864-7425

Peter and Wendy

Cont. from Pg. 1

for area youth, along with two experienced theater instructors, costumes and a set.

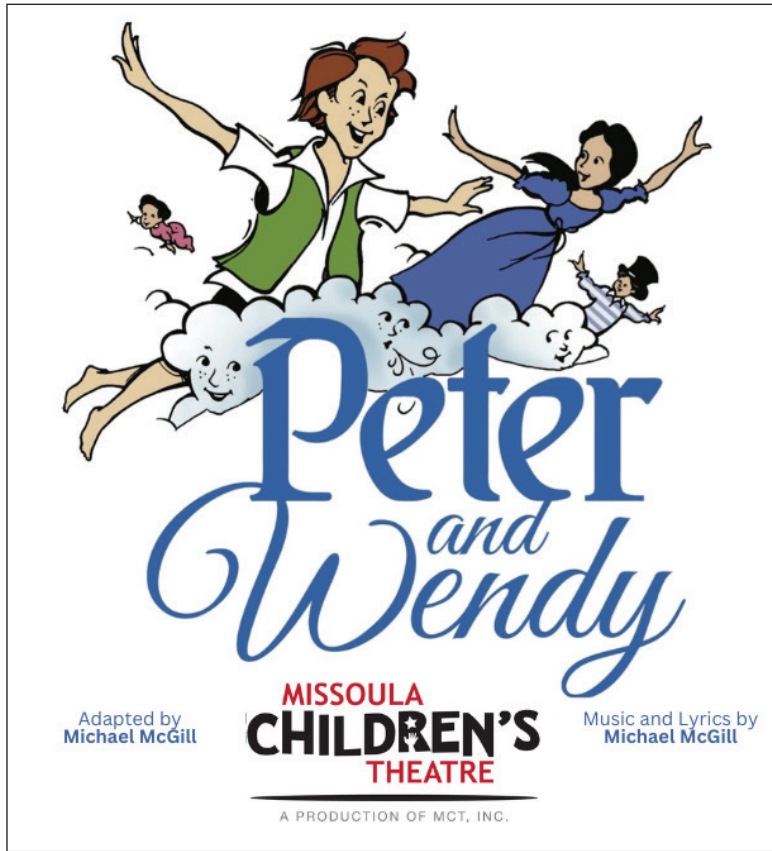
“There are limited theater and art opportunities available to the children of the West End,” said Sara Bachman, a local volunteer helping to coordinate the MCT residency and fundraising.

“Bringing MCT to the area helps bridge this gap. Not only do the children learn about theater and acting, but they also learn important public speaking skills, teamwork and discipline learning their lines.”

Mallory Rice, whose daughter is participating in the program for the third year, said, “The Missoula Children’s Theatre is a highlight in my daughter’s year. The quality of the instruction and production is unmatched.”

West End Theatre Creative is seeking donations to make the production possible again in 2025, as well as donations of meals for the MCT instructors during their residency in the West End. WETC also seeks volunteers who can be available during rehearsals to help as needed during the week.

Peter and Wendy will be presented on Friday, Aug. 2, at 6 p.m.



The West End Theatre Creative and Missoula Children’s Theatre production of Peter and Wendy runs this Friday and Saturday evenings at West End Public School in Nucla. (Courtesy photo)

and Saturday, Aug. 3, at 11 a.m., at the new West End Public School in Nucla. Entry is permitted on the south side of the building near the school bus drop-off. Tickets are a

suggested donation of \$5/per person at the door.

For more information, call Megan Caruso at 720-841-4271 or Sara Bachman at 970-250-0484.



Serving our communities since 1913

970-865-2255

Located in Naturita at the corner of Highway 114 & 97 P.O. Box 160 Naturita, CO, 81422

Yesterday, Today & Tomorrow



Armagost Consulting

Elevate your business with Armagost Consulting’s expert IT solutions.

Contact us today for a free consultation customized to meet your needs.

Dial (970) 369-9558 or visit www.armagostconsulting.com to get started.



TOOKER ELECTRIC LLC

Christopher Tooker
Master Electrician
Electrical Contractor
Phone: 970-864-2321
tookeroffice@gmail.com
www.tookerelectric.com

New Construction
Residential
Commercial
Service



ENJOY 4 SEASONS IN SOUTHWEST COLORADO’S OUTDOOR JEWEL!

Nora Davis (Owner)
(970) 428-2236
Call for an appointment
E-mail: rimrockerrealestate@gmail.com

TGBasin Store

* Snacks * Burgers * Cabins * Campground *

Restaurant Open 8:00-3:00
Now Serving Breakfast · Friday · Saturday · Sunday

[TGBasinStore](https://www.instagram.com/TGBasinStore) · TGBasinStore@gmail.com
(970) 787-8464 · 102 County Road U29 East · Redvale, CO



POWERING COMMUNITIES THROUGH CARING CONNECTIONS

Celebrating National Health Center Week

JOIN US FOR OUR FREE COMMUNITY TACO BAR ON AUGUST 8, 2024

Located at UMC
1350 Aspen Street
Norwood

4-7pm



UMC will have food, drinks, games, raffles, and local community partners for fire truck rides, helicopter tours, and more!



TIMBERLINE
HARDWARE
Locally Owned and Operated

OPEN 7 DAYS A WEEK

NORWOOD
1920 Grand Ave
970-478-7868

TELLURIDE
200 E Colorado Ave
970-728-3640





H N H
Sign
COMPANY, LLC
844-464-7446

VINYL ALUMINUM HOODIES
WRAPS MUGS
BANNERS ENGRAVED
TEE SHIRTS WOOD
HATS PLASTIC
PRINTS STICKERS
CUSTOM GIFTS
...AND SO MUCH MORE

YOUR COMPLETE SIGN SHOP

OPEN MONDAY - FRIDAY 8-5
395 MAIN STREET, NUCLA
WE HAVE 42 YEARS EXPERIENCE
IN CUSTOM DESIGN AND CAN CREATE A
LOGO AND BRING YOUR BRAND TO LIFE!



**Residential, Commercial,
Recycle, Portable Toilets &
Roll Off Dumpsters**

*We now offer luxury portable
toilet rentals for all of your
event needs!*

SERVING THE COMMUNITIES OF:
Nucla, Naturita, Redvale,
Norwood, Telluride, Ridgway,
Log Hill, Delta, and Montrose

31186 Highway 145
Naturita, Colorado
(970) 864-7531
www.bruinwastemanagement.com

ACCEPTING APPLICATIONS

1 & 2 bedroom apartments, Family Living at an affordable price.



Nucla Family Housing
300 East 3rd Street, Nucla, Colorado
(970) 864-2262



Landmark Management: 712-276-1735 • TTY: 800-659-2656

This institution is an equal opportunity provider



Construction
Bryan Littlejohn
Bus: (970) 327-4096 Cell: 428-4096
P.O. Box 422, Naturita, CO 81422

**"Your One Stop
Shop For All Your
Communication Needs"**

NNTC
Wireless 864-7335

AFFORDABLE BOOKKEEPING SERVICES

Deborah Snell (Owner)
E-Mail: affordablebkpservices@gmail.com
Cell: (970) 209-1661 • (719) 371-3734
Office: (719) 430-5631
Mailing: PO Box 433, Westcliffe, CO 81252

QuickBooks, Accounts Payable & Receivable, Sales Tax Assistance, Small Business Set Up, Personal & Business Assistance, Personal & Small Business Income Tax Preparation, Complimentary Consultations, Farm & Ranch Assistance

* NOW SERVING YOUR AREA *

**Four Seasons
Gutter Systems**

QUALITY SERVICE IN WESTERN
COLORADO SINCE 1989

- SEAMLESS 5" & 6" K-STYLE
- HAND CUT, SINGLE SEAM MITERS
- STEEL, ALUMINUM, & COPPER
- UP TO 10-YEAR WARRANTY

**10% MILITARY &
SENIOR DISCOUNT**

(970) 858-1347 ~ FOURSEASONGUTTERS@YAHOO.COM
WWW.FOURSEASONGUTTER.COM

West End Montrose County Sheriff's Office Blotter

7/6/2024

1015 Hours - Deputy was dispatched to Highway 145 mm 115 near Redvale for a utility problem.
1237 Hours - Deputy was dispatched to the 35500 block of 3900 Road near Redvale for an agency assist.
1505 Hours - Deputy was dispatched to the 300 block of East Tenth Avenue in Nucla for a trespassing report.
1550 Hours - Deputy was dispatched to the 500 block of West Fourth Avenue in Nucla for a civil matter.
1837 Hours - Deputy was dispatched to Highway 141 mm 79 near Naturita for an accident.

7/7/2024

0027 Hours - Deputy was dispatched to the 35100 block of 3575 Road near Redvale for a disturbance. Dillon Earley, 32, was arrested for violating a protection order, domestic violence, harassment x2, first degree criminal trespass, and possession of a controlled substance.
1229 Hours - Deputy was dispatched to the 500 block of Main Street in Nucla for found property.
1556 Hours - Deputy was dispatched to the area of Wray Mesa near Paradox for a fire.
1826 Hours - Deputy was dispatched to the 300 block of West Sixth Avenue in Nucla for a disturbance.
2041 Hours - Deputy was dispatched to the 300 block of East Fourth Avenue in Nucla for a littering report.

7/8/2024

1122 Hours - Deputy was dispatched to the 300 block of West Sixth Avenue in Nucla for a civil matter.
1154 Hours - Deputy was dispatched to the 300 block of Payson Street in Naturita for a utility problem.
1531 Hours - Deputy was dispatched to the 35300 block of II Road near Redvale for a disturbance.
1531 Hours - Deputy was dispatched to the intersection of East Fifth Avenue and Main Street in Nucla for a traffic hazard.
1614 Hours - Deputy was dispatched to the area of West Seventh Avenue and Grape Street in Nucla for a parking problem.
1832 Hours - Deputy was dispatched to Highway 141 mm 25 near for an agency assist.
2027 Hours - Deputy was dispatched to the 21600 block of 600 Road near Paradox for a theft report.
2115 Hours - Deputy was dispatched to the 100 block of East Main Street in Naturita for a disturbance.
2153 Hours - Gordon Leist, 62, was contacted in the 100 block of West Main Street in Naturita and issued a warning for expired registration. 1 civil process attempted/served

7/9/2024

0833 Hours - Deputy was dispatched to V19 Road and Highway 141 near Naturita for a traffic hazard.
0909 Hours - Deputy was dispatched to the 400 block of West Fifth Avenue in Nucla for a civil standby.
1002 Hours - Deputy was dispatched to Highway 141 and CC Road near Nucla for a welfare check.
1334 Hours - Deputy was dispatched to the 900 block of Grape

Street in Nucla for a suspicious person.
1533 Hours - Deputy was dispatched to the 29900 block of DD31 Trail near Nucla for a fire. 1 warrant attempt

OBITUARY

George William Spor

April 22, 1936 - July 4, 2024

George William Spor passed away July 4, 2024, from complications from Parkinson's disease at Willow Tree Care Center in Delta, Colorado. He was 88.

George was born April 22, 1936, in Montrose, Colorado, to parents Albert Ernest Spor and Effie Johnson. He spent his childhood in Montrose and graduated from Montrose High School. After high school, George joined the U.S. Army. On May 23, 1964, George married his wife, Sherry Sue Kemper. They remained married until George's death, just over 60 years.

Eventually, George moved to the Nucla, Colorado, area where he lived the majority of his life. He was a member of Our Lady of Sorrows in Nucla and of the Benevolent and Protective Order of the Elks and of the Moose fraternity. George was an avid hunter. He also always took pride in working on his yard and spending time with his family. George retired from Umetco Minerals Corporation after a career of 43 years.

George was preceded in death by both of his parents, Albert and Effie, and all of his siblings: Anita, Ella, Anna, Rose and Walter.

George is survived by his wife, Sherry Sue Spor; son, Todd Alan Spor; daughter, Teresa Renee Burgos of Sterling, Virginia, and grandchildren Alexandra Spor, Trent Burgos, Nicholas Spor and Kristal Burgos.

Service will be a Catholic Mass at Our Lady of Sorrows in Nucla, on Saturday, August 3, 2024, at 12 p.m. Crippin Funeral Home is assisting with arrangements. Any memorial contributions can be made to St. Jude's Children's Hospital.

Water Baptism

Free and Open to Anyone

At the Naturita Town Park

Sunday, August 4th at 2 p.m.

DELTA SALES YARD - MARKET REPORT

300-400# STEERS	3.80-4.20	300-400# HEIFERS	3.50-4.00
400-500# STEERS	3.50-3.80	400-500# HEIFERS	2.90-3.35
500-600# STEERS	2.95-3.35	500-600# HEIFERS	2.75-2.90
600-700# STEERS	2.65-2.80	600-700# HEIFERS	2.30-2.60
700-800# STEERS	2.40-2.55	700-800# HEIFERS	2.30-2.45
800-900# STEERS	2.30-2.45	800-900# HEIFERS	1.90-2.10
Top bulls	1.48-1.70	Medium bulls	1.40-1.44
Young Cows	1.45-1.85	Top cows	1.40-1.61
Medium cows	1.20-1.39	Low-yielding cows	1.10 BELOW

Please remember to take baby animals home as soon as possible , especially in this summer heat.

NEXT WEEK: No sale august 1st.

SUMMER SALE SCHEDULE

NEXT SPECIAL HORSE SALE - AUGUST 3RD.

THURSDAY AUGUST 8TH regular Sale. For this sale we will be selling all your left over 4-H animals (Lambs, goats, pigs, steer)

Thursday August 15th NO SALE
After that a sale every week until Thanksgiving. Please watch our sale schedule for Novembers Special Saturday Feeder Sales.

Need a Ride?

All Points Transit can help!

Local Medical, Shopping, Errands & More
Regional service to Montrose & Grand Junction

Call 970-249-0128 to Schedule
www.allpointstransit.org



Classified Ads

CLASSIFIED AD RATE:
 Per-Week: \$12.95 for 25 words and 20¢ for each additional word.

WEST END PUBLIC SCHOOLS NOW HIRING FOR 2024-2025 SCHOOL YEAR

Preschool Assistant Teacher

- Full-time, up to 32 hours/week
- Hourly pay rate dependent on verified experience: \$15.25-\$28.75
- Benefits include: health, dental, vision, life, PERA Retirement, PERA 401K, paid time off
- Send resume with references to Sara Bray, Elementary Principal, sbray@westendschools.org

Early Childhood Assistant Teacher

- Part-time, up to 28 hours/week
- Hourly pay rate dependent on verified experience: \$15.25-\$28.75
- Benefits include PERA Retirement & paid time off
- Send resume with references to Cydney Starks, Early Childhood Director, cstarks@westendschools.org

Secondary Special Education Paraprofessional

- Full-time, up to 32 hours/week
- Hourly pay rate dependent on verified experience: \$15.50-\$29.00
- Benefits include: health, dental, vision, life, PERA Retirement, PERA 401K, paid time off
- Send resume with references to Candeleria Franklin, Business Manager/HR, cfranklin@westendschools.org

8-2T-C

NORWOOD PUBLIC SCHOOL IS HIRING

- Elementary Teacher
- Middle School Volleyball Coach
- Finance Manager
- Spanish/English Language Learner Teacher
- Paraprofessionals (1/2 or Full-time)
- Activity Driver

The full job postings are located on our website. Please follow the link/URL <https://www.norwoodk12.org/domain/181> and click on "Click here for job listings and to apply online."

School Bus Drivers

Norwood School District is willing to pay for CDL training and certification. Must pass a Class B CDL with S&P endorsement, CDL Drug Test & Physical. The full job description is located on our website. Please follow the link/URL <https://www.norwoodk12.org/domain/181> and click on "Click here for job listings and to apply online."

Small Bus Drivers (Non-CDL Bus Driver Position)

The full job postings are located on our website. Please follow the link/URL <https://www.norwoodk12.org/domain/181> and click on "Click here for job listings and to apply online."

47-8T-C

We will be accepting applications on an ongoing basis until positions are filled.

PUBLIC NOTICE

COLORADO DIVISION OF RECLAMATION, MINING AND SAFETY
 NOTICE OF PROPOSED DECISION (SL-28)

The Colorado Division of Reclamation, Mining and Safety has issued a proposed decision to approve Bond Release Application No. 28 (SL-28) for the New Horizon Mine, Permit No. C-1981-008. The surface operation is operated by Elk Ridge Mining and Reclamation, LLC under the provisions of the Colorado Surface Coal Mining Reclamation Act of 1979. The bond release application was submitted by Elk Ridge Mining and Reclamation, LLC on February 29, 2024. Elk Ridge Mining and Reclamation LLC is submitting an application for Phase I, II, and III performance bond release for five backfill monitoring wells and seven exploratory drill holes. The affected area is located in Montrose County, approximately 1.7 miles Northwest of Nucla, Colorado.

Copies of the proposed decision are available for review at <https://dnrweblink.state.co.us/drms/search.aspx> by searching C1981008 in the "Permit No" field. A user guide is available to help first time users of the imaged document system and can be viewed at https://drive.google.com/file/d/1180Udf_Mpjo3kxIHkP5hMH-w7MeBtxX7/view..

Any person who has an interest which is or may be adversely affected may request an adjudicatory hearing regarding this proposed decision. Requests for a hearing must be made in writing within thirty (30) days of the date following initial publication of this notice, and shall state with reasonable specificity the reasons for the request and objections to the proposed decision.

Colorado Division of Reclamation, Mining and Safety
 1313 Sherman St, Rm 215
 Denver CO 80203
 303-866-3567

Published in the San Miguel Basin Forum on July 24 & 31, 2024

Meet Our Providers!



Dr. Kelley Prince



Dr. Andrew Baker



Robin Richards, PA-C



Scott Hunter, FNP



Tommy Terwilliger, LCSW



Nichol Bray, Hygienist



Our services cover your whole family's needs:

- Healthcare
- Behavioral Health
- Dental
- Pharmacy with Mail Service
- Medicaid Enrollment Assistance
- Financial Assistance for All Services

Call for an Appointment! (970) 327-4233, (970) 327-0527 (Dental)
 Monday-Friday 7:30 am to 5:00 pm. Same day appointments & extended hours available. Call for availability.

Se Habla Español

We are committed to providing quality, cost effective, accessible healthcare to all in the San Miguel River Basin.

STATEPOINT CROSSWORD

THEME: THINGS WITH BUTTONS

ACROSS

- Genoa or storm jib
- Pouch
- Support for #1 Across
- Gaelic language
- Big-ticket ____
- Flowerbed cover
- Western Samoan money
- Agrippina's slayer
- Literature class homework
- *"The Curious Case of ____ Button"
- God of thunder
- Tight or rigid
- Blunder
- * ____ control
- *Alarm clock delay
- Edible tuber
- Racecourses
- Crew propellers
- Often follows dark or back
- ____-Town, or Chicago

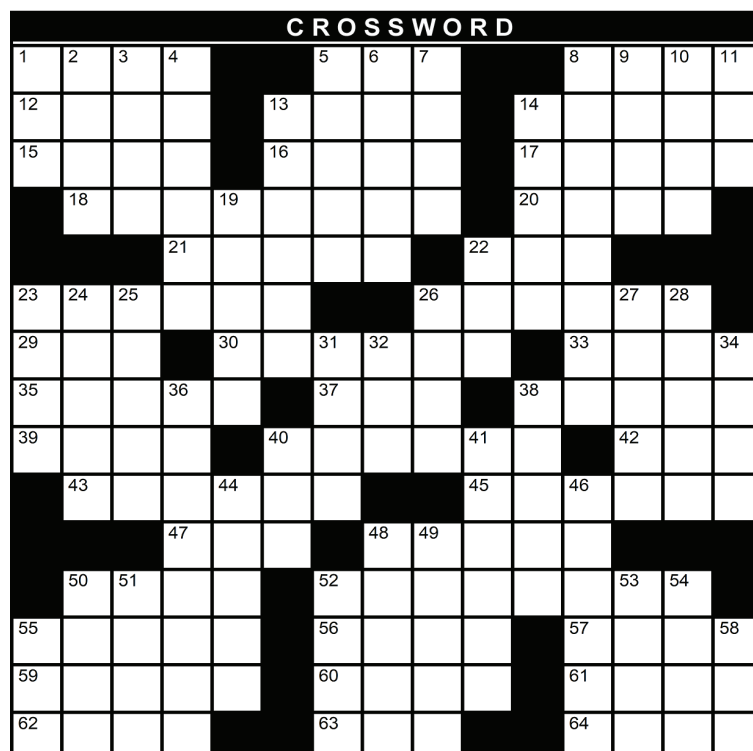
- Friend, south of the border
- Singular of #25 Down
- Containing uranium
- Rip off
- Sleeping sickness vector
- Che Guevara's hat, pl.
- Roman road
- "And Then ____ Were None"
- Hillside, in Scotland
- *Home ringer
- Raccoon's South American cousin
- Debate side
- Spring in a mattress
- Ar, atomic number 18
- Black-tie occasion
- Golfer's aim
- Group with pressure
- Stallone
- Semiprecious variety of agate

DOWN

- Collector's goal



- Kuwaiti, e.g.
- ____ of Man
- Shanty
- Flower trunks
- American Eagle's intimates brand
- "Oh ____!"
- *Edible button
- "The Sun ____ Rises"
- "The Lion King" villain
- Olden day "your"
- More asinine
- City area
- Bulwark
- Ems follower
- Aimless walk
- "Bravo! Bravo!", e.g.
- Pall ____ and ____ of America
- Largest organ of human body
- Mobutu Sese Seko's nation
- Cereal killer
- Land measure
- ____-cha-cha
- Wails
- *Tall building people-mover
- Of sour taste
- All 50 states
- Spanish airline
- Make a logical connection (2 words)
- Repeat an echo
- Opposite of atonal
- In a heated manner
- Dull one
- Angry display
- Entertainingly eccentric people, Down Under
- "On Golden Pond" bird
- ____ of the valley
- *A baseball one has a button on top
- Lexington airport code



SWITCH & GET \$25

Off First Month of New Service!
 USE PROMO CODE: GZ590

Consumer Cellular

CALL CONSUMER CELLULAR **888-804-0913**

© 2023 Consumer Cellular Inc. For promo details please call 888-804-0913

© StatePoint Media

YOUTH

The 2024 San Miguel Basin Junior Rodeo



Josey Tedder rounds the first barrel with speed and precision in the Junior Rodeo Barrel Racing.



Lantry Galley navigates the second barrel!



Colt Carter is all smiles during the poles!



Kelsey Carter and her new horse glide with ease through the poles event!



Shay and Lothan Snyder make a dynamite duo for the team roping.



Sawyer Wareham is a natural at goat tying.



Chloe Sherman gets a last minute pep-talk from her dad.



Rynn Reams is hot on the heels of her breakaway steer.



Illi Henderson had no problem with that goat.



Dilyn Alexander competes in the breakaway roping event. (Photos by Shelley Donnellon)