

THE MILFORD Times

WEDNESDAY, DECEMBER 30, 2020

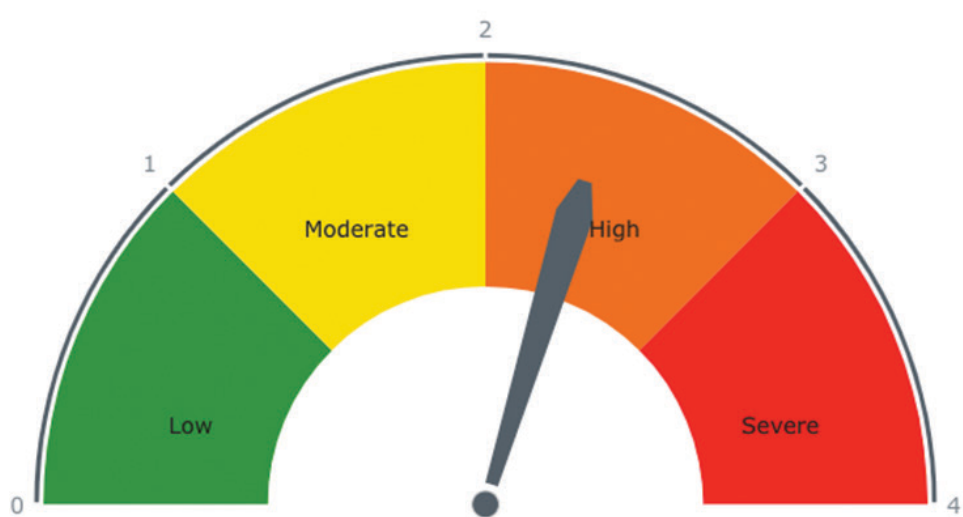
MILFORD, NEBRASKA 68405

VOLUME 62, ISSUE 32

MILFORDTIMES.NET

\$1.00

Current Four Corners District COVID-19 Risk
Updated Weekly By 11:00am Each Friday



COURTESY PHOTO
The risk dial pictured above rates Seward County in the “orange” category. This dial shows case numbers as of Dec. 25.

Four Corners talks COVID-19 vaccine

by Hope Moural
hope@sewardindependent.com

Four Corners Health Department held its bi-weekly COVID-19 sector briefing with updates about vaccines for its last meeting of 2020 on Dec. 23.

Executive director Laura McDougall said Seward’s Memorial Health Care System received doses of the Moderna vaccine last week, and that the health district has prepared phases of rolling it out among its coverage area.

“Right now we’re working in Phase 1A for the vaccine, which includes healthcare workers and long-term care workers,” McDougall said.

Doses of the vaccine were to be distributed to the long-term care workers this week and Phase 1B, which includes the elderly population, is currently being formed by the Four Corners district.

McDougall advised those on the call to keep Christmas gatherings short and limited, even with COVID-19 vaccines being dispersed throughout local communities.

Also during the Zoom call,

Seward City Administrator Greg Butcher reported the city council will review its mask mandate, in effect through Jan. 4, at the scheduled Jan. 5 meeting.

MCHS CEO Roger Reamer said he had been contacted by Test Nebraska to use the hospital as an immunization site when either COVID-19 vaccine becomes available to the general public. He said the institution is working on plans for when that phase occurs.

Concordia University interim president Russ Sommerfeld reported the campus is quiet with students on holiday break, but that once they return Jan. 4 (athletes) and 11 for classes, a mask mandate will still be in place.

Seward Public Schools Superintendent Josh Fields reported both COVID-19 and quarantine numbers in its district continue to decrease, but he supposes Nebraska School Activities Association guidelines will stay the same or increase gradually. He also said a survey regarding vaccinations and feelings toward availability was distributed to faculty and staff recently.

So...it snowed?



CRAIG JONES/MT

The streets of downtown Milford are covered after snowfall on Dec. 28. See more photos on the back page.



CRAIG JONES/MT

Dennis Sturtevant clears his driveway of snow Tuesday morning in Milford.

Go Eagles!



STEPHANIE CROSTON/MT

Konner Schluckebier of Milford (top) works to turn Barret Brandt of Syracuse during a quadrangular Dec. 22 in Milford. Schluckebier won the match by pin. See more about how the Eagles did on page 5.



Board honors employees, talks general assistance

by Hope Moural
hope@sewardindependent.com

The Seward County Board of Commissioners honored employees who have worked in the county for five years during its Dec. 22 meeting. Eight total county employees from various

departments were given a plaque as recognition for their service, including: Casey Jo Tieman, Maria Hatfield, Steven Lechner, Michelle McMann, Anthony Baldinger and Chris Bigsby.

Also during the meeting, the board:

• heard from Seward County Extension’s Ann Dobesh on applications for two vacant positions in the department. The board approved Jennifer Eickhoff to fill the District One position and Krystal Naber

see BOARD, page 2



stop'nshop

410 S. Hwy 6 – Milford, NE 68405

Phone (402) 761-2872 • Hours: 5 a.m. – 11 p.m.



Get your KickBack Card now and earn free stuff!

Follow us
f t

Bud Light Ice Cold 24pk with KickBack	\$17.99
Busch Light Ice Cold 30pk with KickBack	\$19.99
Sam Adams Brewing Ice Cold 6pk	\$6.49
Goose Island Brewing Ice Cold 6pk	\$6.99
Tito's Vodka 750ml	\$16.99
Captain Morgan 750ml	\$15.99
Coke 2 ltrs	2/\$4.00
Fritos/Cheetos 10oz with KickBack	\$2.99

Buy 1 Pizza
Get Double Order Wings
FREE



fast'nfresh'nfun



Tips to grow hollies for Nebraska gardeners

by Sarah Browning
Lancaster County Extension educator

I've always envied southern gardeners and their ability to grow big, beautiful American holly trees.

It would be so nice to simply walk to the backyard and snip a few branches with colorful berries for holiday wreaths or arrangements. During the holiday season, English holly (*I. aquifolium*) is popular in wreaths and greens, but unfortunately it also is not winter hardy in Nebraska. However, there are hollies we can grow, including Meserve and winterberry holly.

Holly is in the *Ilex* genus, a large group containing more than 400 species. Plants are often evergreen, and usually grown as shrubs or trees. Many species of holly are dioecious, meaning each plant produces only male or female flowers. To produce colorful berries, both plants are needed. Female plants will not produce berries without males to pollinate them, although one male plant can pollinate several female plants.

Meserve holly is a group of hybrids originally developed in the early 1950s by Mrs. F. Leighton Meserve of St. James, New York. She crossed cold hardy Prostrate holly, *I. rugosa*, and English holly, resulting in a wonderful group of plants with attractive evergreen foliage and increased cold tolerance. Later breeding work did not always use the same parents, but the cultivars below are still considered Meserve hybrids.

Meserve holly foliage is leathery and dark green, with spines along

the margins similar to English holly. Plants are evergreen, holding their foliage throughout the year, growing best in well-drained soil with consistent moisture and at least partial shade in summer. Best locations in the landscape for Meserve holly are the north, northeast or northwest side of your home where summer temperatures are cooler and some shade is available.

Winter desiccation is a problem for evergreen hollies when soil is dry or the ground is frozen, particularly if plants receive strong winter sun and wind. Make sure plants are well watered throughout fall, so they are fully hydrated going into winter. The use of anti-desiccant spray can also help reduce winter moisture loss.

The first cultivars, released in 1964, were Blue Boy and Blue Girl, followed in 1974 by Blue Prince and Blue Princess. In 1979, China Boy and China Girl were introduced. Blue Girl and Blue Princess provide the best winter hardiness of the blue series, and Blue Princess is considered one of the best berry producers. The China series combines excellent cold hardiness with increased heat tolerance, making them better able to handle the extremes of both winter and summer.

Meserve hollies are slow growing, and although they can reach 8-10 feet in height eventually, it will be many years before they do.

Winterberry, *Ilex verticillata*, is a deciduous shrub with medium to dark green foliage. Fall leaf coloration is yellow, and as a deciduous plant, winterberry loses

all its foliage in fall to reveal its most striking feature - beautiful red berries that really liven up the winter landscape. Cut stems can be held indoors for several weeks, as long as they are dry and not in water. Plants are slow growing and easily pruned, but can get 6-10 feet or more in height.

Winterberry prefers full or partial sun, and moist soils with high organic matter. Its ability to thrive in wet soil makes it a good choice for areas that don't drain well or where water stands for part of the year. However, it will also grow in drier areas. Plants do well in light or heavy soil, but chlorosis can be a problem in high pH soil. Winterberry is hardy to Zone 3.

Cultivars recommended for Nebraska include the following.

- Red Sprite – dwarf cultivar grows 3-5 feet, so great for smaller landscapes
 - Berry Poppins – dwarf cultivar grows 3-4 feet, good berry production; Mr. Poppins is a good pollinator
 - Berry Nice – bright red fruit, good mildew resistant foliage
 - Sparkleberry – bright red fruit persist into March
 - Winter Red – bright red fruit that hang on plants until March or April
 - Jim Dandy – early flowering male, good pollinator for Red Sprite
 - Southern Gentleman – male pollinator for Berry Nice, Sparkleberry and Winter Red
 - Apollo – male pollinator for Sparkleberry
- Next spring, consider planting your own holly, and in a few years, your holiday decorations could be "home grown."

Board

from page 1
to the District Four position.

- approved a three-year contract with Maximus to form a cost allocation plan regarding child support amounts within the county.
- discussed a fee schedule for items sold in each department that are not set by statute. This came via the state auditor's office and it was suggested each county office should make their own schedule and present it to county clerk Sherry Schweitzer to have on file.
- held a public hearing to review updated general assistance guidelines, including a change for equity of assets. A resolution with an

adjustment, naming \$10,000 home equity and a \$2,500 equity as qualifying factors, was passed by the board.

- heard from Clark Kolterman of the Seward County Visitors Committee who reviewed the organization's 2020 happenings and financials.
- opened a single submitted bid for an aerial imagery project by the treasurer's office. Eagleview Technologies submitted a \$172,783.78 bid for the department. Further action will be decided at a future meeting.

The next Seward County Board of Commissioners meeting will be Jan. 5 at 8:30 a.m. on the third floor of the courthouse. The meetings are open to the public.

Seward Kiwanis gives to CASA training

The Kiwanis Club of Seward has announced it is supporting Southeast Nebraska CASA (Court Appointed Special Advocates).

The mission of Kiwanis is to serve children of the world, one child at a time. CASA also serves children by making sure a qualified, compassionate adult will fight for and protect a child's right to be safe, to be treated with dignity and respect, and to learn and grow in the security of a loving family. These missions align perfectly.

The Kiwanis Club of Seward is donating \$5,000 to Southeast Nebraska CASA to assist with fulfilling

one of their 2021 goals to implement, "Bridges Out of Poverty." Bridges Out of Poverty uses the lens of economic class and provides concrete tools and strategies to alleviate poverty. This donation will assist CASA with training, resource manuals and starter kits for the program.

"2020 has been a challenging year for many," said Crystal Kirby, immediate past-president and board member of Seward Kiwanis Club. "While Seward Kiwanis has been impacted by the need to cancel major fundraising events, we have also been fortunate enough to maintain a strong financial

standing. We hope that sharing through our financial strength this year will allow Southeast Nebraska CASA to have a successful year in 2021."

Marci Fehlhafer, executive director for Southeast Nebraska CASA and her team at CASA have continued to grow the organization by creating new opportunities and training events to help volunteers serve the children of Seward County.

"Thank you, Seward Kiwanis, so much for this support," Fehlhafer said. "We are thrilled to be able to offer this training to our volunteers and to the community."

Ring in the new year safely.

RETIREMENT CARD SHOWER



JULIE SCHAEFER
Office Assistant
Seward Station

Help us thank Julie for her 44 years with Farmers Cooperative and wish her well on her retirement.

SEND CARDS TO:
1295 364th St.
Seward, NE 68434



Julie's last day will be January 6, 2021

Have something to celebrate?

Announce your Anniversaries, Graduations, Birthdays, etc. in the **Milford Times**
Call 402-761-2911



A NEW YEAR'S RESOLUTION WE CAN ALL AGREE ON

Let's ring in 2021 the right way.

Keep gatherings small.
Wear a mask indoors and out. And check in on loved ones regularly.

We'll have more to celebrate sooner if we do right, right now.



DoRightRightNow.org



It's A New Year...

Make every second count!



We really appreciate the time you spent with us this year.

Larsen & Associates Auctioneers
Cordova
402-576-3002
larsensauctions.com

HAVE YOU *moved* LET US KNOW!

THE MILFORD
Times

607 1st St. • Milford, NE 68405 • 402-761-2911



Holiday Deadline and Closing

Our Seward office will close at 3:30 p.m. Thursday, Dec. 31 and will be closed Friday, Jan. 1, 2021.

ADVERTISING & NEWS DEADLINE

for the publication date of
JANUARY 6, 2021
is 9:00 a.m., THURSDAY, DEC. 31

THE MILFORD
Times

PO Box 723, Milford, NE 68405 | 402-761-2911

Obituaries

Harold O. Deinert

March 26, 1927 – Dec. 21, 2020

Harold Oscar Deinert, age 93, was born to Victor and Marie (Schroeder) Deinert on March 26, 1927, on the family farm northwest of Emerald and passed away Monday, Dec. 21, 2020, in Seward. He was baptized May 1, 1927, and confirmed Aug. 10, 1941, at St. John's Evangelical Lutheran Church west of Emerald and attended school at Lancaster County District 118 through the eighth grade.



On Nov. 22, 1953, Harold married Verna Jean Meyer at St. Paul United Church of Christ in Lincoln. Harold was a lifelong farmer. He lived on the same farm for 90 years, then moved to Seward in 2016. He was a past member of the Emerald Farmers Co-op Board, Lancaster County School District 118 and five boards, Malcolm Fire Board, Lancaster County ASC and FHA boards and Camp Creek Threshers. Harold was a 67-year member of Bethlehem Lutheran Church and served as a church elder as well.

Harold was preceded in death by his parents; brother, Harvey; and sisters, Vera Herter and Alice Schumacher.

Survivors include his wife, Verna Deinert, Seward; children and spouses, Jean and husband, Ron Petsch, Milford, Donna and husband, Brad Havener, Milford, Melvin and wife, Linda Deinert, Emerald, and JoAnn and husband, Bob Boshart, Emerald; grandchildren, Justine Petsch, Cody and wife, Jamie Havener, Calvin Havener, Scott and wife, Megan Deinert, and Melinda Deinert; and great-grandchildren, Hudson Deinert, Jaden Schulz.

A funeral service was Dec. 24 at Bethlehem Lutheran Church in Pleasant Dale with a graveside service and interment at St. John's Cemetery in Lincoln. Memorial contributions are suggested to the donor's choice. Condolences may be left for the family at www.zabkafuneral-home.com.

Timothy B. Heyen

June 15, 1957 – Dec. 24, 2020

Timothy Boyd Heyen was born in Seward on June 15, 1957, and passed away Thursday, Dec. 24, 2020, in Cadiz, Kentucky. Private memorial services will be held at a later date. King's Funeral Home in Cadiz is in charge of the arrangements.

Mildred I. Stahly

Feb. 5, 1930 – Dec. 19, 2020

Mildred Irene Stahly was born Feb. 5, 1930, in Milford to Harry and Edna (Burkey) Rediger, the oldest of two children, and passed away Saturday, Dec. 19, 2020, at Tabatha Journey House in Lincoln at the age of 90 years, 10 months and 14 days.



Mildred, "Mim" as she was affectionately known, lived in Milford and attended Milford Elementary School after which she went on to attend Milford High School, graduating with the class of 1947. Mim was employed at the Milford 5 Cent to \$1 Store and later at Rediger Chevrolet Co. as a bookkeeper. She enjoyed working with the public and meeting people. Mildred was united in marriage to Richard V. Stahly on Aug. 26, 1951. To this union, a son, James, was born in 1958, at which time they moved to the family farm. Dick and Mildred would have celebrated together their 69th wedding anniversary on Aug. 26, 2020. Mim committed her life to Christ and was a long-time member of Grace Missionary Church. She taught Sunday school for many years and had a great influence in the lives of many young children. Her greatest desire was to share the love of Jesus with others. Mim especially enjoyed sending cards, notes and letters to a multitude of family and friends. She also loved digging in the dirt of her garden and flower beds.

Survivors include her son and daughter-in-law, Jim and Carolyn Stahly, Milford; three grandchildren and spouses, Nate and Mandie Drege of Fargo, North Dakota, Jordan and Megan Shockman of LaMoure, North Dakota, and Caleb and Paige Stahly of Milford; and six great-grandchildren, Ellie, Becklyn, Branson, Rowan, Adley and Abel and two more on the way. Other survivors include her sister-in-law, Shirley Rediger, Milford; sister-in-law, Lois Slaughter, Lincoln; and several nieces, nephews and a host of other relatives and friends.

Mildred was preceded in death by her parents; her husband, Richard; brother, Robert Rediger; brothers-in-law and sisters-in-law, Harold and Dorothy Stahly and Wayne and Jo Stahly; and a brother-in-law, Harold Slaughter.

A graveside service was Dec. 28 at Blue Mound Cemetery in Milford. Memorial contributions are suggested to the Grace Missionary Church of Milford. Condolences may be left for the family at www.lauberfh.com.

Merlyn F. Davids

Feb. 6, 1939 – Dec. 22, 2020

Merlyn Fredrick Davids was born Feb. 6, 1939, in Osmond, to Fredrick and Edith (Petersen) Davids, the oldest of four boys. He passed away Tuesday, Dec. 22, 2020, at Bryan East Medical Center in Lincoln at the age of 81.



He attended Plainview Public School and graduated from Plainview High School with the class of 1956. Merlyn enlisted into the U.S. Air Force on Nov. 4, 1958, and was discharged in 1960 as a B-47 Aircraft Crew Chief. He was united in marriage to Helen Hall in 1961 and to this union, three children were born, Rebekah, Dorothy and Donald. Merl worked several jobs before a lengthy career in the wholesale beer business as a delivery driver, eventually moving into sales. He was blessed with a second marriage to Sheri (Parks) Cejka on May 31, 1986, and was proud to gain another son, Mike, into the family. In January, 1993, Merl became the proud co-owner of Sheri's Grill and Bar. He enjoyed "harassing" the help and gabbing with customers and friends. So many good times and laughs. After selling the bar on July 15, 2007, Merl went back to truck driving. Tommy Havlet kept him busy with contract work and harvest. He enjoyed camping and fishing. Many trips were taken to Table Rock Reservoir in Missouri, Harlan County Reservoir and Milford Lake in Kansas. Together, Merlyn and Sheri enjoyed many road trips riding around this beautiful country, most always through the red rocks. One of his biggest pleasures was to sit in the cockpit of the huge vintage aircraft, "Blue Spruce" and wear Howard Hughes's hat. He had so much fun sitting at a locals' bar in Key West. Merl also enjoyed hunting, playing pool, golfing and mostly being a part of "The Table" at Sheri's.

He was preceded in death by his parents and several aunts and uncles.

Survivors include his wife, Sheri, Pleasant Dale; daughters, son-in-law, Rebekah Greenwalt and Dorothy and Randy Phipps; and sons, daughter-in-law, Donald and Julie Davids and Mike Cejka. His grandchildren include Allyn Shivley, Sara Phipps, Abby (Eric) Holmes, Nick (Elizabeth) Davids, Heather (Daniel) Templeton, Sean (Nitika) Davids and Gavin and Jaelyn Cejka; seven great-grandchildren and one great-great-granddaughter. Other survivors include his mother-in-law, Gerry Boller; brothers, sisters-in-law, Steve and Kathy Davids, Kent and Jackie Davids and Daryl and Peg Davids; brothers-in-law, Terry (Brenda) Parks, Steve (Vicky) Parks, David (Donna) Parks and Rob (Sheri) Parks; many nieces, nephews, great-nieces and nephews, and a host of other relatives and friends.

A memorial service for Merlyn will be at 2 p.m. Wednesday, Dec. 30, at the Milford Mennonite Church with Pastor Tim Springer officiating. He will be laid to rest at the Omaha National Cemetery with military honors at a later date. Memorial contributions are suggested to the Pleasant Dale Fire Department. The family urges all attending Wednesday's service to wear masks. Condolences may be left for the family at www.lauberfh.com.

Traffic

Seward County traffic

Information taken from Seward County court records.

Dec. 14 – 18

Sarah J. Stute, 24, Haigler, careless driving, \$100 fine.

Codie R. Gaunt, 27, Kennewick, Washington, speeding 11-15 mph municipal, \$75 fine.

Ryan C. Metcalf, 35, Mountain View, California, no valid registration on car/pickup/stepvan, \$25 fine.

Mary C. Ourecky, 62, Wilber, no operator's license/waiverable, \$75 fine.

Matthew N. Garner, 39, Lincoln, no valid registration of car/pickup/stepvan, \$25

fine.

Wilson R. Aguilar Lopez, 22, Grand Island, driving too fast for conditions, \$100 fine.

Christopher A. Martin, 22, Seward, no valid registration of car/pickup/stepvan, \$25 fine.

Bailey R. Worster, 26, Seward, no license on person, \$25 fine.

Nathan J. Thompson, 38, Seward, violate stop or yield sign, \$75 fine; no operator's license/waiverable, \$75 fine.

Hany F. Hanna, 45, Los Angeles, California, not use caution for passed/stopped emergency vehicle, \$100 fine.

County court

Information taken from Seward County court records.

Dec. 14 – 18

Durke W. Dailey, 62, Omaha, driving under suspension before reinstated, 30 days jail, revoked license one year.

Terrence T. Lame, 61, Lincoln, possess or use drug paraphernalia, \$100 fine.

Billy F. Scoloris, 30, Ulysses, driving under suspension before reinstated, \$100 fine; no valid

registration of car/pickup/stepvan, \$25 fine.

Gary A. Drumgould, 28, Omaha, driving under suspension before reinstated, \$100 fine; possess or use drug paraphernalia, \$100 fine.

BULL SALE?

Run this size ad in over 150 Newspapers for just \$6.41/newspaper

Place your 2x2 display ad in over 150 Nebraska newspapers & get your message to over 490,000 readers. Statewide coverage for just \$6.41* per publication. *Statewide cost only \$975. Regional ads also available in Central, Northeast, Southeast or Western Nebraska. Other sizes available.



Call this newspaper or 1-800-369-2850 for more information.

Nebraska 2x2/2x4 Display Ad Network

Students

University of Nebraska-Lincoln

The University of Nebraska-Lincoln conferred degrees during a virtual graduation celebration Dec. 19.

Graduates from this area include:

Beaver Crossing—Garrett Richters, College of Agricultural Sciences and Natural Resources, Bachelor of Science in Agricultural Economics with high distinction.

Milford—Quintin Beel, College of Agricultural Sciences and Natural Resources, Bachelor of Science in Animal Science.

Doane University Doane University has named its Dean's List for the Fall 2020 semester. Students must achieve a minimum 3.7 grade point average on a 4.0 scale and hold 12 graded

hours to qualify for this academic distinction.

Students earning the honor from this area include:

Dorchester—Makenna Bird, junior

You can never start too early



Those who plan ahead and start saving early have more time to build assets for retirement, support a family, save for education or other personal goal.

Contact us to get started.

516 First St., Milford, NE 68405 | teammilford.wradvisors.com



Larry Heyen
Financial Advisor
office 402-761-2729
lheyen44444@wradvisors.com



Matthew Sample
Financial Advisor
office 402-761-2729
msample@wradvisors.com



Tiffany Meints
Advisor Associate
office 402-761-2729
tmeints@wradvisors.com

Waddell & Reed, Inc. Member FINRA/SIPC

34764-FP1 (04/17)

Shop local!

New Patient Special

\$99

For Adults

\$79

For Kids

Includes Cleaning, Exam, X-Ray

**Valid for new patients only. Excludes any periodontal therapy. Cannot be combined with any other offers. Kids pricing for 14 and under. Must mention ad to get special pricing. Expires Nov.25th



Seward Smiles
FAMILY DENTISTRY

137 N 7th St. Seward, NE 402-643-3909 info@sewardsmiles.com

We asked you (x2)

What is your favorite kind of Christmas cookie?

Sugar: 12

Chocolate chip: 3

Snickerdoodle: 4

Fudge: 1

Vote for poll question the week before: (are you planning on seeing family at Christmas?)

Yes: 33

No: 11

Now we want to know

Are you going to make a New Year's resolution for 2021?

Yes.

No.

Vote this week on Facebook or at milfordtimes.net. Results will be published in next week's issue.

Keep slowing spread over holidays

by Gov. Pete Ricketts

Christmas and New Year's Day are welcome opportunities to slow down, connect with loved ones, and look forward to 2021. As we approach the year's end, I am thankful for the many sacrifices Nebraskans have made in 2020. Despite many difficulties, our state's residents have displayed inspiring strength and compassion during the pandemic.



Gov. Pete Ricketts

Healthcare workers have done heroic work this year to keep people healthy. Families have adjusted their routines to protect elderly or at-risk loved ones in their households. Businesses have found creative ways to keep the doors open and lights on to serve customers. Places of worship have provided innovative opportunities for their congregations to come together during the pandemic. Teachers have pulled double duty, providing instruction both in-person and for remote learners. Child care centers have adopted rigorous health protocols to continue serving families.

These are just a few of the ways Nebraskans have risen to the challenge in 2020.

Through it all, Nebraskans have been committed to slowing the spread of the virus. This has helped us to protect our hospitals as they care for coronavirus patients. Coronavirus-related hospitalizations in Nebraska continue to decline. They're down more than 40% since peaking on

Nov. 20, 2020.

We moved below 15% of staffed hospital beds with coronavirus patients on Dec. 17. If the percentage is under 15% for seven days (rolling average), we'll move from the "yellow" to "blue" phase of our pandemic response plan. If this happens, we'll adjust our DHMs again in keeping with the plan. A chart listing the restrictions within each color-coded phase of the plan is available through the Nebraska Department of Health and Human Services website by clicking here.

As we gather over the holidays to celebrate, let's think about how to guard against the spread of the virus. Wear a mask when you shop. Limit the size of parties and gatherings. Keep plenty of distance between people. Keep good ventilation indoors, for example, by opening windows to increase air flow if you can. If you get sick, isolate yourself to protect loved ones.

If you plan to visit family, consider getting a test through Test Nebraska. Taking a test can detect the virus, even if you don't have symptoms. This can help you avoid inadvertently passing the virus to loved ones. Test Nebraska lab services will be uninterrupted over the holidays.

Test Nebraska test sites will close at 5 p.m. on Christmas Eve and be closed on Christmas Day. They will be open on both New Year's Eve and New Year's Day. Go to TestNebraska.com to take a brief health assessment and schedule a time to get tested. Test Nebraska continues to deliver results less than 48 hours after the initial swab.

The holidays won't

pause Nebraska's vaccination efforts. We expect about 32,000 doses of the Moderna vaccine to arrive this week. We'll use them to immunize healthcare workers in our Phase 1A priority group.

We've also prioritized long-term care residents and staff in Phase 1A to ensure they get vaccinated quickly. Between this week and next week, we expect 23,400 doses of Pfizer's vaccine to arrive to Nebraska. These doses will be used by pharmacies to vaccinate long-term care facility residents and staff, starting the week of Dec. 28. To view the State of Nebraska's COVID-19 vaccination plan, including the list of groups prioritized for vaccination, go to dhhs.ne.gov/Documents/COVID-19-Vaccination-Plan.pdf.

Coronavirus vaccination has begun nationwide, and the vaccines have proven to be safe. This confirms data from extensive clinical trials, which also demonstrated the safety of both the Pfizer and Moderna vaccines. I encourage Nebraskans who've

been immunized to share their experience with family, friends and neighbors. It's important for everyone to know that the vaccines are very safe and highly effective.

If you have questions about coronavirus vaccination, please email pete.ricketts@nebraska.gov or call (402) 471-2244. I encourage everyone to get vaccinated as soon as they can after they become eligible so that we can put an end to the pandemic.

Before I sign off, I want to wish a merry Christmas to our military servicemen and women on deployment. We appreciate your sacrifice and pray for your safe return home to family and friends. And thanks to the many healthcare workers who will spend Christmas and New Year's Day at the hospital, faithfully caring for those who are ill.

Let's support these men and women on the frontlines of the pandemic by remembering to use our tools to slow the spread of the virus over the holidays.

American Life in Poetry

by Ted Kooser
U.S. Poet Laureate, 2004-2006

Time to clean out a closet and make room for whatever 2021 will bring us! I hope every one of you has a new year that's much better and happier than the one we're all shoving behind. This is the last column I'll have a part in, and I've written a little goodbye poem for you. Happy New Year!

A Donation of Shoes

They're on their way to Goodwill in Destiny's old cardboard carton, the flaps folded inside, lending its scuffed shoulders a look of authority, the box knowing the route, the shoes badly lost and confused, their toes starting in every direction at once, clambering over each other, laces entangled—wingtip, slip-on, workboot and sneaker—every pair trying to get one last, lingering look at the closet before settling down into their smell. What's the saddest about this is seeing those insoles floating up naked, pale flounders beat flat and then dried, no longer to swim through the ocean of days, led on by plump dolphins of feet.

We do not accept unsolicited manuscripts. American Life in Poetry is made possible by The Poetry Foundation (www.poetryfoundation.org), publisher of Poetry magazine. It is also supported by the Department of English at the University of Nebraska, Lincoln. Poem copyright ©2020 by Ted Kooser, "A Donation of Shoes." Poem reprinted by permission of Ted Kooser. Introduction copyright ©2020 by The Poetry Foundation. The introduction's author, Ted Kooser, served as United States Poet Laureate Consultant in Poetry to the Library of Congress from 2004-2006.

Share your opinions via letters to the editor. Please include a phone number so we can verify it's you. Word count is 500.



1st Amendment, U.S. Constitution

Congress shall make no law respecting an establishment of religion or prohibiting the free exercise thereof; or abridging the freedom of speech, or of the press; or the right of the people peaceably to assemble, and to petition the Government for a redress of grievances.

— STAFF DIRECTORY —

Kevin L. Zadina, *publisher* • kevinzadina@sewardindependent.com
Stephanie Croston, *assistant editor/sports editor* • scroston@sewardindependent.com
Hope Moural, *reporter* • hope@sewardindependent.com
Tammy Leff, *business mgr/bookkeeping* • tammyleff@sewardindependent.com
circulation • subscriptions@sewardindependent.com
Jenny Brinkmeyer, *office assistant* • news@milfordtimes.net
Monique Peetz, *office assistant* • monique@sewardindependent.com
legal notices • office@sewardindependent.com
Nichole Javorsky, *advertising* • nichole@sewardindependent.com
Dave Fiala, *graphic artist* • dave@sewardindependent.com
Hailey Behlen, *graphic artist* • hailey@sewardindependent.com

THE MILFORDTimes

USPS 593-200 • Postage paid at Milford, NE 68405
Published once a week • Owned by Rhoades Publishing, Inc.

PO Box 723 • Milford, NE 68405
402-761-2911 or 402-643-3676 • FAX 402-643-6774
www.milfordtimes.net

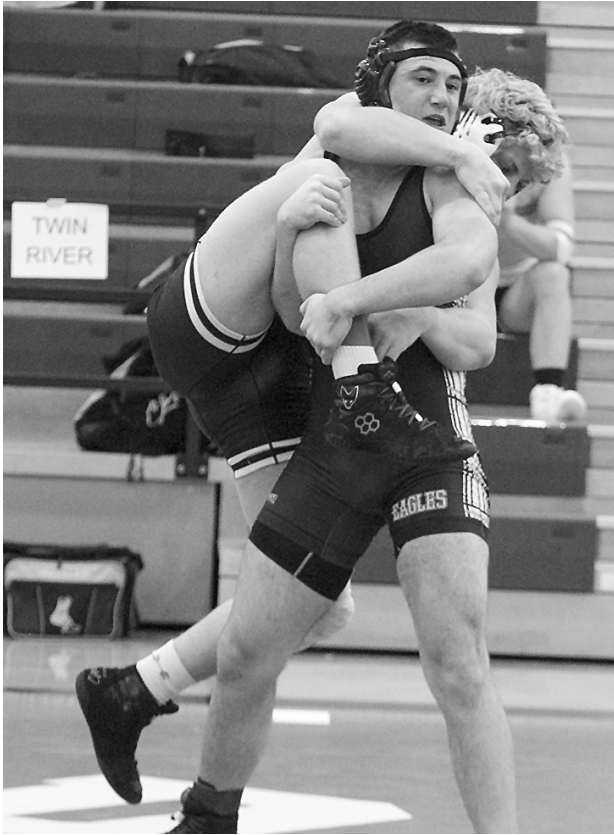
SUBSCRIPTIONS

\$31.00 *Seward County*
\$33.00 *Adjoining Counties (York, Lancaster, Saline, Butler, and Saunders)*
\$37.00 *Statenwide*
\$41.00 *Out of State*

A weekly newspaper published each Wednesday at 129 S. 6th St., Seward, NE 68434 by Rhoades Publishing Inc. Periodical postage paid at Milford, NE. Postmaster send changes of address to P.O. Box 723, Milford, NE 68405.

E-mail the news dept. at editor@sewardindependent.com, the ad dept. at nichole@sewardindependent.com or kevin@sewardindependent.com, the circulation dept. at subscriptions@sewardindependent.com.

Office hours 9 a.m. to 12 p.m. Mon., Thurs., and Fri., 12 p.m. - 4:30 p.m. Wed. Normal deadline is noon Monday.



STEPHANIE CROSTON/MT
Thomas Vance of Milford sets up a takedown against Jed Jones of Twin River Dec. 22.

Eagles 2-1 in home quad

by Stephanie Croston
scroston@sewardindependent.com

Normally, Milford's final wrestling competition of December is a triangular. With event limits imposed this year because of Covid-19, the Eagles turned the day into a quadrangular with David City, Syracuse and Twin River.

The Eagles went 2-1, beating Twin River and Syracuse but losing to David City by three.

Coach Joe Schluckebier said the Eagles wrestled well in all three duals. Twin River's numbers are down, but they have some good wrestlers, he said.

Milford had seen Syracuse at the Logan View Invitational. Schluckebier said the Rockets have good wrestlers, as well. The dual started with Konner Schluckebier wrestling state medalist Barret Brandt. Schluckebier was coming off his first loss, and the coach said he was a little nervous about the match. Konner won by pin.

The dual with David City was the marquee matchup of the evening for MHS.

"We had a plan to beat them, and we thought we had the guys to do it," Coach Schluckebier said.

He doesn't usually move wrestlers from weight to weight in a dual, while other coaches do. David City, for example, moved its 170 pounder to 182 to avoid Christopher Scdoris, but Thomas Vance got the pin in what the coach described as "a crazy match."

In the end, David City won 42-39.

"It was a fun night," Coach Schluckebier said.

After the five-day moratorium, the Eagles were back on the mat for practice Dec. 28. Their next competition is set for Thursday, Jan. 7, at Wilber-Clatonia.

Milford Quad
Milford 66, Twin River 3

120 - Double Forfeit;	126 - Konner Schluckebier (M) win by forfeit;
132 - Eli Vondra (M) pin Jackson Strain (TR) 1:22;	138 - Jack Chapman (M) pin Korbe Urkoski (TR) 0:51;
145 - Trent Stauffer (M) win by forfeit;	152 - Keenan Troyer (M) win by forfeit;
160 - Carter Springer (M) pin Spencer Kula (TR) 3:04;	170 - Jaxson Jones (TR) def. Christopher Scdoris (M) 7-2;
182 - Thomas Vance (M) pin Jed Jones (TR) 4:17;	195 - Hunter Oborny (M)

win by forfeit; 220 - Lorenzo Temple (M) win by forfeit; 285 - Trey Lyon (M) pin Gunner Fink (TR) 3:12; 106 - Double Forfeit; 113 - Conner Kohout (M) win by forfeit

Milford 51, Syracuse 24

126 - Schluckebier (M) pin Barret Brandt (S) 4:33;	132 - Vondra (M) pin Jacob Smith (S) 1:17;	138 - Chapman (M) pin Creighton Orchard (S) 0:47;	145 - Stauffer (M) pin Noah McKenzie (S) 0:47;	152 - Barrett Bischoff (S) pin Troyer (M) 5:33;	160 - Springer (M) win by forfeit;	170 - Scdoris (M) def. Owen Wander (S) 8-3;	182 - Burton Brandt (S) pin Vance (M) 1:35;	195 - Oborny (M) pin Jackson Nordhues (S) 0:58;	220 - Temple (M) pin Chance Buchanan (S) 0:17;	285 - Zachary Burr (S) pin Lyon (M) 0:31;	106 - Double Forfeit;	113 - Kohout (M) pin Caleb Caudill (S) 0:58;	120 - Jace Goebel (S) win by forfeit
----------------------------------------------------	--------------------------------------------	---------------------------------------------------	------------------------------------------------	-------------------------------------------------	------------------------------------	---------------------------------------------	---------------------------------------------	-------------------------------------------------	------------------------------------------------	-------------------------------------------	-----------------------	----------------------------------------------	--------------------------------------

David City 42, Milford 39

132 - Vondra (M) pin Ethan Zegers (DC) 1:51;	138 - Chapman (M) pin Ethan Underwood (DC) 2:42;	145 - Stauffer (M) def. Harley Eickmeier (DC) 4-2;	152 - Clayton Harris (DC) pin Troyer (M) 3:07;	160 - Springer (M) pin Ty Cummings (DC) 0:30;	170 - Scdoris (M) win by forfeit;	182 - Vance (M) pin Tre Daro (DC) 3:13;	195 - Dylan Vodicka (DC) pin Oborny (M) 2:34;	220 - James Escamilla (DC) pin Temple (M) 2:55;	285 - Jake Ingwersen (DC) pin Lyon (M) 0:35;	106 - Keaton Klokke (DC) win by forfeit;	113 - Zach Bongers (DC) pin Kohout (M) 2:00;	120 - Simon Schindler (DC) win by forfeit;	126 - Schluckebier (M) win by forfeit
----------------------------------------------	--------------------------------------------------	----------------------------------------------------	------------------------------------------------	-----------------------------------------------	-----------------------------------	-----------------------------------------	-----------------------------------------------	-------------------------------------------------	----------------------------------------------	------------------------------------------	----------------------------------------------	--------------------------------------------	---------------------------------------

Milford 57, Seward 12 (Dec. 10)

106: Double forfeit;	113: Kohout (M) win by forfeit;	120: Cash Duncan (S) win by forfeit;	126: Schluckebier (M) win by forfeit;	132: Vondra (M) pin Xander Foulk (S) 0:49;	138: Chapman (M) def. Conner Rosendale (S) 7-4;	145: Stauffer (M) def. Breckin Schoepf (S) 8-4;	152: Cameron Schrad (S) pin Troyer (M) 4:39;	160: Springer (M) pin Boone Duncan (S) 1:22;	170: Scdoris (M) def. Nolan Hill (S) 9-8;	182: Vance (M) pin Hunter Novacek (S) 1:02;	195: Oborny (M) pin Dustin Hurley (S) 1:40;	220: Temple (M) win by forfeit;	285: Kasen Petsch (M) win by forfeit
----------------------	---------------------------------	--------------------------------------	---------------------------------------	--------------------------------------------	-------------------------------------------------	-------------------------------------------------	----------------------------------------------	----------------------------------------------	-------------------------------------------	---------------------------------------------	---------------------------------------------	---------------------------------	--------------------------------------

JV: 182: Isaac Voboril (M) pin Conner Towle (S) time not available; 182: Ethan Buchli (M) pin Matt Flyr (S) 2:19

Milford 57, Centennial 12 (Dec. 10)

106: Stewart (C) win by forfeit;	113: Kohout (M) win by forfeit;	120: Double forfeit;	126: Schluckebier (M) pin Keenan Kosek (C) 1:48;	132: Vondra (M) def. Ryan Payne (C) 4-3;	138: Chapman (M) win by forfeit;	145: Stauffer (M) win by forfeit;	152: Troyer (M) pin Cyrus Songster (C) 4:27;	160: Springer (M) win by forfeit;	170: Scdoris (M) pin Garrett Schernikau (C) 1:13;	182: Thomas Vance (M) def. Tyson Rodevald (C) 8-2;	195: Oborny (M) def. Samuel Payne (C) 3-1;	220: Temple (M) pin Nickolas Keith (C) 0:14;	285: Carson Fehlhafer (C) pin Trey Lyon (M) 0:42
----------------------------------	---------------------------------	----------------------	--------------------------------------------------	------------------------------------------	----------------------------------	-----------------------------------	----------------------------------------------	-----------------------------------	---------------------------------------------------	----------------------------------------------------	--------------------------------------------	----------------------------------------------	--------------------------------------------------

Pressure too much for MHS

by Stephanie Croston
scroston@sewardindependent.com

After working for good shots in a 50-38 win over Bruning-Davenport/Shickley Dec. 21, the Milford girls struggled with North Bend's pressure in a 50-27 loss the next night.

"North Bend is No. 1 in C1 for a reason," MHS Coach Phil Stauffer said. "I thought we did a lot of things well but also saw some things we really need to get better at."

Against BDS, he said, Milford didn't settle for three-point attempts. Hannah Kepler led the team with 21 points. Sydney Stelling added 10 points and eight rebounds, and Kaitlin Kontor scored 11.

Milford (3-4) lost to Cross County 48-34 Dec. 28 in the second round of the holiday tournament.

The Runza Holiday Basketball Tournament scheduled for Dec. 29 at Central City has been postponed because of weather.

Milford 50, Bruning-Davenport/Shickley 38

BDS	7	9	12	10	38
MHS	12	8	10	20	50

BDS—Totals 16-47 3-5 38.

MHS—Makena Stutzman 0-1 0-0 0, Kaitlin Kontor 3-9 4-5 11, Hannah Kepler 9-15 1-4 21, Alayna Piening 0-1 0-0 0, Kaitlyn Klug 1-1 0-0 2, Taylor Roth 2-4 0-0 4, Sydney Stelling 3-7 4-8 10, Abby Houk 0-3 2-4 2. Totals 18-41 11-21 50.

Three-point goals—BDS 3-15, MHS 3-9 (Stutzman 0-1, Kontor 1-3, Kepler 2-5). **Rebounds**—BDS 29, MHS 30 (Stelling 8). **Assists**—MHS 8 (Houk 3). **Steals**—MHS 9 (three with 2). **Blocked shots**—MHS 1 (Klug 1). **Turnovers**—BDS 20, MHS 16. **Fouls**—BDS 17, MHS 10.

North Bend 50, Milford 27

MHS	5	6	6	10	27
NBC	14	6	14	16	50

MHS—Stutzman 0-4 0-0 0, Kontor 4-9 0-0 12, Kepler 2-6 2-4 6, Piening 0-2 0-0 0, Roth 1-2 1-2 3, Stelling 2-3 1-2 5, Houk 0-3 1-2 1, Mariah Richards 0-1 0-0 0. Totals 10-31 5-10 27.

NBC—Totals 19-48 11-15 50.

Three-point goals—MHS 2-9 (Stutzman 0-3, Kontor 2-4, Kepler 0-2), NBC 1-11. **Rebounds**—MHS 24 (Kepler, Roth 5), NBC 27. **Assists**—MHS 5 (Kepler 2). **Steals**—MHS 5 (Stelling 2). **Blocked shots**—MHS 2 (Roth, Houk 1). **Turnovers**—MHS 25, NBC 12. **Fouls**—MHS 15, NBC 15.

Cross County 48, Milford 34

MHS	6	12	12	4	34
CCHS	14	13	11	10	48

PHOTO COURTESY BRANDON MOWINKEL

Right: Milford's Abby Houk braces for contact as she looks for an open teammate against BDS Dec. 21.



Boys win three on hardwood

by Stephanie Croston
scroston@sewardindependent.com

The Milford boys' basketball team opened holiday tournament play Dec. 21 with a 59-34 win over Bruning-Davenport/Shickley.

The Eagles finished their pre-moratorium schedule with a 70-55 victory over North Bend Central Dec. 22.

Coach Tony Muller said MHS had to switch

defenses from man-to-man to a 1-3-1 zone in both games, but the zone defense worked better.

Jaxon Weyand was the Eagles' leading scorer with 19 points. Micah Hartwig scored 13, and Seth Stutzman added 12.

After being at home for the BDS game, the Eagles hit the road again Dec. 22 to play North Bend. MHS trailed by 10 in the second quarter and cut the lead to one by halftime, Muller said.

Weyand led the team again with 23 points, and Stutzman recorded 22 points and four blocked shots. Hartwig delivered 10 assists.

The Eagles (7-0) beat Cross County 60-49 Dec. 28 in the holiday tournament. The finals were scheduled for Dec. 29 at Central City but were

postponed because of weather. Milford then plays Saturday, Jan. 2, at Auburn against Falls City.

Milford 59, Bruning-Davenport/Shickley 34

BDS	11	7	7	9	34
MHS	14	17	15	13	59

BDS—Totals 11-39 10-14 34.

MHS—Isaac Yeackley 1-6 0-0 2, Micah Hartwig 5-11 0-0 13, Maddox Baack 1-4 1-1 3, Jaxon Weyand 6-11 7-9 19, Carter Roth 1-1 0-0 2, Kaleb Miller 1-2 2-5 4, Seth Stutzman 6-9 0-0 12, Cabe Schluckebier 2-2 0-0 4. Totals 23-46 10-15 59.

Three-point goals—BDS 2-15, MHS 3-10 (Yeackley 0-1, Hartwig 3-5, Baack 0-1, Weyand 0-2, Stutzman 0-1). **Rebounds**—BDS 28, MHS 25 (Stutzman, Schluckebier 5). **Assists**—MHS 14 (Weyand, Stutzman 3). **Steals**—MHS 14 (Yeackley, Hartwig 5). **Blocked shots**—MHS 1. **Turnovers**—BDS 21, MHS 9. **Fouls**—BDS 15, MHS 15.

Milford 70, North Bend 55

MHS	13	15	18	24	70
NBC	19	10	9	17	55

MHS—Yeackley 5-8 2-2 14, Hartwig 0-5 4-5 4, Baack 1-2 0-0 3, Weyand 8-11 4-7 23, Miller 1-2 0-0 2, Stutzman 10-18 2-2 22, Schluckebier 1-3 0-0 2. Totals 26-49 12-16 70.

NBC—Totals 20-53 8-15 55.

Three-point goals—MHS 6-13 (Yeackley 2-5, Hartwig 0-2, Baack 1-1, Weyand 3-5), NBC 7-28. **Rebounds**—MHS 28 (Hartwig 8), NBC 29. **Assists**—MHS 17 (Hartwig 10). **Steals**—MHS 10 (Stutzman 4). **Blocked shots**—MHS 1. **Turnovers**—MHS 11, NBC 16. **Fouls**—MHS 15, NBC 19.



PHOTO COURTESY BRANDON MOWINKEL

Micah Hartwig of Milford looks for the hoop as he drives into the lane against BDS Dec. 21.

Area Churches

Bellwood Mennonite Church

520 S. B St. • Milford • 761-2709
Pastor Steve Griffin
stephenpaulgriffin@gmail.com
Youth Pastor Taric Leichty • taric33@live.com
www.bellwoodchurch.org

Sunday School	9:00 a.m.
Sunday Worship	10:00 a.m.
Jr. High Youth (Wednesday)	6:15 p.m.
Sr. High Youth (Wednesday)	7:30 p.m.
Christian Montessori School Ages 3-6	7:30-8:09

Beth-El Community Church

115 N. F St. • Milford • 761-3610

Sunday School	9:30 a.m.
Sunday Morning Worship	10:30 a.m.
Sr. High Youth (Select Sundays)	6:00 p.m.
Jr. High Youth (Select Sundays)	6:30 p.m.

Bethlehem Lutheran Church

101 Maple St. • Pleasant Dale • 795-3885

Pastor Tim Gall • www.pleasantdalelutheran.com
Sunday Worship9:00 a.m.
Sunday Bible Study10:30 a.m.

East Fairview Mennonite Church

508 280th • Milford • 761-2836

Senior Pastor Kyle Roth	641-8100
Associate Pastor Brad Roth	641-7962
Sunday School	9:30 a.m.
Sunday Morning Worship	10:20 a.m.
Prayer Meeting	Wed., 7:00 p.m.

Family Life Assembly of God

303 S. A St. • Milford • 761-2664

Pastor Lamoin Lytle • familylifemilford.com
Sunday Worship10:00 a.m.
RoundTable Discussion Live (Sunday)6:00 p.m.
KidLife (Wednesday)6:00 p.m.
Vertical Youth (Wednesday)6:00 p.m.
RoundTable Discussion Review (Wednesday)6:00 p.m.

Good Shepherd Lutheran Church

2668 Pioneers Road (1 mi. west of Milford) • 761-3146

Pastor Steve Stork
www.goodshepherd-milford.org
Sunday Adult Bible Study9:00 a.m.
Sunday Worship10:00 a.m.
Monday Worship6:30 p.m.
Adult Bible StudyThurs., 8:30 a.m.
Kids' Bible Classes, Pre-K through 6th grade(during school year) Wednesday, 6:30 p.m.
Confirmation Class... (during school year) Wednesday night

Grace Missionary Church

501 Fairway Drive • Milford • 761-2084

Senior Pastor Andy Petro • andypetro.mwd@gmail.com
Associate Pastor Levi Petro • leviticuspetro@outlook.com
www.gracemissionary.org
Sunday School9:30 a.m.
Sunday Worship10:30 a.m.
Midweek Prayer (Tuesday)7:00 p.m.
Awana K-6th Grade (Wednesday during school year)7:00 p.m.
Youth Jr. High (Wednesday at Bellwood)6:15 p.m.
Youth Sr. High (Wednesday at Bellwood)7:30 p.m.

Milford Mennonite Church

920 Third St. • Milford • 761-2244

Pastor Tim Springer
milfordmennonite@gmail.com
Sunday School9:00 a.m.
Sunday Worship10:00 a.m.
The Gathering Table – free meal for anyone 2nd & 4th Thursday, 5:30-7:00 p.m.

Milford United Methodist Church

610 Second St. • Milford • 761-2375

Pastor Angela DeFisher
umcmilfordne@gmail.com
www.facebook.com/MilfordUnitedMethodistChurch
Little Leaps of Faith • 402-761-3380
Sunday School9:15 a.m.
Sunday Worship10:30 a.m.
Community Food PantryCall for Appointment

Some churches have resumed services with restrictions. Please check with the church before attending any services.

To find out how to list your church, call 402-643-3676.

SPECIALIZING IN QUALITY POST FRAME BUILDINGS



Commercial
Equestrian
Hobby Shops

Agricultural
Garages
And More!

Eastern CO
970-230-2052

NE and Western IA
402-426-5022

Wisconsin
608-988-6338

GINGERICH STRUCTURES www.GingerichStructures.com

GATEWAY DERMATOLOGY PC
"Quality Care by Caring Professionals for Over 30 Years"

(800) 659-1147
CLINICS HELD MONTHLY AT
Friend
JANUARY 6
Nebraska City
JANUARY 7

MOHS SKIN CANCER SURGERY
GENERAL DERMATOLOGY
DERMATOLOGIC SURGERY
COSMETIC DERMATOLOGY
LASER HAIR REMOVAL



8101 O St., Ste S111 – Lincoln, NE
www.gatewayderm.com

Webinars offer information on farm bill options

by Jenny Rees
Seward/York counties Extension educator

Wishing you and your family a blessed Christmas! Farm bill webinar link: I received some questions this month regarding decisions for 2021 ARC/PLC election sign-up but haven't looked at or worked with decision tools yet. Last week, there was a webinar on program elections and the recorded link can be found at <https://go.unl.edu/yg90>.



Jenny Rees
Extension educator

For those of you who elected ARC-IC for 2019-2020 due to prevent plant or significant yield loss in 2019, it will be important to reconsider your options. This webinar does a great job of explaining and going through them.

With our last election, we could look back to get an idea, we don't have that opportunity going forward. It's nice that it's a one-year election so it can be changed as prices/yields fluctuate. Hope to share more information in January after working with real data to get a feel for things.

Curious how the significant windstorm and drought in areas may impact decisions for specific counties going forward. For now, you can find more information, including the decision tools, at www.fsa.usda.gov/programs-and-services/arcplc_program/index. If you've used the decision tools in the past, you will use the same login info. you created in the past.

Ag land leasing and budgeting webinar was also held last week. If you missed it or were interested in watching

Jenny's REESources

the recording, you can do so at the following YouTube link for 30 days: www.youtube.com/watch?v=dH-RVlh-nIG8&t=166s.

Ag budgeting workshop: Calculating the cost of production per crop enterprise was a webinar held after the ag leasing webinar. You can also view this recording via YouTube at www.youtube.com/watch?v=Klgbkp0QNH0.

Live Christmas trees: Just a reminder to daily check live Christmas trees for their watering needs to avoid a fire hazard. Kelly Feehan, Extension horticulture educator said, "The rule-of-thumb is a tree will use one quart of water per day for every inch of trunk diameter near the base. If you have a tree with a three-inch base, it can use

three quarts of water per day.

"The trunk should have been freshly cut at a slant just prior to putting it in the stand. If the stand is empty for more than six to eight hours, the tree's pores plug up again. Water uptake is much reduced and the tree dries out sooner. If a tree stand dries out for half a day or more, the only thing that can be done is to remove the tree from the stand and recut the base; which is not a fun task with the lights and ornaments. When watering, nothing needs to be added to water in the tree stand to promote freshness."

Christmas cactus: Kelly also shared the following: "To keep Christmas cactus blooming as long as possible, place it in bright but indi-

rect light. Too much sun can cause leaves to turn yellow. Keep soil or potting mix constantly moist but not waterlogged. Even though they are cactus, they are jungle natives and prefer just moist conditions with indirect light.

"Avoid fertilizing Christmas cactus during the winter; but do fertilize every other week from spring through fall. Plants seem to flower best if they are a little pot bound; but if roots become over-crowded in the container, blooming will decrease.

"If you haven't repotted in several years, or you notice a decrease in flowering from the previous year, repot the plant into a slightly larger pot, but wait until spring. If possible, move the plants outside for summer. Keep in a shady area as Christmas cactus will not tolerate full sun."

Online grief support groups available

Tabitha's industry-leading Senior Care provider, offers a variety of support groups throughout Seward, York, Saline, Butler, Polk, Fillmore and surrounding counties.

Online grief and support groups are open to anyone in the community and are a great way to find support while sharing

common experiences and coping tips in the safety and comfort of home. Your loved one did not have to be with Tabitha. Participation is free; register online at Tabitha.org/Hospice/Bereavement.

- Grieving Gracefully Book Club, held the second and fourth Tuesdays, Jan. 12 and 26, from noon-1 p.m. The

support group will read and discuss "Choosing to See: A Journey of Struggle and Hope" by Mary Beth Chapman, a book that focuses on moving through grief with faith. For questions, call Juanita Steenbakkens at (402) 416-7365.

- Growing Through Grief Support Group, held every Tuesday be-

ginning Jan. 19 at 3 p.m. This six-week support group is dedicated for those who recently lost a loved one. Share your story with others who are going through a common experience while receiving helpful tips to successfully move through the grief journey. For questions, call Abby Henre at (402) 486-8546.

- HOPE Book Club, held the first and third Thursdays beginning Jan. 21, from 10-11 a.m. The support group will read and discuss "The Year of Magical Thinking" by Joan Didion, a memoir of her first year after her husband's death. For questions, call Tabitha Hoffman at (402) 362-7739.
- Caregiver Support

Group, held every Thursday beginning Jan. 21 at 2 p.m. This eight-week support group is dedicated for those who are caring for a spouse, parent or other loved one with a serious illness. Each week will cover a different caregiving topic. For questions, call Juanita Steenbakkens at (402) 416-7365.

MARKETPLACE

Help Wanted

MAINTENANCE PERSON NEEDED. Apply at the office. 2245 Heather Drive, Crete. 402-826-2568.

Saline County Hwy Supt. and Planning and Zoning/Weed Control is accepting applications for a **SECRETARY** for 32/40 hours per week. Application forms may be obtained from the office of the Highway Supt., Courthouse, 215 South High, Wilber, Ne. 68465. Applications must be returned no later than 5:00 pm, January 4, 2021. For more information call Bruce Filipi at 402-821-2737.

Classifieds GET THE JOB DONE!



NOW HIRING!

Culligan of Crete has been family owned and operated for over 30 years and is looking to expand our family. Immediate opening for a **DELIVERY DRIVER** to run routes and deliver water-related products in and around the Crete area to residential and commercial customers. We are seeking individuals with excellent customer service skills, valid driver's license and a clean driving record. Should be familiar with the area and able to read a map.

Base salary with unlimited commission. Excellent company benefits include paid holiday, vacation, 401k, insurance and employee discounts.

Drug test and background check required!

Don't miss the opportunity! Send resume or apply at Culligan of Crete, 2220 W. 11th, PO Box 242, Crete, NE 68333



- **Nurse:** (LPN/RN) FT Day & Evening Shifts (M-F Only) & Weekend Only RN
- **CNAs:** FT & PT Day & Evening Shifts
- **MedAide:** FT Evenings | • **Cook:** FT Evenings
- **Activities Director** | • **Dietary Aide:** FT

EST. 1953
Sunrise
COUNTRY MANOR

FOR MORE INFORMATION VISIT:
SUNRISECOUNTRYMANOR.COM
610 224th Road, Milford
Ph: (402) 761-3230 ext. 224

Applications at www.sunrisecountrymanor.com/careers.html



Greene Place

Senior Living

• 3 Part-time medication aide; 1st, 2nd & 3rd shifts

You will primarily be responsible for administering or assisting in the administration of medication and treatments in accordance with a resident's health care provider's orders. You will also be responsible for assisting residents with Activities of Daily Living (ADLs) and Instrumental Activities of Daily Living (IADLs), providing general supervision, and respecting residents' rights and needs of choice.

• 3 Part-time caregiver; 1st, 2nd & 3rd shifts

Caregiver, you will be responsible for assisting residents with their daily routines while treating all with dignity and respect. You will provide person-centered care that is tailored to meet the needs of each resident in a fun and friendly community. Responsibilities:

- Provide quality resident care as indicated on the care plan
- Promote residents' independence
- Provide assistance with housekeeping and laundry
- Participate in community's Life Enrichment Activities, events, and outings, while encouraging residents to attend
- Additional duties as assigned

We are passionate about providing quality care for our residents and offer competitive wages and benefits.

Apply online at www.enlivant.com or call Greene Place at (402) 643-9111. Greene Place is an equal opportunity employer. 600 Church St., Seward



EQUAL HOUSING OPPORTUNITY

All real estate advertising in this newspaper is subject to the Fair Housing Act which makes it illegal to advertise "any preference limitation or discrimination based on race, color, religion, sex, handicap, family status, or national origin, or an intention, to make such preference, limitation or discrimination." Family status includes children under the age of 18 living with parents or legal custodians; pregnant women and people securing custody of children under 18.

The Milford Times will not knowingly accept any advertising for real estate which is in violation of the law. Our readers are hereby informed that all dwellings advertised in this newspaper are available on an equal opportunity basis. To complain of discrimination call HUD toll-free at 1-800-642-6112. <http://www.nol.org/home/NEOC>.

Rent Sokol Hall for various social and business functions. Hall is air-conditioned and handicap accessible. Contact Lumir Sukovaty at 402-821-2429 or Leon Slama at 402-239-2857. For kolaches, contact Joan Kotas at 402-821-2971.

1 BEDROOM APARTMENT
New kitchen, dishwasher, stove, refrigerator, fireplace & A/C. Laundry available. \$475 p/mo. No Pets. No Smoking. 515 South 2nd St-Seward. Call 402-641-2584.

1, 2 and 3 BEDROOM APARTMENTS. 30-day lease. No pets. No smoking. Also garages for rent. Located at 22nd and Ivy-Crete. 402-310-8030

1 & 2 BR Garden level APARTMENTS in Seward. Call for details. 402-641-2580

Found: SMART WATCH near the Plum Creek ball fields. Call & leave message 402-641-3633 to claim.

For Rent

Lost & Found

CLASSIFIEDS
small ads **BIG** deals



Memorial
Health Care Systems

For immediate consideration, complete an application at or send your resume to:

HR Dept., 300 N. Columbia Ave. Seward, NE 68434 or visit www.MHCS.US to complete an online application. For more information call 402-646-4618. EOE

Please visit our website <http://www.mhcs.us/about-us/employment> for a listing of the Temporary - As Needed (PRN) positions available at Memorial Health Care Systems

HOW TO PLACE YOUR AD

Call: 402-643-3676 • Email: office@sewardindependent.com • Online: sewardindependent.com • In person: 129 S. 6th St., Seward, NE

AD DEADLINE: NOON FRIDAY*
FOR ALL PUBLICATIONS

* Subject to change
on holidays

POLICIES: Ads must be prepaid unless you have pre-approved credit. Cash, personal check, Visa, Mastercard or Discover are welcome. Advertisers should check their advertisements in the first issue and report any error to the Seward County Independent at 402-643-3676. We will be responsible for only a one-time error or omission.

Your ad appears in SIX newspapers and reaches readers in two counties!

The Milford Times • Seward County Independent • The Crete News • the Friend Sentinel • the Wilber Republican • Connection

Services

GUITAR, UKULELE, DRUM & BASS LESSONS: Resolve Today To Put More Music In Your Life! Sign up now, classes starting soon.
Jim Krutz, 402-450-0282, Seward.

DURRE'S PLUMBING
• New Construction
• Remodeling • Water Heaters
• Water Treatment Products
— Service and Installation —
Phone 402-643-9327

Oatman Paint & Repair
All your home interior & exterior needs
Jeff Oatman
402-540-5473
Milford, NE

STELLING CARPENTRY LLC
Custom cabinets & trim work, finish work, remodeling, subcontracting, soffit, siding & fascia, replacement door & windows, any residential needs
Ryan Stelling 402-761-2869

BUY IT • SELL IT • FIND IT • IN THE CLASSIFIEDS

GOLDEN RULE EXCAVATING, LLC
Call us for all farm and ag-related dirtwork
402-641-4064
Dave & Matt Burkey Owners
Randy Ulrich Owner/Operator
20+ Years Experience

MILFORD PLUMBING, INC
513 First St.
761-3886
Mark Saltzman
Home: 761-2831
FREE Estimates

Schweitzer Auction Service
Brian D. Schweitzer
402-641-1266
Estates, Antiques & Collectibles, Firearms, Farm & Acreage Equip, Vehicles, Coins & More
Premier Real Estate Broker • 402-761-2291
Milford, NE • www.nebuction.com

MARTIN EXCAVATING INC.
(FORMERLY LEICHTY EXCAVATING, INC.)
TROY MARTIN, OWNER
802 3RD ST. MILFORD NE 68405
(402) 761-3059 HOME (402) 641-6821 CELL
BASEMENTS, DEMOLITION, FILL, SAND, BLACK DIRT, CLAY, TREE REMOVAL, LAGOONS

MILFORD AIR CONDITIONING
309 1st Milford
402-761-2433
• Air Conditioning
• Heating
• Sales & Service
Bill Saltzman
DAIKIN
Air Conditioning & Heating

INVENTORS: FREE information package. Have your product idea developed affordably by the Research & Development pros and presented to manufacturers. Call 1-877-581-2504 for a Free Idea Starter Guide. Submit your idea for a free consultation.

CLASSIFIED ADVERTISING in over 150 newspapers. Reach thousands of readers for \$225/25 word ad. Contact your local newspaper or call 1-800-369-2850.

DOES YOUR basement or crawl space need some attention? Call Thrasher Foundation Repair. A permanent solution for waterproofing, failing foundations, sinking concrete and nasty crawl spaces. Free Inspection & Same Day Estimate. Call 1-844-958-3431.

U.S. MEAT ANIMAL Research Center, Clay Center, NE, has several positions available. Competitive salary. Excellent benefits. Visit https://employment.unl.edu (search keywords 'Clay Center') or call Sheila Trampe at 402-762-4150.

AFFORDABLE PRESS Release service. Send your message to 155 newspapers across Nebraska for one low price! Call 1-800-369-2850 or www.nebpress.com for more details.

DIRECTV - EVERY live football game, every Sunday - anywhere - on your favorite device. Restrictions apply. Call IVS, 1-855-977-3794.

GUARANTEED LIFE Insurance! (Ages 50 to 80). No medical exam. Affordable premiums never increase. Benefits never decrease. Policy will only be cancelled for non-payment. 855-704-3167.

HIGH-SPEED Internet. We instantly compare speed, pricing, availability to find the best service for your needs. Starting at \$39.99/month! Quickly compare offers from top providers. Call 1-888-326-3360.

APPLYING FOR Social Security Disability or Appealing a Denied Claim? Call Bill Gordon & Assoc., Our case managers simplify the process & work hard to help with your case. Call 1-866-818-0868. Free Consultation. Local Attorneys Nationwide [Mail: 2420 N St. NW, Washington DC. Office: Broward Co. FL (TX/NM Bar).

AT&T TV - The Best of Live & On-Demand on all your favorite screens. Choice Package, \$64.99/month plus taxes for 12 months. Premium Channels at No Charge for One Year! Anytime, anywhere. Some restrictions apply. W/24-mo. agmt TV price higher in 2nd year. Regional Sports Fee up to \$8.49/month is extra & applies. Call IVS 1-855-763-0124.

STAY IN your home longer with an American Standard Walk-in Bathtub. Receive up to \$1,500 off, including a free toilet, and a lifetime warranty on the tub and installation! Call us at 1-888-332-9560.

INVITATION FOR Bids. The Clay County Board of Supervisors will accept sealed bids until February 23, 2021, in the office of the Clay County Clerk, Clay County Courthouse, 111 West Fairfield Street, Clay Center, NE 68933. The bids will be opened on March 16, 2021, during the regularly scheduled board meeting. Bids will be for complete inspection and restoration of exterior of courthouse and may include some interior work. Bidders are encouraged to arrange an on site inspection. The county reserves the right to reject any and all bids. Please mark envelopes according to enclosed bid. Please contact Mike Carroll at 402-762-5329 for more information.

THE COVID crisis has cost us all something. Many have lost jobs and financial security. Have \$10K in debt? Credit Cards, Medical Bills, Car Loans. Call National Debt Relief! We can help! Get a Free debt relief quote. Call 1-866-834-5927.

DIRECTV NOW. No Satellite needed. \$40/month. 65 Channels. Stream Breaking News, Live Events, Sports & On Demand Titles. No Annual Contract. No Commitment. Call 1-855-417-4299.

DISH NETWORK \$59.99 for 190 Channels. Blazing Fast Internet, \$19.99/month (where available). Switch & Get a Free \$100 Visa Gift Card. Free Voice Remote. Free HD DVR. Free Streaming on All Devices. Call today! 1-877-688-4784.

BANKRUPTCY: FREE consultation. Lowest rates. No office visit required. As Nebraska's #1 bankruptcy firm, we have helped thousands of clients file bankruptcy in all 93 Nebraska counties. We can Stop garnishments and foreclosures fast. www.SamTurcoLaw.net. Call 402-965-0424 or send e-mail to info@SamTurcoLawOffices.com.

FAMILY MEDICINE clinic lab tech or phlebotomist, full-time. Hours 9-5 Monday through Friday. Requires associate or bachelor's degree in medical technology; ASCP eligible; phlebotomy skills. Competitive pay scale, excellent benefits. Apply online at JCHHealthandLife.org/careers/

BECOME A published author! Publications sold at all major secular & specialty Christian bookstores. Call Christian Faith Publishing for your Free author submission kit. 1-866-558-6428.

PORTABLE OXYGEN Concentrator? May be covered by Medicare! Reclaim independence and mobility with the compact design and long-lasting battery of Inogen One. Free information kit! Call 855-385-3580.

DONATE YOUR car, truck or van. Help veterans find jobs or start a business. Call Patriotic Hearts Foundation. Fast, Free pick up. Max tax-deduction. Operators are standing by! Call 1-877-312-2360.

CHECK OUT THE CLASSIFIEDS! PUBLIC NOTICES

Minutes

PROCEEDINGS OF PUBLIC HEARING AND REGULAR MEETING OF THE PLEASANT DALE BOARD OF TRUSTEES

The following is a condensed version of the minutes from the December 10, 2020 meeting of the Pleasant Dale Board of Trustees. A complete copy of the minutes is on file with the Village Clerk's Office and posted at the following three places: the Community Hall, U.S. Post Office, and the American Legion's bulletin boards. The next regular meeting will be held January 14, 2021. Pleasant Dale Board of Trustees convened on December 10, 2020 at 7:00 p.m. for a Public Hearing on the One and Six Year Roads Plan and zoning amendment. Members Present: Jerry Allen, Jeff Oehm, Leroy Trease, Leslie Thomas. By Phone: Dennis Hill. Also Present – Clerk: Amber Karel. The Chair noted the posting location of the Open Meetings Act on the East Wall, as required by law. The Chair opened the Public Hearing for the One and Six Year Roads Plan at 7:00 p.m. Public Input – Derrick introduced himself from Bluestem network and announced that the fiberoptic install should be complete in the next 15 – 30 days. Miller & Associates, Reed Miller presented a map of the One and Six Year Roads Plan featuring regular maintenance. The Chair closed the Public Hearing for the One and Six Year Roads Plan at 7:04 p.m. The Chair opened the Public Hearing for the Zoning amendment Amend the Pleasant Dale Zoning Ordinance Section 5.72 (permitted principle use) or Section 5.74 (permitted special use) by adding the following: "Light manufacturing operations, providing that such use is not noxious by reason of vibration or noise beyond the confines of the building, or by the emission of particulate, fumes, gas, odor or smoke." at 7:04 p.m. Public input – Property owner and Building inspector discussed details. The Chair closed the Public Hearing for Zoning amendment at 7:12 p.m. Pleasant Dale Board of Trustees convened on December 10, 2020 at 7:12 p.m. The Chair noted the posting location of the Open Meetings Act on the East Wall, as required by law. Members

Present: Jerry Allen, Jeff Oehm, Leroy Trease, Leslie Thomas. By Phone: Dennis Hill. Also Present – Clerk: Amber Karel. Approved the 11/12/2020 Regular Meeting Minutes. Fire – A good turnout for the toy drive and Santa and Mrs. Claus. Pleasant Dale Fire Department drove Santa and Mrs. Claus around town after the Santa drive through at the fire barn. Letters to Santa also going well. Streets – Need salt for streets. Street lights are up. Discussion on left over rock at the ball field parking lot. Water/Sewer – Water Operator – Coliform/Nitrate test negative. VOC testing came back less than reportable limits. All 811 tickets marked and the Bluestem crew in town is doing a great job. Sewer aerator rope replaced. Planning and Zoning – Quarterly meeting scheduled for Thursday, December 17, 2020 at 4:00 pm. Adopt Resolution 2020 – 08 One and Six Year Road Plan – Motion to adopt Resolution 2020 – 08 One and Six Year Road Plan. Ordinance 2020 – 06 Zoning Amendment – Discussion by Village Attorney giving an explanation to modification. Discussion between board members and property owner. Ordinance 2020 – 06 was approved. Ordinance 2020 – 07 Clerk Treasurer maint compensation part – Ordinance 2020 – 07 was approved. Audit Waiver – Reviewed information provided by the Accountant. Motion to approve and submit the 2020 Audit Waiver request for fiscal year ending September 30, 2020. Clerk School Expense Approval – Reviewed cost of Clerk school. Motion to approve Amber Karel to attend. Vyhnaelek Insurance Renewal – Approve coverage with One Beacon – Intact with Vyhnaelek Insurance and pay 2021 policies for the Village/Workers Compensation in the amount of \$7,462.00 and the Fire dept policy in the amount of \$3,726.00. Approved to appoint the same Chair, Leslie Thomas. Approved to appoint the same vice chair and all commissioners as listed on the following slate. Approved to re – appoint John Stevens and Jim Vance to a three – year term on Planning and Zoning. Motion to Approve Engagement Letter with Gabriel, Burger & Else, CPA for Accounting Services. Motion to Approve retainer agreement with Bromm Lindahl Freeman – Caddy & Lausterer. Designated Publishing Locations and Legal Paper – Approved to designate posting as reasonable advance

publishing notice in the following locations, the Community Hall, American Legion Hall and United States Post Office Bulletin Board and the official paper as The Milford Times. Approved the Revenue Report and the following Claims. Abbreviations: Ins – Insurance; Li – License Renewal; Pub – Publishing; Qt – Quarterly Filing; Re – Reimbursement; Se – Services; Su – Supplies; Tr – Travel; Tx – Tax, Ut – Utilities; Arks Equipment – Su \$48.97, Bromm, Lindahl, et al – Se \$1,212.50, Burger, R. CPA – Se \$1,750.00, Karel, A – Re \$113.85, Menards – Su \$407.65, Municipal Supply, Inc – Su \$202.83, Ne Dept of Rev – Tx \$17.22, DHHS – Se \$31.00, NIFCOmechanical – Se \$250.00, NorrisPPD – Ut \$807.95, Overhead door Co – Se \$7,178.45, Sargent drilling – Se \$600.00, Seward Co Independent – Pub \$57.07, Storey Kenworthy – Su \$123.72, Trease, L. – Re \$100.50, Uribe – Se \$48.00, USPS – Su \$110.00, Vyhnaelek – Ins \$11,188.00. Total Salaries – \$2,290.05. Total Claims – \$26,537.76

2021 List of Commissioners and Boards
Board Members, Current Commission
Jeff Oehm, Streets
Jerry Allen, Parks
Leroy Trease, Water/Sewer
Leslie Thomas, Fire
Dennis Hill, Buildings
Name, Current Position
Amber Karel, Clerk/Treasurer
Maureen Freeman-Caddy, Attorney
Miller & Associates, Engineer
Leroy Trease, Water Operator
Miller & Associates-Reed Miller, Streets Superintendent
Kendall Hoggins, Building Inspector
Ryan L. Burger, CPA, Accountant
Jerry McFarland, Nuisance Hearing Officer
Health Board Members
Linda Olson
Leslie Thomas
Louis Griser
Tree Board Members
Deb Bennett (2023)
Planning and Zoning
John Stevens (2023)
Jim Vance (2023)
ADA Compliance Committee
John Stevens
Dennis Hill
Set Agenda for January 14, 2021. Adjourned 8:15 p.m.

Submitted by
Amber Karel, Village Clerk
MT — December 30, 2020

COUNTY COMMISSIONERS OFFICIAL PROCEEDINGS

Boards of Commissioner Meetings are held each Tuesday morning in the Seward County Courthouse at 9:00 a.m., except for the first Tuesday of each month when meetings will be held at 8:30 a.m. Notice of each meeting is posted on the Courthouse bulletin board and on the Commissioner's room door. The agenda for all meetings is kept continually current and is available for public inspection at the County Clerk's Office during normal business hours. The agenda is held open until one business day prior to the meeting for appearance before the Board. The Board has the right to modify the agenda to include items of an emergency nature only at such public meeting.

CLAIMS ALLOWED JANUARY 19, 2020

The Seward County Board of Equalization convened on December 22, 2020 at 8:30 a.m. Present: Chairperson: John Culver Members: Misty Ahmic, Bob Vrbka, Ken Schmieding, Becky Paulsen County Clerk: Sherry Schweitzer Deputy County Assessor: Deanna Boyer Approved the minutes of December 8, 2020. Convened as the Board of Commissioners. Approved the minutes of December 15 & 18, 2020. Andrew Matney, E911 Director, gave an update of the 911 Dept. Commissioners gave an update of their activities. Appointed Krystal Naber and Jennifer Eickhoff as Seward County Extension Board members. Approved 3-year contract with Maximus to develop a Cost Allocation Plan. Discussed copy policy/fee schedule for Seward County. Held public hearing for and adopted General Assistance Guidelines. Clark Kolterman, Chairman of the Seward County Visitor's Committee, was present to give an update of the organization. Opened bids for the Orthophotography and Digital Oblique Aerial Imagery and Software Project. Awarded Employee Recognition certificates for 5 years of service to Seward County. Adopted the agenda for December 29, 2020 and adjourned at 10:06 a.m.

Sherry Schweitzer
County Clerk
MT — December 30, 2020
ZNEZ

Hearings

NOTICE OF PUBLIC HEARING

Notice is given that the Seward County Planning Commission will hold a Public Hearing on Monday, January 18th, 2021, 7:30 p.m., on a zoom telephone or video conference online. Please use: http://zoom.us/j/9421681714 online Password 768261 Regarding the following: Discussion/Action Public Hearing - Conditional Use Permit to operate a Livestock Feeding Operation Parcel ID: 800103971 on a parcel of ground located in the west ½ of the South East ¼ & the East ½ of the South West ¼ of, Section 12, Township 9 North, Range 2 East, Seward County, Nebraska. Notice of said meeting will be posted in the Courthouse North Door. The agenda for said meeting will be kept continually current and available for public inspection in the Zoning Office during normal business hours. The agenda will be held open until 4:00 p.m. of the day, four days before the day of the meeting. The Planning Commission has the right to modify the agenda to include items of an emergency nature only at such meetings. Seward County Zoning Administrator MT — December 30, 2020 ZNEZ

Meetings

NOTICE

A Public Meeting of the Seward County Planning Commission will be held January 18th, 2020, 7:30 pm, on a zoom telephone or video conference online. Please use: http://zoom.us/j/9421681714 online Password 768261 Notice of said meeting will be posted in the Courthouse North Door. The agenda for said meeting will be kept continually current and available for public inspection in the Zoning Office during normal business hours. The agenda will be held open until 4:00 p.m. of the day, two days before the day of the meeting. The Planning Commission has the right to modify the agenda to include items of an emergency nature only at such meetings. Seward County Zoning Administrator MT — December 30, 2020 ZNEZ

Public Notices
YOUR RIGHT TO KNOW

COLLECTIBLES AUCTION
Saturday, Jan. 9 ♦ 9:30 a.m.
4-H Building ♦ Fairgrounds ♦ Seward, NE
Quaker State DSP Tombstone Sign, (9) Pocket Watches, Wrist Watches, (50+) Belt Buckles, (50+) Knives, (50+) Barbie Dolls, (4) JD Pedal Tractors, Large Offering of Toys, Trucks, Cars, Tractors, Coin Banks, Husker Items, Vintage Racing Trophies, Glassware, Collectibles, 6 Gal RW Crock, Erector Set, Coffee & Tea Tins, & Many items yet to be unpacked.
Visit www.NebAuction.com for full details.
SCHWEITZER AUCTION SERVICE
BRIAN SCHWEITZER 402.641.1266
SCOTT JELINEK 402.429.9814



It might be some time before anyone plays on this space shuttle toy in the park at Milford.

CRAIG JONES/MT

It’s beginning to look a lot like winter



Jake Kment gets his exercise while shoveling his driveway Dec. 29 following an overnight snowstorm.

CRAIG JONES/MT



John Slama uses his snowblower Tuesday morning to clear the snow from his driveway.

CRAIG JONES/MT

Departments renew food waste agreement

On Dec. 17, the U.S. Department of Agriculture, the U.S. Environmental Protection Agency and the U.S. Food and Drug Administration announced the renewal of the joint agency formal agreement including the Winning on Reducing Food Waste Initiative.

The agreement reaffirms the agencies’ commitment to improve coordination and communication efforts to better educate Americans on the impacts and importance of reducing food loss and waste. Food loss and waste negatively impact food security, the economy, communities, and the environment.

Since the Trump Administration launched the Winning on Reducing Food Waste Initiative, the collaborative effort has achieved great success. Public-private partnerships, like the United States Food Loss and Waste 2030 Champions, are key to successfully reducing food loss and waste by implementing proven strategies and sharing best practices. In 2020, the Trump Administration welcomed 10 new businesses and organizations to the 2030 Champions.

The renewed three-year agreement will continue to build on these successful partnerships and reiterate a shared commitment to work to-

Facts about food waste

EPA estimates that more food (over 70 billion pounds) reaches landfills than any other material in everyday trash, constituting 24% of discarded municipal solid waste.

Landfills are the third largest source of human-related methane emissions in the U.S.

Food waste not only impacts landfill space and emissions, it negatively impacts the economy. USDA estimates the value of food loss and waste for retailers and consumers each year to be over \$161 billion.

Wasted food also results in unnecessary expenditures of U.S. domestic energy resources. Every time food is lost or wasted, all the energy that went into producing that food is also wasted.

wards the national goal of reducing food loss and waste by 50 percent by 2030.

“The United States is getting a handle on its serious food waste problem,” EPA Administrator Andrew Wheeler said. “The three-year renewal of this joint agency agreement will help our country achieve its ambitious goal of cutting food waste by 50% by 2030.”

“Our nation’s agricultural abundance should be used to nourish those in need, not fill the trash,” U.S. Secretary of Agriculture Sonny Perdue said. “As the world’s population continues to grow and the food systems continue to evolve, now is the time to con-

tinue to educate consumers and businesses alike on the need for food waste reduction.”

“We’ve seen great strides in food loss and waste reduction since first entering the joint agency formal agreement with our federal colleagues, and through collaborative efforts with our public and private partners,” said FDA Commissioner Stephen M. Hahn, M.D. “At FDA, we’ve encouraged food manufacturers and retailers to standardize the way quality-based date labels are used on packaged foods and developed videos and materials to educate consumers. With these continued partnerships and important efforts,

we’re on track to see a 50% reduction of food waste by 2030.”

As part of the Winning on Reducing Food Waste Initiative, EPA, USDA, and FDA issued its FY2019-2020 Federal Interagency Strategy in April 2019, which identifies six priority areas on which the agencies will focus their efforts to reduce food loss and waste in the U.S. They are:

- Priority Area 1: Enhance Interagency Coordination
- Priority Area 2: Increase Consumer Education and Outreach Efforts
- Priority Area 3: Improve Coordination and Guidance on Food Loss and Waste Measurement
- Priority Area 4: Clarify and Communicate Information on Food Safety, Food Date Labels, and Food Donations
- Priority Area 5: Collaborate with Private Industry to Reduce Food Loss and Waste Across the Supply Chain
- Priority Area 6: Encourage Food Waste Reduction by Federal Agencies in their Respective Facilities

The agencies also launched partnerships with organizations at the forefront of food loss and waste reduction efforts. In April 2019, the agencies signed an agreement with ReFED, a network of the nation’s leading business, non-

Ice-fishing safety always begins with ice thickness

by Jerry Kane
Nebraska Game and Parks Commission

Catching fish through the ice can be a fun way to spend a winter day. Winter days are shorter, so any time spent outdoors is a bonus. But with ice-fishing, safety always should come first.

It always starts with ice thickness. When is the ice thick enough to go out for some ice-fishing? It depends.

One thing is certain: It’s more fun when fishing with a friend. From a safety standpoint, it’s especially smart when ice-fishing.

The Nebraska Game and Parks Commission has some tips for a safe ice-fishing outing on the lake.

- A minimum of 3 inches of clear, blue lake ice will support a single angler; 5 inches will hold several anglers in single file.
- Slush ice is about half as strong as clear lake ice, so anglers should double the minimum thickness figures when encountering such conditions. Ice weakens with age, and late in the season, when it becomes dark and honeycombed, it is time to quit fishing for the season.
- Be especially careful on any lake that has moving water in it. Water movement hinders freezing, often leaving hard-to-detect thin spots.
- Materials imbedded in the ice, such as weeds or logs weaken ice. Large objects on

the ice, such as duck blinds or ice shacks, can absorb the sun’s heat and weaken ice. Ice near shore may be weakened by heat from the ground.

- Use an ice chisel or spud bar to strike the ice and evaluate conditions as you venture out.
- Wear ice picks around your neck in case the worst happens and you need something to grip the ice to pull yourself out of the water.
- Wear ice cleats on your boots for traction.
- Have a long throw rope with you in case of emergency.

Drowning is one immediate danger from falling through the ice, but hypothermia, a rapid, drastic lowering of body temperature that causes loss of the use of limbs, disorientation, unconsciousness, and heart failure, is the real threat.

Dress warm, be safe and have fun on the ice this winter.

For more on ice-fishing safety, watch a video at outdoornebraska.gov/howtofish.

Anglers can learn the basics of ice-fishing or pick up a few new tips from experienced anglers at virtual Discover Ice-Fishing clinics in Jan. 16 and 19. Game and Parks Commission and the Nebraska Fish and Game Association will host the classroom clinics via Zoom. Register to attend one or both sessions by going to the calendar event entries at calendar.outdoornebraska.gov.



Find us on Facebook!

THE MILFORD Times

Southeast Nebraska Annual January HAY AUCTION

11:00 a.m. Tuesday, January 5, 2021 11:00 a.m.

LOCATION: Novak Consignment Lot, 2 miles east of Dorchester, Nebr., on Hwy. 33

For Hay Consignments, Contact:
Col. Troy Novak (402) 641-1526
Office (402) 826-5302

TRACTORS AVAILABLE FOR UNLOADING
3 DAYS PRIOR TO AUCTION
JAN. 2, 3, 4 • 9:30 A.M. TO 4 P.M.

Selling Big and Small Bales

**Alfalfa • Bromo
Prairie • Straw • Etc.**

