

**NEW EDITION EVERY FRIDAY!
VOL: 29 • NO. 95 • NOVEMBER 18, 2022**

THE NEMO TRADER

PO BOX 809 • KIRKSVILLE, MO 63501 • PHONE 660-665-8500
Web Site: nemotrader.net • Email: sales@nemotrader.net

A WEEKLY ADVERTISER SERVING ALL OF NORTHEAST MISSOURI AND THE SURROUNDING AREA

| | | | |
|---|--|---|--|
|  <h1>AMMO PLANET</h1> <p>200 W. POTTER AVE • KIRKSVILLE, MO • 660-956-4654 • 660-349-0070 AMMO-PLANET.COM • HOURS: MON & TUE 10-5 • WED-FRI 10-6 • SAT 10-3</p> | |  <p>Black Rain Ordnance Spec-15, 5.56</p> <p>SALE \$899</p> | |
|  <p>Heritage Mfg. Rough Rider, 22LR & 22WMR</p> <p>\$135 after mail in rebate</p> | |  <p>Heritage Mfg. Rough Rider, 22LR As low as</p> <p>\$99 after mail in rebate</p> | |
|  <p>Smith & Wesson EZShield 9MM 380ACP 30 Super Carry</p> <p>Starting At \$370</p> | |  <p>Taurus, G3C 9mm</p> <p>\$214 after mail in rebate</p> | |
|  <p>P10S 9mm P10F 9mm</p> <p>\$549 after mail in rebate</p> | |  <p>Rossi RS22, 22LR</p> <p>\$125 after mail in rebate</p> | |
|  <p>Black Rain Ordnance BRO-A2, 5.56</p> <p>\$799 \$599 EARLY BLACK FRIDAY SPECIAL</p> | |  <p>Fiocchi, 9mm 115gr FMJ</p> <p>500 rds 1000 rds</p> <p>\$173 \$332</p> | |
|  <p>Palmetto State Armory PSA 5.7 Rock</p> <p>5.7 x 28mm Has 2 - 23rd magazines</p> <p>\$499</p> | |  <p>PMC, 223 55 gr. FMJ</p> <p>500 rds 1000 rds</p> <p>\$250 \$475</p> | |



FARM & RANCH.

ELIZABETH GREGORY

660.621.2136

missourihomeandfarm.com

CENTURY21

1605 Baltimore,
Suite A
Kirksville
660.665.5678

21

Lifetime Realty

BLACK FRIDAY

Mystery SALE!

Spend \$100 & Draw for Great Prizes Including:
Targets, Gift Cards, Lights and Discounts up to

25% OFF

ENTIRE PURCHASE!



SAR B6 9mm
\$249!



Kimber 1911 starting at
\$699!

**Come Celebrate Small Business Saturday
and Black Friday With The Gun Grove in Macon, MO!**



\$29.99 500rds
Winchester Wildcat .22LR!



\$100 off & Free Red
Dot! Sig M400 Tread!
Free Red Dot w/ any AR!



\$100 off Sig
Sauer P365 9mm TacPacs!



Heritage Rough Rider
.22LR starting at **\$99*!**

Buy 1 Get 1 Free - Black Rifle Coffee • Pepper Ball Pistols \$69
Buy 2 Get 1 Free - High Country Jerky, Select Browning & Buck Knives & Sonic Boom
Sig Sauer Rangefinder \$99 • Bushnell H2O Binoculars \$59.99 • Taurus G2C 9mm starting at \$199*

The Gun Grove

.com

Tue.-Fri. 10am-6pm & Sat.10am-5pm • 708 Patton St - Macon, MO • 660-395-7400
 Watch our website and facebook for more deals • www.gungrove.com

*after rebate

ED's MACHINERY LLC

QUALITY MACHINERY SINCE 1997

17920 US HWY 136

MEMPHIS MO 63555

660-628-4454

www.edsmachinery.com

Stock Number: 103935

2012 JOHN DEERE 8335R 4392 Hrs., Power Shift Trans., MFWD, Big 1000 PTO, 5 Hyd., Quick Hitch.....\$189,500

Stock Number: 103949

2015 CASE IH MAGNUM 310 2,681 Hrs, Power Shift, MFWD, Big 1000 Pto, Quick Hitch.....\$187,500

Stock Number: 38581

2015 GREAT PLAINS 3000TM 30 Ft, Hyd Fore/Aft, Rock Flex, Single Rolling Basket.....\$59,500

Stock Number: 70104

2015 KUHN KNIGHT 70110 International 7400 SBA, 84,522 Miles, 6x4, Kuhn Knight bD0057Rolls.....\$79,500

Stock Number: 103903

2011 JOHN DEERE 8335R 5570 Hrs. IVT Trans, MFWD, Big 1000 PTO, 4 Hyd. Outlets, 3 Hyd.....\$175,000

Stock Number: 38136

2011 CASE IH MAGNUM 315 3414 Hours, Power Shift, MFWD, Big 1000 PTO, 4 Hyd, Outlets.....\$167,500

Stock Number: 70023

2008 CASE IH RMX370 26Ft, Rock Flex, 3 Bar Spring Tooth Harrow, 9" , Hyd For/Aft Adjust.....\$28,500

Stock Number: 104000

SUPREME INTL 300 540 Pto, Digi-Star Scales, 231 Cu. Ft. Cap. Vertical Auger.....\$9,750

Stock Number: 38692

2018 JOHN DEERE 6110M 672 Hrs, 20 Spd Power Quad Trans w/ Left Hand Reverser.....\$104,500

Stock Number: 70184

2016 CASE IH FARMALL 130A 1,334 Hrs, Power Quad Trans, 540/1000 Pto, 3 Hyd , Loader Ready....\$64,900

Stock Number: 38094

CASE IH TIGERMATE 200 28 Ft Width, 4 Bar Spring Tooth Harrow, Walking Tandem.....\$24,000

Stock Number: 81622

2018 JOHN DEERE 620R JD 620R Loader W/ Grapple & Brackets, Self Leveling, (No Joy Stick).....\$17,900

Sauder's Custom Painting, LLC

Before

After

• Tractors

• Farm Equipment

• Trailers and MORE!

Jason Sauder

660-734-9032

20584 Clark Dr.

Dr. Linneus, MO 64653

BUCKMAN MACHINERY, LLC

573-881-3557

John Deere 4320 Row crop, 18.4x38, 90%, 9925 hrs, dual hydr, straight,.....\$19,500

John Deere 4440, QR, CAH, 9000 hrs, 90% factory duals, good sound tractor,\$31,500

John Deere 5425, 2006, MFWD, 466 current hours, loader ready,.....\$29,500

John Deere 752 4-Basket Tedder, low acres, field ready,\$2,250

John Deere 4450, MFWD, ps, 90% rubber, 10,000 hrs, with allied 795 loader.....\$42,500

John Deere 3020 D, 1968, powershift, 9000 hrs, very straight, Good rubber, Loader Available.....\$11,500

Ground Driven JD Manure Spreaders, Refurbished,\$1,750 Choice

John Deere 5200 w/520 Loader, 2,000 hrs shown, mechanically sound, little on the rough side.\$15,500

John Deere 3020 Gas, powershift, 90% big rubber, dual hydr, 4100 hrs, one owner, really nice, loader available\$8,950

Loaders & Duals available for many

Maximum Yield

- Industry leading yield retention

- Reduce cob bounce and shatter

- Increased harvest speeds

ELITE XL

SERIES

Every Kernel Counts

GERINGHOFF

www.Geringhoff.com | (320) 252-4633

QUINCY TRACTOR LLC.

Contact Us!

Quincy Tractor

217-222-1392

Brookfield Tractor

660-258-7228

Hannibal Tractor

573-221-8212

Bowling Green Tractor

573-324-3337

QUINCYTRACTORLLC.COM

NEW CORN HEADS

QUINCY | GERINGHOFF NS1230 | 12 ROW 30", RIGID, 21 SPLINE OUTPUT SHAFT, END ROW AUGERS, 4 SENSORS INSIGHT CONTROLLER W FORESIGHT.....CALL

QUINCY | GERINGHOFF NS830 | 8 ROW 30", RIGID, END ROW AUGERS, 3 SENSORS INSIGHT CONTROLLER W FORESIGTH...CALL

USED CORN HEADS

HANNIBAL | MAINERO MDD100-24 | 2016, 24', BLACK SHIELDS.....CALL

BOWLING GREEN | MAINERO MDD100-31 | 2016, 31'.....\$31,500

HANNIBAL | GERINGHOFF NS1230F | 2007, NO END CONES, 12 ROW 30"\$49,000

HANNIBAL | NEW HOLLAND 98D830 | 2012.....CALL

HANNIBAL | NEW HOLLAND 98D830 | 2010, 8 ROW 30"\$18,000

QUINCY | NEW HOLLAND 98C830 | 2005.....CALL

QUINCY | NEW HOLLAND 98C830 | 2008, 8 ROW 30"\$12,500

QUINCY | NEW HOLLAND 98C830 | 2008, METER CORN REEL.....\$16,500

HANNIBAL | CASE IH 3408 | 2009, 8 ROW 30", NEW GATHERING CHAINS, NEW SPROCKETS, 100 ACRES ON THEM... ..\$24,000

QUINCY | CASE IH 3408 | 2012, NO END CONES, 360 YEILD BRUSHES, 3 SENSOR HEADER HEIGHT... ..\$26,500

QUINCY | CASE IH 3408 | 2010, NO END CONES.....CALL

HANNIBAL | CASE IH 3208 | 8 ROW 30".....CALL

Quincy Tractor

Brookfield Tractor

Hannibal Tractor

Bowling Green Tractor

NEMO TRADER • Advertise with us TODAY! • Phone: 660.665.8500 • PO BOX 809 • 701 East LaHarpe St, Suite C, KIRKSVILLE, MO 63501

Page 2 • Section A

NEMO

November 18, 2022

AGRI-BUSINESS

Cattle

Angus and Balancer Bulls, conditioned to work. Over 55 years breeding.Total performance, A.I. Sires. Rutledge 641-344-4565

Neese Angus Bulls, bred and developed to work for you! Performance records, E.P.D.S., A.I. Sired. Rutledge 641-344-4565

100 black Angus cow calf pairs. Cows open, 3 to 6 years old. Fancy, \$2,000.00. 660-988-0685.

Registered Angus Bulls! 14-15 month. Sired by Growth Fund, Raindance, Insight, Turning Point, Playbook. Stout , quiet bulls raised on Fescue pasture and hand fed a grain ration. 660-342-5343

Equipment & Supplies

1985 Liebherr 731-C, 150 HP Dozer, 12' Blade, ONLY 4989 hours. Farmer owned last 25 Years. Excellent condition. \$32,000. 660-676-9676

IH 153 Cultivator, 6 row for sale. 573-633-2369

FOR SALE
All Sired Angus Bulls,
14 & 18 Months Old.
Harold Trump
660-341-5730

Buckman Machinery



One station 90 + hp John Deere Tractors, 6420, 6410, all approx. 4500 hrs, triple hydr, mechanically sound, **\$15,950 choice.**



Bush Hog 3615, Batwing, Laminated tires, 540 PTO, used last week. **\$8,950**



John Deere 5320, MFWD, roll bar & canopy, 6500 hrs, well maintained, 95% rubber. **\$20,500**



Woods 3180 Batwing, 15', 1000 PTO, laminated tires, chains, field ready **\$9,500**



John Deere 4455, CAH, QR, 20.8x38 90%, 9000 hrs, 2 owners, very straight, **\$37,500**



John Deere 7230 power quad, reverser, JD 741 Loader, 7400 hrs, above average condition, **\$69,500**

573-881-3557

Equipment & Supplies

Farmall 706 gas, 1966, 72 HP, factory wide front, flat top fenders, fast hitch, new seat, lot of recent work done with new parts, runs good with Dunham Lehr hydraulic bucket loader, \$6500. 217-257-1385

Farmall M, Schwartz wide front, matching 15.5x38 75% tread or better on good rims, OD transmission, live power, stored inside, non running, \$1400. 217-257-1385

Five original gates from the old Kansas City stockyards. Heavy Western style, Kahoka area, \$25.00 each. 319-795-5829.

NH3 14 knife DMI 4300 WT on M and wings, raven cooler closing wheels monitor; Krause 30' disk, \$2000.00 disk. 217-658-4761

Landoll 7430 33' verticle tillage rolling basket, hyd for aft; vertical tillage GP 3000 turbo till rolling basket. 217-658-4761.

Equipment & Supplies

Progressive 12 knife NH3 2 no till cutters in front of each knife, raven cooler, markers monitor. Closing wheels for strip till. 217-658-4761.

MC Farland RD 4030 30' vertical tillage, reel harrow rolling basket; GP 1500 drill with center point. 217-658-4761.

NEMO ADS SELL! Call for more information and specials. 660-665-8500.

LANCASTER LUMBER INC.

Lancaster, MO.

1-800-424-5071

LAN-DOW BUILDINGS

www.lancasterlumber.com

ANGUS BULLS FOR SALE

Coon Angus Ranch
Outstanding selection of 14 month old bulls
1318 Shelby 169, Bethel, MO 63434
Russell 660-341-2705
Larry 660-284-6473
Susan 660-341-5192
ruscatsol@gmail.com
www.coonangusranch.com

NEMOTRADER.NET



631220cb

Golden Grain Bins-Winter Discount

| Grain Bins | Floors w/12"Supp. & Flashing |
|----------------------------|--------------------------------|
| 18"x18' 4,195bu. \$ 6,511 | 18'....\$1,817 30'....\$ 5,072 |
| 27"x21' 11,265bu. \$13,069 | 21'....\$2,485 36'....\$ 7,226 |
| 42"x24' 32,245bu. \$30,463 | 27'....\$4,145 42'....\$ 9,840 |



GMLS Industries, Inc.
PH: 660-699-2179 or 620-983-2136
www.gmlsindustries.com

670222jn

FOR SALE
Our Fall Registered Angus Bulls

We are Selling picks at the Farm!

Bulls are **BIG, STOUT, SLICK BLACK & Gentle.**
Most are A.I. with Top EPD's, Weights, and SuperFeet.
Pedigree & Quality are Second to NONE.

1st come 1st serve.
Up to date on vaccinations & Semen Tested.
\$4000 per pick



Ranch
13815 220th Ave
Monticello, MO 63457
Terry (573)470-0846
Marilynn (573)470-0847

Your Local
FARM SUPPLY SOURCE
NUTRITION • MEDICAL • FARM • PET • APPAREL

Featured Product



MENTION THIS AD AND RECEIVE: \$4 OFF PER BAG • *5 BAG LIMIT

IN STOCK!
SUPER MEAL • HIGH ENERGY
PUPPY FOOD • ADULT FORMULA 26-18

Hometown Animal Health has provided quality products, expert knowledge, and friendly customer service to northeast Missouri and surrounding areas. We are a full-service nutrition, medical, and farm supply source carrying complete lines of animal feed and supplies, farming equipment, agricultural parts, lawn and garden tools, work apparel, and much more!"



Feed • Medical • Farm & Pet Supplies • Footwear & More

website: hometownanimalhealth.com

660-465-2967

18743 US Hwy, 136 Memphis, MO 63555
"on Hwy 136 west of Memphis"

Monday-Friday 8pm to 5pm
Saturday 8am to 1pm

667250jn

WE GOT YOUR NEEDS COVERED!



FARM TARPS TRUCK TARPS
HOOP BUILDING COVERS

Troyer
TARP MFG.

660-486-3301
20264 STATE HWY. VV • ETHEL, MO 63539

631226s

Animal Housing,
Hay Storage & Much More!!



Skylight
Fabric Structures

20749 State Highway VV
Ethel, MO 63539
660-486-3250
833-482-8862

641057ch

Fall CD Special

12 Month CD
3.00%
3.03% APY*

36 Month CD
3.60%
3.65% APY*

*Minimum \$10,000 deposit to open. Limited time offer. Annual Percentage Yield calculated with quarterly interest compounded if you elect not to have your interest compounded, this will reduce your rate of return. Penalty for early withdrawals. Public Funds are not eligible for this rate special.

1 S. Lincoln St.
Green City, MO
63545
660-951-8430

701 N. Pearl St.
Milan, MO 63556
660-951-8432

3311 N. Baltimore
Kirksville, MO
63501
660-951-8431

www.farmbank.com

666018cb

Equipment & Supplies

WANTED TO BUY: Farm Machinery and Estates. Call James L. Johnston. 573-473-4904

Hay/Feed/Seed

Alfalfa grass big square bales for sale. 660-216-1114, located in Edina MO

Hay/Feed/Seed

40 High Quality 5x5 hay bales,alfalfa, clover, timothy, \$70 bale. Kirksville 660-956-5942

Wanted to buy: low quality hay of cornstalks. Will buy a lot, also will rent cornstalks or pasture. 660-988-0685.

MERCHANDISE

Furniture

Bassett King size bed and large dresser with mirror, smoke and pet free, moving and can't take, \$475. 217-257-1385

Call about our classified ad specials. 660-665-8500.

Miscellaneous

1971 Chevy Chevelle, 350 auto, blue inside and out, nice paint, new tires, Cragar wheels, cruise control, \$31,500. 573-248-6111

Billboard tarps, assorted sizes, mostly 14x48's, \$35.00 each. Raymond Kauffman, 25624 Hanover St, LaPlata, MO 63549.

Vintage Drexel French carved county dresser, glass top & French carved mirror, very fine condition, in storage last 30 years. 641-208-7353

Five original gates from the old Kansas City stockyards. Heavy Western style, Kahoka area, \$25.00 each. 319-795-5829.

Check out our tillable farm listings below

233 +/- Acres/ Linn, Adair, Sullivan County Line
-very good soils
-3.4% ROI
-213 +/- tillable crop
-Water and electricity nearby
Cody Kice, agent (660) 341-5862
\$1,747,500

80 +/- Acres/ Sullivan, Adair, Linn County Lines
-sets right on the Adair, Linn, and Sullivan line
-77 +/- tillable crop acres
-3.3% return on investment
Abbott Shoop, agent (573) 821-5472
\$600,000

440 +/- SCOTLAND COUNTY
-400 +/- Acres Highly Tillable
-High Yielding Crops
-12.5 Acre Lake
-Terraced & Tiled
Andy Boyer, agent, 636-295-1476
\$4,378,000

360 +/- ACRES MACON COUNTY
-excellent development opportunity.
-313 +/- acres highly tillable crop land
-Great recreation opportunity
Andy Boyer, agent, 636-295-1476
CONTACT FOR PRICE

60 +/- ACRES MERCER COUNTY
-CRP for the last 10 years
-51.4 Acres out of CRP in 2022
-QDM Area
-Building Site
Andy Boyer, agent, 636-295-1476.
\$338,000

86 +/- Acres Linn County
-Known for its management practices
-77 +/- Acres highly tillable bottom ground
-consistently raised good crops
Andy Boyer, agent, 636-295-1476
CONTACT FOR PRICE

275 +/- Acres Linn County
-230 +/- Acres Tillable
-Excellent hunting and income
-big crop producer
-Very Secluded
Andy Boyer, agent, 636-295-1476
CONTACT FOR PRICE

186 +/- Acres Sullivan County
-Highly productive farm land with abundant Wildlife
-156 +/- Acres Highly Tillable Bottoms
-Easy to hunt multiple winds
Abbott Shoop, agent (573) 821-5472
CONTACT FOR PRICE

SCOTLAND COUNTY

\$3,599,375

165 +/- ACRES + CUSTOM BUILT HOME

165 +/- Acre Property Features:
-A newer custom-built home, 4-bedroom, 4-bathroom
-Overlooking the draws, timber, and bottom fields
-Total seclusion with the feeling of total privacy
-Large shouse w/ heated floors & full living quarters attached
-Large storage sheds
-Lifetime shingles on home
-Lifetime hot water heaters
-Large, stocked pond
-164.3 Acres ROW crop
****Property can be sold as 82 acres+home and 40 acres+home****

AGENTS:

ANDY BOYER
636-295-1476
CODY KICE
660-341-5862
www.boyerlandcompany.com

READY TO CAPITALIZE ON RECORD LAND VALUES?
CALL THE LAND SPECIALISTS.

WHITETAIL PROPERTIES REAL ESTATE

HUNTING | RANCH | FARM | TIMBER

WHITETAILPROPERTIES.COM

RANCH & FARM AUCTIONS

A DIVISION OF WHITETAIL PROPERTIES REAL ESTATE, LLC

RANCHANDFARMAUCTIONS.COM

CONTACT ME TODAY TO LEARN MORE ABOUT SELLING YOUR HUNTING, FARMLAND OR PASTURELAND ON THE OPEN MARKET OR TAKING IT TO AUCTION.

JEFF PROPST

Whitetail Properties Real Estate LLC.
Agent, Land Specialist
Northeast and North Central Missouri
636.209.0362
jeff.propst@whitetailproperties.com

Whitetail Properties Real Estate, LLC DBA Whitetail Properties, DBA Whitetail Trophy Properties Real Estate LLC. Licensed in CO, MN, ND, SD, TN & WI - Jeff Evans, Broker. Licensed in FL, KS & MO - Jefferson Kirk Gilbert, Broker. Licensed in TX & NM - Joey Bellington, Broker. Licensed in IN - Bill Minor, Broker. Licensed in AL, GA, LA, & MS - Sybil Stewart, Broker. Licensed in TN - Tim Burnette, Broker. Licensed in TN & MS - Josh Monk, Broker. Licensed in AR - Anthony Chrisco, Broker. Licensed in NC, SC, VA - Chip Camp, Broker. Licensed in IA, NC - Richard F. Baugh, Broker. Licensed in MI - Edmund Joel Nogaski, Broker. Licensed in IL, MD, WV - Debbie S. Laux, Broker. Licensed in ID, MT, OR, UT, WA, WY & NV - Aaron Miliken, Broker. Licensed in NY - John Myers, Real Estate Broker. Licensed in OK - Dean Anderson, Broker. Licensed in KY - Derek Fisher, Broker. Licensed in OH - Jeremy Schaefer, Principal Broker. Licensed in NE & SD - Jason Schendt, Broker. Licensed in MS - Chipper Gibbs, Broker. Licensed in PA - Jack Brown, Broker.

Miscellaneous

40 High Quality 5x5 hay bales,alfalfa, clover, timothy, \$70 bale. Kirksville 660-956-5942

Call us for all your advertising needs. 660-665-8500.

Premium Metal Roofing

AW Metal Inc.
Metal Roofing Headquarters
641-664-3990 • ammetal.net

Band Saw
New Grizzly 14" Deluxe G0555LX with Mobile Base

Motorcycle Trailer
Pull behind Bike, Like New Aluma Trailer
660-234-5016

D&J'S
SCREEN PRINTING
and embroidery

SLINGIN' INK
for
OVER 25 YEARS

816 W NORTH TOWN RD
KIRKSVILLE, MO
660.665.8001

let's be friends

KIRKSVILLESHIRTS.COM

HAPPY THANKSGIVING
FROM THE
NEMO
Trader



NOW HIRING
Multiple positions available including:
Diesel Technician, Body Technician, Tire Technician,
Detail Shop, Shipping Receiving, Parts Route Consultant.

VOLVO BALL VOLVO
FULL SERVICE HEAVY DUTY TRUCK DEALERSHIP

22280 Hwy 136 • Kahoka, MO 63445
660-727-3358 • balltrucks.com/

BOYER LAND COMPANY, LLC
RECREATIONAL, AG, AUCTION, INVESTMENT

Check out our hunting farm listings below

| | |
|---|--|
| 60+/- ACRES MERCER COUNTY  Recreation, CRP, Possible Tillable -QDM Area -Utilities at road -Building Site -Proven Producer Andy Boyer, agent, 636-295-1476 \$338,000 | 180+/- ACRES LINN COUNTY  -Great place to build/Nice Cabin and outbuildings -CRP and Timber -Numerous large bucks hunted over the years -Excellent turkey hunting Andy Boyer, agent, 636-295-1476 Abbott Shoop, agent, 573-821-5472 \$882,000 |
| 334+/- ACRES LINN COUNTY  -Premier Hunting Farm plus income -Extensively managed for white-tailed deer -Upkeep of food plots Andy Boyer, agent, 636-295-1476 \$1,970,600 | 80+/- ACRES SULLIVAN COUNTY  -Proven Producer -turnkey hunting farm with 3 blinds and food plots -Excellent spot for the avid hunter Tyler Arnold, agent, 660-292-4024 \$360,000 |
| 177+/- ACRES SULLIVAN COUNTY  -Most intensely managed areas -Turnkey with blinds and plots -Farm hunts huge for 177 +/- Acres Tyler Arnold, agent, at 660-292-4024 \$778,800 | 153+/- ACRES MERCER COUNTY  -Known for its management practices -Best big buck areas in North Missouri -Perfect for the serious hunter Jason Courtney, agent, 816-654-2144 \$856,800 |
| 72.4 +/- ACRES CLARK COUNTY  -Nice mature Timber -Excellent hunting and income -BIG MATURE BUCKS and LONGBEARD TURKEYS -Very Secluded Mike Frazier, agent, 660-341-5729 \$398,200 | 216+/- ACRES LEWIS COUNTY  -Highly productive farm land with abundant Wildlife -Well known for its turkey hunting -Easy to hunt multiple winds Cody Kice, agent, 660 341-5862 \$1,447,200 |

Pick one of these bernette beauties and get BERNINA V9 Creator Software FREE⁹.

Looking for a machine that's easy to operate, fun to use and keeps up with all your sewing inspirations? These bernette machines deliver.

bernette 79
\$2,935 **\$2,199**
Top-of-the-line model for sewing and embroidery.

YOURS FREE⁹
BERNINA V9 Creator Software
a \$1,199 value

bernette 70 DECO
\$2,269 **\$1,699**
Focuses exclusively on embroidery.

Green Acres Sew & Vac
bernette SWISS DESIGN
221 W Grand Ave.
Memphis, MO
660-465-7131
greenacressewvac.com

*Offer valid until Dec. 31, 2022. See store for details.

Request For Bids
2022-2023 Season

Snow removal for County owned or leased properties -includes all parking and sidewalks at each of the following locations:

- Courthouse - 106 W. Wahington
- Annex Building - 300 N. Franklin
- Sheriff Office - 215 N. Franklin
- 309 N. Franklin Street Location
- 310 Elson Street Location
- 311 Elson Street Location
- 2817 N. Baltimore (former Maritz Building)

ADDITIONAL BID COMMENTS:
The bid must include the following to be considered complete:

- Bid Summary
- Terms
- Breakdown of price per location

All Bids must be returned by: **NOVEMBER 28, 2022, BY 4:00 PM.**
Bids will be opened in the Commissioner's Office at a date and time to be determined by the Commission.

RETURN BIDS TO:
Adair County Clerk
Sandy Collop
311 N. Elson Street
Kirksville, MO 63501
scollop@adaircom.com

REFER ALL BID INQUIRIES TO:
Adair County Building & Grounds
Supervisor, Joe Nicol
106 West Washington
Kirksville, MO 63501
(660)216-1286
Maintenance@adaircom.com

BIDS MAY BE MAILED, EMAILED, OR DELIVERED IN PERSON

****DO NOT SEND BIDS TO THE BUILDING & GROUNDS OFFICE****
We reserve the right to accept or decline all or any part of the bid. If you decline to bid, please so advise promptly indicating briefly the reason.

Edina Livestock Sales
Edina, Missouri

Friday, November 18th
Special Feeder Calf Sale
Bred Cow and Cow/Calf Sale
Several Yearlings consigned

Friday, November 25th
No Sale

Saturday, November 26th
Kevin and Beth Strange
24th Annual Bred Heifer Sale at 1:00 p.m.
Also selling 3 & 4 year old cows

To Consign For Any or All Sales or For Information Call:
Owner - Kevin Strange • Cell: 660-341-9974
Ryan Strange • Cell: 660-341-9721
Sale Barn: 660-397-9999

Field Reps:
Bill Tom Hall 660-342-5420 Mike Bronestine 660-341-9965
Jason Bichsel 660-216-0373 John Powell 660-341-1717

475 Acres Randolph/Audrain County Real Estate Auction
MACC ACTIVITY CENTER
101 COLLEGE AVENUE. MOBERLY MO
WEDNESDAY DECEMBER 7 2022. 10 AM

Due to the death of CG and Mary Anne Davis we will sell the following at Public Auction.

AUCTIONEERS NOTE: The Davis Family started with these farms in the 1920's and added some in the 1950's. This is the first time they have been for sale in decades. These 475 acres of good tillable and recreation ground are all contiguous. This is a rare opportunity to purchase land, a concrete asset to farm, hunt, or invest in close to Moberly and a short drive to Columbia. Please Join us on the 7th for this wonderful offering. All tracts will be sold choice to the highest bidder being able to pick which tracts the buyer wants. The farms are surveyed and ready for the next owner but they do sell subject to the Trust conformation. Please Call Dave Atkinson 660-788-3333 or Jerry Crutchfield 660-670-1249 for more information or check missourilandandfarm.com for pictures and bidding information.

FARMS LOCATED ON HIGHWAY NN AND CR 152
4.5 MILES EAST OF HIGHWAY 63 SOUTH OF MOBERLY MO.
Online bidding will be available.
Open House on Saturday, Nov. 19 from 11 PM-2 PM

Parcel 1: 82.8 acres is located in Audrain Co being sold in 2 tracts.
Parcel 2: 292.4 acres located in Randolph Co being sold in 14 tracts easements are included in the survey. Tracts vary from 17.5 acres to 23.9 acres with tillable and recreational ground available. All tracts vary in tillable and woods. Good building sites, Tillable, Hunting.
Parcel 3: 99.8 acres located in Randolph Co being sold in 4 tracts 21 acres to 31 acres. Nice recreational ground with building sites on black top highway.

Terms: 10 percent down auction day with balance due at closing. Closing will be on or before Jan 30th 2023. Statements Auction Day take precedence over all ads and printed material. All acres have been surveyed and will be sold by the acre. All farms sold subject to owner conformation.

CG & MARY ANNE DAVIS FARMS, SELLER

MISSOURI LAND AND FARM AUCTIONS
Dave Atkinson 660-788-3333
Jerry Crutchfield 660-670-1249

33284 State Highway A Greentop, MO

120 acre tract with 80 acres tillable located on a hard surface road. The west border connects to a county road and the southern portion borders state highway. On the property sits a 30 x 30 open pole barn previously used as an airplane hanger.

Call Zach Springer today for your showing 660-341-2405

MLS#30884

CENTURY 21
Lifetime Realty

Each Office Independently Owned And Operated

C21 Kirksville.com
1605 S. Baltimore Suite A
Kirksville, MO 63501
660.665.5678

NEMO

Trader

FREE

NEW EDITION EVERY FRIDAY!
VOL. 29 • NO. 52 • JANUARY 28, 2022

NEMO

Trader

THE NEMO TRADER

PO BOX 809 • KIRKSVILLE, MO 63501 • PHONE 660-665-8500

Web Site: nemotrader.net • Email: sales@nemotrader.net

A WEEKLY ADVERTISER SERVING ALL OF NORTHEAST MISSOURI AND THE SURROUNDING AREA

ED'S MACHINERY LLC
QUALITY MACHINERY SINCE 1997

Have equipment to sell? Consign today!
Absolute Auction, No Reserve.

Consignments accepted until Wednesday, March 9th, at 5:00 P.M.
Print advertising deadline: February 11th, 2022

EXCHANGE YOUR EQUIPMENT FOR CASH!

660-883-5501



WWW.EDSMACHINERY.COM

**CONSIGNMENT
AUCTION**

Live on site & Online

March 11th, 2022 @ 9:00 AM



17920 US Hwy 136 • Memphis, MO
- 1 Mile West of Memphis on Hwy 136 -

*The Meeting
Place For Buyers
And Sellers!*

Call Cindy!

660-988-6830

chigh@nemotrader.net

701 East Laharp Ste. C • Kirksville, Mo 63501

NEMO
Trader

KIRKSVILLE
Daily Express

The Kirksville
CRUIER

**WE CAN ALSO
PRINT YOUR
INSERTS!**

CALL OR EMAIL FOR
YOUR CUSTOM QUOTE!

Insert Rates (11,000 pcs):

| | |
|-------------------------|-------|
| 8.5" x 11" single sheet | \$385 |
| 4-12 page tabloid | \$572 |

**We are a free publication serving
a 20 county coverage area in Missouri, Iowa, and Illinois.**

We distribute 11,000 copies each week to convenience stores,
restaurants, and other businesses for readers to pick up.

NEW ISSUE EACH FRIDAY, ALSO AVAILABLE ONLINE AT NEMOTRADER.NET.

LOLLI LIVESTOCK MKT, INC.

All Class Feeder Calf & Yearling
Cow, C/C Bred Hieffer, Breeder Bull Sale

Tuesday, Nov 22 - 11am

Tuesday, Nov 29 - Special Calf & Yearling Sale

Tuesday, Dec 6 - No Cattle Sale

Dec 7-9 Alternative Livestock & Taxidermy Sale

Cafe Open Lolli Livestock Market, Inc. Cafe Open

704 Main st * Macon, MO * 660-385-2516 www.lolibros.com

Frankie 660-651-4040 * Tim 660-651-3496 * Joseph 660-346-9711

Jordan 660-346-0410 * Cody 660-676-9392 Cattle accepted on Sundays

Miscellaneous

Heavy wooden kitchen table, 2 leafs, chairs \$75; China hutch \$50; Curio lighted cabinet \$45; Vintage chest of drawers \$50; Lane Cedar chest early 50's model; lamps; futon; desk utility cart all \$10 each, much more. Kahoka Area 217-257-1385

IH 153 Cultivator, 6 row for sale. 573-633-2369

2 White storm doors 32" & 36" wide very usable, \$50 each; Kitchen table & 6 barrel style chairs, \$24; antique window wts \$2 each. 217-257-1385

Old Cast Iron and Wood School Desk, \$50; Rough cut Walnut Lumber, 180 Board Foot, \$450; Rocket Wood Stove \$125. 660-342-5757

Need something? Let us help you. You can advertise that you are looking for a special item. Call 660-665-8500 for more information.

Miscellaneous

Texas Ranch style table & bar stools; wagon wheel coffee table; Camo bench seat 26"x72"; hunting blinds; tree stands sale. 641-208-7353

Vortex Diamondback rifle scope 4-12 x 40 DBK-04-BDC with Rock River Mount, \$175 new in box. 573-406-5354 Palmyra

Fresh local cooked sorghum, 3 miles West Laplata, 156, 1/2 mile South Iceberg, 1/2 mile West Hanover. Raymond Kaufman.

Pets & Supplies

Frenchton puppies, 2 females, 3 males. Ready to go now. 660-874-4964.

NEMOTRADER.NET

TIMBER MANAGEMENT.

Purchasing Walnut, Oak, Maple & Other Species

WE PAY BEFORE WE CUT

BONDED & INSURED

641-895-8209 Est. 1968

NEMO ADS SELL! Call for more information and specials. 660-665-8500.

BE AN EARLY BIRD! Place your ads before Monday and beat the rush!

VICTORY Metals & Recycling

Kirksville, MO 660-665-8000

victorymetalrecycling.com

For current scrap prices call or visit our Facebook Page

★ **Construction/ Debris Recycling**

Visit Kirksville's construction & debris recycling facility and save trips to the landfill! Take advantage of this service for solid waste removal by bringing your landfill items to Victory Metals C & D recycling facility located at 3602 N. Industrial Rd.

★ **Roll-Off Container Service**

10-20-30-40 Cubic Yard Dumpsters

3602 N. Industrial Rd.,
Kirksville, MO 63501
djanessvmr@gmail.com
www.victorymetalrecycling.com

10% OFF Gift Cards!

DUTCH GARDEN NURSERY

Amaryllis Bulbs IN STOCK!

Flower Bouquets!

Fall Bulbs: Tulips, Daffodils, Crocus, Hyacinth

WE DELIVER!

Plant all through November & December for spring blooms!

Poinsettias We Deliver!

SEASONAL DECOR! Gifts • Succulents Houseplants

Poly Sandbox Diggers

MEMPHIS LOCATION • 660-883-5650 (Beside Country View Store)

EDINA LOCATION • 660-397-4115 (Home Base)

www.dutchgardennursery.com • Open: Mon. - Sat. 8 AM - 6 PM

YODER'S

Beef & Pork processing available **NOW!!**

PROCESSING

SCHEDULE YOURS TODAY

660-486-3221

(Closed Sundays)

NEW FACILITY! 10+ Years Experience

PORK • DEER • BEEF

QUALITY CUT PLUS

- Patties
- Cure & Smoke
- Vacuum Seal
- Summer Sausage
- CWD Checking. (NOT available opening rifle day)
- Snack Sticks
- Jerky
- Fast Turnaround on Deer

13736 Beechnut Street, Ethel, MO 63539 | Don't have your own Animal to Process, No Problem, Call Us!

MISSOURI LIVESTOCK SYMPOSIUM

William Matthew Middle School

1515 S Cottage Grove • Kirksville, MO

Friday, December 2, 2022 • 4 to 9 p.m.

Saturday, December 3, 2022 • 8 a.m. to 4 p.m.

FRIDAY NIGHT KEYNOTE SPEAKER

The Nutritional and Environmental Case for Meat and Livestock

Diana Rodgers, RD

Diana speaks internationally about the intersection of optimal human nutrition, regenerative agriculture, and food justice.

sustainabledish.com

Featuring nationally-known speakers covering timely topics



Dr. Garry Lacefield
Professor Emeritus
Forages Extension Specialist
University of Kentucky



Mike Major
Horse Trainer
Bowie, Texas



Dr. Trey Patterson
Padlock Ranch Co.,
Ranchester, Wyoming



Doug Ferguson
Mr Cattlemaster
Blue Springs, Nebraska



Jeremia Markway
Markway Ranch
Eldon, MO



Lynn Martin, DVM
MU Department of
Veterinary Medicine
Columbia, MO



Dr. Andrew Griffith
Livestock Economist
University of Tennessee



Wesley Tucker
MU Extension Ag
Business Specialist
Bolivar, MO

• It's all FREE! No cost to attend! No registration needed!

• Nationally-known speakers covering timely topics on livestock production and more!

• FREE Trade Show!

Find more information
missourilivestock.com
660-665-9866

| SCHEDULE OF EVENTS FOR FRIDAY, DECEMBER 2 (all events free) | | | | | | | | |
|--|---|--|---|--|--|--|---|--|
| 4 p.m. - Trade Show Doors Open | | | 6 p.m. - FREE co-sponsored Beef Supper | | | | | |
| 7:00 p.m. | Welcome - Andy Jackson, MC and Dr. Robert Webb, Superintendent, Kirksville R-III School District | | | | | | | |
| 7:10 p.m. | Guest Welcomes- Mun Choi, President, University of Missouri System; Chris Chinn, Director, Missouri Department of Agriculture; and Scott Walker, State Conservationists, USDA-Natural Resource Conservation Service | | | | | | | |
| 7:35 p.m. | Recognition of Important Guests | | | | | | | |
| 7:40 p.m. | Recognition of Cover Photo Contest Winner | | | | | | | |
| 7:55 p.m. | Missouri State Fair Queen - Elsie Kigar, Bible Grove, MO | | | | | | | |
| 8:00 p.m. | Beef and Kids and Knowledge, Oh My! Madelyn Sampson, Missouri Angus Princess, Kirksville, MO | | | | | | | |
| 8:05 p.m. | The Nutritional and Environmental Case for Meat and Livestock, Diana Rodgers, RD, a "real food" nutritionist and sustainability advocate from near Boston, Massachusetts. | | | | | | | |
| SCHEDULE OF EVENTS FOR SATURDAY, DECEMBER 3 (all events free) | | | | | | | | |
| Trade Show Open 8 a.m. - 5 p.m. | | | Coffee and Donuts provided by FCS Financial | | | Trade Show Open 8 a.m. - 5 p.m. | | |
| | BEEF CATTLE | FORAGES | HORSE | SHEEP | MEAT GOATS | STOCK DOGS | HORTICULTURE | FARM MANAGEMENT |
| 9 a.m. | Driving the Livestock Markets: Who is Steering and Who is Along for the Ride? Dr. Andrew Griffith, Ag & Resource Economics, University of Tennessee | Developing Drought Resilient Forage-Livestock Systems, Dr. Harley Naumann, Plant Science & Technology, MU | Tack Selection, Bridles, Bits and More, Mike Major, horse trainer, Bowie, TX | Sheep Pneumonia- Causes and Challenges, Maggie Highland, DVM, Wisconsin | Minerals: Do We Really Know Anything? Charlie Robinson, DVM, Bolivar, MO | Visit the Trade Show | Growing Lavender in Missouri, Jennifer Schutter, MU Extension Horticulture | Farm Estate & Succession Planning, Wesley Tucker, Agribusiness Specialist, MU Extension |
| 10 a.m. | A Systems Approach to Managing Cow Herd Replacements, Dr. Trey Patterson, Padlock Ranch, Ranchester, WY | Forage Quality: What is it and What Can We Do to Improve It, Dr. Garry Lacefield, Professor Emeritus, University of Kentucky | Preparing a Horse for Their Purpose with Proper Riding Techniques, Mike Major, horse trainer, Bowie, TX | Profitable Sheep Production - How We Do It - Jeremia Markway, Markway Ranch, Eldon, MO | Build Resilience into Your Goat Pastures, Susan Jaster, Farm Outreach Worker, Lincoln University | Choosing the Right Dog, Rachel Ritland, Radcliffe, Iowa | What's Killing My Trees? Yvette Amerman, MDC Private Land Forester | The Invasive Longhorned Tick, Rosalie Ierardi, DVM, University of Missouri Vet Med |
| 11 a.m. | Beef Speaker Panel: Cow Herd Management and Pre-weaning Strategies, Dr. Jordan Thomas, moderator, MU Extension Beef | Hay Loss Reduction Strategies, Charlie Ellis, MU Extension Ag Engineer, Troy, MO | Colt Starting: Mindset and Preparation, Mike Major, horse trainer, Bowie, TX | Sheep Abortion - Causes and Diagnostic Workshop, Maggie Highland, DVM Wisconsin | NSIP: National Sheep Improvement Program, Charlie Robinson, DVM, Bolivar, MO | Foundations in Training of Stock Dogs, Rachel Ritland, Radcliffe, Iowa | Pollinators and Plants: A Critical Partnership, Dan Getman, Master Gardener | How Much Can I Afford to Spend This Winter to Make it to Better Cattle Prices in the Future? Wesley Tucker, MU |
| Visit the Trade Show | | | | | | | | |
| 12 - 2 p.m. - Free Governor's Style Luncheon | | | | | | | | |
| Hosted by Missouri's finest commodity groups and co-sponsored by your Missouri Department of Agriculture | | | | | | | | |
| 2 p.m. | Marketing Fundamentals to Prosper, Doug Ferguson, Mr Cattlemaster, Blue Springs, NE | Role and Importance of Forage Legumes, Dr. Garry Lacefield, Professor Emeritus, University of Kentucky | Setting Up Your Pregnant Mare (and Future Foal) for Success, Lynn Martin, DVM, MU College of Vet Med | Setting Up for Lambing Success, Charlie Robinson, DVM, Bolivar, MO | Goat Abortion - Causes and Diagnostic Workshop, Maggie Highland, DVM Wisconsin | The Finished Stock Dog and Trial, Rachel Ritland, Radcliffe, Iowa | Holiday Flower Arranging, Jennifer Schutter, MU Extension Horticulture Specialist | Selling Timber: What the Landowner Needs to Know, Dr. Hank Stelzer, MU Extension State Forestry Specialist, Columbia, MO |
| 3 p.m. | Beef Speaker Panel: Post-weaning Production and Opportunities, Dr. Eric Bailey, moderator, MU Extension Beef | Grazing Year Round, Jeremia Markway, Markway Ranch, Eldon, MO | Common Equine Eye Conditions, Lynn Martin, DVM, MU College of Vet Med | Sheep Medicine Overview, Charlie Robinson, DVM, Bolivar, MO | Goat Pneumonia- Causes and Challenges, Maggie Highland, DVM, Wisconsin | Visit the Trade Show | | An Early Outlook for Winter 2022-23, Dr. Anthony Lupo, Atmospheric Science, University of MO |

November 18, 2022

NEMO

Section A · Page7

We're your Shield. We're your Shelter.



AUTO • HOME • LIFE

Shayne Thomas
1515 Green St.
Kirkville, MO 63501
660-665-4685 (Call or Text)
ShayneThomas@ShelterInsurance.com

KIRKSVILLE
MOTOR COMPANY

Sales (660) 956-0212
Service (660) 956-0809
Parts (660) 665-1936

kirkvillemotorcompany.com



3607 N. Baltimore Street Kirkville MO 63501-5128 US



MISSOURI FARM BUREAU INSURANCE

SAWYER INSURANCE AGENCY
chad.sawyer@mofb.com

1204 S Baltimore St. Kirkville | Office: 660-956-4550



ANEW
Realty Group, LLC

Kim Keyes, Broker/Owner
660.665.3277

AnewRealtyGroupLLC.com
511 S. Baltimore St., Suite 8
Kirkville, MO 63501



NORTHEAST MISSOURI STATE BANK

Kirkville Branch: 600 S Baltimore
Kirkville, MO
660-665-6161

La Plata Branch: 139 S Gex Street
La Plata, MO
660-332-4317

Member FDIC northeastmissouristatebank.com



Century 21
Lifetime Realty

1605 S Baltimore St, Suite A
Kirkville, MO 63501

660-665-5678
www.C21Kirkville.com

Each office is individually owned and operated.

**DAVIS-PLAYLE-
HUDSON-RIMER
FUNERAL HOME
& CREMATORY**



2100 E. Shepherd Ave
Kirkville, MO 63501
660-665-2233
www.davisplaylehudsonrimer.com

| WIN | KIRKSVILLE, HS | LOSS |
|--------------------------------------|-------------------|------------------------|
| 6 | | 5 |
| 40 | KIRKSVILLE | VS 9/2 CHILlicothe 14 |
| 0 | KIRKSVILLE | VS 9/9 SAVANNAH 29 |
| 14 | MOBERLY | VS 9/16 KIRKSVILLE 34 |
| 17 | MARSHALL | VS 9/23 KIRKSVILLE 41 |
| 25 | KIRKSVILLE | VS 9/30 HANNIBAL 45 |
| 42 | MEXICO | VS 10/7 KIRKSVILLE 43 |
| 42 | KIRKSVILLE | VS 10/14 FULTON 0 |
| 68 | CAPITAL CITY | VS 10/21 KIRKSVILLE 21 |
| 11 MAN CLASS 4 DISTRICT 5 TOURNAMENT | | |
| 0 | WINFIELD/ELSBERRY | VS 10/28 KIRKSVILLE 59 |
| 43 | JEFFERSON CITY | VS 11/4 KIRKSVILLE 21 |

| WIN | KNOX COUNTY, HS | LOSS |
|-------------------------------------|---------------------|----------------------------|
| 3 | | 8 |
| 50 | SWEET SPRINGS | VS 9/2 KNOX COUNTY 18 |
| 12 | NORTHLAND CHRISTIAN | VS 9/9 KNOX COUNTY 66 |
| 38 | KNOX COUNTY | VS 9/16 STANBERRY 72 |
| 20 | KNOX COUNTY | VS 9/23 NORTH SHELBY 62 |
| 76 | WORTH COUNTY | VS 9/30 KNOX COUNTY 24 |
| 66 | KNOX COUNTY | VS 10/7 NORTHWEST 32 |
| 56 | ST. PAUL LUTHERAN | VS 10/14 KNOX COUNTY 6 |
| 8 | KNOX COUNTY | VS 10/22 BISHOP LeBLOND 62 |
| 8 MAN CLASS 1 DISTRICT 2 TOURNAMENT | | |
| 6 | NORTHWEST | VS 10/28 KNOX COUNTY 48 |
| 13 | ST. PAUL LUTHERAN | VS 11/4 KNOX COUNTY 0 |

**Thank you
to all of our
supporters!**




| WIN | SCHUYLER CO., HS | LOSS |
|-------------------------------------|----------------------------|--------------------------------|
| 4 | | 7 |
| 40 | SCHUYLER CO. | VS 9/2 PATTONSBURG 78 |
| 46 | KEYTESVILLE | VS 9/9 SCHUYLER CO. 70 |
| 74 | NORTH SHELBY | VS 9/16 SCHUYLER CO. 30 |
| 84 | KANSAS CITY EAST CHRISTIAN | VS 9/23 SCHUYLER CO. 26 |
| 28 | SCHUYLER CO. | VS 9/30 BRAYMER 84 |
| 22 | SCHUYLER CO. | VS 10/7 KING CITY 68 |
| 58 | SCHUYLER CO. | VS 10/14 NORTHLAND CHRISTIAN 8 |
| 0 | NORTHWEST | VS 10/21 SCHUYLER CO. 68 |
| 8 MAN CLASS 1 DISTRICT 2 TOURNAMENT | | |
| 24 | SANTA FE | VS 11/4 SCHUYLER CO. 44 |
| 60 | ST. PAUL LUTHERAN | VS 11/11 SCHUYLER CO. 20 |

| WIN | MACON, HS | LOSS |
|--------------------------------------|----------------|------------------------|
| 10 | | 1 |
| 0 | NORTH CALLAWAY | VS 9/2 MACON 33 |
| 26 | MACON | VS 9/9 CLARK COUNTY 18 |
| 14 | PALMYRA | VS 9/16 MACON 49 |
| 45 | MACON | VS 9/23 HIGHLAND 6 |
| 53 | MACON | VS 9/30 BROOKFIELD 20 |
| 26 | SOUTH SHELBY | VS 10/7 MACON 40 |
| 32 | MONROE CITY | VS 10/14 MACON 8 |
| 20 | MACON | VS 10/21 CENTRALIA 14 |
| 11 MAN CLASS 2 DISTRICT 8 TOURNAMENT | | |
| 35 | MACON | VS 10/28 LATHROP 8 |
| 18 | RICHMOND | VS 11/4 MACON 6 |




Tire & Auto
Owners:
**Joe Dimmitt &
Kelly O'Haver**
1102 N Green St
Kirkville, MO
660.665.9017

**Travis~Noe
Funeral
Home**

1008 Potter Avenue, Kirkville, MO
660-665-1300
Neil & Sherry Travis, Brian Noe,
Paulie Schmitz & Brenton Travis

THINKING OF SELLING?



CALL US TODAY!
660-665-5638

KirkvilleRealEstate.com



LOVEGREEN
GOLOVEGREEN.COM



FARM & RANCH.

ELIZABETH GREGORY
660.621.2136

missourihomeandfarm.com

CENTURY21 1605 Baltimore, Suite A
Kirkville
660.665.5678



COLTON'S
Steak House & Grill
We Know What's At Steak!

1116 Country Club Drive • Kirkville, MO
660-665-6336 • ColtonsSteakhouse.com



Chris Clark,
Licensed Sales Associate
Email: chris.clark@mofb.com
Website: www.mofbinsurance.com

AUTO • HOME • LIFE

Clark Agency: 115 W. Potter, Kirkville, MO • (660) 665-1956



CONNECTIONS BANK

2817 N Baltimore St
Kirkville, MO 63501
660-665-7703

ConnectionsBank.com



TRU MEAT PROCESSING

BEEF • PORK • DEER

QUALITY CUT PLUS

VACUUM SEAL

CURE & SMOKE • SHARE THE HARVEST

CUSTOM MEAT PROCESSING

We also sell live beef from our farm by whole, halves, and quarters that can be processed at our facility.

Contact the Hostellers

Office: 573-439-5290 7500 Shelby 352
 Sam: 573-789-3012 Shelby, MO
 Amos: 573-934-3391 63468

ATTENTION HUNTERS!
We Process Deer

LIME SPREADING SERVICE

Equipped with variable rate



PEAVLER TRUCKING LLC

Alan Peavler, 660-216-0618 – Jared Peavler, 660-342-7685

Miller's Spray Foam

DANIEL MILLER

21743 Lost Branch Way
 Brashear, MO 63533

We Strive to Satisfy 660-234-2808

JAGUAR LUMBER

Attn: Land Owners



Buyer of Timber
 *All species also Select yard
 Trees/Logs over 40" diameter,
 *Trees are selectively cut
 to insure optimal Forest
 Regeneration.

Certified & Bonded | Lavon Gingerich 641-664-2080

Show Me Plumbing Services



- General Mini Excavation & Skid Steer Work
- Livestock Watering
- Waterlines & Sewer Systems
- Residential Services & General Plumbing
- Utility Trenching

Stan Schrock 660-988-1163
 Greentop, MO 660-766-2636



HOLIDAY TOY DRIVE

\$499 Down
*on select vehicles**

When You Bring in 4 New, Unwrapped Toys

Minimum \$10 value for each. Toys will be donated to local Children's Hospitals.

car-mart.com

AMERICA'S CAR-MART
Keeping You on the Road

*On retail vehicles priced at \$15,999 or less. With approved credit. See dealer for details. This offer cannot be combined with any other promotional offer.
 Example: \$499 down, 110 weekly payments of \$10.78 per \$1,000 financed at 16.5% APR. Not all vehicles shown qualify for this promotion.

We Offer:

- Peace of Mind Package
- Service Contract Plus
- Accident Protection Plan
- 100% Satisfaction
- Pay Your Way
- Low Down Payments
- Quality Used Vehicles
- Flexible Financing
- Hand Selected Vehicles
- Convenient Payment Options
- Start Your Approval Online
- Over 150 Locations
- 40 Years in Business
- We Buy Cars

660-956-4849 • 2015 North Baltimore • Kirksville

| | | |
|--|--|--|
|  2011 KIA SOUL FWD, 4 Cyl., Silver |  2016 KIA SORENTO FWD, 6 Cyl., Gold |  2020 HYUNDAI ELANTRA FWD, 4 CYL., RED |
|  2012 FORD FUSION FWD, 4 Cyl., Silver |  2010 CHEVY MALIBU FWD, 4 CYL., BROWN |  2011 FORD EXPLORER FWD, 6 Cyl., Black |
|  2013 FORD EDGE FWD, 6 Cyl., Black |  2012 FORD ESCAPE FWD, 4 Cyl., Blue |  2012 FORD FIESTA FWD, 4 Cyl., Gray |
|  2016 HYUNDAI ACCENT FWD, 4 Cyl., Silver |  2014 FORD ESCAPE FWD, 4 Cyl., Blue |  2014 CHEVROLET TAHOE RWD, 8 Cyl., White |
|  2011 GMC SIERRA 2500 4WD, 8 Cyl., Gray |  2015 FORD FUSION FWD, 4 Cyl., Red |  2012 RAM 1500 4WD, 8 Cyl., Black |
|  2004 CHEVY AVEO FWD, 4 Cyl., Green |  2014 CHEVROLET SILVERADO 1500 RWD, 6 Cyl., White |  2011 JEEP GRAND CHEROKEE 4WD, 6 Cyl., Black |



AMERICA'S CAR-MART

Keeping You on the Road



KYLE JENNINGS
 GENERAL MANAGER

NEMO

Trader



Our circulation is 11,000 with a 21 county coverage area in Missouri, Iowa and Illinois. Our paper is a free paper and is distributed to restaurants, convenience stores and other businesses in the area for individuals to pick up. We have a new issue every Friday.



Now offering Inserts Call Cindy @ 660-665-8500 for rates

| TOWN | STATE | COUNTY | TOWN | STATE | COUNTY |
|-------------|----------|-----------|-------------|----------|------------|
| Quincy | Illinois | Adams | Marceline | Missouri | Linn |
| Carthage | Illinois | Hancock | Chillicothe | Missouri | Livingston |
| Hamilton | Illinois | Hancock | Atlanta | Missouri | Macon |
| Centerville | Iowa | Appanoose | Bevier | Missouri | Macon |
| Cincinnati | Iowa | Appanoose | Callao | Missouri | Macon |
| Moravia | Iowa | Appanoose | LaPlata | Missouri | Macon |
| Unionville | Iowa | Appanoose | Macon | Missouri | Macon |
| Bloomfield | Iowa | Davis | New Cambria | Missouri | Macon |
| Drakesville | Iowa | Davis | Hannibal | Missouri | Marion |
| Ft. Madison | Iowa | Lee | Palmyra | Missouri | Marion |
| Hwy 2 | Iowa | Lee | Taylor | Missouri | Marion |
| Keokuk | Iowa | Lee | West Quincy | Missouri | Marion |
| Montrose | Iowa | Lee | Madison | Missouri | Monroe |
| Brashear | Missouri | Adair | Monroe City | Missouri | Monroe |
| Kirksville | Missouri | Adair | Pais | Missouri | Monroe |
| Novinger | Missouri | Adair | Livonia | Missouri | Putnam |
| Alexandra | Missouri | Clark | Unionville | Missouri | Putnam |
| Kahoka | Missouri | Clark | Higbee | Missouri | Randolph |
| Wayland | Missouri | Clark | Moberly | Missouri | Randolph |
| Galt | Missouri | Grundy | Downing | Missouri | Schuyler |
| Trenton | Missouri | Grundy | Lancaster | Missouri | Schuyler |
| Baring | Missouri | Knox | Queen City | Missouri | Schuyler |
| Edina | Missouri | Knox | Arbela | Missouri | Scotland |
| Knox City | Missouri | Knox | Memphis | Missouri | Scotland |
| Canton | Missouri | Lewis | Rutledge | Missouri | Scotland |
| Ewing | Missouri | Lewis | Clarence | Missouri | Shelby |
| Labelle | Missouri | Lewis | Hunneywell | Missouri | Shelby |
| Lewistown | Missouri | Lewis | Shelbina | Missouri | Shelby |
| Brookfield | Missouri | Linn | Green City | Missouri | Sullivan |
| Bucklin | Missouri | Linn | Milan | Missouri | Sullivan |
| Linneus | Missouri | Linn | | | |



**D6C
DOZER
74A**

\$27,000

641-895-1702



Signature
Overhead Doors and Remodeling, LLC

660-785-0248

www.signatureremodelingkv.com

Residential and Commercial Installation and Service

AUTO'S UNLIMITED 660-665-8149 | 660-341-0965
No Sunday Calls! | 17406 Bob Rd • Kirksville, MO

FEATURED VEHICLES

2008 Ford Escape XLT
3.0 Liter, V-6, Flex Fuel, Sunroof, sat. Radio. GREAT 1st Vehicle



Trailer 16 ft with 2 ft dovetail
Electric Brakes, 12,000 lb. Capacity. Excellent condition.



\$3,500

2012 Ford Fusion SE,
128,000 Miles, Excellent Condition. Great Gas Mileage!!



ALL VEHICLES HAVE GONE THROUGH A 60 PT INSPECTION! STATE INSPECTED! CALL FOR MORE INFO!

SHOW-ME SEAMLESS GUTTERING
FREE ESTIMATES • PROMPT SERVICE

- 5" & 6" Gutters
- Siding • Soffit • Fascia

(23 colors available on Gutters & Fascia)

Tried of Cleaning your Gutters?
LEAFPROOF THEM!

ELLIOTT HIX

660-626-3447 • KIRKSVILLE, MO

ATTENTION LAND OWNERS!

BUYER OF STANDING TIMBER
OWNER /OPERATOR OF SAWMILL - BUY/CUT LOGS
CERTIFIED - BONDED - INSURED

TRI STATE TIMBER L.L.C.
PH. 660-341-4921 or 660-465-2975
353 1/2 GRAND AVE. • MEMPHIS, MO 63555



Sports Equipment

Hunting equipment sale:
Box blinds, bow, ladder,
hay bale, hydraulic lift,
Obsession Defcon 6 bow,
Ten Point Cross bow, ri-
files. 641-208-7353

REAL ESTATE SALES

Mobile Homes For Sale

2004 manufactured home
for sale. 1600 sq ft. Must be
moved by buyer. \$60,000.
Call or text 660-349-9826.

BURKHOLDER



2017 Chevy Silverado 3500HD LT
4x4, Double Cab, 6.0V8, Auto, 92k Miles,
Clean Carfax, Southern Truck, Charcoal



\$44,900

Full line of accessories + Outfit your truck here!

Edina 660-397-2551 51001 State Hwy 15 BurkholderTruckSales.com



\$66,900

2020 GMC Sierra 3500HD Base
4x4, Dually, Crew, 6.6 Duramax, Allison,
62k One-Owner Mi, Clean Carfax, White



\$45,900

2020 Ford F-250 XLT, 4x4, Reg Cab
Long Bed, 6.2V8, Auto, 83k One-Owner
Miles, Very Well Kept, Hard to Find, White



\$59,900

2019 Ford F-350 XLT FX4, 4x4
Crew, Dually, 6.7 Diesel, Auto, 125k Acci-
dent Free Mi, Texas Truck, Must See, Blue



\$42,900

2018 GMC Sierra 2500HD SLT Z71
4x4, Crew, 6.0V8, Auto, 128k One-Owner
Miles, Accident Free TEXAS Truck, White



\$38,500

2017 Ford F-250 XL, 4x4, Ext Cab
Longbed, 6.2V8, Auto, 59k One-Owner Mi
Texas Truck, Great Service Record, White



\$59,900

2016 GMC Sierra 2500HD Denali
4x4, Crew, 6.6 Duramax, Allison, 53k Mi,
Must See, Southern Truck, Nice, Maroon



\$29,900

2013 Ford F-250 Lariat FX4, 4x4
Crew, 6.2V8, Auto, 154k Mi, Very Well Kept
Extra Nice-Clean, Southern Truck, Gray



\$21,500

2012 Chevy Silverado 1500 LTZ
4x4, Ext Cab, 5.3V8, Auto, 102k, New
Tires, Local Truck, Excellent Cond, Black



\$59,900

2020 Chevy Silverado 3500HD WT
Double Cab, 4x4, 6.6 Duramax, Allison,
93k Mi, 1 Owner, Alum Flatbed, Nice, Wht



\$27,900

2012 Ram 3500 SLT, 4x4, Crew
Steel Skirted Flatbed, 6.7 Diesel, Auto,
212k Mi, Trade-In, Texas Truck, Nice, Red



BW Trailer Hitches


- All Aluminum
- Customizable
- Built Locally



DON'T JUST PROTECT IT
LINE-X IT

SLIP-RESISTANT SURFACE. PREVENTS RUST & CORROSION.
IMPACT, ABRASION & CHEMICAL RESISTANT.

LIFETIME WARRANTY



LINE-X

Quality Brands We Carry



Martin Truck Bodies



Gatorback Mud Flaps

weather guard Toolboxes

AUTO & TRUCK SALES + ACCESSORIES



NEMO TRADER • Advertise with us TODAY! • Phone: 660.665.8500 • PO BOX 809 • 701 East LaHarpe St, Suite C, KIRKSVILLE, MO 63501

Mobile Homes For Sale

USED DOUBLE WIDE \$34,900 WOW!!!! This won't last 573-657-2176 amegamobilehomes.com

USED DOUBLE WIDE \$34,900 WOW!!!! This won't last 573-657-2176 amegamobilehomes.com

WE HAVE MOBILE HOMES Instock new arrivals (8) homes, need to go as soon as possible! 573-499-9993 columbiadiscounthomes.com

TINY HOMES - We gottem 573-881-3283

TRUE MODULARS - 30 to 60 day delivery available, 3 and 4 bedroom. 573-657-7040 chateau-homes.net

RECREATION

Accessories-Recreation

Vortex Diamondback rifle scope 4-12 x 40 DBK-04-BDC with Rock River Mount, \$175 new in box. 573-406-5354 Palmyra

ATV's

Kawasaki 650 Prairie 4-Wheeler; 2022 Rambo E-Bike new; 2017 Honda Ruckus, 300 miles, savage muzzle loader, Ten Point Cross bow. 641-208-7353

RECREATION

Motorcycles

WANTED TO BUY: Harley Davidson's, any year, any condition, cash money. Days 660-263-1356 or 660-537-0068

Wanted

WANTED TO BUY: Harley Davidson's, any year, any condition, cash money. Days 660-263-1356 or 660-537-0068

SERVICES

Lawn/Garden/Landscape

New 3 pt. tillers, heavy duty, gear driven, 7' to 12' starting at \$4,050. 660-874-4455.

TRANSPORTATION

Automobiles

1971 Chevy Chevelle, 350 auto, blue inside and out, nice paint, new tires, Cragar wheels, cruise control, \$31,500. 573-248-6111

This ad supports journalism. Facebook and Google do not.

#ProtectLocalNews NewsMediaAlliance.org

TRANSPORTATION

Trucks, 4x4's, SUV's

2015 Chevy Silverado 1500, crew cab WT, 4x4, 5.3L, well equipped, windows, locks, tow, keyless brown-stone metallic, 143,000 mile 1 owner, \$18,900. Accelerators since "1974" Kahoka, MO 217-257-1385 or 660-727-3455

Want to buy: Chevy S-10 pickup, 2003 to 2005 for parts. 660-947-7923.

Call about our classified ad specials. 660-665-8500.

BE AN EARLY BIRD! Place your ads before Monday and beat the rush!

The Ultimate Wood Heat.



CLASSIC EDGE TITANIUM HD SERIES Outdoor Wood Furnace
• More Comfort - Thermostatically controlled wood heat.
• Peace of Mind - Keep the fire outside and eliminate the dangers associated with indoor wood heating.
• Save Money - Wood is a renewable, inexpensive and often free energy source.
CAMPEN Heating & Air Conditioning 573-288-8966 Canton, MO CentralBoiler.com

Chat/Dirt/Gravel

DIRT WORK All types of excavation, reclaiming overgrown fields, including CRP and WRP. Building site preparation, creating new trails and crossings, Food plot development and maintenance. Leveling and grading, wetland construction and maintenance. Pond and lake cleaning and construction. Call for quotes. 660-342-2701

CUSTOM GRAIN HARVESTING
Call Steve
660-342-5678

Judd Motors
Call 660-457-3700 Hwy 63 North, Lancaster, MO

| | | |
|---|--|--|
| 1985 GMC 7000 dump truck, single axle, 366 engine, 5+2 trans, disk brakes, 11 ft steel bed, 3 stage single hoist, runs great only. \$8,500 | Bushog SQ184 7 ft brushhog, rslip clutch, 3 pt, 540 PTO, lam wheel, only \$2,500 | Bushog RDTH84 7 ft finish mower, rear discharge, 3 pt, 4 wheels, only \$2,500 |
| 2011 Chevy Suburban, LTZ, 4WD, sunroof, DVD, leather, black, 141K miles, quad seats, \$15,900 | 2007 Ford Freestyle Limited, AWD, leather, sunroof, 3 row seating, 220K, black, drives great, only. \$2,995 | IH 574 tractor, gas, 68 hp, 3 pt, 540 PTO, rear remotes, wide front, new paint, runs good, only \$4,995 |
| 2005 GMC 1500, ext cab, 4wd, V8, 168k, silver, only \$7,995 | 2014 Ford Edge, SEL, AWD, V6, leather, sunroof, 134K, coco, \$14,900 | |
| 2013 GMC Sierra 1500, SLT, crew cab, leather, 4WD, red, 140K miles, excellent, \$19,900 | 2011 Jeep Grand Cherokee, Laredo, 4wd, V6, leather, sunroof, dark blue, only 111k, \$13,900 | |

www.juddmotors.com | In Business Over 75 Years Curly and Kevin Judd

Scrubby Duds
LAUNDROMAT
OPEN 24/7
Fall is coming, time to get out those blankets. Our large machines love doing blankets!
Scrubby Duds - Cool, Clean & Comfortable!
311 S Baltimore St
Phone: 660-349-8943

RAMER TRUCK SALES

| | | |
|--|---|---|
| 2017 Ford F350 XL 6.2L, 65K Miles. \$36,500 | 2020 Ford F350 STX 7.3L, 30K Miles. \$45,900 | 2013 Ford E-350 15 passenger white 5.4L 73k miles |
|--|---|---|

Gorin, Missouri • Monday-Saturday 8am-6pm
www.ramertrucksales.com | HOME: 660.282.1002
CELL: 660.341.6140 | "NO SUNDAY CALLS!"

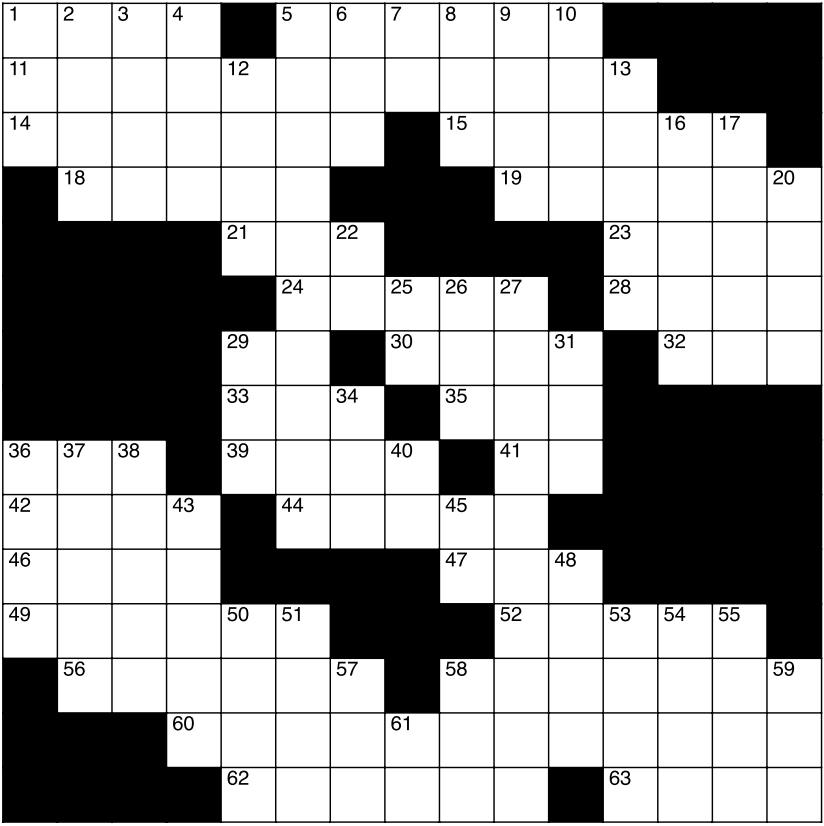
NEMO PUZZLES

CLUES ACROSS

- 1. Greek mountain
- 5. One dependent on something
- 11. Gratitude
- 14. Glazed ceramic ware
- 15. Paddling
- 18. Step
- 19. More greasy
- 21. Upper-class young woman
- 23. Light beige
- 24. Belief in a supreme being
- 28. Indigenous people of Scandinavia
- 29. A beloved princess
- 30. Transfer property
- 32. Field force unit
- 33. Automated teller
- 35. When you hope to get there
- 36. Sino-Soviet block (abbr.)
- 39. Politicians Fischer and Conroy are two
- 41. Blood type
- 42. Stringed instrument
- 44. Curses
- 46. Barbary sheep
- 47. Belonging to a thing
- 49. Supporters
- 52. Leaf-footed bug
- 56. A shower of water
- 58. Attribute to
- 60. Intermittent
- 62. Soda waters
- 63. Scottish island

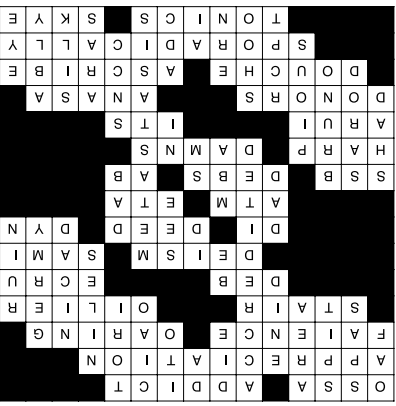
CLUES DOWN

- 1. Klutz
- 2. Relaxing places
- 3. Expel saliva
- 4. The extended location of something
- 5. Certified
- 6. Cease to exist
- 7. Powerful legal pro
- 8. The OJ trial judge
- 9. Popular greeting
- 10. "90210" actress Spelling
- 12. Blyton, children's author
- 13. "This Is Us" star Fitch



- 16. Battery cell with a nickel alode
- 17. Full of bacteria
- 20. Remains of an old building
- 22. Exist
- 25. It gets you into places
- 26. Witness
- 27. The spreading of a disease to another part of the body
- 29. Father
- 31. Touch gently
- 34. Licensed for Wall Street
- 36. Herring-like fish
- 37. Lute used in N. Indian music
- 38. Mirabel shouldn't talk about him
- 40. Atomic #62
- 43. Religious
- 45. Silvery-white metal (abbr.)
- 48. Influential civil rights organization
- 50. Acknowledgment (abbr.)
- 51. Turn away

- 53. Kidney disease (abbr.)
- 54. Smooth-feeling fabric
- 55. Competently
- 57. Sea eagle
- 58. General's assistant (abbr.)
- 59. It helps you see
- 61. Emerging technology



WORD SCRAMBLE

Rearrange the letters to spell something pertaining to caregiving.

A H L T H E

Word scramble grid.

Answer: Health

SUDOKU

Sudoku grid with numbers.

Level: Advanced

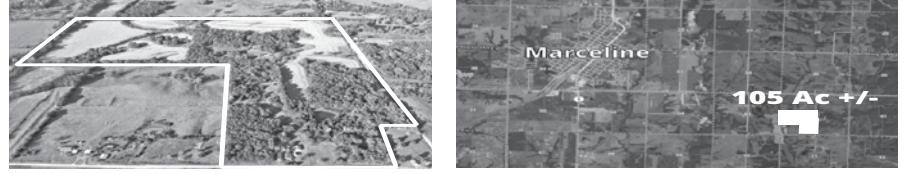
Here's How It Works: Sudoku puzzles are formatted as a 9x9 grid, broken down into nine 3x3 boxes. To solve a sudoku, the numbers 1 through 9 must fill each row, column and box. Each number can appear only once in each row, column and box. You can figure out the order in which the numbers will appear by using the numeric clues already provided in the boxes. The more numbers you name, the easier it gets to solve the puzzle!

Sudoku solution grid.

ANSWER:

Olinger Land Auction
Online-Only | Dec. 2nd - 7th

105 Acres +/- w/ Nice Home - East of Marceline
30499 Peden Chapel Rd, Marceline - Cropland & Hunting



105 Acres +/- (30499 Peden Chapel Rd, Marceline) - Approximately 47 acres tillable, with the balance in heavily wooded draws. The cropland areas are gently rolling throughout the East 2/3's of the property and contains a high producing creek bottom along the West side. This property is an ideal wildlife habitat, with ample food and water sources, as well as abundant hardwood trees throughout. Numerous vantage points allow for unlimited options for tower stands. Entry points from the South and East sides also allow for ease of access for multiple hunters. It also features a 1,644 sf home with a 30'x30' detached garage situated along Peden Chapel Rd. The home has 2 Bed, 2.5 Bath, as well as two living rooms, a utility/laundry room, and kitchen/dining area. This home has great potential for a primary residence or hunting cabin, with plenty of storage for UTVs, boats, tools, you name it! Don't miss out on an incredible property located near Marceline.

Visit EnyeartAuctionRealty.com to Register & View Full Details.

Olinger Family, Seller
ENYEART Auction & Realty LLC

Daniel: 660-288-3022 * Clayton: 660-651-3396 * Loren: 660-651-9889

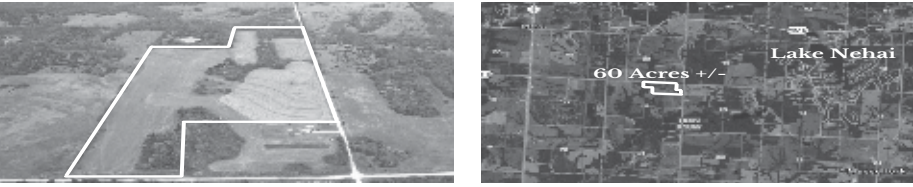
LOCAL MATTERS

Please support the advertisers that power your community paper.

NEWSPAPERS
MATTER
NOW MORE THAN EVER

Gladbach Land Auction
Online-Only | Dec. 9th - 14th

60 Acres +/- Cropland & Hunting
2.5 mi East of Hwy 5 along the South side of Pat Rd



60 Acres +/- This property is a great opportunity for hunters, farmers, and investors alike. Containing approximately 44 open acres with 21 in current production and another 23 potential cropland acres that are currently in hay. The soils are mostly Armstrong loam and Speed silt loam with overall gently rolling topography. The Northern part of the farm is terraced and tiled and has been well maintained. The remainder of the property is in heavily wooded draws and an approximate half acre pond. This combination provides an ideal habitat for wildlife, not to mention its location in an area surrounded by heavy woodland and rolling crop fields. Don't miss out on an incredible property located near Marceline.

Visit EnyeartAuctionRealty.com to Register & View Full Details.

Gladbach Family, Seller
ENYEART Auction & Realty LLC

Daniel: 660-288-3022 * Clayton: 660-651-3396 * Loren: 660-651-9889

Retirement Roofing
AUCTION

1141 GILLAN ROAD - MOBERLY, MO

TUESDAY, NOVEMBER 22, 2022 | 10 AM



REAL ESTATE - TELEHANDLER - FORKLIFT - GENERATORS -
SCISSOR LIFT DUMP TRUCK - DUMP & UTILITY TRAILERS -
SPRAY FOAMER - OVERLAP WELDER - DRAGON WAGONS - METAL
BREAK - SCAFFOLDING - LADDERS & WALK BOARDS - SHELVING
- SHOP & OFFICE ITEMS - SHINGLES - ISO INSULATION - TPO
ROLLS - WINDOWS - NEW MATERIALS & HARDWARE - JOB BOX -
TOOLS - SAFE - ANTIQUES - BULLET TRAP - ICE MACHINE -
APPLIANCES - FULL LISTING @ IMANAUCTION.COM



Beaverson Roofing, Sellers

IMAN AUCTION COMPANY | 660-388-6235 | ImanAuction.com

LET us
HELP
you SELL
your ITEMS!
PLACE A CLASSIFIED IN THE
Nemo Trader
TODAY!

NEMO Trader Classified
COUPON

2 Classified Ads for \$5.00

20 cents per word over 20 words

For an additional \$1.00 run in the Kirksville Daily Express one time.

For and additional \$2.00 run in the Saturday Kirksville
Daily Express and Kirksville Crier one time each.

Must be Mailed in or brought in along with payment

Picture Ads Not Included with Coupon!

Choose Classification

- Agri-Business Real Estate Transportation
Announcements Rentals Yard Sales
Employment Real Estate Sales Auctions & Estate Sales
Financial Recreation
Merchandise Services

Ad No. 1 Each Box Represents a Word (20 words or less)

Grid for Ad No. 1 with 5 rows and 4 columns.

Ad No. 2 Each Box Represents a Word (20 words or less)


Grid for Ad No. 2 with 5 rows and 4 columns.

Name

Mailing Address

Phone Number *
this is required*

PO Box 809 Kirksville, MO 63501 • 660-665-8500



Land Auction


Thursday, December 1, 2022 at 6:00 p.m.

Auction Location: Scotty's Auction Barn & Event Facility, 28251 US Highway 63 North, Macon, Missouri. From US Highway 36 travel approximately 2 miles North of Macon on Highway 63 to Scotty's Auction Barn and Event Center on the West side of the road. Watch for signs the day of the sale.

Real Estate: We will be selling at auction this amazing 119 +/- acres of which 90 acres are highly productive river bottom, tillable ground. This property lays flat with good drainage and excellent hunting. The field is convenient for planting and harvesting. See the attached maps. The property is located at **13587 Epic Lane, New Cambria, Missouri**. If you would like to schedule your personal showing, please call Scotty at 573-356-4405.

DOWN PAYMENT: 10% of the contract purchase price will be due upon acceptance of the Sales Contract. Personal or Cashier's Checks will be accepted. This is "AS IS, WHERE IS" and is non-refundable. CLOSING: Closing shall be within 30 days of the auction date.

SEE MORE PHOTO'S ON SCOTTY'S WEBSITE







573-356-4405
Michael Cunningham 660-651-2288 • Paxton Pittman 660-346-1956
WWW.SCOTTSAUCTIONSERVICE.COM





SULLIVAN AUCTIONEERS, LLC

A FAMILY OWNED BUSINESS SINCE 1979






Headquartered in Hamilton, Illinois, Sullivan Auctioneers, LLC is one of the largest Real Estate and Farm Machinery Auctioneers in the nation. For more than 40 years we have been conducting professional auctions. We connect our sellers with thousands of interested buyers around the world.

Considering an Auction?
 CALL OR EMAIL TODAY FOR A NO OBLIGATION CONSULTATION!
 Toll Free (844) 847-2161 | Sold@SullivanAuctioneers.com
www.SullivanAuctioneers.com | Lic. #444000107



Macon Real Estate & Personal Property Auction

Tuesday, November 22, 2022 at 1:00 p.m.
The estate of James Stewart

Directions: 802 West Bourke Street, Macon, Missouri. From US Highway 63 in Macon, turn West on Vine Street, then turn North on North Rutherford Street then West on East Bourke Street for 0.6 miles to the auction location. Watch for signs the day of the sale.

REAL ESTATE: This 2 bedroom, 2 bath ranch style home with a full unfinished basement features a covered deck, a partially fenced backyard and hardwood flooring. The home has central air, electric heat and a large kitchen with a lot of cabinets.

DOWN PAYMENT: 10% of the contract purchase price will be due upon acceptance of the Sales Contract. Personal or Cashier's Checks will be accepted. This is "AS IS, WHERE IS" and is non-refundable. CLOSING: Closing shall be within 30 days of the auction date.

Real Estate will sell promptly at 3:00 p.m. If you would like to schedule your personal showing, please contact Scotty at 573-356-4405.

HOUSEHOLD FURNISHINGS: Electric reclining sofa; brown upholstered chair; Samsung flat screen television; battery operated Bentley Grandmother clock; oil on canvas; MORE.

ANTIQUES & COLLECTIBLES: antique ice tongs; reproduction white clad icebox; various enamel ware; retro style table and 3 bar stools; vintage women's boots; various crocks; antique Coca-Cola trays; sink pump; vintage snagging rig.


COINS: 1942 Walking Liberty half dollar; 1941 mercury dime; 1916 mercury dime; 1945 mercury dime; 1941 mercury dime; several mercury dimes; several Kennedy half dollars; Presidential and buffalo nickels; \$1 silver certificate; \$2 bills; Betsy Ross \$1 coin; SEVERAL MORE

TOOLS AND OUTDOOR EQUIPMENT: 16 speed floor type drill press; Craftsman 12 inch ban saw; Craftsman 10" radial arm saw; Craftsman portable air compressor; Craftsman 12" table saw; Troybilt Pony rear tire tiller; various hand tools; metal glider rocker; Char grill BBQ grill; SEVERAL MORE

FIREARMS: Winchester Ranger 12 gauge; Marlin model 806 22 caliber; Western Field 22 caliber; Red Rider BB gun; Winchester Model 62a 22 caliber; Henry 22 cal; Heritage Rough Rider 22 revolver with extra cylinder

There will be many more items too numerous to mention.

SEE MORE PHOTO'S ON SCOTTY'S WEBSITE



573-356-4405
Michael Cunningham 660-651-2288 • Paxton Pittman 660-346-1956
WWW.SCOTTSAUCTIONSERVICE.COM


FIND THE

RIGHT RIDE

FOR THE

RIGHT PRICE

*Find the stuff you want. Sell the stuff you don't.
 Save time and money with your local newspaper classifieds.*



SHELBY COUNTY, MISSOURI REAL ESTATE AUCTION

AUCTION

THURSDAY, DECEMBER 8TH • 5:30PM

This farm is 103.4 acres (surveyed acres) with approximately 66.7 FSA tillable acres and 11.99 FSA acres currently enrolled in CRP. The current CRP contract is paying \$1,861 annually and is set to expire 9-30-2026.

With life taking her in a different direction, Deborah Teeple has decided to offer the rest of her farm for sale. Peoples Land Co, LLC is honored to bring you for sale at public auction a phenomenal tillable, CRP, and hunting tract in a great location. The sale will be held at the American Legion Hall in Shelby, MO on December 8, 2022 at 5:30 p.m. This farm is located approximately 4 miles Northeast of Shelbyville, MO on Shelby County Road 255. The farm is approximately 77% tillable with county road frontage and offers great income with outstanding hunting as well. This is an opportunity to own a Shelby County tract that has been in the same family for 35 years and is great tillable, productive soils, great access, and has been cared for at the highest level. The current tenants have farmed this land for many years and have cared for it as if it were their own. This is a once in a lifetime opportunity as land in this area does not come up for sale often.

AUCTION LOCATION: The American Legion Hall in Shelby, MO 63468

Contact: Jay Scott Gander
660.676.1479
www.peopleslandco.com

VIRTUAL ONLINE

KNOX COUNTY, MISSOURI LAND AUCTION

WEDNESDAY, DECEMBER 14, 2022 AT 1:00 PM



300 ACRES± (SUBJECT TO SURVEY) • 5 TRACTS

OPEN HOUSE: SAT., DEC. 3 • 10:00 AM - 12:00 PM

The farm is located approximately 6.2 miles northeast of Edina, MO or approximately 7 miles northwest of Knox City, MO in Sections 3 & 10, T62N•R11W, Liberty Township, Knox County, MO.

Farm represents productive tillable cropland, improved pastureland & hay production, prime Northern Missouri Whitetail Deer & Wild Turkey Hunting acreage, and a well-kept home & outbuildings.

- ✓ **PRODUCTIVE TILLABLE CROPLAND!**
- ✓ **IMPROVED PASTURELAND & HAY PRODUCTION!**
- ✓ **EXCELLENT HUNTING/RECREATIONAL ACREAGE!**
- ✓ **NICE COUNTRY HOME & OUTBUILDINGS!**

THE FOLKERTS FAMILY LEGACY TRUST

Representing Attorney: David Rouner | Rouner Law Office P.C.
 400 N. Franklin Street | Kirksville, MO 63501 | (660) 665-8324

Closing & Title Work: Knox County Abstract
 103 South First Street | Edina, MO 63547 | (660) 397-3259

Auction Managers:
 Bill Fretwell (660) 341-7735 & Jennifer Wood (217) 257-8812




(844) 847-2161
www.SullivanAuctioneers.com
 License #444000107



WE'VE GOT YOUR DREAM JOB ON A SILVER PLATTER

Keep up-to-date with dozens of top job postings throughout your local area. Find your perfect new permanent or temporary position in the classifieds!



Huntsville Land and Farm Equipment Auction

Tuesday, November 29, 2022 at 4:00 p.m.
Donald and Mary Sue Woods

Directions: Auction location – 2311 County Road 1285, Huntsville, Missouri. Follow State Highway C 10.5 miles North of Huntsville then turn East on County Road 1285 for 1.5 miles to the auction location or follow State Highway C South of Beaver 12.4 miles then turn East on County Road 1285 for 1.5 miles to the auction location. Watch for signs the day of the auction.


REAL ESTATE: This 40 acre m/l tract includes tillable acreage with two terraces, a pond and good hunting. The land is located approximately 1/2 mile from the auction location. See the attached map. The real estate will sell promptly at 5:00 p.m. Please call Scotty at 573-356-4405 for more information and to schedule your personal showing.

DOWN PAYMENT: 10% of the contract purchase price will be due upon acceptance of the Sales Contract. Personal or Cashier's Checks will be accepted. This is "AS IS, WHERE IS" and is non-refundable. CLOSING: Closing shall be within 30 days of the auction date.

FARM EQUIPMENT: buggy; iron wheel rake; homemade transport wagon; New Holland mower conditioner; one row mounted John Deere corn picker; Allis Chalmers 1 row pull type picker; Vermeer 605A round baler; Vermeer 625C round baler; Massey Harris 44 narrow front end, sold with new clutch; side delivery rake; John Deere trip loader; homemade iron gates; John Deere cultivator with harrow; one bottom walking plow; John Deere sickle mower; garden cultivator; John Deere 10 disc; post hole digger; John Deere PTO driven manure spreader; wagon running gear.

There will be other items too numerous to mention.

SEE MORE PHOTO'S ON SCOTTY'S WEBSITE



573-356-4405
Michael Cunningham 660-651-2288 • Paxton Pittman 660-346-1956
WWW.SCOTTSAUCTIONSERVICE.COM

KNOX COUNTY REAL ESTATE AUCTION

AUCTION

FRIDAY, DECEMBER 2ND AT 6PM

The Jeff and Leah Otto trust auction will be held at the Knox County Community Center, in Edina. This auction represents a great balance of outstanding tillable acreage, along with some very well-maintained pasture. The farms are located just southwest of Novelty, Missouri in Knox County.

Tract 1 is 157.3 surveyed acres of some of the best tillable land in Northeast Missouri. A road on two sides, terraced and very well maintained. FSA figures indicate 145.06 open acres.

Tract 2 is 120.1 surveyed acres of pasture with wooded draws. The pasture is very well maintained with Black Creek through the property. This property would make not only an outstanding livestock farm, but a great hunting farm with opportunities for large food plots and habitat.

Tract 3 is 154.9 surveyed acres that offers a great combination of tillable and pasture for the investor and farmer that raises both grain and livestock. FSA acres indicate 81.12 open acres.

These tracts will be offered at the Buyers Choice Method with online bidding available on ProxiBid. Title Work will be done by American Title in Macon. Closing will be held on or before January 10th in Macon, Missouri. This farm will sell free and clear for the 2023 crop year.

AUCTION LOCATION: Knox Community Center, 207 N 4th St, Edina, MO 63537

Contact: Anthony Peoples
660.651.6501
www.peopleslandco.com

SMALL ANIMAL AUCTION

Saturday, November 26, 2022

To be held at the

SCHACHTELE BARN - KEYTESVILLE, MO

From Hwy 24 at Keytesville, take Hwy 5 approx 4 miles to site w/ brown barn/green roof on the West side of the road, or from Hwy 36 at Marceline exit take Hwy 5 South, approx. 16 miles to site. Follow Auction signs!

Starting @ 11:30 am

We will start with Misc. Items Outside & Follow with Small Animals approximately 12:00 noon. Expecting 500-700 head of sheep & goats

We are NOT accepting any HOGS! All Out of state Animals to be Sold MUST Have Proper Health Papers!

Lunch Served • Call for More Details!
Tony Schachtele 660-413-3250

WE APPRECIATE ALL CONSIGNMENTS!

Terms Cash - good Check with Proper ID
 We are **NOT** Responsible for Accidents to Man, Woman, Child, or Animal. We are **NOT** Responsible for Lost, Stolen, or Damaged Articles or Property.

TIMED ONLINE | NO-RESERVE

BUSINESS ESTATE AUCTION

BIDDING CLOSES: MONDAY, NOVEMBER 28, 2022 STARTING AT 10:00 AM^{CT}

PHYSICAL ADDRESS: 210 N 19TH ST, HAMILTON, IL 62341




INSPECTION DATE: MONDAY, NOVEMBER 21 • 9:00 AM - 3:00 PM

GENERAL INFORMATION: Mark your calendars now and make plans to participate in this huge business liquidation estate auction. Ruhs Plumbing & Heating has been in business for over 50 years and was known throughout the tri-state area. Their reputation and customer service was second to none with dedicated employees like Dennis McKay, who was with Ruhs for 50 years (Dennis started in 1972, after returning from the service and has been with them everyday since!) and Floyd Rann, who worked there for over 33 years! This business will be missed! Selling the complete inventory to include: trucks; trailers; commercial air compressor; JD riding lawn mowers; metal break; sewer support equipment; power tools; pipe & fittings; hardware; key machine; organizers; antiques & collectables, to include showcases; furnaces; walls & walls of new inventory; and the list goes on and on! This will be phase one of a 2 day liquidation auction... watch for day 2 which will consist of the commercial real estate.

BEVERLY RUHS ESTATE & GREG RUHS

Representing Attorney: Hubert Staff | Staff & Staff
 237 N 6th Street | Suite 200 | Quincy, IL 62301
 (217) 228-8470

Auction Managers:
 Dan Sullivan (319) 795-1808 & Jim Sullivan (844) 847-2161



(844) 847-2161
www.SullivanAuctioneers.com
 License #444000107



TIMED ONLINE ONLY MACHINERY AUCTION

LOTS START ENDING
THURSDAY, DECEMBER 8TH - 10 AM
LOCATION: CLARK COUNTY FAIRGROUNDS (23200 E. MAIN ST, KAHOKA, MO)
PREVIEW DATE: FRIDAY, DECEMBER 2ND - SALE DATE
PICK UP DATES: FRIDAY, DEC 9TH 9AM-NOON & SATURDAY DEC 10TH 9AM-NOON



2005 JD 9560SIS, 4WD Combac, no mounting system, 30.5L-32 tires, 18.4-30 steel tires, Maunlin 15in Extension, Serial# 1195601711062, Reman Engine in 2016, 3725 hours, Reads 4792 hours, 3197 Sep. One Owner, Purchased New, Serviced & majority of the repairs at LMI Equipment



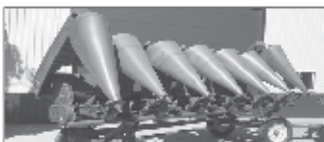
1999 JD 9100 4WD Tractor, 260hp, 24.5 tires, Power Differential lock, Back, 3 remotes, 460/80 R12 tires, 8120 hours, Ser RW91001020637



1979 JD 8440 4WD cab tractor, 215hp, 16/8 QJR tires, 5 pt. quickhitch, 1000 pro, (3) Hyd. Outlets, 20.8 38 good tires & duals, reads 9195 hours, Ser 814011001897R, Family Owned Since New



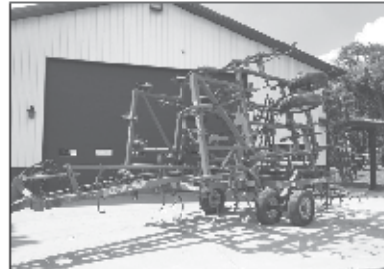
2012 JD 630E 30 ft. Hydra Flex Platform, Ser H0069000746266 Sells Separate - EZ Trail 672 30 ft Head Cart



1995 JD 693 Corn head, poly snouts, roller snapping rolls, Ser H006933661031, Sells complete with H31 Head Cart



2003 JD 637 26.5 ft Disk, Depth Control, hyd. front, 20 1/2 inch front blades, 21 inch back blades, Remlinger 4 bar harrow, Ser X0058657



Sunflower 5034-25 ft field cultivator, walking tandems, 9 inch sweeps, 5 bar harrow, Ser 5099-193



Salford RTS 29 1/2 ft Model 370 Vertical TBI, 3 bar harrows, rolling baskets, Ser 05489



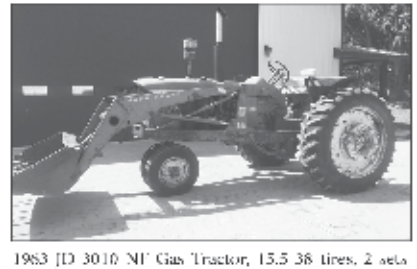
2009 International 92001 Pro Star Premium Day Cab, 15A Cummins engine, 450 hp, Eaton Fuller 10 spd, air ride seat, cruise control, power windows, 11R 22.5 good tires, rear fenders, reads 49,312 miles (replaced dash @ 661,000 miles), fresh servicehead gasket and UGR cooler replaced 3/16/17 at 24,391 miles. Sells Separate - 2010 Maurer 36 ft Topper Bottom Trailer, air ride, 11R22.5 tires, Shurt-Lok roll over tarp, one owner well kept



2008 McFarland HDL-1000 12 bar 30 ft harrow



2009 J & M 750-18 Grain Cart, Small 1000 PTO, 30.5 32 tires, scales, tarp, Ser 3796, One Owner



1983 JD 3010 11' Gas Tractor, 13.5 38 tires, 2 vel rear weights, 3 pt, 2 hyd. outlets, 540 PTO, Ser 3010-1146718, Sells Complete w/ JD 46-A Loader, 5 ft bucket, loader valve



International 560 6 BTM plow



Westfield 100 71 Grain Auger, Used very little



Friesen Seed Titan 2, Honda engine, 2 5/16 inch ball



Glenco PD-19 20 inch Ditcher, Small 1000 PTO



Soil Mover 75R1 pull type scraper, Ser 101 6038



JD 400 Hyd. Fold 30 ft Rotary Hoe



Kungsilde Hyd. Fold 12 row Cultivator, Vibro-crop Series, Ser 3385

BID NOW! ADDITIONAL PHOTOS & DETAILS ONLINE!

AUCTIONEERS NOTE: Timed online only auction. View preview date above! Terms cash or check with proper ID. Not responsible in case of accident or theft. Announcements made sale day take precedence over any advertisement. The above information is believed to be accurate; however, no liability for its accuracy, errors or omissions are assumed by the seller or auction service.

Wilson Farms Herb & Teresa Wilson and Shirley & the late Danny Wilson

McAfee Auction Service, LLC
660-727-3796
www.mcafeeauctionservice.com

McAfee Auction Service, LLC
375 S Johnson • Kahoka, MO
660-727-3796
www.mcafeeauctionservice.com

Sale #1 TIMED ONLINE ONLY
COIN AUCTION
LOTS START ENDING
SUNDAY NOVEMBER 27TH - 1 PM

Selling a nice selection of "Key Date" Indian & Lincoln cents; "Key Date"; Mercury dimes; "Key Date" Washington quarters; "Key Date" Morgan & Peace Dollars; Silver Eagles/ Bulk Silver; Danco Albums of Silver Dimes, Quarters, Halves, Comm. Quarters, Ike, Susan B., Presidential Coins

Dr James E. Gardner Collection

McAfee Auction Service, LLC
375 S Johnson • Kahoka, MO
660-727-3796
www.mcafeeauctionservice.com

ONLINE ONLY HAY AUCTION
LOTS START ENDING
TUESDAY, NOVEMBER 29TH - 10AM

Selling 640 bales of Hay to include: Mixed Grass, Brome/Alalfa, Orchard/ Alalfa, Alalfa and Oat Bales w/ Oats.
Free loading assistance by appointment
All hay to be picked up by Dec. 10th 2022

BID NOW! COMPLETE DETAILS ONLINE!
HENDERSON FARMS & SCOGGIN FARMS SELLERS

BID NOW!

McAfee Auction Service, LLC
375 S Johnson • Kahoka, MO
660-727-3796
www.mcafeeauctionservice.com

TIMED ONLINE ONLY AUCTION
THURSDAY, DECEMBER 1ST

LOTS START ENDING AT 10 AM

RING 1 - FARM EQUIPMENT, FARM SUPPORT & SHOP RELATED, ESTATE AUTO, HUNTING/ OUTDOORSMAN

Selling 2014 Toyota Camry, 35,500 miles (estate auto); AC 185 (D) & D-17 Tractors, Shortline Farm Equipment Farm Support & Shop Related, Hunting & Outdoorsman Items; Farm toys.
PREVIEW: Auto, Tractor & Farm Equipment can be viewed at 375 S. Johnson, Kahoka Mo.
NO PREVIEW AVAILABLE FOR SMALL ITEMS. View terms on portfolio for pickup rates.

RING 2 - ESTATE GUNS & AMMO

Selling Rifles, Shotguns, Pistols & Ammo from the Larry Campbell Estate.
PREVIEW: Guns at 375 S. Johnson, Kahoka Mo.
November 28th, 29th & 30th
during regular business hours.
NO PREVIEW ON AMMO
View terms on portfolio for pickup rates.

BARBARA AND THE LATE LARRY CAMPBELL, WAYNE & BARB HOWELL, MAXINE HYDE ESTATE & ANDY O'DAY SELLERS

**ADDITIONAL DETAILS, PHOTOS &
AUCTIONS AVAILABLE ONLINE!**
WWW.MCAFEEAUCTIONSERVICE.COM

LAND AUCTIONS

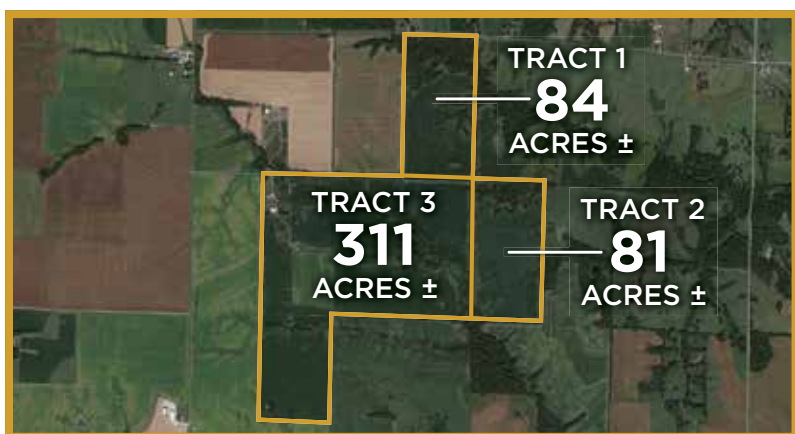


AUCTIONS - SEALED BID ONLY

FIND DETAILS AT [RANCHANDFARMAUCTIONS.COM](https://ranchandfarmauctions.com)

BIDS DUE BY: 11/29/22 | TIME: 5:00 PM CDT

AUCTION LOCATION: Go to [Ranchandfarmauctions.com](https://ranchandfarmauctions.com), call 217-922-0811 or email directors@ranchandfarmauctions.com to request an information packet and Sealed bid form.



476 AC± | 3 TRACTS | CLARK CO, MO

FSA Farmland Acres: 337+/- acres

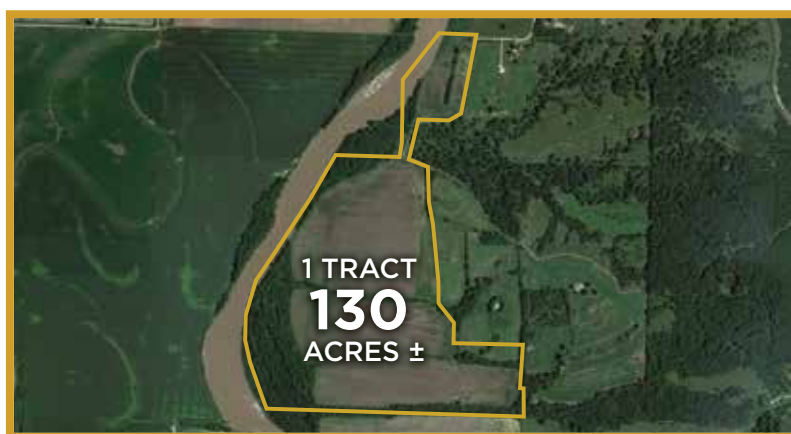
Soil Types: Adco silt loam, Armstrong silt loam, Leonard silt loam, Putnam silt loam

Soil PI/NCCPI/CSR2: Average NCCPI 63.1

Brief Legal: 476 +/- acres located S11/13/14 T63N R8W in Clark Co

Contact Jeff Propst, Agent (636) 209-0362

Jeff.Propst@whitetailproperties.com



130 AC± | 1 TRACT | MACON CO, MO

FSA Farmland Acres: 96.14+/- acres

Soil Types: Dockery silt loam, Bremer loam, Darwin silty clay

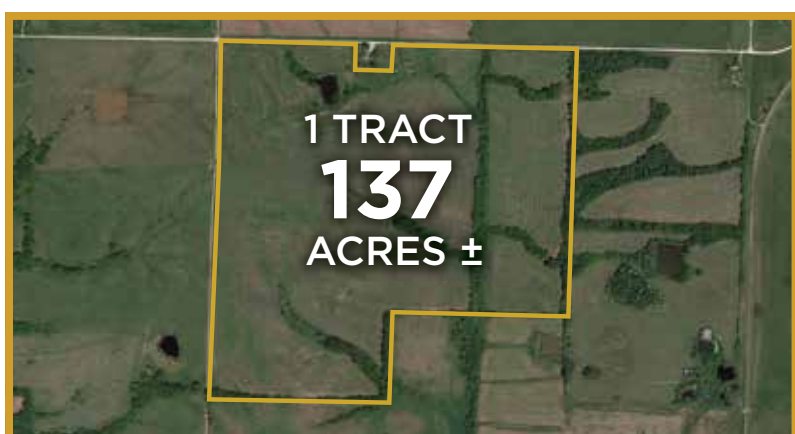
Soil PI/NCCPI/CSR2: Average NCCPI 72.5

Brief Legal: 130+/- acres located S33/34

T58N R16W in Macon Co, MO

Contact Clay Lockard, Agent - (573) 466-9123

Clay.lockard@Whitetailproperties.com



137 AC± | 1 TRACT | MACON CO, MO

FSA Farmland Acres: 132.04+/- acres

Soil Types: Armstrong loam, Armstrong clay loam, Bevier silty clay loam, Wilbur silt loam

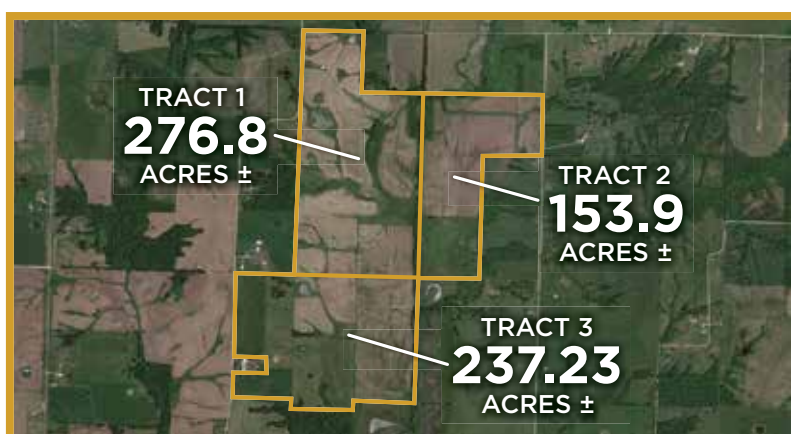
Soil PI/NCCPI/CSR2: Average NCCPI 60.9

Brief Legal: 137+/- Acres Located S35 T57N

R16W In Macon Co, Mo

Contact Clay Lockard, Agent - (573) 466-9123

Clay.lockard@Whitetailproperties.com



662 AC± | 3 TRACTS | MACON CO, MO

FSA Farmland Acres: 624.82+/- acres (from 156)

Soil Types: Blackoar silt loam, Vesser silt loam, Tice silty clay loam, Purdin loam, Armstrong loam

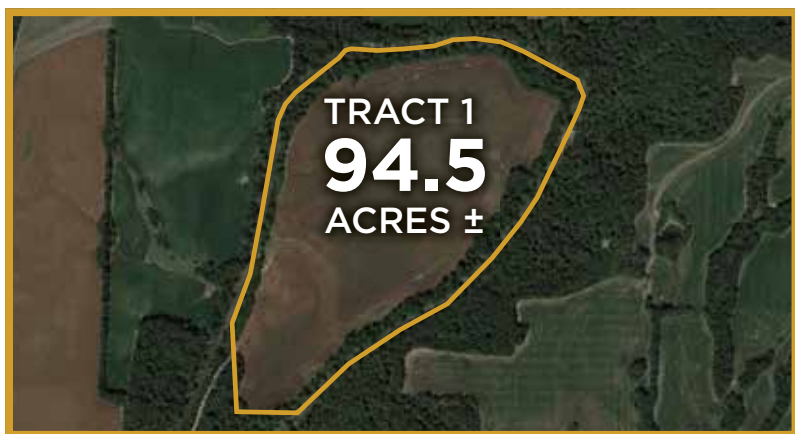
Soil PI/NCCPI/CSR2: Average NCCPI 75.5

Brief Legal: 662 +/- Acres Located S19/20/30

T57N R15W In Macon Co, Mo

Contact Clay Lockard, Agent - (573) 466-9123

Clay.lockard@Whitetailproperties.com



94.5 AC± | 1 TRACT | LEWIS CO, MO

FSA Farmland Acres: 74.08+/- acres

Soil Types: Arbela silt loam, Fatima silt loam, Gifford silt loam

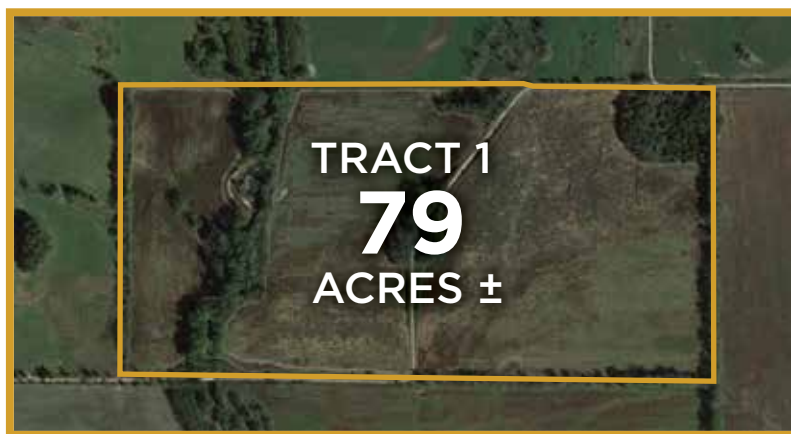
Soil PI/NCCPI/CSR2: Average NCCPI 82.8

Brief Legal: 94.50 +/- Acres Located

S5/6/7/8 T62N R9W Lewis Co, Mo

Contact Jeff Propst, Agent (636) 209-0362

Jeff.Propst@whitetailproperties.com



79 AC± | 1 TRACT | PUTNAM CO, MO

FSA Farmland Acres: 62.06 +/- acres

Soil Types: Gorin Silt loam, Humeston silt loam, Colo silt loam

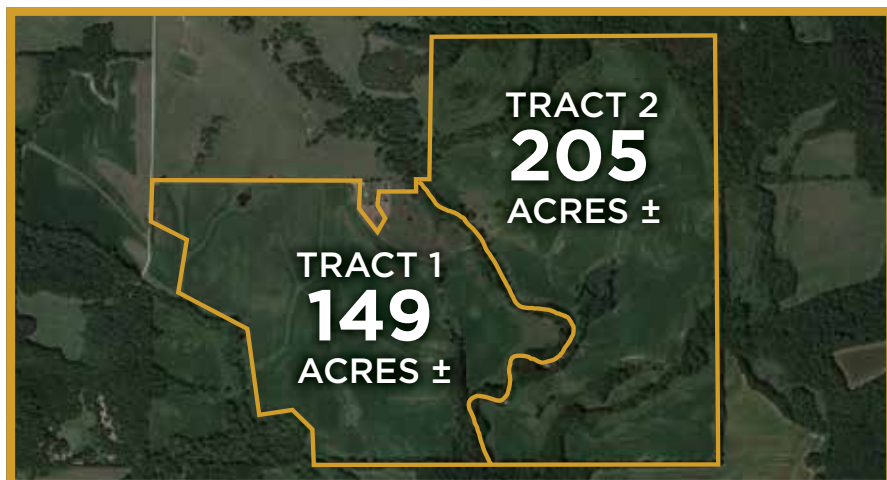
Soil PI/NCCPI/CSR2: Average NCCPI 63.2

Brief Legal: S34/35 T66N R18W Putnam Co

Contact Jeff Propst, Agent (636) 209-0362

Jeff.Propst@whitetailproperties.com

LIVE AND ONLINE AT [RANCHANDFARMAUCTIONS.COM](https://ranchandfarmauctions.com)



354 AC± | 2 TRACTS | RALLS CO, MO

AUCTION DATE: 12/2/22 | **TIME:** 1:00 Pm

AUCTION LOCATION: New London Fire Dept. 212

Carstarphen Drive | New London, Mo

FSA Farmland Acres: 313.92 +/- acres

Soil Types: Armstrong loam, Belknap silt lam, Gorin silt loam, Gifford silt loam

Soil PI/NCCPI/CSR2: NCCPI 66.5

Brief Legal: S28/29 T56N R6W In Ralls Co Mo

Contact Aaron Bennett, Agent 636.887.1022

aaron.bennett@whitetailproperties.com

IN COOPERATION WITH WHITETAIL PROPERTIES REAL ESTATE, LLC

[RANCHANDFARMAUCTIONS.COM](https://ranchandfarmauctions.com)

IN COOPERATION WITH WHITETAIL PROPERTIES REAL ESTATE LLC (C000001603) | Jefferson Kirk Gilbert, Missouri Broker, License # 2015034232 | Joe Gizdic, Director, Ranch & Farm Auctions, 217.299.0332 | Cody Lowderman, MO Auctioneer License 11037