

THE MOUNTAIN EAR

Locally owned and operated since 1977

Volume 47, Issue 34

32 Pages

Thursday, June 13, 2024

\$1.50

Nederland, Colorado

ALLENSPARK | BLACK HAWK | CENTRAL CITY | COAL CREEK CANYON | FERNCLIFF | GOLD HILL | JAMESTOWN | NEDERLAND | PINECLIFFE | ROLLINSVILLE | WARD

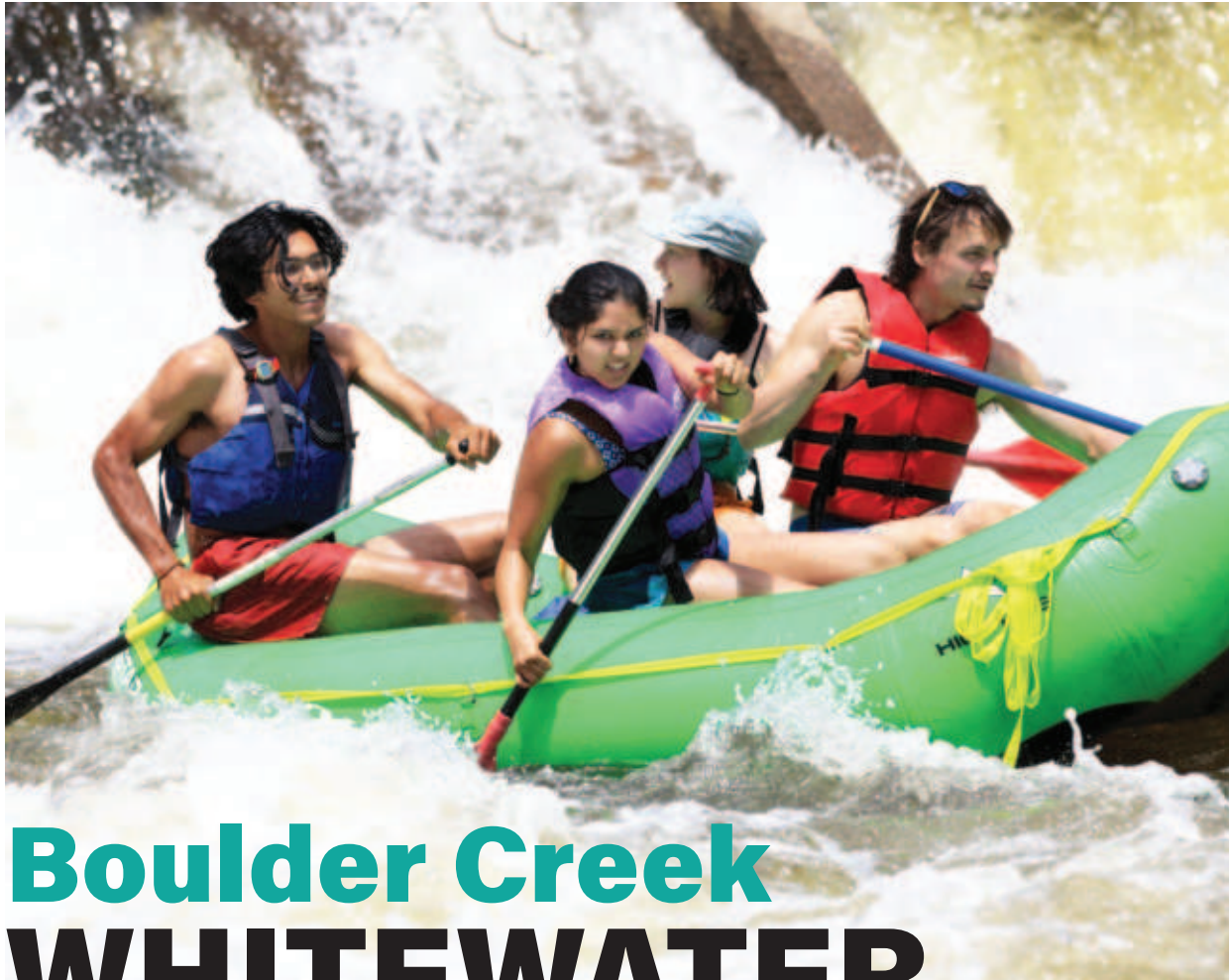


PHOTO BY DAVE GIBSON

Boulder Creek WHITEWATER

Spring runoff Melting mountain snow has creeks and rivers at or near peak levels. See pictures on page 20.

Gilpin BoCC approve Sheriff Department resolutions

MINDY LEARY
GILPIN COUNTY

The Gilpin County Commissioners held their regular meeting on Tuesday, June 11, with all commissioners—Susan Berumen (Chair), Marie Mornis, and Sandy Hollingsworth—in attendance. County Attorney Brad Benning, County Clerk Melanie Bleyler, and County Manager Ray Rears (online) were also present.

The highlights of the meeting were resolutions concerning law enforcement, and more staffing discussions.

Law Enforcement

New Hire: Johnathan Jones, Detention Officer

Resolution 24-87:

Law Enforcement Shooting Range Lease Agreement

The board packet explains, “Gilpin County had a lease agreement with the Albert and Mary Frei Irrevocable Trust for a property with an outdoor shooting range for the Gilpin County Sheriff’s Office to use for practice and training....Clear Creek County also had a lease agreement with Albert and Mary Frei Irrevocable Trust for a shooting range that was located in Clear Creek County.... In January of this year both shooting range properties were sold to Martin Marietta Materials Real Estate Investments, Inc.

“...[N]egotiations began on a new lease agreement. During negotiations, it came to light that the new owners, Martin Marietta Materials, would like to consolidate the two shooting range leases into one, and have both Clear Creek County and Gilpin County share the shooting range located off Lake Gulch Road. Both Counties agreed. The amount for rent is half the amount it was in the previous lease agreement (\$3,000.00 annually).”

Continued on page 24

Archaeology Open House at Central’s former brothel district

MINDY LEARY
CENTRAL CITY

Ever wonder if Central City has more than gold hiding under its soil? Curious locals had the chance to find out at an open house archaeological dig site led by Metropolitan University Assistant Professor Jade Luiz and her students on Saturday, June 8.

They were excavating the former brothel district on Pine Street, which included the renowned Madam Lou Bunch House and four other brothels from over a century ago.

Luiz said 10 to 15 people attended the event, which was located on a hill to the west of Pine Street, just under the inactive Coeur D’Alene mine.

The team’s deepest excavation was about a meter deep. At the

Continued on page 12



PHOTO BY MINDY LEARY

Unearthing clues Dr. Jade Luiz points out a fragment of textile, most likely silk, that was found over burnt wood planks. Initially planning to remove it, she decides to wait until next summer to retrieve the entire artifact.

Cracker Barrel - page 2
Peak Perspectives - page 3
Movie of the Week - page 3
Music - page 4, 5, 18
Letters to Editor - page 6, 7
School & Gilpin Arts - pages 8 to 10
Food pantry truck - page 11
Archaeology - page 12, 13, 18, 19

For Your Health - page 14
Life in Nature - page 15
Boulder Creek - page 16, 17
Ned honors royalty - page 20
NCPC serves community - page 21
Neder-Day of Art - page 22
Government - page 23 to 29
Classifieds & Puzzles - page 30 to 31

“QUOTE OF THE WEEK”

*We don’t see things as they are.
We see them as we are.*

—Anais Nin

THE MOUNTAIN-EAR

98 W 1st Street
Nederland, CO 80466
430 Lawrence Street, Unit C
Central City, CO 80427

office: 303-810-5409
website: www.themtnear.com
email: info@themountainear.com

(usps 548530) is publishing
weekly for \$75 per year by
Mountain Vale Media, llc,
P.O. Box 99, Nederland, CO 80466

Print ISSN: 1543-6071
Website ISSN: 2834-099X

Postmaster

Send address changes to:
The Mountain-Ear
P.O. Box 99, Nederland, CO 80466

Hours

Nederland: 9 a.m. to 5 p.m. Monday to Friday.
Central City: By appointment Monday to
Friday. Call or text us at 303-810-5409 or
email info@themountainear.com.

Advertising

CLASSIFIEDS, DISPLAY and Public Notices
are due by Monday at 5 p.m. (Friday at 5
p.m. if design is required)
DISPLAY ADS can be placed by emailing
marketing@themountainear.com or online
at themtnear.com and click on advertise.
CLASSIFIEDS are placed online at
themtnear.com and click on classifieds.
ONLINE BUSINESS DIRECTORY ads are
placed online at themtnear.com and click
on Business Directory.
FOR ADDITIONAL PRICING, custom packages
or non-profit discount information email us
at marketing@themountainear.com.

Subscriptions

Subscribe online at themtnear.com/subscribe/
\$6 per month
\$50 per year: Online only
\$70 per year: Senior In-State
\$75 per year: Regular In-State
\$100 per year: Out of State
Back issues \$4.50 through US Mail.

Letters

We welcome thoughtful, local letters to the
editor. You can submit online on our website
or by email to info@themountainear.com.
Letters may be edited for length (less than
500 words) and content (rude, vulgar or ob-
scene). Letters must include local name and
address, to be considered for publication in
the next available edition. We reserve the
right to refuse to print letters.

Ownership

The Mountain-Ear is the ONLY Independently
owned newspaper covering all of western
Boulder County and all of Gilpin County. We
also cover western Jefferson County and
north Clear Creek County.

Copyright

Any and all content published in *The
Mountain-Ear* is owned by Mountain Vale
Media, llc. It may not be copied, printed or
reproduced in any way, without express
written consent of the Publisher. ©Moun-
tain Vale Media, llc.

Staff

The Mountain-Ear is made up of 50 contrib-
utors per month. Each staff member is one
spoke in a very large wheel. Without one
spoke, the wheel does not turn effectively.
We welcome community journalists and
personify homegrown journalism.



Friday, June 14

Friday Storytime: Read books,
sing songs, learn some ASL,
and get the wiggles out in the
first half hour, followed by free
play. The Nederland Commu-
nity Library, 200 Highway 72
in Nederland, hosts story time
every Friday morning from 10:15
to 11:15 a.m. for ages 0 - 4 years.
Visit <https://nederland.libcal.com>
for more information.

Build It! with LEGO: Drop in to create
and play! From 1 to 4 p.m. at the Gilpin
County Public Library, kids can let their imag-
inations run free while they construct their own cre-
ations using LEGO bricks. Duplo and Knex kits are also
included. Children under 8 years old must be accom-
panied by an adult. All materials are provided. LEGO
bricks and creations will remain in the library after each
program. Find out more online, www.gilpinlibrary.org.

Family Movie Matinee: Bring the kids for free popcorn
and a movie as we watch a family-friendly film, "Paw
Patrol: The Mighty Movie," in the meeting room at the
Gilpin County Public Library, 15131 Highway 119, Black
Hawk, at 4:30 p.m. Visit us online for more information,
www.gilpinlibrary.org.

Monday, June 17

Crafternoons in June: Join us for Summer Arts and
Crafts! Drop by the Nederland Community Library,
200 Highway 72, and try out a new project each week
in June on Mondays from 3:30 to 5:30 p.m. We'll be
having fun stone painting, making travel journals, spiral
suncatchers, and dragon eyes! Craft time will happen
outside on the deck, weather and supplies permitting.
All ages welcome! Supplies provided! No fees! Visit
<https://nederland.libcal.com> for more information.

Nederland Writers: Bring something you are working
on to share and get feedback or join the group to listen
in and hone your skills. Area writers gather at Neder-
land Community Library every Monday from 1 to 3 p.m.
For details visit <https://nederland.libcal.com>.

Cracker BARREL

Get involved in your community

The Mountain Meditation Circle is a
free and open group that has been
meeting every Monday evening at
6 p.m. for the last four years at the
Gilpin County Public Library. New
participants are always welcome.
New members will need to pro-
vide their contact information pri-
or to attending their first meeting.
Please email Alisa Witt at wittalisa@gmail.com or 847-890-5262 to
provide your contact information.

Meditation and Mindfulness: Practice
meditation, explore readings, and join
discussions in this free program at the Ned-
erland Community Library, every Monday at 5:30
p.m. No meditation experience necessary! Please email
Eric at davis.eric.alan@gmail.com with any questions.

Wednesday, June 19

Preschool Storytime: The Gilpin County Public Library
hosts story time every Wednesday morning from 10
to 11 a.m. for ages 0 - 5 years. Join Children's Librarian
Deb Benitez for stories, fingerplays, rhymes, and more.
A themed craft will follow every story. Previous week's
crafts are available until supplies run out, www.gilpinlibrary.org.

Saturday, June 22

Neder-Day of Art: Join us on Saturday, June 22 as we
celebrate Nederland's incredible local art community
with a day filled with creativity and inspiration! Take
a tour of public murals, attend the fine arts and crafts
show, view live demonstrations, and participate in art-
based activities. Bring your family and friends for a day
of art, culture, and community. Find more information
online, <https://nederdays.com/>.

*Did we miss you? Would you like your event listed in
the Cracker Barrel? Please submit your event online at
<https://www.themtnear.com/events-submission/> to be
included in the next edition. Check us out online at www.themtnear.com/events for more upcoming events.*

Self Help Meetings

Tuesday Night Nederland Cross Talk Meeting A Big
Book meeting at 7 p.m. online via Zoom. For more infor-
mation visit [https://bouldercountyaa.com/meetings/
tuesday-night-nederland-cross-talk-meeting](https://bouldercountyaa.com/meetings/tuesday-night-nederland-cross-talk-meeting).

The Morning Group Group meeting every Thursday
morning at 8 a.m. online via Zoom. For more informa-
tion visit [https://bouldercountyaa.com/meetings/the-
morning-group](https://bouldercountyaa.com/meetings/the-morning-group).

Nederland Group A hybrid meeting every Friday night
at 7 p.m. at St. Rita's Catholic Church at 326 Highway
119, Nederland, and online via Zoom. For more infor-
mation visit [https://bouldercountyaa.com/meetings/
nederland-group](https://bouldercountyaa.com/meetings/nederland-group).

Coal Creek Canyon A meeting held every Wednesday
evening from 7 to 8 p.m. Sponsored by Ed at 303-589-
5056. For more information please visit <https://www.coalcreekcanyon.org/calendar>.

Gilpin County H.A.L.T. An in-person meeting every
Sunday at 6 p.m. held at 226 E. First High Street, Cen-
tral City.

[https://findrecovery.com/aa_meeting/gilpin-county-
h.a.l.t.-central-city/](https://findrecovery.com/aa_meeting/gilpin-county-h.a.l.t.-central-city/).

Gilpin County H.A.L.T. A Big Book meeting every
Wednesday at 7 p.m. held at 226 E. First High Street,
Central City. [https://findrecovery.com/aa_meeting/gil-
pin-county-h.a.l.t.-central-city/](https://findrecovery.com/aa_meeting/gilpin-county-h.a.l.t.-central-city/).

Narcotics Anonymous 12 Step Meeting This is an
open hybrid meeting - anyone can attend - on Sundays
from 6 to 7 p.m. at Nederland Presbyterian Community
Church, 210 North Jefferson Street, Nederland, or online
via Zoom (Meeting ID# 893 7194 1883). We hope to see
you there sometime.

*For additional meetings in Boulder County visit [https://
bouldercountyaa.com/meetings/](https://bouldercountyaa.com/meetings/) and for meetings in
Gilpin, Black Hawk, Central City, and nearby areas visit
https://findrecovery.com/aa_meetings/co/black-hawk/.
For help finding meetings or recovery support for you or
a loved one please call: 866-641-9190.*



Gilpin County Seniors

June 13 - Grocery shopping at Bergen Park King
Soopers

June 14 - Free Senior Fit class 11 a.m., Lunch at 12:15
p.m., Social time

June 17 - Free Senior Fit class 11 a.m.

June 19 - Free Senior Fit class 11 a.m., No senior
lunch, Community Center open.

June 20 - Grocery shopping at Bergen Park Walmart

June 21 - Free Senior Fit class 11 a.m., Lunch at 12:15
p.m., Free Bingo

June 24 - Free Senior Fit class 11 a.m.

June 26 - Free Senior Fit Class 11 a.m., Lunch at 12:15
p.m., Social time

June 27 - Grocery shopping at Bergen Park Walmart

June 28 - Free Senior Fit class 11 a.m., Lunch at 12:15
p.m., Free Bingo

*Please RSVP for lunch at least two business days ahead.
We ask for a \$2.50 donation for lunch. All transportation
is \$2.50 each one-way trip. We are doing door-to-door
medical transportation at this time. Please call for
details. We accept donations for the Senior Fit exercise
classes. Call 303-515-4292 for information.*

Nederland Area Seniors

June 19 - Green chili chicken breast, Spanish rice,
tossed salad with ranch, pears

June 19 - Purple Art event - Art class for seniors! Sug-
gested donation is \$5.

June 26 - Pork carnitas on flatbread, pinto beans,
pico de gallo, tossed salad with ranch, oranges
*Lunch is served at noon. (yoga 11 to 11:30 a.m.) Sug-
gested donation for senior lunch is \$5. RSVP at 303-
258-0799. Our Senior Lounge is open! Please, check
our website calendar for the latest updates [www.
mountainpeaklife.org](http://www.mountainpeaklife.org).*

PEAK PERSPECTIVES: Pondering

BARBARA HARDT
BLACK HAWK

I think one of the coolest things we do at *The Mountain-Ear* is host a lot of contests. In spring we have a Youth Art Contest. We just announced the winners for poetry and art, and prizes are in the mail this week.

Our next contest is an Essay contest (as part of *It's Your Turn*). The essays will focus on your Favorite Day in the Peak to Peak. You can submit from now to July 31, and the essays will run in the August issues.

The Mountain-Ear newspaper is happy to announce the second annual Peak to Peak Studio Tour. The tour is the perfect way to give galleries and visitors a chance to enjoy an incredible day in the mountains. It is all about art and color across the peaks.

The Peak to Peak Studio Tour takes place on September 21 and 22.

If you are interested in joining as a participating artist and want to sign up, contact Bethany at marketing@themountaineer.com or call 720-960-2900.

The Mountain-Ear is looking for a cool car or truck to drive in the parade for the Gilpin County Fair on Friday, July 19. We'd love to participate this year, but let's be real – I have a boring Subaru, and we gotta do better! Line up is at 9:30 a.m. in Central City. Anyone interested in helping us out?

Are you a subscriber? You can subscribe here and we have several



options. This one is a simple 30 day trial, no recurring payment: <https://www.themtnear.com/register/30-day-online-trial/>

This one is \$6 per month with a recurring payment of \$6/month for one year: <https://www.themtnear.com/register/1-month-digital-subscription/> and this one is for one year's online access: <https://www.themtnear.com/register/1-year-online-access/>

If you prefer print (which includes FREE online access), you can choose this option for \$75 for one year: <https://www.themtnear.com/register/1-year-print-online-in-state/>

And, if you subscribe this summer, you can use the coupon code THEMTNEAR for 10% off your subscription.

Thank you for reading *The Mountain-Ear*. We hope you enjoy it. If not, before tossing it in the dumpster, consider one of the following ways of expressing your disgust: shred it into confetti and hold a pity parade. Toss it on that stack of newspapers you need to recycle. Or send any and all feedback (positive, negative or perplexing), to info@themountaineer.com. We appreciate you!

Meet our team!

Publisher
Mountain Vale Media, llc

Managing Editor
Barbara Hardt
info@themountaineer.com

Editors
Sara Sandstrom
editor@themountaineer.com
Lynn Hirshman
copy@themountaineer.com

Senior Journalists
Christopher Kelley
CKelley@themountaineer.com
Mindy Leary
MLEary@themountaineer.com
Omayra Acevedo
OAcevedo@themountaineer.com

Graphic Design
Joyce Robinson
JRobinson@themountaineer.com

Podcast Production
Jamie Lammers
media@themountaineer.com

Marketing & Advertising
Bethany Haas
marketing@themountaineer.com

Web Development & Archivist
Tanya Unger
website@themountaineer.com

Front Desk
Brittney Wagner
frontdesk@themountaineer.com

Accounting
Terri Vernon
accounting@themountaineer.com

Circulation
Tim Dillon

Journalists
Brian Alers
James DeWalt
Dave Gibson
Curt Halsted
Wes Isenhardt
Alexander Joseph
Jamie Lammers
Patrice LeBlanc
John MacKay
Emma Quarterman
Anne Scarffe
John Scarffe

Interns
Eli Crawford
Hayden Hardt-Zeman
Annika Marschke
Polina Savich
Anna Thomason
Cameron Thomason

Volunteers
Karen Anderson
Doug Armitage
Denise Boehler
Richard Brandon
Mark Cohen
Lorena DeSanta
Rick Rudstrom
Amy Skinner
Frank Sanders

Voter Registration option
There will be a voter registration booth at the Gilpin Food Pantry on Thursday, June 20, 2024, from 1 to 3 p.m.
The Gilpin Food Pantry is located at 101 Norton Drive, Black Hawk.


THE BACKDOOR THEATRE
The Garfield Movie
June 14 and 15
Friday and Saturday
Evenings at 7 p.m.
Saturday Matinee at 2 p.m.
After *Garfield's* unexpected reunion with his long-lost father, ragged alley cat Vic, he and his canine friend Odie are forced from their perfectly pampered lives to join Vic on a risky heist.
Director: Mark Dindal. Writers: Paul A. Kaplan, Mark Torgove, David Reynolds. Stars: Chris Pratt, Samuel L. Jackson, Hannah Waddingham. Rated: PG. Time: 1 hour and 41 minutes. Genre: Animation, Adventure, Comedy.
POLICY REMINDERS: Seating is limited to first come first serve. All children under the age of 12 MUST be accompanied by a responsible adult for the duration of the movie.
750 Highway 72 North,
Nederland Community Center


Timberline Station #1
OPEN HOUSE & BOARD OF DIRECTORS MEETING
June 18th


● Free BBQ, beverages and snacks!
● Meet the Timberline Fire Mitigation Coordinator
● Meet your local fire fighters!
● Learn about the fire district!
● Touch a fire truck!
And more!
Tuesday, June 18th
Open House @ 5pm
Board Meeting @ 7pm
Station #1 is located at:
5927 Magnolia Rd
6.2 miles off Hwy 119
For more information contact:
Lt. Kevin Schneider
KSchneider@TimberlineFire.com
(303) 582-5768 xt703

Music of the Mountains

Where to be and what to see

JAMIE LAMMERS
BLACK HAWK

Aera Fox may not have initially wanted to go into music professionally, but she started playing and taking lessons in piano as a kid. Compare this to Sage Cook, who didn't grow up in a musical family, as his parents were ranch hands who moved frequently. Cook got into dancing at a young age, and after his parents split, his stepfather passed down his high school guitar. Eventually, Cook started playing with a honky-tonk band, but it wasn't until he started traveling and hitchhiking with a banjo after high school that music truly became a part of his identity.

During Cook's travels, he would meet three people who, along with him, would become the original lineup of Elephant Revival. After touring for many years with the group, he left, wanting to widen his circle outside of music. Enter Fox, primarily interested in other pursuits: yoga, farming, and living close to the land. Cook, also interested in these pursuits, gravitated towards her. By the time they connected, he knew he didn't want to drag her into the music world, especially not the commercial aspect. He wanted to have his own life with her.

The two have been together for eleven years. Even currently, the two have chosen to settle down and farm over touring frequently, with Cook estimating that music takes up only 20% of their average time budget now. Relatively soon after meeting, though, the band WE DREAM DAWN came together purely by chance. When a friend of Cook's booked him and other friends for a benefit, Cook asked Fox to learn the material on the bass. After performing with drummer Weston Hill, they all formed the three-piece group. Ultimately, Sage and Aera is a spin-off of WE DREAM DAWN, allowing the two to emphasize a quieter, more intimate sound.

Fox arranges and comes up with additional lyric ideas, as well as playing bass and singing harmonies, but Cook writes most of the material



Sage and Aera

himself. While they sing their original material, they also keep WE DREAM DAWN and Elephant Revival material up their sleeve, allowing Cook to embrace his musical roots. Through this process, Fox has found a new appreciation for music. The way she learned music

was structured, and the way Cook learned was instinctual (unlike Fox, Cook cannot read music).

Through Cook, Fox feels she has learned how to truly listen to music, hear harmony, and feel freer in the musical process. Meanwhile, through Fox, Cook has found a

new appreciation for the purity of the art form that he lost when exposed to the music industry. The two love the conversations they get to inspire between themselves and the audience, and they hope that, if anything, the audience is able to find whatever they need most from their shows.

You can see Sage and Aera performing at Casa Colorado, 196 Bear Crossing Road in Black Hawk, on Thursday, June 20, 2024. Doors open at 6 p.m., with snacks served, and bringing your own nourishment is encouraged. The Sarah Banker Band with Scott Messersmith and Dave Solzburg performs first, then Sage and Aera perform, adding up to a total of three hours of live music. \$25 tickets are available at <https://checkout.eventcreate.com/casa-co-concert/select-buy>.

Music Events

Busey Brews

Sunday, June 16 at 2 p.m. - Intergalactic Peace Jelly Duo
Sunday, June 23 at 2 p.m. - Tip of the Spear
Sunday, June 30 at 2 p.m. - Troy Yanel

Facebook: <https://www.facebook.com/BuseyBrews/>
Website: <https://buseybrews.com/>
Location: 70 E. 1st Street, Nederland.
Phone: 1-855-633-2739

Canyon Tavern

Saturday, June 15 at 6 p.m. - Will Whalen
Saturday, June 22 at 6 p.m. - Robert Brannick
Saturday, June 29 at 5 p.m. - Scrapyard Izzy

Facebook: <https://www.facebook.com/Coalcreekcanyon tavern>
Website: <https://canyontavern.com/>
Location: 32138 Highway 72, Coal Creek Canyon.
Phone: 303-642-3180

Continued on page 5

Business Spotlight

Forget Me Not Skin Care
A NATURAL BEAUTY BOUTIQUE
Gift Certificates available
Pattin Sabel, 720-899-8992
Licensed Esthetician
and Nail Technician
forgetmenotskincare.com

NEDERLAND
CHIROPRACTIC
&
WELLNESS CENTER
303-258-7730

VERY NICE
Brewing Company
LOCATED IN THE CARIBOU VILLAGE
SHOPPING CENTER IN NEDERLAND
303-258-3770

Your local Realtor®
JPAR
MODERN REAL ESTATE
Lise Friisbaastad
720-514-9727
RealtorLiseColorado

Kaleidoscope
Fine Arts Gallery
20 Lakeview Dr., Suite 210
Nederland, CO
303-949-3590
k.gallery.ned@gmail.com
kaleidoscope-finearts.com
Local Art and printing services
open Thursday through Monday 11am-5pm

ALL-YOU-CAN-EAT
LUNCH BUFFET!
Every day from 11am to 4pm
Kothmandu Restaurant
Nepali and Indian Cuisine
110 N Jefferson St, Nederland, 303-258-1169
1964 28th St, Boulder, 303-442-6868
kathmandurestaurant.us

WEEKLY GRIEF SUPPORT GROUP
Help and encouragement after the death of
a spouse, child, family member, or friend
Saturdays, 10:15 am to 12:15 pm
Gilpin County Public Library
15131 SH 119, Black Hawk
Sign up: www.griefshare.org
Sponsored by St Paul's Episcopal Church, Central City

Music Events

Continued from page 4

Casa Colorado

Thursday, June 20 at 6 p.m. - Sarah Banker Band/Sage and Aera

Facebook: <https://www.facebook.com/Casa.Colorado.BandB/>

Location: 196 Bear Crossing Road, Black Hawk.

Phone: 303-642-1983

Chipeta Park (Nederland Summer Concert Series)

Saturday, June 15 at 4 p.m. - Wirewood Station with Bear Hat

Website: <https://www.timeserved-productiongroup.com/>

Location: 254-306 Lakeview Drive, Nederland.

Diner Bar Ned

Wednesdays at 8 p.m. - Karaoke
Sundays at 6 p.m. - Open Mic

Facebook: <https://www.facebook.com/dinerbarned/>

Location: 121 N. Jefferson Street, Nederland.

Gold Hill Inn

Thursday, June 13 at 6 p.m. - Andy Thorn and Friends

Friday, June 14 at 8 p.m. - Hundred Pound Housecat

Saturday, June 15 at 6 p.m. - Rebecca Frazier Band

Sunday, June 16 at 5:30 p.m. - Foggy Mountain Spaceship

Wednesday, June 19 at 5:30 p.m. - Wanderin' Pine

Friday, June 21 at 6:30 p.m. - Sturtz

Sunday, June 23 at 5:30 p.m. - Derek Dames Ohl

Wednesday, June 26 at 5:30 p.m. - Anya Hinkle feat. Billy Cardine

Friday, June 28 at 8 p.m. - Bottlerocket Hurricane

Saturday, June 29 at 5:30 p.m. - Poorfree

Sunday, June 30 at 6 p.m. - Daniel Rodriguez and His Band

Facebook: <https://www.facebook.com/GoldHillInn/>

Website: goldhillinn.com

Location: 401 Main Street, Gold Hill.
Phone: 303-443-6461

Gold Hill Store

Thursday, June 13 at 7 p.m. - Abby Brown

Saturday, June 15 at 6:30 p.m. - skiv

Saturday, June 22 at 7 p.m. - Avasso

Friday, June 28 at 7 p.m. - Dwayne Haggins

Facebook: <https://www.facebook.com/pages/Gold-Hill-General-Store/>

Website: <https://www.goldhillstore.com/>

Location: 531 Main Street, Gold Hill.

Howlin Wind Brewing

Saturday, June 15 at 6 p.m. - Melt and the Family Band

Saturday, June 22 at 5 p.m. - Benjamin Sproul Trio

Saturday, June 29 at 5 p.m. - 3rd Anniversary Party with Magoo

Facebook: <https://www.facebook.com/howlinwindbrewing>

Website: <https://www.howlinwindbrewing.com/>

Location: 51 A Main Street, Rollinsville.
Phone: 309-825-5245

Jamestown Mercantile

Thursday, June 13 at 7 p.m. - Andres Santana

Friday, June 14 at 7 p.m. - George Nelson Band

Sunday, June 16 at 12:15 p.m. - Jen Howard

Wednesday, June 19 at 5 p.m. - Open Mic

Thursday, June 20 at 7 p.m. - Mountain Duo

Friday, June 21 at 7 p.m. - Dechen Hawk Band

Saturday, June 22 at 4 p.m. - River on the Mountain Festival

Wednesday, June 26 at 5 p.m. - Keenan O'Meara

Thursday, June 27 at 7 p.m. - Dwayne Haggins

Friday, June 28 at 7 p.m. - Wrenn Van Band

Sunday, June 30 at 12:15 p.m. - Davey and the Midnights

Facebook: <https://www.facebook.com/jamestownmercantile/>

Website: <https://www.jamestown-mercantile.com/>

Location: 108 Main Street, Jamestown.

Phone: 303-442-5847

JKQ BBQ

Friday, June 14 at 6 p.m. - Robby Wicks

Saturday, June 15 at 5 p.m. - Robby Wicks

Friday, June 21 at 6 p.m. - Duey

Saturday, June 22 at 5 p.m. - Duey

Facebook: <https://www.facebook.com/JkqBbq/>

Location: 200 Gregory Street, Black Hawk.

Phone: 720-316-1361

Knotted Root Brewing

Friday, June 14 at 6 p.m. - Reggae DJ

Saturday, June 15 at 5 p.m. - Pineytops

Friday, June 21 at 6 p.m. - Guaro

Friday, June 28 at 6 p.m. - DJ

Saturday, June 29 at 5 p.m. - Danny Shafer

Wednesdays at 6 p.m. - Open Mic

Sundays at 5 p.m. - Jazz Sundays

Facebook: <https://www.facebook.com/knottedrootbrewing/>

Website: <https://www.knottedrootbrewing.com/home>

Location: 250 N. Caribou Street, Nederland.

Phone: 720-248-7129

Nederland Farmers Market

Sunday, June 23 at 10:30 a.m. - Kylie and Friends

Facebook: <https://www.facebook.com/NederlandFarmersMarket/>

Website: <https://www.nederlandfarmersmarket.org/>

Email: nederlandfarmersmarket@gmail.com

Location: 85 E. 1st Street, Nederland.

Old Gallery at Allenspark

Saturday, June 15 at 6:30 p.m. - Tim Merkel

Friday, June 21 at 6 p.m. - Open Mic with Tim Merkel

Wednesday, June 26 at 2 p.m. - Summer Porch Series

Saturday, June 29 at 5 p.m. - Hogabluesa Blues with Blues-Based Trio

Facebook: <https://www.facebook.com/TheAPOldGallery>

Website: <https://www.theoldgallery.org/>

Location: 14863 Highway 7, Allenspark.
Phone: 303-747-2906

Very Nice Brewing Co.

Friday, June 14 at 6 p.m. - David Tilmon

Saturday, June 15 at 5 p.m. - Reservoir Fog

Friday, June 21 at 6 p.m. - Blue Moose Jazz

Saturday, June 22 at 5 p.m. - Stone-Hall

Sunday, June 23 at 5 p.m. - Daniel C. Jones

Friday, June 28 at 6 p.m. - Mountain ReVerb

Saturday, June 29 at 5 p.m. - Steep-land String Band

Sunday, June 30 at 5 p.m. - Poorfree

Facebook: <https://www.facebook.com/verynicebeer>

Website: <https://www.verynicebrewing.com/>

Location: 20 E. Lakeview Drive, #112, Nederland.

Phone: 303-258-3770

Did we miss you? Want to submit your music listing in the Peak to Peak area? Do you have updates to your business? Please call 303-810-5409 or email info@themountaineear.com to be included in the next edition.

Local band hosts day-long music festival

JAMIE LAMMERS
JAMESTOWN

The River Arkansas has hosted music festivals as a band before. Their River on the River festival in Buena Vista will be entering its seventh year this August, with food, river rafting, and plenty of music. Now that the festival has its own legs, lead and songwriter Mike Clark, violinist Rachel Sliker, upright bassist Macon Terry, and percussionist Robin Chestnut have decided to host a second festival in their stomping ground of Jamestown.

At the beginning of this year, they decided they wanted to host a festival on the Front Range, and with the

Jamestown Mercantile being one of their favorite places to play, they figured that would be the perfect place to host it and get help organizing it.

The band is planning on running the festival this year and seeing how it goes, but they're hoping the festival will go well enough that they can keep it going for years to come. With stages in the town hall and Jamestown Park, the plan is to host BBQ plates from the Merc, as well as all-festival-long music performances from the hosting band, Paul DeHaven and his trio, Prairie Wolf, and Pioneer Mother.

Drinks will be served, and the hope is that people can enjoy live music both indoors and outdoors

while also snagging a spot by the creek and enjoying the beautiful scenery. Clark hopes that the festival simply allows people to enjoy their time dancing to the music, eating some good food, and drinking refreshing beverages.

Tickets for the first River on the Mountain Festival are available at <https://www.eventbrite.com/e/river-on-the-mountain-tickets-905776049547>. Tickets are \$20 per person, and it gets you four bands and a full day in the beauty of Jamestown! Head to the Jamestown Mercantile, located at 108 Main Street in Jamestown, on Saturday, June 22, 2024, starting at 4 p.m.

FULL SERVICE MUSIC STORE

20 E Lakeview Dr #109,
Nederland, CO 80466
(303) 258-8863.



- NEW & USED INSTRUMENT SALES •
- ACCESSORIES • LESSONS •
- SET-UP AND REPAIRS •

SUMMER HOURS:
Wednesday to Saturday:
Noon to 5 p.m.
Sunday: Noon to 3 p.m.

Find us on Facebook at
<https://www.facebook.com/BrightwoodMusic/>

We rent student and professional level instruments by the hour, day, week and semester. Stop in and try something out or schedule a time for a demonstration of up to five instruments.



NEDERLAND'S LOCAL INTERNET PROVIDER

We don't log, store, or sell your Internet usage data.

Now offering
100Mbps
in Nederland!

- Residential Broadband from \$29.99
- Kind, Professional & Local Support
- Free Installation (w/one year contract)

Call Today!

303-258-7922

Nedernet has been a locally owned and renewably powered business since 2003.

www.Nedernet.net

Vote for Kathy Gebhardt for State Board of Education

Dear Editor,

As a retired public school special education teacher of 35 years, I am hoping you will join me in voting for Kathy Gebhardt for our State Board of Education (BOE) in the Democratic primary. Kathy has been dedicated to advancing equitable and excellent public education policy and practices for 25 years.

We need a proven public education advocate representing us on the BOE which enacts educational standards and accountability for our schools. Kathy served on Boulder Valley School Board (BVSD) for eight years; two years as president. She has traveled the entire state visiting schools and listening to communities as president of the

Colorado Association of School Boards. She successfully co-led the legal challenge to improve funding which resulted in the largest increase in the state's history. She co-led challenges in the courts to affirm children's constitutional rights. Over her many years of service, Kathy has earned the support of fellow education advocates. Last month she was recognized by Great Education Colorado as a Champion of Public Education.

Our State Board holds power and influence over the future direction of public education. Please vote for Kathy for the strong, tested and outstanding public education defender she is.

Hari Malloy
Peak to Peak

Letter to the Editor

We welcome thoughtful, local letters to the editor. You can submit online on our website or by email to info@themountaineer.com. Letters may be edited for length (less than 500 words) and content (rude, vulgar or obscene). Letters must include local name and address, to be considered for publication in the next available edition. We reserve the right to refuse to print letters. Submit your letter to the editor by emailing the newspaper at info@themountaineer.com, scanning the QR code here, or on our website at <https://www.themtnear.com/submit-letter-or-guest-opinion/>. Letters are the opinion of the author and do not reflect the opinion of *The Mountain-Ear*.



Every week. We touch hearts.
We touch lives. Together we
build strength in communities
and mountain love.



Subscribe now! Use coupon code **THEMTNEAR**

Chipeta park is perfect for music!

Dear Editor,

I have lived in the town limits in Nederland, CO for 24 years. I own two properties in town limits. I have both attended and participated in many events in Town over those years.

On June 1, 2024 I attended the first of a summer music series in Chipeta Park. After years of Covid, the demise of two of Nederland's only and most successful festivals Nedfest and Frozen Dead Guy Days, it was a joy to be dancing in the park, in the sun with fellow community members. I applaud the DDA and the promoters and production team of the summer music series.

I heard second-hand that somebody with authority in the town did not want to continue having the summer music series in Chipeta Park because they were concerned the grass would be trodden. I find this kind of ironic, since there was recently a dispute about literally ripping up the rest of the land in Chipeta Park for an asphalt pump track. I walk in the park almost every day and I noticed no impact from the festivities. It was left in such great condition I could not tell there had been anybody using the property.

I contest that the ONLY appropriate place for the summer music series is the park. There would be two conditions that would change my mind.

1) Re-turf Guercio Field. If you have not visited Guercio Field since Eldora used it as a parking lot and a subsequent group "re-planted" and furrowed it, I encourage you to do so. Since I live in town limits, I walk in this area almost every day. Guercio Field was tilled, leaving an ankle breaking, uneven surface. It has also increased the surface area,

causing it to dry out. It is completely unusable and even a safety hazard. If this field were re-turfed to resemble a flat field, something remotely close to the field the town used for baseball games and Nedfest, we could move the summer music series to Guercio Field. Until this is remedied, the town has a flat field that is no longer usable. As this is one of our only free-to-the public flat spaces in Town Limits with grass, I would like to see this area replanted and resurfaced to represent what it once was, or at least what the field was offered to the town for, a baseball field for their late baseball playing family member. To leave it as is, dishonors the family, the man who died and leaves resentment in those that have played baseball for years in the field, and also enjoyed 20 years of an extraordinary community music festival, Nedfest.

2) Complete the area that is designated for the amphitheater/performance space. My understanding, again second hand, is that there was an environmental study on the area to see if it would be appropriate to develop. I understand that the group who undertook the creation of the children's music area filled in the culvert that was previously and recently created to drain the area. Since the filling in of the culvert, that area is now a pond, with frogs. I think this is a perfect example of Ned having two many entities trying to do good things and not communicating well. Again, if you have not seen the children's music area, and the filled in culvert and the new slimy pond with frogs I encourage you to do so. This area was set aside and hardscaped for an amphitheater. Although I think the children's music area is cute, it is in the wrong place. If we are planning to have live music and

an amphitheater in that space, why would one put up a music area for children that would potentially compete with the music? In addition, there was a weird plastic diorama of local flora and fauna. It had nearly dead growth of things that were right next to the plastic diorama of these things actually thriving in the wild. I do not encourage the use of plastic and this was a poorly thought out design that now looks like it needs to simply be removed. My understanding is that there was money (\$40,000?) earmarked for this amphitheater.

If the summer music series cannot be in Chipeta Park because someone has the odd sense that the park should actually NOT be used for the public due to the grass getting trodden, Ned either needs to fix the now unusable Guercio Park or build the long-forgotten amphitheater space.

I also heard there was the idea to put it in the parking lot BEHIND the B and F. I am sure all the people that brought blankets to sit on the grass in Chipeta while their young kids used the swings, played near the kids pond searching for animals and dogs playfully enjoying the outside and sunshine would not appreciate setting up on an asphalt parking lot with the B and F's refrigerator system running as background noise. If you have not had the pleasure of listening to B and F's refrigerator system running, I suggest you set up your festival chairs in the parking lot on the asphalt and listen.

We have an amazing concert series with amazing local talent, capable producers, sound engineers and a professional staff that is willing and ready to make this one of the most successful things that has ever happened to Nederland. If you are not going to allow them to continue

in the Chipeta Park because you do not want the grass to get trodden, please explain to me why we even have a park. If you are not willing to restore Guercio Park to a usable flat grassy beautiful area where kids can fly kites with grandparents by their side, or music festivals, please explain why.

If you are not going to build the amphitheater in the area earmarked for the amphitheater in the amphitheater space, with the money earmarked for the amphitheater project, please explain why.

I appreciate all of you who volunteer and listen so often to people like me that are frustrated and simply do not understand a lot of choices being made and reasoning behind them.

I am beyond thrilled that the DDA is putting money into this concert series. I think you chose an incredible professional team to execute it. I think everyone needs to get on board with it being in Chipeta Park. When a concert poster is created one needs to include What, Where, When. Currently, there is no WHERE. This is shooting yourself in the foot. If your intention is to get the community to come together to support this amazing event, give it a home. Put it in Chipeta Park for the rest of the summer, fix Guercio Field and build the Amphitheater as soon as possible. There are limited flat, grassy areas in this town and we should invest in them. Give the Summer Music Series Promoters a WHERE.

A heartfelt thanks to all who are involved and have been working to make the summer music festival successful.

Thank you,
Tanya Bokat
Nederland

Why I am voting for Jessica Kays

Dear Editor,

Where I came from nobody knew what a "County Commissioner" was. Nobody knew who they were or what they did. But here in Colorado it's a big deal. Three people make the laws that impact everything from taxes to building codes to road maintenance to wandering dogs. It's a big job that directly affects all of us. Presumably a Commissioner should know A LOT about the County -- and have A LOT of experience working with the County.

I'm a moderate Republican from a long line of Republicans. But like half of Colorado voters, I had registered "unaffiliated" -- it keeps the options open. But that seemed kind of ... wishy-washy, so with the upcoming elections I went to the February 1st Gilpin Republicans (GCRC) meeting. Which turned out to be the evening candidates for County Commissioner were being introduced. And where I first noticed Jessica Kays -- where a few people (who I took to be party leaders) unleashed a withering storm of criticism at her for having the temerity to actually run for office. Most people would have shrunk from a barrage like that, but Ms. Kays calmly spoke for herself, held her ground and made a positive presentation for her candidacy. This woman had nerve and resolve.

After the usual Caucus and Assembly speeches -- where Ms. Kays was voted onto the ballot -- the next time Ms. Kays made a large impression was at the BOCC meeting of April 9, 2024. There, Ms. Kays was the first person to confront the entire Board of County Commissioners, Democrat and Republican, over a Resolution that Ms. Kays said would violate the free speech rights of every person in Gilpin County. Previously, on February 17, 2024, by Motion seconded by Ms. Kays' Republican opponent and passed unanimously by the BOCC, Gilpin County

had instituted a "dress code" prohibiting ANY form of political expression on ANY county property. Not only did Ms. Kays make the first public objection, she submitted a written argument describing how Resolution 24-54 violated the First Amendment and submitted a copy of a Washington lawsuit describing unconstitutional conduct virtually identical to what Gilpin County was doing. In less than 24 hours, County Manager Ray Rears shelved the Resolution. Credit for this reversal has been taken by others -- but it was Ms. Kays who got the job done.

Much ado has been made that on May 2, Ms. Kays refused to debate her Republican opponent. But only a fool plays against a stacked deck, and Vice-chairman Rick Wenzel's floor questioning that night clearly established that a stacked deck is exactly what Kays' opponent was holding. And Ms. Kays made her appearance. She didn't duck out. She took the podium, and in the one minute allotted to her, addressed the

audience, calmly and clearly voiced her objections and renewed her call for a fair and impartial debate. Most recently Ms. Kays and her opponent have accepted Barbara Hardt's invitation to conduct a "roundtable" that will take place this Saturday, June 15, at Roy's Last Shot.

These things all demonstrate a person of conviction, resolve and nerve. But there is another characteristic that Ms. Kays has exhibited throughout this campaign: Positivity. A willingness to express her own vision for this County; to meet with people, talk with them and listen to their concerns. All without mudslinging. All without ever trashing her opponent.

These are all good qualities, but the job Ms. Kays is running for requires more: Knowledge and experience.

And these are things Ms. Kays has in abundance. At age 44 Ms. Kays has spent 25 years, virtually her entire working life, in service of Gilpin County. Starting with four years employed by Gilpin County

as Deputy Clerk and Administrative Assistant. Followed in 2002 with a successful run for Gilpin County Clerk and Recorder, an elected position which she held followed by a second successful run until 2011. Since then, and for the last 13 years, she has been Gilpin County's IT Consultant, giving her insight into all aspects of Gilpin County operations.

One question that has cropped up from Ms. Kays' small but dedicated collection of detractors: Is Ms. Kays a Republican? Of course. She was a Republican when she successfully ran for Clerk and Recorder in 2002 and she's a Republican now. But party affiliation isn't anywhere near as important as the fact that, by knowledge and by experience and by dedication Jessica Kays is the most qualified candidate from ANY party for the job of Gilpin County Commissioner. That's why I'm voting for her.

RHaj Mand
Black Hawk

Kudos for concert!

Dear Editor,

As a resident of a cul-de-sac directly across the street from Chipeta Park, admittedly impacted by events that happen there, I am writing to express my gratitude and enthusiasm at the first of the six-planned musical events on various Saturdays this summer. It was pure joy to sit in the park listening to two very strong performances (and GOOD bands are important), recognizing so many local friends and neighbors doing the same--everyone just smiling, hugging friends, and quietly enjoying the event.

Of the nine homes in my neighborhood I saw the residents of four directly in the park at the event, the residents of another one or two

sat outside their homes listening, one home is currently vacant, and I know that one set of residents who do not like this sort of thing did leave the area during the event. I respect everyone's right to their preferences, but I would say that the majority of us were really enjoying the event, and it was obvious that many drove in from outer neighborhoods and a few from Gilpin County to see the concert, too.

I appreciated that the event was free and mainly geared toward locals and those who happened to be visiting at the time. It really livened up our town. Nederland has always been a town with deep ties to music, and I am glad to see and hear more music happening again.

Regarding impact, between the hours of sound checks and the concert itself, it does present pretty much a full day of sound impacting town neighborhoods. With that in mind, I think keeping the numbers of concerts throughout the summer/fall to 6 - 8 is appropriate. It would

be too much if there were more. But, again, I just wanted to thank you for allowing and promoting both music and visual arts events in Nederland. They are fun for most residents and I believe they are a good and appropriate draw for a small number of additional visitors who will spend money in our town. I spoke with one business owner after the event who said his business was great the whole day of the concert.

One small housekeeping note. I know it is no one's "job" to pick up the park grounds after irresponsible dog owners who do not clean up their dog poop, but there was an unpleasant pile close to where we sat and we kept having to point it out to people walking by so they would not step in it. Maybe pay a few teenagers to do a cleanup/sweep of the grassy area prior to events? Anyway, great job!

Steve & Kristin Conrad
Nederland

Vote for Marie Mornis

Dear Editor,

We are writing in support of Marie Mornis for Gilpin County Commissioner in District #1. We have known Marie for 40 years and have the utmost confidence that she will represent us and the people of Gilpin County effectively.

She has been active in the community for all the years we have known her. She was involved with us in PTO/PTA at the Gilpin School, as well as Booster Club, throughout her three children's education years. She has also always been active in her church and the Republican Party.

She is hard-working, dedicated, smart, persistent, honest and trustworthy; with exceptionally high moral values and ethics. If Marie volunteers, or says she is going to do something, it will be done efficiently, correctly, and in a timely manner.

Marie Mornis will diligently research the issues so that she is confident that she is voting in the best interests of her constituents. She will constantly vote for the good of the People and Gilpin County.

If you want a Gilpin County Commissioner that will vote in your best interest and not to serve her own agenda, then join us in voting for Marie Mornis.

Thank You,
Dominic and Eileen Salerno
Gilpin County

**LISTEN IN TO THE MOUNTAIN-EAR
PODCAST - New episodes every week**



- LOCAL INTERVIEWS •
- AUDIO NEWS
- MUSIC • STORIES & MORE





NEDERLAND FARMERS MARKET

UPCOMING MARKETS

June 9 85 E. Second St
10am-2pm
music ▶ Alphonso

June 23
music ▶ Kylie and Friends

BROUGHT TO YOU WITH GENEROUS SUPPORT FROM



Gilpin School Board sets 2024/25 budget at \$8.4 million

WES ISENHART
GILPIN COUNTY

At their final meeting of the 2023/2024 school year, the Gilpin County RE-1 Board of Education on June 4, 2024, voted to close the books on the 2023/2024 school year and open the books for the 2024/2025 school year.

The Board held a public forum on the proposed 2024/2025 adopted budget to explain it to the board members and the public. Business Analyst Joe Tinucci was on hand to answer any questions from the Board or the public regarding both budgets.

Board member Joe Marr questioned the spreadsheet in the agenda packet titled "23-24 Budget Comparisons." Tinucci explained that the June Budget column was the originally adopted budget that was developed last year for the current school year. The Working Budget column shows the numbers at the end of December. The Supplemental Budget column shows the budget at the end of the school year. It is considered the final budget, including both revenue and expenses for the 2023/2024 school year.

There were three examples of changes from the June Budget to the Supplemental Budget: Current Property Tax and Black Hawk Educational Enhancement Tax.

The Property Tax line item was set at \$2,600,973.28 in the June Budget and revised to \$2,917,054.20 in the year-end Supplemental Budget.

The State Equalization line item decreased from \$2,376,366 in the June Budget to \$2,125,385.82 in the Supplemental Budget. Tinucci explained that the fund decreased because of a decreased enrollment over time.

The Black Hawk Education Enhancement Tax was set at \$1,701,783.34 in the June Budget and \$1,739,099.60 in the Supplemental Budget.

Board Chair Sarah Swanson asked Tinucci about the Tuition/Preschool revenue line item. Superintendent David MacKenzie responded that the school is now getting universal pre-kindergarten money for four-year-olds, which supplements tuition programs for the parents. The revenue tripled from \$65,000 in the June Budget to \$193,756 in the Supplemental Budget.

After a short break following a work session, the Board reconvened for their regular board meeting.

MacKenzie gave an update on the end-of-school-year activities and celebrations that had taken place in the last two weeks, including the recognition of the seniors and the scholarships awarded. He gave a special mention to the tireless activities of the Booster Club, which helped put on all the special events. He said that they do a great job in supporting the students.

MacKenzie's Superintendent Report focused on the two active

Continued on page 9



nederland SUMMER CONCERT SERIES

WIREWOOD STATION WITH BEAR HAT


SATURDAY, JUNE 15TH

CHIPETA PARK

4PM-7PM

FREE

Sponsored by  More information  www.timeservedproductiongroup.com



COOPER PLUMBING & HEATING LLC
Nederland, Colorado

Service, Remodel, New Construction
Serving Boulder County and the surrounding areas

Mark Cooper
Master Plumber

720.258.5067
coopersong2017@gmail.com



HARDT'S BACKHOE SERVICE

Call Chris 303-589-9354

Excavating • Foundations • Utility Lines
Septic Systems • Driveways • Retaining Walls



PHOTOS BY WES ISENHART

Presenting the new budget

Left: Board member Kirsten Goodlett listening to the proposed 2024/2025 school budget. Right: Gilpin RE-1 business analyst Joe Tinucci discussing the 2024/2025 budget with the school board.

\$8.4 million

Continued from page 8

capital improvement projects. The final phase of providing ADA access throughout the school will begin June 10, 2024. It is scheduled to be finished before the next school year begins.

MacKenzie gave a recap of the informational meeting on the Gilpin School District Wastewater Interconnect project, as well as a status update. ESCO has not set a specific date for the start of the project, but is anticipating it to be sometime toward the end of June.

The major new business before the board was approving the 2023/2024 Supplemental and the 2024/2025 Adopted budgets. The Board unanimously approved all the budget proposals. On a second reading, the Board also unanimously approved the supporting budgets for Appropriations, Fund Balance/Reserves, Food Service Fund, Capital Projects Fund, and the Pupil Activity Agency Fund.

Swanson announced that the adopted budget for the 2024/2025 school year would be around \$8.4 million.

In other business, the Board unanimously approved a two-year contract worth \$192,000 with Bobby Jones and discussed accounting changes in the Pupil Activity Fund. MacKenzie reported that they have upgraded the payment system for referees and officials, and they are looking at some old account balances to bring them current.

The final action by the Board was to set the next meeting in August.

The next Board meeting will be a Meet and Confer Study and Dialogue Work Session on August 6. This meeting with staff and educators will focus on health insurance and the benefits package.

The agenda and documents for this meeting are on the RE-1 website (gilpin.k12.co.us) under Board of Education Agendas. Click on the June 4, 2024, date. There is a video of both June 4 meetings on the RE-1 YouTube channel. Specific documents in the June 4 document package to look at include the 23-24 budget comparison report (June 24-25 Budget v1), the Bobby Jones contract (Bobby Jones Speaks Consult_5.7.24.pdf), and the Pupil Activity Fund Balance report (Pupil Activity Fund Cash Balance.pdf)..

For sale



1507 Lazy Z Rd, Nederland
\$1,067,000



105 S Caribou St, Nederland
1.4 acres, creek frontage, \$799,000



1199 Brainard Lake Rd
3.85 acres, \$189,000



3540 Hidden Wilderness,
Idaho Springs, \$199,700



523 Arkansas Mountain Rd
MLS1007362
\$1,500,000

This elegant custom home was completely remodeled and features hickory floors, in-floor radiant heat, custom kitchen cabinetry, solid slab granite countertops, high-end appliances, and much more. Lots of room to entertain and working from home is easy with high-speed internet. Enjoy the wonderful back range and city views from every window. The property is in a sunny, private, and serene setting with National Forest on the NW border.

Let's Work Together to Sell Your Home



Jimmy Keith



jimmykeith@boulderco.com 303-898-2795 cell



Timmy Duggan
REALTOR

Boulder | Nederland | Mountains
Town of Nederland
Planning Commission
(c) 303.589.3999



The Kalinski Team

Gilpin Arts Association hosts 77th Juried Art Show

MINDY LEARY
CENTRAL CITY

The historic Washington Hall, located in the cultural district of Central City, played host to an unforgettable evening on June 8, as the Gilpin County Arts Association celebrated its 77th Annual Juried Art Show.

The event, held at 117 Eureka Street, drew a lively crowd of locals, members, artists, and collectors, all eager to witness the finest artistic talents on display.

Washington Hall has a rich history dating back to its construction in the mid-19th century. It is the oldest continuously-used public building in the state. The Association was established in 1947.

In the past few years, the Association opened the juried show nationwide to applicants, in a move to increase participation and interest.

As attendees entered the hall, they were greeted by a stunning array of artwork spanning various mediums. The anticipation was palpable as the winners were announced, each piece reflecting the talent of its creator. The winners took home varying cash prizes, totaling \$3,500 in all, budgeted from the submission fees.

Prizes included:

- Best of Show \$500, one prize
- First place \$400, one each in three categories
- Second place \$300, one each in three categories
- Third place \$200, one each in three categories
- Honorable mentions \$100, one each in three categories

2D Art Winners:

First Place: “On the Trail” (oil) by Tate Hamilton

Tate Hamilton’s “On the Trail” captivated the jurors with its masterful use of color and texture, bringing the rugged beauty of the trail to life. Hamilton, known for his evocative landscapes, once again proved his prowess in capturing the essence of nature.

Second Place: “Put Together” (watercolor) by Tim Brenner

Tim Brenner described watercolor as an unforgiving art. He stressed that it takes a lot of practice. He has entered his paintings in the last four juried shows and this was his first time winning. His favorite aspect of watercolor is how the paint reflects the light.

Third Place: “Rio Taos” (oil) by Sheila Marie

Sheila Marie’s “Rio Taos” transported viewers to the serene landscape of Taos, New Mexico. Her delicate brushwork and vivid colors created a mesmerizing scene that left a lasting impression.

Honorable Mention: “Central Park West” (oil) by Tate Hamilton

3D Art Winners:

First Place: “Lidded Globe” (clay) by Robert Smith

Robert Smith’s “Lidded Globe”



stood out with its unique design and impeccable craftsmanship. The piece, a testament to Smith’s skill in clay work, combined functionality with artistic elegance.

Second Place: “Labradorite Pearl Pendant Necklace” (jewelry) by Pat Lord

Pat Lord’s “Labradorite Pearl Pendant Necklace” dazzled with its exquisite combination of labradorite and pearl. The piece showcased Lord’s talent in creating wearable art that exudes sophistication.

Third Place: “Jewel” (ceramics) by Judi Mitchell

Judi Mitchell’s “Jewel” showed the versatility of ceramics as an art form. Her innovative approach and attention to detail earned her a well-deserved place among the winners.

Honorable Mention: “High Grade III” by Sebnem Dustin

Photography Winners:

First Place: “To the Other Side” by Steve Sorensen

Steve Sorensen’s “To the Other Side” captured a moment of breathtaking beauty, transporting viewers to another world through his lens.

Art show winners

Top: Jeremy Janus’ “Breakthrough” depicts a powerful moment of light piercing through darkness, symbolizing hope and resilience. It won third place in Photography. Middle: “Put Together” by Tim Brenner won second place in 2D Art. Brenner describes watercolor as an “unforgiving art.” Bottom: Robert Smith’s “Lidded Globe” wins first place in 3D Art. This piece stands out for its unique design and impeccable craftsmanship.

Second Place: “Aspens Central Colorado” by Ian Lipton

Ian Lipton’s “Aspens Central Colorado” showcased the ethereal beauty of Colorado’s aspen trees in black and white. His keen eye for composition and lighting made this piece a standout.

Third Place: “Breakthrough” by Jeremy Janus

Jeremy Janus’ “Breakthrough” depicted a powerful moment of light piercing through darkness, symbolizing hope and resilience. Janus explained that the 30-second exposure photo required over eight hours of storm chasing and the highest aperture setting to allow the most light. He said the spiritual aspect of his work includes battling depression and anxiety with the art of nature photography.

Honorable Mention: “The Baptism” by Michael Potts

President’s Award: “Forest Guardian” by Ted Garcia. The President of the Association, Eric Miller, said, “This is always a difficult decision for me but this year I picked an artist that’s been a friend of the gallery and a guy I know personally. I just love the way this painting is so hyper-focused and detailed.”

Best of Show:

“Monochrome Gateway” (photograph) by David Thoutt

With four decades of experience in the field, Thoutt has honed his craft and developed a deep appreciation for the art of photography. His work spans a diverse range of subjects, including landscapes, wildlife, architecture, and abstract compositions.

Congratulations to all the winners!

Miller encouraged the audience to support the Association, a 501(c)(3) nonprofit, through donation or membership. Attendees mingled, discussed their favorite pieces, and celebrated the remarkable talents that make the gallery a beacon of creativity. There was also action at the cash register.

The Gilpin Arts Association continues to foster a love for the arts, offering a platform for artists to showcase their work and for the community to engage with and appreciate the beauty of artistic expression.

For more information about the Gilpin Arts Association, to become a member, or to find out about upcoming events, visit their website at www.gilpinarts.org or call 303-582-5952.



PHOTOS BY WES ISENHART

Easy loading

Left: Food Pantry Coordinator Corinne Keller demonstrates the customized sliding rack feature of the new Food Pantry truck. The rack can hold 1,400 pounds of food and will make loading and unloading easier. Right: Commissioner Sandy Hollingsworth, CCHA rep Taylor Aurioles, Commissioner Marie Mornis, Food Pantry Coordinator Corinne Keller, and Commissioner Susan Berumen in front of the new Food Pantry truck.

Commissioners launch new Food Pantry truck

WES ISENHART
GILPIN COUNTY

The Gilpin County commissioners introduced the newest vehicle in the County fleet on June 6, 2024, at the Gilpin Food Pantry as they accepted a 2023 Ford F150 from the Colorado Community Health Alliance (CCHA).

The truck, with 1,100 miles on the odometer and a customized rack for the back, will be used for obtaining and delivering supplies for the Gilpin Food Pantry.

CCHA is a Medicaid partner, with grant funding available to help alleviate food insecurity concerns in the county. Hunger and food

insecurity were identified as an elevated concern in the county based on the results of the Gilpin County Community Health Survey.

The Gilpin County Commissioners unanimously approved accepting the grant and the truck at their March 12 meeting. Resolution 24-59 stated that the commissioners authorized accepting the grant offered by CCHA to purchase the vehicle for the Food Pantry, for an amount not to exceed \$55,000. CCHA paid \$50,000 for the truck and then used the remaining funds to customize it, including signage.

While the truck was completely paid for with the grant, annual insurance and maintenance costs are estimated to be around \$4,000 and will be paid for by the County.

A key feature of the new truck is a customized slide-out rack which will allow volunteers and County

employees to load and unload the truck without having to crawl to the back. The rack can hold up to 1,400 pounds of food.

Food Pantry Supervisor Jennifer Josselyn said that the truck will be used by County employees to get food from Food Bank of the Rockies and other resources. The Food Pantry is also planning on using the truck as a “pop-up” market in Rollinsville about once a quarter.

The Gilpin County website has more information about the Food Pantry under the Human Services main webpage. Contact Corinne Keller at 720-432-610 or CKeller@gilpincounty.org for Food Pantry volunteer opportunities. For additional readings on the subject, use the Internet search term: How food banks combat hunger around the world.

O: 303-582-1700
C: 303-619-3646

BOULDERBROKERS
@PROTONMAIL.COM

80 BIG SPRINGS DR.
SUITE#311
NEDERLAND, CO 80466

Your Locally Owned and Operated ONE STOP SHOP

Since 2015

Food and Supplies for Pets Livestock and Wild Birds

& Professional Pet Grooming Services

Over 15 Years Experience!

Call for an appointment:
Pet Grooming
303-258-3535

74 CO-72
(Just west of the traffic circle)
Nederland, CO

Give us a call or stop in!
Retail Store
303-258-3411

PRESENTED BY PARKS & RECREATION

GILPIN COUNTY FAIR ACTIVITIES

WRISTBANDS FOR JULY 20 & 21

Early Bird Special \$5 for Sat & Sun!
After 7/19 \$5 per day

scan me for
waiver & fee

AXE WHOOPING ~ AXE THROWING CAGE
MECHANICAL BULL, INFLATABLE BOXING,
BOUNCY HOUSE & OBSTACLE COURSE

COMMUNITY COMPETITIONS JULY 19, 20 & 21

<p>Friday 19th</p> <p>\$5/entry FIBER & FABRIC ARTS</p> <p>Register w/ 4-H 4-H HORSE/LIVESTOCK SHOW</p> <p>4-H GYMKHANA</p> <p>\$60/team VOLLEYBALL TOURNEY</p>	<p>Saturday 20th</p> <p>RODEO <small>Register w/ 3D Ford</small></p> <p>BACKYARD BAGS Free</p> <p>DOG AGILITY Free</p> <p>LOG SPLITTING Free</p>
<p>4-H registration</p> <p>\$60/team</p>	<p>Sunday 21st</p> <p>REDNECK RELAY <small>Register w/ 3D Ford</small></p> <p>RANCH RODEO</p> <p>PICKLEBALL <small>\$30/team</small></p>

Awards Sponsored by:

Allen Memorial Fairgrounds | 250 Norton Dr. Black Hawk, CO 80422 | 303-582-1453



PHOTOS BY MINDY LEARY

Fascinating finds

Top, left: MSU research students excavating at the Madam Lou Bunch dig site. Thus far, the team has found more than 5,000 artifacts from the late 1800s when Madam Lou Bunch and others occupied the former brothel district on Pine Street. Top, right: Dr. Jade Luiz holds a piece of ceramic found at the dig site. The fragment containing letters most likely belonged to a shaving cream jar. Luiz thinks it is part of a last name since shaving mugs would often have the owner's first initial and full last name. Bottom: Flags mark objects that have been found along the surface. The archaeology research team will return next year to judge the level of erosion around the marked areas.

Archaeology Open House at Central's former brothel district

Continued from page 1

Bunch House, they hit bedrock and thought they were done until they noticed the bedrock was cut, aligning with records that the house was carved out of bedrock. They plan to expand and dig more in that area next year.

Recently, the team unearthed a metal medallion depicting Saint Camillus, the patron of hospitals, nurses, and the sick. They also discovered a high-button boot with a heel but left it in the lab due to the leather's fragility.

The team was digging at five different sites, some with isolated lead levels that they avoided.

Research students Teddy Espinosa and Kera Walker have focused on the Bunch House all season. Teddy found a heart-shaped padlock and a coin, which were displayed at a recent presentation at the Gilpin County Library.

Espinosa, a junior, chose archaeology as his senior field experience, motivated by his interest in the subject



and desire to attend another of Luiz's classes.

Walker, a senior, has spent over 60 hours at the site this season. Her most exciting find was a Central City soda water bottle with diagnostic information, allowing them to pinpoint its origin. The bottle "cross-matched," meaning pieces found in adjacent holes fit together.

Walker plans to continue studying archaeology, focusing on Cultural Resource Management, involving

field surveys, digging, and mapping stratigraphic layers.

Archaeologists sift through small areas of earth, and Luiz teaches her students to work on their knees to better judge the excavation walls, revealing changes in soil texture and color that provide historical context.

"Everything is on an invisible grid," Luiz explained, referring to the georeferencing method they use to categorize the site, indicated by small colored flags throughout the area.

They have dug 19 holes so far, each progressively excavated 10 centimeters at a time, sifting through the dirt. Then they discovered a solid layer of black, composed of charcoal and burned wood, indicating a new stratigraphic layer.

The team still has many questions about the precise locations of the competing brothels. Luiz admitted that "archaeology is inherently destructive," as they can never return a site to its original state. She looks forward to a future where archaeology could be done without digging.

"I don't think we'll ever stop digging. It's core to our identity," Luiz said.

They are interested in the relationships between objects and the historical context of the area to form a more complete interpretation of history.

The first task this summer was marking surface artifacts to measure erosion over the past year. After digging 80 centimeters into the shallow soil, they found artifacts

Continued on page 13

"Out of suffering have emerged the strongest souls; the most massive characters are seared with scars."

– Khalil Gibran



Nederland Community Presbyterian Church

In-person worship is happening every Sunday at 10 a.m.

Online sermons are available at <https://www.nederlandpres.org/>

210 N Jefferson St,
Nederland
303-258-3579

Caribou Painting

- Interior/Exterior
- Residential/Commercial
- Insured

Ray Restaino
720-318-0317
restainoray@gmail.com



TREE SERVICE

Tree removals Stump grinding
Fine pruning Fire mitigation
Wood chipping Lot clearing

Land beautification
Residential & commercial services
No job too big or small

303-847-5221
goodpleetreeservice.com

Brothel

Continued from page 12

such as a decorative spoon and the saint medallion. They also found leather rosettes, the purpose of which is still unknown.

Last year at the Bunch site (House 1), the students discovered stones in a line, theorized to be foundation walls. Inside the excavation hole, they found a complete but fragmented serving dish lid.

Houses 1 and 2 were the last active brothels. House 2 had been occupied by Fred and Nell Warwick, whose arrest marked the end of Central's toleration of brothels.

Under House 2, the group found a layer of machine parts from the nearby mine and, further down, a thin layer of soil containing a chandelier drop, a glove, and a cut-glass coaster.

Luiz has uncovered over 180 newspaper articles detailing the history of the Pine Street Sex District. One account from Laura Evans, a brothel operator from Salida who

rented one of the establishments, describes ore rolling down from the nearby mine and hitting the sloped roof of the house, supporting the theory about the house's placement against the hillside.

The team also uncovered a stack of newspapers with some legible words. Luiz hopes to identify the newspaper through careful study.

She also pointed out a piece of silk cloth found over burnt wood planks. Initially planning to remove it, she decided to wait until next summer to retrieve the entire artifact.

Although the Central City Opera House Association owns the land and granted permission for the excavation, the team took out a state permit requiring the items to be stored in a state-licensed repository. Luiz hopes to establish a repository in Central City to house the items.

She has a long-term, ten-year goal to return to the site each or every other summer. She invites the public to volunteer, believing that "public archaeology" promotes funding and site preservation by creating awareness.

For more information, visit [Central City Archaeology on Facebook](#).



PHOTO BY MINDY LEARY

Madam Lou Bunch dig site

A complete but fragmented serving plate is discovered in the corner of an excavation hole at the Madam Lou Bunch site. Dr. Luiz specializes in Sex Archaeology which deals with historical areas where sex work took place.

POETRY

Some words for the week

CORNER

*the door of my shed
was damaged in the last big
snow
and I haven't had time to fix it
and I don't know what I'm
doing
with my life or my work
or my always waning energy
and I'm watching too much tv
and I'm not writing enough
poetry
and I just turned thirty
and I feel like I've not done
half of what I thought I would
but my shed door needs fixing
I see it through my kitchen
window
as I do the dishes after dinner
and it's still light out
for another hour at least
and so I take out my hammer
and my drill
and I go out and fix the shed
door
and there are birds in the air
I don't know what kind
but they are singing
and the light is late day gold
and I sit in the dirt
and start my repair
because it needs to be done
and I can do it*

Alexander Shalom Joseph is a writer from Gilpin County. He is a published author. For more information and to subscribe to Alexander's Newsletter go to alexandershalomjoseph.com



CU Mountain Research Station 2024 Summer Seminars

Date	Speaker	Title
June 12	George Kiladis	A look at recent climate variability over the Front Range of Colorado
June 19	Bradley Allif	House Ecology: A field guide to the great Indoors
June 26	Katie Rocci	Soil biogeochemical feedbacks to climate change using ecosystem models
July 3	Irina Overeem	Permafrost in the high alpine of the Front Range Rocky Mountains: was permafrost was a factor in the 2022 Chaos Canyon landslide
July 10	Lauren Magliozzi	Fire, water, and the urban wild: Impacts of the Marshall fire on Coal Creek in Boulder County, Colorado
July 17	Mike Moore	Mating and the ecological limits of species on a changing planet
July 24	Chris Ray	A tale of two pikas: from dueling subspecies to dueling visions of the future for an alpine icon
July 31	Mike Gooseff	Water and nutrient fluxes from subalpine watersheds
Aug 7	Suzanne Anderson	Unraveling the whole darn thing: Weathering and erosion and critical zone architecture
Aug 14	Petr Sklenář	Tropical versus Temperate alpine plant ecology and the Ecuador-Colorado pollination project
Aug 21	Jonathan Henn	Alpine plant responses to global change

7pm on Wednesdays in the Megaron
818 County Road 116, Nederland, CO 80466



PHOTO BY RICHARD BRANDON

Calm in nature

The American Heart Association reports spending 120 minutes in nature every week can help relieve stress, which was our goal on a recent hike on the Cub Lake Trail in Rocky Mountain National Park.

of the time he spent on his employee, including direct contact (like meetings), and indirect (researching resources to support his employee).

Additionally, Tristan kept track of the internal time he spent thinking about, worrying, fretting, and stewing about work.

Tristan's next step was resourcing—talking to people both within and outside of the company. His goal was to get a variety of perspectives on the situation, and to learn from others what he might be missing or not seeing.

Finally, Tristan sat down officially with HR and other managers on his team to process all of the information he had compiled, and come up with next steps.

On a personal level, Tristan talked with his wife to discuss how chronic stress had been impacting him and the family.

He immediately made an appointment for a physical with his doctor (it had been a while), began walking the dogs in the evening again, and committed to weekly family hikes every Saturday morning. His wife started making plans for a summer trip, and Tristan put in the vacation request.

Chronic stress doesn't develop overnight, and it's not remedied overnight. The long-term impact on our bodies and minds makes it worth taking the time to address it.

What is your biggest source of long-term stress? I'd love to hear about your experiences at amy@peaktopeakcounseling.com, 303-258-7454, and you can always find past articles at www.peaktopeakcounseling.com or find us at www.facebook.com/peaktopeakcounselingservices.

Workplace chronic stress

AMY SKINNER, MA, LPC, NCC, ACS, RPT-S
PEAK TO PEAK

"I do not know what to do with my employee." Tristan breathed out an exasperated sigh.

"I've tried everything. It seems like he wanted more management time, so I set up an additional weekly meeting. Then he was having personal problems, so I brought in my HR person and we had even more meetings. He wanted time off, so I coordinated with other employees to cover his shifts. Then he wanted more time off." Tristan looked out at the rushing creek behind our office, and sighed again.

"Is this new behavior?" I asked.
"No, that's the thing. When I hired him, I knew he'd need extra

support. He's got some family issues and maybe some mental health thing going on—I don't know, he never told me anything about that. But I wanted to help him out! Give him a chance. My wife told me I was taking on a lot, but I wanted to try." Tristan's expression had shifted from angry to sad, and he began to fidget in his seat.

"But what's different now?" I pressed. "It seems like something has changed recently. Have things gotten worse at work?"

"What's changed is me. The amount of time I'm spending meeting with him, supporting his emotional needs, making up for his mistakes, and frankly just walking on eggshells around the office waiting for the next shoe to drop, is just too much. I'm worrying about the whole

situation during my time off, and now it's impacting my family time. Something's gotta give."

The American Psychological Association (APA) reports that work is one of the top three sources of stress for Americans, and the National Institute for Occupational Safety and Health reports that 75% of workers today believe they are more stressed-out than previous generations.

Long-term workplace stress can lead to chronic stress, which the APA explains can cause anxiety, insomnia, muscle pain, high blood pressure, and a weakened immune system. It can also contribute to the development of major illnesses such as heart disease, depression, and obesity.

Tristan and I came up with a game plan, and he began with observing two weeks at his job: documenting all

- Professional tree service
- Fire mitigation service
- Any job—big or small
- 100% seasoned hardwood
- Split firewood
- No pine or cottonwood



720-840-6120

\$475/cord
2 cord special \$800
5 cords \$1675

EST. 1977

THE MOUNTAIN EAR

THE VOICE OF THE PEAK TO PEAK



SUBSCRIBE TODAY!

WWW.THEMTNEAR.COM



A-C PLUMBING

Service • Remodeling
Construction • Licensed!

Lic# 189389
Over 30 years in the area

LEN CORTEZ, MASTER PLUMBER

PH: 303-619-1952 acplumbingco@me.com

RUDOLPH RANCH, INC.

HORSE BOARDING, OPEN PASTURES, QUIET RANCH SETTING, INDOOR/OUTDOOR STALLS, PASTURE OPTIONS, ROPING OR RIDING ARENA, TRAILS & CLOSE TO GOLDEN GATE STATE PARK, GROUP OUTINGS.

DON'T WANT THE HASSLE OF BUYING AND OWNING YOUR OWN HORSE, LEASE ONE FROM US.

WWW.RUDOLPHRANCH.NET • 303-582-5230



PHOTO BY JAMES DEWALT

JAMES DEWALT HESSIE FALLS

Winter seemed like it was going to continue its hold on us indefinitely this year, reminding me of a few years ago, in 2019, when we had snow solidly through May, remaining cold through June, with summer finally arriving in July.

This year we enjoyed a few teasingly warm days which had me excited to finally plant some flowers for the hummingbirds. And then the very day I was bringing them home to put in the dirt, I drove through a snow squall. The flowers ended up taking temporary residence in my living room, peering out of my sliding glass door for days, with apprehensions and prayers that I wouldn't put them out into the bitter mountain winds.

As though a switch was flipped, we finally snapped out of winter's lingering grip, and suddenly it was actually spring! While we've had a few swings back to cooler weather, the overall warmth seems to have taken over just in time for the summer solstice. The songbirds have returned, the air is abuzz with bickering hummingbirds, and all manner of four-legged critters are out and about, celebrating in the more amiable environment.

Another seemingly celebratory voice is that of our many creeks and streams. The enduring cold held off the high-country snow melt, but now it is as though a dam has burst and the torrent has been let loose from the frozen dam, bellowing with fervent joy as it runs triumphantly through the canyons and valleys. This great force of water is once again free to continue its work sculpting the very face of the land and carving its initials into the earth for the future millennia.

This time of year finds me enjoying a bit of my own celebratory ritual, taking a short hike to one of our local treasures to sit with and give thanks for the transition, lending an ear to the magnificent voice of water's raw power unleashed.

The Hessie watershed holds a very special place in my heart, and its crowning jewel, the falls, is home to this annual tradition. While there are many waterways where I could do the same, this distinct and mighty song resonates deeply with my soul after decades spent traipsing about in the magical valley.

A close ear discerns a rhythm as the tumult cascades over great boulders. This rugged beat brings cadence to my steps as I wend my way through the thick pines along the banks of the churning flow on my climb to the great granite shelf from which spills the main waterfall.

The spray of mist rising from the rushing cataclysm carries a refreshing chill that awakens my body and mind to the basso aria echoing through the forest. Each step carefully placed among the wet rock and roots of elder pines is a step deeper into my soul as well as forward towards my goal.

I prefer to avoid the human element on these ventures, and these days there is quite a bit of it, so I try to find a secluded spot below the main falls to sit and take it all in. The chasm-like drops below the falls allow for close seating to the spectacular show (though caution is necessary, as spray from the tumultuous whitewater creates a very slick surface on the granite, from which a fall would unlikely be recoverable in terms of a rescue or self-extraction, and resulting most likely in death).

It is hard to imagine that such a racket would be considered peaceful, but I find the overwhelming white noise of the water to be quite soothing. (That said, I'm also one of those "crazy folk" who isn't overly bothered by our winter winds due to a few years' sleeping outside in it when I first arrived in Nederland.)

After the walk in, setting the tone of the music of the falls for me, I find it easy to slip into meditation among the raucous crash of water accompanied by the occasional groan and grind of boulders dislodged by the immense forces coursing through the channels.

To sit in such close proximity to this raw power is immensely humbling and tremendously empowering at the same time. The mighty roar and booming voice of the celebration of spring's return is a song that strikes at the very core of my existence. I feel a primal and visceral glee that ties me to all of nature surrounding me, enjoying that same celebration with me, a triumphant and melodious scream: I. AM. ALIVE!

For additional information about James DeWalt Photography, check out <https://jamesdewaltphotography.com>.

The Mountain-Ear presents: News and Brews at Ned Farmers Market

Friday, June 28, 5 p.m.
at 4th Friday at Caribou Village

Come talk to staff members
about anything
newspaper related!

Next up:
Saturday, July 6
at 11 a.m. at
Holistic Homestead
Farmers Market



peakmusic.org
Peak to Peak Music Education Association

PRESENTS...



GILPIN COUNTY FAIRGROUNDS

A BENEFIT FOR THE
GILPIN SCHOOL MUSIC DEPARTMENT

RAPIDGRASS

**DANGO ROSE &
BRIDGET LAW**
OF ELEPHANT REVIVAL, WITH

SILAS HERMAN IN A SPECIAL
ENSEMBLE FEATURING **MARTY O'REILLY**

THE SWEET LILLIES
NOGO GILBILLIES
FINN O'SULLIVAN
WINDY PINES

1:30 - 9:30
7 HOURS OF MUSIC!

FOOD TRUCKS
LOCAL BREWS
KIDS ACTIVITIES
LOCAL ARTISTS

TICKETS \$52 ADV/\$58 DOS
TEENS \$26

KIDS 12 & UNDER FREE!
FOR TICKETS AND INFORMATION
GO TO PEAKMUSIC.ORG



Boulder Creek WHITEWATER



PHOTOS BY DAVE GIBSON

Chills

Top: The rope swing is an exciting feature. Bottom: A rafter is unceremoniously dumped into the icy creek on the west side of Boulder.

Continued on page 17



Boulder Creek

Continued from page 16

Thrills

Top: A kayaker negotiating one of the many drops. Bottom, right: Football anyone? Bottom, left: A boater executes a stern squirt exiting a rapid.



PHOTOS BY DAVE GIBSON

Pam Harrington
303-748-0289

Get a taste of the "Good Life" today!

www.goodlifepilates.com



A SIGNPOST IN THE WILDERNESS

Peak to Peak Counseling

- Coaching • Play Therapy
- Teens • Families
- Adults • Couples

Amy Skinner
MA, LPC, NCC, ACS, RPT-S
303.258.7454
Downtown Nederland
peaktopeakcounseling.com

We Can Do It! Mountain Maidz

- House Cleaning
- Moveouts
- Construction Cleanouts

Nancy Reynolds 720-369-4733



Business Spotlight

HUB NED
COWORKING

80 Big Springs Dr. Nederland, CO
www.hubned.com

Murphy & Associates

Funeral Directors
Call: 303-530-4111
Pager: 303-878-0967
Email: services@murphyfuneraldirectors.com
Boulder, Colorado

Dignified • Personalized • Affordable • Professional

Will Hackett Chimneys

303-440-0820



303-517-9658
Alexandria Armitage, Broker

254 Bergren Rd.
P.O. Box 1346
Nederland, CO 80466



www.nederlandproperty.com
HOME ON THE RANGE REAL ESTATE, INC.

hairStudio
Hair by Tracy

- Cuts • Color • Hi-Lights •
- Low Lights • Perms • Style •

Tracy Tyrer
720.966.7676

Over 300 properties closed

CROCKER REALTY

Tony Thorpe 720-552-2127
Your Trusted Mountain Real Estate Specialist
tony@buydenvernow.com www.BuyDenverNow.com

Tamra K. Waltemath PC
Attorney at Law

Specializing in Wills, Trusts, Living Wills, Power of Attorney, Elder Law, and Probate

303-657-0360
tamra@waltemathlawoffice.com
WaltemathLawOffice.com



melissasellsco@gmail.com
www.melissasellsco.net

HOME SMART

MELISSA KLUCK
720-388-0457




Mark Cohen
J.D., LL.M.
ATTORNEY AT LAW
303-638-3410

Business, Real Estate, Land Use, Trials, Intellectual Property, and Litigation



Distant Star Astrology



For readings, call Karen Anderson
303-258-7258

HAPPY VALLEY Heating & Cooling LLC

- Installation
- Repair
- Maintenance

Rich Frank
720-237-9652



Bin There **Dump** That

720-524-3727

Residential Friendly Dumpsters
www.dumpsterrentaldenver.org



Archaeology provides data on Central City's sex district

MINDY LEARY
GILPIN COUNTY

The Gilpin County Library hosted an insightful presentation on June 6, 2024, by Jade Luiz, a researcher specializing in historical archaeology with a unique focus on the archaeology of sex work.

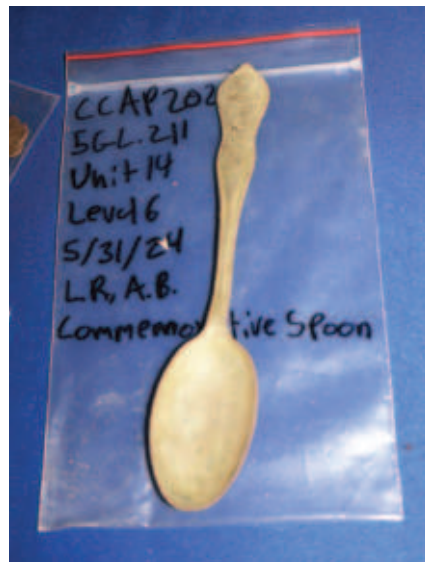
Luiz captivated the audience with her discussion on the Pine Street Sex District in Central City and shared the latest discoveries unearthed by her and her team of Metropolitan State University research students.

What is Archaeology?

Starting with the basics, she humorously clarified that archaeology is not about dinosaurs but about investigating the human past through items left behind. "We're not searching for golden idols like Indiana Jones," she joked. "We're looking for people's trash to recreate their lives."

Historical Archaeology and Sex Work

Luiz's specialty, historical archaeology, deals with relatively recent periods, focusing on cultural changes and transformations. Her specific interest lies in the archaeology



History revealed

Left: This fully intact commemorative spoon features an engraving of a boat and the inscription "Flagship Olympia, Battle of Manila, May 1, 1898." The spoon was most likely decorative and suggests an element of refinement at the site. Right: Dr. Luiz displays a diagnostic bottle unearthed at the Pine Street Sex District dig site. The team plans to research the numbers on the bottle to trace its origin and purpose.



PHOTOS BY MINDY LEARY

of sex work, studying brothels, saloons, and related sites.

When asked how her research has affected her perspective as a woman, she said, "I feel like there's a lot of ways to make people aware of this research, and make people see sex workers as people."

She summarized by saying that there should be no shame in studying sex work, any more so than there should be in studying plumbing: they are both just professions.

She would like to focus on the mitigation of violence, stigmatization, and isolation historically faced by sex workers—challenges that continue to affect sex workers today.

She said she prefers to call it "sex work," instead of prostitution, since the occupation itself could refer to exchanging money for acts other than just sex, like nude photography or burlesque.

Central City's Pine Street Sex District

The main subject of the talk was the history of the Pine Street Sex District. Central City's Pine Street was once a bustling area with five active brothels. This vibrant district operated openly until 1912, when the arrest of the famed Madam Lou Bunch, along with Fred and Nell Warwick, led to its closure. Madam Lou Bunch was a well-known madam, and her arrest marked a significant change in the town's dynamics.

The Pine Street area faced further challenges when a devastating fire in 1905 burned down most of the brothels, including the notorious House 2 and House 3. Despite these setbacks, the district remains archaeologically significant due to the lack of subsequent construction on the site, preserving many of its historical layers.

Unique Finds and Daily Life

The district is unique due to the preservation of its structures and extensive documentation, revealing a diverse community of sex workers, musicians, housekeepers, cooks, and children. Luiz and her team have discovered over 5,000 items.

She shared stories about finding "Mother Hubbard gowns," tea wares, a chandelier drop, and various

ceramics and glassware pieces.

She explained that when most people think about 19th-century sex work, they imagine scenes like those with Marlene Dietrich from "Destiny Rides Again," with lots of feathers and revealing outfits.

However, the reality was quite different. The women often wore Mother Hubbard gowns, considered scandalous at the time because they resembled nightgowns, and were common in the West.

These garments, despite being unflattering by modern standards, were the "sexy" attire of their day. Luiz described scenes of genteel conversation in parlors, evidenced by the discovery of numerous alcohol bottles and full sets of tea wares, indicating that part of the fantasy experience in these spaces may have included refined social interactions.

She discussed the social dynamics and community interactions with the sex district, sharing newspaper articles from the 1880s that showed a keen dislike of the district from the town and criticisms from local religious leaders.

Down the slope from the excavation site, about a block and a half away, stands the Catholic Church, part of what Luiz refers to as the "Catholic complex" due to its close association with the nearby convent.

About a year after the convent's construction, a wooden staircase was commissioned to connect the convent to the church, likely providing a direct route for priests and residents without cutting through the district. She finds the image of people using these stairs, with the brothels clearly visible nearby, particularly fascinating.

June 5 was an exciting day for the team, marked by the discovery of hurricane lamp burners.

She shared that one of the burners was exceptionally well-preserved, featuring a small wheel to operate the gears that raise and lower the wick. Although the other piece was just the top part, it had a decorative crown bit for holding the lamp glass, and the team hoped to find more pieces that fit together.

These artifacts were unearthed within the first half hour of the morning in the yard area of House 2. They were found in a distinct thin layer of yellow sand, rich with 19th-century artifacts, marking a significant find in their excavation.

Another exciting discovery was a fully intact commemorative spoon. The spoon features an engraving of a boat and the inscription "Flagship Olympia, Battle of Manila, May 1, 1898," commemorating a pivotal battle in the Spanish-American War where the American fleet defeated the Spanish fleet and took the Filipino colonies.

The spoon also bears the profile of Commodore Dewey, together with the American flag and an anchor, marking it as a special item, likely intended for display rather than everyday use. This find adds a fascinating piece to the collection of artifacts.

Future Plans and Public Engagement

Looking ahead, Luiz is excited about continuing her research and involving

Continued on page 19

Ranch Home with Solar!

Active

3 beds/2 baths • 1,984 SF • \$679,000 • 2.4 Acres
2482 Dory Hill Rd, Black Hawk • Built in 2004

Remodeled Home Near Fairplay!

Sold

2 beds/3 baths • 1,473 SF • \$634,000 • 1.28 Acres
125 War Pony Way, Como • Stunning Divide Views

Elevated Real Estate
BY CATHERINE CAMP

RE/MAX ALLIANCE

Catherine Camp 303.748.5023

286 N. Bridge St., Nederland • 303.258.7020 • Each office independently owned & operated.



PHOTO BY MINDY LEARY

Excited about archaeology
A presentation slide depicts some of the noteworthy finds this season at the former Pine Street Sex District in Central City.

on Saturday June 8, encouraging people to wear sturdy shoes and join in the digging. She emphasized the importance of public engagement and making archaeology accessible to everyone.

She said to watch out for holes, and that by the afternoon on Sunday, June 9, the team would be filling the excavation holes, not only for safety but to maintain the layers of dirt and prevent them from collapsing.

“One of the reasons we backfill is it actually helps preserve the nice crisp layers. We cover it with a geotextile, a black landscaping fabric, and then we dump the dirt back in the holes,” she explained.

Overall, Luiz's presentation was a fascinating journey into the past, shedding light on the lives of those who lived and worked in Central City's Pine Street Sex District. Her work not only uncovers historical truths but also bridges the gap between past and present, making history come alive for the community.

For further information on Jade Luiz's archaeology work, visit her Facebook, Instagram, and Central City Archaeology's website at <https://centralcityarchaeology.wordpress.com/>.

Archaeology

Continued from page 18

the community. She plans to establish a repository in Gilpin County for the artifacts currently stored in Denver, most likely the Historical Society Museum in Central.

She emphasized the importance of public archaeology and her goal to bring these historical findings back to the community.

She also plans to return next summer to continue the work.

Thanks to Supporters

She expressed her gratitude to the Gilpin County Public Library for inviting her to speak. She conveyed her excitement about sharing the project with the local community. She also extended a big thank you to the Central City Opera House Association for allowing the excavation on their property and being so accommodating.

She gratefully acknowledged the invaluable support and information received from Dr. David Forsythe and the Gilpin County Historical Society. She also thanked her

institution, Metro State, for their continuous support. Luiz emphasized her love for the town and her desire to continue working there.

Special thanks were given to the students and volunteers of the 2023-2024 field schools, whom she called the real heroes of the project. Lastly, she recognized her colleague, Dr. Joe Feldman, for his efforts in collecting stories and information about Madam Lou Bunch Day and the district's history.

Interactive Open House

Luiz invited the audience to an open house at the excavation site

Madam Lou Bunch Day 50th Anniversary Celebration



**The Day's Events
Saturday, June 22, 2024**

- 12 Noon Welcome by Mayor Jeremy Fey
- 12:00-4:00 PM Face Painters and Balloon Artists for the Kids
- 12:15-2:45PM Live Entertainment by Jimmy Lewis Band, The Infamous Backroom Cabaret, The Wild Bunch
- 2:30PM Bed Race Teams Announced and Main Street Parade
- 3:00 PM The Famous Bed Race**
- 4:15-4:45 PM The Infamous Backroom Cabaret Encore
- 4:45 PM The Famous Bed Race Winners Awarded Cash Prizes
- 5:30 PM Madam, Sporting House Girl and Dandy Dan Costume Contest. "Renowned Pedigrees of Local Flare" Receive Bragging Rights.
- 5:00-7:30 PM Madams' and Miners' Ball with Live Entertainment by Blinker Fluid

All Events Take Place on Main Street

Admission is Free

JKQ BBQ MC2 ICE CREAM TACOS LA SABOR EUREKA STREET POPCORN

To learn the history behind Madam Lou Bunch Day or to enter a bed race team for a chance to win \$500, go to VisitCentralCity.com/events.

Sponsored by Main Street Central City

Nederland to honor its royalty

CHRISTOPHER KELLEY
NEDERLAND

The 120 year old cabin known as the Gillaspie House Museum, the home built by Dr. Carbon Gillaspie, which also housed his medical practice, contains many items from Nederland's past. These cherished artifacts have been curated by the Nederland Area Historical Society (NAHS) from donations by local residents and relatives of Nederland's early settlers.

Every summer the Gillaspie House, located at 363-449 North Bridge Street, opens to the public, along with The Nederland Mining Museum. When you visit the cabin and look through all the curious knickknacks of times past you may encounter tightly bound tomes, each entitled The Nugget, with a span of years listed underneath the title.

Those tomes are Nederland High School yearbooks, dating as far back as 1942. The Nugget: 1943-1944 highlights each student's accomplishments in every class, and even includes poems that celebrate them.

One of Nederland High School's sophomore students from 1944 is alive and well today. 97 year old Roy



Slaughenhaupt, a former Trustee of the Nederland Board of Trustees, and a bus supervisor for Nederland Elementary School, having moved from Nederland several years ago, is planning to return to his hometown for its sesquicentennial celebration.

From Friday, August 2 to Sunday, August 4, 2024, the Town of Nederland will be celebrating

the 150th anniversary of its incorporation, which aims to laud Nederland's present and future while honoring its past. Nederland's Public Engagement Manager Peter Cacek, along with volunteers from several non-profit organizations and collaborations with local businesses, have been organizing themed activities for the three-day event.

Nederland Area Seniors Inc. are organizing a Pancake Breakfast which will serve as an opportunity for the town's royalty to be recognized. From 8 to 11 a.m. on the morning of Saturday, August 3, those like Slaughenhaupt who remember a different time will be able to meet and talk with one another about Nederland's halcyon days.

While being served a full pancake breakfast prepared by Natalie Duplessy of Peace, Love, and Cake and other volunteers, these keepers of a cherished past will also be presented with a historic slideshow from NAHS. Nederland High School yearbooks, dating as far back as 1939, will be on

Nederland memories
Remembering Nederland High School's past through photos and yearbooks.

display for attendees to peruse, and several reunions will be recognized, including the Class of 1974's 50th High School Reunion.

A special quilt, designed and crafted by the sixth grade class of 1976 to honor Nederland's centennial celebration, will also be on display, along with a scrapbook documenting the creation of the quilt.

As the summer months bring the busy buzzing of tourists, it becomes that much more important to remember that which made, and still makes, Nederland such a special place to be. With places like the Gillaspie House, with historians like Slaughenhaupt, and with events like Nederland's 150th, our past can be brought to light, bringing clarity to our present and hope for our future.



candace
newlove-marrs
redefining mountain living

2716 highway 72 // active // \$859,000

Extraordinary mountain living awaits in this Pinecliffe home showcasing a wraparound deck with captivating views.

303.717.0664 // candace@milehimodern.com
discover more // mhmmhomes.com

milehimodern
the coolest homes in town

This material is based on third-party information and is deemed reliable but is not guaranteed accurate. ©MileHiModern All Rights Reserved | milehimodern.com | 303.876.1073 | MileHiModern® is a licensed trademark. An Equal Opportunity Company | Equal Housing Opportunity

NED JAZZ & WINE 2024

20 BOOTHS WITH UNLIMITED TASTINGS FROM WINERIES, DISTILLERIES, BREWERY & NA BOOTHS

20 ARTISAN VENDORS

6 HOURS OF LIVE JAZZ

BUY YOUR TICKETS

NEDJAZZWINE.COM

FOLLOW @NEDJAZZWINE FOR EVENT DETAILS

BRING YOUR LAWN CHAIR, SIT BACK, SIP, LISTEN & ENJOY THIS ELEVATED EXPERIENCE.

SPONSORED BY **eldora**

HOMES BY RE/MAX ALLEGES KUVUJAZZ 89.3

NAS Nederland Area Seniors Inc. MOUNTAIN PEAK LIFE

THE BIGGEST FUNDRAISER FOR LOCAL SENIOR PROGRAMS THIS YEAR!

SATURDAY AUGUST 24, 2024 | 11AM-5PM | CHIPETA PARK NEDERLAND



PHOTOS BY WHITNEY DEVOTO

Nederland Community Church enhances space to serve community

A space for community
Nederland Community Church has a place to gather for weddings and social events.

KAITLIN SILBAUGH
NEDERLAND

Nederland Community Presbyterian Church recently hosted its annual garden planting event. Founded in 1916, the church has long been a pillar of the community, fostering a sense of belonging and providing support for Nederland residents.

The garden planting event furthers a broader effort to modernize the church's facilities and better cater to the needs of the community. Led by church volunteers, the revitalization project aims to create a more welcoming and functional space for community activities and gatherings, including a new intimate wedding venue.

"We're thrilled to be able to open up this fantastic space to the wider community," said volunteer Jane Bloom. "We want this to be a community space for everyone, one that can be used for a regular meeting or a family wedding."

The church recently transformed its event space into the Sanctuary at Caribou Gardens. This distinction emphasizes the space's versatility, making it more welcoming to individuals and groups of varied backgrounds. With updated amenities and improved facilities, the Sanctuary at Caribou Gardens is now poised to host a wide range of events, from small gatherings to larger celebrations. The creekside

Caribou Gardens provide a picturesque outdoor setting for an intimate ceremony with loved ones.

In addition to physical upgrades, the church is fostering increased community engagement by welcoming outside groups and local nonprofits into its space. From hosting weddings and small gatherings, to serving as a venue for support groups and providing workspace for locals, the church's commitment to community support is evident.

This commitment will be further showcased on June 22 during the second annual Neder-Day of Art, when the church will host an art gallery event from 3-5 p.m. open to the entire community.

The recent garden planting event is one of several phases of the broader revitalization initiative highlighting Nederland Community Church's long-standing dedication to serving and supporting the residents of Nederland. As the project progresses, the church looks forward to continuing its role as a place of support, unity, and connection for the community.

For more information about hosting events at Sanctuary at Caribou Gardens, visit SanctuaryatCaribouGardens.com, call 720-514-9250, or email Events@SanctuaryatCaribouGardens.com.

Each office is independently owned and operated

HOMES BY JACKIE JONES TEAM **RE/MAX ALLIANCE**

INFO@HOMESBYJACKIEJONES.COM JOIN OUR JUST A PEAK NEWSLETTER

Facebook, Instagram, LinkedIn @HOMESBYJACKIEJONES

Moving mountains for you.

JOSH HARROD 303-517-1763 JACKIE JONES 303-250-7353 286 N BRIDGE ST. #118 NEDERLAND, CO 80466 | 303-258-7020

GATEWAY TO ADVENTURE



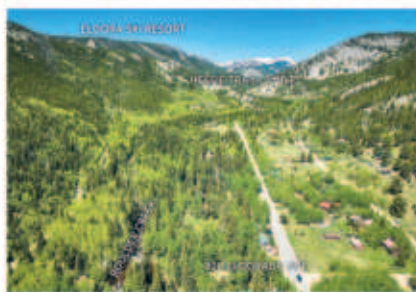
11863 Magnolia Dr
Nederland, CO
3 BED | 2 BATH | 1,748 SQFT
\$1,350,000

SCENIC HAVEN



702 Highpoint Cr
Black Hawk, CO
5 BED | 3 BATH | 3,414 SQFT
\$1,025,000

OPEN HOUSE! 6/15 11-1PM



820 Eldorado Ave
Nederland, CO
2 BED | 3 BATH | 1,949 SQFT
\$1,100,000

CREEK FRONTAGE



188 Silver Creek Rd
Black Hawk, CO
1 BED | 1 BATH | 446 SQFT
\$329,000



ELISABETH GROVE
NEDERLAND

Join us for the Second Annual Nederland Day of Art on Saturday, June 22, featuring a full day of creative opportunities to view art, participate in art activities, and browse and purchase unique gifts and artworks.

Morning Activities

Interactive Mural Painting

Time: 9 a.m. - 4:30 p.m.

Location: Train Cars

Kathy Bremers will be painting an interactive mural, inviting community participation in creating a vibrant public artwork.

Fine Art and Craft Fair

Time: 9 a.m. - 3 p.m.

Location: Community Center

Featuring over 20 artists and vendors, the fair offers a diverse range of creations, including oil and watercolor paintings, batik art, jewelry, ironwork, wood engravings, ceramics, weavings, fused glass, and more. Enjoy delicious treats from a food truck and other vendors while exploring the art exhibit in the Community Center's lounges and hallways.

Music by Evan Cantor 11:30 a.m. - 12:30 p.m.

Library Art Show

Time: 10 a.m. - 5 p.m.

Location: Nederland Community Library

Discover the beautiful watercolor works of Annie Thayer.

Community Presbyterian Church Art Display

Location: Nederland Community Presbyterian Church

Artists Elizabeth Azcarate and award-winning Gretchen Acharya will showcase their stunning paintings.

Guided Mural Walks

Time: 10 a.m. and 1:30 p.m.

Location: Meet at the Visitor Center

Join Danielle for a guided tour of the town's murals, learning about the artists and the stories behind each piece.



Dinosaur Mural at Nature's Own

Nederland presents Neder-Day of Art

Tie-Dye Project

Time: 11 a.m. - 3 p.m.

Location: Visitor Center

Express your creativity by making your own tie-dyed masterpiece. All materials are provided; just bring your imagination and sense of fun.

Afternoon Highlights

Women in Clay Exhibit Launch

Time: 1 - 3 p.m.

Location: Spinning Silica, Caribou Village Shopping Center (Upper Level)

Celebrate the launch of the "Women in Clay" exhibit, featuring works by female Peak to Peak potters such as Leah DeCapio of Spirit of the Rockies, Tania Corvalan, Gabrielle Gewirtz, and Brianna Rashbaum of Spinning Silica. This month-long show will highlight the combination of art and functional wares while celebrating female entrepreneurs. A portion of the sales will benefit a local women's charity. Enjoy live music by Evan Cantor during the reception.

Miniature Art Library Ribbon Cutting

Time: 4 p.m.

Location: Spinning Silica

Join us for the ribbon-cutting ceremony of the new Miniature Art Library, a unique addition to our community.

Picnic Table Painting

Time: 12 - 4 p.m.

Location: Farmers Market parking lot

Watch as artists complete their beautiful picnic table artworks. This project, spearheaded by the Nederland Public Art Committee and funded by the Nederland Downtown Development Authority, blends community spirit with artistic expression. Participate in live painting on a community table and witness the creativity that defines Nederland's unique character.

Additional Art Displays

Explore more local art at the following venues:

On 1st Street: James DeWalt Photography, Lolo's Atelier, and One Brown Mouse

Augustina's Winery - John Mattson paintings

Kaleidoscope Fine Arts Gallery - multiple fine artists

Knotted Root Brewing Company - Brittany Griggs

O'Neil Rocky Mountain Art - stained glass art

Very Nice Brewing Company

New Moon Bakery

Brightwood Music - Custom Guitars

Evening Music

Electronic Music Party

Time: 5 p.m. - 1:30 a.m.

Location: Train Cars

Bulas and Beats; Avante Shard featuring Djs B. Random, Cruxx, Matty Micelli, 639 mph, and Iris

Don't miss this exciting day of fun, creativity, and community!

Studio Tour schedule for 2024

The Mountain-Ear newspaper is happy to announce the second annual Peak to Peak Studio Tour. The tour is the perfect way to give galleries and visitors a chance to enjoy an incredible day in the mountains. It is all about art and color across the peaks.

The Peak to Peak Studio Tour takes place on September 21 and 22, 2024.

If you are interested in joining as a participating artist and want to sign up, go online to our website no later than Friday, June 30, 2024. Scan the OR code here for more information on how to apply or become a sponsor.

Contact Bethany Haas for sponsorship opportunities at 720-960-2900 or marketing@themountaineer.com

HIGH TIMBER MOUNTAIN TREE SERVICES

****Fire Mitigation & Technical Trees****

"Resolve Insurance Requirements"

Consultation & Forest Management

Chipping & Slash Removal

Approved by the Colorado State Forest Service

"Quality" Firewood - Oak & Pine

Fully Insured Since 1981

Phil & Jane Pitzer

303-258-7942

Gilpin Ambulance Authority selects Air Methods

DENISSE COFFMAN
GREENWOOD VILLAGE,
COLORADO

Air Methods (<https://www.airmethods.com/>), the nation's leading air medical service provider, announced today that Gilpin Ambulance Authority has selected Air Methods Ascend's in-person program to provide critical care readiness clinical education for its first responders.

Located about 35 miles west of Denver in the Rocky Mountains, the Gilpin Ambulance Authority works with three fire departments and five law enforcement agencies in providing emergency services in Gilpin County. Responding to a variety of calls including backcountry search and rescue and wildland firefighting medical support, Gilpin Ambulance Authority has 21 full-time employees and responds to nearly 2,000 calls for service each year and transports 800 patients with three 24-hour ambulances.

"Given the variety of calls that we respond to in sometimes extremely remote areas, this training will provide our first responders with the skills necessary to provide top-level care to our most critical of patients," said Gilpin Ambulance Authority Chief Cody Carroll. "Being able to take our first responders to Ascend's state-of-the-art facilities is invaluable to providing the level of care that our patients come to expect and deserve."

Ascend's in-person and online education programs provide access to world-class educators, state-

of-the-art tools, and cutting-edge technologies to help pre-hospital and critical care clinicians build their knowledge, enabling them to operate at the top of their licensure and fulfill continuing education requirements. Education programs include advanced manikin-based simulation and virtual reality training that mirror real-world patient care scenarios, building life-saving skills and confidence.

Ascend's offerings of innovative online education programs include Critical Care Review, and EMS Review which are designed to help flight and critical care clinicians as well as emergency medical responders seeking to advance their training, help improve emergent patient outcomes and meet their continuing education needs. Courses meet certification requirements for the Board of Certification for Emergency Nursing (BCEN), Commission on Accreditation for Pre-Hospital Continuing Education (CAPCE), and International Board of Specialty Certifications (IBSC).

"We are excited to partner with Gilpin Ambulance Authority to provide Critical Care Readiness Clinical Education," said Dr. Stephanie Queen, Air Methods Senior Vice President of Clinical Services. "Our training will provide them with the latest clinical techniques and practices to provide the best possible care for their patients."

Learn more about the Ascend education program at <https://www.onlineascend.com/>.

"QUOTE OF THE WEEK"

*We don't see things as they are.
We see them as we are.*
—Anais Nin

Open 630
am to 7 pm
Every Day!
7320 Black
Hawk Blvd.
Ste 1B
Next To
Post Office
In Black
Hawk
(303)
682-0366



15%
LOCALS
Residents
DISCOUNT!

10%
LOCAL
WORKERS
DISCOUNT!

New at the B&C
Brownie Binge and B&C Splits!



A gluttonous mix of brownie, your favorite ice cream, whipped cream and chocolate sauce, and a cherry on top! \$9.99



3 scoops of your favorite flavors of ice cream, fresh banana, whipped cream, your favorite sauces, and a cherry on top! So BIG you might want to share with your best friend! \$11.99

FAMILY DINNERS: Spaghetti, Lasagna, and more!
Stop by to taste the goodness!

WELCOME TO THE BEST JOB IN THE WORLD



Timberline Fire is now accepting applications for the position of Volunteer Firefighter.

For more information visit our website via the QR code or call 303-582-5768.



No experience needed.
All training provided.



CHOOSE HOW YOU SELL

openmarket
Maximize Your Home's Value

bridge
Buy Before You Sell


instantsale
Guaranteed Cash Offers

The real estate industry has evolved, and you need a partner that understands and provides all available selling solutions.

8z is the modern brokerage for the modern market.

With 8z Select, we provide all options for our clients, so you can SELECT the best opportunity for you.

"Jessica was really great to work with - she made our dream purchase in the mountains a quick reality! She was always fast to respond to our questions, and her personal experiences living in the mountains helped her guide us in ways I didn't expect. I would highly recommend her help!" - Rachel R.



8z

Jessica Fitzer
8z Realtor®
303.258.3686
Jessica.Fitzer@8z.com
JessicaFitzer.8z.com

Gilpin Commissioners approve Sheriff Department resolutions

Continued from page 1

The department made an exception to their policy and made the lease long-term, for 20 years.

Devil's Nose Shooting Range has been postponed and the Dumont range will be too busy, said Armstrong.

Commissioners approved the Lease Agreement.

Resolution 24-92: Disposition of Abandoned Personal Property

The Gilpin County Sheriff's Office (GCSO) has in their possession firearms that were acquired in connection with closed cases over the past 25 years. While the Sheriff's Office has made a diligent effort to reach them, the last known owners of each of the weapons have failed to claim the weapons. The intention is to sell the firearms to a firearms dealer, who can then dispose of them or sell them. The Sheriff's Office can then use the funds to purchase needed equipment.

The Board approved.

Resolution 24-84: Co-Responder Services with Jefferson County

The GCSO has partnered with Jefferson Center for Mental Health to facilitate a tele-health approach to a co-responder program. This partnership will provide a twenty-four hour on-call access to a clinician via a tele-health approach, utilizing a



New hire

Sheriff Kevin Armstrong introduces Johnathan Jones, Detentions Officer, to the Gilpin County Board of County Commissioners on June 11.

mobile data computer installed into each Sheriff's Office vehicle, that may assist with a call for a mental health co-responder.

GCSO does not currently have mobile computers installed in any of its vehicles. Through this partnership, Gilpin County looks to address additional connectivity issues by changing its current line of in-car solutions options to one that should allow for future technology capabilities.

The agreement will purchase approximately 27 ruggedized laptops and approximately 24 in-vehicle computer mounts. It will also fund the data package for the laptops for a period of 36 months, at which time the GCSO will have to obtain another grant or pay for the service out of the annual budget.

Commissioners agreed to the partnership.

Staffing Discussions and Resolutions

Resolution 24-89: Amending the Master Policy & Procedure Manual (P-19, Hiring & Retention Incentive Policy)

Numerous critical yet hard-to-fill positions remain vacant, which impacts community safety. A recent work session focused on this issue, leading to a discussion on staffing incentives.

Human Resources Director Chanda Johnson proposed a program costing \$184,500 over 12-19 months, focusing on positions such as:

- Dispatch
- Deputy
- Maintenance Tech
- Detentions Officer
- Transfer Station
- Child Camp Leader
- Lifeguard

The BoCC held a work session last Tuesday to discuss the issue.

When Johnson brought the proposal back to the board they noticed changes and wanted clarification on how certain positions meet the safety criteria.

Positions less likely to receive incentives included Motor Vehicles Record and Senior Services. Johnson said the goal is to avoid employee burnout. The discussion will continue in the next work session on June 25.

The Commissioners tabled the resolution.

Approved Resolutions

Resolution 24-90: Employee Referral Program

Continued on page 25

Your Real Estate, Property Management & Vacation Rental Specialists



Wendy Williams
Employing Broker
720.201.2752



Tegan Ryan
Associate Broker
720.771.1309



Emily Perry
Associate Broker
303.258.2588



Lynn Slinger
Associate Broker
720.320.3423



Pamela Fleming
Associate Broker
970.215.7907



Mike Zakreski
Associate Broker
303.253.4985

303.258.0656

Serving Nederland, Gilpin & Surrounding Areas
Indianpeaksre.com

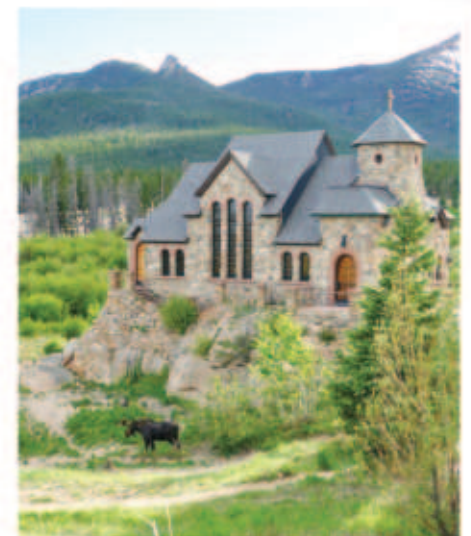


Located at Camp St. Malo, in the visitor's center just behind St. Catherine's Chapel on the Rock.

Mention you saw this Mountain-Ear ad and receive 10% off your order! Grab a seat, take a sip, stay a while.



10758 CO-7, Allenspark, CO 80510
tahosacoffee.com



Sheriff

Continued from page 24

To address a 9% position vacancy rate, this program allows referring employees to earn up to \$900 for successful referrals. Effective June 11, 2024, with a five-year evaluation starting in 2029. Commissioners approved.

Housing and Public Hearings

Resolution BLE-24-1:

53 & 143 Winks Way Boundary Line Elimination

Rob Gutierrez and Kyle Matthews proposed merging three parcels into one, resolving an issue with the dwelling at 143 Winks Way. Unanimous approval.

Resolution BOA-24-2: Variance for 53 Winks Way

A public hearing addressed the variance needed for restoring historic cabins at 53 Winks Way.

The public hearing opened at 10:20 a.m. Matthews explained that these historic cabins cost over \$1.2 million to rejuvenate. He would like utilities brought to the restored cabins.

From the Agenda Packet: "The applicant, JUST Architecture & Design, is seeking to vary from Section 2.3 Zoning District Specifications of the Gilpin County Zoning Regulations, to allow for the reconstruction of two single-family dwellings, of which one will become an accessory dwelling. Staff are recommending approval."

There was no public comment and the hearing closed at 10:31 a.m. The Board approved the variance.

Hollingsworth asked about the private road, Winks Way. Matthews said it is really a glorified driveway and crosses several properties.

Public Health

Resolution 24-88: Emergency Mutual Aid Agreement for Local Colorado Public Health Agencies

Public Health Director Alisa Witt informed the board that CDPHE has requested that all counties sign the Mutual Aid Agreement in the event of a Public Health Emergency that crosses county boundaries, or when help is requested from neighboring counties for assistance in the Public Health Emergency. The Board approved the agreement.

Resolution 24-91: Reporting Illicit Substances on County Property

Witt clarified that if a person is found with illicit drugs that would require a 911 call as it could be a criminal matter. The intent of the resolution is to secure the area to prevent exposure.

The policy would be taught during employee training. Hollingsworth advised Witt to edit "room" to "area," per the work session discussion. The Resolution was approved.

Miscellaneous Resolutions

Resolution 24-93: Appointing Trustee to the Board of Trustees of the Gilpin County Public Library District

Lauren Lottino was recommended for the Library Board of Trustees. All agreed.

Resolution 24-85: Amendment to 2024 I.T. Professional Service Agreement with Teryx, Inc.

Mornis recused herself from this part of the meeting due to a conflict of interest with Jessica Kays, also a Republican candidate for commissioner in this year's election.

Baciak explained that the current agreement with Teryx (2024 I.T. Service Agreement) ends as of June 30, 2024 but the County does not have another vendor to fill the vacancy at this time. In order to ensure that the County's I.T. service needs are met,

this Amendment will extend the current service term with Teryx, Inc. to October 1, 2024. Approved.

Resolution 24-86: Real Property Lease Agreement with Central City Opera House Association

These agreements are annual. The Teller Lot Agreement allows County employees, residents, and visitors to park in the Teller Lot while they attend County business in the Old Courthouse. This use is non-exclusive and is for the entirety of the year.

The Courthouse Parking Lot Agreement allows the Central City Opera Association use of the County's lot during the specified times identified in the Agreement, which will not interfere with the Old Courthouse operation hours.

The Courthouse Lease only spans the length of the 2024 Opera season. Each lease costs the Lessee \$10.00 per year. All agreed.

Local Liquor Licensing Authority

Liquor License Renewal for Toss Woodfired Eatery

Cole Johnson attended the meeting via Zoom and Mornis inquired about Item 5's missing

list. McCormick said this omission is due to upcoming changes of expanding the business and adding a co-owner. The license was renewed.

Public Comment

Kathleen Balfour, local real estate agent, said that her seller has been having a difficult time selling his property because of a red flag from the zoning department for a 150 square-foot addition. She said the seller is the third owner since the unpermitted extension was built.

Additionally, the County has had the property listed incorrectly (for the past 70 years) at 0.69 acres, when the actual size is only 0.49 acres. To compensate for these shortfalls, she continued, the seller had to lower their price and were greatly inconvenienced.

The meeting adjourned into Executive Session at 12:04 p.m.

The next regular meeting of the Gilpin County Board of County Commissioners is scheduled for June 25, 2024, at 9 a.m. and will be held in person at the Historic Courthouse, 203 Eureka Street, Central City and online via Zoom.

Pet of the week

There's a saying old, says that love is blind

Still we're often told "seek and ye shall find"

So I'm going to seek a certain guy I've had in mind

Looking everywhere, haven't found him yet

He's the big affair I cannot forget

Only guy I ever think of with regret

I'd like to chew his initials into my stick

Tell me where's the shepherd for this lost Husky

There's a somebody I'm longing to see

I hope that he turns out to be

Someone to watch over me

I'm a little soul gone lost in a wood

Playin' with coyotes

I know I could always be good

To one who'll watch over me



Ask for Wiley



Yep, 'tis true...They found me rompin' with the coyotes. Here I am at the Humane Society of Boulder Valley, waiting for someone to watch over me:

<https://www.boulderhumane.org/animals/?animalid=55457131>

Plant Shop

JUNE 30TH

12 - 4 PM

AT KNOTTED ROOT BREWING COMPANY

PICK YOUR PLANT.
POT IT.
TAKE IT HOME!

*PRICES VARY

MEYERS SERVICES

- Bridges
- Culverts
- Drainage
- Driveways
- Snow Removal
- Flood Prevention
- River Restoration
- Septic Systems
- Demolition
- General Excavation

Licensed and Insured
PO Box 291
Rollinsville, CO 80474

Jeramy Meyers
jeramy@meyersservices.co
cell: 720.431.8730
office: 303.582.3046

Road construction coming on Highway 119 in Black Hawk

MINDY LEARY
GILPIN COUNTY

The Gilpin County Sheriff's Office shared a road construction notice from the City of Black Hawk, in collaboration with Brannan Sand and Gravel, on their Facebook page on June 10, that presented the following information:

Project: Highway 119, Marchant to Richman – Improvements
Dates: June 17 to June 28, 2024

The project includes:
Rotomilling – The entire width of Highway 119 will be rotomilled.
Patching and paving – Necessary patching will be followed by paving with hot mix asphalt.

Re-striping – The road will be re-striped in its current configuration.

The rotomilling will start at Merchant Street, proceed down the canyon to Richman first, and then up the canyon until completed. This phase is expected to take approximately five working days.

Following this, the same sequence will be used for placing hot mix asphalt, also expected to take about five days. Permanent striping will follow the completion of paving. Temporary striping will be applied daily to maintain traffic flow overnight.

Flaggers will be positioned at critical ingress and egress points

per the Maintenance of Highway Traffic (MHT) plan. During paving operations, access will generally be granted except as noted in the MHT.

Work hours are from 7 a.m. to 5 p.m., with cleanup and equipment off the road by 5 p.m. Emergency access will be available at all times during working hours. Uniformed traffic control will be provided at all signalized intersections.

Please follow the flagmen who will ensure safe passage to your destination.

For concerns during construction, the on-site Superintendent, Jon Gearhart, can be reached at 970-442-1111.

Government Meetings

Black Hawk City Council meetings occur at 3 p.m. on the second and fourth Wednesday of each month. Join us for the next meeting on Wednesday, June 26 in Council Chambers located upstairs at City Hall, 211 Church Street, Black Hawk. For more information check online at <https://www.cityofblackhawk.org/>.

Central City Council meetings are held on the first and third Tuesday of each month. Join the next meeting on Tuesday, June 18 at 7 p.m., in person at City Hall, 141 Nevada Street or online at <https://centralcity.colorado.gov/meetings>.

Central City Historic Preservation Commission meetings are held on the second Wednesday of each month at 6 p.m. Join the next meeting on Wednesday, July 10, at 6 p.m. at City Hall, 141 Nevada Street, or online at <https://centralcity.colorado.gov/meetings>.

Central City Planning Commission will meet at 6 p.m. on the first Wednesday of the month, as needed. Join the next meeting on Wednesday, July 3, at 6 p.m in the City Council Chambers, 141 Nevada Street. Visit online, <https://centralcity.colorado.gov/meetings> for the upcoming 2024 schedule.

Gilpin County Board of County Commissioner (BoCC) meetings are typically held on the second and fourth Tuesday of each month. Attend the next meeting in person at the Gilpin County Community Center, 250 Norton Drive or online via Zoom, at 9 a.m on Tuesday, June 25, <https://gilpincounty.colorado.gov/public-meetings/board-of-county-commissioners-bocc-meeting>.

Gilpin County Historic Preservation Commission meets on the third Thursday of each month at 6 p.m. online via Microsoft Teams. To listen on Thursday, June 20, visit <https://gilpincounty.colorado.gov/public-meetings/historical-preservation-commission-meetings>.

Gilpin County Planning Commission meets on the second Tuesday of each month at 7 p.m. in the Old Gilpin Courthouse at 203 Eureka Street, Central City. To listen online, check out <https://gilpincounty.colorado.gov/public-meetings/planning-commission-meetings> on Tuesday, July 9.

Gilpin County Board of Health meets on Thursday, September 5, in person at the Commissioners' Meeting Hall, 203 Eureka Street, Central City, 2nd floor, and online via Microsoft Teams. Visit online at <https://gilpincounty.colorado.gov/board-of-health-meetings>, for the 2024 schedule.

Nederland Board of Trustees (BOT) meets on the first and third Tuesday of the month from 7 to 11 p.m. Attend on Tuesday, June 18, in person at the Nederland Community Center, 750 Highway 72, or virtually via WebEx, <https://townofnederland.colorado.gov/board-of-trustees>.

Nederland Downtown Development Authority (DDA) meets on the second Wednesday of the month at 6 p.m. Attend in person at the Nederland Community Center or online via WebEx, <https://townofnederland.colorado.gov/downtown-development-authority/>, on Wednesday, July 10, at 6 p.m.

Nederland Board of Zoning Adjustment (BZA) meets as needed on the second Thursday of the quarter (January, April, July, October). Join in person at the Nederland Community Center or online via WebEx, <https://townofnederland.colorado.gov/board-of-zoning-adjustment>, on Thursday, July 11, at 7 p.m.

Nederland Parks, Recreation & Open Space Advisory Board (PROS-AB) meetings are held on the third Thursday of the month from 5:30 until 7:30 p.m. Join in person at the Nederland Community Center or online via WebEx, on Thursday, June 20, <https://townofnederland.colorado.gov/parks-recreation-open-space-advisory-board>.

Nederland Planning Commission (PC) meets on the fourth Wednesday of each month. Join in person on June 26 at 7 p.m. at the Nederland Community Center or via WebEx, <https://townofnederland.colorado.gov/planning-commission>.

Nederland Sustainability Advisory Board (SAB) meets on the fourth Thursday of the month at 6:45 p.m. The next meeting is scheduled on Thursday, June 27, in person at the Nederland Community Center or via WebEx, <https://townofnederland.colorado.gov/sustainability-advisory-board>.

Stay updated with our *The Mountain-Ear* online government events calendar at <https://www.themtnear.com/events/category/government>.

Public Notice

At the May 21, 2024 meeting, the Board of Trustees passed Ordinance No. 862 AN ORDINANCE OF THE BOARD OF TRUSTEES OF THE TOWN OF NEDERLAND, COLORADO, AMENDING CERTAIN SECTIONS OF ARTICLE VII OF CHAPTER 7 OF THE NEDERLAND

MUNICIPAL CODE, CONCERNING PLASTIC, SINGLE-USE BAG, AND POLYSTYRENE POLLUTION REDUCTION. The full text of the Ordinances are available online at https://library.municode.com/co/nederland/ordinances/code_of_ordinances

Public Notice

District Court Denver Probate Court
Gilpin County District Court County, Colorado
Court Address: 2960 Dory Hill Road, #200, Black Hawk, CO 80422

In the Matter of the Estate of

David Herbert Brown

AKA David H. Brown, David Brown and Dave Brown

COURT USE ONLY

Deceased

Attorney or Party Without Attorney (Name and Address):

Case Number: 2024PR030009

Brian Hedberg

Hedberg Law Firm, LLC
9878 W. Belleview Ave., #2387, Denver, CO 80123

Division: G Courtroom

Phone Number: 720-432-2878

E-mail: bhedberg@hedberglawfirm.com

FAX Number: n/a Atty. Reg. #: 37907

NOTICE TO CREDITORS BY PUBLICATION PURSUANT TO § 15-12-801, C.R.S.

NOTICE TO CREDITORS

Estate of David Herbert Brown, also known as David H. Brown, David Brown and Dave Brown, Deceased

Case Number 2024PR030009

All persons having claims against the above named estate are required to present them to Kathleen E. Jagger c/o Hedberg Law Firm, LLC, 9878 W Belleview Avenue, Suite 2387-Hedberg Law Firm, Denver, CO 80123; or to:

District Court of Gilpin County District Court, County, Colorado or
 Denver Probate Court of the City and County of Denver, Colorado

on or before October 7, 2024 or the claims may be forever barred.

Kathleen E. Jagger, Personal Representative
c/o Hedberg Law Firm, LLC

Brian Hedberg, Attorney
Name of Person Giving Notice:

9878 W. Belleview Ave., #2387
Address

Denver, CO 80123
City, State, Zip Code

Jessica Kays

- *Authentic
- *Dedicated
- *Respectful
- *Reliable
- *Efficient
- *Effective
- *Qualified
- *Experienced
- *Committed

Welcome to
GILPIN COUNTY
Rural Mountain Community

I will work for You!
Find out more at:
www.VoteKays.com

BoCC work session discusses policies

MINDY LEARY
GILPIN COUNTY

The Gilpin County Commissioners (BoCC) held a work session on June 4, 2024, at 9 a.m. at the Historic Courthouse in Central City. The session was attended by Commissioners Susan Berumen (Chair), Sandy Hollingsworth, and Marie A. Mornis, along with County Manager Ray Rears, County Attorney Brad Benning, and Deputy Clerk Melanie Bleyler.

Director of Public Health Alisa Witt presented several topics to the Board, including a Field Worker Safety Policy, an ordinance concerning drug-affected properties, and a form for reporting illicit drugs on County property.

Field Worker Safety Policy

Witt explained that the new Field Worker Safety Policy aims to help county employees navigate and manage potential risks when visiting private properties. This policy was prompted by a hostile incident where a health inspector felt threatened by a resident, and cautioned that county residents might resort to violence against inspectors.

Given the issue of poor cell reception in some areas, Witt suggested providing radios for field workers. Public Works Director John Combs questioned the necessity of the policy for all field workers, to which the Board clarified that it would only apply to those accessing private properties.

Human Services Director Janey Barker noted that caseworkers are already trained to handle home visits and manage cell reception dead zones. Mornis inquired about the existence of a written policy, and Barker confirmed that it is included in their training.

Rears proposed the policy serve as a basic framework, with each department developing specific guidelines. He commended Witt for raising the issue and announced that a draft policy would be introduced at the next regular meeting.

Ordinance on Drug-Affected Properties

Witt then discussed an ordinance addressing drug-affected properties, prompted by an incident involving contaminated rental property. The proposed ordinance, based on Colorado Department of Public Health and Environment (CDPHE) standards, would require homeowners to hire licensed professionals for decontamination, with potential condemnation if unmediated. Berumen requested another work session on the ordinance, now scheduled for July 30.

Form for Reporting Illicit Drugs on County Property

Witt explained the form for reporting illicit drugs on County property, which includes reporting paraphernalia. She has prepared a resolution for the next meeting.

Legislative Session Summary

Lobbyists Ed Bowditch and Jennifer Cassell summarized this year's legislative session, highlighting a Democratic majority and the introduction of 705 bills. Bowditch mentioned Proposition 50, which would limit property tax revenue increases, while Cassell noted tax credits for restoring historic properties and SB24-213, which exempts certain structures from county regulation.

Digital Accessibility Plan

Administrative Analyst Sam Bower presented the Digital

Accessibility Plan, aiming to provide disabled individuals access to online tools and technologies. He suggested training employees and potentially hiring an outside consultant to meet the July 1, 2025, deadline.

Gross Reservoir Plan Amendment

Director of Community Development Rob Gutierrez discussed an amendment to the Gross Reservoir plan, switching from truck to helicopter transport for felled trees in order to address heavy traffic concerns. Felled trees and biomass will be moved from the inundation area and then removed by truck.

Electioneering Policy

County Attorney Brad Benning outlined the electioneering policy, which imposes penalties for violations, such as displaying campaign material within 100 feet of a polling center. For clarification, a violation could include a bumper sticker or campaign slogan within 100 feet of the polling center.

Polling centers include:

Gilpin County Courthouse, 203 Eureka Street, Central City, CO 80427

Gilpin County Recreation Center, 250 Norton Drive, Black Hawk, CO 80422

Gilpin County Public Works, 135 Tolland Road, Rollinsville, CO 80474 (light blue building on north side of road)

Benning said that violating the electioneering policy will carry a penalty of 120 days in jail and/or a fine up to \$750. The policy is effective from June 5, ending at 7 p.m. June 25 and applies during any elections throughout subsequent years.

The next regular meeting of the Gilpin County Board of County Commissioners is scheduled for June 11, 2024, at 9 a.m. at the Historical Courthouse, 203 Eureka Street, Central City, and online via Zoom.

PLUMBIN' FREAKED?
Call the **PLUMBIN' GEEK!**

- Plumbing Repair & Replacement
- Drain Cleaning and Thawing
- Hydro-Jetting!
- Water Heaters: Nat. Gas, Propane & Electric

24 Hour Call Line
303-258-3439

Jerry French Licensed & Insured (#186250) **Matt Carhart**

What's happening at Gilpin Parks & Rec

Gilpin County Community Center
250 Norton Drive, Black Hawk
gilpincounty.colorado.gov
303-582-1453

Pool Hours - SUMMER

***Please call to confirm prior to coming**

Now closed on Sunday, Tuesday, and Thursday

Monday and Wednesday: 7:30 a.m. - 7:30 p.m.

Friday: 7:30 a.m. - 5:30 p.m.

Saturday: 9 a.m. - 3:30 p.m.

Building Hours

Now closed on Sunday, Tuesday, and Thursday

Monday and Wednesday: 7:30 a.m. - 8 p.m.

Friday: 7:30 a.m. - 6 p.m.

Saturday: 9 a.m. - 4 p.m.

Cardio Dance: NEW Day and Time

Fridays 8:30-9:15 a.m. Drop-ins \$9/ adults, \$7/60+.

Pilates

Saturdays 9:15-10:15 a.m. Drop-ins \$7/ages 14-59, \$5/60+.

Family Fun Fishing Clinic

Sunday, June 16, 10 a.m. to 1 p.m. FREE! At William C. Russell Park and Pond in Central City. Practice leave no trace, youth poles provided, fun prizes, hamburgers and hotdogs.

Water Safety Day

Friday, June 21, 10 a.m. to noon. FREE! All ages welcome. Bridging the gap between the pool and open water. Safety tips, interactive workshops, water demonstrations, open water skills.

Saturday Morning Clay with Steve - Refining Your Skills

Saturdays, June 22 - July 13, 9:30 a.m. to noon, \$95/four-week session.

Summer Day Camp Enrollment Now Open

Monday through Friday from 7:30 a.m. until 6 p.m. \$45/day per resident child, \$54/day/per non-resident child (+\$10 for field trips). Farmer's Market Saturday, July 6, 10 a.m. - 3 p.m. Join us for vendors, live music and more at the Farmer's Market.

2024 Gilpin County Fair: Friday, July 19 - Sunday, July 21

Sign up now for Volleyball & Pick-

leball Tournaments, Redneck Relay Team Entries, Mutton Bustin' and Early Bird Pricing on Wristbands for Ax Throwing, Mechanical Bull, Inflatable Boxing, Bounce House & Obstacle Course! Vendor booth space available for arts and crafts, exhibition of products, games, information and education, food sales. Applications due by Friday, July 5 at 5 p.m.

Outdoor gear rentals NOW AVAILABLE at the Community Center made possible by our partnership with ACA! Outdoor gear can be rented Mondays and Fridays from 9 a.m. - 5 p.m. Prices vary for gear rentals. For more information please visit <https://www.alwayschooseadventures.org/gearlibrary>.

Friends of the Gilpin County Community Center's "Heart of the Community" Fund supports residents in need with family punch cards for daily admissions, as well as scholarships for youth who need help to cover youth sports and classes. Visit <https://gilpincommunitycenter.org/heart-of-the-community-fund/> for more information and to apply.

Youth Camp (Licensed Child Care): Monday - Thursday, 4 - 6 p.m., Friday 7:30 a.m. - 6 p.m.

Eagles Teen Program: Monday - Thursday, 4:15 - 6 p.m.

Pilates Mat Class: Saturday, 9:15 - 10:15 a.m.

Hatha Yoga: Monday and Friday, 9:30 - 10:30 a.m.

Senior Fit: Monday, Wednesday, and Friday, 11 a.m. - 12 p.m.

Senior Lunch: Wednesday and Friday, 12:15 - 1:15 p.m.

Pickleball: (First 30 minutes is for instruction/practice - no games at this time) Monday and Wednesday, 8:30 - 11:30 a.m. Friday, 1 - 4 p.m.

Aquafit: Monday, Wednesday, and Friday, 9:30 - 10:30 a.m.

Gilpin Stitches Club: 2nd and 4th Monday of each month, 9 a.m. - 4 p.m.

Master Swim: Monday and Wednesday, 6 - 7:30 p.m.

Lap Swim: Monday, Wednesday, and Friday, 8 - 9:30 a.m.

Gilpin CWPP Open House educates residents

WES ISENHART
GILPIN COUNTY

An open house to update Gilpin residents on the Community Wildfire Protection Plan (CWPP) was held at the Gilpin Community Center on June 8, 2024.

Hosted by Gilpin County government, along with contractor SWCA Environmental Consultants (SWCA), the purpose of the open house was to update the community on the status of the CWPP and discuss wildfire mitigation efforts in Gilpin County.

Three speakers opened the presentation. Sheriff Kevin Armstrong spoke briefly about the importance of evacuations from the perspective of the Sheriff's department. He explained the effort that goes into evaluating a situation and deciding to issue an evacuation notice. Armstrong also stressed the need to mitigate for evacuations.

The newly hired Gilpin County Director of Emergency Services, Melissa Lewis, introduced herself

and also focused on the importance of evacuations and wildfire mitigation efforts on private and public lands. Lewis is a veteran wildland firefighter who was previously the Emergency Management Coordinator for the Clear Creek County Sheriff's Office.

SWCA Project Coordinator Rob Fenwick spoke about the CWPP process, and also explained the timeline for completing the CWPP and how important it is that as many residents as possible complete the Gilpin County CWPP survey as soon as possible.

Fenwick used a slide presentation to explain that a CWPP plan is developed collaboratively with key federal, state, and local partners. It assesses risks of a wildfire in the community and prioritizes projects to mitigate those risks.

CWPP plans do not mandate actions. It recommends best practices and actions for stakeholders and communities.

Fenwick estimated that the CWPP would be completed sometime around the end of the year. Right now, the project is collecting data



PHOTO BY WES ISENHART

and developing the plan. There will be another public meeting in August.

The following phase, ending in September, will be a core team review of the data and analysis of proposed projects. October

Continued on page 29

SWCA Environmental Consultants

Hired by the county to update and extend the County CWPP program, SWCA Project Manager Rob Fenwick explains the features at the Resilient Landscapes Open House station.

Public Notice

COMBINED NOTICE - PUBLICATION CRS §38-38-103 FORECLOSURE SALE NO. 24-02PT

To Whom It May Concern: This Notice is given with regard to the following described Deed of Trust:

On April 4, 2024, the undersigned Public Trustee caused the Notice of Election and Demand relating to the Deed of Trust described below to be recorded in the County of Gilpin records.

Original Grantor(s)
James E. Bitner
Original Beneficiary(ies)
LEAD FUNDING, LLC
Current Holder of Evidence of Debt
LEAD FUNDING, LLC
Date of Deed of Trust
July 31, 2019
County of Recording
Gilpin
Recording Date of Deed of Trust
August 12, 2019
Recording Information (Reception No. and/or Book/Page No.)
164197
Original Principal Amount
\$350,000.00
Outstanding Principal Balance
\$350,000.00

Pursuant to CRS §38-38-101(4)(i), you are hereby notified that the covenants of the deed of trust have been violated as follows: Failure to pay principal and interest when due together with all other payments provided for in the evidence of debt secured by the deed of trust and other violations thereof.

THE LIEN FORECLOSED MAY NOT BE A FIRST LIEN. SEE ATTACHED LEGAL DESCRIPTION.

Purported common address: 380 Sierra Timber Road, Black Hawk, CO 80422.

THE PROPERTY DESCRIBED HEREIN IS ALL OF THE PROPERTY CURRENTLY ENCUMBERED BY THE LIEN OF THE DEED OF TRUST.

NOTICE OF SALE

The current holder of the Evidence of Debt secured by the Deed of Trust, described herein, has filed Notice of Election and Demand for sale as provided by law and in said Deed of Trust.

THEREFORE, Notice Is Hereby Given that I will at public auction, at 10:00a.m. on Thursday, 08/01/2024, at The Office of the Gilpin County Public Trustee, sell to the highest and best bidder for cash, the said real property and all interest of the said Grantor(s), Grantor(s)' heirs and assigns therein, for the purpose of paying the indebtedness provided in said Evidence of Debt secured by the Deed of Trust, plus attorneys' fees, the expenses of sale and other items allowed by law, and will issue to the purchaser a Certificate of Purchase, all as provided by law.

First Publication 6/6/2024
Last Publication 7/4/2024
Name of Publication
The Mountain Ear

IF THE SALE DATE IS CONTINUED TO A LATER DATE, THE DEADLINE TO FILE A NOTICE OF INTENT TO CURE BY THOSE PARTIES ENTITLED TO CURE MAY ALSO BE EXTENDED;

DATE: 04/04/2024

Mary R. Lorenz, Public Trustee in and for the County of Gilpin, State of Colorado
By: Public Trustee

The name, address, business telephone number and bar registration number of the attorney(s) representing the legal holder of the indebtedness is:

David R. Doughty #40042
Janeway Law Firm, P.C. 9800 S. Meridian Blvd., Suite 400, Englewood, CO 80112
(855) 263-9295
Attorney File # 24-032061

The Attorney above is acting as a debt collector and is attempting to collect a debt. Any information provided may be used for that purpose.

©Public Trustees' Association of Colorado
Revised 1/2015

LEGAL DESCRIPTION

A parcel of land located within portions of Lots E-5, F-6, and H-8, the Carter Addition #1 to Gilpin Gardens Subdivision, located within the Southeast Quarter of Section 7, Township 2 South, Range 72 West of the Sixth Principal Meridian, County of Gilpin, State of Colorado, being more particularly described as follows, with platted bearings and distances denoted by parentheses:

Commencing at the Southeast Corner of said Section 7, being a found in place 3" diameter brass cap, marked "BLM", whence the east Quarter Corner of said Section, being a found in place 3" diameter brass cap marked "BLM", bears N 00°03'22" W, 2634.44 feet, with all bearings contained herein relative thereto, thence N 01°34'45" W, 1257.83 feet to the Southeast Corner of Lot A-1; thence N 89°17'30" W (S 89°17'45" E), 623.77 (624.00) feet along the Southerly line of Lots A-1, D-4, and G-7; thence N 00°00'26" E, 416.86 (416.00) feet along the Westerly line of Lots G-7 and H-8 to the True Point of Beginning; thence N 64°18'11" E (S 63°53'51" W), 234.73 (232.35) feet; thence N 27°46'32" E (S 27°58'53" W), 225.63 (224.34) feet; thence S 88°25'54" E (N 89°30'45" W), 103.88 (104.00) feet; thence S 00°29'26" W (N 00°21'45" W), 302.90 (303.00) feet; thence S 45°17'52" W, 293.28 feet; thence N 89°17'56" W, 52.00 feet; thence N 00°24'49" E, 208.63 feet; thence N 89°30'20" W, 158.96 feet to the True Point of Beginning,

which is shown as "Parcel No. 3" on the Boundary Line Adjustment Plat recorded in Book 693 at Page 315,

TOGETHER WITH AND SUBJECT TO a non-exclusive access easement, as shown on the Boundary Line Adjustment

Plat recorded in Book 693 at Page 315, which easement is more particularly described as follows:

A fifteen (15) foot wide private access easement, located within Parcels 1, 2, and 3 of the Boundary Line Adjustment Plat for Lots A-1, B-2, D-4, E-5, F-6, G-7, and H-8, the Carter Addition #1 to Gilpin Gardens Subdivision, located within the Southeast Quarter of Section 7, Township 2 South, Range 72 West of the Sixth Principal Meridian, County of Gilpin, State of Colorado, being seven and one-half feet (7.5') on each side of the herein described centerline with side lines extending and shortening as necessary to intersect Parcel lines, more particularly described as follows:

Commencing at the Southeast Corner of said Section 7, being a found in place 3-1/4" diameter brass cap, whence the East Quarter Corner of said Section, being a found in place 3-1/4" diameter brass cap, bears N 00°03'22" W, 2634.44 feet with all bearings contained herein relative thereto, thence N 01°34'45" W, 1257.83 feet to the Southeast corner of Parcel 1; thence N 00°17'02" E, 11.61 feet along the East Line of said Parcel 1 to the True Point of Beginning; thence N 63°01'01" W 200.41 feet; thence along the arc of a curve to the left 145.09 feet, having a radius of 300.00 feet, a central angle of 27°42'37" and which chord bears N 76°52'19" W, 143.68 feet; thence along the arc of a curve to the right 21.97 feet, having a radius of 30.00 feet, a central angle of 41°57'09" and which chord bears N 69°45'04" W, 21.48 feet; thence N 48°46'29" W, 210.09 feet; thence along the arc of a curve to the right 34.59 feet, having a radius of 30.00 feet, a central angle of 66°03'21", and which chord bears N 15°44'49" W, 32.70 feet; thence N 17°16'52" E, 115.95 feet to a point along the common line of said Parcels 2 and 3 and the Point of Terminus.

CWPP

Continued from page 28

is projected to be the release of the first draft with reviews and recommendations to follow.

After reviews and recommendations of the final draft, the Gilpin County commissioners will vote on accepting the plan and moving forward on implementing the recommended projects. A Board vote on the updated CWPP will probably happen shortly after the start of the new year.

Fenwick described the different stations at the open house, and what information was provided at each station.

There were three information stations set up around the room, with experts at each station to answer questions and clarify relevant issues. Residents could visit any of the stations in any order and discuss any questions or concerns with the experts.

The Resilient Landscapes station provided information on creating landscapes that are resilient to fire, insects, and disease disturbances, regardless of jurisdictional boundaries. Creating resilient landscapes includes a wildfire risk assessment, past

and planned fuel treatments, and restoration projects if they are needed.

Sheriff Armstrong and Central City Fire Chief Gary Allen manned The Safe and Effective Wildfire Response station. This station had maps showing the 19 identified evacuation zones in Gilpin County. A safe and effective wildfire response requires all jurisdictions to coordinate their efforts to implement safe, effective, risk-based management decisions.

The Fire-Adapted Communities station emphasized property inspections, home hardening,



PHOTOS BY WES ISENHART

Zone Name	Area Sq Mi	# of Structures	# of Addresses	# Private Parcels	Est Population	Est Property Value (in millions)
Apex Valley	6.04	128	80	223	128	18.347
Black Hawk	2.99	179	129	334	206	801.89
Central City	1.9	467	415	754	564	117.925
Central Gilpin	2.56	538	428	562	684	101.417
Dory Hill	4.71	581	434	628	694	154.449
Dory Lakes	3.83	572	403	521	644	119.224
East Portal	17.76	19	1	15	1	0.04
GCSP / Mineral Acres	10.8	114	52	77	83	14.743
Mammoth Gulch	12.14	12	1	83	1	0.171
Missouri Gulch	7.35	121	93	236	148	48.124
Nevadaville / Pisgah Lake	5.27	257	136	726	217	18.53
Rollinsville	6	278	169	376	270	43.771
Smith Hill	16.67	311	190	284	304	75.496
South	11.23	100	55	483	88	8.775
South Beaver Creek	10.38	872	656	1,385	1,049	145.174
Three Gulches	10.38	432	262	516	419	63.268
Tolland	7.24	74	50	170	80	4.44
Upper Apex Valley	10.2	86	31	300	49	1.355

CWPP evacuation zone matrix for Gilpin County.

Top: Gilpin County Sheriff Armstrong explaining the Office of Emergency Management evacuation zones in Gilpin County and how individual zones can be notified to evacuate. Bottom: Each matrix row shows an individual evacuation zone and contain information on square acres, structures, addresses, and population.

and structural ignitability. It also provided educational materials for doing mitigation around homes.

The station also had Community Wildfire Protection Plan Public Survey forms that could be filled out onsite. The CWPP survey is a key measure of public opinion and sentiment on living in wildfire country. It can also be accessed from the Gilpin County website (gilpincounty.colorado.gov) from the Board of County Commissioners webpage. CSU Extension Agent Jennifer Cook (Jennifer.Cook@colostate.edu) can also be contacted for more information about the survey.

For more information about the 2024 update to the Gilpin County CWPP, contact Sheriff Armstrong (karmstrong@gilpincounty.org) or SWCA Project Manager Rob Fenwick (Robert.Fenwick@swca.com).

Public Notice

Gilpin County School District RE-1
Board of Education
Education Enhancement Tax Statement
May 7, 2024

The Board of Education and the school community are grateful to the voters of the City of Black Hawk for the 1.5% sales tax on lodging, food, and beverage revenue that has been dedicated to the District. **The Education Enhancement Tax (EET) revenue for the school is commonly referred to as the Black Hawk money.**

- 2007-The Great Recession: Gilpin County School District (GCSD) had already been experiencing years of expenditures that exceeded the revenue provided by the state.
 - Maintaining the operations of the school and keeping the doors open for Gilpin children was in financial jeopardy.
 - Board of Education members at that time approached the City of Black Hawk to enter into discussions that evolved into a collaboration to generate needed revenue, keep local control of the community's school, and keep the school property tax mill levy low.
- 2008-The City of Black Hawk taxpayers voted for and passed the Educational Enhancement Tax (EET).
 - The EET dedicated 1.5% sales tax revenue for lodging, food, and beverage for Gilpin school students.
 - Black Hawk taxpayers kept the school open for Gilpin children; saved local control of the school; and saved GCSD from being potentially absorbed into another school district.
- 2009-The Colorado Legislature created a new budget stabilization factor in the Public School Finance Act formula due to the Great Recession and economic downturn that put pressure on the state's budget.
 - The factor is a state budget tool

that proportionally reduces the amount of total funding for each school district below the level otherwise authorized to keep up with inflation as approved by voters in Amendment 23.

- The factor reduces state revenue share to districts. For the last fifteen years (2009-2024) the Budget Stabilization, as well as additional recessions, has reduced GCSD state share revenue a total of \$5,882,208.

- 2024-The EET tax, the Black Hawk money, has generated \$15,402,749 for Gilpin County School children.

EET Ensures Reduced Local School Property Taxes

- GCSD has one of the lowest total program mill levies in Colorado at 6.651 mills. Of the 178 school districts in Colorado, the GCSD mill levy is the eighth lowest.
- The Boulder Valley School District (BVSD) total program mill levy is 27 mills and with overrides and bond redemption the total levy is 48.024 mills.
- The Jefferson County School District (Jeffco) total program mill levy is 27 mills, and with overrides and bond redemption the total levy is 44.526 mills.
- The GCSD total levy with overrides is 9.477 mills, thanks to the City of Black Hawk and its voters.

The EET agreement between the City of Black Hawk and GCSD is to keep the school mill levy low and use EET revenue to:

- Use for school operations and not ask voters for a mill levy override, increasing property taxes.
- Use for capital improvements and not ask voters for a bond issue, increasing property taxes.

EET Revenue Uses

- Increased the teacher starting base salary over the past 10 years from \$33,000

to \$50,000.

- Among program expenditures, the EET supplements and provides:
 - preschool tuition, extracurricular activities, and provides a Chromebook computer to every student.
 - Safer and more reliable transportation fleet of new, upgraded buses, adding an activity bus and a handicap accessible bus for student use.
 - Upgraded activity field and added a 6-lane track.
 - Provided a new and enhanced preschool and elementary playground and increased safety by paving the south parking lot, lining, and creating a one way traffic flow.
 - Supported a long list of capital improvements to enhance student and staff safety at school.
 - All of these achievements are at risk if Gilpin County voters approve a county-wide sales and use tax.

Borrowing \$4.2 Million

The State of Colorado requires GCSD to resolve the non-compliant groundwater discharge from the on-site wastewater treatment facility.

- The best, cost-effective solution is to construct a sewer pipe for \$8.1 million from GCSD to the Black Hawk Central City Sanitation District.
- The Board pursued certificates of participation to borrow \$4.2 million to mitigate cash flow concerns and maintain the financial reserves required by CDE.
- The revenue from the Black Hawk money goes into the General Fund, freeing up other revenue for capital projects.

Potential EET Revenue Loss

There are a number of actions in the EET Intergovernmental Agreement (see agreement) that will end the school Black Hawk money, for example, the creation of a Regional Transportation District that includes part or all of Gilpin County; GCSD

increasing the school mill levy; or, a sales tax, use tax, or lodging tax imposed by Gilpin County voters.

The loss of the EET revenue ...

- Would result in teacher position cuts, elimination of school curricular and extracurricular programs, jeopardize student and staff safety, and put GCSD into a financial survival existence.
- May result in the loss of local community control of the school; and GCSD may be dissolved and absorbed into another school district, for example BVSD, with a 48 mills school total tax levy, or Jeffco, with a 45 mills school total tax levy.
- May force the Board of Education to ask District voters to pass mill levy override questions just to maintain operations and pass bond issue questions for capital improvements to address deferred facility maintenance, transportation, safety, and technology student needs. Either and both would unnecessarily increase the local property owners' tax liabilities.

Thank You

Thank you for considering and evaluating this significant financial risk to our school if we lost the Black Hawk money. The GCSD Board of Education is extremely grateful to the City of Black Hawk and its residents for ongoing support of our school and students.

ADOPTED AND APPROVED this 7th day of May, 2024 by the Gilpin County School District RE-1 Board of Education.

Sarah Swanson, President
Joe Marr, Vice President
Kirsten Goodlett, Secretary/Treasurer
Joe Stranly, Member-at-Large
Tami Velasquez, Member-at-Large

Classifieds

Firewood

HIGH TIMBER FIREWOOD
Pine, Hardwood or Mix
Immediate Delivery
303-258-7942

For Rent

ROLLINSVILLE MINI-STORAGE
www.rollinsvilleministorage.com
Ask us about our move-in special!
303-258-0648

SPACIOUS BASEMENT APARTMENT. Towering trees, a flowing stream, aspens in the meadow, Rollinsville area, 1400 Sq. Ft, completely remodeled, Raised basement apt, garage space, pets negotiable, One person, Utilities Included, Ref, Dep, \$2200, 303-258-7258

For RENT. Beautiful walkout apartment with views on splendid wildlife and wildflower-filled acreage near Nederland in a quiet subdivision. Gentle summer breezes. Antique potbelly stove adds ambiance. \$1,725 per mo. First, last, and security. 6 mo. lease. Sorry, no dogs. Available on June 15. Call 303-258-9322 landline (no texts).

For Sale

WOODWORKING TOOLS AND equipment sale. Various drills, bits, saws, blades, routers, miter saw, drill press, band saw, Delta Unisaw, planner, plate joiner, roto hammer drill, hole shooter drills, clamps, dust collector system, vacuum, Shoptsmith, 28 foot aluminum extension ladder, and much more. Email me at 1407JSale.24@gmail.com for a detailed list and pricing of sale items. Nederland address. Cash and PayPal only. By appointment only.

SACRIFICING MY ENTIRE GLASS FUSING STUDIO; 2 kilns, multiple cutting /grinding tools, 102 lbs glass, multiple molds & much, much more.
gatormichals1@q.com

SEASONAL GARDENER –
PUBLIC WORKS DEPARTMENT
City of Central PT Hourly range
from \$20.05 - \$23.55 per hour DOQ/E

The City of Central is seeking qualified applicants for a part-time semi-skilled position involving horticulture work with specific responsibility for the care and maintenance of flowers, trees and shrub beds located on City properties and along rights-of-way. The main emphasis of this position will be made on the maintenance of floral displays. This position is required to work during special events and on occasional weekends. This position works under the direct supervision of the Public Works Supervisor. Requirements: High School diploma or GED. Must possess and maintain a valid Colorado Driver's License. Apply now: A detailed job description can be found on the City's website www.centralcity.colorado.gov. Qualified applicants should submit a resume and cover letter to the Finance/Human Resources Director at arobbins@cityofcentral.co or mail to P.O. Box 249 Central City, CO 80427. The position is open until 06/14/2024. EOE.

Help Wanted

GILPIN COUNTY IS HIRING!

- Child Camp Leader: \$16.69 - \$22.53
 - Deputy – Court Security: \$30.77 - \$43.77
 - Deputy - Detentions - POST Certified: \$30.77 - \$43.77
 - Deputy – Patrol: \$30.77 - \$43.77
 - Detentions Officer - Non-Certified: \$27.88 - \$39.66
 - Emergency Communications Dispatcher I: \$22.69 - \$31.78
 - Emergency Preparedness Specialist (Part-Time): \$31.39 - \$43.99
 - Facilities Maintenance Tech I: \$20.63 - \$28.89
 - Financial Analyst: \$65,300 - \$91,500
 - Guest Services Representative-Substitute Position: \$17.36 - \$23.46
 - IT Specialist: \$79,000 - \$110,600
 - Office Assistant – Public Works: \$17.36 - \$23.46
 - Records Specialist: \$17.36 - \$23.46
 - Recreation Generalist II: \$22.69 - \$31.78
 - Road & Bridge Worker: \$17.36 - \$23.46
 - Senior Services & Transportation Driver: \$15.77 - \$21.30
 - Sports Official: \$ 20.63 - \$28.89
 - Volunteer - Athletic Coach: Unpaid volunteer position
 - Volunteer - Meals on Wheels Program: Unpaid volunteer position
- Please go to our website to apply at <https://gilpincounty.colorado.gov/careers>

Real Estate

FOR SALE
1507 Lazy Z Rd, Nederland
4BR/3BA, 3453 sqft/1.06 acres
Easy access to National Forest
\$1,097,000

Timmy Duggan
RE/MAX Elevate
303 441 5611

Services

BRIGHTWOOD MUSIC OFFERS INSTRUMENT REPAIRS. Brightwood Music is located at 20 E Lakeview Dr., Unit 109 Nederland. Need to fix up that instrument you found in your grandpas attic? Found a bargain at the local thrift store, on that violin you always wanted? We offer regular luthier services. From restringing your instrument to detailed refret jobs and complete reconstruction! We are open Wednesday through Sunday and can normally get started on your repair the day you bring it in. Call 303.258.8863 for info!

BRIGHTWOOD MUSIC OFFERS MUSIC LESSONS 7 DAYS A WEEK! Brightwood Music lessons are available for all ages and abilities. Now offering socially distant, in-person lessons, Skype and Zoom lessons. To find out more about individual instructors, music lessons, or Brightwood Music in general, please call 303.258.8863.

Public Notice

PUBLIC NOTICE OF MEETING OF GILPIN COUNTY BOARD OF EQUALIZATION

PURSUANT TO C.R.S. 39-8-104

Notice is hereby given that on July 30, 2024, the Gilpin County Board of County Commissioners, sitting as the County Board of Equalization (CBOE), will hear appeals from taxpayers who protested their property valuation.

In the first step of the appeals process, property owners filed objections to the valuations set by the Assessor. Only those owners who properly filed written objections on the form provided by the Assessor may petition the CBOE for a hearing with a qualified Hearing Officer.

To preserve the right to appeal, an appeal must be postmarked or delivered to the Board of County Commissioners Office at the Courthouse on or before close of business July 15, 2024, for real property, and close of business July 20, 2024, for personal property. Recommendations from the Hearing Officer will be submitted to the CBOE for consideration on July 30, 2024.

If you disagree with the CBOE's decision, you may appeal further to the State Board of Assessment Appeals (BAA), request a binding arbitration hearing, or file with the District Court. These appeals must be filed within thirty days of the date the CBOE decision is mailed to you as stated in the Certificate of Mailing enclosed with the decision.

Current Job Openings for the City of Black Hawk

Go to www.cityofblackhawk.org and click on Job Openings for full Job Descriptions, Requirements, and to apply online.



POLICE OFFICER (LATERAL OR POST-CERTIFIED ONLY), Salary Range: \$78,981 - \$128,003 / Annual (paid hourly), DOQ/E.
The City of Black Hawk is currently accepting applications for the position of Police Officer (POST certified or laterals). The position is responsible for performing public safety functions and for providing for the enforcement of federal, state, and municipal

law. Excellent Benefits package (See **Benefits**). **Apply Now:** <https://www.cityofblackhawk.org/>

MAINTENANCE WORKER I, Salary Range: \$52,902 - \$74,063 / Annual (paid hourly), DOQ/E. Operates both light and heavy equipment and performs routine, semi-skilled to skilled work in the maintenance and construction of streets, open space, summer flowers, parks, storm drainage systems, traffic control, signage, striping, landscaping, snow plowing, and City trash operations. Excellent Benefits package (See **Benefits**). **Apply Now:** <https://www.cityofblackhawk.org/>

WATER UTILITY OPERATOR I, II, III or IV, Salary Range: \$55,518 - \$89,977 / Annual (paid hourly), DOQ/E.
Operator I: Colorado Class "D" Water Plant Operator and Class 1 Distribution

Systems Certifications required within one (1) year of employment. Operator II: Colorado Class "C" Water Plant Operator and Class 2 Distribution Systems Certifications required. Operator III: Colorado Class "B" Water Plant Operator and Class 3 Distribution Systems Certifications required. Operator IV: Colorado Class "A" Water Plant Operator and Class 4 Distribution Systems Certifications required. A Water Utility Operator III will operate and maintain the water treatment plants, distribution system, raw water system, maintain and repair water mains, service lines, valves, pumps, and water-related appurtenances. This is the journey-level class in the Utility Operator series and is expected to perform a full range of all duties with minimal instruction and assistance. Excellent Benefits package (See **Benefits**). **Apply Now:** <https://www.cityofblackhawk.org/>

City of Black Hawk Benefits:

The City pays 90% of the medical premium and 100% coverage for dental, vision, group life, and short/long-term disability. The City offers an excellent retirement package with a guaranteed 8% match of base earnings and up to a 12% match based on employees' retirement election. Newly hired employees enjoy over seven weeks of combined annual leave (PTO and Sick), which increases with tenure. Additional benefits include an annual Health and Wellness Reimbursement allowance, an annual Uniform Allowance, a cell phone stipend, and membership to the Gilpin County Recreation Center. The City of Black Hawk conducts post-offer drug/alcohol testing as a condition of employment per the City's Drug and Alcohol Use policy. In addition, post-offer background investigations and physical exams are also required.

Statepoint Crossword and Sudoku Puzzles

THEME: SUMMER BLOCKBUSTERS

ACROSS

- 1. Molten rock in earth's crust
- 6. Scarlett Johansson's 2013 voice only role
- 9. Jezebel's idol
- 13. Not silently
- 14. Pro vote
- 15. Italian bowling
- 16. Proclaimed as true without proof
- 17. Rob Manfred's org.
- 18. Savory taste sensation
- 19. *Tom Cruise's 1986 blockbuster
- 21. *It featured the song "What Was I Made For?"
- 23. Wrath, e.g.
- 24. Milton Bradley's "The Game of _____"
- 25. General Post Office
- 28. A woodwind
- 30. Group of trained professionals, pl.
- 35. Icy precipitation
- 37. Concert units
- 39. Charles Dickens' Heep
- 40. Scandinavian capital
- 41. Rebroadcasted
- 43. Khrushchev's domain, acr.
- 44. *What the gang did in 1988's "A Fish Called Wanda"
- 46. Exploding star
- 47. Clarified butter
- 48. Airport surface
- 50. Highway hauler
- 52. Breed
- 53. Miss Muffet's repast
- 55. Not flow
- 57. *Tim Burton's 1989 and 1992 title character
- 60. *It featured the song "Summer Lovin'"
- 63. Popular fashion magazine
- 64. Road in Rome
- 66. Comment to the audience
- 68. Deposit the ashes
- 69. Giant Hall-of-Famer Mel _____
- 70. Canine skin infection
- 71. Humble and docile

- 72. Name badges, acr.
- 73. Streamlined

DOWN

- 1. Bonkers
- 2. Sir Mix-____-_____
- 3. Kind of boots in the '60s
- 4. One M in MMR vaccine
- 5. Slowly and gracefully, in music
- 6. Mass number
- 7. Snake-like reef dweller
- 8. Teacher of Torah
- 9. *"Oppenheimer" subject
- 10. Popular smoothie berry
- 11. Pinnacle
- 12. Hula dancer's necklace
- 15. B in FBI
- 20. Open up
- 22. Half of NFL
- 24. a.k.a. Hansen's disease
- 25. *1990 Swayze/Moore blockbuster
- 26. Trattoria staple
- 27. Petroleum tanker
- 29. *It premiered in the U.K. on 6/6/76, with The
- 31. Chemical cure
- 32. Revered Hindu
- 33. Drawing support
- 34. *2001 blockbuster ogre
- 36. Type of rich soil
- 38. "Keep this information" button
- 42. Name-chooser
- 45. Wyatt Earp and such
- 49. Cuban dance syllable
- 51. Letter-resembling supports
- 54. End of a poem
- 56. Primary
- 57. Like certain china
- 58. Malaria symptom
- 59. Ankara native
- 60. Gangster's pistols
- 61. Cosine's buddy
- 62. U2 member
- 63. Vigor's partner
- 65. It would
- 67. Comic book cry of horror

CROSSWORD														
1	2	3	4	5		6	7	8		9	10	11	12	
13						14				15				
16						17				18				
	19				20			21	22					
			23				24							
25	26	27		28		29			30		31	32	33	34
35			36		37			38		39				
40					41				42		43			
44				45		46					47			
48					49		50			51		52		
				53		54			55		56			
	57	58	59					60				61	62	
63						64	65			66				67
68						69				70				
71						72				73				



SWITCH & GET
\$25

Off First Month of New Service!
USE PROMO CODE: **GZ590**



Consumer Cellular

CALL CONSUMER CELLULAR **888-804-0913**

©2023 Consumer Cellular Inc. For promo details please call 888-804-0913

© StatePoint Media

Puzzle Solutions

R	O	A	C	H		E	M	S		D	A	B	S	
I	N	F	R	A		L	A	P		R	U	R	A	L
S	T	E	A	L		L	E	A		H	A	I	R	Y
C	O	W	B	O	Y	S		S	K	Y	L	A	B	
		S	E	A		O	M	I	T					
O	V	A		S	L	A	V		T	H	R	A	L	L
R	E	T	E		T	H	E	W		M	A	S	A	I
B	L	O	B		A	E	R	I	C		R	I	N	G
I	A	M	B	S		M	E	N	D		E	A	C	H
T	R	Y	S	T	S		A	D	I	T		N	E	T
				R	U	N	T		C	R	U			
	C	O	R	O	N	A		S	T	A	T	I	O	N
D	R	U	I	D		T	A	N		C	U	L	P	A
V	E	R	N	E		A	G	O		T	R	I	E	R
D	E	S	K			L	A	W		S	N	A	C	K

CROSSWORD: JUNE 6

4	9	5	3	2	1	7	6	8
6	3	8	7	4	5	9	2	1
1	2	7	9	8	6	3	5	4
9	1	4	5	3	2	8	7	6
7	5	6	8	1	4	2	3	9
3	8	2	6	7	9	4	1	5
2	4	3	1	5	8	6	9	7
8	6	1	2	9	7	5	4	3
5	7	9	4	6	3	1	8	2

SUDOKU: JUNE 6

SUDOKU

Call today and receive a **FREE SHOWER PACKAGE PLUS \$1600 OFF**

SAFE STEP WALK-IN TUB 1-855-576-5653

With purchase of a new Safe Step Walk-In Tub. Not applicable with any previous walk-in tub purchase. Offer available while supplies last. No cash value. Must present offer at time of purchase. CSL# 1082165 NSCH 0082989 0083445

						3	6							
8						4								5
						5	1	9						8
	8	4	9	3						2				
7														4
	2					1	8	7	9					
5		2	1	7										
1				8										7
			8	3										

© StatePoint Media

Fill in the blank squares in the grid, making sure that every row, column and 3-by-3 box includes all digits 1 through 9.

LOCAL SERVICE AND EXPERTISE MILES ABOVE ORDINARY!



ELISE WALDRON
SPECIALIZING IN MOUNTAIN REAL ESTATE



COLDWELL BANKER REALTY

elisewaldronhomes.com
elise.waldron@cbrealty.com
303-250-2771





MEET THE DISTRICT 1 REPUBLICAN CANDIDATES!

The Mountain-Ear
is hosting a

Roundtable Discussion

Saturday, June 15, 5:30 p.m.
at Roy's Last Shot

A **roundtable is an informal discussion**, similar to sitting at a kitchen table and talking about things of importance with your family. The purpose of the Roundtable is for the candidates to discuss specific topics on equal footing.

The event is scheduled for 90 minutes. It will not go overtime.

It is moderated only in the sense of making sure everyone present is respectful of each other, making sure it stays on topic, and making sure the public is not interrupting. The audience is expected to listen, not interact.

There will be 5 questions or fewer. Candidates will not get questions ahead of time.

Both candidates submitted responses to previous questions. Their answers are published without any edits, as they were received. Please read both articles, which offer answers to the initial questions. There is FREE access. Use the QR code or the link.

After reading the previous questions, readers may submit additional candidate questions for consideration by email to: p2pcandidatequestions@gmail.com. Deadline for submitting questions is Friday, June 14 at 3 p.m., to allow time to sort questions and select those that will be shared during the discussion.



JESSICA KAYS

<https://www.themtnear.com/articles/candidate-questions-jessica-kays/>



MARIE MORNIS

<https://www.themtnear.com/articles/candidate-questions-marie-mornis/>

THE MOUNTAIN EAR

If you have any questions, please reach out by email to info@themountaineer.com or call Barbara Hardt at 303-881-0365

Don't go it alone.

**Carpool and
combine trips**
to reduce
ground-level ozone.

Created from pollutants like car
exhaust, ozone is the Front
Range's biggest air quality issue
and a leading cause of
respiratory problems.




SIMPLE STEPS BETTER AIR.ORG



Know when it matters most:
text **"BETTERAIRCO"** to **21000**
to sign up for ozone alerts.