



# DISCOVER

Wood County Area **2025**

*Enjoy Wood County - in any season!*







## **SLOT MACHINES | ELECTRONIC TABLE GAMES | DRINKS | FOOD | FUN**

Discover the excitement at Ho-Chunk Gaming Nekoosa, featuring over 400 slot machines, electronic table games, a full-service bar, and dining at the Swiftwater Lounge. Enhance your visit with the Rewards Club, offering exclusive perks, VIP benefits and special promotions for Veterans and First Responders.

Enjoy convenient RV parking with eight electrical hookups, ATV/UTV trailhead, shuttle service, and the Whitetail Crossing convenience store with an ATV/UTV wash station. Join us today for outstanding service and an unforgettable experience!



949 CTY RD G, NEKOOSA, WI 54457 | 800.782.4560



# Welcome to Wood County!

Home to nearly 75,000 year round residents, Wood County acts as a breathtaking backdrop for nature enthusiasts, lively scene for artists, and a hot spot for events ranging from sports games to concerts. Each town offers a unique set of community events, traditions, and landmarks to visit. From northern Wood County's Marshfield to centrally located Wisconsin Rapids and southern Wood County's Nekoosa, there's something for everyone.



## DISCOVER WOOD COUNTY

*The best of all seasons*

is published by Multi Media Channels, LLC.



PO Box 408  
Waupaca, WI 54981  
Hours: Monday-Friday 8am-5pm



© Copyright Multi Media Channels LLC 2025. All Rights Reserved.  
No part of this publication or any of its contents may be reproduced,  
copied, modified, or adapted without the prior written consent of  
Multi Media Channels LLC.

## ▶ DISCOVER Contents

Welcome to Wood County.....	4	Nekoosa.....	20
Events Calendar .....	4	Pittsville .....	22
Wood County Parks.....	5	Port Edwards .....	24
Wood County Libraries .....	6	Rudolph .....	26
Arpin.....	8	Vesper.....	28
Auburndale.....	9	Wisconsin Rapids .....	29
Grand Rapids/Kellner.....	10	Rome .....	35
Marshfield .....	12	Plover .....	36

To view this publication online, visit  
**wrcitytimes.com** and click  
on the Discover Wood County ad





# WELCOME TO Wood County

**C**entrally located in the state, Wood County is home to scenic Wisconsin nature that serves as backdrop for outdoor recreation whether it be hiking or cross country skiing, a buzzing community of art, museums, and music, and local businesses that enrich each community they live in.

The Wisconsin River winds throughout the county, providing boating, water skiing, swimming, kayaking, and fishing in the summer—and when the cold air settles in winter the river provides a spot for ice fishing, cross country skiing, 260 miles of trails for snowmobiles to travel, and even ice skating (along with the 78 other lakes residing in Wood County).

There is something unique to do in each town you stumble across, like Pittsville High School FFA's Splash of Red Cranberry Tours, Marshfield's Wildwood Zoo, Port Edwards' art exhibits at The Alexander House, Rudolph's Grotto Gardens, and so much more. Big town events can be found in small town central Wisconsin, like Marshfield's Central Wisconsin State Fair that hosts numerous musical acts, carnival rides, and several barns full of 4-H animals ready to compete. Can't make the Central Wisconsin State Fair? No problem! Wood County also hosts events like the Maple Fall Fest, a summer full of Wisconsin Rapids' Rafters' games, or catch a show at the Performing Arts Center in Wisconsin Rapids year round.

Wood County offers a small town, welcoming feel with the advantages and activities typically found in a big city.

## MARCH

### Nekoosa Walleye Days

March 22-April 12  
Nekoosa

## APRIL

### Nekoosa Area Easter Events

April 19  
Nekoosa Community Center  
416 Crestview Lane, Nekoosa

## MAY

### Marshfield Dairy Fest

May 30-31  
222 S Central Ave., Marshfield

### Center City Fun Day

May 31  
Wenzel Family Plaza  
201 S Chestnut Ave, Marshfield

## JUNE

### Lunch by the River

June – August  
Thursdays 11:30 a.m. - 1 p.m.  
Veterans Memorial Park  
Wisconsin Rapids

### Gather by the Gazebo

2nd Tuesday, June-August  
Rome Town Center  
1156 Alpine Dr, Nekoosa

### Rendezvous in the Park

3rd Wednesday, June-August  
Riverside Park  
Nekoosa

### Pioneer Festival

June 7-8  
Historic Point Basse  
364 Wakely Road  
Nekoosa

### Cranberry Blossom Fest

June 19-22  
Wisconsin Rapids  
blossomfest.com

### Auburndale Music Fest

June 20-22  
Auburndale Memorial Park  
10654 Park Ave, Auburndale

## JULY

### Marshfield 4th of July

**Firework Show**  
Central Wisconsin State  
Fairgrounds  
513 E. 17th Street, Marshfield

### Pittsville's 4th of July

**Parade & Celebration**  
Riverside Park  
1st Ave, Pittsville

### Wisconsin Rapids Fireworks

Downtown Wisconsin Rapids

### Wisconsin State Shoot

July 8-13  
Homegrounds Shooting Complex  
1312 Akron Drive, Nekoosa

### WI State Water Ski Show

**Championships**  
July 17-20

### South Wood County - Red Sands

6411 South Park Road  
Wisconsin Rapids

### Hub City Days Car & Bike Show

July 24-26  
Downtown Marshfield

## AUGUST

### Arpin Truck & Tractor Pull

August 2  
Kandy Kane Park  
6230 County Rd N, Arpin

### Rudolph Old Tractor Club Show

August 9  
Rudolph Park  
State Highway 13/34, Rudolph

### Kellner Cornfest

August 15-16  
80th Street, Wisconsin Rapids

### Central Wisconsin State Fair

August 19-24  
Central Wisconsin State  
Fairgrounds  
513 E. 17th Street, Marshfield

## SEPTEMBER

### Splash of Red Cranberry Tours

Late September – Late October  
5407 1st Avenue, Pittsville

### Downtown Grand Affair

September 7  
West Grand Ave.,  
Wisconsin Rapids

### Maple Fall Fest

September 13 & 14  
Wildwood Park & Zoo  
1800 S. Roddis Ave, Marshfield

## OCTOBER

### Nekoosa Giant Pumpkin Fest

October 4-5  
Riverside Park  
916 Prospect Ave, Nekoosa

## NOVEMBER

### Rekindle The Spirit Parade

November 26  
Downtown Wisconsin Rapids

## DECEMBER

### Rotary Winter Wonderland

November 28 – December 31  
Wildwood Park & Zoo  
1800 S Roddis Ave, Marshfield

### Nekoosa Hometown Christmas

November 29-December 20  
Riverside Park  
916 Prospect Ave, Nekoosa

### Marshfield Holiday Parade

December 4  
Downtown Marshfield

### Rudolph Country Christmas

December 6  
Main Street, Rudolph

### Christmas In The Barn

December 5-6  
Memory Lane Farm 8638  
Heritage Dr, Marshfield

### Santa in the Park

December 9  
Auburndale Memorial Park  
10654 Park Ave, Auburndale

### Christmas in Kandy Kane Park

December 13  
Kandy Kane Park  
6230 County Rd N, Arpin



# ▶ WOOD COUNTY Parks



## Dexter Park and Lake Dexter

The 300 acre Lake Dexter is the focal point of Dexter Park, surrounded by over 1,000 acres of land with trails. Dexter Park homes 109 individual campsites and allows hunting in designated areas of the park. Lake Dexter was created in 1962 and has a maximum depth of 17 feet at its deepest point.



## Nepco Lake County Park

Located on the north side of 496 acre Nepco Lake, this 125 acre county park provides over a mile of shoreline, giving plenty of space and opportunities for fishing, contains a public boat landing, and over 10 miles of multi-use trails.



## North Wood County Park

The Yellow River winds through North Wood County Park, with a 225 foot suspension bridge arcing over the water to make for a picturesque walk. In addition to the Yellow River, you can find two small manmade dams that create Lake Kaunewinne (five acres) and Lake Manakiki (11 acres). You can also find 99 campsites on site with an abundance of amenities.



## Powers Bluff Park and Winter Recreation Area

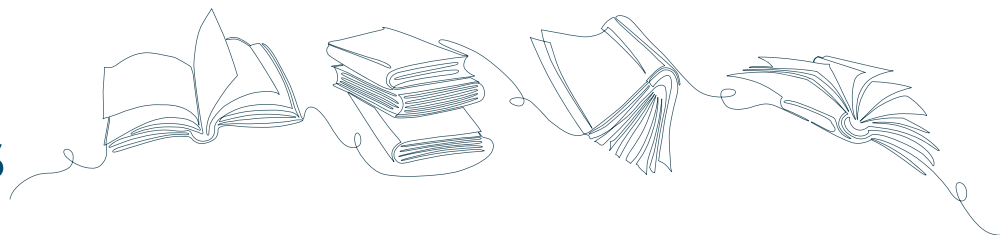
On what was once a mountain range that covered most of northern Wisconsin, Powers Bluff Park now resides and offers year round fun. From sledding, snow tubing, and skiing, to six miles of mountain bike trails and three miles of multi-use trails—Powers Bluff cements itself as an all season nature destination.



## South Wood County Park Lake Wazeecha

Lake Wazeecha is the focal point of South Wood County Park, with a four mile trail encircling the 148 acre lake. With 73 campsites, there is plenty of opportunity to enjoy the park overnight. In addition to the four mile trail, there are disc golf courses, covered shelters, and plenty of picnic areas. South Wood County Park hosts the State Water Ski Tournament each year, making it a fun filled event for all.





**ARPIN:**  
**LESTER PUBLIC LIBRARY**

8091 County E, Arpin  
715-652-2273  
arpinpl.org  
Hours: Mon. and Thurs. 3-7, Tues. 9-5,  
Wed. and Sat. 9-12, Fri. 9-5

**MARSHFIELD:**  
**EVERETT ROEHL MARSHFIELD PUBLIC LIBRARY**

105 S Maple Avenue, Marshfield  
715-387-8494  
marshfieldlibrary.org  
Hours: Mon.-Thurs. 9-8, Fri. 9-6, Sat. 9-5,

**NEKOOSA:**  
**CHARLES AND JOANN LESTER LIBRARY**

100 Park Street, Nekoosa  
715-886-7879  
nekoosalibrary.com  
Hours: Mon. through Thurs. 9-6, Fri. 9-5, Sat. 9-12

**PITTSVILLE:**  
**PITTSVILLE COMMUNITY LIBRARY**

5291 Third Avenue, Pittsville  
715-884-6500  
pittsвилlelibrary.org  
Hours: Mon. 2-7, Tue.-Thurs. 10-5, Fri. & Sat. 9-12

**VESPER:**  
**LESTER PUBLIC LIBRARY OF VESPER**

6550 Virginia Street, Vesper  
715-569-4669  
vesperlibrary.org  
Hours: Mon. and Tues. 10-5, Wed. 2-7,  
Thurs. 2-7, Fri. & Sat. 9-12

**WISCONSIN RAPIDS:**  
**MCMILLAN LIBRARY**

490 East Grand Avenue, Wisconsin Rapids  
715-422-5136  
mcmillanlibrary.org  
Hours: Mon. through Thurs. 9-8, Fri. 9-6, Sat. 9-5



**We hope you enjoy Discover Wood County Area Magazine.**

**Huge thank you to participating businesses and those sharing  
editorial content and photos.**

**Visit your local businesses and help support their local efforts.**

*Gloria, Kimberly, Katie & Kelli*





# Touching Lives and Securing Futures since 1883.

Family, future, quality of life.  
These are values we all share.  
Together we can celebrate  
the good things in life and  
continue to make a positive  
impact on the lives of others  
and our community.

**Scott S. Paterick,**  
**FICF, LUTCF, ChFC®, CLU®**

P.O. Box 422

Wisconsin Rapids, WI 54495

B 715-424-1873,

[scott.s.paterick@mwarep.org](mailto:scott.s.paterick@mwarep.org)

[reps.modernwoodmen.org/spaterick](http://reps.modernwoodmen.org/spaterick)



**Life insurance | Retirement planning**  
**Financial services | Member benefits**

# ▶ DISCOVER Arpin



## Arpin Fast Facts:

The village of Arpin was first established in 1890 when the John Arpin Lumber Company constructed a sawmill a mile east of where the village of Arpin currently resides.

John Batiste Arpin and his brother first came to the central Wisconsin area in the 1860s to pursue logging opportunities.

Still standing today, John Arpin's Queen-Anne styled house built in 1889 was built to show the construction company's scale of operations. The Arpin house, built over one hundred and thirty years ago is still homing guests and available for tours allowing guests to take a step back in time.

Originally occupied by Potawatomi indigenous people who welcomed new settlers with dances and cultural traditions, the first large wave of White settlers came to Arpin in the early twentieth century. Jewish settlers from Europe made central Wisconsin their home, followed by several larger Russian families years later.

The town continued to evolve fast, and by 1920 the dairy industry had surpassed the lumber industry with four cheese factories all within miles of Arpin that employed many of the village's residents.

## Arpin Truck & Tractor Pull

The annual Arpin Truck & Tractor pull is held the first weekend in August. ATV's, garden tractors, trucks and tractors compete.

On Friday evening, modified and stock ATV's and garden tractors compete. Saturday is the main competition with truck pulling weigh-in and registration.

Sunday's events begin with a parade on Main Street. The tractor pull starts at 1 p.m.

Sunday The Arpin Truck & Tractor Pull is held in Arpin's Kandy Kane Park and is sponsored by the Arpin Advancement Association.



## Powers Bluff

Powers Bluff is a worn down peak of an ancient mountain range which once covered northern Wisconsin. It is comprised almost entirely of solid quartzite, and the highest point of elevation in Wood County.

A 1.5 mile long trail stretches through out Powers Bluff, with 70 acres of the park designated as a State Natural Area.

The south 80 acres of the park is listed on the National Register of Historic Places as a Native American Cultural Sensitivity Area with preserved Native American dance rings, and burial grounds.

Powers Bluff is a unique park in Wisconsin, with it having attractions year round. From hiking in summer to tubing in winter, Powers Bluff has much to offer year round.

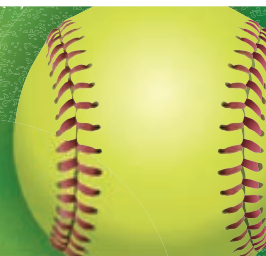


## Christmas in Kandy Kane Park

An annual nighttime holiday parade is set for the second Saturday in December. Following the parade, the lights come on in the park and Santa makes an appearance, to visit with the kids and hear their Christmas wishes. For more information follow Friends of Kandy Kane Park on Facebook.

## Softball Tournament

The Arpin Lions sponsor an annual Softball Tournament on Labor Day Weekend, with games beginning Friday night and continuing thru Labor Day.



## FULL SERVICE TREE CARE PROVIDER

- Tree Removal
- Planting
- Emerald Ash Borer Treatment
- Pruning
- Plant Health Care

ISA Certified Arborist® • Arpin, WI

**715-451-2709**



448058

## Your Local Independent Licensed Insurance Agent

Located in Wisconsin Rapids, right next to the 4 Star Family Restaurant & in the same building as HearCare, LLC



**JTP Insurance Group**

Call or Text 715-315-7932

to connect with a licensed insurance agent

Check out our new website! [www.jtpig.biz](http://www.jtpig.biz)

448052



## ▶ DISCOVER **Auburndale**



**T**ucked away eight miles east of Marshfield, with a population barely reaching 700, Auburndale and its inhabitants embrace the farming tradition much of the town has become known for. With annual events like Drive Your Tractor To School Day, community members celebrate their shared history of farming. Farming embraces the family and friends aspect of the community, with local spots like Berryland Farms, a community staple for decades that now operates as a pick your own apple orchard. Auburndale offers the small town and tight knit community set in a scenic Wisconsin setting, no matter the season.

Every summer, Auburndale brings the community together during Auburndale Music Fest. Held on June 20-22 in 2025, Auburndale Music Fest hosts a wide variety of musical acts, ensuring there is something for everyone to enjoy.



A black and white advertisement for Paul Gross Jewelers. It features a woman with her hair pulled back, wearing a black turtleneck, a necklace, and a bracelet. She is posing with one hand near her face. The word 'Style' is written in a large, elegant, cursive script across the right side of the image. In the bottom right corner, the text 'PAUL GROSS JEWELERS Wisconsin Rapids' is displayed in a serif font.

## WATCH YOUR FAVORITE SPORTS HERE!

**HAPPY HOUR**  
Mon-Thurs 2pm-6pm

- Check out our FB for Entertainment
- Karaoke ▪ Cribbage Dates



Join us for our Annual Cornfest Weekend -  
third weekend in August

4111 80<sup>th</sup> Street South  
Wisconsin Rapids - Downtown Kellner

**715-423-2428**

Hours: Monday-Friday 1:00-Close  
Saturday & Sunday Noon to Close



## ▶ DISCOVER Grand Rapids/ Kellner

**G**rand Rapids is the third largest community in Wood County, and one of the safest towns in Wisconsin. Home to Lake Wazeecha and South Wood County Park which offers hiking, bicycling, fishing, swimming, disc golf, picnics, camping, and boating. Grand Rapids has a variety of outdoor activities for nature enthusiasts, with six golf courses nearby, three campgrounds, and three parks — Grand Rapids can host your time playing 18 holes or snowshoeing beside the lake.



**Kellner Cornfest:** Always the 3rd weekend in August. Come join in the fun with a parade, flea market, games, food vendors, and music in beautiful downtown Kellner.



## VOTED TOP 10 FISH FRY IN WISCONSIN!



#1 IN WOOD COUNTY  
#1 IN WISCONSIN RAPIDS  
SINCE 2001!

1204 80<sup>th</sup> Street S, Wisconsin Rapids,  
WI 54494

**715-423-8884**

**KELLNER  
INTERNATIONAL**  
*FLY IN*  *TO K.I.*  
**BAR & GRILL**  
*Kellner, WI*

448091





## CHAT-R-BOX CATERING

Veteran Owned and Operated  
Heated and Refrigerated Delivery Trucks  
Call Kathi to schedule your next event  
(715) 570-0285  
3821 80th Street South, Kellner, WI  
<http://www.chatrboxcatering.com>



## THE KELLNER HOUSE

Vacation Rental  
Located on the ATV/UTV Trails  
3911 80th Street South  
In Beautiful Downtown Kellner  
4 miles East of Wisconsin Rapids  
Call Kathi (715) 570-0285  
<http://www.thekellnerhouse.com>



## OPENING SUMMER 2025!

Hours: Monday-Saturday 7-2  
Café serving breakfast & lunch  
Locally roasted coffee & espresso,  
smoothies, ice cream, bakery  
Pet friendly outdoor seating area  
3821 80th Street South  
[www.milltowncoffee.com](http://www.milltowncoffee.com)

## ► DISCOVER Marshfield

From its early days as a Hub City, when railroad traffic crisscrossed the state, Marshfield has become a city of diverse economic activities. Marshfield has a long medical tradition going back to 1916 when six doctors formed the Marshfield Clinic. This has evolved into a world-class medical facility serving all of northern Wisconsin. Marshfield is also home to Mid-State Technical College and a two-year campus of the University of Wisconsin. From its early days, Marshfield was a city guided by a progressive vision and it continues to be forward thinking.

### AREAS FOR *Recreation*

Tree-lined streets offer shade in the summer, fragrant blossoms in the spring and colorful displays in the fall. Expanding networks of bicycle and walking trails traverse the city and parks offer abundant recreational opportunities. Feeding the ducks at Wildwood Park and Zoo is a favorite activity for all ages. Ball diamonds, tennis courts and swimming pools encourage activity and the Marshfield Area YMCA offers many sessions for members and non-members. The Continuing Education Department of the UW-Marshfield/Wood County and the Marshfield Area Parks and Recreation Department provide classes and activities for toddlers to seniors.



### POINTS OF *Interest*

#### Chestnut Avenue Center for the Arts

Marshfield's center for performing arts, literary arts and visual arts. The Center is located in a historic church building at the corner of 2nd and Chestnut Avenue, downtown Marshfield.

#### Helen Connor Laird Fine Arts Building

Home to the Helen Connor Laird Theater, Gallery 450 and the UW Box Office. Events are held at the Helen Connor Laird Theater including, concerts, productions, films and lectures. Check their website for upcoming events [marshfield.uwc.edu/campus/arts](http://marshfield.uwc.edu/campus/arts).

#### Marshfield Motor Speedway

Marshfield Motor Speedway brings high-speed asphalt racing to central Wisconsin. The half-mile oval track features Super Late Model action on Saturday nights from late April through September.

#### New Visions Gallery

Exhibits change every six to eight weeks. Located in the lobby of Marshfield Clinic, New Visions Gallery features art from regional, national and international artists. The gallery also maintains the Robert and Barbara Bromberg Collection.

# MELODY GARDENS

## Restaurant & Skateland

Restaurant open at 6 am daily for  
**Breakfast, Lunch & Dinner**  
with a homemade touch!

*We Make Our Own Ice Cream!*

Roller skating hours are available on our website

**1200 S. Oak Ave., Marshfield • 715-384-3326**  
[www.melodygardensmarshfield.com](http://www.melodygardensmarshfield.com)

# CHIP'S

## HAMBURGERS

**1409 South Central Ave., MARSHFIELD**  
**"Home of the Champ" Charbroiled Burgers**  
Golden French Fries, Soft Serve Cones, Root Beer Floats, Shakes  
**Be a Champ & Have a Chipperrific Day! Open 10:30 am daily**





### JuRustic Park

JuRustic Park, M222 Sugarbush Lane, is a display of ancient extinct creatures that inhabited the nearby McMillan Marsh during the Iron Age. Exhibitions range from small six-inch spiders and mosquitoes up to 45-foot, 4,000-pound flying dragons. Open May through October 10 a.m. to 4:30 p.m. (4 p.m. after Labor Day). Call 715-387-1653 during other months.

### UW-Marshfield/Wood County Arboretum

The trails that wind through the 20-acre arboretum and the south and west ends of the UW-Marshfield/Wood County campus are open to the public for walking, cross-country skiing and nature study.

### Upham Mansion

The Upham Mansion was built in 1880 by former Wisconsin Governor William Henry Upham. The North Wood County Historical Society makes its home in this restored mid-Victorian mansion, which contains many of the Upham family's original furnishings and features monthly exhibits. A visitors' favorite is the Pie and Ice Cream Social held each year on the grounds of Upham Mansion as part of Marshfield's Dairyfest celebration in June. Upham Mansion is open Wednesdays and Saturdays from 1:30 p.m. to 4 p.m.



### Wildwood Park & Zoo

Hosts a variety of animals and birds from North America. Featured exhibits include mountain lions, timber wolf, elk, bison, whitetail deer, bald eagles and Kodiak bears.



### World's Largest Round Barn

The round barn was built in 1916. The barn continues to house exhibitors' animals at the fair every year. It is also used throughout the year for a variety of community events.

**Proudly Serving  
Wisconsin Rapids  
& Surrounding  
Communities  
for Over  
50 Years!**

**Terry  
Wolfe  
REALTY  
THE SELLINGEST™**

**LIST WITH  
"THE SELLINGEST"™**

**Office: 715-423-0561  
3610 8th St S  
Wisconsin Rapids  
Supporting  
Local Businesses**

## Central Wisconsin State Fair



The Central Wisconsin State Fair in Marshfield emphasizes the region's unique business and the uniting of family, friends and community. Although the fair is set in Marshfield, it draws people from throughout the county and beyond. With carnival rides, a mouth-watering array of "fair food," and entertainment for everyone in the family, the Central Wisconsin State Fair has it all — animals, kids, music, performers and exhibits from many individuals, businesses and organizations.

The Junior Fair 4-H exhibitors and fair entries from exhibitors of all ages continue to evoke the sights and sounds of the traditional county fair.

Popular entertainers perform each night in the grandstand, as fair-goers thrill to their favorite sounds, whether country or rock.

The Central Wisconsin State Fair continues to pay tribute to its agricultural roots even as it grows and serves new audiences.

The Central Wisconsin State Fair begins on August 19 and continues through August 24.

Be sure to stay up to date on entertainment and event schedules, go to the Central Wisconsin State Fair website [centralwisconsinstatefair.com](http://centralwisconsinstatefair.com) or follow them on Facebook.



**K**iwanis **E**normous **E**quipment **P**layground

**SATURDAY, OCTOBER 4, 2025 • 10:00 am-4:00 pm**

**Marshfield Fairgrounds Park, 513 East 17th Street, Marshfield**



### Why Would I Want to Go?

- *Indoors:* Activities for little hands to create and take home
- *Outdoors:* Explore heavy equipment, farm equipment and vehicles brought in by local businesses
- Food, Beverages & Souvenirs Available • Free Parking

**Admission**  
\$6 for ages  
13 & up  
\$3 for ages  
1-12

 **Kiwanis**  
KIWANIS CLUB OF MARSHFIELD



Visit facebook page:  
Kiwanis Club of Marshfield

448728

**Proceeds from KEEP Event will benefit children's programs in the Marshfield Area.**



## Marshfield hosts Hub City Days Car & Bike Show

The Hub City Days Car & Bike Show takes place in Marshfield's Downtown on Central Avenue each year. The Hub City Days Car Show spans over 10 city blocks, features over 500 car/bike entries, a live DJ, kids games, tons of door prizes, free t-shirts for veterans, veteran appreciation raffle, and a kids-only raffle. Registration is typically free with a suggested donation of a non-perishable food item to benefit the United Way programs.

Car show entries can look forward to more than 80 trophies announced at the end of the show. Hub City Days Car & Bike Show will be held on July 27, 2025.



## INSIDE or OUTSIDE Your Home!...

**Sternweis & Sons**  
MARSHFIELD, WI

BLOCK DIVISION

REDI-MIX

**715-384-4870 715-384-8995**

400 E. Arnold

11397 Wren Rd.

**SINCE 1972**

*We provide you with a LOT more than concrete!*



- ★ Poured Concrete
- ★ Landscape Pavers
- ★ Retaining Walls
- ★ Exterior Brick
- ★ Kozy Heat Fireplaces
- ★ Silica Sand
- ★ Concrete Block
- ★ Pre-Mixed or Bag Cement

- ★ Manufactured Stone
- ★ Concrete Sealers & Patches
- ★ Chimney Supplies
- ★ Retaining Walls & Timbers
- ★ Concrete Pumping Services
- ★ Do it Yourself Outdoor Kits
- ★ Harper/Magnolia Brooms and Squeegees

**FIRE UP THE GOOD LIFE WITH A CHICAGO BRICK OVEN**



**"VISIT us and SEE our STONE and BRICK Wall"**



- Stone & Brick Veneer
- Quick to install
- Economical



448738



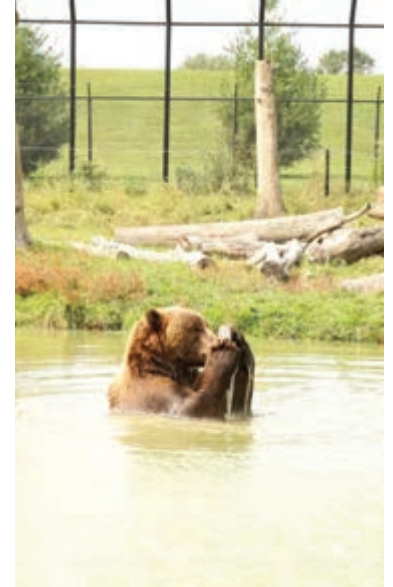
## Discover Marshfield's Outdoors

Enjoy the beauty of nature in all seasons, courtesy of the Marshfield Parks and Recreation Department. In addition to the 18 city parks and recreation areas, there are numerous walking and bicycle trails, with several park and fairground buildings and shelters that may be rented for private parties and receptions. To ask about any date or facility, call 715-384-4642, extension 0.

### Wildwood Park and Zoo

Visit Wildwood Park and Zoo to see animals like the rare twin Kodiak Bears, Munsey and Boda. Established in 1937, Wildwood has grown to become one of the state's premier parks and leading municipal zoos. Travel more than 150 acres by foot or tour the large animal drive in your car.

- **Spring** (April 1-Memorial Day): 7:30 a.m.-6 p.m.
- **Summer** (Memorial Day-Labor Day): 7:30 a.m.-7:30 p.m.
- **Fall** (Labor Day-Oct. 31): 7:30 a.m.-6 p.m.
- **Winter** (Nov. 1-March 31): Monday-Sunday 7:30 a.m.-2:30 p.m.



**4110 Plover Road  
Wisconsin Rapids  
WI 54494**

**715-423-9650**  
**www.ckandc.net** 

### SHOWROOM HOURS:

**Mon-Thurs: 8am-4:30pm**  
**Friday: 8am-4pm**





- E-bikes
- Bicycles
- Pickleball
- Disc Golf
- Snowboards
- Apparel
- Skis
- Snowshoes
- Rentals
- Full Service Dept.



1202 S. CENTRAL AVE  
MARSHFIELD, WI  
715-384-8313  
www.thesportsden.net



Serving Marshfield  
Since 1975!



TREK



SPECIALIZED



448589

## Newman's 1st Street Miniature Golf & Ice Cream

2811 1st Street South, Wisconsin Rapids (near Airport)

715-421-1180

Family Friendly Prices!

**Open Mother's Day Weekend thru Labor Day**  
**Enjoy Soft Serve Treats!**



**Opening May 10th (hours thru June 4th)**

Mon-Fri School Days 4 pm - 8 pm

• Sat 10 am - 8 pm • Sunday 1 pm - 8 pm

Memorial Day 10 am - 8 pm

**Summer hours starting June 5th:**

Mon-Sat 10 am - 9 pm • Sunday 1 pm - 9 pm

**- FAMILY OWNED AND OPERATED -**



447952







for the people, by the people

### Nekoosa Walleye Days



March 22-April 13, 2025

### Nekoosa Easter



April 19, 2025

**For Nekoosa is a nonprofit organization  
created to bring back community  
events to the City of Nekoosa, Wisconsin**

### Mid West Fest



June 21, 2025

### Nekoosa Christmas



November 29-December 20, 2025

[www.fornekoosa.org](http://www.fornekoosa.org)

448819

## DISCOVER Nekoosa

**T**he City of Nekoosa is a small residential community with a strong sense of place. What began as a fur trapping and trading community evolved into sawmills and then paper mills. The river continues to play an important role in the lives of Nekoosa's residents and visitors. Nekoosa is the "northern gateway" to two of the state's largest bodies of water, Petenwell Flowage and Castle Rock Flowage. A boat landing on the south side of Nekoosa, on Point Basse Avenue, offers easy access for fishing and boating. Scenic Riverside Park, near Nekoosa's business quarter, is home to several large events including Walleye Days in the spring. Be sure to mark your calendars and come enjoy the famous GIANT Pumpkin Fest in the fall at the Nekoosa Business Park.



### Walleye Days

Area anglers are invited to compete for cash and prizes. The Nekoosa Area Business Association, Inc., Walleye Days Committee will sponsor the Annual Walleye Days Fishing Contest March 22 - April 13. Participants are encouraged to "catch and release." All fish must be caught on the Wisconsin River, between the Nekoosa Dam and the Petenwell Dam and must be alive when registered. For more information, call 715-302-0345 or find them on Facebook.

### Nekoosa Area Easter Event

On the Saturday before Easter weekend, join the Nekoosa Easter extravaganza for Breakfast with the Bunny, Easter Craft, Arts & More Show, Bunny 5k Run and Egg Hunt. Have breakfast with the Easter Bunny from 8:30-10:30 a.m. at the Retirement Community of Nekoosa. Get hoppin' during the Bunny Run 5K Run/Walk. Start the journey at Goodfella's Pizza head down the bike path towards ERCO Worldwide and back the same route. Get your Easter and spring decor at the Arts, Crafts & More Show. Can't miss the traditional Easter Egg Hunt at Alexander Middle School. Easter Egg Hunt age groups include 4 and under, 5 to 7, and 8 to 10 years old. The Retirement Community of Nekoosa residents generously fill over 3,000 eggs between each age group.

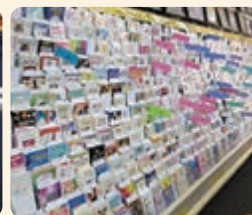
### Pioneer Festival

On the second weekend in June, The Point Basse Pioneer Festival is the premier event at Historic Point Basse. The 2-day event is open to the public and takes place the second full weekend in June. Enjoy the demonstration of period crafts, eat period foods, enjoy period entertainment. Be a judge in the Iron Chef cooking contest. Purchase a bowl for \$5.00 and then sample each chef's entry. Judge which one is the best and then take the bowl home as a souvenir. Saturday, 10:00 a.m. to 5:00 p.m., Sunday, 10:00 a.m. to 4:00 p.m. Adults \$5; Students \$2; Pre-schoolers are free. Historic Point Basse, 300 Wakely Road, Nekoosa. For further information call 715-459-1722. For a complete calendar of events, go to [www.historicpointbasse.com](http://www.historicpointbasse.com).



## ONE of the LAST TRUE WI DIMESTORES!

- Toys • Keys • Housewares
- Seasonal Items
- Kitchen Spices and Much More!



Find us at [beaversvariety.com](http://beaversvariety.com) • 410 Market Street, Nekoosa WI • 715-886-4371



## Nekoosa GIANT Pumpkin Fest

All pumpkins great and small are welcome at the 2025 GIANT Pumpkin Fest. Growers from across the

Midwest travel to Nekoosa to weigh their giant pumpkins for prizes and to be eligible for international competition. Weigh-ins for other fall produce, too, including squash, tomatoes, long gourds, cantaloupe and watermelons. Other popular features include the GIANT pumpkin drop and great pumpkin bake-off. The annual Nekoosa GIANT Pumpkin Fest takes place on the first full weekend in October at Riverside Park in Nekoosa, Wisconsin. The park is located on Highway 73 along the Wisconsin River. There is an admission fee. For more information on this year's festival, visit [nekoosagiantpumpkinfest.com](http://nekoosagiantpumpkinfest.com).



## Nekoosa Hometown Family Christmas

On the first Saturday in December enjoy a fun filled holiday event to kick off the season! Entertainment includes breakfast with Santa, kids story time, cookie decorating, horse drawn wagon rides, holiday arts and crafts, Nekoosa Fire and Ambulance Department open house, holiday parade, and fireworks. For more information, visit [cityofnekoosa.org/event/nekoosa-hometown-christmas](http://cityofnekoosa.org/event/nekoosa-hometown-christmas)

**VETERAN OWNED AND OPERATED SINCE 2012**

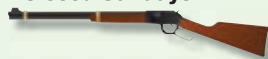
**Dixon**  
Gun Shop, LLC

**WE BUY GUNS**

328 Market Street  
Nekoosa, WI 54457  
715-886-GUNS (4867)

Monday – Friday 10am to 5pm  
Saturday 9am to 1pm  
Closed Sundays

Like Us On Facebook  
Buy, Sell, Trade, Repair



448064



**Nekoosa**

**Phone (715) 886-5500**

357879

**BADGER MARINE**

**SALES — SERVICE — PARTS**

- COMPLETE MARINE SERVICES
- MERCURY OUTBOARD
- VIAGGIO & FLAGSHIP PONTOONS
- LUND ALUMINUM BOATS
- SHORE STATION & HOISTS
- TRAILERS
- SAFETY GEAR
- ACCESSORIES
- WATER SPORTS & MORE

Large Selection of  
High Quality  
Tractors and Mowers!

**715 Hwy. 73 Nekoosa**  
**(715) 886-3308**

[www.badgermarine.com](http://www.badgermarine.com)



357885

**Stop in and see us today!**



## ► DISCOVER Pittsville

**P**ittsville is located midway between Marshfield and Wisconsin Rapids on Highway 80. Lake Dexter, just south of Pittsville, welcomes visitors for camping, fishing, boating, swimming and picnics.



### AREAS FOR *Recreation*

Riverside Park, one block west of the business district, meanders along the Yellow River and provides shelters for gatherings and celebrations. The park's improvements include a playground area, baseball diamonds and tennis/basketball court.



### Pittsville Area Historical Society

The Pittsville Area Historical Society owns and operates a museum at 8256 Monroe Street. Built in 1899, it was originally a Methodist church. The museum property also includes Scranton School, restored to look as it did in the mid 1940s. The school hosts area 3rd and 4th graders every year for "A Day at Scranton School."

Flower gardens and landscaping are maintained by Wood County Master Gardener Volunteers. Museum volunteers are restoring the Powwow ticket booth to be filled with displays about the Pittsville Powwow and Riverside Park. The steeple from St. Joachim's will be restored as a gazebo.

The museum is open most Thursdays from May through September, 9 a.m.-noon and 1-3 p.m. Thursdays are work days for society members. The museum is also open the last Sunday of May, through September from 11 a.m.-3 p.m. and by appointment. For more information, visit [www.pittsvilleareahistoricalsociety.org](http://www.pittsvilleareahistoricalsociety.org)

### Pittsville Area Foundation for the Arts

Pittsville's Performing Arts Center, located at the high school, is home to school and community performances as well as professional entertainments. Visit their website for more information. [www.pittsville-performing-arts.org](http://www.pittsville-performing-arts.org)

## WE CUSTOM MAKE YOUR IDEAS

**We Install Zippers on all Your Summer Gear!**



#### ALSO OFFERING:

- Custom Made Boat Covers
- Custom Boat Seat Covers
- Bimini Tops
- Replace Worn Boat Seats

**Mid-State Upholstery & Canvas, Inc.**

830 Whitrock Ave • Wisconsin Rapids

**715-421-2182**

357850

## Car and Truck Accessories For Any Season

- WeatherTech Floor Mats and Mud Guards
  - Tonneau Covers & Bedliners
  - Plows for ATV'S, UTV'S & Trucks
- AND MUCH MORE!**

Contact Jeremy today for all you truck accessory needs

**715-570-7994**

**WHY GO FACTORY WHEN YOU CAN TRUXCESSORIZE!**



449184



## Splash of Red Cranberry Tours

2025 tours are held in September and October. Call 715-884-6412 for updated dates available.

The Pittsville High School FFA sponsors Splash of Red Cranberry Tours in the fall. The FFA / FFA Alumni are giving cranberry tours to help pay for student scholarships, trips and other member activities.

Tours meet at the Pittsville School Auditorium at 9:15 a.m. Tours will include; touring a current marsh under construction, new beds not yet in production, producing beds with the tourists given the opportunity to pick fresh fruit from the vine, as well as observing the harvest, testing, cleaning and freezing of the berries.

The cost of the tour is \$25 per person. School tours are also available for a discounted price (this does not include the lunch option). All tours include a cranberry treat, juice, and fresh cranberries for each guest to take home. Reservations are a must to let the FFA know how many are coming. Please call 715-884-6412.

Visit [sites.google.com/pittsville.k12.wi.us/cranscience](https://sites.google.com/pittsville.k12.wi.us/cranscience)



## CHECK OUT OUR BRAND NEW PAINT STUDIO!

TRY ONE OF MANY OFFERINGS IN OIL, ACRYLIC, DRAWING + MORE... OR TRY A CLASS IN MOSAICS, COLLAGE, FIBER, JEWELRY & POTTERY!

IN 2024, WE OFFERED 70+ CLASSES!  
WE'RE ALWAYS ADDING NEW OPPORTUNITIES TO OUR WEBSITE



[CULTURALCENTERARTS.COM](https://CULTURALCENTERARTS.COM) | 715-421-4598

2651 8TH STREET SOUTH | WISCONSIN RAPIDS, WI 54494

GIFT SHOP & GALLERY HOURS // TUESDAY - THURSDAY 10A-5P OR BY APPOINTMENT

\*During our Holiday Gifts & Art Fair, open Saturdays 9A-1P



## VISIT OUR GALLERY

2025-26 EXHIBIT SCHEDULE - FREE ADMISSION

UNRAVELING: CREATIVE FIBER ART | APR 17 - JUN 26, 2025

ART OF THE BOOK | JUL 10 - AUG 28, 2025

RURAL VISIONS | SEPT 9 - OCT 23, 2025

2025 HOLIDAY GIFTS & ART FAIR | NOV 11 - DEC 20, 2025\*

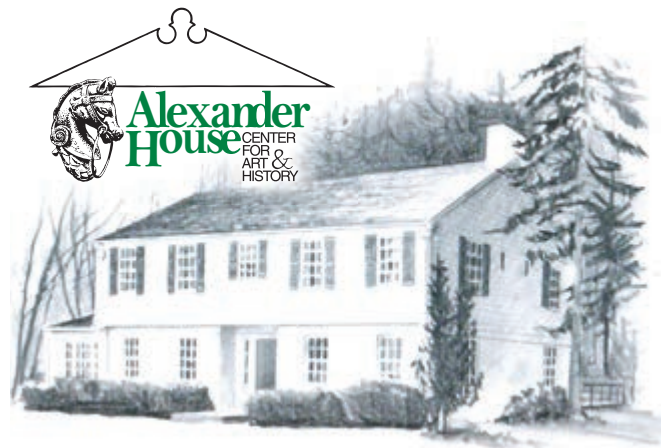
TO BE ANNOUNCED // JAN - MAR 2026

## OTHER OFFERINGS

OPEN POTTERY STUDIO, ARTIST GIFT SHOP,  
MUSIC & LESSONS + SPECIAL EVENTS

## ► DISCOVER Port Edwards

The settlement that became Port Edwards was originally called French Town. The town's founder, John Edwards, had the vision to dam the Wisconsin River to supply power for a sawmill. The original dam was completed in 1840 and the surrounding pine forests were fed into the sawmills for white pine lumber. At the beginning of the 1900's, the lumber mill was converted to a newsprint paper mill. Today, Port Edwards thrives on the preservation of the area's history, its beauty and an abundance of recreational opportunities. Port Edwards is the perfect place to stop for a picnic or snack while biking between Wisconsin Rapids and Nekoosa along the Wisconsin River.



*The Alexander House Center for Art and History is located on the banks of the beautiful Wisconsin River in Port Edwards, Wisconsin.*

1131 Wisconsin River Drive | Port Edwards WI  
[www.alexanderhouseonline.org](http://www.alexanderhouseonline.org) | 715-887-3442

Open 1:00-4:00pm on Sunday, Tuesday & Thursday, or by appointment  
Admission is FREE



find us on Facebook at Alexander House Center for Art and History

## AREAS FOR Recreation

Riverside Park, one block west of the business district, meanders along the Yellow River and provides shelters for gatherings and celebrations. The park's improvements include a playground area, baseball diamonds and tennis/basketball court.

### The Alexander House

A center for art and history, the Alexander House is a combination art gallery and historical museum. A meeting room is available at no charge for local non-profit organizations.

1131 Wisconsin River Drive, Port Edwards.

Open Tuesday, Thursday and Sunday, 1-4 p.m. No charge.  
[www.alexanderhouseonline.org](http://www.alexanderhouseonline.org).



### Port Edwards Village-Wide Garage Sale May 2025

Annual village-wide garage sale from 8 a.m. - 3 p.m.  
Visit [www.facebook.com/villagewidegaragesaleport](http://www.facebook.com/villagewidegaragesaleport)



## Nekoosa Port Edwards State Bank



est. 1913

**[WWW.NPESB.BANK](http://WWW.NPESB.BANK)**  
**(715) 886-3104**

357857

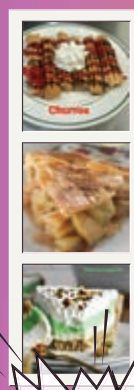
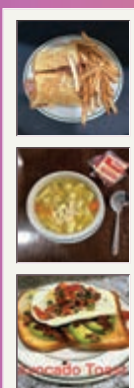
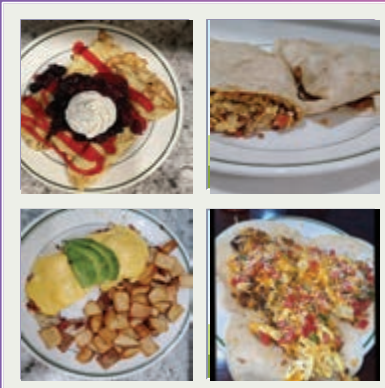
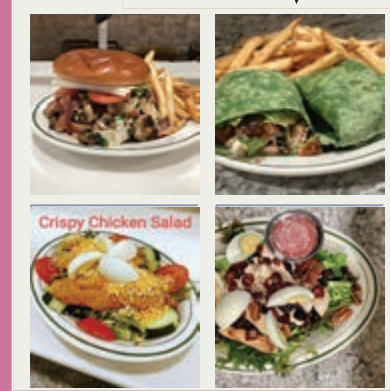
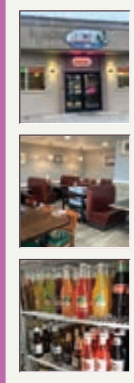




**BREAKFAST  
YOU WON'T FIND  
ANYWHERE  
ELSE !**

**El Café**  
SERVING BREAKFAST & LUNCH

**FRIDAY  
FISH FRY  
10:30-8:00**



**WE HAVE BEER,  
WINE, MIMOSAS,  
BELINIS AND  
MICHALADAS**

**PORT EDWARDS  
221 MARKET AVE  
PORT EDWARDS  
715-887-2233**

## ▶ DISCOVER Rudolph

**R**udolph, seven miles north of Wisconsin Rapids, at the intersection of State Highway 13/34 and County Highway C, was the second town established in Wood County. Rudolph the Red-Nosed Reindeer welcomes visitors to Rudolph throughout the year, but the town of Rudolph was actually named after the son of an early settler, Rudolph Hecox.



### Grotto Gardens and Wonder Cave On the grounds of St. Philip's Parish

Constructed of native stone, the Grotto Gardens are bright with flowers during the summer months. Paths meander over five acres and a picnic area invites relaxation and reflection. Religious and patriotic scenes are set among the stones, plants and trees. The gift shop and Wonder Cave are open Memorial Day thru Sept. 30: 11 a.m.-4 p.m. and Oct 1-31: 11 a.m.-3 p.m. There is no charge to visit the Grotto Gardens. There is a nominal fee to tour the Wonder Cave.

Visit [www.rudolphgrotto.org](http://www.rudolphgrotto.org) for more information.



### AREAS FOR Recreation

Baseball diamonds attract participants throughout the summer months and the Rudolph Community Park offers a shelter with running water and electricity. A skating pond invites skaters during the winter months and a sign to "Follow the Yellow Brick Road" draws walkers to the nature trail in all seasons.

### Annual Rudolph Old Tractor Club Show Second Saturday in August

Rudolph Community Park. Free registration, beginning at 7 a.m., show from 9 a.m. to 6 p.m. The day's events include a tractor parade, dyno to determine a tractor's horsepower, threshing demonstration, swap meet. Antique garden tractor, snowmobile and hit and miss engine displays. Petting zoo and barrel rides for kids. Tractor competition and games, raffles, food. Free admission. For more information email [rudolphtractorclub@gmail.com](mailto:rudolphtractorclub@gmail.com)

### Rudolph's Country Christmas First Saturday in December

A family Christmas festival. Activities include children's games, a petting zoo, horse-drawn wagon rides, train rides, visits with live reindeer and a craft sale. Be sure to look for the yearly commemorative post card. A special one-day, hand-stamped pictorial postal cancellation from the U.S. Postal Service will be available from 9 a.m. to 4 p.m. The day concludes with a children's musical entertainment program, followed by a lighted Christmas parade down Main Street at 5:15 p.m. For more information, go to [www.rudolphcountrychristmas.org](http://www.rudolphcountrychristmas.org)



### Live Music all Summer. You Deserve Some R&R!



Monday-Thursday 3pm-8pm • Friday, Saturday & Sunday 11am-8pm

FOLLOW US ON FACEBOOK @R&R PATIO BAR!

📍 5075 WI-34, WISCONSIN RAPIDS, WI 54495 ☎ 715-421-0088





~ Home Of ~

**Rudolph the Red Nose Reindeer,  
Rudolph Grotto and Wonder Cave,  
and Rudolph Country Christmas**



**Truck • Cars  
Farm Equipment  
Repair**

**Tire Sales & Service**

Call **715-435-3331**

**34**

**Truck & Auto**

6948 Highway 34 • Rudolph  
Open: Mon.-Fri. 8 AM to 5 PM

358818

little sprouts  
learning garden

**Licensed Childcare Center  
Open Year Round**

6:30 am - 5:30 pm

Ages 1 year to 12 years

Accepting WI Shares

6918 Knowledge Ave – Rudolph • **715-435-4747**

359823

**PATSY'S**

1667 Main St., Rudolph  
**715-435-4100**

**Let the Good Times Roll!**

337921



Unit Sizes:

10x20

10x25

10x30

**6763 Hwy 34, Rudolph**

358817



Phone: (715) 435-4477

mail@urbangreenhouse.com

6293 Highway 13/34,

Rudolph, WI 54475

[www.urbangreenhouse.com](http://www.urbangreenhouse.com)



448518



PO Box 185 • Hwy. 13/34 Rudolph, Wisconsin 54475  
715-435-3144

Mon-Fri 8am - 5pm • Saturday 8am - 4pm

359821

**Al's  
AUTO GLASS LLC**

*Locally owned and operated.  
Repair and Replacement.*



**715-572-2046**

358815

## DISCOVER Vesper

Vesper lies between Wisconsin Rapids and Marshfield on Highway 186. Vesper has a village recreation park that unveils its secrets beyond the softball diamonds, tennis courts and volleyball courts. Bring your lunch, a good book or your camera to the well-kept garden area. Rest in the gazebo or venture across the quaint covered bridge over a small, babbling stream. The gardens are designed and maintained by the Wood County Master Gardener Volunteers. A walking path keeps close to the park boundaries and meanders through shady and sunny areas. A rustic path follows the old railroad bed. Water and bathroom facilities are available at the park along with a covered shelter with tables.



### Lester Public Library of Vesper

The Lester Public Library of Vesper is a valuable community asset. The library director, staff and volunteers host a variety of programs for all ages. Visit the library for more information about frequent programming on a variety of topics.

The library offers an array of books, magazines, DVDs and public computers. A small meeting room is available for public use. Contact the Lester Public Library of Vesper, 715-569-4669 or email [vespl@tds.net](mailto:vespl@tds.net). Library hours are Monday and Tuesday 10 a.m. - 5 p.m.; Wednesday and Thursday 2-7 p.m.; Friday and Saturday 9 a.m. - noon; and closed Sundays. Visit [vesperlibrary.org](http://vesperlibrary.org) for more information.

### Library Gardens

Designed and maintained by Wood County Master Gardener Volunteers. Four season gardens available for your viewing anytime. Programs on garden-related subjects are held at the library during the year. Contact the library for a schedule.



## For Over 40 Years

**Our Reputation is to  
find any special tool you  
can't find anywhere else.**

**In Store Discounts & Antique Tools  
(Great Décor Ideas)**

Business Charge Accounts Welcome

**Gift  
Certificates  
Also  
Available**

**Hrs:**  
Monday - Friday • 8 A.M. To 6 P.M.;  
Saturday • 8 A.M. To 5 P.M.

927 Huntington Avenue,  
Wisconsin Rapids, WI 54494

**Phone (715) 423-5333**  
[toolshed@charter.net](mailto:toolshed@charter.net)



**Come experience the joy of all things horses!**

- Private Sheltered Runs • 2 Inside Arenas
- Large Outdoor and 1 Grass Arena • 2 Heated Tack Rooms
- Inside Heated Wash Rack
- Café, Restrooms, Camping and 70 Stall Show Barn

**Mark Long at  
715-323-3666**

**Mark@heartlandec.com**  
**Boarding Starts at \$375**

*Check Out Our Upcoming Events*

**heartlandec.com** 

Rent our large facility for your next event!

**7510 Deer Road, Custer Wisconsin 54423**



**FREE Manure - We Load, you Haul**



# ▶ DISCOVER Wisconsin Rapids



**W**isconsin Rapids, the county seat of Wood County, is a consolidation of the two early towns of Grand Rapids and Centralia, the former lying on the east side of the Wisconsin River, the latter on the west. The Indians gave to this place along the river the name of "Ah-dah-wa-gam," meaning the "two-sided rapids," as the rapids here were divided by a great boulder. Wisconsin Rapids today offers a Midwestern charm and atmosphere while providing access to modern infrastructure and technology, abundant educational and cultural opportunities, a mix of retail establishments and restaurants and a stable business environment.

## Central Wisconsin Cultural Center

Promotes regional arts activities, housing gallery exhibitions, lectures and classes. A pottery studio, piano lessons and workshops on writing, digital photography and watercolor painting are just some of the previous offerings. All gallery art exhibit receptions are free and open to the public.

## Wisconsin Rapids Community Theatre

For over 30 years, WRCT has put on children's productions, special theatrical productions, Broadway-type shows and workshops. Current performances are listed on the website, [www.wrctheatre.org](http://www.wrctheatre.org)

## Rapids Municipal Zoo & Petting Zoo

The Wisconsin Rapids Municipal Zoo is a small zoo with an interactive petting area, beautiful gardens, picnic area and playground. An enclosed building is available for the zoo and to rent for private parties. Open Tuesday through Sunday 10 a.m. to 6 p.m., Memorial Day through the end of August. No charge.

## Arts Council of South Wood County

Arts Council of South Wood County was organized in 1976 as a nonprofit corporation to provide a variety of professional performing art forms for residents of all ages. The Arts Council also provides Arts in Education programs which enrich the lives of area students through performances, workshops and master classes with professional artists. Through individual contributions and corporate sponsors, the Arts Council is able to provide high quality programming and culturally diverse presentations. Visit [savorthearts.com](http://savorthearts.com) for upcoming events.

## Performing Arts Center of Wisconsin Rapids

The Performing Arts Center, or PAC, on the Lincoln High School Campus, hosts a variety of performing arts events, including many professional productions. For a current schedule, go to [www.wrps.org/community/pachome.cfm](http://www.wrps.org/community/pachome.cfm)



## AREAS FOR Recreation

The Wisconsin River plays an important role in the recreation of area residents and tourists. Boating, fishing, or a simple walk along the riverbank contributes to a much-needed connection with nature. Many lakes and thousands of acres of public land provide additional opportunities for outdoor recreation. The area offers abundant fishing and hunting opportunities in all seasons. Winter recreation possibilities include ice fishing, cross country ski trails, snowmobile trails and ice skating rinks. In the summer months, public golf courses continue to draw enthusiasts and growing miles of bicycle trails furnish safe routes for bicyclists. Many parks scattered throughout the city offer playgrounds, picnic areas, tennis courts, ball diamonds and swimming.

## South Wood County Historical Museum

Permanent exhibits at the riverbank mansion of banker Isaac Witter feature the creations of Wisconsin Rapids native Grim Natwick (animator of Betty Boop and Snow White) and the history of cranberry growing in central Wisconsin. Open Memorial Day weekend through Labor Day on Tuesday, Wednesday, Thursday and Sunday from 1 p.m. to 4 p.m. [www.swch-museum.com](http://www.swch-museum.com), 715-423-1580.

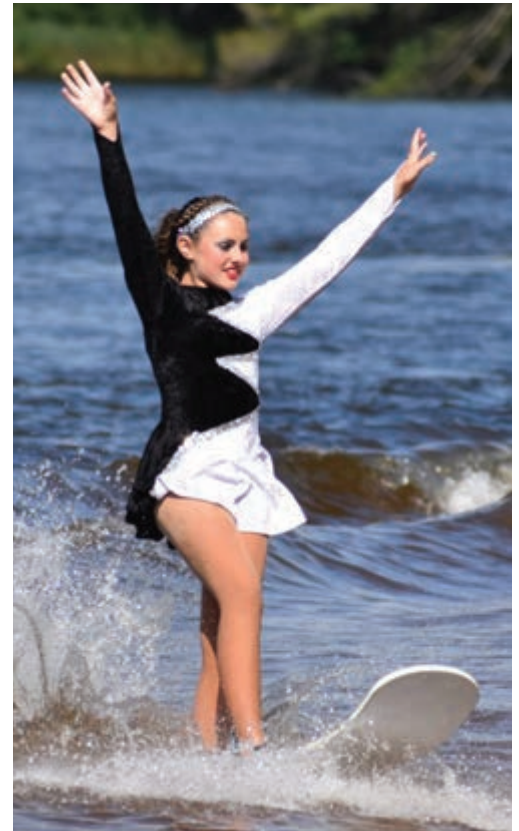


## Wisconsin Rapids is host to state water ski show championships

On the third weekend of July, the Wisconsin Rapids Aqua Skiers Show Team hosts the annual Wisconsin State Water Ski Show Championships, at Red Sands Beach Lake Wazeecha, South Wood County Park. For over five decades, water ski teams from around the state entertain the crowd as they showcase their best acts on and off the water.

Teams compete in three different divisions. Individual competition from around the state of Wisconsin features swivel, freestyle jump, team jump, and strap doubles competition.

For more information, visit [aquaskiers.org/wi-state](http://aquaskiers.org/wi-state).



**We drive to you, so you don't have to drive at all!**  
Serving Wisconsin Rapids & Surrounding Communities



- ✓ Deeds
- ✓ Powers of Attorney
- ✓ Real Estate Transactions
- ✓ Signature Witnessing
- ✓ And more....!
- Reasonable Rates
- After Regular Business Hours Availability
- Weekend Availability



448053

**Call or Text Josh Today! 715-256-7553**  
[josh@jtpmobilenotary.net](mailto:josh@jtpmobilenotary.net) • [www.jtpmobilenotary.com](http://www.jtpmobilenotary.com)

WORLD FAMOUS  
**FISH & SHRIMP**

**COLDEST BEER IN TOWN**  
**WATCH BREWERS HERE**  
**FRIDAY FISH FRY MENU**  
**SPECIALTY BURGER MENU**  
**AND WRAPS**



3140 LAKE AVENUE  
GRAND RAPIDS, WI

**715-421-1122**

DINE IN AND CARRY OUT  
OPEN 1 PM MON-SAT

448542





## Come out and try our NEW Summer Menu

Enjoy our  
Band Lineup on  
our Beautiful Patio  
right on the  
Wisconsin River!



1259 Anchor Landing,  
Wisconsin Rapids, WI 54494



715-423-0010 • [anchorbaybarandgrill.com](http://anchorbaybarandgrill.com)

357535



## Wisconsin Rapids Rafter's

The Wisconsin Rapids Rafter's are a baseball team based in Wisconsin Rapids, Wisconsin that plays in the Northwoods League, a collegiate summer baseball league. The Rafter's play 36 home games in 2025 at historic Witter Field. Witter Field mixes the historic nostalgia of its nearly 100 year old field with modern enhancements, like their Craft River that will float your drink to you as you enjoy the game. Come watch future major league stars in their early days. To view the 2025 Rafter's schedule visit: [northwoodsleague.com/wisconsin-rapids-rafters/schedule/](http://northwoodsleague.com/wisconsin-rapids-rafters/schedule/)



## Wisconsin Rapids Riverkings

The Wisconsin Rapids Riverkings is a Junior Hockey Team within the U.S. Premier Hockey League. Led by Paul Pechmann, The Wisconsin Rapids Riverkings not only are a competitive team of elite players, but also a staple in the community with their involvement on and off the rink. Come watch the Riverkings heat up the ice at the South Wood County Recreation Center!




# GRAB AN OAR!



When you buy a ticket, you aren't just a fan- you're a part of our team. We're all on this raft together!

Visit [Raftersbaseball.com](http://Raftersbaseball.com)  
or email [info@raftersbaseball.com](mailto:info@raftersbaseball.com)  
for more information!







# WISCONSIN RAPIDS RIVERKINGS

2024 - 2025

COACH PAUL PECHMANN

AND ASSISTANT COACH DEREK PUTTICK HAVE THEIR EYES ON NATIONALS AGAIN THIS YEAR AFTER CLOSING OUT THE REGULAR SEASON WITH A 12-GAME WIN STREAK AND AN IMPRESSIVE 35-7 REGULAR SEASON RECORD.

THE RIVERKINGS COMPETE IN THE NORTH DIVISION OF THE USPHL PREMIERE LEAGUE. ON FRIDAY AND SATURDAY NIGHTS, EXCITED FANS PACK IN AT THE SWCRC IN WISCONSIN RAPIDS.

THE PROGRAM'S SUCCESS IS UNDERSCORED BY THE QUALITY AND NUMBER OF PLAYERS ADVANCING TO PLAY AT THE COLLEGIATE AND PRO LEVELS.

447962



1981 Lincoln Street,  
Wisconsin Rapids, WI 54494  
**(715) 421-2063**  
[www.idassportsbarandgrill.com](http://www.idassportsbarandgrill.com)

 @ Ida's Sports Bar and Grill

 @idassportsbar



447946

  
**ARTS  
COUNCIL**



TICKETS  
AVAILABLE ONLINE 24/7  
[WWW.SAVORTHEARTS.COM](http://WWW.SAVORTHEARTS.COM)

**715.424.2787**

1040 8<sup>th</sup> St S, Ste 101  
Wisconsin Rapids

**GET YOUR ENTERTAINMENT ON!**

**CHECK OUT OUR 2025/26 SEASON!**

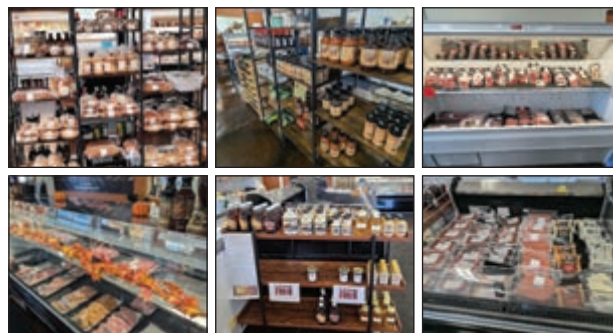


## ▶ VISIT OUR NEIGHBORS: **Rome**

**T**he town of Rome, located in Adams County, is a centrally located hotspot for Wisconsin's nature enthusiasts. With multiple golf courses, like Sand Valley Golf Course and Lake Arrowhead Golf Course, there is something for pro and amateur golfers alike. Rome is home to Dyracuse Recreational Park (the state's largest motorcycle, ATV/UTV park), a 700 acre park with over 10 miles of trails and a four acre sand bowl. With four lakes all located in Rome, there are guaranteed opportunities to fish under a summer sunset or bundle up for a winter of ice fishing. With farmers markets in summer and community gardens, Rome is the perfect place to earn your green thumb. No matter you golf, fish, hike, or garden — Rome, Wisconsin has something for everyone.



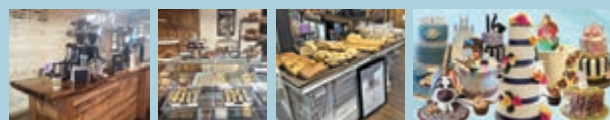
**We're more than the  
*Finest Cuts of Beef!***



**264 Geneva Trail (Rome Town Center) • 715-325-6328**  
Find our Weekly Specials on FB

448549

*Made from Scratch Experience Slice of Heaven*



**Baked Daily Treats • Breads  
Coffee Bar - Your Favorites!  
Homemade Soups • Take n Bake Pizza**



1158 Snow Pass  
Rome Town Center  
**608-449-0702**  
[www.sliceofheavenrome.com](http://www.sliceofheavenrome.com)





## ▶ VISIT OUR NEIGHBORS: **Plover**

**T**he village of Plover, in Portage County, is a quiet town that neighbors Stevens Point — a bustling college city that always has something to offer from sporting events to comedy shows to a 27 mile nature trail, the Green Circle Trail. The Green Circle winds into Plover, offering residents a scenic view to walk and bike year round on Plover portions: Plover River Trail, Paper Mill Trail, and the Hoover Road Trail. Plover offers an abundance of opportunities and social scene events for its residents, and if you're looking for something else — don't look far, just take a quick five minute drive to its neighbor Stevens Point.



*Hosta Stop Gardens*  
*Golden Sands*

A close-up photograph of a vibrant pink day lily flower with yellow centers, surrounded by green foliage.

Specialize in Hostas & Day Lilies

A photograph of a garden bed filled with various green plants and small red flowers, bordered by large, flat stones.

Shop our Retail Garden Center

A close-up photograph of a bright red day lily flower with yellow centers, set against green leaves.
A photograph of a colorful, artistic sign that reads "Love never fails" in a stylized font, surrounded by other garden-related items.

Over a thousand varieties to choose from

A photograph of a peacock standing in a garden with yellow flowers.

**Hosta Stop Gardens**  
1011 Hwy 54 | Plover WI 54467  
kmgonthefarm@gmail.com or mikegiesejr@gmail.com

**Hours:**  
Monday - Friday 10:00am - 6:00pm  
Saturday 8:00am - 6:00pm  
Sunday 9:00am - 4:00pm  
After business hours call for appointment  
715-630-5305 or 715-347-7865

**TOURS ARE WELCOME!**

We can accommodate large buses  
Groups of 10+ will  
Receive 10% off all sales  
Call or email us to  
schedule your tour!



255192





# Voted Wisconsin's #1 Supper Club

## Celebrating Our 90th Year Of Supper Clubbin

**In 1950 the Sky Club became the home of the FIRST ever salad bar...**

In 1935, a new business ventured its way in to the small town of Plover, WI. Boasting its lunch specials consisting of homemade sandwiches and oven - baked chicken, it attracted many hungry tourists who also had the opportunity to spend the evening at the business camping facilities offered at no expense. A gas and oil service station were included for those who may have been on their way to a more distant location. Marion Nall started this unique combination of services set among stately oaks offering a quiet country setting. The original building not only housed a bar and a restaurant, but also served as a home to the operators. It didn't take long for this wayside to become an identifiable

spot for travelers heading through Plover and Stevens Point. Near the end of the war, the tourist season seemed to grow along with the restaurant, whose service was becoming more extensive, hence the term "supper club".



Post war booming the 40's and 50's came rather quickly. It was in those years changes were made to the wayside restaurant which helped identify the present Sky Club. In 1950 an innovative self-service, all - you - can - eat salad bar, believed to be the first ever was introduced. It became an identifying benchmark of the Sky Club. Around this time, the slogan, "Heavenly Food Served by Angels" was introduced, and is said to have been started by Tom Leach, a part - time owner/customer in the early 1940's. The restaurant's history of owners, in order is: George Armstrong '35 Marion Nall '40 Louie Jacobs, John Rocco, Louie and Evelyn Schnittger '50 and finally, in 1961, John Freund. Freund, from Neenah purchased the restaurant and operated it until 1965, but died suddenly. It was then his sons, Doug and Terrol who purchased the restaurant and took over where their father left off. In May of 1966, another son Dennis, fresh out of the Air Force,

joined his brothers in the business. Age was their only asset, but in no time, the business was on its way to success. In 1969, Doug decided to pursue other interests, and left the Sky Club. In late November, the restaurant dealt with a severe setback from a fire forcing the business to close until June, 1970. Dennis and Terry responded to the challenge and rebuilt the restaurant again. With the help of loyal customers, dedicated employees, and a few years' time, an additional dining room was added in 1979. In order to do this, the owner's home located next to the business was moved. Additions were added in 1981 and in 1994. With tremendous pride, the Freund's are able to look back at the history of their business. Dennis Freund retired in the summer of 1999 and Terry Freund retired to his other restaurant "Headwaters" in Boulder Junction Wisconsin in the summer of 2007, passing the tradition down to his two son's Patrick and Eric. The Freund's continue the tradition of the Sky Club and want to thank our past and present patrons and employees, for helping us make the first years successful...

And we've only just begun.... Once again

**2022 Post Road, Plover WI 54467 • 715-341-4000 • [skyclubdining.com](http://skyclubdining.com)**

448065



# Wisconsin River Orthopaedics

---



## **Same-Day Orthopaedic Care**

No Referral Needed

Call today!

715-424-1881

447934





# Better begins with joy.

Better begins at Aspirus Health.

At Aspirus Health, we are committed to your well-being and building healthy communities. That's why Aspirus leads first by caring, along with a strong dedication to excellence.



Find an Aspirus provider.  
call 800.847.4707  
visit [aspirus.org](https://www.aspirus.org)

# Adventure Awaits in the

## WISCONSIN RAPIDS AREA

### The Center of Fun!



Find more fun things to see & do on our website!



VISIT WISCONSIN RAPIDS

[www.VisitWisRapids.com](http://www.VisitWisRapids.com)

715-422-4650 | 160 2nd Street North, Wisconsin Rapids

**June 19-22, 2025**

Four days of "berry" fun events.



@BlossomFest

Visit our website:  
**BlossomFest.com**

