

2025

Wisconsin

NEW LONDON

New London Area Chamber of Commerce Directory & Tourism Guide

THE
CHAMBER
NEW LONDON WI AREA



www.NewLondonChamber.com • NewLondonTourism.com

WE CAN'T WAIT FOR YOU TO VISIT!

2025 EVENTS

- **February 8 & 9** WRAL Art Show
- **March 7 & 8** Vintage Shop Hop
- **March 22** St. Patrick's Day Parade—pg. 23
- **April 24-26** NFL Draft—Check Out Our Specials!
- **May 3** Sturgeon Shuffle 10k 5k
- **May 9-11** May Festival—pg. 37
- **June 1** Wolf River Classic Chevy Club Car Show
- **June 6** Summer Kickoff—Night Market
- **June 14** Rhubarb Fest
- **July 4** Festival Foods 4th of July Celebration
- **Aug 1-3** Legion State Tournament—Hatten Park
- **August 5** National Night Out
- **August 9** Rock N Corn Festival
- **September 12** Wheels on Werner Allen—pg. 38
- **September 13** Fall Fest—pg. 38
- **September 14** Shine Bright Against Cancer –
Color Run / Walk
- **October 18** Pumpkin Palooza
- **October 24** Haunted Trail
- **December 5** Winter Wonderland on the Wolf—pg. 39

AND MANY MORE...

ALL DATES SUBJECT TO CHANGE

For details on all Chamber and community events,
visit the Events tab at NewLondonChamber.com

Check out our new events!

*ALL DATES SUBJECT
TO CHANGE*

For details on all events,
visit the Events tab at
NewLondonChamber.com

WE'LL SEE YOU IN NEW LONDON

COVER PHOTO CREDIT:
Jodi Handschke



STAY INFORMED WITH NL CONNECT

Stay organized and up-to-date with news, announcements, and upcoming events with the

- School District of New London
- City of New London
- New London Area Chamber of Commerce

Download the NL Connect app today for free!







The reasons to love New London
are cut and dried.

America's hardwoods leader.



**GRANITE
VALLEY**

granitevalley.com

425291

Coming Soon to New London!



98 Apartments
Studios, Studio Suites,
1 & 2 Bedrooms Options



On-Site Management
Community Center
Yoga Studio
Fitness Center



SCS
S.C. SWIDERSKI
SCSwiderski.com

Lynn Tank Agency LLC

Insurance Options for All Ages

Heather Guyette

Insurance Agent

(920) 250-6051

heather@lynn-tankagencyllc.com

Heidi Stein

Insurance Agent

(920) 982-2978

heidi@lynn-tankagencyllc.com

WE OFFER
AUTO | HOME | FARM
COVERAGE...CALL FOR RATES!

OFFERING THE FOLLOWING PRODUCTS:

- Individual Health Insurance/"Obamacare"
- Medicare Supplements with top rated carriers
- Medicare Part D Prescription Plans
- Medicare Advantage Plans

438314

221 W. North Water St. • New London WI

Like us on Facebook 



*People You Know
Service You Trust!*

THERE'S NO NATURAL RESOURCE
like
COMMUNITY

With public power's the good we do stays right here.
Because we're here. For you.

**Providing
dependable
electricity
for ALL
your needs!**

- Residential
- Commercial
- Agricultural

113017



920-982-8516 • FAX 920-982-8544
400 E. North Water Street, New London WI 54961





Funeral Directors

Kent Rusch Logan Rusch
Dave Rusch Kevin Dembinski
Peter Moesch

Serving the New London area since 1914.



228632

209 W. Cook St., New London WI, 54961

920.982.3232

www.clinehansonfuneralhome.com



Bookkeeping Expert



- QuickBooks Certified Pro Advisor
- Keeping Your Books - Straight
- QuickBooks Conversions and Training
- Based in New London with Remote Services offered

920-538-0675

ledgerladybookkeeping.com

info@ledgerladybookkeeping.com

438074

PROUD SUPPORTER

NEW LONDON AREA
CHAMBER OF COMMERCE



Associated Bank

New London • 101 Park Street
920-982-4701

Member FDIC. (11/24) W121207



**EMANUEL EV.
LUTHERAN
CHURCH AND
SCHOOL**

Website: www.emanuelnl.org
Church Email: church@emanuelnl.org
School Email: school@emanuelnl.org

- 3P/4K - 8th Grade - Before/After school program
- Worship Services: Saturday at 5:15 pm, Sunday at 8:00 & 10:30 am
- Radio broadcast service at 9:00 am on Sundays on WJMQ 92.3 FM
- Sunday School and Bible Studies from 9:15 - 10:15 am each Sunday
- Individual & family counseling
- Youth groups for Middle School & High School Students

343774

200 E Quincy Street
New London WI 54961
Phone: 920-982-5444

YouTube.com/@emanuelnl
facebook.com/emanuelnl
Fax: 920-982-0954

Welcome

TO NEW LONDON, WISCONSIN

The City of New London resides in two counties with the majority resting in Waupaca County and the remaining in Outagamie County. With the population steadily growing to 7587 last year, New London remains the largest city in Waupaca County spanning over 6 miles. Our city's vibrant history and vast natural resources continue to provide residents with a rich and relaxing environment with which to raise their families and do business. In 2022, after 15 years of work, New London and Killaloe, Ireland finally became Sister Cities, known in Ireland as Twinning! This exciting partnership opens tourism and economic opportunities for the City of New London and Killaloe, County Clare, Ireland! New London experienced a fantastic year of growth in the last couple years and we continue to expand yet we still offer everyone who lives or travels here a small town, friendly atmosphere with big city amenities such as top notch healthcare services, state of the art industry and world class outdoor opportunities. The quality of life here speaks for itself along the shores of two beautiful rivers, thousands of acres of public lands, parks, and developed areas for business growth and expansion. Witness it by walking the Sturgeon Trail, do some shoreline fishing, go on a mural scavenger hunt, play disc golf or enjoy the wind in your face while you ride your ATV / UTV downtown through New London to visit our local establishments. The possibilities are endless.

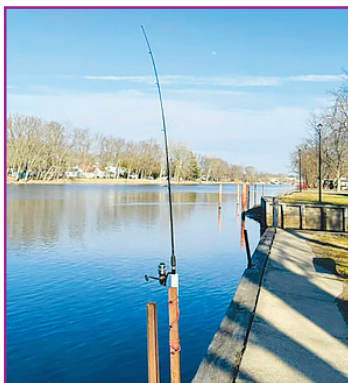


TABLE OF CONTENTS





Griebenow Eyecare

New London • Clintonville



Complete Family Eyecare

Eye Exams & Medical Eye Care
Myopia Control & Ortho-K
Tailored Dry Eye Therapy
Fashion Eyewear & Sunglasses
Contact Lenses & Specialty Lens Care
Treatment of Eye Diseases
Refractive Surgery Consultations

GriebenowEyecare.com

New London

(920) 982-3711

105 Northridge Drive

Clintonville

(715) 823-5112

45 Tenth Street



434507



Discover the rich history
of New London, WI.



New London
Heritage Historical Society

newlondonwihistory.org



MS Driving Instruction Driving School

Teen and Adult Driving Instruction

- 🚗 **Enroll at age 14**
- 🚗 **Temps at age 15**
- 🚗 **License at age 16**

**Locally Owned
by Laurie Eidenberger**

Offers in person or online courses and
Behind the Wheel Lessons

920-716-7726

(Cell - call or text)

Website: www.msdrivinginstruction.com

Email: info@msdrivinginstruction.com



MS DRIVING INSTRUCTION
DRIVING SCHOOL

43923

LIKE WHAT YOU SEE...

**Make sure
you don't
miss your
opportunity
for 2026!**



Contact us today to
reserve your space for 2026

Buyers' Guide or Your Rep.

920-982-2511

436434

Maiman Chiropractic Center



**NEW PATIENTS
WELCOME
920-531-1000**



MAIMAN

**CHIROPRACTIC
CENTER**

501 S. Pearl Street
New London

Work Related Injuries

- Auto Accidents
- Sports Injuries
- Laser Therapy

**MOST INSURANCES
ACCEPTED**

- Blue Cross/Blue Shield
- Network/Affinity
- United Health
- Arise Health Plan
- UMR

Serving the Community for over 45 years!

Daniel E. Maiman, D.C.

Ross H. Kading, D.C.

343905

CHAMBER OF COMMERCE

MEET THE 2025 CHAMBER OFFICERS AND BOARD OF DIRECTORS



At the New London Area Chamber of Commerce our mission is to promote our community's economic growth and the success of our member businesses and organizations. Our vision is to create value for our members by providing educational and networking opportunities, as well as beneficial programs and events. In 2024, the New London Area Chamber Foundation was established. Through strategic partnerships, advocacy, and community engagement, we aim to create an environment where businesses thrive, tourists are

welcomed, and residents enjoy an enriched quality of life. Stop in our office at 420 N. Shawano St. Monday through Thursday 8:30—4 p.m. and Friday 8:30—12 p.m. or call us at (920) 982-5822. April, Sofia or India will be more than happy to assist you. The New London Tourism Center is also located at this address where you can find information about the city, state and surrounding areas. The Tourism Center is open to the public 24/7.

Full Membership
Details Here



SCAN ME

WHY INVEST IN MEMBERSHIP?

MARKETING CONVENIENCE

Advertise

- Weekly Local Loop
- Outdoor Marquee
- Community Calendar
- Newsletter Listing
- Tourism Center
- Member Spotlights

NETWORKING OPPORTUNITIES

Connect

- Monthly Networking
- Ribbon Cuttings
- Money Talks Table
- Events / Banquets
- Business After Hours

VISIBILITY

List

- Website Member Directory
- Tourism Guide Directory
- New London Connect App

MEMBER INCENTIVES

Take Advantage

- Loyalty Program
- Chamber Bucks
- Special Day Media Posts

ECONOMIC DEVELOPMENT

Support

- Business Assistance
- Tourism Promotion
- Expansion or Relocation Assistance

WORKFORCE SUPPORT

Recruit

- Job Postings
- Invites to Job Fairs
- Business Card Display
- Brochure Display

BUSINESS REFERRALS

Promote

- Phone Referrals
- Email Referrals
- Networking

BUSINESS ADVOCATE

Trust

- Economic Development
- City Hall
- School District
- Revitalization
- Tourism

EDUCATIONAL OPPORTUNITIES

Learn

- Business Counseling
- Business Education
- Education Support



All incentives included in membership!

Our mission is to promote our community's economic growth and the success of our member businesses and organizations. Our vision is to create value for our members by providing educational and networking opportunities, as well as beneficial programs and events. We are here to support, serve and guide you. Stop in our office at 420 N. Shawano St.

Monday through Thursday
8:30—4 p.m. | Friday 8:30—12 p.m.
director@newlondonchamber.com
www.newlondonchamber.com
920-982-5822

Contacts • Government

CITY OF NEW LONDON



- Aquatic & Fitness Center 815 W. Washington St. (920) 982-8524
- Building Permit & Inspections 215 N. Shawano St (920) 250-5612
- New London Municipal Building 215 N. Shawano St. (920) 982-8500
- Fire (non-emergency) 215 N. Shawano St. (920) 982-8507
- Floral Hill Cemetery 1210 Beckert Rd. (920) 982-8518
- Housing Authority 505 Division St. (920) 982-8509 x2
- Municipal Court 215 N Shawano St (920) 982-8508
- Parks & Recreation 215 N. Shawano St. (920) 982-8521
- Police (non-emergency) 700 Shiocton St. (920) 982-8505—

Dial 911 for emergencies

- Post Office 208 S. Pearl St. (920) 982-2811
- Public Library 406 S. Pearl St. (920) 982-8519
Future home: 113 W North Water St.
- Public Museum 406 S. Pearl St. (920) 982-8520
- Public Works 215 N. Shawano St. (920) 982-8503
- Senior Center 600 W. Washington St. (920) 982-8522
- Senior / Accessible Transit Service 600 W. Washington St (920) 982-8523

COUNTY INFORMATION

- Waupaca County Clerk (715) 258-6200
- Outagamie County Clerk (920) 832-5077



Living IN NEW LONDON

CABLE/SATELLITE/INTERNET/PHONE SERVICE

- AT&T 4347 W Wisconsin Ave., Appleton (920) 840-6392
- Cellcom / Nsight 301 W North Water St., New London (920) 250-5500
- Spectrum 133 N Mall Dr., Appleton (920) 874-2389
- Star Communications LLC 106 Northridge Dr., New London (920) 560-2437
- Starlink (844) 895-5520
- T-Mobile 1186 N Shawano St. Ste. 1, New London (920) 938-8324
- Unitel, Inc. 2400 W. Leonard St. Appleton (920) 739-1288
- US Cellular 308 Wolf River Plaza, New London (920) 982-7745
- Verizon 1275 N Shawano St., New London (920) 243-7190

ELECTRIC/WATER

- New London Utilities 400 N Water St., New London (920) 982-8516

NATURAL GAS

- WE Energies 800 S Lynndale Dr., Appleton (800) 242-9137

DMV

- Department of Motor Vehicles 801 W Fulton, St., Waupaca (608) 264-7447
- Department of Motor Vehicles 711 W Association Dr., Appleton (608) 264-7447

GARBAGE & RECYCLING

- GFL Environmental E8257 Hwy. 54, New London (920) 982-4116
- Orion Waste Solutions 5325 Ballard Rd., Appleton (920) 759-0501
- Outagamie County Recycling & Solid Waste 1919 Holland Rd., Appleton (920) 832-5277

MEDIA

- Press Star / Buyers' Guide 301 S. Pearl St., New London (920) 982-2511
- Frog Country 92.3 FM WJMQ 1456 East Green Bay St., Shawano, WI (715) 524-2195

RESOURCES

- Community Cupboard 600 W. Washington St., New London (920) 982-9290
- St. John's Food Pantry 209 S. Pearl St., New London (920) 250-5752
- Make the Ride Happen, New London 3003 N Richmond St. (920) 225-1719
- Waupaca County Catch-a-Ride (920) 214-8214
- Mission of Hope House 520 N Shawano St., New London (920) 249-4553
- Salvation Army 301 E Beacon St., New London (920) 538-3249

CHAMBER OF COMMERCE

- Chamber of Commerce 420 N. Shawano St., New London (920) 982-5822
- Tourism Commission 420 N. Shawano St., New London (920) 982-5822

EMPLOYMENT

- IQ Resources , 105 E Waupaca St., New London (920) 982-3660
- QPS Employment Group 105 E Waupaca St., New London (920) 982-3660



Education IN THE COMMUNITY

School District of New London

District Office 901 W. Washington St. (920) 982-8530

The School District of New London is in East Central Wisconsin on the border of Waupaca and Outagamie counties. It covers 144 square miles in three counties with an approximate population of 18,000 and a tax base of just over one billion dollars.

- High School 1700 Klatt Rd. (920) 982-8420
- Middle / Intermediate School 1000 W. Washington St. (920) 982-8532
- Lincoln Elementary 201 E. Washington St. (920) 982-8540
- Parkview Elementary 1300 Werner-Allen Rd. (920) 982-8538
- Readfield Elementary E9177 Hwy. 96 (920) 250-6590
- Sugar Bush Elementary W10736 Cty Tk. WW (715) 752-4135
- Catalyst Academy 709 S. Shawano St. (920) 982-8686
- Next Generation Academy 1700 Klatt Rd. (920) 982-8420



Serving approximately 2,160 students, the School District of New London

partners with the community to ensure that students are engaged in leading their learning toward individual pathways of success. These learning paths enable each student to understand themselves and again academic knowledge toward his / her own personal goals. Partnerships with other institutions of education often allow for students to receive dual credits, as well as industry certificates. We value and respect each individual and strive to continually improve practices.

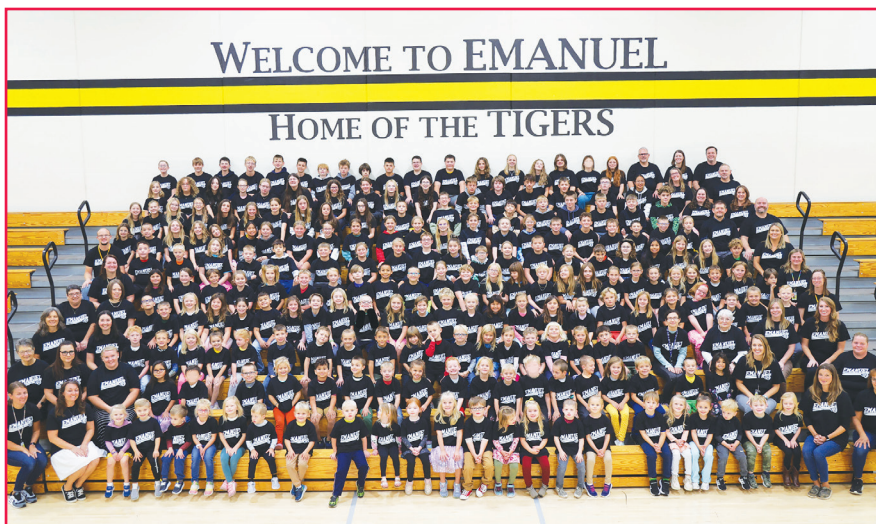
FOR MORE INFORMATION GO TO: WWW.NEWLONDON.K12.WI.US

Scott Bleck, District Administrator / School District of New London

Students in the School District of New London:

- Lead their learning on individual paths
- Engage in reflective practices
- Show integrity through actions
- Value others
- Realize success in achieving goals





Emanuel Lutheran School

■ 200 E. Quincy St. (920) 982-5444

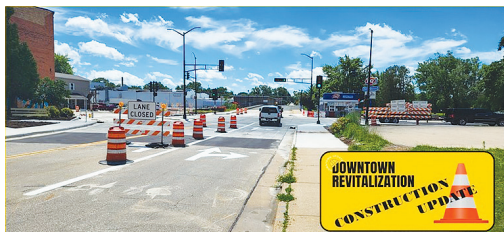
Emanuel has a long history of training students to be humble, bold, and different for a purpose. We are part of the 4th largest non-public school system in the United States, the Wisconsin Evangelical Lutheran Synod (WELS). Emanuel is also part of the Fox Valley Lutheran Schools federation, supporting PreK-12th grade education in partnership with seventeen other Lutheran Elementary Schools across the Fox Valley and Fox Valley Lutheran High School in Appleton. Our school serves 250 students in 3-year-old preschool through 8th grade with a staff of eleven full-time teachers and eight educational aides, as well as numerous other support staff and administrators. Nothing brings us more joy than partnering with families who value a high-quality, Christ-centered education in a world that is increasingly hostile to Christ; it is that dedication to our Savior that sets us apart from any other schooling option in the New London area. If you are interested in learning more about how a foundation in Christ will positively influence your child's education, please contact Principal Bill Fuerstenau at (920) 982-5444 to set up a conference and a tour. May God go with you always!



Revitalization Efforts

Investing and Revitalizing the New London Downtown District-

Downtowns are vital to the prosperity of any community. According to the Wisconsin Economic Development Corporation, only 2% of a community's geographic land area is typically classified as a downtown district. However, this small area generates, on average, 16% of all business establishments, 21% of restaurant spending, and 14% of retail spending. For many, it is the heart of their community. New London's downtown is no exception, serving as the economic and cultural hub that drives the city's retail spending and commerce. Recognizing this, the city prioritized investing in its aging downtown.



Planning for the Downtown Revitalization project began approximately 10 years ago, when the city started applying for an STP Urban grant through the Wisconsin Department of Transportation (DOT) to fund transportation-related improvements along North Water Street. Although the city faced multiple rejections, it persisted. Finally, in March 2020, New London was awarded a \$2.9 million grant. This funding covered approximately 75% of the costs for upgrading the storm sewer, street pavement, signal lights, pedestrian sidewalks, and street lighting. Partnering with the DOT, the city scheduled construction for 2024.

In preparation for these above-ground improvements, the city focused on replacing underground water and sanitary sewer utilities in 2023. Public input played a critical role during the planning stages, with frequent feedback from business owners and customers emphasizing the need for additional parking. Responding to these requests, the city purchased two lots adjacent to an existing public parking area and discontinued the southern portion of Lincoln Court. These combined areas created a new parking lot with over 70 centrally located stalls on North Water Street.

Complementing these infrastructure upgrades, many business and property owners have invested in façade improvements, further enhancing the appearance and vibrancy of downtown New London.



Photo Credit: Aerial Exposure LLC

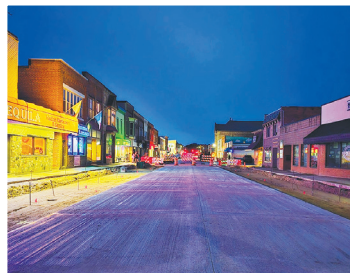


Photo Credit: Bastian Marketing

LET'S GROW—TOGETHER

In tandem with the street reconstruction project, the city encouraged private development by establishing a Tax Incremental District (TID) in the downtown area. This TID has incentivized new developments, including:

A 98-unit premier apartment complex, SCS Wolf River, currently under construction.



The relocation and construction of a new corporate headquarters for First State Bank.

The planned development of two six-plex apartment buildings, one of which includes a mixed-use component with commercial space on the ground floor.

A proposed new beer garden and event space near the Bernegger River Walk.

The development of First State Bank's corporate headquarters also presented a unique opportunity for a public-private partnership. When First State Bank decided to construct a new building, the question arose about the future of its old building at the corner of North Water Street and St. John's Place. The bank ultimately decided to donate the building to the city to serve as the new Public Library—a project the New London Library and Museum Board had been fundraising for.

The donation provided a spacious location for the Library to expand. During fundraising for the building's renovation, the State of Wisconsin launched the Flexibility Facilities Program grant, targeting programs offered by many public libraries and community centers. In October 2024, New London was awarded \$3.9 million through this program, fulfilling the fundraising goal to renovate the former bank building into the new Public Library. Construction is scheduled to begin in early 2025, with completion anticipated by late 2025 or early 2026. This addition will serve as another anchor for the downtown district.



These collective efforts highlight the dedication of the city, businesses, and developers to revitalizing the New London Downtown District. This exciting transformation promises continued growth and vibrancy, setting the stage for a thriving future.



On December 6th, the New London Area Chamber of Commerce hosted a ribbon cutting by partnering with the City of New London during the Winter Wonderland on the Wolf parade. The Mayor, Mark Herter shared an inspiring speech surrounded by local community members.

Photo Credit: Willa Jo Photography

Dining & Desserts IN NEW LONDON

Explore all the great dining and dessert options available in New London. There is something for everyone. Grab a quick bite to eat, dine in one of our friendly-family diners, or choose from any of our sit-down restaurants.

BAR & GRILL

Bean City Bar & Grill

N2505 Bean City Rd.
(920) 982-1500

Bree's Inn II

323 S. Pearl St.
(920) 982-7511

C&R Waterfront Bar & Grill

408 W North Water St.
(920) 982-6550

Cruz Inn

309 S Pearl St.
(920) 360-2343

Dragon's Den Bar & Grill

318 W. North Water St.
(920) 250-5107

Hilby's Restaurant & Sports Bar

106 E. Wolf River Ave.
(920) 982-4982

Huckleberry Acres

Campground/& Huck's Sports Grill

E9005 Huckleberry Rd.
(920) 982-4628

Jeanne Rose Sports Bar

306 W. North Water St.
(920) 250-5821

Phil's Still

E8565 State Road 54
(920) 982-0721

Pup's Irish Pub

E8558 State Road 54
(920) 982-3891

Quiver 'N Minnow

N3748 CR-T
(920) 982-9660

Wolf River Trips & Campground

E8041 County Rd X
(920) 982-2458

CASUAL DINING

El Patron Mexican Food and Grill

203 N Shawano St.
(920) 250-5005

El Tequila Mexican Restaurant

208 W. North Water St
(920) 250-5262

Emily's Café

422 E. Beacon Ave.
(920) 250-5070

Familiar Grounds

206 N. Pearl St.
(920) 982-4332

Family Bake Shop

114 W. North Water St.
(920) 205-6349

Hong Kong Buffet

310 Wolf River Plz
(920) 982-9899

Jolly Rogers Pizzeria

220 W. North Water St.
(920) 982-2333

King House Chinese Restaurant

1931 N. Shawano Ste. 260
(920) 982-0812

Marly's Restaurant

520 S. Pearl St.
(920) 982-5390

New London Family Diner

1601 N. Shawano St.
(920) 982-9060

Palace Breakfast

518 N Shawano St.,
(920) 250-5115

Pantry Café

317 S. Pearl St.
(920) 250-3945

Taqueria Luciano

214 W. North Water St.
(920) 250-5137

FAST FOOD

Domino's Pizza

400 N. Shawano St.
(920) 982-7700

Little Caesars

207 N. Shawano St.
(920) 982-3333

McDonalds

1135 N. Shawano St.
(920) 982-5540

Subway

1200 N. Shawano St.
(920) 982-4401

Supertazon

110 W North Water St.
(920) 572-7635

Taco Bell

1280 Shawano Ave.
(920) 982-7499

FOOD TRUCKS

Big Mouth Gyros - (920) 716-8272

El Patron (920) 250-5005

El Tequila - (920) 408-1207

Hillbilly Bob's BBQ (920) 427-7633

Rolling Tacos - (920) 359-4294

Smokehound BBQ - (920) 659-3232

Tacos El Mana (715) 281-7788

HEALTHY OPTIONS

Longevity Nutrition

201 S. Pearl St.
(920) 250-6500

SUPPER CLUBS & DINING

Crystal Falls (drive thru only)

1500 Handschke Dr.
(920) 982-0627

Pine Tree Supper Club

E8095 Hwy 54
(920) 982-5738

Shamrock Heights Golf & Supper Club

N5525 Old Hwy. 45
(920) 982-9993

The Waters Supper Club

815 W. Wolf River Ave.
(920) 982-7960

SWEET TREATS

Dairy Queen (Seasonal)

600 W. North Water St.
(920) 982-3122

Kist Kandies & Ice Cream

414 E. Cook St.
(920) 358-5714



Your Hometown Chevrolet Dealership Since 1987

- Specializing in Commercial Vehicles
- New & Used Trucks & SUV's



We Service
All Makes
& Models

www.plachgm.com
Corner of Hwy 54 & Hwy 45

920-982-5512

427439



Plach Collision Center

Your Vehicle in need
of body work? We are
open to the public.

Call **920-982-5512**
or stop in for a free estimate!
Just South of 54 on Shawano St.

427442



First Nations History



Natural History



Local History

Come Discover Something New!

Mon.-Fri. 10-5 (year round)

Sat. 10-1 (Labor-Memorial Day)

Free Admission

406 S. Pearl St. New London, WI 54961
newlondonwi.org/museum 920-982-8520



111010

Attractions

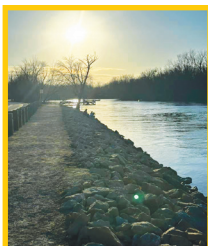
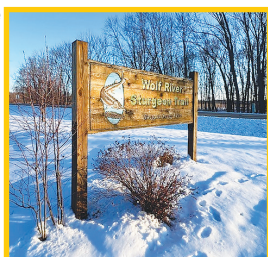
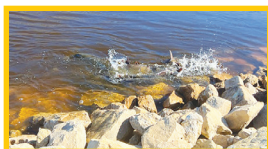
IN NEW LONDON

Big cities can be great, but visiting a smaller city like New London is an experience. Unlike the metropolitan areas that are jam-packed with people and activities our community is peaceful and beautiful. The pace of life slows a bit in small towns, and we offer quaint businesses, home-town family diners, miles of beautiful parks and so much more. Whether you prefer to golf, hike trails, eat delicious local cuisine, catch a movie or go on a mural tour there are plenty of activities to keep you busy. Check out the next few pages for just some of the attractions highlighted in New London starting with a community favorite...Sturgeon Spawning!

Visiting New London, Wisconsin, during Sturgeon Spawning season offers a unique and exciting opportunity to experience one of nature's most incredible events. Make sure to head to New London, WI and visit the Wolf River Sturgeon Trail. The paved Sturgeon Trail along Highway X, just west of New London, is a favorite spot for onlookers to view this wonder of nature. Once the conditions are right and spawning begins, onlookers can view sturgeon up to six feet long from the trail. This incredible sight lasts only for a couple of days, so the window of opportunity to witness this ritual is small.

Rare Natural Phenomenon: The sturgeon spawning season in New London, which occurs typically in the spring, is a rare and awe-inspiring event. Each year, hundreds of lake sturgeons migrate to the Wolf River to spawn. These ancient fish are often referred to as "living fossils" due to their lineage, which dates back over 200 million years. Witnessing the sturgeon spawning is a remarkable experience that few people get to see in person.

New London is a charming small town with friendly locals, great places to eat, and boutique shops to explore. The Sturgeon Spawning season brings in visitors from all over, creating a welcoming atmosphere for tourists. Our town has a rich history tied to the river, and during the spawning season, you can enjoy both the cultural and natural aspects of the area. Make sure to get on the notification list so you don't miss this opportunity. See details below.



For the most up-to-date sturgeon spawning report, call the sturgeon hotline number for recorded daily updates: (920) 303-5444. Sign up for yearly sturgeon spawning email notifications in the New London area by calling the New London Tourism office at (920) 982-5822 or send an email to admin@newlondonchamber.com. Please note that your phone number and/or email will remain on our secure notification lists year after year, with the option to unsubscribe at any time.

Winter Attractions IN NEW LONDON



SNOWMOBILING—Hit the trails in New London on the comprehensive network of groomed trails. Access to the trails can be found between Crystal Falls Banquet Facility and AmericInn Lodge & Suites. Before setting out, check on the open / closed status of trails. To find open snowmobile trails and conditions in the area check out Northport Snowriders Snowmobile Club at www.northportsnowriders.org/



SLEDDING—Find the New London Sledding Hill across from Riverside Park and the boat launch behind the city garage on Wolf River Avenue. Enjoy an afternoon of fun on the hill riding solo or creating a train of tubes. If you forget your sled, borrow one from the Sled Loan Library on site.



SNOW SHOEING—Head to Mosquito Hill Nature Center where they provide lessons, tips and trick about the art of snowshoeing. They also cover the history of this fun winter sport. Find your balance and brave the deep snow with specialized snowshoe gear. Bring your own for a discount or rent them. Check out their Facebook page for more details.



ICE SKATING—Spend an afternoon or evening skating across the ice rink located by the City Garage 915 W Wolf River Ave. Bring your own skates. There is no entrance fee. At night enjoy the overhead lighting provided. There is a warming shelter and heated restrooms available to the east of the parking lot.



ICE FISHING —New London is also known for the great fishing along the river, including perch, bluegill, and walleye. Stop by Johnny's Little Shop of Bait at 1205 W. Wolf River Ave for current ice conditions, fishing supplies, advice, or to get a closer look! Updates are also posted on their Facebook or by calling (920) 982-4802.



BOWLING — New London bowling has really taken off recently especially in our local schools. It's now a school sport and the teams keep growing each year. The New London Lanes is the place to be year round but especially during the cold winter months. This bowling alley offers great food, has a huge bar and fun game area. They have a connected restaurant called Hilby's with all your favorites. Contact 920-982-4982 for your next birthday party celebration.

Spring Attractions IN NEW LONDON



PETE & JOE — Some people are seeing robins, some are hearing the sandhills cranes, but folks going over the Pearl Street bridge are seeing another sure sign that spring is right around the corner when they see Pete and Joe. The New London Fish and Game Club has this time-honored tradition of documenting the ice out date and time for the past 171 years! New London knows when Pete & Joe come out, Spring is Near!



DISC GOLFING—Our course that flows through Hatten Park is one of the best outside of the Valley. It offers an 18-hole course with mostly flat terrain and some wooded areas. With multiple tee pads for every skill level, the course has pin lengths from under 175ft. up to just over 400ft.



GOLFING— Shamrock Heights Golf Course has become one of the oldest and most scenic golf courses in Northeast Wisconsin. Located in the heart of the Wolf River Valley on the north side of New London, Shamrock Heights offers a rich history and a professional atmosphere, making it the perfect place for any golfer. This year the golf course will be celebrating 100 years in business. Watch their Facebook page for fun events and promos.



OPEN MIC —Stop in at Familiar Grounds for the All Acoustic Open Mic – an afternoon of great music, drinks, and friends! Open Mic takes place all year round, the first Sunday of each month from 12:00pm – 3:00pm. Shop local products and gifts throughout the shop and pick up your favorite drink or grab a meal. Don't forget, they deliver!



FISHING — Boating on the Wolf River is a top attraction in the New London Area. The river connects New London, Shawano, Fremont and Winneconne. Popular fish in this river are many varieties of pan fish, large and smallmouth bass, musky, and trout. Float in on the river and set your lines in New London. Stop in at Johnny's Little Shop of Bait for all your fishing supplies.



LIVE THEATRE— This is your opportunity to enjoy community theatre at its best with live entertainment and a variety of quality performing arts. This local group of volunteers have been presenting live community theatre for nearly 40 years.



HONOR OUR VETERANS — View over 1,000 veterans' names on the memorial walls located in Taft Park. Visitors can now use a QR code posted at the park's information kiosk to locate the names of veterans honored at the memorial. Application forms for memorials are available at Taft Park, City Hall and the New London Parks & Recreation office.

Summer Attractions IN NEW LONDON



TUBING— Take your vacation to the next level with epic tubing, canoeing and kayaking trips along the Little Wolf River. Our trips start at Little Wolf River and take you on a one-of-a-kind excursion through beautiful river terrain, exciting rapids, and relaxing bends that all lead back to the Wolf River Camping Grounds. Whether you are planning a day of tubing or a week of camping and fishing, Wolf River Trips and Campgrounds has everything you need for a fun-filled and relaxing vacation for the whole family.



ICE CREAM & TREATS—Visit this hidden gem to try fresh ice cream, soda and candies. Sodas in 31 flavors, many kinds of fudge, and 11 flavors of ice cream in warm waffle cones – all made at the Kist plant in New London. Visit during a hot summer day, there's plenty of room to sit in the screened in porch or take your treat to go.



CAMPING—Get away from the hustle and bustle of work and take the short drive to Camp Huck to unplug in our cozy, family focused campground and resort. Nestled on 95 serene acres in the country just minutes from the Fox Valley! Featuring Huck's 12 acre lake, 2 ponds, Potters Creek, 200+ LARGE grassy campsites, 3 Bunkhouse Cabins plus our new 2 unit, 2 bedroom Deluxe Cabin! Enjoy Wyatt's Play Park & Arcade, swimming & inflatables on Huck's Lake, Maggie's Market, crafts, fishing & more.



FARMERS MARKET—Check out the parking lot behind Events Everlasting located at 509 W North Water St. You'll discover a vibrant gathering of local farmers, artisans, and small businesses offering a wide variety of goods. From freshly picked produce and seasonal fruits to homemade baked goods, jams, and honey, there's something to delight every palate. Shoppers will also find hand-crafted items, including unique jewelry, candles, and decor, alongside plants and flowers and more. Market dates June 8th & 22nd, July 13th & 27th, August 10th & 24th and September 7th from 10-1 p.m.



KAYAKING—Looking for a great opportunity to become one with nature and see some awesome murals created by our local Wolf River Art League? You can use the kayak launch at Riverside Park and float your kayak or canoe down the Wolf and Embarrass Rivers through downtown New London for a relaxing, fun experience! Stop by our local businesses for a convenient meal or treat. Just one of the reasons why New London is your address for great opportunities.



OUTDOOR MUSIC—Enjoy the summer nights while watching free live music right behind the Chamber of Commerce in New London. Concerts will be held monthly on Thursday evenings starting in June and continuing through August. Entertainment will range between blue grass, pop, country and oldies. The New London Lions Club will be serving beer and brats at the concessions. Band schedules will be posted by April, visit newlondonchamber.com for more details.



ATV / UTV RIDES — Just within the last couple of years, day and time restrictions were removed to allow ATV / UTV access 24 hours a day, 365 days a year. Hop on your ride to visit your local establishments in New London or just cruise around to enjoy the scenery. If you have questions regarding rules and regulations check with the City of New London or contact the local New London ATV Club at (920) 359-0798 or www.newlondonatv.com.

Fall Attractions IN NEW LONDON



GET SPOOKED — Spooks on Spurr is a haunted attraction in New London, Wisconsin. The old “Spurr Mansion,” as the local folks call it, is a beautiful house built in the 1800’s. The stories you will hear about the “Spurr Mansion” and the surrounding wooded area, will give you goosebumps. Seven years ago, the old “Spurr Mansion” became the Mansion of Misery and the adjacent woods became the Forest of Freaks. **We recommend our haunt for adults but use your discretion for anyone under 18.** OPEN FRIDAY AND SATURDAY NIGHTS ONLY



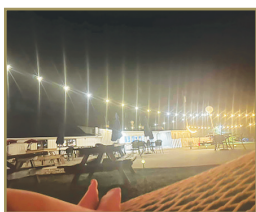
SHOP TILL YOU DROP — Labeled one of the hottest destination spots in New London, Water Street Vintage is a must-see on your list. Shop 15,000 square feet all day long in this two story antique and gift shop. With a large available inventory that changes daily, you’re surely able to find something of interest for everyone; includes vintage, shabby chic, antique, repurposed items, furniture, records, art, jewelry, and more.



EXPLORE HISTORY — Explore one of only five public, multi-topic, museums in Wisconsin. People from all over the country visit the New London Public Museum every year to learn about local, natural, and Native American history. Open Mon.-Fri. 10-5 p.m. year-round Sat. 10-1 p.m. Labor Day – Memorial Day. Free Admission. Located at 406 S. Pearl St. Find us on Facebook or contact the museum at (920) 982-8520 or visit newlondonwi.org/museum.




MOVIE TIME — A movie theatre that includes the historic Grand Opera House, featuring four screens, showing the latest 2-D and 3-D movies. Movies and showtimes are listed online, and purchase your tickets ahead of time online if desired. \$5 movies all day every Tuesday. Popcorn, treats, and soda available at the concession stand. Check out their website or Facebook page for the latest shows and showtimes



VOLLEYBALL — Bean City Bar & Grill has completely revamped their bar and restaurant outdoor area to offer a variety of fun things to do. Whether you want to relax in a comfy hammock, sit by the beautiful table top fire pit or enjoy a game of volleyball — Bean City’s got it all. This place is must see during the warmer months but also offers a variety of fun programs and events during the winter like their stand up comedian show. Check out their Facebook page for full details.



AXE THROWING — Book your next party or gathering to enjoy axe throwing, corn hole toss, darts and pool at NXT Level USC Ultimate Sports Complex. Catering options are available. No party too big for this venue. Large private room also available. Full bar, Golf Simulator, games and more. Bounce house for the kids indoors available for family friendly parties. Jolly Bob’s Pizza and hot beef sandwiches with the famous Black Otter prime rib meat.



2025 Summer Fun!


Year-Round Educational Facility
441 Acres of Preserve
8 Miles of Hiking


TRAILS OPEN DAILY:
 Sunrise to Sunset

BUILDING OPEN:
Tuesday-Friday 7:30am-3:30pm
Saturday-Sunday 10:00am-3:00pm
CLOSED MONDAY


OPEN YEAR-ROUND

NEW: Register and pay for programs online
 here: <https://friends-of-mosquito-hill.square.site/program-registration>



For info:
920-779-6433 
www.mosquitohill.com

436055



creatively meticulous design since 1997

BOOK DESIGN
GRAPHIC DESIGN
MARKETING & BRANDING

Proofreading & Editorial Services | *Email to schedule a*
 Self-Publishing & Print Coordination | **FREE 30-Minute**
Phone Consultation
About Your Project!

ONLINE PORTFOLIO AVAILABLE AT:
MAGNOLIASTUDIO.COM
pjpeter@magnoliastudio.com
707.480.8153

425626



Wolf River Theatrical Troupe
304 St. Johns Place New London, WI

Formed in 1982, this active Troupe of Thespians has consistently offered fine entertainment-plays, musicals and a variety of guest artists—for all ages. We've been honored to be recognized as one of the top two community theatres in the area. We produce 4-5 theatre productions and several additional entertainments throughout the year. Watch for announcements in local papers and on our website and join us for what's sure to be an enjoyable experience. Stay and meet the thespians after the show. Better yet, get involved either on stage or backstage. Ticket prices are affordable, seats and temperatures are comfortable and there are concessions to enjoy. The theatre is wheelchair accessible.



Call for reservations: 920-250-6200
 Check our website - WRJT.org and our Facebook, on line tickets-our.show/wrjt

343726

Radtke-Rhone Insurance Agency, Inc.

We're People Who Care



Put 140 Years of Insurance Experience to Work For You!

Radtke-Rhone Insurance Agency, Inc.

 **982-3048**
www.radtke-rhone.com
 1301 Mill St., New London

- AUTO
- HEALTH
- HOME
- BUSINESS
- LIFE

 Find us on Facebook

434783

Grand Parade & Irish Fest

IN NEW DUBLIN

2025 SCHEDULE OF EVENTS

Subject to change visit newdublin.com for complete details.

♣ Monday March 17– Leprechaun Day

Leprechauns change the name of the town to New Dublin for the week and will appear at various schools, nursing homes and businesses. Refer to the schedule online for the Leprechaun itinerary, they have a FULL day.

♣ Tuesday March 18 – Hooligan Day

Corned beef and cabbage is served during the week at Pup's Irish Pub on Hwy 54 in North Dublin (Northport) and several other fine local establishments in New Dublin (New London).

♣ Wednesday March 19 – Irish Caroling

Irish Caroling at St. Joseph Residence, Washington Center and Trinity Terrace. Song sheets provide a great way to learn all the traditional Irish sing-a-longs while singing to senior citizens. Meet at St. Joseph Residence—New London at 5:00 pm.

♣ Thursday March 20 – Family Entertainment Night

Irish Entertainment and Dignitary Appreciation Night • 7:00 pm at New London Senior High School Auditorium. Talented artists from the New Dublin area present a moving evening of Irish entertainment on stage that features songs, dances, and the humor of Ireland. We will be presenting 2025 Irish Man and Irish Rose: Don & Connie Laughlin, Parade Grand Marshals: April Kopitzke & Chad Hoerth and the Irish Lad & Lassie. It's great family entertainment. Free admission, donations appreciated.

♣ Friday March 21– Céili (kay-lee)

7 pm at Crystal Falls Restaurant & Banquets A traditional gathering of friends and family in celebration of music & dance. Come and learn how to do Irish dance with a Céili band and Caller. Fun for the whole family. Admission is free and donations are appreciated. Finnegan's Wake will also be out-and-about visiting local establishments.

♣ Saturday March 22 – Grand Parade and Irish Fest

St. Patrick's Day Grand Parade – 1:00 pm – downtown New Dublin. One of Wisconsin's largest St. Patrick's Day Parade includes marching and bagpipe bands, clown and specialty performers, clan and business floats, and more. Over 100 units. Trophies awarded for the best entries.

New Dublin Irish Fest – 11:00 am to 6:00 pm – Held under a HUGE heated big top tent by the Festival Foods parking lot downtown. Features food, beverages, entertainment and market booths. Entertainment will be Sheamus Fitzpatrick and the McNally Boys, Band 'O Barley and The Scrubbers. Entrance to Irish Fest is \$5.00 for the whole day.



ALL ROADS OPEN TO NEW DUBLIN

🍀 History of Finnegan's Wake of New Dublin

The Finnegan's Wake tradition has its roots in what began years ago as a lark. While the local police were occupied at the high school watching over school traffic and other juveniles, Mike Coyle, Judy McDaniel, Fluff Barrington, Dave Mulroy, and others decided to take a department store dummy in an old wicker coffin and carry him from Coyle's Tire to the Midtown Restaurant performing an Irish Wake. In fact, it became the first "Finnegan's Wake" in New London, in their own impromptu St. Patrick's Day parade. When it was found out, they were told if they wanted to do this the next year they needed a permit. No one imagined then that this humble beginning in 1983 would grow into the largest St. Patrick's Day parade with an Irish Fest in the state of Wisconsin.



The Shamrock Club of New Dublin



Since 1984 the Shamrock Club has sponsored a week long celebration of St. Patrick's Day in New London, WI. Featuring the largest St. Patrick's parade in the state we have garnered national media coverage each year. Our parade and Irish festival draw thousands to New London each March.



Over the past 40 years, with the help and generosity of many businesses and individuals, we've donated over \$200,000 to local charities in the greater New London area.

Follow us on Facebook & check our website for details on our celebration & club events.

JOIN US!
NEW MEMBERS WELCOME!



The Shamrock Club
of New Dublin
P.O. Box 317
New London, WI 54961
www.newdublin.com



434854

Dine on Our River Side Deck

Full Menu • Nightly Specials
Great Pizza • Riverside Dining

Open for Lunch Fri., Sat., Sun.: 11am-3pm
Serving Dinner Mon., Wed., Thurs. 4:30-Close
Fri.-Sun. 4:00-Close



facebook
US

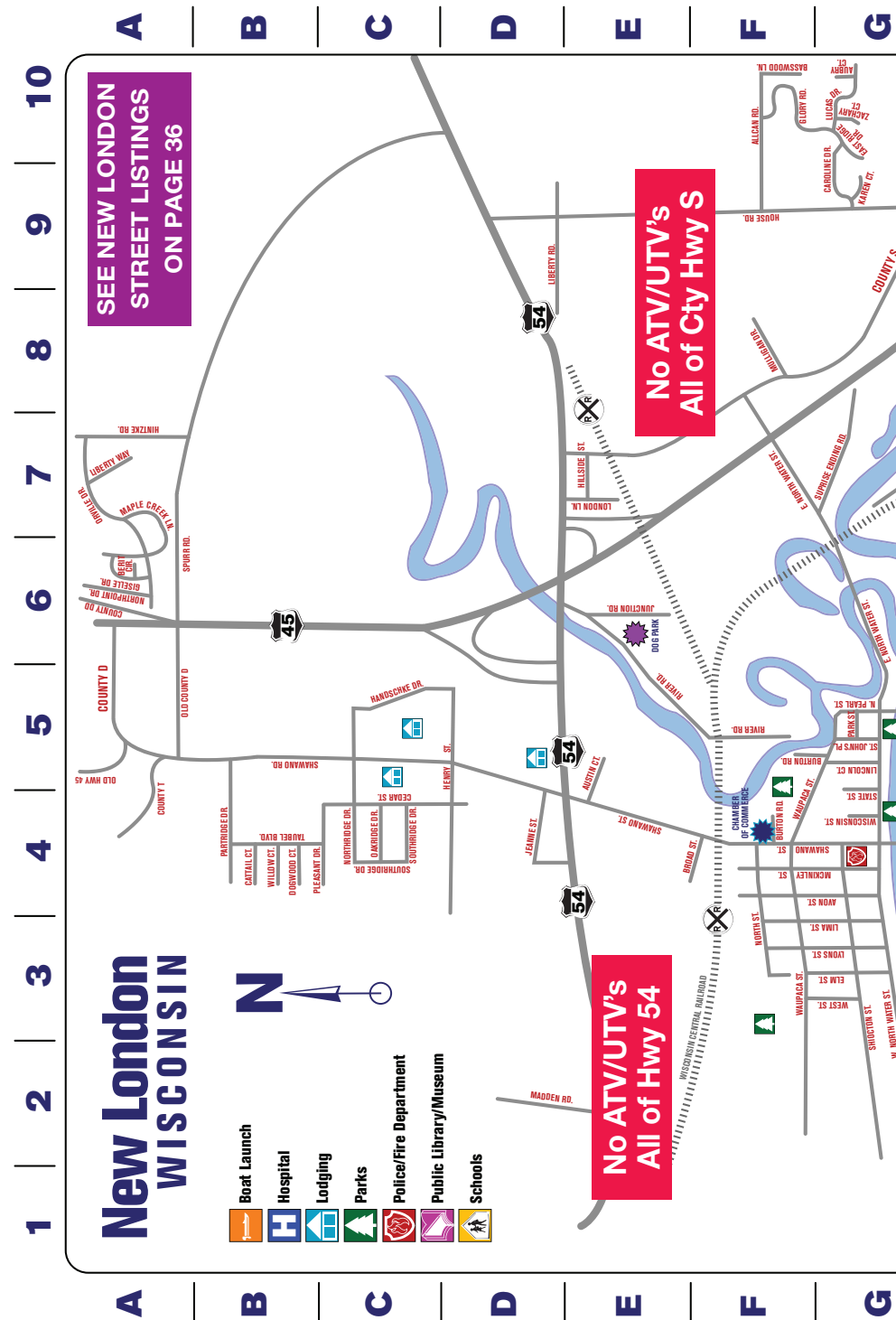
**Fuel Available For
Boats & Snowmobile**

WATCH FOR OUR SPECIAL EVENTS

**SUPPER CLUB
AND LOUNGE**

815 W. Wolf River Ave., New London
920.982.7960 • www.atthewaters.com

344154





See map on pages 28-29

Algoma Street.....	I6	Fox Crossing.....	K1	Madden Road.....	E2	River Road.....	E6
Alcan Road.....	F9	Fox Trail.....	K1	Manske Road.....	M2	Robin Street.....	K3
Appleton Street.....	I3	Fremont Street.....	H7	Maple Creek Lane.....	A7	Rocky Mountain Dr.....	L1
Aubrey Court.....	G10	Giselle Drive.....	A6	Martin Street.....	K5	Roosevelt Court.....	L1
Austin Court.....	E5	Glory Road.....	G9	Mayflower Court.....	K4	Rowland Street.....	J5
Avon Street.....	F4	Greenfield Drive.....	M3	McKinley Street.....	F4	Shawano Road.....	B5
Basswood Lane.....	F10	Grove Street.....	J7	Menasha Street.....	I4	Shawano Street.....	E4
Beacon Avenue.....	H7	Hancock Street.....	H5	Mill (Cty. Hwy. T) St.....	I6	Shiocton Street.....	G4
Bean City Road.....	L2	Handschke Drive.....	H4	Millard Street.....	I5	Smith Street.....	J5
Beckert Road.....	K2	Hatten Park Road.....	3	Minerva Street.....	K5	South Water Street.....	G5
Berit Circle.....	A6	Haymeadow Court.....	K2	Montgomery Street.....	I7	Southland Lane.....	K3
Broad Street.....	E4	Henry Street.....	D4	Montieth Street.....	J7	Southridge Drive.....	C4
Bruce Street.....	I6	High Street.....	J7	Mulligan Drive.....	F8	Spring Street.....	H5
Brynnwood Trace.....	K2	Highway 54.....	E3	Nassau Street.....	J5	Spurr Road.....	A6
Buck Street.....	H4	Hillshire Drive.....	K7	Neenah Street.....	I4	St. John's Place.....	G5
Burton Road.....	F4	Hillside Street.....	E7	North Star Court.....	K2	Starlight Drive.....	K2
Cameron Street.....	J3	Hintzke Road.....	A6	North Street.....	F4	State Street.....	G5
Cardinal Street.....	J3	House Road.....	F9	North Water Street.....	G4	Sun Ray Avenue.....	M2
Caroline Drive.....	G9	Industrial Loop Road.....	K8	Northpoint Drive.....	A6	Sunset Lane.....	L2
Cattail Court.....	B4	Jeanne Street.....	D4	Northridge Drive.....	C4	Suprise Ending Road.....	G7
Cedar Street.....	D5	Jefferson Street.....	J4	Oak Street.....	J6	Tara Court.....	J4
Cedarhurst Drive.....	K2	Jennings Road.....	J1	Oakridge Drive.....	C4	Taubel Boulevard.....	B4
Cook Street.....	H5	Jennings Street.....	J3	Old Highway 54.....	A5	Tower Lane.....	K8
County Trunk D.....	A5	Junction Road.....	E6	Old River Road.....	K8	Wallace Street.....	I6
County Trunk DD.....	A6	Karen Court.....	G9	Orchard Court.....	J3	Walmer Lane.....	K3
County Trunk S.....	F8	Katie Court.....	J4	Orile Street.....	A3	Warren Street.....	I5
County Trunk T.....	N7	Kendall Lane.....	M1	Orrville Drive.....	A7	Washington Street.....	H4
County Trunk W.....	L2	Klatt Road.....	L2	Oshkosh Street.....	J4	Waupaca Street.....	G4
County Trunk X.....	H2	Laura Street.....	J5	Pamela Lane.....	L2	Werner-Allen Blvd.....	I3
Dawn Drive.....	L2	Law Street.....	I5	Paradise Court.....	L1	West Street.....	G3
Dexter Street.....	J4	Lawrence Street.....	J5	Park Street.....	G5	Willow Court.....	B4
Dey Road.....	L1	Liberty Road.....	D9	Parkview Drive.....	J3	Winnifred Street.....	K5
Dickinson Street.....	I4	Liberty Way.....	A7	Partridge Drive.....	B4	Wisconsin Street.....	G4
Division Street.....	J6	Lima Street.....		Pearl Street.....	J5	Wolf River Avenue.....	G4
Dogwood Court.....	B4F4		Pershing Road.....	K3	Woodfield Drive.....	J1
Douglas Street.....	I6	Lincoln Court.....	G5	Pheasant Drive.....	C4	Woodlane Drive.....	G7
Eastridge Drive.....	G10	London Lane.....	E7	Pine Street.....	I4	Wyman Street.....	J5
Elm Street.....	G3	Lucas Drive.....		Pinewood Court.....	J2	Zachary Court.....	G10
Evergreen Street.....	J6	G10		Pinewood Lane.....	J2		
Fairview Drive.....	D5	Lyons Road.....	M2	Quincy Street.....	H6		
Forest Pine Drive.....	M3	Lyons Street.....	F4	Ridgeway Drive.....	I7		



The Power of Art

START MURAL PROJECT & SCULPTURE TRAIL

2019: Enter Season and Kelly Polsin...

In 2019, after 49-years of hosting art shows and other art-related events, and with only a handful of active artists, Wolf River Art League (WRAL) members were asking hard questions about pulling off yet another art show. They were seriously considering disbanding.

Enter Season and Kelly Polsin, lifelong residents of New London. The Polsin family travels quite a bit and discovered that Fort Collins, Colorado was literally blanketed with murals. Season was in awe. She immediately felt the need for this to happen in her home town. When they returned to New London, Season started pounding the streets to drum up interest.

With a lot of leg work, dozens of meetings with businesses, city administrators, the New London Area Chamber of Commerce, and the WRAL, the vision was born. It began with a community fundraiser, raising nearly \$15,000 to start the project! During that time, the league grew from just 8-active members to over 40! The enthusiasm of the project was contagious and after 50+ murals later, the Wolf River Art League was back!

2024: "Life on the River"

To continue our endeavor of "creating an interest in and appreciation for the arts", we brainstormed what could come after an amazing project like our street murals. It was a tough one to surpass, but with a monthly meeting full of mega-creatives, there were no shortage of ideas circling the room. We settled on the one that stood out the most. Transforming the path along the south-side of the Wolf River was next on our list!



Mural: Anna's Wings| Artist: Abby Young

On May 6th, 2022, the first group of people met to mark the beginning of the Sculpture Trail project. With the city's guidance, a theme of "Life on the River" was chosen. The members of the project's group have evolved overtime and, as always, the right people have fallen into place...Sculpture Artists, Welders, Fabricators, and a Landscape Artist to name a few.

CURRENT DAY, 2024 ~ The group is launching a fundraiser to kick-off the trail. The public can purchase stainless steel fish, to be engraved (with family, group, or company names), as part of our first sculpture trail installation. The fish range from a 60" sturgeon for \$1500 to a 5" minnow for \$20. People are encouraged to buy as many as they like as purchases will go toward the concrete foundations, landscaping, and signage.

Online ordering is now available!



NEW LONDON MURAL TOUR

The Wolf River Art League has brought so much color and beauty to the City of New London with their "Start Art Project".

This group of volunteers will continue mural installations and painting throughout the year as long as the weather allows.

Locate the murals by following an interactive Google map!

To access the map, scan the QR code:



SCAN ME

The interactive map will continue to be updated as more beautiful art is added around New London!

You can also find a copy of the map and learn more about the mural project at:
www.newlondontourism.com/murals

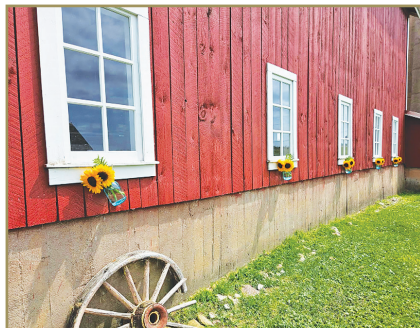
History

EXPERIENCE THE HISTORY AND NOSTALGIA OF THERN FARM

The history of Thern Farm goes back to 1891 when the farmhouse was built as a dining hall for the New London Fair (1891-1912). In its heyday, thousands of visitors walked, came by horse and buggy, or rode the train to come to the fair.

After the fair ended, the land was purchased by the Thern family in 1914 and turned into a small dairy farm. In 2014, Thern Farm was recognized with the Century Farm Award for over 100 years of family ownership of the land. In 2015, Thern Farm became part of the New London Heritage Historical Society ensuring that its historical legacy will live on.

In 2023 Thern Farm was listed on the State Register of Historic Places and in 2024 it was listed on the National Register of Historic Places. Located along Hwy. 54, just east of the U.S. Hwy. 45 bypass, and nestled on the banks of the Embarrass River in New London, WI, the historic Thern Farm is a reminder of days gone by.



In 2016, Thern Farm hired a Director to oversee the operation of the organization. Since opening to the public the farm has offered programs, classes, and events as well as welcomed tours and private rentals. Thern Farm has become known for Rhubarb Fest and Christmas Open Houses which have both become popular annual events.

None of the activities would be possible without a dedicated group of volunteers that are up for almost anything. Whether it's maintaining the garden, parking cars, giving tours, or so much more, it's truly a group effort.

Our goal is to grow the organization while preserving and sharing the history of Thern Farm.



Thern Farm is private property. To inquire about visiting the property please call 920-878-2400.

Healthcare

PROVIDERS

ThedaCare
1405 Mill St.
(920) 531-2000

At ThedaCare, you can rest assured that you'll receive the exceptional care you need, right where you need it — close to home. As a comprehensive health care system dedicated to individualized care, their care providers work to understand your unique medical background, risks, lifestyle, personal values and goals, to help them help you get back to living your best life, sooner. Through their extensive network of primary and specialty care providers, they're here to provide all patients within the communities they serve the level of expertise you deserve.



Ascension Medical Group
1420 Algoma St.
(920) 982-8300

Serving residents of the Wisconsin counties of Waupaca and Outagamie, their board-certified doctors and nurse practitioners provide healthcare services for every member of your family, at every stage of life.

Each time you visit their clinic, your doctor begins with listening. By understanding you and your health and by working together, they help make sure you're getting the care you need and the best care possible.

Their family medicine doctors and care teams provide a wide range of services from annual physicals, preventive health screenings, immunizations and weight management to treating acute illnesses.



Valley Family Medicine
1505 Mill St.
(920) 982-7900

Valley Family Medicine is a local provider owned and operated practice that provides services to your whole family. Dr. Van Hoozen is board-certified in Family Practice as well as board-certified in Addiction Medicine by the American Board of Preventive Medicine. He is also a member of the American Academy of Family Physicians and American Society of Addiction Medicine.



Parks & Recreation

IN NEW LONDON

ABRAHAM PARK 1800 S. PEARL ST. Abraham Park is surrounded by a peaceful neighborhood, and is the perfect spot to enjoy a family picnic. The playground, tennis & basketball courts, and baseball diamond provide fun for all ages.



ANCHOR PARK 100 W, NORTH WATER ST. This is one of New London's smaller parks, nestled at the east end of downtown. It boasts of a beautiful flower garden and a view of the historic former city hall building.

BERNEGGER RIVER WALK 103 S. PEARL ST. Bernegger River Walk is New London's smallest park on the beautifully landscaped banks of the Wolf River. Enjoy fishing from the new docks, or stroll on the paved walking trail.



FRANKLIN PARK 500 DIVISION ST. Established in 1856 this is New London's oldest park. At 1.3 acres, it still offers leisure opportunities: a playground complete with large sandbox and a walkway shaded by the mature trees that make up the park.

HATTEN PARK 801 WERNER-ALLEN BLVD. Named after William Hatten, this park boasts of 120 wooded acres with nature and cross-country ski trails. There are shelters available for rental complete with restrooms, picnic tables, electricity and water. The park offers two playgrounds, basketball court, ball fields, tennis courts, volleyball courts, horseshoe pits and a disc golf course.



JOIN US AT HATTEN PARK on Saturday, Sept. 6, 2025 as we celebrate the park's listing on the **Wisconsin State and National Registers of Historic Places!** The festivities start at 11:00am with activities throughout the park including games, nature walks, a pop-up museum, art projects, and more. Concessions will be available.

KROSTUE PARK 411 ELM ST. 23 acres with picnic tables, ball field, playground, and has open and wooded/nature areas.

LOSS PARK 103 S. PEARL ST. This is New London's smallest park nestled on the landscaped banks of the Wolf River. Enjoy fishing with the kids from the boat dock. Conclude a day of boating by docking here and taking a short walk to New London's downtown area.

MEMORIAL PARK 800 MONTGOMERY ST. This spacious park boasts 13 acres on the banks of the Wolf River. The facility offers a shelter, restrooms, playground, 2 ball fields, and 2 lighted volleyball courts. The park is adjacent to New London Skate Park and the Heritage Historical Village.

MINI PARK 521 W. NORTH WATER ST. This downtown park, although small at 0.2 acres, boasts of a beautiful flower garden and shaded benches. All of the fine eateries downtown New London has to offer are within walking distance from this park.

New London is home to 16 park sites that encompass a combined area of 281.6 acres. The parks also host many different options for you such as leisure parks and sports parks. Discover which park site can be part of your perfect day. Visit newlondontourism.com/parks-directory/ for more details.



NEW LONDON JAYCEES DOG PARK 740 RIVER RD. New London's 3 acre dog park consists of two separate fenced in areas to provide the perfect space to exercise your dogs, both large and small. Check out the new benches made out of plastic caps.

NEW LONDON SKATE PARK 800 MONTGOMERY ST. Try your skills on this park's quarter pipes, launch boxes, grind rails and a pyramid. The park is designed for skateboards, BMX bikes and roller blades. Adjacent to Memorial Park & the Historical Village.



PFEIFER PARK 509 BURTON RD. Named after Dr. Fred Pfeifer, this 9.4 acre park offers many leisure opportunities. Enjoy a peaceful walk along the shady banks of the Embarrass River or play a few games of tennis (lighted courts). Additional amenities include a playground, 3 ball fields, basketball court, restrooms.

RIVER TRAIL PARK 205 S. SHAWANO ST. Take a leisurely stroll along the Wolf River on this beautifully shaded trail. Then enjoy a relaxing picnic as you watch butterflies visit the park's flower garden.



RIVERSIDE PARK 1215 W. WOLF RIVER AVE. Enjoy a stroll through this 5 acre park on the shady banks of the Wolf River. Amenities of the park include boat launches, docks, vehicle/boat trailer parking, shelter, and year-round restrooms.

ST. JOHN'S PARK 122 W. NORTH WATER ST. This 0.4 acre park is located on the Wolf River in historic downtown New London. Take pleasure in a picnic as the river peacefully flows by. A dock is available so boaters can stop and take a leisurely stroll to one of the many New London eateries.



TAFT PARK 400 W. NORTH WATER ST. Nestled in the heart of downtown New London along the Wolf River, this is a very beautiful and peaceful place to relax. Shaded by beautiful mature trees is a war memorial honoring New London's fallen heroes. Boaters can dock here to picnic or enjoy a meal at one of the many fine restaurants downtown. Handicap accessible.

New London Aquatic & FITNESS CENTER

Are you looking for an indoor swimming pool, hot tub, a splash pad or workout room? Well, look no further, we have everything under one roof for the community to enjoy. The main attraction of the Aquatic and Fitness Center is the six-lane, L-shaped indoor pool with a variety of programming for all ages. The pool spans 25 yards across the shallow end while the length from the shallow to deep end measures 25 meters. Brave the diving board or enjoy the pool slide which is open during the public swims. The Pool is patrolled by lifeguards. If you're looking to relax, hop into the whirlpool hot tub which is set to be 103–104 degrees of pure comfort. The hot tub is open throughout the day to patrons 18 and older, but closed to the public during swimming lessons. If the indoor pool or hot tub are not your style and you have little ones, visit the outdoor splash pad filled with sprayers and fountains that will make any child squeal with delight.



The aquatic center also houses an air-conditioned exercise room with a variety of cardio and weight training equipment including treadmills, ellipticals, bikes, a stair stepper, and a row machine. Strength training options include free weights, kettle bells, universal weight machines, an incline bench, and an adjustable sit-up bench. Three flat-screen TVs with Dish Network access and an overhead radio system provide auditory and visual entertainment during your workout.



*Please visit newlondonwi.org for the most up to date details on hours and activities



Accommodations

IN THE NEW LONDON AREA

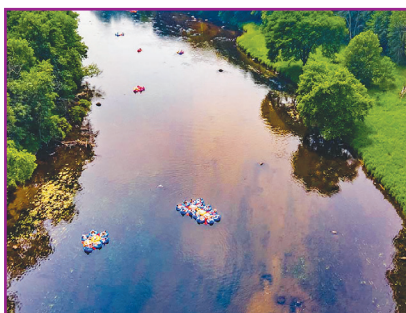
Stay the Night—You will find various lodging options in the area. Amenities may vary at locations visit designated website for details. For camping, glamping, cabins and RV there are multiple campgrounds and areas with various recreation activities available. We'd love to have you book your retreat, conference, banquet, or wedding reception in New London. Visit travel sites where New London is featured such as Airbnb, Vrbo, HomeAway and Expedia when booking your next stay in the area.



AmericInn Indoor Pool



Hucklberry Acres Campground Inflatables



Wolf River Campground Tubing

HOTELS:

AmericInn Lodge & Suites

1404 N. Shawano St.
(920) 982-5700

Quality Inn

1409 N. Shawano St.
(920) 982-5820

BED & BREAKFAST:

Antiques With Inn

1776 Division St.
New London, WI
(920) 982-4366

MOTELS:

Rainbow Motel

1140 N Shawano St.
(920) 982-4550

CAMPING , GLAMPING , CABINS & RV:

Mulroy's Irish Acres Farm

N2841 US-45
(920) 982-4744

Hucklberry Acres Campground

E9005 Hucklberry Rd.
(920) 982-4628

Wolf River Campground

E8041 County Rd. X
(920) 982-2458

Bear Lake Campground

N4715 State Road 22—110
Manawa, WI
(920) 596-3308

Guth's Resort

E7294 Guth Rd.
Weyauwega, WI
(920) 594-2090

Mosquito Hill Nature Center

50 YEARS OF ENVIRONMENTAL EDUCATION

Mosquito Hill Nature Center is located two miles east of New London off County Highway S and offers views from one of the highest elevation points in the area.

The center's picturesque 441 acres borders the Wolf River and includes one of the last intact stands of bottomland hardwood forest on the Wolf. Educational and recreational activities are planned for children, adults, and families throughout the year. Public programs topics are varied and might include astronomy,

basket weaving, yoga, gardening, native communities, and others. Naturalist-led recreational outings might feature birdwatching, canoeing the Embarrass River or biking the back roads of Waupaca County. A five-week Summer Ecology program offers a day-camp environment for children ages 4 to 11 in June and July. A robust school field trip program attracts thousands of elementary-age students annually. Our annual Holiday Make & Take is a gift-making workshop for children and fills to capacity each year. Inside the interpretive building you will find a selection of natural history displays, a gift shop, a library, and classrooms. Free Wi-Fi is available. Outside there is an observatory used during scheduled astronomy events and a natural playscape for children in an old quarry. Funding has been secured to make extensive renovations in and around the building including new interactive educational displays.

Construction started and finished up in late October 2024. The interpretive building remains open during the renovation project, but exhibits will be closed. Three miles of developed



hiking trails include wooded and prairie trails and a loop to scenic vistas from our newly constructed observation platform at the top of Mosquito Hill. The All-People's Trail is a paved, half-mile trail. Rest areas with benches and educational signage are found along the way. During the winter snow season five miles of snowshoe trail and a $\frac{3}{4}$ -mile ungroomed cross-country ski trail provide hours of winter enjoyment. All trails are closed during the gun deer hunting season in November. Seasonal festivals and public programs include Winter Family Fun Day, the Mosquito Hill Fat Tire Bike Race and Harvest Moon Festival. Visit www.mosquitohill.com, the center's Facebook page or call 920-779-6433 for a seasonal calendar of events or additional information.



May Festival

CELEBRATING THE LIFE OF ABIGAIL

The May Festival is more than just a community event—it's a tribute to the life and legacy of Abigail Hoier, a young soul who touched many lives but left us far too soon in 2021. Born out of heartbreak, this festival is a powerful effort by Abigail's family and friends, who have transformed their grief into an opportunity to raise awareness while bringing joy to the community.

Every year, Abigail's loved ones known as the Boo Boo's Crew, work tirelessly to ensure May Festival is a success. From running benefits to securing sponsors, their dedication makes this event possible. All costs are covered by the family, their benefit events, and generous sponsors from the community.

What makes the May Festival truly special is how it brings the community together for an entire weekend of joy and connection. Enjoy all your classic fair rides, for all ages, indulge in mouthwatering fair foods, and listen to amazing live bands filling the air with music and laughter. It's a weekend where everyone—kids, families, and friends—can come together to celebrate life while supporting an important cause.

Check out the line up for 2025: Friday, May 9th at 6 p.m. — **Glam Band**, Saturday, May 10th at 10 a.m. — **Crankin' Yankees**, Saturday, May 10th at 2 p.m. — **Boogie n the Yo-Yo'z**, Saturday, May 10th at 6 p.m. — **Spicy Tie Band**, Sunday, May 11th at 10 a.m. — **Rock"N"Country**, Sunday, May 11th at 2 p.m. **Marblehead**.

The festival serves a bigger purpose than a day of celebration. All proceeds from the event go directly to a scholarship awarded to a student who faces challenges—whether in school, family life, mental health, or other struggles. It's a meaningful way to honor Abigail's memory by supporting others who may be walking a difficult path.

Save the date for May Festival that takes place the entire weekend of Mother's Day and stop down to enjoy some fun and check out the cause it represents.



**ABIGAIL'S STORY REMINDS US ALL THAT EVEN IN THE FACE OF TRAGEDY,
THERE'S POWER IN COMING TOGETHER AS A COMMUNITY TO CREATE
SOMETHING TRULY SPECIAL.**

Fall Fest & Wheels on Werner Allen

WAUPACA COUNTIES LARGEST FESTIVAL



Mark your calendars for the second Saturday in September. You won't want to miss Fall Fest from 9 a.m. – 3 p.m. on September 13th! You'll find a full day of family entertainment, food and fun in New London! Both the car show and Fall Fest will stay on Werner Allen due to the size of the events.

The festival starts off Friday night with the Wheels on Werner Allen Car Show on Werner Allen Road from 5 – 8 p.m. Come on down and view some great old classics, participate in raffles, and win prizes. The New London Lions Club will have food and beverages available for purchase – no carry-ins please.

On Saturday, visit up to 275+ vendors with craft booths, produce and handmade items lining both lanes of Werner Allen. Stop at the Chamber booth to purchase Wisconsin's finest cheese and sausage manufactured locally. Enjoy taste-tempting foods from vendors and non-profit groups.

Head over by the river to find the Fall Fest Fun Zone by The Waters Supper Club & Lounge. Children can enter the Fun Zone area all day for free. Victory Church volunteers their time to run the entire Fun Zone area. Enjoy slides, face painting, balloon twisting, a magician and more. Be sure to stop at the FFA petting zoo and check out the Wolf River Art League's awesome display of art. View the Fire Truck displayed by the New London Fire Department. Enjoy live music and entertainment throughout the day in Hatten Park. Please note: All of the above activities are subject to change prior to the event.

We like to add something new every year to this event and this year we will be bringing in a train for the kids to enjoy along with other fun rides. Keep a look out and let us know what you think of the added feature to our Fun Zone.

There will be lots of fall fun for all ages all weekend and admission is FREE!

Photo Credit: Bastian Marketing & Bastian Media

Winter Wonderland ON THE WOLF



Photo credit Willa Jo Photography

Mark your calendars for this very merry event scheduled for the first **Friday** in December right in the heart of downtown New London! The New London Area Chamber of Commerce and other area businesses partner together to transform the City into a magical Winter Wonderland on the Wolf!

Download the Light Up New London Map to tour the Christmas lights throughout the area. All homes and businesses are encouraged to get their decorations up before December 5th for families to enjoy through the entire holiday season. Or find maps printed at Longevity Nutrition, Familiar Grounds, Chamber Tourism Center or on the New London Chamber Facebook page.

Get lost in the **Winter Wonderland Christmas Displays** by Longevity Nutrition on December 5th featuring a twisting trail of holiday bliss, twinkling lights and Christmas trees. Listen to the Christmas music while sipping hot cocoa. Walk through a live nativity scene and experience the magic of Christmas.

Make sure you grab a spot downtown to see all of the festive entries in the Winter Wonderland Parade. The best spot to see the parade is downtown on North Water St. Mayor's Choice for best entry will go home with a Chamber Bucks prize.

Visit with **Santa and Mrs. Clause at Longevity Nutrition** and leave with a Santa bag and so many joyful memories. Don't forget to bring a letter for Santa if you wish and leave it in his special Christmas mailbox that was sent from the North Pole.

Enjoy the Reindeer Boogie hosted by New London's Parks & Recreation Department at Familiar Grounds. Kids can get their wiggles out while listening to holiday music and enjoying hot cocoa with Yo DJ Entertainment.

We will see you downtown December 5th at Winter Wonderland on the Wolf!



NEW LONDON CHAMBER MEMBER LISTINGS

AGRICULTURE

Bees & Blossoms Farm

Elizabeth & Brian Struck
609 N. Shawano St
New London, WI 54961
Beesandblossomshome.com

Blossom and Bloom Greenhouse LLC

Jen Smith
603 Montieith St
New London, WI 54961
Phone: (920) 982-4573
www.blossomandbloomgreenhouse.com

Country Visions Cooperative

Misty Desrochers
1104 Mulligan Dr.
New London, WI 54961
Phone: (920) 982-1111
Fax: (920) 982-8888
www.countryvisionscoop.com/

Len Ebert & Sons

Tim Ebert
N8495 Hwy. 45
Clintonville, WI 54929
Phone: (715) 752-4428
Fax: (715) 752-4429
www.lenebert.com

Tractor Supply Co

Nicole Davis
1651 N. Shawano St.
New London, WI 54961
Phone: (920) 982-6222
Fax: (920) 982-6336
www.tractorsupply.com

AUTOMOTIVE

Bumper to Bumper

Greg Lohff
104 S. Pearl St.
New London, WI 54961
Phone: (920) 982-8585
www.mybumpertobumperstore.com

Mid-State Tire & Repair

Corey Prinsen
519 N. Shawano St.
New London, WI 54961
Phone: (920) 250-5800
Fax: (920) 982-6167

NAPA Auto Parts – MPEC

Kaleb Steeno
105 Henry St
New London, WI 54961
Phone: (920) 249-5538
www.mpecnapa.com

Plach Automotive

Dan Plach
1101 N. Shawano St.
New London, WI 54961
Phone: (920) 982-5512
Fax: (920) 982-6400
www.plachgm.com

Pomp's Tire & Auto Service

Jack Harty
210 Northridge Dr.
New London, WI 54961
Phone: (920) 982-7140
Fax: (920) 982-7184
www.pompstire.com

BUSINESS & PROFESSIONAL SERVICES

All Seasons Photo

Season Polsin
New London, WI 54961
Phone: (920) 538-4611
www.photosbyseason.com

Bastian Marketing

Lisa Bastian
Manawa, WI 54949
Phone: (920) 359-0744
www.bastianmarketing.com

Bastian Media

Isaiah Bastian
Manawa, WI 54949
Phone: (920) 574-1655
www.bastian-media.com

Cline & Hanson Funeral Home Inc.

Kent Rusch
209 W. Cook St.
New London, WI 54961
Phone: (920) 982-3232
Fax: (920) 982-3399
www.clinehansonfuneralhome.com

Cornelius Lawn Care & Landscaping LLC

Neil Cornelius
New London, WI 54961
Phone: (920) 538-3927

Drop N' Go

Indigo Daul
1186 N. Shawano St. Suite 6
New London, WI 54961
Phone: (218) 400-3284

Events Everlasting

Kim Chonos
509 W North Water St
New London, WI 54961
Phone: (920) 250-5252
www.eventseverlastingco.com

GFL – Green For Life Environmental

Jason Bartlett
E8257 Hwy. 54
New London, WI 54961
Phone: (920) 982-4116
Fax: (920) 982-5676
www.jgraichen@gflenenv.com

IQ Resource Group, Inc.

Brad Ritchie
105 E. Waupaca St
New London, WI 54961
Phone: (920) 982-3660
Fax: (920) 982-3668
www.iqresourcegroup.com

Ledger Lady LLC

Christie Baldwin
New London, WI 54961
Phone: (920) 538-0675
www.ledgerladybookkeeping.com

Mathewson Monuments

Greg Mathewson
750 Industrial Loop Rd.
New London, WI 54961
Phone: (920) 982-6465
Fax: (920) 982-6401
www.mathewsonmonuments.com

Merchants' Choice

Card Services LLC

Trisha Handrich
118 N. Nash St.
Hortonville, WI 54944
Phone: (920) 779-9000
Fax: (920) 779-6776
www.mccs-wi.com

Mosquito Shield of Appleton and the Fox Valley

Nate Grundy
Box 559
New London, WI 54961
Phone: (920) 234-3079
www.Mosshield.com

NXT Level Activewear

Bob Guyette
1107 N. Shawano St
New London, WI 54961
Phone: (920) 250-5339
www.NXTactivewear.com

Print Shop, The

Tim Roberts
302 W. North Water St.
New London, WI 54961
Phone: (920) 982-6585
Fax: (920) 982-6706

QPS Employment Group

Andy Korth
504 W. North Water St.
New London, WI 54961
Phone: (920) 636-4200
Fax: (920) 262-314-8444
www.qpsemployment.com

SARA Design & Studio

Sara Mullen-Hornung
Clintonville, WI 54929
Phone: (262) 490-1607
www.saradesignstudioarts.com

Sweeney Law Office, S.C.

Hans Thompson
216 W. North Water St.
New London, WI 54961
Phone: (920) 250-5504
(920) 833-6114
www.sweeneylawoffice.com

NEW LONDON CHAMBER MEMBER LISTINGS

Team Outfitters

Brad Popham
109 N. Western Ave.
Waupaca, WI 54981
Phone: (715) 258-3832
Teamoutfitterswi.com

Walker Family Veterinary Hospital

Dr. Andrew Walker
1370 N. Shawano St. Ste E
New London, WI 54961
Phone: (920) 250-5239
Walkerfamilyvethospital.com

Werner, Johnson & Hendrickson, S.C

Tom Johnson
308 St. John's Pl.
New London, WI 54961
Phone: (920) 982-7200
Fax: (920) 982-7215
www.wjhlawyers.com

Willia Jo Photography

Katie Smith
New London, WI 54961
Phone: (920) 250-0653

Wisconsin Document Imaging

Aaron Gurney
1850 Velp Avenue
Green Bay, WI 54303
Phone: 920-615-9858
www.wis-imaging.com

Wolf River Lawyers

Keith Steckbauer
Clintonville Office
45 6th St.
Clintonville, WI 54929
New London Office
202 W. North Water St.
New London, WI 54961
Phone: (920) 982-4450
www.wolfriverlawyers.com

Wolf River Veterinary Hospital LLC

Dr. Brent Nokes & Dr. Kyle Ruedinger
216 W. Wolf River Ave.
New London, WI 54961
Phone: (920) 982-2733
Fax: (920) 982-3112
www.wrvet.com

ZenBusiness

5511 Parkcrest Dr., Suite 103.
Austin, TX 78731
Phone: (844) 493-6249
www.zenbusiness.com/wisconsin-llc/

COMMERCIAL & RESIDENTIAL SERVICES

Ann Holz Interiors Plus, LLC

Ann Holz
New London, WI 54961
Phone: (920) 428-8810
www.annholzinteriors.com

Decorated Interiors by Steffanie, LLC

Steffanie Myers
New London, WI 54961
Phone: (920) 359-0330
Interiorsbysteffanie.com

Hilker Warehousing LLC

Tom & Lori Hilker
405 W. Wolf River Ave
New London, WI 54961
Phone: 920-250-6011

Hintzke Well Drilling, Inc.

John, Jason & Jay Hintzke
N5072 Hintzke Rd.
New London, WI 54961
Phone: (920) 982-5426
Fax: (920) 982-5509
www.hintzkewelldrilling.com

Hoffman Heating & Cooling Inc

Greg Junak
633 E. Beckert Rd.
New London, WI 54961
Phone: (920) 982-6565
Fax: (920) 982-6565
www.hoffmanheating.com

Master Electrical Services, LLC

Joelle Meilinger
1913 Mill St.
New London, WI 54961
Phone: (920) 982-6467
Fax: (920) 982-6484
www.masterelectricalservicesllc.com

Mid State Tree Service and Arborist, LLC

Rob Ferg
E7468 State Rd. 54
New London, WI 54961
Phone: (920) 596-1979
Fax: (920) 982-0284
www.midstatetreeservicewi.com

Neyers Communication Services, Inc.

Janet Neyers
W9974 Kelly Dr.
Hortonville, WI 54944
Phone: (920) 779-9959
Fax: (920) 779-9957

Northland Electrical Services

R. Corey Defferding
1705 Orville Dr.
New London, WI 54961
Phone: (920) 531-1197
Fax: (920) 531-1201
www.northlandes.com

Paul's Plumbing

Paul Harwood
515 E. Beacon Ave.
New London, WI 54961
Phone: (920) 841-0227

Storable New London

Dean Paque
404 Elm St.
New London, WI 54961
Phone: (815) 394-9694
www.storablenewlondon.com

Van Handel Heating and Cooling LLC

Nick Van Handel
N3225 Hwy. 15
Hortonville, WI 54944
Phone: (920) 779-3171
www.vanhandelheating.com

Wisconsin Distributors

Appleton, LLC

Todd Talady
3010 N. Zuehlke Dr.
Appleton, WI 54911
Phone: (920) 733-7414
Fax: (920) 733-7013
www.wisconsinistributors.com

Wolf River Propane LLC

Joe Pischke
315 Burton Rd. Ste 104
New London, WI 54961
Phone: 715-752-3333
www.wolfriverpropane.com

Wunderlich Plumbing, LLC

Doug Wunderlich
W10086 Cedar Rd.
Fremont, WI 54940
Phone: (920) 850-8508

CONSTRUCTION / CONTRACTORS

Ablaze Technologies

Justin Higgins
W7526 Elm Ct.
Shiocton, WI 54170
Phone: 920-750-9378
Ablazetechimneys.com

Andracontracting LLC

Timothy Andra
New London, WI 54961
Phone: (920) 312-2398

Bennett's Home Repair

John Bennett
New London, WI 54961
Phone: (920) 915-0370

BNH Lighting, LLC

Jeremy Bellile
444 N. Olk St.
Hortonville, WI 54944
Phone: (920) 213-8693
www.bnhlighting.com

Cutting Edge Home Repair

Donovan Hull-Riggs
N3972 County Rd O
New London, WI 54961
Phone: (920) 570-5084

NEW LONDON CHAMBER MEMBER LISTINGS

Dailey Construction

Ross Dailey
E8258 Prael Rd.
New London, WI 54961
Phone: (920) 982-9637

Durie Electric LLC

John Durie
454 S. Main St.
Big Falls, WI
Phone: (715) 754-5535
www.durieelectric.com

Fox Cities Bath, LLC

Lee Berg
903 North St. Unit 1A
New London, WI 54961
Phone: (920) 505-0108
www.Foxcitiesbath.com

Heise Heating and Air Conditioning

Dan Heise
330 N. Shawano St.
New London, WI 54961
Phone: (920) 982-5672
www.heiseheating.com

J&F Enterprise LLC

Jose Huerta
304 W. North Water St
New London, WI 54961
Phone: (920) 209-2123

JG Restoration

Josh Greil
1720 N. Silverspring Dr.
Appleton, WI 54913
Phone: (920) 428-4200
https://www.jg-restoration.com

K & H Concrete Inc.

Jeff Huebner
E8867 Cty. Tk. N
New London, WI 54961
Phone: (920) 570-2742
Fax: (920) 982-9949

Keehn Electric LLC

Dylan Keehn
Fremont, WI 54969
Phone: (920) 508-1020
www.keehnelectricllc.com

Mid-State Asphalt LLC

Corey Prinsen
519 N. Shawano St.
New London, WI 54961
Phone: (920) 982-6524
Fax: (920) 982-6167
www.midstateasphalt.com

MK Flooring

Matt Kryll
106 W. North Water St.
New London, WI 54961
Phone: (920) 250-5774
www.mkflooringnewlondon@gmail.com

Modern Cleaning Solutions, LLC

Jesse Brownson
New London, WI 54961
Phone: (920) 810-4657
www.moderncleaningsolutionswi.com

Nasi Roofing, LLC

Tess Nasi
2610 S. Casaloma Dr
Appleton, WI 54914
Phone: (920) 574-2599
www.nasiroofing.com

Peeters Construction Co. LLC

Ron Peeters
E9292 Klatt Rd.
New London, WI 54961
Phone: (920) 538-1021
www.peetersconstruction.com

Pieper Electric, Inc.

Jamie Darkow
2400 Industrial Dr.
Neehah, WI 54956
Phone: (920) 886-6800
Fax: (920) 886-6803
www.pieperpower.com

R&K Maldonado Construction LLC

Rodolfo Maldonado
New London, WI
Phone: (920) 878-3699
https://rkmaldonadoconstructionllc.com/

Stalker Sports Floors

Beth Stalker
1215 W. Waupaca St.
New London, WI 54961
Phone: (920) 982-2926
Fax: (920) 982-4811
www.stalkersportsfloors.com

Strongwood

Beth Nash
711 Shadow Road
Waupaca, WI 54981
Phone: (715) 258-4818
www.Strongwood.com

Van Parys Woodworking LLC

JJ Van Parys
1320 Lawrence St
New London, WI 54961
Phone: (928) 607-1183

DINING / CATERING / EVENT FACILITY

Bean City Bar & Grill

Ryan Richeson
N2505 Bean City Rd
New London, WI 54961
Phone: (920) 982-1500
www.beancitybar.com

Bree's Inn II

William Bree
323 S. Pearl St.
New London, WI 54961
Phone: (920) 982-7511

Cruz Inn Inc.

Tammy Jahnke
309 S. Pearl St.
New London, WI 54961
Phone: (920) 360-2343

Dragon's Den Bar & Grill

Suyash Goel
318 W. North Water St
New London, WI 54961
Phone: (920) 250-5107

Crystal Falls Banquets, & Catering

Bailey Kargus & Sydni Williams
1500 Handschke Dr.
New London, WI 54961
Phone: (920) 982-0627
www.crystalfallsnl.com

Domino's

Dacota Maeder
400 N. Shawano St.
New London, WI 54961
Phone: (920) 982-7700
Fax: (920) 982-2285
www.dominos.com

El Tequila Mexican Restaurant

Miguel Hernandez
208 W. North Water St.
New London, WI 54961
Phone: (920) 250-5262

Hilby's Restaurant & Sports Bar

Terry Hilbert
106 E. Wolf River Ave.
New London, WI 54961
Phone: (920) 982-4982
www.hilbysnewlondonlanes.com

Indian Crossing Casino

Beth Nash
E1171 County Rd Q
Waupaca, WI 54981
Phone: (715) 258-3332
IndianCrossingCasino.com

Jolly Roger's Pizzeria

Bob and Shellie Leahy
220 W. North Water St.
New London, WI 54961
Phone: (920) 982-2333
www.jollyrogerspizza.com

Little Caesars Pizza

Bill Veremis
207 N. Shawano St.
New London, WI 54961
Phone: (920) 982-3333
www.littlecaesars.com

McDonald's of New London

Deb Swenson
1135 N. Shawano St.
New London, WI 54961
Phone: (920) 982-5540
Fax: (920) 982-5059

NEW LONDON CHAMBER MEMBER LISTINGS

New London Family Diner, LLC

Bill Benietz
1601 N. Shawano St.
New London, WI 54961
Phone: (920) 982-9060

Palace Breakfast

Laura Vargas
815 N Shawano St.
New London, WI 54961
Phone: (920) 250-5115

Pup's Irish Pub

Colin Loughrin
E8558 State Hwy. 54
New London, WI 54961
Phone: (920) 982-3891

Shamrock Heights Golf & Supper Club

Cory and Carrie Kluge
N5525 Old Hwy. 45
New London, WI 54961
Phone: (920) 982-9993
Fax: (920) 982-9973
www.shamrockheightsgolf.com

Tacos El Mana

Johnny Mayo
616 W. Wolf River Ave
New London, WI 54961
Phone: (715) 281-7788

The Waters Supper Club & Lounge

Jim Adrian
815 W. Wolf River Ave.
New London, WI 54961
Phone: (920) 982-7960
Fax: (920) 982-7964
www.atthewaters.com

EDUCATION / ENVIRONMENT / GOVERNMENT

City of New London

Mayor Mark Herter
215 N. Shawano St.
New London, WI 54961
Phone: (920) 982-8500
Fax: (920) 982-8665
www.newlondonwi.org

Day Care Center of

New London, Inc.

Janet Herzfeldt
1825 Division St.
New London, WI 54961
Phone: (920) 982-6544
www.daycarecenterofnewlondon.com

Mosquito Hill Nature Center

Adam L. Brandt
N3880 Rogers Rd.
New London, WI 54961
Phone: (920) 779-6433
www.mosquitohill.com

MS Driving Instruction

Laurie Eidenberger
New London, WI 54961
Phone: (920) 716-7726
msdrivinginstruction.com

New London Fire Department

Chief Mark Wilfuer
215 N. Shawano St.
New London, WI 54961
Phone: (920) 982-8507
www.newlondonwi.org

New London Parks & Recreation

Ginger Sowle
215 N. Shawano St.
New London, WI 54961
Phone: (920) 982-8521
www.newlondonwi.org

New London Police Department

Jeffrey A. Schlueter
700 Shiocton St.
New London, WI 54961
Phone: (920) 982-8505
www.newlondonwi.org

New London Public Library

Ann Hunt
406 S. Pearl St.
New London, WI 54961
Phone: (920) 982-8519
Fax: (920) 982-8617
www.newlondonlibrary.org

Rawhide Youth Services

Heather Stern
E7475 Rawhide Rd.
New London, WI 54961
Phone: (920) 982-6100
Fax: (920) 982-5040
www.rawhide.org

Robin's Nest Learning Center, LLC

Robin Joy Ernst
112 W. Wolf River Ave.
New London, WI 54961
Phone: (920) 982-1575
Fax: (920) 982-1575
www.robinsnestlearningcenter.net

School District of New London

Scott Bleck
901 W. Washington St.
New London, WI 54961
Phone: (920) 982-8530
Fax: (920) 982-8551
www.newlondon.k12.wi.us

Small Business Development Center at UWSP (SBDC)

Patrick Gatterman
2100 Main St., Room 032
Stevens Point, WI 54481
Phone: (715) 346-3838
www.uwsp.edu/sbdc

State Representative

Kevin Petersen
P.O. Box 227
Waupaca, WI 54981
Phone: (608) 266-3794
Fax: (608) 282-3640

FAMILY / COMMUNITY / CIVIC ORGANIZATIONS

7-11 Club

Leroy Wepner
New London, WI 54961
Phone: (920) 250-1932

American Norris Spencer Post 263 and Auxiliary

Tina Sommer
840 E. North Water St.
New London, WI 54961
Phone: (920) 878-2248

AMVETS

Armin Conradt
New London, WI 54961
Phone: (920) 538-4112

Bear Creek Fireman's Festival and Car Show

Michael Herzfeldt & Andrew Joles
Bear Creek, WI 54922
Phone: (920) 875-0890

Bear Creek Lions Club

Donna Hein
New London, WI 54961
Phone: (920) 475-7622

Boo Boo's Crew

Tracey Hoier
N2271 Hwy 45
New London, WI 54961
Phone: (920) 250-3945

CAP Services, Inc.

Norys Pina
821 E. First Ave., Ste. 3
Appleton, WI 54911
Phone: (920) 968-6365
Fax: (920) 832-9566
www.capservices.org

Child Care Resource & Referral

Candy Hall
1001 W. Kennedy Ave Suite A
Kimberly, WI 54136
Phone: (920) 886-1211

The Community Blood Center

Becky Brown
4406 W. Spencer St.
Appleton, WI 54914
Phone: (920) 560-6639
www.communityblood.org

Cub Scout Pack 3059

Christie Baldwin
1300 Werner Allen Rd.
New London, WI 54961
Phone: (715) 445-2437
www.scouting.org

Father Herb Council 1797

NEW LONDON CHAMBER MEMBER LISTINGS

Knights of Columbus

Pat Hale
P.O. Box 221
New London, WI 54961
Phone: (920) 982-3873
www.kofc1797.org

Friends of the New London Library

Connie Jess Zolkoske
406 S. Pearl St
New London, WI 54961
Phone: (920) 369-8376

Friends of the New London

Public Museum

Brenda Hansen
P.O. Box 62
New London, WI 54961
Phone: (920) 982-8520
www.friendsnlpm.org

His Way Events

Pastor James Roberts
New London, WI 54961
Phone: (920) 819-1889

May Festival

Tracey Hoier
New London, WI 54961
Phone: (920) 250-3945

Medina - Dale - Readfield

Lions Club

Bob Truesdale
New London, WI 54961
Phone: (920) 851-1128
www.e-clubhouse.org/sites/
medinadalereadfieldwi

Mindful Movements Yoga

Mindy Danke
213 W. North Water St
New London, WI 54961
Phone: (920) 915-2146
Mindfulmovementsyogastudi.com

Mission of Hope House of WI

David Mahan
520 N. Shawano St.
New London, WI 54961
Phone: (920) 249-4553
www.missionofhopehouse.org

The Mob Bear Creek

Keith Eulrich
P.O. Box 166
Bear Creek, WI 54922
Phone: (920) 359-0253

New London DECA

Melissa Porath
1700 Klatt Rd.
New London, WI 54961
Phone: (920) 982-8420

New London Fast Break Club

Terry Hoover
P.O. Box 412
New London, WI 54961
Phone: (920) 427-7682
www.newlondonboyshoops.com

New London Fish & Game Club

Tim DeShaney
N5433 Old Hwy 45
New London, WI 54961
Phone: (920) 850-7730
www.newlondonfishandgame.com

New London Girls Youth

Softball Association

Kerri Tennie
P.O. Box 63
New London, WI 54961
Phone: (920) 538-1559

New London Heritage

Historical Society

Charmaine Gerndt
900 Montgomery St.
New London, WI 54961
Phone: (920) 538-2462
www.historicalvillage.com

New London Lions Club

Travis Kloehn
New London, WI 54961
Phone: (920) 982-3133
www.eclubhouse.org/sites/
newlondonwi

New London Rotary Club

Kim Chonos
P.O. Box 268
New London, WI 54961
Phone: (920) 250-5252

New London Wrestling Club

Mark Moser
P.O. Box 546
New London, WI 54961
Phone: (920) 250-2166

New London Youth Baseball

Dale Stern
P.O. Box 419
New London, WI 54961
Phone: (920) 538-0047
www.nlybbulldogs.com

Northport Snowriders

Snowmobile Club

Chris Lessor
P.O. Box 423
New London, WI 54961
Phone: (920) 878-1919
www.northportsnowriders.org

Project Backpack New London

Cheryl Hoffman
New London, WI 54961
Phone: (920) 841-0879

The Salvation Army

Waupaca County

Lillian Roberts
301 E. Beacon Ave
New London, WI 54961
Phone: (920) 538-3249

Scouts BSA Troop

59 - New London

Mike Glatczak
840 E. North Water St.
New London, WI 54961
Phone: (920) 538-1100

Shamrock Club of New Dublin

Anne Stedman
P.O. Box 317
New London, WI 54961
Phone: (920) 740-3582
www.newdublin.com

St. John's Christian Food Pantry

Luanne Nelson
209 S Pearl St
New London, WI 54961
Phone: (920) 428-2179
Stjohnsnl.org

Sturgeon Shuffle Inc.

Lynn Olson
220 W Waupaca St.
New London, WI 54961
Phone: (920) 982-3300
www.runsignup.com/Race/WI/
NewLondon/sturgeonsshuffle

Traumatic Brain Injury

Fight for Life Team

April Lackowski-Postel
New London, WI 54961
Phone: (920) 250-2009

Tony and Lorraine Van Kampen

Weyauwega, WI 54983
Phone: (920) 716-0605

United Way of New London

Joe Marquardt
P.O. Box 104
New London, WI 54961
Phone: (920) 538-4617
www.unitedway.org

Volunteer Fox Cities

Susan Vanden Heuvel
48 Jewelers Dr.
Neenah, WI 54956
Phone: (920) 832-9360
www.volunteerfoxcities.org

Weyauwega Arts Organization

Kathy Fehl
136 E. Main St.
Weyauwega, WI 54983
Phone: (920) 867-4888
www.wegaarts.org

Wisconsin Herd

Steve Brandes
549 High Avenue
Oshkosh, WI 54901
Phone: (920) 233-4373
www.Wisconsinherd.com

NEW LONDON CHAMBER MEMBER LISTINGS

Wolf River Area Patriots

Seth Cowan
New London, WI 54961
Phone: (920) 968-5335
www.wolfriverpatriots.com

Wolf River Art League

Lori Schneider
New London, WI 54961
Phone: (920) 982-0168
www.wolf

Wolf River Classic Chevy Club

Dennis Handschke
P.O. Box 174
New London, WI 54961
Phone: (920) 427-1344
www.wolfriverchevy.wixsite.com/wrcc

Wolf River Theatrical Troupe, Inc.

Margie Brown
304 St. John's Pl.
New London, WI 54961
Phone: (920) 982-3062
www.wrtt.org

FINANCIAL INSTITUTIONS

Associated Bank

Bill Bishop
101 Park St.
New London, WI 54961
Phone: (920) 982-4701
www.associatedbank.com

Community First Credit Union

Catherine Tiesney
603 W. Wolf River Ave.
New London, WI 54961
Phone: (920) 830-7200
Fax: (920) 830-7321
www.communityfirstcu.org

East Wisconsin Savings Bank

Leah Seavecki
109 W. 2nd Street
Kaukauna, WI 54130
Phone: (920) 766-4646
www.eastwis.com

First State Bank

Mathew Lemke
220 West Waupaca St.
New London WI 54961
Phone: (920) 982-3300
Fax: (920) 982-4998
www.bankfirststate.com

Fox Communities Credit Union

Jennifer Leopold
1302 N. Shawano St.
New London, WI 54961
Phone: (920) 982-9420
Fax: (920) 982-9423
www.foxcu.org

Security Finance

Keisha Faulkner
1186 N Shawano St. Suite 4
New London WI 54961
Phone: (920) 982-7300
Fax: (920) 982-7375
www.security-finance.com

Wolf River Community Bank

Lauren Moran
1008 N. Shawano St.
New London, WI 54961
Phone: (920) 982-0055
Fax: (920) 982-9058
www.wolfriverbank.com

HEALTH SERVICES

Academy Martial Arts

Ed (Trapper) Danke
211 W. North Water St.
New London, WI 54961
Phone: (920) 982-6033
www.academynl.com

Advanced Physical Therapy & Sports Medicine

David Reybrock
1370 N. Shawano St., Ste. A
New London, WI 54961
Phone: (920) 982-0100
Fax: (920) 982-0103
www.advancedptsmd.com

Anytime Fitness

Bob Guyette
1111 N. Shawano St.
New London, WI 54961
Phone: (920) 982-9922
www.anytimefitness.com

ARC Angel's

Jennifer Waterstradt
7 S. Main St
Clintonville, WI 54929
Phone: (920) 840-7642
www.arcangelshomecare.com

Ascension Medical Group

Kelly Trombly
1420 Algoma St.
New London, WI 54961
Phone: (920) 982-8300
Fax: (920) 982-8353
www.ascension.org/wisconsin

Aster Assisted Living of Clintonville

Joyce Aiello
38 N. Main St
Clintonville, WI 54929
Phone: (715) 823-4344
AsterSeniorCommunities.com

Clarity Care, Inc.

Ciara Knodl
424 Washington Ave.
Oshkosh, WI 54901
Phone: (920) 236-6560
www.claritycare.org

doTERRA Essential Oils

Nikki Poppe
New London, WI 54961
Phone: (715) 851-6316
www.mydoterra.com/themidwestdrop

Griebenow Eyecare

Melissa Sylte
105 Northridge Dr.
New London, WI 54961
Phone: (920) 982-3711
Fax: (920) 982-3009
www.griebenoweyecare.com

Longevity Nutrition

Tracey & Andy Johnson
201 S. Pearl St.
New London, WI 54961
Phone: (920) 250-6500

Maiman Chiropractic LLC

Dr. Daniel E. Maiman
501 S. Pearl St.
New London, WI 54961
Phone: 531-1000
Fax: (920) 982-0200
www.newlondonchiropractor.com

New London Aquatic and Fitness Center

Jim Thorpe
815 W. Washington St.
New London, WI 54961
Phone: (920) 982-8524
http://www.newlondonwi.org/departments/aquatics_and_fitness_center.php

New London Area First Responders

Tiffany Strey
P.O. Box 131
New London, WI 54961
Phone: (920) 213-5454

New London Total Fitness 24-7

Kurt Daul
1200 N. Shawano St. Ste. 3
New London, WI 54961
Phone: (920) 250-5798
www.newlondontotalfitness.com

NXT Level Ultimate Sports Complex

Bob Guyette
865 Suprise Ending Rd.
New London, WI 54961
Phone: (920) 982-2000
www.uscsportscomplex.com

Rasasvada

Nicole Young
New London, WI 54961
Phone: (920) 538-5440

Simply Skin Aesthetics

Kaitlyn Behm
302 W. Waupaca St.
New London, WI 54961
Phone: (715) 281-5226
<https://simply-skin-aesthetics.square.site/>

NEW LONDON CHAMBER MEMBER LISTINGS

Smiles by Design

Dr. Blake Treichel
P.O. Box 429
Hortonville, WI 54944
Phone: (920) 779-4533
Fax: (920) 779-4333
www.smilesbydesignwi.com

St. Joseph Residence, Inc.

Laurie Shaw
107 E. Beckert Rd.
New London, WI 54961
Phone: (920) 982-5354
Fax: (920) 982-5420
www.stjosephresidence.com

St. Joseph Residence, Inc. -

The Washington Center

Laurie Shaw
500 W. Washington St.
New London, WI 54961
Phone: (920) 982-5354
Fax: (920) 982-5420
www.stjosephresidence.com

Switch Fitness

Luke Haase
N761 Stanley Dr
Fremont, WI 54940
Phone: (920) 716-2558
Switchfitf.me

ThedaCare Medical Center - New London

Jenny Derks
1405 Mill St.
New London, WI 54961
Phone: (920) 531-2000
Fax: (920) 531-2098
www.thedacare.org

ThedaCare Physicians

- New London

Kandi Schlueter
1405 Mill St.
New London, WI 54961
Phone: (920) 531-2400
<https://directory.thedacare.org/location/thedacare-physicians-new-london>

Tri County Chiropractic S.C.

Jared Bedor
1620 N. Shawano St. Ste. E
New London, WI 54961
Phone: (920) 982-5533
Fax: (920) 982-5544
www.tricountychiro.com

INSURANCE / INVESTMENT

AJ Sics - State Farm Insurance

AJ Sics
101 S. Pearl St
New London, WI 54961
Phone: (920) 982-3231
www.thewisconsinagent.com

Barb Nelson Agency - American Family Insurance

Barb Nelson
1370 N. Shawano St. Ste. D
New London, WI 54961
Phone: (920) 982-5537

Cornerstone Insurance

Services LLC

Jeff Bergum
421 S. Pearl St.
New London, WI 54961
Phone: (920) 250-6464
Fax: 250-6466
www.advantagecornerstone.com

Demming-Noel Agency, Inc.

Doug Noel
228 W. North Water St.
New London, WI 54961
Phone: (920) 982-2881
Fax: (920) 982-2883
www.demming-noel.com

Edward Jones / Corey Knepfel

Corey Knepfel
315 Burton Rd.
New London, WI 54961
Phone: (920) 982-7440
www.edwardjones.com/corey-knepfel

Edward Jones / Nicholas Koch

Nicholas Koch
801 W. Wolf River Ave
New London, WI 54961
Phone: (920) 982-3920
<https://www.edwardjones.com/us-en/financial-advisor/nicholas-koch>

Edward Jones Investments

- April Rasmussen

April Rasmussen
801 W. Wolf River Ave
New London, WI 54961
Phone: (920) 982-3920
<https://www.edwardjones.com/us-en/financial-advisor/april-rasmussen>

Lynn Tank Agency LLC

Lynn Tank
221 W. North Water St.
New London, WI 54961
Phone: (920) 250-6051
Fax: (920) 250-6099
www.lynn-tankagencyllc.com

Midwestern Wellness & Insurance Agency

Laura Scherer
New London, WI 54961
Phone: (920) 277-6492
www.midwesternwi.com

Primerica - Gwinette Zielke

New London, WI 54961
Phone: (920) 538-2670
Fax: (920) 759-9940
www.primerica.com

Radtke-Rhone Insurance Agency

Frank and Karie Radtke
1301 Mill St.
New London, WI 54961
Phone: (920) 982-3048
Fax: (920) 982-2584
www.radtkerhone.com

State Farm Insurance -

Dan Gassner Agency

Dan Gassner
432 E. Main St.
Hortonville, WI 54944
Phone: (920) 779-0002
Fax: (920) 779-9993
www.dangassner.com

Stewart Title Company

Sara Thomack
1000 W. Wisconsin Ave., Ste. 7
Appleton, WI 54914
Phone: (920) 659-2749
Fax: (920) 830-0110
www.stewart.com

Thrivent Financial -

Badgerland Group

New London Office

Travis Kloehn
101 W. Waupaca St.
New London, WI 54961
Phone: (920) 982-3133
www.thrivent.com

LODGING & TRAVEL

Americinn Lodge & Suites

Jay Patel
1404 N. Shawano St.
New London, WI 54961
Phone: (920) 982-5700
Fax: (920) 982-5769
www.americinn.com

Huckleberry Acres Campground

Tricia & Brad Hanson
E9005 Huckleberry Lane
New London, WI 54961
Phone: (920) 982-4628
www.camphuck.com

Quality Inn

Bhumi Patel
1409 N. Shawano St.
New London, WI 54961
Phone: (920) 982-5820
Fax: (920) 982-7907
www.choicehotels.com

Wolf River Trips & Campgrounds

Janet Koplien
E8041 Cty. Rd. X
New London, WI 54961
Phone: (920) 982-2458
Fax: (920) 982-6122
www.wolfrivertrips.com

NEW LONDON CHAMBER MEMBER LISTINGS

MANUFACTURING / INDUSTRIAL

Amcor New London

Zachary Frenza
718 High St.
New London, WI 54961
Phone: (920) 531-8001
www.amcor.com

Amcor Flexibles New London Graphics

Stephanie Hochhausen
622 High St.
New London, WI 54961
Phone: (920) 531-8900
Fax: (920) 982-8040
www.amcor.com

Amcor Flexibles New London RE&D

Zachary Frenza
729 High St.
New London, WI 54961
Phone: (920) 527-7622
Fax: (920) 527-6111
www.amcor.com

Amcor Healthcare

Meghan Heiman
755 Industrial Loop Rd.
New London, WI 54961
Phone: (920) 531-1700
Fax: (920) 531-1820
www.amcor.com

Ellsworth Cooperative Creamery - NL

Cristy Wanner
1005 Orville Dr.
New London, WI 54961
Phone: (920) 982-9000
www.ellsworthcheese.com

Granite Valley Forest Products

Becky Sather
500 Cty. Rd. S
New London, WI 54961
Phone: (920) 982-2542
Fax: (920) 982-4591
www.granitevalley.com

Graphic House, Inc.

Kim Berens
8101 Industrial Dr
Wausau, WI 54401
Phone: (715) 842-0402
www.graphichouseinc.com

Machining and Repair Services LLC

Thomas Geiger
1984 American Dr.
Neenah, WI 54956
Phone: (920) 729-1131
Fax: (920) 729-1171
www.machrepair.com

Midstate Machining Inc.

Michael Teal
1927 Hillshire Dr.
New London, WI 54961
Phone: (920) 982-6801
Fax: (920) 982-0606

PalletOne, Inc

Rob Rhode
335 Henry St
New London, WI 54961
Phone: (920) 982-2058

Skeeter Emergency Vehicles / EJ Metals

Brian Hurtt
1201 Maple Creek Lane.
New London, WI 54961
Phone: (920) 718-3287
https://ejmetals.com/

Steel King Industries, Inc.

325 E. Beckert Rd.
New London, WI 54961
Phone: (920) 982-6640
www.steelking.com

Titan Conveyors

Vincenzo Speziale
735 Industrial Rd
New London, WI 54961
Phone: (920) 982-6600

Tuffy Boat LLC

Scott Dufrane
611 E. Beckert Rd.
New London, WI 54961
Phone: (920) 250-6202
www.tuffyboats.com

Tyson Foods Inc.

Tammy Powers
N3620 Cty. Rd. D
New London, WI 54961
Phone: (920) 982-1200
www.tysonfoods.com

MEDIA

Frog Country 92.3 FM WJMQ

Eric Voight
1456 E. Green Bay St.
Shawano, WI 54166
Phone: (800) 236-9824
Fax: (715) 524-9980
www.tchdailynews.com

Magnolia Studio

Phyllis Peterson
E6467 Heinke Dr
New London, WI 54961
Phone: (707) 480-8153
Magnoliastudio.com

New London Press Star / Buyers' Guide

Dave Wood
301 S. Pearl St.
New London, WI 54961
Phone: (920) 982-2511
Fax: (920) 982-7672
www.waupacanow.com

PERSONAL SERVICES & CARE

Copper Leaf Enterprises, LLC

Gina Staskal
906 Algoma St
New London, WI 54961
Phone: (920) 960-1821

Good News Business & Life Coaching LLC

James M Roberts
New London, WI 54961
Phone: (920) 574-7066

Mary Kay, Inc. Patricia Toney - Independent Beauty Consultant

Patricia Toney
New London, WI 54961
Phone: (920) 359-0297
www.marykay.com/ptoney

Pads and Pets LLC

Julia Martinson
New London, WI 54961
Phone: (608) 469-1340
www.padsandpetswi.com

River Edge Salon

Tabitha Meyer
308 W. North Water St.
New London, WI 54961
Phone: (920) 531-1460

Tiki Tan LLC

Laurie Berg
N3762 County Rd T
New London, WI 54961
Phone: (920) 538-0950

PUBLIC UTILITIES

Housing Authority City of New London

Laura Marker
505 Division St.
New London, WI 54961
Phone: (920) 982-8509
Fax: (920) 982-8613
www.nlha.org

New London Utilities

Jay Bessette
400 E. North Water St.
New London, WI 54961
Phone: (920) 982-8516
Fax: (920) 982-8544
www.newlondonutilities.org

REAL ESTATE

Coldwell Banker

Real Estate Group

Laurie Johnson
1275 N. Shawano St., Ste. B
New London, WI 54961
Phone: (920) 982-2121
Fax: (920) 982-5602
www.coldwellhomes.com

NEW LONDON CHAMBER MEMBER LISTINGS

Luke Haase - Empower Real Estate

N761 Stanley Dr
Fremont, WI 54940
Phone: (920) 716-2558
Empowerrealestateinc.com

Real Estate by Jeffrey

Jeffrey Handschke
New London, WI 54961
Phone: (920) 810-1363

Sandy DuFrane -

Century 21 Ace Realty

111 Park St.
New London, WI 54961
Phone: (920) 841-5374
www.c21ace.com/Agent/Detail/
Sandy-DuFrane/102395

S.C. Swiderski

Angela Hansen
401 Ranger St.
Mosinee, WI 54455
Phone: (715) 693-9522
www.scswidewski.com

RECREATION / ENTERTAINMENT

Ashley Ellis, Visual Artist

Ashley Ellis
New London, WI
Phone: (715) 570-2292
www.ashleygordonart.com

Clintonville Riverside Golf Course

Andy Noll
100 Club House Drive
Clintonville, WI 54929
Phone: (715) 823-2991
Clintonvillerriversidegolf.com

Creative Elements Studio

Sarah McBeath
1186 N. Shawano St Ste #2
New London, WI 54961
Phone: (715) 701-5464

Ellen Martinson, Pianist

Ellen Martinson
New London, WI 54961
Phone: (920) 538-0527
www.gigsalad.com/ellen_martinson_
pianist_new_london

Grand Cinema Theatres

Jenny Gutmiedl
208 Wolf River Plaza
New London, WI 54961
Phone: (920) 982-5266
www.grandcinematheatre.com

Johnny's Little Shop of Bait

John Faucher
1205 W. Wolf River Ave.
New London, WI 54961
Phone: (920) 982-4802
www.thelittleshoppeofbait.com

New London ATV Club

Pete Genteman
New London, WI
Phone: (920) 359-0798

New London Lanes

Terry Hilbert
106 E. Wolf River Ave.
New London, WI 54961
Phone: (920) 982-4982
Fax: (920) 982-3939
www.hilbysnewlondonlanes.com

Quiver n' Minnow

Lee Meyer
N3748 Cty. Rd. T
New London, WI 54961
Phone: (920) 982-9660

Shamrock Heights Golf & Supper Club

Cory and Carrie Kluge
N5525 Old Hwy. 45
New London, WI 54961
Phone: (920) 982-9993
Fax: (920) 982-9973
www.shamrockheightsgolf.com

Shiocton Flyers Club

Brian Laedtker
W10054 Bonnin Rd.
New London, WI 54961
Phone: (920) 538-3149
www.airportw34@athenet.net

Spooks on Spurr

Robin Wilson
W10140 Spurr Rd.
New London, WI 54961
Phone: (920) 841-1879
https://www.spooksonspurr.net/

The Vault

Pam & Yash Goel
310 W. North Water St
New London, WI 54961
Phone: TBD

Yo DJ Entertainment

James Kelley
Clintonville, WI 54929
Phone: (920) 538-2677
www.yodjent.net

RELIGIOUS ORGANIZATIONS

Blue Gorilla Lounge

New London, WI 54961
Phone: (920) 584-0069
www.bluegorillalounge.com

Emanuel Evangelical

Lutheran Church

Scarlett Koehler
200 E. Quincy St.
New London, WI 54961
Phone: (920) 982-5444
Fax: (920) 982-0954
www.emanuelnl.org

First Congregational United Church of Christ

Pastor Steve Savides
110 E. Hancock St.
New London, WI 54961
Phone: (920) 982-3731
Firstcongoucnl.com

Iglesia de Cristo Ministerios Elim

Pastor Jose Huerta
616 W. Wolf River Ave.
New London, WI 54961
Phone: (920) 205-6349

Most Precious Blood Parish

Tina Noel
808 S. Pearl St.
New London, WI 54961
Phone: (920) 982-2346
Fax: (920) 982-8381
www.mostpreciousbloodchurch.com

New London Seventh-day Adventist Church

Barbara Showers
921 Smith St.
New London, WI 54961
Phone: (920) 982-9939
www.newlondonwi.adventistchurch.org
http://sdanewlondon.com/

New London United

Methodist Church

Rev. Debi VanDenBoom
709 W. Pine St.
New London, WI 54961
Phone: (920) 982-4703
Fax: (920) 982-2599
www.mynewlondonumc.org

Shepherd of The River

David Franke
616 W. Wolf River Ave.
New London, WI 54961
Phone: (920) 538-5537
www.4theriver.org

St. John's Episcopal Church

Portia Corbin
1513 Pinewood Ln.
New London, WI 54961
Phone: (605) 280-4927
www.stjohnsnl.org

Trinity Lutheran Church

Pastor Charles Thompson
709 W. Beckert Rd.
New London, WI 54961
Phone: (920) 982-5833
www.sites.google.com/view/
trinitynewlondon/home

NEW LONDON CHAMBER MEMBER LISTINGS

Victory Church -

New London Campus

Colleen Spindler
1500 Handschke Dr.
New London, WI 54961
Phone: (715) 258-9661
Fax: (715) 258-9698
www.victorychurchwi.com

SHOPPING & SPECIALTY RETAIL

Amazing Low Prices

Chantell Herzfeldt
210 Wisconsin St.
New London, WI 54961
Phone: (920) 982-2670
Fax: (920) 982-2670

The Bridge Thrift Store

1186 N. Shawano St. Suite 5
New London, WI 54961
Phone: (920) 250-5835
www.mohwi.org/the-bridge

The Bottle Shop

Katherine Thirk
303 S Shawano St
New London, WI 54961
Phone: (920) 982-5133

Christian Custom

Mounts & Creations

Katie Christian
New London, WI 54961
Phone: (920) 538-6694

Deerbrook Transfers & Gifts LLC

Kathy Young
New London, WI 54961
Phone: (920) 538-3650
www.deerbrooktransfers.com

Familiar Grounds

Jennifer & Chris Heideman
206 N. Pearl St.
New London, WI 54961
Phone: (920) 982-4332
Fax: (920) 982-4496
www.familiargrounds.net

Festival Foods

Dennis Kolbe
308 N. Shawano St.
New London, WI 54961
Phone: (920) 982-9869
Fax: (920) 982-9874
www.festivalfood.com

Kwik Trip Store Northside

Kevin Schultz
984 N. Shawano St.
New London, WI 54961
Phone: (920) 982-7513
www.kwiktrip.com

Kwik Trip Store Southside

Kirstie Lechelt
1500 Mill St.
New London, WI 54961
Phone: (920) 982-7530
www.kwiktrip.com

La Costenita

Jeannette & Filemon Luciano
200 W. North Water St
New London, WI 54961
Phone: (920) 982-1001

The Liquidation Station

Amy & Nick Ostrander
N1213 N. Mayflower Dr
Greenville, WI 54942
Phone: (920) 213-3590

MacaPort, LLC

Nick Schaefer
1817 N. Shawano St
New London, WI 54961
Phone: (920) 359-0057
www.MacaPort.com

Modern Flooring

Laurie Berg
N3750 Cty. Rd. T
New London, WI 54961
Phone: (920) 982-4950
Fax: (920) 982-3850
www.modernflooringnl.com

New London Building Supply

Kris Carew
1718 Mill St.
New London, WI 54961
Phone: (920) 982-3832
Fax: (920) 982-6480
www.newlondonbuildingsupply.com

New London Small

Engine Service LLC

Dan Wilfuer
E9033 Worm Rd
New London, WI 54961
Phone: (920) 982-6674

Northern Belle Boutique

Britney Riesenber
1927 N. Shawano St. Ste. C
New London, WI 54961
Phone: (920) 250-5793
www.northernbelleboutique.com

Office Outfitters

Bill Zimmerman
120 W. Badger St.
Waupaca, WI 54981
Phone: (715) 258-3989
Fax: (715) 258-3907
www.office-outfitters.com

Olde Country Store Antiques

Becky Drechsler
E6690 Hwy 54
New London, WI 54961
Phone: (920) 596-3361
www.oldecountrystoreantiques.com/

Olive & Rose Boutique

Pamela Cuevas
309 W. North Water St
New London, WI 54961
Phone: (920) 250-5257
<https://shopoliveandrose.com/>

St. John's Community Thrift Store

Portia Corbin
107 W. North Water St.
New London, WI 54961
Phone: (920) 982-4141
Fax: (920) 982-0948

Tractor Supply Co

Nicole Davis
1651 N. Shawano St.
New London, WI 54961
Phone: (920) 982-6222
Fax: (920) 982-6336
www.tractorsupply.com

Tri-County Overhead Door

Bill Millard Jr.
1910 Hillshire Dr.
New London, WI 54961
Phone: (920) 982-6700
Fax: (920) 982-6709
www.tricountyohdoor.com

Victory Lane Diecast LLC

Nathan O'Bright
1200 N. Shawano St Suite 4
New London, WI 54961
Phone: (920) 372-8991

Wal-Mart Store

Moe Bernard
1717 N. Shawano St.
New London, WI 54961
Phone: (920) 982-7525
Fax: (920) 982-7436
www.walmart.com

Water Street Vintage, LLC

Kelly Rickert
207 W. North Water St.
New London, WI 54961
Phone: (920) 982-9826
www.waterstreetvintage.com

TELECOMMUNICATIONS / COMPUTERS

Cellcom / Nsight

Jeff Arps
P.O. Box 5370
De Pere, WI 54115
Phone: (920) 617-7171
Fax: (920) 339-4037
www.cellcom.com

PC & Cell Solutions

Keith Gowdy
301 W. North Water St.
New London, WI 54961
Phone: (920) 250-5700
Fax: (920) 250-5701
www.pcncell.net

Tech Guides, LLC

Natosha Daul
119 N. McCarthy Rd. Suite A
Appleton, WI 54913
Phone: (920) 757-9131
www.techguides.it

NEW LONDON CHAMBER MEMBER LISTINGS

T-Mobile

Mario Mora
1186 N. Shawano St Suite 1
New London, WI 54961
Phone: (920) 875-0002
www.T-Mobile.com

UltraCom Wireless Communications, Inc.

Sara Nikolay
308 Wolf River Plaza
New London, WI 54961
Phone: (715) 343-1547
Fax: (715) 341-9340
www.ultracomwireless.com

Unitel, Inc.

Mike Toth
2400 W. Leonard St.
Appleton, WI 54914
Phone: (920) 739-1288
Fax: (920) 739-4305
www.unitelinc.com

TRANSPORTATION

Autopro Express Inc.

Mike Wedelstadt
W10890 School Rd
Fremont, WI 54940
Phone: (920) 667-5300

F&S Transport Services LLC

Sandra Saint Hilaire
New London, WI 54961
Phone: (732) 520-8068

Feonix – Mobility Rising

Jess Betts-Nelson
211 N. 14th St
Lincoln, NE 68508
(715) 323-6863
Feonix.org
<https://waupacacar.org/>

Lutheran Social Services of Wisconsin & Upper MI

Holly Keenan
3003 N Richmond St.
Appleton, WI 54911
Phone: (920) 225-1740
www.maketheridehappen.org



- Building Materials • Millwork
- Andersen Windows • Roofing
- Vinyl, and LP Smart Side Siding
- CAD Blueprint Services, Custom House Plans
- Cabinet, Countertop & Closet Design

- Plumbing • Electrical • Tools
- Hardware • Lawn & Garden
- Valspar Paint • Stain & More

M-F 7-5:30 • SAT 7:30-12
SUN CLOSED

www.newlondonbuildingsupply.com
1718 Mill Street, New London, WI
920-982-3832

344126



Great Service & Hometown Values

American Advantage
CORNERSTONE INSURANCE

- AUTO • HOME • LIFE • HEALTH • SR22
- COMMERCIAL • BUSINESS • FARM • BONDS
- WORK COMP. SPEC. EVENTS • UMBRELLA
- PROFESSIONAL LIAB. • TRUCKING
- CONTRACTORS • AND MORE

Jeff Bergum CISR
President

421 South Pearl Street • New London
Phone (920) 250-6464
jeff@advantagecornerstone.com
www.advantagecornerstone.com

116157



St. Joseph Residence

Caring For Our Community since 1967

Serving New London and surrounding communities including Bear Creek, Shiocton, Hortonville, Dale, Medina



The Washington Center Assisted Living Apartments
500 W. Washington Street

Trinity Terrace Assisted Living
1835 E. Division Street

Monarch Meadows Memory Care Assisted Living
107 E. Beckert Rd

“Short-Term Care Unit”

Complex Medical Care
& Physical Rehabilitation

- Post Hospital and Surgical Care
- Certified Wound Nurse
- Certified Medical Director
- IV Administration / Pain Mgmt.
- Excellent Skilled Nursing Care
- Physical, Occupational, & Speech Therapies available 7 days a week
- Pre-planned Surgery Reservations
- Furnished Private Suites
- Outpatient & Home Therapy
- Appointment Transportation
- Medicare Five Star Quality Care Provider ★★★★★



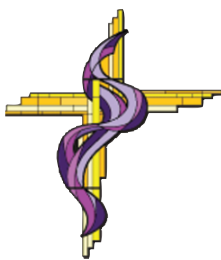
“Our Newest Community” Monarch Meadows Memory Care

Assisted Living Care for
Alzheimer's/Dementia/Memory Loss

- “Friend to Friend” Care Approach
- Safe and Secure Living Environment
- Daily Engagement & Socialization
- Sister Hughes Rose Garden Courtyard

Funding Options Available for Assisted Living

*Compassionate Skilled
Care Close to Home*



Call for a tour today! (920) 982-5354 www.stjosephresidence.com

110810



For over 90 years, the Tyson Foods New London facility has been producing and distributing a wide variety of hams, hot dogs, sliced meats, and smoked sausage products to consumers across the United States.

Each and every day our dedicated team members produce only the highest quality branded products to meet the needs of you and your family.



Jimmy Dean



Go To: [Tysonfoodscareers.com](https://tysonfoodscareers.com)

Tyson is an Equal Opportunity/Affirmative Action Employer. All qualified applicants will be considered without regard to race, national origin, color, religion, age, genetics, sex, sexual orientation, gender identity, disability or veteran status.

© 2021 Tyson Foods, Inc. 15147160

437679