

RISE & SHINE  
IT'S  
**FAIR TIME**

See Pages 8 & 9 for the  
Central Wisconsin State  
Fair Events Page!

**MARSHFIELD HUB CITY**

**LOCAL Times**

www.HubCityTimes.com

Largest Newspaper in Wood County

Find us on Facebook

**Marshfield Buyers' Guide**

PRSR STD  
U.S. POSTAGE PAID  
MARSHFIELD, WI  
PERMIT NO. 10

POSTAL CUSTOMER ECRWSS

MMC  
MULTI-MEDIA CHANNELS  
LOCAL MEDIA • BETTER RESULTS

WEDNESDAY, AUGUST 14, 2024 ■ VOLUME 40 ■ ISSUE 33 ■ 715.384.4440 ■ MARSHFIELD, WI

**FREE**

## School Board sends referendum to November ballot

BY MIKE WARREN  
EDITOR

MARSHFIELD – Voters in the Unified School District of Marshfield will decide in November if the Board of Education should spend \$71.575 million on improvements at Grant Elementary and Marshfield High School.

The board voted 6-1 during a special meeting Aug. 5 to advance the referendum to the Nov. 5 ballot, which also includes national races for the White House, US Senate and

Congress, as well as local State Assembly and Senate races.

“We got a general number. We didn’t see what’s included in that general number. We didn’t get the specifics on it, and that’s what people are asking me. ‘What specifically is included in this?’ Well, I can’t tell them what specifically is included in that, so that’s where I have a problem,” said Cathy Gorst, the only board member to vote against going to referendum for the proposed funding. “I told you at the last meeting that I wasn’t comfortable with that number. I thought we could shave more off.”

“But then on the flipside, if we cut out too much, when

are we going to go back to the well and ask for more money? That’s the struggle that I have,” said Nicole Forst, who was elected to the board in April. “Where do you draw the line? Just the feedback that I’ve heard, seventy-one-point-five is a lot. And I said, ‘Well, if you break it down by month, this is how much it should be,’ then they step back a little bit. I just think it’s that initial sticker shock that is hard for people to swallow.”

“If we don’t do this, we are doing an injustice to this community because we are not maintaining our

See REFERENDUM page 7

**MALL FURNITURE & MATTRESS BEDS**

**2-Sided • Adjustable**

113 W 9th St, Marshfield, WI 54449  
(715) 384-3166 • www.mallfurniturewi.com  
Hours: Mon-Fri: 10-5 • Sat: 10-3 • Sun: 12-3

**HOME SATELLITE CENTER, LLC**

SAVE some MONEY and Switch!

dish DIRECTV AUTHORIZED DEALER

**HOME SATELLITE CENTER, LLC**  
715-387-4206 • 612 E. Arnold St. • Marshfield  
homesatellitecenter.getdish.com

**NEED SPACE?  
RENT OUR PLACE!**  
Big or small, we store it all!

**UNDERCOVER STORAGE**

Marshfield • 715-486-5549

**Alvarez FALCON ROOFING LLC**

We offer

- Residential Shingle
- Commercial Shingle
- Rubber Roof
- Gutters
- Insulation
- Free Estimates
- Serving Central WI and surrounding areas

715-323-8275

Serving Central WI and surrounding areas

Call to book your appointment **715-323-8275**

## ALL EARS HEARING CARE



### Maria Seefeld

Hearing Instrument Specialist

DO YOU HAVE TROUBLE HEARING?

HAVE YOU BEEN TOLD YOU SPEAK LOUDLY?

DO YOU SOMETIMES HEAR WORDS BUT DON'T UNDERSTAND THEM?

HAVE YOU BEEN TOLD THAT YOUR TV VOLUME IS TOO LOUD?

**ALL EARS HEARING CARE CAN HELP!**

### SERVICES

- Free Hearing Screenings
- Comprehensive Hearing Evaluations
- Comprehensive Explanation of Hearing Evaluations & Screenings
- Recommendations for Assistive Listening Devices
- Custom Fitting of Hearing Aids
- Custom Hearing Protection
- Custom Molds and Ear Mold Modification
- Hearing Aid Fitting Adjustments
- Hearing Aid Cleaning
- Diagnostic Evaluation of Hearings Aids
- Trouble Shooting of Hearing Aids
- Counsel Patients and Their Families in Communication and Listening Strategies

### MONTH OF AUGUST PROMO

**BOGO 50% off!**  
Premium Technology Devices

### CONTACT

106 W. McMillan St. Marshfield, WI 54449

PHONE: 715-207-0777 FAX: 715-207-0771

Office Hours Monday-Thursday 9AM-5PM & Friday 9AM-12PM

allearshearingcare.com

**Theresa & Mike, Auburndale**

**Congratulations!  
Enjoy the Ride!**

## Hughes Service

226 Main, Milladore, WI  
hughesservice.com



Open M-F 8am-6pm  
Saturday 8am-12pm

**715-457-2114**



**KANGA LOADERS**

THE WORLD'S FIRST COMPACT MINI LOADER EST. 1981

**Sizzling Summer Special!**  
**\$2500 OFF** Kanga 7 Series mini loaders in stock\*  
**\$2000 OFF** Kanga 6 Series mini loaders in stock\*

- ✓ Heavy duty steel construction
- ✓ Honda gas or Kubota diesel engines
- ✓ Self-leveling bucket, forks, etc.
- ✓ Full flow auxiliary hydraulics operate many attachments: grapple, post hole digger, trencher, power rake and more!

\*Offer valid 07/25/24 - 08/31/24

**WENGER EQUIPMENT** 236228 CR M Athens, WI  
**715-257-7233**  
 WengerEquipment.com  
 POWER EQUIPMENT EXPERTS FOR OVER 37 YEARS

Helping You **Succeed**  
 Advertise with us and get **Results**



**JENSEN & SON ASPHALT PAVING**  
 Medford, WI 715-965-0577

**BLACKTOP PARKING LOTS & DRIVEWAYS**

**COMMERCIAL/RESIDENTIAL**  
**Call - 715-965-0577**

**HSU Growing Supply**  
 Landscaping & Gardening Supplies



Order Bulk by Phone  
 Order Small Items Online  
 or Pickup in Person

• Soil • Compost • Mulch • Grass Seed • Fertilizer • Food Plot  
 • Ginseng Chemicals • Food Waste & Yard waste Recycling Pickup

**715-675-5856 • HsuGrowingSupply.com**  
 237502 Co Rd W Wausau, WI 54403

**PUBLISHER'S LETTER**

**Blueprint For The End Of Days**

Dear Reader,  
 How do you want to exit this world and transition to the next?  
 There are two fundamental ways to approach the end of life, aside from extraordinary circumstances.  
 The first way is to grow old and do the ordinary things necessary to get along. You die with your hearing intact. You can still see clearly. Your voice remains strong. You have most, if not all, of your teeth, and your brain functions well enough to know what day it is. You can walk and manage basic needs independently. Ultimately, you pass away peacefully in your sleep.  
 The second path is to live life to the fullest, pushing your limits every day. Your vision diminishes, your voice weakens, and your hearing fades. You have only a few teeth left, and your body is marked with



wrinkles and scars. You fought hard for good causes and never shied away from a challenge. You practically crawl to your grave, having given everything you had. You face the afterlife unafraid, with the remnants of your soul.  
 So, which path will you choose—the easy way, with its stately graces and comforts, or the challenging route, overcoming obstacles and conflicts, leaving the world a better place behind you?  
 It's your call.

**PATRICK J. WOOD**  
 Publisher  
 Author of "Reflections" a new book now available on Amazon.

**MARSHFIELD HUB CITY Times**

August 23, 2014 - August 21, 2024



**CELEBRATING 10 YEARS**

Watch for our Special **10 Year Anniversary Edition** on August 21, 2024!  
 Also look for our largest and most challenging **Word Search Contest...**  
**We are giving away \$400 in Prizes!**  
 Enter for a chance to win one of ten **\$25 MACCI Gift Certificates** along with additional prizes!

**GLOVERDALE COUNTRY STORE**

2 miles South of Curtiss on Hwy. E 715-223-4797  
 We accept: SNAP/EBT Cards

<b>Beef Patties</b> Uncooked - Frozen 5 lb. <b>ONLY \$1.99</b> a lb	<b>Ham</b> Hickory Smoked Bone-In, Spiral Cut Frozen 9 lbs. <b>ONLY \$1.29</b> a lb	<b>Miracle Whip</b> Original 30 oz. <b>ONLY \$2.29</b>
<b>Pecan Pie</b> 8 inch Pre-baked - Frozen 24 oz. <b>ONLY \$2.99</b>	<b>Orange Juice</b> No Pulp 52 oz. <b>ONLY \$1.99</b>	<b>White Sugar</b> Granulated 50 lbs. <b>ONLY \$32.95</b>

**OPEN MONDAY - FRIDAY 8:30-6:30 • SATURDAY 8:30-4:00**

<b>Chicken Breast</b> Skinless, Boneless Frozen 5 lbs. <b>ONLY \$1.99</b> a lb	<b>Mozzarella Cheese</b> Low Moisture 8 oz. <b>ONLY 99¢</b>	<b>Roast Beef</b> w/Gravy 10 oz. <b>ONLY 89¢</b>
<b>Ham</b> Boneless Extra Lean - Frozen 1.5 lb. <b>ONLY \$1.29</b> a lb	<b>Cream Cheese</b> Original 4-8oz. <b>ONLY \$5.99</b>	<b>Celsius</b> Kiwi Guava 12-12 oz. <b>ONLY \$8.99</b>
<b>Chicken Tenders</b> Breaded - Uncooked Frozen 5 lb. <b>ONLY \$1.99</b> a lb	<b>Cheddar Cheese</b> Shredded 5 lbs. <b>ONLY \$9.99</b>	<b>Cranberry Cocktail Juice</b> 32 oz. <b>ONLY 99¢</b>
<b>Chicken Fries</b> Breaded - Uncooked Frozen 5 lb. <b>ONLY \$1.99</b> a lb	<b>Cheddar Cheese</b> 5 lbs. <b>ONLY \$1.89</b>	<b>Graham Crackers</b> Honey 19.2 oz. <b>ONLY \$1.89</b>
<b>Chicken Nuggets</b> Breaded - Uncooked Frozen 5 lbs. <b>ONLY \$1.69</b> a lb	<b>American Cheese</b> Sliced 5 lbs. <b>ONLY \$6.99</b>	<b>Bacon</b> Center Cut - Frozen 17 oz. <b>ONLY \$2.69</b>
<b>Chicken Breast</b> Sliced - Oven Roasted Frozen 20 oz. <b>ONLY \$1.99</b>	<b>Monterey Jack Cheddar Cheese</b> Shredded 5 lbs. <b>ONLY \$9.99</b>	<b>Bacon</b> Ends/Pieces, Maple Frozen 2 lbs. <b>ONLY \$1.89</b> a lb
<b>Hashbrowns</b> Shredded - Frozen 3 lbs. <b>ONLY \$2.99</b>	<b>Cheddar Cheese</b> Medium 8 oz. <b>ONLY \$1.69</b>	<b>Bison</b> 85-15% Ground - Frozen 16 oz. <b>ONLY \$3.99</b>
<b>Sausage Patties</b> Original - Fully Cooked Frozen 30 oz. <b>ONLY \$2.99</b>	<b>Mixed Vegetables</b> (Corn, Beans, Carrots) Frozen 16 oz. <b>ONLY \$1.49</b>	<b>Tator Tots</b> Browned - Frozen 32 oz. <b>ONLY \$2.29</b>
<b>Blueberries</b> All Natural - Frozen 24 oz. <b>ONLY \$2.99</b>	<b>Onion Rings</b> Breaded, Frozen 4 lbs. <b>ONLY \$5.99</b>	<b>Salami</b> Sliced - Cotto - Frozen 16 oz. <b>ONLY \$1.29</b>

In-store ONLY. We reserve the right to limit quantities.

Your Foundation at Work



**Grace A. Caliebe Scholarship Fund**

Established in Grace Caliebe's will for students from Greenwood pursuing a degree in health care, sciences, mathematics, or engineering. This scholarship can be renewed an additional four years. For more information or to donate to this fund, visit: <https://www.marshfield.foundation>.



**HUNTER DOUGLAS WINDOW TREATMENTS AVAILABLE @ RICE'S MORE THAN FLOORS**

**WHY CHOOSE HUNTER DOUGLAS AND RICE'S?**

- Energy efficient shades that may qualify for Federal tax credit.
- Revolutionary, stylish window treatments
- Help Reduce your monthly utility costs.
- Stay comfortable and add privacy.
- Hunter Douglas Lifetime Guarantee.
- PowerView® Automation option moves your beautiful shades to your schedule. It's your home and your light to control.
- Make the investment today into your home by stopping in or texting us today!



RicesMoreThanFloors.com  
**715-384-4554**  
**TEXT US TODAY!**  
 1313 West Veterans Parkway  
 Marshfield, WI 54449

**MARSHFIELD HUB CITY Times**

**ADVERTISING DEADLINES**

**Private Party Classified Ads • Friday at 10:00am**  
 5 lines (appx. 25 words)  
 \$10 for 1st market - \$5 each additional market

Ads for merchandise priced under \$20 are FREE (3 lines/15 words)  
 Price of any/each item must be listed in the ad

**Add Ons:** Add \$1 per additional line (appx. 5 words)  
 Add \$3 for a Border and \$3 for Bold text • Add a photo or logo for \$7 each

Call our office for details or go to HubCityTimes and click on the **CLASSIFIEDS** banner to place your ad

Business classified ads start at \$30 for 5 lines. Call our office for a quote.

**Display/ROP Ads • Friday at 10:30am**  
 Call Peggy Sue to reserve your ad

**Contact Us**

**Editorial - Mike Warren - mwarren@mmclocal.com**

**Display Advertising**  
 Peggy Sue Behselich - 715-305-4345 - pbehselich@mmclocal.com

**Classified Advertising & Obituaries**  
 Kevin Granquist - 715-384-4440 - kgranquist@mmclocal.com

**104 East 2nd Street • Marshfield, WI 54449**  
**715-384-4440 • www.HubCityTimes.com**

# Preview of six-day Central Wisconsin State Fair

BY MIKE WARREN  
EDITOR

MARSHFIELD – Going to the Central Wisconsin State Fair in Marshfield is like dialing up your favorite streaming service online – there’s always something new being offered while those timeless classics await you as well.

The six-day fair runs Aug. 20-25 at Marshfield Fairgrounds Park, 513 E. 17th St., with the theme, “Rise & Shine: It’s Fair Time.”

“We have been working all year and we are very excited about the week of activities that we have been able to assemble for you,” says Executive Director Dale Christiansen, in his welcome to the 121st Central Wisconsin State Fair.

The grandstand entertainment is always one of the first schedules fairgoers will scope out ahead of time, and this year’s roster should not disappoint.

“In assembling this year’s lineup, we wanted to rise above what we’ve done in the past and still provide the stability of proven acts,” Christiansen adds.

One of the best-selling rock bands of the twenty-first century is headlining this year’s grandstand lineup. Daughtry is scheduled to perform on Friday, Aug. 23 at 7:30 p.m.

“We’re going to a different level with bringing Daughtry into town and we’re hoping to have the place packed,” Christiansen told us in a recent interview.

Country artist Dylan Scott kicks off the grandstand schedule on Wednesday, Aug. 21 at 7:30 p.m.

Back by popular demand, rock tribute band Hairball returns on Thursday, Aug. 22 at 7:30 p.m.

“They’ve been with us for several years, and people that have come to see them just keep saying, ‘Bring them back please,’ so they’re doing well for us, so Hairball’s back again,” Christiansen said.

Tickets for all three shows include gate admission if purchased prior to entering the fair.

“If you buy a VIP package, which gets you down on the ground in front of the stage, Dylan’s tickets for VIP are seventy-five dollars,” said Christiansen. “That includes your gate admission and two beverage tickets. Hairball, their tickets are forty-five for VIP. Daughtry’s VIP tickets are at eighty-dollars.”

For the Dylan Scott show, trackside seating is \$45 and grandstand seats are \$35.

For Hairball, the trackside price is \$35 and the grandstand price is \$25. For Daughtry, trackside seating will cost \$50 and a grandstand ticket runs \$40.

The weekend’s grandstand attractions include the Rice Rodeo Company’s Bulls, Broncs ‘n Barrels show on Saturday, Aug. 24 at 7:30 p.m. and the Obsession with Destruction Demolition Derby on Sunday, Aug. 25 at 2 p.m. Each show will charge \$25 for adults (13 & up) and \$15 for children ages 5-12. Kids ages 4 and under are admitted free of charge.

The opening night of the fair will feature the always-popular Dress-A-Cow contest on Tuesday, Aug. 20 at 7 p.m. in the Jer Lang Show Palace, with the theme, “Dancing Out the Barn Door.”

“After Dress-A-Cow, there’s going to be a farmer Olympics,” Christiansen told us. “They’re looking at putting children’s teams together, adult teams together, and they even had the idea if maybe some businesses would get some teams to compete against each other. I’ve heard throw a bale of hay and a number of different activities that are going to be taking place, so we’re real excited about having that going on down there.”

As always, Wednesday at the fair means Senior Citizen and Veterans Appreciation Day. Those folks are admitted for just \$5. Also on Aug. 21, the Visit Marshfield Family Entertainment Tent will feature the Hayes Boys Orchestra and The Memories at 11:30 a.m., and at 3:15 and 4:30 p.m., respectively.

“The Memories are a staple for Senior Day,” says Christiansen. “They kind of stepped in when Howie Sturtz retired, and Howie was here for years and now The Memories are doing the same.”

Wednesday, Aug. 21 will also feature the Junior Fair’s Market Animal Sale at 6:30 p.m. in the Jer Lang Show Palace.

On Thursday, Aug. 22, the Family Entertainment Tent schedule includes the Eau Claire-based Gator’s Band providing a variety of songs from eight different decades, Medford native Jackson Taylor performing early-to-mid-2000s country music, Marshfield’s own Hub City Jazz, and Appleton rock band Bad Habitz.

The Entertainment Tent lineup for Friday, Aug. 23 will feature the country sound of Dawn Marie from 1 to 3:30 p.m., performances by Marshfield’s Main Street Conservatory of Dance between 4 and 5 p.m. and cover band Star Six Nine from 9 p.m. to midnight.

The Foxfire Affair, Universal Dance



Pig and duck races from Pleasure Valley Farm in Adell will be featured during a high-energy show for kids of all ages at the Central Wisconsin State Fair, in Marshfield Aug. 20-25.

Mike Warren photo



Back by popular demand, rock tribute band Hairball takes the grandstand stage on Thursday, Aug. 22, at the Central Wisconsin State Fair.

Kris Leonhardt photo

Academy of Marshfield, central Wisconsin’s own Mill Creek Cow Tipplers, Red Higgens & Freedom Train, and Soul Whiskey of Wisconsin Rapids all take the Entertainment Tent stage on Saturday, Aug. 24, while Kings Conquest and The Croniks will be featured on Sunday, Aug. 25.

Draft horses will be featured Aug. 23-25 at the fair. On Friday, Aug. 23, the Central Wisconsin State Fair Horse Pull starts at 6

p.m. The Draft Horse Show will be featured all day Saturday, Aug. 24, highlighted by an appearance from the Meyer Farms’ ten-horse pyramid hitch at 6 p.m. The Draft Horse Show concludes on Sunday, Aug. 25, with hitching starting at noon.

Season gate passes and Grandstand show tickets can be purchased in the fair office or online at [www.centralwisconsinstatefair.com](http://www.centralwisconsinstatefair.com).

## Music in the Park in Stratford



STRATFORD – The Stratford Area Chamber of Commerce presents Music in the Park on Wednesday, Aug. 14 at 6:30 p.m.

Bring your lawn chairs to Klemme Park to enjoy music favorites performed by the Balsam Road Ramblers. The concert begins at 6:30 p.m. Complimentary hot dogs, chips, and root beer floats will be served during the concert.

The Stratford Area Museum will be open from 5:30 to 7:30 p.m. during Music in the Park. The museum exhibit takes visitors back 133 years to 1891, for a look at the Stratford

area at the start of the Connor lumber company sawmill operation.

Mark your calendars for Wednesday, Sept. 18 for the next Music in the Park. The September concert features Tiny Shoes. Individuals and businesses interested in sponsoring entertainment groups or refreshments, please contact 715-391-9494.

In the event of inclement weather, the concert will be moved from Klemme Park to the Stratford High School Commons.

Helping You **Succeed**  
Advertise with us and get  
**Results**

**Freudenthal Mfg.**



- One piece Polyethylene construction
- Available in two sizes 68" or 78" diameter
- 5 or 6 window option
- 9" x 26" smoked glass oval windows
- Window in door • Roof vent option
- Windows & door frame with weather stripping
- Designed for gun or bow
- 2 1/2" bottom flange for ground staking
- Easily mounted to your raised platform
- Costs up to 30% less than many other brands

**FROM \$989 to \$1149** Hunting Blinds

W6322 CTH-O Medford, WI 54451 | 1-800-688-0104

**STORE SPECIALS:**  
August 14th-August 20th, 2024

STRAWBERRY MILK	\$3.69	Gallon
TOMATO BASIL CHEDDAR	\$4.00	lb.
TINY SOFT SERVE CONES (Vanilla, Chocolate, Twist) .....	\$1.00	each

Milk from cows not treated with rBGH! No significant difference has been shown between milk from rBGH treated and untreated cows.

**Weber's Farm Store**  
9706 County Road H, Marshfield, WI  
3/4 mile west of Central on 14th Street • [webersfarmstore.com](http://webersfarmstore.com)  
Phone (715) 384-5639 Hours: Mon.-Fri. 8:30-7; Sat. 8:30-5

PROUDLY A PRODUCT OF WISCONSIN

# Visiting a smaller, historic Marshfield



A drone's panoramic view of Marshfield, MO's largest annual event; the city's 2024 Independence Day parade. Photo taken July 4, 2024 at the city's downtown courthouse square. **Danielle Boggs photo**



Thom poses with a scaled model of the Hubble Space Telescope and a plaque that mentioned the telescope's developer, Marshfield, MO native Edwin Hubble. Photo taken July 12, 2024 outside the Webster County Courthouse in that city's downtown. **Danielle Boggs photo**

**BY THOM GERRETSEN  
CONTRIBUTING WRITER**

MARSHFIELD -- I recall that Marshfield, Wisconsin sent a congratulatory letter to Marshfield, Massachusetts when it celebrated its 350th birthday in 1990. Even if we had sent our mayor there, however, I have doubts he would have arrived at the anniversary event on time.

I'd blame heavy traffic from nearby Boston when I tried my own pilgrimage in 2019 on a larger trip with my wife Jean. I fought occasional bumper-to-bumper traffic to Cape Cod on a Saturday afternoon until I turned around. Otherwise, I may have missed the first pitch of a Red Sox baseball game at Fenway Park.

Fast forward to July 2024. As I planned a road trip to

the Major League Baseball All-Star Game in Arlington, Texas I found another Marshfield I didn't know existed: It's in southwest Missouri, around 10 miles east of Springfield. I couldn't reach the last Marshfield I tried visiting, so I was determined to see this one.

Missouri's version has about one-third of the residents as Wisconsin's. I posed with a city entry sign that listed 6,633 residents. But according to Wikipedia, that was as of the 2010 U.S. Census. The 2020 Census listed 7,458. Incorporated in 1856, it is 16 years older than its Wisconsin namesake.

This community's most famous resident is Edwin Hubble: His numerous discoveries as an astronomer included NASA's Hubble Space Telescope. A smaller-scale replica of the telescope is near the center of the downtown courthouse square. Webster County Public Administrator Danielle Boggs couldn't

wait to give me a proper showing.

I wish I could have arrived in town earlier than I did. Not surprisingly, much of Marshfield was quiet around 5:15 p.m. Friday, July 12. However, I wasn't going to deny myself an early afternoon walk in the majestic Ozarks on the panoramic, municipal-owned Bluff View Trail in Wildwood, MO.

In checking out the square, I stepped to a main courthouse entrance and tugged on a locked door. After others went home Boggs -- an elected county official -- answered and asked if I needed help. Missouri's public administrators are advocates for the mentally ill, developmentally-disabled, elderly with dementia, etc. They're also court-appointed representatives for descendants' estates and guardians when no one else can care for those unable to care for themselves.

I showed her my

Marshfield Dairyfest T-shirt and said I just wanted to learn a little more about her community. I felt as if I gave her some relief. Boggs knew that Wisconsin's Marshfield was larger but she didn't know that the city's Clinic headquarters has hundreds of physicians in an integrated health system with more than 1,600 providers in around 60 locations in the Badger State and Upper Michigan.

Hubble isn't Marshfield, MA. Also, this city is next to Interstate-44 which goes through the Missouri Ozarks. Perhaps it's why it has more chain dining choices than you see here. Boggs also made sure I knew that Marshfield streets show part of the route for the Historic Route 66. Before meeting her, I found a logo marker on the square. I also spotted several monuments that honor local veterans. I



A street marker shows where Historic Route 66 passed through Marshfield, MO. Photo taken July 12, 2024 on a downtown street that's part of the Webster County Courthouse square. **Thom Gerretsen photo**

saw an informative state historical marker about Webster County. A gazebo remembers the Marshfield Concert Band from 1903-28. I also learned that this place is Missouri's highest county seat in the Ozarks at 1,490 feet above sea level. Boggs also said I was about a week late for the city's

biggest annual event; the 145th annual Independence Day Parade. She said it has taken place longer than any such July 4 parade west of the Mississippi River. Missouri Gov. Mike Parson was this year's Grand Marshal. Boggs also gave me a drone photo highlight.

The area also has a dairy farming heritage: The Hosmer Dairy Farm Historic District near Marshfield is in the National Register of Historic Places. So is the Rainey Funeral Home Building in the city limits. Before leaving, Boggs encouraged me to grab a copy of the city's 132-year-old weekly newspaper, the *Marshfield Mail* published on Wednesdays, just like this one.

I haven't researched the numbers of Marshfields across the U.S.: Some are cities, some towns, and the Boston area Marshfield is made up of eight villages and six zip codes at the junction of Cape Cod Bay and Massachusetts Bay.

I just know that with a local leader's help, I thoroughly enjoyed visiting this Marshfield.

**Buyers' Guide**  
**HUB CITY Times**  
 Your Marketplace Connection for Marshfield and Surrounding Areas Since 1987.  
 The Marshfield Buyers' Guide is published by Multi Media Channels, LLC every Wednesday.  
 104 East 2nd Street  
 Marshfield, WI 54449  
 Phone: 715.384.4440  
 Marshfield@mmclocal.com  
**Hours**  
 Mon. - Fri. 8 a.m. - Noon  
 1 p.m. - 5 p.m.  
**Publisher**  
 Patrick J. Wood,  
 publisher@mmclocal.com  
**General Manager** -  
 Ernie Neuenfeldt  
**Editor** - Mike Warren  
**Graphic Designer**  
 Tamara Mortensen  
**Office Manager/**  
**Graphic Design**  
 Kevin Granquist  
**Sales Account Executive**  
 Peggy Sue Behselich  
**PaperChain Member**  
**CIRCULATION VERIFICATION COUNCIL**  
 © Copyright Multi Media Channels LLC 2024  
 All Rights Reserved. No part of this publication or any of its contents may be reproduced, copied, modified, or adapted without the prior written consent of Multi Media Channels LLC.

**This Week's Specials • This Week's Specials • This Week's Specials**

<ul style="list-style-type: none"> <li>• <b>Smithfield Applewood Bacon Pork Loins</b> 23 oz. (Case of 4, \$15.95) ..... <b>\$4<sup>35</sup></b></li> <li>• <b>Smithfield Roasted Garlic Herb Pork Tenderloin</b> 19.2 oz. (Case of 4, \$15.95) ..... <b>\$4<sup>35</sup></b></li> <li>• <b>Smithfield Teriyaki Pork Tenderloin</b> 19.2 oz. (Case of 4, \$15.95) ..... <b>\$4<sup>35</sup></b></li> <li>• <b>93% Lean Ground Beef</b> 1 lb. .... <b>\$4<sup>95</sup></b></li> <li>• <b>85% Lean Ground Beef</b> 1 lb. .... <b>\$4<sup>65</sup></b></li> <li>• <b>85% Lean Ground Beef</b> 3 lbs. .... <b>\$11<sup>25</sup></b></li> <li>• <b>Farm Rich Cheddar Cheese Curds</b> 1 lb. (Case of 8, \$29.00) ..... <b>\$3<sup>95</sup></b></li> <li>• <b>Farm Rich Jalapeno Peppers</b> 38 oz. .... <b>\$7<sup>95</sup></b></li> <li>• <b>Kraft Cool Whip</b> 8 oz. (Case of 12, \$17.05) ..... <b>\$1<sup>55</sup></b></li> <li>• <b>Hormel Sliced Ham</b> 24 oz. (case of 8, \$22.65) ..... <b>\$2<sup>95</sup></b></li> </ul>	<ul style="list-style-type: none"> <li>• <b>Smithfield Honey Smoked Sliced Turkey</b> 1 lb. (Case of 12, \$20.35) ..... <b>\$1<sup>85</sup></b></li> <li>• <b>Jennie-O Sliced Turkey Breast</b> 2 lbs. (Case of 6, \$21.20) ..... <b>\$3<sup>85</sup></b></li> <li>• <b>Smithfield Sliced Cotto Salami</b> 1 lb. (Case of 12, \$19.25) ..... <b>\$1<sup>75</sup></b></li> <li>• <b>Blueberries, 24 oz.</b> ..... <b>\$4<sup>95</sup></b></li> <li>• <b>Land O'Lakes Light Sour Cream, 80 oz.</b> ..... <b>\$7<sup>95</sup></b></li> <li>• <b>McCormick Tarter Sauce</b> 8 oz. (Case of 6, \$6.90) ..... <b>\$1<sup>25</sup></b></li> <li>• <b>Kettle Chips</b> 13 oz. (Case of 9, \$24.35) ..... <b>\$2<sup>95</sup></b></li> </ul>
--	---

**FRESH PRODUCE**  
 Lemons, Kiwis, Carrots, Apples, Rainier Cherries, Dark Sweet Cherries, Avocados, Mushrooms, Yellow Bell Peppers, Heirloom Oranges, Onions, Cabbage, Pineapples, Watermelons, Mangos

**715-229-4336**  
 Hwy 29 to E. North 1 mile to Willow Rd. 2 miles West to Pelsdorf 1/4 mile South  
**N14778 Pelsdorf Ave., Curtiss**  
 Mon.-Fri.: 8 a.m.-7 p.m. Sat.: 8 a.m.-5 p.m.

**Rainbow Reflections Discount Groceries**

**THE Village Market**  
 715-659-4896  
**212 S. Pacific St. SPENCER**  
**715-659-4896**  
**HOURS:**  
 Monday-Friday 9:00-6:00;  
 Saturday 9:00-4:00  
 Email: shop@villagemarket.info

**Bulk Food • Deli Seasonal Produce and Fruit**

**DELI MEAT & CHEESE SPECIALS**

Black Forest Honey Ham	..... \$4.69 lb.
Lebanon Bologna	..... \$7.19 lb.
Farmers Cheese	..... \$3.49 lb.
Habanero Jalapeno Cheese	..... \$8.49 lb.
Garlic & Herb Wrap	..... \$5.49

**MEAT SPECIALS**

Smoked Sausage Grillers (14 oz.)	..... \$4.89
Turkey Bacon (12 oz.)	..... \$3.49
Frozen Pollock Fillets (1 lb.)	..... \$4.59

**DAIRY SPECIALS**

Walnut Creek Sour Cream (16 oz.)	..... \$2.49
Feta Cheese (4 oz., Crumbled)	..... \$2.09

**GROCERY SPECIALS**

Fresh Ground Peanut Butter	..... 15% off
Roasted & Salted Sunflower Meats	..... 20% off
Walnut Creek Bagels (6 ct., Ass. Flavors)	..... \$1.69

**Taking Orders for Concord Grapes**

**FRUIT & PRODUCE SPECIALS**

California Plums	..... \$2.39 lb.
Cauliflower	..... \$3.19
2 lb. Carrots	..... \$1.69

*While supply lasts. Specials good thru August 19th, 2024*

# UW-Stevens Point at Marshfield presents Disney's *Frozen Jr.*

### FOR HUB CITY TIMES

MARSHFIELD -- UW-Stevens Point at Marshfield presents Disney's *Frozen Jr.* Aug. 15-16 at 7:30 p.m. and Aug. 17 at 2 p.m.

Based on the 2018 Broadway musical, *Frozen Jr.* brings Elsa, Anna, and the magical land of Arendelle to life, onstage. The show features all of the memorable songs from the animated film, with music and lyrics by Kristen Anderson-Lopez and Robert Lopez, plus five new songs written for the Broadway production.

A story of true love and acceptance between sisters, *Frozen Jr.* expands upon the emotional relationship and journey between Princesses Anna and Elsa. When faced with danger, the two discover their hidden potential and the powerful bond of sisterhood. With a cast of beloved characters and loaded with magic,



Cast members rehearse a scene from "Frozen Jr.," to be presented Aug. 15-17 at UW-Stevens Point at Marshfield. **Rebecca Bauer photo**

adventure, and plenty of humor, *Frozen Jr.* is sure to thaw even the coldest heart.

Under the direction of Donna Thompson, this is UW-Stevens Point at Marshfield 18th annual

youth summer theatre production. The cast consists of over fifty talented central Wisconsin youth ages 11-18.

The performances take place in the Helen Connor Laird Theatre

at UW-Stevens Point at Marshfield. Tickets are \$15 and can be purchased at [tickets.uwsp.edu](http://tickets.uwsp.edu) or at the campus box office starting an hour prior to the show pending availability.

# Motorcyclist killed in car vs. bike collision

## Elderly woman failed to yield right-of-way

### FOR HUB CITY TIMES

WOOD COUNTY – A Wausau man is dead after the motorcycle he was operating collided with a vehicle driven by an elderly woman, who pulled out in front of him. The crash occurred shortly after 7 p.m. on Aug. 8 at Highways 10 and N in the Township of Milladore.

According to the Wood County Sheriff's Department, 60-year-old Alonzo B. Dvorak of Wausau and his passenger were traveling east on Highway 10 when a car driven by 86-year-old Marlene A. Furo of Junction City pulled out in front of their motorcycle from a stop sign on northbound Hwy. N, as she attempted to cross Hwy. 10. From this action, the motorcycle collided with the motor vehicle. This incident remains under investigation by the Wood County Sheriff's Department and the Wisconsin State Patrol.

The dispatch center was informed the crash involved a vehicle versus motorcycle. Wood County Deputies and First Responders made contact at the scene and medical procedures were initiated. Lifesaving attempts with the motorcycle operator were unsuccessful and he was pronounced dead at the scene. His passenger – 57-year-old Monica M. Dvorak of Wausau – sustained multiple injuries and was transported via Lifelink for additional medical care. Furo sustained injuries and was personally transported to a medical facility.

The Wood County Sheriff's Department was assisted at the scene by the Wisconsin State Patrol, Portage County Sheriff's Department, Life Link Helicopter, Sherry First Responders, Marshfield Ambulance Service, Dave's Service Center, Draxler's Service Center and the Wood County Highway Department.

# Rozar receives multiple awards

### FOR HUB CITY TIMES

MADISON -- Representative Donna Rozar (R-Marshfield) has been recognized by multiple groups for her leadership and accomplishments on several issues for this legislative session.

First, Rep. Rozar – a retired nurse and nurse educator – has been named a "Friend of Family Medicine" by the Wisconsin Academy of Family Physicians. She received this award for her continued work strengthening the practice of family medicine, increasing access to care, and ensuring patient safety.

Rep. Rozar also received the "Early Detection Life Saver Award" from the Early Detection Saves Lives Coalition. The coalition gave this award to Rozar for her support of legislation promoting early detection of breast cancer (AB 117). This bill requires insurance policies to cover supplemental breast screening exams or diagnostic exams for an individual who is at increased risk of breast cancer.

Also, the Wisconsin Primary Health Care Association and Family Health Center of Marshfield have named Rozar a "Champion of Community Health Centers." Rep. Rozar earned this recognition through her leadership as Vice-Chair of the Assembly Committee on Health, Aging, and Long-Term Care, as well as a member of the



Rozar

Assembly Committee on Workforce Development and Economic Opportunities to ensure community health centers have the resources needed to continue meeting the health care needs of rural Wisconsinites. Rep. Rozar was previously recognized for her leadership on issues related to community health centers in the 2021-2022 legislative session when she was named "Community Health Center State Grant Champion" by the Wisconsin Primary Health Care Association.

"I am honored to receive these awards," said Rozar. "I

do not legislate to achieve awards, rather to continuously serve the people of central Wisconsin. These awards are a reminder that good policy is good politics, and the policies I advocate for in Madison are beneficial to my constituents and all Wisconsin residents. I will continue to fight for increased access to affordable quality health care for rural Wisconsinites and policies that improve our general well-being."

See ROZAR page 7

**SOUTHSIDE DISCOUNT GROCERIES**  
 301 East 29th Street • Marshfield  
 715-384-3914

Peanut Butter Brownie Mix 17.2 oz.....	\$1.29
Miracle Whip 30 oz.....	\$1.99
Mandarin Oranges 12/4 oz cups.....	\$2.49
Tropical Berry Energy Drink 12/12 oz.....	\$6.99
Beef Hash 15 oz.....	\$1.59
Pepperoni Slices 32 oz.....	\$3.99
Sweet Cucumber Salad 32 oz.....	\$1.89
Bubble Gel Fruit Cups 16/4.5 oz.....	\$3.89
Roast Beef w/Gravy 10 oz.....	\$0.69

**Store Hours: M-F 9-5, Sat 9-4, Sun Closed.**

# Power for the Hard-Working

- Brush Hogs
- Grapples
- Bale Movers
- Rock Buckets
- Post Hole Augers
- Harley Rake (90")
- Jack Hammer
- Post Pounder
- Trencher
- Tiller (72")
- Transit

**Handy Rent, LLC**  
 212931 Legion St., Stratford, WI  
 Call 715-391-3910 • Text 715-819-3119 • [www.handy.rent](http://www.handy.rent)  
 Pickup in Stratford • Delivery Available



# Honoring Marshfield's 150th

# Marshfield 150 for 150: Jeffrey Kleiman

### NOMINATED BY DON SCHNITZLER

History professor Jeffrey Kleiman has lived in Marshfield for more than 35 years, teaching at the UW-Marshfield/Wood County Center, later UW-Stevens Point at Marshfield. During those years, he encouraged students to develop critical thinking skills, presented exceptional programs for life learners, and inspired students and community members alike to set and achieve their goals.

Accepting Marshfield's assistant professor of history position in 1988, Kleiman held a bachelor's degree from Lindenwood College, St. Charles, MA, master's from the University of Cincinnati, OH, and a doctoral from Michigan State University.

His early teaching assignments included typical lower-division undergraduate courses, like American History, Western Civilization and World History. His lectures focused on the complex and compelling stories of real history, and he asked his students to apply critical and analytical thinking skills - beginning the difficult task of interpreting events rather than merely repeating what they had read about them. While teaching in Marshfield, the opportunity for upper-level courses allowed Kleiman to teach in his research field of the Holocaust. His work here culminated in translating a survivor's memoir from Yiddish to English.

Kleiman developed a reputation as being a "notoriously tough grader." He remained an instructor with no compulsion to give anything but an honest grade. Yet, his classes were always filled.

In 1991, to help high school students prepare to enter college, Kleiman introduced a course, "Summer Study Skills: The Key to Academic Success." It aimed at helping students develop the ability to read books and write papers, to take notes, to take tests, set priorities, meet deadlines and to adapt to the new environment of college life.

That same year, the student body, along with the student government Senate awarded him the first of his teaching excellence awards at the Marshfield campus.

Kleiman and then Dean Nancy Auman, offered a special continuing education series entitled, "1964-1989: A Quarter Century of Usage," celebrating the 25th anniversary of University of Wisconsin-Marshfield/Wood County. Over six weeks, they discussed 25 years of changes in education, civil rights, political campaigns, lifestyle trends from hippies to yuppies, impacts of Vietnam, Watergate, Reaganomics and global challenges of the Common Market and the Third World since the campus opened.

Kleiman frequently presented continuing education courses offered on the Marshfield campus and was also often invited to speak for local organizations and at special events. His discussions provided exceptional programs



for everyone on a lifelong learning journey. With topics ranging from local to global history, Kleiman delivered talks on America's religious, political and ethnic history, the Holocaust and Holocaust denial.

In 1994, Kleiman was appointed as a Wisconsin teaching fellow - one of only two faculty selected that year from the UW Centers. Wisconsin teaching fellows are selected from UW System faculty in their first ten years of college teaching who display strong potential to become outstanding teachers at the undergraduate level.

Then in 2002, Kleiman was named a U.S. Fulbright scholar and spent the 2002-2003 school year at the University of Lodz in Lodz, Poland. While there he taught a historical survey of America since 1939, the history of American business and the history of minority groups in America. During that time, he helped six Polish students complete their master's degrees, one of whom had her thesis published by Lodz University Press. He also conducted research on the Holocaust and post-World War II Europe for an intended book project.

Two years after returning to Marshfield, Kleiman was awarded a second Fulbright Scholarship, taking him back to Poland as a senior specialist with the Fulbright Program for lecturing, teaching and conducting seminars in Krakow, Warsaw and Lodz on ethnic and religious politics in the United States. He arrived in Poland to attend an international Holocaust Studies conference in Krakow, where he was invited to deliver an academic paper.

As Marshfield prepared to celebrate its 125th anniversary in 1997, Kleiman joined the Marshfield History Project, a local group interested in creating a unique and comprehensive history of Marshfield. His knowledge of history, research and writing skills provided needed guidance to help bring that history, *The Marshfield Story: Piecing Together Our Past*, to completion. As the major contributor he detailed the city's history from its origins as little more than a clearing alongside the railroad tracks to its status as a modern Wisconsin community. Sifting through thousands of newspaper clippings and integrating the information with state and national trends, he wrote the first five chapters of the book. With submitted stories on businesses, organizations, schools, churches, families, and special sections on Marshfield military, blacksmiths, and railroads, the book was really the first comprehensive history of the city.

In 1999, the State Historical Society of Wisconsin recognized Kleiman's efforts creating the history book with a local history award of merit. Presenting the award, State Historical Society Director, George L. Vogt, said the Marshfield History Book showed that people make history together, and that people working together "can do history." A belief underlying the project remains the role that academic historians should play in helping people make sense of how important local history can be.

An example of this came about when Kleiman served as a board member of the private, non-denominational Henry A. Prashak Memorial Fund, which raised funds to buy the statue of Jesus Christ in Prashak Wayside and the land surrounding it from the City of Marshfield. The challenge came to preserve the only statue in Marshfield's history against those who sought its complete removal.

In response to a pro-Nazi exhibit in the public library during early 2003, Kleiman, and others, founded the Marshfield Social Justice Group. This group worked to help create a welcoming environment for all people living in the Marshfield area and began the Marshfield Area Cultural Fair in the spring of 2004. This activity promoted respect and acceptance of diversity within the community and to promote community harmony. From the outset, Kleiman has actively helped develop plans and participated in most Fairs, which celebrated its 20th anniversary in 2024.

University students and community members alike have benefited from Kleiman's passion for teaching and life-long learning. The Marshfield Story and annual Marshfield Cultural Fair are significant parts of his community legacy. But the greater legacy is seeing what the students accomplished as he encouraged them to think outside of the box: to think differently, creatively and inventively throughout their lives.

## Spiros receives Early Detection Life Saver Award

MADISON -- Representative John Spiros (R-Marshfield) issued the following statement after he received the Early Detection Life Saver Award for his support of legislation to increase access to breast cancer screenings for those at increased risk:

"Cancer ravages families, so anything we can do to detect and treat it early is always a yes in my book," said

Rep. Spiros. "My family, just like so many out there, has been deeply affected by cancer, which makes this award profoundly personal to me."

Rep. Spiros co-authored 2023 Assembly Bill 117, which would have created new coverage requirements for health insurance policies for certain individuals for certain breast examinations, and corresponding cost-sharing limitations for those examinations. The Legislation was championed by Gail Zeamer, a member of the Early Detection Saves Lives Coalition, who passed away earlier this summer.

"While the bill did not make it over the finish line this session, I look forward to working with stakeholders to get it done in Gail's name next session," said Rep. Spiros. "Without our health, we have nothing."



**GUNS & AMMO**  
WE BUY, SELL & TRADE  
Loyal • 715-255-8200  
Colby • 715-316-6300

- Scope Mounting
- Bore Sighting
- Gun Cleaning

loyal@fourmensh.com  
Experience the difference. **4M**  
**FOURMENS**  
FOURMENS FARM HOME  
Sale Ends 8/18/24  
We honor your service. We offer sale prices every day on firearms for all current or prior military, police, firefighter, and EMT. We have hundreds of guns in stock. Have Questions? Ask Us. We're the friendly gun store.

CVA  
Scout takedown  
SALE **\$419.99**

RUGER  
Am 300wm Bronze Go Wild  
SALE **\$599.99**

SPRINGFIELD  
Ecehlon 9mm  
odg 4.5" 17/20rd  
SALE **\$659.99**

SPRINGFIELD  
Elite 4.5" 9mm  
20+1  
SALE **\$399.99**

Excavation Restoration & Equipment

**ERE LLC**  
EXCAVATION Jeff  
owner/operator  
715-613-0011

Tree Stump Removal • General Yard Restoration • Driveways  
Ditching & Trenching • Storm Clean-Up • Water Line Burial  
Drain Tile Burial • Food Plot Clearing • Forestry Mulching  
Hydraulic Jack Hammer • Hole Augering • Soil Conditioning  
& MUCH MORE!

**MEAT SALE!**  
Thurs., Fri., Sat., & Mon.  
Aug. 22, 23, 24 & 26, 2024

Hours  
8:00 am - 5:00 pm

**Country Discount Store**  
N9230 County Rd. O,  
Greenwood, WI 54437

A variety of meats and frozen foods  
at discount prices!

**Quality Roofing & Improvements LLC**  
Roofing • Windows • Siding • 3 Seasons Porches • Bathrooms  
General Remodeling

Harry 21 Years of Experience  
Mike 10 Years of Experience  
Ethan 15 Years of Experience  
Chris (Owner) 30 Years of Experience  
Janah 10 Years of Experience  
Morgan 18 Years of Experience

**Chris @ 715-435-4381**  
• Fully Insured • Many References

Owens Corning  
INNOVATIONS FOR LIVING  
Preferred Installer

### REFERENDUM

from page 1

schools at that point," said School Board President Mark Konrardy. "I even question at this dollar amount whether we're really doing justice to the schools. There are things that need to be taken care of. People say we didn't maintain the buildings. Come again. If you walk in those rooms and you see the equipment, that equipment is immaculate. Our staff has done a hell of a job. And if we maintain the schools, we are going to be able to give a higher education."

"I was not part of the Facilities Committee that put in hours and the examination of facilities and everything else, people that I trust, people that know about these things, I wasn't part of that committee and we have to kind of trust these people, in terms of the stuff that they've worked on," said board member Dale Yakaites.

After completing a comprehensive analysis of school facilities, Madison-based Nexus Solutions identified district-wide needs totaling \$157.2 million. The focus eventually shifted to \$13.8 million in priorities at Grant Elementary and \$47.7 million worth of upgrades at Marshfield High School, for a total of \$61.5 million. An initial athletics/Phy. Ed. package at MHS totaling \$21.7 million was pared down to \$10 million, bringing the referendum funding request total to \$71.5 million.

"Grant School and the high school rose to the top of our conversations because of the safety and security," said Superintendent Dr. Ryan Christianson, during a special board meeting July 29, when various building needs and referendum scenarios were first laid out for district officials by Nexus Solutions.

"Next after safety and security were infrastructure improvements. There's more work that was identified that we removed to pare down to the numbers that you're looking at here. We made some pretty painful cuts to get down to where we sit right now."

Grant Elementary priorities identified in the proposed referendum plan include air conditioning and air handling upgrades, complete lighting, roof and locker replacement, replacing and upgrading some kitchen equipment and a secured entry point and main office at the front of the school.

MHS priorities include mechanical and electrical upgrades, specifically with heating and cooling systems, replacing original air-handling units from when the school was constructed in 1968, replacing most windows and a majority of the school's doors, new roofing and kitchen equipment, and a secure entry point and office addition as part of a Commons area expansion just off the circle drive along the south side of the building.

The proposed \$10 million worth of Phy. Ed. and athletics improvements include new gym bleachers and floors, a new wrestling room addition, a pool spectator area, and remodeled girls' locker room. Excluded from the plans were a boys' locker room expansion and a new fitness center.

If approved, the district's current mill rate would jump from \$5.11 to an estimated \$6.50. District residents can find more information at [marshfield.referendumfacts.org](http://marshfield.referendumfacts.org).

In April 2023, voters rejected a \$99.5 million building-and-remodeling referendum which would have addressed the lion's share of the \$157.2 million in needs district-wide identified by Nexus.

### ROZAR

from page 5

On July 23, Rep. Rozar was presented the 2024 Outstanding Legislator Award by the Wisconsin Counties Association. Rep. Rozar received this award due to her commitment and leadership on responsible public policy initiatives that support county government and improve Wisconsin. One example is 2023 Wisconsin Act 68, relating to county of residence for care management organization (CMO) facility placements. Rozar worked closely with the Wisconsin Counties Association on this legislation over the past two legislative sessions. Additionally, she fought for increased shared revenue payments to counties and other local municipalities, as well as increased

nursing home reimbursements and transportation funding.

"I am honored to have received this award," said Rozar. "As a legislator who also serves as a Wood County Board Supervisor, I understand the important role county governments play in people's lives. Act sixty-eight makes a necessary clarification of state statute. This law will ensure the proper county is billed for their resident's costs, streamline our CMO billing system, and save taxpayer dollars. The increases in shared revenue, nursing home reimbursement, and transportation funding were necessary to ensure county governments serve their residents efficiently."

Act 68 unanimously passed the State Assembly and Senate before Governor Evers signed it into law on Dec. 6, 2023.

**PREVAIL**  
BANK

**Premium Interest Checking**

**4.07%**

APY on \$20,000 or less\*

✓ No monthly service fee.  
✓ No minimum balance.

Open an account online in minutes!

\* APY=Annual Percentage Yield. Rate accurate as of 8/1/2024. The APY calculations are based on an assumed total account balance of \$50,000.00: 4.00% (4.07% APY) on balances of \$0.01 to \$20,000.00; 0.05% (4.07% - 1.66% APY) on any balance of over \$20,000.00. If the qualifications are not met, the interest rate will be 0.05% (0.05% APY) on all balances. Interest is compounded and credited monthly. To qualify for higher interest rate, you must have 10 or more point of sale debit card transactions on the account that post and settle during the statement cycle. ATM transactions do not count as point of sale debit card transactions. \$50 minimum balance to open the account. Fees could reduce the earnings on the account.

Pursue what's possible. /// [prevail.bank](http://prevail.bank) / 800.205.0914

Member FDIC

**Posy Patch Greenhouse & Gift Shop**

**Local Fresh Produce Here Now!**

Tomatoes, Onions, Kohlrabi, Cukes  
Also... Potatoes, Watermelons  
FRESH FRUIT WHEN IN SEASON!  
Buy Local! Call for Large Amounts!

**Canning Tomatoes are Ready!**

Need Baked Goods for Parties or Picnics?  
Pre-Order Is Available  
Pies, Cookies, Donuts, Breads & Rolls  
Give Us a Call!

**Black-Eyed Susans Are Now Blooming**

HOURS:  
MON.-SAT. 8:30 a.m. - 6 p.m.,  
CLOSED SUN.

Summer Planters Looking Tired? Fresh Planted NEW Ones Are Now Ready!

Gift Shop is Loaded with Fall Decor

Fall Garden Mums are Showing Color!

Summer Hibiscus are Ready!

N11839 St. Hwy. 73, Owen 715-267-7644  
(7 miles South of Withee, 6 miles North of Greenwood)

### Service as Seamless as our Gutters

- Seamless Aluminum Gutters 5" & 6" Size
- Residential & Commercial
- LeafBlaster Pro Gutter Guards
- Heavy Duty Hangers with Sealing Fasteners
- Removal & Disposal of Existing Gutters

**LeafBlaster PRO**  
INSTALLED BY PROFESSIONALS

**SCHWARTZ'S**  
Fully Insured • Free Estimates

SEAMLESS GUTTERS  
Service as Seamless as our Gutters

Fully Insured  
FREE ESTIMATES  
715-204-8103  
Marshfield, Wisconsin  
[schwartzsgutters.com](http://schwartzsgutters.com)

**\$500 Off** or **\$100 Off**  
Any Job \$2500+ or Any Job \$1000+

**EXTRA 5% Off Military Discount**

One offer per job. Must present at time of estimate. Offer ends 8-31-24.

UW-Stevens Point at Marshfield's Production of

**Disney FROZEN JR.**

Music and Lyrics by  
Kristen Anderson-Lopez & Robert Lopez  
Book by  
Jennifer Lee

Based on the Disney film written by Jennifer Lee and directed by Chris Buck & Jennifer Lee

Directed by Donna Thompson  
Tickets: \$15  
[tickets.uwsp.edu](http://tickets.uwsp.edu)

Helen Connor Laird Theatre  
2000 W. Fifth St., Marshfield, Wis.

**August 15, 7:30 p.m.**  
**August 16, 7:30 p.m.**  
**August 17, 2 p.m.**

Marshfield UW-Stevens Point  
Sponsored by the Laird Fund for the Arts

**PROUD TO BE YOUR HOMETOWN SHOP** *We Have Everything from Hydraulic Hoses to Red Roses!*

**HARDWARE • FEED • GARDEN CENTER  
MILWAUKEE TOOLS DEALER**

**PFHC** *Flower Shop Open Year Round!*

**Pittsville Farm & Home Center**

**PITTSVILLE, WI • 715.884.HANK (4265)**

**Proud Sponsor of the Draft Horse Show!**

*Proud to support the Central WI State Fair event page!*

**Driver Education Academy**  
"Specialty Education for Crash-Free Driving"

New class monthly • Classroom/behind the wheel taught concurrently  
Enroll now/start now • Limited enrollment  
Marshfield and Surrounding Areas  
**ENROLL TODAY!!**  
715-387-4809 | www.drivereducationacademy.net

**THE DAILY GRIND**  
GOURMET COFFEE & TEA

See Us For Breakfast Before You Head To The Fair!  
**TheGrindMarshfield.com**  
236 S. Central Ave | Marshfield  
715-387-6607

**BADGER ANIMAL CLINIC**  
115 Maple St, Granton  
715-238-7686

Check us out at  
www.badgeranimalclinic.com

*The Central Wisconsin State Fair*

Wood County's  
**CENTRAL WISCONSIN State Fair**

**DD Construction & Cabinetry**  
Dave and Jim Pankratz  
Owners

206 E. 17th Street, Marshfield, WI 54449  
OFFICE: 715-389-1860  
DAVE: 715-305-0188 • JIM: 715-650-1317

**Ben Zawislan**  
715-323-9837  
ben@c21goldkey.com

**WELCOME TO THE FAIR!**

**CENTURY 21**  
Gold Key Realty, Inc.

**AMERICAN Auto Sales & Service**  
**AMERICAN Auto Appearance Center**

**NOW OFFERING VEHICLE DETAILING SERVICES!**  
At Our 900 S. Central Ave. Location by appt. only

900 N. Central Ave. • Marshfield, WI 54449  
715-387-6157 • www.americanautomarshfield.com  
Hours: Mon.- Fri: 7:30 AM - 5:30 PM • Closed Sat. & Sun.

**Here for the moments that change your life**

**SIMPLICITY CREDIT UNION**

**Schmidtke's Cleaning Services LLC**

CARPET, UPHOLSTERY, FURNACE DUCT & DRYER VENT CLEANING, FIRE RESTORATION, WATER DAMAGE RESTORATION, SNOW PLOWING

**Kevin & Kendra** kkschmidtke@yahoo.com  
204466 River Run Rd. • Stratford, WI 54484  
Call Today! 715-384-2063 or 715-207-2065

**exp REALTY**

**PATTY HASENBANK**  
715-305-1669

**HAEBIG'S PAINT AND CUSTOM REPAIR**  
715-383-2138

Owner / Operator - Josh Haebig • (715) 383-2138  
jjhaebig@hotmail.com Collision Repair, Restoration  
9019 Thompson Road, Marshfield Work & Light Mechanical Work

**CHIPS HAMBURGERS**  
Char-Broiled Hamburgers  
1409 SOUTH CENTRAL AVE., MARSHFIELD



**ADMISSION**  
**DAILY GATE PASSES**  
Adults (13+) - \$10  
Children (5-12) - \$5  
Children 4 & Under - FREE

**TUESDAY, AUGUST 20th**  
Adults (ages 13+) - \$5  
Children 12 and under - Free  
**LUNCH SPECIAL**  
Tuesday 11:30 a.m. to 1:30 p.m.  
**FREE GATE ADMISSION**  
Patrons must enter and exit through Gate D (corner of Peach Ave and 17th Street).

**WEDNESDAY, AUGUST 21st**  
**SENIOR CITIZEN DAY**  
Open To Close • Seniors (62+) - \$5  
A valid ID must be presented for discount.  
**VETERANS APPRECIATION DAY**  
9am to 3pm • Veterans - \$5  
All active or retired military personnel (ages 18+) and their spouse or significant other. Must present a military ID for discount

**SATURDAY, AUGUST 26th**  
**BOGO SPECIAL - 11am to 2pm**  
Buy 1 Adult pass and get the 2nd Adult or Child Pass for FREE!

**Welcome to the Fair!**

**STATE INTERSTATE TRUCK CENTERS**  
Assembly Systems  
**www.istatetruck.com**

**Tuesday, August 20 thru Sunday, August 24**  
**MIDWAY SCHEDULE**

**Wednesday, August 21st** • Opens at 2:00pm  
Senior Day: \$2 Ferris Wheel Rides  
Pay One Price Wristband (2-6pm): \$25  
Pay One Price Wristband (6-10pm): \$30

**Thursday, August 22nd** • Opens at 2:00pm  
All Rides: \$2 each (2-6pm)  
Pay One Price Wristband (2-6pm): \$25  
Pay One Price Wristband (6-10pm): \$30

**Friday, August 23rd** • Opens at 2:00pm  
All Rides: One Less Ticket (2-6pm)  
Pay One Price Wristband (2-6pm): \$25  
Pay One Price Wristband (6-10pm): \$30

**Saturday, August 24th**  
Pay One Price Wristband (2-6pm): \$25  
Pay One Price Wristband (6-10pm): \$30

*\*\* Please Note: Wristbands are subject to change without notice or Gravity Storm (Bungee Jumper) requirements. Some rides may be closed.*

**GRANDSTAND ENTERTAINMENT**

<p><b>Tuesday, August 20th</b> 7:30pm <b>THE DWEEBES</b> Free With Gate Admission</p>	<p><b>Wednesday, August 21st</b> 7:30pm <b>DYLAN SCOTT</b> Tickets Include Gate Admission If Purchased Before Entering The Fair \$35 Grandstand   \$45 Trackside   \$75 Vip</p>
<p><b>Friday, August 23rd</b> 7:30pm <b>DAUGHTRY</b> Tickets Include Gate Admission If Purchased Before Entering The Fair \$40 Grandstand   \$50 Trackside   \$80 Vip</p>	<p><b>Saturday, August 24th</b> 7:30pm <b>BULLS, BRONCS -N- BARRELS</b> Tickets Include Gate Admission If Purchased Before Entering The Fair Adults (13 &amp; Up) \$25   Children (5-12) \$15 4 &amp; Under Free</p>

**Grinch's Fabrication Shop LLC**  
Small Engine Repair, Light Fabrication and EVERYTHING In Between  
*Mobile services available and fully insured!*

Cell 715-340-1223  
Guy Burnett  
9733 CTY RD CC  
Pittsville, WI 54466





# Crabby's Lounge

HAPPY HOUR EVERYDAY 2pm-6pm • DINE IN OR CARRY OUT



**Thursday**  
Ribs!



**Friday**  
Fish Fry!



**Saturday**  
Prime Rib!



Home of the  
Baked French Onion  
Soup and  
Turkey Jack sandwich

**501 S. Central Ave.,  
Marshfield**  
**715-898-1234**  
Tues. 11am-7pm  
Wed. & Thurs. 11am-9pm  
Fri. 11am-10pm;  
Sat. 11am-9pm  
Closed Sun. & Mon.

**Fair events page is proudly brought to you by these advertisers!**

**DAILY SCHEDULE OF EVENTS**

**TUESDAY, AUGUST 20th**

11:00 a.m.-9:00 p.m ..... CWSF Vendors Open  
 12:00 Noon ..... Hot Glass Academy (throughout the day)  
 2:00-5:00 p.m. .... Hand Picked - Bluegrass Band  
 3:00-3:30 p.m.; 5:00-5:30 p.m.; 7:00-7:30 p.m. .... Kenny Ahern - Family Entertainer  
 4:00-4:30 p.m.; 6:00-6:30 p.m. .... Pleasure Valley Pig & Duck Races  
 7:00 p.m. .... Dress-A-Cow Contest  
 7:30-11:00 p.m. .... The Dweebs

**WEDNESDAY, AUGUST 21st**

11:00 a.m.-9:00 p.m ..... CWSF Vendors Open  
 11:30-2:30 p.m. .... Hayes Boys Orchestra  
 12:00 Noon ..... Hot Glass Academy (throughout the day)  
 12:30-1:00 p.m.; 3:00-3:30 p.m. .... Pleasure Valley Pig & Duck Races  
 1:30-2:00 p.m.; 5:00-5:30 p.m.; 6:30-7:00 p.m. .... Kenny Ahern - Family Entertainer  
 3:15 p.m.; 4:30 p.m. .... The Memories  
 4:15-4:45 p.m.; 6:00-6:30 p.m. .... Pleasure Valley Pig & Duck Races  
 6:15-7:15 p.m. .... Marshfield Ukulele Group  
 7:30 p.m. .... Dylan Scott  
 9:00-11:30 p.m. .... Poppa Bear Norton

**THURSDAY, AUGUST 22nd**

11:00 a.m.-9:00 p.m ..... CWSF Vendors Open  
 12 Noon ..... Hot Glass Academy (throughout the day)  
 11:30-12:30 p.m. .... The Gators Band  
 12:30-1:00 p.m.; 3:00-3:30 p.m. .... Pleasure Valley Pig & Duck Races  
 1:00-3:30 p.m. .... Jackson Taylor  
 1:30-2:00 p.m.; 3:30-4:00 p.m.; 5:00-5:30 p.m. .... Kenny Ahern - Family Entertainer  
 4:00-5:30 p.m. .... The Gators Band  
 4:15-4:45 p.m.; 6:00-6:30 p.m. .... Pleasure Valley Pig & Duck Races  
 6:00-7:15 p.m. .... Hub City Jazz  
 7:30 p.m. .... Hairball  
 9:00-12:00 a.m. .... Bad Habit

**FRIDAY, AUGUST 23rd**

11:00 a.m.-6:00 p.m ..... CWSF Vendors Open  
 11:30-12:30 p.m. .... CWSF Ambassadors Activity  
 12:00 Noon ..... Hot Glass Academy (throughout the day)  
 12:30-1:00 p.m.; 3:00-3:30 p.m. .... Pleasure Valley Pig & Duck Races  
 1:00-3:30 p.m. .... Dawn Marie  
 1:30-2:00 p.m.; 6:30-7:00 p.m. .... Kenny Ahern - Family Entertainer  
 4:00-5:00 p.m. .... Main Street Conservatory of Dance  
 4:15-4:45 p.m.; 6:00-6:30 p.m. .... Pleasure Valley Pig & Duck Races  
 5:30 p.m. .... Fairest Pie Auction  
 7:30 p.m. .... Daughtry  
 9:00-12:00 a.m. .... Star Six Nine

**SATURDAY, AUGUST 24th**

11:00 a.m.-6:00 p.m ..... CWSF Vendors Open  
 11:00-12:30 p.m. .... The Foxfire Affair  
 12:00 Noon ..... Hot Glass Academy (throughout the day)  
 12:30-1:00 p.m.; 3:00-3:30 p.m. .... Pleasure Valley Pig & Duck Races  
 1:00-2:00 p.m. .... Universal Dance Academy  
 1:00 p.m. .... Pedal Tractor Races  
 2:30-3:00 p.m.; 3:30-4:00 p.m.; 5:30-6:00 p.m. .... Kenny Ahern - Family Entertainer  
 2:30-4:30 p.m. .... Mill Creek Cow Tipplers  
 4:15-4:45 p.m.; 6:00-6:30 p.m. .... Pleasure Valley Pig & Duck Races  
 5:00-7:00 p.m. .... Red Higgins & Freedom Train  
 7:30 p.m. .... "Bulls, Broncs -N- Barrels", Rice Rodeo Co.  
 9:00-12:00 a.m. .... Soul Whiskey

**SUNDAY, AUGUST 25th**

9:00 a.m. & 10:30 a.m. .... Cornerstone Church Service w/Kings Conquest  
 12:00 Noon ..... Hot Glass Academy (throughout the day)  
 11:00 a.m.-9:00 p.m. .... CWSF Vendors Open  
 12:00-12:30 p.m.; 2:45-3:15 p.m.; 4:00-4:30 p.m. .... Kenny Ahern - Family Entertainer  
 12:00-3:00 p.m. .... The Cronicks  
 12:30-1:00 p.m. .... Pleasure Valley Pig & Duck Races  
 1:00 p.m. .... Pedal Tractor Races  
 2:00 p.m. .... Obsession with Destruction Demolition Derby  
 2:00-2:30 p.m.; 3:30-4:00 p.m. .... Pleasure Valley Pig & Duck Races

**RE/MAX American Dream**  
 901 N. Central Ave, Suite 3  
 Marshfield, WI 54449  
 715-384-4423  
 Each Office Independently Owned and Operated

**It's Fair Time!**

**Aster ASSISTED LIVING**  
 305 S. Chestnut Avenue  
 Marshfield, WI 54449  
 Senior Citizen Day at the Fair  
 is Wednesday, August 21st  
**715-305-0409**  
 www.asterseniorcommunities.com

Doing what we love to make you look great, together.

**exclamation**  
 A Creative Marketing Agency  
 exclamationcuso.com

**WATCH REPAIR, SERVICE, & SALES**

**CENTRAL TIME**  
 EST. 2023

**ANTIQUE & VINTAGE WATCHES SPECIALIST**

403 N Central Ave  
 Marshfield, WI 54449  
 715-204-6649  
 chris@thecentraltime.com  
 thecentraltime.com  
**BY APPOINTMENT ONLY**

**Heavy, Medium, and Light Duty Truck, Diesel & Car Repair**

We have the diagnostics and talent to make it happen!

**Jake's QUALITY REPAIR**

1700 S Popple Ave., Marshfield, WI  
**(715) 384-6699**  
 Check us out on Facebook!

**STRUCTURES UNLIMITED**

"Your Fabric Building Specialists"

118280 Forward St., P.O. Box 35, Stratford, WI 54484  
 Office: (715) 687-2453 | (877) 687-2453 | Fax: (715) 687-2331  
 sales@structuresunlimited.com | www.structuresunlimited.com

**Kailey's Kandles & Company**

Shop with us at:

119 S. Central Ave. • Marshfield, WI 54449  
 Follow on Facebook for seasonal hours!

**ART'S BODY SHOP**  
 Frame & Custom

Quality Body & Frame

Office: 715.384.2303  
 1702 S. Central Ave • Marshfield, WI 54449

**PENSKE**  
 Truck Leasing

**WISCONSIN**

**August 25, 2024**

**4th** • Opens at 12:00pm  
 Bumper Car Bandstand (12-5pm): \$35

**5th** • Opens at 12pm  
 Bumper Car Bandstand (12-5pm): \$25  
 \*Rides are not valid on the Bumper Cars  
 (Bumper Cars are not included in the  
 Bandstand). All rides have size & height  
 restrictions. Rides may be closed due to weather



**HAIRBALL**

**Thursday, August 22nd**  
**7:30pm**  
**HAIRBALL**

Tickets Include Gate Admission  
 Purchased Before Entering The Fair  
 Grandstand | \$35 Trackside | \$45 Vip

**DEMOLITION DERBY**

**Friday, August 25th**  
**2:00pm**  
**OBSESSION WITH DESTRUCTION**  
**DEMOLITION DERBY**

Tickets Include Gate Admission  
 Purchased Before Entering The Fair  
 (13 & Up) \$25 | Children (5-12) \$15  
 4 & Under Free

**AB CONSTRUCTION CORPORATION**

**40th ANNIVERSARY**  
 Est. 1984

10 Laemle Ave - Marshfield, WI  
 715-387-8429  
 Loving the environment we share



**Have Fun at the Fair!**

HOME TO THE SIGHTS, SOUNDS, AND CULTURE  
 OF OUR CENTRAL WISCONSIN COMMUNITY

**715-319-3009** FIND US ON SOCIAL MEDIA! @BROCKANDDECKER

**B & D**  
**BROCK & DECKER**  
 REAL ESTATE, LLC

# DNR seeking volunteer hunter education instructors ahead of fall hunting

**FOR HUB CITY TIMES**

MADISON -- The Wisconsin Department of Natural Resources (DNR) is seeking volunteers to promote safe, responsible and ethical hunting practices as hunter education instructors. Volunteer opportunities are available in all parts of the state.

Since the program's creation in 1967, more than 20,000 volunteer instructors have trained and certified more than one million hunters across Wisconsin. These efforts have helped make hunting much safer, with a 95 percent decrease in hunting-related incidents since the program's start. In addition to shaping the future of Wisconsin's hunting tradition, becoming a volunteer instructor is a great way to

obtain hands-on teaching experience, work closely with DNR staff and engage with your local community.

There are two ways to become a certified volunteer hunter education instructor. Interested volunteers can serve as apprentices under a sponsoring instructor for at least two complete courses or attend a certification training session hosted by a DNR Outdoor Skills Trainer.

Once certified, the DNR provides volunteer instructors with all the materials and equipment required to teach a hunter education course. Instructors must teach one class every three years to remain certified, although many teach more.

For more information on becoming a volunteer instructor, please contact the

outdoor skills trainer in your area.

For our area, contact Linda Xiong at 715-214-4211 or reach her at 1300 W. Clairemont

Ave., Eau Claire, WI 54701 or lindav.xiong@wisconsin.gov.



Once certified, the DNR provides volunteer instructors with all the materials and equipment required to teach a hunter education course. Wisconsin DNR photo

**HANSEN AUCTION GROUP ONLINE AUCTION**

**Tractors, Mowers, Power & Hand Woodworking Tools, Household & More**

Featured Items: New Holland T5070 Tractor; Branson 3515h 25.7 HP Diesel Tractor; Shop Made Hydraulic Hillside or Ditch Mower; 2022 Kubota RTV X1100C Side by Side. Plus Case 580 Super L Backhoe Loader, Grasshopper 725D Diesel 61" Cut Zero Turn Mower, Rhino 5' Brush Mower and Much More!

**Online Bidding Ends Thursday, August 22nd • BID NOW AT HANSENAUCTIONGROUP.COM**

Open House Friday, August 16th from 10:00am-2:00pm | 7269 Hwy V, Marshfield, WI 54449 | For more info call 715-265-4656

Terms: 10% Buyers Fee. Bryce Hansen, Wisconsin Registered Auctioneer License #225

**HANSENAUCTIONGROUP.COM**

# AARON & LORENE YODER

**40+ Years of Accumulation**      **W1722 Hill Rd, Granton WI 54436**

## LIVE AUCTION ON AUGUST 28TH - STARTING AT 9AM DST

Directions: From Neillsville, take HWY 10 east to Hill Rd, then continue east 3 miles to auction site.  
From Marshfield, take HWY 10 west to County HWY W, then south 1 mile to auction site.

### FARM MACHINERY

McCormick 7' Grain Binder, McCormick 6' Grain Binder, Oliver Superior 10' Grain Drill, 700 Plateless Corn Planter, International 36 Baler, John Deere 24T Baler, New Holland 66 Baler, Pequea 710 Hay Tedder, John Deere No. 3 Mower w/ 5' Bar, John Deere No. 3 Mower w/ 6' Bar, 2 McCormick Regular Gear 6' Mowers, McCormick Regular Gear 5' Mower, McCormick Green Crop 9 Bar Loader, David Bradley Hay Loader, John Deere Hay Loader, 200 Gallon Field Sprayer, Rosenthal 40 Shredder, MM Corn Sheller, Bell City 24" Thrash Machine, 2 McCormick Corn Binders w/ Carriers Rebuilt, McCormick Corn Binder Rebuilt, Weaver 2 Row Cultivator, 1 Row Cultivator, 3 - international No. 7 Silo Fillers, B40 Silo Filler, C40 Silo Filler, C40 Silo Filler for Parts, 2 - Gehl Choppers, McCormick 2 Row Com Planter Disc Openers, Emerson 2 Bottom Plow, White Horse Sulky Plow, Sulky Plow, 3 - FarmBilt Wagons w/ Racks Rebuilt, Wagon Gear w/ Racks Rebuilt, Wagon Gear w/ Wooden Flare Box, 10' Lime Spreader, Duetz 40HP Power Unit, John Deere 6 Cylinder Power Unit, Wetmor, Bear Cat 16" Grinder, 8" Tandem Disc, Pony Grader, Buck Rake, Spring Tooth Harrow, Kewanee 50' Elevator w/ Drag, Kewanee 40' Elevator, Pioneer Forecart, Forecart, M&S Stainless Steel Manure Spreader, Pequea Manure Spreader, 8' Cultimulcher on Wheels, New Holland 56 Hay Rake, Small Garden Disc. Bobsled w/ Box.

### HOUSEHOLD

Waterfall Bureau, 3 - High Chairs, 3 - Small Childs Rockers, 1 - Large Rocker. 1 - Swivel Rocker, Coffee Table, 1 - Hexagon Night Stand, Night Stand, Card Table w/ Wings, Foosball Game, 3 - Dressers, Rebounder, 6 yr Crib, Hospital Bed, Old Chest of Drawers, SS Milk Pails, SS Strainers, Can Milk Cooler, Selection of Hockey Skates, White Aladdin Lampshade, 5 Burner Oil Stove, 3 Burner Oil Stove, Extension Table w/ Leaves, 2 - No. 22 Enterprise Meat Grinders, 1 - No. 22 Porkert Meat Grinder, Grinder Pulley, Cheese Press, Satchel, 3 Buggy Lantern Boxes, 2 Singer Sewing Machines, Singer Treadle Stand, Several Maytag Wringer Washers, Gas Lamps & Lanterns, 15 qt Boiler.

### HORSES & HARNESES

Team of 3 & 4 yr old Mares, 4 yr old Has Stud Colt At Side, 10 yr old Grey Mare, Broke, 8 yr old Gelding, Broke, 2 yr old Gelding, Halter Broke, 1 yr old Filly Percheron/Belgian Cross, 4 yr old Light Grey Stud, 3 yr old Dark Grey Stud, 10 yr old TSS Standardbred Mare w/ Stud Colt At Side, 9 yr old Sound But Not Safe Driving Mare, Several other Draft Colts. 4 - Sets Nylon Draft Harness, 1 - Leather Driving Harness.

### ANTIQUE & COLLECTIBLES

Myers Wooden Track Hay Carrier, Star No. 564A Harvard IL Hay Carrier, Milwaukee Hay Carrier Pat. Aug 5, 1934, 811 HD Hay Carrier, John Deere Hand Crank Corn Sheller, 1 Horse Sleigh, Briggs & Stratton Foot Pump Engine, 3 - Cigar Boxes, Toy Wagons, Old Wicker Baskets, Cider Press, Potato Planter & Digger.

### PRODUCE SUPPLIES

Used but Good Row Cover, Lots of Hoops, Roll Drip Tape & Connectors.

### GLASSWARE

Milk Glass Grape Water Set, 3 - Milk Glass Grape Cake Stands, Milk Glass Compote, 2 - Milk Glass Grape Candy Dishes, Milk Glass Westmorland Grape Sugar & Creamers, Golden Iridescent Berry Set, XLarge Brown Moon & Stars Footed Candy Dish, 2 - Brown Carnival Grape Compotes, Brown Moon & Star Compotes, Brown Cake Stands & Candy Dishes, Amber Diamond Water Set, Brown Carnival Egg Plate, Amber Moon & Star Canister Set, 2 - Amber Lamps w/ Shades, Wheaton Rooster Amber Canister Set, Brown Carnival Punch Bowl Set, Small Grape Water Set, Small Green Water Set, Clear Hen on Nest, Blue Hen on Nest, Blue Carnival Compote, Frosted Lavender Punch Bowl Set on Stand, Mid Century Purple Crinkle Water Set, More Berry Sets, Cake Stands in Various Colors, Ceramic Covered Turkey Dish, Ceramic Chicken Shaker, Ceramic Hen & Chicks Figurine, Ceramic 3 Piece Turkey Tureen, Ceramic Mallard Duck Candy Dish, More Glassware to Follow.

### MISCELLANEOUS

500 Gallon Poly Water Supply Tank, Ice Saw on Wheels, Big Cauldron Kettle w/ Jacket, Buggy Running Gear, 1 - Horse Lawn Mower, 3 - 9"x20' Silo Pipe, 3 - 9"x15' Silo Pipe, 2 - Center Fills, Other Silo Parts, Pile of Silo Staves, Doors, Hoops for Complete Silo, 2 - Bench Grinders, 2 - 2.5HP Honda Engines, Rare, Rebuilt, 2 - 5.5HP Honda Engines, Rebuilt, 1 - 5HP Predator Engine, Lots of Traps & Snares, B40 & C40 Filler Knives, Lots of Hand Tools, Forks, Garden Rakes, Picks, Etc, 4 Wagons of Small Items, 2 - 11HP Predator Engines, Fishing Gear, Tackle Box, 3" Trash Pump, Pile of 1" Air Dried Pine Boards, Pile of Square Rib tin, Some Rust.

### QUILT TOPS

Light In The Valley, 1 Green, 1 Green/Grey, 1 Teal/Grey, 1 Blue/Grey, 1 Brown/Grey, 1 Purple/Grey.

### GUNS

30-30 Rifle w/ Clip, Bolt Action w/ Case, 6.5x55 Swedish Rifle, JC Higging .22 Auto w/ Case, .22 LR Rifle w/ Clip, Bolt Action, w/ Sling, Gamos Pellet Bag, Eagle Daisy .177cal BB Gun, Bow & Arrow, Some Ammunition.

### CLOCKS

1 - Howard Miller Grandfather Clock, 1 - Ridgeway Grandfather Clock, 1 - Emperor Grandfather Clock, Several Wall Clocks, 2 Anniversary Clocks, 3 - New Hermle BimBam Clock Movements, Complete.

Many, Many More Items To Numerous To Mention!!

Horses will sell at noon with guns and glassware to follow. Lunch stand on site and benefit bake sale.

Auctioneers

Leon Martin - 2554, Sheldon Hedding - 2995 and Tilan Mast

This will be a large auction with 3 rings!

Terms: Cash, card, or good check. All merchandise sold "AS IS" with no warranties expressed or implied by auctioneers. No items removed until settled for. Not responsible for accidents. All announcements made sale day take precedence over printed material.

## SHIRLEY'S HOUSE OF HOPE ONLINE BENEFIT AUCTION

Ends Tuesday, August 27, 2024

Bid Now at [IggysAuction.com!](https://www.iggysauction.com)

**John Deere Kids Tricycle, Wagon Wheels, Vintage Howe Crows Foot Cast Iron Scale, New Duraflame Log Heater, Glass Whiteboard, Walleye Mounts, Furniture, Toys; Collectibles and Antiques:** Hummels, Cobalt Blue Glass, Vintage Posters, Cant Hook; **Tools:** Drill Press, Bandsaw, Ryobi Router, Planer, Vintage Indian Chief Leg Vise, Cushman Lathe Chuck, Bench Grinder, Disc Sander; **Sporting Goods:** Pool Table, Foosball & Air Hockey Tables; **Home & Kitchenware:** Pampered Chef Blender, Rotisserie, Bread Maker, New Portable DVD player, Pictures, Artwork, Dish-ware; **Purses:** Prada, Coach and so much more!

**Preview/Open House Date:**  
Monday, August 26, 2024 (2pm - 5pm) or by Appointment, (715) 305-2475

**Preview/Pick Up Location:**  
Iggys Auction, 206 East Depot Street, Marshfield, WI 54449

IggysAuction.com to View Auction Catalog-Bid Now!

Iggys Auction House

Wisconsin Registered Auction Company #421-53  
Marshfield, WI 54449  
(715) 650-2475 OR (715) 305-2475  
\*Registered Wisconsin Auctioneer: Chris Ignatowski #2709-52  
www.IggysAuction.com

### SUDOKU

							2	8
1			6					9
	4			7				1
	7		5	4				
						1	4	
			8	2				
6			2		9		3	4
5						8		
	2					7		

@MetroCreative      Level: Intermediate

Fill in the blank squares in the grid, making sure that every row, column and 3-by-3 box includes all digits 1 through 9.

9	1	7	8	5	3	6	2	4
2	6	8	4	7	9	3	1	5
4	3	5	6	1	2	7	8	9
7	9	6	1	2	8	5	4	3
5	4	1	3	6	7	2	9	8
3	8	2	9	4	5	1	7	6
1	5	9	7	8	6	4	3	2
6	7	3	2	9	4	8	5	1
8	2	4	5	3	1	9	6	7

392701

# Wisconsin State Patrol reminds drivers to keep kids safe as they head back to school

## FOR HUB CITY TIMES

MADISON -- As families prepare for another school year, the Wisconsin State Patrol reminds drivers to slow down and pay attention to keep kids safe. Traffic patterns will change as school buses head back out on the roads. Plan ahead and watch for pedestrians at all times.

The Wisconsin State Patrol's August Law of the Month is school bus safety. Drivers and caregivers all have a role in ensuring kids get to and from school safely.

"Kids count on their community to keep them safe as they go to and from school," Superintendent Tim Carnahan said. "Their safety must be everyone's top priority. Drivers need to be aware of their surroundings and eliminate distractions, and caregivers should talk with children about bus safety. We all have to work together and stay alert to prevent tragedies."

There are about 600 crashes involving school buses every year in Wisconsin.

### Simple ways drivers can protect kids

School buses stop frequently, and children can be unpredictable. Drivers need to use extra caution when they see a yellow bus on the road. School buses are the only type of vehicle with a specific color required by state law. The national school bus glossy yellow color allows for high visibility for other drivers on the roads.

The school bus loading and unloading area is the most dangerous for pedestrians, so always pay attention to a bus when the stop arm is extended or warning lights are engaged. Also watch for kids waiting at driveways and those walking or biking to or from school.

Wisconsin law requires drivers to use extra caution around school buses:

**Flashing red lights:** Stop at least 20 feet away, in both directions, from a bus when red warning lights are flashing; the only exception is if you are traveling on the other side of a divided road

**Flashing amber/yellow lights:** Slow down when amber or yellow lights are flashing, which signal the bus is about to stop and red lights will soon be activated; drivers can pass a bus with amber lights activated but should do so cautiously

Yield to pedestrians who have a walk

signal or green light, or those who are crossing a road with no signals

Always follow directions from school crossing guards

When passed illegally, bus drivers are authorized to report violations to law enforcement. A citation for failure to stop for a school bus costs \$326.

### Safety conversations with kids

Caregivers should incorporate safety conversations into their family's back to school plans. Talk with children about bus stop safety and general walking or biking precautions.

Children should:

Follow instructions from bus drivers and crossing guards

**Play it SAFE:** Stay at least five giant steps (at least 10 feet) away from the curb when waiting for the bus; Always wait until the bus comes to a complete stop and the driver signals to get on the bus; Face forward after finding a seat on the bus; Exit the bus after it stops and look left-right-left for cars before crossing a street

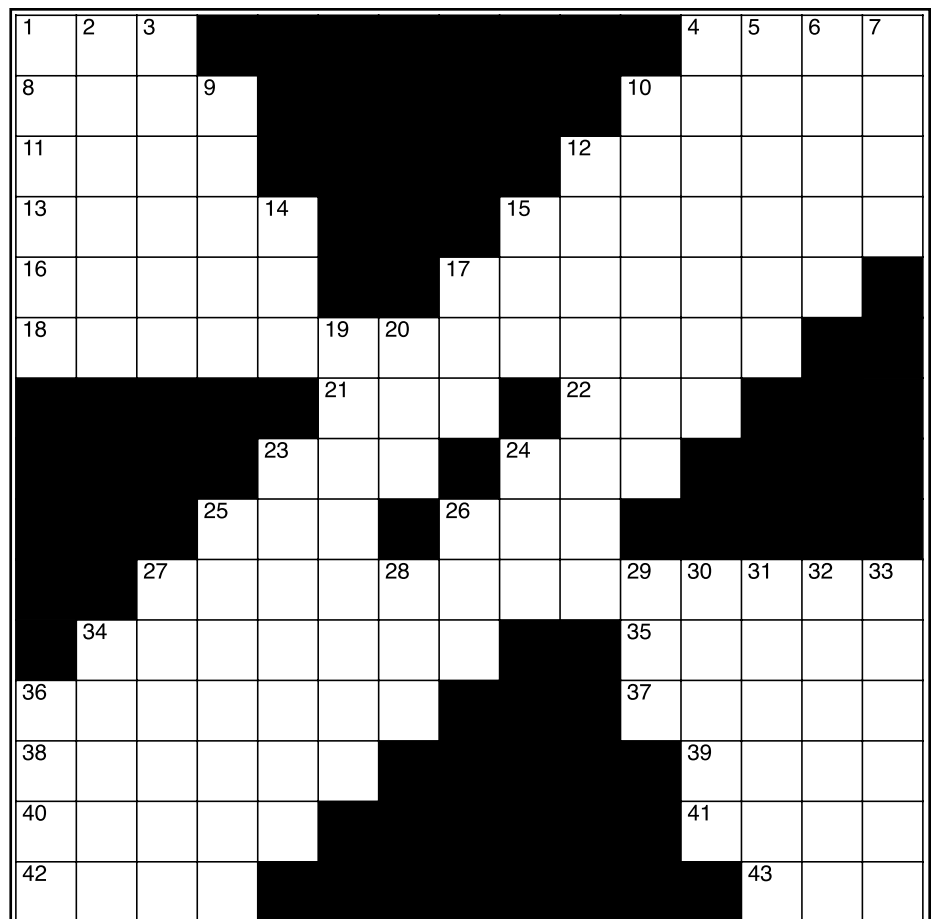
Never walk behind a bus; if a child must cross in front of a bus, tell them to walk on a sidewalk or along the side of the street to a place at least ten feet or five giant steps in front of the bus before crossing; make eye contact with the bus driver before crossing; never stop to pick up an item because the driver might not see them

School buses are designed to be one of the safest vehicles on the road, and drivers receive special training to safely operate a bus. Drivers must pass the Commercial Driver License (CDL) exam with a school bus endorsement. Some bus companies and school districts also hold regular new driver and continuing education programs to ensure safety rules are followed.

In addition, the Wisconsin State Patrol inspects every Wisconsin school bus annually to ensure the vehicles are ready to safely transport children. They conduct about 10,000 inspections each year, evaluating a broad array of mechanical equipment including steering components, brake systems, wheels, tires and structural components. In addition, specially trained inspectors verify that all school bus-specific safety components such as, emergency exits, emergency lighting and stop arms, and other passenger safety items are in place and in proper working order.



After a summer of tune-ups, inspections and cleanings, school buses across the state are ready to once again hit the roads for another school year. **Kobussen Buses photo**



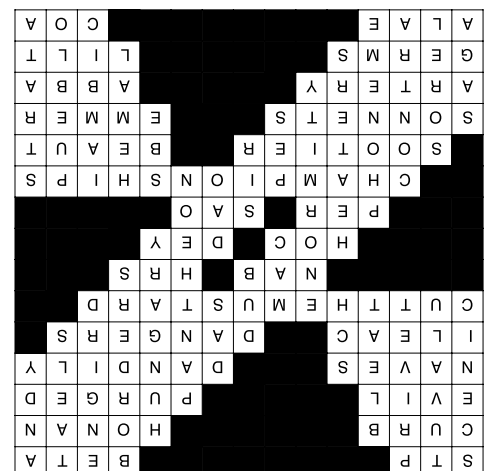
©MetroCreative

### CLUES ACROSS

- 1. Engine additive
- 4. A type of test
- 8. Curtail
- 10. Irish surname
- 11. The opposite of good
- 12. Got rid of
- 13. Central parts of a church building
- 15. Stylistically
- 16. Intestinal
- 17. Negative potential outcomes
- 18. Lived up to a standard
- 21. Snag
- 22. Time units (abbr.)
- 23. Ad \_\_
- 24. "Partridge" actress Susan
- 25. For each
- 26. \_\_ Paulo, city
- 27. League titles
- 34. More intensely black
- 35. Slang for lovely
- 36. Petrarch is known for them
- 37. Old Eurasian wheat
- 38. Body part
- 39. Swedish rock group
- 40. They're worth avoiding
- 41. Rising and falling of the voice

### CLUES DOWN

- 42. Wings
- 43. Enzyme import for respiration
- 17. Assign a nickname
- 19. Huge size
- 20. Partner to cheese
- 23. Fastballs
- 24. Principle underlying the universe
- 25. Distinct units of sound
- 26. Title of respect
- 27. Against
- 28. Foot (Latin)
- 29. One point east of due south
- 30. Concerning the blood
- 31. Type of pentameter
- 32. North American peoples
- 33. Layers of rock
- 34. Georges \_\_, French philosopher
- 36. Lengthy tale



392686

**Advertise Here** **Call 384-4440 TODAY!**

**SELL IT FAST**  
**IN THE CLASSIFIEDS!**

**ALL ROADS REAL ESTATE**  
Residential, Rentals, Land and Commercial  
**715-814-1342**  
1116 Western Ave., Mosinee • 114 E 3rd St., Marshfield  
www.allroadsrealestatewi.com

*Affiliate Real Estate Specialist for*  
*Homes for Heroes*

**A HUNTER'S PARADISE!**  
6409 Messing Lane, Pittsville

**NEW LISTING**

- 48 Acres
- 4 Bedroom
- 2 Bath
- 2 car detached garage
- Barn w/new roof
- Milkhouse, feed room & pole shed
- Call Today!

**\$389,900**

MLS#22403625C  
**Ben Zawislan**  
715-323-9837  
ben@c21goldkey.com

**CENTURY 21**  
Gold Key Realty, Inc.

| SPORTS |

# WIAA announces 2023-24 Award of Excellence recipients

## Owen-Withee is among seven first-time recipients

FOR HUB CITY TIMES

STEVENS POINT -- The Wisconsin Interscholastic Athletic Association salutes the 27 schools that fulfilled criteria to be named recipients of the Award of Excellence in 2023-24.

The award promotes and recognizes the efforts and achievements of schools in the areas of sportsmanship, ethics, integrity, leadership, character and accomplishment.

The recipients of the Award of Excellence, presented to high schools that have verified they have met each of the award's criteria are: Clintonville, Crivitz, Divine Savior Holy Angels, Elkhorn, Fort Atkinson, Germantown, Hilbert, Hortonville, Kiel, Lake Mills, Little Chute, Milwaukee Lutheran, Muskego, New Berlin Eisenhower, Omro, Owen-Withee, Portage, Poynette, Shiocton, Union Grove, Unity, University School of Milwaukee, Waukesha West, Wauzeka-Steuben, Whitewater, Williams Bay, Winter Fort Atkinson is being presented with the award for the sixth time in the eight years since the award's inception.

Divine Savior Holy Angels, Germantown, Hilbert, Hortonville and Lake Mills are receiving the award for the fifth time. There are seven schools receiving the Award of Excellence for the first time, including Kiel, Omro, Owen-Withee, Poynette, Shiocton, Unity and Williams Bay.

Recipients will be presented the Award of Excellence at their respective district's Area Meeting in September and will be recognized for the achievement on the WIAA website, in the WIAA Bulletin and at the 2025 Annual Meeting.

For the second year, the criteria applied toward the Award of Excellence in 2023-24 has included a number of deadline-specific items, including score and schedule verification, enrollment forms, participation forms and fan ejection forms. The following is the list of criteria for award consideration:

Athletic director maintains and updates all information in the WIAA School Directory annually;

Athletic director does due diligence in striving to achieve

staff compliance with all WIAA coaching requirements (i.e. rules video, exam, officials' rankings);

Athletic director conducted regular occurring meetings with a Captain's Club/Team Leadership Council/etc. – sportsmanship, ethics and/or integrity was on the agenda and is discussed;

Athletic director conducted regular occurring meetings with coaches - sportsmanship, ethics and/or integrity was on the agenda and is discussed;

Athletic director conducted at least one informational meeting with student-athletes and their parents – sportsmanship, ethics and/or integrity was on the agenda and is discussed;

Athletic director attended conference meetings – sportsmanship, ethics and/or integrity was on the agenda and is discussed;

Coaches and student-athletes attended a sportsmanship summit/leadership conference/etc.;

There was school representation at one of the seven WIAA Fall Area Meetings;

There was school representation at the WIAA Annual Meeting in April;

Athletic director made the student body aware of

See WIAA page 16



**FALL REGISTRATION & OPEN HOUSE**  
**AUGUST 19, 2024 • 4PM - 8PM**

- Meet studio staff
- Sign up for classes
- Order shoes & dancewear

**CLASSES START SEPT. 9!**

**UNIVERSAL DANCE ACADEMY**  
 715-575-1022  
 503 E. Ives Suite #115  
 uda@udamarshfield.com

**SECOND ANNUAL**  
**Carnival of Life**

Ice cream  
 Games  
 Prizes  
 Food



Come and enjoy low priced brats and hotdogs, games, ice cream and activities for kids and quality time with your family.

Columbus Catholic Highschool back field

11AM-3PM | SAT AUGUST 17 | FREE ENTRY

**Still Picking** **Blueberries**  
**Utech's Rainbow Farm**  
**AVAILABLE FOR PICKING**  
**Open every day 9am-5pm**

- CERTIFIED ORGANIC BLUEBERRIES
- Unsorted 5 lb. bags \$20
- Blueberries \$3.50/lb, you pick
- 10 lbs. or more on U-Pick & receive 10% OFF

**715-536-7271**  
 3880 Rainbow Dr., Merrill  
 9 miles N. of Wausau on Hwy. K, E. 1/4 mile on Rainbow Dr.

**DISCOVER & EXPLORE GREECE & THE SUNNY MED MARCH 2025**



**HIGHLIGHTS:**

- Round trip scheduled airfare from ORD or MSP
- Round trip transfers between airports and hotels
- 4 nights first class hotel in Athens
- 4 nights aboard Celestyal Cruises Discovery
- 17 meals including all breakfasts, 4 lunches & 5 dinners featuring a Greek festive dinner show
- City tour of Athens
- Tour of Parthenon & Acropolis
- See the Olympic Stadium, the Royal Palace
- Full day tour of Mycenae
- Discovery Program guide

**EARLY BIRD DISCOUNT**  
~~\$4,440 PER PERSON~~  
**\$4,149 PER PERSON**  
*if deposited by August 31st!*

**BOOK & SAVE**  
~~\$4,440 PER PERSON~~  
**\$4,249 PER PERSON**  
*if deposited by October 20th!*

**Departing March 20, 2025**

**GO TO TOURSMMC.COM FOR MORE INFO OR TO SIGN UP**

For more information and a full brochure, please contact Chris Brough at 949-253-9361 or email cbrough@adelmantravel.com

**SB State Bank Financial**  
 Member FDIC  
 Marshfield • LaCrosse • Onalaska • Shelby • Sparta  
 www.statebankfinancial.bank  
**PROUD SPONSOR OF THE**

**DRAFT HORSE SHOWS**

**DRAFT HORSE PULL**  
**Friday, August 23rd**  
**6:00 PM**



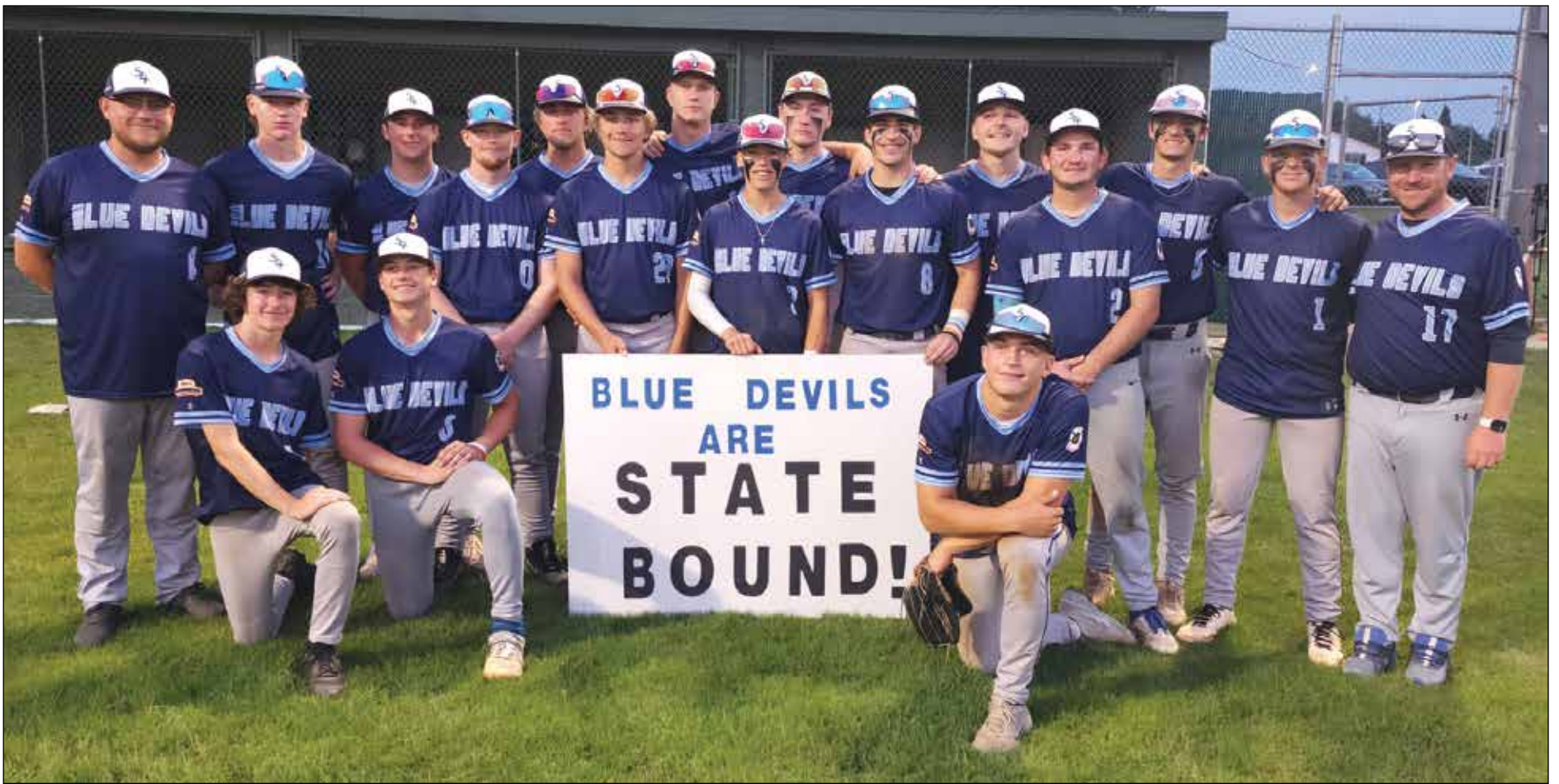
**DRAFT HORSE SHOW**  
**Saturday, August 24th**  
**Halter: 10:00 AM**  
**Hitching: 2:00 PM**  
**Sunday, August 25th**  
**Hitching: 12:00 PM**



**Meyer Farms 10 Horse Pyramid Hitch**  
**Saturday, August 24th**  
**6:00 PM**

at the **Central Wisconsin State Fair**  
 513 East 17th Street Marshfield, WI 54449  
 www.centralwisconsinstatefair.com

# | SPORTS |



## Blue Devils make all-state team

MARSHFIELD -- Two members of the Marshfield Post 54 American Legion baseball team are on the all-state tournament team for this year.

Owen Griesbach and Bryce Erickson both made the all-tournament team for the state tournament that was held

July 30-Aug. 3 in Wisconsin Rapids. As a team, the Blue Devils won the State Tournament Sportsmanship Award.

The Blue Devils finished the tournament 1-2, and were eliminated in the third round. They end their season with an overall record of 20-22. Eau Claire won the state

tournament, with De Pere finishing second. Both of those teams participated at the Great Lakes regional tournament, held Aug. 7-11 in Carol Stream, IL. The regional winner advances to the American Legion World Series in Shelby, NC Aug. 15-20.

**LOOK** at what you may find in the **CLASSIFIEDS**  
 Call 715-384-4440



# GRANDSTAND ENTERTAINMENT



### THE DWEEBES

TUES, AUGUST 20  
7:30 p.m.

FREE WITH GATE ADMISSION  
*Performing in The Family Entertainment Tent*



### DYLAN SCOTT

WED, AUGUST 21  
7:30 p.m.

\$35 GRANDSTAND  
\$45 TRACKSIDE | \$75 VIP  
*Performing in the Grandstand*  
Tickets include gate admission if purchased before entering the fair



### HAIRBALL

THURS, AUGUST 22  
7:30 p.m.

\$25 GRANDSTAND  
\$35 TRACKSIDE | \$45 VIP  
*Performing in the Grandstand*  
Tickets include gate admission if purchased before entering the fair



### DAUGHTRY

FRI, AUGUST 23  
7:30 p.m.

\$40 GRANDSTAND  
\$50 TRACKSIDE | \$80 VIP  
*Performing in the Grandstand*  
Tickets include gate admission if purchased before entering the fair



### BULLS, BRONCS -N- BARRELS

RICE RODEO CO.

SAT, AUGUST 24  
7:30 p.m.

ADULTS (13 & UP) \$25  
CHILDREN (5-12) \$15 | 4 & UNDER FREE  
*Performing in the Grandstand*  
Tickets include gate admission if purchased before entering the fair



### OBSESSION WITH DESTRUCTION DEMOLITION DERBY

SUN, AUGUST 25  
2:00 p.m.

ADULTS (13 & UP) \$25  
CHILDREN (5-12) \$15 | 4 & UNDER FREE  
*Performing in the Grandstand*  
Tickets include gate admission if purchased before entering the fair



# CLASSIFIEDS

**Announcements 7005**

**Hub City Times Classified Ad Deadline**  
To place a classified ad call our office at 715-384-4440 or online at [classifiedsmmc.com](http://classifiedsmmc.com) before 10am on Friday. Your ad will run in the paper the following week. Cost starts at \$10/week for 5 lines (appx 25 words). Prepayment is required.

**WCAN (Wisconsin Community Ad Network) and/or the member publications** review ads to the best of their ability. Unfortunately, many unscrupulous people are ready to take your money! **PLEASE BE CAREFUL ANSWERING ANY AD THAT SOUNDS TOO GOOD TO BE TRUE!** For more information, or to file a complaint regarding an ad, please contact **The Department of Trade, Agriculture & Consumer Protection 1-800-422-7128 (WCAN)**

**Entertainment 7035**

**8th Annual Craft & Vendor Event:** Sat., August 17, 9-3. Black Creek Lake Park. Crafts, food trucks, free admission, 80+ vendors. Something for everyone.

**Rummage Sales This Week 7200**

**Marshfield, 2115 S. Palmetto,** Aug 14-16 8am-5pm. Antiques, Tools, Welder, Drill Press, Table Saw, Inflatable Boat, Books, Glassware

**MARSHFIELD, 413 E. Blodgett,** Thur, Fri, Sat Aug. 22, 23, 24 9am-5:30pm. Collectable misc Antiques, Several Antique Rocking Chairs, Lots of General misc, 4 Good Used Tires LT 275/70R18 Asking \$60 for tires.

**MARSHFIELD Garage Sale, 502 W. 5th St.** Thur. & Fri. Aug. 15 & 16, 8am-5pm, Sat., Aug. 17, 8am-noon. Dining Room Chairs, Books, Glassware, Too Much To List

**MULTI FAMILY GARAGE SALE Marshfield, 2406 S. Washington Ave.** Aug. 15 & 16 7:30pm-6; Aug. 17 8am-1pm, HH, furniture, clothing (all sizes), home décor, toys, teacher supplies & more.

**Rummage Sales This Week 7200**

**Spencer:** Friday, 8/16-Saturday, 8/17, 7 a.m.- 5 p.m. Baby/toddler boy clothes, toys, books, gear, men's clothes, women's clothes, junior clothes (tall pants), video games, DVDs, Razor keypad, keyboards, lamp, jewelry, dish sets, like new 6'x9' area rug, decor, household items, hand-made items and much more. 302 West Louisa Street

**Rummage Sales Upcoming 7202**

**Wausau, WI 54401:** GARAGE SALE at 133 Adrian St., Wausau, WI 54401. Aug 16th & 17th, 8-5. 30 plus years of accumulation to sell including: Jewelry Armoire, Vintage Vanity w/ mirror, Log mirror/Rustic Decor, Furniture, Packer Items, Vinyl Records, Bedding, Decor, Knick Knacks, Glassware, Holiday Dining Ware and more.

**Shop at Home with the Classifieds.**

**Read, Reuse, Recycle**

**Estate Sales 7208**

**Estate Specialists Estate Sale Thursday & Friday August 15 & 16 @ 8:30am 207 N Sixth St, Colby Ray & Janet Gurtner Estate** Everything Is Very Clean And Well Kept. Many Antiques from Rays Market In Unity.

**Outdoor Items & Household To Include:** Cub Cadet Zero Turn Mower 48" Cut, Stainless Commercial Meat Slicer & Stacker Machine, Push Mower, Remington 21" Snowblower, Hand & Power Tools, Socket Sets, Power Cords, Battery Charger, Pressure Washer, Patio Set, Stainless Sink, Coolers, Leaf Blower, Folding Lawn Chairs, Shelving Units, Porch Swing, G&E Washer & Dryer, Dinette Set, Kitchen Cookware & Bakeware, Small Appliances, Roasters, 40" Sony TV, Recliner Sofa, New Lift Chair, Recliner Chair, Lamps & End Tables, Piano, Card Table & Chairs, 4 Piece Queen Size Bedroom Set, Women's Clothing, Luggage, Day Bed, TV Trays, Queen Size Bed, Towels, Bedding, Wildlife Prints, Remo Weatherking Drum Set.

**Antiques & Collectables To Include:** Several Crosscut Saws, Logging Hooks, Log Scafers, Ice Tongs, Lightning Rods & Weather-ervane, RW 10 Gallon Crock & Other Crock, Enterprise Sausage Stuffer, Tonka Trucks, Enamelware, Cream Can, Copper Boiler, Zenith Radio, Lead Crystal Pieces, German Hummels, Childs Oak Roll Top Desk White Sewing Machine With Nice Oak Cabinet And So Much More!! Check Out My Facebook Page For Photos. Estate Specialists of Central WI 715-305-3996

**Computers and Electronics 7216**

**SWITCH & SAVE UP TO \$250/YEAR** on your talk, text & data. No contract & no hidden fees. Unlimited talk & text with flexible data plans. Premium nationwide coverage. 100% U.S. based customer service. For more info, call 1-844-883-1477 (WCAN)

**BUYING OR SELLING** Classifieds can work for you.

**Furniture and Home Decor 7236**

**PLYMOUTH FURNITURE: QUEEN MATTRESSES FROM \$199** 40 Styles on Display! All Sizes Avail. PlymouthFurnitureWI.com 2133 Eastern Ave Plymouth WI 920-892-6006 Open Daily (WCAN)

**Lawn and Garden 7250**

**Mr. Spin Outdoor compost tumbler \$50** Call 715-384-2052

**Miscellaneous Merchandise 7266**

**DO YOU HAVE ITEMS TO SELL?** ... GET RESULTS! Affordable advertising that fits your budget! Reach OVER 300,000 homes! Place your ad in MANY weekly Wisconsin Shoppers & Buyers' Guide papers for as low as \$36.00 **Call today! Publishers Development Service, Inc. (PDS, Inc.) 1-920-922-4864 www.pdsadnet.com**

**Wanted to Buy 7268**

**INSTANT CASH**  
Wanted to buy antique & estate items.  
Most Anything Old. Check the attic, basement, and out buildings I'll Dig Through Piles, we come to you Let's Talk Call Jerry 715-366-2574

**Dogs 7272**

**ACA RED GOLDEN RETRIEVER PUPS** shots/wormed Born 5-22-24 \$350 715-229-4929

**AKC German Shepherd Pups** DOB JUNE 9 \$400 OBO Very Nice, Shots Call 715-304-1097

**BEAGLE PUPPIES** Friendly, Ready to go, shots & wormed \$150 715-229-2364

**CAVALIER PUPS** Red & White, shots, dewormed, sociable 2-M 2-F \$500 715-669-5928

**CAVAPOO PUPPIES** 1-M, 2-F Non-Shedding, Vet/shots wormed \$600 715-701-2066

**COCKER SPANIEL PUPPIES** shots/wormed/dews/Vet No Sun Calls 715-257-1158

**CORGI PUPS** (Parents Reg.) Vet checked Shots/wormed Well socialized with kids \$600 Shawano 715-758-6282 (WCAN)

**LOOKING FOR A JOB? FIND IT IN THE CLASSIFIEDS.**

**Dogs 7272**

**English Springer Spaniel Pups** Ready to go! shots/dewormed \$800 715-257-1360

**F1B Sheepadoodle puppies:** Born 7/30/24 and ready to go to their forever home. See my Facebook group for pics @ (F1B Sheepadoodles in Central Wisconsin and beyond) Reduced rates \$800!!! Call or text 715-218-5379

**German Shepherd Puppies:** Good temperament, great dogs, parents on site. Ready to go! \$200. Please call 715-445-1636

**German Shepherd Puppies:** Vet checked/vaccinated, dewormed, temperament tested, well socialized. Ready Aug. 10th. \$850.00. 715-764-0001

**POMERANIANS APRI REGISTERED** Full of love, Friendly Very Cute, Great fun! Vet chk, shots, \$800 Unregistered Litter \$600 715-654-5149

**PUREBRED BOSTON TERRIER PUPPIES** no papers, shots/wormed, vet checked Ready Aug 7 2-F, 3-M \$475 715-654-0060

**REG GOLDEN RETRIEVER PUPS** Shots/Wormed, Vet Ckd \$500 715-267-6370 No Sun Calls

**REG YORKSHIRE TERRIER PUPPIES** Vet checked/ wormed/dews \$1100 No Sun Calls 715-409-3321 (495932) (WCAN)

**Westie female puppy** ACA pedigree. Shots/dews/dewormed. Sweet & cuddly. \$500 OBO. Call 715-669-7316

**Hay and Straw 7288**

**FOR SALE HAY** Good grass mix baled without rain. Round bales & small square bales. Free Delivery in Full Loads. 920-878-0005 Dale Hay Farm, No answer, try again (WCAN)

**Agriculture Services 7292**

**FRITZ BARN PAINTING** Rusty Roofs, Metal buildings Free Est 608-221-3510 920-821-6311

**Homes for Rent 7409**

**House for rent, Marshfield** (near Wildwood Park) recently updated 3 bedroom, 1 bath, finished basement, central air, 2 car garage, quiet neighborhood, no pets \$1,400/month 715-323-4315

**Vacation For Rent 7421**

**WESLEY FINANCIAL GROUP, LLC** Timeshare Cancellation Experts Over \$50,000,000 in timeshare debt & fees cancelled in 2019. Get FREE informational package & learn how to get rid of your timeshare! FREE consultations. Over 450 positive reviews. CALL 844-374-2565 (WCAN)

**Lots and Acreage For Sale 7466**

**CRANDON, WI (Forest County)** 10 acres on a town road, power available, Land Contract Available, \$89,000; Also 142 Acre Active gravel pit. Call Fred 715-493-6121 (WCAN)

**Collector and Antique 7534**

**1956 Ford Victoria** Runs Good, Looks Good, Asking \$20,500 or make a reasonable offer. Call 715-486-6511

**Vehicles Wanted 7554**

**DONATE YOUR CAR,** truck, boat, RV and more to support our veterans! Schedule a FAST, FREE vehicle pickup and receive a top tax deduction! Call Veteran Car Donations at 1-844-406-2647 today! (WCAN)

**GET A BREAK ON YOUR TAXES!** Donate Your Car, Truck or SUV to assist the blind & visually impaired. Arrange a swift, no-cost vehicle pickup & secure a generous tax credit for 2025. Call HERITAGE FOR THE BLIND today at 844-374-3067 (WCAN)

**General Employment 7110**

**OTR TRUCK DRIVERS FT/PT Put Your Career in Gear!!** Competitive wages & full benefits. Mileage, Drop pay, Paid weekly Home weekends, NO east/west coast, 28 central states. Van & Hopper Division. Agriculture experience a plus. Fox Valley company since 1958 Call Frank 920-788-6242 or 920-858-0238. Van Groll Trucking, Kaukauna

**General Labor 7180**

**Housekeeper,** 2x/month approx 2 hours per time, \$20/hour, vacuuming, dusting, moping. Call 715-384-2052

**Insurance 7308**

**DENTAL INSURANCE.** From Physicians Mutual Insurance Company. Coverage for 400 plus procedures. Real dental insurance - NOT just a discount plan. Don't Wait! Call now! Get your FREE Dental Information Kit with all the details! 855-807-9516 [www.dental50plus.com/wicommunity#6258](http://www.dental50plus.com/wicommunity#6258) (WCAN)

**UP TO \$15,000 OF GUARANTEED LIFE INSURANCE!** No medical exam or health questions. Cash to help pay funeral & other final expenses. Call **Physicians Life Insurance Company 844-433-5898** or visit [www.Life55plus.info/wcp](http://www.Life55plus.info/wcp) (WCAN)

**Health Care Services 7310**

**MobileHelp, America's Premier Mobile Medical Alert System.** Whether you're home or away, for safety and Peace of Mind. No Long Term Contracts! Free Brochure! Call Today! 1-855-491-0732 (WCAN)

**SELL IT FAST IN THE CLASSIFIEDS!**



## WE ARE HIRING AN EDITOR

**Marshfield Hub City Times & Wisconsin Rapids City Times**

**Editor needed to cover Wood County news and events.**

**The position is full-time and entails reporting and taking photos of local news, high school sports, local government, business community, festivals, parades and other local organizations.**

**If interested, please email cover letter, resume, samples of writing and photos to:**

**[eneuenfeldt@mmclocal.com](mailto:eneuenfeldt@mmclocal.com)**  
Subject line: Editor



**MOLDED DIMENSIONS GROUP**

**WE'RE HIRING**

**1st and 2nd Shift Full-Time Production Workers!**

Responsible for the manufacturing of custom molded urethane parts. Must be dependable, great time management skills and able to work in a fast-paced environment. No experience needed, all training will be done on site!

- 10 hr shift, **4 DAYS A WEEK** (Mon-Thurs)  
1st shift: 5:00am-3:00pm  
2nd shift 2:45pm-12:45am
- \$18.00/hr to start with 50¢/hr shift premium
- Find out more of our great benefits, team environment and more!

**APPLY NOW! ON THE SPOT INTERVIEWING 8am-3pm MONDAY — THURSDAY!**

**MOLDED DIMENSIONS GROUP**  
2113 S NIKOLAI AVE | MARSHFIELD, WI  
Email resume: [cseidl@moldedgroup.com](mailto:cseidl@moldedgroup.com)  
[MOLDEDGROUP.COM](http://MOLDEDGROUP.COM)

**| CLASSIFIEDS |**

**Health Care Services 7310**

**STROKE & CARDIOVASCULAR** disease are leading causes of death, according to the AMERICAN HEART ASSOCIATION. Screening can provide peace of mind or early detection! Contact **Life Line Screening** to schedule your screening. Special offer - 5 screenings for just \$149! Call 1-888-675-5048 (WCAN)

**Internet 7318**

**CONNECT TO THE BEST WIRELESS** home Internet with EarthLink. Enjoy speeds from 5G & 4G LTE networks, no contracts, easy installation, & data plans up to 300 GB. Call **844-223-7265 (WCAN)**

**Satellites and Antennas 7324**

**DIRECTV** All your entertainment. Nothing on your roof! Sign up for Direct & get your first three months of Max, Paramount+, Showtime, Starz, MGM+ & Cinemax included. Choice package \$84.99/mo. Some restrictions apply. Call **DIRECTV 1-888-925-9452 (WCAN)**

**DIRECTV OVER INTERNET** Get your favorite live TV, sports, & local channels. 99% signal reliability! CHOICE Package, \$84.99/mo for 12 months. HBO Max & Premium Channels included for 3 mos (w/CHOICE Package or higher) No annual contract, no hidden fees! Some restrictions apply. Call **IVS 1-833-574-1746 (WCAN)**

Get **DISH Satellite TV & Internet!** Free Install, Free HD-DVR Upgrade, 80,000 On-Demand Movies, Plus limited Time Up to \$600 in Gift Cards. Call Today! **1-844-897-8523 (WCAN)**

**HughesNet Satellite Internet:** 25 mbps starting at \$49.99/mo! Get More Data, FREE Off-Peak Data. FAST download speeds. Wifi built in! FREE Standard Installation for lease customers! Limited Time Call **1-844-829-5070 (WCAN)**

**Gutters and Gutter Cleaning 7356**

**ELIMINATE GUTTER CLEANING FOREVER!** LeafFilter, the most advanced debris-blocking gutter protection. Schedule a FREE LeafFilter estimate today. 20% off Entire Purchase. 10% Senior & Military Discounts. Call **1-877-920-3533 (WCAN)**

**Home Building Supply 7358**

**DON'T LET THE STAIRS LIMIT YOUR MOBILITY!** Discover the ideal solution for anyone who struggles on the stairs, is concerned about a fall or wants to regain access to their entire home. Call **AmeriGlide** today! **1-888-686-1458 (WCAN)**

**JACUZZI BATH REMODEL** Can install a new, custom bath or shower in as little as one day. For a limited time, waving ALL installation costs! (Additional terms apply. Subject to change and vary by dealer.) Offer ends 8/25/24 Call **833-224-4977 (WCAN)**

**PREPARE FOR POWER OUTAGES WITH BRIGGS & STRATTON PowerProtect(TM)** standby generators - the most powerful home standby generators available. Industry-leading comprehensive warranty 7 years (\$849 value) Proudly made in the USA. Call **Briggs & Stratton 1-855-918-3220 (WCAN)**

The bathroom of your dreams in as little as 1 day. Limited Time Offer - \$1000 off or No Payments & No Interest for 18 months for customers who qualify. **BCI Bath & Shower**. Many options available. Quality materials & professional installation. Senior & Military Discounts Available. Call today! **1-877-651-1850 (WCAN)**

**THINKING ABOUT INSTALLING A NEW SHOWER?** American Standard makes it easy. FREE design consultation. Enjoy your shower again! Call **1-844-479-1327** today to see how you can save \$1,000 on installation, or visit [www.newshowerdeal.com/wcp](http://www.newshowerdeal.com/wcp) (WCAN)

**Painting and Wallpaper 7364**

**Jerry's Painting & Staining:** Any exterior painting/staining job. Farms, Homes, Sheds, Roofs, Grain Bins, Log Homes, Cabins, Homes. Free quotes. Call **877-881-4242**

**Roofing and Siding 7370**

**REPLACE YOUR ROOF** w/the best looking & longest lasting material, steel from **Erie Metal Roofs!** 3 Styles & multiple colors available. Guaranteed to last a lifetime! Limited Time Offer - up to 50% OFF Installation + Add'l 10% off install (for military, health workers & 1st responders) Call **Erie Metal Roofs 1-877-845-6606 (WCAN)**

**COME JOIN THE BEGERT STAINLESS TEAM!**



**T** RUTHFUL  
**R** ELATIONAL  
**U** NASHAMED  
**S** ERVITUDE  
**T** RANSPARENCY

**IF YOU ARE INTERESTED IN AN EXCITING NEW FUTURE OR HIGH QUALITY STAINLESS PRODUCTS, CONTACT US @ BEGERTSTAINLESS.COM OR 715.384.1740**

**INTEGRITY • HONESTY • PERSEVERANCE • LOYALTY • RESPECT**



**| BUSINESS DIRECTORY |**

**MARSHFIELD HUB CITY Times**  
**GET RESULTS ADVERTISE IN THE BUSINESS DIRECTORY!**  
**715-384-4440**

**JENSEN** Chip & Seal Coating  
**715-965-9199**

- ✓ Seal Coating
- ✓ Crack Sealing
- ✓ Striping
- ✓ Topsoil

Commercial, Residential & Township Spray Patching  
[Jensenchipsealcoat@gmail.com](mailto:Jensenchipsealcoat@gmail.com)

**Wisco Spray Foam, LLC**  
N16465 Bachelors Ave, Thorp, WI 54771  
Commercial Residential & Agricultural  
Free Estimates  
Call Jerry at 608-696-8617

**STICHERT ROOFING**  
**Insist on an Interlox Roof**  
• Lifetime Roofing •  
**The Last Roof You Will Ever Need!**  
**715-683-2490**

**Superior Seamless Gutters LLC**  
YOUR HOME EXTERIOR SPECIALIST!  
10 YEARS EXPERIENCE

Seamless Aluminum Rain Gutters

- 5" and 6" Gutters • Effective Leaf Covers
- Color Matching • Free Estimates
- Soffit • Facia • Siding • Windows • Decks

**We Offer Interior Remodeling During Winter Months**

ARNOLD BURKHOLDER  
CHILI, WISCONSIN **715-607-1710**

**GUMZ DEMOLITION/CONSTRUCTION**

Barns • Silos • House

- Concrete Removal
- Demolition • Land Clearing
- Foundations • Basements • Ditching!

**TEXT/CALL JASON at 715-383-5728**

**MULTI MEDIA CHANNELS THE PARENT COMPANY OF THIS PUBLICATION, IS LOOKING FOR A MARKETING AND SALES CONSULTANT**

The position involves meeting with businesses to find out their needs and create a marketing plan with our lineup of print products. This position sells advertising to businesses to help them grow via weekly newspapers, special sections, web ads, and a variety of specialty magazines.

**This position offers competitive pay and benefits, no nights or weekends, mileage and expense reimbursement.**

**EMAIL MIKE HOLLIHAN AT MHOLLIHAN@MMCLOCAL.COM**

**Wisco Steel Roofing, LLC**

Tired Of Re-Roofing Your House?  
**Try a Steel Roof!**

**CALL TODAY FOR YOUR FREE ESTIMATE**

- Hidden Fastener Snap Lock
- Ventilated at Peak
- 4 Star Hail & Fire Resistant
- Can Be Installed Over Existing Roof

Call Mark **715-503-5460**

**BADGER STATE STEEL ROOFING**

**FREE ESTIMATES!**  
Tired of re-roofing your house?  
**TRY A STEEL ROOF!**

- Snaplok (hidden fastener) • Can Be Installed Over An Existing Roof • 40 Year Factory Warranty • 4-Star Hail and Fire Resistant • Ventilated At Peak • Energy Star Efficient • 28 Colors Available

Jerry Stutzman **Do it Once, Do it Right!** **715-314-2295**

**CITY OF MARSHFIELD WISCONSIN**

**NOW HIRING School Crossing Guards**

The ideal candidate enjoys working outdoors and is focused on making a difference in their community.

**Monday - Friday (Aug - June)**  
**Approx. 7:15am - 8:00am and 2:30pm - 3:15pm**  
Compensated on the basis of 1.5 hours of pay for each crossing session. No prior experience is needed.

Questions? call **715-387-6597**

To apply or view a job description, scan the QR code or visit <https://ci.marshfield.wi.us/government/employment.php>

**HANSEN HOME CONSTRUCTION**

Licensed Insured

- Roofing • Siding • Remodeling
- Decks • Windows • Doors
- Skid Loader Work • Garages
- Kitchens • Baths • Snow Plowing

[www.hansenhomconstruction.com](http://www.hansenhomconstruction.com)  
30 years combined experience!  
KURT **715-305-4688**  
CLIFF **715-305-8593**

**Grinch's Fabrication Shop LLC**  
Cell **715-340-1223** | Shop **715-884-2487**

**Guy Burnett**  
Small Engine Repair, Light Fabrication and **EVERYTHING** In Between  
9733 CTY RD CC Pittsville, WI 54466  
If It's Not BROKE, I Can't Fix It!  
[grinch008@hotmail.com](mailto:grinch008@hotmail.com)

**Services**  
Servicing your ATV, UTV, lawn mowers, riders, snow blowers, leaf blowers, string trimmers, water crafts, rototillers, etc. Mobile mechanic / pickup also available.  
Meeting all your needed service requirements.  
Fully Insured

**WIAA**  
from page 12

sportsmanship initiatives through school assemblies, announcements, posters, etc.;

Three or more athletic teams gave back to their school or community through volunteerism;

Athletic director has taken the free NFHS Sportsmanship course;

Three or more head coaches have taken the free NFHS Sportsmanship course;

Athletic program had no coach ejections at any level;

Athletic program had no coach or player assault of an official at any level;

Athletic director nominated/submitted a boy and/or a girl for WIAA Scholar Athlete recognition (either for local or state level recognition);

Athletic director or designee submits the online season Schedule/Results Verification Form by the established deadlines for all bracketed team sports

(baseball, basketball, football, hockey, soccer, softball, volleyball);

Athletic director or designee completes and submits the accurate enrollment count on the Enrollment Form by the established deadline;

Athletic director or designee completes and submits the accurate data on the online Sports Participation Form by June 30;

Athletic director or designee submits the completed online Fan Ejection Form within three days following the event the ejection occurred, requiring a fan to miss the next competition.

The WIAA, as defined by its Constitution, is a voluntary, unincorporated, and nonprofit organization. The membership oversees interscholastic athletic programs for 513 senior high schools and 36 junior high/middle level schools in its membership. The WIAA sponsors 30 State championship events for boys and girls. For more information, please contact the WIAA office at 715-344-8580.

**Varsho receives third consecutive Heart & Hustle Award**

Marshfield's Daulton Varsho is the starting left fielder for MLB's Toronto Blue Jays of the East Division of the American League. **Courtesy of Toronto Blue Jays**



TORONTO, ONTARIO -- Toronto Blue Jays outfielder Daulton Varsho of Marshfield is the Jays' nominee for Major League Baseball's Heart & Hustle Award for this season. Each team has one nominee for this honor, with the league-wide winner being announced in November. The Blue Jays also nominated Varsho for

this award in 2023, as did the Arizona Diamondbacks when Daulton played for them in 2022. The award honors players who best embody the values, spirit and traditions of baseball, and is the only award in Major League Baseball voted on by former players.

*Donate Blood, Go to the Fair!*

**Give blood or platelets** at our Marshfield Donor Center (508 N Central, Ste 101) between 8/17 - 8/21 and take home a **FREE ticket** to the Central Wisconsin State Fair.

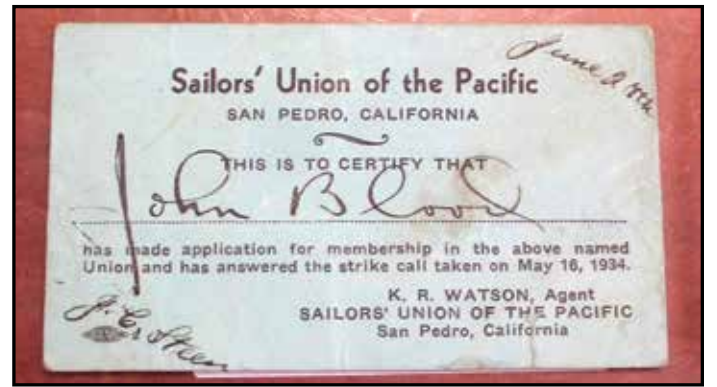
Make your appointment today!



  
Blood Center of Wisconsin

**UNPACKING History**

The Green Bay Packers Hall of Fame generously opened their vault to share pieces of Packers history with the Hub City Times to be highlighted periodically for our readers. For more information on the hall of fame, visit [www.packershofandtours.com](http://www.packershofandtours.com). If you would like to donate Green Bay Packers memorabilia to the Packers Hall of Fame, contact Katie at 920-965-6986 or [katief@gbphof.com](mailto:katief@gbphof.com).



Former Green Bay Packers Player/Coach Johnny Blood's Sailors' Union of the Pacific card. A corresponding longshoreman certificate of discharge lists Blood's discharge date as June 26, 1934, in San Francisco — just a little over a week before what became known as "Bloody Thursday" when longshoremen on strike battling over wages and hours clashed with police. The strike led to the unionization of West Coast ports. During the July 5, 1934, clash hundreds of residents and officers were injured and two people were shot — one died and the other wounded in the head. **Kris Leonhardt photo**

**2024 LOYAL CORN FESTIVAL**

August 22 - August 25

[www.loyalcornfest.com](http://www.loyalcornfest.com)  
Follow us on Facebook • #cornfest

**Harvesting Memories for 65 years! Celebrate the 65th Anniversary with us!**

<p><b>ON THE MIDWAY</b> The Loyal Ambulance Service presents... <b>S &amp; J Enterprizes</b> Carnival hours: Fri. Aug. 23rd • 5:00 pm-10:00 pm Sat. Aug. 24th • 12:00 pm-10:00 pm Sun. Aug. 25th • 12:00 pm-4:00 pm Individual tickets and wristbands will be sold on the grounds only.</p> <p><b>Wristband time:</b> Saturday, August 24th, 6 pm-10 pm \$25.00 Email: <a href="mailto:Loyalcornfest@gmail.com">Loyalcornfest@gmail.com</a> Web Visit: <a href="http://www.loyalcornfest.com">www.loyalcornfest.com</a></p> <p style="background-color: black; color: white; padding: 5px; text-align: center;"><b>Handicap Parking</b> available in the Citizen State Bank Parking lot</p> <p style="background-color: black; color: white; padding: 5px; text-align: center;">Like Trivia? Play <b>Corn Fest Quest</b> on Facebook Questions given out daily until Thursday when the winner will be announced.</p> <p style="background-color: black; color: white; padding: 5px; text-align: center;"><b>Get in on the Corn Fest Raffle and win Big!</b> Drawing held Friday 9:00 pm • \$50, \$50, \$100 Saturday 9:00 pm • \$50, \$50, \$250 Sunday 4:00 pm \$100, \$100, \$250, \$500, \$500</p>	<p><b>THURSDAY, AUGUST 22nd</b> 7:00 pm ... <b>Corn Festival Ecumenical Service</b> at Methodist Church <i>All are welcome to attend</i></p> <p style="text-align: center;"><b>THURS-SAT., GARAGE SALES</b> maps available at local businesses</p> <p><b>FRIDAY, AUGUST 23rd</b> 6:00 pm .... <b>Loyal Royalty coronation</b> Located at the Loyal American Legion Hall</p> <p>6:00 pm .... <b>Coin Scramble</b>, Citizens State Bank parking lot</p> <p>7:00 pm .... <b>Mini Rods &amp; Badger State Dirt Flingers Lawn Tractors</b>, Pulling on dirt track next to Northside Elevator. \$10 admission 10 &amp; under <b>FREE</b></p> <p style="text-align: center;"><b>Raffle Drawing at 9:00 pm</b> Winners posted at Information Booth</p>  <p style="text-align: center;">8:00 pm-12:30 am <b>LIVE BAND • Free Admission!</b> <b>"Boogie and the YoYoz"</b></p>	<p><b>SATURDAY, AUGUST 24th</b> 8:30 am ..... <b>Jyllibean Dash</b></p> <p>9:30 am ..... <b>Spanky's Run/Walk</b> begins on Main Street</p> <p>10 am-4 pm... <b>Craft &amp; Art Show</b> (RZ Builders building)</p> <p>12-6:00 pm... Corn on the cob, all-you-care-to eat with Loyal Corn Fest Button (buttons available at corn area and information booth)</p> <p>12:00 pm ..... Sign up for 9th annual Loyal Fire Dept. <b>Bean Bag Tournament</b>, by old Loyal Fire Hall, 100% payback. <b>Tournament starts at 1:00 pm</b></p> <p>1:00 pm ..... <b>Horse Pull</b> at Vita Plus lot</p> <p>1:00-5:00 pm. <b>Line Dancing</b> at American Legion</p> <p>1-8:00 pm..... <b>BINGO</b> at the Lion's Tent</p> <p><b>Tractor, Truck, &amp; Modified Truck Pull</b> 7 p.m. SHARP \$10 Spectator Fee • \$10 Pit-side Fee 10 &amp; under <b>FREE</b></p> <p style="text-align: center;"><b>LUTHER LEAGUE</b> Food Stands at Clay Track Saturday afternoon 12:00 pit side Saturday night 6:00 pm-10:00 pm both sides</p> <p style="text-align: center;">9:30 pm.1:30 am <b>DJ "The Kidz"</b></p>	<p><b>SUNDAY, AUGUST 25th</b> 12:30 pm ..... Loyal Corn Festival Parade Theme: <b>"Harvesting Memories for 65 years"</b></p> <p style="text-align: center;">2:00 pm – 6:00 pm Live music: <b>RED HIGGINS &amp; FREEDOM TRAIN</b></p> <p>12-6:00 pm Corn on the cob, all-you-care-to eat with Loyal Corn Fest Button (buttons available at corn area and information booth)</p> <p style="text-align: center;"><b>LOYAL LIONS &amp; LOYAL AREA HISTORICAL SOCIETY</b> <b>Chicken Stand</b> (next to corn stand) Serving 11:00 - ?</p> <p style="text-align: center;"><b>BINGO</b> in the Lion's Tent 2pm-6pm</p> <p style="text-align: center;"><b>Kids Pedal Pull</b> Ages 4-12 Girls &amp; Boys Qualifying pull for State Pedal Pull</p> <p style="background-color: black; color: white; padding: 5px; text-align: center;"><b>LOYAL FIREFIGHTERS</b> Beer Stand</p> <p style="background-color: black; color: white; padding: 5px; text-align: center;"><b>LOYAL AMERICAN LEGION AND AMERICAN LEGION AUXILIARY</b> Food Stand</p> <p style="background-color: black; color: white; padding: 5px; text-align: center;"><b>LOYAL UNITED METHODIST CHURCH</b> Ice Cream Stand</p> <p style="background-color: black; color: white; padding: 5px; text-align: center;"><b>LOYAL LIONS</b> Bingo Tent and Pop Stand</p> <p style="background-color: black; color: white; padding: 5px; text-align: center;"><b>LUTHER LEAGUE</b> Food stand at the track</p>
---	---	--	--