

# NEMO

## Trader

**THE NEMO TRADER**  
PO BOX 809 • KIRKSVILLE, MO 63501 • PHONE 660-665-8500  
**Web Site: nemotrader.net • Email: sales@nemotrader.net**

**FREE**

A WEEKLY ADVERTISER SERVING ALL OF NORTHEAST MISSOURI AND THE SURROUNDING AREA



**GREGORY LAND GROUP**  
660.621.2136  
www.gregorylandgroup.com



Owen Miller  
641-242-0346

exp 738874in

**Alan Whitton**  
**Concrete**

Parking Lots • Driveways  
Patios • New & Replacement  
Building Pads • Free Estimates

**660-342-3346**

Licensed and Insured

**Signature**  
Overhead Doors & Remodeling, LLC

**660-785-0248**  
www.signatureremodelingkv.com

Giving your home the attention it deserves!

**Lick Creek FENCING**  
Owen Miller  
641-242-0346

Continuous Fence • Barb Wire  
Woven Wire • Skid Work

**YODER CONSTRUCTION**  
— **DANIEL YODER** —

- Metal Roofing
- Siding
- New Construction

**660-486-3332**  
(Leave Message)

**OUR GOALS:**

- Good Service
- Quality Structure
- Competitive Prices
- Free Estimates

**A&L SALES**

Monday - Saturday • 8 am to 5 pm

- **Bulk Frozen Foods**
- **Muck Boots • Fabric**
- **Footwear**

**25655 HWY 156**  
3 miles west of Laplata, MO

**LAND SALES & AUCTIONS**

**WHITETAIL PROPERTIES REAL ESTATE**  
HUNTING | RANCH | PARK | TRAILER

**SERVING**  
LEWIS • MACON • SHELBY • MARION •  
RANDOLPH • MONROE • RALLS • AUDRAIN

**CLAY LOCKARD**  
EAST CENTRAL MISSOURI  
LAND SPECIALIST  
**573.466.9123**

**WHITETAILPROPERTIES.COM**

**SCOTT'S AUCTION SERVICE**  
573-356-4405  
Auctioneer: Scott Kuntz  
SEE MORE PHOTOS ON SCOTT'S WEBSITE  
WWW.SCOTTSAUCTIONSERVICE.COM

### Bethel Real Estate & Personal Property Auction;



**Saturday, April 26, 2025 at 10 am**

**Estate of John & Louise Daugherty**

**Directions:** 7920 Shelby 158, Bethel, Missouri. BRIDGE WORK REVISED DIRECTIONS – Take Highway 168 East of Shelbyville, travel North on State Highway W to Shelby Country Road 179. Watch for signs.

**Real Estate:** We will be selling at auction this 2 bedroom, ranch style home on 17.5 acres more or less with an open floor plan. The home has rural water, electric heat, a ventless heater and central air on a black foundation crawl space. The property includes several outbuildings. Please contact Scott at 573-356-4405 to schedule your personal showing of the home.

**Carport | Vehicle Farm Equipment Livestock Equipment & Supplies | Antiques & Collectibles | Household Items | Tools & Outdoor Equipment**

There will be many more items at this auction too numerous to list.

### Scotty's Semi-Annual Equipment Consignment Auction;

**Saturday, May 3rd at 10 am**

We will be accepting equipment consignments until 3 pm on Wednesday, April 30th for our semi-annual equipment consignment auction. Due to limited space, small items will need to be approved before consigning. This will be a very large auction so consign early to get the most advertising! Call Scott today at 573-356-4405 to discuss consignments or to schedule hauling.

### Split-Level Home & Personal Property Auction;



**Thursday, May 8th at 4 pm**

**Estate of James S Lawton**

**Directions:** 1401 Primrose Lane, Macon, Missouri. From US Highway 63, travel East on Business Route 36/East Briggs Drive for approximately 0.8 miles, turn right on Sunrise Drive then left on Primrose Lane to the property. Watch for signs.

**Real Estate:** We will be selling this 3 bedroom, 2 bah split-foyer home with a 2 car garage located in a highly sought-after neighborhood. Please call Scott at 573-356-4405 to schedule your personal showing.

**Vehicle | Household Items Antiques & Collectibles Tools & Outdoor Equipment Firearms & Supplies**

### Long Branch Lake Home on 15 acres m/l with Beautiful Lake Views & Personal Property Auction;



**Saturday, May 10th at 10 am**

**The Wright Family**

**Directions:** 28747 Long Branch Lake Road, Macon, Missouri. From US Highway 36, follow the exit North onto Long Branch Lake Road. Travel approximately 1.5 miles to the property. Watch for signs.

**Real Estate:** Located in a highly desirable area, we will be selling this home located adjacent to Long Branch Lake on 15 acres more or less. This is literally the closest home to the lake, the Corps of Engineers owns on three sides of the property. The home is a 3 bedrooms, 3 bathroom ranch built in 1985. It has an open floor plan with center bar, oak cabinets, and a walk-in pantry. It has a three-season room and the basement is partially finished, including a built-in bar. Get ready to bid on this home in a private setting within walking distance to the lake. Please call Scott at 573-356-4405 to schedule your personal showing.

**Trailer | Household Items Antiques & Collectibles Firearms | Tools & Outdoor Equipment**

There will be more items at this auction too numerous to list. More photos to be added soon!

### Shelbina Home, Car & Personal Property Auction;

**Thursday, May 15th at 4 pm**



**Real Estate:** 204 West Birch Street, Shelbina, Missouri. We will be selling at auction this 1997 Dutchman manufactured home and personal property. The home has three bedrooms, two bathrooms, and is on a permanent foundation. This home is well-kept with central air conditioning, natural gas heat, the furnace was replaced in 2023 and the roof was partially replaced in 2020. There is also



a one car, detached garage. Please call Scott at 573-356-4405 to schedule your personal showing.

**Vehicle | Household Items Antiques & Collectibles Tools & Outdoor Items**

There will be many more items at this auction too numerous to list.

### Rustic Home with Acreage & Personal Property Auction;



**Saturday, May 17th at 10 am**

**Todd S. & Deborah Anderson**


**Directions:** 34648 US Highway 63, Macon, Missouri. The property is located approximately 5 miles South of Macon on the East side of US Highway 63. Watch for signs.

**Real Estate:** We will be selling at auction this 3 bedroom, 2 1/2 bath ranch-style, log home ideally located on 15.59 wooded acres more or less. The home has an updated kitchen and main bath, a loft, a full, finished basement and an attached 2 car garage. There is central air conditioning, propane and wood heat in the home. The property has a 662 x 332 fully insulated out building with concrete floors. The property has apple, pear and peach trees, and thornless blackberry and thornless raspberry patches. This is truly an outdoorsman's paradise. Please contact Scott at 573-356-4405 to schedule your personal showing

**Equipment | Household Items Sporting Goods | Antiques & Collectibles | Outdoor Tools & Equipment**

### Shelbina 3 Bed, 2 Bath Home & Personal Property;

**Saturday, July 12, 2025 at 10 am**



**Real Estate:** We will be selling this 3 bedroom, 2 bath home with a full basement, 1 car attached garage and 1 car detached garage. The home has hardwood floors, central air conditioning and a propane furnace. Call Scott at 573-356-4405 to schedule your personal showing.

**Shipping Containers Antiques & Collectibles Household Items**

There will be many more items at this auction too numerous to list








**CALL FOR PRICING**

**NEW LOCATION**

28637 US HWY 136 UNIONVILLE, MO.

**641-895-4107**










**660-423-5482**

Contact us for bulk price & delivery.

info@harrisonfishery.com • www.harrisonfishery.com



**Spring is a Great Time to Stock Your Lakes & Ponds!!**

**Come see us for Freshwater, Game & Baitfish.**

**Species Available:** Large mouth bass, hybrid bluegill, bluegill, redear sunfish, black crappie, fathead minnow, walleye, muskie catfish, golden shiners and more!



**Call 660-457-3700**

Hwy 63 North, Lancaster, MO

**2011 Tahoe**, LT, 4x4, leather, sunroof, only 96k miles, black..... **NEW PRICE \$16,900**

**Low pro steel trailer**, slide in ramps, 84 x 74 deck. **NEW PRICE \$1,250**

**John Deere X740**, mower, diesel, only 740 hours, 60" 7 iron deck, excellent..... **\$7,500**

**2007-14 Chevy box**, red, 8 ft, little rust .....only **\$1,000**

**2006 Chevy 2500HD**, 4x4, 6.0L, reg cab, 8 ft bed, 1 owner, no rust, only 97k, red,..... **LOWER PRICE \$14,500**

**2017 Dodge Grand Caravan, SXT**, power seat, power sliders, only 63k miles, black..... **NEW PRICE \$14,900**

**2002 Pontiac Grand Prix**, prior salvage, 190k miles, black, 3.8L, runs great ..... **LOWER PRICE \$1,995**

**2009 Chevy 3/4 Ton**, Reg cab, 4wd, 6.0L, 55k, White, GREAT Condition, .....only **\$19,900**






**Cumberland Building Dealer**

**www.juddmotors.com** | In Business Over 75 Years

Curly and Kevin Judd

**ANIMAL HOUSING HAY STORAGE & MUCH MORE**

**Skylight FABRIC STRUCTURES**

30697 COLONY AVE • NEW CAMBRIA, MO 63558

**660-486-3250 • 833-482-8862**



**Kirksville, MO • 660-665-8000**

★ **Metal Recycling**

Recycle your scrap metal with us! We pay cash for: Copper, Aluminum, Steel, Stainless Steel, Appliances, E-scrap, Brass, Lead, Radiators, Alternators, Batteries, Starters, Electric Motors, Appliances, & Vehicles (Title & ID required).

★ **Roll-Off Container**

10-20-30-40 Cubic Yard Dumpsters




For current scrap prices call or visit our **Facebook Page**

**3602 Industrial Rd. • Kirksville, MO 63501**

info@victorymetalsrecycling.com

**VICTORYMETALRECYCLING.COM**

**WALK IN. GET BETTER.**





When a surprise illness or health concern can't wait for your regular doctor, you can count on Urgent Care at Complete Family Medicine for fast access to expert, compassionate care.

Urgent Care treats a variety of common illnesses such as sore throat, insect bites and stings, allergic reactions, poison ivy, strep throat, sinus infections, and other non-emergent health concerns.

**OPEN 8:00 AM - 8:00 PM**

**7 DAYS A WEEK | 365 DAYS A YEAR**


**Urgent Care** 

 **Complete Family Medicine**

**cfmcares.com**

**Have a smart phone or tablet?**

You can view current and past Nemo Trader issues online at **www.nemotrader.net**

**NEMO** 



# Central Metals Recycling LLC

## Buyers of Ferrous and Non-Ferrous Metals

We Pay More \$\$\$, Call For Your Best Pricing Today!!

11923 Hwy. 54  
Mexico, MO  
573-581-0336

1601 N. 30th  
Quincy, IL  
217-214-7649

1175 Hwy. 96  
Hamilton, IL  
217-847-3191

## MISSOURI MEAT PROCESSING LLC

26832 CR 161  
Rutledge, MO 63563  
Hours: Mon. - Fri. 7:30-5

### CUSTOM BUTCHERING

Beef - Pork - Deer

### PATIO FURNITURE

missourimeatprocessing@gmail.com

*Milwaukee* **660-883-5322**

## MANY ITEMS IN STOCK & 21 COLORS TO CHOOSE FROM

PATIO TABLE SETS, GLIDERS, LOUNGERS, ADIRONDACKS AND MORE!

J-N-K Lawn Craft was founded in 2000 with our first Glider & Swing made with red cedar wood. By 2015 we brought in the "Tangent Sustainable Lumber" Now in 2025, we are offering you some of America's Finest Outdoor Furniture.

Made with Tangent Sustainable Lumber by J-N-K Lawn Craft

## J-N-K LAWN CRAFT

31782 STATE HWY YY, MACON, MO  
660-346-0104

## ATTENTION LAND OWNERS!!

Buyer of standing timber  
Paying Cash Upfront!

Owner/Operator of Sawmill

- Buy/Cut Logs
- Certified
- Bonded
- Insured

WE HAVE SEMI LOADS OF PINE WOOD LOGS FOR SALE

## Tri State Timber L.L.C.

353 1/2 Grand Ave. • Memphis, Mo 63555  
660-341-4921 • 660-465-2975

## KEIM LUMBER COMPANY LLC

COMPETITIVE PRICES • FREE ESTIMATES

- COMPLETE BUILDING PACKAGES
- WINDOWS AND DOORS
- INSULATION • DRYWALL
- DELIVERY

13625 St. Hwy 3 LaPlata, MO

## FLO RITE GUTTERING

### 660-988-1163

- 5" & 6" Guttering Available
- Leafguard Options
- 20+ Color Options
- Stainless Steel Fasteners

Stan Schrock • Greentop, MO

## Cattle

Angus Bulls, 2 year old pure bred bulls. Lemmon Angus Farm Williamstown call (309) 221-8094

### Equipment & Supplies

John Deere 569 mega wide baler with monitor, net wrap and twine, \$5000. 660-673-6751.

New Holland Rolabar rake, good teeth, factory dolly wheels, stored inside, used as spare, cattle sold. \$1,200. 217-257-1385

Pequea TR10, turbo rake, 10 wheel, pull type, hydraulic fold, no welds, stored inside, used last year, sold cattle, \$3,200. 217-257-1385

'86 Pakh trailer, demolition traler, drop gate, flat bed with sides, 12'. 660-665-1101 leave message.

### Hay/Feed/Seed

Round bales 5' wide 67" inches tall mixed grass hay with alfalfa. Baled dry fertilized, lab tested, net wrapped with plastic surface wrap on top. Load evenings and weekends Watson Hay Sales. 660-341-4031

### Livestock

Percheron cross yearling filly, broke to lead and tie, gentle. yearling standard bred Appalachian mare 660-342-5314

### MERCHANDISE

#### Lawn & Garden

Used garden tillers, all makes. Many Troy-Bilt, and BCS, DR brush-mowers. 660-216-1809

## AGRI-BUSINESS

### Cattle

Hereford bulls, 18 months old, very good dispositions, easy calving, mothers are good milking cows. Line 1 horned genetics excellent way to make high dollar baldie calves, priced at \$4000 with free delivery. Schrock Cattle Co. 660-988-1163.

Dressed beef, orders for quarters. 660-665-3919

## ANGUS BULLS FOR SALE

**Coon Angus Ranch**

Outstanding selection of 18 month old bulls

1318 Shelby 169, Bethel, MO 63434

**Russell 660-341-2705**  
**Susan 660-341-5192**  
ruscatsol@gmail.com  
www.coonangusranch.com

Van Buren County, Iowa

## LAND AUCTION

TUESDAY, MAY 20, 2025 - 1:00 PM CST

127+ Acres (subject to survey)  
Selling in 2 Tracts

**VIRTUAL ONLINE**

The Ganzer farm is located approximately 4 miles east of Cantril, Iowa, 40 miles west of Ft. Madison, IA or 75 miles northwest of Quincy, IL, and is further described as being located in Section 4, T67N - R10W, Des Moines Township, Van Buren County, IA. Approximate address: 28115 Iowa Oak Grove Ave - Cantril, IA (watch for directional signs). The tracts represent income producing CRP farmland, recreational land, attractive home sites and the potential for timber harvesting!

**DAN & LISA GANZER**

Representing Attorney: Steven D. Kundel | Kundel Law Office PC  
300 East 2nd St. - Suite 300 | Muscatine, IA 52761 | (563) 272-0003

Auction Representatives: Dale Jones (309) 299-6400  
John Probasco (641) 856-7355

**MERIT AUCTIONS**

"Specializing in Farm Real Estate & Ag Equipment"

(833) 273-9300 | www.MeritAuctions.com | 444.000611

Physical Address:  
28115 Iowa Oak Grove Ave | Cantril, IA 52542

# BEILSTEIN Camper Sales

573-655-2254

## CHECK OUT OUR SPECIALS!

#G10579

Our Price **\$68,995**

2022 COACHMEN FREELANDER PREMIER FORD E450 26DS  
2 Slide-Outs, Low Miles

#030198A

Our Price **\$29,995**

2016 WILDCAT 323RBX  
3 Slides, Excellent Condition

#013723

SAVE **\$14,580**  
Our Price **\$33,995**

2024 SALEM FSX TOY HAULER 270RTKX PLATINUM  
Factory New, Large Garage, Private Bedroom

#351319

Our Price **\$21,995**

2019 CROSSROADS SUNSET TRAIL SUPER LITE 291RK  
Super Slide, Rear Kitchen

#940623

Our Price **\$10,995**

2023 COLEMAN 17B  
Bunks, Light Weight Easy to Tow

#335627

SAVE **\$23,190**  
Our Price **\$29,995**

2023 SALEM 29BDBX PLATINUM  
Factory New BLOWOUT Double Over Double Bunks

# beilsteincampersales.com

WWW.MEADFARMS.COM

## FEMALE & BULL PRODUCTION SALE

SATURDAY MAY 10, 2025 NOON

At the Mead Sale Headquarters • Versailles, MO

**OVER 400 HEAD SELL!**

100 Spring Pairs • 100 Fall Bred Cows  
50 Fall Bred Heifers • *plus* 120 Bulls

### SIRES REPRESENTED:

Coleman Easy Decision 1539	Stellpflug Hoffman Riseabove
Connealy Craftsman	V A R Conclusion 0234
DVAR Huckleberry 871	Virginia Tech Statesman
E & B Wildcat 9402	Mohican THM Exceed Z426
Ellingson Prolific	SHF Houston D287 H086
EXAR Cover The Bases 0819B	Stellpflug Hoffman Gunsmoke
EZAR Gettysburg 1061	JMAR Jefferson 8M11
EZAR Step Up 9178	LT Countdown
Hoffman Bar None	Mead Triple Threat V1141
S Architect 9501	C-T Reputation 0094
S Thrive JAS 5515	DVO Outside City Limits 798H
SS Identified 7551	Over Draft Pick 413D

AS WELL AS MANY OTHER INDUSTRY LEADING SIRES

## MEAD FARMS

For more information, contact:  
21658 Quarry Lane • Barnett, MO 65011  
Office (573) 302-7011 • Fax (573) 348-8325  
Email: meadangus@yahoo.com  
Alan Mead, Owner (573) 216-0210 • Scott Wall (309) 212-5450

SALE CAN BE VIEWED ON **DVAuction**  
Broadcasting Real-Time Auctions



Lawn & Garden

Troy-Bilt TB42 riding mower, 7 speed, 42" deck, very low use, just had full service, blades sharpened and balanced, ready to mow. Risslers Small Engine, Linneus, Mo. 660-895-5631

Flea Markets

Huge yard sale! 15084 Highway 11, 12 miles west of Highway 63. Thursday 4/24-Sunday 4/27. 8 am-dusk, Sunday 8 am-4 pm. New and used tools, Snap-On, Craftsman and more. Grinding and cutting wheels, cast iron cookware, vintage Tupperware, collectibles, jewelry and makeup, clothing. New coats, shoes, blankets, ponchos and more. New gun safe, generator, candy beef jerky, coffee, cat and dog food, animal trats, beds, leashes.

Miscellaneous

John Deere 569 mega wide baler with monitor, net wrap and twine, \$5000. 660-673-6751.

2016 Wildwood Heritage Glen by Forest River. 38'6", 3 slides, 2 AC's, 1 1/2 baths, fireplace, queen bed. \$20,000 or best offer. 660-488-5559.

**FOR SALE**  
**At Sired Angus Bulls,**  
**14 & 18 Months Old.**  
**Harold Trump**  
**660-341-5730**

Miscellaneous

Old fireworks, pre 1972, some newer, leave message. Cell 573-288-4366, home 573-288-2703.

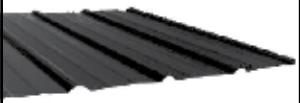
Fish for stocking ponds: catfish, grass carp, crappie, redear, bass, and fat-head minnows. Heindselman Family Farms. 660-341-5692.

We Buy Houses for Cash AS IS! No repairs. No fuss. Any condition. Easy three step process: Call, get cash offer and get paid. Get your fair cash offer today by calling Liz Buys Houses: 1-855-273-9002

SunSetter. America's Number One Awning! Instant shade at the touch of a button. Transform your deck or patio into an outdoor oasis. Up to 10-year limited warranty. Call now and SAVE \$350 today! 1-844-632-2169

NEMOTRADER.NET

**Premium Metal Roofing**



**AW Metal Inc.**

**Metal Roofing Headquarters**

641-664-3990 • awmetal.net

Family Treasure Nook

- Furniture
- Quilts
- Books
- Dishes
- Antiques
- Glassware

13731 State HWY 3, Laplata, MO 63549  
Mon, Tues, Wed, Friday & Sat. 8am - 5pm (Closed Thursday and Sunday)

Show Me Plumbing Services



- General Mini Excavation & Skid Steer Work
- Livestock Watering
- Waterlines & Sewer Systems
- Residential Services & General Plumbing
- Utility Trenching

**Stan Schrock 660-988-1163**  
**Greentop, MO 660-766-2636**

**Connie's MOBILE HOME TRANSPORT**

*We offer the following...*

**Break Downs • Transport • Set up • Anchoring**

**Call Rich today! 573-881-7483**



**LAN-DOW BUILDINGS**

**"We Build To Suit Your Needs"**

**"Custom Built"**

**Pole Barns • Garages • Utility Buildings**

**Dick, Jason or Andy Middleton**

**Memphis Lumber Co.**

**1-800-337-5858 • 660-465-8595**

**Fax: 660-465-8596**

**1<sup>st</sup> Annual Consignment Auction**  
**Sunday, May 4<sup>th</sup> @ 1:00 p.m**  
**at New Danforth Bar & Grill**

1-1.5 miles west of Novinger City Limits on State Hwy 0.

Now Accepting Consignments

of Lawn & Garden, Tools, Small Farm Equipment, Small Tractors, Hunting & Fishing (no guns or ammo), Boats, Boat Motors, Boat Trailers, all other types Trailers, Vehicles, Furniture, Household Items, Fencing & Livestock Supplies, and miscellaneous.

\*NOTE: all items that require licenses would prefer to have a clean title in hand for the sale otherwise salvage or lost title may apply and will be up to the buyer to apply for a title with a bill of sale from seller.

For more information or to consign items contact  
Steve (660) 956-5135, Kevin (660) 626-5048 or  
Landon (660) 292-4274.

New Danforth Bar & Grill will open at 11am serving food & drink, restroom usage, and buyer registration & clerking.



Green Castle & Kirksville, MO

~ AUCTIONEERS ~

Landon Dejong  
(660) 292-4274

Kevin Lawson  
(660) 626-5048

**BROTHERS TIRE**

LOWEST PRICE ON TIRES AND BRAKES SERVICE IN THE AREA

**ONE STOP TIRE SHOP**

910 N. ELSON STREET  
KIRKSVILLE, MO

**660-988-0349**

BUSINESS HOURS: 8-5 MONDAY-FRIDAY  
AFTER HOURS AND WEEKEND INSTALLATIONS AVAILABLE

**TIRE SALE**



**Skyline Service LLC**

Skid Steer and Construction Repair

*Levi Weiler*

**660-346-6881 • 660-883-5525**

Scan Tool Diagnostics  
Exhaust After Treatment Repairs • SCR Unlocks  
Skid Steer Tracks Available

**CELEBRATIONS PARTY RENTAL**  
KIRKSVILLE, MO

**FOR RENT**

- Tables & Chairs
- Tents • Bounce House
- Cotton Candy Machine
- & More!

**660-626-5162 or 660-665-9380**

**LANCASTER LUMBER INC.**

**Lancaster, MO.**

**1-800-424-5071**

**LAN-DOW BUILDINGS**

**www.lancasterlumber.com**

**SHOW-ME SEAMLESS GUTTERING**

FREE ESTIMATES • PROMPT SERVICE

- 5" & 6" Gutters
- Siding • Soffit • Fascia

(23 colors available on Gutters & Fascia)

Tried of Cleaning your Gutters?  
**LEAFPROOF THEM!**

**ELLIOTT HIX**  
**660-626-3447 • KIRKSVILLE, MO**

*Your Local*

**FARM SUPPLY SOURCE**

NUTRITION • MEDICAL • FARM • PET • APPAREL

**MLS Cattle Protein Tubs**

*Hometown*

ANIMAL HEALTH

Feed • Medical • Farm & Pet Supplies • Footwear & More  
website: hometownanimalhealth.com

**660-465-2967**

18743 US Hwy, 136 Memphis, MO 63555 • "on Hwy 136 west of Memphis"

Monday-Friday 8pm to 5pm • Saturday 8am to 1pm

**CAROUSEL PRODUCTIONS**  
PRESENTS

**SMOKE ON THE MOUNTAIN**

~Humor, Faith, & Bluegrass Gospel~  
at  
THE ROYAL THEATRE IN MACON, MISSOURI  
GENERAL ADMISSION \$15  
TICKETS ON SALE NOW  
AT THE BOX OFFICE AND ON EVENTBRITE  
APRIL 25, 26, 27, 30 | MAY 1, 2, 3  
Book by: Connie Ray | Conceived by: Alan Bailey  
Musical Arrangements by: Mike Craver and Mark Hardwick

**TIMBER MANAGEMENT.**

*Purchasing Walnut, Oak, Maple & Other Species*

**WE PAY BEFORE WE CUT**

**BONDED & INSURED**

**641-895-8209**

Est. 1968

There's a better way to get noticed.

Keep life simple. Take out an ad.

**HAZEL CREEK CEMETERY ASSOCIATION**

*Annual Meeting Sunday, May 4th*  
*2:00 p.m. at the cemetery*

Terry Sevits, President

**LARGE LIVE COIN AUCTION**

**SATURDAY, APRIL 26 AT 9 AM**

**PREVIEW STARTS AT 8 AM**  
BOB LEMONE BUILDING  
500 E. HWY 00, HALLSVILLE

**OVER 450 LOTS**

For more pictures and a full coin list, visit [georgeauctionservice.com](http://georgeauctionservice.com)

LUNCH SERVED [auctionzip.com](http://auctionzip.com) ID# 36171

**GEORGE** AUCTION SERVICE  
HALLSVILLE, MO

NOTE: Not responsible for accidents. Announcements auction day take precedence over all printed material  
Auctioneer: Kyle George 573-696-3142

**WANTED**

*To do custom planting, haying, & harvesting in NEMO!*

**ALSO WANT TO RENT CROP GROUND**

**660-341-6879**

**Golden Grain Bins-Spring Discount**

Grain Bins	Floors w/12" Supp. & Flashing
18"x18" 4,195bu. \$ 5,549	18'....\$1,549 30'....\$ 4,323
27"x21' 11,265bu. \$11,138	21'....\$2,118 36'....\$ 6,159
42"x24' 32,245bu. \$25,963	27'....\$3,532 42'....\$ 8,386



**GMLS Industries, Inc.**  
PH: 660-699-2179 or 620-983-2136  
[www.gmlsindustries.com](http://www.gmlsindustries.com)

*Kirksville, Missouri*

**KIRKSVILLE LIVESTOCK LLC**

24295 Benton Road \* P O Box 242 \* Kirksville, MO 63501  
[www.kirksvillelivestock.com](http://www.kirksvillelivestock.com)

SPECIAL BRED HEIFER, COW & BULL SALES 6:00 P.M.  
SPECIAL CATTLE SALES 11:00 A.M.  
SPECIAL SHEEP SALES 10:00 A.M.

**MAY, 2025 SALE SCHEDULE**

- Friday, May 2 - Special Breeding Stock Cattle Sale, 6:00 p.m.
- Monday, May 5 - Special Sheep, Goat, & Hog Sale, 10:00 a.m.
- Monday, May 12 - Special Feeder Cattle Sale, 11:00 a.m.
- Monday, May 19 - Regular Cattle Sale, 11:00 a.m.
- Monday, May 26 - Special Feeder Cattle Sale, 11:00 a.m.

 We are open on Sunday to Receive Your Livestock  
"Your Business is Very Much Appreciated"  
"Proud to Serve Area Livestock Producers"  
For more information or Someone to Phone for information:

**Patty Foster, Office Manager ~ 660-665-9804**  
**Chuck Ambrosia ~ 660-342-3530 ~ Luke West ~ 620-215-5770**  
**Mark Herbold ~ 515-720-8667 ~ Al Ashmead ~ 660-216-8730**  
**Doug Fleshman ~ 660-626-7148 ~ Daniel Smith ~ 660-341-8396**  
**Jeremy Jarman ~ 660-341-9879 ~ Caleb Randolph ~ 641-919-8539**  
**Karol Kirkpatrick ~ 641-777-3403**



**Edina Livestock Sales**  
**Edina, Missouri**

**Friday, April 25th**  
Special Feeder Calf Sale

**Friday, May 2nd**  
Special Feeder Calf Sale

Watch for date of upcoming Herd Dispersal

To Consign For Any or All Sales or For Information Call:  
**Owner - Kevin Strange • Cell: 660-341-9974**  
**Ryan Strange • Cell: 660-341-9721**  
**Sale Barn: 660-397-9999**

**Field Reps:**  
**Bill Tom Hall 660-342-5420**  
**Jason Bichsel 660-216-0373**  
**Mike Bronestine 660-341-9965**  
**John Powell 660-341-1717**



Miscellaneous

Em Woods Transport, will haul English, Amish or anyone by the hour or the mile. 660-988-8167

Sports Equipment

Lazy Man deer blinds, Generation 2 Penthouse, \$1649.95. Fat Girl, Bow or Combo, \$1999.95. heindselmanfamilyfarms.com. 660-341-5692

REAL ESTATE RENTALS

Office/Commercial Rentals

High traffic area, great visibility. Perfect for small businesses or professionals looking for an affordable, well-located office space. Newly remodeled, 1,000 square foot, 4 private offices, \$650.00 per month. Call 660-341-0123 today for more details or to schedule a tour.

REAL ESTATE SALES

Mobile Homes For Sale

Amega Mobile Homes +Amega Mobile Homes = Savings New & Used. 573-657-2176. amegamobilehomes.com

Mobile Home Super Store-Big Chicken in Columbia, 573-499-9993. columbiadis counthomes.com.

TINY HOMES - Missouri franchise 573-881-7965.

LOOK-true modular building your way, Call 573-657-7040. chateauhomes.net

Let us help you with all your advertising needs. Don't know what to say? Call us we can help! 660-665-8500.

Need something? Let us help you. You can advertise that you are looking for a special item.Call 660-665-8500 for more information.

RECREATION

Campers & Trailers

2016 Wildwood Heritage Glen by Forest River. 38'6", 3 slides, 2 AC's, 1 1/2 baths, fireplace, queen bed. \$20,000 or best offer. 660-488-5559.

Motorcycles

2003 Kawasaki Vulcan 1500 Mean Streak (Police Version), 7805 highway miles. Excellent appearance, excellent ride and clear title. Always garage kept w/tarp. Comes with new fork springs, new rear suspension, new grips. \$3,000 firm. Contact me via email for pictures. Will throw in brand new (unused) leather covered/hard sided saddle bags (a \$450.00 value). Contact: Kenchik99@gmail.com



Carpenter Media Group



# Grow Your Business With Us

**NOW OFFERING**

New Digital Marketing Campaigns

**Contact the Multimedia Account Executive Today!**

**Cindy High**



chigh@nemotrader.net



660-665-8500

**Best Services**

- Audience Targeted Display
- Addressable GEO Fencing
- Digital Out of Home Audio
- Targeting Custom Landing Page

765051jm

# Let's Celebrate Our Area Graduating High School Seniors!

IN THE  AND 

## MAY 14TH

we will have feature pages celebrating our area High School Graduates!

We will be publishing a list of area graduating high school seniors, along with full color congratulations style ads. Individuals, families, and businesses are all invited to place an ad on these pages.

Ads begin as low as → **\$60**

*\*with larger sizes also available.*

**Call or email us to place your ad now!**  
*All ads must be submitted by May 7th!*

**660-665-2808 or 660-665-8500**  
**sales@kirksvilledailyexpress.com • sales@nemotrader.net**

# Enhance Your Marketing Strategy With Geofencing & Targeted Display Ads

**Boost your business with cutting-edge marketing techniques that leverage location data and user behavior. Here's how:**

**Geofencing: Real-Time Targeting that Works**

- **Instant Engagement:** Send targeted messages to potential customers when they enter your defined area – a store, event, or neighborhood.
- **Drive Foot Traffic:** Increase visits and sales with timely promotions.
- **Insightful Data:** Track customer movement, stay time, and purchase behavior for better marketing decisions.
- **Personalized Messaging:** Tailor offers based on your customers' locations or previous visits.
- **Enhanced Brand Awareness:** Build brand recognition through repeated, contextually relevant interactions.

**Targeted Display Advertising: Maximize Your ROI**

- **Higher ROI:** Reach specific audience segments based on behavior, interests, and location to improve conversions and reduce ad spend.
- **Better User Experience:** Provide a personalized ad experience with content that's relevant to your customers.
- **Refined Customer Segmentation:** Segment your audience by age, gender, and more to target the right people.
- **Increased Brand Recall:** Repeated ads across multiple platforms keep your brand top of mind.
- **Precise Conversion Tracking:** Measure the effectiveness of ads with detailed tracking to optimize future campaigns.
- **Cross-Platform Reach:** Reach your audience wherever they spend time online—websites, social media, and apps.

## Combine Geofencing & Targeted Display Ads for Maximum Impact

Combine the power of geofencing and targeted display ads for a seamless, multi-touch strategy. Engage customers both in-store and online, driving higher engagement, conversions, and ROI.





**Cindy High**  
chigh@nemo-trader.com

Contact us to elevate your marketing strategy today!



**Savana Wallace**  
swallace@kirksvilledailyexpress.com

## NEMO Trader Classified COUPON

### 2 Classified Ads for just \$6.00

20 cents per word over 20 words  
Must be Mailed in or brought in along with payment.  
*Picture Ads Not Included with Coupon!*

**Choose Classification**

☐ Agri-Business

☐ Real Estate Rentals

☐ Yard Sales

☐ Announcements

☐ Real Estate Sales

☐ Auctions & Estate Sales

☐ Employment

☐ Recreation

☐ Financial

☐ Services

☐ Merchandise

☐ Transportation

**Ad No. 1 Each Box Represents a Word (20 words or less)**


**Ad No. 2 Each Box Represents a Word (20 words or less)**


Name \_\_\_\_\_

Mailing Address \_\_\_\_\_

Phone Number \* \_\_\_\_\_  
this is required\*

**PO Box 809 Kirksville, MO 63501 • 660-665-8500**



# Scrubby Duds

## Laundromat

Large capacity coin machines

OPEN 7 DAYS A WEEK  
24 HOURS A DAY

Your laundry never takes a break & neither do our machines!

311 S. Baltimore Kirksville, MO 63501 660-349-8943 Bob & Paulette Thompson

**MUST SEE!!**  
**2020 GMC Terrain SLT**, AWD, black leather heated seats and steering wheel, backup camera, remote start, collision alert, memory seats, dual climate, & much more, white frost, always been garaged, window sticker, \$36,415 when New 78,000 miles (area one owner).  
**\$18,900**

— **Accelerators —**  
**Performance & Auto**  
Since 1974  
**Kahoka, MO**  
**660-727-3455**  
**Daryl's Cell**  
**217-257-1385**  
Owner/Founder

**Refuge Cemetery**  
**Notice of Annual Meeting**

The Refuge Cemetery Association will hold its annual meeting on **Sunday, April 27th, 2025, at 2:00 PM, at Kirksville Municipal Pool Building.**

All interested parties are encouraged to attend.

Election of officers will be held.

**SERVICES**  
**Health Care**

Portable Oxygen Concentrator May Be Covered by Medicare! Reclaim independence and mobility with the compact design and long-lasting battery of Inogen One. Free information kit! Call 844-299-5183

Home Services

Does your basement or crawl space need some attention? Call Thrasher Foundation Repair! A permanent solution for water-proofing, failing foundations, sinking concrete and nasty crawl spaces. FREE Inspection & Same Day Estimate. \$250 off ANY project with code GET250. Call 1-855-460-1476

Miscellaneous

Consumer Cellular - the same reliable, nationwide coverage as the largest carriers. No long-term contract, no hidden fees and activation is free. All plans feature unlimited talk and text, starting at just \$20/month. For more information, call 1-844-211-0742

Custom Fencing, specializing in barb wire, continuous and vinyl fencing. Call today 641-504-8125.

Freedom Care. Let your loved ones care for you and get paid! Paid by Medicaid. Choose family or friends as your paid caregiver. Check your eligibility today! Call Freedom Care now! 1-844-937-4179

Prepare for power outages today with a Generac Home Standby Generator. Act now to receive a FREE 5-Year warranty with qualifying purchase. Call 1-866-686-8347 today to schedule a free quote. It's not just a generator. It's a power move.

Eliminate gutter cleaning forever! LeafFilter, the most advanced debris-blocking gutter protection. Schedule a FREE LeafFilter estimate today. 20% off Entire Purchase. Plus 10% Senior & Military Discounts. Call 1-844-713-4600

Up to \$15,000.00 of GUARANTEED Life Insurance! No medical exam or health questions. Cash to help pay funeral and other final expenses. Call Physicians Life Insurance Company- 844-491-2689 or visit www.Life55plus.info/Missouri

Need something? Let us help you. You can advertise that you are looking for a special item. Call 660-665-8500 for more information.

# Ralls County

## REAL ESTATE AUCTION

WEDNESDAY, APRIL 30, 2025 AT 10 AM

**AUCTION LOCATION: HOLY ROSARY ACTIVITY CENTER  
405 SOUTH MAIN, MONROE CITY, MO 63456**

PROPERTY ADDRESS & LOCATION: Juniper Lane, Monroe City, MO 63456  
From Highway 36/24 and Highway Z overpass north of Monroe City, MO, go east 3 miles to Highway J, turn and go south 1.3 miles to Juniper Lane, turn left and go east 1.3 miles to the Garner Property on the right.

**150 +/- ACRES OFFERED IN TWO TRACTS  
IN TOWNSHIP 56N, RANGE 7W,  
SECTION 13 IN RALLS COUNTY, MO**

TRACT 1 : Consists of 74 +/- acres lie on the west side of the Garner Property with frontage and access from Juniper Lane which runs along the entire north side of the tract. The tract is primarily open and currently being used for crop production with the exception of a couple wooded fence rows and two narrow strips of timber in the south part of the tract.

TRACT 2: Consists of 77 +/- acres that lie on the east side of the Garner Property with frontage and access from Juniper Lane which runs along the entire north side of the tract. It is basically open and currently in crop production with the exception of a wooded draw and some mature timber along the creek banks. There is a well on this tract.

**SELLERS: JAMES WAYNE & SUSAN GARNER**

**Wheeler** AUCTIONS & REAL ESTATE  
23181 HWY 51, PARIS, MO 65252 | 660-327-5890  
WWW.WHEELERAUCTIONS.COM

CHARLIE NORDWALD | 636-795-4552  
WHEELER AUCTIONS | 660-327-5890  
WWW.WHEELERAUCTIONS.COM

BE AN EARLY BIRD! Place your ads before Monday and beat the rush!

Are you having a garage sale or rummage sale? Call us to advertise. 660-665-8500.

# The Best of Kirksville is HERE!

# 2025

# BEST of KIRKSVILLE

Kirksville Daily Express

*Nominations have begun!*

**NOMINATE** your favorite businesses before **APRIL 30th!**

Late nominations will not be accepted.

Vote for your favorites daily starting **May 1st.**

**SCAN HERE TO NOMINATE NOW!**

Or go to **KirksvilleDailyExpress.com/BestOf**

# VEHICLES & EQUIPMENT AUCTION

## 475+ ITEMS SELL NO RESERVE! WEDNESDAY, MAY 7

**EG5721** '18 Ford F650 SD Crew Cab flatbed truck

**EC3527** '16 Vermeer BC1500 wood chipper

**EM3761** '05 Al-Jon Inc car crusher trailer

**EG2569** '22 Vintage Trailers LTD OL844G-12 toy hauler

**EG2505** '21 Sundowner Trailers camper

**EC0911** '18 Chevy Silverado 3500HD Crew Cab flatbed

**EG2511** '19 Dodge Ram 5500 Crew Cab flatbed

**DM5700** '19 Ford F450 SD Crew Cab service truck

**EL1992** '22 Sundowner 1986TB toy hauler camper

**EC2376** '22 Dodge Ram 2500 Crew Cab pickup

**OB9619** '19 Dodge Challenger

**DV6734** '16 Cadillac Escalade SUV

**purple wave AUCTION**

All items sell where they sit. | 10% buyers premium applies. | 866.608.9283

**BID NOW! purplewave.com**





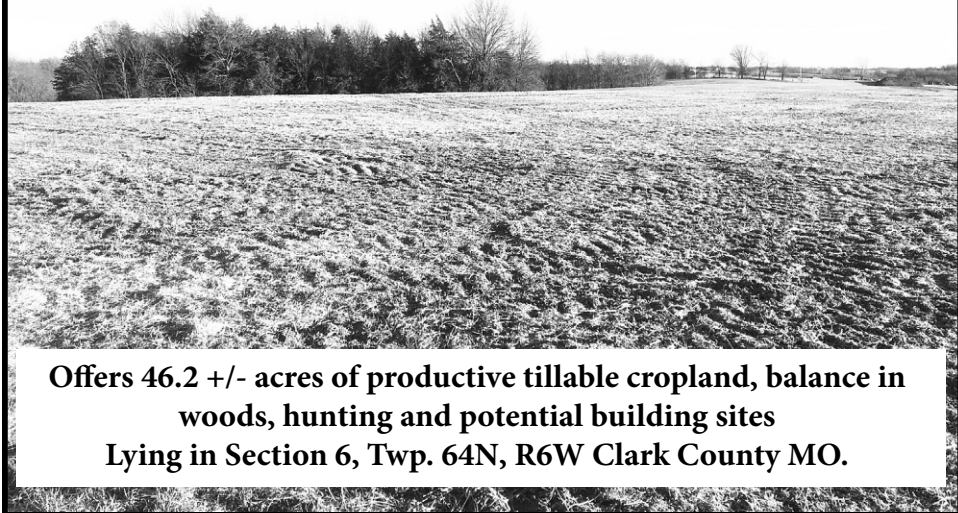
McAfee Auction Service, LLC  
375 S Johnson • Kahoka, MO  
660-727-3796  
www.mcafeeauctionservice.com

## Clark County, MO LAND AUCTION

Thursday, May 8<sup>TH</sup> - 10 AM

Sale conducted at the CARE Building located at 451 N. Vine St., Kahoka, MO

**77.93 SURVEYED ACRES**



Offers 46.2 +/- acres of productive tillable cropland, balance in woods, hunting and potential building sites  
Lying in Section 6, Twp. 64N, R6W Clark County MO.

LOCALLY KNOWN AS KENNETH BLOYD FARM



McAfee Auction Service, LLC  
375 S Johnson • Kahoka, MO  
660-727-3796  
www.mcafeeauctionservice.com

## Clark County, MO LAND AUCTION

Thursday, May 29<sup>TH</sup> - 10 AM

Sale conducted at the CARE Building located at 451 N. Vine St., Kahoka, MO

**105 +/- ACRES/3 TRACTS**  
SUBJECT TO FINAL SURVEY



Offers the perfect weekend getaway cabin/home. Excellent Northeast MO hunting, stocked pond, productive tillable acres and much more!  
Lying in Sect. 6, Twp 65N & Sect. 31, Twp 66N, R9W Clark Co, MO.

RESIDENTIAL OPEN HOUSE: SATURDAY, MAY 17<sup>TH</sup> 1-2PM

JAMES E. AND KAREN L. HETZER REV. TRUST



McAfee Auction Service, LLC  
375 S Johnson • Kahoka, MO  
660-727-3796  
www.mcafeeauctionservice.com

## Clark County, MO LAND AUCTION

Thursday, June 12<sup>TH</sup> - 10 AM

Sale conducted at the CARE Building located at 451 N. Vine St., Kahoka, MO

**169 +/- ACRES/4 TRACTS**  
SUBJECT TO FINAL SURVEY



Conveniently located 1 1/2 mile East of Kahoka, MO. the McKinzie tracts of land offer excellent building sites & homestead with hard surface road EE frontage. Land also offers productive tillable cropland, pasture land, ponds, woodlands and some of NEMO best hunting. Opportunities like these rarely are offered! Lying in Sections 21 & 22 Twp 65N R7W Clark County MO.

RESIDENTIAL OPEN HOUSE  
SUNDAY, JUNE 1<sup>ST</sup> 1-2PM

BECKY MCKINZIE, SELLER

## OPEN HOUSE

April 26th @ 11 a.m.



LOCATION: Paris Fairgrounds 415 East Locust Paris, MO 65275

Fall and Spring Lambs available for purchase  
Stud Rams and consignment sheep available for viewing

\*\* Sheep will be available on a first come, first serve basis. \*\*

\*\* NOTHING WILL BE SOLD PRIOR TO THE OPEN HOUSE \*\*

For any additional information contact Britton Francis at (573) 473-0633  
Follow us on Facebook at Francis Family Farms Katahdins

## WE GOT YOUR NEEDS COVERED!



FARM TARPS

TRUCK TARPS

HOOP BUILDING COVERS

# Troyer

## TARP MFG.

**660-486-3301**

20264 STATE HWY. VV • ETHEL, MO 63539

## KIRKSVILLE AUTO AUCTION

Annual Lawn and Garden Sale

**APRIL 26TH AT 9:30 AM**

23099 POTTER TRIAL • KIRKSVILLE, MO



**ZERO TURN MOWERS:** Hustler Raptor 52" cut, Hustler Fasttrack 44" 18 hp, John Deere two track 737 54" 232 hp, Hustler Fasttrack 52" 20 hp, Toro Titan ZX4800 48" cut 23 hp, Land Pride Razor Z 52" cut 20 hp, Dixon Ram 50" 23 hp, Ferris Z100 60" 26 hp, John Deere F525, John Deere EZ Track Z445 48" cut 24 hp, Cub Cadet Zero Turn, John Deere EZ Track Z445 48" cut 24 hp, Allis Chalmers 625 with deck and 3 point.

**LAWN TRACTOR MOWERS:** John Deere LX176 38" cut 14 hp, John Deere 318, Craftsman 42" cut 16 hp, John Deere 445 hydro 60" cut 24 hp, Deutz Allis 1920 60" cut, Snapper LT200 54" cut 22hp, Yard Machine 38" cut 14 hp, John Deere 145 42" cut 22 hp, John Deere 115 42" cut 22 hp hydro, Simplicity 46" cut hydro, Craftsman 3000, Simplicity 44" cut, John Deere 145 hydro, Craftsman 2000, Toro 23 hp 50" cut hydro, Craftsman GT 5000 48" cut, 4 new Scag zero Turns with warranty.

**TILLERS, PUSH MOWERS AND MISCELLANEOUS:** Craftsman rear tine, Wards front tine, M&D front tine, Craftsman front tine, Craftsman 22" push mower, Troy Bilt 21" electric start, Poulan Pro push mower, Monda push mower, lawn roller, yard and garden carts, wheel barrows, M&D 5 hp chipper/shredder, 2 new Scag lawn vacs, too many to mention.

**ATV'S, GOLF CARTS, BOATS AND TRACTOR:** John Deere 825l Gator, EZ Go John Deere Golf Cart, 2 New IRGC 40 mini golf carts, Lowe 1848 flat bottom boat, motor and trailer, WD48 Allis Chalmers.

**MISCELLANEOUS:** Hand tools, lawn and garden tools, sprayers, flower pots, spreaders, plant hangers, 2 wagon loads of small items also.

**HUGE VARIETY OF VEGETABLE PLANTS:** Watermelon, tomato, onion, herbs and spices, lettuce, big variety of flowers and hanging plants, variety of trees to include: 4 to 5 foot White Pine, White Spruce, Serbian Spruce in 10 gallon pots.

**HUGE VARIETY OF GARDEN PLANTS AND TREES**

For Info or Consignments Call

**Todd Morton - 660.216.8531**

**Tony Morton - 660.216.3373**

**\*\*CONSIGNMENTS COMING IN DAILY\*\***

## LOCAL MATTERS

Please support the advertisers that power your community paper.

NEWSPAPERS  
MATTER  
NOW MORE THAN EVER





# LIVE ON-SITE PRE-HARVEST CONSIGNMENT AUCTION

1 MILE WEST OF GALLATIN, MO ON HWY. 6, GALLATIN INDUSTRIAL PARK

**SATURDAY | APRIL 26 | 8:00 AM**

Please Note: Partial Listing - More to add next week or check online for the up-to-date listing.  
Expecting 1,300 pieces, many individual consignments, retirement, estates and sellouts.

Find us on

BS-Equipment-Auctions

Online Bidding available thru  
Equipmentfacts.com



## The Ultimate Wood Heat.



- **More Comfort** - Thermostatically controlled wood heat.
- **Peace of Mind** - Keep the fire outside and eliminate the dangers associated with indoor wood heating.
- **Save Money** - Wood is a renewable, inexpensive and often free energy source.

**Campen Heating & Air**  
Division of Kraus & Sons Inc.  
Canton, MO 63435  
**573-288-8966**  
CentralBoiler.com

## Roofing

Replace your roof with the best looking and longest lasting material steel from Erie Metal Roofs! Three styles and multiple colors available. Guaranteed to last a lifetime! Limited Time Offer up to 50% off installation + Additional 10% off install (for military, health workers & 1st responders.) Call Erie Metal Roofs: 1-888-809-1119

## Transportation

Em Woods Transport, Am-ish or anyone, short or long runs, by the hour or by the mile. 660-988-8167.

## TRANSPORTATION

### Automobiles

'94 GMC 3500, 4 door, 4x4, \$4000.00. "99 Chevy 3500, 4 door, 4x2, \$7000.00. 660-342-2868.

### Trucks, 4x4's, SUV's

'94 GMC 3500, 4 door, 4x4, \$4000.00. "99 Chevy 3500, 4 door, 4x2, \$7000.00. 660-342-2868

**NEED TO SELL YOUR HOUSE OR PROPERTY?** Get the best coverage around. Call the NEMO and our helpful representatives will assist you in creating your ad. You can even pay over the phone. **Call 660-665-8500 for more information.**



**FIND THE PERFECT PET FOR THE PERFECT PRICE IN THE PERFECT PLACE FOR DEALS**

*Find your next fluffy, feathered or furry friend in your local newspaper classifieds!*



## LOLLI LIVESTOCK MKT, INC.

**Tuesday, April 29 - 11am**  
**Special Feeder Calf & Yearling Sale**

320 bbwf hfrs 725lbs G Chiarottino (load lots)	40 bbwf str/hfrs 5-600lbs
170 bbwf hfrs 650-750lbs M Hatfield/K Lynn (load lots)	35 bbwf str/hfrs 5-700lbs Z Hill
160 bbwf hfrs 7-750lbs N Miller (load lots)	30 bbwf str/hfrs 6-700lbs Albers
80 bbwf str/hfrs 5-650lbs JD Barry	20 bbwf str/hfrs 500lbs C Stallo
80 bbwf str/hfrs 6-725lbs K/L Wooldridge	20 bbwf str/hfrs 5-650lbs J Lineman
75 bbwf str/hfrs 4-600lbs C Vroman	15 bbwf str/hfrs 5-650lbs A Burditt
50 Angus hfrs 700lbs Deeken Bros	10 bbwf str/hfrs D Bartholomew
50 bbwf str/hfrs 5-600lbs McKenzie Farms	10 bbwf str/hfrs 6-700lbs

*This is only a partial listing, many more by sale date.*

Cafe Open **Lolli Livestock Market, Inc.** Cafe Open  
704 Main st \* Macon, MO \* 660-385-2516 www.lolibros.com  
Frankie 660-651-4040 \* Tim 660-651-3496 \* Joseph 660-346-9711  
Jordan 660-346-0410 \* Cody 660-676-9392 Cattle accepted on Sundays

## MACHINERY AND TOOL AUCTION ALTISER AUCTION AND APPRAISAL

2705 Main St Unionville Mo • April 26 that 10 am

Machinery/Campers: 2018 John Deere 3039R w/ 193 hrs with bigger loader and a like new John Deere brush hog, Vermeer TM700 trail mower, Vermeer 505 baler, Kuhn tedder, Bush Hog post hole digger, 2018 Big Tex 14PH 26 foot mega ramp trailer, 2021 Salem Hemisphere gooseneck camper with 5 slides 40 ft, 2014 28 ft Keystone Cougar bumper hitch camper, new 12x20 livestock shed, skid loader post hole digger, skid loader grapple, John Deere 24T square baler always shedded, John Deere rotary hoe, John Deere manure spreader, John Deere side delivery rake, John Deere sickle mower, Nice 6 ft 3 pt disc, small cultivator, New Idea 1 row corn picker, 5 ft brush hog, John Deere snow blower, DR leaf vac, 250 gallon gas barrels and 1 stand, Honda 3 wheeler, 2 older Suzuki 4 wheelers, 40 gallon sprayer for side by side, 3 pt bale spear, lawnmower jacks, tractor chains, antique road grader, antique IH manure spreader on steel in good shape, 2 bottom plow, 2 antique truck bed trailers, John Deere top link, John Deere Model A or B PTO air compressor, 100 500 and 1000 gal propane tanks, gas powered chipper on wheels. Tools: Eastwood tig 200 welder on cart, Echo backpack sprayer, pole saws, Delta band saw, plate compactor, Husqvarna concrete saw, oil, chemicals, #9 wire, shop lights, floor jacks and stands, concrete tools, coolers, tiller, push mowers, like new air conditioners, hand tools, wrenches, sockets, tool boxes, Napa wall cabinet, brake pads, spark plugs, car parts, Loudon I beam trolley, power tools, Rigid pipe cutters, large trailer load of new plumbing items, Honda power washer, generators, bench grinder, gas cans, extension cords, garden tools, fiberglass ladders, like new Stihl weed eater, chainsaws, large stainless milk vat, pull type yard sprayer, Foley bellow, Dewalt and Makita tools, Craftsman toolboxes, carpenter boxes and woodworking tools, log chain, copper wire, yard decorations, small cutting torch and heads, Craftsman 3/4" drive socket set, Cummins bench top lathe, tap and dies, air compressors, chain saw sharpener, ratchet straps, Aires rear tire tiller, machinist chest with tools, job box, stack on rolling tool boxes, various sizes of lumber, dry wall, several boxes of misc. Tools and smalls will sell first followed by machinery. Way too many items to mention them all. Likely more machinery by sale date. Most of the tools will be sold inside in a climate-controlled sit-down type auction.

Find pictures at [altiserauctionandappraisal.com](http://altiserauctionandappraisal.com) or on Facebook.  
Preview from 2 to 5 pm on April 25th. Kris Altiser 660-626-4960

SEE OUR FACEBOOK PAGE FOR PHOTOS



# SAYRE AUCTION, LLC

ON-SITE LIVE CONSIGNMENT AUCTION...

**Saturday, April 26<sup>th</sup> at 10<sup>am</sup>**

28495 Highway TT, Brookfield, MO

**GUNS-AMMO-KNIVES** - Rock Island armory 1911 stainless 45 acp. New in box; 1940 Russian Mosin Nagant 7.62x54 w/sling; Radical Arms AR15 5.56/223 w/ad on flip up sights 3 magazines 2 grips and sling; FMK elite 9 mm.like new in box; Jimenez Arms mod. J.A. 22 pistol; Heritage Arms 22/22 mag. revolver pistol; Mossberg 20 ga. Single shot lever action; Noble mod. 222t 22LR; H&R 1871 12 ga.; BpI Connecticut Valley arms .50 cal; Stoger Turkey 12ga. 3- boxes sig Sauer 6 mm Creedmoor 100gr. Bullets; 3- boxes Hornady 350 Legend 170gr. Bullets; 3- boxes Remington core-lokt 30-30 170gr. Bullets; 2- boxes federal 44 rem mag. 240gr. Bullets; bronze 10mm 200gr. auto 28 shells; Federal Fusion 10 mm auto bonded soft point 200 gr. Shells; Winchester target and practice 10 mm auto 180 gr. FMJ bullets; Browning x-point defense 10 mm auto 180gr. Bullets; 2-boxes handgun line 38 sp.swc 158 gr. bullets; 10-plastic ammo boxes; 2-guns cheats;

## TRUCKS-TRACTORS-TRAILERS-FARM EQUIPMENT

2006 IHC 8600 10spd. Dump truck w/steel bed, been through from top to bottom, ready to go to work; 2016 Ford Explore flex fuel AWD old police vehicle 108k miles vin: M5K8AR1GGB64947; 1995 GMC suburban 1500 gas, vin: 1GKFK16KXSJ742202, 261k miles; **1950 BUICK MOD.41 known as SPECIAL DELUXE SEDAN 248 cid fireball V8 122 hp.Dynaflow auto transmission dual control arm front suspension, rear coil spring suspension, drum brakes, wheelbase 121.5" vin:25901793**; 1984 Itaska motor home 5.7L.v8 95K miles; Coachmen Royal 285 RK fifth wheel camper needs remodel inside; 2021 food trailer w/ac and heat, w/small refrigerator, stainless sink and cabinets, stainless steamer, xp12000E generator like new ready to go to work; Case MXM 175 diesel 4x4 left hand shuttle shift tractor complete overhaul real nice clean tractor no def ser:ACM214360; 2640 Masey 4x4 tractor w/loader; IHC 656 tractor w/loader; 14' bumper hitch trailer; 20' homemade goose neck trailer; 6'x10' tilt trailer; 2023 14' dump trailer GVWR 20,000 new; 2025 Landscape dump trailer 2-7000 lb axels bumper hitch, new; 2025 Landscape dump trailer goose neck 2-7000lb axles new; 2-2025 8' enclosed trailers new one has no back door; 2014 Odes 4 dr. sidexside auto full cab; 2013 Odes 4 dr. sidexside auto full cab both have new tires and new motors; 3pt. hay unroller; 10 wheel rake; 8' 3 pt. blade; Vermeer 10' disc mower conditioner; Vermeer 605H big round baler; Kuhn GMD 280 3pt. disc mower; JD 630 disc; Case 730B ecolo-tiger disc-riper; New Idea 5209 disc mower conditioner; M-W 8 wheel rake pull type; New Holland 68 small square baler string tie; 2-Killbros 590 grain carts; JD 635F flex head w/cart; 2-5580 Hesston big round balers, used last year; 12' Harogator; JD 34 silage chopper; 10'disc; Frontier 12 wheel rake; 4-new skid steer wheels; Koyker loader w/bucket and spikes; Bush Hog 1812 bat wing pull type cutter; 20-24' free standing panels; aluminum semi headache racks; JD 6 row and 4 row bottom plows; 7' 3pt. blade; Danuser post hole digger; truck bed trailer; 2-3pt. bale spears; Mark Twain 16' ski boat w/ 3.0 Mer Cruiser inboard motor; homemade smoker/barbecue on wheels; homemade wood furnace; 2500 lb ATV winch; DeWalt 20v cordless drills; lawn cart; pole saw; grinder on stand; 20 gal. sprayer w/boom; several good semi tires; running gears; camper shell; 8' skid loader snow blades; L shape gas tank; cattle head catch gate; 709 Bobcat backhoe attachment; Several tools coming as well



Note: Folks this a partial listing we will be taking items up to sale day. Sayre auction is not responsible for accidents, stolen or misplaced items. WE DO NOT GUARANTEE ANY ITEMS!!!!!! UNLESS THE OWNER WANTS TO!!!!!! Statements sale day supersede any printed or verbal material. Catering day of sale by Suzy Q's. There will be a loader tractor day of sale.

## SAYRE AUCTION, LLC

"If It's For Sale We Can Sell It" • Family Owned & Operated Since 1978!

Live and Online Auction Services

Cash, Check, and Credit Cards Accepted  
[www.sayreauction.com](http://www.sayreauction.com)

Shawn Sayre 660-734-8782  
Owner - Auctioneer

Alyson Sayre 660-734-5005  
Realtor

Mark Cleveland  
Broker - Auctioneer

Danny Jeffries  
Auctioneer

