

# NEMO Trader

## THE NEMO TRADER

PO BOX 809 • KIRKSVILLE, MO 63501 • PHONE 660-665-8500

Web Site: [nemotrader.net](http://nemotrader.net) • Email: [sales@nemotrader.net](mailto:sales@nemotrader.net)

**FREE**

A WEEKLY ADVERTISER SERVING ALL OF NORTHEAST MISSOURI AND THE SURROUNDING AREA



Elizabeth Gregory  
110 S. Franklin St  
Kirksville, MO 63501  
www.missourihomeandfarm.com  
660.621.2136



**MARTIN'S MOBILE TIRE SERVICE LLC**  
Tractor Tires to Car Tires  
and Anything in Between  
• NO FLUID  
• State Inspection  
• Flexible Shop Hours  
**RANDY**  
660-216-2893



**Signature**  
Overhead Doors & Remodeling, LLC  
660-785-0248  
www.signatureremodelingkv.com  
*Giving your home the attention it deserves!*



**FLO RITE GUTTERING**  
5" & 6" Guttering Available  
• Leafguard Options  
• 20+ Color Options  
• Stainless Steel Fasteners  
Stan Schrock • Greentop, MO  
660-988-1163



**ANTIOCH REPAIR & RENTAL**  
*We fix almost anything!*  
CALL US FOR ALL OF YOUR EQUIPMENT REPAIR & RENTAL NEEDS  
• Attachments • Tires & Tracks • Competitive Rates  
Located Near Knox City, MO  
Call Ethan Zimmerman  
660-299-0808



**LAND SALES & AUCTIONS**  
SERVING  
LEWIS • MACON • SHELBY • MARION • RANDOLPH • MONROE • RALLS • AUDRAIN  
**CLAY LOCKARD**  
EAST CENTRAL MISSOURI LAND SPECIALIST  
573.466.9123  
WHITETAIL PROPERTIES .COM



**GPA**  
CENTRAL PLAINS AGRONOMY  
See us for all of your chemical and fertilizer needs!  
Luke Mudd - Sales Agronomist  
(785) 427-6145



# AMMO PLANET

200 W. POTTER AVE • KIRKSVILLE, MO • 660-956-4654 • 660-349-0070  
AMMO-PLANET.COM • HOURS: MON & TUE 10-5 • WED-FRI 10-6 • SAT 10-3

3 COLORS TO CHOOSE FROM



**GForce GF25** | 12 GA 20" **\$235**

**Ruger 22 LR** | 10/22 Optic Ready **\$199**

**Delton Echo AR-15** | 5.56 **\$379<sup>99</sup>**

**Springfield Armory XD Mod .3** | 9MM 4" 16rds. **\$299**

**Fiocchi 9MM** | 50rds. 115gr. FMJ **\$13<sup>25</sup> EA.**

**X Products XM 42 Flamethrower** **\$425**

**Hexmag Series AR-15** | 30 rd. **\$9<sup>99</sup>**

**Tactacam Reveal X Pro** **\$99<sup>99</sup>**

**AR-15 Complete Build Kit** 5.56 / .223 16" 12" or 15" MLOK Rail Anderson Manufacturing Lower **\$349**

**10% OFF** ATHLON OPTICS

BLACK FRIDAY SALE

# AMMO PLANET'S First Ever

# BLACK FRIDAY

*Sale!!*

Nov. 29th, 2024  
9am - 6pm

**Taurus G3C** | 9MM **\$229**

**Sellier & Bellot** 12ga. 2.75" 00 Buck | **\$140** for 250 shells



# Beilstein

## CAMPER SALES

573-655-2254

**CALL US NOW**  
for the best prices...

28248 327th Ave.  
LaGrange, MO • Hwy 61 South,  
4 Miles South of LaGrange, MO

[beilsteincampersales.com](http://beilsteincampersales.com)



#C16157

**2022 COACHMEN CROSS TRAIL XL 23XG**

**CALL FOR PRICE**

Like New.  
Rear Queen,  
Only 4,500 Miles



#234148

MSRP  
**\$101,806**

**2025 CEDAR CREEK EXPERIENCE 29RL**

**Price \$78,995**

Pure Luxury  
3 Slides,  
Rear Entertainment / Living



#V20074

MSRP  
**\$26,995**

**2020 JAYCO OCTANE SUPER LITE TOY HAULER 222**

**Price \$19,995**

BLOW OUT PRICE,  
Queen Bed, Light Weight



#035355

Retail  
**\$33,350**

**2020 COACHMEN SPIRIT 2454BH**

**Price \$24,995**

Double Over Double Bunks,  
Slide-Out



#069835

MSRP  
**\$53,889**

**2023 SALEM 27RE**

**Price \$32,995**

Factory New, BLOW OUT, 2 Slides, Rear Living



#091507

MSRP  
**\$52,016**

**2023 SALEM HEMISPHERE HYPER-LYTE 22RKHL**

**Price \$33,995**

Factory New, BLOW OUT, Large Slide, Top Of The Line



#069831

MSRP  
**\$55,422**

**2023 SALEM 36VBDS**

**Price \$33,995**

Factory New, BLOW OUT, 2 Slides, Destination Model



#015300

**2021 CHEROKEE WOLF PUP 16TS**

**Price \$11,995**

Rear Dinette, Light Weight Easy To Tow

# WANT BIG DEER?

ATTENTION LANDOWNERS WITHIN 30 MILES OF GREEN CITY, MISSOURI



Roeslein Alternative Energy will pay an excellent per-acre rate to lease row crop & hay ground to build a diverse prairie for a renewable energy project.



TO LEARN MORE, CALL OR EMAIL STEVE MOWRY  
(314) 270-8876 OR SMOWRY@ROESLEINAE.COM





# KIRKSVILLE! POWERSPORTS!



**Northeast Missouri's  
New ARGO Dealer!**

**Now thru Dec. All 2024 models of ATV'S,  
Side X Sides and 6 and 8 wheel Amphibious  
models Sell with a 4 year Ltd. Warranty!**



**LIKE THIS!  
2024 ARGO  
Xplorer 700 EPS**

PRICED TO SELL AT JUST  
**\$7,850**



**OR LIKE  
THIS!**

**2024 ARGO FRONTIER 650  
8X8 AMPHIBIOUS MODEL**

PRICED TO SELL AT JUST  
**\$16,500**

**SO STOP IN TODAY OR CALL US AT**

**660-665-4628**

2808 N Baltimore St, Kirksville, MO 63501

**ANIMAL  
HOUSING  
HAY  
STORAGE  
& MUCH  
MORE**



**Skylight** FABRIC  
STRUCTURES

30697 COLONY AVE. • NEW CAMBRIA, MO 63558  
660-486-3250 • 833-482-8862

**WALK IN. GET BETTER.**



When a surprise illness or health concern can't wait for your regular doctor, you can count on Urgent Care at Complete Family Medicine for fast access to expert, compassionate care.

Urgent Care treats a variety of common illnesses such as sore throat, insect bites and stings, allergic reactions, poison ivy, strep throat, sinus infections, and other non-emergent health concerns.

**OPEN 8:00 AM - 8:00 PM  
7 DAYS A WEEK | 365 DAYS A YEAR**

**Urgent Care** 

 **Complete Family Medicine**

[cfmcares.com](http://cfmcares.com)



MONDAY THRU FRIDAY - 8AM TO 5PM

**NOVINGER**  
AUTO REPAIR & SALES  
SERVICE AND REPAIR AT A PRICE THAT'S FAIR!!!!

501 FRONT ST, NOVINGER, MO 63559  
CALL TODAY FOR YOUR APPOINTMENT OR ESTIMATE  
**660-488-5111**



**10%  
LABOR DISCOUNT**

**NOW THRU DECEMBER 31ST GET A  
FREE TIRE ROTATION  
AND WINTER CHECK OVER  
WITH A PURCHASE OF ONE OF  
OUR OIL CHANGE PACKAGES!!**

- FOR THE FOLLOWING:
- Seniors 65 and Older
  - Military
  - All School Employees
  - 1st Responders/Medical Professionals
  - Law Enforcement

**We are an automotive repair shop.  
WE WORK ON JUST ABOUT EVERYTHING.  
Brakes, tires, ball joints, tie rods, engine and transmission swaps plus a lot more!**

**CALL US FOR A TIRE QUOTE TODAY!**

**WE ARE ALSO A VEHICLE INSPECTION STATION!**

NEMO TRADER • Phone: 660.665.8500 • PO BOX 809 • 705 East LaHarpe St., Suite F, KIRKSVILLE, MO 63501



# Judd Motors

Call 660-457-3700  
Hwy 63 North, Lancaster, MO

**2006 Ford Focus**, ZX4, AT, Only 88K miles, Local Trade, GREAT CAR! Tan.....**\$3,995**

**2021 Chevy Traverse**, AWD, 6 cyl., 6500k miles, Charcoal, Like New.....**\$27,500**

**2020 Grand Caravan**, 1 Owner, power seats, backup camera, remote start, ONLY 50K miles, White, ONLY.....**\$19,900**

**2013 Chevy 1500** LTZ, 4x4, New tires, 116K, leather, silver, excellent, .....**\$15,900**

**Low pro steel trailer**, slide in ramps, 84 x 74 deck..... **NEW PRICE \$1,350**

**John Deere X740**, mower, diesel, only 740 hours, 60" 7 iron deck, excellent.....**\$7,995**

**2012 Case 580N**, Loader Backhoe, Turbo, 4WD, Cab with AC, Extendahoe, New 12 ply Tires, Only 1280 Hours, 1 owner, very clean, ..... only **\$61,000**

**2007-14 Chevy pickup** box, red, 8 ft, little rust..... only **\$1,000**

**2006 Chevy 2500HD**, 4x4, 6.0L, reg cab, 8 ft bed, 1 owner, no rust, only 97k, red, ... **LOWER PRICE \$16,250**

**Cumberland Building Dealer**

[www.juddmotors.com](http://www.juddmotors.com) | In Business Over 75 Years  
Curly and Kevin Judd

**NO SALE! NO FEE!**

## EVERSONVILLE PRODUCE CONSIGNMENT AUCTION

**Friday, November 29, 2024 10:00am**  
21565 Hwy KK • Chula, Mo 64635

**TRACTORS-MACHINERY**

- IH 1066 Tractor
- Unknown Hrs dual PTO
- Dual remote TA Delete
- IH Rotary HOE
- Wetherell 4 row cultivator
- 10' 3pt field cultivator
- 2 fuel tanks 500 gal 1,000 gal New
- 1 tuff ox tree puller
- cement mixer
- Hay-Straw

**FARM - MISC ITEMS**

- 2 8x12 open front buildings with anchors new
- Reznor Propane shop furnace
- 300 sq ft vinyl flooring
- Enterprise N22 meat grinder gear box
- Milk pail with parts
- 1 bundle 7x8" sucker rod
- 10 Free standing cattle panels
- 2 foldable cafeteria 12 ft tables
- 1 6ft round table with 5 chairs
- Several skids box tube cut offs

**MORE BY SALE DAY!!**

- large sq alfalfa hay, small sq straw
- round bale grass hay & straw

**ANY QUESTIONS CALL**  
**660-659-2016**

**Kirksville Area Chamber of Commerce**  
**November 2024** Executive Director: Marie Murphree

Monday - Friday  
8:00 AM - 5:00 PM  
PHONE: 660-665-3766

**Heritage House Realty, Inc.**

Heritage House Realty  
2805 N. Baltimore St  
Kirkville, MO 63501  
660-665-5638  
kirkvillerealestate.com

**KIRKSVILLE AREA Chamber OF COMMERCE**

**SHOP LOCAL**

**See an Elfie? TAKE A SELFIE!**

**State Farm**

**Audra Jackson Harris**  
2121 N. Baltimore St.  
Kirkville, MO 63501  
660-665-0700  
agentaudra.com

**Connections Bank**

Competitive rates & Hometown Service

2817 N. Baltimore  
Kirkville, MO  
(660) 665-7703  
www.connections.bank

**CENTURY 21**  
Lifetime Realty  
1605 S. Baltimore, Suite A  
Kirkville, MO 63501  
660-665-5678  
www.C21Kirkville.com

**COLTON'S Steak House & Grill**

Colton's Steak House & Grill  
1116 Country Club Dr.  
Kirkville, MO 63501  
660-665-6336  
coltonsteakhouses.com

**Selfie with an Elfie is back!**

Starting November 30th, you will find our little helpers in area stores. When you see one of our elves, take a selfie and send it to us via a special QR Code and be entered into our weekly drawings. Look on our Facebook page for participating businesses.

**Corporate Transparency Act Filing Due**

Under the Corporate Transparency Act, many companies in the United States must report information about their beneficial owners—the individuals who ultimately own or control the company—to the Financial Crimes Enforcement Network (FinCEN), a bureau of the U.S. Department of the Treasury.

**Filing is simple, secure, and free of charge.**

Your company may need to report information about its beneficial owners if it is: a corporation, a limited liability company (LLC), or was otherwise created in the United States by filing a document with a secretary of state or any similar office under the law of a state or Indian tribe; or a foreign company and was registered to do business in any U.S. state or Indian tribe by such a filing.

Reporting companies report beneficial ownership information electronically through FinCEN's website: www.fincen.gov/boi. The system provides a confirmation of receipt once a completed report is filed with FinCEN.

If your company was created or registered prior to January 1, 2024, you will have until January 1, 2025 to report BOI. If your company is created or registered in 2024, you must report BOI within 90 calendar days after receiving actual or public notice of your company's creation or registration is effective, whichever is earlier.

The above information and more information about the CTA and BOI can be found on fincen.org. The Small Business Development Center is here to help. If you need help filing a Beneficial Ownership Information Report or need more resources to determine whether or not you should a great place to start! Give us a call to schedule an appointment at 660-665-3348.

**Tire & Auto Owners:**  
**Joe Dimmitt & Kelly O'Haver**  
1102 N Green St  
Kirkville, MO  
660.665.9017

**MIDWEST GOLD & SILVER**  
Rare Coins and Fine Jewelry

111 E. Washington  
Kirkville, MO  
660-216-2346

**Bellacino's**  
Pizza & Grinders

**ORDER ONLINE**  
WWW.BELLACINOS.COM

GRINDERS • PIZZA • SALADS  
WINGS • FRIES • AND MORE!

**GET 10% OFF**  
WHEN YOU PRESENT THIS COUPON.

516 N BALTIMORE ST.  
660-665-7665



**WELCOME TO THE CHAMBER**  
Guiding Light Public Adjusters  
Begging to Stay

**THANK YOU FOR REAFFIRMING YOUR FAITH IN THE CHAMBER**

**Tri-County Electric**  
**Kirkville Brake and Muffler**  
**Grease Lightning**  
**Rotary Club of Kirkville Thousand Hills**  
**Hospice of Northeast Missouri**  
**Northeast Missouri AHEC**  
**Protech**

**Mid-America Orthopedic & Spine Institute**  
**Bill & Mary Kay Crnic**  
**Adair County Historical Society**  
**Cenveo**  
**H&R Block**  
**Flat Branch Home Loans**

**ON THE HORIZON**  
November 30 --Hometown Holidays  
December 2-Estate Planning for Small Business Owners -with Jessica Rooks  
December 5 - Ribbon Cutting at Begging to Stay  
December 6 - Ribbon Cutting Elara Caring  
December 12- Business After Hours at Alliant Bank

**RAIL**  
Rural Advocates for Independent Living INC.

1100 S. Jamison  
Kirkville, MO 63501  
660-627-7245 - Phone  
800-681-7245 - Toll Free  
660-665-9849 - Fax  
WWW.RAILKV.ORG



**Cattle**

For sale, 12 young fall pairs, Angus and Balancers. Neese Angus Rutledge, Mo. 641-344-4565.

**Equipment & Supplies**

AC D14 Narrow front, 14.9x26, good spin out rims, good sheet metal, rebuilt starter, carburetor. Call for details. \$1250.00. 217-257-1385

9500 JD combine, 3650 separator, 5322 hours, engine 925 hours, older head, 6 row corn head, homemade head-trailer. \$32,000.00. 660-988-3099.

JD 3010 gas 1963 narrow front w/rollomatic, 2 remotes, 540 PTO, 3 point, Firestone 23" 15.5x38, rear weights, joy stick controlled. JD 46A loader, 5' bucket, stored inside, original top link and operators manual, engine turns over perfectly, presently not running. \$3500. 217-257-1385.

**Hay/Feed/Seed**

5 x 5 1/2 mixed grass, net wrapped hay. Kirksville area. 816-830-0505.

Alfalfa hay, grass hay, wheat straw for sale. Big squares. Delivery available. 660-956-3420.

Large round net wrapped 5x6 bales Brome hay. Fertilized, baled dry in June, no rain. \$50.00, Macon, Mo. 660-415-6323.

Round bales 5' wide 67" inches tall mixed grass hay with alfalfa. Baled dry fertilized, lab tested, net wrapped with plastic surface wrap on top. Load evenings and weekends Watson Hay Sales. 660-341-4031

**Livestock**

Herd dispersal, approximately 55 head high quality commercial wool ewes. Breeds include Isle de France, Polypay - S.A.M.M. - Suffolk - all ages exposed to Isle de France - Polypay-S.A.M.M. rams. Some will have lambs by sale date. 4 rams also sale, 3-4 years old. Will be at Kirksville Livestock Market on Monday, December 2, 2024

**NEMOTRADER.NET**

**FOR SALE**  
AI Sired Angus Bulls,  
14 & 18 Months Old.  
Harold Trump  
660-341-5730

**Premium Metal Roofing**



**Metal Roofing Headquarters**

641-664-3990 • awmetal.net

**TIMBER MANAGEMENT**

*Purchasing Walnut, Oak, Maple & Other Species*

**WE PAY BEFORE WE CUT**

**BONDED & INSURED**

**641-895-8209**

Est. 1968

**AGRI-BUSINESS**

**Livestock**

Angus and Balancer bulls for sale. EPD's, Bred and handled to work for you. Neese Angus Rutledge, Mo. 641-344-4565.

Call us for all your advertising needs. 660-665-8500.

**MERCHANDISE**

**Sports Equipment**

Lazy Man deer blinds, Generation 2 Penthouse, \$1649.95. Fat Girl, Bow or Combo, \$1999.95. heindselmanfamilyfarms.com. 660-341-5692

**Miscellaneous**

Get a break on your taxes! Donate your car, truck, or SUV to assist the blind and visually impaired. Arrange a swift, no-cost vehicle pickup and secure a generous tax credit for 2025. Call Heritage for the Blind Today at 1-888-761-1316 today!

Need construction crew or someone to disassemble an old mobile home (trailer) and haul off the pieces. 660-956-0485. No answer leave a message on phone.

**FOR SALE:**  
VNS Cereal Rye, Triticale, & Oats. Germ tested & bagged in 2000lb totes. Discounts for trailer loads.  
**660-384-3468**

**Miscellaneous**

55 gallon steel drums, \$5.00 each; John Gingerich, 29366 State Hwy 3, LaPlata, Mo 63549.

For Sale: firewood; John Gingerich, 29366 State Hwy 3, LaPlata, Mo 63549.

**Wanted**

Need construction crew or someone to disassemble an old mobile home (trailer) and haul off the pieces. 660-956-0485. No answer leave a message on phone.

**Wood & Accessories**

Firewood for sale, \$100.00 a pickup load or \$300.00 a cord. Hardwood mix, delivery and stacking available. 660-342-9582.

**Pets & Supplies**

5 month old Boxer puppies, male and female available. Call or text 641-208-7546.

**Pets & Supplies**

Our Persians are looking for forever homes where they will be cherished family members. Rehoming fee applies. Please call/text 660-292-1660 or 660-988-5342

**REAL ESTATE RENTALS**

**Wanted**

Three generation family farm looking for tillable farm ground or pasture ground for rent. Please call 573-721-3260

**REAL ESTATE SALES**

**Acres & Lots-Sales**

Prime hunting land for sale, 50-60 acres in Knox County, Missouri. 660-342-0143.

**Mobile Homes For Sale**

TINY HOMES - Missouri franchise 573-881-7965.

**Connie's MOBILE HOME TRANSPORT**

*We offer the following...*  
Break Downs • Transport • Set up • Anchoring

**Call Rich today! 573-881-7483**

**WE GOT YOUR NEEDS COVERED!**

**FARM TARPS TRUCK TARPS HOOP BUILDING COVERS**

**Troyer TARP MFG.**

**660-486-3301**

**20264 STATE HWY. VV • ETHEL, MO 63539**

**LANCASTER LUMBER INC.**

**Lancaster, MO.**

**1-800-424-5071**

**LAN-DOW BUILDINGS**

[www.lancasterlumber.com](http://www.lancasterlumber.com)

**Golden Grain Bins-Winter Discount**

Grain Bins	Floors w/12" Supp. & Flashing
18"x18' 4,195bu. \$ 5,179	18'.....\$1,446 30'.....\$ 4,035
27"x21' 11,265bu. \$10,396	21'.....\$1,977 36'.....\$ 5,748
42"x24' 32,245bu. \$24,232	27'.....\$3,297 42'.....\$ 7,827

**Golden Grain**

**GMLS Industries, Inc.**  
PH: 660-699-2179 or 620-983-2136  
[www.gmlsindustries.com](http://www.gmlsindustries.com)

**WATSON -HAY SALES-**

**5' WIDE 67" TALL BIG ROUND BALES**

**WE BE AT THE LIVESTOCK SYMPOSIUM DECEMBER 6 - 7 HOPE TO SEE YOU THERE!**

**ALL HAY NET WRAPPED FERTILIZED AND LAB TESTED!**

- 1st cutting mixed grass hay with alfalfa ..... **221 BALES**
- 1st cutting mixed grass hay ..... **106 BALES**
- New seeding hay with oats ..... **65 BALES**
- Will have a 2nd cutting hay.

**-660-341-4031-**

**TO SETTLE THE Estate of Garry Lee Hoyt BY SEALED BID THROUGH DEC 11, 2024:**

2017 Dodge Grand Caravan with 63300 miles, sold AS IS / WHERE IS Van starts and runs, not available for test drive, newer battery. Van can be inspected at Judd Motors, Hwy 63 N, Lancaster, MO

**Phone 660-457-3700**  
(No phone bids accepted)  
**M-F 9:00-4:00**  
**SAT 9:00-2:00**

Winning bidder will be notified by Schuyler Co Administrator on Dec 12, 2024

*Payment in full with cash/cashiers check made to the estate before removal*

*Kirksville, Missouri*

**KIRKSVILLE LIVESTOCK LLC**

24295 Benton Road \* P O Box 242 \* Kirksville, MO 63501  
[www.kirksvillelivestock.com](http://www.kirksvillelivestock.com)

**NORTH CENTRAL MISSOURI SHOW-ME-SELECT BRED HEIFER SALE**  
FRIDAY, DECEMBER 13, 2024 \* 6:30 P.M.  
-LISTINGS-

- Galaxy Beef - 40 head composed of...
- 5 registered Angus heifers,
- 5 commercial Black Angus heifers,
- 25 Red Angus heifers
- 5 CharX heifers
- David Hill - 9 BBWF and 1 RWF of...
- Bennett Farms - 18 registered Angus heifers
- David Clark - 25 Angus an AngusX heifers
- Daniel Smith - 5 AngusX heifers
- Jordan Deterding - 20 BBWF SimAngusX heifers

Heifers have a complete breeding soundness evaluation, pelvic measured, tract scored, evaluated for body condition and weight, and are free of blemishes. Heifers are bred to bulls requiring strict calving ease EPDs A strict immunization protocol is required, including official Brucellosis calthood vaccination. Heifers will calve from late January to April. Many heifers are synchronized for a short calving window

For more info: Zac Erwin, SMS Regional Coordinator, 660-665-9866  
Chuck Ambrosia, Kirksville Livestock, Barn Phone 660-665-9999 • Cell Phone 660-342-3530

We are open on Sunday to Receive Your Livestock "Your Business is Very Much Appreciated" "Proud to Serve Area Livestock Producers" For more information or Someone to Phone for information:  
Patty Foster, Office Manager - 660-665-9804  
Chuck Ambrosia - 660-342-3530 - Luke West - 620-215-5770  
Mark Herbold - 515-720-8667 - Al Ashmead - 660-216-8730  
Doug Fleschman - 660-626-7148 - Daniel Smith - 660-341-8396  
Jeremy Jarman - 660-341-9879 - Caleb Randolph - 641-919-8539  
Karol Kirkpatrick - 641-777-3403

The meeting Place for Buyers and Sellers!!

**NEMO Trader**

**660-665-8500 or email: sales@nemotrader.net**

**SHOP LOCAL - BUY LOCAL - ENJOY LOCAL**

**BUY LOCAL**  
Live in your community





**C&C AG**  
LLC

**CALL FOR PRICING**

**NEW LOCATION**

28637 US HWY 136 UNIONVILLE, MO.

**641-895-4107**



**Mobile Homes For Sale**

40 YEARS THIS YEAR - we have to be something right. Call for quote or any house new or used, double and single. 573-657-2176. amegamobilehomes.com

WE GOT IT - let us bid your mobile home purchase, new and used. 573-499-9993. columbiadiscounthomes.com.

I BUY...used mobile homes. Call or text 573-338-6250 or email Greg S. CDH @outlook.com.

TRIPLE WIDE - moving stock, awesome price. 573-657-7040. chateauhomes.net

**NEMOTRADER.NET**

**SERVICES**

**Home Services**

We Buy Houses for Cash AS IS! No repairs. No fuss. Any condition. Easy three step process: Call, get cash offer and get paid. Get your fair cash offer today by calling Liz Buys Houses: 1-855-273-9002

**ANGUS BULLS FOR SALE**

**Coon Angus Ranch**  
Outstanding selection of 14 month old bulls  
1318 Shelby 169, Bethel, MO 63434  
Russell 660-341-2705  
Susan 660-341-5192  
ruscatsol@gmail.com  
www.coonangusranch.com

**The Ultimate Wood Heat.**

**CLASSIC EDGE**  
TITANIUM HDX  
Outdoor Wood Furnace

- **More Comfort** - Thermostatically controlled wood heat.
- **Peace of Mind** - Keep the fire outside and eliminate the dangers associated with indoor wood heating.
- **Save Money** - Wood is a renewable, inexpensive and often free energy source.

**Campen Heating & Air**  
Division of Kraus & Sons Inc.  
Canton, MO 63435  
573-288-8966  
CentralBoiler.com



**Santa Day**

**SATURDAY, DEC 7**

**9 A.M. - 12 P.M.**

**20% OFF**

**Toys & Licensed Merchandise**

**DEC 7 - 14**

**HWY 63 NORTH  
KIRKSVILLE, MO 63501  
660-665-1500**

**SNPartners.com**

NEMO TRADER • Advertise with us TODAY! • Phone: 660.665.8500 • PO BOX 809 • 705 East LaHarpe St., Suite F, KIRKSVILLE, MO 63501

**Batterson RED ANGUS**

**YEARLING AND AGED BULLS READY FOR FALL BREEDING**

*Available Private Treaty*

**CONTACT JASON BATTERSON: 641-777-4383**

FOR MORE INFO OR TO VIEW AT THE FARM

**VICTORY**  
Metals & Recycling  
KIRKSVILLE, MO  
660-665-8000

For current scrap prices call or visit our **Facebook Page** [victorymetalsrecycling.com](http://victorymetalsrecycling.com)

★ **METAL RECYCLING**  
RECYCLE YOUR SCRAP METAL WITH US! WE PAY CASH FOR: COPPER, ALUMINUM, STEEL, STAINLESS STEEL, APPLIANCES, E-SCRAP, BRASS, LEAD, RADIATORS, ALTERNATORS, BATTERIES, STARTERS, ELECTRIC MOTORS, APPLIANCES, & VEHICLES (TITLE & ID REQUIRED).

★ **ROLL-OFF CONTAINER**  
10-20-30-40 CUBIC YARD DUMPSTERS

**3602 INDUSTRIAL RD. • KIRKSVILLE, MO 63501**  
DJANESVMR@GMAIL.COM  
**VICTORYMETALSRECYCLING.COM**



**A CWD Check Pint & Share The Harvest Partner**  
**Excluding Check Point Opening Weekend of Rifle Season**



# DEER PROCESSING

**SUMMER SAUSAGE**  
**SNACK STICK**  
**JERKY**



- Vacuum Seal
- Cure & Smoke

**BEEK & PORK AVAILABLE**  
**\* Whole \* 1/2 \* 1/4 \***

**YODER'S PROCESSING**  
**PORK - DEER - BEEF**  
**Quality Cuts Plus**

*Striving for Quality Performance & Cleanliness*  
 13736 Beechnut Street  
 Ethel, MO 63539  
**660-486-3221**  
**Closed Sundays**

**KEIM LUMBER COMPANY LLC**

**COMPETITIVE PRICES • FREE ESTIMATES**

- COMPLETE BUILDING PACKAGES
- WINDOWS AND DOORS
- INSULATION • DRYWALL
- DELIVERY

13625 St. Hwy 3 LaPlata, MO

**fb farmbank**



Green City 660-951-8430 | Milan 660-951-8432 | Kirksville 660-951-8431  
[www.farmbank.com](http://www.farmbank.com)



**Heartstring pulling... singing, dancing and comedy!**

102 N Rubey St  
 Macon, MO  
 660-385-2924



**"TIS' THE SEASON"**

A Maples Rep Theatre Holiday Celebration

**Dec 4 - Dec 14**

## Central Metals Recycling LLC



**Buyers of Ferrous and Non-Ferrous Metals**

**We Pay More \$\$\$, Call For Your Best Pricing Today!!**

11923 Hwy. 54 Mexico, MO 573-581-0336  
 1601 N. 30th Quincy, IL 217-214-7649  
 1175 Hwy. 96 Hamilton, IL 217-847-3191

Let us help you with all your advertising needs. Don't know what to say? Call us we can help! 660-665-8500.

**HAVE A PET OR PUPPIES TO SELL?** Call us. You can even pay over the phone. 660-665-8500.

## ATTENTION LAND OWNERS!!

**Buyer of standing timber**  
**Paying Cash Upfront!**

- Buy/Cut Logs
- Certified
- Bonded
- Insured



**WE HAVE SEMI LOADS OF FIRE WOOD LOGS FOR SALE**

**Tri State Timber L.L.C.**  
 353 1/2 Grand Ave. • Memphis, Mo 63555  
 660-341-4921 • 660-465-2975

Please place your classified ads on the NEMO website. Our web address is [nemotrader.net](http://nemotrader.net)

Have items to sell? Have too much stuff? Let us help you get the most for it! Call 660-665-8500.



**William Matthew Middle School**  
 1515 S Cottage Grove  
**Kirksville, MO**

**Friday, December 6**  
**4 to 9 p.m.**

**Saturday, December 7**  
**8 am to 4 pm**

**FRIDAY NIGHT KEYNOTE SPEAKER**

**Cassandra Fish**

**Cattle Market Outlook: How the Industry Has Changed**

Cassandra is a thirty-year professional in the livestock and futures industry. Her daily column, **The Beef**, is read and relied on by thousands of industry professionals. Raised on a third-generation Missouri farm, she has always been a part of the agriculture industry.



### Below are a few of our Saturday featured speakers



**Jim Gerrish**  
 Grazing Expert  
 Idaho



**Ken McNabb**  
 Horse Clinician and Trainer,  
 Wyoming



**Ron Hanson**  
 Professor Emeritus,  
 University of Nebraska



**Dr. Craig Payne**  
 MU Director of Veterinary Medicine



**Richard Winters**  
 Cow Horse Trainer,  
 Texas



**Linda Coffey**  
 Livestock Specialist  
 ATTRA, Arkansas



**Eric Bailey**  
 MU Extension State Beef Specialist



**Mike Harbour**  
 Lamb and goat producer,  
 Texas



**Dr. Jamie Courter**  
 MU Extension State Beef Genetics Specialist



**Rusty Lee**  
 MU Extension Agronomy Specialist



**John Holman**  
 Stock dog trainer,  
 Nebraska



**Rachel Hopkins**  
 MU Extension Agribusiness Specialist

- It's all FREE! No cost to attend!
- No registration needed!
- FREE Trade Show! Free meals!



Visit the MU School of Medicine Shelden Clinical Simulation Van



**Dance With Opportunity Missouri FFA State Officers**  
 Andi Belt President  
 Mikaela Rojas 1st Vice President



Find complete program details at [missourilivestock.com](http://missourilivestock.com) or call 660-665-9866



**CYBER DEAL**

# 1 GIG INTERNET

only

**\$29.95\***  
/mo.

\*For 3 months \$69.95/mo months 4-12 with AutoPay and Paperless billing. Reg Rate \$85/mo.

**Limited time offer. Act fast!**



# /Sparklight®

Always working for you.

Call 1.855.692.4116  
or visit [Sparklight.com/internet](https://Sparklight.com/internet)

\*Promotional rates include discount for Auto Pay with checking/savings account or debit card plus paperless billing. 1000 Mbps download x 50 Mbps upload Internet service is \$29.95/mo. for months 1-3, \$69.95/mo. for months 4-12. Regular rate \$85/mo. after 12 months and is subject to change at any time. Includes unlimited data; however, speeds may slow if data usage surpasses 5 terabytes. Equipment, taxes, surcharges and fees are not included. Customers are required to lease or purchase an approved modem capable of DOCSIS 3.1 in order to receive the internet services listed. Modem with eero Pro 6E lease fee is \$14.99/mo. All services are not available in all areas. Offer available to new customers only. Restrictions apply. Call for details.





# Scotty's Semi-Annual Equipment Consignment Auction



**Saturday, December 7, 2024 at 10 am**  
**Multiple Consignors**  
**ALL ITEMS MUST BE CHECKED IN BEFORE**  
**WEDNESDAY, DECEMBER 4TH AT 3 PM**

**573-356-4405**  
**Auctioneer: Scott Kuntz**  
**SEE MORE PHOTOS ON SCOTTY'S WEBSITE**  
**WWW.SCOTTYSAUCTIONSERVICE.COM**

**28251 US Highway 63 North, Macon MO.**

**Direction:** From US Highway 36 travel approximately 2 miles North of Macon to Scotty's Auction Barn and Event Center on the West side of the highway. Watch for signs the day of the sale.

**CONSIGNED ITEMS:** DoLittle 16 foot enclosed trailer; 2004 GMC box truck (cube van) no a/c; 2006 Scion XB; 18' folding disc; 10' pull type disc; 5' 3 point disc; 6' 3 point cultivator; Continental 4000 pound shop hoist; wagon running gear; 7' 3 point blade; 3 point 3 bottom plow; 2 section drag harrow; John Deere 4020 tractor; IH 650 manure spreader; Vermeer 10 wheel rake; Vermeer 605F round baler; Bush Hog 10' brush cutter;

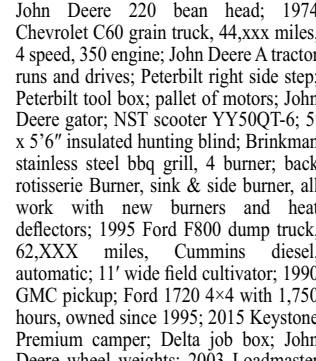
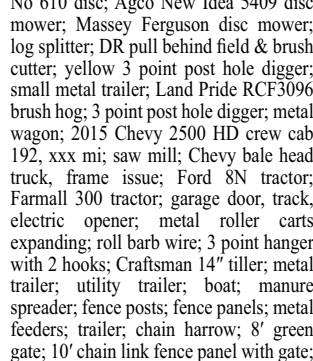
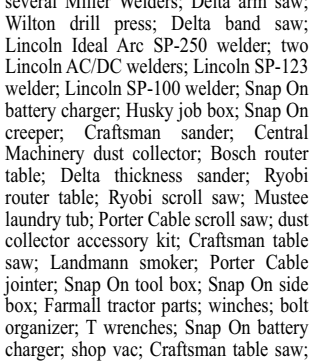
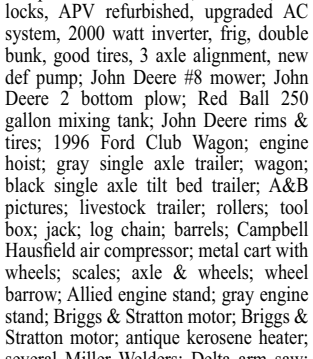
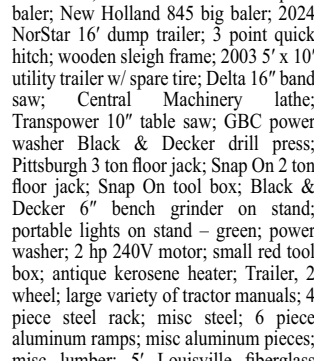
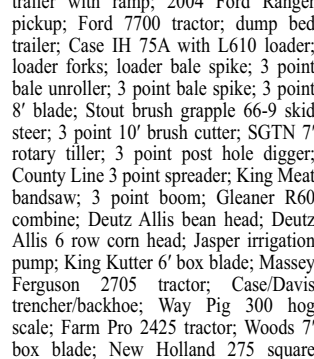
roller tables; 10' garage door with opener; Metal fence braces & wood posts; PTO shaft; sailboat; 2003 Ford Sport Trac, needs thermostat & blower motor; new clutch, new radiator; motor swapped (current motor has 80,xxx miles on it); transmission has 171,xxx miles on it; 1984 Honda Goldwing, new battery, new front shocks; IH 1466 tractor; White 18' folding disc; sawmill horizontal saw; Yardman electric log splitter; harrow, pull type 4 section; Hesston 1320 hay bine; Kuhn 2022, 2 basket hay tedder; Massey Ferguson manure spreader; 1979 Imperial 898, cracked block; 1976 18' flat bottom boat, motor, trailer; 16' flatbed tilt trailer with dovetail; Kioti LK 3054 tractor with loader; Land Pride 4' tiller; 2004 Arctic Cat 4x4 4 wheeler; 5' x 10' pull type trailer with ramp; 2004 Ford Ranger pickup; Ford 7700 tractor; dump bed trailer; Case IH 75A with L610 loader; loader forks; loader bale spike; 3 point 8' blade; Stout brush grapple 66-9 skid steer; 3 point 10' brush cutter; SGTN 7' rotary tiller; 3 point post hole digger; County Line 3 point spreader; King Meat bandsaw; 3 point boom; Gleaner R60 combine; Deutz Allis bean head; Deutz Allis 6 row corn head; Jasper irrigation pump; King Kutter 6' box blade; Massey Ferguson 2705 tractor; Case/Davis trencher/backhoe; Way Pig 300 hog scale; Farm Pro 2425 tractor; Woods 7' box blade; New Holland 275 square baler; New Holland 845 big baler; 2024 NorStar 16' dump trailer; 3 point quick hitch; wooden sleigh frame; 2003 5' x 10' utility trailer w/ spare tire; Delta 16" band saw; Central Machinery lathe; Transpower 10" table saw; GBC power washer Black & Decker drill press; Pittsburgh 3 ton floor jack; Snap On 2 ton floor jack; Snap On tool box; Black & Decker 6" bench grinder on stand; portable lights on stand - green; power washer; 2 hp 240V motor; small red tool box; antique kerosene heater; Trailer, 2 wheel; large variety of tractor manuals; 4 piece steel rack; misc steel; 6 piece aluminum ramps; misc aluminum pieces; misc lumber; 5' Louisville fiberglass

ladder; 4' Werner fiberglass ladder; aluminum ladder or wooden step ladder; wooden work bench; black fiberglass truck top; hand Tools; Yellow storage cabinet - Flammable; misc tools; 15 hedge posts; Husqvarna 42" riding mower; Car trailer, 20 foot; 3 point 5' blade; Land pride 3 point post hole digger; Land pride RTA1250 58" 3 point tiller; Kubota L2501 with loader, 200 hours; Dewalt miter saw; Woods 5' 3 point brush hog; tool box; metal detector; Farmstar 5' box blade; 3 point 6' blade; Gill 7' rock rake; creep feeder; red two wheel wagon; yellow excavator bucket; black excavator bucket; pallet of IH parts; John Deere 7700 combine w/ John Deere 16" bean head; two 500 gallon fuel tanks; two 1,000 gallon fuel tanks; 2017 Western Star tractor trailer, DD15 engine, 12 speed automatic, 836,xxx miles, diff locks, APV refurbished, upgraded AC system, 2000 watt inverter, frig, double bunk, good tires, 3 axle alignment, new def pump; John Deere #8 mower; John Deere 2 bottom plow; Red Ball 250 gallon mixing tank; John Deere rims & tires; 1996 Ford Club Wagon; engine hoist; gray single axle trailer; wagon; black single axle tilt bed trailer; A&B pictures; livestock trailer; rollers; tool box; jack; log chain; barrels; Campbell Hausfield air compressor; metal cart with wheels; scales; axle & wheels; wheel barrow; Allied engine stand; gray engine stand; Briggs & Stratton motor; Briggs & Stratton motor; antique kerosene heater; several Miller Welders; Delta arm saw; Wilton drill press; Delta band saw; Lincoln Ideal Arc SP-250 welder; two Lincoln AC/DC welders; Lincoln SP-123 welder; Lincoln SP-100 welder; Snap On battery charger; Husky job box; Snap On creeper; Craftsman sander; Central Machinery dust collector; Bosch router table; Delta thickness sander; Ryobi router table; Ryobi scroll saw; Mustee laundry tub; Porter Cable scroll saw; dust collector accessory kit; Craftsman table saw; Landmann smoker; Porter Cable jointer; Snap On tool box; Snap On side box; Farmall tractor parts; winches; bolt organizer; T wrenches; Snap On battery charger; shop vac; Craftsman table saw; hard pressure gauge; small table saw; horizontal band saw; bench grinder;

Century welder; black chest with tools; winch; eagle weather vane; 3' bear trap; Case sign; lightning rod balls; cant hook; tool pouch; Stop sign; grill pellets; little plow; Sinclair sign; electric extension cord; miscellaneous hardware; Kwikway valve grinder; Snap On coolant exchanger; Master cool AC machine; Hi Rise transmission jacks; Snap On load tester; bead breaker; engine stands; Rouge Fabrication pipe bender on metal table; Miller Matic 211 welder; Central Machinery bench grinder; bottle jack; big industrial bench grinder; metal break; small engine cabinet; metal cabinets; torch cart; Dayton drill press; Big Industrial bench grinder; Iron Worker 50 ton metal shear; Delta belt sander; Grizzly spindle sander; Grizzly drafting table; Delta jointer; Shop Fox shaper; Delta dust collector; lockers; Milwaukee shop vacs; Powermatic dovetail machine; chalkboard; Powermatic shaper; Grizzly shaper; locker; Rhino SE15-4A batwing brush hog; Kubota M7040 D tractor with loader; Kubota M9540D tractor with loader; Land Pride RC2512 bat wing brush hog; Rhino 10 wheel hay rake; Vermeer 605 series K round baler; John Deere X540 mower; yard broom; 2 bottom plow; portable air compressor; air compressor; 10' blade; hydraulic 8' 6 way blade; blue sickle bar mower; Bunton walk behind mower; 2 row planter; dirt scoop; King Kutter brush hog; 3 Point bale spear w/ hydraulic rotator; Keweenaw No 610 disc; Agco New Idea 5409 disc mower; Massey Ferguson disc mower; log splitter; DR pull behind field & brush cutter; yellow 3 point post hole digger; small metal trailer; Land Pride RCF3096 brush hog; 3 point post hole digger; metal wagon; 2015 Chevy 2500 HD crew cab 192, xxx mi; saw mill; Chevy bale head truck, frame issue; Ford 8N tractor; Farmall 300 tractor; garage door, track, electric opener; metal roller carts expanding; roll bar wire; 3 point hanger with 2 hooks; Craftsman 14" tiller; metal trailer; utility trailer; boat; manure spreader; fence posts; fence panels; metal feeders; trailer; chain harrow; 8' green gate; 10' chain link fence panel with gate; Powder River chute/gates; Champion drill press; band saw; metal work table; drill press; out off saw; drill press; lathe;

grinders; spreaders and chains; misc parts; 2 wheel dolly; Gravely ZT 60 HD mower; 20' combine head wagon; receiver hitch; Kewanee cultipacker; fast hitch; New Holland manure spreader; John Deere 6400 tractor; Blencoe DT8700 chisel plow; electric extension cord; miscellaneous hardware; Kwikway valve grinder; Snap On coolant exchange; Master cool AC machine; Hi Rise transmission jack; Snap On load tester; bead breaker; engine stand; Rouge Fabrication pipe bender on metal table; Miller Matic 211 welder; Central Machinery bench grinder; bottle jack; big industrial bench grinder; metal break; small engine cabinet; metal cabinet; torch cart; Dayton drill press; Big Industrial bench grinder; Iron Worker 50 ton metal shear; Delta belt sander; Grizzly spindle sander; Grizzly drafting table; Delta jointer; Shop Fox shaper; Delta dust collector; lockers; Milwaukee shop vac; Powermatic dovetail machine; chalkboard; Powermatic shaper; Grizzly shaper; locker; Snap On 84" purple tool box; Gallagher solar fencer; Falcon power welder/air comp/gen; 2005 Harley Davidson ultra classic, new battery; Cam tension upgrade; parade lighting; motorcycle trailer; motorcycle accessories; Millermatic 252 mig welder; Ford 6' 3 point blade; stock rack for pickup; Phoenix; 3 point spray tank rack; rims & tires for tractor; steel rims; rake teeth; wheeled metal job box; cultivator; John Deere 220 bean head; 1974 Chevrolet C60 grain truck, 44,xxx miles, 4 speed, 350 engine; John Deere A tractor runs and drives; Peterbilt right side step; Peterbilt tool box; pallet of motors; John Deere gator; NST scooter YY50QT-6; 5' x 5'6" insulated hunting blind; Brinkman stainless steel bbq grill, 4 burner; back rotisserie burner, sink & side burner, all work with new burners and heat deflectors; 1995 Ford F800 dump truck, 62,XXX miles, Cummins diesel, automatic; 11' wide field cultivator; 1990 GMC pickup; Ford 1720 4x4 with 1,750 hours, owned since 1995; 2015 Keystone Premium camper; Delta job box; John Deere wheel weights; 2003 Loadmaster

**MORE ITEMS HAVE BEEN CONSIGNED AND WILL BE ADDED!**



**DOWN PAYMENT:** 10% of the contract purchase price will be due upon acceptance of the Sales Contract. Personal or Cashier's Checks will be accepted. This is "AS IS, WHERE IS" and is non-refundable. **CLOSING:** Closing shall be within 30 days of the auction date.

# MERIT AUCTIONS MACHINERY CONSIGNMENT AUCTION

LOCATION: 5909 AVENUE O | FT. MADISON, IA

**WEDNESDAY, DECEMBER 4, 2024 @ 9:00 AM CST**

**LIVE ONSITE WITH ONLINE BIDDING!**

			<b>TRACTORS   COMBINES &amp; HEADS</b> <b>LATE MODEL FARM EQUIPMENT</b> <b>TRUCKS &amp; TRAILERS   CONSTRUCTION</b> <b>EQUIPMENT   ATTACHMENTS &amp; MUCH MORE!</b>	

**BID NOW** Online Bidding Provided By **Equipment**  
**ONLINE BIDDING PROVIDED BY: proxibid**

**MERIT AUCTIONS** "Specializing in Farm Real Estate & Ag Equipment" (833) 273-9300 | www.MeritAuctions.com | 444.000611 **VISIT OUR WEBSITE FOR DETAILED LISTINGS & PHOTOS!**

**NEMO TRADER • Advertise with us TODAY! • Phone: 660.665.8500 • PO BOX 809 • 705 East LaHarpe St., Suite F, KIRKSVILLE, MO 63501**



**MAKE PLANS TO ATTEND!!**

# Cowboy N Cowgirl Black Friday 24 Weekend

**CHRISTMAS SHOPPING**  
Cowboy & Cowgirl Shopping Extravaganza

Christmas Shopping kickoff for cowboys n cowgirl, take a break from the typical Black Friday shopping & do it western style! Everything for horse, mule n rider on your list...new/used saddles, (various brands, disciplines & styles), handmade tack, pads, jewelry, handbags, wild rags, home decor & much more! Christmas shopping made fun n easy, at your convenience & leisure for the cowboy/cowgirl, bring your family n friends, Black Friday specials, refreshments n door prizes all weekend!

HOSTED by **ROCK RIDGE SADDLES & TACK**

**Friday Nov. 29th 9am to 9pm**  
**Saturday Nov. 30th 9am to 9pm**  
**Sunday Dec. 1st 10am to 4pm**

**Flower City Park Sesquicentennial Building**  
INDOOR & CLIMATE CONTROLLED

**700 N Breckenridge Ave, Palmyra MO**  
Cash, Check and Major Credit/Debit Cards Accepted

Visit our FB page   
**ROCK RIDGE SADDLE AND TRACK**  
or Visit our FB event page   
**COWBOY N COWGIRL BLACK FRIDAY 24 WEEKEND**  
for listing & updates!



733015at

Call us for all your advertising needs. 660-665-8500.

Call about our classified ad specials. 660-665-8500.

Call us for all your advertising needs. 660-665-8500.

## MACHINERY CONSIGNMENT AUCTION

Monday, December 2<sup>nd</sup>, 9 AM  
Western IL Fairgrounds - Griggsville, IL

Farm Machinery, Construction  
Livestock Equipment, Vehicles

**CALL WITH CONSIGNMENTS!**

 217-242-1665 | 217-491-6704  
**CURLESSAUCTION.COM**

**Lawn/Garden/Landscape**

New 3 pt. tillers, heavy duty, gear driven, 7' to 12' starting at \$4,150. 660-874-4455.

**There's a better way to get noticed.**  
Keep life simple. Take out an ad. 

## JUMPS & ROY AUCTION

A BRAND YOU CAN TRUST

**Tom Grant Estate**  
**Saturday Dec. 7, 2024 10 AM**  
308 NW 30<sup>th</sup> St. Trenton, MO

**AUCTIONEERS NOTE:** Due to the passing of Tom Grant the following will be sold at public auction. Something for everyone! Will run two rings. Real Estate to sell at 12:30, followed by Tractors & Equipment.



**REAL ESTATE:** 40 ac m/l of rolling cattle pasture/hunting ground, rural water, includes 1,474 sq. ft 3 BR 1900 circa farmhouse, 1 bath, eat-in kitchen w/ laundry/utility room, living room, geothermal heating/cooling system with, Detached garage/shop building, storage/woodshop building & open front livestock/machinery pole barn. Contact Auction Co. to Preview Property.







**PERSONAL PROPERTY:** Tractors & Small Farm Equipment, Utility Trailers, Tools and Shop Related, Car Port, Storage Shed, Trail Bike, Lawn & Garden, Furniture, Household, Antiques, Collectibles & Primitives.

**Photos and listing - [www.jumpsandroyauction.com](http://www.jumpsandroyauction.com)**  
Scott 660-359-1455 / Rustin 660-605-0860

73257at

# LIVE ON-SITE CONSIGNMENT AUCTION

**Saturday,**  
**Dec. 14, 2024**  
**Starts at 8:00 AM**  
**1 MILE WEST OF**  
**GALLATIN, MO ON HWY. 6,**  
**GALLATIN INDUSTRIAL PARK**



B&S Equipment Sales is a family-owned business, serving agricultural, construction and industrial customers since 2008. We pride ourselves in having a great selection of equipment. Customer service is a key part of our success, too. We're here to help you buy, sell or trade.




Please Note: Partial Listing - More to add next week or check online for the up-to-date listing. Expecting 1,300 pieces, many individual consignments, retirement, estates and sellouts. For more details, to view listings or to contact a B&S representative: [www.bandsequimentsales.com](http://www.bandsequimentsales.com) Office: 660-663-3363 Shay: 660-605-0839 Justin: 660-605-2346

**AgDirect**  
POWERED BY FARM CREDIT.

  **B and S Equipment Sales, LLC**  
**100 Industrial Parkway, Gallatin MO, 64640**  
Office: 660-663-3363 • Shay: 660-605-0839 • Justin: 660-605-2346  
**Online bidding available through [Equipmentfacts.com](http://Equipmentfacts.com)**



[BandSequimentsales.com](http://BandSequimentsales.com) GALLATIN | MISSOURI  
**BUY | SELL | TRADE | EVERY DAY** join us on facebook! 



**AUTOMATIC STANDBY GENERATORS**  
**WINTER STORMS DON'T CARE IF YOU ARE PREPARED... WE DO.**



**PCS ELECTRONICS**  
*Empowering people in times of need.*  
 3100 Brown Station Rd, Ste E  
 Columbia, MO 65202

**Sales, Service & Installation**  
**call 573-814-3131**

Certified factory trained technicians

728529CH

**Lawn/Garden/Landscape**

Want a greener lawn? TruGreen's your go-to for a tailored lawn care plan. Act now and get 50% off your first service with a purchase of an annual plan. Call us at 1-866-416-0207 to learn more

**Chat/Dirt/Gravel**

**DIRT WORK** All types of excavation, reclaiming overgrown fields, including CRP and WRP. Building site preparation, creating new trails and crossings, Food plot development and maintenance. Leveling and grading, wetland construction and maintenance. Pond and lake cleaning and construction. Call for quotes. 660-342-2701

**ABSOLUTE LAND AUCTION**  
**517.2+/- Acres - 7 Tracts**  
**Mercer County, MO**  
 Auction to be held at The Mercer County Fair Building 505 South Steward St. Princeton MO 64673  
**Tuesday, December 10th at 10:00 AM**



LandWatch.com  
 JumpsAndRoyAuction.com

**HomeLand Realty**  
**JUMPS & ROY AUCTION**  
 A BRAND YOU CAN TRUST

**Homeland Realty**  
 Lynn McCarter, Broker: 660.635.0181 tradesdirt@gmail.com  
 Dennis Gutshall, Agent: 660.635.0053 dennisgutshall@gmail.com  
**Jumps & Roy Auction**  
 Scott Roy: 660.359.1455  
 Rustin Jumps: 660.605.0860

731912in

**BE AN EARLY BIRD!** Place your ads before Monday and beat the rush!

Let us help you with all your advertising needs. Don't know what to say? Call us we can help! 660-665-8500.

**LOLLI LIVESTOCK MKT, INC.**  
**Tuesday, Dec 3 - 11am**  
**Special Pre-Conditioned Feeder Calf & Yearling Sale**

80 bbwf hfrs 700lbs (pot load)	33 bbwf str/hfrs 5-700lbs
220 bbwf str/hfrs 5-700lbs	30 bbwf str/hfrs 4-600lbs
200 bbwf str/hfrs 5-700lbs	30 bbwf str/hfrs 5-700lbs
100 bbwf str/hfrs 6-700lbs	30 bbwf str/hfrs 5-700lbs
90 bbwf str/hfrs 5-700lbs	30 bbwf str/hfrs 4-600lbs
80 bbwf str/hfrs 5-700lbs	20 bbwf str/hfrs 4-600lbs
60 bbwf str/hfrs 4-500lbs	20 bbwf str/hfrs 5-700lbs
50 bbwf str/hfrs 6-700lbs	15 bbwf str 650lbs
50 bbwf str 5-700lbs	15 bbwf str/hfrs 5-600lbs
45 bbwf str/hfrs 6-700lbs	12 bbwf str/hfrs 5-600lbs
43 bbwf str 5-650lbs	12 bbwf str/hfrs 5-600lbs
35 bbwf str/hfrs 4-600lbs	10 bbwf str/hfrs 5-600lbs

*This is a partial listing, watch our website or FB for updates.*

**Lolli Livestock Market, Inc.**  
 704 Main st \* Macon, MO \* 660-385-2516  
 Frankie 660-651-4040 \* Tim 660-651-3496 \* Joseph 660-346-9711  
 Jordan 660-346-0410 \* Cody 660-676-9392 **Cattle accepted on Sundays**  
 Follow Us On Face Book & www.lolliibros.com

733460in

**FIRST CLASS PROPERTIES**  
**455.2 ACRES**  
**Cattle & Horse Ranch**  
**Linn County - Linneus, Missouri**

**JT Ranch is a Well-Maintained 455.2 ± Acre Property in Northern Missouri's Rolling Green Hills**  
 This ranch is currently used for cattle and horses, it also has potential for row crop farming. The land includes a 15-paddock intensive grazing system, each about 30-acres with gates and automatic watering stations fed by six stocked ponds, designed to boost ROI without compromising grass quality. The ranch includes a 3-bedroom, 2.5-bath brick home with an attached garage and full basement, plus a range of additional facilities and improvements.



- 84 x 110 Equestrian Building
- 74 x 42 Shop
- Cattle Working Facilities (chute)
- 36 x 24 Stallions Facilities
- 36 x 12 Loafing Building
- 24 x 12 Loafing Shed
- 24 x 100 -3 sided Stables & Storage
- 120 x 61 Barn
- 54 x 40 Barn (loft)
- 40 x 40 Barn(attached 40 x 12 loading shed)
- 2 Superior Grain Storage Bins
- Multiple Utility Hook-ups
- 15 Interior Grazing Paddocks
- 6 Stocked Ponds
- Wildlife Habitat
- Riding Trails and More!

**BRICK RANCH HOME**  
 ■ 3 BR/2.5 BA ■ Attached Garage ■ Full Basement

**84 x 110 EQUESTRIAN BUILDING**

**This ranch is a rare treasure, offering everything for a top-tier livestock operation, equestrian facility, or simply a serene country lifestyle.**

Visit our website for a full description, photos and video: [firstclass-properties.com](http://firstclass-properties.com)

**First Class Properties & Auctions**  
 Jared Williams, Sales-Agent, 660-216-3722 ■ Mary Williams, Broker-Associate 660-734-0506

CALL 660-734-0506 TO SCHEDULE A PRIVATE SHOWING

**DEAN REMY ALBIA IA ONLINE AUCTION**  
**DECEMBER 1-7 2024**  
**REGISTER TO BID; DEMRYAUCTION.HIBID.COM**  
**1916 S 18TH (HWY 5) CENTERVILLE, IOWA**

Join us for a fantastic ONLINE ONLY auction. Dean Remy of Albia, Iowa is selling his collection of Antiques, Primitives and Collectibles that he and his wife had collected over many years. This is an opportunity for the buyer to find many unique pieces of history to add to your own collection. Selling several pieces of Vintage and Antique Furniture, 1940-1950s Coca-Cola Machine (works), Antique General Store Counter top with 3 bins, Antique Post Office Sort Shelf with lock boxes, Large collection of Vintage Aunt Jemima, Metal Lawn Jockey, Alcazar Gas Stove, Large Collection of Sleepy Eye Convention Mugs, Vintage Military clothes, Large collection of Albia, Iowa memorabilia, Blue Band Water Crook (from Albia Sale Barn), Large Amount of Vintage Flue Covers, Several CI Bottle Openers, CI Griswold Skillets, CI Ashtrays and miscellaneous CI pieces, several stone bowls, pitchers and other stoneware pieces, Crystal Wall Coffee Grinders and Wooden coffee grinders, Large lots of old books, newspapers, Life Magazines and postcards, Large amount of Vintage Prints framed and canvas, Lightning Rods and Glass Balls, Vintage Billiards Balls and billiards accessories, Antique Shaving Mirror Shelves, Antique Boot Display Rack, Antique Tools, Vintage Milk & Cottage Cheese Bottles, Large amount of Enamel Ware pieces, Several Antique Woven Baskets, Wooden Well Bucket, Several Oil Lamps, Wood Benches and Stools, Wood Spice Cabinets, Shoe Cobblers Bench with String Holders, Antique Victorian Wooden Bed Pillow Holder, Large Amount of Vintage Kitchenware, Iron Beds with rails, Wooden Tables, Wooden Chairs, Several Antique Displays for various items, American Flags, Antique Barber Doll, Vintage 3FT Tall Plastic Mickey Mouse Display, Antique Dolls, Stuffed Animals and Antique Wooden Children's Toy Furniture Pieces, 2 John Deere Pedal Tractors w/ Wagons, Wool Blankets, Art Deco Clocks, 2 Kit Kat Clocks, Chef Head clock, Dazey Churns; and so much more that's just too numerous to mention.

**AUCTION PREVIEW; DECEMBER 3rd & 5TH, 4:00-6:00 PM**

**DEMRY AUCTION, LLC**  
 1916 S 18th St. (Hwy 5 SOUTH) CENTERVILLE, IOWA  
 Janet Demry: 641 895 4310 and 641 856 6408  
 Tom Demry: 641 895 2508 • Kristy Demry: 641 895 2509  
 Randy Mulay: 641-436-1521 • Dalton Ott: 563-880-5626  
 Website: [www.Demryauction.com](http://www.Demryauction.com)

**JOHNSTON AUCTION & REAL ESTATE**  
**Spicer Estate Auction**  
**Real Estate & Household**  
**Sat., Dec. 7th, 2024**  
**10:00 am**

James L. Johnston, Broker  
 573-473-4904

**Location: 1128 Glenwood Ave., Moberly, MO**  
 5 Bedroom, 3 1/2 Baths, Living Area 2681 sq. ft., 2 car garage, patio, storage shed.

**OPEN HOUSE Wed., Dec. 4 - 4pm-6pm**  
 (or by appointment 573-473-4904)

Also selling household items.

visit website for details & pictures.

[jamesjohnstonauction.com](http://jamesjohnstonauction.com)

**McKenzie Bailey, Auctioneer • 660-888-8482**

**Have a smart phone or tablet?**  
 You can view current and past Nemo Trader issues online at [www.nemotrader.net](http://www.nemotrader.net)

**NEMO Trader**



**LAND FOR SALE**

- 160 +/- Acres
- 138 +/- Tillable
- Knox County, MO

**Ivy Cook**  
Listing Agent  
660-341-4414

**simply**  
real estate  
573-567-5500

**BLACK AND GOLD AUCTIONS**  
• ONE CALL SELLS IT ALL! •

**BUY & SELL TODAY!**

REAL ESTATE FARMS - LAND - HOMES    DOWNSIZING SENIOR TRANSITIONING    PERSONAL PROPERTY ESTATE AUCTIONS    GUNS - GEAR - AMMO

**BID NOW!** [BlackAndGoldAuctions.com](http://BlackAndGoldAuctions.com)

CONTACT US FOR MORE INFO@BLACKANDGOLDAUCTIONS.COM 573.445.7333

INFORMATION ON BUYING AND SELLING TODAY! 4801 I-70 DR SW COLUMBIA, MO 65203

NEMOTRADER.NET    NEMOTRADER.NET    NEMOTRADER.NET

# DEALER AND FARMER MACHINERY AUCTION

**FRIDAY, DECEMBER 20, 2024 • 10 AM**  
AUCTION LOCATION: WHEELER AUCTIONS PROPERTY  
111 BUCHANAN ST. CARTHAGE, IL 62321

**OFFERING LATE MODEL COMBINES, TRACTORS, SPRAYERS, PLANTERS, TILLAGE EQUIPMENT AND MUCH MUCH MORE**

Live on-site bidding with online bidding

WHEELER LIVE ONLINE BIDDING PLATFORM    **BID NOW** Online Bidding Provided By Equipmentfacts    **BID LIVE** Live Bidding Provided By proxibid

FOR MORE INFORMATION:  
Kirby Fecht | 217-248-2906  
Chris Butcher | 309-255-0123

**Wheeler AUCTIONS & REAL ESTATE**  
23101 HWY. 24, PARIS, MO 65275 | 660-327-5890  
WWW.WHEELERAUCTIONS.COM

Illinois Auction Firm License #444000408

**Chop Local Buy Local Enjoy Local**

CALL TODAY! 660-665-8500 [sales@nemotrader.net](mailto:sales@nemotrader.net)

**NEMO**  
Daily Express

**Construction-Services**

Olshan Foundation Solutions. Your trusted foundation repair experts since 1933. Foundation repair. Crawl space recovery. Basement waterproofing. Water management and more. Free evaluation. Limited time up to \$250 off foundation repair. Call Olshan 1-888-437-7797

**Health Care**

Portable Oxygen Concentrator May Be Covered by Medicare! Reclaim independence and mobility with the compact design and long-lasting battery of Inogen One. Free information kit! Call 844-299-5183

**Remodeling**

The bathroom of your dreams in as little as 1 day. Limited Time Offer - \$1000 off or No Payments and No Interest for 18 months for customers who qualify. BCI Bath & Shower. Many options available. Quality materials & professional installation. Senior & Military Discounts Available. Call Today! 1-866-460-1048

Safe Step. North America's #1 Walk-In Tub. Comprehensive lifetime warranty. Top-of-the-line installation and service. Now featuring our FREE shower package and \$1600 Off for a limited time! Call today! Financing available. Call Safe Step 1-833-732-0966

**Miscellaneous**

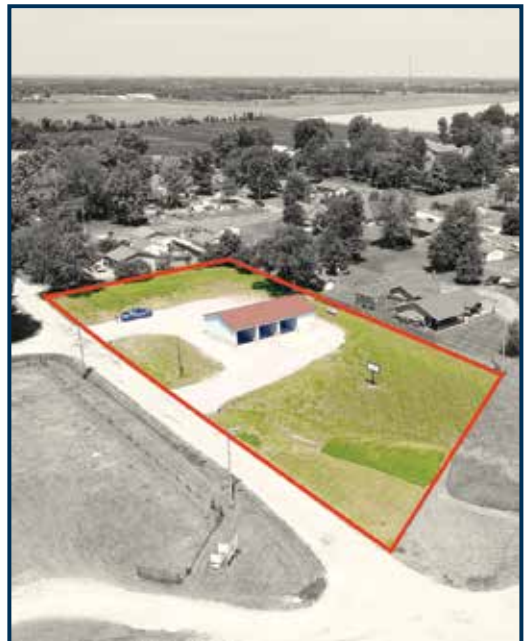
Consumer Cellular - the same reliable, nationwide coverage as the largest carriers. No long-term contract, no hidden fees and activation is free. All plans feature unlimited talk and text, starting at just \$20/month. For more information, call 1-844-211-0742

**United Country Real Estate Land Pros, LLC**

Schuyler County, MO **ONLINE ONLY AUCTION**

**CLOSING: FRIDAY NOVEMBER 29TH, 2024 AT 6PM • 100 E 10TH ST. QUEEN CITY MO 63561**

Introducing a prime real estate listing in Queen City, Missouri! This property features a modern 3-bay car wash, situated on a sprawling 1-acre lot along Highway 63 in the heart of Queen City. The car wash boasts two efficient manual bays that accept credit cards or cash, along with a third bay equipped with a vacuum and primed for an automatic wash setup. Additionally, there is ample space outside for a convenient truck wash expansion. This nearly brand-new car wash is less than a year old and already showing promising revenue growth. Don't miss out on this lucrative business opportunity! Contact the office at 660-465-2971 or visit our website at [www.weknowdirt.net](http://www.weknowdirt.net) to schedule a viewing.



**Terms:** 10% Due at closing of the auction, buyer and seller will enter in a real estate contract upon seller's confirmation of the sale. See website for full list of terms and conditions.

For more information please visit our website:  
**WEKNOWDIRT.NET**

Online Auction Powered By:  
**HiBid**

**AUCTION MANAGER:**  
Tanner Weaver 660-216-9774

**SELLERS: JAY AND JANITA ZEISSET**

[www.weknowdirt.net](http://www.weknowdirt.net) • 660-465-2971 • 19771 US HWY 136 MEMPHIS, MO 63555

**NEMOTRADER.NET**

**2014 Chevy Silverado**  
2500 HD, 4x4, WT, Regular cab, 6.0L, New 10 ply tires, tow, keyless. Has some scratches and bed dents. Rebuilt title, 143,000 miles, area trade.  
**\$12,700**

**2015 Chevy Silverado**  
1500 Crew Cab, WT, 4x4, 4.3L, windows & locks, New Tires, stainless steps, 122,000 miles, 1 owner.  
**\$14,500**

**MUST SEE!!**  
**2020 GMC Terrain SLT**, AWD, black leather heated seats and steering wheel, backup camera, remote start, collision alert, memory seats, dual climate, & much more, white frost, always been garaged, window sticker, 78,000 miles (local one owner).  
**\$19,900**

**Accelerators Performance & Auto**  
Since 1974  
Kahoka, MO  
660-727-3455  
Daryl's Cell  
217-257-1385



**Miscellaneous**

Prepare for power outages today with a Generac Home Standby Generator. Act now to receive a FREE 5-Year warranty with qualifying purchase. Call 1-866-686-8347 today to schedule a free quote. It's not just a generator. It's a power move.

Eliminate gutter cleaning forever! LeafFilter, the most advanced debris-blocking gutter protection. Schedule a FREE LeafFilter estimate today. 20% off Entire Purchase. Plus 10% Senior & Military Discounts. Call 1-844-713-4600

**NEMOTRADER.NET**

**TRANSPORTATION**

**Wanted**

We buy 8,000 cars a week. Sell your old, busted or junk car with no hoops, haggles or headaches. Sell your car to Peddle. Easy three step process. Instant offer. Free pickup. Fast payment. Call 1-844-582-9214

**Parts & Services**

New/used parts. Vehicles, farm, construction, semi's, motors, trannys. Body parts paint matching yours, warrantied/delivery. 800-807-9612

Pickup bed for 2011 Chevy 3500 dually with spray on bed liner. Call 641-208-7546.

**TRANSPORTATION**

**Trucks, 4x4's, SUV's**

2014 GMC Sierra 1500 Z-71, FWD, cab pearl white, fuel wheels, loaded, nice truck, 115,000 miles, \$23,000.00. 660-988-3099.

**AKC LAB PUPPIES**  
\$150 Males - Only 2 left!  
**LAY'S LABS**  
LABELLE, MO  
(660) 956-2482  
**NEMOTRADER.NET**



**Friday, November 29th**  
No Sale "Happy Thanksgiving"

**Friday, December 6th**  
Special Feeder Calf Sale

**Saturday, December 14th**  
Kevin Strange Bred Heifer Sale

To Consign For Any or All Sales or For Information Call:  
Owner - Kevin Strange • Cell: 660-341-9974  
Ryan Strange • Cell: 660-341-9721  
Sale Barn: 660-397-9999

**Field Reps:**

Bill Tom Hall 660-342-5420 Mike Bronestine 660-341-9965  
Jason Bichsel 660-216-0373 John Powell 660-341-1717

**McAfee Auction Service, LLC**  
375 S Johnson • Kahoka, MO  
660-727-3796  
www.mcafeeauctionservice.com

*Clark County, MO*  
**LAND AUCTION**  
**Thursday, December 12<sup>TH</sup> - 10 AM**

Sale conducted at the CARE Building located at 451 N. Vine St., Kahoka, MO

**41.5 ACRES/ 2 TRACTS**  
(Subject to Final Survey)

Productive Tillable Cropland  
Hunting/Recreational  
Lying in Sect 35, Twp. 64N, R8W

**THE FAMILY OF JOHN BERGMAN, SELLERS**

**Wiss & Wiss Equipment Inc.**

2016 John Deere 5100M  
1970 Hours, w/loader & bucket  
\$65,000

MASSEY FERGUSON 4710  
399.3 Hours, Loader, Bucket, 2 Rear Remotes, - \$65,000

GREAT PLAINS 2400TM  
Turbo Max - \$69,500

GREAT PLAINS 3000TM  
Turbo Max - \$67,500

2010 CASE 430  
Tire Machine  
\$28,500

RTV-1100X Camo  
New Tires, Good Condition  
\$16,500

Bobcat T-650  
Call For More Information & Price

For more information call Jerry Redding - 660-727-3374  
Wiss & Wiss Equipment, Inc., 155 E. Chestnut St. Kahoka, Mo

**McAfee Auction Service, LLC**  
375 S Johnson • Kahoka, MO  
660-727-3796  
www.mcafeeauctionservice.com

*Clark County, MO*  
**LAND AUCTION**  
**Thursday, December 19<sup>TH</sup> - 10 AM**

Sale conducted at the CARE Building located at 451 N. Vine St., Kahoka, MO

**163 ACRES/ 2 TRACTS**

PRODUCTIVE TILLABLE CROPLAND  
LYING IN SECT 4 & 9, TWP. 65N, R9W  
SUBJECT TO FINAL SURVEY

**TONY SMITH & TRACY SMITH, SELLERS**

**NEMO Trader Classified COUPON**  
**2 Classified Ads for just \$6.00**

20 cents per word over 20 words  
Must be Mailed in or brought in along with payment.  
Picture Ads Not Included with Coupon!

**Choose Classification**

Agri-Business     Real Estate Rentals     Yard Sales  
 Announcements     Real Estate Sales     Auctions & Estate Sales  
 Employment     Recreation  
 Financial     Services  
 Merchandise     Transportation

**Ad No. 1 Each Box Represents a Word (20 words or less)**


**Ad No. 2 Each Box Represents a Word (20 words or less)**


Name \_\_\_\_\_  
Mailing Address \_\_\_\_\_  
Phone Number \* \_\_\_\_\_  
this is required\*

PO Box 809 Kirksville, MO 63501 • 660-665-8500

**McAfee Auction Service, LLC**  
375 S Johnson • Kahoka, MO  
660-727-3796  
www.mcafeeauctionservice.com

*Lee County, IA*  
**LAND AUCTION**  
**Thursday, January 9<sup>TH</sup> - 10 AM**

Sale conducted at the Farmington Iowa Community Building

**37.77 ACRES**

OPEN LAND  
WOODED DRAW  
BUILDING SITES  
LYING IN SECT 19, TWP. 68N, R7W LEE COUNTY, IA

**JAMES D. BOYER, SELLER**  
Lynch Law Office, Rep. Attn. & Closing Agent



**SHOW-ME SEAMLESS GUTTERING**  
 FREE ESTIMATES • PROMPT SERVICE  
 • 5" & 6" Gutters  
 • Siding • Soffit • Fascia  
 (23 colors available on Gutters & Fascia)

Tried of Cleaning your Gutters?  
**LEAFPROOF THEM!**

ELLIOTT HIX  
 660-626-3447 • KIRKSVILLE, MO

**Skyline Service LLC**  
 Skid Steer and Construction Repair  
 Levi Weiler  
 660-346-6881 • 660-883-5525

Scan Tool Diagnostics  
 Exhaust After Treatment Repairs • SCR Unlocks  
 Skid Steer Tracks Available

**Show Me Plumbing Services**

• General Mini Excavation & Skid Steer Work  
 • Livestock Watering  
 • Waterlines & Sewer Systems  
 • Residential Services & General Plumbing  
 • Utility Trenching

Stan Schrock 660-988-1163  
 Greentop, MO 660-766-2636

**XMAS CASH!**   
**BUYING:**  
**Deer Antlers • Sheds • Racks**

Will travel to your location. WILL PAY CASH!  
**641-208-7353**

**BRIGHTEN UP YOUR HOME FOR THE HOLIDAYS**

**LIMITED TIME OFFER**

**FREE INSTALLATION**  
**\$25 BILL CREDIT**

Call for details: (660) 874-4111  
 Sign up online: NEMR.NET

**NEMR**  
 Offer good for new customers only. Ends 12/31/2024. Equal opportunity provider & employer.

**CELEBRATIONS!**  
**PARTY RENTAL**  
 KIRKSVILLE, MO

FOR RENT  
 • Tables & Chairs  
 • Tents • Bounce House  
 • Cotton Candy Machine  
 • & More!

660-626-5162 or 660-665-9380

**LAN-DOW BUILDINGS**  
**"We Build To Suit Your Needs"**  
**"Custom Built"**

Pole Barns • Garages • Utility Buildings  
 Dick, Jason or Andy Middleton

**Memphis Lumber Co.**  
 1-800-337-5858 • 660-465-8595  
 Fax: 660-465-8596

**VEHICLE FOR SALE**

To settle the Estate of Jeffrey Aldridge by sealed bid through Dec 11, 2024:

2002 Pontiac Gran Prix, not running, 190,400 miles, AS IS / WHERE IS  
 Car can be inspected on north side of square in Lancaster, MO  
 Phone 660-457-3700 ( No phone bids accepted )  
 M-F 9:00-4:00  
 SAT 9:00-2:00

Winning bidder will be notified by Schuyler Co Administrator on Dec 12, 2024  
 Payment in full with cash/cashiers check made to the estate before removal

**JOB OPENING**

**SOIL & WATER CONSERVATION DISTRICTS OF ADAIR, PUTNAM, SCHUYLER & SULLIVAN SHARED TECHNICIAN**

The Adair, Putnam, Schuyler & Sullivan SWCD's are accepting applications for one temporary full time FOSA Shared Technician position. The applicant must possess a valid driver's license and a high school diploma or GED equivalent is required.

Applicants must have the ability to work outdoors in all types of weather conditions on all types of terrain. Applicants must have the ability to establish and maintain a working relationship with public and co-workers, communicate effectively, work independently, and exercise sound judgment and discretion. Surveying experience is preferred but not required. Computer/technology skills are needed and applicant must be able to pass a background check.

Primary work location will be based on proximity to successful candidate's home address. This position is under the supervision of the Adair, Putnam, Schuyler and Sullivan County Boards and is not a state or federal position. Benefits available: Health Insurance, Retirement, Paid Holidays, Sick Leave, and Vacation Leave.

Applications can be picked up at Schuyler County SWCD Office or any of the other 3 County offices. Application can be emailed to you also as long as you call the office with your email. Please attach Resume to application. Deadline for accepting applications is 4:30 pm Friday December 6th, 2024.

For questions you can call 660-947-32.72 ext. 3.  
 EEO employer.

**The Depot Of Milan**  
**Derksen Building Dealer**  
 Call for Discounted Models

660-265-5222 Since '97 thedepotautosales.com

All Vehicles Sold w/3 Month or 3,000 Mile Warranty

**\$18,900**

**2021**  
**Ford Edge SEL-AWD**  
 114k Lease Return Miles - One Owner  
 Clean Carfax- Lther & Loaded

**\$15,900**

**2020**  
**Chevy Equinox LT**  
 87k Lease Return Miles -  
 Very Nice In & Out

**\$13,900**

**2019**  
**Grand Caravan SE**  
 3.6L-V6, 99k Miles Own Owner  
 Clean Carfax

**\$31,500**

**2019**  
**Silverado 1500 LTZ - 4x4**  
 16.2L-V8 - Sunroof \* All the Options 125k 2nd Owner  
 Miles - Clean Carfax Priced Thousand's under Book

**\$24,900**

**2017**  
**Silverado Crew LT-Z71**  
 5.3L-V8 - 128k Miles -  
 Pwr Heated Seats & More

**\$22,900**

**2019**  
**Ford Explorer Limited 4WD**  
 3.5L-V6- 73k Miles Clean Carfax - Pwr  
 Sunroof Bucket Seats & So much more

Monday-Friday • 9am-6pm

**BEFORE YOU BUY, GIVE US A TRY!**

**SPACE AVAILABLE**

Out-of-this-world print advertising rates that fit any budget!





# TIMED ONLINE ONLY



# FALL FARM MACHINERY AUCTION

## LOTS START ENDING THURSDAY DECEMBER 5<sup>TH</sup> AT 10 AM

LARGER EQUIPMENT CAN BE VIEWED DAILY 9AM - 6PM  
AT THE CLARK COUNTY FAIRGROUNDS, EAST EDGE OF KAHOKA, MO  
AUCTION STAFF ONSITE DEC 2ND, 3RD & 4TH 9AM - 4PM FOR BUILDING PREVIEW & KEYS FOR EQUIPMENT

### TRACTORS



### TRUCKS & TRAILERS



### HAY EQUIPMENT

### ROTARY CUTTERS



### PLANTING & TILLAGE EQUIPMENT



### UTVS



### COMBINE/HEADS

### LIVESTOCK EQUIP

### HAY



View Our Website for Additional Details!

[www.mcafeeauctionservice.com](http://www.mcafeeauctionservice.com)

NO LOADING OUT DAY OF SALE!  
LOAD OUT DATES & TIMES AVAILABLE ONLINE!

Monty McAfee: 660-341-7412

Office: 660-727-3796



Held at the Knox County  
Community Center

Thursday,  
Dec. 5th at 6PM

155+  
ACRES  
OFFERED IN  
2 TRACTS

# LAND AUCTION

Delbert R & Neva C Rourke Family Trust & The Hombs Trust

KNOX CO. MISSOURI

**DESCRIPTION:** Peoples Land Co. is excited to present the auction of 155 acres of North Missouri farmland, a property that truly has something for everyone. Whether you're involved in production agriculture, seeking a recreational tract with income potential, or searching for the perfect site to build your new home, this property has it all. Located just outside of Edina on Bee Ridge Road in Knox County, Missouri, the farm features 127 acres of productive tillable land, an 8-acre watershed lake, and scenic timberland. Don't miss out on this versatile opportunity to make it your own!

#### TRACT 1:

This tract spans approximately 113 acres (subject to survey), with access provided on the west side by State Highway T. It includes 88 tillable acres, featuring fertile Putnam, Kilwinning, and Leonard soil types. The crop acres have been enhanced with terraces, improving both productivity and soil management. Additionally, an 8-acre Troublesome Creek watershed structure is situated within this tract. This is a beautiful combination tract with limitless possibilities that will also help pay its way.

#### TRACT 2:

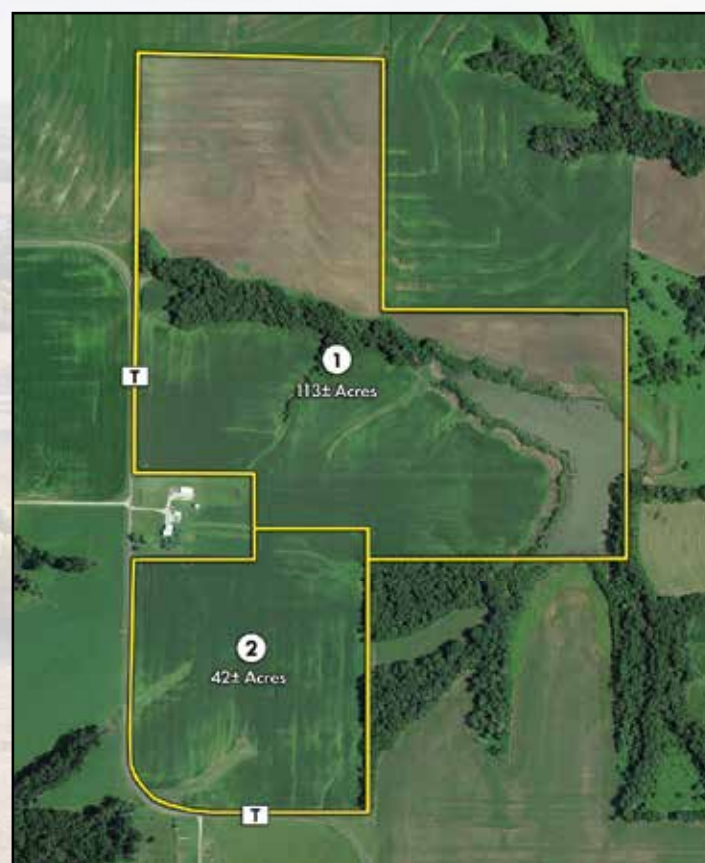
Covering 42 acres (subject to survey), this tract offers access on both the west and south sides via State Highway T. It includes 40 acres of highly productive tillable land, composed of Kilwinning, Putnam, and Leonard soils. A very nice smaller tract of land that will have nearly all acres working for you.

**CLOSING AND TITLE INSURANCE:** Kirksville Land Title Company

*\*\*\*All locations and boundaries shown on maps are thought to be accurate but are not exact. Farm will be sold as-is with no warranties given or implied.*

#### AUCTION TERMS & CONDITIONS:

10% OF BID PRICE TO BE PROVIDED AS DOWN PAYMENT AUCTION DAY. SALE IS NOT CONTINGENT UPON FINANCING. CLOSING TO BE ON OR BEFORE JANUARY 10, 2025. TAXES TO BE PRORATED TO CLOSING. TITLE INSURANCE WILL BE PAID BY THE SELLER. CLOSING COSTS AND COST TO CONDUCT CLOSING WILL BE SHARED BY BUYER AND SELLER 50/50. BUYER TO PAY ALL RECORDING FEES. SELLER AND TENANT TO HAVE RIGHT TO HARVEST 2024 CROPS ON PROPERTY. ALL TRACTS WILL BE SOLD AS-IS WITH NO WARRANTIES GIVEN OR IMPLIED. ALL MAPPING LINES AND BOUNDARIES ARE THOUGHT TO BE ACCURATE BUT ARE NOT EXACT. ALL ANNOUNCEMENTS ON SALE DAY TAKE PRECEDENCE OVER ANY ADVERTISING.



Anthony Peoples  
(660) 651-6501

David Clark  
(660) 216-1107