

NEMO Trader

THE NEMO TRADER

PO BOX 809 • KIRKSVILLE, MO 63501 • PHONE 660-665-8500

Web Site: nemotrader.net • Email: sales@nemotrader.net



A WEEKLY ADVERTISER SERVING ALL OF NORTHEAST MISSOURI AND THE SURROUNDING AREA

D&H Automotive
1201 E Janeway

- Tires • Brakes • State Inspections
- Tune Ups • Batteries
- Transmission Services
- Computer Diagnostics
- Oil Changes • Shocks and Struts

660-665-8542
Master Certified Technician ASE CERTIFIED

- WE SELL -
• Wheels • Trailer Hitches
• Remote Starts

CASH DISCOUNTS

exp REALTY

Elizabeth Gregory
110 S. Franklin St
Kirksville, MO 63501
660.621.2136
www.missourihomeandfarm.com

Lick Creek FENCING
Owen Miller
641-242-0346

Continuous Fence • Barb Wire
Woven Wire • Skid Work

AMMIO PLANET GUN & PAWN SHOP

JOERICE // OWNER
200 W. POTTER AVE - KIRKSVILLE, MO
660-956-4654 • 660-349-0070
EMAIL: sales@ammo-planet.com

WWW.AMMO-PLANET.COM

LAND SALES & AUCTIONS

RANCH & FARM AUCTIONS

A DIVISION/FRENDE MAKE OF WHITETAIL PROPERTIES REAL ESTATE
HUNTING | RANCH | FARM | TIMBER

SERVING
LEWIS • MACON • SHELBY • MARION • RANDOLPH • MONROE • RALLS • AUDRAIN

CLAY LOCKARD
EAST CENTRAL MISSOURI LAND SPECIALIST
573.466.9123

WHITETAIL PROPERTIES.COM

GPA

CENTRAL PLAINS AGRONOMY
See us for all of your chemical and fertilizer needs!

Luke Mudd - Sales Agronomist
(785) 427-6145

DIABETES HEALTH EXPO

HEALTHIER TOGETHER



November 12th
5:00 - 7:30 PM

Ray Miller Elementary, Kirksville, MO

www.EnvisionWell.org/events

This is a free event for the Northeast Missouri community whose lives have been affected by diabetes. Join us for great speakers, community resources and discover new technology & techniques to improve diabetes care. Let's be *Healthier Together!*

PROGRAM OF EVENTS
5:45, 6:30 & 7:15 PM: Prize drawings
5:00 - 7:30PM: Vendor booths open

SPEAKERS
5:45 PM - Nutritional Treatment of Type 2 Diabetes Mellitus with Dr. DeLeeuw, Internal Medicine Physician
6:30 PM - Type 1 Diabetes Caregiver Panel - Q&A

Brought to you by the following sponsors in collaboration with Envision Wellness:

United Healthcare Community Plan | **dexcom** | NORTHEAST MISSOURI HEALTH COUNCIL | **TANDEM** Diabetes Care | Northeast Regional Medical Center
Owned in part by physicians

HOMETOWN RADIO GROUP KMEM & KUDV | **stelo** by Dexcom | **MPCOA** MISSOURI PRIMARY CARE ASSOCIATION | Nephrology & Hypertension Associates | **omnipod** | **Mid-Missouri** DIABETES & ENDOCRINOLOGY

WANT BIG DEER?

ATTENTION LANDOWNERS WITHIN 15 MILES OF GREEN CITY, MISSOURI



Roeslein Alternative Energy will pay highly competitive rates to lease row crop & hay ground to build a diverse prairie for a renewable energy project.



To learn more, please email Steve Mowry:
smowry@roesleinae.com



731283R

To place your Business here, call
NEMOTRADER
660-665-8500

715049R

Cantril LUMBER and HARDWARE

Full Line of Building Materials • Check Out Our Metal Siding Price!
We Sell Central States Metal • OSB • Drywall • Insulation
• Shingles • Plyco Doors • Windows • Overhead Doors
• All Colors of Metal Roofing and Siding • Concrete Perma Columns
• Treated Fence Posts • Metal Gates
See us for all your building needs

319-397-2351 • 1-888-791-9273
Cantril, IA • Mon. - Fri. 7-5 • Sat. 7-12

Travis Funeral Chapel

We have served the wonderful people of LaPlata and the surrounding communities for over 30 years.

Randy & Michele Travis -
Neil & Sherry Travis
LaPlata, MO. 660-332-7145

exp REALTY

Elizabeth Gregory 110 S. Franklin St
660.621.2136 Kirksville, MO 63501
www.missourihomeandfarm.com

Oldham MONUMENT

Monument, Markers & Vases On Display.

400 N. Kansas, Downtown Marceline, MO
660-376-2508 • Ed & Amy Ewigman

AW Metal LLC

Metal Roofing Headquarters
BUY DIRECT
Post Frame Building Kits
www.awmetal.net
641-664-3990

Reserve your spot here!

Call your sales representative today!

Judd Motors

Call 660-457-3700
Hwy 63 North, Lancaster, MO

- 2020 Grand Caravan**, 1 Owner, power seats, backup camera, remote start, ONLY 50K miles, White, ONLY..... **\$19,900**
- 2017 Grand Caravan**, Handicap, rear load, motorized chair included, 26K miles, Burgundy **\$31,900**
- 2013 Chevy 1500**, ext. cab, LTZ, 4x4, New tires, 116K, leather, excellent,..... **\$15,900** silver,
- Low pro steel trailer**, slide in ramps, 84 x 74 deck **NEW PRICE \$1,500**
- John Deere X740**, mower, diesel, only 740 hours, 60" 7 iron deck, excellent **\$7,995**
- 2012 Case 580N**, Loader Backhoe, Turbo, 4WD, Cab with AC, Extendahoe, New 12 ply Tires, Only 1280 Hours, 1 owner, very clean, only **\$61,000**
- 2007-14 Chevy pickup** box, red, 8 ft, little rust only **\$1,000**
- 2002 GMC Sierra** ~~5500~~ **SOLD** **NEW PRICE \$5,999**
Reg. Cab, Long bed, 4x4, v8, 138K, RED
- 2006 Chevy 2500HD**, 4x4, 6.0L, reg cab, 8 ft bed, 1 owner, no rust, only 97k, red, ... **NEW PRICE \$16,900**



Cumberland Building Dealer

www.juddmotors.com

In Business Over 75 Years
Curly and Kevin Judd

A&L SALES

Monday - Saturday • 8 am to 5 pm

- **Bulk Frozen Foods** •
- **Muck Boots • Fabric** •
- **Footware** •

25655 HWY 156
3 miles west of Laplata, MO

ANGUS BULLS FOR SALE

Coon Angus Ranch

Outstanding selection of
14 month old bulls
1318 Shelby 169, Bethel, MO 63434

Russell 660-341-2705
Susan 660-341-5192
ruscatsol@gmail.com
www.coonangusranch.com



(660) 299-9019

49982 State Highway 15 Baring, MO 63531

Hours: Monday - Saturday 8:00 - 5:30



VICTORY

Metals & Recycling

KIRKSVILLE, MO

660-665-8000

For current scrap prices
call or visit our **Facebook Page**
victorymetalsrecycling.com



★ METAL RECYCLING

RECYCLE YOUR SCRAP METAL WITH US! WE PAY CASH FOR: COPPER,
ALUMINUM, STEEL, STAINLESS STEEL, APPLIANCES, E-SCRAP,
BRASS, LEAD, RADIATORS, ALTERNATORS, BATTERIES, STARTERS,
ELECTRIC MOTORS, APPLIANCES, & VEHICLES
(TITLE & ID REQUIRED).

★ ROLL-OFF CONTAINER

10-20-30-40 CUBIC YARD DUMPSTERS

3602 INDUSTRIAL RD. • KIRKSVILLE, MO 63501
DJANESVMR@GMAIL.COM
VICTORYMETALSRECYCLING.COM

Scrubby Duds

Laundromat

Large
capacity
coin
machines

OPEN 7 DAYS A WEEK
24 HOURS A DAY

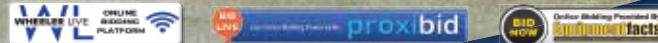
Your laundry
never takes a
break & neither
do our
machines!

311 S. Baltimore Kirksville, MO 63501 660-349-8943 Bob & Paulette Thompson

DEALER MACHINERY AUCTION

TUESDAY, NOVEMBER 19, 2024 AT 10 AM
WHEELER AUCTIONS LOT, 23101 HWY. 24, PARIS, MO 65275

LIVE ON-SITE BIDDING WITH ONLINE BIDDING



Offering late model tractors, combines
and other farm equipment!

Wheeler

AUCTIONS & REAL ESTATE

FOR MORE INFORMATION:
Wheeler Auctions | 660-327-5890
WHEELERAUCTIONS.COM

MAAG ONLINE LAND AUCTION

8 TRACTS
782.6 ACRES

SALISBURY * PRAIRIE HILL * BYNUMVILLE, MISSOURI
BIDDING OPENS NOVEMBER 8TH, 2024 | CLOSES NOVEMBER 13TH @ 6 PM

PRIME CHARITON RIVER BOTTOM GROUND



TRACT #1
LOCATED ON HWY 24
IN SALISBURY

2ND SESSION | 776.7 ACRES
Closes February 19, 2025

TRACT 1: Great location, right on Hwy 24 near busy intersection in the town of Salisbury, MO - Older 36x42 shop w/ 2 roll up garage doors w/ water & electricity
TRACT 2: 40.3 Acres of quality farm ground - 38.19 FSA acres currently in row crop - Older 20x64 lean to shed - Farm is upper bottom land and flat with soils consisting of Triplett silt loam
TRACT 3: 131.3 Acres of quality farm ground - 128.95 FSA acres currently in row crop - 30x48 Older Machine shed & two 7500 m/l Bu grain bins - Farm is upper bottom land and is flat with soils consisting of Triplett silt loam
TRACT 4: 162.0 Acres m/l of quality farm ground - 160.86 FSA acres currently in row crop - Farm is upper bottom land and is flat with majority of the soils consisting of Triplett silt loam & remainder in Carlow silty clay & Speed silt loams

TRACT 5: 55.0 Acres of quality flat bottom land bordering the Chariton River - 40.32 FSA acres currently in row crop - Farm is flat with majority of the soils consisting of Carlow silty clay and remainder in Tice silty loam, farm is levy protected along Chariton River
TRACT 6: 70.0 Acres of quality flat bottom land bordering the Chariton River - 57 FSA acres currently in row crop - Farm is flat with soils consisting of Tice silty loam, farm is levy protected along the Chariton River w/ recent levy improvements
TRACT 7: 161.0 Acres of quality flat bottom land bordering the Chariton River - This farm is flat and lays very well - 100 % of soils consist of Carlow silty clay, farm is levy protected along the Chariton River - FSA DCP cropland for tracts 7 & 8 are combined at 281.93 acres
TRACT 8: 160.4 Acres of quality flat bottom land bordering the Chariton River - This farm is flat and lays very well - Majority of soils consisting of Carlow silty clay w/ remainder in Tice silt loam, farm is levy protected along the Chariton River. **See Terms on Website



Bidding, Full Listing & Maps @
IMANAUCTION.COM

LEO MAAG TRUST & BERNIECE MAAG TRUST

660-788-4298 | 660-414-7967 | 660-388-6235

ANIMAL
HOUSING
HAY
STORAGE
& MUCH
MORE



Skylight FABRIC STRUCTURES

30697 COLONY AVE. • NEW CAMBRIA, MO 63558
660-486-3250 • 833-482-8862

NEMO TRADER • Advertise with us TODAY! • Phone: 660.665.8500 • PO BOX 809 • 705 East LaHarpe St., Suite F, KIRKSVILLE, MO 63501

AGRI-BUSINESS

Equipment & Supplies

AC D14 Narrow front, 14.9x26, good spin out rims, good sheet metal, new battery, rebuilt starter, carburetor. Call for details. \$1400.00. 217-257-1385

International 2200 hydraulic bucket loader and push blade with joystick controls on 574 utility. Fits others. \$1900.00. 217-257-1385

Krone AMR 280 disk mower, 2020, 9.3 cutting with 3 pt, 540 PTO, quick change blades, safe cut hubs, low acres used, shedded. \$9500. 217-257-1385

Wanted: good used farm tractor under 10,000. Loader, cab, FWA, a plus, any make considered. Call 660-216-1544.

JD 3010 gas 1963 narrow front w/rollomatic, 2 remotes, 540 PTO, 3 point, Firestone 23" 15.5x38, rear weights, joy stick controlled. JD 46A loader, 5' bucket, stored inside, original operators manual, presently not running. \$3900.00. 217-257-1385.

Woods HD 315 bat wing 15' mower, 540 PTO, solid deck, no welds, rebuilt cylinders, no leaks, stump jumper, always shedded, operators manual, in use now. \$2900.00. 217-257-1385.

Hay/Feed/Seed

5X51/2 big round bales for sale. Baled dry mixed grass hay with alfalfa. Fertilized, lab tested, net wrapped. Watson Hay Sales 660-341-4031

Mixed grass hay, big round bales, twine tied, 1450 pounds, \$65.00. Load out Saturday and Sunday only. Call 660-341-1296.

BE AN EARLY BIRD! Place your ads before Monday and beat the rush!

Livestock

AQHA sorrel 2024 filly, wyo Blue Hayes/Sonny Dee Bar Foundation breeding. \$1400.00 or best offer. 660-689-3005

MERCHANDISE

Electronics

Duraxa Kyocera flip phone \$100.00 each. US Cellular, great for farmers. Call 660-341-1296.

Miscellaneous

Get a break on your taxes! Donate your car, truck, or SUV to assist the blind and visually impaired. Arrange a swift, no-cost vehicle pickup and secure a generous tax credit for 2025. Call Heritage for the Blind Today at 1-888-761-1316 today!

UKC English Shepherd pups. Born 8/15/2024. Intelligent pets! \$100.00. John Coblentz 641-895-4623.

Pets & Supplies

APRI mini Doxen puppies, 1 male, 12 weeks old, \$300.00. 1 male and 2 females \$500.00. Ready to go October 26. 660-216-4696.

UKC English Shepherd pups. Born 8/15/2024. Intelligent pets! \$100.00. John Coblentz 641-895-4623.

Sports Equipment

Heindselman Farms inventory reduction! Fiberglass deer blinds, Lazy Man, Fat Girl, Bow or Combo, \$1450.00. Brick house, \$1100.00. 660-341-5692

Wanted

Good used farm tractor under 10,000. Loader, cab, FWA, a plus, any make considered. Call 660-216-1544.

REAL ESTATE SALES

Mobile Homes For Sale

40 YEARS THIS YEAR - we have to be something right. Call for quote or any house new or used, double and single. 573-657-2176. amegamobilehomes.com

Dutch 28x64 double wide home, 3 bedrooms, 2 baths, lots of space. All new appliances, kitchen counter tops, siding, doors, windows, carpet throughout, immaculate condition. \$59,000.00 or best offer. 641-242-2282.

I BUY...used mobile homes. Call or text 573-338-6250 or email GregS.CDH@outlook.com.

WE GOT IT - let us bid your mobile home purchase, new and used. 573-499-9993. columbiadiscounthomes.com.

TINY HOMES - Missouri franchise 573-881-7965.

AKC LAB PUPPIES
\$150 Males - Only 2 left!
LAY'S LABS
LABELLE, MO
(660) 956-2482

FOR SALE:
VNS Cereal Rye,
Triticale, & Oats. Germ tested & bagged in 2000lb totes. Discounts for trailer loads.
660-384-3468

FUEL BID
The Adair County Sheriff's office is accepting bids for vehicle fuel. Please see Request for Proposal for details, it may be obtained from the Sheriff's Office at 215 N Franklin St or from www.adair-countymissouri.com/government/bid-requested.

Mobile Homes For Sale

TRIPLE WIDE - moving stock, awesome price. 573-657-7040. chateauhomes.net

RECREATION

Motorcycles

2003 Kawasaki Vulcan 1500 Mean Streak (Police Version), 7805 highway miles. Excellent appearance, excellent ride and clear title. Always garage kept w/tarp. Comes with new fork springs, new rear suspension, new grips. \$3,000 firm. Contact me via email for pictures. Will throw in brand new (unused) leather covered/hard sided saddle bags (a \$450.00 value). Contact: Kenchik99@gmail.com

Have items to sell? Have too much stuff? Let us help you get the most for it! Call 660-665-8500.

FOR SALE
All Sired Angus Bulls,
14 & 18 Months Old.
Harold Trump
660-341-5730

MUST SEE!!
2020 GMC Terrain SLT,
AWD, black leather heated seats and steering wheel, backup camera, remote start, collision alert & much more, white frost, been garaged, window sticker, 78,000 miles (local one owner).
\$19,900

Accelerators Performance & Auto
Since 1974
Kahoka, MO
660-727-3455
Daryl's Cell
217-257-1385

Golden Grain Bins-Winter Discount

Grain Bins	Floors w/12" Supp. & Flashing
18'x18' 4,195bu. \$ 5,179	18'....\$1,446 30'....\$ 4,035
27'x21' 11,265bu. \$10,396	21'....\$1,977 36'....\$ 5,748
42'x24' 32,245bu. \$24,232	27'....\$3,297 42'....\$ 7,827

Golden Grain
GMLS Industries, Inc.
PH: 660-699-2179 or 620-983-2136
www.gmlsindustries.com

CELEBRATIONS! PARTY RENTAL
KIRKSVILLE, MO

FOR RENT

- Tables & Chairs
- Tents • Bounce House
- Cotton Candy Machine
- & More!

660-626-5162 or 660-665-9380

Leinbach Sandblasting Painting
is now under new ownership and a new name!

J&R METALWORKS
General Repair • Sandblasting • Painting

We offer sandblasting & painting service on all types of agriculture & industrial equipment from tractors to semi trailers & more! Small jobs are also welcome.

We are located at 20718 Clark Drive, Linneus MO 64653
660-250-9050

Show Me Plumbing Services

- General Mini Excavation & Skid Steer Work
- Livestock Watering
- Waterlines & Sewer Systems
- Residential Services & General Plumbing
- Utility Trenching

Stan Schrock 660-988-1163
Greentop, MO 660-766-2636

ANTIQUA AUCTION
2705 Main St Unionville Mo • November 9th at 10 am

Indian artifacts to include arrowheads, axes and more, Morgan and Peace dollars, silver half dollars, wheat pennies, die cast banks, primitive cupboards, large walnut wardrobe, Miller pool table light, beer lights, curved glass curio, gunny sacks, oak buffet, Nesbits orange wood box, set large deer horns, ball cards, stereos, radios, cbs, Perfection heater, cameras, books, several blue fruit jars, 1858 fruit jars, hay harpoon and pulley, hay carrier, wood wagon wheel, clocks, beehive, wash stand, dressers, Wonder bread trays, duck decoys, fish finders, Marbles knife with sheath, other knives with sheaths, white clad cabinet, 3 drawer oak cabinet, ice tongs, lamps, kitchen utensils, kitchen decor, wood pews, wood ammo box, wagons, wood barrels, Belknap cast iron skillet, Dicks beer box, Fisher stereo, Lincoln rocker, several chairs, cream cans, corn sheller, 1 bottom plow, garden cultivators and tools, scythes, cast iron kettles, several small items not advertised as we have not seen them at time of advertising. Building will be full as usual. Food and restrooms will be available, indoor sit down type sale in a climate controlled building.

Auction preview on November 8th from 2 to 5 pm.

Kris Altiser 660-626-4960
www.altiserauctionandappraisal.com.

SEE OUR FACEBOOK PAGE FOR PHOTOS

AAA ALTISER AUCTION & APPRAISAL
KRIS ALTISER
660-626-4960

WE GOT YOUR NEEDS COVERED!

FARM TARPS TRUCK TARPS
HOOP BUILDING COVERS

Troyer TARP MFG.
660-486-3301
20264 STATE HWY. VV • ETHEL, MO 63539

NEMO Trader Classified COUPON

2 Classified Ads for just \$6.00

20 cents per word over 20 words
Must be Mailed in or brought in along with payment.
Picture Ads Not Included with Coupon!

Choose Classification

Agri-Business Real Estate Rentals Yard Sales
 Announcements Real Estate Sales Auctions & Estate Sales
 Employment Recreation
 Financial Services
 Merchandise Transportation

Ad No. 1 Each Box Represents a Word (20 words or less)

Ad No. 2 Each Box Represents a Word (20 words or less)

Name _____
Mailing Address _____
Phone Number * _____
this is required*

PO Box 809 Kirksville, MO 63501 • 660-665-8500

Have a smart phone or tablet?
You can view current and past Nemo Trader issues online at www.nemotrader.net

NEMO Trader

KELLY KINZE

C&C AG LLC

CALL FOR PRICING
NEW LOCATION
 28637 US HWY 136 UNIONVILLE, MO.
641-895-4107

2024 KINZE 1051 Grain Cart

2014 KINZE 1300

2024 KINZE 1521 Grain Cart

USED 2021 Kelly Diamond 4614 CL1s Grain Cart

2024 KINZE 1121 Grain Cart

2013 Massey Ferguson 4608

ATTENTION LAND OWNERS!!

Buyer of standing timber
Paying Cash Upfront!

Owner/Operator of Sawmill

- Buy/Cut Logs
- Certified
- Bonded
- Insured

Tri State Timber L.L.C.
 353 1/2 Grand Ave. • Memphis, Mo 63555
 660-341-4921 • 660-465-2975

71121p

KEIM LUMBER COMPANY LLC
COMPETITIVE PRICES • FREE ESTIMATES

- COMPLETE BUILDING PACKAGES
- WINDOWS AND DOORS
- INSULATION • DRYWALL
- DELIVERY

13625 St. Hwy 3 LaPlata, MO

FLO RITE GUTTERING

660-988-1163

- 5" & 6" Guttering Available
- Leafguard Options
- 20+ Color Options
- Stainless Steel Fasteners

Stan Schrock • Greentop, MO

NEMOTRADER.NET

Central Metals Recycling LLC

Buyers of Ferrous and Non-Ferrous Metals

We Pay More \$\$\$, Call For Your Best Pricing Today!!

11923 Hwy. 54 Mexico, MO
1601 N. 30th Quincy, IL
1175 Hwy. 96 Hamilton, IL

573-581-0336 **217-214-7649** **217-847-3191**

Gifford Christian Church
Fall Smorgasbord

Saturday-November 16, 2024
11:00 am to 1:00 pm

Turkey, Ham, Dressing, Noodles, Green Beans, Corn, Salads and Desserts

All You Can Eat!
Free Will Donation

Come Out and Have Some Great Food and Fellowship

JUMPS & ROY AUCTION
 A BRAND YOU CAN TRUST

Mullany Estate
Sunday November 10, 2024 - 1 PM
 522 4th St. Purdin, MO 64674

Auction Note: This will be a small auction, so be on time!

Selling at 1 PM: 1,836 sq ft 1930's built two-story home, 3 bedroom, 1 bath, dining room, family room & finished upstairs, mud/laundry room w/ attached garage, front porch & back deck. Sitting on approximately one fenced acre w/ open front livestock shed, shade trees. Home needs updated, but would be great opportunity for a first time home buyer or rental property. Nice neighborhood. Call to preview! **Terms:** Offered w/ Reasonable Reserve. RE contract signed auction day. 15% non-refundable deposit w/balance due at closing in 30 days or less. 2024 taxes paid by seller. Inspections or survey per buyer. Sold As Is-Where Is!

ALSO SELLING: 4-Wheeler, Fishing Boat, Chevy & Ford Pickups, Collectibles, Furniture, Household, Gold Panning - Keene Portable Sluice System Tools and Lawn/Garden items

AUCTION CONDUCTED BY: Jumps & Roy Auction, LLC
 Scott Roy 660-359-1455 / Rustin Jumps 660-605-0860
 For photos and listing - jumpsandroyauction.com

72018p

Previous Higbee Auto Service Equipment Auction-Under New Ownership

Sat., Nov. 9, 2024 at 10:00 am
 Higbee Auto Service

6390 Highway A, Higbee, MO.

Direction: From US Highway 63 South of Moberly, proceed West on State Highway A for approximately 11.9 miles to the auction location. Watch for signs the day of the auction.

VEHICLES: 1999 GMC 3500 HD, 5 speed tow truck (454), shows 160,xxx with Vulcan wrecker bed; 1987(?) Freightliner, shows 300,xxx, does not run; 2001 Volvo with 10 speed auto shift, stand up sleeper, wet kit, shows 994,xxx miles; 2003 black Impala; several square body Chevy's; lots of vehicles including classics, Impala, Thunderbird, Fairlane, Mercury, Chevy, pickups; school bus, bad engine; Ford F6000; LTI engines in cars; 1983 1 ton wrecker; various motors, transmissions, starters, etc;

TRAILERS: Dorh semi trailer 53'; box trailers; several box trailers with axles; White gooseneck trailer

CONSTRUCTION EQUIPMENT: Ditch Witch JT920, needs work; Ditch Witch JT 921, needs work; Ditch Witch V30; John Deere 850 dozer; Komatsu D21P; LeRoI 125; 1984 Landoll 30 ton with Braden winch tandem dual (Swan truck doesn't sell)

FARM EQUIPMENT: Military Deuce 1/2 with New Holland manure spreader;

Gleaner Combines for parts; two 3 bottom plows

BOATS: semi-V bottom aluminum boat; boat trailers

TOOLS & SHOP EQUIPMENT: metal racks; portable de-rimmer; several single pallet forks; 3 tire changers; aluminum can crusher/blower; tire balancers; framing machine; air compressor, bad pump; transmission jack; several generators; windshield racks; several shop tools and equipment; System One parts washer

MISCELLANEOUS: Conex box; tons of various scrap; several lots of tires; lumber to be dismantled

There will be many more items at this auction too numerous to list. Loaders will be available. **Items to be removed before November 22, 2024. (2 weeks)**

SCOTT'S AUCTION SERVICE
 573-356-4405

Auctioneer: Scott Kuntz
SEE MORE PHOTOS ON SCOTT'S WEBSITE
WWW.SCOTTSAUCTIONSERVICE.COM

Kirkville Real Estate & Personal Property Auction

Thurs., Nov. 14, 2024 at 3:00 pm
 Gary Ray

102 North Hollis Way, Kirkville, MO.

Direction: From US Highway 63, travel East on State Highway 11 for approximately 0.5 miles, turn South on North Hollis Way for approximately 0.2 miles to the property. Watch for signs.

REAL ESTATE: We will be selling this three bedroom, one bath, ranch-style home with a one car attached garage. The home has central air conditioning/heat, an electric water heater and a heat pump. Watch for signs. **Please contact Scott at 573-356-4405 to schedule your personal showing of the home.**

STORAGE BUILDING: We will be selling a 10' x 16' storage building to be moved by the buyer, immediately following the sale of the real estate.

HOUSEHOLD ITEMS: Oreck Intella Shield vacuum cleaner; Shark Rocket vacuum, NIB; GE portable dishwasher; Hamilton Beach microwave; baking ware; Kenmore side by side refrigerator; maple round dining table with 4 chairs; microfiber reclining couch; La Z Boy powered reclining chair; card table with chairs; various pieces of luggage; 3 piece full size maple bedroom set

ANTIQUES & COLLECTIBLES: Tiffany style table lamp; silver plate silverware; aluminum drinking glasses; Waterford crystal; antique oak arched rocking chair; various home decor; large variety of costume jewelry; antique parlor table

MUSICAL INSTRUMENTS: Martin acoustic guitar with case; Conservarte flute

ELECTRONICS & OFFICE EQUIPMENT: HP printer/copier; paper shredder, NIB; HP 17" notebook, NIB; Dell Laptop (2013) NIB; computer table; 2 Halo ac/dc jump packs

ACCESSORIES: various new purses; Size 9 various ladies shoes, NIB - Brands include New Balance and Propel; umbrellas

There are many more items still in boxes or stored that we were unable to get pictures. All or most items are new in the box.

DECEMBER 7TH CONSIGNMENT AUCTION

Dec. 7, 2024 at 10:00 a.m.
Multiple Consignors

Directions: 28251 US Highway 63 North, Macon, Missouri. From US Highway 36 travel approximately 2 miles North of Macon to Scotty's Auction Barn and Event Center on the West side of the road. Watch for signs the day of the auction.

NOW ACCEPTING CONSIGNMENTS FOR OUR DECEMBER 7TH CONSIGNMENT AUCTION!
 We will not be accepting small items without preapproval.

All items must be check in by a Scotty's Auction Service crew member. Call 573-356-4405 to schedule check in of your items.

SEE MORE PHOTOS ON SCOTT'S WEBSITE

SCOTT'S AUCTION SERVICE
 573-356-4405

Michael Cunningham 660-651-2288 • Paxton Pittman 660-346-1956
WWW.SCOTTSAUCTIONSERVICE.COM

714726p

Real Estate & Personal Property Auction

Wed., Nov. 13, 2024 at 4:00 pm
 The Mary Pursley Trust

109 Bennett Avenue, Macon, MO.

Direction: From US Highway 63/North Missouri Street, travel West on Business Route 36/Briggs Drive, turn South on Gantz Street then turn left on Bennett Avenue to the property. Watch for signs.

REAL ESTATE: We will be selling this three bedroom, one and a half bath, ranch style home on a quiet street conveniently located to restaurants and shopping. The home has a full, unfinished basement, gas forced air furnace and central air conditioning. The home is easily maintained and has always been kept up. **Please contact Scott at 573-356-4405 to schedule your personal showing. The real estate will sell first at this auction.**

HOUSEHOLD ITEMS: Whirlpool washer and dryer; various lamps; nice dining room table with 6 chairs; glass refrigerator dishes; queen size bed; Air Care air purifier; Kirby vacuum; Hamilton Beech microwave

ANTIQUES & COLLECTIBLES: antique walnut drop leaf table; oak rocking chair; antique buffet; Fire King mixing bowl; Corning Ware baking dishes; miscellaneous costume jewelry; waterfall chest of drawers, vanity and bed

OUTDOOR EQUIPMENT: aluminum extension ladder; wooden step ladder

There will be many more items too numerous to list.

DOWN PAYMENT: 10% of the contract purchase price will be due upon acceptance of the Sales Contract. Personal or Cashier's Checks will be accepted. This is "AS IS, WHERE IS" and is non-refundable. **CLOSING:** Closing shall be within 30 days of the auction date.

Clarence Real Estate Auction

Wed., Nov. 20, 2024 at 4:00 pm
 Danny & Darla Hays

101 West Elm Street, Clarence, MO.

Direction: From Old 36 East/Business 36, travel South on South Shelby Street for approximately 0.6 miles, turn right onto Elm Street to the property location. Watch for signs.

REAL ESTATE: We will be selling this four bedroom, two bath, brick ranch home conveniently located on a corner lot. The home has a large living room, updated kitchen, laundry room, a full, dry, unfinished basement and a two-car garage. The home has a large patio for entertaining or to enjoy a nice quiet evening outdoors. There have been many updates to the home including flooring, windows and the roof is approximately ten years old. The home has gas, forced heat, two central air conditioning units and a wood fireplace in the basement. This would make a very nice home for your family. **Please contact Scott at 573-356-4405 to schedule your personal showing.**

There's a better way to get noticed.

Keep life simple. Take out an ad.

PCS ELECTRONICS
 Empowering people in times of need.

3100 Brown Station Rd, Ste E
 Columbia, MO 65202

Sales, Service & Installation
call 573-814-3131

Certified factory trained technicians

AUTOMATIC STANDBY GENERATORS
WINTER STORMS DON'T CARE IF YOU ARE PREPARED... WE DO.

KOHLER **GENERAC**

728529CH



FARM SHOP
EDINA, MO

Edina, MO 63537
660-397-3550
farmshopinc.com

Kubota HASSY FENDRON

Edward Jones Member SIPC



Jason K Robison
Financial Advisor
1300 Country Club Dr
Kirkville, MO 63501
660-956-9562

MKT-5894P-A AECSPAD > edwardjones.com

EVERY DAY IS A GIFT.
TAKE TIME TO ENJOY IT.
Reid A. Millard

playlerimermillard.com

PLAYLE-RIMER-MILLARD
Family Funeral Chapel



Reid A. Millard
Funeral Director

CENTURY 21
Lifetime Realty

1605 S Baltimore St, Suite A
Kirkville, MO 63501

660-665-5678
www.C21Kirkville.com

Each office is individually owned and operated.

HyVee
EMPLOYEE OWNED

500 N Baltimore St, Kirkville, MO 63501
Open 6-11 Daily
(660) 665-8335

NM SB **NORTHEAST MISSOURI STATE BANK**

Kirkville Branch: 600 S Baltimore, Kirkville, MO 660-665-6161
La Plata Branch: 139 S Gex Street, La Plata, MO 660-332-4317

Member FDIC northeastmissouristatebank.com

Sonny's Collision Center
Sonny Findling

545 N. Marion
Kirkville, MO 63501
660-665-8533
660-665-8507

WIN	HOME TEAM	DATE	AWAY TEAM	LOSS	WIN	HOME TEAM	DATE	AWAY TEAM	LOSS
9	KIRKVILLE, HS			1	4	KNOX COUNTY, HS			5
0	MACON	8/30	KIRKVILLE	35	37	ST. PAUL LUTHERAN	8/30	KNOX COUNTY	30
42	KIRKVILLE	9/6	CHILlicothe	7	68	PLATTSBURG	9/6	KNOX COUNTY	32
7	KIRKVILLE	9/13	SAVANNAH	6	28	KNOX COUNTY	9/13	BISHOP LEBLOND	52
7	MOBERLY	9/20	KIRKVILLE	28	-	KNOX COUNTY	9/20	OFF WEEK	-
0	MARSHALL	9/27	KIRKVILLE	40	62	SCHUYLER CO.	9/27	KNOX COUNTY	44
16	KIRKVILLE	10/4	HANNIBAL	15	60	PARIS	10/4	KNOX COUNTY	20
13	MEXICO	10/11	KIRKVILLE	28	48	KNOX COUNTY	10/11	NORTH SHELBY	34
42	KIRKVILLE	10/18	FULTON	0	18	LIVINGSTON CO.	10/18	KNOX COUNTY	76
12	CENTRALIA	10/25	KIRKVILLE	41	20	KEYTESVILLE	10/25	KNOX COUNTY	72
11 MAN CLASS 4 DISTRICT 8 TOURNAMENT					8 MAN CLASS 1 DISTRICT 8 TOURNAMENT				
21	KIRKVILLE	11/01	MEXICO	14	52	KNOX COUNTY	11/01	PRINCETON	16
5	SCHUYLER CO., HS			4	3	MACON, HS			7
16	SEYMOUR	8/30	SCHUYLER CO.	52	0	MACON	8/30	KIRKVILLE	35
72	BISHOP LEBLOND	9/6	SCHUYLER CO.	12	18	N. CALLAWAY	9/6	MACON	7
42	SCHUYLER CO.	9/13	PLATTSBURG	46	56	PALMYRA	9/13	MACON	14
28	KEYTESVILLE	9/20	SCHUYLER CO.	60	15	MACON	9/20	HALLSVILLE	46
62	SCHUYLER CO.	9/27	KNOX COUNTY	44	38	CENTRALIA	9/27	MACON	14
70	SCHUYLER CO.	10/4	LIVINGSTON CO.	22	8	CLARK COUNTY	10/4	MACON	15
34	SCHUYLER CO.	10/11	BRAYMER	64	56	MACON	10/11	HIGHLAND	12
58	NORTH SHELBY	10/18	SCHUYLER CO.	62	21	MACON	10/18	SOUTH SHELBY	42
56	PARIS	10/25	SCHUYLER CO.	24	44	MONROE CITY	10/25	MACON	9
11 MAN CLASS 2 DISTRICT 8 TOURNAMENT									
0	MARK TWAIN	11/01	MACON	37					

ALWAYS PUSH FORWARD
with
Connections Bank

Member FDIC

WWW.CONNECTIONS.BANK
2817 N BALTIMORE ST.
KIRKVILLE, MO 63501
660-665-7703

FOOTBALL SCOREBOARD

FOOTBALL SCOREBOARD

CALL US TO INCLUDE YOUR BUSINESS!

660-665-2808

Travis~Noe Funeral Home

1008 Potter Avenue, Kirkville, MO
660-665-1300
Neil & Sherry Travis, Brian Noe, Brenton Travis

Lancaster Lumber INC.

Locally owned
Full Service Retailer of building materials and Hardware
660-457-3814

Shop Local
Buy Local
Support Local

Lancaster, MO | www.lancasterlumber.com | check us out on facebook

Ford DODGE Jeep

LOVEGREEN
GOLOVEGREEN.COM

MISSOURI FARM BUREAU INSURANCE

Chris Clark, Licensed Sales Associate
Email: chris.clark@mofb.com
Website: www.mofbinsurance.com

AUTO HOME LIFE

Clark Agency: 115 W. Potter, Kirkville, MO • (660) 665-1956

THINKING OF SELLING?

Heritage House Realty, Inc.

CALL US TODAY!
660-665-5638

KirkvilleRealEstate.com

COLTON'S
Steak House & Grill

We Know What's At steak!

1116 Country Club Drive • Kirkville, MO
660-665-6336 • ColtonsSteakhouse.com

★ ★ ★
VETERANS DAY
HONORING ALL WHO SERVED

INTERESTING FACTS ABOUT VETERANS DAY

Each November, individuals across the United States gather to remember and honor the brave men and women who devoted their lives to maintaining the freedoms U.S. residents continue to enjoy. Veterans Day is celebrated on November 11 and pays tribute to all American veterans — including the living and deceased — but especially thanks the living veterans who served honorably during war or peacetime, according to History.com. Veterans Day originally was known as Armistice Day, which was established to commemorate the end of World War I. In 1954, President Dwight D. Eisenhower officially changed the name of the holiday to Veterans Day in an effort to recognize all veterans.



MISSOURI FARM BUREAU INSURANCE
SAWYER INSURANCE AGENCY
chad.sawyer@motb.com
1204 S Baltimore St. Kirksville | Office: 660-956-4550



ERICK HANSON
Broker-Sales Associate
660-341-5014 Cell
660-665-5678 Office
erickhansoncentury21@gmail.com
www.c21kirksville.com
Century 21 Lifetime Realty
1605 S. Baltimore St, Suite A
Kirksville, MO 63501
Each office is independently Owned and Operated

The Peach Boutique
Plus-Size Clothing Store
660-988-1100
370A S Baltimore St.
Kirksville, MO 63501

Your Pole Building Experts!



KIRKSVILLE LUMBER
(North of Kirksville Motor Company)
OPEN Mon-Fri 8-5, Sat 8-Noon
660-627-1234
3707 N. Baltimore, Kirksville, MO • www.kirksvillelumber.com

Kirksville, Missouri
KIRKSVILLE LIVESTOCK LLC
24295 BENTON ROAD - KIRKSVILLE, MO
660-665-9804
WWW.KIRKSVILLELIVESTOCK.COM
Proud to Serve Area Livestock Producers




Owners:
Joe Dimmitt & Kelly O'Haver
Tire & Auto
1102 N Green St. Kirksville, MO
660.665.9017

ADAIR COUNTY HEALTH DEPARTMENT



From all of our Employees
Thank You!
VETERANS DAY
HONORING ALL WHO SERVED

KIRKSVILLE MOTOR COMPANY
CHEVROLET BUICK GMC TOYOTA
kirksvillemotorcompany.com



Thank you!
VETERANS

Sales: 660-956-0212 | Service: 660-956-0809 | Parts: 660-665-1936 3607 N. Baltimore Street, Kirksville, MO 63501-5128 US



RAIL
Rural Advocates for Independent Living INC.
1100 S. Jamison • Kirksville, MO 63501
660-627-7245 - Phone
800-681-7245 - Toll Free
660-665-9849 - Fax
WWW.RAILKV.ORG



Kirksville, MO • 660-665-8000

★ **Metal Recycling**
Recycle your scrap metal with us! We pay cash for: Copper, Aluminum, Steel, Stainless Steel, Appliances, E-scrap, Brass, Lead, Radiators, Alternators, Batteries, Starters, Electric Motors, Appliances, & Vehicles (Title & ID required).

★ **Roll-Off Container**
10-20-30-40 Cubic Yard Dumpsters



For current scrap prices call or visit our Facebook Page

3602 Industrial Rd. • Kirksville, MO 63501
info@victorymetalsrecycling.com
VICTORYMETALSRECYCLING.COM



Wholesale Guitars, Musical Instruments
Al Johnson
bigal@marktwin.net **Want to own this business?**

ELECTRONICS UNLIMITED
Open 6 days a week!
17406 Bob Rd. Kirksville, Mo 63501

VETERANS DAY

HONORING ALL WHO SERVED

That name change is just one of many interesting facts about Veterans Day.

- November 11, 1918, was largely considered the end of the "war to end all wars," even though the Treaty of Versailles, which officially ended World War I, was signed roughly seven months later on June 28, 1919.
- While Veterans Day is an American holiday, Canada, Great Britain, Australia, and France also honor the veterans of World War I and World War II on or near November 11th. Canada celebrates Remembrance Day, while Britain observes Remembrance Sunday each year on the second Sunday of November.
- Data from the Department of Veterans Affairs says there are around 19 million U.S. veterans as of 2021.
- Arlington National Cemetery outside of Washington, D.C., holds an annual memorial service on both Memorial Day and Veterans Day. That cemetery is home to the graves of more than 400,000 people, most of whom served in the military.
- Gulf War-era veterans now account for the largest percentage of all U.S. veterans, surpassing the number of Vietnam War-era veterans by almost two million, according to the VA.

- Memorial Day is a time to remember those who died in battle or from wounds suffered in battle. However, Veterans Day honors all of the people who served their country, including both living and deceased veterans.
- The United States Bureau of Labor Statistics indicates women make up approximately 10 percent of the veteran population. By 2025, that number is expected to climb to 12 percent.
- In 2016, President Barack Obama signed the Veterans Day Moment of Silence Act. At 3:11 p.m. (Atlantic Standard Time) on Veterans Day, a moment of silence is observed and continues for 120 seconds.
- The last living American WWI veteran died in 2011. His name was Frank Buckles.
- In 2021, 37 percent of veterans were age 70 and older, according to Pew Research. An additional 36 percent of veterans were between the ages of 50 and 69.
- The U.S. Census Bureau indicates the percentage of the American population with military experience is on the decline. In 2018, about 7 percent of U.S. adults were veterans, down from 18 percent in 1980.

Sonny's
Collision Center
Sonny Findling
545 N. Marion • Kirksville, MO 63501
660-665-8533 • 660-665-8507

Edward Jones Member SIPC
Honoring our nation's heroes
Jason K Robinson
Financial Advisor
1300 Country Club Dr
Kirksville, MO 63501
660-956-9562
[edwardjones.com](http://www.edwardjones.com)

JEPSON LUMBER
"The Best For Less"
KIRKSVILLE MACON
660-665-0313 660-385-4712

fb farmbank
Thank You Veterans
1 S. Lincoln St. Green City, MO 660-951-8430
701 N. Pearl St. Milan, MO 660-951-8432
3311 N. Baltimore Kirksville, MO 660-951-8431
www.farmbank.com

Thank you Veterans!
The Gun Grove
Tuesday-Friday 10am-6pm
Saturday 10am-5pm
708 Patton St Macon, MO 660-395-7400
www.gungrove.com

NM SB NORTHEAST MISSOURI STATE BANK
Kirkville Branch: 600 S Baltimore Kirksville, MO 660-665-6161
La Plata Branch: 139 S Gex Street La Plata, MO 660-332-4317
[northeastmissouristatebank.com](http://www.northeastmissouristatebank.com)

MISSOURI FARM BUREAU INSURANCE
Barbara Clark, Agency Sales Manager
Email: barb.clark@mofb.com
agents.mofbinsurance.com/BarbClark
AUTO HOME LIFE
Clark Agency: 115 W. Potter, Kirksville, MO • (660) 665-1956

Travis Funeral Chapel
HONORING VETERANS DAY
125 South Church Street
La Plata, MO 63549
660-332-7145
travisfuneralchapel.com
Serving La Plata, Missouri & surrounding communities since 1980.

THANK YOU VETERANS - ESPECIALLY OURS -
Polly Petree Hampton
THE BENSON LAW FIRM LLC
(660) 627-0111 www.BensonLawFirm.com

MORTON FINANCIAL SOLUTIONS LLC
Jamey Morton, CLU, ChFC, LUTCF, RFC
Chartered Financial Consultant
660-665-3045
www.mortonfinancial.solutions
405 East Northtown Road
MortonFinancial.Solutions
Securities offered through **Osac Wealth, Inc.** member FINRA/SIPC. Advisory services offered through USAadvisors Wealth Management, LLC. Listed entities are not affiliated with **Osac Wealth**.

SERVICES

Chat/Dirt/Gravel

DIRT WORK All types of excavation, reclaiming overgrown fields, including CRP and WRP. Building site preparation, creating new trails and crossings, Food plot development and maintenance. Leveling and grading, wetland construction and maintenance. Pond and lake cleaning and construction. Call for quotes. 660-342-2701

Construction-Services

Olshan Foundation Solutions. Your trusted foundation repair experts since 1933. Foundation repair. Crawl space recovery. Basement waterproofing. Water management and more. Free evaluation. Limited time up to \$250 off foundation repair. Call Olshan 1-888-437-7797

Health Care

Portable Oxygen Concentrator May Be Covered by Medicare! Reclaim independence and mobility with the compact design and long-lasting battery of Inogen One. Free information kit! Call 844-299-5183

Home Services

Does your basement or crawl space need some attention? Call Thrasher Foundation Repair! A permanent solution for waterproofing, failing foundations, sinking concrete and nasty crawl spaces. FREE Inspection & Same Day Estimate. \$250 off ANY project with code GET250. Call 1-855-460-1476

NEMOTRADER.NET

Lawn/Garden/Landscape

New 3 pt. tillers, heavy duty, gear driven, 7' to 12' starting at \$4,150. 660-874-4455.

Want a greener lawn? TruGreen's your go-to for a tailored lawn care plan. Act now and get 50% off your first service with a purchase of an annual plan. Call us at 1-866-416-0207 to learn more

Miscellaneous

Consumer Cellular - the same reliable, nationwide coverage as the largest carriers. No long-term contract, no hidden fees and activation is free. All plans feature unlimited talk and text, starting at just \$20/month. For more information, call 1-844-211-0742

Are you looking for someone to install continuous fencing? Call today 641-504-8125.

Prepare for power outages today with a Generac Home Standby Generator. Act now to receive a FREE 5-Year warranty with qualifying purchase. Call 1-866-686-8347 today to schedule a free quote. It's not just a generator. It's a power move.

Eliminate gutter cleaning forever! LeafFilter, the most advanced debris-blocking gutter protection. Schedule a FREE LeafFilter estimate today. 20% off Entire Purchase. Plus 10% Senior & Military Discounts. Call 1-844-713-4600

Need something? Let us help you. You can advertise that you are looking for a special item. Call 660-665-8500 for more information.

Remodeling

The bathroom of your dreams in as little as 1 day. Limited Time Offer - \$1000 off or No Payments and No Interest for 18 months for customers who qualify. BCI Bath & Shower. Many options available. Quality materials & professional installation. Senior & Military Discounts Available. Call Today! 1-866-460-1048

Safe Step. North America's #1 Walk-In Tub. Comprehensive lifetime warranty. Top-of-the-line installation and service. Now featuring our FREE shower package and \$1600 Off for a limited time! Call today! Financing available. Call Safe Step 1-833-732-0966

Roofing

Replace your roof with the best looking and longest lasting material steel from Erie Metal Roofs! Three styles and multiple colors available. Guaranteed to last a lifetime! Limited Time Offer up to 50% off installation + Additional 10% off install (for military, health workers & 1st responders.) Call Erie Metal Roofs: 1-888-809-1119

TRANSPORTATION

Automobiles

2005 Ford F150, club cab, 5.4, air, cruise, 4x4, 200k miles, new tires, silver, \$3,500.00. 660-341-5048 or 660-956-2481.

Trucks, 4x4's, SUV's

2003 Jeep Grand Cherokee Overland, 145,000 miles, 4 wheel drive, runs/looks good. \$3600.00 or best offer. 660-689-3005.

TRANSPORTATION

Wanted

We buy 8,000 cars a week. Sell your old, busted or junk car with no hoops, haggles or headaches. Sell your car to Peddle. Easy three step process. Instant offer. Free pickup. Fast payment. Call 1-844-582-9214

YARD SALES

Garage Sale

2002 S Cottage Grove Place, Kirksville. November 8 & 9, 11-5. Bowling balls and bags, 2 weed eaters, lots of miscellaneous.

HAVE A PET OR PUPPIES TO SELL? Call us. You can even pay over the phone. 660-665-8500.

Your Local **FARM SUPPLY SOURCE**
NUTRITION • MEDICAL • FARM • PET • APPAREL

MLS Cattle Protein Tubs

Hometown ANIMAL HEALTH

Feed • Medical • Farm & Pet Supplies • Footwear & More
website: hometownanimalhealth.com

660-465-2967

18743 US Hwy, 136 Memphis, MO 63555 • "on Hwy 136 west of Memphis"
Monday-Friday 8pm to 5pm • Saturday 8am to 1pm

There's a better way to get noticed.

Keep life simple. Take out an ad.

Premium Metal Roofing

AW Metal Inc.

Metal Roofing Headquarters

641-664-3990 • awmetal.net

NEMOTRADER.NET

The Ultimate Wood Heat.

CLASSIC EDGE
TITANIUM HDX
Outdoor Wood Furnace

- **More Comfort** - Thermostatically controlled wood heat.
- **Peace of Mind** - Keep the fire outside and eliminate the dangers associated with indoor wood heating.
- **Save Money** - Wood is a renewable, inexpensive and often free energy source.

Campen Heating & Air
Division of Kraus & Sons Inc.
Canton, MO 63435
573-288-8966
CentralBoiler.com

NEMOTrader

BRAIN GAMES

PUZZLE NO. 1003

			5	3					
8		6	9	4				7	
4									
3								1	6
	1							4	
6	4				7				9
			3					6	
7	2			8	1	3			
							2		

HOW TO PLAY:

Fill in the grid so that every row, every column and every 3x3 box contains the numbers 1 through 9 only once.

Each 3x3 box is outlined with a darker line. You already have a few numbers to get you started. Remember: you must not repeat the numbers 1 through 9 in the same line, column or 3x3 box.

ANSWER TO PUZZLE NO. 1003

1	8	2	9	6	7	4	3	5	9
7	5	3	1	8	9	6	2	7	4
7	9	6	5	2	3	8	4	1	6
6	3	8	7	1	5	2	4	9	6
2	4	1	5	9	8	7	1	6	3
9	1	7	4	7	6	2	8	5	3
3	2	9	8	1	7	5	6	4	7
5	7	1	7	4	6	9	3	8	8
4	9	6	4	3	6	1	7	2	2

LEVEL: ADVANCED

CROSSWORD PUZZLE

NOVEMBER WEEK 1

PUZZLE NO. 263

CROSSWORD PUZZLE ANSWERS USE AMERICAN SPELLING

1	2	3	4		5	6	7	8		9	10	11
12					13					14		
15					16					17		
		18		19				20	21			
22	23			24			25		26			
27			28			29		30				
31					32		33			34	35	36
			37			38		39				
40	41	42			43		44			45		
46				47		48			49			
50					51	52				53	54	55
56					57					58		
59					60					61		

ACROSS

- Seize
- Zipped
- Attack!
- Aristocrat
- Modeling medium
- Supportive
- Small harp
- Infrequent
- Talk
- Commercial writer
- Frame of mind
- Coal weight
- Imitated
- Deli loaves
- Should
- Fast-food order: 2 wds.
- Garland
- Bee's target
- Harvest
- Met musical
- Dull pain
- Rise
- Treat hides
- Finger
- Verse

DOWN

- Styling product
- Sunbeam
- Adjust
- Oozed
- Leftover piece
- Mars, e.g.
- Corn unit
- Stains
- Mist
- Steamed
- Manages
- Not glossy
- Company
- Drag
- "___ Gang"
- Sawbones
- Sultan's ladies

ANSWER TO PUZZLE NO. 263

E	N	K	R	D	E	R	H	A	P	S		
K	R	A	B	E	S	V	A	M	P			
S	E	S	O	R	E	S	L	O	R	E		
	E	W	A	H	R	B	M	H	I			
N	A	T	R	V	O	S	E	H	C	A		
V	A	E	P	O	P	R	E	A	D			
L	E	R	L	O	C	H	I	H	W	R		
	O	G	O	L	T	H	G	O				
S	E	A	L	T	S	D	E	N	O	L		
S	E	A	L	T	S	N	A	M	E			
R	A	P			R	A	R	A	L			
O	P	R	A		L	C	A	L	E			
C	I	S			E	D	S	B	A			

HOROSCOPE

WEEK OF NOVEMBER 3 TO 9, 2024

THE LUCKIEST SIGNS THIS WEEK: AQUARIUS, PISCES AND ARIES

ARIES
Even if your choices seem clear-cut, take all the time you need to make a final decision. New information could come to light, clarifying the situation and making you see the bigger picture.

TAURUS
Change your diet and find time to relax to avoid heartburn. Balance your lifestyle to maintain your physical and mental health.

GEMINI
Expect to receive special attention from a loved one. You may feel anxious about a medical exam. However, you must be patient. The results will take a little longer than expected.

CANCER
Your leadership skills will be in high demand this week. You'll fill in for your boss while they're on vacation and replace a colleague who's on medical leave. You'll be the right person to take on these responsibilities.

LEO
A family getaway is in the works. However, sorting out certain details will take longer than expected. You'll be on the move a lot this week, which will make you appreciate the comforts of home.

VIRGO
Your networking prowess will be needed this week. You'll be asked to help plan an event that requires your communication, organization and negotiation skills.

LIBRA
You'll be working overtime this week! Fortunately, your hard work will be rewarded. After adjusting your schedule, take the time to spoil yourself and enjoy the results of your efforts.

SCORPIO
After laying low for a while, you'll finally be ready to act. Family and friends will challenge you. You'll have the money to tackle a special project or treat yourself to some well-deserved luxuries.

SAGITTARIUS
Although you may feel as if you're treading water, everything will soon pick up speed. Carefully look over your bills to avoid being dinged for a mistake.

CAPRICORN
You and your team will accomplish a remarkable feat. You'll be awarded in front of a crowd. This experience will boost your self-esteem and self-confidence.

AQUARIUS
Your impressive roster of clients will bring in additional income this week. Explore spiritual practices or adopt a lifestyle in line with your convictions.

PISCES
Keep an eye on your deadlines to complete your tasks on time. You may spontaneously plan a trip, which will make you very happy. Remember the saying, "Slow and steady wins the race."

Have a smart phone or tablet?

You can view current and past Nemo Trader issues online at www.nemotrader.net

NEMOTrader

Skyline Service LLC
Skid Steer and Construction Repair
Levi Weiler
660-346-6881 • 660-883-5525
Scan Tool Diagnostics
Exhaust After Treatment Repairs • SCR Unlocks
Skid Steer Tracks Available

1976 International 1066,
Black Stripe, #57193, original paint, cab, 5260
hours, bought in 1978. 3 point, top link, dual
PTO, front weights, 18.4x38, 10.00-16 fronts,
9 bolt hubs, good TA, new batteries, always
stored inside. Starts, runs and drives well,
\$19,000
217-257-1385

ANTIOCH REPAIR & RENTAL
We fix almost anything!
CALL US FOR ALL OF YOUR EQUIPMENT REPAIR & RENTAL NEEDS!
• Attachments • Tires & Tracks • Competitive Rates
Located Near Knox City, MO
Call Ethan Zimmerman
660-299-0808

LAN-DOW BUILDINGS
"We Build To Suit Your Needs"
"Custom Built"
Pole Barns • Garages • Utility Buildings
Dick, Jason or Andy Middleton
Memphis Lumber Co.
1-800-337-5858 • 660-465-8595
Fax: 660-465-8596

Kirksville, Missouri
KIRKSVILLE LIVESTOCK LLC
24295 Benton Road * P O Box 242 * Kirksville, MO 63501
www.kirksvillivelivestock.com
SPECIAL BRED HEIFER, COW & BULL SALES 6:00 P.M.
SPECIAL CATTLE SALES 11:00 A.M.
SPECIAL SHEEP SALES 10:00 A.M.
NOVEMBER, 2024 SALE SCHEDULE
• Friday, November 1 - Special Breeding Stock Cattle Sale, 6:00 p.m.
• Monday, November 4 - Special Sheep, Goat, & Hog Sale, 10:00 a.m.
• Monday, November 11 - Special Feeder Cattle Sale, 11:00 a.m.
• Monday, November 18 - Regular Cattle Sale, 11:00 a.m.
• Monday, November 25 - Special Feeder Cattle Sale, 11:00 a.m.
We are open on Sunday to Receive Your Livestock
"Your Business is Very Much Appreciated"
"Proud to Serve Area Livestock Producers"
For more information or Someone to
Phone for information:
Patty Foster, Office Manager - 660-665-9804
Chuck Ambrosia - 660-342-3530 - Luke West - 620-215-5770
Mark Herbold - 515-720-8667 - Al Ashmead - 660-216-8730
Doug Fleshman - 660-626-7148 - Daniel Smith - 660-341-8396
Jeremy Jarman - 660-341-9879 - Caleb Randolph - 641-919-8539
Karol Kirkpatrick - 641-777-3403

Edina Livestock Sales
Edina, Missouri
Friday, November 8th
Special Feeder Calf Sale
Friday, November 15th
Special Feeder Calf Sale
To Consign For Any or All Sales or For
Information Call:
Owner - Kevin Strange • Cell: 660-341-9974
Ryan Strange • Cell: 660-341-9721
Sale Barn: 660-397-9999
Field Reps:
Bill Tom Hall 660-342-5420 Mike Bronestine 660-341-9965
Jason Bichsel 660-216-0373 John Powell 660-341-1717

Shop Local Buy Local Enjoy Local
CALL TODAY!
660-665-8500
sales@nemotrader.net
NEMO
KIRKSVILLE
Daily Express

Connie's MOBILE HOME TRANSPORT
We offer the following...
Break Downs • Transport • Set up • Anchoring
Call Rich today! 573-881-7483

RAMIER TRUCK SALES

2011 Ford F350 King Ranch, 109K, Kelderman rear air suspension, clean Title. \$29,500	2020 Ford F250 SXT, 7.3 gas, 55K, rebuilt title. \$30,900
2008 Ford F250, 5.4 gas, XL, 295K, \$8,000	2008 Jeep Wrangler Unlimited, 3.8 manual 158k \$11,500
	Gorin, Missouri Monday-Saturday 8am-6pm www.ramertrucksales.com HOME: 660.282.1002 CELL: 660.341.6140 "NO SUNDAY CALLS!"
Dew eze cake feeder, 1000 lb in stock \$4,586 and 1500lb in stock \$4,619	

TIMBER MANAGEMENT.
Purchasing Walnut, Oak, Maple & Other Species
WE PAY BEFORE WE CUT
BONDED & INSURED Est. 1968
641-895-8209

VIRTUAL ONLINE
AUDRAIN COUNTY, MISSOURI LAND AUCTION
WEDNESDAY, DECEMBER 4, 2024 AT 1:00 PM^{CT}

270.67 ACRES ± • 1 TRACT SCAN FOR MORE INFORMATION

The Hayhurst farm is near Ladonia, MO and conveniently located on Hwy 19 and off County Road 630, 2.9 miles south of Ladonia, MO and 2.1 miles north of Scott's Corner, MO. The farm is further described as located in Section 13 & 24, T51N-R7W, Linn Township, Audrain County, Missouri. Farm represents productive tillable cropland and contains a 6" Natural Gas Pipeline that runs across the west side of the property and has one residential tap available.
JOHN HAYHURST
Closing & Title Work: Monroe County Abstract & Title 229 N Main St, Paris, MO 65275 | (660) 327-4109
Auction Managers: Steve Zeiger (573) 231-9802 & Dan Sullivan (319) 795-1833

BigIron SULLIVAN AUCTIONEERS
(844) 847-2161 | www.SullivanAuctioneers.com

VIRTUAL ONLINE
ADAIR COUNTY, MISSOURI LAND AUCTION
WEDNESDAY, NOVEMBER 27, 2024 AT 10:00 AM^{CT}

675 ACRES ± (SUBJECT TO SURVEY) • 3 TRACTS SCAN FOR MORE INFORMATION

The Wayman farm is located just east of Greencastle on Hwy 6. The farm is further described as being located in Section 20 & 21, T63N-R17W, Morrow Township, Adair County, Missouri. The farm is approximately 2.7 miles east of Greencastle, MO, 7 miles west of Novinger, MO or 16 miles west of Kirksville, MO. The tracts represent prime Northeast Missouri pastureland, timber/recreational land, potential building sites, and improved with outbuildings.
RUSSELL "RUSTY" & KIM WAYMAN RUSTY - (660) 341-2250
Closing & Title Work: Pickell Abstract Company 115 S Franklin St, Kirksville, MO 63501 | (660) 665-8324
Auction Managers: Louie Zinn (319) 795-2314 & Dan Sullivan (319) 795-1833

BigIron SULLIVAN AUCTIONEERS
(844) 847-2161 | www.SullivanAuctioneers.com

BRIGHTEN UP YOUR HOME FOR THE HOLIDAYS
LIMITED TIME OFFER
FREE INSTALLATION \$25 BILL CREDIT
Call for details: (660) 874-4111
Sign up online: NEMR.NET
Offer good for new customers only. Ends 12/31/2024. Equal opportunity provider & employer.

LOLLI LIVESTOCK MKT, INC.
Tuesday, Nov 12 - 11am
Special Pre-Conditioned Feeder Calf & Yearling Sale

80 bbwf hfrs 700lbs (load lots)	45 bbwf str/hfrs 4-550lbs
65 bbwf str/hfrs 900lbs (pot load)	40 bbwf str/hfrs 5-700lbs
85 bbwf str/hfrs 4-700lbs	40 bbwf str/hfrs 4-600lbs
90 bbwf str/hfrs 5-700lbs	40 bbwf str/hfrs 5-700lbs
80 bbwf str/hfrs 5-700lbs	30 bbwf str/hfrs 5-700lbs
63 bbwf str/hfrs 5-600lbs	25 bbwf str/hfrs 5-600lbs
55 bbwf str/hfrs 3-600lbs	20 bbwf str/hfrs 5-600lbs
50 bbwf str/hfrs 5-600lbs	20 bbwf str/hfrs 600lbs
50 bbwf str/hfrs 6-700lbs	15 bbwf str/hfrs 5-700lbs

This is a partial listing, watch our website or FB for updates.
Cafe Open Lolli Livestock Market, Inc. 704 Main st * Macon, MO * 660-385-2516
Frankie 660-651-4040 * Tim 660-651-3496 * Joseph 660-346-9711
Jordan 660-346-0410 * Cody 660-676-9392 Cattle accepted on Sundays
Follow Us On Face Book & www.lollibro.com

"DOUBLE" AUCTION HAY & TOOLS + MUCH MORE
Saturday, November 16 • 10:00 A.M.
1916 S. 18TH (HWY 5 S) CENTERVILLE, IOWA
Hay sells at 10:00 AM, followed by the Tools and Misc Equipment
We are accepting consignments of Hay and Bedding of all Sizes.
Contact us right away for proper advertising.
Hay Manager Dalton Ott: 563-880-5626
Tools, Misc. Equipment: Rhino 72" Finish Mower; Land Pride FS1000 3 Pt Seeder; ATV Seeder; Snapper Rear Tine Tiller; Walk behind Weed Eater; Tree Stands; Large Horizontal 220 V Air Compressor; A-Maze-ing Heat Corn Furnace; Floor Jack; Bench Grinder; NIB 12" Dewalt Double-Bevel Compound Miter Saw; Generator; 3 Table Saws; New 300 Gal Stock Tank; Troy Built Snow Blower; Troy Built Tiller; 2 Diamond Plate PKUP Tool Boxes; Large Window AC; Boat Trailer; Cement Mixer; Antenna Masts; Antique Tractor Parts; Fencing Supplies; Weed eaters; Pole Saw; Misc Hand and Power Tools; Lawn Cart; New Dishwasher; 5' Steel Car Ramps; 2 Hitch Carriers; Large Attic Fan; Ariens Trimmer Mower; Troy Built Bronco rear Tine Tiller; 48" Brinly Dethatcher; 4@15" Alum Wheels; Stihl Weed Eater; Echo Weed Eater; 3 Push Mowers-Poulan, Craftsman, Yard Machine; Air Comp; Poly Tank; Step Ladders; 4 Good Truck Tires; Fishing Equip; Ice Auger; Deck Box; Well Pump Spout; Whiskey

DEMRY AUCTION, LLC
1916 S 18th St, (Hwy 5 SOUTH) CENTERVILLE, IOWA
Janet Demry: 641 895 4310 and 641 856 6408
Tom Demry: 641 895 2508 • Kristy Demry: 641 895 2509
Randy Muly: 641-436-1521 • Dalton Ott: 563-880-5626
Website: www.Demryauction.com

Mike Sullivan LAND SALES LLC
REAL ESTATE AUCTIONS SINCE 1979
UPCOMING LAND AUCTIONS

HANCOCK COUNTY, IL
83.8 ACRES - 1 TRACT
TUESDAY, NOVEMBER 19, 2024 AT 10:00 AM
AUCTION TO BE HELD AT THE EAGLES CLUB, CARTHAGE, IL.
This will be an in-person auction with live on-line bidding available.
LOCATION & GENERAL INFORMATION - The Wetterich farm is located at the east edge of Ferris, IL, or 4 miles Northwest of Carthage, IL at Roads 1850N-1800E. It contains 83.8 surveyed acres being the South Half of the Northwest Quarter of Section 36, Rock Creek Township, Hancock County. This exceptional, all level, all tillable, top producing farm has Virden & Ipava "Class A" soils with a 138.6 Productivity Index. Buyer will receive immediate possession for possible fertilizer application and tillage work. Method & Terms, Plats, Aerials, Photos, Drone Video, Etc at www.mikesullivanlandsales.com
MELVIN & MERTON WETTERICH

MCDONOUGH COUNTY, IL
173.48 ACRES - 2 TRACTS
FRIDAY, NOVEMBER 29, 2024 AT 5:00 PM
AUCTION TO BE HELD AT THE LEGION BUILDING IN PLYMOUTH, IL.
This will be an in-person auction with live on-line bidding available.
LOCATION & GENERAL INFORMATION - The Thompson land containing 173.48 surveyed acres is located 2 miles east of Colmar, IL. From Macomb, IL., take Hwy 336 west to the 61 Junction then 4 miles south to Colmar. Take the Colmar Blacktop (Lang Rd) 2 miles north and east, or 6 miles northeast of Plymouth, IL. Road N450 borders the north end and N350 borders the southwest corner. Tracts are in Sections 9 & 16 of LaMoine Township, McDonough County, IL.
TRACT 1 - 90.11 surveyed acres. Road N450 borders the north end. The south end borders tract 2. There are 10 acres of level tillable farmland in the northwest corner. The balance is enrolled in the permanent CREP program and consists of mostly rolling hardwood timber.
TRACT 2 - 83.37 surveyed acres. Road N350 borders the southwest corner and the north end borders tract 1. This tract is enrolled in the permanent CREP program with 40 acres in the CRP tree program through 9-30-26 with an annual payment of \$12,189.00.
The West Central Counties of Illinois have for many years been associated with some of the best Trophy Whitetail hunting in the country. These tracts offer outstanding deer, turkey and small game hunting.
NOTE - Due to people currently hunting this property, we ask that you contact the auctioneer before entering. There will be specific days and times designated to inspect it.
Method & Terms, Plats, Aerials, Photos, Drone Video, Etc at www.mikesullivanlandsales.com
LINDA THOMPSON
Mike Sullivan Land Sales LLC
414 Main • PO Box 68 • Carthage, IL 62321
217-357-5252 • www.mikesullivanlandsales.com

THE ROBERT & GWENDOLYN SMITH TRUST

SHELBY COUNTY, MISSOURI

LAND AUCTION

THURS, NOVEMBER 14TH | 6PM

- HIGHLY TILLABLE LAND
- TOP PRODUCTIVE SOILS
- EXCELLENT LOCATION

312± ACRES

OFFERED IN 4 TRACTS

DESCRIPTION: Peoples Land Co, LLC has the privilege to offer for sale at public auction, the locally known "Bob Smith Farm" for the Robert and Gwendolyn Smith Trust. The sale will be held at the Clarence VFW hall located at 89 North Shelby St., Clarence, MO 63437. The farm is located south of Clarence, MO along Highway 151 and county road Shelby 516. This farm has been in the Smith family for many years and is one of the best farms this area has to offer. The farm features highly tillable land with top productive soils in the perfect location. The layout of the tracts for this farm offer any buyer the opportunity to expand a farming operation, investment portfolio, build a forever home, or own a highly sought after piece of land in a great area. The Smith Family and the current tenant have cared for this farm at the highest level for many years and farms of this quality do not come for sale often so this is one that you will definitely not want to miss. The farm will be sold using the buyer's choice method and will be in four tracts consisting of the following.

TRACT 1: Consists of 100 acres m/l (Subject to final survey) with 95.98 FSA tillable acres making it 96% tillable. Has county road frontage along Shelby 516. Soil types consist of productive Mexico and Putnam soils.

TRACT 2: Consists of 80 acres m/l (Subject to final survey) with 74.74 FSA tillable acres making it 94% tillable. Has highway frontage along Highway 151 and county road frontage along Shelby 516. Soil types consist of productive Mexico, Leonard, and Putnam soils.

TRACT 3: Consists of 114 acres m/l (Subject to final survey) with 70.42 FSA tillable acres, 26.9 acres m/l in hay and pasture (some of which could be put in row crop) and the remaining balance in waterways and wooded areas. Has county road frontage along Shelby 516. Soil types consist of productive Mexico, Leonard, and Piopolis soils. This tract has improvements consisting of two grain bins, an older barn/machine shed, and a hoop building (hoop building will need repaired). Buyer to allow seller and current tenant access and right to load and haul grain that is and/or will be stored in grain bins on subject property until July 1, 2025. Seller and current tenant will have grain hauled out and bins will be emptied by July 1, 2025.

TRACT 4: Consists of 18 acres m/l with 7.08 FSA tillable acres and the remaining balance in timber and waterways. Has county road frontage along Shelby 516. This tract would make an absolute phenomenal hunting and recreational tract. Small tracts like

this one are hard to find and especially in this great area.

CLOSING AND TITLE INSURANCE: MONROE COUNTY ABSTRACT & TITLE, 229 NORTH MAIN ST., PARIS, MO 65275

***All locations and boundaries shown on maps are thought to be accurate but are not exact. Farm will be sold as-is with no warranties given or implied.

SELLER: THE ROBERT & GWENDOLYN SMITH TRUST



HELD AT THE CLARENCE VFW HALL
89 NORTH SHELBY ST., CLARENCE, MO 63437

Anthony Peoples (660) 651-6501
Scott Gander 660-676-1479
www.peopleslandco.com

MCCARTY FARM INVESTMENTS LLC

LAND AUCTION

242.2± ACRES OFFERED IN 2 TRACTS

HIGHLY PRODUCTIVE CROPLAND - NEATLY TERRACED STATE HIGHWAY C FRONTAGE

DESCRIPTION: Peoples Land Co, LLC is honored to offer this outstanding Monroe county farm for sale at public auction. The sale will be held at the Madison Area Community Center located at 115 S. Main St., Madison, MO 65263 on November 12, 2024 at 6:00 P.M. The farm is located approximately 5 miles southwest of Paris, MO along State Highway C. From Highway 24, take Highway C south approximately 4.5 miles to the farm. This farm offers a great opportunity to acquire top notch tillable land that has been cared for at the highest level for many years. The farm is highly productive and neatly terraced to provide the perfect layout as well as has highway frontage for great access. Farms in this area and of this quality are hard to come by especially providing large contiguous tillable fields. The current owner would be willing to cash rent back the tillable acres on a minimum two year contract for \$275 per FSA tillable acre. The farm will be sold using the buyer's choice method and will be in two tracts consisting of the following and possibly will be offered as one tract in its entirety.

TRACT 1: Consists of 122.3 surveyed acres with 104.26 FSA tillable acres m/l (Final FSA acres TBD by Farm Service Agency) making it 86% tillable. Has highway frontage along State Highway C. Soil types consist of productive Mexico, Leonard, and Armstrong soils. This tract also has 0.87 acres of CRP paying \$164.00 annually and expires 9-30-2026.

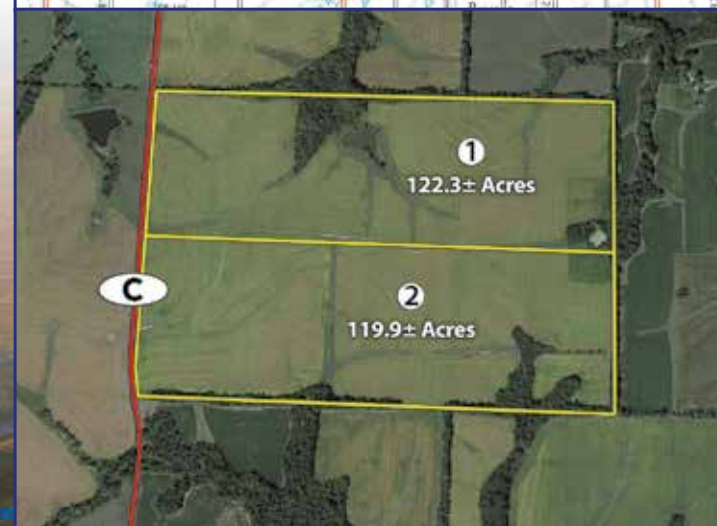
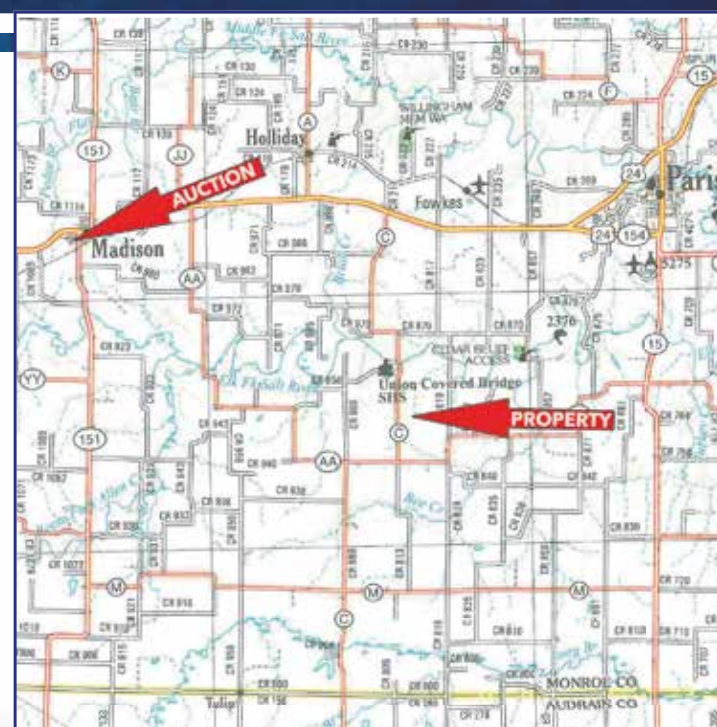
TRACT 2: Consists of 119.9 surveyed acres with 111.39 FSA tillable acres m/l (Final FSA acres TBD by Farm Service Agency) making it 93% tillable. Has highway frontage along State Highway C. Soil types consist of productive Mexico, Leonard, and Armstrong soils.

CLOSING AND TITLE INSURANCE: Monroe County Abstract & Title, 229 North Main St., Paris, MO 65275

***All locations and boundaries shown on maps are thought to be accurate but are not exact. Farm will be sold as-is with no warranties given or implied.

SELLER: MCCARTY FARM INVESTMENTS LLC

TUESDAY,
NOVEMBER 12TH
6:00PM MONROE CO. MO



HELD AT THE MADISON AREA COMMUNITY CENTER
115 S. MAIN ST. MADISON, MO

Scott Gander 660-676-1479
Anthony Peoples (660) 651-6501
www.peopleslandco.com



McAfee Auction Service, LLC
 375 S Johnson • Kahoka, MO
 660-727-3796
 www.mcafeeauctionservice.com

**LIVE ONSITE FARM MACHINERY
 LIVESTOCK EQUIPMENT
 HAY & FARM SUPPORT AUCTION**

SAT NOVEMBER 23RD - 10 AM

SALE CONDUCTED ONSITE LOCATED 1/2 MILE E. OF
 KNOX CITY MO ON HWY 6, THEN N. ON CO ROAD FINCH
 AVE. .9 MILE. (55263 FINCH AVE, KNOX CITY MO)



Selling a 2016 MF 5612 Dyna-4 4WD Cab Tractor w/ Loader, 2054 hours; (2) AC D17 Series IV Tractors w/ Loaders; Trailers to include: Dump, Livestock, Flatbed, Utility & Cargo; Trucks, ATV, UTV, 13' Bush Hog 2815 Rotary Cutter; Land Pride 3 way Blade; Grain Handling, Hay & Misc. Equip.; Livestock Equip.; 150 plus large bales (2024 Season} Hay; Tools, Farm Support Items and much much more

COMPLETE DETAILS ONLINE!

MARY & THE LATE VERLIN TONNIES, SELLERS



McAfee Auction Service, LLC
 375 S Johnson • Kahoka, MO
 660-727-3796
 www.mcafeeauctionservice.com

**TIMED ONLINE ONLY
 GUN, AMMO & RELATED
 AUCTION**

SUNDAY NOVEMBER 24TH

LOTS START ENDING AT 1 PM



Selling a nice selection of collectible guns, rifles, pistols, shotguns, black powder, signal cannons, ammo, reloading supplies & related items.

PREVIEW: (Guns Only) Thurs Nov 21st & Fri Nov 22nd 8am-4pm and Sat Nov 23rd 8am - Noon

Gabby's Gun Shop 743 N Walnut St. Kahoka, MO

NO PREVIEW ON AMMO & MISC

ALL FFL RULES APPLY

TOM HENCKEN COLLECTION



McAfee Auction Service, LLC
 375 S Johnson • Kahoka, MO
 660-727-3796
 www.mcafeeauctionservice.com

**FALL FARM
 MACHINERY
 Consignment
 Auction**

**Timed
 Online
 Only
 Auction**

CONSIGN NOW!

Deadline for Consignments is
Saturday, November 9th at 4PM

CALL 660-727-3796

**CHECK IN STARTS
 WED, NOV 6TH - SAT, NOV 9TH
 9AM - 4PM DAILY**

LARGER EQUIPMENT ACCEPTED
 EARLY BY APPOINTMENT

**Lots Start Closing at 10 am
 Thursday, December 5th**

Equipment will be located at the Clark County Fairgrounds



McAfee Auction Service, LLC
 375 S Johnson • Kahoka, MO
 660-727-3796
 www.mcafeeauctionservice.com

Clark County, MO
LAND AUCTION

Thursday, December 12TH - 10 AM

Sale conducted at the CARE Building located at 451 N. Vine St., Kahoka, MO
41.5 ACRES/ 2 TRACTS
 (Subject to Final Survey)

**Productive Tillable Cropland
 Hunting/Recreational
 Lying in Sect 35, Twp. 64N, R8W**



THE FAMILY OF JOHN BERGMAN, SELLERS



McAfee Auction Service, LLC
 375 S Johnson • Kahoka, MO
 660-727-3796
 www.mcafeeauctionservice.com

Clark County, MO
LAND AUCTION

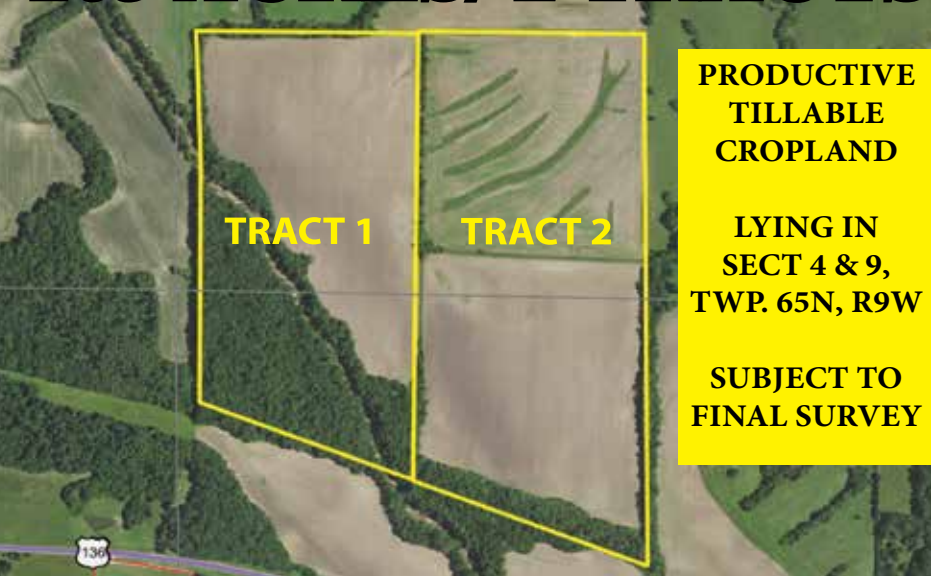
Thursday, December 19TH - 10 AM

Sale conducted at the CARE Building located at 451 N. Vine St., Kahoka, MO
163 ACRES/ 2 TRACTS

**PRODUCTIVE
 TILLABLE
 CROPLAND**

**LYING IN
 SECT 4 & 9,
 TWP. 65N, R9W**

**SUBJECT TO
 FINAL SURVEY**



TONY SMITH & TRACY SMITH, SELLERS