

NEW EDITION EVERY WEDNESDAY!

VOL. 32 • NO. 43 • OCTOBER 23, 2024

NEMO Trader

THE NEMO TRADER

PO BOX 809 • KIRKSVILLE, MO 63501 • PHONE 660-665-8500

Web Site: nemotrader.net • Email: sales@nemotrader.net

FREE

A WEEKLY ADVERTISER SERVING ALL OF NORTHEAST MISSOURI AND THE SURROUNDING AREA

LAND SALES & AUCTIONS

RANCH & FARM AUCTIONS

WHITETAIL PROPERTIES REAL ESTATE
A DIVISION/TRADE NAME OF WHITETAIL PROPERTIES REAL ESTATE
HUNTING | RANCH | FARM | TIMBER

SERVING
LEWIS • MACON • SHELBY • MARION • RANDOLPH • MONROE • RALLS • AUDRAIN

CLAY LOCKARD
EAST CENTRAL MISSOURI LAND SPECIALIST
573.466.9123

WHITETAILPROPERTIES.COM

Whitetail Properties Real Estate, LLC DBA Whitetail Properties, ODA Whitetail Properties Real Estate in FL, US SMO - Whitetail Properties Real Estate, LLC

exp REALTY

Elizabeth Gregory
110 S. Franklin St
Kirksville, MO 63501
www.missourihomeandfarm.com
660.621.2136

Lick Creek FENCING
Owen Miller
641-242-0346

Continuous Fence • Barb Wire
Woven Wire • Skid Work

LENE SHERIFF

FOR ADAM COUNTY VOTE NOV 5th

Paid for the Committee to Elect Jason D. Lene, Stiona Lene, Treasurer

AMMIO PLANET GUN & PAWN SHOP

JOE RICE // OWNER
200 W. POTTER AVE • KIRKSVILLE, MO
660-956-4654 • 660-349-0070
EMAIL: sales@ammo-planet.com

WWW.AMMO-PLANET.COM

Ashley Tambo Reclining Sectional
SAVE \$672
WAS \$36.99 NOW \$29.99/week
* 96 weeks RTO, * \$2,879.04 Total RTO*

TCL 75" 4K UHD Google TV
WAS \$26.99 NOW \$17.99/week
* 72 weeks RTO, * \$1,295.28 Total RTO*

75" TV SAVE \$648

ASHLEY

NOW OPEN

We're Here!
And can't wait to serve you!

\$5 GETS YOU STARTED

Ashley Juararo Queen 6-Piece Bedroom Set
SAVE \$432
WAS \$35.99 NOW \$29.99/week * 72 weeks RTO, * \$2,159.28 Total RTO*

ASHLEY

Your Next Good Night's Sleep Awaits

Passport SLEEP GALLERY

Amana Laundry
3.5 Cu. Ft. Washer WAS \$13.99
NOW \$9.99/week * 96 weeks RTO, * \$9519.04 Total RTO*
6.5 Cu. Ft. Electric Dryer WAS \$13.99
NOW \$9.99/week * 96 weeks RTO, * \$959.04 Total RTO*

Use Code: 5START
online & in-store

SAVE \$384

AMANA

2104 N. BALTIMORE, KIRKSVILLE, MO 63501
Next to Dollar Tree • Text or Call 660-228-2880
shoprentone.com

RENT ONE
HOME FURNISHINGS



FARM SHOP
EDINA, MO

Edina, MO 63537
660-397-3550
farmshopinc.com

Edward Jones Member SIPC

Jason K Robinson
Financial Advisor
1300 Country Club Dr
Kirkville, MO 63501
660-956-9562

MKT-5894P-A AECSPAD > edwardjones.com

EVERY DAY IS A GIFT.
TAKE TIME TO ENJOY IT.
Reid A. Millard

playlerimermillard.com

PLAYLE-RIMER-MILLARD
Family Funeral Chapel

Reid A. Millard
Funeral Director

CENTURY 21
Lifetime Realty

1605 S Baltimore St, Suite A
Kirkville, MO 63501

660-665-5678
www.C21Kirkville.com

Each office is individually owned and operated.

HyVee
EMPLOYEE OWNED

500 N Baltimore St, Kirkville, MO 63501

Open 6-11 Daily
(660) 665-8335

NM SB **NORTHEAST MISSOURI STATE BANK**

Kirkville Branch: 600 S Baltimore, Kirkville, MO 660-665-6161

La Plata Branch: 139 S Gex Street, La Plata, MO 660-332-4317

northeastmissouristatebank.com

Sonny's Collision Center
Sonny Findling

545 N. Marion
Kirkville, MO 63501
660-665-8533
660-665-8507

WIN	HOME TEAM	DATE	AWAY TEAM	LOSS	WIN	HOME TEAM	DATE	AWAY TEAM	LOSS
8	KIRKVILLE, HS			0	1	KNOX COUNTY, HS			6
0	MACON	8/30	KIRKVILLE	35	37	ST. PAUL LUTHERAN	8/30	KNOX COUNTY	30
42	KIRKVILLE	9/6	CHILlicothe	7	68	PLATTSBURG	9/6	KNOX COUNTY	32
7	KIRKVILLE	9/13	SAVANNAH	6	28	KNOX COUNTY	9/13	BISHOP LEBLOND	52
7	MOBERLY	9/20	KIRKVILLE	28	-	KNOX COUNTY	9/20	OFF WEEK	-
0	MARSHALL	9/27	KIRKVILLE	40	62	SCHUYLER CO.	9/27	KNOX COUNTY	44
16	KIRKVILLE	10/4	HANNIBAL	15	60	PARIS	10/4	KNOX COUNTY	20
13	MEXICO	10/11	KIRKVILLE	28	48	KNOX COUNTY	10/11	NORTH SHELBY	34
42	KIRKVILLE	10/18	FULTON	0	18	LIVINGSTON CO.	10/18	KNOX COUNTY	76
0	CENTRALIA	10/25	KIRKVILLE	0	0	KEYTESVILLE	10/25	KNOX COUNTY	0
5	SCHUYLER CO., HS			3	2	MACON, HS			6
16	SEYMOUR	8/30	SCHUYLER CO.	52	0	MACON	8/30	KIRKVILLE	35
72	BISHOP LEBLOND	9/6	SCHUYLER CO.	12	18	N. CALLAWAY	9/6	MACON	7
42	SCHUYLER CO.	9/13	PLATTSBURG	46	56	PALMYRA	9/13	MACON	14
28	KEYTESVILLE	9/20	SCHUYLER CO.	60	15	MACON	9/20	HALLSVILLE	46
62	SCHUYLER CO.	9/27	KNOX COUNTY	44	38	CENTRALIA	9/27	MACON	14
70	SCHUYLER CO.	10/4	LIVINGSTON CO.	22	8	CLARK COUNTY	10/4	MACON	15
34	SCHUYLER CO.	10/11	BRAYMER	64	56	MACON	10/11	HIGHLAND	12
58	NORTH SHELBY	10/18	SCHUYLER CO.	62	21	MACON	10/18	SOUTH SHELBY	42
0	PARIS	10/25	SCHUYLER CO.	0	0	MONROE CITY	10/25	MACON	0

ALWAYS PUSH FORWARD
with Connections Bank

www.connections.bank
2817 N BALTIMORE ST.
KIRKVILLE, MO 63501
660-665-7703

FOOTBALL SCOREBOARD

FOOTBALL SCOREBOARD

CALL US TO INCLUDE YOUR BUSINESS!

660-665-2808

Travis~Noe Funeral Home

1008 Potter Avenue, Kirkville, MO
660-665-1300
Neil & Sherry Travis, Brian Noe, Brenton Travis

Lancaster Lumber INC.

Locally owned
Full Service Retailer of building materials and Hardware
660-457-3814

Shop Local
Buy Local
Support Local

Lancaster, MO | www.lancasterlumber.com | check us out on facebook

LOVEGREEN
GOLOVEGREEN.COM

THINKING OF SELLING?

Heritage House Realty, Inc.

CALL US TODAY!
660-665-5638

KirkvilleRealEstate.com

MISSOURI FARM BUREAU INSURANCE

Chris Clark,
Licensed Sales Associate
Email: chris.clark@mofb.com
Website: www.mofbinsurance.com

AUTO HOME LIFE

Clark Agency: 115 W. Potter, Kirkville, MO • (660) 665-1956

COLTON'S
Steak House & Grill

We Know What's At steak!

1116 Country Club Drive • Kirkville, MO
660-665-6336 • ColtonsSteakhouse.com



HARRISON FISHERY
POND & LAKE STOCKING
Call us today! 660.423.5482

660-423-5482
Contact us for bulk price & delivery.

info@harrisonfishery.com • www.harrisonfishery.com




Fall is a Great Time to Stock Your Lakes & Ponds!!
Come see us for Freshwater, Game & Baitfish.

Species Available: Large mouth bass, hybrid bluegill, bluegill, redear sunfish, black crappie, fathead minnow, walleye, muskie catfish, golden shiners and more!



MEADOWLARK CREAMERY

(660) 299-9019
49982 State Highway 15 Baring, MO 63531
Hours: Monday - Saturday 8:00 - 5:30

Call 660-457-3700
Hwy 63 North, Lancaster, MO

2017 Grand Caravan, Handicap, rear load, motorized chair included, 26K miles, Burgundy **\$34,900**

2013 Chevy 1500, ext. cab, LTZ, 4x4, New tires, 116K, leather, silver, excellent, **\$15,900**

Low pro steel trailer, slide in ramps, 84 x 74 deck. **\$1,995**


John Deere X740, mower, diesel, only 740 hours, 62" deck, excellent..... **\$8,995**

2012 Case 580N, Loader Backhoe, Turbo, 4WD, Cab with AC, Extendahoe, New 12 ply Tires, Only 1280 Hours, 1 owner, very clean, only **\$61,000**

2007-14 Chevy pickup box, red, 8 ft, little rust only **\$1,000**

2002 GMC Sierra 1500 **NEW PRICE \$5,999**
Reg. Cab, Long bed, 4x4, V8, 138K, RED

2006 Chevy 2500HD, 4x4, 6.0L, reg cab, 8 ft bed, 1 owner, no rust, only 97k, red, ... **NEW PRICE \$17,500**



www.juddmotors.com | In Business Over 75 Years
Curly and Kevin Judd



KIRKSVILLE, MO
660-665-8000

For current scrap prices call or visit our **Facebook Page**
victorymetalsrecycling.com




★ **METAL RECYCLING**
RECYCLE YOUR SCRAP METAL WITH US! WE PAY CASH FOR: COPPER, ALUMINUM, STEEL, STAINLESS STEEL, APPLIANCES, E-SCRAP, BRASS, LEAD, RADIATORS, ALTERNATORS, BATTERIES, STARTERS, ELECTRIC MOTORS, APPLIANCES, & VEHICLES (TITLE & ID REQUIRED).

★ **ROLL-OFF CONTAINER**
10-20-30-40 CUBIC YARD DUMPSTERS

3602 INDUSTRIAL RD. • KIRKSVILLE, MO 63501
DJANESVMR@GMAIL.COM
VICTORYMETALSRECYCLING.COM

ANIMAL HOUSING HAY STORAGE & MUCH MORE





TIMED ONLINE!
EQUIPMENT AUCTION

TUESDAY, NOVEMBER 12TH
@ 10:00 AM GST



Physical Address:
7205 E HIGHLAND DR. • JONESBORO, AR 72401






Join us for Alliance Ag Equipment's End of the Year Auction! This will be a timed online absolute auction. Multiple RoGator sprayers and spreaders, Fendt tractors, John Deere sprayers, and much more!

AUCTION REPRESENTATIVES: KAYCEE MCGREGOR (319) 670-8532 & RACHEL FREIDHOF (515) 290-8244



"Specializing in Farm Real Estate & Ag Equipment"

www.MeritAuctions.com
Lic. #444.000611

Skylight FABRIC STRUCTURES

30697 COLONY AVE. • NEW CAMBRIA, MO 63558
660-486-3250 • 833-482-8862




CALL FOR PRICING
NEW LOCATION
28637 US HWY 136 UNIONVILLE, MO.
641-895-4107







Golden Grain Bins-Winter Discount

Grain Bins	Floors w/12" Supp. & Flashing	
18'x18' 4,195bu. \$ 6,067	18'....\$1,693	30'....\$ 4,726
27'x21' 11,265bu. \$12,178	21'....\$2,315	36'....\$ 6,733
42'x24' 32,245bu. \$28,386	27'....\$3,862	42'....\$ 9,169



GMLS Industries, Inc.
 PH: 660-699-2179 or 620-983-2136
 www.gmlsindustries.com

CELEBRATIONS!
PARTY RENTAL
 KIRKSVILLE, MO

FOR RENT

- Tables & Chairs
- Tents • Bounce House
- Cotton Candy Machine & More!

660-626-5162 or 660-665-9380

AGRI-BUSINESS

Equipment & Supplies

AC D14 Narrow front, 14.9x26, good rims, very nice sheet metal, new battery, rebuilt starter, carburetor. Call for details. 217-257-1385

AC 3 bottom snap coupler plow, stored inside, \$200.00. Overhead fuel barrel stand only for 300 gallon tank, \$50.00. 217-257-1385

International 2200 hydraulic bucket loader and push blade with joystick controls on 574 utility. Fits others. \$2100.00. 217-257-1385

2020 Krone AMR 280 disk mower, 9.3 cutting with 3 pt, 540 PTO, quick change blades, safe cut hubs, low acres used, shedded. \$10,200. 217-257-1385

Equipment & Supplies

2014 Krause 8000-30 Excelsior V-Till. Gang Angle adjustment; hyd star wheels; flat bar reel. Blades 20.75" front, 21.00" back. Excellent machine. \$48,000 OBO. Robert Lay, LaBelle, MO 660-341-5471.

Hay/Feed/Seed

Large net wrapped bales mixed grass hay near Bethany, MO. Loading available. 660-730-9001.

5X51/2 big round bales for sale. Baled dry mixed grass hay with alfalfa. Fertilized, lab tested, net wrapped. Watson Hay Sales 660-341-4031

Mixed grass hay, big round bales, twine tied, 1450 pounds, \$65.00. Load out Saturday and Sunday only. Call 660-341-1296.

Your Local
FARM SUPPLY SOURCE
 NUTRITION • MEDICAL • FARM • PET • APPAREL

MLS Cattle Protein Tubs

Hometown
 ANIMAL HEALTH

Feed • Medical • Farm & Pet Supplies • Footwear & More
 website: hometownanimalhealth.com

660-465-2967
 18743 US Hwy, 136 Memphis, MO 63555 • "on Hwy 136 west of Memphis"
 Monday-Friday 8pm to 5pm • Saturday 8am to 1pm

YODER CONSTRUCTION
DANIEL YODER

- Metal Roofing
- Siding
- New Construction

(Leave Message)
660-486-3332

OUR GOALS:

- Good Service
- Quality Structure
- Competitive Prices
- Free Estimates

LAN-DOW BUILDINGS
 "We Build To Suit Your Needs"
 "Custom Built"

Pole Barns • Garages • Utility Buildings
 Dick, Jason or Andy Middleton

Memphis Lumber Co.
 1-800-337-5858 • 660-465-8595
 Fax: 660-465-8596

GO TO FARMBANK.COM

VOTE FOR YOUR FAVORITE PUMPKIN

VOTE BY OCTOBER 25TH

fb

TIMBER MANAGEMENT.

Purchasing Walnut, Oak, Maple & Other Species

WE PAY BEFORE WE CUT

BONDED & INSURED Est. 1968
641-895-8209

W Wiss & iss Equipment Inc.

2016 John Deere 5100M
 1970 Hours, w/loader & bucket
 \$65,000

MASSEY FERGUSON 4710
 399.3 Hours, Loader, Bucket, 2 Rear Remotes, - \$65,000

GREAT PLAINS 2400TM Turbo Max - \$69,500

GREAT PLAINS 3000TM Turbo Max - \$67,500

JOHN DEERE 2038R JD 220R Loader, Bucket, 72D Auto Connect Deck, - \$27,500

JOHN DEERE 4320 JD H180 Loader, Bucket, Joystick, 1 Rear Remote \$32,500

2009 Bobcat S185 945.5 Hours, Aux Hydraulics, Cab, Heat, Air - \$27,500

For more information call Jerry Redding - 660-727-3374
 Wiss & Wiss Equipment, Inc., 155 E. Chestnut St. Kahoka, Mo

Scrubby Duds
 Laundromat

Large capacity coin machines

Your laundry never takes a break & neither do our machines!

**OPEN 7 DAYS A WEEK
 24 HOURS A DAY**

311 S. Baltimore Kirksville, MO 63501 660-349-8943 Bob & Paulette Thompson

NEMO Trader Classified

COUPON

2 Classified Ads for just \$6.00

20 cents per word over 20 words
 Must be Mailed in or brought in along with payment.
 Picture Ads Not Included with Coupon!

Choose Classification

Agri-Business Real Estate Rentals Yard Sales
 Announcements Real Estate Sales Auctions & Estate Sales
 Employment Recreation
 Financial Services
 Merchandise Transportation

Ad No. 1 Each Box Represents a Word (20 words or less)

Ad No. 2 Each Box Represents a Word (20 words or less)

Name _____
 Mailing Address _____
 Phone Number * _____
 this is required*
 PO Box 809 Kirksville, MO 63501 • 660-665-8500

WE GOT YOUR NEEDS COVERED!

FARM TARPS TRUCK TARPS
HOOP BUILDING COVERS

Troyer
TARP MFG.

660-486-3301
 20264 STATE HWY. VV • ETHEL, MO 63539

ANTIQUE AUCTION

2705 Main St Unionville Mo • October 26th at 10 am

75 pound anvil, piles of 1x12 and other seasoned walnut boards, barn beams, Loudon whiffletree, coins to include Morgan and Peace dollars and silver halves, 7 up sign, coke button sign, gas pump signs, 5 gal glass bottles, carousel horse, Ross produce egg crates made into cabinets, cast iron skillets, 2 guitars, 2 one gallon Dazey churns, metal Dazey churn, several hundred metal wrenches and tools to include unique and unusual hand tools, large bud and seagrams bottles, ice saw, wood seeder, hay carrier, cream can, diamond edge sign on a tool carrier, 2 large bullets, hammers, chrome table, old tool boxes, several woodworking planes and tools, leather vise, post beam drill, road signs, hubcaps, sheep shearer blade sharpener, several blue fruit jars, 1858 fruit jars, Monsanto clock, full size John Wayne and Hoppy Casady cutouts, Mickey Mouse phone, washboards, shoe shine kit, ice tongs, 2 round windows, chimney cabinets, tractor seats, kids rockers, several chairs, buggy seat springs, rr crossing sign, steel wheels, yellow Pyrex bowl, Iris and Herringbone, bells, runner sled, wall crank phones, Fenton, crazy quilt, Jeanette glass, History PC schools book, yearbooks, teapots, Old Threshers pot, yard sticks. Folks we still have a trailer load of items to come in that we haven't seen or know what's in it.

Food and restrooms will be available, tools will be sold at an indoor sit down type sale in a climate controlled building. Auction preview on October 25th from 2 to 5 pm.

Check out pictures on Facebook or our website at www.altiserauctionandappraisal.com.

SEE OUR FACEBOOK PAGE FOR PHOTOS



MUST SEE!!

2020 GMC Terrain SLT, AWD, black leather heated seats and steering wheel, backup camera, remote start, collision alert & much more, white frost, been garaged, window sticker, 78,000 miles (local one owner). **\$19,900**

2010 Jeep Liberty Limited, 4x4, V6, loaded, heated leather seats, sunroof, chrome package, new tires, always garaged, Same owner last 12 years, 115,000 miles, Must see **\$9,700**

Accelerators Performance & Auto

Since 1974
Kahoka, MO
660-727-3455
Daryl's Cell
217-257-1385

LOLLI LIVESTOCK MKT, INC.

Tuesday, Oct 29 - 11am

Special Pre-Conditioned Feeder Calf & Yearling Sale

80 bbwf str 700lbs (pot load) 55 bbwf str/hfrs 3-600lbs
75 bbwf hfrs 700lbs (pot load) 50 bbwf str 700lbs
75 bbwf hfrs 675lbs (pot load) 40 bbwf str/hfrs 5-700lbs
300 bbwf str/hfrs 5-700lbs 35 bbwf str/hfrs 5-700lbs
85 bbwf str/hfrs 4-700lbs 28 bbwf str/hfrs 5-600lbs
63 bbwf str/hfrs 5-600lbs 25 bbwf str 450-650lbs
This is a partial listing, watch our website or FB for updates.

Cafe Open Lolli Livestock Market, Inc. Cafe Open
704 Main st * Macon, MO * 660-385-2516
Frankie 660-651-4040 * Tim 660-651-3496 * Joseph 660-346-9711
Jordan 660-346-0410 * Cody 660-676-9392 Cattle accepted on Sundays
Follow Us On Face Book & www.lolibros.com

Professional Auction Services

Like to look for those auction deals? Have land, equipment, or other items you need to have auctioned? Check out these area auction companies!

SAYRE AUCTION LLC

Specializing in Estate & Real Estate Auctions

Serving Linn County and Surrounding Areas

809 West Dake Street • Brookfield, MO 64628

660-734-8782

shawnsayre@gmail.com

www.sayreauction.com

RANCH & FARM AUCTIONS

Specializing in Land & Farms *Online Auctions

Serving All States

115 W. Washington • Pittsfield, IL 62363

217-922-0811

directors@ranchandfarmauctions.com

RANCHANDFARMAUCTIONS.COM

SULLIVAN AUCTIONEERS, A BIGIRON COMPANY

Specializing in Agricultural Real Estate & Machinery

Serving the Tri-State Area

1066 E. US Hwy 136 • Hamilton, IL 62341

844-847-2161

sold@sullivanauctioneers.com

www.sullivanAuctioneers.com

UNITED COUNTRY GILWORTH REAL ESTATE & AUCTION

Specializing in Equipment & Real Estate Sales

Serving North Missouri & Southern Iowa

2020 Main Street • Unionville, MO 63565

660-947-7738

cedgilworth@gilworthrealestate.com

www.ucgilworthauction.com

www.gilworthrealestate.com

NORTH MISSOURI LAND COMPANY

Specializing in Farm, Ag, and Recreational Land

Serving all of North Missouri

506 N. Missouri Street, Suite A • Macon, MO

660-395-5263

northmoland.com

northmoland@gmail.com

MCAFFEE AUCTION SERVICE

Land - Machinery - Estate - Coins

Serving Northeast Missouri

375 South Johnson • Kahoka, MO

660-727-3796

www.mcafeeauctionservice.com

auction@centurylink.net

MERIT AUCTIONS, LLC

Specializing in Farm Real Estate & Ag Equipment

Serving the Greater Midwest

4502 Avenue O • Ft. Madison, IA

833-273-9300

info@meritauctions.com

www.meritauctions.com

MISSOURI LAND AND FARM MIDWEST LAND AND RANCH

Specializing in Ag and Recreation Land,

Serving all of Missouri and Kansas

216 N Main • Brookfield, Mo

660-788-3333

660-734-3925

WHEELER AUCTION SERVICE

Specializing in Real Estate & Farm Machinery

Servicing all locations

23101 Hwy 24 • Paris, MO 65275

660-327-5890

Wheelerauctions.com

ads@wheelerauctions.com

PURPLE WAVE AUCTION

Specializing in online equipment auctions

Serving All States

825 Levee Drive • Manhattan, KS 66502

866.608.9283

auction@purplewave.com

purplewave.com

ALL AUCTION INC.

Specializing in Estate, Property, & Consignments

Auction House & Lot available

Serving Iowa & Missouri

1011 N Front St • Humeston, IA 50123

515-231-5176

allauctionsinc@gmail.com

www.allauctionsinc.com

NEMO

Trader

PO BOX 809 • KIRKSVILLE, MO 63501

PHONE 660-665-8500

Web Site: nemotrader.net

Email: sales@nemotrader.net



McAfee Auction Service, LLC
 375 S Johnson • Kahoka, MO
 660-727-3796
 www.mcafeeauctionservice.com

**TIMED ONLINE ONLY
 HOUSEHOLD LIQUIDATION AUCTION**

**FRIDAY OCTOBER 25TH
 LOTS START ENDING AT 10 AM**

LOCATION: 321 W MISSOURI MEMPHIS, MO



**ONE DAY
 PICK UP
 SATURDAY
 OCT 26TH
 9AM-NOON**

Selling furniture, glassware,
 collectibles & household misc

BID NOW! COMPLETE DETAILS ONLINE!



McAfee Auction Service, LLC
 375 S Johnson • Kahoka, MO
 660-727-3796
 www.mcafeeauctionservice.com

**ABSOLUTE REAL ESTATE
 AUCTION**

TUESDAY OCT 29TH - 10 AM

Sale conducted onsite located on the corner of
 N. Main and W. Hannibal, Wyaconda, MO



Selling a well cared
 for Church building
 with newer metal roof
 & recently updated
 furnace & central air.
 Church bell conveys
 w/ property.

First Baptist Church of Wyaconda, Sellers



McAfee Auction Service, LLC
 375 S Johnson • Kahoka, MO
 660-727-3796
 www.mcafeeauctionservice.com

**LIVE ONSITE FARM MACHINERY
 LIVESTOCK EQUIPMENT
 HAY & FARM SUPPORT AUCTION**

SAT NOVEMBER 23RD - 10 AM

SALE CONDUCTED ONSITE LOCATED 1/2 MILE E. OF
 KNOX CITY MO ON HWY 6, THEN N. ON CO ROAD FINCH
 AVE. .9 MILE. (55263 FINCH AVE, KNOX CITY MO)



Selling a 2016 MF 5612 Dyna-4 4WD Cab Tractor w/ Loader, 2054
 hours; (2) AC D17 Series IV Tractors w/ Loaders; Trailers to include:
 Dump, Livestock, Flatbed, Utility & Cargo; Trucks, ATV, UTV, 13'
 Bush Hog 2815 Rotary Cutter; Land Pride 3 way Blade; Grain Hand-
 ling, Hay & Misc. Equip.; Livestock Equip.; 150 plus large bales
 (2024 Season} Hay; Tools, Farm Support Items and much much more
COMPLETE DETAILS ONLINE!

MARY & THE LATE VERLIN TONNIES, SELLERS



McAfee Auction Service, LLC
 375 S Johnson • Kahoka, MO
 660-727-3796
 www.mcafeeauctionservice.com

**FALL FARM
 MACHINERY
 Consignment
 Auction**

**Timed
 Online
 Only
 Auction**

CONSIGN NOW!

Deadline for Consignments is
Saturday, November 9th at 4PM

CALL 660-727-3796

**CHECK IN STARTS
 WED, NOV 6TH - SAT, NOV 9TH
 9AM - 4PM DAILY**

LARGER EQUIPMENT ACCEPTED BY APPOINTMENT
 STARTING OCTOBER 10TH

**Lots Start Closing at 10 am
 Thursday, December 5th**

Equipment will be located at the Clark County Fairgrounds



McAfee Auction Service, LLC
 375 S Johnson • Kahoka, MO
 660-727-3796
 www.mcafeeauctionservice.com

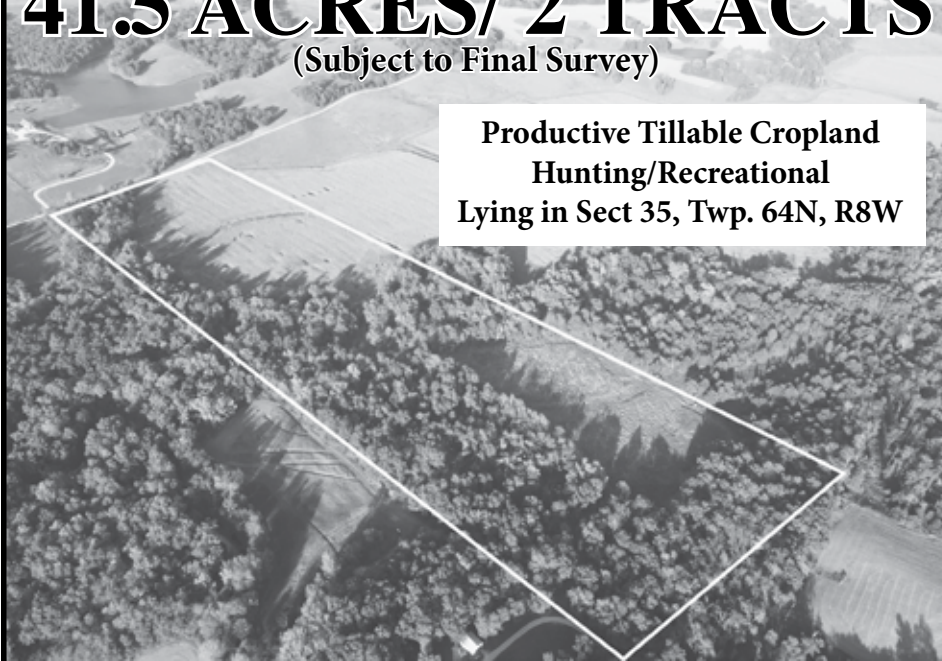
Clark County, MO
LAND AUCTION

Thursday, December 12TH - 10 AM

Sale conducted at the CARE Building located at 451 N. Vine St., Kahoka, MO

41.5 ACRES/ 2 TRACTS
 (Subject to Final Survey)

Productive Tillable Cropland
 Hunting/Recreational
 Lying in Sect 35, Twp. 64N, R8W



THE FAMILY OF JOHN BERGMAN, SELLERS

**THINKING OF SELLING
 LAND OR MACHINERY?
 LET OUR MOTIVATED
 STAFF WORK FOR YOU!**

MONTY: 660-341-7412

OFFICE: 660-727-3796

**ADDITIONAL DETAILS & PHOTOS ONLINE
 WWW.MCAFEEAUCTIONSERVICE.COM**

TIMED ONLINE - NO RESERVE
FARM RETIREMENT AUCTION
TUESDAY, OCTOBER 29 @ 10:00 AM CDT

PHYSICAL ADDRESS:
14839 150TH AVENUE
MYSTIC, IA 52574

Inspection:
FRI, OCTOBER 25
9:00 AM - 2:00 PM

Load Out:
WED, OCTOBER 30
9:00 AM - 3:00 PM




Case IH & Allis Chalmers tractors; Collector tractors; Compact tractors & lawnmowers; large selection of attachments; trucks; trailers; much, much more! Please check website for complete listing.

KEITH & LORENA LAIN REVOCABLE TRUST
 AUCTION REPRESENTATIVE: John Probasco (641) 856-7355

MERIT AUCTIONS
 "Specializing in Farm Real Estate & Ag Equipment"

833.273.9300 | www.MeritAuctions.com | 444.000611

AKC LAB PUPPIES
 \$150 Males - Only 2 left!
LAY'S LABS
 LABELLE, MO
 (660) 956-2482

FOR SALE
All Sired Angus Bulls,
14 & 18 Months Old.
Harold Trump
660-341-5730

FOR SALE:
VNS Cereal Rye,
 Triticale, & Oats. Germ tested & bagged in 2000lb totes. Discounts for trailer loads.
660-384-3468

Premium Metal Roofing



AW Metal Inc.
Metal Roofing Headquarters
 641-664-3990 • awmetal.net

Sharkey COUNTRY AUCTION
 13467 SPALDING ROAD - HANNIBAL, MO
FRIDAY, NOVEMBER 1, 2024 @ 12 NOON







1931 Ford Model A






FORD MODEL A CAR - FARM EQUIPMENT - TOOLS - FARM RELATED - ANTIQUES & COLLECTIBLES - JDX590 LAWN MOWER - LAWN & GARDEN - BOAT - JETSKIS - DEER STAND - HUNTING - GUNS - KNIFE COLLECTION - ELECTRONICS - SPORTS GEAR - HOUSEHOLD - TOYS - CHRISTMAS - BOOKS - FULL LISTING @ IMANAUCTION.COM

IMAN AUCTION COMPANY
 ImanAuction.com | 660-788-4298 | 660-414-7967

Ryan & Jacqueline Sharkey, Sellers



DECEMBER 7TH CONSIGNMENT AUCTION
Dec. 7, 2024 at 10:00 a.m.
Multiple Consignors

Directions: 28251 US Highway 63 North, Macon, Missouri. From US Highway 36 travel approximately 2 miles North of Macon to Scotty's Auction Barn and Event Center on the West side of the road. Watch for signs the day of the auction.

NOW ACCEPTING CONSIGNMENTS FOR OUR DECEMBER 7TH CONSIGNMENT AUCTION!
 We will not be accepting small items without preapproval.

All items must be check in by a Scotty's Auction Service crew member. Call 573-356-4405 to schedule check in of your items.

SEE MORE PHOTOS ON SCOTTY'S WEBSITE

SCOTTY'S AUCTION SERVICE
 573-356-4405
 Michael Cunningham 660-651-2288 • Paxton Pittman 660-346-1956
WWW.SCOTTSAUCTIONSERVICE.COM

Have a smart phone or tablet?
 You can view current and past Nemo Trader issues online at **www.nemotrader.net**



SAYRE AUCTION, LLC
ON SITE LIVE CONSIGNMENT AUCTION
Saturday November 2nd 10am
 28152 Hwy TT. Brookfield mo. 64628

GUNS: Winchester mod. 94 1866 Centennial 30-30 rifle 20" barrel gold plated receiver new in box. s/n 23303: 100th anniversary yellow boy: Winchester mod. 94 1866 Centennial 30-30 rifle 26" barrel gold plated receiver new in box. s/n 17484: 100th anniversary yellow boys: DPMS Panther arms AR10 308 w/3x9x40 scope s/n FFK020263: DPMS Panther arms AR15 223 S/N DNWC026604: Browning Xbolt S/S stalker 65cm s/n JP10591YY354 new in box: Tri-Star Viper G2 wood 20ga. s/n E4A12764 like new in box: Traditions 50 cal. SS muzzleloader new in box: CVA Wolf 50 cal. Muzzleloader new in box: JE 2110Laminated steel Belgium 10ga. Winchester 1873 rifle lever action 38 wc w/hex barrel: Marlin rifle Mod. 1893 32-20 lever action Marlin Rangler rifle mod. 94 32 sp. Lever action new fired: Remington Mod. 33 22 short, long or long rifle: Ruger 10-22 hand checkered stock semi auto: 2-Remington UMC trademark 22 special hex barrel take downs: Winchester mod. 1906 22 short, long or long rifle: JC Higgins Mod.40 12ga. Auto: **TRUCKS-CAR-TRACTORS-MOTORCYCLE:** 1985 k20 Truck 4x4, auto, new motor put in Aug 2021 (less than 8000 miles) transmission repairs completed Sept. 2022 Rebuilt differential 2022. 69442 miles: 2011 F150 XLT EcoBoost crew cab, 4x4, 187k miles auto: 1971 Monte Carlo fresh Finney garage built 406, new posi trac rear end,350 turbo transmission, conner machine tuned and polished aluminum heads, new exhaust w/ceramic coated headers, low miles show ready: 2004 Harley Davidson soft tail motorcycle: **TOOLS-RESTURANT EQUIPMENT:** Tully Reeds old tool collection: True commercial freezer- Glass fronted commercial freezer. 2-Warming tables Way Co fast stop pizza warmer: Ashby ice cream freezer: Good used equipment out of the old PB5 station.

Note: These are some of the early listings, contact Shawn 660-734-8782 to consign. Will except items up to sale day (no household items please) everything sells as is where is with no guarantees! Sayre auction is an agent between buyer and seller not liable for stolen or misplaced items.

WE DO NOT GUARANTEE ANY OF THE ITEMS. Catering wagon by ma's sugar shack.

SAYRE AUCTION, LLC
 "If It's For Sale We Can Sell It" • Family Owned & Operated Since 1978!
 Live and Online Auction Services
 Cash, Check, and Credit Cards Accepted
 www.sayreauction.com

Shawn Sayre 660-734-8782 Owner - Auctioneer
 Alyson Sayre 660-734-5005 Realtor
 Mark Cleveland Broker - Auctioneer
 Danny Jeffries Auctioneer

WANT BIG DEER?
ATTENTION LANDOWNERS WITHIN 15 MILES OF GREEN CITY, MISSOURI



Roeslein Alternative Energy will pay highly competitive rates to lease row crop & hay ground to build a diverse prairie for a renewable energy project.



To learn more, please email Steve Mowry: smowry@roesleinae.com



Connie's MOBILE HOME TRANSPORT

We offer the following...
Break Downs • Transport • Set up • Anchoring

Call Rich today! 573-881-7483

A&L SALES

Monday - Saturday • 8 am to 5 pm

- Bulk Frozen Foods •
- Muck Boots • Fabric •
- Footware •

25655 HWY 156
3 miles west of Laplata, MO

ATTENTION LAND OWNERS!!

Buyer of standing timber
Paying Cash Upfront!

Owner/Operator of Sawmill

- Buy/Cut Logs
- Certified
- Bonded
- Insured

WE HAVE SEMI LOADS OF PINE WOOD LOGS FOR SALE

Tri State Timber L.L.C.
353 1/2 Grand Ave. • Memphis, Mo 63555
660-341-4921 • 660-465-2975

Central Metals Recycling LLC

Buyers of Ferrous and Non-Ferrous Metals

We Pay More \$\$\$, Call For Your Best Pricing Today!!

11923 Hwy. 54 Mexico, MO 573-581-0336 | 1601 N. 30th Quincy, IL 217-214-7649 | 1175 Hwy. 96 Hamilton, IL 217-847-3191

FLO RITE GUTTERING

660-988-1163

- 5" & 6" Guttering Available
- Leafguard Options
- 20+ Color Options
- Stainless Steel Fasteners

Stan Schrock • Greentop, MO

KEIM LUMBER COMPANY LLC

COMPETITIVE PRICES • FREE ESTIMATES

- COMPLETE BUILDING PACKAGES
- WINDOWS AND DOORS
- INSULATION • DRYWALL
- DELIVERY

13625 St. Hwy 3 LaPlata, MO

JUMPS & ROY AUCTION
A BRAND YOU CAN TRUST

Donna & Bob Gibson Estate
Saturday Nov 2, 2024 10 AM
20134 Foley Pl. Princeton, MO

AUCTIONEERS NOTE: Due to the passing of Donna Gibson the following will be sold at public auction. This will be a fun country-style Auction! Will run two rings, Darren Stice, Executor.

REAL ESTATE: Tract 1 - 85 ac m/l of rolling cattle pasture/hunting ground, rural water, automatic cattle water, current pasture lease until March 2025. Tract 2 - 1294 sq. ft updated 1900 circa farmhouse, 4 bedroom, 1 bath, sitting on 4.8 ac m/l with nice Morton Shop Building, Concrete floor, Detached garage, out buildings & rural water. Includes 1.4 ac m/l alfalfa hay and rural water.
Contact Auction Co. to Preview Property.

PERSONAL PROPERTY: 1998 Ford Pickup, 4 Tractors, some 3 pt. and Pull type Equipment, Tools and Shop Related, Woodworking Power Tools and Related, Canoe, John Boat, Lawn & Garden, Furniture, Several Coins, Household, Antiques, Collectibles & Primitives.
Photos and listing - www.jumpsandroyauction.com
Scott 660-359-1455 / Rustin 660-605-0860

MAKE A SPLASH
without wasting cash

Small ads produce big results. Ask about our advertising rates to fit any budget.

PCS ELECTRONICS
Empowering people in times of need.

3100 Brown Station Rd, Ste E
Columbia, MO 65202

Sales, Service & Installation
call 573-814-3131

Certified factory trained technicians

AUTOMATIC STANDBY GENERATORS
WINTER STORMS DON'T CARE IF YOU ARE PREPARED... WE DO.

KOHLER **GENERAC**

SCOTT'S AUCTION SERVICE
573-356-4405
Auctioneer: Scott Kuntz
SEE MORE PHOTOS ON SCOTT'S WEBSITE
WWW.SCOTTSAUCTIONSERVICE.COM

Macon Real Estate & Personal Property Auction

Sat., Oct. 26, 2024 at 10:00 am
Carolyn Williams

chairs; pots and pans; 6' folding plastic tables; twin size bed; Frigidaire stackable washer and dryer; Perfect air dehumidifier; full size oak bed; 5 drawer chest of drawers

ANTIQUE & COLLECTIBLES: drop front secretary; round, antique table; canning jars; massage chair; various crocks; antique floor lamps; Texas ware; antique vanity with mirror; various old pictures and prints; Franklin treadle sewing machine; Singer sewing machine with stand; Lane cedar chest; antique side chair; miscellaneous books; handmade bookcase; sewing supplies; antique oak drop leaf table; Pyrex mixing bowl; England China; older marbles; antique end tables; secretary with display cabinet; self-standing quilt rack; antique vanity with wishbone mirror and towel holder; quilts and blankets; oak rocking chair

HOUSEHOLD ITEMS: full size bed frame; metal cabinets; metal folding

There will be many more items at this auction too numerous to list.

Macon Real Estate & Personal Property Auction

Sat., Nov. 2, 2024 at 10:00 pm
Scott Bealmer

extended cab, new tires, very nice, well maintained truck

HOUSEHOLD ITEMS: Whirlpool gas dryer, Whirlpool washing machine; Haier dorm size refrigerator; chest of drawers; dresser; flatscreen TV; patio table and chairs

ANTIQUE & COLLECTIBLES: 1897 roll top desk, needs restoration; Christmas decor; crystal glassware; John Deere pocketknife collection; cedar chest; pinball machine; guitars; various antique end tables; John Deere toy tractor collection; golf clubs; pig statue collection; antique rocking chair; Americana Porcelain The Patriots 5 of 8 presidents collection; Tiger picture from the old Schlanker's Furniture Store

TOOLS & EQUIPMENT: Coleman upright air compressor; drill; 14" tile cutter; work light; Actrom automotive tune up kit; Alltest diagnostic equipment; Black & Decker battery powered tools

There will be many more items at this auction too numerous to list.

140 acres Bethel Land Auction

Tues., Nov. 5, 2024 at 5:00 pm
Brandon Barnes

CANCELLED

Shelby County Road 156, MO.

Thriving Pumpkin Patch, Mini Farm & Investment Opportunity Auction

Thurs., Nov. 7, 2024 at 4:00 pm
Urban Gardens LLC

701 West La Harpe, Kirksville, MO. this beautifully manicured 10.5-acre property offers a unique blend of agricultural charm and commercial opportunity, right within the city limits.

Direction: From Business Highway 63/ South Baltimore Street in Kirksville, travel North on South Franklin Street for approximately 0.9 miles, turn West on La Harpe Street to the auction location. Watch for signs.

PROPERTY FEATURES: **Main Home:** 6 years old, 3-bed, 2-bath with an open floor plan. Includes a two-car attached garage, propane heat, central air, and handicapped accessibility. Built with top-of-the-line amenities. - **Second Home:** Completely renovated inside and out, with all updates done within the past year. Currently leased to an outstanding tenant until June, 2025, who is eager to stay on if possible.

AGRICULTURAL ZONING WITH MINI-SUBDIVISION POTENTIAL:* Perfectly situated for a variety of uses, from farming to future development.

BUSINESS HIGHLIGHTS: - **Established Seasonal Business:** Operating 55 days a year during the Halloween season, generating a comfortable income. - ***AMENITIES INCLUDE:**** - Blackberries, peach, apple, and cherry trees - Pumpkin patch and large parking area - Pumpkin shed and corn maze - Western-themed playground with a 60' slide - Petting zoo, game buildings, and more

EXPANSION POTENTIAL: With everything in place, the possibilities are endless! Expand with a farmers market, Christmas lights display, tree sales, weddings, or a U-pick orchard. The groundwork has been laid—now it's your turn to take the reins and grow this unique business. Due to health reasons, the current owners are looking to retire and move to Florida. This is a once-in-a-lifetime opportunity to take over a turn-key business with so much more potential.

Business will operate as normal throughout the 2024 season. Please contact Scott at 573-356-4405 to schedule your personal showing.

Macon Investment Real Estate Auction

Thurs., Nov. 6, 2024 at 4:00 pm
Danny and Barbara Primm

this three bedroom, on bath home conveniently located to schools and shopping in Macon. The home has original woodwork throughout, a full, unfinished basement, natural gas heat and wind air units. This would make a perfect starter home or investment property.

Direction: From US Highway 63, North Missouri Street, proceed West on Walnut Street for approximately 0.2 miles, proceed West on Sheridan Street, turn North on Rutherford Street to the property location. Watch for signs

REAL ESTATE: We will be selling

Please contact Scott at 573-356-4405 to schedule your personal showing.

Previous Higbee Auto Service Equipment Auction-Under New Ownership

Sat., Nov. 9, 2024 at 10:00 am
Higbee Auto Service

racks; portable de-rimmer; several single pallet forks; 3 tire changers; aluminum can crusher/blower; tire balancers; framing machine; air compressor, bad pump; transmission jack; several generators; windshield racks; several shop tools and equipment; System One parts washer

MISCELLANEOUS: Conex box; tons of various scrap; several lots of tires; lumber to be dismantled

There will be many more items at this auction too numerous to list. Loaders will be available. Items to be removed before November 22, 2024. (2 weeks)

6390 Highway A, Higbee, MO.

Direction: From US Highway 63 South of Moberly, proceed West on State Highway A for approximately 11.9 miles to the auction location. Watch for signs the day of the auction.

VEHICLES: 1999 GMC 3500 HD, 5 speed tow truck (454), shows 160,xxx with Vulcan wrecker bed; 1987(?) Freightliner, shows 300,xxx, does not run; 2001 Volvo with 10 speed auto shift, stand up sleeper, wet kit, shows 994,xxx miles; 2003 black Impala; several square body Chevy's; lots of vehicles including classics, Impala, Thunderbird, Fairlane, Mercury, Chevy, pickups; school bus, bad engine; Ford F6000; LT1 engines in cars; 1983 1 ton wrecker; various motors, transmissions, starters, etc;

TRAILERS: Dorh semi trailer 53'; box trailers; several box trailers with axles; White gooseneck trailer

CONSTRUCTION EQUIPMENT: Ditch Witch JT920, needs work; Ditch Witch JT 921, needs work; Ditch Witch V30; John Deere 850 dozer; Komatsu D21P; LeRoi 125; 1984 Landoll 30 ton with Braden winch tandem dual (Swan truck doesn't sell)

FARM EQUIPMENT: Military Deuce 1/2 with New Holland manure spreader; Gleaner Combines for parts; two 3 bottom plows

BOATS: semi-V bottom aluminum boat; boat trailers

TOOLS & SHOPEQUIPMENT: metal

