

NEMO Trader

THE NEMO TRADER

PO BOX 809 • KIRKSVILLE, MO 63501 • PHONE 660-665-8500

Web Site: nemotrader.net • Email: sales@nemotrader.net

FREE

A WEEKLY ADVERTISER SERVING ALL OF NORTHEAST MISSOURI AND THE SURROUNDING AREA

YODER CONSTRUCTION
— DANIEL YODER —

- Metal Roofing
- Siding
- New Construction (Leave Message)

OUR GOALS:

- Good Service
- Quality Structure
- Competitive Prices
- Free Estimates

660-486-3332

AUTO'S UNLIMITED
★ FEATURED VEHICLES

660-665-8149 | 660-441-0965 | No Sunday Calls! | 17406 Bob Rd. • Kirksville, MO

2016 John Deere 1025R with quick attach deck!
Excellent condition always shaded

\$13,000 | OBO

Comes with all implements

2014 Grand Caravan SE
Nice clean van

\$6,250 | OBO

ALL VEHICLES HAVE GONE THROUGH A 60 PT INSPECTION!
STATE INSPECTED! CALL FOR MORE INFO!

LAND SALES & AUCTIONS

RANCH & FARM AUCTIONS
A DIVISION/TRADE MAKE OF WHITETAIL PROPERTIES REAL ESTATE

WHITETAIL PROPERTIES REAL ESTATE
HUNTING | RANCH | FARMS | TIMBER

LEWIS • MACON • SHELBY • MARION • RANDOLPH • MONROE • RALLS • AUDRAIN

CLAY LOCKARD
EAST CENTRAL MISSOURI LAND SPECIALIST
573.466.9123

WHITETAILPROPERTIES.COM

Pearler TRUCKING LLC
NOVATEL, MO

ROCK • DIRT • SAND • GRAIN HAULING • LIME SPREADING
EQUIPPED WITH VARIABLE RATE

Alan (660) 216-0618 Jared (660) 342-7685

ANTIQUH REPAIR & RENTAL

We fix almost anything!

CALL US FOR ALL OF YOUR EQUIPMENT REPAIR RENTAL NEEDS

- Attachments
- Tires & Tracks
- Competitive Rates

Located Near Knox City, MO
Call Ethan Zimmerman
660-299-0808

KEIM LUMBER COMPANY LLC

COMPETITIVE PRICES • FREE ESTIMATES

- COMPLETE BUILDING PACKAGES
- WINDOWS AND DOORS
- INSULATION • DRYWALL
- DELIVERY

13625 St. Hwy 3 LaPlata, MO

exp REALTY

Elizabeth Gregory 110 S. Franklin St
Kirksville, MO 63501
660.621.2136
www.missourihomeandfarm.com

ASHLEY

Ashley Tambo Reclining Sectional
SAVE \$672
WAS \$36.99 NOW \$29.99/week @ 96 weeks RTO.* \$2,879.04 Total RTO*

TCL 75" 4K UHD Google TV
WAS \$26.99 NOW \$17.99/week @ 72 weeks RTO.* \$1,295.28 Total RTO*

75" TV SAVE \$648

TCL 75"

NOW OPEN

We're Here!
And can't wait to serve you!

\$5 GETS YOU STARTED

Use Code: 5START
online & in-store

ASHLEY

Ashley Juararo Queen 6-Piece Bedroom Set
SAVE \$432
WAS \$35.99 NOW \$29.99/week @ 72 weeks RTO.* \$2,159.28 Total RTO*

Your Next Good Night's Sleep Awaits
Passport SLEEP GALLERY

Amana Laundry
3.5 Cu. Ft. Washer WAS \$13.99 NOW \$9.99/week @ 96 weeks RTO.* \$959.04 Total RTO*
6.5 Cu. Ft. Electric Dryer WAS \$13.99 NOW \$9.99/week @ 96 weeks RTO.* \$959.04 Total RTO*

AMANA

SAVE \$384

SAVE \$384

2104 N. BALTIMORE, KIRKSVILLE, MO 63501
Next to Dollar Tree • Text or Call 660-228-2880

shoprentone.com



Judd Motors

Call 660-457-3700
Hwy 63 North, Lancaster, MO

2017 Grand Caravan, Handicap, rear load, motorized chair included, 26K miles, Burgundy..... **\$34,900**

2013 Chevy 1500, ext. cab, LTZ, 4x4, New tires, 116K, leather, silver, excellent, **\$15,900**

Low pro steel trailer, slide in ramps, 84 x 74 deck. **\$1,995**

John Deere X740, mower, diesel, only 740 hours, 62" deck, excellent..... **\$8,995**

2012 Case 580N, Loader Backhoe, Turbo, 4WD, Cab with AC, Extendahoe, New 12 ply Tires, Only 1280 Hours, 1 owner, very clean, only **\$61,000**

2007-14 Chevy pickup box, red, 8 ft, little rust only **\$1,000**

2002 GMC Sierra 1500 **NEW PRICE \$5,999**
Reg. Cab, Long bed, 4x4, V8, 138K, RED

2006 Chevy 2500HD, 4x4, 6.0L, reg cab, 8 ft bed, 1 owner, no rust, only 97k, red, ... **NEW PRICE \$17,500**

Cumberland Building Dealer

www.juddmotors.com | In Business Over 75 Years
Curly and Kevin Judd



MEADOWLARK CREAMERY

(660) 299-9019
49982 State Highway 15 Baring, MO 63531
Hours: Monday - Saturday 8:00 - 5:30

CENTURY 21
Lifetime Realty




PRICE REDUCED!!
7 W. HARRISON ST.
GREEN CITY, MO 63545



\$199,900

CHARITY TAYLOR
660.665.5678
c21kirkville.com
1605 S. Baltimore Ste A
Kirkville, MO 63501
660.341.4607

ANIMAL HOUSING HAY STORAGE & MUCH MORE

Your Health YOUR CHOICE






Complete Family Medicine, a service of Hannibal Regional offers a variety of services including: urgent cares, family medicine, osteopathic manipulation, radiology, laboratory, and more! Visit Complete Family Medicine and Hannibal Regional and let us guide you to BETTER

Complete Family Medicine

A service of Hannibal Regional

(660) 665-7575 | www.cfmcares.com

Skylight FABRIC STRUCTURES

30697 COLONY AVE. • NEW CAMBRIA, MO 63558
660-486-3250 • 833-482-8862

161 ACRE LAND AUCTION

Putnam County • Lucerne, MO

PRIME HUNTING/RECREATIONAL PROPERTY

October 26, 2024 • 11:00 AM • Putnam County Fairgrounds 4-H Building

FIRST CLASS PROPERTIES is pleased to offer this 161.8-acre property at auction, showcasing a unique combination of agricultural, hunting, and building potential. Located in western Putnam County, Missouri, between Unionville and Princeton, and South of Hwy 136, this property provides a balance of seclusion and accessibility. The tract's diverse landscape, featuring 60 acres of open area with a row crop base, timber with dense cover, and two ponds, creates an ideal environment for wildlife, complemented by the nearby Medicine Creek bottoms. There is rural water and electricity available at the road, but not installed on the property. Having previously generated annual income of \$16,500.00 through cattle and hunting leases, this property has good perimeter fences and presents an attractive investment opportunity. It will be sold free of leases, with the successful bidder securing hunting rights BEFORE closing after payment of 10% of purchase price to be held in escrow. **Please contact Auctioneer, Mark Smith, or the First Class Properties team for further information.** See firstclass-properties.com for legal description.



DON'T MISS OUT ON THIS one-of-a-kind property!

- Agricultural
- Hunting
- Building Site

161.8 ACRES

TROPHY MOUNTS!

AUCTION TERMS:
Successful bidder will be required to pay 10% of purchase in non-refundable escrow day of sale. Escrow payable to closing agent Hart Abstract and Title, Unionville, MO. Buyer will be given immediate hunting rights upon contract signing and payment of escrow. Final closing and total possession on or before November 26th, 2024. Real estate taxes prorated to closing. Any announcements day of sale take precedence over any printed or advertised materials. Sellers have the right to reject or accept final bid. The farm will be sold as is.



First Class Properties & Auctions

VIEW THIS PROPERTY BY APPOINTMENT
660-734-0506
Mary Williams

SELLERS:
Mark L. Smith, Auctioneer, 660-734-1762 • Jared Williams, Sales-Agent, 660-216-3722
Jared & Jenna Williams Owners/Agents
Mary Williams, Broker-Associate 660-734-0506 • Jenna Williams, Sales-Agent 660-341-8791
Abby Jackson, Sales-Agent 573-286-8525 • Rodney Welch, Sales-Agent 660-292-4848

Connie's
MOBILE HOME TRANSPORT

We offer the following...
Break Downs • Transport • Set up • Anchoring
Call Rich today! 573-881-7483

NEMO
COUNTRY
DANCE
CLUB

- DANCE LESSONS -

October 20, 2024 5 week session
4:30pm • Line Dance Lesson
5:30pm • Couple Dance

2 Step • Waltz • Swing • Triple Step

Mary Immaculate School Gym
Kirksville, MO • Call Vicki 660-342-6825

\$25.00 for 5 week session

Edina Livestock Sales
Edina, Missouri

Friday, October 18th
Special Feeder Calf Sale

Friday, October 25th
Special Feeder Calf Sale

To Consign For Any or All Sales or For Information Call:
Owner - Kevin Strange • Cell: 660-341-9974
Ryan Strange • Cell: 660-341-9721
Sale Barn: 660-397-9999

Field Reps:
Bill Tom Hall 660-342-5420 Mike Bronestine 660-341-9965
Jason Bichsel 660-216-0373 John Powell 660-341-1717

NEMOTRADER.NET NEMOTRADER.NET

Cattle

For lease to good cattle herd: 18 month old Angus bull for fall breeding. 660-341-6911.

Equipment & Supplies

AC D14 Narrow front, 14.9x26, good rims, very nice sheet metal, new battery, rebuilt starter, carburetor. Call for details. 217-257-1385

AC 3 bottom snap coupler plow, stored inside, \$200.00. Overhead fuel barrel stand only for 300 gallon tank, \$50.00. 217-257-1385

FOR SALE
AI Sired Angus Bulls,
14 & 18 Months Old.
Harold Trump
660-341-5730

Leinbach Sandblasting Painting
is now under new ownership and a new name!

J&R METALWORKS
General Repair • Sandblasting • Painting

We offer sandblasting & painting service on all types of agriculture & industrial equipment from tractors to semi trailers & more! Small jobs are also welcome.

We are located at 20718 Clark Drive, Linneus MO 64653
660-250-9050

The Sullivan County Public Water Supply District #1
will accept sealed bids on a
2020 Ford F250, 6.2 L gas, XL, 4x4, extended cab pickup with an 8' model 696 Knapheide service body bed on the truck. The truck also sells with an 8' regular pickup bed off the truck. The truck has approximately 101k miles. This truck has had regular maintenance and has no known mechanical issues.

The truck will be sold "as is" and bidders must be able to take possession immediately. Sealed bids should be submitted to P.W.S.D. #1, P O Box 10, Milan MO 63556 and must be received on or before 4:00 pm on Monday, November 4, 2024. Bids will be opened on Tuesday, November 5, 2024. Envelopes containing bids should be clearly marked "Bid for 2020 Truck". Bids must include: name of bidder, phone number of bidder, address of bidder, total amount of bid and proposed method of payment.

The truck may be viewed at the district office at 1108 South Pearl, Milan MO 63556, Monday through Friday, 9:00 am to 4:30 pm.
For more information contact us at 660-265-4811.
We reserve the right to reject any and all bids for any reason.

AGRI-BUSINESS

Equipment & Supplies

Farmall M, very good Schwartz wide front, matching 15.5x38, good rims, live power pump, extra hydraulics, overdrive transmission, stored inside, believe engine stuck, \$1200.00. 217-257-1385

2014 Krause 8000-30 Excelsior V-Till. Gang Angle adjustment; hyd star wheels; flat bar reel. Blades 20.75" front, 21.00" back. Excellent machine. \$48,000 OBO. Robert Lay, LaBelle, MO 660-341-5471.

International 2200 hydraulic bucket loader and push blade with joystick controls on 574 utility. Fits others. \$2100.00. 217-257-1385

Call about our classified ad specials. 660-665-8500.

Equipment & Supplies

2020 Krone AMR 280 disk mower, 9.3 cutting with 3 pt, 540 PTO, quick change blades, safe cut hubs, low acres used, shedded. \$9,500.00. 217-257-1385

Hay/Feed/Seed

5X51/2 big round bales for sale. Baled dry mixed grass hay with alfalfa. Fertilized, lab tested, net wrapped. Watson Hay Sales 660-341-4031

Mixed grass hay, big round bales, twine tied, 1450 pounds, \$65.00. Load out Saturday and Sunday only. Call 660-341-1296.

Big round bales mixed grass hay, delivery available. Bob Campbell, Memphis, MO. 660-341-9054

Large net wrapped bales mixed grass hay near Bethany, MO. Loading available. 660-730-9001.

For sale: 116 big bales of hay. 660-933-4759

Let us help you with all your advertising needs. Don't know what to say? Call us we can help! 660-665-8500.

FINANCIAL

Business Opportunities

Outdoor hunting sports business available. Profitable high end hunting products, excellent opportunity, welding fabrication knowledge a plus. Information 641-208-7353.

MERCHANDISE

Electronics

Duraxa Kyocera flip phone \$100.00 each. US Cellular, great for farmers. Call 660-341-1296.

Flea Markets

Pumpkins, buy one get one free, all sizes. Also tomatoes, a lot of them, and other vegetables. Schmucker's Produce, 7 miles North of Kirksville to Ft. Madison Way, East 1/2 mile.

Furniture

Texas ranch style bar table with tractor seat stools, very nice. Custom camo bench seat 28'x72" like new. 25 hp Yamaha outboard. 641-208-7353.

Hobbies

Hardinge milling machine, \$750.00. 660-956-6826.

Lawn & Garden

DR roto tiller, used only one season, good condition. 660-485-6705.

Miscellaneous

Get a break on your taxes! Donate your car, truck, or SUV to assist the blind and visually impaired. Arrange a swift, no-cost vehicle pickup and secure a generous tax credit for 2025. Call Heritage for the Blind Today at 1-888-761-1316 today!

LAN-DOW BUILDINGS
"We Build To Suit Your Needs"
"Custom Built"
Pole Barns • Garages • Utility Buildings
Dick, Jason or Andy Middleton

Memphis Lumber Co.
1-800-337-5858 • 660-465-8595
Fax: 660-465-8596

NEMO
Trader
The Meeting Place For
Buyers And Sellers!

HAVE AN EVENT OR SPECIAL THAT YOU WANT TO PROMOTE. INSERTS WOULD BE GREAT!
CALL OR EMAIL FOR YOUR CUSTOM QUOTE!

Call Cindy!
660-988-6830

chigh@nemotrader.net • 705 E. Laharpe Street, Ste F • Kirksville, Mo 63501

We are a free publication serving a 20 county coverage area in Missouri, Iowa, and Illinois.

We distribute 11,000 copies each week to convenience stores, restaurants, and other businesses for readers to pick up.

NEW ISSUE EACH WEDNESDAY, ALSO AVAILABLE ONLINE AT NEMOTRADER.NET.

NEW EDITION EVERY WEDNESDAY!
VOL. 30 • NO. 31 • AUGUST 25, 2023

NEMO
Trader

FREE THE NEMO TRADER
PO BOX 809 • KIRKSVILLE, MO 63501 • PHONE 660-665-8500
Web Site: nemotrader.net • Email: sales@nemotrader.net
A WEEKLY ADVERTISER SERVING ALL OF NORTHEAST MISSOURI AND THE SURROUNDING AREA

Hillside Metals & Building Supplies
• Full line of lumber in stock •
• Complete Building packages Available •
• Metal Custom Cut to Length •
• 26 to 29 Gauge • 20 Colors in Stock •
• Textured Metal in Sock •
• Custom Trim up to 20 Ft. Length •
Office hours: Monday thru Friday 7am to 5pm • 21564 State Hwy J Brashear, Mo 63533

SPARKS AUCTION
September 23rd at 4pm (ON-SITE)
401 E. Arbel St., Lewistown, MO
3 Bedroom • 4.5 acres more or less
Out buildings • Extra 2 car garage
*Fenced was set up for miniature horse facility
To View Contact: Jesse 573-406-8787
To View Pictures Go To: sparksauctions.com

PEAVLER TRUCKING LLC
Equipped with variable rate
Alan Peavler, 660-216-0618 - Jared Peavler, 660-342-7685

ELIZABETH GREGORY
www.MISSOURIHOMELANDFARM.COM
Innovative Real Estate for YOU!
660.621.2136

PUTNAM County State BANK
13 Month Certificate of Deposit Special
5.25%*
5.38 APY**
Minimum opening deposit \$10,000
Substantial Penalty for early withdrawals
Fees could reduce earnings on interest bearing accounts.
Rate accurate as of 07-18-2023
*Interest Rate
** Annual Percentage Yield
420 North Pearl St. Milan, MO 63556 660-265-4034
1522 Main St. Unionville, MO 63565 660-947-2477

KEIM LUMBER COMPANY LLC
COMPETITIVE PRICES • FREE ESTIMATES
• COMPLETE BUILDING PACKAGES
• WINDOWS AND DOORS
• INSULATION • DRYWALL
• DELIVERY
13625 St. Hwy 3 LaPlata, MO

Family Treasure Nook
Antiques
Hand Quilted Quilts
Closed Thursday and Sunday
13731 Hwy 3 La Plata, MO

Insert Rates (11,000 pcs):

8.5" x 11" single sheet	\$407
4-12 page tabloid	\$429

Miscellaneous

Fish for stocking ponds: catfish, grass carp, crappie, redear, bass, and fat-head minnows. Heindselman Family Farms. 660-341-5692.

For sale: 116 big bales of hay. 660-933-4759

Small breed puppies, friendly, a child's best friend, affordable. Call 660-484-3049 or 660-627-2088.

Aspen wood stove, \$400.00. 660-956-6826.

Pets & Supplies

Australian Shepherd, shots and dewormed, Arbela, Mo. 319-520-8660.

Boxer puppies, 14 weeks old, APRI registered. \$200.00. 660-292-1235.

Small breed puppies, friendly, a child's best friend, affordable. Call 660-484-3049 or 660-627-2088.

Please place your classified ads on the NEMO website. Our web address is nemotrader.net

Sports Equipment

Heindselman Farms Inventory reduction! Fiberglass deer blinds, Lazy Man, Fat Girl, Bow or Combo, \$1450.00. Brick house, \$1100.00. 660-341-5692

AKC LAB PUPPIES
\$150 Males - Only 2 left!
 LAY'S LABS
 LABELLE, MO
 (660) 956-2482

Sports Equipment

5-550# deer and wildlife feeders, deer decoys, wool camo suit, snow camo suit (new), 25 hp Yamaha outboard, like new condition. 641-208-7353.

Hunting blind, 2 person, 6' tower on trailer. Ground blind, hay bale blinds. Duck and goose blind. Trailer mounted deer feeders, like new. 641-208-7353.

Wanted

Buying deer antlers, racks, sheds, dead heads, will pay cash. 70 VHS hunting videos, very collectible, 25 hp Yamaha outboard. 641-208-7353.

REAL ESTATE SALES

Mobile Homes For Sale

40 YEARS THIS YEAR - we have to be something right. Call for quote or any house new or used, double and single. 573-657-2176. amegamobilehomes.com

Premium Metal Roofing



Metal Roofing Headquarters

AW Metal Inc.
 641-664-3990 • awmetal.net

TIMBER MANAGEMENT.

Purchasing Walnut, Oak, Maple & Other Species

WE PAY BEFORE WE CUT

BONDED & INSURED Est. 1968
641-895-8209 643286cb

Mid-States Livestock Sales Horse & Tack Auction

Saturday, October 26th, 2024
 Tack @ 10:00 a.m. Horses @ 2:00 p.m.
 KIRKSVILLE LIVESTOCK MARKET
 HWY 63 NORTH KIRKSVILLE MO.

Guest Consigners only on tack, no used tack!

Check us out and like us on Facebook @ Mid-States Livestock Sales. Taking Consignments now!

FOR MORE INFO:
 Josh Weaver (660)341-7964
 Jeb Weaver (660)341-1866

NEMO ADS SELL! Call for more information and specials. 660-665-8500.

BE AN EARLY BIRD! Place your ads before Monday and beat the rush!

LOLLI LIVESTOCK MKT, INC.

Tuesday, Oct 22 - 11am

Special Pre-Conditioned Feeder Calf & Yearling Sale

80 bbwf hfrs 725lbs (pot load)	40 bbwf str 650lbs
80 bbwf hfrs 700lbs (pot load)	35 bbwf str 700lbs
140 bbwf str/hfrs 4-650lbs	35 bbwf str/hfrs 6-700lbs
65 bbwf str/hfrs 4-600lbs	28 bbwf str/hfrs 5-600lbs
62 bbwf str/hfrs 825lbs	25 bbwf str/hfrs 5-600lbs
45 bbwf str/hfrs 4-600lbs	15 bbwf str/hfrs 5-700lbs
45 bbwf str/hfrs 4-500lbs	9 bbwf str/hfrs 6-700lbs
42 bbwf str/hfrs 6-700lbs	2 bbwf str 700lbs

This is a partial listing, watch our website or FB for updates.

Cafe Open
Lolli Livestock Market, Inc.
 704 Main st * Macon, MO * 660-385-2516
 Frankie 660-651-4040 * Tim 660-651-3496 * Joseph 660-346-9711
 Jordan 660-346-0410 * Cody 660-676-9392 *Cattle accepted on Sundays*
 Follow Us On Face Book & www.lollibros.com

\$6,000⁰⁰ FOR SALE
 O.B.O.



96 Chevy 366 gas 5-2 speed
 16' box plumbed for drill fill auger

660-748-6009

Skidsteer work available!!

- Gravel drive renewing
- Brush/pasture mowing Food plots
- Dirt Leveling
- and More!!!



573-248-7165

GUN SHOP INVENTORY LIQUIDATION SALE
ENDING OCTOBER 27, 2024

Bid now at danbuntinauctions.com

- * Hunting Supplies
- * Guns
- * Ammo For This Season
- * Great Gift Ideas For Christmas

Shipped Right To You.


SHIPPING AVAILABLE ON MOST PRODUCTS
GUNS WILL SHIP TO FFL DEALERS ONLY
FULL DETAILS ON WEBSITE.

DANBUNTIN AUCTIONS 29294 U.S. Hwy 136 Wayland, Mo 63472
 Dan/Cindy Buntin Auctioneer, Owners 309-337-6607

VIRTUAL ONLINE

BROWN COUNTY, ILLINOIS LAND AUCTION

THURSDAY, NOVEMBER 14, 2024 AT 10:00 AM^{CT}



163.14 SURVEYED ACRES • 1 TRACT

SCAN FOR MORE INFORMATION

The Koch farm is located approximately 6 miles west of Mt. Sterling, IL (just south of C & L Tiling, Inc), or 35 miles east of Quincy, IL, or 40 miles northwest of Jacksonville, IL. The property is further described as being in part of Section 8, T1S-R4W, Lee Township, Brown County, Illinois.

The farm contains nearly all-tillable Class A farmland! Farmers and investors, be sure to check out this investment quality land - you will not be disappointed.

BERNARD F. KOCH FARM TRUST
DAVID J. KOCH, RANDALL M. KOCH

Representing Attorney: Drew Erwin | Mays, Walden & Anastas PC
 636 Hampshire St # 101, Quincy, IL 62301 | (217) 222-1526
 Auction Manager: John Sullivan (309) 221-6700

BigIron SULLIVAN AUCTIONEERS
 a BigIron company
 (844) 847-2161 | www.SullivanAuctioneers.com

FARM MACHINERY CONSIGNMENT AUCTION

Saturday, Oct. 19th @10 AM

SCHACHTELE BARN - KEYTESVILLE, MO

From Hwy 24 at Keytesville, take Hwy 5 North approx. 4 miles to site with a brown barn/green roof on the West side of the road, or from Hwy 36 at Marceline exit take Hwy 5 South, approx. 16 miles to site.

TRACTORS & LAWN TRACTORS: JD 5200 w/Loader 2449 Hrs; Ford 3000 Diesel w/TA25 Loader; Minneapolis Moline 302 W/Loader; JD 630 Propane-not running; JD 4044M w/JD D170 Loader FWA, Canopy, Dual Hyd Remotes, 304 Hrs-Nice; JD4630 w/Duals; L.S. XR 4145 w/L.S. LL4104 Loader FWA w/Cab Heat & Air & 352 Hrs w/Dual Hyd Remote; AC 180 Gas; Kubota BX1850 w/Kubota LA203 Loader FWA 60" Mower Deck 803 hrs; JD X495 All Wheel Steer 54" Mower Deck 900 hrs; Ford 1215 w/Wood-Dual Loader; JD 1530 w/Bush Hog 2400 QT Loader 2500 hrs; MF 50 Diesel; Cub Farmall-not running; Case 730 w/Loader-not running; Ford 6610 FWA Cab 5532hrs w/Koyker400 Loader;

FARM MACHINERY: NH311 Square Baler; Bush Hog 2315 Mower w/540 pto; Case 8465 A Round Baler; Fuerst 24' Hyd Fold Pasture Harrow; JD 494A Corn Planter; Vermeer WR22 Hay Rake; Vicon DMP 2800 Disc Mower; Kuhn SR110 Speed Rake; 3pt Ford Dirt Scoop; JD Ground Driven Manure Spreader; JD Van Brunt Drill; JD 709 Mower; NH 474 Haybine; Hay Elevator; Oliver Hay Rake; H&S 270 Manure Spreader; NH326 Square Baler; Schuler 175BF Feed Wagon; 10' Cultipacker; VanDale Feed Wagon; JD8300 Drill w/Grass Seed; 4Gravity Wagons; NI Model 12 Manure Spreader; Vermeer 505 Super I Baler; Flatbed Wagon w/JD Gears; IH5100 Drill; UFT 10' No Till Drill; Horvick Spray Pup w/700 Gal Tank; Metal Flare Box Wagon; NI Ground-Driven Manure Spreader; Woods 15' Mower; IH435 Square Baler; JD8300 Drill; Parker Weight Wagon w/Honda Motor & Tarp; 3pt Sprayer w/300 Gal Tank & 20' Booms; Flat Bed Wagon w/Hoist; Flatbed Hay Wagon; JD 12' Chisel Plow; JD 5' Pull-type Brush Hog; JD24T Baler; JD14T Baler; 3-3pt Bale Unroller; 10' Box Blade; NH499 Hay Bine; 3pt Carry-All; JD660 Hay Rake; Several 3pt Bale Spears; NH Pull-type 9' bar Sickle Mower; JD22 Hay Crimper; Heider Auger Wagon; 2 section Pull-Type Harrow; JD 2pt MX8 Mower; JD148 Loader; JD75 Loader; 3 Section Harrow; JD350 Sickle Mower; NH Disc Mower; JD Pull-type Manure Spreader; JD1518 Mower w/1000pto; JD115 3pt 9' Blade; Bison 3pt 9' Hyd Blade; JD4226 Disc Mower; Danuser Post Hole Digger; 2-8' pull-type Disc; 3pt 6' Blade; 3pt Sprayer w/10' Booms & 200gal Tank; Frontier 3pt 4' Box Blade; Case Horse-drawn Sickle Mower; pull-type Cone Seeder; New Bobcat 3pt Backhoe; Pull-type 4' Harrow; Woods 3pt 5' Brush Hog; 2-New King Kutter Carry-all; 3pt Dirt Scoop; 3pt 2Bottom Plow; 3pt 3Bottom Plow; Ford 3pt 6' Brush Hog; King Kutter 3pt 6' Finish Mower; Ford 3pt 6' Disc; Ford 3pt 7' Bar Sickle Mower; 3pt 6' Zip Seeder; 3pt Danuser Post Driver; 3pt 7' Blade; NH456 Pull-type 9' Bar Sickle Mower;

SKID LOADER ATTACHMENTS: Pallet Forks; JCT Rock Grapples; AGT Broom; Blank Plates; Heavy Fork Ext.; Hyd. Pallet Forks; Sickle Mower; Land Honor Log Grapple; JD RC78B Brush Cutter Like New;

TRAILERS, ATVS, & UTVS: 2023 Load Trail 12' Utility Trailer w/ Metal Sides & Ramp Gate; 2005 Wrangler 24' Stock Trailer-Nice; Bush Hog 4430 Side-by-Side; Kodiak Inline Dump Bale Trailer; 1985 24' Sooner Aluminum Stock Trailer; 2010 Calico 16' Gooseneck Stock Trailer-Nice; Pickup Bed Trailer; Older 16' Bumper-hitch Stock Trailer; Gooseneck 10Bale Hay Trailer; Arctic Cat Prowler XT 650; Honda Chuck Wagon; Polaris XP Ranger; Arctic Cat 400 4-wheeler 4x4;

VEHICLES: 1995 Chevy 1500 222,000 Miles -Rusty; 1995 Geo Tracker 190,000 Miles; 1961 Dodge M-37 Power Wagon 14,511 Original Miles; 2012 Ford F350 Gas 4x4 174,700 Miles w/Bale Bed; 1990 Chevy 1/2ton 4x4 w/1000lb Feed Box;

LIVESTOCK EQUIPMENT, FENCING & FARM RELATED MISCELLANEOUS ITEMS: Preifert Calf Table; 3-Wooden Self Feeders; Pischel Galv. 3Ton Creep Feeder w/creep gates; New 2ton Portable Bulk Bin; 1 ton Galv Bulk Bin; 2-5ton Bulk Bin; Powder River Calving Pen; Powder River Squeeze Chute; Powder River 10' Alley Way; Several Round Bale Feeders; 2 Cradle Feeders; Several Feed Troughs; 8' Heavy Gates; 10' Heavy Gates; Several Various lengths Pipe Gates; Big Blue Plastic Water Tank; Big Gray Plastic Hasting's Water Tank; 300 Steel Posts; 23 Cattle Panels; 4-Mirafount Cattle 2 hole Waterers; Mineral Feeders; 6-10' Bow Gates; 24-New 5x8 Treated Posts; Hyd Bale Spear for pick-up; 500lb Creep Feeder; My- D-Han-D Feed Box; QLF Lick Tank; Square Bale Feeders; Hog Chute; 4-Fiberglass Hog Feeders; 24' Freestanding Panels; 2-SPI 4 hole Cattle Waterers.

LAWN & GARDEN & MISCELLANEOUS ITEMS: 168- 2x10s 12' long; 500 Gal Propane Tank; HD7000 Diesel Generator; JD Lawn Cart; Craftsman Generator; Homelite Generator Paddle Boat; 550 Gal Fuel Barrel w/Pump; New 350 Gal Fuel Tank w/Pump 8' Metal Storage Container; Yard Rollers; Western Snow Plow; Metal Burn Barrels; Assortment of Garden Hand Tools; Chain Boomers; New Concrete Saw; Paladin Compactor; Barn Tin; Lawn Carts; 2-Big rolls of 3/8" Cable; Country Tuff 25 ton Log Splitter; 2-Overhead Cranes; Concrete Power Trowels; Auto Crane; Generac Generator; New Gas Water Pump; Go-Cart; Swisher 22ton Log Splitter; 100 Gal Fuel Tank; Metal 5' Ramps; 96- 2x8s Treated 12' long; Several New Hyd Hoses; Several 76" Dexter 3500lb Axles; Several 82" Dexter 5000lb Axles; Squirrel Cage Fans; Several 14' pcs. White Tin; Several 14' pcs. Red Tin; pile used Guttering.

Taking Consignments Daily-Expecting Much More by Sale Day
Check Schachtele Auction Facebook Page for Pictures and Other Consignments. Selling Farm Machinery, Farm Tools & Equipment & Many More Miscellaneous Items (No Household Items)
To Consign Early for Advertising or for More Information Call Tony: (660) 413-3250
Lunch Served
We Appreciate All Consignments!
 Terms Cash-Good Check with Proper ID. We are NOT Responsible for Accidents to Man, Woman, Child or Animal!!
 We are NOT Responsible for Lost, Stolen or Damaged Articles or Property!

The meeting Place for Buyers and Sellers!!

NEMO Trader

660-665-8500 or email: sales@nemotrader.net

SHOP LOCAL - BUY LOCAL - ENJOY LOCAL



Mobile Homes For Sale

I BUY...used mobile homes. Call or text 573-338-6250 or email Greg S. CDH @outlook.com.

WE GOT IT - let us bid your mobile home purchase, new and used. 573-499-9993. columbiadiscounthomes.com.

TINY HOMES - Missouri franchise 573-881-7965.

TRIPLE WIDE - moving stock, awesome price. 573-657-7040. chateauhomes.net

Need something? Let us help you. You can advertise that you are looking for a special item. Call 660-665-8500 for more information.

RECREATION

Accessories-Recreation

Rifle Scope Me-Opta Meo-Star 3x12x56 RD. Ten point crossbow, carbon Nitro RDX. Obsession Defcon 6 bow with case. All in like new condition. 641-208-7353.

Campers & Trailers

1990 Class A motor home, Pace Arrow by Fleetwood, 37 foot. A very clean, deluxe, excellent home. 454 Chevrolet motor and automatic, overdrive transmission, dual rear axles, 104,000 miles. Back up camera, generator, runs and drives good. Kenwood 10 disc CD changer, 43" TV with local antenna and Direct TV antenna and receiver. Microwave, washer dryer combo, 3 beds, 1 is queen, gas range with oven. 20' x 8' awning with screened enclosure. New starter and battery. Located in South Central Iowa on Hwy 2. Asking a reduced price of \$4500.00 or offer. 641-523-3430.

NEMO ADS SELL! Call for more information and specials. 660-665-8500.

SERVICES

Chat/Dirt/Gravel

DIRT WORK All types of excavation, reclaiming overgrown fields, including CRP and WRP. Building site preparation, creating new trails and crossings, Food plot development and maintenance. Leveling and grading, wetland construction and maintenance. Pond and lake cleaning and construction. Call for quotes. 660-342-2701

Construction-Services

Olshan Foundation Solutions. Your trusted foundation repair experts since 1933. Foundation repair. Crawl space recovery. Basement waterproofing. Water management and more. Free evaluation. Limited time up to \$250 off foundation repair. Call Olshan 1-888-437-7797

Health Care

Portable Oxygen Concentrator May Be Covered by Medicare! Reclaim independence and mobility with the compact design and long-lasting battery of Inogen One. Free information kit! Call 844-299-5183

Home Services

Scott Huskey's Insulated Skirting Systems-keeps your home cooler in the summer-warmer in the winter-saves on utilities and looks great! Since 1972, 573-696-3468.

Does your basement or crawl space need some attention? Call Thrasher Foundation Repair! A permanent solution for waterproofing, failing foundations, sinking concrete and nasty crawl spaces. FREE Inspection & Same Day Estimate. \$250 off ANY project with code GET250. Call 1-855-460-1476

Roofing

Replace your roof with the best looking and longest lasting material steel from Erie Metal Roofs! Three styles and multiple colors available. Guaranteed to last a lifetime! Limited Time Offer up to 50% off installation + Additional 10% off install (for military, health workers & 1st responders.) Call Erie Metal Roofs: 1-888-809-1119

Miscellaneous

Consumer Cellular - the same reliable, nationwide coverage as the largest carriers. No long-term contract, no hidden fees and activation is free. All plans feature unlimited talk and text, starting at just \$20/month. For more information, call 1-844-211-0742

FOR SALE:
VNS Cereal Rye, Triticale, & Oats. Germ tested & bagged in 2000lb totes. Discounts for trailer loads. 660-384-3468

Miscellaneous

Prepare for power outages today with a Generac Home Standby Generator. Act now to receive a FREE 5-Year warranty with qualifying purchase. Call 1-866-686-8347 today to schedule a free quote. It's not just a generator. It's a power move.

Eliminate gutter cleaning forever! LeafFilter, the most advanced debris-blocking gutter protection. Schedule a FREE LeafFilter estimate today. 20% off Entire Purchase. Plus 10% Senior & Military Discounts. Call 1-844-713-4600

Remodeling

Safe Step. North America's #1 Walk-In Tub. Comprehensive lifetime warranty. Top-of-the-line installation and service. Now featuring our FREE shower package and \$1600 Off for a limited time! Call today! Financing available. Call Safe Step 1-833-732-0966

MUST SEE!!

2020 GMC Terrain SLT, AWD, black leather heated seats and steering wheel, backup camera, remote start, collision alert & much more, white frost, been garaged, window sticker, 78,000 miles (local one owner). \$19,900

2010 Jeep Liberty Limited, 4x4, V6, loaded, heated leather seats, sunroof, chrome package, new tires, always garaged, Same owner last 12 years, 115,000 miles, Must see \$9,700

Accelerators Performance & Auto
Since 1974
Kahoka, MO
660-727-3455
Daryl's Cell
217-257-1385

Remodeling

The bathroom of your dreams in as little as 1 day. Limited Time Offer - \$1000 off or No Payments and No Interest for 18 months for customers who qualify. BCI Bath & Shower. Many options available. Quality materials & professional installation. Senior & Military Discounts Available. Call Today! 1-866-460-1048

Have Clutter? Need room? Call the NEMO classifieds. We can help! 660-665-8500.

Lawn/Garden/Landscape

New 3 pt. tillers, heavy duty, gear driven, 7' to 12' starting at \$4,150. 660-874-4455.

Have items to sell? Have too much stuff? Let us help you get the most for it! Call 660-665-8500.

The Ultimate Wood Heat.



CLASSIC EDGE
TITANIUM HDX
Outdoor Wood Furnace

- **More Comfort** - Thermostatically controlled wood heat.
- **Peace of Mind** - Keep the fire outside and eliminate the dangers associated with indoor wood heating.
- **Save Money** - Wood is a renewable, inexpensive and often free energy source.

Campan Heating & Air
Division of Kraus & Sons Inc.
Canton, MO 63435
573-288-8966

CentralBoiler.com

SHOW-ME SEAMLESS GUTTERING

FREE ESTIMATES • PROMPT SERVICE

- 5" & 6" Gutters
 - Siding • Soffit • Fascia
- (23 colors available on Gutters & Fascia)

Tried of Cleaning your Gutters?

LEAFPROOF THEM!

ELLIOTT HIX

660-626-3447 • KIRKSVILLE, MO

Skyline Service LLC
Skid Steer and Construction Repair
Levi Weiler
660-346-6881 • 660-883-5525

Scan Tool Diagnostics
Exhaust After Treatment Repairs • SCR Unlocks
Skid Steer Tracks Available

Golden Grain Bins-Winter Discount

Grain Bins	Floors w/12"Supp. & Flashing
18'x18' 4,195bu. \$ 6,067	18'....\$1,693 30'....\$ 4,726
27'x21' 11,265bu. \$12,178	21'....\$2,315 36'....\$ 6,733
42'x24' 32,245bu. \$28,386	27'....\$3,862 42'....\$ 9,169



GMLS Industries, Inc.
PH: 660-699-2179 or 620-983-2136
www.gmlsindustries.com

Show Me Plumbing Services



Stan Schrock 660-988-1163
Greentop, MO 660-766-2636

- General Mini Excavation & Skid Steer Work
- Livestock Watering
- Waterlines & Sewer Systems
- Residential Services & General Plumbing
- Utility Trenching

CELEBRATIONS!

PARTY RENTAL
KIRKSVILLE, MO

FOR RENT

- Tables & Chairs
- Tents • Bounce House
- Cotton Candy Machine
- & More!

660-626-5162 or 660-665-9380

Have a smart phone or tablet?
You can view current and past Nemo Trader issues online at www.nemotrader.net

NEMO Trader

NEMO BRAIN GAMES

-CROSSWORD- PUZZLE
-OCTOBER- WEEK 3

CRYPTO FUN

Solve the code to discover words related to Halloween. Each number corresponds to a letter. (Hint: 24 = A)

A. 15 19 24 23 17
Clue: Spooky

B. 25 23 3 24 25
Clue: Something pleasant

C. 26 5 5 23 6 3 14 14
Clue: Something to ring

D. 19 24 11 26 17
Clue: Sweets

Here's How It Works:
Sudoku puzzles are formatted as a 9x9 grid, broken down into nine 3x3 boxes. To solve a sudoku, the numbers 1 through 9 must fill each row, column and box. Each number can appear only once in each row, column and box. You can figure out the order in which the numbers will appear by using the numeric clues already provided in the boxes. The more numbers you name, the easier it gets to solve the puzzle!

		2						1
8					6	7		
5		9			7		3	
	4							
6	3	1					8	5
				8				
4	9	7	3		6			2
		6		4		5		

Level: Intermediate

-PUZZLE- SODOKU
-OCTOBER- WEEK 3

Fun By The Numbers

Like puzzles? Then you'll love sudoku. This mind-bending puzzle will have you hooked from the moment you square off, so sharpen your pencil and put your sudoku savvy to the test!

WORD SEARCH
-OCTOBER- WEEK 3

HALLOWEEN WORD SEARCH

WORDS

BONE
BOO
CANDY
CAT
COSTUME
DRACULA
GOBLIN
GRAVE
HALLOWEEN
HAUNTED
MONSTER
MOON
NIGHT
OCTOBER
PUMPKINS
SCARE
SCREAM
SKELETON
SPIDER
SPOOKY
TREAT
TRICK
VAMPIRE
WITCH

Find the words hidden vertically, horizontally, diagonally, and backwards.

ANSWER:

1. Tall, upright post on a boat
5. Basics
9. Used to refer to cited works
11. Folds
13. Former UK PM May
15. Cold region of Russia
16. Standard operating procedure
17. Separating
19. Particles
21. A way to map out
22. Referee declares
23. Beginner
25. Water (Spanish)
26. Gov't lawyers
27. Non-reproductive parts of an organism
29. Spanish friends
31. A type of tree

CLUES ACROSS

1. Tall, upright post on a boat
5. Basics
9. Used to refer to cited works
11. Folds
13. Former UK PM May
15. Cold region of Russia
16. Standard operating procedure
17. Separating
19. Particles
21. A way to map out
22. Referee declares
23. Beginner
25. Water (Spanish)
26. Gov't lawyers
27. Non-reproductive parts of an organism
29. Spanish friends
31. A type of tree
33. Walk heavily
34. About a wood
36. Free-swimming marine invertebrate
38. Political action committee
39. SB19 hit song
41. Scorch the surface of
43. Moved quickly on foot
44. Sacred state for a Muslim
46. Growl
48. Pearl Jam frontman
52. Irritating person
53. Something requiring a solution
54. Firing
56. Hazards
57. Taiwan capital
58. Impudence
59. Rock frontman Durst


CLUES DOWN

1. One who rides an elephant
2. Absence of bacteria
3. Soviet Socialist Republic
4. Men's fashion accessories
5. "Honey" actress Jessica
6. Round red root vegetable
7. Latin term for "charity"
8. Doesn't smell good
9. Mental health issue
10. Millisecond
11. Hairstyle
12. Edible starch
14. Middle Eastern military title
15. Protein-rich liquids
18. Indian musical pattern
20. Cancer and Capricorn
24. Country along the Arabian peninsula
26. A bend
28. Fishes of the herring family
30. Antelopes
32. Chaos
34. Popular music app
35. Cooking material
37. Musical instrument
38. San Diego ballplayers
40. Small amounts
42. Poured
43. Fabric
45. Food option
47. Finger millet
49. The U. of Miami mascot is one
50. Alberta, Canada river
51. Canadian flyers
55. Dry white wine drink

CROSSWORD PUZZLE

1	2	3	4		5	6	7	8
9				10		11		12
13				14		15		
16			17		18			
19		20		21				22
23			24		25			26
				28		29		30
			31		32		33	
			34			35		36
						37		38
39					40		41	
								42
43				44		45		46
								47
48			49	50			51	52
53							54	55
56								57
								58
								59

LEADERSHIP - INTEGRITY - DEDICATION



- 19 Years at Kirksville Police
- Police Sergeant
- SWAT Team Commander
- Building Searches Instructor
- American Red Cross Safety Award
- Numerous Life Saving Awards/Commendations
- United States Marine Veteran

WRITE-IN

NOVEMBER 5TH ELECTION

✓ Matt Kellison

FOR ADAIR COUNTY SHERIFF

YOU MUST WRITE IN MY NAME AND FILL IN THE OVAL NEXT TO MY NAME FOR YOUR WRITE-IN VOTE TO COUNT!

My proactive involvement in the Kirksville Police Department exemplifies the spirit of teamwork and dedication that is essential in a law enforcement agency. By making myself available for a wide array of duties, I believe I have become a well-rounded supervisor capable of tackling challenges of all sizes. Whether it's conducting thorough investigations or managing administrative tasks. My commitment to serving the community and supporting my colleagues underscores the importance of adaptability in law enforcement, making me an invaluable member of the team.

In addition to my roles at the department, I also work part-time with the Second Judicial Circuit Drug Court program.

My passion for personal growth drives me to continually enhance my abilities, and I am dedicated to gaining a comprehensive understanding of every aspect of the sheriff's department. My ambition is to become the most effective sheriff possible, serving both the department and the community with integrity. I plan to reinstate a proactive strategy within the department, ensuring that our presence is felt throughout the county while building trust and confidence among the residents.

If you envision a brighter future for our community, I encourage you to write my name on the ballot for the Adair County Sheriff position on November 5th. Please note that my name will not appear on the ballot itself! You will need to completely fill in the oval and write Matt Kellison on the line provided next to it.

I would greatly appreciate your help in spreading the word, and as always, I am thankful for your support.

Paid for by the Citizens to Elect Matt Kellison

Call us for all your advertising needs. 660-665-8500.

Call about our classified ad specials. 660-665-8500.

JUMPS & ROY AUCTION
A BRAND YOU CAN TRUST

Donna & Bob Gibson Estate
Saturday Nov 2, 2024 10 AM
20134 Foley Pl. Princeton, MO

AUCTIONEERS NOTE: Due to the passing of Donna Gibson the following will be sold at public auction. This will be a fun country-style Auction! Will run two rings. Darren Stice, Executor.



REAL ESTATE: Tract 1 - 85 ac m/l of rolling cattle pasture/hunting ground, rural water, automatic cattle water, current pasture lease until March 2025. Tract 2 - 1294 sq. ft updated 1900 circa farmhouse, 4 bedroom, 1 bath, sitting on 4.8 ac m/l with nice Morton Shop Building, Concrete floor, Detached garage, out buildings & rural water. Includes 1.4 ac m/l alfalfa hay and rural water. Contact Auction Co. to Preview Property.





PERSONAL PROPERTY: 1998 Ford Pickup, 4 Tractors, some 3 pt. and Pull type Equipment, Tools and Shop Related, Woodworking Power Tools and Related, Canoe, John Boat, Lawn & Garden, Furniture, Several Coins, Household, Antiques, Collectibles & Primitives.

Photos and listing - www.jumpsandroyauction.com
Scott 660-359-1455 / Rustin 660-605-0860

Shop Local Buy Local Enjoy Local

CALL TODAY! 660-665-8500
sales@nemotrader.net

NEMO
NEMO TRADER
Daily Express

ATTENTION LAND OWNERS!!

Buyer of standing timber
Paying Cash Upfront!

WE HAVE SEMI LOADS OF PINK WOOD LOGS FOR SALE



Owner/Operator of Sawmill

- Buy/Cut Logs
- Certified
- Bonded
- Insured

Tri State Timber L.L.C.
353 1/2 Grand Ave. • Memphis, Mo 63555
660-341-4921 • 660-465-2975

Central Metals Recycling LLC

Buyers of Ferrous and Non-Ferrous Metals

We Pay More \$\$\$, Call For Your Best Pricing Today!!

11923 Hwy. 54 Mexico, MO | 1601 N. 30th Quincy, IL | 1175 Hwy. 96 Hamilton, IL
573-581-0336 | 217-214-7649 | 217-847-3191

TIMED ONLINE - NO RESERVE FARM RETIREMENT AUCTION
TUESDAY, OCTOBER 29 @ 10:00 AM CDT

PHYSICAL ADDRESS: 14839 150TH AVENUE MYSTIC, IA 52574

Inspection: FRI, OCTOBER 25 9:00 AM - 2:00 PM
Load Out: WED, OCTOBER 30 9:00 AM - 3:00 PM




Case IH & Allis Chalmers tractors; Collector tractors; Compact tractors & lawnmowers; large selection of attachments; trucks; trailers; much, much more! Please check website for complete listing.

KEITH & LORENA LAIN REVOCABLE TRUST
AUCTION REPRESENTATIVE: John Probasco (641) 856-7355

MERIT AUCTIONS
"Specializing in Farm Real Estate & Ag Equipment"

833.273.9300 | www.MeritAuctions.com | 444.000611

GO TO FARMBANK.COM

VOTE FOR YOUR FAVORITE PUMPKIN

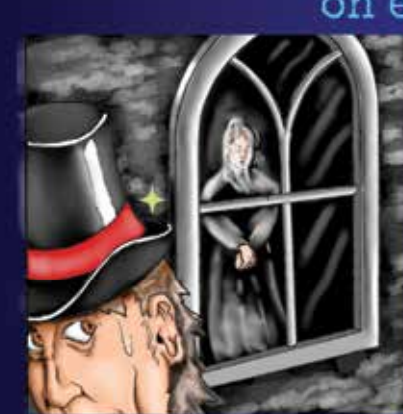
VOTE BY  OCTOBER 25TH



fb

MAPLES REPERTORY THEATRE
102 N Rubey St Macon, MO 660-385-2924
maplesrep.com

A haunting ghost story that will have your hair standing on end!



"THE WOMAN IN BLACK"
OCT 18 - Oct 27

Beilstein CAMPER SALES

CALL US NOW for the best prices...
28248 327th Ave.
LaGrange, MO • Hwy 61 South,
4 Miles South of LaGrange, MO

573-655-2254

FALL INTO SAVINGS!!

#706521



Our Price \$49,995

2022 WILDWOOD HERITAGE GLEN 353BED
4 Slide-Outs, Bunks and front King Bed

#23FS



Call for PRICE

2021 COACHMEN FREELANDER CHEVY 4500 23FS
Extra Large Slide-Out, Only 13,xxx miles

#013723



PRICE \$34,995
SAVE \$13,580

2024 SALEM FSX MAX TOY HAULER 270RTXK PLATINUM
NEW BLOW-OUT, Private Bedroom

#942100



Our Price \$16,495

2021 COLEMAN LIGHT 1855RB
Slide-Out, Rear Bathroom, GREAT PRICE

#009807



Our Price \$18,995

2022 EAST TO WEST SILVER LAKE 25KRB
Rear Bathroom, Front Queen Bed

#069831



OUR PRICE \$34,995
SAVE \$20,427

2023 SALEM 36VBDS
NEW BLOW-OUT, 2 Bedrooms

beilsteincampersales.com

AUTOMATIC STANDBY GENERATORS

WINTER STORMS DON'T CARE IF YOU ARE PREPARED... WE DO.




KOHLER **GENERAC**

PCS ELECTRONICS

Empowering people in times of need.
3100 Brown Station Rd, Ste E
Columbia, MO 65202

Sales, Service & Installation
call 573-814-3131

Certified factory trained technicians



There's a better way to get noticed.
Keep life simple.
Take out an ad.

REAL ESTATE AUCTION

21 116 E. Carpenter Street. - Moberly, MO 65270
FRIDAY, NOV. 8TH 11 A.M.

Due to the death of Mrs. Virginia Williams we will sell the following at Public Auction. Auction conducted on site.

REAL ESTATE: Situated on an Oversized 150' x 100' Corner Lot - 3 BR, 1 BA 1480 Sq. Ft. Home - Newer Roof & Siding - Nice Sized Living Room - Separate Family Room or Potential for 4th BR - 29' x 50' 3 Car Garage with 48' x 58' Concrete Drive - Potential for Home Business - Second Detached 15' x 20' Detached Garage, Lot Easily Split Off for Potential Build Site



OPEN HOUSE: TUESDAY, OCT. 22ND 4-6 P.M.

REAL ESTATE TERMS: 10% down day of Auction upon entry into Real Estate Contracts with Balance Due and Possession given at Closing within 45 days. Property Sold As Is with Seller Providing Clear Title Insurance. Real Estate Sells Subject to Owner Confirmation & Probate Court Approval. Buyer Must Have Financing Secured Prior to Bidding. Statements Auction Day Take Precedence Over Ads.

ESTATE OF VIRGINIA PAULINE WILLIAMS

Larry Williams & Dennis Moenck, Personal Representatives
CENTURY 21 MCKEOWN & ASSOC. INC.
 Greg McCluskey, Realtor 573-397-1951 Office 660-263-1789
 Michael Cunningham, Auctioneer 660-651-2288

Have items to sell? Have too much stuff? Let us help you get the most for it! Call 660-665-8500.

Please place your classified ads on the NEMO website. Our web address is nemotrader.net

HAVE A PET OR PUPPIES TO SELL? Call us. You can even pay over the phone. 660-665-8500.

MAAG ONLINE LAND AUCTION

8 TRACTS 782.6 ACRES

SALISBURY * PRAIRIE HILL * BYNUMVILLE, MISSOURI

BIDDING OPENS NOVEMBER 8TH, 2024 | CLOSES NOVEMBER 13TH @ 6 PM

PRIME CHARITON RIVER BOTTOM GROUND



TRACT 1: Great location, right on Hwy 24 near busy intersection in the town of Salisbury, MO - Older 36x42 shop w/ 2 roll up garage doors w/ water & electricity
TRACT 2: 40.3 Acres of quality farm ground - 38.19 FSA acres currently in row crop - Older 20x64 lean to shed - Farm is upper bottom land and flat with soils consisting of Triplett silt loam
TRACT 3: 131.3 Acres of quality farm ground - 128.95 FSA acres currently in row crop - 30x48 Older Machine shed & two 7500 m/l Bu grain bins - Farm is upper bottom land and is flat with soils consisting of Triplett silt loam
TRACT 4: 162.0 Acres m/l of quality farm ground - 160.86 FSA acres currently in row crop - Farm is upper bottom land and is flat with majority of the soils consisting of Triplett silt loam & remainder in Carlow silty clay & Speed silt loams

TRACT 5: 55.0 Acres of quality flat bottom land bordering the Chariton River - 40.32 FSA acres currently in row crop - Farm is flat with majority of the soils consisting of Carlow silty clay and remainder in Tice silty loam, farm is levy protected along Chariton River
TRACT 6: 70.8 Acres of quality flat bottom land bordering the Chariton River - 57 FSA acres currently in row crop - Farm is flat with soils consisting of Tice silt loam, farm is levy protected along the Chariton River w/ recent levy improvements
TRACT 7: 161.0 Acres of quality flat bottom land bordering the Chariton River - This farm is flat and lays very well - 100% of soils consist of Carlow silty clay, farm is levy protected along the Chariton River - FSA OCP cropland for tracts 7 & 8 are combined at 281.93 acres
TRACT 8: 160.4 Acres of quality flat bottom land bordering the Chariton River - This farm is flat and lays very well - Majority of soils consist of Carlow silty clay w/ remainder in Tice silt loam, farm is levy protected along the Chariton River **See Terms on Website

2ND SESSION | 776.7 ACRES
 Closes February 19, 2025

IMAN AUCTION ESTD. Co 1947
 Bidding, Full Listing & Maps @
IMANAUCTION.COM
LEO MAAG TRUST & BERNIECE MAAG TRUST
 660-788-4298 | 660-414-7967 | 660-388-6235

Single Family 2 Bedroom, 2 Bathroom Home on 22 Private Wooded Acres

21 REAL ESTATE & PERSONAL PROPERTY AUCTION

1435 CR 1755 Cairo, MO 65239

AUCTION CONDUCTED ON SITE

WEDNESDAY, OCTOBER 23RD @ 12:00

If you're looking for peace and privacy, this well maintained 2 BR, 2BA 1300 sq. ft. +/- move in ready home is a dream come true! Privately nestled on 22 wooded acres, with mature oaks an abundance of wildlife and multiple outbuildings it's the perfect spot for nature lovers or anyone wanting a little more space.



The home welcomes you with vaulted ceilings and large picture windows in the living room, providing stunning views of the front lawn where wildlife frequently visits. The spacious kitchen is equipped with a gas range and ample counter space, perfect for cooking and entertaining. Enjoy the convenience of a main-floor laundry room and a large dining area for family meals. The property has a two car 17' x 23' detached garage, 11' x 15' shed and 17' x 23' concrete parking pad for all of your storage needs. Whether you're looking for a peaceful retreat or a place to enjoy the great outdoors, this property has it all. Don't miss out on this rare opportunity to own a private oasis.



10% down the day of auction upon entry into a Real Estate Contract with Balance Due at Possession given at Closing within 45 days. Property Sold As Is with No Contingencies, Seller Providing Clear Title Insurance. Real Estate Sells Subject to Owner Confirmation. Buyer Must Have Financing Secured Prior to Bidding. Statements Auction Day Take Precedence Over Ads.

OPEN HOUSES: Saturday October 12th- 10-12 • Monday October 21st- 5-7

To View the Real Estate Contact Kristy Hosmer 660-223-3035 Chuck McKeown 660-651-6889 or Micheal Cunningham, Auctioneer 660-651-2288 with Century 21 McKeown & Assoc. Inc.

DIRECTIONS: From Cairo MO, head East on Route K for 4.9 miles, turn left onto CC for 2.8 miles, left onto County Road 1755 the property is .8 Miles on the right, see sign.

CENTURY 21 MCKEOWN & ASSOC. INC.

Kristy Hosmer 660-223-3035 Chuck McKeown 660-651-6889
 Michael Cunningham, Auctioneer 660-651-2288
 Office 660-263-1789 LandandAuctions.com

FLO RITE GUTTERING

660-988-1163

- 5" & 6" Guttering Available
- Leafguard Options
- 20+ Color Options
- Stainless Steel Fasteners

Stan Schrock • Greentop, MO

Lawn/Garden/Landscape

Want a greener lawn? TruGreen's your go-to for a tailored lawn care plan. Act now and get 50% off your first service with a purchase of an annual plan. Call us at 1-866-416-0207 to learn more

TRANSPORTATION

Trucks, 4x4's, SUV's

2010 Ford diesel extended cab. 2003 Ford diesel, dually (\$6,500 in new parts). 6251 John Deere Gator. 660-341-9284.

Wanted

We buy 8,000 cars a week. Sell your old, busted or junk car with no hoops, haggles or headaches. Sell your car to Peddle. Easy three step process. Instant offer. Free pickup. Fast payment. Call 1-844-582-9214

HARRISON FISHERY

POND & LAKE STOCKING

660-423-5482

Contact us for bulk price & delivery.

info@harrisonfishery.com • www.harrisonfishery.com

Fall is a Great Time to Stock Your Lakes & Ponds!!
 Come see us for Freshwater, Game & Baitfish.

Species Available: Large mouth bass, hybrid bluegill, bluegill, redear sunfish, black crappie, fathead minnow, walleye, muskie catfish, golden shiners and more!

VICTORY

Metals & Recycling

KIRKSVILLE, MO
 660-665-8000

For current scrap prices call or visit our Facebook Page
 victorymetalsrecycling.com

★ METAL RECYCLING
 RECYCLE YOUR SCRAP METAL WITH US! WE PAY CASH FOR: COPPER, ALUMINUM, STEEL, STAINLESS STEEL, APPLIANCES, E-SCRAP, BRASS, LEAD, RADIATORS, ALTERNATORS, BATTERIES, STARTERS, ELECTRIC MOTORS, APPLIANCES, & VEHICLES (TITLE & ID REQUIRED).

★ ROLL-OFF CONTAINER
 10-20-30-40 CUBIC YARD DUMPSTERS

3602 INDUSTRIAL RD. • KIRKSVILLE, MO 63501
 DJANESVMR@GMAIL.COM
VICTORYMETALSRECYCLING.COM

Midwest Orthopedic Specialists

Meet Mako SmartRobotics

Richard L. Baumann, M.D.

Join us as Dr. Baumann introduces the Stryker Mako Smart Robot now being used for joint replacement surgery!

OCT. 22 5:30 PM The Kroc Center Quincy, IL

OCT. 24 5:30 PM Holiday Inn Express Hannibal, MO

Walk-Ins Welcome!
 RSVP to 573-600-9331



McAfee Auction Service, LLC
 375 S Johnson • Kahoka, MO
 660-727-3796
 www.mcafeeauctionservice.com

**TIMED ONLINE ONLY
 HOUSEHOLD LIQUIDATION AUCTION**

**FRIDAY OCTOBER 25TH
 LOTS START ENDING AT 10 AM**

LOCATION: 321 W MISSOURI MEMPHIS, MO



**ONE DAY
 PICK UP
 SATURDAY
 OCT 26TH
 9AM-NOON**

Selling furniture, glassware,
 collectibles & household misc

BID NOW! COMPLETE DETAILS ONLINE!



McAfee Auction Service, LLC
 375 S Johnson • Kahoka, MO
 660-727-3796
 www.mcafeeauctionservice.com

**ABSOLUTE REAL ESTATE
 AUCTION**

TUESDAY OCT 29TH - 10 AM

Sale conducted onsite located on the corner of
 N. Main and W. Hannibal, Wyaconda, MO



Selling a well cared
 for Church building
 with newer metal roof
 & recently updated
 furnace & central air.
 Church bell conveys
 w/ property.

First Baptist Church of Wyaconda, Sellers



McAfee Auction Service, LLC
 375 S Johnson • Kahoka, MO
 660-727-3796
 www.mcafeeauctionservice.com

**LIVE ONSITE FARM MACHINERY
 LIVESTOCK EQUIPMENT
 HAY & FARM SUPPORT AUCTION**

SAT NOVEMBER 23RD - 10 AM

SALE CONDUCTED ONSITE LOCATED 1/2 MILE E. OF
 KNOX CITY MO ON HWY 6, THEN N. ON CO ROAD FINCH
 AVE. .9 MILE. (55263 FINCH AVE, KNOX CITY MO)



Selling a 2016 MF 5612 Dyna-4 4WD Cab Tractor w/ Loader, 2054
 hours; (2) AC D17 Series IV Tractors w/ Loaders; Trailers to include:
 Dump, Livestock, Flatbed, Utility & Cargo; Trucks, ATV, UTV, 13'
 Bush Hog 2815 Rotary Cutter; Land Pride 3 way Blade; Grain Hand-
 ling, Hay & Misc. Equip.; Livestock Equip.; 150 plus large bales
 (2024 Season} Hay; Tools, Farm Support Items and much much more
COMPLETE DETAILS ONLINE!

MARY & THE LATE VERLIN TONNIES, SELLERS



McAfee Auction Service, LLC
 375 S Johnson • Kahoka, MO
 660-727-3796
 www.mcafeeauctionservice.com

**FALL FARM
 MACHINERY
 Consignment
 Auction**

Timed
 Online
 Only
 Auction

CONSIGN NOW!

Deadline for Consignments is
Saturday, November 9th at 4PM

CALL 660-727-3796

**CHECK IN STARTS
 WED, NOV 6TH - SAT, NOV 9TH
 9AM - 4PM DAILY**

LARGER EQUIPMENT ACCEPTED BY APPOINTMENT
 STARTING OCTOBER 10TH

Lots Start Closing at 10 am
Thursday, December 5th

Equipment will be located at the Clark County Fairgrounds



McAfee Auction Service, LLC
 375 S Johnson • Kahoka, MO
 660-727-3796
 www.mcafeeauctionservice.com

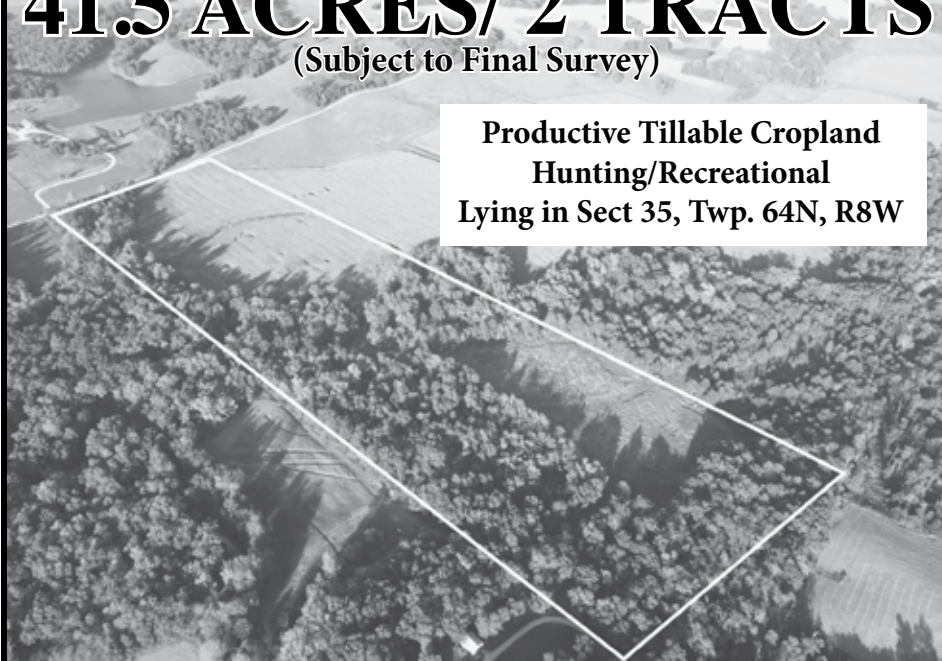
Clark County, MO
LAND AUCTION

Thursday, December 12TH - 10 AM

Sale conducted at the CARE Building located at 451 N. Vine St., Kahoka, MO

41.5 ACRES/ 2 TRACTS
 (Subject to Final Survey)

Productive Tillable Cropland
 Hunting/Recreational
 Lying in Sect 35, Twp. 64N, R8W



THE FAMILY OF JOHN BERGMAN, SELLERS

**THINKING OF SELLING
 LAND OR MACHINERY?
 LET OUR MOTIVATED
 STAFF WORK FOR YOU!**

MONTY: 660-341-7412

OFFICE: 660-727-3796

**ADDITIONAL DETAILS & PHOTOS ONLINE
 WWW.MCAFEEAUCTIONSERVICE.COM**



SCOTTY'S AUCTION SERVICE
573-356-4405
Auctioneer: Scott Kuntz
SEE MORE PHOTOS ON SCOTTY'S WEBSITE
WWW.SCOTTSAUCTIONSERVICE.COM

Macon Real Estate & Personal Property Auction



Sat., Nov. 2, 2024 at 10:00 pm
Scott Bealmer

828 Pine Street, Macon, MO.

Direction: From US Highway 63/North Missouri Street, proceed East on Pine Street to the property location. Watch for signs.

REAL ESTATE: We will be selling this three bedroom, three bath ranch-style home on a large, 0.82 acre lot located on a quiet, dead-end street. The home has an updated main level with 3/4" hardwood floors, a new roof, new siding, new gutters, a 50 gallon gas hot water heater, central air and a natural gas furnace. There is also a full, unfinished basement, an abundance of storage and a 2 car attached garage that is heated and cooled. Included on the property is a 10' x 16' storage shed.

Please call Scotty at 573-356-4405 to schedule your personal showing.

VEHICLE: 2001 Chevy dually, 8.1 engine, Allison transmission, 2 wheel drive, fifth wheel hitch, 102,xxx miles, extended cab, new tires, very nice, well maintained truck

HOUSEHOLD ITEMS: Whirlpool gas dryer, Whirlpool washing machine; Haier dorm size refrigerator; chest of drawers; dresser; flatscreen TV; patio table and chairs

ANTIQUES & COLLECTIBLES: 1897 roll top desk, needs restoration; Christmas decor; crystal glassware; John Deere pocketknife collection; cedar chest; pinball machine; guitars; various antique end tables; John Deere toy tractor collection; golf clubs; pig statue collection; antique rocking chair; Americana Porcelain The Patriots 5 of 8 presidents collection; Tiger picture from the old Schlanker's Furniture Store

TOOLS & EQUIPMENT: Coleman upright air compressor; drill; 14" tile cutter; work light; Actrom automotive tune up kit; Alltest diagnostic equipment; Black & Decker battery powered tools

There will be many more items at this auction too numerous to list.



140 acres Bethel Land Auction



Tues., Nov. 5, 2024 at 5:00 pm
Brandon Barnes

Shelby County Road 156, MO.

Direction: From the intersection of Highway 15 and State Highway J, travel approximately 2.4 miles to Shelby County Road 156, travel on Shelby County Road 156 to farms. Watch for signs.

REAL ESTATE: We will be selling at auction 140 acres of prime Shelby County hunting property separated into three tracts. Buyer(s) will have hunting rights for 2024 and that may begin as soon as the contract is signed and the deposit is paid. Please contact Scott at 573-356-4405 to schedule your personal showing.

TRACT 1: This tract consists of 56 acres more or less with a remodeled cabin. There are 20 acres more or less tillable and the remainder is mature timber with excellent hunting and food plots. There

is a shooting house, maintained trails and a crazy number of large deer and flocks of turkey.

TRACT 2: Consists of 40 acres more or less, with 7 acres tillable.

TRACT 3: Consists of 40 acres more or less and is a combination of open and timber ground. It provides excellent hunting and shooting house. There are food plots and other tillable areas. The deer and turkey are abundant and large.



2 AUCTIONS IN ONE DAY!

Macon Investment Real Estate Auction

Tues., Oct. 22, 2024 at 4:00 pm
NOTE: 2 Auctions, 1 Day



102 Crescent Drive, Macon MO.

Direction: From US Highway 63/South Missouri Street, proceed West on Main Street for approximately 0.5 mile then

continue West on Crescent Drive to the auction location. Watch for signs.

REAL ESTATE: We will be selling this two bedroom, one bath home with a large kitchen, separate laundry room and a small utility shed. Please contact Scott at 573-356-4405 to schedule your personal showing.

2 AUCTIONS IN ONE DAY!

Macon Real Estate Auction

Tues., Oct. 22, 2024 at 4:30 pm
NOTE: 2 Auctions, 1 Day



306 Crescent Drive, Macon MO.

Direction: From US Highway 63/South Missouri Street, proceed West on Main Street for approximately 0.5 mile, continue onto Crescent Drive to the

property. Watch for signs.

REAL ESTATE: We will be selling at auction this older two-story home with four bedrooms upstairs and one bedroom downstairs with a main bath. The home does need some TLC. It also includes a small outbuilding. Please contact Scott at 573-356-4405 to schedule your personal showing.

Macon Real Estate & Personal Property Auction

Sat., Oct. 26, 2024 at 10:00 am
Carolyn Williams



504 Pine Crest Drive, Macon MO.

Direction: From US Highway 63/North Missouri Street, turn West on Briggs Drive, proceed West on Pine Crest Drive to the property. Watch for signs.

chairs; pots and pans; 6' folding plastic tables; twin size bed; Frigidaire stackable washer and dryer; Perfect air dehumidifier; full size oak bed; 5 drawer chest of drawers

ANTIQUES & COLLECTIBLES: drop front secretary; round, antique table; canning jars; massage chair; various crocks; antique floor lamps; Texas ware; antique vanity with mirror; various old pictures and prints; Franklin treadle sewing machine; Singer sewing machine with stand; Lane cedar chest; antique side chair; miscellaneous books; handmade bookcase; sewing supplies; antique oak drop leaf table; Pyrex mixing bowl; England China; older marbles; antique end tables; secretary with display cabinet; self-standing quilt rack; antique vanity with wishbone mirror and towel holder; quilts and blankets; oak rocking chair

There will be many more items at this auction too numerous to list.

HOUSEHOLD ITEMS: full size bed frame; metal cabinets; metal folding

Macon Investment Real Estate Auction

Thurs., Nov. 6, 2024 at 4:00 pm
Danny and Barbara Primm



501 North Rutherford Street, Macon, MO.

Direction: From US Highway 63, North Missouri Street, proceed West on Walnut Street for approximately 0.2 miles, proceed West on Sheridan Street, turn North on Rutherford Street to the property location. Watch for signs

REAL ESTATE: We will be selling this three bedroom, on bath home conveniently located to schools and shopping in Macon. The home has original woodwork throughout, a full, unfinished basement, natural gas heat and wind air units. This would make a perfect starter home or investment property.

Please contact Scott at 573-356-4405 to schedule your personal showing.



DOWN PAYMENT: 10% of the contract purchase price will be due upon acceptance of the Sales Contract. Personal or Cashier's Checks will be accepted. This is "AS IS, WHERE IS" and is non-refundable. CLOSING: Closing shall be within 30 days of the auction date.

WANT BIG DEER?

ATTENTION LANDOWNERS WITHIN 15 MILES OF GREEN CITY, MISSOURI



Roeslein Alternative Energy will pay highly competitive rates to lease row crop & hay ground to build a diverse prairie for a renewable energy project. We will bear 100% of the cost to plant prairie on your land.



To learn more, please email Steve Mowry:
smowry@roesleinae.com



NEMO TRADER • Advertise with us TODAY! • Phone: 660.665.8500 • PO BOX 809 • 705 East LaHarpe St., Suite F, KIRKSVILLE, MO 63501



FALL CONSIGNMENT AUCTION

100 INDUSTRIAL PARKWAY GALLATIN, MISSOURI, 64640

SATURDAY | NOVEMBER 2 | 8:00 AM

Find us on

BS-Equipment-Auctions

Description: This will be our fall consignment auction featuring mainly farm equipment, construction, trucks and trailers. Check out our website to view all listings at www.bandsequipmentsales.com.

Online Bidding available thru Equipmentfacts.com



TRACTORS

John Deere
 JD 8285R, F/R Duals, 4RR, 1000, QH, CHA, 7593hrs
 JD 6125R, H340 LDR, MFWD, 3RR, Int pto, CHA, LHR, 24spd PPS, 9045hrs
 JD 6115M, H340 LDR, MFWD, 3RR, Int pto, CHA, LHR, 24spd PPS, 7303hrs
 JD 6105M, H310 LDR, MFWD, 2RR, Int pto, LHR, PPS, 4154hrs
 JD 5100M, H260 LDR, MFWD, 3RR, 540, CHA, LHR, 5127hrs
 JD 5100E, OS, MFWD, 806hrs, 520m LDR, 3rr, 540
 '22 JD 5055E Tractor, mfwd, loader, 300hrs
 JD 5055E, H240 LDR, MFWD, 1RR, QH, 540, CHA, LHR, 1408hrs
 JD 1023E, 60" deck, QH, 540, HST, 549hrs
 '19 JD 4044M, MFWD, 540, OS, 520hrs
 JD 3025E, 300E LDR, MFWD, OS, 540, HST, 88hrs
 '09 JD 7530, H360 LDR, MFWD, 4RR, Int pto, IVT, 4834hrs
 JD 6430, MFWD, 1RR, Int pto, CHA, LHR, 7349hrs
 JD 6330, 673 LDR, MFWD, 3RR, Int pto, CHA, LHR, PPS, 1327hrs
 JD 6230, 2wd, 2RR, Int pto, LDR ready, CHA, 3668hrs
 JD 8320, MFWD, 4RR, 1000, QH, CHA, PS, 8240hrs
 JD 7320, 741 LDR, MFWD, 4RR, Int pto, R.Wts, CHA, LHR, PPS, 7252hrs
 JD 6320, 640 LDR, MFWD, 3rr, 540, CHA, LHR, PPS, 6841 hrs
 JD 6320, MFWD, 3RR, Int pto, CHA, LHR, PPS, 7051hrs
 JD 6300, 640 LDR, MFWD, 2RR, 540, CHA, PPS, 7679hrs
 JD 7410, MFWD, 2RR, Int pto, CHA, PPS, 5644hrs
 JD 7800, MFWD, F. Wts, R. Duals, 3rr, Int pto, QH, CHA, PQ, 6404hrs
 JD 7800, 725 LDR, 2wd, 3RR, Int pto, CHA, LHR, 7235hrs
 JD 7700, 740 LDR/Grapple, MFWD, 3RR, Int pto, QH, CHA, PS
 JD 6400, 640 LDR, MFWD, 2RR, Int pto, CHA, PQ, 7360hrs
 JD 5225, 542 LDR, MFWD, 1RR, 540, OS, 1006hrs
 JD 2940, 2wd, 2RR, Int pto, OS, 5300hrs
 JD 8450, 4wd, F/R Duals, 3RR, 1000, QH, CHA, 8020hrs
 JD 8440, 4wd, F/R Duals, 3RR, 1000, QH, CHA, 7666hrs
 JD 8440, 4wd, F/R Duals, 3RR, 3pt, CHA, 6847hrs
 JD 8430, 4wd, 3RR, 1000, CHA, JD 4960, MFWD, F/R Wts, 3RR, 1000, QH, CHA, PS, 10,384hrs
 JD 4960, MFWD, R.Duals, 3RR, 1000, CHA, PS, 6913hrs
 JD 4955, MFWD, R. Duals, F/R Wts, 3rr, 1000, 3pt QH, CHA, PS, 8570hrs
 JD 2355, 2wd, OS, canopy, 2RR, 540, 4599hrs
 JD 2355, 2wd, 2RR, 540, CHA, 2621hrs
 JD 2350, 175 LDR, 2wd, 540, OS, 3543hrs
 JD 4440, 148 LDR, 2wd, R.Duals, 2RR, Int pto, CHA, 1955hrs
 JD 4240, 2wd, 2RR, Int pto, OS, 10,900
 JD 4040, JD LDR, 2wd, 2RR, Int pto, CHA, PS, 6394hrs
 JD 2640, 146 LDR/grapple, 2wd, OS, 1RR, 540, 392hrs
 JD 4230, 148 LDR, 2wd, R.Duals, 2RR, Int pto, CHA, 10,650hrs
 JD 4430, 2wd, 2RR, Int pto, R.Wts, CHA, 1382hrs
 JD 4430, 2wd, 2RR, Int pto, CHA, 10860hrs
 JD 4630, 2wd, R.Dis. F.Wts, 3RR, 1000, CHA, PS, 4519hrs
 JD 4630, TA-28 LDR, 2wd, 2RR, 1000, PS, CHA, 7806hrs
 JD 4630, 2wd, 2RR, 1000, F. Wts, CHA, 6217hrs
 JD 3020 Diesel, 2wd, 1RR, Int pto, OS, 215hrs since restoration
 JD 3320, 300 LDR, MFWD, 72" deck, 540, HST, OS, 736hrs
 JD 2320, JD200 LDR, 62" deck, QH, 540, OS, 522hrs
 JD 790, 70 LDR, 4wd, OS, 540, 491hrs
 JD 2305, 62" deck, QH, 540, HST,

951hrs
 JD 850, 2wd, OS, 540, 1021hrs
 JD 140, front blade, belly mower
 JD JD600, 2wd, OS, 2RR, PS, 433hrs
 JD 750, 2wd, 540, OS, 2528hrs
 JD 3010, gas, 2wd, 1RR, 540, 1016hrs
 JD 830, 2wd, 1RR, 540, 680hrs

Case IH/ IH/ I Case
 CIH 210 Puma, MFWD, R/ Duals, 4RR, Int pto, CHA, LHR, PS, 1843hrs
 CIH 115 Maxxum, L750 LDR, MFWD, 2RR, Int pto, CHA, LHR, CIH 115 Maxxum, L105 LDR, MFWD, 3RR, Int pto, CHA, LHR, PPS, 1567hrs,
 CIH 125 Maxxum, L750 LDR, MFWD, 2RR, Int pto, CHA, LHR, PPS, 6776hrs
 CIH MX275, F/R Dis. 4RR, 1000, QH, CHA, PS, LHR, 5300hrs
 CIH MXM190, CIH LDR, MFWD, 4rr, Int pto, CHA, LHR, PS, 1800hrs
 CIH MX110, 2wd, 2RR, Int pto, CHA, PPS, LHR, 6690hrs
 CIH JX70, L720 LDR, MFWD, 2RR, 540, CHA, 644hrs
 CIH Farmall 95U, L740 LDR, MFWD, 2RR, Int pto, CHA, LHR, 1782hrs
 CIH Farmall 75C, MFWD, 2RR, 540, CHA, LHR,
 CIH JX90U, 2wd, OS, F. Wts, 2RR, Int pto, LHR, 2024hrs
 CIH 7130, MFWD, R.Duals, 3RR, 1000, QH, CHA, PS, 7328hrs
 CIH 585, CIH LDR, 2wd, 2RR, 540, CHA, 3644hrs
 CIH 1394, 2wd, 2RR, 540, CHA, 3479hrs
 IH 1086, 2wd, 3RR, dual pto, CHA, 12287hrs
 IH 1086, 2wd, 3RR, dual pto, CHA, 3566hrs
 IH 5288, MFWD, 3RR, dual pto, CHA, 3815hrs
 JI Case 1070, 2wd, 2RR, 540, CHA, 10362hrs

New Holland/Ford
 NH T6070, 850TL LDR, MFWD, 3RR, Int pto, CHA, LHR, 5152hrs
 NH TM115 Turbo, NH LDR, MFWD, 2RR, Int pto, CHA, 6553hrs, LHR
 NH TL100A, BH LDR, MFWD, 2RR, Int pto, CHA, 3666 hours
 NH 5640, 2wd, 2RR, 540, CHA, 7641hrs
 Ford 7710, BH LDR, MFWD, 2RR, Int pto, CHA, 7200hrs
 Ford 901 Powermaster, 2wd, 1rr, 540
 Ford 1715, LDR, MFWD, 540, OS, 530hrs

Kubota
 Kubota M7-172 Premium, MFWD, 4RR, Int pto, QH, 849hrs
 Kubota M7-171 Premium, MFWD, 4RR, Int pto, QH, CHA, 1137hrs
 Kubota M7-151, 2605 LDR, MFWD, 3RR, Int pto, CHA, PS, 1103hrs
 Kubota M6-141, C/H/A Loader, 3RR, Int PTO, 390hrs
 Kubota M135GX, LDR, 2RR, Int pto, CHA, PPS, 1293hrs
 Kubota M125X, LDR, MFWD, 3RR, Int pto, CHA, LHR, 1710hrs
 Kubota L2501, MFWD, LDR, QH, 540, OS, HST, 205hrs
 Kubota L3560, LDR, MFWD, HST, 1RR, 540, CHA, 269hrs

Massey Ferguson
 MF 5460, 940 LDR, MFWD, 2RR, Int pto, CHA, PS, LHR, 3928hrs
 MF 2745, 2wd, R. Duals, 2RR, 540, CHA, 5789hrs
 MF 135, 2wd, 540, 1714hrs

Agco/Allis/Challenger/ JCB/ Mahindra/Other
 '20 JCB 8330 Fastrac, MFWD, CHA, 4270hrs
 Agco DT200A, MFWD, R.Dis, 5rr, 1000, CHA, PS, LHR, 5200hrs
 Challenger MT765, tracks, F.Wts, Track Wts, 5RR, 3PT, 1000, CHA, 7350hrs
 Allis Chalmers 6080, 2wd, 2RR, 540, CHA, 3543hrs
 Allis Chalmers 175, 2wd, 2RR, 540, Cab, 2670hrs
 Allis Chalmers WD, LDR, 2wd, 540 AC 200, 2wd, 2RR, 540, cab, 5055hrs
 AC 200, 2wd, 2RR, 540, cab, 5184hrs
 White 2-70, 2wd, crops, 540,

3362hrs
 White 2-85, 2wd, 2RR, 540, CHA, 7796hrs
 White 6105, 2wd, 3RR, dual pto, CHA, 5156hrs
 Deutz Allis 9130, MFWD, R.Dis, 2RR, 1000, CHA, PPS, 3470hrs
 Mahindra 26XL HST, LDR, 4' brush cutter, 306hrs
 Mahindra mPower 75, LDR, MFWD, 2RR, 540, OS, 483hrs

TRACTOR LOADERS
 JD 640R Loader, bucket, UNUSED
 JD 740 Loader, Brackets, 4440 Brackets
 Kent 1500 Loader, bucket, brackets
 Westendorf XTA-700, bucket, Grapple, brackets
 Koyker 600 loader, bucket, brackets

CONSTRUCTION
Excavators
 Komatsu PC220LC, thumb, 2spd, CHA
 '24 Doosan DX 200 LC, wide track, brush guard, CHA, thumb, UNUSED
 '23 Develon DX35Z, aux hyd, 2spd, CHA, backfill blade, UNUSED
 Kobelco 135SR LC Excavator, hyd thumb, aux hyd, CHA, 7600hrs
 Bobcat E85 mini ex, hyd thumb, aux hyd, backfill blade, CHA, 1306hrs
 Bobcat 325 mini ex, OS, aux hyd, backfill blade, 3571hrs
 60 +/- AGT/Miva/Etc Container Excavators/Skidsteers

Wheel Loaders
 '20 Case 121F XT, CHA, QA, aux hyd, 825hrs
 Deere 244J, bucket, forks, aux hyd, 5800hrs
 Deere 444C loader, diesel, cab

Skid Steers
 Cat 289C, aux hyd, 2spd, CHA, 4819hrs
 IH 5288, MFWD, 3RR, dual pto, CHA, 3815hrs
 Case 1070, 2wd, 2RR, 540, CHA, 10362hrs

BACKHOES
 '14 Case 580SN, Extendahoe, 4wd, CHA, 2757hrs
 Case 580M, 2wd, CHA, Extendahoe, CHA, 4846hrs
 International 2500 Backhoe

Dozers/ Track Loader
 '19 Deere 650K LGP, C/H/A, 1237hrs, 6 way blade, CLEAN
 Caterpillar D6R LGP, 7040hrs, orops
 Deere 655C Track LDR, CHA, 5751hrs

Lifts / Telehandlers/Other
 JD 3420 Telehandler, 23' reach, aux hyd, CHA, 7198hrs
 Allis Chalmers 500 Forklift, diesel, OS, 2434hrs
 Case 588H Forklift, OS, 4wd, 2371hrs
 '14 Genie 2668RT Scissor Lift, Rough Terrain, Kubota diesel 2375hrs
 Sky Jack SJ8243RT Scissor Lift, diesel, 4x4
 Upright 26N Scissor Lift, 510hrs
 Tenant ATLV 4300, 322hrs
 Advance Xterra Street sweeper

CONSTRUCTION EQUIP- REDUCTION LEASE
 Komatsu 61EX Dozer, Cab, heat, AC, ripper, 6way blade, 5800hrs
 Komatsu Roller Compactor, Smooth drum, compact
 Hull TDO 40 Trailer, pintle hitch, dove tail, HD
 Lull JLG 644E/42 Telehandler, 3800hrs
 Reynolds 17E10.5 Scraper
 Case STX450 Tractor, LSW, 4wd, 4800hrs scraper hitch. (ag hitch sells Separately)

COMBINES
 JD 9870STS, 3822/2635hrs, bin extensions, 4wd

'12 JD S680, 3904/2531hrs, 4wd, F. Duals
 '14 JD S690, 4523/2884hrs, 4wd, F. Duals
 CIH 1660, 4wd, 5895hrs
 Gleaner R50, CHA, 3333hrs

HEADS
Platforms
 '17 MacDon FD75-D Draper, JD mount, 40'
 '14 MacDon FD75-S Draper, JD mount, 40'
 '15 JD 640FD Draper
 '10 JD 630F Platform 30'
 '05 JD 630F Platform 30'
 JD 630F Platform
 JD 635F Platform, single point, contour 35'
 JD 925F Platform
 2X JD 936D
 '09 Gleaner 8200 Platform 25'
 Case 1020 Platform 20'
 NH 973 Flexhead Platform 30'
 JD 912, 4 Belt pickup head

Corn Head
 '14 CIH 4206, 6R30" Corn Head
 CIH 3408 8R30" Corn Head
 CIH 1063 6R30" Corn Head
 JD 893 8R30" Corn Head
 JD 894 8R30" Corn Head
 JD 444 4R30" Corn Head
 2x JD 443 3R30" Corn Head
 '10 Drago 630 6R30" Corn Head
 2x Challenger 830 Corn Head
 Agco 630 6R 30" Corn Head

HEADER TRAILERS
 NEW 2024 Industrias America Head Trailers, 25, 30, 35, and 40' models
 '24 Industrias America 840R and 832R models
 Dose Head Hunter Classic, 38'
 '22 IA 435, 35'
 Unverfer HT25
 Woodworth mfg. 30'
 Unverfer HT30

GRAIN CART/WAGONS
 '19 Brandt 1020XR, 1000 bu Grain Cart
 '12 Kinze 1100 Grain Cart, scales, tarp, 1000pto
 '14 Kinze 1100, tarp, scales, 1000 Kinze 450C Conveyor Grain Cart
 Kinze 600 Grain Cart, tarp, 1000 J&M 750 Grain Cart, 750, clean
 EZ Trail 510 Grain Cart, tarp, 1000 Killbros 1160 Grain Cart, tarp, 1000 JD 500 grain cart, tarp, 1000 JD 400 Grain Cart, 1000 JD 1210A, tarp, 1000pto
 Farm King 200 bu. Wagon, JD gear
 Killbros 250 bu. Gravity Wagon
 Parker 2500 Gravity Wagon
 Parker 2100 Gravity Wagon
 Parker 4000 Gravity Wagon
 Bradford 165 Gravity Wagon

SEED TENDERS/ GRAIN HANDLING/ Augers/ Vacs
 REM 3700 grain vac, 1000
 REM 3700 grain vac, 1000, 86hrs
 Parker 1500 weigh wagon, scales, Briggs gas engine
 Hutchinson Drive Over Conveyor
 Westfield MK80-61 Auger, 540
 Convey-All BTS290 seed tender, belt auger
 Convey-All BTS290 seed tender, gas engine, belt auger
 Friesen 220, Honda engine, brush auger, tandem axle trailer

Grinder Mixers/Feed Mills
 '19 Gehl GM170 Grinder mixer, digistar scales, drag, clean as they come
 Gehl MX135 Grinder mixer, extra screens, 1000
 Gehl 55 Mixal, extra screens, 540
 Gehl 95 Grinder Mixer, 540
 IH 1250 Grinder Mixer, extra screens,
 NH 353 Grinder Mixer, 540
 Arts-Way 425-C Grinder Mixer, 540
 Tyler mfg 2 ton grinder mixer, 540

FORAGE EQUIPMENT/ FEED WAGONS/ CHOPPERS/ PROCESSORS
 JD 520 Stalk Chopper, 1000, 20'
 JD 5460 Silage chopper, duradrum, 3R30" head, 5289hrs
 Hay Buster Ranch hand bale processor, 1000
 Highline Bale Pro 7120, 2 bale capacity, 1000 PTO Dumpchief 700 Side Dump Silage Wagon
 Kelly Ryan Comag Vertical Mixer, 540

Kuhn VT156 Vertical Maxx Mixer, scales
 Kuhn 5132 Vertical Maxx, scales, 540
 Heider R feed wagon, tandem axle, 540
 Grain-O-Vator auger wagon, 540
 Farm-Hand Feed-Hand wagon, 540
 Kelly Ryan 4x10 Feed Wagon
 Ag Bagger G6000 silage bagger

TILLAGE
Disks / Vertical Tillage
 JD 2623VT 29' 3", Rolling Baskets
 CIH True Tandem 330 Turbo, rolling baskets
 Landoli 7510-14 Disk, 14' 7" space, rolling basket, only 20 acres use!
 JD 630 disk, 25'
 JD 630 disk, 9" spacing, 24'
 JD 210 disk, 14'
 JD 115 disk, 13'
 JD 230 Disk, hyd fold
 CIH 3900 disk, 32'
 IH 490 disk, hyd fold

RIPPERS/ CHISELS
 Blu-Jet Sub Tiller 4, 7 shank, Only 60 acres of use, pull type inline
 '19 Landoli 2430-11-24, 11 shank, disk gangs, harrow, rolling baskets
 JD 2730 ripper, 14' 6 shank
 CIH 6500 Shank-Till
 Big Ox 9 9 shank ripper, 3PT
 Krause 12t chisel

FIELD CULTIVATORS/ CULTIVATORS
 JD 985 Field Cultivator, 50' rear harrow
 JD 960 field cult. 30'
 JD RM 6 Row Cultivator, 3pt
 JD 1100 Field Cult, 3PT, hyd fold
 JD 1010 field cult, hyd fold, 21'
 CIH 4800 field cult, harrow, 28'
 IH 4600 cult, rear harrow, 26'
 Kewanee 4 Row Cultivator, 3PT
 Glencoe FC16 field cult, spring shank

OTHER TILLAGE
 Phillips 4305 Rotary Harrow, 43'
 Landoli 7130-32 To The Max, rolling cult, 32'
 Unverfer 1225 Rolling Harrow
 JD 200 Field Roller, 40'
 Aerway 20ft Aerator, hyd fold
 I.A. 10VPT Aerator, unused

PLANTERS
 '09 Kinze 3660ASD, 16/31, trash whips, Schlegel posi-close, liquid fert
 Kinze 3500 8/15, no till, trash whips, markers
 Kinze 2200, 12R30", no-till, spiked closing wheels, markers
 '09 Kinze 3660, 16/31, no-till, PDP, clutches
 Kinze 2500, 8/15, no-till, spiked closing
 '04 Kinze 3650, 12/23, no-till/trash combos, liquid fert.
 '05 Kinze 3600, 12/23, no till, liquid fert
 Kinze 2000, 6/11, no till, box extensions
 '10 Kinze 3500, 8/15, no-till, trash whips, box ext.
 Kinze 2000, 6/11, no-till, markers
 '11 JD 1720, 12R30", Orthman Bar, 3PT, Bulk Fill
 JD 7200 6R30", no till, spiked closing wheels
 2-JD 7000 4R38
 Deutz Allis 385, 4R30", no-till

DRILLS/SEEDERS
 Rite Way RH9200 Harrow/Valmar seed box,
 JD 750 Drill, 10' Complete Rebuild!
 JD 750 Drill, 15' 7.5" spacing
 JD 750, no-till, 7.5" space, 15'
 JD 455, 25', 10in
 Great Plains SS30, 30' 8" space
 Great Plains SS30, Markers, 7.5" space, 30'
 Great Plains SS24, no till, markers
 Great Plains SS24, double disk, 7.5", 24'
 IH 510 drill, 10'
 Tye Pasture Pleaser, 3 box, New no-till/Openers, 10'
 Rota Dairon seeder

BALERS
 '18 McHale V640, net, 540, 13000 bales
 JD 560M Silage, net, 1000, 7k bales
 JD 560M, twine, net, 1000
 JD 568 megawide, Net/twine

JD 568 mega wide, net/twine
 JD 567 mega wide, net/twine
 JD 566 Baler, twine
 JD 556, 5x5, twine
 JD 535, net wrap,
 JD 535, twine
 '15 NH RB460, 4x6", net/twine, 540
 NH 678, twine, 540
 NH 688, twine
 NH BR7090 net/twine, bale ramp
 MF 2956A, net/twine, 9,800bales
 Gehl 1875, net wrap, 540
 Hesston 565A, gathering wheels, 1000
 Hesston 856A, twine,
 NH 688 baler, twine, 540

SQUARE BALERS
 Krone BP12130, Big Square, last bale eject, 1000
 JD 337 square baler, twine, 540
 NH 286 Hayliner square baler, 540
 NH 570 square baler, 540

HAY MOWERS/ MOWER CONDITIONERS
 '21 Kuhn GMD3151TL, 10'2" Only 300 acres use!
 '19 Kubota DM1022, 3PT, 540
 JD 630 moco, flails, 1000
 JD R310 Disc Mower, 3PT, 540
 JD 1219 moco, rubber rollers, 540, 9'
 NH 455 sickle mower, 7' bar, 540
 NH Disc bine 312, rubber rollers, 1000, 13'
 Massey Ferguson 1329 Disc Mower, 3PT
 Vicon, 3 pt, 9ft disc mower

HAY RAKES
 NH Procart 1225, 12 wheel rake
 Farm King rake 12, 12 wheel rake
 '13 Vermeer R2300 twin rake, Tedder
 Vermeer WR22, 10 wheel rake
 Vermeer WR20, 8 wheel rake
 Vermeer WR20, 8 wheel rake
 NH 216 twin rake

OTHER HAY EQUIPMENT
 Sitrex 4 basket tedder, hyd fold
 Kuhns AF10 Accumulator
 Kuhns 510F Bale Grapple
 8 bale trailer, shop built, Goose neck
 Stoltzfus Bale Trailer 8'x41'
 Keltec KT-56 Bale Slicer, Quick Attach, standard flow

BRUSH CUTTERS/MOWERS
 '17 Shulte FX520, 20ft,
 JD FC20M Brush Cutter, 1000, 20' Unused!
 Bush Hog 12715L, batwing, 1000, 15'
 Bush hog 12615 batwing, 1000, 15'
 Bush Hog 2615L batwing, 540, 15'
 Bush hog 121-07 3PT, blade
 Tree Terminator Tree Shear, 3pt
 Orthman Soilmover 1000
 Rowse 700 pan scraper, low use

APPLICATORS/FERTILIZER/ANHYDROUS/ SPRAYERS
 '23 Salford Valmar 8611, 11 ton, 66' booms
 Blu-Jet 13 knife anhydrous applicator
 Blu-Jet Land Runner 17 knife, no till, closing wheels, ground drive, walking tandems
 Great Plains TSF1290 Sprayer, 1250 Gallon, rinse tank, induction cone, 90' booms
 Demco HP sprayer, 500 gal, 40' booms
 Top-Air TA500 sprayer, 500 gal, 30' booms
 Hardi Navigator, 550 gal, 60' booms, 540
 Bestway 1000, 1000 gal, 60' booms
 Bestway 700 gal, foam markers, walking tandems
 White Sprayers, 1000 gal, walking tandems, 60' booms

MANURE SPREADERS
 Dual 600 manure spreader, 540
 NH 513 manure spreader, double beater, hyd gate, 540

VEHICLES/ TRUCKS/ SEMIS/ GRAIN TRUCKS

**SPECIAL INTEREST '17 Freightliner Alliance Concrete Pump truck, 32 meter ZZ boom, 102K mi, 937hrs
 '14 Mack Pinnacle CXU613, MP8, 18spd,
 '05 Mack Granite CV713, twin screw, wet kit, 10spd, 692K mi.
 '01 IH 9100i, Gravel Star Dump Bed, single axle, CHA, 753k mi.
 '91 GMC Topkick, Cat Diesel, Flatbed, 197K mi.
 '85 Chevy C60 dump truck,
 '06 Warren End Dump Trailer
 '97 IH 4700, Crew Cab, DT466E, utility bed, 160k mi.
 '88 Peterbilt 379EXHD, cat engine, 13spd, 444K mi.
 '00 Peterbilt 378 Storm Truck, 3406E Cat, 64 CY box, 871K miles
 '83 Ford F700, 8.2 Detroit, tag axle, grain bed
 '90 Volvo Grain Truck, 10 wheel, 22' bed, twin screw
 '74 Dodge D600 Grain Truck, Gas engine, manual, hoist
 '96 GMC Topkick C4500, 366 gas engine, 132k mi.
 '96 Freightliner FL70, Cummins, flatbed, 147k mi.
 '96 Chevy 3500, Flatbed, 92k mi.
 '06 Ford F550, Utility Bed, 357K mi.
 '05 Ford Freestar
 '00 Ford E350 passenger van, power stroke
 '01 Chevy Suburban 2500, 8.1 engine, 182k mi.

Trailers
 '06 Trail King Belly dump, Nice Load King Low boy, Hydraulic Neck, 35ton
 '99 Titan horse trailer, tack room, tandem axle
 '00 Featherlite stock trk, living quarters, low use
 '01 Trailmobile Van Trailer
 '17 Loadtrail, 8x20' drive over fenders, tandem axle
 '81 Wilson Grain Trailer, tarp, 40'
 '01 Wilson, electric tarp, 43'
 '21 Bye Rite Trailer, 7k axles, 20' CM Utility Flat Bed, Fits 1 ton Dually

LAWN MOWERS/ATV
 '23 Argo Frontier 700, Amphibious ATV, unused
 Kubota RTV X900, Diesel, 4wd, hyd bed, 141hrs
 Cub Cadet LT42", 12hrs
 Scag Cheetah, 61 Velocity deck, 1458hrs

OTHER EQUIPMENT
 Aweta KG3-16 Sorting machine, 3 line, 16 size, nice!
 JD 155 hyd blade, 3pt, 9'
 Bush hog 121-07 3PT, blade
 Tree Terminator Tree Shear, 3pt
 Orthman Soilmover 1000
 Rowse 700 pan scraper, low use

LIVESTOCK EQUIPMENT
 For-Most 375 Head gate, palp cage, towable
 '24 Rissler Creep Feeder, Unused
 Phoenix mfg. creep feeder
 I.A. 3650 Bulk feeder, spring axle, unused
 '24 Fee Standing Cattle Panels
 '20 Livestock Sheep/Goat Panels

SKIDSTEER ATTACHMENTS
 Stout Grapples and Pallet Forks,
 JCT Brush Mowers, Open/Enclosed Brooms, Auger Sets, Blades
 HD Skid Steer Bale Spears and Much More!
 -Attachments are unused and Universal Quick Attach
 Bobcat SG60 Stump Grinder, Quick attach
 Skid Pro Sweeper, quick attach, standard flow,

 Unused 1 - 1.5 Ton Mini Excavators Cab and Open Station models Available
 Multiple One Trip 40' Shipping Containers, 4 side doors, 1 end door

SPECIAL NOTES:
 Consignments accepted until the Wednesday prior to auction (10/30), Item list is subject to change, call in advance or check online catalog to make sure item is on the auction lot. All items must be removed within 15 days of auction. No exceptions.

ABBREVIATION KEY: LDR: LOADER, HQA: HYDRAULIC QUICK ATTACH, CHA: CAB HEAT AIR, AUX HYD: AUXILIARY HYDRAULICS, OS: OPEN STATION, MFWD: MECHANICAL FRONT WHEEL DRIVE, SPD: SPEED, PS: POWER SHIFT, HRS: HOURS, RR: REAR REMOTE, PT: POINT, WTS: WEIGHTS, F: FRONT, R: REAR, INT PTO: INTERCHANGEABLE PTO, QH: QUICK HITCH, TRLR: TRAILER, GN: GOOSE NECK

All items must be removed from auction yard within 15 days, no exceptions.



B and S Equipment Sales, LLC

100 industrial Parkway, Gallatin MO, 64640

join us on facebook!

BandEquipmentsales.com

GALLATIN | MISSOURI</