

NEW EDITION EVERY WEDNESDAY!

VOL. 32 • NO. 41 • OCTOBER 9, 2024

NEMO Trader

THE NEMO TRADER

PO BOX 809 • KIRKSVILLE, MO 63501 • PHONE 660-665-8500

Web Site: nemotrader.net • Email: sales@nemotrader.net

FREE

A WEEKLY ADVERTISER SERVING ALL OF NORTHEAST MISSOURI AND THE SURROUNDING AREA

AMMO PLANET
GUN & PAWN SHOP

JOE RICE // OWNER
200 W. POTTER AVE - KIRKSVILLE, MO
660-956-4654 • 660-349-0070
EMAIL: sales@ammo-planet.com
WWW.AMMO-PLANET.COM

CLICK US ON

FLO RITE

GUTTERING

660-988-1163

- 5" & 6" Guttering Available
- Leafguard Options
- 20+ Color Options
- Stainless Steel Fasteners

Stan Schrock • Greentop, MO

Lick Creek FENCING

Owen Miller
641-242-0346

Continuous Fence • Barb Wire
Woven Wire • Skid Work

exp REALTY

Elizabeth Gregory
110 S. Franklin St
Kirksville, MO 63501
660.621.2136
www.missourihomeandfarm.com

LAND SALES & AUCTIONS

RANCH & FARM AUCTIONS

WHITETAIL PROPERTIES REAL ESTATE
HUNTING | RANCH | FARM | TIMBER

SERVING
LEWIS • MACON • SHELBY • MARION •
RANDOLPH • MONROE • RALLS • AUDRAIN

CLAY LOCKARD
EAST CENTRAL MISSOURI
LAND SPECIALIST
573.466.9123

WHITETAIL PROPERTIES.COM

Signature

Overhead Doors & Remodeling, LLC

660-785-0248

www.signatureremodelingkv.com

Giving your home the attention it deserves!

NOW OPEN!

shoprentone.com
RENT ONE
HOME FURNISHINGS



\$5 GETS YOU STARTED

Use Code:
5START
online & in-store

2104 N. BALTIMORE, KIRKSVILLE, MO 63501
Next to Dollar Tree • Text or Call 660-228-2880

everything you
need for your home

NATIONAL

FARMER'S

DAY

OCTOBER 12TH

KIRKSVILLE
Daily Express

NEMO
Trader

and the businesses below would like to
Thank our area farmers on
National Farmer's Day, October 12



We salute you for the long hours and hard work you put in each and every day to put food on the nation's tables!

WATSON

- LAB TESTED
- SURFACE WRAPPED

"Happy National Farmer's Day!"

HAY SALE

TIM & KIM WATSON • 660-341-4031
33224 Pevehouse Way • Brashear, MO 63533

We're your Shield. We're your Shelter.

SHELTER INSURANCE AUTO • HOME • LIFE

Shayne Thomas
1515 Green St.
Kirksville, MO 63501
660-665-4685 (Call or Text)
ShayneThomas@ShelterInsurance.com

JK

Owners:
Joe Dimmitt & Kelly O'Haver

Tire & Auto

1102 N Green St. Kirksville, MO
660.665.9017

Travis~Noe
Funeral Home

1008 Potter Avenue, Kirksville, MO
660-665-1300
Neil & Sherry Travis, Brian Noe, & Brenton Travis

Your Pole Building Experts!

KIRKSVILLE LUMBER
(North of Kirksville Motor Company)

OPEN Mon-Fri 8-5, Sat 8-Noon

660-627-1234

3707 N. Baltimore, Kirksville, MO • www.kirksvillelumbers.com

21 CENTURY 21
Lifetime Realty

1605 S Baltimore St, Suite A
Kirksville, MO 63501

660-665-5678
www.C21Kirksville.com

Each office is individually owned and operated.

KIRKSVILLE LIVESTOCK LLC
24295 BENTON ROAD • KIRKSVILLE, MO
660-665-9804
WWW.KIRKSVILLELIVESTOCK.COM

Proud to Serve Area Livestock Producers

THANK YOU FARMERS!

ADAM SNYDER
660-342-5712
CENTURY 21 Lifetime Realty
660-665-5678

October 12 National Farmer's Day

CENTURY 21

COLTON'S
Steak House & Grill

We Know What's At Steak!

1116 Country Club Drive • Kirksville, MO
660-665-6336 • ColtonsSteakhouse.com

MISSOURI FARM BUREAU INSURANCE

Barbara Clark,
Agency Sales Manager

Email: barb.clark@mofb.com
agents.mofbinsurance.com/BarbClark

AUTO • HOME • LIFE

Clark Agency: 115 W. Potter, Kirksville, MO • (660) 665-1956

Meet the New MX Series

KUBOTA DIESEL TRACTOR MX5400/MX6000

MX5400	Gear-Drive model	46.5 PTO HP
	HST model	46.5 PTO HP
MX6000	HST model	58.5 PTO HP

FARM SHOP
Farm Shop Inc.
54618 MO
Edina, MO 63537
660-397-3550
farmshopinc.com

HCP HEARING CARE PARTNERS
We Listen So You Can Hear

Call today for a free hearing treatment consultation!

855.830.2668

KIRKSVILLE
101 S Baltimore St
Kirksville, MO 63501

HearingCarePartners.com

Thank you to all of our **FARMERS**

BUCHHEIT
Explore the Possibilities of a Simpler Life...

2302 S Baltimore St. • buchheits.com

SUPPORTING THE FARMERS OF TOMORROW

The future of agriculture depends on our hard work today. That's why we're proud to support the National FFA Organization and help inspire the next generation of agriculture dreams.

Adam Mercer, Agent
401 E Northtown Rd
Kirksville, MO 63501
(660) 665-0505

AMERICAN FAMILY INSURANCE

Judd Motors

Call 660-457-3700
Hwy 63 North, Lancaster, MO

- 2017 Grand Caravan, Handicap, rear load, motorized chair included, 26K miles, Burgundy..... **\$34,900**
- 2013 Chevy 1500, ext. cab, LTZ, 4x4, New tires, 116K, leather, silver, excellent, **\$15,900**
- Low pro steel trailer, slide in ramps, 84 x 74 deck. **\$1,995**
- John Deere X740, mower, diesel, only 740 hours, 62" deck, excellent..... **\$8,995**
- 2012 Case 580N, Loader Backhoe, Turbo, 4WD, Cab with AC, Extendahoe, New 12 ply Tires, Only 1280 Hours, 1 owner, very clean, only **\$61,000**
- 2007-14 Chevy pickup box, red, 8 ft, little rust only **\$1,000**
- 2002 GMC Sierra 1500 **NEW PRICE \$5,999**
Reg. Cab, Long bed, 4x4, V8, 138K, RED
- 2006 Chevy 2500HD, 4x4, 6.0L, reg cab, 8 ft bed, 1 owner, no rust, only 97k, red, ... **NEW PRICE \$17,500**



Cumberland Building Dealer

www.juddmotors.com

In Business Over 75 Years
Curly and Kevin Judd

MEADOWLARK CREAMERY

(660) 299-9019
49982 State Highway 15 Baring, MO 63531
Hours: Monday - Saturday 8:00 - 5:30

SATURDAY OCTOBER 12

12144 DOVE AVE, DOUDS, IOWA

STAR G RANCH OVER 250 HEAD RED ANGUS SELL



REGISTERED & COMMERCIAL:

- ★ Cow/Calf Pairs
- ★ Spring Bred Cows & Heifers
- ★ Fancy Open Heifers

Cattle videos on DVAuction.com

GILCHRIST AUCTION CO.

Kyle Gilchrist, Auctioneer



DVAuction.com
Broadcasting Real-Time Auctions



641/919-1077 | redcowseller@yahoo.com | www.redcows.net

VICTORY

Metals & Recycling

KIRKSVILLE, MO

660-665-8000

For current scrap prices call or visit our [Facebook Page](#) victorymetalsrecycling.com



★ METAL RECYCLING

RECYCLE YOUR SCRAP METAL WITH US! WE PAY CASH FOR: COPPER, ALUMINUM, STEEL, STAINLESS STEEL, APPLIANCES, E-SCRAP, BRASS, LEAD, RADIATORS, ALTERNATORS, BATTERIES, STARTERS, ELECTRIC MOTORS, APPLIANCES, & VEHICLES (TITLE & ID REQUIRED).

★ ROLL-OFF CONTAINER

10-20-30-40 CUBIC YARD DUMPSTERS

3602 INDUSTRIAL RD. • KIRKSVILLE, MO 63501

DJANESVMR@GMAIL.COM

VICTORYMETALSRECYCLING.COM

ANIMAL HOUSING HAY STORAGE & MUCH MORE



Skylight

FABRIC STRUCTURES

30697 COLONY AVE. • NEW CAMBRIA, MO 63558

660-486-3250 • 833-482-8862

Freedom SALES EVENT
Check out these Amazing DEALS on a selection of AR-15's

Delton Sierra M2 316L 5.56 | .223 16" MLOK Optic Ready
\$480



Delton Sierra M2 316L 5.56 | .223 16" MLOK Optic Ready
\$425

Diamondback DB15 5.56 | .223 16" MLOK Optic Ready
\$499

Diamondback DB15 5.56 | .223 10" Pistol
\$599

Diamondback DB10 308
\$875

Diamondback DB10 308 win | ODG 16" MLOK
\$850

Anderson Mfg. Complete AR-15 Receiver ODG | FDE
\$200

Anderson Mfg. Stripped AR15 Lower Receiver
\$65

Have a smart phone or tablet? You can view current and past Nemo Trader issues online at www.nemotrader.net

NEMO Trader





THE FARM SHOP
EDINA, MO

Kubota HASSY FENIGSON

Edina, MO 63537
660-397-3550
farmshopinc.com

Edward Jones Member SIPC



Jason K Robinson
Financial Advisor
1300 Country Club Dr
Kirkville, MO 63501
660-956-9562

MKT-5894P-A AECSPAD > edwardjones.com

EVERY DAY IS A GIFT.
TAKE TIME TO ENJOY IT.
Reid A. Millard

playlerimemillard.com

PLAYLE-RIMER-MILLARD
Family Funeral Chapel



Reid A. Millard
Funeral Director

CENTURY 21
Lifetime Realty

1605 S Baltimore St, Suite A
Kirkville, MO 63501

660-665-5678
www.C21Kirkville.com

Each office is individually owned and operated.

HyVee Free & Easy!

EMPLOYEE OWNED

500 N Baltimore St, Kirkville, MO 63501

Open 6-11 Daily
(660) 665-8335

NM SB **NORTHEAST MISSOURI STATE BANK**

Kirkville Branch: 600 S Baltimore, Kirkville, MO 660-665-6161

La Plata Branch: 139 S Gex Street, La Plata, MO 660-332-4317

Member FDIC northeastmissouristatebank.com

Sonny's Collision Center

Sonny Findling

545 N. Marion
Kirkville, MO 63501
660-665-8533
660-665-8507

WIN	HOME TEAM	DATE	AWAY TEAM	LOSS	WIN	HOME TEAM	DATE	AWAY TEAM	LOSS
6	KIRKVILLE, HS			0	0	KNOX COUNTY, HS			5
0	MACON	8/30	KIRKVILLE	35	37	ST. PAUL LUTHERAN	8/30	KNOX COUNTY	30
42	KIRKVILLE	9/6	CHILlicothe	7	68	PLATTSBURG	9/6	KNOX COUNTY	32
7	KIRKVILLE	9/13	SAVANNAH	6	28	KNOX COUNTY	9/13	BISHOP LEBLOND	52
7	MOBERLY	9/20	KIRKVILLE	28	-	KNOX COUNTY	9/20	OFF WEEK	-
0	MARSHALL	9/27	KIRKVILLE	40	62	SCHUYLER CO.	9/27	KNOX COUNTY	44
16	KIRKVILLE	10/4	HANNIBAL	15	60	PARIS	10/4	KNOX COUNTY	20
0	MEXICO	10/11	KIRKVILLE	0	0	KNOX COUNTY	10/11	NORTH SHELBY	0
0	KIRKVILLE	10/18	FULTON	0	0	LIVINGSTON CO.	10/18	KNOX COUNTY	0
0	CENTRALIA	10/25	KIRKVILLE	0	0	KEYTESVILLE	10/25	KNOX COUNTY	0
4	SCHUYLER CO., HS			2	1	MACON, HS			5
16	SEYMOUR	8/30	SCHUYLER CO.	52	0	MACON	8/30	KIRKVILLE	35
72	BISHOP LEBLOND	9/6	SCHUYLER CO.	12	18	N. CALLAWAY	9/6	MACON	7
42	SCHUYLER CO.	9/13	PLATTSBURG	46	56	PALMYRA	9/13	MACON	14
28	KEYTESVILLE	9/20	SCHUYLER CO.	60	15	MACON	9/20	HALLSVILLE	46
62	SCHUYLER CO.	9/27	KNOX COUNTY	44	38	CENTRALIA	9/27	MACON	14
70	SCHUYLER CO.	10/4	LIVINGSTON CO.	22	8	CLARK COUNTY	10/4	MACON	15
0	SCHUYLER CO.	10/11	BRAYMER	0	0	MACON	10/11	HIGHLAND	0
0	NORTH SHELBY	10/18	SCHUYLER CO.	0	0	MACON	10/18	SOUTH SHELBY	0
0	PARIS	10/25	SCHUYLER CO.	0	0	MONROE CITY	10/25	MACON	0

ALWAYS PUSH FORWARD
with
Connections Bank

www.connections.bank
2817 N BALTIMORE ST.
KIRKVILLE, MO 63501
660-665-7703

FOOTBALL SCOREBOARD

FOOTBALL SCOREBOARD

CALL US TO INCLUDE YOUR BUSINESS!

660-665-2808

Travis~Noe Funeral Home

1008 Potter Avenue, Kirkville, MO
660-665-1300
Neil & Sherry Travis, Brian Noe, Brenton Travis

Lancaster Lumber INC.

Locally owned
Full Service Retailer of building materials and Hardware
660-457-3814

Shop Local
Buy Local
Support Local

Lancaster, MO | www.lancasterlumber.com | check us out on facebook

LOVEGREEN GOLOVEGREEN.COM

Ford, Dodge, Jeep

MISSOURI FARM BUREAU INSURANCE

Chris Clark, Licensed Sales Associate
Email: chris.clark@moffb.com
Website: www.moffbinsurance.com

AUTO HOME LIFE

Clark Agency: 118 W. Potter, Kirkville, MO • (660) 665-1966

THINKING OF SELLING?

Heritage House Realty, Inc.

CALL US TODAY!
660-665-5638

KirkvilleRealEstate.com

COLTON'S Steak House & Grill

We Know What's At Steak!

1116 Country Club Drive • Kirkville, MO
660-665-6336 • ColtonsSteakhouse.com

FINANCIAL

Business Opportunities

Outdoor hunting sports business available. Profitable high end hunting products, excellent opportunity, welding fabrication knowledge a plus. Information 641-208-7353.

NEMOTRADER.NET

AGRI-BUSINESS

Equipment & Supplies

Farmall M, very good Schwartz wide front, matching 15.5x38, good rims, live power pump, extra hydraulics, overdrive transmission, stored inside, believe engine stuck, \$1200.00. 217-257-1385

2014 Krause 8000-30 Excelsior V-Till. Gang Angle adjustment; hyd star wheels; flat bar reel. Blades 20.75" front, 21.00" back. Excellent machine. \$48,000 OBO. Robert Lay, LaBelle, MO 660-341-5471.

Corn heads Drago 830; Gleaner 3000 630 electric stripper plates meter corn reel; 630 hugger; 830 black R or M; 630 black M2 217-658-4761.

NH3 DMI 12K dual no till for strip till markers monitor; 13 knife, 14K, 15K, with monitor; disks 30; Krause; Oliver 10', JD 10', Kewanee 8'. 217-658-4761.

International 2200 hydraulic bucket loader and push blade with joystick controls on 574 utility. Fits others. \$2100.00. 217-257-1385

2020 Krone AMR 280 disk mower, 9.3 cutting with 3 pt, 540 PTO, quick change blades, safe cut hubs, low acres used, shedded. \$10,200. 217-257-1385

AC 3 bottom snap coupler plow, stored inside, \$200.00. Overhead fuel barrel stand only for 300 gallon tank, \$50.00. 217-257-1385

Combines, Gleaner R62, IHC 2388, 2188, 1460, 1440; MF 850, 750 all are diesel; JD 55 gas, MF 750 Gas. 217-658-4761.

335 John Deere lawn mower, 54" deck, power steering, good condition, \$1500.00. Phone 660-833-8487.

Hay/Feed/Seed

Large net wrapped bales mixed grass hay near Bethany, MO. Loading available. 660-730-9001.

5'x5' bales of Timothy, Clover, Alfalfa mixed hay. Twine tied, never wet, stored inside. Exceptional quality, \$55.00. Kirksville 660-956-5942

5X5 1/2 big round bales for sale. Baled dry mixed grass hay with alfalfa. Fertilized, lab tested, net wrapped. Watson Hay Sales 660-341-4031

2020 GMC Terrain SLT, AWD, black leather heated seats and steering wheel, backup camera, remote start, collision alert & much more, white frost, been garaged, window sticker, 78,000 miles (local one owner). **\$19,900**

2010 Jeep Liberty Limited, 4x4, V6, loaded, heated leather seats, sunroof, chrome package, new tires, always garaged, Same owner last 12 years, 115,000 miles, Must see **\$9,700**

Accelerators Performance & Auto
Since 1974
Kahoka, MO
660-727-3455
Daryl's Cell
217-257-1385

Hay/Feed/Seed

Big round bales mixed grass hay, delivery available. Bob Campbell, Memphis, MO. 660-341-9054

MERCHANDISE

Flea Markets

Pumpkins, buy one get one free, all sizes. Also tomatoes, a lot of them, and other vegetables. Schmucker's Produce, 7 miles North of Kirksville to Ft. Madison Way, East 1/2 mile.

Furniture

Texas ranch style bar table with tractor seat stools, very nice. Custom camo bench seat 28'x72" like new. 25 hp Yamaha outboard. 641-208-7353.

Pets & Supplies

Australian Shepherd, shots and dewormed, Arbela, Mo. 319-520-8660.

9 week old male and female Yorkies, \$800.00 and up. 660-534-7314.

Sports Equipment

Heindselman Farms inventory reduction! Fiberglass deer blinds, Lazy Man, Fat Girl, Bow or Combo, \$1450.00. Brick house, \$1100.00. 660-341-5692

5-550# deer and wildlife feeders, deer decoys, wool camo suit, snow camo suit (new), 25 hp Yamaha outboard, like new condition. 641-208-7353.

Hunting blind, 2 person, 6' tower on trailer. Ground blind, hay bale blinds. Duck and goose blind. Trailer mounted deer feeders, like new. 641-208-7353.

Miscellaneous

Fish for stocking ponds: catfish, grass carp, crappie, redear, bass, and fathead minnows. Heindselman Family Farms. 660-341-5692.

5'x5' bales of Timothy, Clover, Alfalfa mixed hay. Twine tied, never wet, stored inside. Exceptional quality, \$55.00. Kirksville 660-956-5942

VT Kuhn K 8000 32'; Landall 7430 33'; GP 3000 turbo till 2 30'; DP1500 no till drill; Krause 20' with GP cadie. 217-658-4761.

V-Tech phone new condition. Weather station with remote outside monitor. Call 928-463-1148.

AKC LAB PUPPIES
\$150 Males - Only 2 left!
LAY'S LABS
LABELLE, MO
(660) 956-2482

The Ultimate Wood Heat.



CLASSIC EDGE
TITANIUM HDX
Outdoor Wood Furnace

- **More Comfort** - Thermostatically controlled wood heat.
- **Peace of Mind** - Keep the fire outside and eliminate the dangers associated with indoor wood heating.
- **Save Money** - Wood is a renewable, inexpensive and often free energy source.

Campen Heating & Air
Division of Kraus & Sons Inc.
Canton, MO 63435
573-288-8966
CentralBoiler.com

Adair County Sheriff's Office
The Adair County Sheriff's office is accepting bids for Tankless Hot Water Heater(s). Please see Request for Proposal for details, it may be obtained from the Sheriff's Office at 215 N Franklin St or from www.adair-countymissouri.com/government/bid-requested.

YODER CONSTRUCTION
DANIEL YODER

- Metal Roofing
- Siding
- New Construction

(Leave Message)
660-486-3332

OUR GOALS:

- Good Service
- Quality Structure
- Competitive Prices
- Free Estimates

Show Me Plumbing Services



- General Mini Excavation & Skid Steer Work
- Livestock Watering
- Waterlines & Sewer Systems
- Residential Services & General Plumbing
- Utility Trenching

Stan Schrock 660-988-1163
Greentop, MO 660-766-2636

TIMBER MANAGEMENT.

Purchasing Walnut, Oak, Maple & Other Species

WE PAY BEFORE WE CUT

BONDED & INSURED Est. 1968
641-895-8209

Edina Livestock Sales
Edina, Missouri

Friday, October 11th
Special Feeder Calf Sale
Paul & Denise Feldkamp Borrowman Retirement Sale
28 4 & 5 yr old cows calving in March

Friday, October 18th
Special Feeder Calf Sale

To Consign For Any or All Sales or For Information Call:
Owner - Kevin Strange • Cell: 660-341-9974
Ryan Strange • Cell: 660-341-9721
Sale Barn: 660-397-9999

Field Reps:
Bill Tom Hall 660-342-5420 Mike Bronestine 660-341-9965
Jason Bichsel 660-216-0373 John Powell 660-341-1717

There's a better way to get attention.

Keep life simple. Take out an ad.



Miller's Spray Foam
DANIEL MILLER
Fiberglass Blown-In Available
We Strive to Satisfy
21743 Lost Branch Way
Brashear, MO 63533

ANTIOCH REPAIR & RENTAL

We fix almost anything!

CALL US FOR ALL OF YOUR EQUIPMENT REPAIR & RENTAL NEEDS

- Attachments
- Tires & Tracks
- Competitive Rates

Located Near Knox City, MO
Call **Ethan Zimmerman**
660-299-0808

Golden Grain Bins-Winter Discount

Grain Bins	Floors w/12"Supp. & Flashing
18'x18' 4,195bu. \$ 6,067	18'....\$1,693 30'....\$ 4,726
27'x21' 11,265bu. \$12,178	21'....\$2,315 36'....\$ 6,733
42'x24' 32,245bu. \$28,386	27'....\$3,862 42'....\$ 9,169

Golden Grain

GMLS Industries, Inc.
PH: 660-699-2179 or 620-983-2136
www.gmlsindustries.com

Shop Local Buy Local Enjoy Local

CALL TODAY!
660-665-8500
sales@nemotrader.net

NEMO
KIRKSVILLE
Daily Express

CELEBRATIONS! PARTY RENTAL
KIRKSVILLE, MO

FOR RENT

- Tables & Chairs
- Tents • Bounce House
- Cotton Candy Machine
- & More!

660-626-5162 or 660-665-9380

Skyline Service LLC
Skid Steer and Construction Repair
Levi Weiler
660-346-6881 • 660-883-5525

Scan Tool Diagnostics
Exhaust After Treatment Repairs • SCR Unlocks
Skid Steer Tracks Available

Liebhart Sales, Inc.

660-689-3406 
17546 Lacey • Boston, MO 63557

- Twin Rakes
- Trail Mowers
- Disc Mowers
- DewEze Bale Beds
- Danuser Post-Hole Diggers
- Tedders
- Bale Processors
- New Hydraulic 5th Wheel Balls

NEW EQUIPMENT

USED EQUIPMENT

- TM 1200 Mower
- 605M

New DewEZE Hay Beds in Stock!

The meeting Place for Buyers and Sellers!!

NEMO
Trader

660-665-8500 or email: sales@nemotrader.net

SHOP LOCAL - BUY LOCAL - ENJOY LOCAL




NEMO Trader Classified COUPON

2 Classified Ads for just \$6.00

20 cents per word over 20 words
Must be Mailed in or brought in along with payment.
Picture Ads Not Included with Coupon!

Choose Classification

- Agri-Business
- Announcements
- Employment
- Financial
- Merchandise
- Real Estate Rentals
- Real Estate Sales
- Recreation
- Services
- Transportation
- Yard Sales
- Auctions & Estate Sales

Ad No. 1 Each Box Represents a Word (20 words or less)

Ad No. 2 Each Box Represents a Word (20 words or less)

Name _____

Mailing Address _____

Phone Number * _____
this is required*

PO Box 809 Kirksville, MO 63501 • 660-665-8500

Scrubby Duds

Laundromat

Large capacity coin machines

Your laundry never takes a break & neither do our machines!

OPEN 7 DAYS A WEEK
24 HOURS A DAY

311 S. Baltimore Kirksville, MO 63501 660-349-8943 Bob & Paulette Thompson

WE GOT YOUR NEEDS COVERED!



FARM TARPS

TRUCK TARPS

HOOP BUILDING COVERS

Troyer

TARP MFG.

660-486-3301

20264 STATE HWY. VV • ETHEL, MO 63539

NEMO Trader BRAIN GAMES

CROSSWORD PUZZLE

-OCTOBER- WEEK 2

PUZZLE-SODOKU

-OCTOBER- WEEK 2

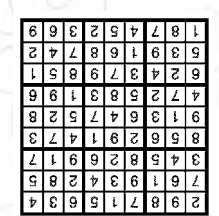
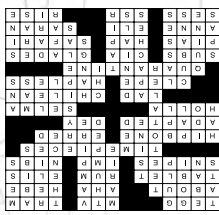
Here's How It Works:
Sudoku puzzles are formatted as a 9x9 grid, broken down into nine 3x3 boxes. To solve a sudoku, the numbers 1 through 9 must fill each row, column and box. Each number can appear only once in each row, column and box. You can figure out the order in which the numbers will appear by using the numeric clues already provided in the boxes. The more numbers you name, the easier it gets to solve the puzzle!

		7	5	3				
			4					
3			2	6	1			
	5			1				3
9								8
	7	2		8				9
6					8			
		9	1	6		7	4	
	7			2				

Level: Intermediate

Fun By The Numbers

Like puzzles? Then you'll love sudoku. This mind-bending puzzle will have you hooked from the moment you square off, so sharpen your pencil and put your sudoku savvy to the test!



ANSWER:
A
B
C
D
E
F
G
H
I
J
K
L
M
N
O
P
Q
R
S
T
U
V
W
X
Y
Z
1
2
3
4
5
6
7
8
9

CLUES ACROSS

1. Unsheared sheep
5. Rock TV channel
8. Streetcar
12. Concerning
14. Exclamation
15. Greek goddess of youth
16. Popular type of device
18. Alcoholic beverage
19. Ancient Olympic Site
20. Sharpshoots
21. Tyrion Lannister was characterized as one
22. Pointed ends of pens
23. Measuring instruments
26. Midsection body part
30. Made a mistake
31. Adjusted
32. "Partridge" actress Susan
33. Yell
34. Civil rights city in Alabama
39. Young boy
42. Type of sea bass
44. To call (archaic)
46. Unfortunate
47. Separate oneself from others
49. Hero sandwiches
50. Spy group
51. Florida is famous for them
56. Irritating individuals
57. Luck
58. Hunting expedition
59. WWII diarist Frank
60. Peyton's younger brother
61. Type of wrap
62. Type of overseas tax or levy
63. Soviet Socialist Republic
64. Wake up

CLUES DOWN

1. Works of body art
2. Israeli politician Abba
3. Renowned desert
4. Eat greedily
5. She didn't make it through the Fr. Revolution
6. Beat
7. Bloodsucker
8. From a place already noted
9. Counted on
10. Alberta Assn. of Baccalaureate World Schools
11. Something one can make
13. One who abstains
17. Wild ox
24. Type of student
25. Bacterial infection of the skin
26. Expresses surprise
27. What engaged couples ultimately say
28. Crony
29. Where one begins (abbr.)
35. Architectural designation
36. "Matt Houston" actor Horsley
37. More (Spanish)
38. Autonomic nervous system
40. Indigenous peoples
41. Deflections
42. Circulating life force
43. Executes with a rope
44. Natives of an island nation
45. Girls
47. Logician and philosopher
48. Nocturnal hoofed animal
49. Relaxing spaces
52. From a distance
53. Form of Persian language
54. Amounts of time
55. Mathematical designation

CRYPTO FUN

Solve the code to discover words related to dog adoption. Each number corresponds to a letter. (Hint: 2 = E)

- A. 9 20 12 5 17
Clue: Bring into the family
- B. 22 18 2 11 17 2 14
Clue: Where pets wait for home
- C. 5 23 5 5 26
Clue: Young dog
- D. 14 2 22 1 23 2
Clue: Animal organization

WORD SEARCH

-OCTOBER- WEEK 2

DOG RESCUE WORD SEARCH

N H V H R U K F L U I F O R E T L E H S
Y F E F C U G N M I A R T P F H B V O
L V V B R V L N M I A T N E V E B T R K
D T F R A S O T B D U K P S P E Z G T D
M R C I B C Z F O Y T S K U S O A T E M
L A F A T M K Z P K K C U A N U O A E L A
H I A L C N T G I F O C E A I A Z K B F
M U C Y L I O N R C L U A E I K R E U A R V
N E I P O B E O Y O I C I A Z E K R I V L R
E R L N I O M I Y L U T V C G E U A I S
E G I Z C A N T S O I N E N C G E U A I S
Z E T D T R V A M O B H D H P M S B V E
G G Y M B H D N C N K C S I Y B E E V A L
N F F G H I N I L L A M B Z E N R E P
I L T U B N C L H E T E E M H T G T Y A
M H E T H G Z P H P V M U T A T R T I K
O L B A L K F P K L O F G O V A N E I E K
H B E C S D H A C A G E V N I Y E N L U
E K H E D H M Y V V G A M T O M T G I F
R L T G V H Z H S Y H L I H R D F M

WORDS

- ADOPTION
- AGREEMENT
- APPLICATION
- AVAILABLE
- BACKGROUND
- BEHAVIOR
- BOARDING
- CAGE
- CHECK
- EVENT
- FACILITY
- GREET
- LEASH
- LICENSE
- MEET
- ORGANIZATION
- REHOMING
- RESCUE
- SHELTER
- TRAINER
- TRAINING
- VETTING

Find the words hidden vertically, horizontally, diagonally, and backwards.

Miscellaneous

Grain Heads, Gleaners 8000 30', 25', 20'; IHC 1020 25', 20', 17 1/2'; NH 25', 20'; Gleaner 15' for F; MF 18; JD 220. 217-658-4761.

Wood Master 4400 wood burning stove with 2 heat exchangers, new fan, \$4000.00. \$13000.00 new. 660-349-5074.

CORN HEADS IH3 983, 883, 863, 963, 944; MF 1163, 1183; for JD; 1144, 330; NH 974, 630 217-658-4761.

4 "card table" cushion chairs, now condition. Call 928-463-1148.

Wanted

Buying deer antlers, racks, sheds, dead heads, will pay cash. 70 VHS hunting videos, very collectible, 25 hp Yamaha outboard. 641-208-7353.

Vintage clothing store seeks LARGE accumulations of old clothing from estates- dusty old farmhouses- hoarder situations. Will travel. Phil- Wild Man Vintage- Lawrence KS Cell # 785-766-7321

REAL ESTATE SALES

Mobile Homes For Sale

WE GOT IT - let us bid your mobile home purchase, new and used. 573-499-9993. columbiadis.counthomes.com.

Mobile Homes For Sale

40 YEARS THIS YEAR - we have to be something right. Call for quote or any house new or used, double and single. 573-657-2176. amegamobilehomes.com

TRIPLE WIDE - moving stock, awesome price. 573-657-7040. chateauhomes.net

I BUY...used mobile homes. Call or text 573-338-6250 or email Greg S. CDH @outlook.com.

TINY HOMES - Missouri franchise 573-881-7965.

RECREATION

Campers & Trailers

1990 Class A motor home, Pace Arrow by Fleetwood, 37 foot. A very clean, deluxe, excellent home. 454 Chevrolet motor and automatic, overdrive transmission, dual rear axles, 104,000 miles. Back up camera, generator, runs and drives good. Kenwood 10 disc CD changer, 43" TV with local antenna and Direct TV antenna and receiver. Microwave, washer dryer combo, 3 beds, 1 is queen, gas range with oven. 20' x 8' awning with screened enclosure. New starter and battery. Located in South Central Iowa on Hwy 2. Asking a reduced price of \$4500.00 or offer. 641-523-3430.

Adair County Sheriff's Office
The Adair County Sheriff's office is accepting bids for HVAC rooftop unit(s). Please see Request for Proposal for details, it may be obtained from the Sheriff's Office at 215 N Franklin St or from www.adair-countymissouri.com/government/bid-requested.

Skidsteer work available!!
• Gravel drive renewing
• Brush/pasture mowing Food plots
• Dirt Leveling
• and More!!!
573-248-7165

McAfee Auction Service, LLC
375 S Johnson • Kahoka, MO
660-727-3796
www.mcafeeauctionservice.com
ABSOLUTE REAL ESTATE AUCTION
TUESDAY OCT 29TH - 10 AM
Selling a well cared for Church building with newer metal roof & recently updated furnace & central air. Church bell conveys w/ property.
First Baptist Church of Wyaconda, Sellers

Let us help you with all your advertising needs. Don't know what to say? Call us we can help! 660-665-8500.
HAVE A PET OR PUPPIES TO SELL? Call us. You can even pay over the phone. 660-665-8500.

McAfee Auction Service, LLC
375 S Johnson • Kahoka, MO
660-727-3796
www.mcafeeauctionservice.com

FALL FARM MACHINERY Consignment Auction
Timed Online Only Auction
CONSIGN NOW!
Deadline for Consignments is Saturday, November 9th at 4PM
CALL 660-727-3796
CHECK IN STARTS WED, NOV 6TH - SAT, NOV 9TH 9AM - 4PM DAILY
LARGER EQUIPMENT ACCEPTED BY APPOINTMENT STARTING OCTOBER 10TH
Lots Start Closing at 10 am Thursday, December 5th
Equipment will be located at the Clark County Fairgrounds

LOLLI LIVESTOCK MKT, INC.
Tuesday, Oct 15 - 11am
Special Cow, C/C & Bull Sale
JEFF MALIZIA - COMPLETE DISPERSAL - 29 Angus cows with spring/summer calves; running back with horned Hereford bulls, all shots up to date. SAMUEL BOWERMAN - 20 Fancy Black Angus Heifers: 2 years old, September calves by side, sired by Angus bulls. JIM FOLEY - 10 Bik/Bwf cows: Calving now, bred to Angus bulls. KEVIN MURPHY - 6 Black Cow/Calf pairs: 5-6 years old. LADDIE ROBINSON - 2 year old Angus bull. ERIC GREENWOOD - 2 year old Charlois bull.
Cafe Open Lollo Livestock Market, Inc. Cafe Open
704 Main st * Macon, MO * 660-385-2516
Frankie 660-651-4040 * Tim 660-651-3496 * Joseph 660-346-9711
Jordan 660-346-0410 * Cody 660-676-9392 Cattle accepted on Sundays
Follow Us On Face Book & www.lolibros.com

FARM MACHINERY CONSIGNMENT AUCTION
Saturday, Oct. 19th @10 AM
SCHACHTELE BARN - KEYTESVILLE, MO
From Hwy 24 at Keytesville, take Hwy 5 North approx. 4 miles to site with a brown barn/green roof on the West side of the road, or from Hwy 36 at Marceline exit take Hwy 5 South, approx. 16 miles to site.
TRACTORS & LAWN TRACTORS: JD 5200 w/Loader 2449 Hrs; Ford 3000 Diesel w/TA25 Loader; Minneapolis Moline 302 W/Loader; JD 630 Propane-not running; JD 4044M w/JD D170 Loader FWA, Canopy, Dual Hyd Remotes, 304 Hrs-Nice; JD4630 w/Duals; L.S. XR 4145 w/L.S. LL4104 Loader FWA w/Cab Heat & Air & 352 Hrs w/Dual Hyd Remote; AC 180 Gas; Kubota BX1850 w/Kubota LA203 Loader FWA 60" Mower Deck 803 hrs; JD X495 All Wheel Steer 54" Mower Deck 900 hrs; Ford 1215 w/Wood-Dual Loader; JD 1530 w/Bush Hog 2400 QT Loader 2500 hrs; MF 50 Diesel; Cub Farm-All not running; Case 730 w/Loader-not running; Ford 6610 FWA Cab 5532hrs w/Koyker400 Loader;
FARM MACHINERY: NH311 Square Baler; Bush Hog 2315 Mower w/540 pto; Case 8465 A Round Baler; Fuerst 24' Hyd Fold Pasture Harrow; JD 494A Corn Planter; Vermeer WR22 Hay Rake; Vicon DMP 2800 Disc Mower; Kuhn SR110 Speed Rake; 3pt Ford Dirt Scoop; JD Ground Driven Manure Spreader; JD Van Brunt Drill; JD 709 Mower; NH 474 Haybine; Hay Elevator; Oliver Hay Rake; H&S 270 Manure Spreader; NH326 Square Baler; Schuler 175BF Feed Wagon; 10' Cultipacker; VanDale Feed Wagon; JD8300 Drill w/Grass Seed; 4Gravity Wagons; NI Model 12 Manure Spreader; Vermeer 505 Super 1 Baler; Flatbed Wagon w/JD Gears; IH5100 Drill; UFT 10' No Till Drill; Horvick Spray Pup w/700 Gal Tank; Metal Flare Box Wagon; NI Ground-Driven Manure Spreader; Woods 15' Mower; IH435 Square Baler; JD8300 Drill; Parker Weight Wagon w/Honda Motor & Tarp; 3pt Sprayer w/300 Gal Tank & 20' Booms; Flat Bed Wagon w/Hois; Flatbed Hay Wagon; JD 12' Chisel Plow; JD 5' Pull-type Brush Hog; JD24T Baler; JD14T Baler; 3-3pt Bale Unroller; 10' Box Blade; NH499 Hay Bine; 3pt Carry-All; JD660 Hay Rake; Several 3pt Bale Spears; NH Pull-type 9' bar Sickle Mower; JD22 Hay Crimper; Heider Auger Wagon; 2 section Pull-Type Harrow; JD 2pt MX8 Mower; JD148 Loader; JD75 Loader; 3 Section Harrow; JD350 Sickle Mower; NH Disc Mower; JD Pull-type Manure Spreader; JD1518 Mower w/1000pto; JD115 3pt 9' Blade; Bison 3pt 9' Hyd Blade; JD4226 Disc Mower; Danuser Post Hole Digger; 2-8' pull-type Disc; 3pt 6' Blade; 3pt Sprayer w/10' Booms & 200gal Tank; Frontier 3pt 4' Box Blade; Case Horse-drawn Sickle Mower; pull-type Cone Seeder; New Bobcat 3pt Backhoe; Pull-type 4' Harrow; Woods 3pt 5' Brush Hog; 2-New King Kutter Carry-all; 3pt Dirt Scoop; 3pt 2Bottom Plow; 3pt 3Bottom Plow; Ford 3pt 6' Brush Hog; King Kutter 3pt 6' Finish Mower; Ford 3pt 6' Disc; Ford 3pt 7' Bar Sickle Mower; 3pt 6' Zip Seeder; 3pt Danuser Post Driver; 3pt 7' Blade; NH456 Pull-type 9' Bar Sickle Mower;
SKID LOADER ATTACHMENTS: Pallet Forks; JCT Rock Grapples; AGT Broom; Blank Plates; Heavy Fork Ext.; Hyd. Pallet Forks; Sickle Mower; Land Honor Log Grapple; JD RC78B Brush Cutter Like New;
TRAILERS, ATVS, & UTVS: 2023 Load Trail 12' Utility Trailer w/ Metal Sides & Ramp Gate; 2005 Wrangler 24' Stock Trailer-Nice; Bush Hog 4430 Side-by-Side; Kodiak Inline Dump Bale Trailer; 1985 24' Sooner Aluminum Stock Trailer; 2010 Calico 16' Gooseneck Stock Trailer-Nice; Pickup Bed Trailer; Older 16' Bumper-hitch Stock Trailer; Gooseneck 10Bale Hay Trailer; Arctic Cat Prowler XT 650; Honda Chuck Wagon; Polaris XP Ranger; Arctic Cat 400 4-wheeler 4x4;
VEHICLES: 1995 Chevy 1500 222,000 Miles -Rusty; 1995 Geo Tracker 190,000 Miles; 1961 Dodge M-37 Power Wagon 14,511 Original Miles; 2012 Ford F350 Gas 4x4 174,700 Miles w/Bale Bed; 1990 Chevy 1/2ton 4x4 w/1000lb Feed Box;
LIVESTOCK EQUIPMENT, FENCING & FARM RELATED MISCELLANEOUS ITEMS: Preifert Calf Table; 3-Wooden Self Feeders; Pischel Galv. 3Ton Creep Feeder w/creep gates; New 2ton Portable Bulk Bin; 1 ton Galv Bulk Bin; 2-5ton Bulk Bin; Powder River Calving Pen; Powder River Squeeze Chute; Powder River 10' Alley Way; Several Round Bale Feeders; 2 Cradle Feeders; Several Feed Troughs; 8' Heavy Gates; 10' Heavy Gates; Several Various lengths Pipe Gates; Big Blue Plastic Water Tank; Big Gray Plastic Hastings Water Tank; 300 Steel Posts; 23 Cattle Panels; 4-Mirafount Cattle 2 hole Waterers; Mineral Feeders; 6-10' Bow Gates; 24-New 5x8 Treated Posts; Hyd Bale Spear for pick-up; 500lb Creep Feeder; My- D-Han-D Feed Box; QLF Lick Tank; Square Bale Feeders; Hog Chute; 4-Fiberglass Hog Feeders; 24' Freestanding Panels; 2-SPI 4 hole Cattle Waterers.
LAWN & GARDEN & MISCELLANEOUS ITEMS: 168- 2x10s 12' long; 500 Gal Propane Tank; HD7000 Diesel Generator; JD Lawn Cart; Craftsman Generator; Homelite Generator Paddle Boat; 550 Gal Fuel Barrel w/Pump; New 350 Gal Fuel Tank w/Pump 8' Metal Storage Container; Yard Rollers; Western Snow Plow; Metal Burn Barrels; Assortment of Garden Hand Tools; Chain Boomers; New Concrete Saw; Paladin Compactor; Barn Tin; Lawn Carts; 2-Big rolls of 3/8" Cable; Country Tuff 25 ton Log Splitter; 2-Overhead Cranes; Concrete Power Trowels; Auto Crane; Generac Generator; New Gas Water Pump; Go-Cart; Swisher 22ton Log Splitter; 100 Gal Fuel Tank; Metal 5' Ramps; 96- 2x8s Treated 12' long; Several New Hyd Hoses; Several 76" Dexter 3500lb Axles; Several 82" Dexter 5000lb Axles; Squirrel Cage Fans; Several 14' pcs. White Tin; Several 14' pcs. Red Tin; pile used Guttering.
Taking Consignments Daily-Expecting Much More by Sale Day
Check Schachtele Auction Facebook Page for Pictures and Other Consignments. Selling Farm Machinery, Farm Tools & Equipment & Many More Miscellaneous Items (No Household Items)
To Consign Early for Advertising or for More Information Call Tony: (660) 413-3250
Lunch Served
We Appreciate All Consignments!
Terms Cash-Good Check with Proper ID. We are NOT Responsible for Accidents to Man, Woman, Child or Animal!
We are NOT Responsible for Lost, Stolen or Damaged Articles or Property!

Connie's MOBILE HOME TRANSPORT
We offer the following... Break Downs • Transport • Set up • Anchoring
Call Rich today! 573-881-7483

Lolli Livestock Market
704 Main Street Macon, Mo 660-385-2516
October 19, 2024 - 8am
Military Collectibles & Modern Sporting Arms Auction
This auction will be featured on AUCTIONZIP. View catalog and/or bid online. All FYI rules apply - View the website for direct links to AuctionZip.
East Fork Guns & Collectibles
email: lollibros@lolibros.com website: www.lolibros.com
A preview will be held Oct 18th 9-5
For further information, contact Jordan 660-346-0410

VIRTUAL ONLINE
SCOTLAND COUNTY, MO LAND AUCTION
THURSDAY, OCTOBER 17, 2024 AT 10:00 AM CT
158 ACRES± (SUBJECT TO SURVEY) • 4 TRACTS
SCAN FOR MORE INFORMATION
The Mallett farm is near Greensburg, MO and conveniently located on Hwy 15 and off County Line Road, 11.6 miles north of Edina, MO and 12.4 miles south of Memphis, MO. The farm is further described as being located in Section 35, T64N-R12W, Tobin Township, Scotland County, Missouri.
Farm represents productive tillable cropland, well maintained pastureland, home, and outbuildings.
DONALD L. MALLET AND VIRGINIA ANNE MALLET FAMILY TRUST
MARTHA GUDEHUS AND TERRY MALLET, CO-TRUSTEES
Representing Attorney: Evan Shoemaker | Van Matre Law Firm, P.C.
1103 E Broadway, Columbia, MO 65201 | (573) 874-7777
Closing & Title Work: Scotland County Abstract
205 East Monroe Street, Memphis, MO | (660) 465-7052
Auction Managers: Louie Zinn (319) 795-2314 & Dan Sullivan (319) 795-1833
BigIron SULLIVAN AUCTIONEERS
(844) 847-2161 | www.SullivanAuctioneers.com

NEMO Trader
11,000 CIRCULATION THAT COVERS MISSOURI, IOWA, AND ILLINOIS.
NEW issue each Friday. Available online at nemotrader.net or pick up at local business in the area.
Call 660-665-8500 or email: sales@nemotrader.net
www.nemotrader.net

A&L SALES

Monday - Saturday • 8 am to 5 pm

- Bulk Frozen Foods •
- Muck Boots • Fabric •
- Footwear •

25655 HWY 156
3 miles west of Laplata, MO

\$9000.00
OBO

FOR SALE

1979 Ford 900 I owner twin screw
18' box 534 gas engine NO RUST
660-748-6009

KEIM LUMBER COMPANY LLC

COMPETITIVE PRICES • FREE ESTIMATES

- COMPLETE BUILDING PACKAGES
- WINDOWS AND DOORS
- INSULATION • DRYWALL
- DELIVERY

13625 St. Hwy 3 LaPlata, MO

LAN-DOW BUILDINGS

"We Build To Suit Your Needs"
"Custom Built"

Pole Barns • Garages • Utility Buildings
Dick, Jason or Andy Middleton

Memphis Lumber Co.
1-800-337-5858 • 660-465-8595
Fax: 660-465-8596

Your Local
FARM SUPPLY SOURCE

NUTRITION • MEDICAL • FARM • PET • APPAREL

SEE US FOR YOUR
SHEEP & GOAT
EQUIPMENT NEEDS

Hometown Animal Health has provided quality products, expert knowledge, and friendly customer service to northeast Missouri and surrounding areas. We are a full-service nutrition, medical, and farm supply source carrying complete lines of animal feed and supplies, farming equipment, agricultural parts, lawn and garden tools, work apparel, and much more!

Hometown ANIMAL HEALTH

Feed • Medical • Farm & Pet Supplies • Footwear & More

website: hometownanimalhealth.com
660-465-2967

18743 US Hwy, 136 Memphis, MO 63555
"on Hwy 136 west of Memphis"

Monday-Friday 8pm to 5pm
Saturday 8am to 1pm

ATTENTION LAND OWNERS!!

Buyer of standing timber
Paying Cash Upfront!

Owner/Operator of Sawmill

- Buy/Cut Logs
- Certified
- Bonded
- Insured

WE HAVE SEMI LOADS OF FIRE WOOD LOGS FOR SALE

Tri State Timber L.L.C.
353 1/2 Grand Ave. • Memphis, Mo 63555
660-341-4921 • 660-465-2975

Central Metals Recycling LLC

Buyers of Ferrous and Non-Ferrous Metals

We Pay More \$\$\$, Call For Your Best Pricing Today!!

11923 Hwy. 54 Mexico, MO 573-581-0336	1601 N. 30th Quincy, IL 217-214-7649	1175 Hwy. 96 Hamilton, IL 217-847-3191
---	--	--

Need something? Let us help you. You can advertise that you are looking for a special item. Call 660-665-8500 for more information.

Need something? Let us help you. You can advertise that you are looking for a special item. Call 660-665-8500 for more information.

GO TO FARBANK.COM

VOTE FOR YOUR FAVORITE PUMPKIN

VOTE BY OCTOBER 25TH

fb

BUCKMAN MACHINERY, LLC

573-881-3557

John Deere 4640,
CAB, 8000 hrs, 2-owner, triple hydr, 20.8x38 duals, cold air, \$27,250

John Deere 4240,
CAH, powershift, duals, wts, 4650 hrs, perfect Iowa tractor, \$28,500.

Cub Cadet,
side-by-side, 4x4, 479 miles, Kohler engine, works the best, \$7,250

Loaders & Duals available for many

MAPLES REPERTORY THEATRE
102 N Rubey St
Macon, MO
660-385-2924

Truvy's Beauty Salon...
where the curlers are hot and the gossip is hotter!

Bring some tissues, cuz you'll surely laugh and maybe cry...

"STEEL MAGNOLIAS"
maplesrep.com
Sept 24 - Oct 13

RECREATION

Accessories-Recreation

Rifle Scope Me-Opta Meo-Star 3x12x56 RD. Ten point crossbow, carbon Nitro RDX. Obsession Defcon 6 bow with case. All in like new condition.
641-208-7353.

HAVE A PET OR PUPPIES TO SELL? Call us. You can even pay over the phone.
660-665-8500.

SERVICES

Chat/Dirt/Gravel

DIRT WORK All types of excavation, reclaiming overgrown fields, including CRP and WRP. Building site preparation, creating new trails and crossings, Food plot development and maintenance. Leveling and grading, wetland construction and maintenance. Pond and lake cleaning and construction. Call for quotes.
660-342-2701

Premium Metal Roofing

AW Metal Inc.

Metal Roofing Headquarters

641-664-3990 • awmetal.net

FOR SALE
AI Sired Angus Bulls,
14 & 18 Months Old.
Harold Trump
660-341-5730

JUMPS & ROY AUCTION

A BRAND YOU CAN TRUST

Martha Maloney Living Estate
Saturday October 12, 2024 - 10 AM
2102 Madison St. Trenton, MO 64683

Real Estate @ Noon: Nice 1272 sq. ft. Ranch-Style home w/ attached garage & full walkout basement, 3 bedroom, 1 1/2 bath, living room, kitchen & dining room, full walkout basement w/ 9ft walls & plumbed for bathroom. Anderson windows, central air, Lennox natural gas forced air furnace w/ whole home humidifier, electric water heater. Flower gardens & landscaped yard on .36 acres. Turn Key Home! Nice neighborhood - Scott and Haddox addition. Call to preview!

ALSO SELLING: A clean, low mileage, one owner, 2002 Buick Century Custom, a nice offering of clean furniture & household, appliances, antiques, collectibles, and lawn and garden items

Scott Roy 660-359-1455 / Rustin Jumps 660-605-0860
For photos and listing - <https://jumpsandroyauction.com>

MULTIPARTY AUCTION

MARION COUNTY FAIRGROUNDS (cattle barns)
Flower City Park, N Breckenridge Ave,
PALMYRA, MO

SATURDAY, OCTOBER 12TH AT 10AM

***Snap On Tools and Miscellaneous**

- Snap On Extension
- Snap On Battery Charger
- DeWalt Generator
- Jack Stands
- Vice Grips
- Pliers
- Screwdrivers
- Tap and Die Set
- Snap On Tool Box
- Snap On Grinder
- Snap On Sockets
- Portable Air Tank
- Drill Bits
- Snap On 2 1/2 Ton Floor Jack
- Parts Cleaner

***Winchester Rifles**

- Model 1903- .22cal.
- Model 90- .22 WFR cal.
- Model 06- .22 cal.
- Model 47- .22 cal.
- Model 55- .22 cal.
- Model 58- .22 cal.
- Model 59- .22 cal.
- Model 61- .22 cal.
- Model 63- .22 cal.
- Model 75- .22 cal.
- Model 90- .22 cal.
- Model 1890- .22 cal.
- Model 1906- .22 cal.
- Model 62A- .22 cal.
- Model 69A- .22 cal.
- Model 72A- .22 cal.
- Model 75 Sporter- .22 cal.
- Model 02- .22 cal.
- Model 99- Thumb Trigger- .22 cal.
- Model 43- .218 Bee
- Model 1894- .30

WCF cal.
Model 36- 9mm cal.
Model 41- .410 cal.
Model 42- .410 cal.
Model 50- 20 ga.
Model 1300- 12 ga.
Model 59 Win-Lite-12ga.

***SIG SAUER PISTOLS**

- Model P365XL- 9mm cal.
- Model P322- .22 cal.

EQUIPMENT

- 2022 XMark Lazer Z. 60 in. deck, 91 hours, 26HP, Van Guard
- Ranger RZR- 2 person- 4 Wheeler
- 10 Foot 3 PT. Tiller

FURNITURE

- Antique Dressers
- Antique Drop Leaf Desks
- Antique China Cabinets
- Dressers
- Bedroom Suites
- Several Camel Back Trunks
- Claw Foot Piano
- Stool

HOUSEHOLD ITEMS

- Set of Green Dishes
- Small Assortment of Pink Dishes
- Lots of Knick Knacks
- Antique Lamp
- Several Large Crocks

MISCELLANEOUS ITEMS

- Arrowheads

Hammond & Watson AUCTION SERVICE

Lionel Hammond
573-406-3877
PALMYRA MO

Like us on FB

Look us up on Auction Zip

Fox Auction LLC
660-341-1453

Angus Herd Dispersal AUCTION

Directions: From Downing, MO go north 6 miles on RT N to Swanston RD then west to site. Watch for signs!!

Saturday, October 26th, 2024 @ 9:30 am

ANGUS COWS, HEIFERS & CALVES: 35-fall calving Angus cows, 3-5 yr olds w/ calves • 30-spring calving Angus cows 3-5 yr olds (start calving Jan 20th) • 30 calves, approx 500lb, weaned from the above listed cows • 14 bred heifers (start calving Jan 10th) • 9 open yearling heifers • These cows are all home raised or bought as heifers. Mainly Brinkley genetics. Gentle herd, used to rotational grazing, with good body condition. More photos on website.

ANGUS BULLS: 2- 2 yr old 3/8 Simmental 5/8 Angus (High Point genetics) • 2.5 yr old registered Angus • Photos & genetic info on website

SHOP ITEMS: Otis walk behind 5000lb forklift w/ new CRX1000 engine • big air compressor 1 OR 2 WAGON LOADS OF SHOP ITEMS

JR. (ALLEN) FOX: 660-341-1453
WILSON FOX: 660-216-9227

lots more items online at
www.foxauctionservice.com

Miner Hill, LLC

Live County Music on Friday Evenings at 7pm

Flea Market

Lot Rentals Start at \$25
Lot rental by the month or by the season, electric available on some lots! RV lots available with 50 amp electric hookups

Free Public Admission!

Antiques	Crafts
Guns	Unique Junkie
Baked Goods	& Much More!

Weekend 50/50 Drawing Saturday 3pm

2024 Dates
April 26-27
May 24-25
June 28-29
July Closed
Aug Closed
Sept 27-28
Oct 18-19

Great Food
Miner Hill Cafe serves Breakfast-Lunch - Dinner

Contact Info
(660) 375-1212
Minehillllc@yahoo.com
www.minerhill.com

1310 N Missouri Ave
Marceline, MO 64658

LIKE US ON **facebook**
www.facebook.com/MinerHillLLC

HARRISON FISHERY
POND & LAKE STOCKING

660-423-5482

Contact us for bulk price & delivery.

info@harrisonfishery.com • www.harrisonfishery.com

Fall is a Great Time to Stock Your Lakes & Ponds!!
Come see us for Freshwater, Game & Baitfish.

Species Available: Large mouth bass, hybrid bluegill, bluegill, redear sunfish, black crappie, fathead minnow, walleye, muskie catfish, golden shiners and more!

161 ACRE LAND AUCTION
Putnam County - Lucerne, MO

PRIME HUNTING/RECREATIONAL PROPERTY

October 26, 2024 • 11:00 AM • Putnam County Fairgrounds 4-H Building

FIRST CLASS PROPERTIES is pleased to offer this 161.8-acre property at auction, showcasing a unique combination of agricultural, hunting, and building potential. Located in western Putnam County, Missouri, between Unionville and Princeton, and South of Hwy 136, this property provides a balance of seclusion and accessibility. The tract's diverse landscape, featuring 60 acres of open area with a row crop base, timber with dense cover, and two ponds, creates an ideal environment for wildlife, complemented by the nearby Medicine Creek bottoms. There is rural water and electricity available at the road, but not installed on the property. Having previously generated annual income of \$16,500.00 through cattle and hunting leases, this property has good perimeter fences and presents an attractive investment opportunity. It will be sold free of leases, with the successful bidder securing hunting rights BEFORE closing after payment of 10% of purchase price to be held in escrow. Please contact Auctioneer, Mark Smith, or the First Class Properties team for further information. See firstclass-properties.com for legal description.

DON'T MISS OUT ON THIS one-of-a-kind property!

- Agricultural
- Hunting
- Building Site

161.8 ACRES

TROPHY MOUNTS!

AUCTION TERMS: Successful bidder will be required to pay 10% of purchase in non-refundable escrow day of sale. Escrow payable to closing agent Hart Abstract and Title, Unionville, MO. Buyer will be given immediate hunting rights upon contract signing and payment of escrow. Final closing and total possession on or before November 26th, 2024. Real estate taxes prorated to closing. Any announcements day of sale take precedence over any printed or advertised materials. Sellers have the right to reject or accept final bid. The farm will be sold as is.

First Class Properties & Auctions

VIEW THIS PROPERTY BY APPOINTMENT
660-734-0506
Mary Williams

SELLERS: Mark L. Smith, Auctioneer, 660-734-1762 • Jared Williams, Sales-Agent, 660-216-3722
Jared & Jenna Williams Owners/Agents
Mary Williams, Broker-Associate 660-734-0506 • Jenna Williams, Sales-Agent 660-341-8791
Abby Jackson, Sales-Agent 573-286-8525 • Rodney Welch, Sales-Agent 660-292-4848

MORTON
FINANCIAL SOLUTIONS LLC



Jamey Morton,
CLU, ChFC, LUTCF, RFC
Chartered Financial Consultant

660-665-3045
www.mortonfinancial.solutions

405 East Northtown Road
— MortonFinancial.Solutions —

Securities offered through **Osaic Wealth, Inc.** member FINRA/SIPC. Advisory services offered through USAdivisors Wealth Management, LLC. Listed entities are not affiliated with **Osaic Wealth**.

Turn Your Clutter Into Cash

Get money in your pocket and room in your garage when you sell your stuff and promote your sale through the newspaper classifieds!

\$254
\$95
\$21
\$33
\$57



There's a better way to get noticed.

Keep life simple.
Take out an ad.

PCS ELECTRONICS
Empowering people in times of need.
3100 Brown Station Rd, Ste E
Columbia, MO 65202

Sales, Service & Installation
call 573-814-3131

Certified factory trained technicians

WINTER STORMS DON'T CARE IF YOU ARE PREPARED... WE DO.

AUTOMATIC STANDBY GENERATORS

KOHLER **GENERAC**



SEE MORE PHOTOS ON SCOTTY'S WEBSITE
WWW.SCOTTSAUCTIONSERVICE.COM

Business Liquidation & Personal Property Auction



Sat., Oct. 12, 2024 at 10:00 am
Jon & Darla Dwiggins and Sieren's Palace

28251 US Highway 63 North, Macon, MO.

Direction: From US Highway 36 travel approximately 2 miles North of Macon to Scotty's Auction Barn and Event Center on the West side of the highway. Watch for signs the day of the sale.

VEHICLE: 2008 Mercedes, 155,xxx miles with hail damage

BUSINESS EQUIPMENT: 2 TEC cash registers; 4 way clothing racks; round racks; lady's clothing form; 5 drawer metal cabinets; Vera Bradley shelves; 5 display cases; Monarch Marking Systems 9425; Brighton jewelry display rack; female mannequins; miscellaneous display racks and stands; black display table; 16 four way clothing racks; 6 round clothing racks; 1 three way clothing rack; 2 two way clothing racks; 2 long, two bar clothing racks; 5 rolling clothing racks

BUSINESS INVENTORY: clothing; women's clothing; lots of hangers

HOUSEHOLD ITEMS: king size bed; dresser; leather couch; leather loveseat; entertainment stand; 4 post bed frame; stand up/lay down tanning beds; rolling shelves; mini fridge; microwave; 4 black chairs

ANTIQUES & COLLECTIBLES: marble top chest of drawers; blanket chest; piano; grandfather clock; wood stove; pheasant pie; wooden duck decor; antique runner sled; copper boiler; old antique sugar bucket; stuffed Christmas mice; wooden carvings; globes; plant stand

TOOLS & OUTDOOR EQUIPMENT: 2001 Scag 60" Turf Tiger zero turn mower, 861 hours; Troy Bilt Bronco rear tine tiller; band saws; work tables; 30' x 90' tent; several 4' x 8' tables; 2 aluminium step ladders

There will be many more items added to this auction as there are items in storage to be pulled out at a later date.



LaPlata Real Estate & Railroad Equipment Auction



Thurs., Oct. 17, 2024 at 4:00 pm
Seller: On file

219 East Sanders Street, LaPlata, MO.

Direction: From US Highway 63, travel West on Clark Street for approximately 0.4 miles, turn North on South Brown Street to Sanders Street and the auction location. Watch for signs.

REAL ESTATE: This 60' x 80' Red Iron structure is insulated, has 3 large overhead, roll up doors, concrete floors, an office and rest rooms. The building is wired for 220 and has overhead radiant heat. The building sits on a large lot and offers excellent storage or a great business opportunity. Please contact Scott at 573-356-4405 to schedule your personal showing.

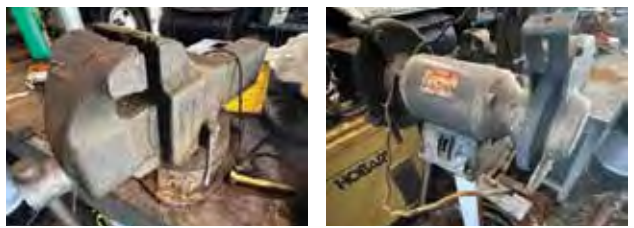
VEHICLES: 2003 International 4300 DT466, Allison auto transmission, 157,xxx miles, crew cab service truck with 300 lb hoist and ton of storage; 1993 Chevy Cheyenne ton service truck, crew cab; 1992 Volvo GMC tanker/sprayer truck, automatic

EQUIPMENT: 1975 Tamper double brush cutter, runs and operates; 2 other Tamper for parts only; Yale forklift, double stage gas; Military power washer machine, has not been tested; Pettibone Speedswing Model 360 loader, articulating loader bucket, been sitting for over ten years; 5 bottom, 3 point plow; parts engine for Tamper machine; brush cutter deck

TOOLS: drip torch; chop saw; small and large A frame on casters; hydraulic press; Rock Island vise; Recardo vise; Astro stand up drill press; Wright chain hoist; ZEF parts washer; heavy duty jack stands; Ramco horizontal band saw; Morgan heavy duty vise; Dayton grinder on stand; Hobart 531 wire welder; Wilton vise; heavy duty floor jack; heavy duty cherry picker; miscellaneous tool boxes; Gates hydraulic machine, works; P&G sand blaster; heavy duty engine stand; Ridgid pipe threader

MISCELLANEOUS: various Railroad crossing signs; storage lockers; several metal work benches; organizer drawers; metal storage bins; roll around welding table; pallet shelving; lots of various parts; various tires; various metal and scrap

There will be many more items at this auction too numerous to list.



DOWN PAYMENT: 10% of the contract purchase price will be due upon acceptance of the Sales Contract. Personal or Cashier's Checks will be accepted. This is "AS IS, WHERE IS" and is non-refundable. CLOSING: Closing shall be within 30 days of the auction date.

5 Acre m/l Real Estate & Personal Property Auction



Sat., Oct. 19, 2024 at 10:00 am
Joe McGhee

24789 Jewell Avenue, Macon, MO.

Direction: From US Highway 63 North of Macon, travel West on State Highway AX for approximately 0.8 miles, turn North on Jewell Avenue for approximately 0.2 miles to the property. Watch for signs

REAL ESTATE: This three bedroom, two and a half bath, manufactured home sits on approximately 5.29 acres more or less and offers a park-like setting with a beautiful pond. The home features a lot of natural lighting, a two-car attached garage, a gas, electric or wood fireplace, central air conditioning and an electric furnace. The property has a 30' x 30' shed with concrete floor, heat and air conditioning, two overhead doors, a walk-through door and overhead storage. Please contact Scott at 573-356-4405 to schedule your personal showing.

VEHICLES: 2005 GMC 4x4, unknown mileage due to display not working; Kawasaki Prairie 300 4 wheeler

BUILDING: portable chicken house

HOUSEHOLD ITEMS: 2 camouflage recliners; glider recliner; oak claw foot table; oval coffee table; Sanyo flatscreen TV; 2 twin size beds; dressers; full size bed; lots of canning jars; kitchenware; various baking dishes; microwave; oak bar stools

ANTIQUES & COLLECTIBLES: antique Boston rocker chair; steamer trunk; several various crocks; curio cabinet; several quilts, hand quilted and machine; coalmine canary cage; Hopalong Cassidy cup; large variety of locally found arrowheads, some purchased (buyer to determine); pottery pieces; large variety of Native American knives; Old Timer knife set in display case; Western knife; Case pocket knife; Salesman sample wood stoves; globe;

TOOLS & OUTDOOR ITEMS: Stihl chainsaw; Toro S120 electric snowblower; Briggs & Stratton 2200 PSI

Shelbina Real Estate & Personal Property Auction



Thurs., Oct. 24, 2024 at 4:00 pm
Patti Baymiller

305 West College Avenue, Shelbina MO.

Direction: From US Highway 36, proceed South on State Highway 15/ North Center Street for approximately 0.4 miles, turn right on College Avenue to the auction location. Watch for signs.

REAL ESTATE: We will be selling at auction this 1949 built two bedrooms, 1 bath home, perfect for a starter home or downsizing home for a single, couple or small family. The home has a large, shaded deck, a one car garage and a bonus asphalt pad in the back. It features original woodwork, a built-in chest of drawers and bookcase. The home has natural gas forced air heat and hot water, central air, an electric stove, electric washer and dryer hookups. The home is located on a large corner lot with mature trees, close to a school bus stop. The home has had many upgrades and improvements. Please contact Scott at 573-356-4405 to schedule your personal showing. At request of seller, no showings will be offered before October 1, 2024.

HOUSEHOLD ITEMS: coffee tables; 5 wicker bar stools; large dresser; desks; 2 drawer file cabinet; dining room table and 6 chairs; twin bed; dresser; nightstand; bed; bench; chest; cordless phones; linens; tv; round table; boxes of tile; cooler; mirrors; rugs; trash cans; book ends; wax warmer; Adirondack chair; coffee pot; vase; refrigerator; tall table and 2 chairs; file box; ironing board; small appliances; washer; dryer; oak cabinets; end table; IKEA chair and ottoman; lamps; sofa; 1 drawer filing cabinet; 3 drawer filing cabinet; PC monitor; chair; tv/cr combo; twin bed and frame; vacuum cleaner; commode; humidifier

Macon Real Estate & Personal Property Auction



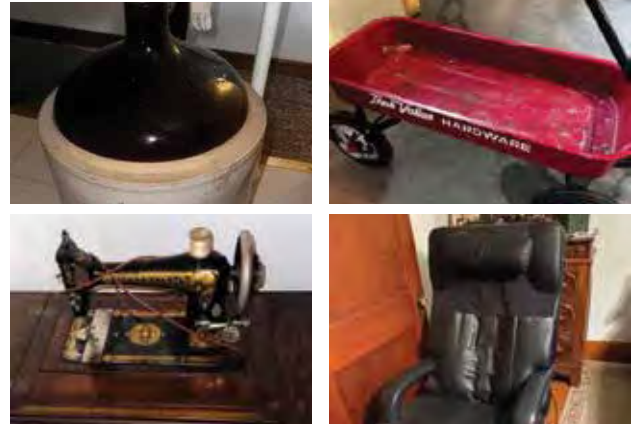
Sat., Oct. 26, 2024 at 10:00 am
Carolyn Williams

504 Pine Crest Drive, Macon MO.

Direction: From US Highway 63/North Missouri Street, turn West on Briggs Drive, proceed West on Pine Crest Drive to the property. Watch for signs.

REAL ESTATE: This 3 bedroom, 2 bath ranch style home sits on approximately 0.66 of an acre with large shade trees and beautiful scenery overlooking the golf course. The home has an attached 2 car attached garage, unfinished, dry basement, central air conditioning and propane heat. It is located on a quiet, dead-end road, next to the Missouri State Highway Patrol Troop B headquarters. Please call Scott at 573-356-4405 to schedule your personal showing.

HOUSEHOLD ITEMS: full size bed frame; metal cabinets; metal folding



Macon Real Estate & Personal Property Auction



Sat., Nov. 2, 2024 at 10:00 pm
Scott Bealmer

828 Pine Street, Macon, MO.

Direction: From US Highway 63/North Missouri Street, proceed East on Pine Street to the property location. Watch for signs.

REAL ESTATE: We will be selling this three bedroom, three bath ranch-style home on a large, 0.82 acre lot located on a quiet, dead-end street. The home has an updated main level with 3/4" hardwood floors, a new roof, new siding, new gutters, a 50 gallon gas hot water heater, central air and a natural gas furnace. There is also a full, unfinished basement, an abundance of storage and a 2 car attached garage that is heated and cooled. Included on the property is a 10' x 16' storage shed.

Please call Scott at 573-356-4405 to schedule your personal showing.

VEHICLE: 2001 Chevy dually, 8.1 engine, Allison transmission, 2 wheel drive, fifth wheel hitch, 102,xxx miles, extended cab, new tires, very nice, well maintained truck

HOUSEHOLD ITEMS: Whirlpool gas dryer, Whirlpool washing machine; Haier dorm size refrigerator; chest of drawers; dresser; flatscreen TV; patio table and chairs

ANTIQUES & COLLECTIBLES: 1897 roll top desk, needs restoration; Christmas decor; crystal glassware; John Deere pocketknife collection; cedar chest; pinball machine; guitars; various antique end tables; John Deere toy tractor collection; golf clubs; pig statue collection; antique rocking chair; Americana Porcelain The Patriots 5 of 8 presidents collection; Tiger picture from the old Schlanker's Furniture Store

TOOLS & EQUIPMENT: Coleman upright air compressor; drill; 14" tile cutter; work light; Actrom automotive tune up kit; Alltest diagnostic equipment; Black & Decker battery powered tools

There will be many more items at this auction too numerous to list.

Bethel Land Auction



Tues., Nov. 5, 2024 at 5:00 pm
Brandon Barnes

Shelby County Road 156, MO.

Direction: From the intersection of Highway 15 and State Highway J, travel approximately 2.4 miles to Shelby County Road 156, travel on Shelby County Road 156 to farms. Watch for signs.

REAL ESTATE: We will be selling at auction 140 acres of prime Shelby County hunting property separated into three tracts. Buyer(s) will have hunting rights for 2024 and that may begin as soon as the contract is signed and the deposit is paid. Please contact Scott at 573-356-4405 to schedule your personal showing.

TRACT 1: This tract consists of 56 acres more or less with a remodeled cabin. There are 20 acres more or less tillable and the remainder is mature timber with excellent hunting and food plots. There is a shooting house, maintained trails and a crazy number of large deer and flocks of turkey.

TRACT 2: Consists of 40 acres more or less, with 7 acres tillable.

TRACT 3: Consists of 40 acres more or less and is a combination of open and timber ground. It provides excellent hunting and shooting house. There are food plots and other tillable areas. The deer and turkey are abundant and large.

Thriving Pumpkin Patch, Mini Farm & Investment Opportunity Auction



Thurs., Nov. 7, 2024 at 4:00 pm
Urban Gardens LLC

701 West La Harpe, Kirksville, MO. this beautifully manicured 10.5-acre property offers a unique blend of agricultural charm and commercial opportunity, right within the city limits.

Direction: From Business Highway 63/ South Baltimore Street in Kirksville, travel North on South Franklin Street for approximately 0.9 miles, turn West on La Harpe Street to the auction location. Watch for signs.

PROPERTY FEATURES: **Main Home:** 6 years old, 3-bed, 2-bath with an open floor plan. Includes a two-car attached garage, propane heat, central air, and handicapped accessibility. Built with top-of-the-line amenities. - **Second Home:** Completely renovated inside and out, with all updates done within the past year. Currently leased to an outstanding tenant until June, 2025, who is eager to stay on if possible.

AGRICULTURAL ZONING WITH MINI-SUBDIVISION POTENTIAL:* Perfectly situated for a variety of uses, from farming to future development.

BUSINESS HIGHLIGHTS: - **Established Seasonal Business:** Operating 55 days a year during

the Halloween season, generating a comfortable income. - *

AMENITIES INCLUDE:* - Blackberries, peach, apple, and cherry trees - Pumpkin patch and large parking area - Pumpkin shed and corn maze - Western-themed playground with a 60' slide - Petting zoo, game buildings, and more

EXPANSION POTENTIAL: With everything in place, the possibilities are endless! Expand with a farmers market, Christmas lights display, tree sales, weddings, or a U-pick orchard. The groundwork has been laid—now it's your turn to take the reins and grow this unique business. Due to health reasons, the current owners are looking to retire and move to Florida. This is a once-in-a-lifetime opportunity to take over a turn-key business with so much more potential.

Business will operate as normal throughout the 2024 season. Please contact Scott at 573-356-4405 to schedule your personal showing.

