

# NEMO Trader

## THE NEMO TRADER

PO BOX 809 • KIRKSVILLE, MO 63501 • PHONE 660-665-8500

Web Site: [nemotrader.net](http://nemotrader.net) • Email: [sales@nemotrader.net](mailto:sales@nemotrader.net)

**FREE**

A WEEKLY ADVERTISER SERVING ALL OF NORTHEAST MISSOURI AND THE SURROUNDING AREA

**ANTIQUH REPAIR & RENTAL**

*We fix almost anything!*

CALL US FOR ALL OF YOUR EQUIPMENT REPAIR & RENTAL NEEDS

- Attachments
- Tires & Tracks
- Competitive Rates

Located Near Knox City, MO  
Call Ethan Zimmerman  
**660-299-0808**

**FLEA MARKET**

September 21, 2024

Novinger Community Firehouse  
Hwy. 6 west of Kirksville  
9 am to 3pm

For more information contact Linda Pickett 660-626-5401

**exp REALTY**

Elizabeth Gregory  
110 S. Franklin St  
Kirksville, MO 63501  
www.missourihomeandfarm.com

717010p

**MODERN RESTORATION REMODELING LLC**

**FREE ESTIMATES!!!**

**SPECIALIZING IN KITCHEN AND BATHROOM REMODELING**

660.413.2439

WWW.FACEBOOK.COM/MODERNRESTORATIONLLC

CHECK US OUT ON FACEBOOK

**YODER CONSTRUCTION**  
— DANIEL YODER —

- Metal Roofing
- Siding
- New Construction

OUR GOALS:

- Good Service
- Quality Structure
- Competitive Prices
- Free Estimates

**660-486-3332**  
(Leave Message)

**Pearler TRUCKING LLC**  
NOVLETTA, MO

ROCK • DIRT • SAND • GRAIN HAULING • LIME SPREADING  
EQUIPPED WITH VARIABLE RATE

Alan (660) 216-0618 Jared (660) 342-7685

**LAND SALES & AUCTIONS**

**WHITETAIL PROPERTIES REAL ESTATE**  
HUNTING | RANCH | FARMS | TIMBER

**WHITETAIL PROPERTIES REAL ESTATE**  
A DIVISION OF THE NAME OF WHITETAIL PROPERTIES REAL ESTATE

SERVING  
LEWIS • MACON • SHELBY • MARION • RANDOLPH • MONROE • RALLS • AUDRAIN

**CLAY LOCKARD**  
EAST CENTRAL MISSOURI LAND SPECIALIST

**573.466.9123**

**WHITETAILPROPERTIES.COM**

Best of Missouri Award



## 2ND ANNUAL "If It Rolls, It Shows" VEHICLE SHOW AND SWAP MEET

OCTOBER 5, 2024

UNIONVILLE, MO.—FAIR GROUNDS  
REGISTRATION 8:00 AM TO 10:00  
PRIZES AWARDED AT 2:00 PM.

### CLASSES:

AUTOS AND PICK UPS THRU 1950, 1951 TO 1980, 1981 AND UP, STREET RODS, RAT RODS, MOTORCYCLES, TRACTORS, SEMIS, HIGH SCHOOL STUDENT'S CARS



### ENTRY FEE:

VEHICLES \$10.00 – SWAP MEET \$20.00

### CONTACTS:

Rick Adkins 870-577-2735 | Steve Pearson 660-216-8476  
Tom Keedy 660-626-7803



**NO ALCOHOL OR ILLEGAL DRUGS PERMITTED ON GROUNDS**

# Your Health YOUR CHOICE



Complete Family Medicine, a service of Hannibal Regional offers a variety of services including: urgent cares, family medicine, osteopathic manipulation, radiology, laboratory, and more! Visit Complete Family Medicine and Hannibal Regional and let us guide you to BETTER



## Complete Family Medicine

A service of Hannibal Regional

(660) 665-7575 | [www.cfmcares.com](http://www.cfmcares.com)

72659jn

## Judd Motors

Call 660-457-3700  
Hwy 63 North, Lancaster, MO

- JD 10ft cultipac** **SOLD**, great..... only **\$2,000**
- 2012 Case 580N**, Loader Backhoe, Turbo, 4WD, Cab with AC, Extendahoe, New 12 ply Tires, Only 1280 Hours, 1 owner, very clean, ..... only **\$61,000**
- AC Disk**, 10Ft., **SOLD**, ..... only **\$1,250**
- 2007-14 Chevy pickup** box, red, 8 ft, little rust ..... only **\$1,000**
- 2002 GMC Sierra 1500** ..... **NEW PRICE \$5,999**  
Reg. Cab, Long bed, 4x4, V8, 138K, RED
- 2006 Chevy 2500HD**, 4x4, 6.0L, reg cab, 8 ft bed, 1 owner, no rust, only 97k, red, **NEW PRICE \$17,500**
- 2015 GMC Sierra 2500 Denali**, 6.0L, 4wd, crew cab, short bed, sunroof, heat/cool leather, spray-in bed liner, nerf bars, 207k miles, pearl white, excellent, ..... only **\$20,900**



**Cumberland Building Dealer**

[www.juddmotors.com](http://www.juddmotors.com)

In Business Over 75 Years  
Curly and Kevin Judd

72756jn



**Metals & Recycling**

KIRKSVILLE, MO

660-665-8000

For current scrap prices call or visit our **Facebook Page** [victorymetalsrecycling.com](http://victorymetalsrecycling.com)



### ★ METAL RECYCLING

RECYCLE YOUR SCRAP METAL WITH US! WE PAY CASH FOR: COPPER, ALUMINUM, STEEL, STAINLESS STEEL, APPLIANCES, E-SCRAP, BRASS, LEAD, RADIATORS, ALTERNATORS, BATTERIES, STARTERS, ELECTRIC MOTORS, APPLIANCES, & VEHICLES (TITLE & ID REQUIRED).

### ★ ROLL-OFF CONTAINER

10-20-30-40 CUBIC YARD DUMPSTERS

3602 INDUSTRIAL RD. • KIRKSVILLE, MO 63501

[DJANESVMR@GMAIL.COM](mailto:DJANESVMR@GMAIL.COM)

[VICTORYMETALSRECYCLING.COM](http://VICTORYMETALSRECYCLING.COM)

72013jn

# We are seeking 15 participants to experience and provide feedback on cutting-edge hearing aid technology

## Now Through September 30, 2024

Help us shape the future of hearing care by testing the latest innovations.

### Why Participate?

- Be among the first to try revolutionary hearing devices.
- Receive a complimentary hearing screening.
- Contribute valuable feedback to enhance future hearing solutions.

As a token of appreciation, participants will receive a \$10 gift card to Casey's upon completion of the trial.

**Call now before spots fill up!**

**855.830.2668**



Convenient locations to serve you in Kirksville, Bethany, Maryville, Macon, and Chillicothe

[HearingCarePartners.com](http://HearingCarePartners.com)

### We Listen So You Can Hear

Dr. Michelle Woodward, Au.D., CCC-A, Owner  
Dr. Mariah VanHoose, Au.D., CCC-A • Dana Kimmel, BC-HIS  
Courtney Stanton, HIS • Nicole Poppa, HIS  
Alisha Dromey, HIS • Kaitlyn Dinwiddie, HIS



72810jn

**Growing Together!**

**fb farmbank**

1 S. Lincoln St. Green City, MO 660-951-8430  
 701 N. Pearl St. Milan, MO 660-951-8432  
 3311 N. Baltimore Kirksville, MO 660-951-8431

www.farmbank.com

**Central Metals Recycling LLC**

**Buyers of Ferrous and Non-Ferrous Metals**

**We Pay More \$\$\$, Call For Your Best Pricing Today!!**

11923 Hwy. 54 Mexico, MO 573-581-0336  
 1601 N. 30th Quincy, IL 217-214-7649  
 1175 Hwy. 96 Hamilton, IL 217-847-3191

**KEIM LUMBER COMPANY LLC**

COMPETITIVE PRICES • FREE ESTIMATES

- COMPLETE BUILDING PACKAGES
- WINDOWS AND DOORS
- INSULATION • DRYWALL
- DELIVERY

13625 St. Hwy 3 LaPlata, MO

**Fall Season at Maples Rep**

**MAPLES REPERTORY THEATRE**

UPSTATE MISSOURI'S PROFESSIONAL THEATRE

MAPLESREP.COM

Steel Magnolias  
 SEPT 25 - OCT 13

The Woman In Black  
 OCTOBER 18 - 27

TIS THE SEASON: Holiday Celebration  
 DECEMBER 4 - 15

NEMOTRADER.NET

**ATTENTION LAND OWNERS!!**

**Buyer of standing timber**

Paying Cash Upfront!

Owner/Operator of Sawmill

- Buy/Cut Logs
- Certified
- Bonded
- Insured

**Tri State Timber L.L.C.**

353 1/2 Grand Ave. • Memphis, Mo 63555  
 660-341-4921 • 660-465-2975

**FLO RITE GUTTERING**

660-988-1163

- 5" & 6" Guttering Available
- Leafguard Options
- 20+ Color Options
- Stainless Steel Fasteners

Stan Schrock • Greentop, MO

**Quarter Rock Farms**

1145 Highway Y • Spickard, MO

**SELLING:**

- STRAW BALES
- CELOSIA
- MUMS

Great for Fall Decorations

Fundraising opportunities available for groups!

Open every weekend after Labor Day

CALL OR MESSAGE 660-833-9511

Your Local **FARM SUPPLY SOURCE**

NUTRITION • MEDICAL • FARM • PET • APPAREL

SEE US FOR YOUR **SHEEP & GOAT** EQUIPMENT NEEDS

Hometown Animal Health has provided quality products, expert knowledge, and friendly customer service to northeast Missouri and surrounding areas. We are a full-service nutrition, medical, and farm supply source carrying complete lines of animal feed and supplies, farming equipment, agricultural parts, lawn and garden tools, work apparel, and much more!

**Hometown ANIMAL HEALTH**

Feed • Medical • Farm & Pet Supplies • Footwear & More

website: [hometownanimalhealth.com](http://hometownanimalhealth.com)

**660-465-2967**

18743 US Hwy, 136 Memphis, MO 63555  
 "on Hwy 136 west of Memphis"

Monday-Friday 8pm to 5pm  
 Saturday 8am to 1pm

**Beilstein CAMPER SALES**

CALL US NOW for the best prices...

28248 327th Ave. LaGrange, MO • Hwy 61 South, 4 Miles South of LaGrange, MO

573-655-2254

**BLOWOUT SALE!**

<p>#G12886</p> <p>Call for BEST PRICE</p> <p><b>2016 JAYCO REDHAWK FORD E-450 29XK</b>                  Slide-Out, ONLY 6,xxx Miles</p>	<p>#031889</p> <p>Our Price <b>\$11,995</b></p> <p><b>2024 COLEMAN RUBICON 1400BH</b>                  Only 1940lbs, Tow With Almost Any Vehicle</p>	<p>#V20074</p> <p>PRICE \$26,995                  Our Price <b>\$22,995</b></p> <p><b>2020 JAYCO OCTANE SUPER LITE TOY HAULER 222</b>                  Queen Bed, Nice Sized Garage</p>
<p>#035355</p> <p>PRICE \$32,495                  Our Price <b>\$25,995</b></p> <p><b>2020 COACHMEN SPIRIT 2454BH</b>                  Slide-Out, Double Over Double Bunks</p>	<p>#091507</p> <p>MSRP \$52,016                  Our Price <b>\$34,995</b></p> <p><b>2023 SALEM HEMISPHERE HYPER-LYTE 22RKHL</b>                  NEW, Slide-Out, Rear Kitchen, Nice</p>	<p>#092050</p> <p>MSRP \$54,491                  Our Price <b>\$37,995</b></p> <p><b>2024 SALEM HEMISPHERE HYPER-LYTE 24RDHL</b>                  NEW, Rear Living, Tilting Bed</p>

**beilsteincampersales.com**

**There's a better way to get noticed.**

Keep life simple. Take out an ad.

**AUTOMATIC STANDBY GENERATORS**

SUMMER STORMS DON'T CARE IF YOU ARE PREPARED... WE DO.

**KOHLER** **GENERAC**

**PCS ELECTRONICS**

Empowering people in times of need.

3100 Brown Station Rd, Ste E Columbia, MO 65202

**Sales, Service & Installation**

call 573-814-3131

Certified factory trained technicians

The City of Novinger will hold a  
**PUBLIC AUCTION**  
**October 1st at 6:00pm**

for the **SALE** of a lot located at  
**801 Main St, Novinger, MO.**

Legal description are lots 3&4 BLK 9 Novinger and Lorenze 4th Addition Novinger Adair Co. MO.

Bidding will start with a  
**minimum \$3500.00 bid.**

The successful bidder will be responsible for all closing costs and title work.

Contact:  
**cityofnovinger@gmail.com**  
or **660-216-9926**

for any questions.

*The City of Novinger reserves the right to accept or refuse any and all bids*



**Edina Livestock Sales**  
**Edina, Missouri**

**Friday, September 20th**  
Special Feeder Calf Sale

**Friday, September 27th**  
Special Feeder Calf Sale

To Consign For Any or All Sales or For Information Call:

Owner - Kevin Strange • Cell: 660-341-9974  
Ryan Strange • Cell: 660-341-9721  
Sale Barn: 660-397-9999

**Field Reps:**

Bill Tom Hall 660-342-5420 Mike Bronestine 660-341-9965  
Jason Bichsel 660-216-0373 John Powell 660-341-1717



**LAN-DOW BUILDINGS**  
"We Build To Suit Your Needs"  
"Custom Built"  
Pole Barns • Garages • Utility Buildings  
Dick, Jason or Andy Middleton  
**Memphis Lumber Co.**  
1-800-337-5858 • 660-465-8595  
Fax: 660-465-8596

*Kirkville, Missouri*  
**KIRKSVILLE LIVESTOCK LLC**  
24295 Benton Road \* P O Box 242 \* Kirkville, MO 63501  
[www.kirkvillivelivestock.com](http://www.kirkvillivelivestock.com)

**\*ATTENTION SHEEP & GOAT PRODUCERS\***  
Now accepting consignments for the  
**SPECIAL BREEDING STOCK SHEEP & GOAT SALE**  
**THURSDAY, SEPTEMBER 26, 2024 • 6:00 P.M.**  
This sale will feature registered and commercial sheep & goats for the autumn breeding season  
-EARLY LISTINGS-

- 13 registered Il-de-France ram lambs
- 12 Dorper ewe lambs, open
- 35 Katahdin ewes, 1 to 4 years old, exposed to Katahdin ram for January lambing start-
- [10 white-headed Dorper ewes, 2 & 3 years old, exposed to a black-headed Dorper ram for a December lambing start]
- 1 Dorper/Katahdin ram lamb
- 1 white Katahdin ram lamb
- 12 hair ewes, 1 to 3 years old, exposed for a December lambing start
- 12 Katahdin ewe lambs, open
- 5 Dapple Boer nannies, 2 years old, exposed to a Dapple Boer billy
- 1 Dapple Boer billy, 2 years old
- 5 mix nannies, exposed to a Boer billy

**\*COMPLETE DISPERSAL\***

- \* [24 Katahdin ewes, 2 to 4 years old, exposed
- 6 Katahdin ewes, 4+ years old, exposed
- 13 Katahdin ewe lambs, exposed September 12
- 2 Katahdin rams, 2 years old
- 4 Katahdin ram lambs\*
- [50 Katahdin & Dorper ewes, 2 to 4 years old, exposed to Katahdin & Dorper rams
- 2 white Katahdin rams, 1 year old
- 1 Dorper ram, 2 years old]

We are open on Sunday to Receive Your Livestock  
"Your Business is Very Much Appreciated"  
"Proud to Serve Area Livestock Producers"  
For more information or Someone to  
Phone for information:  
Patty Foster, Office Manager - 660-665-9804  
Chuck Ambrosia - 660-342-3530 - Luke West - 620-215-5770  
Mark Herbold - 515-720-8667 - Al Ashmead - 660-216-8730  
Doug Fieshman - 660-626-7148 - Daniel Smith - 660-341-8396  
Jeremy Jarman - 660-341-9879 - Caleb Randolph - 641-919-8539  
Karol Kirkpatrick - 641-777-3403

**AGRI-BUSINESS**  
**Equipment & Supplies**

Woods HD 315 bat wing 15' mower, 540 PTO, solid deck, no welds, rebuilt cylinders, stump jumper, always shedded, operators manual, in use now. \$2900.00. 217-257-1385.

**The Ultimate Wood Heat.**



**CLASSIC EDGE**  
TITANIUM HDX  
Outdoor Wood Furnace

- **More Comfort** - Thermostatically controlled wood heat.
- **Peace of Mind** - Keep the fire outside and eliminate the dangers associated with indoor wood heating.
- **Save Money** - Wood is a renewable, inexpensive and often free energy source.

**Campen Heating & Air**  
Division of Kraus & Sons Inc.  
Canton, MO 63435  
**573-288-8966**  
[CentralBoiler.com](http://CentralBoiler.com)

2020 Krone AMR 280 disk mower, 9.3 cutting with 3 pt quick change blades, safe cut hubs, low acres used, shedded. \$10,200. 217-257-1385

Corn heads Drago 830; Gleaner 3000 630 electric stripper plates meter corn reel; 630 hugger; 830 black R or M; 630 black M2 217-658-4761.

NH3 DMI 12K dual no till for strip till markers monitor; 13 knife, 14K, 15K, with monitor; disks 30; Krause; Oliver 10', JD 10', Kewanee 8'. 217-658-4761.

Westfield auger, MK10x71, hydraulic power swing hopper, excellent condition, \$8,200.00. 660-341-1869.

Combines, Gleaner R62, IHC 2388, 2188, 1460, 1440; MF 850, 750 all are diesel; JD 55 gas, MF 750 Gas. 217-658-4761.

7 foot pull behind brush mower, don't know kind, Keokuk, IA \$700.00 or best offer. 319-470-0463.

Butler grain bin, 6 rings, 7 1/2' tall sides. Size ideal for gazebo, \$250.00. 217-257-1385

A 1951 Ford Tractor in Good Condition For Sale \$1,500.00 Edina Missouri Call 319-520-7179.

**NEMOTRADER.NET**

**Connie's MOBILE HOME TRANSPORT**

We offer the following...  
Break Downs • Transport • Set up • Anchoring

**Call Rich today! 573-881-7483**

**1976 International 1066,**  
Black Stripe, #57193, original paint, cab, 5260 hours, bought in 1978. 3 point, top link, dual PTO, front weights, 18.4x38, 0.00-16 fronts, 9 bolt hubs, good TA, new batteries, always stored inside. Starts, runs and drives well,  
**\$19,000**  
**217-257-1385**

**NEMO TRADER BRAIN GAMES**

**-CROSSWORD- PUZZLE**  
-SEPTEMBER- WEEK 3

**-PUZZLE- SODOKU**  
-SEPTEMBER- WEEK 3

**Here's How It Works:**  
Sudoku puzzles are formatted as a 9x9 grid, broken down into nine 3x3 boxes. To solve a sudoku, the numbers 1 through 9 must fill each row, column and box. Each number can appear only once in each row, column and box. You can figure out the order in which the numbers will appear by using the numeric clues already provided in the boxes. The more numbers you name, the easier it gets to solve the puzzle!

		3	2					7
		4			3	8		
6								1
						7		
					2	4		
	5		1	7		9		
				8				5
			7		1			9
1			9	2	6			

Level: Intermediate

**Fun By The Numbers**

Like puzzles? Then you'll love sudoku. This mind-bending puzzle will have you hooked from the moment you square off, so sharpen your pencil and put your sudoku savvy to the test!

**WORD SEARCH**  
-SEPTEMBER- WEEK 3

**ANSWER:**

ANCHOR  
APPLIQUE  
BASTE  
BIAS  
BOBBIN  
BODICE  
BUTTONHOLE  
CASING  
DART  
FACING  
FOLD  
GRAIN  
HEM  
LENGTH  
MACHINE  
NOTCH  
PATTERN  
PINS  
PLEAT  
SEAM  
SELVEDGE  
STITCHING  
TACK  
TENSION

**CLUES ACROSS**

- Wrest
- Russian river
- Grupo Montparnasse founder
- One who quits prematurely
- Related to the nature of being
- Early multimedia
- Indigenous Tibetan religion
- Tease
- J.M. \_\_, Irish dramatist
- Pounds per square inch
- Surrendered
- Notable Dallas Cowboy Leon
- Dash
- Man who behaves dishonorably
- British Air Aces
- Data executive
- Spiritual leader
- Flower cluster
- Of the cheek
- Tears down
- Uncoordinated
- Touches lightly
- Soak
- Founder of Babism
- Not good
- Inches per minute (abbr.)
- Type of casino game
- Skills assessments for adults
- Check
- Gives a job
- Fifth note of a major scale
- Small, faint constellation
- Thou
- Reduce
- Another recording
- Removes for good
- Jill and Catherine are two
- Cruise

**CLUES DOWN**

- Greenwich Time
- Metropolis
- Complete
- Scheduled
- One who obeys
- Resinlike substance secreted by certain lac insects
- Days (Spanish)
- Unsaturated hydrocarbon radical
- Region of the U.S. (abbr.)
- Tributary of the Alabama River
- One who eliminates
- Ballroom music
- Officer in the Book of Mormon
- Denies
- Barrels per day (abbr.)
- Make vital
- Former NFLer Newton
- Kashmiri tribe
- Indigenous S. American person
- Capacitance unit
- MLB great Scherzer
- Taxi
- Boggy
- Artist's workshop
- Feline
- Prosecutors
- Freshwater perches
- Young ladies
- Whittles
- Licensed for Wall Street
- Type of gene
- Express displeasure
- Fly high
- Norwegian krone
- Investment account
- Chinese surname
- Language
- By the way (abbr.)

**CRYPTO FUN**

Solve the code to discover words related to sewing. Each number corresponds to a letter. (Hint: 24 = 1)

**A. 17 26 26 14 6 26**  
Clue: Sharp instrument

**B. 24 22 11 26 18 14**  
Clue: String or floss

**C. 12 24 9 24 13 22**  
Clue: Make, mend or join together

**D. 18 24 24 18 13 22**  
Clue: Fasten or join

**GET SEWING WORD SEARCH**

Find the words hidden vertically, horizontally, diagonally, and backwards.

**WORDS**

ANCHOR  
APPLIQUE  
BASTE  
BIAS  
BOBBIN  
BODICE  
BUTTONHOLE  
CASING  
DART  
FACING  
FOLD  
GRAIN  
HEM  
LENGTH  
MACHINE  
NOTCH  
PATTERN  
PINS  
PLEAT  
SEAM  
SELVEDGE  
STITCHING  
TACK  
TENSION

**ANSWER:**

ANCHOR  
APPLIQUE  
BASTE  
BIAS  
BOBBIN  
BODICE  
BUTTONHOLE  
CASING  
DART  
FACING  
FOLD  
GRAIN  
HEM  
LENGTH  
MACHINE  
NOTCH  
PATTERN  
PINS  
PLEAT  
SEAM  
SELVEDGE  
STITCHING  
TACK  
TENSION

**ANSWER:**

ANCHOR  
APPLIQUE  
BASTE  
BIAS  
BOBBIN  
BODICE  
BUTTONHOLE  
CASING  
DART  
FACING  
FOLD  
GRAIN  
HEM  
LENGTH  
MACHINE  
NOTCH  
PATTERN  
PINS  
PLEAT  
SEAM  
SELVEDGE  
STITCHING  
TACK  
TENSION

**Equipment & Supplies**

Gooseneck livestock trailer, inside 20 foot, outside 8 foot with gate, \$1850.00, Keokuk, IA, 319-470-0463.

**Hay/Feed/Seed**

5X51/2 big round bales for sale. Baled dry mixed grass hay with alfalfa. Fertilized, lab tested, net wrapped. Watson Hay Sales 660-341-4031

Big round bales mixed grass hay, delivery available. Bob Campbell, Memphis, MO, 660-342-9054

Hay for sale: Big bales out of John Deere baler, 114 brome, 100 mixed grass, \$55.00 a bale. Take them all, I will take \$11,000. Mike Thurman 660-651-8546

**Livestock**

Yearling Friesian cross bay filly, \$850.00. Set of nylon harness, \$350.00. 660-342-5314

**NEMOTRADER.NET**

**MERCHANDISE**

**Miscellaneous**

Overhead roll up door, 8 1/2' wide x 8' tall. Sand filter for pool with electric motor and pump gauge system. Will also work for greenhouse. Cheap. 641-208-2021.

Fish for stocking ponds: catfish, grass carp, crappie, redear, bass, and fat-head minnows. Heindselman Family Farms. 660-341-5692.

Haier air conditioner, 10,000 BTU, remote, covers 450 square foot, used very little. \$100.00. Older Amana AC, \$20.00. 217-257-1385

**Miscellaneous**

Grain Heads, Gleaners 8000 30, 25', 20'; IHC 1020 25', 20'; 7 1/2'; NH 25', 20'; Gleaner 15' for F; MF 18; JD 220. 217-658-4761.

VT Kuhn K 8000 32'; Landall 7430 33'; GP 3000 turbo till 2 30'; AP1500 no till drill; Krause 20' with GP cadie. 217-658-4761.

**CORN HEADS IH3** 983, 883, 863, 963, 944; MF 1163, 1183; for JD; 1144, 330; NH 974, 630 217-658-4761.

Hardy H-5 wood furnace, 9 years old, grates are good, \$5000.00. 660-626-4673.

**Lawn & Garden**

Want a greener lawn? TruGreens your go-to for a tailored lawn care plan. Act now and get 50% off your first service with a purchase of an annual plan. Call us at 1-866-416-0207 to learn more

**Pets & Supplies**

3 APRI registered mini Doxen puppies. Shots and wormed, \$600.00, would trade for Mastiff puppy. 660-216-4696.

**Sports Equipment**

Heindselman Farms inventory reduction! Fiberglass deer blinds, Lazy Man, Fat Girl, Bow or Combo, \$1450.00. Brick house, \$1100.00. 660-341-5692

**REAL ESTATE SALES**

**Acreages & Lots-Sales**

40 Acres (ALL TILLIBLE) located in Queen City MO. Farm being cash rented for \$175 an acre. Asking \$8000 an acre.

**FOR SALE**  
AI Sired Angus Bulls,  
14 & 18 Months Old.  
Harold Trump  
660-341-5730

**Rootcare**  
Having problems with:  
\*Nail Trimming  
\*Hard skin/Calus  
\*Corns  
\*Fungal Nail  
\*Athletes Foot  
\*Diabetic  
Call for appointment  
**660-240-1991**  
1st Tuesday of the Month at  
Trenton's North 85 Center  
Home Visits available  
Rachel Rempel  
Registered Nurse  
Certified Foot Care Specialist

**AKC LAB PUPPIES**  
\$150 Males - Only 2 left!  
LAY'S LABS  
LABELLE, MO  
(660) 956-2482

**2020 GMC Terrain SLT,**  
AWD, black leather heated seats and steering wheel, backup camera, remote start, collision alert & much more, white frost, been garaged, window sticker, 78,000 miles (local one owner).  
**\$20,700**  
**2010 Jeep Liberty Limited,**  
4x4, V6, loaded, heated leather seats, sunroof, chrome package, new tires, always garaged, Same owner last 12 years, 115,000 miles  
**\$10,500**

**Accelerators Performance & Auto**  
for "50" Years  
Kahoka, MO  
660-727-3455  
Daryl's Cell  
217-257-1385

**CELEBRATIONS!**  
**PARTY RENTAL**  
KIRKSVILLE, MO  
FOR RENT  
• Tables & Chairs  
• Tents • Bounce House  
• Cotton Candy Machine  
& More!  
**660-626-5162 or 660-665-9380**

**Golden Grain Bins-Winter Discount**

Grain Bins	Floors w/12"Supp. & Flashing	
18'x18' 4,195bu. \$ 6,067	18'....\$1,693	30'....\$ 4,726
27'x21' 11,265bu. \$12,178	21'....\$2,315	36'....\$ 6,733
42'x24' 32,245bu. \$28,386	27'....\$3,862	42'....\$ 9,169

**Golden Grain**  
GMLS Industries, Inc.  
PH: 660-699-2179 or 620-983-2136  
www.gmlsindustries.com

**FARM & INDUSTRIAL PAINTING**  
- Pat Costello -  
• Houses  
• Barns  
• Morton Sheds  
• Barn Repairs  
• Metal Roofs  
• All colors!  
**FREE Estimates**  
**Tri-State Painting 1-800-940-8289**  
(Leave Message)

**TIMBER MANAGEMENT.**  
Purchasing  
Walnut, Oak,  
Maple & Other  
Species  
**WE PAY BEFORE WE CUT**  
**BONDED & INSURED**  
**641-895-8209** Est. 1968

**Miner Hill, LLC**  
Live County Music on Friday Evenings at 7pm  
**Flea Market**  
Lot Rentals Start at \$25  
Free Public Admission!  
Antiques Crafts  
Guns Unique Junkie  
Baked Goods & Much More!  
Weekend 50/50 Drawing Saturday 3pm  
2024 Dates  
April 26-27  
May 24-25  
June 28-29  
July Closed  
Aug Closed  
Sept 27-28  
Oct 18-19  
Contact Info  
(660) 375-1212  
Minehillllc@yahoo.com  
www.minerhill.com  
1310 N Missouri Ave  
Marceline, MO 64658

**WE OFFER CUSTOM HARVESTING!**  
We have Multiple John Deere S Series Machines with Draper Heads available.  
We harvest  
• wheat  
• corn  
• beans  
"Got big yields? Give us a call to rent a second combine."  
Give us a call for your harvesting needs and for a quote.  
Merlin Ramer #880-341-2045

**WE GOT YOUR NEEDS COVERED!**  
**FARM TARPS TRUCK TARPS HOOP BUILDING COVERS**  
**Troyer TARP MFG.**  
**660-486-3301**  
20264 STATE HWY. VV • ETHEL, MO 63539

**NEMO Trader Classified COUPON**  
2 Classified Ads for just **\$6.00**  
20 cents per word over 20 words  
Must be Mailed in or brought in along with payment.  
Picture Ads Not Included with Coupon!  
Choose Classification  
 Agri-Business  Real Estate Rentals  Yard Sales  
 Announcements  Real Estate Sales  Auctions & Estate Sales  
 Employment  Recreation   
 Financial  Services  
 Merchandise  Transportation  
Ad No. 1 Each Box Represents a Word (20 words or less)  
Ad No. 2 Each Box Represents a Word (20 words or less)  
Name \_\_\_\_\_  
Mailing Address \_\_\_\_\_  
Phone Number \* \_\_\_\_\_  
this is required\*  
PO Box 809 Kirksville, MO 63501 • 660-665-8500

**Turn Your Clutter Into Cash**  
Get money in your pocket and room in your garage when you sell your stuff and promote your sale through the newspaper classifieds!  
\$254  
\$33  
\$95  
\$21  
\$57

**Acres & Lots-Sales**

LAKE OF THE OZARKS Autumn Special - Lots for building, tiny sheds, campers or own for investment, starting at \$5,550.00 - \$150.00 down \$95.00 per month. Beautiful trees, calm water, great fishing, jet skiing, swimming, boating and relaxing. No credit checks, owner financing, and immediate possession. Free lake access and boat ramps. Prices good through September 23, 2024. Hwy 135 between Stover and Sunrise Beach, MO. Take lake road 135-12 to the Ivy Bend Land Office. Closed Tuesdays and Wednesdays Call anytime 573-372-6493

**Mobile Homes For Sale**

40 YEARS THIS YEAR - we have to be something right. Call for quote or any house new or used, double and single. 573-657-2176. amegamobilehomes.com

I BUY...used mobile homes. Call or text 573-338-6250 or email Greg S. CDH @outlook.com.

WE GOT IT - let us bid your mobile home purchase, new and used. 573-499-9993. columbiadiscounthomes.com.

TINY HOMES - Missouri franchise 573-881-7965.

2007 16'x75' trailer house, 3 bedroom, 2 bath. Located 5 miles North of Knox City. \$27,500.00 obo. Excellent condition. 660-299-0322.

TRIPLE WIDE - moving stock, awesome price. 573-657-7040. chateauhomes.net

Have items to sell? Have too much stuff? Let us help you get the most for it! Call 660-665-8500.

**RECREATION**

**ATV's**

2001 Polaris 500, 4x4 with windshield, \$8,000. 573-288-4283.

**Motorcycles**

2003 Kawasaki Vulcan 1500 Mean Streak (Police Version), 7805 highway miles. Excellent appearance, excellent ride and clear title. Always garage kept w/tarp. Comes with new fork springs, new rear suspension, new grips. \$3,000 firm. Contact me via email for pictures. Will throw in brand new (unused) leather covered/hard sided saddle bags (a \$450.00 value). Contact: Kenchik99@gmail.com

**SHOW-ME SEAMLESS GUTTERING**

FREE ESTIMATES • PROMPT SERVICE

- 5" & 6" Gutters
  - Siding • Soffit • Fascia
- (23 colors available on Gutters & Fascia)

Tried of Cleaning your Gutters?

**LEAFPROOF THEM!**

ELLIOTT HIX  
660-626-3447 • KIRKSVILLE, MO

**Show Me Plumbing Services**



- General Mini Excavation & Skid Steer Work
- Livestock Watering
- Waterlines & Sewer Systems
- Residential Services & General Plumbing
- Utility Trenching

Stan Schrock 660-988-1163  
Greentop, MO 660-766-2636

**Chat/Dirt/Gravel**

DIRT WORK All types of excavation, reclaiming overgrown fields, including CRP and WRP. Building site preparation, creating new trails and crossings, Food plot development and maintenance. Leveling and grading, wetland construction and maintenance. Pond and lake cleaning and construction. Call for quotes. 660-342-2701

**Cleaning**

WATER DAMAGE CLEANUP & RESTORATION: A small amount of water can lead to major damage in your home. Our trusted professionals do complete repairs to protect your family and your home's value! Call 24/7: 1-877-595-9109. Have zip code of service location ready when you call!

**Home Services**

Scott Huskey's Insulated Skirting Systems-keeps your home cooler in the summer-warmer in the winter-saves on utilities and looks great! Since 1972, 573-696-3468.

PEST CONTROL: PROTECT YOUR HOME from pests safely and affordably. Roaches, Bed Bugs, Rodent, Termite, Spiders and other pests. Locally owned and affordable. Call for service or an inspection today! 1-888-618-1486 Have zip code of property ready when calling!

Does your basement or crawl space need some attention? Call Thrasher Foundation Repair! A permanent solution for waterproofing, failing foundations, sinking concrete and nasty crawl spaces. FREE Inspection & Same Day Estimate. \$250 off ANY project with code GET250. Call 1-855-460-1476

**NEMOTRADER.NET**

**Premium Metal Roofing**



**Metal Roofing Headquarters**

641-664-3990 • awmetal.net

**Lawn/Garden/Landscape**

New 3 pt. tillers, heavy duty, gear driven, 7' to 12' starting at \$4,150. 660-874-4455.

**Remodeling**

The bathroom of your dreams in as little as 1 day. Limited Time Offer - \$1000 off or No Payments and No Interest for 18 months for customers who qualify. BCI Bath & Shower. Many options available. Quality materials & professional installation. Senior & Military Discounts Available. Call Today! 1-866-460-1048

**Miscellaneous**

Consumer Cellular-the same reliable, nationwide coverage as the largest carriers. No long-term contract, no hidden fees and activation is free. All plans feature unlimited talk and text, starting at just \$20/month. For more information, call 1-844-211-0742

**NEMOTRADER.NET**

**Skyline Service LLC**  
Skid Steer and Construction Repair  
Levi Weiler  
660-346-6881 • 660-883-5525

Scan Tool Diagnostics  
Exhaust After Treatment Repairs • SCR Unlocks  
Skid Steer Tracks Available

**HARRISON FISHERY**  
POND & LAKE STOCKING  
Call us today! 660.423.5482

Pond & Lake Stocking Specialists

info@harrisonfishery.com  
harrisonfishery.com

**Small Animal Auction**  
Saturday, Sept. 28, 2024  
To be held at the  
**SCHACHTELE BARN - KEYTESVILLE, MO**  
From Hwy 24 at Keytesville, take Hwy 5 approx 4 miles to site w/ brown barn/green roof on the West side of the road, or from Hwy 36 at Marceline exit take Hwy 5 South, approx. 16 miles to site. Follow Auction signs!  
**Starting @ 11:30 am**  
We will start with Misc. Items Outside & Follow with Small Animals approximately 12:00 noon. Expecting Chickens, Geese, Ducks, Turkeys, Rabbits, Goats & Many Other Small Animals!  
**We are NOT accepting any HOGS! All Out of state Animals to be Sold MUST Have Proper Health Papers!**  
Lunch Served • Call for More Details!  
Tony Schachtele 660-413-3250  
**We Appreciate All Consignments!**  
Terms Cash - good Check with Proper ID  
We are NOT Responsible for Accidents to Man, Woman, Child, or Animal. We are NOT Responsible for Lost, Stolen, or Damaged Articles or Property.

**SERVICES**

**Miscellaneous**

HOME BREAK-INS take less than 60 SECONDS. Don't wait! Protect your family, your home, your assets NOW for as little as 70¢ a day! Call 1-888-618-0515.

**Roofing**

ATTENTION: INSULATED METAL ROOFS COMPLETE \$4,995.00\* Siding /Windows \$1,000 OFF OFFER ENDS SOON WE WILL NOT BE UNDERSOLD, 100% Financing, SR/Military Discounts, SAVE HUNDREDS!! Finally a company with affordable prices. 800-350-0591\* for details

**TRANSPORTATION**

**Parts & Services**

Brush guard, Aries 2052, black, fits 2003-2006 Toyota Tundra extended cab, never installed. No brackets. \$250.00. 660-341-4561.

Call about our classified ad specials. 660-665-8500.

**LOLLI LIVESTOCK MKT, INC.**  
**NO SALE Tuesday, Sept 24th**

October 1 - Special Calf & Yearling Sale  
October 8 - Special Calf & Yearling Sale  
October 15 - Special Cow, Cow/Calf & Breeding Bull Sale  
October 22 - Special Calf & Yearling Sale  
October 29 - Special Calf & Yearling Sale

Cafe Open **Lolli Livestock Market, Inc.** Cafe Open  
704 Main st \* Macon, MO \* 660-385-2516  
Frankie 660-651-4040 \* Tim 660-651-3496 \* Joseph 660-346-9711  
Jordan 660-346-0410 \* Cody 660-676-9392 *Cattle accepted on Sundays*  
Follow Us On Face Book & www.lollibro.com

**VIRTUAL ONLINE**  
**SCOTLAND COUNTY, MO LAND AUCTION**  
**THURSDAY, OCTOBER 17, 2024 AT 10:00 AM<sup>CT</sup>**

158 ACRES± (SUBJECT TO SURVEY) • 4 TRACTS

SCAN FOR MORE INFORMATION

The Mallett farm is near Greensburg, MO and conveniently located on Hwy 15 and off County Line Road, 11.6 miles north of Edina, MO and 12.4 miles south of Memphis, MO. The farm is further described as being located in Section 35, T64N-R12W, Tobin Township, Scotland County, Missouri.  
Farm represents productive tillable cropland, well maintained pastureland, home, and outbuildings.  
**DONALD L. MALLETT AND VIRGINIA ANNE MALLETT FAMILY TRUST**  
**MARTHA GUDEHUS AND TERRY MALLETT, CO-TRUSTEES**  
Representing Attorney: Evan Shoemaker | Van Matre Law Firm, P.C.  
1103 E Broadway, Columbia, MO 65201 | (573) 874-7777  
Closing & Title Work: Scotland County Abstract  
205 East Monroe Street, Memphis, MO | (660) 465-7052  
Auction Managers: Louie Zinn (319) 795-2314 & Dan Sullivan (319) 795-1833

**BigIron** **SULLIVAN AUCTIONEERS**  
a BigIron company  
(844) 847-2161 | www.SullivanAuctioneers.com

**ANNUAL FALL MACHINERY AND EQUIPMENT AUCTION**  
**SATURDAY OCTOBER 5, 2024 9 AM (BE ON TIME)**

Online bidding will be available on Select Items at: demryauction.hibid.com  
1916 SOUTH 18TH (HWY 5) CENTERVILLE, IOWA

TRACTORS: JD 7810 MFWD; JD 4450; JD 4440; JD3020; WHITE MPWD; OLIVER 1950T; 1947 AC C; 1947 Oliver 60; 1935 JD A; 1939 JD B; 1948 M w/ 9 speed m & w Trans, fenders, new tires, parade condition; MF 135 as-is; **GRAIN CART, COMBINES, AND EQUIPMENT:** Brent 782 Grain Cart; Brent 740 Gravity Wagon; Case IH 1640 Combine w/ 983 Corn Head; 1020 Grain Head w/ Cart; IH Hyd Fold Disc; New Holland H7450 Mow Max Conditioner; Vermeer 605N Baler w/ Wrap & Kicker; Vermeer VR 1224 12 Wheel Rake; Bush Hog 2615 Legend Batwing Mower; JD 726 Soil Finisher; Traviseed Hitch Doc HSC4000 Cart; NH 499 Haybine; NH 680 M Spreader; White 6100 Corn Planter; JD 247 Sq Baler; 3 Grain Augers; 6 Gravity Flow Wagons; 3 Flare Box Wagons (1 w/load firewood); 60" Kubota Zero Turn L Mower; Case IH 3950 Disc; Kewanee 1010 Disc; 3 Grinder Mixers; IH Case 1660 Combine w/ Bean Head; 2-494 JD Planters; IH 12' Disc; Caldwell 549 Auger Wagon; Small Farm Trailer; 1969 NH Sq. Baler; JD 275 3pt Disc Mower; Danuser 3 pt Post Hole Digger w/ 3 Augers; 16' Hayrack on Huskee Gear; NH 850 Round Baler; 2 Hyd Snow Blades, 300 Series;  
**SKID LOADER ATT., LARGE SHOP TOOLS, CAR, TRUCKS, ETC:** 03 Kenworth T300 Cab & Chassy, 350K, 6 Speed; 05 Volvo Semi; 1978 MERCURY GRAND MARQUE, 4 DOOR, 8 CYL; Skid Loader attachments=Mower; 2 loader att; FMC Side Winder; Hyd Tree Cutter; Bob's Tools Upright Air Comp.; Hobart Generator; Miller Welder on Cart; Drill Press

**NOTE:** DUE TO A LARGE NUMBER OF EARLY CONSIGNMENTS, WE ARE EXPECTING A GREAT SELECTION ON SALE DAY. WE MUST LIMIT THE NUMBER OF TOOLS & SMALL ITEMS FOR THIS AUCTION. WE PLAN TO SELL THESE ITEMS AT OUR COMBINED HAY AND TOOLS AUCTION NOV 16. ALREADY HAVE TOOLS, TRACTOR PARTS, NEW RUBBERMAID TANK LISTED. CONTACT US TO LIST YOUR HAY AND ITEMS TO SELL.

**DEMRY AUCTION, LLC**  
1916 S 18th St, (Hwy 5 SOUTH) CENTERVILLE, IOWA  
Janet Demry: 641 895 4310 and 641 856 6408  
Tom Demry: 641 895 2508 • Kristy Demry: 641 895 2509  
Randy Mulay: 641-436-1521 • Dalton Ott: 563-880-5626  
Website: www.Demryauction.com

**NEMOTRADER.NET**

**FARM MACHINERY CONSIGNMENT AUCTION**  
Saturday, Oct. 19th, 2024  
Sale starts @ 10:00 AM

**SCHACHTELE BARN - KEYTESVILLE, MO**  
From Hwy 24 at Keytesville, take Hwy 5 approx 4 miles to site w/ brown barn/green roof on the West side of the road, or from Hwy 36 at Marceline exit take Hwy 5 South, approx. 16 miles to site. Follow Auction signs!  
Selling Farm Machinery, Farm Tools & Equipment & Many More Miscellaneous Items (NO household Items)

**Now ACCEPTING CONSIGNMENTS**

To Consign Early for advertising or for more information  
Call Tony: 660-413-3250  
**WE APPRECIATE ALL CONSIGNMENTS!**  
Terms Cash - good Check with Proper ID  
We are NOT Responsible for Accidents to Man, Woman, Child, or Animal. We are NOT Responsible for Lost, Stolen, or Damaged Articles or Property.

FIND THE  
**PERFECT PET**  
FOR THE  
**PERFECT PRICE**  
IN THE  
**PERFECT PLACE**  
FOR DEALS

Find the stuff you want and sell the stuff you don't in the local newspaper classifieds.

# Professional Auction Services

Like to look for those auction deals? Have land, equipment, or other items you need to have auctioned? Check out these area auction companies!

## SAYRE AUCTION LLC

*Specializing in Estate & Real Estate Auctions*  
*Serving Linn County and Surrounding Areas*  
809 West Dake Street • Brookfield, MO 64628  
**660-734-8782**  
shawnsayre@ymail.com  
www.sayreauction.com

## RANCH & FARM AUCTIONS

*Specializing in Land & Farms \*Online Auctions*  
*Serving All States*  
115 W. Washington • Pittsfield, IL 62363  
**217-922-0811**  
directors@ranchandfarmauctions.com  
RANCHANDFARMAUCTIONS.COM

## SULLIVAN AUCTIONEERS, A BIGIRON COMPANY

*Specializing in Agricultural Real Estate & Machinery*  
*Serving the Tri-State Area*  
1066 E. US Hwy 136 • Hamilton, IL 62341  
**844-847-2161**  
sold@sullivanauctioneers.com  
www.sullivanAuctioneers.com

## UNITED COUNTRY GILWORTH REAL ESTATE & AUCTION

*Specializing in Equipment & Real Estate Sales*  
*Serving North Missouri & Southern Iowa*  
2020 Main Street • Unionville, MO 63565  
**660-947-7738**  
cedgilworth@gilworthrealestate.com  
www.ucgilworthauction.com  
www.gilworthrealestate.com

## NORTH MISSOURI LAND COMPANY

*Specializing in Farm, Ag, and Recreational Land*  
*Serving all of North Missouri*  
506 N. Missouri Street, Suite A • Macon, MO  
**660-395-5263**  
northmoland.com  
northmoland@gmail.com

## MCAFFEE AUCTION SERVICE

*Land - Machinery - Estate - Coins*  
*Serving Northeast Missouri*  
375 South Johnson • Kahoka, MO  
**660-727-3796**  
www.mcafeeauctionservice.com  
auction@centurylink.net

## MERIT AUCTIONS, LLC

*Specializing in Farm Real Estate & Ag Equipment*  
*Serving the Greater Midwest*  
4502 Avenue O • Ft. Madison, IA  
**833-273-9300**  
info@meritauctions.com  
www.meritauctions.com

## MISSOURI LAND AND FARM MIDWEST LAND AND RANCH

*Specializing in Ag and Recreation Land,*  
*Serving all of Missouri and Kansas*  
216 N Main • Brookfield, Mo  
**660-788-3333**  
**660-734-3925**

## WHEELER AUCTION SERVICE

*Specializing in Real Estate & Farm Machinery*  
*Servicing all locations*  
23101 Hwy 24 • Paris, MO 65275  
**660-327-5890**  
Wheelerauctions.com  
ads@wheelerauctions.com

## PURPLE WAVE AUCTION

*Specializing in online equipment auctions*  
*Serving All States*  
825 Levee Drive • Manhattan, KS 66502  
**866.608.9283**  
auction@purplewave.com  
purplewave.com

## ALL AUCTION INC.

*Specializing in Estate, Property, & Consignments*  
*Auction House & Lot available*  
*Serving Iowa & Missouri*  
1011 N Front St • Humeston, IA 50123  
**515-231-5176**  
allauctionsinc@gmail.com  
www.allauctionsinc.com

# NEMO

Trader

PO BOX 809 • KIRKSVILLE, MO 63501  
PHONE 660-665-8500  
Web Site: [nemotrader.net](http://nemotrader.net)  
Email: [sales@nemotrader.net](mailto:sales@nemotrader.net)

7202911

The meeting Place for Buyers and Sellers!!

# NEMO

Trader

**660-665-8500 or email: [sales@nemotrader.net](mailto:sales@nemotrader.net)**

**SHOP LOCAL - BUY LOCAL - ENJOY LOCAL**

# AUCTION

SATURDAY, SEPTEMBER 28, 2024 10:00 AM

SALE TO BE CONDUCTED FOR THE  
**ROGER FRANKLIN ESTATE**  
14214 WHITEFISH TRAIL, ELDON, IOWA  
OR 2 Miles East of Eldon on Hwy. 16 to the Douds Stone Sand Plant,  
then South 1/2 mile to Auction Site  
Auction Signs Will Be Posted

**TRACTORS, COMBINE COLLECTOR TRACTORS & DOZERS:** Cat Challenger 65, cab, 4 outlets, recent complete overhaul; Case 1370, cab, dual outlets, good tires, 3-pt; Case 1070, cab, 3-pt, DO; Deutz D-100-06 tractor, FWA, dual outlets, 3-pt, Serial #Kubota M8200, FWA, cab, 3-pt, w/Kubota LA1251 quick-attach loader, shows 1,310 hours; Case 1660 combine, RWA, shows 880 hours; Case 1083 8-row corn head, poly; (2) 1020 20' grain platforms; Case 600 collector combine; Farmall Super MTA, NF, rear fenders, runs good; Deutz D100-06, FWA, dual outlets, 3-pt, 18.4x38 tires, open station, shows 2,186 hours; Case 33 Junior Twin-Power 101, WF, new tires; Farmall C, NF, w/belly mower; Case VAC, older restoration w/eagle claw hitch; 1949 UST track military dozer w/5' hydraulic blade; John Deere 450 diesel dozer w/3-in-1 bucket; 1960 Case 310 dozer, gas, w/blade, runs good; Case 1825 skidloader w/repower Cat engine; Bobcat skidloader, non-running.

**FARM EQUIPMENT:** Brillion 600 Land Commander disc ripper, 9-shank, low acres; Brush Whacker 15' hydraulic-fold heavy-duty brush cutter; IH 55W wire-tie baler w/4-cyl. gas engine; Small 5' 2-wheel dirt scoop; 3-pt. forklift; 3-pt. sliding hitch; Kewanee 22' hydraulic flat-fold disc; IH 4600 27' hydraulic-fold pull-type field cultivator; New Holland 68 twine-tie square baler; Carlson 2-pt. flail ditch mower; (2) 6' box blades; Case 12-row 183 hydraulic-fold cultivator; IH 3-pt. field cultivator; 6-row 3-pt. cultivator; 3-pt. bale stabber; 1000-gal. anhydrous tank used for water, on 3-wheel cart w/Honda engine; Steel bargebox wagon on heavy-duty gear w/hydraulic lift;

**UTV & TRUCKS:** Kubota RTB11440-CPX, diesel, 2-seat side by side; 2000 Volvo tandem-axle w/2 auxiliary axles dump truck w/16' steel bed, hoist, 10-spd, roll tarp, w/new 22.5 tires; 1991 Ford Louisville 700 diesel, single-axle, 5+2, w/highway spreader box, shows 58,000 miles; 1984 International tandem-axle diesel, 5+2 grain truck w/steel 16' box & hoist. These above 3 trucks always shedded, run good. Mack 350 engine w/less than 4,000 miles; (14) New 22.5 Hercules truck tires; (2) 24.5 truck tires; Asst. of new recapped truck tires; 2003 Wilson 42' walking floor trailer; 1979 VW bumper-hitch 16' stock trailer. **CONSIGNED:** 1994 GMC tandem-axle dump truck, air-lift cheater, Volvo diesel engine, 10-spd, 11x22.5 new tires, with Ravens alum. 18' dump box & hoist, air gate; 20DT tandem-axle dual-wheel heavy-duty 28' trailer w/dovetail, heavy-duty ramps, pintle hitch;

**COLLECTOR CAR, MOTOR HOME, GENERATORS:** 1928 Ford 1-1/2T. truck, wooden box, always kept inside, for restoration; Mercedes Benz 190, 4D, diesel, complete, always stored inside, runs, for restoration; 1994 Four Winds 5000 24' motor home; 2007 US Army diesel-powered generator, on heavy-duty 2-wheel trailer; Ingersoll Rand port. air compressor, on 2-wheel trailer; Light Plant 10K generator w/lights & DC welder; Wind Power port. 2-wheel PTO generator; Older walk-behind gas-powered trencher; Flat-bottom jon boat on 2-wheel trailer w/Mercury 9hp motor; Old seed cleaner; Seadoo Challenger boat on trailer; Large stationary 220 120-gal. 2-stage compressor; 220 120-gal. air compressor, like new.

**TOOLS:** BBC & Aladdin gas-powered steam cleaners; Large grinder & stand; Lincoln 225 welder; 60-gal. horizontal twin-cyl. air compressor; Miller Blue Star port. welder w/leads, on 2-wheel trailer; Miller-Matic 200 gas-powered welder; Forney elec. welder; Large Snap-On tool cabinet w/base & top box; Rimco industrial hydraulic press; Parts cleaner; Waterloo base tool cabinet & top box; Slant-front Montezuma toolbox; **Extremely large 200-lb. anvil & stand;** Drop cords; Hydraulic jacks; Log chains; Oil barrels & stands; 10T. floor jack; Engine hoists; Small sandblaster; (2) Oxyacetylene torch sets; Large asst. of hand tools incl. sockets, wrenches, hammers, screwdrivers, grease guns; Floor-mount drill press; Drill press & stand; Power hacksaw; Battery chargers; Tool carts; Pipe threaders; Power hacksaw; Milwaukee 1/2" drill; Cutoff saw & stand; Large shop fan; Large bench vise; Hand-held grinders; Chain saws; Sprayers; Shop fans; Chain hoists; Rolling tool carts; Torch set; Large Wilton vise w/roller table; Vise & stand; Asst. of biodiesel manufacturing equipment incl. vats, tubs, heaters, fuel blender & others; Pickup fuel tank; Port. gas high-pressure washer; Roof fence-row mower.

**COLLECTIBLES & FURNITURE:** Antique Mobil gas pump, complete w/top; (2) Free-standing elec. pinball machines; (2) Wall-hung super deluxe pinball machines; (4) Countertop casino slot machines; Antique Wurlitzer jukebox; Electronic dart machine; Football table; Rockola full-size competition shuffleboard table; Old 1-cent stacks; Brunswick Monarch full-size pool table; Old barber's chair; Old child's rocking horse; Antique tin, pedal rocking horse; Antique Charter Oak white enamel wood-fired kitchen stove; Antique Seller's kitchen cabinet; Possum belly base cabinet; Old spool-legged baby bed; Double-door wooden curio cabinet; Over-sized glass-front lighted free-standing showcase; Antique ornate hall bench; Large Weber stainless steel grill; Amana refrigerator/freezer; Hobart meat slicer; Asst. of exercise incl. weight machine, treadmill, Atomic heat & massage recliner; Burgundy & brown power-lift chairs; (2) 3-cushion sofas; Sanyo 55" flat-screen TV; Wurlitzer spinet-style piano; Clocks; Elec. heater; Old spring wagon seat; Wooden school desk; Floor & table lamps; Grandfather clock; Old wall telephone; Oak dry sink; 5-pc. bedroom suite incl. queen-size bed, mattress & box springs, double dresser w/mirror, 4-drawer chest & 2 nightstands; Quilt rack; Coffee & end tables; Green Aladdin lamp; Old croquet set; Weather vane; Round dining table; **Outdoor Heatmor wood or gas-fired furnace, brand new, never used.**

**PICKUP & CAR:** 2014 Ford Lariat F150 4D PU, 4x4, Eco-boost, full power, w/approx. 86,000 miles; 2011 Cadillac Sedan Deville, fully loaded, leather interior, 153,000 miles, looks & runs like new.

**AUCTIONEER'S NOTE:** This ad is only the highlights of what can be found at this auction. We will be running two rings all day. This is a very unique auction. Check website for pictures - www.almartinauctions.com.

**TERMS: CASH/ GOOD CHECK POSITIVE ID REQUIRED** **MASTERCARD/VISA DEBIT/CREDIT CARDS**

All property must be settled for before removal - All items sold as is where is - Not responsible in case of accidents. Announcements made day of sale take precedence over any advertising.

**ROGER FRANKLIN ESTATE & FRANKLIN FARMS, SELLER**  
**AL MARTIN REAL ESTATE & AUCTION CO., INC.**  
307 Church Street • Ottumwa, IA 52501 • 641-682-5465 • www.almartinauctions.com

# Mid-States Livestock Sales Horse & Tack Auction

**Saturday, September 28th, 2024**  
Tack @ 10:00 a.m. Horses @ 2:00 p.m.  
KIRKSVILLE LIVESTOCK MARKET  
HWY 63 NORTH KIRKSVILLE MO.

**Guest Consigners only on tack, no used tack!**  
Check us out and like us on Facebook @ Mid-States Livestock Sales.  
**Taking Consignments now!**

**FOR MORE INFO:**  
Josh Weaver (660)341-7964  
Jeb Weaver (660)341-8666

**McAfee Auction Service, LLC**  
375 S Johnson • Kahoka, MO  
660-727-3796  
www.mcafeeauctionservice.com

## TIMED ONLINE ONLY 100+ GUNS/ AMMO RELOADING SUPPLIES & RELATED ITEMS AUCTION

**WEDNESDAY OCTOBER 2nd**  
LOTS START ENDING AT 10AM



Selling at Absolute Auction 100 plus guns, ammo & reloading supplies, 85% from the Richard M. Dochterman Estate. additional guns consigned by multiple smaller Estates and others. Guest consigner of new merchandise as well.

**PREVIEW: (Guns Only) Mon Sept 30th & Tues Oct 1st 8am-4pm**  
Gabby's Gun Shop 743 N Walnut St. Kahoka, MO  
**NO PREVIEW ON AMMO & MISC**

**ALL FFL RULES APPLY**

**McAfee Auction Service, LLC**  
375 S Johnson • Kahoka, MO  
660-727-3796  
www.mcafeeauctionservice.com

## TIMED ONLINE SCOTLAND & CLARK CO REAL ESTATE & MOBILE HOME AUCTION

**TUESDAY, SEPTEMBER 24TH - 10 AM**

**904 SQ FT, 2 BR, 1 BATH**



**526 CLEVELAND, MEMPHIS**

**SINGLE WIDE, 2 CAR GARAGE**



**601 ORCHARD ST, MEMPHIS**

**3 BR, 2 BATH SINGLE WIDE**



**123 N SANDERS, MEMPHIS**

Selling 3 parcels of Real Estate located in Memphis, MO. 1 parcel of Real Estate located in the town of Winchester, MO. 2009 16' X 74' Mobile home located in Wayland Acres Mobil Home Park.

**COMPLETE DETAILS, TERMS & OPEN HOUSE INFO ONLINE**

**2009 16'X76' MFG HOME**



**WAYLAND ACRES MOBILE HOME PARK**

**2560 SQ', 3 BR HOME**



**WINCHESTER, MO**

**Shirley Clatt Living Estate, Caroline Dennison Living Estate, Janet Parsons Living Estate**  
**Brett B. Bozarth Attorney for Court Appointed Conservator**

**NEMOTRADER.NET**

**NEED TO SELL YOUR HOUSE OR PROPERTY?** Get the best coverage around. Call the NEMO and our helpful representatives will assist you in creating your ad. You can even pay over the phone. **Call 660-665-8500 for more information.**

Call us for all your advertising needs. **660-665-8500.**

Call about our classified ad specials. **660-665-8500.**

**• SPRAY FOAM**  
**• CELLULOSE**  
**• FIBER GLASS**

**Premier Foam Insulation, LLC**  
— Macon, MO —

**KARY JENNINGS • 660-591-2735** | **DREW KERNS • 573-286-2411**  
EMAIL: PREMIERFOAMLCC@GMAIL.COM

Let us help you with all your advertising needs. Don't know what to say? Call us we can help! **660-665-8500.**

**HAVE A PET OR PUPPIES TO SELL?** Call us. You can even pay over the phone. **660-665-8500.**

**573-356-4405**  
Auctioneer: **Scott Kuntz**  
**SEE MORE PHOTOS ON SCOTTY'S WEBSITE**  
**WWW.SCOTTSAUCTIONSERVICE.COM**

## Automobile Collection & Farm Equipment Auction



**Sat., Sept. 21, 2024 at 10:00 am**  
**Late Charles Walter & Connie Walter**

**TRAILERS:** 20' 1984 gooseneck trailer, triple axel with ramps; homemade trailer, needs floor; 18' gooseneck trailer (1978?); 1979 homemade trailer; 1977 utility trailer

**10778 Hwy J, Jacksonville, MO.**

**Direction:** From US Highway 63, travel East on State Highway 13 for approximately 10.9 miles to the auction location. Watch for signs the day of the auction.

**BUILDING:** Two 8'x10' buildings to be moved by buyer

**VEHICLES:** 1960 Chevrolet; 1949 2 ton truck; 1949 International pickup; 1964 Chevy van; 2003 Honda 4 wheeler; 1978 Chevy pickup; 1979 Chevy van; 1962 Volkswagon coupe; 1952 Ford 2 door; 1976 Chevy Malibu; 1982 2 wheel homemade trailer; 1975 homemade trailer; 1956 GMC pickup; 1956 Ford pickup; 1958 Ford pickup; 1961 Plymouth 4 door; 1961 Ford 2 door; 1962 Ford pickup; 1962 Tannu 2 door; 1962 Ford bus; 1962 Chevy pickup; 1963 GMC pickup; 1963 Oldsmobile 4 door; **see website form items.**

**FARM EQUIPMENT:** John Deere 510 baler, twine tied; Massey 150 Industrial with loader; disc mower; loader; rake; wagon; **see website form items.**

**LIVESTOCK EQUIPMENT:** portable hog trailer; several tanks ranging from 3,000 - 5,000 gallons; gates; **see website form items.**

**TOOLS:** Hobart 220 mig welder; hand tools; **see website form items.**

**MISCELLANEOUS:** two wood stoves; 1 beam; scrap iron

**There will be many more items at this auction too numerous to list.**



## Winigan Farm Equipment, Antique & Collectible Auction



**Thurs., Sept. 26, 2024 at 4:00 pm**  
**Sharon & The Late Hubert Pfeiffer**

**ANTIQUES & COLLECTIBLES:** figurines; salesman sample ceramic round oak stove; antique trunk; various collectible cake stands; carnival glass; Fenton glassware; green Depression glass; **see website form items.**

**TOOLS & OUTDOOR EQUIPMENT:** John Deere X720 Ultimate 720 hours with 54" deck, cruise control; A frame; chain hoist; hydro lift; tire chains (22); miscellaneous hardware tools; clamp; electric supplies; **see website form items.**

**33257 Main St, Winigan, MO.**

**Direction:** From Missouri Highway 129/Thimble Road, proceed East on Main Street to the auction location. Watch for signs the day of the auction.

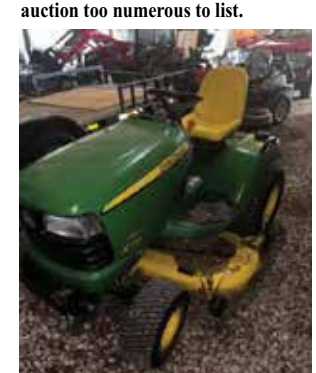
**TRAILER & VEHICLE PARTS:** 2020 16 foot utility trailer with two 3,500 pound axles, like new; 1,500 lb axle; 1968 rear truck axle

**FARM EQUIPMENT:** Bush Hog silage wagon with automatic gate; Westfield 8' x 72' swing out hopper auger; 5,000 bushel bin with upright clean out auger; 6,000 bushel dryer; GSI (4) 9 ton feed bulk bins (unloading auger sold separately); unloading auger; 6' steel posts (approx. 10)

**HOUSEHOLD ITEMS:** book cases; 3 cushion couch, chair and loveseat; 2 glider rockers; miscellaneous kitchenware; oak chest of drawers; 2 drawer file cabinets; blankets, linens and towels; 4 drawer chest of drawers, matching dressing mirror and full size bed; matching maple end tables and coffee table; several gliders; hide-a-bed; card table with 4 chairs; Vizio flat screen TV

**FIREARMS & ACCESSORIES:** (not stored at auction location) Colt 32WCF revolver in original condition; Ruger 357 blackhawk; S&W 357 Highway Patrol; Ruger .22 single six; Ruger 45 blackhawk; Marlin Original Golden AS .22 cal; Glenfield Model 60 .22; Springfield Model 87A .22; Henry .22 Golden Boy octagon barrel; **see website form items.**

**There will be many more items at this auction too numerous to list.**



**DOWN PAYMENT:** 10% of the contract purchase price will be due upon acceptance of the Sales Contract. Personal or Cashier's Checks will be accepted. This is "AS IS, WHERE IS" and is non-refundable. **CLOSING:** Closing shall be within 30 days of the auction date.

## PUBLIC AUCTION

**2705 Main St Unionville Mo • September 21st at 10 am**

John Deere 214 39" deck w/ snowblower, John Deere D110 48" mower, Husky 25 hp mower with 46" deck. Weedeaters, royal chainsaw, hitch receivers, small 32 wheel trailer, outdoor yard art, planters, empty totes, white clad lamp end table, turkey fryer, rubbermaid cabinet, woodstove, treadmill, several storage cabinets, shelves, glass top table and chairs, coffee table, sofa tables, full and single beds, dressers, lazyboys, tables and chairs, chest and upright deep freezers, metal wardrobes, bedroom outfit, china hutch, curved glass china, curio cabinets, Sony 46" flat tv, rugs, lamps, small kitchen appliances, lots of seasonal, house decor and kitchen items, canning jars, Antiques: cream can, steel wheels, #12 Griswold skillet, other cast iron, broad ax, accordion, xylophone, suitcase phonograph, Dazey churn, table top speaker, lightning rods and balls, bottles, Dexter meat cleaver, enamelware, quilts, camera, miniature cast iron stove, typewriter, depression glass, colored glass compotes, hen on nests, Murano chickens, silverware, unique smoking pipes, large amount of chicken items to include many salt and peppers, decor and more. Building is full.

Food and restrooms will be available, indoor sit down type sale in climate controlled building. **Auction preview on Sept. 20th from 2 to 5 pm.**

**Check out pictures on Facebook or our website at www.altiserauctionandappraisal.com.**

**SEE OUR FACEBOOK PAGE FOR PHOTOS**

**ALTISER**  
AUCTION & APPRAISAL  
**KRIS ALTISER**  
660-626-4960

**LOCAL MATTERS**  
Please support the advertisers that power your hometown paper.

**NEWSPAPERS MATTER**  
NOW MORE THAN EVER

# LAST CALL BEFORE FALL

*Farmer and Dealer Machinery Auction*

**FRIDAY, SEPTEMBER 20, 2024 AT 10 AM**  
AUCTION LOCATION: WHEELER AUCTIONS LOT, 23101 HWY. 24, PARIS, MO

*Consignments Welcome!*

**ACCEPTING CONSIGNMENTS ON THE LOT BEGINNING TUESDAY, SEPT. 3**  
Tuesday, September 3 - Friday, September 6 (8AM-4PM)  
Monday, September 9 - Friday, September 13 (8AM-4PM)  
Monday, September 16 - Tuesday September 17 (8AM-4PM)  
All items must be to the Paris lot by Tuesday, September 17 at 4PM  
**NO CONSIGNMENTS ACCEPTED ON THE WEEKENDS**

**Wheeler AUCTIONS & REAL ESTATE**  
23101 HWY. 24, PARIS, MO 65275 | 640-327-5890  
WWW.WHEELERAUCTIONS.COM

**LIVE ON-SITE BIDDING WITH ONLINE BIDDING**

**Chas Wheeler** Owner/Auctioneer  
**Kirby Fecht** 217-248-2906

**Charlie Nordwald** 636-795-4552  
**Brett Sayre** 573-881-1876

**Mike Williams** 816-797-5450  
**Chris Butcher** 309-255-0123

**FOR MORE INFORMATION:**  
Wheeler Auctions | 660-327-5890  
**WHEELERAUCTIONS.COM**



**TRANSPORTATION**

**Trucks, 4x4's, SUV's**

2010 Ford diesel extended cab. 2003 Ford diesel, dually (\$6,500 in new parts). 6251 John Deere Gator. 660-341-9284.

**NEED TO SELL YOUR HOUSE OR PROPERTY?** Get the best coverage around. Call the NEMO and our helpful representatives will assist you in creating your ad. You can even pay over the phone. Call 660-665-8500 for more information.

**YARD SALES**

**Garage Sale**

810 College Park Dr, September 20-21, 7am-2pm. Table 8 chairs, furniture, Christmas, holiday, home decor, Fiestaware, toys, old ladders, humidifier.

Estate Garage Sale: 1107 N. Luther, Kirksville. 9/21/24 8AM. LR furn., TVs, stereo, VCR, kitchen small app, dishes & utensils, bath items, books, videos, tools, Harley collectables & supplies, desk items.

*Shop Local Buy Local Enjoy Local*

**CALL TODAY!**  
660-665-8500  
sales@nemotrader.net

**NEMO**  
Kirksville  
Daily Express



**MEADOWLARK CREAMERY**

(660) 299-9019  
49982 State Highway 15 Baring, MO 63531  
Hours: Monday - Saturday 8:00 - 5:30

**High Auction Service, LLC**

**2024 Fall Consignment AUCTION**

**Friday, September 27, 2024 @ 9:00 A.M.**

Auction held at 15970 Kelso Avenue, 1 mile west of Downing, Missouri on Hwy 136

**Tractors & Machinery**  
MF 1135 tractor w/ cab 5560 actual hr. 18.4-38 tires  
AC 190 XT diesel tractor new turbo, clutch & brakes  
Ford 3000 diesel tractor w/ TA 25 Westendorf loader (pending)  
JD 5045E tractor w/ JD 3 pt. brushcutter 108 hr.  
Parker gravity flow wagon - Glenco soil saver, pull type  
Brent 420 grain cart - NI 4665 round baler twine  
Bush Hog 15' batwing brushcutter 1000 PTO lam. tires  
SB 2800 MK II 3 pt. disc mower - Agco 3315 disc bine  
CIH 1020 20' grain platform - CIH 1063 corn head  
JD 5200 tractor w/ JD 512 loader, 2449 hrs. - IH grain platform  
NI 326 2 row pullytype corn picker - JD 709 3 pt. brushcutter

**Skid Steer & Forklift**  
2005 Deere 320 skidsteer 7866 hr. (new turbo & water pump)  
2018 Kubota SSV 75 skidsteer 1341 hr. 2 speed 74" bucket  
CAT 277B skidsteer track loader, enclosed cab w/ heat  
Hyster S30XL forklift (2598 hr.) - Stout grapple bucket  
BobCat manure fork w/ grapple - F07 box blade  
AGT industrial H12R mini hoe

**UTVs - ATV's - Mowers - Blinds**  
2020 Polaris Ranger 1000 8360 miles, new tires  
2023 JD GatorXUV 590 M sidesside, 50 miles  
2019 Kubota side kick EPS 850 5718 miles  
Polaris Ranger 500 Pro Star RTV 1225 miles  
2015 Polaris Ranger 900XP w/ cab  
2021 Polaris Ranger 1000XP cab w/ hard doors, crank windows, tilt windshield  
2020 Polaris Ranger 1000 w/ power steering  
Polaris 425 Magnum 4x4 ATV, new rear bushing  
JD 425 riding mower 54" deck  
ExMark Viking walk-behind 48" com. mower  
Dixon Kodiak 40 hr. ZTR 52"  
Simplicity mower, 48" deck, new  
Simplicity riding mower, 42" deck, new  
6x6 Midwest Extreme hunting blind  
Radix softshell hunting blind

**Metal - Shop Tools - Etc.**  
Lots of misc. metal - alum. soffit - 6000 watt generator  
Tool chest w/ tools - lots misc. shop items - small welder  
Misc. old Tonka toys - Stepladders - drill press  
There will be lots of tools and hayrack items to sell

**Livestock Equipment & Fencing**  
Arrow squeeze chute - 18 ton bulk bin w/ slide  
18 ton bulk bin - (20) 8' concrete feed bunks  
(30) 24' free standing panels - fence panels - gates  
(12) 20' free standing sheep or goat panels  
New: woven wire, barbwire, gates etc.  
210 gal. poly water tank for pickup  
DeLaval 1 1/2" glass pipelnew/ receiver jar, compl.  
DeLaval 2" pipeline w/ receiver jar

**Auctioneers Note:** These are the early consignments, so be sure to check for updated listings and photos on our website as we are accepting consignments until Wednesday, September 25. Loader & personnel available on auction day. Make plans to attend!! Running 2 auction rings Thanks, Randy

**High Auction Service LLC Downing MO - Randy High 660.216.0515**  
www.highauctionservice.com e-mail: highauctionservice@gmail.com 727935jn  
Cash or check with proper ID. Not responsible for accidents or theft. Announcements day of the sale take precedence over any advertising.

**2 Tracts 127 Acres Tillable Hunting Building Sites**

**21 LAND AUCTION**

County Roads 1235 & 1225 - Huntsville, MO 65259

**\*\*AUCTION CONDUCTED AT MACC ACTIVITY CENTER\*\***

101 College Ave - Moberly, MO 65270

**TUESDAY, SEPTEMBER 24<sup>TH</sup> 3 P.M.**

Prime combination farms on the edge of Huntsville, selling in two tracts!! Located minutes from Moberly or a short drive to Columbia! These family-owned farms, held for over 59 years, have been freshly surveyed and will be sold by the acre. Don't miss this rare opportunity to own these quality tracts! For more information see LandandAuctions.com/Winkler.

**TRACT #1:** Located in Section 25, Township 54N, Range 15 W - **88.2 Surveyed Acres** with 39 FSA Open Acres, Currently in Soybeans - Access on County Road 1225 or Holman Heights Road - Prime Building Site with Electric, Water & Sewer Available on SE Corner off of Holman Heights - Tract also Provides Excellent Hunting with Income - Land Lays Level to Gently Rolling - Perfect Mix of Woods & Open Acres - Private Setting - Mature Timber

**TRACT #2:** Located in Section 24, Township 54N, Range 15W - **39.1 Surveyed Acres** with 22.25 FSA Open Acres, Currently in Soybeans - Land Lays Level -

Excellent Access with County Road Frontage - Prime Building Site or Recreational Tract with Income - Nice Mix of Woods & Open Acreage - Older Outbuilding & Pond **REAL ESTATE TERMS:** 10% down day of Auction upon entry into Real Estate Contracts with Balance Due and Possession given at Closing within 45 days. Property Sold As Is with No Contingencies, Seller Providing Clear Title Insurance. Real Estate Sells Subject to Owner Confirmation. Buyer Must Have Financing Secured Prior to Bidding. Statements Auction Day Take Precedence Over Ads. Possession of Crop Ground to be after Harvest 2024. No Hunting Leases in Place.

**DAVID E. WINKLER & CORDELIA PENTON, SELLERS**  
**CENTURY 21 MCKEOWN & ASSOC. INC.**  
Brittany Long 660-676-4622 Lacy Ackley 660-833-8777  
Michael Cunningham, Auctioneer 660-651-2288  
Office 660-263-1789 LandandAuctions.com

**MISSOURI CANCER ASSOCIATES**

**Your Kirksville Care Team**



**Elangovan Balakrishnan, MD**  
Medical Oncologist & Hematologist



**Uma Ramadoss, MD**  
Medical Oncologist & Hematologist



**Liana Makarian, MD**  
Medical Oncologist & Hematologist



**Andrew Iliff, MD**  
Medical Oncologist & Hematologist



**Caleb Smith, MD**  
Medical Oncologist & Hematologist



**Beth Mettes, DNP, FNP-BC**

There for you, every step of the way.

For over 40 years, we have walked with patients through every stage of cancer, from diagnosis, to treatment and survivorship.

We look forward to continuing to serve the Kirksville community and providing the exceptional cancer care that you deserve!

www.missouricancer.com

660-785-1050  
603 W. Pierce  
Kirksville, MO

866-724-2413  
1705 E. Broadway  
Columbia, MO

**ANIMAL HOUSING HAY STORAGE & MUCH MORE**





**Skylight FABRIC STRUCTURES**

30697 COLONY AVE. • NEW CAMBRIA, MO 63558  
660-486-3250 • 833-482-8862

**FARM SHOP**  
EDINA, MO

**Edina, MO 63537**  
660-397-3550  
farmshopinc.com

Kubota HARRY FERGUSON

**Edward Jones** Member SIPC

**Jason K Robinson**  
Financial Advisor  
1300 Country Club Dr  
Kirkville, MO 63501  
660-956-9562

MKT-5894P-A AECSPAD >edwardjones.com

**EVERY DAY IS A GIFT.**  
TAKE TIME TO ENJOY IT.  
*Reid A. Millard*

playlerimemillard.com

**PLAYLE-RIMER-MILLARD**  
Family Funeral Chapel

**Reid A. Millard**  
Funeral Director

**CENTURY 21**  
**Lifetime Realty**

1605 S Baltimore St, Suite A  
Kirkville, MO 63501

**660-665-5678**  
www.C21Kirkville.com

Each office is individually owned and operated.

**HyVee**  
EASY! EASY! EASY!

**EMPLOYEE OWNED**

500 N Baltimore St, Kirkville, MO 63501  
Open 6-11 Daily  
**(660) 665-8335**

**NM SB** **NORTHEAST MISSOURI STATE BANK**

**Kirkville Branch:** 600 S Baltimore, Kirkville, MO 660-665-6161

**La Plata Branch:** 139 S Gex Street, La Plata, MO 660-332-4317

Member FDIC northeastmissouristatebank.com

**Bellacino's**  
Pizza & Grinders

**ORDER ONLINE**  
WWW.BELLACINOS.COM

GRINDERS • PIZZA • SALADS  
WINGS • FRIES • AND MORE!

**GET OUR NEW APP!**

516 N BALTIMORE ST.  
660-665-7665

WIN	HOME TEAM	DATE	AWAY TEAM	LOSS	WIN	HOME TEAM	DATE	AWAY TEAM	LOSS
3	KIRKVILLE, HS			0	0	KNOX COUNTY, HS			3
0	MACON	8/30	KIRKVILLE	35	37	ST. PAUL LUTHERAN	8/30	KNOX COUNTY	30
42	KIRKVILLE	9/6	CHILlicothe	7	68	PLATTSBURG	9/6	KNOX COUNTY	32
7	KIRKVILLE	9/13	SAVANNAH	6	28	KNOX COUNTY	9/13	BISHOP LEBLOND	52
0	MOBERLY	9/20	KIRKVILLE	0	0	KNOX COUNTY	9/20	OFF WEEK	0
0	MARSHALL	9/27	KIRKVILLE	0	0	SCHUYLER CO.	9/27	KNOX COUNTY	0
0	KIRKVILLE	10/4	HANNIBAL	0	0	PARIS	10/4	KNOX COUNTY	0
0	MEXICO	10/11	KIRKVILLE	0	0	KNOX COUNTY	10/11	NORTH SHELBY	0
0	KIRKVILLE	10/18	FULTON	0	0	LIVINGSTON CO.	10/18	KNOX COUNTY	0
0	CENTRALIA	10/25	KIRKVILLE	0	0	KEYTESVILLE	10/25	KNOX COUNTY	0
1	SCHUYLER CO., HS			2	0	MACON, HS			3
16	SEYMOUR	8/30	SCHUYLER CO.	52	0	MACON	8/30	KIRKVILLE	35
72	BISHOP LEBLOND	9/6	SCHUYLER CO.	12	18	N. CALLAWAY	9/6	MACON	7
42	SCHUYLER CO.	9/13	PLATTSBURG	46	56	PALMYRA	9/13	MACON	14
0	KEYTESVILLE	9/20	SCHUYLER CO.	0	0	MACON	9/20	HALLSVILLE	0
0	SCHUYLER CO.	9/27	KNOX COUNTY	0	0	CENTRALIA	9/27	MACON	0
0	SCHUYLER CO.	10/4	LIVINGSTON CO.	0	0	CLARK COUNTY	10/4	MACON	0
0	SCHUYLER CO.	10/11	BRAYMER	0	0	MACON	10/11	HIGHLAND	0
0	NORTH SHELBY	10/18	SCHUYLER CO.	0	0	MACON	10/18	SOUTH SHELBY	0
0	PARIS	10/25	SCHUYLER CO.	0	0	MONROE CITY	10/25	MACON	0

**ALWAYS PUSH FORWARD**  
with  
Connections Bank

Member FDIC

WWW.CONNECTIONS.BANK  
2817 N BALTIMORE ST.  
KIRKVILLE, MO 63501  
660-665-7703

**FOOTBALL SCOREBOARD**

**FOOTBALL SCOREBOARD**

**Sonny's Collision Center**  
Sonny Findling

545 N. Marion  
Kirkville, MO 63501  
660-665-8533  
660-665-8507

**Travis~Noe Funeral Home**

1008 Potter Avenue, Kirkville, MO  
**660-665-1300**  
Neil & Sherry Travis, Brian Noe, Brenton Travis

**Lancaster Lumber INC.**

Locally owned  
Full Service Retailer of building materials and Hardware  
660-457-3814

Shop Local  
Buy Local  
Support Local

Lancaster, MO | www.lancasterlumber.com | check us out on facebook

Ford DODGE Jeep

**LOVEGREEN**  
GOLOVEGREEN.COM

**MISSOURI FARM BUREAU INSURANCE**

Chris Clark, Licensed Sales Associate  
Email: chris.clark@mofb.com  
Website: www.mofbinsurance.com

AUTO HOME LIFE

Clark Agency: 115 W. Potter, Kirkville, MO • (660) 665-1956

**THINKING OF SELLING?**

**Heritage House Realty, Inc.**

CALL US TODAY!  
660-665-5638

KirkvilleRealEstate.com

**COLTON'S**  
Steak House & Grill

We Know What's At steak!

1116 Country Club Drive • Kirkville, MO  
660-665-6336 • ColtonsSteakhouse.com