

NEMO Trader

THE NEMO TRADER

PO BOX 809 • KIRKSVILLE, MO 63501 • PHONE 660-665-8500

Web Site: nemotrader.net • Email: sales@nemotrader.net



A WEEKLY ADVERTISER SERVING ALL OF NORTHEAST MISSOURI AND THE SURROUNDING AREA

LAND SALES & AUCTIONS

WHITETAIL PROPERTIES REAL ESTATE
HUNTING | RANCH | FARM | TIMBER

CLAY LOCKARD
EAST CENTRAL MISSOURI LAND SPECIALIST
573.466.9123

LEWIS • MACON • SHELBY • MARION • RANDOLPH • MONROE • RALLS • AUDRAIN

WHITETAILPROPERTIES.COM

exp REALTY

Elizabeth Gregory
110 S. Franklin St
Kirksville, MO 63501
www.missourihomeandfarm.com
660.621.2136

FARM & INDUSTRIAL PAINTING

• Houses - Pat Costello
• Barns
• Morton Sheds
• Barn Repairs
• Metal Roofs
• All colors!

FREE Estimates

Tri-State Painting 1-800-940-8289
(Leave Message)

MODERN RESTORATION REMODELING LLC

FREE ESTIMATES!!!
SPECIALIZING IN KITCHEN AND BATHROOM REMODELING

660.413.2439
CHECK US OUT ON FACEBOOK
WWW.FACEBOOK.COM/MODERNRESTORATIONLLC

PFI

• SPRAY FOAM
• CELLULOSE
• FIBER GLASS

Premier Foam Insulation, LLC
Macon, MO

KARY JENNINGS • 660-591-2735 | DREW KERNS • 573-286-2411
EMAIL: PREMIERFOAMLLC@GMAIL.COM

KEIM LUMBER COMPANY LLC

COMPETITIVE PRICES • FREE ESTIMATES
• COMPLETE BUILDING PACKAGES
• WINDOWS AND DOORS
• INSULATION • DRYWALL
• DELIVERY

13625 St. Hwy 3 LaPlata, MO

YODER CONSTRUCTION

DANIEL YODER

• Metal Roofing
• Siding
• New Construction

OUR GOALS:
• Good Service
• Quality Structure
• Competitive Prices
• Free Estimates

660-486-3332

SCOTT'S AUCTION SERVICE

573-356-4405
Auctioneer: Scott Kuntz
SEE MORE PHOTOS ON SCOTT'S WEBSITE
WWW.SCOTTYSAUCTIONSERVICE.COM

Macon Restaurant Auction

Thurs., Aug. 15, 2024 at 5:00 pm
James and Kristin Myers

211 E Bourke St, Macon, MO.

Direction: From US Highway 63/North Missouri Street, turn West on Vine Street then travel North on Rutherford Street to Bourke Street where the property is located. Watch for signs.

REAL ESTATE: This custom-built restaurant, located in the heart of downtown Macon, offers endless opportunities. The facility has new additions, updates and additional space to expand. It can currently accommodate nearly 100 people at one time. The restaurant has a rustic, cabin-like feel with a custom bar area, rock archways, a separate event room, an efficient and effective kitchen, dishwasher area, fresh meat butchering area and lots of storage space. Contents will sell with

the building so it can be a seamless, turn-key transaction with an opportunity to begin making money immediately. The business formerly operated as Smokehouse BBQ and closed due to the health of the current owners. It would be ideal for a restaurant, winery, sandwich shop, a bar and grill or could easily be converted to another type of business. The property includes paved parking and has additional public parking located just across the street. It is conveniently located at the crossroads of Rutherford Street and Bourke Street, within walking distance of several local businesses with many employees. **Please contact Scott for your personal showing at 573-356-4405**

2 Tracts-77 Acres m/l Bevier Pasture & Home

Thurs., Sept. 5, 2024 at 5:00 pm
The Allsach Family

25998 Hemlock Rd, Bevier MO.

Direction: From US Highway 36, travel North on State Highway O for approximately 2.4 miles, turn West on State Highway OO for approximately 2.5 miles, proceed West on Hemlock Road to the property. Watch for signs.

REAL ESTATE: We will be selling this 77 acre m/l farm, divided into 2 separate tracts. This farm has been in the same family for many years. This is a great opportunity to purchase such a wonderful piece of property. Please call Scott at 573-356-4405 to schedule your showing.

TRACT 1: Consists of 41.5 acres m/l that include two ponds, good grass and perimeter fencing. It has a brick, 3 bedroom, 3 bath, ranch style home

with full basement that includes a kitchen, rec area and room for 3 more possible bedrooms. Also included are a 2 car garage/metal sided shop, a large, working cattle barn and a dog kennel. The property is in Bevier school district.

TRACT 2: Consists of approximately 35.5 acres m/l of pasture that produces good grass with perimeter fencing that currently holds cattle.

Linneus Real Estate & Personal Property Auction

Sat., Aug. 10, 2024 at 10:00 am
Leroy Dean Tye

627 S. Fillmore St, Linneus, MO.

Direction: From US Highway 36, travel North on Highway 5 for approximately 6.9 miles, turn right on East Columbia Street for approximately 0.2 miles then turn left on South Fillmore Street to the auction location. Watch for signs.

NOTE: 2 Auctions in one day!

REAL ESTATE: We will be selling at auction this two bedroom, one and a half bath home manufactured home on 14 acres. Please contact Scott at 573-356-4405 to schedule your personal showing.

VEHICLES & TRAILERS: 16' tandem axle car trailer; 2010 Chevy extended cab 2500HD Vortec gas engine Work package; 18' equipment trailer with hand winch; 14' 3 person Jon boat with trailer; 2015 Doolittle 7' x 16' enclosed trailer; 2010 Doolittle 8' x 24' trailer

OUTDOOR EQUIPMENT: Husqvarna YT46LS mower; Cub Cadet GTX 1054 mower; John Deere LA175 mower; Yardman 46" mower; miscellaneous

hand tools; various ladders; John Deere 3 point 6' brush hog; Huskee 22 ton log splitter;

ANTIQUES & COLLECTIBLES: antique Wm Hinton Floor Safe; antique meat cleavers; blue swirl enamel ware; primitive wash stand; Boos Jack butcher block; antique kitchen cupboard; antique utensils; various art pottery pitchers & bowls; ; carousel horse; various antique prints & paintings; antique chest of drawers; antique wooden bread bowl; large retro Davy Crockett lamp; primitive painted oval table; Native American art & prints; antique display cabinet; and more.

There will be many more items too numerous to list.

Farm Equipment & Personal Property Auction

Fri., Aug. 16, 2024 at 10:00 am
James E Dawson Estate

28251 US Highway 63 N, Macon, MO.

Direction: From US Highway 36 travel approximately 2 miles North of Macon to Scotty's Auction Barn and Event Center on the West side of the highway. Watch for signs the day of the sale.

TRACTORS & EQUIPMENT: 4030 John Deere tractor with loader; and more.

LIVESTOCK SUPPLIES: 108 large round hay bales; and more.

TOOLS & OUTDOOR EQUIPMENT: pressure washer; drill press; and more.

LAWN EQUIPMENT: 54" Hustler zero turn mower; and more.

There will be many more items too numerous to list.

HOUSEHOLD ITEMS: deep freeze; 2 dressers; 2 full size beds; and more.

VEHICLES & TRAILERS: 2009 Chevy Silverado 2500 HD 61,xxxx miles 6.0 Vortec, 4x4, gooseneck ball, long bed and running boards; and more.

Real Estate & Personal Property Auction

Sat., Sept. 7, 2024 at 10:00 am
Donald R (Bob) Graves

204 W Spruce St, Shelbina, MO.

Direction: From US Highway 36, proceed South on Highway 15/North Center Street for approximately 0.3 miles, turn right on West Spruce Street to the auction location. Watch for signs.

REAL ESTATE: We will be selling this majestic 3 bedroom, 2 1/2 bath home that has a large living room, dining room, sitting room/possible bedroom and laundry room. The home features pocket doors, hardwood floors under the carpet, solid oak build-ins with leaded glass and a finished basement. The home has central air conditioning. You must see this home to appreciate the solid build and beautiful finishes. Please call Scott at 573-356-4405 to schedule your personal showing.

HOUSEHOLD ITEMS: large oak dining room table; large oak lighted hutch; various exercise equipment; entertainment center; glider rockers; Broyhill couch; miscellaneous wood shelves; dresser with mirror; king size bed; maple desk; book case; various end tables; leather office chair; 2 drawer file cabinets; queen size bed

ANTIQUES & COLLECTIBLES: antique scooter; boys bicycles; cast iron coin banks; crafting room items; various VW toys; kerosene lamps; antique butter churns; #2 crock; miscellaneous glassware; Tell City bench; Tell City coffee table; Tell City wooden rocker; Tell City hall tree; antique fire extinguisher; Sound Design stereo system; ornate wooden clock; mortar & pestle; antique spool cabinet; Thomas

Kincade picture; cast iron door stop; quilt rack; quilts; antique red wagon; nail kegs; various VW parts; small wooden barrel; 2 man crosscut saws; Case emblem; 80's-90's license plates; reproduction coin operated phone; Bakelite phone; dry sink; large variety of books; single pedestal roll top desk; Vectrox arcade system; Tell City drop leaf table; Kellogg antique telephone; antique oak rocking chair; single pedestal writing desk; drop front secretary

TOOLS & OUTDOOR EQUIPMENT: Ford riding lawnmower; multi fold aluminum ladder; Toro Professional Pace lawnmower; Echo leaf blower; bench grinder; small portable air compressor; Remington weed eater; Toro electric leaf blower; like-new 20'-24' RV cover; 2 hydraulic floor jacks; 2 tier roll around tool chest; car organizer; miscellaneous hand tools; kerosene heater; shepard's hooks; miscellaneous long handle tools; shop lamp; Craftsman 10" table saw; ropeless tree pruner; Craftsman scroll saw; Central Machinery table top drill press; jointer

There will be many more items too numerous to list.

Purdin Real Estate & Personal Property Auction

Sat., Aug. 10, 2024 at 4:00 pm
Leroy Dean Tye

Highway 5, Purdin, MO.

Direction: From US Highway 36, travel North on Missouri Highway 5 to Main Street approximately 12.5 miles watch for signs.

NOTE: 2 Auctions in one day!

REAL ESTATE: We will be selling at auction 4 pieces of real estate located in downtown Purdin, Missouri. 401 C Street currently houses the US Post Office, to the West is a large antique store, across C Street/Main Street is a 58' x 54' Morton building with a 8' x 8' loading dock and 12' x 12' garage door and on the Southwest corner of C Street/Main Street and Highway 5 is an older building. All pieces of real estate will be sold separately. Please call Scott at 573-356-4405 to schedule your personal showing.

ANTIQUES & COLLECTIBLES: large crock collection; antique doctor's bag; Excello brand shortening barrel; lots of smalls & figurines; large; variety of kerosene lamps; various oil cans and antique gas jugs; miscellaneous antique trunks; wooden tool boxes; nail kegs; eveners; antique doors; lots & lots of enamel ware; curved front curio cabinet; antique wood stove; several treadle sewing machines; antique oak drop leaf table; and more.

TOOLS & OUTDOOR ITEMS: lots of long handle tools; lots & lots of shelving - both wood and metal; miscellaneous fishing poles; several heavy roll around carts.

There will be many more items too numerous to list.

Business/Residential Buildings on 8.56 acres m/l

Thurs., Aug. 29, 2024 at 5:00 am
Marie Lindquist

52690 Highway 6, Edina, MO.

Direction: 52690 Highway 6, Edina, Missouri. From Highway 15, proceed West approximately 1.4 miles on Highway 6 to the auction location. Watch for signs.

REAL ESTATE: With highway frontage, sitting approximately 100 yards off the road, the property is not zoned and has endless possibilities. Currently set up as a veterinary office, the 2004 ranch style building sits on 8.56 acres more or less and could easily be used as a business, converted to a 4 or 5 bedroom home or split into a duplex.

It has 2"x6" exterior walls, propane heat, ground source central air conditioning, a central vac system, laundry hook ups, a 2019 electric water heater, a 5 year old furnace and sits on a 4 foot crawl space. The shop has floor drains, water hook up, a horse stall with oak walls, a bathroom and overhead storage. There are heavy duty corrugated pens on the property, a fully stocked pond and a fenced dog run.

SELLING SEPARATELY: 250 gallon fuel tank; animal crematory.

Are You Ready for SCHOOL Real Patio Furniture?

Mover and Shaker Sale!

10% OFF

Poly Furniture, Anything That Moves! Rockers, Gliders & Swings IN Stock & Special Orders!

THIS SPECIAL SALE IS FOR THE MONTH OF AUGUST

Want to see All the Different options we offer? Visit: Dutchboypoly.com

DUTCH GARDEN NURSERY

MEMPHIS LOCATION • 660-883-5650 (Beside Country View Store)
EDINA LOCATION • 660-397-4115 (Home Base)
www.dutchgardennursery.com • Open: Mon. - Sat. 8 AM - 6 PM

Mast Retirement AUCTION

724922jn

660-341-1453 DIRECTIONS: From Kirksville, MO airport go south on Hwy 63 approximately 1/2 mile to Glenview Trail then continue south to site. Watch for signs!

Saturday, August 17th, 2024 @ 9:00am

MACHINERY: Dion 28x48 Thrash machine (long feeder) • Rosenthal shredder • MM corn sheller • field sprayer • fertilizer spreader on wheels • Cummins 4 cyl power unit • VM 4 cyl power unit • Gehl B silage chopper • MC corn binder w/ bundle carrier • corn binder • JD 14 hole grain drill small wheel w/ clutch • JD 16 hole grain drill big wheel • Pioneer R 16" 2 bottom plow w/ KV bottoms

HORSES AND HORSE RELATED ITEMS

EZ BOARDWALK & SAWMILL 24' W/ HONDA ENGINE

48 WOOL SHEEP OF ALL AGES • 54 LAMBS

HOUSEHOLD

HAY & STRAW: 75 round bales • second cutting small square bales • 400 bales bean straw • approximately 300 bales speltz straw

FARM & LIVESTOCK ITEMS: motor powered sheep shearer • 3 round bale feeders • 5 farrowing pens • 4.5 ton SS hog feeder • 3-2 ton Osborn pig feeders • Osborn 1 ton pig feeder

300 gal bulk tank • Thermo King cooler • misc SS milking equipment

SHOP ITEMS: Craftsman 10" table saw • Clipper 12" belt laser on stand • engine hoist • Puma air compressor w/ Honda GX160 • Echo CS 620 chainsaw • Echo CS 400 chainsaw • approximately 100 1/2 blocks

Running two rings

Alvin & Rosa Mast
29573 Glenview Trail
Laplata MO 63549

JR. (ALLEN) FOX: 660-341-1453
WILSON FOX: 660-216-9227

lots more items online at www.foxauctionservice.com

Judd Motors Call 660-457-3700
Hwy 63 North, Lancaster, MO

2012 Case 580N, Loader Backhoe, Turbo, 4WD, Cab with AC, Extendahoe, New 12 ply Tires, Only 1280 Hours, 1 owner, very clean, only **\$62,500**

AC Disk, 10Ft., Good shape, only **\$1,250**

2007-14 Chevy pickup box, red, 8 ft, little rust only **\$1,000**

2002 GMC Sierra 1500 NEW PRICE **\$6,500**
Reg. Cab, Long bed, 4x4, V8, 138K, RED

2006 Chevy 2500HD, 4x4, 6.0L, reg cab, 8 ft bed, 1 owner, no rust, only 97k, red, NEW PRICE **\$17,500**

2015 GMC Sierra 2500 Denali, 6.0L, 4wd, crew cab, short bed, sunroof, heat/cool leather, spray-in bed liner, nerf bars, 207k miles, pearl white, excellent, only **\$21,900**

Cumberland Building Dealer

www.juddmotors.com | In Business Over 75 Years
Curly and Kevin Judd

celebrating the **10TH ANNIVERSARY**

Helping Hands Benefit Auction

Supporting the Clinic for Special Children and local pediatric needs.

Friday August 16
5:00- Serving cheesesteak sandwiches, salad bar, fresh cookies and more | NEW EVENTS for 2024 | 7:30- Children's Auction (children auctioneer, bid & buy) | Coffee & Lotus Bar & CANDYLAND Stand

Saturday August 17
9:30- Airplane Candy Drop | 10:15- Auction Begins | 10:30- Start Serving Lunch Including: Smoked Brisket, BBQ Chicken, Fresh-cut Fries, Lemonade, Banana Splits and much more | 12:15 Remarks by CSC Doctor | 1:00- Second Auction ring opens

BOTH EVENTS AT RICHARD GOOD RESIDENCE 10507 COUNTY ROAD 813-MEMPHIS MO

Specially handcrafted wooden semi, Oakwood 4 pc. bedroom set, Oakwood table & chairs, 3 piece outdoor chair set, 2 sets poly swivel gliders, 2-14' canoes, 30 small straw bales. Lots of Milwaukee tools: impacts, drills, saws, shop vacs, trimmers, weed eaters, 16" chainsaw, backpack sprayers, lights, edgers, tire inflators and more, 360 tractor blind, Dream Yard swing set, double hammock chair, 2-balance bikes, pedal tractor, 2-Spikeball games, tractor & trailer riding toys, 2-bean bag toss, web swing, 16' trampoline, children bikes, girls dresses, 2-dolls from Grandmas Dollhouse, 2-one night cabin rentals, 2-A Good Heritage book, Several Games sold as a single player to each event. Dates as follow: Aug. 25 frisbee golf game, Aug. 31 softball game, Sept. 14 croquet game & supper, Fine Dining Experience, fresh baked goods, quilts, theme/gift baskets, meal certificates, toys, food and much, much more!!!!

Donations can be dropped off at Richard Good Residence, from Wed.-Sat. morning, for other pick-up locations and questions contact:
Bryan B. 660.342.2733
Harlan B. 660.341.4113
Ed Lynn G. 660.341.3040
Michael M. 660.342.8833
Lavern M. 660.342.3316

Coffee & Lotus Bar & CANDYLAND STAND

The Clinic for Special Children will have a stand set up 9-2 Saturday to do Carrier Testing. Cost for the Plain Insight Panel is \$99

ANIMAL HOUSING HAY STORAGE & MUCH MORE

Skylight FABRIC STRUCTURES

30697 COLONY AVE. • NEW CAMBRIA, MO 63558
660-486-3250 • 833-482-8862

VICTORY Metals & Recycling
KIRKSVILLE, MO
660-665-8000

For current scrap prices call or visit our Facebook Page victorymetalsrecycling.com

★ METAL RECYCLING
RECYCLE YOUR SCRAP METAL WITH US! WE PAY CASH FOR: COPPER, ALUMINUM, STEEL, STAINLESS STEEL, APPLIANCES, E-SCRAP, BRASS, LEAD, RADIATORS, ALTERNATORS, BATTERIES, STARTERS, ELECTRIC MOTORS, APPLIANCES, & VEHICLES (TITLE & ID REQUIRED).

★ ROLL-OFF CONTAINER
10-20-30-40 CUBIC YARD DUMPSTERS

3602 INDUSTRIAL RD. • KIRKSVILLE, MO 63501
DJANESVMR@GMAIL.COM
VICTORYMETALSRECYCLING.COM

Shop Local Buy Local Enjoy Local

CALL TODAY! 660-665-8500
sales@nemotrader.net

NEMO Daily Express

FIND THE PERFECT PET FOR THE PERFECT PRICE IN THE PERFECT PLACE FOR DEALS

Find the stuff you want and sell the stuff you don't in the newspaper classifieds.

AUTOMATIC STANDBY GENERATORS
SUMMER STORMS DON'T CARE IF YOU ARE PREPARED... WE DO.

PCS ELECTRONICS
Empowering people in times of need.
3100 Brown Station Rd, Ste E
Columbia, MO 65202

Sales, Service & Installation
call 573-814-3131

Certified factory trained technicians

AGRI-BUSINESS

Equipment & Supplies

2 new Titan 14"x38" double bevel rims, silver, \$350.00 each. Farmall fenders off early 706 with grab handle, not flat tops, \$450.00 per pair. 217-257-1385.

IH #2200, hydraulic bucket loader with joystick controls on 574 utility, fits others. \$2100.00. 217-257-1385.

Farmall M with Schwartz wide front, matching 15.5x38 tires on good rims. Extra hydraulics, overdrive transmission, stored inside, engine stuck. \$1250.00. 217-257-1385.

Farmers Market

Schmucker Produce, tomatoes, zucchini, green beans, buy 10 pound bulk, cucumber, also melons will start. 7 miles North of Kirksville to Ft. Madison Way, East 1/2 mile.

Hay/Feed/Seed

5X51/2 big round bales for sale. Baled dry mixed grass hay with alfalfa. Fertilized, lab tested, net wrapped. Watson Hay Sales 660-341-4031

5'x65" big round bales. Fescue Timothy grass mix. Some Fescue Clover mix. Fertilized, net wrapped. Put up dry. Buy at summer prices. Kahoka, Mo 217-257-1385.

Livestock

Heritage butcher hogs, live delivered, 1.00 per pound, dressed, \$2.00 a bound. Barbecue roaster hogs, 1/4's, 1/2's and wholes. Reunions, events, parties. Delivered. Information. 573-604-0674.

NEMO ADS SELL! Call for more information and specials. 660-665-8500.

EMPLOYMENT

Help Wanted

Research Coordinator II, A.T. Still University Kirksville, MO. Plan and implement multiple clinical and academic research/scholarly projects. BS preferred, 3-5yrs experience. To apply, visit: <https://apptrkr.com/5469847>

Miscellaneous

Looking to hire brush-hog/haying of pasture land. About 10 acres NE of LaPlata. Hay on shares; you keep 70%; other wise just brush hogged. 660-332-4026.

Call about our classified ad specials. 660-665-8500.

FOR SALE
All Sired Angus Bulls,
14 & 18 Months Old.
Harold Trump
660-341-5730

37.17 ACRES HUNTING GROUND
in Knox County MO. Outside Edina, on Highway 15

INCLUDES:

- 10 acre Wetland with income, attracting and supporting many waterfowl.
- Active river waterway with otters and beaver.
- Timber
- Brush
- Pasture
- Abundant Deer
- Turkey
- Rabbit
- Quail
- Blackberries
- Mushrooms
- Walnuts
- and more!

\$6,100 PER ACRE
CALL: 217-242-9667

Show Me Plumbing Services



- General Mini Excavation & Skid Steer Work
- Livestock Watering
- Waterlines & Sewer Systems
- Residential Services & General Plumbing
- Utility Trenching

Stan Schrock 660-988-1163
Greentop, MO 660-766-2636

SHOW-ME SEAMLESS GUTTERING
FREE ESTIMATES • PROMPT SERVICE

- 5" & 6" Gutters
- Siding • Soffit • Fascia

(23 colors available on Gutters & Fascia)

Tried of Cleaning your Gutters?
LEAFPROOF THEM!

ELLIOTT HIX
660-626-3447 • KIRKSVILLE, MO

EVERSONVILLE PRODUCE AUCTION
21565 Hwy KK • Chula, Mo 64635

BUY AND SELL
Farm Fresh Produce, Bedding Plants, Flowers, Pumpkins, Fall Decorations

MAY - SEPTEMBER
MONDAYS AND THURSDAY'S 2 PM
PHONE: 660-659-2016

Golden Grain Bins-Winter Discount

Grain Bins	Floors w/12"Supp. & Flashing
18'x18' 4,195bu. \$ 6,067	18'....\$1,693 30'....\$ 4,726
27'x21' 11,265bu. \$12,178	21'....\$2,315 36'....\$ 6,733
42'x24' 32,245bu. \$28,386	27'....\$3,862 42'....\$ 9,169

Golden Grain

GMLS Industries, Inc.
PH: 660-699-2179 or 620-983-2136
www.gmlsindustries.com

LANCASTER LUMBER INC.

Lancaster, MO.

1-800-424-5071

LAN-DOW BUILDINGS

www.lancasterlumber.com

To place your Business here, call
NEMOTRADER
660-665-8500

Cantril LUMBER and HARDWARE

Full Line of Building Materials • Check Out Our Metal Siding Price!
We Sell Central States Metal • OSB • Drywall • Insulation
• Shingles • Plyco Doors • Windows • Overhead Doors
• All Colors of Metal Roofing and Siding • Concrete Perma Columns
• Treated Fence Posts • Metal Gates
See us for all your building needs

319-397-2351 • 1-888-791-9273
Cantril, IA • Mon. - Fri. 7-5 • Sat. 7-12

Travis Funeral Chapel

We have served the wonderful people of LaPlata and the surrounding communities for over 30 years.

Randy & Michele Travis -
Neil & Sherry Travis
LaPlata, MO. 660-332-7145

exp REALTY

Elizabeth Gregory 110 S. Franklin St
660.621.2136 Kirksville, MO 63501
www.missourihomeandfarm.com

Oldham MONUMENT

Monument, Markers & Vases On Display.

400 N. Kansas, Downtown Marceline, MO
660-376-2508 • Ed & Amy Ewigman

AW Metal LLC
Metal Roofing Headquarters

BUY DIRECT

Post Frame Building Kits
www.awmetal.net
641-664-3990

Reserve your spot here!

Call your sales representative today!

The meeting Place for Buyers and Sellers!!

NEMO Trader

660-665-8500 or email: sales@nemotrader.net

SHOP LOCAL - BUY LOCAL - ENJOY LOCAL

BUY LOCAL
Invest in your community

Miscellaneous

HOME BREAK-INS take less than 60 SECONDS. Don't wait! Protect your family, your home, your assets NOW for as little as 70¢ a day! Call 1-888-618-0515.

Call us for all your advertising needs. 660-665-8500.

Have items to sell? Have too much stuff? Let us help you get the most for it! Call 660-665-8500.

CELEBRATIONS!
PARTY RENTAL
 KIRKSVILLE, MO

FOR RENT

- Tables & Chairs
- Tents • Bounce House
- Cotton Candy Machine
- & More!

660-626-5162 or 660-665-9380

PUBLIC AUCTION
2705 Main St Unionville Mo • August 17th at 10 am

Antiques: Morgan and Peace dollars, wheat pennies, silver Kennedy half dollars, several wood and steel wagon wheels, blue and clear fruit jars, framed prints, Standard can, Archer can, feed sacks, Centerville feed sack, IH tractor tool box, 15 gal Western crock, 5 gal Red Wing crock, 3 gallon blue ribbon crock, other small crocks, sets of old dishes, compotes, quilts, Frankoma, large and small John Deere planter boxes, John Deere corn sheller, Frosty mugs, MFA items, sleds, cast iron kettle, oak school desk, high chair, sprinkler can, hay harpoon, homemade branding irons, cabinets, tables, wood ladder, bicycle, bottles, milk crates and bottles, cream cans, galvanized items, cast iron items, die cast banks, license plates, several wood boxes, pop crates, tractor seats, Royal forge blower, Ford tailgate, well pump, wood keg, large copper tub, What Cheer Iowa sewer tile piece, industrial cart in rough shape, buggy seats, sewing machines, lamps, lanterns, several boxes of miscellaneous. Household and Shop: foosball table, upright jewelry box, exercise bike, wood stove, amps and speakers, Hyla vacuum, garden planter, upright deep freeze, kitchen table and chairs, several cabinets, empty totes, coffee table, decor, boxes of kitchen and household, pots pans, ATV sprayer, yard and hand tools, large wrench set, Craftsman socket set, wrenches and tools, 48" aluminum pipe wrench.

Food and restrooms will be available, indoor sit down type sale in climate controlled building
Auction preview on August 16th from 2 to 5 pm.

Check out pictures on Facebook or our website at www.altiserauctionandappraisal.com.

ALTISER AUCTION & APPRAISAL
 KRIS ALTISER
 660-626-4960

SEE OUR FACEBOOK PAGE FOR PHOTOS

COIN AND DIECAST TOY BANK AUCTION
2705 Main St Unionville Mo • August 18th at 1 pm

Antiques: Die cast banks to sell first with nearly 200 lots of new old stock banks in the box to include Texaco Conoco and others, there are planes cars trucks trains and more. Coins will sell sometime close to 2 pm or shortly after. Coins to include several 2 1/2 gold Indian heads and coronet heads, Morgan dollars with some semi key dates, walking liberty with key dates, other silver halves, wheat cents and more.

Food and restrooms will be available, indoor sit-down type sale in climate-controlled building.

Find more detailed listing at www.altiserauctionandappraisal.com.

ALTISER AUCTION & APPRAISAL
 KRIS ALTISER
 660-626-4960

SEE OUR FACEBOOK PAGE FOR PHOTOS

WE OFFER CUSTOM HARVESTING!

We have Multiple John Deere S Series Machines with Draper Heads available.

We harvest

- wheat
- corn
- beans

Give us a call for your harvesting needs and for a quote.
 Merlin Ramer #660-341-2045

NEMO Trader Classified
COUPON

2 Classified Ads for just \$6.00

20 cents per word over 20 words
 Must be Mailed in or brought in along with payment.
Picture Ads Not Included with Coupon!

Choose Classification

Agri-Business Real Estate Rentals Yard Sales
 Announcements Real Estate Sales Auctions & Estate Sales
 Employment Recreation
 Financial Services
 Merchandise Transportation

Ad No. 1 Each Box Represents a Word (20 words or less)

Ad No. 2 Each Box Represents a Word (20 words or less)

Name _____
 Mailing Address _____
 Phone Number * _____
 this is required*

PO Box 809 Kirksville, MO 63501 • 660-665-8500

WE GOT YOUR NEEDS COVERED!

FARM TARPS TRUCK TARPS
HOOP BUILDING COVERS

Troyer
TARP MFG.
660-486-3301
 20264 STATE HWY. VV • ETHEL, MO 63539

NEMO Trader

11,000 CIRCULATION THAT COVERS MISSOURI, IOWA, AND ILLINOIS.
NEW issue each WEDNESDAY.
 Available online at nemotrader.net or pick up at local business in the area.
 Call 660-665-8500 or email: sales@nemotrader.net

www.nemotrader.net

Remodeling

The bathroom of your dreams in as little as 1 day. Limited Time Offer - \$1000 off or No Payments and No Interest for 18 months for customers who qualify. BCI Bath & Shower. Many options available. Quality materials & professional installation. Senior & Military Discounts Available. Call Today! 1-866-460-1048

Roofing

NEW METAL ROOF \$5995* COMPLETELY INSTALLED. 45 year warranty. Only \$79/mo*. Huge sale on Siding and Windows. LIMITED TIME 800-664-4856 *for details. Senior / Military Discounts

Need something? Let us help you. You can advertise that you are looking for a special item. Call 660-665-8500 for more information.

Connie's MOBILE HOME TRANSPORT
We offer the following...
Break Downs • Transport • Set up • Anchoring
Call Rich today! 573-881-7483

ANTIOCH REPAIR & RENTAL
We fix almost anything!
CALL US FOR ALL OF YOUR EQUIPMENT REPAIR & RENTAL NEEDS
• Attachments • Tires & Tracks • Competitive Rates
Located Near Knox City, MO
Call Ethan Zimmerman
660-299-0808

HARRISON FISHERY
Pond & Lake Stocking Specialists
Call us today! 660.423.3482
info@harrisonfishery.com
harrisonfishery.com

LAN-DOW BUILDINGS
"We Build To Suit Your Needs"
"Custom Built"
Pole Barns • Garages • Utility Buildings
Dick, Jason or Andy Middleton
Memphis Lumber Co.
1-800-337-5858 • 660-465-8595
Fax: 660-465-8596

VIRTUAL ONLINE
RALLS COUNTY, MISSOURI LAND AUCTION
WEDNESDAY, AUGUST 21, 2024 AT 1:00 PM^{CT}
338.9 SURVEYED ACRES ± • 2 TRACTS
SCAN FOR MORE INFORMATION
The Ray & Elsie Moore Estate real estate contains 338.9 acres to be sold in 2 tracts and is located in Ralls County, MO. Tracts 1 & 2 are located 2.9 miles east of New London, MO, north of MO Hwy V. Tract 1 is further described as being in Section 4, T55N-R4W & Section 33, T56N-R4W, Saverton Township, Ralls County, Missouri. Tract 2 is further described as being in Section 33, T56N-R4W, Saverton Township, Ralls County, Missouri.
The land represents an excellent opportunity for cattle, row crop farmers, and investors. Investors and farmers - be sure to check out these properties which offer something for everyone.
RAY & ELSIE MOORE ESTATE
Closing & Title Work by: Accurate Land Title Company
218 Broadway, Hannibal, MO 63401 | (573) 221-1002
Auction Managers: Steve Zeiger (573) 231-9802 & Dan Sullivan (319) 795-1833
BigIron SULLIVAN AUCTIONEERS a BigIron company (844) 847-2161 | www.SullivanAuctioneers.com

VIRTUAL ONLINE
MARION COUNTY, MISSOURI LAND AUCTION
WEDNESDAY, AUGUST 21, 2024 AT 10:00 AM^{CT}
94 ACRES ± (SUBJECT TO SURVEY) • 2 TRACTS
SCAN FOR MORE INFORMATION
The Glenn E. & Martha L. Griesbaum farm is located in Marion County, MO. Tract 1 is located 2.5 miles south of Palmyra, MO and tract 2 is located 3 miles south of Palmyra, MO and are further described as being located in Section 12, T57N-R6W, South River Township, Marion County, Missouri. Both tracts offer an excellent opportunity with tract 1 being mainly pasture ground with great potential for development. Tract 2 has approximately 46 acres of highly productive soils and also offers a great potential for commercial or residential development (subject to re-zoning approval).
Farmers and investors, be sure to check out these properties which offer something for everyone.
GLENN E. & MARTHA L. GRIESBAUM
Closing & Title Work: Mark Twain Title Company
123 S Main St, Palmyra, MO 63461 | (573) 769-2212
Auction Managers: Steve Zeiger (573) 231-9802 & Dan Sullivan (319) 795-1833
BigIron SULLIVAN AUCTIONEERS a BigIron company (844) 847-2161 | www.SullivanAuctioneers.com

TIMBER MANAGEMENT.
Purchasing Walnut, Oak, Maple & Other Species
WE PAY BEFORE WE CUT
BONDED & INSURED
641-895-8209 Est. 1968

HAY AUCTION
Saturday, AUGUST 31 • 10:00 A.M.
1916 S. 18TH (HWY 5 S) CENTERVILLE, IOWA
WE ARE NOW ACCEPTING CONSIGNMENTS FOR OUR SPECIAL HAY, BEDDING AUCTION OF ALL SIZES.
CONTACT: DALTON OTT SALE MANAGER 563-880-5626 TO LIST YOUR HAY
DEMRY AUCTION, LLC
1916 S 18th St, (Hwy 5 SOUTH) CENTERVILLE, IOWA
Janet Demry: 641 895 4310 and 641 856 6408
Tom Demry: 641 895 2508 • Kristy Demry: 641 895 2509
Randy Mulay: 641-436-1521 • Dalton Ott: 563-880-5626
Website: www.Demryauction.com

Edina Livestock Sales
Edina, Missouri
Friday, August 9th
Special Feeder Cafe Sale
Friday, August 16th
Special Feeder Cafe Sale
Friday, August 23rd
Special Cow Sale at 1:00 p.m.
TL Ranch 35 Big, Fancy 3 - 6 years old Fall calving Cows Papers available
Fortney & Reed 65 Nice 3 - 6 years old Fall Bred Cows
Cole Turpin 20 Spring Cow/Calf Pairs 4- 6 years old 350# calves Bred back
To Consign For Any or All Sales or For Information Call:
Owner - Kevin Strange • Cell: 660-341-9974
Ryan Strange • Cell: 660-341-9721
Sale Barn: 660-397-9999
Field Reps:
Bill Tom Hall 660-342-5420 Mike Bronestine 660-341-9965
Jason Bichsel 660-216-0373 John Powell 660-341-1717

RAMER TRUCK SALES
2008 Ford F250, 5.4 gas, XL, 295K, \$8,000
2014 GMC Yukon, XL, 191K, clean title, SLT, 4WD \$8,950
2009 GMC 2500, 6.6, clean title, 176K \$9,900
2008 Jeep Wrangler Unlimited, 3.8 manual 158k \$11,500
2011 Ford F350 Lariat, 6.7, 189K, \$19,500
2022 Ford Bronco, 2 door, 9600 miles, 2.7 eco boost outer banks, salvage title \$34,000
2012 Ford F150, 3.5 EcoBoost platinum, 243K, \$8,500
Dew eze cake feeder, 1000 lb in stock \$4,586 and 1500lb in stock \$4,619
Gorin, Missouri Monday-Saturday 8am-6pm
www.ramertrucksales.com
HOME: 660.282.1002
CELL: 660.341.6140
"NO SUNDAY CALLS!"
2011 Ford F250 Lariat, 6.7 158k Clean title \$22,500

LOLLI LIVESTOCK MKT, INC.
Tuesday, August 13 - 11am
Special Pre-Conditioned Feeder Calf & Yearling Sale
200 Fancy home raised Angus/Angus source str/hftrs 5-800lbs (1 pot load) 725lb str
160 bbwf hftrs 650-675lbs (pot load lots)
160 bbwf hftrs 700lbs (pot load lots)
80 bbwf hftrs 675lbs (pot load)
160 bbwf hftrs 700lbs (pot loadlots)
120 fancy Angus hftrs 1000lbs (pot load lots)
80 bbwf str/hftrs 5-700lbs 45 bbwf str/hftrs 5-700lbs
65 bbwf str/hftrs 4-600lbs 40 bbwf hftrs 600lbs
60 bbwf str/hftrs 5-700lbs 30 bbwf str/hftrs 5-700lbs
60 bbwf str/hftrs 5-700lbs 28 bbwf str/hftrs 5-600lbs
50 bbwf str/hftrs 4-500lbs 27 bbwf hftrs 700lbs
50 bbwf str/hftrs 4-500lbs 25 bbwf str/hftrs 5-600lbs
48 bbwf str/hftrs 3-600lbs 10 bbwf str/hftrs 9-950lbs
This is only a partial listing, many more by sale date.
August 20 - Special Cow, C/C, Bull Sale
Cafe Open Lolli Livestock Market, Inc. Cafe Open
704 Main st * Macon, MO * 660-385-2516
Frankie 660-651-4040 * Tim 660-651-3496 * Joseph 660-346-9711
Jordan 660-346-0410 * Cody 660-676-9392 Cattle accepted on Sundays
Follow Us On Face Book & www.lollibro.com

Linn & Macon County REAL ESTATE AUCTION
Former Russell Liebhart Farm
THURSDAY, AUGUST 22, 2024 AT 10 AM
AUCTION LOCATION:
19162 HWY 129, BUCKLIN, MO 64632
Property Directions: From Bucklin approx 10 Miles North on Hwy 129. From New Boston approx 2 Miles South on Hwy 129
127+/- ACRES OFFERED IN THREE TRACTS
LOCATED IN TWP 59N. RANGE 17W. SEC. 19 & 31 IN MACON COUNTY, MO AND 59N. 18W. SEC. 13 IN LINN COUNTY, MO.
TRACT 1
40 acres +/- in Linn County. A wonderful grass farm with excellent hunting. This 40 acre rural water on the south end with a meter in place perfect for a new home. This 40 has excellent road frontage to Hwy 229 on the west side and Hwy 129 on the south.
TRACT 2
52.73 Surveyed acres in both Linn and Macon County. Tract 2 has an access easement through the Liebhart farm to, as shown on the survey. This blue sky of heaven will be excellent for hunting and also a productive grass farm.
TRACT 3
35.15 surveyed acres in Macon County this is a hunter paradise and an excellent location to build a home with total isolation. This sportsman paradise is located with monster wildlife and can hold several hunters at one time if so desired.
To view property please contact Brett Sayre at 573-881-1876.
SELLER: SAYRE FAMILY TRUST / JACKIE LIEBHART TRUST
Wheeler AUCTIONS & REAL ESTATE
BRETT SAYRE | 573-881-1876
WHEELER AUCTIONS | 660-327-8990
WWW.WHEELERAUCTIONS.COM

Call us for all your advertising needs. 660-665-8500. Call about our classified ad specials. 660-665-8500.

AUCTION
Saturday, AUGUST 10 • 10:00 A.M.
DAN AND ILETA MIHALOVICH
Auction Building, 1916 S. 18th (Hwy 5 S) Centerville, Iowa
ANTIQUES & COLLECTIBLES: Possum Belly Cabinet; Commode w/ Towel Rack; Nice Oak Dresser w/ Mirror; Drop Front Secretary; Tall Kitchen Cupboard; 2 Nice Parlor Tables; Table 6/Chairs; Very Old Smoke Stand; Modern Lawyer's Bookcase; Vintage Floor Lamp; Large amount of Dale Earnhardt Collectables including Die Cast Cars, 2 Very large albums of NASCAR Trading Cards, and more. Several Trophy's from local Car Shows; Depression Glass; McCoy & USA Stoneware; Large amount of HarCrest Stoneware; Lambrecht's Butter Crock; Tulip Bowl; Lamb & Flower Jar/Id; Copper General Model Quick Aid A-70c Fire Guard Ext; Vendo upright Coke Machine, works, key; Terry Redlin, Jesse Barnes Framed Wildlife Prints; Various Iowa License Plates 1919-1969; Very Large Collection of Hub Caps; Quilt; Acid Delco Light Exide Jar; Feed Sacks; Miners Hat & Pit Lamp; Miner's Lunch Bucket; Beatrice Well Pump; Very Large Collection of Clear Crosscut Pattern Dishes-Punch Bowl, Lamp, Serving Dishes & more; Large Calumet Baking Powder Tin; Enamel Table; Milk Bottles; Singer Treadle Sewing Machine; Christmas Collectables; Small Picnic Basket; 6 School Arm Chairs; & more.
TOOLS, GARAGE ITEMS; Craftsman Limited Edition Table Saw; Like New Troy Built Chipper Vac; McCulloch Chain Saw; Shop Smith; Sandborn Magna Force Air Compressor; 2 - 6' Rubbermaid Lawn Tool Sheds; 2-7' Metal Shelving; Large Menard's Work Bench; 2- Metal Frame Hvy Duty Work Bench; Alum Ext Ladder & Step Ladders; Solar 6/12 Volt Battery Charger; Squirrel Cage Fan; Nice Metal Pull Behind Lawn Cart; Work Stool/Creeper; Walk Behind Seeder; 2 Floor Jacks; Rubbermaid Cart; Jack Stands; Modern Gun Case; Small Rolling Tool Box; Echo Back Pack Blower; Gas Leaf Blower; Skisaw; Ammo Box; Air Tools; 2014 John Deere X304 all wheel steer riding lawn mower; battery powered blower and String Trimmer with 4 batteries; Coca Cola Buddy Lee Doll; and a large amount of Hand Tools and garage items.
HOUSEHOLD & MISC; A LARGE AMOUNT OF GOOD FURNITURE: Several Nice Dressers w/ Mirrors, Chest of Drawers; 2- Very Nice Tables/Chairs; Large Nice Sectional Sofa; Large set of Wood Framed Sofa, Loveseat, Chair & Stool; Blonde Dresser w/ Mirror, Bed Frame, Cedar Chest; Tall 6 Shelf Bookshelf; Kenmore Upright Freezer; Nice Large Brown Recliner; Large Black Recliner; End Tables; Glass Show Case; Beds; Card Tables/Chairs; Bedding; Linens; Kitchen Items; **STILL UNPACKING**
FIREARMS: YOU MUST HAVE IOWA PERMIT TO PURCHASE, IOWA CONCEALED WEAPON PERMIT OR FFL AND SUPPLY A VALID IOWA D.L. NO OUT OF STATE SALES UNLESS YOU HAVE AN FFL. NO EXCEPTIONS; 22 Savage Mod. 24 Sporrster Target Rifle; 22 RWS German H.P. Air Rifle; 12 Ga. Winchester Model 12 Vent Rib + Choke; 45 Cal. Knight Black Powder; Mod. D656 Custom Stove; 50 Cal. Knight Black Powder; MK992 Camo + Stainless; 16 Ga. Belgium Double Barrel Collector; POSSIBLY= 22 Cal H&R Revolve.
DEMRY AUCTION, LLC
1916 S 18th St, (Hwy 5 SOUTH) CENTERVILLE, IOWA
Janet Demry: 641 895 4310 and 641 856 6408
Tom Demry: 641 895 2508 • Kristy Demry: 641 895 2509
Randy Mulay: 641-436-1521 • Dalton Ott: 563-880-5626
Website: www.Demryauction.com

TRANSPORTATION
Parts & Services

USED PARTS VEHICLES, semi's, farm/construction equipment. Motors/Tranny's, body parts, color matching yours, warranted/delivery. 800-807-9612

TRANSPORTATION
Trucks, 4x4's, SUV's

2006 Ford F250 Extended cab, 4x4, gas, automatic, 5.4, 155,000 miles \$8500.00 Phone 660-341-0252

Lolli Livestock Market
presents their annual
Sporting Goods, Ammo & Firearms Auction
704 Main Street Macon, Mo 660-385-2516
AUGUST 16-17, 2024

8:00 am Friday - 8 am Saturday
Ammo & GUNS including pre 1898, C&R & modern firearms

This auction will be featured on AUCTIONZIP. View catalog and/or bid online. All FFL rules apply - View the website for direct links to AuctionZip.

East Fork Guns & Collectibles
email: lollibros@lolibros.com website: www.lolibros.com

ATTENTION LAND OWNERS!!

Buyer of standing timber
Paying Cash Upfront!

Owner/Operator of Sawmill

- Buy/Cut Logs
- Certified
- Bonded
- Insured

Tri State Timber L.L.C.
353 1/2 Grand Ave. • Memphis, Mo 63555
660-341-4921 • 660-465-2975

WE HAVE SEMI LOADS OF FINE WOOD LOGS FOR SALE

Have items to sell? Have too much stuff? Let us help you get the most for it! Call 660-665-8500.

Let us help you with all your advertising needs. Don't know what to say? Call us we can help! 660-665-8500.

GRAINBINSUPPLY
"The Grain Bin People" GBS

BIN PACKAGES ARRIVING DAILY

- 36X6 (20,000 BU)
- 36X7 (24,000 BU)
- 42X7 (33,000 BU)
- 48X9 (55,000 BU)
- 48X10 (60,000 BU)

CALL FOR DETAILS ABOUT PACKAGES, OR OTHER SIZES. RESERVE YOUR SPOT NOW!

Sukup CAIRO, MO FOLLOW US (660) 263-6700

Your Local
FARM SUPPLY SOURCE
NUTRITION • MEDICAL • FARM • PET • APPAREL

SEE US FOR YOUR
SHEEP & GOAT
EQUIPMENT NEEDS

Hometown Animal Health has provided quality products, expert knowledge, and friendly customer service to northeast Missouri and surrounding areas. We are a full-service nutrition, medical, and farm supply source carrying complete lines of animal feed and supplies, farming equipment, agricultural parts, lawn and garden tools, work apparel, and much more!

Hometown ANIMAL HEALTH
Feed • Medical • Farm & Pet Supplies • Footwear & More
website: hometownanimalhealth.com
660-465-2967
18743 US Hwy, 136 Memphis, MO 63555
"on Hwy 136 west of Memphis"
Monday-Friday 8pm to 5pm
Saturday 8am to 1pm

Home & 4 Ac. +/- 28' x 34' Outbuilding
REAL ESTATE AUCTION
221 Sparks Ave. - Moberly, MO 65270
THURS. AUGUST 22ND 4 P.M.

As Mrs. Doris Crutchfield has moved and is downsizing, She will be offering her personal property and Real Estate at Public Auction.
REAL ESTATE SELLS AT 5 P.M.: 1892 Sq. Ft. 3 BR, 2 BA home on 4 ac. +/- Easy access to Morley, Street & Hwy 24. The property has 2 outbuildings, a 24' x 24' garage/shop as well as a 28' x 34' building with a 28' x 30' addition. *Open House: Thurs. August 8th 5 p.m. - 7 p.m.* Lots of potential on this parcel that offers privacy and space! To view Real Estate Contact Chuck McKeown 660-651-6889 or Michael Cunningham, Auctioneer 660-651-2288 with Century 21 McKeown & Assoc. Inc. See LandandAuctions.com/Crutchfield for more information.
REAL ESTATE TERMS: 10% down day of Auction upon entry into Real Estate Contracts with Balance Due and Possession given at Closing, Preferably within 45 days. Property Sold As Is with Seller Providing Clear Title Insurance. Real Estate Sells Subject to Owner Confirmation. Buyer Must Have Financing Secured Prior to Bidding. Statements Auction Day Take Precedence Over Ads. See website for full list of personal property, LandandAuctions.com

MRS. DORIS CRUTCHFIELD
Byron Shaw, Personal Representative
CENTURY 21 MCKEOWN & ASSOC. INC.
Chuck McKeown 660-651-6889 Michael Cunningham 660-651-2288
Office 660-263-1789 LandandAuctions.com

Sparks Auction
204 E Reid St, Edina, MO 63537

Saturday, September 7th @ 9AM
MACHINERY AND GUN AUCTION

LIVE AUCTION OR ONLINE
NO Charge for NO SALE
Machinery, Auto's, Guns, Tillage Tools, Fencing, ETC.
If you don't use it turn it into CASH

Bring Items ANYTIME! FIRST COME FIRST TO SELL!
Call Today to Consign.
Jesse Sparks 573-406-8787

Call Jesse for All Auction Needs
Land • Real Estate • Household • Machinery • Vehicles

FLO RITE GUTTERING

660-988-1163

- 5" & 6" Guttering Available
- Leafguard Options
- 20+ Color Options
- Stainless Steel Fasteners

Stan Schrock • Greentop, MO

Central Metals Recycling LLC

Buyers of Ferrous and Non-Ferrous Metals

We Pay More \$\$\$, Call For Your Best Pricing Today!!

11923 Hwy. 54 Mexico, MO 573-581-0336
1601 N. 30th Quincy, IL 217-214-7649
1175 Hwy. 96 Hamilton, IL 217-847-3191

NEMOTRADER.NET

fb farmbank

FULL TIME OPENINGS
Green City, Milan, and Kirksville

Looking for dedicated, self-motivated, team-oriented individuals seeking a great opportunity as a Universal Banker.
Apply online at www.farmbank.com
An Equal Opportunity Employer

Green City 660.951.8430 Milan 660.951.8432 Kirksville 660.951.8431
www.farmbank.com Member FDIC

RETIREMENT SALE
EVERYTHING MUST GO!!

WE HAVE TAKEN ADDITIONAL MARKDOWNS!

Sierens PALACE

110 W. HARRISON ST. KIRKSVILLE Mo. 63501

Beilstein CAMPER SALES

CALL US NOW for the best prices...
28248 327th Ave. LaGrange, MO • Hwy 61 South, 4 Miles South of LaGrange, MO
573-655-2254

BLOWOUT SALE!

#561969 2021 COACHMEN NOVA RAM PROMASTER 3500 20RB Only 44,000 Miles, One Owner CALL FOR PRICE	#013723 2020 JAYCO OCTANE SUPER LITE TOY HAULER 222 #V20074 Large Garage, Private Bedroom MSRP \$46,013 Our Price \$34,995	#334520 2023 SALEM 22RBSX PLATINUM NEW, SALE PRICED Slide-Out, Rear Bath PRICE \$36,995 MSRP \$46,125 Our Price \$28,495
#091507 2023 SALEM HEMISPHERE HYPER-LYTE 22RKHL NEW, SALE PRICED, Light Weight, Rear Bath PRICE \$39,995 MSRP \$52,016 Our Price \$34,995	#069835 2023 SALEM 27RE NEW, SALE PRICED, 2 Slides, Rear Entertainment PRICE \$36,995 MSRP \$53,889 Our Price \$34,995	#090773 2023 SALEM HEMISPHERE 314BUD NEW, SALE PRICED, 2 Slides, 2 Bedrooms PRICE \$47,995 MSRP \$69,820 Our Price \$45,495

beilsteincampersales.com



Clark County, MO LAND AUCTION

THURSDAY, AUGUST 15TH - 10 AM
Sale conducted at the CARE Building (451 N. Vine St. Kahoka, MO)

70+/- ACRES/ 2 TRACTS

TRACT 1



TRACT 2



RESIDENTIAL REAL ESTATE & PERSONAL PROPERTY AUCTION

SATURDAY, AUG 17TH - 10 AM



OPEN HOUSE: AUG 11TH 1-2 PM

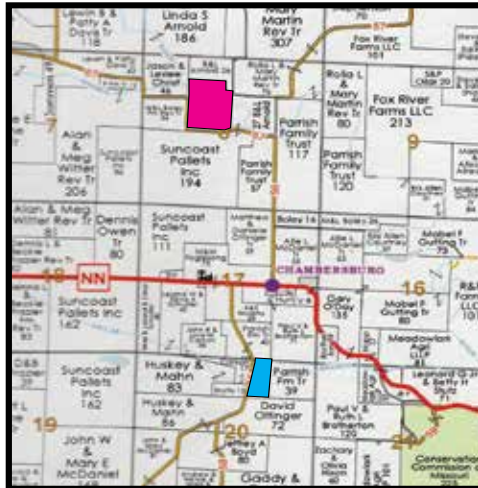
Selling an 896 Sq' 2 bedroom, 1 bath home built in 1900. Home offers a eat in kitchen, living room and enclosed porch. Other improvements include 26' X 55' utility shed / carport all setting on a 75' X 150' lot.

TERMS & CONDITIONS

Real Estate Sells at 10 a.m. Sharp! Real estate does not sell contingent to financing or any other buyer(s) contingencies. All Improvements Sell "As Is". Real estate conveyed subject to any easements of record in effect at the closing date. Real estate conveyed subject to "Shared Feature" driveway. Immediately following the bidding, the successful buyer(s) will be required to pay 10% down day of sale payable to Oak Hill Title Company Escrow and sign into a written agreement with the sellers. The balance of the purchase price will be due on or before Sept. 18th 2024. 2024 real estate taxes will be prorated (2023 \$175.49). Owners Policy of Title Insurance in the full amount of purchase price will be provided by the sellers. All additional closing cost will be divided in equal shares between the buyer(s) and sellers. Closing conducted by Oak Hill Title Company located at 309 Lewis Street, Canton, MO.

PERSONAL PROPERTY

Selling a 2003 Chevy Silverado reg. cab pickup; selection of Tools, Lawn Related Item, Misc Household. Watch our Website Closer to Sale Date for Additional Information & Photos on Personal Property.



GENERAL INFORMATION

The O'Day tracts of land are located North & South of Chambersburg, MO. Tracts offer income producing recreational land, prime Northeast Missouri hunting & building sites. Lying in Sections 8 & 20 Twp. 66N R8W Clark Co. MO.

TRACT 1: 52 +/- ACRES

- Offers 17.54 +/- Acres of productive tillable cropland, 9.1 Acres CRP. Balance in Wooded Draws with Access to Fox River. Lying in Section 8, Twp. 66N, R8W Clark County, MO.
- Access By County Road 67 Running along the South Side and a portion of the West Side.
- Cropland Soil Types: Vesser, Weller and Wakeland.
- CRP Contract Info: Contract Number 1050A (7.9 Acres) ending 9-30-24, Annual Payment \$1080.00, Contract Number 11255A (1.2 Acres) ending 9-30-31, Annual Payment \$192.00.

TRACT 2: 18 +/- ACRES

- Offers 2.5 Acres of open land currently in CRP contract ending 9-30-2033, annual payment \$291.00. Balance in timber, potential building site, hunting Lying in Section 20, Twp. 66N, R8W, Clark County, MO.
- Access by County Road 55 Running along the West Side.

TERMS & CONDITIONS

- Tracts will be sold on a price per acre basis, based on taxable acreage and offered through the method of "Buyer's Choice"
- Tracts do not sell contingent to financing or any other buyer's contingencies.
- Real estate conveyed subject to any recorded easements of record in effect at the day of closing.
- Immediately following the bidding, the successful buyer(s) will be required to pay 10% down the day of sale payable to Oak Hill Title Company Escrow and sign into a written contract with the seller(s). The balance of the purchase price will be due at the closing on or before September 18th, 2024.
- Tract 1 sells subject to current row crop tenant and to the terms of the CRP contract. Possession given on cropland after fall harvest.
- The 2024 taxes (Tract 1 \$80.84, Tract 2 \$14.76) will be prorated at closing.
- Sellers will provide (Owner's Policy) Title Insurance in the full amount of the purchase price.
- All additional closing costs will be divided in equal shares between the buyer's & seller's.
- Closing conducted by Oak Hill Title Company located at 309 Lewis Street, Canton, MO. Contact closing agent at 573-288-4462 for any 1031 Exchange or closing questions.
- All lines on maps are for identification purposes only, these lines may or may not be accurate.

AUCTIONEER'S NOTE: Excellent opportunity to purchase smaller tracts of land offering prime hunting and potential building site. Terms cash or check with proper ID. Not responsible in case of accident. Announcements made sale day take precedence over any advertisement. The above information is believed to be accurate; however, no liability for its accuracy, errors or omissions are assumed by the seller or auction service.

ANDREW J. O'DAY ESTATE

Connie Campbell, Judith O'Day, Charles O'Day, Jacob O'Day And Megan O'Day, Sellers
Oak Hill Title Company, Closing Agent



McAfee Auction Service, LLC

375 S Johnson • Kahoka, MO

660-727-3796

www.mcafeeauctionservice.com

TIMED ONLINE ONLY FARMER RETIREMENT AUCTION

LOTS START ENDING AT 10 AM
FRIDAY SEPTEMBER 6TH

LOCATION: 23139 COUNTY ROAD 550, MEMPHIS, MO 63555

PREVIEW: STARTS SAT. SEPT. 24TH 9 A.M.- 4 P.M. DAILY

PICKUP: (CASHIER ONSITE) SATURDAY SEPT. 7TH 9 A.M.- NOON



SELLING A COMPLETE LINE OF FARM EQUIPMENT TO INCLUDE:
(3) JD Tractors, JD Combine & Heads, Trucks, Trailers, Planting Equip., Tillage Equip., Seed & Grain Handling Equip., Trencher, Dozer, Hay Equip. and Livestock Equip.

CARL & ROSE TRUEBLOOD, SELLERS



McAfee Auction Service, LLC

375 S Johnson • Kahoka, MO

660-727-3796

www.mcafeeauctionservice.com

LIVE ONSITE MONTROSE, IA REAL ESTATE & PERSONAL PROPERTY ESTATE AUCTION SATURDAY AUGUST 24TH - 10 AM

Sale conducted onsite located at 301 Spruce Street, Montrose, IA



OPEN HOUSE:
SUN, AUGUST 18TH
1-2PM

Selling a 1204 sq' 3 bedroom well kept home with a 30' x 66' multi car garage.



Also selling 2002 Fisher 16 Pro Avenger fishing boat, Utility trailer, Lawn equipment, lawn related, tools, shop related, household misc.



COMPLETE DETAILS & PHOTOS ONLINE!

JIMMIE E. BOECKER ESTATE
CONNIE BOECKER, EXECUTOR

ADDITIONAL DETAILS
& PHOTOS ONLINE

WWW.MCAFEEAUCTIONSERVICE.COM