

NEMO Trader

FREE THE NEMO TRADER

PO BOX 809 • KIRKSVILLE, MO 63501 • PHONE 660-665-8500

Web Site: nemotrader.net • Email: sales@nemotrader.net

A WEEKLY ADVERTISER SERVING ALL OF NORTHEAST MISSOURI AND THE SURROUNDING AREA

Signature
Overhead Doors & Remodeling, LLC
660-785-0248
www.signatureremodelingkv.com
Giving your home the attention it deserves!

Lick Creek FENCING
Owen Miller
641-242-0346
**Continuous Fence • Barb Wire
Woven Wire • Skid Work**

AMMIO PLANET
GUN & PAWN SHOP
JOE RICE // OWNER
200 W. POTTER AVE - KIRKSVILLE, MO
660-956-4654 • 660-349-0070
EMAIL: sales@ammio-planet.com
WWW.AMMIO-PLANET.COM

LAND SALES & AUCTIONS
RANCH & FARM AUCTIONS
A DIVISION/FRENDS OF WHITETAIL PROPERTIES REAL ESTATE
HUNTING | RANCH | FARM | TIMBER
SERVING
LEWIS • MACON • SHELBY • MARION • RANDOLPH • MONROE • RALLS • AUDRAIN
CLAY LOCKARD
EAST CENTRAL MISSOURI LAND SPECIALIST
573.466.9123
WHITETAIL PROPERTIES.COM

exp REALTY
Elizabeth Gregory
110 S. Franklin St
Kirksville, MO 63501
660.621.2136
www.missourihomeandfarm.com

MODERN RESTORATION & REMODELING LLC
YOUR REMODELING SPECIALIST
660.413.2439

SCOTT'S AUCTION SERVICE
573-356-4405
Auctioneer: Scott Kuntz
SEE MORE PHOTOS ON SCOTT'S WEBSITE
WWW.SCOTTSAUCTIONSERVICE.COM

2 Tracts – Randolph County Home, Farm Land & Personal Property Auction

Sat., Aug. 3, 2024 at 10:00 am
Gary Winn

has propane hot water boiler heat and central air. The property includes a 3 stall, log horse barn and 2 utility sheds.
Please call Scott at 573-356-4405 to schedule your personal showing.
FARM EQUIPMENT: AGCO 6085 with 5,5xx hours, MFWA, nice running tractor; and more.
TOOLS & SHOPEQUIPMENT: shop vise; and more.
OUTDOOR ITEMS: various coolers and camping gear; and more.
ANTIQUES & COLLECTIBLES: approximately 75-pound anvil; and more.
HOUSEHOLD ITEMS: 2 file cabinets; 4 drawer dresser; and more.
There will be more items at this auction too numerous to list.

TRACT 1: Consists of 181 acres more or less of gently rolling ground. Approximately 70 acres is bottom ground completely farmable. The hunting is amazing, there is a stocked pond with large crappie and the pasture produces good grass and utilizes well. The pond for water for watering the pasture is fenced and leased until November.

TRACT 2: 1972 built ranch-style home with approximately 1,500 square feet has two bedrooms, one and half baths and sits on 18 acres more or less. The home has an open kitchen/dining room with large pantry, covered deck, 2 car attached garage and an additional half bath and full kitchen in the basement. The home

Macon Real Estate & Personal Property Auction

Thurs., Aug. 8, 2024 at 4:00 pm
Ed & Judy Tumlin

roof, siding, gutters and garage door. It has an attached two car garage, a garage in the basement and a detached brick 24' x 36' car garage with a loft. Please call Scott at 573-356-4405 to schedule your personal showing.
TRAILER, BOAT & ACCESSORIES: **HOUSEHOLD ITEMS:** **ANTIQUES & COLLECTIBLES:** **TOOLS & OUTDOOR EQUIPMENT:** and more.
There will be more items too numerous to list.

REAL ESTATE: You will love this three bedroom brick, ranch style home located on a quiet street in a highly sought after neighborhood. The home has an open floor plan, 3 bedrooms on the main level and two bedrooms and one bath in the basement. The home has beautiful landscaping, a large shed yard, a new

Linneus Real Estate & Personal Property Auction

Sat., Aug. 10, 2024 at 10:00 am
Leroy Dean Tye

meat cleavers; blue swirl enamel ware; primitive wash stand; Boos Jack butcher block; antique kitchen cupboard; antique utensils; various art pottery pitchers & bowls; ; carousel horse; various antique prints & paintings; antique chest of drawers; antique wooden bread bowl; large retro Davy Crockett lamp; primitive painted oval table; Native American art & prints; antique display cabinet; Davy Crockett collection; several small wooden kegs; antique Stag scene crock; large antique General Store display cabinet; cast iron Boston Terriers; cast iron black Americana bank; Antique J. Stevens .22; antique #3 Red Wing water jug; several whiskey barrels; antique wooden boat; Davy Crockett wooden rocking horse; wooden decoys; front half mount of a mountain lion; various kerosene lamps; antique church pews; large antique whiskey barrel; iron folk art
There will be many more items too numerous to list.

NOTE: 2 Auctions in one day!
REAL ESTATE: We will be selling at auction this two bedroom, one and a half bath home manufactured home on 14 acres. Please contact Scott at 573-356-4405 to schedule your personal showing.
VEHICLES & TRAILERS: 16' tandem axle car trailer; 2010 Chevy extended cab 2500HD Vortec gas engine Work package; 18' equipment trailer with hand winch; 14' 3 person Jon boat with trailer; 2015 Doolittle 7' x 16' enclosed trailer; 2010 Doolittle 8' x 24' trailer

OUTDOOR EQUIPMENT: Husqvarna YT46LS mower; Cub Cadet GTX 1054 mower; John Deere LA175 mower; Yardman 46" mower; miscellaneous hand tools; various ladders; John Deere 3 point 6" brush hog; Huskee 22 ton log splitter;
ANTIQUES & COLLECTIBLES: antique Wm Hinton Floor Safe; antique

Purdin Real Estate & Personal Property Auction

Sat., Aug. 10, 2024 at 4:00 pm
Leroy Dean Tye

eveners; antique doors; lots & lots of enamel ware; curved front curio cabinet; antique wood stove; several treadle sewing machines; antique oak drop leaf table; large variety of miscellaneous antique chairs; older Penny Vile slot machine; large potato bin; several large trunks; miscellaneous architectural pieces; several bird cages; numerous floor lamps; miscellaneous display cabinets and hutches; miscellaneous barn doors and lumber; plastic "Gas Light Room Fine Dining" sign; architectural ceiling pieces; antique feed scale; ox yoke; several wall mirrors; antique baby buggy; barn trolley and rail
TOOLS & OUTDOOR ITEMS: lots of long handle tools; lots & lots of shelving – both wood and metal; miscellaneous fishing poles; several heavy roll around carts.
There will be many more items too numerous to list.

NOTE: 2 Auctions in one day!
REAL ESTATE: We will be selling at auction 4 pieces of real estate located in downtown Purdin, Missouri. 401 C Street currently houses the US Post Office, to the West is a large antique store, across C Street/Main Street is a 58' x 54' Morton building with a 8' x 8' loading dock and 12' x 12' garage door and on the Southwest corner of C Street/Main Street and Highway 5 is an older building. All pieces of real estate will be sold separately. Please call Scott at 573-356-4405 to schedule your personal showing.

ANTIQUES & COLLECTIBLES: large crock collection; antique doctor's bag; Excello brand shortening barrel; lots of smalls & figurines; large; variety of kerosene lamps; various oil cans and antique gas jugs; miscellaneous antique trunks; wooden tool boxes; nail kegs;

Macon Restaurant Auction

Thurs., Aug. 15, 2024 at 5:00 pm
James and Kristin Myers

the building so it can be a seamless, turn-key transaction with an opportunity to begin making money immediately. The business formerly operated as Smokehouse BBQ and closed due to the health of the current owners. It would be ideal for a restaurant, winery, sandwich shop, a bar and grill or could easily be converted to another type of business. The property includes paved parking and has additional public parking located just across the street. It is conveniently located at the crossroads of Rutherford Street and Bourke Street, within walking distance of several local businesses with many employees. **Please contact Scott for your personal showing at 573-356-4405**

REAL ESTATE: This custom-built restaurant, located in the heart of downtown Macon, offers endless opportunities. The facility has new additions, updates and additional space to expand. It can currently accommodate nearly 100 people at one time. The restaurant has a rustic, cabin-like feel with a custom bar area, rock archways, a separate event room, an efficient and effective kitchen, dishwasher area, fresh meat butchering area and lots of storage space. Contents will sell with

Farm Equipment & Personal Property Auction

Fri., Aug. 16, 2024 at 10:00 am
James E Dawson Estate

TRACTORS & EQUIPMENT: 4030 John Deere tractor with loader; and more.
LIVESTOCK SUPPLIES: 108 large round hay bales; and more.
TOOLS & OUTDOOR EQUIPMENT: pressure washer; drill press; and more.
LAWN EQUIPMENT: 54" Hustler zero turn mower; and more.
There will be many more items too numerous to list.

HOUSEHOLD ITEMS: deep freezer; 2 dressers; 2 full size beds; and more.
VEHICLES & TRAILERS: 2009 Chevy Silverado 2500 HD 61,xxxx miles 6.0 Vortec, 4x4, gooseneck ball, long bed and running boards; and more.

Business/Residential Buildings on 8.56 acres m/l

Thurs., Aug. 29, 2024 at 5:00 am
Marie Lindquist

It has 2"x6" exterior walls, propane heat, ground source central air conditioning, a central vac system, laundry hook ups, a 2019 electric water heater, a 5 year old furnace and sits on a 4 foot crawl space. The shop has floor drains, water hook up, a horse stall with oak walls, a bathroom and overhead storage. There are heavy duty corral pens on the property, a fully stocked pond and a fenced dog run.
SELLING SEPARATELY: 250 gallon fuel tank; animal crematory.

Judd Motors

Call 660-457-3700
Hwy 63 North, Lancaster, MO

- 2012 Case 580N**, Loader Backhoe, Turbo, 4WD, Cab with AC, Extendahoe, New 12 ply Tires, Only 1280 Hours, 1 owner, very clean,.....only **\$62,500**
- AC Disk**, 10Ft., Good shape, only **\$1,250**
- 2007-14 Chevy pickup** box, red, 8 ft, little rust only **\$1,000**
- 2002 GMC Sierra 1500** **NEW PRICE \$6,500**
Reg. Cab, Long bed, 4x4, V8, 138K, RED
- 2006 Chevy 2500HD**, 4x4, 6.0L, reg cab, 8 ft bed, 1 owner, no rust, only 97k, red, **NEW PRICE \$17,500**
- 2015 GMC Sierra 2500 Denali**, 6.0L, 4wd, crew cab, short bed, sunroof, heat/cool leather, spray-in bed liner, nerf bars, 207k miles, pearl white, excellent,..... only **\$21,900**



Cumberland Building Dealer

www.juddmotors.com | In Business Over 75 Years
Curly and Kevin Judd

DEALER AND FARMER Machinery Auction



MONDAY. AUGUST 26, 2024 • 10 AM

**AUCTION LOCATION: WHEELER AUCTIONS PROPERTY
111 BUCHANAN ST. CARTHAGE, IL 62321**

**CONSIGNMENTS WELCOME! ADVERTISING DEADLINE: WED., AUGUST 7TH
CONTACT KIRBY FECHT 217-248-2906 OR CHRIS BUTCHER 309-255-0123**

**CONSIGNMENTS FROM MULTIPLE
JOHN DEERE, CASE IH DEALERS AND LOCAL FARMERS!**

Live on-site bidding with online bidding

WHEELER LIVE ONLINE BIDDING PLATFORM | **BID NOW** Online Bidding Provided By **EquipmentFacts** | **BID LIVE** Live Online Bidding Provided By **proxibid**

Wheeler AUCTIONS & REAL ESTATE
29191 HWY. 24, PARIS, MO 65275 | 660-327-5890
www.wheelerauctions.com

TO CONSIGN PLEASE CALL
Kirby Fecht | 217-248-2906
Chris Butcher | 309-255-0123
Illinois Auction Firm License #444000408



Skylight FABRIC STRUCTURES

30697 COLONY AVE. • NEW CAMBRIA, MO 63558
660-486-3250 • 833-482-8862

ATTENTION LAND OWNERS!!

Buyer of standing timber
Paying Cash Upfront!

Owner/Operator of Sawmill

- Buy/Cut Logs
- Certified
- Bonded
- Insured

WE HAVE SEMI LOADS OF FINE WOOD LOGS FOR SALE

Tri State Timber L.L.C.
353 1/2 Grand Ave. • Memphis, Mo 63555
660-341-4921 • 660-465-2975

Central Metals Recycling LLC

Buyers of Ferrous and Non-Ferrous Metals

We Pay More \$\$\$, Call For Your Best Pricing Today!!

11923 Hwy. 54 Mexico, MO | 1601 N. 30th Quincy, IL | 1175 Hwy. 96 Hamilton, IL
573-581-0336 | 217-214-7649 | 217-847-3191

AGRI-BUSINESS

Cattle

Registered Miniature Herefords, 1 bull, 4 cows. 1 hair sheep buck lamb, 40 pounds. 641-664-1949, 15199 175th, Drakesville, IA 52552.

Equipment & Supplies

2 new Titan 14"x38" double bevel rims, silver, \$350.00 each. Farmall fenders off early 706 with grab handle, not flat tops, \$450.00 per pair. 217-257-1385.

IH #2200, hydraulic bucket loader with joystick controls on 574 utility, fits others. \$2100.00. 217-257-1385.

Farmall M with Schwartz wide front, matching 15.5x38 tires on good rims. Extra hydraulics, overdrive transmission, stored inside, engine stuck. \$1250.00. 217-257-1385.

John Deere double disk, 12' hydraulic lift. John Deere hay rake 8' on steel wheels. 641-664-1949, 15199 175th, Drakesville, IA.

NEMOTRADER.NET

Mast Retirement AUCTION

660-341-1453 | DIRECTIONS: From Kirksville, MO airport go south on Hwy 63 approximately 1/2 mile to Glenview Trail then continue south to site. Watch for signs!!

Saturday, August 17th, 2024 @ 9:00am

MACHINERY: Dion 28x48 Thrash machine (long feeder) • Rosenthal shredder • MM corn sheller • field sprayer • fertilizer spreader on wheels • Cummins 4 cyl power unit • VM 4 cyl power unit • Gehl B silage chopper • MC corn binder w/ bundle carrier • corn binder • JD 14 hole grain drill small wheel w/ clutch • JD 16 hole grain drill big wheel • Pioneer R 16" 2 bottom plow w/ KV bottoms

HORSES AND HORSE RELATED ITEMS

HAY & STRAW: 75 round bales • second cutting small square bales • 400 bales bean straw • approximately 300 bales speltz straw

FARM & LIVESTOCK ITEMS: motor powered sheep shearer • 3 round bale feeders • 5 farrowing pens • 4.5 ton SS hog feeder • 3-2 ton Osborn pig feeders • Osborn 1 ton pig feeder

48 WOOL SHEEP OF ALL AGES • 54 LAMBS

HOUSEHOLD 300 gal bulk tank • Thermo King cooler • misc SS milking equipment

SHOP ITEMS: Craftsman 10' table saw • Clipper 12" belt laser on stand • engine hoist • Puma air compressor w/ Honda GX160 • Echo CS 620 chainsaw • Echo CS 400 chainsaw • approximately 100 1/2 blocks

Running two rings

Alvin & Rosa Mast
29573 Glenview Trail
Laplata MO 63549

lots more items online at www.foxauctionservice.com

LUTE LAND & PERSONAL PROPERTY AUCTION

2917 COUNTY ROAD 2420 - HIGBEE, MO

FRIDAY, AUGUST 2, 2024 @ 10 AM

3 TRACTS 144.4 ACRES 3 BEDROOM HOME

TRACT 1 11.3 Survey acres w/ 3 Bedroom ranch style home

TRACT 2 44.4 Surveyed acres

TRACT 3 88.7 Surveyed acres

21 Chuck McKeown w/ Century 21 McKeown & Associates @ 660-651-6889 / 660-263-1789

TRACTOR - BRUSH HOG - EQUIPMENT - TRAILERS - TOOLS - MOWER - FARM RELATED - GUN SAFE - ANTIQUES - COLLECTIBLES - APPLIANCES - HOUSEHOLD - LANDSCAPING ROCKS - YARD ORNAMENTS - OUTDOOR ITEMS - FULL LISTING @ IMANAUCTION.COM

Irvin Lute, Seller
CINDY HENDRICKS - PERSONAL REPRESENTATIVE

IMAN AUCTION COMPANY
ImanAuction.com | 660-788-4298 | 660-414-7967

VICTORY Metals & Recycling

KIRKSVILLE, MO
660-665-8000

For current scrap prices call or visit our **Facebook Page** victorymetalsrecycling.com

★ METAL RECYCLING

RECYCLE YOUR SCRAP METAL WITH US! WE PAY CASH FOR: COPPER, ALUMINUM, STEEL, STAINLESS STEEL, APPLIANCES, E-SCRAP, BRASS, LEAD, RADIATORS, ALTERNATORS, BATTERIES, STARTERS, ELECTRIC MOTORS, APPLIANCES, & VEHICLES (TITLE & ID REQUIRED).

★ ROLL-OFF CONTAINER

10-20-30-40 CUBIC YARD DUMPSTERS

3602 INDUSTRIAL RD. • KIRKSVILLE, MO 63501
DJANESVMR@GMAIL.COM
VICTORYMETALSRECYCLING.COM

Hay/Feed/Seed

5X51/2 big round bales for sale. Baled dry mixed grass hay with alfalfa. Fertilized, lab tested, net wrapped. Watson Hay Sales 660-341-4031

5'x65" big round bales. Fescue Timothy grass mix. Some Fescue Clover mix. Fertilized, net wrapped. Buy at summer prices. 217-257-1385.

Livestock

Heritage butcher hogs, live delivered, 1.00 per pound, dressed, \$2.00 a pound. Barbecue roaster hogs, 1/4's, 1/2's and wholes. Reunions, events, parties. Delivered. Information. 573-604-0674.

EMPLOYMENT

Miscellaneous

Looking to hire brush-hog/haying of pasture land. About 10 acres NE of LaPlata. Hay on shares; you keep 70%; other wise just bush hogged. 660-332-4026.

AKC LAB PUPPIES

Farm Raised - Ready Now
Lay's Labs
LaBelle, MO • 660-956-2482

The Ultimate Wood Heat.



CLASSIC EDGE
TITANIUM HDX
Outdoor Wood Furnace

- **More Comfort** - Thermostatically controlled wood heat.
- **Peace of Mind** - Keep the fire outside and eliminate the dangers associated with indoor wood heating.
- **Save Money** - Wood is a renewable, inexpensive and often free energy source.

Campen Heating & Air
Division of Kraus & Sons Inc.
Canton, MO 63435
573-288-8966
CentralBoiler.com

Transportation/Drivers

???CDL License??? Meets all state and federal laws. Online + 2 days training, ability to drive manual transmission. Jefferson City, Willow Springs, Mo. Please call 573-353-2853.

FINANCIAL

Business Opportunities

Outdoor hunting sports business available. Profitable high end hunting products, excellent opportunity, welding fabrication knowledge a plus. Information 641-208-7353.

MERCHANDISE

Furniture

Texas ranch style bar table with tractor seat stools, very nice. Custom camo bench seat 28'x72" like new. 25 hp Yamaha outboard. 641-208-7353.

NEMOTRADER.NET

Premium Metal Roofing



Metal Roofing Headquarters
641-664-3990 • awmetal.net

KEIM LUMBER COMPANY LLC
COMPETITIVE PRICES • FREE ESTIMATES

- COMPLETE BUILDING PACKAGES
- WINDOWS AND DOORS
- INSULATION • DRYWALL
- DELIVERY

13625 St. Hwy 3 LaPlata, MO

PFI
Premier Foam Insulation, LLC
— Macon, MO —

- SPRAY FOAM
- CELLULOSE
- FIBER GLASS

KARY JENNINGS • 660-591-2735 | DREW KERNS • 573-286-2411
EMAIL: PREMIERFOAMLCC@GMAIL.COM

Adair County Sheriff's Office
Accepting Bids

The Adair County Sheriff's Office is requesting bids for the upgrade of floors, walls, showers, and replacement of glass panels in the Adair County Detention Center. A bid package may be obtained in the Sheriff's Office at 215 N. Franklin St. in Kirksville or from www.adaircountymissouri.com/government/bids-requested. Bids will be due by August 19, 2024 at 4:00 pm local time.

Let us help you with all your advertising needs. Don't know what to say? Call us we can help! **660-665-8500**.

HAVE A PET OR PUPPIES TO SELL? Call us. You can even pay over the phone. **660-665-8500**.

HAY AUCTION
Saturday, AUGUST 31 • 10:00 A.M.

1916 S. 18TH (HWY 5 S) CENTERVILLE, IOWA
WE ARE NOW ACCEPTING CONSIGNMENTS FOR OUR SPECIAL HAY, BEDDING AUCTION OF ALL SIZES.
CONTACT: DALTON OTT SALE MANAGER 563-880-5626 TO LIST YOUR HAY

DEMRY AUCTION, LLC
1916 S 18th St, (Hwy 5 SOUTH) CENTERVILLE, IOWA
Janet Demry: 641 895 4310 and 641 856 6408
Tom Demry: 641 895 2508 • Kristy Demry: 641 895 2509
Randy Mulay: 641-436-1521 • Dalton Ott: 563-880-5626
Website: www.Demryauction.com

FLO RITE GUTTERING

660-988-1163

- 5" & 6" Guttering Available
- Leafguard Options
- 20+ Color Options
- Stainless Steel Fasteners

Stan Schrock • Greentop, MO

AUTOMATIC STANDBY GENERATORS
SUMMER STORMS DON'T CARE IF YOU ARE PREPARED... WE DO.



KOHLER **GENERAC**

PCS ELECTRONICS
Empowering people in times of need.
3100 Brown Station Rd, Ste E
Columbia, MO 65202

Sales, Service & Installation
call 573-814-3131

Certified factory trained technicians

LAN-DOW BUILDINGS
"We Build To Suit Your Needs"
"Custom Built"
Pole Barns • Garages • Utility Buildings
Dick, Jason or Andy Middleton

Memphis Lumber Co.
1-800-337-5858 • 660-465-8595
Fax: 660-465-8596

Your Local **FARM SUPPLY SOURCE**
NUTRITION • MEDICAL • FARM • PET • APPAREL

SEE US FOR YOUR **SHEEP & GOAT** EQUIPMENT NEEDS



Hometown Animal Health has provided quality products, expert knowledge, and friendly customer service to northeast Missouri and surrounding areas. We are a full-service nutrition, medical, and farm supply source carrying complete lines of animal feed and supplies, farming equipment, agricultural parts, lawn and garden tools, work apparel, and much more!"

Hometown ANIMAL HEALTH
Feed • Medical • Farm & Pet Supplies • Footwear & More
website: hometownanimalhealth.com
660-465-2967
18743 US Hwy, 136 Memphis, MO 63555
"on Hwy 136 west of Memphis"

Monday-Friday 8pm to 5pm
Saturday 8am to 1pm

Sparks Auction
204 E Reid St, Edina, MO 63537

Saturday, September 7th @ 9AM

MACHINERY AND GUN AUCTION

LIVE AUCTION OR ONLINE
NO Charge for NO SALE
Machinery, Auto's, Guns, Tillage Tools, Fencing, ETC.
If you don't use it turn it into CASH

Bring Items ANYTIME! FIRST COME FIRST TO SELL!
Call Today to Consign.
Jesse Sparks 573-406-8787

Call Jesse for All Auction Needs
Land • Real Estate • Household • Machinery • Vehicles

GRAINBINSUPPLY
"The Grain Bin People" **GBS**

BIN PACKAGES ARRIVING DAILY

- 36X6 (20,000 BU)
- 36X7 (24,000 BU)
- 42X7 (33,000 BU)
- 48X9 (55,000 BU)
- 48X10 (60,000 BU)

CALL FOR DETAILS ABOUT PACKAGES, OR OTHER SIZES.
RESERVE YOUR SPOT NOW!

Sukup CAIRO, MO (660) 263-6700

VIRTUAL ONLINE
LEE COUNTY, IOWA
LAND AUCTION
TUESDAY, AUGUST 27, 2024 AT 10:00 AM^{CT}

586.25 SURVEYED ACRES • 4 TRACTS • APARTMENT BUILDING

OPEN HOUSE: TUESDAY, AUGUST 13 • 4:00 - 5:30 PM

Tracts 1 & 2 of the Auwaerter Farms are located 2 miles west of the west edge of Ft. Madison, Iowa. The farms are further described as being located in Sections 20, 21, 28 & 29, Jefferson Township, Lee County, Iowa. Tracts 3 & 4 of the Auwaerter Farms are located 2 1/2 miles east of Argyle, Iowa. The farms are further described as being located in Sections 2 & 11, Des Moines Township, Lee County, Iowa. The Auwaerter apartment building is located at 100 Main Street, Montrose, Iowa.

The Auwaerter Farms represent very productive nearly 100% tillable tracts of land as well as a combination of tillable and hunting/recreational tracts. Also included on this auction is an income producing 4-unit apartment building. Don't miss this chance to start in or add several acres to a new or existing farming operation, plus the opportunity to purchase an income producing property in the quaint small town of Montrose, Iowa.

DALE W. & ELLA M. AUWAERTER
Representing Attorney:
Gregory A. Johnson | Law Office of Gregory A. Johnson
516 7th Street, Fort Madison, Iowa 52627 | (319) 372-2532
Auction Manager: Jeff Hoyer (319) 759-4320

BigIron **SULLIVAN AUCTIONEERS**
a BigIron company
(844) 847-2161 | www.SullivanAuctioneers.com

Miscellaneous

2020 John Deere 1025R compact tractor package, loader, 54" deck, 34 hours. Like new, books \$15,000, trade 660-216-1544.

Fish for stocking ponds: catfish, grass carp, crappie, redear, bass, and fathead minnows. Heindselman Family Farms. 660-341-5692.

Call about our classified ad specials. 660-665-8500.

Miscellaneous

1997 Ford Taurus, 153K, \$600.00. VR tiller, 174 cc and cultivator 55 cc, \$700.00 for both. 660-216-7600.

Sports Equipment

5-550# deer and wildlife feeders, deer decoys, wool camo suit, snow camo suit (new), 25 hp Yamaha outboard, like new condition. 641-208-7353.

Connie's MOBILE HOME TRANSPORT
We offer the following...
Break Downs • Transport • Set up • Anchoring
Call Rich today! 573-881-7483

Golden Grain Bins-Winter Discount

Grain Bins	Floors w/12" Supp. & Flashing
18'x18' 4,195bu. \$ 6,067	18'....\$1,693 30'....\$ 4,726
27'x21' 11,265bu. \$12,178	21'....\$2,315 36'....\$ 6,733
42'x24' 32,245bu. \$28,386	27'....\$3,862 42'....\$ 9,169

Golden Grain
GMLS Industries, Inc.
PH: 660-699-2179 or 620-983-2136
www.gmlsindustries.com

Liebhart Sales, Inc.
660-689-3406 Vermeer
17546 Lacey • Boston, MO 63557

- Twin Rakes
- Trail Mowers
- Disc Mowers
- DewEze Bale Beds
- Danuser Post-Hole Diggers
- Tedders
- Bale Processors
- New Hydraulic 5th Wheel Balls

NEW EQUIPMENT

- TM 1200 Mower • 605M

USED EQUIPMENT

New DewEZE Hay Beds in Stock!

Edina Livestock Sales
Edina, Missouri

Friday, August 2nd
Special Feeder Calf Sale

Friday, August 9th
Special Feeder Calf Sale

To Consign For Any or All Sales or For Information Call:
Owner - Kevin Strange • Cell: 660-341-9974
Ryan Strange • Cell: 660-341-9721
Sale Barn: 660-397-9999

Field Reps:
Bill Tom Hall 660-342-5420 Mike Bronestine 660-341-9965
Jason Bichsel 660-216-0373 John Powell 660-341-1717

Kirksville, Missouri
KIRKSVILLE LIVESTOCK LLC

24295 Benton Road * P O Box 242 * Kirksville, MO 63501
www.kirksvillelivestock.com

SPECIAL BRED HEIFER, COW & BULL SALES 6:00 P.M.
SPECIAL CATTLE SALES 11:00 A.M.
SPECIAL SHEEP SALES 10:00 A.M.

AUGUST, 2024 SALE SCHEDULE

- Friday, August 2 - Special Breeding Stock Cattle Sale, 6:00 p.m.
- Monday, August 5 - Special Sheep, Goat, & Hog Sale, 10:00 a.m.
- Monday, August 12 - Special Feeder Cattle Sale, 11:00 a.m.
- Monday, August 19 - Regular Cattle Sale, 11:00 a.m.
- Monday, August 26 - Special Feeder Cattle Sale, 11:00 a.m.

We are open on Sunday to Receive Your Livestock
"Your Business is Very Much Appreciated"
"Proud to Serve Area Livestock Producers"
For more information or Someone to Phone for information:
Patty Foster, Office Manager - 660-665-9804
Chuck Ambrosia - 660-342-3530 - Luke West - 620-215-5770
Mark Herbold - 515-720-8667 - Al Ashmead - 660-216-8730
Doug Fleshman - 660-626-7148 - Daniel Smith - 660-341-8396
Jeremy Jarman - 660-341-9879 - Caleb Randolph - 641-919-8539
Karol Kirkpatrick - 641-777-3403

FOR SALE ARCHERY
3 BOWS - ALL ARE BOWTECH

- FANATIC 3.0 XL 28.5" - 32" 50#- 60#
- FANATIC 3.0 SD 24" - 29" 40#- 50#
- NEW SS34 26" - 31.5" HUNTING BOW

ALL BOWS ARE TOP OF THE LINE
HURT SHOULDER CAN'T SHOOT ANYMORE
660-234-5016

TIMBER MANAGEMENT.
Purchasing Walnut, Oak, Maple & Other Species

WE PAY BEFORE WE CUT

BONDED & INSURED Est. 1968
641-895-8209 643286cb

NEMO ADS SELL! Call for more information and specials. 660-665-8500.

BE AN EARLY BIRD! Place your ads before Monday and beat the rush!

RAMER TRUCK SALES

2008 Ford F250, 5.4 gas, XL, 295K, \$8,000

2014 GMC Yukon, XL, 191K, clean title, SLT, 4WD \$8,950

2009 GMC 2500, 6.6, clean title, 176K \$9,900

2008 Jeep Wrangler Unlimited, 3.8 manual 158k \$11,500

2011 Ford F350 Lariat, 6.7, 189K, \$22,500

2022 Ford Bronco, 2 door, 9600 miles, 2.7 eco boost outer banks, salvage title \$34,000

2012 Ford F150 3.5 Ecoboost platinum, 243K, \$8,500

Dew eze cake feeder, 1000 lb in stock \$4,586 and 1500lb in stock \$4,619

2011 Ford F250 Lariat, 6.7 158k Clean title \$22,500

Gorin, Missouri
Monday-Saturday
8am-6pm
www.ramertrucksales.com
HOME: 660.282.1002
CELL: 660.341.6140
"NO SUNDAY CALLS!"

NEMO BRAIN GAMES

CROSSWORD PUZZLE - JULY - WEEK 4

PUZZLE - SODOKU - JULY - WEEK 4

CRYPTO FUN
Determine the code to reveal the answer!

Solve the code to discover words related to thrill-seeking. Each number corresponds to a letter. (Hint: 7 = E)

A. 23 9 12 7 21 11 8 16 7
Clue: Exciting prospect

B. 11 26 16 13 22 22
Clue: Sudden rush

C. 23 9 16 7 21 23 22 13 21 7
Clue: Adrenal hormone

D. 25 7 23 11
Clue: Accomplishment

WORD SEARCH - JULY - WEEK 4

ADVENTUROUS WORD SEARCH

Find the words hidden vertically, horizontally, diagonally, and backwards.

WORDS

ACHIEVEMENT
ACTION
ACTIVE
ADVENTURES
BARRIERS
BOUNDARIES
BUMPS
BUNGEE
CHILLS
CLIMBING
COASTER
COMPETITION
ENDURANCE
EXERTION
EXTREME
GOALS
HEART-RACING
HIGH
PARACHUTE
RAPIDS
SCARY
SPEED
THRILLING
TRAIL BLAZE

CLUES ACROSS

- Spiritual leaders
- A solution
- Fortified wine
- Edible mollusk
- Blood group
- A way to compare
- Gov't lawyer
- Actor Ciaran
- Calendar month
- Very willing
- __ ex Machina
- Satisfies
- Type of berry
- Distinctive practice
- Popular pickup truck model
- Dekagram
- Naturally occurring solid material
- Company officer
- Villains
- Cricket frogs
- German founder of psychology
- Endured
- A female domestic
- A situation you can be in
- Cigarette (slang)
- Fiber optic network (abbr.)
- Belgian composer Walter
- Employee stock ownership plan
- Belonging to the bottom layer
- Musical or vocal sound
- Yankees' great Judge
- Dickens character
- Beloved late sportscaster Craig
- South Dakota
- Exposing human vice or folly to ridicule
- Atomic #79
- Former Braves pitcher Julio
- Humor
- Shawl
- Hospital unit

CLUES DOWN

- Animal disease
- Commercial
- Arts and crafts supplies
- Containers
- Investment vehicle
- A way to greet in a friendly way
- Bulged downward
- "A Day Without" singer
- Lay about
- Intestinal
- Negative
- Caused to be loved
- Prominent in Islamic eschatology
- Sincere
- Not in
- Number above the line in a fraction
- Bill Murray chased one
- Pouch
- Swedish krona
- Start over
- Wild white or yellow flower
- Fourteen
- Visual way of interacting with a computer (abbr.)
- Up-to-date
- Campaigns
- Touch lightly
- "Boardwalk Empire" actress Gretchen
- Violent seizure of property
- One who supports the Pope
- Malaise
- Body fluid
- Inauthentic person
- Title of respect
- Chilean city
- Central Japanese city
- Garment
- Draw from
- Automobile
- The man
- Top government lawyer

Sports Equipment

Hunting blind, 2 person, 6' tower on trailer. Ground blind, hay bale blinds. Duck and goose blind. Trailer mounted deer feeders, like new. 641-208-7353.

Pets & Supplies

St. Bernard mixed puppies. 11 weeks old. 816-560-0247

Wanted

Buying deer antlers, racks, sheds, dead heads, will pay cash. 70 VHS hunting videos, very collectible, 25 hp Yamaha outboard. 641-208-7353.

REAL ESTATE SALES

Mobile Homes For Sale

40 YEARS THIS YEAR - we have to be something right. Call for quote or any house new or used, double and single. 573-657-2176. amegamobilehomes.com

WE GOT IT - let us bid your mobile home purchase, new and used. 573-499-9993. columbiadiscounthomes.com.

I BUY...used mobile homes. Call or text 573-338-6250 or email Greg S. CDH @outlook.com.

TRIPLE WIDE - moving stock, awesome price. 573-657-7040. chateauhomes.net

NEMO ADS SELL! Call for more information and specials. 660-665-8500.

Mobile Homes For Sale

TINY HOMES - Missouri franchise 573-881-7965.

RECREATION

Accessories-Recreation

Rifle Scope Me-Opta Meo-Star 3x12x56 RD. Ten point crossbow, carbon Nitro RDX. Obsession Defcon 6 bow with case. All in like new condition. 641-208-7353.

SERVICES

Chat/Dirt/Gravel

DIRT WORK All types of excavation, reclaiming overgrown fields, including CRP and WRP. Building site preparation, creating new trails and crossings, Food plot development and maintenance. Leveling and grading, wetland construction and maintenance. Pond and lake cleaning and construction. Call for quotes. 660-342-2701

Lawn/Garden/Landscape

New 3 pt. tillers, heavy duty, gear driven, 7' to 12' starting at \$4,150. 660-874-4455.

FOR SALE
All Sired Angus Bulls,
14 & 18 Months Old.
Harold Trump
660-341-5730

37.17 ACRES HUNTING GROUND
in Knox County MO. Outside Edina, on Highway 15

INCLUDES:

- 10 acre Wetland with income, attracting and supporting many waterfowl.
- Active river waterway with otters and beaver.
- Timber
- Brush
- Pasture
- Abundant Deer
- Turkey
- Rabbit
- Quail
- Blackberries
- Mushrooms
- Walnuts
- and more!

\$6,100 PER ACRE
CALL: 217-242-9667

Show Me Plumbing Services



- General Mini Excavation & Skid Steer Work
- Livestock Watering
- Waterlines & Sewer Systems
- Residential Services & General Plumbing
- Utility Trenching

Stan Schrock 660-988-1163
Greentop, MO 660-766-2636

HARRISON FISHERY
POND & LAKE STOCKING

Pond & Lake Stocking Specialists

Call us today! 660.423.5482

info@harrisonfishery.com
harrisonfishery.com

United Rentals
Kirkville

WE SELL

NEW & USED EQUIPMENT!

3008 N Baltimore, Kirksville, MO 63501
660.234.8488
UnitedRentals.com

FARM & INDUSTRIAL PAINTING
- Pat Costello -

- Houses
- Barns
- Morton Sheds
- Barn Repairs
- Metal Roofs
- All colors!

FREE Estimates

Tri-State Painting 1-800-940-8289
(Leave Message)

YODER CONSTRUCTION
DANIEL YODER

- Metal Roofing
- Siding
- New Construction

OUR GOALS:

- Good Service
- Quality Structure
- Competitive Prices
- Free Estimates

660-486-3332

CELEBRATIONS!
PARTY RENTAL
KIRKSVILLE, MO

FOR RENT

- Tables & Chairs
- Tents • Bounce House
- Cotton Candy Machine
- & More!

660-626-5162 or 660-665-9380

LOLLI LIVESTOCK MKT, INC.

NO SALE Tuesday, August 6

August 13 - 11am **Special Calf & Yearling Sale**
August 20 - 11am **Special Cow, C/G & Bull Sale**
August 27 - 11am **Special Calf & Yearling Sale**

Cafe Open **Lolli Livestock Market, Inc.** Cafe Open
704 Main st * Macon, MO * 660-385-2516
Frankie 660-651-4040 * Tim 660-651-3496 * Joseph 660-346-9711
Jordan 660-346-0410 * Cody 660-676-9392 Cattle accepted on Sundays
Follow Us On Face Book & www.lolibros.com

Are you having a garage sale or rummage sale? Call us to advertise. 660-665-8500.

Have Clutter? Need room? Call the NEMO classifieds. We can help! 660-665-8500.

East Fork Guns & Collectibles
Sporting Goods, Ammo & Firearms Auction
SATURDAY, AUGUST 16-17, 2024

8am Friday - 8am Saturday
Ammo & GUNS including pre 1898, C&R, modern firearms.
Online bidding available at AuctionZip.

Located at
Lolli Livestock Market
704 Main Street Macon, Mo 660-385-2516

This auction will be featured in person & on AUCTIONZIP. View catalog and/or bid online.

Featuring over 500 guns!

Preview guns/inventory Thursday, August 15th 9-5pm
email: lolibros@lolibros.com website: www.lolibros.com

Skyline Service LLC
Skid Steer and Construction Repair
Levi Weiler
660-346-6881 • 660-883-5525

Scan Tool Diagnostics
Exhaust After Treatment Repairs • SCR Unlocks
Skid Steer Tracks Available

LANCASTER LUMBER INC.

Lancaster, MO.

1-800-424-5071

LAN-DOW BUILDINGS

www.lancasterlumber.com

NEMO
Trader

APPANOOSE DAVIS LEE HANCOCK
PUTNAM SCHUYLER SCOTLAND CLARK
SULLIVAN ADAIR KNOX LEWIS ADAMS
GRUNDY LIVINGSTON LINN MACON SHELBY MARION
RANDOLPH MONROE

705 E. Laharpe Street, Ste. F
Kirkville, MO 63501
660-665-8500
sales@nemotrader.net

TOWN	STATE	COUNTY	TOWN	STATE	COUNTY	TOWN	STATE	COUNTY
Quincy	Illinois	Adams	Galt	Missouri	Grundy	Palmyra	Missouri	Marion
Carthage	Illinois	Hancock	Trenton	Missouri	Grundy	Taylor	Missouri	Marion
Hamilton	Illinois	Hancock	Baring	Missouri	Knox	West Quincy	Missouri	Marion
Centerville	Iowa	Appanoose	Edina	Missouri	Knox	Madison	Missouri	Monroe
Cincinnati	Iowa	Appanoose	Knox City	Missouri	Knox	Monroe City	Missouri	Monroe
Moravia	Iowa	Appanoose	Canton	Missouri	Lewis	Paris	Missouri	Monroe
Unionville	Iowa	Appanoose	Ewing	Missouri	Lewis	Livonia	Missouri	Putnam
Bloomfield	Iowa	Davis	Labelle	Missouri	Lewis	Unionville	Missouri	Putnam
Drakesville	Iowa	Davis	Lewistown	Missouri	Lewis	Moberly	Missouri	Randolph
Ft. Madison	Iowa	Lee	Brookfield	Missouri	Linn	Downing	Missouri	Schuyler
Hwy 2	Iowa	Lee	Marceline	Missouri	Linn	Lancaster	Missouri	Schuyler
Keokuk	Iowa	Lee	Chillicothe	Missouri	Livingston	Queen City	Missouri	Schuyler
Montrose	Iowa	Lee	Atlanta	Missouri	Macon	Arbela	Missouri	Scotland
Brashear	Missouri	Adair	Bevier	Missouri	Macon	Memphis	Missouri	Scotland
Kirkville	Missouri	Adair	Callao	Missouri	Macon	Rutledge	Missouri	Scotland
Novinger	Missouri	Adair	LaPlata	Missouri	Macon	Shelbina	Missouri	Shelby
Alexandria	Missouri	Clark	Macon	Missouri	Macon	Green City	Missouri	Sullivan
Kahoka	Missouri	Clark	New Cambria	Missouri	Macon	Milan	Missouri	Sullivan
Wayland	Missouri	Clark	Hannibal	Missouri	Marion			


Our circulation is 11,000 with a 21 county coverage area in Missouri, Iowa and Illinois. Our paper is a free paper and is distributed to restaurants, convenience stores and other businesses in the area for individuals to pick up. We have a new issue every Wednesday.




VIRTUAL ONLINE

RALLS COUNTY, MISSOURI LAND AUCTION

WEDNESDAY, AUGUST 21, 2024 AT 1:00 PM^{CT}



338.9 SURVEYED ACRES± • 2 TRACTS




SCAN FOR MORE INFORMATION

The Ray & Elsie Moore Estate real estate contains 338.9 acres to be sold in 2 tracts and is located in Ralls County, MO. Tracts 1 & 2 are located 2.9 miles east of New London, MO, north of MO Hwy V. Tract 1 is further described as being in Section 4, T55N-R4W & Section 33, T56N-R4W, Saverton Township, Ralls County, Missouri. Tract 2 is further described as being in Section 33, T56N-R4W, Saverton Township, Ralls County, Missouri.

The land represents an excellent opportunity for cattle, row crop farmers, and investors. Investors and farmers - be sure to check out these properties which offer something for everyone.

RAY & ELSIE MOORE ESTATE

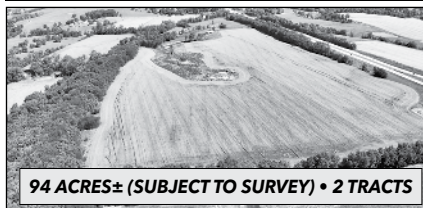
Closing & Title Work by: Accurate Land Title Company
218 Broadway, Hannibal, MO 63401 | (573) 221-1002
Auction Managers: Steve Zeiger (573) 231-9802 & Dan Sullivan (319) 795-1833

BigIron  **SULLIVAN AUCTIONEERS**
a BigIron company
(844) 847-2161 | www.SullivanAuctioneers.com

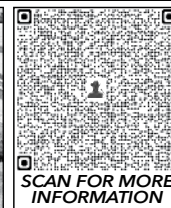
VIRTUAL ONLINE

MARION COUNTY, MISSOURI LAND AUCTION

WEDNESDAY, AUGUST 21, 2024 AT 10:00 AM^{CT}



94 ACRES± (SUBJECT TO SURVEY) • 2 TRACTS




SCAN FOR MORE INFORMATION

The Glenn E. & Martha L. Griesbaum farm is located in Marion County, MO. Tract 1 is located 2.5 miles south of Palmyra, MO and tract 2 is located 3 miles south of Palmyra, MO and are further described as being located in Section 12, T57N-R6W, South River Township, Marion County, Missouri. Both tracts offer an excellent opportunity with tract 1 being mainly pasture ground with great potential for development. Tract 2 has approximately 46 acres of highly productive soils and also offers a great potential for commercial or residential development (subject to re-zoning approval).

Farmers and investors, be sure to check out these properties which offer something for everyone.

GLENN E. & MARTHA L. GRIESBAUM

Closing & Title Work: Mark Twain Title Company
123 S Main St, Palmyra, MO 63461 | (573) 769-2212
Auction Managers: Steve Zeiger (573) 231-9802 & Dan Sullivan (319) 795-1833

BigIron  **SULLIVAN AUCTIONEERS**
a BigIron company
(844) 847-2161 | www.SullivanAuctioneers.com

Registered Pembroke Welsh Corgi's

Farm Raised • Socialized • Play Full!
2 MALES PUPPIES AVAILABLE NOW!
Vet Check • Shots • Worming • Records
660-626-3951



CLIP AND SAVE CLIP AND SAVE CLIP AND SAVE CLIP AND SAVE CLIP AND SAVE CLIP AND SAVE

AUCTION

Saturday, AUGUST 10 • 10:00 A.M.

DAN AND ILETA MIHALOVICH
Auction Building, 1916 S. 18th (Hwy 5 S) Centerville, Iowa

ANTIQUES & COLLECTIBLES: Possum Belly Cabinet; Commode w/ Towel Rack; Nice Oak Dresser w/ Mirror; Drop Front Secretary; Tall Kitchen Cupboard; 2 Nice Parlor Tables; Table 6/Chairs; Very Old Smoke Stand; Modern Lawyer's Bookcase; Vintage Floor Lamp; Large amount of Dale Earnhardt Collectables including Die Cast Cars, 2 Very large albums of Nascar Trading Cards, and more. Several Trophys from local Car Shows; Depression Glass; McCoy & USA Stoneware; Large amount of HarCrest Stoneware; Lambrecht's Butter Crock; Tulip Bowl; Lamb & Flower Jar/lid; Copper General Model Quick Aid A-70c Fire Guard Ext; Vendo upright Coke Machine, works key; Terry Redlin, Jesse Barnes Framed Wildlife Prints; Various Iowa License Plates 1919=1969; Very Large Collection of Hub Caps; Quilt; Acid Delco Light Exide Jar; Feed Sacks; Miners Hat & Pit Lamp; Miner's Lunch Bucket; Beatrice Well Pump; Very Large Collection of Clear Crosscut Pattern Dishes-Punch Bowl, Lamp, Serving Dishes & more; Large Calumet Baking Powder Tin; Enamel Table; Milk Bottles; Singer Treadle Sewing Machine; Christmas Collectables; Small Picnic Basket; 6 School Arm Chairs; & more;

TOOLS, GARAGE ITEMS: Craftsman Limited Edition Table Saw; Like New Troy Built Chipper Vac; McCulloch Chain Saw; Shop Smith; Sandborn Magna Force Air Compressor; 2 - 6' Rubbermaid Lawn Tool Sheds; 2-7' Metal Shelving; Large Menard's Work Bench; 2- Metal Frame Hwy Duty Work Bench; Alum Ext Ladder & Step Ladders; Solar 6/12 Volt Battery Charger; Squirrel Cage Fan; Nice Metal Pull Behind Lawn Cart; Work Stool/Creeper; Walk Behind Seeder; 2 Floor Jacks; Rubbermaid Cart; Jack Stands; Modern Gun Case; Small Rolling Tool Box; Echo Back Pack Blower; Gas Leaf Blower; Skilsaw; Ammo Box; Air Tools; and a large amount of Hand Tools and garage items.

HOUSEHOLD & MISC; A LARGE AMOUNT OF GOOD FURNITURE: Several Nice Dressers w/ Mirrors, Chest of Drawers; 2- Very Nice Tables/Chairs; Large Nice Sectional Sofa; Large set of Wood Framed Sofa, Loveseat, Chair & Stool; Blonde Dresser w/ Mirror, Bed Frame, Cedar Chest; Tall 6 Shelf Bookshelf; Kenmore Upright Freezer; Nice Large Brown Recliner; Large Black Recliner; End Tables; Glass Show Case; Beds; Card Tables/Chairs; Bedding; Linens; Kitchen Items; **STILL UNPACKING**

DEMRY AUCTION, LLC
1916 S 18th St, (Hwy 5 SOUTH) CENTERVILLE, IOWA
Janet Demry: 641 895 4310 and 641 856 6408
Tom Demry: 641 895 2508 • Kristy Demry: 641 895 2509
Randy Mulay: 641-436-1521 • Dalton Ott: 563-880-5626
Website: www.Demryauction.com

CLIP AND SAVE CLIP AND SAVE CLIP AND SAVE CLIP AND SAVE CLIP AND SAVE CLIP AND SAVE

CONSTRUCTION EQUIPMENT AUCTION

425+ ITEMS SELL NO RESERVE! THURSDAY, AUGUST 8



EJ5738 '98 Ditch Witch J7702C directional boring unit



DX0822 '11 Sany SY810U excavator



DX0901 '10 Case 580 Super N backhoe



DO2444 '23 Peterbilt 567 dump truck



DK6707 '18 CAT 323 excavator



purple wave AUCTION

INVENTORY INCLUDES: dump trucks, directional boring units, excavators, backhoes, dozers, mini excavators, tractors, skid steers, compactors, motor graders, vacuum excavators, wheel loaders, bucket trucks, curbside machines, snow trucks, street sweepers, telehandlers, and more. All items are sold "AS IS." 10% buyers premium applies.

Are you having a garage sale or rummage sale? Call us to advertise. **660-665-8500.**

FOR SALE

Wheat Straw
65' Net wrapped, EASY location to load.
660-341-4470

NEMO ADS SELL! Call for more information and specials. **660-665-8500.**

WE OFFER CUSTOM HARVESTING!

We have Multiple John Deere S Series Machines with Draper Heads available.

We harvest

- wheat
- corn
- beans



Give us a call for your harvesting needs and for a quote.
Merlin Ramer #660-341-2045

Scrubby Duds

Laundromat


Large capacity coin machines

OPEN 7 DAYS A WEEK
24 HOURS A DAY

Your laundry never takes a break & neither do our machines!

311 S. Baltimore Kirksville, MO 63501 660-349-8943 Bob & Paulette Thompson

WE GOT YOUR NEEDS COVERED!



**FARM TARPS TRUCK TARPS
HOOP BUILDING COVERS**

Troyer

TARP MFG.

660-486-3301
20264 STATE HWY. VV • ETHEL, MO 63539

NEMO Trader Classified COUPON

2 Classified Ads for just \$6.00

20 cents per word over 20 words
Must be Mailed in or brought in along with payment.
Picture Ads Not Included with Coupon!

Choose Classification

Agri-Business

Real Estate Rentals

Yard Sales

Announcements

Real Estate Sales

Auctions & Estate Sales

Employment

Recreation

Financial

Services

Merchandise

Transportation

Ad No. 1 Each Box Represents a Word (20 words or less)

Ad No. 2 Each Box Represents a Word (20 words or less)

Name _____

Mailing Address _____

Phone Number * _____
this is required*

PO Box 809 Kirksville, MO 63501 • 660-665-8500

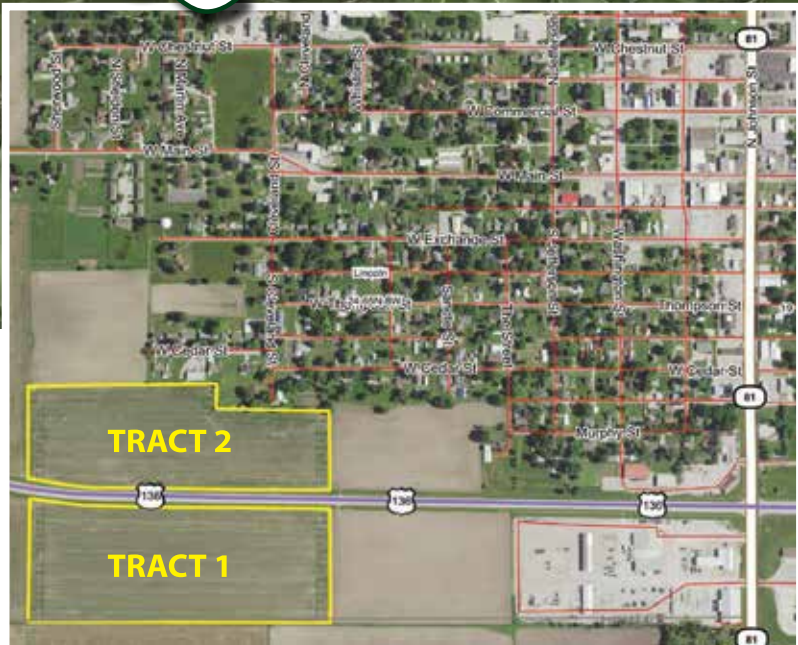


Clark County, MO LAND AUCTION

TUESDAY, AUGUST 6TH - 10 AM
Sale conducted at the CARE Building (451 N. Vine Street, Kahoka, MO)

*Prime
Location*

**43 ACRES
2 TRACTS**



GENERAL INFORMATION

Location! Location! Location! The Bourgeois tracts of land are conveniently located just West of the Jct. of Hwy. 81 and 136 on the edge of Kahoka, MO. Offers prime tillable cropland, commercial highway frontage potential and/or residential opportunities. Lying in Sect. 24, Twp 65 N, R8W Clark County MO.

TRACT 1: 24 +/- Acres

- Offers 100% prime tillable cropland and commercial potential.
- Access off Hwy. 136 running along the North side.
- Soil Type: Edina

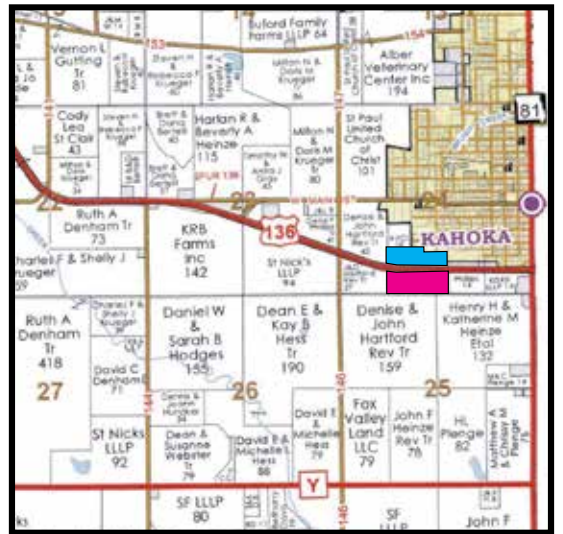
TRACT 2: 19 +/- Acres

- Offers 100% prime tillable cropland, commercial potential and residential opportunities.
- Access off Hwy. 136 running along the South side.
- Soil Types: Edina & Adco

TERMS & CONDITIONS

- Tracts will be sold on a price per acre basis, based on taxable acreage and offered through the method of "Buyer's Choice".
- Tracts will not be combined.
- Tracts do not sell contingent to financing or any other buyers contingencies.
- Real estate conveyed subject to any easements of record in effect at the day of closing.
- Immediately following the bidding, the successful buyer(s) will be required to pay 10% down the day of sale payable to Oak Hill Title Company Escrow and sign into a written contract with the seller(s). The balance of the purchase price will be due at closing on or before September 4th 2024.
- Both tracts sell subject to current row crop tenant. Possession given after fall harvest.
- The 2024 real estate taxes will be prorated at closing.
- Sellers will provide (owner's policy) title insurance in the full amount of the purchase price.
- All additional closing costs will be divided in equal shares between the buyer(s) and sellers.
- Closing conducted by Oak Hill Title Company located at 309 Lewis Street, Canton, MO. Contact closing agent at 573-288-4462 for any 1031 exchange or closing questions.
- All lines on maps are for identification purposes only, these lines may or may not be accurate

AUCTIONEER'S NOTE: Excellent opportunity to purchase prime tillable cropland or prime location with hwy. frontage for your business or residential development. Opportunities like these are once in a lifetime! Terms cash or check with proper ID. Not responsible in case of accident. Announcements made sale day take precedence over any advertisement. The above information is believed to be accurate; however, no liability for its accuracy, errors or omissions are assumed by the seller or auction service.



**THE FAMILY OF ONEIDA BOURGEOIS, SELLERS
WENDELL BOURGEOIS, BETHANY WIEMANN AND LYNN PALAZZO**

Closing conducted by Oak Hills Title Company

McAfee Auction Service, LLC
375 S Johnson • Kahoka, MO
660-727-3796
www.mcafeeauctionservice.com

**TIMED ONLINE ONLY
OUTDOOR COOKERS/ JD TRACTOR
BREWING & DISTILLING AUCTION**

**FRIDAY AUGUST 2ND
LOTS START ENDING AT 10 AM**



PREVIEW: SATURDAY JULY 27TH 10 A.M. - NOON
PICKUP: SATURDAY AUGUST 3RD 9 A.M. - NOON
LOCATION: 23001 E MAIN, KAHOKA, MO
Selling Quality outdoor cookers/ smokers, expresso, brewing, distilling, shortwave radio, gun safe, tools, Honda EB10000 generator, 2021 JD 5090E loader tractor only 342 one owner hours and much much more!

COMPLETE DETAILS ONLINE!

McAfee Auction Service, LLC
375 S Johnson • Kahoka, MO
660-727-3796
www.mcafeeauctionservice.com

**Clark County, MO
LAND AUCTION**

Thursday, August 15TH - 10 AM

Sale conducted at the CARE Building located at 451 N. Vine St., Kahoka, MO

**70 ACRES/ 2 TRACTS
CROPLAND/ RECREATIONAL/
BUILDING SITE**



**ANDREW J. O'DAY ESTATE
CONNIE CAMPBELL, JUDITH O'DAY, CHARLES O'DAY,
JACOB O'DAY AND MEGAN O'DAY, SELLERS**

**ADDITIONAL DETAILS
& PHOTOS ONLINE**
WWW.MCAFEEAUCTIONSERVICE.COM

McAfee Auction Service, LLC
375 S Johnson • Kahoka, MO
660-727-3796
www.mcafeeauctionservice.com

**LIVE ONSITE WAYLAND, MO REAL ESTATE
& PERSONAL PROPERTY ESTATE AUCTION
SATURDAY AUGUST 17TH - 10 AM**

Sale conducted onsite located at 10 West Des Moines St. Wayland, MO



Selling a 896 sq' 2 bedroom, 1 bath home, utility shed / carport setting on a 75' x 150 lot.

OPEN HOUSE
Sunday, August 11th
1-2pm



Also selling a 2003 Chevy pickup, tools, lawn related and misc. household.

COMPLETE DETAILS & PHOTOS ONLINE!

**ANDREW J. O'DAY ESTATE
CONNIE CAMPBELL, JUDITH O'DAY, CHARLES O'DAY,
JACOB O'DAY AND MEGAN O'DAY, SELLERS**

McAfee Auction Service, LLC
375 S Johnson • Kahoka, MO
660-727-3796
www.mcafeeauctionservice.com

**LIVE ONSITE MONTROSE, IA REAL ESTATE
& PERSONAL PROPERTY ESTATE AUCTION
SATURDAY AUGUST 24TH - 10 AM**

Sale conducted onsite located at 301 Spruce Street, Montrose, IA



OPEN HOUSE:
SUN, AUGUST 18TH
1-2PM



Also selling 2002 Fisher 16 Pro Avenger fishing boat, Utility trailer, Lawn equipment, lawn related, tools, shop related, household misc.

COMPLETE DETAILS & PHOTOS ONLINE!

**JIMMIE E. BOECKER ESTATE
CONNIE BOECKER, EXECUTOR**

MAPLES REP THEATRE
THURSDAY, AUGUST 1ST AT 7:30
- SUMMER CABARET SHOW -

TICKETS ON SALE NOW!
MAPLESREP.COM

CABARET

Home Services

Scott Huskey's Insulated Skirting Systems-keeps your home cooler in the summer-warmer in the winter-saves on utilities and looks great! Since 1972, 573-696-3468.

TRANSPORTATION

Automobiles

If you are looking for a low mileage older car, check with me, that is all I deal in. 641-895-7982.

For sale 2000 Mercury Mystique, 76K, no rust, no issues, selling for health reasons, great older car. \$2,600 FIRM. 641-895-79825

Parts & Services

USED PARTS VEHICLES, semi's, farm/construction equipment. Motors/Tranny's, body parts, color matching yours, warranted/delivery. 800-807-9612

Trucks, 4x4's, SUV's

2003 ford F-250 new transmission 3 years ago, new fuel pump 2 years ago, new front shocks, plugs, wires, and coil packs a year ago. Clean truck. \$9,600.00 call or text Jeff at 660-341-5769

celebrating the **10TH ANNIVERSARY**

Helping Hands Benefit Auction

Supporting the **Clinic for Special Children** and local pediatric needs.

Friday August 16
5:00- Serving cheesesteak sandwiches, salad bar, fresh cookies and more | **NEW EVENTS for 2024** | 7:30- Children's Auction (children auctioneer, bid & buy) | Coffee & Lotus Bar & CANDYLAND Stand

Saturday August 17
9:30- Airplane Candy Drop | 10:15- Auction Begins | 10:30- Start Serving Lunch Including: Smoked Brisket, BBQ Chicken, Fresh-cut Fries, Lemonade, Banana Splits and much more | 12:15 Remarks by CSC Doctor | 1:00- Second Auction ring opens

BOTH EVENTS AT RICHARD GOOD RESIDENCE 10507 COUNTY ROAD 813-MEMPHIS MO

Specially handcrafted wooden semi, Oakwood 4 pc. bedroom set, Oakwood table & chairs, 3 piece outdoor chair set, 2 sets poly swivel gliders, 2-14' canoes, 30 small straw bales. Lots of Milwaukee tools: impacts, drills, saws, shop vacs, trimmers, weed eaters, 16" chainsaw, backpack sprayers, lights, edgers, tire inflators and more, 360 hunting blind, Dream Yard swing set, double hammock chair, 2-balance bikes, pedal tractor, 2-Spikeball games, tractor & trailer riding toys, 2-bean bag toss, web swing, 16' trampoline, children bikes, girls dresses, 2-dolls from Grandmas Dollhouse, 2-one night cabin rentals, 2-A Good Heritage book, Several Games sold as a single player to each event. Dates as follow: Aug. 25 frisbee golf game, Aug. 31 softball game, Sept. 14 croquet game & supper, Fine Dining Experience, fresh baked goods, quilts, theme/gift baskets, meal certificates, toys, food and much, much more!!!!

Donations can be dropped off at Richard Good Residence, from Wed.-Sat. morning, for other pick-up locations and questions contact:
Bryan B. 660.342.2733
Harlan B. 660.341.4113
Ed Lynn G. 660.341.3040
Michael M. 660.342.8833
Lavern M. 660.342.3316

Coffee & Lotus Bar & CANDYLAND STAND

fridayevening

The Clinic for Special Children will have a stand set up 9-2 Saturday to do Carrier Testing. Cost for the Plain Insight Panel is \$99

Kirksville Area Chamber of Commerce
July 2024 Executive Director: Marie Murphree

Monday - Friday
8:00 AM - 5:00 PM
PHONE: 660-665-3766

Heritage House Realty, Inc.

Heritage House Realty
2805 N. Baltimore St
Kirksville, MO 63501
660-665-5638
kirksvillerealestate.com

Kirksville Area Chamber of Commerce

State Farm

Audra Jackson Harris
2121 N. Baltimore St.
Kirksville, MO 63501
660-665-0700
agentaudra.com

Connections Bank

Competitive rates & Hometown Service

2817 N. Baltimore
Kirksville, MO
(660) 665-7703
www.connections.bank

Thank you to the sponsors of our 30th Annual Golf Outing!

Presenting Sponsor
NORTHEAST MISSOURI STATE BANK

Clubhouse Sponsors
Complete Family Medicine
Hollister

Course Sponsors
Tri-County Electric Cooperative
Jason Munn (660)-956-0633 We're your Shield. We're your Shelter.

Winning Team Sponsor
Kraft Heinz

CENTURY 21
Lifetime Realty
1605 S. Baltimore, Suite A
Kirksville, MO 63501
660-665-5678
www.C21Kirksville.com

Colton's Steak House & Grill

1116 Country Club Dr.
Kirksville, MO 63501
660-665-6336
coltonsteakhouses.com



Kirksville Leadership Institute Tours Adair County Food Pantry

The 2024 Class of Kirksville Leadership Institute July session focused on economic development. Here participants, Bobbi Robie, Adam Robinson, RaeLynn Lowe, Nathan Nichol, Karrie Maag and Eric Amini-Rad are learning about the Adair County Food Pantry from Pantry Manager, Jennifer Walston. The class also learned about SBDC, KREDI at the Missouri Jobs Center.

Tire & Auto Owners:
Joe Dimmitt & Kelly O'Haver
1102 N Green St
Kirksville, MO
660.665.9017

MIDWEST GOLD & SILVER
Rare Coins and Fine Jewelry

111 E. Washington
Kirksville, MO
660-216-2346

Coming Sept. 21st
Join the Kirksville Area Chamber of Commerce for a fun filled night of music and laughter as we present **Dueling Pianos**, Saturday September 21st at 7:00 p.m. in the Georgian Room at Truman State University. Tickets on sale now.

Dueling Pianos

REGISTER NOW

Bellacino's
Pizza & Grinders

ORDER ONLINE
WWW.BELLACINOS.COM

GRINDERS • PIZZA • SALADS
WINGS • FRIES • AND MORE!

GET 10% OFF
WHEN YOU PRESENT THIS COUPON.

516 N BALTIMORE ST.
660-665-7665



- WELCOME TO THE CHAMBER!**
- MA Bank
Sydenstricker Nobbe Partners
Country Financial
- THANK YOU!**
RENEWING MEMBERS
- Lovegreen Ford
Missouri Health and Wellness
NEMO Senior Citizen Services, Inc.
Pancake City
Pure Air CaBin
Western's Smokehouse
Four Horizons Realty, Inc.
Hollister, Inc.
Trainweb, LLC
- NEMR
World Finance Corporation
Evonne Baker-Century 21
Alzheimer's Association
BOTT Radio Network
ANew Realty Group
Alliant Bank
Minear Appraisal

ON THE HORIZON

- August 6- Election Day (Primaries)
- August 9-30th Annual Chamber Golf Outing
- August 14 - Grounds for Discussion at Mark Twain Behavioral Health
- September 8-Student Welcome
- September 21 - Duelling Pianos

Interested in joining the Chamber visit www.KirksvilleChamber.com

RAIL
Rural Advocates for Independent Living INC.

1100 S. Jamison
Kirksville, MO 63501

660-627-7245 - Phone
800-681-7245 - Toll Free
660-665-9849 - Fax
WWW.RAILKV.ORG

WWW.KIRKSVILLECHAMBER.COM