

NEMO Trader

THE NEMO TRADER

PO BOX 809 • KIRKSVILLE, MO 63501 • PHONE 660-665-8500

Web Site: nemotrader.net • Email: sales@nemotrader.net

FREE

A WEEKLY ADVERTISER SERVING ALL OF NORTHEAST MISSOURI AND THE SURROUNDING AREA

37.17 ACRES HUNTING GROUND
in Knox County MO, Outside Edina, on Highway 15

INCLUDES:

- 10 acre Wetland with income, attracting and supporting many waterfowl.
- Active river waterway with otters and beaver.
- Timber
- Brush
- Pasture
- Abundant Deer
- Turkey
- Rabbit
- Quail
- Blackberries
- and more!
- Mushrooms

\$6,100 PER ACRE
CALL: 217-242-9667

**MODERN RESTORATION
REMODELING LLC**

YOUR REMODELING SPECIALIST

660.413.2439

LAND SALES & AUCTIONS

RANCH & FARM AUCTIONS

WHITETAIL PROPERTIES REAL ESTATE
HUNTING | RANCH | FARM | TIMBER

LEWIS • MACON • SHELBY • MARION • RANDOLPH • MONROE • RALLS • AUDRAIN

CLAY LOCKARD
EAST CENTRAL MISSOURI
LAND SPECIALIST
573.466.9123

WHITETAIL PROPERTIES.COM

PFI

• SPRAY FOAM
• CELLULOSE
• FIBER GLASS

Premier Foam Insulation, LLC
— Macon, MO —

KARY JENNINGS • 660-591-2735 | DREW KERNS • 573-286-2411
EMAIL: PREMIERFOAMLLC@GMAIL.COM

exp REALTY

Elizabeth Gregory
110 S. Franklin St
Kirksville, MO 63501
www.missourihomeandfarm.com
660.621.2136

Sparks Auction

204 E Reid St, Edina, MO 63537

Saturday, September 7th @ 9AM

MACHINERY AND GUN AUCTION

LIVE AUCTION OR ONLINE
NO Charge for NO SALE
Machinery, Auto's, Guns, Tillage Tools, Fencing, ETC.
If you don't use it turn it into CASH

DON'T DELAY, BRING IN TODAY!

Bring Items ANYTIME! FIRST COME FIRST TO SELL!
Call Today to Consign.
Jesse Sparks 573-406-8787

Call Jesse for All Auction Needs
Land • Real Estate • Household • Machinery • Vehicles

SCOTT'S AUCTION SERVICE
573-356-4405
Auctioneer: Scott Kuntz
SEE MORE PHOTOS ON SCOTT'S WEBSITE
WWW.SCOTTYSAUCTIONSERVICE.COM

Country Home & Personal Property Auction

Thurs., Aug. 1, 2024 at 4:00 pm
Jerry & Reathel Bonnot

36446 Interlude Rd, Macon, MO.

Direction: 36446 Interlude Road, Macon, Missouri. From US Highway 63 South of Macon, travel West on State Highway T for approximately 5.8 miles, turn North on State Highway C for approximately 3.3 miles then turn East on Interlude Road to the property. Please watch for signs.

REAL ESTATE: This 2004 manufactured, three bedroom, two bath home offers quiet country living on 4.12 acres more or less. The home has a large, open floor plan with a separate laundry room, propane heat and a two car garage. The property also has a 30' x 40' shop with a 20' x 40' lean-to, 220 electric service and is located in Bevier school district. Please call Scott to schedule your personal showing.

HOUSEHOLD ITEMS: style Ethan Allen dresser; over stuffed recliner; Broyhill end table; miscellaneous linens; 2 Kenmore chest type freezers; GE washing machine; Amana electric dryer; GE side by side refrigerator; 4 drawer filing cabinet with key; and more.

ANTIQUES & COLLECTIBLES: antique chalks; and more.

SPORTING GOODS: Basstender plastic 10.2 boat with trailer; and more.

TOOLS & OUTDOOR EQUIPMENT: Brinley lawn cart; and more.

There will be many more items too numerous to list.

Macon Real Estate & Personal Property Auction

Thurs., Aug. 8, 2024 at 4:00 pm
Ed & Judy Tumlin

1314 Magnolia St, Macon, MO.

Direction: From US Highway 63/North Missouri Street, travel East on Briggs Drive for approximately 0.6 miles, turn right on Havenwood Drive then left on Ridgeway Drive. Proceed right on to Hawthorne drive for approximately 0.4 miles then turn left on to Magnolia Street to the auction location. Watch for signs.

REAL ESTATE: You will love this three bedroom brick, ranch style home located on a quiet street in a highly sought after neighborhood. The home has an open floor plan, 3 bedrooms on the main level and two bedrooms and one bath in the basement. The home has beautiful landscaping, a large shed yard, a new roof, siding, gutters and garage door. It has an attached two car garage, a garage in the basement and a detached brick 24' x 36' car garage with a loft. Please call Scott at 573-356-4405 to schedule your personal showing.

TRAILER, BOAT & ACCESSORIES: Top Tracker 10' flat bottom Jon boat; 5' x 10' tilt bed trailer; lots of fishing poles & fishing equipment; boat anchors; Pro Series 16K fifth wheel; RV hitches; Tailgater by dish

HOUSEHOLD ITEMS: sliding shower door; home decor; table and 4 chairs; Nordic Track 590QS treadmill; wicker corner shelf; Kenmore upright freezer; Holland grill; fish fryers; 2 wicker chairs; miscellaneous pots and pans; kitchen items, some new; Samsung washer and dryer; matching couch and loveseat; Sony flat screen TV; dresser with mirror; Whirlpool trash compactor; Blackstone 29" griddle

ANTIQUES & COLLECTIBLES: Coca-Cola picture; Coca-Cola mirror; craft items; Diamond #5 ice water crock; children's books; variety of farm toys new in box; Nascar toys new in box; Dukes of Hazzard trash can; pool table with new slate top by Valley Pool Table; die cast toys; stain glass sign (Pool); Lane cedar chest; Precious Moments dolls; metal butter churn; miscellaneous antique chairs; weathervane; and more.

TOOLS & OUTDOOR EQUIPMENT: Husqvarna zero turn mower with Kohler motor 242F; John Deere self propelled mower; Proto tool chest; Craftsman 20 gallon air compressor; aluminum ramps; electric power washer balder, miter box; bench grinder; miscellaneous hand tools; electric supplies; ratchet straps; wheel barrow; FS40C weed eater; Craftsman table top drill press; 2 multi fold ladders; chain binders; and more.

There will be many more items too numerous to list.

Purdin Real Estate & Personal Property Auction

Sat., Aug. 10, 2024 at 4:00 pm
Leroy Dean Tye

Highway 5, Purdin, MO.

Direction: From US Highway 36, travel North on Missouri Highway 5 to Main Street approximately 12.5 miles watch for signs.

NOTE: 2 Auctions in one day!

REAL ESTATE: We will be selling at auction 4 pieces of real estate located in downtown Purdin, Missouri. 401 C Street currently houses the US Post Office, to the West is a large antique store, across C Street/Main Street is a 58' x 54' Morton building with a 8' x 8' loading dock and 12' x 12' garage door and on the Southwest corner of C Street/Main Street and Highway 5 is an older building. All pieces of real estate will be sold separately. Please call Scott at 573-356-4405 to schedule your personal showing.

ANTIQUES & COLLECTIBLES: large crock collection; and more.

TOOLS & OUTDOOR ITEMS: lots of long handle tools; and more.

There will be many more items too numerous to list.

2 Tracts – Randolph County Home, Farm Land & Personal Property Auction

Sat., Aug. 3, 2024 at 10:00 am
Gary Winn

1198 Private Road 2323, Moberly, MO.

Direction: From US Highway 24 East of Moberly, proceed South on County Road B120/County Road 2323 for approximately 0.2 miles to the property. Watch for signs.

REAL ESTATE: We will be selling at auction in two separate tracts this farm that has been in the Winn family for over 100 years. The property has been surveyed. See attached maps.

TRACT 1: Consists of 181 acres more or less of gently rolling ground. Approximately 70 acres is bottom ground completely farmable. The hunting is amazing, there is a stocked pond with large crappie and the pasture produces good grass and utilizes well. The pond for water for watering the pasture is fenced and leased until November.

TRACT 2: 1972 built ranch-style home with approximately 1,500 square feet has two bedrooms, one and half baths and sits on 18 acres more or less. The home has an open kitchen/dining room with large pantry, covered deck, 2 car attached garage and an additional half bath and full kitchen in the basement. The home has propane hot water boiler heat and central air. The property includes a 3 stall, log horse barn and 2 utility sheds.

PLEASE call Scott at 573-356-4405 to schedule your personal showing.

FARM EQUIPMENT: AGCO 6085 with 5,5xx hours, MFWA, nice running tractor; and more.

TOOLS & SHOP EQUIPMENT: shop vise; and more.

OUTDOOR ITEMS: various coolers and camping gear; and more.

ANTIQUES & COLLECTIBLES: approximately 75-pound anvil; and more.

HOUSEHOLD ITEMS: 2 file cabinets; 4 drawer dresser; and more.

There will be more items at this auction too numerous to list.

Linneus Real Estate & Personal Property Auction

Sat., Aug. 10, 2024 at 10:00 am
Leroy Dean Tye

627 S. Fillmore St, Linneus, MO.

Direction: From US Highway 36, travel North on Highway 5 for approximately 6.9 miles, turn right on East Columbia Street for approximately 0.2 miles then turn left on South Fillmore Street to the auction location. Watch for signs.

NOTE: 2 Auctions in one day!

REAL ESTATE: We will be selling at auction this two bedroom, one and a half bath home manufactured home on 14 acres. Please contact Scott at 573-356-4405 to schedule your personal showing.

VEHICLES & TRAILERS: 16' tandem axle car trailer; 2010 Chevy extended cab 2500HD Vortec gas engine Work package; 18' equipment trailer with hand winch; 14' 3 person Jon boat with trailer; 2015 Doolittle 7' x 16' enclosed trailer; 2010 Doolittle 8' x 24' trailer

OUTDOOR EQUIPMENT: Husqvarna YT46LS mower; Cub Cadet GTX 1054 mower; John Deere LA175 mower; Yardman 46" mower; miscellaneous hand tools; various ladders; John Deere 3 point 6' brush hog; and more.

ANTIQUES & COLLECTIBLES: antique Wm Hinton Floor Safe; antique meat cleavers; blue swirl enamel ware; primitive wash stand; Boos Jack butcher block; antique kitchen cupboard; antique utensils; various art pottery pitchers & bowls; carousel horse; various antique prints & paintings; antique chest of drawers; antique wooden bread bowl; large retro Davy Crockett lamp; primitive painted oval table; and more.

There will be many more items too numerous to list.

Macon Restaurant Auction

Thurs., Aug. 15, 2024 at 5:00 pm
James and Kristin Myers

211 E Bourke St, Macon, MO.

Direction: From US Highway 63/North Missouri Street, turn West on Vine Street then travel North on Rutherford Street to Bourke Street where the property is located. Watch for signs.

REAL ESTATE: This custom-built restaurant, located in the heart of downtown Macon, offers endless opportunities. The facility has new additions, updates and additional space to expand. It can currently accommodate nearly 100 people at one time. The restaurant has a rustic, cabin-like feel with a custom bar area, rock archways, a separate event room, an efficient and effective kitchen, dishwasher area, fresh meat butchering area and lots of storage space. Contents will sell with the building so it can be a seamless, turn-key transaction with an opportunity to begin making money immediately. The business formerly operated as Smokehouse BBQ and closed due to the health of the current owners. It would be ideal for a restaurant, winery, sandwich shop, a bar and grill or could easily be converted to another type of business. The property includes paved parking and has additional public parking located just across the street. It is conveniently located at the crossroads of Rutherford Street and Bourke Street, within walking distance of several local businesses with many employees. **Please contact Scott for your personal showing at 573-356-4405**

Farm Equipment & Personal Property Auction

Fri., Aug. 16, 2024 at 10:00 am
James E Dawson Estate

28251 US Highway 63 N, Macon, MO.

Direction: From US Highway 36 travel approximately 2 miles North of Macon to Scotty's Auction Barn and Event Center on the West side of the highway. Watch for signs the day of the sale.

HOUSEHOLD ITEMS: deep freeze; 2 dressers; 2 full size beds; and more.

VEHICLES & TRAILERS: 2009 Chevy Silverado 2500 HD 61,xxxx miles 6.0 Vortec, 4x4, gooseneck ball, long bed and running boards; and more.

TRACTORS & EQUIPMENT: 4030 John Deere tractor with loader; and more.

LIVESTOCK SUPPLIES: 108 large round hay bales; and more.

TOOLS & OUTDOOR EQUIPMENT: pressure washer; drill press; and more.

LAWN EQUIPMENT: 54" Hustler zero turn mower; and more.

There will be many more items too numerous to list.

ATTENTION LAND OWNERS!!
Buyer of standing timber
Paying Cash Upfront!
 Owner/Operator of Sawmill
 • Buy/Cut Logs
 • Certified
 • Bonded
 • Insured

WE HAVE SEMI LOADS OF FINE WOOD LOGS FOR SALE

Tri State Timber L.L.C.
 353 1/2 Grand Ave. • Memphis, Mo 63555
 660-341-4921 • 660-465-2975

Central Metals Recycling LLC

Buyers of Ferrous and Non-Ferrous Metals

We Pay More \$\$\$, Call For Your Best Pricing Today!!

11923 Hwy. 54 Mexico, MO 573-581-0336
 1601 N. 30th Quincy, IL 217-214-7649
 1175 Hwy. 96 Hamilton, IL 217-847-3191

fb farmbank

FULL TIME OPENINGS
Green City, Milan, and Kirksville
 Looking for dedicated, self-motivated, team-oriented individuals seeking a great opportunity as a Universal Banker.
 Apply online at www.farmbank.com
 An Equal Opportunity Employer

Green City 660.951.8430
 Milan 660.951.8432
 Kirksville 660.951.8431

www.farmbank.com

BUCKMAN MACHINERY, LLC
 573-881-3557

John Deere 5300, MFWD, 2325 hrs, new front tires, with Koyker Loader **\$18,950**

John Deere 5425, 2007, only 479 actual hrs, reverser trans, joystick, good as it looks, loader available, **\$29,500**.

John Deere 4450, ps, triple hydr, 90% matching duals, QT 7500 Loader/Grapple, wts, 10,400 hrs, will trade, **\$42,500**

John Deere 2350 & 146 Loader, quick attach bucket, roll bar/canopy, 4600 hrs, one owner, **\$13,950**

John Deere 2440, 6200 one-owner hrs, HiLo, 90% tires, with Bush Hog 2447 QT, skid loader bracket, joystick, **\$8,500**

John Deere 3020 D, 8000 hrs, 148 Loader, recent shop work, dual hydro, **\$9,950**

John Deere 6200, MFWD, open station, power quad, reverser, 640 Loader, 6800 hrs, sound/proven machine, will trade, **\$22,500**

John Deere 4320, open station, good tires & tin, 8500 hrs, **\$18,500**

John Deere 24T Hay Baler, good condition, **\$2,450**

John Deere 74 Rake, dolly wheels, 5 bar, **\$2,650**

John Deere HX Batwing, small, 1000 PTO, airplane tires, shedded, chain guards, field ready, **\$10,950**

Farmhand 822 Grinder/Mixer used very little, original hammers, scales, auger feeder, shedded, **\$8,250**

John Deere HX Batwing, small, 1000 PTO, airplane tires, shedded, chain guards, field ready, **\$11,950**

John Deere MX8 Mounted Brush Cutter, 3pt, shedded, **\$6,950 Cal**

Rhino SR15M Batwing Brush Hog, 8 luminated, 1000 PTO, field ready, **\$5,250**

Mixed Grass, 45-50 lbs., **\$6.50/bale**, delivery available

Alfalfa - 55 lb treated bales, very little grass/weeds, **\$9/bale**, delivery available

2024 Alfalfa Orchard Grass Mix, **\$9/bale**, Pure Alfalfa, **\$10/bale**, delivery available

Big Round Bales Grass, 1600 lb, net wrapped, Hallsville area, **\$70/bale**

Big Round Bales Alfalfa/Grass Mix, 1650 lb, net wrapped, **\$90/bale**

Loaders & Duals available for many

KEIM LUMBER COMPANY LLC
 COMPETITIVE PRICES • FREE ESTIMATES
 • COMPLETE BUILDING PACKAGES
 • WINDOWS AND DOORS
 • INSULATION • DRYWALL
 • DELIVERY

13625 St. Hwy 3 LaPlata, MO

GRAINBINSUPPLY
 "The Grain Bin People" **GBS**

BIN PACKAGES ARRIVING DAILY

- 36X6 (20,000 BU)
- 36X7 (24,000 BU)
- 42X7 (33,000 BU)
- 48X9 (55,000 BU)
- 48X10 (60,000 BU)

CALL FOR DETAILS ABOUT PACKAGES, OR OTHER SIZES. RESERVE YOUR SPOT NOW!

Sukup CAIRO, MO (660) 263-6700

CELEBRATIONS! PARTY RENTAL
 KIRKSVILLE, MO

FOR RENT

- Tables & Chairs
- Tents • Bounce House
- Cotton Candy Machine & More!

660-626-5162 or 660-665-9380

Need something? Let us help you. You can advertise that you are looking for a special item. Call 660-665-8500 for more information.

Call us for all your advertising needs. 660-665-8500.

Call about our classified ad specials. 660-665-8500.

FLO RITE GUTTERING

660-988-1163

- 5" & 6" Guttering Available
- Leafguard Options
- 20+ Color Options
- Stainless Steel Fasteners

Stan Schrock • Greentop, MO

Your Local
FARM SUPPLY SOURCE
 NUTRITION • MEDICAL • FARM • PET • APPAREL

SEE US FOR YOUR SHEEP & GOAT EQUIPMENT NEEDS

Hometown Animal Health has provided quality products, expert knowledge, and friendly customer service to northeast Missouri and surrounding areas. We are a full-service nutrition, medical, and farm supply source carrying complete lines of animal feed and supplies, farming equipment, agricultural parts, lawn and garden tools, work apparel, and much more!

Hometown ANIMAL HEALTH

Feed • Medical • Farm & Pet Supplies • Footwear & More

website: hometownanimalhealth.com
660-465-2967
 18743 US Hwy, 136 Memphis, MO 63555
 "on Hwy 136 west of Memphis"

Monday-Friday 8pm to 5pm
 Saturday 8am to 1pm

There's a better way to get noticed.
 Keep life simple. Take out an ad.

Beilstein CAMPER SALES

CALL US NOW for the best prices...
 28248 327th Ave.
 LaGrange, MO • Hwy 61 South,
 4 Miles South of LaGrange, MO

BLOWOUT SALE!

<p>#646357</p> <p>Our Price \$39,995</p> <p>2023 GRAND DESIGN IMAGINE 2800BH Super Slide-Out, Double Over Double Bunks</p>	<p>#013723</p> <p>MSRP \$48,575 Our Price \$34,995</p> <p>2024 SALEM FSX MAX TOY HAULER 270RTKX PLATINUM Large Garage, Private Bedroom</p>	<p>#200199</p> <p>MSRP \$19,995 Our Price \$15,995</p> <p>2019 SURVEYOR LEGEND 19RBL Slide-Out, Rear Bathroom, Light Weight</p>
<p>#334520</p> <p>MSRP \$46,125 Our Price \$28,495</p> <p>2023 SALEM 22RBSX PLATINUM NEW BLOW OUT, Rear Bathroom, Slide-Out</p>	<p>#335627</p> <p>MSRP \$53,185 Our Price \$33,495</p> <p>2023 SALEM 29DBX PLATINUM NEW BLOW OUT, King Bedroom, Double Over</p>	<p>#077567</p> <p>Our Price \$2,995</p> <p>2025 HEARTLAND BARLOW 14FT DOVETAIL SA</p>

beilsteincampersales.com

AGRI-BUSINESS

Cattle

Registered Miniature Herefords, 1 bull, 4 cows. 1 hair sheep buck lamb, 40 pounds. 641-664-1949, 15199 175th, Drakesville, IA 52552.

Equipment & Supplies

2 new Titan 14"x38" double bevel rims, silver, \$350.00 each. Farmall fenders off early 706 with grab handle, not flat tops, \$450.00 per pair. 217-257-1385.

IH #2200, hydraulic bucket loader with joystick controls on 574 utility, fits others. \$2100.00. 217-257-1385.

Farmall M with Schwartz wide front, matching 15.5x38 tires on good rims. Extra hydraulics, overdrive transmission, stored inside, engine stuck. \$1250.00. 217-257-1385.

John Deere double disk, 12' hydraulic lift. John Deere hay rake 8' on steel wheels. 641-664-1949, 15199 175th, Drakesville, IA.

EMPLOYMENT

Miscellaneous

Looking to hire brushhog/haying of pasture land. About 10 acres NE of LaPlata. Hay on shares; you keep 70%; other wise just brush hogged. 660-332-4026.

Hay/Feed/Seed

For Sale 4x5 Dry Mixed Grass Hay, Fertilized, Net Wrapped in Ewing MO. Call or Text (217) 440-4066

Hay/Feed/Seed

5X51/2 big round bales for sale. Baled dry mixed grass hay with alfalfa. Fertilized, lab tested, net wrapped. Watson Hay Sales 660-341-4031

5'x65" big round bales. Fescue Timothy grass mix. Some Fescue Clover mix. Fertilized, net wrapped. Buy at summer prices. 217-257-1385.

Transportation/Drivers

???CDL License??? Meets all state and federal laws. Online + 2 days training, ability to drive manual transmission. Jefferson City, Willow Springs, Mo. Please call 573-353-2853.

MERCHANDISE

Miscellaneous

Fish for stocking ponds: catfish, grass carp, crappie, redear, bass, and fathead minnows. Heindselman Family Farms. 660-341-5692.

1997 Ford Taurus, 153K, \$600.00. VR tiller, 174 cc and cultivator 55 cc, \$700.00 for both. 660-216-7600.

Wanted

Wanted: Salvage and breakable tractors, old cars and trucks and old construction equipment. Leave message. 660-346-1216.

AKC LAB PUPPIES
Farm Raised - Ready Now
Lay's Labs
LaBelle, MO • 660-956-2482

Pets & Supplies

When veterinary care is unavailable or unaffordable, ask for Happy Jack® animal healthcare for cats, dogs, & horses. At Tractor Supply® & MFA Co-ops. (www.happyjackinc.com)

St. Bernard mixed puppies. 11 weeks old. 816-560-0247

REAL ESTATE SALES

Mobile Homes For Sale

40 YEARS THIS YEAR - we have to be something right. Call for quote or any house new or used, double and single. 573-657-2176. amegamobilehomes.com

I BUY...used mobile homes. Call or text 573-338-6250 or email GregS.CDH@outlook.com.

WE GOT IT - let us bid your mobile home purchase, new and used. 573-499-9993. columbiadiscounthomes.com.

TINY HOMES - Missouri franchise 573-881-7965.

Premium Metal Roofing
Metal Roofing Headquarters
641-664-3990 • awmetal.net

Mobile Homes For Sale

TRIPLE WIDE - moving stock, awesome price. 573-657-7040. chateauhomes.net

Health/Beauty/Fitness

Portable Oxygen Concentrator May Be Covered by Medicare! Reclaim independence and mobility with the compact design and long-lasting battery of Inogen One. Free information kit! Call 844-299-5183

Call about our classified ad specials. 660-665-8500.

The Ultimate Wood Heat.
Classic Edge
Titanium HDX Outdoor Wood Furnace
• More Comfort - Thermostatically controlled wood heat.
• Peace of Mind - Keep the fire outside and eliminate the dangers associated with indoor wood heating.
• Save Money - Wood is a renewable, inexpensive and often free energy source.
Campen Heating & Air
Division of Kraus & Sons Inc.
Canton, MO 63435
573-288-8966
CentralBoiler.com

Health/Beauty/Fitness

DENTAL INSURANCE from Physicians Mutual Insurance Company. Coverage for 400 plus procedures. Real dental insurance - NOT just a discount plan. Do not wait! Call now! Get your FREE Dental Information Kit with all the details! 1-888-510-0095 www.dent150plus.com/Missouri #6258

NEMOTRADER.NET

FARM & INDUSTRIAL PAINTING
- Pat Costello -
• Houses
• Barns
• Morton Sheds
• Barn Repairs
• Metal Roofs
• All colors!
Tri-State Painting 1-800-940-8289
(Leave Message)

Skyline Service LLC
Skid Steer and Construction Repair
Levi Weiler
660-346-6881 • 660-883-5525
Scan Tool Diagnostics
Exhaust After Treatment Repairs • SCR Unlocks
Skid Steer Tracks Available

Adair County Sheriff's Office
Accepting Bids
The Adair County Sheriff's Office is requesting bids for the upgrade of floors, walls, showers, and replacement of glass panels in the Adair County Detention Center. A bid package may be obtained in the Sheriff's Office at 215 N. Franklin St. in Kirksville or from www.adaircountymissouri.com/government/bids-requested. Bids will be due by August 19, 2024 at 4:00 pm local time.

FOR SALE ARCHERY
3 BOWS - ALL ARE BOWTECH
• FANATIC 3.0 XL 28.5" - 32" 50# - 60#
• FANATIC 3.0 SD 24" - 29" 40# - 50#
• NEW SS34 26" - 31.5" HUNTING BOW
ALL BOWS ARE TOP OF THE LINE HURT SHOULDER CAN'T SHOOT ANYMORE
660-234-5016

Show Me Plumbing Services
• General Mini Excavation & Skid Steer Work
• Livestock Watering
• Waterlines & Sewer Systems
• Residential Services & General Plumbing
• Utility Trenching
Stan Schrock 660-988-1163
Greentop, MO 660-766-2636

TIMBER MANAGEMENT.
Purchasing Walnut, Oak, Maple & Other Species
WE PAY BEFORE WE CUT
BONDED & INSURED
641-895-8209 Est. 1968

Edina Livestock Sales
Edina, Missouri
Friday, July 26th
Special Feeder Calf Sale
Friday, August 2nd
Special Feeder Calf Sale
To Consign For Any or All Sales or For Information Call:
Owner - Kevin Strange • Cell: 660-341-9974
Ryan Strange • Cell: 660-341-9721
Sale Barn: 660-397-9999
Field Reps:
Bill Tom Hall 660-342-5420 Mike Bronestine 660-341-9965
Jason Bichsel 660-216-0373 John Powell 660-341-1717

SHOW-ME SEAMLESS GUTTERING
FREE ESTIMATES • PROMPT SERVICE
• 5" & 6" Gutters
• Siding • Soffit • Fascia
(23 colors available on Gutters & Fascia)
Tried of Cleaning your Gutters?
LEAFPROOF THEM!
ELLIOTT HIX
660-626-3447 • KIRKSVILLE, MO

LANCASTER LUMBER INC.
Lancaster, MO.
1-800-424-5071
LAN-DOW BUILDINGS
www.lancasterlumber.com

Golden Grain Bins-Winter Discount
Grain Bins Floors w/12" Supp. & Flashing
18'x18' 4,195bu. \$ 6,067 18'....\$1,693 30'....\$ 4,726
27'x21' 11,265bu. \$12,178 21'....\$2,315 36'....\$ 6,733
42'x24' 32,245bu. \$28,386 27'....\$3,862 42'....\$ 9,169
Golden Grain
GMLS Industries, Inc.
PH: 660-699-2179 or 620-983-2136
www.gmlsindustries.com

HARRISON FISHERY
POND & LAKE STOCKING
Call us today! 660.423.3482
Pond & Lake Stocking Specialists
info@harrisonfishery.com
harrisonfishery.com

KIRKSVILLE LIVESTOCK LLC
24295 Benton Road * P O Box 242 * Kirksville, MO 63501
www.kirksvillelivestock.com
SPECIAL BRED HEIFER, COW & BULL SALES 6:00 P.M.
SPECIAL CATTLE SALES 11:00 A.M.
SPECIAL SHEEP SALES 10:00 A.M.
AUGUST, 2024 SALE SCHEDULE
• Friday, August 2 - Special Breeding Stock Cattle Sale, 6:00 p.m.
• Monday, August 5 - Special Sheep, Goat, & Hog Sale, 10:00 a.m.
• Monday, August 12 - Special Feeder Cattle Sale, 11:00 a.m.
• Monday, August 19 - Regular Cattle Sale, 11:00 a.m.
• Monday, August 26 - Special Feeder Cattle Sale, 11:00 a.m.
We are open on Sunday to Receive Your Livestock
"Your Business is Very Much Appreciated"
"Proud to Serve Area Livestock Producers"
For more information or Someone to Phone for information:
Patty Foster, Office Manager - 660-665-9804
Chuck Ambrosia - 660-342-3530 - Luke West - 620-215-5770
Mark Herbold - 515-720-8667 - Al Ashmead - 660-216-8730
Doug Fleshman - 660-626-7148 - Daniel Smith - 660-341-8396
Jeremy Jarman - 660-341-9879 - Caleb Randolph - 641-919-8539
Karol Kirkpatrick - 641-777-3403

FIND THE PERFECT PET FOR THE PERFECT PRICE IN THE PERFECT PLACE FOR DEALS
Find your next fluffy, feathered or furry friend in your local newspaper classifieds!

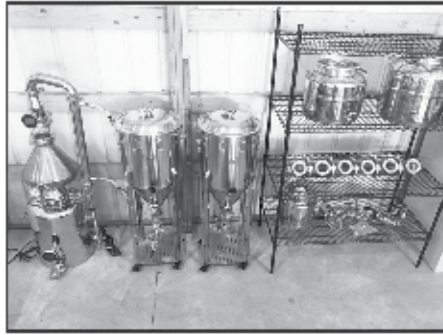
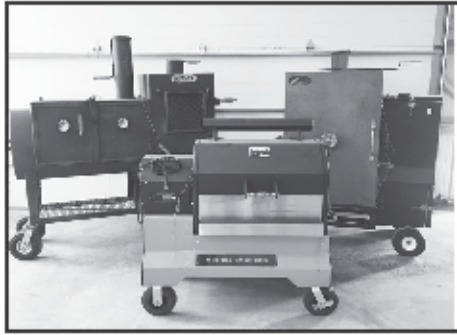
WE GOT YOUR NEEDS COVERED!
FARM TARPS TRUCK TARPS HOOP BUILDING COVERS
Troyer TARP MFG.
660-486-3301
20264 STATE HWY. VV • ETHEL, MO 63539



McAfee Auction Service, LLC
 375 S Johnson • Kahoka, MO
 660-727-3796
 www.mcafeeauctionservice.com

**TIMED ONLINE ONLY
 OUTDOOR COOKERS/ JD TRACTOR
 BREWING & DISTILLING AUCTION**

**FRIDAY AUGUST 2ND
 LOTS START ENDING AT 10 AM**



BID NOW!

PREVIEW: SATURDAY JULY 27TH 10 A.M. - NOON
 PICKUP: SATURDAY AUGUST 3RD 9 A.M. - NOON
 LOCATION: 23001 E MAIN, KAHOKA, MO
 Selling Quality outdoor cookers/ smokers, espresso, brewing, distilling, shortwave radio, gun safe, tools, Honda EB10000 generator, 2021 JD 5090E loader tractor only 342 one owner hours and much much more!

COMPLETE DETAILS ONLINE!



McAfee Auction Service, LLC
 375 S Johnson • Kahoka, MO
 660-727-3796
 www.mcafeeauctionservice.com

**Clark County, MO
 LAND AUCTION**

Tuesday, August 6TH - 10 AM

Sale conducted at the CARE Building located at 451 N. Vine St., Kahoka, MO

43 ACRES/ 2 TRACTS



LOCATION! LOCATION! LOCATION!

The Bourgeois Tracts of Land are Conveniently located just West of the Jct of Hwy 81 & 136 on the edge of Kahoka, MO Offers Prime Tillable Cropland, Commercial Hwy Frontage Potential and/or Residential Opportunities. Lying in Sect.24, Twp. 65N, R8W Clark Co, MO

THE FAMILY OF ONEIDA BOURGEOIS, SELLERS
 (Wendell Bourgeois, Bethany Wiemann & Lynn Palazzo)



McAfee Auction Service, LLC
 375 S Johnson • Kahoka, MO
 660-727-3796
 www.mcafeeauctionservice.com

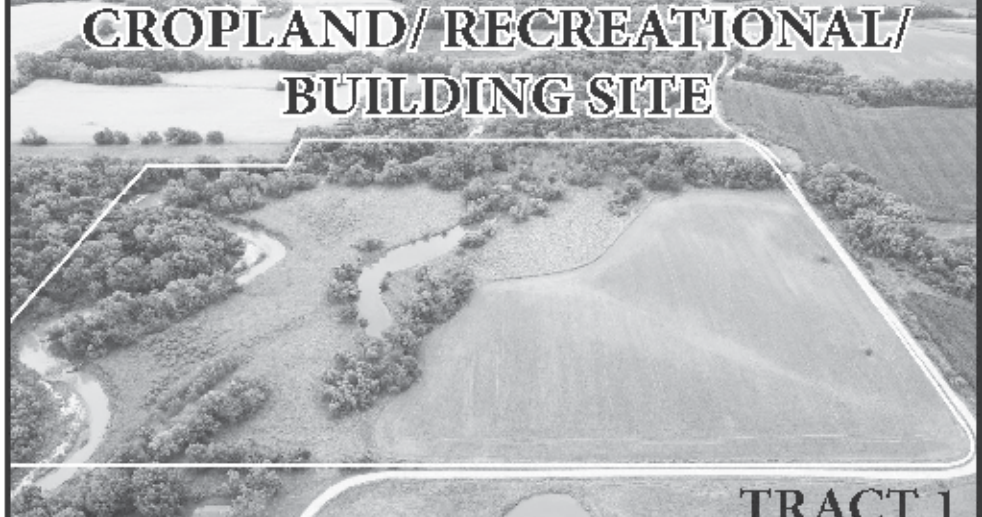
**Clark County, MO
 LAND AUCTION**

Thursday, August 15TH - 10 AM

Sale conducted at the CARE Building located at 451 N. Vine St., Kahoka, MO

70 ACRES/ 2 TRACTS

**CROPLAND/ RECREATIONAL/
 BUILDING SITE**



TRACT 1

ANDREW J. O'DAY ESTATE

CONNIE CAMPBELL, JUDITH O'DAY, CHARLES O'DAY,
 JACOB O'DAY AND MEGAN O'DAY, SELLERS



McAfee Auction Service, LLC
 375 S Johnson • Kahoka, MO
 660-727-3796
 www.mcafeeauctionservice.com

**LIVE ONSITE WAYLAND, MO REAL ESTATE
 & PERSONAL PROPERTY ESTATE AUCTION**

SATURDAY AUGUST 17TH - 10 AM

Sale conducted onsite located at 10 West Des Moines St. Wayland, MO



Selling a 896 sq' 2 bedroom, 1 bath home, utility shed / carport setting on a 75' x 150 lot.

OPEN HOUSE
 Sunday, August 11th
 1-2pm



Also selling a 2003 Chevy pickup, tools, lawn related and misc. household.

**COMPLETE DETAILS &
 PHOTOS ONLINE!**

ANDREW J. O'DAY ESTATE

CONNIE CAMPBELL, JUDITH O'DAY, CHARLES O'DAY,
 JACOB O'DAY AND MEGAN O'DAY, SELLERS



McAfee Auction Service, LLC
 375 S Johnson • Kahoka, MO
 660-727-3796
 www.mcafeeauctionservice.com

**LIVE ONSITE MONTROSE, IA REAL ESTATE
 & PERSONAL PROPERTY ESTATE AUCTION**

SATURDAY AUGUST 24TH - 10 AM

Sale conducted onsite located at 301 Spruce Street, Montrose, IA



Selling a 1204 sq' 3 bedroom well kept home with a 30' x 66' multi car garage.



Also selling 2002 Fisher 16 Pro Avenger fishing boat, Utility trailer, Lawn equipment, lawn related, tools, shop related, household misc.

COMPLETE DETAILS & PHOTOS ONLINE!

JIMMIE E. BOECKER, ESTATE

CONNIE BOECKER, EXECUTOR

**ADDITIONAL DETAILS & PHOTOS ONLINE
 WWW.MCAFEEAUCTIONSERVICE.COM**

LAN-DOW BUILDINGS
"We Build To Suit Your Needs"
"Custom Built"
 Pole Barns • Garages • Utility Buildings
 Dick, Jason or Andy Middleton

Memphis Lumber Co.
 1-800-337-5858 • 660-465-8595
 Fax: 660-465-8596

LEE COUNTY, IOWA
LAND AUCTION
 VIRTUAL ONLINE
THURSDAY, AUGUST 22 @ 2:00 PM CDT

2741 ACRES±

The farm is located in Section 3, Des Moines Township, Lee County, IA 2.5 miles Northeast of the small town of Argyle, IA. (Argyle is 8 miles south of Donnellson, IA.)
 Make plans now to participate in this Lee County, IA Land Auction. This tract offers productive tillable farmland and highly attractive hunting and recreational acreage. If you're looking for a neat secluded tract we advise you to take a look!

DENIS PEZLEY & DIXIE FETTE
 REPRESENTING ATTORNEY: Gregory A. Johnson
 516 7th Street | Ft. Madison, IA 52627 | (319) 372-2532
 AUCTION REPRESENTATIVE: Kaycee McGregor (319) 670-8532

MERIT AUCTIONS
 "Specializing in Farm Real Estate & Ag Equipment"
 833.273.9300 | www.MeritAuctions.com | 444.000611

LOLLI LIVESTOCK MKT, INC.
Tuesday, July 30 - 11am
Special Pre-Conditioned Feeder Calf & Yearling Sale

160 fancy Angus hfrs 700lbs (load lots)
 80 bbwf hfrs 675lbs (pot load)
 70 fancy Angus hfrs 750lbs (pot load)
 Breeding quality

65 bbwf str/hfrs 4-600lbs 35 bbwf hfrs 650-700lbs
 60 bbwf str/hfrs 5-700lbs 30 bbwf str/hfrs 5-700lbs
 50 bbwf str/hfrs 4-500lbs 20 bbwf str/hfrs 5-700lbs
 48 bbwf str/hfrs 3-600lbs 15 bbwf str/hfrs 6-800lbs

This is only a partial listing, many more by sale date.
August 6 - Regular Cattle Sale

Cafe Open Lolli Livestock Market, Inc. Cafe Open
 704 Main st * Macon, MO * 660-385-2516
 Frankie 660-651-4040 * Tim 660-651-3496 * Joseph 660-346-9711
 Jordan 660-346-0410 * Cody 660-676-9392 Cattle accepted on Sundays
 Follow Us On Face Book & www.lollibro.com

Small Animal Auction
Saturday, July 27
 To be held at the
SCHACHTELE BARN - KEYTESVILLE, MO
 From Hwy 24 at Keytesville, take Hwy 5 approx 4 miles to site w/ brown barn/green roof on the West side of the road, or from Hwy 36 at Marceline exit take Hwy 5 South, approx. 16 miles to site. Follow Auction signs!

Starting @ 11:30 am
 We will start with Misc. Items Outside & Follow with Small Animals approximately 12:00 noon. Expecting Chickens, Geese, Ducks, Turkeys, Rabbits, Goats & Many Other Small Animals!

We are NOT accepting any HOGS! All Out of state Animals to be Sold MUST Have Proper Health Papers!
 Lunch Served • Call for More Details!
Tony Schachtele 660-413-3250

We Appreciate All Consignments!
 Terms Cash - good Check with Proper ID
 We are NOT Responsible for Accidents to Man, Woman, Child, or Animal. We are NOT Responsible for Lost, Stolen, or Damaged Articles or Property.

Connie's MOBILE HOME TRANSPORT
We offer the following...
 Break Downs • Transport • Set up • Anchoring
Call Rich today! 573-881-7483

VIRTUAL ONLINE
RALLS COUNTY, MISSOURI
LAND AUCTION
WEDNESDAY, AUGUST 21, 2024 AT 1:00 PM CT

338.9 SURVEYED ACRES± • 2 TRACTS

The Ray & Elsie Moore Estate real estate contains 338.9 acres to be sold in 2 tracts and is located in Ralls County, MO. Tracts 1 & 2 are located 2.9 miles east of New London, MO, north of MO Hwy V.
 Tract 1 is further described as being in Section 4, T55N-R4W & Section 33, T56N-R4W, Saverton Township, Ralls County, Missouri. Tract 2 is further described as being in Section 33, T56N-R4W, Saverton Township, Ralls County, Missouri.

The land represents an excellent opportunity for cattle, row crop farmers, and investors. Investors and farmers - be sure to check out these properties which offer something for everyone.

RAY & ELSIE MOORE ESTATE
 Closing & Title Work by: Accurate Land Title Company
 218 Broadway, Hannibal, MO 63401 | (573) 221-1002
 Auction Managers: Steve Zeiger (573) 231-9802 & Dan Sullivan (319) 795-1833

BigIron SULLIVAN AUCTIONEERS
 (844) 847-2161 | www.SullivanAuctioneers.com

Goehring Auction Services Public Auction
Multi-Consigner
 910 Louis Street
 Keosauqua, Ia 52565
Sunday July 28 @ 11am

Crocks - multiple lighting rod balls - wooden bowls - advertising tins - cast iron skillets - lots of glassware - wooden signs - neon lights - box of Jarts - Christmas & Halloween decorations - very nice bedroom outfit display case - gorgeous buffet - couches - recliners - vintage horse - clocks - candy machine - cast iron hay trolleys - lots of primitives not listed

Murray lawnmower - woodchipper - ladders - chainsaws - saws - lots and lots of hand tools - air compressor
 Huge mix of merchandise definitely something for everyone.

www.goehringauctionservices.com
 Terms: CASH OR GOOD CHECK. All announcements made day of sale take precedence over ads. Not responsible for accidents or theft. Sold "as is, where is."
Col. Mike Goehring 319-288-0704
Mike Best 641-777-1429

BE AN EARLY BIRD! Place your ads before Monday and beat the rush!
NEMO ADS SELL! Call for more information and specials. **660-665-8500.**

COIN, SILVER, & GOLD AUCTION **500+ LOTS**
SATURDAY, JULY 27, 2024

LOT PREVIEW BEGINS AT 8 AM
LIVE AUCTION AT 9 AM
500 E. HWY OO, HALLSVILLE

COINS: silver Proof sets (1950's - 1960's), modern US Mint: 2023 (P), (S), Morgan and Peace, UNC and Proof; Half-cents: 1803 VG, 1808 G, 1828 G, 1828 UNC; Indian Head cents: (full set, in lots) + 1866 G, 1868 AU/UNC, 1871 G; (2) 1877 KEY, AG + Good; 1909-S (KEY) VG; Wheat cents: (2) 1909-S V.D.B., (2) 1914-D, (2) 1922 No D, 1924 Unc, (2) 1931-S (XF, Unc), 15,000 Wheats, many solid-date rolls (mostly 1940s, 1950s; sold in bulk); 1912-S V-nickel, Fine; 1861 (P) Seated half-dime BU; 1916-D Mercury dime, AG-3; bags of 100 Mercury dimes; sev. rolls silver Washington quarters; Half dollars: 1807 Capped, 50/20 variety; 1857-0 Seated; Commemoratives: 1892, 1893 Columbian Expo, 1922 U.S. Grant, No Star in Field, BU; 1923 Monroe; 1926 Sesquicentennial, XF; 1936 Lynchburg, nice BU; 1951, 1952 Washing-Carver; many Barbars, Walking Libs, Franklins (many PCGS, MS-64); Silver dollars: 1800 Draped Bust, AMERICA I variety, Fine or better detail; 1846, 1871 Seated Liberty (low mintage, both VG details, with small holes); 1876 (VF) Trade dollar; 440 Morgan/Piece dollars incl full set of CC's, 2 GSA's, KEY dates, many PCGS/NGC graded: 1878-S BU, 1878-CC (VG + XF), 1879 (AU-55), 1879-CC (G), 180-CC (G/VG), 1881-CC (MS-64, PCGS), 1883-CC (GSA + MS-64, NGC), 1883-0 (MS-63), 1884-0 (MS-63 + MS-64, PCGS) 1884-CC (MS-62, NGC); 1885-CC (GSA, high-grade), 1889-CC strong obverse (XF+), 1892-CC (VF/XF), 1894 Key Date (at least VF), plus many others, incl. full rolls of 1921 Morgans and mixed Peace dollars.

SILVER: 50+ American Silver Eagles, incl. 8 graded MS-70; lots of 90% silver

GOLD: \$855 \$1 Indian Princess (EF-40, ANACS); 1861 \$2.50 Liberty (nice AU); 1882 \$5 Liberty; 1906-D \$5 Liberty; 1909-D \$5 Indian; 1916-B, 1947-B Swiss 20 Franc pieces, Unc., + other gold pieces

PAPER CURRENCY: Fractional notes, 1899 \$1 Black Eagle, 1934-A \$500 Fed. Res. Note (PMG VF-20).

georgeauctionservice.com **GEORGE AUCTION SERVICE** HALLSVILLE, MO
 LUNCH SERVED 844-847-2161
 PAYMENT TERMS: 1) Cash strongly preferred. 2) Credit Cards (Visa, MasterCard and Discover) accepted, up to \$500.00 (3% convenience fee) 3) Personal checks accepted; if paying by check, and you are unknown to the auction company, lots may be held for up to 10 business days to allow time for the check to clear. Lots will be securely shipped to you, free of charge, as quickly as possible after bank clearance.

RETIREMENT SALE
EVERYTHING MUST GO!!
WE HAVE TAKEN ADDITIONAL MARKDOWNS!

Sierens PALACE

110 W. HARRISON ST.
KIRKSVILLE MO. 63501

LAND AUCTION **RANCH-FARM AUCTIONS**
1327 AC± | 10 TRACTS
SULLIVAN CO, MO
8/2/24 AT 1 PM
SMITHFIELD ED CENTER
(NORTH OF PRINCETON OFF HWY 65)
17999 US 65,
PRINCETON, MO 64673

IN COOPERATION WITH WHITETAIL PROPERTIES REAL ESTATE, LLC
 JEFF PROPST, AGENT: 636.209.0362
 STEPHEN STOCKMAN, AGENT: 660.953.1241

RANCHANDFARMAUCTIONS.COM
 IN COOPERATION WITH WHITETAIL PROPERTIES REAL ESTATE, LLC (C00000803) | Jefferson RIA Gilbert, Missouri Broker License # 201504212 | Joe Glabe, Director, Ranch & Farm Auctions, 21209 0332 | Jeff Propst, Missouri Land Specialist for Whittail Properties Real Estate, LLC, 636.209.0362 | Stephen Stockman, Missouri Land Specialist for Whittail Properties Real Estate, LLC, 660.953.1241 | Cody Lowman, MO Auctioneer License 10337

NEMOTRADER.NET

VIRTUAL ONLINE
MARION COUNTY, MISSOURI
LAND AUCTION
WEDNESDAY, AUGUST 21, 2024 AT 10:00 AM CT

94 ACRES± (SUBJECT TO SURVEY) • 2 TRACTS

The Glenn E. & Martha L. Griesbaum farm is located in Marion County, MO. Tract 1 is located 2.5 miles south of Palmyra, MO and tract 2 is located 3 miles south of Palmyra, MO and are further described as being located in Section 12, T57N-R6W, South River Township, Marion County, Missouri. Both tracts offer an excellent opportunity with tract 1 being mainly pasture ground with great potential for development. Tract 2 has approximately 46 acres of highly productive soils and also offers a great potential for commercial or residential development (subject to re-zoning approval).

Farmers and investors, be sure to check out these properties which offer something for everyone.

GLENN E. & MARTHA L. GRIESBAUM
 Closing & Title Work: Mark Twain Title Company
 123 S Main St, Palmyra, MO 63461 | (573) 769-2212
 Auction Managers: Steve Zeiger (573) 231-9802 & Dan Sullivan (319) 795-1833

BigIron SULLIVAN AUCTIONEERS
 (844) 847-2161 | www.SullivanAuctioneers.com

LARGE AUCTION
Saturday, July 27 • 10:00 A.M.
2332 590th St. Exline, Iowa

2012 Cat 277C Skidsteer w/ Tracs, D, 4200 hours; 2022 Gravelly Zero Turn Mower; 40 + ANTIQUE TRACTORS (80 % Run) Farm Equipment, Scrap Iron, AND Large amount of Antiques, Primitives Thru Out the Auction.

TRACTORS, FARM EQUIP: Farmall 140 Tr. w/ Belly Mower; SC Case Tractor; Propane Oliver Tractor; WD AC Tractor; 16 IH Tractor; 770 Oliver; H Farmall; IH W6 Tractor; Super M Farmall w/ Loader; MF 175 w/ Loader; Ferguson T030; H Farmall w/ wf; Case D.I. Tractor w/Loader; Minn. Moline Tractor; Super C Farmall w/ WF; Case D.I. Tractor w/Loader; Minn. Moline Tractor; W9 Farmall; Oliver 77; MORE TRACTORS, KEEP WATCHING; IH 16 Rake; Skid Steer Bucket; (3 Point Plows-Disc-Hay Stabbers, & Scraper Blades); MF Snowmobile; Pull behind Antique Road Grader; Farmall F20 Loader; Box Seed Wagon; Antique Planter; 3 Pt Brush Hog; Wagon Running Gear; Farmall Engines; Power Take Off Engines; Large amount of Tractor Weights, Tires, and Tractor Parts; MULTIPLE HIT AND MISS ENGINES; 6 X 10 ATV Trailer; PTO Trash Pump; Power Shift HYD Wagon;

1986 Rolls Royce Silver Spur; Double Side Dodge Cornet; Antique 1 Ton Chev. Truck; 2 Car Dolly; Antique Cadillac Parts; Model A & Model T Parts; Diesel Power Generator & Light Source; Horse Drawn Carriages; Blacksmith Forges; Honda Trash Pump; Concrete Mixer; Standard Oil Barrels; Large amount of new pole barn metal; Large amount of Scaffolding & Platforms; Soffit & Gutters; Garage Door & Parts; Metal Warehouse Shelving; Pallet of Marble; Orchard Sprayer; Semi Jacks; Chrome Wheels; Boat Motors; SCRAP IRON

demryauction.com and Demry Auction LLC on Facebook for photos
AUCTIONEER'S NOTE: PLAN TO SPEND THE DAY WITH US, MORE TRACTORS, EQUIPMENT, AND SURPRISES TO DISCOVER.

DEMRY AUCTION, LLC
 1916 S 18th St. (Hwy 5 SOUTH) CENTERVILLE, IOWA
Janet Demry: 641 895 4310 and 641 856 6408
Tom Demry: 641 895 2508 • **Kristy Demry:** 641 895 2509
Randy Weisley: 641-436-1521 • **Dalton Ott:** 563-880-5626
Website: www.Demryauction.com

Chat/Dirt/Gravel

DIRT WORK All types of excavation, reclaiming overgrown fields, including CRP and WRP. Building site preparation, creating new trails and crossings, Food plot development and maintenance. Leveling and grading, wetland construction and maintenance. Pond and lake cleaning and construction. Call for quotes. 660-342-2701

Cleaning

WATER DAMAGE CLEANUP & RESTORATION: A small amount of water can lead to major damage in your home. Our trusted professionals do complete repairs to protect your family and your home's value! Call 24/7: 1-877-595-9109. Have zip code of service location ready when you call!

SERVICES

Home Services

Get paid to care for your loved ones in the comfort of your home! Medicaid Required! Call 314-282-5731 for more info.

Scott Huskey's Insulated Skirting Systems-keeps your home cooler in the summer-warmer in the winter-saves on utilities and looks great! Since 1972, 573-696-3468.

PEST CONTROL: PROTECT YOUR HOME from pests safely and affordably. Roaches, Bed Bugs, Rodent, Termite, Spiders and other pests. Locally owned and affordable. Call for service or an inspection today! 1-888-618-1486 Have zip code of property ready when calling!

Call about our classified ad specials. 660-665-8500.

Lawn/Garden/Landscape

New 3 pt. tillers, heavy duty, gear driven, 7' to 12' starting at \$4,150. 660-874-4455.

Miscellaneous

HOME BREAK-INS take less than 60 SECONDS. Don't wait! Protect your family, your home, your assets NOW for as little as 70¢ a day! Call 1-888-618-0515.

Roofing

NEW METAL ROOF \$5995* COMPLETELY INSTALLED. 45 year warranty. Only \$79/mo*. Huge sale on Siding and Windows. LIMITED TIME 800-664-4856 *for details. Senior / Military Discounts

Please place your classified ads on the NEMO website. Our web address is nemotrader.net

FOR SALE
AI Sired Angus Bulls,
14 & 18 Months Old.
Harold Trump
660-341-5730

Shop Local
Buy Local
Enjoy Local

CALL TODAY!
660-665-8500
sales@nemotrader.net

NEMO
Daily Express



Judd Motors Call 660-457-3700
Hwy 63 North, Lancaster, MO

2012 Case 580N, Loader Backhoe, Turbo, 4WD, Cab with AC, Extendahoe, New 12 ply Tires, Only 1280 Hours, 1 owner, very clean,.....only **\$62,500**

AC Disk, 10Ft., Good shape, only **\$1,250**

2007-14 Chevy pickup box, red, 8 ft, little rust only **\$1,000**

2002 GMC Sierra 1500 **NEW PRICE \$6,500**
Reg. Cab, Long bed, 4x4, V8, 138K, RED

2006 Chevy 2500HD, 4x4, 6.0L, reg cab, 8 ft bed, 1 owner, no rust, only 97k, red, **NEW PRICE \$17,500**

2015 GMC Sierra 2500 Denali, 6.0L, 4wd, crew cab, short bed, sunroof, heat/cool leather, spray-in bed liner, nerf bars, 207k miles, pearl white, excellent, only **\$21,900**

Cumberland Building Dealer

www.juddmotors.com | In Business Over 75 Years
Curly and Kevin Judd

ANNUAL JULY
Consignment Auction
SATURDAY, JULY 27, 2024 AT 8 AM
WHEELER AUCTIONS LOT, 23101 HWY. 24, PARIS, MO

Live On-Site Bidding with online bidding available

WHEELER LIVE ONLINE BIDDING PLATFORM

BID NOW Online Bidding Provided By Equipmentfacts

BID LIVE Live On-Site Bidding Provided By proxibid

3000+ PIECES OF MACHINERY FROM AREA FARMERS AND DEALERS!

RECEIVING MACHINERY DAILY STARTING:
Monday, July 8 until Thursday, July 25 at Noon
8 A.M. - 5 P.M. (M-F) | 9 A.M. - 3 P.M. (Sat. & Sun.)

Wheeler
AUCTIONS & REAL ESTATE
33101 HWY. 24, PARIS, MO 65275 | 660-327-5890
WWW.WHEELERAUCTIONS.COM

VISIT WHEELERAUCTIONS.COM FOR MORE INFORMATION!

NEMOTRADER.NET

VICTORY
Metals & Recycling
KIRKSVILLE, MO
660-665-8000

For current scrap prices call or visit our Facebook Page
victorymetalsrecycling.com

★ **METAL RECYCLING**
RECYCLE YOUR SCRAP METAL WITH US! WE PAY CASH FOR: COPPER, ALUMINUM, STEEL, STAINLESS STEEL, APPLIANCES, E-SCRAP, BRASS, LEAD, RADIATORS, ALTERNATORS, BATTERIES, STARTERS, ELECTRIC MOTORS, APPLIANCES, & VEHICLES (TITLE & ID REQUIRED).

★ **ROLL-OFF CONTAINER**
10-20-30-40 CUBIC YARD DUMPSTERS

3602 INDUSTRIAL RD. • KIRKSVILLE, MO 63501
DJANESVMR@GMAIL.COM
VICTORYMETALSRECYCLING.COM

57th Annual Western Illinois Threshers
August 2, 3, & 4, 2024

Friday, Aug. 2
9:00 a.m. Tractor Games
3:00 p.m. Kids Pedal Tractor Pull
6:00 p.m. Antique Tractor Pull
6:30 p.m. Ribeye Steak Dinner
8:00 p.m. Music Entertainment

Saturday, Aug. 3
7:00-10:00 a.m. Country Breakfast
8:00 a.m. Pony Pull
10:00 a.m. Antique tractor pull
12:00 p.m. Tractor Games
1:00 p.m. Horse Plowing
3:00 p.m. Antique Tractor & Car Parade
6:00 p.m. Smoked Pork Chop Dinner
6:30 p.m. Country-Western Entertainment
8:00 p.m. Quilt Auction; More Country-Western entertainment

Sunday, Aug. 4
7:00-10:00 a.m. Country Breakfast
8:30 a.m. Morning Worship Service
9:30 a.m. Antique Tractor Pull (Exhibition Only)
1:00 p.m. Horse Plowing
1:30 p.m. Fun & Games for Kids
3:00 p.m. Antique Tractor & Car Parade
4:00 p.m. Tractor & Quilt Drawing

FEATURING GRAHAM BRADLEY



Family Fun, Free Parking, Admission by \$5 button (12 years and older) good all 3 days
Primitive camping or electrical hook-ups (20 and 30 amp) on grounds for a fee. Many food vendors. \$20 fee to register golf carts or ATV's. No bicycles allowed on grounds.

Daily Features: Horse Plowing, Steam Power Threshing, Pony Power Threshing, Straw Baling, Large & Small Sawmills, Corn Shelling, Stonemill Cornmeal Grinding, Blacksmithing, Rock Crushing, Gas Engines, Rail Handcar & Motorcar Display & Ride, Ladies Bazaar, Antique Household Items & Shop Tools, Quilting, Rug Weaving, Sheep Shearing, Woodworking, Crafts, Flea Market, Petting Zoo, Activities for Kids, Bingo Daily, Raffle Tractor Allis Chalmers WD

Grounds include Old Windmill, Schoolhouse, Log Cabins, TP&W Depots & Caboose, Grandstand, Museum Building, General Store, Print Shop, Blacksmith Shop, Post Office, Filling Station.

Largest and most complete line of Gas Tractors, Cars, Trucks & Engines.
For more information visit our website:
www.westernillinoisthreshers.org

ANIMAL HOUSING HAY STORAGE & MUCH MORE

Skylight FABRIC STRUCTURES

30697 COLONY AVE. • NEW CAMBRIA, MO 63558
660-486-3250 • 833-482-8862