

# NEMO

## Trader

**THE NEMO TRADER**  
PO BOX 809 • KIRKSVILLE, MO 63501 • PHONE 660-665-8500  
**Web Site: nemotrader.net • Email: sales@nemotrader.net**

**FREE**

A WEEKLY ADVERTISER SERVING ALL OF NORTHEAST MISSOURI AND THE SURROUNDING AREA

**Signature**  
Overhead Doors & Remodeling, LLC  
**660-785-0248**  
www.signatureremodelingkv.com  
*Giving your home the attention it deserves!*

**MODERN RESTORATION**  
REMODELING LLC  
**YOUR REMODELING SPECIALIST**  
**660.413.2439**

**Lick Creek FENCING**  
Owen Miller  
641-242-0346  
**Continuous Fence • Barb Wire  
Woven Wire • Skid Work**

**Pearler TRUCKING LLC**  
NOVATEL MO  
**ROCK • DIRT • SAND • GRAIN HAULING • LIME SPREADING**  
EQUIPPED WITH VARIABLE RATE  
**Alan (660) 216-0618 • Jared (660) 342-7685**

**exp REALTY**  
Elizabeth Gregory  
110 S. Franklin St  
Kirksville, MO 63501  
www.missourihomeandfarm.com  
660.621.2136

**LAND SALES & AUCTIONS**  
**CLAY LOCKARD**  
EAST CENTRAL MISSOURI  
LAND SPECIALIST  
**573.466.9123**  
**WHITETAILPROPERTIES.COM**  
Lewis • Macon • Shelby • Marion • Randolph • Monroe • Ralls • Audrain  
SERVING  
WHITETAIL PROPERTIES REAL ESTATE  
HUNTING | RANCH | PARKS | TIMBER  
A DIVISION/TRADE NAME OF  
WHITETAIL PROPERTIES REAL ESTATE  
BEST  
Whitetail Properties Real Estate, LLC DBA Whitetail Properties, DBA Whitetail Properties Real Estate, in FL, KS & MO - Jefferson Kirk, Clint, Brian, & Clay Lockard

**Central Metals Recycling LLC**  
**Buyers of Ferrous and Non-Ferrous Metals**  
**We Pay More \$\$\$, Call For Your Best Pricing Today!!**  
11923 Hwy. 54 Mexico, MO 573-581-0336  
1601 N. 30th Quincy, IL 217-214-7649  
1175 Hwy. 96 Hamilton, IL 217-847-3191

**ATTENTION LAND OWNERS!!**  
**Buyer of standing timber**  
**Paying Cash Upfront!**  
Owner/Operator of Sawmill  
• Buy/Cut Logs  
• Certified  
• Bonded  
• Insured  
**Tri State Timber L.L.C.**  
353 1/2 Grand Ave. • Memphis, Mo 63555  
660-341-4921 • 660-465-2975  
**WE HAVE SEMI LOADS OF FINE WOOD LOGS FOR SALE**

**FLO RITE GUTTERING**  
**660-988-1163**  
• 5" & 6" Guttering Available  
• Leafguard Options  
• 20+ Color Options  
• Stainless Steel Fasteners  
**Stan Schrock • Greentop, MO**

**Shop Local Buy Local Enjoy Local**  
CALL TODAY!  
660-665-8500  
sales@nemotrader.net  
**NEMO**  
Daily Express

*Your Local*  
**FARM SUPPLY SOURCE**  
NUTRITION • MEDICAL • FARM • PET • APPAREL  
**SEE US FOR YOUR SHEEP & GOAT EQUIPMENT NEEDS**

Hometown Animal Health has provided quality products, expert knowledge, and friendly customer service to northeast Missouri and surrounding areas.  
We are a full-service nutrition, medical, and farm supply source carrying complete lines of animal feed and supplies, farming equipment, agricultural parts, lawn and garden tools, work apparel, and much more!"  
**Hometown ANIMAL HEALTH**  
Feed • Medical • Farm & Pet Supplies • Footwear & More  
website: hometownanimalhealth.com  
**660-465-2967**  
18743 US Hwy, 136 Memphis, MO 63555  
"on Hwy 136 west of Memphis"  
Monday-Friday 8pm to 5pm  
Saturday 8am to 1pm

Building our community is done beautifully with materials & services by  
**Hillside Metals**  
Your attractive, seamless, wood grain siding creates timeless structures with modern materials.  
Your stone siding, by Affinity, makes a Hillside Metals Home beautiful from the outside in  
**HILLSIDE METALS & BUILDING SUPPLIES**  
21564 STATE HWY J, BRASHEAR, MO 63533  
CALL RYAN: **(660) 730-8617**  
Please leave a message with your name & preferred contact information to receive uninterrupted focus upon your building goals.

**PUBLIC AUCTION**  
**Jim and Lola Kluxdal Estate**  
**Saturday, June 22nd, 2024 • 10:00 A.M.**  
23740 217th Avenue, Centerville, Iowa  
Hwy 5 South of Centerville to J46 (Turn West at John Deere) to 217th Ave. then go North to the auction site. Watch for Auction Signs  
100 pieces of antique, vintage, mid-century and modern furniture. To include: several very nice buffets, dressers w/mirror, chest of drawers, old ice box, antique secretary, china cabinets, roll top desk, antique desks, beds, tables & chairs, outdoor furniture, wardrobe, Dr cabinet, dining room set, couches, recliners, pump organ, player piano, victrola, side tables, bar stools, whiskey barrel bar w/stools, rocking chairs, lamps, bedroom sets, display cabinet, shelving, framed pictures including Native American décor, quilt rack, sewing machines w/cabinets, old school desks, antique wall telephone, and more!  
2 full size slot machines Cherry Bar and Flipper (both work), 3 vintage accordions w/cases, 20 plus Elvis whiskey decanters (most w/ boxes), large pressed steel toy collection including Tonka dump trucks, cement trucks, dozers, road graders, end loader, semis, pickups, campers, trailers, boats and more, large collection of vintage beer and liquor lights Budweiser, Hamm's, Miller Lite, Coors, Natural Light, Schlitz, Miller High Life, Pabst, Falstaff, also several beer wall signs and mirrors, cream cans, green Planter's Peanuts jar, mantel clock, oil lamps, patchwork comforters, large amount of bar supplies, beer mugs & glasses, horse collar and hames, tools, band saw, table saw, snow blower, vintage vehicle parts including grills, radiators and more.  
1989 Chevrolet 1500 4X4 extended cab w/ topper 116,937 miles on odometer, 1984 Itasca Windcruiser motorhome approximately 34 ft, auto level, 53,120 miles on odometer (very clean for it's age).  
**STILL UNBOXING MUCH MORE BY SALE DAY!**  
demryauction.com and Demry Auction LLC on Facebook for photos  
**Auctioneer's note:** Here is your chance to bid on an outstanding collection of clean antique furniture, beer lights, toys and much more, most of the day we will be inside.  
**DEMRY AUCTION, LLC**  
1916 S 18th St. (Hwy 5 SOUTH) CENTERVILLE, IOWA  
Janet Demry: 641 895 4310 and 641 856 6408  
Tom Demry: 641 895 2508 • Kristy Demry: 641 895 2509  
Randy Mulay: 641-436-1521 • Dalton Ott: 563-880-5626  
Website: www.Demryauction.com

102 N. Main St.  
Memphis, MO  
660-883-2924

A classic through and through,  
with witt, farce  
and romance!

MAPLESREP.COM

**"The Importance of Being Earnest"**

JUNE 28 thru JULY 27

**Dutch Garden Nursery**  
*Your Full Service Garden Center*

**Cover Crop Seed**  
Buck Wheat • Radish Eco Till  
Western Sugar Beet  
Forage Turnip  
Spring Green Garden Mix  
Ground Breaker Mix

- FOOD PLOT SEED
- BIG BUCK FOOD PLOT MIX
- GRASS SEED (SEVERAL OPTIONS)

**OPEN ALL SUMMER!**  
Sprays for all your garden & flower needs!  
Fungicide and insecticide.

**1/2 Price SALE**  
On Hanging Baskets & Annual Bedding Plants and Vegetable Plants

Fertilizer for all your Plants & Lawn!

Bulk Mulch & Bulk Rock  
Blue Compost (several options)  
Landscape Blocks!

Perennials, Grasses, Shrubs: Evergreen & Flowering  
Trees: Shade, Fruit, Nut & Flowering

**Delivery Available** for all these Products

**Summer Hours:**  
**Monday - Saturday 8 AM to 6:00 PM**  
MEMPHIS LOCATION (beside Country View Store): 660-883-5650  
EDINA LOCATION (Home Base): 660-397-4115  
www.dutchgardennursery.com

**Growing Together!**

Green City      Milan      Kirksville

660-951-8430    660-951-8432    660-951-8431

www.farmbank.com

**KEIM LUMBER COMPANY LLC**  
COMPETITIVE PRICES • FREE ESTIMATES

- COMPLETE BUILDING PACKAGES
- WINDOWS AND DOORS
- INSULATION • DRYWALL
- DELIVERY

13625 St. Hwy 3 LaPlata, MO

# KIRKSVILLE'S ANNUAL Red, White & Blue FESTIVAL

## Friday, July 5

### Summer On the Square Concerts

Kirksville Community Band: 5:00 pm  
The Aaron Russell Band: 7:00 pm

United Way Pie Contest and Auction  
\*Drop pies off between 4:00 - 5:00 pm  
\*Pie Auction held between music sets

## Saturday, July 6

### Morning on the Square

Kiwanis Farmers' Market: 7:00 am - Noon  
Joint Service Club Pancake Breakfast: 7:00 am - 11:00 am  
Classic Car Show: 8:00 am - Noon  
8th Annual FLATS Uncle Sam 5k Run: 8:30 am Start  
Parade: 10:00 am




### North Park

Games for Kids: Block Party event starting at 5:00 pm  
Food Trucks: Start serving at 5:00 pm  
Live Entertainment:  
Clint & Nick: 5:30 - 6:30 pm  
Boot Cut: 7:00 - 9:30 pm  
Fireworks: 9:30 pm  
(\*Rain Date for Fireworks - Sunday, July 7th)

VisitKirksville.com



ANIMAL  
HOUSING  
HAY  
STORAGE  
& MUCH  
MORE

Skylight
FABRIC  
STRUCTURES

30697 COLONY AVE. • NEW CAMBRIA, MO 63558  
660-486-3250 • 833-482-8862

ACCIDENTS  
DON'T SCHEDULE  
APPOINTMENTS




Complete Family Medicine

Urgent  
Care



HERE WHEN YOU NEED US

OPEN 8:00 AM - 8:00 PM  
7 DAYS A WEEK | 365 DAYS A YEAR

cfmcares.com | 660-665-7575

Sparks Auction

204 E Reid St, Edina, MO 63537



Saturday, June 29th at 9 am
www.SPARKSAUCTIONSERVICE.COM

4

RINGS

LARGE INVENTORY  
REDUCTION AUCTION

Tools, Antique, 4 wheelers, Mowers  
TO VIEW PICTURES GO TO:  
www.SPARKSAUCTIONSERVICE.COM

Bring Items ANYTIME!  
FIRST COME FIRST TO SELL!  
Call Today to Consign.  
Jesse Sparks 573-406-8787

Call Jesse for All Auction Needs  
Land • Real Estate • Household • Machinery • Vehicles

Call us for all your advertising needs. 660-665-8500.

Call about our classified ad specials. 660-665-8500.

Call us for all your advertising needs. 660-665-8500.



KIRKSVILLE, MO  
660-665-8000

For current scrap prices  
call or visit our **Facebook Page**  
victorymetalsrecycling.com

★ METAL RECYCLING

RECYCLE YOUR SCRAP METAL WITH US! WE PAY CASH FOR: COPPER,  
ALUMINUM, STEEL, STAINLESS STEEL, APPLIANCES, E-SCRAP,  
BRASS, LEAD, RADIATORS, ALTERNATORS, BATTERIES, STARTERS,  
ELECTRIC MOTORS, APPLIANCES, & VEHICLES  
(TITLE & ID REQUIRED).

★ ROLL-OFF CONTAINER

10-20-30-40 CUBIC YARD DUMPSTERS

3602 INDUSTRIAL RD. • KIRKSVILLE, MO 63501  
DJANESVMR@GMAIL.COM  
VICTORYMETALSRECYCLING.COM

T-5 Properties

LAND AUCTION  
130 ACRES



Highly productive Randolph County Missouri  
tillable and recreational land auction:

Tract 1: 40 acres with 39+/- tillable, majority  
class 2, Calwoods Silt Loam, with the remainder  
comprised of Keswick Silt Loam. Tillable acres  
are currently rented for \$275 for 3 more years,  
but can be cancelled for buyer if necessary.



Tract 2: 62 acres showing 51 acres tillable, with  
70% made of class 2, Calwoods Silt Loam. This  
tract offers excellent build sites with utilities  
available, great hilltop access points, and  
beautiful views. Tillable acres are currently  
rented for \$200/acre.



Tract 3: 28 acres of timber, owned access of  
County Road 2460. This recreational tract  
offers premium deer and turkey hunting, as well  
as a very secluded place for a home or camp.  
NO EASEMENTS.



July 23rd, 2024 – 6pm  
Moberly Auditorium

Call Luke Shoemaker 660-676-2218 or go to www.northmoland.com

Have a smart phone or tablet?  
You can view current and past Nemo Trader issues online at  
www.nemotrader.net



Golden Grain Bins-Winter Discount

Grain Bins	Floors w/12"Supp. & Flashing
18'x18' 4,195bu. \$ 6,067	18'....\$1,693 30'....\$ 4,726
27'x21' 11,265bu. \$12,178	21'....\$2,315 36'....\$ 6,733
42'x24' 32,245bu. \$28,386	27'....\$3,862 42'....\$ 9,169



GMLS Industries, Inc.  
PH: 660-699-2179 or 620-983-2136  
www.gmlsindustries.com

706880ch

LOLLI LIVESTOCK MKT, INC.

Tuesday, June 25 - 11am

Special Pre-Conditioned Calf & Yearling Sale

80 bbwf hfrs 670lbs(pot load)	25 bbwf str/hfrs 5-700lbs
75 bbwf str/hfrs 5-600lbs	21 bbwf str/hfrs 5-700lbs
60 bbwf str/hfrs 5-700lbs	20 bbwf str/hfrs 5-700lbs
50 bbwf str/hfrs 550-750lbs	20 bbwf str/hfrs 5-700lbs
45 bbwf str/hfrs 4-600lbs	20 bbwf str/hfrs 6-800lbs
40 bbwf str/hfrs 6-700lbs	18 bbwf str/hfrs 5-650lbs
40 bbwf str/hfrs 5-600lbs	15 bbwf str/hfrs 6-700lbs
30 bbwf str/hfrs 5-700lbs	15 bbwf str/hfrs 5-600lbs
30 bbwf str/hfrs 5-600lbs	15 bbwf str/hfrs 6-700lbs
25 bbwf str/hfrs 5-700lbs	10 bbwf str/hfrs 5-600lbs

This is only a partial listing, many more by sale date.

Cafe Open Lolli Livestock Market, Inc. Cafe Open  
704 Main st \* Macon, MO \* 660-385-2516  
Frankie 660-651-4040 \* Tim 660-651-3496 \* Joseph 660-346-9711  
Jordan 660-346-0410 \* Cody 660-676-9392 Cattle accepted on Sundays  
Follow Us On Face Book & www.lolliibros.com

720789jn

Small Animal Auction

Saturday, June 29th

To be held at the

SCHACHTELE BARN - KEYTESVILLE, MO

From Hwy 24 at Keytesville, take Hwy 5 approx 4 miles to site w/ brown barn/green roof on the West side of the road, or from Hwy 36 at Marceline exit take Hwy 5 South, approx. 16 miles to site. Follow Auction signs!

Starting @ 11:30 am

We will start with Misc. Items Outside & Follow with Small Animals approximately 12:00 noon. Expecting Chickens, Geese, Ducks, Turkeys, Rabbits, Goats & Many Other Small Animals!

We are NOT accepting any HOGS! All Out of state Animals to be Sold MUST Have Proper Health Papers! Lunch Served • Call for More Details!

Tony Schachtele 660-413-3250

We Appreciate All Consignments!

Terms Cash - good Check with Proper ID  
We are NOT Responsible for Accidents to Man, Woman, Child, or Animal. We are NOT Responsible for Lost, Stolen, or Damaged Articles or Property.

720744jn

RAMIER TRUCK SALES

2011 Ford F350 Lariat, 6.7, 189K. \$22,500	2018 Ford F150, 3.0 Diesel, platinum, 38K. \$36,500
2012 Ford F150 3.5 Ecoboost platinum, 243K. \$8,500	2008 Jeep Wrangler Unlimited, 3.8 manual 158k \$11,500
2011 Ford F350m, 6.7, XL, 170K, with 2017 pick-up engine. \$19,500	2022 Ford Bronco, 2 door, 9600 miles, 2.7 eco boost outer banks, salvage title \$34,000
2011 Ford F250 Lariat, 6.7 158k Clean title \$22,500	Dew eze cake feeder, 1000 lb in stock \$4,586 and 1500lb in stock \$4,619

Gorin, Missouri  
Monday-Saturday • 8am-6pm  
www.ramiertrucksales.com  
HOME: 660.282.1002 • CELL: 660.341.6140  
"NO SUNDAY CALLS!"

720815jn

Show Me Plumbing Services



Stan Schrock 660-988-1163  
Greentop, MO 660-766-2636

- General Mini Excavation & Skid Steer Work
- Livestock Watering
- Waterlines & Sewer Systems
- Residential Services & General Plumbing
- Utility Trenching

631236sl



FOR SALE:  
Registered Hereford Bulls  
18-24 Months Old,

JRC FARMS  
Jim Clark  
Mercer, MO.  
660-748-6464



Friday, June 21st  
Special Feeder Calf Sale

Friday, June 28th  
Special Feeder Calf Sale

To Consign For Any or All Sales or For Information Call:  
Owner - Kevin Strange • Cell: 660-341-9974  
Ryan Strange • Cell: 660-341-9721  
Sale Barn: 660-397-9999

Field Reps:

Bill Tom Hall 660-342-5420 Mike Bronestine 660-341-9965  
Jason Bichsel 660-216-0373 John Powell 660-341-1717

20740c

Liebhart Sales, Inc.

660-689-3406 Vermeer  
17546 Lacey • Boston, MO 63557

- Twin Rakes
- Trail Mowers
- Disc Mowers
- DewEze Bale Beds
- Danuser Post-Hole Diggers
- NEW 30 ft. Flex Harrow
- Tedders
- Bale Processors
- New Hydraulic 5th Wheel Balls



719704at

New DewEZE Hay Beds in Stock!

FARM MACHINERY CONSIGNMENT AUCTION

Saturday, July 20th, 2024  
Sale starts @ 10:00 AM

SCHACHTELE BARN - KEYTESVILLE, MO  
From Hwy 24 at Keytesville, take Hwy 5 approx 4 miles to site w/ brown barn/green roof on the West side of the road, or from Hwy 36 at Marceline exit take Hwy 5 South, approx. 16 miles to site. Follow Auction signs!

Selling Farm Machinery, Farm Tools & Equipment & Many More Miscellaneous Items (NO household Items)

Now ACCEPTING CONSIGNMENTS

To Consign Early for advertising or for more information  
Call Tony: 660-413-3250

WE APPRECIATE ALL CONSIGNMENTS!

Terms Cash - good Check with Proper ID  
We are NOT Responsible for Accidents to Man, Woman, Child, or Animal. We are NOT Responsible for Lost, Stolen, or Damaged Articles or Property.

719697at

TIMBER MANAGEMENT.

Purchasing Walnut, Oak, Maple & Other Species

WE PAY BEFORE WE CUT

BONDED & INSURED  
641-895-8209

Est. 1968

ESTATE AUCTION

Saturday June 22, 2024 • 10AM  
306 N 8th St. Lancaster, MO

Directions: US HWY 63 to 136E then turn on North 8th St

Estate of the late Junior and Martha Schmitter

**Household:** Kenmore upright freezer, Kenmore Refrigerator, Maytag washer and electric dryer, full size bed with frame, multiple dressers and chest drawers with mirrors, matching couch and chair, electric lift chair, rocker recliner, propane cook stove, oak kitchen table made by Oakwood, multiple kitchen chairs, 2 electric ice cream machines, newer record player with cd player and am/fm radio, lots of records, newer wooden kitchen cart, lots of dishes, Tupperware, cookbooks, cutting boards, Fireking and Pyrex glass baking dishes, Corningware square baking dishes with lids, 2 metal kitchen cabinets, New in box stove board Quilting and Sewing: older rug loom, yarn, doilies and crochet material, lot of handmade quilts, lots of quilting material, fabric patterns.

**Antiques:** wash tubs, enamel pans/bowls, jar of marbles, Griswold and Wagner cast iron skillets, silverware, trunk, globe, crock bowls, old Lancaster newspapers

**Instruments:** American Hi Hat guitar with case, Alvarez acoustic guitar in case, antique Strad violin in case ( it shows model 1716 and was redone in 1938, antique copy of a Stradivarius violin, piano in excellent condition with piano bench

**Lawnmower/Propane tank/tools:** Craftsman DLT3000 42' hydrostat, Approx 250 gallon propane tank with ID tag, binoculars, tacklebox, mole traps, ammo box

**Auctioneers note:** This auction will have 50+ years of collection, lots more items too numerous to mention

**Terms:** not responsible for accidents, announcements auction day take precedence over all printed material, cash or good check

THERE WILL BE FOOD ON SITE DAY OF SALE  
RESTROOM ON SITE

720846jn

ALDRIDGE AUCTION SERVICE  
Shane Aldridge • 660-342-2058

Call us for all your advertising needs. 660-665-8500.

Call about our classified ad specials. 660-665-8500.



Large "Absolute" Construction Equipment Auction

FRIDAY, JUNE 21ST, 2024 @ 11 AM

SELLER: THE LATE ROLAND (TD) AKERS & LYDIA MAE AKERS

ADDRESS: 103 Colbert Lane, Whiteside, MO

**Directions:** From Troy, MO, Take Hwy 61 North Approx. 15 miles, Turn Left on Hwy 2. Continue on Hwy 2 1.4 Miles, Turn Right on Colbert Lane. Continue Colbert Lane ¼ Mile, Auction on Left Hand Side. Watch for Allen Auction Signs Day of the Sale. Z

OPEN HOUSE TO VIEW EQUIPMENT  
THURSDAY, JUNE 20TH @ 3-5 P.M.

AUCTION REPRESENTATIVES WILL BE AT THE FARM TO PREVIEW ANY OF THE EQUIPMENT TO BE SOLD THE FOLLOWING DAY.

**CATERPILLAR DOZERS:** Caterpillar D6D Dozer, 9' 9" Blade; Caterpillar D6C Dozer, 9' 9" Blade; Caterpillar D6c Dozer, 9' 9" Blade; Caterpillar D7E Dozer, Hyd. Blade, Good Tracks

**SKIDLOADER:** Bobcat 963 Skidloader, Hardtires, Forks/Smooth Bucket, Shows 1217 Hours

**CATERPILLAR HIGHLIFT & SCRAPER:** Caterpillar 955K Highlift, Bucket w/ Cutting Edge, Good Undercarriage; Caterpillar 621 Scraper, 20 Yard, w/ 3306 Motor

**HEAVY DUTY TRUCKS & LOW BOYS:** 1990 Volvo Road Tractor, Wet Kit, Sleeper, Eaton Fueller 13 Spd., Shows 223,XXX Miles; 1974 Hyster Low Boy, Triple Axle, Good Floor, 30' w/ 8' Dove Tail; 1981 Ford 700 Road Tractor, Diesel, 3208 Motor, Dually; 1977 Chevrolet C65 Dump Truck, Tandem Dually; Drop Deck 40' Dually Trailer, Needs Floor, Air Brakes; 1951 Phelan Low Boy Trailer, 20', Dove Tail w/ Ramps, Good Shape

**CATERPILLAR ROAD GRADERS & EQUIPMENT:** Caterpillar 112F Road Grader, 12' Belly Blade; Caterpillar No. 12 Roade Grader, No Blade, Pony Motor, Parts; Pull Type Sheeps Foot, 5'; Dozer Blade, Hyd, 9 ½'; Backhoe Bucket; ROPS/Canopies for Highlift/Dozers

**BACKHOE:** John Deere 410C Backhoe, Loader, Backhoe Attachment, Shows 2608 Hours

**VEHICLES & TRAILERS:** 2003 Dodge 4 Door Truck, 4x4, Automatic; 2000 Ford F-350 Dually Truck, v10 Tritan Motor, 4-Door, 144,XXX Miles, 4x4; Pennel Hitch Tag Along Trailer w/ Fuel Tank; Brooks Brothers 16' Trailer, Needs Floor, 8' Wide, Tandem; 1985 Ford Service Truck, Tool Boxes on Side, For Parts; 1984 Chevrolet S-10 Pickup, For Parts; 1998 Buick Le Sabre 4 Door Car, 80,XXX Miles; 1998 Lincoln 4-Door Town Car; Fruehauf Enclosed Dry Trailer, For Parts/Storage; 1989 Boat w/ Evenrude Motor; 1983 MONI Tag Along Camper, For Parts

**TRACTORS & EQUIPMENT:** John Deere 401-C Tractor, Diesel, w/ Loader & Trencher Attachment, Runs Good; Masey Ferguson 1100 Tractor, w/f, 3pt., For Parts/Repair; International 184 Tractor w/ Belly Mower Deck; International Tag Along Disk, 8'; John Deere 717 Brush Hog, 3pt; 3pt Brush Hog; 3pt Tiller

**SHOP EQUIPMENT & TOOLS:** MagnaForce Upright Air Compressor; Lincoln 225 Amp Welder; Lot of Misc. Hyd. Hoses; AC Torch Set; Lot of Misc Wrenches; 2-Flat Tool Boxes; Upright Tool Box; Lot of Log Chains; Lot of Load Binders; Misc. Amount of Air Tools; Stack of Safety Cones; Magna Force Generator; Trailer House Jacks; Large Shop Vise; ¾ Drive Socket Sets; Breaker Bars; Lot of Hand Tools; Chain Hoists; Sledge Hammers; Lot of Bolt Bins; Large Pile of Culvert Pipe, All Sizes; Expecting 1-2 Trailer Loads of Shop Equipment & ToolS

**Special Note:** We are currently in the process of determining which machinery will run or not. We encourage you to attend the open house to preview the equipment. Equipment will need to be removed in 30 days, property is being sold.

**Auctioneers Note:** Due to the unfortunate passing of Roland Akers, we will sell the following dozers, highlifts, trucks/trailers, machinery at public auction. Very well known the community, Roland operated Akers Construction for over 60 years. Please note this is only a 1-2-hour auction, bring your trailers. Check out the preview date to come inspect the equipment before the auction. Thanks, Charlie & Kyle.

ALLEN AUCTION & REAL ESTATE SERVICE LLC  
(636) 338-4805 • Hawk Point, MO • www.allenauction.net  
KAIMANN AUCTIONS & REAL ESTATE LLC  
(573) 485-2121 • Eolia, MO • www.callkaimann.com

718839jn

For updates on list & photos check our website  
WWW.ALLENAUCTION.NET

AGRI-BUSINESS

Equipment & Supplies

**TW27 RINO 7** foot mower, 3 point, bought new, used 3-5 hours. \$4500.00. 217-985-4745, Lima, Il, leave message.

**NEMOTRADER.NET**

**AKC LAB PUPPIES**  
*Farm Raised*  
**Lay's Labs**  
LaBelle, MO • 660-956-2482



Equipment & Supplies

New Holland 260 (RH) dolly wheel bar rake and New Holland 56 dolly wheel rake with tandem hitch. Pulled as pair, stored inside. \$2900. 217-257-1385.

Gooseneck Horse trailer. 3 horse with rear tack and unfinished dressing room. Solid trailer with new hub and one new backing plate. Call 660 341 9522

Call about our classified ad specials. 660-665-8500.

Farmers Market

Home grown tomatoes 3 pounds for \$7.00 or by the box. Green beans, potatoes, zucchini 2 for \$1.00, cucumber, green onion, cabbage and other vegetables. Schmucker Produce 7 miles North Kirksville to Ft. Madison Way, East 1/2 mile.

Schmucker Produce plans on opening on June 5th for the season, 9 am to 6 pm, closed on Sunday. 7 miles North Kirksville to Ft. Madison Way, East 1/2 mile.

Tomatoes \$2.50/pound. Lettuce, green onions, radishes, peas, peaches and other vegetables. Schmucker Produce 7 miles North Kirksville to Ft. Madison Way, East 1/2 mile.

Livestock

Coming yearling Percheron colt broke to lead. Also 2 year old quarter pony, real gentle and halter broke. 660-342-5314.

3 free roosters, 1 year old. 660-341-5137.

EMPLOYMENT

Transportation/Drivers

???CDL License??? Meets all state and federal laws. Online + 2 days training, ability to drive manual transmission. Jefferson City, Willow Springs, Mo. Please call 573-353-2853.

MERCHANDISE

Miscellaneous

24 Foot Pontoon, 60HP Bigfoot 4 stroke, tandem axle trailer. New bimini and new ladder under front. \$8500. Water ready. Call 660-665-4447

2006 Saturn Sky convertible, 16,000 miles, silver with black interior. 217-257-7537.

Fish for stocking ponds: catfish, grass carp, crappie, redear, bass, and fathead minnows. Heindselman Family Farms. 660-341-5692.

TW27 Rino 7 foot mower, 3 point, bought new, used 3-5 hours. \$4500.00. 217-985-4745, Lima, Il, leave message.

**FOR SALE**  
**At Sired Angus Bulls,**  
**14 & 18 Months Old.**  
**Harold Trump**  
**660-341-5730**



Sports Equipment

Hunt in the dry Lazyman fiberglass deer blinds. Starting at \$1299.00. Four models to choose from. heindselmanfamilyfarms.com, 660-341-5692.

Wanted

Wanted: Propane tanks, will buy any size, 330 gallon to 1000 gallon. Jacob Troyer, 660-773-5486.

REAL ESTATE RENTALS

Apartments

Upstairs 1 bedroom apartment, partially furnished. 660-216-0866.

REAL ESTATE SALES

Mobile Homes For Sale

40 YEARS THIS YEAR - we have to be something right. Call for quote or any house new or used, double and single. 573-657-2176. amegamobilehomes.com

I BUY...used mobile homes. Call or text 573-338-6250 or email Greg S. CDH @outlook.com.

WE GOT IT - let us bid your mobile home purchase, new and used. 573-499-9993. columbiadis.counthomes.com.

TINY HOMES - Missouri franchise 573-881-7965.

Mobile Homes For Sale

TRIPLE WIDE - moving stock, awesome price. 573-657-7040. chateauhomes.net

RECREATION

Boats & Motors

24 Foot Pontoon, 60HP Bigfoot 4 stroke, tandem axle trailer. New bimini and new ladder under front. \$8500. Water ready. Call 660-665-4447

Campers & Trailers

Gooseneck Horse trailer. 3 horse with rear tack and unfinished dressing room. Solid trailer with new hub and one new backing plate. Call 660 341 9522

SERVICES

Chat/Dirt/Gravel

DIRT WORK All types of excavation, reclaiming overgrown fields, including CRP and WRP. Building site preparation, creating new trails and crossings, Food plot development and maintenance. Leveling and grading, wetland construction and maintenance. Pond and lake cleaning and construction. Call for quotes. 660-342-2701

Home Services

Scott Huskey's Insulated Skirting Systems-keeps your home cooler in the summer-warmer in the winter-saves on utilities and looks great! Since 1972, 573-696-3468.

**VIRTUAL ONLINE**  
**SCOTLAND COUNTY, MO**  
**LAND AUCTION**  
**THURSDAY, JUNE 27, 2024 AT 1:00 PM<sup>CT</sup>**



**143 ACRES± • 2 TRACTS**

**OPEN HOUSE: SAT., JUNE 15, 2024 • 10:00 AM - 2:00 PM**  
The Burkholder farm and home are conveniently located on Hwy 15, 11.6 miles north of Edina, MO and 12.4 miles south of Memphis, MO. The farm is further described as being located in Section 34, T64N-R12W, Tobin Township, Scotland County, Missouri.  
*The two tracts offer everything anyone would want when it comes to tillable cropland, hunting, cattle production, and rural living. The tracts consist of productive tillable cropland, excellent hunting, pastureland, turn-key livestock facilities, lake, outbuildings, and a beautiful custom-built home. It is a must see to appreciate!*  
**BURKHOLDER REVOCABLE LIVING TRUST**  
**ALVIN AND LENA MAE BURKHOLDER**  
**Closing & Title Work:** Scotland County Abstract  
205 East Monroe Street, Memphis, MO | (660) 465-7052  
**Auction Managers:** Louie Zinn (319) 795-2314 & Dan Sullivan (319) 795-1833



**SCAN FOR MORE INFORMATION**

**BigIron**  
(844) 847-2161 | www.SullivanAuctioneers.com

**SULLIVAN AUCTIONEERS**  
a BigIron company

**The Ultimate Wood Heat.**



**CLASSIC EDGE**  
TITANIUM HDX  
Outdoor Wood Furnace

- **More Comfort** - Thermostatically controlled wood heat.
- **Peace of Mind** - Keep the fire outside and eliminate the dangers associated with indoor wood heating.
- **Save Money** - Wood is a renewable, inexpensive and often free energy source.

**Campen Heating & Air**  
Division of Kraus & Sons Inc.  
Canton, MO 63435  
**573-288-8966**  
**CentralBoiler.com**

**LANCASTER LUMBER INC.**  
**Lancaster, MO.**  
**1-800-424-5071**  
**LAN-DOW BUILDINGS**  
**www.lancasterlumber.com**



**Adair County Sheriff's Office**  
**Accepting Bids**

The Adair County Sheriff's Office is accepting bids for the upgrade of floors, walls, showers, and replacement of glass panels in the Adair County Detention Center. Parties interested in submitting a bid may obtain a bid package from the Sheriff's Office at 215 N. Franklin St. in Kirksville or from the Adair County website [www.adair-countymissouri.com/government/bids-requested](http://www.adair-countymissouri.com/government/bids-requested). Bids will be opened at the Courthouse on July 9, 2024 at 11:00AM.

**Polled Hereford BULLS**



**GALEN KRIEG**  
**217-743-5382**  
**309-299-5695**  
Basco, IL

**Miner Hill, LLC**  
*Flea Market*  
Live County Music on Friday Evenings at 7pm

**Lot Rentals Start at \$25**  
Lot rental by the month or by the season, electric available on some lots! RV lots available with 50 amp electric hookups  
**Great Food**  
Miner Hill Cafe serves Breakfast-Lunch - Dinner

**Free Public Admission!**  
Antiques Crafts  
Guns Unique Junkue  
Baked Goods & Much More!  
Weekend 50/50 Drawing Saturday 3pm

**2024 Dates**  
**April 26-27**  
**May 24-25**  
**June 28-29**  
**July Closed**  
**Aug Closed**  
**Sept 27-28**  
**Oct 18-19**



**facebook**  
www.facebook.com/MinerHillLLC



**Contact Info**  
**(660) 375-1212**  
Minehillllc@yahoo.com  
www.minerhill.com  
1310 N Missouri Ave  
Marceline, MO 64658

**DIECAST BANK**  
**GI JOE AND STAR WARS**  
**ONLINE AUCTION**  
**Lots start ending on June 18th at 5 pm**

See auctions at [altiserauctionandappraisal.hibid.com](http://altiserauctionandappraisal.hibid.com)  
Call Kris Altiser with any questions at 660-626-4960

**AAA**  
**ALTISER**  
AUCTION AND APPRAISAL  
**KRIS ALTISER**  
**660-626-4960**



**ONLINE ONLY REAL ESTATE AUCTION**  
**20 acres in Putnam County on Hwy 136**  
**Will sell online only with a soft close at 10 am on June 25**

See auctions at [altiserauctionandappraisal.hibid.com](http://altiserauctionandappraisal.hibid.com)  
Call Kris Altiser with any questions at 660-626-4960

**AAA**  
**ALTISER**  
AUCTION AND APPRAISAL  
**KRIS ALTISER**  
**660-626-4960**



**WE GOT YOUR NEEDS COVERED!**



**FARM TARPS**  
**HOOP BUILDING COVERS**

**TRUCK TARPS**

**Scrubby Duds**  
**Laundromat**

**Large capacity coin machines**

**OPEN 7 DAYS A WEEK**  
**24 HOURS A DAY**

**Your laundry never takes a break & neither do our machines!**

**311 S. Baltimore Kirksville, MO 63501 660-349-8943 Bob & Paulette Thompson**

**Troyer**  
**TARP MFG.**  
**660-486-3301**  
**20264 STATE HWY. VV • ETHEL, MO 63539**



**FOR SALE**



**2013 Victory 5'x10' enclosed Trailer with custom built shelves for sale**  
**\$1,500 or best offer.**  
**660-627-6252**

# DEALER AND FARMER MACHINERY AUCTION

CONSIGNMENTS FROM MULTIPLE JOHN DEERE, CASE IH DEALERS AND LOCAL FARMERS!



**THURSDAY, JUNE 20, 2024 • 10 AM**  
 AUCTION LOCATION: WHEELER AUCTIONS PROPERTY, 111 BUCHANAN ST. CARTHAGE, IL 62321  
**VISIT [WHEELERAUCTIONS.COM](http://WHEELERAUCTIONS.COM) FOR FULL LISTING AND PHOTOS!**

Live on-site bidding with online bidding

**Wheeler** AUCTIONS & REAL ESTATE  
 23101 HWY. 24, PARIS, MO 65253 | 660-227-5890  
[WWW.WHEELERAUCTIONS.COM](http://WWW.WHEELERAUCTIONS.COM)

FOR MORE INFORMATION:  
 Kirby Fecht | 217-248-2906 or Chris Butler | 309-255-0123  
 Illinois Auction Firm License #444000408

Call us for all your advertising needs. **660-665-8500.**

Call about our classified ad specials. **660-665-8500.**

## SCOTT'S AUCTION SERVICE

573-356-4405  
 Auctioneer: Scott Kuntz  
**SEE MORE PHOTOS ON SCOTT'S WEBSITE**  
[WWW.SCOTTSAUCTIONSERVICE.COM](http://WWW.SCOTTSAUCTIONSERVICE.COM)

### Personal Property Auction

**Sat., June 22, 2024 at 10 am**  
**Gene Hatcher**



**406 East College Avenue, Shelbyna, Mo.**

**Direction:** From US Highway 36, proceed South on Highway 15/South Center Street, then turn left on East College Ave to the auction location. Watch for signs the day of the auction.

**VEHICLES & TRAILER:** 2014 Chevy Equinox, 138,xxx miles; 2013 Polaris Ranger 4WD 800 ELP, 5,8xx miles, 661 hours; 2015 single axle trailer with fold down ramp

**HOUSEHOLD ITEMS:** Tupperware; folding chairs; two glider rockers; LaZBoy recliner; couch; Sony flat screen TV; ranch wood TV stand; oak China hutch; bent arm rocking chair; Bissell vacuum; various end tables; maple dining room table with 6 chairs; oak table with 4 chairs and a leaf; oak swivel bar stools; white cabinet; electric lamp; Pyrex measuring cups; various kitchenware; small chest of drawers; Queen Anne style upholstered chair; Queen size maple bed; maple style dresser with mirror; two walnut night stands; maple dresser with mirror; maple chest of drawers; maple style queen size bed; pine cabinet; Whirlpool front load washer and dryer; small deep freezer; Amana refrigerator/freezer

**ANTIQUES & COLLECTIBLES:** Hickey Drug Store picture; Christmas decor; electrified hurricane lamp; signed MU vs OK State 2014 cotton bowl; Coca-Cola plates with display case; various crystal; angel figurines; small Coca-Cola collection; various pharmacy memorabilia; several signed Cardinals baseballs; antique candy dispenser; St. Louis Cardinals clock; large collection of blue Pfaltzgraff; green depression glassware; pink depression glassware; Wedgewood China set; various clear glass; old Planter's Peanuts jar; several mortar and pestle grinders; metal MFA sign; oak ice cream fountain furniture; lawyer's bookcase; antique scale; metal cigar box; needlepoint side chair; oak double pedestal desk; quilt; quilt rack; Walham pocket watch; oak antique rocking chair; various pictures; oil on canvas; vintage Christmas tree glass; oriental costume; jewelry armoire; various costume jewelry; pineapple bench; pre-lit Christmas tree

**FIREARMS:** Smith & Wesson 38 spl revolver; H&R .22 revolver; starter pistol

**TOOLS & OUTDOOR EQUIPMENT:** Holland grill; park bench glider; glass top patio set; lawn chairs; various step ladders; Schwinn exercise bike; 4000 Generac generator; metal patio set; glider bench.

### Kirksville Real Estate & Personal Property Auction

**Thurs., June 27, 2024 at 4 pm**  
**On Record**



**802 S Baltimore St, Kirksville, Mo.**

**Direction:** From US Highway 63, proceed West on East Shepherd Avenue for approximately 1 mile, turn North on Baltimore Street for approximately 1.5 miles to the auction location. Watch for signs.

**REAL ESTATE:** We will be selling at auction this 4 bedroom, 2 bath home

**PERSONAL PROPERTY:** We will sell choice items then will sell picking rights room to room. Items to sell include: metal file cabinet; wicker chairs; cast iron dish; antique fan; sewing machine; costumes; miscellaneous tools; sheet metal brake; table saw; wheelbarrow; push mower

**There will be more items at this auction too numerous to list.**

### 80 Acre +/- Shelby County Farm Auction

**Tues., July 9, 2024 at 5 pm**  
**Chris Kendrick**



**520 E Maple St, Shelbyna, Mo.**

**Direction:** From US Highway 36, proceed South on highway 15 for approximately 0.1 mile, then turn left on East Maple Street for approximately 0.6 miles to the auction location. Watch for signs the day of the auction.

**REAL ESTATE:** We will be selling at auction this 80 acre farm located at 7291

**Shelby Road 413, Lentner, Missouri.** The property is mainly flat to gently sloping with approximately 40 acres tillable and a 5.5 acre lake. Included are a 40' x 150' vinyl hoop building with one open end and two 43' x 200' hog barns that occupy four bulk bins per building and a 1.5 acre lagoon. Each facility has concrete slats, self feeding and watering systems, adjustable curtains and centrally located fans. The facilities will require some TLC. Please call Scott at 573-356-4405 to schedule your personal showing of the facility.

### Macon Real Estate & Personal Property Auction

**Thurs., July 11, 2024 at 4 pm**  
**Jean Cogilanes**



**204 Daugherty Street, Macon, Mo.**

**Direction:** From US Highway 63/ North Missouri Street, proceed West on Vine Street for approximately 0.2 miles, turn North on North Rutherford Street for approximately 0.2 miles, then turn West on Daugherty Street to the property. Watch for signs.

**REAL ESTATE:** We will be selling this well cared for cottage style home with 2 bedrooms and 2 bathrooms at auction. The home has a bedroom and bathroom on the main level, waxed hardwood floors, a carport and central air conditioning. It is within walking distance of historic downtown Macon and all that it has to offer. This would make a perfect house for anyone. Please call Scott at 573-356-4405 to schedule your personal showing.

**HOUSEHOLD ITEMS:** couch and matching chair; LaZBoy recliner; round oak kitchen table with 6 chairs; maple full size bed; queen size bed; dresser with mirror; nightstand; chest of drawers; miscellaneous dishware; child's dresser with mirror; Maytag washing machine; Hot Point gas dryer; Gibson small chest-type freezer

**ANTIQUES:** antique wood chest; antique cookie cutters; cat figurine collection; #2 Western crock with crack; oak chamber cabinet; miscellaneous salts; wood bread box; metal bread box; cake stand; enamel ware; primitive trunk; antique table; antique buffet; sewing table; galvanized wash tub; wire egg basket; miscellaneous books

**TOOLS & OUTDOOR EQUIPMENT:** Cub Cadet LT1040 hydrostat mower, 90 hours, very nice; work bench; EGO battery leaf blower; miscellaneous long handle tools; live trap

**There will be more items at this auction too numerous to list.**

**DOWN PAYMENT:** 10% of the contract purchase price will be due upon acceptance of the Sales Contract. Personal or Cashier's Checks will be accepted. This is "AS IS, WHERE IS" and is non-refundable. **CLOSING:** Closing shall be within 30 days of the auction date.

## ONLINE COMMERCIAL LANDSCAPE & LAWN CARE AUCTION

IMAN AUCTION CENTER - SALISBURY, MO

**BIDDING OPENS JUNE 17, 2024 | CLOSES JUNE 23 @ 6 PM**

BIDDING @ [ImanAuction.com](http://ImanAuction.com)

**MOWERS - TRAILER - POLE SAWS - FUEL TANKS - SNOW PLOWS - ATV - LOG SPLITTER - SPREADERS - TRIMMERS - CHAIN SAWS & MORE**

**IMAN AUCTION COMPANY**  
[ImanAuction.com](http://ImanAuction.com) | 660-788-4298 | 660-414-7967

## High 2024 Summer Consignment AUCTION

**Friday, June 28, 2024 @ 9:00 A.M.**

Auction held at 15970 Kelso Avenue  
 1 mile West of Downing, MO. on Hwy 136

**Tractors - Machinery**  
 Kubota M8540 tractor w/ LA 1353 loader FWA (5658 hr.) new rubber  
 JD 3010 gas tractor 15.5-38 rear tires new alternator, starter & battery fully serviced  
 BushHog 3210 brush cutter semi-mount (nice)  
 Krone KW 5.52/4x7 hay tedder (like new)  
 2007 Vicon MC 2800 3 pt. disc mower 9'  
 NH 488 haybine - NH 256 hayrake  
 8 wheel rake on Kelderman cart  
 BushHog 268 brushcutter 3 pt. 8'  
 IH 5100 grain drill - IH 530 manure spreader  
 MF 1560 round baler - AC 3 bottom plow 3 pt.  
 Wil-Rich 24' field cultivator - 2 running gears  
 Old anhydrous applicator - Kewanee blade  
 AC snap coupler 3 bottom plow  
 Grain-O-Vator auger wagon  
 Danuser posthole digger

**Lunch on grounds by The Hungry Fox**

**RTV - ATVS & Truckbed**  
 2022 Polaris Ranger 500 5150 miles windshield (1 owner)  
 2009 Yamaha Big Bear 400 ATV 4x4  
 2021 Honda Talon 1000R Fox Live Valve, 1055 miles  
 New 98x104 Alum flatbed fits Dually 8'

**Livestock Equipment & Fencing**  
 Corrugated 2 ton bulk bin w/ slide  
 (2) 2 ton Shuld bulk bins w/ slides  
 Cradle big bale hay feeder  
 Century Products poly calf dome  
 Mira-Fount hog waterer - tire feeder  
 Several used T-posts - poly hog feeder  
 Stock tanks - misc. gates & feed bunks

**Shop Tools - Building material & Misc.**  
 New Aluminum 115 gallon fuel tank - handyman jack  
 Predator 2000 inverter - Maytag wringer washer  
 Dog box - dog pen - several bundles of metal  
 Building accessories - also lots of aluminum soffit

**Auctioneers Note:** These are the early consignments, so be sure to check for updated listings and photos on our website as we are accepting consignments until Wednesday, June 26. Loader & personnel available on auction day. Make plans to attend!! Thanks, Randy

### High Auction Service LLC Downing Mo - Randy High 660.216.0515

[www.highauctionservice.com](http://www.highauctionservice.com) e-mail: [highauctionservice@gmail.com](mailto:highauctionservice@gmail.com)  
 Cash or check with proper ID. Not responsible for accidents or theft. Announcements day of the sale take precedence over any advertising.

Call us for all your advertising needs. **660-665-8500.**

Call about our classified ad specials. **660-665-8500.**

Call us for all your advertising needs. **660-665-8500.**

## 173.26± ACRES OFFERED IN 5 TRACTS

**Friday, June 21st at 6pm**  
 Auction Held at the Comfort Inn in Macon

## Land Auction

**The Estate of Cedric Drew Belt**  
 Atlanta, MO - Macon County

### Well Maintained Tillable/Pasture • Beautiful 1,560 SF Home & Shed


**Great Building Sites on Hard Surface Road**

The farm represents highly productive tillable and grass acreage, that has been maintained to the highest degree and truly represents the epitome of a steward's care. There is an opportunity at a beautiful home, large cattle and horse barn, great build sites and beautiful pasture. It fits anyone looking to expand an existing row-crop or cattle operation, invest in tillable acreage, or even relocate an entire operation. This Macon County farm sits on a quiet hardtop road, with some great neighbors and gorgeous views. Fertile soils, tight fences and amenities that are extremely hard to find, make this farm, truly special. This farm carries an impressive 141.38 crop land acres, out of the the surveyed 173.26 acres and offers something for everyone. The sale will be held both live and online on June 21st at 6 PM at the Comfort Inn, in Macon. The farm will be offered in 5 individual tracts at the 'Buyer's Choice' method to accommodate the large variety of potential buyers and situations, with Tract 3 sold at the conclusion of the sale for a lump sum price.

close proximity to both four lane Highways, 63 and 36. This tract also boasts a 140'x64' barn that something to behold. Priorly used as a riding arena, this barn is equipped with stalls, drinkers, and a nice tack room/office. If you're looking to calve out heifers, break colts, or both, this is an awesome barn. **Tract 3 will be sold at the conclusion of the sale, at a lump sum price. Tract 3 Open House will be held on June 9th & June 19th • 5-7PM**

**TRACT 4**  
 38.42 surveyed acres with FSA indicating 30.54 crop acres. This tract came out of CRP in the fall of 2023. At nearly 80% tillable and on the blacktop, this farm not only offers a great opportunity at highly productive tillable acreage but would also offer the sportsman and rancher high use opportunity as well.

**TRACT 5**  
 34.96 surveyed acres with FSA indicating 34.13 crop acres. This tract came out of CRP in the fall of 2023. This is a 98% tillable tract with a highway on two sides and represents a very highly productive tract. This tract is suited for expanding an operation, a beginning farmer, or anyone looking for a safe investment in a fertile, high percent tillable tract.



**TRACT 1**  
 60.98 surveyed acres with FSA Indicating 44.49 crop acres currently in grass production. One look at the grass quality of this tract and you'll see it packs extremely fertile soils. This tract offers a nice hay barn as well as well-maintained pasture, fences and ponds. The view and use possibilities on Tract 1 are second to none. Don't overlook this farm as a tillable tract that also offers great hunting opportunity.

**TRACT 2**  
 33.31 surveyed acres with FSA Indicating approximately 28 crop acres currently in grass production. Tract 2 has a road on two sides with great access and would fit like a glove to anyone looking to add Tract 3 to it as well. Well maintained fences and gorgeous views come with this well manicured tract.

**TRACT 3**  
 This tract contains a beautiful 1560 square foot home with three bedrooms and two baths and a large cattle/equine facility that sits 5.49 acres. The home is equipped with central air, propane heat and rural water source. This home was built in 2003 and sits on a full basement that is ready to be finished by its new owner. Tract 3 sits on a very quiet blacktop, in

**Anthony Peoples**  
 660-651-6501  
[www.peopleslandco.com](http://www.peopleslandco.com)

Personal Representative: Rebecca A. Belt  
 Representing Attorney: Wallace Trosen  
 (660) 665-4070

**There's  
a better  
way to get  
attention.**

Keep life simple.  
Take out an ad.



# Judd Motors

Call 660-457-3700  
Hwy 63 North, Lancaster, MO

**2007-14 Chevy pickup** box, red, 8 ft, little rust .....only **\$1,000**

**2002 GMC Sierra 1500** ..... **NEW PRICE \$6,995**  
Reg. Cab, Long bed, 4x4, V8, 138K, RED

**2006 Chevy 2500HD**, 4x4, 6.0L, reg cab, 8 ft bed,  
1 owner, no rust, only 97k, red,..... only **\$18,250**

**2015 GMC Sierra 2500 Denali**, 6.0L, 4wd, crew cab, short  
bed, sunroof, heat/cool leather, spray-in bed liner, nerf bars,  
207k miles, pearl white, excellent, ..... only **\$21,900**



**Cumberland  
Building Dealer**

[www.juddmotors.com](http://www.juddmotors.com)

In Business Over 75 Years  
Curly and Kevin Judd

**Have a smart phone or tablet?**

You can view current and past Nemo Trader issues online at

[www.nemotrader.net](http://www.nemotrader.net)

**NEMO**

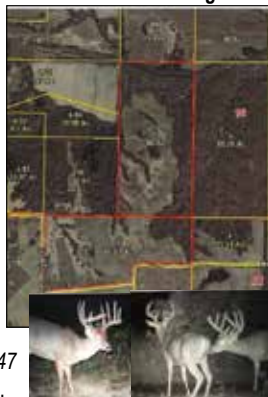


**Macon County - Income Producing Hunting Tract!!**



Nature Ave. - Excello, MO 65247

**Private Income Producing 143.9 Surveyed Ac. Tillable & Hunting Tract**  
- **Macon County!!** Conveniently Located  
between Moberly & Macon just off High-  
way Y - Farm has Excellent Access that  
borders Mallard Ave. & Nature Ave -  
80.79 FSA Open Acres - 2024 Crop in  
Beans - Marketable Timber - Land Lays  
Level to Gently Rolling - Numerous Deer  
Trails & Turkeys (Can be seen on Drone  
Views!) - Older Pond - Accessible Rural  
Water & Electric on SW Corner of Prop-  
erty - This Farm has been in the Family  
for 120+ Years, Don't Miss It!! Located at  
Mallard & Nature Ave. - Excello, MO 65247  
MLS#24-167 \$791,450.00 \$5,500 Per Ac.



Contact Julie Green 660-263-1789 or  
660-734-2454 w/ Century 21 McKeown & Assoc.  
[www.c21McKeown.com](http://www.c21McKeown.com) - [landandauctions.com](http://landandauctions.com)



**James L. Johnston**  
AUCTIONEER

**573-473-4904 • 660-291-5921**

# CONSIGNMENT AUCTION

## SATURDAY, JUNE 29

### 10:00 am

**Johnston Auction Center**  
Hwy 24 • Madison, MO

- **10:00 AM - Tools, Glassware, Furniture**
- **11:00 AM Coins & Guns**
- **12:00 Farm Machinery, Building, Tractors, Trailers**



**CAR**

2009 Chevy Impala



**TRAILERS**

New 5x10 Dump Trailer  
New 16ft Utility Trailer  
Used 6x12 Trailer  
5x12 Stock Trailer  
Other Trailers



**Approx 100 Lots of  
Gold &  
Silver Coins**



**LARGE STORAGE BUILDING**  
**10X16**

**FURNITURE & COLLECTIBLES**

12 Church Pews  
100+ Longaberger Baskets  
50+ Assorted Crock Pieces  
Many Collector Items  
Furniture  
Dining Sets  
Hutches  
Cabinets  
Shelves  
Assorted Pieces of Furniture  
Many Hand & Electric Tools



**TRACTORS**

JD 1023 Tractor w/Loader, 180 hrs, hydro 4WD  
AC 190 XT Series 3, super nice, 3 pt, 4 remotes  
JD Z655 ZTR Mower  
Cub Cadet 1045 Mower  
Farmall 300 FH  
Ferguson TO-20  
Ferguson TO-30  
L 425 New Holland Skid Steer  
AC D-15 w/Loader  
Kubota L2900 4WD  
Dynamic Industries 4WD Loader

**MACHINERY**

Rhino 20ft Brush Hog  
Bush Hog 14ft Brush Hog  
New 12ft Industrious Brush Hog  
New Titan 10ft Brush Hog  
3 PT 5ft Brush Hog  
MF 6 Row Planter  
Danuser Blade 3 PT  
AC PT 7ft Sickle Mower  
10ft Dunham Lehr Mulcher  
4ft Box Blade  
3 PT 6ft Tiller  
3 PT 4ft Tiller  
Several 3PT Pieces of Equipment  
Assorted Grapple Bucket &  
Other Skid Steer Attachments  
JD 510 Round Baler  
Model 175 Fence Line Feed Wagon  
Hardee Ditch Bank Mower  
Arps 740 3PT Backhoe  
Long 3PT Backhoe  
Also Steel Posts & Fence Wire

**GUNS**

22 Colt Single Action Buntline Pistol  
22 Winchester Single  
1897 Winchester 12 ga  
Fox Model B 20 ga Double  
Winchester Model 61 Pump 22 cal



**James L. Johnston, Licensed Broker & Auctioneer • 573-473-4904 • Office - 660-291-5921 • Madison, MO**

**James - McKenzie - Pete - Robbie - Ralls**  
**SELLING TWO RINGS**

Terms: Cash or Good Check • Photo ID Required for Bidder Number  
Not Responsible for Accidents, Lost or Stolen Items.

Announcements day of auction take precedence over all advertisements.

[jamesjohnstonauction.com](http://jamesjohnstonauction.com)



**CELEBRATIONS!**  
**PARTY RENTAL**  
 KIRKSVILLE, MO

**FOR RENT**

- Tables & Chairs
- Tents • Bounce House
- Cotton Candy Machine
- & More!

660-626-5162 or 660-665-9380

**HARRISON FISHERY**  
 POND & LAKE STOCKING  
 Call us today! 660.423.3482

Pond & Lake Stocking Specialists

info@harrisonfishery.com  
 harrisonfishery.com

**LAN-DOW BUILDINGS**  
 "We Build To Suit Your Needs"  
 "Custom Built"

Pole Barns • Garages • Utility Buildings  
 Dick, Jason or Andy Middleton

**Memphis Lumber Co.**  
 1-800-337-5858 • 660-465-8595  
 Fax: 660-465-8596

**Skyline Service LLC**  
 Skid Steer and Construction Repair  
 Levi Weiler

660-346-6881 • 660-883-5525

Scan Tool Diagnostics  
 Exhaust After Treatment Repairs • SCR Unlocks  
 Skid Steer Tracks Available

**United Rentals**  
 Kirksville

**WE SELL**  
**NEW & USED**  
**EQUIPMENT!**

3008 N Baltimore, Kirksville, MO 63501  
**660.234.8488**  
 UnitedRentals.com

# Professional Auction Services

**Like to look for those auction deals? Have land, equipment, or other items you need to have auctioned? Check out these area auction companies!**

## SAYRE AUCTION LLC

*Specializing in Estate & Real Estate Auctions*  
*Serving Linn County and Surrounding Areas*  
 809 West Dake Street • Brookfield, MO 64628  
**660-734-8782**  
 shawnsayre@ymail.com  
 www.sayreauction.com

## RANCH & FARM AUCTIONS

*Specializing in Land & Farms \*Online Auctions*  
*Serving All States*  
 115 W. Washington • Pittsfield, IL 62363  
**217-922-0811**  
 directors@ranchandfarmauctions.com  
 RANCHANDFARMAUCTIONS.COM

## SULLIVAN AUCTIONEERS, A BIGIRON COMPANY

*Specializing in Agricultural Real Estate & Machinery*  
*Serving the Tri-State Area*  
 1066 E. US Hwy 136 • Hamilton, IL 62341  
**844-847-2161**  
 sold@sullivanauctioneers.com  
 www.sullivanAuctioneers.com

## UNITED COUNTRY GILWORTH REAL ESTATE & AUCTION

*Specializing in Equipment & Real Estate Sales*  
*Serving North Missouri & Southern Iowa*  
 2020 Main Street • Unionville, MO 63565  
**660-947-7738**  
 cedgilworth@gilworthrealestate.com  
 www.ucgilworthauction.com  
 www.gilworthrealestate.com

## NORTH MISSOURI LAND COMPANY

*Specializing in Farm, Ag, and Recreational Land*  
*Serving all of North Missouri*  
 506 N. Missouri Street, Suite A • Macon, MO  
**660-395-5263**  
 northmoland.com  
 northmoland@gmail.com

## MCAFFEE AUCTION SERVICE

*Land - Machinery - Estate - Coins*  
*Serving Northeast Missouri*  
 375 South Johnson • Kahoka, MO  
**660-727-3796**  
 www.mcafeeauctionservice.com  
 auction@centurylink.net

## MERIT AUCTIONS, LLC

*Specializing in Farm Real Estate & Ag Equipment*  
*Serving the Greater Midwest*  
 4502 Avenue O • Ft. Madison, IA  
**833-273-9300**  
 info@meritauctions.com  
 www.meritauctions.com

## MISSOURI LAND AND FARM MIDWEST LAND AND RANCH

*Specializing in Ag and Recreation Land,*  
*Serving all of Missouri and Kansas*  
 216 N Main • Brookfield, Mo  
**660-788-3333**  
**660-734-3925**

## WHEELER AUCTION SERVICE

*Specializing in Real Estate & Farm Machinery*  
*Servicing all locations*  
 23101 Hwy 24 • Paris, MO 65275  
**660-327-5890**  
 Wheelerauctions.com  
 ads@wheelerauctions.com

## PURPLE WAVE AUCTION

*Specializing in online equipment auctions*  
*Serving All States*  
 825 Levee Drive • Manhattan, KS 66502  
**866.608.9283**  
 auction@purplewave.com  
 purplewave.com

## ALL AUCTION INC.

*Specializing in Estate, Property, & Consignments*  
*Auction House & Lot available*  
*Serving Iowa & Missouri*  
 1011 N Front St • Humeston, IA 50123  
**515-231-5176**  
 allauctionsinc@gmail.com  
 www.allauctionsinc.com

**NEMO**  
*Trader*

PO BOX 809 • KIRKSVILLE, MO 63501  
 PHONE 660-665-8500  
 Web Site: **nemotrader.net**  
 Email: **sales@nemotrader.net**