

NEMO Trader

THE NEMO TRADER

PO BOX 809 • KIRKSVILLE, MO 63501 • PHONE 660-665-8500

Web Site: nemotrader.net • Email: sales@nemotrader.net

FREE

A WEEKLY ADVERTISER SERVING ALL OF NORTHEAST MISSOURI AND THE SURROUNDING AREA



ELIZABETH GREGORY
Real Estate

WWW.MISSOURIHOMEANDEARM.COM

Innovative Real Estate for YOU!

660.621.2136



Overhead Doors & Remodeling, LLC

660-785-0248

www.signatureremodelingkv.com

Giving your home the attention it deserves!




KEIM LUMBER COMPANY LLC

COMPETITIVE PRICES • FREE ESTIMATES

- COMPLETE BUILDING PACKAGES
- WINDOWS AND DOORS
- INSULATION • DRYWALL
- DELIVERY

13625 St. Hwy 3 LaPlata, MO



Owen Miller
641-242-0346

**Continuous Fence • Barb Wire
Woven Wire • Skid Work**



204 E. Reid St., Edina, MO 63537

Licensed in Missouri, Iowa, and Illinois

Family Owned and Operated

28 Years of Combined Experience

FFL Certified

Let us Put More Money in Your Pocket!

On Site Commission Rates	Machinery Rates
Household- 20 to 25%	Under \$1,000.00 = 15%
Land- 1%	\$1,001.00 to \$5,000.00 = 10%
Real Estate/Home-3%	\$5,001.00 to \$25,000.00 = 6%
Vehicles - 10%	\$25,001.00 to Over = 3%
Firearms - 10%	

Jesse Sparks • 573-406-8787
Dalton Sparks • 573-822-4598



204 E Reid St, Edina, MO 63537

Saturday, April 6th, 2024 @ 9 am

www.SPARKSAUCTIONSERVICE.COM

Machinery/Gun Auction

Bring In Your Machinery, Tractors, Side by Sides, ATVs, Combines, Firearms, Ammo, Vehicles, Tools, Etc.

If you have it and want it SOLD, Bring it in!!!

Firearms = 10%
Ammo = 15%

Commission Rates
Machinery/Vehicles:
Under \$1,000 = 15%
\$1,001 to \$5,000 = 10%
\$5,001 to \$25,000 = 6%
\$25,001 and Over = 3%

Bring Items ANYTIME!

FIRST COME FIRST TO SELL!
Call Today to Consign.
Jesse Sparks 573-406-8787



OPEN HOUSE SPECIALS

Open House every Saturday in March.

Free hot dogs, popcorn, refreshments and door prizes.

Beilstein Camper Sales

www.beilsteincampersales.com

Since 1956, family owned Beilstein Camper Sales has provided exceptional value and service to our customers. We feature a wide selection of new RVs from Forest River, Heartland and Keystone. We're on the Avenue of the Saints along side Highway 61, four miles south of La Grange, Missouri. Stop by today to get a great deal!

Beilstein

GAMPER SALES

573-655-2254

CALL US NOW for the best prices...

28248 327th Ave.
LaGrange, MO • Hwy 61 South,
4 Miles South of LaGrange, MO

 <p>#214357</p> <p>Sale Price \$29,995</p> <p>2016 Cedar Creek Silverback 331K 3 Slide-Outs, Rear Living/Entertainment</p>	 <p>#010878</p> <p>Sale Price \$41,995</p> <p>2020 Palomino Columbus Compass 366RLC 3 Slide-Outs, Nice Couples Camper With Open Space</p>	 <p>#008206</p> <p>Sale Price \$15,995</p> <p>2021 SALEM FSX 167RBKX PLATINUM Rear Bathroom, Front Murphy Bed</p>
 <p>#Blue</p> <p>Sale Price \$19,995</p> <p>2020 Venture RV Stratus 261VRK Large Slide-Out, Rear Kitchen, Great Value</p>	 <p>#V20074</p> <p>Sale Price \$24,995</p> <p>2020 Jayco Octane Super Lite Toy Hauler 222 Spacious Garage, Queen Bedroom</p>	 <p>#801669</p> <p>Sale Price \$24,995</p> <p>2023 Salem FSX 178BHSKX Platinum NEW Fiberglass With Slide-Out</p>
 <p>#111077</p> <p>Sale Price \$8,195</p> <p>2023 Darkhorse Cargo 75x14 TA 75x14 TA NEW Two Tone, Side Entry and Rear Ramp</p>	 <p>#072286</p> <p>Sale Price \$6,795</p> <p>2022 Heartland Barlow 20 ft. Flatbed Dovetail</p>	 <p>#152674</p> <p>Sale Price \$2,595</p> <p>2024 Miscellaneous Master Tow Dolly 80THDSB</p>

AGRI-BUSINESS

Equipment & Supplies

Case 2290, cab, cold air, duals, good tires. Dependable and field ready. \$15,000.00 or best offer. Loren Martin. 660-883-5318.

Galvanized steel cable, 7/16 inch, 4,000 feet, fencing, corrals, many uses possible. \$600.00. Loren Martin. 660-883-5318.

Planter parts-JD 7000 and Kinze 2000, row units, transmissions, boxes, lids and others. Also 20.8 x 42 Rear tire, 20%. 4-180 white tractor. 1155 MF would possibly part. 660-247-0613.

Hay/Feed/Seed

100 big bales of hay, shedded, \$120.00, North of Downing, Mo. 217-440-5873.

Excellent quality Alfalfa hay for sale, big square bales. 3rd and 4th cutting. Delivery available. 660-956-3420.

Wanted to buy hay. 641-895-3400.

Are you having a garage sale or rummage sale? Call us to advertise. 660-665-8500.

Livestock

Home grown Berkshire cross butcher hogs and Angus beef. Live \$1.00/pound, processing \$2.00/pound. Beef \$1.80/pound, processing \$1.75/pound. Whole/halves, delivered. 800-807-9612.

MERCHANDISE

Miscellaneous

100 big bales of hay, shedded, \$120.00, North of Downing, Mo. 217-440-5873.

Pets & Supplies

APRI registered miniature black and tan male Dachshund puppy. Date of birth 1/7/2024, shots and wormed. \$650.00. 660-216-4696.

REAL ESTATE RENTALS

Acreages & Lots-Rental

Deer lease wanted: father and son looking to lease land for 2024 deer season. 314-610-0590

HAVE A PET OR PUPPIES TO SELL? Call us. You can even pay over the phone. 660-665-8500.

REAL ESTATE SALES

Mobile Homes For Sale

40 YEARS THIS YEAR - we have to be something right. Call for quote or any house new or used, double and single. 573-657-2176. amegamobilehomes.com

I BUY...used mobile homes. Call or text 573-338-6250 or email GregS.CDH@outlook.com.

WE GOT IT - let us bid your mobile home purchase, new and used. 573-499-9993. columbiadiscounthomes.com.

TINY HOMES - Missouri franchise 573-881-7965.

TRIPLE WIDE - moving stock, awesome price. 573-657-7040. chateauhomes.net

Have a smart phone or tablet? You can view current and past Nemo Trader issues online at www.nemotrader.net



Judd Motors Call 660-457-3700 Hwy 63 North, Lancaster, MO

2017 FORD F250 XLT, crew cab, 4x4, 6.2L gas, red, 246K miles, excellent cond, MUST SEE **NEW PRICE \$18,900**

2007-14 Chevy pickup box, red, 8 ft, little rust.. only **\$1,250**

2012 Chevy Impala LT, sunroof, only 96K miles, charcoal **NEW PRICE \$8,995**

2013 Toyota 5-SPEAKER XLE, leather, sunroof, charcoal, Like New **NEW PRICE \$20,900**

2002 GMC Sierra 1500, Reg. Cab, Long bed, 4x4, V8, 138K, RED **NEW PRICE \$7,995**

Cumberland Building Dealer

www.juddmotors.com | In Business Over 75 Years Curly and Kevin Judd

LUTTRULL FAMILY FARMING

EXPERIENCED FARM FAMILY LOOKING FOR ROW CROP ACREAGE TO RENT

PLEASE CONTACT
BRENT: 660-341-1561
KATY: 660-341-1318



ANIMAL HOUSING HAY STORAGE & MUCH MORE




Skylight FABRIC STRUCTURES

30697 COLONY AVE. • NEW CAMBRIA, MO 63558
660-486-3250 • 833-482-8862

RED RECKONING

ONLY THE TOP 50 BULLS SELL!

SATURDAY, MARCH 16TH
Lunch at 12:00 Noon - Auction at 1:00 p.m.
Gilchrist / Star G Ranch Auction Barn
12144 Dove Ave., Douds, IA 52551

REGISTERED RED ANGUS

18 MONTH OLD BULLS, YEARLING BULLS & COMMERCIAL RED ANGUS FEMALES

Selling

ALL BULLS WILL BE:

- FERTILITY EVALUATED
- ULTRASOUNDED FOR CARCASS TRAITS
- DNA GENOMIC ENHANCED
- GUARANTEED BREEDERS

Selling sons of - Gilchrist High Endurance; Alamo; MRLA Resource; HRP Quarterback 0150; Domain; Limit Up; Chappell Home Run; Bieber Atomic; STRA Relentless; Bieber Blue Chip; Grindstone; Chappell General Custer; Six Mile Fifth Sense; Bieber Energize; GMRA Game Changer; Laser Focused; Jacobson Weigh Out; WEBR Reform; KFRA H2 Mr Stockmarket.

TOP 1% PROS, 1% HB & 1% GM 1

LIVE BIDDING AT DVAuction

Catalog at www.redcows.net
Videos at DVAuction.com

For more information:
Kyle Gilchrist 641/919-1077
Star G Ranch, Inc.
Steve Koedam 507/920-7594
Koedam Cattle Co.
Dave Kemen 320/212-2478
Kemen Farms Red Angus

15th ANNUAL Southwest Iowa Gelbvieh & BALANCER BULL & FEMALE SALE

FRIDAY, MARCH 15, 2024 • 1:00 PM

CRESTON LIVESTOCK AUCTION • 201 N. CHERRY • CRESTON, IA

Bulls Are Feed Efficiency Tested & Ultrasounded

Also, 3 Registered Open Heifers



For More Info Or Sales Catalog Call:

Carl Reiste 515-490-3561 Ed & Jim McCreary 641-234-0039
Mike Bauer 712-304-4320 Roy Holste 712-303-1947
Gary Martens 712-764-5007 Doug Hobbs 515-822-2561
Anthony Kopriva 319-231-6279

This sale will be broadcast live on the internet.

DVAuction Broadcasting Real-Time Auctions
Real time bidding & proxy bidding available.

Don't Miss This Sale!

Videos and the sale can be seen on DVAuction.com.




SERVICES

Chat/Dirt/Gravel

DIRT WORK All types of excavation, reclaiming overgrown fields, including CRP and WRP. Building site preparation, creating new trails and crossings, Food plot development and maintenance. Leveling and grading, wetland construction and maintenance. Pond and lake cleaning and construction. Call for quotes. 660-342-2701

Home Services

Scott Huskey's Insulated Skirting Systems-keeps your home cooler in the summer-warmer in the winter-saves on utilities and looks great! Since 1972, 573-696-3468.

Lawn/Garden/Landscape

New 3 pt. tillers, heavy duty, gear driven, 7' to 12' starting at \$4,150. 660-874-4455.

ANGUS BULLS FOR SALE

Coon Angus Ranch
 Outstanding selection of 14 month old bulls
 1318 Shelby 169, Bethel, MO 63434
 Russell 660-341-2705
 Susan 660-341-5192
 ruscatsol@gmail.com
 www.coonangusranch.com

The Ultimate Wood Heat.

CLASSIC EDGE
 TITANIUM HDX
 Outdoor Wood Furnace

- **More Comfort** - Thermostatically controlled wood heat.
- **Peace of Mind** - Keep the fire outside and eliminate the dangers associated with indoor wood heating.
- **Save Money** - Wood is a renewable, inexpensive and often free energy source.

Campen Heating & Air
 Division of Kraus & Sons Inc.
 Canton, MO 63435
 573-288-8966
 CentralBoiler.com

Shop Local
 Buy Local
 Enjoy Local

CALL TODAY!
 660-665-8500
 www.nemotrader.net

NEMO
 Daily Express

Your Local
FARM SUPPLY SOURCE
 NUTRITION • MEDICAL • FARM • PET • APPAREL

SEE US FOR YOUR
SHEEP & GOAT
 EQUIPMENT NEEDS

Hometown Animal Health has provided quality products, expert knowledge, and friendly customer service to northeast Missouri and surrounding areas. We are a full-service nutrition, medical, and farm supply source carrying complete lines of animal feed and supplies, farming equipment, agricultural parts, lawn and garden tools, work apparel, and much more!

Hometown ANIMAL HEALTH
 Feed • Medical • Farm & Pet Supplies • Footwear & More

website: hometownanimalhealth.com
660-465-2967
 18743 US Hwy, 136 Memphis, MO 63555
 "on Hwy 136 west of Memphis"

Monday-Friday 8pm to 5pm
 Saturday 8am to 1pm

The meeting Place for Buyers and Sellers!!

NEMO
 Trader

660-665-8500 or email: sales@nemotrader.net
 SHOP LOCAL - BUY LOCAL - ENJOY LOCAL

Perfect time of the year to plant your clover food plot, so it's ready for spring turkey season and perfect for fall deer hunting. Want to create a food plot? No problem we got everything to remove brush and trees to create a perfect food plot!

Bryan 660-956-3823

VICTORY
 Metals & Recycling
 Kirksville, MO
 660-665-8000

For current scrap prices call or visit our Facebook Page victorymetalsrecycling.com

★ **METAL RECYCLING**
 RECYCLE YOUR SCRAP METAL WITH US! WE PAY CASH FOR: COPPER, ALUMINUM, STEEL, STAINLESS STEEL, APPLIANCES, E-SCRAP, BRASS, LEAD, RADIATORS, ALTERNATORS, BATTERIES, STARTERS, ELECTRIC MOTORS, APPLIANCES, & VEHICLES (TITLE & ID REQUIRED).

★ **ROLL-OFF CONTAINER**
 10-20-30-40 CUBIC YARD DUMPSTERS

3602 INDUSTRIAL RD. • KIRKSVILLE, MO 63501
 DJANESVMR@GMAIL.COM
VICTORYMETALSRECYCLING.COM

CLEAVER DERMATOLOGY

Cleaver Dermatology
 is now in Centerville, IA
 - Beginning April 23rd
 The 4th Tuesday of each Month
 @ Chariton Valley Medical Center
 707 S Main St. Centerville, IA
 Now accepting new patients
 Call 660-627-7546 now to schedule!

SN PARTNERS **SYDENSTRICKER NOBBE**
 INVENTORY REDUCTION AUCTION

FRIDAY MARCH 22, 2024 AT 11 AM
 LIVE ONSITE AUCTION WITH INTERNET BIDDING
 AUCTION LOCATION: 7025 State HWY F, Palmyra, MO 63461

20+ LATE MODEL PLANTERS
 LATE MODEL COMBINES
 10+ LATE MODEL AG TRACTORS AND MORE...

ONLINE BIDDING AVAILABLE THROUGH
WHEELER LIVE ONLINE BIDDING PLATFORM
BID NOW Online Bidding Provided By **Equipmentfacts**

VISIT WHEELERAUCTIONS.COM FOR FULL LISTING AND PHOTOS!

Wheeler AUCTIONS & REAL ESTATE
 23101 HWY. 24, PARIS, MO 65275 | 660-327-5890
 WWW.WHEELERAUCTIONS.COM

For more information:
 Kirby Fecht 217-248-2906
 Sydenstricker Nobbe Representative,
 Steve 573-591-0001

SAYRE AUCTION, LLC
 Wednesday March 13th, 2024 at 5:30PM
 1/2 Mile West of US 36 and MO U/5 Junction - Lilac Road

LIVE ON SITE- REAL ESTATE AUCTION - 1/2 Mile west of Marceline and 36 Junctions in Linn Co. Mo. On the North side of Lilac Road. 7-57N-18W Yellow Creek Township. (watch for sale signs)

REAL ESTATE - 135 M/L acres subject to survey, 129 acres of pasture or tillable acreage, one small pond, large lake with frost proof water. This property was in row crops 5 years ago and has been fertilized and hayed ever since, good stand of brome mix grass. Would make a good cattle farm with a little TLC on the fences or great row crop farm. Would also have some amazing views to build that dream home on, this a must-see beautiful piece of property located in north central Missouri. Sets just off Chicago-Kansas City Expressway (Hwy 36). To View property contact Shawn 660-734-8782
 Owner -Mark Cleveland

Lot	Area	Acres	Remarks
1	129.39	2.91	129.39
2	136.73	3.11	136.73
3	136.73	3.11	136.73
4	136.73	3.11	136.73
5	136.73	3.11	136.73
6	136.73	3.11	136.73
7	136.73	3.11	136.73
8	136.73	3.11	136.73
9	136.73	3.11	136.73
10	136.73	3.11	136.73
11	136.73	3.11	136.73
12	136.73	3.11	136.73
13	136.73	3.11	136.73
14	136.73	3.11	136.73
15	136.73	3.11	136.73
16	136.73	3.11	136.73
17	136.73	3.11	136.73
18	136.73	3.11	136.73
19	136.73	3.11	136.73
20	136.73	3.11	136.73
21	136.73	3.11	136.73
22	136.73	3.11	136.73
23	136.73	3.11	136.73
24	136.73	3.11	136.73
25	136.73	3.11	136.73
26	136.73	3.11	136.73
27	136.73	3.11	136.73
28	136.73	3.11	136.73
29	136.73	3.11	136.73
30	136.73	3.11	136.73
31	136.73	3.11	136.73
32	136.73	3.11	136.73
33	136.73	3.11	136.73
34	136.73	3.11	136.73
35	136.73	3.11	136.73
36	136.73	3.11	136.73
37	136.73	3.11	136.73
38	136.73	3.11	136.73
39	136.73	3.11	136.73
40	136.73	3.11	136.73
41	136.73	3.11	136.73
42	136.73	3.11	136.73
43	136.73	3.11	136.73
44	136.73	3.11	136.73
45	136.73	3.11	136.73
46	136.73	3.11	136.73
47	136.73	3.11	136.73
48	136.73	3.11	136.73
49	136.73	3.11	136.73
50	136.73	3.11	136.73
51	136.73	3.11	136.73
52	136.73	3.11	136.73
53	136.73	3.11	136.73
54	136.73	3.11	136.73
55	136.73	3.11	136.73
56	136.73	3.11	136.73
57	136.73	3.11	136.73
58	136.73	3.11	136.73
59	136.73	3.11	136.73
60	136.73	3.11	136.73
61	136.73	3.11	136.73
62	136.73	3.11	136.73
63	136.73	3.11	136.73
64	136.73	3.11	136.73
65	136.73	3.11	136.73
66	136.73	3.11	136.73
67	136.73	3.11	136.73
68	136.73	3.11	136.73
69	136.73	3.11	136.73
70	136.73	3.11	136.73
71	136.73	3.11	136.73
72	136.73	3.11	136.73
73	136.73	3.11	136.73
74	136.73	3.11	136.73
75	136.73	3.11	136.73
76	136.73	3.11	136.73
77	136.73	3.11	136.73
78	136.73	3.11	136.73
79	136.73	3.11	136.73
80	136.73	3.11	136.73
81	136.73	3.11	136.73
82	136.73	3.11	136.73
83	136.73	3.11	136.73
84	136.73	3.11	136.73
85	136.73	3.11	136.73
86	136.73	3.11	136.73
87	136.73	3.11	136.73
88	136.73	3.11	136.73
89	136.73	3.11	136.73
90	136.73	3.11	136.73
91	136.73	3.11	136.73
92	136.73	3.11	136.73
93	136.73	3.11	136.73
94	136.73	3.11	136.73
95	136.73	3.11	136.73
96	136.73	3.11	136.73
97	136.73	3.11	136.73
98	136.73	3.11	136.73
99	136.73	3.11	136.73
100	136.73	3.11	136.73

Note: Once and a lifetime chance to purchase that property you all have been looking for. Statements sale day supersedes printed material. 10% down (non-refundable) escrow payment day of sale with signed contract balance at closing at Professional Land and Title. We will be doing phone bids with pre-approval from the auction company.

SAYRE AUCTION, LLC
 "If It's For Sale We Can Sell It" • Family Owned & Operated Since 1978!
www.sayreauction.com
 Live and Online Auction Services
 Cash, Check, and Credit Cards Accepted
 Shawn Sayre 660-734-8782 | Alyson Sayre 660-734-5005 | Mark Cleveland 660-412-7040 | Danny Jeffries 660-342-1075

ANTIQUA AUCTION

2705 Main St Unionville Mo 63565 • March 9th at 10 am

7 Ft wood cigar indian, Goodyear porcelain sign, Dixies hybrid sign with bull on it, 1928 kkk letter, Clock, Aladdin lamp, Globe fruit jar, goddess oil lamp, Pyrex, Jadeite, John Deere tractor umbrella, galvanized bathtub, galvanized wash tubs, several marbles, costume jewelry and and boxes, several Morgan dollars, silver dimes and quarters, glassware, several old surge milkers, 5 gal western crock, other crocks, lots of old kitchenware and enamelware, jars, coffee jars, advertising boxes, lightning rod balls, ivory cigarette case, credit production association items, oil lamps, fruit jars, tobacco tins, Aunt Jemima corn muffin pan, lots of framed prints, ball cards, marbles, Briggs and Stratton display with sign, ice skates, pulleys, KK kraut cutter, War books, word working plane, keys, #13 mason jar, lanterns, wood dough bowl, beer advertising, pine church pews, blue Dazey churn, political buttons, crosscut saws, several Tonka trucks, unusual tools, cream can, hay grapple, feed sacks, 1940s U of I yearbooks, mounted deer head, hay trolley, tractor seat, ice cream table and chairs, square body gas pump face plates, 1916 la license plate, jars of buttons, guitar John Deere weathervane with a deer, hand tools, oil bottle, many items not advertised, will be more by sale date. **Preview from 2 to 5 pm on March 8th.** Inside sit down type sale.

Food and restrooms available. Check out pictures on Facebook or our website at www.altiserauctionandappraisal.com.

SEE OUR FACEBOOK PAGE FOR PHOTOS



McAfee Auction Service, LLC

375 S Johnson • Kahoka, MO

660-727-3796

www.mcafeeauctionservice.com

**LARGE PERSONAL PROPERTY
ONSITE AUCTION**

SATURDAY MARCH 9TH - 10 AM

SALE LOCATED AT 23001 EAST MAIN ST, KAHOKA, MO



Selling 2006 Ford Taurus SE, 3.0L V6, 102,000 miles; Various pieces of furniture, kitchen items, common household misc., few collectibles, antiques and lawn related items.

LARGE AUCTION! SOMETHING FOR EVERYONE!

Bertha Joan Palmer Family Rev. Trust, Sellers



McAfee Auction Service, LLC

375 S Johnson • Kahoka, MO

660-727-3796

www.mcafeeauctionservice.com

**TIMED ONLINE ONLY
ESTATE AUCTION**

**FRIDAY MARCH 15TH
LOTS START ENDING AT 10 AM**

LOCATION: 29852 STATE HWY 16 CANTON, MO



Selling a nice selection of personal property, wood stoves, lawn related, tools, kitchen and bathroom fixtures, interior doors etc.



BID NOW! COMPLETE DETAILS ONLINE!

Mildred Whiston Estate



McAfee Auction Service, LLC

375 S Johnson • Kahoka, MO

660-727-3796

www.mcafeeauctionservice.com

Clark County, MO
LAND AUCTION

Sale conducted at the CARE Building located at 451 N. Vine Street, Kahoka, MO

39 +/- ACRES

Lying in Sect. 3, TWP 66N, R8W Clark Co. MO

**Thursday,
March
28TH
at 10 AM**

**PRIME HIGHLY
PRODUCTIVE
TILLABLE
CROPLAND**

THE LORIGAN FAMILY, SELLERS



McAfee Auction Service, LLC

375 S Johnson • Kahoka, MO

660-727-3796

www.mcafeeauctionservice.com

Scotland County, MO
LAND AUCTION

Sale conducted at the Scotland Co. Rex Plex Center located at 541 Grand (Hwy 136) Memphis, MO

125.3 ACRES/ 2 TRACTS

Lying in Sect. 30 & 31, TWP 66N, R12W Scotland Co. MO

**PRODUCTIVE
TILLABLE CROPLAND
WOODLANDS
BUILDING SITES
EXCEPTIONAL
NEMO HUNTING**



**Thursday,
April 4TH
at 6 PM**

**MATT CAPSTICK, LEONARD CAPSTICK
AND CHRISTINA BALDUCCI, SELLERS**

VEHICLES & EQUIPMENT AUCTION

**350+ ITEMS SELL NO RESERVE!
WEDNESDAY, MARCH 13**



OF9291 '80 Chevy C10
Cheyenne pickup truck



EH3838 '19 Toyota 4Runner
TRD Off Road SUV



NJ9523 '17 Ford F250 Super
Duty XL SuperCab pickup



EG1188 '22 Ford F650 Super
Duty truck cab and chassis



EI3520 '21 Ditch Witch SK600
compact utility loader



INVENTORY INCLUDES: pickup trucks, SUVs, forklifts, compact utility loaders, flatbed trucks, box trucks, service trucks and more. All items are sold "AS IS." 10% buyers premium applies.

BID NOW! purplewave.com

**NEMO Trader Classified
COUPON**

**2 Classified Ads for just
\$6.00**

20 cents per word over 20 words
Must be Mailed in or brought in along with payment.
Picture Ads Not Included with Coupon!

Choose Classification

- Agri-Business
- Announcements
- Employment
- Financial
- Merchandise
- Real Estate Rentals
- Real Estate Sales
- Recreation
- Services
- Transportation
- Yard Sales
- Auctions & Estate Sales

Ad No. 1 Each Box Represents a Word (20 words or less)

Ad No. 2 Each Box Represents a Word (20 words or less)

Name _____

Mailing Address _____

Phone Number * _____
this is required*

PO Box 809 Kirksville, MO 63501 • 660-665-8500

BORDER COLLIE PUPPIES!
 Shots & Dewormed • Negotiable Prices
 Deliverable in Person
 573-414-4601 / 573-979-5375

FOR SALE
 AI Sired Angus Bulls,
 14 & 18 Months Old.
Harold Trump
 660-341-5730

Premium Metal Roofing



A W Metal Inc.

Metal Roofing Headquarters

641-664-3990 • awmetal.net

2010 Ford F150 XL,
 Regular Cab, 4x4, 4.6 V8,
 Auto and Air, Tow Package,
 New Tires (E), no rust,
 70,000 miles, 1 owner,
\$13,900

2024 Car Hauler,
 16' x 2' steel deck,
 dovetail, 84" between fenders,
 brakes, break away,
 6 lug wheels, 8 ply tires,
 2 5/16 coupler, 7K dogleg jack.
\$4,200

Accelerators Performance & Auto
 Since "1974"
Kahoka, MO
 660-727-3455
 Daryl's Cell
 217-257-1385

Have a smart phone or tablet?
 You can view current and past Nemo Trader issues online at www.nemotrader.net



Edina Livestock Sales
Edina, Missouri

Friday, March 8th
 Special Feeder Calf Sale
 Several nice consignments

Friday, March 15th
 Special Feeder Calf Sale

To Consign For Any or All Sales or For Information Call:
 Owner - Kevin Strange • Cell: 660-341-9974
 Ryan Strange • Cell: 660-341-9721
 Sale Barn: 660-397-9999

Field Reps:
 Bill Tom Hall 660-342-5420 Mike Bronestine 660-341-9965
 Jason Bichsel 660-216-0373 John Powell 660-341-1717

VIRTUAL ONLINE

KNOX COUNTY, MISSOURI LAND AUCTION

TUESDAY, MARCH 19, 2024 AT 10:00 AM^{CT}



121.80 TAXABLE ACRES± • 1 TRACT

The Palmer farm is located 4.8 miles east of Novelty, MO on County Road 372 just off Hwy 15, or 5 miles northwest of Plevna, MO. The farm is further described as being located in Section 10, T60N-R11W, Bourbon Township, Knox County, Missouri.

The land contains a total of 121.80 taxable acres, will be sold in 1 tract, and represents productive tillable farmland.


PALMER FARMS INC

Representing Attorney: Knox County Abstract
 105 S 1st St, Edina, MO 63537 | (660) 397-3259

Auction Managers: Louie Zinn (319) 795-2314 & Dan Sullivan (319) 795-1833

BigIron SULLIVAN AUCTIONEERS
 a BigIron company
 (844) 847-2161 | www.SullivanAuctioneers.com

WE GOT YOUR NEEDS COVERED!



FARM TARPS TRUCK TARPS
HOOP BUILDING COVERS

Troyer TARP MFG.

660-486-3301
 20264 STATE HWY. VV • ETHEL, MO 63539

HAVE A SMART PHONE OR TABLET?

You can view current and past Nemo Trader issues online at www.nemotrader.net

One ad reaches 21 Counties in Missouri, Iowa & Illinois with 11,000 circulation

Call Today to place an ad!

660-665-8500
 705 East LaHarpe Street, Ste. F
 Kirksville, MO 63501



THE KIRKSVILLE QUARTERLY
COVERING EVENTS IN MAY & JUNE 2024

Publishing on **April 24, 2024**

Deadline to advertise is **March 29, 2024**

5000 copies each edition. Kirksville Daily Express subscribers will receive it in the April 24, Wednesday edition, and other copies will be available at local businesses in Kirksville, Novinger, Green Castle, Green City, Greentop, Queen City, Edina, Laplata Macon, and Milan for FREE!

Call today to advertise your business in the April Edition!

KIRKSVILLE Daily Express

705 E. La Harpe Street, STE F • Kirksville, MO 63501
 Email: sales@kirksvilledailyexpress.com
 Phone: 660-665-2808
 Website: kirksvilledailyexpress.com



Current issue is available at local businesses and online

All ads are in full color

The meeting Place for Buyers and Sellers!!



NEMO
660-665-8500 or email: sales@nemotrader.net
SHOP LOCAL - BUY LOCAL - ENJOY LOCAL

LANCASTER LUMBER INC.

Lancaster, MO.
1-800-424-5071



LAN-DOW BUILDINGS

www.lancasterlumber.com



LAN-DOW BUILDINGS

"We Build To Suit Your Needs"
"Custom Built"

Pole Barns • Garages • Utility Buildings
"H" Don or Dick Middleton

Memphis Lumber Co.
1-800-337-5858 • 660-465-8595
Fax: 660-465-8596

HAY FOR SALE:
84 Large Round Wrapped Mix Grass Bales.
\$100.00 per bale.
Located in, Browning, MO Call 816.499.2533, leave message.

HAY AUCTION
Saturday, March 16, 2024 • 10:00 A.M.

1916 S. 18th St. (Hwy 5 S) Centerville, IA
ACCEPTING CONSIGNMENTS NOW
Expecting a nice selection of hay and bedding of all sizes
DALTON OTT SALE MANAGER • 563-880-5626
To list your hay, Or Time to bring it in.

SPRING FARM MACHINERY / EQUIPMENT AUCTION
SATURDAY APRIL 6, 2024

ITS TIME TO LIST YOUR EQUIPMENT
FARM EQUIPMENT, FENCING, ATV'S, HAY, LAWN/GARDEN, CONSTRUCTION, FARM RELATED ITEMS

DEMRY AUCTION, LLC
1916 S 18th St. (Hwy 5 SOUTH) CENTERVILLE, IOWA
Janet Demry: 641 895 4310 and 641 856 6408
Tom Demry: 641 895 2508 • Kristy Demry: 641 895 2509
Randy Mulay: 641-436-1521 • Dalton Ott: 563-880-5626
Website: www.Demryauction.com

Machinery Auction
Thursday, March 21 • 10a.m.

Selling Farm & Commercial Equipment:

Tractors, trailers, trucks, skid loaders, construction equipment/supplies, lawn & garden, ATVs, hay & tillage equipment, livestock equipment, fencing supplies and much more.

CONSIGN NOW
WHILE THE MARKET IS STRONG!
Call Jordan 660-346-0410 Cody 660-676-9392
Joseph 660-346-9711 or Frankie 660-651-4040

Consignor checks printed the day of the sale.
Trucking Available.

Lolli Livestock Market, Inc.
704 Main St.
Macon, Mo 660-385-2516

LAKE OF THE OZARKS

Spring Special Lots
STARTING AT
\$4,995

Build, camp, or own for investment also acreage tracts. Beautiful wooded area, free lake access and boat ramps, lots are a short distance from the lake, no credit checks, owner financing, and immediate possession. Missouri conservation boat ramp with a covered dock and rest rooms close by.

\$125 down • \$69 per month.

Prices good through March 19th, 2024. Hwy 135 between Stover and Sunrise Beach, MO. Take lake road 135-12 to the Ivy Bend Land Office. Closed Tuesdays and Wednesdays
CALL ANYTIME • 573-372-6493

CITY OF LANCASTER IS ACCEPTING BIDS FOR THE FOLLOWING ITEMS:

ROCK: 1/2 inch, 1 inch, 3 inch and granular fill
Delivered as needed to city stock yard
PREMIX-500 tons

Sealed Bid must be received by Friday, April 5, 2024 by 4:00 pm
1. Mail to City of Lancaster, P.O. Box 477, Lancaster, MO 63548
2. Present sealed bids in person, City Hall, 209 E. Washington St. Lancaster, MO

For further information contact city clerk at 660-457-3022

CELEBRATIONS PARTY RENTAL
KIRKSVILLE, MO

FOR RENT

- Tables & Chairs
- Tents • Bounce House
- Cotton Candy Machine
- & More!

660-626-5162 or 660-665-9380

SHOW-ME SEAMLESS GUTTERING
FREE ESTIMATES • PROMPT SERVICE

- 5" & 6" Gutters
- Siding • Soffit • Fascia

(23 colors available on Gutters & Fascia)

Tried of Cleaning your Gutters?
LEAFPROOF THEM!

ELLIOTT HIX
660-626-3447 • KIRKSVILLE, MO

Connie's MOBILE HOME TRANSPORT

We offer the following...

Break Downs • Transport • Set up • Anchoring

Call Rich today! 573-881-7483

Shop Local
Buy Local
Enjoy Local

CALL TODAY!
660-665-8500
sales@nemotrader.net

NEMO Trader
KIRKSVILLE
Daily Express



To place your Business here, call
NEMOTRADER
660-665-8500

Cantril LUMBER and HARDWARE

Full Line of Building Materials • Check Out Our Metal Siding Price!
We Sell Central States Metal • OSB • Drywall • Insulation
• Shingles • Plyco Doors • Windows • Overhead Doors
• All Colors of Metal Roofing and Siding • Concrete Perma Columns
• Treated Fence Posts • Metal Gates
See us for all your building needs

319-397-2351 • 1-888-791-9273
Cantril, IA • Mon. - Fri. 7-5 • Sat. 7-12

Travis Funeral Chapel

We have served the wonderful people of LaPlata and the surrounding communities for over 30 years.

Randy & Michele Travis -
Neil & Sherry Travis
LaPlata, MO. 660-332-7145

exp REALTY

ELIZABETH GREGORY
Realtor

WWW.MISSOURIHOMEANDFARM.COM

Innovative Real Estate for YOU!
660.621.2136

Oldham MONUMENT

Monument, Markers & Vases On Display.

400 N. Kansas, Downtown Marceline, MO
660-376-2508 • Ed & Amy Ewigman

AW Metal LLC
Metal Roofing Headquarters

BUY DIRECT

Post Frame Building Kits
www.awmetal.net
641-664-3990

Reserve your spot here!

Call your sales representative today!

AECI Land LLC. has 3 tracts of pasture land for lease to the highest bidder located in Randolph Co. Mo. near the Thomas Hill Energy Center. The 3 tracts combined are approx. 1,100 acres. Please contact AECI Land listed below for more information and to schedule an onsite inspection by 3:00 p.m. March 22nd, 2024, Dallas Sandner, Land Agent, AECI Land, LLC, 4297 Hwy. F, Clifton Hill, Mo. 65244. Tel: 660-261-3327 Cell: 660-651-2073 E-Mail: dsandner@aeci.org

AECI Land L.L.C. has approx. 600 acres of hay ground in seven separate tracts for lease to the highest bidder. All tracts of land are within Randolph Co. Mo near the Thomas Hill Energy Center. Please contact AECI Land listed below for more information and to schedule an onsite inspection by 3 p.m. March 22, 2024. Dallas Sandner, Land Agent, AECI Land, LLC. 4297 Hwy. F, Clifton Hill, Mo. 65244. Tel: 660-261-3327, Cell: 660-651-2073. E-Mail: dsandner@aeci.org

NEMOTRADER.NET

2ND CUTTING GRASS MIX, SOME ORCHARD

3x8 bales \$95 a bale
200 little square bales
alfalfa 4th cutting, \$6 each. Will deliver 100 or more, \$3.00 a loaded mile

660-341-2203

Golden Grain Bins-Winter Discount

Grain Bins	Floors w/12"Supp. & Flashing
18'x18' 4,195bu. \$ 6,067	18'....\$1,693 30'....\$ 4,726
27'x21' 11,265bu. \$12,178	21'....\$2,315 36'....\$ 6,733
42'x24' 32,245bu. \$28,386	27'....\$3,862 42'....\$ 9,169

Golden Grain GMLS Industries, Inc.
PH: 660-699-2179 or 620-983-2136
www.gmlsindustries.com

MFA OIL SERVICE TECHNICIAN

If you're an excellent troubleshooter who is mechanically inclined, safety-minded and service-oriented, we want you! This position is located in Memphis.

JOB REQUIREMENTS:

- High school diploma or equivalent
- Experience in truck and equipment maintenance
- Ability to lift 100 pounds
- Possess or obtain a current CDL with HAZMAT, Tanker and Air Brake endorsements
- Possess or obtain required propane certifications

We offer competitive pay and a full range of benefit options. If you want to work for a family-oriented company that invests in employee development and offers opportunities for advancement, join the MFA Oil team today!

Visit www.mfaoil.com/careers to view full description & apply. Email: hrrecruiter@mfaoil.com

ANTIOCH REPAIR & RENTAL

We fix almost anything!

- Manlift
- Mini Hoes
- Telehandler
- Compact Tractors
- Skidloader
- Forklifts
- Minor Tractor Repairs, ect.

RENTAL

- Skidsteer
- Manlift
- Attachments
- Mini Hoe
- Concrete Saw
- Flatbed Goose Neck & Bumper Hutch Trailers

Located Near Knox City, MO
Call Ethan Zimmerman
660-299-0808

Have a smart phone or tablet?
You can view current and past Nemo Trader issues online at www.nemotrader.net

3 antique Brunswick slate pool tables restored for sale or trade. May trade for gun or gun safe. Call 573-248-0942.

Wanted: Hay ground to custom mow, rake, and bale or will bale on shares. Kelsey Farms, 660-341-6879.

Hay for sale, mixed grass, 300 big bales available. 660-626-6831.

Big net wrapped bales of mixed grass hay, (JD569), Atlanta, Mo, will load. \$100.00 each. 660-473-3025.

Wanted: Someone to tear out fence for the red brand steel posts and 4 barb wire. Atlanta, MO. 660-473-3025.

IHC 1200 planter 16 row, 30" bulk fill, with liquid fertilizer coulters, with 2 200 gallon tanks. SNCB5036249. 217-658-4761.

Bear Cat grinder mixer, John Deere 7000, 4 row planter, cattle show equipment, saddles & horse items. 660-341-6625

Krause 8000, 32 foot Excelsior V-till gang angle adjustment, hydraulic star wheels, flat bar reel, nice machine. SN3562. 217-658-4761.

Skyline Service LLC
Skid Steer and Construction Repair
Levi Weiler
660-346-6881 • 660-883-5525

Scan Tool Diagnostics
Exhaust After Treatment Repairs • SCR Unlocks
Skid Steer Tracks Available

Show Me Plumbing Services

- General Mini Excavation & Skid Steer Work
- Livestock Watering
- Waterlines & Sewer Systems
- Residential Services & General Plumbing
- Utility Trenching

Stan Schrock 660-988-1163
Greentop, MO 660-766-2636

TIMBER MANAGEMENT.

Purchasing Walnut, Oak, Maple & Other Species

WE PAY BEFORE WE CUT

BONDED & INSURED Est. 1968
641-895-8209

29th Anniversary Sale

Mississippi Valley Angus Association

Online Bidding & Viewing Saturday, March 16, 2024 6:30 p.m.

73 Lots F&T Livestock Market
Bulls/Open Heifers Palmyra, MO
Spring Pairs/Bred
Full Pairs/Bred

For information or sale catalog:
Albert Meyers 573-719-7322 / albert@doubleangusranch.com
Veiv catalog online: www.DoubleAAngusRanch.com

VIRTUAL ONLINE

RALLS COUNTY, MISSOURI LAND AUCTION

WEDNESDAY, MARCH 27, 2024 AT 10:00 AM^{CT}

312.2 ACRES ± • 3 TRACTS

Tract 1 is located approximately 2 1/2 miles from Center, MO and Tracts 2 & 3 are located between Center and New London, MO, just north of Hwy 19. The land is further described as being located in Section 14, T55N-R6W, Center Township and Sections 16 & 21, T55N-R5W, Spencer Township, Ralls County, Missouri.

All three tracts are nearly 100% tillable and represent some of the most productive land in northern Missouri! This land has been very well cared for and has outstanding yield history.

ALL TRACTS SELL WITH FULL POSSESSION FOR THE '24 CROP YEAR!

L.J. & RUTH C. HAGAN TRUST

Representing Attorney: James McConnell Law Office
127 E Walnut St, Shelbina, MO 63468 | (573) 588-2115

Closing & Title Work: Lisa Minor | Monroe County Abstract & Title Co.
PO Box 248, 229 North Main, Paris, MO 65275 | (660) 327-4109

Auction Managers: Steve Zeiger (573) 231-9802 & Dan Sullivan (319) 795-1833

BigIron SULLIVAN AUCTIONEERS
(844) 847-2161 | www.SullivanAuctioneers.com

VIRTUAL ONLINE

CLARK COUNTY, MISSOURI LAND AUCTION

FRIDAY, MARCH 15, 2024 AT 10:00 AM^{CT}

99 TAXABLE ACRES ± • 1 TRACT

The farm is located approximately 6.5 miles north of Williamstown, MO or 15 miles southwest of Kahoka, MO. It is further described as being located in Sections 26 & 35, T64N-R9W, Washington Township, Clark County, Missouri. The farm is directly located on the northeast side of Hwy D and Hwy A junction.

Farm represents productive tillable cropland/CRP, well maintained pastureland, exceptional northeast Missouri whitetail deer & wild turkey hunting, and prime rural building sites.

DOROTHY L. KIRCHNER FARM
STEVE KIRCHNER, SHELIA WELKER, SHERI KIRCHNER, DENNIS KIRCHNER, SUSAN KIRCHNER - SELLERS

Closing & Title Work: Oak Hills Title Company
309 Lewis St., Canton, MO 63435

Auction Managers: Louie Zinn (319) 795-2314 & Dan Sullivan (319) 795-1833

BigIron SULLIVAN AUCTIONEERS
(844) 847-2161 | www.SullivanAuctioneers.com

NEW CAMBRIA LIVESTOCK AUCTION LLC
Phil & Stacey McBee - Owners
29262 State Hwy 149, Box 94, New Cambria, MO 63558

Special Calf and Yearling Sale
THURSDAY, MARCH 7TH, 2024
STARTING AT 11:00 AM

Office (660) 226-5222 • Phil McBee (660) 754-2148
Doug Lock (660) 641-3898 • Lavon Moore (660) 384-2008
Randy Nute (660) 651-5389 • Tyler Gratz (573)-690-7312

To view our latest market reports and cattle listings, visit Our NEW website at: www.newcambrialivestockauction.com
We appreciate your business!!!!

HUNTING GROUND FOR SALE

Sullivan Co Missouri

48 Acres Timber Hunting Property: Outstanding Turkey and Deer Hunting. West of Milan on Highway E. For asking price owner will install two NEW TTIAN HUNTING BLINOS AND FOOD PLOTS.....**\$179,500**

38.4+ACRES TIMBER PIECE-GREAT For Turkey and Deer. Located on Highway RA close to Sears Lake and New Roy Blunt Reservoir.....**\$163,200**

CONTACT **Duane Schnelle** 660-265-5541
Boyer Land Co, LLC
South Main St
Milan, Mo 63556
816-654-2144

Kirksville, Missouri
KIRKSVILLE LIVESTOCK LLC

24295 Benton Road * P O Box 242 * Kirksville, MO 63501
www.kirksvillivelivestock.com

- Monday, March 11- Special Feeder Cattle Sale, 11:00 a.m
- Saturday, March 16 - Ertel Cattle Annual Production Sale 5:30 p.m. www.ertelcattle.com
- Monday, March 18 - Regular Cattle Sale, 11:00 a.m.
- Monday, March 25 - Special Feeder Cattle Sale, 11:00 a.m.
- Friday, March 29 - Batterson & Barnes Production Bull Sale, in conjunction with the Greater Midwest Red Angus Spring event, 6:00 p.m.

Early listings many more listings by sale day
Check website for updated listings: www.kirksvillivelivestock.com

We are open on Sunday to Receive Your Livestock
"Your Business is Very Much Appreciated"
"Proud to Serve Area Livestock Producers"
For more information or Someone to Phone for information:
Patty Foster, Office Manager - 660-665-9804
Chuck Ambrosia - 660-342-3530 - Luke West - 620-215-5770
Mark Herbold - 515-720-8667 - Al Ashmead - 660-216-8730
Doug Flesher - 660-626-7148 - Daniel Smith - 660-341-8396
Jeremy Jarman - 660-341-9879 - Caleb Randolph - 641-919-8539
Karol Kirkpatrick - 641-777-3403

LOLLI LIVESTOCK MKT, INC.

Tuesday, March 12 - 11am

Special Calf & Yearling Pre-Conditioned Sale

185 bbwf hfs (lot loads) 160 bbwf str home raised (lot loads)
80 bbwf hfs 650lbs (pot load) 60 bbwf str/hfs 5-700lbs
130 bbwf hfs 600lbs 50 bbwf str/hfs 5-700lbs
125 bbwf str/hfs 5-700lbs 28 bbwf str/hfs 5-600lbs
100 bbwf str/hfs 5-700lbs 25 bbwf str/hfs 6-800lbs
80 bbwf str/hfs 4-600lbs 21 bbwf str 700lbs
75 bbwf str/hfs 5-700lbs 20 bbwf str/hfs 5-700lbs
70 bbwf str/hfs 5-650lbs 15 bbwf hfs 600lbs
60 bbwf str/hfs 5-700lbs 4 bbwf str/hfs 5-650lbs

Cafe Open Lollo Livestock Market, Inc. Cafe Open
704 Main st * Macon, MO * 660-385-2516
Frankie 660-651-4040 * Tim 660-651-3496 * Joseph 660-346-9711
Jordan 660-346-0410 * Cody 660-676-9392 Cattle accepted on Sundays
Follow Us On Face Book & www.LolloLibros.com

VIRTUAL ONLINE

RALLS COUNTY, MISSOURI LAND AUCTION

THURSDAY, MARCH 28, 2024 AT 10:00 AM^{CT}

73.61 TAXABLE ACRES ± • 1 TRACT

The Roger & Eileen Moore farm is located on the south side of Hwy 19, approximately 1/4 miles southwest of the Hwy 19 and US 61 intersection (southwest of New London, MO). The land is further described as being in Sections 1 & 12, T55N-R5W, & Section 6, T55N-R4W, Spencer Township, Ralls County, Missouri.

The real estate contains 73.61 taxable acres and will be sold in 1 tract. The farm represents highly productive tillable cropland, with great potential for commercial development.

ROGER MOORE FARM

Closing & Title Work: Accurate Land Title Co
218 Broadway, Hannibal, MO 63401 | (573) 221-1002
Auction Managers: Steve Zeiger (573) 231-9802 & Dan Sullivan (319) 795-1833

BigIron SULLIVAN AUCTIONEERS
(844) 847-2161 | www.SullivanAuctioneers.com

TIMED ONLINE ONLY



SPRING FARM MACHINERY AUCTION

LOTS START ENDING THURSDAY MARCH 21ST AT 10 AM

LARGER EQUIPMENT CAN BE VIEWED DAILY 9AM - 6PM
AT THE CLARK COUNTY FAIRGROUNDS, EAST EDGE OF KAHOKA, MO
AUCTION STAFF ONSITE MARCH 18TH-20TH 9AM - 4PM FOR BUILDING PREVIEW & KEYS FOR EQUIPMENT

TRACTORS



TRUCKS & TRAILERS



HAY EQUIPMENT



PLANTING & TILLAGE EQUIPMENT



LAWN EQUIP



RTVS



COMBINES



CAMPERS



CONSTRUCTION EQUIPMENT



View Our Website for Additional Details!
www.mcafeeauctionservice.com

NO LOADING OUT DAY OF SALE!
LOAD OUT DATES & TIMES AVAILABLE ONLINE!

Monty McAfee: 660-341-7412

Office: 660-727-3796

HAVE A SMART PHONE OR TABLET?

You can view current and past Nemo Trader issues online at www.nemotrader.net

One ad reaches 21 Counties in Missouri, Iowa & Illinois with 11,000 circulation

Call Today to place an ad!



660-665-8500

705 East LaHarpe Street, Ste. F
Kirksville, MO 63501

NEMO
Trader

ATTENTION LAND OWNERS!!

Buyer of standing timber
Paying Cash Upfront!

- Buy/Cut Logs
- Certified
- Bonded
- Insured



WE HAVE SEMI LOADS OF FINE WOOD LOGS FOR SALE

Tri State Timber L.L.C.

353 1/2 Grand Ave. • Memphis, Mo 63555
660-341-4921 • 660-465-2975

Central Metals Recycling LLC



Buyers of Ferrous and Non-Ferrous Metals

We Pay More \$\$\$, Call For Your Best Pricing Today!!

11923 Hwy. 54 Mexico, MO | 1601 N. 30th Quincy, IL | 1175 Hwy. 96 Hamilton, IL
573-581-0336 | 217-214-7649 | 217-847-3191

Chop Local Buy Local Enjoy Local

CALL TODAY!
660-665-8500
sales@nemotrader.net

NEMO
Trader
Daily Express



SPRING SALE
UP TO 25% OFF

Miller Ag
CAR PORTS & BUILDINGS

6' to 100' wide clear span • Up to 25' tall walls
WWW.MILLERAG.NET
ARBELA, MO • 660-341-0929 • JOE MILLER

GRAIN BINS SUPPLY
"The Grain Bin People" **GBS**

If you haven't called us, you haven't finished your homework!

Cairo, MO
(660) 263-6700

www.grainbinsupply.com

22nd Annual Production Sale
Brinkley Angus Ranch Saturday • 1 PM (CDT)
March 16, 2024
Green City Livestock Market • Green City, Missouri

Selling 145 Registered Angus Bulls and 15 Registered Angus Bred Heifers

103 Age-Advantaged Bulls with an avg \$C of +315, an avg Marbling score EPD of +1.09 and an avg YW EPD of +143 • 42 Spring Yearling Bulls with an avg \$C of +316, an avg Marbling score EPD of +1.09 and an avg YW EPD of +138 • 14 Bred Fall Yearling Heifers with an avg \$C of +329, an avg Marbling score EPD of +1.22 and an avg YW EPD of +142 • 1 Spring Yearling half interest donor prospect by Basin Jameson from Basin Blackcap Lady 0172 with amazing EPDs

20708163

LOT 28

• B A R Dynamic 2797-0403 - B A R Dynamic x Connealy Armory - Number 5 for WW EPD and YW EPD, Number 7 for CED, Number 9 for adj URE and Number 10 for \$W, dam balance avg birth ratio of 2 at 93, avg weaning ratio of 2 at 121, avg yearling ratio of 2 at 113 and avg progeny URE ratio of 2 at 105.

Brinkley Angus Ranch

53921 Hwy 6 • Milan, MO 63556
Jim • 660-265-5565
brinkleyangus@nemr.net
brinkleyangusranch.com

Find us on Facebook

20708257

LOT 47

• B A R Dynamic 2756-0403 - B A R Dynamic x Connealy Upscale - classic of the kind and power of sons of his \$140,000 sire that topped the 2021 sale and produced as a the first calf from a paternal sister to the 2023 top-seller Brinkley Prosperity by the B A R high maternal brother to Confidence Plus.

FLO RITE
GUTTERING

660-988-1163

- Leafguard Options
- Stainless Steel Fasteners

Stan Schrock • Greentop, MO

WE SELL LAND



WHITETAIL PROPERTIES REAL ESTATE

HUNTING | RANCH | FARM | TIMBER



A DIVISION/TRADE NAME OF WHITETAIL PROPERTIES REAL ESTATE

2023 SOLDS

Adair Co, Missouri 70 AC±
Adair Co, Missouri 173 AC±
Clark Co, Missouri 3.5 AC±
Clark Co, Missouri 12 AC±
Clark Co, Missouri 22 AC±
Clark Co, Missouri 36.5 AC±
Clark Co, Missouri 40.1 AC±
Clark Co, Missouri 59.8 AC±
Clark Co, Missouri 72 AC±
Clark Co, Missouri 126 AC±
Clark Co, Missouri 153 AC±
Clark Co, Missouri 225 AC±
Decatur Co, Iowa 70 AC±

Gentry Co, Missouri 117 AC±
Harrison Co, Missouri 479.2 AC±
Knox Co, Missouri 78 AC±
Linn Co, Missouri 37 AC±
Linn Co, Missouri 121 AC±
Mercer Co, Missouri 0 AC±
Mercer Co, Missouri 3.2 AC±
Mercer Co, Missouri 8.5 AC±
Mercer Co, Missouri 30 AC±
Mercer Co, Missouri 36 AC±
Mercer Co, Missouri 40 AC±
Mercer Co, Missouri 40 AC±
Mercer Co, Missouri 53.857 AC±

Mercer Co, Missouri 71 AC±
Mercer Co, Missouri 81 AC±
Mercer Co, Missouri 94.686 AC±
Mercer Co, Missouri 110.7 AC±
Mercer Co, Missouri 120 AC±
Mercer Co, Missouri 141 AC±
Mercer Co, Missouri 197 AC±
Mercer Co, Missouri 334 AC±
Mercer Co, Missouri 420 AC±
Mercer Co, Missouri 660 AC±
Putnam Co, Missouri 15 AC±
Putnam Co, Missouri 21 AC±
Putnam Co, Missouri 79 AC±

Putnam Co, Missouri 100 AC±
Putnam Co, Missouri 137.3 AC±
Putnam Co, Missouri 738 AC±
Schuyler Co, Missouri 37 AC±
Schuyler Co, Missouri 80 AC±
Schuyler Co, Missouri 116 AC±
Schuyler Co, Missouri 563.8 AC±
Sullivan Co, Missouri 80.3 AC±
Sullivan Co, Missouri 160 AC±
Sullivan Co, Missouri 160 AC±
Sullivan Co, Missouri 187 AC±
Sullivan Co, Missouri 485 AC±

AUCTIONS

Mercer Co, Missouri 3.2 AC±
Mercer Co, Missouri 40 AC±
Mercer Co, Missouri 120 AC±

Mercer Co, Missouri 141 AC±
Mercer Co, Missouri 197 AC±
Mercer Co, Missouri 334 AC±

Mercer Co, Missouri 420 AC±
Schuyler Co, Missouri 563.8 AC±
Schuyler Co, Missouri 574.9 AC±

CONTACT YOUR LOCAL LAND SPECIALISTS TO LEARN MORE ABOUT BUYING & SELLING HUNTING, FARM, RANCH & TIMBERLAND.



JEFF PROPST
NORTHEAST & NORTH CENTRAL MISSOURI LAND SPECIALIST
636.209.0362



STEPHEN STOCKMAN
NORTHEAST MISSOURI LAND SPECIALIST
660.953.1242

WHITETAILPROPERTIES.COM

Whitetail Properties Real Estate, LLC DBA Whitetail Properties, DBA Whitetail Properties Real Estate. In the States of Nebraska & North Dakota DBA Whitetail Trophy Properties Real Estate LLC. Licensed in CO, MN, ND, SD, TN & WI - Jeffrey Evans, Broker. Licensed in FL, KS & MO - Jefferson Kirk Gilbert, Broker. Licensed in TX - Joey Bellington, Broker. Licensed in IN - Dan Bates, Broker. Licensed in AL, GA, LA, & MS - Sybil Stewart, Broker. Licensed in TN & MS - Josh Monk, Broker. Licensed in AR - Anthony Chrisco, Broker. Licensed in NC, SC, VA - Chip Camp, Broker. Licensed in IA, NC - Richard F. Baugh, Broker. Licensed in MI - Edmund Joel Nogaski, Broker. Licensed in IL, MD, WV - Debbie S. Laux, Broker. Licensed in ID, MT, OR, UT, WA, WY & NV - Aaron Milliken, Broker. Licensed in NY - John Myers, Real Estate Broker. Licensed in OK - Dean Anderson, Broker. Licensed in KY, ME, NH & NM - Derek Fisher, Broker. Licensed in OH - Jeremy Schaefer, Principal Broker. Licensed in NE & SD - Jason Schendt, Broker. Licensed in MS - Chipper Gibbs, Broker. Licensed in PA - Jack Brown, Broker.





SCOTTY'S AUCTION SERVICE

573-356-4405

Auctioneer: Scott Kuntz

SEE MORE PHOTOS ON SCOTTY'S WEBSITE

WWW.SCOTTYSAUCTIONSERVICE.COM

Adorable Log Home on 4 acres Real Estate Auction

Thursday, March 14, 2024 at 5:00 p.m.

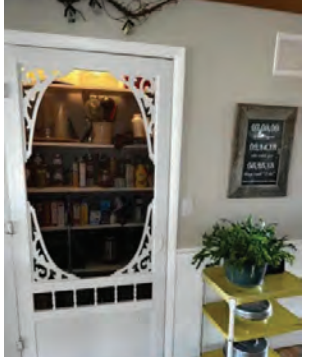
Allen and Myra Conover

15011 State Highway K, Greentop, Missouri.

Direction: From US Highway 63 at Greentop, travel West on East 6th Street, continue onto State Highway K/West 5th Street for approximately 3.3 miles to the auction location. Watch for signs.

REAL ESTATE: We will be selling at auction this two-bedroom, one and a half bath ranch style log home on four acres more or less. The home has an open concept floor plan, a kitchen with like-new appliances, a pantry and plenty of cabinet space, a sunk-in living room with in-floor heat and a woodstove, a mudroom with a half bath and more storage and an attached, heated 3 car garage with several cabinets and storage space. The home has 2"x6" well insulated walls, a Woodmaster boiler outdoor wood furnace, a four-year-old gas furnace and a Generac 7000 generator. The property also has a 20' x 108' building with separate electric meter, propane heat, washer and electric dryer hookup, window air conditioning, a French drain and a turn-

key dog kennel with dog runs that can house 25 adult dogs. There is a 20' x 28' shop area included on the east end of the dog kennel. There is also a 27' x 32' barn. This property has a fruit tree orchard and offers amazing views of the surrounding countryside. **The home will be open for viewing beginning at 2 p.m. the day of the auction or you can call Scott at 573-356-4405 to schedule your personal showing.**



7.8 acres m/l Hobby Farm & Personal Property Auction

Saturday, March 23, 2024 at 10 a.m.

Carolyn Barron Trust

33796 Mineral Place, Macon, Missouri.

Direction: From US Highway 36 approximately 2.6 miles east of Macon, travel North on Lariat Street approximately 0.8 miles, turn right on Mineral Place to the auction location. Watch for signs.

REAL ESTATE: We will be selling this quaint hobby farm that includes a three bedroom, one bath farmhouse, a 20' x 30' metal building and a 10' x 25' metal building all on 7.8 acres more or less of gently rolling ground. With a quiet country setting and beautiful views, this would make a perfect setting for your family to grow and thrive. The home will be open on Friday, March 22, from 9 a.m. until noon or from 8 a.m. throughout the auction for viewing. You may also call Scott at 573-356-4405 to schedule your personal showing.

HOUSEHOLD ITEMS: electric fireplace, several metal kitchen cabinets; pots and pans; dishware; electric fireplace with bar and record player; ice cream maker

Antiques & Collectibles: concrete jockey statue; primitive dry sink; large chicken collection; antique bird cage; brass figurine collection; retro Western scene lamp; speck maple glass front

display case; lots of various glassware; miscellaneous figurines; copper boiler with lid; antique self-standing medicine cabinet; old kerosene lamps; antique kitchen cupboard with flour sifter; antique pine cabinet; antique glass front cabinet; crock jugs; Cape Cod glassware; oak wash stand with mirror; crock chicken waterer; old Judge jar; antique screw out house jack; antique chifforobe; antique metal cabinet with paper towel holder; old children's story books; antique chest of drawers; pine glass front display cabinet; child's chest of drawers; antique side chair; various pictures and prints; metal antique tumbled bed; old steamer trunk; 1969 Circus Parade calendar, Kirksville, MO; several advertising silhouettes; Singer sewing machine; antique metal full size bed; Victrola cabinet with no player; antique oak square table; old cast iron stove; glass ice bucket; vintage Christmas decor; old pedal tractor, needs work; old pedal car; primitive cabinet; Griswald #3 skillet; purple carnival glass; Tonka toys; glass milk jugs and bottles; antique hand crank telephone; Avon steins; Smurf glass collection; handmade Western cooler; iron wheels; green Depression glass; GEM well pump; various iron wire gates; old tricycles; antique flower chair; square and round galvanized tubs; antique step

ladder; antique metal lawn chairs

TOOLS & OUTDOOR EQUIPMENT: miscellaneous tools; lawn cart; walk behind weed eater; long handle tools; Craftsman front tine tiller; Stihl straight shaft weed eater; pancake air compressor; new Black & Decker weed eater; 2 kerosene heaters; purple martin house; picnic table

LIVESTOCK EQUIPMENT: fence posts; metal fencing; lawn dethatcher; partial rolls of woven wire; miscellaneous feeders; Quonset hut; portable chicken coop; pony cart; goat stand

There will be many more items at this auction too numerous to mention.



62 Acre Hunting/Recreation Real Estate, Household & Tool Auction

Saturday, March 30, 2024 at 10:00 a.m.

Esther & the Late Jimmy D. Taylor Jr.

14643 Flagpole Avenue, Elmer, Missouri.

Direction: From US Highway 63 North of Atlanta, travel West on State Highway J for approximately 10.4 miles, turn right on South Gemmel Street/ East Missouri Avenue, turn right on South Santa Fe Street, continue onto Festival Avenue, turn right on Flagpole Avenue to the auction location. Watch for signs.

REAL ESTATE: We will be selling at auction this 2006 Redman Homes Manufactured 52' x 27' home on a block foundation with a front deck with a stocked pond on 62 acres more or less. The home has 3 bedrooms, 2 bathrooms, plenty of cabinet space, updated appliances and a master bedroom with a garden tub. It has gas and electric heat. The property has a 31' x 32' shop with a concrete floor, 220 amp electrical and 9' x 8' garage doors. There is also a 12' x 16' garage, 18' x 21' shed with a concrete floor and a 41' x 7' box trailer. The property offers amazing hunting as it backs up to 1,300 acres of Missouri Department of Conservation ground. The home will be open Friday, March 29, from 9 a.m. to 2 p.m. for viewing or beginning at 8 a.m. on auction day. To schedule your personal showing, please contact Scott at 573-356-4405.

BUILDING: To be sold separately after the real estate sells, a 40' x 14' metal shed with 9' x 7' garage doors and

walk through door. Must be removed by purchaser within 30 days of the auction.

VEHICLES, BOATS & TRAILERS: 2006 Chevrolet W4500 6.0 gas 16' box truck; Suzuki Samari, 5 speed; various wood hauling trailers; 12 foot Jon boat; Alumacraft 15 foot boat with 15 hp Evinrude motor and trailer; Seaking 11 foot semi-V boat; square body Chevy trucks; various car parts; Yamaha ATV

TRACTORS & EQUIPMENT: Farmall 300 3 point, old restoration; Kewanee 3 point 8 foot blade; Case 530 open station backhoe; Speedco 22 ton gas log splitter; homemade gas log splitter; Side Winder 6RY6 brush cutter; 3 point post hole digger; 2 augers; fuel barrel on stand



hydraulic hoses and cylinders; Dobbins spray tank; 25 gallon poly tank; International push mower; Cub Cadet 125, painted; cherry picker; Sears horizontal double tank air compressor; variety of hand tools; sockets; wrenches; miscellaneous tires; Onan electric start portable generator; Cub Cadet 1250 hydrostat; Cub Cadet 127 hydrostat; Snap On tool chest; Craftsman tool chests; paint shaker; band saw;

HOUSEHOLD ITEMS: Amana chest type deep freezer; Roper stand up freezer; Roper washer and dryer; milk can; ice tongs; roll top desk; oak end tables; leather LaZboy recliner; chest of drawers; queen size bed frame; oak dining table; Roper refrigerator; curio cabinet

There will be many more items at this auction too numerous to mention.



Shelbina Investment Real Estate & Personal Property Auction

Thursday, April 4, 2024 at 4:00 p.m.

Estate of Lloyd & Dorothy Bowen

408 Rawlings Street, Shelbina, Missouri

Direction: From State Highway 15 in Shelbina, travel West on Beech Street for approximately 0.2 miles then turn right on Rawlings Street to the auction location. Watch for signs.

REAL ESTATE: We will be selling this two bedroom, 1 bath, bungalow home on 0.94 acre more or less with original woodwork with highway frontage. The home is solid and well built and includes a 23' x 40' garage. The property will be open from 9 a.m. until auction time the day of the auction or you may call Scott at 573-356-4405 to schedule your personal showing.

HOUSEHOLD ITEMS: oak lighted curio cabinet; oak entertainment center; 4 1/2" x 2" 10" decorative wall mirror; stainless roaster pan

ANTIQUES & COLLECTIBLES: primitive kitchen cabinets; glass front

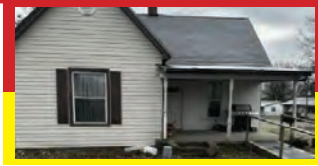
primitive cabinet; Western Flyer bicycle; Westpoint bicycle; antique steamer trunk; antique Pepsi cooler; some of the very first Avon collectibles, large collection was started in the 1970's; seashell collection; old alarm clocks; macrame baskets; antique tractor seats

TOOLS & OUTDOOR EQUIPMENT: horizontal air compressor; various long handle tools; small air pump; miscellaneous hand



tools

There are many items that have been stored away and we are unable to picture or list them at this time. You never know what we will find when we are setting up this auction!



1011 South Maple Avenue, Salisbury, Missouri.

Direction: From US Highway 24, travel South on North Weber Street for approximately 0.9 miles then turn West on East 9th Street for approximately 0.3 miles then left on South Maple Avenue to the auction location. Watch for signs.

REAL ESTATE: We will be selling this one bedroom, one bath home that is conveniently located across from the Jr/Sr High School in Salisbury, Missouri. The home has a living room, dining room and kitchen with some of the original woodwork still intact and a basement. There is a natural gas furnace

Salisbury Real Estate & Personal Property Auction

Friday, April 5, 2024 at 4:00 p.m.

Betty Mundy

and water heater. The home will be open beginning at 10:00 a.m. the day of the auction for viewing. To schedule your personal showing, please contact Scott at 573-356-4405.

HOUSEHOLD ITEMS: Hamilton Beach slow cooker; new turkey fryer; Wellsaw Model 400 meat saw; metal baker's rack; Haier small chest type deep freezer; new Hamilton Beach mixer; Kenmore washing machine; Amana electric clothes dryer; portable GE dishwasher; oak dining room table with 6 chairs; meat processing set

TOOLS & OUTDOOR EQUIPMENT: new Predator 4,000 peak watts generator;

Toro Vortex push mower; miscellaneous fishing gear; portable pet pen; Porter Cable angle grinder; Dewalt electric drill; various hand tools; new loading ramps (72" x 9" steel); large dog kennel; Craftsman gas leaf blower; Snap On bolt grip puller set; deep well impact socket set;

ANTIQUES & COLLECTIBLES: various cast iron skillets (no markings); Sanitary grocery scale; 5' Jimmy Santa Claus; Wagner cast iron Dutch oven; metal Marlboro sign

There will be more items at this auction too numerous to list.



32822 US Highway 63 South, Macon, Missouri.

Direction: Follow US Highway 63 South of Macon approximately 0.7 miles to the auction location. Watch for sign.

REAL ESTATE: Providing 13 acres more or less, this property has been used as an event venue and a landscape/nursery business in the past. The 100' x 60' metal building has 2 bathrooms with stalls, a breakroom/kitchen, an upstairs storage area, baseboard electric heat with ceiling heaters, 3 air conditioning units and 6" insulated walls and ceiling. The building has a glass entry door off the front porch, and a 12' x 10' garage door and double steel entry door in the rear. The building was previously one large, open floor plan but walls for a 41' x 47' office/showroom area and a 57' x 57' garage area have been added. Those walls can be removed to revert to the previous floor plan, if the

Claypoole Nursery Retirement Auction;

Saturday, April 6, 2024 at 10:00 a.m.

Claypoole Nursery

purchaser chooses. Also included is a 16' x 24' garage with a walk-through door and a 8' x 8' garage door and a 10' x 20' storage shed with windows. The property sits just outside the city limits of Macon and has rural water, Macon Electric Coop electricity and a lagoon. The building will be open Monday, April 1 and Tuesday, April 2 for viewing or you may call Scott at 573-356-4405 to schedule your personal showing.

BUILDINGS TO BE SOLD IMMEDIATELY AFTER REAL ESTATE: 12' x 16' portable building with 8' x 8' roll up door; framework for 2 greenhouses, one 22' x 64' (currently assembled) and one approximately the same size (not assembled)

VEHICLES: 2005 Ford 550, 150,xxx miles; 2006 Chevy 2500 4x4, 3/4 ton 8 cylinder, 51 hp, 189,xxx miles; 2007 Chevy 3500 1 ton; 2008 Chevy Silverado 1500, 4x2; 2009 Toyota Prius; 1980 Corvette with 383 engine, 98,xxx

miles; and more.

TRAILERS: 2015 Maxwell 16' Calico stock trailer with center dividing gate; 1999 PJ 18' deck, 2' dovetail with fold down ramps and two 7,000 pound axles; 10' x 76" two wheel trailer; 2005 PJTM 24' deck over trailer; and more.

EQUIPMENT: LAWN & GARDEN EQUIPMENT: TOOLS & SHOP EQUIPMENT: ANTIQUES & COLLECTIBLES: LANDSCAPING MATERIALS: MISCELLANEOUS ITEMS:

There will be many more items at this auction too numerous to list.



35459 Mahogany Street, Macon, Missouri.

Direction: From US Highway 63, follow State Highway YY East approximately 6.3 miles, turn left on Mahogany Street to the auction location. Watch for signs the day of the auction.

VEHICLE: 2009 Chevy Impala LT with 57,xxx miles, a very well maintained, garaged car

HOUSEHOLD ITEMS: assorted glassware; antique right-handed ball gloves; antique toaster; True Cold deep freezer, runs and operates; towels, linens and blankets; bookcase; Samsung dorm size refrigerator; child's chest of drawers; 3 sets of chest of drawers; dresser with mirror; two wheelchairs; single pedestal seat; blonde dresser with mirror; 2 infrared quartz heaters; GE washing machine; Hotpoint gas dryer; GE 4 burner cookstove/oven; curved front curio cabinet; oak dining table with 6 chairs; Admiral side by side refrigerator; Crosley upright frost free freezer; two electric lift chairs

Sandner Personal Property Auction

Thursday, April 11, 2024 at 4:00 p.m.

Albert and Joanne Sandner Trust

Antiques & Collectibles: crock jugs; #4 crock - Monmouth Pottery Co., Monmouth, IL; antique "Cola Cooler"; salesman sample cast iron stove; pair of buck saws; vintage levels; draw knives; older carpentry tools; Emerson Electric metal blade fan; lard press; antique bottle capper; Blackhawk hand corn sheller; red swirl enamelware; retro canister set; pocket knife collection; aluminum salt & pepper collections; ceramic dog, pig and Sambo; metal chicken art; various costume jewelry; Sears Kenmore sewing machine, runs; antique rocking chair; antique Christmas decorations; Vaseline dish; original IH memorabilia; various hardback books including the history of the John Deere tractor; Griswold cast iron ashtray skillet; large variety of foot traps; various oil lamps; miscellaneous 45 records; double wash tub; single wash tub; Elgin men's pocket watch; Westlock pocket watch; deer scene pocket watch; various antlers and mounts; several pieces of cast iron cookware including Griswold; rooster match holder; Pyrex mixing bowls;

Glass Bake, Fire King and Corning bakeware; Fire King mixing bowls; antique canister set; Fire King coffee mugs and bowls; antique bakeware; antique cookie cutters; large variety of older kitchenware; child's metal TV trays; Looney Toon glasses; older coffee pots; pink depression glass; GEM well pump

TOOLS & OUTDOOR ITEMS: Troy Bilt 46" riding lawn mower; Poulan Pro riding lawn mower; miscellaneous hand tools; house jacks; Craftsman cutting torch outfit; Rockworth portable air compressor; Clear Drive front tine tiller; Powercraft front tine tiller; long handle tools; Craftsman tool boxes; 4 water pumps, 1 gas powered; Lincoln 225 welder; 2 wheel pull-type lawn cart; wheel barrow

SPORTING ARMS: Marlin 37 .22 pump rifle; Remington 1100 shotgun with extra chokes

There will be more items at this auction too numerous to list.

Shelby County 68.5 Acres m/l, House with 3 acres m/l, Office/Shop in Clarence & Personal Property Auction;

Saturday, April 13, 2024 at 10:00 a.m.

The Late John C. Janes

3767 Shelby 201, Clarence, Missouri.

Direction: From US Highway 36, travel North on Highway 151 for approximately 4.1 miles, turn West on Shelby 202 for approximately 1.4 miles then turn right on Shelby 201 to the auction location. Watch for signs.

REAL ESTATE: We will be selling at auction in three separate tracts the following real estate:

3767 SHELBY 201, CLARENCE, MO: 3 +/- acres with unfinished shed/home with an open floor plan approximately 30'x64' with endless possibilities with your finishing touches. It is heated and cooled with a Mitsubishi split unit and includes a shop that is approximately 32' x 48'.

68.5 +/- ACRES FARM GROUND, SHELBY COUNTY, MO: The acreage adjoins the above property and is approximately 80% tillable, to be sold by the acre.

100 GRAND STREET, CLARENCE, MO: This property includes a 30' x 64' garage with 40' x 40' office and shop. This is prime property for a workshop, handy man shop or for an entrepreneur to dream of their own possibilities.

The home will be open Friday, April 12, from 9 a.m. to 2 p.m. or from 8 a.m. and throughout the auction for viewing. If you would like to schedule a personal showing, please contact Scott at 573-356-4405.

VEHICLES: 2004 Chevy 2WD 45,xxx mi; 1998 Chevy Monte Carlo 140,xxx mi; 2005 Chevy pickup Z-71 parts truck; 1961 Chevy tandem axle grain truck; 1973 Chevy C60 tandem axle truck w/ grain bed; 1980 GMC White fire truck, Clarence Rural Fire Dept; 2000 Chevy pickup 2WD unknown condition; 16- tandem axle car trailer with rear gate

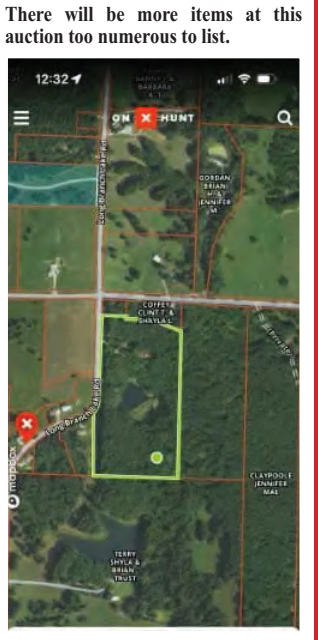
TRACTORS & OUTDOOR EQUIPMENT: Massey Ferguson 1100 tractor with front weights; Simplicity riding lawn mower; John Deere GT235 riding mower; Massey Ferguson 1655 garden tractor; Yard Man riding lawn mower; large shop vise; Whitaker

Automotive cabinet; Craftsman tool chest; 21 gallon central pneumatic air compressor; complete 69 hemi with new crank; U.S. General tool box with misc wrenches; King 20 gallon parts washer; metal shelving; 2 Huskey height adjustable work tables; Craftsman tool cabinet; Craftsman 3 tire tool box; Snap On electric power washer 2,000 psi new torch cart; self standing display cabinet; US General tool chest; floor jack; Werner fiberglass extension ladder; Werner fiberglass step ladder; Victor cutting torch set up; Forney welder (older); live trap; 110 volt air compressor; Sears commercial 60/100 amp battery charger; Bosch on demand water heater; various 18 volt Ryobi battery operated tools; various new & used tires; automotive wire; Craftsman tool chest; MAC deep well sockets; Chicago Electric metal cut off saw; large variety of various automotive parts & lubricants; storage cabinets; Quincy 80 gallon 5 hp air compressor; shop vise; work bench; parts washer; Craftsman tool chest; various air tools; used oil reservoir; Snap On tool chest; variety of Snap On tools; Guardian power drill press (floor model); Snap On torque wrenches; Blue Point air tools; Snap On air tools; Snap On sockets & wrenches; Craftsman tools & wrenches; drill press vise; Snap On impact sockets; Snap On line wrenches; Snap On drill bits; various bulk bins; several automotive display cabinets; cherry picker; Murray Riding lawn mower; Snap on YA205 mig welder; Unite UT1202 tire changer; Boda tire balancer; MTD riding mower; 1 1/4 ton floor jack; Dewalt truck tool box; Central Pneumatic sand blaster cabinet; baker's scaffolding; car dollies; engine stand

wash tub; antique feed scales; Lite beer neon sign; Pepsi signs; Feed advertising and thermometer; Moorman's feed coat hook; LC Smith double barrel 12 gauge shotgun; Stevens single shot .22 bolt action rifle; Bayard Arms Belgium 12 gauge double barrel shotgun; Savage 245-E .410 and .22 Long rifle 3" chambered; Western Auto Revelation Model 120 .22 Long rifle; Crossman 2100 classic .177 caliber pellet air rifle; Daisy #102 model 36 BB gun

HOUSEHOLD ITEMS: glider swing; Sylvania flatscreen TV; various TV antennas; LaZBoy recliner; 2 couches (1 has queen size hide-a-bed); chest of drawers; computer desk; round oak kitchen table with 4 chairs; Ruud 50 gallon electric water heater; Roper washer & dryer; Sound Design Hifi stereo; miscellaneous computer equipment; Magic Chef dorm refrigerator; metal office desk; Visio 24" flatscreen tv new in box; miscellaneous bedsteads & bedding; miscellaneous kitchen supplies

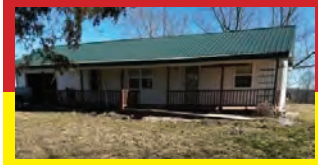
There will be more items at this auction too numerous to list.



Country Home Auction on 14.37 peaceful acres m/l

Thursday, April 18, 2024 at 4:00 p.m.

Bud & the Late Marilyn Richards



34676 Nevada Avenue, Anabel, Missouri.

Direction: From US Highway 63 South of Macon, travel East on State Highway PP for approximately 6.5 miles, turn South on Nevada Avenue for approximately 1.8 miles to the auction location. Watch for signs.

REAL ESTATE: We will be selling at auction this three bedroom, two bath ranch style home on 14.37 acres more or less. The home has an open floor plan with a main suite on a crawl space and includes an attached one car garage. The property also includes a metal shop with electricity and two garage doors, two stocked ponds and

pecan trees. This home is ideal for those wanting their own little slice of heaven and would make the perfect hobby farm or just a great place to kick back and relax in the country. The home will be open beginning at 1:00 p.m. the day of the auction or contact Scott at 573-356-4405 to schedule your personal showing.