

NEMO Trader

THE NEMO TRADER

PO BOX 809 • KIRKSVILLE, MO 63501 • PHONE 660-665-8500

Web Site: nemotrader.net • Email: sales@nemotrader.net

FREE

A WEEKLY ADVERTISER SERVING ALL OF NORTHEAST MISSOURI AND THE SURROUNDING AREA



exp REALTY

ELIZABETH GREGORY
Realtor

WWW.MISSOURIHOMEANDEARM.COM

Innovative Real Estate for YOU!

660.621.2136



Sparks Auction

204 E Reid St, Edina, MO 68537

Saturday, April 6th, 2024 @ 9 am

WWW.SPARKSAUCTIONSERVICE.COM

Commission Rates

Machinery/Vehicles:

- Under \$1,000 = 15%
- \$1,001 to \$5,000 = 10%
- \$5,001 to \$25,000 = 6%
- \$25,001 and Over = 3%

Firearms = 10%

Ammo = 15%

Machinery/Gun Auction

Bring In Your Machinery, Tractors, Side by Sides, ATVs, Combines, Firearms, Ammo, Vehicles, Tools, Etc.

If you have it and want it SOLD, Bring it in!!!

Bring Items ANYTIME!

FIRST COME FIRST TO SELL!

Call Today to Consign.

Jesse Sparks 573-406-8787



Annual Production Sale

Saturday, March 16, 2024, 5:30 (CT)

Kirkville Livestock Market

Kirkville, Missouri

100 Gelbvieh, Balancer & Angus Lots Sell

60 Gelbvieh, Balancer and Angus Bulls

40 Gelbvieh and Balancer Fall Bred and Open Heifers

All bulls and females sell with GE EPDs

50% of bulls selling qualify for Show-Me-Select

First breeding season guarantee - details in sale book

All bred heifers pregnancy tested and due to calve fall of 2024

Online Sale Book and Videos Start Here



The sale will be broadcast live on the internet.

DVAuction
Producing Real Time Auctions

Ginger Ertel 660-234-2654

26694 Anchor Way Greentop, MO 63546

gerTEL@ertelcattle.com www.ertelcattle.com



ERTL 322L Homo Black Homo Polled 77.3% GV Bull
Sire: DCH Triple K Husker G413



ERTL 384L Homo Black Homo Polled 65% Balancer Bull
Sire: DBRG Mr Desperado 0085H



ERTL 388L Homo Black Homo Polled 44% Balancer Bull
Sire: ERTL 106J Mr Warrior

WE SELL LAND



WHITETAIL PROPERTIES REAL ESTATE

HUNTING | RANCH | FARM | TIMBER



A DIVISION/TRADE NAME OF
WHITETAIL PROPERTIES REAL ESTATE

2023 SOLDS

Adair Co, Missouri 70 AC±

Adair Co, Missouri 173 AC±

Clark Co, Missouri 3.5 AC±

Clark Co, Missouri 12 AC±

Clark Co, Missouri 22 AC±

Clark Co, Missouri 36.5 AC±

Clark Co, Missouri 40.1 AC±

Clark Co, Missouri 59.8 AC±

Clark Co, Missouri 72 AC±

Clark Co, Missouri 126 AC±

Clark Co, Missouri 153 AC±

Clark Co, Missouri 225 AC±

Decatur Co, Iowa 70 AC±

Gentry Co, Missouri 117 AC±

Harrison Co, Missouri 479.2 AC±

Knox Co, Missouri 78 AC±

Linn Co, Missouri 37 AC±

Linn Co, Missouri 121 AC±

Mercer Co, Missouri 0 AC±

Mercer Co, Missouri 3.2 AC±

Mercer Co, Missouri 8.5 AC±

Mercer Co, Missouri 30 AC±

Mercer Co, Missouri 36 AC±

Mercer Co, Missouri 40 AC±

Mercer Co, Missouri 40 AC±

Mercer Co, Missouri 53.857 AC±

Mercer Co, Missouri 71 AC±

Mercer Co, Missouri 81 AC±

Mercer Co, Missouri 94.686 AC±

Mercer Co, Missouri 110.7 AC±

Mercer Co, Missouri 120 AC±

Mercer Co, Missouri 141 AC±

Mercer Co, Missouri 197 AC±

Mercer Co, Missouri 334 AC±

Mercer Co, Missouri 420 AC±

Mercer Co, Missouri 660 AC±

Putnam Co, Missouri 15 AC±

Putnam Co, Missouri 21 AC±

Putnam Co, Missouri 79 AC±

Putnam Co, Missouri 100 AC±

Putnam Co, Missouri 137.3 AC±

Putnam Co, Missouri 738 AC±

Schuyler Co, Missouri 37 AC±

Schuyler Co, Missouri 80 AC±

Schuyler Co, Missouri 116 AC±

Schuyler Co, Missouri 563.8 AC±

Sullivan Co, Missouri 80.3 AC±

Sullivan Co, Missouri 160 AC±

Sullivan Co, Missouri 160 AC±

Sullivan Co, Missouri 187 AC±

Sullivan Co, Missouri 485 AC±

AUCTIONS

Mercer Co, Missouri 3.2 AC±

Mercer Co, Missouri 40 AC±

Mercer Co, Missouri 120 AC±

Mercer Co, Missouri 141 AC±

Mercer Co, Missouri 197 AC±

Mercer Co, Missouri 334 AC±


Mercer Co, Missouri 420 AC±

Schuyler Co, Missouri 563.8 AC±

Schuyler Co, Missouri 574.9 AC±

CONTACT YOUR LOCAL LAND SPECIALISTS

TO LEARN MORE ABOUT BUYING & SELLING HUNTING, FARM, RANCH & TIMBERLAND.



JEFF PROPST

NORTHEAST & NORTH CENTRAL MISSOURI LAND SPECIALIST

636.209.0362



STEPHEN STOCKMAN

NORTHEAST MISSOURI LAND SPECIALIST

660.953.1242

AGRI-BUSINESS

Equipment & Supplies

1973 International 966, 91 hp, low hours on engine, 18.4x34, dual hydraulics, 3 point, 540/1000 pto, flat tops, new batteries with IH #2250 loader quick attach bucket. Straight and original. Starts easy, runs good. \$11,700.00. Bale fork available. 217-257-1385.

Planter parts-JD 7000 and Kinze 2000, row units, transmissions, boxes, lids and others. Also 20.8 x 42 Rear tire, 20%. 4-180 white tractor. 1155 MF would possibly part. 660-247-0613.

Hay/Feed/Seed

600 wire tied small square bales straw. Tight solid bales. Stored inside. Call 660-216-0618 Knox City area.

Hay/Feed/Seed

400 square bales wire tied grass hay. Call 660-342-7685. Knox City area.

100 big bales of hay, shedded, \$120.00, North of Downing, Mo. 217-440-5873.

Excellent quality Alfalfa hay for sale, big square bales. 3rd and 4th cutting. Delivery available. 660-956-3420.

Wanted to buy hay. 641-895-3400.

Livestock

Home grown Berkshire cross butcher hogs and Angus beef. Live \$1.00/pound, processing \$2.00/pound. Beef \$1.80/pound, processing \$1.75/pound. Whole/halves, delivered. 800-807-9612.

MERCHANDISE

Antiques & Collectibles

Stihl MS362 chainsaw, 20" bar, used very little, \$375.00. Older Homelite Super XL102, 18" bar, runs good, \$250.00. Stihl new saw box for 300 series saws, \$40.00. 2 vintage hanging oil lames, decorative red metal frames with glass, \$30.00 for pair. LaPlata. 660-342-5757.

Lawn & Garden

Stihl MS362 chainsaw, 20" bar, used very little, \$375.00. Older Homelite Super XL102, 18" bar, runs good, \$250.00. Stihl new saw box for 300 series saws, \$40.00. 2 vintage hanging oil lames, decorative red metal frames with glass, \$30.00 for pair. LaPlata. 660-342-5757.

Miscellaneous

100 big bales of hay, shedded, \$120.00, North of Downing, Mo. 217-440-5873.

Pomeranian puppies born 12-21-23, Pomsy puppies born 12-10-23. 3 adults available, 2 female, 1 male, registered. 660-341-5141.

Several rifle and shotgun stocks and forends. \$25.00 to \$45.00 each. 319-470-8889.

NEMO ADS SELL! Call for more information and specials. 660-665-8500.

ATTENTION LAND OWNERS!!

Buyer of standing timber
Paying Cash Upfront!

Owner/Operator of Sawmill

- Buy/Cut Logs
- Certified
- Bonded
- Insured

Tri State Timber L.L.C.
353 1/2 Grand Ave. • Memphis, Mo 63555
660-341-4921 • 660-465-2975



Judd Motors Call 660-457-3700
Hwy 63 North, Lancaster, MO

2017 FORD F250 XLT,..... NEW PRICE **\$18,900**
crew cab, 4x4, 6.2L gas, red, 246K miles, excellent cond, MUST SEE

2007-14 Chevy pickup box, red, 8 ft, little rust.. only **\$1,250**


2012 Chevy Impala LT..... NEW PRICE **\$8,995**
sunroof, only 96K miles, charcoal

2013 Toyota Sienna Van XLE..... NEW PRICE **\$20,900**
leather, sunroof, 79K miles, charcoal, Like New

2002 GMC Sierra 1500..... NEW PRICE **\$7,995**
Reg. Cab, Long bed, 4x4, V8, 138K, RED

Cumberland Building Dealer

www.juddmotors.com | In Business Over 75 Years
Curly and Kevin Judd



CLEAVER DERMATOLOGY


Cleaver Dermatology
is now in Centerville, IA

- Beginning April 23rd
The 4th Tuesday of each Month

@ Chariton Valley Medical Center
707 S Main St. Centerville, IA

Now accepting new patients

Call 660-627-7546 now to schedule!



LUTTRULL FAMILY FARMING
EXPERIENCED FARM FAMILY LOOKING FOR
ROW CROP ACREAGE TO RENT

PLEASE CONTACT
BRENT: 660-341-1561
KATY: 660-341-1318



VICTORY
Metals & Recycling
KIRKSVILLE, MO
660-665-8000

For current scrap prices
call or visit our **Facebook Page**
victorymetalsrecycling.com




★ **METAL RECYCLING**
RECYCLE YOUR SCRAP METAL WITH US! WE PAY CASH FOR: COPPER, ALUMINUM, STEEL, STAINLESS STEEL, APPLIANCES, E-SCRAP, BRASS, LEAD, RADIATORS, ALTERNATORS, BATTERIES, STARTERS, ELECTRIC MOTORS, APPLIANCES, & VEHICLES (TITLE & ID REQUIRED).

★ **ROLL-OFF CONTAINER**
10-20-30-40 CUBIC YARD DUMPSTERS

3602 INDUSTRIAL RD. • KIRKSVILLE, MO 63501
DJANESVMR@GMAIL.COM
VICTORYMETALSRECYCLING.COM



ANIMAL HOUSING HAY STORAGE & MUCH MORE

SN PARTNERS **SYDENSTRICKER NOBBE**
INVENTORY REDUCTION AUCTION

FRIDAY MARCH 22, 2024 AT 11 AM
LIVE ONSITE AUCTION WITH INTERNET BIDDING
AUCTION LOCATION: 7025 State HWY F, Palmyra, MO 63461

20+ LATE MODEL PLANTERS
LATE MODEL COMBINES
10+ LATE MODEL
AG TRACTORS AND MORE...

ONLINE BIDDING AVAILABLE THROUGH

WHEELER LIVE ONLINE BIDDING PLATFORM

BID NOW Online Bidding Provided By **Equipmentfacts**

VISIT WHEELERAUCTIONS.COM
FOR FULL LISTING AND PHOTOS!

Wheeler AUCTIONS & REAL ESTATE
23101 HWY. 24, PARIS, MO 65275 | 660-327-5890
WWW.WHEELERAUCTIONS.COM

For more information:
Kirby Fecht 217-248-2906
Sydenstricker Nobbbe Representative,
Steve 573-591-0001



Skylight FABRIC STRUCTURES

30697 COLONY AVE. • NEW CAMBRIA, MO 63558
660-486-3250 • 833-482-8862

Pets & Supplies

APRI registered miniature black and tan male Dachshund puppy. Date of birth 1/7/2024, shots and wormed. \$650.00. 660-216-4696.

Pomeranian puppies born 12-21-23, full blooded, 1st shot, wormed. 2 female, 1 male. F2 Pomsy puppies born 12-10-23, shot, wormed. 660-341-5141.

Call us for all your advertising needs. 660-665-8500.

Wanted

Looking for standing timber to harvest. William Plank, 12824 Highway D, Princeton, Mo 64673. 660-748-4020.

BORDER COLLIE PUPPIES!

Shots & Dewormed - Negotiable Prices

Deliverable in Person 573-414-4601/573-979-5375



Premium Metal Roofing

AW Metal Inc.
Metal Roofing Headquarters
641-664-3990 • awmetal.net

Let us help you with all your advertising needs. Don't know what to say? Call us we can help! 660-665-8500.

FOR SALE
All Sired Angus Bulls,
14 & 18 Months Old.
Harold Trump
660-341-5730

ANGUS BULLS FOR SALE
Coon Angus Ranch
Outstanding selection of 14 month old bulls
1318 Shelby 169, Bethel, MO 63434
Russell 660-341-2705
Susan 660-341-5192
ruscatsol@gmail.com
www.coonangusranch.com

Want to buy: Mossberg model 25, .22 rifle and or parts. 319-470-8889.

Galvanized steel cable, 7/16 inch, 4,000 feet, fencing, corrals, many uses possible. \$600.00. Loren Martin. 660-883-5318.

2013 FORD F150, V6, auto, no rust and no issues. Crank windows, will text photo. \$6,800.00. 641-895-7982.

Case 2290, cab, cold air, duals, good tires. Dependable and field ready. \$15,000.00 or best offer. Loren Martin. 660-883-5318.

SPRING SALE
UP TO 25% OFF

Miller Ag
CAR PORTS & BUILDINGS
6' to 100' wide clear span • Up to 25' tall walls
WWW.MILLERAG.NET
ARBELA, MO • 660-341-0929 • JOE MILLER

\$549,000

15062 State Hwy T Baring, MO
29 +/- Acres, Beautiful 4 BR 3 Bath 5000 +/- Sq ft home. Horse barn w/4 stalls, tack & feed room, water, paddocks. Large pond fenced and on blacktop.

Taylor or Drennan Bailey
Bailey Properties, Inc 314-283-4886
www.buymland.com

Is that cylinder leaking?

Specializing in Cylinder Repair

KEIM HYDRAULICS LLC
18748 200th St. • Bloomfield, IA 52537
Ph: 641-208-5346 • 641-664-KEIM

Central Metals Recycling LLC

Buyers of Ferrous and Non-Ferrous Metals

We Pay More \$\$\$, Call For Your Best Pricing Today!!

11923 Hwy. 54 Mexico, MO 573-581-0336	1601 N. 30th Quincy, IL 217-214-7649	1175 Hwy. 96 Hamilton, IL 217-847-3191
---	--	--

GRAINBINSUPPLY
"The Grain Bin People" GBS

If you haven't called us, you haven't finished your homework!

Cairo, MO
(660) 263-6700

www.grainbinsupply.com

McAfee Auction Service, LLC
375 S Johnson • Kahoka, MO
660-727-3796
www.mcafeeauctionservice.com

Clark County, MO
LAND AUCTION

Sale conducted at the CARE Building located at 451 N. Vine Street, Kahoka, MO

39 +/- ACRES

Lying in Sect. 3, TWP 66N, R8W Clark Co. MO

Thursday, March 28TH at 10 AM

PRIME HIGHLY PRODUCTIVE TILLABLE CROPLAND

THE LORIGAN FAMILY, SELLERS

BUCKMAN MACHINERY, LLC
573-881-3557

John Deere 4240, (your Grandpa's tractor), 6700 1-owner hrs, 4 new Firestone, qr, wts, extremely nice, **\$34,950**

John Deere 2955, MFWD, CAH, 90% rubber, HiLo, new interior, 5800 hrs, one owner, Bush Hog QT Loader & spike, **\$29,500**

John Deere 4440, Northern Illinois source, 7700 hrs, 90% rubber, qr, new hydr, excellent condition, **\$34,950**

JD 40 Manure Spreader, great condition, low use, w/hydr end gate, **\$3,950**

John Deere 2040 D, 5000 hrs, big rubber, dual hydro, loader available, **\$5,950**

John Deere 3020, 1967, 38" rubber, dual hydro, runs great, **\$8,950.**

John Deere 4020, 1968, new tires, OH engine & injection system, dual hydro, 8000 hrs, perfect sheet metal **\$12,500**

John Deere 4010 D, only 2375 actual hrs, nice, loader available, **\$11,500**

John Deere 6200, MFWD, open station, power quad, 6000 hrs, with 640 Loader, sound machine, will trade **\$25,500**

Bush Hog RT Tiller, 3 pt, 5' **\$2,500**

John Deere MX8 Mounted Cutter 3pt, shedded **\$6,950**

Rhino SR15M Batwing Brush Hog, 8 luminated, 1000 PTO, field ready **\$5,750**

2023 Mixed Grass, 45-50 lbs., \$8/bale, delivery available.
Alfalfa - 55 lb treated bales, very little grass/weeds, \$12, delivery available.
Cow Hay - 4x5 Big round bales, net, \$95/bale, delivery available.

Loaders & Duals available for many

CONSIGNMENT AUCTION
MARCH 8th, 2024 | 9AM

NO RESERVE. | Live ON-SITE!

50+ Tractors	30+ Hay Equipment
30+ Planting Equipment	40+ Tillage Equipment
10+ Combines	20+ Construction
15+ Headers	AND MUCH MORE!

Online Bidding Provided By **LIVE Equipmentfacts**

FINANCING AVAILABLE
dfs AgDirect HOME BANK

ED'S MACHINERY LLC
QUALITY MACHINERY SINCE 1997

CONTACT US:
660-628-4454
edsmachinery.com

B&S Equipment Auctions

LIVE ON-SITE CONSIGNMENT AUCTION
LOCATION: 100 INDUSTRIAL PARKWAY, GALLATIN 64640
SAT | MAR 2 | 9:00 AM
find us on facebook @ BS-Equipment-Auctions
www.bandsequipmentsales.com

REAL ESTATE RENTALS

Acres & Lots-Rental

Productive 147.5+/- acre tillable farm available for lease 2024 crop year. Located near Shelbina. Planted in corn 2023. Contact landowner Craig Boren 314-503-7721.

Deer lease wanted: father and son looking to lease land for 2024 deer season. 314-610-0590

REAL ESTATE SALES

Mobile Homes For Sale

40 YEARS THIS YEAR - we have to be something right. Call for quote or any house new or used, double and single. 573-657-2176. amegamobilehomes.com

I BUY...used mobile homes. Call or text 573-338-6250 or email GregS.CDH@outlook.com.

NEMO ADS SELL! Call for more information and specials. 660-665-8500.

Mobile Homes For Sale

WE GOT IT - let us bid your mobile home purchase, new and used. 573-499-9993. columbiadiscounthomes.com.

TINY HOMES - Missouri franchise 573-881-7965.

TRIPLE WIDE - moving stock, awesome price. 573-657-7040. chateauhomes.net

SERVICES

Chat/Dirt/Gravel

DIRT WORK All types of excavation, reclaiming overgrown fields, including CRP and WRP. Building site preparation, creating new trails and crossings, Food plot development and maintenance. Leveling and grading, wetland construction and maintenance. Pond and lake cleaning and construction. Call for quotes. 660-342-2701

Home Services

Scott Huskey's Insulated Skirting Systems-keeps your home cooler in the summer-warmer in the winter-saves on utilities and looks great! Since 1972, 573-696-3468.

Lawn/Garden/Landscape

New 3 pt. tillers, heavy duty, gear driven, 7' to 12' starting at \$4,150. 660-874-4455.

Have Clutter? Need room? Call the NEMO classifieds. We can help! 660-665-8500.

TRANSPORTATION

Accessories-Transportation

2024 car hauler, 16' plus 2' steel deck, dove tail. 84" between fenders, brakes, break away, 6 lug wheels, 8 ply tires, 7K dogleg jack, 2 5/16 coupler. \$4,200.00. 217-257-1385.

Automobiles

Estate car, 2004 Dodge Stratus, 98K, always serviced, dependable, good car with no issues. \$2,800.00. 641-895-7982.

TRANSPORTATION

Trucks, 4x4's, SUV's

2002 Ford 450, 7.3 diesel, 6 speed, 2 wd, 12' Knappa-heide stake bed w/hoist. 90,000 miles, new batteries, starter, \$13,500 obo. 641-895-1996

Have a smart phone or tablet? You can view current and past Nemo Trader issues online at www.nemotrader.net

Show Me Plumbing Services



- General Mini Excavation & Skid Steer Work
- Livestock Watering
- Waterlines & Sewer Systems
- Residential Services & General Plumbing
- Utility Trenching

Stan Schrock 660-988-1163
Greentop, MO 660-766-2636

RAMMER TRUCK SALES

2022 Ford F350, 6.7 diesel, 6300 miles, clean title. CALL FOR PRICES	2023 Ford F350, 7.3 gas XLT, 1385 miles, salvage title. \$48,500
2022 Ford F350 XL, 6.7 Cab & Chassis, 15K miles, salvage title. CALL FOR PRICES	2022 Ford F350 XL, 6.7 XLT, 15K miles, rebuilt title. \$52,900
2021 Ford F350 XLT, New Dew EZE 684 bale bed, 6.7 clean title \$68,500	Dew eze cake feeder, 1000 lb in stock \$4,586 and 1500lb in stock \$4,619
2012 Ford Expedition Limited, 5.4l, 200k miles, prior salvage title \$6,500	2019 Ford F150 King Ranch, 97k 3.5 ECO boost, 4x4, clean title \$31,900
2020 Ford F250 Platinum, 6.7 1148k Rebuilt Title \$49,900	2022 Ford Bronco, 2 door, 9600 miles, 2.7 eco boost outer banks, salvage title \$42,500

Gorin, Missouri
Monday-Saturday • 8am-6pm
www.rammertrucksales.com
HOME: 660.282.1002 • CELL: 660.341.6140
"NO SUNDAY CALLS!"

CITY OF LANCASTER IS ACCEPTING BIDS FOR THE FOLLOWING ITEMS:

ROCK: 1/2 inch, 1 inch, 3 inch and granular fill
Delivered as needed to city stock yard

PREMIX-500 tons

Sealed Bid must be received by Friday, April 5, 2024 by 4:00 pm
1. Mail to City of Lancaster, P.O. Box 477, Lancaster, MO 63548
2. Present sealed bids in person, City Hall, 209 E. Washington St. Lancaster, MO

For further information contact city clerk at 660-457-3022

LAKE OF THE OZARKS

Spring Special Lots

STARTING AT **\$4,995**

\$125 down • \$69 per month.

Build, camp, or own for investment also acreage tracts. Beautiful wooded area, free lake access and boat ramps, lots are a short distance from the lake, no credit checks, owner financing, and immediate possession. Missouri conservation boat ramp with a covered dock and rest rooms close by.

Prices good through March 19th, 2024. Hwy 135 between Stover and Sunrise Beach, MO. Take lake road 135-12 to the Ivy Bend Land Office. Closed Tuesdays and Wednesdays

CALL ANYTIME • 573-372-6493

United Rentals WE SELL
Kirksville

NEW & USED EQUIPMENT!

3008 N Baltimore, Kirksville, MO 63501
660.234.8488
UnitedRentals.com

VIRTUAL ONLINE

KNOX COUNTY, MISSOURI LAND AUCTION

TUESDAY, MARCH 19, 2024 AT 10:00 AM CT

121.80 TAXABLE ACRES ± • 1 TRACT

The Palmer farm is located 4.8 miles east of Novelty, MO on County Road 372 just off Hwy 15, or 5 miles northwest of Plevna, MO. The farm is further described as being located in Section 10, T60N-R11W, Bourbon Township, Knox County, Missouri.

The land contains a total of 121.80 taxable acres, will be sold in 1 tract, and represents productive tillable farmland.

PALMER FARMS INC

Representing Attorney: Knox County Abstract
105 S 1st St, Edina, MO 63537 | (660) 397-3259

Auction Managers: Louie Zinn (319) 795-2314 & Dan Sullivan (319) 795-1833

BigIron SULLIVAN AUCTIONEERS
a BigIron company
(844) 847-2161 | www.SullivanAuctioneers.com

Connie's MOBILE HOME TRANSPORT

We offer the following...

Break Downs • Transport • Set up • Anchoring

Call Rich today! 573-881-7483

Skyline Service LLC

Skid Steer and Construction Repair
Levi Weiler

660-346-6881 • 660-883-5525

Scan Tool Diagnostics
Exhaust After Treatment Repairs • SCR Unlocks
Skid Steer Tracks Available

Miller's Spray Foam DANIEL MILLER

Fiberglass Blown-In Available

We Strive to Satisfy 660-234-2808

21743 Lost Branch Way
Brashear, MO 63533

LANCASTER LUMBER INC.

Lancaster, MO.

1-800-424-5071

LAN-DOW BUILDINGS

www.lancasterlumber.com

NEW CAMBRIA LIVESTOCK AUCTION LLC
Phil & Stacey McBee - Owners
29262 State Hwy 149, Box 94, New Cambria, MO 63558

Special Calf and Yearling Sale
THURSDAY, MARCH 7TH, 2024
STARTING AT 11:00 AM

Office (660) 226-5222 • Phil McBee (660) 754-2148
Doug Lock (660) 641-3898 • Lavon Moore (660) 384-2008
Randy Nute (660) 651-5389 • Tyler Gratz (573)-690-7312

To view our latest market reports and cattle listings, visit Our NEW website at: www.newcambrialivestockauction.com

We appreciate your business!!!!

TIMBER MANAGEMENT.

Purchasing Walnut, Oak, Maple & Other Species

WE PAY BEFORE WE CUT

BONDED & INSURED **641-895-8209** Est. 1968

MFA OIL SERVICE TECHNICIAN

If you're an excellent troubleshooter who is mechanically inclined, safety-minded and service-oriented, we want you! This position is located in Memphis.

JOB REQUIREMENTS:

- High school diploma or equivalent
- Experience in truck and equipment maintenance
- Ability to lift 100 pounds
- Possess or obtain a current CDL with HAZMAT, Tanker and Air Brake endorsements
- Possess or obtain required propane certifications

We offer competitive pay and a full range of benefit options. If you want to work for a family-oriented company that invests in employee development and offers opportunities for advancement, join the MFA Oil team today!

Visit www.mfaoil.com/careers to view full description & apply. Email: hrrecruiter@mfaoil.com

MACHINERY AUCTION

MARCH 8TH @ 10:00AM

Eversonville Produce Auction
21565 Hwy KK • Chula, Mo 64635
660-659-2016

NO INTERNET BIDDING ON SITE ONLY

COMMISSION \$1-\$1,000..15% \$1001+ 7% \$600.00 CAP

- SELLING -

- IH 1466 Fenders Nice Led Lights lots of New Parts
- JD 4240 2 WD, 4 Post went through clutch wiring-lighting
- JD 4010 1963 Diesel Nice Straight Paint Faded SN# Cat 00252PPD-01482
- CAT 252 Skid loader 4568 hrs, new tires, 1 owner 72" bucket
- CAT T35D Forklift 3500lb, runs, smokes, some oil leaks
- JD 165 riding mower
- Apache 20' Hay Feeder, New Bottom Paint
- JD 329 6 Cylinder Engine, out of 4420 Combine
- JD 330 Round Baler
- JD 8250 Grain Drill, 21 hole, 7 1/2" Spacing
- 7x14 Wagon Hydro hoist 2' sides
- Frontier 8 Wheel Hay Rake
- 8 Ton Wagon Running Gear
- Allis Chalmers 3 Bottom Plow, quick hitch
- Husqvarna riding mower YTH 21K46 46"bagger 154.6 hrs
- 2-8 Ton running gears, 4 steel wagon wheels 6 bolt
- ELS Manure lagoon pump 26FT 6" almost brand new
- 12' IH Disk Tandem 10' Keawane disc
- Bear Cat Grinder mixer 100bu, 48 free stalls
- Keawane 48' elevator heavy chain
- 75x80 Steel Frame Building Frame Kit Only
- Case IH 1300 3pt, 9ft sickle bar mower good cond.
- JD Drill 10', Allis Chalmers 6 row till planter 3pt
- Tuffox Tree Puller New 84" Grapple New
- Bales pear New 96" high jump bucket new

- MISC ITEMS -

Craftsman table saw, Craftsman bandsaw, Craftsman drill press, 42" Cummins metal bandsaw, Kerosene incubator, 200 egg electric incubator 400 egg, Chain connectors, Snaps, Hydraulic hoses 3x1', torch helmet, welding helmet, torch hose, 3 gauges, heat lamp, 12 volt fencer, solar fencer, fence posts, fencing material.

MORE ITEMS BY SLAE DAY, ALSO SELLING HAY & FIREWOOD! COME JOIN US FOR THE DAY

AUCTION PHONE 660-639-2676

Golden Grain Bins-Winter Discount

Grain Bins	Floors w/12"Supp. & Flashing
18'x18' 4,195bu. \$ 6,067	18'....\$1,693 30'....\$ 4,726
27'x21' 11,265bu. \$12,178	21'....\$2,315 36'....\$ 6,733
42'x24' 32,245bu. \$28,386	27'....\$3,862 42'....\$ 9,169



GMLS Industries, Inc.
PH: 660-699-2179 or 620-983-2136
www.gmlsindustries.com

706880b

HAY FOR SALE:

84 Large Round Wrapped Mix Grass Bales.
\$160.00 per bale.
Located in, Browning, MO Call 816.499.2533, leave message.



LAN-DOW BUILDINGS

**"We Build To Suit Your Needs"
"Custom Built"**

Pole Barns • Garages • Utility Buildings
"H" Don or Dick Middleton

Memphis Lumber Co.
1-800-337-5858 • 660-465-8595
Fax: 660-465-8596

631134s

Liebhart Sales, Inc.

660-689-3406 Vermeer
17546 Lacey • Boston, MO 63557

- Twin Rakes
- Trail Mowers
- Disc Mowers
- DewEze Bale Beds
- Danuser Post-Hole Diggers
- NEW 30 ft. Flex Harrow
- Hydraulic Fold with 5/8 Chain
- Tedders
- Bale Processors
- New Hydraulic 5th Wheel Balls

New DewEZE Hay Beds in Stock!

706847b

29th Anniversary Sale

Mississippi Valley Angus Association

Online Bidding & Viewing **Saturday, March 16, 2024**
73 Lots **6:30 p.m.**
Bulls/Open Heifers **F&T Livestock Market**
Spring Pairs/Bred **Palmyra, MO**
Full Pairs/Bred

For information or sale catalog:
Albert Meyers 573-719-7322 / albert@doubleangusranch.com
View catalog online: www.DoubleAAngusRanch.com

711827b

Lick Creek FENCING

Owen Miller
641-242-0346

Continuous Fence • Barb Wire
Woven Wire • Skid Work

606230b

ANTIOCH REPAIR & RENTAL

We fix almost anything!

- Manlift
- Mini Hoes
- Telehandler
- Compact Tractors
- Skidloader
- Forklifts
- Minor Tractor Repairs, ect.

RENTAL

- Skidsteer
- Manlift
- Attachments
- Mini Hoe
- Concrete Saw
- Flatbed Goose Neck & Bumper Hutch Trailers

Located Near Knox City, MO
Call Ethan Zimmerman
660-299-0808

710927f

VIRTUAL ONLINE

HANCOCK COUNTY, ILLINOIS LAND AUCTION

THURSDAY, MARCH 21, 2024 AT 11:00 AM^{CT}

293 ACRES± • 4 TRACTS

The Schrader farm is located along Hwy 96 north of Lima, IL (west & south of Sutter, IL) and is further described as being located in Sections 6 & 18, T3N - R8W, Walker Township, Hancock County, Illinois.

The tracts represent productive, tillable farmland, CRP acres & timber/draws for recreation & hunting. The farms sell free & clear for the 2024 crop year!

THE ELEANOR SUE SCHRADER TRUST
MARY HURLBURT, AVP TRUST COORDINATOR
MARINE BANK & TRUST, SUCCESSOR TRUSTEE

Representing Attorney: Thomas F. Hartzell | 217-357-3121
Tucker, Hartzell, & Bryant | PO Box 70, Carthage, Illinois 62322

Auction Managers: Michael Sullivan (309) 333-0916 & Dan Sullivan (319) 795-1833

BigIron SULLIVAN AUCTIONEERS
(844) 847-2161 | www.SullivanAuctioneers.com

711162b

CLIP AND SAVE CLIP AND SAVE CLIP AND SAVE CLIP AND SAVE CLIP AND SAVE CLIP AND SAVE CLIP AND SAVE

CABIN FEVER AUCTION

Estates + More

Saturday, March 2, 2024 • 10:00 A.M.

1916 S. 18th St. Centerville, Iowa

Spend the day with us: Just a sample of the many items selling in this large auction.

JD Pedal Tractor, 3 Old Metal Toy Cranes; Collection of Old Irons; Collections to include: Belt Buckles, Knives, 91-92 Fleer Basketball Cards, NBA Basketball Cards + more; Life Size Doll, 60+ years old; Antiques/ Collectibles; Monty Leather Saddle; Powered Wheelchair, as-is; Nice Oak Secretary; Antique Safe; Large amount of Nice Clean Furniture including Cedar Chest, China Hutch's; Bookcase; Beds; Sofas/ Chairs; Deep Freeze; Washer/Dryer; & more appliances; China; Large set of Corelle; Large Amount of Moulton la School Year Books from 1940's on up; Decorated Lion's Club Vest; Pyrex; Quilts; Sewing Items; Cookbooks; Stein Collection; Wooden Train; Mc Coy; Fire King; COLLECTION OF COMMEMORATIVE 15+ POSTAGE STAMP SEPARATE COLLECTION ENVELOPES, COLLECTION OF STAMP YEARBOOKS. THIS COLLECTION IS ALL IN NEW CONDITION; Guitar; NIB Bookcases; Lockers; Ladders; Power Tools; Gas Cans; Garage and Garden Items; Shelving; Kitchen Items; Large amount of Collectibles; STILL UNPACKING, SOMETHING FOR EVERYONE. YOU WON'T BE DISAPPOINTED!

HAY AUCTION SATURDAY APRIL 6, 2024
CONSIGN NOW!

ANNUAL SPRING MACHINERY/ FARM EQUIPMENT AUCTION SATURDAY APRIL 6, 2024
CONSIGN NOW!

DEMRY AUCTION, LLC
1916 S 18th St. (Hwy 5 SOUTH) CENTERVILLE, IOWA
Janet Demry: 641 895 4310 and 641 856 6408
Tom Demry: 641 895 2508 • Kristy Demry: 641 895 2509
Randy Mulay: 641-436-1521 • Dalton Ott: 563-880-5626
Website: www.Demryauction.com

710317b

VIRTUAL ONLINE

CLARK COUNTY, MISSOURI LAND AUCTION

FRIDAY, MARCH 15, 2024 AT 10:00 AM^{CT}

99 TAXABLE ACRES± • 1 TRACT

The farm is located approximately 6.5 miles north of Williamstown, MO or 15 miles southwest of Kahoka, MO. It is further described as being located in Sections 26 & 35, T64N-R9W, Washington Township, Clark County, Missouri. The farm is directly located on the northeast side of Hwy D and Hwy A junction.

Farm represents productive tillable cropland/CRP, well maintained pastureland, exceptional northeast Missouri whitetail deer & wild turkey hunting, and prime rural building sites.

DOROTHY L. KIRCHNER FARM
STEVE KIRCHNER, SHELIA WELKER, SHERI KIRCHNER,
DENNIS KIRCHNER, SUSAN KIRCHNER - SELLERS

Closing & Title Work: Oak Hills Title Company
309 Lewis St., Canton, MO 63435

Auction Managers: Louie Zinn (319) 795-2314 & Dan Sullivan (319) 795-1833

BigIron SULLIVAN AUCTIONEERS
(844) 847-2161 | www.SullivanAuctioneers.com

710416at

Edina Livestock Sales

Edina, Missouri

Friday, March 1st
Special Feeder Calf Sale
Mike Franke Dispersal 60 Cows many with calves

Friday, March 8th
Special Feeder Calf Sale

To Consign For Any or All Sales or For Information Call:
Owner - Kevin Strange • Cell: 660-341-9974
Ryan Strange • Cell: 660-341-9721
Sale Barn: 660-397-9999

Field Reps:
Bill Tom Hall 660-342-5420 Mike Bronestine 660-341-9965
Jason Bichsel 660-216-0373 John Powell 660-341-1717

711649p

Kirksville, Missouri

KIRKSVILLE LIVESTOCK LLC

24295 Benton Road * P O Box 242 * Kirksville, MO 63501
www.kirksvillivelivestock.com
SPECIAL BREEDING STOCK SALE
MARCH 1, 2024 • 6:00 P.M.

Bred Cows, CCPR

- Clayton Kline - **Complete Dispersal** - 36 Angus cows, 3 to SS ages, many with fall & spring calves, calves from and cows mated to Angus bulls
- Richardson Farms - 30 Blk & Red cows, 5 to SS ages, mated to Red Angus bulls for a March 1 calving start
- Andrew Roberts - 10 Blk cows, 3 & 4 years old, mated to Galaxy Beef or Sydenstricker bulls for a March 1 calving start • 15 Blk cows, 6 to SS ages, mated to Galaxy

Beef or Sydenstricker bulls • for a March 1 calving start

- Patty Talbert - 7 Red cows, 4 to SS ages, mated to a Red bull for an early March calving start

Breeding Bulls

- Richard Morelock - 1 registered Angus bull, 3 years old, "RW Mead 316", #20139004, +10 CED,
- +3 BW, "Capitalist" & "Fundamental" • bloodlines
- Richardson Farms - 2 Red Angus bulls, 2 years old

Early listings many more listings by sale day
Check website for updated listings: www.kirksvillivelivestock.com

We are open on Sunday to Receive Your Livestock
"Your Business is Very Much Appreciated"
"Proud to Serve Area Livestock Producers"
For more information or Someone to Phone for information:
Patty Foster, Office Manager - 660-665-9804
Chuck Ambrosia - 660-342-3530 - Luke West - 620-215-5770
Mark Herbold - 515-720-8667 - Al Ashmead - 660-216-8730
Doug Flesher - 660-626-7148 - Daniel Smith - 660-341-8396
Jeremy Jarman - 660-341-9879 - Caleb Randolph - 641-919-8539
Karol Kirkpatrick - 641-777-3403

71249b

LAND FOR SALE

Sullivan Co Missouri

38.4 +/- acres: Timber piece. Great hunting deer and turkey, RA Highway close to Sears Lake and New Roy Blunt Reservoir **\$163,200**

120 +/- acres: North of Milan-Locust Creek Bottom, 94 acres tilled by owner, great hunting. Potential for great return on investment with tillable or hunting lease close to New Roy Blunt Reservoir Dam. Outstanding yearly yield..... **\$899,000**

62.5 +/- acres: South of Harris, Mo. 49 acres tillable, close to 4 percent return with tillable and hunting lease **\$340,695**

59 +/- acres: Pollock, Mo. Close to Highway 5, nice pasture farm, newer fences, nice pond, could be tilled **\$292,000**

50 +/- acres: Two miles West of Milan on Highway E, great building sit for dream home or commercial structure. 10 acres bottom ground in production with approximately 20 acres hay ground.. **\$260,000**

CONTACT
Duane Schnelle
660-265-5541

Boyer Land Co, LLC
South Main St
Milan, Mo 63556
816-654-2144

711197m

VIRTUAL ONLINE

RALLS COUNTY, MISSOURI LAND AUCTION

THURSDAY, MARCH 28, 2024 AT 10:00 AM^{CT}

73.61 TAXABLE ACRES± • 1 TRACT

The Roger & Eileen Moore farm is located on the south side of Hwy 19, approximately ¼ miles southwest of the Hwy 19 and US 61 intersection (southwest of New London, MO). The land is further described as being in Sections 1 & 12, T55N-R5W, & Section 6, T55N-R4W, Spencer Township, Ralls County, Missouri. The real estate contains 73.61 taxable acres and will be sold in 1 tract. The farm represents highly productive tillable cropland, with great potential for commercial development.

ROGER MOORE FARM

Closing & Title Work: Accurate Land Title Co
218 Broadway, Hannibal, MO 63401 | (573) 221-1002
Auction Managers: Steve Zeiger (573) 231-9802 & Dan Sullivan (319) 795-1833

BigIron SULLIVAN AUCTIONEERS
(844) 847-2161 | www.SullivanAuctioneers.com

711165p

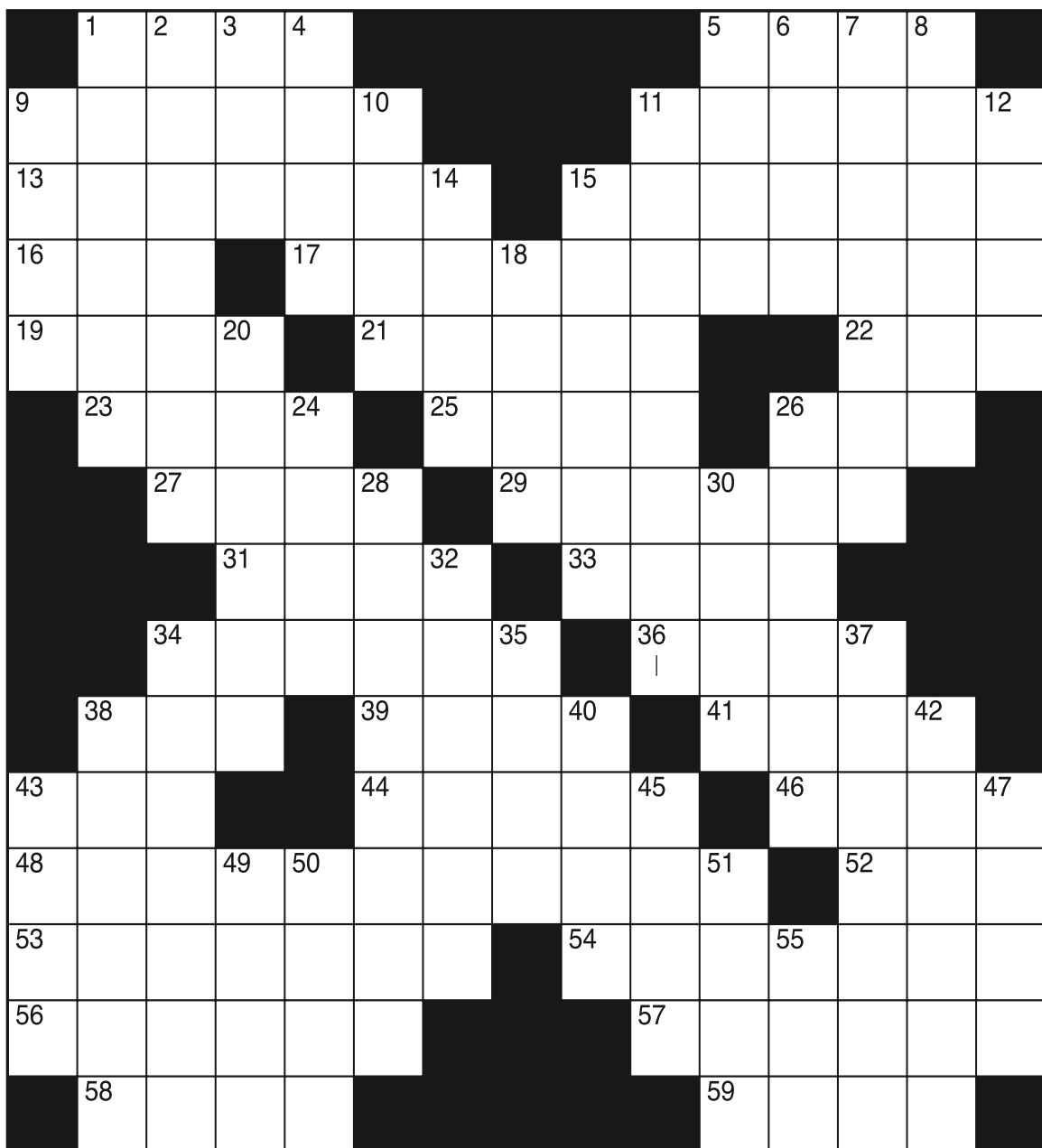
*Shop Local
Buy Local
Enjoy Local*

CALL TODAY!
660-665-8500
sales@nemotrader.net

NEMO
Trader
KIRKSVILLE
Daily Express



708808jn



CLUES ACROSS

- 1. Muscular strength
- 5. Not the front
- 9. Japanese female entertainer
- 11. Soars up
- 13. Proof you paid
- 15. Immobile
- 16. Type of drug
- 17. Traveling from place to place
- 19. So
- 21. Los Super Seven member Cesar
- 22. Small insect
- 23. Ancient Hebrew measure
- 25. Beginner
- 26. Consumeda
- 27. Fruit of the true service tree
- 29. Part of Congress
- 31. Needlefishes
- 33. Blood serum of an animal
- 34. Ancient measure of length
- 36. Concubine
- 38. One billion years
- 39. Not false
- 41. Vienna (German)
- 43. Short-term memory
- 44. Actresses Meg and Jennifer
- 46. Clothed
- 48. Basketball's "Zen Master"
- 52. Irish bar
- 53. Age-old
- 54. Pride
- 56. Niger's capital
- 57. Makes amends
- 58. Sound made by horses
- 59. Russian river

CLUES DOWN

- 1. Cut the baby teeth
- 2. Reflexes
- 3. Midway between east and southeast
- 4. Beat
- 5. Sign of aging
- 6. Goidelic language of Ireland
- 7. Raise public concern
- 8. Make new again
- 9. Something unpleasant
- 10. Roman orator
- 11. Flavored
- 12. Subdivision
- 14. A pace of running
- 15. Allows to live
- 18. Terrorist organization
- 20. Feudal Japanese commander
- 24. Type of horse
- 26. Uncoordinated
- 28. Deceased actress Murphy
- 30. Get into ___ : fight
- 32. Inflexible
- 34. Amusing
- 35. Be morose
- 37. Reviewing online
- 38. Denoting origin
- 40. In addition
- 42. The state that precedes vomiting
- 43. Ballplayer Denard
- 45. Spiritual discipline
- 47. Database management system
- 49. Fancy car
- 50. Off-road vehicle
- 51. ___ bene: observe carefully
- 55. Jerry's pal

THE KIRKSVILLE QUARTERLY

COVERING EVENTS IN MAY & JUNE 2024

Publishing on
April 24, 2024

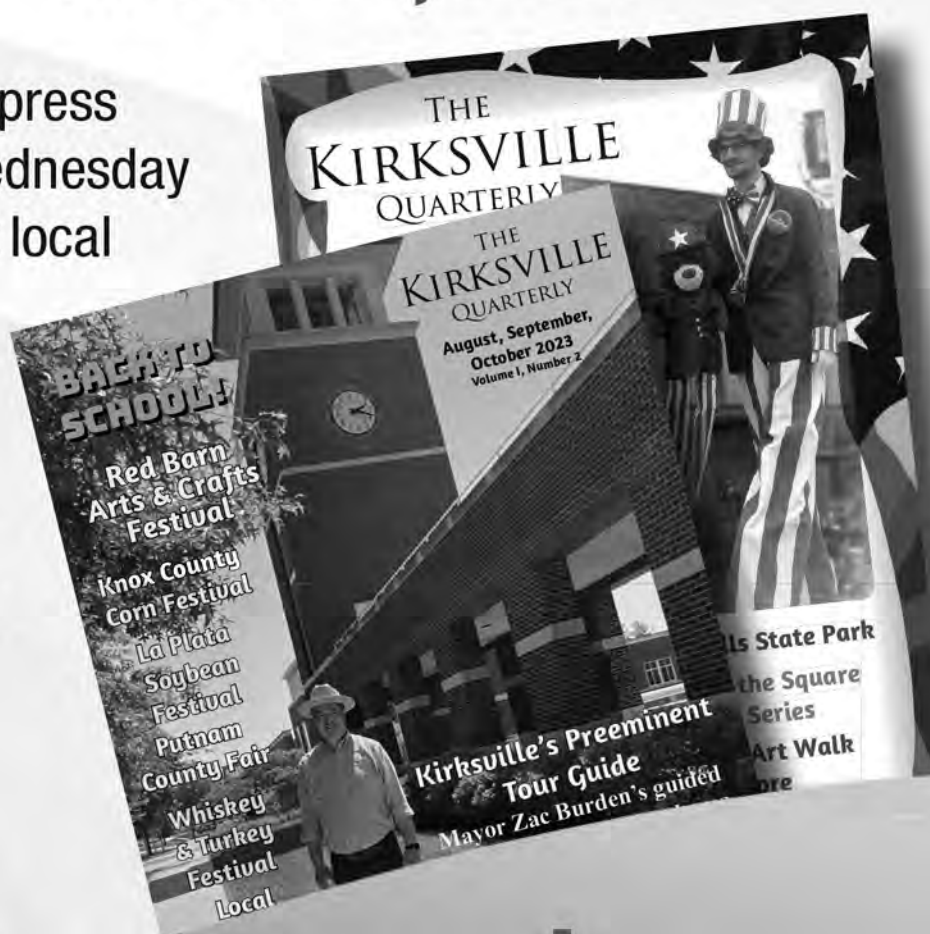
Deadline to advertise is
March 14, 2024

5000 copies each edition. Kirksville Daily Express subscribers will receive it in the April 24, Wednesday edition, and other copies will be available at local businesses in Kirksville, Novinger, Green Castle, Green City, Greentop, Queen City, Edina, Laplata Macon, and Milan for FREE!

Call today to advertise your business in the April Edition!

**KIRKSVILLE
Daily Express**

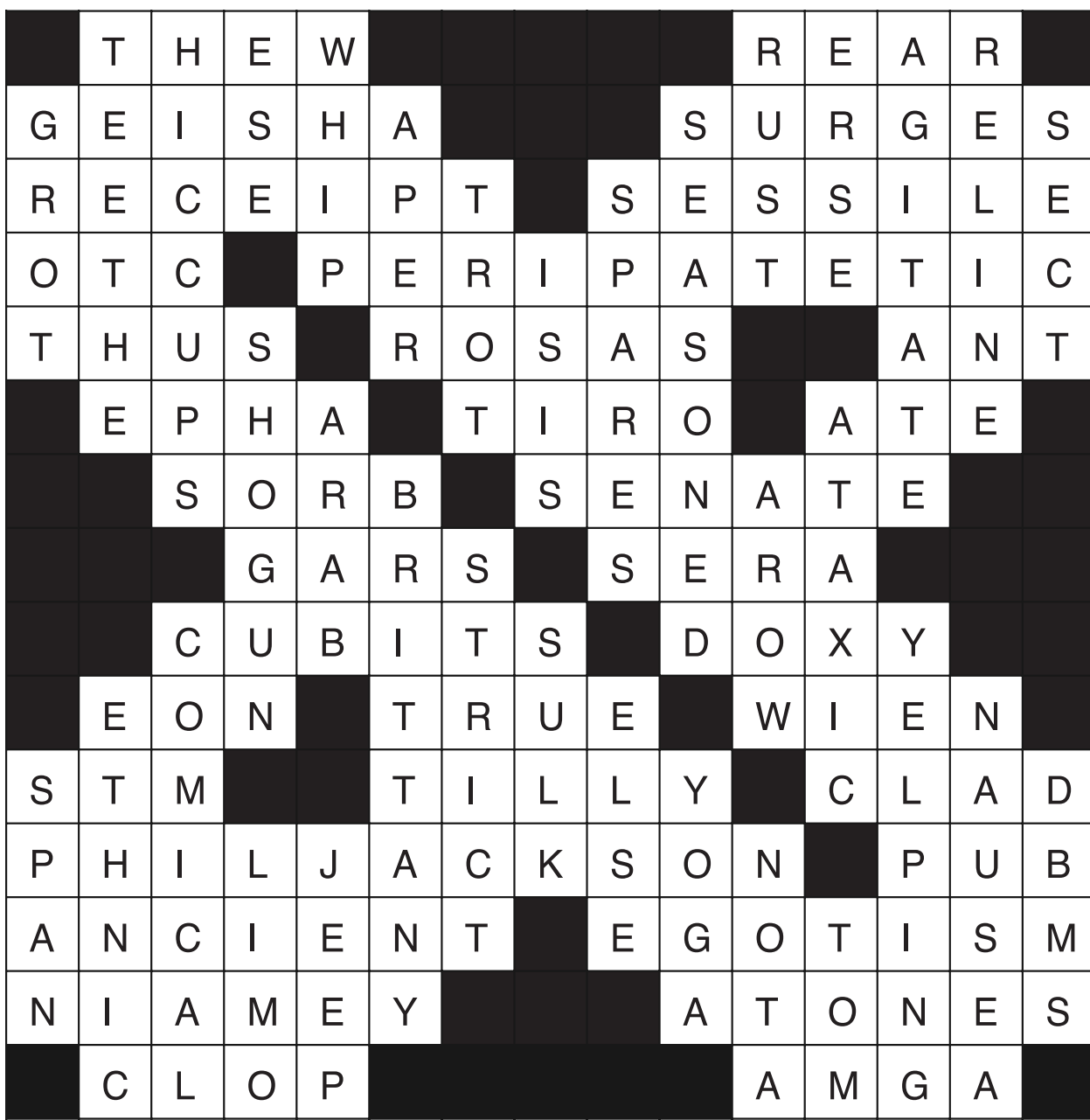
705 E. La Harpe Street, STE F • Kirksville, MO 63501
Email: sales@kirksvilledailyexpress.com
Phone: 660-665-2808
Website: kirksvilledailyexpress.com



Current January issue is out now!

All ads are in full color

711573jn



**2ND CUTTING GRASS MIX,
SOME ORCHARD**
 3x8 bales \$95 a bale
 50 net wrapped corn
 fodder bales, baled with 569
 John Deere round baler \$50 each
660-341-2203

Machinery Auction
Thursday, March 21 10a.m.

Selling Farm & Commercial Equipment:
 Tractors, trailers, trucks, skid loaders, construction
 equipment/supplies, lawn & garden, ATVs,
 hay & tillage equipment, livestock equipment,
 fencing supplies and much more.
CONSIGN NOW
WHILE THE MARKET IS STRONG!
 Call Jordan 660-346-0410 Cody 660-676-9392
 Joseph 660-346-9711 or Frankie 660-651-4040

Consignor checks printed the day of the sale.
 Trucking Available.

Lolli Livestock Market, Inc.
704 Main St.
Macon, Mo 660-385-2516

LOLLI LIVESTOCK MKT, INC.

Tuesday, March 5 - 11am
**Special Calf & Yearling
 Pre-Conditioned Sale**

- 100 bbwf hfrs 675lbs (pot load) 80 bbwf hfrs 700lbs (pot load)
- 250 bbwf str/hfrs 5-700lbs 20 bbwf str/hfrs 5-700lbs
- 150 bbwf str/hfrs 4-700lbs 17 bbwf str/hfrs 5-650lbs
- 130 bbwf str/hfrs 5-700lbs 17 bbwf str/hfrs 5-800lbs
- 125 bbwf str/hfrs 5-700lbs 15 bbwf str/hfrs 4-500lbs
- 51 red angus str 700lbs 15 bbwf str/hfrs 4-700lbs
- 50 bbwf str/hfrs 5-700lbs 15 bbwf str/hfrs 4-600lbs
- 40 bbwf str/hfrs 5-700lbs 15 bbwf str/hfrs 5-700lbs
- 30 bbwf str/hfrs 6-700lbs 15 bbwf str 4-600lbs
- 30 bbwf str/hfrs 5-700lbs 15 bbwf str/hfrs 5-700lbs
- 23 bbwf str/hfrs 5-700lbs 15 bbwf str/hfrs 5-700lbs
- 23 bbwf str/hfrs 6-700lbs 14 bbwf str/hfrs 5-600lbs
- 20 bbwf str/hfrs 4-600lbs 10 bbwf str/hfrs 4-500lbs

Cafe Open **Lolli Livestock Market, Inc.** Cafe Open
 704 Main st * Macon, MO * 660-385-2516
 Frankie 660-651-4040 * Tim 660-651-3496 * Joseph 660-346-9711
 Jordan 660-346-0410 * Cody 660-676-9392 **Cattle accepted on Sundays**
 Follow Us On Face Book & www.lolliibros.com

The meeting Place for Buyers and Sellers!!

NEMO
 Traders

660-665-8500 or email: sales@nemotrader.net
 SHOP LOCAL - BUY LOCAL - ENJOY LOCAL

Scrubby Duds
 Laundromat

Large capacity coin machines
 Your laundry never takes a break & neither do our machines!

**OPEN 7 DAYS A WEEK
 24 HOURS A DAY**

311 S. Baltimore Kirksville, MO 63501 660-349-8943 Bob & Paulette Thompson

CALL TODAY!
 660-665-8500
 sales@nemotrader.net

WE GOT YOUR NEEDS COVERED!

**FARM TARPS TRUCK TARPS
 HOOP BUILDING COVERS**

Troyer
TARP MFG.

660-486-3301
 20264 STATE HWY. VV • ETHEL, MO 63539

NEMO Trader Classified
COUPON

2 Classified Ads for just
\$ 6.00

20 cents per word over 20 words
 Must be Mailed in or brought in along with payment.
 Picture Ads Not Included with Coupon!

- Choose Classification**
- Agri-Business Real Estate Rentals Yard Sales
 - Announcements Real Estate Sales Auctions & Estate Sales
 - Employment Recreation
 - Financial Services
 - Merchandise Transportation

Ad No. 1 Each Box Represents a Word (20 words or less)

Ad No. 2 Each Box Represents a Word (20 words or less)

Name _____
 Mailing Address _____
 Phone Number * _____
 this is required*
 PO Box 809 Kirksville, MO 63501 • 660-665-8500

KEIM LUMBER COMPANY LLC
COMPETITIVE PRICES • FREE ESTIMATES

- COMPLETE BUILDING PACKAGES
- WINDOWS AND DOORS
- INSULATION • DRYWALL
- DELIVERY

13625 St. Hwy 3 LaPlata, MO

www.SPARKSAUCTIONSERVICE.COM

Sparks AUCTION
 573-406-8787
 EST. 1986

204 E. Reid St,
 Edina, MO 63537
 Licensed In Missouri Iowa, and Illinois

Family Owned and Operated
28 Years of Combined Experience
 FFL Certified

Let us Put More Money In Your Pocket!

On Site Commission Rates	Machinery Rates
Household- 20 to 25%	Under \$1,000.00 = 15%
Land- 1%	\$1001.00 to \$5,000.00 = 10%
Real Estate/Home-3%	\$5,001.00 to \$25,000.00 = 6%
Vehicles - 10%	\$25,001.00 to Over = 3%
Firearms - 10%	

Jesse Sparks • 573-406-8787
 Dalton Sparks • 573-822-4598

Land • Real Estate • Household • Machinery • Vehicles

Your Local
FARM SUPPLY SOURCE

NUTRITION • MEDICAL • FARM • PET • APPAREL

SEE US FOR YOUR
SHEEP & GOAT
 EQUIPMENT NEEDS

fb farmbank

We Support
NATIONAL FFA WEEK
 February 17-24, 2024

Green City 660.951.8430
 Milan 660.951.8432
 Kirksville 660.951.8431

www.farmbank.com

AUTO'S UNLIMITED
FEATURED VEHICLES

660-665-8149 | 660-341-0965 | No Sunday Calls! | 17406 Bob Rd • Kirksville, MO

2010 Ford Escape XLT
 Sunroof, Sirius satellite, loaded with equipment, excellent condition 20.5 MPG town 26 to 27 on Highway
\$7,900

2014 Grand Caravan SE
 nice clean van
\$8,500

2016 John Deere 1025R with attachments
 Excellent condition always shedded

ALL VEHICLES HAVE GONE THROUGH A 60 PT INSPECTION! STATE INSPECTED! CALL FOR MORE INFO!

Hometown Animal Health has provided quality products, expert knowledge, and friendly customer service to northeast Missouri and surrounding areas. We are a full-service nutrition, medical, and farm supply source carrying complete lines of animal feed and supplies, farming equipment, agricultural parts, lawn and garden tools, work apparel, and much more!

Hometown ANIMAL HEALTH

Feed • Medical • Farm & Pet Supplies • Footwear & More

website: hometownanimalhealth.com
660-465-2967
 18743 US Hwy, 136 Memphis, MO 63555
 "on Hwy 136 west of Memphis"

Monday-Friday 8pm to 5pm
 Saturday 8am to 1pm

VIRTUAL ONLINE
LEE COUNTY, IOWA LAND AUCTION
THURSDAY, MARCH 7, 2024 AT 10:00 AM CT

425 ACRES± • 4 TRACTS

The Mitchell Farm is generally located 4 miles southwest of Argyle, Iowa off of US Highway 27 (Avenue of the Saints). The farm is further described as being located in Sections 19, 20, 29 & 30, Des Moines Township, Lee County, Iowa.

The Mitchell farm offers highly productive soils with Tract 2 having a CSR2 near 90! This farm is 90%+ tillable with Tracts 1 & 2 being nearly 100% tillable. Don't miss this opportunity to add quality farm ground to your current operation.

JAMES R. MITCHELL FAMILY TRUST
 DR. IDOL MITCHELL - TRUSTEE

Attorney: Elaine Fehseke Gray | Fehseke & Gray Law Offices
 1023 Ave G, Fort Madison, IA 52627 | (319) 372-7181

Auction Managers: Jeff Hoyer (319) 759-4320
 Dan Sullivan (844) 847-2161 & Colette Kennedy (309) 360-1226

BigIron SULLIVAN AUCTIONEERS
 a BigIron company
 (844) 847-2161 | www.SullivanAuctioneers.com

Open House

OPEN HOUSE SPECIALS

Open House every Saturday in March.
 Free hot dogs, popcorn, refreshments and door prizes.

Beilstein Camper Sales
www.beilsteincampersales.com

Since 1956, family owned Beilstein Camper Sales has provided exceptional value and service to our customers. We feature a wide selection of new RVs from Forest River, Heartland and Keystone. We're on the Avenue of the Saints along side Highway 61, four miles south of La Grange, Missouri. Stop by today to get a great deal!

CALL US NOW for the best prices...
 28248 327th Ave.
 LaGrange, MO • Hwy 61 South,
 4 Miles South of LaGrange, MO

573-655-2254

<p>#430775</p> <p>Sale Price \$31,995</p> <p>2023 Salem Cruise Lite 28VBXLX Platinum Super Slide-Out, 1 Queen and 1 King Bed</p>	<p>#801071</p> <p>Sale Price \$19,995</p> <p>2022 Salem FSX 169RSK Slide-Out, Light Weight Easy to Tow</p>	<p>#801397</p> <p>Sale Price \$19,995</p> <p>2023 Salem FSX 167RBK Rear Bathroom, Murphy Bed, Light Weight</p>
<p>#801669</p> <p>Sale Price \$24,995</p> <p>2023 Salem FSX 178BHSKX Platinum Best Selling, Slide-Out, Double over Double Bunks</p>	<p>#430803</p> <p>Sale Price \$21,995</p> <p>2023 Salem Cruise Lit 19DBXLX Platinum Double over Double Bunks, Room for the family</p>	<p>#334520</p> <p>Sale Price \$30,995</p> <p>2023 Salem 22RBSX Platinum Slide-Out, Rear Bathroom, Private Front King Bedroom</p>
<p>#013188</p> <p>Sale Price \$14,995</p> <p>2023 SALEM FSX Limited Edition 174BHLE Great First Camper, Queen Bed with Bunks</p>	<p>#070355</p> <p>Sale Price \$43,495</p> <p>2023 Salem 33TSX Platinum 3 Slide-Outs, Tons of Space, King Bedroom</p>	<p>#091640</p> <p>Sale Price \$45,995</p> <p>2023 Salem Hemisphere 270FKS Front Kitchen, 2 Slide-Outs, King Bedroom</p>

The Ultimate Wood Heat.



CLASSIC EDGE
TITANIUM HDX
Outdoor Wood Furnace

- **More Comfort** - Thermostatically controlled wood heat.
- **Peace of Mind** - Keep the fire outside and eliminate the dangers associated with indoor wood heating.
- **Save Money** - Wood is a renewable, inexpensive and often free energy source.

Campen Heating & Air
Division of Kraus & Sons Inc.
Canton, MO 63435
573-288-8966
CentralBoiler.com

Have items to sell? Have too much stuff? Let us help you get the most for it!
Call 660-665-8500.



SCOTTY'S AUCTION SERVICE
573-356-4405
Auctioneer: Scott Kuntz
SEE MORE PHOTOS ON SCOTTY'S WEBSITE
WWW.SCOTTYSAUCTIONSERVICE.COM

Scott Kuntz Wins Missouri Professional Auction Association's 2024 Bid Calling Championship
Press Release: February 20, 2024

Columbia, Missouri - Missouri Professional Auctioneers Association is proud to announce that Scott Kuntz of Scotty's Auction Service in Macon, has won the 2024 Missouri bid calling championship at the MPAA Winter Conference held at the Drury Plaza Hotel in Columbia, Missouri, on February 17, 2024. There were 14 contestants from 4 states entered in the competition. After a preliminary round, finalists answered 2 interview questions and then auctioneered two (2) assigned items. The interview was weighted at 40% and Finals Bid Calling weighted at 60% to determine the total final round contestant score. The Champion Bid Caller receives a belt buckle, a plaque, a cash prize and next year's conference registration. They are then asked to return the following year and emcee the MPAA Bid Calling Contest and auctioneer for the Ringman competition.



FLO RITE GUTTERING

660-988-1163

- Leafguard Options
- Stainless Steel Fasteners

Stan Schrock • Greentop, MO

Have a smart phone or tablet?
You can view current and past Nemo Trader issues online at www.nemotrader.net




Kirkville Area Chamber of Commerce
March 2024 Executive Director: Marie Murpree

Monday - Friday
8:00 AM - 5:00 PM
PHONE: 660-665-3766



Heritage House Realty, Inc.

Heritage House Realty
2805 N. Baltimore St
Kirkville, MO 63501
660-665-5638
kirkvillerealestate.com



Connections Bank

Competitive rates &
Hometown Service

2817 N. Baltimore
Kirkville, MO
(660) 665-7703
www.connections.bank



Colton's Steak House & Grill

1116 Country Club Dr.
Kirkville, MO 63501
660-665-6336
coltonssteakhouses.com

MIDWEST GOLD & SILVER
Rare Coins and Fine Jewelry



111 E. Washington
Kirkville, MO
660-216-2346




KIRKSVILLE AREA Chamber OF COMMERCE

Space is limited, get your tickets now!

You are Invited!
Kirkville Area Chamber of Commerce
Annual Banquet:
Featuring the KVYP 5 under 40 Award!

March 7th 2024
5:30-8:30 pm
White Oaks Barn

Join us in celebrating
the young leaders of our community

Contact the Chamber for tickets
or sponsorship opportunities at
Info@kirkvillechamber.com

New Federal Reporting Requirements Impact Small Business



Effective January 1, 2024, under the Corporate Transparency Act, many companies in the United States must report information about their beneficial owners—the individuals who ultimately own or control the company—to the Financial Crimes Enforcement Network (FinCEN), a bureau of the U.S. Department of the Treasury. Filing is simple, secure, and free of charge. Below are a few frequently asked question from fincen.org intended to help navigate the Corporate Transparency Act (CTA) and beneficial ownership information (BOI) reporting.

Who Has to Report?

Companies required to report are called reporting companies. Reporting companies may have to obtain information from their beneficial owners and report that information to FinCEN.

Your company may need to report information about its beneficial owners if it is:

- a corporation, a limited liability company (LLC), or was otherwise created in the United States by filing a document with a secretary of state or any similar office under the law of a state or Indian tribe; or
- a foreign company and was registered to do business in any U.S. state or Indian tribe by such a filing.

Who Does Not Have to Report?

Twenty-three types of entities are exempt from beneficial ownership information reporting requirements, including publicly traded companies, nonprofits, and certain large operating companies.

How Do I Report?

Reporting companies report beneficial ownership information electronically through FinCEN's website: www.fincen.gov/boi. The system provides a confirmation of receipt once a completed report is filed with FinCEN.

When Do I Report?

- If your company was created or registered prior to January 1, 2024, you will have until January 1, 2025 to report BOI.
- If your company is created or registered in 2024, you must report BOI within 90 calendar days after receiving actual or public notice that your company's creation or registration is effective, whichever is earlier.

The above information and more information about the CTA and BOI can be found on fincen.org.

The Small Business Development Center is here to help.

If you need help filing a Beneficial Ownership Information Report or need more resources to determine whether or not you should file, the SBDC is a great place to start! Give us a call to schedule an appointment at 660-665-3348.

WELCOME TO THE CHAMBER

Sodexo
Elara Caring
Northeast Missouri Area Agency on Ageing

THANK YOU!

THANK YOU FOR REAFFIRMING YOUR FAITH IN THE CHAMBER

Fidler on the Roof KC
Iris & Ivy-Designs from the Heart
Depot Inn & Suites
Kraft Heinz
Sparklight
EagleStaff Financial Group, LLC
Jef & Marilyn Romine
City of Kirkville

Bailey's Window Cleaning
Bonzai
D & J's Screen Printing
Mow-N-Go
WILDFlower Spa, LLC
Gallery 104
Elite Handyman Services, LLC

For more information about current memberships visit www.kirkvillechamber.com/directory

ON THE HORIZON

March 7, Annual Banquet-White Oaks Barn - 5:30 - 8:30 p.m.




Audra Jackson Harris
2121 N. Baltimore St.
Kirkville, MO 63501
660-665-0700
agentaudra.com



CENTURY 21
Lifetime Realty
1605 S. Baltimore,
Suite A
Kirkville, MO 63501
660-665-5678
www.C21Kirkville.com



Tire & Auto Owners:
Joe Dimmitt & Kelly O'Haver
1102 N Green St
Kirkville, MO
660.665.9017



Bellacino's
Pizza & Grinders

ORDER ONLINE
WWW.BELLACINOS.COM

GRINDERS • PIZZA • SALADS
WINGS • FRIES • AND MORE!

GET 10% OFF
WHEN YOU PRESENT THIS COUPON.

516 N BALTIMORE ST.
660-665-7665



RAIL
Rural Advocates for Independent Living INC.

1100 S. Jamison
Kirkville, MO 63501

660-627-7245 - Phone
800-681-7245 - Toll Free
660-665-9849 - Fax
WWW.RAILKV.ORG



SCOTTY'S

AUCTION SERVICE

573-356-4405

Auctioneer: Scott Kuntz

SEE MORE PHOTOS ON SCOTTY'S WEBSITE

WWW.SCOTTYSAUCTIONSERVICE.COM

5 Acre Hobby Farm & Personal Property Auction

Saturday, March 2, 2024, at 10:00 a.m.
Estate of RC Duckworth & Glee Duckworth

21250 County Road 250, Kahoka, Missouri
Direction: From Missouri Highway 81/S. Johnson Street approximately 3.3 miles South of Kahoka, travel West on County Road 250 for approximately 0.7 miles to the property. Watch for signs.

REAL ESTATE: We will be selling this 3 bedroom, 1 1/2 bath ranch style manufactured home on a full, unfinished basement with an open floor plan, located on 5 acres more or less. The home has a gas oven/range, dishwasher and propane heat. The property includes a 25' x 30' outbuilding with a shop and a one car garage. The property will be open for viewing on Friday, March 1 from 10 a.m. until 2 p.m. or beginning at 8 a.m. the day of the auction. If you would like to schedule a personal showing, please contact Scott at 573-356-4405.

VEHICLE, ATV & TRAILERS: 1998 Dodge pickup with title; Honda 300 4 Trax 4 wheeler; 1990 16 foot stock trailer; Dodge mid-size van for parts or scrap; old camper scrap; small 2 wheel trailer, no title

FARM EQUIPMENT: 3 point 6 foot brush hog; 2 point bale spike; Danuser 3 point post hole digger; Massey Ferguson 3 point 5 foot blade; older hay wagon; flare box wagon; wagon with running gear; 10 foot pull-type disc; Farnall M wide front tractor; Farnall H narrow front tractor; older 12 foot pull-type drill; corn crib; little red goat shed

HOUSEHOLD ITEMS: modern legal bookcase; Sharp flatscreen tv; Emerson

6-disc CD player; queen size hide-a-bed; LaZboy clinic; large collection of Corelle ware and Pyrex; maple style kitchen table with leaves; 3-sided glass front curio cabinet; computer desk; single pedestal style writing desk; more

ANTIQUES & COLLECTIBLES: antique side table; trinkets and figurines; Americana handmade craft bench; Little Golden children's books; bible stories; games; antique frames; antique cherry-style side table; wall mounted coffee grinder; miscellaneous sewing supplies; Singer sewing machine with case; mid-century buffet; Uncle Ben cookie jar; Lincoldn drape, Washington drape, Aladdin lamp and other various kerosene lamps; lots of various glassware; pink depression glassware; Griswold cast iron skillet; antique barn lantern; Daisy butter churn; electric butter churn; butter mold; Casio keyboard; miscellaneous costume jewelry; various Precious Moments figurines; John Deere pedal tractor with trailer; cast iron Dutch ovens; antique end table; antique sugar bucket; primitive kitchen cabinet; truck racing track; retro yellow top kitchen table; antique barn door; runner sled;

cast iron kettle with holes; wash tub with stand; antique corn sheller; older bicycles and tricycles; various old doors; reproduction 1900 auto frame; John Deere toy collection

TOOLS & OUTDOOR EQUIPMENT: plastic full size truck tool box; Craftsman tool chest; miscellaneous hand tools; Honda push mower; Chicago Electric wire welder; Craftsman bench top drill press; small belt sander; aluminum appliance dolly; small variety of woodworking tools; #5 shop vise; work table and benches; Craftsman scroll saw; John Deere lawn cart; stainless CharBroil barbecue grill; John Deere Z425 zero turn lawnmower with 782 hours; Stihl FS45 gas powered weed eater; cutting torch outfit; router and table; small live trap; Werner aluminum extension ladder; Delta band saw; Craftsman table saw; work table and benches; lawn sweep; Powermate air compressor; shop vac; miscellaneous log chains; outdoor patio set, round with glass top; front tire tiller; gas tank on stand; lots of various scrap iron

There will be many more items at this auction too numerous to mention.



Adorable Log Home on 4 acres Real Estate Auction

Thursday, March 14, 2024 at 5:00 p.m.
Allen and Myra Conover

15011 State Highway K, Greentop, Missouri.
Direction: From US Highway 63 at Greentop, travel West on East 6th Street, continue onto State Highway K/West 5th Street for approximately 3.3 miles to the auction location. Watch for signs.

REAL ESTATE: We will be selling at auction this two-bedroom, one and a half bath ranch style log home on four acres more or less. The home has an open concept floor plan, a kitchen with like-new appliances, a pantry and plenty of cabinet space, a sunk-in living room with in-floor heat and a woodstove, a mudroom with a half bath and more

storage and an attached, heated 3 car garage with several cabinets and storage space. The home has 2"x6" well insulated walls, a Woodmaster boiler outdoor wood furnace, a four-year-old gas furnace and a Generac 7000 generator. The property also has a 20' x 108' building with separate electric meter, propane heat, washer and electric dryer hookup, window air conditioning, a French drain and a turkey dog kennel with dog runs that can house 25 adult dogs. There is a 20' x 28' shop area included on the east end of the dog kennel. There is also a 27' x 32' barn. This property has a fruit tree orchard and offers amazing views of the surrounding countryside. The home



will be open for viewing beginning at 2 p.m. the day of the auction or you can call Scott at 573-356-4405 to schedule your personal showing.

7.8 acres m/l Hobby Farm & Personal Property Auction

Saturday, March 23, 2024 at 10 a.m.
Carolyn Barron Trust

33796 Mineral Place, Macon, Missouri.
Direction: From US Highway 36 approximately 2.6 miles east of Macon, travel North on Lariat Street approximately 0.8 miles, turn right on Mineral Place to the auction location. Watch for signs.

REAL ESTATE: We will be selling this quaint hobby farm that includes a three bedroom, one bath farmhouse, a 20' x 30' metal building and a 10' x 25' metal building all on 7.8 acres more or less of gently rolling ground. With a quiet country setting and beautiful views, this would make a perfect setting for your family to grow and thrive. The home will be open on Friday, March 22, from 9 a.m. until noon or from 8 a.m. throughout the auction for viewing. You may also call Scott at 573-356-4405 to schedule your personal showing.

HOUSEHOLD ITEMS: electric fireplace, several metal kitchen cabinets; pots and pans; dishware; electric fireplace with bar and record player; ice cream maker

Antiques & Collectibles: concrete jockey statue; primitive dry sink; large chicken collection; antique bird cage; brass figurine collection; retro Western scene lamp; speck maple glass front display case; lots of various glassware; miscellaneous figurines; copper boiler with lid; antique self-standing medicine cabinet; old kerosene lamps; antique kitchen cupboard with flour sifter; antique pine cabinet; antique glass front cabinet; crock jugs; Cape Cod glassware; oak wash stand with mirror; crock chicken waterer; old Judge jar; antique screw out house jack; antique chifforobe; antique metal cabinet with paper towel holder; old children's story books; antique chest of drawers; pine glass front display cabinet; child's chest of drawers; antique side chair; various pictures and prints; metal antique trundle bed; old steamer trunk; 1969 Circus Parade calendar, Kirksville, MO; several advertising silhouettes; Singer sewing machine; antique metal full size bed; Victrola cabinet with no player; antique oak square table; old cast iron stove; glass ice bucket; vintage

Christmas decor; old pedal tractor, needs work; old pedal car; primitive cabinet; Griswold #3 skillet; purple carnival glass; Tonka toys; glass milk jugs and bottles; antique hand crank telephone; Avon steins; Smurf glass collection; handmade Western cooler; John wheels; green Depression glass; GEM well pump; various iron wire gates; old tricycles; antique flower chair; square and round galvanized tubs; antique step ladder; antique metal lawn chairs

TOOLS & OUTDOOR EQUIPMENT: miscellaneous tools; lawn cart; walk behind weed eater; long handle tools; Craftsman front tine tiller; Stihl straight shaft weed eater; pancake air compressor; new Black & Decker weed eater; 2 kerosene heaters; purple martin house; picnic table

LIVESTOCK EQUIPMENT: fence posts; metal fencing; lawn dethatcher; partial rolls of woven wire; miscellaneous feeders; Quonset hut; portable chicken coop; pony cart; goat stand

There will be many more items at this auction too numerous to mention.

62 Acre Hunting/Recreation Real Estate, Household & Tool Auction

Saturday, March 30, 2024 at 10:00 a.m.
Esther & the Late Jimmy D. Taylor Jr.

14643 Flagpole Avenue, Elmer, Missouri.
Direction: From US Highway 63 North of Atlanta, travel West on State Highway J for approximately 10.4 miles, turn right on South Gemmel Street/ East Missouri Avenue, turn right on South Santa Fe Street, continue onto Festival Avenue, turn right on Flagpole Avenue to the auction location. Watch for signs.

REAL ESTATE: We will be selling at auction this 2006 Redman Homes Manufactured 52' x 27' home on a block foundation with a front deck with a stocked pond on 62 acres more or less. The home has 3 bedrooms, 2 bathrooms, plenty of cabinet space, updated appliances and a master bedroom with a garden tub. It has gas and electric heat. The property has a 31' x 32' shed with a concrete floor, 220 amp electrical and 9' x 8' garage doors. There is also a 12' x 16' garage, 18' x 21' shed with a concrete floor and a 41' x 7' box trailer. The property offers amazing hunting as it backs up to 1,300 acres of Missouri Department of Conservation ground. The home will be open Friday, March 29, from 9 a.m. to 2 p.m. for viewing or beginning at 8 a.m. on auction day. To schedule your personal showing, please contact Scott at 573-356-4405.

BUILDING: To be sold separately after the real estate sells, a 40' x 14' metal shed with 9' x 7' garage doors and

walk through door. Must be removed by purchaser within 30 days of the auction.

VEHICLES, BOATS & TRAILERS: 2006 Chevrolet W4500 6.0 gas 16' box truck; Suzuki Samari, 5 speed; various wood hauling trailers; 12 foot Jon boat; Alumacraft 15 foot boat with 15 hp Evinrude motor and trailer; Seaking 11 foot semi-V boat; square body Chevy trucks; various car parts; Yamaha ATV

TRACTORS & EQUIPMENT: Farnall 300 3 point, old restoration; Kewanee 3 point 8 foot blade; Case 530 open station backhoe; Speedco 22 ton gas log splitter; homemade gas log splitter; Side Winder 6RY6 brush cutter; 3 point post hole digger; 2 augers; fuel barrel on stand



hydraulic hoses and cylinders; Dobbins spray tank; 25 gallon poly tank; International push mower; Cub Cadet 125, painted; cherry picker; Sears horizontal double tank air compressor; variety of hand tools; sockets; wrenches; miscellaneous tires; Onan electric start portable generator; Cub Cadet 1250 hydrostat; Cub Cadet 1275 hydrostat; Snap On tool chest; Craftsman tool chests; paint shaker; band saw;

HOUSEHOLD ITEMS: Amana chest type deep freezer; Roper stand up freezer; Roper washer and dryer; milk can; ice tongs; roll top desk; oak end tables; leather LaZboy recliner; chest of drawers; queen size bed frame; oak dining table; Roper refrigerator; curio cabinet

There will be many more items at this auction too numerous to mention.



408 Rawlings Street, Shelbina, Missouri

Direction: From State Highway 15 in Shelbina, travel West on Beech Street for approximately 0.2 miles then turn right on Rawlings Street to the auction location. Watch for signs.

REAL ESTATE: We will be selling this two bedroom, 1 bath, bungalow home on 0.94 acre more or less with original woodwork with highway frontage. The home is solid and well built and includes a 23' x 40' garage. The property will be open from 9 a.m. until auction time the day of the auction or you may call Scott at 573-356-4405 to schedule your personal showing.

HOUSEHOLD ITEMS: oak lighted curio cabinet; oak entertainment center; 4 1/2" x 2' 10" decorative wall mirror; stainless roaster pan

ANTIQUES & COLLECTIBLES: primitive kitchen cabinets; glass front

Shelbina Investment Real Estate & Personal Property Auction

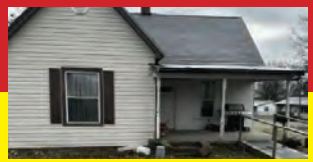
Thursday, April 4, 2024 at 4:00 p.m.
Estate of Lloyd & Dorothy Bowen

primitive cabinet; Western Flyer bicycle; Westpoint bicycle; antique steamer trunk; antique Pepsi cooler; some of the very first Avon collectibles, large collection was started in the 1970's; seashell collection; old alarm clocks; macrame baskets; antique tractor seats

TOOLS & OUTDOOR EQUIPMENT: horizontal air compressor; various long handle tools; small air pump; miscellaneous hand



tools
 There are many items that have been stored away and we are unable to picture or list them at this time. You never know what we will find when we are setting up this auction!



1011 South Maple Avenue, Salisbury, Missouri.

Direction: From US Highway 24, travel South on North Weber Street for approximately 0.9 miles then turn West on East 9th Street for approximately 0.3 miles then left on South Maple Avenue to the auction location. Watch for signs.

REAL ESTATE: We will be selling this one bedroom, one bath home that is conveniently located across from the Jr/Sr High School in Salisbury, Missouri. The home has a living room, dining room and kitchen with some of the original woodwork still intact and a basement. There is a natural gas furnace

Salisbury Real Estate & Personal Property Auction

Friday, April 5, 2024 at 4:00 p.m.
Betty Mundy

and water heater. The home will be open beginning at 10:00 a.m. the day of the auction for viewing. To schedule your personal showing, please contact Scott at 573-356-4405.

HOUSEHOLD ITEMS: Hamilton Beach slow cooker; new turkey fryer; Wellsaw Model 400 meat saw; metal baker's rack; Haier small chest type deep freezer; new Hamilton Beach mixer; Kenmore washing machine; Amana electric clothes dryer; portable GE dishwasher; oak dining room table with 6 chairs; meat processing set

TOOLS & OUTDOOR EQUIPMENT: new Predator 4,000 peak watts generator;

Toro Vortex push mower; miscellaneous fishing gear; portable pet pen; Porter Cable angle grinder; Dewalt electric drill; various hand tools; new loading ramps (72" x 9" steel); large dog kennel; Craftsman gas leaf blower; Snap On bolt grip puller set; deep well impact socket set;

ANTIQUES & COLLECTIBLES: various cast iron skillets (no markings); Sanitary grocery scale; 5' Jimmy Santa Claus; Wagner cast iron Dutch oven; metal Marlboro sign

There will be more items at this auction too numerous to list.



35459 Mahogany Street, Macon, Missouri.

Direction: From US Highway 63, follow State Highway YY East approximately 6.3 miles, turn left on Mahogany Street to the auction location. Watch for signs the day of the auction.

VEHICLE: 2009 Chevy Impala LT with 57,xxx miles, a very well maintained, garaged car

HOUSEHOLD ITEMS: assorted glassware; antique right-handed hand gloves; antique toaster; True Cold deep freezer, runs and operates; towels, linens and blankets; bookcase; Samsung dorm size refrigerator; child's chest of drawers; 3 sets of chest of drawers; dresser with mirror; two wheelchairs; single pedestal desk; blonde dresser with mirror; 2 infrared quartz heaters; GE washing machine; Hotpoint gas dryer; GE 4 burner cookstove/oven; curved front curio cabinet; oak dining table with 6 chairs; Admiral side by side refrigerator; Crosley upright frost free freezer; two electric lift chairs

Sandner Personal Property Auction

Thursday, April 11, 2024 at 4:00 p.m.
Albert and Joanne Sandner Trust

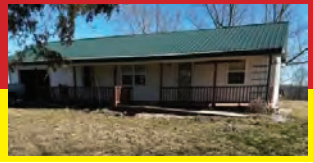
Antiques & Collectibles: crock jugs; #4 crock - Monmouth Pottery Co, Monmouth, IL; antique "Cola Cooler"; salesman sample cast iron stove; pair of buck saws; vintage levels; draw knives; older carpentry tools; Emerson Electric metal blade fan; lard press; antique bottle capper; Blackhawk hand corn sheller; red swirl enamelware; retro canister set; pocket knife collection; aluminum salt and pepper collections; ceramic dog, pig and Sambo; metal chicken art; various costume jewelry; Sears Kenmore sewing machine, runs; antique rocking chair; antique Christmas decorations; Vaseline dish; original IH memorabilia; various hardback books including the history of the John Deere tractor; Griswold cast iron ashtray skillet; large variety of foot traps; various oil lamps; miscellaneous 45 records; double wash tub; single wash tub; Elgin men's pocket watch; Westlock pocket watch; deer scene pocket watch; various antlers and mounts; several pieces of cast iron cookware including Griswold; rooster match holder; Pyrex mixing bowls;

Glass Bake, Fire King and Corning bakeware; Fire King mixing bowls; antique canister set; Fire King coffee mugs and bowls; antique bakeware; antique cookie cutters; large variety of older kitchenware; child's metal TV trays; Looney Toon glasses; older coffee pots; pink depression glass; GEM well pump

TOOLS & OUTDOOR ITEMS: Troy Bilt 46" riding lawn mower; Poulan Pro riding lawn mower; miscellaneous hand tools; house jacks; Craftsman cutting torch outfit; Rockworth portable air compressor; Clear Drive front tine tiller; Powercraft front tine tiller; long handle tools; Craftsman tool boxes; 4 water pumps, 1 gas powered; Lincoln 225 welder; 2 wheel pull-type lawn cart; wheel barrow

SPORTING ARMS: Marlin 37 .22 pump rifle; Remington 1100 shotgun with extra chokes

There will be more items at this auction too numerous to list.



3767 Shelby 201, Clarence, Missouri.

Direction: From US Highway 36, travel North on Highway 151 for approximately 4.1 miles, turn West on Shelby 202 for approximately 1.4 miles then turn right on Shelby 201 to the auction location. Watch for signs.

REAL ESTATE: We will be selling at auction in three separate tracts the following real estate:

3767 SHELBY 201, CLARENCE, MO: 3 +/- acres with unfinished shed/house with an open floor plan approximately 30'x64' with endless possibilities with your finishing touches. It is heated and cooled with a Mitsubishi split unit and includes a shop that is approximately 32' x 48'.

68.5 +/- ACRES FARM GROUND, SHELBY COUNTY, MO: The acreage adjoins the above property and is approximately 80% tillable, to be sold by the acre.

100 GRAND STREET, CLARENCE, MO: This property includes a 30' x 64' garage with 40' x 40' office and shop. This is prime property for a workshop, handy man shop or for an entrepreneur to dream of their own possibilities.

The home will be open Friday, April 12, from 9 a.m. to 2 p.m. or from 8 a.m. and throughout the auction for viewing. If you would like to schedule a personal showing, please contact Scott at 573-356-4405.

VEHICLES: 2004 Chevy 2WD 45,xxx mi; 1998 Chevy Monte Carlo 140,xxx mi; 2005 Chevy pickup Z-71 parts truck; 1961 Chevy tandem axle grain truck; 1973 Chevy C60 tandem axle truck w/ grain bed; 1980 GMC White fire truck, Clarence Rural Fire Dept; 2000 Chevy pickup 2WD unknown condition; 16- tandem axle car trailer with rear gate

TRACTORS & OUTDOOR EQUIPMENT: Massey Ferguson 1100 tractor with front weights; Simplicity riding lawn mower; John Deere GT235 riding mower; Massey Ferguson 1655 garden tractor; Yard Man riding lawn mower; large shop vise; Whitaker

Shelby County 68.5 Acres m/l, House with 3 acres m/l, Office/Shop in Clarence & Personal Property Auction;

Saturday, April 13, 2024 at 10:00 a.m.
The Late John C. Janes

Automotive cabinet; Craftsman tool chest; 21 gallon central pneumatic air compressor; complete 69 hemi with new crank; U.S. General tool box with misc wrenches; King 20 gallon parts washer; metal shelving; 2 Huskey height adjustable work tables; Craftsman tool cabinet; Craftsman 3 tier tool box; Snap On electric power washer 2,000 psi new torch cart; self standing display cabinet; US General tool chest; floor jack; Werner fiberglass extension ladder; Werner fiberglass step ladder; Victor cutting torch set up; Fomey welder (older); live trap; 110 volt air compressor; Sears commercial 60/100 amp battery charger; Bosch on demand water heater; various 18 volt Ryobi battery operated tools; various new & used tires; automotive wire; Craftsman tool chest; MAC deep well sockets; Chicago Electric metal cut off saw; large variety of various automotive parts & lubricants; storage cabinets; Quincy 80 gallon 5 hp air compressor; shop vise; work bench; parts washer; Craftsman tool chest; various air tools; used oil reservoir; Snap On tool chest; variety of Snap On tools; Guardian power drill press (floor model); Snap On torque wrenches; Blue Point air tools; Snap On air tools; Snap On sockets & wrenches; Craftsman tools & wrenches; drill press vise; Snap On impact sockets; Snap On line wrenches; Snap On drill bits; various bulk bins; several automotive display cabinets; cherry picker; Murray Riding lawn mower; Snap on YA205 mig welder; Unite UT1202 tire changer; Boda tire balancer; MTD riding mower; 1 1/4 ton floor jack; Dewalt truck tool box; Central Pneumatic sand blaster cabinet; baker's scaffolding; car dollies; engine stand

wash tub; antique feed scales; Lite beer neon sign; Pepsi signs; Feed advertising and thermometer; Moorman's feed coat hook; L.C Smith double barrel 12 gauge shotgun; Stevens single shot .22 bolt action rifle; Bayard Arms Belgium 12 gauge double barrel shotgun; Savage 245-E .410 and .22 Long rifle 3" chambered; Western Auto Revelation Model 120 .22 Long rifle; Crossman 2100 classic .177 caliber pellet air rifle; Daisy #102 model 36 BB gun

HOUSEHOLD ITEMS: glider slider; Sylvania flatscreen TV; various TV antennas; LaZBoy recliner; 2 couches (1 has queen size hide-a-bed); chest of drawers; computer desk; round oak kitchen table with 4 chairs; Ruud 50 gallon electric water heater; Roper washer & dryer; Sound Design Hifi stereo; miscellaneous computer equipment; Magic Chef dorm refrigerator; metal office desk; Visio 24" flatscreen tv new in box; miscellaneous bedsheet & bedding; miscellaneous kitchen supplies

There will be more items at this auction too numerous to list.



Country Home Auction on 14.37 peaceful acres m/l

Thursday, April 18, 2024 at 4:00 p.m.
Bud & the Late Marilyn Richards

REAL ESTATE: We will be selling at auction this three bedroom, two bath ranch style home on 14.37 acres more or less. The home has an open floor plan with a main suite on a crawl space and includes an attached one car garage. The property also includes a metal shop with electricity and two garage doors, two stocked ponds and

pecan trees. This home is ideal for those wanting their own little slice of heaven and would make the perfect hobby farm or just a great place to kick back and relax in the country. The home will be open beginning at 1:00 p.m. the day of the auction or contact Scott at 573-356-4405 to schedule your personal showing.