

KIRKSVILLE Daily Express

KIRKSVILLEDAILEXPRESS.COM

WEDNESDAY

JANUARY 31, 2024 | \$2

Kirksville business license renewals due before end of February

By City of Kirksville

If you own or manage a Kirksville business, it's time to complete your business license renewal for 2024.

Business license renewals were mailed the first week of January on green paper to valid business license holders. Business license renewals are due back to the city

on or before Feb. 29. Return the completed renewal form, along with all required documents and fees, to the Finance Department at City Hall.

If you have not received your renewal notice, contact the Finance Department at 660-627-1251.

Licensed contractors, plumbers and electricians:

renewals received after the Feb. 29 deadline will be considered late and will require the applicant to pay a penalty and complete the process over again, including the contractor testing/waiver process.

Additionally, the city would like to remind businesses of the Student Discount program. More than 20 local

businesses are offering discounts or specials to students attending A.T. Still University, Moberly Area Community College's Kirksville campus and Truman State University. If this is something your business is interested in, visit kirksvillemcity.com/p/student-discount for information and to see which businesses are currently participating.



City receives grant to convert abandoned railway into new trail

By City of Kirksville

The city of Kirksville has been awarded a Transportation Alternatives Program grant by the Missouri Highways and Transportation Commission that will be used to build a new multi-use trail on abandoned railroad land.

This project is phase one of a multi-phase project that will revitalize the obsolete rail corridor by providing a safe walking, biking and overall activity trail for residents.

The planned trail will start at existing sidewalk at the intersection of North Baltimore Street and East Cottonwood Street, continue northwest with a new crosswalk at Library Lane near the Adair County Public

Library, and continue northwest to connect to planned sidewalk at North New Street. In total, this will be approximately 1,400 lineal feet of paved trail.

"This trail will connect important community centers such as the library, Rotary Park and Kirksville Aquatic Center to surrounding neighborhoods and businesses," said City Manager Mari Macomber. "Additional phases of this trail project will create a great trail system across the north side of the city."

Trains were once a key part of Kirksville's history, with two railroads that ran through town. The east-west railroad line was run under several names before becoming part of the Burlington Northern Santa Fe Railway

Company. Those areas have since been abandoned for many decades, as the westward portion was decommissioned in the 1950s and the eastward section removed in the 1980s.

The total project is estimated to cost \$200,000. The grant will cover 80 percent, which is roughly \$160,000. The costs cover the purchase of the land and the subsequent trail construction.

Trail construction was a topic selected by the community as part of last year's Kirk's Capital Improvement Tournament. Funds designated from that will be used toward this project, as well as planned expansion in the future since this grant will help stretch those dollars.

100th anniversary of Baldwin Hall fire



Truman State hosts candlelight celebration to commemorate 100th anniversary of Baldwin Hall fire

By Truman State University

Truman State University hosted a candlelight celebration at Kirk Memorial on Jan. 28, to commemorate the 100th anniversary of the fire that destroyed the original Baldwin Hall and the library.

When the fire was discovered at around 3:30 p.m., classes were still in session. It spread rapidly, engulfing the entire building and moving to the connecting corridor of the library. Brave students ran into the library to save as many books as possible, but by 10:30 p.m., both buildings were gone.

Famously, there was an all-University meeting the next day, where students, faculty, staff and members of the community

came together in support of the school, vowing it would continue. Business owners offered space in their stores, church leaders offered their sanctuaries as teaching spaces and A.T. Still University offered their campus resources too. That sense of community saved the school at a tenuous moment in its history, and it has been a hallmark in the 100 years since.

In addition to remembering the history of the fire, the candlelight celebration will honor the sense of community that remains. It can be seen in efforts like the Greenwood Interprofessional Autism Center and the Kirk Building project that will soon be a skills center with services available to people of Kirksville and northeast Missouri.



PHOTOS BY NEMO PHOTOGRAPHY

NEMO Storm Spotter Training coming in February

By Echo Menges
The Edina Sentinel

The US National Weather Service (NWS) St. Louis office will host Storm Spotter Training at the Knox County Community Center in Edina on Thursday, Feb. 22. This is one of two in-person Storm Spotter Training classes offered by the NWS St. Louis office in Northeast Missouri in 2024.

Pre-registration is not required. Storm Spotter Trainings are offered free of charge. No prior experience is necessary. All ages are welcome. Those who have already taken NWS Storm Spotter Training in the past are also invited to refresh their knowledge.

According to the NWS, attendees will learn the basics of thunderstorm development, storm structure, features to look for, where to find them, what, when, and how to report information,



and basic severe weather safety.

The training will be taught by NWS Meteorologist Matt Beitscher.

The Knox County Community Center and the NEMOnews Media Group are co-sponsoring this event. It is being held in February, outside of the spring planting season, to give those working in the agriculture field an equal opportunity to attend this training.

According to the NWS website, anyone interested in public service

is encouraged to become a trained volunteer storm spotter. Volunteer storm spotters include police and fire personnel, dispatchers, EMS workers, public utility workers, and private citizens. Individuals affiliated with hospitals, schools, churches and nursing homes, or who have a responsibility for protecting others, are encouraged to become a Storm Spotter.

If you cannot attend the event in Edina, another in-person Storm Spotter Training will be held in Northeast Missouri by the NWS St. Louis office on March 11, 2024, in Palmyra at the Sesquicentennial Building, 621 Johnston Avenue, from 6:30 to 8:30 p.m. This event is open to all at no cost to attendees. Pre-registration is not required.

For a list of training opportunities elsewhere in Missouri and Illinois, visit the NWS St. Louis office website at: weather.gov/lsx/.

INSIDE



CommunityA2
ObituariesA3
ColumnsA4

Local HistoryA5
SportsB1-B2
PuzzlesB3

ClassifiedsB4
Church DirectoryB5
NewsB6

OBITUARIES INSIDE

Frank H. "Frankie" McIntyre Jr., 83
Marjorie Irene (Carter) Weber, 101
Zola Nadean Logan, 91
Jimmy Kenneth Schempp, 69

Lecture by Rock and Roll Hall of Fame recording artist

In partnership with the Black History 101 Mobile Museum, the Kohlenberg Lyceum event series will host a lecture by Rock and Roll Hall of Fame recording artist Professor Griff on Feb. 1 at the Baldwin Auditorium on the Truman State campus. (Call for details: (660) 785-4133). As a co-founding member of the revolutionary hip hop group Public Enemy, Griff draws on his exemplary life of service and an impressive 20-plus-year musical career to captivate audiences with his universal call for social responsibility within both the hip hop community and larger culture. Tickets are required and are free for all Kohlenberg Lyceum Series events thanks to the generous support of the Friends of the Lyceum program and the Truman State University Foundation. Tickets are available approximately two weeks before the performance at the locations listed: Truman State University Campus; Advancement Office (McClain Hall 205); Admissions Office (Ruth W. Towne Museum and Visitors Center); Union and Involvement Office Main Desk (Student Union Building); Kirksville Arts Association/Sue Ross Arts Center (215 S. Franklin St.) and Kirksville Chamber of Commerce (315 S. Franklin St.). If available, any remaining tickets will be available at the event starting 30 minutes before the show. Downtown Kirksville.

James Thompson Guest Flute Recital and Lecture

James Thompson will hold a guest flute recital and lecture beginning at 2 p.m. on Saturday, Feb. 3 at the Ophelia Parrish Performance Hall at Truman State University. This event is free and open to the public.

Party for the late Ray Klingensmith

A celebration of life will be held for the late Ray Klinginsmith on Saturday, Feb. 10 at Dukum Inn, 111 S. Elson Street in Kirksville, from 4-7 p.m. Please wear apparel that represents your connection to Ray (Putnam County, Truman State, Mizzou, Rotary, CVA, Kansas City Chiefs, etc.).

Kirksville Thousand Hills Rotary Club Game Night

The Kirksville Thousand Hills Rotary Club will hold a Game Night beginning at 5:30 p.m. on Saturday, Feb. 10 at the Kirksville Country Club, 1115 Country Club Drive in Kirksville. Enjoy an evening of fellowship and fun with the Thousand Hills Rotary Club members. Light refreshments served, cash bar.

Mary Immaculate's Night of Merriment: Denim & Diamonds

Formerly known as the Sweet-heart Dinner, Mary Immaculate's Night of Merriment: Denim & Diamonds will be held at the White Oaks Barn on Saturday, Feb. 10 beginning at 5 p.m. Tickets are \$75 per person.

\$600 for a table of eight. Price includes dinner, an auction and a live band. New this year, a special VIP table for \$1,000, which brings you special treatment all evening including preferred seating, special recognition, your own personal server and two bottles of wine + beer. You also get the pleasure of being served dinner before other patrons.

Piano Festival Guest Artist Recital

The 41st Annual Truman Piano Festival will be held on Friday, Feb. 16, beginning at 7:30 p.m. at the Truman State University Ophelia Parrish Performance Hall. The guest artist recital will be performed by Dr. Slawomir Dobrzanski. This recital is free and open to the public.

The Complete Beethoven Cello and Piano Sonatas and Variations, Part 1

The Complete Beethoven Cello and Piano Sonatas and Variations Part 1, will be held on Saturday, Feb. 17, beginning at 7:30 p.m., at the Truman State University Ophelia Parrish Performance Hall. This performance is free and open to the public.

25th Annual National Project Linus "Make A Blanket Day" Sew-In at Moose Lodge

The 25th Annual National Project Linus "Make A Blanket Day" Sew-In event will be held on Saturday, Feb. 17, at the Kirksville Moose Lodge, at 2405 E. Illinois Street in Kirksville. The mission of Project Linus is to provide love, a sense of

security, warmth and comfort to children who are seriously ill, traumatized, or otherwise in need through the gifts of new, handmade blankets and afghan, loving created by volunteer "Blanketeers". Blankets for children in need will be assembled at the Moose Lodge and they would like to invite the community to attend. No sewing experience is needed to join the fun. Anyone who can learn to tie a square knot is invited to participate in the event anytime between 10 a.m. and 4 p.m. Volunteers may bring a completed blanket or bring their own sewing machine and complete one of the precut kits available during the event. Donations of new cotton fabric, acrylic yarn, fleece and other blanket-making supplies will be accepted during the event. The North Central Missouri Chapter of Project Linus has delivered over 18,500 blankets to area children in need. For more information on the Sew-In event, or to learn more about Project Linus, contact Conni Douvier at 660-947-4315, douvier@nemr.net, or visit their website at <http://www.projectlinus.org>.

Barn Quilt Painting Workshop

Kirksville Arts Association will hold a Barn Quilt Painting Workshop led by Bohemian Folk Barn Quilts on Sunday, Feb. 17 from 9 a.m. to 4 p.m. at the Sue Ross Arts Center, 215 S. Franklin Street in Kirksville. Free refreshments will be provided as will primed and pattern drawn ready to paint two foot by two foot aluminum composite board and brushes, paint and tape. Participants will need to bring a hairdryer. Pattern must be selected at time of registration. Paint colors selected the day of workshop. Cost is \$130 for KAA members, \$140 for non-members. No refunds for missed event but can be used for future workshop with instructor. Register and payment due on Feb. 9.

The Complete Beethoven Cello and Piano Sonatas and Variations, Part 2

The Complete Beethoven Cello and Piano Sonatas and Variations Part 2, will be held on Sunday, Feb. 18, beginning at 7:30 p.m., at the Truman State University Ophelia Parrish Performance Hall. This performance is free and open to the public.

NEMO Storm Spotter Training

The National Weather Service (NWS) will offer NEMO Storm Spotter Training from 6:30-8:30 p.m. on Thursday, Feb. 22 at the Knox County Community Center, 207 N. Fourth Street in Edina. Learn the basics of thunderstorm development; the fundamentals of storm structure; how to identify potential severe weather features; information to report and how to report information; and basic weather safety. Pre-registration is not required, there is no cost to participants and everyone is welcome. Sponsored by the NEMO news Media Group and the Knox County Community Center. In 2023, an EF2 tornado overtook the town of Baring and residents there did not have any warning. Organizers of this event feel it is imperative to educate as many folks in Northeast Missouri as possible about identifying these storms as early as possible and communicating information to the NWS through the Storm Spotter program.

Kirksville Brewing ribbon cutting ceremony

The Kirksville Chamber of Commerce will hold a ribbon cutting ceremony for Kirksville Brewing, 114 W. Harrison Street, Kirksville, on Friday, Feb. 23 at 4 p.m.



By Curtain Call Theater

Curtain Call Theater's spring schedule of classic movie showings has been updated. The new schedule is below. All movies are at 7 p.m. with free admission and donations welcomed.

Feb. 16 — In the Good
Old Summertime
March 1 — Easter
Parade
April 19 — Casablanca
May 24 — The Guns of
Navarone
June 14 — State Fair
July 12 — The Adven-
tures of Robin Hood

At the Jan. 24 Rotary Club of Kirksville meeting, Marie Murphree provided an update on the Kirksville Area Chamber of Commerce, an organization in which she has served as executive director for the past nine months. She is pictured with Rotary club President Melissa Stuart (right). ROTARY CLUB OF KIRKSVILLE

By University of
Missouri Extension

For individuals interested in becoming a University of Missouri Extension Master Gardener, an in-person course will be held from Thursdays, Feb. 29 through May 16, from 9:30 a.m.-12:30 p.m., at the Kirksville Aquatic Center meeting room. Most classes will have a garden tour or hands-on learning opportunities. You can find registration information at <https://extension.missouri.edu/events/master-gardener-course-kirksville>.

The mission of the Missouri Master Gardener Extension Program is “helping others learn to grow.” The Master Gardener program provides in-depth horticultural training to individuals throughout Missouri who

then volunteer their time applying what they have learned to help others in their communities learn about gardening and environmental education.

After the course, individuals will be encouraged to join a local chapter, and complete 30 volunteer hours of service and six continuing education hours within the first year to become a certified Master Gardener. Local chapters have monthly meetings, social activities, garden tours, service projects, and much more. Chapters organize projects monthly so members can get their volunteer service hours.

There is a fee for the course. For more information contact Jennifer Schutter, MU Extension Field Specialist in Horticulture at schutterjl@missouri.edu or 660-665-9866.



Sparklight®

FETCH
UNLIMITED[†]
INTERNET.

300 Mbps Internet
with Unlimited Data[†]

\$39^{95*}
/mo. for
18 months



NO CONTRACTS +
FREE INSTALLATION

Call 1.855.808.4765
or visit
[Sparklight.com/savings](#)

[†]Speeds may slow if data usage surpasses 5 terabytes. *Limited time offer. Includes Unlimited data. Promotional rate for 300Mbps Internet service is \$39.95/mo. for 18 months. Regular rate applies after promotional period, which is presently \$70/mo. and is subject to change at any time. Equipment, taxes, surcharges and fees are not included. Activation fees and deposit based on credit report. Fully discounted installation could require enrolling in Sparklight Easy Pay. Customers are required to lease or purchase an approved modem. Modem lease fee is \$12.50/mo. Actual internet speeds will vary. All services are not available in all areas. Offer available to new customers only. Restrictions apply. Call for details.

708653jn

<h1 style="margin: 0;">KIRKSVILLE</h1> <h1 style="margin: 0;">Daily Express</h1> <p style="margin: 10px 0 0 0;">705 E. LaHarpe St., Suite F, Kirksville, MO, 63501 660-665-2808</p> <p style="margin: 10px 0 0 0;">The Kirksville Daily Express (USPS 296-060) Periodicals postage paid at Kirksville, Mo., and at additional mail offices.</p> <p style="margin: 10px 0 0 0;">PUBLISHER: JIM HART jhart@whig.com</p> <p style="margin: 10px 0 0 0;">POSTMASTER: Send address changes to P.O. Box 809, Kirksville, MO, 63501</p>	<h2 style="margin: 0;">HOW TO CONTACT THE KIRKSVILLE DAILY EXPRESS</h2> <table border="0" style="width: 100%;"> <tr> <td style="width: 33%; text-align: center;"> MARTY BACHMAN <i>Managing Editor</i> news @kirksvilledailyexpress.com </td> <td style="width: 33%; text-align: center;"> ADAM TUMINO <i>Sports Editor</i> sports @kirksvilledailyexpress.com </td> <td style="width: 33%; text-align: center;"> DAWN BURGIN <i>Circulation</i> dburgin @kirksvilledailyexpress.com </td> </tr> <tr> <td style="width: 33%; text-align: center;"> CINDY HIGH <i>Advertising</i> chigh @kirksvilledailyexpress.com </td> <td></td> <td></td> </tr> </table>	MARTY BACHMAN <i>Managing Editor</i> news @kirksvilledailyexpress.com	ADAM TUMINO <i>Sports Editor</i> sports @kirksvilledailyexpress.com	DAWN BURGIN <i>Circulation</i> dburgin @kirksvilledailyexpress.com	CINDY HIGH <i>Advertising</i> chigh @kirksvilledailyexpress.com			<p style="margin: 0;">Publishes Wednesdays with the exception of New Year's Day, Memorial Day, Independence Day, Labor Day, Thanksgiving and Christmas. Subscription rate is \$160.51 per year in the state of Missouri.</p> <p style="margin: 10px 0 0 0;"><i>For questions regarding subscriptions or to pay your bill, place a delivery hold or start your subscription, call 855-288-4399 or email circulation@phillipsmedia.com.</i></p> <p style="margin: 10px 0 0 0;">E-Edition: Online at KirksvilleDailyExpress.com</p> <p style="margin: 10px 0 0 0;">Entire contents ©2024, Kirksville Express, all rights reserved. Prices are subject to change at any time. No refunds.</p>
MARTY BACHMAN <i>Managing Editor</i> news @kirksvilledailyexpress.com	ADAM TUMINO <i>Sports Editor</i> sports @kirksvilledailyexpress.com	DAWN BURGIN <i>Circulation</i> dburgin @kirksvilledailyexpress.com						
CINDY HIGH <i>Advertising</i> chigh @kirksvilledailyexpress.com								

OBITUARIES

Frank H. 'Frankie' McIntyre, Jr.

Jan 12, 1940 – Jan 26, 2024

Frank H. "Frankie" McIntyre Jr., 83, passed away Friday January 26, 2024 at The Pines in Kirksville, Missouri.

Frank was born June 12, 1940 at home in Kirksville, the son of Frank and Lucille (Scrivens) McIntyre. He was a 1958 graduate of the old Kirksville High School. On February 19, 1965 in Kirksville, Missouri, Frankie married Ruth "Ruthie" Mabry who preceded him in death. He was also preceded in death by his parents and his faithful dog, Jake.

In addition to farming in Adair County for nearly sixty years, Frank co-owned Kirksville Livestock Market in the early 80s. He worked construction in the early 60s. His civic duties included serving as a member of the Adair County Water District Board and as a member and President of the Kirksville School Board. His proudest accomplishments while serving were being instrumental in building the new junior high (William Matthew Middle School) and getting rural water west of the Chariton River. He was a 4-H beef leader for many years and raised and groomed many champion steers. Frank lived in Kirksville for all but 5 years of his life where he and Ruthie resided in Southern California while he worked at Crown Trucks. Once they returned, Frank continued farming and hunting in Kirksville. In June 2016, Frank was seriously injured in a farming accident. This injury ended his ability to physically farm, but his vast knowledge and amazing memory were vital to his son Mark, as he took over the day- to-day operation of McIntyre Farms.

Frank was a legend to those who knew him. He had a quick wit and great sense of humor. He was known to be absolutely fearless. Frankie had a compassion for all animals, including his cattle, horses, hogs, turkeys, geese, peacocks, ducks, chickens, dogs and cats. He made a powerful impact on all those who knew him, and the many, "Frankie stories" will forever keep his memory alive. He was one of the original Adair County cattlemen to have Simmental cattle.

Frank is survived by his children, Mark (Polly Petree) McIntyre of Kirksville and Mitzi (Jeff) Limback of Park City, UT; grandchildren, Candice (Rich) Perkins of St. Louis, Jennifer (Garrett) Payne of Columbia, Madeline and Ella Limback of Park City, UT; sister, Ellen Sue (Pete) Sireno of Albany, GA; brother-in-law, Alan (Cathy) Mabry of Lampasas, TX; great-grandson, Chance Payne of Columbia; nieces Lisa (Jon) Henry of Columbia, Felicia Sireno of Atlanta, GA, Maria (Jonathan) Bullman of Pace, FL, and great nieces Ashlyn, Sophia, Isabella, and Talia Bullman of Pace, FL.

Funeral services will be Saturday February 3, 2024 at the Travis-Noe Funeral Home in Kirksville. The visitation will be from 10am to noon with the funeral to follow. Frankie will be laid to rest next to Ruthie at Union Temple Cemetery west of Kirksville. Pallbearers are Larry Dudgeon, David Hill, Curt Hill, Rich Perkins, Garrett Payne, Brian Moffat, and Mark McIntyre. Honorary pallbearers are his four granddaughters.

In lieu of flowers, contributions can be made to Union Temple Cemetery in Frank's name, and they may be left at or mailed to Travis-Noe Funeral Home, P.O. Box 306, Kirksville, MO.



Zola Nadean Logan

Sept 14, 1932 – Jan 27, 2024

Zola Nadean Logan, 91, of Kirksville passed away Saturday, January 27, 2024 at The Pines in Kirksville.

The daughter of Earnest and Della (Halley) Carter, she was born September 14, 1932 in Kirksville, Missouri. On April 29, 1951 Zola was united in married to Edwin Logan and he preceded her in death on August 24, 2009.

She was also preceded in death by her parents; three sisters, Jean Moore, Marie Trader and Doris Berry; and one brother, Ernest Carter.

After her marriage, she and Edwin moved to St. Louis where she worked for Bell Telephone Company until she retired and moved back to Adair County.

She enjoyed traveling, cooking, and entertaining friends. She was a member of Hamilton Street Baptist Church in Kirksville.

Visitation will be from 12:00 to 1:00 p.m. Thursday, February 1, 2024 with funeral service at 1:00 p.m. at Davis-Playle-Hudson-Rimer Funeral Home. Burial will be in Maple Hills Cemetery. Arrangements in the care of Davis-Playle-Hudson-Rimer Funeral Home; ww.davisplaylehudsonrimer.com.



Jimmy Kenneth Schempp

Jimmy Kenneth Schempp, 69, of La-Belle, Missouri, passed away Friday, January 26, 2024 at LaBelle Manor Care in LaBelle, Missouri.

Jimmy was the son of the late Robert Kenneth and Margaret Elizabeth (Chadwell) Schempp. He was also preceded in death by two sisters, Marjorie Montague and Evelyn Hopkins. He married Debra Jo Kite who survives. Jimmy is also survived by two sons, Dustin Schempp (Alexa Smyser), and Jason Schempp all of Kirksville, MO; one sister and brother-in-law, Shirley and Keith Stokes of Quincy, IL; as well as eight grandchildren, Payton Schempp, Hudson Schempp, Rylan Cook, Jaetyn Walter, Brecken Schempp, Madison McCarty, Jerzee Schempp, and Asher Schempp.

Jimmy was a graduate from Brashear High School. He was a self employed recycler for years.

Jimmy enjoyed coaching, hunting, and going to the lake boating and skiing.

It was Jimmy's wish to be cremated and his family will receive friends during a public visitation on Thursday, February 1, 2024 from 5:00 to 6:00 p.m. in the chapel of Travis-Noe Funeral Home in Kirksville. Inurnment will take place at a later date at Willmathsville Cemetery in Willmathsville, MO.



Marjorie Irene (Carter) Weber

Oct 6, 1922 – Jan 21, 2024

Marjorie Irene (Carter) Weber, 101, of Kirksville, Missouri, passed away peacefully Sunday evening (January 21, 2024) at The Pines in Kirksville.

The daughter of Jesse and Lizzie (Mattingley) Carter, Marjorie was born October 6, 1922 in Yarrow, Missouri. Marjorie (Marge as she was commonly referred to) was preceded in death by her husband Kenny; one daughter Judy (Weber) Unash; parents Lizzie and Jesse Carter; two sisters Mary Casady and Francis Lowe as well as one brother Caryle Carter.

Marjorie is survived by one son Ronald Weber and wife Shirley of Kirksville, MO; four grandchildren, Shane Weber and wife Michelle of Kirksville, MO, Shannon Weber and fiancé Cindy of Kirksville, MO, Kevin Unash of St. Louis, MO, Heather Miller and husband Jamie of St. Louis, MO; nine great grandchildren, Mericoh Weber, Reece Weber, Sydney Weber, Slade Weber all of Kirksville, MO, Olivia Unash, Sophia Unash, Sam Miller, Ellie Miller and Josie Miller all of St. Louis, MO; as well as many nieces and nephews.



Marge was raised in southwest Adair County where she attended rural school. In the spring of 1941, she received her diploma from Kirksville High School. In that same year she met and fell in love with her bus driver Kenny Weber. The were united in marriage on August 27, 1941 and spent 65 wonderful years together before his passing on March 4, 2006. She was a member of the First Christian Church of Kirksville and supporter of the El Kadir Shrine Club as an El Kadir Jewel. After raising her children, Marge went to work for Merin's Dress Shop. Soon after, she became co-owner and manager renaming the business "Mamselle's Fashion". She made many friends and employed many people during that time which she considered the most important part of her business. Marge took great pride in being a businesswoman during the 27 years she owned and managed her clothing store. As much pride as she had in her business, nothing was more important to her than family. Marge was known as a devoted daughter, sister, wife, aunt, mother, grandmother and great grandmother and always kept family as her top priority no matter the circumstances.

Marge enjoyed working in her yard, maintaining her landscape and growing her cacti of which she had many. She also enjoyed cooking and baking pies especially for Kenny's card playing group. Later in life, she and Kenny looked forward to their winter trips to Nassau with their many friends. Marge is an example to her family of a life well lived. She showed her family not only the meaning of love, but more important the meaning of unconditional love. We are very blessed to have her in our lives for many years and will be missed until we meet again. Thank you for all that you have given us — we love you.

Private family services will be held under the direction of Travis-Noe Funeral Home of Kirksville.

Memorial donations in memory of Marge may be made to First Christian Church or to the Shriner's Children's Hospital and may be left or mailed to Travis-Noe Funeral Home, P.O. Box 306, Kirksville, MO 63501.

CDC awards Kirksville public water system for fluoridation quality

By Missouri Department of Health and Senior Services

JEFFERSON CITY — Missouri Department of Health and Senior Services announced that Kirksville's water system has been awarded a Water Fluoridation Quality Award from the U.S. Centers for Disease Control and Prevention (CDC).

Fluoridation is the adjustment of fluoride in drinking water to a level that is effective for preventing tooth decay. The award recognizes those communities that achieved excellence in community water fluoridation by maintaining a consistent level of fluoride in drinking water throughout 2022.

For 2022, a total of 1,209 public water systems in 27 states received these awards, including 53 in Missouri.

"Water fluoridation is one of the best investments that a community can make in

maintaining the oral health of its citizens. It is equally as effective in preventing cavities in children and adults," stated Casey Hannan, MPH, Director, CDC Division of Oral Health. "Fluoridation is also highly cost effective. Studies continue to show that for every \$1 a community invests in water fluoridation, \$20 are saved in dental treatment costs."

Community water fluoridation has been recognized by CDC as one of 10 great public health achievements of the 20th century. CDC recommends water fluoridation as one of the most practical, cost-effective, equitable and safe measures a community can take to prevent tooth decay and improve oral health.

"We are so very excited to present this award to these Missouri community water systems and offer our continued support from the Office of Dental Health," said



Missouri State Dental Director Jacqueline Miller, DDS, MS, MPH. "Water operators are the unsung champions of this public health initiative providing safe, clean and fluoridated water. They deserve our praise, admiration and appreciation as they continue to protect the oral health of their community."

2ND QUARTER ATLANTA C-3 HONOR ROLL 2023-2024

Principal's Honor Roll

Braydon Baker, Lanee Brien, Konnor Carman, Sylvie Christensen, Dane Christy, Trace Phelps, Carson Reed, Kamberly West, Sawyer Nelson, Mason Reed, Kevin Spearman, Bailey Watson, Jevin White, Sara Drake, Landon Gladhill, Gabe Gunnels, Cooper Nelson, Kaydin Proctor, Jaxson Reed, Mason Thomas, Olivia Calhoun, Whitney Baker, Jackson Nay, Jada Nelson, Jon Reuter-dahl, Lexi Ross, London Smith, Wyatt Smithson, Jaden White, Brody Baker, Alyssa Bramel, Savannah Klamart



A Honor Roll

Aryan Bowen, Aaron Curtis, Kaitlin Farmer, Brooklyn Smith, Nathan Teeple, KEYTON Arnold, Davin Binder, McKenzie Bowen, Carter Christensen, Grady Hruska, Kynleigh Stull, Keyaira Arnold, Patience Boone, Ottis Dunseith, Sam McElhaney, Joshua Watson, Bella Baker, Ashland Hager, Parker Hinkle,

Megan Peavler, Owen Mason, Iyan Bowen, Tucker Fitzsimmons

B Honor Roll

Keaton Hatcher, Jason Kane, Kolby Carman, Lathan Carr, Cole Gravitt, Aislyn Bender, Tyler Foster, Logan Gladhill, Chyann Hager, Jaidev Langdon, Tanner Fitzsimmons, Gage Harrington, Owen Baker, Baylie Binder, Kale Bowens, Easton Foote, Jaedyn Lusher

KIRKSVILLE AREA NEWS BRIEFS

Kirksville Baseball and Softball League registration

Registration for the 2024 Kirksville Baseball and Softball Leagues will open on Monday, Feb. 12. For more information on dates, times and registration fees, contact the Kirksville Parks and Recreation Department at 660-627-1485.

Pantry for Adair County 'Souper Bowl'

Get ready for the 2024 Souper Bowl extravaganza! Join Pantry for Adair County in tackling hunger within Adair County by donating cans of soup or funds for soup to PAC. The Souper Bowl runs through Feb. 12. Donations accepted at 2012 S. Halliburton, Kirksville. Get in the Game – Fight Hunger.

Build A Buddy registration now open

Looking for the perfect Valentine's Day activity with your kids? The Kirksville Parks and Recreation Department announced that its Build A Buddy program is back. Sign up for Build A Buddy and choose from five different kits. Each kit contains everything you need to build your very own stuffed buddy. Each kit contains a 15-inch stuffable animal, stuffing, mini heart, birth certificate, and step-by-step instructions. Build A Buddy kits may be picked up from Feb. 12 to 18 at the Kirksville Aquatic Center. Register today for \$15 per kit at parks.kirksvillecity.com, or in person at the Kirksville Aquatic Center. Supplies are limited, so complete your registration soon. For more information, contact Luke Callaghan with the Parks and Recreation Department at 660-627-1485.

Registration for the 15th Annual Community Engagement Conference open

Registration for the 15th Annual Community Engagement Conference is open. This year the conference will feature magician and self-advocate, Cody Clark. Clark will share his magical along with how he became successful in his career. In addition to Clark's keynote presentation, he will offer a 30-minute question and answer session, a breakout ses-

sion and a full magic show at the end of the conference. This year's conference also offers five tracks of three breakout sessions with information for all.

Track 1 — The Magic of Advocacy: This track will offer information about advocating for yourself and living your best life.

Track 2 — The Magic of Childhood: At the request of conference attendees, this new track will offer information for parents and guardians of children from birth through pre-teen.

Track 3 — The Magic of Planning for Adulthood: In this track, attendees will learn about resources available for young adults preparing for adulthood.

Track 4 — Using the Magic of Assistive Technology — Breakout sessions in this track will provide information about how using various types of assistive technology can help you to live a more independent life.

Track 5 — The Magic of Resiliency — Attendees to breakout sessions in this track will learn how to be more resilient and care for themselves, as well as, the people they support.

NEW THIS YEAR — In honor of this being the 15th year for the

conference, t-shirts are available for purchase. All t-shirt purchases must be submitted no later than Friday, Feb. 16. Contact Melissa Cline at melissacline@sb40life.org

Mobility: African-American Artists Abroad at Truman State University Art Gallery

Mobility: African-American Artists Abroad will be showcased at the Truman State University Art Gallery, Jan. 23 – March 1. Mobility: African-American Artists Abroad, is work from the Petrucci Family Foundation Collection of African-American Art. An opening reception and talk will be held on Tuesday, Jan. 23, at 5 p.m. University Art Gallery Hours: Monday-Thursday 8:30 a.m. to 7 p.m.; Friday 8:30 a.m. to 5 p.m.; Saturday Noon to 4:30 p.m. Art Gallery exhibits are free and open to the public. Please note, the University Art Gallery is closed between exhibitions and during all Truman State University breaks.

Additional information at gallery.arttruman.com. The Art Gallery is located on the first floor of the Ophelia Parrish Fine Arts Center, at the corner of Normal and Mulanix Streets – entrance on the west side of the building.

Kirksville, Missouri

KIRKSVILLE LIVESTOCK LLC

24295 Benton Road * P O Box 242 * Kirksville, MO 63501

www.kirksvillivelivestock.com

SPECIAL BRED HEIFER, COW & BULL SALES 6:00 P.M.
SPECIAL CATTLE SALES 11:00 A.M.
SPECIAL SHEEP SALES 10:00 A.M.

FEBRUARY, 2024

- Friday, February 2 - Special Breeding Stock Cattle Sale. 6:00 p.m.
- Monday, February 5 - Special Sheep, Goat & Hog Sale, 10:00 a.m.
- Monday, February 12 - Special Feeder Cattle Sale, 11:00 a.m.
- Monday, February 19 - Regular Cattle Sale, 11:00 a.m.
- Monday, February 26 - Special Feeder Cattle Sale, 11:00 a.m.

We are open on Sunday to Receive Your Livestock
"Your Business is Very Much Appreciated"
"Proud to Serve Area Livestock Producers"
For more information or Someone to Phone for information:
Patty Foster, Office Manager ~ 660-665-9804
Chuck Ambrosia ~ 660-342-3530 ~ Luke West ~ 620-215-5770
Mark Herbold ~ 515-720-8667 ~ Al Ashmead ~ 660-216-8730
Doug Fleishman ~ 660-626-7148 ~ Daniel Smith ~ 660-341-8396
Jeremy Jarman ~ 660-341-9879 ~ Caleb Randolph ~ 641-919-8539
Karol Kirkpatrick ~ 641-777-3403

ROBIN WRITES

Socks to the rescue

It's the perfect time to pay tribute to the humble sock. Can you imagine enduring the last few weeks without them?

I think we take them for granted; we pad around our heated homes in socks and don't feel the cold that swirls below our knees. Our toes are swaddled like sardines in a cotton can.

I grew up with tough feet and determined toes. Barefoot summers were followed by sandaled school days, and I only bothered with socks in the cruelest of winter cold. My body was an efficiency furnace, and heat was evenly distributed from head to toe.

On Sundays, I wore delicate white crew socks with frilly lace around the tops. It was as if covered feet and ankles were important on the Lord's Day. As soon as I got home, though, they were quickly removed.

Mom was a barefoot expert. Her pudgy toes and substantial ankles carried her throughout the house as she swept and cooked and shooed us all from this place to that. When she put on her sturdy, plain slip-on shoes, we knew we must be going somewhere.

Dad was a big sock wearer. I don't remember seeing his feet more than a handful of times. Grayish, limp wads of material hid his toes as he sat in his recliner and watched TV. I could see them snaking up the legs of his blue work pants, ending beyond his skinny calves. We giggled at the silliness of seeing him without the work boots he wore each weekday.

Instead of wearing our socks, we kids found fun ways to use them.

My brothers rounded out a wire clothes hanger, wedged its hook along the top of their bedroom door, and played basketball with a pair of rolled-up (probably stinky, dirty, boy) socks. I could hear the thump of missed shots and the hanger clattering against the door.

When I'd dare to try and join in the game, I'd be pelted with the sock-ball. It was disgusting.

I thought odd socks were the best. When a lone sock was relegated to the rag pile, it was fair game for craft-making.

Knee socks made the best puppets. All I needed was a couple buttons for eyes, maybe some yarn clumps for hair, and my arm. I'd shove my open hand inside and mold a mouth between my fingers and thumb. My puppet looked this way and that, mouth agape and eyes wobbling, while I imagined a sock voice for her.

The easiest Barbie clothes were made from ribbed sock tops. I'd cut off the floppy, thin bottom of the sock and—Presto—a slinky tube dress. Barbie's ample bust held the sock firmly in place



ROBIN GARRISON LEACH
ROBIN WRITES

(as long as I didn't use Dad's stretched out ones).

Winter days, our socks did more than just keep our feet warm. When it was time to make a snowman or sled or shovel snow, we slid sock after sock on our bare hands. By the time we were protected to Mom's satisfaction, our hands resembled catcher's mitts.

Sometimes, Mom added a bread bag to the top of our sock gloves to help protect against melting snow, and off we set...to try and do anything while lugging the huge paws around.

Those days of sock fun are long gone. I now realize the luxury of wearing thick socks for warmth and comfort. Nothing feels better—especially on frigid winter days—than long, fuzzy socks cradling my feet and calves. And even though a superstition says wearing socks to bed can cause nightmares, I risk it to keep my tootsies warm each night.

Look down and give a little “thank you” to your socks today.

Contact Robin at
robinwrites@yahoo.com

HOME COUNTRY

Telling it like it is to an expert



SLIM RANGLES
HOME COUNTRY

Hey, I was there to help, right? Right there in the kitchenette loaned us by the Roosevelt Hotel in Anchorage. My wife, Pam, ran the headquarters for the Iditarod Dogsled Race, and it was the second year of the race, 1974, and there I sat, a genuine Alaskan long-distance dog musher who had participated in the first race the year before.

So when a nicely dressed elderly gentleman with a thick Boston accent stopped by for coffee and questions about the race ... hey, I'm there for you.

He said his name was Norman Vaughan and he had some questions, and we talked for more than an hour. Oh, I explained to this obvious city guy all about how the dogs were hooked up, and how far we could go each day, depending on weather. He was a good student, too. When he rose to go, he said, “Slim, I think we'll be seeing a lot of each other and become good friends.”

There was something about Norman that I genuinely admired, even if I couldn't have said exactly what it was.

For the record, the race begins (for 50 years now) on the first Saturday in March in Anchorage, then crosses 1,100 miles of Alaska to end up on Front Street in Nome. This gives a guy a long, cold camping trip before he gets to Front Street. Many aren't able to complete the race for various reasons, and I was one of those.

Four days in, I crushed an ankle. I crawled in the sled and the team took me 20 miles to the next checkpoint, where I was ignominiously airlifted to a hospital in Anchorage by Army helicopter.

So about a half hour after Norman left, we were discussing him and sipping coffee when the news guy on the radio said, “The special guest at the musher's banquet tonight will be Colonel Norman Vaughan, who drove a dog team to the South Pole in 1928.”

Yes, there was laughter. A lot.

Norman Vaughan drove his dog team to the South Pole as a possible rescuer in case Richard Byrd's plane was forced down. During World War II, Norman was in charge of dog team rescue in Greenland, where they could rescue any air crews forced down on the ice cap. More than 100 fliers were rescued by his dog teams.

He and I were friends for the rest of his life, and when Norman Vaughan finally was able to finish the Iditarod Race in Nome, one of my dogs was his leader.

But after giving this polar explorer the benefit of my “vast” experience, about all I could do is grin and shrug and say, “Well, at least now he knows how to do it the right way.”

Brought to you by Sweetgrass Mornings, by Slim Randles. Now available at Walmart and Ebay.

THE ROCKWOOD FILES

Teenagers 101

Don't be such a hagfish



GWEN ROCKWOOD
THE ROCKWOOD FILES

Before I had teenagers of my own, I interviewed a child psychologist for an article I was writing at the time. During the interview, I asked the doctor for tips on how parents could better relate to teenagers. His answer stuck with me: “Parents need to remember that almost all teenagers have the same number one fear, and it influences nearly everything they do and say.”

“What's the number one fear?” I asked.

“Embarrassment,” he said, matter-of-factly. “They'll do almost anything to avoid it.”

It sounded simple enough, and, more importantly, it rang true. I remember being a teenager and thinking that a root canal without anesthesia would've been preferable to tripping on my way up the gym bleachers during a pep rally. (Thankfully, I went to high school before moments like that were routinely captured and shared on YouTube for the entire Google universe to see. Today's teens aren't so lucky.)

But it wasn't until my own kids began to morph into teenagers nine years ago that I realized there's more to this story. Not only do teens live with a stifling fear of embarrassment and ridicule, they also have defense mechanisms to guard against the somewhat routine humiliations they experience while enduring this major transition in life. It's these defense mechanisms — the intense moodiness, the snark, the unexplained anger — that make teens so tricky to live with at times.

And that reminds me of the hagfish — an awkward-looking, grey creature with no eyes that smells bad and produces large amounts of sticky slime, which exudes from pores all over its body when it feels threatened.

Please understand that the hagfish is not particularly vicious. It just wants to feel its way along the sea, mind its own business and not get eaten by a bigger fish. But when it senses the approach of a predator, it releases a big gush of slime that mixes with seawater and instantly becomes thicker, clogging the gills of its attacker.

The predator ends up choking to death on what is essentially a big blob of super-strong snot.

But sometimes the hagfish produces so much killer slime that it, too, gets caught in its own glob. When it's trapped by its own mess, it ties itself in a knot and pushes the knot down the length of its rope-like body to scrape off the slime and swim away.

Many of you already understand why the defensive hagfish reminds me so much of teens and the perils of parenting them. Who among us has not accidentally poked a teenage hagfish and then barely escaped with our sanity?

Teens experience their fears (and every other emotion) more intensely than the rest of us do. Their world is smaller, and their perspective is limited. They can't always see what's up ahead. They're simply feeling their way along a vast sea of emotions. And it's common for that still fragile ego to get spooked and react without thinking.

Sometimes teens spew out a big blob of overreaction (or icy aloofness or disrespectful disdain) and then retreat to the safety of their rooms. While their parents struggle through the messy aftermath, the teen ties him or herself into an emotional knot, smoothes it out somehow, and eventually emerges unscathed by the whole experience.

To my fellow parents, maybe what's true for a hagfish is true for our teens, too. Even on their moodiest days, our teens don't hate us. It's just that they're part hagfish. (In truth, we probably all are.) And sometimes we're going to get slimed.

All any of us can do is try to navigate this turbulent world (even when it's scary) and keep on swimming.

Gwen Rockwood is a syndicated freelance columnist. Email her at gwenrockwood5@gmail.com. Her book is available on Amazon.

POETRY CORNER

Winter is Upon Us

It takes 31 days... to get January to go,
But there's February and March... and I can't stand the snow.
Shoveling the drive... it's such a pain in the rear,
Each winter I wonder... why am I still here?
This weather stinks... the car doors are all froze,
Icicles are hanging... including one from my nose.
I dig deep in my pocket... and pull out the keys,
This car better start... oh turnover please.
Oh happy day... it started right off,
No sputters, no wheezes...



not even a cough.
As I drive off to work... now to stay out of the ditch,
Why have a season... that makes everyone bellyache?

— Daniel D. Donovan

PUBLIC HEALTH CORNER

National Radon Action Month

By Brandon Carlyle, B.S., CHES®
Health Educator
Adair County Health Dept.

In this edition, we're shining a spotlight on a silent but significant threat — Radon exposure. National Radon Action Month is recognized each January. This month is dedicated to raising awareness about radon, a naturally occurring gas that can seep into homes and pose a risk to our health.

Understanding Radon:
Radon is considered to be the second leading cause of lung cancer in the U.S. Radon is a radioactive gas that is colorless, odorless, and tasteless. Radon gas is released into the air from the natural breakdown of uranium in rocks and soil. It can enter homes through the ground and accumulate to levels that may pose health risks, particularly through prolonged exposure. Radon becomes a risk indoors because as it continues to break down, it emits atomic particles that upon entering the lungs can alter DNA and potentially result in Lung Cancer. Radon can be tested and measured in pCi/L (picocuries per liter) and there are estimated risks to health from the exposure depending on the concentration. Missouri Department of Health and Senior Services (MO DHSS) and the Environmental Protection Agency (EPA) recommend that if the concentration of radon is

4 pCi/L or greater, then remediation should be done to lower risk. MO DHSS is currently offering free radon kits for citizens by filling out the form provided in the link below.

Link to Request a Free Test Kit: <https://forms.office.com/Pages/ResponsePage.aspx?id=ksbAgTjUaU6Q88Dyy-IpOx-Wosdj3SHJlgJmnLS-Wi7pdUNzdIQk5NTEw3Qjln-V0dFNkhrQTFLN0EzOC4u>

Key Facts and Risks:
Health Impacts: Radon is the second leading cause of lung cancer after smoking. Prolonged exposure to elevated radon levels can significantly increase the risk of lung cancer.

Common Entry Points: Radon can enter homes through cracks in the foundation, gaps around pipes, sump pumps, and other openings. Any home, regardless of its age or construction, can have elevated radon levels.

Testing and Mitigation: Testing your home for radon is simple and inexpensive. If elevated levels are detected, mitigation measures can be taken to reduce radon concentrations and minimize health risks.

Preventive Measures: Properly ventilating basements, sealing foundation cracks, and installing radon mitigation systems are effective measures to prevent radon entry into homes.

Your Role in Radon Action:
Testing Your Home: Take the initiative to test your home for radon. Test kits are readily

available, or you can hire a professional to conduct testing.

Spreading Awareness: Share information about radon with friends, family and neighbors. Increased awareness contributes to a collective effort to address radon exposure in our community.

Encouraging Mitigation: If elevated radon levels are detected, take prompt action to mitigate the issue. Professional radon mitigation services can effectively reduce radon concentrations.

Community Advocacy: Advocate for radon testing in schools, workplaces, and public buildings. Promote policies and practices that prioritize radon awareness and mitigation.

Your Commitment to Radon Awareness Matters:
By taking proactive steps and encouraging those around you to do the same, you contribute to a healthier and safer community. If you have questions about radon or need assistance, reach out to your local health department's Environmental Health Specialist, Stewart Blessing at (660) 665-8491 and select option 4 for Environmental.

For additional information on radon visit: <https://www.epa.gov/radon> or Call the Missouri Radon Hotline at: (217)-241-9050 for more information about Radon.

Thank you for your dedication to the well-being of our community.

TURNING THE PAGE

This Week
in Local
History

By Larry Evans

100 Years Ago, January 28, 1924

Baldwin Hall, the first building on the campus of the Kirksville State Teachers College (now Truman State University), was destroyed by fire. Library Hall that was connected to it also burned although it appeared early on that the library could be saved. It appeared that only classrooms in the Demonstration School building would remain available for use. The new city fire truck pumped two large streams of water from the lake on the blaze. Three buildings, Baldwin Hall, Library Hall, and Science Hall were all connected, and Science Hall did not sustain extensive damage. Shortly after the fire started, students and faculty members started carrying books out of the library, and in their efforts, some were nearly overcome with smoke. The janitor was overcome by smoke and had to be rescued from the second floor of Baldwin Hall. He was seen hanging out of a second-floor window of Baldwin Hall gasping for breath. He was rescued by two men who carried him down the stairway. The origin of the fire was unknown, but it was thought that the fire started near one of the big chimneys in Baldwin Hall. Baldwin Hall was erected in 1873. The two connecting buildings were added later. The estimated loss of the two structures was \$300,000, while the insurance coverage amounted to only \$110,000. Before rebuilding could start, the Missouri state legislature would have to appropriate money for that purpose.

70 Years Ago, January 28, 1954

Thirty cases of ringworm were confirmed in the Kirksville public schools with other possible cases pending confirmation. The junior high school, Greenwood School, and Willard School students had been examined while Washington and Benton schools were still pending examination. School authorities, under the supervision of Dr. Vernon H. Casner, the public health officer, were making an “intensive diagnostic survey” to determine the extent of ringworm in the schools. In the diagnostic survey, each child was checked under an ultraviolet light. If the child had ringworm, the infected area would be indicated. Students with ringworm were not barred from attending school, but parents were notified, and precautionary steps were taken to assure limited contact in cases where the disease existed.

70 Years Ago, February 2, 1954

A would-be robber who tried to hold up Rupe Rinehart, long-time operator of the Rinehart newsstand, got more than he bargained for as the 75-year-old news dealer “popped” his assailant with his cane and grabbed the attacker’s presumed “pistol.” Rinehart was on his way home on South Franklin Street after locking up the newsstand at 10:30 p.m. when the incident occurred. When he reached Propst Cleaners on the east side of the Franklin, he felt an object being stuck in his ribs, and a man asked, “How do you like that?” Rinehart turned around and saw a man with a handkerchief over his face. The man shoved the “gun” into Rupe’s stomach, and Rinehart asked, “Are you kidding?” The assailant then replied that he was serious. With that Rinehart took his cane and hit the



man in the side of the head, breaking the cane. At the same time, he grabbed the barrel of the supposed “gun” which was actually a pipe stem. The attacker then turned and fled the scene. Rinehart went home and called the police. The next day he displayed a portion of his broken cane and the pipe stem at his news agency. Rinehart had \$2.20 in his pocket at the time of the attempted hold-up.

70 Years Ago, February 3, 1954

Ralph M. Pickell, 84, a Kirksville abstractor for more than forty years, died following a paralytic stroke. Pickell was born near Hamilton, Missouri, in 1869. His father served in the Pennsylvania cavalry during the Civil War. After the war the family moved west settling first in Caldwell County. Pickell received a law degree from the University of Missouri in 1899. After graduation he opened a law office in Gallatin, Missouri, and served as prosecuting attorney of Daviess County. In 1903 he moved with his new wife, Daisy L. (Gordon) Pickell, to Kirksville where he entered the Railway Mail Service and later transferred to the Kirksville Post Office. He served as Kirksville’s Police Judge for a time and opened a law and abstract office which he operated for some forty years. The Pickell Abstract Company is celebrating 100 years of service to the area at its current location on South Franklin Street in Kirksville.

55 Years Ago, January 29, 1969

Charles Smith, the Kirksville man accused of killing his wife, Donna, in 1961, was declared mentally unfit to stand trial by psychiatrists appointed by the court and the state. The court appointed private St. Louis psychiatrist examined Smith and concluded that he was incapable of assisting in his own defense or incapable of conversing with his attorney. A second evaluation by the prosecution resulted in the same conclusion as the first. “It is obvious that he (Smith) is not competent to stand trial.” St. Louis Circuit Judge, Douglas L. C. Jones ordered Smith committed to the state mental hospital at Fulton for “as long as his unfitness shall last.” Smith had been scheduled to stand trial February 3. Smith had fought extradition to Missouri from Boise, Idaho, where he had been in jail since 1963. He was scheduled to stand trial earlier, but several court deferments prevented the trial from taking place.

35 Years Ago, February 1, 1989

An anti-smoking campaign was getting ready to be fired up in Kirksville as a group of concerned citizens planned to present a petition to the upcoming Kirksville City Council meeting. City Manager Robert Kuftrin said: “I would anticipate the Council will take no action on the measure next week but will probably take the matter under study for possible action later. The petition that had circulated around the city asked for the city to implement a clean indoor air ordinance, which would not ban smoking in public places nor force smokers to quit smoking, but rather it would prohibit smoking in public places or at public meetings, except in designated areas. The cities of Columbia and Kansas City had already enacted similar anti-smoking ordinances.

© Copyright 2024 by Larry Evans



The original Baldwin Hall was constructed in 1873.

EMBRACING LOCAL HISTORY

Part 87

Corporal Hervey Dix — First Adair County casualty of the Civil War

By Blytha Ellis, President
Adair County Historical
Society and Museum

Hervey Dix was not a native of Missouri, but during his duties as a corporal in the early part of the Civil War, he became the first casualty of that war in Adair County, Mo. He was buried in Kirksville, and after the war, he was honored by having a post of the Grand Army of the Republic in Adair County named for him.

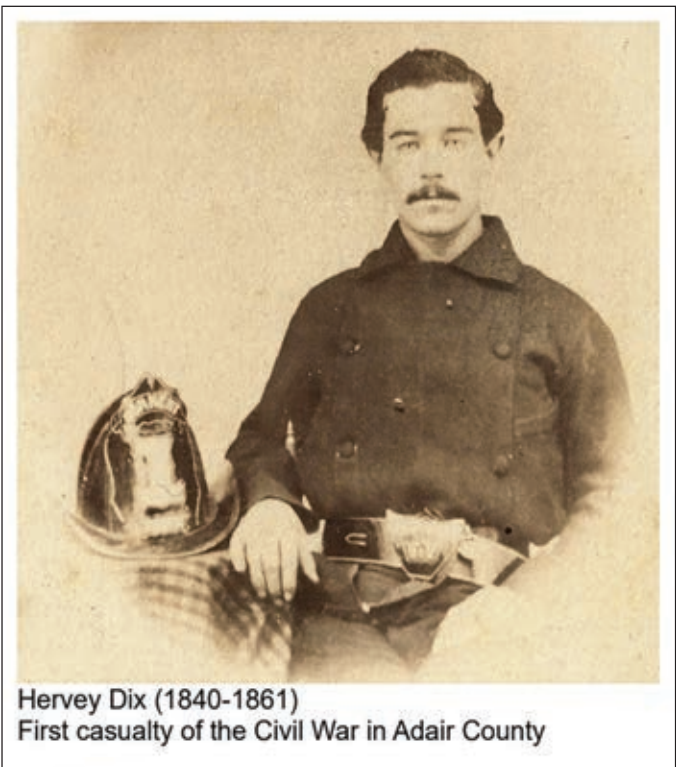
There always seems to be a question about the odd spelling of Hervey’s name. However, it is correctly spelled with an “e” as the second letter rather than an “a.” Hervey was born August 27, 1840, in Charleston, Massachusetts, the son of James Hervey Dix and Ann Maria (Bleisdill) Dix. Hervey had one sister, Mary Dix, who was born in 1835. Hervey’s father’s occupation in 1860 was merchant. Hervey at age 19 was listed as a painter in this same census. It is interesting to note that in this 1860 census, the real estate claimed by Hervey’s father was worth \$12,000. This was much more than his neighbors who declared only \$300 to \$600 in real estate value. This seems to indicate that the Dix family was well off financially.

In a studio photo of Hervey Dix which the Historical Society has, it shows him dressed as a firefighter. It is unknown where this photo was taken, in his home state or after he moved West.

Shortly after 1860, Hervey left Massachusetts and moved to Iowa. He first spent some time in the town of Monona and then settled in McGregor, a town in Clayton County in the northeast part of Iowa. McGregor is located on the Mississippi River across from Prairie du Chien, Wisconsin. What brought Hervey to this location in Iowa is unknown.

Alexander MacGregor (name spelled different than the town) who founded the town of McGregor had started a ferry in 1837 which operated across the Mississippi between McGregor and Prairie du Chien. Then in 1857, a railroad was built from Prairie du Chien to Milwaukee. This connected Lake Michigan with the Mississippi, quickly making McGregor a major commercial center for shipping grain from Iowa to Milwaukee. Perhaps, Hervey came to this location to work in the lucrative shipping business. But, Hervey did not live to see the population of McGregor explode to over 5,500 in the 1870s when the city became the busiest shipping port west of Chicago.

It was in Clayton County, Iowa, that Hervey Dix heard about the beginnings of the Civil War. He joined other young men from the area when he enlisted with Union forces on May 22, 1861, at the age of 20. He be-



Hervey Dix (1840-1861)
First casualty of the Civil War in Adair County



gan his duty as a Corporal in Company C of Iowa’s 3rd Infantry Regiment on June 8, 1861. Sadly, his military service, and his life, would be short term.

Hervey’s Iowa company was assigned to go approximately 270 miles south of Clayton County and join an Illinois detachment to assist troops in unfamiliar territory in Northeast Missouri. They were to interrupt the recruitment efforts of the Confederates in that area and stop any formation of rebel troops in the border state of Missouri.

There were several home guard units organized in Northeast Missouri in the summer of 1861. A Home Guard Company was formed under Captain Nathan Winters and another under Captain Foster R. Hawk. Both of these companies were sworn into federal service on August 1, 1861. Later, they became Companies A and B, respectively, of the 22nd Infantry, Missouri Volunteers, under Lieutenant Colonel John D. Foster and Major Andrew Hynes Linder. (This latter name should be familiar to those who have read previous episodes of this history. See Part 64.)

With these two companies, there were in this regiment four other companies which are said to have been raised by Lieutenant Colonel Morse between Hannibal and Macon. The work of recruiting men for these two Adair County companies and of getting them sworn into service was facilitated by the arrival in Kirksville in July 1861 of some detachments of the 16th Illinois Infantry and the 3rd Iowa Infantry of which Harvey Dix was a Corporal. These Iowa and Illinois troops were in Adair County not only to help in recruiting federal soldiers, but also to run down Confederate recruits and recruiting officers.

One of the home guard units was the Adair County Home Guard Company of Mounted Infantry formed

in May 1861. In August 1861, they joined Corporal Dix’s 3rd Iowa Infantry in pursuit of Colonel Green, a Confederate recruiting officer.

Before the work of organizing the 22nd Missouri had been completed, a skirmish occurred between 12 men from the two Adair County companies which were to become a part of that regiment, and a squad of Confederate recruits. The squad from the Adair County companies was under Corporal Hervey Dix.

On August 19, 1861, Dix’s squad went out on a scout in northeastern Adair County trying to find Colonel Green. At noon, Dix and his men stopped to eat a meal at the farmhouse of a Union man named Westenhaver about 10 miles northeast of Kirksville.

Dix and his men were caught off guard when a squad of 18 Confederates under Captain Robert Hagar from Monroe County surrounded the farmhouse. The rebels demanded a surrender. Corporal Dix shouted, “I never surrender!” Hagar’s men then began firing at the farmhouse. Corporal Dix rushed from the residence and returned their fire. He shot down two Confederates and wounded at least two more with his revolver.

Dix then backed himself into the chimney corner of the outside of the house for protection. From that position, he fought as fiercely as he could. However, it would have been safer had he stayed in the house and shot from the windows. Perhaps he ran out in order to protect the Westenhaver family. We, of course, do not know what he was thinking at that time, but he put himself in a vulnerable position.

When Hervey briefly stepped out from his chimney cover during the gun battle, he was shot from behind by Captain Hagar. Hagar’s bullet passed through Hervey’s head, killing him instantly. There, on a farmer’s lawn, far away from his home state of Massachusetts and his adopted state of Iowa, and within the boundaries of Adair County, Missouri, Hervey Dix died in service to his country.

What happened after Hervey’s death? Read our next episode.

© Copyright 2024 by Blytha Ellis

Look back in History with

Pickell Abstract Company

As They Celebrate 100 YEARS in Business

660-665-8324 | pickellabstractcompany.com

CRC announces 2024 scholarship program for area students

By Cooperative Response Center

AUSTIN, MINN. – The Cooperative Response Center Foundation announced its postsecondary education scholarship program for the 2024 school year, awarding up to \$12,000 to high school seniors attending schools in the communities in which it works. This is the sixteenth year CRC has offered a scholarship program for area students, the first year administered through the CRC Foundation.

CRC will award up to eight \$1,500 scholarships to seniors attending high schools, both public and private, in the following communities: Austin, Minn., Dunlap, Tenn., Abilene, Texas, and Kirksville. High school senior sons and daughters of regular full- and part-time CRC employees are also eligible.



The deadline to apply for one of CRC’s \$1,500 scholarships is Wednesday, April 10. For more information about CRC’s scholarship program or to obtain a scholarship application, visit CRC’s website at www.crc.coop and click on the Community tab. Contact Julie Schramek, corporate communications manager, at 507.437.2304 or info@crc.coop with any questions.

About CRC

CRC is a nationwide, cooperatively owned and operated, 24/7 contact center and alarm monitoring center. Founded in 1992, CRC has steadily increased the size and scope of its operation with offices currently in Austin, Dunlap, Abilene, and Kirksville. CRC serves over 550 members and associate members in 47 states, representing over 12.3 million consumers. Visit CRC on the web at www.crc.coop.

MREIC announces success of Small Business Revolving Loan

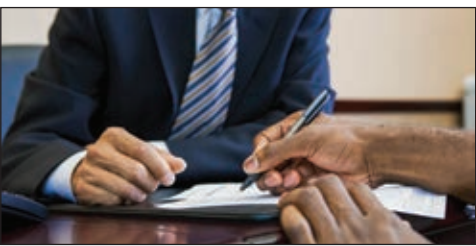
By MREIC

In celebration of the U.S. Economic Development Administration’s Revolving Loan Fund (RLF) week, Missouri Rural Enterprise and Innovation Center (MREIC) announced the successful lending of over \$82,000 to four small businesses in the 16 counties in MREIC’s service area.

A revolving loan fund is a gap financing measure primarily used for development and expansion of small businesses. It is a self-replenishing pool of money, utilizing interest and principal payments on old loans to issue new ones.

MREIC received a grant from the USDA’s Rural Business Development Grant program to establish the revolving loan fund. The funds were offered to for-profit businesses to create/retain employment or provide needed equipment or services. Some examples of the types of fixed asset financing include land, buildings, manufacturing equipment, office and work equipment, and infrastructure improvements.

One of the benefits of borrowing money from a revolving loan fund is that repayment terms are attractive. MREIC offered a 3-year repayment amortization



with an interest rate of 1/3 prime. Loans can cover up to 75 percent of a project cost, capped at \$15,000 unless additional funds remain available and then not to exceed USDA cap of \$46,363.

Recipients included:

- A chiropractor needing a new specialized chair;
- A radio station needing a new tower;
- A retail small business needing funds for repairs and improvements;
- A startup veterinary business needing equipment.

Applicants must demonstrate the ability to repay the funds. Financial documentation of profit/loss, tax returns, and balance statements are required.

For more information, and to check on available funds, call 660-665-3348 or email atiedemann@kirksvillecity.com.

Lutheran Family and Children’s Services empowers Kirksville parents with free Pregnancy to Parenting Program

By Lutheran Family and Children’s Services

Raising children can be the most rewarding and, sometimes, the most challenging adventure of your life. Lutheran Family and Children’s Services (LFCS), one of Missouri’s oldest social service agencies, supports Kirksville families at every step with its free Pregnancy to Parenting Program.

This comprehensive program provides crucial support, guidance and resources for families en-



rolled during pregnancy and continuing until their child’s first birthday.

“In Kirksville and surrounding communities, parenting doesn’t have to be solo,” said Heather Wall, director of Parenting Services for LFCS. “We bring personalized support and resources to your doorstep, empowering families to

thrive with practical tools, a listening ear, and a safe place to grow together.”

Strong Support, Delivered Wherever You Need It

The LFCS Parenting Program goes beyond one-size-fits-all workshops, directly supporting Kirksville parents in their homes, schools, or other comfortable community settings. LFCS’s experienced and understanding staff will:

- Work with you to identify your family’s goals and aspirations.
- Connect you to vital

community resources for childcare, food assistance, and more.

- Offer practical guidance on conflict resolution, positive communication, and building strong family bonds.
- Empower you with effective discipline techniques, stress management tools, and self-care strategies.
- Provide a supportive network of peers to share experiences and learn from each other.

More than Parenting: A Comprehensive Safety Net for Families

LFCS Mid-Missouri understands that families in the Kirksville area need more than just parenting help. That is why LFCS offers a comprehensive range of services, including pregnancy support, adoption services, and mental health services.

“No matter the challenge, we are here to listen, to support, and help your family thrive,” Wall said. “Don’t hesitate to reach out to us.”

To learn more about the FREE Parenting Program and other programs and services, contact the LFCS Mid-Missouri office at 573-815-9955, toll-free at 866-326-5327, or visit lfcsmo.org.

is a statewide agency headquartered in St. Louis, with regional offices in Columbia, Cape Girardeau, Springfield, Joplin, and Kansas City and numerous satellite counseling sites. LFCS serves Missouri families from all walks of life in their greatest times of need. The nonprofit social services organization provides four key support areas to help children and families —Adoption, Behavioral Health, Parenting Education, and Pregnancy Support. The programs in these areas empower individuals and families to develop healthy, supportive foundations for a lifetime. Services are open to anyone regardless of race, faith, national origin, gender, or age.



GREASE LIGHTNING
TEN MINUTE OIL CHANGE
1215 N Green St. Kirksville, MO
660-665-6068



COMPLETE AUTO & RV, LLC
COLLISION REPAIR
(660) 988-7920
211 E. Elm Street • Kirksville, MO



JK Tire & Auto
Owners: Joe Dimmitt & Kelly O’Haver
1102 N Green St. Kirksville, MO
660.665.9017



GNS Auto Body, LLC
301 N. Marion St. Kirksville, Mo 63501
gnsautobody.net
G.J Sizemore Owner
Phone: 660-956-0612
Email: gnsautobody@outlook.com

Your Local

FARM SUPPLY SOURCE

NUTRITION • MEDICAL • FARM • PET • APPAREL

SEE US FOR YOUR
SHEEP & GOAT
EQUIPMENT NEEDS



Hometown Animal Health has provided quality products, expert knowledge, and friendly customer service to northeast Missouri and surrounding areas. We are a full-service nutrition, medical, and farm supply source carrying complete lines of animal feed and supplies, farming equipment, agricultural parts, lawn and garden tools, work apparel, and much more!

Hometown ANIMAL HEALTH

Feed • Medical • Farm & Pet Supplies • Footwear & More

website: hometownanimalhealth.com

660-465-2967

18743 US Hwy, 136 Memphis, MO 63555
“on Hwy 136 west of Memphis”

Monday-Friday 8pm to 5pm • Saturday 8am to 1pm



Sign up for our

Newsletters

Stay up to date with the latest news & offers from the

KIRKSVILLE Daily Express

SCAN HERE >>> to Sign Up Now!

OR go to KirksvilleDailyExpress.com/Newsletters



Tigers come out on top in pair of home conference games last week

By Adam Tumino

After securing a tough home conference win over Moberly last Tuesday, winning 61-50, the Kirksville boys basketball team followed it up with another win over Hannibal on Friday. The Tigers beat the Pirates 49-47 to pick up their second-straight win and third win in their last four games. This stretch comes after Kirksville had lost three of the previous four games. They are now 10-5 on the season.

The win over Moberly saw the Tigers hold a two-point lead entering the fourth before they were able to pull away late to earn the double-digit win.

A major factor in that fourth quarter was a run from senior Gavin Pike, who scored seven-straight points for the Tigers and extended their 42-39 win to 49-42. He also had an assist to make it 51-42 with just over two minutes remaining to more or less put the game away. He also had key rebounds down the stretch, including one on the offensive end, and blocked a shot to keep Moberly at bay.



The Kirksville bench celebrates a basket by Gavin Pike in the fourth quarter of the game against Moberly on Jan. 23.



The Kirksville student section wills a free throw into the basket in the game against Moberly on Jan. 23.

Head coach Tyler Martin said that Pike has shown a lot stepping in as a major contributor at the varsity level this season.

“He’s doing a heck of a job,” Martin said. “He’s a kid that just works his tail off and goes about his business pretty quietly. That was awesome for him... We were able to get some looks

that we hadn’t gotten for him earlier in the game, and he just went and attacked and made plays. He stepped up so we kept feeding him.”

Pike led the team with 18 points in the game.

Martin also said he was pleased with the effort, especially late, and the team’s ability to execute down the stretch.

“That was a win that we needed to get where we needed to execute a little bit and make some plays, and we made some plays down the stretch,” he said. “I was proud of our guys. I was proud of their effort. Hopefully that can be a chemistry-building game that we can springboard into the second half of the season with.”

The win over Hannibal was almost the opposite, with the Tigers holding a 10-point lead entering the fourth that the Pirates managed to cut into.

Despite the Hannibal surge late, the Tigers were able to keep a narrow lead thanks in part to junior Cole Kelly. He



Kirksville junior Cole Kelly drives to the basket in the game against Hannibal on Jan. 26. PHOTOS BY ADAM TUMINO

scored seven of his team-high 18 points in the fourth quarter, and after having missed a pair of free throws earlier in the fourth, came to the line in the final seconds and knocked down both shots. These free throws made sure Hannibal’s made three at the buzzer was relatively harmless and not a game-tying shot.

Martin was a little less pleased with the fourth-quarter in that game, but was overall pleased that the team still pulled off the win.

“It was good that we got the win,” he said. “We didn’t execute exactly how we envisioned or planned, but you’ve got to take them as they come.”

He said that some careless ball handling allowed Hannibal to create turnovers, and with those extra possessions, get back into the game.

“They started going to that run and jump, and our passing got really relaxed and we gave them a lot of extra opportunities there late,” Martin said. “We’ve

got to learn from it and keep moving on.”

After these two conference wins at home, the Tigers entered tournament play in the Southern Boone Classic this week. Martin said he hoped to see the team find more success offensively after seeing scoring numbers drop off a bit in recent games.

“We’re going to face three really good teams, and hopefully we can find some rhythm offensively,” he said. “Right now we’re kind of struggling on that end. We’re forcing a little bit at times, especially in late game situations. Just finding rhythm and executing, that will be big.”

The Tigers are averaging 56.2 points per game this season, but were at 61.3 points per game through the first nine games. In the last six games, they are averaging 48.5 points per game.

The defensive output has also faltered a bit. Kirksville was allowing 36.4 points per game in the first nine and 51.8 over the last six. Still, they managed to go 3-3 in the last six games.

Kirksville girls struggle in pair of tough conference matchups

By Adam Tumino

The Kirksville girls basketball team ran into a couple of tough home matchups last week, first falling to a 16-2 Moberly team last Tuesday and then losing to a 10-6 Hannibal team on Friday. The Tigers lost 65-33 to Moberly and 49-18 to Hannibal. The Tigers fell to 7-8 with the losses.

The game against Moberly was a tall hill to climb for the Tigers, and head coach Nick Totta said that games against talented teams can potentially get out of hand if you allow the opponent to capitalize on any mistakes.

“When you play a talented team, you don’t have much margin for error,” he said. “I thought our girls competed, but I thought our execution could’ve been better. Our goal was to get them in the half court, and unfortunately we didn’t take care of the ball well enough and a lot of the things were run outs and layups.”

Those clean baskets for the Spartans led to the Tigers allowing a season high



Kirksville senior Jersey Herbst releases a shot in the game against Moberly on Jan. 23.

in points allowed. The normally defensively-sound Tigers are still allowing an average of just 39.7 points per game this season.

The game against Hannibal featured similar struggles with turnovers leading to easy baskets for Hannibal. Particularly in the first half, pressure put on by the Pirates’ defense caused the

Tigers to throw many errant passes that either went out of bounds or into the hands of Hannibal defenders.

The Tigers scored just five points in the first half before becoming slightly more effective after halftime. They scored eight points in the third quarter and five more in the fourth, even with the clock run-

ning at times due to the large lead for Hannibal.

Totta said that the defensive pressure was something they were expecting to see and prepared for in practice, but it can be difficult to replicate it outside of an actual game.

“I don’t think it was any different than what we expected,” he said. “You work on it in practice, but the bottom line is that it’s hard to replicate that or recreate it in practice. So when you go out and face it, it’s going to be quicker. The gaps and the passing angles aren’t going to be there.”

This was also the second-straight game where the relatively inexperienced Tigers faced a team with a solid core of upperclassmen and seniors. Seven of the 17 players listed on Moberly’s roster are juniors or seniors. Hannibal has 11 juniors and seniors on its 14-player roster. Kirksville has just four juniors and one senior listed on the 16-player roster.



Kirksville sophomore Chloe Carter battles in the paint in the game against Hannibal on Jan. 26.



Kirksville junior Paishynce Fouts drives through contact in the game against Moberly on Jan. 23.

Totta said that inexperienced teams are bound to run into tough games that can be used as learning experiences going forward, even if they may be tough in the moment.

“There’s growing pains,” he said. “That’s one of those growing pains that’s a little more tough to swallow than others, but you can do one of two things at this point; You can crawl in a hole and try to get away from everything, or you can come out and compete, and fight, and battle. I think these kids are that type, and we talked about it at halftime, that you’re going to have to come out and keep competing. That’s how you’re going to get better.”

A bright spot in the loss to Hannibal was the play of sophomore Chloe Carter. She scored 13 of the team’s 18 points and all eight of Kirksville’s points in the

third quarter. She was also active on defense and secured tough rebounds on both ends of the floor throughout the game.

Totta said that she’s a player that embodies that competitive spirit he wants to see from everyone on the roster.

“Night in, night out, Chloe Carter is going to compete, she’s going to battle, and I think we need to take her lead,” he said. “It’s easy when things aren’t going your way to start to feel sorry for yourself. That’s the easy thing to do... I think we can all get better by following Chloe’s lead in that regard.”

The Tigers are playing through the Southern Boone Classic throughout this week and then have a road rematch against Moberly on Feb. 6. They will be back at home on Feb. 9 to play Fulton.



Kirksville sophomore Mya Harris makes a pass in the game against Hannibal on Jan. 26.

Truman State teams find mixed results in conference road games

By Adam Tumino

The Truman State men's and women's basketball teams hit the road last week for conference games against Rockhurst and William Jewell. The teams found mixed results, with the women's team splitting the games and the men having a three-game winning streak snapped with a pair of losses.

Women's Basketball

The Truman State women's basketball team split a pair of road conference games last week, first falling to Rockhurst on the road Thursday before beating William Jewell in a close game Saturday, picking up their second conference win of the season. The Bulldogs are now 2-10 in conference play this season and 5-13 overall.



Truman women's head coach Theo Dean talks with an official during a timeout in the game against Drury on Jan. 20.

The game on Thursday saw Rockhurst pull away in the second half after a relatively close first half. Truman trailed 18-15 after the first quarter and 36-28 at halftime. Rockhurst would then outscore Truman 23-19 in the third quarter and 29-20 in the fourth to earn an 88-67 win.

Freshman guard Molly Joyce scored a team-high 19 points fresh off her career-high 24 points scored in the Bulldogs' previous game against Drury. She struggled a bit from the field, shooting just 4-of-15 and 1-of-6 from three, but went 10-of-10 from the free-throw line. Forward Ellie Weltha came up just short of another double-double, scoring eight points to go with 11 rebounds.

Turnovers, which have been a problem before this

season, once again came back to bite the Bulldogs. Their 26 turnovers led to 31 Rockhurst points.

Limiting those turnovers was one of the keys to their win over William Jewell on Saturday. The Bulldogs turned the ball over 15 times and allowed just 10 points off turnovers, which was vital in what turned out to be a narrow 61-58 win.

The Bulldogs held a 32-28 lead at halftime over the Cardinals and led by as many as 12 points in the third quarter before William Jewell cut the score to 46-44 by the end of the period. The Cardinals then led 52-48 in the fourth quarter before a 10-2 run by Truman put them back up by four points with just 33 seconds. They held on from there to get the win, their first conference win on the road.

Eight of the 10 points Truman scored in their game-sealing run came from the free throw line, where they shot 11-of-14 in the fourth quarter. Free throws were vital in the game as Truman went 27-of-33 from the line while William Jewell was just 8-of-12.

Weltha led the team with 16 points to go with seven rebounds. Maddie Niemeier posted season highs with 12 points and 14 rebounds to pick up her second double-double in the last four games. Emma Bulman scored 14 points off the bench. These three shot a combined 13-of-18 from the field.

Truman will be back at home for games against McKendree on Feb. 1 and

Missouri-St. Louis on Feb. 3. The Bulldogs will be looking to avenge two close losses. They fell to McKendree in the conference opener back on Nov. 25, losing 76-71, and played Missouri-St. Louis on Jan. 6, losing 61-60. McKendree is 10-3 in conference play this season while Missouri-St. Louis is 6-7.

Men's Basketball

With the pair of conference losses last week, the Bulldogs dropped to 4-6 in conference play and 7-11 overall. The Bulldogs entered Thursday's game against Rockhurst on a three-game winning streak, but soon found themselves down by as much as 25 points in the first half to the Hawks. They managed to cut the deficit to 11 by halftime and trailed by as few as four points midway through the second half, but then fell behind and eventually lost 92-73.

Despite the halftime deficit, the Bulldogs shot 15-of-29 from the field in the first half. Rockhurst shot a slightly-lower percentage at 17-of-34, but also made two more three pointers than Truman and five more free throws.

However, Truman's shooting faltered a bit in the second half while Rockhurst only got more efficient, shooting 15-of-26 from the field, 6-of-13 from three and 6-of-6 from the line in the final 20 minutes. Truman shot 13-of-33 in the second half. The Bulldogs also allowed 26 points off turnovers in the game, which is nearly dou-



Truman freshman Kobi Williams plays perimeter defense in the game against Drury on Jan. 20.

ble their season average.

Three Truman players scored in double figures, led by forwards Landon Eiland and Brennan Lovette with 14 and 12 points respectively. They also led the team in rebounds, with seven and

six respectively. Guard Casen Lawrence knocked down three threes off the bench and finished with 12 points as well. Xavier Hall had eight points and a team high seven assists.

In the game against William Jewell on Saturday, Truman led by eight points at halftime and then trailed by as many as six in the second half before the two teams battled it out over the final minutes. A William Jewell basket in the final seconds gave them a 74-72 win.

There were four lead changes and four ties in the final three minutes of the game. A three by Eiland put the Bulldogs up 67-66 with 2:55 left before William Jewell reclaimed a one-point lead on the ensuing possession. Eiland was then fouled on a three-point attempt, going 2-of-3 to give Truman the lead back. William Jewell tied it up again on a free

throw before Eiland struck once again, this time with a dunk to put Truman up 71-69 with 1:48 to go.

William Jewell tied the score after that before both teams had players make one free throw on back-to-back possessions to knot the score at 72-72 with 31 seconds left.

William Jewell then took the lead for good on a layup from Isaac Patterson with five seconds left. A three at the buzzer from Truman's Kobi Williams did not fall as the Bulldogs lost by two.

Patterson's game-winner capped off a 25-point scoring night for him to lead all players. He shot 8-of-11 from the field in the game. Three other Cardinal players scored in double figures.

Truman was led by Trey Shearer with 18 points. He was 8-of-14 from the field and 1-of-2 from three. Lovette had another solid game with 13 points and a team-high seven rebounds.

Truman will host McKendree on Feb. 1 and Missouri-St. Louis on Feb. 3. McKendree is 4-7 in conference play and Missouri-St. Louis is 6-5. Truman played Missouri-St. Louis back on Jan. 6, losing 81-67.

Truman's esports earns third national divisional championship

By Truman State University

Truman's esports team earned their third national divisional championship

during the fall 2023 semester.

Esports had two "Super Smash Bros" teams, purple and blue, with the

blue team going the entire season undefeated. Blue team finished the semester with a thrilling victory against North Central

University. They began the best-of-three match with a loss, but battled to take the championship to the final game. Performanc-

es by players Peter "yolo" Guidry and Zach "dmlol" Miesner ended the game that made Truman national divisional champions for the third time. The other members of blue team are Cam "Inaba" Horosewski, Ethan "J3t" Becher and Noah "cobermai" Higgins.

Open tryouts for esports took place Jan. 20 at the esports lab in Barnett Hall. Current competitive game

titles are "Rocket League," "League of Legends" and "Super Smash Bros."

Matches are live-streamed on Twitch at twitch.tv/trumanesports. More information about Truman esports is available on the team website, esports.truman.edu. Up-to-date information can also be found on the team Instagram and X, @TrumanEsports.



2024
Customer
Appreciation
Week

SAVINGS ON PARTS & ATTACHMENTS
ALL WEEK FEBRUARY 5-10

10% CASH DISCOUNT
5% JDF MULTI-USE ACCT DISCOUNT
ON PARTS & ATTACHMENTS

PLUS...February 1-29
12% off Filters
10% off Oil...PLUS LOTS MORE!
Visit SNPartners.com

JOHN DEERE
Sydenstricker
Nobbe Partners

KEIM LUMBER COMPANY LLC
COMPETITIVE PRICES • FREE ESTIMATES

- COMPLETE BUILDING PACKAGES
- WINDOWS AND DOORS
- INSULATION • DRYWALL
- DELIVERY

13625 St. Hwy 3 LaPlata, MO

Growing Together!

fb farmbank

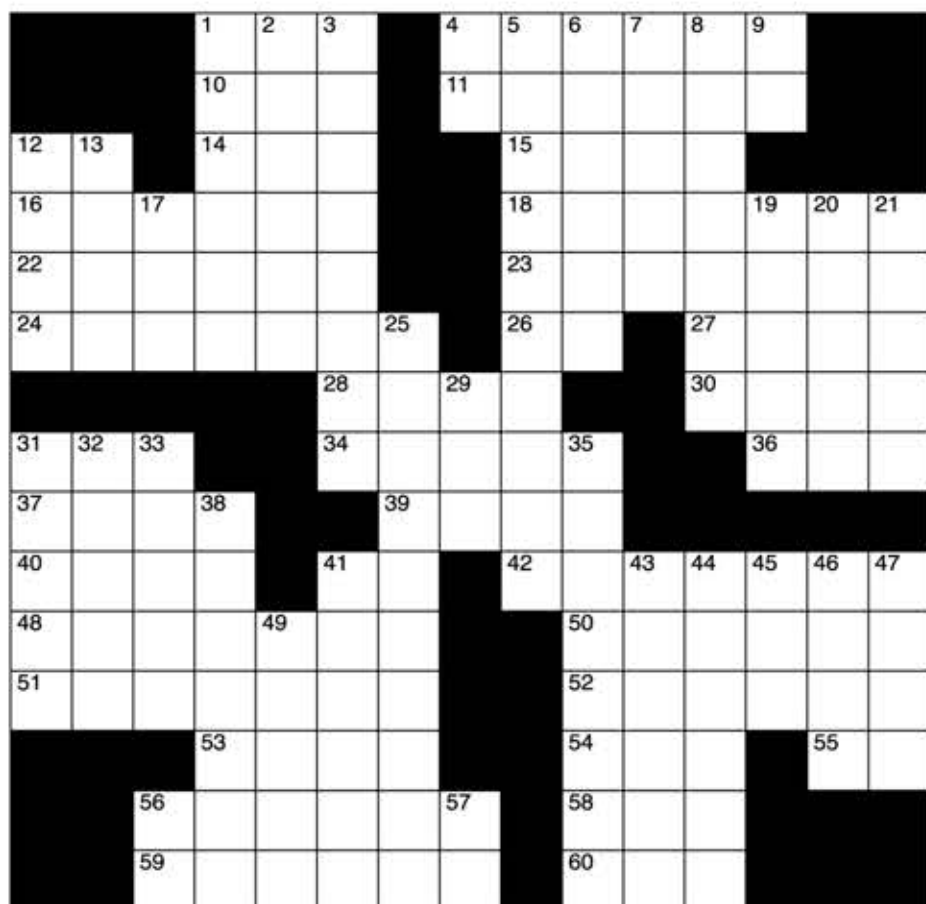
1 S. Lincoln St.
Green City, MO
660-951-8430

701 N. Pearl St.
Milan, MO
660-951-8432

3311 N. Baltimore
Kirksville, MO
660-951-8431

www.farmbank.com

Member FDIC

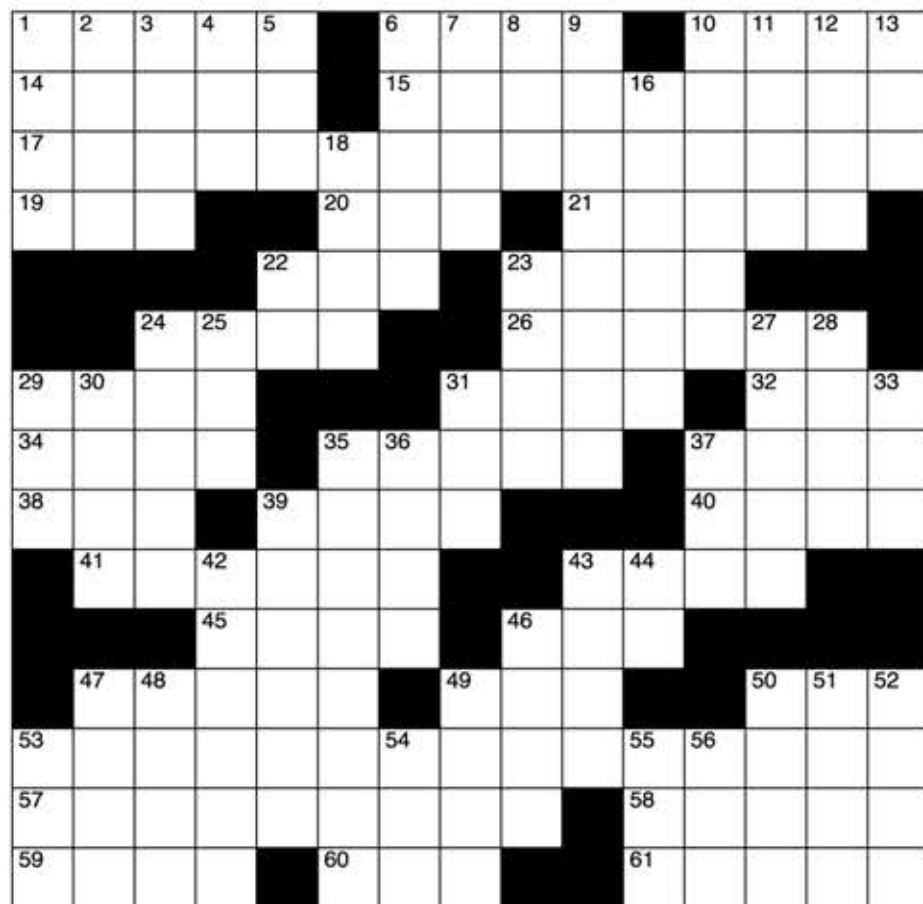


CLUES ACROSS

1. Small Eurasian deer
4. Irish county
10. A major division of geological time
11. Broadway actor Lane
12. Canadian province
14. It causes fainting (abbr.)
15. Two
16. A notable one is blue
18. Utter repeatedly
22. Rings
23. Sullies
24. Occurs
26. Publicity
27. Near
28. Tools of a trade
30. Offer in good faith
31. "American Idol" network
34. Garments
36. Soviet Socialist Republic
37. Retired NFL DC Dean
39. Hot meal
40. A type of gin
41. Percussion instrument
42. A \$10 bill
48. About ground
50. Medicine man
51. Seedless raisin
52. National capital of Albania
53. Appendage
54. OJ trial judge
55. By the way
56. Bicycle parts
58. Barbie's friend
59. In a way, stretched
60. Commercials

CLUES DOWN

1. Make up for
2. American songbird
3. Pay
4. International organization
5. Engravers
6. Declared as fact
7. Criminal
8. Jewelry
9. Hospital worker (abbr.)
12. Nonsense (slang)
13. Town in Galilee
17. Value
19. Another name
20. Sheep in second year before shearing
21. Town in Surrey, England
25. Appropriate during a time of year
29. Creative output
31. Recesses
32. District in N. Germany
33. Rider of Rohan
35. The official emblem of the German Third Reich
38. One who puts down roots
41. Scribe
43. Painted a bright color
44. Tycoons
45. Actress Thurman
46. Walking accessory
47. Crest of a hill
49. Member of a North American people
56. Type of computer
57. U.S. State (abbr.)



CLUES ACROSS

- PUZZLES ACROSS**
1. Become less intense
 6. Variety of pear
 10. Religion native to China
 14. Type of tooth
 15. Fitted out
 17. Make every effort
 19. Autonomic nervous system
 20. Complete
 21. Alternate name
 22. River in France and Belgium
 23. Miami's mascot is one
 24. Turfs
 26. Most cognizant of reality
 29. Broad volcanic crater
 31. Canadian surname
 32. Satisfaction
 34. Traitorous Greek
mythological prince
 35. Collide
 37. Immune response
 38. Feline
 39. High opinion of one's own
appearance
 40. Thin strip to align parts
 41. Containers
 43. Convicted American spy
 45. Breathe noisily
 46. Taxi
 47. Pancakes made from
buckwheat flour
 49. Swiss river
 50. I.M. __, architect
 53. Have surgery
 57. Formal withdrawal
 58. Dutch and German surname
 59. Square measures
 60. 2,000 lbs.
 61. Degrade someone

CLUES DOWN

1. Siberian river
2. Blessing
3. Substitutes (abbr.)
4. Principle underlying the universe
5. Work unit
6. Yellow edible fruits
7. Gemstone
8. A place ships dock (abbr.)
9. Evergreen tropical tree
10. Reality TV star Richards
11. Nonflowering aquatic plant
12. Stakes
13. Antidiuretic hormone
16. Make warm again
18. Light beams
22. Lethal dose
23. Terrorist group
24. Kids love him
25. Naturally occurring solid
27. German surname meaning "man from Saxony"
28. Popular cuisine
29. Partner to cheese
30. Type of horse
31. __ Diego
33. Defensive nuclear weapon
35. Most shrewd
36. It may be for shopping
37. Midway between south and southeast
39. A stock of foods
42. The bindings of books
43. Swiss river
44. Megabyte
46. Sammy __, songwriter
47. Dutch colonist
48. Clare Booth __, American writer
49. Sun or solar disk
50. Popular type of bread
51. Transfers of money (abbr.)
52. Association of engineering professionals
53. Young women's association
54. City
55. Niger-Congo branch of languages
56. Pointed end of a pen

SUDOKU

			4	9				1
4	6				8			
5			7					
						5	8	3
1		5						
		3				1		4
				3				
	7		9	6			2	
			2		5	4		7

Level: Advanced

Here's How It Works:

Sudoku puzzles are formatted as a 9x9 grid, broken down into nine 3x3 boxes. To solve a sudoku, the numbers 1 through 9 must fill each row, column and box. Each number can appear only once in each row, column and box. You can figure out the order in which the numbers will appear by using the numeric clues already provided in the boxes. The more numbers you name, the easier it gets to solve the puzzle!

Fun By The Numbers

Like puzzles?
Then you'll love
sudoku. This
mind-bending
puzzle will have
you hooked from
the moment you
square off, so
sharpen your
pencil and put
your sudoku
savvy to the test!

SUDOKU

	5				9		1	8
4		7				3		
	8	6	3			4	9	
			8	9	2			
6	2		5					1
3					6		8	5
	3		9	2	5			
		1		8				3
	6					8		

Level: Beginner

Here's How It Works:

Sudoku puzzles are formatted as a 9x9 grid, broken down into nine 3x3 boxes. To solve a sudoku, the numbers 1 through 9 must fill each row, column and box. Each number can appear only once in each row, column and box. You can figure out the order in which the numbers will appear by using the numeric clues already provided in the boxes. The more numbers you name, the easier it gets to solve the puzzle!

Subscribe to Our FREE Newsletter

Have the Kirksville Daily Express delivered to your email box every morning, six days a week!

KIRKSVILLE
Daily Express
Daily Headlines

NEWS • SPORTS • OBITUARIES • OPINION • E-EDITIONS • ABOUT US

Kirkville Daily Express

CLASSIFIEDS

OPEN 8:00AM - 5:00PM MON. - FRI. | 660.665.2808
705 E LAHARPE, SUITE F, KIRKSVILLE, MO
WWW.KIRKSVILLEDAILYEXPRESS.COM

DEADLINES: *Classifieds: 2 Days prior at noon*
Display: Fri. noon for Wed. and Wed. noon for Sat.

AGRI-BUSINESS

Equipment & Supplies

Tree big bale hay rings for cattle. 660-216-7271.

John Deere bale spear, quick attach, fits 600/700 series loaders, \$550.00. Ki- wanee 8 foot HD snap coupler blade, \$350.00. 217-257-1385.

Priefert 180 degree sweep tub, reversible with 20 foot adjustable alley way. 660-216-7271.

Hay/Feed/Seed

600 wire tied small square bales straw. Tight solid bales. Stored inside. Call 660-216-0618 Knox City area.

400 square bales wire tied grass hay. Call 660-342-7685. Knox City area.

Silage bales, 1800 pounds, 9.72% protein, relative feed value 166, nitrate less than 0.02, \$100.00 a bale. 573-470-0077.

Wanted to buy hay. 641-895-3400.

Big square bales of wheat straw, \$60.00 per bale. Delivery Available. 660-956-3420.

Excellent quality Alfalfa hay for sale, big square bales. Also grass hay available. Delivery availa- ble. 660-956-3420.

Large round bales straw, \$53.00. 3x3 square bales, \$43.00. Sorghum salvage, \$80.00 per ton. Delivery available James Port. 660-684-6930.

Livestock

Heritage hogs, ready now and all year long, to butcher, halves and wholes, \$1.00 per pound, your locker or ours, delivered. 800-807-9612.

MERCHANDISE

Wanted

Looking for standing timber to harvest. William Plank, 12824 Highway D, Princeton, Mo 64673. 660-748-4020.

REAL ESTATE RENTALS

Wanted

Father and son looking for hunting ground to lease for 2024. 636-288-4050

HUNTING LEASE WANTED, 2-3 responsible people looking for hunting lease, insurance will be included, looking for long term relationship. Call or Text Pat 314-952-9684

REAL ESTATE SALES

Mobile Homes For Sale

DISCOUNT NEW MOBILE HOME-Prices start at \$64,900 delivered and set up. 573-499-9993. columbiadiscounthomes.com.

NEW INVENTORY-\$59,900 Delivered and set up. Hurry! Call Adam 573-657-2176. amegamobilehomes.com.

Tiny Homes Missouri fran- chise 573-881-7965.

BASEMENT READY TRUE MODS--in stock ready for delivery, 573-657-7040. chateauhomes.net

RECREATION

Other-Recreation

Father and son looking for hunting ground to lease for 2024. 636-288-4050

SERVICES

Chat/Dirt/Gravel

DIRT WORK All types of excavation, reclaiming overgrown fields, includ- ing CRP and WRP. Building site preparation, creating new trails and crossings, Food plot development and maintenance. Leveling and grading, wetland con- struction and mainte- nance. Pond and lake cleaning and construction. Call for quotes. 660-342-2701

Home Services

Scott Huskey's Insulated Skirting Systems-keeps your home cooler in the summer-warmer in the winter-saves on utilities and looks great! Since 1972, 573-696-3468.

Lawn/Garden/Landscape

New 3 pt. tillers, heavy duty, gear driven, 7' to 12' starting at \$4,150. 660-874-4455.

TRANSPORTATION

Accessories-Transportation

New and used parts, "cars, pickups,semi's, farm/con- struction equipment" mo- tors/trannys, body parts, paint matching your code, warrantied and delivered. 800-807-9612.

Let us help you with all your advertising needs. Don't know what to say? Call us can help! 660-665-2808.

BORDER COLLIE PUPPIES!

Shots & Dewormed • Negotiable Prices

Deliverable in Person

573-414-4601/ 573-979-5375



TRUSTEE'S SALE

IN RE: Brian A. Jones, a single man Trustee's Sale:
For default in payment of debt and performance of obligation secured by Deed of Trust executed by Brian A. Jones, a single man dated July 15, 2020 and recorded in the Office of the Recorder of Deeds of Adair County, Missouri in Book 1096, Page 734 the undersigned Successor Trustee, at the request of the legal holder of said Note will on Tuesday, February 13, 2024 between the hours of 9:00 a.m. and 5:00 p.m., (at the specific time of 3:30 PM), at the South Front Door of the Court House, City of Kirksville, County of Adair, State of Missouri, sell at public vendue to the highest bidder for cash the following described real estate, described in said Deed of Trust, and situated in Adair County, State of Missouri, to wit:
ALL OF LOT 2, IN BLOCK 3, IN PORTER'S HIGHLAND ADDITION TO THE TOWN, NOW CITY, OF KIRKSVILLE, ADAIR COUNTY, MISSOURI.

to satisfy said debt and cost.

MILLSAP & SINGER, P.C.,
Successor Trustee
612 Spirit Drive
St. Louis, MO 63005
(636) 537-0110
File No: 216675.021324.438377 FC

NOTICE

Pursuant to the Fair Debt Collection Practices Act, 15 U.S.C. §1692c(b), no information concerning the collection of this debt may be given without the prior consent of the consumer given directly to the debt collector or the express permission of a court of competent jurisdiction. The debt collector is attempting to collect a debt and any information obtained will be used for that purpose.

PUBLISH ON: January 17, 2024 01/24/2024, 01/31/2024, 02/07/2024

TRUSTEE'S SALE

IN RE: Sara Helmer, and John E. Helmer, wife and husband Trustee's Sale:
For default in payment of debt and performance of obligation secured by Deed of Trust executed by Sara Helmer, and John E. Helmer, wife and husband dated July 19, 2012 and recorded in the Office of the Recorder of Deeds of Adair County, Missouri in Book 971, Page 62 the undersigned Successor Trustee, at the request of the legal holder of said Note will on Tuesday, February 13, 2024 between the hours of 9:00 a.m. and 5:00 p.m., (at the specific time of 3:30 PM), at the South Front Door of the Court House, City of Kirksville, County of Adair, State of Missouri, sell at public vendue to the highest bidder for cash the follow- ing described real estate, described in said Deed of Trust, and situated in Adair County, State of Missouri, to wit:

COMMENCING AT THE SOUTHWEST CORNER OF THE SW1/4 SE1/4 SW1/4 OF SECTION 36, TOWNSHIP 64 NORTH, RANGE 16 WEST., NORTH 89 DE- GREES 15 MINUTES 30 SECONDS EAST A DISTANCE OF 608.0 FEET; THENCE ALONG THE CENTERLINE OF COUNTY ROAD THE FOLLOWING COURSES AND DISTANCES, NORTH 17 DEGREES 53 MINUTES 22 SECONDS WEST A DISTANCE OF 58.77 FEET; THENCE NORTH 34 DEGREES 48 MINUTES 30 SECONDS WEST. A DISTANCE OF 141.92 FEET TO THE POINT OF BEGIN- NING, THENCE NORTH 34 DEGREES 48 MINUTES 30 SECONDS WEST. A DISTANCE OF 38.11 FEET; THENCE NORTH 16 DEGREES 24 MINUTES WEST. A DISTANCE OF 108.43 FEET; THENCE NORTH 13 DEGREES 43 MINUTES 10 SECONDS EAST A DISTANCE OF 112.29 FEET; THENCE LEAVING SAID CEN- TERLINE NORTH 84 DEGREES 53 MINUTES WEST A DISTANCE OF 180.66 FEET; THENCE SOUTH 5 DEGREES 55 MINUTES 20 SECONDS WEST A DIS- TANCE OF 267.13 FEET; THENCE NORTH 88 DEGREES 43 MINUTES 10 SEC- ONDS EAST A DISTANCE OF 233.30 FEET TO THE POINT OF BEGINNING, SITUATED IN THE SE 1/4 SW 1/4 OF SAID SECTION 36.

to satisfy said debt and cost.

MILLSAP & SINGER, P.C.,
Successor Trustee
612 Spirit Drive
St. Louis, MO 63005
(636) 537-0110
File No: 218163.021324.437747 FC

NOTICE

Pursuant to the Fair Debt Collection Practices Act, 15 U.S.C. §1692c(b), no information concerning the collection of this debt may be given without the prior consent of the consumer given directly to the debt collector or the express permission of a court of competent jurisdiction. The debt collector is attempting to collect a debt and any information obtained will be used for that purpose.

PUBLISH ON: January 17, 2024 01/24/2024, 01/31/2024, 02/07/2024

TRUSTEE'S SALE

IN RE: Elaine Rimer, an unmarried woman Trustee's Sale:
For default in payment of debt and performance of obligation secured by Deed of Trust executed by Elaine Rimer, an unmarried woman dated September 16, 2022 and recorded in the Office of the Recorder of Deeds of Adair County, Mis- souri in Book 1142, Page 91 the undersigned Successor Trustee, at the request of the legal holder of said Note will on Tuesday, February 20, 2024 between the hours of 9:00 a.m. and 5:00 p.m., (at the specific time of 3:30 PM), at the South Front Door of the Court House, City of Kirksville, County of Adair, State of Missouri, sell at public vendue to the highest bidder for cash the following described real estate, described in said Deed of Trust, and situated in Adair County, State of Missouri, to wit:
THE FOLLOWING DESCRIBED PROPERTY SITUATED IN THE COUNTY OF ADAIR, STATE OF MISSOURI, TO WIT: BEGINNING AT A POINT ON THE NORTH LINE OF THE SOUTHWEST QUARTER OF NORTHEAST QUARTER OF SECTION 10, TOWNSHIP 62, RANGE 16, SAID POINT BEING DUE EAST A DISTANCE OF 248 FEET FROM THE NORTHWEST CORNER OF THE EAST HALF OF THE SOUTHWEST QUARTER OF NORTHEAST QUARTER OF SAID SECTION 10; THENCE DUE SOUTH A DISTANCE OF 248 FEET, THENCE DUE WEST A DISTANCE OF 248 FEET; THENCE DUE NORTH A DISTANCE OF 139.37 FEET TO A POINT OF CURVE, THENCE ALONG THE ARC OF A CURVE TO THE RIGHT HAVING A RADIUS OF 108.73 FEET A DISTANCE OF 107.63 FEET TO THE POINT OF TANGENT, THENCE DUE EAST A DISTANCE OF 139.37 FEET TO THE POINT OF BEGINNING CONTAINING 1.358 ACRES EX- CEPTING THAT PORTION ON THE NORTH AND WEST SIDES USED AS A PUB- LIC ROAD, ADAIR COUNTY, MISSOURI.
BEGINNING 313 FEET WEST OF THE NORTHEAST CORNER OF THE EAST HALF OF THE SOUTHWEST QUARTER OF NORTHEAST QUARTER OF SECTION 10, TOWNSHIP 62, RANGE 16, THENCE SOUTH 433 FEET, THENCE WEST 347 FEET, THENCE NORTH 185 FEET, THENCE EAST 248 FEET, THENCE NORTH 248 FEET, THENCE EAST 99 FEET TO THE POINT OF BEGINNING, ADAIR COUNTY, MISSOURI.
BEGINNING 313 FEET WEST AND 433 FEET SOUTH OF THE NORTHEAST CORNER OF THE EAST HALF OF THE SOUTHWEST QUARTER OF THE NORTHEAST QUARTER OF SECTION 10, TOWNSHIP 62, RANGE 16, THENCE WEST 347 FEET, THENCE SOUTH 411 FEET, THENCE EAST 9 FEET, THENCE SOUTH 278 FEET, MORE OR LESS, TO THE SOUTH LINE OF THE NORTH 8 ACRES OF THE SOUTH 14 ACRES OF THE SOUTHWEST QUARTER OF THE NORTHEAST QUARTER OF SAID SECTION 10, THENCE EAST 338 FEET, THENCE NORTH TO THE POINT OF BEGINNING, ADAIR COUNTY, MISSOURI.
to satisfy said debt and cost.

MILLSAP & SINGER, P.C.,
Successor Trustee
612 Spirit Drive
St. Louis, MO 63005
(636) 537-0110
File No: 216847.022024.438221 FC

NOTICE

Pursuant to the Fair Debt Collection Practices Act, 15 U.S.C. §1692c(b), no information concerning the collection of this debt may be given without the pri- or consent of the consumer given directly to the debt collector or the express permission of a court of competent jurisdiction. The debt collector is attempting to collect a debt and any information obtained will be used for that purpose.

PUBLISH ON: January 24, 2024 01/31/2024, 02/07/2024, 02/14/2024

PUBLIC NOTICE

Pursuant to US Code, Title 42 Chapter 116, Subchapter III-11044 – The Adair County Local Emergency Planning Committee (LEPC) hereby notifies the public that emergency response plans, material safety data sheets and inventory forms have been submitted under this section. These materials along with any follow- up emergency notices may be reviewed at the Adair County LEPC Office (Kirkville Fire Department, 401 North Franklin, Kirksville, MO) upon appointment. Contact 660-665-3734 to schedule an appointment.

639203s

DEPARTMENT OF HOMELAND SECURITY

FEDERAL EMERGENCY MANAGEMENT AGENCY

Proposed Flood Hazard Determinations for Adair County, Missouri and Incorporated Areas

The Department of Homeland Security's Federal Emergency Management Agency has issued a preliminary Flood Insurance Rate Map (FIRM), and where applicable, Flood Insurance Study (FIS) report, reflecting proposed flood hazard determinations within Adair County, Missouri and Incorporated Areas. These flood hazard determinations may include the addition or modification of Base Flood Elevations, base flood depths, Special Flood Hazard Area boundaries or zone designations, or the regulatory floodway. Technical information or comments are solicited on the proposed flood hazard determinations shown on the preliminary FIRM and/or FIS report for Adair County, Missouri and Incorporated Areas. These flood hazard determinations are the basis for the floodplain management measures that your community is required to either adopt or show evidence of being already in effect in order to qualify or remain qualified for participation in the National Flood Insurance Program. However, before these determinations are effective for floodplain management purposes, you will be provided an opportunity to appeal the proposed information. For information on the statutory 90-day period provided for appeals, as well as a complete listing of the communities affected and the locations where copies of the FIRM are available for review, please visit FEMA's website at https://www.floodmaps.fema.gov/fhm/BFE_Status/bfe_main.asp, or call the FEMA Mapping and Insurance eXchange (FMIX) toll free at 1-877-FEMA MAP (1-877-336-2627).

708717at

FCS FINANCIAL

Growing Relationships. Creating Opportunities.
- A Farm Credit Cooperative -

CUSTOMER SERVICE REPRESENTATIVE
MACON, MO

At FCS Financial, part of the nationwide Farm Credit System, we are looking for a Customer Service Representative to join our Team in Macon! Are you looking for a career opportunity with an opportunity to grow and work with great people? If so, take this opportunity to apply! If you have a passion for assisting your local agriculture community, you are friendly, energetic, organized, and you like a variety of work, apply now! We are looking for someone that has experience in providing excellent customer service, meeting coordination, and enjoys variety in their work. FCS Financial provides on the job training and has many growth opportunities within the Association. We offer a highly competitive compensation and benefits package with the starting salary for this position at \$37,000, however salary may be commensurate with experience.
Apply now through our online application system at www.myfcsfinancial.com! Working knowledge of farm operations, the agriculture industry, experience in financial services, lending or title company environment preferred. Additional details and instructions are available on our Careers page about our application process or please give us a call to learn more about this opportunity at **573-636-7809 x1111**. This position will close on open until filled. Pre-employment background check required. EEO/AA/M/F/Veteran/Disability

707920at

Sealed bids will be received by the Construction Manager Agent, S. M. Wilson & Co, for the Adair County R-II School District at **Brashear School** located at **205 West Dewey Street Brashear, Mo. 63533**, until **2:00 pm CDT, on Monday, February 19th, 2024**, for the Bid Packages described herein.

Bids will be publicly opened and read aloud at Brashear School located at 205 West Dewey Street Brashear, MO. 63533.
Bid Package No. 3 – Bus Barn
03A CONCRETE
06A GENERAL TRADES
07C INSULATION / SPRAY FOAM INSULATION (w/ 06A)
07I FLASHING & SHEET METAL (w/ 06A)
07Q JOINT SEALANTS (w/ 06A)
08A DOORS, FRAMES, HARDWARE (w/ 06A)
08D COILING DOORS & GRILLS (w/ 06A)
13F PRE-ENGINEERED STRUCTURES (Alternate #1)
22A PLUMBING
23A HVAC
26A ELECTRICAL
31A EARTHWORK
33A SITE UTILITIES

A Pre-bid Meeting for Bid Package No. 3 will begin at **10:00 am on Thursday, February 8th 2024**, at the Brashear School located at 205 West Dewey Street Brashear, Mo. 63533. The purpose of this meeting is to address technical questions concerning the project from prospective bidders. Contractors shall not visit the site unless prior arrangements are made with the Construction Manager. The School District reserves the right to reject any and all Bids, and to waive informalities therein to determine the lowest and best bid.

The bid documents will be available for viewing on BuildingConnected.com. <https://app.buildingconnected.com/public/5913928fce945d0a00d28943>

No Bid may be withdrawn for a period of thirty (30) days subsequent to the specified time for receipt of Bids.

Any offer exceeding \$100,000 will be subject to a Bid Bond or Certified Check made payable to the Owner, in the amount of 5% of the Base Bid shall accompany the Bid Packages as a guarantee that the bidder, if awarded the Contract, will furnish a satisfactory Performance and Payment Bond; execute the Contract; and proceed with the work. Upon failure to do so, he shall forfeit the deposit or amount of the Bid Bond as liquidated damages, and no mistakes or errors on the part of the Bidder shall excuse the Bidder or entitle him to a return of the deposit or Bid Bond.

The prevailing wage law is in effect on this project.

Bidders must be in compliance with the rules and regulations of the Fair Employment Practices Commission.

Participation by Minority and Female Business Enterprises is encouraged.

The Construction Management Agent for this project is S. M. Wilson & Co. Contact info:
Patrick Aylesworth
Director of Operations
Direct: 314.633.9689
patrick.aylesworth@smwilson.com

The Adair County R-II School District is an Equal Opportunity Employer.

S. M. Wilson & Co. is an Equal Opportunity Employer. S. M. Wilson strives to make our industry a more inclusive community and to sustain this model for future generations. Bidders agree to take all reasonable steps necessary to ensure Minority, Women and Disadvantaged Business Enterprises have an opportunity to participate in the performance of this project. Consideration of subcontract award may be based on diversity involvement.

LOCAL MATTERS.

Please support the proud advertisers that power your community paper.



NEWSPAPERS
MATTER
NOW MORE THAN EVER

THIS WEEK'S FEATURED CHURCH

Seventh Day
Adventist Church



21

CENTURY 21

Lifetime Realty

1605 S. Baltimore, Suite A
Kirksville, MO 63501
660-665-5678

www.c21kirkville.com

Electronics

Wholesale Electronics,
Instruments & Home Theater

Unlimited

Al Johnson, owner

17406 Bob Road, Johnson Dr., Kirksville
Shop: (660) 665-8149 Cell: (660) 341-0965

TELEPHONES - SYSTEMS - SALES & SERVICE
DATE & FIBER CABLING

WINKLER

COMMUNICATION

SERVICES

RON WINKLER
2810 N. Baltimore
P.O. Box 7507
Kirksville, MO 63501

www.wcs1.com
660-665-1144
FAX 660-665-0776

BOTT RADIO NETWORK.COM

INTEGRITY

107.9 FM

BRN

STRENGTH

Kirksville

Quality Bible Teaching, News & Information

NEMO CPA's L.L.C.

Laurie Love, CPA

202 East Sanders Street
P.O. Box 25 La Plata, MO 63549
Phone: 660-332-7904
Fax: 660-332-4811
email: LLoveCPA62@gmail.com

DIABETES AND
NUTRITION CENTER

1506 Crown Drive
Kirksville, MO 63501
Phone (660) 627-4493 Ext. 412



KIRKSVILLE AREA CHURCH DIRECTORY

This Directory is made possible by these businesses who encourage all of us to attend worship services. The Church Listings below are provided at NO CHARGE to our area churches in Kirksville. If your Church is not listed, please call us at 660-665-2808.

Faith Lutheran Church
1820 S. Baltimore, Baltimore & LaHarpe
David Lukefahr, Pastor
7:30 a.m. The Lutheran Hour KLTE
8:15 a.m. Worship Service Peace, Milan
9:00 a.m. Adult Bible Study Faith
9:00 a.m. Sunday School Faith
10:15 a.m. Worship Service Faith
10:00 p.m. Issues, Etc. 107.9 KLTE
www.faithkirkville.org

Hamilton Street Baptist Church
802 W. Hamilton
Pastor Tim Ingle
9:00 a.m. Sunday School/Small Groups
10:15 a.m. Worship Service
www.hamiltonstreet.org

Rehoboth Baptist Church
100 Pfeiffer Rd.
Curtis Ferguson, Pastor
9:45 a.m. Sunday School
10:30 a.m. Fellowship
11:00 a.m. Worship Service
rbchurch.net • 660-665-7577

First Presbyterian Church (USA)
201 S. High at McPherson
Communion 1st Sunday
9:30 a.m. Morning Worship.
10:30 a.m. Fellowship Time.
11:00 a.m. Church School/all ages
5:30 p.m. College Fellowship

Kirkville Church of Christ
110 Pfeiffer Ave.
Elders/Pastors: Dan Green, Dean Hansen
10:00 a.m. Bible Study
11 a.m. Worship
Weds 6:30p.m. Bible Study
www.kvcoc.org

First Baptist Church
207 E. Washington
Jason Marlin, Pastor
9:30 a.m. Bible Study for all ages
10:45 a.m. Worship & Kidz Worship
firstbaptistkirkville.com

Faith United Methodist Church
1602 E. Illinois
Pastor: Joshua Ritzheimer
9:45 a.m. Sunday School
10:45 a.m. Worship
Southside Baptist Church
1010 W. Burton
Pastor: Aaron Rodgerson
10:00 a.m. Sunday School
11:00 a.m. Preaching
6:30 p.m. Evening Service

First Church of God
2900 S. Halliburton
Chad Earhart
9:00 a.m. Sunday School
10:30 a.m. Morning Worship
www.kirkvillechurchofgod.com

Central Church of Christ
2010 S. Halliburton
9:30 a.m. Sunday School
10:30 am. Worship Service

Faith Baptist Church
502 N. Florence
Pastor: Brandon Rhea
10:00 a.m. Bible Study
11:00 a.m. Morning Worship
12:30 p.m. Noon Lunch

The Crossing Church
810 E. Shepherd Ave.
9 a.m. & 10:45 a.m. Sunday Service
www.thecrossing.net

Grace Community Bible Church
1501 E. Northtown Rd.
Benjamin Jorden, Pastor
Affiliated with the Evangelical Free

Church of America
9:30 a.m. Worship
11:00 a.m. Sunday School for all ages
12 p.m., 5 p.m., 6 p.m. Small groups
KirkvilleGCBC@gmail.com
www.KirkvilleGCBC.com • 660.665.1615

First United Methodist Church
300 E. Washington
Pastors - Rev. Scott Beard & Rev. Jennifer Finley
9:30 a.m. Worship In Person & Online
kvumc.org

Pure Air Baptist Church
9:45 a.m. Sunday School
11:00 a.m. Morning Worship
TBA Bible Study

Church of God of Prophecy
807 Benton Way
Pastor: Rob Linhart
10:00 a.m. Sunday School
6:30 p.m. Evening Service

Fellowship Baptist Church
1701 S. Jamison St., Kirksville
Larry Gibson, Pastor
9:00 a.m. Sunday Worship
10:30 a.m. Sunday Bible Study
fbck@sbcglobal.net
www.fellowshipbbc.org • 660-665-0633

Yarrow Methodist Church
Highway N., Yarrow
Guest Pastors
10:00 a.m. Sunday School
11:00 a.m. Worship Service

Mary Immaculate Catholic Church
Weekday Masses: Tuesday: 5:30 p.m.
Wed. & Friday: 7 a.m. Thursday: 8 a.m.
Weekend Masses: Saturday: 5:30 p.m.
Sunday: 9 a.m. & 11 a.m.

Catholic Newman Center
11:00 a.m. and 7:00 p.m. Sunday
7:00 a.m. Monday
9:00 p.m. Wednesday

Union Temple Church
Southwest of Kirksville
Alan Coonfield, Pastor
Every Sunday Evening
5-5:30 p.m. Bible Study
5:30-6:30 p.m. Church Service

Sugar Creek Baptist Church
5 mi South on Hwy 3
Pastor, Virgil K. Jones
10:00 a.m. Worship Service

Hazel Creek Primitive Baptist Church
2 mi. W. Greentop on Rt. K then 1/2 mi. S.
Elder Dillion Thurman, minister
Services on 1st, 3rd & 5th Sundays
10:30 a.m. Song Service
11:00 a.m. Preaching

Meadow Brook Christian Church
602 E. Washington
9:30 a.m. Sunday School
10:30 Morning Worship

St. Rose of Lima Catholic Church
Novinger, Mo.
7:30 a.m. Sunday

Life Church of Kirkville
112 W. Potter
Jeremy Pingle, Pastor
10:00 a.m. Sunday Morning Service

Community Presbyterian Church
210 N. Owensby, LaPlata, Mo
Pastor Rev Jeff Carter
9:30 a.m. Sunday School
10:40 a.m. Worship Service

Cornerstone Church
1702 N Elson St Kirkville, MO
Jeremy Broach, Senior Pastor
Chad Stearman, Associate Pastor
Sunday 10 am - Morning Worship
Wednesday 6:30 pm-8 pm Family Minis-try Night
www.cornerstonechurch.faith

Countryside Christian Church
S. Boundary St. Rt. H, Troy Mills
Preacher, Harold R. Engel
8:30 - 9:45 a.m. Blended Worship
10:00 - 10:45 a.m. Sunday School
11:00 a.m. - 12:15 p.m. Worship
6:00 p.m. High School-College Youth meet
www.countrysidekv.com

Gifford Christian Church
Minister: Darren Potter
9:30 a.m. Sunday School
10:30 a.m. Morning Worship

Lake Road Chapel
22963 Potter Trail
Pastors: Andrew Turner, Andy Thomp-son, David Kelly
10:00 a.m. Sunday Morning Worship Service
www.lakeroadchapel.org

Church of God (Holiness)
1601 N. Elson
Pastor Ralph E. Wheeler, Jr.
9:45 a.m. Sunday School
10:45 a.m. Morning Worship
6:00 p.m. Evening Worship

New Hope Evangelical Church
620 Steer Creek Way
9:30 - 10:20 a.m. Bible Class
10:20 - 10:30 a.m. Fellowship time
10:30 a.m. Praise & Worship
7:00 p.m. Evening Worship
Darrell Draper, Pastor
660-341-0000
Jim Maxey, Calling Pastor
660-665-6949 or 660-216-4183

First Assembly of God
2401 S. High St., Kirksville
Shawn Meintz, Pastor
Sundays:
9:30 a.m. Sunday School
10:40 a.m. Worship Wednesdays:
6:30 p.m. Family Night
www.kirkvillefirst.org
info@kirkvillefirst.org

First Liberty Full Gospel
1302 E. Filmore
Rev. Fred Baker, Pastor
10:00 a.m. Sunday School
11:00 a.m. Morning Worship
6:00 p.m. Evening Worship

Novinger Baptist Church
Highway 6 & 149
Rev. Darrell Crooks, Pastor
10:00 a.m. Sunday School
11:00 a.m. Morning Worship
7:00 p.m. Evening Worship

First Christian Church
(Disciples of Christ)
High & Harrison
9:30 a.m. Worship Service

The Church of Jesus Christ of Latter Day Saints

2000 E. Normal

Kirksville First Ward Bishop John Grider
11 a.m. - 2 p.m. Sunday Services
Kirkville Second Ward Bishop Isaac Ison
9 a.m. - 12:00 p.m. Sunday Services

Trinity Episcopal Church
124 N. Mularnix
Rev. Amy L. Fallon, Pastor
10:00 a.m. Holy Eucharist

Seventh Day Adventist Church
1301 N. Elson
Curtis Denney, Pastor
9:30 a.m. Sabbath School (Saturday)
11:00 a.m. Worship Service (Saturday)
Fellowship Dinner on 4th Saturday.

United Methodist Church
Brashear Charge, Brashear Lay Minister, Nancy Douglas
10:00 a.m. Sunday School
11:00 a.m. Worship
7:00 p.m. Singspiration - 1st Sunday

Willow Bend Association East Center Community Church
10:00 a.m. Sunday School
10:45 a.m. Worship

Illinois Bend Community Church
Highway 3
Pastor Terry Hunsaker
8:30 a.m. Worship
9:30 a.m. Bible Study
660-349-0052

Baring Community Church
11:00 a.m. Worship.

Downing Christian Church
430 E. Prime Street
Minister Walker Franke
Associate Minister Larry Smith
9:30 am Sunday School
10:30 am Worship Service
6:00 pm Evening Service
660-379-2329

Willow Bend Church
Find Us on Facebook for Event Schedule

New Hope Methodist Reformed Church - Millard
9:15 a.m. Bible Stud
10:00 a.m. Worship

Greentop Community Church
Highway K, Greentop, Mo.
Pastor: Lynae McFarland
10:30 a.m. Worship Service

Trinity United Fellowship Church
Pastor: Josh Botello
9:00 a.m. Worship
10:00 a.m. Sunday School

Lancaster United Methodist Church
Pastor: Joshua Ritzheimer
9:00 a.m. Worship
10:00 a.m. Sunday School

Shekinah Mennonite Church
15981 Blueberry Way, Kirkville
John Mark Miller, Pastor Roger Berry
9:30 a.m. Bible Study
10:30 a.m. Worship
6:00 p.m. 2nd Sunday - hymn sing.
6:00 p.m. 4th Sunday of month Topic

Bethel Community Church
12 miles NE of Kirksville on Rt. T
Marvin Cross, Pastor
9:30 a.m. Sunday School
10:30 a.m. Morning Worship
6:00 p.m. Kid's Klub/Youth Fellowship
7:00 p.m. Evening Worship.

Lancaster Baptist Church
Southeast Side of Square, Lancaster
Lonnie Johnson, Pastor
9:45 a.m. Sunday School
10:45 a.m. Morning Worship
6:00 p.m. Evening Worship

Grace Bible Baptist Church
Greencastle, Mo.
Rev. Earl Baker, Pastor
10:30 a.m. Morning Worship
5:00 p.m. Evening Service

Winigan Christian Church
Ryan Crist, Pastor
9:30 a.m. Sunday School
10:30 a.m. Worship Service

First Baptist Church
Winigan, Winigan, Mo.
Sam Burkholder, Pastor
9:30 a.m. Sunday School
10:30 a.m. Morning Worship
6:00 p.m. Evening Worship

Fairview Baptist Church
53610 Knob Hill Road, Pollock
Sam Burkholder, Pastor
10:00 a.m. Sunday School
11:00 a.m. Worship Service
6:00 p.m. Sunday Evening

Bible Missionary Church
508 S. Main St.
Bro. Glenn Kiger, Pastor
10:00 a.m. Sunday School
11:00 a.m. Worship Service
7:00 p.m. Evening Worship

LaPlata Christian Church
Scott McNay, Pastor

9:00 a.m. Sunday School
10:00 a.m. Worship Service

Queen City Christian Church
Queen City, Mo.
Justin Briney, Pastor
9:30 a.m. Bible School
10:30 a.m. Communion/worship Hour

United Pentecostal Church
1502 E. Northtown Road
David E. Brown, Pastor
10:00 a.m. Sunday School
6:30 p.m. Sunday Evening Worship

Brashear Community Bible Church
Donny Powell, Pastor
9:30 a.m. Sunday School
6:00 p.m. Morning Worship
660-323-5305

First Baptist Church of LaPlata
B. J. McAlpin, Pastor
9:00 am "Donut Hole" Fellowship
9:00 am Sunday School
10:00 am Worship Service
6:00 pm Evening Worship
6:00 pm Monday - AWANA
http://laplatafbc.org/
Email: laplatafbc@gmail.com

Hazel Creek Free Will Baptist Church
8 mi. N.W. of Kirksville on Rt. B.
Tim Hodges, Pastor
10:00 a.m. Sunday School
11:00 a.m. Morning worship
7:00 p.m. Evening Worship

Worthington Baptist Church
Worthington, Mo.
Roger Busnell, Pastor
9:30 a.m. Sunday School
10:30 a.m. Morning worship
7:00 p.m. Evening Worship

The Salvation Army
1004 W. Gardner
Brian and Michelle Bump, Pastors
9:30 a.m. Sunday School
10:45 a.m. Worship Service
5:00 p.m. Evening Worship

Queen City First Baptist Church
6th at Washington St.
Sam Burkholder, Pastor
9:30 a.m. Sunday School
10:30 a.m. Morning Worship
7:00 p.m. Evening Worship

St. John's Lutheran Church ELCA
North of Queen City go East on Rt. O
Pastor, Bill Iammatteo-Code
10:00 a.m. Sunday School
11:00 a.m. Worship Service

Hurdland First Baptist Church
Robert Shobe, Pastor
9:30 a.m. Sunday School
10:30 a.m. Worship Service
7:30 p.m. Sun. & Weds. Worship and/or Bible Study

Colony Baptist Church
9:30 a.m. Sunday School
10:30 a.m. 4th Sunday worship

Cornerstone Community Church
Meeting at the Fohn Family Center
404N. Elson
9:30 a.m. Sunday Small Group Bible Study designed for adults

Locust Hill Community Church
Rt. I, Novelty, Mo
William Gaines, Pastor
9:30 a.m. Sunday School
10:30 a.m. Morning Worship

New Harmony Free Will Baptist
3 miles West of Greentop on Rt. K
10:00 a.m. Sunday School
10:45 a.m. Morning Worship

Word Alive! Family Church
Hwy 63, Greentop
Pastors: Robert Gange
10:00 a.m. Sunday Worship,
Adult service, Childrens Church

Schuyler County Church of Faith
Highway 136 East, Lancaster
Sonny Smyser, Pastor
8 a.m. & 10 a.m. Sunday Services
11:00 a.m. Adult Sunday Class
3rd Sunday Fellowship dinner 12 noon

Gospel Outreach Church
209 W. Washington
Norman Keller, Pastor
Gonda Manning, Co pastor
7:00 p.m. Thursday Services
7:00 p.m. Sunday Services

Victory Baptist Church
Of Greentop
-Meets at the Willmathsville Community Church on Hwy A.
Pastor Joshua Wesley
10:30 a.m. Worship

Union Temple
Pastor Alan Coonfield
Sunday evening worship
5:00 pm Bible Study
5:30 pm Worship

WEEKLY HOROSCOPES

ARIES
Mar 21/Apr 20
Something will occur this week that surprises you, Aries. You may even wonder if it is a trick being played on you. It is no trick, so buckle down for an adventure.

TAURUS
Apr 21/May 21
You have pushed your mind and body quite far over the last several days, Taurus. Now you have to slow down or pay the consequences. Do not add anything else to your list.

GEMINI
May 22/June 21
Gemini, you may believe you have discovered a good thing and it could be right. But don't wait too long to act since this good thing has an expiration date. The clock is ticking.

CANCER
June 22/July 22
Cancer, you might not be able to control what is happening this week, but you can control how you react to different situations.



Keep your distance if an altercation arises.

LEO – July 23/Aug 23
Something you discover about a friend this week could leave you reeling, Leo. The signs have been there for awhile and you really should have seen it coming.

VIRGO – Aug 24/Sept 22
Virgo, if you are on the move this week, there is a chance that you will experience some interesting people along the way. At least one person might be a good networking contact.

LIBRA
Sept 23/Oct 23
More than anything right now, this week you need to relax and unwind, Libra. Take things at a slow pace, and spend more time at

home with family then at work.

SCORPIO
Oct 24/Nov 2
Try not to take any financial risks right now, Scorpio. If you are planning to invest, then you may want to get all of the facts before gambling too much in the stock market.

SAGITTARIUS
Nov 23/Dec 21
This week you will be back to your best, Sagittarius. Things will work out, so use your positive attitude to the benefit of yourself and others.

CAPRICORN
Dec 22/Jan 20
Capricorn, even though you are conservative by nature, this week you are ready to take a chance of some sort. Enjoy the journey even if the efforts do not bring you enormous success.

AQUARIUS
Jan 21/Febr 18
Aquarius, a kind word from you may be all that is needed to bring a smile

to someone's face. Do not underestimate the power of a kind and simple gesture.

PISCES
You don't usually lack confidence, Pisces. But you may not want to push ahead with a project for fear of failure. You should

be more adventurous and not worry too much.

FAMOUS BIRTHDAYS
JANUARY 28
Joey Fatone, Singer (47)
JANUARY 29
Adam Lambert, Singer (42)
JANUARY 30

Kid Cudi, Rapper (40)
JANUARY 31
Justin Timberlake, Singer (43)
FEBRUARY 1
Harry Styles, Singer (30)
FEBRUARY 2
Gerard Pique, Athlete (37)
FEBRUARY 3
Warwick Davis, Actor (54)

7	8	4	5	1	2	9	6	8
9	2	8	4	8	6	1	7	8
5	1	6	7	8	6	4	5	2
4	6	1	2	7	9	8	8	9
2	9	7	6	8	5	4	1	5
8	9	5	1	4	9	7	2	6
8	4	9	8	2	7	6	1	5
6	7	8	8	5	1	2	9	4
1	5	2	9	6	4	8	3	7
ANSWER:								

6	4	8	1	8	7	2	9	5
8	2	5	4	8	9	1	7	6
7	9	1	5	2	6	4	8	8
5	8	2	9	7	1	6	4	8
1	7	6	8	4	5	8	2	9
4	8	9	2	6	8	5	1	7
2	6	4	7	5	8	9	8	1
9	5	8	8	1	2	7	6	4
8	1	7	6	9	4	2	3	5
ANSWER:								

ROE	ULSTER	CEA	NATHAN
BC	ERIN	PAIR	AN
LAGOON	INTER	ATE	
ANNULI	DEFILES		
HAPPENS	AD	NIGH	
ABC	GEAR	NGAGE	
PEES	STE	W	
SLOE	PO	RAWBUCK	
EARTHEN	SHAMAN		
SULTANA	TIRANA		
CLINB	TO	EP	
PEDALS	KEN		
CRANED	ADS		

ABATE	BOSC	DABA	
MOLAR	APPARELED		
GOTOGREAT	LENGTH		
ANS	ALL	ALIAB	
LYR	IBIS		
SODS	SANEST		
MAARE	SIN	AHA	
ARNE	OLASH	SCAB	
CAT	VATIN	ASHIM	
BRASING	AMER		
CLIN	CA	PREI	
GOUNDER	THE	KNIFE	
SECESSION	WITTE		
ARES	TION	ABASE	

Truman State University announces Vice President’s Academic Honor Roll

By Truman State University

Truman State University has released the Vice President’s Academic Honor Roll for the fall 2023 semester. To qualify for this list, an undergraduate student must attain a semester grade point average between 3.5 and 3.9 and must complete 12 semester hours of credit. A list of honorees, organized by state and hometown, can be accessed at truman.edu/honors/fall-2023-vice-president-for-academic-affairs-list. Hometowns are based upon the permanent address given to the University by the student. Students who have

requested a directory hold on their information are not included on the list. Any questions regarding student eligibility for inclusion on the list can be directed to the Academic Affairs Office at (660) 785-4105.

Area honorees include:

Kirksville: Mar Agelet de Saracibar Ariet; Fehintola Akintola; Madie Anderson; Pablo Andrade; Chloe Armentrout; Precious Barnabas; Sujata Basnet; Judah Belzer; Yohani Berhanu; Shikha Bhattarai; Ellie Bindner; Roy Bonney; Jacob Capps; MaKenna Carnes; Jossua Chartier; Diego Colmenero-Cortez;

Riccardo Crapanzano; Shehara Dedigama; Yuanzhi Ding; Mariam Elkadi; Helina Engdayehu; Bryce Ensign; Zoey Featherston; Nicole Galarza Guilarte; Helen Gari; Joslyn Griego; Darlin Hernandez; Zoe Holt; Riley Holzmeier; Rachel Homoki; Umair Iqbal; Qinglong Jia; Zixian Jiang; Tyler Jones; Hinako Kaneda; Sara Kangarloo; Yuho Kasuga; Dagmawit Kebede; Marcus Kelly; Rihana Kemal; EoJin Kim; Hinako Kobashi; Fatema Amin Labonno; Jenny Lamp; Bhone Lin; Madeline MacDonough; Swoichhya Maharjan; Stefani Maricic; Haley McCarty; Ella

McCleary; Juan Mejia Beltran; Zach Miesner; Lacey Mihalevich; Khadija Mohammed Kalli; Luis Mole-ro; Tutu Mtetwa; Bezawit Mulatu; Mizuki Narumiya; Lily Neveux; Anna Nguyen; Anna Nicol; Jessi Nigh; Tomas Orjuela Munoz; Madison Payne; Hank Phan; Shibam Pokhrel; Holden Potter; Yashwinder Rajput; Kyle Ratliff; Stephanie Renasco Guzmann; Anna Rhein; Abhishek Roka; Ibrahim Sakibu; Lydia Salazar; Catherine Seymour; Aditya Shah; Suraj Shrestha; Egor Smirnov; Sierra Snyder; Rashedul Alam Sohan; Aidan Spurgeon; Cierra Stine-Atkinson; Jo-



siah Stocks; Jade Strooh; Hannaniah Tafesse; Yiwen Tan; Roshan Thapa Magar; Alexandra Thornhill; Rose Tran; Lauren Uchida; Stephanie Vaughn; Zach Vincent; Thomas Weber; Max Wilber; Matthew Winkler; Qishen Xiang; Zirui Xie; Yinuo Zhang.

Green Castle: Caley Mayor; Greentop: Emily Durham; La Plata: Olivia Combs; Zoie Harden; Lucy Lindsey; Lancaster: Kelsey Cohagan; Macon: Fiona Chao; Memphis: Hayden Long; Novinger: Navia Ellsworth; Emaleigh Kennedy; Unionville: Mackenzie Homann; Vince Jones.



Kirkville Area Chamber of Commerce

February 2024

Executive Director: Marie Murphree

Monday - Friday
8:00 AM - 5:00 PM
PHONE: 660-665-3766



Heritage House Realty
2805 N. Baltimore St
Kirkville, MO 63501
660-665-5638
kirksvillerealestate.com

631256



Connections Bank
2817 N. Baltimore St.
Kirkville, MO
660-665-7703
Member FDIC
connectionsbank.com

632458



Colton's Steak House & Grill
1116 Country Club Dr.
Kirkville, MO 63501
660-665-6336
coltonssteakhouses.com

631275



ELITE VIRTUAL HANDYMAN SERVICES
(660) 956-9341 KIRKSVILLE
LET US HANDLE YOUR TO DO LIST
HOME REPAIR • DECK & STEP REPAIR
HOME MAINTENANCE • TREE REMOVAL
FUTURE ASSEMBLY • GUTTER CLEANING
SECURITY SYSTEM INSTALLS • MOWING
CEILING FAN & LIGHTS • SECURITY
LIGHTS • GARAGE DOOR INSTALLS &
REPAIR • APT. FLIPS • STORM DOOR
INSTALLS • FAUCET & SINK INSTALLS
THIS AND MORE!

631275



MIDWEST GOLD & SILVER
Rare Coins and Fine Jewelry
111 E. Washington
Kirkville, MO
660-216-2346

660930



KIRKSVILLE AREA Chamber OF COMMERCE

SAVE THE DATE

ANNUAL BANQUET: 5 UNDER 40

Help us celebrate the young leaders in our community

MARCH 7 2024

You don't want to miss this great evening.

New Federal Reporting Requirements Impact Small Business



Effective January 1, 2024, under the Corporate Transparency Act, many companies in the United States must report information about their beneficial owners—the individuals who ultimately own or control the company—to the Financial Crimes Enforcement Network (FinCEN), a bureau of the U.S. Department of the Treasury. Filing is simple, secure, and free of charge. Below are a few frequently asked question from fincen.org intended to help navigate the Corporate Transparency Act (CTA) and beneficial ownership information (BOI) reporting.

Who Has to Report?
Companies that have to report are called reporting companies. Reporting companies may have to obtain information from their beneficial owners and report that information to FinCEN.
Your company may need to report information about its beneficial owners if it is:
-a corporation, a limited liability company (LLC), or was otherwise created in the United States by filing a document with a secretary of state or any similar office under the law of a state or Indian tribe; or
-a foreign company and was registered to do business in any U.S. state or Indian tribe by such a filing.
Who Does Not Have to Report?
Twenty-three types of entities are exempt from beneficial ownership information reporting requirements, including publicly traded companies, nonprofits, and certain large operating companies.
How Do I Report?
Reporting companies report beneficial ownership information electronically through FinCEN's website: www.fincen.gov/boi. The system provides a confirmation of receipt once a completed report is filed with FinCEN.
When Do I Report?
-If your company was created or registered prior to January 1, 2024, you will have until January 1, 2025 to report BOI.
-If your company is created or registered in 2024, you must report BOI within 90 calendar days after receiving actual or public notice that your company's creation or registration is effective, whichever is earlier.
The above information and more information about the CTA and BOI can be found on fincen.org.

The Small Business Development Center is here to help.
If you need help filing a Beneficial Ownership Information Report or need more resources to determine whether or not you should file, the SBDC is a great place to start! Give us a call to schedule an appointment at 660-665-3348.

WELCOME TO THE CHAMBER

First Christian Church
Northeast Christian High School

THANK YOU !

THANK YOU FOR REAFFIRMING YOUR FAITH IN THE CHAMBER

Baltimore Meadows
Corey R. Eagen CPA, LLC
Lifeline Pregnancy Help Clinic
Pickell Abstract
Beard's Decorating Center
Lloyd Distributing
Kirkville Autoworks
Harden, Cummins, Moss, & Miller, LLC
State Farm Insurance-Audra Jackson
Harris Agency
Golden Eagle Distributing
Andy's Lawn & Landscape, LLC
Kirkville Mini Storage
Adair County Public Library

Century 21-Lifeime Realty
Hawkins Harrison Insurance
First United Methodist Church
AT Still University
Hightower Wholsale
Pure Aire Cabin
Kirkville Daily Express
Advanced Machining and Automation
Rider Drug
Peters Heating & Air Conditioning
Midwest Gold and Silver
Warehouse 660
Scrubby Duds
Gardner Collier Jewelry
Hines Performance Parts

KTVO Television
Bank Midwest
St. Andrew's Apartments
Edward Jones- Jon Peck
S & S Printing
Davis Playle Hudson Rimer Funeral Home
Liberty Utilities
Blossom Shop Flowers & Gifts
Curtain Call Theatre Company
Vorhee's Plumbing & Drain Services, LLC
Hy-Vee Food & Drug Store
Missouri Job Center
Truman State University
Grossnickle Insurance

For more information about current memberships visit www.kirkvillechamber.com/directory

ON THE HORIZON

February 15, KLI Recruiting Event-Holiday Inn Express
February 23, Ribbon Cutting Kirkville Brewing
March 7, Annual Banquet-White Oaks Barn



Audra Jackson Harris
2121 N. Baltimore St.
Kirkville, MO 63501
660-665-0700
agentaudra.com

632458



CENTURY 21
Lifetime Realty
1605 S. Baltimore,
Suite A
Kirkville, MO 63501
660-665-5678
www.C21Kirkville.com

631655



Tire & Auto Owners:
Joe Dimmitt & Kelly O'Haver
1102 N Green St
Kirkville, MO
660.665.9017

656930



Bellacino's
Pizza & Grinders
ORDER ONLINE
WWW.BELLACINOS.COM
GRINDERS • PIZZA • SALADS
WINGS • FRIES • AND MORE!
GET 10% OFF
WHEN YOU PRESENT THIS COUPON.
516 N BALTIMORE ST.
660-665-7665

631373



RAIL
Rural Advocates for Independent Living INC.
1100 S. Jamison
Kirkville, MO 63501
660-627-7245 - Phone
800-681-7245 - Toll Free
660-665-9849 - Fax
WWW.RAILKV.ORG

645924