

# NEMO Trader

**FREE THE NEMO TRADER**


PO BOX 809 • KIRKSVILLE, MO 63501 • PHONE 660-665-8500

Web Site: [nemotrader.net](http://nemotrader.net) • Email: [sales@nemotrader.net](mailto:sales@nemotrader.net)

A WEEKLY ADVERTISER SERVING ALL OF NORTHEAST MISSOURI AND THE SURROUNDING AREA

**LIME SPREADING SERVICE**

Equipped with variable rate



**PEAVLER TRUCKING LLC**  
Alan Peavler, 660-216-0618 - Jared Peavler, 660-342-7685

**CELEBRATIONS PARTY RENTAL**  
KIRKSVILLE, MO

FOR RENT

- Tables & Chairs
- Tents • Bounce House
- Cotton Candy Machine
- & More!

660-626-5162 or 660-665-9380

**Signature**

Overhead Doors & Remodeling, LLC

**660-785-0248**

[www.signatureremodelingkv.com](http://www.signatureremodelingkv.com)

*Giving your home the attention it deserves!*

**exp REALTY**

ELIZABETH GREGORY  
*Realtor*

WWW.MISSOURIHOMEANDFARM.COM

Innovative Real Estate for YOU!

**660.621.2136**

**WWW.SPARKSAUCTIONSERVICE.COM**

204 E. Reid St,  
Edina, MO 63537

Licensed in Missouri, Iowa, and Illinois

Family Owned and Operated

**28 Years of Combined Experience**  
FFL Certified

**Let us Put More Money in Your Pocket!**

**KEIM LUMBER COMPANY LLC**

COMPETITIVE PRICES • FREE ESTIMATES

- COMPLETE BUILDING PACKAGES
- WINDOWS AND DOORS
- INSULATION • DRYWALL
- DELIVERY

13625 St. Hwy 3 LaPlata, MO

**On Site Commission Rates**

Household- 20 to 25%

Land- 1%

Real Estate/Home-3%

Vehicles - 10%

Firearms - 10%

**Machinery Rates**

Under \$1,000.00 = 15%

\$1001.00 to \$5,000.00 = 10%

\$5,001.00 to \$25,000.00 = 6%

\$25,001.00 to Over = 3%

**Jesse Sparks • 573-406-8787**

**Dalton Sparks • 573-822-4598**

Land • Real Estate • Household • Machinery • Vehicles

## ONLINE FARM EQUIPMENT AUCTION

IMAN AUCTION CENTER - 31614 HIGHWAY 24, SALISBURY, MO

BID NOW @ [IMANAUCTION.COM](http://IMANAUCTION.COM) | FIRST LOT CLOSES DECEMBER 17, 2023 @ 6 PM



**BID NOW @ [IMANAUCTION.COM](http://IMANAUCTION.COM)**

TRACTORS - PLANTERS - TILLAGE EQUIPMENT  
- SKID LOADERS & ATTACHMENTS - AUTOS -  
GRAIN TRUCKS - UTV'S - ATV'S - CATTLE  
EQUIPMENT - MOWERS - HAY EQUIPMENT -  
TRAILERS - MANY, MANY MORE ITEMS.



IMAN AUCTION COMPANY | 660-388-6235 | [ImanAuction.com](http://ImanAuction.com)

**WE GOT YOUR NEEDS COVERED!**



**FARM TARPS TRUCK TARPS**  
**HOOP BUILDING COVERS**

**Troyer**  
**TARP MFG.**

**660-486-3301**

20264 STATE HWY. VV • ETHEL, MO 63539

WE ARE PUBLISHING THE

**NEMO**  
ON **WEDNESDAYS**  
Trader

**NEW**

**DEADLINE**

will be **THURSDAY** by **5PM**

**AGRI-BUSINESS**

**Cattle**

Neese Angus and Balancer bulls for sale. Ready for service. Conditioned to work! Rutledge, Missouri. 641-344-4565.

Registered red Angus two year old bulls, good EDD's and gentle disposition. 660-216-3301.

**Equipment & Supplies**

2014 Krause 8000-30 Excelsior V-TILL. Gang angle adjustment; hydraulic star wheels; flat bar reel. Blades 20.75" front, 21.00" back. Excellent machine. \$58,000 or make offer. Robert Lay, LaBelle, Mo. 660-341-5471.

**Have a smart phone or tablet?**  
You can view current and past Nemo Trader issues online at [www.nemotrader.net](http://www.nemotrader.net)



**Hay/Feed/Seed**

500 net wrapped bales clean CRP hay. 500 net wrapped bales 1st cutting orchard/brome grass hay. 200 net wrapped 2nd cutting orchard/brome grass hay. Don Hoover, St. Catherine, MO. 660-734-1593 or 660-734-4155. We deliver!

For sale corn silage bale's wrapped, weighing 1800 pounds, semi delivery available. 9.72 protein, relative feed value 166, nitrate less than 0.02. \$100.00 per bale. 573-470-0077.

Big square bales of wheat straw, \$60.00 per bale. Delivery Available. 660-956-3420.

Excellent quality Alfalfa hay for sale, big square bales. Also grass hay available. Delivery available. 660-956-3420.

Small square bales straw, \$4.00 a bale. Located in Leonard, Mo. 660-251-3444.

Call about our classified ad specials. 660-665-8500.

**Livestock**

Neese Angus and Balancer bulls for sale. Ready for service. Conditioned to work! Rutledge, Missouri. 641-344-4565.

**EMPLOYMENT**

**Transportation/Drivers**

???CDL License??? Fast and economical. Meets all ELDT requirements. 2 days training. You need a learners permit and ability to drive a manual. Jefferson City, Strafford, Willow Springs, Mo. Please call 573-353-2853 [www.capitaltruckdrivinginstitute.com](http://www.capitaltruckdrivinginstitute.com).

**MERCHANDISE**

**Pets & Supplies**

Golden Doodles F2, ready for new homes, all shots dewormed and vet checked. Males and females. 660-874-4964.

**BE AN EARLY BIRD!** Place your ads before Monday and beat the rush!

**Pets & Supplies**

Pure breed Golden Retriever puppies. Have had 2nd round of shots and been wormed. \$500.00 815-701-6486

**FOR SALE**  
**All Sired Angus Bulls,**  
**14 & 18 Months Old.**  
**Harold Trump**  
**660-341-5730**

**ANGUS BULLS FOR SALE**  
**Coon Angus Ranch**  
Outstanding selection of 14 month old bulls  
1318 Shelby 169, Bethel, MO 63434  
**Russell 660-341-2705**  
**Susan 660-341-5192**  
[ruscatsol@gmail.com](mailto:ruscatsol@gmail.com)  
[www.coonangusranch.com](http://www.coonangusranch.com)



**Sports Equipment**

Hunt in the dry Lazyman fiberglass deer blinds. Starting at \$1299.00. Four models to choose from. [heindselmanfamilyfarms.com](http://heindselmanfamilyfarms.com), 660-341-5692.

**Wood & Accessories**

Cut up saw mill firewood. \$20.00 pickup load. No Sunday business. 10 miles NE of Canton, MO. Ely S. Eicher, 26750 State Hwy E, Canton, MO 63435

**TIMBER MANAGEMENT.**  
*Purchasing Walnut, Oak, Maple & Other Species*  
**WE PAY BEFORE WE CUT**  
**BONDED & INSURED**  
**641-895-8209** Est. 1968



**BURKHOLDER**



**2022 Ford F-350 Lariat, 4x4, Crew**  
Dually, 6.7 Diesel, 50k One-Owner Miles, Accident Free, Well Kept, Texas Truck, White



Reduced!  
~~\$78,900~~ **\$73,900**

Full line of accessories Outfit your truck here!

**Edina 660-397-2551 51001 State Hwy 15 BurkholderTruckSales.com**

<p><b>Reduced!</b></p>  <p><b>\$51,900</b></p> <p><b>2022 Chevy Silverado 2500HD WT</b> 4x4, Crew, 6.6V8, 21k One-Owner Miles, Remaining Factory Warranty, Greenstone</p>	<p><b>Reduced!</b></p>  <p><b>\$59,900</b></p> <p><b>2021 Nissan NVP 3500HD SL</b> 5.6V8, Only 26k One-Owner Miles, Personal Van, This Van is Near New, Blue</p>	<p><b>Reduced!</b></p>  <p><b>\$30,900</b></p> <p><b>2021 Chrysler Pacifica Touring L</b> 7 Pass, 3.6V6, 44k One-Owner Miles, Accident Free, Well Kept, Nice &amp; Clean, Gray</p>	<p><b>Reduced!</b></p>  <p><b>\$39,900</b></p> <p><b>2020 Chevy Express 2500 LS</b> 12 Pass, 6.0V8, Auto, 88k One-Owner Miles, Very Well Kept, Hard to Find, Black</p>	<p><b>Reduced!</b></p>  <p><b>\$38,900</b></p> <p><b>2015 Ford F-350 XL, 4x4, Reg Cab</b> Dually, 6.2V8, Auto, Only 23k One-Owner Miles, Accident Free, Nice, White</p>
<p><b>Reduced!</b></p>  <p><b>\$39,900</b></p> <p><b>2014 Chevy Express 3500 LT</b> 15 Pass, 6.0V8, Auto, 39k Mi, One-Owner, Very Nice &amp; Clean, Well Kept Van, Black</p>	<p><b>Reduced!</b></p>  <p><b>\$42,900</b></p> <p><b>2014 Chevy Express 1500 LT AWD</b> 8 Pass, 5.3V8, Auto, Only 46k One-Owner Miles, Ready for Winter, Nice, Dark Blue</p>	<p><b>Reduced!</b></p>  <p><b>\$28,900</b></p> <p><b>2008 Chevy Express 1500 LS AWD</b> 8 Pass, 5.3V8, Auto, Only 94k Miles, Good Condition, Come See, Dark Green</p>	<p><b>Reduced!</b></p>  <p><b>\$64,900</b></p> <p><b>2021 Ford F-250 XLT, 4x4, Crew</b> 6.7 Diesel, 38k One-Owner Mi, CM Utility Bed, Extra Clean Texas Truck, Nice, White</p>	<p><b>Reduced!</b></p>  <p><b>\$42,900</b></p> <p><b>2017 Ford F-350 XL, 4x4, Ext Cab</b> 6.2V8, Knapheide Utility Bed, 87k One-Owner Miles, Well Kept, Extra Nice, Blue</p>

Looking for that **Perfect Gift?**



Truck Accessories

We have something for everyone!

**THIS MONTH'S SPECIAL!!**

**RANCH HAND**  
Legend Front Bumper and Install Package

Save **\$100**



**RANCH HAND**  
PROTECT YOUR TRUCK



Ratchet Straps



Expedition Coolers

**AUTO & TRUCK SALES + ACCESSORIES**



**REAL ESTATE SALES**

**Acreages & Lots-Sales**

22 acres, 18 acres crop ground, pond. 60x80 pole building, cement floor. 6 miles East of Kirksville, off Highway 6. 641-226-2266.

Call about our classified ad specials. 660-665-8500.

**Mobile Homes For Sale**

DISCOUNT NEW MOBILE HOME-Prices start at \$64,900 delivered and set up. 573-499-9993. columbiadiscountmobilehomes.com.

NEW INVENTORY-\$59,900 Delivered and set up, Hurry! Call Adam 573-657-2176. amegamobilehomes.com

**Mobile Homes For Sale**

Tiny Homes Missouri franchise 573-881-7965.

BASEMENT READY TRUE MODS--in stock ready for delivery, 573-657-7040. chateauhomes.net

Call us for all your advertising needs. 660-665-8500.

**DEALER AND FARMER MACHINERY AUCTION**



CONSIGNMENTS FROM MULTIPLE JOHN DEERE AND CASE IH DEALERS CONSIGNMENTS FROM LOCAL FARMERS!

FRIDAY, DECEMBER 15, 2023 • 10 AM

AUCTION LOCATION: WHEELER AUCTIONS PROPERTY, 111 BUCHANAN ST. CARTHAGE, IL 62321

Live on-site bidding with online bidding

**Wheeler**  
AUCTIONS & REAL ESTATE



For more information:

Kirby Fecht | 217-248-2906

Wheeler Auctions | 660-327-5890

70621in

**ANIMAL HOUSING HAY STORAGE & MUCH MORE**



**Skylight FABRIC STRUCTURES**

30697 COLONY AVE. • NEW CAMBRIA, MO 63558

660-486-3250 • 833-482-8862

699347at

**LOCAL MATTERS**

Please support the advertisers that power your community paper.

**NEWSPAPERS MATTER**  
NOW MORE THAN EVER

**LUTTRULL FAMILY FARMING**  
EXPERIENCED FARM FAMILY LOOKING FOR ROW CROP ACREAGE TO RENT



PLEASE CONTACT

BRENT: 660-341-1561

KATY: 660-341-1318

702339in

**Judd Motors**

Call 660-457-3700  
Hwy 63 North, Lancaster, MO

**2017 FORD F250 XLT**,..... only **\$19,900**  
crew cab, 4x4, 6.2L gas, red, 246K miles, excellent cond, MUST SEE

**IH 574 tractor**,..... **NEW PRICE \$9,250**  
gas, 60 hp, with IH 2250 loader, PTO, 3 pt, runs great,

**2016 Ford Explorer XLT**..... **NEW PRICE \$17,500**  
4wd, V6, 3 row, silver, only 88k miles, very nice

**1998 Chevy 1500**..... **SOLD** only **\$4,250**  
ext cab, good shape, 4x4, green

**2007-14 Chevy pickup** box, red ..... only **\$1,250**

**2012 Chevy Impala LT**..... **NEW PRICE \$9,250**  
sunroof, only 96K miles, charcoal

**2013 Toyota Sienna Van XLE**..... **NEW PRICE \$21,900**  
leather, sunroof, 79K miles, charcoal, Like New

**2002 GMC Sierra 1500**..... only **\$8,995**

Reg. Cab, Long bed, 4x4, V8, 138K, RED



**Cumberland Building Dealer**

[www.juddmotors.com](http://www.juddmotors.com)

In Business Over 75 Years  
Curly and Kevin Judd

7024500in

**VICTORY Metals & Recycling**  
KIRKSVILLE, MO  
660-665-8000

For current scrap prices call or visit our **Facebook Page**  
[victorymetalsrecycling.com](http://victorymetalsrecycling.com)



**★ METAL RECYCLING**

RECYCLE YOUR SCRAP METAL WITH US! WE PAY CASH FOR: COPPER, ALUMINUM, STEEL, STAINLESS STEEL, APPLIANCES, E-SCRAP, BRASS, LEAD, RADIATORS, ALTERNATORS, BATTERIES, STARTERS, ELECTRIC MOTORS, APPLIANCES, & VEHICLES (TITLE & ID REQUIRED).

**★ ROLL-OFF CONTAINER**

10-20-30-40 CUBIC YARD DUMPSTERS

3602 INDUSTRIAL RD. • KIRKSVILLE, MO 63501

[DJANESVMR@GMAIL.COM](mailto:DJANESVMR@GMAIL.COM)

[VICTORYMETALSRECYCLING.COM](http://VICTORYMETALSRECYCLING.COM)

702123in

*Urgent Care Open!*  
even during the holidays



**Complete Family Medicine**

**Urgent Care**

**8 am - 8 pm EVERY DAY**

704570in

**Recreational For Sale**

Hunt in the dry Lazyman fiberglass deer blinds. Starting at \$1299.00. Four models to choose from. heindselmanfamilyfarms.com, 660-341-5692.

**RECREATION**

**Motorcycles**

WANTED TO BUY: Harley Davidson's, any year, any condition, cash money. Days 660-263-1356 or 660-537-0068

**SERVICES**

**Chat/Dirt/Gravel**

**DIRT WORK** All types of excavation, reclaiming overgrown fields, including CRP and WRP. Building site preparation, creating new trails and crossings, Food plot development and maintenance. Leveling and grading, wetland construction and maintenance. Pond and lake cleaning and construction. Call for quotes. 660-342-2701

**Wanted**

WANTED TO BUY: Harley Davidson's, any year, any condition, cash money. Days 660-263-1356 or 660-537-0068

Americans discard ONE BILLION TREES WORTH of paper products each year. **PLEASE RECYCLE THIS NEWSPAPER**

**Central Metals Recycling LLC**



**Buyers of Ferrous and Non-Ferrous Metals**

**We Pay More \$\$\$, Call For Your Best Pricing Today!!**

**11923 Hwy. 54 Mexico, MO 573-581-0336** | **1601 N. 30th Quincy, IL 217-214-7649** | **1175 Hwy. 96 Hamilton, IL 217-847-3191**



**LAN-DOW BUILDINGS**

**"We Build To Suit Your Needs" "Custom Built"**

Pole Barns • Garages • Utility Buildings  
"H" Don or Dick Middleton

**Memphis Lumber Co.**  
1-800-337-5858 • 660-465-8595  
Fax: 660-465-8596

**ATTENTION LAND OWNERS!!**

**Buyer of standing timber**  
Paying Cash Upfront!

Owner/Operator of Sawmill

- Buy/Cut Logs
- Certified
- Bonded
- Insured

**Tri State Timber L.L.C.**  
353 1/2 Grand Ave. • Memphis, Mo 63555  
660-341-4921 • 660-465-2975

WE HAVE SEMI LOADS OF FINE WOOD LOGS FOR SALE

**LANCASTER LUMBER INC.**

**Lancaster, MO.**

**1-800-424-5071**

**LAN-DOW BUILDINGS**

[www.lancasterlumber.com](http://www.lancasterlumber.com)

**Show Me Plumbing Services**

- General Mini Excavation & Skid Steer Work
- Livestock Watering
- Waterlines & Sewer Systems
- Residential Services & General Plumbing
- Utility Trenching

**Stan Schrock 660-988-1163**  
**Greentop, MO 660-766-2636**

**Skyline Service LLC**

Skid Steer and Construction Repair  
**Levi Weiler**

660-346-6881 • 660-883-5525

Scan Tool Diagnostics  
Exhaust After Treatment Repairs • SCR Unlocks  
Skid Steer Tracks Available

**Connie's MOBILE HOME TRANSPORT**

We offer the following...

Break Downs • Transport • Set up • Anchoring

**Call Rich today! 573-881-7483**

**Golden Grain Bins-Winter Discount**

Grain Bins	Floors w/12" Supp. & Flashing
18'x18' 4,195bu. \$ 5,253	18'....\$1,466 30'....\$ 4,092
27'x21' 11,265bu. \$10,544	21'....\$2,005 36'....\$ 5,830
42'x24' 32,245bu. \$24,578	27'....\$3,344 42'....\$ 7,939

**Golden Grain** | **GMLS Industries, Inc.**  
PH: 660-699-2179 or 620-983-2136  
[www.gmlsindustries.com](http://www.gmlsindustries.com)

**LANGMAID STOCK DOGS**

ABCA Border Collies  
Top cow dog Bloodlines  
Pups, started dogs, finished dogs  
Full health and working guarantee on all dogs  
All dogs eligible for \$25,000+shootout dog trial.

**RYAN & DAWN LANGMAID**  
Green City, MO

**254-595-6677**

**Edina Livestock Sales**  
Edina, Missouri

**Friday, December 15th**  
Special Cow Sale

- James Penn 10 AI Bred Heifers
- Lance & Alan Trenhaile 13 Angus Heifers 3/1 for 75 days
- Ryan Brown 50 coming 3 yr old Angus Cows & 25 4-5 yr old Angus Cows
- Land Brothers 80 6-8 yr old Cows

**SEVERAL MORE IN SMALL LOTS**

**Friday, December, 22nd**  
No Sale - *Merry Christmas!*

To Consign For Any or All Sales or For Information Call:  
Owner - Kevin Strange • Cell: 660-341-9974  
Ryan Strange • Cell: 660-341-9721  
Sale Barn: 660-397-9999

**Field Reps:**  
Bill Tom Hall 660-342-5420 Mike Bronestine 660-341-9965  
Jason Bichsel 660-216-0373 John Powell 660-341-1717

**RAMIER TRUCK SALES**

2022 Ford F350, 6.7 diesel, 6300 miles, clean title. <b>CALL FOR PRICES</b>	2023 Ford F350, 7.3 gas XLT, 1385 miles, salvage title. <b>CALL FOR PRICES</b>
2022 Ford F350 XL, 6.7 Cab & Chassis, 15K miles, salvage title. <b>CALL FOR PRICES</b>	2022 Ford F350 XL, 6.7 XLT, 15K miles, rebuilt title. <b>\$52,900</b>
2021 Ford F350 XLT, New Dew EZE 684 bale bed, 6.7 clean title <b>\$71,900</b>	Dew eze cake feeder, 1000 lb in stock <b>\$4,586</b> and 1500lb in stock <b>\$4,619</b>
2012 Ford Expedition Limited, 5.4l, 200k miles, prior salvage title <b>\$6,500</b>	2020 Ford Ranger, 4x4, Lariat, Black, 41k miles, Rebuilt Title <b>\$28,000</b>

Gorin, Missouri • Monday-Saturday 8am-6pm  
[www.ramiertrucksales.com](http://www.ramiertrucksales.com) | HOME: 660.282.1002  
DewEze CELL: 660.341.6140 | "NO SUNDAY CALLS!"

**There's a better way to get noticed.**

Keep life simple. Take out an ad.

**SHOW-ME SEAMLESS GUTTERING**

FREE ESTIMATES • PROMPT SERVICE

- 5" & 6" Gutters
- Siding • Soffit • Fascia

(23 colors available on Gutters & Fascia)

Tried of Cleaning your Gutters?  
**LEAFPROOF THEM!**

ELLIOTT HIX  
660-626-3447 • KIRKSVILLE, MO

**NEW CAMBRIA LIVESTOCK AUCTION LLC**  
Phil & Stacey McBee - Owners  
29262 State Hwy 149, Box 94, New Cambria, MO 63558

**Special Calf and Yearling Sale**  
(FEATURING WHITE & RED TAG)  
SATURDAY, DECEMBER 16TH--SPECIAL COW SALE  
THURSDAY, DECEMBER 21ST--SPECIAL COW SALE

Office (660) 226-5222 • Phil McBee (660) 754-2148  
Doug Lock (660) 641-3898 • Lavon Moore (660) 384-2008  
Randy Nute (660) 651-5389 • Tyler Gratz (573)-690-7312

To view our latest market reports and cattle listings visit Our website at: [newcambrialivestockauction.com](http://newcambrialivestockauction.com)

**We appreciate your business!!!!**

**HAY AUCTION**

Saturday, December 16, 2023 - 10:00 A.M.  
1916 S. 18 TH ST. (HWY 5 S) CENTERVILLE, IA

ACCEPTING CONSIGNMENTS NOW  
Expecting a nice selection of hay and bedding of all sizes

DALTON OTT SALE MANAGER  
563-880-5626 To list your hay, Or Time to bring it in.

**DEMRY AUCTION, LLC**  
1916 S 18th St, (Hwy 5 SOUTH) CENTERVILLE, IOWA | 641-856-6408

Tom Demry: 641-895-2508 • Kristy Demry: 641-895-2509  
Janet Demry: 641-895-4310 and 641-856-6924  
Junior Lawson: 641-895-0037 Randy Mulay: 641-436-1521  
Dalton Ott: 563-880-5626 • Website: [www.Demryauction.com](http://www.Demryauction.com)

**VIRTUAL ONLINE**

**PUTNAM COUNTY, MISSOURI LAND AUCTION**

**MONDAY, DECEMBER 18, 2023 AT 1:00 PM<sup>CT</sup>**

**408 ACRES± (SUBJECT TO SURVEY) • 3 TRACTS**

The farm is located approximately 9.5 miles east of Powersville, MO, or 13.5 miles northwest of Unionville, MO, and approximately 8.1 miles north of Hwy 136. Tracts 1-3 are in Sections 28 & 29, T67N-R20W, Sherman Township, Putnam County, MO.

The farm represents a mixture of tillable farmland, pastureland, and timber.

**ERIC EWING & LARRY VAN DYNE TRUST**

Representing Attorney: Natalie Oswald  
Schmiedeskamp, Robertson, Neu & Mitchell, LLP  
525 Jersey St, Quincy, IL 62301 | (217) 223-3030

Closing & Title Work: Hart Abstract & Title  
2308 Main St, Unionville, MO 63565 | (660) 947-3959

Auction Managers: Louie Zinn (319) 795-2314 & Dan Sullivan (319) 795-1833

**BigIron** | **SULLIVAN AUCTIONEERS**  
a BigIron company  
(844) 847-2161 | [www.SullivanAuctioneers.com](http://www.SullivanAuctioneers.com)

**LOLLI LIVESTOCK MKT, INC.**

**Special Calf & Yearling Sale**

**Tuesday, Dec 17 - 11am**

160 bbwf hfrs 675-700lb (lot Loads)  
75 bbwf str 700lbs (pot load)

80 bbwf str/hfrs 5-700lbs 38 bbwf str/hfrs 4-600lbs  
75 bbwf str 700lbs 25 bbwf str/hfrs 5-700lbs  
70 bbwf str/hfrs 5-700lbs 22 bbwf str/hfrs 6-700lbs  
65 bbwf str/hfrs 4-600lbs 12 bbwf str/hfrs 5-700lbs  
55 bbwf str/hfrs 5-700lbs 10 bbwf str/hfrs 6-700lbs  
48 bbwf str/hfrs 4-600lbs 10 bbwf str 6-700lbs

This is only a partial listing, many more by sale date.

Tuesday, Dec 19 - 11am - Special Calf & Yearling Sale

We would like to wish each of you  
**A Happy Holiday Season**  
From The Lolli Families & Staff!

Cafe Open **Lolli Livestock Market, Inc.** Cafe Open  
704 Main st \* Macon, MO \* 660-385-2516 [www.lollilibros.com](http://www.lollilibros.com)  
Frankie 660-651-4040 \* Tim 660-651-3496 \* Joseph 660-346-9711  
Jordan 660-346-0410 \* Cody 660-676-9392 Cattle accepted on Sundays

Have a smart phone or tablet?  
You can view current and past Nemo Trader issues online at [www.nemotrader.net](http://www.nemotrader.net)



**TIMED ONLINE ONLY**

# RETIREMENT AUCTION

LOTS START ENDING AT 10 AM  
**WEDNESDAY, DECEMBER 20<sup>TH</sup>**

LOCATION: 30092 HWY Z, CANTON MO  
(JUST WEST OF THE JCT. OF HWY. 61 AND RTE Z)



2011

2147 SEP/3077 ENG

2011 JD 9770 STS 4WD/2 spd., Combine, Bullet Rotor, Greenstar Ready, Premier Cab, C.M Hi-Torque Var. Spd., SideHill Performance Pkg. Grain Tank Extension, 520/85-R42 Tires & Duals, 600/65-R28 Steer Tires, 2147 Sep. Hours, 3077 Engine Hours, Ser# 1H09770SVB0741752



2008

4469 HRS

2008 JD 8430 MFWD Tractor, Deluxe Command View Cab, Greenstar Ready, Buddy Seat, 305 HP, 9.0L 6 Cyl. Diesel, 16/4 Powershift, 4 Remotes, 1000 PTO, Quick Hitch, Front Weight Bracket & 4 Weights, 380/80 R38 Front Tires, Fenders, 480/80 R50 Rear Tires, Duals, Inner Rear Weights, 4469 Hours, Ser# RW8430PO23845



2006

3721 HRS

2006 JD 7420 MFWD Cab Tractor, 135 HP, 6.8L 6 Cyl. Diesel, 20 spd-PQ, LED Light Kit, 3 Remotes, 1000 PTO, Set of 12 Front Weights, 460/85-R38 Rear Tires & Duals, 380/85-R28 Front Tires, Fenders, 3721 Hours, Ser# RW7420R032590



2020 MacDon FD135 Flex Drapper, Single Point Hook Up, JD Transition, Single Knife Drive, FM100 Float Module, Stubble Lights, Ser# 375246-20



1997 JD 608C Corn Head 8/30, Poly. Stubble lights, Ser# H0608CX72642.



1981 JD 4440 2WD Cab Tractor, 7.6L 6 Cyl. Diesel, Quad Range, 2 Hyd Outlets, 540/1000 PTO, (11) Front Weights 18.4-38 Tires, Quick Hitch , 8887 hours, Ser#4440H044033R



2013 Kinze 3500 8/30 Planter, Elec Ag Leader Sure Drive, Ag Leader Direct Command Switch Box, Vac Pressure Sensor, Speed Tube Monitoring, Precision Bulls Eye Steel Tubes, Liquid Control Module (4 Sections), Ag Leader Sure Stop Clutches (4 Sections), Dry Fertilizer, Direct Command Switch Box, Liquid Control Module, Corn/Bean Meters, Markers, Ser# 101173, Sells w/ No-Til Coulters.



2006 Freightliner, 460 Mercedes Engine, 10 spd, Columbia Cab, Wet Kit, 946,253 Miles



2002 JD 980 S-Shank 24ft. Field Cultivator, 3 Bar Harrow & Rolling Basket, Ser# N00980X019093



JD Model 400 30 ft. Rotary Hoe, Wing Fold, Land Wheels



1996 AG-Chem Rogator 854 Self Propelled Sprayer, 80 ft. Boom, 800 gal. Tank, Foam Markers, 14.9-R46 Tires, Ag Leader Versa, Auto Swath Unlock, GPS 1500, Direct Command Liquid Control (5-Sections)



1997 Wheeler 38 ft. Hopper Bottom Grain Trailer, Shur-Lock 4500 HD Power Tarp w/Remote, Air Brakes



1994 Hoppe Grain Master Aluminum Trailer, 24 ft. Single Hopper, Air Brakes, Roll Tarp



1989 Ford L8000 Truck, Diesel, 9 spd. Knapheide 18 ft. Grain Bed & Hoist, Roll Over Tarp, Reads 115,857 Miles



McFarlane (HDL-1146-12) 46 ft. 12 Bar Harrow, Ser# 20692



Landoll 7431 VT, 33 ft., 21 in. Front Blades, 21.5 in. Rear Blades, Hyd. Basket Lift, Single Point Depth Control, Ser# 74E1101576



1996 Case IH 3900 Disk, 24 ft., 19 1/2 in. Front Blades, 19 in. Back Blades



JD 960 C-Shank 27.5 ft. Field Cultivator, Harrow Attachment



1996 Case IH 3900 Disk, 24 ft., 19 1/2 in. Front Blades, 19 in. Back Blades



1989 Ford Single Axle Nurse Truck, Diesel Engine, 9 spd. 1600 gal. Aluminum Tank, Reads 151,680 Miles



JD 120 Flail Chopper, 20 ft., Small 1000 PTO, Ser# P00120X001505



Port Industries 1410C2 Dirt Scraper, 68 X 50-00-32 Flotation Tires, Ser# 111046



**LOAD OUT DATE**

NO LOADING OUT DAY OF SALE

Cashier onsite and load out

Thursday, December 21st 9am - Noon



1985 Int. S1900, Diesel, 4 spd., Wet Kit, Reads 242,156 Miles

**BID NOW! ADDITIONAL PHOTOS & DETAILS ONLINE!**

AUCTIONEER'S NOTE: Timed online only auction. Terms cash or check with proper ID. Not responsible in case of accident or theft. Announcements made sale day take precedence over any advertisement. The above information is believed to be accurate; however, no liability for its accuracy, errors or omissions are assumed by the seller or auction service.

## Otte Family Revocable Inter Vivos Trust

**Edward & Deborah Otte, Sellers**

Preview By Appointment - Call Ed at 660-341-1633

McAfee Auction Service, LLC

660-727-3796

www.mcafeeauctionservice.com



McAfee Auction Service, LLC

375 S Johnson • Kahoka, MO

660-727-3796

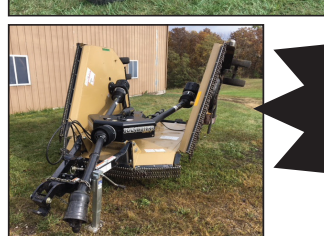
www.mcafeeauctionservice.com

## TIMED ONLINE ONLY EQUIP & PERSONAL PROPERTY ESTATE AUCTION

**THURSDAY DEC 14<sup>TH</sup>**  
**LOTS START ENDING AT 10 AM**

LOCATION: 47922 STATE HWY V RUTLEDGE, MO

PREVIEW: SATURDAY DEC 9TH 10AM - NOON



ALSO SELLING  
ANTIQUES,  
COLLECTIBLES,  
TOOLS, MISC &  
GUNS

COMPLETE DETAILS ONLINE!

**Martin O. Guinn Family Trust**

Carol Murfin, Gloria Guinn and Marva Livengood Trustees



McAfee Auction Service, LLC

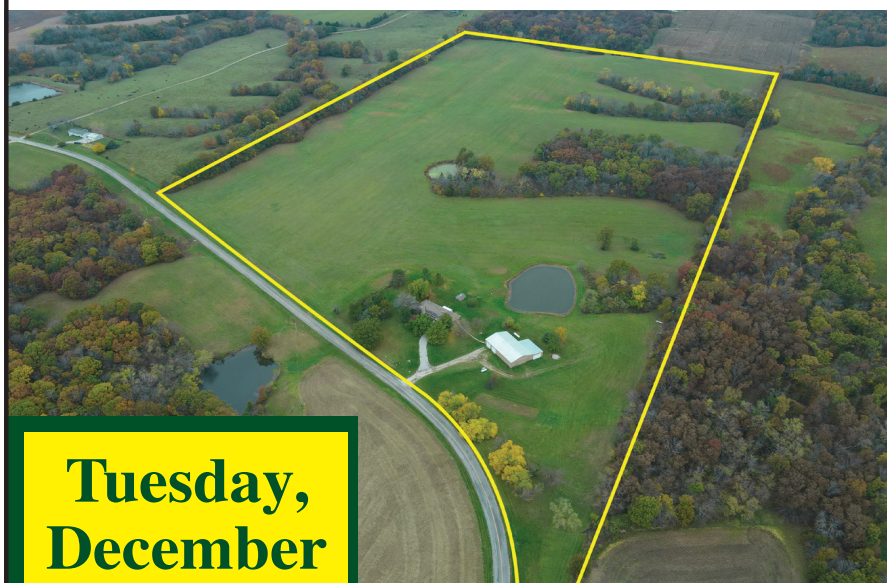
375 S Johnson • Kahoka, MO

660-727-3796

www.mcafeeauctionservice.com

## Knox County, MO LAND AUCTION 63 +/- ACRES

Sale Conducted onsite (47922 State Hwy V Rutledge, MO)  
Lying in Sect. 15, Twp.63N, R10W, Knox Co. MO



**Tuesday,  
December  
19<sup>TH</sup>  
at 10 AM**

**2 TRACTS**  
CROPLAND • HOMESTEAD

MARTIN O. GUINN FAMILY TRUST

**Construction-Services**

SPRAY FOAM INSTALLATION! We install open and closed cell spray foam. Strengthen your building and block drafts! Over 1 Million sq. ft. applied. Contact Lester at 641-208-7071, Spray Tek LLC 16302 192nd Street Bloomfield IA 52537

Please place your classified ads on the NEMO website. Our web address is [nemotrader.net](http://nemotrader.net)

**Home Services**

Scott Huskey's Insulated Skirting Systems-keeps your home cooler in the summer-warmer in the winter-saves on utilities and looks great! Since 1972, 573-696-3468.

Golden Retriever puppies in time for Christmas, \$300.00. AKC, no Sunday calls. 660-639-2207.

**Lawn/Garden/Landscape**

New 3 pt. tillers, heavy duty, gear driven, 7' to 12' starting at \$4,150. 660-874-4455.

Have a smart phone or tablet? You can view current and past Nemo Trader issues online at [www.nemotrader.net](http://www.nemotrader.net)



**TRANSPORTATION**

**Accessories-Transportation**

2024 HP 84"x18' car hauler, 2' steel deck plate dove tail. 7000 pound gvwr, brakes both axles, break away system, 6 lug wheels, 8 ply tires, ramps, 7K dogleg jack, 2 5/16 coupler, spare tire mount. \$4,200.00. Accelerators since "1974", Kahoka, MO, 217-257-1385 anytime.

**TRANSPORTATION**

**Automobiles**

2000 white Ford F250, 2 wheel drive, 150,000 miles. 4 new tires, single cab. 660-341-5048 or 660-956-2481.

Americans discard ONE BILLION TREES WORTH of paper products each year. **PLEASE RECYCLE THIS NEWSPAPER**

**TRANSPORTATION**

**Trucks, 4x4's, SUV's**

2014 Chevy 2500 HD 4x4 WT regular cab. 6.0 V8, gas, automatic, trailer package, new 10 ply tires, original window sticker, 142,000 miles, area trade, rebuilt title. Bed has scratches and dents, serviced and inspected. Runs good, \$12,700.00. Accelerators since "1974", Kahoka, Mo. 660-727-3455, 217-257-1385 anytime.

## Shelby County

**REAL ESTATE & PERSONAL PROPERTY AUCTION**  
**THURSDAY, DECEMBER 28, 2023 AT 10 AM**  
**AUCTION & PROPERTY LOCATION:**  
**5874 HIGHWAY J, BETHEL, MO 63434**

PROPERTY LOCATION: From the north edge of Bethel on Highway 15, turn and east on Highway J 1/2 mile to Hunolt property on the left.

**160 +/- ACRES OFFERED IN TWO TRACTS, TRACT ONE IS 40 +/- ACRES WITH HUNOLT HOMESTEAD AND TRACT TWO IS 120 +/- ACRES OF TILLABLE FARM LAND AND RECREATIONAL PROPERTY. IT IS ALL LOCATED IN TOWNSHIP 59N, RANGE 10W, SECTIONS 27 & 28 OF SHELBY COUNTY, MO**

**TRACT 1:** 40 +/- Acres with frontage and access off Highway J which runs along the south side of this tract. The tract is primarily open and currently being used for crop production (28.68 tillable acres). Tract one includes: 1920 sq. foot home (4 bedrooms, 2 1/2 baths), 40' x 60' pole frame structure w/ 15' side walls, 36,000 bushel grain bin, and a 8' x 20' building.

**TRACT 2:** 120 +/- acres that will be accessed over a 40' easement along the west side of Tract One, directly off Highway J. According to the Shelby County FSA Office there are 112.76 tillable acres, the balance is in wooded draws, fence rows, and waterways.



**PERSONAL PROPERTY CONSIST OF COMBINE & HEADS, TRACTORS, BULLDOZERS, TRUCKS & TRAILER, FARM EQUIPMENT, TANKS & MISC., FOOD HANDLING EQUIPMENT, HOUSEHOLD ITEMS, SHOP TOOLS, LAWNMOWER - ATV, HOG HOUSE, HAY, WINDMILL & RELOADING EQUIPMENT**



**FORMER PROPERTY OF RANDY HUNOLT**  
**OWNERS: CHRIS HUNOLT, LACY MEYER & AVERY HUNOLT**

**Wheeler AUCTIONS & REAL ESTATE**  
 CHARLIE NORDWALD | 636-795-4552  
 WHEELER AUCTIONS | 660-327-5890  
 WWW.WHEELERAUCTIONS.COM

# Christmas & New Years

## - DEADLINES -

**NEMO TRADER**  
**12/27 PAPER** | **DEADLINE IS**  
**12/21 BY 5PM**

**NEMO TRADER**  
**1/3 PAPER** | **DEADLINE IS**  
**12/27 BY 5PM**

Merry Christmas & Happy New Year from **NEMO Traders**

## Tri-Bros. Inventory

# LIQUIDATION AUCTION

**THURSDAY, DECEMBER 14, 2023 AT 10 AM**  
**AUCTION LOCATION: KERR FARMS GRAIN FACILITY**  
**642 Quincy Road, Mount Sterling, IL 62353**



**SELLING TRACTORS, BALERS, HARVEST EQUIPMENT, HAY & FORAGE, TILLAGE EQUIPMENT, PLANTERS AND OTHER FARM MACHINERY**



**Wheeler AUCTIONS & REAL ESTATE**  
 23101 HWY. 24, PARIS, MO 65275 | 660-327-5890  
 WWW.WHEELERAUCTIONS.COM

**FOR MORE INFORMATION CONTACT:**  
**Alex Kerr | 217-242-9600**  
**Allen Yoder | 217-259-6191**  
**Wheeler Auctions | 660-327-5890**  
 Illinois Auction Firm License #444000408

*Your Local*  
**FARM SUPPLY SOURCE**

NUTRITION • MEDICAL • FARM • PET • APPAREL

## SEE US FOR YOUR SHEEP & GOAT EQUIPMENT NEEDS



Hometown Animal Health has provided quality products, expert knowledge, and friendly customer service to northeast Missouri and surrounding areas. We are a full-service nutrition, medical, and farm supply source carrying complete lines of animal feed and supplies, farming equipment, agricultural parts, lawn and garden tools, work apparel, and much more!

**Hometown ANIMAL HEALTH**  
 Feed • Medical • Farm & Pet Supplies • Footwear & More

website: [hometownanimalhealth.com](http://hometownanimalhealth.com)  
**660-465-2967**

18743 US Hwy, 136 Memphis, MO 63555  
 "on Hwy 136 west of Memphis"

Monday-Friday 8pm to 5pm  
 Saturday 8am to 1pm

# Beilstein

## CAMPER SALES

**CALL US NOW for the best prices...**  
 28248 327th Ave.  
 LaGrange, MO • Hwy 61 South,  
 4 Miles South of LaGrange, MO

**CHECK OUT OUR SPECTACULAR SAVINGS**

 <b>#246292</b> Our Price <b>\$34,995</b> 2020 Keystone Hideout 300RLDS Rear Entertainment, 2 Slides	 <b>#031154</b> Our Price <b>\$24,995</b> 2019 Coachmen Catalina Trailblazer Toy Hauler 26TH TOY HAULER, Private Bedroom	 <b>#334974</b> <b>NEW</b> Our Price <b>\$36,495</b> 2023 Salem 26DBUDX Platinum Super Slide, King Bed, Bunks
 <b>#091507</b> <b>NEW</b> Our Price <b>\$36,995</b> 2023 Salem Hemisphere Hyper-Lyte 22RKHL Top Of The Line, Easy to Tow, Super Slide	 <b>#074389A</b> Our Price <b>\$17,495</b> 2023 Salem FSX 161QK Queen Bed, Light Weight Easy To Tow	 <b>#74904</b> <b>NEW</b> Our Price <b>\$2,995</b> 2023 Heartland Barlow 14FT DOVETAIL SA

**beilsteincampersales.com**

To all past, Present and Future Customers  
**Thank you**  
 for all your calls & business in 2023!  
 8777 Merry Christmas & Happy New Year!!  
 Tim & Kim Watson



**MillerAg**  
 CAR PORTS & BUILDINGS  
 6' to 100' wide clear span • Up to 25' tall walls  
 WWW.MILLERAG.NET  
 ARBELA, MO • 660-341-0929 • JOE MILLER

**FOR SALE**  
 J.D. 1978 model 4840  
 with 7800 hrs. Excellent rubber, fast Hitch,  
 12 suit case weights, well maintained.  
 Info call 660-676-7677 leave message,  
 or call 573-470-0077

**fb farmbank**  
**Christmas Club Account**  
 The easiest way to save for the Holidays all year long.

1 S. Lincoln St. Green City, MO 660-951-8430  
 701 N. Pearl St. Milan, MO 660-951-8432  
 3311 N. Baltimore Kirksville, MO 660-951-8431

www.farmbank.com Member FDIC

**Have a smart phone or tablet?**  
 You can view current and past Nemo Trader issues online at  
**www.nemotrader.net**



# WE HAVE YOUR DREAM CAR!



**AMERICA'S CAR-MART**  
*Keeping You on the Road*  
 car-mart.com



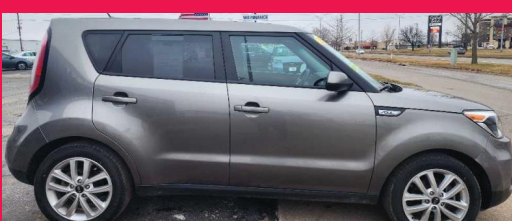
**We Offer:**

- Peace of Mind Package
- Service Contract Plus
- Accident Protection Plan
- 100% Satisfaction
- Pay Your Way
- Low Down Payments
- Quality Used Vehicles
- Flexible Financing
- Hand Selected Vehicles
- Convenient Payment Options
- Start Your Approval Online
- Over 150 Locations
- 42 Years in Business
- We Buy Cars

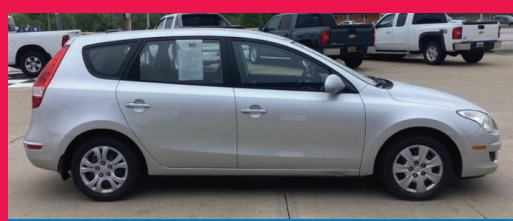
**660-956-4849 • 2015 North Baltimore • Kirksville**



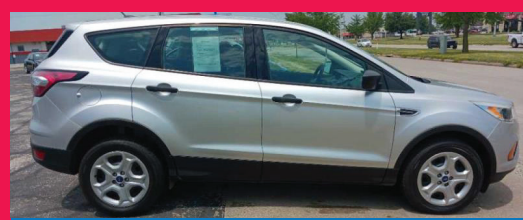
2016 KIA SEDONA  
 FWD, 6 Cyl., White



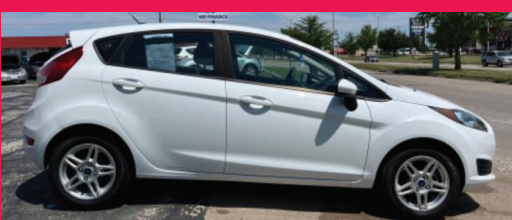
2018 KIA SOUL  
 FWD, 4 Cyl., Gray



2010 HYUNDAI ELANTRA  
 FWD, 4 CYL., SILVER



2014 FORD ESCAPE  
 FWD, 4 Cyl., Silver



2017 FORD FIESTA  
 FWD, 4 Cyl., White



2016 NISSAN ROGUE  
 AWD, 4 Cyl., White



2014 FORD FOCUS,  
 FWD, 4 CYL., SILVER



2018 KIA SOUL  
 FWD, 4 CYL., WHITE



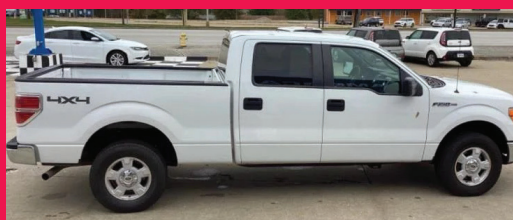
2012 FORD F150  
 4WD, 6 CYL., WHITE



2013 FORD F150 LARIAT  
 4WD, 8 Cyl., Brown



2012 MAZDA MAZDA 5  
 FWD, 4 CYL., RED



2014 FORD F150  
 4WD, 8 Cyl., White



2009 NISSAN SENTRA  
 FWD, 4 Cyl., Silver



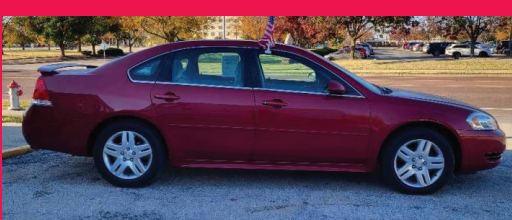
2015 KIA SOUL  
 FWD, 4 CYL., WHITE



2013 FORD EDGE  
 FWD, 6 CYL., BLACK



2014 FORD FLEX  
 FWD, 6 Cyl., Gray



2012 CHEVROLET IMPALA  
 FWD, 6 Cyl., Maroon



2014 HYUNDAI ELANTRA  
 FWD, 4 Cyl., White



**AMERICA'S CAR-MART**  
*Keeping You on the Road*



**KYLE JENNINGS**  
 GENERAL MANAGER

**Miscellaneous**

Butcher pigs raised in deep bedding. No Sunday calls. 660-639-2207.

**Premium Metal Roofing**



**Metal Roofing Headquarters**

641-664-3990 • awmetal.net

**FOR SALE**

Brand new 12" Porter Cable Super Dovetail jig, brand new, still in box, **\$240**

De Walt Plate Joiner Kit, **\$190**

2 Combo Belt Disc Sanders, 4x36x6' Sanding Wheel, like new, **\$125 each**

Bosch Router Table, used very little

3 Bench Model Drill Presses

Lots of other tools, too numerous to mention

**660-292-0356**  
If you need a tool, I probably have it!

**The Ultimate Wood Heat.**



- **More Comfort** - Thermostatically controlled wood heat.
- **Peace of Mind** - Keep the fire outside and eliminate the dangers associated with indoor wood heating.
- **Save Money** - Wood is a renewable, inexpensive and often free energy source.

**Campan Heating & Air**  
Division of Kraus & Sons Inc.  
Canton, MO 63435  
**573-288-8966**  
CentralBoiler.com

**2015 Chevy Silverado 1500**, 4x4 Crew Cab WT 5.3L Windows & Locks, Tow, Silver, 61,000 miles One Owner **\$21,500**

**2011 Chevy Silverado 1500**, 4x4 Regular Cab 4.3L Automatic, Air, 72,000 miles One Owner, No Rust **\$13,900**

Accelerators Performance & Auto  
Since "1974"  
**Kahoka, MO**  
**660-727-3455**  
**Daryl's Cell**  
**217-257-1385**



FIND THE PERFECT PET FOR THE PERFECT PRICE IN THE PERFECT PLACE FOR DEALS

Find the stuff you want and sell the stuff you don't in the newspaper classifieds.



**SPACE AVAILABLE**  
Ask about our advertising rates to fit any budget!

**ANTIOCH REPAIR**  
SPECIALIZING in  
• Skid loaders  
• Ag Equipment  
• Construction Equipment  
Call us for all your attachment needs  
**Ethan Zimmerman • 660-299-0808**

**SCOTT ROY AUCTION**

**THURSDAY, DEC. 21, 2023 • 10 AM**  
**K.D. Whitt Retirement Auction**  
30829 Jasmine Rd., Princeton, MO

AUCTIONEER'S NOTE: KD is retiring from farming and will sell the following pieces of equipment. Contact Auction company for prior inspection. This will not be a long auction so be on time. No smalls. Photos to be updated on website after staging.



**TRACTORS:** 2005 JD 9220, second owner tractor, 4259 hours, 4WD, 24 spd sync range, 4 rear remotes, rear pto, SN# HO30108, 1990 JD 4955, 9110 machine hrs, 312 hrs on new motor installed 7/15 (have service invoice), front wheel assist, 15 spd powershift, big pto, full rack of front weights, rear duals, JD cat III fast hitch SN# P006870, JD 4640 - parts or salvage SN# 001956R



**COMBINE:** 2003 JD 9450, 2965 machine hrs, 245 hrs on new motor installed 3/20 (have service invoice), 1991 separator hrs, 4WD, 60 series header hookup, retrofitted 9500 hopper extension, SN# W700132 SELLING SEPERATELY: JD 625F bean platform w/Woodworth 25 ft. platform trailer, JD 625F platform (parts only)



**EQUIPMENT:** Kinze 3600 16-31 planter, REM 27 Hundred grain vac, Meridian bulk seed tender, 220 BST, Honda motor (one owner), Demco1050 Auger wagon, JD 900 6 shank 3 pt v-ripper, Kelly Diamond Harrow 45 Rice, JD 2210L field cultivator w/harrow attachment, JD 630x tandem disc (needs work and tires), Krause mod 1900 tandem disc (needs axle work), JD 5-16 plow, Toreq mod 11 scraper (pan needs some work, needs hydraulic hoses), Westfield MK100-71 8" auger, JD 400 20ft rotary hoe, 500 gal fuel barrel, 1000 gal fuel barrel



**GRAIN TRUCKS:** Not running - 1968 & 1969 Chevy C50, 1974 Chevy C65 10-wheeler, steel bed

For photos and listing - Facebook: Scott Roy Auction and Jumps Auctions  
www.scottroyauction.com and www.shomemoreauctions.com

Terms: Driver's license or legal ID for registration. Cash or check w/ ID. All items sold As-Is Where-Is. All items paid for day of auction. Announcements made auction day take precedence over printed material. NOT responsible for accidents or errors in advertising. Load out assistance available day of auction.

**Auctioneers: Scott Roy & Rustin Jumps**  
**660-359-1455 or 660-605-0860**

**NEMO Trader Classified COUPON**

**2 Classified Ads for just \$6.00**

20 cents per word over 20 words  
Must be Mailed in or brought in along with payment.  
Picture Ads Not Included with Coupon!

**Choose Classification**

- Agri-Business
- Announcements
- Employment
- Financial
- Merchandise
- Real Estate Rentals
- Real Estate Sales
- Recreation
- Services
- Transportation
- Yard Sales
- Auctions & Estate Sales

**Ad No. 1 Each Box Represents a Word (20 words or less)**


**Ad No. 2 Each Box Represents a Word (20 words or less)**


Name \_\_\_\_\_

Mailing Address \_\_\_\_\_

Phone Number \* \_\_\_\_\_  
this is required\*

**PO Box 809 Kirksville, MO 63501 • 660-665-8500**

**FRONTLINE FENCING LLC**  
660-956-2430 • Greentop, MO

- \* Arrowquip Cattle Handling Equipment
- \* Ranger Squeeze Chutes
- \* Heavy Duty Tubs and Crowding Alleys
- \* Calving Pens
- \* Heavy Duty Gates - Custom and Standard Sizes
- \* Steel Pipe Fencing - Corrals, Working Areas

**660-956-2430 • Greentop, MO**

**MAPLES REPERTORY THEATRE**  
Thank you for a **GREAT 2023!**  
102 N. Rubey St., Macon, Mo 63552  
660-385-2924 • www.maplesrep.com

**2024 SEASON TICKETS ON SALE NOW!**  
GIFTCARDS ARE AVAILABLE!

- The Sound of Music •
- The Importance of Being Earnest •
- Lucky Stiff • Steel Magnolias •
- The Woman in Black •
- 'Tis The Season: A Maples Rep Holiday Celebration •

**BUCKMAN MACHINERY, LLC**  
573-881-3557

**John Deere 6300**, cab, power quad, loader, 5400 hrs, with new engine, 90% rubber, **\$36,500**

**John Deere 7130**, MFWD, cab, triple hydr, 5400 hrs, 70% rubber **\$44,500**

**John Deere 4010 D**, only 2375 actual hrs, nice, loader available, ..... **\$13,950**

**John Deere 6200**, MFWD, open station, power quad, 6000 hrs, with 640 Loader, sound machine, will trade ..... **\$26,500**

**Bush Hog RT Tiller**, 3 pt, 5' ..... **\$2,500**

**John Deere MX8 Mounted Cutter** 3pt mowed, shedded... **\$6,950**

**John Deere 158 Loader**, no welds, ..... **\$4,500**

**John Deere 148 Loader**, ..... **\$2,950**

**John Deere 146 Loader**, ..... **\$2,750**

**Rhino SR15M Batwing Brush Hog**, 8 luminated, 1000 PTO, field ready ..... **\$5,750**

**John Deere 709 3pt PTO Mower**, no welds ..... **\$1,950**

**Farmhand 822 Grinder/Mixer. Auger feeder**, scales, very low use, shedded ..... **\$8,750.**

**Hesston S220 Spreader**, one owner, shedded, very low use, like new ..... **\$8,650.**

---

**Alfalfa - 2nd cutting**, 3x3x8 bales, 21% treat, green, \$175/bale delivery available

**2023 Mixed Grass**, 45-50 lbs., \$10/bale, delivery available.

**Alfalfa - 4th cutting**, 55 lb treated bales, very little grass/weeds, \$12, delivery available

**Loaders & Duals available for many**

**Have a smart phone or tablet?**  
You can view current and past Nemo Trader issues online at **www.nemotrader.net**

**NEMO Trader**