

NEMO Trader

THE NEMO TRADER

PO BOX 809 • KIRKSVILLE, MO 63501 • PHONE 660-665-8500

Web Site: nemotrader.net • Email: sales@nemotrader.net

FREE

A WEEKLY ADVERTISER SERVING ALL OF NORTHEAST MISSOURI AND THE SURROUNDING AREA

skyline service LLC
 Skid Steer and Construction Repair
 Levi Weiler
 660-346-6881 • 660-883-5525
 Scan Tool Diagnostics
 Exhaust After Treatment Repairs • SCR Unlocks
 Skid Steer Tracks Available

SATURDAY DECEMBER 2ND @ 2PM
 (REAL ESTATE AUCTION ONLY)
 3 Bedroom Home, with garage & half basement.
 Lots 4, 5, & 6
Sparks AUCTION
 573-406-8787
 EST. 1988
 106 W. Jefferson
 Monticello, MO
 To view home contact:
 Jesse Sparks at 573-406-8787

exp REALTY
 ELIZABETH GREGORY
 Realtor
 WWW.MISSOURIHOMEANDFARM.COM
 Innovative Real Estate for YOU!
 660.621.2136

Sonny & Son's Tree Services
 • TREE TOPPING •
 • COMPLETE TREE REMOVAL •
 • LOW LIMBING •
 • OVER-THE-HOUSE •
 • TREE LIMB REMOVAL •
 • CLEANUP INCLUDED •
 Call Today for a FREE estimate
 Sonny - 660-353-0837
 Son Zach - 417-509-0250
 BONDED AND INSURED
 40 YEARS
 EST. 1983

LIME SPREADING SERVICE
 Equipped with variable rate
PEAVLER TRUCKING LLC
 Alan Peavler, 660-216-0618 - Jared Peavler, 660-342-7685

ASI
Agri Systems Inc.
 1103 Nixon Industrial Blvd. • Macon, MO
 888-627-4232
 We have taken over for CSC!
 All Pressure Washers & Air Compressors!

Signature
 Overhead Doors & Remodeling, LLC
 660-785-0248
 www.signatureremodelingkv.com
 Giving your home the attention it deserves!

LANCASTER LUMBER INC.
 Lancaster, MO.
 1-800-424-5071
 LAN-DOW BUILDINGS
 www.lancasterlumber.com

STAR SEARCH XXXI

PRESENTED BY:

FABIUS CREEK ANGUS

RETIREMENT DISPERSAL SALE

December 9, 2023 - 1 PM - Maggie's Machine Shed - 18130 296th Trail, Bloomfield, IA



Lady Jane I393 of MAF • AAA 18295830
 Selling the high-selling donor at \$23,000 from Miller Angus in South Dakota. This donor has produced two natural bull calves that have averaged \$10,000. This donor has produced several top notch heifer calves that the Miller Angus farm have chosen to keep as replacement heifers. Sells open with a Connealy Craftsman heifer calf at side.

**SELLING:
 200 head**

140 Bred Spring Calving Cows



Miss Zara H126 of MAF • AAA 17981714
 Selling the second-high-selling donor from Miller Angus in South Dakota. This donor has raised four sale-topping sons for Miller Angus averaging \$12,125. She produced Miller Angus' 2022 sale topper at \$29,000. Sells open with a Connealy Craftsman heifer calf at side.

60 Bred Replacement Heifers

**BLOOMFIELD, IA
 FABIUS CREEK ANGUS SALE**



Fabius Prophet 8143 • AAA 19812232
 2/21/2018 Granddaughter of the \$430,000 Progress 830 sells bred to Craftsman.



Fabius Diana 0846 • AAA 19753415
 An Exar Rapture Granddaughter from the \$25,000 Lady Diana family.

DVAuction
 Broadcasting Real-Time Auctions

DEAN & NANCY HOUGLAND
 29244 ICE AVE • BLOOMFIELD, IA 52537

FOR MORE INFORMATION CONTACT:
 FABIUS CREEK ANGUS

DEAN 641-208-9626 • NANCY 641-208-0434
 HOME 641-929-3208 • MAGGIE 641-208-0000

MERCHANDISE

Building Supplies

Billboard Tarps, assorted sizes, mostly 14'x48', \$35.00 each. Raymond Kauffman, 25624 Hanover Street, LaPlata, Mo 63549.

13 house trusses for sale. Designed for 42" wide building, 2 foot centers. No Sunday calls please. 314-330-3474.

Miscellaneous

One Advantage feeder, \$600.00 or best offer. Stihl 250 chainsaw with 18" bar, \$150.00 or best offer. 641-242-2546.

Fresh local cooked sorghum, 3 miles West LaPlata, 156, 1/2 mile South Iceberg, 1/2 mile West Hanover Street, Raymond Kauffman.

Americans discard ONE BILLION TREES WORTH of paper products each year. **PLEASE RECYCLE THIS NEWSPAPER**

Pets & Supplies

2 male Border Collie puppies. Cat 246B skid steer, 1890 hours, \$25,500.00 or best offer. Kubota RTV 900 diesel side by side, \$7,500.00 or best offer.

Sports Equipment

Hunt in the dry Lazyman fiberglass deer blinds. Starting at \$1299.00. Four models to choose from. heindselmanfamilyfarms.com, 660-341-5692.

Wood & Accessories

Cut up saw mill firewood, \$20.00 pickup load. No Sunday business. 10 miles NE of Canton, MO. Ely S. Eicher, 26750 State Hwy E, Canton, MO 63435

REAL ESTATE SALES

Mobile Homes For Sale

DISCOUNT NEW MOBILE HOME-Prices start at \$64,900 delivered and set up. 573-499-9993. columbiadiscounthomes.com.

Mobile Homes For Sale

NEW INVENTORY-\$59,900 Delivered and set up, Hurry! Call Adam 573-657-2176. amegamobilehomes.com

Tiny Homes Missouri franchise 573-881-7965.

BASEMENT READY TRUE MODS--in stock ready for delivery, 573-657-7040. chateauhomes.net

Recreational For Sale

Hunt in the dry Lazyman fiberglass deer blinds. Starting at \$1299.00. Four models to choose from. heindselmanfamilyfarms.com, 660-341-5692.

RECREATION

Motorcycles

WANTED TO BUY: Harley Davidson's, any year, any condition, cash money. Days 660-263-1356 or 660-537-0068

Are you having a garage sale or rummage sale? Call us to advertise. 660-665-8500.

RECREATION

Wanted

WANTED TO BUY: Harley Davidson's, any year, any condition, cash money. Days 660-263-1356 or 660-537-0068

SERVICES

Chat/Dirt/Gravel

DIRT WORK All types of excavation, reclaiming overgrown fields, including CRP and WRP. Building site preparation, creating new trails and crossings, Food plot development and maintenance. Leveling and grading, wetland construction and maintenance. Pond and lake cleaning and construction. Call for quotes. 660-342-2701

Construction-Services

SPRAY FOAM INSTALLATION! We install open and closed cell spray foam. Strengthen your building and block drafts! Over 1 Million bd. ft. applied. Contact Lester at 641-208-7071, Spray Tek LLC 16302 192nd Street Bloomfield IA 52537

Home Services

Scott Huskey's Insulated Skirting Systems-keeps your home cooler in the summer-warmer in the winter-saves on utilities and looks great! Since 1972, 573-696-3468.

Lawn/Garden/Landscape

New 3 pt. tillers, heavy duty, gear driven, 7' to 12' starting at \$4,150. 660-874-4455.

TRANSPORTATION

Automobiles

2000 white Ford F250, 2 wheel drive, 150,000 miles. 4 new tires, single cab. 660-341-5048 or 660-956-2481.

2014 Toyota Tacoma with topper, 48,000 miles, excellent condition, asking \$16,000.00. Call 660-216-4812 or 660-341-8661.

Parts & Services

Wheels and tires, 2 - 235/70R15 on 15x8" Rally's, 5x4 3/4. 2 - 14" 214/70R14 with trim rings. For information call 573-248-6111.

Trucks, 4x4's, SUV's

1956 Ford Fairlane, 2 door, 302, 3 speed automatic, runs, drives, stops. Needs TLC. For information call 573-248-6111.

Have items to sell? Have too much stuff? Let us help you get the most for it! Call 660-665-8500.

There's a better way to get noticed.

Keep life simple. Take out an ad.



\$699 DOWN
on select vehicles*

When you bring in 6 New, Unwrapped Toys.

Minimum \$10 value for each toy. Toys will be donated to local Children's Hospitals.

*On retail vehicles priced at \$16,999 or less. With approved credit. See dealer for details. This offer cannot be combined with any other promotional offer. Example: \$699 down, 182 weekly payments of \$7.42 per \$1000 financed at 18% APR. Interest rates may vary by state of purchase. Not all vehicles shown qualify for this promotion.



We Offer:

- Peace of Mind Package
- Service Contract Plus
- Accident Protection Plan
- 100% Satisfaction
- Pay Your Way
- Low Down Payments
- Quality Used Vehicles
- Flexible Financing
- Hand Selected Vehicles
- Convenient Payment Options
- Start Your Approval Online
- Over 150 Locations
- 42 Years in Business
- We Buy Cars

660-956-4849 • 2015 North Baltimore • Kirksville



2016 KIA SEDONA
FWD, 6 Cyl., White



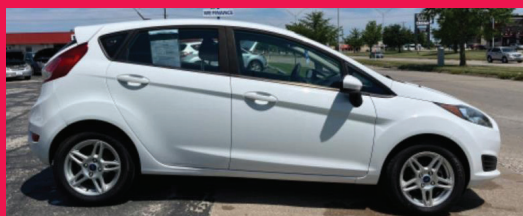
2009 NISSAN SENTRA
FWD, 4 Cyl., Silver



2010 HYUNDAI ELANTRA
FWD, 4 CYL., SILVER



2014 FORD ESCAPE
FWD, 4 Cyl., Silver



2017 FORD FIESTA
FWD, 4 Cyl., White



2016 CHRYSLER 200,
FWD, 4 CYL., WHITE



2016 NISSAN ROGUE
AWD, 4 Cyl., White



2014 FORD FOCUS,
FWD, 4 CYL., SILVER



2015 KIA SOUL
FWD, 4 CYL., WHITE



2012 FORD F150
4WD, 6 CYL., WHITE



2014 FORD FLEX
FWD, 6 Cyl., Gray



2012 CHEVROLET IMPALA
FWD, 6 Cyl., Maroon



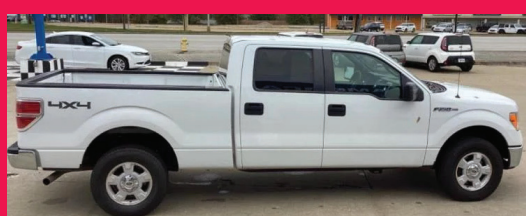
2012 MAZDA MAZDA 5
FWD, 4 CYL., RED



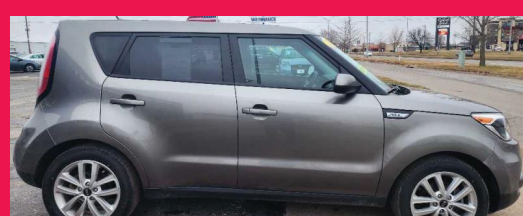
2013 FORD F150 LARIAT
4WD, 8 Cyl., Brown



2007 HYUNDAI SANTA FE
FWD, 6 Cyl., Blue



2014 FORD F150
4WD, 8 Cyl., White



2018 KIA SOUL
FWD, 4 Cyl., Gray



2012 GMC ACADIA
AWD, 6 CYL., BLACK



AMERICA'S CAR-MART

Keeping You on the Road



KYLE JENNINGS
GENERAL MANAGER

703986in

TRANSPORTATION

Trucks, 4x4's, SUV's

2014 Toyota Tacoma with topper, 48,000 miles, excellent condition, asking \$16,000.00. Call 660-216-4812 or 660-341-8661.

2003 Toyota Tundra extended cab TRO 4x4 pickup, 200k miles. Accepting sealed bids through 12/7/2023. Sold as is no warranty. Farmbank 660-951-8431.

Cattle

Neese Angus and Balancer bulls for sale. Ready for service. Conditioned to work! Rutledge, Missouri. 641-344-4565.

Need something? Let us help you. You can advertise that you are looking for a special item. Call 660-665-8500 for more information.

AGRI-BUSINESS

Hay/Feed/Seed

Net wrapped mixed grass hay, 5x5 bales, never rained on, \$100.00 a bale. 660-341-1150 or 660-434-5486.

Big square bales of wheat straw, \$60.00 per bale. Delivery Available. 660-956-3420.

Excellent quality Alfalfa hay for sale, big square bales. Also grass hay available. Delivery available. 660-956-3420.

Small square bales straw, \$4.00 a bale. Located in Leonard, Mo. 660-251-3444.

Have a smart phone or tablet? You can view current and past Nemo Trader issues online at www.nemotrader.net

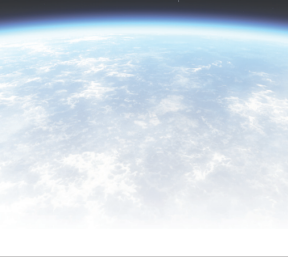


Livestock

Neese Angus and Balancer bulls for sale. Ready for service. Conditioned to work! Rutledge, Missouri. 641-344-4565.

SPACE AVAILABLE

Ask about our affordable advertising rates to fit any budget!



WE GOT YOUR NEEDS COVERED!



FARM TARPS TRUCK TARPS HOOP BUILDING COVERS

Troyer
TARP MFG.

660-486-3301

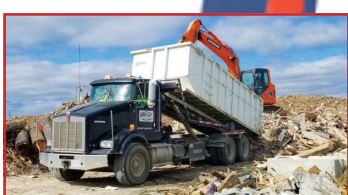
20264 STATE HWY. VV • ETHEL, MO 63539



KIRKSVILLE, MO

660-665-8000

For current scrap prices call or visit our **Facebook Page** victorymetalsrecycling.com



★ METAL RECYCLING

RECYCLE YOUR SCRAP METAL WITH US! WE PAY CASH FOR: COPPER, ALUMINUM, STEEL, STAINLESS STEEL, APPLIANCES, E-SCRAP, BRASS, LEAD, RADIATORS, ALTERNATORS, BATTERIES, STARTERS, ELECTRIC MOTORS, APPLIANCES, & VEHICLES (TITLE & ID REQUIRED).

★ ROLL-OFF CONTAINER

10-20-30-40 CUBIC YARD DUMPSTERS

3602 INDUSTRIAL RD. • KIRKSVILLE, MO 63501
DJANESVMR@GMAIL.COM

VICTORYMETALSRECYCLING.COM

NEMO Trader Classified COUPON

2 Classified Ads for just \$6.00

20 cents per word over 20 words
Must be Mailed in or brought in along with payment.
Picture Ads Not Included with Coupon!

Choose Classification

- Agri-Business
- Announcements
- Employment
- Financial
- Merchandise
- Real Estate Rentals
- Real Estate Sales
- Recreation
- Services
- Transportation
- Yard Sales
- Auctions & Estate Sales

Ad No. 1 Each Box Represents a Word (20 words or less)

Ad No. 2 Each Box Represents a Word (20 words or less)

Name _____

Mailing Address _____

Phone Number * _____
this is required*

PO Box 809 Kirksville, MO 63501 • 660-665-8500

EQUIP AUCTIONS

HUNDREDS OF ITEMS SELL NO RESERVE! THURSDAY, DECEMBER 7



LV9119 '07 Peterbilt 385 semi truck



JE9468 '15 John Deere 672GP motor grader



LO9955 '12 Kenworth T800 semi truck



JE9413 '13 Peterbilt 388 semi truck



DR5876 '16 Kenworth T880 semi truck



INVENTORY INCLUDES: semi trucks, motor graders, dozers, flatbed trailers, drop deck equipment trailer, service truck, slip form paver, box trucks, skid steers, backhoe, roll-off container truck and more. All items are sold "AS IS." 10% buyers premium applies. **866.608.9283**

BID NOW! purplewave.com

Sea-Bar Farms

LAND AUCTION 241 ACRES



Premium tillable tracts offer approximately 172 total open acres, and are almost all creek bottom tillable.

Tract 1: 75+/- total acres, showing 56 acres tillable. This tract is located at the corner of Hwy 156 and Hwy 149, with excellent paved road access for grain removal.



Tract 2: 79+/- total acres, showing 57 acres tillable, and is currently planted to Corn. Long 1/2 mile rows will make this a very desirable tract for everyone.



Tract 3: 87+/- total acres, showing 59 acres tillable. Tract 2 lays on the north side of Chariot Place, with Walnut Creek running from north to south, splitting the property. This tract shows 59 acres open, with 13.7 acres enrolled in CRP and 45+/- acres tillable.



November 30th, 2023 - 6pm
Comfort Inn Macon, MO

Call David Wilt 660-676-2331 or go to www.northmoland.com

SCOTTY'S AUCTION SERVICE

573-356-4405

Auctioneer: Scott Kuntz

SEE MORE PHOTO'S ON SCOTTY'S WEBSITE

WWW.SCOTTSAUCTIONSERVICE.COM



Farm Equipment, Vehicle, Livestock Equipment & Tool Auction
Saturday, December 2, 2023 at 10:00 a.m.
 Multiple Consignors-NO small items accepted without pre-approval

28251 US Highway 63 North, Macon, Missouri.
 Directions: From US Highway 36 travel approximately 2 miles North of Macon to Scotty's Auction Barn and Event Center on the West side of the highway

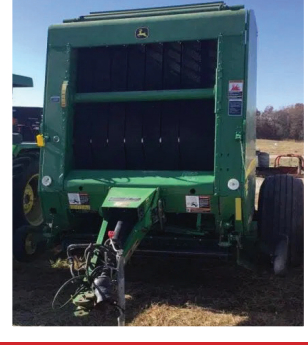
NO SMALL items will be accepted
ONLINE BIDDING AVAILABLE

Consignments must be checked in with Scotty's personnel.
 We will not be responsible for items left after hours without a consignor sheet completed by the seller. Items left over 15 days after the auction incur a \$10/day storage fee. After 60 days, items will be sold to cover storage fees.

CONSIGNED ITEMS: 07 Travelong Advantage livestock 5th wheel trailer;

IH Fuel truck 250,xxx miles; John Deere 4052M tractor with 400 E loader 220 hrs; Frontier RC2072 brush cutter; John Deere 5103 tractor with 512 loader 511 hours; Squealer By Bush Hog SQ720 brush cutter; hay racks; Stock Trailer; 1966 Chevy Grain Truck; 2020 PJTM 8' x 5' trailer; Lindsay post driver; 1988 Ford L8000 with Ford diesel, runs and drives; John Deere 314 tractor and tiller; woven fence wire; Seed Tender; door track; Massey Ferguson TL30; Land Pride brush hog; Hesston 5220 manure spreader; 2010 John Deere 568 round baler, 15,867 bales, net wrap 1,000 PTO128 bales on new wet

kit, poly strippers and pickup teeth, new belts, went through Sydenstricker every year; Prairie Clipper brush cutter 3 point bale spike; 3 point scoop; and MANY MORE!
 There will be many more items too numerous to list.



ANIMAL HOUSING HAY STORAGE & MUCH MORE



Bucklin Land Auction
Thursday, December 7, 2023 at 5:00 p.m.
 Joel L & Juda Brame and Bernard H & Constance Sheer Revocable Trust

Directions: From US Highway 36, turn North on 129 at Bucklin for 8.8 miles, turn West for 0.8 miles on Mabry Road to the farm. Watch for signs.

REAL ESTATE: We will be selling at auction this 181 acres of mostly tillable ground located in Linn County Missouri. The property offers income potential with draws and ravines offering excellent deer and turkey habitat. Please call Scotty at 573-356-4405 to schedule your personal showing.



DOWN PAYMENT: 10% of the contract purchase price will be due upon acceptance of the Sales Contract. Personal or Cashier's Checks will be accepted. This is "AS IS, WHERE IS" and is non-refundable. CLOSING: Closing shall be within 30 days of the auction date.

Skylight FABRIC STRUCTURES

30697 COLONY AVE. • NEW CAMBRIA, MO 63558
 660-486-3250 • 833-482-8862

MISSOURI LIVESTOCK SYMPOSIUM

William Matthew Middle School
 1515 S Cottage Grove • Kirksville, MO
Friday, December 1, 2023 • 4 to 9 p.m.
Saturday, December 2, 2023 • 8 am to 4 pm

FRIDAY NIGHT KEYNOTE SPEAKER
Corbitt Wall
 A commercial cattle manager and livestock market analyst for DV Auction, Wall is best known for his honest and insightful video market report Feeder Flash. Residing in Canyon, TX, Wall reports daily market information and shares commentary on the current livestock market environment.

Featuring nationally-known speakers covering timely topics

 Dr. Ron Hanson Professor Emeritus University of Nebraska	 Jamie Kurtz NRCS State Grasslands Specialist	 Jim Greendyk Horse Trainer Rio Verde, Arizona	 Wesley Tucker MU Extension Agribusiness Specialist	 Jeff Christiansen Cowdog Trainer Millsap, Texas	 Dr. David Brown MU Extension Livestock Specialist, Osceola, MO
---	---	--	---	--	---

SCHEDULE OF EVENTS FOR FRIDAY, DECEMBER 1 (all events free)						
4 p.m. - Trade Show Doors Open 6 p.m. - FREE co-sponsored Beef Supper						
7:00 p.m. Welcome - Andy Jackson, MC and Dr. Robert Webb, Superintendent, Kirksville R-III School District						
7:10 p.m. Guest Welcomes - Dr. Chadwick Higgins, Interim Vice Chancellor Extension/Engagement, University of Missouri-Columbia and Jamie Kurtz, State Grassland Specialist, USDA-NRCS						
7:25 p.m. Recognition of Important Guests						
7:30 p.m. Recognition of Cover Photo Contest Winner						
7:40 p.m. Recognition of Livestock Achievement Award - Dr. Mac Wilt, Paris, MO						
7:55 p.m. Audrey Belfield, LaPlata, MO-1 st Runner Up Missouri State Fair Queen and Emma Harvey, Memphis, MO-Missouri Beef Queen						
8:05 p.m. Keynote: Packer's Playbook, Corbitt Wall, Livestock Market Analyst for DV Auction						
SCHEDULE OF EVENTS FOR SATURDAY, DECEMBER 2 (all events free)						
Trade Show Open 8 a.m. - 4 p.m. Coffee and Donuts provided by FCS Financial Trade Show Open 8 a.m. - 4 p.m.						
BEEF CATTLE	FORAGES	HCRSE	SHEEP	MEAT GOATS	NUTRITION STOCK DOGS	AROUND THE FARM AND HOME FARM MANAGEMENT/ MORE BEEF
9 a.m. <i>How the "Red Solo Cup Cow" Can Improve Your Bottom Line.</i> Steve Campbell, Taylor Made Beef, Parma, ID	<i>Do Native Grasses Fit in Your Operation.</i> Jamie Kurtz, State Grasslands Specialist, NRCS	<i>Why Kn'1 My Horse Progressing in Training, Part 1.</i> Jim Greendyk, Scottsdale, AZ	<i>Most Recent Methods for Parasite Control.</i> Dr. Mohan Acharya, Lincoln University, Jefferson City, MO	<i>The Role of Condensed Tannins in Goat Nutrition.</i> Dr. David Brown, MU Extension Livestock Specialist, Osceola, MO	<i>Dog Selection and Puppy Evaluation.</i> Jeff Christiansen, Millsap, TX	<i>Small to Mid-size Poultry Producers: Challenges and Solutions.</i> Dr. Javad Aljuboori, MU Extension State Poultry Specialist
10 a.m. <i>Buller Proofing Your Beef Operation.</i> Dr. Joe Homer, State Extension Ag Economics Specialist, MU	<i>Alternative Strategies for Extending the Grazing Season.</i> Dr. Harley Naumann, Forage & Grazing Mgmt. Specialist, MU	<i>Why Kn'1 My Horse Progressing in Training, Part 2.</i> Jim Greendyk, Scottsdale, AZ	<i>Bringing the Next Generation Back to the Farm.</i> David Boatright, Sedalia, MO	<i>Successful 4-H & FFA Goat Projects.</i> Marty Gibbs, Texas A & M, San Angelo, TX	<i>Know Your Beef: A Guide to Wholesale Cuts.</i> Missouri Beef Industry Council	<i>Honey Bees in the Ag Landscape: What Can We Do to Support Bees?</i> Randall Cass, Iowa State Univ.
11 a.m. <i>Which Has Risen Faster - Cattle Prices or Cost of Production?</i> Wesley Tucker, MU Extension Agribusiness Specialist, Bolivar, MO	<i>Do You Want to Sign the Front or the Back of the Check?</i> David Boatright, Sedalia, MO	<i>Wounds and Septic Joints.</i> Megan McCracken, DVM, Assistant Equine Teaching Professor, MU	<i>Multispecies Grazing - Diversifying with Sheep.</i> Dr. David Brown, MU Extension Livestock Specialist	<i>Opportunities for Goat Herd Genetic Improvement.</i> Dr. Andrew Weaver, Extension Small Ruminant Specialist, NC State University	<i>Beef up the Holidays with the Missouri Beef Industry Council</i>	<i>Avoiding Mistakes of a Farm Succession Train Wreck.</i> Dr. Ron Hanson, Professor Emeritus, Univ. of Nebraska
Visit the Trade Show 12 - 2 p.m. - Free Governor's Style Luncheon Hosted by Missouri's finest commodity groups and co-sponsored by your Missouri Department of Agriculture						
2 p.m. <i>How to Feed Cows With No Feed.</i> Dr. Eric Bailey, State Extension Beef Specialist, MU	<i>Options for \$5,000 Per Acre Pasture.</i> Wesley Tucker, MU Extension Agribusiness Specialist	<i>Advanced Lameness Diagnosis.</i> Megan McCracken, DVM, MU	<i>Successful 4-H & FFA Sheep Projects.</i> Marty Gibbs, District Extension Administrator, Texas A & M	<i>Nutritional Considerations for Improved Herd Performance.</i> Dr. Andrew Weaver, NC State University	<i>Training of the Stock Dog.</i> Jeff Christiansen, Millsap, TX	<i>Make and Take a Holiday Floral Arrangement.</i> Jennifer Schutter, MU Extension Field Specialist in Horticulture, Kirksville, MO
3 p.m. <i>Deworming Strategies and Liver Fluke Control.</i> Chris Perry, DVM, Bethel, MO	<i>Producer Panel.</i> Dr. Harley Naumann, moderator. David Otte, David Boatright, and Jamie Kurtz, panel members	<i>What Is the Judge Looking For?</i> Jim Greendyk, Scottsdale, AZ	<i>Selection Strategies for Flock Genetic Improvement.</i> Dr. Andrew Weaver, NC State Univ.	<i>Most Recent Methods for Parasite Control.</i> Dr. Mohan Acharya, Lincoln University, Jefferson City, MO	<i>How to Properly Use the Stock Dog.</i> Jeff Christiansen, Millsap, TX	<i>White Oak, Whiskey & Wine.</i> Dr. Hank Stelzer, MU Extension State Forestry Specialist, Columbia, MO

• It's all FREE! No cost to attend! No registration needed!

• Nationally-known speakers covering timely topics on livestock production and more!

• FREE Trade Show!

Find more information
missourilivestock.com
 660-665-9866

LOCAL MATTERS.

Please support the proud advertisers that power your community paper.

NEWSPAPERS MATTER
 NOW MORE THAN EVER

ANGUS BULLS FOR SALE

Coon Angus Ranch



Outstanding selection of 14 month old bulls

1318 Shelby 169, Bethel, MO 63434

Russell 660-341-2705
Susan 660-341-5192
ruscatsol@gmail.com
www.coonangusranch.com

Americans discard ONE BILLION TREES WORTH of paper products each year.

PLEASE RECYCLE THIS NEWSPAPER

Premium Metal Roofing



AW Metal Inc.

Metal Roofing Headquarters

641-664-3990 • awmetal.net

BE AN EARLY BIRD! Place your ads before Monday and beat the rush!

Golden Grain Bins-Winter Discount

Grain Bins	Floors w/12" Supp. & Flashing
18'x18' 4,195bu. \$ 5,253	18'....\$1,466 30'....\$ 4,092
27'x21' 11,265bu. \$10,544	21'....\$2,005 36'....\$ 5,830
42'x24' 32,245bu. \$24,578	27'....\$3,344 42'....\$ 7,939

Golden Grain

GMLS Industries, Inc.
PH: 660-699-2179 or 620-983-2136
www.gmlsindustries.com

Show Me Plumbing Services



- General Mini Excavation & Skid Steer Work
- Livestock Watering
- Waterlines & Sewer Systems
- Residential Services & General Plumbing
- Utility Trenching

Stan Schrock 660-988-1163
Greentop, MO 660-766-2636

ATTENTION LAND OWNERS!!

Buyer of standing timber

Paying Cash Upfront!

Owner/Operator of Sawmill

- Buy/Cut Logs
- Certified
- Bonded
- Insured

WE HAVE SEMI LOADS OF FIRE WOOD LOGS FOR SALE

Tri State Timber L.L.C.
353 1/2 Grand Ave. • Memphis, Mo 63555
660-341-4921 • 660-465-2975

LOLLI LIVESTOCK MKT, INC.

No Cattle Sale

Tuesday, Dec 5

Dec 6-8 Special Exotic Hoofstock & Taxidermy Auction
Tuesday, Dec 12 - Special Calf & Yearling Sale - 11am
Thursday, Dec 14 - Special Cow, C/C, Bull Sale - 5pm
Tuesday, Dec 19 - Special Calf & Yearling Sale - 11am
Tuesday, Dec 19 - NO SALE

Cafe Open

Lolli Livestock Market, Inc. Cafe Open

704 Main st * Macon, MO * 660-385-2516 www.lollibro.com

Frankie 660-651-4040 * Tim 660-651-3496 * Joseph 660-346-9711
Jordan 660-346-0410 * Cody 660-676-9392 Cattle accepted on Sundays

GOEHRING HEREFORD PRODUCTION FEMALE SALE

ALE HELD AT KEOSAUQUA SALES CO.

Wednesday December 6th 2023 at 1:00

10 head of Fall Yearling Hereford Bulls

60 head of spring bred heifers • AI Service sires: GO KING E33 • BG LCC PERFECTO 84F • VARSITY 801F • BIRDWELL REDBIRD 7098 0558BT

Heifer pregnancy are sexed. Heifers due to start calving Feb 1st

15TH ANNUAL 5X CATTLE BRED FEMALE SALE

AT KEOSAUQUA SALES CO KEOSAUQUA IA

Wednesday Dec 6th @ 5:00

150 hd 3 yr old Angus cows coming with 2nd calf

They are mated to Hereford bulls to start March 1st. Ultrasounded early and will be sorted into tight calving groups with sexed calves. Very high quality set!

170 fancy Angus Heifers

AI bred to Genex sire B/D Rice Standout 9065. Start calving Feb 12th. Cleaned up with LBW Ochsner Ranch Angus bulls. Ultrasounded to determine calving time and sex of calves. An outstanding group that are the ideal female to sustain you in the beef business

140 F1 Black White Face Heifers

AI bred to Genex sire B/D Rice Standout 9065. Start calving Feb 12th. Cleaned up with LBW Ochsner Ranch Angus bulls. Ultrasounded to determine calving time and sex of calves. An outstanding group that are the ideal female to sustain you in the beef business

60 hd Angus Heifers

AI bred to Hereford Bull BG LCC Perfcto 84F. start calving March 1st. Cleaned up with Hereford bulls. Ultrasounded to determine calving time and sex of calves

160 hd Angus Heifers

Reeves Ranch Origin. AI bred to OCC Angus Bull. Start calving Feb 1st Cleaned up with OCC Angus bulls. Ultrasounded to determine calving time

If you can't attend the sale register on www.LiveAuctions.tv to bid

KEOSAUQUA SALES CO

20555 Hwy 1 Keosauqua, IA 52565

For more information check our website www.keosauquasaleco.com or find us on Facebook

Bill Goehring 641-919-9365 • Lucas Goehring 641-919-6272
Sale Barn 319-293-3508
Auctioneer Cody Lowderman 309-313-2171

Kirksville, Missouri

KIRKSVILLE LIVESTOCK LLC

24295 Benton Road * P O Box 242 * Kirksville, MO 63501

www.kirksvillelivestock.com

SPECIAL BRED HEIFER, COW & BULL SALES 6:00 P.M.
SPECIAL CATTLE SALES 11:00 A.M.
SPECIAL SHEEP SALES 10:00 A.M.

DECEMBER, 2023

- Friday, December 1 - Special Breeding Stock Cattle Sale, 6:00 p.m.
- Monday, December 4 - Special Sheep & Goat Sale, 10:00 a.m.
- Friday, December 8 - *North Central Missouri Show-Me-Select Bred Heifer Sale, 6:00 p.m.*
- Monday, December 11 - Special Feeder Cattle Sale, 11:00 a.m.
- Friday, December 15 - Special Breeding Stock Cattle Sale, 6:00 p.m.
- Monday, December 18 - Special Feeder Cattle Sale, 11:00 a.m.
- Monday, December 25 - **MERRY CHRISTMAS** - No Sale -

We are open on Sunday to Receive Your Livestock
"Your Business is Very Much Appreciated"
"Proud to Serve Area Livestock Producers"
For more information or someone to
Phone for information:

Patty Foster, Office Manager - 660-665-9804
Chuck Ambrosia - 660-342-3530 - Luke West - 620-215-5770
Mark Herbold - 515-720-8667 - Al Ashmead - 660-216-8730
Doug Fieshman - 660-626-7148 - Daniel Smith - 660-341-8396
Jeremy Jarman - 660-341-9879 - Caleb Randolph - 641-919-8539
Karol Kirkpatrick - 641-777-3403

TIMBER MANAGEMENT.

Purchasing Walnut, Oak, Maple & Other Species

WE PAY BEFORE WE CUT

BONDED & INSURED

641-895-8209

Est. 1968

RAMER TRUCK SALES

 2022 Ford F350, 6.7 diesel, 6300 miles, salvage title. CALL FOR PRICES	 2023 Ford F350, 7.3 gas XLT, 1385 miles, salvage title. CALL FOR PRICES
 2022 Ford F350 XL, 6.7 Cab & Chassis, 15K miles, salvage title. CALL FOR PRICES	 2022 Ford F350 XL, 6.7 XLT, 15K miles, rebuilt title. \$52,900
 2011 Ford Explorer XLT, 172K, rebuilt title \$6,450	 Dew eze cake feeder, 1000 lb in stock \$4,586 and 1500lb in stock \$4,619
 2021 Ford F350 XLT, New Dew EZE 684 bale bed, 6.7 clean title \$71,900	 2020 Ford Ranger, 4x4, Lariat, Black, 41k miles, Rebuilt Title \$28,000
 2012 Ford Expedition Limited, 5.4l, 200k miles, prior salvage title \$6,500	 2021 Honda Talon 1000R, Live Valve, 900 miles \$24,500

Gorin, Missouri • Monday-Saturday 8am-6pm
www.ramertrucksales.com | HOME: 660.282.1002
DewEze CELL: 660.341.6140 | "NO SUNDAY CALLS!"

AUCTION

SATURDAY, DECEMBER 9, 2023 10:00 AM

SALE TO BE CONDUCTED AT THE PROPERTY LOCATED

219 FOX & SAUK ROAD, OTTUMWA, IOWA

OR 2 Blocks East of the National Guard Armory, off of Business Hwy. 63 North, at the North edge of Ottumwa. Auction Signs Will Be Posted

COLLECTOR CAR, PICKUP, TRAILERS: 1971 Ford Torino GT, 9,000 actual miles, 2D, orig. 351 Cleveland engine, auto, showroom condition, identical to Gran Torino movie car; 2020 Dodge 1T. dually pickup, 4D, diesel, 65,000 miles; 2002 Ford F150 PU, 6 cyl, auto, 4D, 130,000 miles; 2018 Champion 34' 5th-wheel camper, 4 slides, front bedroom, full bath, dual roof air, self-contained; 2020 H & H 16' tandem-axle dump trailer w/ tarp & ramps; 2020 H & H 24' cargo trailer, 7' interior height, rear cargo doors; 2017 Wells Cargo 16' tandem-axle enclosed trailer w/ramp rear door; H & H 6'x12' single-axle alum. flatbed trailer w/ramp gate; 2022 Delta 20' flatbed bumper-hitch trailer, tilt-bed, w/8-bolt wheels; 2020 Western Boss snowplow, 8' super-duty w/auxiliary lighting & controls; (4) Matching 18" pickup tires; (6) 17" tires, used.

UTV, FORKLIFT, MANLIFT, SKIDLOADER, TRACKHOE & INDUSTRIAL BENDERS: 2023 Yamaha Wolverine side-by-side UTV, extreme terrain, 4-passenger, 616 miles, w/hard roof & windshield; New Nifty TM50 fully self-contained manlift, 55' reach, pull-type, used once; Yale 6,00-lb. forklift, LP, 2-stage mast; Case SR160 skidloader, diesel, like new, low hours; 2022 Bobcat E10 trackhoe, 119 actual hours, hydraulic adjustable track spacing down to 30" width; Stanley MB05 skidloader-mount jackhammer; Miller Bobcat generator/welder, 250 AC/DC, w/11,000-watt generator, complete w/leads, like new; Miller-Matic 252 wire welder w/tank, Lincoln IdealArc 250 AC/DC welder, like new; Lincoln 4800 Touchmate plasma cutter table w/Lincoln 80 flex-cut plasma cutter; Cam Spray 5,000 psi water-jet, 500' of hose, on single-axle trailer w/gas engine; Niagara Spartan Line SP10 bending press, 220v, w/feed table; Haco ATS460 heavy-duty commercial press brake, 220v; Dry Blast Model 1536 sandblasting cabinet, 4'; Mark II 8' alum. brake; Over-size metal job box; Generac gas-powered high-pressure washer; Walk-behind gas-powered concrete saw; Metal scaffolding; 200-amp battery charger; Bosch port. air compressor; Wen gas-powered tamper; Gas earth auger; (2) Pipeline optician cameras w/250' of cable, like new; (2) Mitre saws; Oxyacetylene torch set; Stihl chain saw; Milwaukee backpack blower; Concrete float & concrete tools; Makita elec. power punch; Heavy-duty steel bench & vise; Shop vacs; Toolboxes; Barrel fans; 100-gal. pickup fuel tank & toolbox; Blast heater; Alum. & fiberglass ladders; Circular saws; Drills; Impacts; Paint stirrer; Large asst. of hand tools incl. sockets, wrenches, hammers; Tile saws.

GRILL, LAWN MOWER, TILLER: New custom-made stainless steel heavy-duty commercial BBQ grill, on alum. 2-wheel trailer, complete w/ accessory pieces; Cub Cadet Z4XL zero-turn mower w/60" deck; New Earthquake front-tine tiller; New central air conditioning compressor, in box; Elec. cement mixer; Stainless steel 2-compartment sink; Asst. of steel shelving.

AUCTIONEER'S NOTE: Outstanding selection of late model vehicles & construction equipment. You will not be disappointed in the selection to be found at this auction. In case of inclement weather, smaller items will be sold inside. Go to our website for pictures - www.almartinauctions.com

TERMS: CASH/ GOOD CHECK POSITIVE ID REQUIRED

MASTERCARD/VISA DEBIT/CREDIT CARDS

All property must be settled for before removal - All items sold as is where is - Not responsible in case of accidents.
Announcements made day of sale take precedence over any advertising.

MARTINEZ CONSTRUCTION, SELLER

AL MARTIN REAL ESTATE & AUCTION CO., INC.
307 Church Street • Ottumwa, IA 52501 • 641-682-5465 www.almartinauctions.com

KEIM LUMBER COMPANY LLC

COMPETITIVE PRICES • FREE ESTIMATES

- COMPLETE BUILDING PACKAGES
- WINDOWS AND DOORS
- INSULATION • DRYWALL
- DELIVERY

13625 St. Hwy 3 LaPlata, MO

Central Metals Recycling LLC



Buyers of Ferrous and Non-Ferrous Metals

We Pay More \$\$\$, Call For Your Best Pricing Today!!

11923 Hwy. 54 Mexico, MO 573-581-0336
1601 N. 30th Quincy, IL 217-214-7649
1175 Hwy. 96 Hamilton, IL 217-847-3191

ANTIHOCH REPAIR

SPECIALIZING in

- Skid loaders
- Ag Equipment
- Construction Equipment

Call us for all your attachment needs

Ethan Zimmerman • 660-299-0808

SHOW-ME SEAMLESS GUTTERING

FREE ESTIMATES • PROMPT SERVICE

- 5" & 6" Gutters
- Siding • Soffit • Fascia

(23 colors available on Gutters & Fascia)

Tried of Cleaning your Gutters?

LEAFPROOF THEM!

ELLIOTT HIX

660-626-3447 • KIRKSVILLE, MO

NEW CAMBRIA LIVESTOCK AUCTION LLC

Phil & Stacey McBee - Owners

29262 State Hwy 149, Box 94, New Cambria, MO 63558

Special Calf and Yearling Sale

THURSDAY, DECEMBER 7TH
STARTING AT 11:00 AM

Office (660) 226-5222 • Phil McBee (660) 754-2148
Doug Lock (660) 641-3898 • Lavon Moore (660) 384-2008
Randy Nute (660) 651-5389 • Tyler Gratz (573)-690-7312

To view our latest market reports and cattle listings visit
Our website at: newcambrialivestockauction.com

We appreciate your business!!!!

HAY AUCTION

Saturday, December 16, 2023 - 10:00 A.M.

1916 S. 18 TH ST. (HWY 5 S) CENTERVILLE, IA

ACCEPTING CONSIGNMENTS NOW

Big Round Bales of Hay, Cornstalk Bales, Bean Stubble and Alfalfa; Square Bales of Straw, Hay, and Alfalfa;

DALTON OTT SALE MANAGER
563-880-5626 To list your hay, Or Time to bring it in.

DEMRY AUCTION, LLC

1916 S 18th St, (Hwy 5 SOUTH) CENTERVILLE, IOWA | 641-856-6408

Tom Demry: 641-895-2508 • Kristy Demry: 641-895-2509
Janet Demry: 641-895-4310 and 641-856-6924
Junior Lawson: 641-895-0037 Randy Mulay: 641-436-1521
Dalton Ott: 563-880-5626 • Website: www.Demryauction.com

LANGMAID STOCK DOGS



ABCA Border Collies
Top cow dog Bloodlines
Pups, started dogs, finished dogs
Full health and working guarantee on all dogs
All dogs eligible for \$25,000+shootout dog trial.

RYAN & DAWN LANGMAID

Green City, MO

254-595-6677



McAfee Auction Service, LLC
 375 S Johnson • Kahoka, MO
 660-727-3796
 www.mcafeeauctionservice.com

FALL FARM MACHINERY *Consignment Auction*

**Timed
 Online
 Only
 Auction**

**Lots Start Closing at 10 am
 Thursday, November 30th**



Selling a nice selection of low houred loader tractors and other tractors, various tillage equipment, grain drills, grain handling equip., nice selection of rotary cutters, shortline equipment, forklift, livestock equip., lawn & garden equip., trucks, trailers, ATV's, UTV's, building products, massive amount of welding supplies, massive amount of electric motors, Snap-On tool box and tools, shop equipment, large collection of estate ag toys, chain saws and much much more

BID NOW! COMPLETE DETAILS ONLINE!



McAfee Auction Service, LLC
 375 S Johnson • Kahoka, MO
 660-727-3796
 www.mcafeeauctionservice.com

TIMED ONLINE ONLY FARMER RETIREMENT AUCTION

WEDNESDAY DEC 20TH

LOTS START ENDING AT 10 AM

LOCATION: 30092 HWY Z, CANTON MO



SELLING A COMPLETE LINE OF FARM EQUIPMENT TO INCLUDE:

2011 JD 9770 STS 4WD Combine 2147 sep.; 3077 eng.; 2020 MacDon FD135 Drapper; 1997 JD 683 Corn Head; Head Carts; Tractors: 2008 JD 8430 MFWD 4469 hrs.; 2006 JD 7420 MFWD 3721hrs.; 1981 JD 4440 8887 hrs.; 2013 Kinze Planter; RoGator Sprayer; Road Tractors; Trucks; Trailers; Landoll 7431 VT 33'; Tillage Equip.; Ditcher; Scraper; GPS Equipment

COMPLETE DETAILS ONLINE!

**OTTE FAMILY REVOCABLE INTER VIVOS TRUST
 EDWARD & DEBORAH OTTE, SELLERS**



McAfee Auction Service, LLC
 375 S Johnson • Kahoka, MO
 660-727-3796
 www.mcafeeauctionservice.com

TIMED ONLINE ONLY EQUIP & PERSONAL PROPERTY ESTATE AUCTION

THURSDAY DEC 14TH
LOTS START ENDING AT 10 AM

COMPLETE DETAILS ONLINE!

LOCATION: 47922 STATE HWY V RUTLEDGE, MO

PREVIEW: SATURDAY DEC 9TH 10AM - NOON



PERSONAL PROPERTY

ALSO SELLING: A lifetime accumulation to include: Amana Iowa Roll Top Desk, Bedroom Furniture, Antiques Furniture, (2) Sets Of Sterling Silver, Jewelry, Vintage Clocks, Grandfather Clock, Nice Selection of Flow Blue China, B/W Windmill China, Several Pieces Of Stoneware, Nice Selection Of Griswold Cast Iron, Vintage Sleigh Bells, Horse Drawn Sleigh, Vintage Pinball Machine, Shop Equip., Nice Selection Of Tools and Various Other Items

MARTIN O. GUINN FAMILY TRUST



McAfee Auction Service, LLC
 375 S Johnson • Kahoka, MO
 660-727-3796
 www.mcafeeauctionservice.com

Knox County, MO LAND AUCTION

Tuesday, Dec 19TH - 10 AM

Sale Conducted onsite (47922 State Hwy V Rutledge, MO)

63 +/- ACRES/ 2 TRACTS
 (Subject to Final Survey)

Lying in Sect. 15, Twp.63N, R10W, Knox Co. MO



OPEN HOUSE
 Sat, Dec 9th
 10am-Noon

MARTIN O. GUINN FAMILY TRUST



LAN-DOW BUILDINGS
"We Build To Suit Your Needs"
"Custom Built"
 Pole Barns • Garages • Utility Buildings
 "H" Don or Dick Middleton
Memphis Lumber Co.
1-800-337-5858 • 660-465-8595
Fax: 660-465-8596

FOXHOLE LLC IN CENTERVILLE IOWA 

FOXHOLE LLC IN CENTERVILLE IOWA IS PAYING CASH FOR YOUR... UNWANTED FIREARMS, KNIVES, VINTAGE SIGNS, BRAND NAME TOOLS, BARN FINDS, AND OTHER MISC ITEMS. WE CAN COME TO YOU!*

INSTANT LOANS ON FIREARMS UP TO \$3,500. WE ARE A FFL DEALER IN CENTERVILLE IOWA WITH A HUGE INVENTORY OF GUNS & AMMO! LOCATED INSIDE FOGLE TRUE VALUE! BEST DEALS AROUND!

1101 N. 18TH ST • STE B • CENTERVILLE, IA 52544
 www.foxholegunrange.com
641-437-1053 • 641-799-7991 • 641-203-6998
 *NO JUNK OR SALVAGE



B&S Equipment Auctions

join us on facebook!

CONSIGNMENTS WANTED FOR December 16th AUCTION

find us on facebook @ BS-Equipment-Auctions
 www.bandsequipmentsales.com
 BandEquipmentSales.com | Office 660-663-3363
 Shay 660.605.0839 | Justin 660.605.2346

FRONTLINE FENCING LLC
 660-956-2430 • Greentop, MO



- * Arrowquip Cattle Handling Equipment
- * Ranger Squeeze Chutes
- * Heavy Duty Tubs and Crowding Alleys
- * Calving Pens
- * Heavy Duty Gates – Custom and Standard Sizes
- * Steel Pipe Fencing – Corrals, Working Areas

660-956-2430 • Greentop, MO

2023 Holiday Show!

MAPLES REPERTORY THEATRE

SORRY! WRONG CHIMNEY!
 Live onstage
 Nov 29 – Dec 10, 2023

102 N Rubey Street www.maplesrep.com 2023 Tickets: \$36
 Macon, MO 63552 (660) 385-2924 2023 Students: \$25

2024 Season Tickets Onsale Now!

- || The Sound of Music ||
- || The Importance of Being Earnest ||
- || Lucky Stiff || Steel Magnolias ||
- || The Woman in Black ||
- || 'Tis The Season: A Maples Rep Holiday Celebration ||

Your Local
FARM SUPPLY SOURCE
 NUTRITION • MEDICAL • FARM • PET • APPAREL

SEE US FOR YOUR SHEEP & GOAT EQUIPMENT NEEDS







Hometown Animal Health has provided quality products, expert knowledge, and friendly customer service to northeast Missouri and surrounding areas. We are a full-service nutrition, medical, and farm supply source carrying complete lines of animal feed and supplies, farming equipment, agricultural parts, lawn and garden tools, work apparel, and much more!

Hometown ANIMAL HEALTH
 Feed • Medical • Farm & Pet Supplies • Footwear & More
 website: hometownanimalhealth.com
660-465-2967
 18743 US Hwy, 136 Memphis, MO 63555
 "on Hwy 136 west of Memphis"
 Monday-Friday 8pm to 5pm
 Saturday 8am to 1pm

Let's celebrate together!

2ND ANNUAL NEMO UNITED WAY Light Contest

Show off your holiday light decorating skills and festive spirit!
 Registration deadline is Dec 13th

Registration:
 \$20 Home
 \$30 Business
 Scan QR Code to Register!



Residential winner receives a ring doorbell!
 Business winner receives \$50 Mi Casa giftcard!

Thank you to our sponsors:
 Home Depot & Kirksville Daily Express




RYE CREEK WELDING & REPAIR LLC



Machinist, Steel Sales, Mig, Tig, Stick and aluminum welding
660-956-8282
 19760 Rye Creek Rd
 Novinger, MO 63559

VIRTUAL ONLINE
LINN COUNTY, MISSOURI LAND AUCTION
 TUESDAY, DECEMBER 12, 2023 AT 1:00 PM^{CT}



401 TAXABLE ACRES± • 4 TRACTS

The Buckley Farms are located just outside of Saint Catharine, MO to the east and approximately 6 miles east of Brookfield, MO, north of Hwy 36. The land is further described as being located in Sections 1 & 2, T57N-R19W, and Section 36, T58N-R19W, Yellow Creek Township, Linn County, Missouri.


All tracts represent highly preferred whitetail deer and wild turkey habitat which makes for excellent hunting & recreation. A total of 279.52 CRP acres between the four tracts provide income and great habitat for all wildlife.

KNOWN LOCALLY AS PC BUCKLEY FARMS JIM BUCKLEY, DONNA CASEBOLT, AND JULIA BURNS - SELLERS

Representing Attorneys:
 Mark Untersee | Untersee and Associates
 Kansas City, MO | (816) 531-1333
 Dana Macoubrie | Cleaveland, Macoubrie & Cox, LLC
 Chillicothe, MO | (660) 646-4522

Title Company: Linn County Abstract Co.
 118 N Main Street., Brookfield, MO | (660) 258-2260

Auction Manager: Louie Zinn (319) 795-2314
 Steve Zieger (573) 231-9802 & Dan Sullivan (319) 795-1833

BigIron  **SULLIVAN AUCTIONEERS**
 a BigIron company
 (844) 847-2161 | www.SullivanAuctioneers.com

Tri-Bros. Inventory
LIQUIDATION AUCTION
 THURSDAY, DECEMBER 14, 2023 AT 10 AM
AUCTION LOCATION: KERR FARMS GRAIN FACILITY
 642 Quincy Road, Mount Sterling, IL 62353






SELLING TRACTORS, BALERS, HARVEST EQUIPMENT, HAY & FORAGE, TILLAGE EQUIPMENT, PLANTERS AND OTHER FARM MACHINERY





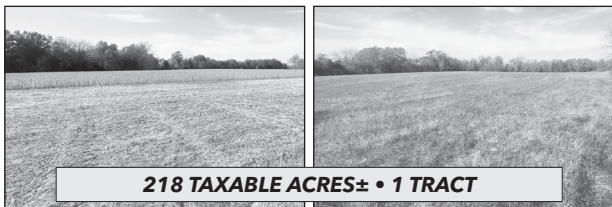

Wheeler AUCTIONS & REAL ESTATE
 23101 HWY. 24, PARIS, MO 65275 | 660-327-5890
 WWW.WHEELERAUCTIONS.COM

FOR MORE INFORMATION CONTACT:
 Alex Kerr | 217-242-9600
 Allen Yoder | 217-259-6191
 Wheeler Auctions | 660-327-5896
 Illinois Auction Firm License #444000408

VIRTUAL ONLINE

**MARION COUNTY, MISSOURI
LAND AUCTION**

FRIDAY, DECEMBER 1, 2023 AT 10:00 AM^{CT}




218 TAXABLE ACRES± • 1 TRACT

The William J. Poppe farm is located on the west side of Marion County State Hwy A and is approximately 8 miles north and west of Palmyra, MO. The land is further described as being in Section 31, T59N-R6W, Fabius Township, Marion County, Missouri.

The real estate contains 218 taxable acres and will be sold in 1 tract. The farm represents highly productive tillable cropland, outstanding northern Missouri whitetail deer, and wild turkey hunting acreage.

WILLIAM J. POPPE FARM

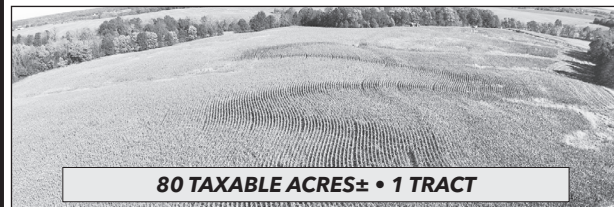
Title Company: Mark Twain Title Company
123 S Main St, Palmyra, MO 63461 | (573) 769-2212
Auction Manager: Steve Zeiger (573) 231-9802

BigIron  **SULLIVAN AUCTIONEERS**
a BigIron company
(844) 847-2161 | www.SullivanAuctioneers.com

VIRTUAL ONLINE

**LEWIS COUNTY, MISSOURI
LAND AUCTION**

THURSDAY, DECEMBER 7, 2023 AT 1:00 PM^{CT}



80 TAXABLE ACRES± • 1 TRACT

The Yackley farm is located on 210th Avenue and is approximately 3.5 miles southwest of Ewing, MO and is further described as being located in Section 24, T60N-R8W, Highland Township, Lewis County, Missouri.


The land contains a total of 80 taxable acres, will be sold in 1 tract, and represents highly productive tillable farmland and timber.

**ERNEST AND DOROTHY YACKLEY TRUST
KATHERINE WATTS-TRUSTEE**

Representing Attorney: Christopher Scholz
Scholz Palmer and Duesterhaus LLP | (217) 223-3444
625 Vermont Street, Quincy, Illinois 62301

Title Work: Oak Hills Title Company
309 Lewis Street, Canton, Mo 63435 | (573) 288-4462

Auction Managers: Louie Zinn (319) 795-2314
& Dan Sullivan (319) 795-1833

BigIron  **SULLIVAN AUCTIONEERS**
a BigIron company
(844) 847-2161 | www.SullivanAuctioneers.com


Edina, Missouri

**Saturday, December 2nd
Kevin & Beth Annual
Heifer Sale at 1:00 p.m.**
150 Bred Heifers
130 3 Year Olds
(40 BWF, 5 Red Angus, & 85 Blk)

**Friday, December 8th
Special Feeder Calf Sale**
800 head of Yearlings & new crop calves

**Friday, December 15th
Special Cow Sale**

To Consign For Any or All Sales or For
Information Call:
Owner - Kevin Strange • Cell: 660-341-9974
Ryan Strange • Cell: 660-341-9721
Sale Barn: 660-397-9999

Field Reps:
Bill Tom Hall 660-342-5420 Mike Bronestine 660-341-9965
Jason Bichsel 660-216-0373 John Powell 660-341-1717

Professional Auction Services

Like to look for those auction deals? Have land, equipment, or other items you need to have auctioned? Check out these area auction companies!

SAYRE AUCTION LLC
Specializing in Estate & Real Estate Auctions
Serving Linn County and Surrounding Areas
809 West Dake Street • Brookfield, MO 64628
660-734-8782
shawnsayre@gmail.com
www.sayreauction.com

RANCH & FARM AUCTIONS
*Specializing in Land & Farms *Online Auctions*
Serving All States
115 W. Washington • Pittsfield, IL 62363
217-922-0811
directors@ranchandfarmauctions.com
RANCHANDFARMAUCTIONS.COM

PEOPLES LAND COMPANY LLC
Specializing in Real Estates & Land
Serving all locations
113 E. Hwy 151 • Leonard, MO 63451
660-651-6501
Apeoples02@gmail.com
peopleslandco.com

**SULLIVAN AUCTIONEERS,
A BIGIRON COMPANY**
Specializing in Agricultural Real Estate & Machinery
Serving the Tri-State Area
1066 E. US Hwy 136 • Hamilton, IL 62341
844-847-2161
sold@sullivanauctioneers.com
www.sullivanAuctioneers.com

**UNITED COUNTRY GILWORTH REAL
ESTATE & AUCTION**
Specializing in Equipment & Real Estate Sales
Serving North Missouri & Southern Iowa
2020 Main Street • Unionville, MO 63565
660-947-7738
cedgilworth@gilworthrealestate.com
www.ucgilworthauction.com
www.gilworthrealestate.com

NORTH MISSOURI LAND COMPANY
Specializing in Farm, Ag, and Recreational Land
Serving all of North Missouri
506 N. Missouri Street, Suite A • Macon, MO
660-395-5263
northmoland.com
northmoland@gmail.com

MCAFFEE AUCTION SERVICE
Land - Machinery - Estate - Coins
Serving Northeast Missouri
375 South Johnson • Kahoka, MO
660-727-3796
www.mcafeeauctionservice.com
auction@centurylink.net

TROPHY PROPERTIES AND AUCTION
Specializing in Farms & Recreational Properties
Serving MO, IL, KS, IA
15480 Clayton Rd Ste. 101 • Ballwin, MO
855-573-LAND
www.TrophyPA.com

MERIT AUCTIONS, LLC
Specializing in Farm Real Estate & Ag Equipment
Serving the Greater Midwest
4502 Avenue O • Ft. Madison, IA
833-273-9300
info@meritauctions.com
www.meritauctions.com

J AND J ESSENTIALS
Online Auction Services
Household, Estates and Collections
Serving Iowa and Missouri
208 South St. Pulaski, IA 52584
641-208-1971
jandjauctionservicesllc@gmail.com
http://jandjessentials.hibid.com

NEMO *Trader* PO BOX 809 • KIRKSVILLE, MO 63501
PHONE 660-665-8500
Web Site: nemotrader.net
Email: sales@nemotrader.net

Have a smart phone or tablet?
You can view current and past Nemo Trader issues online at
www.nemotrader.net



BARN RESTORATION

Specializing in Barn & Pole Barn
Repair and Restoration



See more restorations!



WAGLER BUILDERS

(641) 777-5000 • john@waglerbuilders.com @waglerbuilders

fb farmbank

Christmas Club Account

The easiest way to save for the Holidays all year long.

1 S. Lincoln St. Green City, MO 660-951-8430
701 N. Pearl St. Milan, MO 660-951-8432
3311 N. Baltimore Kirksville, MO 660-951-8431

www.farmbank.com Member FDIC

FALL SALE UP TO 15% OFF

MILLER AG

CAR PORTS & BUILDINGS
6' to 100' wide clear span • Up to 25' tall walls

WWW.MILLERAG.NET
ARBELA, MO • 660-341-0929 • JOE MILLER

BURKHOLDER



2022 Ford F-350 Lariat, 4x4, Crew
Dually, 6.7 Diesel, 50k One-Owner Miles,
Accident Free, Well Kept, Texas Truck, White



Reduced!
~~\$78,900~~ \$73,900

Full line of accessories Outfit your truck here!

Edina 660-397-2551 51001 State Hwy 15 BurkholderTruckSales.com

Reduced!



\$35,900

2020 Toyota Tacoma SR5, 4x4
Crew, 3.5V6, Auto, Only 22k One-Owner
Miles, Local Trade, Very Well Kept, Silver

Reduced!



\$58,900

2020 Nissan NVP 3500HD SL
12 Pass, 5.6V8, Only 29k Mi, One-Owner,
Personal Vehicle, Extra Nice-Clean, Red

Reduced!



\$58,900

2020 Nissan NVP 3500HD SL
12 Pass, 5.6V8, Only 30k Mi, One-Owner
Personal Vehicle, Very Nice-Clean, Silver

Reduced!



\$31,900

2020 Chevy Traverse Premier AWD
3.6V6, Auto, 82k Miles, Loaded, Very Well
Kept, Nice-Clean, Black Cherry Metallic

Reduced!



\$24,900

2019 Toyota Sienna LE AWD, 7 Pass
3.5V6, Auto, 107k One-Owner Mi, Clean
Carfax, Perfect Service Record, Nice, Gray

Reduced!



\$30,900

2019 Ford F-250 XLT, 4x4, Crew
6.2V8, 134k One-Owner Mi, Accident Free
Great Service History, Nice & Clean, Black

Reduced!



\$29,900

2016 Jeep Wrangler Unlimited
Rubicon Hard Rock, 4x4, 3.6V6, 6-Speed,
Manual, 84k One-Owner Miles, New Tires

Reduced!



\$38,900

2015 Ford F-350 XL, 4x4, Reg Cab
Dually, 6.2V8, Auto, Only 23k One-Owner
Miles, Accident Free, Nice, White



\$29,900

2010 Chevy Express 1500 LT AWD
8 Pass, 5.3V8, Auto, Only 105k Miles,
Hard to Find, Well Kept, Come See, Silver

Reduced!



\$42,900

2017 Ford F-350 XL, 4x4, Ext Cab
6.2V8, Knapheide Utility Bed, 87k One-
Owner Miles, Well Kept, Extra Nice, Blue



BW Trailer Hitches

- All Aluminum
- Customizable
- Built Locally



PRICE ALERT!!

MAJOR PRICE REDUCTIONS ON OUR INVENTORY

EFFECTIVE IMMEDIATELY!

BurkholderTruckSales.com

Looking to Rent Vans?

- 15 Passenger Seating
- Cargo Carriers Available
- Day Trips or Long Excursions
- Clean, Functional Vans



Call us today!!
(660) 397-2551

Martin Truck Bodies



Gatorback Mud Flaps

Weather Guard Toolboxes

AUTO & TRUCK SALES + ACCESSORIES



WE ARE PUBLISHING THE **NEMO** ON **WEDNESDAYS** **NEW DEADLINE** will be **THURSDAY** by **5PM**

705 E. Laharpe Street Ste. F • Kirksville, MO 63501 • 660-665-8500 • sales@nemotrader.net



THE CHILDREN OF
MIKE (GLENDELL) AND CLARA O'BRIEN

Lewis County, MO LAND SALE By Sealed Bid

Sealed Bids will be opened at the Queen of Peace Parish Hall, 103 W Clow Avenue, Ewing, MO 63440

Monday, December 4, 2023, at 1:00 p.m.
97 Acres M/L (Per Tax Records)

The real estate is located in Section Seventeen (17), Township Sixty (60) North, Range Seven (7) West, in Lewis County, Missouri, and borders Missouri State Highway 6 on both sides. Directions from Ewing, MO: Travel approximately 1.0 mile Southeast on Missouri Highway 6 (Signs will be posted).

For additional information, including how to submit a bid, and information regarding the bidding procedure, please call (573) 288-1111, email bbozarth@bozarthlawllc.com, or send your written request to Bozarth Law LLC., 405 Clark Street, Suite 120, Canton, MO 63435

The Children of Mike (Glendell) and Clara O'Brien • Seller

703003jn



STRETCH

YOUR BUDGET WITH CLASSIFIED ADS!

Get money in your pocket and room in your garage when you sell your stuff and promote your sales in your local newspaper classifieds.

LUTTRULL FAMILY FARMING

**EXPERIENCED FARM FAMILY LOOKING FOR
ROW CROP ACREAGE TO RENT**



PLEASE CONTACT
BRENT: 660-341-1561
KATY: 660-341-1318

703033jn

Judd Motors

Call 660-457-3700
Hwy 63 North, Lancaster, MO

- 2017 FORD F250 XLT**,..... ONLY **\$19,900**
crew cab, 4x4, 6.2L gas, red, 246K miles, excellent cond,
- IH 574 tractor**,..... ONLY **\$9,995**
gas, 60 hp, with IH 2250 loader, PTO, 3 pt, runs great,
- 2011 Grand Jeep Cherokee**..... **\$11,250**
4WD, 4WD, V6, heated leather, sunroof, dark blue, 113K, **SOLD**
- 2016 Ford Explorer XLT**..... ONLY **\$17,900**
4wd, V6, 3 row, silver, only 88k miles, very nice
- 1998 Chevy 1500**..... only **\$4,250**
ext cab, good shape, 4x4, 183k, green
- 2007-14 Chevy pickup** box, red only **\$1,250**
- 2012 Chevy Impala LT**..... only **\$9,995**
sunroof, only 96K miles, charcoal
- 2013 Toyota Sienna Van XLE**..... only **\$23,900**
leather, sunroof, 79K miles, charcoal, Like New

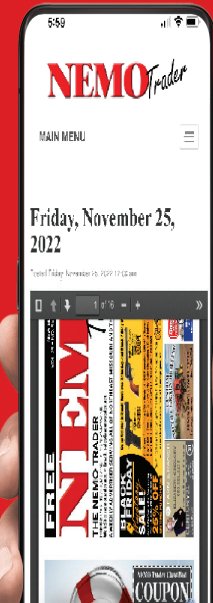


**Cumberland
Building Dealer**

www.juddmotors.com | In Business Over 75 Years
Curly and Kevin Judd

703035jn

**Have a smart
phone or tablet?**
You can view current and
past Nemo Trader
issues online at
www.nemotrader.net



672696jn



YOUR DREAM JOB

**ON A SILVER
PLATTER.**

Keep up-to-date with area job postings
in print and online. Find your perfect
position with quality employers in your
local newspaper classifieds!

Accepting New Patients!



AURORA BELL, D.O.
FAMILY MEDICINE

**1611 S BALTIMORE | STE A
KIRKSVILLE, MO**

**CALL (660) 665-7575
TO SCHEDULE AN APPOINTMENT**

 **Complete Family Medicine**

690292b

There's a better way to get noticed.
Keep life simple. Take out an ad.



CELEBRATIONS!
PARTY RENTAL
KIRKSVILLE, MO

FOR RENT

- Tables & Chairs
- Tents • Bounce House
- Cotton Candy Machine
- & More!

660-626-5162 or 660-665-9380

BORDER COLLIE PUPPIES!
Shots & Dewormed • Negotiable Prices

Deliverable in Person
573-414-4601/ 573-979-5375



FOR SALE
All Sired Angus Bulls,
14 & 18 Months Old.
Harold Trump
660-341-5730

The Ultimate Wood Heat.



CLASSIC EDGE
TITANIUM HDX
Outdoor Wood Furnace

- **More Comfort** - Thermostatically controlled wood heat.
- **Peace of Mind** - Keep the fire outside and eliminate the dangers associated with indoor wood heating.
- **Save Money** - Wood is a renewable, inexpensive and often free energy source.

Campan Heating & Air
Division of Kraus & Sons Inc.
Canton, MO 63435
573-288-8966
CentralBoiler.com

LINNEUS FARM
BUSH HOG® EQUIPMENT
130 E Smith, Linneus MO • 64653
Call: 660-895-5163
Monday-Friday 8-5, Saturday 8-?

New 7' Bush Hog BH217	\$5,650
New 12' Bush Hog 1812	\$17,775
New 15' Bush Hog 1815	\$20,750
New 15' Bush Hog 2815	\$27,400
New 15' Bush Hog 4115	\$28,000
New Bush Hog Tiller RTX92G	\$6,800
New Bale Unroller	\$1,550
New 24' Redline Harrow with Hydro Fold	\$9,225
New 30' Redline Harrows with Hydro Fold	\$10,100
New 10' Brown Box Scraper with Tilt	\$5,550
New 12' Brown Scraper without Tilt	\$5,000
New MBX84 Scrapers	\$2,150
New MBX96 Scraper	\$2,400

Connie's
MOBILE HOME TRANSPORT

We offer the following...

Break Downs • Transport • Set up • Anchoring

Call Rich today! 573-881-7483

Have a smart phone or tablet?
You can view current and past Nemo Trader issues online at www.nemotrader.net



Americans discard ONE BILLION TREES WORTH of paper products each year.

PLEASE RECYCLE THIS NEWSPAPER

End of the year is upon us and we are loaded up with New Bush Hog Cutters



BH217, 1812's, 1815's, 2815's the NEW 4115 and 12820's coming any day.

#9 Used 15' Rhino 3150, 1000 RPM	\$13,750
Used 15' Schulte FX1800, 1000 RPM	\$12,500
#5 Used 15' Bush Hog 12715, 1000 RPM	\$14,000
#17 Used 15' Bush Hog 2615 L, 540 RPM	\$11,000

We Stock an Excellent Line of Parts!
Find our full listing at www.linneusfarmequipment.com

LAND AUCTION
FRIDAY, DECEMBER 15, 2023 AT 6 P.M.

Held at the Knox County Community Center

Description: Peoples Land Co, LLC is honored to offer the Pence Farm for sale at public auction. The sale will be held at the Knox County Community Center, 207 4th St., Edina, MO 63537 on December 15, 2023 at 6:00 p.m. The farm is located approximately 9 miles west of Novelty, MO along Millrun St. For directions from Novelty, go west on Hwy. 156 approximately 6 miles to Mohogany Ave. Then go south on Mohogany approximately 2 miles to Millrun St. and then go west on Millrun St. for 1/2 miles to the farm. The land represents a once in a lifetime opportunity to purchase a great combo farm in this area of Knox County. The farm consists of 106 acres m/l with 84.6 FSA tillable acres m/l making it 80% tillable with county road frontage along Millrun St. This farm will provide great income along with phenomenal hunting. The productive soils and location makes this farm one that the potential is endless whether it is a building site, investment opportunity, or recreational opportunity. The current tenant has cared for this farm at the highest level and farms in this area don't come for sale often so make plans to attend this great land auction.

106± AC. *All locations and boundaries shown on maps are thought to be accurate but are not exact. Farm will be sold as-is with no warranties given or implied.


PEOPLES LAND COMPANY LLC
Seller: Carl D. Pence Revocable Living Trust

Jay Scott Gander | 660-676-1479
Anthony Peoples | 660-651-6501

www.peopleslandco.com



BUCKMAN MACHINERY, LLC
573-881-3557



John Deere 6300, cab, power quad, loader, 5400 hrs, with new engine, 90% rubber, \$36,500

John Deere 300 Corn Picker, 2-corn (2 row 30"), excellent mechanical condition. \$6,750

John Deere 7130, MFWD, cab, triple hydr, 5400 hrs, 70% rubber \$44,500

John Deere 3020 D, WF, dual hydr, 16.9x38, 7000 hrs showing, loader available, \$8,750

John Deere 4010 D, only 2375 actual hrs, nice, loader available, \$13,950

John Deere 6200, MFWD, open station, power quad, 6000 hrs, with 640 Loader, sound machine, will trade \$27,500

John Deere 4430, CAH, quad, new tires, new cab kit, triple hydr, with Westendorf WL 42 Loader & grapple \$26,500

Bush Hog RT Tiller, 3 pt, 5' \$2,500

John Deere MX8 Mounted Cutter 3pt mowed 20 acres, new, shedded \$6,950

John Deere 158 Loader, no welds, \$4,500

John Deere 148 Loader, \$2,950

John Deere 146 Loader, \$2,750

Rhino SR15M Batwing Brush Hg, 8 luminated, 1000 PTO, field ready \$5,750

John Deere 709 3pt PTO Mower, no welds \$1,950

Alfalfa - 2nd cutting, 3x3x8 bales, 21% treat, green, \$175/bale delivery available

2023 Mixed Grass, 45-50 lbs., \$10/bale, delivery available.

Alfalfa - 4th cutting, 55 lb treated bales, very little grass/weeds, \$12, delivery available

Red Angus/Charolais Cross Bull, 24 months old, guaranteed, \$3000

Loaders & Duals available for many

Beilstein CAMPER SALES
CALL US NOW for the best prices...
28248 327th Ave.
LaGrange, MO • Hwy 61 South,
4 Miles South of LaGrange, MO
573-655-2254

CHECK OUT OUR SPECTACULAR SAVINGS

#815114 2024 Fuzion Impact Aluminum Toy Hauler 2813 Extra Height and Huge Garage Our Price \$35,995	#801397 2023 Salem FSX 167RBK NEW Rear Bathroom, Light Weight Our Price \$19,995	#508801 2019 Keystone Cougar Half-Ton 22RBS Rear Bathroom, King Bed in Front Our Price \$24,995
#035355 2020 Coachmen Spirit 2454BH Slide-Out, Double Over Double Bunks Our Price \$29,995	#072286 2022 Heartland Barlow 20FT FLATBED DOVETAIL Our Price \$6,795	#114411 2023 Darkhorse Cargo 8.5X18 TANDEM AXLES Our Price \$9,195

beilsteincampersales.com



Kirkville Area Chamber of Commerce

December 2023

Executive Director: Marie Murphree

Monday - Friday
8:00 AM - 5:00 PM
PHONE: 660-665-3766



Heritage House Realty
2805 N. Baltimore St
Kirkville, MO 63501
660-665-5638
kirkvillerealestate.com



CONNECTIONS
BANK

Connections Bank
2817 N. Baltimore St.
Kirkville, MO
660-665-7703

Member FDIC
connectionsbank.com



Colton's Steak House
& Grill
1116 Country Club Dr.
Kirkville, MO 63501
660-665-6336
coltonsteakhouses.com



Claypoole Nursery LLC

Claypoole Nursery
32822 US Hwy 63
South
Macon, MO
660-385-2011
claypoolenursery.com
claypoolenursery@cvalley.net



ELITE VIRTUAL HANDYMAN SERVICES
(660) 956-9341 KIRKSVILLE
LET US HANDLE YOUR TO DO LIST
HOME REPAIR • DECK & STEP REPAIR
HOME MAINTENANCE • TREE REMOVAL
FUTURE ASSEMBLY • GUTTER CLEANING
SECURITY SYSTEM INSTALLS • MOWING
CEILING FAN & LIGHTS • SECURITY
LIGHTS • GARAGE DOOR INSTALLS &
REPAIR • APT. FLIPS • STORM DOOR
INSTALLS • FAUCET & SINK INSTALLS
THIS AND MORE!

MIDWEST GOLD & SILVER
Rare Coins and Fine Jewelry



111 E. Washington
Kirkville, MO
660-216-2346



KLI Graduation

The Kirkville Leadership Institute Class of 2023 graduated November 17 at Thousand Hills Dining Lodge after an etiquette luncheon hosted by 2022 Graduate Robin Kolb. Graduates presented the class project to guests followed by the presentation plaques to the graduates.



Welcome to the Chamber!

Join us in welcoming Nathan Nichols as the new Member Services Coordinator here at the Chamber.

660-665-3766

315 S Franklin St Kirkville, MO 63501
kelsey.roberts@kirkvillechamber.com



Selfie with an Elfie

We have little Elfies hiding out in shops & restaurants all over Kirkville! Our Elfies are all about taking selfies.

Starts November 25th
Ends: December 29th

- Find an Elfie in one of our business partners.
- Snap a selfie with the elfie.
- Post it to Facebook.
- Use **#SelfiewithanElfieKV**.
- Tag the business where you found our Elfie.
- Submit your selfie to info@kirkvillechamber.com

Each time you find a new Elfie snap that selfie tag the business & post it with the hashtag

Every post will be entered for a chance to win \$50 in Kirkville Ca\$h!

Prize drawings held at noon
Each Friday in December!

Only one entry per person, per store. Of course, we encourage you to include a receipt from the store in your selfie, but no purchase is necessary. Winners will be drawn at random.

WELCOME TO THE CHAMBER

Applegate Crafts & Antiques, EccoRide of Missouri, Joe's Italian Restaurant, and Celebrations Rentals.

For more information about current memberships visit www.kirkvillechamber.com/directory

THANK YOU!

THANK YOU FOR REAFFIRMING YOUR FAITH IN THE CHAMBER

Adair County Public Water Supply District
#!Clever Dermatology
Cooperative Response Center
Harold G. Butzer, Inc.
Hospice of Northeast Missouri
Mary Immaculate Church & School
Mid-America Orthopaedic & Spine Institute

NEMO Fair Association
Ourback Welding & Machining
Pizza Hut
Sprocket Technologies
The Golden Ruler of Kirkville
The Rooks Law Firm
University of Missouri Extension - Adair County

ON THE HORIZON

December 14- Business After Hours at Alliant Bank 5:00 - 7:00 p.m.



Audra Jackson Harris
2121 N. Baltimore St.
Kirkville, MO 63501
660-665-0700
agentaudra.com



CENTURY 21

Lifetime Realty
1605 S. Baltimore,
Suite A
Kirkville, MO 63501
660-665-5678
www.C21Kirkville.com



Tire & Auto
Owners:

Joe Dimmitt &
Kelly O'Haver
1102 N Green St
Kirkville, MO
660.665.9017



ORDER ONLINE

WWW.BELLACINOS.COM

GRINDERS • PIZZA • SALADS
WINGS • FRIES • AND MORE!

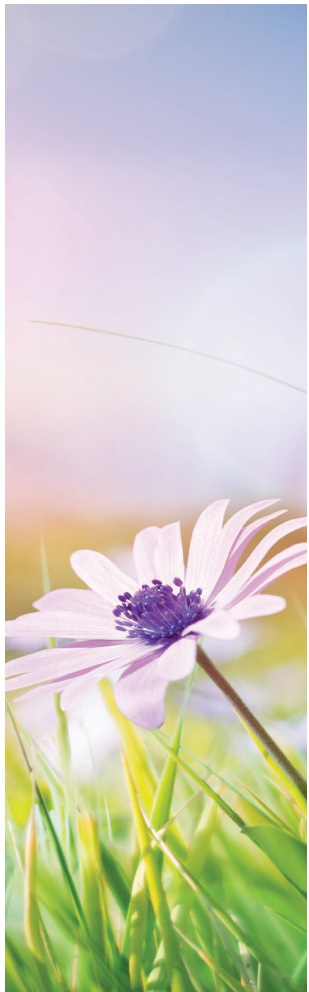
GET 10% OFF
WHEN YOU PRESENT THIS COUPON.

516 N BALTIMORE ST.
660-665-7665



1100 S. Jamison
Kirkville, MO 63501

660-627-7245 - Phone
800-681-7245 - Toll Free
660-665-9849 - Fax
WWW.RAILKV.ORG



WWW.KIRKSVILLECHAMBER.COM