

NEMO Trader

THE NEMO TRADER

PO BOX 809 • KIRKSVILLE, MO 63501 • PHONE 660-665-8500

Web Site: nemotrader.net • Email: sales@nemotrader.net

FREE

A WEEKLY ADVERTISER SERVING ALL OF NORTHEAST MISSOURI AND THE SURROUNDING AREA

SKULL CLEANING & WHITENING

660-346-7611
JOSEPH HILTY

DRIP OFF AVE. 3922 KAWAK AVE. EXCELLO, MO
BUCKRIDGE CUSTOM MEATS

exp REALTY

ELIZABETH GREGORY
Realtor

WWW.MISSOURIHOMEANDEARM.COM

Innovative Real Estate for YOU!

660.621.2136

KEIM LUMBER COMPANY LLC

COMPETITIVE PRICES • FREE ESTIMATES

- COMPLETE BUILDING PACKAGES
- WINDOWS AND DOORS
- INSULATION • DRYWALL
- DELIVERY

13625 St. Hwy 3 LaPlata, MO

FRONTLINE FENCING LLC

660-956-2430 • Greentop, MO

- * Arrowquip Cattle Handling Equipment
- * Ranger Squeeze Chutes
- * Heavy Duty Tubs and Crowding Alleys
- * Calving Pens
- * Heavy Duty Gates – Custom and Standard Sizes
- * Steel Pipe Fencing – Corrals, Working Areas

1991.069

B&S Equipment Auctions

join us on facebook!

CONSIGNMENTS WANTED FOR December 16th AUCTION

find us on facebook @ BS-Equipment-Auctions
www.bandsequipmentsales.com

BandEquipmentSales.com | Office 660-663-3363
Shay 660.605.0839 | Justin 660.605.2346

SATURDAY DECEMBER 2ND @ 2PM
(REALESTATE AUCTION ONLY)

3 Bedroom Home, with garage & half basement.
Lots 4, 5, & 6

106 W. Jefferson
Monticello, MO

To view home contact:
Jesse Sparks at 573-406-8787

Sparks AUCTION
573-406-8787
EST. 1988

BLACK FRIDAY

Come Celebrate **Small Business Saturday** and **Black Friday** With The Gun Grove in Macon, MO!

Mystery
SALE!
NOVEMBER 24th & 25th



AR-15 Starting at **\$499**



Remington Thunderbolt 22LR 525rds **\$29.99**



Walther PDP 9mm **\$100 OFF**



Taurus G2c 9mm **\$199**



.45 acp 1911s Starting at **\$399**



Aiming Thermal Scopes **\$500 OFF**

Spend \$100 & Draw for Great Prizes Including: Targets, Gift Cards, Lights and Discounts up to 25% OFF ENTIRE PURCHASE!

Buy 1 Get 1 Free
Black Rifle Coffee, Wigwam Socks, Ready Wise & Simple Kitchen

Buy 2 Get 1 Free
Browning, Buck, Cobratec and Outdoor Edge Knives, Duke Cannon, Nebo Flashlights, Powder, Primers & Hats

50% OFF
Warne and Alien Gear Holsters

50% OFF
Cases, Slings & Cleaning with Long Gun Purchase

Sig Sauer Buckmasters Scopes **STARTING AT \$99**

30% OFF
Howard Leight Hearing Protection

AND MORE!

The
Gun Grove
.com

Tue.-Fri. 10am-6pm & Sat.10am-5pm
708 Patton St - Macon, MO • 660-395-7400

Watch our website and facebook for more deals www.gungrove.com

ASI
Agri Systems Inc.
 1103 Nixon Industrial Blvd. • Macon, MO
 888-627-4232

We have taken over for CSC!
 All Pressure Washers & Air Compressors!

AIR COMPRESSORS
 Home & Industrial Series

- Many Models Available!
- We Stock Replacement Parts
- w/Current Supply Issues Call for Availability
- Contractor Series

POWER WASHERS

VIRTUAL ONLINE
LINN COUNTY, MISSOURI
LAND AUCTION
 TUESDAY, DECEMBER 12, 2023 AT 1:00 PM^{CT}

401 TAXABLE ACRES± • 4 TRACTS

The Buckley Farms are located just outside of Saint Catharine, MO to the east and approximately 6 miles east of Brookfield, MO, north of Hwy 36. The land is further described as being located in Sections 1 & 2, T57N-R19W, and Section 36, T58N-R19W, Yellow Creek Township, Linn County, Missouri.

All tracts represent highly preferred whitetail deer and wild turkey habitat which makes for excellent hunting & recreation. A total of 279.52 CRP acres between the four tracts provide income and great habitat for all wildlife.

KNOWN LOCALLY AS PC BUCKLEY FARMS
JIM BUCKLEY, DONNA CASEBOLT, AND JULIA BURNS - SELLERS

Representing Attorneys:
 Mark Untersee | Untersee and Associates
 Kansas City, MO | (816) 531-1333
 Dana Macoubrie | Cleaveland, Macoubrie & Cox, LLC
 Chillicothe, MO | (660) 646-4522

Title Company: Linn County Abstract Co.
 118 N Main Street., Brookfield, MO | (660) 258-2260

Auction Manager: Louie Zinn (319) 795-2314
 Steve Zieger (573) 231-9802 & Dan Sullivan (319) 795-1833

BigIron **SULLIVAN AUCTIONEERS**
 a BigIron company
 (844) 847-2161 | www.SullivanAuctioneers.com

Your Local
FARM SUPPLY SOURCE
 NUTRITION • MEDICAL • FARM • PET • APPAREL

SEE US FOR YOUR SHEEP & GOAT EQUIPMENT NEEDS

Hometown Animal Health has provided quality products, expert knowledge, and friendly customer service to northeast Missouri and surrounding areas. We are a full-service nutrition, medical, and farm supply source carrying complete lines of animal feed and supplies, farming equipment, agricultural parts, lawn and garden tools, work apparel, and much more!

Hometown ANIMAL HEALTH
 Feed • Medical • Farm & Pet Supplies • Footwear & More
 website: hometownanimalhealth.com
660-465-2967
 18743 US Hwy, 136 Memphis, MO 63555
 "on Hwy 136 west of Memphis"
 Monday-Friday 8pm to 5pm
 Saturday 8am to 1pm

TROY BLACKWELL FARM Retirement Auction

FRIDAY, DEC. 1 at 10 AM
AUCTION LOCATION:
 7002 Hwy 61 Outer Road East, Frankford, MO

TRACTORS: INCLUDING JD 9RX, 9R, 8R, AND 6RS
 COMBINES: 2 JOHN DEERE S770S ON TRACKS,
 HEADERS: 2-708C CORNHEAD & 2 735FD'S
 PLANTERS, TILLAGE, HAY EQUIPMENT
 FULL LINE OF CONSTRUCTION EQUIPMENT: DOZERS,
 EXCAVATORS, SCRAPERS, HAUL TRUCKS
 LOGGING EQUIPMENT, SEMI-TRUCKS AND TRAILERS,
 FARM VEHICLES & MUCH MORE!

Wheeler AUCTIONS & REAL ESTATE
 23101 HWY. 24, PARIS, MO 65275 | 660-327-5890
 WWW.WHEELERAUCTIONS.COM

FOR MORE INFORMATION CONTACT:
 Kirby Fecht at 217-248-2906 or Wheeler Auctions at
 660-327-5890 or visit our website at wheelerauctions.com.



KNOX COUNTY, MO LAND AUCTION
 FRIDAY, DECEMBER 15, 2023 AT 6 P.M.
 Held at the Knox County Community Center

Description: Peoples Land Co, LLC is honored to offer the Pence Farm for sale at public auction. The sale will be held at the Knox County Community Center, 207 4th St., Edina, MO 63537 on December 15, 2023 at 6:00 p.m. The farm is located approximately 9 miles west of Novelty, MO along Millrun St. For directions from Novelty, go west on Hwy. 156 approximately 6 miles to Mohogany Ave. Then go south on Mohogany approximately 2 miles to Millrun St. and then go west on Millrun St. for 1/2 miles to the farm. The land represents a once in a lifetime opportunity to purchase a great combo farm in this area of Knox County. The farm consists of 106 acres m/l with 84.6 FSA tillable acres m/l making it 80% tillable with county road frontage along Millrun St. This farm will provide great income along with phenomenal hunting. The productive soils and location makes this farm one that the potential is endless whether it is a building site, investment opportunity, or recreational opportunity. The current tenant has cared for this farm at the highest level and farms in this area don't come for sale often so make plans to attend this great land auction.

106± AC. *All locations and boundaries shown on maps are thought to be accurate but are not exact. Farm will be sold as-is with no warranties given or implied.

PEOPLES LAND COMPANY LLC
 Seller: Carl D. Pence Revocable Living Trust

Jay Scott Gander | 660-676-1479
 Anthony Peoples | 660-651-6501
www.peopleslandco.com

Real Estate Auction
Wednesday, Nov. 29th • 6pm
 Held at the American Legion, Shelbina, MO

OUTSTANDING TILLABLE FARM
BEAUTIFUL FARMSTEAD
MISSOURI CENTURY FARM

163.1± Acres
 OFFERED IN 2 TRACTS
 Shelbina, Missouri | Monroe County

Description: If there was ever a farm that anyone would love to own, it is this one and Peoples Land Co, LLC is honored to offer it for sale at public auction. The sale will be held at the American Legion Hall located at 520 East Maple St., Shelbina, MO 63468 on November 29, 2023 at 6:00 p.m. The farm is located in Monroe County south and east of Shelbina, MO at 30326 Monroe Road 307, Shelbina, MO 63468. This is a century farm that has raised a large family and has been cared for and farmed by the same family forever. It would be hard to find a more well cared for farm in this area. The farm will be sold using the buyer's choice method and will be in two tracts consisting of the following:

Tract 1: Consists of 82.6 surveyed acres with 70.28 acres m/l FSA tillable acres making it 85% tillable. The balance is made up of waterways, a nice pond, and the homeplace. Has county road frontage along Monroe Road 307. Soil types consist of productive Putnam, Leonard, and Mexico soils. The improvements on this tract are an older country home, a barn, grain bins, and multiple sheds and outbuildings.

Tract 2: Consists of 80.5 surveyed acres with 75.18 acres m/l FSA tillable acres making it 94% tillable. Has county road frontage along Monroe Road 307 and Monroe Road 390. Soil types consist of productive Putnam, Leonard, and Mexico soils.

*All locations and boundaries shown on maps are thought to be accurate but are not exact. Farm will be sold as-is with no warranties given or implied.

PEOPLES LAND COMPANY LLC
 Seller: Dimmitt Family Trust

Jay Scott Gander | 660-676-1479
 Anthony Peoples | 660-651-6501
www.peopleslandco.com

Machinery Tool Outdoor Sportsman Auction
2705 Main St Unionville Mo 63565 • December 2nd at 10 am

1999 Ford Ranger 4x4 new transmission and motor, 2001 Dodge Durango 4x4, 2009 Mitsubishi Galant, fishing boat on trailer with 9.9 mercury motor, jon boat, 20 ft gooseneck trailer, 1964 John Deere 110 mower, other older John Deere 110 mower, 2 craftsman riding mowers, Simplicity mower, Toro zero turn mower, Swisher 60" pull type mower, finish mower, pull type disc, harrow sections, mounted tiller, like new snow blower, snow blower, older Deere mounted snow blower, mounted sickle mower for riding mower, Deere snow blade for riding mower, push mowers, tiller, 2 yard thatchers, mower ramps, 2 power washers, weed whip, generator, Massey 50 tractor very nice, tractor weights, IH hammer mill, large log splitter on wheels, AC 2 row planter, 2 bottom plow, 6 ft brush hog, gain cart with roof, head chute, 3 pt post hole digger, cultipacker for repair, rotary hoe, 3 pt bale unroller, 500 gallon top air sprayer, Deere 6ft brush hog, New Holland 851 baler, New Holland 489 moco, cultivators, harrow on cart, several panels, and gates, several rolls barb wire, 3 rolls woven wire several fence posts some are new, fence braces, channel iron, 3 point bale stabbers, 3 point blades, feed bunks, 4000 pound lift, engine holder, skid loader pallet forks and fork extensions, 4 pallets of shingles, 55 gallon metal and plastic barrels, new doors and windows, new warn winch, electric hoist, Rigid electric pipe threader, tool boxes, hand tools, yard tools, several power tools in cases, drill press, sander, work bench and vise, wrenches, oxygen acetylene torch set up, lead sled, live traps, ammo, knives, bb and pellet guns, 3006 Remington 742, 12 ga wingmaster 1400, 12 ga aimtech pump, 16 ga riverside arms SS, 16 Stevens 311D double barrel, 20 Ga Remington Sportsman, 20 Ga H&R Topper, 32 cal Savage, 32 cal Hopkins and Allen, 25 cal Jennings, deer stand on trailer. Will be more by sale day. Half of the sale will be held inside.

Food and restrooms available. **Check out pictures on the website at www.altiserauctionandappraisal.com.**

SEE OUR FACEBOOK PAGE FOR PHOTOS



LUTTRULL FAMILY FARMING

EXPERIENCED FARM FAMILY LOOKING FOR ROW CROP ACREAGE TO RENT



PLEASE CONTACT
BRENT: 660-341-1561
KATY: 660-341-1318

HAPPY THANKSGIVING
 FROM THE **NEMO** Trader

ONLINE GUN, COIN & JEWELRY AUCTION

IMAN AUCTION CENTER - 34614 HIGHWAY 24, SALISBURY, MO
OPENS NOVEMBER 20, 2023 & CLOSSES NOVEMBER 26 @ 6 PM
GUN & COIN COLLECTION FROM EDDIE FIELDS OF PARIS, MO & OTHERS.



AUCTION PREVIEW: Friday, November 24 | 1-5 PM

Selling 250 Long Guns & Pistols by Browning, Remington, Colt, Winchester, Marlin, Ruger, Smith & Wesson, Savage, Glock, German Drilling * Dozen Black Powder Rifles & Pistols * Ammo * Reloading Supplies * Scopes * 2019 Polaris 570 4 Wheeler, only 200 hrs * Deer Mounts & Horns * Gold & Silver Jewelry * Large Coin Collection from the late Eddie Fields of Paris, MO

BIDDING @ IMANAUCTION.COM
 IMAN AUCTION COMPANY | 660-388-6235 | ImanAuction.com



Santa DAY 2023
SATURDAY, DEC. 2ND | 9AM-12PM



20% OFF TOYS & LICENSED MERCHANDISE
 Offer valid thru 12/8/2023. Peg Perrigo 6 & 12 Volt Ride-On Toys are excluded.

- | | | | | | |
|----------------------------------|--------------------------------|---------------------------------|----------------------------------|---------------------------------|------------------------------------|
| ALBION, IL
618-445-3676 | CURRYVILLE, MO
573-594-6493 | HERMANN, MO
573-486-3204 | MEXICO, MO
573-581-5900 | ROCHEPORT, MO
573-446-3030 | STE. GENEVIEVE, MO
573-883-5703 |
| BENTON, IL
618-435-4430 | DUTZOW, MO
636-432-2295 | JERSEYVILLE, IL
618-498-5504 | MOSCOW MILLS, MO
660-366-9400 | SALISBURY, MO
660-388-6166 | STEELEVILLE, IL
618-965-3475 |
| CARTERSVILLE, IL
618-393-8546 | FARMINGTON, MO
573-750-2688 | KIRKSVILLE, MO
660-665-1500 | NORRIS CITY, IL
318-378-2184 | SCOTT CITY, MO
573-335-0192 | TIPTON, MO
660-433-5596 |
| CHILlicothe, MO
660-646-5493 | FLORA, IL
618-622-4444 | MACON, MO
660-385-2177 | PALMYRA, MO
573-769-2112 | ST. CHARLES, MO
636-493-0288 | WATERLOO, IL
618-939-6717 |
| COLUMBIA, MO
573-476-0730 | | | | | WAYNE CITY, IL
618-895-3130 |

EVENT WILL NOT BE HELD AT ANNA, IL OR UNION, MO LOCATIONS. SOME RESTRICTIONS APPLY. SEE DEALER FOR DETAILS.

SNPartners.com

ANIMAL HOUSING HAY STORAGE & MUCH MORE



Skylight FABRIC STRUCTURES
 30697 COLONY AVE. • NEW CAMBRIA, MO 63558
 660-486-3250 • 833-482-8862

AGRI-BUSINESS

Cattle

Neese Angus and Balancer bulls for sale. Ready for service. Conditioned to work! Rutledge, Missouri. 641-344-4565.

Equipment & Supplies

2014 Krause 8000-30 Excelsior. Gang angle adjustment; hydraulic star wheels; flat bar reel. Blades 20.75" front, 21.00" back. Excellent machine. \$58,000 or make offer. Robert Lay, LaBelle, Mo. 660-341-5471.

Hay/Feed/Seed

Big round mixed hay, 1st and 2nd cuttings, lab tested and surface wrapped. Call for information. 660-341-4031. Watson Hay Sales, phone calls only.

Net wrapped mixed grass hay, 5x5 bales, never rained on, \$100.00 a bale. 660-341-1150 or 660-434-5486.

Big square bales of wheat straw, \$60.00 per bale. Delivery Available. 660-956-3420.

Excellent quality Alfalfa hay for sale, big square bales. Also grass hay available. Delivery available. 660-956-3420.

Small square bales straw, \$4.00 a bale. Located in Leonard, Mo. 660-251-3444.

Livestock

Neese Angus and Balancer bulls for sale. Ready for service. Conditioned to work! Rutledge, Missouri. 641-344-4565.

EMPLOYMENT

Transportation/Drivers

???CDL License??? Fast and economical. Meets all ELDT requirements. 2 days training. You need a learners permit and ability to drive a manual. Jefferson City, Strafford, Willow Springs, Mo. Please call 573-353-2853 www.capitaltruckdrivinginstitute.com.

MERCHANDISE

Antiques & Collectibles

MJ Hummel plates and figurines from the 1980's in original boxes. Cash only, Memphis, Mo. 660-216-0038.

Farm and construction and Tonka toys. Rare to sand-box, 1/16 scale mostly. Cash only, Memphis, Mo. 660-346-0438.

LANCASTER LUMBER INC.

Lancaster, MO.

1-800-424-5071

LAN-DOW BUILDINGS

www.lancasterlumber.com



TIMBER MANAGEMENT.

Purchasing Walnut, Oak, Maple & Other Species

WE PAY BEFORE WE CUT

BONDED & INSURED
641-895-8209

Est. 1968

Kirksville, Missouri
KIRKSVILLE LIVESTOCK LLC

24295 Benton Road * P O Box 242 * Kirksville, MO 63501
www.kirksvillelivestock.com
SPECIAL FEEDER CATTLE SALE
MONDAY, NOVEMBER 27, 2023 • 11:00 A.M.

- Anthony Linhart - 62 Blk str & hfrs, 2 rounds shots, 60 days weaned, 550-650#
- Shane & Anthony Linhart - 34 Blk str & hfrs, 2 rounds shots, 450-550#
- JWP Ag - 26 Blk str & hfrs, 1 round shots, 450-550#
- Cohen & Brittney Kelsey - 45 Blk (some Red) str & hfrs, 2 rounds shots, 45 days weaned, 500-550#
- Harold Vansickle - 39 Blk & mix str & hfrs, 1 round shots, 450-550#
- Billy Wilkerson - 21 Blk hfrs, 2 rounds shots, 90 days weaned, 650-750#, breeding quality hfrs available
- Andy Clem & Justin High - 25 BBWF str & hfrs, 2 rounds shots, 40 days weaned, 450-600#
- Paul Walsh - 10 Blk bulls & hfrs, 450-550#

Early listings many more listings by sale day
Check website for updated listings: www.kirksvillelivestock.com

We are open on Sunday to Receive Your Livestock
"Your Business is Very Much Appreciated"
"Proud to Serve Area Livestock Producers"
For more information or Someone to Phone for information:
Patty Foster, Office Manager - 660-665-9804
Chuck Ambrosia - 660-342-3530 - Luke West - 620-215-5770
Mark Herbold - 515-720-8667 - Al Ashmead - 660-216-8730
Doug Fleshman - 660-626-7148 - Daniel Smith - 660-341-8396
Jeremy Jarman - 660-341-9879 - Caleb Randolph - 641-919-8539
Karol Kirkpatrick - 641-777-3403

THE CHILDREN OF
MIKE (GLENDELL) AND CLARA O'BRIEN

Lewis County, MO LAND SALE By Sealed Bid

Sealed Bids will be opened at the Queen of Peace Parish Hall, 103 W Clow Avenue, Ewing, MO 63440

Monday, December 4, 2023, at 1:00 p.m.
97 Acres M/L (Per Tax Records)

The real estate is located in Section Seventeen (17), Township Sixty (60) North, Range Seven (7) West, in Lewis County, Missouri, and borders Missouri State Highway 6 on both sides. Directions from Ewing, MO: Travel approximately 1.0 mile Southeast on Missouri Highway 6 (Signs will be posted).

For additional information, including how to submit a bid, and information regarding the bidding procedure, please call (573) 288-1111, email bbozarth@bozarthlawllc.com, or send your written request to Bozarth Law LLC., 405 Clark Street, Suite 120, Canton, MO 63435

The Children of Mike (Glendell) and Clara O'Brien • Seller

WE GOT YOUR
NEEDS COVERED!

FARM TARPS
TRUCK TARPS

HOOP BUILDING COVERS

Troyer

TARP MFG.

660-486-3301

20264 STATE HWY. VV • ETHEL, MO 63539

Scrubby Duds

Laundromat

Large capacity coin machines

Your laundry never takes a break & neither do our machines!

OPEN 7 DAYS A WEEK
24 HOURS A DAY

311 S. Baltimore Kirksville, MO 63501 660-349-8943 Bob & Paulette Thompson

NEMO Trader Classified
COUPON

2 Classified Ads for just
\$6.00

20 cents per word over 20 words
Must be Mailed in or brought in along with payment.
Picture Ads Not Included with Coupon!

Choose Classification

Agri-Business

Announcements

Employment

Financial

Merchandise

Real Estate Rentals

Real Estate Sales

Recreation

Services

Transportation

Yard Sales

Auctions & Estate Sales

Ad No. 1 Each Box Represents a Word (20 words or less)

Ad No. 2 Each Box Represents a Word (20 words or less)

Name _____

Mailing Address _____

Phone Number * _____
this is required*

PO Box 809 Kirksville, MO 63501 • 660-665-8500

JH COOK CONSTRUCTION
EQUIPMENT AUCTION

ALL ITEMS SELL NO RESERVE!
THURSDAY, NOVEMBER 30

DP2115 '21 CAT 320GC excavator

DP2117 '13 CAT D6TXW dozer

DP2116 '97 Kenworth W900 semi truck

DP2118 '16 Ford F350 SD Lariat Platinum Crew Cab

DP2119 '01 Ford F250 Super Duty XLT SuperCab

OPEN INSPECTION: Nov 24 & 28 / 12 pm - 4 pm **LOCATION:** JH Cook Construction, 453 Hwy H, Leonard, MO 63451 *All items are sold "AS IS." 10% buyers premium applies.* **866.608.9283**

BID NOW! purplewave.com

Building Supplies

Electric hammer breaker with tack and chisels. Chainsaw with bars and chains. Electric Lincoln welder SP-140-T. 217-257-4276, Quincy, down-sizing.

Billboard Tarps, assorted sizes, mostly 14'x48', \$35.00 each. Raymond Kauffman, 25624 Hanover Street, LaPlata, Mo 63549.

Miscellaneous

6 Sahara Desert arrowheads. Steam locomotive photos. 71 rolls Wheat Cents plus other coin items. 660-332-7840.

Call us for all your advertising needs. 660-665-8500.

Miscellaneous

Electric hammer breaker with tack and chisels. Chainsaw with bars and chains. Electric Lincoln welder SP-140-T. 217-257-4276, Quincy, down-sizing.

Military items, railroad, dvd's, stamp albums and stamps, 31 day wall clock, Dale Jr. die cast 8 and 88 cars, \$400.00. 660-332-7840.

Fresh local cooked sorghum, 3 miles West LaPlata, 156, 1/2 mile South Iceberg, 1/2 mile West Hanover Street, Raymond Kauffman.

HAVE A PET OR PUPPIES TO SELL? Call us. You can even pay over the phone. 660-665-8500.



L & M KUSTOM
Kitchens & Wood Working

KITCHEN • OFFICE • BATH

FREE ESTIMATES

LeRoy Detweiler
660-748-3339

28194 Jaguar Place Princeton, MO 64673

Show Me Plumbing Services



- General Mini Excavation & Skid Steer Work
- Livestock Watering
- Waterlines & Sewer Systems
- Residential Services & General Plumbing
- Utility Trenching

Stan Schrock 660-988-1163
Greentop, MO 660-766-2636

FOXHOLE LLC IN CENTERVILLE IOWA

FOXHOLE LLC IN CENTERVILLE IOWA IS PAYING CASH FOR YOUR... UNWANTED FIREARMS, KNIVES, VINTAGE SIGNS, BRAND NAME TOOLS, BARN FINDS, AND OTHER MISC ITEMS. WE CAN COME TO YOU!*

INSTANT LOANS ON FIREARMS UP TO \$3,500. WE ARE A FFL DEALER IN CENTERVILLE IOWA WITH A HUGE INVENTORY OF GUNS & AMMO! LOCATED INSIDE FOGLE TRUE VALUE! BEST DEALS AROUND!

1101 N. 18TH ST • STE B • CENTERVILLE, IA 52544
www.foxholegunrange.com
641-437-1053 • 641-799-7991 • 641-203-6998
*NO JUNK OR SALVAGE



LAN-DOW BUILDINGS

"We Build To Suit Your Needs"

"Custom Built"

Pole Barns • Garages • Utility Buildings

"H" Don or Dick Middleton

Memphis Lumber Co.

1-800-337-5858 • 660-465-8595

Fax: 660-465-8596

Liebhart Sales, Inc.

660-689-3406 

17546 Lacey • Boston, MO 63557

- Twin Rakes
- Trail Mowers
- Disc Mowers
- DewEze Bale Beds
- Danuser Post-Hole Diggers
- NEW 30 ft. Flex Harrow
- Hydraulic Fold with 5/8 Chain
- Tedders
- Bale Processors


New DewEZE Hay Beds in Stock!

USED EQUIPMENT

- AUGER**
 - 18" Danuser Auger
- DISC MOWERS**
 - 7030 Vermeer
 - 3700 Mower Conditioner
 - New IDEA 5409
- BALERS**
 - 505 I
- RAKES**
 - R23



Is that cylinder leaking?



Specializing in Cylinder Repair

KEIM HYDRAULICS LLC

18748 200th St. • Bloomfield, IA 52537
Ph: 641-208-5346 • 641-664-KEIM



LANGMAID STOCK DOGS

ABCA Border Collies
Top cow dog Bloodlines
Pups, started dogs, finished dogs
Full health and working guarantee on all dogs
All dogs eligible for \$25,000+shootout dog trial.

RYAN & DAWN LANGMAID
Green City, MO

254-595-6677

RAMIER TRUCK SALES

 2022 Ford F350, 6.7 diesel, 6300 miles, salvage title. CALL FOR PRICES	 2023 Ford F350, 7.3 gas XLT, 1385 miles, salvage title. CALL FOR PRICES
 2022 Ford F350 XL, 6.7 Cab & Chassis, 15K miles, salvage title. CALL FOR PRICES	 2022 Ford F350 XL, 6.7 XLT, 15K miles, rebuilt title. \$52,900
 2011 Ford Explorer XLT, 172K, rebuilt title \$6,450	 Dew eze cake feeder, 1000 lb in stock \$4,586 and 1500lb in stock \$4,619
 2021 Ford F350 XLT, New Dew EZE 684 bale bed, 6.7 clean title \$71,900	 2020 Ford Ranger, 4x4, Lariat, Black, 41k miles, Rebuilt Title \$28,000
 2012 Ford Expedition Limited, 5.4l, 200k miles, prior salvage title \$6,500	 2021 Honda Talon 1000R, Live Valve, 900 miles \$24,500

Gorin, Missouri • Monday-Saturday 8am-6pm
www.ramiertrucksales.com | HOME: 660.282.1002
CELL: 660.341.6140 | "NO SUNDAY CALLS!"

Make Plans to Attend!

GOWBOY N COWGIRL

BLACK FRIDAY WEEKEND

CHRISTMAS SHOPPING

EXTRAYAGANZA

Christmas shopping kickoff for cowboys n cowgirls, take a break from the typical Black Friday shopping & do it western style! Everything for horse, mule n rider on your list... new/used saddles, (various brands, disciplines & styles), handmade tack, pads, jewelry, handbags, wild rags, home decor & much more! Christmas shopping made fun n easy, at your convenience & leisure for the cowboy/cowgirl. Bring your family n friends, Black Friday Specials, Refreshments n Door Prizes all weekend.

Hosted by: Rick Ridge Saddles & Tack

FRI, NOV. 24 & SAT, NOV. 25 - 9AM - 9PM

SUN, NOV. 26 (10AM-4PM)

FLOWER CITY SESQUICENTENNIAL BLDG

**** Indoor & Climate Controlled ****

700 N. Breckenridge Ave, Palmyra, MO

Cash, Check & Major Credit/Debit Cards Accepted

VISIT OUR FB page

Rock Ridge Saddles And Tack

or visit our FB Event Page

Cowboy N Cowgirl Black Friday Weekend

for listings & updates!

NEW CAMBRIA LIVESTOCK AUCTION LLC

Phil & Stacey McBee - Owners
29262 State Hwy 149, Box 94, New Cambria, MO 63558

Special Calf and Yearling Sale

THURSDAY, NOVEMBER 30TH
STARTING AT 11:00 AM

Office (660) 226-5222 • Phil McBee (660) 754-2148
Doug Lock (660) 641-3898 • Lavon Moore (660) 384-2008
Randy Nute (660) 651-5389 • Tyler Gratz (573)-690-7312

To view our latest market reports and cattle listings visit
Our website at: newcambrialivestockauction.com

We appreciate your business!!!!



Missouri Department of Transportation

Be Part of the MoDOT Team

Join a team environment to help the Missouri transportation system progress. MoDOT is now hiring quality individuals with a good work ethic and positive attitude.

NOW HIRING FOR THE FOLLOWING POSITIONS:

FULL-TIME MAINTENANCE WORKERS
MEXICO, HANNIBAL, WARRENTON, AND WAYLAND MAINTENANCE FACILITIES

HEAVY EQUIPMENT TECHNICIANS (MECHANICS)
EDINA/MEMPHIS/WAYLAND AND SHELBYNA MAINTENANCE FACILITIES

Qualified applicants will have a valid operator's license and a passing grade on the written portion of the CDL exam; or a Class A or Class B CDL with tanker endorsement and no air brake restrictions.

For more information or to be considered for these opportunities apply on-line at www.modot.org/careers by Sunday, November 26, 2023.


Drug Free Work Environment •
Equal Employment Opportunity/Affirmative Action Employer M/F/D/V

LOLLI LIVESTOCK MKT, INC.

Special Calf & Yearling

Tuesday, Nov 28 - 11am

80 bbwf hfrs 700lbs - Gabe Chiarottino (pot load)
80 bbwf hfrs 700lbs - Nolan Miller (pot load)
75 bbwf hfrs 650lbs - Joseph Lolli (pot load)
70 bbwf str 700lbs - Carl Emmerich (pot load)
200 Fancy Blk Angus hfrs 725lbs - Drew Lock (selling in load lots)

For updated listings  visit our cattle page

200 bbwf str/hfrs 5-700lbs - Jim Reynolds
110 bbwf str/hfrs 575-750lbs - Thomas Bros.
80 bbwf str/hfrs 5-800lbs - Ralph Meissen
80 bbwf str/hfrs 5-700lbs - Kolby Bailey
55 bbwf str/hfrs 7-800lbs - Chris Wise
50 bbwf str/hfrs 5-700lbs - Tamera Moore
40 bbwf str/hfrs 5-600lbs - Lendal Arnold
25 bbwf str/hfrs 450-550lbs - David Hayhurst
25 bbwf str/hfrs 4-650lbs - Wayne Halter
20 bbwf str/hfrs 6-700lbs - Ed Putnam

This is only a partial listing, many more by sale date.

Cafe Open **Lolli Livestock Market, Inc.** Cafe Open
704 Main st • Macon, MO • 660-385-2516 www.lollibros.com
Frankie 660-651-4040 • Tim 660-651-3496 • Joseph 660-346-9711
Jordan 660-346-0410 • Cody 660-676-9392 Cattle accepted on Sundays

REQUEST FOR BIDS

Adair County is seeking bids from qualified vendors to propose managed IT services for the county. The County Commission is accepting proposals for equipment services to meet the needs of the County. All offices of the County are participating in this RFP except the Adair County Sheriff's Office. The bidder should propose a 36-month services agreement with maintenance and support included.

It is desired that the bidder also provide an option for a technology refresh and support for three additional years after the end of the initial contract period. This option will be exercised at the sole option of the County if a mutually acceptable price/performance agreement is reached. The County's current IT environment consists of 7 Windows Servers and 55 Windows 10 systems (40 desktops & 15 laptops), 5 managed Network Devices (router switches) and 3 firewalls.

Additional Bid Comments

The bid must include the following to be considered complete:

- Bid Summary
- Terms
- Breakdown of price per hour

All bids must be returned by: December 11, 2023 by 4:00 p.m.. Bids will be opened in the Commissioners' office at a date and time to be determined by the Commission.

RETURN BIDS TO:
Adair County Clerk
Sandy Collop
106 W. Washington
Kirksville, MO 63501
scollop@adaircorno.com
Bids may be mailed or emailed.

Refer all bid inquiries to:
Adair County Commissioners Monday-Wednesday
106 W. Washington
Kirksville, MO 63501
660-665-2283
mshahan@adaircorno.com
Do Not Send Bids to the Commission Office
All questions are due 11-30-23 at noon.

The County of Adair hereby notifies all bidders that it will affirmatively ensure that in any contract entered into pursuant to this advertisement, businesses owned and controlled by the socially and economically disadvantaged individuals will be afforded full opportunity to submit bids in response to this invitation and will not be discriminated against on the grounds of race, color, religion, creed, sex, age, ancestry, or nation origin in consideration for an award. Special Needs: If you have special needs addressed by the Americans with Disabilities Act, please contact the County Clerk's Office at 660-665-3350 at least 5 working days prior to the bid opening you plan to attend. The contract, if awarded, will be awarded to the responsive, compliant, and responsible bidder whose bid submission complies with stated statute and County bid policy. Each contractor will need to supply a W-9 for tax purposes. If you have any questions, feel free to contract the County Clerk, at 660-665-3350.

Connections Bank
 Member FDIC
 ConnectionsBank.com
 2817 N. Baltimore St
 Kirksville, MO 63501
 660-665-7703

THE BENSON LAW FIRM LLC
 Work Comp • **INJURY** • Criminal
 JAY BENSON
 POLLY PETREE HAMPTON
 QUINN BENSON
 BensonLawFirm.com 660-627-0111

Need a bigger yard?
VICKI & RE/MAX HOME TEAM
 111 S. BALTIMORE SUITE A | KIRKSVILLE, MO 63501 | 660.665.8100
VICKIBENSON.NET

THINKING OF SELLING?
Heritage House Realty, Inc.
 CALL US TODAY!
 660-665-5638
 KirksvilleRealEstate.com

LOVEGREEN
 GOLOVEGREEN.COM
 Ford Dodge Jeep

MISSOURI FARM BUREAU INSURANCE
 Chris Clark,
 Licensed Sales Associate
 Email: chris.clark@mofb.com
 Website: www.mofbinsurance.com
 AUTO HOME LIFE
 Clark Agency: 115 W. Potter. Kirksville, MO • (660) 665-1956

Bellacino's Pizza & Grinders
ORDER ONLINE
 WWW.BELLACINOS.COM
 GRINDERS • PIZZA • SALADS
 WINGS • FRIES • AND MORE!
GET OUR NEW APP!
 516 N BALTIMORE ST.
 660-665-7665

WIN	KIRKSVILLE, HS	LOSS	WIN	KNOX COUNTY, HS	LOSS
5		6	2		9
42	CHILlicothe	26	42	KNOX COUNTY	78
42	SAVANNAH	0	56	BISHOP LEBLOND	22
6	KIRKSVILLE	35	76	KNOX COUNTY	80
28	KIRKSVILLE	10	80	NORTH SHELBY	34
53	HANNIBAL	0	52	KNOX COUNTY	44
24	KIRKSVILLE	13	46	NORTHWEST	30
7	FULTON	44	46	SLATER	26
20	KIRKSVILLE	35	95	BRAYMER	50
11 MAN CLASS 4 DISTRICT 8 TOURNAMENT			8 MAN CLASS 1 DISTRICT 8 TOURNAMENT		
28	KIRKSVILLE	13	50	KNOX COUNTY	36
49	SMITHVILLE	8	72	SCHUYLER CO.	20

DAVIS-PLAYLE-HUDSON-RIMER FUNERAL HOME & CREMATORY
 2100 E. Shepherd Ave
 Kirksville, MO 63501
 660-665-2233
 www.davisplaylehudsonrimer.com

Chad Q Davis
 Agent
 In Kirksville & Edina
 111 W. Jefferson Kirksville, MO 63501
 106 E Reid St Edina, MO 63537

State Farm
 Chad Davis, Agent
 Call or Text
 660-665-6668
 www.chaddavisinsurance.com

WIN	SCHUYLER CO., HS	LOSS	WIN	MACON, HS	LOSS
8		3	0		10
60	SCHUYLER CO.	14	42	KIRKSVILLE	26
74	SCHUYLER CO.	30	14	MACON	20
74	BRAYMER	56	51	CLARK COUNTY	0
32	SOUTHWEST	60	20	MACON	34
14	NORTHLAND C.	62	40	HIGHLAND	20
81	SCHUYLER CO.	42	34	BROOKFIELD	0
8 MAN CLASS 1 DISTRICT 8 TOURNAMENT			0		
N/A	SCHUYLER CO.	N/A	7	MACON	36
72	SCHUYLER CO.	20	42	CENTRALIA	0
56	SCHUYLER CO.	40	11 MAN CLASS 2 DISTRICT 8 TOURNAMENT		
70	WORTH CO.	16	49	MOBERLY	10

FOOTBALL SCOREBOARD

JK Tire & Auto
 Owners:
 Joe Dimmitt & Kelly O'Haver
 1102 N Green St
 Kirksville, MO
 660.665.9017

Travis~Noe Funeral Home
 1008 Potter Avenue, Kirksville, MO
 660-665-1300
 Neil & Sherry Travis, Brian Noe, Brenton Travis

exp REALTY
 ELIZABETH GREGORY
 Realtor
 WWW.MISSOURIHOMEANDFARM.COM
 Innovative Real Estate for YOU!
 660.621.2136

NM SB NORTHEAST MISSOURI STATE BANK
 Kirksville Branch: 600 S Baltimore Kirksville, MO 660-665-6161
 La Plata Branch: 139 S Gex Street La Plata, MO 660-332-4317
 Member FDIC northeastmissouristatebank.com

ANew Realty Group, LLC
 Kim Keyes, Broker/Owner
 660.665.3277
 AnewRealtyGroupLLC.com
 511 S. Baltimore St., Suite 8
 Kirksville, MO 63501

SHELTER INSURANCE
 AUTO • HOME • LIFE
 Shayne Thomas
 1515 Green St.
 Kirksville, MO 63501
 660-665-4685 (Call or Text)
 ShayneThomas@ShelterInsurance.com

21 CENTURY 21 Lifetime Realty
 1605 S Baltimore St, Suite A
 Kirksville, MO 63501
 660-665-5678
 www.C21Kirksville.com
 Each office is individually owned and operated.

COLTON'S Steak House & Grill
 We Know What's At Steak!
 1116 Country Club Drive • Kirksville, MO
 660-665-6336 • ColtonsSteakhouse.com

AUTO'S UNLIMITED
FEATURED VEHICLES
 2010 Ford Escape XLT
 Sunroof, Sirius satellite, loaded with equipment, excellent condition 20.5 MPG town 29 to 27 on Highway
 660-665-8149
 660-341-0965
 No Sunday Calls!
 17406 Bob Rd •
 Kirksville, MO
 ALL VEHICLES HAVE GONE THROUGH A 60 PT INSPECTION! STATE INSPECTED! CALL FOR MORE INFO!

ANTIOCH REPAIR
 SPECIALIZING in
 • Skid loaders
 • Ag Equipment
 • Construction Equipment
 Call us for all your attachment needs
Ethan Zimmerman • 660-299-0808

Skyline Service LLC
 Skid Steer and Construction Repair
 Levi Weiler
 660-346-6881 • 660-883-5525
 Scan Tool Diagnostics
 Exhaust After Treatment Repairs • SCR Unlocks
 Skid Steer Tracks Available

CELEBRATIONS PARTY RENTAL
 KIRKSVILLE, MO
 FOR RENT
 • Tables & Chairs
 • Tents • Bounce House
 • Cotton Candy Machine
 • & More!
 660-626-5162 or 660-665-9380

Have a smart phone or tablet?
 You can view current and past Nemo Trader issues online at
www.nemotrader.net

Central Metals Recycling LLC
 Buyers of Ferrous and Non-Ferrous Metals
 We Pay More \$\$\$, Call For Your Best Pricing Today!!
 11923 Hwy. 54 Mexico, MO 573-581-0336
 1601 N. 30th Quincy, IL 217-214-7649
 1175 Hwy. 96 Hamilton, IL 217-847-3191

\$699 DOWN
 on select vehicles*
 When you bring in 6 New, Unwrapped Toys.
 Minimum \$10 value for each toy. Toys will be donated to local Children's Hospitals.
 *On retail vehicles priced at \$16,999 or less. With approved credit. See dealer for details. This offer cannot be combined with any other promotional offer. Example: \$699 down. 182 weekly payments of \$7.42 per \$1000 financed at 18% APR. Interest rates may vary by state of purchase. Not all vehicles shown qualify for this promotion.

15th Annual HOLIDAY TOY DRIVE

AMERICA'S CAR-MART
 Keeping You on the Road
 car-mart.com

We Offer:

- Peace of Mind Package
- Service Contract Plus
- Accident Protection Plan
- 100% Satisfaction
- Pay Your Way
- Low Down Payments
- Quality Used Vehicles
- Flexible Financing
- Hand Selected Vehicles
- Convenient Payment Options
- Start Your Approval Online
- Over 150 Locations
- 42 Years in Business
- We Buy Cars

660-956-4849 • 2015 North Baltimore • Kirksville

2019 HYUNDAI KONA AWD, 4 Cyl., Gray	2008 CHEVROLET COBALT FWD, 4 Cyl., Silver	2012 MAZDA MAZDA 5 FWD, 4 Cyl., RED
2012 GMC ACADIA AWD, 6 Cyl., BLACK	2012 CHEVROLET IMPALA FWD, 6 Cyl., Maroon	2016 NISSAN ROGUE AWD, 4 Cyl., White
2007 HYUNDAI SANTA FE FWD, 6 Cyl., Blue	2014 FORD FLEX FWD, 6 Cyl., Gray	2014 FORD F150 4WD, 8 Cyl., White
2013 FORD F150 LARIAT 4WD, 8 Cyl., Brown	2017 FORD FIESTA FWD, 4 Cyl., White	2018 KIA SOUL FWD, 4 Cyl., Gray
2016 CHRYSLER 200, FWD, 4 Cyl., WHITE	2012 FORD F150 4WD, 6 Cyl., WHITE	2015 KIA SOUL FWD, 4 Cyl., WHITE
2014 FORD FOCUS, FWD, 4 Cyl., SILVER	2010 HYUNDAI ELANTRA FWD, 4 Cyl., SILVER	2014 FORD ESCAPE FWD, 4 Cyl., Silver

AMERICA'S CAR-MART
 Keeping You on the Road

KYLE JENNINGS
 GENERAL MANAGER



McAfee Auction Service, LLC
 375 S Johnson • Kahoka, MO
 660-727-3796
 www.mcafeeauctionservice.com

FALL FARM MACHINERY Consignment Auction

Timed
 Online
 Only
 Auction

Lots Start Closing at 10 am
Thursday, November 30th



Selling a nice selection of low houred loader tractors and other tractors, various tillage equipment, grain drills, grain handling equip., nice selection of rotary cutters, shortline equipment, forklift, livestock equip., lawn & garden equip., trucks, trailers, ATV's, UTV's, building products, massive amount of welding supplies, massive amount of electric motors, Snap-On tool box and tools, shop equipment, large collection of estate ag toys, chain saws and much much more

BID NOW! COMPLETE DETAILS ONLINE!



McAfee Auction Service, LLC
 375 S Johnson • Kahoka, MO
 660-727-3796
 www.mcafeeauctionservice.com

TIMED ONLINE ONLY FARMER RETIREMENT AUCTION

WEDNESDAY DEC 20TH
 LOTS START ENDING AT 10 AM

LOCATION: 30092 HWY Z, CANTON MO



SELLING A COMPLETE LINE OF FARM EQUIPMENT TO INCLUDE:

2011 JD 9770 STS 4WD Combine 2147 sep.; 3077 eng.; 2020 MacDon FD135 Drapper; 1997 JD 683 Corn Head; Head Carts; Tractors: 2008 JD 8430 MFWD 4469 hrs.; 2006 JD 7420 MFWD 3721hrs.; 1981 JD 4440 8887 hrs.; 2013 Kinze Planter; RoGator Sprayer; Road Tractors; Trucks; Trailers; Landoll 7431 VT 33'; Tillage Equip.; Ditcher; Scraper; GPS Equipment

COMPLETE DETAILS ONLINE!

OTTE FAMILY REVOCABLE INTER VIVOS TRUST
 EDWARD & DEBORAH OTTE, SELLERS



McAfee Auction Service, LLC
 375 S Johnson • Kahoka, MO
 660-727-3796
 www.mcafeeauctionservice.com

TIMED ONLINE ONLY EQUIP & PERSONAL PROPERTY ESTATE AUCTION

THURSDAY DEC 14TH
 LOTS START ENDING AT 10 AM

COMPLETE DETAILS ONLINE!

LOCATION: 47922 STATE HWY V RUTLEDGE, MO

PREVIEW: SATURDAY DEC 9TH 10AM - NOON



PERSONAL PROPERTY

ALSO SELLING: A lifetime accumulation to include: Amana Iowa Roll Top Desk, Bedroom Furniture, Antiques Furniture, (2) Sets Of Sterling Silver, Jewelry, Vintage Clocks, Grandfather Clock, Nice Selection of Flow Blue China, B/W Windmill China, Several Pieces Of Stoneware, Nice Selection Of Griswold Cast Iron, Vintage Sleigh Bells, Horse Drawn Sleigh, Vintage Pinball Machine, Shop Equip., Nice Selection Of Tools and Various Other Items

MARTIN O. GUINN FAMILY TRUST



McAfee Auction Service, LLC
 375 S Johnson • Kahoka, MO
 660-727-3796
 www.mcafeeauctionservice.com

Knox County, MO LAND AUCTION

Tuesday, Dec 19TH - 10 AM

Sale Conducted onsite (47922 State Hwy V Rutledge, MO)

63 +/- ACRES/ 2 TRACTS
 (Subject to Final Survey)

Lying in Sect. 15, Twp.63N, R10W, Knox Co. MO



OPEN HOUSE
 Sat, Dec 9th
 10am-Noon

MARTIN O. GUINN FAMILY TRUST

CONSIGNMENT AUCTION

DECEMBER 8th, 2023 | 9AM



NO RESERVE. | **Live ON-SITE!**

- 40+ Tractors
- 20+ Combines
- 40+ Headers
- 20+ Planting Equipment
- 20+ Hay Equipment
- 20+ Construction
- 30+ Tillage Equipment
- AND MUCH MORE!



FINANCING AVAILABLE



ED'S MACHINERY LLC
QUALITY MACHINERY SINCE 1997

CONTACT US:
660-628-4454
edsmachinery.com

ATTENTION LAND OWNERS!!
Buyer of standing timber
 Paying Cash Upfront!
 Owner/Operator of Sawmill
 • Buy/Cut Logs
 • Certified
 • Bonded
 • Insured

WE HAVE SEMI LOADS OF FIRE WOOD LOGS FOR SALE

Tri State Timber L.L.C.
 353 1/2 Grand Ave. • Memphis, Mo 63555
 660-341-4921 • 660-465-2975

LINNEUS FARM BUSH HOG® EQUIPMENT

130 E Smith, Linneus MO • 64653
 Call: 660-895-5163
 Monday-Friday 8-5, Saturday 8-?

New 7' Bush Hog BH217	\$5,650
New 12' Bush Hog 1812	\$17,775
New 15' Bush Hog 1815	\$20,750
New 15' Bush Hog 2815	\$27,400
New 15' Bush Hog 4115	\$28,000
New Bush Hog Tiller RTX92G	\$6,800
New Bale Unroller	\$1,550
New 24' Redline Harrow with Hydro Fold	\$9,225
New 30' Redline Harrows with Hydro Fold	\$10,100
New 10' Brown Box Scraper with Tilt	\$5,550
New 12' Brown Scraper without Tilt	\$5,000
New MBX84 Scrapers	\$2,150
New MBX96 Scraper	\$2,400

End of the year is upon us and we are loaded up with New Bush Hog Cutters



BH217, 1812's, 1815's, 2815's the NEW 4115 and 12820's coming any day.

#9 Used 15' Rhino 3150, 1000 RPM	\$13,750
Used 15' Schulte FX1800, 1000 RPM	\$12,500
#5 Used 15' Bush Hog 12715, 1000 RPM	\$14,000
#17 Used 15' Bush Hog 2615 L, 540 RPM	\$11,000

We Stock an Excellent Line of Parts!
 Find our full listing at www.linneusfarmequipment.com

ONLINE AUCTION

102 ACRES± IN PETTIS COUNTY, MISSOURI • SELLING IN 6 TRACTS



Location

ALL TRACTS: Part of 22527 Hwy 65, Sedalia, MO

Information

- TRACT 1:** Great short-term or long-term rental business opportunity! This 15.8+/- acres located on a busy state highway features 9 adorable newer cabins along with a 6 bedroom, 3 bath home perfect for manager's quarters or could be divided into duplex for more income. It also includes a nice 30'x40' workshop for storage, 5 RV lots, and a newer well house.
- TRACT 2:** Nice RV Park situated on 11+/- acres near the Missouri State Fairgrounds. Includes 21 RV sites (9 must be moved due to highway interchange improvements). You will also find two cute 2 bedroom cabins and a wash station with showers, washers and dryers. Room for expansion is provided by two 20'x26' footings and one 30'x44' footing. (If purchased separately from tract 1, the new owner will need to add a well and sewage hookup).
- TRACT 3:** Quiet RV Park on 19.5+/- pretty acres with 38 newer asphalt pads with power, water, and DNR-approved sewage system. (If purchased separately from tract 1, the new owner will need to add a well).
- TRACT 4:** This gorgeous 35+/- acres features an outstanding, totally renovated 12-suite bed & breakfast with lots of class and charm. Each beautiful suite has its ensuite private bath. On this fantastic property, you will also find a relaxing inground saltwater pool with a gazebo. This private and peaceful setting provides a prime wedding location with the lovely little chapel and a newly constructed 8,000 sq. ft. event venue, complete with a full kitchen/bar and an upstairs loft area with separate dressing suites perfect for a wedding party.
- TRACT 5:** Beautiful partially wooded 5.85+/- acres on a blacktop road only minutes to town. Great location for your dream home.
- TRACT 6:** Mostly wooded 20+/- acres on a blacktop road only minutes to town with many possibilities.

BID ONLINE

NOV. 21-DEC. 05, 2023

BIDDING ENDS AT 1 P.M. CDT

Get a salebill, register and bid at www.bigiron.com

Attend the Auction

Tuesday, December 5, 2023

9 a.m. CST until bidding ends

Best Western

3120 S Limit Ave | Sedalia, MO 65301

Seller:

Happy Acres, LLC

Contact Your Agent:

ARLYN SWARTZENTRUBER

Real Estate Sales Representative

660.287.2079

arlym.s@bigironrealty.com

BigIron REALTY

[EXPERTS IN SELLING LAND]

Information was obtained from sources deemed reliable, but broker makes no guarantees as to accuracy. All prospective buyers urged to fully inspect property and rely on their own conclusions. Copyright 2023 BigIron Realty. All rights reserved.

Connie's
MOBILE HOME TRANSPORT

We offer the following...
Break Downs • Transport • Set up • Anchoring

Call Rich today! 573-881-7483

Lick Creek
FENCING

Owen Miller
641-242-0346

Continuous Fence • Barb Wire
Woven Wire • Skid Work

- BUYERS AND SELLERS WANTED -
HAY AND FIREWOOD
AUCTION

November 24th at 10AM
Eversonville Produce Auction
21565 Hwy. KK, Chula, MO 64635

- SELLING -

- Large square alfalfa 3rd, 4th, 5th cuttings
- Large square oats alfalfa mix
- Large round grass
- Large round straw
- Small square straw
- Several loads of firewood

COMMISSION 7%

- CALL TO CONSIGN -

Kevin Zimmerman 660-659-2016 Manager
Lance Croy 816-284-2140 Auctioneer

RYE CREEK WELDING & REPAIR LLC



Machinist, Steel Sales, Mig, Tig, Stick and aluminum welding
660-956-8282
19760 Rye Creek Rd
Novinger, MO 63559

Edina Livestock Sales
Edina, Missouri

Friday, November 24th
No Sale - Happy Thanksgiving!

Saturday, December 2nd
Kevin & Beth Annual Heifer Sale at 1:00 p.m.
150 Bred Heifers
130 3 Year Olds (40 BWF, 5 Red Angus, & 85 Blk)

Friday, December 8th
Special Feeder Calf Sale
800 head of Yearlings & new crop calves

Friday, December 15th
Special Cow Sale

To Consign For Any or All Sales or For Information Call:
Owner - Kevin Strange • Cell: 660-341-9974
Ryan Strange • Cell: 660-341-9721
Sale Barn: 660-397-9999

Field Reps:
Bill Tom Hall 660-342-5420 Mike Bronestine 660-341-9965
Jason Bichsel 660-216-0373 John Powell 660-341-1717

Pets & Supplies

2 male Border Collie puppies. Cat 246B skid steer, 1890 hours, \$25,500.00 or best offer. Kubota RTV 900 diesel side by side, \$7,500.00 or best offer.

Sports Equipment

Hunt in the dry Lazyman fiberglass deer blinds. Starting at \$1299.00. Four models to choose from. heinselmanfamilyfarms.com, 660-341-5692.

Wood & Accessories

Cut up saw mill firewood, \$20.00 pickup load. No Sunday business. 10 miles NE of Canton, MO. Ely S. Eicher, 26750 State Hwy E, Canton, MO 63435

REAL ESTATE RENTALS

Wanted

Older couple looking for deer hunting land to lease, 40 acres or more. Tim, 636-288-4050.

REAL ESTATE SALES

Mobile Homes For Sale

DISCOUNT NEW MOBILE HOME-Prices start at \$64,900 delivered and set up. 573-499-9993. columbiadiscounthomes.com.

NEW INVENTORY-\$59,900 Delivered and set up, Hurry! Call Adam 573-657-2176. amegamobilehomes.com

Tiny Homes Missouri franchise 573-881-7965.

BASEMENT READY TRUE MODS--in stock ready for delivery, 573-657-7040. chateauhomes.net

Recreational For Sale

Hunt in the dry Lazyman fiberglass deer blinds. Starting at \$1299.00. Four models to choose from. heinselmanfamilyfarms.com, 660-341-5692.

RECREATION

Motorcycles

WANTED TO BUY: Harley Davidson's, any year, any condition, cash money. Days 660-263-1356 or 660-537-0068

Wanted

WANTED TO BUY: Harley Davidson's, any year, any condition, cash money. Days 660-263-1356 or 660-537-0068

SERVICES

Chat/Dirt/Gravel

DIRT WORK All types of excavation, reclaiming overgrown fields, including CRP and WRP. Building site preparation, creating new trails and crossings, Food plot development and maintenance. Leveling and grading, wetland construction and maintenance. Pond and lake cleaning and construction. Call for quotes. 660-342-2701

Construction-Services

SPRAY FOAM INSTALLATION! We install open and closed cell spray foam. Strengthen your building and block drafts! Over 1 Million bd. ft. applied. Contact Lester at 641-208-7071, Spray Tek LLC 16302 192nd Street Bloomfield IA 52537

Home Services

Scott Huskey's Insulated Skirting Systems-keeps your home cooler in the summer-warmer in the winter-saves on utilities and looks great! Since 1972, 573-696-3468.

Lawn/Garden/Landscape

New 3 pt. tillers, heavy duty, gear driven, 7' to 12' starting at \$4,150. 660-874-4455.

Let us help you with all your advertising needs. Don't know what to say? Call us we can help! 660-665-8500.

TRANSPORTATION

Accessories-Transportation

2024 HP 84"X18" car hauler, 2' steel deck plate dove tail. 7000 pound gwwr, brakes both axles, break away system, 6 lug wheels, 8 ply tires, ramps, 7K dogleg jack, 2 5/16 coupler, spare tire mount. \$4,200.00. Accelerators since "1974", Kahoka, MO, 217-257-1385 anytime.

Automobiles

2000 white Ford F250, 2 wheel drive, 150,000 miles. 4 new tires, single cab. 6 6 0 - 3 4 1 - 5 0 4 8 or 660-956-2481.

Parts & Services

Wheels and tires, 2 - 235/70R15 on 15x8" Rally's, 5x4 3/4. 2 - 14" 214/70R14 with trim rings. For information call 573-248-6111.

Trucks, 4x4's, SUV's

1956 Ford Fairlane, 2 door, 302, 3 speed automatic, runs, drives, stops. Needs TLC. For information call 573-248-6111.

2014 Chevy 2500 HD 4x4 WT regular cab. 6.0 V8, gas, automatic, trailer package, new 10 ply tires, original window sticker, 142 mile area trade, rebuilt title. Bed has scratches and dents, serviced and inspected. Runs good, \$12,700.00. Accelerators since "1974", Kahoka, Mo. 660-727-3455, 217-257-1385 anytime.

NEMOTRADER.NET

FOR SALE
At Sired Angus Bulls,
14 & 18 Months Old.
Harold Trump
660-341-5730

ANGUS BULLS FOR SALE

Coon Angus Ranch

Outstanding selection of
14 month old bulls
1318 Shelby 169, Bethel, MO 63434
Russell 660-341-2705
Susan 660-341-5192
ruscatsol@gmail.com
www.coonangusranch.com

Premium Metal Roofing



A W Metal Inc.

Metal Roofing Headquarters
641-664-3990 • awmetal.net

The Ultimate Wood Heat.



CLASSIC EDGE
TITANIUM HDX
Outdoor Wood Furnace

- **More Comfort** - Thermostatically controlled wood heat.
- **Peace of Mind** - Keep the fire outside and eliminate the dangers associated with indoor wood heating.
- **Save Money** - Wood is a renewable, inexpensive and often free energy source.

Campen Heating & Air
Division of Kraus & Sons Inc.
Canton, MO 63435
573-288-8966
CentralBoiler.com

United Rentals
Kirksville

WE SELL

NEW & USED EQUIPMENT!

3008 N Baltimore, Kirksville, MO 63501
660.234.8488
UnitedRentals.com

Golden Grain Bins-Winter Discount

Grain Bins	Floors w/12" Supp. & Flashing
18'x18' 4,195bu. \$ 5,253	18'.....\$1,466 30'.....\$ 4,092
27'x21' 11,265bu. \$10,544	21'.....\$2,005 36'.....\$ 5,830
42'x24' 32,245bu. \$24,578	27'.....\$3,344 42'.....\$ 7,939

Golden Grain

GMLS Industries, Inc.
PH: 660-699-2179 or 620-983-2136
www.gmlsindustries.com



There's a better way to get noticed.

Keep life simple.
Take out an ad.

Have a smart phone or tablet? You can view current and past Nemo Trader issues online at www.nemotrader.net



Let us help you with all your advertising needs. Don't know what to say? Call us we can help! 660-665-8500.

LAKE SIDE TOWING & RECOVERY

24 hour local and long distance towing
75 Ton Rotator & Air Cushion Recovery
Now Serving from two locations
Kirkville, MO • Memphis, MO
Shop 660-883-5622
Cell 660-341-1252

NEW LOCATION IN KIRKVILLE



Accident Cleanup • Jump Starts • Unlocks • Fuel Delivery
www.lakesidetowingandrecoveryllc.com

FALL SALE UP TO 15% OFF

MILLER AG

CAR PORTS & BUILDINGS
6' to 100' wide clear span • Up to 25' tall walls
WWW.MILLERAG.NET
ARBELA, MO • 660-341-0929 • JOE MILLER

BARN RESTORATION

Specializing in Barn & Pole Barn Repair and Restoration




See more restorations!

WAGLER BUILDERS

(641) 777-5000 • john@waglerbuilders.com @waglerbuilders



Growing Together

HAPPY Thanksgiving

1 S. Lincoln St. Green City, MO 660-951-8430
701 N. Pearl St. Milan, MO 660-951-8432
3311 N. Baltimore Kirkville, MO 660-951-8431

www.farmbank.com

2023 Holiday Show!



SORRY! WRONG CHIMNEY!
Live onstage
Nov 29 - Dec 10, 2023

102 N Rubey Street Macon, MO 63552
www.maplesrep.com
2023 Tickets: \$36
2023 Students: \$25

2024 Season Tickets Onsale Now!

- || The Sound of Music ||
- || The Importance of Being Earnest ||
- || Lucky Stiff || Steel Magnolias ||
- || The Woman in Black ||
- || 'Tis The Season: A Maples Rep Holiday Celebration ||

SCHUYLER COUNTY, MISSOURI LAND AUCTION

VIRTUAL ONLINE
WED., NOVEMBER 29 @ 10:00 AM CST



91.1± Farm offered in 1 tract
TAXABLE ACRES

JANICE & BRYAN LITTLE

Land is located in Section 22, Glenwood Township, Schuyler County, MO approximately 1/2 mile south of Glenwood, MO or 2 1/2 miles west of Lancaster, MO to be sold in 1 tract.

This farm features productive tillable cropland with approximately 25 acres that recently came out of CRP. Tract also includes improved pastureland, a pond, as well as a mobile home and a very nice steel storage building.

TITLE WORK: PICKELL ABSTRACT CO.
115 S. FRANKLIN | KIRKVILLE, MO 63501 | (660) 665-8324
AUCTION MANAGER: JOHN PROBASCO (641) 856-7355

MERIT AUCTIONS

"Specializing in Farm Real Estate & Ag Equipment"

833.273.9300 | www.MeritAuctions.com | 444.000611

23RD ANNUAL TRUMP BRED HEIFER AUCTION

FRIDAY, NOVEMBER 24, 2023 | 1:00 PM




AUCTION TO BE HELD AT CARTHAGE LIVESTOCK, INC.
1300 WABASH AVE., CARTHAGE, IL, 62321

200 REPUTATION BRED HEIFERS

- 200 head of fancy Angus bred heifers: 60% confirmed AI'd to "Brickyard" with the balance bred natural service to performance tested registered calving ease Angus bulls that meet the Missouri Select Heifer criteria.
- The AI'd heifers are due to calve on January 24, 2024.
- The natural service-bred heifers will start calving on February 4th for approximately 55 days (A large majority will calve in Feb./March).
- Heifers will be sold in small, uniform lots.
- Complete and thorough vaccination program to include Cattle Master 4 + VL5 and Spirovac VL5. All heifers are callhoed vaccinated and have had their first round of Scour Guard shots.
- All heifers in this sale have been ultrasounded, tested free for BVD, CHV & eligible to go to any state.
- All heifers will carry a "Show Me Select" ear tag!
- For information on the "Show-Me-Select" program, contact Zac Erwin (660) 626-3891, University of Missouri Livestock Specialist

HAROLD & MARVIS TRUMP (660) 341-5730
BRYCE BURR (660) 216-7566 | KARLEE BURR (660) 956-5583

AUCTION MANAGERS:
CODY HOLST (217) 242-8747 | MICHAEL SULLIVAN (309) 333-0916

BigIron www.bigiron.com

SULLIVAN AUCTIONEERS www.sullivanauctioneers.com

MISSOURI LIVESTOCK SYMPOSIUM

William Matthew Middle School
1515 S Cottage Grove • Kirkville, MO
Friday, December 1, 2023 • 4 to 9 p.m.
Saturday, December 2, 2023 • 8 am to 4 pm

FRIDAY NIGHT KEYNOTE SPEAKER

Corbitt Wall

A commercial cattle manager and livestock market analyst for DV Auction, Wall is best known for his honest and insightful video market report Feeder Flash. Residing in Canyon, TX, Wall reports daily market information and shares commentary on the current livestock market environment.



Featuring nationally-known speakers covering timely topics



Dr. Ron Hanson
Professor Emeritus
University of Nebraska



Jamie Kurtz
NRCS State
Grasslands Specialist



Jim Greendyk
Horse Trainer
Rio Verde, Arizona




Wesley Tucker
MU Extension
Agribusiness Specialist




Jeff Christiansen
Cowdog Trainer
Millsap, Texas



Dr. David Brown
MU Extension Livestock
Specialist, Osceola, MO



Marty Gibbs
Texas A & M
San Angelo, Texas



Dr. Andrew Weaver
Extension Small Ruminant
Specialist, North Carolina

SCHEDULE OF EVENTS FOR FRIDAY, DECEMBER 1 (all events free)							
4 p.m. - Trade Show Doors Open				6 p.m. - FREE co-sponsored Beef Supper			
7:00 p.m.	Welcome - Andy Jackson, MC and Dr. Robert Webb, Superintendent, Kirkville R-III School District						
7:10 p.m.	Guest Welcomes - Dr. Chadwick Higgins, Interim Vice Chancellor Extension/Engagement, University of Missouri-Columbia and Jamie Kurtz, State Grassland Specialist, USDA-NRCS						
7:25 p.m.	Recognition of Important Guests						
7:30 p.m.	Recognition of Cover Photo Contest Winner						
7:40 p.m.	Recognition of Livestock Achievement Award - Dr. Mac Wilt, Paris, MO						
7:55 p.m.	Audrey Belfield, LaPlata, MO-1 st Runner Up Missouri State Fair Queen and Emma Harvey, Memphis, MO-Missouri Beef Queen						
8:05 p.m.	Keynote: Packer's Playbook, Corbitt Wall, Livestock Market Analyst for DV Auction						
SCHEDULE OF EVENTS FOR SATURDAY, DECEMBER 2 (all events free)							
Trade Show Open 8 a.m. - 4 p.m.				Coffee and Donuts provided by FCS Financial			
Trade Show Open 8 a.m. - 4 p.m.							
BEEF CATTLE	FORAGES	HCRES	SHEEP	MEAT GOATS	NUTRITION / STOCK DOGS	AROUND THE FARM AND HOME	FARM MANAGEMENT / MORE BEEF
9 a.m.	How the "Red Solo Cup Cow" Can Improve Your Bottom Line, Steve Campbell, Taylor Made Beef, Parma, ID	Do Native Grasses Fit in Your Operation, Jamie Kurtz, State Grasslands Specialist, NRCS	Why Isn't My Horse Progressing in Training, Part 1, Jim Greendyk, Scottsdale, AZ	Most Recent Methods for Parasite Control, Dr. Mohan Acharya, Jefferson University, Jefferson City, MO	The Role of Condensed Tannins in Goat Nutrition, Dr. David Brown, MU Extension Livestock Specialist, Osceola, MO	Dog Selection and Puppy Evaluation, Jeff Christiansen, Millsap, TX	Small to Mid-size Poultry Producers: Challenges and Solutions, Dr. Ron Hanson, MU Extension Agribusiness Specialist, Bolivar, MO
10 a.m.	Buller Proofing Your Beef Operation, Dr. Joe Homer, State Extension Ag Economics Specialist, MU	Alternative Strategies for Extending the Grazing Season, Dr. Harley Naumann, Forage & Grazing Mgmt. Specialist, MU	Why Isn't My Horse Progressing in Training, Part 2, Jim Greendyk, Scottsdale, AZ	Bringing the Next Generation Back to the Farm, David Boatright, Sedalia, MO	Successful 4-H & FFA Goat Projects, Marty Gibbs, Texas A & M, San Angelo, TX	Know Your Beef: A Guide to Wholesale Beef, Missouri Beef Industry Council	Honey Bees in the Ag Landscape: What Can We Do to Support Bees? Randall Cass, Iowa State Univ. Gardening
11 a.m.	Which Has Risen Faster - Cattle Prices or Cost of Production? Wesley Tucker, MU Extension Agribusiness Specialist, Bolivar, MO	Do You Want to Sign the Front or the Back of the Check? David Boatright, Sedalia, MO	Wounds and Septic Joints, Megan McCracken, DVM, Assistant Equine Teaching Professor, MU	Multispecies Grazing Diversifying with Sheep, Dr. David Brown, MU Extension Livestock Specialist	Opportunities for Goat Herd Genetic Improvement, Dr. Andrew Weaver, MU Extension Small Ruminant Specialist, NC State University	Beef up the Holidays with the Missouri Beef Industry Council	Avoiding Mistakes of a Farm Succession Train Wreck, Dr. Ron Hanson, Professor Emeritus, Univ. of Nebraska
12 - 2 p.m. - Free Governor's Style Luncheon Hosted by Missouri's finest commodity groups and co-sponsored by your Missouri Department of Agriculture							
2 p.m.	How to Feed Cows With No Feed, Dr. Eric Bailey, State Extension Beef Specialist, MU	Options for \$5,000 Per Acre Pasture, Wesley Tucker, MU Extension Agribusiness Specialist	Advanced Lameness Diagnosis, Megan McCracken, DVM, MU	Successful 4-H & FFA Sheep Projects, Marty Gibbs, District Extension Administrator, Texas A & M	Nutritional Considerations for Improved Herd Performance, Dr. Andrew Weaver, NC State University	Training of the Stock Dog, Jeff Christiansen, Millsap, TX	Make and Take a Holiday Floral Arrangement, Jennifer Schutter, MU Extension Field Specialist in Horticulture, Kirkville, MO
3 p.m.	Deworming Strategies and Liver Fluke Control, Chris Perry, DVM, Bethel, MO	Producer Panel, Dr. Harley Naumann, moderator, David Otte, David Boatright, and Jamie Kurtz, panel members	What Is the Judge Looking For? Jim Greendyk, Scottsdale, AZ	Selection Strategies for Flock Genetic Improvement, Dr. Andrew Weaver, NC State Univ.	Most Recent Methods for Parasite Control, Dr. Mohan Acharya, Lincoln University, Jefferson City, MO	How to Properly Use the Stock Dog, Jeff Christiansen, Millsap, TX	White Oak, Whiskey & Wine, Dr. Hank Stelzer, MU Extension State Forestry Specialist, Columbia, MO

- It's all FREE! No cost to attend! No registration needed!
- Nationally-known speakers covering timely topics on livestock production and more!
- FREE Trade Show!

Find more information missourilivestock.com
660-665-9866

Sea-Bar Farms

MACON COUNTY LAND AUCTION

241 ACRES • 3 Tracts



November 30th, 2023 - 6pm
Comfort Inn Macon, MO



Call David Wilt 660-676-2331 for specific farm questions or go to
www.northmoland.com

SCOTTY'S AUCTION SERVICE

573-356-4405

Auctioneer: Scott Kuntz

SEE MORE PHOTOS ON SCOTTY'S WEBSITE

WWW.SCOTTYSAUCTIONSERVICE.COM

Shelbina Spacious Ranch Home and Personal Property Auction

Thursday, November 30, 2023 at 4:00 p.m.
Pam Hartgrove

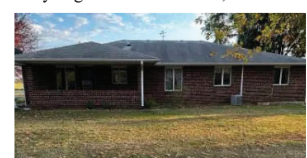


102 East Shelbina Street, Shelbina, Missouri.
Directions: From US Highway 36, follow Highway 15 (South Center Street/East Shelbina Street) for approximately 1 mile to the auction location. Watch for signs.

REAL ESTATE: This brick, 3 bedroom, 2 bath home on a 0.92 acre more or less lot, would make a great family home. It has a large living room, large eat-in kitchen, dining room, utility room, plenty of storage, an oversized 2 car, attached garage, covered, concrete front porch, covered concrete back porch and a full, unfinished basement. The home has hot water heat, central air conditioning, newer Rheem hot water heater and includes a Gen Aire range; Whirlpool oven, Whirlpool refrigerator; Kitchenaid trash compactor, Whirlpool dishwasher and an outbuilding with concrete floor. The lot has a park-like setting and is conveniently located in the quiet town of Shelbina, Missouri.. Please call Scotty at 573-356-4405 to schedule your personal showing. The home will be open for viewing beginning at 3:00 p.m. the day of the auction.

HOUSEHOLD ITEMS: tv stand; oak style end table; computer desk; full size bed; dresser with mirror; full size bed; oak style end table; knotty pine dining room table with 6 chairs; Whirlpool washer; Whirlpool dryer; GE microwave; Bissell steamer; Hoover vacuum; Nesco slow cooker; Richmond gas 40 gallon hot water heater; childs chest of drawers; metal shelving; miscellaneous kitchenware

ANTIQUES AND COLLECTIBLES: Peary grandfather clock; chenille



Semi-Annual Consignment Auction

Saturday, December 2, 2023 at 10:00 a.m.
Multiple Consignors-NO small items accepted without pre-approval

28251 US Highway 63 North, Macon, Missouri. Direction: From US Highway 36 travel approximately 2 miles North of Macon to Scotty's Auction Barn and Event Center on the West side of the highway.

We will accept consignments beginning Monday, November 6th
Consignments WILL NOT be accepted after 3:00 p.m. on November 29th
Consignments must be checked in with Scotty's personnel.

Bucklin Land Auction

Thursday, December 7, 2023 at 5:00 p.m.
Joel L & Juda Brame and Bernard H & Constance Sheer Revocable Trust

Directions: From US Highway 36, turn North on 129 at Bucklin for 8.8 miles, turn West for 0.8 miles on Mabry Road to the farm. Watch for signs.

REAL ESTATE: We will be selling at auction this 181 acres of mostly tillable ground located in Linn County Missouri. The property offers income potential with draws and ravines offering excellent deer and turkey habitat. Please call Scotty at 573-356-4405 to schedule your personal showing.



DOWN PAYMENT: 10% of the contract purchase price will be due upon acceptance of the Sales Contract. Personal or Cashier's Checks will be accepted. This is "AS IS, WHERE IS" and is non-refundable. CLOSING: Closing shall be within 30 days of the auction date.

Judd Motors

Call 660-457-3700
Hwy 63 North, Lancaster, MO

- 2017 FORD F250 XLT**,..... ONLY **\$19,900**
crew cab, 4x4, 6.2L gas, red, 246K miles, excellent cond,
- IH 574 tractor**,..... ONLY **\$9,995**
gas, 60 hp, with IH 2250 loader, PTO, 3 pt, runs great,
- 2011 Grand Jeep Cherokee** **\$11,250**
4WD, 4WD, V6, heated leather, sunroof, dark blue, 113K,
- 2016 Ford Explorer XLT** ONLY **\$17,900**
4wd, V6, 3 row, silver, only 88k miles, very nice
- 1998 Chevy 1500** only **\$4,250**
ext cab, good shape, 4x4, 183k, green
- 2007-14 Chevy pickup** box, red only **\$1,250**
- 2012 Chevy Impala LT** only **\$9,995**
sunroof, only 96K miles, charcoal
- 2013 Toyota Sienna Van XLE** only **\$23,900**
leather, sunroof, 79K miles, charcoal, Like New



Cumberland Building Dealer

www.juddmotors.com | In Business Over 75 Years
Curly and Kevin Judd

VICTORY

Metals & Recycling

KIRKSVILLE, MO
660-665-8000

For current scrap prices call or visit our **Facebook Page**
victorymetalsrecycling.com



★ **METAL RECYCLING**
RECYCLE YOUR SCRAP METAL WITH US! WE PAY CASH FOR: COPPER, ALUMINUM, STEEL, STAINLESS STEEL, APPLIANCES, E-SCRAP, BRASS, LEAD, RADIATORS, ALTERNATORS, BATTERIES, STARTERS, ELECTRIC MOTORS, APPLIANCES, & VEHICLES (TITLE & ID REQUIRED).

★ **ROLL-OFF CONTAINER**
10-20-30-40 CUBIC YARD DUMPSTERS

3602 INDUSTRIAL RD. • KIRKSVILLE, MO 63501
DJANESVMR@GMAIL.COM
VICTORYMETALSRECYCLING.COM

DEALER AND FARMER MACHINERY AUCTION

FRIDAY, DECEMBER 15, 2023 • 10 AM
AUCTION LOCATION: WHEELER AUCTIONS PROPERTY
111 BUCHANAN ST. CARTHAGE, IL 62321

CONSIGNMENTS FROM MULTIPLE JOHN DEERE AND CASE IH DEALERS
CONSIGNMENTS FROM LOCAL FARMERS!

TO CONSIGN PLEASE CONTACT KIRBY FECHT 217-248-2906
ADVERTISING DEADLINE WILL BE MONDAY, NOVEMBER 27, 2023

LIVE ON-SITE BIDDING WITH ONLINE BIDDING

Online Bidding Provided By **Equipmentfacts**

For more information Kirby Fecht | 217-248-2906 or Wheeler Auctions 660-327-5890.

Wheeler AUCTIONS & REAL ESTATE

23101 HWY. 24, PARIS, MO 65275 | 660-327-5890
WWW.WHEELERAUCTIONS.COM

Illinois Auction Firm License #444000408

WE ARE PUBLISHING THE **NEMO** ON **WEDNESDAYS** **NEW DEADLINE** will be **THURSDAY** by **5PM**

705 E. Laharpe Street Ste. F • Kirksville, MO 63501 • 660-665-8500 • sales@nemotrader.net