

# NEMO Trader

**THE NEMO TRADER**

PO BOX 809 • KIRKSVILLE, MO 63501 • PHONE 660-665-8500

Web Site: [nemotrader.net](http://nemotrader.net) • Email: [sales@nemotrader.net](mailto:sales@nemotrader.net)

**FREE**

A WEEKLY ADVERTISER SERVING ALL OF NORTHEAST MISSOURI AND THE SURROUNDING AREA

**SATURDAY DECEMBER 2ND @ 2PM**  
(REALESTATE AUCTION ONLY)  
3 Bedroom Home, with garage & half basement.  
Lots 4, 5, & 6

**Sparks AUCTION**  
573-406-8787  
EST. 1985

106 W. Jefferson  
Monticello, MO

To view home contact:  
Jesse Sparks at 573-406-8787

**exp REALTY**

ELIZABETH GREGORY  
*Realtor*

WWW.MISSOURIHOMEANDFARM.COM

Innovative Real Estate for YOU!

**660.621.2136**

**Signature**

Overhead Doors & Remodeling, LLC

**660-785-0248**

[www.signatureremodelingkv.com](http://www.signatureremodelingkv.com)

*Giving your home the attention it deserves!*

**YODER'S**

**Beef & Pork processing**

**PORK • DEER • BEEF**

**QUALITY CUT PLUS**

- Patties
- Cure & Smoke
- Vacuum Seal
- Summer Sausage on Deer
- CWD Checking. (NOT available opening rifle day)
- Snack Sticks
- Jerky
- Fast Turnaround

**PROCESsing**

SCHEDULE YOURS TODAY

**660-486-3221**  
(Closed Sundays)

**13 Years Experience!**

13736 Beechnut Street, Ethel, MO 63539 | Don't have your own Animal to Process, No Problem, Call Us!

**LIME SPREADING SERVICE**

Equipped with variable rate

**PEAVLER TRUCKING LLC**

Alan Peavler, 660-216-0618 - Jared Peavler, 660-342-7685

**SKULL CLEANING & WHITENING**

660-346-7611  
**JOSEPH HILTY**

DROP OFF AT: 36232 KAWAK AVE., EXCELO, MO  
BUCKRIDGE CUSTOM MEATS

# BLACK FRIDAY

Come Celebrate **Small Business Saturday** and **Black Friday** With The Gun Grove in Macon, MO!

**Mystery SALE!**

**NOVEMBER 24th & 25th**



Walther PDP 9mm  
**\$100 OFF**



Taurus G2c 9mm  
**\$199**



.45 acp 1911s  
Starting at **\$399**



Aiming Thermal Scopes  
**\$500 OFF**



AR-15 Starting at **\$499**



Remington Thunderbolt 22LR 525rds  
**\$29.99**

Spend \$100 & Draw for Great Prizes Including:  
Targets, Gift Cards, Lights and Discounts up to **25% OFF ENTIRE PURCHASE!**

## The Gun Grove

Tue.-Fri. 10am-6pm & Sat. 10am-5pm  
708 Patton St - Macon, MO • 660-395-7400  
[www.gungrove.com](http://www.gungrove.com)

Watch our website and facebook for more deals [www.gungrove.com](http://www.gungrove.com)

**Buy 1 Get 1 Free**  
Black Rifle Coffee, Wigwam Socks, Ready Wise & Simple Kitchen

---

**Buy 2 Get 1 Free**  
Browning, Buck, Cobratec and Outdoor Edge Knives, Duke Cannon, Nebo Flashlights, Powder, Primers & Hats

---

**50% OFF**  
Warne and Alien Gear Holsters

---

**50% OFF**  
Cases, Slings & Cleaning with Long Gun Purchase

---

Sig Sauer Buckmasters Scopes  
**STARTING AT \$99**

---

**30% OFF**  
Howard Leight Hearing Protection

**AND MORE!**

**AGRI-BUSINESS**

**Cattle**

Neese Angus and Balancer bulls for sale. Ready for service. Conditioned to work! Rutledge, Missouri. 641-344-4565.

**Equipment & Supplies**

1973 International 966, 91 hp, low hours on engine, 18.4x34, dual hydraulics, 3 point, 540/1000 pto, flat tops, new batteries with 2250 loader quick attach bucket. Starts easy, runs good. \$11,500.00 Bale fork available. 217-257-1385.

2014 Krause 8000-30 Excelsior. Gang angle adjustment; hydraulic star wheels; flat bar reel. Blades 20.75" front, 21.00" back. Excellent machine. \$58,000 or make offer. Robert Lay, LaBelle, Mo. 660-341-5471.

1979 Chevy C70 grain truck, 74,000 miles, needs steel floor, works good, tires, Knapheide hoist, brakes work. \$1800.00. 573-719-4245

1983 F3 Gleaner 95 hp, rebuilt brakes, new foot clutch, Tight Walker good augers, 15 foot, needs a little work, 4 row 30" corn head. \$2500.00. 573-719-4245.

Call about our classified ad specials. 660-665-8500.

**Equipment & Supplies**

Vertical tillage GP 3000 turbo till II, wt kit, rolling harrow, rolling basket; Krause 30' disk; disk chisel. 217-658-4761.

DMI 4200 NH#, 14K, Raven CW monitor; DMI 13K Raven closing wheels monitor; JD 10' Disk, other equipment. 217-658-4761.

DMI 4300 NH3, 15k, Raven closing disk monitor; progressive 1300 NH3, 12K, dual no-till coulters Raven closing Markus monitor. 217-658-4761.

Landoll 7430 33' vertical tillage, tandem wheel, rolling basket, hydraulic for and aft; GP 1500 no till drill 15', 217-658-4761.

Oliver 1600 Diesel wide front starts great. \$6000.00 or best offer. Please call evenings, no Sunday Calls. 660-639-2207.

**Hay/Feed/Seed**

Big round grass hay net wrapped, first cutting, \$100.00 per bale. 573-406-2156.

Big round mixed hay, 1st and 2nd cuttings, lab tested and surface wrapped. Call for information. 660-341-4031. Watson Hay Sales, phone calls only.

Have Clutter? Need room? Call the NEMO classifieds. We can help! 660-665-8500.

**Hay/Feed/Seed**

Big square bales of wheat straw, \$60.00 per bale. Delivery Available. 660-956-3420.

Excellent quality Alfalfa hay for sale, big square bales. Also grass hay available. Delivery available. 660-956-3420.

Small square bales straw, \$4.00 a bale. Located in Leonard, Mo. 660-251-3444.

**Livestock**

Neese Angus and Balancer bulls for sale. Ready for service. Conditioned to work! Rutledge, Missouri. 641-344-4565.

**EMPLOYMENT**

**Transportation/Drivers**

???CDL License??? Fast and economical. Meets all ELDT requirements. 2 days training. You need a learners permit and ability to drive a manual. Jefferson City, Strafford, Willow Springs, Mo. Please call 573-353-2853 www.capitaltruckdrivinginstitute.com.

**MERCHANDISE**

**Antiques & Collectibles**

MJ Hummel plates and figurines from the 1980's in original boxes. Cash only. Memphis, Mo. 660-216-0038.

**Antiques & Collectibles**

Farm and construction and Tonka toys. Rare to sand-box, 1/16 scale mostly. Cash only, Memphis, Mo. 660-346-0438.

**Building Supplies**

Billboard Tarps, assorted sizes, mostly 14'x48', \$35.00 each. Raymond Kauffman, 25624 Hanover Street, LaPlata, Mo 63549.

**Miscellaneous**

Fresh local cooked sorghum, 3 miles West LaPlata, 156, 1/2 mile South Iceberg, 1/2 mile West Hanover Street, Raymond Kauffman.

Need something? Let us help you. You can advertise that you are looking for a special item. Call 660-665-8500 for more information.

**Pets & Supplies**

Registered adult female Pomsy, 9 month old male Pomsy, dob 12/20/22. All shots. Text for pictures. 660-341-5141.

2 male Border Collie puppies. Cat 246B skid steer, 1890 hours, \$25,500.00 or best offer. Kubota RTV 900 diesel side by side, \$7,500.00 or best offer.

Golden Retriever puppies, AKC, \$400.00, 5-way shot, ready December 9. Reserve yours now. Please call evenings, no Sunday Calls. 660-639-2207.

Registered Pomeranian puppies, dob 8/20, 8 weeks, 1st shots and wormed. 2 males, 1 female. 2 male Pomsy Poms, not registered. 660-341-5141.

BE AN EARLY BIRD! Place your ads before Monday and beat the rush!

**Sports Equipment**

Hunt in the dry Lazyman fiberglass deer blinds. Starting at \$1299.00. Four models to choose from. heindselmanfamilyfarms.com, 660-341-5692.

**REAL ESTATE RENTALS**

**Wanted**

Older couple looking for deer hunting land to lease, 40 acres or more. Tim, 636-288-4050.


**REAL ESTATE SALES**

**Mobile Homes For Sale**

DISCOUNT NEW MOBILE HOME-Prices start at \$64,900 delivered and set up. 573-499-9993. columbiadiscounthomes.com.

NEW INVENTORY-\$59,900 Delivered and set up, Hurry! Call Adam 573-657-2176. amegamobilehomes.com

**WE GOT YOUR NEEDS COVERED!**



**FARM TARPS      TRUCK TARPS**  
**HOOP BUILDING COVERS**

*Troyer*  
**TARP MFG.**

**660-486-3301**  
**20264 STATE HWY. VV • ETHEL, MO 63539**

**ANIMAL HOUSING HAY STORAGE & MUCH MORE**





**Skylight FABRIC STRUCTURES**

30697 COLONY AVE. • NEW CAMBRIA, MO 63558  
**660-486-3250 • 833-482-8862**

**SCOTTY'S AUCTION SERVICE**

**573-356-4405**

**Auctioneer: Scott Kuntz**

**SEE MORE PHOTOS ON SCOTTY'S WEBSITE**

**WWW.SCOTTYSAUCTIONSERVICE.COM**

**Macon Investment Real Estate Auction**

**Friday, November 17, 2023 at 5:00 p.m.**

**John J and Bonnie Bruno**

201-205 Weller Street, Macon, Missouri.

Directions: Follow US Highway 63 South of US Highway 36 for approximately 0.2 miles, turn West on Weller Street for approximately 0.1 miles to the auction location. Watch for signs.

REAL ESTATE: We will be selling at auction this 1.92 acre more or less lot in Macon. The lot has two residences, one which is occupied, and three storage buildings. It could be used for rental income as it is or more structures could be added for additional income. The property lies mostly flat and can be accessed from Weller Street, a quiet, dead end street or from Briggs Drive which is a busy thoroughfare. It has excellent frontage and is located near the intersection of US Highway 36 and US Highway 63. This would be a great business opportunity. Please call Scotty at 573-356-4405 to schedule your personal showing.






**Shelbina Spacious Ranch Home and Personal Property Auction**

**Thursday, November 30, 2023 at 4:00 p.m.**

**Pam Hartgrove**

102 East Shelbina Street, Shelbina, Missouri.

Directions: From US Highway 36, follow Highway 15 (South Center Street/East Shelbina Street) for approximately 1 mile to the auction location. Watch for signs.

REAL ESTATE: This brick, 3 bedroom, 2 bath home on a 0.92 acre more or less lot, would make a great family home. It has a large living room, large eat-in kitchen, dining room, utility room, plenty of storage, an oversized 2 car, attached garage, covered, concrete front porch, covered concrete back porch and a full, unfinished basement. The home has hot water heat, central air conditioning, newer Rheem hot water heater and includes a Gen Aire range; Whirlpool oven, Whirlpool refrigerator; Kitchenaid trash compactor, Whirlpool dishwasher and an outbuilding with concrete floor. The lot has a park-like setting and is conveniently located in the quiet town of Shelbina, Missouri. Please call Scotty at 573-356-4405 to schedule your personal showing. The home will be open for viewing beginning at 3:00 p.m. the day of the auction.

HOUSEHOLD ITEMS: tv stand; oak style end table; computer desk; full size bed; dresser with mirror; full size bed; oak style end table; knotty pine dining room table with 6 chairs; Whirlpool washer; Whirlpool dryer; GE microwave; Bissell steamer; Hoover vacuum; Nesco slow cooker; Richmond gas 40 gallon hot water heater; child's chest of drawers; metal shelving; miscellaneous kitchenware

bedspread; Christmas decor; vintage glider; concrete birdbath; small vintage blow mold Santa Clause approx. 12" tall; various antique tables, some need repair; antique chest of drawers; parlor stove; decorative gates; kerosene lamp; wooden military foot locker; miscellaneous China; #6 crock; antique

ANTIQUES AND COLLECTIBLES: Peary grandfather clock; chenille






**Bucklin Land Auction**

**Thursday, December 7, 2023 at 5:00 p.m.**

**Joel L. & Juda Brame and Bernard H & Constance Sheer Revocable Trust**

Directions: From US Highway 36, turn North on 129 at Bucklin for 8.8 miles, turn West for 0.8 miles on Mabry Road to the farm. Watch for signs.

REAL ESTATE: We will be selling at auction this 181 acres of mostly tillable ground located in Linn County Missouri. The property offers income potential with draws and ravines offering excellent deer and turkey habitat. Please call Scotty at 573-356-4405 to schedule your personal showing.





**Semi-Annual Consignment Auction**

**Saturday, December 2, 2023 at 10:00 a.m.**

**Multiple Consignors-NO small items accepted without pre-approval**

28251 US Highway 63 North, Macon, Missouri. Direction: From US Highway 36 travel approximately 2 miles North of Macon to Scotty's Auction Barn and Event Center on the West side of the highway.

**We will accept consignments beginning Monday, November 6th**

Consignments WILL NOT be accepted after 3:00 p.m. on November 29th

Consignments must be checked in with Scotty's personnel.



DOWN PAYMENT: 10% of the contract purchase price will be due upon acceptance of the Sales Contract. Personal or Cashier's Checks will be accepted. This is "AS IS, WHERE IS" and is non-refundable. CLOSING: Closing shall be within 30 days of the auction date.

**Mobile Homes For Sale**

Tiny Homes Missouri franchise 573-881-7965.

BASEMENT READY TRUE MODS--in stock ready for delivery, 573-657-7040. chateauhomes.net

**Recreational For Sale**

Hunt in the dry Lazyman fiberglass deer blinds. Starting at \$1299.00. Four models to choose from. heindselmanfamilyfarms.com, 660-341-5692.

**RECREATION**

**Motorcycles**

WANTED TO BUY: Harley Davidson's, any year, any condition, cash money. Days 660-263-1356 or 660-537-0068

**Wanted**

WANTED TO BUY: Harley Davidson's, any year, any condition, cash money. Days 660-263-1356 or 660-537-0068

**SERVICES**

**Chat/Dirt/Gravel**

DIRT WORK All types of excavation, reclaiming overgrown fields, including CRP and WRP. Building site preparation, creating new trails and crossings, Food plot development and maintenance. Leveling and grading, wetland construction and maintenance. Pond and lake cleaning and construction. Call for quotes. 660-342-2701

Have a smart phone or tablet? You can view current and past Nemo Trader issues online at [www.nemotrader.net](http://www.nemotrader.net)



**ANGUS BULLS FOR SALE**

**Coon Angus Ranch**

Outstanding selection of 14 month old bulls

1318 Shelby 169, Bethel, MO 63434

Russell 660-341-2705  
Susan 660-341-5192  
ruscatsol@gmail.com  
www.coonangusranch.com



**The Ultimate Wood Heat.**



**CLASSIC EDGE**  
TITANIUM HDX  
Outdoor Wood Furnace

- **More Comfort** - Thermostatically controlled wood heat.
- **Peace of Mind** - Keep the fire outside and eliminate the dangers associated with indoor wood heating.
- **Save Money** - Wood is a renewable, inexpensive and often free energy source.

**Campen Heating & Air**  
Division of Kraus & Sons Inc.  
Canton, MO 63435  
573-288-8966  
CentralBoiler.com

**Construction-Services**

SPRAY FOAM INSTALLATION! We install open and closed cell spray foam. Strengthen your building and block drafts! Over 1 Million bd. ft. applied. Contact Lester at 641-208-7071, Spray Tek LLC 16302 192nd Street Bloomfield IA 52537

Need something? Let us help you. You can advertise that you are looking for a special item. Call 660-665-8500 for more information.

**Home Services**


Scott Huskey's Insulated Skirting Systems-keeps your home cooler in the summer-warmer in the winter-saves on utilities and looks great! Since 1972, 573-696-3468.

**FOR SALE**  
AI Sired Angus Bulls,  
14 & 18 Months Old.  
Harold Trump  
660-341-5730

**VIRTUAL ONLINE**

**CLARK COUNTY, MISSOURI LAND AUCTION**

**MONDAY, NOVEMBER 20, 2023 AT 1:00 PM CT**



**250 ACRES± • 4 TRACTS**

- ✓ HIGHLY PRODUCTIVE TILLABLE CROPLAND!
- ✓ EXCELLENT NORTHEAST MISSOURI HUNTING!
- ✓ PRIME RURAL BUILDING SITES!
- ✓ BLACKTOP FRONTAGE!

The farm is located approximately 4.8 miles north of Williamstown, MO or 16 miles southwest of Kahoka, MO in Sections 1, 2, 11 & 12, T63N-R9W, Washington and Union Townships, Clark County, MO.

*Farm represents well-maintained, productive tillable cropland with recent terrace work completed, exceptional northeast Missouri whitetail deer & wild turkey hunting, prime rural building sites & CRP income.*

**EWING FARMS INC**

Representing Attorney: James Rapp  
Schmiedeskamp, Robertson, Neu & Mitchell, LLP  
525 Jersey St, Quincy, IL 62301 | (217) 223-3030

Title Company: Oak Hills Title Company  
309 Lewis St, Canton, MO 63435 | (573) 288-4462

Auction Managers: Louie Zinn (319) 795-2314 & Dan Sullivan (319) 795-1833

**BigIron** **SULLIVAN AUCTIONEERS**  
a BigIron company  
(844) 847-2161 | www.SullivanAuctioneers.com

**Small Animal Auction**

**Saturday, Nov. 25th, 2023**

To be held at the **SCHACHTELE BARN - KEYTESVILLE, MO**

From Hwy 24 at Keytesville, take Hwy 5 approx 4 miles to site w/ brown barn/green roof on the West side of the road, or from Hwy 36 at Marceline exit take Hwy 5 South, approx. 16 miles to site. Follow Auction signs!

**Starting @ 11:30 am**

We will start with Misc. Items Outside & Follow with Small Animals approximately 12:00 noon. Expecting Chickens, Geese, Ducks, Turkeys, Rabbits, Goats & Many Other Small Animals!

**We are NOT accepting any HOGS! All Out of state Animals to be Sold MUST Have Proper Health Papers!**

Lunch Served • Call for More Details!  
**Tony Schachtele 660-413-3250**

**We Appreciate All Consignments!**

Terms Cash - good Check with Proper ID  
We are NOT Responsible for Accidents to Man, Woman, Child, or Animal. We are NOT Responsible for Lost, Stolen, or Damaged Articles or Property.

**Judd Motors** Call 660-457-3700  
Hwy 63 North, Lancaster, MO

**2011 Grand Jeep Cherokee** ..... **\$11,250**  
4WD, 4WD, V6, heated leather, sunroof, dark blue, 113K,

**2013 Case 580N Loader Backhoe turbo** ..... **\$56,900**  
4WD, Cab, AC, Extendahoe, foot swing, air ride, cruise control, 18" bucket, flip pads, 1 owner, VERY NICE, only 1100 hours. **SOLD**

**2016 Ford Explorer XLT** ..... **ONLY \$17,900**  
4wd, V6, 3 row, silver, only 88k miles, very nice

**1998 Chevy 1500** ..... only **\$4,250**  
ext cab, good shape, 4x4, 183k, green


**2007-14 Chevy pickup box, red** ..... only **\$1,250**

**45 BALES** ..... **\$115 Each**  
GOOD CRP GRASS **SOLD** net wrap

**2012 Chevy Impala LT** ..... only **\$9,995**  
sunroof, only 96K miles, charcoal

**2013 Toyota Sienna Van XLE** ..... only **\$23,900**  
leather, sunroof, 79K miles, charcoal, Like New

**www.juddmotors.com** | In Business Over 75 Years  
Curly and Kevin Judd



**Scotland County, Missouri LAND AUCTION**

**62 ACRES M/L**

**1 tract**

**Francis Frazier Estate**  
26782 State Route RA  
Gorin, Missouri 63543

**Saturday, November 25, 2023 @ 10:00 A.M.**



All lines drawn on maps, photos, etc. are approximate and no liability for errors is assumed. Buyers should verify the information to their satisfaction. Real Estate is being sold as is!

We will hold an open house to view the property, on Saturday November 4, from 12:00 to 2:00 p.m.  
Land is generally located in section 16, Township 64, Range 10 West, Scotland County Mo.

From Gorin, Mo: Go East 1 mile on State Route U to State Route RA then South 1/2 mile to auction site Watch for signs!

**Terms of Real Estate:** Property will be sold on a price per acre basis. 10% of the bid price to be paid day of the auction, with the balance paid at closing on or around 30 days. Full possession will be given at time of closing. Closing and title work by Scotland County Abstract (660) 465-7052

**Property will sell at 12:00 noon - 62 acres m/l - Currently there are 20 acres in row crop and approx. 22 acres of hay ground with the balance in timber and draws. Improvements include a ranch style brick home with full basement, 3 bedrooms, 2 1/2 baths, kitchen, dining room, and living area with an open floor plan. This house was built in the late 1990s and was very well constructed. Home has a ground source heat pump and central air. Also on the property is a 30x48 garage/shop with 3 overhead doors and a 15' lean to on the back. It is insulated with ventless propane heaters. A 30x40 pole shed w/ concrete floor, work bench and shelving, 2 roll doors and 1 walk-thru Also 2 small out-buildings and a carport.**

This property is the total package with land, house, shop etc.!!! Be sure to check it out!

**Tractor - Machinery - RTV & Trailer**  
Ford 8N gas tractor, 3 pt PTO, like new tires  
2014 Polaris Ranger 4x4 570 EFI 166 hr.  
2015 Aluma 6810 trailer w/ fold down ramps  
3 pt brush cutter - 3 pt carryall frame  
3 pt landscaping rake - MF 39 3 pt disc 8' Servis E60 pull-type brush cutter

**Lawn - Garden & Toy cars**  
Dixon Kodiak ZTR commercial 50" cut mower - (2) lawn sweeps  
eMark E series Radius ultra cut 60" ZTR mower, 71 hr. like new  
Stihl weed eater - Craftsman 14" rear tine tiller - stepladders  
Craftsman 22" string trimmer - fishing poles & tackle  
Ryobi cordless chain saw w/ ext. - ATV sprayer - ATV seeder  
Garden tools - toy car collection and lots of trophies

**Household**  
Frigidaire refrigerator - Hotpoint refrigerator - chest freezer  
GE electric coil stove - butcher block rolling cart - stepstool  
Upright freezer - electric grillade - misc. household items  
Solid table w/leaves - (6) solid oak captain chairs on wheels  
La-Z-Boy maroon sofa w/ recliners - La-Z-Boy brown recliner  
4 pc. bedroom set - Lane cedar chest - several end tables  
Dresser w/ mirror - (2) chest of drawer - nightstand - fan  
Pool table w/ ping pong cover - space heater - several ice chests  
Magazine racks - Hoover sweeper - curio cabinet - stereos  
Display cabinet - folding chairs - ironing board - blender  
Roast pan - coffeepot - air fryer - toaster - knife set - Corelle  
Air mattress - golf clubs - several shelving units - Dutch oven  
Large collection of Gospel & Country CDs - older treadmill

**Shop Tools**  
Complete Lift automotive lift mod. 8,000 CSP XLT  
4 post automotivlift 8,000 lb. capacity - engine stand  
Clarke HD plus tool chest - 3 gal. port. air compressor  
Craftsman 10" table saw - Ridgid miter saw - Reddi heater  
Workmate400 - hand tools - jaw horse - organizer shelves  
Sand blaster and cabinet - Guardian power drill press  
Clarke 20 gal. parts washer - wood clamps - power tools  
Husky 2,600 psi power washer - 20 ton shop press  
Clarke mig 180 EN welder, on cart - floor jack - bench grinder  
GBC mod. TE6580V 80 gal. air compressor - air tools  
Handyman jack - comelongs - cargo carrier - gas jugs  
Lots of unlisted tools - receiver hitches - clevises  
Pressure washer - Stinger wet/dry vac - jack stands

**High Auction Service LLC** Downing Mo - Randy High 660.216.0515  
www.highauctionservice.com e-mail: highauctionservice@gmail.com  
Cash or check with proper ID. Not responsible for accidents or theft. Announcements day of the sale take precedence over any advertising. 701019jn

**VEHICLES & EQUIPMENT AUCTION**

**700+ ITEMS SELL NO RESERVE! WEDNESDAY, NOVEMBER 29**



**DQ1013** '19 Chevy Silverado  
2500HD Crew Cab pickup truck



**LB9555** '07 John Deere 325  
skid steer loader



**NP9088** '15 Dodge Ram  
5500HD bucket truck



**MG9487** '16 GMC Sierra  
3500HD Denali Crew Cab



**MQ9566** '21 Ford F250 Super  
Duty XLT Crew Cab pickup

**purple wave AUCTION**

**INVENTORY INCLUDES:** pickup trucks, skid steers, box trucks, toy hauler camper, flatbed trucks, service trucks, tractors, classic vehicles, SUVs, passenger vehicles, forklifts, delivery truck, campers, fuel truck and more. All items are sold "AS IS." 10% buyers premium applies.

**BID NOW! purplewave.com**

**DEALER AND FARMER MACHINERY AUCTION**

**FRIDAY, DECEMBER 15, 2023 • 10 AM**

**AUCTION LOCATION: WHEELER AUCTIONS PROPERTY**  
111 BUCHANAN ST. CARTHAGE, IL 62321

**CONSIGNMENTS FROM MULTIPLE JOHN DEERE AND CASE IH DEALERS CONSIGNMENTS FROM LOCAL FARMERS!**

**TO CONSIGN PLEASE CONTACT KIRBY FECHT 217-248-2906**  
**ADVERTISING DEADLINE WILL BE MONDAY, NOVEMBER 27, 2023**

**LIVE ON-SITE BIDDING WITH ONLINE BIDDING**

**WHEELER LIVE** ONLINE BIDDING PLATFORM **BID NOW** Online Bidding Provided By **Equipmentfacts**

For more information  
Kirby Fecht | 217-248-2906  
or Wheeler Auctions  
660-327-5890.

**Wheeler AUCTIONS & REAL ESTATE**  
23101 HWY. 24, PARIS, MO 65275 | 660-327-5890  
WWW.WHEELERAUCTIONS.COM

Illinois Auction Firm License #444000408

**Lawn/Garden/Landscape**

New 3 pt. tillers, heavy duty, gear driven, 7' to 12' starting at \$4,150. 660-874-4455.

**TRANSPORTATION**

**Accessories-Transportation**

2024 HP 84" 16' plus 2' steel deck plate dove tail. 7000 pound gvwr, brakes both axles, 6 lug wheels, 8 ply tires, ramps, 7K dogleg jack, 2 5/16 coupler, spare tire mount. \$4,200.00. 217-257-1385.

Please place your classified ads on the NEMO website. Our web address is nemotrader.net

**TRANSPORTATION**

**Automobiles**

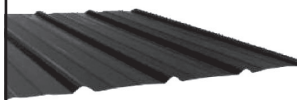
2000 white Ford F250, 2 wheel drive, 150,000 miles. 4 new tires, single cab. 660-341-5048 or 660-956-2481.

**SPACE AVAILABLE**

Ask about our affordable advertising rates to fit any budget!



**Premium Metal Roofing**



**AW Metal Inc.**

**Metal Roofing Headquarters**

641-664-3990 • awmetal.net

**LUTTRULL FAMILY FARMING**  
**EXPERIENCED FARM FAMILY LOOKING FOR ROW CROP ACREAGE TO RENT**

PLEASE CONTACT  
 BRENT: 660-341-1561  
 KATY: 660-341-1318

*Sea-Bar Farms*  
**LAND AUCTION**  
**241 ACRES**

**North Missouri LAND COMPANY**

Premium tillable tracts offer approximately 172 total open acres, and are almost all creek bottom tillable.

Tract 1: 75+/- total acres, showing 56 acres tillable. This tract is located at the corner of Hwy 156 and Hwy 149, with excellent paved road access for grain removal.

Tract 2: 79+/- total acres, showing 57 acres tillable, and is currently planted to Corn. Long 1/2 mile rows will make this a very desirable tract for everyone.

Tract 3: 87+/- total acres, showing 59 acres tillable. Tract 2 lays on the north side of Chariot Place, with Walnut Creek running from north to south, splitting the property. This tract shows 59 acres open, with 13.7 acres enrolled in CRP and 45+/- acres tillable.

**November 30th, 2023 - 6pm**  
**Comfort Inn Macon, MO**  
 Call David Wilt 660-676-2331 or go to [www.northmoland.com](http://www.northmoland.com)

**VICTORY**  
**Metals & Recycling**  
 KIRKSVILLE, MO  
**660-665-8000**

For current scrap prices call or visit our **Facebook Page** [victorymetalsrecycling.com](http://victorymetalsrecycling.com)

**★ METAL RECYCLING**  
 RECYCLE YOUR SCRAP METAL WITH US! WE PAY CASH FOR: COPPER, ALUMINUM, STEEL, STAINLESS STEEL, APPLIANCES, E-SCRAP, BRASS, LEAD, RADIATORS, ALTERNATORS, BATTERIES, STARTERS, ELECTRIC MOTORS, APPLIANCES, & VEHICLES (TITLE & ID REQUIRED).

**★ ROLL-OFF CONTAINER**  
 10-20-30-40 CUBIC YARD DUMPSTERS

**3602 INDUSTRIAL RD. • KIRKSVILLE, MO 63501**  
**DJANESVMR@GMAIL.COM**  
**VICTORYMETALSRECYCLING.COM**

*Accepting New Patients!*

**AURORA BELL, D.O.**  
**FAMILY MEDICINE**

**1611 S BALTIMORE | STE A**  
**KIRKSVILLE, MO**

**CALL (660) 665-7575**  
**TO SCHEDULE AN APPOINTMENT**

**Complete Family Medicine**

**NEMO Trader Classified COUPON**

**2 Classified Ads for just \$6.00**

20 cents per word over 20 words  
 Must be Mailed in or brought in along with payment.  
 Picture Ads Not Included with Coupon!

**Choose Classification**


Agri-Business     Real Estate Rentals     Yard Sales  
 Announcements     Real Estate Sales     Auctions & Estate Sales  
 Employment     Recreation  
 Financial     Services  
 Merchandise     Transportation

**Ad No. 1 Each Box Represents a Word (20 words or less)**


**Ad No. 2 Each Box Represents a Word (20 words or less)**


Name \_\_\_\_\_  
 Mailing Address \_\_\_\_\_  
 Phone Number \* \_\_\_\_\_  
 this is required\*  
**PO Box 809 Kirksville, MO 63501 • 660-665-8500**

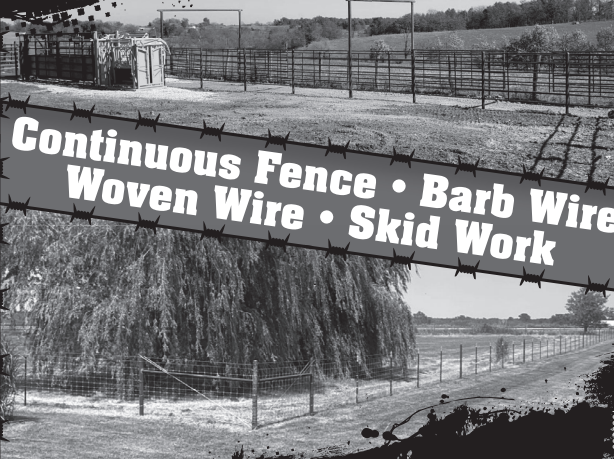
**FRONTLINE FENCING LLC**  
660-956-2430 • Greentop, MO



- \* Arrowquip Cattle Handling Equipment
- \* Ranger Squeeze Chutes
- \* Heavy Duty Tubs and Crowding Alleys
- \* Calving Pens
- \* Heavy Duty Gates – Custom and Standard Sizes
- \* Steel Pipe Fencing – Corrals, Working Areas

660-956-2430 • Greentop, MO

**Lick Creek FENCING**  
Owen Miller  
641-242-0346



Continuous Fence • Barb Wire  
Woven Wire • Skid Work



**LAN-DOW BUILDINGS**  
“We Build To Suit Your Needs”  
“Custom Built”  
Pole Barns • Garages • Utility Buildings  
“H” Don or Dick Middleton  
**Memphis Lumber Co.**  
1-800-337-5858 • 660-465-8595  
Fax: 660-465-8596

**\$699 DOWN**  
on select vehicles\*

**When you bring in 6 New, Unwrapped Toys.**

Minimum \$10 value for each toy. Toys will be donated to local Children's Hospitals.

\*On retail vehicles priced at \$16,999 or less. With approved credit. See dealer for details. This offer cannot be combined with any other promotional offer. Example: \$699 down, 182 weekly payments of \$7.42 per \$1000 financed at 18% APR. Interest rates may vary by state of purchase.

**15th Annual HOLIDAY TOY DRIVE**



**AMERICA'S CAR-MART**  
Keeping You on the Road

f @ X v in i  
car-mart.com

**We Offer:**

- Peace of Mind Package
- Service Contract Plus
- Accident Protection Plan
- 100% Satisfaction
- Pay Your Way
- Low Down Payments
- Quality Used Vehicles
- Flexible Financing
- Hand Selected Vehicles
- Convenient Payment Options
- Start Your Approval Online
- Over 150 Locations
- 42 Years in Business
- We Buy Cars

**660-956-4849 • 2015 North Baltimore • Kirksville**

 <b>2014 FORD ESCAPE</b> FWD, 4 Cyl., Silver	 <b>2017 CADILLAC XT5</b> AWD, 6 Cyl., Black	 <b>2018 KIA SOUL</b> FWD, 4 Cyl., Gray
 <b>2016 FORD FUSION</b> FWD, 4 Cyl., Gray	 <b>2014 FORD FOCUS,</b> FWD, 4 CYL., SILVER	 <b>2014 CHEVROLET CRUZE</b> FWD, 4 CYL., RED
 <b>2016 NISSAN ROGUE,</b> FWD, 4 CYL., WHITE	 <b>2012 FORD F150</b> 4WD, 6 CYL., WHITE	 <b>2017 NISSAN ALTIMA</b> FWD, 4 Cyl., Black
 <b>2017 KIA SORENTO</b> FWD, 4 Cyl., Gray	 <b>2015 KIA SOUL</b> FWD, 4 CYL., WHITE	 <b>2016 CHRYSLER 200,</b> FWD, 4 CYL., WHITE
 <b>2010 HYUNDAI ELANTRA</b> FWD, 4 CYL., SILVER	 <b>2008 FORD F150</b> 4WD, 8 Cyl., Maroon	 <b>2013 HONDA CIVIC</b> FWD, 4 Cyl., Maroon
 <b>2017 FORD FIESTA</b> FWD, 4 Cyl., White	 <b>2014 CHEVROLET MALIBU</b> FWD, 4 Cyl., Gray	 <b>2014 CHEVROLET CRUZE</b> FWD, 4 Cyl., White

**AMERICA'S CAR-MART**  
Keeping You on the Road



**KYLE JENNINGS**  
GENERAL MANAGER

# TIMED ONLINE ONLY



# FALL FARM MACHINERY AUCTION

LOTS START ENDING THURSDAY NOVEMBER 30<sup>TH</sup> AT 10 AM

RING 1: LARGER EQUIPMENT CAN BE VIEWED DAILY 9AM - 5PM  
SMALL ITEMS CAN BE VIEWED MONDAY, NOV 27<sup>TH</sup>-29<sup>TH</sup> 9AM - 4PM  
AT THE CLARK COUNTY FAIRGROUNDS, EAST EDGE OF KAHOKA, MO

## TRACTORS



## TRUCKS & TRAILERS



## HAY EQUIPMENT



## PLANTING & SEED EQUIP

## TILLAGE EQUIP

## FORK LIFT

## TOOLS



## 4-WHEELERS

## RTVS



ALSO SELLING  
LARGE QTY  
OF TOYS  
(RING 1)

# BID NOW!

RING 2: WELDING SUPPLIES/ ELECTRIC MOTORS  
LOCATION: 410 JOHNSON ST, KEOKUK, IA



RING 2 ITEMS CAN BE VIEWED BY APPOINTMENT ONLY  
MONDAY NOV. 27<sup>TH</sup>- 29<sup>TH</sup> DURING REGULAR BUSINESS HOURS

View Our Website for Additional Details!

[www.mcafeeauctionservice.com](http://www.mcafeeauctionservice.com)

NO LOADING OUT DAY OF SALE!  
LOAD OUT DATES & TIMES AVAILABLE ONLINE!

Monty McAfee: 660-341-7412

Office: 660-727-3796

# Beilstein

CAMPER SALES

573-655-2254

**CALL US NOW**  
for the best prices...

28248 327th Ave.  
LaGrange, MO • Hwy 61 South,  
4 Miles South of LaGrange, MO

**CHECK OUT OUR  
SPECTACULAR FALL SAVINGS**

#330252A



Our Price  
**\$29,995**

2021 Salem  
30KQBSS  
Super Slide-Out, Rear Bunk Room

#V20074



Our Price  
**\$24,995**

2020 Jayco Octane Super  
Lite Toy Hauler 222  
Front Queen Bed, Great Price

#508801



Our Price  
**\$24,995**

2019 Keystone Cougar  
Half-Ton 22RBS  
Slide-Out, Rear Bath, King Bed

#091507



Our Price  
**\$36,995**

2023 Salem Hemisphere  
Hyper-Lyte 22RKHL  
NEW, Super Slide-Out, Rear Bath, Luxury

#110503



Our Price  
**\$7,995**

2022 Darkhorse Cargo  
7x14 TA TA35  
NEW

#072286



Our Price  
**\$6,795**

2022 Heartland Barlow  
20FT FLATBED DOVETAIL  
NEW

**beilsteincampersales.com**

## Your Local FARM SUPPLY SOURCE

NUTRITION • MEDICAL • FARM • PET • APPAREL

SEE US FOR YOUR  
**SHEEP & GOAT**  
EQUIPMENT NEEDS



Hometown Animal Health has provided quality products, expert knowledge, and friendly customer service to northeast Missouri and surrounding areas. We are a full-service nutrition, medical, and farm supply source carrying complete lines of animal feed and supplies, farming equipment, agricultural parts, lawn and garden tools, work apparel, and much more!

**Hometown**  
ANIMAL HEALTH

Feed • Medical • Farm & Pet Supplies • Footwear & More

website: [hometownanimalhealth.com](http://hometownanimalhealth.com)

**660-465-2967**

18743 US Hwy, 136 Memphis, MO 63555  
"on Hwy 136 west of Memphis"

Monday-Friday 8pm to 5pm  
Saturday 8am to 1pm



WE'VE GOT YOUR DREAM JOB ON A  
**SILVER PLATTER**

Keep up-to-date with dozens of job postings throughout your local area.  
Find the perfect permanent or temporary position in the classifieds!

**MENARDS®**



**11%\* SALE ENDS  
THANKSGIVING DAY!**

Stores closed Thanksgiving Day. 11% Rebate\* remains in effect for purchases made on MENARDS.COM® on Thanksgiving Day.

This is it  
11% OFF\* Everything  
is ending! Make that big  
purchase now -  
in store thru  
Wednesday, 11/22 or  
online thru Thanksgiving  
Day! Hurry in before it's  
too late!  
**DON'T MISS OUT!**



**LAST CHANCE  
TO SAVE ON  
BIG  
PROJECTS!**



Shop our weekly flyer  
at **MENARDS.com®** or

**SCAN HERE**  
to view today's deals!



\* Mail-in Rebate. Rebate is in form of merchandise credit check. See flyer for details.

We're your Shield. We're your Shelter.



**SHELTER INSURANCE** AUTO • HOME • LIFE

**Shayne Thomas**  
1515 Green St.  
Kirkville, MO 63501  
660-665-4685 (Call or Text)  
ShayneThomas@ShelterInsurance.com



**21 CENTURY 21**  
**Lifetime Realty**

1605 S Baltimore St, Suite A  
Kirkville, MO 63501

**660-665-5678**  
www.C21Kirkville.com

Each office is individually owned and operated.



**COLTON'S**  
Steak House & Grill

*We Know What's At Steak!*

1116 Country Club Drive • Kirkville, MO  
660-665-6336 • ColtonsSteakhouse.com

**exp REALTY**

**ELIZABETH GREGORY**  
Realtor

WWW.MISSOURIHOMEANDFARM.COM

Innovative Real Estate for YOU!

**660.621.2136**



**NM SB** **NORTHEAST MISSOURI STATE BANK**

**Kirkville Branch:** 600 S Baltimore, Kirkville, MO, 660-665-6161

**La Plata Branch:** 139 S Gex Street, La Plata, MO, 660-332-4317

Member FDIC northeastmissouristatebank.com

**ANEW Realty Group, LLC**

**Kim Keyes, Broker/Owner**  
**660.665.3277**

AnewRealtyGroupLLC.com  
511 S. Baltimore St., Suite 8  
Kirkville, MO 63501

**JK**  
Tire & Auto

Owners:  
**Joe Dimmitt & Kelly O'Haver**

1102 N Green St  
Kirkville, MO  
**660.665.9017**

WIN	HOME TEAM	VS	DATE	AWAY TEAM	LOSS
5	KIRKVILLE, HS				6
42	CHILlicothe	9/7		KIRKVILLE	26
42	SAVANNAH	9/8		KIRKVILLE	0
6	KIRKVILLE	9/15		MOBERLY	35
28	KIRKVILLE	9/22		MARSHALL	10
53	HANNIBAL	9/29		KIRKVILLE	0
24	KIRKVILLE	10/6		MEXICO	13
7	FULTON	10/13		KIRKVILLE	44
20	KIRKVILLE	10/20		CAPITAL CITY	35

**Travis~Noe**  
**Funeral Home**

1008 Potter Avenue, Kirkville, MO  
**660-665-1300**  
Neil & Sherry Travis, Brian Noe, Brenton Travis



**Chad Q Davis**  
Agent  
In Kirkville & Edina

111 W. Jefferson, Kirkville, MO 63501  
106 E Reid St, Edina, MO 63537

WIN	HOME TEAM	VS	DATE	AWAY TEAM	LOSS
28	KIRKVILLE	10/27		EXCELSIOR SPRINGS	13
49	SMITHVILLE	11/3		KIRKVILLE	8

**State Farm**  
Chad Davis, Agent  
Call or Text  
**660-665-6668**  
www.chaddavisinsurance.com

WIN	HOME TEAM	VS	DATE	AWAY TEAM	LOSS
8	SCHUYLER CO., HS				2
60	SCHUYLER CO.	9/15		NORTH SHELBY	14
74	SCHUYLER CO.	9/22		PARIS	30
74	BRAYMER	9/29		SCHUYLER CO.	56
32	SOUTHWEST	10/6		SCHUYLER CO.	60
14	NORTHLAND C.	10/13		SCHUYLER CO.	62
81	SCHUYLER CO.	10/20		SLATER	42



**Bellacino's**  
Pizza & Grinders

**ORDER ONLINE**  
WWW.BELLACINOS.COM

GRINDERS • PIZZA • SALADS  
WINGS • FRIES • AND MORE!

**GET OUR NEW APP!**

516 N BALTIMORE ST.  
660-665-7665

WIN	HOME TEAM	VS	DATE	AWAY TEAM	LOSS
0	MACON, HS				10
42	KIRKVILLE	8/25		MACON	26
14	MACON	9/1		N. CALLAWAY	20
51	CLARK COUNTY	9/8		MACON	0
20	MACON	9/15		PALMYRA	34
40	HIGHLAND	9/22		MACON	20
34	BROOKFIELD	9/29		MACON	0
0	MACON	10/6		SOUTH SHELBY	42
7	MACON	10/13		MONROE CITY	36
42	CENTRALIA	10/20		MACON	0
49	MOBERLY	10/27		MACON	10

**DAVIS-PLAYLE-HUDSON-RIMER**  
**FUNERAL HOME & CREMATORY**

2100 E. Shepherd Ave  
Kirkville, MO 63501  
660-665-2233  
www.davisplayleHUDSONRIMER.com

**THINKING OF SELLING?**

**Heritage House Realty, Inc**

CALL US TODAY!  
660-665-5638

KirkvilleRealEstate.com

**LOVEGREEN**  
GOLOVEGREEN.COM

Ford, Dodge, Jeep

**MISSOURI FARM BUREAU INSURANCE**

**Chris Clark**, Licensed Sales Associate  
Email: chris.clark@mofb.com  
Website: www.mofbinsurance.com

AUTO • HOME • LIFE

Clark Agency: 115 W. Potter, Kirkville, MO • (660) 665-1966



**Connections Bank**

2817 N Baltimore St  
Kirkville, MO 63501  
660-665-7703

ConnectionsBank.com

**Need a bigger yard?**

**VICKI & BENSON RE/MAX HOME TEAM**  
111 S. BALTIMORE SUITE A | KIRKVILLE, MO 63501 | 660.465.8100

VICKIBENSON.NET



**THE BENSON LAW FIRM LLC**

Work Comp • INJURY • Criminal

JAY BENSON  
POLLY PETREE HAMPTON  
QUINN BENSON

BensonLawFirm.com 660.627.0111





VIRTUAL ONLINE

**KNOX COUNTY, MISSOURI  
LAND AUCTION**

TUESDAY, NOVEMBER 21, 2023 AT 1:00 PM<sup>CT</sup>



196.79 ACRES± • 3 TRACTS

The Davis farm is located southeast of Edina, MO approximately 8.6 miles, just south of Hwy TT. The farm is further described as being located in Section 21 & 28, T61N-R11W, Bee Ridge Township, Knox County, Missouri. The land contains a total of 196.79 taxable acres, will be sold in 3 tracts, and represents highly productive tillable farmland, income producing CRP, and hunting. Farmers, investors, and hunters - don't miss this opportunity!

**DOROTHY DAVIS  
REVOCABLE LIVING TRUST  
CARL DAVIS AND CAROL AHLEMEYER, CO-EXECUTORS**


Title Work: Knox County Abstract  
105 S 1st St, Edina, MO 63537 | (660) 397-3259  
Auction Managers: Louie Zinn (319) 795-2314 & Dan Sullivan (319) 795-1833

**BigIron** **SULLIVAN AUCTIONEERS**  
a BigIron company  
(844) 847-2161 | www.SullivanAuctioneers.com

VIRTUAL ONLINE

**CLARK COUNTY, MISSOURI  
LAND AUCTION**

TUESDAY, NOVEMBER 21, 2023 AT 11:00 AM<sup>CT</sup>



500 ACRES± • 4 TRACTS

The land is located approximately 5 miles north of Luray, Missouri. It is further described as being located in Section 22, T66N-R9W, Folker Township, Clark County, Missouri.

The tracts represent tillable cropland, pastureland, timber/recreational land, potential building sites, and a home.

**SANDRA S. HEATH ESTATE  
ANNE H. TUTTLE & HELEN TUTTLE CO-PLERNARY GUARDIANS**


Representing Attorney: Jules V. DeCoster | DeCoster Law Office  
PO Box 81, Monticello, Missouri 63457 | (573) 767-5304  
Auction Managers: Louie Zinn (319) 795-2314 & Dan Sullivan (319) 795-1833

**BigIron** **SULLIVAN AUCTIONEERS**  
a BigIron company  
(844) 847-2161 | www.SullivanAuctioneers.com

VIRTUAL ONLINE

**MARION COUNTY, MISSOURI  
LAND AUCTION**

FRIDAY, DECEMBER 1, 2023 AT 10:00 AM<sup>CT</sup>



218 TAXABLE ACRES± • 1 TRACT

The William J. Poppe farm is located on the west side of Marion County State Hwy A and is approximately 8 miles north and west of Palmyra, MO. The land is further described as being in Section 31, T59N-R6W, Fabius Township, Marion County, Missouri.

The real estate contains 218 taxable acres and will be sold in 1 tract. The farm represents highly productive tillable cropland, outstanding northern Missouri whitetail deer, and wild turkey hunting acreage.

**WILLIAM J. POPPE FARM**


Title Company: Mark Twain Title Company  
123 S Main St, Palmyra, MO 63461 | (573) 769-2212  
Auction Manager: Steve Zeiger (573) 231-9802

**BigIron** **SULLIVAN AUCTIONEERS**  
a BigIron company  
(844) 847-2161 | www.SullivanAuctioneers.com

VIRTUAL ONLINE

**LEWIS COUNTY, MISSOURI  
LAND AUCTION**

THURSDAY, DECEMBER 7, 2023 AT 1:00 PM<sup>CT</sup>



80 TAXABLE ACRES± • 1 TRACT

The Yackley farm is located on 210th Avenue and is approximately 3.5 miles southwest of Ewing, MO and is further described as being located in Section 24, T60N-R8W, Highland Township, Lewis County, Missouri. The land contains a total of 80 taxable acres, will be sold in 1 tract, and represents highly productive tillable farmland and timber.

**ERNEST AND DOROTHY YACKLEY TRUST  
KATHERINE WATTS-TRUSTEE**

Representing Attorney: Christopher Scholz  
Scholz Palmer and Duesterhaus LLP | (217) 223-3444  
625 Vermont Street, Quincy, Illinois 62301  
Title Work: Oak Hills Title Company  
309 Lewis Street, Canton, Mo 63435 | (573) 288-4462  
Auction Managers: Louie Zinn (319) 795-2314 & Dan Sullivan (319) 795-1833

**BigIron** **SULLIVAN AUCTIONEERS**  
a BigIron company  
(844) 847-2161 | www.SullivanAuctioneers.com

**TROY BLACKWELL FARM  
Retirement Auction**



**FRIDAY, DEC. 1 at 10 AM**  
AUCTION LOCATION:  
7002 Hwy 61 Outer Road East, Frankford, MO

TRACTORS: INCLUDING JD 9RX, 9R, 8R, AND 6RS  
COMBINES: 2 JOHN DEERE S770S ON TRACKS,  
HEADERS: 2-708C CORNHEAD & 2 735FD'S  
PLANTERS, TILLAGE, HAY EQUIPMENT  
FULL LINE OF CONSTRUCTION EQUIPMENT: DOZERS,  
EXCAVATORS, SCRAPERS, HAUL TRUCKS  
LOGGING EQUIPMENT, SEMI-TRUCKS AND TRAILERS,  
FARM VEHICLES & MUCH MORE!

**Wheeler**   
**AUCTIONS & REAL ESTATE**

23101 HWY. 24, PARIS, MO 65275 | 660-327-5890  
WWW.WHEELERAUCTIONS.COM

FOR MORE INFORMATION CONTACT:  
Kirby Fecht at 217-248-2906 or Wheeler Auctions at  
660-327-5890 or visit our website at wheelerauctions.com.

**BID NOW** Online Bidding Provided By **Equipmentfacts**  
**WHEELER LIVE** ONLINE BIDDING PLATFORM

**Real Estate Auction**  
**Wednesday, Nov. 29th • 6pm**  
Held at the American Legion, Shelbina, MO



**OUTSTANDING TILLABLE FARM  
BEAUTIFUL FARMSTEAD  
MISSOURI CENTURY FARM**

**163.1<sup>±</sup> Acres**  
**OFFERED IN 2 TRACTS**  
Shelbina, Missouri | Monroe County

**Description:** If there was ever a farm that anyone would love to own, it is this one and Peoples Land Co, LLC is honored to offer it for sale at public auction. The sale will be held at the American Legion Hall located at 520 East Maple St., Shelbina, MO 63468 on November 29, 2023 at 6:00 p.m. The farm is located in Monroe County south and east of Shelbina, MO at 30326 Monroe Road 307, Shelbina, MO 63468. This is a century farm that has raised a large family and has been cared for and farmed by the same family forever. It would be hard to find a more well cared for farm in this area. The farm will be sold using the buyer's choice method and will be in two tracts consisting of the following:

**Tract 1:** Consists of 82.6 surveyed acres with 70.28 acres m/l FSA tillable acres making it 85% tillable. The balance is made up of waterways, a nice pond, and the homeplace. Has county road frontage along Monroe Road 307. Soil types consist of productive Putnam, Leonard, and Mexico soils. The improvements on this tract are an older country home, a barn, grain bins, and multiple sheds and outbuildings.

**Tract 2:** Consists of 80.5 surveyed acres with 75.18 acres m/l FSA tillable acres making it 94% tillable. Has county road frontage along Monroe Road 307 and Monroe Road 390. Soil types consist of productive Putnam, Leonard, and Mexico soils.

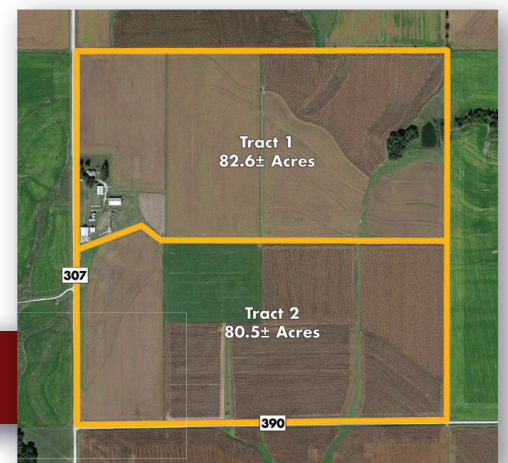
\*All locations and boundaries shown on maps are thought to be accurate but are not exact. Farm will be sold as-is with no warranties given or implied.



Seller:  
Dimmitt  
Family  
Trust

Jay Scott Gander | 660-676-1479  
Anthony Peoples | 660-651-6501

[www.peopleslandco.com](http://www.peopleslandco.com)



**KNOX COUNTY, MO** **LAND AUCTION**

FRIDAY, DECEMBER 15, 2023 AT 6 P.M.

Held at the Knox County Community Center

**Description:** Peoples Land Co, LLC is honored to offer the Pence Farm for sale at public auction. The sale will be held at the Knox County Community Center, 207 4th St., Edina, MO 63537 on December 15, 2023 at 6:00 p.m. The farm is located approximately 9 miles west of Novelty, MO along Millrun St. For directions from Novelty, go west on Hwy. 156 approximately 6 miles to Mohogany Ave. Then go south on Mohogany approximately 2 miles to Millrun St. and then go west on Millrun St. for 1/2 miles to the farm. The land represents a once in a lifetime opportunity to purchase a great combo farm in this area of Knox County. The farm consists of 106 acres m/l with 84.6 FSA tillable acres m/l making it 80% tillable with county road frontage along Millrun St. This farm will provide great income along with phenomenal hunting. The productive soils and location makes this farm one that the potential is endless whether it is a building site, investment opportunity, or recreational opportunity. The current tenant has cared for this farm at the highest level and farms in this area don't come for sale often so make plans to attend this great land auction.

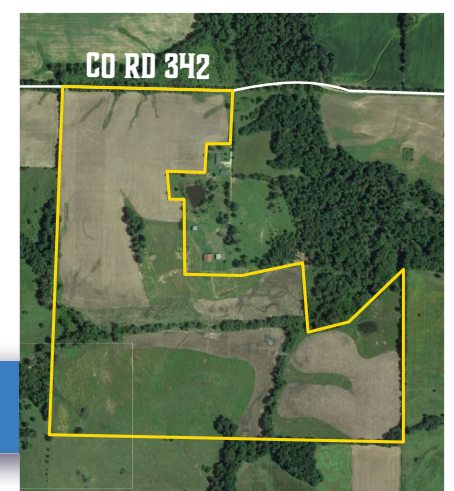
**106<sup>±</sup> AC.** \*All locations and boundaries shown on maps are thought to be accurate but are not exact. Farm will be sold as-is with no warranties given or implied.



Seller: Carl  
D. Pence  
Revocable  
Living Trust

Jay Scott Gander | 660-676-1479  
Anthony Peoples | 660-651-6501

[www.peopleslandco.com](http://www.peopleslandco.com)



**NEW CAMBRIA LIVESTOCK AUCTION LLC**  
 Phil & Stacey McBee - Owners  
 29262 State Hwy 149, Box 94, New Cambria, MO 63558

**Special Calf and Yearling Sale**

THURSDAY, NOVEMBER 30TH  
 STARTING AT 11:00 AM

Office (660) 226-5222 • Phil McBee (660) 754-2148  
 Doug Lock (660) 641-3898 • Lavon Moore (660) 384-2008  
 Randy Nute (660) 651-5389 • Tyler Gratz (573)-690-7312

To view our latest market reports and cattle listings visit  
 Our website at: [newcambrialivestockauction.com](http://newcambrialivestockauction.com)  
**We appreciate your business!!!!**

**ATTENTION LAND OWNERS!!**

**Buyer of standing timber**  
 Paying Cash Upfront!

Owner/Operator of Sawmill

- Buy/Cut Logs
- Certified
- Bonded
- Insured

**Tri State Timber L.L.C.**  
 353 1/2 Grand Ave. • Memphis, Mo 63555  
 660-341-4921 • 660-465-2975

**LAND AUCTION**

**563.8 AC± | 5 TRACTS SCHUYLER CO, MO**

**AUCTION: LIVE AND ONLINE AT RANCHANDFARMAUCTIONS.COM**  
**AUCTION DATE: 11/21/23**  
**AUCTION TIME: 11:00 AM**  
**AUCTION LOCATION: LANCASTER COUNTRY CLUB**  
 15106 US HWY 63  
 LANCASTER, MO 63548

**IN COOPERATION WITH WHITETAIL PROPERTIES REAL ESTATE, LLC**  
 JEFF PROPST, AGENT: 636.209.0362  
 STEPHEN STOCKMAN, AGENT: 660.953.1242

**RANCHANDFARMAUCTIONS.COM**

**LOLLI LIVESTOCK MKT, INC.**

**Big Special Thanksgiving Cow, Cow/Calf & Breeding Bulls Sale**  
**Tuesday, Nov 21 - 11am**

**COMPLETE DISPERSALS**

**MIKE GUNNELS - 50 Black Cows:**  
 25 head 3-5 years old, 5 first calf heifers, 15 head 5-12 years old, bred to Coon-Walstreet bulls, start calving Jan 19th.

**7 HILLS FARM - CAREY HENKE: 25 Black Angus Cow/Calf Pairs:**  
 4-8 years old, calves born Sept-Oct, sired by Angus bulls, all cows home raised & good shot records.

**JERRY COPENHAVER: 50 Black/bwf Cow/Calf Pairs:**  
 4-8 years old, calves born Sept-Oct, sired by Hereford bulls.

**DAVID DOCTORIAN: 60 Black Angus/Simm X Cow/Calf Pairs:**  
 4-8 years old, calves born Sept-Oct, sired by Angus bull, utd on all shots.

**MCDORMAN FARMS - 77 Black/Bwf/Red Angus Cows:**  
 3-10 years old, start calving Feb 28th, sired by Angus bulls, May 1st, cows had 8-way, leptos, worm & poured.

**10 Blk/bwf/red Angus Cow/Calf Pairs:**  
 3-6 years old, calves born Sept-Oct, utd on shots.

**STEVENS FARMS - 20 Black Cow/Calf Pairs:**  
 Calves born Aug-Sept, sired by Angus bulls.

**This is a partial listing with more to be added.**

Follow our website for updated listings  
[lollibros@lollibros.com](mailto:lollibros@lollibros.com)

**Lolli Livestock Market, Inc.**  
 704 Main St. Macon, MO 660-385-2516  
 Frankie 660-651-4040 \* Tim 660-651-3496  
 Joseph 660-346-9711 \* Jordan 660-346-0410 \* Cody 660-676-9392

**RYE CREEK WELDING & REPAIR LLC**

**Machinist, Steel Sales, Mig, Tig, Stick and aluminum welding**  
**660-956-8282**  
 19760 Rye Creek Rd  
 Novinger, MO 63559

**Skyline Service LLC**  
 Skid Steer and Construction Repair  
 Levi Weiler  
 660-346-6881 • 660-883-5525

Scan Tool Diagnostics  
 Exhaust After Treatment Repairs • SCR Unlocks  
 Skid Steer Tracks Available

**McAfee Auction Service, LLC**  
 375 S Johnson • Kahoka, MO  
 660-727-3796  
[www.mcafeeauctionservice.com](http://www.mcafeeauctionservice.com)

**TIMED ONLINE ONLY EQUIP & PERSONAL PROPERTY ESTATE AUCTION**

**THURSDAY DEC 14TH**  
**LOTS START ENDING AT 10 AM**

COMPLETE DETAILS ONLINE!

LOCATION:  
 47922 STATE HWY V  
 RUTLEDGE, MO  
 PREVIEW: SATURDAY  
 DEC 9TH 10AM - NOON

ALSO SELLING ANTIQUES, COLLECTIBLES, TOOLS & MISC

**Martin O. Guinn Family Trust**  
 Carol Murfin, Gloria Guinn and Marva Livengood Trustees

**VIRTUAL ONLINE**

**LINN COUNTY, MISSOURI LAND AUCTION**

**TUESDAY, DECEMBER 12, 2023 AT 1:00 PM CT**

**401 TAXABLE ACRES± • 4 TRACTS**

The Buckley Farms are located just outside of Saint Catharine, MO to the east and approximately 6 miles east of Brookfield, MO, north of Hwy 36. The land is further described as being located in Sections 1 & 2, T57N-R19W, and Section 36, T58N-R19W, Yellow Creek Township, Linn County, Missouri.

All tracts represent highly preferred whitetail deer and wild turkey habitat which makes for excellent hunting & recreation. A total of 279.52 CRP acres between the four tracts provide income and great habitat for all wildlife.

**KNOWN LOCALLY AS PC BUCKLEY FARMS**  
**JIM BUCKLEY, DONNA CASEBOLT, AND JULIA BURNS - SELLERS**

Representing Attorneys:  
 Mark Untersee | Untersee and Associates  
 Kansas City, MO | (816) 531-1333  
 Dana Macoubrie | Cleaveland, Macoubrie & Cox, LLC  
 Chillicothe, MO | (660) 646-4522

Title Company: Linn County Abstract Co.  
 118 N Main Street, Brookfield, MO | (660) 258-2260

Auction Manager: Louie Zinn (319) 795-2314  
 Steve Zieger (573) 231-9802 & Dan Sullivan (319) 795-1833

**BigIron** | **SULLIVAN AUCTIONEERS**  
 a BigIron company  
 (844) 847-2161 | [www.SullivanAuctioneers.com](http://www.SullivanAuctioneers.com)

**LINNEUS FARM BUSH HOG® EQUIPMENT**

**130 E Smith, Linneus MO • 64653**  
**Call: 660-895-5163**  
**Monday-Friday 8-5, Saturday 8-?**

New 7' Bush Hog BH217	\$5,650
New 12' Bush Hog 1812	\$17,775
New 15' Bush Hog 1815	\$20,750
New 15' Bush Hog 2815	\$27,400
New 15' Bush Hog 4115	\$28,000
New Bush Hog Tiller RTX92G	\$6,800
New Bale Unroller	\$1,550
New 24' Redline Harrow with Hydro Fold	\$9,225
New 30' Redline Harrows with Hydro Fold	\$10,100
New 10' Brown Box Scraper with Tilt	\$5,550
New 12' Brown Scraper without Tilt	\$5,000
New MBX84 Scrapers	\$2,150
New MBX96 Scraper	\$2,400

**End of the year is upon us and we are loaded up with New Bush Hog Cutters**

BH217, 1812's, 1815's, 2815's the NEW 4115 and 12820's coming any day.

#9 Used 15' Rhino 3150, 1000 RPM	\$13,750
Used 15' Schulte FX1800, 1000 RPM	\$12,500
#5 Used 15' Bush Hog 12715, 1000 RPM	\$14,000
#17 Used 15' Bush Hog 2615 L, 540 RPM	\$11,000

**We Stock an Excellent Line of Parts!**  
 Find our full listing at [www.linneusfarmequipment.com](http://www.linneusfarmequipment.com)

**BARN RESTORATION**

Specializing in Barn & Pole Barn Repair and Restoration

**WAGLER BUILDERS**  
 (641) 777-5000 • [john@waglerbuilders.com](mailto:john@waglerbuilders.com) @waglerbuilders

**2023 Holiday Show!**

**MAPLES REPERTORY THEATRE**

**SORRY! WRONG CHIMNEY!**  
 Live onstage  
 Nov 29 - Dec 10, 2023

102 N Rubey Street Macon, MO 63552  
[www.maplesrep.com](http://www.maplesrep.com)  
 2023 Tickets: \$36  
 2023 Students: \$25

**2024 Season Tickets Onsale Now!**

The Sound of Music  
 The Importance of Being Earnest  
 Lucky Stiff  
 Steel Magnolias  
 The Woman in Black  
 'Tis The Season: A Maples Rep Holiday Celebration

**BUCKMAN MACHINERY, LLC**  
**573-881-3557**

**John Deere 6300,**  
 cab, power quad, loader, 5400 hrs, with new engine, 90% rubber,  
**\$36,500**

**John Deere 300 Corn Picker,**  
 2-corn (2 row 30"), excellent mechanical condition.  
**\$6,750**

**John Deere 4240,**  
 2-owner, QR, overall good condition, 18.4x38 tires,  
**\$26,500**

**John Deere 7130,**  
 MFWD, cab, triple hydr, 5400 hrs, 70% rubber  
**\$44,500**

**Arts-Way 475 Grinder Mixer,**  
 scales, auger feeder, 3 screens, 2 owner, low use, shedded  
**\$5,950**

**John Deere 3020 D, WF, dual hydr, 16.9x38, 7000 hrs**  
 showing, loader available,..... **\$8,750**

**John Deere 4010 D, only 2375 actual hrs, nice,**  
 loader available, ..... **\$13,950**

**John Deere MX8 Mounted Cutter 3pt mowed 20 acres,**  
 new, shedded ..... **\$6,950**

**Gehl 95 Grinder, excellent condition, ground 40-50**  
 batches in life, 3 screens, shedded, ..... **\$4,950**

**John Deere 158 Loader, no welds, ..... \$4,500**

**John Deere 148 Loader, ..... \$2,950**

**John Deere 146 Loader, ..... \$2,750**

**Rhino SR15M Batwing Brush Hg, 8 luminated, 1000 PTO,**  
 field ready ..... **\$5,750**

**John Deere 709 3pt PTO Mower, no welds ..... \$1,950**

**John Deere 7130, MFWD, cab, triple hydr, 5400 hrs, 70%**  
 rubber, ..... **\$44,500.**

**Hunting Land for Lease: 180 acres, lease September -**  
 September, water, electric, camping,..... **\$2,500/year.**

**Alfalfa - 2nd cutting, 3x3x8 bales, 21% treat, green,**  
 \$165/bale delivery available

**2023 Mixed Grass, 45-50 lbs., \$10/bale, delivery available.**

**Alfalfa - 4th cutting, 55 lb treated bales, very little grass/**  
 weeds, \$12, delivery available

**Red Angus/Charolais Cross Bull,**  
 24 months old, guaranteed,  
**\$3000**

**Loaders & Duals available for many**

**HAY AUCTION**  
**Saturday, Nov. 18, 2023 – 10:00 A.M.**  
**1916 S. 18TH (HWY 5 S) CENTERVILLE, IOWA**  
**ALSO SELLING:** 2007 Ford F-250 Pick UP with 26,000 Original Miles, 5.4L, with a Boss Power V Snow Plow; 2003 Saturn Car, 71,000 Miles, Lady owned car since new, Good Condition; Wide Variety of Big Round Bales of Hay, Cornstalk Bales, Bean Stubble and Alfalfa; Square Bales of Straw, Hay, and Alfalfa; DALTON OTT SALE MANAGER 563-880-5626 To list your hay, Or Time to bring it in. The 16TH & 17TH Someone will be available to help unload your large bales. Accepting Consignments up until 9 AM, day of the auction.  
**DEMRY AUCTION, LLC**  
 1916 S 18th St, (Hwy 5 SOUTH) CENTERVILLE, IOWA | 641-856-6408  
**Tom Demry:** 641-895-2508 • **Kristy Demry:** 641-895-2509  
**Janet Demry:** 641-895-4310 and 641-856-6924  
**Junior Lawson:** 641-895-0037 **Randy Mulay:** 641-436-1521  
**Dalton Ott:** 563-880-5626 • **Website:** www.Demryauction.com

**LANGMAID STOCK DOGS**  
 ABCA Border Collies  
 Top cow dog Bloodlines  
 Pups, started dogs, finished dogs  
 Full health and working guarantee on all dogs  
 All dogs eligible for \$25,000+shootout dog trial.  
**RYAN & DAWN LANGMAID**  
 Green City, MO  
**254-595-6677**

**Central Metals Recycling LLC**  
**Buyers of Ferrous and Non-Ferrous Metals**  
**We Pay More \$\$\$, Call For Your Best Pricing Today!!**  
**11923 Hwy. 54 Mexico, MO** | **1601 N. 30th Quincy, IL** | **1175 Hwy. 96 Hamilton, IL**  
**573-581-0336** | **217-214-7649** | **217-847-3191**

**Edina Livestock Sales**  
 Edina, Missouri  
**Friday, November 17th**  
 Special Feeder Calf Sale  
**Friday, November 24th**  
 No Sale - Happy Thanksgiving!  
**Saturday, December 2nd**  
 Kevin & Beth Strange  
 Bred Heifer and 3 yr Old Cow Sale  
 To Consign For Any or All Sales or For Information Call:  
 Owner - Kevin Strange • Cell: 660-341-9974  
 Ryan Strange • Cell: 660-341-9721  
 Sale Barn: 660-397-9999  
**Field Reps:**  
 Bill Tom Hall 660-342-5420 Mike Bronestine 660-341-9965  
 Jason Bichsel 660-216-0373 John Powell 660-341-1717

**RAMIER TRUCK SALES**  
 2011 Ford Explorer XLT, 172K, rebuilt title **\$6,450**  
 Dew eze cake feeder, 1000 lb in stock **\$4,586** and 1500lb in stock **\$4,619**  
 2021 Ford F350 XLT, New Dew EZE 684 bale bed, 6.7 clean title **\$71,900**  
 2020 Ford Ranger, 4x4, Lariat, Black, 41k miles, Rebuilt Title **\$28,000**  
 2012 Ford Expedition Limited, 5.4l, 200k miles, prior salvage title **\$6,500**  
 2021 Honda Talon 1000R, Live Valve, 900 miles **\$24,500**  
 Gorin, Missouri • Monday-Saturday 8am-6pm  
 www.ramiertrucksales.com | HOME: 660.282.1002  
 CELL: 660.341.6140 | "NO SUNDAY CALLS!"

**TIMBER MANAGEMENT.**  
 Purchasing Walnut, Oak, Maple & Other Species  
**WE PAY BEFORE WE CUT**  
**BONDED & INSURED**  
**641-895-8209** Est. 1968

McAfee Auction Service, LLC  
 375 S Johnson • Kahoka, MO  
 660-727-3796  
 www.mcafeeauctionservice.com  
**Knox County, MO LAND AUCTION**  
 Sale Conducted Nnsite (47922 State Hwy V Rutledge, MO)  
**63 +/- ACRES/ 2 TRACTS**  
 (Subject to Final Survey)  
 Lying in Sect. 15, Twp.63N, R10W, Knox Co. MO  
**PRODUCTIVE TILLABLE LAND**  
**Tuesday, December 19th at 10 AM**  
 3 Bedroom, 2 1/2 Bath Home  
 OPEN HOUSE Sat, Dec 9th 10am-Noon  
**MARTIN O. GUINN FAMILY TRUST**

**PUBLIC AUCTION**  
 244121 HICKORY STREET - BEVIER, MO  
**WEDNESDAY, NOVEMBER 22, 2023 @ 12 NOON**  
 TRACTOR - TRAILER - KAWASAKI MULE - BOAT - IMPLEMENTS - TOOL BOX - AIR COMPRESSOR - TOOLS - GUN SAFE - PATIO FURNITURE - LAWN ROLLER - WEED EATERS - FARM ITEMS - SLEEP NUMBER BEDS - MODERN FURNITURE - APPLIANCES - STAIRWAY LIFT CHAIR - WOOD STOVE - HOUSEHOLD - ANTIQUES - COLLECTIBLES - FULL LISTING @ IMAUCTION.COM  
**LARRY DEAN & JANE ANN STACY, SELLERS**  
**IMAN AUCTION COMPANY | 660-388-6235 | ImanAuction.com**

FIND THE PERFECT PET FOR THE PERFECT PRICE IN THE PERFECT PLACE FOR DEALS  
 Find the stuff you want and sell the stuff you don't in the newspaper classifieds.  


**ASI Agri Systems Inc.**  
 1103 Nixon Industrial Blvd. • Macon, MO  
 888-627-4232  
 We have taken over for CSC!  
 All Pressure Washers & Air Compressors!  
**AIR COMPRESSORS**  
 Home & Industrial Series  
 • Many Models Available!  
 • We Stock Replacement Parts  
 • w/Current Supply Issues  
 Call for Availability  
 • Contractor Series  
**POWER WASHERS**

The meeting Place for Buyers and Sellers!!  
**NEMO Trader**  
**660-665-8500 or email: sales@nemotrader.net**  
**SHOP LOCAL - BUY LOCAL - ENJOY LOCAL**  


**- BUYERS AND SELLERS WANTED -  
HAY AND FIREWOOD  
AUCTION**

**November 24th at 10AM**

Eversonville Produce Auction  
21565 Hwy. KK, Chula, MO 64635

**- SELLING -**

- Large square alfalfa 3rd, 4th, 5th cuttings
- Large square oats alfalfa mix
- Large round grass
- Large round straw
- Small square straw
- Several loads of firewood

**COMMISSION  
7%**

**- CALL TO CONSIGN -**

Kevin Zimmerman  
**660-659-2016**  
Manager

Lance Croy  
**816-284-2140**  
Auctioneer



**CONSIGNMENTS WANTED FOR  
December 16th  
AUCTION**

find us on facebook @ BS-Equipment-Auctions  
[www.bandsequimentsales.com](http://www.bandsequimentsales.com)  
BandSequimentsales.com | Office 660-663-3363  
Shay 660.605.0839 | Justin 660.605.2346

join us on facebook!

**FOXHOLE LLC IN  
CENTERVILLE IOWA**



**FOXHOLE LLC IN CENTERVILLE IOWA  
IS PAYING CASH FOR YOUR...  
UNWANTED FIREARMS, KNIVES,  
VINTAGE SIGNS, BRAND NAME TOOLS,  
BARN FINDS, AND OTHER MISC ITEMS.  
WE CAN COME TO YOU!\***

**INSTANT LOANS ON FIREARMS UP TO \$3,500.  
WE ARE A FFL DEALER IN CENTERVILLE IOWA  
WITH A HUGE INVENTORY OF GUNS & AMMO!  
LOCATED INSIDE FOGLE TRUE VALUE!  
BEST DEALS AROUND!**

1101 N. 18TH ST • STE B • CENTERVILLE, IA 52544  
[www.foxholegunrange.com](http://www.foxholegunrange.com)

**641-437-1053 • 641-799-7991 • 641-203-6998**  
\*NO JUNK OR SALVAGE

**BURKHOLDER**



**2022 Chevy Silverado 2500HD WT**  
4x4, Crew, 6.6V8, 21k One-Owner Miles, Re-  
maining Factory Warranty, Near New! Green



**\$53,500**

Full line of accessories **+** Outfit your truck here!

**Edina 660-397-2551 51001 State Hwy 15 BurkholderTruckSales.com**



**\$32,900**

**2021 Chrysler Pacifica Touring L**  
7 Pass, 3.6V6, 44k One-Owner Miles, Ac-  
cident Free, Well Kept, Nice & Clean, Gray



**\$38,900**

**2020 Toyota Tacoma SR5, 4x4**  
Crew, 3.5V6, Auto, Only 22k One-Owner  
Miles, Local Trade, Very Well Kept, Silver



**\$35,500**

**2020 Ford F-250 XL, 4x4, Reg Cab**  
Longbed, 6.2V8, 92k Mi, One-Owner, Ac-  
cident Free, Good Service Record, White



**\$26,900**

**2019 Toyota Sienna LE AWD, 7 Pass**  
3.5V6, Auto, 107k One-Owner Mi, Clean  
Carfax, Perfect Service Record, Nice, Gray



**\$31,500**

**2016 Jeep Wrangler Unlimited**  
Rubicon Hard Rock, 4x4, 3.6V6, 6-Speed,  
Manual, 84k One-Owner Miles, New Tires



**\$37,500**

**2016 GMC Sierra 1500 SLT, 4x4**  
Crew Cab, 6.2V8, 76k Mi, Accident Free,  
Great Service Record, Must See, Nice! Red



**\$41,900**

**2014 Chevy Express 3500 LT**  
15 Pass, 6.0V8, Auto, 39k Mi, One-Owner,  
Very Nice & Clean, Well Kept Van, Black



**\$42,900**

**2014 Chevy Express 1500 LT AWD**  
8 Pass, 5.3V8, Auto, Only 46k One-Own-  
er Miles, Ready for Winter, Nice, Dark Blue



**\$28,900**

**2008 Chevy Express 1500 LS AWD**  
8 Pass, 5.3V8, Auto, Only 94k Miles,  
Good Condition, Come See, Dark Green



**\$44,900**

**2017 Ford F-350 XL, 4x4, Ext Cab**  
6.2V8, Knapheide Utility Bed, 87k One-  
Owner Miles, Well Kept, Extra Nice, Blue



**BED COVERS**



**FLOOR LINERS**



**RACHETING TIE DOWNS**

**TRUCK GEAR  
BY LINE-X**

**BUILT TOUGH.**



**Bumpers/Grille Guards**



**Steps / Nerf Bars**



**DECKED** Drawer Systems

**Looking to Rent Vans?**



- 15 Passenger Seating
- Cargo Carriers Available
- Day Trips or Long Excursions
- Clean, Functional Vans



**Call us today!!  
(660) 397-2551**

**AUTO & TRUCK SALES + ACCESSORIES**



**LANCASTER LUMBER INC.**

Lancaster, MO.

1-800-424-5071

LAN-DOW BUILDINGS

www.lancasterlumber.com



631220cb

**Show Me Plumbing Services**



- General Mini Excavation & Skid Steer Work
- Livestock Watering
- Waterlines & Sewer Systems
- Residential Services & General Plumbing
- Utility Trenching

Stan Schrock 660-988-1163  
Greentop, MO 660-766-2636

631236f

Have a smart phone or tablet?

You can view current and past Nemo Trader issues online at

www.nemotrader.net



**NEMO** Trader

**UPCOMING EQUIPMENT AUCTIONS**

WEDNESDAY, NOVEMBER 22 • 10:00 AM

**MIKE & KRISTI HORSCH RETIREMENT**  
WELLINGTON, KS



MONDAY, NOVEMBER 27 • 9:00 AM



MONDAY, NOVEMBER 27 • 10:00 AM

**SHARP BROTHERS FARMS LLC**  
PERRY, MO



TUESDAY, NOVEMBER 28 • 11:00 AM



GIBSON CITY, IL



WEDNESDAY, NOVEMBER 29 • 10:00 AM

**JR & B LAND LLC**  
GOVE, KS



WEDNESDAY, NOVEMBER 29 • 10:00 AM

**GREGORY FARMS**  
CHENEY, KS



THURSDAY, NOVEMBER 30 • 10:00 AM

**D&R FARMS**  
THOMASBORO, IL



THURSDAY, NOVEMBER 30 • 12:00 PM

**CODY UNRUH**  
COPELAND, KS



FRIDAY, DECEMBER 1 • 10:00 AM



MONDAY, DECEMBER 4 • 10:00 AM



VISIT OUR WEBSITE FOR ADDITIONAL DETAILS, PHOTOS & ONLINE BIDDING CATALOGS!

**BigIron**

(800) 937-3558  
WWW.BIGIRON.COM

(844) 847-2161  
WWW.SULLIVANAUCTIONEERS.COM  
License #444000107

**SULLIVAN**  
AUCTIONEERS  
a BigIron company

Have a smart phone or tablet?

You can view current and past Nemo Trader issues online at

www.nemotrader.net

**NEMO** Trader



**CELEBRATIONS!**  
**PARTY RENTAL**  
 KIRKSVILLE, MO

FOR RENT

- Tables & Chairs
- Tents • Bounce House
- Cotton Candy Machine
- & More!

660-626-5162 or 660-665-9380

**SHOW-ME SEAMLESS GUTTERING**  
 FREE ESTIMATES • PROMPT SERVICE

- 5" & 6" Gutters
- Siding • Soffit • Fascia

(23 colors available on Gutters & Fascia)

Tired of Cleaning your Gutters?  
**LEAFPROOF THEM!**

ELLIOTT HIX  
 LEAFPROOF

660-626-3447 • KIRKSVILLE, MO

*Connie's*  
**MOBILE HOME TRANSPORT**

We offer the following..  
 Break Downs • Transport • Set up • Anchoring

Call Rich today! 573-881-7483

**UPCOMING EQUIPMENT AUCTIONS**

TUESDAY, DECEMBER 5 • 10:00 AM



TUESDAY, DECEMBER 5 • 10:00 AM

**GARY NETTLETON**  
 SAYBROOK, IL



WEDNESDAY, DECEMBER 6 • 10:00 AM

**CMR FARMS**  
 HAMILTON, IL



WEDNESDAY, DECEMBER 6 • 10:00 AM

**STEVE FLORER RETIREMENT**  
 WEST DES MOINES, IA



WEDNESDAY, DECEMBER 6 • 10:00 AM

**BRIAN RUSSELL FARMS**  
 HARRISONVILLE, MO



WEDNESDAY, DECEMBER 6 • 10:00 AM

**RONALD EAGAN II**  
 ATWOOD, IL



THURSDAY, DECEMBER 7 • 10:00 AM

**JOHNSON TRACTOR**  
 ILLINOIS & WISCONSIN



THURSDAY, DECEMBER 7 • 10:00 AM

**JOE & LUCY GLEESPEN**  
 ROSAMOND, IL



THURSDAY, DECEMBER 7 • 11:00 AM

**DOUGLAS & EVELYN MATSON**  
 LONGFORD, KS



FRIDAY, DECEMBER 8 • 10:00 AM

ATLANTA, IL



VISIT OUR WEBSITE FOR ADDITIONAL DETAILS, PHOTOS & ONLINE BIDDING CATALOGS!

**BigIron**

(800) 937-3558  
 WWW.BIGIRON.COM

(844) 847-2161  
 WWW.SULLIVANAUCTIONEERS.COM  
 License #444000107

**SULLIVAN AUCTIONEERS**  
 a BigIron company

WE ARE PUBLISHING THE **NEW** **DEADLINE** ON **WEDNESDAYS** will be **THURSDAY** by **5PM**

**NEMO Trader**  
 705 E. Laharpe Street Ste. F • Kirksville, MO 63501 • 660-665-8500 • sales@nemotrader.net

**KEIM LUMBER COMPANY LLC**  
**COMPETITIVE PRICES • FREE ESTIMATES**  
 • COMPLETE BUILDING PACKAGES  
 • WINDOWS AND DOORS  
 • INSULATION • DRYWALL  
 • DELIVERY

13625 St. Hwy 3 LaPlata, MO

**Golden Grain Bins-Winter Discount**

Grain Bins	Floors w/12"Supp. & Flashing
18'x18' 4,195bu. \$ 5,253	18'....\$1,466 30'....\$ 4,092
27'x21' 11,265bu. \$10,544	21'....\$2,005 36'....\$ 5,830
42'x24' 32,245bu. \$24,578	27'....\$3,344 42'....\$ 7,939

**Golden Grain** GMLS Industries, Inc.  
 PH: 660-699-2179 or 620-983-2136  
 www.gmlsindustries.com

**ANTIOCH REPAIR**  
**SPECIALIZING in**  
 • Skid loaders  
 • Ag Equipment  
 • Construction Equipment

Call us for all your attachment needs  
**Ethan Zimmerman • 660-299-0808**



**UPCOMING EQUIPMENT AUCTIONS**

MONDAY, DECEMBER 11 • 10:00 AM



TUESDAY, DECEMBER 12 • 10:00 AM

**MAX DAIL RETIREMENT**  
 ERIE, IL



TUESDAY, DECEMBER 12 • 12:00 PM

**REG STEGMAN**  
 SPEARVILLE, KS



WEDNESDAY, DECEMBER 13 • 10:00 AM

**GARY THOMPSON RETIREMENT**  
 VAN HORNE, IA



THURSDAY, DECEMBER 14 • 10:00 AM

**BEARD**  
 IMPLEMENT COMPANY  
 IL & MO



THURSDAY, DECEMBER 14 • 2:00 PM

**RANDY BRADBURY RETIREMENT**  
 ODELL, IL



FRIDAY, DECEMBER 15 • 10:00 AM

**WEMPEN FARMS**  
 RAYMOND, IL



FRIDAY, DECEMBER 15 • 11:00 AM



FRIDAY, DECEMBER 15 • 1:00 PM

**ALLEN & CAROLYN OLTMANN'S**  
 DELMAR, IA



TUESDAY, DECEMBER 19 • 10:00 AM

**ROGER PETERSON**  
 GRAETTINGER, IA



**VISIT OUR WEBSITE FOR ADDITIONAL DETAILS, PHOTOS & ONLINE BIDDING CATALOGS!**

**BigIron**

(800) 937-3558  
 WWW.BIGIRON.COM

(844) 847-2161  
 WWW.SULLIVANAUCTIONEERS.COM  
 License #444000107

**SULLIVAN AUCTIONEERS**  
 a BigIron company



**Turn Clutter Into Cash**

Get more money in your pocket and room in your garage when you sell your stuff and promote your sale with the newspaper classifieds!

**FALL SALE**  
UP TO **15% OFF**

**MILLER AG**

**CAR PORTS & BUILDINGS**  
6' to 100' wide clear span • Up to 25' tall walls

[WWW.MILLERAG.NET](http://WWW.MILLERAG.NET)  
ARBELA, MO • 660-341-0929 • JOE MILLER

**fb farmbank**  
Growing Together

**HAPPY Thanksgiving**

1 S. Lincoln St. Green City, MO 660-951-8430  
701 N. Pearl St. Milan, MO 660-951-8432  
3311 N. Baltimore Kirksville, MO 660-951-8431

[www.farmbank.com](http://www.farmbank.com)

Member FDIC

**-EARLY- DEADLINE**  
November 29th

**NEMO** Trader

issue deadline will be **November 22, 2023** by 5:00p.m.

[sales@nemotrader.net](mailto:sales@nemotrader.net)  
**660-665-8500**

## UPCOMING EQUIPMENT AUCTIONS

TUESDAY, DECEMBER 19 • 1:00 PM

**HARRIS KUIPER ESTATE**  
RUSSELL, IA



THURSDAY, DECEMBER 21 • 9:00 AM

**CONRAD TRUCKING INC.**  
DANFORTH, IL



THURSDAY, DECEMBER 21 • 10:00 AM

**MARKS FARMS INC.**  
WEST SALEM, IL



FRIDAY, DECEMBER 29 • 10:00 AM

**BARKER IMPLEMENT**  
SHELBYVILLE, IL



# LOOKING TO BUY OR SELL?

*Contact us Today!*



No other agricultural auction company and real estate firm has more registered agricultural bidders and buyers than **BigIron and Sullivan Auctioneers.**



SCAN TO  
**SELL**

**BigIron**

(800) 937-3558  
[WWW.BIGIRON.COM](http://WWW.BIGIRON.COM)

(844) 847-2161  
[WWW.SULLIVANAUCTIONEERS.COM](http://WWW.SULLIVANAUCTIONEERS.COM)  
License #444000107

**SULLIVAN AUCTIONEERS**  
a BigIron company