

# NEMO Trader

**THE NEMO TRADER**

PO BOX 809 • KIRKSVILLE, MO 63501 • PHONE 660-665-8500

Web Site: [nemotrader.net](http://nemotrader.net) • Email: [sales@nemotrader.net](mailto:sales@nemotrader.net)

**FREE**

A WEEKLY ADVERTISER SERVING ALL OF NORTHEAST MISSOURI AND THE SURROUNDING AREA

**Robert Aldridge DEER PROCESSING**

**Youth Hunter Rifle Giveaway**

DRAWING WILL BE **Monday October 30th @ 7pm**

**1ST PRIZE SAVAGE .243 RIFLE W/SCOPE**

**2ND PRIZE \$100 CASH**

**3RD PRIZE \$75 CASH**

**YOUTH HUNTERS AGES 6-15 YEARS OLD**

Each deer you bring in for processing, you will be entered in the drawing for a Savage .243 Rifle.

**October 28th & October 29th**

Qualified Adult Must Register Rifle as Per FFA Rules

We participate in the **SHARE THE HARVEST Program**

**Robert Aldridge DEER PROCESSING**

806 Cedar Str., Queen City, MO  
1 Block N. of City Park  
Office: 660-766-2582 Cell: 660-216-1337

**exp REALTY**

ELIZABETH GREGORY  
*Real Estate*

WWW.MISSOURIHOMEANDFARM.COM

Innovative Real Estate for YOU!

660.621.2136

**LIONS CLUB GUN SHOW**

Buy-Sell-Trade

Lion's Club Building (PC Fairgrounds)  
UNIONVILLE, MO

**Saturday, October 21st at 9AM**

**\$\$\$ CASH FOR GUNS \$\$\$**

**\$5.00 ADMISSION**

Proceeds go to Lions Club

**VENDORS WANTED WITH LOTS OF GUNS!**

**TABLES \$10**

CALL JIM to Reserve  
**660-355-GUNS (4867)**

**SCOTTY'S AUCTION SERVICE**

573-356-4405

Auctioneer: Scott Kuntz

SEE MORE PHOTOS ON SCOTTY'S WEBSITE

[WWW.SCOTTYSAUCTIONSERVICE.COM](http://WWW.SCOTTYSAUCTIONSERVICE.COM)

**Large Construction Business Liquidation Auction**

Thursday, November 8, 2023 at 10:00 a.m.

Willis Bros. Inc

**30285 Kimball Place, Macon, Missouri**

**Direction:** Follow US Highway 63 North from Macon approximately 4.3 miles, turn West on Kimball Place to the auction location. Watch for signs the day of the auction.

**This auction will be live and online**  
<https://hibid.com/catalog/489031/willis-bros-equipment-auction>

**EQUIPMENT:** Morkoa MST-2200 track carrier 12 ton capacity, Starts, runs and operates, shows 2,200 hours; 1995 Case 580 Super L Cummins front wheel assist; Construction King auxiliary hydraulics 6,300 hours, tac does not work, starts, runs and operates; John Deere 670A maintainer, articulating, approximately 2,500 hours, starts, runs, and operates; International 4900 BT with dump bed, starts, runs and operates, miles unknown; Ford F800 digger truck 3200 Cat motor, starts and runs bucket upper controls don't work, 48' boom with 2 augers, 71,xxx miles; Pace American 30' enclosed gooseneck trailer, air assist hydraulic brakes, Items in trailer do not sell; International dump truck, Dt466 diesel, Allison transmission, runs and operates; 1993 International S2500 dump truck, 466 13 speed, runs and operates; 1997 Kentucky Mfg Co 48' semi trailer, dry trailer, decent tires, items inside sell separately; Miller diesel welder/generator Trailblazer, runs and operates; horizontal hydraulic boring machine; Belshe 22' double axle trailer, pintle hitch, homemade title; 6" MJ pipe fittings; 12" MJ pipe fittings; Mikasa plate compactor, 18" x 22" surface pad; snow fence and sand bag barriers; Wacker Neuson 3" trash pump Honda motor with exit and return hoses; pipe grabber 16"; Ingersoll-Rand 175 air compressor, Deutz diesel runs as should; John Deere 4430 quad range shifting pattern, starts and runs as should, shows 6,3xx hours; Land Pride RCM5015 15' batwing brush cutter, pull type 1,000 RPM; Vermeer D25 Navigator horizontal boring machine, pull type 1,000 RPM, runs and operates; 1975 Ford 9000 mixing truck, runs; 1987 cutter; construction cones; Etnyre Chip Spreader with 12' feeder starts and runs; Takeuchi TL130 skid loader, Yanmar diesel engine' unknown hours, runs but 2 speed does not work; Takeuchi TL130 skid loader, Yanmar diesel engine, need tracks, starts and runs as it should, unknown hours; Komatsu PC75UU mid size excavator starts and runs, smokes, Z boom, missing glass; Case 850 D long track , 6 way blade with rippers, runs and operates shows 6,xxx hours; Komatsu PC75UU mid size excavator, starts and runs 24' tooth bucket 5,xxx hours Z boom; Impact walk behind vibrating roller, starts and runs as it should; Vermeer M475 trencher 7' boom, Deutz diesel engine 600 series chain, runs and operates as it should; 1994 Kubota L4200 tractor with LA680 loader, front wheel assist, fly shift transmission shows 2,100 hours, tac does not work; 5' box blade with star fire teeth; John Deere 7720 Turbo field ready combine 4,9xx hours; Sperry New Holland 316 Hayliner square baler, wire -good, straight machine; John Deere 7000 8 row planter with Donahue trailer; John Deere 7720 combine will be sold with tires-tracks will be sold separately, parts machine; universal metal tracks; Vermeer 7x11 Navigator directional boring machine Kubota diesel engine 768 hours showing; 2001 Freightliner FL80 Jetter Back truck Automatic transmission 622,xxx miles runs and operates; Pettibone model 6 6,000 lb machine 1,341 hours runs and operates; Diesel powered irrigation unit with pintle hitch; 20' pintle hitch trailer with 4' dove tail; and MUCH MORE!

**We will be adding more items to this listing. Check back often!**

**There will be many more items at this auction too numerous to**

**Willis Bros Inc Real Estate Auction – Selling 11 Tracts in Macon & Adair Counties**

**Wednesday, November 8, 2023 at Noon**

Willis Bros Inc

**30285 Kimball Place, Macon, Missouri**

**Direction:** Follow US Highway 63 North from Macon approximately 4.3 miles, turn West on Kimball Place to the auction location. Watch for signs the day of the auction.

**REAL ESTATE:**

**TRACT 1:** 30285 Kimball Place, Macon, Missouri. 6.8 acres more or less, commercial location with an office, four large shops and storage buildings. This all brick building built in 2001, is currently set up as an office but can easily be converted to a 3 bedroom home with a full, unfinished basement. There is a concrete safe room with a vault door. The office/home has fully insulated, 6' walls and the roof was replaced in 2020.

**TRACTS 2 THROUGH 7:** US Highway 63 and State Highway AX, Macon, Missouri. We will be selling 6, three acre more or less tracts of flat ground for development. All tracts are adjacent to each other.

**TRACT 8:** US Highway 63 and State Highway AX, Macon, Missouri. 3.3 acres more or less flat lying ground which includes an older farmhouse.

**TRACTS 9 THROUGH 11:** US Highway 63, Sublette/Kirkville, Missouri. We will be selling 3 tracts of three acres more or less each. Rural water runs near the property.

**REAL ESTATE TERMS & CONDITIONS:**

**PROCEDURE:** All bids placed are by the Acre. The winning bidder get their choice of tract(s). In the first round of bidding, the property will not be considered "SOLD" but will be considered "PENDING". When all tracts are considered "PENDING", the auctioneer will meet with the seller and each tract will be opened back up for additional bids. If high bidder chooses more than one tract of land at the same time in the first round of bidding, those properties will be opened back up together for bidding.

**ACCEPTANCE OF BID PRICES:** Winning bidder will enter into a Contract to Purchase immediately upon being declared the Successful Bidder by the Auctioneer. The Seller reserves the right to reject any and all bids. Once accepted, this agreement shall be binding on the parties and their successors and assigns. This agreement is NOT subject to financing, inspections, or other contingencies that delay the closing for any such reason.

**DOWN PAYMENT:** 10% of the contract purchase price will be due upon acceptance of the Sales Contract. Personal or Cashier's Checks will be accepted. This is "AS IS, WHERE IS" and is non-refundable.

**CLOSING:** Closing shall be within 30 days of the auction date.

**POSSESSION:** Possession will be given at closing, subject to the remaining rights of the current tenant(s) if any.

**TITLE:** Seller shall furnish the buyer at Sellers expense an Owners Policy of Title Insurance in the amount of the purchase price, and agrees to provide and execute a proper deed conveying merchantable title to the real estate to the buyer.

**REAL ESTATE TAXES:** Real Estate taxes shall be prorated as of the date of closing between the Seller and the Buyer.

The information is believed to be accurate; however, no liability for its accuracy, errors or omissions is assumed. All lines are on maps, photographs, etc. are approximate. Buyer should verify the information to their satisfaction. There are no expressed or implied warranties pertaining to this property. Real estate (including all improvements, if any) is being sold As Is, Where Is with NO warranties expressed or implied. Please make all inspections and have financing arranged prior to the end of bidding. Not responsible for accidents or theft. Statements made the day of auction take precedence over printed material.

**Macon Investment Real Estate Auction**

**Friday, November 17, 2023 at 5:00 p.m.**

John J and Bonnie Bruno

**201-205 Weller Street, Macon, Missouri.**

**Directions:** Follow US Highway 63 South of US Highway 36 for approximately 0.2 miles, turn West on Weller Street for approximately 0.1 miles to the auction location. Watch for signs.

excellent frontage and is located near the intersection of US Highway 36 and US Highway 63. This would be a great business opportunity. Please call Scotty as 573-356-4405 to schedule your personal showing.

**REAL ESTATE:** We will be selling at auction this 1.92 acre more or less lot in Macon. The lot has two residences, one which is occupied, and three storage buildings. It could be used for rental income as it is or more structures could be added for additional income. The property lies mostly flat and can be accessed from Weller Street, a quiet, dead end street or from Briggs Drive which is a busy thoroughfare. It has



**AGRI-BUSINESS**

**Cattle**

A2 A2 Cattle For Sale. 660-665-3919

Registered Angus 18 month virgin bull. Gentle, great disposition, low birth weight. Also, registered open coming yearling breeding heifer. 660-341-6911.

Yearling Angus bulls, bred to Baldrige, semen tested. Lee Lemmon, Williamstown, 573-853-4550. Mark Lemmon 309-221-8094.

Have items to sell? Have too much stuff? Let us help you get the most for it! Call 660-665-8500.

**Equipment & Supplies**

1935 WC Allis Chalmers, \$950.00. 3 bottom John Deere pull type plow, \$225.00. 660-956-6826.

2001 Gleaner 6 row corn head, 2021 450 Polaris four wheeler. 20 foot tandem tilt trailer. 660-651-3936.

3 bottom pull type plow IH. 660-956-6826.

2018 John Deere 3039R utility tractor with bucket. Purchased new, 171 hours, 60 inch mid mower, 6 foot Frontier cutter, 4 wd. Always stored inside, serviced on a regular basis, hydraulic. \$28,000.00, 660-265-5541.

**Farms & Acreage**

Experienced farm family looking to expand farm. Will give bids on productive row crop farmland in NE MO. Call Brent at 660-341-1561 or Katy at 660-341-1318.

Multi generational family farm interested in renting large tracts of tillable farm ground. 573-721-3260.

**Hay/Feed/Seed**

Big round bales of mixed hay, net wrapped, none been wet. Call 660-216-7696.

**BE AN EARLY BIRD!** Place your ads before Monday and beat the rush!

**Estate Antique Auction**

**2705 Main St Unionville, MO • October 28th 10:00 am**

We will be selling an estate that has been sitting on the same farm for 150 years, to include antiques, primitives, guns and unique barn finds over 2 auctions. First auction to include: primitive cabinets, several steel wheels, around 25 crocks to include 4 gal beehive salt glaze, Eagle pottery Macomb, early Monmouth, windmill tails, fan and motors, several wood 50 gal barrels, several wood advertising boxes, Delaval cream separator, barn door rollers, barn doors, wood incubator, several blue fruit jars, nail kegs, oyster cans, very old Universal Car Co Centerville la wood sign, enamelware, wood ladders, 6' windmill, lightning rod balls and rod, tractor tool boxes, wood kegs used for greasing buggies, broad ax, galvanized tubs and buckets, Maytag washers, copper wash tub, wood churn, corn sheller, forge table and blowers, cream cans, wood planes, coffee grinder, sausage stuffer, stools, sugar bucket, scales, weights, vices, PO desk, well pumps, cider press, several pieces of antique farm machinery including a RI 2 bottom plow, as well as some wooden horse drawn items stored in the barn. **Sportsman items:** 1920s hunting magazines, ammo boxes, tools, Ideal Midget powder measures, Winchester powder can, many little items used for working on guns, rough guns for parts, Winchester 69 22, rough model 24 Remington, Stevens Junior 22, homemade 22, 1917 Winchester 22-250 homemade, rough S&W revolver, Marlin 60 22 rifle. Folks, the buildings are full and in no way can we see everything to advertise. You don't come across finds like this very often so be sure to attend as there will be surprises. Second sale will be on January 20th. **Preview from 2 to 5 pm on October 27th.** Sit down type sale in a climate-controlled building.

Food and restrooms available. **Check out pictures on the website at [www.altiserauctionandappraisal.com](http://www.altiserauctionandappraisal.com).**

SEE OUR FACEBOOK PAGE FOR PHOTOS



**WE GOT YOUR NEEDS COVERED!**



**FARM TARPS TRUCK TARPS HOOP BUILDING COVERS**

*Troyer*  
**TARP MFG.**

**660-486-3301**

**20264 STATE HWY. VV • ETHEL, MO 63539**

*Accepting New Patients!*



**AURORA BELL, D.O.**  
**FAMILY MEDICINE**

**1611 S BALTIMORE | STE A**  
**KIRKSVILLE, MO**

**CALL (660) 665-7575**  
**TO SCHEDULE AN APPOINTMENT**

**Complete Family Medicine**

**PUBLIC AUCTION**

We will sell the following personal property for the late Charles Elam. **Located at 126 E. Sanders in LaPlata, Mo. (Christy's Auction House) This will be a sit down auction.**

**ANTIQUES AND COLLECTIBLES**  
**SATURDAY, OCTOBER 28TH 2023 @ 10:30 AM.**

**FURNITURE:** Oak drop leaf table, wooden spool cabinet with 16 drawers, drop front secretary bookcase, oak lift seat hall tree with mirror, walnut drop front secretary, oak upright file cabinet, oak roll top desk, lift top wooden ice chest, oak three drawer ice box, round oak table with claw foot legs, 3 child wooden rockers, walnut child's wooden cradle, Wilcox and White roller walnut pump organ with approximately 20 paper roles (rare).

**GLASSWARE:** 2 Sleepy Eye pitchers, Sleepy Eye salt bowl, 3 buttermilk pitchers, 2 leaded cut glass pitchers and tumblers, gold trim berry pattern glass and dessert sets, gold trim pattern glass water set, Frankoma dishes, 2 large Fiesta platters, assorted hand painted plates and wall plates, hand painted cups and saucers, Germany hand painted glassware, various pieces of Carnival glass and Depression glass, 2 Ironstone pitcher and bowls (one is hand painted), Magellica platter, ruby red caster set with butter dish, nest of Pyrex bowls, ruby red etching coffee maker with porcelain filter, refrigerator dishes, Dr. W. H. Gooch ruby red glass (Elmer, Mo.), hen on the nest lazy susan, complete set of Empress China (Gaiety pattern), Frankoma pottery, Hagger pottery, McCoy pottery, Weller pottery.

**LAMPS AND PRIMITIVES:** Gone with the wind lamp, old kerosene hanging lamp (electrified) with glass prisms, Tiffany type table lamp, lighted smoking stand (complete), spinning wheel, 2 Civil War Officer swords, 3 sets of coffee grinders, sterling souvenir spoons, 2 sets of Holmes and Edwards silver plate flatware, wooden potato masher, wooden butter mold, stain glass window, Toledo #257 scale with large brass tray, 3 Daytona candy scales, 2 bullet molds, 7 antique powder flasks, hammered aluminum tea set with pitcher and glasses, various silver plated trays, child flat irons, End of Trail pictures, End of Trail brass bookends, End of Trail sculpture, old post office box bank, old ladies and children set of moccasins, old post cards, WWII navy pants and scarf, Old Northwest territory ladies coat (Indian design) Ozark airline history picture on marble, old Boy Scout hand book, signed and numbered hand carved duck decoy, 5 Jesse Barnes framed pictures (winter scenes).

**CLOCKS:** Antique wooden clocks, 3 kitchen, 2 mantle and 1 weighted, George Washington Banjo clock, Grandfather clock, wind up weight wall clock.

**TOOLS AND OUTDOOR ITEMS:** 8 foot Husky aluminum step ladder, gas leaf blower, Black and Decker battery powered weed eater, Handyman jack, S&K socket set 3/4 inch drive up to 1 1/4 inch, electric Skill saw 7 1/4 inch, electric hand grander, 1/2 inch electric drill, Craftsman tool box with various tools and sockets, pipe wrench, 2 trouble lights, propane torch kit, heavy duty lopper, fire extinguishers, 4 steel traps, rechargeable spot light, turkey fryer, fishing rods, gas cans, set of left handed golf clubs.

**AUCTIONEERS NOTE:** This will be a very good and interesting auction with some very old antique items. Mr. Elam was in his late 90's at the time of passing. Please plan to attend. Terms Cash/Check with ID: Lunch on grounds. Not responsible for Accidents.

**OWNER: FAMILY OF CHARLES ELAM (501) 681-5759.**

**Christy's Auction Service**



La Plata, MO 63549 660-341-4531

Full sale bill & pictures located on Facebook:

Christy's Auction Service & Auction zip

Auctioneers - David Christy 660-341-4531

Dr. Gary Elam (501) 681-5759 Greg Smoot (660) 341-5175



**LOCAL MATTERS**

Please support the advertisers that power your community paper.

**NEWSPAPERS MATTER**  
NOW MORE THAN EVER

**Stock Your Pond with the Best!**  
**We stock most species**  
**freshwater, game & baitfish.**



**Species Available:** Largemouth bass, hybrid bluegill, bluegill, redear sunfish, black crappie, fathead minnow, walleye, muskie, catfish, golden shiners and more!



**Gone Fishing**

Time to gather up the little ones, get their fishing poles and go enjoy a day of fishing!



info@harrisonfishery.com • www.harrisonfishery.com

**660-423-5482**

Contact us for bulk price & delivery.



# SCHUYLER COUNTY, MISSOURI REAL ESTATE & PERSONAL PROPERTY AUCTION *2 Day Event!*

LIVE & ONLINE!



TUESDAY, OCTOBER 24, 2023  
@ 9:00 A.M.

REAL ESTATE SELLS @ 3:00 P.M.  
Live & Online - Selling Real Estate & Personal Property

WEDNESDAY, OCTOBER 25, 2023  
@ 10:00 A.M.

3-RING TIMED ONLINE ONLY EVENT!  
Selling signs, toys, antique furniture & much more!



## DARWIN L. STEGGALL ESTATE

REPRESENTING ATTORNEY: Tom Hensley  
122 W. Harrison Street | Kirksville, MO 63501 | (660) 665-4419  
TITLE WORK BY: Schuyler County Abstract Co.  
118 E. Jackson | Lancaster, MO 63548 | (660) 457-3804

SELLING REAL ESTATE, VEHICLES,  
SIGNS, TOYS, ANTIQUE FURNITURE  
& MUCH MORE!

ONLINE BIDDING  
PROVIDED BY: **proxibid**

AUCTION REPRESENTATIVES:  
John Probasco (641) 856-7355  
& Jim Huff (319) 931-9292

**MERIT AUCTIONS**  
"Specializing in Farm Real Estate & Ag Equipment"

Merit Auctions | Toll Free 833.273.9300 | www.MeritAuctions.com | Lic. #444.000611

### Hay/Feed/Seed

For sale corn silage bale's wrapped, weighing 1800 pounds, semi delivery available. 9.72 protein, relative feed value 166, nitrate less than 0.02 573-470-0077.

Big square bales of wheat straw, \$60.00 per bale. Alfalfa and crass hay available. 660-956-3420.

### Livestock

Two 2 year old Nubian billy goats. Finest quality. 7% butterfat dam. \$150.00 each. 641-664-1949.

Yearling Angus bulls, bred to Baldrige, semen tested. Lee Lemmon, Williamstown, 573-853-4550. Mark Lemmon 309-221-8094.

### EMPLOYMENT

#### Miscellaneous

With hunting season here, make loading game easy with the SB Bed Winch! Available for Honda, Can Am, Polaris, and Yamaha UTVs, go to sbwoodandweld.com or find us on Facebook at SB Wood and Weld! Shipping available or shop local and Save!

#### MERCHANDISE

##### Building Supplies

Billboard Tarps, assorted sizes, mostly 14'x48', \$35.00 each. Raymond Kauffman, 25624 Hanover Street, LaPlata, Mo 63549.

Have items to sell? Have too much stuff? Let us help you get the most for it! Call 660-665-8500.

### Miscellaneous

Three antique slate pool tables for sale or trade. 573-248-0942.

For Sale: Dressed Beef Quarters and Halves, \$3.90 per pound, includes processing. Available mid-November. 660-665-3919

Fish for stocking ponds: catfish, grass carp, crappie, redear, bass, an fat-head minnows. Heindselman Family Farms. 660-341-5692.

Fresh local cooked sorghum, 3 miles West LaPlata, 156, 1/2 mile South Iceberg, 1/2 mile West Hanover Street, Raymond Kauffman.

HAVE A PET OR PUPPIES TO SELL? Call us. You can even pay over the phone. 660-665-8500.

**FREE EVENT!!**

**NOV 9th**

**NEMO FAIR GROUNDS**  
Doors Open at 5:00  
Program 5:30-8:00 pm

CORNERSTONE CHURCH PRESENTS

# BLESSING OF THE HUNT

Speakers  
**Jay Lowder**  
Hunter and Author  
Other Guest Speakers

Be Present to Win an  
**Enclosed Tower Deer Stand**  
with a **Ruger Deer Rifle**  
Hundreds of Door Prizes

Conservation Hunting Safety | Food Available For Purchase

**KIRKSVILLE TOURISM**

## McBride Angus

### COMPLETE DISPERSAL SALE

NOON • FRIDAY, OCTOBER 27, 2023 • WHEELER ANGUS, PARIS, MO  
NEARLY 150 HEAD SELL: 34 FALL COW/CALF PAIRS AND FALL-BRED COWS •  
17 SERVICE-AGE BULLS • 19 FALL YEARLING HEIFERS • 9 SPRING-BRED COWS WITH  
SPRING BULL AND HEIFER CALVES • 2 HERD SIRE



**BDM EDWINA TITUS 020**  
SELLS WITH FALL BULL CALF AT SIDE, BORN 8/25 BY MAN IN BLACK.



**BAM FOREVER LADY 026**  
SELLS WITH A FALL CALF AT SIDE.

VIDEOS & BIDDING ON  
**DVAuction**  
Broadcasting Real-Time Auctions

REGISTERED ANGUS  
since **1952**

PERFORMANCE TESTING  
since **1966**



**BDM EDWINA ERICA 031**  
SELLS WITH FALL HEIFER CALF AT SIDE, BORN 8/17 BY MAN IN BLACK BY.

*Featured M Sires*

- BAR DYNAMIC
- BJ SURPASS
- DEER VALLEY GROWTH FUND
- HCC WHITEWATER 9010
- LAR MAN IN BLACK
- MUSGRAVE CRACKERJACK
- SYDGEN KCF GAVEL 8361



**BAM FOREVER LADY 752**  
SELLS WITH A FALL BULL CALF AT SIDE, BORN 8/22 BY DYNAMIC.



**BDM EDWINA ERICA 338**  
SELLS WITH A FALL HEIFER CALF AT SIDE, BORN 8/6 BY GROWTH FUND.



**BOBBY DALE & BARBARA MCBRIDE**  
MISSOURI PIONEER ANGUS BREEDER

**McBride Angus**

**BOBBY DALE & BARBARA MCBRIDE**  
9292 Audrain Road 140, Centralia, MO 65240 • H (573) 682-2874 • C (573) 682-7175

For your free reference sale booklet, contact anyone in the office of the Sale Manager, TOM BURKE, KURT SCHAFF, ALEX POPPLEWELL, AMERICAN ANGUS HALL OF FAME, at the WORLD ANGUS HEADQUARTERS, PO Box 660, Smithville, MO 64089-0660. Phone: (816) 532-0811. Fax: (816) 532-0851. E-Mail: angushall@angushall.com

## ONLINE AUCTION

### 200 ACRES-SOLD IN 2 TRACTS

BIGHORN STREET ETHEL, MO  
MACON COUNTY  
TRACT 1- 160 AC +/- TRACT 2- 40 AC +/-

Sellers: Teddy and Megan McGuire

VIEWING DAY October 28th 9:30am-11am  
BIDDING OPENS November 13th 9am  
BIDDING CLOSES November 15th 2pm



**Troy Thurman**  
660-537-0987



**Jason Thurman**  
660-537-0953

800-895-4430  
MissouriLandAndHome.com/Auctions

3516 I-70 Dr SE Ste. A  
Columbia, MO 65201

United Country Real Estate  
AUCTION SERVICES  
Columbia, MO

2022 TOP BROKERAGE

ONLINE | UNRESERVED

## W&M WELDING INC. AUCTION

SEDALIA, MO

WEDNESDAY, OCTOBER 25, 2023 | 10:00 AM<sup>CT</sup>








**SELLERS ON THIS AUCTION**

- W&M WELDING INC.
- GARY MCMULLIN
- WAYNE MCMULLIN
- STATE FAIR COMMUNITY COLLEGE

**SALES REPRESENTATIVE**  
ZACH LUKAS 1 (319) 361-4169  
BRICE PANNIER 1 (660) 829-5051

**FEATURED AUCTION ITEMS:**

- CRANES
- TELEHANDLERS
- FORKLIFTS
- TRUCK TRACTORS
- TRAILERS
- PICKUPS
- WELDERS
- SHOP EQUIPMENT AND MORE!

**OPEN HOUSE/EQUIPMENT INSPECTION**  
OCTOBER 18TH 2023 10:00AM - 2:00PM  
LUNCH PROVIDED COURTESY OF BIGIRON

VISIT OUR WEBSITE FOR ADDITIONAL INFORMATION!  
1 (800) 937-3558 | www.bigiron.com

# BigIron

**SULLIVAN AUCTIONEERS**  
a BigIron company



# NEMO Trademarks BRAIN GAMES

## CROSSWORD PUZZLE

-October- WEEK 3

### PUZZLE SODOKU

-October- WEEK 3

**Here's How It Works:**  
Sudoku puzzles are formatted as a 9x9 grid, broken down into nine 3x3 boxes. To solve a sudoku, the numbers 1 through 9 must fill each row, column and box. Each number can appear only once in each row, column and box. You can figure out the order in which the numbers will appear by using the numeric clues already provided in the boxes. The more numbers you name, the easier it gets to solve the puzzle!

7				6				5
	4							2
	1			7				
9					1	7		
					6			5
8				2	7	6	4	
		2						
4				8				
		1		5	2			4

Level: Intermediate

**Fun By The Numbers**  
Like puzzles? Then you'll love sudoku. This mind-bending puzzle will have you hooked from the moment you square off, so sharpen your pencil and put your sudoku savvy to the test!

### CLUES ACROSS

- A device to disengage without a key
- Subdivision
- Network of nerves
- Lounge chair
- Ocean
- C. European river
- Bowl-shaped cavity
- \_\_\_ Caesar, comedian
- Lyric poems
- Tia's sister
- A way to develop
- Cows collectively
- Areas close by
- Slightly disreputable
- Made a mistake
- One who cites
- Food stall: \_\_\_ pai dong
- Narrow valley between hills
- Members of people living mainly in the Congo
- More (Spanish)
- Classroom implements
- Cognizant of
- One who tells on others
- Free from slavery
- Thick piece of something
- Containing two nitrogen atoms between carbon atoms
- Removed entirely
- Late rocker Turner
- Appreciated
- Observation expedition
- Opposite of subtracts
- Unit of work
- Wreckage on the sea bed
- Affirmative! (slang)
- Witness
- River in England

### CLUES DOWN

- A dissenting clique
- Japanese city
- Spiritual leader
- Second letter of Greek alphabet
- Musical term
- Ruled over
- Fortified wine
- First year player
- Moved in a circular way
- Adolescents
- Scottish or Irish Gaelic language
- Someone who serves in the armed forces
- Bring up
- Factual written account (abbr.)
- Having three sides
- Annoy
- Hustle
- American WW2 leader
- Stale atmosphere
- US Treasury
- Sound unit
- They \_\_\_
- Soviet Socialist Republic
- Places to play video games
- Medical event
- When you hope to arrive
- Fixed prices
- Popular Boston song
- Valley in Indiana and Illinois
- Omit when speaking
- German explorer of the Congo Basin
- Stick around
- From a distance
- Heroic tale
- Amounts of time
- Eat

### CRYPTO FUN

Determine the code to reveal the answer!

Solve the code to discover words related to dental hygiene. Each number corresponds to a letter. (Hint: 17 = T)

A. 10 12 13 18 6 19 3  
Clue: Dental technique

B. 17 13 8 17 13 8  
Clue: Hard, calcified deposits

C. 17 9 19 3 11 1  
Clue: Part of the mouth

D. 17 9 9 17 7 23 8 11 10 7  
Clue: Cleaning device

Answers: A. scaling B. tartar C. tongue D. toothbrush

## WORD SEARCH

-October- WEEK 3

### DENTAL HYGIENE WORD SEARCH

U M C I S T A I N S P A Q G M E A O T T  
 P J L E B A W F U W A D Y N O W I N D E M F H A  
 L I U A I B M W I D Q T U A P I H D W C A F R J A  
 I O C N F T A T I S B C H E A Y N T B G A A M N N  
 A M I D D E T U A H E A S O M O G A A W M M  
 H E N E L M T E Y U A D E B A N M I U I Q  
 Q L I A N E N H W D T B S N R A T R A T P  
 D P T N W O R C N R F A G C I H Q H L I  
 G M T H E D H G E O L B D T Y I H L E I  
 P R B E J P I A Q G I I I G O T P R L D B  
 L D D D I C T P E B C E S I T O O E E A S  
 A I E I D H O S S A H E A O E A R C M S E  
 Q W D R G N I B R U N S T R Q N T J C C E  
 U E O T O O A Y E I L I C N I R N B E N Y Q C C  
 F E E L D S P T R C J Y B I E O A N D C B  
 P J G F B F F L O T M L A F E L N J C A S  
 J B O Q J O B W E E F N M F W L Q D H C S

### WORDS

- ABRASION
- ABSCISS
- ABUTMENT
- ACID
- ADJUSTMENT
- AMALGAM
- ANALGESIA
- BACTERIA
- BICUSPID
- BITE
- BONDING
- BREATH
- CARIES
- CLEANING
- CROWN
- FLUORIDE
- HYGIENIST
- PARTIAL
- PLAQUE
- ROOT
- SEDATION
- STAINS
- TARTAR
- TOOTH

T A A U N M I Q P I I B S S E C C S B A S  
 T H R J M W U N T L E D A S M C C Q Y C C H  
 O F F G A A I L L A H L R E C C J Y D N J D  
 A M A L G A M W R Q H P E R T N M A N Q  
 E E C T B O N I I T H I I T O A N E A O L L  
 M D W O T M A P A I Y I O O E Q B R E E W  
 G N I D N O B A R C T T G T O R R I F F F  
 Q I W H Y S E N G X D I I A T I R B A M  
 A N O I T T A D E S S A B I S E S N I Y L N  
 P D Y P H E A R B F L L C H N C H J M F  
 S A J A C H U H T R O G B A U I M C T E  
 N W R U B A Y S D N E Q E S R L S R O E  
 I U Q T S S U E W W C G A P S B I S T L W  
 A F L D I T T N H R H I T O I I E P F B  
 T W W I E A M M N O D P C H N A Y S F O  
 S A M B T D L E E W E J I D G O F D B J  
 I D B I F D E U N H E D I R O U L F O  
 C L E A N I N G A T T B D E D T J E G O  
 M J I U C M E N I P M R D I W O D E J B  
 U P L I O A H Q L D G P L A Q U E F P J

1	2	3	4		5	6	7		8	9	10	11		
12				13			14			15				
16					17			18			19			
20							21				22			
				23		24				25				
26	27	28	29					30						
31								32						
33									34	35	36	37	38	
				39	40	41		42	43					
			44	45				46						
	47							48						
49					50				51		52	53	54	55
56					57				58					
59					60					61				
62					63						64			

E	S	A	R		E	E	S		H	A	E	Y
N	A	G	A	L		G	R	E	S	D	D	A
I	A	R	A	F	S		U	D	A	N	A	T
D	S	E	A	R	E		O	A	Z	A	B	S
				E	A	P	C	I	N	A	M	E
R	E	L	T	T	A	T	A	R	E	A	W	A
S	R	S	E	R	A	S	E	M	A	S		
S	B	A	S	L	U	B	A	S	E	R	G	O
				D	A	I			R	C	E	R
				D	E	R	R	E	H	S	F	R
				S	I	E	S	I	N	I	C	V
E	N	E	K	I	N	E	A	G	E	A	R	A
S	D	E	S				S	I	D	S	R	E
R	D	E	R				S	E	A	M	E	S
E	T	E	R				A	R	M	A	B	N

5	2	4	1	8	6	3	9	7
6	1	7	5	3	9	2	8	4
9	8	3	7	2	4	5	6	1
4	5	9	6	1	8	7	2	3
7	3	1	9	5	2	8	4	6
2	6	8	3	4	7	9	1	5
8	9	5	4	7	1	6	3	2
1	7	6	2	9	3	4	5	8
3	4	2	8	6	5	1	7	9





There's a better way to get attention.

Keep life simple. Take out an ad.

**SHOW-ME SEAMLESS GUTTERING**  
 FREE ESTIMATES • PROMPT SERVICE  
 • 5" & 6" Gutters  
 • Siding • Soffit • Fascia  
 (23 colors available on Gutters & Fascia)  
 Tried of Cleaning your Gutters?  
**LEAFPROOF THEM!**  
 ELLIOTT HIX  
 660-626-3447 • KIRKSVILLE, MO

**Connie's MOBILE HOME TRANSPORT**  
 We offer the following...  
 Break Downs • Transport • Set up • Anchoring  
 Call Rich today! 573-881-7483

# SHARYN MCCOSKEY MOVING AUCTION

FRIDAY, OCTOBER 27<sup>TH</sup>, 2023 • 10:00 AM  
 AUCTION TO BE HELD ONSITE: 822 BROOKFIELD AVE, BROOKFIELD, MO

As I will be moving from the area, we will sell the following at the home located 822 Brookfield Ave., Brookfield, MO. From the Twin Parks in Brookfield, travel north on Main Street two blocks to Prairie Street. Turn west on Prairie Street for 3 blocks to Brookfield Avenue, then turn north on Brookfield Avenue a short distance to the sale location. Auction signs posted sale day.

## BROOKFIELD REAL ESTATE, LOVELY 2 BED/1BATH

This charming, solid, two-story 1577 sq ft home is situated on the historic Brookfield Avenue. The 2-bedroom, 1½ bathroom home features newer laminate flooring throughout the main floor and original hardwood floors upstairs. As you approach the home you are welcomed by a nice front porch that overlooks the oak tree shaded front yard. Entering you will find a good-sized living room and front staircase. Nestled next to the living room is the formal dining room large enough to accommodate most families and a bonus room that majority would use as an office or sewing area. A nice eat-in kitchen and main floor laundry completes the first floor. Upstairs, there are two bedrooms, both having walk in closets and an oversized updated bathroom. The home has vinyl siding, a single car detached garage, newer asphalt shingle roof (2016), a newer 200A electric service, and good basement. If you're in the market for a nice home in a great area be sure to not miss this one! The real estate will sell at approximately 12 noon. Contact the auction firm at (660) 240-9161 for viewing.



**APPLIANCES, FURNITURE, HOUSEHOLD:** Whirlpool refrigerator (white, top-freezer); Whirlpool electric stove (30", smooth glass top, white); Midea small chest freezer; Whirlpool washing machine (top load); Whirlpool electric dryer; Lane sofa, matching chair/ottoman; swivel rocker-recliner; rocker recliner; maple hutch, maple serving cart; KitchenAid stand mixer; Hamilton Beach food processor; Hamilton Beach blender; kitchen step stools (3", 4"); Frigidaire microwave; cast iron skillet; Bluebird china set; sad irons; metal milk box, milk bottles; war ration coupons; old Valentines; brass bells; Bissell carpet machine; Sony stereo system; Insignia flat screen tv; wicker chest; twin bed; sewing machines (Brother x2); sewing thread supplies; office chair; writing desk; WAKE 21-speed bicycle (like new); Satori 15-speed bicycle; Raleigh 10-speed bicycle; 7-person tent; Coleman camp stove; fishing pole; white Cracker Barrel style rocking chairs (x2); and other items to be added by sale day! Come see!

**JEWELRY, GUITAR:** A nice selection of gold and sterling jewelry including 14k YG amethyst; 10k YG aquamarine; 14k ruby w/ diamonds; 14k YG emerald; 14k YG sapphire; 14k YG citrine (matching earrings); 14k YG necklace with pendant; 14k YG bracelet; several 14K YG necklaces (cable, box, flat, etc); sterling ring; watches and other items; Paul Epiphone Studio model electric guitar; Mustang II amplifier

**SHOP & GARDEN TOOLS, LAWNMOWER:** Clark EN125 Flux core electric mig welder; auto dark welding helmet; Clark chest-on-chest tool box; Craftsman table saw (10", 2.7HP); Delta miter saw (10"); drill press (5-speed bench top); Delta band saw (bench top); Samborn portable air compressor (155 psi); Jun-Air small air compressor; bench grinder (8" on stand); router and router table; chop saw; porta power set; 9 way slide hammer/pulley set; two-wheel dolly; power steering bleeding kit; pipe wrenches (6+); vises (bench, machine, etc); drafting set; flaring tool set; ring plier set; new mop bucket; yard and garden tools (shovels, scrapers, more); drywall square; electric power washer; hand planes; step ladder (6', aluminum); extension ladder (20', aluminum, new); hand sprayers; air hoses; Quik Grip clamps; Workmate; air chisel; punches, chisels; gear pullers; Hand tools including (vise grips, screwdrivers, channel locks, pliers, ratchets); socket sets (impacts, deep well, metric, SAE); drill bits; wrenches; Allen wrenches; torque wrench; tap and die sets; pipe cutters; plumbing and electrical supplies; Corded hand tools including Craftsman hammer drill; spindle sander; hand belt sander; jig saw; circular saw; angle grinder; belt sanders; vibrating sanders; Dremel tool; angle screw gun; torch set; shop work lights; sawzall, shop vacs; Cordless tools including B&D weed eater; B&D leaf blower; B&D nailer; others; Hart electric push mower (18"); Brute push mower (22"); bbq grill; Murray snow blower; yard ornaments; and more items

ADDITIONAL DETAILS & PHOTOS ONLINE AT:  
[www.teterauction.com](http://www.teterauction.com)

SHARYN MCCOSKEY, OWNER



TETER AUCTION COMPANY, LLC  
 (660) 240-9161  
[www.TeterAuction.com](http://www.TeterAuction.com)  
 722 Washington St. P.O. Box 723  
 Chillicothe, MO 64601

# VEHICLES & EQUIPMENT AUCTION

700+ ITEMS SELL NO RESERVE!  
 WEDNESDAY, OCTOBER 25



IQ9995 '19 Manitou MT625H telehandler



IQ9957 '21 Bobcat L28 compact wheel loader



IQ9973 '17 Chevy Silverado 3500HD pickup truck



DK8820 '23 KZ Connect camper



DQ0943 '15 GMC Sierra 2500HD Denali Crew Cab



INVENTORY INCLUDES: campers, rollback trucks, horizontal grinder, telehandler, flatbed trucks, tow trucks, mobile command center vehicle, RVs and more. All items are sold "AS IS." 10% buyers premium applies. 866.608.9283

BID NOW! [purplewave.com](http://purplewave.com)

# NEMO Trader



Our circulation is 11,000 with a 21 county coverage area in Missouri, Iowa and Illinois. Our paper is a free paper and is distributed to restaurants, convenience stores and other businesses in the area for individuals to pick up. We have a new issue every Wednesday.



705 E. Laharpe Street, Ste. F  
 Kirksville, MO 63501  
 660-665-8500  
[sales@nemotrader.net](mailto:sales@nemotrader.net)

TOWN	STATE	COUNTY	TOWN	STATE	COUNTY	TOWN	STATE	COUNTY
Quincy	Illinois	Adams	Galt	Missouri	Grundy	Palmyra	Missouri	Marion
Carthage	Illinois	Hancock	Trenton	Missouri	Grundy	Taylor	Missouri	Marion
Hamilton	Illinois	Hancock	Baring	Missouri	Knox	West Quincy	Missouri	Marion
Centerville	Iowa	Appanoose	Edina	Missouri	Knox	Madison	Missouri	Monroe
Cincinnati	Iowa	Appanoose	Knox City	Missouri	Knox	Monroe City	Missouri	Monroe
Moravia	Iowa	Appanoose	Canton	Missouri	Lewis	Paris	Missouri	Monroe
Unionville	Iowa	Appanoose	Ewing	Missouri	Lewis	Livonia	Missouri	Putnam
Bloomfield	Iowa	Davis	Labelle	Missouri	Lewis	Unionville	Missouri	Putnam
Drakesville	Iowa	Davis	Lewistown	Missouri	Lewis	Moberly	Missouri	Randolph
Ft. Madison	Iowa	Lee	Brookfield	Missouri	Linn	Downing	Missouri	Schuyler
Hwy 2	Iowa	Lee	Marceline	Missouri	Linn	Lancaster	Missouri	Schuyler
Keokuk	Iowa	Lee	Chillicothe	Missouri	Livingston	Queen City	Missouri	Schuyler
Montrose	Iowa	Lee	Atlanta	Missouri	Macon	Arbela	Missouri	Scotland
Brashear	Missouri	Adair	Bevier	Missouri	Macon	Memphis	Missouri	Scotland
Kirksville	Missouri	Adair	Callao	Missouri	Macon	Rutledge	Missouri	Scotland
Novinger	Missouri	Adair	LaPlata	Missouri	Macon	Shelbina	Missouri	Shelby
Alexandria	Missouri	Clark	Macon	Missouri	Macon	Green City	Missouri	Sullivan
Kahoka	Missouri	Clark	New Cambria	Missouri	Macon	Milan	Missouri	Sullivan
Wayland	Missouri	Clark	Hannibal	Missouri	Marion			



# Central Metals Recycling LLC



**Buyers of Ferrous and Non-Ferrous Metals**

**We Pay More \$\$\$, Call For Your Best Pricing Today!!**

11923 Hwy. 54 Mexico, MO 573-581-0336  
 1601 N. 30th Quincy, IL 217-214-7649  
 1175 Hwy. 96 Hamilton, IL 217-847-3191

## BARN RESTORATION

Specializing in Barn & Pole Barn Repair and Restoration



See more restorations!



**WAGLER BUILDERS**

(641) 777-5000 • john@waglerbuilders.com @waglerbuilders



**MILLER AG**

**CAR PORTS & BUILDINGS**  
 6' to 100' wide clear span • Up to 25' tall walls

[WWW.MILLERAG.NET](http://WWW.MILLERAG.NET)

ARBELA, MO • 660-341-0929 • JOE MILLER

## FRONTLINE FENCING LLC

660-956-2430 • Greentop, MO



\* Arrowquip Cattle Handling Equipment

\* Ranger Squeeze Chutes

\* Heavy Duty Tubs and Crowding Alleys

\* Calving Pens

\* Heavy Duty Gates – Custom and Standard Sizes

\* Steel Pipe Fencing – Corrals, Working Areas

660-956-2430 • Greentop, MO

### Pets & Supplies

Standard Australian Shepherd puppies, 10 weeks old, shots and wormed. Arbel, Mo. 319-520-8660.

German Shepherd puppies- Will be large. Farm raised. Full blooded. Good guard dogs. Keep predators away from livestock. \$400. 660-216-5892

Three pure bred Border Collie puppies, one month old, ready to go. \$200.00. 660-299-0808.

### Sports Equipment

Hunt in the dry Lazyman fiberglass deer blinds. Starting at \$1299.00. Four models to choose from. heindselmanfamilyfarms.com, 660-341-5692.

CVA Hunter 45-70 rifle like new with Leupold scope, \$550.00 or best offer, ammo available. 319-470-8889.

Lots of rifle shotgun stocks, different makes and models, \$20.00 - \$40.00 each. 319-470-8889.

**There's a better way to get noticed.**

Keep life simple. Take out an ad.



**LAND AUCTION**

**380.2± ACRES OFFERED IN 6 TRACTS**

Shelby County, Missouri

**PRODUCTIVE CROPLAND • GRASSLAND • HUNTING LAND**

#### DESCRIPTION:

Due to the passing of their parents, the Smoot Brothers have decided to offer the family farms for sale at public auction. The sale will be held at the American Legion Hall at 520 East Maple St., Shelbina, MO 63468 on November 16, 2023 at 6:00 p.m. The land is located in two great areas of Shelby County north of Bethel, MO and also northeast of Shelbyville, MO. These farms have been in the Smoot Family for many years and represent some of the most productive cropland, grassland, and hunting land in the entire county. The current tenants have cared for these farms at the highest level for many years with a 50/50 crop share arrangement. This will most likely be the only time that you will see these farms sell during this lifetime as they are quality tracts that anyone would love to have. The farms will be sold using the buyer's choice method and will be in six tracts consisting of the following:

**Tracts 1 and 2 are located along Highway 15 North of Bethel, MO approximately 4 miles:**

**TRACT 1:** Consists of 37.2 surveyed acres with 33.83 acres m/l FSA tillable acres making it 91% tillable. Has highway frontage along Highway 15 on two sides. Soil types consist of productive Putnam, Leonard, and Mexico soils.

**TRACT 2:** Consists of 37.1 surveyed acres with 34.48 acres m/l FSA tillable acres making it 93% tillable. Has highway frontage along Highway 15 and county road frontage along Shelby 151. Soil types consist of productive Putnam, Leonard, and Mexico soils.

**Tracts 3 through 6 are located along Shelby 244. From Shelbyville, MO take Highway 168 east approximately 6.5 miles to Highway W. Then go north on Highway W approximately 3.5 miles to Shelby 244. Then go west on Shelby 244 to the farms which are on the South side of Shelby 244.**

**TRACT 3:** Consists of 78.8 surveyed acres with approximately 42.98 acres m/l FSA grass acres. Some of the grass acres could be farmed or offer excellent haying or grazing opportunities. The hunting on this tract is some of the best around with the location being in a well-known area for top-notch hunting. Has county road frontage along Shelby 244.

**TRACT 4:** Consists of 79.9 surveyed acres with approximately 29.05 acres m/l FSA grass acres. Some of the grass acres could be farmed or offer excellent haying or grazing opportunities. The hunting on this tract is some of the best around with the location being in a well-known area for top-notch hunting. Has county road frontage along Shelby 244.

**TRACT 5:** Consists of 52.4 surveyed acres with approximately 36.71 acres m/l FSA grass acres. This tract was the "homeplace" consisting of the old farmhouse along with a nice machine shed, barns, grain bins, and multiple outbuildings. There are endless opportunities on this tract to build a forever home, hunting cabin, or make it your own farmstead to raise a family. Electric, rural water and well water are present on this tract. Has county road frontage along Shelby 244.

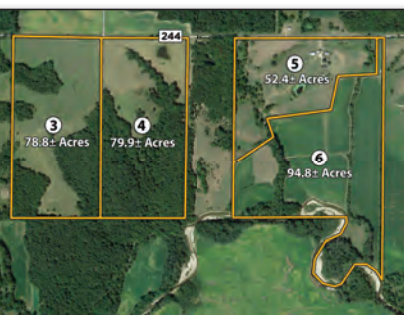
**TRACT 6:** Consists of 94.8 surveyed acres with approximately 4.45 acres m/l FSA grass acres and 58.02 acres m/l FSA tillable acres. The tillable land lies in the river bottom of the North River and is highly productive. With the southern border of this tract being next to the North River, this offers some of the best hunting in the area. Has county road frontage along Shelby 244.

**Sellers:** Patricia J. Smoot Family Trust

**Held at the American Legion Hall Shelbina, MO**

**THURSDAY NOV. 16TH • 6PM**

Anthony Peoples - 660.651.6501  
 Jay Scott Gander - 660.676.1479  
[www.peopleslandco.com](http://www.peopleslandco.com)



**ANIMAL HOUSING HAY STORAGE & MUCH MORE**



**Skylight FABRIC STRUCTURES**

30697 COLONY AVE. • NEW CAMBRIA, MO 63558

660-486-3250 • 833-482-8862

### REAL ESTATE SALES

#### Acres & Lots-Sales

Hunting land for sale, Sullivan County, Milan, Mo. 62 acre farm, 2 miles from Milan, great deer and turkey hunting, approximately 21 acres row crop, \$244,900.00. 38.4 awesome acres hunting and recreational property, Northeast of Milan. 1 1/2 miles from new Roy Blunt Reservoir Dam that is being built, great turkey and deer hunting, \$163,200.00. Duane Schnelle, Boyer Land Company, LLC 816-654-2144.

### Mobile Homes For Sale

DISCOUNT NEW MOBILE HOME-Prices start at \$64,900 delivered and set up. 573-499-9993. [columbiadiscountmobilehomes.com](http://columbiadiscountmobilehomes.com).

NEW INVENTORY-\$59,900 Delivered and set up, Hurry! Call Adam 573-657-2176. [amegamobilehomes.com](http://amegamobilehomes.com)

Tiny Homes Missouri franchise 573-881-7965.

BASEMENT READY TRUE MODS-in stock ready for delivery, 573-657-7040. [chateauhomes.net](http://chateauhomes.net)

### Recreational For Sale

Hunt in the dry Lazyman fiberglass deer blinds. Starting at \$1299.00. Four models to choose from. [heindselmanfamilyfarms.com](http://heindselmanfamilyfarms.com), 660-341-5692.

### RECREATION

#### Motorcycles

WANTED TO BUY: Harley Davidson's, any year, any condition, cash money. Days 660-263-1356 or 660-537-0068

#### Wanted

WANTED TO BUY: Harley Davidson's, any year, any condition, cash money. Days 660-263-1356 or 660-537-0068

### SERVICES

#### Chat/Dirt/Gravel

DIRT WORK All types of excavation, reclaiming overgrown fields, including CRP and WRP. Building site preparation, creating new trails and crossings, Food plot development and maintenance. Leveling and grading, wetland construction and maintenance. Pond and lake cleaning and construction. Call for quotes. 660-342-2701

#### Cleaning

HELP WANTED: Someone to do part time house-cleaning and various tasks in Greentop area. Transportation possible. 660-216-8378.

### Construction-Services

SPRAY FOAM INSTALLATION! We install open and closed cell spray foam. Strengthen your building and block drafts! Over 1 Million sq. ft. applied. Contact Lester at 641-208-7071, Spray Tek LLC 16302 192nd Street Bloomfield IA 52537

### Home Services

Scott Huskey's Home Service is now providing 2 skirting systems for manufactured home. The insulated skirting saves on utilities and prevents freeze ups. The uninsulated is very strong and protects the underside. Both systems look great! Since 1972 573-696-3468.

Scott Huskey's Insulated Skirting Systems-keeps your home cooler in the summer-warmer in the winter-saves on utilities and looks great! Since 1972, 573-696-3468.

### Lawn/Garden/Landscape

New 3 pt. tillers, heavy duty, gear driven, 7' to 12' starting at \$4,150. 660-874-4455.

### YARD SALES

#### Garage Sale

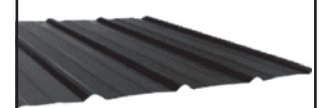
1105 N Locust, Greentop, MO. October 20th 8-2, October 21st 8-?. Large household sale for Jeanette King. Everything must go, furniture, kitchenware, tools, 2 John Deere mowers, yard rake, wagon, tiller, lots of miscellaneous.

Let us help you with all your advertising needs. Don't know what to say? Call us we can help! 660-665-8500.

**FOR SALE**  
**AI Sired Angus Bulls,**  
**14 & 18 Months Old.**  
**Harold Trump**  
**660-341-5730**

Have a smart phone or tablet? You can view current and past Nemo Trader issues online at [www.nemotrader.net](http://www.nemotrader.net)

### Premium Metal Roofing



**AW Metal Inc.**

**Metal Roofing Headquarters**

641-664-3990 • [awmetal.net](http://awmetal.net)



[WWW.MEADFARMS.COM](http://WWW.MEADFARMS.COM)

**81ST ANNUAL FALL PRODUCTION SALE**  
**SATURDAY OCT 28, 2023 NOON**  
 At the Mead Sale Headquarters • Versailles, MO



**MEAD HUCKLEBERRY X2077**

BD: 08-11-2022 • \*20656490

\*DVAR Huckleberry 871 x \*Deer Valley Growth Fund CED +7, BW +1.6, WW +92, YW +169, PAP +2.14, HP +13.6, MILK +30, CW +87, MRB +1.25, RE +1.11, \$M +80, \$B +224, \$C +371

**500 HEAD SELL!**  
**250 BULLS 250 FEMALES**

SALE CAN BE VIEWED ON **DVAuction** Broadcasting Real-Time Auctions

**MEAD FARMS**

21658 Quarry Lane • Barnett, MO 65011  
 Office (573) 302-7011 • Fax (573) 348-8325  
 email: [meadangus@yahoo.com](mailto:meadangus@yahoo.com)  
[www.meadfarms.com](http://www.meadfarms.com)

Alan Mead, Owner (573) 216-0210  
 Scott Wall (309) 212-5450

Missouri's Leading Pathfinder® Herd



**Don't like to clean?**  
**We'll do it for you!**

Office Cleaning Available After Hours, call for more info!

**COMMUNITY OPPORTUNITIES, INC**  
**Janitorial Services**  
 1001 S. Osteopathy | 660-665-5768

**Car Detailing | Cars-SUVs-Trucks-Vans**

Schedule Your Appointment Now! 660-665-5768

I have had my vehicles detailed at Community Opportunities, Inc. for several years. They have done a professional job each time for a very economical price. I highly recommend their car detailing services.

John Wichmann/  
 Paglia's Pizza

Community Opportunities, Inc.  
 Employing Individuals With Disabilities

**BYRD LAND AUCTION**  
 FRIDAY, NOVEMBER 10TH | 6PM  
 MARION & MONROE COUNTIES, MISSOURI

**340± ACRES OFFERED IN 4 TRACTS**

HIGHLY PRODUCTIVE, WELL-MAINTAINED, HIGH PERCENT TILLABLE FARM, JUST OFF OF HIGHWAY 36!

**DESCRIPTION:**  
 Peoples Land Co, LLC is honored to offer this once in a lifetime Marion and Monroe County property for sale at public auction. The sale will be held at the Knights of Columbus Hall located at 424 South Locust in Monroe City, MO 63456 on November 10, 2023 at 6:00 p.m. The farm is located west of Monroe City and east of Hunnewell along County Line Road/County Road 218 off of State Highway EE. This farm has been in the Byrd Family for many years and is one of the best farms that this area has to offer. The location of the farm is perfect with it being a mile or less from US Highway 36 and close proximity to grain marketing facilities. Every tract is highly tillable with top productive soils and perfect access and layout. When you combine all the characteristics of this property together, it checks all of the boxes for any buyer looking to expand a farming operation, investment portfolio, build a forever home, or just own an absolute gem of a farm in Northeast Missouri. The current tenant has cared for this farm at the highest level for many years and farms of this high quality and location don't come for sale often so this is definitely one that you do not want to miss. The farm will be sold using the buyer's choice method and will be in four tracts consisting of the following:

**TRACT 1:** Consists of 79.5 surveyed acres with 74.84 acres m/l FSA tillable acres making it 95% tillable. Has county road frontage along County Line Road/County Road 218. Soil types consist of productive Putnam, Leonard, and Mexico soils.

**TRACT 2:** Consists of 62.0 surveyed acres with 58.48 acres m/l FSA tillable acres making it 95% tillable. Has county road frontage along County Line Road/County Road 218. Soil types consist of productive Putnam and Mexico soils.

**TRACT 3:** Consists of 97.1 surveyed acres with 80.03 acres m/l FSA tillable acres making it 83% tillable. The balance is comprised of waterways and a few wooded areas along with a potential home site. This tract has improvements consisting of a small shed for storage along with grain bins. The total grain storage capacity is approximately 34,000 bushels made up of:

- 13,000 bushel bin
- Two 1,000 bushel bins
- 5,000 bushel bin
- 8,000 bushel bin
- 6,000 bushel bin


Has county road frontage along County Line Road/County Road 218. Soil types consist of productive Putnam, Leonard, and Mexico soils.

**TRACT 4:** Consists of 102.9 surveyed acres with 99.03 acres m/l FSA tillable acres making it 97% tillable. Has county road frontage along County Line Road/County Road 218. Soil types consist of productive Putnam, Leonard, and Mexico soils.

**Sellers:** Byrd Farm LLC  
 Held at the Knights of Columbus Hall,  
 Monroe City, Missouri

Jay Scott Gander - 660.676.1479  
 Anthony Peoples - 660.651.6501  
[www.peopleslandco.com](http://www.peopleslandco.com)

**PEOPLES LAND COMPANY LLC**



**FULL LISTING @ IMA NAUCTION.COM**

**CRUTCHFIELD AUCTION**  
 2447 HWY BB - HUNTSVILLE, MO  
**TUESDAY, OCTOBER 24, 2023 @ 12 NOON**

Glenda has moved to extended care and will sell everything at public auction. Plan to spend most of the day with us this is a large auction, everything clean and well cared for! Good parking available. Do Not Take Hwy 3 South Road closed, at Huntsville exit follow Iman Auction signs.



PRIMITIVES - CROCKS - CLOCKS - PYREX - GLASSWARE - ANTIQUE FURNITURE - QUILTS - PIANO - HOUSEHOLD - APPLIANCES - TOOLS - MOWER - WOOD SPLITTER - CHAIN SAW - OUTDOOR ITEMS - FULL LISTING @ IMA NAUCTION.COM

**Mrs. Dave "Glenda" Crutchfield, Seller**

IMAN AUCTION COMPANY | 660-388-6235 | [ImanAuction.com](http://ImanAuction.com)

**STRETCH**  
 YOUR BUDGET WITH CLASSIFIED ADS!

Get money in your pocket and room in your garage when you sell your stuff and promote your sales in your local newspaper classifieds.



**2-DAY TIMED ONLINE | NO-RESERVE SULLIVAN COLLECTOR CAR AUCTION**  
**MONDAY & TUESDAY, OCTOBER 30 & 31, 2023 AT 9:00 AM<sup>CT</sup> EACH DAY**

Day 1 vehicles: 1204 Buchanan St., Carthage, IL | Manager: Craig Hoyer (844) 847-2161 | [Cars@SullivanAuctioneers.com](mailto:Cars@SullivanAuctioneers.com)  
**OPEN HOUSE: MONDAY, OCTOBER 23<sup>RD</sup> - SUNDAY, OCTOBER 29<sup>TH</sup> • 9:00 AM - 3:00 PM EACH DAY**  
 Day 2 vehicles will be located offsite at various locations | Contact your local BigIron Representative  
**APPOINTMENTS CAN BE SCHEDULED WITH AUCTION MANAGER**

Online bidding will open on Monday, October 23rd with lots beginning to close Monday, October 30th & Tuesday, October 31st at 9:00 AM each day. Unprecedented buyer friendly terms. Online bidders will settle for the HAMMER PRICE. NO BUYER'S PREMIUM!  
 Day 1 vehicles will be housed and available for pre-auction inspection at Sullivan Auctioneers Carthage, IL facility, 1204 Buchanan Street. Carthage, IL is located approximately 10 miles east of Sullivan Auctioneers Hamilton, IL facility on Hwy. 136. All items will be photographed and described for the online bidding catalog. Sullivan Auctioneers Carthage facility will be open for viewing the entire week prior to the auction, beginning on Monday, October 23rd - Sunday, October 29th. Viewing will be from 9:00 AM - 3:00 PM each day. Day 2 vehicles will be located at various locations. Appointments can be scheduled with auction manager. Contact your local BigIron Representative.

**250+ CARS ALREADY IN-HOUSE. VISIT [WWW.SULLIVANAUCTIONEERS.COM](http://WWW.SULLIVANAUCTIONEERS.COM) FOR FULL LISTING.**



- '69 Cougar Eliminator
- '68 Ford F100 4x4
- '65 Ford Mustang Conv.
- '77 Chevy Camaro Z/28
- '70 Dodge Challenger T/A
- '77 GMC K5 Jimmy 4x4
- '70 GTO "Judge"
- '55 Chevy Bel Air
- '70 Chevy Chevelle SS
- '70 Chevy Chevelle SS
- '60 Cadillac Series 62
- '79 Pontiac Trans Am
- '70 Pontiac GTO
- '56 Ford Thunderbird
- '58 Ford Retractable
- '69 Chevy Chevelle SS
- '69 Chevy Camaro Coupe
- '57 Chevy Bel Air 2 Dr.
- '72 Chevy K5 4x4 Blazer
- '48 Indian Chief M/C
- '68 Chevy Camaro SS
- '55 Chevy 3100
- '04 Ram SRT
- '65 Pontiac 2 Dr. HT
- '07 Ford Mustang GT
- '10 Hemi Challenger R/T
- '70 Plymouth Roadrunner
- '78 Pontiac Trans Am
- '79 Pontiac Trans Am
- '68 Chevy Corvette Conv.
- '64 Corvette Roadster
- '77 Chevy Camaro
- '78 Pontiac Trans Am
- '85 Chevy K10 4x4
- '66 Ford Mustang Conv.
- '35 Ford 2 Dr. Sedan
- '79 Pontiac Trans Am
- '65 Ford Mustang Coupe
- '73 Ford Mustang Mach 1
- '72 Chevy Monte Carlo
- '73 Mustang Mach 1
- '16 Overland Touring
- '79 Ford F150 4x4
- '67 Ford Galaxie 500
- '65 Plymouth Satellite
- '12 Chevy Camaro SS
- '71 Ford Mustang Mach 1
- '68 Buick Riviera 2 Dr.
- '74 Porsche 914
- '76 AMC Pacer
- '64 Chevy Chevelle SS
- '63 Ford Falcon Conv.
- '68 Chevy Chevelle
- '66 Ford Mustang Coupe
- '81 Chevy Silverado 4x4
- '75 Pontiac Sport Coupe
- '78 Toyota Land Cruiser
- '84 GMC 1500
- '64 Dodge Polara Conv.
- '93 Chevy Corvette
- '77 Ford F150 4x4
- '19 Ram 1500 4x4
- '32 Chevy Delivery
- '55 Ford T-bird Conv.
- '54 Ford F250 Pickup
- '63 Ford Galaxie 2 Dr. HT
- '79 Chevy Camaro Z/28
- '54 Ford Crestline Victoria
- '67 Chevy Chevelle SS
- '66 Shelby Cobra Replica
- '69 Shelby GT350
- '56 Chevy 2 Dr.
- '63 Chevy Impala SS
- '57 Chevy Bel Air 4 Dr. HT
- '67 Pontiac Firebird Conv.
- '85 Chevy K30 4x4
- '64 Ford Galaxie 500
- '73 Mercury Cougar XR7
- '11 Sea Doo Boat
- '66 Dodge Charger
- '65 Ford Mustang Fastback
- '73 Chevy Corvette Conv.
- '18 Ford TT Tanker Truck
- '07 Dodge Ram 2500 4x4
- '12 Chevy Camaro Coupe
- '04 Jeep Wrangler 4x4
- '94 Ford F150 4x4
- '73 Mustang Mach 1
- '49 Chevy Fleetline Coupe
- '55 Chevy Nomad Bel Air
- '70 Chevy Monte Carlo
- '60 Chevy Bel Air 2 Dr.
- '69 Chevy Corvette Conv.
- '72 Chevy C10 Stepside
- '67 Ford Mustang Coupe
- '70 Chevy Corvette
- '68 Oldsmobile Cutlass
- '65 Ford Mustang Coupe
- '49 Chevy Thriftmaster
- '88 Chevy K5 4x4 Blazer
- '56 Ford Sunliner Conv.
- '70 Plymouth Satellite
- '96 Chevy Corvette
- '77 Ford Bronco 4x4
- '69 Oldsmobile Cutlass 442
- '67 Chevy Chevelle Conv.
- '67 Chevy Nova
- '57 Ford Thunderbird
- '36 Ford Pickup
- '47 IHC KB-1
- '95 Saab 900 Se Turbo
- '02 Chevy Tahoe
- '69 Mustang Mach 1
- '94 Chevy Z/28 Conv.
- '69 Ford Mustang Mach 1
- '74 Chevy Corvette Coupe
- '65 Ford Mustang Fastback
- '98 Ford F150 4x4
- '51 Chevy 5 Window
- '74 Ford Torino
- '87 Pontiac Trans Am GTA
- '86 Oldsmobile 442
- '86 Pontiac Grand Prix SJ
- '84 Chevy El Camino SS
- '94 Chevy Camaro Z/28
- '74 Buick Lesabre Conv.
- '95 Jaguar XJS Conv.
- '02 Chevy Camaro SS
- '48 Plymouth Special
- '06 Pontiac GTO
- '84 Chevy Corvette Coupe
- '95 Pontiac Firebird Conv.
- '82 Chevy Corvette
- '02 Chevy Camaro Z/28
- '59 Edsel Ranger 4 Dr. HT
- '49 Chevy Deluxe Sedan
- '33 Chevy Master Eagle
- '85 Buick Riviera
- '96 Chevy Corvette Conv.
- '65 Ford Mustang Coupe
- '76 Chevy Monte Carlo
- '08 Saturn Ionslice Sky
- '72 Ford Pickup
- '50 Chevy Deluxe
- '59 Ford Edsel Ranger
- '39 Ford Coupe
- '84 Chevy K5 Blazer 4x4
- '05 Mercedes CLK 320
- '74 Volkswagen Beetle
- '34 Ford Street Rod Coupe
- '79 Ford T-Bucket
- '33 Ford 3-Window Coupe
- '32 Ford 3-Window Coupe
- '16 Harley Heritage Softail
- '71 Triumph Bonneville
- '74 Triumph Trident
- '08 Harley Ultra Classic
- '01 Harley Road King
- '04 Harley Ultra Classic
- '57 Ford Fairlane 500
- '56 Dodge Royal Lancer
- '77 Rolls Royce
- '67 Pontiac Firebird Conv.
- '47 Dodge Pickup
- '92 Cadillac Fleetwood
- '64 Olds. Jetstar 88
- '96 Ford F250 Ext. Cab
- '66 Honda CB160
- '80 Rinker Boat & Trailer
- '54 Olds. 88 2 Dr.
- '00 Easy Haul Slant Trailer
- '03 Chevy 2500HD 4x4
- '98 Lincoln Mark VIII
- '03 Volkswagen Beetle
- '03 Mitsubishi Eclipse
- '12 Chevy 4x4 Short Bed
- '68 Oldsmobile Delmont 88
- '66 IHC Scout 4x4
- '89 Chevy Corvette
- '83 Chevy S10 Pickup
- '91 Buick Le Sabre
- '89 Oldsmobile Royal 88.
- '75 Chevy Monte Carlo
- '02 VW GTI 337
- '74 Chevy Camaro
- '76 Olds. Ninety Eight
- '05 Chevy Silverado 4x4
- '88 Cadillac Allante Conv.
- '88 Chevy Silverado 4x4
- '72 Chevy C20
- '99 Ford Ext. Cab 4x4
- '66 Ford Thunderbird
- '95 Chevy Corvette
- '04 Chevy 2500HD 2wd
- '03 Ford Super Crew 4x4
- '22 Ford Model-T Touring
- '93 Jeep Cherokee 4x4
- '12 Chevy Silverado 1500
- '76 Dodge Power Wagon
- '75 Datsun 280Z
- '92 Chevy Short Bed 4x4
- '84 Pontiac Fiero SE
- '63 Chevy Flatbed
- Farmall 706 Scale Tractor
- '81 Buick Riviera
- '22 AMO Car Trailer
- '22 Homedale Trailer
- '85 Buick Regale T Type
- '58 Edsel Ranger
- '05 JERR Car Trailer
- '97 Ford F150 Ext. Cab 4x4
- '92 Ford F150 2wd
- '88 Buick Reatta
- '62 Chevy C40 Flatbed
- '97 Ford F150 Ext. Pickup
- '92 Ford F150 XLT 4x4
- '04 Chevy Blazer 4x4
- '68 Chevy Impala
- '69 Ford Tbird
- '65 Ford Mustang
- '08 Ford Mustang Conv.
- More Listings Online!
- '96 Chevy Silverado
- '96 Cadillac Sedan Deville
- '67 Ford Fairlane

**BigIron** (800) 937-3558 [BIGIRON.COM](http://BIGIRON.COM)

(844) 847-2161 [SULLIVANAUCTIONEERS.COM](http://SULLIVANAUCTIONEERS.COM)

**SULLIVAN AUCTIONEERS**  
 a BigIron company



We're your Shield. We're your Shelter.



**SHELTER INSURANCE** AUTO • HOME • LIFE

**Shayne Thomas**  
1515 Green St.  
Kirkville, MO 63501  
660-665-4685 (Call or Text)  
ShayneThomas@ShelterInsurance.com



**21 CENTURY 21**  
**Lifetime Realty**

1605 S Baltimore St, Suite A  
Kirkville, MO 63501

**660-665-5678**  
www.C21Kirkville.com

Each office is individually owned and operated.




**COLTON'S**  
**Steak House & Grill**

*We Know What's At Steak!*

1116 Country Club Drive • Kirkville, MO  
660-665-6336 • ColtonsSteakhouse.com



**exp REALTY**

**ELIZABETH GREGORY**  
*Realtor*

WWW.MISSOURIHOMEANDFARM.COM

Innovative Real Estate for YOU!

**660.621.2136**

**NM SB** **NORTHEAST MISSOURI STATE BANK**

**Kirkville Branch:** 600 S Baltimore, Kirkville, MO 660-665-6161

**La Plata Branch:** 139 S Gex Street, La Plata, MO 660-332-4317

Member FDIC northeastmissouristatebank.com



**ANEW** Realty Group, LLC

**Kim Keyes, Broker/Owner**  
**660.665.3277**

AnewRealtyGroupLLC.com  
511 S. Baltimore St., Suite 8  
Kirkville, MO 63501



**Tire & Auto**

Owners:  
**Joe Dimmitt & Kelly O'Haver**

1102 N Green St  
Kirkville, MO

**660.665.9017**

WIN	HOME TEAM	VS	AWAY TEAM	LOSS	WIN	HOME TEAM	VS	AWAY TEAM	LOSS
4	KIRKVILLE, HS			4	1	KNOX COUNTY, HS			7
42	KIRKVILLE	8/25	MACON	26	26	KNOX COUNTY	8/25	SCHUYLER CO.	54
42	CHILlicothe	9/1	KIRKVILLE	26	42	KNOX COUNTY	9/1	PLATTSBURG	78
42	SAVANNAH	9/8	KIRKVILLE	0	56	BISHOP LEBLOND	9/8	KNOX COUNTY	22
6	KIRKVILLE	9/15	MOBERLY	35	76	KNOX COUNTY	9/15	SOUTHWEST	80
28	KIRKVILLE	9/22	MARSHALL	10	80	NORTH SHELBY	9/22	KNOX COUNTY	34
53	HANNIBAL	9/29	KIRKVILLE	0	52	KNOX COUNTY	9/29	PARIS	44
24	KIRKVILLE	10/6	MEXICO	13	46	NORTHWEST	10/6	KNOX COUNTY	30
7	FULTON	10/13	KIRKVILLE	44	46	SLATER	10/13	KNOX COUNTY	26
0	KIRKVILLE	10/20	CAPITAL CITY	0	0	BRAYMER	10/20	KNOX COUNTY	0

**Travis~Noe**  
**Funeral Home**

1008 Potter Avenue, Kirkville, MO  
**660-665-1300**  
Neil & Sherry Travis, Brian Noe, Brenton Travis



**Chad Q Davis**  
**Agent**  
In Kirkville & Edina

111 W. Jefferson  
Kirkville, MO 63501

106 E Reid St  
Edina, MO 63537



**State Farm**  
Chad Davis, Agent  
Call or Text  
**660-665-6668**  
www.chaddavisinsurance.com

WIN	HOME TEAM	VS	AWAY TEAM	LOSS	WIN	HOME TEAM	VS	AWAY TEAM	LOSS
6	SCHUYLER CO., HS			2	0	MACON, HS			8
26	KNOX CO.	8/25	SCHUYLER CO.	54	42	KIRKVILLE	8/25	MACON	26
52	SCHUYLER CO.	9/1	BISHOP LEBLOND	28	14	MACON	9/1	N. CALLAWAY	20
92	PLATTSBURG	9/8	SCHUYLER CO.	68	51	CLARK COUNTY	9/8	MACON	0
60	SCHUYLER CO.	9/15	NORTH SHELBY	14	20	MACON	9/15	PALMYRA	34
74	SCHUYLER CO.	9/22	PARIS	30	40	HIGHLAND	9/22	MACON	20
74	BRAYMER	9/29	SCHUYLER CO.	56	34	BROOKFIELD	9/29	MACON	0
32	SOUTHWEST	10/6	SCHUYLER CO.	60	0	MACON	10/6	SOUTH SHELBY	42
14	NORTHLAND C.	10/13	SCHUYLER CO.	62	7	MACON	10/13	MONROE CITY	36
0	SCHUYLER CO.	10/20	SLATER	0	0	CENTRALIA	10/20	MACON	0



**FOOTBALL**  
**SCOREBOARD**

**Bellacino's**  
Pizza & Grinders

**ORDER ONLINE**  
WWW.BELLACINOS.COM

GRINDERS • PIZZA • SALADS  
WINGS • FRIES • AND MORE!

**GET OUR NEW APP!**

516 N BALTIMORE ST.  
660-665-7665

**DAVIS-PLAYLE-HUDSON-RIMER**  
**FUNERAL HOME & CREMATORY**



2100 E. Shepherd Ave  
Kirkville, MO 63501  
660-665-2233  
www.davisplaylehudsonrimer.com

**THINKING OF SELLING?**



CALL US TODAY!  
660-665-5638

KirkvilleRealEstate.com



**LOVEGREEN**  
GOLOVEGREEN.COM

Ford, Dodge, Jeep



**Chris Clark,**  
Licensed Sales Associate  
Email: chris.clark@mofb.com  
Website: www.mofbinsurance.com

AUTO • HOME • LIFE

Clark Agency: 118 W. Potter, Kirkville, MO • (660) 665-1956




**Connections Bank**

2817 N Baltimore St  
Kirkville, MO 63501  
660-665-7703

ConnectionsBank.com

**Need a bigger yard?**



**VICKI & BENSON RE/MAX HOME TEAM**  
111 S. BALTIMORE SUITE A | KIRKVILLE, MO 63501 | 660.665.8100

**VICKIBENSON.NET**

**THE BENSON LAW FIRM LLC**

Work Comp • **INJURY** • Criminal

JAY BENSON  
POLLY PETREE HAMPTON  
QUINN BENSON

BensonLawFirm.com 660.627.0111





**WE ARE HIRING!**

The City of Lancaster is currently accepting applications until **October 25, 2023 at 4 p.m.** for the position of **City Clerk**.

The City Clerk serves as the City's Water Utility Clerk, City Treasurer, and Records Keeper.

The ideal candidate will be a self-starter and possess excellent customer service skills. This full-time role takes place Monday-Friday, 8 a.m. to 12 p.m. and 1 p.m. to 4 p.m.

Applications and job description are available for pick up at Lancaster City Hall. They can also be found online at [lancastermo.com/public-notices](http://lancastermo.com/public-notices).

**Lick Creek FENCING**  
Owen Miller  
641-242-0346

Continuous Fence • Barb Wire  
Woven Wire • Skid Work

**THE Shramek FARMS**

Multi Generational family farm is looking to expand in the area. Interested in cash renting good tracts of tillable acreage.

Please call 573-721-3260

**LANCASTER LUMBER INC.**

Lancaster, MO.  
**1-800-424-5071**  
LAN-DOW BUILDINGS

[www.lancasterlumber.com](http://www.lancasterlumber.com)

**BURKHOLDER**

**LINE-X**

**2022 Ford F-350 King Ranch Ultimate**  
4x4, Crew, 6.7 Diesel, 10-Spd Auto, 39k Miles, One-Owner, Ranch Hand Bumpers, Atlas Blue

Full line of accessories **+** Outfit your truck here!

**\$89,900**

Edina 660-397-2551 51001 State Hwy 15 [BurkholderTruckSales.com](http://BurkholderTruckSales.com)

 <p><b>2020 Nissan NVP 3500HD SL</b> 12 Pass, 5.6V8, Only 30k Mi, One-Owner Personal Vehicle, Very Nice-Clean, Silver</p> <p><b>\$61,500</b></p>	 <p><b>2020 Chevy Traverse Premier AWD</b> 3.6V6, Auto, 82k Miles, Loaded, Very Well Kept, Nice-Clean, Black Cherry Metallic</p> <p><b>\$34,900</b></p>	 <p><b>2020 Chevy Express 2500 LT</b> 12 Pass, 6.0V8, Auto, Only 61k Miles, Very Well Kept, Taxi or Family Ready, Nice, Blk</p> <p><b>\$44,900</b></p>	 <p><b>2019 Toyota Sienna LE AWD, 7 Pass</b> 3.5V6, Auto, 107k One-Owner Mi, Clean Carfax, Perfect Service Record, Nice, Gray</p> <p><b>\$26,900</b></p>	 <p><b>2019 Ford F-250 XLT, 4x4, Crew</b> 6.2V8, 134k One-Owner Mi, Accident Free Great Service History, Nice &amp; Clean, Black</p> <p><b>\$34,900</b></p>
 <p><b>2016 GMC Sierra 2500HD SLE, 4x4</b> Crew, 6.0V8, 128k One-Owner Mi, Perfect Service Record, Southern Truck, Charcoal</p> <p><b>\$32,900</b></p>	 <p><b>2015 GMC Sierra 2500HD SLE Z71</b> 4x4, Crew, 6.0V8, Only 50k One-Owner Miles, Clean Texas Truck, Come See, Black</p> <p><b>\$36,900</b></p>	 <p><b>2015 Ford F-350 XL, 4x4, Reg Cab</b> Dually, 6.2V8, Auto, Only 23k One-Owner Miles, Accident Free, Nice, White</p> <p><b>\$41,900</b></p>	 <p><b>2013 Chevy Express 1500 LT AWD</b> 8 Pass, 5.3V8, Auto, Only 49k One-Owner Miles, Extra Nice-Clean, Come See, Black</p> <p><b>\$42,900</b></p>	 <p><b>2010 Chevy Express 1500 LT AWD</b> 8 Pass, 5.3V8, Auto, Only 105k Miles, Hard to Find, Well Kept, Come See, Silver</p> <p><b>\$29,900</b></p>

**TRUCK GEAR BY LINE-X**

**BUILT TOUGH**

**Bumpers/Grille Guards** **RANCH HAND**

**Steps / Nerf Bars** **AMP RESEARCH** **WESTIN**

**DECKED** Drawer Systems

**BED COVERS** **FLOOR LINERS** **RACHETING TIE DOWNS**

**Looking to Rent Vans?**

- ✓ 15 Passenger Seating
- ✓ Cargo Carriers Available
- ✓ Day Trips or Long Excursions
- ✓ Clean, Functional Vans

**Call us today!!**  
**(660) 397-2551**

**AUTO & TRUCK SALES + ACCESSORIES**

**B**



**CELEBRATIONS!**  
PARTY RENTAL  
KIRKSVILLE, MO

FOR RENT

- Tables & Chairs
- Tents • Bounce House
- Cotton Candy Machine
- & More!

660-626-5162 or 660-665-9380

**LIME SPREADING SERVICE**

Equipped with variable rate

**PEAVLER TRUCKING LLC**

Alan Peavler, 660-216-0618 - Jared Peavler, 660-342-7685

**fb farmbank**

Growing Together

Green City Milan Kirksville  
660-951-8430 • 660-951-8432 • 660-951-8431

www.farmbank.com

**Skyline Service LLC**

Skid Steer and Construction Repair  
Levi Weiler

660-346-6881 • 660-883-5525

Scan Tool Diagnostics  
Exhaust After Treatment Repairs • SCR Unlocks  
Skid Steer Tracks Available

**Golden Grain Bins-Summer Savings**

Grain Bins	Floors w/12"Supp. & Flashing
18'x18' 4,195bu. \$ 7,029	18'....\$1,962 30'....\$ 5,476
27'x21' 11,265bu. \$14,108	21'....\$2,682 36'....\$ 7,801
42'x24' 32,245bu. \$32,886	27'....\$4,474 42'....\$10,623

**Golden Grain**

GMLS Industries, Inc.  
PH: 660-699-2179 or 620-983-2136  
www.gmlsindustries.com

**ADVERTISE YOUR GARAGE SALE HERE**

**Show Me Plumbing Services**

- General Mini Excavation & Skid Steer Work
- Livestock Watering
- Waterlines & Sewer Systems
- Residential Services & General Plumbing
- Utility Trenching

Stan Schrock 660-988-1163  
Greentop, MO 660-766-2636

**CRAFT REAL ESTATE MOVING AUCTION**

325 NORTH MAIN STREET - HUNTSVILLE, MO

**THURSDAY OCTOBER 26, 2023 @ 12 NOON**

Cleo & her late husband Boise H. Jr. have lived in this home since 1955, she has decided to move closer to her daughter and will sell everything at public auction. Also Selling Antiques, Appliances, Household & More. Full listing @ [IMANAUCTION.COM](http://IMANAUCTION.COM)

**REAL ESTATE:** (12 Noon) Well-kept 2 bedroom home w/ 1 bath - Nice family room w/ gas fireplace - Kitchen w/ white painted cabinets - Additional room off kitchen could be a non-conforming bedroom or office, sewing room etc - Nice 17x19 screened in porch - Walk out 1/2 basement - Home has CA/Heat, newer roof, vinyl siding and more - 12x24 garage w/ small shop area w/ heat - 13x18 Carport - Few older mower/garden sheds - Nice deep lot 75x177 -

**REAL ESTATE TERMS:** 10% Down Auction Day, Balance due & Possession given at closing (45 days), Title Insurance Provided by Seller & Taxes Prorated, Sells with no Contingencies & with Sellers Confirmation.

**ANTIQUES - CROCKS - CAST IRON - PICTURES - PAINTINGS - APPLIANCES - HOUSEHOLD - LAWN & GARDEN - TOOLS - LADDERS - FULL LISTING & PHOTOS @ IMANAUCTION.COM**

**EDITH "CLEO" CRAFT, SELLER**

IMAN AUCTION COMPANY | 660-388-6235 | [ImanAuction.com](http://ImanAuction.com)

**LAN-DOW BUILDINGS**

"We Build To Suit Your Needs"  
"Custom Built"

Pole Barns • Garages • Utility Buildings  
"H" Don or Dick Middleton

**Memphis Lumber Co.**

1-800-337-5858 • 660-465-8595  
Fax: 660-465-8596

**FOXHOLE LLC IN CENTERVILLE IOWA**

**FOXHOLE LLC IN CENTERVILLE IOWA IS PAYING CASH FOR YOUR... UNWANTED FIREARMS, KNIVES, VINTAGE SIGNS, BRAND NAME TOOLS, BARN FINDS, AND OTHER MISC ITEMS. WE CAN COME TO YOU!\***

**INSTANT LOANS ON FIREARMS UP TO \$3,500. WE ARE A FFL DEALER IN CENTERVILLE IOWA WITH A HUGE INVENTORY OF GUNS & AMMO! LOCATED INSIDE FOGLE TRUE VALUE! BEST DEALS AROUND!**

1101 N. 18TH ST • STE B • CENTERVILLE, IA 52544  
www.foxholegunrange.com  
641-437-1053 • 641-799-7991 • 641-203-6998  
\*NO JUNK OR SALVAGE

**NEMO Trader Classified COUPON**

2 Classified Ads for just **\$6.00**

20 cents per word over 20 words  
Must be Mailed in or brought in along with payment.  
Picture Ads Not Included with Coupon!

**Choose Classification**

<input type="checkbox"/> Agri-Business	<input type="checkbox"/> Real Estate Rentals	<input type="checkbox"/> Yard Sales
<input type="checkbox"/> Announcements	<input type="checkbox"/> Real Estate Sales	<input type="checkbox"/> Auctions & Estate Sales
<input type="checkbox"/> Employment	<input type="checkbox"/> Recreation	
<input type="checkbox"/> Financial	<input type="checkbox"/> Services	
<input type="checkbox"/> Merchandise	<input type="checkbox"/> Transportation	

**Ad No. 1 Each Box Represents a Word (20 words or less)**


**Ad No. 2 Each Box Represents a Word (20 words or less)**


Name \_\_\_\_\_

Mailing Address \_\_\_\_\_

Phone Number \* \_\_\_\_\_  
this is required\*

**PO Box 809 Kirksville, MO 63501 • 660-665-8500**

**LOLLI LIVESTOCK MKT, INC.**

**Special Calf & Yearling Sale**

**Tuesday, Oct 24 - 11am**

**Pot Loads**

100 bbwf str, 700lbs, coming off grass - Jack Davidson  
85 bbwf str, 900lbs, coming off grass - Kenny Rutter  
68 bbwf str, 900lbs, coming off grass - Blomberg Farms  
65 bbwf str, 875lbs, coming off grass - Mitch Dixon  
85 bbwf hfrs, 675lbs - Gabe Chiarottino  
85 bbwf hfrs, 650lbs - Joseph Lolli

75 bbwf str/hfrs 4-650lbs - Monat  
65 bbwf str/hfrs 4-600lbs - Lynn County  
60 bbwf str/hfrs 4-600lbs - Elliott Farms  
60 bbwf str/hfrs 4-600lbs - Macon County  
55 bbwf str/hfrs 5-700lbs - Shelby County  
50 bbwf str/hfrs 5-600lbs - Cathy Baker  
50 bbwf str/hfrs 5-700lbs - Robert McClintock  
45 bbwf str/hfrs 4-600lbs - Macon County  
40 bbwf str/hfrs 4-600lbs - Lynn Gittemeier  
20 bbwf str/hfrs 4-600lbs - Dick Sebers  
20 bbwf str/hfrs 5-700lbs - Donnie Bond  
20 bbwf str/hfrs 5-700lbs - Tracy Carson  
18 bbwf str/hfrs 450-600lbs - Robert Magruder  
15 bbwf str 5-700lbs - Brent Fuemmeler  
11 bbwf str/hfrs 5-600lbs - May Schiltz  
8 bbwf str/hfrs 5-700lbs - Mervin Borntrager

*This is only a partial listing, many more by sale date.*

Tuesday, October 31 - 11am Special Cow, C/C & Breeding Bull Sale

Cafe Open **Lolli Livestock Market, Inc.** Cafe Open  
704 Main st \* Macon, MO \* 660-385-2516 www.lolliibros.com  
Frankie 660-651-4040 \* Tim 660-651-3496 \* Joseph 660-346-9711  
Jordan 660-346-0410 \* Cody 660-676-9392 Cattle accepted on Sundays

**SPACE AVAILABLE**

ASK ABOUT OUR OUT-OF-THIS-WORLD PRINT ADVERTISING RATES THAT FIT ANY BUDGET!



Is that cylinder leaking?



Specializing in Cylinder Repair

**KEIM HYDRAULICS LLC**

18748 200th St. • Bloomfield, IA 52537  
Ph: 641-208-5346 • 641-664-KEIM

**ATTENTION LAND OWNERS!!**

**Buyer of standing timber**  
Paying Cash Upfront!

Owner/Operator of Sawmill

- Buy/Cut Logs
- Certified
- Bonded
- Insured



WE HAVE SEMI LOADS OF FINE WOOD LOGS FOR SALE

**Tri State Timber L.L.C.**

353 1/2 Grand Ave. • Memphis, Mo 63555  
660-341-4921 • 660-465-2975

*Sea-Bar Farms*

**LAND AUCTION**  
**241 ACRES**

North Missouri LAND COMPANY

Premium tillable tracts offer approximately 172 total open acres, and are almost all creek bottom tillable.

Tract 1: 75+/- total acres, showing 56 acres tillable. This tract is located at the corner of Hwy 156 and Hwy 149, with excellent paved road access for grain removal.



Tract 1

Tract 2: 79+/- total acres, showing 57 acres tillable, and is currently planted to Corn. Long 1/2 mile rows will make this a very desirable tract for everyone.



Tract 2

Tract 3: 87+/- total acres, showing 59 acres tillable. Tract 2 lays on the north side of Chariot Place, with Walnut Creek running from north to south, splitting the property. This tract shows 59 acres open, with 13.7 acres enrolled in CRP and 45+/- acres tillable.



Tract 3

**November 30th, 2023 - 6pm**  
**Comfort Inn Macon, MO**

Call David Wilt 660-676-2331 or go to [www.northmoland.com](http://www.northmoland.com)

**BUCKMAN MACHINERY, LLC**

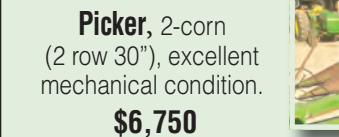
573-881-3557



**John Deere 6300**, cab, power quad, loader, 5400 hrs, with new engine, 90% rubber, **\$36,500**



**John Deere 300 Corn Picker**, 2-corn (2 row 30"), excellent mechanical condition. **\$6,750**



**John Deere 4240**, 2-owner, QR, overall good condition, 18.4x38 tires, **\$26,500**



**John Deere 3020 D**, WF, dual hydr, 16.9x38, 7000 hrs showing, loader available, **\$8,750**

**John Deere 4010 D**, only 2375 actual hrs, nice, loader available, **\$13,950**

**Gehl 95 Grinder**, excellent condition, ground 40-50 batches in life, 3 screens, shedded, **\$4,950**

**5 - PTO manure Spreaders**, small - medium, **\$1250 - \$3250**

**John Deere 158 Loader**, no welds, **\$4,500**

**John Deere 148 Loader**, **\$2,950**

**John Deere 146 Loader**, **\$2,750**

**John Deere 44 PTO Manure Spreader**, longtime shedded, very good condition, **\$2,750**

**Rhino SR15M Batwing Brush Hg**, 8 luminated, 1000 PTO, field ready, **\$5,750**

**John Deere 709 3pt PTO Mower**, no welds, **\$1,950**

**Alfalfa - 2nd cutting**, 3x3x8 bales, 21% treat, green, \$165/bale delivery available

**2023 Mixed Grass**, 45-50 lbs., \$10/bale, delivery available.

**Alfalfa - 4th cutting**, 55 lb treated bales, very little grass/weeds, \$12, delivery available

Loaders & Duals available for many

**Judd Motors** Call 660-457-3700 Hwy 63 North, Lancaster, MO

**2013 Case 580N Loader Backhoe turbo** ..... **\$54,900**

4WD, Cab, AC, Extendahoe, foot swing, air ride seat, ride control, 18" bucket, flip pads, 1 owner, VERY NICE, only 1100 hours.

**2016 Ford Explorer XLT** ..... **ONLY \$17,900**

4wd, V6, 3 row, silver, only 88k miles, very nice

**1998 Chevy 1500** ..... only **\$4995**

ext cab, good shape, 4x4, 183k, green

**2007-14 Chevy pickup box, red** ..... only **\$1500**

**45 BALES**, ..... **\$115 Each**

GOOD CRP GRASS HAY, JD net wrap

**2012 Chevy Impala LT** ..... only **\$10,500**

sunroof, only 96K miles, charcoal

**2013 Toyota Sienna Van XLE** ..... only **\$23,900**

leather, sunroof, 79K miles, charcoal, Like New



Cumberland Building Dealer

[www.juddmotors.com](http://www.juddmotors.com)

In Business Over 75 Years  
Curly and Kevin Judd

**The Ultimate Wood Heat.**



CLASSIC EDGE  
TITANIUM HDX  
Outdoor Wood Furnace

- **More Comfort** - Thermostatically controlled wood heat.
- **Peace of Mind** - Keep the fire outside and eliminate the dangers associated with indoor wood heating.
- **Save Money** - Wood is a renewable, inexpensive and often free energy source.

**Campen Heating & Air**

Division of Kraus & Sons Inc.  
Canton, MO 63435

**573-288-8966**

[CentralBoiler.com](http://CentralBoiler.com)

**LAND AUCTION** **67.7± Acres**  
**THURS, OCTOBER 26TH AT 6PM** SHELBY COUNTY, MO

HELD AT THE AMERICAN LEGION HALL IN SHELBYNA, MO

**Description:** Peoples Land Co, LLC is excited to offer for sale at public auction this phenomenal Shelby County tract of land. The sale will be held at the American Legion Hall in Shelbina, MO on October 26, 2023 at 6:00 p.m. This property represents a rare opportunity to purchase a top notch farm in an area where land does not come for sale often.

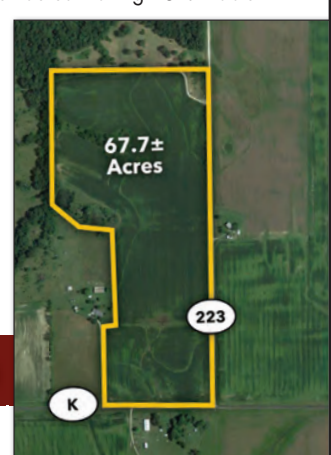
The farm consists of 67.73 surveyed acres m/l with 54.64 m/l FSA open acres making it 81% tillable with blacktop frontage along State Highway K as well as county road frontage along Shelby 223. The productive soils and location make this farm extremely suitable for a building site, investment, or recreational opportunity. The current tenant has cared for this farm at the highest level and this farm's layout offers a great opportunity to purchase a property that everyone would love to have.

Seller: VonThun Family Farm, LLC



Auction Manager: Scott Gander 660.676.1479

[www.peopleslandco.com](http://www.peopleslandco.com)



1968 Catalina 400 V8, 2 barrel. 56k+ original miles, mint condition, \$13,500/obo



New Holland 10 Arm Rake, \$1,800/obo

84 mixed grass large round wrapped bales, \$150.00 per bale

Located in Browning, MO - **816.499.2533**

LEAVE MESSAGE

**VICTORY Metals & Recycling**  
KIRKSVILLE, MO  
**660-665-8000**

For current scrap prices call or visit our **Facebook Page** [victorymetalrecycling.com](http://victorymetalrecycling.com)



★ **METAL RECYCLING**

RECYCLE YOUR SCRAP METAL WITH US! WE PAY CASH FOR: COPPER, ALUMINUM, STEEL, STAINLESS STEEL, APPLIANCES, E-SCRAP, BRASS, LEAD, RADIATORS, ALTERNATORS, BATTERIES, STARTERS, ELECTRIC MOTORS, APPLIANCES, & VEHICLES (TITLE & ID REQUIRED).

★ **ROLL-OFF CONTAINER**

10-20-30-40 CUBIC YARD DUMPSTERS

**3602 INDUSTRIAL RD. • KIRKSVILLE, MO 63501**

[DJANESVMR@GMAIL.COM](mailto:DJANESVMR@GMAIL.COM)

[WWW.VICTORYMETALRECYCLING.COM](http://WWW.VICTORYMETALRECYCLING.COM)

*Land Auction*

**83± ACRES**  
SHELBY COUNTY, MISSOURI

Productive Tillable Land • Great Hunting  
**THURSDAY, NOV. 9TH | 6PM**

Held at the American Legion Hall in Shelbina, MO

Farm will be sold as 1 tract consisting of 83 acres m/l. The farm is located along Shelby 208 north and west of Shelbina, MO. From Shelbina, MO take Highway 15 north approximately 3 miles. Then go west on Highway P approximately 3 miles to Shelby 208. Then go south on Shelby 208 approximately 1/2 mile to the farm.

**Description:** Peoples Land Co, LLC is honored to offer the Boyles Family property for sale at public auction. The sale will be held at the American Legion Hall in Shelbina, MO on November 9, 2023 at 6:00 p.m. The land represents an opportunity to purchase a very desirable farm in Shelby County that offers exceptional tillable land along with phenomenal hunting. The farm consists of 83 acres m/l with 73.51 m/l FSA open acres. Of the 73.51 FSA open acres, 25.91 acres has been in row crop production and 47.60 acres have been in CRP but are expired. This leaves the new buyer options on how the farm is utilized for the future. The farm provides highly productive soils, a great layout, and a perfect location that will suit any investment or recreational opportunity. The current tenant has been on this farm for many years and has cared for the farm at the highest level.



Sellers: Randy Boyles, Chris Neale, Mona Bower, Robert Bower

Auction Manager: Scott Gander 660.676.1479

[www.peopleslandco.com](http://www.peopleslandco.com)







**Edina Livestock Sales**  
Edina, Missouri

**Friday, October 20th**  
Special Feeder Calf Sale

**Friday, October 27th**  
Special Feeder Calf Sale

To Consign For Any or All Sales or For Information Call:  
Owner - Kevin Strange • Cell: 660-341-9974  
Ryan Strange • Cell: 660-341-9721  
Sale Barn: 660-397-9999

**Field Reps:**  
Bill Tom Hall 660-342-5420 Mike Bronestine 660-341-9965  
Jason Bichsel 660-216-0373 John Powell 660-341-1717

**NEW CAMBRIA LIVESTOCK AUCTION LLC**  
Phil & Stacey McBee - Owners  
29262 State Hwy 149, Box 94, New Cambria, MO 63558

**Special Calf and Yearling Sale**  
THURSDAY, NOVEMBER 2ND, 2023  
STARTING AT 11:00 AM

Office (660) 226-5222 • Phil McBee (660) 754-2148  
Doug Lock (660) 641-3898 • Lavon Moore (660) 384-2008  
Randy Nute (660) 651-5389 • Tyler Gratz (573)-690-7312

To view our latest market reports and cattle listings visit  
Our website at: [newcambrialivestockauction.com](http://newcambrialivestockauction.com)  
**We appreciate your business!!!!**



**LANGMAID STOCK DOGS**

ABCA Border Collies  
Top cow dog Bloodlines  
Pups, started dogs, finished dogs  
Full health and working guarantee on all dogs  
All dogs eligible for \$25,000+shootout dog trial.

**RYAN & DAWN LANGMAID**  
Green City, MO

**254-595-6677**

**GUN AND KNIFE DAY**  
Saturday Oct 28  
American Legion Building  
600 Spring Str. Milan, MO

Doors open at 8am  
\$2 entry fee

\$20 fee per table  
Buy, Sell, Trade all Day!

\*\* Buy a \$20 Ticket to Win Ruger 243 deer Rifle \*\*

All proceeds go to Milan American Legion Post  
For questions, contact LeRoy Wyant or BR Richardson 660-265-5518

**45th ANNUAL CRAFT GIFT SHOW**  
SPONSORED BY: RANDOLPH COUNTY FAMILY & COMMUNITY EDUCATION  
CRAFTERS AND HOME-BASED BUSINESSES WELCOME

NOVEMBER 10, 2023: 11 AM-6 PM  
NOVEMBER 11, 2023: 9 AM - 3 PM

MOBERLY AREA COMMUNITY COLLEGE ACTIVITY CENTER  
101 College Ave., Moberly, MO

ADMISSION \$2 FOR 12 & OLDER  
FOOD STAND AVAILABLE AND DOOR PRIZES GIVEN AWAY BOTH DAYS  
KIDS 12 AND YOUNGER "MAKE FREE GIFTS ON STAGE PROJECT" WILL BE SATURDAY FROM 10 AM TO NOON.  
FOR INFORMATION CALL: 660-277-4712 / 660-670-2560  
email: [rcmayo@cvalley.net](mailto:rcmayo@cvalley.net)  
BOOTH SPACE AVAILABLE UNTIL NOVEMBER 3

**McAfee Auction Service, LLC**  
375 S Johnson • Kahoka, MO  
660-727-3796  
[www.mcafeeauctionservice.com](http://www.mcafeeauctionservice.com)

**FALL FARM MACHINERY Consignment Auction**  
Timed Online Only Auction

**ADVANCE NOTICE**  
Deadline for Consignments is Saturday, November 4th at 5PM

CALL 660-727-3796  
TO BE INCLUDED IN OUR EARLY ADVERTISING

CHECK IN STARTS  
WEDNESDAY, NOV 1ST - SATURDAY, NOV 4TH  
9AM - 5PM DAILY

Lots Start Closing at 10 am  
Thursday, November 30th

Equipment will be located at the Clark County Fairgrounds

**HAY AUCTION**  
Saturday Nov. 18, 2023 • 10 AM  
DEMRY AUCTION FACILITY, 1916 S. 18 TH ST.  
CENTERVILLE, IA. 52544

Now accepting consignments of hay, straw and corn stalk bales of all size.

For more information or to list your hay please contact  
Dalton Ott, Sale Manager, 563-880-5626

**DEMRY AUCTION, LLC**  
1916 S 18th St. (Hwy 5 SOUTH) CENTERVILLE, IOWA | 641-856-6408

Tom Demry: 641-895-2508 • Kristy Demry: 641-895-2509  
Janet Demry: 641-895-4310 and 641-856-6924  
Junior Lawson: 641-895-0037 Randy Mulay: 641-436-1521  
Dalton Ott: 563-880-5626 • Website: [www.Demryauction.com](http://www.Demryauction.com)

**Mid-States Livestock Sales**  
Horse & Tack Auction

Saturday, October 28, 2023  
Tack @ 10:00 A.M. Horses @ 2:00 P.M.

KIRKSVILLE LIVESTOCK MARKET  
Hwy 63 NORTH KIRKSVILLE MO.

Guest Consigners only on Tack, No used tack.  
Taking early consignments now! Check us out and like us on Facebook @ Mid-States Livestock Sales for all of our early listings and videos.

FOR MORE INFO:  
Josh Weaver (660)341-7964 • Jeb Weaver (660)341-1866

**RYE CREEK WELDING & REPAIR LLC**



**Machinist, Steel Sales, Mig, Tig, Stick and aluminum welding**  
**660-956-8282**  
19760 Rye Creek Rd  
Novinger, MO 63559

**TIMBER MANAGEMENT.**

Purchasing Walnut, Oak, Maple & Other Species

WE PAY BEFORE WE CUT

BONDED & INSURED  
**641-895-8209**  
Est. 1968

**EVERS CONSTRUCTION RETIREMENT AUCTION**  
Saturday Oct. 21, 2023 • 10 AM  
1100 E. STATE ST. CENTERVILLE, IOWA

2017 Kubota SSV75 2 sp. hand/foot controls, heat/air, 1160 hrs.; 2005 Bobcat S250 open cab, high flow, hand/foot controls, 4,200 hrs.; 2001 Ford F450, 7.3 Diesel, 2WD, 12 ft. Knapheide dump bed, 80,000 miles; 1996 Chevrolet 3500HD, 6.5 Diesel, 2WD, 10 ft. Electric Hoist Bed, 150,000 miles; 2006 Trailerman 16' bumper hitch, 2' tail, 7000 lb. axles, fold up ramps;

**SKID STEER ATTACHMENTS:** Kent concrete breaker; Bobcat concrete breaker; Auger; Pallet Forks; Booms; Basket; (2) Interlake Dump Hoppers;

**CONCRETE TOOLS:** Terex Self-Propelled 32'X6' Aluminum Screenshot w/ Honda Motor; Husqvarna FS520 concrete saw, 69 hrs.; Cushion Cut 18 hp. concrete saw; (4) Stihl quickie-saws; 300 ft. DeeZee 6" metal forms w/ fillers; 160 ft. DeeZee 6" radius forms w/ corners; (2) 36" power trowels; plate tamper; pogo tampers; jumping jack tamper; jack hammer; jack hammer bits; 2 man auger; concrete stamps; concrete blankets; concrete chutes; adjustable form braces; form lumber 2X4-2X12; 400 concrete stakes; wall ties; anchor bolts; roerd; concrete tools;

**TOOLS & MISC:** 5,550-watt generator; cutting torch; 1/2" drill press; 5 hp upright air compressor; (3) welders; porta-power; (2) table saws; hammer drills, core bits; chipping hammers, hand and air tools; abrasive blades; diamond blades; shovels, rakes, pry bars, sledges; electric & amp; gas water pumps; industrial shelves; revolving bolt bin; vises; log chains; binders; ratchet straps; steel pipe, pvc pipe and fittings; new safety fence; large amt. nuts, bolts, hardware & electrical;

**VINTAGE ITEMS:** 1930's Kohen Barber Chair (from Mitchell Bros. Centerville); 1960's Pepsi machine; 1930's King Air Hammer-Riveter; jewelers brazing torch; roerd shear; Keen Kutter items; pump oil cans; Railroad spike puller; 2-wheel freight cart; 8' & 6' Woods Bro. shovel; advertising pry bars; wire milk crates; Craftsman & amp; Bluepoint tools; brace & bits; RARE EC Atkins hacksaw; Digston saws & amp; buttons; coat hooks & amp; pulleys; grinder/home made in Ottumwa; house jacks; numerous items;

**DEMRY AUCTION, LLC**  
1916 S 18th St. (Hwy 5 SOUTH) CENTERVILLE, IOWA | 641-856-6408

Tom Demry: 641-895-2508 • Kristy Demry: 641-895-2509  
Janet Demry: 641-895-4310 and 641-856-6924  
Junior Lawson: 641-895-0037 Randy Mulay: 641-436-1521  
Dalton Ott: 563-880-5626 • Website: [www.Demryauction.com](http://www.Demryauction.com)

**Small Animal Auction**  
Saturday, Oct. 28th, 2023

To be held at the  
**SCHACHTELE BARN - KEYTESVILLE, MO**

From Hwy 24 at Keytesville, take Hwy 5 approx 4 miles to site w/ brown barn/green roof on the West side of the road, or from Hwy 36 at Marceline exit take Hwy 5 South, approx. 16 miles to site. Follow Auction signs!

**Starting @ 11:30 am**

We will start with Misc. Items Outside & Follow with Small Animals approximately 12:00 noon. Expecting Chickens, Geese, Ducks, Turkeys, Rabbits, Goats & Many Other Small Animals!

**We are NOT accepting any HOGS! All Out of state Animals to be Sold MUST Have Proper Health Papers!**  
Lunch Served • Call for More Details!  
**Tony Schachtele 660-413-3250**

**We Appreciate All Consignments!**

Terms Cash - good Check with Proper ID  
We are NOT Responsible for Accidents to Man, Woman, Child, or Animal. We are NOT Responsible for Lost, Stolen, or Damaged Articles or Property.

**RAMER TRUCK SALES**



2021 Ford F350 XLT, New Dew EZE 684 bale bed, 6.7 clean title **\$71,900**



2020 Ford Ranger, 4x4, Lariat, Black, 41k miles, Rebuilt Title **\$29,000**



2012 Ford Expedition Limited, 5.4l, 200k miles, prior salvage title **\$6,500**

Gorin, Missouri • Monday-Saturday 8am-6pm  
[www.ramertrucksales.com](http://www.ramertrucksales.com) | HOME: 660.282.1002  
CELL: 660.341.6140 | "NO SUNDAY CALLS!"

**Edward Jones** > [edwardjones.com](http://edwardjones.com) | Member SIPC

**We're more than just a great rate**

Bank-issued, FDIC-insured **5.45%**  
1-year APY\*

Call or visit your local financial advisor today.

**Jason K Robinson**  
Financial Advisor  
1300 Country Club Dr  
Kirksville, MO 63501-5362  
660-956-9562

\* Annual Percentage Yield (APY) effective 10/12/2023. CDs offered by Edward Jones are bank-issued and FDIC-insured up to \$250,000 (principal and interest accrued but not yet paid) per depositor, per insured depository institution, for each account ownership category. Please visit [www.fdic.gov](http://www.fdic.gov) or contact your financial advisor for additional information. Subject to availability and price change. CD values are subject to interest rate risk such that when interest rates rise, the prices of CDs can decrease. If CDs are sold prior to maturity, the investor can lose principal value. FDIC insurance does not cover losses in market value. Early withdrawal may not be permitted. Yields quoted are net of all commissions. CDs require the distribution of interest and do not allow interest to compound. CDs offered through Edward Jones are issued by banks and thrifts nationwide. All CDs sold by Edward Jones are registered with the Depository Trust Corp. (DTC).



Clip & Save • Clip & Save • Clip & Save • Clip & Save • Clip & Save

# Miner Hill, LLC

**Flea Market/Swap Meet** Live Country Music Friday & Saturday Evenings

**Free Public Admission**

Lot Rentals Start at \$25  
Lot rental per month or per season. Save one month by paying for the whole season in April. Electric/camper hookups available

**Great Food**  
Come try out the New Miner Hill Nugget Cafe featuring our Smash Burgers along with a full Menu of Breakfast and Lunch

**Contact info**  
(660) 375-1212  
Minerhill@yachoo.com  
www.minerhill.com  
1310 N Missouri Ave  
Marcelline, MO 64658

Antiques  
Guns  
Auto Parts  
Baked Goods

Crafts  
Unique Junkie & Much More!  
50/50 Drawing  
Fri & Sat

**2023 Dates**  
Oct 27 - 28

www.facebook.com/minerhillllc

Clip & Save • Clip & Save • Clip & Save • Clip & Save • Clip & Save

## RONALD PARKER ESTATE AUCTION

**SATURDAY, OCTOBER 28<sup>TH</sup>, 2023 • 10:00 AM**

AUCTION TO BE HELD ONSITE: 5639 LIV 251, CHULA, MO

Due to the death of Ronald Parker, the following will be sold at the home located at 5639 LIV 251, Chula, MO. From Chillicothe, travel north on HWY 65 for 6 miles to LIV 214, then turn east on LIV 214 for 2 miles to LIV 251. Turn north on LIV 251 a short distance to sale location. Auction signs posted sale day.

### CHULA SMALL COUNTRY ACREAGE - 7.5 ACRES ±



The Parker property is located approximately 9 miles northeast of Chillicothe, MO or 3 miles southwest of Chula, MO. The property is further described as being in Section 29, T59N•23W, Cream Ridge Township, Livingston County, MO. If you are in the market for a hard-to-find small country acreage, this could be the one for you! This auction features 7.5 acres ± and is located on a well-maintained county road. The property is improved with a partially finished 1 bed, 1 bath actual barn/industrial and will feature 1500 sq. ft. of living space, operable elevator, large back deck and a 30'x50' unfinished work/storage area below. The parcel will also include a nice 36'x36' garage with foam insulated walls and concrete floors as well as, an older 2-bedroom ranch style home that has been vacant for some time. Rural water, septic sewer and fiber optic internet is already in place. The improvements on the property are surrounded by all species of trees making this a very park like setting. A must see property! The real estate will sell at approximately 12 noon. Contact the auction firm at (660) 240-9161 for viewing.

**ADDITIONAL DETAILS & PHOTOS ONLINE AT:**  
[www.teterauction.com](http://www.teterauction.com)

**JOHN DEERE TRACTOR, TRUCK, MOWER:** 2016 John Deere 3032E MFWD utility tractor, 540 PTO, hydrostatic trans., 15-19.5 rear tires, 25x8.50-14 front tires, rops, sells complete w/ John Deere D160 loader, 60" bucket, ONLY 51.6 hours, VIN: 1LV3032ETFH715397; 2017 Dodge Ram 1500 pickup truck, crew cab, 4WD, (no key at listing - additional information coming soon); John Deere Z540M Z-trak zero turn lawn mower, 24hp, Tuff Torq dual hydros, 54" deck; Dixon zero turn lawn mower, 42" deck; 1000 gallon Butler propane tank; 6.5'x12' utility trailer, tandem axle, drop gate; 3-pt. Countryline posthole digger, 540 PTO, 12" bit; 3-pt. 6' Frontier box blade w/ teeth; 3-pt. Frontier Ps1001 subsoiler

**SHOP EQUIPMENT, MACHINIST:** Great quality tools and equipment! Grizzly model 1023S 10" table saw (3hp, 220V, TEFC motor); Grizzly model G4050 metal cutting band saw (6 1/2" x 8", built-in coolant system, hyd. feed); Jet 6" jointer/planer (3/4 hp, 1 phase); Craftsman 20" drill press (12 spd., 3/4" chuck, 2 hp); Grizzly model G0557 24" pan and box brake; Dewalt sliding compound miter saw; Craftsman 11" band saw; Delta scroll saw; Ryobi 10" planer; Jet 14" closed stand bandsaw; Greenhouse electric power washer (1800psi); shop vacs; Black and Decker miter saw; KFF drill press; Delta hollow chisel mortiser; Delta disc sander (12"); Delta disc/belt sander (5"); 30"x60" steel frame work tables on 6" casters (x3); 330 lb. capacity mobile shop cart; wire shelving (on wheels, x10); Goodyear shop crane (2T); Reliant dust collection system; pallet jack; oxy-acetylene torch set; router table; router bit sets; router guides; tool boxes; strapping tool set; Delta jig set; vises (4+); two-wheel dolly; and others.

Precision tools including Enco vertical milling/drilling machine, model 105-1100; Grizzly digital read-out control panel (for milling machine); Grizzly power table feed (for milling machine); Wilson 5" vise; Starrett micrometers; digital calipers; digital protractor; precision level; Grizzly micro anvils; depth gauges; steel mini machinist clamps; stud remover set; Starrett surface plate; reamers; deburring tools; machine vises; Lista tool cabinet (7 drawer); Durham machinist parts organizers (loaded with precision nuts, bolts, washers, etc, 10+); stock aluminum, brass, steel block, rods, angle iron, plus copper, steel pipe, threaded rod; 1/8"x6"x various lengths steel plate; solid brass rod up to 1.5"x8"; hundreds of drill bits in organizers; Forstner bit set; tap and die sets; 2T Arbor press; multimeters; punch sets; Impossible to list it all... Come see!

**TOOLS, LAWN & GARDEN, MORE:** Large run of hand tools including pliers; vise grips; channel locks; ring pliers; hammers; crescent wrenches; pipe wrenches; flat bars; hammers; speed squares; screw drivers; Craftsman wrench sets (combination, SAE, metric); multiple socket sets (1/4", 3/8", 1/2", 3/4", Craftsman, Kobalt, others); Craftsman chest on chest tool box; Lincoln Sp-175 Plus mig welder; spring clamps; welding clamps; 25+ bar clamps (Quik grip, Kobalt, others); rolling stands; c-clamps; files (triangle, bastard, flat, others); T-handle hex key sets; hack saws; shop stools; 1T chain hoist; log chains; extension ladders (Keller 24' fiberglass, Cuprum 14' aluminum); fiberglass step ladders (6', 8', 12'); tape measures (10'-300'); table top shear; 3T floor jack; 12 T bottle jack (x3); Milwaukee circular saw; Milwaukee angle drill; Milwaukee sawzall (w/ case); Bosch plunge router; Dewalt HD shears; Makita belt sanders; Hitachi angle grinder; Bosch jig saw; WEN 8" bench grinder; Delta bench grinder; other bench grinders; Bosch hammer drill; Bosch screw gun; angle sander; Husqvarna 450 Rancher chainsaw; Dewalt heat gun; Dremel tool (lots of attachments); belt sanders; extension cords; retractable electrical cords (x3); Ingersoll Rand air compressor (80 gal horizontal, 2 HP, 230V); Kobalt portable air compressor (1.5 HP, 11 gal); Campbell Hausfield 13 gal pancake compressor; Bostitch nailers; Grizzly air 1/2" ratchet; air hoses (8+); hose reels; air pigs; pneumatic couplers, fittings; yard aerator; several garden HD garden hoses on reel carts, others; 30 drawer wood cabinet; 3-drawer cabinets; rolling work bench (32"x5' -x3); wheelbarrow; floor creep; 4' level; yard and garden tools including (shovels, rakes, hoes, etc); Country Tuff yard cart; 15 gal. ATV sprayer; Kobalt cordless weedeater; several board feet of dimensional lumber (2x12, 2x10, 2x8, 2x6, 4x4); scaffolding; new T-post (6.5' x13, 6' x50+); T-post puller; post pounder; Red brand woven wire; cedar mulch blend (x10 bags); MFA 20-10-10 fertilizer (x6); top-soil (x10); dust pans; gas cans; new and used electrical wire; Craftsman LT 1000 garden tractor (17.5 HP, no deck); aluminum ATV ramps; Scott's spreader; Hastings 200 gal galvanized water tank; pickup topper (fits 7'); and more! Plus lots of new sand paper, sanding wheels; cutting wheels; grinding wheels; lots of new screws, nuts, and bolts, boxes of Bostitch stick nails); Roundup, Barrier herbicides; cases of ceramic floor tile; stainless tables (6', x2); and primitives and collectibles scattered around the farm including hay trolley; cast iron "crossing" sign; CB&Q railroad turn style; galvanized tubs (x5); park bench; wooden patio glider rocker; paper cutter; french fry cutter; 3 gal Western crock; Whirlpool refrigerator (ice maker, black); Jenn-Air gas range w/ oven; Amana and Maytag washing machine; and more to be discovered by sale day!

**RONALD PARKER ESTATE**  
Representing Attorney: Trentis Miller | Chapman and Cowherd, P.C.  
903 Jackson St., Chillicothe, MO 64601 | (660) 646-0627

**TETER AUCTION COMPANY, LLC**  
(660) 240-9161  
www.TeterAuction.com

AUCTIONEERS:  
Josh Teter, David May, Tyler Keenan,  
David Blackburn

**Turn Your Clutter Into Cash**

Get money in your pocket and room in your garage when you sell your stuff and promote your sale through the newspaper classifieds!

\$254  
\$95  
\$33  
\$21  
\$57

# FARM MACHINERY CONSIGNMENT AUCTION

**Saturday, Oct. 21st @10:00 AM**  
@ Schachtele Auction Barn Keytesville, MO

From Hwy 24 at Keytesville, take Hwy 5 North approx. 4 miles to site with a brown barn/green roof on the West side of the road, or from Hwy 36 at Marceline exit take Hwy 5 South, approx. 16 miles to site.



**Tractors & Skid Loaders:** 2012 Case 105Cw/Case L630 Loader FWA cab heat & air 1209hrs; Mahindra 1538 w/Mahindra Loader FWA cab heat & air 245hrs; JD2640 Diesel w/JD146Loader; JD3020 Gas; JD4230 w/Loader cab heat & air; JD4010 Diesel w/JD48 Loader; Ford Tractor w/Loader; Case245 w/Belly Mower; Kubota BX2200 w/Mower Deck; JD1020 Gas w/JD146 Loader; Case350 Crawler; Mahindra450; Ford3400 Gas; Ferguson30; IH300; JD60-not running; Yanmar Diesel YM146 Lawn Tractor; Oliver1850 Diesel; Commander tracked Skid Loader; JD770 FWA w/JD Loader; IH284 Gas; JD790 w/ JD Loader; A Farmall; Ford 7710 w/Ford Loader; JD A-Parade ready; Deutz-Allis 5230 w/Deutz-Allis Loader; Skid Loader Attachments: New Grapples; New JCT Tiller; New JCT Mowers; New Pallet Forks; New Bale Spears; Blank Plates; Bobcat Landscape Rake; New Root Bucket; 2-Bobcat Brooms; JD Pallet Forks;

**Trailers, UTV & Vehicles:** 1966 IH 1300 4x4 w/Knapheide Bed Hoist 35,745 Miles 1 owner & all Original-Runs & Drives; 2021 Hisun750 CC 4 Seater Side by Side 2,100 Miles; JD 4x2 Gator; 2013 Look 12' Cargo Trailer; 12' Welding Trailer w/Fuel Tank & Tool box; Hale 16' Bumper Hitch Stock Trailer; 12' Utility Trailer; Trailerman 18' Flatbed Trailer w/5,200 lb Axles; 1984 Chevy Dump Truck w/V-8 Gas Motor;

**Farm Machinery & Equipment:** 2-JD336 Twine Balers; JD1217 Haybine, New Holland 512 Manure Spreader w/top beater; Metal Flare Box Wagon; Brown 3pt 7' Tree Cutter; 24' Pasture Harrow; 2Bottom Rollover Plow; 12' Pull-type Box Blade; JD 3pt 4' Cultivator; JD145 Loader; White 4Bottom Rollover Plow; 12' pull-type Disc; New Idea Manure Spreader w/Slop Gate; JD 14T Baler; 8' pull-type Box Blade; JD375 Baler; New Holland269 Baler; JD Hay Rack Wagon; Rhino 15' Batwing Finishing Mower; IH103 Manure Spreader; 12' pull-type Cultivator; King Kutter 3pt 6' Disc; Land Pride 72" 3pt Finishing Mower; Danuser Post Hole Digger w/16" Auger; Several 3pt 2Bottom Plows; Case 8' Grain Drill; Oliver 3pt 3Bottom Plow; Several 3pt Blades 4', 5' & 6'; JD 3pt 2row Corn Planter; 3pt Weight Box; JD64 Hay Rake; 3pt 6' Disc; 3pt Rotary Hoe; Several 3pt 3Bottom Plows; JD LX5 Brush Hog; New Bobcat 3pt 4' Tiller; 3pt 8' Disc; New Holland451 Sickle Mower; pull-type 8' Cultipacker; 4' pull-type Mini Red Harrow; New Agrotk 3pt 5' No-till Drill; 3pt Post Driver; 3pt King Kutter 6' Brush Hog; Titan 6' Flail Mower; JD 3pt 4' Tiller; Several 3pt Bale Unrollers; Rhino 3pt 72" Box Blade; 3pt 12' Rotary Hoe; 3pt Ford Sickle Mower w/6' Bar; New Holland488 Haybine; JD38 Silage Chopper w/2Row Head; Case Manure Spreader; New Holland258 Hay Rake-parts only; JD 5Bar Hay Rake; 3pt 8' Brush Hog; New Industrias America 3pt 9' Blade w/hyd. tilt; New Industrias America 10' 3pt Blade w/hyd. tilt; Koyker500 Loader; Allis Chalmers pull type Sickle Mower w/9' Bar; New Holland451 3pt Sickle Mower w 7'Bar; IH540 Manure Spreader; Gravity Wagon; 3pt 8' Blade w/hyd. tilt; pull type 6' Brush Hog; pull type 6' Tandem Disc; pull type 6' Driveway Roller; 3pt Big Ox Heavy 8' Blade w/hyd. tilt; Krause 3pt 12' Chisel Plow; IH2250 Loader; 2-24T Balers; pull type New Holland Manure Spreader; JD350 3pt Sickle Mower w/9' Bar; Case 3pt Backhoe; Workmaster Loader; Kelly Ryan Manure Spreader; Arts-Way Feed Wagon w/Scales; Bushhog 15' Batwing Mower w/540 pto; 3pt 4' Box Blade; 3pt 4' Brush Hog; 3pt 3' Disc; 3pt King Kutter 6' Tiller; 3pt Woods TSG50 Stump Grinder; 3pt 12' Tiller-like new; AC 3Bottom Plow; MF 3pt 4Bottom Plow; JD68 Auger Wagon; AC 18' Disc; IH5100 Grain Drill w/small Seed Box; 3pt Cone Spreader; Several 3pt Bale Spears; Gravity Wagon w/JD Gears; JD Barge wagon w/hoist; JD Manure Spreader; JD 3pt 6' Disc; Wacker Portable Water pump w/Diesel Motor;

**Livestock Equipment, Fencing & Farm Related Miscellaneous Items:** New 2-Ton Portable Bin; New Cradle Feeders; Priefert Squeeze Chute; Powder River Squeeze Chute; New Tarter Mineral Feeders; New Tarter Sheep Gates 4', 6', 8', 10', 12' & 16'; 15- Tarter 10' Corral Panels; New Tarter 16', 18' & 20' Gates; Several Wire Cattle Panels; Several Wire Hog Panels; 40-24' Freestanding Corral Panels; 4Ton Galvanized Bulk Bin; 2Ton Galvanized Bulk Bin; New Tarter Crowding System w/ Ally;

**Lawn & Garden & Miscellaneous Items:** 40' New Storage Container w/4 Side Doors; 3pt Log splitter; Pallet Jack; Scaffolding; 2 hole Dog Box; pull type Cone Seeder; Old JD Garden Tiller; Agri-Fab Yard Sweep; pull type 60 Gal. Sprayer; DR walk behind Field & Brush Mower; DR Leaf & Lawn Vacuum w/gas motor; Earthquake rear-tine Tiller-like new; 8-new Chain Slings; Miller Bobcat Welder; 50Gal. Fuel Tank w/pump; 150 Gal. Fuel tank w/ pump; 500 Gal. Fuel Tank w/pump; 2-Stainless Steel Tool Chest; Wood Cook Stove; Plastic 50 Gal. Barrels; Metal 50 Gal. Barrels; 15Gal., 30Gal. & 85Gal. Water Tanks; 15-16' Freestanding Sheep Panels; 10-8' Sheep Corral Panels; 2-Sheep Panels w/gates; Poly Lawn Cart; Troy-Bilt rear-tine Tiller; walk behind Sickle Mower; Kubota Push Mower; gas powered Generator; Delta Job Box; Several Walking Plows; Wooden Whiskey Barrel; Small 4Wheel Wagon; Tire Cage; Go-Cart

**Taking Consignments Daily Expecting Much More by Sale Day**  
Check Schachtele Auction Facebook Page for Pictures and Other Consignments.  
**Selling Farm Machinery, Farm Tools & Equipment & Many More Miscellaneous Items (No Household Items)**

**To Consign Early for Advertising or for More Information Call**  
**Tony: (660) 413-3250**  
Lunch Served by A & T's Lunch wagon

## WE APPRECIATE ALL CONSIGNMENTS!

**Terms:** Cash-Good Check with Proper ID. We are NOT Responsible for Accidents to Man, Woman, Child or Animal! We are NOT Responsible for Lost, Stolen or Damaged Articles or Property!



**KEIM LUMBER COMPANY LLC**  
**COMPETITIVE PRICES • FREE ESTIMATES**

- COMPLETE BUILDING PACKAGES
- WINDOWS AND DOORS
- INSULATION • DRYWALL
- DELIVERY

13625 St. Hwy 3 LaPlata, MO

**CUSTOM AIR SOLUTIONS LLC**  
**Furnace, A/C, and Boilers**  
 Serving the Memphis area

**Fall Is Here!!**  
 Is Your Furnace Ready?  
 Call 660-342-5147

**Limited Time Only**  
 Furnace Tune - up  
 \$75 per system

\*Some restrictions apply, call for details

**ANTIOCH REPAIR**

**SPECIALIZING in**

- Skid loaders
- Ag Equipment
- Construction Equipment

Call us for all your attachment needs  
**Ethan Zimmerman • 660-299-0808**

**DRIVE AWAY CANCER**

We're proud to support the fight against cancer with a \$10,000 donation to the American Cancer Society.



**We Offer:**

- Peace of Mind Package
- Service Contract Plus
- Accident Protection Plan
- 100% Satisfaction
- Pay Your Way
- Low Down Payments
- Quality Used Vehicles
- Flexible Financing
- Hand Selected Vehicles
- Convenient Payment Options
- Start Your Approval Online
- Over 150 Locations
- 42 Years in Business
- We Buy Cars

**660-956-4849 • 2015 North Baltimore • Kirksville**



2016 NISSAN ROGUE, FWD, 4 CYL., WHITE



2016 FORD FUSION FWD, 4 Cyl., Gray



2010 HYUNDAI ELANTRA FWD, 4 CYL., SILVER



2016 CHRYSLER 200, FWD, 4 CYL., WHITE



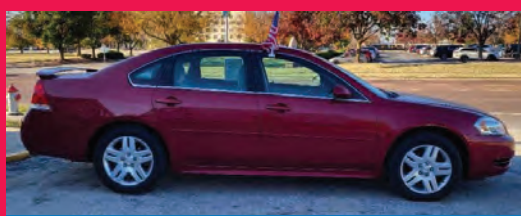
2014 FORD FOCUS, FWD, 4 CYL., SILVER



2017 FORD FIESTA FWD, 4 Cyl., White



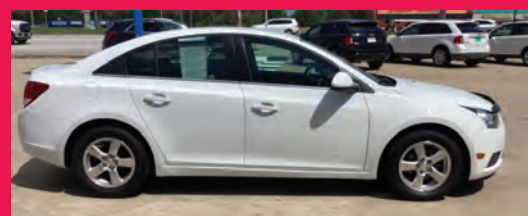
2012 FORD F150 4WD, 6 CYL., WHITE



2012 CHEVROLET IMPALA FWD, 6 CYL., MAROON



2014 FORD ESCAPE FWD, 4 Cyl., Silver



2014 CHEVROLET CRUZE FWD, 4 Cyl., White



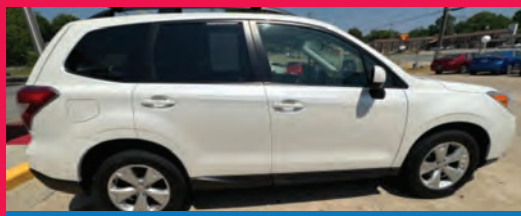
2019 HYUNDAI KONA AWD, 4 Cyl, Gray



2013 HONDA CIVIC FWD, 4 Cyl., Maroon



2018 KIA SOUL FWD, 4 Cyl., Gray



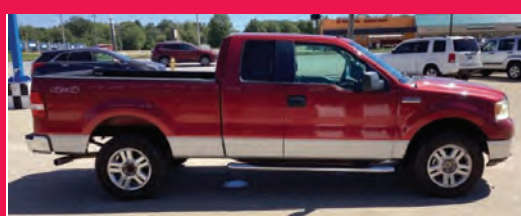
2014 SUBARU FORESTER AWD, 4 Cyl., White



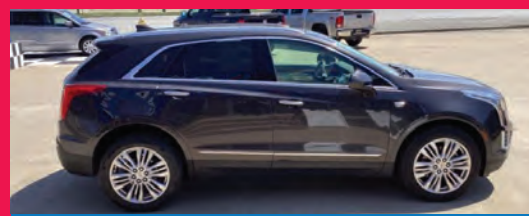
2012 KIA SOUL, FWD, 4 CYL., SILVER



2015 JEEP PATRIOT FWD, 4 Cyl., Black



2008 FORD F150 4WD, 8 Cyl., Maroon



2017 CADILLAC XT5 AWD, 6 Cyl., Black



Keeping You on the Road



**KYLE JENNINGS**  
 GENERAL MANAGER

WE ARE PUBLISHING THE **NEW** **DEADLINE** ON **WEDNESDAYS** will be **THURSDAY** by **5PM**

**NEMO Trader**

705 E. Laharpe Street Ste. F • Kirksville, MO 63501 • 660-665-8500 • sales@nemotrader.net



# LAND AUCTION

## FRI, NOVEMBER 3RD AT 6PM

# 138± ACRES

ADAIR COUNTY, MO

Held at The Green Theatre 217 S. Gex St, LaPlata, MO 63549

Description: This is a chance of a lifetime at a high percent tillable, outstanding farm right on highway 63!

A farm that simply doesn't come up for sale very often, this farm boast 131.12 NHEL FSA Cropland Acres out of 138 acres, making it 95% tillable! It also includes a 60X75 machine shed with a 40' door that makes it a breeze to park a combine in after a long day in the field. The farm location is not something to overlook. The farm sits right on 63 with the blacktop Highway KK on its north border. This farm simply checks all the boxes for the farmer and investor alike.

Seller: Matteson Family Revocable Trust

**PEOPLES**  
LAND COMPANY LLC

AUCTION MANAGER:  
Anthony Peoples 660.651.6501

[www.peopleslandco.com](http://www.peopleslandco.com)

## FANS - HEATERS

12" IHP, 18" 3 HP, 24" 7-10HP and 28" 10-15 HP. All Single phase. (1) 10 HP 3-phase centrifugal fan on hand. Transitions available.

24", 28", and heater for centrifugal fan. All are liquid heaters with thermostat controls. Full Heat.

New Sukup Standard Spreadway (suitable for 8" auger) and Hi-Cap Spreadway (suitable for 10" auger) (1) used spreader (suitable for 8" auger).

**GRAINBINSUPPLY**  
"The Grain Bin People" **GBS**

**CAIRO, MO**  
(660) 263-6700

## REAL ESTATE AND PERSONAL PROPERTY AUCTION

**Sale Date: October 28, 2023 @ 10a.m.**  
225 East Summer Street,  
Monroe City, Missouri

**Open House: Sunday, October 15, 2023 @ 1:00pm-3:00pm**

### Property Description

Large Corner Lot - 100X140, 1974 Double Wide with modifications, Small Storage Shed with overhead door (12 X 18), Large 2 Car Garage with cement floor (24 X 27), Storage Attached to 2 car garage (14 X 24), Large 2 car carport that has been blacktopped, Metal roofs on all buildings

### Personal Property

Furniture, Appliances and Household, Tools and Lawn Equipment, Antiques

Seller: **Carolyn Fahy**

**Hammond & Watson**  
AUCTION SERVICE

Lionel Hammond  
573-406-3877  
PALMYRA MO

Like us on FB

Look us up on Auction Zip

## 162± ACRES • 5 TRACTS

(SUBJECT TO SURVEY)

## MONROE & APPANOOSE COUNTY, IOWA LAND AUCTION

VIRTUAL ONLINE  
TUESDAY, NOVEMBER 14 @ 10:00 AM CST

### PAUL MIHALOVICH ESTATE

Land is located in Sections 32 & 33, Monroe Township, Monroe County, IA and Section 4, Taylor Township, Appanoose County, IA to be sold in 5 tracts.

This farm offers it all including highly productive tillable farmland, desirable hunting & recreational acreage and home building sites. Tracts 3, 4 & 5 feature several development/business opportunities and is conveniently located in the small town of Moravia, IA.

REPRESENTING ATTORNEY: Michael D. Craver | Craver & Grothe  
303 W. State Street | Centerville, IA 52544 | (641) 435-6946

AUCTION MANAGER: John Probasco (641) 856-7355

**MERIT AUCTIONS**  
"Specializing in Farm Real Estate & Ag Equipment"

833.273.9300 | [www.MeritAuctions.com](http://www.MeritAuctions.com) | 444.000611

## MACHINERY CONSIGNMENT AUCTION

TIMED ONLINE  
THURSDAY, DECEMBER 21 @ 10:00 AM CST

### MAKE PLANS NOW TO PARTICIPATE IN THIS UPCOMING YEAR-END FARM & CONSTRUCTION EQUIPMENT AUCTION!

Please call the office (833) 273-9300 or email: [info@meritauctions.com](mailto:info@meritauctions.com) to discuss consigning your equipment as all items will be considered on a per piece basis. All items will be sold from your farm or place of business and Merit will send an auction representative to obtain details and photos. This will be a no-reserve timed online-only event!

**MERIT AUCTIONS**  
"Specializing in Farm Real Estate & Ag Equipment"

833.273.9300 | [www.MeritAuctions.com](http://www.MeritAuctions.com) | 444.000611

## Your Local FARM SUPPLY SOURCE

NUTRITION • MEDICAL • FARM • PET • APPAREL

### SEE US FOR YOUR SHEEP & GOAT EQUIPMENT NEEDS

Hometown Animal Health has provided quality products, expert knowledge, and friendly customer service to northeast Missouri and surrounding areas. We are a full-service nutrition, medical, and farm supply source carrying complete lines of animal feed and supplies, farming equipment, agricultural parts, lawn and garden tools, work apparel, and much more!

**Hometown ANIMAL HEALTH**

Feed • Medical • Farm & Pet Supplies • Footwear & More

website: [hometownanimalhealth.com](http://hometownanimalhealth.com)

# 660-465-2967

18743 US Hwy, 136 Memphis, MO 63555  
"on Hwy 136 west of Memphis"

Monday-Friday 8pm to 5pm  
Saturday 8am to 1pm

# Beilstein CAMPER SALES

## CALL US NOW for the best prices...

28243 327th Ave.  
LaGrange, MO • Hwy 61 South,  
4 Miles South of LaGrange, MO

573-655-2254

## CHECK OUT OUR SPECTACULAR FALL SAVINGS

**#2813**

Our Price **\$35,995**

2024 Keystone Fuzion Impact Aluminum Toy Hauler  
Toy Hauler, Just Arrived Huge Garage and Back Gate

**#214887A**

Our Price **\$15,995**

2011 Heartland Caliber 265RLS  
Super Slide-Out, Rear Living Room

**#046192A**

Our Price **\$15,995**

2018 Cherokee Wolf Pup 16BHS  
Queen Bed, Bunks, Light Weight

**#091640**

Our Price **\$45,995**

NEW 2023 Salem Hemisphere 270FKS  
2 Slide-Outs, King Bed, Front Kitchen

**#091551**

Our Price **\$37,995**

NEW 2023 Salem Hemisphere Hyper-Lyte 25RBHL  
Super Slide-Out, Rear Bath

**#074389A**

Our Price **\$17,495**

2023 Salem FSX 161QK  
Light Weight. Easy to Tow, Queen Bed

# beilsteincampersales.com





# SCOTTY'S

## AUCTION SERVICE

573-356-4405

**Auctioneer: Scott Kuntz**

**SEE MORE PHOTO'S ON SCOTTY'S WEBSITE**

**WWW.SCOTTSAUCTIONSERVICE.COM**



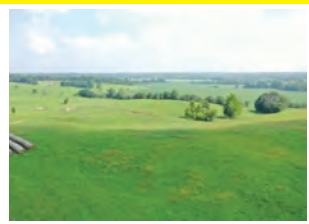
### Huntsville Land Auction

**Wednesday, October 18, 2023 at 5:00 p.m.**  
Frank Lopez

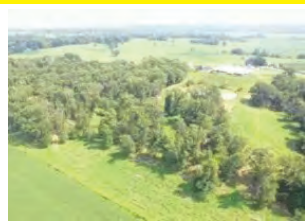
**2746 Highway D, Huntsville, Missouri.**

**Direction:** From US Highway 24 at Huntsville, follow Highway D South for approximately 1.6 miles to the property. Watch for signs.

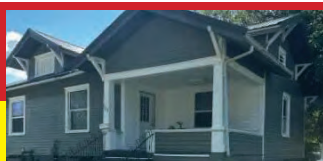
**REAL ESTATE:** We will be selling at auction 109.6 acres more or less of beautiful, rolling farm land. The land is mostly pasture, having good perimeter fencing and cross fencing. The current owner has a cattle operation setup for rotational grazing. The farm offers



excellent hunting with paths leading to open fields. The home and 19 acres more or less is not included in the sale.



**Please contact Scotty at 573-356-4405 to schedule your personal showing.**



### Shelbina Real Estate Auction

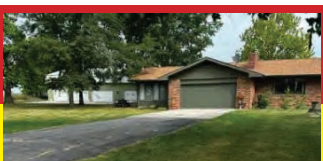
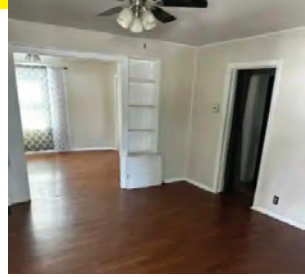
**Thursday, October 19, 2023 at 5:00 p.m.**  
James Millard

**203 East Mill Street, Shelbina, Missouri**

**Direction:** From US Highway 24 at Huntsville, follow Highway D South for approximately 1.6 miles to the property. Watch for signs.

**REAL ESTATE:** We will be selling at auction this two bedroom, one bath bungalow style home. The home has hardwood floors, some original woodwork, a full, unfinished basement and a newer HVAC system. This

would make a great starter home or an investment opportunity. **Contact Scotty at 573-356-4405 to schedule your personal showing.**



### Queen City Quality Home With Large Shop & Personal Property Auction

**Saturday, October 21, 2023 at 10:00 a.m.**  
The late Martin & Anne Alexander Estate

**410 West 6th Street, Queen City, Missouri**

**Direction:** From US Highway 63, follow State Highway W West for approximately 0.8 miles, turn West 6th Street to the auction location. Follow the signs.

**REAL ESTATE:** This 1969 built brick ranch style home on 6.3 acres more or less offers approximately 3,100 square feet of living space with a partially finished, walk-out basement and a large, comfortable sunroom. The home has three to four bedrooms, two and one half baths, Anderson casement windows, solid wood interior doors, an extra wide stairway and built in bookshelves. You can appreciate the quality construction and the spacious floor plan, great for entertaining and hosting guests. The home has hot water heat and central air conditioning. The roof was replaced in 2021. There are brick sidewalks, stamped concrete retaining walls and the yard is nicely landscaped. The property also has a 3,402 square foot (81' x 42') Morton Building which includes a 46' x 42' insulated workshop with heat and air conditioning, a 46' x 42' ballroom style, full height storage area, a shop area/paint booth, room to park multiple vehicles and a half bathroom. The building has a 9' x 8' overhead door, two 16' x 8' overhead doors, a 12'6" x 11'6" overhead door and a walk through door. The building has fire retardant walls throughout. The acreage is gently rolling and offers an opportunity for a large yard, a hobby farm or could be divided by the buyer and offered as a separate piece of property. **Please contact Scotty at 573-356-4405 to schedule your personal showing.**

center; 4 piece queen size bedroom set; maple 4 piece bedroom set; Samsung flat screen tv; Apex DVD player; Sharp VCR; surround sound; coffee table; end tables; couch; round table with 4 rolling chairs; numerous lamps; miscellaneous kitchenware; electric heater

**COLLECTIBLES & ANTIQUES:** Fischer brand tournament size pool table and accessories; strap traveling trunk; miscellaneous pictures and prints; antique hump back trunk; wall mounted quilt rack; standing quilt rack; Ridgeway Grandfather clock; pink depression glass; ruby red stemware; miscellaneous stemware; Fostoria America glassware; plate collection; hen on nest; fluted amber glassware; King Crown glassware; antique hand turned walnut floor lamp with fringe shade; salt cellars; mini creamers; sugar bowls; vinyl records; Longaberger basket; collectible Hjars; cookie jars; Franzen Circus posters; Queen City circus posters; automobile collectible posters and calendars; ME Dawson floor safe, no combination; miscellaneous collectible signs and Ford memorabilia; fireplace tools; Christmas and seasonal decorations; antique bicycles; antique runner sleds; Mickey Mouse chalkboard

**TOOLS & OUTDOOR EQUIPMENT:** Handy 1100 110 power washer; wrought iron bench; square patio table;



Craftsman tools; hose reel; metal cutting band saw; two large pine wooden cabinets; bolt organizers; air tools; industrial roll around cart; pull type lawn sprayer; Werner fiberglass 24' extension ladder; Johnson gas forge; Industrial metal basket; rivet machines; dry storage barrels with lids and rings; metal storage cabinets

**There will be many more items at this auction too numerous to list.**



### Macon Ranch Home, Collectible & Personal Property Auction

**Tuesday, October 24, 2023 at 4:00 p.m.**  
Estate of Gerald Maloney

**510 Vine Street, Macon, Missouri.**

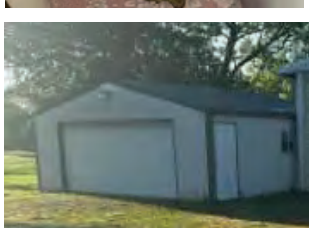
**Direction:** From US Highway 36, turn West on Vine Street to the auction location. Watch for signs.

**REAL ESTATE:** This 2 possibly 3 bedroom, 2 bath brick, ranch style home on 1 acre more or less, park-like lot within the city limits would make a great family home. The home has hardwood floors throughout a partial, walk out, unfinished basement, an electric Carrier furnace and central air. There is also plenty of room for vehicles and storage in the detached 24' x 24' two car garage with a walk through door and a 16' x 7' overhead door, the 15' x 20' one car garage with a walk through door and a 8' x 7' overhead door and the 12' x 25' Pacemaker building with 10' x 12' overhead door built especially for a recreational vehicle. **Please call Scotty at 573-356-4405 to schedule your personal showing.**

**HOUSEHOLD ITEMS:** 4 piece queen size bedroom set; 3 piece queen size bedroom set; Weslo treadmill; jewelry armoire; Rainbow vacuum; Gibson upright upright freezer; Montgomery Ward portable dishwasher; Emerson microwave; Maytag washing machine; Maytag electric dryer, and MORE.

**ANTIQUES & COLLECTIBLES:** retro turntable and radio console; Montgomery Ward sewing machine; sewing baskets; matching retro lamps; wooden rocking chair; hand painted

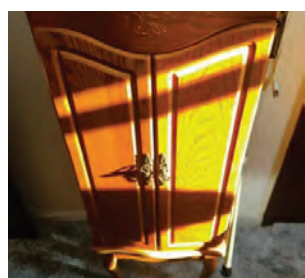
vases; covered compotes; maple style drop front secretary; fruit bowls; unique retro bar/radio with record player; Pyrex baking ware; colored aluminum cups and bowls; miscellaneous collector plates; various vases; Rodgers flatware set; wooden blanket chest; glass ice bucket; antique 3 drawer chest of drawers; vintage wine set; waterfall style hope chest; small jewelry boxes; costume jewelry; Retro single pedestal desk/vanity; electrified antique hand painted lamps; Compaq computer; miscellaneous oil paintings and prints; Coldsport retro refrigerator; Nylint



firetruck; antique cameras; and MORE.

**TOOLS & OUTDOOR ITEMS:** Davidson 8' fiberglass step ladder; house jacks; aluminum extension ladder; metal storage cabinets; miscellaneous hand tools; portable lawn cart; wheel barrow; Murray lawnmower; long handle tools; wrought iron park bench; child's park bench; portable folding picnic table; plastic patio chairs; concrete flower pot and miscellaneous lawn statuary; croquet set

**There will be many more items at this auction too numerous to list.**



### Shelbina Real Estate & Personal Property Auction

**Thursday, October 26, 2023 at 4:00 p.m.**  
Nellie & the late Leon Latchford

**608 South Center Street, Shelbina, Missouri**

**Direction:** From US Highway 36 at Shelbina, turn South on North Center Street/Highway 15 for approximately 0.8 miles to the auction location. Watch for signs.

**REAL ESTATE:** This three bedroom, two and one half bath, brick ranch style home has a partially finished basement that includes a canning kitchen. The home has a two car, attached garage, new HVAC and baseboard heat in the basement. There is a 20' x 25' Morton building with partial concrete and two large sliding doors. It would make a great family home. Please contact Scotty at 573-356-4405 to schedule your personal showing.

**VEHICLE:** 2005 Buick LaCross with 49,xxx miles, mechanically sound car has some dents and dings

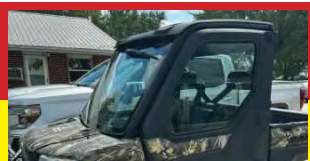
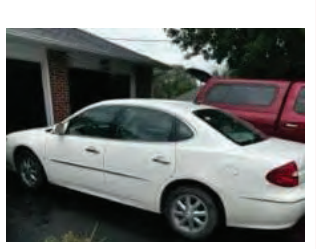
**HOUSEHOLD ITEMS:** Amana washing machine; Whirlpool dryer; GE refrigerator/freezer; like new lift chair; oak adjustable height coffee table; glider rockers; oak modern pie safe; China hutch; miscellaneous kitchenware; kitchen table with 4 chairs; modern roll top desk; leather couch; leather reclining chair; Tashiba flat screen TV; folding chairs; 3 piece full size bedroom set; curio cabinet; 4 piece queen size bedroom set; Progressive vacuum cleaner; lawn chairs

**ANTIQUES & COLLECTIBLES:** Hummel collection; Duncan Phife drop leaf table; large wood trunk; Bethel pottery; Rodgers flatware set; Camelot China set; angel collection; Fenton glass; Pfaltzgraff; cast iron door stop; school bell; bell cabinet; hump back trunk; antique vanity; Singer sewing machine with stand; variety of quilts; quilt rack; hand quilted bedspread; #5

Crock; #3 Ruckles crock; Macomb, Illinois crock bowl; holiday decor; waterfall chest of drawers and vanity; cast iron Indian warrior

**COINS:** 1926 Liberty; several Kennedys; 1897 Indian 942 Walking Liberty; 1897 Indian head penny; 1904 Indian head penny

**There will be many more items at this auction too numerous to mention.**



### Shelbyville Vacant Lot, Personal Property & Collectible Auction

**Saturday, October 28, 2023 at 10:00 a.m.**  
Virginia Boyles

**305 Monroe Street, Shelbyville, Missouri.**

**Direction:** From Missouri Highway 15, follow 1st Street East two blocks, then turn North on Jefferson Street to the auction location. Watch for signs.

**REAL ESTATE:** 205 South Washington Street, Shelbyville, Missouri. (across from old car wash) We will be selling at auction this .19 acre more or less (42 yards deep x 22 yards wide) lot in Shelbyville with concrete pad for a manufactured home, water and electric

accessible. Has a nice garden spot located on it. Conveniently located, this would make a great location for your future home. Please contact Scotty for your personal showing at 573-356-4405.

**STORAGE BUILDING, CAMPER & TRAILER:** 8' x 12' wooden storage building with metal roof, barn style doors and a loft for storage; ; MORE.

**ANTIQUES & COLLECTIBLES:** oil lamp collection; SuPro electric dalcimer; electric bass guitar; ; MORE.

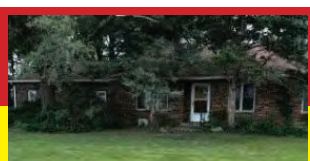
**COLLECTIBLE CURRENCY:**



**KNIFE COLLECTION: SPORTING ARMS: HOUSEHOLD ITEMS:** roll around kitchen chairs; miscellaneous end tables; walker; wheel chair; MORE.

**TOOLS & OUTDOOR EQUIPMENT:** Dixon ZTR 42" deck lawnmower, Kawasaki motor; picnic table with metal frame; MORE.

**There will be more items at this auction too numerous to mention.**



### Kirksville 7 acre m/l Real Estate & Personal Property Auction

**Wednesday, November 1, 2023 at 3:00 p.m.**  
Harold & Margaret Quint

**29027 Sunrise Lane, Kirksville, Missouri.**

**Directions** From US Highway 63 at Kirksville, turn East on Missouri Highway 6 for 2.6 miles, turn South on Pasture Lane for 1 mile then continue straight on Sunrise Lane to the auction location. Watch for signs.

**REAL ESTATE:** This 1958-59 built brick, ranch home on 7 acres more or less would make a great family home. It has 3 bedrooms, 1 bathroom and sits on a crawl space. The home has foam insulated interior walls, central air conditioning and Pella vinyl replacement windows. The roof is less than 10 years old, the propane furnace was new 3 years ago and the electric water heater was replaced 1 year ago. There is a shelter house and patio out back with electric for family gatherings or relaxing and the home is surrounded by mature trees, providing great shade. Please contact Scotty for your personal showing at 573-356-4405.

**HOUSEHOLD ITEMS:** couch; chair; full size bed frame; kitchen table with rolling chairs

**TRACTOR & FARM EQUIPMENT:** 1967 Farnall 706 gas with

F348 front end loader; 8' 3 point blade; 3 point manure fork; Pittsburgh 3 point cultivator; John Deere 3 point rotary hoe; Ford posthole digger; 3 section harrow; steel rack; metal gates; truck stock rack; wire cattle panels; AND MORE.

**ANTIQUES & COLLECTIBLES:** 1948 or 49 Willie's panel truck, no transmission, no motor, no title; 100 gallon fuel cell; older manure spreader needs work; older hay wagon needs work; Silver Shell motor Oil can; May-

tag motor oil can; old kitchen scales; Busch beer light; Carnival glass candy dish; 2007 pound anvil, repaired; old wooden barn gates; AND MORE.

**TOOLS & OUTDOOR EQUIPMENT:** John Deere XTS 38" deck hydro lawnmower; Lincoln 225 arc welder; cherry picker; BHG bbq grill

**There will be many more items at this auction too numerous to list.**



### Kirksville 40 Acre m/l Real Estate & Personal Property Auction

**Thursday, November 2, 2023 at 1:00 p.m.**  
Jim Anesi

**19735 Caldwell Way, Kirksville, Missouri.**

**Directions** From US Highway 63 at Kirksville, follow State Highway 11 East approximately 2.5 miles, turn north on Caldwell Way for approximately 0.4 miles to the auction location. Watch for signs.

**REAL ESTATE:** This property consists of 40 acres more or less with a brick front, ranch style home is set up for livestock and includes a stocked pond. It has a 40'x80' and a 30' x 50' outbuilding, fencing and cross-fencing, 3 hydrants and 2 electric heated troughs. The home has three bedrooms and one bath upstairs and the full, mostly finished basement with walk out has two bedrooms and one bathroom. It has a gas furnace, central air conditioning and a wood burning fireplace. Please contact Scotty to schedule your personalized showing at 573-356-4405.

**VEHICLES & TRAILERS:** 2009 Ford F350 4x4, V8 Power Stroke 6.4 diesel, 40,xxx miles on new motor; 2006 Barret 32' aluminum fifth wheel stock trailer barn style doors, with 2 dividers, one sliding; 1994 Coose 6x20

fifth wheel stock trailer; 2008 Polaris 570 side by side, AWD with winch; 6'x10' tilt bed single axle trailer;

**TRACTOR & FARM EQUIPMENT:** Oliver 1655 gas tractor with front end loader; 6' King Kutter 3 point brush hog; 3 point post hole digger with 2 auger bits; AND MORE.

**ANTIQUES & COLLECTIBLES:** cast iron Dutch oven; antique water pumps; Jim Anesi Livestock Dealer sign; fish aquarium; large variety of ammunition

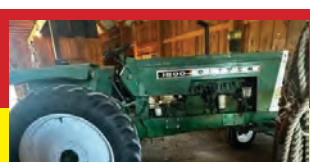
**HOUSEHOLD ITEMS:** small chest type freezer; GE washer and dryer; antique oak desk; Schwinn Precision elliptical machine;

**LIVESTOCK EQUIPMENT &**



**TACK:** several English saddles; high back saddle; Saddle Bronc handle rigging; fence corner braces; 37 +/- round bales of hay approximately 1,500 pounds; AND MORE.

**TOOLS & OUTDOOR EQUIPMENT:** Shumaker batter charger; 30 gallon air compressor; 8' aluminum step ladder; 10' fiberglass step ladder; wheel barrow; There will be more items at this auction too numerous to list.



### Farm Equipment, Tools & Collectible Auction

**Saturday, November 4, 2023 at 10:00 a.m.**  
Ron and Donna Petre

**Scotty's Auction Barn & Event Center, 28251 US Highway 63 North, Macon, Missouri.**

**Directions:** From US Highway 36 travel approximately 2 miles North of Macon to Scotty's Auction Barn and Event Center on the West side of the highway.

**VEHICLES & TRAILERS:** 2001 Chevy 2500 Duramax 4x4, Allison transmission, leather interior, gooseneck ball, shows 232,xxx miles; 1997 16' Pro Stock livestock trailer, excellent condition; 14' tandem axle flatbed trailer; Yardman XLT YS200 4x2 side by side with winch; Polaris Sportsman 90CC ATV, needs work

**HOUSEHOLD ITEMS:** 8 oak dining chairs; 4 bar stools; miscellaneous glassware; wall clock; computer armoire; leather roll around desk chair; desk; fern stand; lamps; corner cabinet; stair tread runners; upholstered sofa and matching side chair; More items

**ANTIQUES & COLLECTIBLES:** 6x6 elk mount; fox mount; antique oak buffet; collectible tins; kitchen decor; meat grinder; crocks; antique snow shoes; two horse weathervanes;

antique press; antique Atlas Powder Company box; cast iron skillet and trivets, some Griswold; miscellaneous wall decor; antique buggy lanterns; wood planes; jaw clamps; antique floor lamp; washboards; wringer; enamel wash bowl; sat irons; antique hat boxes; fireplace tools; wall shelf; antique perfume bottles; antique blanket chest; Lincoln drape electrified Aladdin lamp with shade; dressing divider; antique oak end table; duck themed lamps; More items

**OUTDOOR ITEMS:** Char broil BBQ grill; patio furniture; metal baker's rack; metal plant stand; miscellaneous lifejackets and outdoor toys; More items

**TOOLS & EQUIPMENT:** 2 electric



power washers; Craftsman gas power washer; Toro electric leaf blower; Lincoln 225 arc welder; 1 1/2 ton floor jack; Napa floor jack; jack stands; Craftsman torch outfit with bottle; More items

**FARM & LIVESTOCK EQUIPMENT:** International 666 tractor with IH 1701 front end loader, gas, shows 4,2xx hours; More item

**There will be many more items at this auction too numerous to list.**

