

FREE!

NEW EDITION EVERY FRIDAY!
VOL. 29 • NO. 14 • APRIL 23, 2021

NEMO *Trader*

THE NEMO TRADER

PO BOX 190 • KIRKSVILLE, MO 63501
PHONE 660-665-8500 • FAX 660-665-2024
Web Site: nemotrader.net
Email: nemotrader@gatehousemedia.com

A WEEKLY ADVERTISER SERVING ALL OF NORTHEAST MISSOURI AND THE SURROUNDING AREA



Call 660-457-3700
Hwy 63 North, Lancaster, MO

- 2017 Grand Caravan SE, DVD, 82K, one owner, Charcoal, new tires, \$11,900
- 2017 Ford Explorer, XLT, 4wd, V6, 3 row, full power, only 52k, silver, only \$24,900
- 2015 GMC 2500HD, SLT, 4x4, crew cab, shortbed, 6.0L, heat & cool leather, bed cover, 1 owner, only 107k miles, charcoal, very nice, only \$34,900
- 2015 Equinox, All Wheel Drive, 1 owner, 129k, silver, nice, Remote start, new tires, only \$9,500
- 2015 Jeep Cherokee Latitude, 4x4, V6, leather, red, only 84k very nice \$15,900
- 2014 Equinox, LT, AWD, only 91k miles, red, only \$10,500
- 2011 Jeep Grand Cherokee, 4wd, leather, NAV, charcoal, only 86k miles, excellent, one owner, only \$14,900
- 2007 Chevy **SOLD** 5.3L, blue, only 120k, nice \$11,900
- 2006 Chevy 2500 HD, 6.0 L, 4x4, reg. cab, long bed, 126K, one owner, white, very nice. \$16,900
- 2005 GMC 2500HD, SLE, 2wd, 6.0L, ext cab, long bed, only 119k, silver, very nice, only \$13,900

www.juddmotors.com

In Business Over 75 Years
Curly and Kevin Judd

DIGITAL

WE HAVE A LOT TO OFFER

- Websites
- On-Target Display Ads
- Search Engine Marketing
- Search Engine Optimization
- Reputation Monitoring
- Social Advertising
- Logo Creation
- Retargeting

PHONE:
660.665.8500

ADDRESS:
110 E. McPherson Kirksville, MO 63501

EMAIL:
nemotrader@gatehousemedia.com

NEMO
Trader

GANNETT



Dutch Garden Nursery

"Your Full Service Garden Center"

Rhubarb • Berry Plants • Asparagus Crowns • Tomato & Pepper Plants • Herbs

ROSES IN BLOOM!

READY SOON!

Vine Ripened Tomatoes

Lawn & Garden Care Products
Grass Seed & Fertilizer

Shrubs : Evergreens
Flowering Shrubs, Grasses, Lilacs, Hydrangeas, Butterfly Bush, Many More!

BULK & BAGGED ROCK
Fruit, Shade & Ornamental Trees!
Garden Seeds & Veggie Plants

Hanging Baskets & Pots
Ferns, Hibiscus Trees, Mandevilla, Succulents & Mini Gardens

Landscaping Blocks, Firepits • Flagstone Edgers • Pavers

BULK MULCH
Delivery Available!

MEMPHIS (beside Country View Store) 660-883-5650
EDINA (Home Base) 4 miles north of Edina 660-397-4115
www.dutchgardennursery.com ~ Open Mon.-Fri. 8-6 Sat. 8-5



P-R

DISTRIBUTORS

GOLF CARTS

Sales – Service – Rentals – Customizing






573-693-8147
29566 Lantern Road, Laplata, MO

VICTORY

Metals & Recycling

Kirksville, MO 660-665-8000
victorymetalrecycling.com

For current scrap prices call or visit our [Facebook Page](#)

★ **Construction/Debris Recycling**

Visit Kirksville's construction & debris recycling facility and save trips to the landfill! Take advantage of this service for solid waste removal by bringing your landfill items to Victory Metals C & D recycling facility located at 3602 N. Industrial Rd.

★ **Roll-Off Container Service**

10-20-30-40 Cubic Yard Dumpsters

3602 N. Industrial Rd.,
Kirksville, MO 63501
djanesvmr@gmail.com
www.victorymetalrecycling.com



FOR SALE: Brand new LT 265/70 R-17 (E) 10 ply tires, \$117 cash & carry. Take the saving and buy the weekly groceries or the family budget. Accelerators Since "1974" Kahoka, MO 660-727-3455 or 217-257-1385 call anytime

FOR SALE John Deere 5075 E Tractor, MFWD, cab, reverser, 925 hrs, H240 Loader, clean, \$38,500. Call 573-881-3557

FOR SALE: DMI 32' FC w/Harrow, \$5000; Krause 30' Disc model #9 tandem on main frame, 9" spacing, 19" blades, \$2000, smaller disc. 217-658-4761

WANTED TO BUY: Harley Davidson's, any year, any condition, cash money. Days 660-263-1356 or 660-537-0068

WANTED TO BUY: Farm Machinery and Estates. Call James L. Johnston. 573-473-4904

FOR SALE: 6 hp Mercury boat motor. Titled, runs good, older model, \$200. Macon, MO, Call 660-651-7457.

FOR SALE: Used garden tillers Troy-Bilt, BCS and other sizes. DR Bruch mowers. Kahoka, MO 660-216-1809

Wevers Outside Wood Furnaces a dealer for Heatmor Stainless Steel Outside Furnaces, have an assortment of parts, line, and etc. Taking orders for new outside wood furnaces. Used 120 furnace, burns wood or coal, has shaker grates, for \$5,550. Call 660-423-5242, cell 660-216-9885. Open 6pm-9pm Monday-Friday, Saturday anytime, call first.

FOR SALE: New 3 pt. tillers, heavy duty, gear driven, 7' to 10' starting at \$3050. 660-874-4455

PASTURE AND HAY GROUND Needed around Adair & Knox County. Please Contact 660-216-5887 or 417-773-2507

FOR SALE: 2010 Case 8120 Combine, 2975 HR -2097 HR, NO DEF, RWA, DIF Lock, 620 Drive Tires, 28 Steer Tires, luxury cab, clean machine, \$95,000. 641-895-8014

FOR SALE: Fish for stocking ponds – Catfish, Grass Carp, Crappie, Blue Gills, Red Ear, Bass, and Minnows. Heindselman Family Farms, Call Greg 660-341-5692

FOR SALE John Deere 4230, CAH, QR, 7000 hrs, turbo, sharp, Iowa tractor, \$18,500. Call 573-881-3557

ANYTHING ON WHEELS!



HIGHWAY 63
INSURANCE
(660) 956-9283



highway63insurance.com



Signature

Overhead Doors and Remodeling, LLC

660-785-0248

www.signatureremodelingkv.com

Residential and Commercial Installation and Service

GNS AUTO BODY, LLC

660-956-0612
301 N. Marion St. Kirksville MO 63501
**New Location*

gnsautobody.net
G.J Sizemore owner



AFFORDABLE

STORAGE UNITS

FOR RENT

UNITS AVAILABLE STARTING AT \$75/UNIT

CALL NOW
660-627-3399
KIRKSVILLE, MO

Keeping Kirksville on the Road



Elizabeth Walter,
General Manager



2015 N. Baltimore St. • 956-4849 • car-mart.com



660.956.4849 | 2015 NORTH BALTIMORE KIRKSVILLE

- Low Down Payments
- Quality Used Vehicles
- Flexible Financing
- Weekly, Bi-Weekly, or Monthly Payments
- Start Your Approval Online
- 100% Satisfaction
- Hand Selected Vehicles
- Over 150 Locations
- We Trade for Anything
- Since 1981
- Service Contract Plus
- Accident Protection Plan
- We Buy Cars



2014 JEEP COMPASS LATITUDE
4WD, 4 Cyl., White



2009 FORD EXPLORER XLT
4WD, 8 Cyl., White



2008 TOYOTA RAV4
4WD, 4 Cyl., Red.



2013 KIA SOUL BASE
FWD, 4 Cyl., brown



2012 FORD FOCUS S
FWD, 4 Cyl, Blue



2004 FORD EXPLORER SPORT TRAC
XLT, 4WD, 6 Cyl., 4 doors, tan.



2007 LEXUS RX 350
AWD, 6 Cyl., Black



2007 SCION TC BASE
FWD, 4 Cyl, maroon



2007 MERCURY MOUNTAINEER
Base, auto, AWD, 6 Cyl., Maroon



2014 DODGE GRAND CARAVAN
SE, FWD, 4 Doors, 6 Cyl., Red.



2014 HYUNDAI SANTA FE
SUV L, FWD, 4 Cyl., Gray



2008 CHRYSLER ASPEN LIMITED
4WD, 8 Cyl., white



2006 JEEP LIBERTY
sport, 4WD, 6 Cyl., blue



2007 HYUNDAI TUCSON
GLS, FWD, 4 Cyl.,



2006 GMC YUKON XL 1500 DENALI
AWD, 8 Cyl., black.

WE BUY CARS



ELIZABETH WALTER
GENERAL MANAGER

MAIN CREEK REPAIR

Larry Geiser

23316 State Hwy H
Kirksville, MO 63501

(715) 415-1995

**Bolts • Belts • Bearings
Hydraulic Hoses • Steel
Welding • Fabricating
Tractor & Equipment Repair**

MAIN CREEK RENTALS

23316 State Hwy H
Kirksville, MO 63501

(660) 988-6917

- Mini Excavator
- Dozer
- Skytrack
- Equipter (Shingle Buggy)
- Snorkle
- Grapple
- Post Hole Digger
- Man Basket

FOR SALE: New Garden Seeds – Seed Potatoes, Onion Bulbs and Plants. Homemade Candy, Local Honey, Stainless Steel Housewares, Wooden Handles, Lamps & Chimneys, Greeting Cards, and more. Train Track Candies 11538 Iceberg Ave, LaPlata, MO, 3rd lane to your left.

FOR SALE: Vegetable Plants \$1.25 a 4 PK, Bedding Plants \$1.50 a 4 PK, Succulents, a Variety of Hanging Baskets and Planters at Kauffman Produce 11538 Iceberg Ave, LaPlata MO 63549

FOR SALE: JD 7000 6RN w/5R splitter on back, no till, monitor, \$5250; JD 7000 6RN W7R splitter on back, no till, \$6000; JD 7000 12RN no till monitor, \$2000. 217-658-4761.

FOR SALE: Ford 800, new rims, live PTO in good condition, \$2500. 660-341-8089

Scott Huskey's Home Service R-10 Foundation Enclosure Systems for manufactured, modular, & site built homes. Saves on utilities and prevents freeze up. General maintenance and repairs since 1972. 573-696-3468 "GO DAWGS"

FOR SALE: High quality grass hay, \$35 per bale. 217-653-4762

FOR SALE: Simmental and Sim-Angus bulls, excellent calving ease, top performance and outstanding EPD's with real eye appeal. API as high as 165. Sired by the Breeds' top Sires. "Drake Simmental" Ph Larry 641-895-9422 or Mason 641-895-5735

FOR SALE: Older 21' length overall, 16 1/2 deck, heavy frame shop built, flatbed trailer, mobile axles, bumper hitch 2 5/16" ball, needs flooring, with MO title, \$700. 217-257-1385

FOR SALE: Kubota 2020 ZD1211L diesel fuel only, 3 cyl., 24.8 HP, 72" cut, purchased in September, has the new style seat, new never been used, \$15,000. 660-216-4942

FOR SALE: Whitetail Institute food plot seeds in stock at Whitetail Seed and Supply, 14136 State Hwy 3, LaPlata, MO 63549.

FOR SALE: Herford bulls, 2 years old, BSE tested, horned or polled. Circle C Herford's, Powersville, \$2000. 660-216-3465.

FOR SALE John Deere 4020 Tractor, 1969, 3600 hrs, dual hydr, Dif Lock, new rubber, original, \$17,500. Call 573-881-3557

FOR SALE: Kinze 24 row, 15" row, fold bean planter only no till, \$4500; White 1230 vertical fold, \$1250; IHC 800 6RN L fert, monitor, \$1750. 217-658-4761.

FOR SALE: 21-acre farm mostly pasture, 32'x44', 3 story house, walk in basement. 40'x64' shed with 20' lean to. All new in 2017, 80 fruit trees, North of Downing, \$210,000 OBO. Mervin Gingerich, 27605 Bobs Road, Downing, MO 63536. 660-379-2621.

FOR SALE: Limousin and Limflex bulls yearlings, black and polled, good dispositions, AI sired, semen tested, free delivery \$2500 Schrock Cattle 660-988-1163

FOR SALE: 3 overhead doors 16ft wide x 12ft high with openers \$1750.00 per door. 660-341-4012

STANDING FOR SERVICE Black 16 hand 3/4 Morgan 1/4 Percheron Stallion. Put some size to your Quarter Horse Mares. \$250 Service Fee LFG 641-722-3227

FOR SALE: Neese Angus Bulls over 50 years breeding for Optimum Performance, tested, ready to work. Rutledge, MO 641-344-4565

LIMOUSIN & LIM FLEX BULLS for Sale: Black & Red, All Polled, out of TOP AI Sires, low birth weight, w/Performance & Carcass EPD's. Potter's Limousin Cincinnati, IA 641-436-7153 or 641-658-2786

FOR SALE: Registered yearling Angus bulls, A1 sired, 25 years A1 genetics. Miller Angus Farm, 660-341-4043, if no answer please leave message. I will return your call.

HANDYMAN: Install interior and exterior doors and windows, siding, decks, showers and toilets, flooring and drywall. 660-956-2189.

FOR SALE: John Deere 14' BWA disk, good blades, duals, shedded. 319-572-2322

FOR SALE John Deere 2940 Tractor, 5400 hrs, cab, air, new rubber, estate tractor, \$15,500. Call 573-881-3557

REAL ESTATE FOR SALE: 4 Bedroom, 2 full baths on 3.5 acres, 7 miles South of Novinger on Hwy K. Call 660-341-0276



Your trusted source for quality Fish!

Harrison Fishery, Inc. is a family owned and operated business.

We stock most species freshwater, game & baitfish.

Contact us for price & delivery

curtis@harrisonfishery.com
660-423-5482

Species Available	Bluegill	Walleye
Largemouth bass	Redear sunfish	Muskie
Hybrid bluegill	Black crappie	Catfish
Golden shiners	Fathead minnow	<i>and More!</i>

Time to gather up the little ones, get their fishing poles and go enjoy a day of fishing



www.harrisonfishery.com

NEED TO TRIM OVER GROWN FENCE ROWS?

Rent this Kubota SVL95 Skid Steer

\$510.00 per day
\$1530.00 per week

Call 660-659-2011



14 ft Saw

MOOSE RUN REPAIR

8 YEARS EXPERIENCE

**Tractor • Skid Steer • Combine • Air Conditioning
Self-propelled Forage Harvester & General AG Repairs**

Specializing in John Deere

**Engine • Transmission • Hydraulics
Power Shift/IVT Diagnosis & Repair
Computer/Electronic System Diagnosis & Repair**



660-988-3843

DELVIN "MOOSE" STEINER • QUEEN CITY, MO

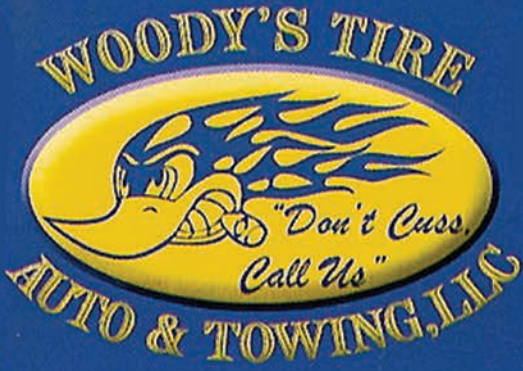
Need A Tow?



Locked out of your Vehicle ?



Need Tires?



WOODY'S TIRE AUTO & TOWING, LLC



23½ hr Towing Service

YOUR AUTHORIZED **GOODYEAR** DEALER

660-665-8617
After Hours 660-216-3123

ALIGNMENTS • SHOCKS BRAKES • RADIATOR REPAIR
1102 N. GREEN • KIRKSVILLE, MO

CALL TODAY
FOR CURRENT
REBATES ON TIRES

SPRING IS YOUR GO TIME.
GET OUT THERE.
You've been waiting all winter for this moment.

POLARIS
SPRING SALES EVENT

REBATES UP TO **\$1,000** ON 2020 MODELS
TERMS AND CONDITIONS APPLY

Explore Inventory >

Slayton

POLARIS

10456 State Route B, Downing, MO
6 miles W. of Memphis, then 13 miles N. on B
660-328-6627

VISIT POLARIS.COM FOR MORE OFFERS
 POLARIS



IT'S FREE!

EVERY FRIDAY

The NEMO Trader

CALL US FOR ADVERTISING QUOTES | 660.665.8500

CELEBRATIONS! **PARTY RENTAL**
KIRKSVILLE, MO

FOR RENT
**TABLES - CHAIRS - TENTS - BOUNCE HOUSE
& COTTON CANDY MACHINE...ECT.**

660-626-5162 or 660-665-9380

**Premium
Metal Roofing**



A W Metal Inc.
Metal Roofing Headquarters
641-664-3990 • awmetal.net

WANTED
**Good Log Cutter &
Skidder Operator**
Experienced only, good
pay, full time.
Call 660-342-2122



John Deere 5075 E Tractor, MFWD, cab, reverser, 925 hrs, H240 Loader, clean, \$38,500.



John Deere 4650 Tractor, 1988, MFWD, ps, wts, factory duals, QH, triple hydr, 10,200 hrs, recent overhaul, \$36,500.



Great selection of 40, 50 and 55 series Row Crop John Deere Tractors, all processed through shop, field ready, loaders available, priced to sell.



Collectors Special: John Deere 4010 Gas Tractor, completely restored with all proper JD materials, roll bar/canopy, new tires, will trade, \$12,500.



John Deere 5300 Tractor, 540 Loader, new clutch, hydr clutch, \$22,500.



John Deere 4255 Tractor, MFWD, 6900 hrs, 95% Firestone duals, sharp, \$49,500.

Call 573-881-3557

FOR SALE: Fixer upper house in Wyaconda MO, antique furniture, collectables, tools, doors and misc., old camper suitable for deer hunters. 660-341-8192

FOR SALE: 2006 Peterbilt 379w C13 Cat engine, extended hood, 48" stand-up sleeper, super singles with 75% rubber, 1,280,000 miles, maintenance records available, \$49,000. 660-654-2006

FOR SALE: Simi flatbed two 1400 gal and 600 gal tank, chemical inductor, \$1750; Dugan gooseneck livestock trailer, 24' long, 6' wide, 6' high, 2 gates, open top; \$1850. 217-658-4761.

FOR SALE: 1981 GMC 3500 1 ton dual wheels, Knapheide flat bed, 350, 4 speed, 300 gallon fuel tank, fell-rite pump, 4 locking tool boxes, running boards, pull bumper, good rubber, basically no rust, and inexpensive service truck, \$3900. 217-257-1385

FOR SALE: Wisconsin Maple Syrup, \$155 for 5 gal bucket, 2021 crop. Raymond Kauffman, 25624 Hanover St, LaPlata, Mo 63549.

FOR SALE: Good Quality Alfalfa grass hay, big square bales. 660-216-1114

FOR SALE: 300 Breyer Horse 50 year Collection, in excellent condition, sell one or all. 660-676-9199

Single White Female 36 seeking single white male 29-49 old. Call Queennie at 931-337-7724 No drug use, No Married man

Individual with 1-10 Acres you till and plant, I furnish seed/fertilizer your grass, \$2000/\$3000 Acre Sweet Corn. Call 573-604-0674

Organic Litter delivered 24T lots \$80 T NPK monthly grass/hay ground, \$80 acre cost compare triple 19 \$550T 800-807-9612

FOR SALE: M1 Carbine Inland 1950 very good shape \$1000.00. Lots of Carbine Ammo. Call 660-654-6057

FOR SALE: LP Fork Lift, runs good and works. 636-443-9104

FOR SALE: Pride power chair from scooter store. Like new, 2 new batteries, model T55300. Call 660-216-8865. Asking \$750.00

FOR SALE: 750 Honda Shadow, 9,675 miles, \$2000. Would trade on a car dolly or a car hauler trailer. 660-342-1986.

FOR SALE: John Deere 350 Sickle Mower, 9 foot bar, 3-point, good condition, \$900 firm. Labelle, MO, will load. 573-248-6172.

FOR SALE: 2-24x32 Firestones on rims, 1-30x32 Firestone, really good, \$500. 660-485-6258


FOR SALE: Parting out 1947 John Deere B has good radiator and other parts. Call for pricing. 660-216-1495.

FOR SALE John Deere 4430 Tractor, open station, factory duals, 90% rubber, 10,000 hrs, \$11500. Call 573-881-3557

FOR SALE: Case IH 1200 12/23 center fill, no till, center pivot, monitor, manual, \$42,500; JD 1780 16/31 Max M Plus, Keton on corn, Seed Star Monitor, shedded, \$18,500. 217-658-4761

WANTED TO BUY: Harley Davidson's, any year, any condition, cash money. Days 660-263-1356 or 660-537-0068

HAY STORAGE SOLUTIONS AND MUCH MORE!



"Today, I checked with Joseph to see when he was planning to deliver and construct my second hoop building. Two years ago I purchased a 55'x98' hoop building from Skylight buildings. It was erected on my site on time and the building went up in two days.

I was concerned about the durability of a vinyl building compared to a metal sided structure. That was until I noticed that a rock from my Brush Hog 2715 had impelled itself into the metal building. The Skylight building would not have been damaged. Also, the name says a lot. I thought that I would wire in lights like my other buildings but to date I have not found the need.

The reason I thought I needed to build a large building was to store my hay inside. I knew I was losing hay quality due to weather damage but baling with 568 John Deere and net wrapping my hay I thought I was keeping my hay loss at a minimum. I found the first year that I had underestimated my losses. I was very pleased with the results of storing hay inside. It is most gratifying to put a bale into the hay ring and seeing that the previous bale was almost completely consumed by the cows or the feeder calves. I had a record amount of carry over from last year and it is safely stored inside ready to be used this winter! This will allow for hay sales this winter.

The construction of the building's frame is strong, the foundation supports are 24" and very deep. I am very satisfied and have ordered another 55' x 140' to be installed in a few weeks. This one will be used to store our small square bales and equipment.

Thank you Joseph for your service and this chance to recommend your buildings."

Wiley and Susan Hibbard, Perry, Missouri

20749 State Highway VV
Ethel, MO 63539
660-486-3250

Skylight
Fabric Structures

FRONTLINE FENCING LLC Custom Steel Pipe Fencing
Kirksville, MO • (660) 956-2430





- Corrals -Feedlots -Custom Built Gates - Mobile Welding
- Custom Built Cattle Handling Equipment -Tubs -Alleys - Freestanding Panels
- 6 and 7 bar gates in stock from 30" to 20', custom lengths on request.
 - ArrowQuip Cattle Handling Equipment
- All types of Custom Farm Fence -Barbed Wire -Woven Wire

29386 St. Hwy T - 5 1/2 miles east of Hwy 63

FOR SALE: New 3 pt. tillers, heavy duty, gear driven, 7' to 10' starting at \$3050. 660-874-4455

FOR SALE: John Deere 318 lawn tractor 18 hp, power steer, 50" cut runs good, call 573-248-6003

FOR SALE: Fish for stocking ponds - Catfish, Grass Carp, Crappie, Blue Gills, Red Ear, Bass, and Minnows. Heindselman Family Farms, Call Greg 660-341-5692

FOR SALE: Ford 800, new rims, live PTO in good condition, \$2500. 660-341-8089

FOR SALE: 6 hp Mercury boat motor. Titled, runs good, older model, \$200. Macon, MO, Call 660-651-7457.

FOR SALE: Outstanding two-year old Simmental bull. Sired by Wide Range, used in own herd last year, \$4000. Drake Simmental (Larry) 641-895-9422

FOR SALE: Archery supplies, crossbows, optics and more at Whitetail Seed and Supply, 14136 State Hwy 3, LaPlata, MO 63549.

FOR SALE: Herford bulls, 2 years old, BSE tested, horned or polled. Circle C Herford's, Powersville, \$2000. 660-216-3465.

FOR SALE: IHC 800 12RN end transport, new lead, disk open, row cleaners, monitor, \$2000; IHC 950 630 N disk, row cleaners, monitor, \$1850; 217-658-4761.

FOR SALE: 21-acre farm mostly pasture, 32'x44', 3 story house, walk in basement. 40'x64' shed with 20' lean to. All new in 2017, 80 fruit trees, North of Downing, \$210,000 OBO. Mervin Gingerich, 27605 Bobs Road, Downing, MO 63536. 660-379-2621.

FOR SALE: Angus and Balancer bulls, conditioned to work! Tested, May delivery. Neese Farms, Rutledge, MO 641-344-4565

FOR SALE: Case 3-point 3 bottom plow, \$350, one 12.4x38 Titon tractor tire, 95% tread, one Firestone 12.4x38 tractor tire. Will separate. 660-216-1495.

FOR SALE: Registered yearling Angus bulls, A1 sired, 25 years A1 genetics. Miller Angus Farm, 660-341-4043, if no answer please leave message. I will return your call.

FOR SALE John Deere 709 Brush Hog, new clutch, no welds, \$1,950. Call 573-881-3557

HANDYMAN: Install interior and exterior doors and windows, siding, decks, showers and toilets, flooring and drywall. 660-956-2189.

FOR SALE: Polled shorthorn bulls. Ready to work. Reasonable prices, various ages. AAA shorthorns, the Meierotto family. Between Kahoka, MO and Farmington, IA. 319-572-2322

FOR SALE: Wisconsin Maple Syrup, \$155 for 5 gal bucket, 2021 crop. Raymond Kauffman, 25624 Hanover St, LaPlata, Mo 63549.

FOR SALE: Kelly Ryan PTO Manure spreader, in excellent condition; also Wanted to buy good used truck. 660-676-9199

FOR SALE: All three for \$90,000 apartment buildings in Albia Iowa. 9 apartments and storefront. Call Charles at 931-337-7724

FOR SALE: IHC 5100 21 hole with cylinder, \$2250; JD drill 8300 16 hole, 10" spacing, \$1750; NI 5112 hyd swing 12' hay bine, rubber rolls, \$1250/ bar mowers; sprayers; 217-658-4761.

"New/Used Parts" Vehicles/Semi's/ Farm/ & Construction Equipment/ Pickups "Tranny's/Engines" Body Parts paint Code Matching Delivered/Warrantied. 800-807-9612

FOR SALE: Used Rear Tractor tires, some like new, 18.4x38, 13.6x28 & 16.9x30. 636-443-9104

FOR SALE John Deere 569 Baler, 4000 bales, shedded, all options, includes moisture monitor, clean. Trade? \$32,500. Call 573-881-3557

FOR SALE: John Deere 318 lawn tractor 18 hp, power steer, 50" cut runs good, call 573-248-6003

FOR SALE: Pride power chair from scooter store. Like new, 2 new batteries, model T55300. Call 660-216-8865. Asking \$750.00

FOR SALE: 750 Honda Shadow, 9,675 miles, \$2000. Would trade on a car dolly or a car hauler trailer. 660-342-1986.

FOR SALE: John Deere 350 Sickle Mower, 9 foot bar, 3-point, good condition, \$900 firm. Labelle, MO, will load. 573-248-6172.

FOR SALE: Case 400 gas w.f. eagle hitch, \$2500. 660-485-6258.

"New/Used Parts" Vehicles/Semi's/ Farm/ & Construction Equipment/ Pickups "Tranny's/Engines" Body Parts paint Code Matching Delivered/Warrantied. 800-807-9612

FOR SALE 1st cutting Alfalfa/ Orchard grass mix, 80/20, 19.6% protein, 55 lbs. bales, \$5, delivery available. Call 573-881-3557

BATHROOM RENOVATIONS. EASY, ONE DAY updates! We specialize in safe bathing. Grab bars, no slip flooring & seated showers. Call for a free in-home consultation: 855-980-4002

FOR SALE 2013 GMC 3500

Diesel, Dually, 4x4, Ext. cab with 3 yr. old Hyrabad. 123K miles. **NO rust.**

Call 660-216-0618



BUYERS OF CORN, SOYBEAN, ORGANIC, NON-GMO CORN AND SOYBEANS

Baring Elevator LLC

Contracts Offered
Forward Pricing
Target Orders

Baring, MO
660.892.4411
www.baringelevator.com

CONTACT US FOR PRICING
Lewis 660-341-2937
Roger 660-223-2442

CLARK COUNTY, MISSOURI

LAND AUCTION

Kahoka, Missouri

80+ acres - 1 tract

TUESDAY, MAY 4, 2021 AT 10AM

Auction held at the CARE Center, 451 North Vine Street, Kahoka, Missouri.
Land is located 6 miles north of Kahoka on State Highway 81, then 1 1/2 miles east on State Highway C, then 2 1/4 miles north on County Road 81, then 1/2 mile east on County Road 94.

80 ACRES M/L

Take a look at this perfect hunting & recreational property. Currently there is 13.1 acres in CRP with the balance of the land being timber! FSA information: 13.1 acres tillable all of which are in the CRP program as follows: 13.1 acres at \$119.91 = \$1,571.00 and expires on 9-30-2021. Majority soil types on the tillable include: Gorin, Adco. Located in Section 8, Sweet Home Township, Clark County, Missouri.

Online Bidding Available!

Ora Halferty Estate, Rickey & Brenda Halferty, and Herbert (Owen) & Jane Halferty
H. Scott Summers - Attorney for the Sellers
Contact Terry Hoenig at Steffes Group, 319.385.2000 or 319.470.7120

SteffesGroup.com

Steffes Group, Inc., 2245 E Bluegrass Road, Mt. Pleasant, IA 52641 | 319.385.2000



LANCASTER LUMBER INC.

Lancaster, MO.

1-800-424-5071

LAN-DOW BUILDINGS

www.lancasterlumber.com



CRP SEED MIXES!

Brome Grass Seed for Sale

"Looking for very careful customer driven drill operators with their own medium size tractors to pull our seed drills"

Our seed mix labels (tags) specify "genetic origin and production origin" and are approved by Missouri NRCS offices.

We've been harvesting prairie seed in Northern Missouri and Southern Iowa and providing Iowa and Missouri CRP seed mixes since 1987.

OSENBAUGH'S PRAIRIE SEED FARMS

CALL 641-766-6790

EMAIL john@prairieseedsfarms.com

CRP MIXES • WILDFLOWERS • PRAIRIE GRASSES

KEEP'EM N

Est. 2009

FENCING, PIPE & STEEL

FOR ALL YOUR FENCING NEEDS.

Quality Cattle Equipment, too!

620-215-5770 KIRKSVILLE, MO
SPECIAL ORDERS AVAILABLE

Check out our current inventory at
Kirksville Livestock Sales.

SINGLE \$550
DOUBLE \$950
HEAVY DUTY HAY FEEDERS

HEAVY-DUTY \$850
REPLACEMENT BUMPERS
Dodge, Chevy, Ford & GMC

HALF TUB \$2,600 **FULL TUB \$3,100**

If you're looking to build a pipe fence or corral, wire fence, or need quality cattle equipment, **WE'RE HERE TO SERVE YOU!**

\$2,900
20' ADJUSTABLE ALLEY

MINERAL FEEDERS \$375

Gates • Continuous Panels • Tubs • Alleys • Posts • Pipe • Bumpers • Cattle Feeders



FOR SALE:



Yearling
Sim-Angus &
Balancer Bulls
(Gelbvieh/Angus)

GE-EPDS, polled, black, black baldy, and red, several Show-Me Select qualified calving ease bulls available.

Call 660-234-5265

FOR SALE: Brand new LT 265/75R-16 E (10 ply) tires, \$119 each cash & carry, let us save your money for the weekly groceries or the family budget. Accelerators Since "1974" Kahoka, MO 660-727-3455 or 217-257-1385 anytime

CANCER GENETIC SCREENING KIT. Protect yourself and your family with early genetic screening! See if you qualify for a test at no cost to you with your Medicare Part B coverage. Call 855-623-4490. (Mon-Sun 9am-8pm ET)

FOR SALE: JD 750 drill, with grass, front dolly wheels, \$12,500. GP 1500 drill with center pivot caddle, 22 hole, 8 inch spacing, \$11,500. 217-658-4761.

Parkinson Disease? Did you or a loved one work as an agricultural worker or a landscaper. If you developed Parkinson's Disease you may be entitled to compensation. Attorney Charles Johnson 1-800-535-5727

CREDIT CARD DEBT? Financially Stressed Out? Stop the harassment! Make one monthly payment YOU can AFFORD! Get Help Now and Save! Call Toll Free 888-925-5404

ATTENTION SMALL BUSINESS OWNERS! Are you protected in case of property damage or if you have an interruption in service due to a property event? Business Owner Property insurance IS AFFORDABLE and WILL PROTECT YOU when the unexpected happens! For free quote, call 844-877-9891 (M-F 7:30am-9:30pm ET)

ARE YOU BEHIND \$10k OR MORE ON YOUR TAXES? Stop wage & bank levies, liens & audits, unfiled tax returns, payroll issues, & resolve tax debt FAST. Call 855-820-8878

BECOME A PUBLISHED AUTHOR! We edit, print and distribute your work internationally. We do the work, you reap the Rewards! Call for a FREE Author's Submission Kit: 844-261-5841

SAVE YOUR HOME! Are you behind paying your MORTGAGE? Denied a Loan Modification? Is the bank threatening foreclosure? CALL Homeowner's Relief Line! FREE CONSULATATION! 855-624-8601.

BEST SATELLITE TV with 2-Year Price Guarantee! \$59.99/mo with 190 channels and 3 months free premium movie channels! Free next day installation! Call 888-986-4740

WANTED TO BUY: Farm Machinery and Estates. Call James L. Johnston. 573-473-4904

MACHINERY & EQUIPMENT AUCTION

Friday, April 30th • 10 a.m.
14474 Route K, Madison, MO

From Moberly, go 12 miles East on Hwy 24, at Madison go North on Hwy 151 for 3 mi then go West 3/4 Mi on Rt. K to Auction Site.



James 573-473-4904
Jeffrey 573-239-6056

TRACTORS: NH 6635 2/Q750 loader; Ford 1520 4WD, 3 pt, hydro w/loader; IH 606 WF w/loader; IH 2500B WF 3 pt; Ford 2000; Farmall 560 WF 3 pt, w/loader; Case IH 685 4WD w/Farmhand 740 loader; Kubota L4400 4WD; 2-AC 180 diesels; JD 2010; more expected by sale date.

TRAILERS: NEW 20' Car trailer, ramp, carrier, brakes; NEW 18' Car trailer, ramp, carrier, brakes; NEW 14' Utility trailer w/ end gate; 5th wheel saddle; hydraulic dump trailer; 12' dump trailer, gooseneck, tandem; & more.

DISCS - PLOWS - CULTIVATORS: International 20' disc; Kewanee 20' disc; AC 16' disc; AC 14' disc; 12' 3pt disc; 8' wheel disc; 2 - 6' 3pt discs; New Idea 4 btm plow; AC 1 btm plow; JD 4 btm plow; 3 btm FH plow; 3 pt 2 btm plow; 9' chisel plow; Brillion 15' culti-packer; 7' field cultivator; 6' field cultivator; 2 - 7' 3 pt cultivators; 6' 3 pt cultivator; still accepting consignments!

BRUSH HOGS - TILLERS: NEW Titan 10' brush hog; New Industrias America 12' brush hog; New Howse 15 1/2' Batwing brush hog; Bush Hog 10' brush hog, PT; Woods 7' 3 pt brush hog; Woods 6' 3 pt brush hog; Sidewinder 6' brush hog; 7' 3pt brush hog; 6' pt brush hog; Hinomoto 5 1/2' 3 pt tiller; King Kutter 3 pt 5' tiller; and more.

MANURE SPREADERS: New Idea 205 13' manure spreader; JD Model H manure spreader; 2 - JD PT manure spreader; Forage King manure spreader; IH 530 manure spreader.

CAMPER: 1994 Legacy Gooseneck Camper 24', new tires w/100mi, new water pump, fully remodeled interior, no leaks.

SKID STEER ATTACHMENTS: 66" rock bucket; 44" pallet forks; bale spear; Hy post auger w/10" auger; asst. NEW grapple buckets; tree shearer; forks; 72" bucket

& more.

WAGONS & MISC.: Knoedler auger wagon w/horizontal auger; JD model 68 auger wagon; 200 bu gravity wagon w/flotation tires; JD 4000 grinder mixer; Bunk Line \$175 mixer/feeder wagon; Heider auger wagon; 6'x12' wagon w/hoist; fencing; tools; tires; steel posts; a-frame w/hoist; hyd wood splitter; 6'x10' shed; shelving; welders; sand blaster; & more.

LAWN, GARDEN, ATV, BOAT: Craftsman 15 hp 24" mower/w grass catcher; Snapper ZTR w/52" deck; lawn aerator; push mowers; Polaris 250 Trail Boss 2WD atv; 17' aluminum boat, 50 hp motor & trailer; Johnson 70 hp boat motor; boat trailer; & more.

MISC. IMPLEMENTS: IH 3082 3 pt backhoe attachment; 3 pt backhoe; Long 1190 3 pt backhoe; 3 pt ditcher; MTD wood chipper; AC 9' dozer blade, front w/brackets; 8' Rhino HD blade; HD 10' 3 pt blade; Koyker loader bucket w/brackets; 3 pt bale spear; Case IH 96 hay rake; Vermeer 605G baler; 3 pt disc mower; 3 pt sprayer; 74" front end loader bucket; 2 - 3 pt snow blowers; Case 580B loader/bucket; PT sprayer w/pump; Great Bend 900 Hi-Master Loader w/grapple; Case 3 pt forklift for tractor; Windpower 3 pt post auger; King Kutter rock rake; JD 2 row corn planter, all original; Kewanee 7' PT blade, snap coupler; 5 - 3 pt post augers; 4 row planter; 100 gal fuel tank w/pump; King Kutter 8' box blade; 3 pt broadcast spreader; 3 pt dirt scoop; 3 pt 6' blade & MUCH MORE!

LIVE ONSITE & ONLINE BIDDING on select items.



James L. Johnston, Licensed Broker & Auctioneer • Jeffrey JJ Johnston, Auctioneer
Kenny Shirey & Bob Cook, Jr, Associate Auctioneers • Office - 660-291-5921 • Madison, MO

Terms: Cash or Good Check • Photo ID Required for Bidder Number • Not Responsible for Accidents, Lost or Stolen Items. Announcements day of auction take precedence over all advertisements.

JamesJohnstonAuction.com



SILO DEMOLITION

We knock them down!!
We DO NOT Clean up!!

- CEMENT SILOS ONLY
- TRAVEL SOUTH & MIDWEST

CALL (989) 620-4098



NEMO SMALL ANIMAL & BIRD AUCTION

May 1st 2021 12 Noon

22486 Michigan Trail
Kirksville, MO 63501

Daryle 660-216-1492

Lee 660-988-3818

Consignments taken 8AM
until time of sale.

Auction 1st Saturday of every Month!

*Out of State Animals must have proper paperwork



For all your advertising needs email us at
nemotrader@gatehousemedia.com

Public Auction

Osceola Trailer Sales Closeout & Johnston Properties

Saturday, May 1st, 2021 10:00 AM

614 W. McLane St., Osceola, IA 50213

Located next to the Great Western Bank on US Highway 34 in Osceola, Iowa

Go to www.wagnerdentauctions.com and download our app to bid on the live and online portion of this auction – commencing at 11:00AM



Trailer Sales Inventory

The remaining inventory of Osceola Trailer Sales, mostly utility trailers with ramp gates some single axle other tandem axle; 2013 26' Speed Loader EX, remote tilt, 10,000 pound winch, 8 lug aluminum wheels with 14 ply tires, original MSO, never titled, set-up to haul 20' shipping containers; (25) new tires mounted on five bolt wheels; new jacks; other trailer related parts; (2) BW 5th wheels, (1) that slides; one set heavy duty trailer ramps; one set heavy duty speed loader fenders;

Recreational Items

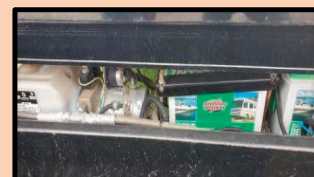
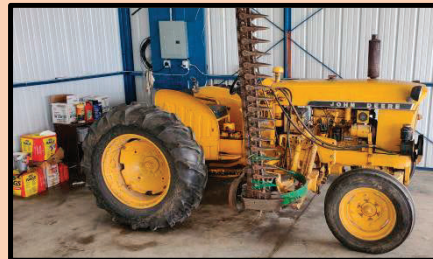
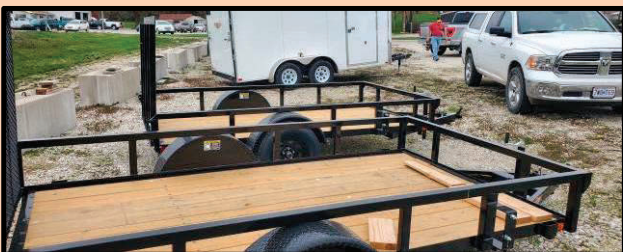
1997 Ranger 45IV bass boat with matching single axle trailer, 150 HP Evinrude outboard engine recently serviced with 580 hours, Minnkota Terrova trolling motor, 2 live wells, 3 battery charger, 7" & 10" Hummingbird graft/plotters, sells with storage cover, stored inside or on a lift; 9.9 Honda 4 stroke trolling motor with electric start, SN#1200666;

Construction Equipment

1994 Ford model 8000 dump truck, Cummins 210 HP diesel engine, 5 speed transmission; will scale 6.5 - 7 tones, air gate, air piped to the black plate for a pup trailer, brake controller on the back, pintle hitch, 36,000 actual miles; John Deere 1010 tractor with 5' side sickle mower, great plains 10' solid stand drill with grass seed attachments, model Ewing 10 1575, SN# 4537U, 757 total acres; Case 550 E Longtrack dozer with 6 way blade, re-built torque converter, rear main seal replaced, re-built brakes, 50% undercarriage, 6730 hours, SN# JAK0015054; near new Land Pride 15' batwing mower, been over 60 acres twice; chains front & back, heavy gear boxes, rancher series 2, shedded, SN# 1151578; heavy duty table saw; Stihl T578 gas power chop saw; Miller Matic 200 with tank welder; (2) large barn fans with wheels; ladders from 6'-20'; (2) John Deere weight boxes; (20) 100 pound John Deere front weights; push lawn mowers; gas powered post hole digger; (50) m/l 2 ton concrete highway dividers; (2) trailers of misc. construction & residential type items; gas powered snow blower; gas welder;

Consigned

Vermeer five big bale accumulator;



Wagner-DentAuctions.com

1026 40th Street, Humeston, IA 50123

Don Wagner 641-931-6832 donaldwagner44@gmail.com
 Jason Dent 515-231-5176 imagerodeo@gmail.com

Find us on "Wagner-Dent Auctions"

Terms: Cash, check or credit cards. No items will be removed until settled for. Sellers or auction company are not responsible for accidents, errors in listings or lost items. Announcements made day of sale take precedence over any printed matter. When registering for a buyer number proper I.D. will be required.

Lunch & Restroom onsite

Grand Opening

Kirksville Community
Horse Center.com



Phone: 660-342-6118

You're invited!

Ribbon cutting May 7, 4:30. Sawdust Scramble and free t-shirts.
Saturday 11-7 Liberty and Roping demonstrations, games and BBQ fundraiser.

25161 Laurel Lane Kirksville, Mo 63501
www.kirksvillecommunityhorsecenter.com

MAST MEATS, LLC

660-766-2211

USDA & Custom Slaughter & Processing

CALL OR STOP BY FOR SPECIALS

Retail store hours • Mon-Fri 8-5 Sat 8:30-3
mastmeatsllc.com • 405 US Hwy. 63, Queen City, MO 63561

Buying Used Mobile Homes

1990 AND NEWER



PORTER HOMES 573-231-6667

HughesNet – America's #1 Choice for Satellite Internet. Call Today and Save! More Data. Free Installation. Available Everywhere. No Hard Data Limits. Call 855-248-7966

NEED NEW FLOORING? Call Empire Today to schedule a FREE in-home estimate on Carpeting & Flooring. Call Today! 877-866-8797

NEED NEW WINDOW TREATMENTS? Call Empire Today to schedule a FREE in-home estimate on blinds & shades. Call Today! 877-710-4641

Over \$10K in debt? Be debt free in 24-48 months. Pay a fraction of what you owe. A+ BBB rated. Call National Debt Relief 877-278-4861.

SelectQuote is dedicated to finding a Medicare plan right for you and your wallet. Call 844-361-4727 today and receive a free quote from one of our multiple carriers.

Attention: Auto Injury Victims. If you have suffered a serious injury in an auto accident, call us! Our attorneys have the experience to get you the full compensation you deserve! Call Now: 877-496-3293

BEAUTIFUL BATH UPDATES in as little as ONE DAY! Superior quality bath and shower systems at AFFORDABLE PRICES! Lifetime warranty & professional installs. Call Now! 844-980-3902

FREE AUTO INSURANCE QUOTES for uninsured and insured drivers. Let us show you how much you can save! Call: 888-320-7567.

YOU MAY QUALIFY for disability benefits if you have are under a doctor's care for a health condition that prevents you from working for a year or more. Call now! 877-430-9760

HEARING AIDS!! Buy one/get one FREE! Nearly invisible, fully rechargeable IN-EAR NANO hearing aids priced thousands less than competitors! 45-day trial! 855-409-6186

PROBLEM CREDIT REPORT? Lexington Law works to challenge inaccurate negative items including: identity theft, collections, late payments, liens and more from your credit report. Call for a free credit repair consultation: 855-622-0369. John C. Heath, Attorney at Law, PLLC, dba Lexington Law Firm.

FOR SALE
AI Sired Angus Bulls,
14 & 18 Months Old.
Harold Trump
660-341-5730

For Sale:

2007 TL150 Takeuchi 90 Hp Yanmar diesel 3800 hrs Cab, heat, AC 2sp new tracks, new paint, serviced \$24,950.00

2004 7320 John Deere FWA Left 4 Reverser Front Weights New 42" tires on rear only 3200 hrs, serviced. \$44,950.00

Vermeer TS 44 A Tree Spade 44" New Honda Engine pull type \$5,000

Vermeer WR220 10 Wheel Rake \$1,500

Adair Co Ag & Lawn LLC

Greentop, MO
660-341-6267 or 660-397-9970



AUTO'S UNLIMITED

660-665-8149

660-341-0965

No Sunday Calls!
17406 Bob Rd • Kirksville, MO

FEATURED VEHICLES



2005 Buick Rendezvous cxi, all-wheel drive, excellent condition, low mileage



2011 Dodge Nitro SE, four-wheel drive, excellent condition



2011 Ford Fusion SEL, loaded with equipment, excellent condition

CALL FOR MORE INFO!

All Vehicles Have Received:
60 point inspection
(performed by local garage)
Detailed and Serviced
State Inspection

For Your Equipment Needs!

LOTS OF USED EQUIPMENT AVAILABLE

Vermeer 605 N Balers, Twin Rakes, Trailed Mowers, Disc Mowers, Tedders, Bale Processors-

Offer high capacity, speed, reliability, efficiency, fuel savings...

DeWeze Bale Beds-

Lift, load, transport and feed big, round bales...

Danuser Post-Hole Diggers-

Offer quality & reliability, outperforms the competition...

USED EQUIPMENT

BALERS

605 N Net
605 L Net
605 K Net

RAKES

R2800
R2300
VR1224

MOWERS

TM 1210
8040
7030
Vicon 4000

TEDDERS

TD250

BALE PROCESSORS

BPX 9000
BPX 9010

Liebhart Sales, Inc.

Call Today!!

17546 Lacey Drive •
New Boston, MO. 63557
660-689-3406

LAN-DOW BUILDINGS

"We Build To Suit Your Needs"
"Custom Built"

Pole Barns • Garages • Utility Buildings
"H" Don or Dick Middleton

Memphis Lumber Co.

1-800-337-5858 • 660-465-8595

Fax: 660-465-8596

GOOD TIMES

SWAP MEET

June 4 & 5 2021

Lathrop Antique Grounds
2488 MO-33 Lathrop, MO 64465

RESERVE SPOTS TODAY

Call Rick or Tycene Wilson

660-868-0759

660-868-1861

VENDORS

20x20 booth \$30

Buy 3 or more for \$25 each
\$35 at the gate

Gates Open 6am for Vendors

Gates Open 7am for Buyers

Food Vendors Welcome

Showers available

SAVE BIG on HOME INSURANCE! Compare 20 A-rated Insurance companies. Let us do the shopping & save you time & money. Get a quote within minutes. Average savings of \$444/year! Call 877-594-0878. (M-F 8am-8pm Central)

BOY SCOUT COMPENSATION FUND - Anyone that was inappropriately touched by a Scout leader deserves justice and financial compensation! Victims may be eligible for a significant cash settlement. Time to file is limited. Call Now! 866-395-0568

Attention Viagra users: Generic 100 mg blue pills or Generic 20 mg yellow pills. Get 45 plus 5 free \$99 + S/H. Guaranteed, no prescription necessary. Call 877-801-0749

FOR SALE: Brand new LT 265/70 R-17 (E) 10 ply tires, \$117 cash & carry. Take the saving and buy the weekly groceries or the family budget. Accelerators Since "1974" Kahoka, MO 660-727-3455 or 217-257-1385 call anytime

FOR SALE John Deere 5075 E Tractor, MFWD, cab, reverser, 925 hrs, H240 Loader, clean, \$38,500. Call 573-881-3557

FOR SALE: DMI 32' FC w/Harrow, \$5000; Krause 30' Disc model #9 tandem on main frame, 9" spacing, 19" blades, \$2000, smaller disc. 217-658-4761


FOR SALE: Ford 800, new rims, live PTO in good condition, \$2500. 660-341-8089

Show Me Plumbing Services



- *General Mini Excavation & Skid Steer Work
- *Livestock Watering
- *Waterlines & Sewer Systems
- *Residential Services & General Plumbing
- *Utility Trenching

Stan Schrock • 660-988-1163
Greentop, MO. • 660-766-2636



FOR SALE:
Registered Hereford Bulls
18-24 Months Old,

JRC FARMS
Jim Clark
Mercer, MO.
660-748-6464

ATTENTION LAND OWNERS!

BUYER OF STANDING TIMBER
OWNER /OPERATOR OF SAWMILL - BUY/CUT LOGS
CERTIFIED - BONDED - INSURED



TRI STATE TIMBER L.L.C.
PH. 660-341-4921 or 660-465-2975
353 1/2 GRAND AVE. • MEMPHIS, MO 63555




Edina Livestock Sales
Edina, Missouri
Weekly Sales Start @ 12:30pm

April 23rd - Special Feeder Calf Sale

Golden Grain Bins-Spring Discount

Grain Bins	Floors w/12"Supp. & Flashing
18'x18' 4,195bu. \$ 5,726	18'....\$1,567 30'....\$4,366
27'x21' 11,265bu. \$11,204	21'....\$2,141 36'....\$6,217
42'x24' 32,245bu. \$25,370	27'....\$3,568 42'....\$8,463




GMLS Industries, Inc.
PH: 660-699-2179 or 620-983-2136
www.gmlsindustries.com

ALL SALES TELEVISED ON DV AUCTION

To Consign For Any or All Sales or For Information Call:
Owner - Kevin Strange • Cell: 660-341-9974
Ryan Strange • Cell: 660-341-9721
Sale Barn: 660-397-9999

Field Reps:	Mike Bronestine 660-341-9965	Jason Bischel 660-216-0373
Bill Tom Hall 660-342-5420	Trey Gashwiler 660-216-8751	John Powell 660-341-1717



McAfee/Hayes Auction Service, LLC
375 S Johnson • Kahoka, MO
660-727-3796
www.mcafeeauctionservice.com

Clark County, MO LAND AUCTION


Sale conducted at the Caldwell Building located at 30191 HWY 16, Canton, MO
(West of Canton 1 1/2 mile on Hwy. 16)

80

ACRES

- 37 ACRES CROP LAND
- CABIN
- EXCELLENT HUNTING

Lying in Sect. 31,
Twp 64N, R6W



Tuesday,

June 8TH

at 6 PM

The Children of The Late
Richard Eugene "Gene" & Irene Riney, Sellers



McAfee/Hayes Auction Service, LLC
375 S Johnson • Kahoka, MO
660-727-3796
www.mcafeeauctionservice.com

ESTATE AUCTION

SATURDAY MAY 8TH - 10 AM

Sale conducted at the Caldwell Building located at 30191 HWY 16, Canton, MO (West of Canton 1 1/2 mile on Hwy. 16)









Doors Open at 8am for Preview

Selling a lifetime collection of antique furniture, antiques, collectibles, large assortment of vintage glassware, Roseville, Shawnee, collectible figurines, Longaberger baskets, household misc, lawn related and so much more.

Complete Details & Photos Online

THE LATE DONALD AND TERESA MARTIN ESTATE

FARM EQUIPMENT & IRON AUCTION

SATURDAY, MAY 1 • 9:00 A.M.

AUCTION TO BE HELD ONSITE: 11180 Arrow Rd., Meadville, MO

Due to the death of my husband, I will sell the following at my farm located at 11180 Arrow Rd., Meadville, MO. (From Hwy 36, go north on Blacktop "EE" for 1 mile to Arrow Rd., then east to sale.) St. Hwy "EE" is located approximately 2 miles west of Meadville, MO. Auction signs posted sale day.

TRACTORS, SKID STEER, KINZE PLANTER, SPRAYER, HAY EQUIP.



1969 International Harvester 756 gas tractor, 7522 hours, w/ Westendorf front-end loader (bucket and bale spear), 540/1000 PTO, 18.34x34 tires, 2 hyd. remotes, runs good; Massey Ferguson 1155 diesel tractor, cab, 2549 hours, 540 PTO, 3 pt., 2 hyd. remotes, duals, front weights; the following are restoration projects/part tractors - (2) JD 70 tractors; Massey Harris 44, narrow front

; JD A tractor; IH 806 diesel; Case 1835B skid steer, diesel, runs good, 4431 hours, hand controls, sells with pallet forks; Kinze 2600, 12/23 split row, monitor, folding markers, no-till coulters, corn and bean meters; Melroe Spra-Coupe 3630, 3779 hours, 60' booms, Cummins diesel, 300 gal. tank, raven monitor, 12.4x24 rear tires, 9.00-24 front tires; Sitrex 10 wheel V rake; Vermeer WR-22 10 wheel V rake w/ center kicker wheel; Tonutti 12 wheel hi-capacity hay rake; JD 894A side delivery rake; Bush Hog DM 90 disc mower, 9' cut; Lely Optimo 200 disc mower, 9' cut; "The Gator" 6020 disc mower, 9' cut; Vermeer 605H round baler, 540 PTO, twine tie; JD 24-T square baler; Vermeer 605C round baler; Vermeer 605B round baler; More!



CASE IH COMBINES, DOZERS, GRAIN CARTS, FARM EQUIPMENT

Case IH 1440 axial flow combine, 3560 hrs., 2WD; Case IH 1460 axial flow combine, 1649 hours, 2WD; Gleaner N6 combine, non-running; Cat D6 dozer, 10' blade, hydraulic, narrow gauge, (bad clutch), SN: 8U12996; Cat D7 dozer, cable unit, 10' blade, 22" tracks, runs; International 4600 field cultivator, 24', spring tine shovels, 3 bar harrow; (2) United Farm Tool grain carts, 500, 700 bushel, roll over tarp, 1000 PTO, side auger; like new Bush Hog model 100 hyd. 9' blade, 3 pt.; Hutchison 6" auger; AC model 1300 field cultivator; JD 7000 planter, 8 row, markers; JD 7000 planter, 6 row, parts; Hesston PT-10 mower conditioner; 7 shank V ripper; Krause disc, 24'; 2 pt. cultivator, 12'; IH 963 corn head, 6 row, high tin; IH 1020 bean head, poly skids; IH 820 bean head; Gleaner 320 bean head; Unverferth "HT-25" header cart; E-Z Trail header cart; Oliver 76 Superior grain drill; (2) 4 bottom plows; hay elevator; iron wheeled manure spreader; (2) IH tractor cabs; Gehl 65MX grinder mixer; Tomohawk quick-attach 66" smooth bucket; (3) skid-steer buckets; skid-steer grapple, 60"; steel skid steer tracks; 3 pt. quick hitch; fuel barrels w/ stands; Elk River calf creep; several farm gates and corral panels of various sizes; 100+ new steel t-posts; gravity flow wagon on running gear; many other pieces of machinery being drug out, this is a partial listing!

PICKUPS, TRAILERS, UTV



1996 Dodge Ram 2500 Laramie SLT, ext. cab, Cummins turbo diesel, 192,059 miles, manual trans., 4WD, power lock and windows, 5th wheel ball, near new tires; Arctic Cat Prowler XT 650 UTV, tilt bed, 3613 miles; 16' triple axle hyd. gooseneck dump trailer; excellent 2006 Titan gooseneck livestock T/A trailer, 22'x6.5', cut gate, side escape door, good

shape; new unfinished T/A gooseneck flat bed trailer, 30', dual front jacks, just needs the floor placed; 2004 Longhorn gooseneck flat bed trailer, T/A duals, 26', flip over ramps; 1978 Hale gooseneck livestock trailer, 20'; 1974 International Loadstar 1800 grain truck w/ Westgo 20' bed; 1986 Ford F-250, 4WD, w/ spray tank and booms; 1963 Ford Model 600 grain truck; 1964 Ford Model 610 grain truck; 1984 Ford F-250, diesel, 4WD, manual trans., shows 54,175 miles w/ hyd. bale unroller; Duo-Lift Spra-coupe trailer, 15'x9'; 1942 grain truck (restoration project);

OLD MACHINERY, SALVAGE, IRON, LOTS OF POUNDS

Lots of old machinery for scrap or parts; several piles of scrap iron; 1000 gal. steel barrel; Volvo N12 dump truck with bed; Davis Fleetline 70+4 trencher/backhoe; wheel weights; no-till coulters; gooseneck trailer frame; 20' batwing brush cutter for scrap; Gleaner F combine; older planters and disks; old feed mills; hay bines; SCRAP IRON!! (If you're in the iron business, don't miss this one!) This is a very partial listing!

CARPOR, GRAIN BINS, SHOP TOOLS, MISC.

Excellent 24'Wx30'Lx14'T steel carport; 5000 bushel grain bin, 2 older smaller grain bins; wind mill tower (no fan); like new Dewalt 30 gal. air compressor; Dewalt chop saw; socket sets of various drives; 50' retractable air hose; log chains & boomers; handi-man jacks; fence stretchers; drill bits; misc. wrenches; new tap & die set; nut drivers; several electric power cords; 7+ electric fences; bar clamps; (2) Montezuma 30" portable tool boxes; air tools; skill saw; 10" drill press; 5 h.p. B&S motor; universal hyd. fluid; 5+ rolls of new barb wire; Sthil m5 310 chain saw; bottle jacks; metal yard cart; electric fencing wire w/ reel; two wheel dolly; gas cans; rakes, shovels, spades, etc.; several new oil filters, fuel filters, tubes of grease, etc.; new bale spear prongs; air-o-vac grain tubes; used barn tin; nuts, bolts, organizers; several power tools; craftsman tool chest; cross cut saw; new hay rake wheels; garden tillers; seed cleaners; wooden ladder; truck tool boxes; ATV sprayer w/ wand; Bixby corn stove, low use; Snow flame model 2100 corn stover; telephone poles; lots of misc. tools and other items, could not see it all! **AUCTIONEER NOTE:** Large auction from a lifetime of farming. Several nice pieces of equipment ready for use or the field and a huge scrap iron/salvage auction as well, one of our biggest in years! Well over 50 tons. Bring trucks, trailers & oxy-acetylene. Loader tractor will help load day of sale only.

DETAILED LISTING & PHOTOS ONLINE JANESE & THE LATE ALLAN TIMMONS



TETER AUCTION COMPANY, LLC
FOR ADDITIONAL INFORMATION, CONTACT:

Joshua Teter: (660) 963-2461

David May: (660) 973-9523

www.teterauction.com

SUNRISE VARIETY STORE

4TH YEAR ANNIVERSARY SALE

FRIDAY APRIL 23RD & SATURDAY 24TH

10% off Storewide (excluding 50lb bags)

Refreshment provided all day *sandwiches from 11am to 2pm.

29366 State Hwy 3, LaPlata, MO 63549 • Hours 8am-5pm

THE "KIRKSVILLE FRIDAY NIGHT AUCTION"

Now accepting consignments

Wed - Thurs 1:30 - 6 PM, Fri 1:30 - 3 PM

HWY 6 West, Kirksville, MO City Limits.

Auction every Friday @ 5:30 pm

Auctioneer:

Jerry McMMain
Rhea Golden

Ph. 660-665-9380

www.mcmainauctionservice.com

LOLLI BROS. LIVESTOCK MKT, INC.



Special Calf/Yearling Sale Tuesday, April 27 * 11am



90hd str/hfrs 600-750lbs
80hd str/hfrs 600-800lbs
75hd hfrs 675lbs
70hd hfrs 675lbs
63hd str/hfrs 500-700lbs
57hd str/hfrs 400-700lbs
53hd str/hfrs 500-600lbs
50hd str/hfrs 500-750lbs
48hd str/hfrs 600-675lbs
40hd str/hfrs 400-600lbs
35hd str/hfrs 500-700lbs
30hd str/hfrs 500-700lbs
30hd hfrs 700lbs
28hd str/hfrs 500-700lbs

25hd str/hfrs 400-600lbs
25hd str/hfrs 500-700lbs
25hd str/hfrs 600-700lbs
25hd hfrs 675lbs
23hd str/hfrs 500-700lbs
21hd str/hfrs 60-800lbs
20hd str/hfrs 500-700lbs
20hd str/hfrs 500-700lbs
20hd str/hfrs 400-600lbs
20hd str/hfrs 400-700lbs
20hd str/hfrs 600-700lbs
15hd str/hfrs 450-600lbs
15hd hfrs 600-650lbs
15hd str/hfrs 60-750lbs

This is only a partial listing, many more by sale date.

Cafe Open

Lolli Bros. Livestock Market, Inc.

Cafe Open

704 Main st * Macon, MO * 660-385-2516 * www.lollibros.com

Dominic 660-651-4024 * Frankie 660-651-4040

Tim 660-651-3496 * Joseph 660-346-9711 * Cattle accepted on Sundays

KIRKSVILLE LIVESTOCK LLC

April 26th - 11:00 a.m. -Special Feeder Cattle Sale-

Bill & Wanda King - 43 Blk str & hfrs, 2 round shots, 90 days weaned, 600-725#

Jimmy Montgomery - 25 BBWF str & hfrs, 1 round shots, 60 days weaned, 600-650#

Clayton Kaden - 18 Blk str & hfrs, 2 round shots, weaned 70 days, 600-700#

Larry Snow - 18 Blk str & hfrs, 1 round shots, 60 days weaned, 500-600#

Denny Dunkin - 15 Blk bulls & hfrs, 450-550#

Many more listing by sale day

Check website for updated listings:

www.kirksvillivelivestock.com

We are open on Sunday to Receive Your Livestock
"Your Business is Very Much Appreciated"



Phone For Information:
Patty Foster, Office: 660-665-9804
Chuck Ambrosia: 660-342-3530
Caleb Randolph: 641-919-8539
Mark Herbold: 515-720-8667



Al Ashmead: 660-216-8730 Doug Fleshman: 660-626-7148
Daniel Smith: 660-341-8396 Jeremy Jarman: 660-341-9879
Karol Kirkpatrick: 641-777-3403

WANTED TO BUY: Harley Davidson's, any year, any condition, cash money. Days 660-263-1356 or 660-537-0068

FOR SALE: 6 hp Mercury boat motor. Titled, runs good, older model, \$200. Macon, MO, Call 660-651-7457.

FOR SALE: Used garden tillers Troy-Bilt, BCS and other sizes. DR Bruch mowers. Kahoka, MO 660-216-1809

Wevers Outside Wood Furnaces a dealer for Heatmor Stainless Steel Outside Furnaces, have an assortment of parts, line, and etc. Taking orders for new outside wood furnaces. Used 120 furnace, burns wood or coal, has shaker grates, for \$5,550. Call 660-423-5242, cell 660-216-9885. Open 6pm-9pm Monday-Friday, Saturday anytime, call first.

FOR SALE: New 3 pt. tillers, heavy duty, gear driven, 7' to 10' starting at \$3050. 660-874-4455

PASTURE AND HAY GROUND Needed around Adair & Knox County. Please Contact 660-216-5887 or 417-773-2507

FOR SALE: 2010 Case 8120 Combine, 2975 HR -2097 HR, NO DEF, RWA, DIF Lock, 620 Drive Tires, 28 Steer Tires, luxury cab, clean machine, \$95,000. 641-895-8014

FOR SALE: Fish for stocking ponds - Catfish, Grass Carp, Crappie, Blue Gills, Red Ear, Bass, and Minnows. Heindselman Family Farms, Call Greg 660-341-5692

FOR SALE John Deere 4230, CAH, QR, 7000 hrs, turbo, sharp, Iowa tractor, \$18,500. Call 573-881-3557

FOR SALE: New Garden Seeds - Seed Potatoes, Onion Bulbs and Plants. Homemade Candy, Local Honey, Stainless Steel Housewares, Wooden Handles, Lamps & Chimneys, Greeting Cards, and more. Train Track Candies 11538 Iceberg Ave, LaPlata, MO, 3rd lane to your left.

FOR SALE: Vegetable Plants \$1.25 a 4 PK, Bedding Plants \$1.50 a 4 PK, Succulents, a Variety of Hanging Baskets and Planters at Kauffman Produce 11538 Iceberg Ave, LaPlata MO 63549

FOR SALE John Deere 4020 Tractor, 1969, 3600 hrs, dual hydr, Dif Lock, new rubber, original, \$17,500. Call 573-881-3557

The Ultimate Wood Heat.



- **More Comfort** - Thermostatically controlled wood heat.
- **Peace of Mind** - Keep the fire outside and eliminate the dangers associated with indoor wood heating.
- **Save Money** - Wood is a renewable, inexpensive and often free energy source.

CAMPEN
Heating & Air Conditioning
573-288-8966
Canton, MO

CentralBoiler.com

FOR SALE: JD 7000 6RN w/5R splitter on back, no till, monitor, \$5250; JD 7000 6RN W7R splitter on back, no till, \$6000; JD 7000 12RN no till monitor, \$2000. 217-658-4761.

Scott Huskey's Home Service R-10 Foundation Enclosure Systems for manufactured, modular, & site built homes. Saves on utilities and prevents freeze up. General maintenance and repairs since 1972. 573-696-3468 "GO DAWGS"

FOR SALE: High quality grass hay, \$35 per bale. 217-653-4762

FOR SALE: Simmental and Sim-Angus bulls, excellent calving ease, top performance and outstanding EPD's with real eye appeal. API as high as 165. Sired by the Breeds' top Sires. "Drake Simmental" Ph Larry 641-895-9422 or Mason 641-895-5735

FOR SALE: Older 21' length overall, 16 1/2 deck, heavy frame shop built, flatbed trailer, mobile axles, bumper hitch 2 5/16" ball, needs flooring, with MO title, \$700. 217-257-1385

FOR SALE: Kubota 2020 ZD1211L diesel fuel only, 3 cyl., 24.8 HP, 72" cut, purchased in September, has the new style seat, new never been used, \$15,000. 660-216-4942

FOR SALE: Whitetail Institute food plot seeds in stock at Whitetail Seed and Supply, 14136 State Hwy 3, LaPlata, MO 63549.

FOR SALE: Herford bulls, 2 years old, BSE tested, horned or polled. Circle C Herford's, Powersville, \$2000. 660-216-3465.

FOR SALE: 3 overhead doors 16ft wide x 12ft high with openers \$1750.00 per door. 660-341-4012

FOR SALE: Kinze 24 row, 15" row, fold bean planter only no till, \$4500; White 1230 vertical fold, \$1250; IHC 800 6RN L fert, monitor; \$1750. 217-658-4761.

FOR SALE: 21-acre farm mostly pasture, 32'x44', 3 story house, walk in basement. 40'x64' shed with 20' lean to. All new in 2017, 80 fruit trees, North of Downing, \$210,000 OBO. Mervin Gingerich, 27605 Bobs Road, Downing, MO 63536. 660-379-2621.

FOR SALE: Limousin and Limflex bulls yearlings, black and polled, good dispositions, AI sired, semen tested, free delivery \$2500 Schrock Cattle 660-988-1163

STANDING FOR SERVICE Black 16 hand 3/4 Morgan 1/4 Percheron Stallion. Put some size to your Quarter Horse Mares. \$250 Service Fee LFG 641-722-3227

FOR SALE: John Deere 14' BWA disk, good blades, duals, shedded. 319-572-2322

FOR SALE: Neese Angus Bulls over 50 years breeding for Optimum Performance, tested, ready to work. Rutledge, MO 641-344-4565

LIMOUSIN & LIM FLEX BULLS for Sale: Black & Red, All Polled, out of TOP AI Sires, low birth weight, w/Performance & Carcass EPD's. Potter's Limousin Cincinnati, IA 641-436-7153 or 641-658-2786

FOR SALE: Registered yearling Angus bulls, A1 sired, 25 years A1 genetics. Miller Angus Farm, 660-341-4043, if no answer please leave message. I will return your call.

HANDYMAN: Install interior and exterior doors and windows, siding, decks, showers and toilets, flooring and drywall. 660-956-2189.

FOR SALE: Simi flatbed two 1400 gal and 600 gal tank, chemical inductor, \$1750; Dugan gooseneck livestock trailer, 24' long, 6' wide, 6' high, 2 gates, open top; \$1850. 217-658-4761.

DOUGHERTY ESTATE AUCTION

18859 HWY B - CLARK, MO

FRIDAY, APRIL 30, 2021 @ 10 AM



TRACTORS, BALER, RAKE, MOWER, SALVAGE - SUV, TRUCK, 4-WHEELER, BOAT, MOWERS - TOOLS - FARM RELATED - FISHING & HUNTING - CARNIVAL GLASS - ANTIQUES - COLLECTIBLES & GLASSWARE - APPLIANCES & HOUSEHOLD - FULL LISTING @ IMANAUCTION.COM



Estate of Mrs. Jerry (Joan) Dougherty

IMAN AUCTION COMPANY

660-788-4298 | 660-414-7830 | 660-388-6235

SULLIVAN AUCTIONEERS, LLC

A FAMILY OWNED BUSINESS SINCE 1979



Headquartered in Hamilton, Illinois, Sullivan Auctioneers, LLC is one of the largest Real Estate and Farm Machinery Auctioneers in the nation.

For more than 40 years we have been conducting professional auctions. We connect our sellers with thousands of interested buyers around the world.

Considering an Auction?

CALL OR EMAIL TODAY FOR A NO OBLIGATION CONSULTATION!

Toll Free (844) 847-2161 | Sold@SullivanAuctioneers.com
www.SullivanAuctioneers.com | Lic. #444000107

WE HAVE SEED!!

- *Oats *Clovers *Timothy
- *Perennial Ryegrass
- *Lespedeza Grass *Trefoil

Call
Max **660-868-1010**
Neal **660-868-0787**

Ridgway, MO



SOLD IN 2021

JEFF PROPST | Land Specialist | (636) 209-0362
jeff.propst@whitetailproperties.com



NORTH EAST MISSOURI LAND SOLDS

- Putnam Co, MO 235 acres - SOLD
- Adair Co, MO 437 acres - SOLD
- Adair Co, MO 220 acres - SOLD
- Putnam Co, MO 140 acres - SOLD
- Adair Co, MO 441 acres- SOLD
- Ralls Co, MO 110 acres- SOLD
- Schuyler Co, MO 161 acres - SOLD
- Mercer Co, MO 140 acres - SOLD
- Mercer Co, MO 1,529 acres - SOLD
- Mercer Co, MO 100 acres - SOLD

- Sullivan Co, MO 248 acres - SOLD
- Clark Co, MO 60.4 acres - SOLD
- Putnam Co, MO 467 acres - SOLD
- Adair Co, MO 106 acres - SOLD
- Putnam Co, MO 108 acres - SOLD
- Shelby Co, MO 70 acres - SOLD
- Shelby Co, MO 150 acres - SOLD
- Adair Co, MO 272 acres - SOLD
- Putnam Co, MO 81 acres - SOLD



WHITETAIL PROPERTIES REAL ESTATE

HUNTING | RANCH | FARM | TIMBER

WHITETAILPROPERTIES.COM



Whitetail Properties Real Estate, LLC DBA Whitetail Properties, In the States of Nebraska & North Dakota DBA Whitetail Trophy Properties Real Estate LLC, Licensed in IL, MO, IA, KS, KY, NE & OK - Dan Perez, Broker Licensed in AR, CO, CA, MN, ND, SD, TN & WI - Jeff Evans, Broker Licensed in FL, OH & PA - Jefferson Kirk Gilbert, Broker Licensed in TX & NM - Joey Bellington, Broker Licensed in IN - Bill Minor, Broker Licensed in AL, GA, LA, & MS - Sybil Stewart, Broker Licensed in TN - Tim Bumette, Broker Licensed in TN - Bobby Powers, Broker Licensed in AR - Anthony Christco, Broker Licensed in NC, SC, VA - Chip Camp, Broker Licensed in NC - Rich Baugh, Broker Licensed in MI - Edmund Joel Nogoski, Broker Licensed in MD, WV - Debbie S. Laux, Broker Licensed in MT, ID, UT, WY, OR - Aaron Milliken, Broker Licensed in NY - John Myers, Real Estate Broker.





Annual Spring Consignment Sale

Numerous Consigners

Sat, May 1, 2021 at 10:00 a.m.

Scotty's Auction Facility & Event Center,
US Highway 63 North, Macon, MO 63552



Directions: From the intersection of Highway 36 and Highway 63 in Macon, Missouri, proceed North on Highway 63 approximately 1.5 miles. Look for the big red barn on the West side of Highway 63 - Scotty's Auction Facility and Event Center

We will be selling at auction vehicles and farm equipment on consignment at our annual spring sale. Photos will be added as items are consigned. Consign early for the most marketing. Please contact Scotty at 573-356-4405 to add items to the auction.

International 5088 with 5000 hours, very nice tractor; 1977 Ford F250 Custom 4x4, V8; 1979 Ford F250 Ranger XLT 4x4, rebuilt 351 motor; John Deere 445 lawn mower; 2003 Honda Rancher ES 2wd 187 miles; Film on UTV sprayer; 2006 F150 2WDw/bedcover 238,273 miles; 1977 F250 4x4 w/ hydraulic bale stabber 4 speed; 1979 F150 2wd green; 1977 F150 Ford ranger xlt 2wd automatic; Ford V8 motor and transmission; 8 bale gooseneck bale trailer; Massey Ferguson 383 Diesel w/buhler bucket and bale spike, 595 loader, 5578 hours; MF 285 diesel tractor; Red 3pt bale spike; MF 50 gas tractor runs; MF 50 gas tractor; Ferguson 40

Massey Ferguson narrow front end assembly; Kuhn GMD 700-GII HD 9ft disc mower; Pallet of suitcase weights, tractor seat, weight; Vermeer R23 twin rake hydraulic drive; New Idea 5 bar rake; Vermeer 505 super I twine baler; New Holland 852 twine baler; New Holland 852 twine baler parts; JD 14T square baler; Allis Chalmers white top roto baler; Pallet of twine; 3pt single shank cable plow; 3pt slip scoop; 3pt stiff shank cultivator; 3 pt Ferguson 2 bottom plow; 3 pt Dearborn's 2 bottom plow with 3rd bottom; 3 pt homemade carryall; 3 pt 7ft blade; 3pt white bale spike; 3 pt bale unroller; 3 pt white bale spike; Ford ranger pickup bed trailer; GMC pickup bed trailer; Gravity flow wagon; Wooden bared wagon; Sets of 18.4-30 tractor tires; Metal bunk feeders; 8ft J bunk feeder; Red steel hay rings; Aluminum hay ring; Danuser 3 pt post hole digger with one bit; Post hole digger bits; Head chute; 2 galvanized gates; 6 cattle panels; 6 green farm gates various lengths; 8 orange corral gates; 10 green corral gates; 4 black corral gates; 1 orange bow gate; 1 green bow gate; JD 2440, 240 loader, 7056 hours; 2006 Cherokee Forest River Toy Hauler; 1999 Dodge Intrepid; 2005 Dodge Ram 3500, 59 Cummins and bale bumper; Hay processor; 1991 Jayco 22' bumper hitch camper; Land pride 3pt finish mower; Bearcat chipper; Craftsman lawn sweep; 2006 GMC Duramax, crew cab, long bed, 4WD, 322,000 miles; John Deere 670 rake; Duramax of misc. tools; 3pt 6' ft Ferguson Disc; 3pt 2 bottom Ferguson Blow; 3pt 6' blade; 3pt 2 row cultivator; 3pt post hole digger no auger; Case 1825 diesel skidsteer, 2568 hours; Ford 3pt 7' sickle mower; Red 3pt cherry picker; 50" yard roller; Dearborn 3pt 2 bottom plow; Douglas 6' 3pt finish mower; Tractor chains; Deer stand; Harrow sections; Small tractor drawbar; Stabilizer arm Ford 3pts; Ford tractor bumper; 11R-22.5 semi tires on wheels; Floater 20" tire on wheel; Stihl 029 super chainsaw; 8' 3pt disk; Hurri-hot heater; IH 46 twine baler; Goodyear 16.9x30 tractor tire; John Deere 1209 mower; 2001 Skyjack 8831; John Deere 950m zero turn mower; Dart gun; 2018 Dodge 4x4; 5 17" Ford rims; John Deere riding mower; IH tractor cab; 24-5 truck tires; 16" trailer tires; Log splitter; 16' cargo trailer; 15 ton feed bin; IH 470 18' disk; Green field cultivator; John Deere 494 planter; Gravity wagon; Allis Chalmers 2 row 3pt planter; Versatile 8in auger; 2 Armstrong 16.5L-16.1SL tires; 12.4-24 tire; John Deere 4440 tractor; Massey Ferguson 175 diesel; King Kutter 8ft 3pt brush hog; Massey Ferguson 165 gas, 3763 hours, multi power; John Deere 7000 6 row planter; Bush whacker 15ft brush hog batwing; Massey Ferguson 6ft 3pt blade; King Kutter 3pt 6ft disk; King Kutter 3pt 1 row c tine cultivator; Ford 3 bottom 3pt plow; IH McCormick pull type sickle mower; King Kutter 3pt middle buster; 3pt 6ft chain harrow; 3pt 9ft rigid harrow; King Kutter 3pt cherry picker; King Kutter bucket bale spike; Land pride 6 1/2ft land leveler; King Kutter 3pt trailer mover; King Kutter 3pt carryall; 3pt homemade bale spike; Massey Ferguson #33 grain drill 10ft; Massey Ferguson #43 grain drill 13ft; Cosmo 500 3pt hopper spreader; King Kutter 6 shank 72in 3pt box blade; King Kutter 72in 3pt finish mower; King Kutter 3pt bale spike; King Kutter 3pt 6ft yard rake; Priefert 3pt 6ft land leveler; Yellow 3pt cherry picker; 3pt Ford slip scoop model 19; Red 3pt bale fork; King kutter 3pt pallet mover; King Kutter 3pt 6ft danish tine field cultivator; John Deere 3pt 7000 2 row planter w/ damaged boxes; Massey Ferguson 180 gas w/loader and bucket; Black manure forks for bucket; 12 pieces of red scaffolding and 3 deck pieces; Farm star pallet forks for bucket; Red 3pt 1 shank ripper; Massey Ferguson model 115 9 shank disk chisel; International 1586, 1629 hours; Case IH 4800 21ft vibra shank field cultivator; Case IH 21ft 496 disc; Green hydraulic gravity flow wagon; Gate trailer; 3 poly bottom bunk feeders; Creep feeders; Drag harrows; Single gang drag disc; Long elevator feed bunk; Yellow bat wing brush hog; JD 7ft sickle mower; Ford 7ft sickle mower; 3 pieces of green elevator feed bunk; Old IH truck no title; Pallet of barb wire; JD manure spreader; 2 section drag harrow with evened; Combination water; Richie water; Wooden ladders; Few well pump; Well pumps; 3 pt seeder; Green truck tool box; Water tanks; Crust Buster 3 pt grain drill; Red homemade bumper hitch dump trailer w/ gas motor; JD 7000 4 row planter; Durability hay rack; Field cultivator; Delta Pro under bed box; Black plastic Tuff box; JD truck tool box; 3 metal gates; Rolls of barb wire; 3 stacks of hedge posts; 20 ft T240 Bush Wacker brush hog; JD 605 C track loader w/3063 hrs; MF 1155; 6ft blade

Consigned by John and Connie Ford: John Deere 4440, excellent rubber, 6956 hours, 85p power shift, nice tractor; Massey Ferguson 180 gas with front end loader; International 1586 tractor shows 1629 hours, very solid tractor with duals; Case IH 21' 496 disc, 7 1/2 spacing; Case IH 21' 4800 vibra shank field cultivator with harrow; Massey Ferguson 175 diesel tractor, good rubber, solid tractor; Massey Ferguson 165 gas tractor multi power; 8' King Kutter 3 point brush hog; Massey Ferguson 43 13' drill; Massey Ferguson #33 10' drill; Bush Whacker 15' batwing brush cutter; bumper hitch grain dump trailer with independent gas engine

www.scottysauctionservice.com



Scotty Kuntz 573-356-4405

Michael Cunningham 660-651-2288 • Paxton Pittman 918-316-7500

WANTED: DIRT work. All types of excavation, reclaiming overgrown fields, including CRP and WRP. Building site preparation, terrace, tiling maintaining, creating new trails, crossings, rock hauling, Food plot development and maintenance. Leveling, grading, wetland construction and maintenance. Pond, lake, cleaning, construction. Call for quotes. 660-342-2701

showMe Fencing

660-332-4099

25645 Hwy F, Kirksville, MO 63501

TRUST US with all your **FENCING NEEDS**

*Woven Wire *Corral Pipe *Barb wire

Virtual Online Auction - Bid @ www.SullivanAuctioneers.com



No Reserve Van Buren County, Iowa
LAND AUCTION

88.78
Taxable
Acres±
1 Tract

MONDAY, MAY 3RD AT 10:00 A.M.

Land is located in Sections 1 & 2, Des Moines Township, Van Buren County, Iowa. (8 miles south of Keosauqua, Iowa.)

Hunters and recreationalists, mark your calendars now for this upcoming Van Buren County, Iowa land auction. This property offers awesome outdoor activities for the whitetail deer and wild turkey hunting enthusiasts. The farm also offers several ponds and has high signs of several species of waterfowl. We urge you to take a look at this well-managed property.

Libertyville Savings Bank - Seller

Attorney: Paul Zingg • Deneffe, Gardner & Zingg, P.C. • 104 S. Court St., Ottumwa, Iowa 52501

AUCTION MANAGERS: Jim Huff (319) 931-9292 • Jeff Hoyer (319) 759-4320

SULLIVAN AUCTIONEERS, LLC • TOLL FREE (844) 847-2161
www.SullivanAuctioneers.com • IL Lic. #444000107

RESULTS FROM SALE APR 17TH

BUTCHERS	\$63.00-74.00/CWT
SOWS	\$61.00-74.00/CWT
FEEDER LAMBS	\$280.00-330.00/CWT
FAT LAMBS	\$150.00-162.50/CWT
CULL EWES	\$90.00-113.00/CWT
KID GOATS 40-70#	\$90.00-350.00/HD
NANNIES	\$95.00-285.00/HD
STRS	
BLK	410-485 \$179.00-200.00
BLK	510-580 \$166.00-195.00
BLK	610-690 \$147.00-168.50
BLK	710-780 \$134.00-155.00
MIX	815-850 \$123.00-140.00
HFRS	
BLK	400-485 \$153.00-178.00
BLK	510-585 \$134.00-149.00
BLK	610-675 \$132.00-144.00
MIX	725-780 \$121.00-136.00
POUND COWS	\$44.00-51.00/CWT LOW YIELDING \$52.00-61.00/ CWT MID YIELDING \$61.00-74.00/ CWT HIGH YIELDING
POUND BULLS	\$75.00-101.00/CWT

REGULAR SALE SAT APRIL 24TH

SPECIAL CATTLE SALE SAT MAY 1ST

MACHINERY & FARM EQUIPMENT CONSIGNMENT SALE JUNE 1ST

CALL WITH CONSIGNMENTS



Watch website for early listings

www.keosauquasaleco.com

Keosauqua Sales Co

319-293-3508

BILL GOEHRING 641-919-9365

LUCAS GOEHRING 641-919-6272

SALE BARN 319-293-3508

FIND US ON FACEBOOK

FOR SALE John Deere 2940 Tractor, 5400 hrs, cab, air, new rubber, estate tractor, \$15,500. Call 573-881-3557

REAL ESTATE FOR SALE: 4 Bedroom, 2 full baths on 3.5 acres, 7 miles South of Novinger on Hwy K. Call 660-341-0276

FOR SALE: Fixer upper house in Wyaconda MO, antique furniture, collectables, tools, doors and misc., old camper suitable for deer hunters. 660-341-8192

FOR SALE: 2006 Peterbilt 379w C13 Cat engine, extended hood, 48" stand-up sleeper, super singles with 75% rubber, 1,280,000 miles, maintenance records available, \$49,000. 660-654-2006

FOR SALE: 1981 GMC 3500 1 ton dual wheels, Knapheide flat bed, 350, 4 speed, 300 gallon fuel tank, fell-rite pump, 4 locking tool boxes, running boards, pull bumper, good rubber, basically no rust, and inexpensive service truck, \$3900. 217-257-1385

FOR SALE: Wisconsin Maple Syrup, \$155 for 5 gal bucket, 2021 crop. Raymond Kauffman, 25624 Hanover St, LaPlata, Mo 63549.

FOR SALE: Good Quality Alfalfa grass hay, big square bales. 660-216-1114

FOR SALE: 300 Breyer Horse 50 year Collection, in excellent condition, sell one or all. 660-676-9199

Single White Female 36 seeking single white male 29-49 old. Call Queenie at 931-337-7724 No drug use, No Married man

Individual with 1-10 Acres you till and plant, I furnish seed/fertilizer your grass, \$2000/\$3000 Acre Sweet Corn. Call 573-604-0674

Organic Litter delivered 24T lots \$80 T NPK monthly grass/hay ground, \$80 acre cost compare triple 19 \$550T 800-807-9612

NOW OPEN!

Gingerich Green House

100's of Baskets, Panters, Pots, bedding plants, veg. plants and much more to choose from.

24570 Banner Lane,
Brashear, MO 63533

Mon-Sat. 8am-6pm
(No Sunday sales)

Polled Hereford

BULLS

Complete Performance Data



GALEN KRIEG

217-743-5382

309-299-5695

Basco, IL



SEEKING APPLICATIONS

The Lewis County Soil & Water Conservation District (SWCD) has an opening for a full-time employee. The applicant must possess a driver's license, a high school diploma or GED. Accounting, computer and technology experience is preferred, but not required. Applicant must pass a background check.

Applications can be picked up at **504 S. Washington St., Monticello, MO** or email audrey.rayl@swcd.mo.gov.

The deadline for accepting applications is 4:30 p.m. Friday, May 7, 2021.



Real Estate and Personal Property Auction

Jim Schmadeke

Sat, May 8, 2021 at 10:00 a.m.

301 N Adams St, Shelbyville, MO 63469



Directions to Auction Location: ATravel North on Highway 15 in Shelbyville, turn East on 3rd Street for 0.2 miles, proceed North on Adams Street to auction location. Watch for signs the day of the sale.

Real Estate: This 4 bedroom, 2 bath bungalow style home with unfinished basement is very well maintained and ready for your family. The large 2 car garage is connected by a breezeway. The home offers hardwood and tile floors throughout, a large open kitchen with plenty of solid oak cabinets for storage, a large living room and formal dining room with a lot of natural light. The large master suite includes a bathroom with a stand up shower. The home has a propane furnace with central air. If you are looking for a low maintenance home in a quiet town, this is a must see!

The real estate will sell promptly at noon. If you would like to schedule your personal showing, please call Scotty at 573-356-4405.

*See Terms and Conditions for Purchase of Real Estate below.

Household Items: Table with 4 chairs; sofa table; oak glider rocker; New Home sewing machine with stand; matching couch, sofa and chair; Vizio flat screen TV; entertainment center; 2 book cases; oak computer desk; small maple dropleaf breakfast table; 2 green upholstered swivel rockers; table lamp with lampshade; Magnavox stereo, CD, cassette and record player with 2 Magnavox speakers; various table lamps; 5 piece wicker patio set; ceramic 3 foot tall Welcome Bear with fish; Kenmore upright freezer; various canning jars; lots of Christmas decorations; children's play chairs

Vehicle: 1995 Ford Ranger, 5 speed, 2 wheel drive, 170,000 miles, needs work

Antiques and Collectibles: Oak table with 4 chairs; Antique wash stand with drawers; two antique bowls and pitchers; oak side board with mirror; old communion table from Emden Baptist church; oak drop leaf table; oak Mission style full size bed; antique oak 4 drawer dresser with mirror; #3 Cluskey crock, white inside; 1 gallon crocks; 1 gallon crock jug; marble top lady's vanity; Maple full size bed; Lane seat ladder back chair; 4 drawer oak dresser with wishbone mirror; antique oak cane seat and back rocking chair; maple full size bed; various pictures and prints; antique high chair; oak corner cabinet; butcher block with wine rack, #10 Cluskey crock, brown inside; hand carved duck; hand carved deer; antique Macon Post Office box; oak 3 drawer wash stand; antique oak rocking chair; antique China cabinet; antique wash stand; Longaberger basket; older marbles; blue Ball jars; old milk bottles; Ruckles crock; old kitchen scales; antique coal mine lunch pail; 4 quart Daisy butter churn; pink and green Depression glassware; antique Emden Bank book; Emden Bank bank; Shelbyville bank bag; miscellaneous antique books; 1938 Shelbyville High School yearbook; 1972 Shelby County history book 1st edition; various antique educational books; WWII 230th Field Artillery BN history; 1940's cookbooks; 2 metal rocking chairs; Emden Baptist Church pew; cream can with lid; Shelbyville Grade School child's school desk; galvanized round wash tub; 2 burn lanterns; antique wooden planer; cast iron tea kettle; enamel ware; blue squirrel kettle; match holders; Atari console game system

Tools and Equipment: Craftsman gas powered power washer, 2800 PSI; Porta Cable 6 hp, 20gal, 110 volt air compressor; Dremel scroll saw; Delta 8" table top drill press; Craftsman 2 tier tool chest; miscellaneous hand tools; wheelbarrow; Kenmore garage refrigerator; Poulan Pro self propelled push mower; 2 wheel dolly; Ryobi gas weed eater; Delta 10" miter saw

Hunting and Outdoors: Winchester M1200 pump 12 gauge; Remington Model 99, 6mm auto rifle; Smoker BBQ; Weber BBQ grill; Weber fire ring; Huffy women's bike; various fishing poles; kerosene heater

There will be many more items at this sale too numerous to mention.

DOWN PAYMENT: 10% of the contract purchase price will be due upon acceptance of the Sales Contract. Personal or Cashier's Checks will be accepted. This is "AS IS, WHERE IS" and is non-refundable. **CLOSING:** Closing shall be within 30 days of the auction date.

www.scottysauctionservice.com



Scotty Kuntz 573-356-4405

Michael Cunningham 660-651-2288 • Paxton Pittman 918-316-7500

PERSONAL & REAL ESTATE AUCTION

As we have retired and are moving, we will sell the following real estate, household items, antiques, & etc. located at 315 East Benton Street in La Plata, MO

SATURDAY, MAY 22ND, 2021 @ 10 A.M.

Real estate to be offered for sale at 12:30 p.m. consists of a 4 bedroom, 2 bath, 2 story home with a newer 21'x24' bedroom addition w/two 9' closets, nice oak kitchen cabinets w/handmade pantry & appliance center, near new dishwasher, & electric flat top range.. Seven rooms are on the ground level, sunporch on the front, screened in porch on the back; vinyl siding; good roof; two gas furnaces; central air up and downstairs; newer vinyl windows; two car garage with electric openers; 24'x40' shop w/concrete floor and wall heater and metal lined inside; 12'x9' storage shed; older barn with 6 box stalls, hay loft and a 3 bay lean to shed; piped fence barn lot all located on a beautiful 10.73 acres m/l. **TERMS:** 10 PERCENT DOWN DAY OF SALE W/BALANCE DUE WITHIN APPROXIMATELY 45 DAYS W/TITLE INSURANCE FURNISHED.

HOUSEHOLD ITEMS: 2 white refrigerators – Maytag automatic washer – 10 cubic ft. upright freeze – 3 flat screen TV's of various sizes – large wooden dining table w/2 leaves, 6 padded cane back chairs & matching large lighted hutch – marble top wooden buffet – 15 drawer wooden chest – Estey Spinnet piano – 10' wooden book shelf – occasional chairs – Lazy Boy rocker/recliner – Centurion gun safe w/combination – one cushion couch – microwave – handmade oak wardrobe – iron patio table w/6 chairs – wooden quilt racks – small wooden end tables – large wooden toy chest – metal wardrobe cabinet – exercise equipment – various golf clubs, bags, & golf balls – office chairs - lots of other household items too numerous to mention. **ANTIQUES & COLLECTIBLES:** Empire maple step back chest - Barrister lawyer's book case – painted primitive cabinet – round butcher block table – 2 drawer oak library table – walnut game table – small walnut one drawer table – oak C-roll top desk – 6 mission oak straight back chairs – small wooden table w/cane top – mission oak magazine rack – little folding stepladder – 3 drawer end table w/side pockets – red oak hand crafted table – 3 small wooden child's chairs – trunks – 5 drawer wooden chest – oak office chairs – 2 doll trunks – wooden printers tray – small 4 drawer wooden parts cabinet – Tiffany type leaded glass lamp – wooden print & picture set in case – Avante 31 day mantle clock – horse & carriage clock – electric ruby red hanging lamp – Singer Featherweight sewing machine in case – 120 Base accordion in case – several wicker baskets – large collection of paper weights – collection of shot glasses – 5 electric Aladdin lamps of various colors – Alacite Aladdin candle holders – ice cream scoop – Green Cow buttermilk pitcher – several pocket knives & pocket watches – 2 glass towel bars – kerosene lamps – several pictures & prints – electric milk glass lamp – blue coin glass dish - lots of other antiques & collectibles too numerous to mention. **SURREY, SADDLES, & TACK:** Good surrey w/removable fringe top & shafts – Western 18" roping saddle – 2 English saddles (one is child's) – antique high back saddle – kid's pony saddle – Western saddle – 4 wooden sleigh runners – 2 horse bosals – one set of quarter horse driving harness – several saddle pads & blankets – bridles & bits – 3 portable saddle racks – 2 metal wall mounted horse heads – spurs - lots of other items too numerous to mention. **GOLF CART, TRACTORS & MACHINERY:** 2002 Yamaha gas golf cart w/top & windshield (runs good) – JD 2030 gas tractor w/wide front, hydraulic loader & bucket, & canopy – JD 870 diesel, 4x4 tractor w/turf tires - 6', 3 pt. blade – 5', 3pt. rotary cutter – 3 pt. carryall – rubber tire 40 bushel manure spreader – 3 pt. dirt scoop – 3 pt. bale stabber – wall mounted horse hay & grain feeder –big bale horse feeder – 2 wheel lawn dump cart – 2 wheel lawn aerator – steel posts – feed buckets – woven wire – lots of other items too numerous to mention. **TOOLS & MISCELLANEOUS:** Craftsman miter saw – Craftsman 2 pc tool chest – Homelite 240 chain saw – Craftsman 12" bandsaw – 10" table saw – 2 - two wheel bench grinders (one is on stand) – Coleman 10 hp generator – metal table on rollers – wooden workbench w/vises – several sets of shelving – several electric hand tools – assortment cabinets & trays – Campbell Hausfeld 20 gallon, 5 hp portable air compressor – air pig – lots of fencing tools – hand planes – sockets (some are S & K & Craftsman) – wrenches – punches – screwdrivers – 20' aluminum extension ladder – receiver hitches – metal car ramps – dog house – lawn & garden tools – lots of other items too numerous to mention. **AUCTIONEER'S NOTE:** This is a very large & unique auction with many pictures posted on the website and Facebook page -- Cash/Check w/ID - lunch & porta potty on grounds.

OWNERS: LOUIS & CAROL BERREY

For more information call 660-626-6641



Christy's Auction Service

La Plata, MO 63549 660-341-4531

See Websites for Photos:

www.dchristyauctions.com & Christy's Auction Service on Facebook

Auctioneers: David Christy – 660-341-4531

Jason Wood – 660-341-7884 Greg Smoot – 660-341-5175



THE NEMO TRADER

CLASSIFIED COUPON

Clip This Coupon Out of This Week's NEMO Trader and run

2 CLASSIFIED ADS FOR \$5.00

Picture Ads Not Included with Coupon! Call For Pricing!

(Each Ad Must Be 20 Words or Less.)

~20¢ per word over 20 words~

Cash NOT ACCEPTED

Check or Money Order Only

Ad No. 1: (20 words or less)

Ad No. 2: (20 words or less)

**YOUR CLASSIFIED AD WILL BE READ IN OVER 19 COUNTIES, IN 3 STATES!
BY COUNTLESS BUYERS!!!**

**TO RECEIVE THIS RATE: COUPON MUST BE MAILED IN
ALONG WITH YOUR PAYMENT!**

**THE NEMO TRADER, P.O. BOX 190
KIRKSVILLE, MO. 63501 ~ 660-665-8500**

BURKHOLDER



2019 GMC Sierra 2500HD SLE, 4x4
Crew, 6.0V8, Auto, 144k Hwy Miles, One-Owner, Clean Carfax, Well Kept, Nice, Black

\$35,900

Full line of accessories Outfit your truck here!

Edina 660-397-2551 51001 State Hwy 15 BurkholderTruckSales.com



\$36,900

2018 Ford F-150 Lariat FX4, Crew Cab, 6.5 Bed, 3.5 EcoBoost, Auto, 78k One-Owner Mi, Extra Nice-Clean, White



\$33,900

2017 Ford F-250 XLT, FX4, Crew Cab, 6.2V8, Auto, 142k Mi, One-Owner Texas Truck, A Must See, Extra Nice-Clean, White



\$17,900

2016 Toyota Sienna XLE, 8 Pass, 3.5V6, Auto, 130k Miles, Local Trade-In, Nice Van, Family Ready, Come See, Black



\$17,500

2016 Honda Odyssey EX, 8 Pass, 3.5V6, 85k One-Owner Miles, Extra Clean & Nice, Come See, Family Ready, Black



\$44,900

2016 GMC Sierra 2500HD SLT Z71 4x4, Crew, 6.0V8, Auto, 74k Miles, Clean Carfax, Perfect Service Record, Black



\$30,900

2015 Chevy Suburban 1500 LTZ 4x4, 7 Pass, 5.3V8, Auto, 129k Mi, Clean Carfax, Local Trade, Loaded, Nice, Black



\$25,900

2015 Chevy Suburban 1500 LT, 4x4 7 Pass, 5.3V8, Auto, 138k Miles, Sunroof, Nav, DVD, Nice, Ready for Vacation, Black



\$35,900

2012 Ram 2500 SLT, 4x4, Reg Cab Longbed, 6.7 Cummins, 6-Speed Manual, 90k Mi, Excellent Service Record, White



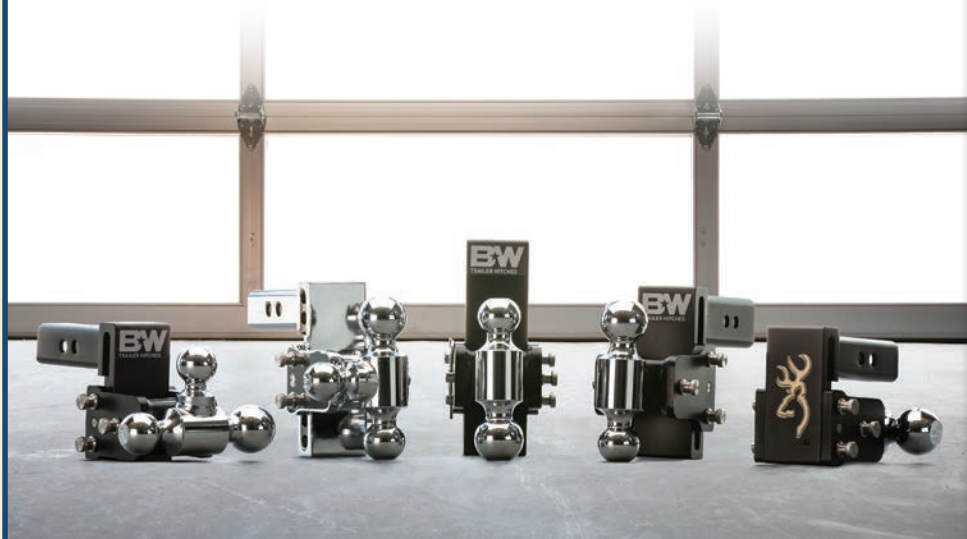
\$36,900

2015 GMC Sierra 2500HD SLT Z71 4x4, Crew, 6.0V8, Auto, 132k, One-Owner Texas Truck, Perfect Service Record, Chrl

Financing Options Available

THIS MONTH'S SPECIAL!!

B&W Tow & Stow Hitches



20% OFF



Quality Brands We Carry



AUTO & TRUCK SALES + ACCESSORIES

