

FREE!

NEW EDITION EVERY FRIDAY!
VOL. 29 • NO. 17 • MAY 14, 2021

NEMO *Trader*

THE NEMO TRADER

PO BOX 190 • KIRKSVILLE, MO 63501
PHONE 660-665-8500 • FAX 660-665-2024
Web Site: nemotrader.net
Email: nemotrader@gatehousemedia.com

A WEEKLY ADVERTISER SERVING ALL OF NORTHEAST MISSOURI AND THE SURROUNDING AREA

DIGITAL

WE HAVE A LOT TO OFFER

- Websites
- On-Target Display Ads
- Search Engine Marketing
- Search Engine Optimization
- Reputation Monitoring
- Social Advertising
- Logo Creation
- Retargeting

PHONE:
660.665.8500

ADDRESS:
110 E. McPherson Kirksville, MO 63501

EMAIL:
nemotrader@gatehousemedia.com

NEMO *Trader*

THREE AUCTIONS

TIMED ONLINE COIN AUCTION LOTS CLOSING ON MAY 23RD

Selling gold coins, many graded coins of all kinds, several silver bars, kilo silver bar, proof sets, Peace, Canadian and Eagle rolls, Platinum coins.
altiserauctionandappraisal.hibid.com

PERSONAL PROPERTY AUCTION SATURDAY MAY 15TH 10 AM

2705 Main St Unionville, MO 63565
We will be selling the personal property of Dr. Dawn Ann Fairley as she downsizes.

Guns: to sell at 1:00 pm Beretta 1200 12 ga. Ithaca S12 sxs shotgun 12 ga. Remington game master 760 30-06. Browning sweet 16 A5. Remington 870 20 ga. Remington 870 express magnum 12 ga. Revelation 22 Winchester 30-30. Revelation 20 ga. Winchester model 75 competition with brass scope. Western Field 20 ga. Ithaca 22. Mossberg military 22. Ithaca 20 ga model 87. Sears Ted Williams 20 ga with slug barrel. Ithaca 900 12 ga. Mauser pistol. ammo for some of the calibers listed, gun cases.

Vehicle/Motorcycle: To sell at noon, 1995 Harley Davidson Heritage softail, 1967 Ford Falcon, has a new motor that has never been started, motorcycle & car parts.

Household/Antiques: Wood ice box, treadle sewing machine, cream separator, crocks, dolls, oil lamps, book shelves, desk, beds, coffee table, canning jars, canners, chairs, large walnut counter, kiln, moulds, stereo equipment, silk flowers, chairs, picnic basket, horse items, very large amount of items packed away in boxes that have yet to be uncovered.

Tools: Several nice tools to include power tools of all kinds, nail guns, nails, wrenches, sockets, Hilti concrete gun, binders, tool boxes, wet saw, several Rigid items, new materials for building a house to include ductwork, copper tubing, pex, and electrical supplies, painting supplies, furnace. High quality auction. The building will be full and will be a very large auction.

Indoor climate controlled sit down style auction. Auction preview on May 14th from 2 to 5 pm. Can see photos at Altiser Auction Facebook page. Statements made the day of sale take precedence over printed material. Food and restrooms are available.

WENDELL AND JANET DEVORE ESTATE AUCTION MAY 22ND @ 10AM 719 1st st. Plano, IA

Real Estate to sell at 12:00 on May 22nd. Open house for viewing will be May 16th from 1 to 4 pm. Large ranch house with several outbuildings and garages. Located close to Lake Rathbun. Buyers will enter into a written contract with 10% down the day of sale. Property to sell with owner approval.

Vehicles: 1951 Ford F-1 truck in good condition, 1968 chevy panel truck w/ 327.

Antiques/Gold: Several 10 12 14k gold necklaces and rings, 10K Bulova watch, Peace dollar belt buckle, pocket watches, wrist watches, costume jewelry, jewelry boxes, pocket knives, carnival glass, keys, cream can, fire hydrants, large rocks, stop light, history putnam county book, galvanized items, industrial bins, cedar boards, old dressers, cast iron bathtub, barn rope, pitcher pump, several well pumps and cylinders, wagon wheels, 18 and 10 ft windmill stands, windmill fan, porcelain light, pop crates, table top scale, wood panel doors, 2 man saws, nearly 1000 precious moments, Hamms stein, bakelite radio, high chairs, trunks, 5 gal oil cans, horse bridles, cast iron skillets. Household: new gas water heater, 220 tanning bed, cabinets, several boxes of household items, electric push mower, lawn furniture cushions, pyrex, glassware, bicycles.

Machinery/Tools: MF1155 tractor in need of some repair. Ford tractor for scrap, loader for ford backhoe for ford, 1 bottom plow, 2 hay wagons, several old truck bed trailers, John Deere sickle mower, fuel barrels on stands, bulk bin, auger, 300 gallon rubbermaid tank, 250 150 gallon propane tanks, auger bits, panel van box made into trailer, bin jacks, resin pump on trailer, antique hay rake, plastic nurse tanks, hay and straw square bales, cement mixer, i beams, gas powered pump, cylinders, gates, swine food, cary all, wagon seeders, large chain hoists, scrap iron, copper scrap iron, batteries, radiators, welder, cutting torch setup, vises, large rolling tool box, tools of all kinds to include s&k and craftsman, lg metal shelving, magnets, chain binders, gear pullers, porta power, Leica transit, drill press, generator, shop books, fencing material, industrial cart, oil cans, wheel barrow, metal band saw, 21 gallon air compressor, tires and rims, buckets, lumber, heaters, bolt cutters, Deere pit air compressor, floor jacks, electric motors, chain link fence, bale spear, lots of plumbing and electrical supplies, craftsman riding mower, vinyl fencing, masonite siding. Folks this is a large auction and has a little bit of everything come spend the day with us.

Can see photos at Altiser Auction Facebook page. Statements made the day of sale take precedence over printed material. Food and restrooms are available. Real Estate listing by United Country Gilworth Real Estate Ced Gilworth Broker 660-626-8445 2020 Main st Unionville, MO 63565

SEE OUR FACEBOOK PAGE FOR PHOTOS

AAA
ALTISER
AUCTION & APPRAISAL
KRIS ALTISER
660-626-4960



GANNETT



P-R DISTRIBUTORS

GOLF CARTS

Sales – Service – Rentals – Customizing



573-693-8147
29566 Lantern Road, Laplata, MO

FOR SALE: John Deere 4255 Tractor, MFWD, 6900 hrs, 95% Firestone duals, sharp, \$49,500. Call 573-881-3557

FARM RAISED CATFISH "Dressed/Delivered/Fresh" order in advance, hormone free Beef, Hogs, Chickens" experience home raised "1/4's 1/2's " 573-604-0674

FOR SALE: 2007 Ford Fusion SE, V6, fully loaded, power sunroof, leather, keyless, factory CD player, alloys, spoiler, only 128,000 miles, black in color, sharp, same owner last 12 year, \$4700. Accelerators Since "1974" Kahoka, MO 660-727-3455 or 217-257-1385 call anytime

FOR SALE: Farmall cub tractor w/ Woods Belly mower & blade, runs good, excellent condition. 636-443-9104

FOR SALE: 6 Bale Hay trailer, \$850. 660-665-1595

FOR SALE: Case IH 1200 12/23 center fill, no till, center pivot, monitor, manual, \$42,500; JD 1780 16/31 Max M Plus, Keton on corn, Seed Star Monitor, shedded, \$18,500. 217-658-4761

PASTURE AND HAY GROUND Needed around Adair & Knox County. Please Contact 660-216-5887 or 417-773-2507

FOR SALE: John Deere 4020 Tractor, 1968, 3-pt, diff lock, 7000 hrs, fully restored, top to bottom, new rubber, Grandpa steps, \$19,500. Call 573-881-3557

FOR SALE: 2010 Case 8120 Combine, 2975 HR -2097 HR, NO DEF, RWA, DIF Lock, 620 Drive Tires, 28 Steer Tires, luxury cab, clean machine, \$95,000. 641-895-8014

FOR SALE: Fish for stocking ponds – Catfish, Grass Carp, Crappie, Blue Gills, Red Ear, Bass, and Minnows. Heindselman Family Farms, Call Greg 660-341-5692

FOR SALE: New Garden Seeds – Seed Potatoes, Onion Bulbs and Plants. Homemade Candy, Local Honey, Stainless Steel Housewares, Wooden Handles, Lamps & Chimneys, Greeting Cards, and more. Train Track Candies 11538 Iceberg Ave, LaPlata, MO, 3rd lane to your left.



SIDE-STEPS

6000XL TRUCKBED

TIRES!

BUMPERS!

WEATHERTECH PRODUCTS

WE ARE YOUR ONE STOP TRUCK ACCESSORY SHOP!

MUD FLAPS

ADVANTAGE SERVICE BODY

EZ DUMP BODY

CANTRIL TRUCK & TRAILER
319-238-7367
 101 North St. • Cantril, IA

NEW/USED PARTS Vehicles/ Semi's/Farm/Construction Equipment. "Tranny's/Engines" "Body parts paint matching yours. "Warrantied/Delivery" 800-807-9612

FOR SALE: Ford 800, new rims, new tubes, Live PTO, in good condition, \$2500, Brush Hog available. 660-341-8089

Limousin and Limflex bulls yearlings, black and polled, good dispositions, AI sired, semen tested, free delivery \$2500 Schrock Cattle 660-988-1163

Scott Huskey's Home Service R-10 Foundation Enclosure Systems for manufactured, modular, & site built homes. Saves on utilities and prevents freeze up. General maintenance and repairs since 1972. 573-696-3468 "GO DAWGS"

WANTED TO BUY: Harley Davidson's, any year, any condition, cash money. Days 660-263-1356 or 660-537-0068

WANTED TO BUY: Farm Machinery and Estates. Call James L. Johnston. 573-473-4904

Wevers Outside Wood Furnaces a dealer for Heatmor Stainless Steel Outside Furnaces, have an assortment of parts, line, and etc. Taking orders for new outside wood furnaces. Used 120 furnace, burns wood or coal, has shaker grates, for \$5,550. Call 660-423-5242, cell 660-216-9885. Open 6pm-9pm Monday-Friday, Saturday anytime, call first.

FOR SALE: New 3 pt. tillers, heavy duty, gear driven, 7' to 10' starting at \$3050. 660-874-4455

FOR SALE: John Deere 4430 Tractor, open station, factory duals, 90% rubber, 10,000 hrs, \$11,500. Call 573-881-3557

FOR SALE: Vegetable Plants \$1.25 a 4 PK, Bedding Plants \$1.50 a 4 PK, Succulents, a Variety of Hanging Baskets and Planters at Kauffman Produce 11538 Iceberg Ave, LaPlata MO 63549

FOR SALE: John Deere 4020 Tractor, 1969, 3600 hrs showing, power shift, dual hydr, Diff Lock, new rubber, original, \$17,500. Call 573-881-3557

SUMMER BARBECUES are here enjoy great farm raises Catfish and Homegrown Sweet Corn. Order early information call 573-604-0674 "Delivered"

NEMO TRADER OFFERS TOTAL WEBSITE PLUS

A professional website PLUS Perch

With Total Website Plus, our expert web developers build you a responsive, SEO-friendly website to connect you with people searching for your business—and you don't have to lift a finger! We take care of everything so you can get back to running your business. Included with your new website is Perch. This award-winning solution monitors your online presence and provides guidance to help market online through quick, easy, and effective tasks.



CINDY HIGH
 Multi-Media Sales Executive

110 E. McPherson Street
 Kirksville MO

Office # 660-665-8500 ext. 19
 Email: nemotrader@gatehousemedia.com



GANNETT

NEMO
 Trader



Countryside Market

Hello from Countryside Market!

Beautiful Hanging Baskets for Mom \$24.95

Planters—Large \$44.95, Small \$24.95

Knock Out Roses \$19.99

Glider with Fold Down Table \$399.99

Picnic Tables – Square, Octagon, and Regular

Bacon \$3.49 / Lb

2.5 Miles North Of Town Kirksville, MO
660-665-3215 or 988-0742

FOR SALE: Registered Lab puppies, 5 mo old, males, up to date on shots and wormer, silver, chocolate, and black, big blocky high quality pups, friendly and ready to start \$300 each 660-988-1163 call or text.

FOR SALE: Neese Angus Bulls over 50 years breeding for Optimum Performance, tested, ready to work. Rutledge, MO 641-344-4565.

ORGANIC CHICKEN LITTER high "NKP" 25 T. loads, \$80 T delivered litter carry overs where your \$550 ton dry leaves yearly. 800-807-9612

FOR SALE: 1981 GMC 3500 1 ton dual wheels, Knapheide flat bed, 350, 4 speed, 300 gallon fuel tank, fell-rite pump, 4 locking tool boxes, running boards, pull bumper, good rubber, basically no rust, and inexpensive service truck, with low mileage, \$3900. Accelerators Since "1974" Kahoka, MO 660-727-3455 or 217-257-1385 call anytime

FOR SALE: DMI 32' FC w/Harrow, \$5000; Krause 30' Disc model #9 tandem on main frame, 9" spacing, 19" blades, \$2000, smaller disc. 217-658-4761

WANTED SMALL ACREAGE with home, fixer uppers considered, must be in Adair, Schuyler or Putnam Counties. Cash Buyer 319-530-8070 Leave message

FOR SALE: 3 Week old Angus heifer bottle calf doing well not a twin, \$375; 2 - 300 gallon plastic water tanks, will not hold water, gardening etc? 217-257-1385

FOR SALE: High quality grass hay, \$35 per bale. 217-653-4762

FOR SALE: 6 hp Mercury boat motor. Titled, runs good, older model, \$200. Macon, MO, Call 660-651-7457.

FOR SALE: John Deere 4230, CAH, QR, 7000 hrs, turbo, sharp, Iowa tractor, \$18,500. Call 573-881-3557

DIRT WORK All types of excavation, reclaiming overgrown fields, including CRP and WRP. Building site preparation, terrace and tiling maintaining and creating new trails and crossings, rock hauling, Food plot development and maintenance. Leveling and grading, wetland construction and maintenance. Pond and lake cleaning and construction. Call for quotes. 660-342-2701

LIMOUSIN & LIM FLEX BULLS for Sale: Black & Red, All Polled, out of TOP AI Sires, low birth weight, w/Performance & Carcass EPD's. Potter's Limousin Cincinnati, IA 641-436-7153 or 641-658-2786

FOR SALE: 3 Low Birth weight Polled Hereford Bulls, good growth, high quality, good disposition. 217-242-1262

FOR SALE: Sim-Angus bulls, high quality, 14-18 months Black, Polled. Paul Martin Shelbina 573-822-4216

FOR SALE: Used garden tillers Troy-Bilt, BCS and other sizes. DR Bruch mowers. Kahoka, MO 660-216-1809

FOR SALE: IHC 5100 21 hole with cylinder, \$2250; JD drill 8300 16 hole, 10" spacing, \$1750; NI 5112 hyd swing 12' hay bine, rubber rolls, \$1250/ bar mowers; sprayers; 217-658-4761.




FOR ALL YOUR FENCING NEEDS.

Quality Cattle Equipment, too!

620-215-5770

KIRKSVILLE, MO
SPECIAL ORDERS AVAILABLE



SINGLE
\$550



DOUBLE
\$950



HEAVY-DUTY \$850
REPLACEMENT BUMPERS
Dodge, Chevy, Ford & GMC



HALF TUB \$2,600



MINERAL FEEDERS \$375



\$2,900
20' ADJUSTABLE ALLEY

Gates • Continuous Panels • Tubs • Alleys • Posts • Pipe • Bumpers • Cattle Feeders

Check out our current inventory at Kirksville Livestock Sales.

If you're looking to build a pipe fence or corral, wire fence, or need quality cattle equipment, WE'RE HERE TO SERVE YOU!



SECURITY CAMERAS FOR FARMS & SMALL BUSINESS



SERVICES.
SOLUTIONS.
SUPPORT.



ON SIGHT 24/7

TRY BEFORE BUY
* Pay 3 months up front
* Remote Technical Support Included!

AFTER 3 MONTHS

You choose 1 of 3 options

BUY IT OUT

Purchase the Surveillance System minus the up-front cost you've already paid.

RENT

Continue with monthly payments.

SEND IT BACK

Whether you only need it for a few months or it's not what you were looking for, now you have the option!



ON SIGHT 24/7 VIDEO SURVEILLANCE

PROFESSIONALS YOU CAN TRUST.

Proudly Serving the Midwestern United States since 2012

5 Star Google Review

"On Sight 24/7 is a relatively inexpensive great security option. It allows us to monitor those coming and going, even at night with infrared. We've used the same system now for over 5 years. Competent techs and kind and helpful staff makes for a worthwhile security system."

C. Heins

660.956.9944



Ed's Machinery LLC

quality machinery since 1997

Hwy. 136, Memphis, MO (One Mile West) • www.edsmachinery.com

Business# 660-883-5501 • Fax# 660-883-5702



2010 CHALLENGER MT765C
4,105 Hours, Power Shift, 30" Tracks, Big 1000 Pto, Quick Hitch, 4 Hyd, ISO, Hammer Strap
\$89,500



2000 JOHN DEERE 566
5X6 Bale Size, Net & Twine, 27,262 Bales, Small 1000 Pto, Rear Bale Kicker, 31x13.5-15 Tire Size,
\$7,950




1997 WILSON DWH400
42Ft. Ag-Hoppers, Ele. Tarp, Air Ride, 11R22.5 14 Ply Tires, **\$16,500**



1990 JOHN DEERE 4955
6,544 Hrs, Power Shift, 2WD, Big 1000 Pto, 3 Hyd, Quick Hitch, Hammer Strap, Front Light Bar, Rear Wheel Wts, 18 Front Wts, 20.8R38 Tires & Duals, 14L-16.1 Front Tires, Cold Air: **\$49,500**



JOHN DEERE 4630
4,807 Hrs Showing, Power Shift, 2 WD, Small 1000 Pto, 3 Hyd, Hammer Strap, 10 Front Wt, Top Link, 18.4R38 Tires, **\$22,500**



JOHN DEERE 4640
9,307 Hours, Power Quad Trans, 2 WD, Big 1000 Pto, 2 Hyd, Quick Hitch, 8 Front Wts, Front Fuel Tank, 18.4R42 Rear Tires w/ Duals, New Front Tires **\$24,500**



2015 KRONE SWADRO 800/26
2 Basket Rake, 2 Pt Hitch, 540 Pto,
\$16,500



2007 JOHN DEERE 735
11 Foot Cut, Small 1000 Pto, Rubber Rolls,
\$13,900



CASE IH TIGERMATE II
52 Foot, 4 Bar Spring Tooth Harrow, Hammer On Sweeps, 9" Sweeps, 8 Bolt Wheels, Walking Tandems **\$23,900**




OLIVER 1855
3,199 Hrs Showing, 2 Hyd, 540 Pto, 3 Pt Arms & Top Link, Set Back Axle, Diesel Motor, 20.8-34 Tires, (Note.... Pto Keeps Turning)
\$10,500



KUHN GA300GM
Single Basket Rake, 3 Pt Hitch, 540 Pto,
Call for price



NEW HOLLAND 1431
13 Foot Cut, 1000 Pto, Rubber Rolls, Draw Bar Hitch, **\$10,500**





MOOSE RUN REPAIR

8 YEARS EXPERIENCE

Tractor • Skid Steer • Combine • Air Conditioning
Self-propelled Forage Harvester & General AG Repairs

Specializing in John Deere

Engine • Transmission • Hydraulics
Power Shift/IVT Diagnosis & Repair
Computer/Electronic System Diagnosis & Repair

660-988-3843
DELVIN "MOOSE" STEINER • QUEEN CITY, MO

HANDYMAN: Install interior and exterior doors and windows, siding, decks, showers and toilets, flooring and drywall. 660-956-2189.

FOR SALE: International Square baler; New Idea Corn Picker, narrow row; Case Threshing machine. 573-674-3601

FOR SALE: John Deere 2940 Tractor, 5400 hrs, cab, air, new rubber, estate tractor, \$14,950. Call 573-881-3557

WANTED: Artsway Grinder mixer with scales, preferably with hydraulic lift & swing. Leave a message 641-664-3395

FOR SALE: 2007 JD 8230 tractor, ILS duals front and back, 3588 hours, \$119,000 obo. 660-265-5077

FOR SALE: Good Quality Alfalfa grass hay, big square bales; also 2021 first cutting big round bales alfalfa grass hay, high moisture. 660-216-1114

COWS FOR SALE: 75 Black and BWF Cows 5 years – SS, 40 Charolais Cross Cows 3 – 7 years old. Cows are calving now. 660-537-6247 or 660-838-6247

FOR SALE: 2008 John Deere 5625 4WD and loader 100 HP, just over 1000 hours, includes 542 heavy duty self-leveling loader with bucket, bale spike, and pallet forks, sales price \$10,880 text me at 402-925-0687

FOR SALE: Truck tire sidewalls for plastic covering on forage piles. Delivery possible 660-299-0781

FOR SALE: Simmental and Sim-Angus bulls, excellent calving ease, top performance and outstanding EPD's with real eye appeal. API as high as 165. Sired by the Breeds' top Sires. "Drake Simmental" Ph Larry 641-895-9422 or Mason 641-895-5735

FOR SALE: JD 7000 6RN w/5R splitter on back, no till, monitor, \$5250; JD 7000 6RN W7R splitter on back, no till, \$6000; JD 7000 12RN no till monitor, \$2000. 217-658-4761.

FOR SALE: Outstanding two-year old Simmental bull. Sired by Wide Range, used in own herd last year, \$4000. Drake Simmental (Larry) 641-895-9422

FOR SALE: JD 750 drill, with grass, front dolly wheels, \$12,500. GP 1500 drill with center pivot caddle, 22 hole, 8 inch spacing, \$11,500. 217-658-4761.

FOR SALE: Kubota 2020 ZD1211L diesel fuel only, 3 cyl., 24.8 HP, 72" cut, purchased in September, has the new style seat, new never been used, \$15,000. 660-216-4942

FOR SALE: Parts for John Deere 1219 conditioner and others, E88923 forged guards, E75474, E76370 section, E59663 and more mostly all new bolts & misc. 217-257-1385

FOR SALE: John Deere 569 Baler, 4000 bales, shedded, all options, includes moisture monitor, clean. Trade? \$32,500. Call 573-881-3557

FOR SALE: Whitetail Institute food plot seeds in stock at Whitetail Seed and Supply, 14136 State Hwy 3, LaPlata, MO 63549.

FOR SALE: 108 Kune speed rake; 2 row John Deere planter 573-541-1367 or 573-221-2178

4 TIRES FOR SALE: LT 245/75 R16 Mud & Snow 10 ply rated, still have ½ tread, \$35 each or \$100 for all 4. 660-342-1951

FOR SALE: New lift chair, never used, big size, light brown. Call 660-216-6136 for details, leave name, number. Knox City.

FOR SALE: 400 International planter, 6 row, \$850 OBO; JD 500 series baler, \$650 OBO; Vermeer 605 E big baler, \$700 OBO; 8' Enclosed trailer, \$600 OBO. 660-216-3715

SUMMER BARBECUES are here enjoy great farm raises Catfish and Homegrown Sweet Corn. Order early information call 573-604-0674 "Delivered"

FOR SALE: 2013 25' Heartland Trail Runner Camper, 1 large slide, excellent condition, separate BR with new Queen Mattress, 2 sofa beds,. Text or call for pics, located in Unionville MO \$14,000. 615-390-0094



HARRISON FISHERY
POND & LAKE STOCKING
Call us today! 660.423.5482



Your trusted source for quality Fish!

Harrison Fishery, Inc. is a family owned and operated business.

We stock most species freshwater, game & baitfish.

Contact us for price & delivery

curtis@harrisonfishery.com
660-423-5482

Species Available	Bluegill	Walleye
Largemouth bass	Redear sunfish	Muskie
Hybrid bluegill	Black crappie	Catfish
Golden shiners	Fathead minnow	<i>and More!</i>

Time to gather up the little ones, get their fishing poles and go enjoy a day of fishing



www.harrisonfishery.com



DJ's CONSTRUCTION

ROOFING * POLE SHEDS * GARAGES * DECKS & MORE

FREE ESTIMATES

SPECIALIZING IN STEEL ROOFING

DANIEL J. MILLER
60597 EARNEST ST. KNOX CITY, MO 63446 | 660-956-2774

CLOSED

TEMPORARILY

As part of the community effort to slow the spread of the COVID-19 virus, we are following the CDC recommendations for social distancing.

The **NEMO Trader** office will be **CLOSED** until further notice.

We are still working to provide our customers with the best possible service during this time.
We will continue to operate, take calls and publish our paper.

Please stay safe.

PLEASE USE THE FOLLOWING CONTACT INFORMATION

FOR LINE CLASSIFIEDS AND BILLING QUESTIONS
Call 660-665-8500 or
Email jkirkpatrick@nemo-trader.com

FOR ADVERTISING QUESTIONS
Call 660-988-6830 or
Email nemotrader@gatehousemedia.com

NEMO Trader **GANNETT**

SPRING IS YOUR GO TIME.
GET OUT THERE.
 You've been waiting all winter for this moment.

POLARIS
 SPRING SALES EVENT

REBATES
 UP TO **\$1,000** ON 2020
 MODELS

TERMS AND CONDITIONS APPLY

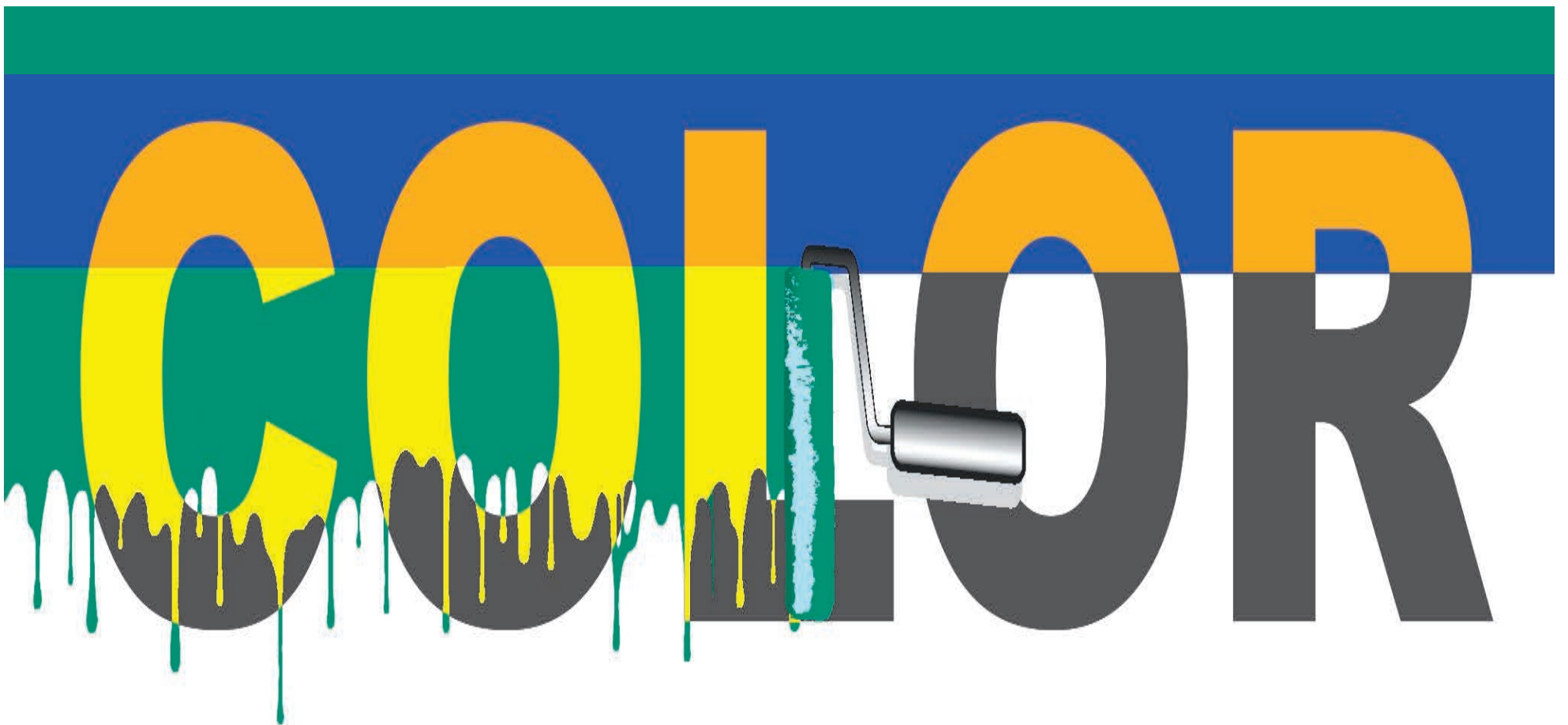
[Explore Inventory >](#)

Slayton
POLARIS

10456 State Route B, Downing, MO
 6 miles W. of Memphis, then 13 miles N. on B
660-328-6627

VISIT POLARIS.COM FOR MORE OFFERS

make your ad **STAND OUT** with...



call 660.665.8500 for a quote today **The NEMO Trader**

MAIN CREEK REPAIR

Larry Geiser

23316 State Hwy H
Kirksville, MO 63501

(715) 415-1995

**Bolts • Belts • Bearings
Hydraulic Hoses • Steel
Welding • Fabricating
Tractor & Equipment Repair**

MAIN CREEK RENTALS

23316 State Hwy H
Kirksville, MO 63501

(660) 988-6917

- Mini Excavator
- Dozer
- Skytrack
- Equipter (Shingle Buggy)
- Snorkle
- Grapple
- Post Hole Digger
- Man Basket

FOR SALE: John Deere 4430 Tractor, CAH, 7600 hrs, 80% 18.4x38, synco range, runs out good, Loader available, \$13,500. Call 573-881-3557

LIMOUSIN & LIM FLEX BULLS for Sale: Black & Red, All Polled, out of TOP AI Sires, low birth weight, w/Performance & Carcass EPD's. Potter's Limousin Cincinnati, IA 641-436-7153 or 641-658-2786



John Deere 4650 Tractor, 1988, MFWD, ps, wts, factory duals, QH, triple hydr, 10,200 hrs, recent overhaul, \$36,500.



John Deere 6145 M Tractor, MFWD, 2485 hrs, new rubber, 4 door, triple hydr, 16 speed, \$72,500. Will trade.



John Deere 4240 Tractor, CAH, one owner, 8000 hrs, recent overhaul, power shift with Farm Hand QT Loader, 29,500.

Call 573-881-3557

FOR SALE: JD BWA 16' disc, manual fold, duals, hydraulic cylinder included, \$2000. 660-665-1595

FOR SALE: NH 489 Haybine, 9' Moco, rubber rollers, excellent condition, always stored inside, \$3500. 660-665-1595

FOR SALE: LP Fork Lift, runs good and works. 636-443-9104

LOOKING FOR a female 55-65 for companionship and someone to enjoy life with. Please call 660-346-1216. If no answer call back.

WANTED TO buy: good used tread mill. 641-895-7982.

FOR SALE: Kinze 24 row, 15" row, fold bean planter only no till, \$4500; White 1230 vertical fold, \$1250; IHC 800 6RN L fert, monitor; \$1750. 217-658-4761.

WANTED: DAD'S silver 1988 ford F250, red interior, 460, 5 speed in LaPlata/Kirksville area. 660-372-1154.

FOR SALE: Pyrenees puppies, for more information call 660-342-6004.

THE ANNUAL meeting of the Parcels Salisbury Cemetery will be held May 23, 2021, at 3:00 p.m. at the cemetery.

FOR SALE: 54 inch mower deck off 2020 John Deere 1025E compact tractor. Fit others, new, never used. Books \$1500. 660-216-1544

FOR SALE: Grandfather clock, Howard Miller, \$200. Exercise bike, Air Gometer DP, \$40. Call 660-216-5560, Macon, MO.

FOR SALE: Simi flatbed two 1400 gal and 600 gal tank, chemical inductor, \$1750; Dugan gooseneck livestock trailer, 24' long, 6' wide, 6' high, 2 gates, open top; \$1850. 217-658-4761.

WANTED TO buy: Recumbent bike, stationary, good condition. Near Macon, MO. Call 660-216-5560.

FOR SALE: Playboy magazines, 81 issues, call 660-341-0023 for details. \$50 for all.

FOR SALE: Oliver tractors, 88 diesel, 77 with loader, both run good. Call for more details. 660-456-7070.

FOR SALE: John Deere 5310 Tractor, 2 wd, with JD 522 Loader, 3200 hrs, big rubber, \$13,500. Call 573-881-3557

WANTED TO BUY: Harley Davidson's, any year, any condition, cash money. Days 660-263-1356 or 660-537-0068

FOR SALE: New 3 pt. tillers, heavy duty, gear driven, 7' to 10' starting at \$3050. 660-874-4455

FOR SALE: Fish for stocking ponds - Catfish, Grass Carp, Crappie, Blue Gills, Red Ear, Bass, and Minnows. Heindselman Family Farms, Call Greg 660-341-5692

FOR SALE: Ford 1500 with rear mounted finish mower and 5' brush hog, \$3500. 660-341-8089

Registered Red Angus cows, 2-8 years old great producers, good condition, good dispositions with black calves cows are wormed and vaccinated ready to turn out Schrock Cattle 660-988-1163

COY'S BOATWORKS LLC

2615 E. Illinois Street, Kirksville, MO 63501

660-665-4447

Email: COYBOATS@CABLEONE.NET

In stock for install

Garmin Panoptix LiveScope Transducer System

We are factory certified Mercury, Suzuki, Mercruiser technicians.

We'll repair all make & models.

ALL THREE PANOPTIX LIVESCOPE VIEWS



WE DO PROFESSIONAL INSTALLATION

In stock for install

Minn Kota Ultrex Bow

Bluetooth, I-Pilot, GPS Trolling Motor, 80#, 45", 24 Volt



CALL NOW TO SET UP AN APPOINTMENT WITH OUR PROFESSIONAL TECHNICIANS

660-665-4447

BUYERS OF CORN, SOYBEAN, ORGANIC, NON-GMO CORN AND SOYBEANS



Contracts Offered
Forward Pricing
Target Orders

Baring, MO

660.892.4411

www.baringelevator.com

CONTACT US FOR PRICING

Lewis 660-341-2937

Roger 660-223-2442

CRP SEED MIXES!

WANT TO BUY DONAHUE/JOHN DEERE IMPLEMENT CARRIER

Brome Grass Seed for Sale

"Looking for very careful customer driven drill operators with their own medium size tractors to pull our seed drills"

Our seed mix labels (tags) specify "genetic origin and production origin" and are approved by Missouri NRCS offices.

We've been harvesting prairie seed in Northern Missouri and Southern Iowa and providing Iowa and Missouri CRP seed mixes since 1987.



CALL 641-766-6790

EMAIL

john@prairieseedfarms.com

CRP MIXES • WILDFLOWERS • PRAIRIE GRASSES

FOR SALE: John Deere 44" Mulching mower deck, good belts off Lx188 fits other models \$100; Procecta hard plastic tool box, full size, \$29. 217-257-1385

FOR SALE: Angus and Balancer bulls, conditioned to work! Tested, May delivery, Neese Farms, Rutledge, MO 641-344-4565.

FOR SALE: Kuhn 112 Speedrake, 5 yrs. old, 12 new rake wheels late 2020, shedded, \$5,750. Call 573-881-3557

ORGANIC CHICKEN LITTER high "NKP" 25 T. loads, \$80 T delivered litter carry overs where your \$550 ton dry leaves yearly. 800-807-9612

FOR SALE: 6 hp Mercury boat motor. Titled, runs good, older model, \$200. Macon, MO, Call 660-651-7457.

FOR SALE: 2003 Chevy 4 door auto. Runs, drives and looks great, high mileage, \$1000 obo. 573-288-5333.

HANDYMAN: Install interior and exterior doors and windows, siding, decks, showers and toilets, flooring and drywall. 660-956-2189.

FOR SALE: Rhino 3-point 12' blade, \$7500 obo. 12 yd soil mover scraper, very good condition, \$20,000 obo. 660-265-5077

FOR SALE: Archery supplies, crossbows, optics and more at Whitetail Seed and Supply, 14136 State Hwy 3, LaPlata, MO 63549.

FOR SALE: Stirex DM-Disc Mower, 9', like new, \$4,750. Call 573-881-3557

FOR SALE: New lift chair, never used, big size, light brown. Call 660-216-6136 for details, leave name, number. Knoxville

FOR SALE: Craftsman mower 42", Kohler motoer, bought new in 7-8-2018; 20.5 John Deere disk; 2001 F150 4 WD, 5 spd, V6. 573-541-1367 or 573-221-2178

FOR SALE: 400 International planter, 6 row, \$850 OBO; JD 500 series baler, \$650 OBO; Vermeer 605 E big baler, \$700 OBO; 8' Enclosed trailer, \$600 OBO. 660-216-3715

FOR SALE: NH 278 square baler, twine tie, restored, dry storage, works great, \$4500. 660-665-1595

NEW/USED PARTS Vehicles/ Semi's/Farm/Construction Equipment. "Tranny's/Engines" "Body parts paint matching yours. "Warrantied/Delivery" 800-807-9612

FOR SALE: Used Rear Tractor tires, some like new, 18.4x38, 13.6x28 & 16.9x30. 636-443-9104

Dutch Garden Nursery

"Your Full Service Garden Center"

Fresh Cut
FLOWER BOUQUETS

Stop By or Call
660-883-5650

CLOSED

Thursday, May 13th for
ASCENSION DAY

Vine Ripened Tomatoes
READY NOW! >>>>

ATTENTION!!!

NEW load of Nursery Plants!

Shrubs - Grasses
Evergreen Bushes-Perennials

Lawn & Garden Care Products
Grass Seed & Fertilizer

Herb Plants & Veggie Plants

New Supply In Stock Of:

Fruit, Shade & Ornamental Trees!

Landscape Blocks,
Firepits - Pavers
Flagstone Edgers

BULK
MULCH

Delivery Available!

MEMPHIS (beside Country View Store) 660-883-5650

EDINA (Home Base) 4 miles north of Edina 660-397-4115

www.dutchgardennursery.com ~ Open Mon.-Fri. 8-6 Sat. 8-5

FRONTLINE FENCING LLC

Kirkville, MO • (660) 956-2430

Custom Steel Pipe Fencing

- Corrals - Feedlots - Custom Built Gates - Mobile Welding
- Custom Built Cattle Handling Equipment - Tubs - Alleys - Freestanding Panels
- 6 and 7 bar gates in stock from 30" to 20", custom lengths on request.
 - ArrowQuip Cattle Handling Equipment
- All types of Custom Farm Fence - Barbed Wire - Woven Wire

29386 St. Hwy T - 5 1/2 miles east of Hwy 63

Need A Tow? Locked out of your Vehicle? Need Tires?

WOODY'S TIRE AUTO & TOWING, LLC

YOUR AUTHORIZED **GOODYEAR** DEALER

ALIGNMENTS • SHOCKS BRAKES • RADIATOR REPAIR

1102 N. GREEN • KIRKSVILLE, MO

23 1/2 hr Towing Service

CALL TODAY FOR CURRENT REBATES ON TIRES

660-665-8617

After Hours 660-216-3123

E For all your advertising needs email us at

nemotrader@gatehousemedia.com

VICTORY

Metals & Recycling

Kirksville, MO 660-665-8000

victorymetalrecycling.com

For current scrap prices call or visit our [Facebook Page](#)

★ Construction/Debris Recycling

Visit Kirksville's construction & debris recycling facility and save trips to the landfill! Take advantage of this service for solid waste removal by bringing your landfill items to Victory Metals C & D recycling facility located at 3602 N. Industrial Rd.

★ Roll-Off Container Service

10-20-30-40 Cubic Yard Dumpsters

3602 N. Industrial Rd.,
Kirksville, MO 63501

djanesvmr@gmail.com

www.victorymetalrecycling.com



290 +/- Acre Real Estate Auction

Michael Modica

Thursday, May 27, 2021 at 5:00 p.m.

35241 Navel Place, Anabel, MO 63431



Directions to Land: 35241 Navel Place, Anabel, MO 63431, From US Highway 36, turn South on State Highway V at Anabel, Missouri, to Noble Road. Turn left on Nevada Avenue to Naval Place. Look for signs. Sale to be held at Scotty's Auction Facility and Event Center.

Auction Location: From the intersection of Highway 36 and Highway 63 in Macon, Missouri, proceed North on Highway 63 approximately 1.5 miles. Look for the big red barn on the West side of Highway 63 - Scotty's Auction Facility and Event Center

Real Estate: We are offering 290 +/- acres located at 35241 Navel Place, Anabel, Missouri, at public auction. This will be offered in multiple tracts using the buyers choice method. This means that the high bidder will have their choice of tract or tracts in any order they choose. This is 290 +/- acres of contiguous land that offers some of the best hunting in the area. Deer roam the property in herds and turkeys in flocks. The property offers open pasture, woods and a balance of tillable acres for amazing food plots. Trails throughout the property allow easy access to your desired hunting spot. Each tract offers beautiful building sites. This is a hard to find property that offers everything you always dreamed of - privacy, seclusion, peacefulness, abundance of wildlife and much more. You can buy it all or you can buy individual tracts. All tracts are subject to survey.

The real estate will sell promptly at 5 p.m.. If you would like to schedule your personal showing, please call Scotty at 573-356-4405.

**See Terms and Conditions for Purchase of Real Estate below.*

DOWN PAYMENT: 10% of the contract purchase price will be due upon acceptance of the Sales Contract. Personal or Cashier's Checks will be accepted. This is "AS IS, WHERE IS" and is non-refundable.

CLOSING: Closing shall be within 30 days of the auction date.

www.scottysauctionservice.com



Scotty Kuntz 573-356-4405

Michael Cunningham 660-651-2288 • Paxton Pittman 918-316-7500

TGI Friday

TGI Free

TGI Full OF GREAT ADS

NEMO

Trader

Phone:
660.665.8500

Address:
110 E. McPherson Kirksville, MO 63501

ADVERTISE with us TODAY!

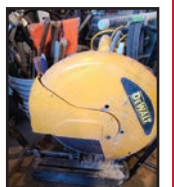
LARGE ESTATE AUCTION

SUNDAY, May 16TH @1PM.

**Marion County Fairgrounds/ Flower City Park
Palmyra, Mo (cattle barns)**

CAR	GUNS & GUN SAFE
TOOLS	HUNTING AND FISHING
LUMBER	HOUSEHOLD
ANTIQUES	AND MUCH, MUCH, MORE

Auctioneer notes: Studebaker will sale at 2pm. This sale will have a very large assortment of wood and metal craft tools. Very nice, clean items!



SELLERS:

THE LATE" DAVID MILES

More pictures and information at:

www.hammondwatsonauctionservice.com

Hammond & Watson
AUCTION SERVICE

Lionel Hammond & Kirk Watson

573-406-3877

PALMYRA MO

Like us on FB



Look us up on
Auction Zip



LOOKING FOR a female 55-65 for companionship and someone to enjoy life with. Please call 660-346-1216. If no answer call back.

WANTED TO buy: good used tread mill. 641-895-7982.

WANTED: DAD'S silver 1988 ford F250, red interior, 460, 5 speed in LaPlata/Kirksville area. 660-372-1154

FOR SALE: IHC 800 12RN end transport, new lead, disk open, row cleaners, monitor, \$2000; IHC 950 630 N disk, row cleaners, monitor, \$1850; 217-658-4761.

FOR SALE: Pyrenees puppies, for more information call 660-342-6004.

THE ANNUAL meeting of the Parcels Salisbury Cemetery will be held May 23, 2021, at 3:00 p.m. at the cemetery.

FOR SALE: Large cross over tool box, diamond tread, aluminum, good, sharp, locks work, make offer. 660-216-1544.

FOR SALE: 1948 International fire truck, good solid truck with all accessories, good title. 573-288-5333.

FOR SALE: Manual pipe treading kit with clamp, \$75, for details call 660-341-0023.

FOR SALE: Oliver 66 wide front, 3-point, like new tires, runs, 2000 Massey Ferguson hay rake. 660-456-7070.

FOR SALE: Rosi 4 Basket Tedder, manual fold, new teeth, new tires, \$2,950. Call 573-881-3557

FOR SALE: 6 Bale Hay trailer, \$850. 660-665-1595

FOR SALE: Sim-Angus bulls, high quality, 14-18 months Black, Polled. Paul Martin Shelbina 573-822-4216

FOR SALE: Brand new LT 265/70 R-17 (E) 10 ply tires, \$119 cash & carry. Take the savings and buy the weekly groceries. Accelerators Since "1974" Kahoka, MO 660-727-3455 or 217-257-1385 call anytime

FARM RAISED CATFISH "Dressed/Delivered/Fresh" order in advance, hormone free Beef, Hogs, Chickens" experience home raised "1/4's 1/2's" 573-604-0674

FOR SALE: John Deere 950 Culti-Mulcher, 15', low use, \$3,500. Call 573-881-3557

FOR SALE: John Deere 4255 Tractor, MFWD, 6900 hrs, 95% Firestone duals, sharp, \$49,500. Call 573-881-3557

FARM RAISED CATFISH "Dressed/Delivered/Fresh" order in advance, hormone free Beef, Hogs, Chickens" experience home raised "1/4's 1/2's" 573-604-0674

FOR SALE: 2007 Ford Fusion SE, V6, fully loaded, power sunroof, leather, keyless, factory CD player, alloys, spoiler, only 128,000 miles, black in color, sharp, same owner last 12 year, \$4700. Accelerators Since "1974" Kahoka, MO 660-727-3455 or 217-257-1385 call anytime

FOR SALE: Farmall cub tractor w/ Woods Belly mower & blade, runs good, excellent condition. 636-443-9104

FOR SALE: Registered Lab puppies, 5 mo old, males, up to date on shots and wormer, silver, chocolate, and black, big blocky high quality pups, friendly and ready to start \$300 each 660-988-1163 call or text.

WANTED TO BUY: Harley Davidson's, any year, any condition, cash money. Days 660-263-1356 or 660-537-0068

WANTED TO BUY: Farm Machinery and Estates. Call James L. Johnston. 573-473-4904

Wevers Outside Wood Furnaces a dealer for Heatmor Stainless Steel Outside Furnaces, have an assortment of parts, line, and etc. Taking orders for new outside wood furnaces. Used 120 furnace, burns wood or coal, has shaker grates, for \$5,550. Call 660-423-5242, cell 660-216-9885. Open 6pm-9pm Monday-Friday, Saturday anytime, call first.

FOR SALE: New 3 pt. tillers, heavy duty, gear driven, 7' to 10' starting at \$3050. 660-874-4455

FOR SALE: John Deere 4430 Tractor, open station, factory duals, 90% rubber, 10,000 hrs, \$11,500. Call 573-881-3557



For Sale:
2013 Ford F250 Iariat
Extended Cab, 6.2 engine, b/w hitch, new battery, tires, short bed. 61K miles.
660-341-8315



Home on 26 Acres m/l Real Estate Auction

Jeri Ann Judy

Thu, June 3, 2021 at 5:00 p.m.

63624 State Highway K, Rutledge, MO 63563



Directions to Auction Location: From the US Highway 63, State Highway Y intersection at Exello, Missouri, turn East onto State Highway Y for 7.5 miles, turn left onto Onxy Avenue for 0.5 miles to the auction location. Watch for signs the day of the sale.

Real Estate: This 2 bedroom, 2 full bath home is located on a picturesque 26 acres. There are amazing views of the plentiful wildlife from the wrap around porch. The home features an open floor plan with vaulted ceilings, an abundance of hickory cabinets, stainless steel appliances, in floor heat, 2" x 6" exterior walls, 200 amp service entrance, laundry room, walk-in pantry, Hardy outdoor wood furnace, split air and heat unit and a lagoon. The average utility bill with water has been around \$120 and the property is in Macon School District.

The real estate will sell promptly at five o'clock. If you would like to schedule your personal showing, please call Scotty at 573-356-4405.

*See Terms and Conditions for Purchase of Real Estate below.

DOWN PAYMENT: 10% of the contract purchase price will be due upon acceptance of the Sales Contract. Personal or Cashier's Checks will be accepted. This is "AS IS, WHERE IS" and is non-refundable.

CLOSING: Closing shall be within 30 days of the auction date.

To be sold separately immediately following the sale of real estate: 9' x 12' storage shed

www.scottysauctionservice.com



Scotty Kuntz 573-356-4405

Michael Cunningham 660-651-2288 • Paxton Pittman 918-316-7500

WANTED

Pleasure type horse with excellent disposition to buy or lease. Message 641-777-4666

Randolph County REAL ESTATE & PERSONAL PROPERTY AUCTION

SATURDAY, JUNE 5, 2021 at 10 AM

**AUCTION & PROPERTY LOCATION:
1362 Highway CC, Cairo, MO 65239**

Directions: From Cairo, MO take Highway K east of Hwy. 63 for 3 miles to Hwy. CC, turn left and property starts on the right and the auction will be conducted at the first house on the right.

The real estate is located in Township 55N, Range 13W, Section 33 in Randolph County. The Robb property consists of a total of 79 +/- acres and will be offered in 5 tracts ranging from 6 +/- acres and the homestead to 32 +/- acres.



**PROPERTY VIEWING
Saturday, May 22 from 2 PM to 4 PM**

Personal Property:

HOUSEHOLD, ANTIQUES & COLLECTIBLES, SHOP TOOLS, PLATFORM SCALES, GAS TANK, LAWN EQUIPMENT, FISHING EQUIPMENT & MISC., TRACTORS & FARM EQUIPMENT, CAR, PORTABLE BUILDING & GATES

For full listing and details visit wheelerauctions.com!

SELLER: ODELL (DECEASED) & SHERRY ROBB

Wheeler
AUCTIONS & REAL ESTATE
23101 HWY. 24, PARIS, MO 65275 | 660-327-5890
WWW.WHEELERAUCTIONS.COM

For more information
Charlie Nordwald | 636-795-4552
Brett Sayre | 573-881-1876
www.wheelerauctions.com

HAY STORAGE SOLUTIONS AND MUCH MORE!



"Today, I checked with Joseph to see when he was planning to deliver and construct my second hoop building. Two years ago I purchased a 55'x98' hoop building from Skylight buildings. It was erected on my site on time and the building went up in two days.

I was concerned about the durability of a vinyl building compared to a metal sided structure. That was until I noticed that a rock from my Brush Hog 2715 had impelled itself into the metal building. The Skylight building would not have been damaged. Also, the name says a lot. I thought that I would wire in lights like my other buildings but to date I have not found the need.

The reason I thought I needed to build a large building was to store my hay inside. I knew I was losing hay quality due to weather damage but baling with 568 John Deere and net wrapping my hay I thought I was keeping my hay loss at a minimum. I found the first year that I had underestimated my losses. I was very pleased with the results of storing hay inside. It is most gratifying to put a bale into the hay ring and seeing that the previous bale was almost completely consumed by the cows or the feeder calves. I had a record amount of carry over from last year and it is safely stored inside ready to be used this winter! This will allow for hay sales this winter.

The construction of the building's frame is strong, the foundation supports are 24" and very deep. I am very satisfied and have ordered another 55' x 140' to be installed in a few weeks. This one will be used to store our small square bales and equipment.

Thank you Joseph for your service and this chance to recommend your buildings."

Wiley and Susan Hibbard, Perry, Missouri

20749 State Highway VV
Ethel, MO 63539
660-486-3250

Skylight
Fabric Structures



Signature
Overhead Doors and Remodeling, LLC

660-785-0248

www.signatureremodelingkv.com

Residential and Commercial Installation and Service



WE ARE HIRING!

Send resume to:
Bank of Kirksville
Attn: Personnel
PO Box 787
Kirksville, MO 63501
EOE
Member FDIC


LOAN SECRETARY POSITION:
Previous secretarial and switchboard experience preferred. Excellent customer service skills required, attention to detail and a friendly outgoing personality. Full time position with benefits.



Matt Kurtz
OWNER

16 Bobwhite St.
Kirksville, MO 63501
717-381-9973
KTB897@gmail.com

COMMODITIES AND GRAIN HAULING



Personal Property Auction

Kenny and Elizabeth Creed

Thursday May 20, 2021 at 4:00 p.m.
4125 State Highway M, Moberly, MO 65270



Directions: From US Highway 63 proceed East on Highway M for approximately 2.5 miles to auction location. Watch for signs the day of the sale.

Vehicle, Tractor and Equipment: 1989 Lincoln Town Car Signature Series, leather interior, 230,000 miles; Massey Ferguson 235 gas tractor, very well taken care of; 3 point RMS 500 5' brush hog with tail wheel; 3 point Priefert 5' blade; 3 point King Cutter middle buster plow; 1 section drag harrow; 3 point draw bar

Furniture and Household: GGlass top table with 4 chairs; Ethan Allen couch with hide-a-bed and matching love seat; drop leaf maple coffee table; 2 wingback upholstered chairs; maple magazine rack table; La-Z-boy recliner, well used; maple dresser with mirror; oak coat rack with umbrella holder; Hon 2 drawer file cabinet; 4 drawer file cabinet; metal desk; walnut roll around office chair; 2 wooden bar stools; expanded metal patio set with 4 chairs; Charbroil gas grill; expanded metal tea cart; expanded metal black patio set with 3 chairs; 2 bar stools; various lamps; 2 solid pine book cases; Two 5 drawer chester drawers; various mirrors; 2 maple full size beds; 3 drawer chester drawers with hat compartment; glass top sofa table; La-Z-Boy sofa; knotty pine coffee table; bookcase with 3 drawers; new Sleep Comfort extra long day bed; round maple table; Ethan Allen rocking chair; 2 metal bakers racks; maple dining table with 6 chairs; maple hutch; various side chairs; 3 TV trays;

Antiques and Collectibles: Pfaltzgraff Verona dishes; Pinky and Blue Boy figurines; Blue Delft figurines; Celestron Astromaster 70 telescope; 2 antique electric tear drop lamps; antique bent arm straight back rocking chair; Singer sewing machine, needs work; miscellaneous oils and prints; ornate Caprani de matai lamp; double pedestal desk; 2 electric antique fluted lamps; lighted China cabinet; large variety of Candlewick glassware; antique pool table with 3/4" slate, needs restored

Sporting Goods: Remington 17 gauge Sportsman 48; Browning Belgium Sweet 16 gauge with screw on choke; Lifespun R3 stationary bike; Golds Gym weight bar, 2 - 25 pounds, 4 - 10 pounds; Murray adult bicycle; Evinrude 3 horsepower outboard with title; Grumman 16' aluminum canoe with trailer and titles;

Tools and Equipment: Husqvarna YTH 21K45 model, 46" deck with 304 hours; Craftsman 4 cycle mini tiller, like new; Werner 8' aluminum ladder; Husqvarna gas straight shaft weed eater; battery charger; various long handle tools; Scouts seed spreader; 3 step ladder; Echo CS-501P chainsaw, like new; Husqvarna 235 chain saw; 10" Craftsman radial arm saw; old air compressor; metal work bench with vise; wooden work bench; Clarke 16" variable speed scroll saw; Craftsman 10" band saw; Fimeo 15 gal ATV sprayer; Rubbermaid poly wheelbarrow; miscellaneous hand tools; Husqvarna gas auger with 4" and 8" bits; Werner 24' aluminum extension ladder;

There will be many more items at this sale too numerous to mention.

www.scottysauctionservice.com



Scotty Kuntz 573-356-4405

Michael Cunningham 660-651-2288 • Paxton Pittman 918-316-7500

FOR SALE: Vegetable Plants \$1.25 a 4 PK, Bedding Plants \$1.50 a 4 PK, Succulents, a Variety of Hanging Baskets and Planters at Kauffman Produce 11538 Iceberg Ave, LaPlata MO 63549

FOR SALE: Case IH 1200 12/23 center fill, no till, center pivot, monitor, manual, \$42,500; JD 1780 16/31 Max M Plus, Keton on corn, Seed Star Monitor, shedded, \$18,500. 217-658-4761

PASTURE AND HAY GROUND Needed around Adair & Knox County. Please Contact 660-216-5887 or 417-773-2507

FOR SALE: John Deere 4020 Tractor, 1968, 3-pt, diff lock, 7000 hrs, fully restored, top to bottom, new rubber, Grandpa steps, \$19,500. Call 573-881-3557

FOR SALE: New Garden Seeds - Seed Potatoes, Onion Bulbs and Plants. Homemade Candy, Local Honey, Stainless Steel Housewares, Wooden Handles, Lamps & Chimneys, Greeting Cards, and more. Train Track Candies 11538 Iceberg Ave, LaPlata, MO, 3rd lane to your left.

FOR SALE: 3 Low Birth weight Polled Hereford Bulls, good growth, high quality, good disposition. 217-242-1262

FOR SALE: 2010 Case 8120 Combine, 2975 HR -2097 HR, NO DEF, RWA, DIF Lock, 620 Drive Tires, 28 Steer Tires, luxury cab, clean machine, \$95,000. 641-895-8014

FOR SALE: Fish for stocking ponds - Catfish, Grass Carp, Crappie, Blue Gills, Red Ear, Bass, and Minnows. Heindselman Family Farms, Call Greg 660-341-5692

NEW/USED PARTS Vehicles/Semi's/Farm/Construction Equipment. "Tranny's/Engines" "Body parts paint matching yours. "Warrantied/Delivery" 800-807-9612

FOR SALE: Ford 800, new rims, new tubes, Live PTO, in good condition, \$2500, Brush Hog available. 660-341-8089

Limousin and Limflex bulls yearlings, black and polled, good dispositions, AI sired, semen tested, free delivery \$2500 Schrock Cattle 660-988-1163

FOR SALE: 6 hp Mercury boat motor. Titled, runs good, older model, \$200. Macon, MO, Call 660-651-7457.

FOR SALE: Truck tire sidewalls for plastic covering on forage piles. Delivery possible 660-299-0781

FOR SALE: John Deere 4020 Tractor, 1969, 3600 hrs showing, power shift, dual hydr, Diff Lock, new rubber, original, \$17,500. Call 573-881-3557

SUMMER BARBECUES are here enjoy great farm raies Catfish and Homegrown Sweet Corn. Order early information call 573-604-0674 "Delivered"

FOR SALE: Neese Angus Bulls over 50 years breeding for Optimum Performance, tested, ready to work. Rutledge, MO 641-344-4565.

ORGANIC CHICKEN LITTER high "NKP" 25 T. loads, \$80 T delivered litter carry overs where your \$550 ton dry leaves yearly. 800-807-9612

FOR SALE: 1981 GMC 3500 1 ton dual wheels, Knapheide flat bed, 350, 4 speed, 300 gallon fuel tank, fell-rite pump, 4 locking tool boxes, running boards, pull bumper, good rubber, basically no rust, and inexpensive service truck, with low mileage, \$3900. Accelerators Since "1974" Kahoka, MO 660-727-3455 or 217-257-1385 call anytime

FOR SALE: DMI 32' FC w/Harrow, \$5000; Krause 30' Disc model #9 tandem on main frame, 9" spacing, 19" blades, \$2000, smaller disc. 217-658-4761

ANYTHING ON WHEELS!



HIGHWAY 63 INSURANCE
(660) 956-9283



highway63insurance.com

Premium Metal Roofing



AW Metal Inc.
Metal Roofing Headquarters
641-664-3990 • awmetal.net

NEMIO Trader

Our circulation is 16,000 with a 19 county coverage area in Missouri, Iowa and Illinois. Our paper is a free paper and is distributed to restaurants, convenience stores and other businesses in the area for individuals to pick up. We have a new issue every Friday.

P.O Box 190
Kirksville, Mo 63501

Office: 660-665-8500
Cell: 660-988-6830
Fax: 660-665-2024
Email: nemotrader@gatehousemedia.com

TOWN DROP ROUTE

<p>MISSOURI</p> <ul style="list-style-type: none"> Alexandera Arbela Atlanta Baring Bevier Brashear Brookfield Browning Bucklin Callao Canton Clarence Downing Durham Edina Ewing Galt Hartford Green Castle Green City Greentop Hannibal Higbee Honeywell Jamesport Kahoka Kirksville Knox City Labelle Laclede Lancaster LaPlata Laredo Lewistown Linneus Livonia Macon 	<ul style="list-style-type: none"> Madison Marcelline Memphis Milan Moberly Monroe City Monticello New Cambria Novinger Palmyra Paris Purdin Queen City Rutledge Shelbina Trenton Unionville Wayland West Quincy <p>IOWA</p> <ul style="list-style-type: none"> Centerville Cincinnati Drakesville Ft. Madison Keokuk Montrose Moravia Unionville Bloomfield Hwy 2 <p>ILLINOIS</p> <ul style="list-style-type: none"> Carthage Hamilton Noita Quincy
---	---

CALL FOR PRICES

WANTED SMALL ACREAGE with home, fixer uppers considered, must be in Adair, Schuyler or Putnam Counties. Cash Buyer 319-530-8070 Leave message

FOR SALE: 3 Week old Angus heifer bottle calf doing well not a twin, \$375; 2 - 300 gallon plastic water tanks, will not hold water, gardening etc ? 217-257-1385

Scott Huskey's Home Service R-10 Foundation Enclosure Systems for manufactured, modular, & site built homes. Saves on utilities and prevents freeze up. General maintenance and repairs since 1972. 573-696-3468 "GO DAWGS"

FOR SALE: High quality grass hay, \$35 per bale. 217-653-4762

FOR SALE: John Deere 4230, CAH, QR, 7000 hrs, turbo, sharp, Iowa tractor, \$18,500. Call 573-881-3557

DIRT WORK All types of excavation, reclaiming overgrown fields, including CRP and WRP. Building site preparation, terrace and tiling maintaining and creating new trails and crossings, rock hauling, Food plot development and maintenance. Leveling and grading, wetland construction and maintenance. Pond and lake cleaning and construction. Call for quotes. 660-342-2701

LIMOUSIN & LIM FLEX BULLS for Sale: Black & Red, All Polled, out of TOP AI Sires, low birth weight, w/Performance & Carcass EPD's. Potter's Limousin Cincinnati, IA 641-436-7153 or 641-658-2786

COWS FOR SALE: 75 Black and BWF Cows 5 years - SS, 40 Charolais Cross Cows 3 - 7 years old. Cows are calving now. 660-537-6247 or 660-838-6247

FOR SALE: Used garden tillers Troy-Bilt, BCS and other sizes. DR Bruch mowers. Kahoka, MO 660-216-1809

FOR SALE: IHC 5100 21 hole with cylinder, \$2250; JD drill 8300 16 hole, 10" spacing, \$1750; NI 5112 hyd swing 12' hay bine, rubber rolls, \$1250/ bar mowers; sprayers; 217-658-4761.

HANDYMAN: Install interior and exterior doors and windows, siding, decks, showers and toilets, flooring and drywall. 660-956-2189.

FOR SALE: International Square baler; New Idea Corn Picker, narrow row; Case Threshing machine. 573-674-3601

FOR SALE: John Deere 2940 Tractor, 5400 hrs, cab, air, new rubber, estate tractor, \$14,950. Call 573-881-3557

WANTED: Artsway Grinder mixer with scales, preferably with hydraulic lift & swing. Leave a message 641-664-3395

FOR SALE: 2007 JD 8230 tractor, ILS duals front and back, 3588 hours, \$119,000 obo. 660-265-5077

FOR SALE: Good Quality Alfalfa grass hay, big square bales; also 2021 first cutting big round bales alfalfa grass hay, high moisture. 660-216-1114

FOR SALE: 2008 John Deere 5625 4WD and loader 100 HP, just over 1000 hours, includes 542 heavy duty self-leveling loader with bucket, bale spike, and pallet forks, sales price \$10,880 text me at 402-925-0687

FOR SALE: LP Fork Lift, runs good and works. 636-443-9104

FOR SALE: Simmental and Sim-Angus bulls, excellent calving ease, top performance and outstanding EPD's with real eye appeal. API as high as 165. Sired by the Breeds' top Sires. "Drake Simmental" Ph Larry 641-895-9422 or Mason 641-895-5735

FOR SALE: JD 7000 6RN w/5R splitter on back, no till, monitor, \$5250; JD 7000 6RN W7R splitter on back, no till, \$6000; JD 7000 12RN no till monitor, \$2000. 217-658-4761.

FOR SALE: Outstanding two-year old Simmental bull. Sired by Wide Range, used in own herd last year, \$4000. Drake Simmental (Larry) 641-895-9422

FOR SALE: JD 750 drill, with grass, front dolly wheels, \$12,500. GP 1500 drill with center pivot caddle, 22 hole, 8 inch spacing, \$11,500. 217-658-4761.

FOR SALE: Kubota 2020 ZD1211L diesel fuel only, 3 cyl., 24.8 HP, 72" cut, purchased in September, has the new style seat, new never been used, \$15,000. 660-216-4942

FOR SALE: 108 Kune speed rake; 2 row John Deere planter 573-541-1367 or 573-221-2178

SUMMER BARBECUES are here enjoy great farm raies Catfish and Homegrown Sweet Corn. Order early information call 573-604-0674 "Delivered"



Real Estate and Personal Property Auction

Larry Wolfe

Sat, June 5, 2021 at 10:00 a.m.

13764 N Highway 63, Jacksonville, MO 65260



Directions to Auction Location: Travel North on Highway 63 from Jacksonville, Missouri, for 0.6 miles. The property will be on your right. Watch for signs the day of the sale.

Real Estate: This 2 bedroom home on approximately 3 acres more or less, is conveniently located on Highway 63 North of Jacksonville, Missouri. The property includes a 30' x 60' building with a concrete floor, plumbing and electric.

The real estate will sell promptly at noon. If you would like to schedule your personal showing, please call Scotty at 573-356-4405.

*See Terms and Conditions for Purchase of Real Estate below.

DOWN PAYMENT: 10% of the contract purchase price will be due upon acceptance of the Sales Contract. Personal or Cashier's Checks will be accepted. This is "AS IS, WHERE IS" and is non-refundable.

Storage Buildings: Three 8' x 12' portable buildings

Vehicles: 64 1/2 - 66 Ford Mustangs; 2000 BMW, no title, as is;

Tools and Equipment: 2 Bobcats; Massey Ferguson MF 35 diesel; ;

There will be many more items at this sale too numerous to mention.

www.scottysauctionservice.com



Scotty Kuntz 573-356-4405

Michael Cunningham 660-651-2288 • Paxton Pittman 918-316-7500

showMe Fencing
660-332-4099
25645 Hwy F, Kirksville, MO 63501
TRUST US with all your **FENCING NEEDS**
*Woven Wire *Corral Pipe *Barb wire

Farm Equipment and Personal Property Auction
Clayton and Curtis Husted
Sat, May 22, 2021 at 10:00 a.m.
63624 State Highway K, Rutledge, MO 63563

Directions to Auction Location: From Edina, Missouri, take State Highway 15 North 3.5 miles to State Highway EE, proceed North 1.8 miles to State Highway K then turn right for 10.5 miles to Colony Store. Look for signs the day of the auction.

Vehicles, Trailers and Miscellaneous: 1991 Ford 4x4 F150, XLT, 8.5 liters, miles unknown; 1997 Isuzu box truck, 16' box with rollup door, miles unknown; 2005 Massey Ferguson 5460 with 1070 loader, 1389 hours and bale spike-left hand reverser, joystick loader - good honest tractor; ProStock 16' stock trailer; hay wagons;

Tools and Miscellaneous: 6 power washers; Handycore 100 wire welder; Lincoln 225 arc welder; Mr Heater contractor diesel 125,000 BTU; Continental heavy duty 12 speed drill press;

There will be many more items at this sale too numerous to mention.

www.scottysauctionservice.com

SCOTTY'S AUCTION SERVICE
Scotty Kuntz 573-356-4405
Michael Cunningham 660-651-2288 • Paxton Pittman 918-316-7500

ALL BULL SELL

All bull sell with Genomic Enhanced EPDs Polled black, black baldy, and red bulls available. Show-Me Select qualified calving ease bulls. All bulls have passed breeding soundness exam.

GINGER ERTEL
26694 Anchor Way
Greentop, MO 63546
gertel@ertelcattle.com
660-234-5265


SOLID 3 BEDROOM, 3.5 BATH, BRICK RANCH HOME OVER FULL BASEMENT, ON A LARGE TREE SHADED LOT THAT OFFERS A COMFORTABLE FLOWING FLOOR PLAN.

2200 S. FIRST KIRKSVILLE, MO
MLS#27784
\$245,000

CALL PAM DANNER @ 660.341.8269 FOR A SHOWING OR WWW.KIRKSVILLEREALESTATE.COM

Virtual Online
HANCOCK COUNTY, ILLINOIS
LAND AUCTION
145.76± ACRES • 3 TRACTS

Thursday,
JUNE 17
@ 1:00 P.M.



OPEN HOUSE:
 Sat., June 5th • 10 AM-12 Noon

**FARMERS, INVESTORS AND COUNTRY HOMEBUYERS -
 BE SURE TO CHECK OUT THIS PROPERTY.**

The farm is ideally located at the east edge of Carthage, IL along Highway 336 and is further described as being located in Northeast Quarter of Section 20, T5N-R6W, Carthage Township, Hancock County, IL. Tract 1 represents nearly all-tillable, productive Class A farmland. Tract 2 is a small parcel with productive soils and potential for commercial development. Tract 3 consists of an attractive country home with farm outbuildings and situated on approximately 3 acres.

DONALD & NORMA WHEWELL ESTATES
 Representing Attorney: Albert V. Ancelet
 Capps, Ancelet, Icenogle & Wallace
 55 S. Adams Street | Carthage, IL 62321 | (217) 357-2107

AUCTION MANAGERS: Randy Sharpe (217) 357-4993 & John Sullivan (309) 221-6700

SULLIVAN AUCTIONEERS, LLC • TOLL FREE (844) 847-2161
 www.SullivanAuctioneers.com • IL Lic. #444000107

GREEN CITY LIVESTOCK MARKETING, LLC
 19037 HWY 129 S.
 GREEN CITY MO 63545
 (660) 874-4146 • www.greencitylivestock.com

NEXT SALE:
Wednesday, June 2nd
 Special Calf & Yearling Sale

1,898 head were sold at the May 5th Special Calf & Yearling Sale. Compared to the last sale two weeks ago, steers & heifers sold \$5-\$10 lower on most weights, with the weaker spot being unweaned, fleshy calves. Slaughter cows were steady, with bulls bringing \$2-\$3 higher.

STEERS:			HEIFERS:		
McDonald & Sanders	405 Mix	163.00	Jackie Buster	650 Ang	146.50
Gerald Spencer	430 Ang	175.00	Alan Rosendahl	652 Ang	147.00
Jerry Jacobs	431 BBWF	181.50	Cole Young	654 Ang	146.00
Geosling & Hines	433 Ang	168.00	Leon Weekley	657 Ang	134.00
Jeremiah & Jessica Waltz	453 Ang	179.00	Richard Clark	658 BBWF	142.00
Matt & Brad Ayers	455 Ang	180.00	Larry Stevenson	668 Ang	144.00
David Watt Estate	455 Ang	175.00	Pope Family Trust	670 Ang	134.00
Lindel Woodside	460 BBWF	170.00	Drew Daniels	684 Mix	144.50
Guffey Farms	476 Ang	181.50	Eddie & Judy Smock	685 BBWF	147.25
Henry & Elizabeth Hostetler	485 Ang	158.00	Tim Acton	688 Ang	147.50
Dan Ewigman	509 Ang	174.50	Bill Young	688 Mix	142.50
Tim Findling	518 Mix	140.00	Danny Smithson	799 BBWF	139.00
Riley & Zentz	524 Ang	160.50	Woods Farms	804 Ang	131.50
Terry Mack	539 Ang	162.00	Charles Sevitts	858 BBWF	128.50
Linny & Christopher Hoermann	541 Ang	163.00			
Jake & Charlene Shermuly	551 Ang	157.25			
Les Mills	557 Ang	151.50			
Roger Casady	558 BBWF	153.00			
Shane Evans	596 BBWF	157.00			
Paul & Leslie Ewigman	601 Ang	153.25			
Matt Pfeiff	602 Ang	148.00			
Willy Ewigman	606 Ang	150.50			
Dennis Foster	608 BBWF	151.25			
Larry McDonald	615 Ang	136.50			
O'Kane Ranch	621 Ang	154.25			
Buckner Farms	624 Ang	147.00			
Matt & Brad Ayers	628 Ang	149.50			
Jr. Carr	633 BBWF	145.00			
Kay Young	635 Ang	150.00			
Reed & Snyder	637 Ang	147.50			
Billy Lindbloom	641 Ang	144.50			
Tim Lewis	643 Ang (bulls)	131.00			
David Evans	649 Ang	147.75			

WEBSITE: www.greencitylivestock.com • **BARN:** 660-874-4146

OWNERS
 Darren Hodgen: 573-999-3252
 Cody McClamroch: 660-349-6535
 Operations Manager: Steve Evans, 660-375-2545

FIELD REPS
 Chuck Daniels: 660-626-7621
 Steve Frazier: 660-626-7066 • Jeff Gray: 660-265-5569
 Justin Morgan: 660-216-9719 • Baylon Belt: 660-342-5618

We are your top market for all classes of cattle
We value and appreciate your business!

FOR SALE: John Deere 569 Baler, 4000 bales, shedded, all options, includes moisture monitor, clean. Trade? \$32,500. Call 573-881-3557

FOR SALE: Whitetail Institute food plot seeds in stock at Whitetail Seed and Supply, 14136 State Hwy 3, LaPlata, MO 63549.

FOR SALE: Parts for John Deere 1219 conditioner and others, E88923 forged guards, E75474, E76370 section, E59663 and more mostly all new bolts & misc. 217-257-1385

FOR SALE: Pyrenees puppies, for more information call 660-342-6004.

4 TIRES FOR SALE: LT 245/75 R16 Mud & Snow 10 ply rated, still have 1/2 tread, \$35 each or \$100 for all 4. 660-342-1951

FOR SALE: New lift chair, never used, big size, light brown. Call 660-216-6136 for details, leave name, number. Knox City.

FOR SALE: 400 International planter, 6 row, \$850 OBO; JD 500 series baler, \$650 OBO; Vermeer 605 E big baler, \$700 OBO; 8' Enclosed trailer, \$600 OBO. 660-216-3715

FOR SALE: New 3 pt. tillers, heavy duty, gear driven, 7' to 10' starting at \$3050. 660-874-4455

FOR SALE: 2013 25' Heartland Trail Runner Camper, 1 large slide, excellent condition, separate BR with new Queen Mattress, 2 sofa beds,. Text or call for pics, located in Unionville MO \$14,000. 615-390-0094

FOR SALE: John Deere 4430 Tractor, CAH, 7600 hrs, 80% 18.4x38, synco range, runs out good, Loader available, \$13,500. Call 573-881-3557

LIMOUSIN & LIM FLEX BULLS for Sale: Black & Red, All Polled, out of TOP AI Sires, low birth weight, w/Performance & Carcass EPD's. Potter's Limousin Cincinnati, IA 641-436-7153 or 641-658-2786

FOR SALE: JD BWA 16' disc, manual fold, duals, hydraulic cylinder included, \$2000. 660-665-1595

FOR SALE: NH 489 Haybine, 9' Moco, rubber rollers, excellent condition, always stored inside, \$3500. 660-665-1595

LOOKING FOR a female 55-65 for companionship and someone to enjoy life with. Please call 660-346-1216. If no answer call back.

WANTED TO buy: good used tread mill. 641-895-7982.

FOR SALE: Kinze 24 row, 15" row, fold bean planter only no till, \$4500; White 1230 vertical fold, \$1250; IHC 800 6RN L fert, monitor; \$1750. 217-658-4761.

WANTED: DAD'S silver 1988 ford F250, red interior, 460, 5 speed in LaPlata/Kirksville area. 660-372-1154.

THE ANNUAL meeting of the Parcels Salisbury Cemetery will be held May 23, 2021, at 3:00 p.m. at the cemetery.

FOR SALE: 54 inch mower deck off 2020 John Deere 1025E compact tractor. Fit others, new, never used. Books \$1500. 660-216-1544

FOR SALE: Simi flatbed two 1400 gal and 600 gal tank, chemical inductor, \$1750; Dugan gooseneck livestock trailer, 24' long, 6' wide, 6' high, 2 gates, open top; \$1850. 217-658-4761.

WANTED
Good Log Cutter & Skidder Operator
Experienced only, good pay, full time.
Call 660-342-2122


Tired Of Cleaning Your Gutters? LEAFPROOF THEM!



Show-ME Seamless Guttering
5" & 6" Gutters W/16 Colors Available
Free Estimates
Prompt Service
Siding • Soffit • Facia

Elliott Hix
660-626-3447
Kirksville, MO

Fascia - 20 colors available



FOR SALE:
 Registered Hereford Bulls
 18-24 Months Old,

JRC FARMS
 Jim Clark
 Mercer, MO.
 660-748-6464

AUTO'S UNLIMITED
660-665-8149
660-341-0965
No Sunday Calls!
 17406 Bob Rd • Kirksville, MO

FEATURED VEHICLES



nice older Ford minivan low miles excellent condition \$3300



2005 Ford Escape four-wheel drive 125,000 miles great shape

CALL FOR MORE INFO!

All Vehicles Have Received:
60 point inspection
(performed by local garage)
Detailed and Serviced State Inspection



Judd Motors
Call 660-457-3700
 Hwy 63 North, Lancaster, MO

- 2017 Grand Cherokee 2K, one owner, Charcoal, new tires **SOLD**
- 2017 Ford Explorer 4x4, 6, 3 row, full power, only 52k, silver **SOLD**
- 2015 GMC 2500HD, SLT, 4x4, crew cab, shortbed, 6.0L, heat & cool leather, bed cover, 1 owner, only 113k miles, charcoal, very nice, only **\$34,900**
- 2015 Equinox, All Wheel Drive, 1 owner, 129k, silver, nice, Remote start, new tires, only **\$9,250**
- 2015 Jeep Cherokee Latitude, 4x4, V6, heated cloth, red, only 84k very nice **\$15,250**
- 2006 Chevy 1500, 4x4, crew cab, 5.3L, leather, red, 147k, **\$11,900**
- 2006 Chevy 2500 HD, 6.0 L, 4x4, reg. cab, long bed, 126K, one owner, white, very nice. **\$15,900**
- 2005 GMC 2500HD, SLE, 2wd, 6.0L, ext cab, long bed, only 119k, silver, very nice, only **\$12,900**
- Kubota M6800 tractor with loader, MFD, cab/AC, 70 hp, only 2500 hrs, new paint, only **\$32,900**

www.juddmotors.com | **In Business Over 75 Years**
 Curly and Kevin Judd

WANTED TO buy: Recumbent bike, stationary, good condition. Near Macon, MO. Call 660-216-5560.

FOR SALE: Grandfather clock, Howard Miller, \$200. Exercise bike, Air Gometer DP, \$40. Call 660-216-5560, Macon, MO.

FOR SALE: Playboy magazines, 81 issues, call 660-341-0023 for details. \$50 for all.

FOR SALE: Oliver tractors, 88 diesel, 77 with loader, both run good. Call for more details. 660-456-7070.

FOR SALE: John Deere 5310 Tractor, 2 wd, with JD 522 Loader, 3200 hrs, big rubber, \$13,500. Call 573-881-3557

WANTED TO BUY: Harley Davidson's, any year, any condition, cash money. Days 660-263-1356 or 660-537-0068

FOR SALE: Fish for stocking ponds - Catfish, Grass Carp, Crappie, Blue Gills, Red Ear, Bass, and Minnows. Heindselman Family Farms, Call Greg 660-341-5692

FOR SALE: Ford 1500 with rear mounted finish mower and 5' brush hog, \$3500. 660-341-8089

Registered Red Angus cows, 2-8 years old great producers, good condition, good dispositions with black calves cows are wormed and vaccinated ready to turn out Schrock Cattle 660-988-1163

FOR SALE: John Deere 44" Mulching mower deck, good belts off Lx188 fits other models \$100; Procecta hard plastic tool box, full size, \$29. 217-257-1385

FOR SALE: Angus and Balancer bulls, conditioned to work! Tested, May delivery, Neese Farms, Rutledge, MO 641-344-4565.

FOR SALE: Kuhn 112 Speedrake, 5 yrs. old, 12 new rake wheels late 2020, shedded, \$5,750. Call 573-881-3557

ORGANIC CHICKEN LITTER high "NKP" 25 T. loads, \$80 T delivered litter carry overs where your \$550 ton dry leaves yearly. 800-807-9612

FOR SALE: 6 hp Mercury boat motor. Titled, runs good, older model, \$200. Macon, MO, Call 660-651-7457.

FOR SALE: Craftsman mower 42", Kohler motoer, bought new in 7-8-2018; 20.5 John Deere disk; 2001 F150 4 WD, 5 spd, V6. 573-541-1367 or 573-221-2178

FOR SALE: 2003 Chevy 4 door auto. Runs, drives and looks great, high mileage, \$1000 obo. 573-288-5333.

HANDYMAN: Install interior and exterior doors and windows, siding, decks, showers and toilets, flooring and drywall. 660-956-2189.

FOR SALE: Rhino 3-point 12' blade, \$7500 obo. 12 yd soil mover scraper, very good condition, \$20,000 obo. 660-265-5077

FOR SALE: Archery supplies, crossbows, optics and more at Whitetail Seed and Supply, 14136 State Hwy 3, LaPlata, MO 63549.

FOR SALE: Stirex DM-Disc Mower, 9', like new, \$4,750. Call 573-881-3557

FOR SALE: New lift chair, never used, big size, light brown. Call 660-216-6136 for details, leave name, number. Knox City

FOR SALE: 400 International planter, 6 row, \$850 OBO; JD 500 series baler, \$650 OBO; Vermeer 605 E big baler, \$700 OBO; 8' Enclosed trailer, \$600 OBO. 660-216-3715

FOR SALE: NH 278 square baler, twine tie, restored, dry storage, works great, \$4500. 660-665-1595

NEW/USED PARTS Vehicles/ Semi's/Farm/Construction Equipment. "Tranny's/Engines" "Body parts paint matching yours. "Warrantied/Delivery" 800-807-9612

FOR SALE: Used Rear Tractor tires, some like new, 18.4x38, 13.6x28 & 16.9x30. 636-443-9104

FOR SALE: Brand new LT 265/70 R-17 (E) 10 ply tires, \$119 cash & carry. Take the savings and buy the weekly groceries. Accelerators Since "1974" Kahoka, MO 660-727-3455 or 217-257-1385 call anytime

CELEBRATIONS! PARTY RENTAL
KIRKSVILLE, MO

FOR RENT
TABLES - CHAIRS - TENTS - BOUNCE HOUSE & COTTON CANDY MACHINE...ECT.

660-626-5162 or 660-665-9380

LaPlata Community Benefit Auction

June 26, 2021

Wanting Consignments for the upcoming annual auction on June 26, 2021. Horses, ponies, cows, sheep, pigs, poultry, tack, machinery, guns, furniture, glassware, quilts, etc. Sale bill deadline date is May 20th. Will take consignments up to sale date.

For more information contact:

Amos Gingerich 26090 Igloo Street, LaPlata, Mo 63549
Randy High 660-216-0515

For Sale:

2007 TL150 Takeuchi 90 Hp Yanmar diesel 3800 hrs Cab, heat, AC 2sp new tracks, new paint, serviced \$24,950.00

2004 7320 John Deere FWA Left 4 Reverser Front Weights New 42" tires on rear only 3200 hrs, serviced. \$44,950.00

Vermeer TS 44 A Tree Spade 44" New Honda Engine pull type \$5,000

Vermeer WR220 10 Wheel Rake \$1,500

Adair Co Ag & Lawn LLC
Greentop, MO
660-341-6267 or 660-397-9970




LAN-DOW BUILDINGS

"We Build To Suit Your Needs"

"Custom Built"

Pole Barns • Garages • Utility Buildings

"H" Don or Dick Middleton

Memphis Lumber Co.

1-800-337-5858 • 660-465-8595

Fax: 660-465-8596

FOR SALE


AI Sired Angus Bulls,
14 & 18 Months Old.

Harold Trump
660-341-5730

Polled Hereford

BULLS

Complete Performance Data



GALEN KRIEG
217-743-5382
Basco, IL

Mid-States Horse & Tack Auction



Saturday May 29, 2021

Tack @ 10:00a.m. • Horses @ 2:00 P.M.

KIRKSVILLE LIVESTOCK MARKET
HWY 63 NORTH KIRKSVILLE, MO

Guest Consigners only on Tack!

Check us out and like us on Facebook at Mid-States Livestock Sales




TAKING EARLY CONSIGNMENTS NOW!

For More Information:
Josh Weaver: 660-341-7964 • Jeb Weaver: 660-341-1866

SULLIVAN AUCTIONEERS, LLC

A FAMILY OWNED BUSINESS SINCE 1979

 MATT	 MICHAEL	 LUKE	 JOHN
 DAN	 JOE	 JIM	 BILL

Headquartered in Hamilton, Illinois, Sullivan Auctioneers, LLC is one of the largest Real Estate and Farm Machinery Auctioneers in the nation.

For more than 40 years we have been conducting professional auctions. We connect our sellers with thousands of interested buyers around the world.

Considering an Auction?

CALL OR EMAIL TODAY FOR A NO OBLIGATION CONSULTATION!

Toll Free (844) 847-2161 | Sold@SullivanAuctioneers.com
www.SullivanAuctioneers.com | Lic. #444000107

LOLLI BROS. LIVESTOCK MKT, INC.

Special Cow, Cow/Calf & Bull Sale

Tuesday, May 18 *11am

GREG YOUNG - 5 Fancy Angus Cows w/calves: 3-4 years old, calves born April 1st, home raised.

JEFF JOCHIMSON - 50 Black & Red Angus crows, spring herd dispersal: 3-5 years old 2/ calves by side. Calves are sired by Black Simmental/Angus Bulls. Cows are in short pasture & hay conditioned.

DON RUSSELL - 11 Fancy Angus Heifer pairs: calves born March 1st, have had all shots, poured & ready for grass.

KEVIN JENNINGS - 25 Black/BWF Cows/ SS: start calving in September, bred to Angus bulls.

MIKE TEAL - 35 Black/BWF Cows: 5-8 years old, start calving in Sept, bred to Angus Bulls.

GREG YOUNG - 1 Registered Angus Bull: 4 years old, semen & trich tested.

JAY SHEWMAKER - 4 Angus bulls, 18 months: sired by Connealy, Traveler & New Design, semen & trich tested. See our website for dam registration papers.

JEFF JOCHIMSON - 2 Angus bulls, 3 years old. 1 Blk Semi Angus bull, 3 years old, 1 Red Semi Angus bull, 4 years old.

GERALD DICK - 1 Registered Angus Bull: 3 years old, Sydenstricker breeding, semen & trich good.
This is only a partial listing, many more by sale date.

YOUR BUSINESS IS GREATLY APPRECIATED!

Cafe Open Lollo Bros. Livestock Market, Inc. Cafe Open
704 Main st * Macon, MO * 660-385-2516 * www.lollibros.com
Dominic 660-651-4024 * Frankie 660-651-4040
Tim 660-651-3496 * Joseph 660-346-9711 Cattle accepted on Sundays

Bull Breeding Soundness Day

MAY 25, 2021

At the Edina Livestock Market in Edina, MO
\$55 / Head Includes Vac's & Pour On



Please RSVP to the Canton Vet Clinic
573-288-3817

LANCASTER LUMBER INC.

Lancaster, MO.

1-800-424-5071

LAN-DOW BUILDINGS

www.lancasterlumber.com



High Retirement FARM AUCTION

Friday, May 21, 2021 @ 9:00 A.M

From LaPlata MO: go West on HWY 156 approx. 1 mile to January PL, then South 1/2 mile to Idaho Street, then West 3/4 mile to auction site. Watch for signs!

Monroe & Mattie Shrock

27561 Idaho Street
LaPlata, MO 63549

Machinery & Silo

Ford 60hp gas power unit, runs good - (2) forecarts
Red Seal 30hp gas power unit w/ reduction gear
Pioneer forecart w/ brakes - Pioneer 14" sulky plow
JD 14" sulky plow w/ slat bottom
McCormick Deering 22' thrashing machine w/ straw cutter, good cond. - JD 336 square baler w/ engine
McCormick #9 6' mower on regular gear - (3) hay racks
McCormick #7 6' mower on regular gear - 30' elevator
Minnesota 5' mower for parts - steel flare box on steel gear
(2) Case #6 5' mowers for parts - 60' endless drive belt
Kewanee 500 40' elevator w/ drag - NI manure spreader
Triple box wagon on steel gear, good condition
JD all steel wagon gear - (4) steel wagon gears
Lots of various size steel wheels - endgate seeder
McCormick Deering 6' drill, needs work - 10' single disc
McCormick #7 silage cutter w/ pipes, good condition
Papec silo filler & web - 12'X24' rib stave silo
NI 10A manure spreader - McCormick 2 row planter
(5) NI 10A manure spreaders, need work - sleigh runners
JD model E manure front end manure spreader, no box
(2) McCormick corn binders - 5 shovel cultivator
(2) McCormick corn binders for parts - Clipper seed cleaner
Hand seeders - McCormick 8' grain binder, needs work
McCormick 2 row planter w/ dolly wheels - 25' windmill tower
JD 8' tandem disc - (2) McCormick 8' single disc
McCormick 6' single disc - single section harrow
2 section harrow - 2 section spring tooth harrow
(2) McCormick 1 row cultivators - hay loader for parts
(2) McCormick 1 row cultivators, need work
Dunham single roll cultipacker - (2) JD 640 5 bar rakes
NI side delivery rake - several sets of buggy hanger
Montgomery Ward grinder w/ extra screens

Horses & Livestock Equipment

Smooth mouth Belgian red sorrel gelding
Smooth mouth Belgian Standardbred cross bay gelding, used as a team w/ Belgian gelding
(4) sets of nylon draft harnesses - collars of various sizes
Lots of new & used cattle panels - cattle headgate
Woven wire - barb wire - lots of new & used steel posts
Approx. 25 stanchions - (3) bale rings - bale spear
2, 3, & 4 horse eveners - 10 gallon milk cans
EM-BEE 400 gal. bulk tank w/ cooling unit

Buildings - Corn Crib - Shop Tools

Several moveable buildings - (2) wire corn cribs
(2) v bottom boats - Force water pump
Several pump jacks - several handyman jacks
speed jack - (2) DR brush mowers (26" & 30")
(2) Mono buzz saws - several cross cut saws
Several bow saws - several push mowers
Bachtold brush mower - lots of forks, shovels, spades
Cement mixer - (4) hay forks - Sears & Roebuck transit
Post auger - jobbers - metal seats - 1 ton chain hoist
Post vice - wood chipper/shredder - crowbars
Pry bars - hand planers - hand saws
Galvanized minnow bucket
Craftsman 24" jig saw - (4) fuel barrels
10" Craftsman table saw w/ engine
Several hundred wire fur stretchers
Wooden fur stretchers - chain binders
Wooden pulleys - several tongue trucks
Breast drills - braces - wrenches - C clamps
Fairbanks platform scales - 16' wooden ladder
12' extension ladder - stepladders - various garden tools
Lots & lots of shop tools

Household

Several Maytag washers - cast iron pots & kettles - cast iron bathtub w/ legs - steel bed frames - 6 yr. crib
Rollaway beds - ironing boards - lots of folding chairs - several meat grinders, various brands & sizes - tabletop stove
Various pressure cookers - several Coleman campstoves - Single burner oilstoves - 2 burner oilstove - painted cupboard
5 burner oilstove - kerosene lamps - double & single mantel gas lanterns - pots & pans, some stainless steel - old piano
Kerosene mantle lanterns - treadle sewing machines - misc. kitchen items - wardrobe - dressers - metal utility carts
Blue & green canning jars - old copper clad cookstove Ashley woodstove w/ jacket - typewriters - kerosene fridge

Auctioneer's Note: This auction will be an interesting one as we will be selling 50 years accumulation for the Schrocks. There is lots & lots of stuff, and much more than we were able to list individually. We plan to run 2 rings all day, so come prepared. Lunch will be served on grounds. Make plans to attend!

High Auction Service LLC Kris High 660.342.8634 - Randy High 660.216.0515

for additional photos go to: www.highauctionservice.com email: highauctionservice@gmail.com
Terms: Cash or check with proper I.D. Not responsible in case of accidents or theft. Announcements day of sale take precedence over any advertising.

NEMO Advertising Deadline MONDAY @ 5:00 PM

-DIGITAL -DISPLAY -CLASSIFIEDS

Questions about advertising? Our highly trained staff would be glad to help you with all your advertising needs. Contact us today.

NEMO Trader

CONTACT

OFFICE: 660-665-8500 FAX: 660-665-2024

EMAIL: nemotrader@gatehousemedia.com

ADDRESS: 110 E. Mcpherson St. Kirksville, Mo

MAILING ADDRESS: P.O. Box 190 Kirksville, Mo 63501



RESULTS FROM SALE MAY 8TH

BUTCHERS \$73.00-90.00/CWT
SOWS \$46.00-63.50/CWT

FEEDER LAMBS \$242.50-335.00/CWT
FAT LAMBS \$152.00-175.00/CWT
CULL EWES \$87.00-118.00/CWT
KID GOATS 40-70# \$75.00-315.00/HD
NANNIES \$110.00-340.00/HD

HEIFER PAIRS \$1900-2100
MIDDLE AGE COW PAIRS \$1400-1700
MIDDLE & SS BRED COWS \$1000-1400

POUND COWS \$47.50-52.00/CWT LOW YIELDING
\$52.00-63.00/ CWT MID YIELDING
\$64.00-71.00/ CWT HIGH YIELDING

POUND BULLS \$77.00-95.00/CWT

SPECIAL CATTLE SALE SAT MAY 15TH

MACHINERY & FARM EQUIPMENT CONSIGNMENT SALE JUNE 1ST
CALL WITH CONSIGNMENTS

Watch website for early listings
www.keosauquasaleco.com
Keosauqua Sales Co
319-293-3508

BILL GOEHRING 641-919-9365
LUCAS GOEHRING 641-919-6272
SALE BARN 319-293-3508
FIND US ON FACEBOOK

LOOKING FOR a female 55-65 for companionship and someone to enjoy life with. Please call 660-346-1216. If no answer call back.

WANTED TO buy: good used tread mill. 641-895-7982.

WANTED: DAD'S silver 1988 ford F250, red interior, 460, 5 speed in LaPlata/Kirksville area. 660-372-1154

FOR SALE: IHC 800 12RN end transport, new lead, disk open, row cleaners, monitor, \$2000; IHC 950 630 N disk, row cleaners, monitor, \$1850; 217-658-4761.

FOR SALE: Pyrenees puppies, for more information call 660-342-6004.

THE ANNUAL meeting of the Parcels Salisbury Cemetery will be held May 23, 2021, at 3:00 p.m. at the cemetery.

FOR SALE: Large cross over tool box, diamond tread, aluminum, good, sharp, locks work, make offer. 660-216-1544.

FOR SALE: 1948 International fire truck, good solid truck with all accessories, good title. 573-288-5333.

FOR SALE: Manual pipe treading kit with clamp, \$75, for details call 660-341-0023.

FOR SALE: Oliver 66 wide front, 3-point, like new tires, runs, 2000 Massey Ferguson hay rake. 660-456-7070.

FOR SALE: Rosi 4 Basket Tedder, manual fold, new teeth, new tires, \$2,950. Call 573-881-3557

FARM RAISED CATFISH "Dressed/Delivered/Fresh" order in advance, hormone free Beef, Hogs, Chickens" experience home raised "1/4's 1/2's" 573-604-0674

FOR SALE: John Deere 950 Culti-Mulcher, 15', low use, \$3,500. Call 573-881-3557

FOR SALE: John Deere 4255 Tractor, MFWD, 6900 hrs, 95% Firestone duals, sharp, \$49,500. Call 573-881-3557

FARM RAISED CATFISH "Dressed/Delivered/Fresh" order in advance, hormone free Beef, Hogs, Chickens" experience home raised "1/4's 1/2's" 573-604-0674

FOR SALE: 2007 Ford Fusion SE, V6, fully loaded, power sunroof, leather, keyless, factory CD player, alloys, spoiler, only 128,000 miles, black in color, sharp, same owner last 12 year, \$4700. Accelerators Since "1974" Kahoka, MO 660-727-3455 or 217-257-1385 call anytime

FOR SALE: Farmall cub tractor w/ Woods Belly mower & blade, runs good, excellent condition. 636-443-9104

FOR SALE: 6 Bale Hay trailer, \$850. 660-665-1595

WANTED TO BUY: Harley Davidson's, any year, any condition, cash money. Days 660-263-1356 or 660-537-0068

The Ultimate Wood Heat.



- **More Comfort** - Thermostatically controlled wood heat.
- **Peace of Mind** - Keep the fire outside and eliminate the dangers associated with indoor wood heating.
- **Save Money** - Wood is a renewable, inexpensive and often free energy source.

CAMPEN
Heating & Air Conditioning
573-288-8966
Canton, MO
CentralBoiler.com

Virtual Online Auction - Bid @ www.SullivanAuctioneers.com

HANCOCK COUNTY, ILLINOIS LAND AUCTION

FRIDAY, JUNE 18TH @ 10:00 A.M.

160 ACRES± • 2 TRACTS

The farm is located approximately 4 miles northwest of Plymouth, IL, just west of St. Mary along the Colmar to Denver Road (13 miles southeast of Carthage or 20 miles southwest of Macomb, IL). The property is further described as being located in the South Half of Section 10, T4N-R5W, St. Mary Township, Hancock County, IL.

Tract 1 is nearly all-tillable, productive Class A farmland and Tract 2 is improved, open pasture land.

LEWIS A. AND MARGARET A. PAYNE TRUST
MATTHEW PAYNE | KEVIN PAYNE | REBECCA PAYNE

Representing Attorney: Christopher G. Scholz
Scholz, Loos, Palmer, Siebers & Duesterhaus LLP
625 Vermont | Quincy, IL 62301 | (217) 223-3444

AUCTION MANAGERS: John Sullivan (309) 221-6700 & Dan Sullivan (319) 795-1833

SULLIVAN AUCTIONEERS, LLC • TOLL FREE (844) 847-2161
www.SullivanAuctioneers.com • IL Lic. #444000107

PUBLIC AUCTION

We will sell the following real estate and personal property of Edward and Thelma Walker located north of New Cambria, MO on Rt. Z, 6 miles to Rt. VV then north 2 miles to Artic Road and then turn west and go 1/2 mile on Anchor Avenue to 22981 Anchor Avenue, Bucklin, MO on

SATURDAY, JUNE 12TH, 2021 @ 10 A.M.

REAL ESTATE TO BE OFFERED FOR SALE AT 12 NOON consists of 22 acres M/L with two ponds, timber & grass which is ideal deer & turkey hunting and older home with electric and water service.

FOR MORE INFORMATION OR SHOWING, CONTACT JASON ANDERSON @ 660-412-1376.

TERMS: 10 PERCENT DOWN DAY OF SALE W/BALANCE DUE WITHIN APPROXIMATELY 45 DAYS W/TITLE INSURANCE FURNISHED.

OWNER: TINA SCHNEIDERHEINZE

For more information call 660-413-2122

Christy's Auction Service



La Plata, MO 63549 660-341-4531
See Websites for Photos: www.dchristyauctions.com
& Christy's Auction Service on Facebook
Auctioneers: David Christy - 660-341-4531
Jason Wood - 660-341-7884 Greg Smoot - 660-341-5175



CUSTOM CHOPPING

We chop all kinds of forages.
Hauling equipment & drivers available.

DEVON ZIMMERMAN

660-464-1324
25741 State D, Downing, MO 63536



For Your Equipment Needs!

LOTS OF
USED EQUIPMENT
AVAILABLE

**Vermeer 605 N Balers, Twin Rakes,
Trailed Mowers, Disc Mowers,
Tedders, Bale Processors-**

*Offer high capacity, speed, reliability,
efficiency, fuel savings...*

DeWeze Bale Beds-

Lift, load, transport and feed big, round bales...

Danuser Post-Hole Diggers-

Offer quality & reliability, outperforms the competition...

USED EQUIPMENT

BALERS

605 N Net
605 L Net
605 K Net

RAKES

R2800
R2300
VR1224

MOWERS

TM 1210
8040
7030
Vicon 4000

TEDDERS

TD250

BALE PROCESSORS

BPX 9000
BPX 9010

Troyer TARP MFG.

660-486-3301

20264 State • Hwy. VV • Ethel, MO. 63539



Hoop Building Covers

FARM TARPS

TRUCK TARPS

WE GOT YOUR NEEDS COVERED!

Liebhart Sales, Inc.

Call Today!!

17546 Lacey Drive •
New Boston, MO. 63557
660-689-3406

Golden Grain Bins-Spring Discount

Grain Bins	Floors w/12"Supp. & Flashing	
18'x18' 4,195bu. \$ 6,645	18'....\$1,956	30'....\$ 5,465
27'x21' 11,265bu. \$13,143	21'....\$2,676	36'....\$ 7,790
42'x24' 32,245bu. \$30,190	27'....\$4,466	42'....\$10,609



GMLS Industries, Inc.
PH: 660-699-2179 or 620-983-2136
www.gmlsindustries.com



Friday, May 14 - Special Feeder Calf Sale

Watch for up coming Cow Sale

ALL SALES TELEVISED ON DV AUCTION

To Consign For Any or All Sales or For Information Call:

Owner - Kevin Strange • Cell: 660-341-9974
Ryan Strange • Cell: 660-341-9721
Sale Barn: 660-397-9999

Field Reps:	Mike Bronestine 660-341-9965	Jason Bischel 660-216-0373
Bill Tom Hall 660-342-5420	Trey Gashwiler 660-216-8751	John Powell 660-341-1717

FOR SALE: Case IH 1200 12/23 center fill, no till, center pivot, monitor, manual, \$42,500; JD 1780 16/31 Max M Plus, Keton on corn, Seed Star Monitor, shedded, \$18,500. 217-658-4761

WANTED TO BUY: Farm Machinery and Estates. Call James L. Johnston. 573-473-4904

Wevers Outside Wood Furnaces a dealer for Heatmor Stainless Steel Outside Furnaces, have an assortment of parts, line, and etc. Taking orders for new outside wood furnaces. Used 120 furnace, burns wood or coal, has shaker grates, for \$5,550. Call 660-423-5242, cell 660-216-9885. Open 6pm-9pm Monday-Friday, Saturday anytime, call first.

FOR SALE: New 3 pt. tillers, heavy duty, gear driven, 7' to 10' starting at \$3050. 660-874-4455

FOR SALE: John Deere 4430 Tractor, open station, factory duals, 90% rubber, 10,000 hrs, \$11,500. Call 573-881-3557

FOR SALE: Vegetable Plants \$1.25 a 4 PK, Bedding Plants \$1.50 a 4 PK, Succulents, a Variety of Hanging Baskets and Planters at Kauffman Produce 11538 Iceberg Ave, LaPlata MO 63549

PASTURE AND HAY GROUND Needed around Adair & Knox County. Please Contact 660-216-5887 or 417-773-2507

FOR SALE: 2010 Case 8120 Combine, 2975 HR -2097 HR, NO DEF, RWA, DIF Lock, 620 Drive Tires, 28 Steer Tires, luxury cab, clean machine, \$95,000. 641-895-8014

FOR SALE: Fish for stocking ponds - Catfish, Grass Carp, Crappie, Blue Gills, Red Ear, Bass, and Minnows. Heindselman Family Farms, Call Greg 660-341-5692

FOR SALE: New Garden Seeds - Seed Potatoes, Onion Bulbs and Plants. Homemade Candy, Local Honey, Stainless Steel Housewares, Wooden Handles, Lamps & Chimneys, Greeting Cards, and more. Train Track Candies 11538 Iceberg Ave, LaPlata, MO, 3rd lane to your left.

NEW/USED PARTS Vehicles/Semi's/Farm/Construction Equipment. "Tranny's/Engines" "Body parts paint matching yours. "Warrantied/Delivery" 800-807-9612

FOR SALE: Ford 800, new rims, new tubes, Live PTO, in good condition, \$2500, Brush Hog available. 660-341-8089

Limousin and Limflex bulls yearlings, black and polled, good dispositions, AI sired, semen tested, free delivery \$2500 Schrock Cattle 660-988-1163

Scott Huskey's Home Service R-10 Foundation Enclosure Systems for manufactured, modular, & site built homes. Saves on utilities and prevents freeze up. General maintenance and repairs since 1972. 573-696-3468 "GO DAWGS"

FOR SALE: John Deere 4020 Tractor, 1969, 3600 hrs showing, power shift, dual hydr, Diff Lock, new rubber, original, \$17,500. Call 573-881-3557

SUMMER BARBECUES are here enjoy great farm raies Catfish and Homegrown Sweet Corn. Order early information call 573-604-0674 "Delivered"

FOR SALE: Registered Lab puppies, 5 mo old, males, up to date on shots and wormer, silver, chocolate, and black, big blocky high quality pups, friendly and ready to start \$300 each 660-988-1163 call or text.

FOR SALE: Neese Angus Bulls over 50 years breeding for Optimum Performance, tested, ready to work. Rutledge, MO 641-344-4565.

ORGANIC CHICKEN LITTER high "NKP" 25 T. loads, \$80 T delivered litter carry overs where your \$550 ton dry leaves yearly. 800-807-9612

FOR SALE: John Deere 4020 Tractor, 1968, 3-pt, diff lock, 7000 hrs, fully restored, top to bottom, new rubber, Grandpa steps, \$19,500. Call 573-881-3557

FOR SALE: 1981 GMC 3500 1 ton dual wheels, Knapheide flat bed, 350, 4 speed, 300 gallon fuel tank, fell-rite pump, 4 locking tool boxes, running boards, pull bumper, good rubber, basically no rust, and inexpensive service truck, with low mileage, \$3900. Accelerators Since "1974" Kahoka, MO 660-727-3455 or 217-257-1385 call anytime

FOR SALE: DMI 32' FC w/Harrow, \$5000; Krause 30' Disc model #9 tandem on main frame, 9" spacing, 19" blades, \$2000, smaller disc. 217-658-4761

WANTED SMALL ACREAGE with home, fixer uppers considered, must be in Adair, Schuyler or Putnam Counties. Cash Buyer 319-530-8070 Leave message

FOR SALE: 3 Week old Angus heifer bottle calf doing well not a twin, \$375; 2 - 300 gallon plastic water tanks, will not hold water, gardening etc ? 217-257-1385

FOR SALE: High quality grass hay, \$35 per bale. 217-653-4762

FOR SALE: 6 hp Mercury boat motor. Titled, runs good, older model, \$200. Macon, MO, Call 660-651-7457.

FOR SALE: John Deere 4230, CAH, QR, 7000 hrs, turbo, sharp, Iowa tractor, \$18,500. Call 573-881-3557

DIRT WORK All types of excavation, reclaiming overgrown fields, including CRP and WRP. Building site preparation, terrace and tiling maintaining and creating new trails and crossings, rock hauling, Food plot development and maintenance. Leveling and grading, wetland construction and maintenance. Pond and lake cleaning and construction. Call for quotes. 660-342-2701

PERSONAL & REAL ESTATE AUCTION

As we have retired and are moving, we will sell the following real estate, household items, antiques, & etc. located at 315 East Benton Street in La Plata, MO

SATURDAY, MAY 22ND, 2021 @ 10 A.M.

Real estate to be offered for sale at 12:30 p.m. consists of a 4 bedroom, 2 bath, 2 story home with a newer 21'x24' bedroom addition w/two 9' closets, nice oak kitchen cabinets w/handmade pantry & appliance center, near new dishwasher, & electric flat top range.. Seven rooms are on the ground level, sunporch on the front, screened in porch on the back; vinyl siding; good roof; two gas furnaces; central air up and downstairs; newer vinyl windows; two car garage with electric openers; 24'x40' shop w/concrete floor and wall heater and metal lined inside; 12'x9' storage shed; older barn with 6 box stalls, hay loft and a 3 bay lean to shed; piped fence barn lot all located on a beautiful 10.73 acres m/l. **TERMS:** 10 PERCENT DOWN DAY OF SALE W/BALANCE DUE WITHIN APPROXIMATELY 45 DAYS W/TITLE INSURANCE FURNISHED.

HOUSEHOLD ITEMS: 2 white refrigerators - Maytag automatic washer - 10 cubic ft. upright freeze - 3 flat screen TV's of various sizes - large wooden dining table w/2 leaves, 6 padded cane back chairs & matching large lighted hutch - marble top wooden buffet - 15 drawer wooden chest - Estey Spinet piano - 10' wooden book shelf - occasional chairs - Lazy Boy rocker/recliner - Centurion gun safe w/combination - one cushion couch - microwave - handmade oak wardrobe - iron patio table w/6 chairs - wooden quilt racks - small wooden end tables - large wooden toy chest - metal wardrobe cabinet - exercise equipment - various golf clubs, bags, & golf balls - office chairs - lots of other household items too numerous to mention. **ANTIQUES & COLLECTIBLES:** Empire maple step back chest - Barrister lawyer's book case - painted primitive cabinet - round butcher block table - 2 drawer oak library table - walnut game table - small walnut one drawer table - oak C-roll top desk - 6 mission oak straight back chairs - small wooden table w/cane top - mission oak magazine rack - little folding stepladder - 3 drawer end table w/side pockets - red oak hand crafted table - 3 small wooden child's chairs - trunks - 5 drawer wooden chest - oak office chairs - 2 doll trunks - wooden printers tray - small 4 drawer wooden parts cabinet - Tiffany type leaded glass lamp - wooden print & picture set in case - Avante 31 day mantle clock - horse & carriage clock - electric ruby red hanging lamp - Singer Featherweight sewing machine in case - 120 Base accordion in case - several wicker baskets - large collection of paper weights - collection of shot glasses - 5 electric Aladdin lamps of various colors - Alacite Aladdin candle holders - ice cream scoop - Green Cow buttermilk pitcher - several pocket knives & pocket watches - 2 glass towel bars - kerosene lamps - several pictures & prints - electric milk glass lamp - blue coin glass dish - lots of other antiques & collectibles too numerous to mention. **SURREY, SADDLES, & TACK:** Good surrey w/removable fringe top & shafts - Western 18" roping saddle - 2 English saddles (one is child's) - antique high back saddle - kid's pony saddle - Western saddle - 4 wooden sleigh runners - 2 horse bosals - one set of quarter horse driving harness - several saddle pads & blankets - bridles & bits - 3 portable saddle racks - 2 metal wall mounted horse heads - spurs - lots of other items too numerous to mention. **GOLF CART, TRACTOR & MACHINERY:** Yamaha gas golf cart w/top & windshield (runs good) - JD 2030 gas tractor w/wide front, hydraulic loader & bucket, & canopy - 6', 3 pt. blade - 5', 3pt. rotary cutter - 3 pt. carryall - rubber tire 40 bushel manure spreader - 3 pt. dirt scoop - 3 pt. bale stabber - wall mounted horse hay & grain feeder - big bale horse feeder - 2 wheel lawn dump cart - 2 wheel lawn aerator - steel posts - feed buckets - woven wire - lots of other items too numerous to mention. **TOOLS & MISCELLANEOUS:** Craftsman miter saw - Craftsman 2 pc tool chest - Homelite 240 chain saw - Craftsman 12" bandsaw - 10" table saw - 2 - two wheel bench grinders (one is on stand) - Coleman 10 hp generator - metal table on rollers - wooden workbench w/vise - several sets of shelving - several electric hand tools - assortment cabinets & trays - Campbell Hausfeld 20 gallon, 5 hp portable air compressor - air pig - lots of fencing tools - hand planes - sockets (some are S & K & Craftsman) - wrenches - punches - screwdrivers - 20' aluminum extension ladder - receiver hitches - metal car ramps - dog house - lawn & garden tools - lots of other items too numerous to mention. **AUCTIONEER'S NOTE:** This is a very large & unique auction with many pictures posted on the website and Facebook page -- Cash/Check w/ID - lunch & porta potty on grounds.

OWNERS: LOUIS & CAROL BERREY

For more information call 660-626-6641



Christy's Auction Service

La Plata, MO 63549 660-341-4531

See Websites for Photos:

www.dchristyauctions.com & Christy's Auction Service on Facebook

Auctioneers: David Christy - 660-341-4531

Jason Wood - 660-341-7884 Greg Smoot - 660-341-5175



MAST MEATS, LLC
 660-766-2211

USDA & Custom Slaughter & Processing

CALL OR STOP BY FOR SPECIALS

Retail store hours • Mon-Fri 8-5 Sat 8:30-3
mastmeatsllc.com • 405 US Hwy. 63, Queen City, MO 63561

CUSTOM AG SERVICES

BALE WRAPPING

Wet or Dry Hay
 Round or Square Bales
 White, Black or Green Wrap

SILAGE BAGGING

6,8,9 & 10 ft. baggers
 Inoculant Application
 & Sales

Volume Discounts

Mobile Grain Processing Available

Nolan Diller | 660-956-3656



LIMOUSIN & LIM FLEX BULLS for Sale: Black & Red, All Polled, out of TOP AI Sires, low birth weight, w/Performance & Carcass EPD's. Potter's Limousin Cincinnati, IA 641-436-7153 or 641-658-2786

FOR SALE: 3 Low Birth weight Polled Hereford Bulls, good growth, high quality, good disposition. 217-242-1262

FOR SALE: Sim-Angus bulls, high quality, 14-18 months Black, Polled. Paul Martin Shelbina 573-822-4216

FOR SALE: Used garden tillers Troy-Bilt, BCS and other sizes. DR Bruch mowers. Kahoka, MO 660-216-1809

FOR SALE: IHC 5100 21 hole with cylinder, \$2250; JD drill 8300 16 hole, 10" spacing, \$1750; NI 5112 hyd swing 12' hay bine, rubber rolls, \$1250/ bar mowers; sprayers; 217-658-4761.

HANDYMAN: Install interior and exterior doors and windows, siding, decks, showers and toilets, flooring and drywall. 660-956-2189.

FOR SALE: International Square baler; New Idea Corn Picker, narrow row; Case Threshing machine. 573-674-3601

FOR SALE: John Deere 2940 Tractor, 5400 hrs, cab, air, new rubber, estate tractor, \$14,950. Call 573-881-3557

WANTED: Artsway Grinder mixer with scales, preferably with hydraulic lift & swing. Leave a message 641-664-3395

FOR SALE: 2007 JD 8230 tractor, ILS duals front and back, 3588 hours, \$119,000 obo. 660-265-5077

FOR SALE: Good Quality Alfalfa grass hay, big square bales; also 2021 first cutting big round bales alfalfa grass hay, high moisture. 660-216-1114

COWS FOR SALE: 75 Black and BWF Cows 5 years – SS, 40 Charolais Cross Cows 3 – 7 years old. Cows are calving now. 660-537-6247 or 660-838-6247

FOR SALE: JD BWA 16' disc, manual fold, duals, hydraulic cylinder included, \$2000. 660-665-1595

FOR SALE: Truck tire sidewalls for plastic covering on forage piles. Delivery possible 660-299-0781

FOR SALE: Simmental and Sim-Angus bulls, excellent calving ease, top performance and outstanding EPD's with real eye appeal. API as high as 165. Sired by the Breeds' top Sires. "Drake Simmental" Ph Larry 641-895-9422 or Mason 641-895-5735

FOR SALE: JD 7000 6RN w/5R splitter on back, no till, monitor, \$5250; JD 7000 6RN W7R splitter on back, no till, \$6000; JD 7000 12RN no till monitor, \$2000. 217-658-4761.

FOR SALE: Outstanding two-year old Simmental bull. Sired by Wide Range, used in own herd last year, \$4000. Drake Simmental (Larry) 641-895-9422

FOR SALE: Pyrenees puppies, for more information call 660-342-6004.

If you have feed lots or pastures that needs seeding.

WE HAVE SEED!!

***Oats *Clovers *Timothy**
***Perennial Ryegrass**
***Lespedeza Grass *Trefoil**

Call
Max **660-868-1010**
Neal **660-868-0787**
Ridgway, MO



PUBLIC AUCTION

Saturday, May 22, 2021 - 10:00 am

American Legion Building
600 East Spring Street, Milan Mo

Real Estate Offered at 1pm.

Location of Home and property is 400 East Garden Street, Milan MO Property will be sold at American Legion Building at 1pm. Two story 1/2 basement home with new vinyl siding, 4 bedrooms, 2 bath, recently remodeled. Roof is 3 years old. New wiring, 200 amp service, 30x30 shop, setting on 2 acres more or less.

To view property call BR Richardson 660-265-5518.
Terms 10% down day of sale. 30 day closing

Personal property - Buck board wagon with wood wheels, doctor's buggy with wood wheels, washer for parts, lots of yard tools, wood stove, 20 ft ladder, Stihl chain saw woodsman, weed eaters, leaf blowers, pile of scrap lumber, misc windows, lots of hand tools, shop lights, air compressor, Rigid drill press, clevis, shop vac, 4000 watt generator, GenARac, grinders, Rigid chop saw, grinder buffer, extension cords, cream separator, coolers, file cabinets, wood sleigh runner, air tank, 4x5 trailer, double wheel barrow, Bolens snow blower, grass rake pull type, gas powered edger, wood tool box, ice tongs, grass seeder, Push mower, old scales, bucket of nails, steel post driver, hydraulic cylinder, portable propane heater, old outhouse, 10x16 wood shed, 3 patio sets, cast iron pot, windmill, hog panels, poly water tanks, hay wagon, porch swing, Cub Cadet riding mower 48", wooden bed frames, mirrors, wall decor, wooden chest, pots and pans, dishes, wooden stools, floor rugs, electric fireplace, lamps, full size mattress and box springs, bedding, 5pc trunk set, dressers, wooden trunk, hutch with mirror, suitcases, mixer, washer and dryer, Roper side by side refrigerator, Acorn chair lift, brass bed (king) like new mattress and box springs, 3pt blade, 3pt 2 bottom plow, 2 row planter, 4 row cultivator, rotary disc, 12ft pull type disc.

*Property of Bob Sparks
and the late Arlene Sparks*

Richardson Auction Service

B.R. Richardson, Auctioneer 660-265-5518

Statements made on sale day take precedence over printed material.
Not responsible for accidents or theft. Nothing removed until settled for.
Concessions on Grounds Proceeds to American Legion Post

KIRKSVILLE LIVESTOCK LLC

May 17th - 11:00 a.m. -Special Feeder Cattle Sale-

Jr Ballanger & Sons - 400 BBWF & few color str & hfrs, consisting of 250 str & 150 hfrs, 85% home raised, spring breeding hfrs available, complete health program, no implants, 750-850#

May 21st - 6:00 p.m. -Special Breeding Stock Sale-

Greenley Research Center - 29 BBWF 2 year old heifers, AI'd to "Tahoe" and "Rainfall" for a Sept 25 start, followed up with SimAngus bulls, complete vaccination program

Gary Mallett - 14 BBWF 2 year old heifers, mated to Blk Bull for a September 1 calving start

Derrick Shaw - *Complete Dispersal* - 27 BBWF CCPR, 6 to 8 years old, spring calves from Cason SimAngus bulls

- 12 BBWF cows, mated to Cason SimAngus bulls for summer calving, cows all purchased as ShowMeSelect 2 year old heifers

D & L Farms - 35 BBWF cows, 3 to 5 years old, mated to Brinkley Angus bulls for a September 1 calving start

- 25 Red cows, 3 to 5 years old, mated to Brinkley Angus bulls for a September 1 calving start

Eric Pinkston - 28 Blk cows, 5 years old, ShowMeSelect qualified as 2 year old heifers, mated to Blk bulls with "Sitz Upward" and "Conneally" genetics for a September 7 calving start

Bryan Wyers - 10 Blk cows, 3 & 4 years old, P3, mated to Angus or Hereford bulls

Mark Herbold - 2 - 18 month old Pure bred Angus bulls

Many more listing by sale day

Check website for updated listings:
www.kirksvillivelivestock.com

We are open on Sunday to Receive Your Livestock
"Your Business is Very Much Appreciated"



Phone For Information:
Patty Foster, Office: 660-665-9804
Chuck Ambrosia: 660-342-3530
Caleb Randolph: 641-919-8539
Mark Herbold: 515-720-8667



Al Ashmead: 660-216-8730 Doug Fleshman: 660-626-7148
Daniel Smith: 660-341-8396 Jeremy Jarman 660-341-9879
Karol Kirkpatrick 641-777-3403

THE NEMO TRADER

CLASSIFIED COUPON

Clip This Coupon Out of This Week's NEMO Trader and run
2 CLASSIFIED ADS FOR \$5.00

Picture Ads Not Included with Coupon! Call For Pricing!

(Each Ad Must Be 20 Words or Less.)

~20¢ per word over 20 words~

Cash NOT ACCEPTED

Check or Money Order Only

Ad No. 1: (20 words or less)

Ad No. 2: (20 words or less)

YOUR CLASSIFIED AD WILL BE READ IN OVER 19 COUNTIES, IN 3 STATES!
BY COUNTLESS BUYERS!!!

TO RECEIVE THIS RATE: COUPON MUST BE MAILED IN
ALONG WITH YOUR PAYMENT!
THE NEMO TRADER, P.O. Box 190
KIRKSVILLE, MO. 63501 ~ 660-665-8500

MOVING AUCTION

3727 HWY 24 - MOBERLY, MO (2 MILES EAST OF MOBERLY)
FRIDAY, MAY 21, 2021 @ 11 AM



SKID STEER, TRACTOR, EQUIPMENT:

Daewoo DS1601 skid steer, new tires, 48 Hp, 2,078 hrs - Skid steer pallet forks - Skid steer 3 pt adapter - 1999 Nortrac NT 254 utility tractor, Fwa, hyd tilt blade - Haul Master quick hitch - 3 Pt land scaping rake - Carry all - Harrow section - 35 Gal water tank - 2 JD suit case wts - 2 Oliver front wt

TRUCK, TRAILER, HITCHES: 2006 Dodge 2500 Big Horn Edition, 4x4, crew cab, 5.9 Cummins HO, auto, clean truck, 210,xxx miles - 2001 PJ 22' tilt equipment trailer, 1 owner - 5,000 lbs receiver hitch winch - Pr 8' Hd aluminum loading ramps, nice - Brinley 32k 5th wheel/gooseneck hitch - Drawrite 16k sliding 5th wheel hitch - 40 Gallon auxiliary fuel tank - Receiver hitches - Chevy fender skirts for 94-03

MOWERS, CHAIN SAW, LAWN CARE: Gravely ZT54XL zero turn mower, 513 hours - JD 425 riding mower - Swisher 60" trail mower, 19 Hp, elec start - Nice Stihl MS180C chain saw - 12 Volt seeder & sprayer both hook into receiver hitches - Pull lawn spreader - ATV winch - 110v water pump & hose - Boat motor tanks - Adjustable ladder - Pump sprayer - Garden tools

TORCH, GENERATOR, WELDER, HEATERS: Oxy & Act torch outfit w/ bottles - Nice Sportsman 4,000 watt generator, duel fuel - Lincoln 225 Arc welder & table - DHC 2000 gas welding outfit - Welding clamps, grips - Welding helmets - 12V Propane start up heater (airplane

heater) - Reddy Pro bullet heater, nice

TOOLS, SHOP EQUIPMENT: Craftsman 3 stack roll about tool box - Delta table saw - Max Air shop fan - 24' Ext ladder - AC Delco 4T porta power - Metal cutoff saw - Drill press - Craftsman belt & disc sander - 6' Dbl grinder - Roll about shop stools - Porter Cable 1/2 impact wr - Air tools - Craftsman skt set - Large wrenches - 1/2 Breaker bars - Torque wrench - 1/2 Drill - Drill Doctor sharpener - Tap & die set - 3/4 skt set - Impact skt set - 1/4 Skt set - Metric & SAE ratchet wrenches - Rigid 24" pipe wr - Sentry locking safe - 50 pieces of 8' pallet rack supports - 8"x16" beam - Parts cleaner with solvent - Creeper - Jack stands - 2 Floor jacks - New hydraulic fluid - Electrical supplies, wire, ties, boxes - RH grinder - 7" cut off wheels - Shelving system - Bolt bins - Air tank - Shop vac - Hd dolly - Body tools - Case of Quick Clean degreaser

GUNS, TOYS, OTHER: Marlin 336R/LA rifle, 35 Rem. - US Remington 1903A3 sporterized, 30-06 - Mossberg 802 Plinker, 22 cal - Mossberg 535, 12 ga, 3 1/2 mag - Rifle scopes, Vortex Cross Fire II - Hubley tractor & cultivator - True Scale Combine, Elevator & Baler toys - Antique sled - Free standing mirror

Terms: Cash, Check or Credit Card (3%) With Proper ID, Not Responsible for Sold Items or Accidents, Statements Made Auction Day Take Precedence Over Ads. Lunch by Rae & Restrooms Available.

Dennis & Kay Snodgrass, Sellers

IMAN AUCTION COMPANY
660-788-4298 | 660-414-7830 | 660-388-6235

FOR SALE: JD 750 drill, with grass, front dolly wheels, \$12,500. GP 1500 drill with center pivot caddle, 22 hole, 8 inch spacing, \$11,500. 217-658-4761.

FOR SALE: Kubota 2020 ZD1211L diesel fuel only, 3 cyl., 24.8 HP, 72" cut, purchased in September, has the new style seat, new never been used, \$15,000. 660-216-4942

FOR SALE: Parts for John Deere 1219 conditioner and others, E88923 forged guards, E75474, E76370 section, E59663 and more mostly all new bolts & misc. 217-257-1385

FOR SALE: John Deere 569 Baler, 4000 bales, shedded, all options, includes moisture monitor, clean. Trade? \$32,500. Call 573-881-3557

FOR SALE: Whitetail Institute food plot seeds in stock at Whitetail Seed and Supply, 14136 State Hwy 3, LaPlata, MO 63549.

FOR SALE: 108 Kune speed rake; 2 row John Deere planter 573-541-1367 or 573-221-2178

4 TIRES FOR SALE: LT 245/75 R16 Mud & Snow 10 ply rated, still have 1/2 tread, \$35 each or \$100 for all 4. 660-342-1951

FOR SALE: New lift chair, never used, big size, light brown. Call 660-216-6136 for details, leave name, number. Knox City.

FOR SALE: 2008 John Deere 5625 4WD and loader 100 HP, just over 1000 hours, includes 542 heavy duty self-leveling loader with bucket, bale spike, and pallet forks, sales price \$10,880 text me at 402-925-0687

FOR SALE: 400 International planter, 6 row, \$850 OBO; JD 500 series baler, \$650 OBO; Vermeer 605 E big baler, \$700 OBO; 8' Enclosed trailer, \$600 OBO. 660-216-3715

SUMMER BARBECUES are here enjoy great farm raies Catfish and Homegrown Sweet Corn. Order early information call 573-604-0674 "Delivered"

FOR SALE: John Deere 4430 Tractor, CAH, 7600 hrs, 80% 18.4x38, synco range, runs out good, Loader available, \$13,500. Call 573-881-3557

FOR SALE: Kinze 24 row, 15" row, fold bean planter only no till, \$4500; White 1230 vertical fold, \$1250; IHC 800 6RN L fert, monitor; \$1750. 217-658-4761.

LIMOUSIN & LIM FLEX BULLS for Sale: Black & Red, All Polled, out of TOP AI Sires, low birth weight, w/Performance & Carcass EPD's. Potter's Limousin Cincinnati, IA 641-436-7153 or 641-658-2786

FOR SALE: 2013 25' Heartland Trail Runner Camper, 1 large slide, excellent condition, separate BR with new Queen Mattress, 2 sofa beds,. Text or call for pics, located in Unionville MO \$14,000. 615-390-0094

FOR SALE: NH 489 Haybine, 9' Moco, rubber rollers, excellent condition, always stored inside, \$3500. 660-665-1595

FOR SALE: LP Fork Lift, runs good and works. 636-443-9104

LOOKING FOR a female 55-65 for companionship and someone to enjoy life with. Please call 660-346-1216. If no answer call back.

WANTED: DAD'S silver 1988 ford F250, red interior, 460, 5 speed in LaPlata/Kirksville area. 660-372-1154.

THE ANNUAL meeting of the Parcels Salisbury Cemetery will be held May 23, 2021, at 3:00 p.m. at the cemetery.

Gingerich & Borntrager

MOVING AUCTION

Porta-Pottys on Grounds Lunch by Amish Ladies

Wednesday, May 19, 2021 • 9:00 a.m. D.S.T.

Location: U.S. Equipment - 24372 Iris Street - LaPlata, MO 63549

From LaPlata take 156 west 6 miles to 3, south 2 miles to Iris Street, east 3/4 mile to Auction.

Farm Machinery: Electric Wagon Gear (on steel); NH 270 Baler on steel w/motor mount (field ready); 50 qt. Kewanee Elevator w/drag (good); NH 55 Hay Rake w/Dolly; NH 55 Hay Rake; 14T Baler on steel; McCormick reg. gear Haymower 6' bar; (2) McCormick Corn Binders; Bundle Carrier; 2 bottom 16" Plow; Rosenthal Corn Shredder (good condition). (2) Crop Sprayers; 2-Row Cultivator w/rolling shields (I&J style); McCormick Grain Drill w/grass seeder; Powerline Forecast w/spring torsion & raised tongue (like new); U-S Forecart w/rubber torsion (new); (2) Flare Box on steel; Gravity Flo Wagon; Hostetler Gear on steel (needs work); (2) 1-Section Drag Harrows; 10' Single Disc; Viking Elevator (very good); JD Corn Planter; McCormick Corn Binder (needs work); McCormick Corn Binder (field ready); NH 273 Hay Liner Baler; McCormick No. 9 Hay Mower w/7' bar; Lag Skidding Cart; Pickup Trailer; Pioneer Foot Lift Plow (good); 6' Tandem Disc; New Idea Manure Spreader, overhauled (two-wheeled); 2' Cultimulcher; 3' Cultimulcher; NH Hayrake (good); Fertilizer Boxes for JD 7000 Corn Planter; Misc. parts for JD Planter; (2) Used 5-Shovel Cultivators; New 5-shovel Cultivator; (3) Trailer House axles & wheels; Set 4-horse Pulley Ropes; Misc. 2-horse Evers; DR Brush Mower w/brush deck and finish deck.

Sawmill Equipment: EZ Boardwalk Bandsaw w/new belts, 20' rail w/8 extension & 23 hp Vanguard battery-start interchangeable to recoil (good working condition); Banding Cart w/clips and steel banding and tools; Heavy-duty 3'x5' Dockplate 10,000 lbs. rating (very good); 3'x10' Stone Boat w/steel front; 680 Echo Chainsaw w/24" bar (good); 590 Echo Chain Saw w/20" bar; Stihl B+ 45 Motor Drill (very good); Table Top Chop Saw (needs work); Jointer; Echo Blower; Echo 550 Chainsaw; 385 Hushey Chainsaw; Small Paddle Blower (2) 5' Lumber Rollers; (2) 48" Cant Hooks; Lot of V-Belts; Saw Wrench; Heavy 12" Steel Elbows; Morgan 3-blade Edger; Morgan Cutt-off Saw; Deutz 65 Horse diesel Motor, Serial #F4L912; Shop-Built 3 1/2 yard Dumpster on Wheels.

Shop Equipment: Shop Built Mechanical Forklift, 10'6" Reach; 50' wide x 103' long overhead Crane, complete & ready to go to work; Cutting Torch set; Propane Cutting Torch Set; 4'x4' Welding Table; 16' Line Shaft on I-beam w/bearings & pulleys; 20 ton Hydraulic Shop Press; Grizzly Belt Sander on Stand; Marvel 2 Power Hacksaw w/new blades (good); Hydraulic Pipe Bender w/dies; (3) Steel Carts, heavy-duty 2'x4'; Sickle Stone Grinder; Big Grinder on Stand; 18 hr. Kohler Electric Start (good); 12 1/2 hr. Kohler Electric Start (good); Honda w/reduction Gear; Misc.

Honda Motors; Shop Pans; Steel Racks & Misc. Short Steel pieces; Gear Boxes; Snow ??? Transmission; Steel Pipe; Beams; Cable Clutches; 1/2 Ton Chain Hoist; (2) 12'x1" Line Shaft w/bearing & pulleys; 20'x1 1/2" Line Shaft w/bearings & pulleys; 14" Stihl concrete Saw (works) (TranSet Set; 10' Extension Ladder; Lot Misc. Lawn Mowers (need work); Lot Tomato Cages; Two Wagon Loads Miscellaneous.

Livestock Equipment: Feed Bunks; 12' Wooden Sheep Feeder; Round Bale Horse Ring (good); (2) 4x10 concrete Hog Slates (good); Mineral Feeder; Water Tanks; (2) 24' wooden Feed Bunks (new); (10) 6-bar Panels; (10) 20' 60-bar Corral Panels; (100) 4"x5"x8' Fiberglass Posts; Misc. Barbwire and Woven Wire; 1000 bu. Wire Crib w/Roof (excellent condition); 3-4-5 Tine Forks (good); 250 gal. Sunset Bulk Tank; Rabbit Cages; (2) Portable Chicken Coops.

Livestock: Yearling Stan. x 3 whites & blaze; 7-yr. Dunn Qt. Mare (broke); Miniature Pony Mare (broke but needs a boss) 5-yr. Gelding hackney Cross Pony (broke); 2-yr. Jersey Bull; 300 lb. Beef Cross Bull; 2nd time fresh Jersey Cross Milk Cow (very gentle); Jersey Bull Calf.

Household: Small Ashland Cook Stove; Kitchen Queen Cookstove (works); Full-size Bed; Bunk Bed; Six yr. Crib (good); Rhythm Clock, Westminster Chime (like new); Child Horse Swing (new); Living Room Stove; Stove w/Glass Door; Tile Flooring; Misc. Shoes & Boots; R.C. Allen Adding Machine (works good); 5 burner Oil Stove w/Baker on top; Lot of Gas Lanterns; Lot of Misc. Glassware; Punch Bowl Set; Rainbow Green Canister; Lot of Milk White Glassware; Hickory Chest; Gun Cabinet; Small Heating Stove.

Guns & Hunting: Stevens 30-30 bolt action w/Scope; Marlin 30-30 lever action, open sights; 22 Heritage Rough Rider; Hang-on Deer Stand; Tree Stand; Tasca Scope; PSE Crossbow 405 Fps w/scope, fully loaded (like new); Simons 3x9x32 Scope; Swift 3x9x40 Scope; Misc. Calls; 243 brake open Single Shot w/full barrel.

Miscellaneous Harness & Buggy: Set Nylon draft size Harness; Set nylon halfling size Harness; 15" Saddle; Lot used Collars; 16" Saddle; Lot Halters & Lead Ropes; One-horse Wooden Sleigh; Buggy Gears; Set padded Brakes; Aluminum Hack Buggy on Gear; Pony Cart w/flat-free wheels; Sleigh Runners; Wooden Hack Buggy Bed (used); Road Cart.

Miscellaneous: 10'x16' spary foamed Ice House w/new door; 20'x40' white Tent, good shape.

Auction Conducted By:

Diamond Z Auction SERVICES, LLC

Auctioneers:
Matt Zimmerman
Mervin Lee Zimmerman

For more information call:
715-512-0500
715-721-0657

Terms and Conditions:

Cash, credit card or good check must be paid day of sale.

All statements made day of sale take precedence over printed materials. Not responsible for accidents or theft.

Show Me Plumbing Services



*General Mini Excavation & Skid Steer Work
*Livestock Watering
*Waterlines & Sewer Systems
*Residential Services & General Plumbing
*Utility Trenching

Stan Schrock - 660-988-1163
Greentop, MO. - 660-766-2636

ATTENTION LAND OWNERS!

BUYER OF STANDING TIMBER
OWNER / OPERATOR OF SAWMILL - BUY/CUT LOGS
CERTIFIED - BONDED - INSURED



TRI STATE TIMBER L.L.C.

PH. 660-341-4921 or 660-465-2975

353 1/2 GRAND AVE. • MEMPHIS, MO 63555

PUBLIC AUCTION

Saturday MAY 15TH, 2021 - 9:30 AM

Location: the "McMain Auction House" located at the west city limits of Kirksville, Mo on Hwy 6 West

Selling will be the R.E. Justice Estate and a guest complete household

Furniture: Sofa and matching loveseat, 5 pc table and chair set, (3) oak bar stools, 7 pc oak dining set with buffet and hutch, solid oak entertainment center (Oakwood Industries), oak glider rocker, occasional tables, recliner, quilt stand, swivel rocker, 42 inch gas rand (lp or net), 30 inch electric range, fireplace, pictures, small appliances, armoire, stereo system, rocking recliner, full size box & mattress, roll-front microwave stand, 2-pc oak bedroom suite, Steel safe, bookcase, dresser, pie cupboard, small chest freezer, cheval mirror, like new sofa sleeper, elec. Treadmill, exerciser, bedding and linen, cedar chest, luggage, fruit jars, pr. Saloon doors, lawn chairs, porch glider, (3) file cabinet, appliance lift, shelving, pedestal fan, pots, pans & dishes, 4 pc bedroom suite, (2) pc oak shelf unit, oak desk,

Shop: Power lift dolly, (2) work bench/base cabinets, ext. cords New* 100 gal. fuel (slit tank) w//double pump (pick up mount)

Mower: 202 Kubota 3 cyl. Diesel lawn tractor (24.8 hp) w/72 inch cut (New type sent) 2/10 th hr. usage

Guns: (new) Marlin 20 ga/22 hornet (over-under), Stevens Crack shot, Winchester 190 Auto

Boat: 2005 14 FT. "Tracker" Jon boat with live well, boat trailer *Car-Hauler Trailer

Antiques & Collectibles: hand sewn quilts, tie comforts, walnut dress w/wishbone mirror, fancy stand table, horse collar, flat-top trunk, oil lamps, fancy iron bed w/wrap around foot, vintage oak dresser & mirror, oak press back chairs, press back/ spindle rocker, Red Ryder BB gun (like new condition)

-OWNER-
- Nora Justice-
-Guest Estate-

Auctioneers:
Jerry McMain
Rhea Golden

Kirksville MO
Ph. 660-665-9380
www.mcmainauctionservice.com

Heat/cool Lunch Counter Restrooms Seated



McAfee/Hayes Auction Service, LLC

375 S Johnson • Kahoka, MO
660-727-3796

www.mcafeeauctionservice.com

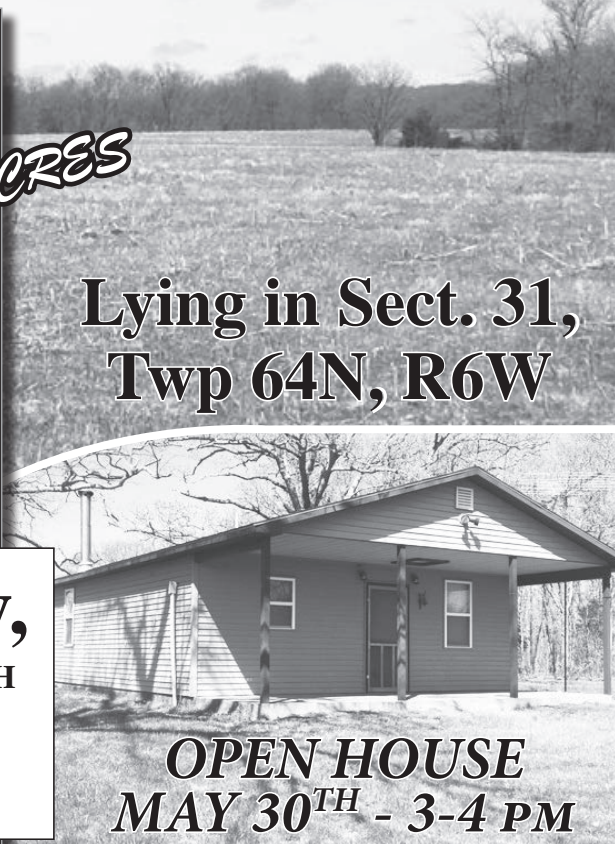
Clark County, MO
LAND AUCTION

Sale conducted at the Caldwell Building located at 30191 HWY 16, Canton, MO
(West of Canton 1 1/2 mile on Hwy. 16)

80 *ACRES*

- 37 ACRES CROP LAND
- CABIN
- EXCELLENT HUNTING

Lying in Sect. 31,
Twp 64N, R6W



OPEN HOUSE
MAY 30TH - 3-4 PM

**Tuesday,
June 8TH
at 6 PM**

The Children of The Late
Richard Eugene "Gene" & Irene Riney, Sellers



McAfee/Hayes Auction Service, LLC

375 S Johnson • Kahoka, MO
660-727-3796

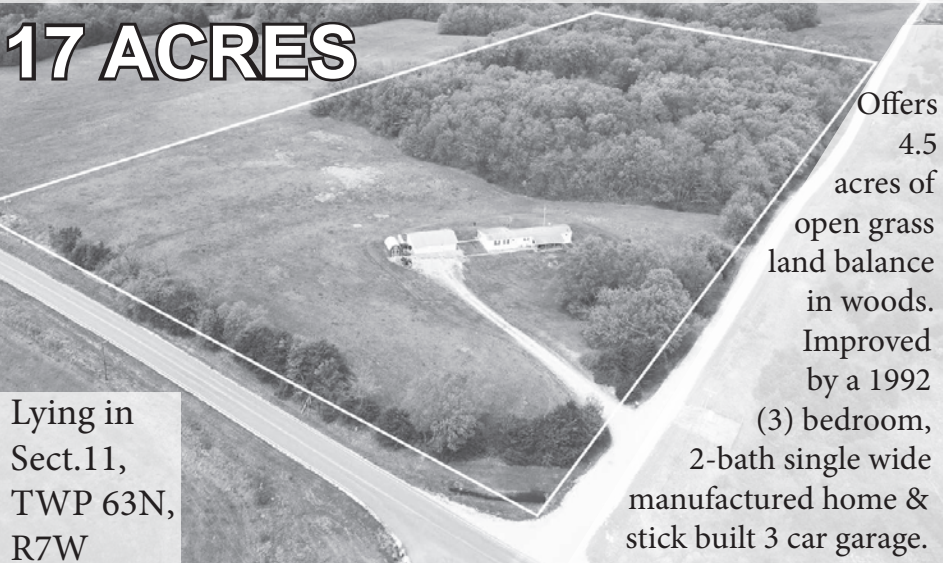
www.mcafeeauctionservice.com

CLARK CO LAND & PERSONAL PROPERTY AUCTION

SATURDAY JUNE 19TH - 10 AM

Sale will be conducted on site located at the Jct. of Hwy 81 and Rte Z,
1/2 mile North of St. Patrick MO.

17 ACRES



Lying in
Sect. 11,
TWP 63N,
R7W

Offers
4.5
acres of
open grass
land balance
in woods.
Improved
by a 1992
(3) bedroom,
2-bath single wide
manufactured home &
stick built 3 car garage.

OPEN HOUSE: SUNDAY JUNE 6TH 1-2PM
EXCELLENT POTENTIAL SMALL ACREAGE
BUILDING SITE WITH UTILITIES

ALSO SELLING : Tractor, Lawn Equipment, Tools & Shop
Related, Household, Hot Tub and Much More...

BOB GRANT & FAMILY SELLERS



McAfee/Hayes Auction Service, LLC

375 S Johnson • Kahoka, MO
660-727-3796

www.mcafeeauctionservice.com

RESIDENTIAL REAL ESTATE & PERSONAL PROPERTY AUCTION

2 TRACTS/ MARION COUNTY

SATURDAY JUNE 12TH - 10 AM

Sale will be conducted on site 1 1/2 mile West of Taylor MO.
on Co Rd. 306 (Address 6296 Co. Rd. 306 Taylor MO.)



PRIME LOCATION

OPEN HOUSE: MAY 30TH - 1-2 PM

Tract 1: 5.5 acres of mostly open land, pond, 4-5 bedroom 2 story home, Shop building & Machine Shed.

Tract 2: 9 acres of open undeveloped land, Prime building site. Both tracts are lying in Sect. 3 & 10, Twp.59N, R6W, Marion Co., MO.

ALSO SELLING a lifetime accumulation of Personal Property to include: Antiques, Collectibles, Kitchen and Common Household, Lawn related and Much More.

The Children of The Late
Richard Eugene "Gene" & Irene Riney, Sellers



McAfee/Hayes Auction Service, LLC

375 S Johnson • Kahoka, MO
660-727-3796

www.mcafeeauctionservice.com

Lewis County, MO
LAND AUCTION

Sale conducted at the Queen of Peace Hall
103 W. Clove Ave, Ewing, MO

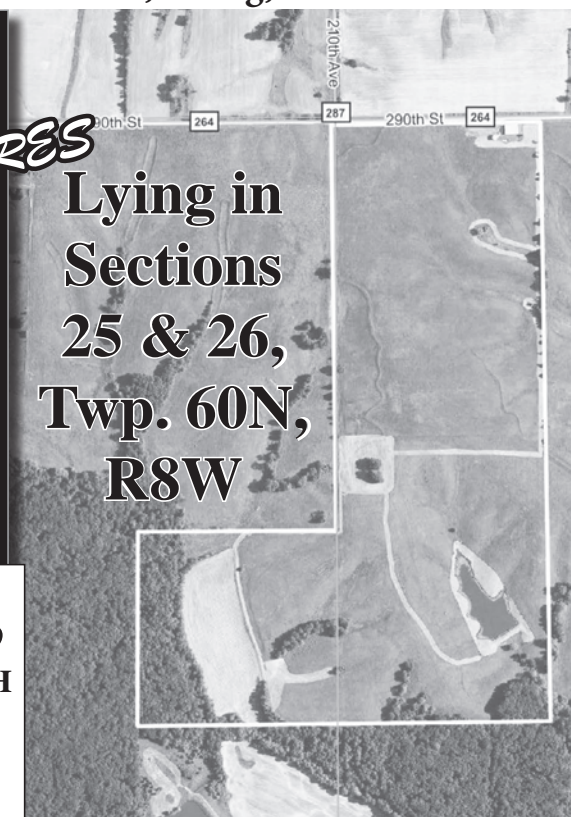
154 *ACRES*

- INCOME PRODUCING OPEN TILLABLE LAND
- BUILDING SITES
- UTILITIES

Lying in
Sections
25 & 26,
Twp. 60N,
R8W

**Tuesday,
June 24TH
at 6 PM**

Carl Robert Krietemeyer Estate



COMMUNITY FAN DRIVE **\$1000 OFF** the Down on select vehicles



When You Bring In Any New Box Fan.

Box fans will be donated to local charities.

660.956.4849 | 2015 NORTH BALTIMORE KIRKSVILLE

- Low Down Payments
- Quality Used Vehicles
- Flexible Financing
- Weekly, Bi-Weekly, or Monthly Payments
- Start Your Approval Online
- 100% Satisfaction
- Hand Selected Vehicles
- Over 150 Locations
- We Trade for Anything
- Since 1981
- Service Contract Plus
- Accident Protection Plan
- We Buy Cars



2006 JEEP LIBERTY sport, 4WD, 6 Cyl., blue



2007 HYUNDAI TUCSON GLS, FWD, 4 Cyl.,



2006 GMC YUKON XL 1500 DENALI AWD, 8 Cyl., black.



2014 JEEP COMPASS LATITUDE 4WD, 4 Cyl., White



2009 FORD EXPLORER XLT 4WD, 8 Cyl., White



2008 TOYOTA RAV4 4WD, 4 Cyl., Red.



2007 LEXUS RX 350 AWD, 6 Cyl., Black



2007 SCION TC BASE FWD, 4 Cyl, maroon



2007 MERCURY MOUNTAINEER Base, auto, AWD, 6 Cyl., Maroon



2013 KIA SOUL BASE FWD, 4 Cyl., brown



2012 FORD FOCUS S FWD, 4 Cyl, Blue



2004 FORD EXPLORER SPORT TRAC XLT, 4WD, 6 Cyl., 4 doors, tan.



2014 DODGE GRAND CARAVAN SE, FWD, 4 Doors, 6 Cyl., Red.



2014 HYUNDAI SANTA FE SUV L, FWD, 4 Cyl., Gray



2008 CHRYSLER ASPEN LIMITED 4WD, 8 Cyl., white

WE BUY CARS



ELIZABETH WALTER
GENERAL MANAGER