

FREE!

NEW EDITION EVERY FRIDAY!
VOL. 29 • NO. 23 • June 25, 2021

NEMO *Trader*

THE NEMO TRADER

PO BOX 190 • KIRKSVILLE, MO 63501
PHONE 660-665-8500 • FAX 660-665-2024
Web Site: nemotrader.net
Email: nemotrader@gatehousemedia.com

A WEEKLY ADVERTISER SERVING ALL OF NORTHEAST MISSOURI AND THE SURROUNDING AREA

NEED TRUCK PARTS & ACCESSORIES? **We've Gotcha Covered!**

TRAILER PARTS

BUMPERS

WINCHES

TIRES

B&W HITCHES

AIRLIFT

GRILLE GUARDS

TRUXEDO BED COVERS

Check it out!

CANTRIL TRUCK & TRAILER
319-238-7367
101 North St. • Cantril, IA

DIGITAL

WE HAVE A LOT TO OFFER

- Websites
- On-Target Display Ads
- Search Engine Marketing
- Search Engine Optimization
- Reputation Monitoring
- Social Advertising
- Logo Creation
- Retargeting

PHONE:
660.665.8500

ADDRESS:
110 E. McPherson Kirksville, MO 63501

EMAIL:
nemotrader@gatehousemedia.com

NEMO
Trader

GANNETT



FOR SALE: John Deere 4240 8000 hrs, recent overhaul, power shift, Loader available, Tractor, CAH, one owner, \$25,500. Call 573-881-3557

WANTED TO BUY: Harley Davidson's, any year, any condition, cash money. Days 660-263-1356 or 660-537-0068

WANTED TO BUY: Farm Machinery and Estates. Call James L. Johnston. 573-473-4904

Wevers Outside Wood Furnaces a dealer for Heatmor Stainless Steel Outside Furnaces, have an assortment of parts, line, and etc. Taking

orders for new outside wood furnaces. Used 120 furnace, burns wood or coal, has shaker grates, for \$5,550. Call 660-423-5242, cell 660-216-9885. Open 6pm-9pm Monday-Friday, Saturday anytime, call first.

FOR SALE: New 3 pt. tillers, heavy duty, gear driven, 7' to 10' starting at \$3050. 660-874-4455

PASTURE AND HAY GROUND Needed around Adair & Knox

VICTORY

Metals & Recycling

Kirkville, MO 660-665-8000

victorymetalrecycling.com 

For current scrap prices call or visit our [Facebook Page](#)

★ Construction/Debris Recycling

Visit Kirkville's construction & debris recycling facility and save trips to the landfill! Take advantage of this service for solid waste removal by bringing your landfill items to Victory Metals C & D recycling facility located at 3602 N. Industrial Rd.

★ Roll-Off Container Service

10-20-30-40 Cubic Yard Dumpsters

3602 N. Industrial Rd.,
Kirkville, MO 63501

djanesvmr@gmail.com

www.victorymetalrecycling.com



LAN-DOW BUILDINGS

"We Build To Suit Your Needs"
"Custom Built"

Pole Barns • Garages • Utility Buildings
"H" Don or Dick Middleton

Memphis Lumber Co.

1-800-337-5858 • 660-465-8595

Fax: 660-465-8596



For all your advertising needs email us at nemotrader@gatehousemedia.com

SPRING IS YOUR GO TIME.
GET OUT THERE.

You've been waiting all winter for this moment.



REBATES UP TO **\$1,000** ON 2020 MODELS

TERMS AND CONDITIONS APPLY

POLARIS
SPRING SALES EVENT

[Explore Inventory >](#)

Slayton

POLARIS

10456 State Route B, Downing, MO
6 miles W. of Memphis, then 13 miles N. on B

660-328-6627

VISIT POLARIS.COM FOR MORE OFFERS



MEDICARE CONFUSION?

You are not alone... over 80% of Seniors are!

Join Us

For a **FREE** Medicare
101 Seminar!



Derek Teter
Licensed Agent



Ryne Watts
Licensed Agent



senior**benefits**services

Whether you are nearing retirement and about to transition into Medicare, or if you have been enrolled for some time now... there can often be a lot of confusion surrounding the program.

Join us to learn more about:

- The different pathways of Medicare
- When to enroll in Medicare
- How to make changes to your current coverage
- Receiving all of the Medicare benefits you are eligible for

<i>Part A</i>	<i>Part B</i>	<i>Part C</i>	<i>Part D</i>
Hospital Insurance	Medical Insurance	Medicare Advantage Plans	Prescription Drug Plans

YMCA of Hannibal

1 YMCA Drive
Hannibal, MO 63401

Join us from
6:00-7:00 pm
on one of these dates

- July 19
- August 16
- September 20
- October 18
- November 15
- December 20

Randolph Area YMCA

1000 Qwix Road
Moberly, MO 65270

Join us from
6:00-7:00 pm
on one of these dates

- July 5
- August 2
- October 4
- November 1
- December 6

Kirksville Holiday Inn

2523 South Franklin Street
Kirksville, MO 63501

Join us from
6:00-7:00 pm
on one of these dates

- July 12
- August 9
- September 13
- October 11
- October 15
- November 8
- December 13



Can't make it but have Medicare questions?

Call us for a free Medicare review!

Products we offer

- Medicare Supplement
- Medicare Advantage Plans
- Prescription Drug Plans
- Life Insurance
- Dental/Vision/Hearing
- Long-Term Care

and more!

☎ 800-627-2768

🌐 www.sbsteam.net



FROM MASSEY FERGUSON
A world of experience. Working with you.

NEW TRACTORS

- 2021 MASSEY FERGUSON GC1723 - HST, PLATFORM, FL1805 , BUCKET 48", 18X8.50-10 AND 26X12.00-12 INDUSTRIAL
- 2021 MASSEY FERGUSON1526- HST, PLATFORM, 25X8.50-14 - R14-17.5, FLX2106 LOADER WITH SSL 54" BUCKET
- 2020 MASSEY FERGUSON1835 -HST, CAB, 25X8.50-14 AND 15X19.5, FL2611 LOADER - - 66" SSLBUCKET

USED TRACTORS

- MASSEY FERGUSON 1529L - L100 LOADER WITH 60" PIN ON BUCKET, 8X8 SHUTTLE. 1146 HOURS ...\$14,900
- MASSEY FERGUSON 180 - PERKINS DIESEL, LOADER, WIDE FRONT, 2WD - WESTENDORF LOADER W/BUCKET & SPEAR...\$8,500.00
- MASSEY FERGUSON 1085 - WESTENDORF LOADER, BUCKET & BALE SPEAR, 3700 HOURS, ONE OWNER...\$10,900
- 2018 VERSATILE335 - 380/80R38 AND 480/80R50 DUALS, DELUXE CAB, HD DRAWBAR 1.5" PIN, REAR WEIGHTS 4X200, FRONT WEIGHTS 24X30, AM/FM/CD/WB RADIO, GPS, LED LIGHTING, 500 HOURS.... \$179,500
- NEW HOLLAND T5050 - 3125 HOURS, CAB, LOADER ...\$42,750
- NEW HOLLAND TG255 - SUPERSTEER, BUCKET, 4 REMOTES, FRONT & REAR DUALS, QUICK HITCH, FULL SERVICE, ...\$59,000.00
- 2006 NEW HOLLAND TC26DA - 1015 HOURS, TURF TIRES, HYDRO, FOLDING ROPS, 914 - 60" MID MOWER, ... \$7,500.00
- 1997 NEW HOLLAND 8160 - WESTENDORF TA29 LOADER W/ BUCKET & SPEAR, CAB, FWA, SEMI POWERSHIFT, 18.4R38 REAR AT 50%, 14.9R28 FRONTS AT 30%, 9877 HOURS, OVERHAULED ENGINE AT 9813 HRS & REMAN CLUTCH ...\$34,000.00
- NEW HOLLAND T4.75 - ROPS, 2WD ...\$16,900.00
- 1987 JOHN DEERE 4250 - 2WD, NO CAB, DUALS, 7914 HOURS, ... \$21,000.00
- 1979 JOHN DEERE 2840 - HINIKER CAB, HEAT,2WD, 4005 HRS, NO LOADER, FRONT WEIGHTS...\$12,000.00
- JOHN DEERE 4240 - 11,860 HOURS, HAS 58 LOADER ... \$27,500
- CASE IH MX285 - 480/70R34 SINGLES, 480/80R50 DUALS, FULL SET FRONT WEIGHTS, 4 REMOTES \$49,000.00
- 2007 CASE IH STX530 -LIKE NEW TRACKS, 5 REMOTES, PTO, 4580 HOURS, ...\$189,500.00



660-258-7228
288955 US 36 East
Brookfield, MO

WWW.BROOKFIELDTRACTOR.COM

Buy with confidence. We have you covered.



100%
Satisfaction™



ACCIDENT
Protection Plan™



SERVICE
Contract Plus™



PAY
Your Way™

For more information visit car-mart.com/peace-of-mind



car-mart.com

660.956.4849 | 2015 NORTH BALTIMORE KIRKSVILLE

- Low Down Payments
- Quality Us Vehicles ed
- Flexible Financing
- Weekly, Bi-Weekly
- Start Your Approval Online
- 100% Satisfaction
- Hand Selected Vehicles
- Over 150 Locations
- We Trade for Anything
- We Buy Cars
- Convenient Payment Options
- Since 1981



2014 CHEVROLET MALIBU LT
FWD, 4 Cyl., White



2013 Ford Edge SE
FWD, 6 Cyl., Black



2011 Ford Escape XLT
FWD, 4 Cyl., red



2015 FORD FOCUS SE
4 doors, 4 cyl., White, FWD



2016 HYUNDAI ELANTRA SE
4 Cyl., Fwd, Blue



2006 GMC YUKON XL 1500 DENALI
AWD, 8 Cyl., black.



2014 CHEVROLET CAPTIVA SPORT
FWD, 4 Cyl., Red



2011 Chevrolet Aveo LT
FWD, 4 Cyl., white



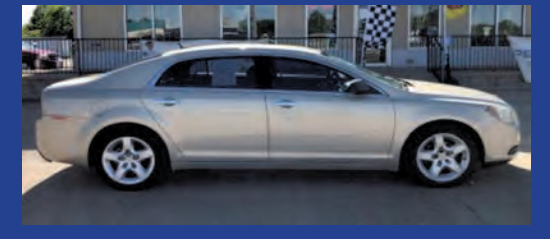
2009 FORD MUSTANG BASE
auto, RWD, 6 Cyl., Black



2010 FORD EXPLORER XLT
RWD, 6 Cyl, Silver, 3rd Row



2012 FORD FUSION SE



2011 CHEVROLET MALIBU LS



2008 GMC Envoy SLT
4WD, 6 Cyl., White



2008 Chevrolet Silverado 1500 LTZ
4 doors, 4WD, 8 Cyl., Blue



2004 FORD EXPLORER SPORT TRAC
XLT, 4WD, 6 Cyl., 4 doors, tan.



2014 DODGE GRAND CARAVAN
SE, FWD, 4 Doors, 6 Cyl., Red.



2014 HYUNDAI SANTA FE
SUV L, FWD, 4 Cyl., Gray



2010 NISSAN ALTIMA BASE



AMERICA'S CAR-MART

Keeping You on the Road



ELIZABETH WALTER
GENERAL MANAGER

Antioch Paint & Repair

Specializing in fixing skid loaders
& other equipment.
Some equipment painting.
Ethan Zimmerman

660-299-0808
Serving Northeast MO

CUSTOM CHOPPING

We chop all kinds of forages.
Hauling equipment &
drivers available.

DEVON ZIMMERMAN

660-464-1324
Serving North Missouri and Southern Iowa



MAIN CREEK REPAIR

Larry Geiser

23316 State Hwy H
Kirksville, MO 63501

(715) 415-1995

**Bolts • Belts • Bearings
Hydraulic Hoses • Steel
Welding • Fabricating
Tractor & Equipment Repair**

MAIN CREEK RENTALS

23316 State Hwy H
Kirksville, MO 63501

(660) 988-6917

- Mini Excavator
- Dozer
- Skytrack
- Equipter (Shingle Buggy)
- Snorkle
- Grapple
- Post Hole Digger
- Man Basket



GOLF CARTS

Sales – Service – Rentals – Customizing



573-693-8147

29566 Lantern Road, Laplata, MO

NEMO Trader

**Our circulation is 16,000 with a
19 county coverage area in
Missouri, Iowa and Illinois.
Our paper is a free paper and
is distributed to restaurants,
convenience stores and other
businesses in the area for
individuals to pick up. We have
a new issue every Friday.**

P.O Box 190
Kirksville, Mo 63501

Online paper:
<https://issuu.com/nemotrader>

Office: 660-665-8500
Cell: 660-988-6830
Fax: 660-665-2024

Email: nemotrader@gatehousemedia.com

TOWN DROP ROUTE

- | | |
|---|--|
| <p>MISSOURI</p> <ul style="list-style-type: none"> • Alexandera • Arbela • Atlanta • Baring • Bevier • Brashear • Brookfield • Browning • Bucklin • Callao • Canton • Clarence • Downing • Durham • Edina • Ewing • Galt • Hartford • Green Castle • Green City • Greentop • Hannibal • Higbee • Honeywell • Jamesport • Kahoka • Kirksville • Knox City • Labelle • Laclede • Lancaster • LaPlata • Laredo • Lewistown • Linneus • Livonia • Macon | <ul style="list-style-type: none"> • Madison • Marceline • Memphis • Milan • Moberly • Monroe City • Monticello • New Cambria • Novinger • Palmyra • Paris • Purdin • Queen City • Rutledge • Shelbina • Trenton • Unionville • Wayland • West Quincy <p>IOWA</p> <ul style="list-style-type: none"> • Centerville • Cincinnati • Drakesville • Ft. Madison • Keokuk • Montrose • Moravia • Unionville • Bloomfield • Hwy 2 <p>ILLINOIS</p> <ul style="list-style-type: none"> • Carthage • Hamilton • Noita • Quincy |
|---|--|

CALL FOR PRICES

SECURITY CAMERAS FOR FARMS & SMALL BUSINESS



**SERVICES.
SOLUTIONS.
SUPPORT.**

ON SIGHT 24/7
90 DAY
TRY BEFORE BUY

* Pay 3 months up front
* Remote Technical Support Included!

AFTER 3 MONTHS

You choose 1 of 3 options

BUY IT OUT

Purchase the Surveillance System
minus the up-front cost you've
already paid.

RENT

Continue with
monthly payments.

SEND IT BACK

Whether you only need it for a few
months or it's not what you were looking
for, now you have the option!

ON SIGHT 24/7
VIDEO SURVEILLANCE

PROFESSIONALS YOU CAN TRUST.

Proudly Serving the Midwestern United States since 2012

5 Star Google Review

"On Sight 24/7 is a relatively inexpensive great security option. It allows us to monitor those coming and going, even at night with infrared. We've used the same system now for over 5 years. Competent techs and kind and helpful staff makes for a worthwhile security system."

C. Heins

660.956.9944

County. Please Contact 660-216-5887 or 417-773-2507

FOR SALE: 2010 Case 8120 Combine, 2975 HR -2097 HR, NO DEF, RWA, DIF Lock, 620 Drive Tires, 28 Steer Tires, luxury cab, clean machine, \$95,000. 641-895-8014

FOR SALE: Fish for stocking ponds - Catfish, Grass Carp, Crappie, Blue Gills, Red Ear, Bass, and Minnows. Heind-

selman Family Farms, Call Greg 660-341-5692

FOR SALE: Tomatoes, Cucumber, Zucchini, Potatoes, Onions and Green Beans. Located at Kauffman Produce 11538 Iceberg Ave LaPlata MO 63549. Will also be at the LaPlata Farmers Market every Wednesday from 4 pm to 7 pm

FOR SALE: Sweet Potato Slips, Garden Seeds, Seed Potatoes, Onion Bulbs. Home-

made Candy, Local Honey, Stainless Steel Kitchen Wares, Some Glassware, Lamps & Chimneys, New Supply of Greeting Cards Wooden Handles & and more. Train Track Candies 11538 Iceberg Ave,

LaPlata, MO, 3rd lane to your left.

HANDYMAN: Install interior and exterior doors and windows, siding, decks, showers and toilets, flooring and dry-wall. 660-956-2189.

FOR SALE: Ford 2910 DSL, good paint and sheet metal, good tires, w/Bush hog quick




FOR SALE:
Registered
Hereford Bulls
18-24 Months Old,

JRC FARMS
Jim Clark
Mercer, MO.
660-748-6464

Golden Grain Bins-Spring Discount


Grain Bins	Floors w/12"Supp. & Flashing
18'x18' 4,195bu. \$ 6,645	18'....\$1,956 30'....\$ 5,465
27'x21' 11,265bu. \$13,143	21'....\$2,676 36'....\$ 7,790
42'x24' 32,245bu. \$30,190	27'....\$4,466 42'....\$10,609



GMLS Industries, Inc.
PH: 660-699-2179 or 620-983-2136
www.gmlsindustries.com

The Family of Vicki Bryan Rhoades would like to sincerely thank everyone for their kindness during this difficult time.

Vicki added to the sum of human joy, and were everyone who she did some loving service, to bring a blossom to her grave, she would sleep beneath a wilderness of flowers.









LARGE MULTIPARTY SALE

SUNDAY, JUNE 27TH 2021 @ 1PM

Marion County Fairgrounds/ Flower City Park (Cattle Barns)

CAR	HOUSEHOLD
GUNS/ COINS	JEWELRY
ANTIQUES	AND
ANTIQUÉ/ MODERN FURNITURE	MUCH MORE....

Auctioneer Notes: CAR AND GUNS will sale at 2pm.










SELLERS:
DEREK DAVIDSON, LORRETA BOHON, KATHRYN OLSON BIER,
DARRYL BUNTE, ANN & BETH FORBES, RODNEY KUNTEMAYER

More pictures and information at:
www.hammondwatsonauctionservice.com

Hammond & Watson AUCTION SERVICE

Lionel Hammond & Kirk Watson
573-406-3877
PALMYRA MO

Like us on FB 

Look us up on Auction Zip 

The Ultimate Wood Heat.




- **More Comfort** - Thermostatically controlled wood heat.
- **Peace of Mind** - Keep the fire outside and eliminate the dangers associated with indoor wood heating.
- **Save Money** - Wood is a renewable, inexpensive and often free energy source.

CAMPEN
Heating & Air Conditioning
573-288-8966
Canton, MO
CentralBoiler.com



John Deere 4255 Tractor, MFWD, 6900 hrs, 95% Firestone duals, sharp, \$48,950.



John Deere 6145 M Tractor, MFWD, 3485 hrs, new rubber, 4 door, triple hydr, 16 speed, \$69,500. Will trade.



John Deere 4440 Tractor, 1980, runs fine, one owner, 6800 hrs, power shift, tin work perfect, new 18.4-38 factory duals, clean cab, \$31,950.

NEED TRUCK PARTS & ACCESSORIES? We've Gotcha Covered!



TRAILER PARTS

BUMPERS

B&W HITCHES

WINCHES

TIRES

AIRLIFT

GRILLE GUARDS

TRUXEDO BED COVERS

CANTRIL TRUCK & TRAILER
319-238-7367
101 North St. • Cantril, IA



John Deere 4020 Tractor, 1968, 3-pt, diff lock, 7000 hrs, fully restored, top to bottom, new rubber, Grandpa steps, \$19,500.



John Deere 4020 Tractor, 1969, 3600 hrs showing, power shift, dual hydr, Diff Lock, new rubber, original, \$17,500.

Call 573-881-3557

tach loader, \$7000. 660-341-8089

DIRT WORK All types of excavation, reclaiming overgrown

fields, including CRP and WRP. Building site preparation, terrace and tiling maintaining and creating new trails

and crossings, rock hauling, Food plot development and maintenance. Leveling and grading, wetland construction and maintenance. Pond and lake cleaning and construction. Call for quotes. 660-342-2701

FOR SALE: John Deere 2950 MFWD Tractor w/FarmhandXL 740 Loader, 6000 hrs, average condition, \$25,950. Call 573-881-3557

FOR SALE: Used garden tillers Troy-Bilt, BCS and other sizes. DR Brush mowers. Kahoka, MO 660-216-1809

WANT TO BUY: 15' or 12' Brush Hog in real good condition, 540 PTO. 660-676-9199

FOR SALE: New Skid loader attachments. Forks, Buckets and Bale Spears in Stock. No Sunday Calls 660-988-7385

BUYING Used Mobile Homes. Porter Homes 573-231-6667

FOR SALE: 1/2 Border collie pups will make great farm dogs! Will be weaned with puppy shots and dewormed and ready for a home by 4th of July, \$150 OBO. Contact Regina 660-332-4026

FOR SALE: New Holland 352 Grinder Mixer, one owner,

right out of owner's shed, has auger feeder, extended unloading auger, extra screens, textured – runs out smooth and quiet, \$4,950. Call 573-881-3557

Home Grown Tomatoes, Turnips, Green Onions, Zucchini, Cucumber, Potatoes. Schmucker Produce 7 miles north Kirksville to Ft Madison Way East 1/2 mile

NEW/USED parts vehicles/pickups/semi's farm construction equipment. "Motors/trannys" body parts, paint matching yours warranted/delivery. 800-807-9612

FOR SALE: Thompson Omega 50 caliber Muzzleloader with many accessories; 10 point Wicked Ridge Crossbow with many accessories. 660-299-0682

MALLARD DUCKS FOR SALE: Various ages none over 2 years old, babies and young ducks. 573-288-4303 leave message

FOR SALE: 2009 Kawasaki Contours 1400, 1 owner, red, back luggage trunk, always serviced and garaged, nice, has extras. 319-795-6804

FOR SALE: Guineas - Adults \$15.00, Keets \$5.00, Hatching eggs \$10 a dozen. Chickens - Laying hens \$10, Barred Rock, Rhode Island Red, Black Sex Link. Chicks 6 weeks old Barred Rock, Buff Orpington, Black Sex Link, Aracana. Cairo MO 660-651-8102

WANTED John Deere 343 Corn Head in good condition. 217-257-4059

FOR SALE: John Deere 40 Manure Spreader, very little use, shedded, end gate extra sides, \$3,950. Call 573-881-3557

FOR SALE: Grower Lights and other misc seed starting supplies. Have moved and no room to store, \$200. 660-676-5531

FOR SALE: H&S bi-fold V rake, manual fold, hydraulic lift, good teeth, good hoses, shows very little wear. Not

ANYTHING ON WHEELS!



HIGHWAY 63 INSURANCE
(660) 956-9283

highway63insurance.com

TEMPORARILY CLOSED

As part of the community effort to slow the spread of the COVID-19 virus, we are following the CDC recommendations for social distancing.

The **NEMO Trader** office will be **CLOSED** until further notice.

We are still working to provide our customers with the best possible service during this time. We will continue to operate, take calls and publish our paper.

Please stay safe.

PLEASE USE THE FOLLOWING CONTACT INFORMATION

FOR LINE CLASSIFIEDS AND BILLING QUESTIONS
Call 660-665-8500 or
Email jkirkpatrick@nemo-trader.com

FOR ADVERTISING QUESTIONS
Call 660-988-6830 or
Email nemotrader@gatehousemedia.com

NEMO Trader **GANNETT**

NORTH MISSOURI LIVESTOCK AUCTION, LLC

52762 Bus Hwy 5 Milan, MO 63556
Paul & Deanna Eitel, Owners

SHEEP & GOAT SALE
MONDAY, June 28, 2021
NOON START

Sheep & Goat Sales will be the 4th Monday of the Month
Check out listings and pictures on our Facebook Page at North Missouri Livestock Auction, LLC

Paul Eitel - 660-265-6404 Barn: 660-265-4286
Auctioneer: Robert Barker 641-680-013
Field Reps: David Ernst 641-891-9501
Joseph Gingerich 660-684-6265, Carl Aldridge 660-342-0322

FOR SALE
Call Steve Taylor
660-342-2889



2002 Cadillac
Like new, 100K miles

ATTENTION LAND OWNERS!

BUYER OF STANDING TIMBER
OWNER / OPERATOR OF SAWMILL - BUY/CUT LOGS
CERTIFIED - BONDED - INSURED


TRI STATE TIMBER L.L.C.
PH. 660-341-4921 or 660-465-2975
353 1/2 GRAND AVE. • MEMPHIS, MO 63555

MOOSE RUN REPAIR
8 YEARS EXPERIENCE

Tractor • Skid Steer • Combine • Air Conditioning
Self-propelled Forage Harvester & General AG Repairs

Specializing in John Deere
Engine • Transmission • Hydraulics
Power Shift/IVT Diagnosis & Repair
Computer/Electronic System Diagnosis & Repair

INTERSTATE BATTERIES **TIGERLIGHTS**



660-988-3843
DELVIN "MOOSE" STEINER • QUEEN CITY, MO

CENTURY 21 Lifetime Realty

FARM & RANCH

A community member for over 26 years, Elizabeth is a real estate professional connecting sellers in Northeast Missouri to buyers across our great country.


Considering selling a farm or home? Call on a local expert who knows you, and who is committed to helping you get the most for your property.

Serving Knox, Macon, Adair, Sullivan, Linn, Putnam and Shelby Counties.

Elizabeth Gregory, Realtor
Lic. # 2021008017

LISTING A PROPERTY?
CALL OR EMAIL ELIZABETH FOR A NO OBLIGATION CONSULTATION
660.621.2136 | egregory.c21@gmail.com
farmandhome.c21.com
Century21 Lifetime Realty | 660.665.5678

Polled Hereford BULLS
Complete Performance Data



GALEN KRIEG
217-743-5382
309-299-5695
Basco, IL

FOR SALE
2021 Springdale camper. Electric awning, stabilizing jacks, hitch jack. Sleeps 6, length 26.6 feet.
660-342-4582

sprung. Call evenings 660-626-3951.

LIMOUSIN & LIM FLEX BULLS for Sale: Black & Red, All Polled, out of TOP AI Sires, low birth weight, w/Performance & Carcass EPD's. Potter's Limousin Cincinnati, IA 641-436-7153 or 641-658-2786

HELP WANTED: Need Female Personal Care Attendant Marceline. Background Check and GED Required. Monday - Friday 5:00 pm - 11:00 pm. Starting at \$14.00, W2 given. 660-734-0152 Leave message with Jessica or Jasmine

FOR SALE: New Holland 56 Hay Rake, lots of new teeth, \$800. 660-341-6218

FOR SALE: New Holland 616 Disc Mower, field ready, good tarp, \$3,950. Call 573-881-3557

FOR SALE: 2008 Chevy Equinox, rebuild able title, high miles, runs good, new tires, drive every day, \$3000. Call Vicki at 641-895-2949 Centerville

FOR SALE: Non-GMO pasture raised, broiler chickens, \$2.50 @ lb., dressed, fresh or frozen!! Call 66-342-5232 to place your order

FOR SALE: Solid Oak rolltop computer desk, good condition, \$950. Call or text 660-342-7303

FOR SALE: 3 PT JD 7000 two row planter with stand comes with Corn/Beans/Sunflower

plates. Been completely rebuilt, like new, great for food plots. Shelby County, must pick up 314-276-9343

FOR SALE: JD D140 Garden tractor, new belts, blade & seat, \$1000; JD 345 Garden tractor, new seat, 54" deck, good condition, \$1500; Case 730 tractor, wide front, needs



Signature
Overhead Doors and Remodeling, LLC

660-785-0248

www.signatureremodelingkv.com

Residential and Commercial Installation and Service

CELEBRATIONS! PARTY RENTAL
KIRKSVILLE, MO

FOR RENT
TABLES - CHAIRS - TENTS - BOUNCE HOUSE & COTTON CANDY MACHINE...ECT.

660-626-5162 or 660-665-9380

Show Me Plumbing Services



- *General Mini Excavation & Skid Steer Work
- *Livestock Watering
- *Waterlines & Sewer Systems
- *Residential Services & General Plumbing
- *Utility Trenching

Stan Schrock - 660-988-1163
Greentop, MO. - 660-766-2636

MAST MEATS, LLC
660-766-2211
USDA & Custom Slaughter & Processing
CALL OR STOP BY FOR SPECIALS
Retail store hours • Mon-Fri 8-5 Sat 8:30-3
mastmeatsllc.com • 405 US Hwy. 63, Queen City, MO 63561

AUTO'S UNLIMITED 660-665-8149
660-341-0965
No Sunday Calls!
17406 Bob Rd • Kirksville, MO

FEATURED VEHICLES

1997 Ford F250



3/4 ton, everything works, cod AC, 4WD, make a great farm truck or wood hauling truck - \$1,950

2005 Ford Escape



4WD, moonroof, 125K miles, excellent condition - \$5,000

ALL VEHICLES HAVE GONE THROUGH A 60 PT INSPECTION! STATE INSPECTED! CALL FOR MORE INFO!

2009 Mercury Milan



Nice car for new driver or college student great shape, excellent condition, great MPG - \$5,000

Harris Land Management & Services LLC 

Gus Harris * 660-216-7268 * Licensed & Insured
Like us on facebook



Brush Clearing * Trenches * Roads
Post Hole Digging * Shooting Lanes
Mobile Metal Fabrication
Repair * Stump Removal

Judd Motors Call 660-457-3700
Hwy 63 North, Lancaster, MO



- 2015 GMC 2500HD, SLT, 4x4, crew cab, shortbed, 6.0L, heat & cool leather, bed cover, 1 owner, only 113k miles, charcoal, very nice, new tires only \$35,900
- 2015 Equinox, All Wheel Drive, 1 owner, 129k, silver, nice, Remote start, new tires, only \$10,900
- 2012 Chevy Captiva, LTZ, AWD, Leather, sunroof, 112K, maroon, \$9,995
- 2013 Ford Edge Limited, AWD, leather, sunroof, new tires, maroon, only 99k, excellent \$14,900
- 2011 Chevy Cruze, LT, RS pkg, black, 84K, \$7,995
- 2006 Chevy 1500, 4x4, crew cab, 5.3L, leather, red, 147k, \$11,250
- 2005 Chrysler 300, limited, leather, sunroof, 63K, silver, \$7,995
- 2005 GMC 2500HD, SLE, 2wd, 6.0L, ext cab, long bed, only 119k, silver, very nice, only \$11,900
- 2000 Jeep Grand Cherokee, 4wd, 4.0L, leather, sunroof, gray, 180k, only \$3,995

www.juddmotors.com | In Business Over 75 Years
Curly and Kevin Judd

B&K Since 1914

WE ARE HIRING!

LOAN SECRETARY POSITION: Previous secretarial and switchboard experience preferred. Excellent customer service skills required, attention to detail and a friendly outgoing personality. Full time position with benefits.

Send resume to:
Bank of Kirksville
Attn: Personnel
PO Box 787
Kirksville, MO 63501
EOE
Member FDIC

FRONTLINE FENCING LLC

Steel Pipe Fencing.
Custom Built Gates and Livestock Handling Equipment.
Barbed Wire and Woven Wire Fence.
Arrowquip Cattle Handling Equipment.
Post Driver Rental.



29386 St Hwy T,
Greentop, MO
660-956-2430

EL KADIR SHRINE CLUB ANNUAL FIREWORKS STAND

Open 9am - 9pm
June 20 - July 5

2401 S Baltimore St
Kirksville, Missouri

GREAT SELECTIONS
GREAT PRICES

starter repair, \$1500. 660-341-3492

FOR SALE: John Deere 275 Disc Mower, 9', nice, good tarp, \$4,950. Call 573-881-3557

FOR SALE: Vermeer Baler 605 SM, 6700 bales, excellent condition, stored inside, \$30,000; NH 278 square baler, twine tie, restored, \$4500; Krome disc mower 283 S, 9' cut, \$5000. 660-665-1595

FOR SALE: 2002 Ford Super Duty 4 door pickup, nice body & interior, mechanically complete inspection. 660-216-3685 or 319-768-6023

FOR SALE: 2 New T-Off 2011 Chevy HD Hoods, \$250; 5 Used tailgates fits 97-07 Chevy, \$225; 1 new 07-13 GMC 1500 Grille chrome, \$200; 2006 Chevy K2500 Crew cab white, \$750, new 2010 Chevy Dually bed, silver, New 2011 rear bumper ¾ ton chrome, \$295. 660-341-6267

FOR SALE: Like new Ryobi battery operated string trimmer. Only used twice. Charger box, line, manual, lithium battery. Call 660-486-3359

FOR SALE: Ford 2000 gas 4 speed needs overhaul, Arbela, MO 660-988-6971.

WANTED: Older bottle gas Range in good condition. 660-349-9845

URGENT NEEDING TO BUY Older big round baler, field ready, 540 equal to Vermeer Model F or G or equivalent (I have been using a Vermeer F for past few years) Call 217-743-5226 ask for Carrol

FOR SALE: John Deere 569 Baler. Net, kicker, 1000 rpm, big tires, 16,000 bales, new belts, field ready, will trade, \$18,500. Call 573-881-3557

FOR LEASE: 55 or 105 Acres of grass land for hay. Located in Southwest Clark County 573-853-4496 or 573-406-8664

FOR SALE: 18 fancy 2 year old Red Angus bred heifers and 10 fancy 2 year old composite Red Angus X Charolais bred heifers due to start calving August 29th for 60 days, \$2000 per head. 8 exceptional 2 year old bred Charolais heifers due to start calving August 29th \$1700 per head. All 36 heif-

ers are weighing up to 1200 pounds, pelvic measured, reproductive track scored, and fully vaccinated, very gentle and bred to Show Me Select qualified Reed Angus bulls with CED ratings of 14. Phone 660-676-0710

YARD PLANT SALE: 1407 East Harrison 6/25 9:00 am to 5:00 pm, 6/26 8:00 am to 1:00 pm Adult bicycles, dog kennels, kids clothes, toys, dishes and more

FOR SALE: Several steel fence posts 5', 5 ½', 6', 6 ½', \$3 each or 10 or more \$2.50 each; also metal electric posts. Call 573-478-3658

FOR SALE: Lincoln 225 Welder 20' lead's, \$200. 660-342-3519

FOR SALE: German Sport gun model 1911 semi-auto, 22LR pistol; Want to Buy Marlin model 39 22LR Lever rifle. 660-988-3977

FOR SALE: John Deere 285 Disc mower, 9', like new, \$7,950. Call 573-881-3557

WANTED TO BUY: Harley Davidson's, any year, any condition, cash money. Days

660-263-1356 or 660-537-0068

FOR SALE: New 3 pt. tillers, heavy duty, gear driven, 7' to 10' starting at \$3050. 660-874-4455

FOR SALE: Fish for stocking ponds - Catfish, Grass Carp, Crappie, Blue Gills, Red Ear, Bass, and Minnows. Heindselman Family Farms, Call Greg 660-341-5692

HANDYMAN: Install interior and exterior doors and windows, siding, decks, showers and toilets, flooring and dry-wall. 660-956-2189.

FOR SALE: Ford 2910 DSL, good paint and sheet metal, good tires, w/Bush hog quick tach loader, \$7000. 660-341-8089

FOR SALE: 300 Briar Horses in excellent condition, 50 year collection, buy one or all. 660-676-9199

FARM RAISED fresh catfish; home raised Iowa Chops, beef T-bones/ribeye's. Missouri bottom raised sweet-corn. Order ahead, Beef/hogs whole/halves with locker ap-

pointments, "Keep-Ad' 573-604-0674 delivered.

SCHMUCKER PRODUCE is open! Tomatoes, onions, lettuce, radishes, asparagus and other vegetables. Open 9 am to 6 pm. Closed Sunday.

FOR SALE: John Deere 569 Baler. Net, kicker, 1000 rpm, big tires, 16,000 bales, new belts, field ready, will trade, \$18,500. Call 573-881-3557

FOR SALE: GEHL model 1870 round baler, twin tie, 5'x6' bales. Field ready, stored inside, 540 PTO gathering wheels/tires great shape. 660-626-3951.

LIMOUSIN & LIM FLEX BULLS for Sale: Black & Red, All Polled, out of TOP AI Sires, low birth weight, w/Performance & Carcass EPD's. Potter's Limousin Cincinnati, IA 641-436-7153 or 641-658-2786

FOR SALE: IH Rotary Hoe as is \$200. 660-341-6218

FOR SALE: 2000 Ford Super Duty 4 door pickup, new motor, 60,000 miles more or less, everything related to motor has been renewed, on



There's a better way to get noticed.

Keep life simple.
Take out an ad.

the road daily. 660-216-3685 or 319-768-6023

FOR SALE: John Deere 2940 Tractor, 5400 hrs, cab, air, new rubber, estate tractor, \$14,500. Call 573-881-3557

FOR SALE: Like new Ryobi battery operated string trimmer. Only used twice. Charger box, line, manual, lithium battery. Call 660-486-3359

FOR SALE: Ya200 front deck mower, 76" cut, 20 hp, Kohler hydro \$700, Arbela, MO. 660-988-6971

YARD PLANT SALE: 1407 East Harrison 6/25 9:00 am to 5:00 pm, 6/26 8:00 am to 1:00 pm Adult bicycles, dog kennels, kids clothes, toys, dishes and more

FOR SALE: Priefert head gate, automatic catch, model 91, always shedded, \$495. 573-478-3658

FOR SALE: Sepeedco quick hitch, heavy duty CAT 2 or 3, \$200. 660-342-3519

FOR SALE: Official licensed Harley Davidson items.

Books, DVD's, music CD's; 1984 to 1987 mint condition Easy Rider magazines, other items. 660-988-3977

FOR SALE: John Deere 6200 Tractor, MFWD, open station, 6000 hrs, power quad, with 640 Loader, \$25,500. Call 573-881-3557

CREDIT CARD DEBT? Financially Stressed Out? Stop the harassment! Make one monthly payment YOU can AFFORD! Get Help Now and Save! Call Toll Free 888-925-5404

ARE YOU BEHIND \$10k OR MORE ON YOUR TAXES? Stop wage & bank levies, liens & audits, unfiled tax returns, payroll issues, & resolve tax debt FAST. Call 855-820-8878

BECOME A PUBLISHED AUTHOR! We edit, print and distribute your work internationally. We do the work, you reap the Rewards! Call for a FREE Authors Submission Kit: 844-261-5841

CANCER GENETIC SCREENING KIT. Protect yourself and

your family with early genetic screening! See if you qualify for a test at no cost to you with your Medicare Part B coverage. Call 855-623-4490. (Mon-Sun 9am-8pm ET)

ATTENTION SMALL BUSINESS OWNERS! Are you protected in case of property damage or if you have an interruption in service due to a property event? Business Owner Property insurance IS AFFORDABLE and WILL PROTECT YOU when the unexpected happens! For free quote, call 844-877-9891 (M-F 7:30am-9:30pm ET)

BATHROOM RENOVATIONS. EASY, ONE DAY updates! We specialize in safe bathing. Grab bars, no slip flooring & seated showers. Call for a free in-home consultation: 855-980-4002

BEST SATELLITE TV with 2-Year Price Guarantee! \$59.99/mo with 190 channels and 3 months free premium movie channels! Free next day installation! Call 888-986-4740

SAVE YOUR HOME! Are you behind paying your MORTGAGE? Denied a Loan Modification? Is the bank threatening foreclosure? CALL Homeowner's Relief Line! FREE CONSULTATION! 855-624-8601.

HughesNet – America's #1 Choice for Satellite Internet. Call Today and Save! More Data. Free Installation. Available Everywhere. No Hard Data Limits. Call 855-248-7966

NEED NEW FLOORING? Call Empire Today to schedule a FREE in-home estimate on Carpeting & Flooring. Call Today! 877-866-8797

NEED NEW WINDOW TREATMENTS? Call Empire Today to schedule a FREE in-home estimate on blinds & shades. Call Today! 877-710-4641

Over \$10K in debt? Be debt free in 24-48 months. Pay a fraction of what you owe. A+ BBB rated. Call National Debt Relief 877-278-4861.

SelectQuote is dedicated to finding a Medicare plan right

for you and your wallet. Call 844-361-4727 today and receive a free quote from one of our multiple carriers.

Attention: Auto Injury Victims. If you have suffered a serious injury in an auto accident, call us! Our attorneys have the experience to get you the full compensation you deserve! Call Now: 877-496-3293

BEAUTIFUL BATH UPDATES in as little as ONE DAY! Superior quality bath and shower systems at AFFORDABLE PRICES! Lifetime warranty & professional installs. Call Now! 844-980-3902

BOY SCOUT COMPENSATION FUND - Anyone that was inappropriately touched by a Scout leader deserves justice and financial compensation! Victims may be eligible for a significant cash settlement. Time to file is limited. Call Now! 866-395-0568

DONATE YOUR CAR TO CHARITY. Receive maximum value of write off for your taxes. Running or not! All con-

FIND THE
PERFECT PET
FOR THE
PERFECT PRICE
IN THE
PERFECT PLACE
FOR DEALS

*Find the stuff you want
and sell the stuff you don't with
the newspaper classifieds.*



ditions accepted. Free pickup. Call for details. 855-986-8602

FREE AUTO INSURANCE QUOTES for uninsured and insured drivers. Let us show you how much you can save! Call: 888-320-7567.

YOU MAY QUALIFY for disability benefits if you have are under a doctor's care for a health condition that prevents you from working for a year or more. Call now! 877-430-9760

PROBLEM CREDIT REPORT? Lexington Law works to challenge inaccurate negative items including: identity theft, collections, late payments, liens and more from your credit report. Call for a free credit repair consultation: 855-622-0369. John C. Heath, Attorney at Law, PLLC, dba Lexington Law Firm.

SAVE BIG on HOME INSURANCE! Compare 20 A-rated Insurance companies. Let us do the shopping & save you time & money. Get a quote within minutes. Average savings of \$444/year! Call 877-594-0878. (M-F 8am-8pm Central)

Attention Viagra users: Generic 100 mg blue pills or Generic 20 mg yellow pills. Get 45 plus 5 free \$99 + S/H. Guaranteed, no prescription necessary. Call 877-801-0749

FOR SALE: John Deere 4240 Tractor, CAH, one owner, 8000 hrs, recent overhaul, power shift, Loader available, \$25,500. Call 573-881-3557

WANTED TO BUY: Harley Davidson's, any year, any condition, cash money. Days 660-263-1356 or 660-537-0068

WANTED TO BUY: Farm Machinery and Estates. Call James L. Johnston. 573-473-4904

Wevers Outside Wood Furnaces a dealer for Heatmor Stainless Steel Outside Furnaces, have an assortment of parts, line, and etc. Taking orders for new outside wood furnaces. Used 120 furnace, burns wood or coal, has shaker grates, for \$5,550. Call 660-423-5242, cell 660-216-9885. Open 6pm-9pm Mon-

day-Friday, Saturday anytime, call first.

FOR SALE: New 3 pt. tillers, heavy duty, gear driven, 7' to 10' starting at \$3050. 660-874-4455

PASTURE AND HAY GROUND Needed around Adair & Knox County. Please Contact 660-216-5887 or 417-773-2507

FOR SALE: 2010 Case 8120 Combine, 2975 HR -2097 HR, NO DEF, RWA, DIF Lock, 620 Drive Tires, 28 Steer Tires, luxury cab, clean machine, \$95,000. 641-895-8014

FOR SALE: Fish for stocking ponds - Catfish, Grass Carp, Crappie, Blue Gills, Red Ear, Bass, and Minnows. Heindselman Family Farms, Call Greg 660-341-5692

FOR SALE: Tomatoes, Cucumber, Zucchini, Potatoes, Onions and Green Beans. Located at Kauffman Produce 11538 Iceberg Ave LaPlata MO 63549. Will also be at the LaPlata Farmers Market every Wednesday from 4 pm to 7 pm

FOR SALE: Sweet Potato Slips, Garden Seeds, Seed Potatoes, Onion Bulbs. Home-made Candy, Local Honey,

Stainless Steel Kitchen Wares, Some Glassware, Lamps & Chimneys, New Supply of Greeting Cards Wooden Han-

Dutch Garden Nursery

Your Full Service Garden Center

Fresh Cut Flowers
Ready made bouquets or by the stem.
Helium Balloons!

Delivery available in Memphis and Edina area
Call: 660-883-5650

BAGGED ROCK & SAND LANDSCAPE BLOCKS FIREPITS • FLAGSTONE EDGERS • PAVERS



1/2 PRICE SALE ON ANNUAL FLOWERS

LOTS OF SHRUBS & TREES for your landscape



Bulk Mulch & Bulk Rock Delivery Available!

Summer Hours:

Monday - Saturday 8 AM to 5:30 PM

MEMPHIS LOCATION (beside Country View Store): 660-883-5650

EDINA LOCATION (Home Base): 660-397-4115

www.dutchgardennursery.com

NEMO TRADER OFFERS TOTAL WEBSITE PLUS

A professional website PLUS Perch

With Total Website Plus, our expert web developers build you a responsive, SEO-friendly website to connect you with people searching for your business—and you don't have to lift a finger! We take care of everything so you can get back to running your business. Included with your new website is Perch. This award-winning solution monitors your online presence and provides guidance to help market online through quick, easy, and effective tasks.



CINDY HIGH

Multi-Media Sales Executive

110 E. McPherson Street
Kirksville MO

Office # 660-665-8500 ext. 19
Email: nemotrader@gatehousemedia.com



GANNETT

NEMO Trader

Est. 2009

KEEP'EM N

FENCING, PIPE & STEEL

FOR ALL YOUR FENCING NEEDS.

Quality Cattle Equipment, too!

620-215-5770

KIRKSVILLE, MO

SPECIAL ORDERS AVAILABLE

Check out our current inventory at Kirksville Livestock Sales.

SINGLE \$550
DOUBLE \$950
HEAVY DUTY HAY FEEDERS

HEAVY-DUTY \$850
REPLACEMENT BUMPERS
Dodge, Chevy, Ford & GMC

HALF TUB \$2,600 **FULL TUB \$3,100**

MINERAL FEEDERS \$375

\$2,900
20' ADJUSTABLE ALLEY

If you're looking to build a pipe fence or corral, wire fence, or need quality cattle equipment,
WE'RE HERE TO SERVE YOU!

Gates • Continuous Panels • Tubs • Alleys • Posts • Pipe • Bumpers • Cattle Feeders

BUYERS OF CORN, SOYBEAN, ORGANIC, NON-GMO CORN AND SOYBEANS

Baring Elevator

Contracts Offered
Forward Pricing
Target Orders

Baring, MO

660.892.4411

www.baringelevator.com

CONTACT US FOR PRICING

Lewis 660-341-2937

Roger 660-223-2442

For Your Equipment Needs!

LOTS OF USED EQUIPMENT AVAILABLE

Vermeer 605 N Balers, Twin Rakes, Tralled Mowers, Disc Mowers, Tedders, Bale Processors-

Offer high capacity, speed, reliability, efficiency, fuel savings...

DeWeze Bale Beds-

Lift, load, transport and feed big, round bales...

Danuser Post-Hole Diggers-

Offer quality & reliability, outperforms the competition...

USED EQUIPMENT

BALERS
605 N Net
605 L Net
605 K Net

RAKES
R2800
R2300
VR1224

MOWERS
TM 1210
8040
7030
Vicon 4000

TEDDERS
TD250

BALE PROCESSORS
BPX 9000
BPX 9010

Liebhart Sales, Inc.

17546 Lacey Drive •
New Boston, MO. 63557

660-689-3406

Call Today!!

dles & and more. Train Track Candies 11538 Iceberg Ave, LaPlata, MO, 3rd lane to your left.

HANDYMAN: Install interior and exterior doors and windows, siding, decks, showers and toilets, flooring and dry-wall. 660-956-2189.

FOR SALE: Ford 2910 DSL, good paint and sheet metal, good tires, w/Bush hog quick tach loader, \$7000. 660-341-8089

DIRT WORK All types of excavation, reclaiming overgrown fields, including CRP and WRP. Building site preparation, terrace and tiling maintaining and creating new trails and crossings, rock hauling, Food plot development and maintenance. Leveling and

grading, wetland construction and maintenance. Pond and lake cleaning and construction. Call for quotes. 660-342-2701

FOR SALE: John Deere 2950 MFWD Tractor w/FarmhandXL 740 Loader, 6000 hrs, average condition, \$25,950. Call 573-881-3557

FOR SALE: Used garden tillers Troy-Bilt, BCS and other sizes. DR Brush mowers. Kahoka, MO 660-216-1809

WANT TO BUY: 15' or 12' Brush Hog in real good condition, 540 PTO. 660-676-9199

FOR SALE: New Skid loader attachments. Forks, Buckets and Bale Spears in Stock. No Sunday Calls 660-988-7385

BUYING Used Mobile Homes. Porter Homes 573-231-6667

FOR SALE: 1/2 Border collie pups will make great farm dogs! Will be weaned with puppy shots and dewormed and ready for a home by 4th of July, \$150 OBO. Contact Regina 660-332-4026

FOR SALE: New Holland 352 Grinder Mixer, one owner, right out of owner's shed, has auger feeder, extended unloading auger, extra screens, texted - runs out smooth and quiet, \$4,950. Call 573-881-3557

Home Grown Tomatoes, Turnips, Green Onions, Zucchini, Cucumber, Potatoes. Schmucker Produce 7 miles north Kirksville to Ft Madison Way East 1/2 mile

NEW/USED parts vehicles/pickups/semi's farm construction equipment. "Motors/trannys" body parts, paint matching yours warranted/delivery. 800-807-9612

FOR SALE: Thompson Omega 50 caliber Muzzleloader with many accessories; 10 point Wicked Ridge Crossbow with many accessories. 660-299-0682

MALLARD DUCKS FOR SALE: Various ages none over 2 years old, babies and young ducks. 573-288-4303 leave message

FOR SALE: 2009 Kawasaki Contours 1400, 1 owner, red, back luggage trunk, always serviced and garaged, nice, has extras. 319-795-6804

FOR SALE: Guineas - Adults \$15.00, Keets \$5.00, Hatching eggs \$10 a dozen. Chickens -

Laying hens \$10, Barred Rock, Rhode Island Red, Black Sex Link. Chicks 6 weeks old Barred Rock, Buff Orpington, Black Sex Link, Aracana. Cairo MO 660-651-8102

WANTED John Deere 343 Corn Head in good condition. 217-257-4059

FOR SALE: John Deere 40 Manure Spreader, very little use, shedded, end gate extra sides, \$3,950. Call 573-881-3557

FOR SALE: Grower Lights and other misc seed staring supplies. Have moved and no room to store, \$200. 660-676-5531

FOR SALE: H&S bi-fold V rake, manual fold, hydraulic lift, good teeth, good hoses, shows very little wear. Not

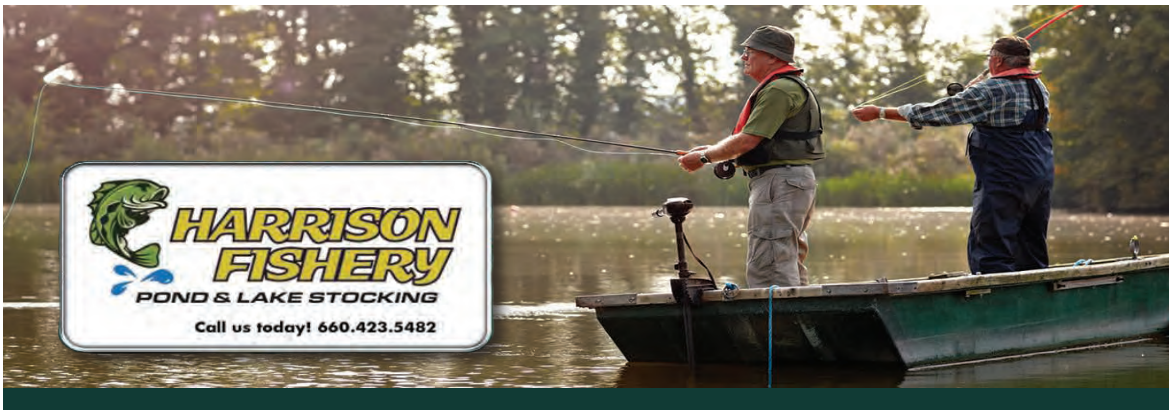
Warranty • 319-696-2981 • Warranty • www.rsautosalesinc.com • Warranty • 319-696-2981 • Warranty • 319-696-2981

R.S. AUTO INC.
www.rsautosalesinc.com
Office (319) 696-2981
214 S. Center St
Lockridge, IA 52635
rsauto@yahoo.com

319-696-2981 Check Our website for our wide Variety on 4x4 Trucks - Cars - Mini Vans - Handicap Vans - SUV Motorhomes & Much More

 114,242 Miles 4x4, Diesel, Dually \$29,900	 177,706 Miles 4x4, Diesel \$24,900	 148K Miles 5.9L Cummins Diesel, 2WD, Auto, Dually, Crew Cab, Leather, 5th Wheel Hitch \$18,900	 159,822 Miles 5.3L V8, 4x4, Auto, 4 Dr Ext Cab, Alum Flatbed, LED Lights, Cloth Interior \$13,900
 66,237 Miles 4x4 \$24,900	 49,660 Miles 4x4, 5 Spd Manual \$14,900	 161,939 Miles 4x4 \$12,900	 76,580 Miles 5.7L Hemi, 4x4 \$14,900
 117,855 Miles 4x4 \$11,900	 115,189 Miles 5.7L Hemi V8, 4x4, Auto, Gas, Quad Cab, Bedcover, Cloth Interior, Loaded \$11,900	 180,022 Miles 4x4 \$5,900	 174,587 Miles 4x4 \$5,900
 175,375 Miles 2.4L 4 Cyl, FWD, Auto, Gas, Cloth Interior, Normal Wear \$3,450	 111,670 Miles 2.4L 6 Cyl, Gas, 4x4, Auto, Sunroof, Leather, OnStar, Sirius XM, Great Shape \$3,450	 69,369 Miles 1.4L 4 Cyl, FWD, Auto, Gas, Black Cloth Interior, Super Loaded \$8,900	 105,890 Miles AWD, Camera, Nav \$19,900
 98,060 Miles 4x4 \$19,900	 35,206 Miles AWD, Convertible \$14,900	 90,305 Miles 4x4 \$15,900	 141,847 Miles 4x4 \$7,900
 155,429 Miles 3.6L 6 Cyl, FWD, Auto, Gas, Park Assist Sensors, 3rd Row Seating, Leather, Sharp! \$5,900	 76,043 Miles 4x4 \$10,900	 90,868 Miles AWD \$1,995	 120,520 Miles 1.5L 4 Cyl, Auto, Gas, Hatchback, Cloth Interior, Rust Free, Clean \$7,900
 117,540 Miles 2.4L 4 Cyl, FWD, Auto, 7" Touch Screen Radio, Leather, Camera, Remote Engine Start \$7,450	 77,097 Miles 2.5L 4 Cyl, Auto, Park Assist Sensors, Heated Leather, Loaded \$7,900	 102,551 Miles 2.4L 4 Cyl, Blue Drive System, Camera, Sunroof, Navigation, Leather \$9,900	 40,086 Miles 1.8L 4 Cyl, FWD, Gas, Auto, Cloth Interior, Super Clean, Sharp! \$8,900
 51,076 Miles 1.4L 4 Cyl, FWD, Auto, Gas, Leather Interior, Extra Clean, Sharp! \$6,900	 71K Miles 3.8L V6 Gas Engine, Auto, Sunroof, Heated Leather, Great Shape \$4,900	 88,201 Miles 2.4L 4 Cyl, FWD, Auto, Sunroof, Leather, Local Trade, Normal Wear \$6,900	 84,647 Miles 1.6L 4 Cyl, 6 Spd Manual, Coupe, Panoramic Sunroof, Leather, Sharp \$7,450
 174,717 Miles 2.0L 4 Cyl, FWD, Gas, Manual Trans, Sunroof, Cloth Interior, Local Trade \$1,995	 Local Trade 4.0L 2WD, Auto, Coupe, Leather, Normal Wear, Runs & Drives \$3,900	 134,841 Miles 2.4L 4 Cyl, FWD, Gas, Auto, Cloth Interior, Local Trade, Normal Wear \$2,450	 113,198 Miles 2.4L 4 Cyl, 4x4, Auto, Gas, Cloth Interior, Sirius XM, Normal Wear \$5,900
 100,146 Miles AWD \$10,900	 64,747 Miles 3.6L, Pwr Sliding Doors, Cloth Interior, Rear Air, VMI Northstar Handicap, Kneel System, Wheel Chair Ramp \$26,900	 126,251 Miles 3.6L V6 Gas, Auto, 3rd Row, Stow-N-Go, Leather, DVD, Local Trade \$7,900	 Local Trade 5.4L V8, Auto, Gas, Cut-Away Box Truck, Dual Rear Wheels, Good Box Floor \$10,900
 37,860 Miles 8 Cyl Engine, Auto, Slideout, Generator, Furnace, A/C, Fully Equipped \$13,900	 \$12,500 WITHOUT FORKS \$15,000 W/FORKS Low Miles, 5.9L Cummins Diesel Engine, 16 Ft Long Forks, Runs & Drives \$3,500	 Series V Diesel Engine, AWD, Dana Axles, High-Low-Neutral Trans, Front PTO \$3,500	 Local Trade 250cc Liquid Cooled, 4 Stroke, 6 Spd Fuel Injection, Twin Cam, Throttle Body \$2,450
 114,882 Miles 53 Ft Long, Front/Rear Tip-Out, Gooseneck, 12K Lb Winch/Dual Jacks, Wire Harness, Tie Downs \$6,900	 129,119 Miles 2.2L 4 Cyl, FWD, Auto, Gas, Cloth Interior, Local Trade, Clean Title \$3,900	 156,665 Miles 4.6L V8 Triton, Auto, Gas, 2 Dr Reg Cab, Cloth Interior, Local Trade, Normal Wear \$2,900	

Warranty • 319-696-2981 • Warranty • www.rsautosalesinc.com • Warranty • 319-696-2981 • Warranty • 319-696-2981



Your trusted source for quality Fish!

Harrison Fishery, Inc. is a family owned and operated business.

We stock most species freshwater, game & baitfish.

Contact us for price & delivery

curtis@harrisonfishery.com
660-423-5482

Species Available	Bluegill	Walleye
Largemouth bass	Redear sunfish	Muskie
Hybrid bluegill	Black crappie	Catfish
Golden shiners	Fathead minnow	and More!

Time to gather up the little ones, get their fishing poles and go enjoy a day of fishing



www.harrisonfishery.com

sprung. Call evenings 660-626-3951.

LIMOUSIN & LIM FLEX BULLS for Sale: Black & Red, All Polled, out of TOP AI Sires, low birth weight, w/Performance & Carcass EPD's. Potter's Limousin Cincinnati, IA 641-436-7153 or 641-658-2786

HELP WANTED: Need Female Personal Care Attendant Marceline. Background Check and GED Required. Monday - Friday 5:00 pm - 11:00 pm. Starting at \$14.00,

W2 given. 660-734-0152 Leave message with Jessica or Jasmine

FOR SALE: New Holland 56 Hay Rake, lots of new teeth, \$800. 660-341-6218

FOR SALE: New Holland 616 Disc Mower, field ready, good tarp, \$3,950. Call 573-881-3557

FOR SALE: 2008 Chevy Equinox, rebuild able title, high miles, runs good, new tires, drive every day, \$3000. Call Vicki at 641-895-2949 Center-ville

Tired Of Cleaning Your Gutters? LEAFPROOF THEM!

Show-ME Seamless Guttering
5" & 6" Gutters W/ 16 Colors Available
Free Estimates
Prompt Service
Siding • Soffit • Fascia

Fascia - 20 colors available

Elliott Hix
660-626-3447
Kirksville, MO

Colony Store

Rt. K, Colony, MO.

Having a load of Georgia Free Stone Peaches on Thursday, June 24th around Noon



Open Monday - Saturday 9am-4pm
Closed Sunday

660-434-5502 | 660-341-2966

LANCASTER LUMBER INC.

Lancaster, MO.

1-800-424-5071

LAN-DOW BUILDINGS

www.lancasterlumber.com



Countryside Market

Hello from Countryside Market!

Fresh Produce ----	Sandwich Cookies ----
Georgia Peaches \$2.49 per lb	3 Flavors \$1.19 per Pkg
Tomatoes \$3.99 per lb	Chocolate Crème
Zucchini	Chocolate
Cucumbers	Vanilla
Green Beans as we can get them	Honey Graham Crackers \$1.29
	Peach Slices ---- 106 oz / \$5.69

2.5 Miles North Of Town Kirksville, MO
660-665-3215 or 988-0742

Troyer TARP MFG.

660-486-3301

20264 State • Hwy. VV • Ethel, MO. 63539



Hoop Building Covers

FARM TARPS

TRUCK TARPS

WE GOT YOUR NEEDS COVERED!

FOR SALE: Non-GMO pasture raised, broiler chickens, \$2.50 @ lb., dressed, fresh or frozen!! Call 66-342-5232 to place your order

FOR SALE: Solid Oak rolltop computer desk, good condition, \$950. Call or text 660-342-7303

FOR SALE: 3 PT JD 7000 two row planter with stand comes with Corn/Beans/Sunflower plates. Been completely rebuilt, like new, great for food plots. Shelby County, must pick up 314-276-9343

FOR SALE: JD D140 Garden tractor, new belts, blade & seat, \$1000; JD 345 Garden tractor, new seat, 54" deck, good condition, \$1500; Case

730 tractor, wide front, needs starter repair, \$1500. 660-341-3492

FOR SALE: John Deere 275 Disc Mower, 9', nice, good tarp, \$4,950. Call 573-881-3557

FOR SALE: Vermeer Baler 605 SM, 6700 bales, excellent condition, stored inside, \$30,000; NH 278 square baler, twine tie, restored, \$4500; Krome disc mower 283 S, 9' cut, \$5000. 660-665-1595

FOR SALE: 2002 Ford Super Duty 4 door pickup, nice body & interior, mechanically complete inspection. 660-216-3685 or 319-768-6023

FOR SALE: 2 New T-Off 2011 Chevy HD Hoods, \$250; 5

Used tailgates fits 97-07 Chevy, \$225; 1 new 07-13 GMC 1500 Grille chrome, \$200; 2006 Chevy K2500 Crew cab white, \$750, new 2010 Chevy Dually bed, silver, New 2011 rear bumper 3/4 ton chrome, \$295. 660-341-6267

FOR SALE: Like new Ryobi battery operated string trimmer. Only used twice. Charger box, line, manual, lithium battery. Call 660-486-3359

FOR SALE: Ford 2000 gas 4 speed needs overhaul, Arbela, MO 660-988-6971.

WANTED: Older bottle gas Range in good condition. 660-349-9845

URGENT NEEDING TO BUY Older big round baler, field ready, 540 equal to Vermeer Model F or G or equivalent (I have been using a Vermeer F

LOLLI BROS. LIVESTOCK MKT, INC.

Special Feeder Calf Sale
Tuesday, June 29 * 11am

- | | | |
|------------------------|-------|------------------------|
| 65 str/850lbs | Pot | 40 hfrs 600-650lbs |
| 65 str/800lbs | Loads | 36 str/hfrs 650-700lbs |
| 75 hfrs 700lbs | | 35 str/hfrs 500-650lbs |
| 80 str/hfrs 500-700lbs | | 33 str 700lbs |
| 74 str/hfrs 700-750lbs | | 30 hfrs 650-675lbs |
| 55 str/hfrs 500-700lbs | | 26 str/hfrs 500-600lbs |
| 55 str/hfrs 700-800lbs | | 25 str 750lbs |
| 53 str/hfrs 500-700lbs | | 25 str/hfrs 600-800lbs |
| 50 str/hfrs 500-700lbs | | 20 str/hfrs 500-600lbs |
| 46 str/hfrs 400-500lbs | | 20 hfrs 550-650lbs |
| 40 hfrs 450-650 lbs | | 18 str/hfrs 500-600lbs |
| 40 str/hfrs 500-700lbs | | 16 str 600-650lbs |
| 40 str/hfrs 500-650lbs | | 9 str/hfrs 500-600lbs |

This is only a partial listing, many more by sale date.

YOUR BUSINESS IS GREATLY APPRECIATED!

Cafe Open
Lolli Bros. Livestock Market, Inc.
704 Main st * Macon, MO * 660-385-2516 * www.lollibros.com
Tim 660-651-3496 * Joseph 660-346-9711
Frankie 660-651-4040 * Dominic 660-651-4024 * Cattle accepted on Sundays

HELP WANTED

NEED A CHANGE??

Due to our expanding business, we are accepting applications for

AUTO TECHNICIAN

Competitive Wages • Group Insurance
• Vacation Retirement Plan

Stop by to see Terry and Pick your application up TODAY!!

MUST HAVE TOOLS & DRIVERS LICENSE

Woody's Tire, Auto & Towing LLC

1102 N. Green St., Kirksville, MO • 660-665-8617

HELP WANTED



BID NOW @ IMANAUCTION.COM

Online Cupp Estate

JEWELRY AUCTION

IMAN AUCTION CENTER | 34614 HIGHWAY 24 - SALISBURY, MO

BIDDING ENDS: SUNDAY, JUNE 27, 2021 @ 7 PM

Jewelry Preview

Friday, June 25

1 - 5 PM












Cupp Trust, Seller * Larry L. Cupp Trustee

IMAN AUCTION

IMAN AUCTION COMPANY

660-788-4298 | 660-414-7830 | 660-388-6235

HAY STORAGE SOLUTIONS AND MUCH MORE!



"Today, I checked with Joseph to see when he was planning to deliver and construct my second hoop building. Two years ago I purchased a 55'x98' hoop building from Skylight buildings. It was erected on my site on time and the building went up in two days.

I was concerned about the durability of a vinyl building compared to a metal sided structure. That was until I noticed that a rock from my Brush Hog 2715 had impelled itself into the metal building. The Skylight building would not have been damaged. Also, the name says a lot. I thought that I would wire in lights like my other buildings but to date I have not found the need.

The reason I thought I needed to build a large building was to store my hay inside. I knew I was losing hay quality due to weather damage but baling with 568 John Deere and net wrapping my hay I thought I was keeping my hay loss at a minimum. I found the first year that I had underestimated my losses. I was very pleased with the results of storing hay inside. It is most gratifying to put a bale into the hay ring and seeing that the previous bale was almost completely consumed by the cows or the feeder calves. I had a record amount of carry over from last year and it is safely stored inside ready to be used this winter! This will allow for hay sales this winter.

The construction of the building's frame is strong, the foundation supports are 24" and very deep. I am very satisfied and have ordered another 55' x 140' to be installed in a few weeks. This one will be used to store our small square bales and equipment.

Thank you Joseph for your service and this chance to recommend your buildings."

Wiley and Susan Hibbard, Perry, Missouri

20749 State Highway VV
Ethel, MO 63539
660-486-3250

Skylight

Fabric Structures

for past few years) Call 217-743-5226 ask for Carrol

belts, field ready, will trade, \$18,500. Call 573-881-3557

FOR SALE: John Deere 569 Baler. Net, kicker, 1000 rpm, big tires, 16,000 bales, new

FOR LEASE: 55 or 105 Acres of grass land for hay. Located in Southwest Clark County

573-853-4496 or 573-406-8664

heifers due to start calving August 29th for 60 days, \$2000 per head. 8 exceptional 2 year old bred Charolais heifers due to start calving August 29th \$1700 per head. All 36 heifers are weighing up to 1200

pounds, pelvic measured, reproductive track scored, and fully vaccinated, very gentle and bred to Show Me Select qualified Reed Angus bulls with CED ratings of 14. Phone 660-676-0710

High PUBLIC AUCTION

Saturday, July 3, 2021 @ 9:00 A.M.

Directions from Albia, Iowa: go South on Hwy 5 approx. 4 miles to 645 Avenue, then South 1/2 mi to 240th Street, then East 1 mile to 655 Avenue, then South 2 miles to auction site. Watch for signs!

Elmer & Christine Miller
2541 655 Ave - Albia, Iowa 52531
Elmer, VM: 641-724-3470

Equipment & Trailers
Vermeer RT850 trencher w/ B300 backhoe 845 hrs, GREAT COND.
Trencher SN: 1VRW092CS21000210 Backhoe SN: 1VRW080N221000244
2013 Genie 3369RT scissor lift, dual fuel, foam filled tires, 1580 hrs, SN: GS6913-1735
2015 Big Tex 25'5" gooseneck flatbed, mega ramps, elec. jack, side toolboxes, dual wheel 10,000 lb. axles, has title - 2008 Doolittle 8X16 enclosed trailer, needs axle
2008 Delta 25' bumper hitch flatbed, hyd. jack, 7000 lb. axles, IA registration only
1996 Hull 16' bumper hitch trailer, 5000 lb. axles, IA registration only

Construction Tools
Cordless tools: (2) Senco drywall screwguns - (2) Dewalt framing nailers
(3) Hitachi framing nailers - Paslode framing nailer - Dewalt Caulk gun
(2) Dewalt drywall screwguns - Dewalt sawsall - screwguns - hammerdrill
Skilaws - tin shears - Hitachi nailers - Dewalt trim staplers - electric tools
Briggs & Stratton 5750 watt generator (like new) - Eagle 9000 watt generator
3000 watt generator - Dewalt 12" double bevel miter saw w/ stand - ext. cords
Hitachi 12" double bevel miter saw w/ stand - Dewalt skillaw - multi tool
Bosch hand planer - Milwaukee sawsall - light on stand - Skil hand held router
Skil hand held sander - metal chop saw - roughneck chain sharpener
Air Tools: Jenny portable air compressor - Puma portable air compressor
Eagle portable air compressor - Quincy air compressor (no engine)
Electric Metabo air compressor (new) - Emglo electric air compressor
(6) Paslode framing nailers - (2) Masterforce roofing nailers
(3) Bostitch roofing nailers - Masterforce roofing nailer - Bostitch cap stapler
Bostitch hanger nailer - (3) Masterforce hanger nailers - Masterforce trim stapler
Masterforce 16 ga trim nailer - Bostitch 18 ga trim nailer - Paslode framing nailers
Hand Tools: Spectra LL100N laser transit - Skihl TS500I concrete saw - saw horses
Extension ladders - multi ladders - toolboxes/Dewalt tool belt (new) - saw blades
Tape measures - chalklines - chalk - T square - L square - speed squares - drill bits
Socket sets - wrenches - vise grips - crescent wrenches - pipe wrenches - concrete stakes
Air hoses - long handled nail pullers - lots more misc. construction tools

Building Supplies
New & used doors & windows - double bubble
Vinyl cedar impression siding (sterling grey)
Ridge vent - poly 1X4 trim boards - tar paper
Precut soffit - 16X10 garage door (new, non-insulated)
Partial rolls coilstock - vinyl brick mold - stacks of misc lumber
Nails & screws - concrete anchors - boxes of misc. hardware
24", 32", 36" trusses - some bridge planks - concrete blocks

Farm Machinery & Equipment
Gateway forcart w/ steel wheels & brakes
Miller forcart w/ steel wheels & brakes
Spring box wagon w/ 2 seats, steel wheels, lights, brakes
Cattle chute w/ Foremost headgate - (2) 4 ton bulk bins
Cattle creep feeders - sheep & goat digital scale - water tanks
Hay feeders - cattle & goat feed bunks - bales rings - goat stand
6 fence posts - cattle panels - calf bottles & holders - buckets
Hookover buckets - cattle wormer & vaccines - goat mineral
Syringes - SS strainer - 10x10 box stall - portable water pump
Small trap - approx. 10 coral gates - 3000 psi pressure washer

Auctioneer's Note: As the Millers have sold their farm and are relocating, we will be selling these items at Public Auction. This auction will have good quality & clean merchandise. You do not want to miss it. Due to the size of the auction, we anticipate running 2 auction rings so come prepared with an extra bidder. Come out and join us on the 3rd!

High Auction Service LLC Kris High 660.342.8634 - Randy High 660.216.0515
for additional photos go to: www.highauctionservice.com email: highauctionservice@gmail.com
Terms: Cash or check with proper I.D. Not responsible in case of accidents or theft. Announcements day of sale take precedence over any advertising.

THOMPSON MOVING AUCTION

23647 ANCHOR AVENUE - BUCKLIN, MO
WEDNESDAY, JUNE 30, 2021 @ 12 NOON

From Hwy 129 in Bucklin go north 5 miles to Nation Rd then East 3 miles to Anchor Ave then 1 mile to farm. Watch for Iman Auction Signs! The Thompson's have very nice things, please plan to attend!

MF 1250 UTILITY TRACTOR w/ LOADER, FWA * NICE 3 PT IMPLEMENTS I.E. 6' TILLER, MOWER, BLADES, NOTCH BLADE DISC * NICE HONDA FOREMAN 4 WHEELER * ATV SPRAYER W/ BOOMS * 4 WHEELER GARPS * WARN TRAILER WINCH * FENCING ITEMS * LAWN & GARDEN ITEMS * 15 PALLETS OF LARGE LANDSCAPING BLOCKS * SHOTGUNS & RIFLES * RELOADING SUPPLIES * AMMO * OUTFITTER TENT * STIHL LIMB & CHAIN SAWS * HAND & POWER TOOLS * NICE SHOP FAN * ANTIQUES & COLLECTIBLES * SLATE POOL TABLE * NICE KENMORE FREEZER * HOUSEHOLD * SEWING MACHINES & MUCH MORE, PARTIAL LISTING SEE IMANAUCTION.COM FOR FULL AD W/ PHOTOS & AUCTION TERMS!

Jim & Joyce Thompson, Sellers
IMAN AUCTION COMPANY | 660-788-4298 | ImanAuction.com

Moberly, MO, Real Estate and Personal Property Auction

July 15, 2021 at 5:00 p.m.
Patrick Craig and the late Janet Craig Estate
1011 Bond Street, Moberly, MO 65270

Directions to Auction Location: 1011 Bond Street, Moberly, Missouri. From US Highway 24 in Moberly, head South on Emerson Street for approximately 0.6 miles. Turn left on Bond Street 0.2 miles to Auction. Look for signs the day of the auction.

Real Estate: This 3 bedroom, 2 story, Craftsman style home made with Moberly brick, has 1 1/4 bath and an unfinished basement. The home has the original hardwood floors throughout, a large front porch and a large back deck. It also has a 40 gallon natural gas water heater(2008), gas furnace (1995), central air conditioning and includes a two car detached garage and a fenced in backyard.

The real estate will sell promptly at six o'clock. If you would like to schedule your personal showing, please call Scotty at 573-356-4405.

***See Terms and Conditions for Purchase of Real Estate below.**

DOWN PAYMENT: 10% of the contract purchase price will be due upon acceptance of the Sales Contract. Personal or Cashier's Checks will be accepted. This is "AS IS, WHERE IS" and is non-refundable. CLOSING: Closing shall be within 30 days of the auction date.

Household Items: Kroehler chair, couch and loveseat; La-Z-boy recliner; Sony TV; Sony surround sound system; electronic chime mantel clock; miscellaneous end tables; metal computer desk; roll around office chair; octagon dining table with leaf and 6 chairs; lots more.

Antiques and Collectibles: Copper boiler; maple drop leaf secretary; occupied Japan figurines; hen on nest; Hobnail covered compote glassware; antique side table; Carnival glassware; other miscellaneous glassware; Baldwin Acrosonic piano; lots more

Musical Equipment: Peavey classic chorus 212 guitar amp;

Outdoor Tools and Equipment: Troy-bilt variable speed push mower; metal patio table; 4 metal cane wrapped chairs (need work); miscellaneous long handle tools;

There will be many more items at this sale too numerous to mention.

SCOTTY'S AUCTION SERVICE
Scotty Kuntz 573-356-4405
Michael Cunningham 660-651-2288 • Paxton Pittman 918-316-7500

Edina Livestock Sales

Edina, Missouri

Friday, June 25th Special Cow Sale

100 Fall Black Cows 3 to 5 year olds
Ultrasounded to calve 8/20/21 to 10/5/21
30 Cow/Calf Pairs 4 to 8 years old
Many more by Sale time

ALL SALES TELEVISED ON DV AUCTION
To Consign For Any or All Sales or For Information Call:
Owner - Kevin Strange • Cell: 660-341-9974
Ryan Strange • Cell: 660-341-9721
Sale Barn: 660-397-9999

Field Reps:
Mike Bronestine 660-341-9965
Jason Bischel 660-216-0373
Bill Tom Hall 660-342-5420
Trey Gashwiler 660-216-8751
John Powell 660-341-1717

YARD PLANT SALE: 1407 East Harrison 6/25 9:00 am to 5:00 pm, 6/26 8:00 am to 1:00 pm Adult bicycles, dog kennels, kids clothes, toys, dishes and more

FOR SALE: Several steel fence posts 5', 5 1/2', 6', 6 1/2', \$3 each or 10 or more \$2.50 each; also metal electric posts. Call 573-478-3658

FOR SALE: Lincoln 225 Welder 20' lead's, \$200. 660-342-3519

FOR SALE: German Sport gun model 1911 semi-auto, 22LR pistol; Want to Buy Marlin model 39 22LR Lever rifle. 660-988-3977

FOR SALE: John Deere 285 Disc mower, 9', like new, \$7,950. Call 573-881-3557

WANTED TO BUY: Harley Davidson's, any year, any condition, cash money. Days 660-263-1356 or 660-537-0068

FOR SALE: New 3 pt. tillers, heavy duty, gear driven, 7' to 10' starting at \$3050. 660-874-4455

FOR SALE: Fish for stocking ponds - Catfish, Grass Carp, Crappie, Blue Gills, Red Ear, Bass, and Minnows. Heindselman Family Farms, Call Greg 660-341-5692

HANDYMAN: Install interior and exterior doors and windows, siding, decks, showers and toilets, flooring and dry-wall. 660-956-2189.

FOR SALE: Ford 2910 DSL, good paint and sheet metal, good tires, w/Bush hog quick tach loader, \$7000. 660-341-8089

FOR SALE
Al Sired Angus Bulls,
14 & 18 Months Old.
Harold Trump
660-341-5730

SELLING

Due to Health Reasons:

Jet 6" Edger/Joiner Cabinet Model on Rollers - \$475
Industrial Router Table w/Bosch Plunge Router on Roll-A-Way cabinet w/lots of bits - \$300
Craftsman 12" Bandsaw on Stand w/wheels - \$130
Delta 13" 2 Speed Planer on Roll-A-Way Cabinet - \$275
Craftsman 10" Cast Iron Table Saw w/wheels - \$225
Delta 1 Horsepower Portable Dust Collector - \$200

Palmyra Missouri
573-629-9503

Premium Metal Roofing

AW Metal Inc.
Metal Roofing Headquarters
641-664-3990 • awmetal.net

ESTATE AUCTION

SUNDAY, JULY 11TH, 2021 @ 1PM
MARION COUNTY FAIRGROUNDS/
FLOWER CITY PARK (CATTLE BARNS)
PALMYRA, MO

TRUCK
4 WHEELER
GUNS
TRACTORS/ MOWERS

BOATS
HUNTING/ FISHING
SHOP/ YARD TOOLS
AND MUCH MORE.....

Auctioneer Notes: This is a smaller sale but very nice clean items.

SELLER:
PAUL DOELLMAN ESTATE
More pictures and information at:
www.hammondwatsonauctionservice.com

Hammond & Watson AUCTION SERVICE
Lionel Hammond & Kirk Watson
573-406-3877
PALMYRA MO

Like us on FB
Look us up on Auction Zip

FOR SALE: 300 Briar Horses in excellent condition, 50 year collection, buy one or all. 660-676-9199

FARM RAISED fresh catfish; home raised Iowa Chops, beef T-bones/ribeye's. Missouri bottom raised sweet-corn. Order ahead, Beef/hogs whole/halves with locker appointments, "Keep-Ad" 573-604-0674 delivered.

SCHMUCKER PRODUCE is open! Tomatoes, onions, lettuce, radishes, asparagus and other vegetables. Open 9 am to 6 pm. Closed Sunday.

FOR SALE: John Deere 569 Baler. Net, kicker, 1000 rpm, big tires, 16,000 bales, new belts, field ready, will trade, \$18,500. Call 573-881-3557

FOR SALE: GEHL model 1870 round baler, twin tie, 5'x6' bales. Field ready, stored inside, 540 PTO gathering wheels/tires great shape. 660-626-3951.

LIMOUSIN & LIM FLEX BULLS for Sale: Black & Red, All Polled, out of TOP AI Sires, low birth weight, w/Performance & Carcass EPD's. Potter's Limousin Cincinnati,

IA 641-436-7153 or 641-658-2786

FOR SALE: IH Rotary Hoe as is \$200. 660-341-6218

FOR SALE: 2000 Ford Super Duty 4 door pickup, new motor, 60,000 miles more or less, everything related to motor has been renewed, on the road daily. 660-216-3685 or 319-768-6023

FOR SALE: John Deere 2940 Tractor, 5400 hrs, cab, air, new rubber, estate tractor, \$14,500. Call 573-881-3557

FOR SALE: Like new Ryobi battery operated string trimmer. Only used twice. Charger box, line, manual, lithium battery. Call 660-486-3359

FOR SALE: Ya200 front deck mower, 76" cut, 20 hp, Kohler hydro \$700, Arbela, MO. 660-988-6971

YARD PLANT SALE: 1407 East Harrison 6/25 9:00 am to 5:00 pm, 6/26 8:00 am to 1:00 pm Adult bicycles, dog kennels, kids clothes, toys, dishes and more

FOR SALE: Priefert head gate, automatic catch, model 91, always shedded, \$495. 573-478-3658

FOR SALE: Sepeedco quick hitch, heavy duty CAT 2 or 3, \$200. 660-342-3519

FOR SALE: Official licensed Harley Davidson items. Books, DVD's, music CD's 1984 to 1987 mint condition Easy Rider magazines, other items. 660-988-3977

FOR SALE: John Deere 6200 Tractor, MFWD, open station, 6000 hrs, power quad, with 640 Loader, \$25,500. Call 573-881-3557

CREDIT CARD DEBT? Financially Stressed Out? Stop the harassment! Make one monthly payment YOU can

Machinery Auction

Thursday, July 22 * 10a.m.

Selling Farm & Commercial Equipment:

Tractors, trailers, trucks, skid loaders, construction equipment /supplies, lawn & garden, ATVs, hay & tillage equipment, livestock equipment, fencing supplies and much more.

CONSIGN NOW!

Call the barn or Frankie at 660-651-4040

Held in conjunction with Macon County Flywheel Reunion

Consignor checks available for pick up day of sale.
Trucking available.

Lolli Bros. Livestock Market, Inc.

Macon, Mo 660-385-2516

ANTIQUe & COLLECTIBLE LIQUIDATION AUCTION

Saturday June 26th - 10:00 AM

Location: "the McMain Auction House" located at the west city limits of Kirksville, Mo on Hwy 6

As we have sold our auction house we will be liquidating our 47 year collection of the following items. All sales are final and all items sell to the highest bidder.

Antique and Collectibles: 6 ft. hand curved wooden Indian, (3 sets) long horn mounts,

Saddles: 1880 high back, Monroe Veach 15 inch, Australian, McClellan Cavalry, pack saddle; horse bit collection, Spur collection, oil bottle collection (Imperial, MFA, Standard, etc.) 80 pc western hat collection, large Coney Bear Trap, Vintage Snow Shoes, hickory trappers back pack basket, Rug beater collection, stone "mason" jars, (2) deer head mounts, old fruit jars, cast iron "Coke" sign, Nice "Home Comfort" wood cook stove, Stone jars & jugs.

Churns: wooden barrel, sq wood, & crock: (2) copper kettles, Old tins, buckets, wooden water jug, irons, bal scales, lg copper sauce pan, brass pan set, *featherlite Sewing machine, brass trolley can bell, (Pr.) wooden bread boards (goose design), *Bank Teller window ("Yarrow Mo Bank") glass /bar windows), chicken house next ladder (collection farm-first Settler in Adair County), Vintage typewriter, fireman's bucket, brasskettle, 9 pc "Beam" bottle train (full bottles) 10 ft length, Railroad lanterns, padlocks, 1950" Toshiba wall Mount Radio (7TH-425), (50) tin signs (old & New, Laplata Mo, Kirksville, MO, Leo Roller Rink, black memorabilia, water cans, "Traffic builder" Penny one-arm bandit gumball machine (win Cigarettes), *1930's Merry-go-round car (hard Rubber tired roadster) from the Lake Muir Amusement park Excelsior Springs Mo, pedal horse trike, wicker baby stroller, wicker doll stroller, salesman sample rug loom, tin steam Roller riding toy, copper boiler, copper sprayer, John Deer pedal tractor (restored), bird cages, very nice toy carriage (leather/wood w/ folding tops), wooden yoke, fuel cans, cargo wagon trunk, wooden rocking hours, pedal fir truck, 3'x4'x6' wall mount display case, Shariff Rig Cookie Jars, Carbide lights, 2 gal. "western" crick basket, Griswold iron skillet w/ wooden handle, 18 inch x 24 in Adv. Poster (Deere-Dealer, & Harvester Co., 1887 cray print framed), (8) vintage microphones Kay Banyo, banjolin, iron Wheels, 1700's brass fireplace Rotation (wind up/Perpetual motion), 6ft hand-carved wooden Indian.

Indian Artifacts: includes axes, ceremonial items, clay pipe, ceremonial axe, grinding stones, awels, hand curved wooden ceremonial mark, (5) Indian busts, 5x8 Indian portrait, Rug, display case, full-street turkey mount, turkey mount (2) buck deer head mounts.

Toys: stage coach (wooden, detailed, iron frog, gas powered, airplane, cannon, toy soldiers & figurines, fire truck, army dump, various trucks, * die cast caterpillars included full motion dozers, grader, end loader, clam bucket, and more, die cast tractors (J.D., case, AC, Farmall (allis WD Franklin mint issue), one tow corn picks and more, doll house, western, movie poster, roll top desk (disassembled), "Quick-N-Easy" #06080 wash machine, w/ringer & tub stand, neon guitar sign.

Primitive farm items include: Saws, seeder, horse items, bits, WWI saddle bags, etc., cast iron character banks, character telephones (Green Giant, Mickey Mouse, Winnie, etc., 8 pc western character incentives, toy sewing machines, gold hunter case watches, small cast iron toys include, tractors, 3-wheel cop & cycle, black racer, motorcycle & cop, etc.,

Note: This is just a particle listing and you will not be disappointed

Auctioneers: Jerry McMain Rhea Golden
Kirksville MO
Ph. 660-665-9380
www.mcmainauctionservice.com

Heat/cool Lunch Counter Restrooms Seated



SULLIVAN AUCTIONEERS, LLC

A FAMILY OWNED BUSINESS SINCE 1979


MATT


MICHAEL


LUKE


JOHN


DAN


JOE


JIM


BILL

Headquartered in Hamilton, Illinois, Sullivan Auctioneers, LLC is one of the largest Real Estate and Farm Machinery Auctioneers in the nation.

For more than 40 years we have been conducting professional auctions. We connect our sellers with thousands of interested buyers around the world.

Considering an Auction?

CALL OR EMAIL TODAY FOR A NO OBLIGATION CONSULTATION!

Toll Free (844) 847-2161 | Sold@SullivanAuctioneers.com
www.SullivanAuctioneers.com | Lic. #444000107

THE NEMO TRADER

CLASSIFIED COUPON

Clip This Coupon Out of This Week's NEMO Trader and run 2 CLASSIFIED ADS FOR \$5.00

Picture Ads Not Included with Coupon! Call For Pricing!

(Each Ad Must Be 20 Words or Less.)

~20¢ per word over 20 words~

Cash NOT ACCEPTED Check or Money Order Only

Ad No. 1: (20 words or less)

Ad No. 2: (20 words or less)

YOUR CLASSIFIED AD WILL BE READ IN OVER 19 COUNTIES, IN 3 STATES!

BY COUNTLESS BUYERS!!!

TO RECEIVE THIS RATE: COUPON MUST BE MAILED IN ALONG WITH YOUR PAYMENT!

THE NEMO TRADER, P.O. BOX 190

KIRKSVILLE, MO. 63501 ~ 660-665-8500

AFFORD! Get Help Now and Save! Call Toll Free 888-925-5404

ARE YOU BEHIND \$10k OR MORE ON YOUR TAXES? Stop wage & bank levies, liens & audits, unfiled tax returns, payroll issues, & resolve tax debt FAST. Call 855-820-8878

BECOME A PUBLISHED AUTHOR! We edit, print and distribute your work internationally. We do the work, you reap the Rewards! Call for a FREE Authors Submission Kit: 844-261-5841

CANCER GENETIC SCREENING KIT. Protect yourself and your family with early genetic screening! See if you qualify for a test at no cost to you with your Medicare Part B coverage. Call 855-623-4490. (Mon-Sun 9am-8pm ET)

ATTENTION SMALL BUSINESS OWNERS! Are you protected in case of property damage or if you have an interruption in service due to a property event? Business Owner Property insurance IS AFFORDABLE and WILL PROTECT YOU when the unexpected happens! For free

quote, call 844-877-9891 (M-F 7:30am-9:30pm ET)

BATHROOM RENOVATIONS. EASY, ONE DAY updates! We specialize in safe bathing. Grab bars, no slip flooring & seated showers. Call for a free in-home consultation: 855-980-4002

BEST SATELLITE TV with 2-Year Price Guarantee! \$59.99/mo with 190 channels and 3 months free premium movie channels! Free next day installation! Call 888-986-4740

SAVE YOUR HOME! Are you behind paying your MORTGAGE? Denied a Loan Modification? Is the bank threatening foreclosure? CALL Homeown-

er's Relief Line! FREE CONSULTATION! 855-624-8601.

HughesNet - America's #1 Choice for Satellite Internet. Call Today and Save! More Data. Free Installation. Available Everywhere. No Hard Data Limits. Call 855-248-7966

NEED NEW FLOORING? Call Empire Today to schedule a FREE in-home estimate on Carpeting & Flooring. Call Today! 877-866-8797

NEED NEW WINDOW TREATMENTS? Call Empire Today to schedule a FREE in-home estimate on blinds & shades. Call Today! 877-710-4641

Over \$10K in debt? Be debt free in 24-48 months. Pay a fraction of what you owe. A+

BBB rated. Call National Debt Relief 877-278-4861.

SelectQuote is dedicated to finding a Medicare plan right for you and your wallet. Call 844-361-4727 today and receive a free quote from one of our multiple carriers.

Attention: Auto Injury Victims. If you have suffered a serious injury in an auto accident, call us! Our attorneys have the experience to get you the full compensation you deserve! Call Now: 877-496-3293

BEAUTIFUL BATH UPDATES in as little as ONE DAY! Superior quality bath and shower systems at AFFORDABLE PRICES! Lifetime warranty & professional installs. Call Now! 844-980-3902

BOY SCOUT COMPENSATION FUND - Anyone that was inappropriately touched by a Scout leader deserves justice and financial compensation! Victims may be eligible for a significant cash settlement. Time to file is limited. Call Now! 866-395-0568

DONATE YOUR CAR TO CHARITY. Receive maximum value of write off for your taxes. Running or not! All conditions accepted. Free pickup. Call for details. 855-986-8602

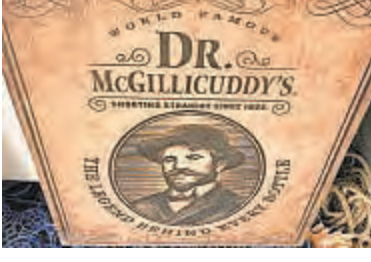
FREE AUTO INSURANCE QUOTES for uninsured and insured drivers. Let us show you how much you can save! Call: 888-320-7567.

YOU MAY QUALIFY for disability benefits if you have are under a doctor's care for a health condition that prevents you from working for a year or more. Call now! 877-430-9760

PROBLEM CREDIT REPORT? Lexington Law works to challenge inaccurate negative items including: identity theft, collections, late payments, liens and more from your credit report. Call for a free credit repair consultation: 855-622-0369. John C. Heath, Attorney at Law, PLLC, dba Lexington Law Firm.

Brookfield, MO, Real Estate and Personal Property Auction

Saturday, July 17, 2021 at 10:00 a.m.
Gary Biswell
547 1/2 Prairie Street, Brookfield, MO 64628



Directions to Auction Location: 547 1/2 Prairie Street, Brookfield, Missouri. From US Highway 36 at Brookfield take Highway 11 North approximately 1.2 miles. Turn right on East Park Street for approximately 0.3 miles. Turn right on East Prairie Street to the auction location. Look for signs the day of the auction.

Real Estate: Sitting on a 60' x 40' lot, this property includes a 2 car garage with electricity, 28' x 32' concrete floor and a 10' x 12' portable building. This would be a great place for all of your projects or to store your collectibles.

The real estate will sell promptly at noon. If you would like to schedule your personal showing, please call Scotty at 573-356-4405.

***See Terms and Conditions for Purchase of Real Estate below.**


DOWN PAYMENT: 10% of the contract purchase price will be due upon acceptance of the Sales Contract. Personal or Cashier's Checks will be accepted. This is "AS IS, WHERE IS" and is non-refundable. **CLOSING:** Closing shall be within 30 days of the auction date.

Tractors, Tools and Outdoor Equipment: 2 David Bradley walk behind tractors; walk behind tractor implements; Tradesman 10' portable table saw.

Antiques and Collectibles: Pepsi Cola cooler; #40 Daisy churn; 3 piece Pyrex nesting bowl set; antique bird cage with stand; Peet Bros. Mfg soap crate; LOTS MORE

Household Items: Upper kitchen cupboard; new in box fire pit; new in box rolling cart coolers

There will be many more items at this auction too numerous to mention.



Scotty Kuntz 573-356-4405
Michael Cunningham 660-651-2288 • Paxton Pittman 918-316-7500

Real Estate, Farm Equipment, Salon Equipment and Personal Property Auction;

Thursday, July 1, 2021 at 4:00 p.m.
Larry and Becky Roberts
511 College Street, Clarence, MO 63437



Directions to Auction Location: From the intersection of US Highway 36 and North Shelby Street at Clarence, proceed South on North Shelby Street 0.5 miles. Turn left on Walnut Street for 0.5 miles, left on 1st Street for 0.2 miles, turn left on College Street to the auction location. Look for signs the day of the auction.

Real Estate: This 2 bedroom, 1 bath home, country-style home offers a large living room, large kitchen with updated oak cabinets, dining area and utility room/pantry with plenty of storage. The real estate will sell promptly at 5:00 p.m.. If you would like to schedule your personal showing, please call Scotty at 573-356-4405.

***See Terms and Conditions for Purchase of Real Estate below.**

DOWN PAYMENT: 10% of the contract purchase price will be due upon acceptance of the Sales Contract. Personal or Cashier's Checks will be accepted. This is "AS IS, WHERE IS" and is non-refundable. **CLOSING:** Closing shall be within 30 days of the auction date.

Vehicles and Equipment: 2005 F250, 5.4 L, 175,000 miles, flat bed with hydraulic bale spike; John Deere 425 riding lawn mower

Household Items: GE upright freezer; dorm size GE refrigerator; side by side Whirlpool refrigerator/freezer; 4 year old Maytag washer, XL capacity and Maytag electric dryer, XL capacity

Salon Equipment: 2 Salon mate professional hairdryers; salon hair cutting chair; salon station; salon equipment; miscellaneous shampoos and hair sprays

There will be many more items at this sale too numerous to mention.



Scotty Kuntz 573-356-4405
Michael Cunningham 660-651-2288 • Paxton Pittman 918-316-7500

Fishville, Missouri
KIRKSVILLE LIVESTOCK LLC

SALE DATES FOR JULY 2021

Monday, July 5
No Sale following Independence Day

Friday, July 9
Special Bred Cow & Breeding Bull Sale, 6:00 p.m.

Monday, July 12
Special Sheep & Goat Sale, 10:00 a.m.

Monday, July 19
Special Feeder Cattle Sale, 11:00 a.m.

Monday, July 26
Regular Cattle Sale, 11:00 a.m.

Check website for updated listings:
www.kirksvillivelivestock.com

We are open on Sunday to Receive Your Livestock "Your Business is Very Much Appreciated"



Phone for information:
Patty Foster, office: 660-665-9804
Chuck Ambrosia: 660-342-3530
Luke West: 620-215-5770
Mark Herbold: 515-720-8667



Al Ashmead: 660-216-8730

Doug Fleshman: 660-626-7148

Daniel Smith: 660-341-8396

Jeremy Jarman: 660-341-9879

Caleb Randolph: 641-919-8539

KM-70KDE03482

GOING OUT OF BUSINESS AUCTION

As we are closing the C & R Market (La Plata store only) we will sell the following items located at **109 EAST CLARK STREET, LA PLATA, MO** on

SAT., JUNE 26TH, 2021 @ 10:30 A.M.

15 Door Tyler Medium Temp Dairy Case LED Lights- Remote Compressor Not Included (N/I) - 10 Door Tyler Medium Temp Processed Meat Case LED Lights - Remote Compressor (N/I) - 5 Door Tyler Medium Temp Fresh Meat Case LED Lights - Remote Compressor (N/I) - 4 Door Tyler Medium Temp Produce Case LED Lights - Remote Compressor (N/I) - two - 15 Door Hussman Frozen Food Cases LED Lights - Remote Compressor (N/I) - 10 Door Tyler Medium Temp Produce Case LED Lights - Remote Compressor (N/I) - 10 Door Hussman Frozen Food Case - Remote Compressor (N/I) - Walk In Dairy Cooler with 8 Glass Doors Approx. dimension 20' x 8' - Remote Compressor (N/I) - Walk In Freezer Approx. dimension 18' x 12 Pallet Door - Remote Compressor (N/I) - Walk In Produce Cooler Approx. dimension 13' x 7' - Remote Compressor (N/I) - Walk In Combo Cooler Approx. dimension 30' X 12' Pallet Door - Remote Compressor (N/I) - 8' Stainless Steel Prep Table with #10 Can Opener Attached - Two 6' Poly Top Stainless Steel Meat Cutting Table - Three Zephyr Check lanes 10' Long w/ Conveyor belts - Four 3 Drawer Metal Storage Cabinets w/ Countertop - Three Sets of Double Action Swinging Aluminum Doors - 4' Henny Penny Hot Deli Case with Stand - Hobart Meat Saw - Meat Tenderizer - Hobart Meat Grinder - 8' Poly Top Stainless Steel Meat Cutting Table - Two Wrapping Stations - Three Vat Stainless Steel Sink w/ Sprayer - 60" Fox Cardboard Baler Compactor - Two M&M Collectible Figurine Candy Displays - Employee Lockers - Six 36' Lozier Gondola Shelving 60" height - Eight 4' Lozier Wall Shelving Sections 60" height - 20' Lozier Wall Shelving Sections 60" height - 54' Lozier Wall Shelving Sections 60" height - Two 8' Lozier Wall Shelving Sections 60" height - 8' Lozier Gondola Shelving 60" height - 12' Mead Soda Shelving - 19' Mead Soda Shelving - Three Oak Produce Display Tables - Three 2 Drawer Filing Cabinets - Two 4 Drawer Filing Cabinets - Metal Desk - Several Misc. Shelving Units - Misc. Supplies and Inventory - Pallet Jack and stock carts.

ALL ITEMS MUST BE REMOVED FROM THE PREMISES BY FRI., JULY 2ND!

OWNERS: C & R MARKETS

For more information or to schedule a showing, call (660) 385-2151 and ask for Mark Thomas

TERMS: Cash/Check w/ID - Porta Pot & Lunch on Grounds

Christy's Auction Service



La Plata, MO 63549 660-341-4531
See Websites for Photos: www.dchristyauctions.com
& Christy's Auction Service on Facebook
Auctioneers - David Christy
Jason Wood - 660-341-7884 Greg Smoot - 660-341-5175



SAVE BIG on HOME INSURANCE! Compare 20 A-rated Insurance companies. Let us do the shopping & save you time & money. Get a quote within

minutes. Average savings of \$444/year! Call 877-594-0878. (M-F 8am-8pm Central)

Attention Viagra users: Generic 100 mg blue pills or

Generic 20 mg yellow pills. Get 45 plus 5 free \$99 + S/H. Guaranteed, no prescription necessary. Call 877-801-0749ATTENTION

SMALL BUSINESS OWNERS! Are you protected in case of property damage or if you have an interruption in service due to a property event? Business Owner

Property insurance IS AFFORDABLE and WILL PROTECT YOU when the unexpected happens! For free quote, call 844-877-9891 (M-F 7:30am-9:30pm ET)

Tri-Annual **Consignment AUCTION** **NO RESERVE**

FRIDAY, AUGUST 13, 2021 • 9:00 A.M.
 CONSIGNMENTS ACCEPTED UNTIL TUESDAY, AUGUST 10 AT 5:00 P.M.
 PRINT ADVERTISING DEADLINE: JULY 12TH, 2021

Ed's Machinery LLC quality machinery since 1997
 (660) 883-5501 • Fax (660) 883-5702
 17920 Hwy 136 • Memphis, MO
 1 Mile West of Memphis on Hwy 136
 www.edsmachinery.com

COMPETITIVE RATES | NATIONWIDE PUBLICITY
ONLINE BIDDING AVAILABLE
HUNDREDS OF BUYERS IN ATTENDANCE

AUCTION HELD LIVE ON-SITE

SULLIVAN LAND COMPANY LLC

345.73 TAXABLE ACRES ADAMS COUNTY, ILLINOIS

The Allain farm is located 4 miles north of Ursa, IL or 12 miles north of Quincy, IL, in part of Sections 19, 20, 29 and 30, T2N-R8W, Ursa Township, Adams County, IL. There are approximately 164 tillable acres with the balance of the farm in mature timber and pastureland, which offers outstanding wildlife and hunting opportunities - Whitetail deer, wild turkey, waterfowl, upland birds, and small game are abundant! The property is bordered on the south, east and west sides by Bear Creek with rock outcroppings and scenic views. Secluded access off Highway 96 by a deeded Right-of-way. The farm is improved with a 1-story home (would make an excellent cabin/private getaway) and several farm outbuildings. Listing price: \$4,990/acre.

VIDEO TOUR OF THE FARM ONLINE!

LISTING AGENT: LOUIE ZINN (319) 795-2314

Details, Maps & Photos: SullivanLandCo.com
 SULLIVAN AUCTIONEERS, LLC | (844) 847-2161 | LIC. #444000107
 P O BOX 111 | 1066 E US HWY 136 | HAMILTON, IL 62341

McAfee/Hayes Auction Service, LLC
 375 S Johnson • Kahoka, MO
 660-727-3796
 www.mcafeeauctionservice.com

Clark County, MO
LAND AUCTION
 Sale conducted at the CARE Building located at 451 N. Vine Street Kahoka, MO

HIGHLY PRODUCTIVE TILLABLE LAND

77 ACRES
 2 TRACTS
 Lying in Sect. 34, Twp. 65N, R7W

Thursday, July 22ND at 6 PM

OPEN HOUSE: SUNDAY JULY 11TH 1-2PM

RONNIE STUTZ ESTATE
 Joann Markus Executor/ Crystal M. Hawk, Rep. Att.

McAfee/Hayes Auction Service, LLC
 375 S Johnson • Kahoka, MO
 660-727-3796
 www.mcafeeauctionservice.com

ESTATE AUCTION
SATURDAY JULY 17TH - 10 AM

Sale will be conducted on site located at 609 N. 5th St. LaGrange MO

Complete Details & Photos Online

PATRICIA AND THE LATE BERT RICHARD COTTRELL, SELLERS

McAfee/Hayes Auction Service, LLC
 375 S Johnson • Kahoka, MO
 660-727-3796
 www.mcafeeauctionservice.com

RESIDENTIAL REAL ESTATE & PERSONAL PROPERTY AUCTION
SATURDAY JULY 24TH - 10 AM

Sale conducted on site located 3/4 mile Southwest of Revere, MO on Highway C. (Address 24939 Highway C Revere, MO)

OPEN HOUSE: Sunday June 27th 1-2pm and Sunday July 11th 3-4 pm

Take advantage of this rare opportunity to purchase a very well built 4063 sq' total living space 3-4 bedroom rural full brick home. Home Features 2545 sq' on main level, 1518 sq' finished basement, 5 bathrooms, 2 kitchens, geo thermal and electric radiant heat, 2 fireplaces, LP whole house generator and much much more. Other improvements: 42X72' pole building w/ cement floor and electric. Sitting on 2.5 +/- acres.

Also Selling a Nice Selection of Antiques, Collectibles, Household, Misc., Boat and Other Useful Items.

CHARLES & JERI BRAXTON TRUST
CHARLES BRAXTON TRUSTEE

THINKING OF SELLING LAND OR MACHINERY? LET OUR MOTIVATED STAFF WORK FOR YOU!

MONTY: 660-341-7412 OFFICE: 660-727-3796



TIMED ONLINE • 2-DAY NO-RESERVE COLLECTOR CAR & MEMORABILIA AUCTION

MON. & TUES., JULY 12TH & 13TH @ 9:00 A.M. CST EACH DAY

7-DAY PREVIEW: MON., JULY 5TH - SUN., JULY 11TH • 9 A.M. - 3 P.M.

Online bidding will open on Friday, July 2nd with the lots beginning to close on Monday, July 12th at 9:00 a.m. CST. Vehicles will sell on Monday with memorabilia & collector car parts selling on Tuesday. Unprecedented buyer friendly terms. Online bidders will settle for the HAMMER PRICE. No buyer's premium!

Most vehicles and memorabilia offered at this 2 day event will be housed and available for pre-auction inspection at Sullivan's Carthage, IL facility, 1204 Buchanan Street. A few vehicles and memorabilia are located off site. Carthage, IL is located approximately 10 miles east of Sullivan Auctioneers Hamilton, IL facility on Hwy. 136. All items will be photographed and described for the online bidding catalog. Anyone wishing to inspect an item will need to contact us by phone or email. Our Carthage, IL facility will be open for viewing the entire week prior to the auction beginning on Monday, July 5th - Sunday, July 11th. Viewings will be from 9:00 a.m. - 3:00 p.m. each day. Phone (217) 847-2160.



'64 IMPALA SS 409/4 SP.



'70 SUPERBIRD 440



'68 SHELBY 500KR



'63 IMPALA SS 409/4 SP.



'68 CAMARO SS



'69 CORVETTE



'54 CORVETTE



'69 CAMARO SS



'57 BEL AIR



'58 ISETTA 300



'67 CAMARO SS



'60 FORD TBIRD



'48 CHEVY 3100



SEVERAL TRANS AMS



'65 GTO 4 SPEED



'69 CAMARO SS



'68 CHEVELLE SS



'81 JEEP 15K MI.



'70 CHEVELLE 454



'72 CHEVELLE SS



'57 CADILLAC



'65 PONTIAC CONV.



'71 CORVETTE



'69 CAMARO SS



'62 GALAXIE 500



'68 BRONCO 4X4



'76 BRONCO 4X4



'72 K5 BLAZER 4X4



'74 BRONCO 4X4



'87 K5 BLAZER



'05 MUSTANG 7K MI.



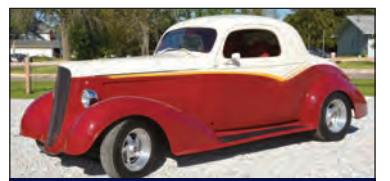
SEVERAL MACH 1'S



'65 MUSTANG 289



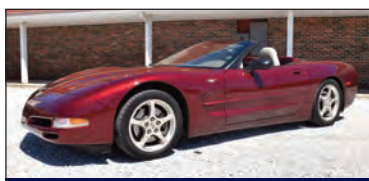
'68 CHEVELLE 396



LOTS OF STREETRODS



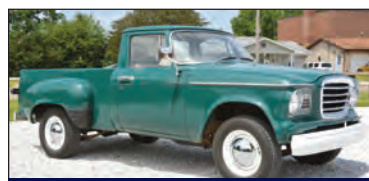
SEVERAL NOVAS



'03 CORVETTE 28K MI.



LIL RED EXPRESS



VINTAGE PICKUPS



'51 FORD PICKUP

- '68 SHELBY 500KR
- '63 IMPALA 409/4 SP.
- '64 IMPALA 409/4 SP.
- '70 SUPERBIRD 440
- '68 CAMARO SS COUPE
- '03 CORVETTE CONV.
- '68 CAMARO SS COUPE
- '69 CORVETTE COUPE
- '54 CORVETTE CONV.
- '69 CAMARO SS COUPE
- '57 BEL AIR 2 DR. HT.
- '36 CHEVY COUPE
- '37 FORD 2 DR.
- '39 STUDEBAKER TRUCK
- '29 MODEL A 2 DR.
- 37 FORD COUPE
- '46 MERCURY 2 DR.
- '83 CHEVY K10
- '58 ISETTA 300
- '67 CAMARO SS CONV.
- '60 THUNDERBIRD CONV.
- '50 JEEPSTER CONV.
- '48 CHEVY 3100 PICKUP
- '80 PONTIAC TRANS AM
- '53 CHEVY 3800 PICKUP
- '65 GTO 4 SP.
- '69 CAMARO SS COUPE
- '67 SKYLARK CONV.
- '29 MODEL A PHAETON
- '30 MODEL A ROADSTER
- '68 CHEVELLE 396
- '18 JEEP 4X4 15K MI.
- '70 NOVA SS
- '87 CHEVY K10
- '64 IMPALA 409 4 SP.
- '79 DODGE LIL RED EXPRESS
- '70 CHEVY C10
- '70 CHEVELLE 454
- '75 PONTIAC TA 455
- '72 CHEVELLE 350
- '57 CADILLAC COUPE
- '66 GALAXIE 500 CONV.
- '65 GALAXIE 500 CONV.
- '61 FORD STARLINER 2 DR.
- '62 GALAXIE 500 2 DR.
- '65 PONTIAC CONV.
- '30 MODEL A ROADSTER
- '63 GALAXIE 500 CONV.
- '71 CORVETTE COUPE
- '69 CAMARO COUPE
- '72 CHEVY C10
- '72 CHEVY NOVA SS
- '86 CHEVY K10
- '68 BRONCO 1/2 CAB
- '76 BRONCO FULL CAB
- '74 BRONCO FULL CAB
- '72 CHEVY K5 BLAZER
- '64 NOVA II 454
- '51 FORD PICKUP
- '55 THUNDERBIRD CONV.
- '37 CHEVY COUPE
- '87 CHEVY K5 BLAZER
- '73 MACH I
- '10 FORD RAPTOR
- '05 MUSTANG 7K MI.
- '63 CORVETTE CONV.
- '68 CHEVELLE 396
- '51 CHEVY 2 DR.
- '56 CHEVY BEL AIR
- '73 PLYMOUTH SATELLITE
- '89 RAM CHARGER 4X4
- '85 RAM CHARGER 4X4
- '92 RAM CHARGER 4X4
- '84 OLDS HURST 2 DR.
- '65 LAND CRUISER 4X4
- '73 MACH I RAM AIR
- '75 PONTIAC TRANS AM
- '81 FIREBIRD FORMULA
- '70 OLDS RALLYE 350
- '71 OLDS 2 DR.
- '82 CORVETTE COUPE
- '84 FIERO PACECAR
- '73 VW BEETLE
- '06 MUSTANG COUPE
- '08 MUSTANG COUPE
- '23 FORD T-BUCKET
- '24 FORD T-BUCKET
- '69 VW CONV.
- '55 T-BIRD TURQUOISE
- '55 T-BIRD WHITE
- '00 PONTIAC WS6
- '73 VW BEETLE
- '70 LINCOLN MARK III
- '68 FAIRLANE 500
- '46 FORD F1
- '65 EL CAMINO
- '66 BUICK STARFIRE
- '59 LINCOLN CONV.
- '02 T-BIRD CONV.
- '93 MITSUBISHI 3000
- '72 MONTE CARLO
- '52 CHEVY 3100
- '55 CHEVY 3100
- '69 EL DORADO
- '62 NASH METRO
- '72 OLDS CUTLASS
- '65 FALCON CONV.
- '53 FORD CRESTLINER
- '23 MODEL T 2 DR.
- '63 CORVETTE CONV.
- '64 CHEVY CHEVELLE
- '50 STUDEBAKER
- '65 MUSTANG CONV.
- '29 ESSEX RAT ROD
- '84 CAMARO Z28
- '72 MUSTANG GRANDE
- '88 MUSTANG GT
- '87 MUSTANG LX
- '77 JEEP 4X4
- '93 JEEP 4X4
- '02 EL DORADO 42K MI.
- '81 JEEP 4X4
- '79 EL CAMINO
- '79 GMC EL CAMINO
- '86 CAMARO Z28
- '89 MERCEDES 560SL
- '47 CHEVY COUPE
- '29 MODEL A 2 DR.
- '79 LINCOLN CONTINENTAL
- '79 LINCOLN MARK V
- '67 MERCEDES 200
- '39 BUICK SPECIAL
- '01 FORD LIGHTNING
- '91 CORVETTE CONV.
- '30 MODEL A SEDAN
- '95 JEEP 4X4
- '87 CHEVY C10
- '07 GMC 4X4 1700 MI.!!!
- 2 DOZEN+ MOTORCYCLES
- CAMPERS & RV'S
- PONTOON & OTHER BOATS
- 500+ LOTS OF MEMORABILIA
- ALL AT NO-RESERVE!