

NEMO TRADER BUSINESS SPOTLIGHT • NEMO TRADER BUSINESS SPOTLIGHT • NEMO TRADER BUSINESS SPOTLIGHT • NEMO TRADER BUSINESS SPOTLIGHT • NEMO TRADER BUSINESS SPOTLIGHT

NEMO TRADER BUSINESS SPOTLIGHT • NEMO TRADER BUSINESS SPOTLIGHT • NEMO TRADER BUSINESS SPOTLIGHT • NEMO TRADER BUSINESS SPOTLIGHT • NEMO TRADER BUSINESS SPOTLIGHT

TO PLACE YOUR BUSINESS HERE, CALL
NEMO TRADER

660-665-8500

AW Metal LLC
 Metal Roofing Headquarters
 641-664-3990

Buy Direct
 Post Frame Building Kits
www.awmetal.net



Play Bingo!!
 Where: Shrine Club, Kirksville, MO.
 When: Every Wednesday
 Doors Open at 5 pm.
 Early Bird Games: 6:30 pm.
 Bingo Starts at 7 pm.
 2 Progressive Games -
 Electronic Bingo Cards
 Great Food & Family Fun!!!!
 660-665-3312



Pull Tabs!

Cantril Lumber
 Cantril, Ia. • Mon-Fri. 7-5 • Sat. 7-12
 Ph: 319-397-2351 1-888-791-9273

Full Line of Building Materials • Check Out Our Metal Siding Price! We Sell Central States Metal

- OSB •Drywall •Insulation •Shingles •Plyco Doors
- Windows •Overhead Doors •All Colors of Metal Roofing and Siding
- Concrete Perma Columns •Treated Fence Posts •Metal Gates


See us for all your building needs!






FARM & RANCH.
ELIZABETH GREGORY
 Cell: 660.621.2136
farmandhome.c21.com

CENTURY21
 Lifetime Realty

1605 Baltimore, Suite A, Kirksville, MO 660.665.5678



Oldham Monument, LLC.
 Monument, Markers & Vases On Display.
 400 N. Kansas
 Downtown Marceline, MO.
 Phone: 660-376-2508
 Ed & Amy Ewigman

NEMO CPA'S L.L.C.
LAURIE LOVE, CPA
 202 E. Sanders Street • P.O. Box 25 • LaPlata, MO.
 Phone: 660-332-7904
 Fax: 660-332-4811
 email: llovecpa62@gmail.com

EMAIL
nemotrader@gatehousemedia.com
TO PLACE YOUR AD HERE



Travis Funeral Chapel
 We have served the wonderful families of LaPlata and the surrounding communities for more than 30 years.
 Randy & Michele Travis •
 Neil & Sherry Travis
 LaPlata, MO. 660-332-7145



WOODY'S TIRE AUTO & TOWING, LLC
 660-665-9017 • 1102 N. Green, Kirksville, MO
www.woodystireautoandtowing.com Like us on Facebook



Don't Cuss, Call Us

JOHNSTON AUCTION & REAL ESTATE

HUGE Farm Retirement & Multi-Estate Auction

Sat., July 24 • 10 AM

Johnston Auction Center Hwy 24, Madison, MO.

Equipment, Coins, Guns, Antiques & Collectibles, Tools, Household Items & MORE

John Deere 4430 Tractor, Allis Chalmers 6080 Tractor, Hesston 8465 Baler, Hay Trailer, Vermeer Haybine, Disc Mowers, 2000 Ford F-450 7.3L Diesel truck, 2012 BMW 1600cc motorcycle, Classic 1970's Jeep, Isuzu 18ft Box Truck and MUCH MORE!

James - 573-473-4904 • jamesjohnstonauction.com • Jeffrey - 573-239-6056

KEEP'EM N FENCING, PIPE & STEEL

Est. 2009

FOR ALL YOUR FENCING NEEDS.

Quality Cattle Equipment, too!

620-215-5770 KIRKSVILLE, MO
SPECIAL ORDERS AVAILABLE

Check out our current inventory at Kirksville Livestock Sales.

 <p>SINGLE \$550 HEAVY DUTY HAY FEEDERS</p>	 <p>DOUBLE \$950 HEAVY DUTY HAY FEEDERS</p>	 <p>HEAVY-DUTY \$850 REPLACEMENT BUMPERS Dodge, Chevy, Ford & GMC</p>	 <p>HALF TUB \$2,600</p>	 <p>FULL TUB \$3,100</p>
---	--	--	--	--

MINERAL FEEDERS \$375

20' ADJUSTABLE ALLEY \$2,900

If you're looking to build a pipe fence or corral, wire fence, or need quality cattle equipment, **WE'RE HERE TO SERVE YOU!**

Gates • Continuous Panels • Tubs • Alleys • Posts • Pipe • Bumpers • Cattle Feeders

Troyer TARP MFG.

660-486-3301

20264 State • Hwy. VV • Ethel, MO. 63539



Hoop Building Covers **FARM TARPS** **TRUCK TARPS**

WE GOT YOUR NEEDS COVERED!

ber, w/60" Finish Mower, \$3750. 660-341-8089

FOR SALE: Tomatoes, Cucumber, Zucchini, Potatoes, Onions and Green Beans. Located at Kauffman Produce 11538 Iceberg Ave

LaPlata MO 63549. Will also be at the LaPlata Farmers Market every Wednesday from 4 pm to 7 pm

FOR SALE: Woods Cadet 72, 6'3 pt, 540 PTO, rotary mower, laminated single rear wheel, ready to



MOOSE RUN REPAIR

8 YEARS EXPERIENCE

Tractor • Skid Steer • Combine • Air Conditioning
Self-propelled Forage Harvester & General AG Repairs

Specializing in John Deere

Engine • Transmission • Hydraulics
Power Shift/IVT Diagnosis & Repair
Computer/Electronic System Diagnosis & Repair




660-988-3843
DELVIN "MOOSE" STEINER • QUEEN CITY, MO

CENTURY 21 Lifetime Realty

FARM & RANCH



A community member for over 26 years, Elizabeth is a real estate professional connecting sellers in Northeast Missouri to buyers across our great country.

Considering selling a farm or home? Call on a local expert who knows you, and who is committed to helping you get the most for your property.

Serving Knox, Macon, Adair, Sullivan, Linn, Putnam and Shelby Counties.

Elizabeth Gregory, Realtor
Lic. # 2021008017

LISTING A PROPERTY?

CALL OR EMAIL ELIZABETH FOR A NO OBLIGATION CONSULTATION
660.621.2136 | egregory.c21@gmail.com
farmandhome.c21.com
Century21 Lifetime Realty | 660.665.5678

NOW HIRING

Sawmill Worker
Assist in daily operations of the sawmill, maintenance and cleanup of mill site, lifting, sorting, stacking lumber, transporting logs and lumber from multiple sites to the mill and kiln. Must be able to work outdoors and lift 50+ lbs. Ability to run a chainsaw, skid steer, and forklift. Must have a valid driver's license. \$15/hour, four days a week, mill site in Rutledge.

Woodworker/shop manager
Minimum of 2 years' experience in woodworking. Knowledge of machinery- planer, joiner, sanders, routers. Knowledge of epoxy, wood fastening, and finishes desired but can train. Seeking a detail-oriented person who understands schedules, deadlines, quality control. Job requires the ability to work on your feet, lift 50lbs, work as a team and manage part-time shop workers in sanding/epoxy tasks. Job requires good communication, good time management, the ability to follow directions and problem solve. \$15-20/hour - potential for salary and profit-sharing.

Woodshop located in Memphis.
Call Josh at 660-730-0854

use, \$550; 1 pair original AC rear wheel wts, fits WD-D17, \$150 pair. 217-257-1385

FOR SALE: Spices, and Seasoning, Farm Dust, Honey Garden Seeds, Homemade Candy. New Supply of Greeting Cards, Wooden Handles, Lamps & Chimneys, some Aladdin, S.S. Kitchen Wares, Mixing Spoons, Kitchen Towels & Clothes, Some Glassware. Train Track Candies 11538 Iceberg Ave, LaPlata, MO, 3rd lane to your left.

FOR SALE: New Holland 352 Grinder Mixer, one owner, right out of owner's shed, has auger feeder, extended unloading auger, extra screens, texted - runs out smooth and quiet, \$4,950. Call 573-881-3557

HANDYMAN: Install interior and exterior doors and windows, siding, decks, showers and toilets, flooring and drywall. 660-956-2189.

DIRT WORK All types of excavation, reclaiming overgrown fields, including CRP and WRP. Building site preparation, terrace and tiling maintaining and creating new trails and crossings, rock hauling, Food plot development and maintenance. Leveling and grading, wetland construction and maintenance. Pond and lake cleaning and construction. Call for quotes. 660-342-2701

FOR SALE: Used garden tillers Troy-Bilt, BCS and other sizes. DR Brush mowers. Kahoka, MO 660-216-1809

FOR SALE: JD D140 Garden tractor, new belts, blade & seat, \$1000; JD 345 Garden tractor, new seat, 54" deck, good condition, \$1500; Case 730 tractor, wide front, needs starter repair, \$1500. 660-341-2492

WANT TO BUY: 15' or 12' Brush Hog in real good condition, 540 PTO. 660-676-9199

FOR SALE: Misc AC Parts: D14-15 drawbar, \$55; D19 drawbar 75, latch arms, WD, D17- D19 gas heads, 3 pt parts, top links, 26", 8" hubs, rear wheel wts, side curtains D17, front wheels, etc., distributor, grill shell. 217-257-1385

FOR RENT: Near Ethel 30 acres for pasture and hunting. 660-341-9081

FOR SALE: Firestone 18.4 x 38 Super all traction radials, brand new mounted on rims 1/2 price of new, can deliver, best offer. 217-357-1324

FOR SALE: John Deere 2940 Tractor, 5400 hrs, cab, air, new rubber, estate tractor, \$14,500. Call 573-881-3557

FOR SALE: 2004 JOHN DEERE 625F, GREEN PLATFORM, hydroflex, kept inside, field ready. \$12,900. 660-299-0615

HUNTING EQUIPMENT sale, 35+ box, bow, haybale, ladder stands, hog trap, deer and turkey feeders, deer and goose decoys. All used, great condition. 641-208-7353

FOR SALE: New Skid loader attachments. Forks, Buckets and Bale Spears in Stock. No Sunday Calls 660-988-7385

BUYING Used Mobile Homes. Porter Homes 573-231-6667

FOR SALE: Ford 1520, w/Ford loader, hydrostat, 4x4, excellent paint and sheet metal, good rubber, \$9000. 660-341-8089

FOR SALE: 1/2 Border collie pups will make great farm dogs! Will be weaned with puppy shots

HELP WANTED

NEED A CHANGE??
Due to our expanding business, we are accepting applications for

AUTO TECHNICIAN

Competitive Wages • Group Insurance • Vacation Retirement Plan

Stop by to see Terry and Pick your application up TODAY!!
MUST HAVE TOOLS & DRIVERS LICENSE



Woody's Tire, Auto & Towing LLC

1102 N. Green St., Kirksville, MO • 660-665-8617

HELP WANTED

FOR SALE



\$1,800 obo Baring Mo. 660-341-2937
2006 Chevy Impala LTZ
 Black, black leather interior, 168,000 miles, fair condition.

FRONTLINE FENCING LLC

Steel Pipe Fencing.
 Custom Built Gates and Livestock Handling Equipment.
 Barbed Wire and Woven Wire Fence.
 Arrowquip Cattle Handling Equipment.
 Post Driver Rental.



**29386 St Hwy T,
 Greentop, MO
 660-956-2430**

Country Music Show
BLACK DIAMOND JUBILEE




Highway O 63 South
 Macon, Missouri
 660.385.2657 or 2304

New Starting Time
 7:00 pm

July 10th
 Duke Mason
 "Little Giant"

July 24th
 Mike Hughes
 "Oregon, Mo"

HAY STORAGE SOLUTIONS AND MUCH MORE!



"Today, I checked with Joseph to see when he was planning to deliver and construct my second hoop building. Two years ago I purchased a 55'x98' hoop building from Skylight buildings. It was erected on my site on time and the building went up in two days.

I was concerned about the durability of a vinyl building compared to a metal sided structure. That was until I noticed that a rock from my Brush Hog 2715 had impelled itself into the metal building. The Skylight building would not have been damaged. Also, the name says a lot. I thought that I would wire in lights like my other buildings but to date I have not found the need.

The reason I thought I needed to build a large building was to store my hay inside. I knew I was losing hay quality due to weather damage but baling with 568 John Deere and net wrapping my hay I thought I was keeping my hay loss at a minimum. I found the first year that I had underestimated my losses. I was very pleased with the results of storing hay inside. It is most gratifying to put a bale into the hay ring and seeing that the previous bale was almost completely consumed by the cows or the feeder calves. I had a record amount of carry over from last year and it is safely stored inside ready to be used this winter! This will allow for hay sales this winter.

The construction of the building's frame is strong, the foundation supports are 24" and very deep. I am very satisfied and have ordered another 55' x 140' to be installed in a few weeks. This one will be used to store our small square bales and equipment.

Thank you Joseph for your service and this chance to recommend your buildings."

Wiley and Susan Hibbard, Perry, Missouri

20749 State Highway VV
 Ethel, MO 63539
 660-486-3250

Skylight

Fabric Structures

Buy with confidence. We have you covered.



100% Satisfaction™



ACCIDENT Protection Plan™



SERVICE Contract Plus™



PAY Your Way™

For more information visit car-mart.com/peace-of-mind



car-mart.com

660.956.4849 | 2015 NORTH BALTIMORE KIRKSVILLE

- Low Down Payments
- Quality Us Vehicles ed
- Flexible Financing
- Weekly, Bi-Weekly
- Start Your Approval Online
- 100% Satisfaction
- Hand Selected Vehicles
- Over 150 Locations
- We Trade for Anything
- We Buy Cars
- Convenient Payment Options
- Since 1981



2008 Lexus ES350, FWD, 6 Cyl., Red



2013 Ford Edge SE FWD, 6 Cyl., Black



2011 Ford Escape XLT FWD, 4 Cyl., red



2015 FORD FOCUS SE 4 doors, 4 cyl., White, FWD



2016 HYUNDAI ELANTRA SE 4 Cyl., Fwd, Blue



2006 GMC YUKON XL 1500 DENALI AWD, 8 Cyl., black.



2014 CHEVROLET CAPTIVA SPORT FWD, 4 Cyl., Red



2011 Chevrolet Aveo LT FWD, 4 Cyl., white



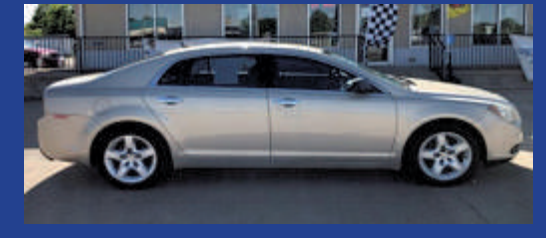
2015 Kia Soul Base, FWD, 4 cyl. Gray



2010 Chevrolet Traverse, LT, FWD, 6 Cyl., Blue



2012 FORD FUSION SE



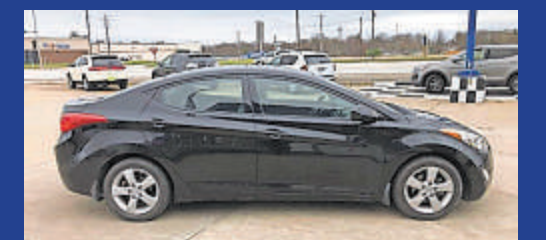
2011 CHEVROLET MALIBU LS



2008 GMC Envoy SLT 4WD, 6 Cyl., White



2008 Chevrolet Silverado 1500 LTZ 4 doors, 4WD, 8 Cyl., Blue



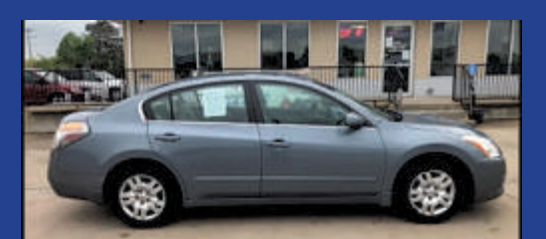
2013 Hyundai Elantra, GLS, FWD, 4 Cyl., Black



2014 DODGE GRAND CARAVAN SE, FWD, 4 Doors, 6 Cyl., Red.



2014 HYUNDAI SANTA FE SUV L, FWD, 4 Cyl., Gray



2010 NISSAN ALTIMA BASE



AMERICA'S CAR-MART

Keeping You on the Road



ELIZABETH WALTER GENERAL MANAGER

and dewormed and ready for a home by 4th of July, \$150 OBO. Contact Regina 660-332-4026

Home Grown Tomatoes, Turnips, Green Onions, Zucchini, Cucumber, Potatoes. Schmucker Produce 7 miles north Kirksville to Ft Madison Way East 1/2 mile

L&S NEMO AUCITON Come join us the first Saturday of every month at 11 am for our SMALL ANIMAL AUCTION. Call Lee at 660-988-3818 FOR CONSIGNMENTS, Merchandise Auction 3rd Saturday of the month.

FOR SALE: IHC rear split wts., \$150 set; IHC fast hitch 2 pt to 3 pt adapter arms, \$125; Fasthitch to 3pt one piece adapter, \$145; like new PTO shields 06-56-series, \$25 each; 560, 706 trim, 656 grill, misc parts, 1 (piece wheel) wts, \$100 set. 217-257-1385

FOR SALE: John Deere 285 Disc mower, 9, like new, \$7,950. Call 573-881-3557

FOR SALE: Cute and very playful Lab mix puppies, black w/some white, ready to go on 7/9/21. 660-373-2552

FOR SALE: Male 1/2 Rottweiler 1/2 Pitbull, black and Rottweiler colored, \$300. Diane 515-370-2833

WANTED TO BUY SOON: Older big round baler, field ready, 540 PTO, equal to Vermeer Model F or G. My hay ground is getting

Ramer Truck Sales



2012 Ford F-350 XLT 6.7 240k \$15,900



2011 Ford F150 XLT 3.5L At 4x4 Clean Title 158650 \$11,900



2011 Ford F-350 4x4 6.7L lariat 235k \$17,900



2013 Ford explore 4wd xlt clean title 167k \$11,900

Gorin, Missouri
8 am. to 6 pm. Monday - Saturday

www.ramertrucksales.com

HOME 660.282.1002 CELL 660.341.6140 *NO SUNDAY CALLS!*



After 55 years in business,
Morris Oil Co.
 will be closing on June 30, 2021
 due to medical reasons.

We thank all our customers for their patronage over the years.

Charles and Helen Morris
 Charla Rohm
 Kevin Morris
 Paul Morris-Station Manager
 Roger Treasure-Station Manager
 And Fuel Truck Operator



BURKHOLDER



2016 Chevy Silverado 3500HD LTZ
 Dually, 4x4, Crew, 6.6 Duramax, Allison, 111k
 One-Owner Mi, Texas Truck, Nice-Clean, White



\$54,900

Full line of accessories Outfit your truck here!

Edina 660-397-2551 51001 State Hwy 15 BurkholderTruckSales.com



\$59,900

2018 Ford F-250 Lariat FX4, Crew
 6.7 Diesel, Auto, 74k One-Owner Miles,
 Well Kept, Nice-Clean Local Truck, White



\$29,900

2017 Ford F-250 XL STX, 4x4
 Reg Cab Longbed, 6.2V8, Auto, 131k One-
 Owner Mi, Well Kept, Hard to Find, White



\$41,900

2016 GMC Sierra 1500 SLT Z71, 4x4
 Crew, 5.3V8, Auto, Only 62k Miles, Bum-
 pers-Steps-Wheels, Sharp, Nice, Silver



\$41,900

2015 Ford F-250 XLT FX4, 4x4
 Crew, 6.7 Diesel, Auto, 99k Miles, Local
 Trade, Extra Nice, Very Well Kept, White



\$54,900

2015 Chevy Silverado 2500HD LTZ
 4x4, Crew, 6.6 Duramax, Allison, Only 66k
 Miles, Perfect Service Record, Nice, Black



\$11,900

2011 Toyota Sienna XLE, 8 Pass
 3.5V6, Auto, 174k Well Kept Miles, Nice
 & Clean Budget Price Family Van, Gray



\$48,900

2018 Ford Transit 350HD Cutaway
 KUV, 3.7V6, Auto, 80k One-Owner Miles,
 Nice, Well Kept, Ready for Work, White



\$49,900

2018 Ford F-350 XL, 4x4, Ext Cab
 4dr, Dually, 6.2V8, 99k Mi, Utility Box w/
 Liberator 3200 Crane, Nice Set-Up, White



\$54,900

2016 GMC Sierra 2500HD SLE Z71
 4x4, Reg Cab, 8' Alum Flatbed, 6.6 Dura-
 max, Allison, 28k Miles, Must See, White

**Financing
 Options
 Available**

THIS MONTH'S SPECIAL!!

TRUCK GEAR BY LINE-X

ECLIPSE HARD ROLL-UP TONNEAU COVER

- ▶ MULTIPLE ROWS OF LATCH POINTS FOR ENHANCED SECURITY
- ▶ PREMIUM MATTE BLACK FABRIC-HIGH-END, HIGH-WEAVE FABRIC DELIVERS A STRIKING MATTE BLACK FINISH THAT EFFECTIVELY HIDES DIRT AND DUST
- ▶ LOW-PROFILE RAIL DESIGN ALLOWS FOR A SLEEK DESIGN, FLUSH-MOUNTED APPEARANCE
- ▶ BLACK POWDER COAT ALUMINUM SLATS ADD STRENGTH AND ELEVATED STYLING
- ▶ EASY TO OPEN THE COVER FROM EITHER SIDE OF THE TRUCK
- ▶ QUICK-RELEASE SYSTEM ALLOWS THE ENTIRE COVER TO BE REMOVED IN SECONDS WITHOUT TOOLS
- ▶ SUPERIOR WOVEN MATERIAL STAYS LOOKING CLEAN NO MATTER WHAT YOU PUT IT THROUGH
- ▶ MADE IN THE USA
- ▶ LIFETIME END-TO-END WARRANTY



\$100 OFF

SLEEK, STYLISH AND SECURE THE TRUCK GEAR BY LINE-X ECLIPSE HARD ROLL-UP COVER COMMANDS ATTENTION.

DON'T JUST PROTECT IT LINE-X IT

SLIP-RESISTANT SURFACE. PREVENTS RUST & CORROSION.
 IMPACT, ABRASION & CHEMICAL RESISTANT.



Quality Brands We Carry



AUTO & TRUCK SALES + ACCESSORIES



weedy now. Call 217-743-5226 ask for Carrol

HOME GROWN tomatoes, also by box, cucumber 5/\$2. Zucchini Squash 5/\$2, turnip 3#/\$2. Green onion 2 bunches for \$2.50. Large, sweet onion 2/\$1, new potatoes 3 quart/\$5. Green Beans. Schmucker Produce, 7 miles N of Kirksville to Ft. Madison Way, 1/2-mile East

WANTED 500 Bushel Ear Corn 217-656-3944 or 217-242-4344

DEER RIFLES FOR SALE: Remington Sportsman 30-06 wood, great condition, \$450; Herter model U9, wood 243 caliber, Redfield scope, \$475; Tri Star Camo 12 gauge auto, new in the box, \$400. YOU NEED AMMO? I GOT IT! 217-577-9538

FARM RAISED fresh catfish; home raised Iowa Chops, beef T-bones/ribeye's. Missouri bottom raised sweetcorn. Order ahead, Beef/hogs whole/halves with locker appointments, "Keep-Ad" 573-604-0674 delivered.

FOR SALE: Thompson Omega 50 caliber Muzzleloader with many accessories; 10 point Wicked Ridge Crossbow with many accessories. 660-299-0682

MALLARD DUCKS FOR SALE: Various ages none over 2 years old, babies and young ducks. 573-288-4303 leave message

FOR SALE: 2009 Kawasaki Contours 1400, 1 owner, red, back luggage trunk, always serviced and garaged, nice, has extras. 319-795-6804

FOR SALE: Older heavy frame shop built 21', 16 1/2' deck, 8' wide, flatbed trailer, mobile axles, bumper hitch, 2 5/16 ball, could

use flooring, with MO title, \$700. 217-257-1385

FOR SALE: Guineas - Adults \$15.00, Keets \$5.00, Hatching eggs \$10 a dozen. Chickens - Laying hens \$10, Barred Rock, Rhode Island Red, Black Sex Link. Chicks 6 weeks old Barred Rock, Buff Orpington, Black Sex Link, Aracana. Cairo MO 660-651-8102

WANTED John Deere 343 Corn Head in good condition. 217-257-4059

FOR SALE: Ford 5000, good paint and sheet metal, new tires, Live PTO, power steering, \$6500. 660-341-8089

FOR SALE: John Deere 6200 Tractor, MFWD, open station, 6000 hrs, power quad, with 640 Loader, \$25,500. Call 573-881-3557

FOR SALE: Four Harness Counter Balance Loom, 45" weaving width, includes extras like bench, yarn, etc. \$700. 570-599-4944 or 319-795-5670 leave message

FOR SALE: Heeler pups 2 blue, 3 red, 11 weeks old, shots, wormed, front-lined, still need rabies shots. Call or text for availability and pictures, \$200. 217-617-7161

FOR SALE: 1967 Chevy grain truck with dump box, 2500 series, \$2500. 319-470-0277

NEW TRUCK take offs for sale, Bridge Stone tries, 275-60-R20, \$440 for four. Hurdland, 660-216-9610

FOR SALE: Allis Chalmers 512 riding mower, 30-inch cut, new battery, \$250, Knox City. 660-341-4474

FOR SALE: 1981 GMC 3500 1 ton dual wheels, 2 WD, Knapheide flat bed, 350, 4 speed, 300 gallon fuel tank, fell-rite pump, 4 locking tool boxes, running boards, pull bumper, good rubber, basically no rust, and inexpensive service truck, \$3700. Accelerators Since "1974" Kahoka, MO 660-727-3455 or 217-257-1385 call anytime

FOR SALE: John Deere 569 Baler, net, 1000 rpm, big tires, 16,000 bales, new belts, field ready, will trade, \$17,500. Call 573-881-3557

WANTED TO BUY: Harley Davidson's, any year, any condition, cash money. Days 660-263-1356 or 660-537-0068

FOR SALE: New 3 pt. tillers, heavy duty, gear driven, 7' to 10' starting at \$3050. 660-874-4455

FOR SALE: Fish for stocking ponds - Catfish, Grass Carp, Crappie, Blue Gills, Red Ear, Bass, and Minnows. Heindselman Family Farms, Call Greg 660-341-5692

HANDYMAN: Install interior and exterior doors and windows, siding, decks, showers and toilets, flooring and drywall. 660-956-2189.

FOR SALE: John Deere 40 Manure Spreader, very little use, shedded, end gate extra sides, \$3,950. Call 573-881-3557

FOR SALE: Receiver hitch insert 6" drop, 2 5/16" ball with distribution hitch mounting used for dually, \$65., brake force controller, \$20, trailer lock by Master Controller, \$20, trailer lock by Master lock, \$15, Towing custom mirror extensions fits over existing mir-

rors GM 1999 & newer style, \$20. 217-257-1385

FOR SALE: Ford 4000 SU, power steering, Live PTO, excellent paint and sheet metal, new tires, new injection pump, \$5500. 660-341-8089

CREDIT CARD DEBT? Financially Stressed Out? Stop the harassment! Make one monthly payment YOU can AFFORD! Get Help Now and Save! Call Toll Free 888-925-5404

ARE YOU BEHIND \$10k OR MORE ON YOUR TAXES? Stop wage & bank levies, liens & audits, unfiled tax returns, payroll issues, & resolve tax debt FAST. Call 855-820-8878

BECOME A PUBLISHED AUTHOR! We edit, print and distribute your work internationally. We do the work, you reap the Rewards! Call for a FREE Authors Submission Kit: 844-261-5841

CANCER GENETIC SCREENING KIT. Protect yourself and your family with early genetic screening! See if you qualify for a test at no cost to you with your Medicare Part B coverage. Call +1855-623-4490. (Mon-Sun 9am-8pm ET)

ATTENTION SMALL BUSINESS OWNERS! Are you protected in case of property damage or if you have an interruption in service due to a property event? Business Owner Property insurance IS AFFORDABLE and WILL PROTECT YOU when the unexpected happens! For free quote, call 844-877-9891 (M-F 7:30am-9:30pm ET)

BATHROOM RENOVATIONS. EASY, ONE DAY updates! We specialize

in safe bathing. Grab bars, no slip flooring & seated showers. Call for a free in-home consultation: 855-980-4002

BEST SATELLITE TV with 2-Year Price Guarantee! \$59.99/mo with 190 channels and 3 months free premium movie channels! Free next day installation! Call 888-986-4740

SAVE YOUR HOME! Are you behind paying your MORTGAGE? Denied a Loan Modification? Is the bank threatening foreclosure? CALL Homeowners Relief Line! FREE CONSULTATION! 855-624-8601.

HughesNet - Americas #1 Choice for Satellite Internet. Call Today and Save! More Data. Free Installation. Available Everywhere. No Hard Data Limits. Call 855-248-7966

NEED NEW FLOORING? Call Empire Today to schedule a FREE in-home estimate on Carpeting & Flooring. Call Today! 877-866-8797

NEED NEW WINDOW TREATMENTS? Call Empire Today to schedule a FREE in-home estimate on blinds & shades. Call Today! 877-710-4641

Over \$10K in debt? Be debt free in 24-48 months. Pay a fraction of what you owe. A+ BBB rated. Call National Debt Relief 877-278-4861.

SelectQuote is dedicated to finding a Medicare plan right for you and your wallet. Call 844-361-4727 today and receive a free quote from one of our multiple carriers.

Attention: Auto Injury Victims. If you have suffered a serious

TOUGH. PROVEN. BLUE.



NOW is the time to increase the **EFFICIENCY** of next year's harvest **AND** get the **BEST PRICE** on a new Kinze single or dual auger grain cart!

©2020 by Kinze Manufacturing, Inc. All rights reserved.

CONTACT US TODAY TO LEARN MORE



NEW GRAIN CARTS

- 2020 KINZE 1051 - TRACKS, PTO 1.75-20 SPLINE, ELECTRIC SCALE PKG 51 SERIES, GT400 DISPLAY, MANUAL ROLL TARP 27758 ... \$108,091
- 2021 KINZE 1051 - TRACKS 36, ELECTRIC SCALE PKG 51 SERIES, GT 400 DISPLAY, PTO 1.75-20 SPLINE, MANUAL ROLL TARP 27821 ... \$115,000
- 2021 KINZE 1051 - FLOATATION TIRE 1050/50R32TL 198D LUG, ELEC SCALE PACKAGE 51 SERIES, 1.75 PTO 20 SPLINE, MANUAL ROLL TARP, ... \$66,500
- 2021 KINZE 1051 - FLOATATION TIRE 1050/50R32TL 198D LUG, ELEC SCALE PKG 51 SERIES, 1.75 PTO 20 SPLINE, MANUAL ROLL TARP, ... \$66,500
- 2021 KINZE 1205 - FLOATATION TRACK, ELECTRONIC SCALE PKG, ROLL TARP... \$166,000
- 2021 KINZE 1105 - FLOATATION TRACK, ELECTRONIC SCALE PKG, ROLL TARP WGS22671627993 ... \$158,000

USED GRAIN CARTS

- 2017 KINZE 1100 - TRACKS, PLASTIC ON AUGERS PUT ON AFTER 1ST YEAR OF USE. TRACKS VERY GOOD ... \$90,000
- 2017 KINZE 1100 - TRACKS, PLASTIC ON AUGERS PUT ON AFTER 1ST YEAR OF USE. TRACKS VERY GOOD ... \$90,000
- 1997 KINZE 840 - TARP, TIRES, ELECTRIC SCALES, ... \$22,500
- 2002 KINZE 840 - 30.5L-32 FIRESTONE TIRES, ROLL TARP, ADJUSTABLE SPOUT, NEEDS HORIZONTAL & LOWER VERTICAL AUGER. UPPER AUGER ... \$17,500
- 2009 J&M 875-18 - GREEN, 1000 1.75 PTO, FIRESTONE 30.5X32 R1 TIRES, MANUAL ROLL TARP, HYD SPOUT, LIGHTS, NEW AUGERS THIS YEAR, NEEDS PTO SHIELD ... \$21,500
- 2002 J&M 750-16 - 750 BUSHEL, ROLL TARP, SCALES WITH 460 DATA LOG HEAD, GOOD TIRES, AUGERS REPLACED 2 SEASONS AGO, LITTLE WEAR... \$19,500
- 2014 KILLBROS 1950 - \$28,900
- BRENT 1082 - 35.5X32, DIAMOND TREAD TIRES, TARP, NO SCALES, BIG 1000 PTO ... \$32,500
- FICKLINCA15000 - 750 BUSHEL GRAIN CART ... \$11,500
- UHT 500 - ORANGE, 500 BUSHEL GRAIN CART, UNITED FARM TOOLS ... \$4,750



800-288-5917

WWW.QUINCYTRACTORLLC.COM

injury in an auto accident, call us! Our attorneys have the experience to get you the full compensation you deserve! Call Now: 877-496-3293

BEAUTIFUL BATH UPDATES in as little as ONE DAY! Superior quality bath and shower systems at AFFORDABLE PRICES! Lifetime warranty & professional installs. Call Now! 844-980-3902

BOY SCOUT COMPENSATION FUND - Anyone that was inappropriately touched by a Scout leader deserves justice and financial compensation! Victims may be eligible for a significant cash settlement. Time to file is limited. Call Now! 866-395-0568

DONATE YOUR CAR TO CHARITY. Receive maximum value of write off for your taxes. Running or not! All conditions accepted. Free pickup. Call for details. 855-986-8602

FREE AUTO INSURANCE QUOTES for uninsured and insured drivers. Let us show you how much you can save! Call: 888-320-7567.

YOU MAY QUALIFY for disability benefits if you have are under a doctor's care for a health condition that prevents you from working for a year or more. Call now! 877-430-9760

PROBLEM CREDIT REPORT? Lexington Law works to challenge inaccurate negative items including: identity theft, collections, late payments, liens and more from your credit report. Call for a free credit repair consultation: 855-622-0369. John C. Heath, Attorney at Law, PLLC, dba Lexington Law Firm.

SAVE BIG on HOME INSURANCE! Compare 20 A-rated Insurance companies. Let us do the shopping & save you time & money.

Get a quote within minutes. Average savings of \$444/year! Call 877-594-0878. (M-F 8am-8pm Central)

Attention Viagra users: Generic 100 mg blue pills or Generic 20 mg yellow pills. Get 45 plus 5 free \$99 + S/H. Guaranteed, no

prescription necessary. Call 877-801-0749

FOR SALE: Ford 2910 DSL, good paint and sheet metal, good tires, w/Bush hog quick tach loader, \$6500. 660-341-8089

FOR SALE: 2012 Chevy 2500 HD extended cab, 4x4, LT, 6.0,

High PUBLIC AUCTION

Saturday, July 3, 2021 @ 9:00 A.M.

Directions from Albia, Iowa: go South on Hwy 5 approx. 4 miles to 645 Avenue, then South 1/2 mi. to 240th Street, then East 1 mile to 655 Avenue, then South 2 miles to auction site. Watch for signs!

Elmer & Christine Miller
2541 655 Ave - Albia, Iowa 52531
Elmer, VM: 641-724-3470

Horses & Ponies - Tack
9 yr. old Standardbred mare (16HH, TSS, pacing bred, broke)
3 yr old paint pony mare, broke
Team 15 yr. old palomino Quarter horse geldings (13.2HH, broke)
6 yr. old Hackney mare, broke to drive
(2) 18 yr old registered pony mares
8 yr. old mini pony mare
1 yr. old pony mare (broke to lead)
1 yr. old pony/donkey stallion (broke to lead)
Set of quarter horse harnesses - Brama Webb buggy
Riding bridle - harness (new) - lead & neck ropes

Lunch by Amish ladies

Equipment & Trailers
Vermeer RT850 trencher w/ B300 backhoe 845 hrs, GREAT COND.
Trencher SN: 1VRW092CS21000210 Backhoe SN: 1VRW080N221000244
2013 Genie 3369RT scissor lift, dual fuel, foam filled tires, 1580 hrs, SN: G56913-1735
2015 Big Tex 25'x45' gooseneck flatbed, mega ramps, elec. jack, side toolboxes, dual wheel 10,000 lb. axles, has title - 2008 Doolittle 8'X16' enclosed trailer, needs axle
2008 Delta 25' bumper hitch flatbed, hyd. jack, 7000 lb. axles, IA registration only
1996 Hull 16' bumper hitch trailer, 5000 lb. axles, IA registration only

Construction Tools
Coralex tools: (2) Senco drywall screwguns - (2) Dewalt framing nailers
(3) Hitachi framing nailers - Paslode framing nailer - Dewalt nail gun
(2) Dewalt drywall screwguns - Dewalt sawmill - screwguns - hammerdrill
Skilsaws - tin shears - Hitachi nailers - Dewalt trim staplers - electric tools
Briggs & Stratton 5750 watt generator (like new) - Eagle 9000 watt generator
3000 watt generator - Dewalt 12" double bevel miter saw w/ stand - ext. cords
Hitachi 12" double bevel miter saw w/ stand - Dewalt skilsaw - multi tool
Bosch hand planer - Milwaukee sawmill - light on stand - Skil handheld router
Skil handheld sander - metal chop saw - roughneck chain sharpener
Air Tools: Jenny portable air compressor - Puma portable air compressor
Eagle portable air compressor - Quincy air compressor (no engine)
Electric Metabo air compressor (new) - Emglo electric air compressor
(6) Paslode framing nailers - (2) Masterforce roofing nailers
(3) Bostitch roofing nailers - Masterforce roofing nailer - Bostitch cap stapler
Bostitch hanger nailer - (3) Masterforce hanger nailers - Masterforce trim stapler
Masterforce 16 ga. trim nailer - Bostitch 18 ga. trim nailer - Paslode framing nailers
Hand Tools: Spectra LL100N laser transit - Stihl TSS5000 concrete saw - saw hoses
Extension ladders - multi ladders - toolboxes/Dewalt tool belt (new) - saw blades
Tape measures - chalklines - chalk - T square - L square - speed squares - drill bits
Socket sets - wrenches - vise grips - crescent wrenches - pipe wrenches - concrete stakes
Air hoses - long handled nail pullers - lots more misc. construction tools

Building Supplies
New & used doors & windows - double bubble
Vinyl cedar impression siding (sterling grey)
Ridge vent - poly 1X4 trim boards - tar paper
Precut soffit - 16X10 garage door (new, non-insulated)
Partial rolls coilstock - vinyl brick mold - stacks of misc lumber
Nails & screws - concrete anchors - boxes of misc. hardware
24', 32', 36' trusses - some bridge planks - concrete blocks

Farm Machinery & Equipment
Gateway forcart w/ steel wheels & brakes
Miller forcart w/ steel wheels & brakes
Spring box wagon w/ 2 seats, steel wheels, lights, brakes
Cattle chute w/ Foremost headgate - (2) 4 ton bulk bins
Cattle creep feeders - sheep & goat digital scale - water tanks
Hay feeders - cattle & goat feed bunks - bales rings - goat stand
6' fence posts - cattle panels - calf bottles & holders - buckets
Hookover buckets - cattle warmer & vaccines - goat mineral
Syringes - SS strainer - 10x10 box stall - portable water pump
Small trap - approx. 10 corral gates - 3000 psi pressure washer

Auctioneer's Note: As the Millers have sold their farm and are relocating, we will be selling these items at Public Auction. This auction will have good quality & clean merchandise. You do not want to miss it. Due to the size of the auction, we anticipate running 2 auction rings so come prepared with an extra bidder. Come out and join us on the 3rd!

High Auction Service LLC Kris High 660.342.8634 - Randy High 660.216.0515
for additional photos go to: www.highauctionservice.com email: highauctionservice@gmail.com
Terms: Cash or check with proper I.D. Not responsible in case of accidents or theft. Announcements day of sale take precedence over any advertising.

MONSTER TRUCK RACING LEAGUE



FRIDAY, JULY 9TH, 2021

MONSTER TRUCKS

AND TOUGH TRUCK RACING!

FEATURING PRO MONSTER TRUCKS AS SEEN ON TV!

TOUGH TRUCK RACING:
PRE REGISTRATION REQUIRED • LIMITED TO 20 ENTRANTS
\$50 NON REFUNDABLE ENTRY FEE TO BE PAID WHEN SIGNING UP
CALL 573-406-7856 FOR INFO

FEATURING:
MONSTER TRUCK ACTION!
TOUGH TRUCK RACING!
MONSTER TRUCK FAN ZONE!
& MONSTER TRUCK RIDES!

FAN ZONE & MONSTER TRUCK RIDES: 5PM - 7PM
SHOW STARTS: 7:30PM

ADULTS: \$15 • YOUTH AGES 5 - 11: \$10 • KIDS AGES 4 & UNDER GO FREE

VISIT FACEBOOK.COM/SHELBYCOUNTYFAIRMISSOURI FOR TICKETS AND INFO!

TICKET PURCHASES AND EVENT ATTENDANCE ARE AT THE SOLE DISCRETION AND RISK OF THE CONSUMER

????????? ?????????? ?????????? ?????????? ?????????? ?????????? ?????????? ?????????? ?????????? ??????????




WHOLESALE-GUITARS, MUSICAL INSTRUMENTS

Electronics Unlimited

ELECTRONICS AND HOME THEATER

AL JOHNSON

17406 Bob Rd. Shop 660-665-8149
Kirksville, MO 63501 bigal@marktwain.net Cell 660-341-0965



Edina Livestock Sales

Edina, Missouri

Friday, July 2nd

No Sale

Friday, July 9th

Special Feeder Calf Sale

ALL SALES TELEVISED ON DV AUCTION

To Consign For Any or All Sales or For Information Call:
Owner - Kevin Strange • Cell: 660-341-9974
Ryan Strange • Cell: 660-341-9721
Sale Barn: 660-397-9999

Field Reps:	Mike Bronestine 660-341-9965	Jason Bischel 660-216-0373
Bill Tom Hall 660-342-5420	Trey Gashwiler 660-216-8751	John Powell 660-341-1717

Farm Machinery Consignment Auction

Saturday, July 17th @10:00 AM

Schachtele Auction Barn Keytesville, MO

From Hwy 24 at Keytesville, take Hwy 5 North approx. 4 miles to site with a brown barn/green roof on the West side of the road, or from Hwy 36 at Marceline exit take Hwy 5 South, approx. 16 miles to site.

Tractors & Skid Loader:
2017 John Deere 6145M w/Heat & AC 5400 Hours-nice & ready to work; IH464 Tractor-Gas; 2017 Kubota SVL 95-25 Track Skid Steer high flow w/hydraulic quick attach -cab Heat & AC; John Deere 950 Tractor; John Deere 630 Propane narrow-front has been restored; John Deere 4010 gas narrow-front; John Deere 2440 Diesel w/John Deere 175 Loader; Kubota B7100 4WD hydro w/1846 BushHog Loader; Allis Chalmers 6060 Diesel w/Loader; Ford 3000 Gas; 665 Farm Trac diesel w/new rubber; Kubota L285 w/Loader; John Deere 2040 w/Loader;

Farm Machinery:
John Deere HX15 15' Brushcutter; King Cutter 2 -Bottom Plow; Vermeer 605L 5x6 Baler Net & Twine; 9' AgCo Disc Mower; New Holland Hay Rake; Case IH 8330 Mower Conditioner; 3 pt 8' Blade; New 6' Pull-type Box Blade; 6' 3pt Blade; 3pt 6' BrushHog; 3pt 2-Bottom Plow; 3pt Bale Mover; 12' Kewanee Disc; 6' Rotary Hoe; John Deere 2 -row Corn Planter; 3pt 2-bottom Plow; John Deere Hay Rake; 6' King Cutter Tiller; Case IH 530 Manure Spreader; New Holland 273 Square Baler; 4 wheel Box Wagon w/Hoist; 3pt Post Hole Digger w/auger; 3pt carryall; 3pt Pasture Aerator; 3pt 5' Brushcutter; Danuser Post Hole Digger w/18" auger; 24" Post Hole Auger; 3pt 4' Yard Aerator; 3pt 6' Disc; Woods 5' Finishing Mower; Dearborne 2 -bottom Plow; John Deere K Horse Drawn Manure Spreader; 3pt Bale Stabber; 3pt 5' Blade; 4wheel Lawn Cart; 5' Harrow; 2 Gravity Wagons; Pull-type Sprayer w/30'Booms; 4wheel Wagon w/hoist and Parkhurst Bed; John Deere 535 Baler Twine only & 1000 PTO; John Deere 1209 Mower Conditioner; Great Plains 15' Solid Stand Drill w/grass seed and caddy; 4wheel Wagon w/grain box & hoist; IH5100 Soybean Special w/grass seed; John Deere 8' 3pt Brushcutter; pull-type Big Bale Mover; 10' Horse Drawn Disc; Gravity Wagon w/auger; John Deere 8000 Drill; Ford Hay Rake; John Deere 535 Baler twine only 540 PTO; Horse Drawn Manure Spreader needs restored; 3pt Sprayer; New 4', 6', 8' Drag Harrows; New 3pt Bale Unroller; New Titan 6', 5', 4' Box Blades; New Titan 6', 5', 4' Brushcutter; Vermeer 505 Baler; IH 425 Square Baler;

Skid Loader Attachments:
New Brush Cutter; Lowe Post Hole Digger; New 84" Stout Grapple Bucket; Bale Spear; Plus Several other New Attachments;

Trailers & Campers:
2006 Timpette 42' Grain Hopper Alum. Wheels & Air Ride; EZ Haul 6 Bale Dump Hay Trailer; 20'Gooseneck Stock Trailer; 10' Rice Utility Trailer; Pickupbed Trailer; 1997 20' Skyline Nomad Bumper Hitch Camper -Clean; Many more used & new trailers by Sale Day;

UTV & Lawnmowers:
2012 Polaris 800 Ranger 4400 miles good condition and runs good; Snapper SpeedX 1430 Lawnmower w/3pt has been restored; 2 David Bradley Garden Tractors 1 has a plow & cultivator;

Farm Related Miscellaneous Items:
25-New 10' Corral Panels; 1-Walk thru Gate; Several New Gates 16', 14', 12' & 8'; Mineral Feeder; Used Feed Troughs; Steel Posts; Bale Rings; 100' Rolls of 2x4 Wire 4', 5', 6'; 10 - 24' Freestanding Panels; 30-used Hog Panels; 25 Rolls new Barb Wire; 2-ton Portable Bulk Bin; New 30'x 20' Hoop Building in a box; Push Lawnmower; 2-wheel Horse Cart; Wood Scaffolding; 2-wheel Lawncart; 2 4-hole Ritchie Waters; 1-2hole Ritchie Water; Fenders off 4020 John Deere; Portable Squeeze Chute; 3 rolls 100' 4" Field Tile; 10' Flat-bottom Boat; 16' V-bottom Aluminum Boat w/Trailer; Squeeze Chute; Horse Trough w/hay feeder; Metal 10' Square Bale Feeder; New 85 gall. Water Tank ; 18 & 30 gall. Water Tanks; 10 -Metal 50 gall. Barrels; 2 Clinton gas Motors;

Taking Consignments Daily-Expecting Much More by Sale Day
Check Schachtele Auction Facebook Page for Pictures and Other Consignments.
Selling Farm Machinery, Farm Tools & Equipment & Many More Miscellaneous Items (No Household Items)

To Consign Early for Advertising or for More Information Call Tony: (660) 413-3250
We Appreciate All Consignments!

Terms Cash-Good Check with Proper ID.
We are NOT Responsible for Accidents to Man, Woman, Child or Animal!
We are NOT Responsible for Lost, Stolen or Damaged Articles or Property!

loaded, power seat, climate control, keyless, new tires, 158,000 miles locally owned, the right kind. \$17,900 selling price. Accelerators Since "1974" Kahoka,

MO 660-727-3455 or 217-257-1385 call anytime

FOR SALE: John Deere 6145 M Tractor, MFWD, 3485 hrs, new

rubber, triple hydr, 16 speed, \$69,500. Will trade. Call 573-881-3557

FOR SALE: 300 Briar Horses in excellent condition, 50 year collection, buy one or all. 660-676-9199

FOR SALE: 2017 Honda Ruckus, only 200 miles; 2002 Kawasaki 6550 Prairie, great condition; 2014 Yamaha F-25 HP tiller out-

board, electric start, like new, excellent condition. 641-208-7353

FOR SALE: Male Wolf/Dog Hybrid, ¼ Blood Alaskan Timber Wolf, ¼ Malamute, ¼ Gray Wolf, ¼ Husky Beautiful Dog just too big for me, \$300. Diane 515-370-2833

SCHMUCKER PRODUCE is open! Tomatoes, onions, lettuce, radishes, asparagus and other

vegetables. Open 9 am to 6 pm. Closed Sunday.

NEW/USED parts vehicles/pick-ups/semi's farm construction equipment. "Motors/trannys" body parts, paint matching yours warranted/delivery. 800-807-9612.

FOR SALE: 2002 Chevy 3500 box van, asking \$3000. Argyle, IA. 319-470-0277

MAST MEATS, LLC
660-766-2211
 USDA & Custom Slaughter & Processing
 CALL OR STOP BY FOR SPECIALS
 Retail store hours • Mon-Fri 8-5 Sat 8:30-3
 mastmeatsllc.com • 405 US Hwy. 63, Queen City, MO 63561

TRUXEDO BED COVERS **BUMPERS**

CANTRIL TRUCK & TRAILER
319-238-7367
 101 North St. • Cantril, IA

TRAILER PARTS

AIRLIFT

B&W HITCHES

TIRES

WINCHES

GRILLE GUARDS

See us for all your truck accessories!

VICTORY Metals & Recycling
Kirkville, MO 660-665-8000
 victorymetalrecycling.com

For current scrap prices call or visit our **Facebook Page**

★ **Construction/Debris Recycling**
 Visit Kirkville's construction & debris recycling facility and save trips to the landfill! Take advantage of this service for solid waste removal by bringing your landfill items to Victory Metals C & D recycling facility located at 3602 N. Industrial Rd.

★ **Roll-Off Container Service**
 10-20-30-40 Cubic Yard Dumpsters

3602 N. Industrial Rd.,
 Kirkville, MO 63501
 djanesvmr@gmail.com
 www.victorymetalrecycling.com



NEMIO
Trader

Our circulation is 16,000 with a 19 county coverage area in Missouri, Iowa and Illinois. Our paper is a free paper and is distributed to restaurants, convenience stores and other businesses in the area for individuals to pick up. We have a new issue every Friday.

TOWN DROP ROUTE

<p>MISSOURI</p> <ul style="list-style-type: none"> • Alexandera • Arbela • Atlanta • Baring • Bevier • Brashear • Brookfield • Browning • Bucklin • Callao • Canton • Clarence • Downing • Durham • Edina • Ewing • Galt • Hartford • Green Castle • Green City • Greentop • Hannibal • Higbee • Honeywell • Jamesport • Kahoka • Kirkville • Knox City • Labelle • Laclede • Lancaster • LaPlata • Laredo • Lewistown • Linneus • Livonia • Macon 	<ul style="list-style-type: none"> • Madison • Marceline • Memphis • Milan • Moberly • Monroe City • Monticello • New Cambria • Novinger • Palmyra • Paris • Purdin • Queen City • Rutledge • Shelbina • Trenton • Unionville • Wayland • West Quincy <p>IOWA</p> <ul style="list-style-type: none"> • Centerville • Cincinnati • Drakesville • Ft. Madison • Keokuk • Montrose • Moravia • Unionville • Bloomfield • Hwy 2 <p>ILLINOIS</p> <ul style="list-style-type: none"> • Carthage • Hamilton • Noita • Quincy
--	--

P.O Box 190
 Kirkville, Mo 63501

Online paper:
<https://issuu.com/nemotrader>

Office: 660-665-8500
 Cell: 660-988-6830
 Fax: 660-665-2024
 Email: nemotrader@gatehousemedia.com

CALL FOR PRICES

NEMO TRADER OFFERS TOTAL WEBSITE PLUS

A professional website PLUS Perch

With Total Website Plus, our expert web developers build you a responsive, SEO-friendly website to connect you with people searching for your business—and you don't have to lift a finger! We take care of everything so you can get back to running your business. Included with your new website is Perch. This award-winning solution monitors your online presence and provides guidance to help market online through quick, easy, and effective tasks.



CINDY HIGH

Multi-Media Sales Executive

110 E. McPherson Street
Kirksville MO

Office # 660-665-8500 ext. 19
Email: nemotrader@gatehousemedia.com



GANNETT

NEMO
Trader



JULY SPECIAL FEATURES:

Brisket-Bone-In Pork Chops-Ham Burgers-Pork Burger, Hamburger or Lamb Burger Patties-Brats

Serving deli sandwiches daily! Friday lunch specials as advertised.

WE'RE GOING TO THE FAIR!

Green Hills Fresh Meats is excited to be providing concession services at the 2021 Linn County Fair. Find us in the Exhibit Building July 9th-17th. Come out and support our local 4-H and FFA youth! More details and a full menu available on our Facebook page

July 2: Bacon Cheeseburger with Steak Fries

LUNCH SPECIALS AT THE FAIRGROUNDS:

****July 9: DRIVE THROUGH LUNCH! Philly Cheesesteak Sandwich with Fries**

****July 16:HOG SHOW DAY! Pulled Pork Sandwich with Slaw and Fruit Salad**

July 23: BBQ Chicken Sandwich with Macaroni Salad

July 30: Bone In Grilled Pork Chop with Green Beans and Applesauce

****July 9 and July 16 Lunch Specials will be served at the Linn County Fairgrounds. No in-store special. Cash or check only on these days.****

Find us on Facebook at Green Hills Fresh Meats

Monday-Friday 8:30am-5:30pm - Saturday 9am-1pm

700 Brookfield Avenue - (660) 258-5148 Ext. 2

FOR SALE: Approximately 45-foot 3 leg tower for CB or TV antenna, \$120, Hurdland. 660-216-9610

FOR SALE: Allis Chalmers 512 riding mower, 30-inch cut, new battery, \$250, Knox City. 660-341-4474

FOR SALE: John Deere 44" mulching mower deck, good belts off LX 188 fits other models, \$75; John Deere 1219 conditioner mower parts fits others, forged, guards, sections, belts & misc., mostly all new, sell all deal. 217-257-1385

WANTED TO BUY: Harley Davidson's, any year, any condition, cash money. Days 660-263-1356 or 660-537-0068

WANTED TO BUY: Farm Machinery and Estates. Call James L. Johnston. 573-473-4904

FOR SALE: John Deere 4240 Tractor, CAH, one owner, 8000 hrs, recent overhaul, power shift, Loader available, \$25,500. Call 573-881-3557

Wevers Outside Wood Furnaces a dealer for Heatmor Stainless Steel Outside Furnaces, have an assortment of parts, line, and etc. Taking orders for new outside wood furnaces. Used 120 furnace, burns wood or coal, has shaker grates, for \$5,550. Call 660-423-5242, cell 660-216-9885. Open 6pm-9pm Monday-Friday, Saturday anytime, call first.

FOR SALE: New 3 pt. tillers, heavy duty, gear driven, 7' to 10' starting at \$3050. 660-874-4455

PASTURE AND HAY GROUND Needed around Adair & Knox County. Please Contact 660-216-5887 or 417-773-2507

FOR SALE: 2010 Case 8120 Combine, 2975 HR -2097 HR, NO DEF, RWA, DIF Lock, 620 Drive Tires, 28 Steer Tires, luxury cab, clean machine, \$95,000. 641-895-8014

FOR SALE: Fish for stocking ponds - Catfish, Grass Carp, Crappie, Blue Gills, Red Ear, Bass, and Minnows. Heindselman Family Farms, Call Greg 660-341-5692

FOR SALE: Ford 1310, good paint and sheet metal, excellent rubber, w/60" Finish Mower, \$3750. 660-341-8089

FOR SALE: Tomatoes, Cucumber, Zucchini, Potatoes, Onions and Green Beans. Located at Kauffman Produce 11538 Iceberg Ave LaPlata MO 63549. Will also be at the LaPlata Farmers Market every Wednesday from 4 pm to 7 pm

FOR SALE: Woods Cadet 72, 6' 3 pt, 540 PTO, rotary mower, laminated single rear wheel, ready to use, \$550; 1 pair original AC rear wheel wts, fits WD-D17, \$150 pair. 217-257-1385

FOR SALE: Spices, and Seasoning, Farm Dust, Honey Garden Seeds, Homemade Candy. New Supply of Greeting Cards, Wooden Handles, Lamps & Chimneys, some Aladdin, S.S. Kitchen Wares, Mixing Spoons, Kitchen Towels & Clothes, Some Glassware. Train Track Candies 11538 Iceberg Ave, LaPlata, MO, 3rd lane to your left.

FOR SALE: New Holland 352 Grinder Mixer, one owner, right out of owner's shed, has auger feeder, extended unloading auger, extra screens, texted - runs out smooth and quiet, \$4,950. Call 573-881-3557

HANDYMAN: Install interior and exterior doors and windows, siding, decks, showers and toilets, flooring and drywall. 660-956-2189.

DIRT WORK All types of excavation, reclaiming overgrown fields, including CRP and WRP. Building site preparation, terrace and tiling maintaining and creating new trails and crossings, rock hauling, Food plot development and maintenance. Leveling and grading, wetland construction

Antioch Paint & Repair

Specializing in fixing skid loaders & other equipment.
Some equipment painting.
Ethan Zimmerman
660-299-0808
Serving Northeast MO

B^oF^K
Since 1914

WE ARE HIRING!

LOAN SECRETARY POSITION:
Previous secretarial and switchboard experience preferred. Excellent customer service skills required, attention to detail and a friendly outgoing personality. Full time position with benefits.

Send resume to:
Bank of Kirksville
Attn: Personnel
PO Box 787
Kirksville, MO 63501
EOE
Member FDIC

ATTENTION LAND OWNERS!

**BUYER OF STANDING TIMBER
OWNER / OPERATOR OF SAWMILL - BUY/CUT LOGS
CERTIFIED - BONDED - INSURED**



TRI STATE TIMBER L.L.C.
PH. 660-341-4921 or 660-465-2975
353 1/2 GRAND AVE. • MEMPHIS, MO 63555

ANYTHING ON WHEELS!



highway63insurance.com

Harris Land Management & Services LLC 

Gus Harris * 660-216-7268 * Licensed & Insured
Like us on facebook



**Brush Clearing * Trenches * Roads
Post Hole Digging * Shooting Lanes
Mobile Metal Fabrication
Repair * Stump Removal**

and maintenance. Pond and lake cleaning and construction. Call for quotes. 660-342-2701

FOR SALE: Used garden tillers Troy-Bilt, BCS and other sizes. DR Brush mowers. Kahoka, MO 660-216-1809

FOR SALE: JD D140 Garden tractor, new belts, blade & seat, \$1000; JD 345 Garden tractor, new seat, 54" deck, good condition, \$1500; Case 730 tractor, wide front, needs starter repair, \$1500. 660-341-2492

WANT TO BUY: 15' or 12' Brush Hog in real good condition, 540 PTO. 660-676-9199

FOR SALE: Misc AC Parts: D14-15 drawbar, \$55; D19 drawbar 75, latch arms, WD, D17- D19 gas heads, 3 pt parts, top links, 26", 8" hubs, rear wheel wts, side curtains D17, front wheels, etc., distributor, grill shell. 217-257-1385

FOR RENT: Near Ethel 30 acres for pasture and hunting. 660-341-9081

FOR SALE: Firestone 18.4 x 38 Super all traction radials, brand new mounted on rims 1/2 price of new, can deliver, best offer. 217-357-1324

FOR SALE: John Deere 2940 Tractor, 5400 hrs, cab, air, new rubber, estate tractor, \$14,500. Call 573-881-3557

FOR SALE: 2004 JOHN DEERE 625F, GREEN PLATFORM, hydraulic, kept inside, field ready. \$12,900. 660-299-0615

BUYERS OF CORN, SOYBEAN, ORGANIC, NON-GMO CORN AND SOYBEANS



Baring Elevator L L C

**Contracts Offered
Forward Pricing
Target Orders**

Baring, MO
660.892.4411
www.baringelevator.com

CONTACT US FOR PRICING
Lewis 660-341-2937
Roger 660-223-2442

EL KADIR SHRINE CLUB ANNUAL FIREWORKS STAND

**Open 9am - 9pm
June 20 - July 5**

2401 S Baltimore St
Kirksville, Missouri

GREAT SELECTIONS

GREAT PRICES

SPRING IS YOUR GO TIME.
GET OUT THERE.

You've been waiting all winter for this moment.



REBATES UP TO \$1,000 ON 2020 MODELS

POLARIS SPRING SALES EVENT

TERMS AND CONDITIONS APPLY

[Explore Inventory >](#)

Slayton

POLARIS

10456 State Route B, Downing, MO
6 miles W. of Memphis, then 13 miles N. on B
660-328-6627

VISIT POLARIS.COM FOR MORE OFFERS



MAIN CREEK REPAIR

Larry Geiser

23316 State Hwy H
Kirksville, MO 63501

(715) 415-1995

**Bolts • Belts • Bearings
Hydraulic Hoses • Steel
Welding • Fabricating
Tractor & Equipment Repair**

MAIN CREEK RENTALS

23316 State Hwy H
Kirksville, MO 63501

(660) 988-6917

- Mini Excavator
- Equipter (Shingle Buggy)
- Post Hole Digger
- Dozer
- Snorkle
- Man Basket
- Skytrack
- Grapple

HUNTING EQUIPMENT sale, 35+ box, bow, haybale, ladder

stands, hog trap, deer and turkey feeders, deer and goose

decoys. All used, great condition. 641-208-7353

For Your Equipment Needs!

LOTS OF USED EQUIPMENT AVAILABLE

Vermeer 605 N Balers, Twin Rakes, Trailed Mowers, Disc Mowers, Tedders, Bale Processors-

Offer high capacity, speed, reliability, efficiency, fuel savings...

DeWeze Bale Beds-

Lift, load, transport and feed big, round bales...

Danuser Post-Hole Diggers-

Offer quality & reliability, outperforms the competition...

USED EQUIPMENT

BALERS

605 N Net
605 L Net
605 K Net

RAKES

R2800
R2300
VR1224

MOWERS

TM 1210
8040
7030
Vicon 4000

TEDDERS

TD250

BALE PROCESSORS

BPX 9000
BPX 9010

Liebhart Sales, Inc.

17546 Lacey Drive •
New Boston, MO. 63557

Call Today!!

660-689-3406

FOR SALE: New Skid loader attachments. Forks, Buckets and Bale Spears in Stock. No Sunday Calls 660-988-7385

BUYING Used Mobile Homes. Porter Homes 573-231-6667

FOR SALE: Ford 1520, w/Ford loader, hydrostat, 4x4, excellent paint and sheet metal, good rubber, \$9000. 660-341-8089

FOR SALE: ½ Border collie pups will make great farm dogs! Will be weaned with puppy shots and dewormed and ready for a home by 4th of July, \$150 OBO. Contact Regina 660-332-4026

Home Grown Tomatoes, Turnips, Green Onions, Zucchini, Cucumber, Potatoes. Schmucker Produce 7 miles north Kirksville to Ft Madison Way East ½ mile

L&S NEMO AUCITON Come join us the first Saturday of every month at 11 am for our SMALL ANIMAL AUCTION. Call Lee at 660-988-3818 FOR CONSIGNMENTS, Merchandise Auction 3rd Saturday of the month.

FOR SALE: IHC rear split wts., \$150 set; IHC fast hitch 2 pt to 3 pt adapter arms, \$125; Fasthitch to 3pt one piece adapter, \$145; like new PTO shields 06-56-series, \$25 each; 560, 706 trim, 656 grill, misc parts, 1 (piece wheel) wts, \$100 set. 217-257-1385

FOR SALE: John Deere 285 Disc mower, 9', like new, \$7,950. Call 573-881-3557

McAfee/Hayes Auction Service, LLC
375 S Johnson • Kahoka, MO
660-727-3796
www.mcafeeauctionservice.com

Clark County, MO LAND AUCTION

Sale conducted at the CARE Building located at 451 N. Vine Street Kahoka, MO

HIGHLY PRODUCTIVE TILLABLE LAND

77 ACRES

2 TRACTS

Lying in Sect. 34,
Twp. 65N, R7W

Thursday, July 22ND at 6 PM

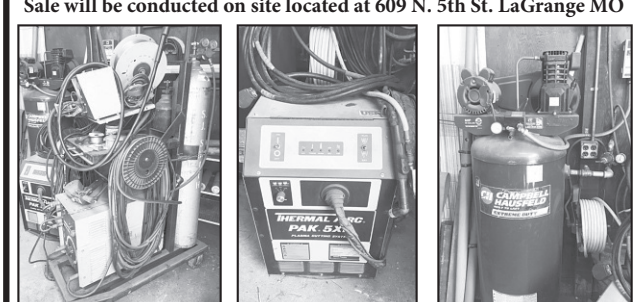
OPEN HOUSE: SUNDAY JULY 11TH 1-2PM

RONNIE STUTZ ESTATE
Joann Markus Executor/ Crystal M. Hawk, Rep. Att.

McAfee/Hayes Auction Service, LLC
375 S Johnson • Kahoka, MO
660-727-3796
www.mcafeeauctionservice.com

ESTATE AUCTION SATURDAY JULY 17TH - 10 AM

Sale will be conducted on site located at 609 N. 5th St. LaGrange MO



Mr. Cottrell owned and operated Cottrell & Sons Welding from 1959-2015. Selling will be a complete liquidation of his welding shop & support items, as well as woodworking equipment, guns & other items.

Complete Details & Photos Online

PATRICIA AND THE LATE BERT RICHARD COTTRELL, SELLERS

McAfee/Hayes Auction Service, LLC
375 S Johnson • Kahoka, MO
660-727-3796
www.mcafeeauctionservice.com

RESIDENTIAL REAL ESTATE & PERSONAL PROPERTY AUCTION

SATURDAY JULY 24TH - 10 AM

Sale conducted on site located 3/4 mile Southwest of Revere, MO on Highway C. (Address 24939 Highway C Revere, MO)



OPEN HOUSE: Sunday July 11th 3-4 pm

Take advantage of this rare opportunity to purchase a very well built 4063 sq' total living space 3-4 bedroom rural full brick home. Home Features 2545 sq' on main level, 1518 sq' finished basement, 5 bathrooms, 2 kitchens, geo thermal and electric radiant heat, 2 fireplaces, LP whole house generator and much much more. Other improvements: 42X72' pole building w/ cement floor and electric. Sitting on 2.5 +/- acres.

Also Selling a Nice Selection of Antiques, Collectibles, Household, Misc., Boat and Other Useful Items.

CHARLES & JERI BRAXTON TRUST
CHARLES BRAXTON TRUSTEE

**THINKING OF SELLING LAND OR MACHINERY?
LET OUR MOTIVATED STAFF WORK FOR YOU!**

MONTY: 660-341-7412 OFFICE: 660-727-3796

FOR SALE: Cute and very playful Lab mix puppies, black w/some white, ready to go on 7/9/21. 660-373-2552

FOR SALE: Male 1/2 Rottweiler 1/2 Pitbull, black and Rottweiler colored, \$300. Diane 515-370-2833

WANTED TO BUY SOON: Older big round baler, field ready, 540 PTO, equal to Vermeer Model F or G. My hay ground is getting weedy now. Call 217-743-5226 ask for Carrol

HOME GROWN tomatoes, also by box, cucumber 5/\$2. Zucchini Squash 5/\$2, turnip 3#/\$2. Green onion 2 bunches for \$2.50. Large, sweet onion 2/\$1, new potatoes 3 quart/\$5. Green Beans. Schmucker Produce, 7 miles N of Kirksville to Ft. Madison Way, 1/2-mile East

WANTED 500 Bushel Ear Corn 217-656-3944 or 217-242-4344

DEER RIFLES FOR SALE: Remington Sportsman 30-06 wood,

great condition, \$450; Herter model U9, wood 243 caliber, Redfield scope, \$475; Tri Star Camo 12 gauge auto, new in the box, \$400. YOU NEED AMMO? I GOT IT! 217-577-9538

FARM RAISED fresh catfish; home raised Iowa Chops, beef T-bones/ribeye's. Missouri bottom raised sweetcorn. Order ahead, Beef/hogs whole/halves with locker appointments, "Keep-Ad" 573-604-0674 delivered.

FOR SALE: Thompson Omega 50 caliber Muzzleloader with many accessories; 10 point Wicked Ridge Crossbow with many accessories. 660-299-0682

MALLARD DUCKS FOR SALE: Various ages none over 2 years old, babies and young ducks. 573-288-4303 leave message

FOR SALE: 2009 Kawasaki Concours 1400, 1 owner, red, back luggage trunk, always serviced and garaged, nice, has extras. 319-795-6804

FOR SALE: Older heavy frame shop built 21', 16 1/2' deck, 8' wide, flatbed trailer, mobile axles, bumper hitch, 2 5/16 ball, could use flooring, with MO title, \$700. 217-257-1385

FOR SALE: Guineas - Adults \$15.00, Keets \$5.00, Hatching eggs \$10 a dozen. Chickens - Laying hens \$10, Barred Rock, Rhode Island Red, Black Sex Link. Chicks 6 weeks old Barred Rock, Buff Orpington, Black Sex Link, Aracana. Cairo MO 660-651-8102

WANTED John Deere 343 Corn Head in good condition. 217-257-4059

FOR SALE: Ford 5000, good paint and sheet metal, new tires, Live PTO, power steering, \$6500. 660-341-8089

FOR SALE: John Deere 6200 Tractor, MFWD, open station, 6000 hrs, power quad, with 640 Loader, \$25,500. Call 573-881-3557

FOR SALE: Four Harness Counter Balance Loom, 45" weaving width, includes extras like bench, yarn, etc. \$700. 570-599-4944 or 319-795-5670 leave message

FOR SALE: Heeler pups 2 blue, 3 red, 11 weeks old, shots, wormed, front-lined, still need rabies shots. Call or text for availability and pictures, \$200. 217-617-7161

FOR SALE: 1967 Chevy grain truck with dump box, 2500 series, \$2500. 319-470-0277

NEW TRUCK take offs for sale, Bridge Stone tries, 275-60-R20, \$440 for four. Hurdland, 660-216-9610

FOR SALE: Allis Chalmers 512 riding mower, 30-inch cut, new battery, \$250, Knox City. 660-341-4474

FOR SALE: 1981 GMC 3500 1 ton dual wheels, 2 WD, Knapheide flat bed, 350, 4 speed, 300 gallon fuel tank, fell-rite pump, 4 locking tool boxes, running boards, pull bumper, good rubber, ba-

Golden Grain Bins-Spring Discount

Grain Bins	Floors w/12" Supp. & Flashing
18'x18' 4,195bu. \$ 6,645	18'....\$1,956 30'....\$ 5,465
27'x21' 11,265bu. \$13,143	21'....\$2,676 36'....\$ 7,790
42'x24' 32,245bu. \$30,190	27'....\$4,466 42'....\$10,609



GMLS Industries, Inc.
PH: 660-699-2179 or 620-983-2136
www.gmlsindustries.com

SHELBY COUNTY, MISSOURI REAL ESTATE

AUCTION

96[±] ACRES

FRIDAY, JUNE 25TH AT 10:30AM

This is one of those tracts that don't come along often. It offers great hunting with some fantastic opportunities at pasture and tillable acreage. As a prospective building site, the views and privacy, all in a great community are a hard to find combination.

LAND INSPECTION:
Walkover Inspections
are Welcome Any Time.

AUCTION LOCATION:
American Legion
520 E. Maple St.
Shelbina, MO 63468

- FSA 55.6 Crop Acres
- Great Timber
- Manicured Pasture
- Awesome Hunting
- One of the best building sites in the county!

Attention Farmers & Investors! This is A Fantastic Opportunity!



OWNERS: Lackey Brothers
Contact:
Anthony Peoples 660.651.6501

www.peopleslandco.com

PUBLIC ESTATE AUCTION

We will sell the following real estate, household, tools, motorcycles, lawnmower, truck, etc. located at 1105 Vine Street, Macon, MO on

SATURDAY, JULY 10TH, 2021 @ 10 A.M.

REAL ESTATE TO BE OFFERED FOR SALE AT 12:30 P.M. consists of 6 acres M/L open land with a metal 36'x72' Quonset hut building that is spray foam lined, inside is framed up for living quarters, patio & deck, natural gas, water, sewer, and electric service to building.

FOR MORE INFORMATION OR SHOWING. CONTACT ERIC WILSON @ (443) 966-0844. TERMS: 10 PERCENT DOWN DAY OF SALE W/BALANCE DUE WITHIN APPROXIMATELY 45 DAYS W/TITLE INSURANCE FURNISHED.

HOUSEHOLD: Whirlpool chest type deep freeze - 4 lighted China cabinets - Kenmore automatic washer w/matching dryer - 2 Lazyboy rocker recliners - brown floral couch w/matching loveseat - wooden dining table w/2 leaves and 4 chairs - several flat screen TV's of various sizes - 2 queen size beds complete - several chest of drawers - standing jewelry cabinet - glider rocker - coffee & end tables - wooden book shelves - dehumidifier - wooden desk - TV stand - electric fireplace - fans - heaters - bedding & linens - pots & pans - dishes - costume jewelry - Christmas décor - table lamps - sets of China dishes - hand painted wood figurines - wicker baskets - iron tables & stands - several used remote control airplanes & parts - remote control car - model cars - airplane weather vane - metal Radio Flyer Air Nite child's pedal plane - Canon camera w/extra lens - several sets of binoculars - large telescope on stand - stainless steel gas BBQ grill - wooden porch swing - homemade upright smoker - gold sifting pans & equipment - electric hot water heater - metal detector - double stainless steel sink - Victor electric scooter - pellet heating stove - mantle clock - kitchen cabinet - lots of other items too numerous to mention. **TOOLS & SHOP ITEMS:** AC Delco 3500 watt generator - Power Con 220v, 300 amp DC stick & tig welder - Craftsman 5hp, 30 gallon portable air compressor - Lincoln AC 225 arc welder - 110 wire fed welder - 12T pipe bender - 2 wheel bench grinder - sand blaster - small torch - propane weed burner torch - battery charger - gas powered chipper shredder - Ariens ST724 self-propelled 7 hp. snow blower - Craftsman 6" x 48" x 9" disc sander - grinder on stand - Craftsman 10" table saw - Craftsman wet/dry shop vac - 2 1/2T floor jack - chain hoist - 4 wheel roller carts - 2 metal table benches w/drawers - metal shop cabinets - metal vise - compound miter saw - Milwaukee hammer drill - portable band saw - XL1750 PSI, 5 hp gas pressure washer - air pig - cordless drills - 150' & 200' tapes - Stihl MS 180C chain saw - electric nailer - various air tools - small electrical tools - Craftsman 5 drawer rolling tool chest - Craftsman 3 pc. stackable tool chest - chop saw - shop lights & cords - 5 drawer rolling tool chest - jack stands - lots of Craftsman ratchets, sockets (shallow & deep well), extensions - Robo grip pliers - crow's feet - torque sockets - nut drivers - tap & dies - hole reamers - drill bits - torque wrenches - S & K ratchets & sockets - staple guns & hammers - HD plastic shelving - folding saw horses - 6' fiberglass stepladder - assortment cabinets full - pipe wrenches of various sizes - crescent wrenches of various sizes - impact sockets - ratchet wrenches - open & box end wrenches - PVC conduit pipe - electrical outlets & supplies - gas weed eater - leaf blower - log chains - wheel barrow - folding aluminum ladder - handyman jack - C-clamps - bottle jacks - Rubbermaid truck tool boxes - garden hose & reel - 7 rolls of garden wire - 4 wheel lawn wagon w/fold down metal sides - several rolls of bubble wrap insulation - two 45-75-16 studded snow tires & rims - lawn & garden tools & lots of other items too numerous to mention. **TRUCK, STORAGE CONTAINER, SOLAR PANELS, MOTORCYCLE, 3 WHEEL MOTORCYCLE, LAWN MOWER, & SKID STEER:** Dixie Chopper ET3300, 72" cut w/9xx hrs. zero turn riding lawn mower - CASE 1825 diesel skid loader - 1985 Honda Goldwing motorcycle w/3,244 miles - homemade diesel 3 wheel trike motorcycle - homemade 7'x12' tandem trailer w/ramps - 8'x40' metal storage container (mouse proof) - 1996 Dodge Ram 2500, v10 magnum extended cab, auto, 2 wheel drive w/74,000 miles - 14 solar panels, wind charger, batteries, converters, controller, system complete. **GUNS TO BE SOLD AFTER REAL ESTATE AT 12:30 P.M.:** Winchester 243, auto Model 100 - Winchester 308 cal. auto Model 100 - Glock 19, 9x19 Austria pistol - pump up air rifle - hard case gun carrier. **AUCTIONEER'S NOTE:** Plan to attend this very large and interesting auction. Cash/Check w/ID - lunch & porta potty on grounds.

OWNER: ESTATE OF JOHN WILSON

James Eric Wilson, Personal Representative

Christy's Auction Service

La Plata, MO 63549 660-341-4531
See Websites for Photos: www.dchristyauctions.com
& Christy's Auction Service on Facebook
Auctioneers: David Christy - 660-341-4531
Jason Wood - 660-341-7884 Greg Smoot - 660-341-5175



GREEN CITY LIVESTOCK MARKETING, LLC

19037 HWY 129 S.
GREEN CITY MO 63545
(660) 874 - 4146 • www.greencitylivestock.com

NEXT SALES:

Wednesday, July 7th
Annual Beef BBQ Customer Appreciation Sale

Wednesday, July 21st
Special Calf & Yearling Sale

2,357 head were sold at the June 23rd Special Calf & Yearling Sale. Compared to the last sale three weeks ago, steers under 700 lbs and all weights of heifers sold 7.00 to 10.00 higher with several spots sharply higher. Steers over 700 lbs steady to 3.00 higher. Slaughter cows steady to 2.00 higher with some high dressing cows up to 4.00 higher.

STEERS:					
Fortney & Read	415 Mix	180.00	Mino Farms	857 Char	138.35
Trevor Creel	420 Ang	173.00	Zach Alderton	865 BBWF	143.50
Steve Simmons	440 Mix	187.50	Rick Ayers	876 Ang	144.85
Robert Foster	443 Ang	197.00	Brent Minear	884 BBWF	144.30
Benji & Carroll Walker	476 Ang	190.00			
Dayton Butler	498 BBWF/Xbred	198.25	HEIFERS:		
Zane Klein	501 Ang	191.00	Gordon Campbell	425 Ang	155.00
Jim Norwood	511 Mix	169.75	King & Carmack	429 Ang	162.00
Tanner Gregg	515 Ang	186.00	Harold Moore	483 Ang	158.50
Jim Gingrich	529 Ang	195.00	Dayton Butler	504 BBWF	167.50
Norma & Phillip James	540 BBWF	180.00	Robert Foster	519 BBWF	165.00
Robert Foster	546 Ang	190.00	Jim Norwood	519 Mix	148.75
Johnson & Johnson	553 Ang	185.50	Steve Simmons	525 Mix	164.75
Ronald & Bruce Jacobs	565 Ang (bulls)	150.50	Jason Courtney	535 Ang	153.00
Zane Klein	594 BBWF	179.25	Norma & Phillip James	535 BBWF	165.00
Oscar Mensa	597 BBWF	179.50	Zane Klein	556 BBWF	159.00
Harold Moore	606 Ang	178.50	Trevor Shafer	560 Mix	148.00
Dennis McDonald	618 Mix	168.00	Dennis Fehr	578 BBWF	153.00
Drake Minear	633 BBWF	175.85	Peacock Farms	582 BBWF	150.00
Dayton Butler	643 BBWF	169.00	Johnson & Johnson	584 Ang	153.00
Jim Gingrich	661 Ang	169.25	Damon Crist	598 Ang	154.50
Eddie & Judy Smock	665 Xbred	169.50	William Bortrager	601 Mix	149.75
Johnson & Johnson	670 Ang	174.25	Carver Farms	608 Ang	147.00
Carver Farms	670 BBWF	164.50	Jim Gingrich	643 Ang	148.25
Ron Divens	675 RWF	135.00	Stan & Rye Page	661 Ang	153.25
Matt Foster	676 Ang	168.25	Kendall Foster	671 Ang	143.50
Ronnie Phillips	683 Xbred	156.50	Stan & Rye Page	675 Mix	145.00
David Moore	689 Ang	157.50	Stan & Rye Page	687 BBWF	150.50
Damon Crist	708 BBWF	164.75	David Perkins	687 Mix	148.50
Kendall Foster	710 Ang	165.25	Stan & Rye Page	700 Ang	150.25
Mino Farms	720 BBWF	156.00	Eddie & Judy Smock	709 Xbred	142.25
Oscar Mensa	737 Ang	156.25	Stan & Rye Page	749 BBWF	146.25
Kendall Foster	806 Ang	152.50	David Perkins	779 BBWF	140.50
			Zach Alderton	899 Mix	134.85

WEBSITE: www.greencitylivestock.com • **BARN:** 660-874-4146

OWNERS

Darren Hodgen: 573-999-3252
Cody McClamroch: 660-349-6535
Operations Manager: Steve Evans, 660-375-2545

FIELD REPS

Chuck Daniels: 660-626-7621
Steve Frazier: 660-626-7066 • Jeff Gray: 660-265-5569
Justin Morgan: 660-216-9719

*We are your top market for all classes of cattle *
We value and appreciate your business!

sically no rust, and inexpensive service truck, \$3700. Acceler-

CELEBRATIONS! **PARTY RENTAL**
KIRKSVILLE, MO

FOR RENT
**TABLES - CHAIRS - TENTS - BOUNCE HOUSE
& COTTON CANDY MACHINE...ECT.**

660-626-5162 or 660-665-9380

SULLIVAN AUCTIONEERS, LLC

A FAMILY OWNED BUSINESS SINCE 1979

Headquartered in Hamilton, Illinois, Sullivan Auctioneers, LLC is one of the largest Real Estate and Farm Machinery Auctioneers in the nation. For more than 40 years we have been conducting professional auctions. We connect our sellers with thousands of interested buyers around the world.

Considering an Auction?
CALL OR EMAIL TODAY FOR A NO OBLIGATION CONSULTATION!
Toll Free (844) 847-2161 | Sold@SullivanAuctioneers.com
www.SullivanAuctioneers.com | Lic. #444000107

ators Since "1974" Kahoka, MO
660-727-3455 or 217-257-1385
call anytime

FOR SALE: John Deere 569 Baler, net, 1000 rpm, big tires, 16,000 bales, new belts, field ready, will trade, \$17,500. Call 573-881-3557

WANTED TO BUY: Harley Davidson's, any year, any condition, cash money. Days 660-263-1356 or 660-537-0068

FOR SALE: New 3 pt. tillers, heavy duty, gear driven, 7' to 10' starting at \$3050. 660-874-4455

Show Me Plumbing Services

- *General Mini Excavation & Skid Steer Work
- *Livestock Watering
- *Waterlines & Sewer Systems
- *Residential Services & General Plumbing
- *Utility Trenching

Stan Schrock • 660-988-1163
Greentop, MO. • 660-766-2636

LAN-DOW BUILDINGS

"We Build To Suit Your Needs"
"Custom Built"

Pole Barns • Garages • Utility Buildings
"H" Don or Dick Middleton

Memphis Lumber Co.
1-800-337-5858 • 660-465-8595
Fax: 660-465-8596

FOR SALE: Fish for stocking ponds – Catfish, Grass Carp, Crappie, Blue Gills, Red Ear, Bass, and Minnows. Heindselman Family Farms, Call Greg 660-341-5692

HANDYMAN: Install interior and exterior doors and windows, siding, decks, showers and toilets, flooring and drywall. 660-956-2189.

FOR SALE: John Deere 40 Manure Spreader, very little use, shedded, end gate extra sides, \$3,950. Call 573-881-3557

FOR SALE: Receiver hitch insert 6" drop, 2 5/16" ball with distribution hitch mounting used for dually, \$65., brake force controller, \$20, trailer lock by Master Controller, \$20, trailer lock by Master lock, \$15, Towing custom mirror extensions fits over existing mirrors GM 1999 & newer style, \$20. 217-257-1385

FOR SALE: Ford 4000 SU, power steering, Live PTO, excellent paint and sheet metal, new tires, new injection pump, \$5500. 660-341-8089

CREDIT CARD DEBT? Financially Stressed Out? Stop the harassment! Make one monthly payment YOU can AFFORD! Get Help Now and Save! Call Toll Free 888-925-5404

ARE YOU BEHIND \$10k OR MORE ON YOUR TAXES? Stop wage & bank levies, liens & audits, unfiled tax returns, payroll issues, & resolve tax debt FAST. Call 855-820-8878

BECOME A PUBLISHED AUTHOR! We edit, print and distribute your work internationally. We do the work, you reap the Rewards! Call for a FREE Authors Submission Kit: 844-261-5841

CANCER GENETIC SCREENING KIT. Protect yourself and your family with early genetic screening! See if you qualify for a test at no cost to you with your Medicare Part B coverage. Call +1855-623-4490. (Mon-Sun 9am-8pm ET)

ATTENTION SMALL BUSINESS OWNERS! Are you protected in case of property damage or if you have an interruption in service due to a property event? Business Owner Property insurance IS AFFORDABLE and WILL PROTECT YOU when the unexpected happens! For free quote, call 844-877-9891 (M-F 7:30am-9:30pm ET)

BATHROOM RENOVATIONS. EASY, ONE DAY updates! We specialize in safe bathing. Grab bars, no slip flooring & seated showers. Call for a free in-home consultation: 855-980-4002

BEST SATELLITE TV with 2-Year Price Guarantee! \$59.99/mo with 190 channels and 3 months free premium movie channels! Free next day installation! Call 888-986-4740

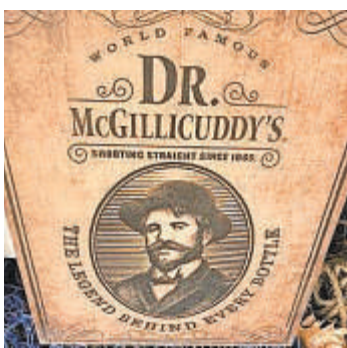
SAVE YOUR HOME! Are you behind paying your MORTGAGE? Denied a Loan Modification? Is the bank threatening foreclosure? CALL Homeowners Relief Line! FREE CONSULATATION! 855-624-8601.

HughesNet - Americas #1 Choice for Satellite Internet. Call Today and Save! More Data. Free Installation. Available Everywhere. No Hard Data Limits. Call 855-248-7966

NEED NEW FLOORING? Call Empire Today to schedule a FREE in-home estimate on Carpeting

Brookfield, MO, Real Estate and Personal Property Auction;

Saturday, July 17, 2021 at 10:00 a.m.
Gary Biswell
547 1/2 Prairie Street, Brookfield, MO 64628



Directions to Auction Location: 547 1/2 Prairie Street, Brookfield, Missouri. From US Highway 36 at Brookfield take Highway 11 North approximately 1.2 miles. Turn right on East Park Street for approximately 0.3 miles. Turn right on East Prairie Street to the auction location. Look for signs the day of the auction.

Real Estate: Sitting on a 60' x 40' lot, this property includes a 2 car garage with electricity, 28' x 32' concrete floor and a 10' x 12' portable building. This would be a great place for all of your projects or to store your collectibles.

The real estate will sell promptly at noon. If you would like to schedule your personal showing, please call Scotty at 573-356-4405.

*See Terms and Conditions for Purchase of Real Estate below.

DOWN PAYMENT: 10% of the contract purchase price will be due upon acceptance of the Sales Contract. Personal or Cashier's Checks will be accepted. This is "AS IS, WHERE IS" and is non-refundable. CLOSING: Closing shall be within 30 days of the auction date.

Tractors, Tools and Outdoor Equipment: 2 David Bradley walk behind tractors; walk behind tractor implements; Tradesman 10" portable table saw; 110 volt air compressor; 6' 3 point blade; aluminum Mercury outboard motor (no title); 8 N Ford tractor grill; Craftsman 18 hp riding mower with blade; Deutz-Allis riding mower

Antiques and Collectibles: Pepsi Cola cooler; #40 Daisy churn; 3 piece Pyrex nesting bowl set; antique bird cage with stand; Peet Bros. Mfg soap crate; Pennants brand crate; Pepsi Cola crate; Farmer's market sign; Cooper Financial; cast iron toys/figures; dinner bell with yoke; primitive medicine cabinet; antique 4 drawer chest of drawers; black Americana cookie jar; various Kentucky Tavern mirrors and advertising; large assortment of Jack Daniels items and advertising; antique chest of drawers and side wardrobe; various bar mats; large assortment of liquor signs and advertising; Radio Super wagon; antique child's wheel barrow; large selection of shot glasses; various antique wooden trunks – C.A. Taylor works; variety of antique beer cans; oak antique table; primitive shoe drying rack from Brown Shoe Factory in Brookfield; antique decorative porch post; older Maytag clock; child's doll house; Kahlua advertising park bench; various barrel top advertising; #3 crock with crack; glass wash board; Penn Guard lamp; curio cabinet; barrel type butter churn; The Canton Junior corn sheller; large copper wire rack; chainsaw carved Welcome Bear; Pearl brand xylophone; Citizen Bank office wooden chair; older fiddle; Southern Comfort street light; several horse head cast iron hitching posts; pointer dog weather vane; wrought iron gate; 2 window irons; Ray Ball Auction sign; Texaco roll over can; cut cast metal sign; Peter Pan large porcelain sign; corn sheller; J.C. Higgins bicycle; Bull Durham sign (damaged); antique metal toys; blow mold Christmas decorations; Remington typewriter; Winchester wooden ammo box; miscellaneous road signs; Emerson antique metal fan; rotary seed cleaner; large Coca-Cola clock; West Coast Chopper bicycle; various wooden boxes; metal Coca-Cola tray

Household Items: Upper kitchen cupboard; new in box fire pit; new in box rolling cart coolers
There will be more items at this auction too numerous to mention.

SCOTTY'S AUCTION SERVICE

Scotty Kuntz 573-356-4405
Michael Cunningham 660-651-2288 • Paxton Pittman 918-316-7500

Moberly, MO, Real Estate and Personal Property Auction

July 15, 2021 at 5:00 p.m.
Patrick Craig and the late Janet Craig Estate
1011 Bond Street, Moberly, MO 65270



Directions to Auction Location: 1011 Bond Street, Moberly, Missouri. From US Highway 24 in Moberly, head South on Emerson Street for approximately 0.6 miles. Turn left on Bond Street 0.2 miles to Auction. Look for signs the day of the auction.

Real Estate: This 3 bedroom, 2 story, Craftsman style home made with Moberly brick, has 1 1/4 bath and an unfinished basement. The home has the original hardwood floors throughout, a large front porch and a large back deck. It also has a 40 gallon natural gas water heater(2008), gas furnace (1995),

central air conditioning and includes a two car detached garage and a fenced in backyard. The real estate will sell promptly at six o'clock. If you would like to schedule your personal showing, please call Scotty at 573-356-4405.

*See Terms and Conditions for Purchase of Real Estate below.

DOWN PAYMENT: 10% of the contract purchase price will be due upon acceptance of the Sales Contract. Personal or Cashier's Checks will be accepted. This is "AS IS, WHERE IS" and is non-refundable. CLOSING: Closing shall be within 30 days of the auction date.

Household Items: Kroehler chair, couch and loveseat; La-Z-boy recliner; Sony TV; Sony surround sound system; electronic chime mantel clock; miscellaneous end tables; metal computer desk; roll around office chair; octagon dining table with leaf and 6 chairs; oak curved front lighted curio cabinet; rectangular kitchen table with 4 chairs; Sharp microwave; Whirlpool refrigerator with ice maker; dorm size GE refrigerator; miscellaneous kitchenware; pots and pans; potato bin; miscellaneous prints and pictures; two matching twin beds; 5 drawer chest of drawers; dresser with mirror; Sanyo 24 flat screen TV; lots of linen and blankets; Image 10.0 treadmill; stationary air rider bike; like new walkers, wheelchairs, etc; Tappan electric oven/range; miscellaneous canning jars

Antiques and Collectibles: Copper boiler; maple drop leaf secretary; occupied Japan figurines; hen on nest; Hobnail covered compote glassware; antique side table; Carnival glassware; other miscellaneous glassware; Baldwin Acrosonic piano; 1947 Singer sewing machine with cabinet; sewing cabinet; 14 karat gold earrings; sterling silver and 10 karat gold earrings and necklace; miscellaneous costume jewelry; Flintridge China set (made in the USA); antique full size bed; antique waterfall style vanity; antique oak rocking chairs; cherry style jewelry armoire; pair French decor lamps; #8 cast iron skillet with lid

Musical Equipment: Peavey classic chorus 212 guitar amp; Fender deluxe 85 amp; Shure microphone; Pro44 microphone; Casio tone bank keyboard CT-670; Centaur switchboard; Hohner Bass 3 electric

Outdoor Tools and Equipment: Troy-bilt variable speed push mower; metal patio table; 4 metal cane wrapped chairs (need work); miscellaneous long handle tools; Rubbermaid storage cabinet; Davidson aluminum step ladder; multifold aluminum ladder.

There will be many more items at this sale too numerous to mention.

SCOTTY'S AUCTION SERVICE

Scotty Kuntz 573-356-4405
Michael Cunningham 660-651-2288 • Paxton Pittman 918-316-7500



For all your advertising needs email us at
nemotrader@gatehousemedia.com

Large **NO-RESERVE** MOVING AUCTION

FRIDAY, JULY 9, 2021 • 9:00 AM

AUCTION TO BE HELD AT THE RESIDENCE

20590 ST. HWY 190, JAMESPORT, MISSOURI

Having sold our home and moving from the area, the following personal property will be sold at the residence located 20590 St. Hwy 190, Jamesport, MO. Just a short distance from Jamesport 4-way, head east on Highway 190/Aubrey st. for 2 blocks then north on 190/N. Locust for 5 blocks to sale site. From Highway 6, turn south on Highway 190 for .5 miles to sale site. Watch for signs on sale day!

BOBCAT SKID-STEER, SHOP RELATED TOOLS, MOWER

2011 Bobcat S130 skid-steer, 2400 hrs, hi-flow hydraulics, foot controls, quick attach, Kubota diesel engine, very clean machine! Also selling heavy duty 48" pallet forks (quick attach); 4' finish mower; 4' tiller (3pt); (2) buckets (quick attach, 60", smooth, toothed); single bottom plow (3pt); post auger (3pt); homemade portable hunting hut (5.5x9', deck, insulated, heated, on trailer, NICE!); Craftsman 4200w generator; Troybilt Pony garden tiller; Bolens BL410 tiller; Cub Cadet RZT Mower (zero-turn, 50" cut, Kawasaki engine); fuel barrel on stand (250g, diesel); and much more.

A LARGE run of shop tools including Industrial Air compressor (80 gal, 175 max psi, 2 stage); retractable air hose-reel; air tools (sanders, ratchets, impacts, chisels, etc); Central Pneumatic Sand blast cabinet (40#, like new); Chain saws (Partner 500, Poulan); Mobile pallet jack (5k capacity); Hitachi compound miter saw; Porter-Cable work mate; Rigid 10" table saw; Chicago Electric 40 amp plasma cutter; MoJack lawn mower lift; Schumacher battery charger (6/12v); Tecumseh portable auger; floor jacks (3.5T, 2.5T); Wen 12.5" thickness planer; Rigid tile saws (2); Bostitch framing nailer; DAPC brad nailer; Portable Lincoln Arc welder (AC/DC, gas engine, electric start, cables); Hobart BetaMig 250 welder; Welding supplies (wire, stick, helmet, clamps, pliers, etc); Lincoln 225 arc welder; Armitage Mouse Hole anvil (132#, pritchel, hardy holes); GMC 15 amp chop saw; Duracraft 1600 drill press (3/4 hp, 16 speeds); Oxy-Acetylene torch set (bottles, cart, Victor, Purox, new hose); Hydraulic table cart; LARGE US General Tool chest (27 drawers, side cabinet, on wheels, 51" tall, 76" wide, NICE!); US General Tool chest (5 drawers, on wheels); parts washer; hoists (chain, electric); portable concrete mixer; concrete block mold; Homelite electric wood splitter; Delta 15" scroll saw; Milwaukee portable band saw; 6" bench grinder...PLUS hand tools including many power tools by Milwaukee, Makita, Black and Decker, Stanley, Craftsman, Dewalt, others, (power drills, hammer drill, sanders, reciprocating saws, circular saws; angle grinders, routers, jig saws; more; PLUS combination wrench sets; ratchets and socket sets (1/4, 3/8, 1/2, 3/4" drive); hammers; screwdrivers; crescent wrenches; pliers (needle, channel, wire, ring, cutters, etc); pry bars; punches/chisels; files, tap-die sets; hole saws, drill bits; levels; squares; clamps (c, bar); pipe wrenches; jack stands, come-a-longs; several bolt organizers; portable air tank; garden tools (spades, jobbers, axes, rakes, shovels, more); handyman jack; bottle jacks; car ramps; step ladders (5', 6', 8'); Delta aluminum tool box; dock floats (sealed plastic, 4'x8'x20", 4'x6'x16", 2'x4'x20"); misc lumber; t-posts; aluminum loading ramps; Kraus Multimatic aluminum ladder; Ext ladder; 2-wheel dolly; wheelbarrow; log chains; boomers; Carriers (class B, aluminum, steel); some scrap iron; like new 1" gas powered utility pump; many steel file cabinets; large pile of firewood; and many items too numerous to list!

25+ GUNS, AMMO, SAFES, FISHING, ARCHERY EQUIPMENT

Very nice run of guns including Ruger Red Label, 12 ga., O/U; Mossberg Model 535, 12 ga., camo; High Standard Flite King Deluxe, 410 ga.; Remington Baikal IZH 94, 22L.R./410 ga., O/U; Thompson Center Arms Encore, 209x50 mag, 30-06, 12 ga. Interchangeable barrels, Crickett 22 S,L,L.R., "Amendment Edition"; Rossi Model S411220, 22L.R./410 ga.; Ruger M77 Mark II, 30-06, SS barrel, scope; Ruger M77 Mark II, 223, SS barrel, scope; Ruger All-Weather 77/22, 22L.R., SS barrel, scope; Ruger 77/22, 22 Hornet, walnut stock, scope; Ruger M77, 243, scope; Ruger 10/22 Carbine, 22 L.R., SS barrel, scope; Henry Lever Action, 22 S,L,L.R.; Remington Nylon 66, 22L.R.; Taurus Circuit Judge, 45/410, scope; Savage 245-E, 22/20 ga., O/U, scope; Ruger New Model Super Blackhawk, 44 mag., SS barrel; Ruger Blackhawk, cal. 357; Ruger Single Six, 22L.R., 22 mag., extra cyl.; High Standard Model 103 Supermatic Citation, 22L.R.; High Standard Model C, 22 S; High Standard Model W104 Double Nine, 22L.R. western grips; Browning Buck Mark, 22L.R. bull barrel, scope; pellet guns; gun safes (Granite Security gun safe- 24x30x61, Diebold safe-25x27x61); Sentry house safes (x2); several thousand rounds of ammunition (22 cal S,L, LR, Hornet, .410g, 44mag, 30.06, 357, 223, 12g shotgun); reloading supplies, holsters, magazines, Tasco shot saver; Holographic sight, Gunmaster cleaning kit; Simmons 2.5-10x40 scope, other gun supplies; hunting knives (Schrade, Buck, etc); archery equipment including PSE hunting bow; bow cases; 3 dz arrows; fletching supplies; arrow cut-off machine; 20+ set deer antlers; camping lanterns; camo clothing; deer stands; 2-wheel deer cart; deer decoys (1 w/ remote control); turkey decoys (1 w/ remote); archery targets; fishing rod collection (40+ New and Old! Daiwa, Abu Garcia, South Bend, Johnson, Zebco) steel fishing rods, tackle box (lots of hard baits); rod rack, dip nets, more! All local and federal firearm laws will apply!



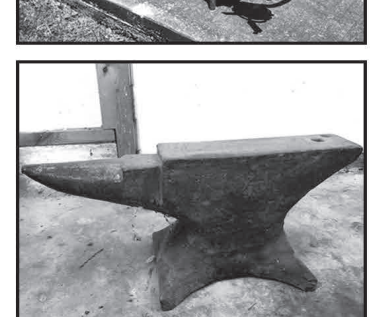
CLASSIC CAR

BEAUTIFUL 1979 Chevrolet El Camino SS, restored, shows 69,896 miles, automatic, AC, chrome wheels, redone cloth interior, power steering; 350 cu in motor (cam upgrade) VIN: 1W80J9K460575. This is a show quality car that is a hard find in this condition!

HOUSEHOLD, FURNITURE, ANTIQUES

Maytag refrigerator (black, 3 door, nice!); Amana electric stove (black, glass top, self clean); Whirlpool Cabrio washing machine (top load, white, clean); GE dryer (Super capacity, hvy duty); chest freezers (2); leather dual reclining sofa (dark brown, like new); leather recliner; living room table set (4 matching pieces, 2 end, 1 coffee, 1 sofa table); beautiful Oak china cabinet; Vizio 50" flat screen TV; electric fireplace in Oak cabinet; king size bed w/ matching triple dresser; 3 pc bedroom set (full bed, dresser, night stand); UNUSUAL antique oak High-boy dresser w/ hatbox; hall seat; bar stools; kitchen table w/ 4 matching chairs (bar height); office chairs (3 like new); Oak entertainment cabinet; 5g Western crock; Usual run of household appliances (toaster, can openers, microwave, food saver, Gotham cookware set, elec fryers, slow cookers; George Foreman; coffee maker, coolers, Pampered Chef, plus much more!); Vacuums (Kirby Gen 4, Kirby Diamond Edition, Electrolux); 4 pc Rattan Patio set (NIB); Redwood patio furniture (double rocker, glider, rocking chairs, table); wooden wishing well; windmill; pitcher pump, iron wheel; bird baths; landscaping bricks, 300+ new bricks, 40+ 12"x12" stones; wash tub; bird feeders; Martin house; plus glassware, pots and pans, utensils, and more household related items! A very large auction, expect more than is listed!

AUCTIONEERS NOTE: A truly exceptional auction here with something for everyone and very nice quality from start to finish. The yard will be full! For more color photos, go to www.teterauction.com. If you have to work-take the day off! You won't regret it. Note 9:00 start time. Come early for prime parking spot. Large tent will be available for shade! Good lunch and restrooms will be available on the grounds. Not responsible for accidents, errors or omissions. Announcements sale day take precedence.



LARRY & DIANA PAGE

TETER
AUCTION COMPANY

DETAILS & PHOTOS ONLINE AT www.TeterAuction.com

AUCTION MANAGER:
Joshua Teter (660) 963-2461

TETER AUCTION COMPANY, LLC
ADDITIONAL INFORMATION CONTACT:
OFFICE: (660) 963-2461

Teter Auction Company, LLC • 305 Pleasant St., Laclede, MO 64651 • Email: sold@teterauction.com

& Flooring. Call Today! 877-866-8797

NEED NEW WINDOW TREATMENTS? Call Empire Today to schedule a FREE in-home estimate on blinds & shades. Call Today! 877-710-4641

Over \$10K in debt? Be debt free in 24-48 months. Pay a fraction of what you owe. A+ BBB rated. Call National Debt Relief 877-278-4861.

SelectQuote is dedicated to finding a Medicare plan right for you and your wallet. Call 844-361-4727 today and receive a free

quote from one of our multiple carriers.

Attention: Auto Injury Victims. If you have suffered a serious injury in an auto accident, call us! Our attorneys have the experience to get you the full compensation you deserve! Call Now: 877-496-3293

BEAUTIFUL BATH UPDATES in as little as ONE DAY! Superior quality bath and shower systems at AFFORDABLE PRICES! Lifetime warranty & professional installs. Call Now! 844-980-3902

BOY SCOUT COMPENSATION FUND - Anyone that was inappropriately touched by a Scout

leader deserves justice and financial compensation! Victims may be eligible for a significant cash settlement. Time to file is limited. Call Now! 866-395-0568

DONATE YOUR CAR TO CHARITY. Receive maximum value of write off for your taxes. Running or not! All conditions accepted. Free pickup. Call for details. 855-986-8602

FREE AUTO INSURANCE QUOTES for uninsured and insured drivers. Let us show you how much you can save! Call: 888-320-7567.

YOU MAY QUALIFY for disability benefits if you have are under a doctor's care for a health condition that prevents you from working for a year or more. Call now! 877-430-9760

PROBLEM CREDIT REPORT? Lexington Law works to challenge

Estate Auction

Saturday, July 10, 2021 10:00 a.m.

at the Appanoose Co. Fairgrounds, 4-H Exhibit Building, 703 W Franklin St., Centerville, Iowa



Antiques/Collectibles

3 hand stitched quilts
 approx 50 MAD & Cracked magazines
 1950s & '60s Walt Disney comic & coloring books
 iron muffin pan oil lamps Hull art vases
 hand-embroidered pillow cases Sleepy Eye pitcher
 24"X30" beveled-edged mirror Stradiarius violin
 iron match box holder brass blow torch
 Gibson 6 string guitar marbles scythe
 The Lone Ranger book brush/mirror sets
 oak Gibsons Cambria ice box coal bucket
 sev. oak straight back chairs parlor table
 silver serving set Nutrena chick feed sack
 PEIRA Parsons College books (1940s)
 old card games lg Paul Detlefsen print
 granite top table small oak chest trunk
 oak commode w/. towel rack rag rugs
 cast iron waffle iron square dance records (vinyl)
 White Rotary treadle sewing machine in ornate
 wooden cabinet 1915-1920 era doll (in case)
 lg original painting of barn and landscape
 View Master w/ several slide show reels
 Homer Laughlin egg shell dish set
 Style House Fine China Pampadoria dish set
 Lots of older glassware incl. Germany pitcher
 Franciscan dishes (many items)
 election buttons wicker baby buggy
 pine hutch (frosted glass)
 hurricane oil lamps oak framed mirror
 pressed back oak rocker misc sheet music
 costume jewelry jewelry boxes
 12-place setting Nobility Plate Silver flatware in
 wooden Ambassador case
 Nobility Plate cream & sugar

Toys

iron AR Cable mfg. bus
 Buddy L Construction Co. crane
 approx 1915-1920 doll in glass case
 spring rocking horse Mary Lou stroller
 Little Orphan Annie metal stove tricycle
 hand-made Raggedy Ann and Andy dolls
 Crescent iron stove Sunny Suzy wringer washer
 radio flyer metal childs wagon metal plane
 Broom Tail stick horse toy iron cream separator
 John Deere toy tractor/wagon/square baler
 metal barn farm set kids books drum
 Lindstrom childs sewing machine 2 runner sleds
 childs sad iron & wooden ironing board
 porcelain doll Ben Franklin light bank
 lots of books -- Hardy Boys series, Boy Scouts 1912,
 Burgess bedtime story books, Mark Twain, Laura
 Ingalls Wilder, Herbert Hoover & more!
 3 Tonka trucks wooden framed chalkboard
 Tonka sand loader wooden trains
 Tonka Farm trailer Rossmoyne fire truck
 Lincoln logs Crazy blocks game
 Walt Disney kids chalkboard wooden doll bed
 DVDs Kung Fu, Avengers, Twilight Zone & more



'98 Buick Century automobile 66,721 miles
 '05 Buick LeSabre automobile 190,000 miles
 '84 Honda "Shadow" motorcycle (for parts)
 John Deere SX95 riding lawnmower
 Yard Man 6 hp mulching mower
 OHV 20" pushmower
 Schwinn 3 wheeled bicycle
 3 Schwinn bicycles Gold's Gym Power Tower
 1960s Stingray bicycle
 Single-speed recumbent trike
Ham Radio Equipment:
 Swan 350 SSB Transceiver
 Signal Generator kit
 Meter Assembly kit
 Swan 117XC Power Supply
 Knight Meter

Household items

wood 4 tier shelves fans Vanity w. mirror
 lamps drop leaf table
 Ellington Piano Co. -- upright piano
 green couch straight chair Trinitron television
 oak pedestal kitchen table Westinghouse electric stove
 Maytag washer / dryer (gas) 2 Maytag wringer washers
 double rinse tubs Skelgas lg gas stove/oven
 Kromex flour/sugar/coffee/tea canisters
 metal shelves misc pans / dishware assorted baskets
 Coleman cooler speakers Pier 1 cabinet book ends
 KampKold cooler 2 & 3 drawer metal filing cabinets
 Cardio glide exercise machine set of Color Craft glasses
 golf balls 30 or 40 assorted golf clubs Centerville afghan
 Xmas decorations model 1894 bb gun
 air guns ping pong table folding chairs picture frames
 hundreds of 33 vinyl records older stereo auto harp
 Whopper Atlanta Stove works wood stove
 metal water sprinkler canning jars misc sewing notions
 Colliers Encyclopedia set Pyrex pieces dulcimer
 canes/walker/bath seat

Tools

Craftsman 10" table saw Dremel saber saw
 aluminum extension ladder joiner
 hand garden tiller wooden step ladder
 battery charger work bench various hand tools
 end wrenches socket sets level wheel grinders
 electric drills sanders 3-in-1 air compressor
 chainsaw pruners saws bushel baskets

MANY MORE ITEMS TO BE DISCOVERED!

Lunch provided on premises by Buffy's Dance Studio

Home Selling Saturday, August 7, 2021

Home located at 862 Mikels Dr., Centerville, Iowa
 3 bedroom, 2 bath Rambler with walkout basement, built in 1971 on 1/3 acre lot with mature trees and backing up to a horse pasture. This house offers 1240 sq. ft. finished, plus a large insulated 3-season porch off the back, with ample storage throughout. It has forced air heat, central air, and features wood-burning fireplace. Tuck-under 1 car garage plus carport. Unfinished lower level offers great potential. 2019 property taxes were \$2508. Current estimated value on Zillow: \$142,000.

**Open house visitations July 10th 9:00-10:00 a.m.
 July 18th 2:00-4:00 p.m. August 1st 2:00-4:00 p.m.**

Teri Dickinson 641/ 919-5342 Ed Dickinson 641/ 919-2529

O.R. & Alice Pauline Parks Estate

Kyle Gilchrist Auctioneer

View more details on our website www.redcows.net and check us out on Facebook

Terms: Cash or good check

641/ 919-1077 Not responsible for accidents

All items must be paid for before leaving the premises.

All participants attend at their own risk

Announcements from block take precedence over all printed material

Polled Hereford BULLS

Complete Performance Data



GALEN KRIEG

217-743-5382

309-299-5695

Basco, IL



John Deere 4020 Tractor, 1969, 3600 hrs, 18.4x38, power shift, dual hydr, Diff Lock, original, \$17,500.



John Deere 4255 Tractor, MFWD, 6900 hrs, 95% Firestone duals, sharp, \$48,950.



John Deere 4440 Tractor, 1980, runs fine, one owner, 6800 hrs, power shift, tin work perfect, new 18.4-38 factory duals, clean cab, \$31,950.

Call 573-881-3557

inaccurate negative items including: identity theft, collections, late payments, liens and more

from your credit report. Call for a free credit repair consultation: 855-622-0369. John C. Heath,

Attorney at Law, PLLC, dba Lexington Law Firm.

SAVE BIG on HOME INSURANCE! Compare 20 A-rated Insurance companies. Let us do the shopping & save you time & money. Get a quote within minutes. Average savings of \$444/year! Call 877-594-0878. (M-F 8am-8pm Central)

Attention Viagra users: Generic 100 mg blue pills or Generic 20 mg yellow pills. Get 45 plus 5 free \$99 + S/H. Guaranteed, no prescription necessary. Call 877-801-0749

FOR SALE: Ford 2910 DSL, good paint and sheet metal, good tires, w/Bush hog quick tach loader, \$6500. 660-341-8089

FOR SALE: 2012 Chevy 2500 HD extended cab, 4x4, LT, 6.0, loaded, power seat, climate control, keyless, new tires, 158,000 miles locally owned, the right kind. \$17,900 selling price. Accelerators Since "1974" Kahoka, MO 660-727-3455 or 217-257-1385 call anytime

FOR SALE: John Deere 6145 M Tractor, MFWD, 3485 hrs, new

Kirksville Real Estate and Personal Property Auction

Thursday, July 8, 2021 @ 5:00 p.m.

William Lay Estate

31 Overbrook Drive, Kirksville, MO 63501



Directions: 31 Overbrook Drive, Kirksville, MO 63501. From Highway 6, travel North on Baltimore Street approximately 0.1 mile and turn right on Center Drive, then left onto Broadview for 0.2 miles then left

on Overbrook Drive to auction. Property will be located on your right. Look for signs the day of the sale.

Real Estate: This 3 bedroom, 2 bath, ranch-style brick home is located in a nice neighborhood. It offers a laundry room, a master bedroom with a walk-in closet and 3/4 bath, a utility shed and a paved walking trail. With a few personal touches, this home will be ready for your family.

The real estate will sell promptly at six o'clock. If you would like to schedule your personal showing, please call Scotty at 573-356-4405.

*See Terms and Conditions for Purchase of Real Estate below.

DOWN PAYMENT: 10% of the contract purchase price will be due upon acceptance of the Sales Contract. Personal or Cashier's Checks will be accepted. This is "AS IS, WHERE IS" and is non-refundable. CLOSING: Closing shall be within 30 days of the auction date.

To be sold separately: 15' x 15' carport

Vehicles and Trailers: 2000 Dodge Pickup; 2003 Coachman camper; 2010 trailer

Furniture and Household: Sanyo 47" flat screen TV; Vizio 60" flat screen TV; TCL 32" flat screen TV; Sanyo 32" flat screen TV; Sony stereo system; Pyrex dishes; Fireking dishes; miscellaneous pots and pans; Rainbow vacuum; Waterfall style double pedestal vanity; Waterfall style chest of drawers; Waterfall style full size bed; Blonde chest of drawers; blonde dresser with mirror; Double pedestal child's desk; Maytag dryer; Maytag washer/dryer set; Blonde chest of drawers; Retro style bookcase; 2 Oreck ext life vacuums; 7 ammo boxes; Air Maximum stationary bike; Schwinn Air Dyne stationary bike;

Equipment and Outdoor: Yard Machine 46" riding lawnmower; Home Lite gas weed eater; Stihl SH85 blower; Namotu mountain bike

There will be many more items at this sale too numerous to mention.



Scotty Kuntz 573-356-4405

Michael Cunningham 660-651-2288 • Paxton Pittman 918-316-7500

TIMED ONLINE, NO-RESERVE COLLECTOR TRACTOR AUCTION

BIDDING CLOSES: WEDNESDAY, JULY 14TH STARTING AT 9:00 A.M. CDT

RUSS & RICKEY ALEXANDER COLLECTION (573) 248-4123: 1959 John Deere 830; 1960 John Deere 730; (2) 1959 John Deere 730's; 1958 John Deere 720; 1957 John Deere 720; 1960 John Deere 630; 1959 John Deere 530; 1958 John Deere 430; 1959 John Deere 330 Utility; 1931 John Deere GP; 1938 John Deere B; Plus plows and other attachments.

ROBERT D. GIBBS REVOCABLE LIVING TRUST: 1931 John Deere GP 2wd; 1938 John Deere B 2wd.

The above collections are located at 48121 HUNTINGTON LANE, HANNIBAL, MO 63401

INSPECTION DATE: Friday, July 9th from 10:00 A.M. - 5:00 P.M.

JIM SCHLEISMAN COLLECTION (515) 370-0592: 1959 John Deere 730 tractor; 1958 John Deere 720 diesel tractor; 1960 John Deere 630 tractor; (2) 1957 John Deere 620 tractors; 1956 John Deere 520 tractor; 1957 John Deere 420 tractor; 1957 John Deere 320 tractor; John Deere 50 tractor; 1929 John Deere D tractor; 1952 John Deere A tractor; 1950 John Deere A tractor; 1949 John Deere A tractor; 1946 John Deere A tractor; 1943 John Deere A tractor; 1950 John Deere B tractor; 1949 John Deere B tractor; 1945 John Deere B tractor; 1939 John Deere B tractor; 1947 John Deere G tractor; 1939 John Deere H tractor; and more.

The Schleisman collection is located at 1802 WESTWOOD DRIVE, JEFFERSON, IA 50129

INSPECTION DATE: Friday, July 9th from 10:00 A.M. - 2:00 P.M.



DETAILS • PHOTOS • BIDDING: www.SullivanAuctioneers.com TF (844) 847-2161 • Lic. #444000107

ONLINE BIDDING POWERED BY proxibid.

AUCTION MANAGERS: MATT SULLIVAN (309) 221-7001 JIM HUFF (319) 931-9292 JOHN PROBASCO (641) 856-7355



P-R DISTRIBUTORS

GOLF CARTS

Sales – Service – Rentals – Customizing






573-693-8147

29566 Lantern Road, Laplata, MO

THE NEMO TRADER

CLASSIFIED COUPON

Clip This Coupon Out of This Week's NEMO Trader and run 2 CLASSIFIED ADS FOR \$5.00

Picture Ads Not Included with Coupon! Call For Pricing!

(Each Ad Must Be 20 Words or Less.)

~20¢ per word over 20 words~

Cash NOT ACCEPTED

Check or Money Order Only

Ad No. 1: (20 words or less)

Ad No. 2: (20 words or less)

YOUR CLASSIFIED AD WILL BE READ IN OVER 19 COUNTIES, IN 3 STATES!
BY COUNTLESS BUYERS!!!

TO RECEIVE THIS RATE: COUPON MUST BE MAILED IN
ALONG WITH YOUR PAYMENT!
THE NEMO TRADER, P.O. BOX 190
KIRKSVILLE, MO. 63501 ~ 660-665-8500

rubber, triple hydr, 16 speed, \$69,500. Will trade. Call 573-881-3557

FOR SALE: 300 Briar Horses in excellent condition, 50 year collection, buy one or all. 660-676-9199

FOR SALE: 2017 Honda Ruckus, only 200 miles; 2002 Kawasaki 6550 Prairie, great condition; 2014 Yamaha F-25 HP tiller outboard, electric start, like new, excellent condition. 641-208-7353

Wolf, ¼ Malamute, ¼ Gray Wolf, ¼ Husky Beautiful Dog just too big for me, \$300. Diane 515-370-2833

SCHMUCKER PRODUCE is open! Tomatoes, onions, lettuce, radishes, asparagus and other

FOR SALE: Male Wolf/Dog Hybrid, ¼ Blood Alaskan Timber

vegetables. Open 9 am to 6 pm. Closed Sunday.

NEW/USED parts vehicles/pick-ups/semi's farm construction equipment. "Motors/trannys" body parts, paint matching yours warranted/delivery. 800-807-9612.

Moberly, MO, Real Estate and Personal Property Auction

Thursday, July 22, 2021 at 5:00 p.m.
The late Patsy Lang Chirillo
1605 Parkwood Drive, Moberly, MO 65270



Directions to Auction Location: 1605 Parkwood Drive, Moberly, Missouri. Travel West on US Highway 24 from Moberly to Rothwell Park Road. Turn South for 0.9 miles then take a right on Fisk Avenue. Take a slight left on Greenbrier Road which becomes Parkwood Drive. Follow Parkwood Drive for 0.2 miles and the property will be on your left. Watch for signs the day of the sale.

Real Estate: This beautiful brick, ranch home was built in 1996 and offers 2 bedrooms, 3 bathrooms and an open floor plan. The large kitchen has an abundance of oak cabinets, a center island, lazy Susan spice cabinet, pull out storage in the lower cabinets and a walk-in pantry.

The real estate will sell promptly at 6:00 p.m.. If you would like to schedule your personal showing, please call Scotty at 573-356-4405.

*See Terms and Conditions for Purchase of Real Estate below.

DOWN PAYMENT: 10% of the contract purchase price will be due upon acceptance of the Sales Contract. Personal or Cashier's Checks will be accepted. This is "AS IS, WHERE IS" and is non-refundable. CLOSING: Closing shall be within 30 days of the auction date.

Storage Building: 10' x 16' portable building to be sold separately

Vehicles: 2006 Buick LaCrosse CXL with 51,000 miles

Household Items: Frigidaire refrigerator/freezer, Whirlpool electric dryer, Whirlpool washing machine; Gometer stationary exercise air bike; Callaway right handed golf clubs lots more

Outdoor Tools and Equipment: Plastic storage locker; hose and caddy; Weber BBQ grill; Werner aluminum 12' extension ladder; miscellaneous long handle tools; lots more

Antiques and Collectibles: Wabash Railroad Company public tariff file; Philco antique radio; German made signs; antique oak split curio cabinet; antique oak mission-style end table; lots more

There will be many more items at this sale too numerous to mention.



Scotty Kuntz 573-356-4405

Michael Cunningham 660-651-2288 • Paxton Pittman 918-316-7500



Signature
Overhead Doors and Remodeling, LLC

660-785-0248

www.signatureremodelingkv.com

Residential and Commercial Installation and Service

ESTATE AUCTION

SUNDAY, JULY 11TH, 2021 @ 1PM

MARION COUNTY FAIRGROUNDS/
FLOWER CITY PARK (CATTLE BARNS)
PALMYRA, MO

TRUCK
4 WHEELER
GUNS
TRACTORS/ MOWERS

BOATS
HUNTING/ FISHING
SHOP/ YARD TOOLS
AND MUCH MORE.....

Auctioneer Notes: This is a smaller sale but very nice clean items.



SELLER:
PAUL DOELLMAN ESTATE

More pictures and information at:
www.hammondwatsonauctionservice.com

Hammond & Watson
AUCTION SERVICE

Lionel Hammond & Kirk Watson
573-406-3877
PALMYRA MO

Like us on FB



Look us up on
Auction Zip



KM-70KDE03494

Personal Property Auction

Saturday, July 10, 2021 at 10:00 a.m.
William Lay Estate

Scotty's Auction Facility and Event Center,
28251 US Highway 63 North, Macon, MO 63552



Directions: 28251 Us Highway 63 North, Macon, Missouri. Auction to be held at Scotty's Auction Facility and Event Center, 2 miles north of Macon, Missouri, on US Highway 63. Look for auction barn on your left. Watch for signs the day of the sale.

Vehicles: 1998 Dodge Ram 2500 SLT Laramie with 73,000 miles; 1994 Mercury Grand Marquis,

74,000 miles; 1979 Ford F250 4x4 auto, 141,000 miles; 1975 Honda MR 175 Enduro; Honda 200 three wheeler; 1975 Kawasaki 900 Z1B dual overhead cam 9000 miles; 1980 Suzuki GS 250T 7338 miles; child's dirt bike; 2014 Yamaha Bolt

Farm Equipment: Farmall 350; 10 shank chisel plow; 4 bottom International 3 point plow; Front end loader boom; John Deere drill; Farmall 400 wide front with loader; Snow blade for Farmall tractor; John Deere 6400 with 640 self leveling loader 2100 hours; Rhino 8 foot blade

Outdoor and Lawn Equipment: Grasshopper 725K 61" cut Kohler gas; Murray M125 riding mower 38' cut, Briggs & Stratton 12.5 motor; Poulan Pro self propelled (not running); Stihl MS390 chainsaw; Stihl 009 trimmer; various Homelite McCullough chainsaws; Murray 21" push mower; Vanguard gas powered power washer;

Tools and Equipment: Craftsman floor model drill presses; 4 tier S&K tool box; 4 wheel hay wagon; Curtis 80 gal air compressor; Lincoln AC 225 amp welder; Cherry picker; Power Mat 5000 watt generator; engine stand; 3 floor jacks; Redline salamander portable heater; 24' aluminum extension ladder; 12' fiberglass step ladder; wooden storage cubbies; 6" bench vise; Forge vise (blacksmith vise); approximately 20 vises; miscellaneous wrenches and sockets; large variety of hand tools; large vise; large variety of electric power tools; Craftsman 3/4 horse bench grinder; metal storage cabinets; Victor torch set with tanks and cart; large anvil with many welds (shop vise attached); scrap metal

There will be more items at this auction too numerous to mention.



Scotty Kuntz 573-356-4405

Michael Cunningham 660-651-2288 • Paxton Pittman 918-316-7500

Judd Motors

Call 660-457-3700
Hwy 63 North, Lancaster, MO

- 2015 GMC 2500HD, SLT, 4x4, crew cab, shortbed, 6.0L, heat & cool leather, bed cover, 1 owner, only 113k miles, charcoal, very nice, new tires only \$35,900
- 2015 Equinox, All Wheel Drive, 1 owner, 129k, silver, nice, Remote start, new tires, only \$10,900
- 2012 Chevy Captiva, LTZ, AWD, Leather, sunroof, 112K, maroon, \$9,995
- 2013 Ford Edge Limited, AWD, leather, sunroof, new tires, maroon, only 99k, excellent \$14,900

- 2011 Chevy Cruze, LT, RS pkg, black, 84K, \$7,995
- 2007 Chevy 3500, 4x4, crew cab, 5.3L, leather, red, 147k, \$11,900 **SOLD**
- 2005 Chrysler 300, limited, leather, sunroof, 63K, silver, \$7,995
- 2005 GMC 2500HD, SLE, 2wd, 6.0L, ext cab, long bed, only 119k, silver, very nice, only \$11,900
- 2000 Jeep Grand Cherokee, 4wd, 4.0L, leather, sunroof, gray, 180k, only \$3,995

www.juddmotors.com

In Business Over 75 Years
Curly and Kevin Judd

FOR SALE
AI Sired Angus Bulls,
14 & 18 Months Old.
Harold Trump
660-341-5730

Premium
Metal Roofing

A W Metal Inc.
Metal Roofing Headquarters
641-664-3990 • awmetal.net

Wanted to
Rent 2 bed house/
apt. La plata,
Kirksville, Macon,
Lancaster area.
Edina
Call 309-525-1006

The Ultimate
Wood Heat.

CENTRAL BOILER CLASSIC EDGE
TITANIUM HD SERIES
Outdoor Wood Furnace

- **More Comfort** - Thermostatically controlled wood heat.
- **Peace of Mind** - Keep the fire outside and eliminate the dangers associated with indoor wood heating.
- **Save Money** - Wood is a renewable, inexpensive and often free energy source.

CAMPEN
Heating & Air Conditioning
573-288-8966
Canton, MO
CentralBoiler.com