

FREE!

NEW EDITION EVERY FRIDAY!
VOL. 29 • NO. 25 • JULY 9, 2021

NEMO *Trader*

THE NEMO TRADER

PO BOX 190 • KIRKSVILLE, MO 63501
PHONE 660-665-8500 • FAX 660-665-2024
Web Site: nemotrader.net
Email: nemotrader@gatehousemedia.com

A WEEKLY ADVERTISER SERVING ALL OF NORTHEAST MISSOURI AND THE SURROUNDING AREA

2021

APPANOOSE COUNTRY FAIR

July 18-24

SUNDAY, JULY 18

7:00 - 9:00 Mark Ministries & Withrow's Gospel Concert

MONDAY, JULY 19

7:00 Fair Dedication
7:30 Crowning of the Fair Queen
Bill Riley Talent Show & Fireworks

TUESDAY, JULY 20

7:00 Mutton-Bustin' (ages 3-7)
7:30 Duckworth Rodeo (full rodeo)
Lucas Beebe Band following

WEDNESDAY, JULY 21

7:00 Mutton-Bustin' (ages 3-7)
7:30 Duckworth Rodeo (full rodeo)
Lucas Beebe Band following

THURSDAY, JULY 22

6:00 Redneck Rally Bring a Lawnchair
Bootcut Band following

FRIDAY, JULY 23

Bike Night at the Fair with Centerville Main Street
7:30 Standing Hampton Concert
9:00 Steve Augeri Concert

SATURDAY, JULY 24

9:00 a.m. 4H/FFA Livestock Auction
7:30 Demolition Derby (Lunatic Promotions)



ADMISSION

SEASON PASS

(valid July 18-July 24)

before noon July 19th..... \$35
after noon July 19th..... \$45

SENIOR SEASON PASS

(65 years of age and older)

before noon July 19th..... \$25
after noon July 19th..... \$35

(Season Passes available for purchase at Centerville Produce, Fareway, Chamber, Iowa Trust, Community First, Farmer's Bank & Bratz)

DAILY PASS

Mon-Wed before 5:00pm \$7
Mon-Wed after 5:00pm \$10
Thursday before noon \$7
Thursday after noon \$20
Friday \$20
Saturday \$20

Children 10 and under are FREE with a paid adult admission Monday - Saturday

Mechanical Bull and PACT Beer Garden available July 20-24

Livestock

Livestock shown daily at the Ron Turk Memorial Arena

Exhibits

4-H & FFA Static Exhibits in the Exhibit Building

Local Businesses showcased nightly in the Commercial Building

DIGITAL

WE HAVE A LOT TO OFFER

- Websites
- On-Target Display Ads
- Search Engine Marketing
- Search Engine Optimization
- Reputation Monitoring
- Social Advertising
- Logo Creation
- Retargeting

PHONE:
660.665.8500

ADDRESS:
110 E. McPherson Kirksville, MO 63501

EMAIL:
nemotrader@gatehousemedia.com

NEMO
Trader

GANNETT



FOR SALE: John Deere 2940 Tractor, 5400 hrs, cab, air, new rubber, estate tractor, \$14,500. Call 573-881-3557

FOR SALE: Ford 1310, good paint and sheet metal, excellent rubber, w/60" Finish Mower, \$3750. 660-341-8089

FOR SALE: New Skid loader attachments. Forks, Buckets and Bale Spears in Stock. No Sunday Calls 660-988-7385

HOME GROWN turnips 3#/\$2, zucchini and cucumber 5/\$2, cabbage head \$1, new potatoes 3 qt/\$5. Beans and beets \$2/qt,

Broccoli 2/\$1, cauliflower. Tomatoes buy box or 3#/\$7 or \$2.50/pound. Schmucker Produce, 7 miles North of Kirksville to Ft. Madison Way, 1/2 mile East.

WANT TO BUY: 15' or 12' Brush Hog in real good condition, 540 PTO. 660-676-9199

FOR RENT: Near Ethel 30 acres for pasture and hunting. 660-341-9081

FOR SALE: Firestone 18.4 x 38 Super all traction radials, brand new mounted on rims 1/2 price of new, can deliver, best offer. 217-357-1324

FOR SALE: 2004 JOHN DEERE 625F, GREEN PLATFORM, hydriflex, kept inside, field ready. \$12,900. 660-299-0615

HUNTING EQUIPMENT sale, 35+ box, bow, hay bale, ladder stands, hog trap, deer and turkey feeders, deer and goose decoys. All used, great condition. 641-208-7353

FOR SALE: John Deere 285 Disc mower, 9', like new, \$7,950. Call 573-881-3557

FOR SALE: JD 925 Platform full fingers, Poly Snouts equipped with single point hookups, \$6000. 217-242-6984

FOR SALE: 1967 GTO, 1969 GTO HT and convertible, 1970 GTO cars need rebuilt. 660-734-8368.

FOR SALE: Ford 3000 gas, good sheet metal and paint, good tires,

live PTO, power steering, \$4500. 660-341-8089

FOR SALE: Used garden tillers Troy-Bilt, BCS and other sizes. DR Brush mowers. Kahoka, MO 660-216-1809

FOR SALE: JD D140 Garden tractor, new belts, blade & seat, \$1000; JD 345 Garden tractor, new seat, 54" deck, good condition, \$1500; Case 730 tractor, wide front, needs starter repair, \$1500. 660-341-2492

WHITETAIL INSTITUTE food plot seeds in stock at Whitetail Seed and Supply, 14136 State Hwy 3, LaPlata, MO 63549, 3 South.

FOR SALE: 2017 Honda Ruckus, only 200 miles; 2002 Kawasaki 650 Prairie, great condition; 2014 Yamaha F-25 HP tiller outboard, electric start, like new, excellent condition. 641-208-7353

Feed for all your needs. Patriot horse feed, cattle mineral, chicken feed, Showtime dog food. Feed Store, Hwy 156, LaPlata

WANTED TO BUY: Harley Davidson's, any year, any condition, cash money. Days 660-263-1356 or 660-537-0068

FOR SALE: John Deere 6200 Tractor, MFWD, open station, 6000 hrs, power quad, with 640 Loader, \$25,500. Call 573-881-3557

WANTED TO BUY: Farm Machinery and Estates. Call James L.

Johnston. 573-473-4904

FOR SALE: Ford 1520, w/Ford loader, hydrostat, 4x4, excellent paint and sheet metal, good rubber, \$9000. 660-341-8089

Wevers Outside Wood Furnaces a dealer for Heatmor Stainless Steel Outside Furnaces, have an assortment of parts, line, and etc. Taking orders for new outside wood furnaces. Used 120 furnace, burns wood or coal, has shaker grates, for \$5,550. Call 660-423-5242, cell 660-216-9885. Open 6pm-9pm Monday-Friday, Saturday anytime, call first.

FOR SALE: New 3 pt. tillers, heavy duty, gear driven, 7' to 10' starting at \$3050. 660-874-4455

PASTURE AND HAY GROUND Needed around Adair & Knox County. Please Contact 660-216-5887 or 417-773-2507



FOR SALE: 2010 Case 8120 Combine, 2975 HR -2097 HR, NO DEF, RWA, DIF Lock, 620 Drive Tires, 28 Steer Tires, luxury cab, clean machine, \$95,000. 641-895-8014

FOR SALE: Fish for stocking ponds - Catfish, Grass Carp, Crappie, Blue Gills, Red Ear, Bass, and Minnows. Heindselman Family Farms, Call Greg 660-341-5692

FOR SALE: Tomatoes, Cucumber, Zucchini, Potatoes, Onions and Green Beans. Located at Kauffman Produce 11538 Iceberg Ave LaPlata MO 63549. Will also be at



A FAMILY OWNED BUSINESS SINCE 1979

 MATT	 MICHAEL	 LUKE	 JOHN
 DAN	 JOE	 JIM	 BILL

Headquartered in Hamilton, Illinois, Sullivan Auctioneers, LLC is one of the largest Real Estate and Farm Machinery Auctioneers in the nation. For more than 40 years we have been conducting professional auctions. We connect our sellers with thousands of interested buyers around the world.

Considering an Auction?
CALL OR EMAIL TODAY FOR A NO OBLIGATION CONSULTATION!
Toll Free (844) 847-2161 | Sold@SullivanAuctioneers.com
www.SullivanAuctioneers.com | Lic. #444000107



For all your advertising needs email us at nemotrader@gatehousemedia.com



SPRING IS YOUR GO TIME.
GET OUT THERE.
You've been waiting all winter for this moment.

REBATES UP TO **\$1,000** ON 2020 MODELS
TERMS AND CONDITIONS APPLY

POLARIS SPRING SALES EVENT Explore Inventory >

Slayton
POLARIS

10456 State Route B, Downing, MO
6 miles W. of Memphis, then 13 miles N. on B
660-328-6627

VISIT POLARIS.COM FOR MORE OFFERS


the LaPlata Farmers Market every Wednesday from 4 pm to 7 pm

FOR SALE: Spices, and Seasoning, Farm Dust, Honey Garden Seeds,

Homemade Candy. New Supply of Greeting Cards, Wooden Handles, Lamps & Chimneys, some Aladdin, S.S. Kitchen Wares,

Mixing Spoons, Kitchen Towels & Clothes, Some Glassware. Train Track Candies 11538 Iceberg Ave, LaPlata, MO, 3rd lane to your left.

HANDYMAN: Install interior and exterior doors and windows, siding, decks, showers and toilets, flooring and drywall. 660-956-2189.

FOR SALE: John Deere 569 Baler, net, 1000 rpm, big tires, 16,000 bales, new belts, field ready, will trade, \$17,500. Call 573-881-3557

DIRT WORK All types of excavation, reclaiming overgrown fields, including CRP and WRP. Building site preparation, terrace and tiling maintaining and creating new trails and crossings, rock hauling, Food plot development and maintenance. Leveling and grading, wetland construction and maintenance. Pond and lake cleaning and construction. Call for quotes. 660-342-2701

BUYING Used Mobile Homes. Porter Homes 573-231-6667

FOR SALE: 1/2 Border collie pups will make great farm dogs! Will be weaned with puppy shots and dewormed and ready for a home by 4th of July, \$150 OBO. Contact Regina 660-332-4026

Home Grown Tomatoes, Turnips, Green Onions, Zucchini, Cucumber, Potatoes. Schmucker Produce 7 miles north Kirksville to Ft Madison Way East 1/2 mile

L&S NEMO AUCITON Come join us the first Saturday of every month at 11 am for our SMALL ANIMAL AUCTION. Call Lee at 660-988-3818 FOR CONSIGNMENTS, Merchandise Auction 3rd Saturday of the month.

FOR SALE: Cute and very playful Lab mix puppies, black w/some white, ready to go on 7/9/21. 660-373-2552

FOR SALE: Male 1/2 Rottweiler 1/2 Pitbull, black and Rottweiler colored, \$300. Diane 515-370-2833

Buyer of Standing Timber Any Species. Land Clearing and Clear Cutting Available. TSI Work. Kline Dried Firewood For Sale. Bonded. State Line Firewood 641-898-2398

Show Me Plumbing Services



- *General Mini Excavation & Skid Steer Work
- *Livestock Watering
- *Waterlines & Sewer Systems
- *Residential Services & General Plumbing
- *Utility Trenching

Stan Schrock • 660-988-1163
Greentop, MO. • 660-766-2636

MAST MEATS, LLC

660-766-2211

USDA & Custom Slaughter & Processing

CALL OR STOP BY FOR SPECIALS

Retail store hours • Mon-Fri 8-5 Sat 8:30-3

mastmeatsllc.com • 405 US Hwy. 63, Queen City, MO 63561



Signature

Overhead Doors and Remodeling, LLC

660-785-0248

www.signatureremodelingkv.com

Residential and Commercial Installation and Service

CELEBRATIONS!

PARTY RENTAL

KIRKSVILLE, MO

FOR RENT

TABLES - CHAIRS - TENTS - BOUNCE HOUSE & COTTON CANDY MACHINE...ECT.

660-626-5162 or 660-665-9380

For Your Equipment Needs!

LOTS OF USED EQUIPMENT AVAILABLE

Vermeer 605 N Balers, Twin Rakes, Trailed Mowers, Disc Mowers, Tedders, Bale Processors-

Offer high capacity, speed, reliability, efficiency, fuel savings...

DeWeze Bale Beds-

Lift, load, transport and feed big, round bales...

Danuser Post-Hole Diggers-

Offer quality & reliability, outperforms the competition...

USED EQUIPMENT	
BALERS	RAKES
605 N Net	R2800
605 L Net	R2300
605 K Net	VR1224
MOWERS	TEDDERS
TM 1210	TD250
8040	
7030	
Vicon 4000	BALE PROCESSORS
	BPX 9000
	BPX 9010

Liebhart Sales, Inc.

17546 Lacey Drive • New Boston, MO. 63557

660-689-3406

Call Today!!

BUYERS OF CORN, SOYBEAN, ORGANIC, NON-GMO CORN AND SOYBEANS



Baring Elevator

Contracts Offered Forward Pricing Target Orders

Baring, MO 660.892.4411 www.baringelevator.com

CONTACT US FOR PRICING
Lewis 660-341-2937
Roger 660-223-2442



P-R DISTRIBUTORS

GOLF CARTS

Sales – Service – Rentals – Customizing



573-693-8147
29566 Lantern Road, Laplata, MO



JOHN DEERE



SYDENSTRICKER NOBBE

PARTNERS FOR THE LAND



JULY FIRECRACKER SAVINGS

0% FINANCING FOR 84 MONTHS

On A New Round Baler or Mower Conditioner or 6E Tractor

SNPartners.com For More Details

WANTED TO BUY SOON: Older big round baler, field ready, 540 PTO, equal to Vermeer Model F

or G. My hay ground is getting weedy now. Call 217-743-5226 ask for Carrol

HOME GROWN tomatoes, also by box, cucumber 5/\$2. Zucchini Squash 5/\$2, turnip 3#/\$2. Green

onion 2 bunches for \$2.50. Large, sweet onion 2/\$1, new potatoes 3 quart/\$5. Green Beans. Schmucker Produce, 7 miles N of Kirksville to Ft. Madison Way, 1/2-mile East

FOR SALE: John Deere 6145 M Tractor, MFWD, 3485 hrs, new rubber, triple hydr, 16 speed, \$69,500. Will trade. Call 573-881-3557

WANTED 500 Bushel Ear Corn 217-656-3944 or 217-242-4344

FOR SALE: 12-volt low impedance electric fencer, 30-mile Parac brand, USA made, like new box and manual. Elmer, MO 660-486-3359.

FOR SALE: Ford 5000, good paint and sheet metal, new tires, Live PTO, power steering, \$6500. 660-341-8089

FOR SALE: 100 Louis L'Amour books and 20 Zane Grey books. 660-332-7842

NEMO TRADER OFFERS TOTAL WEBSITE PLUS

A professional website PLUS Perch

With Total Website Plus, our expert web developers build you a responsive, SEO-friendly website to connect you with people searching for your business—and you don't have to lift a finger! We take care of everything so you can get back to running your business. Included with your new website is Perch. This award-winning solution monitors your online presence and provides guidance to help market online through quick, easy, and effective tasks.



CINDY HIGH

Multi-Media Sales Executive

110 E. McPherson Street
Kirksville MO

Office # 660-665-8500 ext. 19
Email: nemotrader@gatehousemedia.com



GANNETT



Ed's Machinery LLC

quality machinery since 1997

Hwy. 136, Memphis, MO (One Mile West) • www.edsmachinery.com
Business# 660-883-5501 • Fax# 660-883-5702



1986 Case IH 2096
5,995 Hours, Power Shift, Small 1000 Pto Interchangeable To 540 Pto, 2 Hyd, Top Link, 5.9 Cummings Engine, 480/80R38 Rear Tires (Note: Tractor Has Clutch Problems) **Featured \$15,500**



CASE IH 2394
7,970 Hours, Power Shift, 2 Hyd, Small 1000 Pto, Top Link, 480/80R42 Rear Tires, (Note: Air Is Not Working!!) **Featured \$18,500**



1988 CASE IH 9130
5302 Hrs, 3 Scv's, Pwr Shift, 3 Pt, Hammer Strap, 18.4-38 Tires. **\$29,900**



2014 CHALLENGER MT685D
2,910 Hours, Power Shift, MFWD, 540/1000 Pto, 5 Hyd + Return Line, Quick Hitch, Hammer Strap, 23 Front Wts, 480/80R50 Rear Tires, 420/85R34 Fronts (Note: Currently Being Used On Their Farm) **\$119,500**



2010 CHALLENGER MT765C
4,105 Hours, Power Shift, 30" Tracks, Big 1000 Pto, Quick Hitch, 4 Hyd, ISO, Hammer Strap **\$89,500**



2009 JOHN DEERE 6230 PREMIUM
3340 Hr, PWR Quad, Left Hand Reverser, 2 Scv's, 540/1000 Pto, Front Fenders, **\$69,500**



1990 CASE IH 1660
5,009 Hours, 2 WD, Chopper, Field Tracker, Maurer Bin Ext, 24.5-32 Tires, 14.9-24 Rear Tires, Cummins Engine **\$10,900**



1999 CASE IH 2366
4508/3097 Hrs, 4X4, 3 Speed Trans, Chopper/Spreader, Contour Master, Field Tracker, J&M Bin Ext, 30.5-32 Tires, 18.4-26 Rears, Well Maintained! **\$34,900**



2014 CASE IH 9230
2713 Engine Hours, 2036 Separator Hours, 36" Wide Tracks, 4X4, Pro 700 Screen, Leather Seats, Spreader/Chopper, Big Top Bin Ext, Rear Wheel Wts, Field Tracker, Cross Auger Control, Hyd pivoting spout, Long Auger, Electric Mirrors, Loaded! **Featured \$169,500**



1986 JOHN DEERE 4425
3,278 Hrs, 2 WD, Chopper, 28L-26 Tires, 13.5-16 Rears **\$8,500**



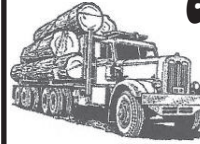
1998 CASE IH 2388
4,961/3257 Hours, 2 WD, Spreader/Chopper, Contour Master, Maurer Bin Ext **\$24,900**



1993 JOHN DEERE 9500
5346/3717 Hrs, 2 WD, 3 Speed Transmission, Hopper Ext, Rock Trap, 30.5L32 Tires, 14.9-24 Rears **\$16,500**

ATTENTION LAND OWNERS!

**BUYER OF STANDING TIMBER
OWNER / OPERATOR OF SAWMILL - BUY/CUT LOGS
CERTIFIED - BONDED - INSURED**



TRI STATE TIMBER L.L.C.
PH. 660-341-4921 or 660-465-2975
353 1/2 GRAND AVE. • MEMPHIS, MO 63555



WE ARE HIRING!

LOAN SECRETARY POSITION:
Previous secretarial and switchboard experience preferred. Excellent customer service skills required, attention to detail and a friendly outgoing personality. Full time position with benefits.

Send resume to:

Bank of Kirksville
Attn: Personnel
PO Box 787
Kirksville, MO 63501

EOE
Member FDIC

ANYTHING ON WHEELS!



highway63insurance.com

MAIN CREEK REPAIR

Larry Geiser

23316 State Hwy H
Kirksville, MO 63501

(715) 415-1995

**Bolts • Belts • Bearings
Hydraulic Hoses • Steel
Welding • Fabricating
Tractor & Equipment Repair**

MAIN CREEK RENTALS

23316 State Hwy H
Kirksville, MO 63501

(660) 988-6917

- Mini Excavator
- Dozer
- Skytrack

- Equipter (Shingle Buggy)
- Snorkle
- Grapple

- Post Hole Digger
- Man Basket

FOR SALE: 12-volt low impedance electric fence, 30-mile Parac brand, USA made, like new box and manual. Elmer, MO 660-486-3359.

FOR SALE: 100 Louis L'Amour books and 20 Zane Grey books. 660-332-7842

FOR SALE: Ford 4000 SU, power steering, Live PTO, excellent paint and sheet metal, new tires, new injection pump, \$5500. 660-341-8089

WANTED TO BUY: heavy-duty chain-link fencing, six feet or higher, no Sunday calls. 660-639-2207.

FOR SALE: 2002 Chevy cargo van, looks and runs great. Argyle, IA. 319-470-0277.

CREDIT CARD DEBT? Financially Stressed Out? Stop the harass-

ment! Make one monthly payment YOU can AFFORD! Get Help Now and Save! Call Toll Free 888-925-5404

ARE YOU BEHIND \$10k OR MORE ON YOUR TAXES? Stop wage & bank levies, liens & audits, unfiled tax returns, payroll issues, & resolve tax debt FAST. Call 855-820-8878

BECOME A PUBLISHED AUTHOR! We edit, print and distribute your work internationally. We do the work, you reap the Rewards! Call for a FREE Authors Submission Kit: 844-261-5841

CANCER GENETIC SCREENING KIT. Protect yourself and your family with early genetic screening! See if you qualify for a test at no cost to you with your Medicare Part B coverage. Call 1-855-623-4490. (Mon-Sun 9am-8pm ET)

ATTENTION SMALL BUSINESS OWNERS! Are you protected in case of property damage or if you have an interruption in service due to a property event? Business Owner Property insurance IS AFFORDABLE and WILL PROTECT YOU when the unexpected happens! For free quote, call 844-877-9891 (M-F 7:30am-9:30pm ET)

BATHROOM RENOVATIONS. EASY, ONE DAY updates! We specialize in safe bathing. Grab bars, no slip flooring & seated showers. Call for a free in-home consultation: 855-980-4002

BEST SATELLITE TV with 2-Year Price Guarantee! \$59.99/mo with 190 channels and 3 months free premium movie channels! Free next day installation! Call 888-986-4740

SAVE YOUR HOME! Are you behind paying your MORTGAGE?

Denied a Loan Modification? Is the bank threatening foreclosure? CALL Homeowners Relief Line! FREE CONSULTATION! 855-624-8601.

HughesNet - Americas #1 Choice for Satellite Internet. Call Today and Save! More Data. Free Installation. Available Everywhere. No Hard Data Limits. Call 855-248-7966

NEED NEW FLOORING? Call Empire Today to schedule a FREE in-home estimate on Carpeting & Flooring. Call Today! 877-866-8797

NEED NEW WINDOW TREATMENTS? Call Empire Today to schedule a FREE in-home estimate on blinds & shades. Call Today! 877-710-4641

Over \$10K in debt? Be debt free in 24-48 months. Pay a fraction

of what you owe. A+ BBB rated. Call National Debt Relief 877-278-4861.

SelectQuote is dedicated to finding a Medicare plan right for you and your wallet. Call 844-361-4727 today and receive a free quote from one of our multiple carriers.

Attention: Auto Injury Victims. If you have suffered a serious injury in an auto accident, call us! Our attorneys have the experience to get you the full compensation you deserve! Call Now: 877-496-3293

BEAUTIFUL BATH UPDATES in as little as ONE DAY! Superior quality bath and shower systems at AFFORDABLE PRICES! Lifetime warranty & professional installs. Call Now! 844-980-3902

Warranty • 319-696-2981 • Warranty • www.rsautosalesinc.com • Warranty • 319-696-2981 • Warranty • 319-696-2981



R.S. AUTO INC.
www.rsautosalesinc.com
Office (319) 696-2981
214 S. Center St
Lockridge, IA 52635
rsautolinc@yahoo.com

319-696-2981 Check our website for our wide variety on
4x4 Trucks - Cars - Mini Vans - Handicap Vans - SUV
Motorhomes & Much More

 <p>37,860 Miles \$13,900 '03 Winnebago Itasca Sunova Motorhome 8 Cyl Engine, Auto, Slideout, Generator, Furnace, A/C, Fully Equipped</p>	 <p>52,293 Miles \$21,900 '15 Passenger '18 Chevy Express G3500 LT 6.0L V8, Auto, 15 Passenger Van, Flex Fuel, Cloth Interior, Excellent Shape</p>	 <p>79,563 Miles CALL '16 Dodge Grand Caravan SXT 3.6L 6 Cyl, Auto, Stow-N-Go Seats, 7 Passenger, Black Cloth Interior</p>	 <p>64,747 Miles REDUCED \$23,900 '14 Dodge Grand Caravan, 3.6L, Pwr Sliding Doors, Cloth Interior, Rear Air, VMI Northstar Handicap, Kneel System, Wheel Chair Ramp</p>		
 <p>37,282 Miles \$25,900 '15 Jeep Wrangler Unlimited Sahara 3.6L 6 Cyl, 4x4, Auto, Hardtop, Camera, Leather, Touch Screen, Navigation</p>	 <p>77,057 Miles \$14,900 '15 GMC Terrain SLE 2.4L 4 Cyl, Auto, Gas, Camera, Cloth Interior, Super Clean, Rust Free</p>	 <p>59,521 Miles CALL '15 Buick Encore Convenience 1.4L 4 Cyl, Auto, Camera, Leather, Remote Engine Start, OnStar</p>	 <p>73,048 Miles \$5,900 '15 Chevy Spark LS 1.2L 4 Cyl, FWD, 5 Spd Manual, Gas, Hatchback, Leather Interior, Nice</p>	 <p>126,251 Miles \$7,900 '12 Chrysler Town & Country Touring, 3.6L V6 Gas, Auto, 3rd Row, Stow-N-Go, Leather, DVD, Local Trade</p>	 <p>138,464 Miles \$4,900 '09 Dodge Grand Caravan SE 3.3L 6 Cyl, FWD, Auto, Flex Fuel, 3rd Row, Stow-N-Go, Cloth Interior</p>
 <p>105,890 Miles \$19,900 AWD, Camera, Nav '14 GMC Sierra Yukon XL Denali 6.2L V8, AWD, Auto, Sunroof, Camera, Navigation, DVD, Leather, Sharp!</p>	 <p>109,067 Miles \$9,900 '13 GMC Terrain SLT 2.4L 4 Cyl, Auto, Gas, Camera, Leather, 7" Touch Screen, Loaded</p>	 <p>44,665 Miles \$10,900 '15 Kia Soul + 1.6L 4 Cyl, FWD, Gas, Auto, Leather Interior, Rust Free, Extra Clean</p>	 <p>100,146 Miles \$10,900 AWD '12 Ford Flex Platinum, 3.5L, AWD, Auto, Camera, Vista Roof, Leather, Navigation, 3rd Row Seating, Loaded</p>	 <p>76,043 Miles \$10,900 4x4 '12 Jeep Liberty Jet Ltd 3.7L V6, 4x4, Auto, Gas, Park Assist, Leather, Extra Clean, Nice</p>	 <p>72,761 Miles \$4,900 '07 Buick Rendezvous CXL 3.5L V6, FWD, Auto, Park Assist Sensors, Cloth Interior, Local Trade</p>
 <p>90,305 Miles \$15,900 4x4 '07 Toyota FJ Cruiser, 4.0L V6, 4x4, Gas, Black Aluminum Wheels, Cloth Interior, Rust Free, Sharp!</p>	 <p>169,220 Miles \$6,900 4x4 '06 GMC Envoy Denali 5.3L V8, 4x4, Auto, Sunroof, Leather, 3rd Row, 7 Passenger</p>	 <p>141,847 Miles \$7,900 4x4 '10 Dodge Nitro SXT 3.7L 6 Cyl, 4x4, Auto, Gas, Leather, Sunroof, Sirius XM, Super Clean, Sharp!</p>	 <p>113,198 Miles \$5,900 4x4 '08 Jeep Compass 2.4L 4 Cyl, 4x4, Auto, Gas, Cloth Interior, Sirius XM, Normal Wear</p>	 <p>175,375 Miles \$3,450 '07 Saturn Vue Hybrid 2.4L 4 Cyl, FWD, Auto, Gas, Cloth Interior, Normal Wear</p>	 <p>129,119 Miles \$3,900 '06 Saturn Vue 2.2L 4 Cyl, FWD, Auto, Gas, Cloth Interior, Local Trade, Clean Title</p>
 <p>111,670 Miles \$5,450 '06 Chevy Equinox LT 3.4L Engine, 6 Cyl, Gas, Auto, Cloth Interior, Extra Clean, Local Trade</p>	 <p>Local Trade \$3,450 '07 Chevy Trailblazer LT 2.4L 6 Cyl, Gas, 4x4, Auto, Sunroof, Leather, OnStar, Sirius XM, Great Shape</p>	 <p>192,196 Miles \$3,900 4x4 '01 Jeep Grand Cherokee Ltd 4.7L V8, 4x4, Auto, Gas, Sunroof, Leather, Local Trade, Clean Title</p>	 <p>134,841 Miles \$2,450 '06 Chrysler PT Cruiser Touring 2.4L 4 Cyl, FWD, Gas, Auto, Cloth Interior, Local Trade, Normal Wear</p>	 <p>114,882 Miles \$3,900 '05 Chevy Cobalt LS 2.2L 4 Cyl, FWD, Auto, 4 Dr Sedan, Gray Cloth, Excellent Shape</p>	 <p>174,717 Miles \$1,995 '04 Mazda 3 2.0L 4 Cyl, FWD, Gas, Manual Trans, Sunroof, Cloth Interior, Local Trade</p>
 <p>61,822 Miles \$6,900 '13 Ford Fiesta SE 1.6L 4 Cyl, FWD, Auto, Gas, Cloth Interior, Power Windows & Locks, Sharp</p>	 <p>117,950 Miles \$5,900 '11 Chevy Malibu 2LT 2.4 4 Cyl, Gas Engine, Auto, Cloth Interior, Heated Seats, Super Clean</p>	 <p>153,371 Miles \$4,450 '08 Chevy Impala LT 3.5L 6 Cyl, FWD, Auto, Cloth Interior, Local Trade, Normal Wear</p>	 <p>88,201 Miles REDUCED \$5,900 '06 Honda Accord 2.4L 4 Cyl, FWD, Auto, Sunroof, Leather, Local Trade, Normal Wear</p>	 <p>Local Trade \$2,900 '07 Chrysler Sebring Touring 2.7L Engine, FWD, Auto, Gas, Cloth Interior, Normal Wear, Runs & Drives</p>	 <p>Local Trade \$2,450 '04 Pontiac Grand Prix GT 3.8L 6 Cyl, FWD, Auto, Cloth Interior, Extra Clean, Lady Owned, Normal Wear</p>
 <p>102,551 Miles \$9,900 '15 Hyundai Sonata Hybrid 2.4L 4 Cyl, Blue Drive System, Camera, Sunroof, Navigation, Leather</p>	 <p>78,404 Miles \$8,900 '15 Dodge Dart AERO 1.4L 4 Cyl, FWD, Auto, Camera, Cloth Interior, Touch Screen, Navigation, Loaded</p>	 <p>109,853 Miles \$9,450 '14 Chevy Cruze LTZ, RS Package, 1.4L 4 Cyl, FWD, Auto, Sunroof, Camera, Leather, Push-Button Start, Sharp!</p>	 <p>120,520 Miles \$7,900 '15 Honda FIT LX 1.5L 4 Cyl, Auto, Gas, Hatchback, Cloth Interior, Rust Free, Clean</p>	 <p>77,097 Miles \$7,900 '13 Ford Fusion SE 2.5L 4 Cyl, Auto, Park Assist Sensors, Heated Leather, Loaded</p>	 <p>51,076 Miles \$6,900 '13 Fiat 500 Sport 1.4L 4 Cyl, FWD, Auto, Gas, Leather Interior, Extra Clean, Sharp!</p>
 <p>78,724 Miles \$10,900 AWD '12 Subaru Outback 2.5L Limited 2.5L 4 Cyl, AWD, Auto, Gas, Leather Interior, Sharp!</p>	 <p>85,468 Miles \$7,450 '11 Chevy Cruze LTZ, 1.4L 4 Cyl, FWD, Auto, Gas, Rear Park Assist Sensors, Leather Interior, Excellent Condition</p>	 <p>113,724 Miles \$35,900 Diesel, 4x4 '13 GMC Sierra K2500 Denali 6.6L V8 Turbo Engine Duramax Diesel, 4x4, Allison Trans, Camera, Leather, Navigation</p>	 <p>35,206 Miles \$14,900 AWD, Convertible '12 Nissan Murano Cross Cabriolet 3.5L 6 Cyl, AWD, Convertible, Camera, Leather, Navigation, Sharp!</p>	 <p>180,022 Miles \$4,450 '06 Ram 1500 ST 3.7L 6 Cyl, 2WD, Auto, Gas, Reg Cab, Longbed, Normal Wear</p>	 <p>156,665 Miles \$2,900 '98 Ford F150 XLT 4.6L V8 Triton, Auto, Gas, 2 Dr Reg Cab, Cloth Interior, Local Trade, Normal Wear</p>
 <p>114,242 Miles \$29,900 4x4, Diesel, Dually '13 GMC Sierra K3500 Denali 6.6L Duramax Diesel, 4x4, Allison Trans, Dually, Crew, Leather, Sunroof, Camera</p>	 <p>170,532 Miles \$27,900 Diesel, 4x4, 6 Spd '08 Dodge Ram 3500 ST, 6.7L Cummins Diesel, 4x4, 6 Spd Manual, Dually, Flatbed, 5th Wheel Hitch, Cloth, Southern Truck</p>	 <p>177,706 Miles \$24,900 4x4, Diesel '07 Ram 3500 ST 6.7L Cummins Diesel, 4x4, 6 Spd Manual, Dually, Quad Cab, HD Flatbed, Sharp!</p>	 <p>148K Miles \$19,900 '06 Dodge Ram 3500 Laramie 5.9L Cummins Diesel, 2WD, Auto, Dually, Crew Cab, Leather, 5th Wheel Hitch</p>	 <p>76,580 Miles \$14,900 5.7L Hemi, 4x4 '07 Dodge Ram Mega Cab 5.7L V8 Hemi Engine, Auto, Mega Cab, Cloth Interior, Fender Flares, Sharp!</p>	 <p>115,189 Miles \$11,900 5.7L Hemi, 4x4 '05 Dodge Ram 1500 Daytona 5.7L Hemi V8, 4x4, Auto, Gas, Quad Cab, Bedcover, Cloth Interior, Loaded</p>
 <p>161,939 Miles \$12,900 4x4 '09 Chevy Avalanche LTZ 5.3L V8, 4x4, Auto, Flex Fuel, Leather Interior, Sunroof, Loaded</p>	 <p>66,237 Miles \$14,900 4x4 '05 Toyota Tundra SR5 4.7L V8, 4x4, Auto, Double Cab, Cloth Interior, Nice</p>	 <p>49,660 Miles \$14,900 4x4, 5 Spd Manual '11 Ford Ranger XLT, 4.0L V6, 4x4, 5 Spd Manual, Gas, 4 Dr Super Cab, Cloth Interior, Rust Free, Southern Truck</p>	 <p>159,822 Miles \$13,900 4x4 '08 Chevy Silverado 1500 5.3L V8, 4x4, Auto, 4 Dr Ext Cab, Alum Flatbed, LED Lights, Cloth Interior</p>	 <p>Local Trade \$5,900 '03 GMC Sierra K2500HD 6.0L V8, 4x4, Auto, Gas, 4 Dr Ext Cab, Longbed, Cloth Interior, Normal Wear, Sharp!</p>	 <p>Local Trade \$2,450 '12 Honda CBR 250R 250cc Liquid Cooled, 4 Stroke, 6 Spd Fuel Injection, Twin Cam, Throttle Body</p>

Warranty • 319-696-2981 • Warranty • www.rsautosalesinc.com • Warranty • 319-696-2981 • Warranty • 319-696-2981

BOY SCOUT COMPENSATION FUND - Anyone that was inappropriately touched by a Scout leader deserves justice and financial compensation! Victims may be eligible for a significant cash settlement. Time to file is limited. Call Now! 866-395-0568

DONATE YOUR CAR TO CHARITY. Receive maximum value of write off for your taxes. Running or not! All conditions accepted. Free pickup. Call for details. 855-986-8602

FREE AUTO INSURANCE QUOTES for uninsured and insured drivers. Let us show you how much you can save! Call: 888-320-7567.

YOU MAY QUALIFY for disability benefits if you have are under a doctor's care for a health condition that prevents you from working for a year or more. Call now! 877-430-9760

PROBLEM CREDIT REPORT? Lexington Law works to challenge inaccurate negative items including: identity theft, collections, late payments, liens and more from your credit report. Call for a free credit repair consultation: 855-622-0369. John C. Heath, Attorney at Law, PLLC, dba Lexington Law Firm.

SAVE BIG on HOME INSURANCE! Compare 20 A-rated Insurance companies. Let us do the shopping & save you time & money. Get a quote within minutes. Average savings of \$444/year! Call 877-594-0878. (M-F 8am-8pm Central)

Attention Viagra users: Generic 100 mg blue pills or Generic 20 mg yellow pills. Get 45 plus 5 free \$99 + S/H. Guaranteed, no prescription necessary. Call 877-801-0749

FOR SALE: John Deere 2940 Tractor, 5400 hrs, cab, air, new rubber,

estate tractor, \$14,500. Call 573-881-3557

FOR SALE: Ford 1310, good paint and sheet metal, excellent rubber, w/60" Finish Mower, \$3750. 660-341-8089

FOR SALE: New Skid loader attachments. Forks, Buckets and Bale Spears in Stock. No Sunday Calls 660-988-7385

HOME GROWN turnips 3#/\$2, zucchini and cucumber 5/\$2, cabbage head \$1, new potatoes 3 qt/\$5. Beans and beets \$2/qt, Broccoli 2/\$1, cauliflower. Tomatoes buy box or 3#/\$7 or \$2.50/pound. Schmucker Produce, 7 miles North of Kirksville to Ft. Madison Way, 1/2 mile East.

WANT TO BUY: 15' or 12' Brush Hog in real good condition, 540 PTO. 660-676-9199

FOR RENT: Near Ethel 30 acres for pasture and hunting. 660-341-9081

FOR SALE: Firestone 18.4 x 38 Super all traction radials, brand new mounted on rims 1/2 price of new, can deliver, best offer. 217-357-1324

FOR SALE: 2004 JOHN DEERE 625F, GREEN PLATFORM, hydrflex, kept inside, field ready. \$12,900. 660-299-0615

HUNTING EQUIPMENT sale, 35+ box, bow, hay bale, ladder stands, hog trap, deer and turkey feeders, deer and goose decoys. All used, great condition. 641-208-7353

FOR SALE: John Deere 285 Disc mower, 9', like new, \$7,950. Call 573-881-3557

FOR SALE: JD 925 Platform full fingers, Poly Snouts equipped with single point hookups, \$6000. 217-242-6984

FOR SALE: 1967 GTO, 1969 GTO HT and convertible, 1970 GTO cars need rebuilt. 660-734-8368.

FOR SALE: Ford 3000 gas, good sheet metal and paint, good tires, live PTO, power steering, \$4500. 660-341-8089

FOR SALE: Used garden tillers Troy-Bilt, BCS and other sizes. DR Brush mowers. Kahoka, MO 660-216-1809

FOR SALE: JD D140 Garden tractor, new belts, blade & seat,

\$1000; JD 345 Garden tractor, new seat, 54" deck, good condition, \$1500; Case 730 tractor, wide front, needs starter repair, \$1500. 660-341-2492

WHITETAIL INSTITUTE food plot seeds in stock at Whitetail Seed and Supply, 14136 State Hwy 3, LaPlata, MO 63549, 3 South.

FOR SALE: 2017 Honda Ruckus, only 200 miles; 2002 Kawasaki 650 Prairie, great condition; 2014 Yamaha F-25 HP tiller outboard, electric start, like new, excellent condition. 641-208-7353

Feed for all your needs. Patriot horse feed, cattle mineral, chicken feed, Showtime dog food. Feed Store, Hwy 156, LaPlata

Dutch Garden Nursery

Your Full Service Garden Center

Cover Crop Seed

Buck Wheat • Radish Eco Till • Western Sugar Beet Forage Turnip And more selection.....

- FOOD PLOT SEED • BIG BUCK FOOD PLOT MIX
- SWEET SPOT FOOD PLOT MIX • GRASS SEED

OPEN ALL SUMMER!

Sprays for all your garden and flower needs! Fungicide and insecticide.



Bulk Mulch & Bulk Rock • Landscape Blocks!

GARDEN SEEDS:

Green bean seed, lettuce, radish, beet seed, turnip seed, and many more for your fall garden!

Cabbage Broccoli Cauliflower Plants Lettuce

Fertilizer for all your Plants & Lawn!



Beautiful Plants, Perennials, Shrubs, Succulents. 1/2 PRICE ANNUALS!

Summer Hours:

Monday - Saturday 8 AM to 5:30 PM

MEMPHIS LOCATION (beside Country View Store): 660-883-5650

EDINA LOCATION (Home Base): 660-397-4115

www.dutchgardennursery.com

Beilstein
CAMPER SALES



Call us now for the best prices...

573-655-2254

28248 327th Ave. • LaGrange, MO • Hwy 61 South, 4 Miles South of LaGrange, MO



\$25,495

2014 Vengeance 29V
IN STOCK TOY HAULER, Slide-Out



\$22,995

2019 Salem FSX 260RT
TOY HAULER, Private Bedroom IN STOCK



\$24,995

2012 Keystone Outback Super-Lite 298RE
3 Slide-Outs, Rear Entertainment



\$19,995

2011 Rockwood Signature Ultra Lite 8315BSS
2 Slide-Outs, Front Kitchen



\$15,995

2016 Salem Cruise Lite 232RBXL
Slide-Out, Rear Bathroom



\$36,573
\$31,995

2021 Salem 27RK
Large Slide-Out, Rear Kitchen

Visit Our Website For More Great Bargains! www.beilsteincampersales.com

RYE CREEK WELDING

CUSTOM FABRICATION – STEEL SALES
PORTABLE WELDING. MIG. TIG. STICK
ALUMINUM & STAINLESS
50+ YEARS EXPERIENCE

RUSTY
660-341-2250

JUSTIN
660-292-2389

FRONTLINE FENCING LLC

Steel Pipe Fencing.
Custom Built Gates and Livestock Handling Equipment.
Barbed Wire and Woven Wire Fence.
Arrowquip Cattle Handling Equipment.
Post Driver Rental.



29386 St Hwy T,
Greentop, MO
660-956-2430

WANTED TO BUY: Harley Davidson's, any year, any condition, cash money. Days 660-263-1356 or 660-537-0068

FOR SALE: John Deere 6200 Tractor, MFWD, open station, 6000 hrs, power quad, with 640 Loader, \$25,500. Call 573-881-3557

WANTED TO BUY: Farm Machinery and Estates. Call James L. Johnston. 573-473-4904

FOR SALE: Ford 1520, w/Ford loader, hydrostat, 4x4, excellent paint and sheet metal, good rubber, \$9000. 660-341-8089

Wevers Outside Wood Furnaces a dealer for Heatmor Stainless Steel Outside Furnaces, have an assortment of parts, line, and etc. Taking orders for new outside wood furnaces. Used 120 furnace, burns wood or coal, has shaker grates, for \$5,550. Call 660-423-5242, cell 660-216-9885. Open 6pm-9pm Monday-Friday, Saturday anytime, call first.

FOR SALE: New 3 pt. tillers, heavy duty, gear driven, 7' to 10' starting at \$3050. 660-874-4455

PASTURE AND HAY GROUND Needed around Adair & Knox

County. Please Contact 660-216-5887 or 417-773-2507

FOR SALE: 2010 Case 8120 Combine, 2975 HR -2097 HR, NO DEF, RWA, DIF Lock, 620 Drive Tires, 28 Steer Tires, luxury cab, clean machine, \$95,000. 641-895-8014

FOR SALE: Fish for stocking ponds - Catfish, Grass Carp, Crappie, Blue Gills, Red Ear, Bass, and Minnows. Heindselman Family Farms, Call Greg 660-341-5692

FOR SALE: Tomatoes, Cucumber, Zucchini, Potatoes, Onions and Green Beans. Located at Kauffman Produce 11538 Iceberg Ave

LaPlata MO 63549. Will also be at the LaPlata Farmers Market every Wednesday from 4 pm to 7 pm

FOR SALE: Spices, and Seasoning, Farm Dust, Honey Garden Seeds,

Homemade Candy. New Supply of Greeting Cards, Wooden Handles, Lamps & Chimneys, some Aladdin, S.S. Kitchen Wares, Mixing Spoons, Kitchen Towels &



HARRISON FISHERY
POND & LAKE STOCKING
Call us today! 660.423.5482

Your trusted source for quality Fish!

Harrison Fishery, Inc. is a family owned and operated business.

We stock most species freshwater, game & baitfish.

Contact us for price & delivery

curtis@harrisonfishery.com
660-423-5482

Species Available

Largemouth bass
Hybrid bluegill
Golden shiners

Bluegill
Redear sunfish
Black crappie
Fathead minnow

Walleye
Muskie
Catfish
and More!

Time to gather up the little ones, get their fishing poles and go enjoy a day of fishing



www.harrisonfishery.com

LOLLI BROS. LIVESTOCK MKT, INC.
Macon, MO
Tuesday, July 13 * 11am
Special Feeder Calf & Yearling Sale
July 20 - Cow, Cow/Calf & Breeding Bull Sale
Please call our office for a complete listing.

Cafe Open Lolli Bros. Livestock Market, Inc. Cafe Open
704 Main st * Macon, MO
660-385-2516 * www.lollibros.com
Dominic 660-651-4024 * Frankie 660-651-4040
Tim 660-651-3496 * Joseph 660-346-9711
Cattle accepted on Sundays

New Load
#1 Georgia PEACHES - 2 3/4 Free-stone
1/2 bushel box - \$25 (tax included)

@ The Colony Store
(660) 434-5502 or (660) 341-2966

Only a few bin packages left for 2021!

48'x9 Ring
48'x10 Ring
48'x12 Ring

Call Now!!

GRAINBIN SUPPLY "The Grain Bin People" GBS
(660) 263-6700 - Cairo
(573) 594-2167 - Vandaila
www.grainbinsupply.com

Sukup

HELP WANTED **NEED A CHANGE??** **HELP WANTED**

Due to our expanding business, we are accepting applications for

AUTO TECHNICIAN

Competitive Wages • Group Insurance
• Vacation Retirement Plan

Stop by to see Terry and Pick your application up TODAY!!
MUST HAVE TOOLS & DRIVERS LICENSE

Woody's Tire, Auto & Towing LLC

1102 N. Green St., Kirksville, MO • 660-665-8617

CENTURY 21 Lifetime Realty

FARM & RANCH

A community member for over 26 years, Elizabeth is a real estate professional connecting sellers in Northeast Missouri to buyers across our great country.

Considering selling a farm or home? Call on a local expert who knows you, and who is committed to helping you get the most for your property.

Serving Knox, Macon, Adair, Sullivan, Linn, Putnam and Shelby Counties.

Elizabeth Gregory, Realtor
Lic. # 2021008017

LISTING A PROPERTY?

CALL OR EMAIL ELIZABETH FOR A NO OBLIGATION CONSULTATION
660.621.2136 | egregory.c21@gmail.com
farmandhome.c21.com
Century21 Lifetime Realty | 660.665.5678

ALL AMERICAN TRADE-UP SALE

Your Vehicle Trade is Your Down Payment

On Select Vehicles*



DONATION TO HOPE FOR HEROES FOR EVERY VEHICLE SOLD
(up to \$10,000 total donation)



[f](#) [@](#) [t](#) [v](#) [in](#) [i](#) [car-mart.com](#)

*On retail vehicles priced at \$15,999 or less. With approved credit. See dealer for details. This offer cannot be combined with any other promotional offer.

- Low Down Payments
- Quality Us Vehicles ed
- Flexible Financing
- Weekly, Bi-Weekly
- Start Your Approval Online
- 100% Satisfaction
- Hand Selected Vehicles
- Over 150 Locations
- We Trade for Anything
- We Buy Cars
- Convenient Payment Options
- Since 1981



2008 Lexus ES350,
FWD, 6 Cyl., Red



2013 Ford Edge SE
FWD, 6 Cyl., Black



2011 Ford Escape XLT
FWD, 4 Cyl., red



2015 FORD FOCUS SE
4 doors, 4 cyl., White, FWD



2016 HYUNDAI ELANTRA SE
4 Cyl., Fwd, Blue



2006 GMC YUKON XL 1500 DENALI
AWD, 8 Cyl., black.



2014 CHEVROLET CAPTIVA SPORT
FWD, 4 Cyl., Red



2011 Chevrolet Aveo LT
FWD, 4 Cyl., white



2015 Kia Soul Base,
FWD, 4 cyl. Gray



2011 Ford Flex
SE, FWD, 6 Cyl., Silver



2012 FORD FUSION SE



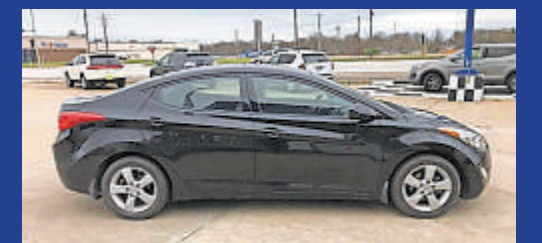
2011 CHEVROLET MALIBU LS



2008 GMC Envoy SLT
4WD, 6 Cyl., White



2012 Ram 1500 ST
4WD, 8 Cyl, Gray



2013 Hyundai Elantra, GLS,
FWD, 4 Cyl., Black



2014 DODGE GRAND CARAVAN
SE, FWD, 4 Doors, 6 Cyl., Red.



2014 HYUNDAI SANTA FE
SUV L, FWD, 4 Cyl., Gray



2010 NISSAN ALTIMA BASE



AMERICA'S CAR-MART

Keeping You on the Road



ELIZABETH WALTER
GENERAL MANAGER

Clothes, Some Glassware. Train Track Candies 11538 Iceberg Ave, LaPlata, MO, 3rd lane to your left.

HANDYMAN: Install interior and exterior doors and windows, siding, decks, showers and toilets,

flooring and drywall. 660-956-2189.

FOR SALE: John Deere 569 Baler, net, 1000 rpm, big tires, 16,000 bales, new belts, field ready, will trade, \$17,500. Call 573-881-3557

DIRT WORK All types of excavation, reclaiming overgrown fields, including CRP and WRP. Building site preparation, terrace and tiling maintaining and creating new trails and crossings, rock hauling, Food plot development

and maintenance. Leveling and grading, wetland construction and maintenance. Pond and lake

cleaning and construction. Call for quotes. 660-342-2701

BUYING Used Mobile Homes. Porter Homes 573-231-6667

Troyer

TARP MFG.

660-486-3301
20264 State • Hwy. VV • Ethel, MO. 63539



Hoop Building Covers

FARM TARPS

TRUCK TARPS

WE GOT YOUR NEEDS COVERED!



Peace of Mind!

The feeling you get with a security system from **On Sight 24/7**

Security Cameras for Farms, Small Business, Schools & Government







"On Sight 24/7 is a relatively inexpensive great security option. It allows us to monitor those coming and going, even at night with infrared. We've used the same system now for over 5 years. Competent techs and kind and helpful staff makes for a worthwhile security system." - C. Heins

FREE SECURITY ASSESSMENT!
(\$150 Value)

UP TO **\$250 OFF**
YOUR ORDER*

*Some restrictions may apply, call for details.

Ask about our 90 Day Try Before you buy!





PROFESSIONALS YOU CAN TRUST.
 Proudly Serving the Midwestern United States since 2012.

SERVICES. SOLUTIONS. SUPPORT.
660.956.9944

Ramer Truck Sales



2012 Ford F-350 XLT 6.7 240k \$15,900



2011 Ford F150 XLT 3.5L At 4x4 Clean Title 158650 \$11,900



2012 Ford F-350 4x4 6.7L lariat 235k \$18,900



2013 Ford explore 4wd xlt clean title 167k \$11,900

Gorin, Missouri
 8 am. to 6 pm. Monday - Saturday

www.ramertrucksales.com

HOME 660.282.1002 CELL 660.341.6140 *NO SUNDAY CALLS!*



or G. My hay ground is getting weedy now. Call 217-743-5226 ask for Carrol

HOME GROWN tomatoes, also by box, cucumber 5/\$2. Zucchini Squash 5/\$2, turnip 3#/\$2. Green onion 2 bunches for \$2.50. Large, sweet onion 2/\$1, new potatoes 3 quart/\$5. Green Beans. Schmucker Produce, 7 miles N of Kirksville to Ft. Madison Way, 1/2-mile East

WANTED 500 Bushel Ear Corn 217-656-3944 or 217-242-4344

FOR SALE: Ford 5000, good paint and sheet metal, new tires, Live PTO, power steering, \$6500. 660-341-8089

FOR SALE: John Deere 6145 M Tractor, MFWD, 3485 hrs, new rubber, triple hydr, 16 speed, \$69,500. Will trade. Call 573-881-3557

FOR SALE: 12-volt low impedance electric fence, 30-mile Parac brand, USA made, like new box and manual. Elmer, MO 660-486-3359.

FOR SALE: 100 Louis L'Amour books and 20 Zane Grey books. 660-332-7842

WANTED TO BUY: small, diesel wheel loader, with a lifting capacity of at 3000 pounds. No Sunday calls. 660-639-2207

FOR SALE: 1967 C-30 Chevy grain truck with dump box. Looks and runs great. Argyle, IA. 319-470-0277.

FOR SALE: 300 Briar Horses in excellent condition, 50 year col-

lection, buy one or all. 660-676-

9199

Macon County - 957.6 Acre Farm!!



21
Old Mine Haul Road - Macon, MO 63552

Hard to Find Contiguous 957.6 Surved Acre Grass Farm Cattle Ready!! Located in Macon County with Private Setting Minutes from Macon or Moberly - Access to the Farm on East & West Sides - Excellent Fences - Corral Area on NE Side of Farm - 75 Acres of Clear Deep Water Strip Pits - Excellent Fishing, Deer & Turkey Hunting - Previous Hunting Lease \$15,000 Annually - Easy 2 Hour Drive from Kansas City or 2.5 Hours from St. Louis - Truly One of a Kind Property!! MLS# 21-204 \$2,031,500.00



Contact Julie Green 660-263-1789 or 660-734-2454 w/ Century 21 McKeown & Assoc. www.c21McKeown.com - landandauctions.com

KM-70KDE0048

VIRTUAL LIVE ONLINE
LEWIS COUNTY, MISSOURI
LAND AUCTION
THURSDAY, AUGUST 5, 2021 @ 10:00 A.M.



202.02 SURVEYED ACRES
3 TRACTS

Land is located in Sections 21 & 30, T62N•R6W, Canton Township, Lewis County, MO. Farm represents highly productive tillable cropland with the balance in hardwood timber and wooded draws. Farm offers premier northern Missouri whitetail deer & wild turkey hunting acreage.

BAKER FAMILY
PERSONAL REPRESENTATIVE - CINDY LEWIS

Attorney: Anthony J. Soukenik | Sandberg Phoenix
120 S. Central Avenue | Clayton, MO 63105 | (314) 446-4279
Title Work: Oak Hills Title Co. | 307 Lewis Street | Canton, MO | (573) 288-4461

AUCTION MANAGER: Bill Fretwell (660) 341-7735
SULLIVAN AUCTIONEERS, LLC • TOLL FREE (844) 847-2161
www.SullivanAuctioneers.com • IL Lic. #444000107



ESTATE AUCTION

Saturday, July 17th • 10 am
at 1641 N. 400th Ave. • Payson, Il.

The Estate of William E. Oberling

- 2016 Lincoln MKX • Gold and Silver Jewelry • JD Riding Mower
- Antiques & Collectibles • Tools • Household & Appliances

JEFF OBERLING CO EXECUTOR • 918-933-0991
JAIME OBERLING CO EXECUTOR • 217-430-6666

Vehicle and Jewelry offered online and live at 11 am

REGISTER TO BID ONLINE AT: WWW.CHUPPSAUCTION.HIBID.COM
View Terms/Pictures at: www.joberling.ccoklahoma.com

VIRTUAL LIVE ONLINE
KNOX COUNTY, MISSOURI
LAND AUCTION
THURSDAY, AUGUST 5, 2021 @ 1:00 P.M.



108± ACRES
(SUBJECT TO SURVEY)
1 Tract


Land is located approximately 2.5 miles west of Newark, MO along State Hwy. 156 in Sections 21 & 28, T60N•R10W, Fabius Township, Knox County, Missouri. Land represents productive tillable farmland with the balance in hardwood timber, wooded draws and Little Fabius River. Farm offers premier Northern Missouri whitetail deer & wild turkey hunting acreage.

WILMA L. HUSE FAMILY TRUST
TERRY LOGAN & VICKI MYERS

Closing & Title Work: Knox County Abstract
103 South First St. | Edina, MO 63537 | (660) 397-3259

AUCTION MANAGER: Bill Fretwell (660) 341-7735
SULLIVAN AUCTIONEERS, LLC • TOLL FREE (844) 847-2161
www.SullivanAuctioneers.com • IL Lic. #444000107

HAY STORAGE SOLUTIONS AND MUCH MORE!



"Today, I checked with Joseph to see when he was planning to deliver and construct my second hoop building. Two years ago I purchased a 55'x98' hoop building from Skylight buildings. It was erected on my site on time and the building went up in two days.

I was concerned about the durability of a vinyl building compared to a metal sided structure. That was until I noticed that a rock from my Brush Hog 2715 had impelled itself into the metal building. The Skylight building would not have been damaged. Also, the name says a lot. I thought that I would wire in lights like my other buildings but to date I have not found the need.

The reason I thought I needed to build a large building was to store my hay inside. I knew I was losing hay quality due to weather damage but baling with 568 John Deere and net wrapping my hay I thought I was keeping my hay loss at a minimum. I found the first year that I had underestimated my losses. I was very pleased with the results of storing hay inside. It is most gratifying to put a bale into the hay ring and seeing that the previous bale was almost completely consumed by the cows or the feeder calves. I had a record amount of carry over from last year and it is safely stored inside ready to be used this winter! This will allow for hay sales this winter.

The construction of the building's frame is strong, the foundation supports are 24" and very deep. I am very satisfied and have ordered another 55' x 140' to be installed in a few weeks. This one will be used to store our small square bales and equipment.

Thank you Joseph for your service and this chance to recommend your buildings."

Wiley and Susan Hibbard, Perry, Missouri

20749 State Highway VV
Ethel, MO 63539
660-486-3250

Skylight
Fabric Structures

ESTATE AUCTION

1st of 2 auctions

We will sell at auction the following coins and personal items, located at the Farmington Community Center in Farmington, Iowa (Across the street from Cases)

WATCH FOR THE AUCTION SIGNS ON

SAT. JULY 17, 2021 10:00 A.M.

COINS (OVER 545 LOTS WILL SELL AT 11:00 a.m.)

Over 100 Morgan silver dollars - Carson City silver dollars - several uncirculated silver dollars - Draped Bust dollars - 10 oz silver bar - 1 oz dollars - proof sets - U.S. mint silver proof sets - 1,-2, 5- 3- 5- 10- 50 dollar gold coins - Capped Bust, Seated Liberty, Liberty walking, Franklin, Kennedy half dollars - Isabella, Capped Bust, Seated Liberty, Barber, Standing Liberty, Washington, State quarters - Hobo nickels, Buffalo, Westward Journey, Jefferson, V, Shield nickels - Liberty seated, Capped Bust, Barber, Mercury dimes - Large cent - Half cent - 2 cent coins - Twenty cent coins - 3 cent coins - Half penny - 1/2 dimes - Indian head pennies - Paper money - Wheat pennies - Foreign money

GUNS (SELLS AT 10:00)

Ruger Mini 14, 223 cal. 5 clips & case, S#583-84799 - Ruger 22 cal. Pistol w/clip & case, S#71669 - Trapper model 22 cal revolver, hex barrell S#115611

POST CARDS & STAMP

4 Albums w/ very old post cards - stamp books & stamps - Hank Arrow, Jerry Rice & Jose Canseco player cards

BELT BUCKLES

28 Various belt buckles

TOKENS - WATCHES

25 various wooden tokens - 100 plus various tokens - Elgin, Stelite electronic, "Ben Franklin pocket watches w/watch fob - John Deere, B.P. Feeds, Moorman & other wrist watches

JEWELRY & COLLECTIBLES

Austrian crystal necklace - Masonic slide chain - 3 antique pictures frames full of small ornamental pins - necklaces - rings - cuff links - bracelets - ear rings & etc - large world coin book 1801-1900 7th edition - 1936 Watkins cook book - Sheaffer pen set - 2 pr old eye glasses - 2 Zippo lighters - small Dovetail wooden chest - Echo harmonica - Hat pins - other small primitive items - 10 pcs. Various collectible glassware

2 DENIM JACKETS/ WESTERN SINGERS AUTOGRAPHS

AUCTIONEERS COMMENT: Doors open at 8:30 A.M. Saturday. Please follow Covid 19 guide lines

TERMS: Cash or Approved checks • Proper I.D. • Not responsible in case of accidents • Any announcement made day of sale over the auction block holds precedence over any advertising.

RON REIF ESTATE

DeVere Clinton, Executor, Elkader, IA. John Wehr, Attorney for the Estate, Sigourney, Ia.

SALE CONDUCTED BY

CURT FETT AUCTION SERVICE

Col. Curt Fett 319-931-1206 • Col. Cody Fett - Col. Colten Fett - Josh Brecount, Broker of United Country Land Pros. 319-470-8485

FOR SALE: 1976 Trans Am \$3000; 1966 Catalina convertible \$2500; Chevelle 12 bolt rear \$500; 454 \$500. 660-734-8368.

COMPLETE LINE livestock feed, all-stock, 3-way, corn, oats, hog feed, mineral tubs and more. Feed Store, Hwy 156, LaPlata

WHITETAIL INSTITUTE 30-06 tall tine mineral archery supplies and more. Whitetail Seed and Supply, 14136 State Hwy 3, LaPlata, MO

WANTED TO BUY: Harley Davidson's, any year, any condition, cash money. Days 660-263-1356 or 660-537-0068

FOR SALE: New 3 pt. tillers, heavy duty, gear driven, 7' to 10' starting at \$3050. 660-874-4455

FOR SALE: Fish for stocking ponds - Catfish, Grass Carp, Crappie, Blue Gills, Red Ear, Bass, and Minnows. Heindselman Family Farms, Call Greg 660-341-5692

FOR SALE: John Deere 40 Manure Spreader, very little use, shedded, end gate extra sides, \$3,950. Call 573-881-3557

HANDYMAN: Install interior and exterior doors and windows, siding, decks, showers and toilets, flooring and drywall. 660-956-2189.

FOR SALE: Male Wolf/Dog Hybrid, 1/4 Blood Alaskan Timber Wolf, 1/4 Malamute, 1/4 Gray Wolf, 1/4 Husky Beautiful Dog just too big for me, \$300. Diane 515-370-2833

FOR SALE: New Holland 352 Grinder Mixer, one owner, right out of owner's shed, has auger feeder, extended unloading auger, extra screens, tested - runs out smooth and quiet, \$4,950. Call 573-881-3557

FOR SALE: 12-volt low impedance electric fencer, 30-mile Parac brand, USA made, like new box and manual. Elmer, MO 660-486-3359.

FOR SALE: 100 Louis L'Amour books and 20 Zane Grey books. 660-332-7842

FOR SALE: Ford 4000 SU, power steering, Live PTO, excellent paint and sheet metal, new tires, new injection pump, \$5500. 660-341-8089

WANTED TO BUY: heavy-duty chain-link fencing, six feet or higher, no Sunday calls. 660-639-2207.

FOR SALE: 2002 Chevy cargo van, looks and runs great. Argyle, IA. 319-470-0277.

CREDIT CARD DEBT? Financially Stressed Out? Stop the harassment! Make one monthly payment YOU can AFFORD! Get Help Now and Save! Call Toll Free 888-925-5404

ARE YOU BEHIND \$10k OR MORE ON YOUR TAXES? Stop wage & bank levies, liens & audits, unfiled tax returns, payroll issues, & resolve tax debt FAST. Call 855-820-8878

BECOME A PUBLISHED AUTHOR! We edit, print and distribute your work internationally. We do the work, you reap the Rewards! Call for a FREE Authors Submission Kit: 844-261-5841

CANCER GENETIC SCREENING KIT. Protect yourself and your family with early genetic screening! See if you qualify for a test at no cost to you with your Medicare Part B coverage. Call +1855-623-4490. (Mon-Sun 9am-8pm ET)

ATTENTION SMALL BUSINESS OWNERS! Are you protected in case of property damage or if you have an interruption in service due to a property event? Business Owner Property insurance IS AFFORDABLE and WILL PROTECT YOU when the unexpected happens!

For free quote, call 844-877-9891 (M-F 7:30am-9:30pm ET)

BATHROOM RENOVATIONS. EASY, ONE DAY updates! We specialize in safe bathing. Grab bars, no slip flooring & seated showers. Call for a free in-home consultation: 855-980-4002

LANCASTER LUMBER INC.
Lancaster, MO.
1-800-424-5071
LAN-DOW BUILDINGS
www.lancasterlumber.com



KEOSAUQUA SALES CO
Special Cattle Sale
Sat July 10th
 Expecting 300-400 hd feeder calves
Regular sale Sat July 17th
 Check the website for more info
www.keosauquasaleco.com
319-293-3508
Bill cell phone 641-919-936

Moberly, MO, Real Estate and Personal Property Auction

Thursday, July 22, 2021 at 5:00 p.m.
 The late Patsy Lang Chirillo
 1605 Parkwood Drive, Moberly, MO 65270



Directions to Auction Location: 1605 Parkwood Drive, Moberly, Missouri. Travel West on US Highway 24 from Moberly to Rothwell Park Road. Turn South for 0.9 miles then take a right on Fisk Avenue. Take a slight left on Greenbrier Road which becomes Parkwood Drive. Follow Parkwood Drive for 0.2 miles and the property will be on your left. Watch for signs the day of the sale.

Real Estate: This beautiful brick, ranch home was built in 1996 and offers 2 bedrooms, 3 bathrooms and an open floor plan. The large kitchen has an abundance of oak cabinets, a center island, lazy Susan spice cabinet, pull out storage in the lower cabinets and a walk-in pantry. The master bedroom has an en suite bath and large closets. The home also has a mud room/laundry room and all closets feature automatic lighting. The home includes a full unfinished basement, electric water heater (Ao Smith) and electric forced air furnace (Trane 2016) and a General Power humidifier. You can enjoy the park-like setting from the large screened in back porch.

The real estate will sell promptly at 6:00 p.m.. If you would like to schedule your personal showing, please call Scotty at 573-356-4405.

***See Terms and Conditions for Purchase of Real Estate below.**

DOWN PAYMENT: 10% of the contract purchase price will be due upon acceptance of the Sales Contract. Personal or Cashier's Checks will be accepted. This is "AS IS, WHERE IS" and is non-refundable. **CLOSING:** Closing shall be within 30 days of the auction date.

Storage Building: 10' x 16' portable building to be sold separately

Vehicles: 2006 Buick LaCross CXL with 51,000 miles, leather interior, power windows, power locks and heated seats. This is a very nice vehicle. 2017 Ford Edge Titanium with 30,000 miles, navigation system, backup camera, leather, heated seats, sunroof, Eco-boost, AWD

Household Items: Frigidaire refrigerator/freezer, Whirlpool electric dryer; Whirlpool washing machine; Gometer stationary exercise air bike; oak breakfast nook; oak kitchen table with 4 chairs; wall hugger recliner; hall tree with etched mirror and marble top; double reclining microfiber couch; coffee table; round oak end table; upholstered rocking chair; Flexsteel occasional chair; various pictures and prints; oak full size bed; oak wardrobe with drawers and mirrored doors; oak claw and ball foot lingerie dresser; Cosco card table with 4 chairs; Kirby vacuum; oak full/queen bed with full mattress and headboard; oak dresser with mirror; Lane cedar chest; oak single pedestal roll top desk;; Thermalwave Sunheat space heaters; miscellaneous kitchen appliances; Community flatware set; Corelle ware; Corning ware; pots and pans; miscellaneous kitchen ware; clock; barometer; thermometer; wicker patio set, 2 chairs, couch and table; wicker ice cream table and chairs; Callaway right handed golf clubs

Outdoor Tools and Equipment: Plastic storage locker; hose and caddy; Weber BBQ grill; Werner aluminum 12' extension ladder; miscellaneous long handle tools; Rubbermaid wheel barrow; Toro self propelled push mower; Toro Professional, reversible push mower; Troy-bilt lawn vac; Mercury 4" bench vise; miscellaneous hand tools; Fiskers pole saw; Craftsman gas power weed eater; Weed eater gas leaf blower

Antiques and Collectibles: Wabash Railroad Company public tariff file; Philco antique radio; German made signs; antique oak split curio cabinet; antique oak mission-style end table; lighted oak curio cabinet; antique oak drop front storage cabinet; hand painted decorative pitchers; Carnival glass; Noritake China; miscellaneous Christmas decor;

There will be many more items at this sale too numerous to mention.

SCOTTY'S AUCTION SERVICE
Scotty Kuntz 573-356-4405
Michael Cunningham 660-651-2288 • Paxton Pittman 918-316-7500

BEST SATELLITE TV with 2-Year Price Guarantee! \$59.99/mo with 190 channels and 3 months free premium movie channels! Free next day installation! Call 888-986-4740

SAVE YOUR HOME! Are you behind paying your MORTGAGE?

Denied a Loan Modification? Is the bank threatening foreclosure? CALL Homeowners Relief Line! FREE CONSULATATION! 855-624-8601.

HughesNet - Americas #1 Choice for Satellite Internet. Call Today and Save! More Data. Free Instal-

Edina Livestock Sales
Edina, Missouri
Friday, July 9th
-40 Pairs (Heifer to 8 year olds)
with 350# calves
Friday, July 16th
Special Feeder Calf Sale
ALL SALES TELEVISED ON DV AUCTION
To Consign For Any or All Sales or For Information Call: Owner -Kevin Strange •Cell: 660-341-9974 Ryan Strange •Cell: 660-341-9721 Sale Barn: 660-397-9999

Field Reps:	Mike Bronestine 660-341-9965	Jason Bischel 660-216-0373
Bill TomHall 660-342-5420	Trey Gashwiler 660-341-9965	John Powell 660-341-1717

AUCTION
SATURDAY, JULY 17, 2021 10:00 AM
7853 - 215th AVENUE, OTTUMWA, IOWA

30 ACRES - ALL TIMBER - ULTRA MODERN HOME
REAL ESTATE: 1-1/2-story earth-berm home, constructed in 1985. Over 2,800 square feet of living space in this highly-efficient home. Main level has large living room plus family area, eat-in kitchen, master bedroom plus full bath, with lots of storage. Balcony overlooks main level which leads to three large bedrooms plus full bath. This home has all-natural wood interior finish with carpet & hardwood flooring. Lower level features walkout to a 10'x52' stamped patio. Exterior is of cedar siding, with metal roof. Gas heat & central air. 40'x64' pole-frame building, constructed in 2003, with half-concrete floor. **30 Acres of native oak timber.** All situated 7 miles west of Ottumwa on Highway 34, then South on 215th Avenue 1/2 mile. Or go west of Ottumwa on Bluegrass Road to 215th Avenue, then North 3/4 mile. This outstanding acreage is a super getaway.
TERMS: 20% down day of sale, balance in cash upon delivery of a Warranty Deed, accompanied by Abstract of Title showing merchantable title. Real estate taxes will be pro-rated to possession date, possession given upon settlement.
REAL ESTATE WILL SELL AT 12:00 NOON
 For further particulars or an appointment to inspect the property, please call the auction company: 641-682-5465.

BLACKSMITH & METAL FORGING TOOLS: Anvils - Peter Wright 578-lb, 305-lb, 135-lb, 128-lb, & 109-lb. anvils; Mouse Hole 120-lb. anvil; Hay Budden 194-lb. anvil; Trent Manville 200-lb, 50 & 75 lb. anvils; 52" cone anvil; Several forge tables, some w/blowers; Mounted forge on table w/hand blower; 25-lb. Little Giant trip hammer, old style; Full gear-drive forge; 30-lb. new style Kerrihard trip hammer; Kerrihard 30-lb. old style trip hammer; Large vise & stand; Green River step vise; Champion 20" camelback drill press; Grinder w/Pennzoil stand; (3) Champion #400 forge blowers; Champion elec. & gear-drive blowers; Midway gear blower; Stake anvils; Pexto block; Large swage block; Pair - buggy wheel soaking trays; 4-1/2" antique wooden bellows w/tube; Large stainless steel vat; Line shafts & hangers; Large asst. of tongs, hammers, punches, chisels; Manual shear; Forging coal.
WELDERS & TOOLS, COLLECTOR PICKUP: Lincoln Ranger 10 port. welder, Kubota diesel, on 2-wheel trailer; (2) Miller engine-driven welders, for parts; Hypertherm 1250 plasma cutter; Miller water cooler for tig torch; Heavy-duty gear-reduction chain hoist; 120-gal. upright 220 air compressor; 3-phase 120-gal. tank horizontal air compressor; Other compressors, for parts; Hydraulic tubing bender & dies; Makita & Evolution chop saws; New Milwaukee grease gun; Tool cabinets; Rockwell lathe; Rockwell 10" table saw; Walker 4T, floor jack; 20hp 3-phase elec. motor; Schumacher 2-wheel battery charger; Heavy-duty commercial grinder; Bench-mount chain-saw sharpener; Engine stand; Asst. of steel incl. plate & channel; (5) 6"x6" steel H beams, 10' & 12' long; Diamond plate; Several boxes grinding wheels; Saw blades; Shop vacs; Workbench; Handyman & hydraulic jacks; Blast heater; Large asst. of hand tools; John Deere LUC, belt-driven; **1950 3-window Chevy pickup, complete, titled, restoration project;** Car parts incl. Chev. 454 engine complete, 396 Chevy motor out of late 60's Chevelle; Zoomie headers for big block, small block Chev. headers; Chev. pickup for salvage; Chev. S-10 chassis; (2) Honda Mini-Trail 70's, for parts; Log chains; Anglehead grinder; Car ramps; Parts washer; Drill presses, free-standing & wall mount; Chains & binders; Power washer.

POLARIS RANGER, TRACTOR, TRAILER, LAWN MOWER: 2014 Polaris Ranger XP900, cab, heater, 4x4, winch, 2,300 miles; AC WD45, WF, new tires; Snap coupler 6' blade; Snap-coupler bale stabber; AC snap-coupler 3-bottom plow; Single-axle 12' tilt-bed trailer; Country Clipper zero-turn 22hp lawn mower w/60" deck; Huskee rear-tine tiller; Yamaha 225 3-wheeler; Shop-built wood splitter, 15hp engine on 2-wheel trailer; AC tractor-style riding lawn mower, for restoration; John Deere 110 lawn mower, for restoration; 28' single-axle semi-trailer, for storage; 16' flat-bottom alum. jon boat w/Evinrude 25hp motor & trailer; Alum. 10' flat-bottom boat; 12' alum. canoe; Pull-type lawn vac; Chief 350 outdoor motor; Iron-wheeled wagon; Fimco sprayer; Kawasaki Prairie 650 v-twin 4x4, for parts; 300-gal. LP tank; Stihl 021 chain saw; Stihl tiller; Stihl weed eater; Kencing incl. 2 rolls barbed wire & steel posts; Pile of 2" lumber; Shop-built smoker on 2-wheel trailer; **Harness - Complete set of horse work harness;** Other tack, girths, halters, ropes & saddles.
GUNS & SAFE: Ruger 77 stainless Varmint 22-250; Ruger 77 stainless 25-06; P. Beretta AL390 12-ga. Sport Trap; Stevens 820B 12-ga. pump; Marlin 81-DL 22-cal; Savage Arms hex-barrel 22 pump; Thompson Center 36-cal. Seneca; Thompson Center 50-cal. Hawken; ARMI S Marco 50-cal. Hawken; Knight NK-85 54-cal; Lyman Plains 54-cal. rifle; Jericho Model 21 22 revolver; Black powder pistol. Asst. of ammunition & reloading supplies.
GUN PERMIT REQUIRED FOR THE PURCHASE OF ALL FIREARMS. Shaw Walker 2-drawer key-lock fireproof safe, 28" w x 26" h.

DEER MOUNTS, WILDLIFE PRINTS: Mounted antler entangled buck deer, life-size, on stand; Mounted turkey; Wildlife prints from Larry Zach, Dave Barnhouse, George Dietz & Marion Anderson.

POOL TABLE, APPLIANCES & HOUSEHOLD ITEMS: American Heritage Regulation-size pool table, like new, w/claw feet; Whirlpool refrigerator/freezer; Samsung bottom freezer refrigerator; Kenmore side-by-side refrigerator/freezer; Countertop refrigerator; Kenmore Elite auto. washer, like new; Samsung elec. dryer; (3) Flat-screen TV's; (2) Chest-type deep freezers; Lazy Boy loveseat sofa w/end recliners; Blue Lazy Boy recliner; Glider rocker w/ottoman; 3-cushion hide-a-bed sofa; Tempur-Pedic king-size bed; Office chairs; Wooden bookcase; Metal shelving; Floor & table lamps; Fitness equipment incl. elliptical glide & recumbent bike; Metal-frame fiberglass picnic table; Patio tables; Hammock.

AUCTIONEER'S NOTE: This will be a very unusual & outstanding auction. The Cornelisons are moving out-of-state and selling everything. Be sure & check out pictures on the website - www.almartinauctions.com

TERMS: CASH/GOOD CHECK POSITIVE ID REQUIRED
 All property must be settled for before removal - All items sold as is where is - Not responsible in case of accidents. Announcements made day of sale take precedence over any advertising.

BRUCE & LEANN CORNELISON, OWNERS
AL MARTIN REAL ESTATE & AUCTION CO, INC.
 307 Church Street, Ottumwa, IA 52501
 Phone: 641-682-5465 www.almartinauctions.com

lation. Available Everywhere. No Hard Data Limits. Call 855-248-7966

NEED NEW FLOORING? Call Empire Today to schedule a FREE in-home estimate on Carpeting & Flooring. Call Today! 877-866-8797

NEED NEW WINDOW TREATMENTS? Call Empire Today to schedule a FREE in-home esti-

mate on blinds & shades. Call Today! 877-710-4641

Over \$10K in debt? Be debt free in 24-48 months. Pay a fraction of what you owe. A+ BBB rated. Call National Debt Relief 877-278-4861.

SelectQuote is dedicated to finding a Medicare plan right for you and your wallet. Call 844-361-4727 today and receive a free

quote from one of our multiple carriers.

Attention: Auto Injury Victims. If you have suffered a serious injury in an auto accident, call us! Our attorneys have the experience to get you the full compensation

you deserve! Call Now: 877-496-3293

BEAUTIFUL BATH UPDATES in as little as ONE DAY! Superior quality bath and shower systems at AFFORDABLE PRICES! Lifetime warranty & professional installs. Call Now! 844-980-3902

BOY SCOUT COMPENSATION

The Ultimate Wood Heat.



- **More Comfort** - Thermostatically controlled wood heat.
- **Peace of Mind** - Keep the fire outside and eliminate the dangers associated with indoor wood heating.
- **Save Money** - Wood is a renewable, inexpensive and often free energy source.

CAMPEN
Heating & Air Conditioning
573-288-8966
Canton, MO
CentralBoiler.com

TIMED ONLINE • NO-RESERVE FARM RETIREMENT AUCTION

BIDDING CLOSSES: MONDAY, AUGUST 2ND STARTING AT 10:00 A.M.

Items are located at the farm just south of the Pekin High School near Packwood, IA (Packwood is located 13 miles northwest of Fairfield, IA)



Highlights Include: IH 4366 4wd tractor, showing 6,915 hours; IH 4186 4wd tractor, showing 6,756 hours; IH 1066 2wd tractor, showing 5,382 hours; Farmall 560 diesel tractor, showing 3,500 hours; JD 3020 LP gas tractor w/ JD 148 loader, showing 5,977 hours; JD 4720 MFWD compact tractor, cab, sells w/ JD 400CX loader, 984 hours; Case-IH 2166 4wd combine, 3,119 eng./2,501 sep. hours; Case-IH 2166 4wd combine, 3,957 eng./2,810 sep. hours; Geringhoff "Rota-Disk 8 row 30" cornhead; Case-IH 1020 20' platform; Kinze 3500 8/15 row Interplant planter; Case-IH 415 28' mulcher; JD 726 28' field finisher; JD 400 30' rotary hoe; Glencoe 17' 13 shank disc chisel; Besler 20' 3-pt. rotary stalk chopper; Brent 774 grain cart; (2) Westfield MK100-71 swing away augers & others; Bush Hog 2620 20' batwing mower; JD MX6 6' 3-pt. rotary mower; JD 709 7' 3-pt. rotary mower; (3) Mack RS600L grain trucks w/ 22' grain boxes; 1974 GMC Astro 95 cabover semi; 1989 Wilson "Pacesetter" 43' hopper bottom grain trailer; Several pup grain trailers; 2003 Chevy 3500 4wd 4 door dually service truck, Duramax, 76,952 miles; 1993 Chevy 3500 2 wd 4 door dually service truck, 6.5 L diesel, 159,578 miles; 1994 Chevy 2500 4wd Suburban, 6.5L diesel, 137,777 miles; 1975 Olds Delta 88 Royale 2 door convertible, showing 45,646 miles; 1975 Chevy Custom Deluxe 20 2 wd pickup, showing 42,162 miles; 1974 Pontiac Grand Safari station wagon, showing 66,890 miles; 1975 Harley Davidson FLH1200 motorcycle, showing only 1,874 miles; 1996 Travel Supreme 40' 5th wheel travel trailer; 2008 TravAlong 7' x 12' dump trailer; Snowco 66' x 13' tilt bed trailer; Roose 6.5' x 10 tilt bed trailer; Cub Cadet "Volunteer" 4wd UTV, 5,859 miles; Quantity of tools & farm support items.

ROLAND & THE LATE ARLOINE McCREERY

Auction Managers: John Probasco (641) 856-7355 & Jim Huff (319) 931-9292

SULLIVAN AUCTIONEERS, LLC • TOLL FREE (844) 847-2161

www.SullivanAuctioneers.com • IL Lic. #444000107

Lake Street Real Estate Auction

Tuesday, July 20, 2021 at 5:00 p.m.

Winkler

33027 Lake Street, Macon, MO 63552



Directions to Auction Location: 33027 Lake Street, Macon, Missouri. Travel East on US Highway 36 from Macon 0.8 miles to Kellogg Avenue. Turn North for 0.8 miles then turn right on Lake Street for 2.2 miles to auction location on the left. Watch for signs the day of the sale.

Real Estate: This 3 bedroom, 1 bath, basement style ranch home sits on 2.4 acres

The real estate will sell promptly at 6:00 p.m. If you would like to schedule your personal showing, please call Scotty at 573-356-4405.

*See Terms and Conditions for Purchase of Real Estate below.

DOWN PAYMENT: 10% of the contract purchase price will be due upon acceptance of the Sales Contract. Personal or Cashier's Checks will be accepted. This is "AS IS, WHERE IS" and is non-refundable. **CLOSING:** Closing shall be within 30 days of the auction date.

Household Items: Frigidaire upright refrigerator/freezer; Hot Point electric dryer; Frigidaire washing machine; GE console stereo/turntable; 3 piece full size bedroom set;

Outdoor Tools and Equipment: Styrofoam incubator; wheelbarrow;

Antiques and Collectibles: Fantique walnut cupboard; oak wash stand; round oak style kitchen table and 4 chairs; oak 3 drawer chest of drawers;

There will be many more items at this sale too numerous to mention.



Scotty Kuntz 573-356-4405

Michael Cunningham 660-651-2288 • Paxton Pittman 918-316-7500

Personal Property Auction

Saturday, July 24, 2021 at 10:00 a.m.

Rita and the late Rich Davis

36245 US Highway 63, Excello, MO 65247



Directions to Auction Location: 36245 US Highway 63, Excello, Missouri. Located on US Highway 63 approximately 4 miles south of Macon. Watch for signs the day of the sale.

Vehicles and Trailers: Mirro Craft 14' aluminum boat, trailer and 25 hp Mercury outboard motor; 3' x 7' trailer

Antiques and Collectibles: antique oak drop leaf table; antique oak high back full size bed; oak claw and glass ball square table; blue Oriental dishes; light pink and silver Gold Standard porcelain China set, 11 dinner plates, 12 coffee cups, platter, serving bowls, coffee carafe, cream and sugar bowl, butter dish, platter, saucers, soup bowls; crystal pedestal bowl; other

glassware; 16 piece set of demitasse cups and saucers; glass tri-front lighted curio cabinet; antique oak vanity with beveled wishbone mirror; pressed back, curved arm rocking chair; child's rocking chair; older pictures and prints; antique trunks; antique school desk; oak double pedestal desk, has some damage; Ertl Ford die cast tractor; Allis Chalmers toy tractor;

Household Furnishings: Mauve upholstered rocking chair; table lamps; maple chest of drawers; various home decor; 5 piece sectional sofa with queen size hide-a-bed; miscellaneous end tables; Rainbow vacuum; Oreck shampooer; Christmas decor; Oster 4 quart ice cream maker;

Outdoor and Lawn Equipment: Simplicity 44" zero turn lawnmower; John Deere LX 188 mower, needs work; Craftsman rear tine tiller; John Deere STX46 riding lawn mower; lawn mower jack; yard roller; steel frame yard wagon with foldable sides; 3 point, 5' blade; 3 point scoop; dog kennel; pet supplies; flower pots

Tools and Equipment: Lincoln 225 AC welder; Craftsman 10 inch table saw; Charge Aire Pro compressor; back pack sprayer; car ramps; Johnred chainsaw; Remington pole saw; General 2100 PSI gas power washer; Delta miter saw; Craftsman 2 tier tool box; Craftsman tools; Kenmore water softener, new in the box; bench top drill press; C clamps; lots of miscellaneous hand tools; electric power tools; 2000 pound electric winch; floor jack; long handled tools; stain glass repair tools and kit; miscellaneous drill bits; wood machinist box

Sporting Goods: Uberti 45 revolver 4" barrel, like new; Remington model 700 50 cal with 3x9 Simmons scope; Browning made in Japan over/under 12 gauge; Remington 870 Express 12 gauge 2 3/4 shells or 3"; Winchester model 50 12 gauge semi-automatic; Remington brown nylon 66 22 LR; Ruger 10/22 22 LR, new in box; Remington shotgun stock, butt plate and receiver; Glock 27 Gen 4 40 cal pistol with 2 mags; Glock 22 40 cal 5 mags; Browning Buckmark 22 LR bull barrel; stainless handcuffs; miscellaneous holsters; 40 cal ammo, Mec shotgun reloader; hunting back pack; sleeping bags; miscellaneous hunting gear; scuba fins and mask set; clay thrower; portable shooting bench; Felt triathlon 82 bike, new tires; Look triathlon bike size large; Trex training bike; Mongoose XR250 mountain bike; Power X Next mountain bike; stationary bike; 10 foot sit on fishing Discovery kayak; 10 foot sit on fishing Sundolphin 10 kayak; kayak paddles; miscellaneous fishing poles

Firearms are not on location at this time, they will be onsite the day of the auction

There will be many more items at this sale too numerous to mention.



Scotty Kuntz 573-356-4405

Michael Cunningham 660-651-2288 • Paxton Pittman 918-316-7500

PUBLIC AUCTION

RONALD FUNK

DATE: SUNDAY JULY 11, 2021

TIME: 11:00A.M.

LOCATION: 17771 BLUEBIRD TRAIL KIRKSVILLE MO - EAST OF NOVINGER BETWEEN OLD 6 & NEW 6

DUE TO HAVING SOLD OUR HOUSE AND LAND, WE ARE MOVING OUT OF THE AREA AND WILL OFFER OUR MERCHANDISE AT PUBLIC AUCTION.

WATCH FOR SIGNS DAY OF AUCTION!

HOUSEHOLD: Hide-a-bed sofa, ottoman, wooden shelf, blue rocker recliner, Thomas organ, Singer sewing machine in cabinet, some figurines, wall shelf, bird house, BBQ grill, porch swing, small chest type GE freezer-like new, GE refrigerator, Haier dorm size refrigerator, Unican Sate USA made in Illinois, 2 metal storage cabinets, filing cabinets, iPad 2nd generation 16GB, new silk tripod for photography.

ANTIQUES: 25+ pieces of cast iron to include Griswold, Wagner, Lodge, skillets, tea kettles, and Dutch oven. Keen Kutter meat grinder and other grinders, Kraut cutter, 6 ladder back chairs over 100 years old, 2 large old hand saws, diesel type electric train purchased at Western Auto in Kirksville when Ron was a child still in original box, washboards, Coca-Cola cooler in wooden chest, lawn ornaments.

LAWN MOWER & EQUIPMENT: John Deere 4100 riding lawn tractor 3-point front wheel assist 5 suitcase weights hydro stat extra hydraulics, 5' King Kutter brush hog, Harrow, utility box, dump trailer, wheelbarrow, dump trailer, box scraper, John Deere 60" cut lawn mower deck, Warrior 200 Massimo Motor moped, 16' car trailer tandem axle, lawn seeder, game feeder.

TOOLS: Craftsman belt disc sander-like new, Craftsman 3500-watt generator, Stihl MS250 chainsaw 18" bar, leaf blower, tripod light, misc. hand tools.

SPORTING GOODS: Reloading press, lots of powder, bullets & primers, fishing rods and misc. fishing items.

GO TO JEFFRIES AUCTION ON FACEBOOK TO SEE PICTURES!

COOKSHACK WILL BE ON-SITE DAY OF AUCTION

STATEMENT DAY OF SALE TAKES PROCEDURE OVERWRITTEN AD

AUCTIONEERS NOTE

This is just a partial listing. This is an exceptional opportunity to buy quality merchandise that is like new condition and very clean.

JEFFRIES AUCTION SERVICE

Danny Jeffries
House 1-660-874-4590
Cell 1-660-342-1075

FOR SALE
AI Sired Angus Bulls,
14 & 18 Months Old.
Harold Trump
660-341-5730

Premium Metal Roofing



AW Metal Inc.
Metal Roofing Headquarters
641-664-3990 • awmetal.net



John Deere 4020 Tractor,
1969, 3600 hrs, 18.4x38,
power shift, dual hydr, Diff
Lock, original, \$17,500.



John Deere 4255 Tractor,
MFWD, 6900 hrs, 95%
Firestone duals, sharp,
\$48,950.

Call 573-881-3557

FUND - Anyone that was inappropriately touched by a Scout leader deserves justice and financial compensation! Victims may be eligible for a significant cash settlement. Time to file is limited. Call Now! 866-395-0568

DONATE YOUR CAR TO CHARITY. Receive maximum value of write off for your taxes. Running or not! All conditions accepted. Free pickup. Call for details. 855-986-8602

FREE AUTO INSURANCE QUOTES for uninsured and insured drivers.

Let us show you how much you can save! Call: 888-320-7567.

YOU MAY QUALIFY for disability benefits if you have are under a doctor's care for a health condition that prevents you from work-

ing for a year or more. Call now! 877-430-9760

PROBLEM CREDIT REPORT? Lexington Law works to challenge inaccurate negative items including: identity theft, collections, late payments, liens and more

from your credit report. Call for a free credit repair consultation: 855-622-0369. John C. Heath, Attorney at Law, PLLC, dba Lexington Law Firm.

SAVE BIG on HOME INSURANCE! Compare 20 A-rated Insurance

ESTATE AUCTION

SUNDAY, JULY 11TH, 2021 @ 1PM

**MARION COUNTY FAIRGROUNDS/
FLOWER CITY PARK (CATTLE BARNS)
PALMYRA, MO**

**TRUCK
4 WHEELER
GUNS
TRACTORS/ MOWERS**

**BOATS
HUNTING/ FISHING
SHOP/ YARD TOOLS
AND MUCH MORE.....**

Auctioneer Notes: This is a smaller sale but very nice clean items.



**SELLER:
PAUL DOELLMAN ESTATE**

More pictures and information at:

www.hammondwatsonauctionservice.com

**Hammond & Watson
AUCTION SERVICE**

Lionel Hammond & Kirk Watson

573-406-3877

PALMYRA MO

Like us on FB



Look us up on
Auction Zip



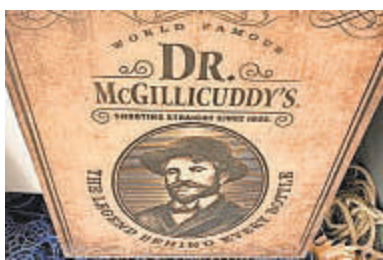
KM-70KDE03494

Brookfield, MO, Real Estate and Personal Property Auction

Saturday, July 17, 2021 at 10:00 a.m.

Gary Biswell

547 1/2 Prairie Street, Brookfield, MO 64628



Directions to Auction Location: 547 1/2 Prairie Street, Brookfield, Missouri. From US Highway 36 at Brookfield take Highway 11 North approximately 1.2 miles. Turn right on East Park Street for approximately 0.3 miles. Turn right on East Prairie Street to the auction location. Look for signs the day of the auction.

Real Estate: Sitting on a 60' x 40' lot, this property includes a 2 car garage with electricity, 28' x 32' concrete floor and a

10' x 12' portable building. This would be a great place for all of your projects or to store your collectibles.

The real estate will sell promptly at noon. If you would like to schedule your personal showing, please call Scotty at 573-356-4405.

***See Terms and Conditions for Purchase of Real Estate below.**

DOWN PAYMENT: 10% of the contract purchase price will be due upon acceptance of the Sales Contract. Personal or Cashier's Checks will be accepted. This is "AS IS, WHERE IS" and is non-refundable. **CLOSING:** Closing shall be within 30 days of the auction date.

Tractors, Tools and Outdoor Equipment: 2 David Bradley walk behind tractors; walk behind tractor implements; Tradesman 10' portable table saw;

Antiques and Collectibles: Pepsi Cola cooler; #40 Daisy churn; 3 piece Pyrex nesting bowl set; antique bird cage with stand; Peet Bros. Mfg soap crate; LOTS MORE

Household Items: Upper kitchen cupboard; new in box fire pit; new in box rolling cart coolers

There will be many more items at this auction too numerous to mention.



Scotty Kuntz 573-356-4405

Michael Cunningham 660-651-2288 • Paxton Pittman 918-316-7500

PUBLIC AUCTION

We will sell the following items for Steve Brookhart, Janet Hawkins, the late Harvey and Martha Hartung Estate and others located at **CHRISTY'S AUCTION BARN, 126 EAST SANDERS STREET, LA PLATA, MO** on

SATURDAY, JULY 17TH, 2021 @ 10 A.M.

HOUSEHOLD: Large white Signature upright deep freeze – white Crosley chest type deep freeze – Kenmore portable dishwasher – Frigidaire 110 window AC – queen size bed complete – full size bed complete – set of wooden bunk beds – wooden dining table w/2 leaves, 6 chairs, & matching hutch – 2 rocker recliners (one is leather) – loveseat hide a bed w/matching foot stool – 54" Samsung flat screen TV – curved glass China cabinet w/light – chest of drawers & dressers – large sleigh grandfather's clock – brown floral hide a bed divan – small round wooden dining table – wooden book shelves – 2 piece corner desk – wooden kneehole desk – cedar chest – Kenmore & Singer sewing machines in cabinets – baker's rack – small buffet w/marble top – glass door TV cabinet – coffee and end tables – two 2 drawer wooden file cabinets – bedding & linens – wooden rocker – Farberware mixer w/bowl – pictures & frames – pots & pans – silverware & kitchen utensils – several boxes of books & records – 2 Bissell electric sweepers – small electrical appliances – canning jars – Tupperware – Corning Ware – 2 large sets of Rose China dishes – lots of odd & end dishes – 2 globes – pressure cookers – king size mattress – other household items too numerous to mention. **ANTIQUES & COLLECTIBLES** – Oak drop front desk – oak library table – treadle sewing machines – 3 oak wooden straight chairs – oak dresser w/mirror – metal bed – cement colored boy horse tie – iron legged stands – pony cart – bird cages – large grindstones – wicker stool – oak wall phone complete – 2 good 21 1/4" x 40 1/4" stain glass windows – flat top & camel back trunks – iron skillet & other iron ware – Dazey #40 glass churn – quilts & quilt tops – ceramic Christmas tree – 5 gallon cream can – costume jewelry – small spoon collection – three 6 gallon stone crocks – glass kerosene lamps – nest of Pyrex bowls of various colors – brown crock bowl – pheasant mount – MFA memorabilia – pitcher & bowl – chalk rooster & dogs – Wm. Rogers silverware – Liberty blue China dish set – wooden nail keg – water sprinkler cans – coal buckets – lots of other antiques & collectibles too numerous to mention. **AMMUNITION** – 12 & 20 ga. shotgun shells – 12 ga slugs – a few 410 & 357 shells – 22 rifle shells. **SHOP TOOLS & MISCELLANEOUS ITEMS** – Snap-On ratchet wrenches – Snap-On ratchet & sockets & wire nippers – crescent wrenches of all sizes – set of King Dick wrenches – several JC Penney open & box end – ratchet wrenches – 3/8" & 1/2" drive ratchets & sockets – Craftsman torque wrench – Craftsman 2 piece, 15 drawer roller tool box – 3T floor jack – large assortment of hammers, open & box end wrenches – jack stands – battery charger – c-clamps – assortment cabinets – 2 metal tool boxes – small wooden table w/vise & grinder – stainless steel double wash tubs – vet examination table w/stainless steel top – Mantis tiller – bicycles – several air pigs – plastic & metal shelving – lawn chairs – lawn & garden tools – set of driving harness – nuts & bolts – pet carrier – lots of other miscellaneous items too numerous to mention. **AUCTIONEER'S NOTE** – Please plan to attend this very large auction with both buildings full of items. **TERMS: Cash/Check w/ID - Lunch on Grounds**

Christy's Auction Service

La Plata, MO 63549 660-341-4531
See Websites for Photos: www.dchristyauctions.com
& Christy's Auction Service on Facebook

Auctioneers – David Christy
Jason Wood – 660-341-7884 Greg Smoot – 660-341-5175

THE NEMO TRADER

CLASSIFIED COUPON

Clip This Coupon Out of This Week's NEMO Trader and run
2 CLASSIFIED ADS FOR \$5.00

Picture Ads Not Included with Coupon! Call For Pricing!

(Each Ad Must Be 20 Words or Less.)

~20¢ per word over 20 words~

Cash NOT ACCEPTED

Check or Money Order Only

Ad No. 1: (20 words or less)

Ad No. 2: (20 words or less)

**YOUR CLASSIFIED AD WILL BE READ IN OVER 19 COUNTIES, IN 3 STATES!
BY COUNTLESS BUYERS!!!**

**TO RECEIVE THIS RATE: COUPON MUST BE MAILED IN
ALONG WITH YOUR PAYMENT!**

THE NEMO TRADER, P.O. Box 190

KIRKSVILLE, MO. 63501 ~ 660-665-8500



James L. Johnston & Jeffrey JJ Johnston
AUCTIONEERS
573-473-4904 • 660-291-5921 • 573-239-6056

HUGE Multi-Estate & Farm Retirement Auction

Sat., July. 24th • 10 am
Johnston Auction Center, Hwy. 24, Madison, MO



EQUIPMENT: John Deere 4430 Tractor w/loader, Allis Chalmers 6080 Tractor, Int. 606 gas tractor w/loader, Hesston 8465 Baler, Hay Trailer, Vermeer Rebel TM700 Haybine, New Idea 5409 9' Disc Mower; 8hp Briggs & Stratton wood splitter; Landpride 3pt 7' blade; John Deere 702 Wheel Rake; Oliver 281 manure spreader; Case 8' drill with grass seed box; AC 6 row no till planter; Tye 3pt press wheel drill; 2- steel flatbed wagons; 300 gal. gas tank and stand; 18 ft. disc; 3 pt. post hole auger; trailer frame; 2 disc mowers for parts; 13ft. Brady field cultivator; 4 btm semi-mtd plow; Vermeer 2 prong bale spear; 3pt. 10' Glencoe chisel plow; & more



COINS: Approx. 150 Lots Gold and Silver Coins and Bank Notes. Selling @ Approx. 1 p.m. Visit JAMESJOHNSTONAUCTION.COM for complete coin list.

GUNS: Colt 1899 New Army and Navy .38 cal; Colt 1904 New Army .38 cal; Colt Police Positive .22 cal; Colt .22 cal bolt action (Colteer); Colt .22 cal semi-auto Courier; Thompson .50 cal Black Powder.

ANTIQUES & COLLECTIBLES: Betty Boop; designer handbags; Depression Glass; Figurines; knick knacks, bric-a-brac; numerous items from Four Estates.

FURNITURE: Vintage, Antique & Modern Furniture. Maple, Oak, Hardwood and more! Couch sets, bedroom sets, dining room sets, small appliances, vintage lamps, mirrors, night stands, mattresses, dressers, desks, coffee tables.

MISC: 12 bales Alfalfa Hay; 3 propane tanks; 200+ sheets of tin; dish-ware, kitchenware; decore galore! Contents of 3 homes.

TOOLS: Hand tools, power tools

LAWN & GARDEN: Cub Cadet LTX1045 lawn mower; Cub Cadet tiller; Ex-Mark Commercial ZTR mower; Craftsman Push-On-Irr. 9' Jon Boat

Many More Items Too Numerous To Mention!



companies. Let us do the shopping & save you time & money. Get a quote within minutes. Average savings of \$444/year! Call 877-594-0878. (M-F 8am-8pm Central)

Attention Viagra users: Generic 100 mg blue pills or Generic 20 mg yellow pills. Get 45 plus 5 free \$99 + S/H. Guaranteed, no prescription necessary. Call 877-801-0749

FOR SALE: John Deere 2940 Tractor, 5400 hrs, cab, air, new rubber, estate tractor, \$14,500. Call 573-881-3557

FOR SALE: Ford 1310, good paint and sheet metal, excellent rubber, w/60" Finish Mower, \$3750. 660-341-8089

FOR SALE: New Skid loader attachments. Forks, Buckets and Bale Spears in Stock. No Sunday Calls 660-988-7385

HOME GROWN turnips 3#/\$2, zucchini and cucumber 5/\$2, cabbage head \$1, new potatoes 3 qt/\$5. Beans and beets \$2/qt, Broccoli 2/\$1, cauliflower. Tomatoes buy box or 3#/\$7 or \$2.50/pound. Schmucker Produce, 7 miles North of Kirksville to Ft. Madison Way, 1/2 mile East.



Danny & Katie Hochstetler AUCTION

DIRECTIONS: From Downing, MO go north on RT N for 6 miles then go west on Swanston RD to site. Watch for signs!!

SATURDAY, JULY 24TH 2021 @ 9:30 AM

MACHINERY: Isuzu Thermo-King 40 hp diesel JD 6 cyl. diesel power unit on gear Inersol Rand 4 cyl. diesel JD 4 cyl. engine Honda 11hp White Horse 627 ground driven hyd. cart 2 Pioneer auto guide fore carts shop built wide wheel cart MC 28" threshing machine MC #9 mower w/ 7' bar 2 MC #7 mowers w/ 7' bars 6 MC #9 mowers w/ 6' bars MC #7 mower w/ 6' bar MC #9 mower for rebuilding NH 258 rake w/ dolly

27799 Swantson RD.

Downing, MO 63536

CLIPPER #8 BELT LACER

SNAPPER 36" WALK BEHIND LAWN MOWER
WALK BEHIND FORK LIFT W/ 5000 LB CAPACITY

FARM & SHOP RELATED ITEMS: Powder River head chute Honda rear tine tiller fuel tanks 500 gal. air tank 11-10' concrete bunks 3 bale rings Bachtold & Roof mowers 1 ton grain bin 2 ton bulk bin on wheels DAIRY EQUIPMENT: Sunset 300 gal. SS milk tank milk tank w/ R22 freon frame w/ Inersol Rand 4 cyl. engine vacuum pump & cooling unit (nice setup, sells in separate pieces) 2-milkers (1 SS & 1 plastic) SS buckets SS strainers SS wash vat single goat milk stand

DEWALT 12" AIR SLIDING MITER SAW
ROCKWELL 18" PLANER
GRIZZELY 8" JOINTER

lots more items online at www.foxauctionservice.com

FOX AUCTION LLC

JR. (ALLEN) FOX: 660-341-1453 WILSON FOX: 660-216-9227



McAfee/Hayes Auction Service, LLC

375 S Johnson • Kahoka, MO
660-727-3796

www.mcafeeauctionservice.com

Clark County, MO

LAND AUCTION

Sale conducted at the CARE Building located at 451 N. Vine Street Kahoka, MO

HIGHLY PRODUCTIVE TILLABLE LAND

77 ACRES

2 TRACTS

Thursday,
July 22ND
at 6 PM

Lying in Sect. 34,
Twp. 65N, R7W



OPEN HOUSE: SUNDAY JULY 11TH 1-2PM

RONNIE STUTZ ESTATE

Joann Markus Executor/ Crystal M. Hawk, Rep. Att.



McAfee/Hayes Auction Service, LLC

375 S Johnson • Kahoka, MO
660-727-3796

www.mcafeeauctionservice.com

RESIDENTIAL REAL ESTATE & PERSONAL PROPERTY AUCTION

SATURDAY JULY 24TH - 10 AM

Sale conducted onsite located 3/4 mile Southwest of Revere, MO on Highway C. (Address 24989 Highway C Revere, MO)



OPEN HOUSE: Sunday July 11th 3-4 pm

Take advantage of this rare opportunity to purchase a very well built 4063 sq' total living space 3-4 bedroom rural full brick home. Home Features 2545 sq' on main level, 1518 sq' finished basement, 5 bathrooms, 2 kitchens, geo thermal and electric radiant heat, 2 fireplaces, LP whole house generator and much much more. Other improvements: 42X72' pole building w/ cement floor and electric. Sitting on 2.5 +/- acres.

Also Selling a Nice Selection of Antiques, Collectibles, Household, Misc., Boat and Other Useful Items.

CHARLES & JERI BRAXTON TRUST

CHARLES BRAXTON TRUSTEE

WANT TO BUY: 15' or 12' Brush Hog in real good condition, 540 PTO. 660-676-9199

FOR RENT: Near Ethel 30 acres for pasture and hunting. 660-341-9081

FOR SALE: Firestone 18.4 x 38 Super all traction radials, brand

new mounted on rims 1/2 price of new, can deliver, best offer. 217-357-1324

FOR SALE: 2004 JOHN DEERE 625F, GREEN PLATFORM, hydr-a-flex, kept inside, field ready. \$12,900. 660-299-0615

HUNTING EQUIPMENT sale, 35+ box, bow, hay bale, ladder stands, hog trap, deer and turkey feeders, deer and goose decoys. All used, great condition. 641-208-7353

FOR SALE: John Deere 285 Disc mower, 9', like new, \$7,950. Call 573-881-3557

FOR SALE: JD 925 Platform full fingers, Poly Snouts equipped with single point hookups, \$6000. 217-242-6984

FOR SALE: 1967 GTO, 1969 GTO HT and convertible, 1970 GTO cars need rebuilt. 660-734-8368.

FOR SALE: Ford 3000 gas, good sheet metal and paint, good tires, live PTO, power steering, \$4500. 660-341-8089

FOR SALE: Used garden tillers Troy-Bilt, BCS and other sizes. DR Brush mowers. Kahoka, MO 660-216-1809

Moberly, MO, Real Estate and Personal Property Auction

July 15, 2021 at 5:00 p.m.
Patrick Craig and the late Janet Craig Estate
1011 Bond Street, Moberly, MO 65270



Directions to Auction Location: 1011 Bond Street, Moberly, Missouri. From US Highway 24 in Moberly, head South on Emerson Street for approximately 0.6 miles. Turn left on Bond Street 0.2 miles to Auction. Look for signs the day of the auction.

Real Estate: . This 3 bedroom, 2 story, Craftsman style home made with Moberly brick, has 1 1/4 bath and an unfinished basement. The home has the original hardwood floors throughout, a large front porch and a

large back deck. It also has a 40 gallon natural gas water heater(2008), gas furnace (1995), central air conditioning and includes a two car detached garage and a fenced in backyard.

The real estate will sell promptly at six o'clock. If you would like to schedule your personal showing, please call Scotty at 573-356-4405.

*See Terms and Conditions for Purchase of Real Estate below.

DOWN PAYMENT: 10% of the contract purchase price will be due upon acceptance of the Sales Contract. Personal or Cashier's Checks will be accepted. This is "AS IS, WHERE IS" and is non-refundable. CLOSING: Closing shall be within 30 days of the auction date.

Household Items: Kroehler chair, couch and loveseat; La-Z-boy recliner; Sony TV; Sony surround sound system; electronic chime mantel clock; miscellaneous end tables; metal computer desk; roll around office chair; octagon dining table with leaf and 6 chairs; lots more.

Antiques and Collectibles: Copper boiler; maple drop leaf secretary; occupied Japan figurines; hen on nest; Hobnail covered compote glassware; antique side table; Carnival glassware; other miscellaneous glassware; Baldwin Acrosonic piano; lots more

Musical Equipment: Peavey classic chorus 212 guitar amp;

Outdoor Tools and Equipment: Troy-bilt variable speed push mower; metal patio table; 4 metal cane wrapped chairs (need work); miscellaneous long handle tools;

There will be many more items at this sale too numerous to mention.



Scotty Kuntz 573-356-4405

Michael Cunningham 660-651-2288 • Paxton Pittman 918-316-7500

RM-100618477

SHELBY COUNTY, MISSOURI REAL ESTATE

AUCTION

96[±] ACRES

FRIDAY, JUNE 25TH AT 10:30AM

This is one of those tracts that don't come along often. It offers great hunting with some fantastic opportunities at pasture and tillable acreage. As a prospective building site, the views and privacy, all in a great community are a hard to find combination.

LAND INSPECTION:
Walkover Inspections
are Welcome Any Time.

AUCTION LOCATION:
American Legion
520 E. Maple St.
Shelbina, MO 63468

- FSA 55.6 Crop Acres
- Great Timber
- Manicured Pasture
- Awesome Hunting
- One of the best building sites in the county!

Attention Farmers & Investors! This is A Fantastic Opportunity!



OWNERS: Lackey Brothers
Contact:
Anthony Peoples 660.651.6501

www.peopleslandco.com

SAYRE AUCTION, LLC

Onsite live auction, SATURDAY JULY 17TH 11am

812 West Wood St. Brookfield, MO 64628

Watch for Sale Signs

OWNER
ESTATE OF CHARLETTA SHIFLETT

REAL ESTATE: Move in ready home with 3 bedrooms, 2 baths, large living-family room, nice size kitchen with built in cabinets, laundry room, original oak hardwood floors, approx. 1,156 sq.ft., one level with unfinished basement with bathroom. 12'x36' attached garage. Nice size front porch, 12'x12' storage shed in back yard. Wessington House natural gas HVAC unit. Natural gas hot water heater.

LARGE LOT: Also selling separate, 190'x240' empty lot across street from house. Real estate sells at 12 noon. 10% down with signed contract day of sale, balance at closing at professional land and title. To view property contact Shawn 660-734-8782



JEWELRY: 2 ring platinum & diamond wedding set; white gold marquise with multi diamonds; 2-14qt yellow gold rings multi diamonds; 14qt yellow gold ring w/green sapphire and multi diamonds; yellow gold ring w/blue sapphire stone; pearl rings; mothers ring; pearl necklace with matching earrings; pearl necklace; opal necklace with matching earrings; Carletta's jewelry is top of the line appraised jewelry. Too many to list individually, we will have some costume jewelry.



APPALIANCES-FURNITURE-HOUSEHOLD: Kenmore elec. Stove; Frigidaire refrigerator; Amana refrigerator; Maytag elec. Dryer; Kenmore elec. Dryer; Amana small chest type deep freeze; 3pc queen bed room set; 4pc full size bedroom set; 3pc full size bedroom set; overstuffed 3 cushion sofa; rocker recliner; 2- overstuffed recliner's; oak square table; hall cabinet; oak creole cabinet; oak claw footed kitchen table w/6chairs; oak curved glass dish hutch; large oak cabinet; Hamilton grandfather clock; coffee and end tables; lamps; pots and pans; linens; quilts; blankets; toaster oven; carper shampooer; silverware; old cookbooks; Noritake dishes; ladies scarfs; ladies wigs; head mana can's; wash bowl on stand; precious moment's; milk glass dishes; ladies purses; lefton china.



TERRY REDLIN PRINTS-SAFES-TOOLS-MOWER: Winter Wonderland and Heading Home prints by Terry Redlin; Railway express agency safe; well's fargo safe; old Brunswick snooker table (fair shape); shovels; rakes spades; lawn tools; 3 galvanized water can's; Craftsman T2200 riding lawn mower Briggs & Stratton 19 hp motor; murray straight shaft weed eater; lawn chairs; wrenches; socket's; 2- metal cabinets; 6' aluminum ladder; patio table; concrete yard ornament's.

NOTE: Carletta and (Glennell) were recognized in their community for their support in local events. They bought and donated the very best. This is a partial listing, still going through boxes. Statements sale day supersede printed material. Ma's Sugar Shack will be there.

SAYRE AUCTION, LLC

"If It's For Sale We Can Sell It" • Family Owned & Operated Since 1978!

www.sayreauction.com

Shawn Sayre 660-734-8782

Jordan Sayre 660-413-3230

Bill Sayre 660-734-0827



Sugar Creek Lake AUCTION

COUNTY ROAD 1310 - MOBERLY, MO

FRIDAY, JULY 16, 2021 @ 10 AM



2580 CR 1310: Large modern ranch home on 2.5 +/- acre corner lot, 2 car attached garage, ground source heat, 2 main level bedrooms, main level laundry, large finished basement, vaulted ceilings, covered rear patio and front porch - 40x50' Heated shop

2496 CR 1310: 1,200 SqFt, 3 bed, 2 full bath home on approximately half an acre lot, vinyl siding, parquet flooring, fireplace, covered rear deck, utility shed, older barn at rear of lot

2616 CR 1310: Approximate 2-acre lot, half open/half forested, very private and visible only from the road - Utilities & sewer available

Tractor, Equipment, Vehicles, Carport, JD Mower: (Sells 12-45) Kama TS354C Loader Tractor w/ FWA, 934 hrs, diesel, Koyker loader - 5' 3pt box blade - International 6' sickle mower - Excellent John Deere X540, 54", power steering, hydrostat, 269 hrs - 1974 Volkswagen Beetle, fantastic restored condition - 1992 Chevrolet S10 Blazer 4x4, 154,xxx miles, 4 door, V6, clean - 1996 Chrysler Town & Country Limited, 127,xxx miles, clean - 1988 Chevrolet 1500 Truck, 2WD, step side, needs engine work, solid truck - 2014 Aluma AE46 cargo trailer, 4' x6', motorcycle type - 14' Homemade utility trailer - Nice 12'x18' carport to be removed

Shop Tools, Lawn & Garden: Excellent Ingersoll-Rand T-30 air compressor, 220v - Lincoln AC-225 welder - Hobart Handler 135 wire welder w/ cart - Chicago Elec Arc 180 welder - Chicago Elec 230 spot welder - Foley Belsaw 12 1/2" planer, 220v - Good Skat Blast sand blasting cabinet, self-contained - HD drill press - Good machinist tools by Starret, calipers, mics, etc - Greenleaf milling machine bits - Cherry picker - Engine stand - Steel tables - Jack stands - 8' fiberglass ladder - Tip sand blaster - Floor jacks - Craftsman grinder on stand - Metal band saw on stand - 20 ton shop press - Husky

elec. power washer - Bostitch pancake compressor - Porter Cable reciprocating saw, brad and finish nailers - Dremel - Porta power - Pneumatic tools - Power woodworking tools - Many hand tools, i.e. wrenches, hammers, pliers, screwdrivers, ratchets, socket sets, etc. - DeWalt 7730 radial arm saw - Delta compound miter - (3) Shop Smith systems - 6 Sections of scaffolding - Troy-Bilt 4 cycle trimmer w/ attachment - Cub Cadet 60 riding mower w/ fiberglass body - Chapin 20v backpack sprayer, like new - Fishing tackle

Modern Furniture & Appliances: Nice oak 5 pc king bdrm suite - Maple double twin bedroom set - Excellent oak dining table w/ 8 chairs and matching hutch - Hardrock maple 4 pc full bedroom set - Justice sofa - Rocker recliners - Glider rocker - Flat TV's - Rolltop desk - Oak sewing caddy - Oak kitchen table w/ roll about chairs - Reclining sectional sofa - 4 Oak swivel bar chairs - Park benches - Unlisted furniture - Nice Whirlpool washer/elec. dryer

Antiques & Collectibles: Oak ice box - Vtg Harmony Reso-Tone banjo w/ case - Crocks & other stoneware - Bakelite butterscotch flatware - Some Fenton and Carnival glass - Vtg wicker hamper - Pyrex wheat pattern - Shawnee Korn King - Cobalt glass - Comic books - Primitive immigrant type chest

BOBBY BLADES REVOCABLE TRUST
Jennifer Deck - Debra Kirkley - Trustees



IMAN AUCTION COMPANY

660-788-4298 | 660-414-7830 | 660-388-6235

FOR SALE: JD D140 Garden tractor, new belts, blade & seat, \$1000; JD 345 Garden tractor, new seat, 54" deck, good condition, \$1500; Case 730 tractor, wide front, needs starter repair, \$1500. 660-341-2492

WHITETAIL INSTITUTE food plot seeds in stock at Whitetail Seed and Supply, 14136 State Hwy 3, LaPlata, MO 63549, 3 South.

FOR SALE: 2017 Honda Ruckus, only 200 miles; 2002 Kawasaki 650 Prairie, great condition; 2014 Yamaha F-25 HP tiller outboard, electric start, like new, excellent condition. 641-208-7353

Feed for all your needs. Patriot horse feed, cattle mineral, chicken feed, Showtime dog food. Feed Store, Hwy 156, LaPlata

WANTED TO BUY: Harley Davidson's, any year, any condition, cash money. Days 660-263-1356 or 660-537-0068

FOR SALE: John Deere 6200 Tractor, MFWD, open station, 6000 hrs, power quad, with 640 Loader, \$25,500. Call 573-881-3557

WANTED TO BUY: Farm Machinery and Estates. Call James L.

Johnston. 573-473-4904

FOR SALE: Ford 1520, w/Ford loader, hydrostat, 4x4, excellent paint and sheet metal, good rubber, \$9000. 660-341-8089

Wevers Outside Wood Furnaces a dealer for Heatmor Stainless Steel Outside Furnaces, have an assortment of parts, line, and etc. Taking orders for new outside wood furnaces. Used 120 furnace, burns wood or coal, has shaker grates, for \$5,550. Call 660-423-5242, cell 660-216-9885. Open 6pm-9pm Monday-Friday, Saturday anytime, call first.

FOR SALE: New 3 pt. tillers, heavy duty, gear driven, 7' to 10' starting at \$3050. 660-874-4455

PASTURE AND HAY GROUND Needed around Adair & Knox County. Please Contact 660-216-5887 or 417-773-2507

FOR SALE: 2010 Case 8120 Combine, 2975 HR -2097 HR, NO DEF, RWA, DIF Lock, 620 Drive Tires, 28 Steer Tires, luxury cab, clean machine, \$95,000. 641-895-8014

FOR SALE: Fish for stocking ponds - Catfish, Grass Carp, Crappie, Blue Gills, Red Ear, Bass, and

Minnows. Heindselman Family Farms, Call Greg 660-341-5692

FOR SALE: Tomatoes, Cucumber, Zucchini, Potatoes, Onions and Green Beans. Located at Kauffman Produce 11538 Iceberg Ave LaPlata MO 63549. Will also be at the LaPlata Farmers Market every Wednesday from 4 pm to 7 pm

FOR SALE: Spices, and Seasoning, Farm Dust, Honey Garden Seeds, Homemade Candy. New Supply of Greeting Cards, Wooden Handles, Lamps & Chimneys, some Aladdin, S.S. Kitchen Wares, Mixing Spoons, Kitchen Towels & Clothes, Some Glassware. Train Track Candies 11538 Iceberg Ave, LaPlata, MO, 3rd lane to your left.

HANDYMAN: Install interior and exterior doors and windows, siding, decks, showers and toilets, flooring and drywall. 660-956-2189.

FOR SALE: John Deere 569 Baler, net, 1000 rpm, big tires, 16,000 bales, new belts, field ready, will trade, \$17,500. Call 573-881-3557

DIRT WORK All types of excavation, reclaiming overgrown fields, including CRP and WRP. Building site preparation, terrace and

tiling maintaining and creating new trails and crossings, rock hauling, Food plot development and maintenance. Leveling and grading, wetland construction and maintenance. Pond and lake cleaning and construction. Call for quotes. 660-342-2701

BUYING Used Mobile Homes. Porter Homes 573-231-6667

FOR SALE: 1/2 Border collie pups will make great farm dogs! Will be weaned with puppy shots and dewormed and ready for a home by 4th of July, \$150 OBO. Contact Regina 660-332-4026

Home Grown Tomatoes, Turnips, Green Onions, Zucchini, Cucumber, Potatoes. Schmucker Produce 7 miles north Kirksville to Ft Madison Way East 1/2 mile

L&S NEMO AUCITON Come join us the first Saturday of every month at 11 am for our SMALL ANIMAL AUCTION. Call Lee at 660-988-3818 FOR CONSIGNMENTS, Merchandise Auction 3rd Saturday of the month.

FOR SALE: Cute and very playful Lab mix puppies, black w/some white, ready to go on 7/9/21. 660-373-2552

FOR SALE: Male 1/2 Rottweiler 1/2 Pitbull, black and Rottweiler colored, \$300. Diane 515-370-2833

WANTED TO BUY SOON: Older big round baler, field ready, 540 PTO, equal to Vermeer Model F or G. My hay ground is getting weedy now. Call 217-743-5226 ask for Carrol

HOME GROWN tomatoes, also by box, cucumber 5/\$2. Zucchini Squash 5/\$2, turnip 3#/\$2. Green onion 2 bunches for \$2.50. Large, sweet onion 2/\$1, new potatoes 3 quart/\$5. Green Beans. Schmucker Produce, 7 miles N of Kirksville to Ft. Madison Way, 1/2-mile East

WANTED 500 Bushel Ear Corn 217-656-3944 or 217-242-4344

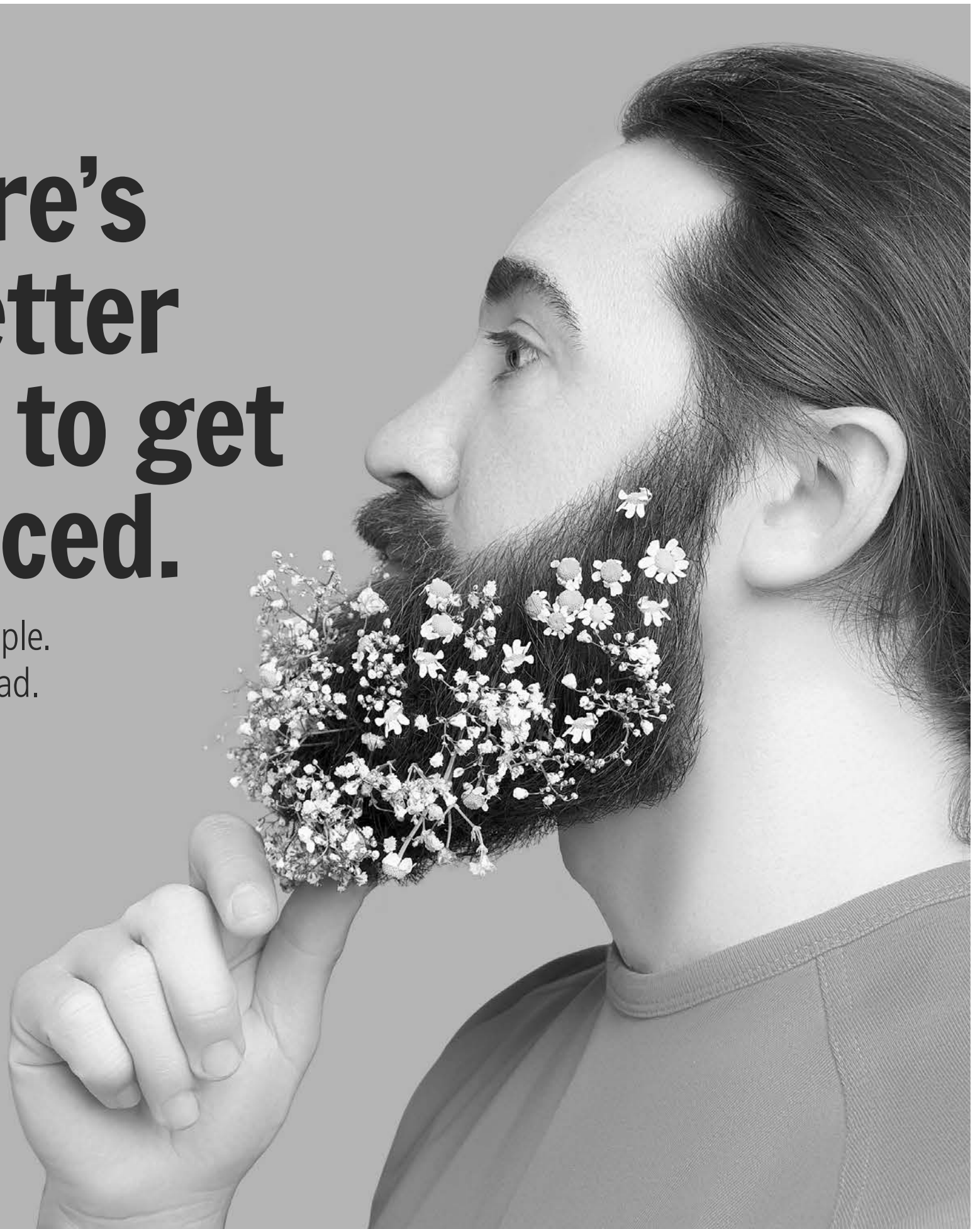
FOR SALE: Ford 5000, good paint and sheet metal, new tires, Live PTO, power steering, \$6500. 660-341-8089

FOR SALE: John Deere 6145 M Tractor, MFWD, 3485 hrs, new rubber, triple hydr, 16 speed, \$69,500. Will trade. Call 573-881-3557

FOR SALE: 12-volt low impedance electric fencer, 30-mile Parac brand, USA made, like new box

There's a better way to get noticed.

Keep life simple.
Take out an ad.



and manual. Elmer, MO 660-486-3359.

FOR SALE: 100 Louis L'Amour books and 20 Zane Grey books. 660-332-7842

WANTED TO BUY: small, diesel wheel loader, with a lifting capacity of at 3000 pounds. No Sunday calls. 660-639-2207

FOR SALE: 1967 C-30 Chevy grain truck with dump box. Looks and runs great. Argyle, IA. 319-470-0277.

FOR SALE: 300 Briar Horses in excellent condition, 50 year collection, buy one or all. 660-676-9199

FOR SALE: 1976 Trans Am \$3000; 1966 Catalina convertible \$2500; Chevelle 12 bolt rear \$500; 454 \$500. 660-734-8368.

COMPLETE LINE livestock feed, all-stock, 3-way, corn, oats, hog

feed, mineral tubs and more. Feed Store, Hwy 156, LaPlata

WHITETAIL INSTITUTE 30-06 tall tine mineral archery supplies and more. Whitetail Seed and Supply, 14136 State Hwy 3, LaPlata, MO

WANTED TO BUY: Harley Davidson's, any year, any condition, cash money. Days 660-263-1356 or 660-537-0068

FOR SALE: New 3 pt. tillers, heavy duty, gear driven, 7' to 10' starting at \$3050. 660-874-4455

FOR SALE: Fish for stocking ponds – Catfish, Grass Carp, Crappie, Blue Gills, Red Ear, Bass, and Minnows. Heindselman Family Farms, Call Greg 660-341-5692

FOR SALE: John Deere 40 Manure Spreader, very little use, shedded, end gate extra sides, \$3,950. Call 573-881-3557

HANDYMAN: Install interior and exterior doors and windows, siding, decks, showers and toilets, flooring and drywall. 660-956-2189.

FOR SALE: Male Wolf/Dog Hybrid, ¼ Blood Alaskan Timber Wolf, ¼ Malamute, ¼ Gray Wolf, ¼ Husky Beautiful Dog just too big for me, \$300. Diane 515-370-2833

FOR SALE: New Holland 352 Grinder Mixer, one owner, right out of owner's shed, has auger feeder, extended unloading auger, extra screens, tested – runs out smooth and quiet, \$4,950. Call 573-881-3557

FOR SALE: 12-volt low impedance electric fencer, 30-mile Parac brand, USA made, like new box and manual. Elmer, MO 660-486-3359.

FOR SALE: 100 Louis L'Amour books and 20 Zane Grey books. 660-332-7842

FOR SALE: Ford 4000 SU, power steering, Live PTO, excellent paint and sheet metal, new tires, new injection pump, \$5500. 660-341-8089

WANTED TO BUY: heavy-duty chain-link fencing, six feet or higher, no Sunday calls. 660-639-2207.

FOR SALE: 2002 Chevy cargo van, looks and runs great. Argyle, IA. 319-470-0277.

CREDIT CARD DEBT? Financially Stressed Out? Stop the harassment! Make one monthly payment YOU can AFFORD! Get Help Now and Save! Call Toll Free 888-925-5404

ARE YOU BEHIND \$10k OR MORE ON YOUR TAXES? Stop wage & bank levies, liens & audits, un-

filed tax returns, payroll issues, & resolve tax debt FAST. Call 855-820-8878

BECOME A PUBLISHED AUTHOR! We edit, print and distribute your work internationally. We do the work, you reap the Rewards! Call for a FREE Authors Submission Kit: 844-261-5841

CANCER GENETIC SCREENING KIT. Protect yourself and your family with early genetic screening! See if you qualify for a test at no cost to you with your Medicare Part B coverage. Call 855-623-4490. (Mon-Sun 9am-8pm ET)

ATTENTION SMALL BUSINESS OWNERS! Are you protected in case of property damage or if you have an interruption in service due to a property event? Business Owner Property insurance IS AFFORDABLE and WILL PROTECT YOU when the unexpected happens! For free quote, call 844-877-9891 (M-F 7:30am-9:30pm ET)



Share Some
GOOD NEWS!

Birth Announcements

Welcome, Hayley Ryan!
 • Born April 22, 2019
 • 9 lbs. 22 inches
 Proud Parents
 Lydia & Mike Ryan

Celebrate your happy news with your community through the local newspaper.

Birthdays • Birth/Adoption Announcements • Engagements
 Weddings • Anniversaries • Retirements • Memorials
Call today to place your celebratory ad!



WELDING SHOP AND SUPPORT ITEMS ESTATE AUCTION

Saturday, July 17TH - 10 AM

SALE CONDUCTED AT 609 N. 5TH ST. LAGRANGE, MO



SHOP EQUIPMENT / TOOLS AND FIXTURES

- Hobart Beta Mig LF sells complete w/ cart, accessories, Central Welding Supplies, bottles and lease.
- Thermal Arc Pac 5XR plasma cutting system.
- Lincoln Electric Square Wave Tig 175, sells complete w/ cart, Central Welding Supplies, bottle and lease.
- Airco Model 1.8ADT-2-A Busybee transformer welder sells complete w/ long leads.
- Nice selection of assorted size welding rods, Speedglass helmet and others.
- Large estimated 250lb anvil, 100lb anvil w/ stand, both sell w/ hardies. Also selling small anvil.
- 6" ft tall 20 ton shop press.
- Nice selection of bench vises to include: (4", 5", 5", 6) Wilton, Parker, Morgan, Reed, Craftsman.
- Acetylene torch cart set, sells complete w/ Central Welding Supplies, bottles and lease. Also selling additional oxygen and acetylene bottles. Misc torch gauges.
- Craftsman 20in 2hp floor model drill press, Duracraft " in DP514 bench model drill press; Central Machinery bench model drill press on stand; 4 drill press vises, nice assortment of drill bits.
- AFF 750lb engine stand.
- Campbell Hausfeld 6hp, 60 gal, 125PSI upright air compressor, misc air hose, hose reel, accessories, Campbell Hausfeld twin tank air compressor, portable 7 gal air tank.
- Craftsman " hp bench grinder on stand, NIB 8in and 6in Craftsman bench grinders.
- Ridgid chop saw w/ stand, 10gal sand blaster; Jefferson powered hack saw w/ stand.
- Atlas H-36 metal lathe, sells complete w/ stand and accessories.
- Nice selection of air tools to include: Impacts up to 1in; die grinders, cut off, air chisels, impact sockets; several grinding stones, cut off wheels, etc.
- Ener Pac 18, 39 and 50 porta power set sells complete w/ cart and accessories; other porta powers.
- 5 ton car stands; floor jack, 48in Handyman jack, several bottle jacks, screw jack, several adjustable welding stands, trailer jack, iron saw horses, folding saw horses.
- Selection of air hoist, several chain hoist, chain hoist I beam trolleys, selection of log chains, 10 plus chain binders, various cum-a-longs, large set of lifting tongs.
- Selection of pipe clamps up to 10ft, large assortment of various size c-clamps, magnetic corner clamps, band clamp.
- Nice selection of steel cabinets and tables to include: (2) 5ft wide X 6" ft tall Stronghold storage cabinets. 58in X 31in welding bench; 3ft X 4ft welding table w/ pan; 38in X 5ft work bench w/ Craftsman vise and storage. 28in wide X 5ft tall roll around shelf cart; 28in X 5ft shop bench w/ 3 drawers; (2) Clark 13 drawer cabinets; shop carts; multi drawer steel organizer; wooden bolt bin; various other wall and floor model steel storage cabinets, KAR products 6 drawer organizer, Remline roll around tool chest w/ top box, NIB. Ridgid adjustable frame castor set.
- Pittsburg compact bench model bender; metal planetary ring roller on pedestal, pipe vise, pipe benders, Ridgid pipe cutters.
- Selection of tap and die's, some sets.
- Assorted pullers, slide puller, various styles.
- Dayton pedestal shop fan, hanging fans, Reddy Heater Pro 115, 115,000 BTU heater.
- Hand Tools: Very Large Selection! Name brand socket sets; assorted wrenches; extensions; torch wrench; 1" in drive socket set 7/8in up to 2" in sells on roll around cart; additional 1" in socket set; Snap On 1 1/8 in - 1 5/8 in wrench set; S&K 5/16 - 1 3/8 in wrench set; Fuller and Craftsman wrench sets and various other wrenches. Ridgid up to 36in pipe wrenches aluminum and steel; various size crescent style adjustable wrenches; various style hammers, mauls, etc.; massive selection of assorted style grip clamps; screw drivers; large assortment of assorted style pliers; tin snips, hack saws, T-handle allen wrenches, whole saws, grease guns, pry bars, tire irons, files, various punches and chisels, shoulder and auger drills, wood bits, wood chisels, scrapers, bolt cutters, number and letter stamp sets
- Power Tools: Dewalt hammer drill; Craftsman all-in-one cutting system, reciprocating saws, sanders, drills, angle grinders, routers and bits, airless paint sprayer.
- Cement hand trowels, bow float.
- Werner 10ft and 8ft fiberglass step ladders; 12ft aluminum extension ladder, ladder stand off.
- Wood working: Craftsman table saw, bench top mitre saw w/ stand, router w/ table, drill doctor, work mate style bench, MK 13in tile cutter.
- Surebender air nailer set, Remington ram set, several tape measures, squares, wood planes, misc lumber, levels, tools belts, nails, crews, etc.
- Nice selection of extension cords, various misc electrical supplies, assorted size wire, shop lights, various trailer marker lights, etc.
- Pintle hitch, Assorted trailer hitches and trailer balls, hitch pins, trail tow hand cart.
- Schumacher floor model battery charger, 100amp battery load tester, jumper cables.
- Craftsman 16 gal shop vac, 8 gal shop vac.
- Various flat, angle, rod and tubing steel.
- Wheel barrel, assorted shovels, post jobbers, axes, B&D hedge trimmer, new Craftsman lawn mower seat, 2 cement deer lawn ornaments, Electric 1500 PSI power washer.



Kenmore washer, N.G. Kenmore dryer, butcher block top stand, fitness mate weight lifting system; Set of 4 Nash hubcaps, Model T hubcap, Hot Rod and Roding magazines; Misc other useful items.

Additional Photos Online

GUNS/MISC

- Winchester Model 94, 30-30cal, S# 2239325.
- Remington Model 550, 22cal rifle.
- Winchester Model 77, 22cal rifle.
- H&R 410ga Single Shot.
- JC Higgins Model 20, 12ga.
- 1916 Mauser, 7.62.
- Daisy BB gun.
- Misc ammo.
- Stack-on key lock gun safe.



AUCTIONEER'S NOTE: Make plans to attend! Nice offering and volume of name brand items. Lunch available. Terms cash or check with proper ID. Not responsible in case of accident or theft. Announcements made sale day take precedence over any advertisement. The above information is believed to be accurate; however, no liability for its accuracy, errors or omissions are assumed by the seller or auction service.

PATRICIA & THE LATE BERT RICHARD COTTRELL, SELLERS

McAfee/Hayes Auction Service, LLC
660-727-3796
www.mcafeeauctionservice.com