

FREE!

NEW EDITION EVERY FRIDAY!
VOL. 29 • NO. 26 • JULY 16, 2021

NEMO *Trader*

THE NEMO TRADER

PO BOX 190 • KIRKSVILLE, MO 63501
PHONE 660-665-8500 • FAX 660-665-2024
Web Site: nemotrader.net
Email: nemotrader@gatehousemedia.com

A WEEKLY ADVERTISER SERVING ALL OF NORTHEAST MISSOURI AND THE SURROUNDING AREA

NEMO *Trader*

Our circulation is 16,000 with a 19 county coverage area in Missouri, Iowa and Illinois. Our paper is a free paper and is distributed to restaurants, convenience stores and other businesses in the area for individuals to pick up. We have a new issue every Friday.

P.O Box 190
Kirksville, Mo 63501

Online paper:
<https://issuu.com/nemotrader>

Office: 660-665-8500
Cell: 660-988-6830
Fax: 660-665-2024

Email: nemotrader@gatehousemedia.com

TOWN DROP ROUTE

MISSOURI

- Alexandera
- Arbela
- Atlanta
- Baring
- Bevier
- Brashear
- Brookfield
- Browning
- Bucklin
- Callao
- Canton
- Clarence
- Downing
- Durham
- Edina
- Ewing
- Galt
- Hartford
- Green Castle
- Green City
- Greentop
- Hannibal
- Higbee
- Honeywell
- Jamesport
- Kahoka
- Kirksville
- Knox City
- Labelle
- Laclede
- Lancaster
- LaPlata
- Laredo
- Lewistown
- Linneus
- Livonia
- Macon

- Madison
- Marceline
- Memphis
- Milan
- Moberly
- Monroe City
- Monticello
- New Cambria
- Novinger
- Palmyra
- Paris
- Purdin
- Queen City
- Rutledge
- Shelbina
- Trenton
- Unionville
- Wayland
- West Quincy

IOWA

- Centerville
- Cincinnati
- Drakesville
- Ft. Madison
- Keokuk
- Montrose
- Moravia
- Unionville
- Bloomfield
- Hwy 2

ILLINOIS

- Carthage
- Hamilton
- Noita
- Quincy

CALL FOR PRICES

TOUGH. PROVEN. BLUE.



NOW is the time to increase the **EFFICIENCY** of next year's harvest **AND** get the **BEST PRICE** on a new Kinze single or dual auger grain cart!

CONTACT US TODAY TO LEARN MORE



800-288-5917

WWW.QUINCYTRACTORLLC.COM

KINZE
TRUE. BLUE. Advantage.
Kinze.com

NEW CARTS

- 2020 KINZE1051 - TRACKS, MANUAL ROLL TARP
- 2021 KINZE1051 - TRACKS MANUAL ROLL TARP
- 2021 KINZE1051 - FLOATATION TIRE MANUAL ROLL TARP
- 2021 KINZE 1051 - FLOATATION TIRE MANUAL ROLL TARP
- 2021 KINZE 1205 - FLOATATION TRACK, ROLL TARP
- 2021 KINZE 1105 - FLOATATION TRACK, ROLL TARP

USED CARTS

- 2017 KINZE 1100 - TRACKS VERY GOOD...\$90,000
- 2017 KINZE 1100 - TRACKS VERY GOOD...\$90,000
- 1997 KINZE840 - TARP, TIRES, ELECTRIC SCALES, ... \$22,500
- 2002 KINZE 840 - , ROLL TARP, ADJUSTABLE SPOUT, ...\$17,500
- UHT500 - 500 BU ...\$4,750
- 2009 J&M 875-18 - 1000 1.75 PTO, HYD SPOUT ...\$21,500
- 2002 J&M750-16 - 750 BU, ROLL TARP, SCALES W/ 460 DATA LOG HEAD, ...\$19,500
- 2014 KILLBROS 1950 - \$28,900
- BRENT1082 - 1000 PTO ...\$32,500
- FICKLIN CA15000 - 750 BU... \$11,500

FOR SALE: 2012 Chevy 2500 HD extended cab, 4x4, LT, 6.0, loaded, power seat, climate control, keyless, new tires, 158,000 miles locally owned, the right kind. \$17,900 selling price. Accelerators Since "1974" Kahoka, MO 660-727-3455 or 217-257-1385 call anytime

FOR SALE: Ford 1310, good paint and sheet metal, excellent rubber, w/60" Finish Mower, \$3750. 660-341-8089

FOR SALE: New Holland 352 Grinder Mixer, one owner, right out of owner's shed, has auger feeder, extended unloading auger, extra screens, tested - runs out smooth

and quiet, \$4,950. Call 573-881-3557

WANTED TO BUY: Harley Davidson's, any year, any condition, cash money. Days 660-263-1356 or 660-537-0068

FOR SALE: New 3 pt. tillers, heavy duty, gear driven, 7' to 10' starting at \$3050. 660-874-4455

FOR SALE: Fish for stocking ponds - Catfish, Grass Carp, Crappie, Blue Gills, Red Ear, Bass, and Minnows. Heindselman Family Farms, Call Greg 660-341-5692

HANDYMAN: Install interior and exterior doors and windows, siding,

decks, showers and toilets, flooring and drywall. 660-956-2189.

Driveway repair. Excavation. Trenching. Brush clearing. Site prep and cleanup. Leveling. CRP work. Transportation. Heavy installation. Welding. 660-216-7268

FOR SALE: Billboard tarps, assorted sizes, mostly 14x48's, \$35 each. Raymond Kauffman, 25624 Hanover St, LaPlata, MO 63549.

Feed for all your needs. Patriot horse feed, cattle mineral, chicken feed, Showtime dog food. Feed Store, Hwy 156, LaPlata

NEW USED parts: cars, trucks, semi's, farm/construction equipment. Motors/tranny's, paint color matching yours. Warrantied/delivery. 800-807-9612.

FOR SALE: John Deere 44" mulching mower deck, good belts off LX 188 fits other models, \$75; John Deere 1219 conditioner mower parts fits others, forged, guards, sec-

NEMO TRADER OFFERS TOTAL WEBSITE PLUS

A professional website PLUS Perch

With Total Website Plus, our expert web developers build you a responsive, SEO-friendly website to connect you with people searching for your business—and you don't have to lift a finger! We take care of everything so you can get back to running your business. Included with your new website is Perch. This award-winning solution monitors your online presence and provides guidance to help market online through quick, easy, and effective tasks.



CINDY HIGH

Multi-Media Sales Executive

110 E. McPherson Street
Kirksville MO

Office # 660-665-8500 ext. 19
Email: nemotrader@gatehousemedia.com



GANNETT

NEMO
Trader

MAIN CREEK REPAIR

Larry Geiser

23316 State Hwy H
Kirksville, MO 63501

(715) 415-1995

Bolts • Belts • Bearings
Hydraulic Hoses • Steel
Welding • Fabricating
Tractor & Equipment Repair

MAIN CREEK RENTALS

23316 State Hwy H
Kirksville, MO 63501

(660) 988-6917

- Mini Excavator
- Equipter (Shingle Buggy)
- Post Hole Digger
- Dozer
- Snorkle
- Man Basket
- Skytrack
- Grapple

DIGITAL

WE HAVE A LOT TO OFFER

- Websites
- On-Target Display Ads
- Search Engine Marketing
- Search Engine Optimization
- Reputation Monitoring
- Social Advertising
- Logo Creation
- Retargeting

PHONE:
660.665.8500

ADDRESS:
110 E. McPherson Kirksville, MO 63501

EMAIL:
nemotrader@gatehousemedia.com

NEMO
Trader

GANNETT



Show Me Plumbing Services



- *General Mini Excavation & Skid Steer Work
- *Livestock Watering
- *Waterlines & Sewer Systems
- *Residential Services & General Plumbing
- *Utility Trenching

Stan Schrock • 660-988-1163
Greentop, MO. • 660-766-2636

tions, bolts & misc., mostly all new, sell all, deal; Over 30 new JD pieces, \$175. 217-257-1385

FOR SALE: Used garden tillers Troy-Bilt, BCS and other sizes. DR Brush mowers. Kahoka, MO 660-216-1809

FOR SALE: JD D140 Garden tractor, new belts, blade & seat, \$1000; JD

345 Garden tractor, new seat, 54" deck, good condition, \$1500; Case 730 tractor, wide front, needs starter repair, \$1500. 660-341-2492

WHITETAIL INSTITUTE food plot seeds in stock at Whitetail Seed and Supply, 14136 State Hwy 3, LaPlata, MO 63549, 3 South.

FOR SALE: 2017 Honda Ruckus, only 200 miles; 2002 Kawasaki 650 Prairie, great condition; 2014 Yamaha F-25 HP tiller outboard, electric start, like new, excellent condition. 641-208-7353

FOR SALE: 16' Bass Tracker II fishing boat and trailer, 40 horse Mercury motor, with lots of accessories, \$3500 OBO. 660-341-9522

FOR SALE: John Deere 2940 Tractor, 5400 hrs, cab, air, new rubber, estate tractor, \$14,500. Call 573-881-3557

FOR SALE: Belgium Stallion, 15 hands gentle and easy to handle. 2 years and 2 months. Excellent animal, \$1800, Carthage, IL. 217-357-4768.

FOR SALE: Cute and very playful Lab mix puppies, black w/some white, ready to go. 660-373-2552

CLOSED

TEMPORARILY

As part of the community effort to slow the spread of the COVID-19 virus, we are following the CDC recommendations for social distancing.

The **NEMO Trader** office will be **CLOSED** until further notice.

We are still working to provide our customers with the best possible service during this time. We will continue to operate, take calls and publish our paper.

Please stay safe.

PLEASE USE THE FOLLOWING CONTACT INFORMATION

FOR LINE CLASSIFIEDS AND BILLING QUESTIONS
 Call 660-665-8500 or
 Email jkirkpatrick@nemo-trader.com

FOR ADVERTISING QUESTIONS
 Call 660-988-6830 or
 Email nemotrader@gatehousemedia.com






WE ARE HIRING!

Send resume to:

Bank of Kirksville
 Attn: Personnel
 PO Box 787
 Kirksville, MO 63501

EOE
Member FDIC

LOAN SECRETARY POSITION:
 Previous secretarial and switchboard experience preferred. Excellent customer service skills required, attention to detail and a friendly outgoing personality. Full time position with benefits.



P-R DISTRIBUTORS

GOLF CARTS

Sales – Service – Rentals – Customizing






573-693-8147

29566 Lantern Road, Laplata, MO

SPRING IS YOUR GO TIME.

GET OUT THERE.

You've been waiting all winter for this moment.





REBATES UP TO \$1,000 ON 2020 MODELS

TERMS AND CONDITIONS APPLY

Explore Inventory >

Slayton

POLARIS

10456 State Route B, Downing, MO
 6 miles W. of Memphis, then 13 miles N. on B
660-328-6627

VISIT POLARIS.COM FOR MORE OFFERS



FOR SALE: 300 Briar Horses in excellent condition, 50 year collection, buy one or all. 660-676-9199

FOR RENT: Near Ethel 30 acres for pasture and hunting. 660-341-9081

FOR SALE: Firestone 18.4 x 38 Super all traction radials, brand new mounted on rims 1/2 price of new, can deliver, best offer. 217-357-1324

FOR SALE: 1981 GMC 3500 1 ton dual wheels, 2 WD, Knapheide flat bed, 350, 4 speed, 300 gallon fuel tank, fell-rite pump, 4 locking tool boxes, running boards, pull bumper, good rubber, basically no rust, and inexpensive service truck, \$3700. Accelerators Since "1974" Kahoka, MO 660-727-3455 or 217-257-1385 call anytime

FOR SALE: 2004 JOHN DEERE 625F, GREEN PLATFORM, hydraflex, kept inside, field ready. \$12,900. 660-299-0615

HUNTING EQUIPMENT sale, 35+ box, bow, hay bale, ladder stands, hog trap, deer and turkey feeders, deer and goose decoys. All used, great condition. 641-208-7353

FOR SALE: Ford 1520, w/Ford loader, hydrostat, 4x4, excellent

paint and sheet metal, good rubber, \$9000. 660-341-8089

FOR SALE: JD 925 Platform full fingers, Poly Snouts equipped with single point hookups, \$6000. 217-242-6984

FOR SALE: John Deere 285 Disc mower, 9', like new, \$7,950. Call 573-881-3557

FOR SALE: 1967 GTO, 1969 GTO HT and convertible, 1970 GTO cars need rebuilt. 660-734-8368.

FOR SALE: Guineas - Adults \$15.00, Keets \$5.00, Hatching eggs \$10 a dozen. Chickens - Laying hens \$10, Barred Rock, Rhode Island Red, Black Sex Link. Chicks 6 weeks old Barred Rock, Buff Orpington, Black Sex Link, Aracana. Cairo MO 660-651-8102

FOR SALE: Vermeer R 2300 all hydraulic rake, like new, \$16,000. 660-216-1020

WANTED: 30X60 or 40x60 Pole tent, something that needs a little repair

might work. Contact Chris Kauffman 12254 Harness Ave LaPlata MO 63549

FOR SALE: 4 Bedroom 2 Story home, sets on large corner lot, needs some TLC. LaBelle MO 217-440-4505

BUYERS OF CORN, SOYBEAN, ORGANIC, NON-GMO CORN AND SOYBEANS



Baring Elevator L L C

Contracts Offered
Forward Pricing
Target Orders

Baring, MO
660.892.4411
www.baringelevator.com

CONTACT US FOR PRICING
Lewis 660-341-2937
Roger 660-223-2442

CELEBRATIONS! PARTY RENTAL
KIRKSVILLE, MO

FOR RENT
TABLES - CHAIRS - TENTS - BOUNCE HOUSE & COTTON CANDY MACHINE...ECT.

660-626-5162 or 660-665-9380

Golden Grain Bins-Spring Discount

Grain Bins	Floors w/12" Supp. & Flashing
18'x18' 4,195bu. \$ 6,645	18'....\$1,956 30'....\$ 5,465
27'x21' 11,265bu. \$13,143	21'....\$2,676 36'....\$ 7,790
42'x24' 32,245bu. \$30,190	27'....\$4,466 42'....\$10,609

Golden Grain

GMLS Industries, Inc.
PH: 660-699-2179 or 620-983-2136
www.gmlsindustries.com



Judd Motors

Call 660-457-3700
Hwy 63 North, Lancaster, MO

- 2015 GMC 2500HD, SLT, 4x4, crew cab, short-bed, 6.0L, heat & cool leather, bed cover, 1 owner, only 113k miles, charcoal, very nice, new tires only \$35,900
- 2015 Equinox, All Wheel Drive, 1 owner, 129k, silver, nice, Remote start, new tires, only \$10,900
- 2012 Chevy Captiva, LTZ, AWD, Leather, sun-roof, 112K, maroon, \$9,995
- 2011 Chevy Cruze, LT, RS pkg, black, 84K, \$7,995
- 2006 Chevy 1500, 4x4, crew cab, 5.3L, leather, red, 147k, \$11,250
- 2006 Chevy Colorado, ext cab, AT, 2wd, silver, only 44k miles \$9995
- 2005 GMC 2500HD, SLE, 2wd, 6.0L, ext cab, long bed, only 119k, silver, very nice, only \$11,900

www.juddmotors.com | In Business Over 75 Years
Curly and Kevin Judd

VICTORY
Metals & Recycling
Kirksville, MO 660-665-8000
victorymetalrecycling.com

For current scrap prices call or visit our Facebook Page

★ **Construction/Debris Recycling**
Visit Kirksville's construction & debris recycling facility and save trips to the landfill! Take advantage of this service for solid waste removal by bringing your landfill items to Victory Metals C & D recycling facility located at 3602 N. Industrial Rd.

★ **Roll-Off Container Service**
10-20-30-40 Cubic Yard Dumpsters

3602 N. Industrial Rd.,
Kirksville, MO 63501
djanesvmr@gmail.com
www.victorymetalrecycling.com




LAN-DOW BUILDINGS
"We Build To Suit Your Needs"
"Custom Built"
Pole Barns • Garages • Utility Buildings
"H" Don or Dick Middleton
Memphis Lumber Co.
1-800-337-5858 • 660-465-8595
Fax: 660-465-8596

For Your Equipment Needs!

LOTS OF USED EQUIPMENT AVAILABLE

Vermeer 605 N Balers, Twin Rakes, Tralled Mowers, Disc Mowers, Tedders, Bale Processors-
Offer high capacity, speed, reliability, efficiency, fuel savings...
DeWeze Bale Beds-
Lift, load, transport and feed big, round bales...
Danuser Post-Hole Diggers-
Offer quality & reliability, outperforms the competition...

USED EQUIPMENT

BALERS	RAKES
605 N Net	R2800
605 L Net	R2300
605 K Net	VR1224

MOWERS	TEDDERS
TM 1210	TD250
8040	
7030	
Vicon 4000	

BALE PROCESSORS
BPX 9000
BPX 9010

Liebhart Sales, Inc.
17546 Lacey Drive •
New Boston, MO. 63557
660-689-3406

Call Today!!

BURKHOLDER



2020 Ram 2500 Tradesman, 4x4, Crew
6.7 Diesel, Auto, 16k Miles, One-Owner, Clean Carfax, Remaining Factory Warranty, Maroon

\$59,900

Full line of accessories Outfit your truck here!

Edina 660-397-2551 51001 State Hwy 15 BurkholderTruckSales.com



2018 Chevy Silverado 2500HD LT
4x4, Crew, 6.0V8, Auto, 29k One-Owner Mi, Topper, Bed Slide, Texas Truck, White

\$38,900



2017 Ford F-250 XL STX, 4x4
Reg Cab Longbed, 6.2V8, Auto, 131k One-Owner Mi, Well Kept, Hard to Find, White

\$29,900



2017 Chevy Suburban 1500 LT
7 Pass, 5.3V8, Auto, 77k Miles, DVD, Nav, Nice-Clean, Family Ride, Come See, Black

\$45,900



2016 Ram 2500 Laramie, 4x4, Crew
6.7 Diesel, Auto, 98k Miles, Clean Carfax, Extra Clean-Nice, Must See, Black/Silver

\$54,900



2016 GMC Sierra 1500 SLT Z71, 4x4
Crew, 5.3V8, Auto, Only 62k Miles, Bumpers-Steps-Wheels, Sharp, Nice, Silver

\$41,900



2016 Chevy Silverado 3500HD LTZ
Dually, 4x4, Crew, 6.6 Duramax, Allison, 111k One-Owner Miles, Texas Truck, White

\$54,900



2015 Ford F-250 XLT FX4, 4x4
Crew, 6.7 Diesel, Auto, 99k Miles, Local Trade, Extra Nice, Very Well Kept, White

\$41,900



2015 Chevy Silverado 2500HD LTZ
4x4, Crew, 6.6 Duramax, Allison, Only 66k Miles, Perfect Service Record, Nice, Black

\$54,900



2015 Chevy Silverado 2500HD LT
Z71, 4x4, Crew, 6.0V8, Auto, 88k Miles, Local Truck, Hard to Find, Nice, Silver

\$39,900

Financing Options Available

THIS MONTH'S SPECIAL!!

TRUCK GEAR BY LINE-X

ECLIPSE HARD ROLL-UP TONNEAU COVER

- ▶ MULTIPLE ROWS OF LATCH POINTS FOR ENHANCED SECURITY
- ▶ PREMIUM MATTE BLACK FABRIC-HIGH-END, HIGH-WEAVE FABRIC DELIVERS A STRIKING MATTE BLACK FINISH THAT EFFECTIVELY HIDES DIRT AND DUST
- ▶ LOW-PROFILE RAIL DESIGN ALLOWS FOR A SLEEK DESIGN, FLUSH-MOUNTED APPEARANCE
- ▶ BLACK POWDER COAT ALUMINUM SLATS ADD STRENGTH AND ELEVATED STYLING
- ▶ EASY TO OPEN THE COVER FROM EITHER SIDE OF THE TRUCK
- ▶ QUICK-RELEASE SYSTEM ALLOWS THE ENTIRE COVER TO BE REMOVED IN SECONDS WITHOUT TOOLS
- ▶ SUPERIOR WOVEN MATERIAL STAYS LOOKING CLEAN NO MATTER WHAT YOU PUT IT THROUGH
- ▶ MADE IN THE USA
- ▶ LIFETIME END-TO-END WARRANTY



\$100 OFF

SLEEK, STYLISH AND SECURE THE TRUCK GEAR BY LINE-X ECLIPSE HARD ROLL-UP COVER COMMANDS ATTENTION.



Quality Brands We Carry



L&S NEMO AUCTION 22486 Michigan Trail will have a merchandise auction 3rd Saturday of every month starting at 11 am you can bring your items now. 660-988-3818

Central Illinois Siamese Kittens-Seal point kittens-shots included, litter-trained. Call 217-440-7920 or email bjacquot@gmail.com http://ambientelectrons.org/kittens_index.html

FOR SALE: Older heavy frame shop built 21', 16 1/2' deck, 8' wide, flatbed trailer, mobile axles, bumper hitch, 2 5/16 ball, could use flooring, with MO title, \$700. 217-257-1385

FOR SALE: 725 Grasshopper Mower, 61" deck, Kubota motor, \$4250. 660-216-1020

T POST FOR SALE: 215 6 1/2' heavy \$3.50 each, 30 6 1/2' light \$3.00 each, 75 6' heavy \$3.00 each. Or Best Offer 660-659-2033

FOR SALE: New Skid loader attachments. Forks, Buckets and Bale Spears in Stock. No Sunday Calls 660-988-7385

HOME GROWN turnips 3#/\$2, zucchini and cucumber 5/\$2, cabbage head \$1, new potatoes 3 qt/\$5. Beans and beets \$2/qt, Broccoli 2/\$1, cauliflower. Tomatoes buy box or 3#/\$7 or \$2.50/pound. Schmucker Produce, 7 miles North of Kirksville to Ft. Madison Way, 1/2 mile East.

FOR SALE: 2003 HD Super Glide 100th year, blue, 8665 miles. \$6500. Call 573-822-3643. John Price, leave name and number, will call back.

FOR SALE: John Deere 6200 Tractor, MFWD, open station, 6000 hrs, power quad, with 640 Loader, \$25,500. Call 573-881-3557

FOR SALE: 54" mower deck off 2020 John Deere 1025 R, compact tractor. New, books, 1900 option. Sell \$1150. 660-216-1544.

FOR SALE: Dachshund, 3 males, 12 weeks old, registered, shots, wormed. Call 660-342-4985. No Sunday calls please.

FOR SALE: Aberdeen heifers, 5 confirmed 3rd period, bred 2 maybe. Bred to Aberdeen bull, \$1800 each obo. 660-216-5111.

FOR SALE: Dual registered Jersey, AJCA, A2A2, 10YO, well-trained, A1ed for good hand milking. Discounted for quick sale. Messages. 660-627-6526.

SPORTS CARDS: 100's football cards; Mahomes, Mayfield, Murray, Lock, Dawson. Also vintage football/baseball. Call 660-332-7888 or 660-384-1176.

FOR SALE: Woods Cadet 72, 6'3 pt, 540 PTO, rotary mower, laminated



SULLIVAN AUCTIONEERS, LLC

A FAMILY OWNED BUSINESS SINCE 1979

 MATT	 MICHAEL	 LUKE	 JOHN
 DAN	 JOE	 JIM	 BILL

Headquartered in Hamilton, Illinois, Sullivan Auctioneers, LLC is one of the largest Real Estate and Farm Machinery Auctioneers in the nation. For more than 40 years we have been conducting professional auctions. We connect our sellers with thousands of interested buyers around the world.

Considering an Auction?
CALL OR EMAIL TODAY FOR A NO OBLIGATION CONSULTATION!
Toll Free (844) 847-2161 | Sold@SullivanAuctioneers.com
www.SullivanAuctioneers.com | Lic. #444000107

HUGE Multi-Estate & Farm Retirement Auction

Sat., July. 24th • 10 am
Johnston Auction Center, Hwy. 24, Madison, MO

EQUIPMENT: John Deere 4430 Tractor w/loader, Allis Chalmers 6080 Tractor, Int. 606 gas tractor w/loader, Hesston 8465 Baler, Hay Trailer, Vermeer Rebel TM700 Disc Mower, New Idea 5409 9' Disc Mower; 8hp Briggs & Stratton wood splitter; Landpride 3pt 7' blade; John Deere 702 Wheel Rake; Oliver 281 manure spreader; Case 8' drill with grass seed box; AC 6 row no till planter; Tye 3pt press wheel drill; 2- steel flatbed wagons; 300 gal. gas tank and stand; 18 ft. disc; 3 pt. post hole auger; trailer frame; 2 disc mowers for parts; 13ft. Brady field cultivator; 4 btm semi-mtd plow; Vermeer 2 prong bale spear; 3pt. 10' Glencoe chisel plow; 1968 Jeep CJ5; 1992 Chrysler LeBaron w/125K miles; 3pt. 12' brush hog; AC 6 row no till planter; Tye 3 pt 20 hold press wheel drill; 300 gal. gas tank and stand; falt bed wagon w/gear; Kraal 18' folding disc 9" spacing; steel floor Gagnon w/gear 6x12; 3 pt 10' Glencoe chisel plow; 13' Brady field cultivator, pt w/buster bar; 5 btm 16" spacing semi mtd plow w/cylinder; 3pt 12" post auger; trailer frame; 2 disc mowers, parts only; steel flat bed wagon & more

COINS: Approx. 150 Lots Gold and Silver Coins and Bank Notes. Selling @ Approx. 1 p.m. Go to JAMESJOHNSTONAUCTION.COM for complete coin list.

GUNS: Colt 1899 New Army and Navy .38 cal; Colt 1904 New Army .38 cal; Colt Police Positive .22 cal; Colt .22 cal bolt action (Colteer); Colt .22 cal semi-auto Courier; Thompson .50 cal Black Powder.

ANTIQUES & COLLECTIBLES: Betty Boop; designer handbags; Depression Glass; Figurines; License plate collection; knick knacks, bric-a-brac; numerous items from Four Estates.

FURNITURE: Vintage, Antique & Modern Furniture. Maple, Oak, Hardwood and more! Couch sets, bedroom sets, dining room sets, small appliances, vintage lamps, mirrors, night stands, mattresses, dressers, desks, coffee tables.

MISCELLANEOUS: 11 bales Alfalfa Hay; 3 propane tanks; 200+ sheets of tin; semi-precious stone; dishware, kitchenware; decore galore! Contents of 3 homes.

TOOLS: Hand tools, power tools

LAWN & GARDEN: Cub Cadet LTX1045 lawn mower; Cub Cadet tiller; Ex-Mark Commercial ZTR mower; Craftsman Push mower; 9' Jon Boat; many more items too numerous to mention.



James L. Johnston, Licensed Broker & Auctioneer
Jeffrey JJ Johnston, Auctioneer
Bob Cook, Jr, Kenny Shirey, Pete Ramsey, Josh Bright - Associate Auctioneers
Office - 660-291-5921 • Madison, MO

Not Responsible for Accidents, Lost or Stolen Items. Announcements day of auction take precedence over all advertisements. Terms: Cash or Good Check • Photo ID Required for Bidder Number

For Updated List Visit
jamesjohnstonauction.com

We will always give you a FAIR DEAL!

YOUR FULL TRAILER SERVICE SHOP

We Have Trailer Wheels And Tires In Stock!

TRAILER PARTS

AIRLIFT

WINCHES

B&W HITCHES

See us for all your truck accessories!

CANTRIL TRUCK & TRAILER

319-238-7367

101 North St. • Cantril, IA

TRUXEDO BED COVERS

BUMPERS



CONSIGNMENT AUCTION
JULY 24th, 2021 10:00 AM
10055 US HIGHWAY 136 Downing MO 63536
Contact: Eric Anders (660) 341-4621

MACHINERY, LIVESTOCK EQUIPMENT AND MANY OTHER FARM RELATED ITEMS

ITEMS INCLUDE:

1974 International 766 Diesel Tractor, 18 foot Kewanee disc, 2 Westendorf mount bale stabbers, Ford three point three bottom plow, Fuel barrel with stand, Powder River squeeze cattle chute with Palp cage, 11 Foot Krause Chisel, Veermeer Bale Wrapper, John Deere 5 bottom semi mounted plow, Boat and boat trailer, Gravity Flow wagon with auger, New Idea ground driven manure spreader, 5 roll barb wire unroller, Gravity flow wagon, 10 foot disc chisel, cattle bunk, fence panels

Skid steer grapple (NEW), Skid Steer post hole digger with auger (NEW), three point brush cutter, Ford dirt scoop, AC snap coupler blade, 13 foot John Deere Disc, 3 point bale unroller Hydraulic drive 30 foot auger, and many more items on site and still arriving daily and hay rack items will be sold as well.

Still accepting consignments until July 22nd, 2021

Not responsible in case of accidents or theft

Announcements made sale day take precedence over any advertisements. (also see pictures on our facebook page Anders Auction Service, LLC)

single rear wheel, ready to use, \$550; 1 pair original AC rear wheel wts, fits WD-D17, \$150 pair. 217-257-1385

FOR SALE: Ford 5000, good paint and sheet metal, new tires, Live PTO, power steering, \$6500. 660-341-8089

FOR SALE: Portable generator, Westinghouse, WGEN 9500 DF, brand new. 9500 rated, 12,500 peak watts, dual fuel. Electric start, cover included. 660-341-4050.

WANTED TO BUY: Harley Davidson's, any year, any condition, cash money. Days 660-263-1356 or 660-537-0068

WANTED TO BUY: Farm Machinery and Estates. Call James L. Johnston. 573-473-4904

FOR SALE: John Deere 569 Baler, net, 1000 rpm, big tires, 16,000 bales, new belts, field ready, will trade, \$17,500. Call 573-881-3557

Wevers Outside Wood Furnaces a dealer for Heatmor Stainless Steel Outside Furnaces, have an assortment of parts, line, and etc. Taking orders for new outside wood furnaces. Used 120 furnace, burns wood or coal, has shaker grates, for \$5,550. Call 660-423-5242, cell 660-216-9885. Open 6pm-9pm Monday-Friday, Saturday anytime, call first.

FOR SALE: New 3 pt. tillers, heavy duty, gear driven, 7' to 10' starting at \$3050. 660-874-4455

PASTURE AND HAY GROUND Needed around Adair & Knox County. Please Contact 660-216-5887 or 417-773-2507

FOR SALE: 2010 Case 8120 Combine, 2975 HR -2097 HR, NO DEF, RWA, DIF Lock, 620 Drive Tires, 28 Steer Tires, luxury cab, clean machine, \$95,000. 641-895-8014

FOR SALE: Rhino TW 120, 10' rotary mower, 1000 PTO, pull type with lift cylinder, \$3900. 217-257-1385

FOR SALE: Fish for stocking ponds - Catfish, Grass Carp, Crappie, Blue Gills, Red Ear, Bass, and Minnows. Heindselman Family Farms, Call Greg 660-341-5692

FOR SALE: Tomatoes, Cucumber, Zucchini, Potatoes, Onions and Green Beans. Located at Kauffman Produce 11538 Iceberg Ave LaPlata MO 63549. Will also be at the LaPlata Farmers Market every Wednesday from 4 pm to 7 pm

FOR SALE: Spices, and Seasoning, Farm Dust, Honey Garden Seeds, Homemade Candy. New Supply of Greeting Cards, Wooden Handles, Lamps & Chimneys, some Aladdin, S.S. Kitchen Wares, Mixing Spoons, Kitchen Towels & Clothes, Some Glassware. Train Track Candies 11538 Iceberg Ave, LaPlata, MO, 3rd lane to your left.

FOR SALE: IHC rear split wts., \$150 set; IHC fast hitch 2 pt to 3 pt adapter arms, \$125; Fasthitch to 3pt one piece adapter, \$145; like new PTO shields 06-56- series, \$25 each; 560, 706 trim, 656 grill, misc parts, 1 (piece wheel) wts, \$100 set. 217-257-1385

HANDYMAN: Install interior and exterior doors and windows, siding, decks, showers and toilets, flooring and drywall. 660-956-2189.

DIRT WORK All types of excavation, reclaiming overgrown fields, including CRP and WRP. Building site preparation, terrace and tiling maintaining and creating new trails and crossings, rock hauling, Food plot development and maintenance. Leveling and grading, wetland construction and maintenance. Pond and lake cleaning and construction. Call for quotes. 660-342-2701

FOR SALE: John Deere 40 Manure Spreader, very little use, shedded, end gate extra sides, \$3,950. Call 573-881-3557

NEW SHIPMENT of billboard tarps, 2 miles West of LaPlata on 156, 1/2 mile South on Iceberg, 1/2 mile West on Hanover, Raymond Kauffman.

COMPLETE LINE livestock feed, all-stock, 3-way, corn, oats, hog feed, mineral tubs and more. Feed Store, Hwy 156, LaPlata

FRESH FARM raised dressed/delivered catfish, "nothing like a fish fry for fund raisers". Churches, VFW, Eagles, all benefits. 573-604-0674.

WHITETAIL INSTITUTE 30-06 tall time mineral archery supplies and more. Whitetail Seed and Supply, 14136 State Hwy 3, LaPlata, MO

FOR SALE: Misc AC Parts: D14-15 drawbar, \$55; D19 drawbar 75, latch arms, WD, D17- D19 gas heads, 3

pt parts, top links, 26", 8" hubs , rear wheel wts, side curtains D17, front wheels, etc., distributor, grill shell. 217-257-1385

FOR SALE: Ford 4000 SU, power steering, Live PTO, excellent paint

LOLLI BROS. LIVESTOCK MKT, INC.

Special Cow, Cow/Calf & Bull Sale
Tuesday, July 20 *11am

ROY TRACY - 8 Fancy Angus Heifers Pairs, calved in May.
BORINTRAGER FARMS - 8 Black Cow/Calf pairs & bred cows: 4-6 years old.
RUSTY TIMBROOK - 23 Fancy Angus Heifers: 1200lbs, start calving Sept. 1, 60 day calving period. bred to low birth weight Angus Bulls, pelvic checked, tract scored, pre breeding shots, long range shots, scourguard.

This is only a partial listing, many more by sale date.

Special Calf/Yearling Sale Tuesday July 27

Cafe Open **Lolli Bros. Livestock Market, Inc.** Cafe Open
704 Main st Macon, MO * 660-385-2516 * www.lollibros.com
Dominic 660-651-4024 * Frankie 660-651-4040
Tim 660-651-3496 * Joseph 660-346-9711 *Cattle accepted on Sunday*

MOOSE RUN REPAIR
8 YEARS EXPERIENCE

Tractor • Skid Steer • Combine • Air Conditioning
Self-propelled Forage Harvester & General AG Repairs

Specializing in John Deere

Engine • Transmission • Hydraulics
Power Shift/IVT Diagnosis & Repair
Computer/Electronic System Diagnosis & Repair

INTERSTATE BATTERIES **TIGERLIGHTS**

660-988-3843
DELVIN "MOOSE" STEINER • QUEEN CITY, MO

Machinery Auction
Thursday, July 22 * 10a.m.

Selling Farm & Commercial Equipment:

Tractors, trailers, trucks, skid loaders, construction equipment /supplies, lawn & garden, ATVs, hay & tillage equipment, livestock equipment, fencing supplies and much more.
CONSIGN NOW!
Call the barn or Frankie at **660-651-4040**

Held in conjunction with Macon County Flywheel Reunion
Consignor checks available for pick up day of sale. Trucking available.

Lolli Bros. Livestock Market, Inc.
Macon, Mo 660-385-2516

MAST MEATS, LLC
660-766-2211
USDA & Custom Slaughter & Processing
CALL OR STOP BY FOR SPECIALS
Retail store hours • Mon-Fri 8-5 Sat 8:30-3
mastmeatsllc.com • 405 US Hwy. 63, Queen City, MO 63561

ANYTHING ON WHEELS!

HIGHWAY 63 INSURANCE
(660) 956-9283

highway63insurance.com

FRONTLINE FENCING LLC

Steel Pipe Fencing.
Custom Built Gates and Livestock Handling Equipment.
Barbed Wire and Woven Wire Fence.
Arrowquip Cattle Handling Equipment.
Post Driver Rental.

29386 St Hwy T,
Greentop, MO
660-956-2430

Dutch Garden Nursery
Your Full Service Garden Center

COVER CROP SEED

Buck Wheat
Radish Eco Till
Western Sugar Beet
Forage Turnip
and more selection...

* FOOD PLOT SEED
* BIG BUCK FOOD PLOT MIX
* SWEET SPOT FOOD PLOT MIX
* GRASS SEED

OPEN ALL SUMMER!

Sprays for all of your garden and flower needs!
Fungicide and Insecticide

BULK MULCH & BULK ROCK LANDSCAPE BLOCKS

Beautiful Plants, Perennials, Shrubs, Succulents.
1/2 Price Annuals!

SUMMER HOURS: MON.-SAT. 8 a.m. to 5:30 p.m.
MEMPHIS LOCATION (beside Country View Store)
660-883-5650
Edina Location: (Home Base) 660-397-4115
www.dutchgardennursery.com

GARDEN SEEDS: for your fall garden
Cabbage
Broccoli
Cauliflower Plants
Lettuce

Fertilizer for all of your Plants & Lawn!
New selection of house plants arriving this week! Lots to choose from: African Violets, Ficus, Snake Plant & many more!

and sheet metal, new tires, new injection pump, \$5500. 660-341-8089

OLDER GELDING, buggy horse, not for long distance. Good looking animal, \$500. 217-357-4768.

WANT TO BUY: 15' or 12' Brush Hog in real good condition, 540 PTO. 660-676-9199

FOR SALE: 1976 Trans Am \$3000; 1966 Catalina convertible \$2500; Chevelle 12 bolt rear \$500; 454 \$500. 660-734-8368.

FOR SALE: John Deere 6430 Tractor, MFWD, power quad, reverser, new rubber, 640 SL Loader, 5,000 hrs, clean, \$56,500. Call 573-881-3557

FOR SALE: Red & White Australian Shepherd, female, very friendly, works with cows if you help her, sell her cheap or make offer. Chris Kauffman 12254 Harness Ave LaPlata MO 63549

T POST FOR SALE: 215 6 1/2 heavy \$3.50 each, 30 6 1/2 light \$3.00 each, 75 6' heavy \$3.00 each. Or Best Offer 660-659-2033

FOR SALE: 2006 HD Sportster 1200 cc, color maroon, 12093 miles, \$5000. 573-822-3643, John Price. Leave name and number will call back.

FOR SALE: Large cross over tool box, aluminum, diamond plate, locks,

work, make offer. Call 660-216-1544.

FOR SALE: Dachshund, 1 red dapple female, 7 weeks, registered, shots, wormed. Call 660-342-4985. No Sunday calls please.

FOR SALE: John Deere 2950 Tractor, MFWD, CAH, 5,000 hrs, 90% trim, Westendorf Loader, \$25,500. Call 573-881-3557

FOR SALE: Ford 3000 gas, good sheet metal and paint, good tires, live PTO, power steering, \$4500. 660-341-8089

FOR SALE: Receiver hitch insert 6" drop, 2 5/16" ball with distribution hitch mounting used for dually,

ANYTHING ON WHEELS!

HIGHWAY 63
INSURANCE
(660) 956-9283



highway63insurance.com

Countryside Market

Hello from Countryside Market!

Save the Date.

July 23rd and 24th

Customer Appreciation Days

July Friday 23rd and Saturday 24th

Free Ice Cream cones both days.

Free Homemade Donut

2.5 Miles North Of Town Kirksville, MO
660-665-3215 or 988-0742

FOR ALL YOUR FENCING NEEDS.
Quality Cattle Equipment, too!

620-215-5770 KIRKSVILLE, MO
SPECIAL ORDERS AVAILABLE

Check out our current inventory at Kirksville Livestock Sales.

SINGLE \$550
HEAVY DUTY HAY FEEDERS

DOUBLE \$950
HEAVY DUTY HAY FEEDERS

HEAVY-DUTY \$850
REPLACEMENT BUMPERS
Dodge, Chevy, Ford & GMC

HALF TUB \$2,600 **FULL TUB \$3,100**

If you're looking to build a pipe fence or corral, wire fence, or need quality cattle equipment, **WE'RE HERE TO SERVE YOU!**

\$375
MINERAL FEEDERS

\$2,900
20' ADJUSTABLE ALLEY

Gates • Continuous Panels • Tubs • Alleys • Posts • Pipe • Bumpers • Cattle Feeders

HARRISON FISHERY
POND & LAKE STOCKING
Call us today! 660.423.5482

Your trusted source for quality Fish!

Harrison Fishery, Inc. is a family owned and operated business.

We stock most species freshwater, game & baitfish.

Contact us for price & delivery

curtis@harrisonfishery.com
660-423-5482

Species Available	Bluegill	Walleye
Largemouth bass	Redear sunfish	Muskie
Hybrid bluegill	Black crappie	Catfish
Golden shiners	Fathead minnow	and More!

Time to gather up the little ones, get their fishing poles and go enjoy a day of fishing



www.harrisonfishery.com

Peace of Mind!
The feeling you get with a security system from On Sight 24/7

Security Cameras for Farms, Small Business, Schools & Government



"On Sight 24/7 is a relatively inexpensive great security option. It allows us to monitor those coming and going, even at night with infrared. We've used the same system now for over 5 years. Competent techs and kind and helpful staff makes for a worthwhile security system." - C. Heins

FREE SECURITY ASSESSMENT!
(\$150 Value)

UP TO **\$250 OFF** YOUR ORDER*

*Some restrictions may apply, call for details.

Ask about our 90 Day Try Before you buy!



ON SIGHT 24/7
VIDEO SURVEILLANCE

PROFESSIONALS YOU CAN TRUST.
Proudly Serving the Midwestern United States since 2012.

SERVICES. SOLUTIONS. SUPPORT. 660.956.9944

Only a few bin packages left for 2021!

**48'x9 Ring
48'x10 Ring
48'x12 Ring**

Call Now!!



GRAINBINSUPPLY "The Grain Bin People" **GBS**

(660) 263-6700 - Cairo
(573) 594-2167 - Vandaila
www.grainbinsupply.com

Sukup

KM-70KDE065

Troyer
TARP MFG.

660-486-3301
20264 State • Hwy. VV • Ethel, MO. 63539



Hoop Building Covers **FARM TARPS** **TRUCK TARPS**

WE GOT YOUR NEEDS COVERED!

CENTURY 21 **FARM & RANCH**
Lifetime Realty



A community member for over 26 years, Elizabeth is a real estate professional connecting sellers in Northeast Missouri to buyers across our great country.

Considering selling a farm or home? Call on a local expert who knows you, and who is committed to helping you get the most for your property.

Serving Knox, Macon, Adair, Sullivan, Linn, Putnam and Shelby Counties.

Elizabeth Gregory, Realtor
Lic. # 2021008017

LISTING A PROPERTY?
CALL OR EMAIL ELIZABETH FOR A NO OBLIGATION CONSULTATION
660.621.2136 | egregory.c21@gmail.com
farmandhome.c21.com
Century21 Lifetime Realty | 660.665.5678

KM-70KDE03441

2021 APPANOOSE COUNTY FAIR *July 18-24*



ADMISSION

SEASON PASS
(valid July 18-July 24)
before noon July 19th.....\$35 • after noon July 19th.....\$45

SENIOR SEASON PASS
(65 years of age and older)
before noon July 19th.....\$25 • after noon July 19th.....\$35
(Season Passes available for purchase at Centerville Produce, Fareway, Chamber, Iowa Trust, Community First, Farmer's Bank & Bratz)

DAILY PASS

Mon-Wed before 5:00pm.....	\$7
Mon-Wed after 5:00pm.....	\$10
Thursday before noon.....	\$7
Thursday after noon.....	\$20
Friday.....	\$20
Saturday.....	\$20

Children 10 and under are FREE with a paid adult admission Monday- Saturday

Mechanical Bull and PACT Beer Garden available July 20-24

Livestock
Livestock shows daily at the Ron Turk Memorial Arena

Exhibits
4-H & FFA Static Exhibits in the Exhibit Building
Local Businesses showcased nightly in the Commercial Building

SUNDAY, JULY 18
7:00 - 9:00
Mark Ministries & Withrow's Gospel Concert

MONDAY, JULY 19
7:00 Fair Dedication
7:30 Crowning of the Fair Queen
Bill Riley Talent Show & Fireworks

TUESDAY, JULY 20
7:00 Mutton-Bustin' (ages 3-7)
7:30 Duckworth Rodeo (full rodeo)
Lucas Beebe Band following

WEDNESDAY, JULY 21
7:00 Mutton-Bustin' (ages 3-7)
7:30 Duckworth Rodeo (full rodeo)
Lucas Beebe Band following

THURSDAY, JULY 22
6:00
Redneck Rally
Bring a Lawnchair
Bootcut Band following

FRIDAY, JULY 23
7:30
Standing Hampton Concert
9:00
Steve Augeri Concert

SATURDAY, JULY 24
9:00 a.m.
4H/FFA Livestock Auction
7:30 Demolition Derby (Lunatic Promotions)

KM-70KDE037

ALL AMERICAN TRADE-UP SALE

Your Vehicle Trade is Your Down Payment

On Select Vehicles*



**DONATION TO HOPE FOR HEROES
FOR EVERY VEHICLE SOLD**
(up to \$10,000 total donation)



[f](#) [@](#) [t](#) [v](#) [i](#) [i](#) **car-mart.com**

**On retail vehicles priced at \$15,999 or less. With approved credit. See dealer for details. This offer cannot be combined with any other promotional offer.*

- Low Down Payments
- Quality Us Vehicles ed
- Flexible Financing
- Weekly, Bi-Weekly
- Start Your Approval Online
- 100% Satisfaction
- Hand Selected Vehicles
- Over 150 Locations
- We Trade for Anything
- We Buy Cars
- Convenient Payment Options
- Since 1981



2008 Lexus ES350,
FWD, 6 Cyl., Red



2013 Ford Edge SE
FWD, 6 Cyl., Black



2011 Ford Escape XLT
FWD, 4 Cyl., red



2015 FORD FOCUS SE
4 doors, 4 cyl., White, FWD



2016 HYUNDAI ELANTRA SE
4 Cyl., Fwd, Blue



2006 GMC YUKON XL 1500 DENALI
AWD, 8 Cyl., black.



2014 CHEVROLET CAPTIVA SPORT
FWD, 4 Cyl., Red



2011 Chevrolet Aveo LT
FWD, 4 Cyl., white



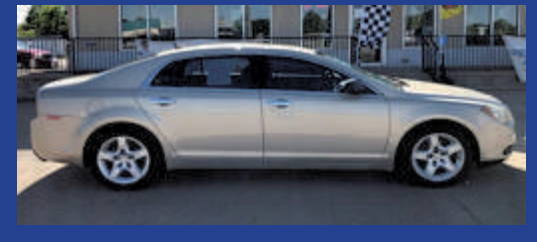
2015 Kia Soul Base,
FWD, 4 cyl. Gray



2011 Ford Flex
SE, FWD, 6 Cyl., Silver



2012 FORD FUSION SE



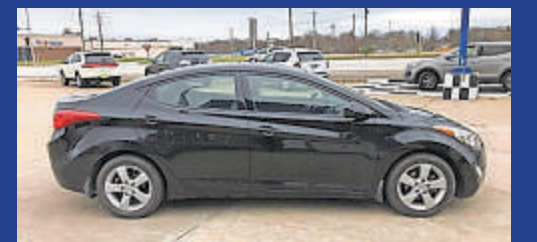
2011 CHEVROLET MALIBU LS



2008 GMC Envoy SLT
4WD, 6 Cyl., White



2012 Ram 1500 ST
4WD, 8 Cyl., Gray



2013 Hyundai Elantra, GLS,
FWD, 4 Cyl., Black



2014 DODGE GRAND CARAVAN
SE, FWD, 4 Doors, 6 Cyl., Red.



2014 HYUNDAI SANTA FE
SUV L, FWD, 4 Cyl., Gray



2010 NISSAN ALTIMA BASE



660-956-4849
2015 N. Baltimore Str. Kirksville MO



ELIZABETH WALTER
GENERAL MANAGER

can AFFORD! Get Help Now and Save! Call Toll Free 888-925-5404

ARE YOU BEHIND \$10k OR MORE ON YOUR TAXES? Stop wage & bank levies, liens & audits, unfiled tax returns, payroll issues, & resolve tax debt FAST. Call 855-820-8878

BECOME A PUBLISHED AUTHOR! We edit, print and distribute your work internationally. We do the work, you reap the Rewards! Call for a FREE Author Submission Kit: 844-261-5841

CANCER GENETIC SCREENING KIT. Protect yourself and your family with early genetic screening! See if you qualify for a test at no cost to you with your Medicare Part B coverage. Call 1-855-623-4490. (Mon-Sun 9am-8pm ET)

ATTENTION SMALL BUSINESS OWNERS! Are you protected in case of property damage or if you have an interruption in service due to a property event? Business Owner Property insurance IS AFFORDABLE and WILL PROTECT YOU when the unexpected happens! For free quote, call 844-877-9891 (M-F 7:30am-9:30pm ET)

BATHROOM RENOVATIONS. EASY, ONE DAY updates! We specialize in safe bathing. Grab bars, no slip flooring & seated showers. Call for a free in-home consultation: 855-980-4002

BEST SATELLITE TV with 2-Year Price Guarantee! \$59.99/mo with 190 channels and 3 months free premium movie channels! Free next day installation! Call 888-986-4740

SAVE YOUR HOME! Are you behind paying your MORTGAGE? Denied

a Loan Modification? Is the bank threatening foreclosure? CALL Homeowners Relief Line! FREE CONSULTATION! 855-624-8601.

HughesNet - Americas #1 Choice for Satellite Internet. Call Today and Save! More Data. Free Installation. Available Everywhere. No Hard Data Limits. Call 855-248-7966

NEED NEW FLOORING? Call Empire Today to schedule a FREE in-home estimate on Carpeting & Flooring. Call Today! 877-866-8797

NEED NEW WINDOW TREATMENTS? Call Empire Today to schedule a FREE in-home estimate on blinds & shades. Call Today! 877-710-4641

Over \$10K in debt? Be debt free in 24-48 months. Pay a fraction of what you owe. A+ BBB rated. Call National Debt Relief 877-278-4861.

SelectQuote is dedicated to finding a Medicare plan right for you and your wallet. Call 844-361-4727 today and receive a free quote from one of our multiple carriers.



Signature
Overhead Doors and Remodeling, LLC

660-785-0248

www.signatureremodelingkv.com

Residential and Commercial Installation and Service

REIF ESTATE AUCTION
2 DAY AUCTION

AUCTION CONDUCTED AT DIFFERENT LOCATIONS AND TIMES (the day 1 & 2 will be published week of aug.2)
WATCH FOR THE AUCTION SIGNS ON DAY #1
FRI. AUGUST 6, 2021 5:00 P.M.

LOCATED AT THE STORAGE UNIT, CORNER OF HIGHWAY #1 AND CEDAR STREET, BIRMINGHAM, IOWA

RON'S CAR COLLECTION

2007 Mustang GT Saleen "Sleeper", torch red, A.T.Super Charged
2007 Mustang GT, Maroon, V8, 45,677 miles
1986 Buick Regal Limited, 307 V8, 68,389 miles
1975 Chevrolet Corvette, Black, 61,150 miles
1979 Dotson 280 ZX, 70,139 miles
1968 Plymouth Fury III, 4 door, Auto 383 V8
2007 Lincoln MKX, 49,073 miles
2009 Mercury Grand Marquis, 4.6 L, V8, 113,050 miles
Also selling Pedal Car

TERMS: Cash or Approved checks • Proper I.D. • Letter from your bank. Not responsible in case of accidents • Any announcement made day of sale over the auction block holds precedence over any advertising.

RON REIF ESTATE
DeVere Clinton, Executor, Elkader, IA. John Wehr, Attorney for the Estate, Sigourney, Ia.
SALE CONDUCTED BY
CURT FETT AUCTION SERVICE



Edina Livestock Sales
Edina, Missouri

Friday, July 16th
Special Feeder Calf Sale

Friday, July 23rd
Special Feeder Calf Sale

ALL SALES TELEVISED ON DV AUCTION
To Consign For Any or All Sales or For Information Call: Owner -Kevin Strange •Cell: 660-341-9974 Ryan Strange •Cell: 660-341-9721 Sale Barn: 660-397-9999

Field Reps:	Mike Bronestine 660-341-9965	Jason Bischel 660-216-0373
	Trey Gashwiler 660-341-9965	John Powell 660-341-1717
	Bill TomHall 660-342-5420	

ANYTHING ON WHEELS!




HIGHWAY 63
INSURANCE
(660) 956-9283



highway63insurance.com

ATTENTION LAND OWNERS!

BUYER OF STANDING TIMBER
OWNER / OPERATOR OF SAWMILL - BUY/CUT LOGS
CERTIFIED - BONDED - INSURED



TRI STATE TIMBER L.L.C.
PH. 660-341-4921 or 660-465-2975
353 1/2 GRAND AVE. • MEMPHIS, MO 63555

GREEN CITY LIVESTOCK MARKETING, LLC
19037 HWY 129 S.
GREEN CITY MO 63545
(660) 874 - 4146 • www.greencitylivestock.com

Next Sales:
Wednesday, July 21st
Special Calf & Yearling Sale
Wednesday, August 4th
Special Calf & Yearling Sale

3,801 head were sold at the July 7th Annual Customer Appreciation Beef BBQ Sale. Compared to the last sale two weeks ago, steers and heifers sold 3.00 to 8.00 higher with a few select weights trading 8.00 to 13.00 higher, mostly 550-700 lb heifers. Slaughter cows steady. Excellent quality on offer this week for the Annual Customer Appreciation BBQ Sale with a good mix of home raised calves and load lots of backgrounded yearlings. Trade was very active and with a handful of extra buyers in the seats, some weights reached prices that one would have to reach quite a ways into the memory bank to find.

STEERS		HEIFERS	
Phillip Timmerman	325 Ang 214.00	Todd Shiflett	724 BBWF 156.25
Jason Courtney	331 BWF 218.00	John Howe	726 Ang 163.75
Derek Slaughter	340 Ang (bulls) 191.00	Charles Howe	733 BBWF 163.00
Joshua & Rachael Hall	424 Mix 212.50	McClure Farms	750 BBWF 152.00
Jay Raymer	429 Mix 207.00	Jerry & Peggy Ward	757 Ang 158.00
Keith & Tracy Albrecht	436 Ang 217.50	Todd Sparks	815 Ang 138.00
Leon Maggart	438 BBWF 212.50	McClure Farms	831 BBWF 149.25
Jerry Corbin	442 Ang 208.00	Harden Farms	834 RedAng/CharX 148.85
Legacy Acres Farms	445 BBWF 190.00	David Perkins	840 Ang/CharX 153.50
Donald Lloyd	451 Ang 199.00	McClure Farms	858 BBWF 152.50
Michael Jackson	451 Ang 190.50	Jim Pfeiff	860 Mix 157.35
Mark McClamroch	454 Ang 200.00	Henry Wiskur	915 Ang 155.25
JD & Spencer Wright	469 BBWF 201.00	Henry Wiskur	927 Ang 153.75
Bennett Farms	496 Ang 200.00	Lee & Jolene Jaynes	942 Ang 149.60
David Frazier	501 Ang 195.00	Kenny Sparks	944 BBWF 153.60
Josh Powngnas	515 Ang 178.00		
Dennis Clapp	516 Ang 198.00		
Allen Jacobs	522 BBWF 190.00		
Lippitt Farms	527 Ang 180.00		
Leon Maggart	533 Ang 195.50		
David & Susan Rigdon	537 Ang 200.00		
Roger & Wendell Liebhart	545 BBWF/RWF 191.00		
Steve Biggs	551 Ang 185.00		
Mark McClamroch	554 Ang 182.50		
Ken Salsman	555 BBWF 200.00		
Carl Liebhart	555 Mix 187.00		
Gary Drummond	564 Ang 180.00		
Dean & Dallas Wilson	565 BBWF 188.00		
Kevin & Brandon Judas	566 Mix 177.25		
Mark & Craig Hill	573 Ang 186.00		
Garry Widner	574 BBWF 192.00		
Dale Fitzgerald	575 BBWF 190.00		
Roger Frazier	591 Ang 184.00		
James Coffman	602 Ang 160.50		
Jim Thomas	603 Ang 164.50		
John Moffitt	608 Ang 169.50		
Kaleb Shiflett	621 Ang 165.00		
Dean & Dallas Wilson	626 BBWF 182.00		
Gerald Roberson	635 Ang 165.00		
University of Missouri	641 Mix 160.25		
Doug Palmer	643 Ang 163.50		
Grant Shipley	645 Ang 155.00		
Bennett Farms	648 Ang 165.00		
Wes Allnutt	658 Ang 172.50		
McClure Farms	658 BBWF 162.50		
Ron Camp	667 Ang 169.00		
Tommy Creason	667 Ang 152.00		
Tyler Anderson	668 Ang 165.00		
Kay Young	668 Mix 162.00		
Lane Thurlo	675 Ang 152.50		
Dennis Clapp	679 Ang 165.00		
David Dudley	711 Ang 152.75		
David Perkins	714 Ang/CharX 166.25		
Robert & Dale Norfleet	724 AngX 165.00		

WEBSITE: www.greencitylivestock.com • **BARN:** 660-874-4146

OWNERS
Darren Hodgen: 573-999-3252
Cody McClamroch: 660-349-6535
Operations Manager: Steve Evans, 660-375-2545

FIELD REPS
Chuck Daniels: 660-626-7621
Steve Frazier: 660-626-7066 • Jeff Gray: 660-265-5569
Justin Morgan: 660-216-9719

**We are your top market for all classes of cattle *
We value and appreciate your business!*

The Ultimate Wood Heat.



CLASSIC EDGE
TITANIUM HD SERIES
Outdoor Wood Furnace

- More Comfort** - Thermostatically controlled wood heat.
- Peace of Mind** - Keep the fire outside and eliminate the dangers associated with indoor wood heating.
- Save Money** - Wood is a renewable, inexpensive and often free energy source.

CAMPEN
Heating & Air Conditioning
573-288-8966
Canton, MO
CentralBoiler.com

Buyer of Standing Timber Any Species.
Land Clearing and Clear Cutting Available. TSI Work.
Kline Dried Firewood For Sale. Bonded.
State Line Firewood
641-898-2398

FOR SALE
AI Sired Angus Bulls,
14 & 18 Months Old.
Harold Trump
660-341-5730

Premium Metal Roofing



AW Metal Inc.
Metal Roofing Headquarters
641-664-3990 • awmetal.net

Attention: Auto Injury Victims. If you have suffered a serious injury in an auto accident, call us! Our attorneys have the experience to get you the full compensation you deserve! Call Now: 877-496-3293

BEAUTIFUL BATH UPDATES in as little as ONE DAY! Superior qual-

ity bath and shower systems at AFFORDABLE PRICES! Lifetime warranty & professional installs. Call Now! 844-980-3902

BOY SCOUT COMPENSATION FUND - Anyone that was inappropriately touched by a Scout leader deserves justice and financial compensation!

Victims may be eligible for a significant cash settlement. Time to file is limited. Call Now! 866-395-0568

DONATE YOUR CAR TO CHARITY. Receive maximum value of write off for your taxes. Running or not! All conditions accepted. Free pickup. Call for details. 855-986-8602

FREE AUTO INSURANCE QUOTES for uninsured and insured drivers.

Let us show you how much you can save! Call: 888-320-7567.

YOU MAY QUALIFY for disability benefits if you have are under a doctor's care for a health condition that prevents you from working for a year or more. Call now! 877-430-9760

PROBLEM CREDIT REPORT? Lexington Law works to challenge inaccurate negative items including:

identity theft, collections, late payments, liens and more from your credit report. Call for a free credit repair consultation: 855-622-0369. John C. Heath, Attorney at Law, PLLC, dba Lexington Law Firm.

SAVE BIG on HOME INSURANCE! Compare 20 A-rated Insurance companies. Let us do the shopping & save you time & money. Get a quote within minutes. Average

RYE CREEK WELDING

CUSTOM FABRICATION – STEEL SALES
PORTABLE WELDING. MIG. TIG. STICK
ALUMINUM & STAINLESS
50+ YEARS EXPERIENCE

RUSTY **JUSTIN**
660-341-2250 **660-292-2389**

Personal Property Auction

Saturday, July 24, 2021 at 10:00 a.m..
Rita and the late Rich Davis
36245 US Highway 63, Excello, MO 65247



Directions: 36245 US Highway 63, Excello, Missouri. Located on US Highway 63 approximately 4 miles south of Macon. Watch for signs the day of the sale.

Vehicles and Trailers: Mirro Craft 14' aluminum boat, trailer and 25 hp Mercury outboard motor; 3' x 7' trailer

Antiques and Collectibles: antique oak drop leaf table; antique oak high back full size bed; oak claw and glass ball square table; blue Oriental dishes; light pink and silver Gold Standard porcelain China set, 11 dinner plates, 12 coffee cups, platter, serving bowls,

Household Furnishings: Mauve upholstered rocking chair; table lamps; maple chest of drawers; various home decor; 5 piece sectional sofa with queen size hide-a-bed,

Outdoor and Lawn Equipment: Simplicity 44" zero turn lawnmower,

Tools and Equipment: Lincoln 225 AC welder; Craftsman 10 inch table saw; Charge Aire Pro compressor; back pack sprayer; car ramps; Johnsred chainsaw; Remington pole saw,

Sporting Goods: Uberti 45 revolver 4" barrel, like new; Remington model 700 50 cal with 3x9 Simmons scope; Browning made in Japan over/under 12 gauge; Remington 870 Express 12 gauge 2 3/4 shells or 3"; Winchester model 50 12 gauge semi-automatic

Firearms are not on location at this time, they will be onsite the day of the auction

There will be more items at this auction too numerous to mention



Scotty Kuntz 573-356-4405

Michael Cunningham 660-651-2288 • Paxton Pittman 918-316-7500

Lake Street Real Estate Auction

Tuesday, July 20, 2021 at 5:00 p.m.
Winkler
33027 Lake Street, Macon, MO 63552



Directions to Auction Location: 33027 Lake Street, Macon, Missouri. Travel East on US Highway 36 from Macon 0.8 miles to Kellogg Avenue. Turn North for 0.8 miles then turn right on Lake Street for 2.2 miles to auction location on the left. Watch for signs the day of the sale.

Real Estate: This 3 bedroom, 1 bath, basement style ranch home sits on 2.4 acres

The real estate will sell promptly at 6:00 p.m.. If you would like to schedule your personal showing, please call Scotty at 573-356-4405.

*See Terms and Conditions for Purchase of Real Estate below.

DOWN PAYMENT: 10% of the contract purchase price will be due upon acceptance of the Sales Contract. Personal or Cashier's Checks will be accepted. This is "AS IS, WHERE IS" and is non-refundable. **CLOSING:** Closing shall be within 30 days of the auction date.

Household Items: Frigidaire upright refrigerator/freezer; Hot Point electric dryer; Frigidaire washing machine; GE console stereo/turntable; 3 piece full size bedroom set;

Outdoor Tools and Equipment: Styrofoam incubator; wheelbarrow;

Antiques and Collectibles: Fantique walnut cupboard; oak wash stand; round oak style kitchen table and 4 chairs; oak 3 drawer chest of drawers;

There will be many more items at this sale too numerous to mention.



Scotty Kuntz 573-356-4405

Michael Cunningham 660-651-2288 • Paxton Pittman 918-316-7500

HELP WANTED

NEED A CHANGE??
Due to our expanding business, we are accepting applications for

AUTO TECHNICIAN

Competitive Wages • Group Insurance
• Vacation Retirement Plan

Stop by to see Terry and Pick your application up TODAY!!
MUST HAVE TOOLS & DRIVERS LICENSE

Woody's Tire, Auto & Towing LLC

1102 N. Green St., Kirksville, MO • 660-665-8617

HELP WANTED

THE NEMO TRADER

CLASSIFIED COUPON

Clip This Coupon Out of This Week's NEMO Trader and run
2 CLASSIFIED ADS FOR \$5.00

Picture Ads Not Included with Coupon! Call For Pricing!

(Each Ad Must Be 20 Words or Less.)

~20¢ per word over 20 words~

Cash NOT ACCEPTED

Check or Money Order Only

Ad No. 1: (20 words or less)

Ad No. 2: (20 words or less)

**YOUR CLASSIFIED AD WILL BE READ IN OVER 19 COUNTIES, IN 3 STATES!
BY COUNTLESS BUYERS!!!**

**TO RECEIVE THIS RATE: COUPON MUST BE MAILED IN
ALONG WITH YOUR PAYMENT!
THE NEMO TRADER, P.O. Box 190
KIRKSVILLE, MO. 63501 ~ 660-665-8500**

savings of \$444/year! Call 877-594-0878. (M-F 8am-8pm Central)

SLOW DOWN, ENJOY LIFE, LIVE LONGER...Look what you can

own for under \$500,000 in beautiful East Texas in a great

hometown to live in

<https://www.kw.com/property/LST-6689906379600871429-8>



ESTATE AUCTION

Saturday, July 17th • 10 am
 at 1641 N. 400th Ave. • Payson, Il.

The Estate of William E. Oberling

- 2016 Lincoln MKX • Gold and Silver Jewelry • JD Riding Mower
- Antiques & Collectibles • Tools • Household & Appliances

JEFF OBERLING CO EXECUTOR • 918-933-0991
 JAIME OBERLING CO EXECUTOR • 217-430-6666

Vehicle and Jewelry offered online and live at 11am

REGISTER TO BID ONLINE AT: WWW.CHUPPSAUCTION.HIBID.COM
View Terms/Pictures at: WWW.JOBERLING.CCOKLAHOMA.COM

LANCASTER LUMBER INC.

Lancaster, MO.

1-800-424-5071

LAN-DOW BUILDINGS



www.lancasterlumber.com

Antioch Repair

Specializing in fixing skid loaders & other equipment.
 Ethan Zimmerman


660-299-0808
 Serving Northeast MO



Moberly Investment Real Estate Auction

Tuesday, August 3, 2021 at 5:00 p.m.

1015 W Rollins St, 1000 W Reed St, 106 Lyons St, 103 Lyons St and corner lot at Rollins & Lyons St, Moberly, MO 65270



Directions to Auction Location: 1015 W Rollins Street, Moberly, Missouri. From US Highway 24 in Moberly, head South on Emerson Street for 0.9 miles, turn left onto West Reed Street then right on College Avenue. The auction location will be on the left. Watch for signs the day of the sale.

Real Estate: We will be offering at auction 5 properties in Moberly, Missouri, all of these properties are within walking distance of Moberly Area Community College, Rothwell Park and downtown Moberly. These properties would be a great investment or could be turned into your next home with a little TLC. Don't miss out on this amazing opportunity!

Property 1: 1015 W Rollins Street, Moberly, MO – 1,652 square foot 3 bedroom, 1 1/2 bath, 2 story home with a basement; approximately 0.25 acre lot

Property 2: 1000 W Reed Street, Moberly, MO – 2 story duplex, 2 bedrooms, 1 bath on each level, wood siding, brick front with a basement and garage; central air and window units; roof is less than 10 years old; approximately 5,600 square foot lot

Property 3: 106 Lyons Street, Moberly, MO – 3 bedroom, 1 bath with full, unfinished basement; arch doorways, original woodwork, hardwood floors throughout the home; gas furnace and fireplace; approximately 3,000 square foot lot

Property 4: 103 Lyons Street, Moberly, MO – ready to be remodeled with full, unfinished basement, updated wiring, forced air gas furnace, all new windows and wood fireplace; approximately 3,900 square foot lot

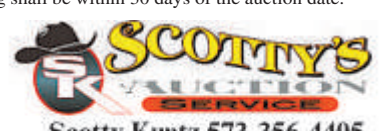
Property 5: Corner of Rollins Street and Lyons Street, Moberly, MO – 76.5' x 76.5' lot

The real estate will sell promptly at 5:00 p.m.. If you would like to schedule your personal showing, please call Scotty at 573-356-4405.

***See Terms and Conditions for Purchase of Real Estate below.**

DOWN PAYMENT: 10% of the contract purchase price will be due upon acceptance of the Sales Contract. Personal or Cashier's Checks will be accepted. This is "AS IS, WHERE IS" and is non-refundable.

CLOSING: Closing shall be within 30 days of the auction date.



Scotty Kuntz 573-356-4405
 Michael Cunningham 660-651-2288 • Paxton Pittman 918-316-7500

Moberly, MO, Real Estate and Personal Property Auction

Thursday, July 22, 2021 at 5:00 p.m.
 The late Patsy Lang Chirillo
 1605 Parkwood Drive, Moberly, MO 65270



Directions to Auction Location: 1605 Parkwood Drive, Moberly, Missouri. Travel West on US Highway 24 from Moberly to Rothwell Park Road. Turn South for 0.9 miles then take a right on Fisk Avenue. Take a slight left on Greenbrier Road which becomes Parkwood Drive. Follow Parkwood Drive for 0.2 miles and the property will be on your left. Watch for signs the day of the sale.

Real Estate: This beautiful brick, ranch home was built in 1996 and offers 2 bedrooms, 3 bathrooms and an open floor plan. The large kitchen has an abundance of oak cabinets, a center island, lazy Susan spice cabinet, pull out storage in the lower cabinets and a walk-in pantry.

The real estate will sell promptly at 6:00 p.m.. If you would like to schedule your personal showing, please call Scotty at 573-356-4405.

***See Terms and Conditions for Purchase of Real Estate below.**

DOWN PAYMENT: 10% of the contract purchase price will be due upon acceptance of the Sales Contract. Personal or Cashier's Checks will be accepted. This is "AS IS, WHERE IS" and is non-refundable. CLOSING: Closing shall be within 30 days of the auction date.

Storage Building: 10' x 16' portable building to be sold separately

Vehicles: 2006 Buick LaCross CXL with 51,000 miles

Household Items: Frigidaire refrigerator/freezer, Whirlpool electric dryer; Whirlpool washing machine; Gometer stationary exercise air bike; Callaway right handed golf clubs lots more

Outdoor Tools and Equipment: Plastic storage locker; hose and caddy; Weber BBQ grill; Werner aluminum 12' extension ladder; miscellaneous long handle tools; lots more

Antiques and Collectibles: Wabash Railroad Company public tariff file; Philco antique radio; German made signs; antique oak split curio cabinet; antique oak mission-style end table; lots more

There will be many more items at this sale too numerous to mention.



Scotty Kuntz 573-356-4405
 Michael Cunningham 660-651-2288 • Paxton Pittman 918-316-7500



John Deere 4020 Tractor, 1969, 3600 hrs, 18.4x38, power shift, dual hydr, Diff Lock, original, \$17,500.



John Deere 1020 Gas Tractor, Iowa tractor, 609 hrs showing, new tires, 3 pt & valve, perfect in every way, \$7,500.



MF 235 Tractor, low, low use, new rubber, 3 pt, always shedded, \$5,250.

Call 573-881-3557

Kirksville Real Estate and Barber Shop Auction

Monday, August 2, 2021 at 5:00 p.m.
 Donaldson
 110 East Jefferson Street, Kirksville, MO 63501



Directions: 110 East Jefferson Street, Kirksville, Missouri. From Business Route 63 in Kirksville, turn West on East Franklin Street for approximately 0.6 miles. The auction will be located on your left. Look for signs the day of the sale.

Real Estate: This well established Kirksville business is located in a high visibility area and is available for you to purchase and make your own. The store front is located in the busy downtown area and offers retail space, 3 separate sleeping areas and 2 bathrooms. There is also dedicated, covered parking in the rear of the building. It sits on a 54' x 108' lot. You can make this building whatever you wish for it to be. The real estate will sell promptly at six o'clock. If you would like to schedule your personal showing, please call Scotty at 573-356-4405.

***See Terms and Conditions for Purchase of Real Estate below.**

DOWN PAYMENT: 10% of the contract purchase price will be due upon acceptance of the Sales Contract. Personal or Cashier's Checks will be accepted. This is "AS IS, WHERE IS" and is non-refundable.

CLOSING: Closing shall be within 30 days of the auction date.

Contents: Antique National cash register; antique barber chair, longhorn; homemade barber chair; ABS Cold dorm refrigerator; twin size bed; other miscellaneous items

There will be more items at this auction too numerous to mention.



Scotty Kuntz 573-356-4405
 Michael Cunningham 660-651-2288 • Paxton Pittman 918-316-7500


PUBLIC AUCTION

22512 RIDGE RD BLAKESBURG IA
8 Miles west of Ottumwa on Highway 34 to Ridge road on north
Saturday July 24th 10 am

We will be selling the following personal property for Mike Mccusker as he has sold his place and is moving out of state.

Guns/Ammo: Mauser 8mm, Savage single 12 ga, Army Colt black powder pistol new in box, Davenport 10 ga, Remington 1100 12 ga 3", LC Smith SXS 10 ga hammered, S&W 1000P 12 ga 3"1863 Savage flintlock rifle, 1832 Flintlock rifle, around 700 rounds of 8mm, 12 and 20 ga shells, 22 shells, pellet rifle, several pounds of lead, fishing rods and tackle, turkey fryer, tents. Trailer/Boat: 16ft homemade car trailer, 1989 Invader 16 ft ski boat, 8 ft homemade enclosed trailer, motorized bike, nice dune buggy. Antique/Collectible/Household: 15 cuckoo clocks, several RC planes and boats, 2 clawfoot tubs 1 is 4 ft, steel wheels, lubester, 8 ft RC plane, normal run of household items. Tools: very large amount of tools of all kinds, 6 ft shop table, large upright compressor, battery chargers, new air paint sprayers, hydra drill well drilling machine, metal brake, electric winch, whole house generator, portable generator, water line, 100 gal propane tank, log chains, cable cutter, large pipe wrench, several feet new chain, chain saws, power pole saw, power washer, treated lumber, wheelbarrows, 110v wire welder, well pump, hard tire machine, tire leak tester, stove pipe, wood stove, levels, transit, chain hoists, jacks, ladders, heavy duty ext cords, rain barrels, 300 gal water tank, electric fencer, table saw, hilti fastener gun, drywall lift, cement saw, arc welder, drill press, scaffolding, garden fence, power and hand tools.

Can see photos at Altiser Auction Facebook page. Statements made the day of sale take precedence over printed material. Food and restrooms are available.



SEE OUR FACEBOOK PAGE FOR PHOTOS

KRIS ALTISER
 660-626-4960



McAfee/Hayes Auction Service, LLC

375 S Johnson • Kahoka, MO
660-727-3796

www.mcafeeauctionservice.com

Clark County, MO
LAND AUCTION

Sale conducted at the CARE Building located at 451 N. Vine Street Kahoka, MO

**HIGHLY
PRODUCTIVE
TILLABLE
LAND**

77 ACRES
2 TRACTS

Lying in Sect. 34,
Twp. 65N, R7W

**Thursday,
July 22ND
at 6 PM**



RONNIE STUTZ ESTATE

Joann Markus Executor/ Crystal M. Hawk, Rep. Att.



McAfee/Hayes Auction Service, LLC

375 S Johnson • Kahoka, MO
660-727-3796

www.mcafeeauctionservice.com

**RESIDENTIAL REAL ESTATE
& PERSONAL PROPERTY
AUCTION**

SATURDAY JULY 24TH - 10 AM

Sale conducted onsite located 3/4 mile Southwest of Revere, MO on
Highway C. (Address 24989 Highway C Revere, MO)



Take advantage of this rare opportunity to purchase a very well built 4063 sq' total living space 3-4 bedroom rural full brick home. Home Features 2545 sq' on main level, 1518 sq' finished basement, 5 bathrooms, 2 kitchens, geo thermal and electric radiant heat, 2 fireplaces, LP whole house generator and much much more. Other improvements: 42X72' pole building w/ cement floor and electric. Sitting on 2.5 +/- acres.

Also Selling a Nice Selection of Antiques, Collectibles, Household, Misc., Boat and Other Useful Items.

**CHARLES & JERI BRAXTON TRUST
CHARLES BRAXTON TRUSTEE**



McAfee/Hayes Auction Service, LLC

375 S Johnson • Kahoka, MO
660-727-3796

www.mcafeeauctionservice.com

**LARGE PERSONAL
PROPERTY AUCTION**

SATURDAY JULY 31ST - 10 AM

Sale conducted at 23001 East Main Street Kahoka MO
(across from the Clark County Fairgrounds)



Selling a nice selection of personal property to include, lawn mowers, four wheeler, Jon boats, nice selection of tools and related items, lawn related, household appliances and furniture, antiques, collectibles, quilts, Ertl farm toys, die cast cars, large Nascar/ Dale Earnhardt collection and so much more.

Additional Photos & Details Online!

**RAY AND JOAN PEEK, NELMA
GOODALE AND OTHERS, SELLERS**



McAfee/Hayes Auction Service, LLC

375 S Johnson • Kahoka, MO
660-727-3796

www.mcafeeauctionservice.com

**LARGE MOVING
AUCTION**

SATURDAY AUG 14TH - 10 AM

located at 14175 Hwy. K Luray, MO (9 miles North of Luray or 5 miles South of Mt. Sterling IA on Rte. K)



1966 JD 4020 Diesel, sells complete with JD 158 loader with material bucket; Equipment; Farm Related; Household Misc.; Collectibles

Additional Photos & Details Online!



JUNIOR KROUSE, SELLER



McAfee/Hayes Auction Service, LLC

375 S Johnson • Kahoka, MO
660-727-3796

www.mcafeeauctionservice.com

**TIMED ONLINE ONLY
ESTATE COIN AUCTION**

**LOTS START ENDING
SATURDAY AUGUST 1ST - 1 PM**



Sale 1 of this extraordinary estate auction features five Monster Boxes of Silver, several high graded gold pieces, Half Cents, Lincoln Cents including key dates, BU Washington Quarters including key dates, Liberty Head Half Dollars, various Commemorative Silver Coins and much, much more.

Online Bidding **proxibid**
Powered By:

**BID
NOW!**

Additional Photos & Details Online!

MONTY: 660-341-7412 OFFICE: 660-727-3796



For all your advertising needs email us at nemotrader@gatehousemedia.com

Ramer Truck Sales



2012 Ford F-350 XLT 6.7 240k
\$15,900



2011 Ford F150 XLT 3.5L At 4x4
Clean Title 158650 \$11,900



2011 Ford F-350 4x4 6.7L lariat 235k
\$17,900



2013 Ford explore 4wd xlt clean title
167k \$11,900

Gorin, Missouri
8 am. to 6 pm. Monday - Saturday

www.ramertrucksales.com

HOME 660.282.1002 CELL 660.341.6140 *NO SUNDAY CALLS!*



2021

APPANOOSE COUNTY FAIR

July
18-24



**SUNDAY,
JULY 18**

7:00 - 9:00

Mark Ministries & Withrow's
Gospel Concert

**MONDAY,
JULY 19**

7:00 Fair Dedication

7:30 Crowning of the Fair Queen
Bill Riley Talent Show & Fireworks

**TUESDAY,
JULY 20**

7:00 Mutton-Bustin' (ages 3-7)

7:30 Duckworth Rodeo (full rodeo)
Lucas Beebe Band following

**WEDNESDAY,
JULY 21**

7:00 Mutton-Bustin' (ages 3-7)

7:30 Duckworth Rodeo (full rodeo)
Lucas Beebe Band following

**THURSDAY,
JULY 22**

6:00

Redneck Rally
Bring a Lawnchair
Bootcut Band following

**FRIDAY,
JULY 23**

Bike Night at the Fair with
Centerville MainStreet

7:30

Standing Hampton Concert

9:00

Steve Augeri Concert

**SATURDAY,
JULY 24**

9:00 a.m.

4H/FFA Livestock Auction

7:30 Demolition Derby
(Lunatic Promotions)

ADMISSION

SEASON PASS

(valid July 18-July 24)

before noon July 19th.....\$35 • after noon July 19th.....\$45

SENIOR SEASON PASS

(65 years of age and older)

before noon July 19th.....\$25 • after noon July 19th.....\$35

(Season Passes available for purchase at Centerville Produce, Fareway, Chamber, Iowa Trust, Community First, Farmer's Bank & Bratz)

DAILY PASS

Mon-Wed before 5:00pm.....	\$7
Mon-Wed after 5:00pm.....	\$10
Thursday before noon.....	\$7
Thursday after noon.....	\$20
Friday.....	\$20
Saturday.....	\$20

Children 10 and under are FREE with a paid adult admission Monday- Saturday

**Mechanical Bull and PACT
Beer Garden available July 20-24**

Livestock

Livestock shows daily at the Ron Turk Memorial Arena

Exhibits

4-H & FFA Static Exhibits in the Exhibit Building

Local Businesses showcased nightly in the Commercial Building