

FREE!

NEW EDITION EVERY FRIDAY!
VOL. 29 • NO. 34 • SEPTEMBER 10, 2021

NEMO *Trader*

THE NEMO TRADER

PO BOX 190 • KIRKSVILLE, MO 63501

PHONE 660-665-8500

Web Site: nemotrader.net

Email: nemotrader@gatehousemedia.com

A WEEKLY ADVERTISER SERVING ALL OF NORTHEAST MISSOURI AND THE SURROUNDING AREA

HILLSIDE METALS

Customer Appreciation Day

Friday Sept 17-4pm to 7pm

Food for everyone & door prices
5% off everything ALL DAY

METAL CUSTOM CUT TO LENGTH

- *Trim, Screws and Accessories
- *Door Track
- *Windows & Doors
- *Over Head Doors

INSULATION

- *Blow in insulation
- *Spray foam: Open & Close Cell

COMPLETE BUILDING PACKAGES

Stop by today to get our Best Prices

REGULAR & TEXTURED METAL

26, 29 Gauge Metal with
40 year paint warranty



"Your Satisfaction is our Goal"

HILLSIDE METALS

Office hours: Monday thru Friday / 7am to 5:30 pm
21564 State Hwy J Brashear, Mo 63533

SPRING IS YOUR GO TIME.

GET OUT THERE.

You've been waiting all winter for this moment.

REBATES UP TO **\$1,000** ON 2020 MODELS

POLARIS
SPRING SALES EVENT

TERMS AND CONDITIONS APPLY

[Explore Inventory >](#)

Slayton

POLARIS

10456 State Route B, Downing, MO
6 miles W. of Memphis, then 13 miles N. on B

660-328-6627

VISIT POLARIS.COM FOR MORE OFFERS



FOR SALE: John Deere 4320 Tractor, straight off farm, ft wts, rear wts, 38" tires, 11,000 hrs, runs good, \$13,500. Call 573-881-3557

FOR SALE: Ford 3000 D, good pant and sheet metal, excellent rubber, 8 speed, \$4500. 660-341-8089

FOR SALE: 5 X 5 1/2 big round bales of mixed grass hay, Bailed dry no rain fertilized lab tested surface wrapped. Call 660-341-4031 Watson hay sales

FOR SALE: Mums \$8 a piece, also have large combo's \$20; large variety of colors. Pumpkins and fall decorations. Kauffman Produce 11538 Iceberg Ave La Plata MO 63549

STOCK MOBILE HOMES AVAILABLE: We gottem, single and double 3 and 4 bedroom! Call Tuffy 573-657-2176 amegamobilehomes.com

FOR SALE: John Deere 265 SL Loader, bucket, JD 20 thru 55 series mount, sharp, \$6,250. Call 573-881-3557

FOR SALE: NH 973 20' flex; NH 973 25' flex; NH 974 630 corn head; MF 1163 corn head; MF 1144 corn head; Gleaner 630 LM or R; Gleaner 830 corn head LM or R. 217-658-4761

FOR SALE: Heider Auger Wagon, 100 bushel, 540 PTO, boards on each side, manual auger swing either side, shedded, clean solid wagon, \$750. 217-257-1385 anytime

WANTED TO BUY: Harley Davidson's, any year, any condition, cash money. Days 660-263-1356 or 660-537-0068

FOR SALE: New 3 pt. tillers, heavy duty, gear driven, 7' to 10' starting at \$3050. 660-874-4455

HANDYMAN: Install interior and exterior doors and windows, siding, decks, showers and toilets, flooring and drywall, roofs and dirt work. 660-956-2189.

SCOTT HUSKEY'S HOME SERVICE R-10 Foundation Enclosure Systems for manufactured, modular, & site built homes. Saves on utilities and prevents freeze ups. General maintenance and repairs since 1972 573-696-3468 "GO DAWGS"

FOR SALE: Polled Shorthorn Bulls, ready to work, delivery available. AAA Shorthorns, The Meierotto Family. Hwy 81 between Kahoka, MO and Farmington, IA 319-572-2322

FOR SALE: Westendorf TA 25 quick tach loader fits JD 3020 or 4020, comes with control valve and all mounting brackets, \$1500 obo. 660-684-6977.

FOR SALE: John Deere 2950 Tractor, MFWD, CAH, 5,000 hrs, 90% tires, Westendorf Loader, cold AC, \$25,500. Call 573-881-3557

FRESH DRESSED Farm raised fish. If you freeze our fish they taste as fresh the day dressed. Benefits, Organizations, reunions. Call me will show you a money making event. 573-604-0674 delivered.

FOR SALE: 24x60 Double wide trailer house near Rutledge, MO, with mold problems, make offer. No Sunday Calls 660-341-2160

FOR SALE: Gehl 600 2 row chopper; Fox 2250 2 row corn, hay pickup fox 3000 2 row; Fox w/1 row hd; H&S silage wagon WT gears; Gehl silage wagon; silage wagon. 217-658-4761

FOR SALE: AC D-17 Series 3, WF, SC, new rear tires and tubes, front end loader, runs excellent, always shedded, \$4000. Kirksville No Pics 660-342-4287

FOR SALE: November and February Ram Lambs. Jim Vermazen Montrose Iowa 319-371-7189

FOR SALE: 1946 M Farmall, wide front, 3pt, fenders, good paint. 573-541-2015

FOR SALE: Remington 700 BDL rifle, 280 caliber, Tasco World Class Scope 3x9x40; Custom made Rifle, 7x57 caliber, Tasco World Class scope 3x9x40; Mossberg 500 pump action 20 gauge shotgun, accu-choke 2 3/4" or 3" shells. 660-651-3722

FOR SALE: MF 235 Tractor, low, low use, new rubber, 3 pt, always shedded, \$4,950. Call 573-881-3557

FOR SALE: Hot rod tractor, WD45 with 454 big block with automatic transmission, 400 turbo runs great, \$2500. 573-822-2651

Driveway repair. Excavation. Trenching. Brush clearing. Site prep and cleanup. Leveling. CRP work. Transportation. Heavy installation. Welding. 660-216-7268

FOR SALE: Ford 1500, good paint and sheet metal, good rubber, with rear mounted finish mower, \$3500. 660-341-8089

FOR SALE: Great Pyrenees puppies, born 7-25-21 \$125 each or \$100 each for the litter or what is left. Mose Miller 12548 Hilton Ave LaPlata MO 63549

For sale: 8 Great Pyrenees puppies, 4 females, 4 males, 5 weeks old, \$250 each. Leroy Borntreger 12743 Hilton Ave LaPlata MO 63549

FOR SALE: Gleaner R62 combine, CDF rotor lateral tilt; MF 850 D hydra; NH TR 96; IHC 1440 diesel; MF 750 diesel; 2 kastern silage wagon; JD 55 EB 12' platform. 217-658-4760

FOR SALE: Good used Industrial Channel drain tin 27 gauge approx., galvanized under white paint, very few holes, large number of long sheets; Antique paver brick (Moberly Missouri Pavers), \$4.00 per brick, also Solid red brick .75 cents per brick. 660-676-5021 Clarence MO

FOR SALE: IHC 983 corn head; IHC 883 corn head; Drago 830 corn head, adj deck plates; IHC 820 17 1/2' MF 830 for JD. 217-658-4761

FOR SALE: 1998 Jeep Cherokee 4 WD, 4 door, air, radio, Reese hitch, 145,000 miles, \$3200 cash. Text 217-653-7100 for return call. Canton MO

FOR SALE: John Deere 7220 Tractor, MFWD, CAH, power shift, 9000 one owner hrs, \$49,500. Call 573-881-3557

FOR SALE: Land Pride RCR 2584 7' Rotary cutter, stump jumper, front chains, laminated tire, ready to use, real good, \$1400. 217-257-1385 anytime

FOR SALE: Hay big round bales, small square bales, alfalfa, grass, and some mixed, for prices call Bob 660-342-4048

FOR SALE: Mickey Thompson rims off F150, \$150; Ranger truck parts, \$200. Call 660-379-2598

SCHMUCKER PRODUCE Has tomatoes by lb, onion, cucumber, zucchini squash, acron melon, pepper beats, canning tomatoes, \$9 for 1/2 bu while they last, 7 miles North Kirksville to Ft Madison Way 1/2 mile East

HUSKY MIX PUPPIES Ready for their new homes, they have had their first 3 rounds of shots and one round of deworming, \$150 OBO. Please call/text 515-249-9655 (When calling please leave a message)

FOR SALE: 2014 RZR 800-S, nice older person driven, 3200 miles, \$8495. Kirksville 660-341-9522



The new GENESIS® T8 with PLM Intelligence™ is the first tractor on the market to fully integrate New Holland's advanced Precision Land Management platform. So, no matter where you are, you're connected to real-time insights, information and support for maximum productivity. Available in eight models from 320 to 435 maximum horsepower, the GENESIS T8 with PLM Intelligence is built for the way you work.

Learn more at GenesisT8.newholland.com



newholland.com

NEW TRACTORS

- NEW HOLLAND POWERSTAR 120 - 120 ENGINE, 90 PTO HP, DELUXE CAB, 4WD, LOADER BUCKET
- NEW HOLLAND WORKMASTER 120 - CAB, HVAC, 2 REMOTES, 632TL LOADER W/ 84" BUCKET, 540 PTO,
- NEW HOLLAND T8.320 - 250HP, DELUXE CAB, POWERSHIFT, 1000PTO
- NEW HOLLAND T8.435 - POWERSHIFT, 400HP, LUXURY TECH CAB, 1000 PTO
- NEW HOLLAND T9.435 - POWERSHIFT, 370HP, DELUXE CAB

USED TRACTORS

- NEW HOLLAND TC26DA - 1015 HRS, TURF TIRES, HYDRO, 914 - 60" MID MOWER
- NEW HOLLAND BOOMER 25 - HYDROSTAT, NO LOADER, NO MOWER
- NEW HOLLAND T5050 - 3125 HOURS, CAB, LOADER
- NEW HOLLAND 8160 MFWD - LOADER BUCKET & SPEAR, CAB, FWA, SEMI POWERSHIFT,
- 2011 NEW HOLLAND T6030 - 1880 HOURS, 115HP, 3 REMOTES, 540/1000 PTO, 16X16 PARTIAL POWERSHIFT TRANSMISSION, SUPER STEER, NEW TRANSMISSION, NEW AC,
- 2013 NEW HOLLAND T8.330 - LUXURY CAB, 18F POWERSHIFT, CLASS 4.75 STD AXLE, HI FLOW, 5 ELEC REMOTES, 1000 PTO, HI CAP DRAWBAR, 3 PT HD HITCH W/ HYD TOP LINK
- NEW HOLLAND TG255 - 875TL LOADER, SUPERSTEER, BUCKET, 4 REMOTES, FRONT & REAR DUALS, QUICK HITCH, FULL SERVICE, 3PT CYL LEAKS,
- 2007 CASE IHSTX530 - LIKE NEW TRACKS, 5 REMOTES, PTO, 4580 HRS
- 2014 NEW HOLLAND T9.600 - 3228 HRS, GPS, LUXURY CAB, POWER SHIFT, DIFF LOCK, HI CAP PUMP, 6 REAR REMOTES, HID LIGHTING



833-774-1606

www.QuincyTractorLLC.com

Buy with confidence. We have you covered.



100% Satisfaction™



ACCIDENT Protection Plan™



SERVICE Contract Plus™



PAY Your Way™

For more information visit car-mart.com/peace-of-mind



car-mart.com

660-956-4849 • 2015 North Baltimore • Kirksville

• Peace of Mind Package

• Service Contract Plus

• Accident Protection Plan

• 100% Satisfaction

• Pay Your Way

• Low Down Payments

• Quality Used Vehicles

• Flexible Financing

• Hand Selected Vehicles

• Convenient Payment Options

• Start Your Approval Online

• Over 150 Locations

• 40 Years in Business

• We Buy Cars



2010 GMC ACADIA
SLT, FWD, 6 Cyl., Red



2006 DODGE RAM 1500 SLT
4WD, 8 Cyl., 4 doors, Red



2010 NISSAN ALTIMA
FWD, 4 Cyl., Blue



2008 LEXUS ES350,
FWD, 6 Cyl., Red



2017 FORD ESCAPE SE,
FWD, 4 Cyl., White



2011 CHEVROLET SILVERADO 1500,
LT, 4WD, 8 Cyl., Blue



2012 TOYOTA RAV4,
Base, 4WD, 4 Cyl., Black



2010 Lexus RX350
AWD, 6 Cyl., Red



2016 CHEVROLET CRUZE LIMITED LTZ,
FWD, 4 Cyl., Red



2014 CHEVROLET CAPTIVA SPORT LT,
FWD, 4 Cyl., Maroon



2013 LINCOLN MKX,
AWD, 6 Cyl., Silver



2015 KIA SOUL
FWD, 4 Cyl., Gray



2010 CADILLAC ESCALADE,
AWD, 8 Cyl., Red



2010 Mazda Mazda3,
FWD, 4 Cyl., 5 Gears, white



2008 SUBARU TRIBECA LIMITED,
AWD, 6 CYL., GRAY



2008 CHEVROLET SILVERADO 1500, LS,
4 WD, 8 Cyl., White



2012 RAM 1500 ST
4WD, 8 Cyl., Gray



2009 KIA RONDO LX,
FWD, 4 Cyl., Black



AMERICA'S CAR-MART

Keeping You on the Road



ELIZABETH WALTER
GENERAL MANAGER

HAY FOR SALE: 80 Bales Brome, \$55 per bale, 163 bales CRP hay, \$45 per bale. I will come down on the price if you take all of the brome or all of the CRP hay. Baled with a 567 John Deere baler, net wrapped. Call 660-651-8546 Atlanta MO

NATIVE PLANTS for butterfly gardens, rain gardens, hard to mow banks, and restoration. Peckosh Landscaping 23198 Hwy H/ Boundary St. Kirksville, MO. Just north of the Troy Mills store. Call Claire at 660-349-0061.

FOR SALE
All Sired Angus Bulls,
14 & 18 Months Old.
Harold Trump
660-341-5730

ARE YOU COVERED? Accidents and illnesses occur without warning. Let us help you make sure you, your family and/or employees are covered. Health, Cancer, Accident, Hospital, Critical Illness, Short Term Disability, Dental, Vision, Life. Linda 660-537-5177 linda_buchmann@us.aflac.com Denise 314-465-5611 denise@healthinsuranceagt.com

FOR SALE: Farmhand XL 740 Loader, QT, 7' bucket, good paint, \$3,750. Call 573-881-3557

FOR SALE: Smooth mouth mare \$600; also small bales of straw \$5.00; 4x5 net wrapped hay, \$45. 660-342-5314

FOR SALE: Silver Lab puppies, 5 weeks old, silver males and females big healthy pups up to date on shots and wormer ready to go Sept 1, farm raised, top quality \$250 660-988-1163

WHITETAIL INSTITUTE Food plot seeds, archery supplies, optics, and more. Whitetail Seed and Supply 14136 State Hwy 3 LaPlata MO 63549

FOR SALE: Ford 5000 D, good sheet metal & paint, good rubber, runs good, \$6500. 660-341-8089

FOR SALE: Wholesale Southern Yellow Pine. Shelby Supply 660-299-0615

HOUSE FOR SALE: Macon MO, fixer upper 500 feet from the School and 300 feet from the park. 660-676-5531

HIGH QUALITY Hay for sale \$45 per bale. 217-653-4762

FOR SALE: Fish for stocking ponds – Catfish, Grass Carp, Crappie, Blue Gills, Red Ear, Bass, and Minnows. Heindselman Family Farms, Call Greg 660-341-5692

AVAILABLE STOCK MOBILE HOMES immediately, double wide and single, 3 and 4 bedroom. 573-499-9993 columbiadiscounthomes.com

FOR SALE: Rossi 4 Basket Tedder, field ready, \$3,250. Call 573-881-3557

FOR SALE: John Deere 125 Chuck wagon with roof on John Deere 1265 gear, John Deere 112 Chuck Wagon on 953 gear. 319-572-2322

NEW/USED Parts "vehicles, pickups, semi's, construction/ farm equipment" "motors/tranny's" body parts paint matching yours. "Delivered/warrantied" 800-807-9612

FOR SALE: Gleaner 8000 30' SCH sickle, F&A; JD 930 poly dividers; JD 220 flex; JD 216 flex; IHC 1020 20'; IHC 1020 17 1/2' MF 918 217-658-4761

FOR SALE: AC D-17 Series 3, WF, SC, new rear tires and tubes, front end loader, runs excellent, always shedded, \$4000. Kirksville No Pics 660-342-4287

FOR SALE: November and February Ram Lambs. Jim Vermazen Montrose Iowa 319-371-7189

FOR SALE: 1953 Super M, power steering, live hydraulic. 573-541-2015

FOR SALE: Older heavy frame shop built 21', 16 1/2' deck, 8' wide, flatbed trailer, mobile axles, bumper hitch, 2 5/16 ball, could use flooring, with MO title, \$650. 217-257-1385

FOR SALE: Dunbugy 1972 1600 VW pipe frame, front closed in, \$2500. In Hannibal, MO. 573-822-2651.

FOR SALE: Great Pyrenees puppies, born 7-25-21 \$125 each or \$100 each for the litter or what is left. Mose Miller 12548 Hilton Ave LaPlata MO 63549

FOR SALE: Good used Industrial Channel drain tin 27 gauge approx., galvanized under white paint, very few holes, large number of long sheets; Antique paver brick (Moberly Missouri Pavers), \$4.00 per brick, also Solid red brick .75 cents per brick. 660-676-5021 Clarence MO

Ed's Machinery LLC
 quality machinery since 1997

660-628-4454

edsmachinery.com

COMBINE SPECIAL!

- Free delivery within 500 Miles!
- Financing as low as 2.49%
- Third party inspection available!



2014 JOHN DEERE S670
 1660/1053 Hours, 4X4, 3 Speed Trans.....\$159,500



2013 JOHN DEERE S680
 2385/1746 Hours, 2WD, Pro drive trans,.....\$124,500



2012 JOHN DEERE S680
 1,964/1,344 Hours, 2WD, Pro drive trans.....\$129,500



2011 JOHN DEERE 9870 STS
 2303/1651 Hours, 4X4, 3 Speed Trans.....\$99,500



2009 JOHN DEERE 9770 STS
 4067/2815 Hours, 4X4, 3 Speed Trans.....\$74,900



2008 JOHN DEERE 9770 STS
 2802/1812 Hours, 2WD, 3 Spd Trans\$89,500



2011 JOHN DEERE 9670 STS
 2928/2047 Hours, 4X4, 3 Speed Trans.....\$94,500



2008 JOHN DEERE 9670 STS
 3,389/2501 Hrs, 4X4, 3 Speed Trans.....\$72,500



2015 CLAAS LEXION 740
 1866/1179 Hours, 4X4, Ag-Leader Screen..\$149,500



2014 CASE IH 9230
 2713 \2036 Hours, 36" Tracks, 4X4\$159,500



2013 CASE IH 8230
 2867/2083 Hours, 4 WD, 4 Spd Trans.....\$137,500



1999 CASE IH 2388
 4738/3627 Hrs, 4X4, Field Tracker.....\$29,900

17920 US Hwy 136 • Memphis MO 63555



NEMR Telecom is pleased to offer LIFELINE service – providing discounted telephone or internet service for eligible consumers

The Lifeline Universal Service Program is a government supported program available to qualified, low-income consumers and offers a discount for eligible services. Eligible services include telephone and internet service (federal minimum service standards must apply). Qualified applicants will be eligible for a monthly discount of at least \$9.25. Toll blocking is available at no charge to all LIFELINE customers.

To be eligible for LIFELINE, an applicant must participate in one of the following:

- MO HealthNet (Medicaid)
- Supplemental Nutrition Assistance Program (SNAP) (Food Stamps)
- Supplemental Security Income (SSI)
- Veterans Pension and Survivors Benefit Programs
- Federal Public Housing Assistance (FPHA)
- Income at or below 135% of the Federal Poverty Level

Additionally, up to \$14.75 in monthly support is available to qualified LIFELINE customers through the Missouri Universal Service Fund (MoUSF). Disabled customers or customers with a disabled dependent may qualify for \$24.00 in monthly support through the MoUSF.

Lifeline is available only to eligible consumers that qualify through their participation in the above-listed government programs or through their income. It is a non-transferrable service and limited to one benefit per household.

Go to www.checklifeline.org to check your eligibility in the Lifeline program.

If you live in a NEMR service area, please call our business office or visit www.nemr.net for more information.



NEMR Telecom, 718 S West Street, Green City, MO 660-874-4111 www.nemr.net

KM-70KDE354

For all your advertising needs email us at nemotrader@gatehousemedia.com

WE SELL LAND

— PASSION DRIVEN EXPERTISE —

CONTACT YOUR LOCAL LAND SPECIALIST TO
LEARN MORE ABOUT BUYING AND SELLING
HUNTING, FARM, RANCH AND TIMBERLAND.

JEFF PROPST

Northeast and North Central
Missouri Land Specialist

(636) 209-0362

JEFF.PROPST@WHITETAILPROPERTIES.COM



WHITETAIL PROPERTIES REAL ESTATE

HUNTING | RANCH | FARM | TIMBER

WHITETAILPROPERTIES.COM

VICTORY

Metals & Recycling

Kirkville, MO 660-665-8000

victorymetalrecycling.com

For current scrap prices call or visit our [Facebook Page](#)

★ Construction/Debris Recycling

Visit Kirkville's construction & debris recycling facility and save trips to the landfill! Take advantage of this service for solid waste removal by bringing your landfill items to Victory Metals C & D recycling facility located at 3602 N. Industrial Rd.

★ Roll-Off Container Service

10-20-30-40 Cubic Yard Dumpsters

3602 N. Industrial Rd.,
Kirkville, MO 63501

djanesvmr@gmail.com

www.victorymetalrecycling.com



John Deere 2840 D Tractor, dual hydr, 4700 hrs, 90% tires, with JD 148 Loader with QA Bucket & Bale Spear, \$13,500



John Deere 2750 Tractor, MFWD, open station, w/245 SL Loader, dual hydr, HiLo, wts, 5,000 hrs, \$22,500



John Deere 4230 Tractor, CAH, cold air, power shift, 6,800 hrs, JD 158 Loader, 18.4x38 95% \$23,500

20 Series JD Tractors, 3020. (2) 4020s late models, 4320 or 2940, all used, tested recently, \$12,950 choice or \$48,000 for all

573-881-3557

KM-70KDE358

HAY STORAGE SOLUTIONS AND MUCH MORE!



"Today, I checked with Joseph to see when he was planning to deliver and construct my second hoop building. Two years ago I purchased a 55'x98' hoop building from Skylight buildings. It was erected on my site on time and the building went up in two days.

I was concerned about the durability of a vinyl building compared to a metal sided structure. That was until I noticed that a rock from my Brush Hog 2715 had impelled itself into the metal building. The Skylight building would not have been damaged. Also, the name says a lot. I thought that I would wire in lights like my other buildings but to date I have not found the need.

The reason I thought I needed to build a large building was to store my hay inside. I knew I was losing hay quality due to weather damage but baling with 568 John Deere and net wrapping my hay I thought I was keeping my hay loss at a minimum. I found the first year that I had underestimated my losses. I was very pleased with the results of storing hay inside. It is most gratifying to put a bale into the hay ring and seeing that the previous bale was almost completely consumed by the cows or the feeder calves. I had a record amount of carry over from last year and it is safely stored inside ready to be used this winter! This will allow for hay sales this winter.

The construction of the building's frame is strong, the foundation supports are 24" and very deep. I am very satisfied and have ordered another 55' x 140' to be installed in a few weeks. This one will be used to store our small square bales and equipment.

Thank you Joseph for your service and this chance to recommend your buildings."

Wiley and Susan Hibbard, Perry, Missouri

20749 State Highway VV
Ethel, MO 63539
660-486-3250

Skylight

Fabric Structures

MAIN CREEK REPAIR

Larry Geiser

23316 State Hwy H
Kirkville, MO 63501

(715) 415-1995

Bolts • Belts • Bearings
Hydraulic Hoses • Steel
Welding • Fabricating
Tractor & Equipment Repair

MAIN CREEK RENTALS

23316 State Hwy H
Kirkville, MO 63501

(660) 988-6917

- Mini Excavator
- Dozer
- Skytrack
- Equipter (Shingle Buggy)
- Snorkle
- Grapple
- Post Hole Digger
- Man Basket

BURKHOLDER



2017 Ford F-350 Lariat, 4x4, Crew
6.7 Diesel, Auto, 98k Miles, High Rise Fiberglass Topper, A Must See Truck, Very Nice-Clean, Black

Full line of accessories Outfit your truck here!

\$64,900

Edina 660-397-2551 51001 State Hwy 15 BurkholderTruckSales.com



2020 Chevy Silverado 1500 LT Z71
4x4, Crew, 5.3V8, Auto, Only 6k Miles, Still Like New, All Factory Warranty, Gray



2016 Chevy Suburban 1500 LTZ
4x4, 5.3V8, Auto, 95k One-Owner Miles, Local Trade, New Tires, Nice, Clean, White



2016 Chevy Silverado 3500HD LTZ
Dually, 4x4, Crew, 6.6 Duramax, Allison, 111k One-Owner Miles, Texas Truck, White



2016 Chevy Silverado 3500HD LT
4x4, Crew, 6.0V8, Auto, Only 43k One-Owner Miles, Texas Truck, Must See, Black



2015 Chevy Silverado 2500HD LTZ
Z71, 4x4, Crew, 6.6 Duramax, Allison, 110k Mi, Must See, Well Kept, Local Trade, Blue



2015 Chevy Silverado 2500HD LTZ
4x4, Crew, 6.6 Duramax, Allison, 91k One-Owner Miles, Must See, Texas Truck, Black



2010 Dodge Ram 3500 Laramie
Dually, Crew, 6.7 Cummins, Auto, 103k Mi, Very Well Kept, Arkansas Truck, Nice, Silver



2019 Ford F-350 XL, 4x4, Crew
6.7 Diesel, Auto, 31k One-Owner Miles, Utility Bed w/ Liftmoore Crane, Nice, Wht



2017 Ram 3500 SLT, Cab Chassis
8' CM Steel Flat, 6.7 Cummins, 6spd Man, 72k Miles, Nice Set-Up, Texas Truck, Red

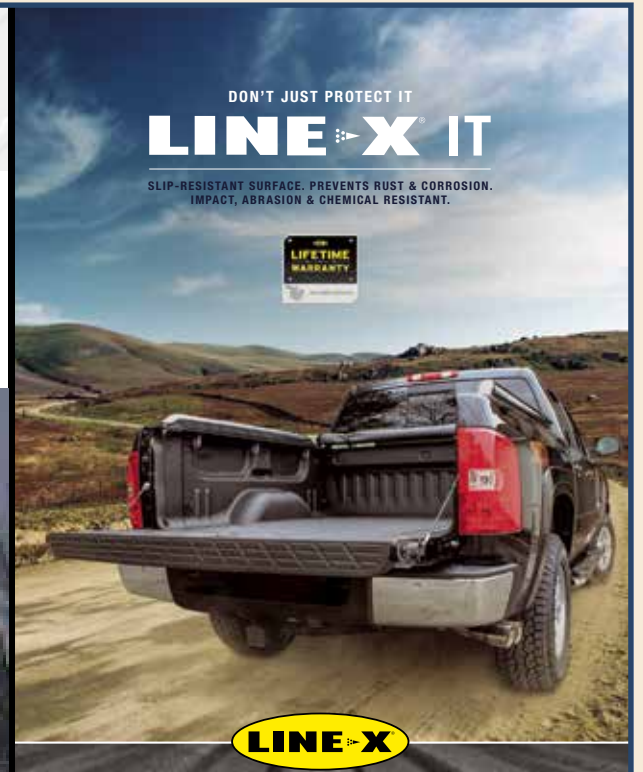
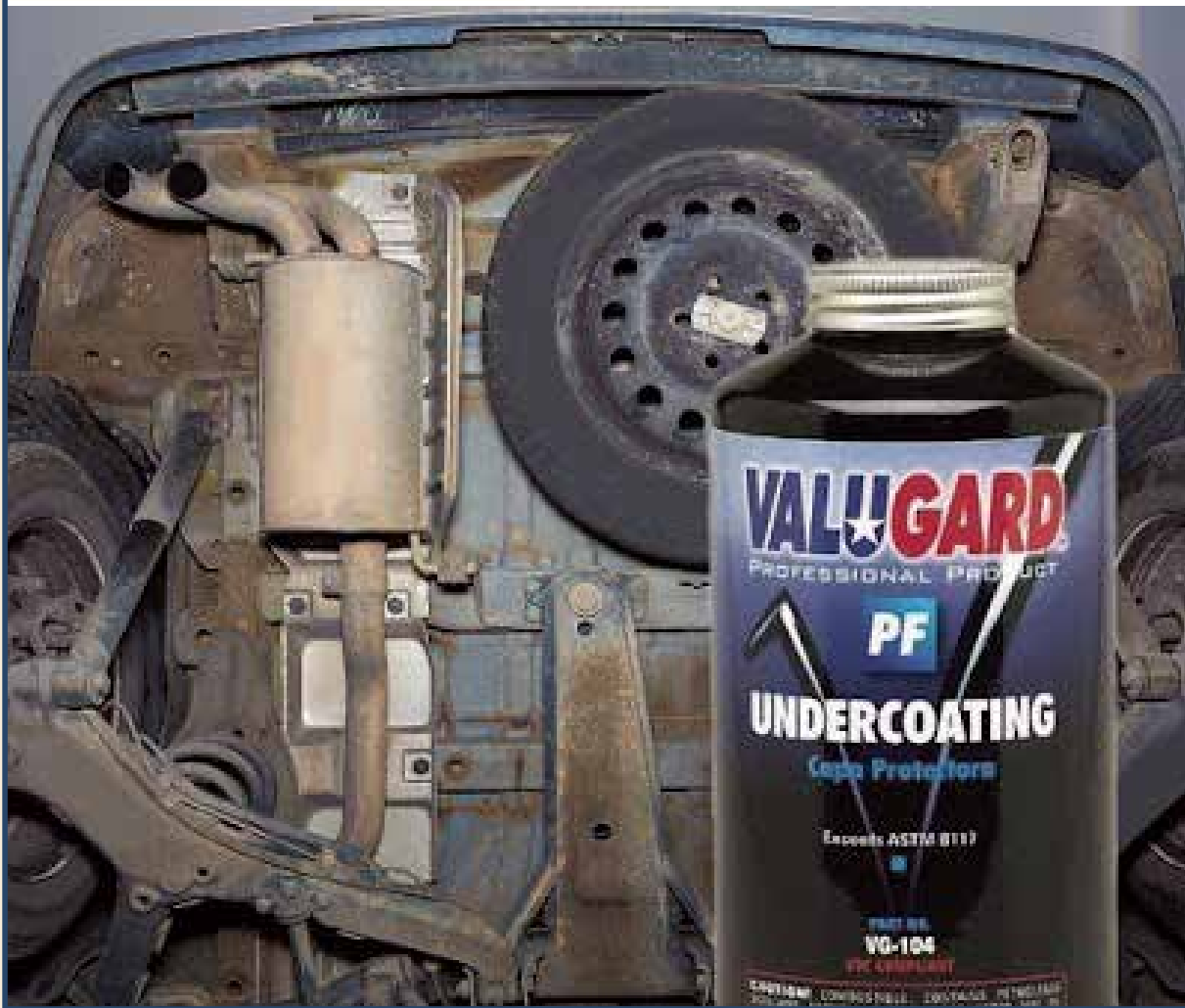
Financing Options Available

THIS MONTH'S SPECIAL!!

50%



Rust Proofing
With an Undercoat purchase



Quality Brands We Carry



WeatherTech



AUTO & TRUCK SALES + ACCESSORIES



FOR SALE
5 X 5 1/2 big round
bales of mixed
grass hay
Bailed dry no rain
fertilized lab tested
surface wrapped
CALL 660-341-4031
Watson hay sales



FOR SALE: 1998 Jeep Cherokee 4 WD, 4 door, air, radio, Reese hitch, 145,000 miles, \$3200 cash. Text 217-653-7100 for return call. Canton MO

FOR SALE: 2017 RZR 1000 Turbo, 3200 miles, real good shape, \$17,995. Kirksville 660-341-9522

FOR SALE: John Deere 145 Loader, good bucket & control valve, all utility mounting brackets, \$2,750. Call 573-881-3557

FOR SALE: Ford 4000 D SU, power steering, Live PTO, excellent paint & sheet metal, new tires, \$5500. 660-341-8089

WANTED TO BUY: Harley Davidson's, any year, any condition, cash money. Days 660-263-1356 or 660-537-0068

WANTED TO BUY: Farm Machinery and Estates. Call James L. Johnston. 573-473-4904

Wevers Outside Wood Furnaces a dealer for Heatmor Stainless Steel Outside Furnaces, have an assortment of parts, line, and etc. Taking orders for new outside wood furnaces. Call 660-423-5242, cell 660-216-9885. Open 6pm-9pm Monday-Friday, Saturday anytime, call first.

FOR SALE: New 3 pt. tillers, heavy duty, gear driven, 7' to 10' starting at \$3050. 660-874-4455

TRUE MODULARS 30 to 60 day delivery available, 3 and 4 bedroom. 573-657-7040 chateauhomes.net

FOR SALE: New Holland 352 Grinder Mixer, one owner, used the day we picked up, has auger feeder, extended unloading auger, extra screens, \$1,750. Call 573-881-3557

PASTURE AND HAY GROUND Needed around Adair & Knox County. Please Contact 660-216-5887 or 417-773-2507

FOR SALE: 2010 Case 8120 Combine, 2975 HR -2097 HR, NO DEF, RWA, DIF Lock, 620 Drive Tires, 28 Steer Tires, luxury cab, clean machine, \$85,000. 641-895-8014

FOR SALE: Regular Jar flats, Spices & Seasonings, Barnyard Grilling Dust, Honey, Turnip Seeds, Boxed Greetings, Wooden Handles, Kerosene Lamps & Parts, some Alladdin parts., S.S. Kitchen Wares and Mixing Spoons, Poly and Wooden Clothespins. Train Track Candies & More 11538 Iceberg Ave 3rd Lane to your left

HANDYMAN: Install interior and exterior doors and windows, siding, decks, showers and toilets, flooring and drywall, roofs and dirt work. 660-956-2189.

DIRT WORK All types of excavation, reclaiming overgrown fields, including CRP and WRP. Building site preparation, terrace and tiling maintaining and creating new trails and crossings, rock hauling, Food plot development and maintenance. Leveling and grading, wetland construction and maintenance. Pond and lake cleaning and construction. Call for quotes. 660-342-2701

FOR SALE: Registered AKC Labrador Retriever puppies, yellow. Farm-raised and loved! MO Health Certificate. Dam and Sire on farm. Ready to go now! Lay's Labs - LaBelle, MO 660-956-2482.

TINY HOMES We gottem 573-881-3283

FRONTLINE FENCING LLC

**Steel Pipe Fencing.
Custom Built Gates and Livestock
Handling Equipment.
Barbed Wire and Woven Wire Fence.
Arrowquip Cattle Handling Equipment.
Post Driver Rental.**



29386 St Hwy T,
Greentop, MO
660-956-2430

NATIVE PLANTS for butterfly gardens, rain gardens, hard to mow banks, and restoration. Peckosh Landscaping 23198 Hwy H/ Boundary St. Kirksville, MO. Just north of the Troy Mills store. Call Claire at 660-349-0061.

CENTERPOINT CROSSBOWS In stock Axe 405 crossbow & more Whitetail Seed and Supply 14136 State Hwy 3 LaPlata MO 63549

FOR SALE: Fish for stocking ponds - Catfish, Grass Carp, Crappie, Blue Gills, Red Ear, Bass, and Minnows. Heindselman Family Farms, Call Greg 660-341-5692

FOR SALE: Gleaner 800 25' lateral tilt hyd for & aft; Gleaner 520 20'; Gleaner 830hugger H' Gleaner 3000 630, w/corn head. 217-658-4761



HARRISON FISHERY
POND & LAKE STOCKING
Call us today! 660.423.5482

Your trusted source for quality Fish!

Harrison Fishery, Inc. is a family owned and operated business.

We stock most species freshwater, game & baitfish.

Contact us for price & delivery

curtis@harrisonfishery.com
660-423-5482

Species Available	Bluegill	Walleye
Largemouth bass	Redear sunfish	Muskie
Hybrid bluegill	Black crappie	Catfish
Golden shiners	Fathead minnow	and More!

*Time to gather up the
little ones,
get their fishing poles
and go enjoy a
day of fishing*



www.harrisonfishery.com

Golden Grain Bins

Grain Bins	Floors w/12" Supp. & Flashing	
18'x18' 4,195bu. \$ 7,398	18'....\$2,065	30'....\$5,764
27'x21' 11,265bu. \$14,851	21'....\$2,824	36'....\$8,211
42'x24' 32,245bu. \$34,616	27'....\$4,710	42'....\$11,182



GMLS Industries, Inc.
PH: 660-699-2179 or 620-983-2136
www.gmlsindustries.com

For Your Equipment Needs!

**LOTS OF
USED EQUIPMENT
AVAILABLE**

**Vermeer 605 N Balers, Twin Rakes,
Trailed Mowers, Disc Mowers,
Teddens, Bale Processors-**
Offer high capacity, speed, reliability,
efficiency, fuel savings...

DeWeze Bale Beds-
Lift, load, transport and feed big, round bales...

Danuser Post-Hole Diggers-
Offer quality & reliability, outperforms the competition...

USED EQUIPMENT

BALERS	RAKES
605 N Net	R2800
605 L Net	R2300
605 K Net	VR1224
MOWERS	TEDDERS
TM 1210	TD250
8040	
7030	
Vicon 4000	BALE PROCESSORS
	BPX 9000
	BPX 9010

Liebhart Sales, Inc.
17546 Lacey Drive •
New Boston, MO. 63557
660-689-3406

Call Today!!

FOR SALE: John Deere 285 Disc mower, 9', QH ready, low acres, \$6,500. Call 573-881-3557

FOR SALE: John Deere 4320 Tractor, straight off farm, ft wts, rear wts, 38" tires, 11,000 hrs, runs good, \$13,500. Call 573-881-3557

FOR SALE: Ford 3000 D, good pant and sheet metal, excellent rubber, 8 speed, \$4500. 660-341-8089

FOR SALE: 5 X 5 1/2 big round bales of mixed grass hay, Bailed dry no rain fertilized lab tested surface wrapped. Call 660-341-4031 Watson hay sales

FOR SALE: Mums \$8 a piece, also have large combo's \$20; large variety of colors. Pumpkins and fall decorations. Kauffman Produce 11538 Iceberg Ave La Plata MO 63549

STOCK MOBILE HOMES AVAILABLE: We gottem, single and double 3 and 4 bedroom! Call Tuffy 573-657-2176 amegamobilehomes.com

FOR SALE: John Deere 265 SL Loader, bucket, JD 20 thru 55 series mount, sharp, \$6,250. Call 573-881-3557

FOR SALE: NH 973 20' flex; NH 973 25' flex; NH 974 630 corn head; MF 1163 corn head; MF 1144 corn head; Gleaner 630 LM or R; Gleaner 830 corn head LM or R. 217-658-4761

FOR SALE: Heider Auger Wagon, 100 bushel, 540 PTO, boards on each side, manual auger swing either side, shedded, clean solid wagon, \$750. 217-257-1385 anytime

WANTED TO BUY: Harley Davidson's, any year, any condition, cash money. Days 660-263-1356 or 660-537-0068

FOR SALE: New 3 pt. tillers, heavy duty, gear driven, 7' to 10' starting at \$3050. 660-874-4455

HANDYMAN: Install interior and exterior doors and windows, siding, decks, showers and toilets, flooring and drywall, roofs and dirt work. 660-956-2189.

SCOTT HUSKEY'S HOME SERVICE R-10 Foundation Enclosure Systems for manufactured, modular, & site built homes. Saves on utilities and prevents freeze ups. General maintenance and repairs since 1972 573-696-3468 "GO DAWGS"

FOR SALE: Polled Shorthorn Bulls, ready to work, delivery available. AAA Shorthorns, The Meierotto Family. Hwy 81 between Kahoka, MO and Farmington, IA 319-572-2322

FOR SALE: Westendorf TA 25 quick tach loader fits JD 3020 or 4020, comes with control valve and all mounting brackets, \$1500 obo. 660-684-6977.

FOR SALE: John Deere 2950 Tractor, MFWD, CAH, 5,000 hrs, 90% tires, Westendorf Loader, cold AC, \$25,500. Call 573-881-3557

FRESH DRESSED Farm raised fish. If you freeze our fish they taste as fresh the day dressed. Benefits, Organizations, reunions. Call me will show you a money making event. 573-604-0674 delivered.

FOR SALE: 24x60 Double wide trailer house near Rutledge, MO, with mold problems, make offer. No Sunday Calls 660-341-2160

The Ultimate Wood Heat.



- **More Comfort** - Thermostatically controlled wood heat.
- **Peace of Mind** - Keep the fire outside and eliminate the dangers associated with indoor wood heating.
- **Save Money** - Wood is a renewable, inexpensive and often free energy source.

CAMPEN
Heating & Air Conditioning
573-288-8966
Canton, MO
CentralBoiler.com

AUTO'S UNLIMITED
660-665-8149
660-341-0965
No Sunday Calls!
17406 Bob Rd • Kirksville, MO

FEATURED VEHICLES

2008 Ford Escape XLT



Excellent Condition, New Tires

2002 Jeep Liberty 4x4



Great Shape, \$4,950

ALL VEHICLES HAVE GONE THROUGH A 60 PT INSPECTION! STATE INSPECTED!
CALL FOR MORE INFO!



LAN-DOW BUILDINGS
"We Build To Suit Your Needs"
"Custom Built"
Pole Barns • Garages • Utility Buildings
"H" Don or Dick Middleton
Memphis Lumber Co.
1-800-337-5858 • 660-465-8595
Fax: 660-465-8596



FOR SALE
Call Steve Taylor
660-342-2889

2002 Cadillac
Like new, 100K miles

Beilstein CAMPER SALES

573-655-2254

28248 327th Ave. • LaGrange, MO • Hwy 61 South, 4 Miles South of LaGrange, MO

Call us now for the best prices...

NEMR Telecom se complace en ofrecer el servicio LIFELINE, que proporciona un servicio telefónico o de Internet con descuento para los consumidores elegibles

El Programa de Servicio Universal Lifeline es un programa respaldado por el gobierno disponible para consumidores calificados y de bajos ingresos y ofrece un descuento por servicios elegibles. Los servicios elegibles incluyen el servicio telefónico y de Internet (deben aplicarse los estándares federales de servicio mínimo). Qualified solicitantes serán elegibles para un descuento mensual de al menos \$9.25. El bloqueo de peajes está disponible sin cargo para todos los clientes de LIFELINE.

Para ser elegible para LIFELINE, un solicitante debe participar en uno de los siguientes:

- MO HealthNet (Medicaid)
- Programa de Asistencia Nutricional Suplementaria (SNAP) (Cupones de alimentos)
- Seguridad de Ingreso Suplementario (SSI)
- Programas de Pensiones y Beneficios para Sobrevivientes de Veteranos
- Asistencia Federal de Vivienda Pública (FPHA)
- Ingresos iguales o inferiores al 135% del Nivel Federal de Pobreza

Undditionally, hasta \$14.75 en soporte mensual está disponible para clientes calificados de LIFELINE a través del Fondo de Servicio Universal de Missouri (MoUSF). Los clientes discapacitados o los clientes con undependiente dirigido por disabpueden calificar por \$24.00 en soporte mensual a través del MoUSF.

Lifeline está disponible solo para consumidores elegibles que califican a través de su participación en los programas gubernamentales mencionados anteriormente o a través de sus ingresos. Es un servicio intransferible y limitado a una prestación por hogar.

Vaya a www.checklifeline.org para verificar su elegibilidad en el programa Lifeline.

Si vive en un área de servicio de NEMR, llame a nuestra oficina comercial o visite www.nemr.net para obtener más información.

NEMR Telecom
NEMR Telecom, 718 S West Street, Green City, MO
660-874-4111
www.nemr.net

#531301



2018 Keystone Sprinter 297FWRLS
3 Slide-Outs, Rear Living Room
\$39,995

#20FSX260



2020 Salem FSX 260RT TOY HAULER
Private Bedroom
\$25,995

#WP16TS



2020 Cherokee Wolf Pup 16TS
Light Weight Easy To Tow
\$19,995

#CAT243



2017 Coachmen Catalina Legacy 243RBS
Large Slide-Out, Queen Bed
\$22,995

#450056A



2015 Keystone Outback Super-Lite 316RL
3 Slide-Outs, Rear Living Room
\$27,995

#28VB



2022 Salem Cruise Lite 28VBXL
Large Slide-Out, Bunk Room
\$33,995

Visit Our Website For More Great Bargains! www.beilsteincampersales.com

CELEBRATIONS! **PARTY RENTAL**
KIRKSVILLE, MO

FOR RENT
**TABLES - CHAIRS - TENTS - BOUNCE HOUSE
& COTTON CANDY MACHINE...ECT.**

660-626-5162 or 660-665-9380

B^oF^K
Since 1914

WE ARE HIRING!

Loan Officer Position—Full time with benefits. Experience preferred but willing to train.

Loan Secretary—Full time with benefits. Previous secretarial and/or switchboard experience preferred. Must be friendly, outgoing and dependable with attention to detail.

Teller Positions—Full time with benefits. Prefer prior cash handling experience. Excellent customer service skills with friendly outgoing personality, good work ethics and dependability required.

Banking Career—Applicants must have strong communication & computer skills. Ability to multi-task & learn quickly. Qualified applicants should have two years prior banking experience or a degree in related field.

Send resume to: Bank of Kirksville, P. O. Box 787, Kirksville, MO 63501. EOE

FOR SALE: Gehl 600 2 row chopper; Fox 2250 2 row corn, hay pickup fox 3000 2 row; Fox w/1 row hd; H&S silage wagon WT gears; Gehl silage wagon; silage wagon. 217-658-4761

FOR SALE: AC D-17 Series 3, WF, SC, new rear tires and tubes, front end loader, runs excellent, always shedded, \$4000. Kirksville No Pics 660-342-4287

FOR SALE: November and February Ram Lambs. Jim Vermazen Montrose Iowa 319-371-7189

FOR SALE: 1946 M Farmall, wide front, 3pt, fenders, good paint. 573-541-2015

FOR SALE: Remington 700 BDL rifle, 280 caliber, Tasco World Class Scope 3x9x40; Custom made Rifle, 7x57 caliber, Tasco World Class scope 3x9x40; Mossberg 500 pump action 20 gauge shotgun, accu-choke 2 3/4" or 3" shells. 660-651-3722

Premium Metal Roofing



AW Metal Inc.
Metal Roofing Headquarters
641-664-3990 • awmetal.net

FOR SALE: MF 235 Tractor, low, low use, new rubber, 3 pt, always shedded, \$4,950. Call 573-881-3557

FOR SALE: Hot rod tractor, WD45 with 454 big block with automatic transmission, 400 turbo runs great, \$2500. 573-822-2651

Driveway repair. Excavation. Trenching. Brush clearing. Site prep and cleanup. Leveling. CRP work. Transportation. Heavy installation. Welding. 660-216-7268

FOR SALE: Ford 1500, good paint and sheet metal, good rubber, with rear mounted finish mower, \$3500. 660-341-8089

FOR SALE: Great Pyrenees puppies, born 7-25-21 \$125 each or \$100 each for the litter or what is left. Mose Miller 12548 Hilton Ave LaPlata MO 63549

For sale: 8 Great Pyrenees puppies, 4 females, 4 males, 5 weeks old, \$250 each. Leroy Borntreger 12743 Hilton Ave LaPlata MO 63549

FOR SALE: Gleaner R62 combine, CDF rotor lateral tilt; MF 850 D hydra; NH TR 96; IHC 1440 diesel; MF 750 diesel; 2 kastern silage wagon; JD 55 EB 12' platform. 217-658-4760

FOR SALE: Good used Industrial Channel drain tin 27 gauge approx., galvanized under white paint, very few holes, large number of long sheets; Antique paver brick (Moberly Missouri Pavers), \$4.00 per brick, also Solid red brick .75 cents per brick. 660-676-5021 Clarence MO

FOR SALE: IHC 983 corn head; IHC 883 corn head; Drago 830 corn head, adj deck plates; IHC 820 17 1/2' MF 830 for JD. 217-658-4761

FOR SALE: 1998 Jeep Cherokee 4 WD, 4 door, air, radio, Reese hitch, 145,000 miles, \$3200 cash. Text 217-653-7100 for return call. Canton MO

FOR SALE: John Deere 7220 Tractor, MFWD, CAH, power shift, 9000 one owner hrs, \$49,500. Call 573-881-3557

FOR SALE: Land Pride RCR 2584 7' Rotary cutter, stump jumper, front chains, laminated tire, ready to use, real good, \$1400. 217-257-1385 anytime

FOR SALE: Hay big round bales, small square bales, alfalfa, grass, and some mixed, for prices call Bob 660-342-4048

FOR SALE: Mickey Thompson rims off F150, \$150; Ranger truck parts, \$200. Call 660-379-2598

ATTENTION LAND OWNERS!

**BUYER OF STANDING TIMBER
OWNER / OPERATOR OF SAWMILL - BUY/CUT LOGS**

CERTIFIED - BONDED - INSURED

TRI STATE TIMBER L.L.C.
PH. 660-341-4921 or 660-465-2975
353 1/2 GRAND AVE. • MEMPHIS, MO 63555




Judd Motors Call 660-457-3700
Hwy 63 North, Lancaster, MO

- **2015 GMC 2500HD**, SLT, 4x4, crew cab, shortbed, 6.0L, heat & cool leather, bed cover, 1 owner, only 113k miles, charcoal, very nice, new tires only \$35,900
- **2015 Equinox**, All Wheel Drive, 1 owner, 129k, silver, nice, Remote start, only \$10250
- **2013 Impala**, LTZ, leather, only 104k, charcoal, very nice \$9995
- **2012 Chevy Captiva**, LTZ, AWD, Leather, sunroof, 112K, maroon, \$8995
- **2008 Chevy Impala LT**, Leather, Sunroof, 101k, white \$7995
- **2005 GMC 2500HD**, SLE, 2wd, 6.0L, ext cab, long bed, only 119k, silver, very nice, only \$10900
- **2005 Buick LeSabre**, cloth, 3800 engine, white, only 52k miles, very nice only \$10900
- **2003 Ford F350**, diesel, 4x4, crew cab, flatbed, 300k, runs good, brown, only \$7995
- **1996 Dodge Ram**, 4x4, V8, 3/4 T, reg cab, 200k miles, runs good, 1 owner, red, only \$2995
- **1996 Dodge Ram**, reg cab, 4x4, V8, 200k miles, 1 owner, red and rusty, runs good, only \$2995

Cumberland Building Dealer

www.juddmotors.com

In Business Over 75 Years
Curly and Kevin Judd

TEMPORARILY CLOSED

As part of the community effort to slow the spread of the COVID-19 virus, we are following the CDC recommendations for social distancing.

The **NEMO Trader** office will be **CLOSED** until further notice.

We are still working to provide our customers with the best possible service during this time. We will continue to operate, take calls and publish our paper.

Please stay safe.

PLEASE USE THE FOLLOWING CONTACT INFORMATION

FOR LINE CLASSIFIEDS AND BILLING QUESTIONS
Call 660-665-8500 or
Email jkirkpatrick@nemo-trader.com

FOR ADVERTISING QUESTIONS
Call 660-988-6830 or
Email nemotrader@gatehousemedia.com

NEMO Trader **GANNETT**

SCHMUCKER PRODUCE Has tomatoes by lb, onion, cucumber, zucchini squash, acron melon, pepper beats, canning tomatoes, \$9 for 1/2 bu while they last, 7 miles North Kirksville to Ft Madison Way 1/2 mile East

HUSKY MIX PUPPIES Ready for their new homes, they have had their first 3 rounds of shots and one round of deworming, \$150 OBO. Please call/text 515-249-9655 (When calling please leave a message)

FOR SALE: 2014 RZR 800-S, nice older person driven, 3200 miles, \$8495. Kirksville 660-341-9522

HAY FOR SALE: 80 Bales Brome, \$55 per bale, 163 bales CRP hay, \$45 per bale. I will come down on the price if you take all of the brome or all of the CRP hay. Baled with a 567 John Deere baler, net wrapped. Call 660-651-8546 Atlanta MO

NATIVE PLANTS for butterfly gardens, rain gardens, hard to mow banks, and restoration. Peckosh Landscaping 23198 Hwy H/ Boundary St. Kirksville, MO. Just north of the Troy Mills store. Call Claire at 660-349-0061.

ARE YOU COVERED? Accidents and illnesses occur without warning. Let us help you make sure you, your family and/or employees are covered. Health, Cancer, Accident, Hospital, Critical Illness, Short Term Disability, Dental, Vision, Life. Linda 660-537-5177 linda_buchmann@us.aflac.com Denise 314-465-5611 denise@healthinsuranceagt.com

FOR SALE: Farmhand XL 740 Loader, QT, 7' bucket, good paint, \$3,750. Call 573-881-3557

FOR SALE: Smooth mouth mare \$600; also small bales of straw \$5.00; 4x5 net wrapped hay, \$45. 660-342-5314

FOR SALE: Silver Lab puppies, 5 weeks old, silver males and females big healthy pups up to date on shots and wormer ready to go Sept 1, farm raised, top quality \$250 660-988-1163

WHITETAIL INSTITUTE Food plot seeds, archery supplies, optics, and more. Whitetail Seed and Supply 14136 State Hwy 3 LaPlata MO 63549

FOR SALE: Ford 5000 D, good sheet metal & paint, good rubber, runs good, \$6500. 660-341-8089

FOR SALE: Wholesale Southern Yellow Pine. Shelby Supply 660-299-0615

HOUSE FOR SALE: Macon MO, fixer upper 500 feet from the School and 300 feet from the park. 660-676-5531

HIGH QUALITY Hay for sale \$45 per bale. 217-653-4762

FOR SALE: Fish for stocking ponds - Catfish, Grass Carp, Crappie, Blue Gills, Red Ear, Bass, and Minnows. Heindselman Family Farms, Call Greg 660-341-5692

AVAILABLE STOCK MOBILE HOMES immediately, double wide and single, 3 and 4 bedroom. 573-499-9993 columbiadiscounthomes.com

FOR SALE: Rossi 4 Basket Tedder, field ready, \$3,250. Call 573-881-3557

FOR SALE: John Deere 125 Chuck wagon with roof on John Deere 1265 gear, John Deere 112 Chuck Wagon on 953 gear. 319-572-2322

NEW/USED Parts "vehicles, pickups, semi's, construction/farm equipment" "motors/tranny's" body parts paint matching yours. "Delivered/warrantied" 800-807-9612

FOR SALE: Gleaner 8000 30' SCH sickle, F&A; JD 930 poly dividers; JD 220 flex; JD 216 flex; IHC 1020 20'; IHC 1020 17 1/2' MF 918 217-658-4761

FOR SALE: AC D-17 Series 3, WF, SC, new rear tires and tubes, front end loader, runs excellent, always shedded, \$4000. Kirksville No Pics 660-342-4287

FOR SALE: November and February Ram Lambs. Jim Vermazen Montrose Iowa 319-371-7189

FOR SALE: 1953 Super M, power steering, live hydraulic. 573-541-2015

FOR SALE: Older heavy frame shop built 21', 16 1/2' deck, 8' wide, flatbed trailer, mobile axles, bumper hitch, 2 5/16 ball, could use flooring, with MO title, \$650. 217-257-1385

FOR SALE: Dunbugy 1972 1600 VW pipe frame, front closed in, \$2500. In Hannibal, MO. 573-822-2651.

Buyer of Standing Timber Any Species. Land Clearing and Clear Cutting Available. TSI Work. Kline Dried Firewood For Sale. Bonded. State Line Firewood 641-898-2398



CUSTOM CHOPPING
ALL TYPES OF FORAGES
PRESERVATIVE AVAILABLE
Devon Zimmerman 660.464.1324

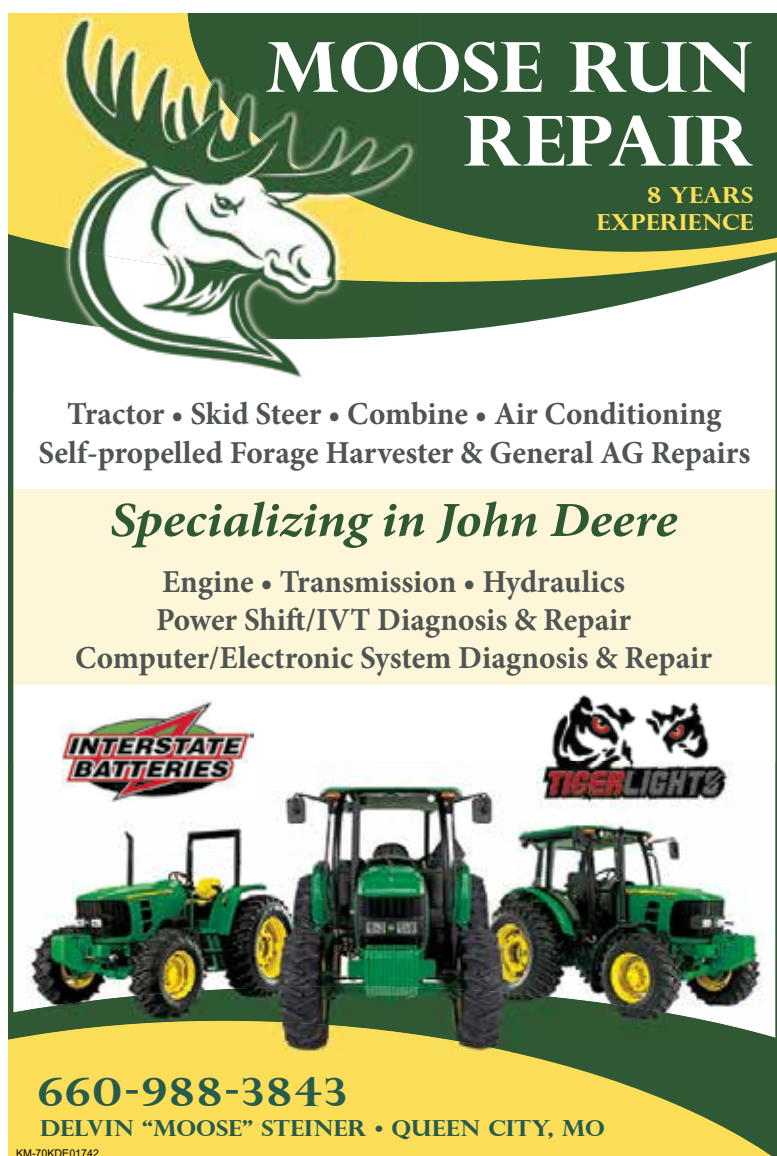
MAST MEATS, LLC
660-766-2211
USDA & Custom Slaughter & Processing
CALL OR STOP BY FOR SPECIALS
Retail store hours • Mon-Fri 8-5 Sat 8:30-3
mastmeatsllc.com • 405 US Hwy. 63, Queen City, MO 63561



Only a few bin packages left for 2021!
48'x9 Ring
48'x10 Ring
48'x12 Ring
Call Now!!
GRAINBINSUPPLY "The Grain Bin People" GBS
(660) 263-6700 - Cairo
(573) 594-2167 - Vandalla
www.grainbinsupply.com
Sukup



Signature
Overhead Doors and Remodeling, LLC
660-785-0248
www.signatureremodelingkv.com
Residential and Commercial Installation and Service



MOOSE RUN REPAIR
8 YEARS EXPERIENCE
Tractor • Skid Steer • Combine • Air Conditioning
Self-propelled Forage Harvester & General AG Repairs
Specializing in John Deere
Engine • Transmission • Hydraulics
Power Shift/IVT Diagnosis & Repair
Computer/Electronic System Diagnosis & Repair
INTERSTATE BATTERIES
TIGERLIGHTS
660-988-3843
DELVIN "MOOSE" STEINER • QUEEN CITY, MO



Troyer
TARP MFG.
660-486-3301
20264 State • Hwy. VV • Ethel, MO. 63539
Hoop Building Covers
FARM TARPS
TRUCK TARPS
WE GOT YOUR NEEDS COVERED!

LANCASTER LUMBER INC.
Lancaster, MO.
1-800-424-5071
LAN-DOW BUILDINGS
www.lancasterlumber.com



Show Me Plumbing Services



- *General Mini Excavation & Skid Steer Work
- *Livestock Watering
- *Waterlines & Sewer Systems
- *Residential Services & General Plumbing
- *Utility Trenching

Stan Schrock • 660-988-1163
Greentop, MO. • 660-766-2636

FOR SALE: Great Pyrenees puppies, born 7-25-21 \$125 each or \$100 each for the litter or what is left. Mose Miller 12548 Hilton Ave LaPlata MO 63549

FOR SALE: Good used Industrial Channel drain tin 27 gauge approx., galvanized under white paint, very few holes, large number of long sheets; Antique paver brick (Moberly Missouri Pavers), \$4.00 per brick, also Solid red brick .75 cents per brick. 660-676-5021 Clarence MO



P-R DISTRIBUTORS

GOLF CARTS

Sales – Service – Rentals – Customizing



573-693-8147
29566 Lantern Road, Laplata, MO

ANYTHING ON WHEELS!



highway63insurance.com

BUYERS OF CORN, SOYBEAN, ORGANIC, NON-GMO CORN AND SOYBEANS



Baring Elevator L L C

Contracts Offered
 Forward Pricing
 Target Orders

Baring, MO
 660.892.4411
 www.baringelevator.com

CONTACT US FOR PRICING
 Lewis 660-341-2937
 Roger 660-223-2442

FOR ALL YOUR FENCING NEEDS.
 Quality Cattle Equipment, too!



620-215-5770 KIRKSVILLE, MO
SPECIAL ORDERS AVAILABLE

Check out our current inventory at Kirksville Livestock Sales.

 SINGLE \$650 HEAVY DUTY HAY FEEDERS	 DOUBLE \$1,050 HEAVY DUTY HAY FEEDERS	 HEAVY-DUTY \$1,050 REPLACEMENT BUMPERS Dodge, Chevy, Ford & GMC	 HALF TUB \$2,900	 FULL TUB \$3,800
 MINERAL FEEDERS \$375	 \$3,400 ADJUSTABLE ALLEY	If you're looking to build a pipe fence or corral, wire fence, or need quality cattle equipment, WE'RE HERE TO SERVE YOU!		

Gates • Continuous Panels • Tubs • Alleys • Posts • Pipe • Bumpers • Cattle Feeders

NOW OPEN!

KEIM'S KOUNTRY MARKET



31941 Mahogany Street, Macon, MO
 (3 miles south of Macon on HWY 63 to Mahogany Street)
 CLOSED SUNDAY

Bulk Food	Cheese
Spices	Baked Goods
Meat	Seasonal Produce

Open Monday-Saturday 8 am - 5:30 pm
 Closed Sunday



IT'S FREE!
EVERY FRIDAY The NEMO Trader

CALL US FOR ADVERTISING QUOTES | 660.665.8500

FOR SALE: 1998 Jeep Cherokee 4 WD, 4 door, air, radio, Reese hitch, 145,000 miles, \$3200 cash. Text 217-653-7100 for return call. Canton MO

FOR SALE: 2017 RZR 1000 Turbo, 3200 miles, real good shape, \$17,995. Kirksville 660-341-9522

FOR SALE: John Deere 145 Loader, good bucket & control valve, all utility mounting brackets, \$2,750. Call 573-881-3557

NATIVE PLANTS for butterfly gardens, rain gardens, hard to mow banks, and restoration. Peckosh Landscaping 23198 Hwy H/ Boundary St. Kirksville, MO. Just north of the Troy Mills store. Call Claire at 660-349-0061.

CENTERPOINT CROSSBOWS In stock Axe 405 crossbow & more Whitetail Seed and Supply 14136 State Hwy 3 LaPlata MO 63549

FOR SALE: Fish for stocking ponds - Catfish, Grass Carp, Crappie, Blue Gills, Red Ear, Bass, and Minnows. Heindselman Family Farms, Call Greg 660-341-5692

FOR SALE: Gleaner 800 25' lateral tilt hyd for & aft; Gleaner 520 20'; Gleaner 830hugger H' Gleaner 3000 630, w/corn head. 217-658-4761

FOR SALE: Ford 4000 D SU, power steering, Live PTO, excellent paint & sheet metal, new tires, \$5500. 660-341-8089

WANTED TO BUY: Harley Davidson's, any year, any condition, cash money. Days 660-263-1356 or 660-537-0068

WANTED TO BUY: Farm Machinery and Estates. Call James L. Johnston. 573-473-4904

Wevers Outside Wood Furnaces a dealer for Heatmor Stainless Steel Outside Furnaces, have an assortment of parts, line, and etc. Taking orders for new outside wood furnaces. Call 660-423-5242, cell 660-216-9885. Open 6pm-9pm Monday-Friday, Saturday anytime, call first.

FOR SALE: New 3 pt. tillers, heavy duty, gear driven, 7' to 10' starting at \$3050. 660-874-4455

TRUE MODULARS 30 to 60 day delivery available, 3 and 4 bedroom. 573-657-7040 chateauhomes.net

FOR SALE: New Holland 352 Grinder Mixer, one owner, used the day we picked up, has auger feeder, extended unloading auger, extra screens, \$1,750. Call 573-881-3557

PASTURE AND HAY GROUND Needed around Adair & Knox County. Please Contact 660-216-5887 or 417-773-2507

FOR SALE: 2010 Case 8120 Combine, 2975 HR -2097 HR, NO DEF, RWA, DIF Lock, 620 Drive Tires, 28 Steer Tires, luxury cab, clean machine, \$85,000. 641-895-8014

FOR SALE: Regular Jar flats, Spices & Seasonings, Barnyard Grilling Dust, Honey, Turnip Seeds, Boxed Greetings, Wooden Handles, Kerosene Lamps & Parts, some Alladdin parts., S.S. Kitchen Wares and Mixing Spoons, Poly and Wooden Clothespins. Train Track Candies & More 11538 Iceberg Ave 3rd Lane to your left

HANDYMAN: Install interior and exterior doors and windows, siding, decks, showers and toilets, flooring and drywall, roofs and dirt work. 660-956-2189.

NORTH MISSOURI LIVESTOCK AUCTION, LLC
52762 Bus Hwy 5 Milan, MO 63556
Paul & Deanna Eitel, Owners

SPECIAL BREEDING SHEEP & GOAT SALE
Thursday, Sept 23 at 6:30 pm
Gates and Livestock Equip. at 6pm
(Call in your listings soon for Advertising)

REGULAR SHEEP & GOAT SALE
Monday Sept 27 at Noon

Sheep & Goat Sales will be the 4th Monday of the Month
Check out listings and pictures on our Facebook Page at
North Missouri Livestock Auction, LLC

Paul Eitel- 660-265-6404 Barn: 660-265-4286
Auctioneer: Robert Barker 641-680-013
Field Reps: David Ernst 641-891-9501
Joseph Gingerich 660-684-6265, Carl Aldridge 660-342-0322

VIRTUAL ONLINE • KNOX COUNTY, MO
LAND AUCTION
THURSDAY, OCTOBER 7, 2021 @ 10:00 A.M.

285± ACRES
(Subject to Survey)
4 TRACTS

Land is located in Sections 23 & 24, T60N•R13W, Salt River Township, Knox County, MO.
LAND REPRESENTS HIGHLY PRODUCTIVE TILLABLE CROPLAND.

PAUL BRITTON TRUST
CLOSING & TITLE WORK BY: OAK HILLS TITLE CO.
307 LEWIS STREET | CANTON, MO | (573) 288-4461
AUCTION MANAGER: Bill Fretwell (660) 341-7735
SULLIVAN AUCTIONEERS, LLC • TOLL FREE (844) 847-2161
www.SullivanAuctioneers.com • IL Lic. #444000107

Rudy & Sarah Petersheim

FOX AUCTION LLC
660-341-1453

DIRECTIONS: From Canton, MO go north on Hwy 81 for 10 miles then go west on 120th St to auction site. Watch for signs!

FRIDAY, SEPTEMBER 24TH, 2021 @ 9:30 AM

MACHINERY: Ford 6 cyl diesel • Bell City 28" thrash machine w/ bean pulleys • 2-MC #9 hay mowers w/ 6' bars • MC #9 hay mower w/ 7' bar • MC #9 hay mower trailer-gear 7' bar • **MOWERS ARE REBUILT AND FIELD READY** • NI hay loader • MC corn binder

HORSES & HORSE RELATED
HAY: 500 bales of 1st cutting hay, 2021, grass alfalfa mix • 350 bales 1st cutting hay, 2020, grass alfalfa mix
GUNS: Savage Axis 270 w/ scope • Ranger 22 SS rifle • Remington 870 Wingmaster 12 ga • Savage model 93 .17 bull barrel w/ scope • New Ruger 10-22 • Marlin 925 22 mag. w/ Tasco scope • Ruger 22 revolver single 6 w/ mag cyl • Heritage 22 long w/ mag cyl • Kentucky 50 cal black powder pistol • Savage 22 long or short rifle • Thompson 50 cal muzzle loader (1863)

2 HIDDEN VIEW DOUBLE WATER 3"x6" PUMPS FOR DEEP WELLS (NEW) BUILDING & MATERIALS

FOX AUCTION LLC lots more items online at www.foxauctionservice.com
•• JR. (ALLEN) FOX: 660-341-1453 WILSON FOX: 660-216-9227 ••

FARM RELATED ITEMS
27421 120th Street
Canton, MO 63435

Farm Equipment, Livestock and Personal Property Auction

Saturday, September 11, 2021 at 10:00 a.m.
Frank and Barb Lopez
2746 State Highway D, Huntsville, MO 65259

Directions: 2746 State Highway D, Huntsville, Missouri. From Highway 24 at Huntsville, follow State Highway C South 0.1 miles to County Road 161 for 1.6 miles to State Highway D. The auction will be approximately 0.1 miles. Watch for signs the day of the sale.

Farm Equipment: Deweze Super Slicer II; pull type calf catcher; 300 gallon pull type sprayer; 3 point fence wire unroller; lighted sign frame; older 72" skid loader bucket; 3 ton portable creep feeder; 8' aluminum side truck boxes; Curtis 8' skid steer snow plow; 3 point Marval hydraulic spin hay wrapper; 16' farm gates; 6 Nitro 35 x 12.59 NT wheels and tires; miscellaneous 7.5 x 16 tires; Danuser 3 point PTO post driver; Kawasaki Teryx 4x4 side by side, 899 hours, marvel bed, aggressive tires; 4 HD alloy tires and rims; brand new poly Salt Dogg salt spreader;

Vehicles: 2001 Dodge 4x4 extended cab, 3500 Cummins, 362,000 miles, almost new tires, heavy Fab Fours bumper, gooseneck ball, automatic, transmission rebuilt at 300,000 miles, spray in bed liner; 2003 Hummer taillights; soft top for 1995 Jeep Wrangler; 2012 VW grill and plastic; 4 amp battery tender;

Household furnishings: Bar stool height Cedar table and 4 chairs; harvest style cedar table with 6 chairs; microfiber recliner; reclining chair; cedar end table; microfiber couch; wicker top round table; wood top wicker side end table.

Antiques and Collectibles: Antique side chair; antique upholstered knitting chair; antique wood frame windows; Hotwheel kid's play table; King's Hawaiian bread rack; older sugar bucket; antique milk cans and gas cans;

Tools and Sporting Goods: Horizon EZ69 elliptical machine; ping pong table; Bowflex Sport weight machine; karaoke vision machine; bamboo lounge chairs with matching coffee and end tables; Razor scooter; Kona men's bicycle; kids bike; wooden 5 gun cabinet; camo 0.177 caliber pellet gun;

Livestock: Approximately 30 cows, Irish Black & Irish Black cross, most 3, 4, and 5 years old, one 7 year old and a 3 year old black bull.

There will be many more items at this auction too numerous to mention.

SCOTT'S AUCTION SERVICE
Scotty Kuntz 573-356-4405
Michael Cunningham 660-651-2288 • Paxton Pittman 918-316-7500
WWW.SCOTTSAUCTIONSERVICE.COM

Edina Livestock Sales
Edina, Missouri
Weekly Sales Start @ 12:30pm

Friday, September 10th

- Special Feed Calf Sale
- Several loads of Yearlings
- 700# Heifers to 1000# Steers

Friday, September 17th

- Special Feed Calf Sale

ALL SALES TELEVISED ON DV AUCTION
To Consign For Any or All Sales or For Information Call:
Owner - Kevin Strange • Cell: 660-341-9974
Ryan Strange • Cell: 660-341-9721
Sale Barn: 660-397-9999

Field Reps:	Mike Bronestine 660-341-9965	Jason Bischel 660-216-0373
Bill Tom Hall 660-342-5420	Trey Gashwiler 660-216-8751	John Powell 660-341-1717

HELP WANTED

NEED A CHANGE??
Due to our expanding business,
we are accepting applications for

AUTO TECHNICIAN

Competitive Wages • Group Insurance
• Vacation Retirement Plan

Stop by to see Terry and Pick your
application up TODAY!!
MUST HAVE TOOLS & DRIVERS LICENSE

**Woody's Tire,
Auto & Towing LLC**

1102 N. Green St., Kirksville, MO • 660-665-8617

*"Don't Cuss,
Call Us"*

FARM CONSIGNMENT AUCTION

Saturday, October 2, 10:00am
Lineville, IA

Allen Auction Service, Princeton, MO
To Consign Early, call
Jerry Allen 660-953-0346

Consignments accepted until noon on Friday the day before the sale.
Deadline is September 16 to be listed in sale bill.

VIRTUAL ONLINE • SCOTLAND COUNTY, MO LAND AUCTION

FRIDAY, OCTOBER 8, 2021 @ 10:00 A.M.



82± ACRES
 (Subject to Survey)
2 TRACTS

Land is located in Sections 24 & 25, T64N•R12W, Scotland County, MO.

LAND REPRESENTS PRODUCTIVE TILLABLE CROPLAND AND OFFERS PREMIERE WHITETAIL DEER & WILD TURKEY HUNTING ACREAGE.

EUREKA LAND COMPANY

ROBERT L. MOORE | RICHARD PAYNE | TOM CROLEY | SHARON S. PAYNE | E. RICHARD WEBBER

CLOSING & TITLE WORK BY: SCOTLAND COUNTY ABSTRACT
 205 E. MONROE STREET | MEMPHIS, MO | (660) 465-7052

AUCTION MANAGERS: Bill Fretwell (660) 341-7735 and Stan Prather (660) 341-5950

SULLIVAN AUCTIONEERS, LLC • TOLL FREE (844) 847-2161
www.SullivanAuctioneers.com • IL Lic. #444000107

Kirkville Real Estate and Personal Property Sale

Thursday, September 23, 2021 at 5:00 p.m. Burton and Jane Picht
6 Kirkwood Lane, Kirkville, MO 63501

Directions: 6 Kirkwood Lane, Kirkville, MO 63501. From US Highway 63, travel West on State Highway 6 approximately 0.3 miles to Pfeiffer Avenue. Turn left and travel 0.2 miles to East McPherson Street. Turn right for 0.2 miles to Kirkwood Lane. Property will be located on your right. Look for signs the day of the sale.

Real Estate: This well maintained 3 bedroom, 1.5 bath, ranch-style, brick home is located on a quiet cul-de-sac. The home offers 1,728 square feet and was built in 1975. It has a formal dining room, wood burning fireplace, attached sunroom, large kitchen with dishwasher and sliding door pantry, utility/laundry room, built in grill and attached, over-sized 1 car garage. The home has central air, baseboard heat, Trane forced air gas heat, 40 gallon gas water heater and a 10' x 10' utility shed in the backyard. The roof has been replaced in the past few years.

The real estate will sell promptly at six o'clock. If you would like to schedule your personal showing, please call Scotty at 573-356-4405.

*See Terms and Conditions for Purchase of Real Estate below.

DOWN PAYMENT: 10% of the contract purchase price will be due upon acceptance of the Sales Contract. Personal or Cashier's Checks will be accepted. This is "AS IS, WHERE IS" and is non-refundable. **CLOSING:** Closing shall be within 30 days of the auction date.

Furniture and Household: Large dining room table with extra leaf and 6 chairs; 2 swivel maple bar stools; Proform Crosswalk 400 E treadmill; LaZBoy recliner; loveseat; Broyhill microfiber couch; coffee table; Sony flat screen TV; TV stand; like new electric reclining lift chair; various book cases; maple style pillow top mattress, queen size bed; modern roll top desk; child's 4 drawer chest of drawers; Kenmore 36 sewing machine with stand; Oak queen size 5 piece bedroom set; Magic Chef microwave; Kenmore washing machine; Kenmore electric dryer; various lamps; book shelves; Kenmore upright freezer

Antiques and Collectibles: Antique telephone table; Wurlitzer piano; very large collection of diecast and plastic cars and trucks, various sizes; large assortment of Barbie dolls in boxes from the late 1990's; Topps 1987 baseball card sets 3/4 full; 1988, 1989, 1990, 1991, 1992 Topps box sets; 1990 Score Collector set; 1990 Bowman set; 1994 Upper Deck box set; large assortment of baseball cards from mid 1980's to 1990's; very large collection of stamps from 1980's and 1990's; 1976 1 of 3 stamps; coins including 1999 American Eagle; 1995 1 ounce silver dollar; 2000 gold 1 dollar coins; partial collection 1999-2008; several foreign coins; 8 piece Bavarian China set

There will be many more items at this sale too numerous to mention.



Scotty Kuntz 573-356-4405

Michael Cunningham 660-651-2288 • Paxton Pittman 918-316-7500

WWW.SCOTTYSAUCTIONSERVICE.COM

SULLIVAN AUCTIONEERS, LLC

A FAMILY OWNED BUSINESS SINCE 1979



Headquartered in Hamilton, Illinois, Sullivan Auctioneers, LLC is one of the largest Real Estate and Farm Machinery Auctioneers in the nation. For more than 40 years we have been conducting professional auctions. We connect our sellers with thousands of interested buyers around the world.

Considering an Auction?

CALL OR EMAIL TODAY FOR A NO OBLIGATION CONSULTATION!

Toll Free (844) 847-2161 | Sold@SullivanAuctioneers.com
 www.SullivanAuctioneers.com | Lic. #444000107

CENTURY 21 FARM & RANCH

Lifetime Realty



A community member for over 26 years, Elizabeth is a real estate professional connecting sellers in Northeast Missouri to buyers across our great country.

Considering selling a farm or home? Call on a local expert who knows you, and who is committed to helping you get the most for your property.

Serving Knox, Macon, Adair, Sullivan, Linn, Putnam and Shelby Counties.

Elizabeth Gregory, Realtor
 Lic. # 2021008017

LISTING A PROPERTY?

CALL OR EMAIL ELIZABETH FOR A NO OBLIGATION CONSULTATION

660.621.2136 | egregory.c21@gmail.com

farmandhome.c21.com

Century21 Lifetime Realty | 660.665.5678

DIRT WORK All types of excavation, reclaiming overgrown fields, including CRP and WRP. Building site preparation, terrace and tiling maintaining and creating new trails and crossings, rock hauling, Food plot development and maintenance. Leveling and grading, wetland construction and maintenance. Pond and lake cleaning and construction. Call for quotes. 660-342-2701

FOR SALE: Registered AKC Labrador Retriever puppies, yellow. Farm-raised and loved! MO Health Certificate. Dam and Sire on farm. Ready to go now! Lay's Labs - LaBelle, MO 660-956-2482.

TINY HOMES We gottem 573-881-3283

FOR SALE: John Deere 285 Disc mower, 9', QH ready, low acres, \$6,500. Call 573-881-3557

FOR SALE: John Deere 4320 Tractor, straight off farm, ft wts, rear wts, 38" tires, 11,000 hrs, runs good, \$13,500. Call 573-881-3557

FOR SALE: Ford 3000 D, good pant and sheet metal, excellent rubber, 8 speed, \$4500. 660-341-8089

FOR SALE: 5 X 5 1/2 big round bales of mixed grass hay, Bailed dry no rain fertilized lab tested surface wrapped. Call 660-341-4031 Watson hay sales

FOR SALE: Mums \$8 a piece, also have large combo's \$20; large variety of colors. Pumpkins and fall decorations. Kauffman Produce 11538 Iceberg Ave La Plata MO 63549

STOCK MOBILE HOMES AVAILABLE: We gottem, single and double 3 and 4 bedroom! Call Tuffy 573-657-2176 amegamobilehomes.com

FOR SALE: John Deere 265 SL Loader, bucket, JD 20 thru 55 series mount, sharp, \$6,250. Call 573-881-3557

FOR SALE: NH 973 20' flex; NH 973 25' flex; NH 974 630 corn head; MF 1163 corn head; MF 1144 corn head; Gleaner 630 LM or R; Gleaner 830 corn head LM or R. 217-658-4761

PUBLIC AUCTION

SATURDAY SEPTEMBER 18TH 10AM

2705 Main St Unionville, Mo

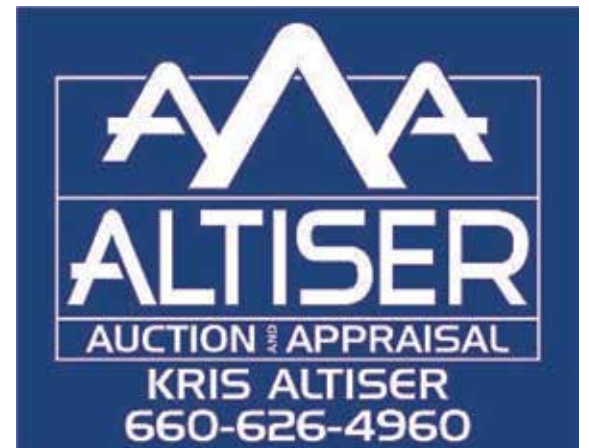
Antique and Collectible: Blow molds to include santa and cart on a train, several candlesticks and nutcrackers, santas, reindeer, geese. Coca Cola ice cream table and chairs, other coca cola items, bread rack, wonderbread trays, cider press, 2 1960s vanities, end tables, plant stands, steel wheels, nesting box, camel back trunk, dresser, lamps, frosted glass window, gas cans, galvanized items, jewel t bowl, enamel coffee pot, cast iron kettle, old tools, buckets, ammo boxes, wood boxes, CI skillets, Griswold 3 skillet, pulleys, post vises, B&S Mobiloil kick start engine, David Bradley Chainsaw, large tap and die, round oak table and chairs, several old chairs, toys, costume jewelry, mirrors, radio, fans, old and unusual copper washing machine on wheels, unique chest, sleds, wagon, pop crates. Peavey amp, cradle, wood cart, SS milk cans, 2-man saws, teeter totter, wood tool caddies, Modern: couch, dumb bells, kids toys, golf clubs, tools, craftsman router, chain hoists, vise, ext cods, fish tank. Building is full, many items are not advertised.

Preview on September 17th from 2-5 pm. Can see photos at Altiser Auction Facebook page. Statements made the day of sale take precedence over printed material. Food and restrooms are available.



SEE OUR FACEBOOK PAGE FOR PHOTOS

KM-70KDE366



KRIS ALTISER
 660-626-4960

FOR SALE: Heider Auger Wagon, 100 bushel, 540 PTO, boards on each side, manual auger swing either side, shedded, clean solid wagon, \$750. 217-257-1385 anytime

WANTED TO BUY: Harley Davidson's, any year, any condition, cash money. Days 660-263-1356 or 660-537-0068

FOR SALE: New 3 pt. tillers, heavy duty, gear driven, 7' to 10' starting at \$3050. 660-874-4455

HANDYMAN: Install interior and exterior doors and windows, siding, decks, showers and toilets, flooring and drywall, roofs and dirt work. 660-956-2189.

SCOTT HUSKEY'S HOME SERVICE R-10 Foundation Enclosure Systems for manufactured, modular, & site built homes. Saves on utilities and prevents freeze ups. General maintenance and repairs since 1972 573-696-3468 "GO DAWGS"

FOR SALE: Polled Shorthorn Bulls, ready to work, delivery available. AAA Shorthorns, The Meierotto Family. Hwy 81 between Kahoka, MO and Farmington, IA 319-572-2322

FOR SALE: Westendorf TA 25 quick tach loader fits JD 3020 or 4020, comes with control valve and all mounting brackets, \$1500 obo. 660-684-6977.

FOR SALE: John Deere 2950 Tractor, MFWD, CAH, 5,000 hrs, 90% tires, Westendorf Loader, cold AC, \$25,500. Call 573-881-3557

FRESH DRESSED Farm raised fish. If you freeze our fish they taste as fresh the day dressed. Benefits, Organizations, reunions. Call me will show you a money making event. 573-604-0674 delivered.

FOR SALE: 24x60 Double wide trailer house near Rutledge, MO, with mold problems, make offer. No Sunday Calls 660-341-2160

FOR SALE: Gehl 600 2 row chopper; Fox 2250 2 row corn, hay pickup fox 3000 2 row; Fox w/1 row hd; H&S silage wagon WT gears; Gehl silage wagon; silage wagon. 217-658-4761

FOR SALE: AC D-17 Series 3, WF, SC, new rear tires and tubes, front end loader, runs excellent, always shedded, \$4000. Kirksville No Pics 660-342-4287

Bethel Real Estate and Personal Property Auction



Saturday, September 18, 2021 at 10:00 a.m.
Fern Prince and the late Wally Prince
379 East 1st Street, Bethel, MO 63434

Directions: 379 East 1st Street, Bethel, Missouri. From Highway 168 at Shelbyville, follow Highway 15 North approximately 5.2 miles. Turn right on East 1st Street for approximately 0.2 miles. Watch for signs the day of the sale.

Real Estate: This large two story home is a landmark in the historic town of Bethel, Missouri. It offers 3 bedrooms, 2 bathrooms, a large kitchen and hardwood floors throughout the home. With arched doorways, built in cabinets in the living room and all original woodwork, you'll love the character that is impossible to find. It has a metal roof, an oversized 2 car garage, full, unfinished basement and air conditioning. The home sits on 0.426 acres with mature shade trees and established asparagus and grape vines. There is also a 14'6" x 18' outbuilding and a 16' x 12' metal building for plenty of storage. The real estate will sell promptly at noon. If you would like to schedule your personal showing, please call Scotty at 573-356-4405.

*See Terms and Conditions for Purchase of Real Estate below.

DOWN PAYMENT: 10% of the contract purchase price will be due upon acceptance of the Sales Contract. Personal or Cashier's Checks will be accepted. This is "AS IS, WHERE IS" and is non-refundable. CLOSING: Closing shall be within 30 days of the auction date

Home Furnishings: Ornate dresser; Eden Pure radiant heater; 4 poster queen size bed; 5 piece bedroom set; large dining room table with extra leaves and 6 chairs; Chandelier style seashell light; power chair; Maytag non print French door refrigerator; MORE

Antiques and Collectibles: Custom made chess board (28" tall, 28" square) with 2 matching rook chairs, 18" tall; 1:18 model cars, pick ups, motorcycles, airplanes and ships; classic and collectibles; gas pumps over 250; approximately 25 reproductions of oils on canvas; MORE

Musical Instruments: Kay model 88 acoustic guitar with adjustable neck; Kona guitar with adjustable pick ups; Epiphone guitar; Gibson style J-45; Epiphone style V-8; Guild model DCEI; Kay; Martin & Co model D3 serial number 913251; Savannah; Harmony Marquis model H5403N; Guild model 291 39; Washburn electric double cut away; Washburn acoustic, new in box MORE

Tools and Outdoor: 2 shop lights; caddy creeper, new in box; AC gauge set; portable generator; various hand tools; battery charges; air hoses; sanding belts; portable sand blaster; 2 hp electric pressure washer; receiver carry all; lawnmower jacks; MORE

Sporting Goods: 3 wall mount gun lockers and 1 corner gun locker; live trap Rifles: Winchester model 94 30-30, like new; Winchester model 94 AE 30-30; Winchester model 94 32 Win Special; Winchester model 71 348 WCF; Winchester M100 308 Win 4x Redfield scope; Remington Speedmaster model 552 .22 with Weaver scope; JMC .22 long rifle single shot; Winchester model 190 .22 semi automatic; Winchester model 1893 12 gauge pump; Marlin model 90 12 gauge over/under 2 3/4"; Winchester model 24 side by side 16 gauge 2 3/4"; Remington 12 gauge Damascus barrel, hammer type; French made Continsouza MLE-M-16 8 mm; Norinco ATD .22, new in box; H&R 18741 Handi-rifle 444 Marlin AIM sports scope, new in box; H&R 35 Remington AIM sports scope model SC2, new in box with 444 barrel; H&R 1871 Handi-rifle 35 Whelen synthetic stock, new in box; Howa 1500 model series 2506, new in box; Henry lever action 22 BSA Venturing Edition model H001BV, new in box; Henry Golden Boy 22 commemorative Americas bravest with fireman tribute edition with octagon barrel model H004GM, new in box; Henry lever action 22 LR octagon barrel Evil Roy edition model H001TER, new in box; Henry Golden Boy coal miners tribute 2nd edition model H004CMZ 22 LR octagon barrel, new in box; Henry Golden Boy 22 LR octagon barrel law enforcement tribute edition model H004LE, new in box; Henry Golden Boy 22 LR Lincoln 1809-2009 bicentennial edition model H004AL octagon barrel, new in box; Taurus model M63 22 LR semi auto, new in box; MORE LISTED ON WEBSITE



Scotty Kuntz 573-356-4405
Michael Cunningham 660-651-2288 • Paxton Pittman 918-316-7500
WWW.SCOTTSAUCTIONSERVICE.COM

KM-70KDE361

VIRTUAL ONLINE • KNOX COUNTY, MO LAND AUCTION

THURSDAY, OCTOBER 7, 2021 @ 11:00 A.M.



Land is located in Section 23, T60N•R13W, Salt River Township, Knox County, MO.

JEREMY TOUBL

CLOSING & TITLE WORK BY: KNOX COUNTY ABSTRACT
103 S. FIRST STREET | EDINA, MO | (660) 397-3259

AUCTION MANAGER: Bill Fretwell (660) 341-7735
SULLIVAN AUCTIONEERS, LLC • TOLL FREE (844) 847-2161
www.SullivanAuctioneers.com • IL Lic. #444000107



NEMO SMALL ANIMAL & BIRD AUCTION

September 18th 2021

NEMO Fair Grounds

2700 E ILLINOIS ST. KIRKSVILLE MO

Poultry, Small Animals & Cages 10.30 am

Special Breeding Stock Goat/Sheep Sale 4PM

Accepting consignments of Poultry, Waterfowl, Pet

Shop Birds, Exotics Animals, Rabbits, Peafowl,

Pheasants, Claves, Sheep, Ponies, Cages.

Consign early for advertisement.

660-216-1492 Daryle

KM-70KDE339

"Continuation" of the Kelly Family Auction Saturday September 18, 2021 9 AM Located: Auction Building 1916 S. 18th (Hwy 5 South) Centerville, Iowa

Large amount of Pieced Quilt Tops (ready to finish) and a few completed Beautiful Quilts; Sewing Machines; Sewing Notions; Chenille Bed Spreads; Quarter Play Genuine Slate Playfield Pool Table, Bay City, Michigan, 1970's, Good Condition, 3362710; 70's Seeburg Red Phonograph Juke Box, L52, 140331, 160 Selections, Quarter Play; Very Large amount of Vinyl LP Albums; Sheet Music including a 1956 Elvis Love Me Tender, 1942 Irving Berlin White Christmas + more; Marx Original Violin-Uke; Post Card Collection; Tapestry's from Italy/Belgium; A VERY LARGE AMOUNT OF ARTWORK, PAINTINGS, PICTURES, JJ Audobon Prints; Lincoln Drape Lamp, elec; Martha & George matching Lamps; Large amount of Art Glass, Milk Glass, Fenton, Sooner Glass and more; Many Antiques and Collectables; 2 Umbrella Stands; 10 Vol. Set of 1789-1897 Presidents by Richardson; Beautiful Hanging Red Light; NIB Lava Lamp; Nice Large Eagle Statue, Suanti Galleries; Baseball & Sport Books; Matching Sofa/ Loveseat/Chairs; Power Hospital Bed; Dressers; Beds; Nice Cedar Chest; Glass Show Case; Several Modern China Hutch; Book Shelves; Tables; 2 Marble Top Stands; Nice set of end tables; Library Table; Antique Desk; Very Old Tall Antique Radio; Large Ornate Mirrors & Pictures; Roc A Chair; Nice large Antique Wall Clock; Several Fishing Tackle Boxes, loaded; Alum Ext. Ladder; Hand Tools; Power Tools; and many Garage Items; 1954 Pontiac Catalina Chiefton Fender Skirts; Box Lots; and so much more. Plan to spend the day with us. You will be surprised what we discover.

Follow us on Facebook for Pictures --- Demry Auction LLC (Photo's for Sept 18 Auc)

Demry Auction, LLC Centerville, Iowa
Tom Demry 641-895-2508

Janet Demry 641-895-4310 641-856-6408

Kristy Demry 641-895-2509

Junior Lawson 641-895-0037

KM-70KDE348

Dutch Garden Nursery

Your Full-Service Garden Center

Hardy Garden Mums IN BLOOM

Pest Control Supplies



Mouse Baits & More

BIRD SEED

- Black Oil Sunflower
- Cardinal
- Nut & Berry Blend
- Nyger



Flower bouquet or by the stem!

GIFTS • SUCCULENTS • HOUSE PLANTS

SEED FOR COVER CROP AND FIELD PLOTS

GRASS SEED • STRAW • MULCH

Hours: Monday - Saturday 8 AM to 5:30 PM

MEMPHIS LOCATION (beside Country View Store): 660-883-5650

EDINA LOCATION (Home Base): 660-397-4115

www.dutchgardennursery.com

NEOMO TRADER • Advertise with us TODAY!

Phone: 660.665.8500 • PO BOX 190 • KIRKSVILLE, MO 63501

LOLLI BROS. LIVESTOCK MKT, INC.

All Class Feeder Calf & Yearling
Cow, Cow/Calf, Bred Cow Sale
Tuesday, Sept 14 *11am

LARRY ROBERTS - Complete Dispersal - 30 Cows: age 4-SS, Black Angus & Black Baldies, some with calves, bred to Angus Bulls.
JIM THORNHILL - Complete Dispersal - 26 Cows: mostly black, 16+ pairs, bred back, 1 Black Angus bull, 3+ years old.
DEREK SLAUGHTER - 30 Black Cows: 5-SS, bred to Angus Bulls.
JERRY JEFFRIES - 2 Cow/Calf pairs: 4 years old, running with red Angus bulls.
This is only a partial listing, many more by sale date.

September 21, No Cattle Sale
September 22-24, Alternative Livestock & Taxidermy Sale
September 28, Special Calf & Yearling Sale

Cafe Open Lollibros Livestock Market, Inc. Cafe Open
704 Main st * Macon, MO * 660-385-2516 * www.lollibros.com
Dominic 660-651-4024 * Frankie 660-651-4040
Tim 660-651-3496 * Joseph 660-346-9711 Cattle accepted on Sundays

SPARKS AUCTION SERVICE

September 25th, 2021 @ 9 AM
Machinery consignment auction

We Will Except the following..
Tractors, Implements, Combines, Lawn Mowers, Campers,
Auto's Boats, Hay, Post, Hand & Yard tools.

No Charge for No Sales 99% Sold on Spring Sale.

0-1000 = 15% 10,001-25,000 = 6%
1001-5000 = 10% 25,001-50,000 = 4%
5001-10,000 = 8% 50,001 & over = 2%



Let us market your Product.
Bring in when ready. Give us a call!!

204 E. Reid EDINA, MO 573-406-8787

FOR SALE: November and February Ram Lambs. Jim Vermazen Montrose Iowa 319-371-7189

FOR SALE: 1946 M Farmall, wide front, 3pt, fenders, good paint. 573-541-2015

FOR SALE: Remington 700 BDL rifle, 280 caliber, Tasco World Class Scope 3x9x40; Custom made Rifle, 7x57 caliber, Tasco World Class scope 3x9x40; Mossberg 500 pump action 20 gauge shotgun, accuchoke 2 3/4" or 3" shells. 660-651-3722

FOR SALE: MF 235 Tractor, low, low use, new rubber, 3 pt, always shedded, \$4,950. Call 573-881-3557

FOR SALE: Hot rod tractor, WD45 with 454 big block with automatic transmission, 400 turbo runs great, \$2500. 573-822-2651

Driveway repair. Excavation. Trenching. Brush clearing. Site prep and cleanup. Leveling. CRP work. Transportation. Heavy installation. Welding. 660-216-7268

FOR SALE: Ford 1500, good paint and sheet metal, good rubber, with rear mounted finish mower, \$3500. 660-341-8089

FOR SALE: Great Pyrenees puppies, born 7-25-21 \$125 each or \$100 each for the litter or what is left. Mose Miller 12548 Hilton Ave LaPlata MO 63549

For sale: 8 Great Pyrenees puppies, 4 females, 4 males, 5 weeks old, \$250 each. Leroy Borntrager 12743 Hilton Ave LaPlata MO 63549

FOR SALE: Gleaner R62 combine, CDF rotor lateral tilt; MF 850 D hydra; NH TR 96; IHC 1440 diesel; MF 750 diesel; 2 kastern silage wagon; JD 55 EB 12' platform. 217-658-4760

FOR SALE: Good used Industrial Channel drain tin 27 gauge approx., galvanized under white paint, very few holes, large number of long sheets; Antique paver brick (Moberly Missouri Pavers), \$4.00 per brick, also Solid red brick .75 cents per brick. 660-676-5021 Clarence MO

FOR SALE: IHC 983 corn head; IHC 883 corn head; Drago 830 corn head, adj deck plates; IHC 820 17 1/2' MF 830 for JD. 217-658-4761

FOR SALE: 1998 Jeep Cherokee 4 WD, 4 door, air, radio, Reese hitch, 145,000 miles, \$3200 cash. Text 217-653-7100 for return call. Canton MO

FOR SALE: John Deere 7220 Tractor, MFWD, CAH, power shift, 9000 one owner hrs, \$49,500. Call 573-881-3557

FOR SALE: Land Pride RCR 2584 7' Rotary cutter, stump jumper, front chains, laminated tire, ready to use, real good, \$1400. 217-257-1385 anytime

FOR SALE: Hay big round bales, small square bales, alfalfa, grass, and some mixed, for prices call Bob 660-342-4048

FOR SALE: Mickey Thompson rims off F150, \$150; Ranger truck parts, \$200. Call 660-379-2598

SCHMUCKER PRODUCE Has tomatoes by lb, onion, cucumber, zucchini squash, acron melon, pepper beats, canning tomatoes, \$9 for 1/2 bu while they last, 7 miles North Kirksville to Ft Madison Way 1/2 mile East

GOVERNMENT EQUIPMENT AUCTION

530+ ITEMS SELL
NO RESERVE!
TUESDAY,
SEPTEMBER 14



KW9834 '13 New Holland B95C backhoe



KQ9792 '10 Case 590 Super M Series III backhoe



DM5262 '16 Zaugg Rolba Mobil 170 snow blower



KW9879 '09 Mack Mammoth refuse truck



DN1926 '02 John Deere 770CH motor grader



IJ9902 '04 Case 521DXT wheel loader



KY9193 '87 CAT Challenger 65 track tractor



DM6360 '06 GMC C8500 crane truck



KK9370 '17 Ford F150 XLT SuperCrew pickup



JN9496 '10 Ford F350 Super Duty XLT Crew Cab pickup



DM1289 '08 Sterling L9500 construction dump truck



KV9224 '94 John Deere 6400 MFWD tractor



INVENTORY INCLUDES: backhoes, motor grader, wheel loader, tractors, pickup trucks, dump trucks, fire trucks, SUVs, flatbed trucks, utility trucks, passenger vehicles, equipment trailers, ambulance, box trucks, school buses, semi trucks, melter/applicator, lawn mowers and more. All items are sold "AS IS." 10% buyers premium applies.

BID NOW! purplewave.com

PUBLIC AUCTION

7198 WEST HIGHWAY 24 - HUNTSVILLE, MO
(Located 2 miles West of Huntsville on Hwy 24)

MONDAY, SEPTEMBER 13, 2021 @ 12 NOON

Large auction, general listing with many duplicates, these buildings are packed full, expect much more! See ImanAuction.com For Full Listing!



TRACTOR - BRUSH HOG - PORTABLE BUILDINGS - CORRAL - FARM RELATED - WOODWORKING TOOLS - WOOD FURNACE - CHAIN SAWS - HAND & POWER TOOLS - LUMBER - TIN - METAL TUBING - BUILDING MATERIALS - SCAFFOLDING - SHOP CABINETS - TABLES - ANTIQUES & COLLECTIBLES - MODERN FURNITURE - HOUSEHOLD
CHELSEA DIEHLS
- SELLER -



IMAN AUCTION COMPANY
660-788-4298 | 660-414-7830 | ImanAuction.com

GREEN CITY LIVESTOCK MARKETING, LLC

19037 HWY 129 S.

GREEN CITY MO 63545

(660) 874 - 4146 • www.greencitylivestock.com

Next Sales:

Wednesday, September 15th

Special Calf & Yearling Sale

Wednesday, October 6th

Annual Angus & Angus Factored

Calf & Yearling Sale

2,935 head were sold at the September 1st Annual Angus & Angus Factored Calf & Yearling Sale. Compared to the last tested market four weeks ago, steers and heifers sold mostly 2.00 to 5.00 higher with 700-800 lb heifers trading as much as 10.00 higher on the strength of a large reputation consignment of backgrounded heifers. Slaughter cows & bulls were fully steady.

STEERS			HEIFERS		
Steve Helphingstine	385 Ang	205.00	JV Norton	817 Ang	160.00
Adrian Farms	405 Ang	185.00	Sattman Farms	885 BBWF	151.85
Brent Atchley	442 BBWF	187.00	Biggs Angus	890 BBWF	155.75
Travis Carmack	465 Ang	172.00	Henry Wiskur	905 Ang	155.75
Karlos Hoerrmann	482 BBWF	197.50	Kenny Sparks	916 BBWF	155.25
Dale Britt	534 Ang	190.00	Sattman Farms	974 BBWF	144.35
David Watt Estate	556 Ang	178.00	Lee & Jolene Jaynes	975 Ang	148.50
Wayman Cattle Co.	556 Char/AngX	183.75	Lona Jackson	1033 Ang	137.60
Jeff Eddy	558 BBWF	181.50	Gary Shipley	1034 Mix	135.75
Steve Simmons	565 Ang	179.00			
Steve Helphingstine	575 Ang	189.25	HEIFERS		
Chuck Snyder	588 Ang	184.00	Adrian Farms	450 Mix	161.50
McClamroch Farms	590 BBWF/RWF	184.25	Gregg Steele	502 Ang	170.75
Greg Williams	620 Ang	183.50	Wayman Cattle Co. 517 Char/AngX		172.00
Gregg Steele	621 Ang	182.75	Mitch Balfour	524 Ang	164.50
Mitch Balfour	640 Ang	175.00	Dale Britt	529 Ang	160.00
Kilmer Farms	658 Mix	171.00	Steve Simmons	555 BWF	155.00
Marcus Liebhart	665 Ang	175.00	Steve Helphingstine	580 Ang	159.00
Jake & Charlene Shermuly	665 Ang	172.25	Wayman Cattle Co. 601 Char/AngX		163.25
Dale Britt	669 Ang	176.00	Marcus Liebhart	605 Ang	155.00
Wayman Cattle Co.	671 Char/AngX	175.50	Matt Reeves	607 Ang	164.00
Tad Carnahan	677 BBWF	176.50	David Watt Estate	613 Ang	157.75
Weter Farms	679 BBWF	177.00	Karlos Hoerrmann	623 Mix	158.00
Jim Seidel	687 Ang	175.00	JV Norton	633 Ang	160.00
John Howe	700 BBWF	171.00	Weter Farms	633 BBWF	161.00
Matt Reeves	708 Ang	174.00	Kilmer Farms	650 Mix	155.50
Glen Kirby	719 BBWF/RWF	169.75	John Howe	652 BBWF/Xbred	164.75
Michael Harden	721 Ang	174.50	Jake & Charlene Shermuly	669 Ang	155.00
Albert Zentz	723 Ang	169.00	Denny Page	674 BBWF	165.00
JV Norton	733 Ang	170.00	Minear Farms	686 Ang	160.00
Don & Gary Jepson	736 Ang	175.00	Jr Cordray	687 BBWF	158.50
Jr Cordray	746 BBWF	161.00	Gary Perkins	696 BBWF	153.00
Jim Palmer	751 Ang	171.00	David Perkins	696 Mix	155.00
Cole Young	755 Ang	158.00	Greg Williams	697 Ang	148.00
Gene McLaughlin	783 Ang	147.00	Jason Speichinger	703 BBWF	157.50
Joe & Danny Amidei	785 Ang	157.00	Greg Fleshman	704 Ang	160.25
Gary Perkins	790 Mix	157.00	Stan & Rye Page	707 BBWF	162.00
John Webb	801 Ang	160.00	Glen Kirby	710 BBWF/Red Ang	154.00
Harden Farms	802 Mix	147.75	Greg Fleshman	715 Ang	159.00
Harden Farms	808 BBWF	164.75	Stan & Rye Page	718 Mix	156.00
Thomas & Thomas	811 Ang	154.25	Don & Gary Jepson	722 Ang	154.50
Glen Kirby	812 BBWF/RWF	162.00	Glen & Kyle Eitel	736 Ang	150.50
Glen & Kyle Eitel	815 BBWF	161.00	John Webb	748 BBWF	149.75
			Zach Alderton	768 BBWF	152.50
			Jim Palmer	770 Mix	153.25
			Sattman Farms	819 Ang	143.75

WEBSITE: www.greencitylivestock.com • BARN: 660-874-4146

OWNERS

Darren Hodgen: 573-999-3252

Cody McClamroch: 660-349-6535

Operations Manager: Steve Evans, 660-375-2545

FIELD REPS

Chuck Daniels: 660-626-7621

Steve Frazier: 660-626-7066 • Jeff Gray: 660-956-8251

Justin Morgan: 660-216-9719

*We are your top market for all classes of cattle *

We value and appreciate your business!

PUBLIC AUCTION

To settle the Estate of the late Richard & Louise Franks, we will sell the following items located at 18979 State Hwy HH, Elmer, MO, which is located 3 miles south of Elmer on State Hwy HH to farm on

SAT., SEPTEMBER 18TH, 2021 @ 10 A.M.

HOUSEHOLD GOODS: Two Samsung flat screen TV's - two cushion leather divan - brown leather recliner - two piece queen size bedroom set complete - infrared heater - two door glass hutch - Starck spinet piano w/bench - round wooden dining table w/ 2 chairs - metal day bed - chest of drawers - two blue swivel rockers - cedar chest - jewelry box on legs - glider rocker - microwave - wooden file cabinet - two night stands - sweepers - office chair - floor & table lamps - two walnut tables w/marble tops - bedding & linens - puzzles & games - Christmas décor & ornaments - records - pictures - mirrors - kitchen utensils - silverware - pots & pans - canning jars - Corning Ware - luggage - battery handicapped scooter - other household items too numerous to mention. **ANTIQUES & COLLECTIBLES** - Bird's Eye maple vanity dresser w/bench & matching bed - queen size sleigh bed complete - oak rocker - child's highchair - child's rocker - pulpet from Cash church - handmade walnut coffee table - 10 gallon Blue Ribbon stone crock - crock bowls - stone jug - glass churn - wooden coffee grinder - collection of JD memorabilia - green Aladdin lamp - glass kerosene lamp - iron floor lamps - wooden Remington box - large round saw blade - old wooden box w/lid - child's books - cookbooks - school books (some from Elmer & Rock Creek) - 3 papier mache dolls - costume jewelry - fancy handwork - good metal Coca-Cola cooler - sad irons - counter scales - old milk bottles - green fruit jars - metal bird cage w/stand - silver plated items - pink & green glassware - various other glassware - wooden school desk - paper press - two kerosene jugs - old wood stove - seasoned walnut lumber of various lengths & widths & of other antiques & collectibles too numerous to mention. **TRACTOR & MACHINERY** - JD 2155 diesel tractor w/wide front, 3 pt. canopy & 3.4xx hrs. - Land Pride RCR3596, 3 pt., 8' rotary cutter - Freeman 8', 3 pt. blade - 5', 3pt. rotary cutter - 3 pt. post hole digger - 8' pull type wheel disc w/cylinder - Oliver 4 bottom pull type sand plow - 9 shank, 3 pt. chisel plow - 3 pt. rotary hoe - 3 pt. bale stabber - Case 3pt., 24 disc drill - 3 pt. boom - 3 pt. dirt scoop - ATV 12 volt sprayer - small 2 wheel trailer - electric auger for grain bin - two old self-propelled combines for scrap - various other scrap iron - 12' flat bottom Jon boat - tractor chains - walking plow - various other items too numerous to mention. **TOOLS & MISCELLANEOUS** - Elites Series 5500 watt portable generator - Guardian 5 speed drill press - grinder on stand - 6" Allied bench grinder - MO Amp older electric welder - 3/4" drive socket set up to 2" w/ratchets & various other sockets and sizes - gear pullers - bottle jacks - handyman jack - pipe wrenches - bolt cutters - open & box end wrenches - battery charger - floor jack - electric hand power tools - log chains - assortment cabinets - bolt bins - portable air compressor - air pig - sickle sharpener - chain hoist - pipe vise - welding table - HD press frame - several steel traps - nuts & bolts - approximately 15 sheets of blandex - wire cattle panels - electric fence post - lawn & garden tools - two sections of TV tower - lots of other items too numerous to mention. **TERMS: Cash/Check w/ID - Lunch & porta potty on Grounds**

OWNERS - ROBERT FRANKS & PHYLLIS SMOOT

Christy's Auction Service



La Plata, MO 63549 660-341-4531
See Websites for Photos: www.dchristyauctions.com
& Christy's Auction Service on Facebook

Auctioneers - David Christy
Jason Wood - 660-341-7884 Greg Smoot - 660-341-5175



THE NEMO TRADER

CLASSIFIED COUPON

Clip This Coupon Out of This Week's NEMO Trader and run

2 CLASSIFIED ADS FOR \$5.00

Picture Ads Not Included with Coupon! Call For Pricing!

(Each Ad Must Be 20 Words or Less.)

~20¢ per word over 20 words~

Cash NOT ACCEPTED

Check or Money Order Only

Ad No. 1: (20 words or less)

Ad No. 2: (20 words or less)

YOUR CLASSIFIED AD WILL BE READ IN OVER 19 COUNTIES, IN 3 STATES!

BY COUNTLESS BUYERS!!!

TO RECEIVE THIS RATE: COUPON MUST BE MAILED IN ALONG WITH YOUR PAYMENT!

**THE NEMO TRADER, P.O. Box 190
KIRKSVILLE, MO. 63501 ~ 660-665-8500**



Farm Equipment, Antiques and Sporting Goods Auction

Saturday, September 25, 2021 at 10:00 a.m.

Rex and Helga Hollenbeck
17995 State Highway DD, Lentner, MO 63450

Directions: 17995 Route DD, Lentner, Missouri. From U.S. Highway 36 at Lentner, Missouri, follow State Highway A South to State Highway DD. Watch for signs the day of the sale.

Farm and Livestock Equipment: 474 International gas tractor showing 23,116 hours, nice little tractor; Parker gravity flow wagon; Farmall cub tractor; concrete bull float; branding iron burner; 2 complete sets of irons; 3 point Danuser post hole digger; MORE

Antiques and Collectibles: Antique high wheel corn wagon sold by : N.E. Hollenbeck, Leonard, MO; longhorn skulls; antique well pump; antique shop cabinet; license plates; machinist organizer; antique school desk from Fairview school; MORE

Tools and Equipment: 150 PSI 110V air compressor; Lincoln AC-225 arc welder; oxy and acetylene torch set; metal storage locker; wood bolt organizer; numerous extension cords; MORE

Outdoors and Sporting Goods: Old bicycles; Custom 22-250 with bull barrel and Nikon scope; NATMT2 Van Buran AR15; Browning Belgium 12 gauge, 28 1/2 barrel; Winchester model 12, 12 gauge, nickel steel; L.C. Smith side by side double barrel 12 gauge Damascus barrel; Remington model 870 12 gauge; Marlin 17 MMR with Bushnell scope; Winchester 275 94AE XTR, Mark Twain edition 67 of 150; Winchester model 70 30-06 featherweight; Winchester model 94 XTR 375 Mark Twain edition 27 of 150; Winchester 30-30 model 94 Lone Star commemorative; Mossberg model 380 22 LR; Savage model 10 243; Acura trigger with Simmons scope; Winchester model 12 12 gauge, full choke; M&R 22 9 shot revolver; Smith & Wesson M&P 22 semi automatic pistol; Smith & Wesson 22 M&P with rail laser and lighted sight; Colt Detective Special 38 snub nose; Colt Officer Special 22 LR with 6" & 11" barrels; Remington Derringer 31 Rem fire pocket pistol; Ruger 22/45 Mark III with bull barrel; Colt 1911 U.S. Army 45 caliber; Smith & Wesson M&P 40 caliber; Ruger Security Six 357 mag; Ruger 380 caliber LCP; Taurus 45 Millennium; Colt Dragon picket model stage coach scene on cylinder 1849 31 caliber; Ruger LC 9-5 9mm with improved trigger; Colt single action 22 Scout 1819 Arkansas Territory sesquicentennial 1969; Ruger SR 22P 22 LR; Colt 22 single action Frontier Scout 1819 Alabama sesquicentennial 1969; Mossberg Maverick 12 gauge Security, new in box; Mossberg 22LR 702 Plinkster, new in box; Daisy lever action BB gun; Crossman pump BB gun; Liberty 30 gun safe with combination lock; lots of ammo; 40 ACP, 22-250, 38 special; 30-06; 243; 17, 22 LR; J.C. Higgins Model 10116 22 LR; miscellaneous scopes

Household items: Amana chest type freezer; Tru Test Imperial chest freezer; oak kitchen cupboard; Crafts; file cabinets; maple end tables; maple China hutch; drop leaf table; hide-a-bed; miscellaneous chairs

There will be many more items at this auction too numerous to mention.



Scotty Kuntz 573-356-4405
Michael Cunningham 660-651-2288 • Paxton Pittman 918-316-7500
WWW.SCOTTSAUCTIONSERVICE.COM

KM-70KDE351



Real Estate, Antique and Personal Property Auction

Thursday, September 30, 2021 at 5:00 p.m.
Estate of Beverly Blodgett

2511 South Jameson Street, Kirksville, MO 63501

Directions: 2511 South Jameson Street, Kirksville, Missouri, 63501. From U.S. Highway 63 in Kirksville, turn East on State Highway 11 for approximately 0.6 miles, then turn North on South Jameson Street for approximately 0.3 miles. Watch for signs the day of the sale.

Real Estate: What a great location! You must see this home sitting on a large 1.44 acre corner lot with several mature shade trees, an attached 1 car garage, a 22' x18' detached garage and a 10'x 12' storage shed. The 2 bedroom, 1 bath home has vinyl siding, a large dining room, plenty of cupboards in the kitchen and a spacious living room. It includes a Rudd gas furnace and an approximately 10' x 12' concrete floor basement.

The real estate will sell promptly at six o'clock. If you would like to schedule your personal showing, please call Scotty at 573-356-4405.

*See Terms and Conditions for Purchase of Real Estate below.

DOWN PAYMENT: 10% of the contract purchase price will be due upon acceptance of the Sales Contract. Personal or Cashier's Checks will be accepted. This is "AS IS, WHERE IS" and is non-refundable. **CLOSING:** Closing shall be within 30 days of the auction date.

Vehicles: 1996 Chevy 4x4, extended cab with 200,000 miles; 2005 Dodge Caravan mini van 200,000 miles

Antiques and Collectibles: Antique oak wash stand; maple hutch; antique China hutch; hen on nest; antique oak chest of drawers; antique type writer; Planter's Peanuts jar; Carnation Malted Milk glass container; Dazey churn jar (no mixer); drop front secretary with glass front display; antique chest of drawers and glove boxes; oak square table; antique oak rocking chair; #5 Blue Ribbon crock jug; antique barn lantern; miscellaneous jars; old garden cultivator; old buck saw; galvanized boiler; Grey Round Red wagon

Household Items: Chef dorm size refrigerator; miscellaneous mixing bowls; plastic organizer; HYL A air and room cleaning system, like new vacuum; Vizio flat screen TV; dresser with mirror; costume jewelry; Kenmore 220 window air conditioner

Outdoor and Sporting Goods: Trex 820 bicycle; Schwinn Sidewinder bicycle; dog steps; bird cage; Miscellaneous hand tools

There will be more items at this auction too numerous to mention

GO TO WEBSITE FOR FULL LISTINGS



Scotty Kuntz 573-356-4405
Michael Cunningham 660-651-2288 • Paxton Pittman 918-316-7500
WWW.SCOTTSAUCTIONSERVICE.COM

KM-70KDE362

HUSKY MIX PUPPIES Ready for their new homes, they have had their first 3 rounds of shots and one round of deworming, \$150 OBO. Please call/text 515-249-9655 (When calling please leave a message)

FOR SALE: 2014 RZR 800-S, nice older person driven, 3200 miles, \$8495. Kirksville 660-341-9522

HAY FOR SALE: 80 Bales Brome, \$55 per bale, 163 bales CRP hay, \$45 per bale. I will come down on the price if you take all of the brome or all of the CRP hay. Baled with a 567 John Deere baler, net wrapped. Call 660-651-8546 Atlanta MO

NATIVE PLANTS for butterfly gardens, rain gardens, hard to mow banks, and restoration. Peckosh Landscaping 23198 Hwy H/ Boundary St. Kirksville, MO. Just north of the Troy Mills store. Call Claire at 660-349-0061.

ARE YOU COVERED? Accidents and illnesses occur without warning. Let us help you make sure you, your family and/or employees are covered. Health, Cancer, Accident, Hospital, Critical Illness, Short Term Disability, Dental, Vision, Life. Linda 660-537-5177 linda_buchmann@us.aflac.com Denise 314-465-5611 denise@healthinsuranceagt.com

FOR SALE: Farmhand XL 740 Loader, QT, 7' bucket, good paint, \$3,750. Call 573-881-3557

FOR SALE: Smooth mouth mare \$600; also small bales of straw \$5.00; 4x5 net wrapped hay, \$45. 660-342-5314

TIMED ONLINE ONLY AUCTIONS - BID NOW!

McAfee/Hayes Auction Service, LLC
375 S Johnson • Kahoka, MO
660-727-3796
www.mcafeeauctionservice.com

TIMED ONLINE ONLY ESTATE FARM MACHINERY AUCTION

LOTS START ENDING AT 10 AM ON TUESDAY SEPTEMBER 14TH

SELLING TRACTORS, TRUCK, ROTARY CUTTER, TILLAGE & MISC. EQUIPMENT, SALVAGE, FARM RELATED

CHECK OUR WEBSITE FOR COMPLETE DETAILS
ITEMS CAN BE VIEWED SEPT 9TH- SALE DAY 9-5 DAILY
LOCATED AT 3599 JOHNSON ST. ROAD, KEOKUK IA
(AUCTION STAFF ONSITE SUNDAY SEPT 12TH 10 A.M.- NOON TO START TRACTORS)

DWIGHT NELSON ESTATE

McAfee/Hayes Auction Service, LLC
375 S Johnson • Kahoka, MO
660-727-3796
www.mcafeeauctionservice.com

TIMED ONLINE ONLY FARM MACHINERY & TOOL AUCTION

LOTS START ENDING AT 10 AM ON TUESDAY SEPTEMBER 21ST

SELLING TRACTORS, COMBINE, RTV, TRAILERS, ROTARY CUTTERS, FARM EQUIP., FARM RELATED, SHOP & TOOLS RELATED.

CHECK OUR WEBSITE FOR COMPLETE DETAILS
MAJORITY OF ITEMS CAN BE PREVIEWED ON OUR LOT
AT 375 S JOHNSON, KAHOKA (COMBINE & GRAIN CART OFF SITE)

THE FAMILIES OF
CLIFFORD & LOLA GARES, GEORGE T. MARTIN & OTHERS

McAfee/Hayes Auction Service, LLC
375 S Johnson • Kahoka, MO
660-727-3796
www.mcafeeauctionservice.com

TIMED ONLINE ONLY RESTAURANT EQUIPMENT AUCTION

LOTS START ENDING AT 1 PM ON THURSDAY SEPTEMBER 30TH

As Steve & Anne have purchased a former restaurant and are renovating the property for a different purpose, they will be liquidating all the restaurant equipment from this structure.

CHECK OUR WEBSITE FOR COMPLETE DETAILS
PREVIEW - MONDAY SEPT. 20TH 10 AM - NOON
ITEMS LOCATED AT 461 N JOHNSON, KAHOKA, MO

STEVE & ANNE HOWELL, SELLERS

MONTY: 660-341-7412 OFFICE: 660-727-3796



McAfee/Hayes Auction Service, LLC

375 S Johnson • Kahoka, MO
660-727-3796

www.mcafeeauctionservice.com

**RURAL RESIDENTIAL REAL ESTATE
AUCTION**

THURSDAY SEPT 23RD - 6 PM

Sale conducted onsite located 1 1/2 miles East of Hurdland, MO on Hwy. 6 (48855 State Hwy. 6 Hurdland, MO)



Take advantage of this rare opportunity to purchase a very well built 3248 sq' total living space 3- plus bedroom, 3 car garage, walk out basement, full brick home. Home features 1624 sq' on main level, 1624 sq' finished basement, 2 bathrooms, 2 kitchens, geo thermal heat and air, 2 fireplaces. Many nice updates! Setting on 3 +/- Surveyed acres w/ pond, mature trees and nice landscaping. (Subject to final survey)

OPEN HOUSE: FRIDAY SEPT. 10th 5-6 pm

JERRY J. & ESTHER A. PLOWMAN TRUST



McAfee/Hayes Auction Service, LLC

375 S Johnson • Kahoka, MO
660-727-3796

www.mcafeeauctionservice.com

Lewis County, MO
LAND AUCTION

Sale conducted at the Queen of Peace Hall
103 W. Clow Ave. Ewing MO

**428 +/- ACRES/
7 TRACTS**

**Productive
Tillable
Farmland,
Pasture,
Woodlands,
Home, Pole
Building**

**Tuesday,
September
28TH
at 6 PM**



**THE FAMILY OF
SAM & MARY MCCRACKEN**



McAfee/Hayes Auction Service, LLC

375 S Johnson • Kahoka, MO
660-727-3796

www.mcafeeauctionservice.com

Clark County, MO
LAND AUCTION

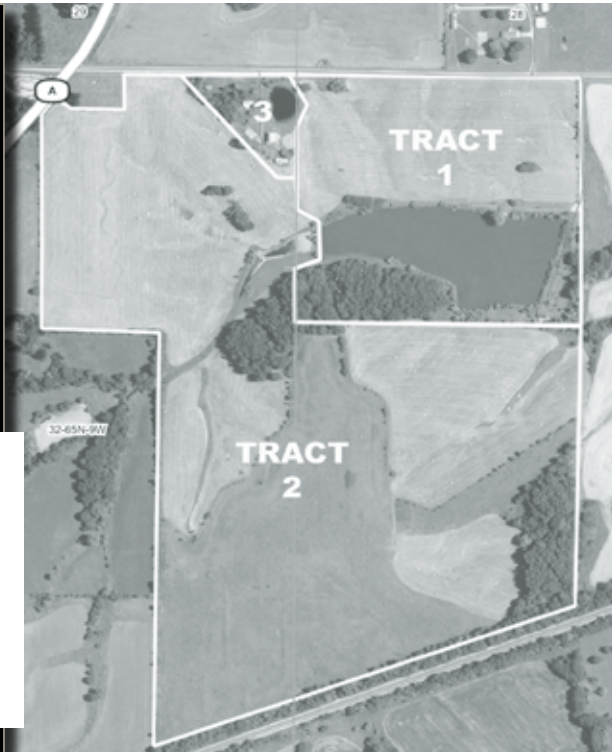
Sale will be conducted at the Care Building located at
451 N. Vine Street Kahoka, MO

160 ACRES/ 3 TRACTS

Tracts located 1/4 miles north of Wyaconda, MO on Hwy A.
(Address : 11980 Co Rd 127-EW, Wyaconda MO)

**Productive
Tillable
Farmland,
CRP Income,
9.63 Acre Lake,
Homestead/
Out Buildings**

**Tuesday,
October
12TH
at 6 PM**



THE FAMILY OF GEORGE T. MARTIN



McAfee/Hayes Auction Service, LLC

375 S Johnson • Kahoka, MO
660-727-3796

www.mcafeeauctionservice.com

Clark County, MO
LAND AUCTION

Sale will be conducted at the Care Building located at
451 N. Vine Street Kahoka, MO

TUESDAY, OCTOBER 19TH - 6 PM

334 ACRES/ 5 TRACTS



The Gares farms are lying South and Southeast of Kahoka, MO ranging from 2 miles to 4 3/4 miles from town. These tracts offer attractive combination farms with productive rowcrop acreage, pasture land with fencing, lake, ponds, several building sites and a homestead with several desirable outbuildings.

**THE FAMILY OF
CLIFFORD & LOLA GARES, SELLER
DENNIS W. SMITH, REP. ATTORNEY**



ESTATE AUCTION

ESTATE OF DAVE PATE

SAT, SEPTEMBER 18TH - 9:00AM

LOCATION: CHRIS & FREDA GINGERICH

28000 HWY 5 - CINCINNATI, IA 52549

DIRECTIONS: 6 MILES SOUTH OF CENTERVILLE ON HWY 5
OR 14 MILES NORTH OF UNIONVILLE, MO ON HWY 5

Questions or for more information call Chris at 641-658-2425

AUCTIONEER - ROBERT HELMUTH, WC • 715-600-4827

SELLING WILL BE 154 CT. LONG RIFLE, HAND GUNS, 17,000 & DIFFERENT CALIBER AMMO. HUNTING, FISHING & CAMPING GEAR

Auctioneer Note: Dave was into competition shooting & reloading. Lots of high end guns, some Nib. with Nikon & Leopard scopes, Bull barrels, a cleaner line up of guns will be hard to find! **Catalogs on guns available day of auction.**

FFL RULES APPLY FOR OUT OR STATE BUYERS PAYMENT PLAN CASH OR GOOD CHECK (DAY OF AUCTION) OFF ROAD PARKING AVAILABLE. INSIDE SIT-DOWN TYPE AUCTION LUNCH & BAKE SALE BY AMISH LADIES

Not responsible for accidents. Announcements day of sale take precedence over printed material.



GUNS

- Umarex 22 Cal 5.5 w/ Scope
- Steven's 200 300 Win. Mag. Bolt Scope
- Steven's 308 308 w/ Scope
- Browning A5 Mag. Belgium Scope
- Remington 870 Lw. Mag. 20 Ga. Wing Master
- Remington 870 Lw. Mag. 12 Ga. Wing Master
- Savage 110 223 Rem. Accut. Leupold
- Savage A17 Thumbhole Pro-Staff Scope
- Savage A17-17 HMR Pro-Staff Scope
- Savage A17-accu-Trigger Pro-Staff Scope
- Savage 10 204 Rugar Cal. Pro-Staff Scope
- Savage 10 204
- Marlin 917VS 17 Cal. HMR
- Savage 25 17 Hornet Pro-Staff Scope
- Savage 25 17 Hornet Buck Master Scope
- Savage B. Mag 17, Winn. Cal. Nikon Scope
- Savage 40 22 Hornet Leupold Scope
- Rugar 10-22 Heavy Barr
- Savage 25 22 Hornet
- CZ 527 17 Hornet
- Savage B Mag. 17 Buck Master Scope
- Remington 700 223 Leupold Scope
- Stevens 93 22 WMR Simmons Scope
- Mauser Bauer 30-06 Pistol Grip
- Remington 700 30-06
- Remington 700 22-250 BDL
- Remington 700 222
- Remington 7 Mil. Mag. Leupold Scope
- Savage Mark 15B
- Remington 700 6 Mil. Leupold Scope
- Rugar 10-22 Simmons Scope
- Savage Axis 223 Rem. Busnell Scope
- Marlin 917 M25 Cal. Simmons Scope
- Savage 12 204 Rugar Leupold Scope
- Remington 700 22-250 Refield Scope
- Remington 1100 LW 28 Ga. Wingmaster Scope
- Remington 7600 30-06 Leupold Scope
- Savage 110 243 Winch. Bushnell Scope
- Marlin 22 Cal. Winch. Simmons
- Marlin 22 Cal. Winch. Simmons
- Savage 93 17 HMR Simmons Scope
- Remington 11 Shotgun
- Benelli Nova 12 Ga. Pump
- Remington 1100 12 Ga.
- Browning Pump 10 Ga.
- Eagle Arms 410
- Coast - Coast 267 410 Pump
- New England 410
- Savage Mark 11 22 Heavy Barrel Bushnell
- Rugar American 22 WMR Etched Weaver
- Remington 700 223 Leupold Scope
- Remington 700 221 Fireball Leupold
- Baretta 12 Ga. Ma 303
- Franchi 12 Ga. & 20 Ga.
- Benelli M1 Super 90, 12 Ga.
- Tri-Star Viper 20 Ga.
- Ten Point Crossbow
- Remington 700 243 Leupold Scope
- Marlin 17BS 17 HRM Burris Scope
- Savage 110 223 Rem. Bushnell Scope
- Savage 11 22-25 Rem. Burris Scope
- Cavalry Over Under 28 Ga. Ni. B.
- Quail Engrave Scope
- Remington 700 270 Winch. Leupold Scope
- Savage 110 22-250 Burris Scope
- Remington 700 BDR 17 Rem. Burris Scope
- Remington 700 22-250 Sope Mtn.
- Remington 700 338 Win. Mag. Leupold Scope
- Savage 112 22-250 Scope Mtns.

- Remington 870 Exp. Mag. 12 Ga. Nikon Scope
- Savage 22-250 Leupold Scope
- Stevens 200 25-06 Rem. Leupold Scope
- Browning BPS 12 Ga. Pump
- Sherian Silverstreak C9A 5MM for 20 Cal. Pellet Gun
- Stevens 223 Camo SS Nikon Scope
- Walther P22 Pistol
- Rugar 45 Cal. Handgun Scope
- Bersa 380 CC Thunoer
- MP 45 Hand Gun
- XPM 45 Hand Gun
- CCK 27 .40 Hand Gun
- XPM 44



- Colt 380 Auto Gov. Pocketlite
- S&W 460 Mag. Revolver
- XDM 9
- Winchester 06 22 Pump Old
- Remington 870 12 Ga. Wingmaster
- Remington 870 20 Ga.
- Remington 11-87 12 Ga. Sportsman
- Browning Field Model 20 Ga. Pump
- Winchester Supar x3 12 Ga.
- Browning Field Model 410 Pump
- Marlin x57 308
- Henry 22 Lever
- Henry G.B. 22
- Stevens 555 28 Ga.
- AR15 SL15
- Browning A-Bolt 270



- Rugar Handgun 44 Ma 9. Black H.
- Rugar New Model 357 Black Hawk
- Rugar Mark 2 22 Cal. Hand Gun
- Rugar Mark 3 22 Hunter
- Remington 1100 28 Ga.
- Remington 1100 410 Ga. Auto 3
- S&W M-Paris 5.56
- Henry Golden Boy 22 Nra MH004
- Browning Gold H. 12 Ga.
- Beretta 92fs 9MM Police Edition
- Benelli Legacy 28 Ga.
- Benelli 20 Ga. & 12 Ga.
- Remington 1100 LT 20 20 Ga.
- Remington 380 Auto
- Walther 9MM
- Rugar Single 6 22
- Rugar Bearcat 22
- Winch. 69 22
- Ruger Single Six 22
- Taurus PT138 Pro. 380
- Remington 700 7MM-08
- Henry Golden Boy 22
- Rugar SR22P 22 Hand Gun
- Winch. 1906 22
- Savage Axis 223
- Rugar 10-22
- Remington 5 17 HMR
- Remington 1100 20 Ga.
- Browning A Bolt 204
- Remington 7 308
- Remington 7400 270
- Remington 700 22-250
- Ithaca 12 Ga. Pump
- Remington 870 LW 20 Ga. Mag.
- Browning A Bolt 270
- Rugar M77 Mark 280
- (2) Remington 572 22 Fieldmaster
- Mossberg 500 E 410
- Weatherby Pa-08 12 Ga. Pump
- Rugar Single Six New Model 22 Cal.



- Ruger 22/45 Light 22 Cal.
- Rohm Hand Gun RG 38 Spec.
- Taurus PT 22 Cal.
- Rugar SR9 9MM Hand Gun
- Winch. 70 243
- Beretta Hand Gun 9MM
- Walther Hand Gun 9MM
- Browning A Bolt 308 Medallion
- Knight Muzzelloader 50 Cal.
- SKB 20 Ga. Pum

CAMPING SUPPLIES

- Fishing poles
- Tackle boxes
- (8) Folding camping chairs
- (2) New 6 person Coleman tents
- Junior tent
- Folding cots
- (2) Weber gas grills
- (9) Igloo coolers
- Big Chief smoker
- New life jackets
- 2400 PSI Generac Pressure Washer Rebuilt Pump
- (2) Portable work lights elect cords
- Several Stanley socket set/kits
- Minnnow buckets
- Fish nets
- Back pack
- Paint ball machine on tri-pod
- Trailer 5th Wheel attach
- 16' Flat bottom boat with trailer & motor
- Range finder

HUNTING SUPPLIES

- (2) 36 gun, gun safes
- 24 gun, gun safe
- 10 gun, gun safe
- (2) Tree stands
- (4) Receiver hitch deer carriers
- Deer carrier on wheels
- (2) Spot lights
- (5) Shooting tables
- Pistol sighting table
- Extra gun cases
- Gun sighting table
- Lots of gun cleaning supplies
- (8) New in box scopes
- Camo blind
- (2) Octagon hand built blinds

RELOADING EQUIPMENT

- (2) Mec Model 761R
- Mec Model 600 Jr.
- Mec Model 76
- Dillion RL 450
- Powder shot
- Hand reload tools
- Powder measurers
- Hand prime tools
- Lot of extra parts
- 15,000 + rounds empty for reload
- Scales & Calibers
- Frankford rotary elect. tumbler
- Hand tumblers
- 17,000 + rounds diff. caliber ammo
- Lots of extra dies & parts