

FREE!

**NEW EDITION EVERY FRIDAY!
VOL. 29 • NO. 35 • SEPTEMBER 17, 2021**

NEMO *Trader*

THE NEMO TRADER

PO BOX 190 • KIRKSVILLE, MO 63501

PHONE 660-665-8500

Web Site: nemotrader.net

Email: nemotrader@gatehousemedia.com

A WEEKLY ADVERTISER SERVING ALL OF NORTHEAST MISSOURI AND THE SURROUNDING AREA

Judd Motors

Call 660-457-3700
Hwy 63 North, Lancaster, MO

- **2015 GMC 2500HD**, SLT, 4x4, crew cab, shortbed, 6.0L, heat & cool leather, bed cover, 1 owner, only 113k miles, charcoal, very nice, new tires only \$35,900
- **2015 Equinox**, All Wheel Drive, 1 owner, 129k, silver, nice, Remote start, only \$9995
- **2013 Impala**, LTZ, leather, only 104k, charcoal, very nice \$9,250
- **2012 Chevy Captiva**, LTZ, AWD, Leather, sunroof, 112K, maroon, \$8995
- **2008 Chevy Impala LT**, Leather, Sunroof, 101k, white \$7,250
- **2005 GMC 2500HD**, SLE, 2wd, 6.0L, ext cab, long bed, only 119k, silver, very nice, only \$9995
- **2005 Buick LeSabre**, cloth, 3800 engine, white, only 52k miles, very nice only \$10900
- **2003 Ford F350**, diesel, 4x4, crew cab, flatbed, 300k, runs good, brown, only \$7995
- **1996 Dodge Ram**, reg cab, 3/4 T, 4x4, V8, 200k miles, 1 owner, red and rusty, runs good, only \$1,995

**Cumberland
Building Dealer**

www.juddmotors.com

In Business Over 75 Years
Curly and Kevin Judd

The **NEMO** *Trader* IS NOW A
PROUD MEMBER
OF THE
PHILLIPS MEDIA GROUP
NEWSPAPER FAMILY

Watch for exciting changes coming soon!

FOR SALE: John Deere 2040 Tractor, sharp, 90% rubber, 5565 hrs, hydr valve, Loader available, \$9,750. Call 573-881-3557

FOR SALE: NH 973 20' flex; NH 973 25' flex; NH 974 630 corn head; MF 1163 corn head; MF 1144 corn head; Gleaner 630 LM or R; Gleaner 830 corn head LM or R. 217-658-4761

FOR SALE: Shiba-Inu puppies, registered, 11 wks old, \$750.00, Edina, MO 660-397-3675

FOR SALE: Large Round bales hay, \$35 each. Put up dry, loading on site anytime. McKims, Brashear. 660-373-5629 or 660-956-5612.

FOR SALE: 2 Federal like new LT 265/70R17 snow tires, \$150. 2 very good Bridgestone 265/65R18 mud tires, \$80. 319-470-0277, Argyle, IA.

FOR SALE: 3 bedroom, single bath, full basement with single car garage. Large yard in Moberly, asking \$65,000. Call Dennis 660-815-7718.

FOR SALE: 5.56 Ammo by IMI, 62 grain, green tip, 30 rounds/box, \$24 Firm. 815-575-1287

FOR SALE: Dog Kennel Equipment, dog houses 6x10 panels with gate, 10x10 panels & misc. 660-956-6542

FOR SALE: John Deere 4320 Tractor, straight off farm, ft wts, rear wts, 38" tires, 11,000 hrs, runs good, \$13,500. Call 573-881-3557

FOR SALE: Case IH 1644, engine hours 3489, with 17.5' 1020 head, \$23,500. 217-242-7114

FOR SALE: 2012 GMC Sierra, 117,000 miles, 4 door, 6 speed transmission, 20" wheels, all leather, heated and cooled electric seats. Best model bed liner, bed rails, running boards, backup camera, white in color, \$22,000. Lentner, MO 660-699-3741.

HAY FOR SALE: 80 Bales Brome, \$55 per bale, 163 bales CRP hay, \$45 per bale. I will come down on the price if you take all of the brome or all of the CRP hay. Baled with a 567 John Deere baler, net wrapped. Call 660-651-8546 Atlanta MO

FOR SALE: Hay big round bales, small square bales, alfalfa, grass, and some mixed, for prices call Bob 660-342-4048

FOR SALE: Mickey Thompson rims off F150, \$150; Ranger truck parts, \$200. Call 660-379-2598

SCHMUCKER PRODUCE Has tomatoes by lb, onion, cucumber, zucchini squash, acron melon, pepper beats, canning tomatoes, \$9 for 1/2 bu while they last, 7 miles North Kirksville to Ft Madison Way 1/2 mile East

HUSKY MIX PUPPIES Ready for their new homes, they have had their first 3 rounds of shots and one round of deworming, \$150 OBO. Please call/text 515-249-9655 (When calling please leave a message)

FOR SALE: 2014 RZR 800-S, nice older person driven, 3200 miles, \$8495. Kirksville 660-341-9522

FOR SALE: 1998 Jeep Cherokee 4 WD, 4 door, air, radio, Reese hitch, 145,000 miles, \$3200 cash. Text 217-653-7100 for return call. Canton MO

FOR SALE: Gleaner R62 combine, CDF rotor lateral tilt; MF 850 D hydra; NH TR 96; IHC 1440 diesel; MF 750 diesel; 2 kastern silage wagon; JD 55 EB 12' platform. 217-658-4760

FOR SALE: Good used Industrial Channel drain tin 27 gauge approx., galvanized under white paint, very few holes, large number of long sheets; Antique paver brick (Moberly Missouri Pavers), \$4.00 per brick, also Solid red brick .75 cents per brick. 660-676-5021 Clarence MO

For sale: 8 Great Pyrenees puppies, 4 females, 4 males, 5 weeks old, \$250 each. Leroy Borntreger 12743 Hilton Ave LaPlata MO 63549

FOR SALE: John Deere 2950 Tractor, MFWD, CAH, 5,000 hrs, 90% tires, Westendorf Loader, cold AC, \$25,500. Call 573-881-3557

Driveway repair. Excavation. Trenching. Brush clearing. Site prep and cleanup. Leveling. CRP work. Transportation. Heavy installation. Welding. 660-216-7268

FOR SALE: Great Pyrenees puppies, born 7-25-21 \$125 each or \$100 each for the litter or what is left. Mose Miller 12548 Hilton Ave LaPlata MO 63549

FOR SALE: IHC 983 corn head; IHC 883 corn head; Drago 830 corn head, adj deck plates; IHC 820 17 1/2' MF 830 for JD. 217-658-4761

FOR SALE: 2 Killer Instinct Cross Bows, brand new, comes with everything, \$350 each; 2 Marlin 30-30, excellent condition, \$675 each. 217-577-9538

FOR SALE: 10 Week old AKC American Brittany puppies, born 6/27/21, 8 available, 2 females, 6 males. Located in Lewistown MO Call or text 573-248-6895

Logan Agri-Service, Inc. of LaBelle, MO is growing and looking to add members to its team. We are currently looking for someone to operate a sprayer and/or fertilizer spreader. We are also looking for someone who can drive application support equipment (nurse/tender truck). We will train the right person. If you are interested in joining the Logan team, contact Luke Lay, LaBelle Plant Manager, at 660-342-6424

SCHMUCKER PRODUCE: Nice canning tomatoes by 1/2 box. Also, cucumber, onion, zucchini squash. Also tomatoes by the pound. Pumpkins, also specialty squash, 6 for \$10. 7 miles N of Kirksville to Ft. Madison Way, then East 1/2 mile.

FOR SALE: MF 235 Tractor, low, low use, new rubber, 3 pt, always shedded, \$4,950. Call 573-881-3557

ARE YOU COVERED? Accidents and illnesses occur without warning. Let us help you make sure you, your family and/or employees are covered. Health, Cancer, Accident, Hospital, Critical Illness, Short Term Disability, Dental, Vision, Life. Linda 660-537-5177 linda_buchmann@us.aflac.com Denise 314-465-5611 denise@healthinsuranceagt.com

FOR SALE: Smooth mouth mare \$600; also small bales of straw \$5.00; 4x5 net wrapped hay, \$45. 660-342-5314

WANTED TO BUY: Sports Card Collections & Accumulations. Unopened Boxes, Cases, Sets, Etc. 319-470-2786

NATIVE PLANTS for butterfly gardens, rain gardens, hard to mow banks, and restoration. Peckosh Landscaping 23198 Hwy H/Boundary St. Kirksville, MO. Just north of the Troy Mills store. Call Claire at 660-349-0061.

FOR SALE: Heider Auger Wagon, 100 bushel, 540 PTO, boards on each side, manual auger swing either side, shedded, clean solid wagon, \$750. 217-257-1385 anytime

HANDYMAN: Install interior and exterior doors and windows, siding, decks, showers and toilets, flooring and drywall, roofs and dirt work. 660-956-2189.



VERSATILE

versatile-ag.com

SIMPLY PRODUCTIVE
SIMPLY VERSATILE



The Versatile Nemesis distills over half a century of rugged horsepower into a mid-range tractor that can be used for every day operation. Available from 175 - 210 hp, the tractor features industry-leading components from Cummins and ZF for superior value and enhanced performance. The largest cab in the segment also provides ideal visibility and reduced operator fatigue. Other notable features include an easy to understand advance hydraulic system and a standard 360 degree lighting package.



©2021 BUHLER VERSATILE INC. | ALL RIGHTS RESERVED | INFO@VERSATILE-AG

-NEW TRACTORS-

- VERSATILE NEMESIS 175 - RIGID FRONT AXLE W/ DIFF LOCK, 5 EHR VALVES W/ HIGH FLOW, QUICK HITCH CAT 3, HD CAT 3 DRAWBAR, RADAR, VPASS STEER READY, LOADER W/ SOFT RIDE & 102" BUCKET
- VERSATILE NEMESIS 210 - FRONT SINGLES, REAR DUALS, FRONT SUSP AXLE W/ DIFF LOCK, 5 EHR VALVES W/ HIGH FLOW, QUICK HITCH CAT 3, HD CAT 3 DRAWBAR, RADAR, VPASS STEER READY

-USED TRACTORS-

- 2011 NEW HOLLAND T6030 - 1880 HRS, 115HP, 3 REMOTES, 540/1000 PTO, 16X16 PARTIAL POWERSHIFT TRANSMISSION -NEW, SUPER STEER
- 2018 VERSATILE 335 - DUALS, DELUXE CAB, HD DRAWBAR 1.5" PIN, REAR WEIGHTS 4X200, FRONT WEIGHTS 24X30, GPS, 500 HRS...\$179,500
- 2013 NEW HOLLAND T8.330 - LUXURY CAB W/ SUSPENSION, 18F POWERSHIFT, CLASS 4.75 STD AXLE, HI FLOW, 5 ELEC REMOTES, 1000 PTO, 3 PT HD HITCH W/ HYD TOP LINK, FRONT WEIGHTS, DUALS
- 2016 NEW HOLLAND T8.380 - CVT, 2972 HRS, DUALS, FRONT WEIGHTS, DELUXE LEATHER SEAT, SUSP FRONT AXLE...\$139,000
- 2007 CASE IH STX530 - LIKE NEW TRACKS, 5 REMOTES, 4580 HRS...\$189,500
- 2014 NEW HOLLAND T9.600 - 3228 HRS, GPS, LUXURY CAB, POWER SHIFT, DIFF LOCK, HI CAP PUMP, 6 REAR REMOTES, HID LIGHTING, TRACK

-USED COMBINES-

- 2008 NEW HOLLAND CR9070 - 1750 ENGINE HRS & 1250 THRESH HRS ...\$135,000
- 2009 NEW HOLLAND CR9070 ... \$54,900
- 2010 NEW HOLLAND CR9070 - 2211 ENGINE HRS ...\$120,000
- 2014 NEW HOLLAND CR8090 - 1100 HRS, ALL NEW TIRES, 4WD
- 2013 NEW HOLLAND CR8090 - 1100 HRS, ALL NEW TIRES, 4WD
- 2014 NEW HOLLAND CR6.90 - 2WD, 520/85R42 DUALS, 1630 ENG HRS & 1181 SEP HRS
- 2013 NEW HOLLAND CR6090 - 2219.19 HRS, 1585.84 THRESHING...\$139,500
- 2008 NEW HOLLAND CR9060 - 4WD, C/B ROTOR, SL CLEANING SHOE, 2008 HRS
- 1991 NEW HOLLAND TR86 ... \$12,000
- 1993 GLEANER R52 - 2WD, DUETZ ALLIS...\$19,829
- 2007 GLEANER A75 - 3345 ENG, 2240 SEP HRS, MUD HOG RWA, - LATERAL TILT...\$52,500
- 2010 CASE IH 8120 - 2312 SEP HRS, RWA, 36" TRACKS ON FRONT, GPS, NAV II, LATERAL TILT FEEDER HOUSE, AIR SEAT LEATHER, 350 BU GRAIN TANK, STRAW CHOPPER...\$105,000



833-774-1606

WWW.QUINCYTRACTORLLC.COM

Buy with confidence. We have you covered.



100% Satisfaction™



ACCIDENT Protection Plan™



SERVICE Contract Plus™



PAY Your Way™

For more information visit car-mart.com/peace-of-mind



car-mart.com

660-956-4849 • 2015 North Baltimore • Kirksville

• Peace of Mind Package

• Service Contract Plus

• Accident Protection Plan

• 100% Satisfaction

• Pay Your Way

• Low Down Payments

• Quality Used Vehicles

• Flexible Financing

• Hand Selected Vehicles

• Convenient Payment Options

• Start Your Approval Online

• Over 150 Locations

• 40 Years in Business

• We Buy Cars



2010 GMC ACADIA
SLT, FWD, 6 Cyl., Red



2006 DODGE RAM 1500 SLT
4WD, 8 Cyl., 4 doors, Red



2010 NISSAN ALTIMA
FWD, 4 Cyl., Blue



2008 LEXUS ES350,
FWD, 6 Cyl., Red



2017 FORD ESCAPE SE,
FWD, 4 Cyl., White



2011 CHEVROLET SILVERADO 1500,
LT, 4WD, 8 Cyl., Blue



2012 TOYOTA RAV4,
Base, 4WD, 4 Cyl., Black



2010 Lexus RX350
AWD, 6 Cyl., Red



2016 CHEVROLET CRUZE LIMITED LTZ,
FWD, 4 Cyl., Red



2014 CHEVROLET CAPTIVA SPORT LT,
FWD, 4 Cyl., Maroon



2013 LINCOLN MKX,
AWD, 6 Cyl., Silver



2015 KIA SOUL
FWD, 4 Cyl., Gray



2010 CADILLAC ESCALADE,
AWD, 8 Cyl., Red



2010 Mazda Mazda3,
FWD, 4 Cyl., 5 Gears, white



2008 SUBARU TRIBECA LIMITED,
AWD, 6 CYL., GRAY



2008 CHEVROLET SILVERADO 1500, LS,
4 WD, 8 Cyl., White



2012 RAM 1500 ST
4WD, 8 Cyl., Gray



2009 KIA RONDO LX,
FWD, 4 Cyl., Black



AMERICA'S CAR-MART

Keeping You on the Road



ELIZABETH WALTER
GENERAL MANAGER

MAIN CREEK REPAIR

Larry Geiser

23316 State Hwy H
Kirksville, MO 63501

(715) 415-1995

**Bolts • Belts • Bearings
Hydraulic Hoses • Steel
Welding • Fabricating
Tractor & Equipment Repair**

MAIN CREEK RENTALS

23316 State Hwy H
Kirksville, MO 63501

(660) 988-6917

- Mini Excavator
- Equipter (Shingle Buggy)
- Post Hole Digger
- Dozer
- Snorkle
- Man Basket
- Skytrack
- Grapple

FOR SALE: Fish for stocking ponds – Catfish, Grass Carp, Crappie, Blue Gills, Red Ear, Bass, and Minnows. Heindselman Family Farms, Call Greg 660-341-5692

WANTED TO BUY: Harley Davidson's, any year, any condition, cash money. Days 660-263-1356 or 660-537-0068

WANTED TO BUY: Farm Machinery and Estates. Call James L. Johnston. 573-473-4904

STOCK MOBILE HOMES AVAILABLE: We gottem, single and double 3 and 4 bedroom! Call Tuffy 573-657-2176 amegamobilehomes.com

Wevers Outside Wood Furnaces a dealer for Heatmor Stainless Steel Outside Furnaces, have an assortment of parts, line, and etc. Taking orders for new outside wood furnaces. Call 660-423-5242, cell 660-216-9885. Open 6pm-9pm Monday-Friday, Saturday anytime, call first.

FOR SALE: New 3 pt. tillers, heavy duty, gear driven, 7' to 10' starting at \$3050. 660-874-4455

PASTURE AND HAY GROUND Needed around Adair & Knox County. Please Contact 660-216-5887 or 417-773-2507

FOR SALE: John Deere 7220 Tractor, MFWD, CAH, power shift, 9000 one owner hrs, \$49,500. Call 573-881-3557

FOR SALE: 2010 Case 8120 Combine, 2975 HR -2097 HR, NO DEF, RWA, DIF Lock, 620 Drive Tires, 28 Steer Tires, luxury cab, clean machine, \$85,000. 641-895-8014

HANDYMAN: Install interior and exterior doors and windows, siding, decks, showers and toilets, flooring and drywall, roofs and dirt work. 660-956-2189.

FOR SALE: Mums \$8 a piece, also have large combo's \$20; large variety of colors. Pumpkins and fall decorations. Kauffman Produce 11538 Iceberg Ave La Plata MO 63549



P-R DISTRIBUTORS

GOLF CARTS

Sales – Service – Rentals – Customizing






573-693-8147
29566 Lantern Road, Laplata, MO



IT'S FREE!
EVERY FRIDAY The NEMO Trader

CALL US FOR ADVERTISING QUOTES | 660.665.8500



SPRING IS YOUR GO TIME.
GET OUT THERE.

You've been waiting all winter for this moment.



REBATES UP TO **\$1,000** ON 2020 MODELS

TERMS AND CONDITIONS APPLY

[Explore Inventory >](#)

Slayton
POLARIS

10456 State Route B, Downing, MO
6 miles W. of Memphis, then 13 miles N. on B
660-328-6627

VISIT POLARIS.COM FOR MORE OFFERS


WE SELL LAND

— PASSION DRIVEN EXPERTISE —

CONTACT YOUR LOCAL LAND SPECIALIST TO
LEARN MORE ABOUT BUYING AND SELLING
HUNTING, FARM, RANCH AND TIMBERLAND.

JEFF PROPST

Northeast and North Central
Missouri Land Specialist

(636) 209-0362

JEFF.PROPST@WHITETAILPROPERTIES.COM



WHITETAIL PROPERTIES REAL ESTATE

HUNTING | RANCH | FARM | TIMBER

WHITETAILPROPERTIES.COM



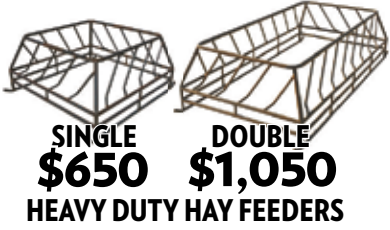


FOR ALL YOUR FENCING NEEDS.

Quality Cattle Equipment, too!

620-215-5770 KIRKSVILLE, MO
SPECIAL ORDERS AVAILABLE

Check out our current inventory at
Kirksville Livestock Sales.



SINGLE \$650
DOUBLE \$1,050
HEAVY DUTY HAY FEEDERS



HEAVY-DUTY \$1,050
REPLACEMENT BUMPERS
Dodge, Chevy, Ford & GMC



HALF TUB \$2,900 **FULL TUB \$3,800**

If you're looking to build a pipe fence or corral, wire fence, or need quality cattle equipment, **WE'RE HERE TO SERVE YOU!**



MINERAL FEEDERS \$375



\$3,400
ADJUSTABLE ALLEY

Gates • Continuous Panels • Tubs • Alleys • Posts • Pipe • Bumpers • Cattle Feeders

Ed's Machinery LLC
quality machinery since 1997

660-883-5501

edsmachinery.com

COMBINE SPECIAL!

- Free delivery within 500 Miles!
- Financing as low as 2.49%
- Third party inspection available!



2014 JOHN DEERE S670
1660/1053 Hours, 4X4, 3 Speed Trans.....**\$159,500**



2013 JOHN DEERE S680
2385/1746 Hours, 2WD, Pro drive trans.....**\$124,500**



2012 JOHN DEERE S680
1,964/1,344 Hours, 2WD, Pro drive trans.....**\$129,500**



2011 JOHN DEERE 9670 STS
2928/2047 Hours, 4X4, 3 Speed Trans.....**\$94,500**



2008 JOHN DEERE 9670 STS
3,389/2501 Hrs, 4X4, 3 Speed Trans.....**\$72,500**



2008 JOHN DEERE 9770 STS
2802/1812 Hours, 2WD, 3 Spd Trans**\$89,500**



2009 JOHN DEERE 9770 STS
4067/2815 Hours, 4X4, 3 Speed Trans.....**\$74,900**



2014 CASE IH 9230
2713 \2036 Hours, 36" Tracks, 4X4**\$159,500**



2013 CASE IH 8230
2867/2083 Hours, 4 WD, 4 Spd Trans.....**\$137,500**



1999 CASE IH 2388
4738/3627 Hrs, 4X4, Field Tracker.....**\$29,900**



2009 NEW HOLLAND CR9060
2478/1630 Hours, 4X4, Contour Master.....**\$59,500**



2015 CLAAS LEXION 740
1866/1179 Hours, 4X4, Ag-Leader Screen..**\$149,500**

17920 US Hwy 136 • Memphis MO 63555



DIRT WORK All types of excavation, reclaiming overgrown fields, including CRP and WRP. Building site preparation, terrace and tiling maintaining and creating new trails and crossings, rock hauling, Food plot development and maintenance. Leveling and grading, wetland construction and maintenance. Pond and lake cleaning and construction. Call for quotes. 660-342-2701

FOR SALE: Gleaner 8000 30' SCH sickle, F&A; JD 930 poly dividers; JD 220 flex; JD 216 flex; IHC 1020 20'; IHC 1020 17 1/2' MF 918 217-658-4761

WHITETAIL INSTITUTE Food plot seeds, archery supplies, optics, and more. Whitetail Seed and Supply 14136 State Hwy 3 LaPlata MO 63549

FOR SALE: Registered AKC Labrador Retriever puppies, yellow. Farm-raised and loved! MO Health Certificate. Dam and Sire on farm. Ready to go now! Lay's Labs - LaBelle, MO 660-956-2482.

DEER SEASON is almost here, Mossberg, Patriot & Savage rifles 243, 6.5 Creedmoor, 30-06 available, \$475 each. All new in the box. 217-577-9538

STOCK MOBILE HOMES AVAILABLE: We gottem, single and double 3 and 4 bedroom! Call Tuffy 573-657-2176 amegamobilehomes.com

AVAILABLE STOCK MOBILE HOMES immediately, double wide and single, 3 and 4 bedroom. 573-499-9993 columbiadiscountshomes.com

Ramer Truck Sales



2011 Ford F150 XLT 3.5L At 4x4
Clean Title 158650 11,500



2011 Ford F-350 4x4 6.7L Lariat 235k
\$17,900



Used Zimmerman Flat bed Aluminum for short bed daullie \$1,950



2016 Ford Explorer Limited Black 3.5 4x4 99k miles Rebuilt title \$16,900



2021 Ford F250 STX white 4door short bed 6.7L 4x4 2000 miles Rebuilt title \$54,500



2019 Ford F350 Platinum 4 door long bed 6.7L auto 4x4 white 123k miles rebuilt title \$55,000

Gorin, Missouri • 8 am. to 6 pm. Monday - Saturday

www.ramertrucksales.com

HOME 660.282.1002 CELL 660.341.6140 *NO SUNDAY CALLS!



Extra Help

2021

Extra Help is a prescription drug assistance program for people on Medi-care who have limited incomes and assets. The program assists people with Medicare Part D Premiums, deductibles, and co-payments. You may qualify if your income and assets meet these criteria:

EXTRA HELP ELIGIBILITY

	Monthly In-come Limit	Asset Limit
Single	\$1,630	\$14,790
Couple	\$2,198	\$29,520

For more information and/or assistance, contact: **660.665.8314**



FOR SALE: Farmhand XL 740 Loader, QT, 7' bucket, good paint, \$3,750. Call 573-881-3557

TRUE MODULARS 30 to 60 day delivery available, 3 and 4 bedroom. 573-657-7040 chateauhomes.net

TINY HOMES We gottem 573-881-3283

FOR SALE: Mums \$8 a piece, also have large combo's \$20; large variety of colors. Pumpkins and fall decorations. Kauffman Produce 11538 Iceberg Ave La Plata MO 63549

FOR SALE: 5 X 5 1/2 big round bales of mixed grass hay, Baled dry no rain fertilized lab tested surface wrapped. Call 660-341-4031 Watson hay sales

FOR SALE: Ford 4000 D SU, power steering, Live PTO, excellent paint & sheet metal, new tires, \$5500. 660-341-8089

FOR SALE: Homemade Candies, Fresh Garlic, Regular and Wide Mouth Jar Lids, Jams & Jellies, Spices, Honey S.S. One Piece Dippers 1oz to 8 oz S.S. Kitchen Wares, Air Freshness, Gift Items, Kerosene Lamps and Parts, Some Aladdin Parts, Poly and Wooden Clothespins, Filter Disks, Wooden handles, Blankets and Throws, Pint Jars, Boxed Cards, Coloring Books. Train Track Candies & More 11538 Iceberg Ave, La Plata 3rd Lane to your Left.

FOR SALE: Land Pride RCR 2584 7' Rotary cutter, stump jumper, front chains, laminated tire, ready to use, real good, \$1400. 217-257-1385 anytime

SCOTT HUSKEY'S HOME SERVICE R-10 Foundation Enclosure Systems for manufactured, modular, & site built homes. Saves on utilities and prevents freeze ups. General maintenance and repairs since 1972 573-696-3468 "GO DAWGS"

HIGH QUALITY Hay for sale \$45 per bale. 217-653-4762

FOR SALE: Wholesale Southern Yellow Pine. Shelby Supply 660-299-0615

HOUSE FOR SALE: Macon MO, fixer upper 500 feet from the School and 300 feet from the park. 660-676-5531

FOR SALE: Rossi 4 Basket Tedder, field ready, \$3,250. Call 573-881-3557

ATTENTION HUNTERS: Whitetail Institute Products, CenterPoint Archery, Rage, Muzzy, Wac'em, G5 Broad heads, Carbon Express arrows, Nocturnal Lighted Nocks, Block Targets, Scent Thief Scent killer Products, Adam Hayes Moon Guides, Tinks Lures, IQ Bow Sights, Ghost blinds, Leopold & Vortex Optics, Chippewa Wedge-Loc Tree Stands, and more at Whitetail Seed and Supply 14136 State Hwy 3 LaPlata MO 63549

HELP WANTED

NEED A CHANGE??

Due to our expanding business, we are accepting applications for

AUTO TECHNICIAN

Competitive Wages • Group Insurance
• Vacation Retirement Plan

Stop by to see Terry and Pick your application up TODAY!!

MUST HAVE TOOLS & DRIVERS LICENSE

Woody's Tire, Auto & Towing LLC

1102 N. Green St., Kirksville, MO • 660-665-8617

HELP WANTED



Affordable Quality Roof Restoration

- Have you got a metal building or roof that is starting to rust or leak?
- Would you like to have it leak proof? Shine for years?
- Would you like to save 70% over replacement?



If so give me a call at **641-722-3020**
Free Estimates

For Your Equipment Needs!

LOTS OF USED EQUIPMENT AVAILABLE

Vermeer 605 N Balers, Twin Rakes, Trailed Mowers, Disc Mowers, Tedders, Bale Processors-
Offer high capacity, speed, reliability, efficiency, fuel savings...
DeWeze Bale Beds-
Lift, load, transport and feed big, round bales...
Danuser Post-Hole Diggers-
Offer quality & reliability, outperforms the competition...

USED EQUIPMENT

<p><u>BALERS</u></p> <p>605 N Net 605 L Net 605 K Net</p> <p><u>MOWERS</u></p> <p>TM 1210 8040 7030 Vicon 4000</p>	<p><u>RAKES</u></p> <p>R2800 R2300 VR1224</p> <p><u>TEDDERS</u></p> <p>TD250</p> <p><u>BALE PROCESSORS</u></p> <p>BPX 9000 BPX 9010</p>
--	---

Liebhart Sales, Inc.

17546 Lacey Drive - New Boston, MO. 63557

660-689-3406

Call Today!!



Kirksville, MO 660-665-8000

victorymetalrecycling.com

For current scrap prices call or visit our *Facebook Page*

★ **Construction/Debris Recycling**

Visit Kirksville's construction & debris recycling facility and save trips to the landfill! Take advantage of this service for solid waste removal by bringing your landfill items to Victory Metals C & D recycling facility located at 3602 N. Industrial Rd.

★ **Roll-Off Container Service**

10-20-30-40 Cubic Yard Dumpsters

3602 N. Industrial Rd., Kirksville, MO 63501

djanesvmr@gmail.com

www.victorymetalrecycling.com





E

For all your advertising needs email us at

nemotrader@gatehousemedia.com




MOOSE RUN REPAIR

8 YEARS EXPERIENCE

Tractor • Skid Steer • Combine • Air Conditioning
Self-propelled Forage Harvester & General AG Repairs

Specializing in John Deere

Engine • Transmission • Hydraulics
Power Shift/IVT Diagnosis & Repair
Computer/Electronic System Diagnosis & Repair

660-988-3843
DELVIN "MOOSE" STEINER • QUEEN CITY, MO

KM-70KDE01742

FOR SALE: Silver Lab puppies, 5 weeks old, silver males and females big healthy pups up to date on shots and wormer ready to go Sept 1, farm raised, top quality \$250 660-988-1163

FOR SALE: Gleaner 800 25' lateral tilt hyd for & aft; Gleaner 520 20'; Gleaner 830hugger H' Gleaner 3000 630, w/corn head. 217-658-4761

WHITETAIL INSTITUTE Food plot seeds, archery supplies, optics, and more. Whitetail Seed and Supply 14136 State Hwy 3 LaPlata MO 63549

SUFFOLK and Hamp meat type Rams, Ewes and Ewe Lambs. Heindman Breeding 660-341-6625

NEW SKID Loader attachments: bale spears, buckets etc., 4200 lb 42" forks, triple blade rotary cutters 74" or 80" grass/brush or tree. NO Sunday Calls 660-988-7385

DEER SEASON is almost here, Mossberg, Patriot & Savage rifles 243, 6.5 Creedmoor, 30-06 available, \$475 each. All new in the box. 217-577-9538

HIGH QUALITY Hay for sale \$45 per bale. 217-653-4762

HUNTING EQUIPMENT sale, 35+ box, bow, hay bale, ladder stands, hog trap, deer and turkey feeders, deer and goose decoys. All used, great condition. 641-208-7353

FOR SALE: Fish for stocking ponds - Catfish, Grass Carp, Crappie, Blue Gills, Red Ear, Bass, and Minnows. Heindselman Family Farms, Call Greg 660-341-5692

FOR SALE: John Deere 145 Loader, good bucket & control valve, all utility mounting brackets, \$2,750. Call 573-881-3557

FOR SALE: Great Pyrenees puppies, born 7-25-21 \$125 each or \$100 each for the litter or what is left. Mose Miller 12548 Hilton Ave LaPlata MO 63549

FOR SALE: Good used Industrial Channel drain tin 27 gauge approx., galvanized under white paint, very few holes, large number of long sheets; Antique paver brick (Moberly Missouri Pavers), \$4.00 per brick, also Solid red brick .75 cents per brick. 660-676-5021 Clarence MO

FOR SALE: 1998 Jeep Cherokee 4 WD, 4 door, air, radio, Reese hitch, 145,000 miles, \$3200 cash. Text 217-653-7100 for return call. Canton MO

FOR SALE: 2017 RZR 1000 Turbo, 3200 miles, real good shape, \$17,995. Kirksville 660-341-9522

FOR SALE: Old full size slate Snooker table, cues and cue rack, wood score keeper, needs some work, full set of Snooker balls w/rack, useable as is, \$1500. Lentner MO 660-699-3741

FOR SALE: Remington Model 572 pump .22 caliber rifle. In very good condition, checkered slide adjustment, rear sight. Call Dennis 660-815-7718.

FOR SALE: 16x8 white spoke wheels, \$80 for all 4. AC Lincoln welder, \$175. 319-470-0277, Argyle, IA

FOR SALE: Large Round bales hay, \$35 each. Put up dry, loading on site anytime. McKims, Brashear. 660-373-5629 or 660-956-5612.

FOR SALE: Shiba-Inu puppies, registered, 11 wks old, \$750.00, Edina, MO 660-397-3675

FOR SALE: John Deere 285 Disc mower, 9', QH ready, low acres, \$6,500. Call 573-881-3557

NATIVE PLANTS for butterfly gardens, rain gardens, hard to mow banks, and restoration. Peckosh Landscaping 23198 Hwy H/Boundary St. Kirksville, MO. Just north of the Troy Mills store. Call Claire at 660-349-0061.

WANTED TO BUY: Antique Watches & Clocks. Watchmaker Tools & Parts. 319-470-2786

FOR SALE: 2 Killer Instinct Cross Bows, brand new, comes with everything, \$350 each; 2 Marlin 30-30, excellent condition, \$675 each. 217-577-9538

FOR SALE: Older heavy frame shop built 21', 16 1/2' deck, 8' wide, flatbed trailer, mobile axles, bumper hitch, 2 5/16 ball, could use flooring, with MO title, \$650. 217-257-1385

HAY STORAGE SOLUTIONS AND MUCH MORE!



"Today, I checked with Joseph to see when he was planning to deliver and construct my second hoop building. Two years ago I purchased a 55'x98' hoop building from Skylight buildings. It was erected on my site on time and the building went up in two days.

I was concerned about the durability of a vinyl building compared to a metal sided structure. That was until I noticed that a rock from my Brush Hog 2715 had impelled itself into the metal building. The Skylight building would not have been damaged. Also, the name says a lot. I thought that I would wire in lights like my other buildings but to date I have not found the need.

The reason I thought I needed to build a large building was to store my hay inside. I knew I was losing hay quality due to weather damage but baling with 568 John Deere and net wrapping my hay I thought I was keeping my hay loss at a minimum. I found the first year that I had underestimated my losses. I was very pleased with the results of storing hay inside. It is most gratifying to put a bale into the hay ring and seeing that the previous bale was almost completely consumed by the cows or the feeder calves. I had a record amount of carry over from last year and it is safely stored inside ready to be used this winter! This will allow for hay sales this winter.

The construction of the building's frame is strong, the foundation supports are 24" and very deep. I am very satisfied and have ordered another 55' x 140' to be installed in a few weeks. This one will be used to store our small square bales and equipment.

Thank you Joseph for your service and this chance to recommend your buildings."

Wiley and Susan Hibbard, Perry, Missouri

20749 State Highway VV
Ethel, MO 63539
660-486-3250

Skylight
Fabric Structures

MAST MEATS, LLC

660-766-2211

USDA & Custom Slaughter & Processing
CALL OR STOP BY FOR SPECIALS
Retail store hours • Mon-Fri 8-5 Sat 8:30-3
mastmeatsllc.com • 405 US Hwy. 63, Queen City, MO 63561

B^oK
Since 1914

WE ARE HIRING!

Loan Officer Position—Full time with benefits. Experience preferred but willing to train.

Loan Secretary—Full time with benefits. Previous secretarial and/or switchboard experience preferred. Must be friendly, outgoing and dependable with attention to detail.

Teller Positions—Full time with benefits. Prefer prior cash handling experience. Excellent customer service skills with friendly outgoing personality, good work ethics and dependability required.

Banking Career—Applicants must have strong communication & computer skills. Ability to multi-task & learn quickly. Qualified applicants should have two years prior banking experience or a degree in related field.

Send resume to: Bank of Kirksville, P. O. Box 787, Kirksville, MO 63501. EOE

KM-70KDE332

FOR SALE: Gehl 600 2 row chopper; Fox 2250 2 row corn, hay pickup fox 3000 2 row; Fox w/1 row hd; H&S silage wagon WT gears; Gehl silage wagon; silage wagon. 217-658-4761

FOR SALE: John Deere 265 SL Loader, bucket, JD 20 thru 55 series mount, sharp, \$6,250. Call 573-881-3557

WANTED TO BUY: Harley Davidson's, any year, any condition, cash money. Days 660-263-1356 or 660-537-0068

FOR SALE: New 3 pt. tillers, heavy duty, gear driven, 7' to 10' starting at \$3050. 660-874-4455

HANDYMAN: Install interior and exterior doors and windows, siding, decks, showers and toilets, flooring and drywall, roofs and dirt work. 660-956-2189.

FOR SALE: Ford 4000 D SU, power steering, Live PTO, excellent paint & sheet metal, new tires, \$5500. 660-341-8089

FOR SALE: 2017 Honda Ruckus, only 200 miles; 2002 Kawasaki 650 Prairie, great condition; 2014 Yamaha F-25 HP tiller outboard, electric start, like new, excellent condition. 641-208-7353

CENTERPOINT CROSSBOWS In stock Axe 405 crossbow & more Whitetail Seed and Supply 14136 State Hwy 3 LaPlata MO 63549

FOR SALE: John Deere 2040 Tractor, sharp, 90% rubber, 5565 hrs, hydr valve, Loader available, \$9,750. Call 573-881-3557

FOR SALE: NH 973 20' flex; NH 973 25' flex; NH 974 630 corn head; MF 1163 corn head; MF 1144 corn head; Gleaner 630 LM or R; Gleaner 830 corn head LM or R. 217-658-4761

FOR SALE: Shiba-Inu puppies, registered, 11 wks old, \$750.00, Edina, MO 660-397-3675

FOR SALE: Large Round bales hay, \$35 each. Put up dry, loading on site anytime. McKims, Brashear. 660-373-5629 or 660-956-5612.

FOR SALE: 2 Federal like new LT 265/70R17 snow tires, \$150. 2 very good Bridgestone 265/65R18 mud tires, \$80. 319-470-0277, Argyle, IA.

FOR SALE: 3 bedroom, single bath, full basement with single car garage. Large yard in Moberly, asking \$65,000. Call Dennis 660-815-7718.

FOR SALE: 5.56 Ammo by IMI, 62 grain, green tip, 30 rounds/box, \$24 Firm. 815-575-1287

FOR SALE: Dog Kennel Equipment, dog houses 6x10 panels with gate, 10x10 panels & misc. 660-956-6542

FOR SALE: John Deere 4320 Tractor, straight off farm, ft wts, rear wts, 38" tires, 11,000 hrs, runs good, \$13,500. Call 573-881-3557

FOR SALE: Case IH 1644, engine hours 3489, with 17.5' 1020 head, \$23,500. 217-242-7114

FOR SALE: 2012 GMC Sierra, 117,000 miles, 4 door, 6 speed transmission, 20" wheels, all leather, heated and cooled electric seats. Best model bed liner, bed rails, running boards, backup camera, white in color, \$22,000. Lentner, MO 660-699-3741.

FOR SALE: Great Pyrenees puppies, born 7-25-21 \$125 each or \$100 each for the litter or what is left. Mose Miller 12548 Hilton Ave LaPlata MO 63549

HAY FOR SALE: 80 Bales Brome, \$55 per bale, 163 bales CRP hay, \$45 per bale. I will come down on the price if you take all of the brome or all of the CRP hay. Baled with a 567 John Deere baler, net wrapped. Call 660-651-8546 Atlanta MO

FOR SALE: Hay big round bales, small square bales, alfalfa, grass, and some mixed, for prices call Bob 660-342-4048

FOR SALE: Mickey Thompson rims off F150, \$150; Ranger truck parts, \$200. Call 660-379-2598

SCHMUCKER PRODUCE Has tomatoes by lb, onion, cucumber, zucchini squash, acron melon, pepper beats, canning tomatoes, \$9 for 1/2 bu while they last, 7 miles North Kirksville to Ft Madison Way 1/2 mile East

HUSKY MIX PUPPIES Ready for their new homes, they have had their first 3 rounds of shots and one round of deworming, \$150 OBO. Please call/text 515-249-9655 (When calling please leave a message)

Buyer of Standing Timber Any Species. Land Clearing and Clear Cutting Available. TSI Work. Kline Dried Firewood For Sale. Bonded. **State Line Firewood** 641-898-2398



Signature
Overhead Doors and Remodeling, LLC

660-785-0248

www.signatureremodelingkv.com

Residential and Commercial Installation and Service

Brad's Welding Shop Is Your Newest Dealer For Arrowquip Cattle Handling Equipment.

15 YEAR UNLIMITED WARRANTY



Call Us For All Your Cattle Handling Needs!

BRAD'S WELDING SHOP

12673 Almond Ave • 1158 Marceline, MO 64658 • 660-376-1158 • www.bradsweldingshop.com



HARRISON FISHERY
POND & LAKE STOCKING
Call us today! 660.423.5482

Show Me Plumbing Services



- *General Mini Excavation & Skid Steer Work
- *Livestock Watering
- *Waterlines & Sewer Systems
- *Residential Services & General Plumbing
- *Utility Trenching

Stan Schrock • 660-988-1163
Greentop, MO. • 660-766-2636



Countryside Market

Hello from countryside Market!

Fall Decorations are here

Regular Mum's \$10.00 each

Pie Pumpkins \$1.99 each

Lots of Gourds and Squash to choose from

Ham Steaks \$1.99/lb

Hebrew National Beef Franks \$8.29/5 lbs

Cheddar Wurst \$2.19

2.5 Miles North Of Town Kirksville, MO
660-665-3215 or 988-0742

Your trusted source for quality Fish!

Harrison Fishery, Inc. is a family owned and operated business.

We stock most species freshwater, game & baitfish.

Contact us for price & delivery

curtis@harrisonfishery.com
660-423-5482

Species Available	Bluegill	Walleye
Largemouth bass	Redear sunfish	Muskie
Hybrid bluegill	Black crappie	Catfish
Golden shiners	Fathead minnow	<i>and More!</i>

Time to gather up the little ones, get their fishing poles and go enjoy a day of fishing



www.harrisonfishery.com

FOR SALE: 2014 RZR 800-S, nice older person driven, 3200 miles, \$8495. Kirksville 660-341-9522

FOR SALE: 1998 Jeep Cherokee 4 WD, 4 door, air, radio, Reese hitch, 145,000 miles, \$3200 cash. Text 217-653-7100 for return call. Canton MO

FOR SALE: Gleaner R62 combine, CDF rotor lateral tilt; MF 850 D hydra; NH TR 96; IHC 1440 diesel; MF 750 diesel; 2 kastern silage wagon; JD 55 EB 12' platform. 217-658-4760

FOR SALE: Good used Industrial Channel drain tin 27 gauge approx., galvanized under white paint, very few holes, large number of long sheets; Antique paver brick (Moberly Missouri Pavers), \$4.00 per brick, also Solid red brick .75 cents per brick. 660-676-5021 Clarence MO

For sale: 8 Great Pyrenees puppies, 4 females, 4 males, 5 weeks old, \$250 each. Leroy Borntreger 12743 Hilton Ave LaPlata MO 63549

FOR SALE: John Deere 2950 Tractor, MFWD, CAH, 5,000 hrs, 90% tires, Westendorf Loader, cold AC, \$25,500. Call 573-881-3557

Driveway repair. Excavation. Trenching. Brush clearing. Site prep and cleanup. Leveling. CRP work. Transportation. Heavy installation. Welding. 660-216-7268

FOR SALE: Great Pyrenees puppies, born 7-25-21 \$125 each or \$100 each for the litter or what is left. Mose Miller 12548 Hilton Ave LaPlata MO 63549

FOR SALE: IHC 983 corn head; IHC 883 corn head; Drago 830 corn head, adj deck plates; IHC 820 17 1/2' MF 830 for JD. 217-658-4761

FOR SALE: 2 Killer Instinct Cross Bows, brand new, comes with everything, \$350 each; 2 Marlin 30-30, excellent condition, \$675 each. 217-577-9538

FOR SALE: 10 Week old AKC American Brittany puppies, born 6/27/21, 8 available, 2 females, 6 males. Located in Lewistown MO Call or text 573-248-6895

Logan Agri-Service, Inc. of LaBelle, MO is growing and looking to add members to its team. We are currently looking for someone to operate a sprayer and/or fertilizer spreader. We are also looking for someone who can drive application support equipment (nurse/tender truck). We will train the right person. If you are interested in joining the Logan team, contact Luke Lay, LaBelle Plant Manager, at 660-342-6424

SCHMUCKER PRODUCE: Nice canning tomatoes by 1/2 box. Also, cucumber, onion, zucchini squash. Also tomatoes by the pound. Pumpkins, also specialty squash, 6 for \$10. 7 miles N of Kirksville to Ft. Madison Way, then East 1/2 mile.

FOR SALE: MF 235 Tractor, low, low use, new rubber, 3 pt, always shedded, \$4,950. Call 573-881-3557

ARE YOU COVERED? Accidents and illnesses occur without warning. Let us help you make sure you, your family and/or employees are covered. Health, Cancer, Accident, Hospital, Critical Illness, Short Term Disability, Dental, Vision, Life. Linda 660-537-5177 linda_buchmann@us.aflac.com Denise 314-465-5611 denise@healthinsuranceagt.com

FOR SALE: Smooth mouth mare \$600; also small bales of straw \$5.00; 4x5 net wrapped hay, \$45. 660-342-5314

WANTED TO BUY: Sports Card Collections & Accumulations. Unopened Boxes, Cases, Sets, Etc. 319-470-2786

HIGH QUALITY Hay for sale \$45 per bale. 217-653-4762

NATIVE PLANTS for butterfly gardens, rain gardens, hard to mow banks, and restoration. Peckosh Landscaping 23198 Hwy H/Boundary St. Kirksville, MO. Just north of the Troy Mills store. Call Claire at 660-349-0061.

FOR SALE: Heider Auger Wagon, 100 bushel, 540 PTO, boards on each side, manual auger swing either side, shedded, clean solid wagon, \$750. 217-257-1385 anytime

FOR SALE: Fish for stocking ponds - Catfish, Grass Carp, Crappie, Blue Gills, Red Ear, Bass, and Minnows. Heindselman Family Farms, Call Greg 660-341-5692

WANTED TO BUY: Harley Davidson's, any year, any condition, cash money. Days 660-263-1356 or 660-537-0068

WANTED TO BUY: Farm Machinery and Estates. Call James L. Johnston. 573-473-4904

Wevers Outside Wood Furnaces a dealer for Heatmor Stainless Steel Outside Furnaces, have an assortment of parts, line, and etc. Taking orders for new outside wood furnaces. Call 660-423-5242, cell 660-216-9885. Open 6pm-9pm Monday-Friday, Saturday anytime, call first.

FOR SALE: New 3 pt. tillers, heavy duty, gear driven, 7' to 10' starting at \$3050. 660-874-4455

PASTURE AND HAY GROUND Needed around Adair & Knox County. Please Contact 660-216-5887 or 417-773-2507

FOR SALE: John Deere 7220 Tractor, MFWD, CAH, power shift, 9000 one owner hrs, \$49,500. Call 573-881-3557

Golden Grain Bins

Grain Bins	Floors w/12" Supp. & Flashing	
18'x18' 4,195bu. \$ 7,398	18'....\$2,065	30'....\$5,764
27'x21' 11,265bu. \$14,851	21'....\$2,824	36'....\$8,211
42'x24' 32,245bu. \$34,616	27'....\$4,710	42'....\$11,182



GMLS Industries, Inc.
PH: 660-699-2179 or 620-983-2136
www.gmlsindustries.com

CUSTOM CHOPPING

ALL TYPES OF FORAGES
PRESERVATIVE AVAILABLE

Devon Zimmerman 660.464.1324

FOR SALE
All Sired Angus Bulls,
14 & 18 Months Old.
Harold Trump
660-341-5730

Beilstein
CAMPER SALES

573-655-2254

28248 327th Ave. • LaGrange, MO • Hwy 61 South, 4 Miles South of LaGrange, MO

Call us now for the best prices...

BUYERS OF CORN, SOYBEAN, ORGANIC, NON-GMO CORN AND SOYBEANS

Baring Elevator LLC

Contracts Offered
Forward Pricing
Target Orders

Baring, MO
660.892.4411
www.baringelevator.com

CONTACT US FOR PRICING
Lewis 660-341-2937
Roger 660-223-2442



LAN-DOW BUILDINGS

"We Build To Suit Your Needs"
"Custom Built"

Pole Barns • Garages • Utility Buildings
"H" Don or Dick Middleton

Memphis Lumber Co.
1-800-337-5858 • 660-465-8595
Fax: 660-465-8596

<p>#VENG29V</p> <p>\$25,495</p> <p>2014 Vengeance 29V TOY HAULER With Slide-Out</p>	<p>#2022RBS</p> <p>\$30,995</p> <p>2022 Salem 22RBS Slide-Out, Rear Bath</p>
<p>#300BH</p> <p>\$32,995</p> <p>2018 Salem Hemisphere GLX 300BH 3 Slide-Outs, Rear Bunks</p>	<p>#088816</p> <p>\$44,995</p> <p>2021 Salem Hemisphere 314BUD Rear Bunks, Outdoor Kitchen</p>
<p>#U21171</p> <p>\$22,995</p> <p>2021 Salem Cruise Lite 171RBXL Easy Bed, Rear Bathroom</p>	<p>#28VB</p> <p>\$33,995</p> <p>2022 Salem Cruise Lite 28VBXL Large Slide-Out, Private Bedroom</p>

Visit Our Website For More Great Bargains! www.beilsteincampersales.com

FOR SALE: 2010 Case 8120 Combine, 2975 HR -2097 HR, NO DEF, RWA, DIF Lock, 620 Drive Tires, 28 Steer Tires, luxury cab, clean machine, \$85,000. 641-895-8014

HANDYMAN: Install interior and exterior doors and windows, siding, decks, showers and toilets, flooring and drywall, roofs and dirt work. 660-956-2189.

DIRT WORK All types of excavation, reclaiming overgrown fields, including CRP and WRP. Building site preparation, terrace and tiling maintaining and creating new trails and crossings, rock hauling, Food plot development and maintenance. Leveling and grading, wetland construction and maintenance. Pond and lake cleaning and construction. Call for quotes. 660-342-2701

FOR SALE: Gleaner 8000 30' SCH sickle, F&A; JD 930 poly dividers; JD 220 flex; JD 216 flex; IHC 1020 20'; IHC 1020 17 1/2' MF 918 217-658-4761

FOR SALE: Registered AKC Labrador Retriever puppies, yellow. Farm-raised and loved! MO Health Certificate. Dam and Sire on farm. Ready to go now! Lay's Labs - LaBelle, MO 660-956-2482.

DEER SEASON is almost here, Mossberg, Patriot & Savage rifles 243, 6.5 Creedmoor, 30-06 available, \$475 each. All new in the box. 217-577-9538

STOCK MOBILE HOMES AVAILABLE: We gottem, single and double 3 and 4 bedroom! Call Tuffy 573-657-2176 amegamobilehomes.com

AVAILABLE STOCK MOBILE HOMES immediately, double wide and single, 3 and 4 bedroom. 573-499-9993 columbiadiscounthomes.com

FOR SALE: Farmhand XL 740 Loader, QT, 7' bucket, good paint, \$3,750. Call 573-881-3557

TRUE MODULARS 30 to 60 day delivery available, 3 and 4 bedroom. 573-657-7040 chateauhomes.net

TINY HOMES We gottem 573-881-3283

FOR SALE: Mums \$8 a piece, also have large combo's \$20; large variety of colors. Pumpkins and fall decorations. Kauffman Produce 11538 Iceberg Ave La Plata MO 63549

FOR SALE: 5 X 51/2 big round bales of mixed grass hay, Bailed dry no rain fertilized lab tested surface wrapped. Call 660-341-4031 Watson hay sales

FOR SALE: Ford 4000 D SU, power steering, Live PTO, excellent paint & sheet metal, new tires, \$5500. 660-341-8089

FOR SALE: Homemade Candies, Fresh Garlic, Regular and Wide Mouth Jar Lids, Jams & Jellies, Spices, Honey S.S. One Piece Dippers 1oz to 8 oz S.S. Kitchen Wares, Air Freshness, Gift Items, Kerosene Lamps and Parts, Some Aladdin Parts, Poly and Wooden Clothespins, Filter Disks, Wooden handles, Blankets and Throws, Pint Jars, Boxed Cards, Coloring Books. Train Track Candies & More 11538 Iceberg Ave, La Plata 3rd Lane to your Left.

FOR SALE: Land Pride RCR 2584 7' Rotary cutter, stump jumper, front chains, laminated tire, ready to use, real good, \$1400. 217-257-1385 anytime

SCOTT HUSKEY'S HOME SERVICE R-10 Foundation Enclosure Systems for manufactured, modular, & site built homes. Saves on utilities and prevents freeze ups. General maintenance and repairs since 1972 573-696-3468 "GO DAWGS"

HIGH QUALITY Hay for sale \$45 per bale. 217-653-4762

FOR SALE: Wholesale Southern Yellow Pine. Shelby Supply 660-299-0615

HOUSE FOR SALE: Macon MO, fixer upper 500 feet from the School and 300 feet from the park. 660-676-5531

FOR SALE: Rossi 4 Basket Tedder, field ready, \$3,250. Call 573-881-3557

ATTENTION HUNTERS: Whitetail Institute Products, CenterPoint Archery, Rage, Muzzy, Wac'em, G5 Broad heads, Carbon Express arrows, Nocturnal Lighted Nocks, Block Targets, Scent Thief Scent killer Products, Adam Hayes Moon Guides, Tinks Lures, IQ Bow Sights, Ghost blinds, Leopold & Vortex Optics, Chippewa Wedge-Loc Tree Stands, and more at Whitetail Seed and Supply 14136 State Hwy 3 LaPlata MO 63549

FOR SALE: Silver Lab puppies, 5 weeks old, silver males and females big healthy pups up to date on shots and wormer ready to go Sept 1, farm raised, top quality \$250 660-988-1163

FOR SALE: Gleaner 800 25' lateral tilt hyd for & aft; Gleaner 520 20'; Gleaner 830hugger H' Gleaner 3000 630, w/corn head. 217-658-4761

WHITETAIL INSTITUTE Food plot seeds, archery supplies, optics, and more. Whitetail Seed and Supply 14136 State Hwy 3 LaPlata MO 63549

SUFFOLK and Hamp meat type Rams, Ewes and Ewe Lambs. Heindman Breeding 660-341-6625

NEW SKID Loader attachments: bale spears, buckets etc., 4200 lb 42" forks, triple blade rotary cutters 74" or 80" grass/brush or tree. NO Sunday Calls 660-988-7385

DEER SEASON is almost here, Mossberg, Patriot & Savage rifles 243, 6.5 Creedmoor, 30-06 available, \$475 each. All new in the box. 217-577-9538

HUNTING EQUIPMENT sale, 35+ box, bow, hay bale, ladder stands, hog trap, deer and turkey feeders, deer and goose decoys. All used, great condition. 641-208-7353

FOR SALE: Fish for stocking ponds - Catfish, Grass Carp, Crappie, Blue Gills, Red Ear, Bass, and Minnows. Heindselman Family Farms, Call Greg 660-341-5692

FOR SALE: John Deere 145 Loader, good bucket & control valve, all utility mounting brackets, \$2,750. Call 573-881-3557

FRONTLINE FENCING LLC

**Steel Pipe Fencing.
Custom Built Gates and Livestock Handling Equipment.
Barbed Wire and Woven Wire Fence.
Arrowquip Cattle Handling Equipment.
Post Driver Rental.**



**29386 St Hwy T,
Greentop, MO
660-956-2430**

CELEBRATIONS! **PARTY RENTAL**
KIRKSVILLE, MO

FOR RENT
**TABLES - CHAIRS - TENTS - BOUNCE HOUSE
& COTTON CANDY MACHINE...ECT.**

660-626-5162 or 660-665-9380

Democratic Club Fall Picnic

Sunday Sept. 26, 6-8pm

Brashear Park, Kirksville
Hear from State Candidates

Details and register at
<https://www.facebook.com/AdairDemsMO/>

Paid for by Adair County Democratic Club, Barbara Smith-Mandell, Treasurer

Only a few bin packages left for 2021!

**48'x9 Ring
48'x10 Ring
48'x12 Ring**

Call Now!!

GRAIN BIN SUPPLY "The Grain Bin People" **GES**

(660) 263-6700 - Cairo
(573) 594-2167 - Vandaila
www.grainbinsupply.com

Sukup

Troyer
TARP MFG.

660-486-3301

20264 State • Hwy. VV • Ethel, MO. 63539

Hoop Building Covers **FARM TARPS** **TRUCK TARPS**

WE GOT YOUR NEEDS COVERED!

The

NEMO

Trader

IS NOW A

PROUD MEMBER

OF THE

**PHILLIPS MEDIA GROUP
NEWSPAPER FAMILY**

*Watch for exciting changes
coming soon!*

FOR SALE: Great Pyrenees puppies, born 7-25-21 \$125 each or \$100 each for the litter or what is left. Mose Miller 12548 Hilton Ave LaPlata MO 63549

FOR SALE: Remington Model 572 pump .22 caliber rifle. In very good condition, checkered slide adjustment, rear sight. Call Dennis 660-815-7718.

FOR SALE: Good used Industrial Channel drain tin 27 gauge approx., galvanized under white paint, very few holes, large number of long sheets; Antique paver brick (Moberly Missouri Pavers), \$4.00 per brick, also Solid red brick .75 cents per brick. 660-676-5021 Clarence MO

FOR SALE: 16x8 white spoke wheels, \$80 for all 4. AC Lincoln welder, \$175. 319-470-0277, Argyle, IA

FOR SALE: Large Round bales hay, \$35 each. Put up dry, loading on site anytime. McKims, Brashear. 660-373-5629 or 660-956-5612.

FOR SALE: 1998 Jeep Cherokee 4 WD, 4 door, air, radio, Reese hitch, 145,000 miles, \$3200 cash. Text 217-653-7100 for return call. Canton MO

FOR SALE: Shiba-Inu puppies, registered, 11 wks old, \$750.00, Edina, MO 660-397-3675

FOR SALE: 2017 RZR 1000 Turbo, 3200 miles, real good shape, \$17,995. Kirksville 660-341-9522

FOR SALE: John Deere 285 Disc mower, 9', QH ready, low acres, \$6,500. Call 573-881-3557

FOR SALE: Old full size slate Snooker table, cues and cue rack, wood score keeper, needs some work, full set of Snooker balls w/rack, useable as is, \$1500. Lentner MO 660-699-3741

NATIVE PLANTS for butterfly gardens, rain gardens, hard to mow banks, and restoration. Peckosh Landscaping 23198 Hwy H/Boundary St. Kirksville, MO. Just north of the Troy Mills store. Call Claire at 660-349-0061.

LANCASTER LUMBER INC.
Lancaster, MO.
1-800-424-5071
LAN-DOW BUILDINGS
www.lancasterlumber.com

SULLIVAN AUCTIONEERS, LLC
 A FAMILY OWNED BUSINESS SINCE 1979

 MATT	 MICHAEL	 LUKE	 JOHN
 DAN	 JOE	 JIM	 BILL

Headquartered in Hamilton, Illinois, Sullivan Auctioneers, LLC is one of the largest Real Estate and Farm Machinery Auctioneers in the nation. For more than 40 years we have been conducting professional auctions. We connect our sellers with thousands of interested buyers around the world.

Considering an Auction?
 CALL OR EMAIL TODAY FOR A NO OBLIGATION CONSULTATION!
 Toll Free (844) 847-2161 | Sold@SullivanAuctioneers.com
 www.SullivanAuctioneers.com | Lic. #444000107



John Deere 2840 D Tractor, dual hydr, 4700 hrs, 90% tires, with JD 148 Loader with QA Bucket & Bale Spear, \$13,500



John Deere 2750 Tractor, MFWD, open station, w/245 SL Loader, dual hydr, HiLo, wts, 5,000 hrs, \$22,500



John Deere 4230 Tractor, CAH, cold air, power shift, 6,800 hrs, JD 158 Loader, 18.4x38 95% \$22,950



20 Series JD Tractors, 3020. (2) 4020s late models, 4320 or 2940, all used, tested recently, \$12,950 choice or \$48,000 for all.



John Deere 5520 Tractor, MFWD and 511 SL Loader, new tires, reverser joystick, 5500 hrs, one owner, \$42,500.

573-881-3557

Americans discard ONE BILLION TREES WORTH of paper products each year.
PLEASE RECYCLE THIS NEWSPAPER

KEIM'S KOUNTRY MARKET
 31941 Mahogany Street
 Macon, MO 63552



HOURS
MONDAY-FRIDAY 8AM-6PM
SATURDAY 8 AM-5PM
CLOSED SUNDAY

• BULK FOOD • SPICES • MEAT • CHEESE
 • BAKED GOODS • SEASONS PRODUCE

“Continuation” of the Kelly Family Auction
Saturday September 18, 2021 9 AM
Located: Auction Building
1916 S. 18th (Hwy 5 South) Centerville, Iowa

LARGE AUCTION! 60 + Pieced Quilt Tops, ready to finish; 200+ Nice Paintings & Artwork; Large Trailer load of Hand Tools, Power Tools, Tool Boxes & Garage Items; Sewing Machines; Sewing Notions; Chenille Bed Spreads; Quarter Play Genuine Slate Playfield Pool Table, Bay City, Michigan, 1970's, Good Condition, 3362710; 70's Seeburg Red Phonograph Juke Box, L52, 140331, 160 Selections, Quarter Play; Very Large amount of Vinyl LP Albums; Sheet Music including a 1956 Elvis Love Me Tender, 1942 Irving Berlin White Christmas + more; Marx Original Violin-Uke; Post Card Collection; Tapestry's from Italy/Belgium; A VERY LARGE AMOUNT OF ARTWORK, PAINTINGS, PICTURES , JJ Audobon Prints; Lincoln Drape Lamp ,elec; Martha & George matching Lamps; Large amount of Art Glass, Milk Glass, Fenton, Sooner Glass and more; Many Antiques and Collectables; 2 Umbrella Stands; 10 Vol. Set of 1789-1897 Presidents by Richardson; Beautiful Hanging Red Light; NIB Lava Lamp; Nice Large Eagle Statue,Suanti Galleries; Baseball & Sport Books; Matching Sofa/ Loveseat/Chairs; Power Hospital Bed; Dressers; Beds; Nice Cedar Chest; Glass Show Case; Several Modern China Hutch; Book Shelves; Tables; 2 Marble Top Stands; Nice set of end tables; Library Table; Antique Desk; Very Old Tall Antique Radio; Large Ornate Mirrors & Pictures; Roc A Chair; Nice large Antique Wall Clock; Several Fishing Tackle Boxes, loaded; Alum Ext. Ladder; Hand Tools; Power Tools; and many Garage Items; 1954 Pontiac Catalina Chiefton Fender Skirts; Box Lots; and so much more. Plan to spend the day with us. You will be surprised what we discover.

Follow us on Facebook for Pictures --- Demry Auction LLC (Photo's for Sept 18 Auc)

Demry Auction, LLC Centerville, Iowa
Tom Demry 641-895-2508
Janet Demry 641-895-4310 641-856-6408
Kristy Demry 641-895-2509
Junior Lawson 641-895-0037

CENTURY 21 FARM & RANCH
 Lifetime Realty



A community member for over 26 years, Elizabeth is a real estate professional connecting sellers in Northeast Missouri to buyers across our great country.

Considering selling a farm or home? Call on a local expert who knows you, and who is committed to helping you get the most for your property.

Serving Knox, Macon, Adair, Sullivan, Linn, Putnam and Shelby Counties.

Elizabeth Gregory, Realtor
 Lic. # 2021008017

LISTING A PROPERTY?
 CALL OR EMAIL ELIZABETH FOR A NO OBLIGATION CONSULTATION
 660.621.2136 | egregory.c21@gmail.com
farmandhome.c21.com
 Century21 Lifetime Realty | 660.665.5678

Macon Real Estate and Personal Property Auction

Thursday, October 7, 2021 at 4:30 p.m.
The Waller Family

1308 N Rutherford Street, Macon, MO 63552

Directions: 1308 North Rutherford Street, Macon, Missouri. From US Highway 63 in Macon, turn West on Pace Street then South on Rutherford Street. The property will be on your left. Look for signs the day of the sale.

Real Estate: Located close to restaurants, shopping and schools, this 2 bedroom, 1 bath home with full unfinished basement will make a great home for your family. The home has vinyl siding and a 1 car detached garage. The car port will be sold separately.

The real estate will sell promptly at 5:00 p.m.. If you would like to schedule your personal showing, please call Scotty at 573-356-4405.

*See Terms and Conditions for Purchase of Real Estate below.

DOWN PAYMENT: 10% of the contract purchase price will be due upon acceptance of the Sales Contract. Personal or Cashier's Checks will be accepted. This is "AS IS, WHERE IS" and is non-refundable.

CLOSING: Closing shall be within 30 days of the auction date.

Car Port: 15' x 20' metal carport

Household Items: Amana washer; GE electric dryer; glass front, 3 sided curio cabinet; tweed recliner; England Corsair sofa; maple 3 piece full size bedroom set; More

Antiques and Collectibles: Antique wooden rocker; antique cane bottom chair; double pedestal child's desk; signed oil on canvas; size 42 leather motorcycle jacket; MORE

Outdoor and Tools: Concrete flower planter; outdoor patio set; tool chest; miscellaneous tools; pancake air compressor; NAPA battery charger; bolt trays with lid x 7; long handled tools

There will be many more items at this auction too numerous to mention.



Scotty Kuntz 573-356-4405

Michael Cunningham 660-651-2288 • Paxton Pittman 918-316-7500

WWW.SCOTTYSAUCTIONSERVICE.COM

Mid-States Horse & Tack Auction



Saturday September 25, 2021
Tack @ 10:00 A.M.
Horses @ 2:00 P.M.

KIRKSVILLE LIVESTOCK MARKET
HWY 63 NORTH KIRKSVILLE MO.

Few Early Listings:

- | | |
|---|--|
| Fancy AQHA 5yr. Blue Belle Warrior/ Driftin Tivio Black Ranch Broke Gld. | Fancy 8yr. Black/White Really Broke Paint Mare. |
| Fancy AQHA 3yr Driftwood/Hancock Buckskin Broke Gld. | Fancy 13yr. Ranch Broke Sorrel mare vet checked in foal to a bay roan Percheron stud. |
| Fancy AQHA 2yr. BC Blue Easter 011/Kings Hollywood Bill Broke Red Dun Filly. | Fancy 6yr. Broke Blue Roan Gld. |
| Fancy AQHA 8yr. Right This Minnick/ Pat Cowan Broke Buckskin Mare. | Fancy 3yr. Bay Roan Gld. |
| Fancy APHA 16yr. Painter Leo McCue/Chiquitto Diablo Paint Broke Mare. | 4yr. Registered Appaloosa Broke trail riding Gld. |
| Fancy APHA 3yr. Sun Moon Star Deck/Deck of Stars Broke Sorrel Mare. | 4yr standard bred daughter of Big Jim Broke to pull a buggy. |
| Fancy 13yr. Black ranch broke gld. | "Diamond" Fancy 11yr. Broke Gray Pony Mare been used in 4-H and fun shows. |
| Fancy 13yr. Sorrel Broke Gld. Broke for anybody. | Fancy 12yr. Kid Broke Paint Pony Mare. |

Guest Consigners only on Tack!

Check us out and like us on Facebook at **Mid-States Livestock Sales** to see our early listings and videos!



For More Information:

Josh Weaver: 660-341-7964 • Jeb Weaver: 660-341-1866

SCHLANKER AUCTION

1808 OAKHILL DRIVE - MACON, MO

FRIDAY OCTOBER 15, 2021 @ 10 AM

The Schlanker's owned and operated Schlanker Furniture and sold top quality furnishings for over 55 years. Also selling items from late attorney Paul D. Hess Jr., Joan Schlanker's father. Great selection from antiques to quality modern furnishings. Large auction, plan to attend!



REAL ESTATE OPEN HOUSE
September 22, 2021 5-7PM

One of a kind 3 bedroom all brick ranch home on 2.59 acres m/l adjoining the Macon Country Club & across from the Oakhill Mansion - Home has a large 3 car garage - Enclosed breezeway - Nice large kitchen with cork flooring & brick hearth fireplace - Dining & family rooms have green stained knotty pine car siding with vaulted ceilings & fireplace - 3 Nice sized bedrooms with closets - 2 Full bathes - Large screened in porch - Basement is partially finished with large rec room and remainder in open storage w/ additional 1/2 bath - Home has a security system & had many updates to include plumbing/wiring, flooring and much more - Hip roof barn is also included with this property - Don't miss out on this one of a kind property, this could be one of the best locations in Macon

HOME OF THE LATE WILLIAM & BETTY SCHLANKER
- DICK & JOAN SCHLANKER SELLERS -



IMAN AUCTION COMPANY

660-788-4298 | 660-414-7830 | ImanAuction.com



WANTED TO BUY: Antique Watches & Clocks. Watchmaker Tools & Parts. 319-470-2786

FOR SALE: 2 Killer Instinct Cross Bows, brand new, comes with everything, \$350 each; 2 Marlin 30-30, excellent condition, \$675 each. 217-577-9538

FOR SALE: Older heavy frame shop built 21', 16 1/2' deck, 8' wide, flatbed trailer, mobile axles, bumper hitch, 2 5/16 ball, could use flooring, with MO title, \$650. 217-257-1385

FOR SALE: Gehl 600 2 row chopper; Fox 2250 2 row corn, hay pickup fox 3000 2 row; Fox w/1 row hd; H&S silage wagon WT gears; Gehl silage wagon; silage wagon. 217-658-4761

FOR SALE: John Deere 265 SL Loader, bucket, JD 20 thru 55 series mount, sharp, \$6,250. Call 573-881-3557

WANTED TO BUY: Harley Davidson's, any year, any condition, cash money. Days 660-263-1356 or 660-537-0068

FOR SALE: New 3 pt. tillers, heavy duty, gear driven, 7' to 10' starting at \$3050. 660-874-4455

Live Auction

Estate of the late Theresa Dillard

Saturday September 18th @ 9 a.m.

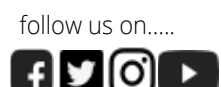
Location: 660 South East. 40th Street Laredo MO, 64652



- Shop Items & Tools**
Shop vise, Electric grinder/ buffer, hand crank grinder, wrench sets, assorted flats of hand tools, several bolt & nut storage bins, 12V golf cart charger, Forney Soldering unit, 2 aluminum extension ladders, 2 folding ladders, Marquette 39-100 battery charger. large floor jack, generator Husky 1650 psi power washer. 4x 20.8 R42 Firestone tires "3 good, one in back is flat".
- Households & Collectibles**
Table tops full of assorted cooking ware, good stainless steel pans & pots as well as a number ceramic collectible figurines & several totes of yarn. decorative American flag pallet, collectible 70s & up license plates, ice cream churn, several bed frames of numerous sizes. Collectible cigar boxes mostly in good condition.
- Auctioneers Notes:**
This is a partial listing of some of the highlights of this auction. many more items to be listed on the website. Lunch will be provided. Terms are Cash, Check, or Credit Card. Announcements made day of sale take precedence over written ads.
- Vehicles, Trailer, Motorcycle, Scooter**
Wooden Ice Box
1998 Chevrolet 4X4 extended cab showing 164,794 miles. good condition - minus some rusty spots.
1982 Yamaha Enduro Motorcycle "not running" 1978 Honda Express Moped Scooter "not running. Play-Mor enclosed Trailer measures 7' x 5' Not Running Chevy 1500, will sell as is, has V8 engine. 2007 Chevy Uplander Mini Van high miles. Gas powered Go Kart "not running" Large Wooden Ice Box, will be at the responsibility of the buyer to remove, from the property
- Furniture**
Childrens wooden potty seat, 2 sturdy collapsible shelving units, 8 metal shelving units, large jewelry box, refinished wooden dresser & matching vanity w/ mirror "both nice pieces" French Proventional end table, 4 living room book shelving units, rose floral pattern upholstered sofa, Pear grandfather clock "nice piece" folding wooden rocking chair "nice piece" Childrens wooden kitchen play set, Lego storage & play table, 2 wooden high chairs, recliner, w/ foot stool.



mwauctions.bid
660-654-2084



Live Auctions Online Auctions

View Details & More @ mwauctions.bid

HANDYMAN: Install interior and exterior doors and windows, siding, decks, showers and toilets, flooring and drywall, roofs and dirt work. 660-956-2189.

FOR SALE: Ford 4000 D SU, power steering, Live PTO, excellent paint & sheet metal, new tires, \$5500. 660-341-8089

FOR SALE: 2017 Honda Ruckus, only 200 miles; 2002 Kawasaki 650 Prairie, great condition; 2014 Yamaha F-25 HP tiller outboard, electric start, like new, excellent condition. 641-208-7353

CENTERPOINT CROSSBOWS In stock Axe 405 crossbow & more Whitetail Seed and Supply 14136 State Hwy 3 LaPlata MO 63549

FOR SALE: John Deere 2040 Tractor, sharp, 90% rubber, 5565 hrs, hydr valve, Loader available, \$9,750. Call 573-881-3557

FOR SALE: NH 973 20' flex; NH 973 25' flex; NH 974 630 corn head; MF 1163 corn head; MF 1144 corn head; Gleaner 630 LM or R; Gleaner 830 corn head LM or R. 217-658-4761

FOR SALE: Shiba-Inu puppies, registered, 11 wks old, \$750.00, Edina, MO 660-397-3675

HIGH QUALITY Hay for sale \$45 per bale. 217-653-4762



Saturday Sept. 25, 2021 9:30 AM
Gary and Nancy Tate, 231 SE Hwy E, Laredo, MO
MOVING AUCTION



Highlights to include: 2015 Ram 3500 4x4 Cummins turbo, 29,720 miles, one owner, super clean, always shedded, 2012 Silverado Bighorn 38 ft. travel trailer, one owner, super clean, always shedded, 2019 JD 1025R estate mower w/120R loader, 60" deck, diesel, 100.2 hrs, one owner, JD Z425 EZtrak mower, 54" deck, 397 hrs, 1997 Titan Classic 22 ft. livestock trailer, MF Super 90 w/loader, 16 ft. Champion bass boat w/150 Merc, Bushhog quick attach loader, 2001 Yamaha Big Bear 400 4x4 ATV w/snow blade, 8' x 12' storage shed, Saddles and tack, 3 pt. equipment, livestock panels, tools, misc. shop, scrap iron, Antiques and collectibles, some household and furniture, Frigidaire Gallery stainless steel propane kitchen stove, and more . . .





For photos and listing - scottroyauction.com
 Scott Roy Auction | Trenton, MO | 660-359-1455



IT'S FREE!

EVERY FRIDAY

The NEMO Trader

CALL US FOR ADVERTISING QUOTES | 660.665.8500



MOSSY OAK
PROPERTIES
 Boley Real Estate
America's Land Specialist
 1480 S Clinton • Albia, IA 52531

LAND AUCTION

131 M/L
TOTAL ACRES

SATURDAY, SEPT. 25, 2021
10:00 AM AT THE
WESTBRIDGE HOTEL
CENTERVILLE, IA

www.boleystrealestate.com • (641) 932-1234

535th St & 180th Ave • Centerville, IA

Tract 1

63 M/L ACRES

45.61 FSA cropland acres * CSR2 49.5



Tract 2

68 M/L ACRES

46.68 FSA cropland acres * CSR2 37.4



Broker - Tyler Boley
 641-799-7837
 tboley@mossyoakproperties.com

Auctioneer - Cory Behr
 641-425-8466
 cbehr@mossyoakproperties.com

PUBLIC AUCTION

SATURDAY SEPTEMBER 25TH 10AM

2705 Main St Unionville, Mo

Canning jars, terra cotta and clay pots, rolling shelf, many unique wood items, cane collection, yard-stick collection, chicken wire, incubator, pampered chef items, new socks, leggings and hy vis clothing, ball cards, comics, tables and chairs, cruiser bicycle, file cabinets, wood boxes, Kennedy tool box, 2 homelite chainsaws, generator, mineral tubs, dent repair kit, tools, 5 speed drill press on stand, chain hoist, ext cords. new lag bolts. Building is full, many items are not advertised, planning on some household items as well as some furniture.

Preview on September 24th from 2-5 pm. Can see photos at Altiser Auction Facebook page. Statements made the day of sale take precedence over printed material. Food and restrooms are available.

SEE OUR FACEBOOK PAGE FOR PHOTOS



KRIS ALTISER
660-626-4960

Kirksville Real Estate and Personal Property Sale

Thursday, September 23, 2021 at 5:00 p.m.
Burton and Jane Picht
 6 Kirkwood Lane, Kirksville, MO 63501



Directions: 6 Kirkwood Lane, Kirksville, MO 63501. From US Highway 63, travel West on State Highway 6 approximately 0.3 miles to Pfeiffer Avenue. Turn left and travel 0.2 miles to East McPherson Street. Turn right for 0.2 miles to Kirkwood Lane. Property will be located on your right. Look for signs the day of the sale.

Real Estate: This well maintained 3 bedroom, 1.5 bath, ranch-style, brick home is located on a quiet cul-de-sac. The home offers 1,728 square feet and was built in 1975. It has a formal dining room, wood burning fireplace, attached sunroom, large kitchen with dishwasher and sliding door pantry, utility/laundry room, built in grill and attached, over-sized 1 car garage. The home has central air, baseboard heat, Trane forced air gas heat, 40 gallon gas water heater and a 10' x 10' utility shed in the backyard. The roof has been replaced in the past few years.

The real estate will sell promptly at six o'clock. If you would like to schedule your personal showing, please call Scotty at 573-356-4405.

***See Terms and Conditions for Purchase of Real Estate below.**


DOWN PAYMENT: 10% of the contract purchase price will be due upon acceptance of the Sales Contract. Personal or Cashier's Checks will be accepted. This is "AS IS, WHERE IS" and is non-refundable.

CLOSING: Closing shall be within 30 days of the auction date

FURNITURE AND HOUSEHOLD: Large dining room table with extra leaf and 6 chairs; 2 swivel maple bar stools; Proform Crosswalk 400 E treadmill; LaZBoy recliner; loveseat; Broyhill microfiber couch; lots more

ANTIQUES AND COLLECTIBLES: Antique telephone table; Wurlitzer piano; very large collection of diecast and plastic cars and trucks, lots more

There will be many more items at this sale too numerous to mention.



Scotty Kuntz 573-356-4405
 Michael Cunningham 660-651-2288 • Paxton Pittman 918-316-7500
 WWW.SCOTTSAUCTIONSERVICE.COM

Real Estate, Antique and Personal Property Auction

Thursday, September 30, 2021 at 5:00 p.m.
Estate of Beverly Blodgett
 2511 South Jameson Street, Kirksville, MO 63501



Directions: 2511 South Jameson Street, Kirksville, Missouri, 63501. From U.S. Highway 63 in Kirksville, turn East on State Highway 11 for approximately 0.6 miles, then turn North on South Jameson Street for approximately 0.3 miles. Watch for signs the day of the sale.

Real Estate: What a great location! You must see this home sitting on a large 1.44 acre corner lot with several mature shade trees, an attached 1 car garage, a 22' x 18' detached garage and a 10' x 12' storage shed. The 2 bedroom, 1 bath home has vinyl siding, a large dining room, plenty of cupboards in the kitchen and a spacious living room. It includes a Rudd gas furnace and an approximately 10' x 12' concrete floor basement.

The real estate will sell promptly at six o'clock. If you would like to schedule your personal showing, please call Scotty at 573-356-4405.

***See Terms and Conditions for Purchase of Real Estate below.**

DOWN PAYMENT: 10% of the contract purchase price will be due upon acceptance of the Sales Contract. Personal or Cashier's Checks will be accepted. This is "AS IS, WHERE IS" and is non-refundable.

CLOSING: Closing shall be within 30 days of the auction date.

Vehicles: 1996 Chevy 4x4, extended cab with 200,000 miles; 2005 Dodge Caravan mini van 200,000 miles.

Antiques and Collectibles: Antique oak wash stand; maple hutch; antique China hutch; hen on nest; antique oak chest of drawers; antique type writer; Planter's Peanuts jar; Carnation Malted Milk glass container; Dazey churn jar (no mixer); drop front secretary with glass front display; antique chest of drawers and glove boxes; oak square table; antique oak rocking chair; #5 Blue Ribbon crock jug; antique barn lantern; miscellaneous jars; old garden cultivator; old buck saw; galvanized boiler; Grey Round Red wagon.

Household Items: Chef dorm size refrigerator; miscellaneous mixing bowls; plastic organizer; HYLEA air and room cleaning system, like new vacuum; Vizio flat screen TV; dresser with mirror; costume jewelry; Kenmore 220 window air conditioner.

Outdoor and Sporting Goods: Trex 820 bicycle; Schwinn Sidewinder bicycle; dog steps; bird cage; Miscellaneous hand tools.

There will be many more items at this auction too numerous to mention.



Scotty Kuntz 573-356-4405
 Michael Cunningham 660-651-2288 • Paxton Pittman 918-316-7500
 WWW.SCOTTSAUCTIONSERVICE.COM



IT'S FREE!

EVERY FRIDAY

The NEMO Trader

CALL US FOR ADVERTISING QUOTES | 660.665.8500

ATTENTION LAND OWNERS!

**BUYER OF STANDING TIMBER
OWNER / OPERATOR OF SAWMILL - BUY/CUT LOGS
CERTIFIED - BONDED - INSURED**



TRI STATE TIMBER L.L.C.
PH. 660-341-4921 or 660-465-2975
353 1/2 GRAND AVE. • MEMPHIS, MO 63555

High 2021 Fall Consignment AUCTION

Auction held at 15970 Kelso Avenue 1 mile West of Downing, MO. on Hwy 136

Friday, September 24, 2021 @ 9:00 A.M.



Machinery

JD 2630 diesel tractor w/ loader - 20' Krause disc
JD 4640 tractor, 7000 hrs - Farmall 706 gas tractor, 7745 hrs
NDE 1502 tnr mixer w/ scales, RH discharge - 8' chain harrow
NI 325, 36" 2 row corn picker - IH 1850 front end loader
Garfield 550 5.5 yd. dirt scraper w/ dolly, forced ejection, like new
Danuser F8 post digger w/ 12" auger - (2) new skidsteer grapples
Perkins diesel power unit w/ clutch - Skidsteer pallet forks
JD 3020 gas tractor, 5798 hrs - (12) new Yetter coulters
Vermeer 605 Super XL baler, net & twine - seed cleaner
Rhino 15' batwing brush cutter - loader bucket
New skidsteer post digger w/ 3 augers - 6' brush cutter
(2) new 5th wheel bale spears - 3 pt bale spears
JD 3 bottom plow - NI 121F 12' seeder w/ grass box
4 section spike harrow - JD 894A rake - 8' drum roller,
(3) 3 pt bale unrollers - truck bed bale unroller -
Shaver 3 pt post pounder - Kelly front end loader
2 section spike harrow - Howse 6' 3 pt brush cutter
(2) 66X43.00-25 tires - 3 pt woven wire unroller
Five Star 3 pt post hole digger w/ extension
7 shank chisel plow - (2) gravity fl ow wagons
JD silage dump wagon - Case skidsteer bucket
JD front mount weights w/ bracket
(2) DMI 250 bu. gravity wagons - 3pt. root rake
4' 3pt food plot one pass tool w/ seeder

Vehicles & Trailers

1997 Titan 7X20 steel stock trailer
16' Homemade gooseneck trailer
2010 Dodge Grand Caravan, 194,000 mi.



Misc. Items

MEP - 803A 10K diesel generator, low hours
Miller 140 110v wire welder on cart, like new
Conrad American 30' bin sheets & drying floor
Heatmore outdoor woodstove - misc. used metal
Late model Ford grille guard - used insulation sheets
Lots of landscaping bricks - 22' & 24' used trusses
50' fiberglass sheeting - lots of misc. shop items



Livestock Equipment

(2) portable creep feeders
2,4,6 ton bulk bins - bale rings
(2) sm. creep feeders - mineral feeders
Water tanks - upright hog feeders

Running 2 auction rings!

Auctioneers Note: This is a brief listing and we will be selling lots of unlisted items, so expect surprises! Loader & personnel available on auction day. Make plans to attend!! Thanks, Randy

High Auction Service LLC - Kris High 660.342.8634

Randy High 660.216.0515

KLEITSCH AUCTION

1407 COUNTY ROAD 1257, HUNTSVILLE, MO * MOBERLY AREA

THURSDAY, SEPTEMBER 23, 2021 @ 10 AM

FULL LISTING & PHOTOS @ IMANAUCTION.COM

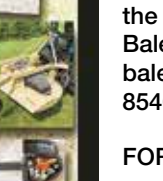


REAL ESTATE: 78 Acres m/l of recreational farmland w/ a beautiful 6.5 acre stocked strip pit/lake - Majority of the farm is currently in hay production (43.92 Acres) and remainder is in heavy woods - Property has excellent hunting & fishing - Very nice 1985 2 bedroom mobile home, screened in porch overlook the beautiful lake and picturesque property - Nice 40'x60' Insulated pole barn, full bath included



TO VIEW REAL ESTATE OR FOR MORE INFO, CALL WAYNE DUNWOODY WITH CENTURY 21 MCKEOWN & ASSOCIATES @ 660-651-2079 OR 660-263-1789

ALSO SELLING: TRACTORS, TRUCK, IMPLEMENTS * 200 BALES of HAY * BOATS * TRAILERS * 4 WHEELERS * PORTABLE BUILDING * LAWN TOOLS & EQUIPMENT * TOOLS * WOOD FURNACE * ANTIQUES * APPLIANCES * HOUSEHOLD & OUTDOOR FURNITURE *



GERALD & SHARON KLEITSCH, SELLERS



IMAN AUCTION COMPANY
660-788-4298 | 660-414-7830 | 660-388-6235

PUBLIC AUCTION

We will sell the following items for Shirley Baldwin, Delbert Sivert, the late Evelyn Falls, and others located at CHRISTY'S AUCTION BARN, 126 EAST SANDERS STREET, LA PLATA, MO on

SAT., SEPTEMBER 25TH, 2021 @ 10 A.M.

GUNS, AMMUNITION, KNIVES, FISHING LURES, & FISHING SUPPLIES TO BE SOLD AT 10 A.M. IN THE HOOP BUILDING WITH ATF PAPERWORK TO BE DONE THAT DAY:

GUNS - Winchester Model 63, 22 cal., semi-auto - Winchester Model 37, 410 curved hammer - Winchester Model 370, 20 ga., single shot - Winchester Model 1300, 12 ga. pump - Remington Model 510, 22 cal., single shot - Marlin #40 22 cal. semi-automatic - Iver Johnson 20 ga. matted rib 28" barrel - Ruger Red label 20 ga. over & under with chokes - Western Field 410, matted rib 27" barrel single shot - Taurus Model 62, 22 cal. semi-automatic - Black Diamond Thompson Center 50 cal. black powder - RMC 22 cal. black powder rifle - Thompson Center 22 cal. semi-automatic w/box - Ruger K77-22 stainless steel skeleton stock green insert 22 mag. w/scope - Ruger K77-22 stainless steel skeleton stock, 22 mag. w/scope - Ruger 10-22 lam stock stainless bull barrel - Ruger 10-22 sportster - FIE revolver 31 cal. - Daisy 1000.177 cal. air rifle w/scope - Red Ryder BB gun in box - Crossman Model 2100 classic air rifle. **AMMUNITION** - 12 & 20 ga. shotgun shells - 38 special - 357 mags - various amounts of 22 cal. - 30-40 & 280 rifle shells - approximately 75 pocket knives consisting of Case, Buck, Old Timer, Uncle Henry, Queen, Ted & Gerber - approximately 100 new & used fishing lures - fishing rods & reels - shotgun reloading accessories. **CAR** - 2002 Cadillac North Star 4 door car. **HOUSEHOLD** - White GE large chest type deep freeze - almond Maytag refrigerator w/ice maker - white Frigidaire 30" electric range - almond Maytag automatic washer w/matching electric dryer - two infrared heaters (one has remote) - 3 pc. queen size bedroom set complete - full size 3 pc. bedroom set complete - like new large leather & cloth sectional divan w/matching foot stool - three flat screen TVs of various sizes - large 3 pc. TV entertainment center - dark wood dresser w/mirror and 2 matching night stands - two microwaves - wooden glass coffee & end tables - two rocker recliners - 3 cushion divan - white wooden dining table w/one leaf & four chairs - two occasional chairs - wooden book shelves - small 2 pc. open front hutch - wooden oak hall table - quilt rack - electric fireplace - small 110v AC - lots of small electrical appliances - sets of pots & pans - lots of baking & pie dishes - large set of China ware - two sets of silverware - Corning Ware - bedding & linens - floor & table lamps - Tupperware -2 & 4 drawer metal file cabinets - Kirby sweeper w/all of the attachments - Brother zig-zag sewing machine - 2 guitars - toys & games - cookbooks - other books - costume jewelry - Halloween & Christmas décor - wicker baskets - antique glass kerosene lamps - oak wash stand w/towel bar - pitchers & bowls - lots of fruit jars of various sizes - canning lids - pressure & water canners - bird houses - metal folding tables - lawn chairs - wooden picnic table w/iron legs - wooden & iron park bench - wooden antique knock down wardrobe - antique wooden bed - other household items too numerous to mention. **TOOLS & OUTDOOR MISCELLANEOUS** - Propane fish cooker - new Poulan Wild Thing chainsaw in case - electric fish cooker - air pickup gate - air hose - deer antlers - open & box end wrenches - new parts washer cabinet - measuring wheel - grain moisture tester - counter scales - 2-wheel lawn dump cart - Army diesel single & 3 phase generator - Hub Pilot semi air lift axle - four Budd, 8 bolt, aluminum semi wheels - lots of other items too numerous to mention. **TERMS:** Cash/Check w/ID - Lunch on Grounds



Christy's Auction Service

La Plata, MO 63549 660-341-4531
See Websites for Photos: www.dchristyauctions.com
& Christy's Auction Service on Facebook
Auctioneers - David Christy 660-341-4531
Jason Wood - 660-341-7884 Greg Smoot - 660-341-5175



NEOMO TRADER • Advertise with us TODAY! • Phone: 660.665.8500 • PO BOX 190 • KIRKSVILLE, MO 63501

Premium Metal Roofing



AW Metal Inc.
Metal Roofing Headquarters
641-664-3990 • awmetal.net

Small Animal Auction

To be held at the
Schachtele Auction Barn - Keytesville, MO

From Hwy 24 at Keytesville, take Hwy 5 approx 4 miles to site w/ brown barn/green roof on the West side of the road, or from Hwy 36 at Marceline exit take Hwy 5 South, approx. 16 miles to site. Follow Auction signs!

Saturday September 25th, 2021 • Starting @ 11:30 am

We will start with Misc. Items Outside & Follow with Small Animals approximately 12:00 Noon.
Expecting Chickens, Geese, Ducks, Turkeys, Rabbits Goats & Many Other Small Animals!

We are NOT accepting any Hogs! All Out of state Animals to be Sold MUST Have Proper Health Papers!

Lunch Served • Call for More Details!
Tony Schachtele 660-413-3250

We Appreciate All Consignments!
Terms Cash - good Check with Proper ID

We are **NOT** Responsible for Accidents to Man, Woman, Child, or Animal.
We are **NOT** Responsible for Lost, Stolen, or Damaged Articles or Property.



MINER HILL FLEA MARKET / SWAP MEET

LIVE COUNTRY MUSIC

Friday & Saturday Evenings

2021 IS CUSTOMER APPRECIATION FREE PUBLIC ADMISSION!

Lot Rentals Start at \$25
Lot rental per month or per season
Electric/Camper hookups Available.

Great Food
Sandwiches, French Fries,
Ice Cream Cones & More

Antiques * Guns * RV & Auto Parts * Baked Goods
Crafts * Unique Junque * Much More!!

50/50 DRAWING FRIDAY & SATURDAY

Like us on Facebook
www.facebook.com/MinerHillLLC

2021 DATES
SEPT 24-25
OCT 22-23

Contact Info
660-375-1212
Email: minerhillllc@yahoo.com
Website: www.minerhill.com

1310 N. Missouri Ave
Marceline, MO 64658


The Ultimate Wood Heat.



CLASSIC EDGE
TITANIUM HD SERIES
Outdoor Wood Furnace

- More Comfort** - Thermostatically controlled wood heat.
- Peace of Mind** - Keep the fire outside and eliminate the dangers associated with indoor wood heating.
- Save Money** - Wood is a renewable, inexpensive and often free energy source.

CAMPEN
Heating & Air Conditioning
573-288-8966
Canton, MO
CentralBoiler.com



Bethel Real Estate and Personal Property Auction

Saturday, September 18, 2021 at 10:00 a.m.
Fern Prince and the late Wally Prince
379 East 1st Street, Bethel, MO 63434

Directions: 379 East 1st Street, Bethel, Missouri. From Highway 168 at Shelbyville, follow Highway 15 North approximately 5.2 miles. Turn right on East 1st Street for approximately 0.2 miles. Watch for signs the day of the sale.

Real Estate: This large two story home is a landmark in the historic town of Bethel, Missouri. It offers 3 bedrooms, 2 bathrooms, a large kitchen and hardwood floors throughout the home. There is also a 14'6" x 18' outbuilding and a 16' x 12' metal building for plenty of storage. The real estate will sell promptly at noon. If you would like to schedule your personal showing, please call Scotty at 573-356-4405. *See Terms and Conditions for Purchase of Real Estate below.

DOWN PAYMENT: 10% of the contract purchase price will be due upon acceptance of the Sales Contract. Personal or Cashier's Checks will be accepted. This is "AS IS, WHERE IS" and is non-refundable. CLOSING: Closing shall be within 30 days of the auction date.

Home Furnishings: Ornate dresser; Eden Pure radiant heater; 4 poster queen size bed; 5 piece bedroom set; large dining room table with extra leaves and 6 chairs; Chandelier style seashell light; power chair; Maytag non print French door refrigerator; Gold Star microwave;

Antiques and Collectibles: Custom made chess board (28" tall, 28" square) with 2 matching rook chairs, 18" tall; 1:18 model cars, pick ups, motorcycles, airplanes and ships; classic and collectibles; gas pumps over 250; approximately 25 reproductions of oils on canvas; hand carved native figurines; large collection of holiday decor,

Musical Instruments: Kay model 88 acoustic guitar with adjustable neck; Kona guitar with adjustable pick ups; Epiphone guitar; Gibson style J-45; Epiphone style V-8; Guild model DCEI; Kay; Martin & Co model D3 serial number 913251; Savannah; Harmony Marquis model H5403N; Guild model 291 39; Washburn electric double cut away; Washburn acoustic, new in box;

Tools and Outdoor: 2 shop lights; caddy creeper, new in box; AC gauge set; portable generator; various hand tools; battery charges; air hoses; sanding belts; portable sand blaster; 2 hp electric pressure washer; receiver carry all; lawnmower jacks; buck saw; miscellaneous tomato cages;

Sporting Goods: 3 wall mount gun lockers and 1 corner gun locker; live trap

Rifles: Winchester model 94 30-30, like new; Winchester model 94 AE 30-30; Winchester model 94 32 Win Special; Winchester model 71 348 WCF; Winchester M100 308 Win 4x Redfield scope; Remington Speedmaster model 552 .22 with Weaver scope; JMC .22 long rifle single shot; Winchester model 190 .22 semi automatic; Winchester model 1893 12 gauge pump;

Handguns: Heritage Arms Rough Rider 4 3/4" barrel 22 & 22 mag cylinders, new in box; Auto ordinance model 1911 AI .45, new in box; China small arms TT Olympic pistol .22 new in box; Smith & Wesson model 659 9 mm with red dot Tasco, new in box; Barretta model U22 22 LR, new in box; Russian Nugent revolver 7.62 with holster, new in box;

Knives: More than 100 knives including Winchester, Remington, Uncle Henry, Swiss Army and Case hunting, pocket and collectible knives, many new in the box; 2 butterfly knives with 14" blade

Ammo: 4 40 mm shells; 250 Savage; 6.5 JA p; 257 Roberts; 30 Remington; 243; 303 Savage; 300 Savage; 356 Winchester; 222 Remington; 7 mm Mauser; 7 mm 08; 308; 22 Hornets; 375 Winchester; 44/40; 38/40 Winchester; 25 auto; 44 mag; 9mm 38 auto; other miscellaneous ammo

Firearms, knives and ammunition will be moved onsite the day of the auction for viewing

There will be more items at this auction too numerous to mention



Scotty Kuntz 573-356-4405
Michael Cunningham 660-651-2288 • Faxton Pittman 918-316-7500

WWW.SCOTTSAUCTIONSERVICE.COM

THE NEMO TRADER

CLASSIFIED COUPON

Clip This Coupon Out of This Week's NEMO Trader and run
2 CLASSIFIED ADS FOR \$5.00

Picture Ads Not Included with Coupon! Call For Pricing!
(Each Ad Must Be 20 Words or Less.)
~20¢ per word over 20 words~

Cash NOT ACCEPTED Check or Money Order Only

Ad No. 1: (20 words or less)

Ad No. 2: (20 words or less)

**YOUR CLASSIFIED AD WILL BE READ IN OVER 19 COUNTIES, IN 3 STATES!
BY COUNTLESS BUYERS!!!**

**TO RECEIVE THIS RATE: COUPON MUST BE MAILED IN
ALONG WITH YOUR PAYMENT!**
**THE NEMO TRADER, P.O. Box 190
KIRKSVILLE, MO. 63501 ~ 660-665-8500**

CLARK COUNTY, MO VIRTUAL ONLINE LAND AUCTION

FRIDAY, OCTOBER 15, 2021 @ 10:00 A.M.

49± ACRES
(Subject to Survey)
1 TRACT

LAND IS LOCATED IN SECTION 28, T65N•R6W, DES MOINES TOWNSHIP, CLARK COUNTY, MISSOURI.
HARD TO FIND SMALL RECREATIONAL PROPERTY WITH INCOME PRODUCING TILLABLE ACRES.

CESSFORD CONSTRUCTION CO.

CLOSING & TITLE WORK BY: OAK HILLS TITLE CO.
307 LEWIS STREET | CANTON, MO | (573) 288-4461

AUCTION MANAGER: Bill Fretwell (660) 341-7735
SULLIVAN AUCTIONEERS, LLC • TOLL FREE (844) 847-2161
www.SullivanAuctioneers.com • IL Lic. #444000107

Farm Equipment, Antiques and Sporting Goods Auction

Saturday, September 25, 2021 at 10:00 a.m.
Rex and Helga Hollenbeck

17995 State Highway DD, Lentner, MO 63450

Directions: 17995 Route DD, Lentner, Missouri. From U.S. Highway 36 at Lentner, Missouri, follow State Highway A South to State Highway DD. Watch for signs the day of the sale.

Farm and Livestock Equipment: 474 International gas tractor showing 23,116 hours, nice little tractor; Parker gravity flow wagon; Farnall cub tractor; concrete bull float; branding iron burner; 2 complete sets of irons; 3 point Danuser post hole digger; air tailgate for Ford pickup; old corn sheller; miscellaneous gat hinges and electric fence ratchets; 9' International chisel plow; 15' International field cultivator; 7' John Deere brush hog; 3 point 8' blade; log chains; International center hubcap from L-160 truck;

Antiques and Collectibles: Antique high wheel corn wagon sold by : N.E. Hollenbeck, Lentner, MO; longhorn skulls; antique well pump; antique shop cabinet; license plates; machinist organizer; antique school desk from Fairview school; 1980;s plat book; antique meat cleaver; primitive glass front cabinet; antique barbwire collection; hand painted longhorn painting by Ellen Alley (1982); cast iron dinner bell; antique wash stand; nail keg; cast elephant door stop; copper boiler; German wall chime clock; German saddle; oak antique table; antique side chairs; miscellaneous pictures and prints; glassware

Tools and Equipment: 150 PSI 110V air compressor; Lincoln AC-225 arc welder; oxy and acetylene torch set; metal storage locker; wood bolt organizer; numerous extension cords; roll around tool chest; Duracraft drill press; Miscellaneous lumber; miscellaneous hand tools; bottle jacks; long handle tools;

Outdoors and Sporting Goods: Old bicycles; Custom 22-250 with bull barrel and Nikon scope; NATMT2 Van Buran AR15; Browning Belgium 12 gauge, 28 1/2 barrel; Winchester model 12, 12 gauge, nickel steel; L.C. Smith side by side double barrel 12 gauge Damascus barrel; Remington model 870 12 gauge; Marlin 17 MMR with Bushnell scope; Winchester 275 94AE XTR, Mark Twain edition 67 of 150; Winchester model 70 30-06 featherweight; Winchester model 94 XTR 375 Mark Twain edition 27 or 150; Winchester 30-30 model 94 Lone Star commemorative; Mossberg model 380 22 LR; Savage model 10 243; Acura trigger with Simmons scope; Winchester model 12 12 gauge, full choke; M&R 22 9 shot revolver; Smith & Wesson M&P 22 semi automatic pistol; Smith & Wesson 22 M&P with rail laser and lighted sight; Colt Detective Special 38 snub nose; Colt Officer Special 22 LR with 6" & 11" barrels; Remington Derringer 31 Rem fire pocket pistol; Ruger 22/45 Mark III with bull barrel; Colt 1911 U.S. Army 45 caliber; Smith & Wesson M&P 40 caliber; Ruger Security Six 357 mag; Ruger 380 caliber LCP; Taurus 45 Millennium; Colt Dragoon picket model stage coach scene on cylinder 1849 31 caliber; Ruger LC 9-5 9mm with improved trigger; Colt single action 22 Scout 1819 Arkansas Territory sesquicentennial 1969; Ruger SR 22P 22 LR; Colt 22 single action Frontier Scout 1819 Alabama sesquicentennial 1969; Mossberg Maverick 12 gauge Security, new in box; Mossberg 22LR 702 Plinkster, new in box; Daisy lever action BB gun; Crossman pump BB gun; Liberty 30 gun safe with combination lock; lots of ammo; 40 ACP, 22-250, 38 special; 30-06; 243; 17, 22 LR; J.C. Higgins Model 10116 22 LR; miscellaneous scopes

Household items: Amana chest type freezer; Tru Test Imperial chest freezer; oak kitchen cupboard; Crafts; file cabinets; maple end tables; maple China hutch; drop leaf table; hide-a-bed; miscellaneous chairs.

There will be many more items at this auction too numerous to mention.



Scotty Kuntz 573-356-4405

Michael Cunningham 660-651-2288 • Paxton Pittman 918-316-7500

WWW.SCOTTSAUCTIONSERVICE.COM

SCHMUCKER PRODUCE Has tomatoes by lb, onion, cucumber, zucchini squash, acron melon, pepper beats, canning tomatoes, \$9 for 1/2 bu while they last, 7 miles North Kirksville to Ft Madison Way 1/2 mile East

HUSKY MIX PUPPIES Ready for their new homes, they have had their first 3 rounds of shots and one round of deworming, \$150 OBO. Please call/text 515-249-9655 (When calling please leave a message)

FOR SALE: 2014 RZR 800-S, nice older person driven, 3200 miles, \$8495. Kirksville 660-341-9522

HIGH QUALITY Hay for sale \$45 per bale. 217-653-4762

FOR SALE: 1998 Jeep Cherokee 4 WD, 4 door, air, radio, Reese hitch, 145,000 miles, \$3200 cash. Text 217-653-7100 for return call. Canton MO

FOR SALE: Gleaner R62 combine, CDF rotor lateral tilt; MF 850 D hydra; NH TR 96; IHC 1440 diesel; MF 750 diesel; 2 kastern silage wagon; JD 55 EB 12' platform. 217-658-4760

FOR SALE: Good used Industrial Channel drain tin 27 gauge approx., galvanized under white paint, very few holes, large number of long sheets; Antique paver brick (Moberly Missouri Pavers), \$4.00 per brick, also Solid red brick .75 cents per brick. 660-676-5021 Clarence MO

For sale: 8 Great Pyrenees puppies, 4 females, 4 males, 5 weeks old, \$250 each. Leroy Borntrager 12743 Hilton Ave LaPlata MO 63549

FOR SALE: John Deere 2950 Tractor, MFWD, CAH, 5,000 hrs, 90% tires, Westendorf Loader, cold AC, \$25,500. Call 573-881-3557

Driveway repair. Excavation. Trenching. Brush clearing. Site prep and cleanup. Leveling. CRP work. Transportation. Heavy installation. Welding. 660-216-7268

FOR SALE: Great Pyrenees puppies, born 7-25-21 \$125 each or \$100 each for the litter or what is left. Mose Miller 12548 Hilton Ave LaPlata MO 63549

High Farm Retirement AUCTION

LARRY & DENISE HEAD 29258 State HWY 15 - Memphis MO 63555

Tuesday, September 28, 2021 @ 9:00 A.M.

Directions: From Memphis Missouri, go South on HWY 15 - 12 miles to auction site. From Edina MO go North on HWY 15 - 12 miles to auction site. Watch for signs!

Machinery

Kubota M9000 w/ Kubota LA1251 loader, FWA, 4033 hrs, runs good
2005 JD 325 Skidsteer, 1047 hrs, full cab - Hesston 560 round baler
AC 6070 tractor w/ AC 460 loader, FWA, unnown hrs. - skid steer hay forks
Allis Chalmers 7040 tractor w/ 8070 engine, new tires, unknown hrs, power shift
IH 950 grinder mixer - Schwartz 3 pt snowblower - (3) gravity flow wagons
LandPride 35-120 10' pull type brush cutter - Grouser skid steer tracks
5 bottom MF plow - 13' Tye 3 pt grain drill - MF side delivery rake
14' JD tandem disc - H&S 8 wheel rake - JD 18' field cultivator w/ harrow
1979 NI 1 row corn picker - JD 7000 6 row planter w/ 15 bu. bulk tanks
Danuser post digger w/ extension & 24" bit - (3) 3 pt bale carriers
Shop built 8' 3 pt blade - (2) NH 451 3 pt sickle mowers
JD 400 Hydra Push manure spreader



Snap-On - Cornwell - MAC Tools
60"X24"X48" Cornwell toolbox
21"X24"X48" Cornwell side cabinet
Selling a full selection of Snap-On, Cornwell, & Mac tools.
Please refer to our website:
www.highauctionservice.com
for complete listing & photos



Trailers - UTV'S - Lawn & Garden

2016 6X20 Calico stock/horse trailer, very nice
2000 May 28' gooseneck flatbed trailer, 7000# axles
1974 Dodge D600 4 ton truck w/ 15' dump bed
2015 Polaris Ace Sportsman 570, 558 miles
12' truck box wagon w/ hoist
2016 JD 825i gator, 6500 miles
JD X300 42" riding mower - Poulan push mower
Eathquake 16" rear tine tiller - 14' jon boat
Poulan push mower - 7X7 poly garden shed

FOR INFO CONTACT LARRY 660-216-9009



Livestock Equipment - Hay - Silage

20X7 4 bale hay combo feeder trailer
(35) concrete J bunks, 2 styles
Portable squeeze chute w/ palpation cage & Foremost headgate - cattle squeeze chute
Mineral feeders - Brower 2 hole hog feeder
(5) bale feeders - elevator feed bunks
Various water tanks - old hedge post
Lots of various gates & panels
(4) 4"X40' steel pipe - new & used t-posts
Approx. 50 ton 2021 Ryelage, 14.5% protein
Approx. 200 5'x6' grass hay bales
Approx. 100 small square of straw
(23) big round stalk bales



Lunch served by Bobby Rays

Auctioneer's note: After making the decision to retire off the farm, Larry & Denise will be offering this fine selection of machinery, livestock equipment, and shop tools up for auction. There will be many more items than this bill reflects. Hope to see you there!

High Auction Service LLC - Kris High 660.342.8634 | Randy High 660.216.0515

www.highauctionservice.com

e-mail: highauctionservice@gmail.com

Cash or check with proper ID. Not responsible for accidents or theft. Announcements day of the sale take precedence over any advertising.

FOR SALE: IHC 983 corn head; IHC 883 corn head; Drago 830 corn head, adj deck plates; IHC 820 17 1/2' MF 830 for JD. 217-658-4761

FOR SALE: 2 Killer Instinct Cross Bows, brand new, comes with everything, \$350 each; 2 Marlin 30-30, excellent condition, \$675 each. 217-577-9538

FOR SALE: 10 Week old AKC American Brittany puppies, born 6/27/21, 8 available, 2 females, 6 males. Located in Lewistown MO Call or text 573-248-6895

Logan Agri-Service, Inc. of LaBelle, MO is growing and looking to add members to its team. We are currently looking for someone to operate a sprayer and/or fertilizer spreader. We are also looking for someone who can drive application support equipment (nurse/tender truck). We will train the right person. If you are interested in joining the Logan team, contact Luke Lay, LaBelle Plant Manager, at 660-342-6424

SCHMUCKER PRODUCE: Nice canning tomatoes by 1/2 box. Also, cucumber, onion, zucchini squash. Also tomatoes by the pound. Pumpkins, also specialty squash, 6 for \$10. 7 miles N of Kirksville to Ft. Madison Way, then East 1/2 mile.



Shelbina Commercial Real Estate Auction

Tuesday, October 5, 2021 at 5:00 p.m.
Former Church Building Auction
 202 W Walnut Street, Shelbina, MO 634681

Directions: 202 W Walnut Street, Shelbina, Missouri. From US Highway 36 at Shelbina, follow Highway 15 (North Center Street) South for 0.3 miles, turn right on Walnut Street and the property will be on your right. Watch for signs the day of the sale.

Real Estate: This large brick church building has 3 levels above ground, a large balcony with pews, a lot of original woodwork, hardwood flooring throughout the majority of the building including the sanctuary, large pocket doors, 6 stained glass windows, ornate original crown molding, multiple classrooms or office areas, five restrooms with commodes and sinks, a large working kitchen, a handicap accessible entrance. Included are all pews, the sound system, the pipe organ and piping, shelving that can be removed or left stationary, numerous folding chairs and tables, several pianos and numerous hymnals. The building has not been operational as a church for approximately 2 years. It could be used for that purpose or easily converted for other uses. This is an absolute auction and the property will be sold on this day.

The real estate will sell promptly at five o'clock. If you would like to schedule your personal showing, please call Scotty at 573-356-4405.

**See Terms and Conditions for Purchase of Real Estate below.*

DOWN PAYMENT: 10% of the contract purchase price will be due upon acceptance of the Sales Contract. Personal or Cashier's Checks will be accepted. This is "AS IS, WHERE IS" and is non-refundable.

CLOSING: Closing shall be within 30 days of the auction date.



Scotty Kuntz 573-356-4405
 Michael Cunningham 660-651-2288 • Paxton Pittman 918-316-7500
 WWW.SCOTTYSAUCTIONSERVICE.COM

ANYTHING ON WHEELS!



highway63insurance.com



Edina, Missouri
 Weekly Sales Start @ 12:30pm

Friday, September 17th - Special Bred Cow Sale

Hagan & Heinke - Spring Bred Cows

Friday, September 24th - Special Feeder Calf Sale

Watch for upcoming Fall Calving Cow Sale

To Consign For Any or All Sales or For Information Call:
 Owner - Kevin Strange • Cell: 660-341-9974
 Ryan Strange • Cell: 660-341-9721
 Sale Barn: 660-397-9999

Field Reps:	Mike Bronstine 660-341-9965	Jason Bischel 660-216-0373
Bill Tom HALL 660-342-5420	Trey Gashwiler 660-216-8751	John Powell 660-341-1717

NEOMO TRADER • Advertise with us TODAY! • Phone: 660.665.8500
 PO BOX 190 • KIRKSVILLE, MO 63501



McAfee/Hayes Auction Service, LLC

375 S Johnson • Kahoka, MO
 660-727-3796

www.mcafeeauctionservice.com

TIMED ONLINE ONLY FARM MACHINERY & TOOL AUCTION

LOTS START ENDING AT 10 AM ON TUESDAY SEPTEMBER 21ST



SELLING TRACTORS, COMBINE, RTV, TRAILERS, ROTARY CUTTERS, FARM EQUIP., FARM RELATED, SHOP & TOOLS RELATED.

CHECK OUR WEBSITE FOR COMPLETE DETAILS

MAJORITY OF ITEMS CAN BE PREVIEWED ON OUR LOT AT 375 S JOHNSON, KAHOKA (COMBINE & GRAIN CART OFF SITE)

THE FAMILIES OF CLIFFORD & LOLA GARES, GEORGE T. MARTIN & OTHERS



McAfee/Hayes Auction Service, LLC

375 S Johnson • Kahoka, MO
 660-727-3796

www.mcafeeauctionservice.com

TIMED ONLINE ONLY RESTAURANT EQUIPMENT AUCTION

LOTS START ENDING AT 1 PM ON THURSDAY SEPTEMBER 30TH



As Steve & Anne have purchased a former restaurant and are renovating the property for a different purpose, they will be liquidating all the restaurant equipment from this structure.

CHECK OUR WEBSITE FOR COMPLETE DETAILS

PREVIEW - MONDAY SEPT. 20TH 10 AM - NOON
 ITEMS LOCATED AT 461 N JOHNSON, KAHOKA, MO

STEVE & ANNE HOWELL, SELLERS



McAfee/Hayes Auction Service, LLC

375 S Johnson • Kahoka, MO
660-727-3796

www.mcafeeauctionservice.com

RURAL RESIDENTIAL REAL ESTATE AUCTION

THURSDAY SEPT 23RD - 6 PM

Sale conducted onsite located 1 1/2 miles East of Hurdland, MO on Hwy. 6 (48855 State Hwy. 6 Hurdland, MO)



Take advantage of this rare opportunity to purchase a very well built 3248 sq' total living space 3- plus bedroom, 3 car garage, walk out basement, full brick home. Home features 1624 sq' on main level, 1624 sq' finished basement, 2 bathrooms, 2 kitchens, geo thermal heat and air, 2 fireplaces. Many nice updates! Setting on 3 +/- Surveyed acres w/ pond, mature trees and nice landscaping. (Subject to final survey)

JERRY J. & ESTHER A. PLOWMAN TRUST



McAfee/Hayes Auction Service, LLC

375 S Johnson • Kahoka, MO
660-727-3796

www.mcafeeauctionservice.com

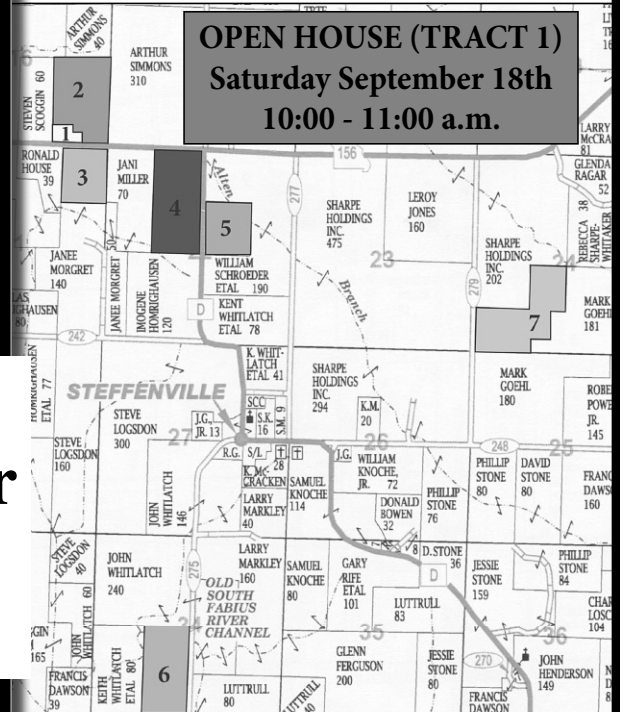
Lewis County, MO LAND AUCTION

Sale conducted at the Queen of Peace Hall
103 W. Clow Ave. Ewing MO

**428 +/- ACRES/
7 TRACTS**

**Productive
Tillable
Farmland,
Pasture,
Woodlands,
Home, Pole
Building**

**Tuesday,
September
28TH
at 6 PM**



**OPEN HOUSE (TRACT 1)
Saturday September 18th
10:00 - 11:00 a.m.**

**THE FAMILY OF
SAM & MARY MCCRACKEN**



McAfee/Hayes Auction Service, LLC

375 S Johnson • Kahoka, MO
660-727-3796

www.mcafeeauctionservice.com

Clark County, MO LAND AUCTION

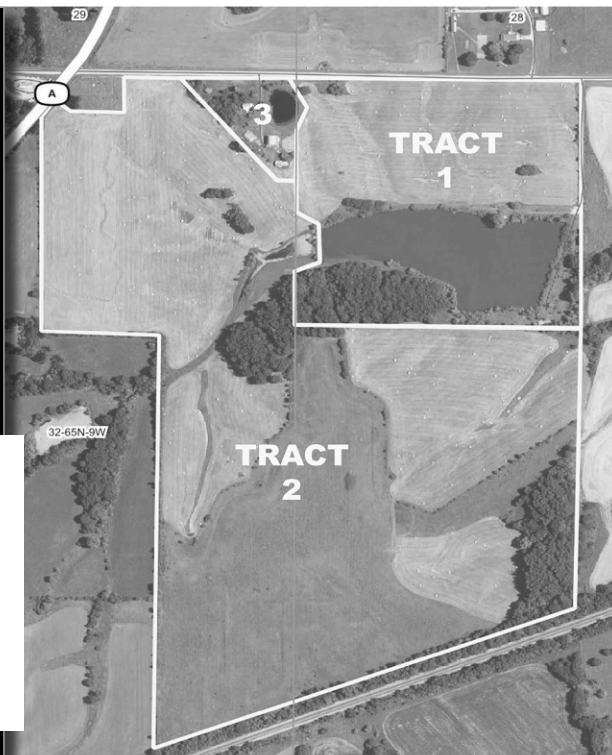
Sale will be conducted at the Care Building located at
451 N. Vine Street Kahoka, MO

160 ACRES/ 3 TRACTS

Tracts located 1/4 miles north of Wyaconda, MO on Hwy A.
(Address : 11980 Co Rd 127-EW, Wyaconda MO)

**Productive
Tillable
Farmland,
CRP Income,
9.63 Acre Lake,
Homestead/
Out Buildings**

**Tuesday,
October
12TH
at 6 PM**



THE FAMILY OF GEORGE T. MARTIN



McAfee/Hayes Auction Service, LLC

375 S Johnson • Kahoka, MO
660-727-3796

www.mcafeeauctionservice.com

Clark County, MO LAND AUCTION

Sale will be conducted at the Care Building located at
451 N. Vine Street Kahoka, MO

TUESDAY, OCTOBER 19TH - 6 PM

334 ACRES/ 5 TRACTS



The Gares farms are lying South and Southeast of Kahoka, MO ranging from 2 miles to 4 3/4 miles from town. These tracts offer attractive combination farms with productive rowcrop acreage, pasture land with fencing, lake, ponds, several building sites and a homestead with several desirable outbuildings.

**THE FAMILY OF
CLIFFORD & LOLA GARES, SELLER
DENNIS W. SMITH, REP. ATTORNEY**