

**FREE!**

NEW EDITION EVERY FRIDAY!  
VOL. 29 • NO. 36 • SEPTEMBER 24, 2021

# NEMO *Trader*

**THE NEMO TRADER**

PO BOX 190 • KIRKSVILLE, MO 63501

PHONE 660-665-8500

Web Site: [nemotrader.net](http://nemotrader.net)

Email: [nemotrader@gatehousemedia.com](mailto:nemotrader@gatehousemedia.com)

A WEEKLY ADVERTISER SERVING ALL OF NORTHEAST MISSOURI AND THE SURROUNDING AREA



# AMMO PLANET

200 W. POTTER AVE • KIRKSVILLE, MO • 660-956-4654 • 660-349-0070  
AMMO-PLANET.COM • HOURS: MON & TUE 10-5 • WED-FRI 10-6 • SAT 9-3



**Anderson Manufacturing**

AM-15  
5.56 / 223

**ON SALE \$549**



**Anderson Manufacturing**

AM-15 Complete Lower

**\$255** with matching handguard



**Rock Island Armory**

VR60 12ga

**\$499**

**FREE 9RD MAG** with  
purchase of VR60 until  
supplies run out



**CMMG**

Banshee 300 MK4

5.7x28mm

**Glocks in stock NOW:**

- Glock 19 9mm
- Glock 19X 9mm
- Glock 48 9mm
- Glock 17 gen 3 9mm
- Glock 17 gen 5 9mm
- Glock 45 9mm
- Glock 17 gen 5 MOS 9mm
- Glock 34 9mm
- Glock 23 40 S&W

**Timney Triggers for Glock gen 3, 4, & 5**  
NOW IN STOCK!

**\$149.99**



**Smith & Wesson**

M&P15-22 22LR

**\$425**

**Garmin Authorized Dealer!**

- ALPHA 200i- IN STOCK NOW
- ALPHA 100- IN STOCK NOW
- ALPHA 100 /TT 15- IN STOCK NOW
- TT 15 Mini Dog Device- IN STOCK NOW
- Drivetrack 71 North America -IN STOCK NOW

The

# NEMO

*Trader*

IS NOW A

# PROUD MEMBER

OF THE

# PHILLIPS MEDIA GROUP

# NEWSPAPER FAMILY

*Watch for exciting changes coming soon!*



WANTED TO BUY: 12'-15' Brush Hog in new or good condition; also good used pickup truck. 660-676-9199

FOR SALE: NH 973 20' flex; NH 973 25' flex; NH 974 630 corn head; MF 1163 corn head; MF 1144 corn head; Gleaner 630 LM or R; Gleaner 830 corn head LM or R. 217-658-4761

FOR SALE: John Deere 2950 MFWD Tractor, w/Farmhand XL 740 Loader, 6000 hrs, average condition, \$24,950. Call 573-881-3557

FOR SALE: 2 Killer Instinct Cross Bows, brand new, comes with everything, \$350 each; 2 Marlin 30-30, excellent condition, \$675 each. 217-577-9538

FOR SALE: 20" rims Verde 5 bolt, GM, nice condition, 2 Falcon 275/45R20 tires, usable tread included, \$850, make offer. 660-956-5306.

FOR SALE: Heider Auger Wagon, 100 bushel, 540 PTO, boards on each side, manual auger swing either side, shedded, clean solid wagon, \$750. 217-257-1385 anytime

WANTED TO BUY: Farm Machinery and Estates. Call James L. Johnston. 573-473-4904

STOCK MOBILE HOMES AVAILABLE: We gottem, single and double 3 and 4 bedroom! Call Tuffy 573-657-2176 amegamobilehomes.com

WANTED TO BUY: Harley Davidson's, any year, any condition, cash money. Days 660-263-1356 or 660-537-0068

FOR SALE: New 3 pt. tillers, heavy duty, gear driven, 7' to 10' starting at \$3050. 660-874-4455

HANDYMAN: Install interior and exterior doors and windows, siding, decks, showers and toilets, flooring and drywall, roofs and dirt work. 660-956-2189.

FOR SALE: International 674 diesel with Quick Tach hydraulic bucket loader, power steering, good tires & paint, \$9700. 660-341-8089

FOR SALE: Progressive 1300 12K NH3 WT on M&W dual no till coulters raven coolers monitor markers, for strip till; DMI 4200 NH3 WT on M&W raven 440M 14K no till. 217-658-4761

FOR SALE: John Deere 2040 Tractor, sharp, 90% rubber, 5565 hrs, hydr valve, Loader available, \$9,750. Call 573-881-3557

FOR SALE: 2012 GMC Sierra, 117,000 miles, 4 door, 6 speed transmission, 20" wheels, all leather, heated and cooled electric seats. Best model bed liner, bed rails, running boards, backup camera, white in color, \$22,000. Lentner, MO 660-699-3741.

NATIVE PLANTS for butterfly gardens, rain gardens, hard to mow banks, and restoration. Peckosh Landscaping 23198 Hwy H/Boundary St. Kirksville, MO. Just north of the Troy Mills store. Call Claire at 660-349-0061.

ARE YOU COVERED? Accidents and illnesses occur without warning. Let us help you make sure you, your family and/or employees are covered. Health, Cancer, Accident, Hospital, Critical Illness, Short Term Disability, Dental, Vision, Life. Linda 660-537-5177 linda\_buchmann@us.aflac.com Denise 314-465-5611 denise@healthinsuranceagt.com

FOR SALE: Side by side refrigerator/freezer, works good, \$150. Argyle, IA 319-410-0277.

FOR SALE: Smooth mouth mare \$600; also small bales of straw \$5.00; 4x5 net wrapped hay, \$45. 660-342-5314

FOR SALE: Mayrath 10" x 65' auger, Swing hopper dtd lift, \$1250; Westfield 8"x61' swing hopper, \$650; Kewanee 8"x 60', \$350; other Auger disks, disk chisels. 217-658-4761

WANTED TO BUY: Sports Card Collections & Accumulations. Unopened Boxes, Cases, Sets, Etc. 319-470-2786

FOR SALE: 10 Week old AKC American Brittany puppies, born 6/27/21, 8 available, 2 females, 6 males. Located in Lewistown MO Call or text 573-248-6895

Logan Agri-Service, Inc. of LaBelle, MO is growing and looking to add members to its team. We are currently looking for someone to operate a sprayer and/or fertilizer spreader. We are also looking for someone who can drive application support equipment (nurse/tender truck). We will train the right person. If you are interested in joining the Logan team, contact Luke Lay, LaBelle Plant Manager, at 660-342-6424

**Only a few bin packages left for 2021!**

Call Now!!

48" x9 Ring  
48" x10 Ring  
48" x12 Ring

GRAIN BINS SUPPLY "The Grain Bin People" GBS

(660) 263-6700 - Cairo  
(573) 594-2167 - Vandaila  
www.grainbinsupply.com

Sukup

KM-70KDE065

GOOD WORKING CONDITION

2010 HUTCHINSON-MAYRATH 13"x72' GRAIN AUGER SWING AROUND HOPPER

**\$3,600**

PHONE 660-665-8996 OR 660-216-1335

KM-70KDE432

Buyer of Standing Timber Any Species. Land Clearing and Clear Cutting Available. TSI Work. Kline Dried Firewood For Sale. Bonded. State Line Firewood 641-898-2398

**VERSATILE**

versatile-ag.com

**Simply Productive Simply Versatile**

The Versatile Nemesis distills over half a century of rugged horsepower into a mid-range tractor that can be used for every day operation. Available from 175 - 210 hp, the tractor features industry-leading components from Cummins and ZF for superior value and enhanced performance. The largest cab in the segment also provides ideal visibility and reduced operator fatigue. Other notable features include an easy to understand advance hydraulic system and a standard 360 degree lighting package.

©2021 BUHLER VERSATILE INC. | ALL RIGHTS RESERVED | INFO@VERSATILE-AG

- NEW TRACTORS-**
- VERSATILE NEMESIS 175 - RIGID FRONT AXLE W/ DIFF LOCK, 5 EHR VALVES W/ HIGH FLOW, QUICK HITCH CAT 3, HD CAT 3 DRAWBAR, RADAR, VPASS STEER READY, LOADER W/ SOFT RIDE & 102" BUCKET
  - VERSATILE NEMESIS 210 - FRONT SINGLES, REAR DUALS, FRONT SUSP AXLE W/ DIFF LOCK, 5 EHR VALVES W/ HIGH FLOW, QUICK HITCH CAT 3, HD CAT 3 DRAWBAR, RADAR, VPASS STEER READY
- USED TRACTORS-**
- 2011 NEW HOLLAND T6030 - 1880 HRS, 115HP, 3 REMOTES, 540/1000 PTO, 16X16 PARTIAL POWERSHIFT TRANSMISSION -NEW, SUPER STEER
  - 2018 VERSATILE 335 - DUALS, DELUXE CAB, HD DRAWBAR 1.5" PIN, REAR WEIGHTS 4X200, FRONT WEIGHTS 24X30, GPS, 500 HRS...\$179,500
  - 2013 NEW HOLLAND T8.330 - LUXURY CAB W/ SUSPENSION, 18F POWERSHIFT, CLASS 4.75 STD AXLE, HI FLOW, 5 ELEC REMOTES, 1000 PTO, 3 PT HD HITCH W/ HYD TOP LINK, FRONT WEIGHTS, DUALS
  - 2016 NEW HOLLAND T8.380 - CVT, 2972 HRS, DUALS, FRONT WEIGHTS, DELUXE LEATHER SEAT, SUSP FRONT AXLE...\$139,000
  - 2007 CASE IH STX530 - LIKE NEW TRACKS, 5 REMOTES, 4580 HRS...\$189,500
  - 2014 NEW HOLLAND T9.600 - 3228 HRS, GPS, LUXURY CAB, POWER SHIFT, DIFF LOCK, HI CAP PUMP, 6 REAR REMOTES, HID LIGHTING, TRACK

- USED COMBINES-**
- 2008 NEW HOLLAND CR9070 - 1750 ENGINE HRS & 1250 THRESH HRS ...\$135,000
  - 2009 NEW HOLLAND CR9070 ... \$54,900
  - 2010 NEW HOLLAND CR9070 - 2211 ENGINE HRS ...\$120,000
  - 2014 NEW HOLLAND CR8090 - 1100 HRS, ALL NEW TIRES, 4WD
  - 2013 NEW HOLLAND CR8090 - 1100 HRS, ALL NEW TIRES, 4WD
  - 2014 NEW HOLLAND CR6.90 - 2WD, 520/85R42 DUALS, 1630 ENG HRS & 1181 SEP HRS
  - 2013 NEW HOLLAND CR6090 - 2219.19 HRS, 1585.84 THRESHING...\$139,500
  - 2008 NEW HOLLAND CR9060 - 4WD, C/B ROTOR, SL CLEANING SHOE, 2008 HRS
  - 1991 NEW HOLLAND TR86 ... \$12,000
  - 1993 GLEANER R52 - 2WD, DUETZ ALLIS...\$19,829
  - 2007 GLEANER A75 - 3345 ENG, 2240 SEP HRS, MUD HOG RWA, - LATERAL TILT...\$52,500
  - 2010 CASE IH 8120 - 2312 SEP HRS, RWA, 36" TRACKS ON FRONT, GPS, NAV II, LATERAL TILT FEEDER HOUSE, AIR SEAT LEATHER, 350 BU GRAIN TANK, STRAW CHOPPER...\$105,000
- Quincy Tractor Hannibal Tractor Bowling Green Tractor Brookfield Tractor
- 833-774-1606
- WWW.QUINCYTRACTORLLC.COM



# BURKHOLDER



**2017 Ford F-350 Lariat, 4x4, Crew**  
6.7 Diesel, Auto, 98k Miles, High Rise Fiberglass Topper, A Must See Truck, Very Nice-Clean, Black

Full line of accessories Outfit your truck here!

**\$64,900**

**Edina 660-397-2551 51001 State Hwy 15 BurkholderTruckSales.com**



**\$59,900**

**2020 Ram 2500 Tradesman, 4x4**  
Crew, 6.7 Diesel, Auto, 16k Miles, One-Owner, Clean Carfax, Near New, Maroon



**\$65,900**

**2018 GMC Sierra 3500HD Denali**  
4x4, Crew, 6.6 Duramax, Allison, 76k One Owner Mi, Nice, Ready for the Road, Black



**\$59,900**

**2017 Ford F-250 XLT FX4, 4x4**  
Crew Cab, 6.7 Diesel, Auto, Only 20k One Owner Miles, Near New, Come See, Gray



**\$32,900**

**2016 Chevy Silverado 3500HD WT**  
4x4, Double Cab, Long Bed, 6.0V8, Auto, 144k Mi, Clean Carfax, Nice-Clean, White



**\$52,900**

**2016 Chevy Silverado 3500HD WT**  
4x4, Reg Cab, 6.6 Duramax, Allison, 34k Miles, Clean Carfax, Hard to Find, White



**\$41,900**

**2015 Ford F-250 XLT FX4, 4x4**  
Crew, 6.7 Diesel, Auto, 99k Miles, Local Trade, Extra Nice, Very Well Kept, White



**\$33,900**

**2015 Chevy Silverado 2500HD LT**  
Z71, 4x4, Crew, 6.0V8, Auto, 146k Miles, Local Trade, Clean Carfax, Nice, Maroon



**\$42,900**

**2010 Dodge Ram 3500 Laramie**  
Dually, Crew, 6.7 Cummins, Auto, 103k Mi, Very Well Kept, Arkansas Truck, Nice, Silver



**\$19,900**

**2009 Ford F-250 XL, 4x4, Reg Cab**  
Long Bed, 5.4V8, Auto, 96k One-Owner Miles, Local Truck, A MUST SEE, Red

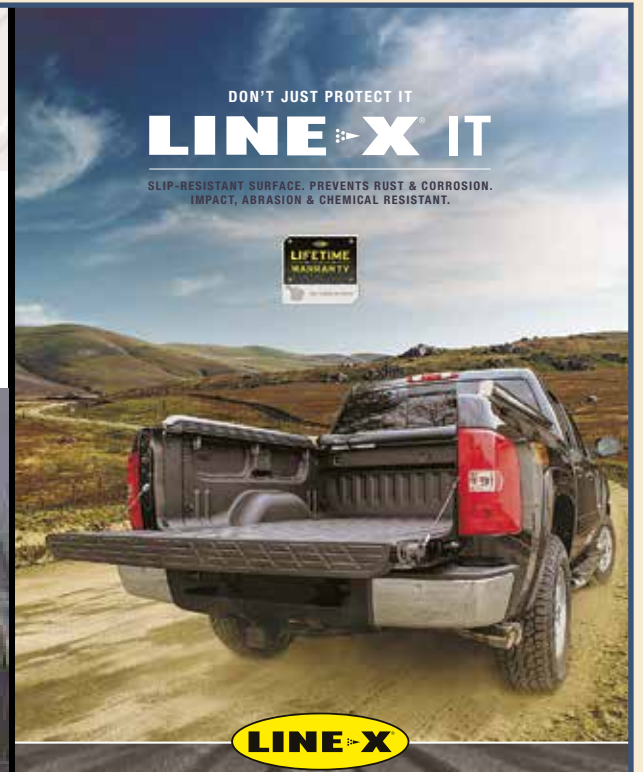
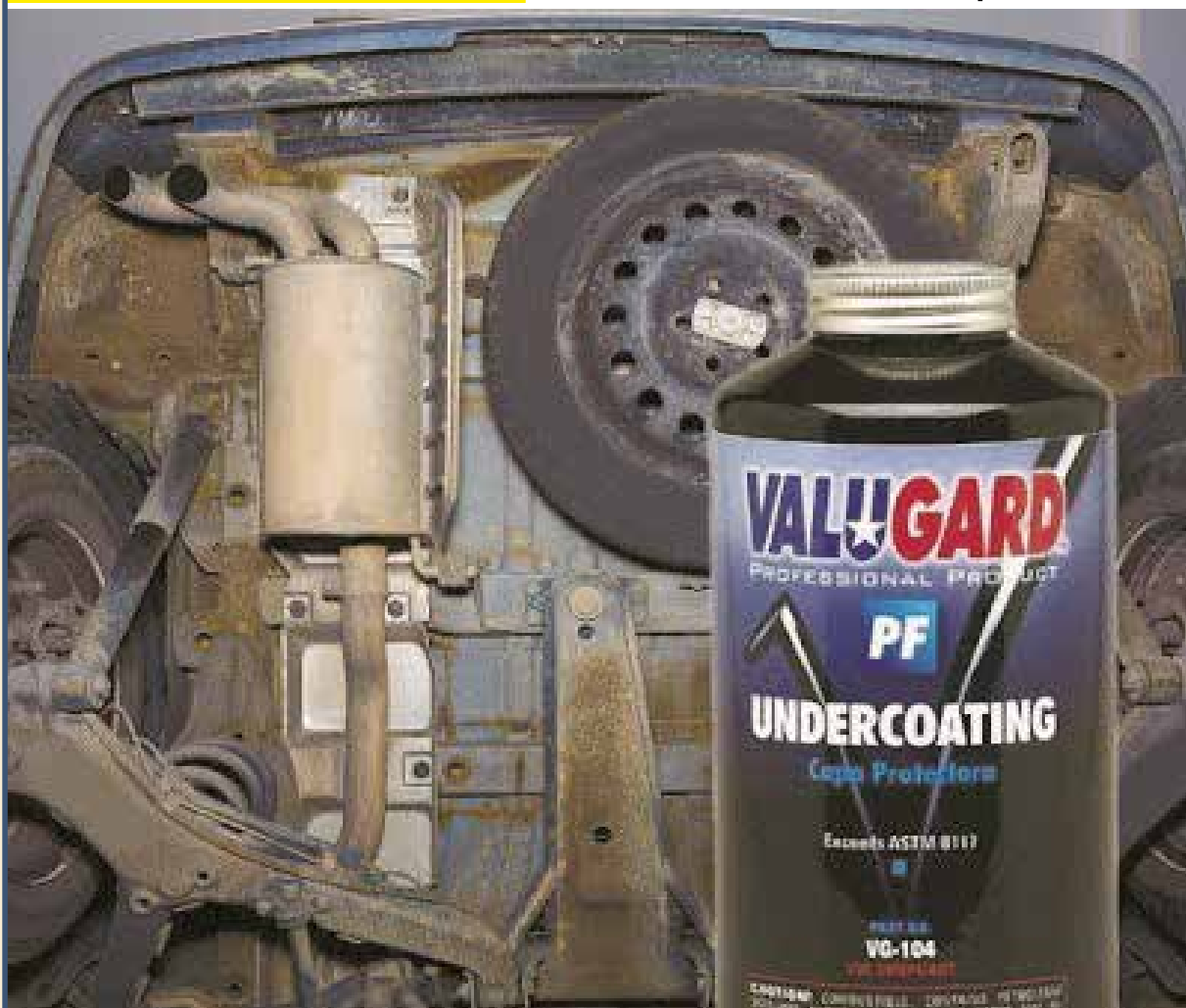
**Financing Options Available**

## THIS MONTH'S SPECIAL!!

**50%**



**Rust Proofing**  
With an Undercoat purchase



### Quality Brands We Carry



**AUTO & TRUCK SALES + ACCESSORIES**





**HELP WANTED**

**NEED A CHANGE??**

*Due to our expanding business,  
we are accepting applications for*

# AUTO TECHNICIAN

*Competitive Wages • Group Insurance  
• Vacation Retirement Plan*

**Stop by to see Terry and Pick your application up TODAY!!**

*MUST HAVE TOOLS & DRIVERS LICENSE*

## Woody's Tire, Auto & Towing LLC

**1102 N. Green St., Kirksville, MO • 660-665-8617**

**HELP WANTED**







**HARRISON FISHERY**  
POND & LAKE STOCKING  
Call us today! 660.423.5482

## Your trusted source for quality Fish!

Harrison Fishery, Inc. is a family owned and operated business.

We stock most species freshwater, game & baitfish.

Contact us for price & delivery

curtis@harrisonfishery.com  
**660-423-5482**

Species Available	Bluegill	Walleye
Largemouth bass	Redear sunfish	Muskie
Hybrid bluegill	Black crappie	Catfish
Golden shiners	Fathead minnow	<i>and More!</i>

Time to gather up the little ones,  
get their fishing poles  
and go enjoy a day of fishing



**www.harrisonfishery.com**



# email

nemotrader@gatehousemedia.com

**SCHMUCKER PRODUCE:** Nice canning tomatoes by 1/2 box. Also, cucumber, onion, zucchini squash. Also tomatoes by the pound. Pumpkins, also specialty squash, 6 for \$10. 7 miles N of Kirksville to Ft. Madison Way, then East 1/2 mile.

**FOR SALE:** Pristine Deer Rifle, Remington model 7400, 270 cal, semi-automatic, scope, sling, w/ box of 270 cal ammunition, rifle like new, \$750 for all Kirksville 660-342-4287

**DEER SEASON** is almost here, Mossberg, Patriot & Savage rifles 243, 6.5 Creedmoor, 30-06 available, \$475 each. All new in the box. 217-577-9538

**FOR SALE:** JD 750 15' no till drill, dolly wheels, w/grass seeder; GP 1500 drill w/center pivot no till caddie, \$11,500; ICH 5100 drill 21 hole, w/cylinder press wheels, \$2250. 217-658-4761

**FOR SALE:** Red Angus bull, 2 years old, great EPD's. Semen tested and vaccinated. Double H Red Angus. Call 660-216-3301 or 660-216-1437.

**FOR SALE:** John Deere 4020 Tractor, straight off farm, ft wts, rear wts, 38" tires, 11,000 hrs, roll bar/canopy, runs good, \$13,500. Call 573-881-3557

**FOR SALE:** Silver Lab puppies, 5 weeks old, silver males and females big healthy pups up to date on shots and wormer ready to go Sept 1, farm raised, top quality \$250 660-988-1163

**WHITETAIL INSTITUTE** Food plot seeds, archery supplies, optics, and more. Whitetail Seed and Supply 14136 State Hwy 3 LaPlata MO 63549

**TRUE MODULARS** 30 to 60 day delivery available, 3 and 4 bedroom. 573-657-7040 chateauhomes.net

**NEW SKID** Loader attachments: bale spears, buckets etc., 4200 lb 42" forks, triple blade rotary cutters 74" or 80" grass/brush or tree. NO Sunday Calls 660-988-7385

**AVAILABLE STOCK MOBILE HOMES** immediately, double wide and single, 3 and 4 bedroom. 573-499-9993 columbiadiscountshomes.com

**FOR SALE:** 1991 GMC Grain Truck \$4000, 366 fuel injected gas engine, 5 speed manual transmission with splitter 15' grain bed. Call or text 660-216-3219

**FOR SALE:** 7 Fall-Calving Red Angus Cross Cows, calving now, ages 3-7. Retirement Dispersal, \$1250 each take all. Sutter IL 217-658-3951

**FOR SALE:** Suffolk and Hamp meat type Rams, Ewes and Ewe Lambs. Hindman Breeding 660-341-6625


**LABS, LABS, LABS!!** Male chocolate Lab 2 year old, will make great stud dog or pet \$200. Black female pups 5 months old, \$50 each, black male & female pups 10 weeks old, \$200. All up to date on shots and wormer. Call 660-342-2520

### Golden Grain Bins

Grain Bins	Floors w/12" Supp. & Flashing	
18'x18' 4,195bu. \$ 7,398	18'....\$2,065	30'....\$5,764
27'x21' 11,265bu. \$14,851	21'....\$2,824	36'....\$8,211
42'x24' 32,245bu. \$34,616	27'....\$4,710	42'....\$11,182



**GMLS Industries, Inc.**  
PH: 660-699-2179 or 620-983-2136  
www.gmlsindustries.com




# Extra Help

## 2021

Extra Help is a prescription drug assistance program for people on Medi-care who have limited incomes and assets. The program assists people with Medicare Part D Premiums, deductibles, and co-payments. You may qualify if your income and assets meet these criteria:

EXTRA HELP ELIGIBILITY		
	Monthly In-come Limit	Asset Limit
Single	\$1,630	\$14,790
Couple	\$2,198	\$29,520

For more information and/or assistance, contact: **660.665.8314**



**Heartland RSVP**  
of Northeast Missouri



KM-70KDE386



**Buy with confidence. We have you covered.**



**100% Satisfaction™**



**ACCIDENT Protection Plan™**



**SERVICE Contract Plus™**



**PAY Your Way™**

For more information visit [car-mart.com/peace-of-mind](http://car-mart.com/peace-of-mind)



[car-mart.com](http://car-mart.com)

**660-956-4849 • 2015 North Baltimore • Kirksville**

• Peace of Mind Package

• Service Contract Plus

• Accident Protection Plan

• 100% Satisfaction

• Pay Your Way

• Low Down Payments

• Quality Used Vehicles

• Flexible Financing

• Hand Selected Vehicles

• Convenient Payment Options

• Start Your Approval Online

• Over 150 Locations

• 40 Years in Business

• We Buy Cars



**2013 NISSAN CUBE**  
FWD, 4 Cyl., Silver



**2006 DODGE RAM 1500 SLT**  
4WD, 8 Cyl., 4 doors, Red



**2013 FORD FIESTA**  
FWD, 4 Cyl., Silver



**2008 LEXUS ES350,**  
FWD, 6 Cyl., Red



**2017 FORD ESCAPE SE,**  
FWD, 4 Cyl., White



**2011 CHEVROLET SILVERADO 1500,**  
LT, 4WD, 8 Cyl., Blue



**2012 TOYOTA RAV4,**  
Base, 4WD, 4 Cyl., Black



**2010 Lexus RX350**  
AWD, 6 Cyl., Red



**2007 Ford F150**  
4 WD, 8 Cyl., Gray



**2007 Ford Fusion SE**  
FWD, 6 Cyl. Red



**2007 DODGE RAM 1500 SLT**  
4WD, 8 Cyl., Silver



**2015 KIA SOUL**  
FWD, 4 Cyl., Gray



**2010 CADILLAC ESCALADE,**  
AWD, 8 Cyl., Red



**2010 FORD FOCUS SEL**  
FWD, 4 Cyl., Red



**2008 SUBARU TRIBECA LIMITED,**  
AWD, 6 CYL., GRAY



**2008 MERCURY MOUNTAINEER PREMIER**  
RWD, 8 Cyl., White



**2012 RAM 1500 ST**  
4WD, 8 Cyl., Gray



**2009 KIA RONDO LX,**  
FWD, 4 Cyl., Black



**AMERICA'S CAR-MART**

*Keeping You on the Road*



**ELIZABETH WALTER**  
GENERAL MANAGER





# IT'S FREE! EVERY FRIDAY

The NEMO Trader

CALL US FOR ADVERTISING QUOTES | 660.665.8500

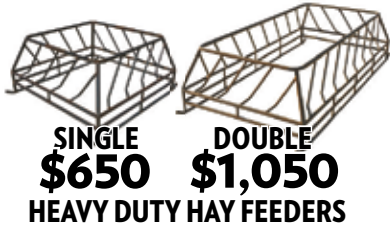


## FOR ALL YOUR FENCING NEEDS.

Quality Cattle Equipment, too!

**620-215-5770** KIRKSVILLE, MO  
SPECIAL ORDERS AVAILABLE

Check out our current inventory at  
Kirksville Livestock Sales.



**SINGLE \$650**  
**DOUBLE \$1,050**  
HEAVY DUTY HAY FEEDERS



**HEAVY-DUTY \$1,050**  
REPLACEMENT BUMPERS  
Dodge, Chevy, Ford & GMC



**HALF TUB \$2,900** **FULL TUB \$3,800**

If you're looking to build a pipe fence or corral, wire fence, or need quality cattle equipment,  
**WE'RE HERE TO SERVE YOU!**



**MINERAL FEEDERS \$375**



**\$3,400**  
ADJUSTABLE ALLEY

Gates • Continuous Panels • Tubs • Alleys • Posts • Pipe • Bumpers • Cattle Feeders

## HAY STORAGE SOLUTIONS AND MUCH MORE!



"Today, I checked with Joseph to see when he was planning to deliver and construct my second hoop building. Two years ago I purchased a 55'x98' hoop building from Skylight buildings. It was erected on my site on time and the building went up in two days.

I was concerned about the durability of a vinyl building compared to a metal sided structure. That was until I noticed that a rock from my Brush Hog 2715 had impelled itself into the metal building. The Skylight building would not have been damaged. Also, the name says a lot. I thought that I would wire in lights like my other buildings but to date I have not found the need.

The reason I thought I needed to build a large building was to store my hay inside. I knew I was losing hay quality due to weather damage but baling with 568 John Deere and net wrapping my hay I thought I was keeping my hay loss at a minimum. I found the first year that I had underestimated my losses. I was very pleased with the results of storing hay inside. It is most gratifying to put a bale into the hay ring and seeing that the previous bale was almost completely consumed by the cows or the feeder calves. I had a record amount of carry over from last year and it is safely stored inside ready to be used this winter! This will allow for hay sales this winter.

The construction of the building's frame is strong, the foundation supports are 24" and very deep. I am very satisfied and have ordered another 55' x 140' to be installed in a few weeks. This one will be used to store our small square bales and equipment.

Thank you Joseph for your service and this chance to recommend your buildings."

Wiley and Susan Hibbard, Perry, Missouri

20749 State Highway VV  
Ethel, MO 63539  
660-486-3250

# Skylight

Fabric Structures

FOR SALE: Boer Spanish Cross & Spanish Nannies, some kidding now, prospects for next year. 641-919-0824 Packwood Iowa

FOR SALE: Agco 3000 630 Ch, elect stripper plates, single point hookup, w/meter corn reel; Drago 830 ch., self adj stripper plates; JD FBB w/grass clutch lift, \$750. 217-658-4761

FOR SALE: John Deere 7220 Tractor, MFWD, CAH, power shift, 9000 one owner hrs, \$49,500. Call 573-881-3557

HUNTING EQUIPMENT sale, 35+ box, bow, hay bale, ladder stands, hog trap, deer and turkey feeders, deer and goose decoys. All used, great condition. 641-208-7353

FOR SALE: Wholesale Southern Yellow Pine. Shelby Supply 660-299-0615

HOUSE FOR SALE: Macon MO, fixer upper 500 feet from the School and 300 feet from the park. 660-676-5531

FOR SALE: Farmhand XL 740 Loader, QT, 7' bucket, good paint, \$3,750. Call 573-881-3557

FOR SALE: Fish for stocking ponds - Catfish, Grass Carp, Crappie, Blue Gills, Red Ear, Bass, and Minnows. Heindselman Family Farms, Call Greg 660-341-5692

SCOTT HUSKEY'S HOME SERVICE R-10 Foundation Enclosure Systems for manufactured, modular, & site built homes. Saves on utilities and prevents freeze ups. General maintenance and repairs since 1972 573-696-3468 "GO DAWGS"

HIGH QUALITY Hay for sale \$45 per bale. 217-653-4762

FOR SALE: Gehl 600 2 row chopper; Fox 2250 2 row corn, hay pickup fox 3000 2 row; Fox w/1 row hd; H&S silage wagon WT gears; Gehl silage wagon; silage wagon. 217-658-4761

FOR SALE: 2 Killer Instinct Cross Bows, brand new, comes with everything, \$350 each; 2 Marlin 30-30, excellent condition, \$675 each. 217-577-9538

FOR SALE: Rossi 4 Basket Tedder, field ready, \$3,250. Call 573-881-3557

## Show Me Plumbing Services



- \*General Mini Excavation & Skid Steer Work
- \*Livestock Watering
- \*Waterlines & Sewer Systems
- \*Residential Services & General Plumbing
- \*Utility Trenching

Stan Schrock • 660-988-1163  
Greentop, MO. • 660-766-2636

## ATTENTION LAND OWNERS!

**BUYER OF STANDING TIMBER**  
**OWNER / OPERATOR OF SAWMILL - BUY/CUT LOGS**  
**CERTIFIED - BONDED - INSURED**



TRI STATE TIMBER L.L.C.  
PH. 660-341-4921 or 660-465-2975  
353 1/2 GRAND AVE. • MEMPHIS, MO 63555



# MOOSE RUN REPAIR

8 YEARS EXPERIENCE

Tractor • Skid Steer • Combine • Air Conditioning  
Self-propelled Forage Harvester & General AG Repairs

## Specializing in John Deere

Engine • Transmission • Hydraulics  
Power Shift/IVT Diagnosis & Repair  
Computer/Electronic System Diagnosis & Repair



**660-988-3843**

DELVIN "MOOSE" STEINER • QUEEN CITY, MO

KM-70KDE01742



# VICTORY

## Metals & Recycling

Kirksville, MO 660-665-8000

victorymetalrecycling.com

For current scrap prices call or visit our [Facebook Page](#)

### ★ Construction/Debris Recycling

Visit Kirksville's construction & debris recycling facility and save trips to the landfill! Take advantage of this service for solid waste removal by bringing your landfill items to Victory Metals C & D recycling facility located at 3602 N. Industrial Rd.

### ★ Roll-Off Container Service

10-20-30-40 Cubic Yard Dumpsters

3602 N. Industrial Rd.,  
Kirksville, MO 63501

djanessvmr@gmail.com

www.victorymetalrecycling.com



## For Your Equipment Needs!

LOTS OF USED EQUIPMENT AVAILABLE

**Vermeer 605 N Balers, Twin Rakes, Trailed Mowers, Disc Mowers, Tedders, Bale Processors-**

*Offer high capacity, speed, reliability, efficiency, fuel savings...*

**DeWeze Bale Beds-**

*Lift, load, transport and feed big, round bales...*

**Danuser Post-Hole Diggers-**

*Offer quality & reliability, outperforms the competition...*

### USED EQUIPMENT

BALERS

605 N Net  
605 L Net  
605 K Net

RAKES

R2800  
R2300  
VR1224

MOWERS

TM 1210  
8040  
7030  
Vicon 4000

TEDDERS

TD250

BALE PROCESSORS

BPX 9000  
BPX 9010

## Liebhart Sales, Inc.

17546 Lacey Drive -  
New Boston, MO. 63557  
**660-689-3406**

Call Today!!

NEOMO TRADER • Advertise with us TODAY! • Phone: 660.665.8500  
PO BOX 190 • KIRKSVILLE, MO 63501

SPRING IS YOUR GO TIME.  
**GET OUT THERE.**  
You've been waiting all winter for this moment.

REBATES UP TO **\$1,000** ON 2020 MODELS  
TERMS AND CONDITIONS APPLY

**POLARIS** SPRING SALES EVENT

Explore Inventory >

**Slayton**  
**POLARIS**

10456 State Route B, Downing, MO  
6 miles W. of Memphis, then 13 miles N. on B

660-328-6627

VISIT [POLARIS.COM](#) FOR MORE OFFERS



For all your advertising needs email us at  
**nemotrader@gatehousemedia.com**



# MAIN CREEK REPAIR

**Larry Geiser**

23316 State Hwy H  
Kirksville, MO 63501

**(715) 415-1995**

**Bolts • Belts • Bearings  
Hydraulic Hoses • Steel  
Welding • Fabricating  
Tractor & Equipment Repair**

# MAIN CREEK RENTALS

23316 State Hwy H  
Kirksville, MO 63501

**(660) 988-6917**

- Mini Excavator
- Dozer
- Skytrack
- Equipter (Shingle Buggy)
- Snorkle
- Grapple
- Post Hole Digger
- Man Basket

Wevers Outside Wood Furnaces a dealer for Heatmor Stainless Steel Outside Furnaces, have an assortment of parts, line, and etc. Taking orders for new outside wood furnaces. Call 660-423-5242, cell 660-216-9885. Open 6pm-9pm Monday-Friday, Saturday anytime, call first.

FOR SALE: Registered AKC Labrador Retriever puppies, yellow. Farm-raised and loved! MO Health Certificate. Dam and Sire on farm. Ready to go now! Lay's Labs - LaBelle, MO 660-956-2482.

**FOR SALE**  
**All Sired Angus Bulls,**  
**14 & 18 Months Old.**  
**Harold Trump**  
**660-341-5730**

Country Music Show  
**BLACK DIAMOND JUBILEE**  
Highway O 63 South, Macon, Missouri  
660.385.2657 or 2304

New starting Time 7:00 pm

September 25, 2021  
Becky Denton, Paris, MO

October 9, 2021  
Donny Roberts, Bevier, MO



ATTENTION HUNTERS: Whitetail Institute Products, CenterPoint Archery, Rage, Muzzy, Wac'em, G5 Broad heads, Carbon Express arrows, Nocturnal Lighted Nocks, Block Targets, Scent Thief Scent killer Products, Adam Hayes Moon Guides, Tinks Lures, IQ Bow Sights, Ghost blinds, Leopold & Vortex Optics, Chippewa Wedge-Loc Tree Stands, and more at Whitetail Seed and Supply 14136 State Hwy 3 LaPlata MO 63549

FOR SALE: New 3 pt. tillers, heavy duty, gear driven, 7' to 10' starting at \$3050. 660-874-4455

FOR SALE: 5 X 5 1/2 big round bales of mixed grass hay, Bailed dry no rain fertilized lab tested surface wrapped. Call 660-341-4031 Watson hay sales

FOR SALE: Gleaner 800 25' lateral tilt hyd for & aft; Gleaner 520 20'; Gleaner 830hugger H' Gleaner 3000 630, w/corn head. 217-658-4761

PASTURE AND HAY GROUND Needed around Adair & Knox County. Please Contact 660-216-5887 or 417-773-2507

FOR SALE: 2010 Case 8120 Combine, 2975 HR -2097 HR, NO DEF, RWA, DIF Lock, 620 Drive Tires, 28 Steer Tires, luxury cab, clean machine, \$85,000. 641-895-8014

HANDYMAN: Install interior and exterior doors and windows, siding, decks, showers and toilets, flooring and drywall, roofs and dirt work. 660-956-2189.

**FOR SALE**  
5 X 5 1/2 big round bales of mixed grass hay  
Bailed dry no rain fertilized lab tested surface wrapped  
CALL 660-341-4031  
Watson hay sales

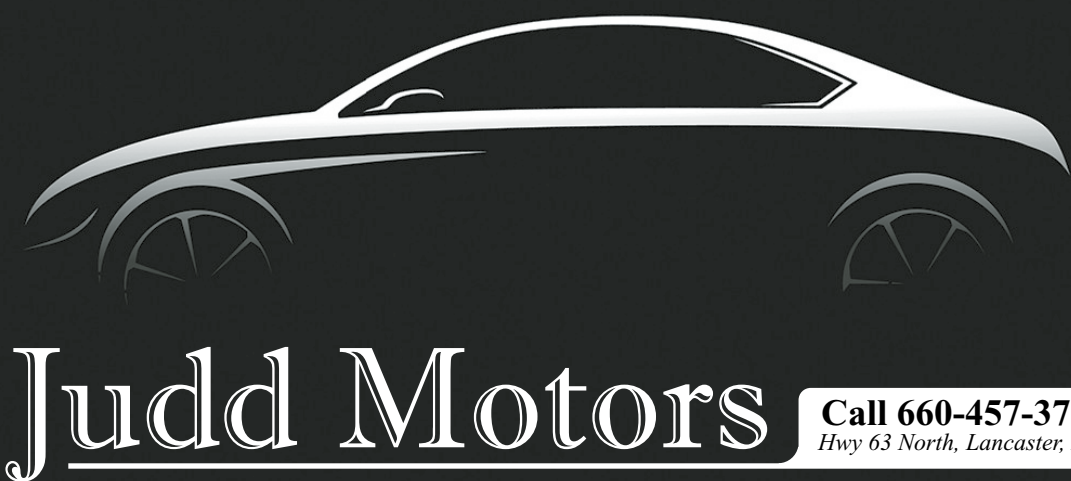


## LAN-DOW BUILDINGS

**"We Build To Suit Your Needs"  
"Custom Built"**

**Pole Barns • Garages • Utility Buildings  
"H" Don or Dick Middleton**

**Memphis Lumber Co.**  
**1-800-337-5858 • 660-465-8595**  
**Fax: 660-465-8596**



# Judd Motors

Call 660-457-3700  
Hwy 63 North, Lancaster, MO

- **2015 GMC 2500HD**, SLT, 4x4, crew cab, shortbed, 6.0L, heat & cool leather, bed cover, 1 owner, only 113k miles, charcoal, very nice, new tires only \$35,900
- **2015 Equinox**, All Wheel Drive, 1 owner, 129k, silver, nice, Remote start, only \$9995
- **2013 Impala**, LTZ, leather, only 104k, charcoal, very nice \$9,250
- **2012 Chevy Captiva**, LTZ, AWD, Leather, sunroof, 112K, maroon, \$8995
- **2008 Chevy Impala LT**, Leather, Sunroof, 101k, white \$7,250
- **2005 GMC 2500HD**, SLE, 2wd, 6.0L, ext cab, long bed, only 119k, silver, very nice, only \$9995
- **2005 Buick LeSabre**, cloth, 3800 engine, white, only 52k miles, very nice only \$10900
- **2003 Ford F350**, diesel, 4x4, crew cab, flatbed, 300k, runs good, brown, only \$7995
- **1996 Dodge Ram**, reg cab, 3/4 T, 4x4, V8, 200k miles, 1 owner, red and rusty, runs good, only \$1,995

**Cumberland Building Dealer**

[www.juddmotors.com](http://www.juddmotors.com)

In Business Over 75 Years  
Curly and Kevin Judd

## Ramer Truck Sales



2011 Ford F150 XLT 3.5L At 4x4  
Clean Title 158650 11,500



2011 Ford F-350 4x4 6.7L lariat 235k  
\$17,900



Used Zimmerman Flat bed Aluminum for short bed daullie \$1,950



2016 Ford Explorer Limited Black 3.5 4x4 99k miles Rebuilt title \$16,900



2021 Ford F250 STX white 4door short bed 6.7L 4x4 2000 miles Rebuilt title \$54,500



2019 Ford F350 Platinum 4 door long bed 6.7L auto 4x4 white 123k miles rebuilt title \$55,000

**Gorin, Missouri • 8 am. to 6 pm. Monday - Saturday**

[www.ramertrucksales.com](http://www.ramertrucksales.com)

HOME 660.282.1002 CELL 660.341.6140 \*NO SUNDAY CALLS\*





**DIRT WORK** All types of excavation, reclaiming overgrown fields, including CRP and WRP. Building site preparation, terrace and tiling maintaining and creating new trails and crossings, rock hauling, Food plot development and maintenance. Leveling and grading, wetland construction and maintenance. Pond and lake cleaning and construction. Call for quotes. 660-342-2701

**FOR SALE:** Mums \$8 a piece, also have large combo's \$20; large variety of colors. Pumpkins and fall decorations. Kauffman Produce 11538 Iceberg Ave La Plata MO 63549

**TINY HOMES** We gottem 573-881-3283

**WANTED TO BUY:** Harley Davidson's, any year, any condition, cash money. Days 660-263-1356 or 660-537-0068

**FOR SALE:** Ford 4000 D SU, power steering, Live PTO, excellent paint & sheet metal, new tires, \$5500. 660-341-8089

**FOR SALE:** John Deere 145 Loader, good bucket & control valve, all utility mounting brackets, \$2,750. Call 573-881-3557

**FOR SALE:** Gleaner 8000 30' SCH sickle, F&A; JD 930 poly dividers; JD 220 flex; JD 216 flex; IHC 1020 20'; IHC 1020 17 1/2' MF 918 217-658-4761

**NATIVE PLANTS** for butterfly gardens, rain gardens, hard to mow banks, and restoration. Peckosh Landscaping 23198 Hwy H/Boundary St. Kirksville, MO. Just north of the Troy Mills store. Call Claire at 660-349-0061.

**WANTED TO BUY:** Antique Watches & Clocks. Watchmaker Tools & Parts. 319-470-2786

### Affordable Quality Roof Restoration

- Have you got a metal building or roof that is starting to rust or leak?
- Would you like to have it leak proof? Shine for years?
- Would you like to save 70% over replacement?

If so give me a call at **641-722-3020**  
Free Estimates



# P-R DISTRIBUTORS

## GOLF CARTS

Sales – Service – Rentals – Customizing



573-693-8147

29566 Lantern Road, Laplata, MO

### ANYTHING ON WHEELS!



(660) 956-9283

highway63insurance.com

### Brad's Welding Shop Is Your Newest Dealer For Arrowquip Cattle Handling Equipment.

15 YEAR UNLIMITED WARRANTY



Call Us For All Your Cattle Handling Needs!

## BRAD'S WELDING SHOP

12673 Almond Ave • 1158 Marceline, MO 64658 • 660-376-1158 • www.bradsweldingshop.com

# Troyer TARP MFG.

660-486-3301

20264 State • Hwy. VV • Ethel, MO. 63539



Hoop Building Covers

FARM TARPS

TRUCK TARPS

## WE GOT YOUR NEEDS COVERED!

**B<sup>o</sup>F<sup>K</sup>**

Since 1914

### WE ARE HIRING!

**Loan Officer Position**—Full time with benefits. Experience preferred but willing to train.

**Loan Secretary**—Full time with benefits. Previous secretarial and/or switchboard experience preferred. Must be friendly, outgoing and dependable with attention to detail.

**Teller Positions**—Full time with benefits. Prefer prior cash handling experience. Excellent customer service skills with friendly outgoing personality, good work ethics and dependability required.

**Banking Career**—Applicants must have strong communication & computer skills. Ability to multi-task & learn quickly. Qualified applicants should have two years prior banking experience or a degree in related field.

Send resume to: Bank of Kirksville, P. O. Box 787, Kirksville, MO 63501. EOE



**MAST MEATS, LLC**  
**660-766-2211**  
 USDA & Custom Slaughter & Processing  
**CALL OR STOP BY FOR SPECIALS**  
 Retail store hours • Mon-Fri 8-5 Sat 8:30-3  
 mastmeatsllc.com • 405 US Hwy. 63, Queen City, MO 63561

**LOLLI BROS. LIVESTOCK MKT, INC.**  
 Special Feeder Calf & Yearling Sale  
 Tuesday, September 28 \* 11am  
*This is only a partial listing, many more by sale date.*

75 str/hfrs 500-700lbs	25 str/hfrs 700-800lbs
75 str 700-750lbs	25 str/hfrs 600-700lbs
70 str/hfrs 400-600lbs	25 str 700lbs
65 str 825lbs	23 hfrs 600-625lbs
45 str/hfrs	20 str/hfrs 40-600lbs
40 str/hfrs 600-700lbs	15 str/hfrs 500-700lbs
35 str 80lbs	15 str/hfrs 500-600lbs
32 str/hfrs 600-700lbs	15 str/hfrs 500-700lbs
30 str 650-700lbs	15 str/hfrs 600-800lbs
30 str/hfrs 500-700lbs	8 str/hfrs 400-500lbs
28 str/hfrs 500-700lbs	8 str 450lbs

**YOUR BUSINESS IS GREATLY APPRECIATED!**  
 October 5 Regular Cattle Sale - October 12 Special Calf & Yearling Sale

Cafe Open Lolli Bros. Livestock Market, Inc. Cafe Open  
 704 Main st \* Macon, MO \* 660-385-2516 \* www.lollibros.com  
 Tim 660-651-3496 \* Joseph 660-346-9711  
 Frankie 660-651-4040 \* Dominic 660-651-4024 \* Cattle accepted on Sundays

**VIRTUAL ONLINE • KNOX & MACON COUNTY, MO**  
**LAND AUCTION** 290± ACRES (Subject to Survey) 7 TRACTS  
**FRIDAY, OCTOBER 22, 2021 @ 10:00 A.M.**



**OPEN HOUSE**  
 SAT., OCTOBER 9<sup>TH</sup> • 10 AM - 12 NOON  
 45855 MILLRUN • NOVELTY, MO 63460

Land is located approximately 7 miles west of Novelty, MO or 10 miles east of LaPlata, MO in Sections 21 & 28, T60N•R13W, Johnson Township, Macon County, MO and Sections 22 & 27, T60N•R13W, Salt River Township, Knox County, MO.

LAND REPRESENTS PRODUCTIVE TILLABLE CROPLAND, PRIME HUNTING/RECREATIONAL ACREAGE AND A BEAUTIFUL COUNTRY HOME!

**GEORGIA MANCHE**  
 CLOSING & TITLE WORK BY: KNOX COUNTY ABSTRACT  
 103 S. FIRST STREET | EDINA, MO 63537 | (660) 397-3259

AUCTION MANAGER: BILL FRETWELL (660) 341-7735  
 SULLIVAN AUCTIONEERS, LLC • TOLL FREE (844) 847-2161  
 www.SullivanAuctioneers.com • IL Lic. #444000107

**Countryside Market**  
 Hello from countryside Market!  
**Fall Decorations are here**  
 Regular Mum's \$10.00 each  
 Pie Pumpkins \$1.99 each  
**Lots of Gourds and Squash to choose from**  
 Ham Steaks \$1.99/lb  
 Hebrew National Beef Franks \$8.29/5 lbs  
 Cheddar Wurst \$2.19

2.5 Miles North Of Town Kirksville, MO  
 660-665-3215 or 988-0742

FOR SALE: Homemade Candies, Fresh Garlic, Regular and Wide Mouth Jar Lids, Jams & Jellies, Spices, Honey S.S. One Piece Dippers 1oz to 8 oz S.S. Kitchen Wares, Air Freshness, Gift Items, Kerosene Lamps and Parts, Some Aladdin Parts, Poly and Wooden Clothespins, Filter Disks, Wooden handles, Blankets and Throws, Pint Jars, Boxed Cards, Coloring Books. Train Track Candies & More 11538 Iceberg Ave, La Plata 3rd Lane to your Left.

FOR SALE: IHC 983 corn head; IHC 883 corn head; Drago 830 corn head, adj deck plates; IHC 820 17 1/2' MF 830 for JD. 217-658-4761

FOR SALE: 220 Lincoln electric welder, \$150, Argyle, IA 319-410-0277.



John Deere 2840 D Tractor, dual hydr, 4700 hrs, 90% tires, with JD 148 Loader with QA Bucket & Bale Spear, \$13,500



John Deere 2750 Tractor, MFWD, open station, w/245 SL Loader, dual hydr, HiLo, wts, 5,000 hrs, \$22,500



20 Series JD Tractors, 3020. (2) 4020s late models, 4320 or 2940, all used, tested recently, \$12,950 choice or \$48,000 for all.



John Deere 5520 Tractor, MFWD and 511 SL Loader, new tires, reverser joystick, 5500 hrs, one owner, \$42,500.

**573-881-3557**

FOR SALE: Old full size slate Snooker table, cues and cue rack, wood score keeper, needs some work, full set of Snooker balls w/rack, useable as is, \$1000. Lentner MO 660-699-3741

WANTED: A Good 4 door vehicle 2014 to 2020 model prefer one with reasonable mileage and excellent shape. 660-342-4287 Kirksville

FOR SALE: Red Angus bull, 2 years old, great EPD's. Semen tested and vaccinated. Double H Red Angus. Call 660-216-3301 or 660-216-1437.

DEER SEASON is almost here, Mossberg, Patriot & Savage rifles 243, 6.5 Creedmoor, 30-06 available, \$475 each. All new in the box. 217-577-9538

FOR SALE: Yamaha V-star 250, red, only 1010 miles, like new windshield, rear rack, clean title, bill of sale. \$3800 obo, 660-956-5306.

FOR SALE: Fish for stocking ponds - Catfish, Grass Carp, Crappie, Blue Gills, Red Ear, Bass, and Minnows. Heindselman Family Farms, Call Greg 660-341-5692

FOR SALE: 2017 Honda Ruckus, only 200 miles; 2002 Kawasaki 650 Prairie, great condition; 2014 Yamaha F-25 HP tiller outboard, electric start, like new, excellent condition. 641-208-7353

FOR SALE: NH 973 20' flex; NH 973 25' flex; NH 974 630 corn head; MF 1163 corn head; MF 1144 corn head; Gleaner 630 LM or R; Gleaner 830 corn head LM or R. 217-658-4761

MCKAY SHEPHERDS & BORDER COLLIE Has several trained dogs for sale. 641-919-0824 Packwood Iowa

FOR SALE: Big round bales, really good brome, and other mixed grass, baled dry, fertilized, net wrapped, some in barn, \$40-\$45 NEMO Kahoka Area 217-257-1385 anytime

**Premium Metal Roofing**



**AW Metal Inc.**  
 Metal Roofing Headquarters  
 641-664-3990 • awmetal.net

**The City of Laclede is Hiring for a Part time City Clerk.**  
 Hours and Wages to be discussed.  
 Send resume to City of Laclede PO Box 142 Laclede Mo 64651.

**Accepting CONSIGNMENTS**  
 Consign Early For Advertising!!!

**FARM MACHINERY CONSIGNMENT AUCTION**  
**Saturday, October 16, 2021 @ 10:00 am**  
**SCHACHTELE AUCTION BARN**  
 Keytesville, MO  
**Call Tony: 660-413-3250**  
 Selling: Farm Machinery  
 Farm Tools & Equipment  
 & Many More Miscellaneous Items  
 (No Household Items)  
**We Appreciate All Consignments!**

**FRONTLINE FENCING LLC**



**Steel Pipe Fencing.**  
**Custom Built Gates and Livestock Handling Equipment.**  
**Barbed Wire and Woven Wire Fence.**  
**Arrowquip Cattle Handling Equipment.**  
**Post Driver Rental.**

29386 St Hwy T, Greentop, MO  
**660-956-2430**



**CENTERPOINT CROSSBOWS** In stock Axe 405 crossbow & more Whitetail Seed and Supply 14136 State Hwy 3 LaPlata MO 63549

**FOR SALE:** John Deere 285 Disc mower, 9', QH ready, low acres, \$6,500. Call 573-881-3557

**FOR SALE:** 20 Black Angus heifers, 2nd & 3rd period pregnancy, bred to Angus bull; 12 Angus heifers & calves. All nice and gentle. 660-676-9199

**WANTED TO BUY:** 12'-15' Brush Hog in new or good condition; also good used pickup truck. 660-676-9199

**FOR SALE:** NH 973 20' flex; NH 973 25' flex; NH 974 630 corn head; MF 1163 corn head; MF 1144 corn head; Gleaner 630 LM or R; Gleaner 830 corn head LM or R. 217-658-4761

**FOR SALE:** John Deere 2950 MFWD Tractor, w/Farmhand XL 740 Loader, 6000 hrs, average condition, \$24,950. Call 573-881-3557

**FOR SALE:** 2 Killer Instinct Cross Bows, brand new, comes with everything, \$350 each; 2 Marlin 30-30, excellent condition, \$675 each. 217-577-9538

**FOR SALE:** 20" rims Verde 5 bolt, GM, nice condition, 2 Falcon 275/45R20 tires, usable tread included, \$850, make offer. 660-956-5306.

**FOR SALE:** Side by side refrigerator/freezer, works good, \$150. Argyle, IA 319-410-0277.

**FOR SALE:** Heider Auger Wagon, 100 bushel, 540 PTO, boards on each side, manual auger swing either side, shedded, clean solid wagon, \$750. 217-257-1385 anytime

**WANTED TO BUY:** Farm Machinery and Estates. Call James L. Johnston. 573-473-4904

**STOCK MOBILE HOMES AVAILABLE:** We gottem, single and double 3 and 4 bedroom! Call Tuffy 573-657-2176 amegamobilehomes.com

**WANTED TO BUY:** Harley Davidson's, any year, any condition, cash money. Days 660-263-1356 or 660-537-0068

**FOR SALE:** New 3 pt. tillers, heavy duty, gear driven, 7' to 10' starting at \$3050. 660-874-4455

**HANDYMAN:** Install interior and exterior doors and windows, siding, decks, showers and toilets, flooring and drywall, roofs and dirt work. 660-956-2189.

**FOR SALE:** International 674 diesel with Quick Tach hydraulic bucket loader, power steering, good tires & paint, \$9700. 660-341-8089

**FOR SALE:** Progressive 1300 12K NH3 WT on M&W dual no till coulters raven coolers monitor markers, for strip till; DMI 4200 NH3 WT on M&W raven 440M 14K no till. 217-658-4761

**FOR SALE:** John Deere 2040 Tractor, sharp, 90% rubber, 5565 hrs, hydr valve, Loader available, \$9,750. Call 573-881-3557

\$11,500; ICH 5100 drill 21 hole, w/cylinder press wheels, \$2250. 217-658-4761

**CUSTOM CHOPPING**

ALL TYPES OF FORAGES PRESERVATIVE AVAILABLE

Devon Zimmerman 660.464.1324

**FOX AUCTION LLC** 660-341-1453

**AUCTION**

Directions: From Bloomfield, IA go 2 miles north on Hwy 63 to 180th Ave/Drakesville Rd, then go west to Lilac then north to site.

**SATURDAY, OCTOBER 2ND 2021 @ 9:30 AM**

**lots of coins** NEW COLLECTIBLES: over 100 replica coins, some originals • plates • bowie knives • watches • stamp collection David Stephenson 20956 165th St. Bloomfield, IA 52537

**HOUSEHOLD:** several Singer sewing machine heads for parts or repair • cedar chest • book shelves • kitchen utensils • books • magazines • vinyl records • lamps

**TRACTORS, TRAILER, LAWN & GARDEN:** 1969 4 horse Trailer w/ title • lawn mower trailer w/ high sides • M&M 4 star gas (hasn't ran for a year) • Farmall F20 for parts or repair • wide front for AC WD • aluminum Ford Tarus wheels • 4 new 16" tires on 6 bolt wheels • snap coupler 2 bottom plow • snap coupler sickle mower needs repair • 15' brush cutter for parts

**SHOP EQUIPMENT & TOOLS:** 20 ton shop press • torch (like new) • metal band saw (like new) • floor jack • several shop work benches • Shop Master table saw • ratchet straps • bench grinder • grinding wheels

**FARM ITEMS:** Beta team harness for 36" pony team w/ collars (nice) • misc tack • T posts • fence stretcher • misc fence supplies • used lumber • RR ties • 2x6's & 2x8's

MANY UNLISTED NEW & USED TOOLS CONTACT TIM @ 641.208.2050

10'X16' STORAGE BUILDING ON SKIDS **lots more items online at FOX AUCTION LLC** www.foxauctionservice.com

•• JR. (ALLEN) FOX: 660-341-1453 WILSON FOX: 660-216-9227 ••

**VIRTUAL ONLINE • LEWIS COUNTY, MO LAND AUCTION**

FRIDAY, OCTOBER 22, 2021 @ 1:00 P.M.

104± ACRES (Subject to Survey) 2 TRACTS

Land is located in Section 28, T63N•R7W, Lewis County, MO.

**PRODUCTIVE TILLABLE CROPLAND! EXCELLENT HUNTING & RECREATIONAL OPPORTUNITIES!**

**ARTKRAS FAMILY**

CAROL INSALACO | KATHY POOLE | SUSAN ARTKRAS | STACY HAGNER

CLOSING & TITLE WORK BY: OAK HILLS TITLE CO. 307 LEWIS STREET | CANTON, MO | (573) 288-4461

AUCTION MANAGER: BILL FRETWELL (660) 341-7735

SULLIVAN AUCTIONEERS, LLC • TOLL FREE (844) 847-2161 www.SullivanAuctioneers.com • IL Lic. #444000107

**Edina Livestock Sales**

Edina, Missouri

Weekly Sales Start @ 12:30pm

**Friday, September 24th - Special Feeder Calf Sale**

**Hagan & Heinke - Spring Bred Cows**

**Friday, October 1st - Special Feeder Calf Sale**

**Watch for upcoming Fall Calving Cow Sale**

To Consign For Any or All Sales or For Information Call: Owner - Kevin Strange • Cell: 660-341-9974 Ryan Strange • Cell: 660-341-9721 Sale Barn: 660-397-9999

Field Reps:	Mike Bronestine 660-341-9965	Jason Bischel 660-216-0373
Bill Tom HALL 660-342-5420	Trey Gashwiler 660-216-8751	John Powell 660-341-1717

**Signature** Overhead Doors and Remodeling, LLC

660-785-0248

www.signatureremodelingkv.com

Residential and Commercial Installation and Service

**Auction Notice**

**Absolute Real Estate**

**October 4th @ 5:00 pm**

Selling 2 bedroom home in Ridgway MO. Some personal property will be sold as well. Home will sell at 6:00pm Sharp. House will sell to the highest bidder regardless of price.

**Auction Managers:**

Mike Witten: 660-654-2084 Reed Breneman: 660-365--151

**Details & More@ mwauctions.bid**

**NEMO COWBOY CHURCH**

First Thursday night of each month • Kirksville Livestock Market 7:00 PM • Bring a friend and if you can't find one, bring your dog. We will worship through music with Gary Fagen and the Word will be preached by Tom Rowland. Mark your calendars and come join us

**"COME AS YOU ARE. LEAVE CHANGED."**

**TIMED ONLINE • NO-RESERVE ESTATE AUCTION**

Equipment Inspection: Saturday, October 9th 9:00 A.M. - 3:00 P.M.

**BIDDING CLOSING: TUESDAY, OCTOBER 12TH STARTING AT 10:00 A.M.**

Items are located at the farm near Moravia, IA • 705 W. North St., Moravia, Iowa

**HIGHLIGHTS INCLUDE:** John Deere 4020 diesel high crop tractor; John Deere 4020 diesel hyd. front wheel assist tractor; John Deere 5010 2wd diesel tractor; John Deere 50 tractor; John Deere B high crop tractor; John Deere L tractor; Allis Chalmers WD45 4wd articulating tractor; Allis Chalmers D21 Series II diesel tractor; Allis Chalmers 190XT diesel high crop tractor; Allis Chalmers D15 diesel tractor; Allis Chalmers WD high crop tractor; Allis Chalmers WD45 diesel tractor; Allis Chalmers HD3 crawler loader; Allis Chalmers CA high crop tractor; Allis Chalmers I40 industrial tractor; Allis Chalmers G tractor; Allis Chalmers D road grader; Harris Power Horse 4wd dozer tractor; Gibson E leaver steer tractor; (2) Gibson D tractors; Farmall Super MTA tractor, believed to originally painted white; Farmall Super MD diesel tractor; Farmall H high crop conversion tractor; Farmall B high crop tractor; Fate-Root-Heath "Silver King tractor; Bristol diesel crawler tractor; Koehring 4475 Teleskoop wheeled excavator; John Deere 3010 industrial tractor w/ JD 720 loader; Baker diesel forklift; 1956 Daimler 4 door sedan, showing 26,490 miles; 1953 Ford Crown Victoria 2 hard top, showing 36,772 miles; 1947 Ford flatbed truck, showing 47,082 miles; 1966 Mack B75 day cab semi; 1949 F7 fire truck; M43 4wd military ambulance, showing 45,312 miles; 1976 Ford F250 2wd "Camper Special" extended cab pickup w/ Detroit 453 diesel engine, showing 84,607 miles; 1933 Chevrolet Custom Trike, 355 aluminum engine, showing 2,854 miles; Service Station Equipment Co. EM-150 clock face fuel pump; John Deere wooden goat wagon and much more!

**PAUL MIHALOVICH ESTATE**

AUCTION MANAGER: JOHN PROBASCO (641) 856-7355

SULLIVAN AUCTIONEERS, LLC • (844) 847-2161 • www.SullivanAuctioneers.com • IL Lic. #444000107

**emailism**

nemotrader@gatehousemedia.com



# TRIPLE L FARM AUCTION

NORBORNE, MO

From Hwy 10 take CR 151 (Across from School) go south 2 1/4 miles to CR 334 then east 1 mile to CR 161 then south 1 mile to farm. Watch for Iman Auction signs.

WEDNESDAY, SEPTEMBER 29, 2021 @ 10 AM



DOZER - TRACK HOE - STEIGER DIRT SCOOP - BOBCAT - TRACTORS - LOADER - TILLAGE - SHREDDER - SLURRY WAGON - IMPLEMENTS - TRUCKS - TRAILERS - POWER PLANTS - WATER PUMP - BOATS - ANVIL - WELDER - TORCH - SHOP TOOLS - HYDRAULIC HOSE MACHINE - STEEL & IRON - SALVAGE - FARM RELATED - ANTIQUES - Full Listing / Terms @ ImanAuction.com



TRIPLE L FARMS, SELLERS

**IMAN AUCTION COMPANY**  
660-788-4298 | 660-414-7830 | 660-388-6235

## ANNUAL FALL FARM MACHINERY / EQUIPMENT AUCTION

SATURDAY OCTOBER 9, 2021 @ 9 AM

1916 S. 18th St (Hwy 5 S ) Centerville, Iowa

Early Listings: 96 JD 3020 Gas Tractor w/ JD 46A Loader/ Chains SNT 141R088249R; JD 88 8' 3Pt Blade; Bale Mover; 8 N Ford Tractor; International 606 Gas Tractor w/ Loader & Canopy; MF 250 D Tractor 40hp w/ Canopy; Horse Drawn Doctor's Buggy on Rubber w/ Brakes; Horse Drawn Parade Wagon w/ Bonnet-Ornate Green on Rubber w/ Brakes; Like New Aluma 21' Tilt Bed Trailer w/ Winch; 12' Tilt Bed Trailer; Westfield MK-61 Auger w/ Hopper, used this year; 2 Gravity Wagons; Pr 18.4 38" Tractor Tires; H&S Bifold Wheel Rake; Like New Tomahawk Bale Unroller; Barge Wagon; JD 894 Rake; Older AC Pull Blade; 4 Bale Trailer; 11' Single Disc; IH Sickle Mowing Machine(no cyl); FMC Side Winder Brush Cutter; 91 Gooseneck Titan Livestock Trailer; 94 Ford E350 Box Van; 01 Chev G3500 Box Van; Older Bumper Hitch Livestock Trailer; 150+ Good 6' & 8' Sheets Used Steel; Corral Panels; Fencing; Used Lumber; Feed Bunks; Hay Rings; Water Tanks; 32' Steel Livestock Feed Bunk; 2@ 15' Steel Bunks; 300 Gal Diesel Fuel Tank; Pallet of Set of Alum Stakes & Bows for Semi; Wood Splitter; Like New 60 Gal Campbell Hausfeld 220 Extreme Duty Air Compressor; 17+ High Wheel Rake Wheels; Horse Drawn Wagon Tongues, Single & Double Trees, Set of Four 5' Wood Hoops for Covered Wagon; Large amount of Construction Materials and Tools; 40" Dixon Mower; Push Mowers; KEEP WATCHING, EQUIPMENT COMING IN. CALL TO LIST YOUR EQUIPMENT, BUYERS ARE JUST WAITING FOR THE AUCTION.

PICTURES: DEMRY AUCTION LLC ON FB

**DEMRY AUCTION, LLC**

**JANET DEMRY**

**641-895-4310 • 641-856-6408**

**TOM DEMRY**

**641-895-2508**

**KRISTY DEMRY**

**JUNIOR LAWSON**

**641-895-2509**

**641-895-0037**

**CELEBRATIONS!** PARTY RENTAL  
KIRKSVILLE, MO

FOR RENT  
**TABLES - CHAIRS - TENTS - BOUNCE HOUSE & COTTON CANDY MACHINE...ECT.**

660-626-5162 or 660-665-9380

**VIRTUAL ONLINE • SCOTLAND COUNTY, MO LAND AUCTION**

FRIDAY, OCTOBER 8, 2021 @ 10:00 A.M.

**86± ACRES**  
(Subject to Survey)  
2 TRACTS

Land is located in Sections 24 & 25, T64N•R12W, Scotland County, MO.  
LAND REPRESENTS PRODUCTIVE TILLABLE CROPLAND AND OFFERS PREMIERE WHITETAIL DEER & WILD TURKEY HUNTING ACREAGE.

**EUREKA LAND COMPANY**  
ROBERT L. MOORE | RICHARD PAYNE | TOM CROLEY | SHARON S. PAYNE | E. RICHARD WEBBER

CLOSING & TITLE WORK BY: SCOTLAND COUNTY ABSTRACT  
205 E. MONROE STREET | MEMPHIS, MO | (660) 465-7052

AUCTION MANAGERS: Bill Fretwell (660) 341-7735 and Stan Prather (660) 341-5950

SULLIVAN AUCTIONEERS, LLC • TOLL FREE (844) 847-2161  
www.SullivanAuctioneers.com • IL Lic. #444000107

**Farm Equipment and Personal Property Auction**

Saturday, October 9, 2021 at 10:00 a.m.  
The Alvin A Clark Jr and Jean L Clark Trust  
19971 Auburn Place, Ethel, MO 63539

**Directions:** 19971 Auburn Place, Ethel, Missouri. From US Highway 36 at New Cambria, follow Highway 149 North, turn left on Route Z for 0.3 miles Take a slight right on to Route VV for 5.5 miles. Turn left on Aurora Street for 0.8 miles, continue straight on Auburn Place to auction location. Watch for signs the day of the sale.

**Building:** 12' x 16' metal storage shed

**Farm and Lawn Equipment:** 165 Massey Ferguson gas tractor; Polaris Sportsman 335, 514 miles; ATV trailer; Danuser post hole auger, 3 point with 8" bit; 8' x 4' farm trailer; Snapper SR 825 25" with bagger; Cub Cadet LT 1045 46", 352 hours; Toro GTS5 600 push mower; Lawnboy Goldpro series push mower; small lawn cart; new 48" roll woven wire; aluminum loading ramps; rolls of cable; rolls of new electric fence wire; 3' galvanized oval water tank; miscellaneous lumper; 10'7" bridge plank loading ramps; 3 point carry-all; Earthway garden seeder; hand push garden plow; Earthquake front tine tiller; Haul Rite lawn trailer; Yardman rear tine tiller; 46" lawn sweeper; 8N Ford tractor jack; 3 point boom; Ford 401 sickle bar mower; 4' x6' 3 point carry all; 3 point fork lift; Ford 3 point 3 bottom plow; two 3 point dirt scoops; miscellaneous woven wire and barbed wire; miscellaneous hedge posts; 6' x 2' steel beams; 6' steel posts; 8' 3 point disc; 500 gallon fuel tank with stand; two wheel trailer; #9 wire; wagon box; red tip barbed wire; corrugated barn tin; 2 ton chain hoist; 10' sewer tape

**Household Items:** 2 porch swings; Sunbeam propane BBQ grill; folding picnic table and benches;

**Antiques and Collectibles:** Antique hog oiler cast iron; ice tongs; one man crosscut saw; antique buck saw; vintage metal cabinets; radio flyer pedal cart; iron wheels; barn siding; nail keg; vintage Bostrom transit and tripod, unknown certification date

**Outdoor Equipment and Tools:** Simplex handy man style jack miscellaneous hand tools; 6' wooden work bench; Craftsman 10" radial arm saw; Rockwell miter saw with bench; bolt bin with contents; bead breaker; wire spools; wood/coal burning stove; Pro life HD lawnmower jack; car ramp; Craftsman electric sander; Campbell Hausfield 110 air compressor; Porter Cable 155 PSI 60 gallon air compressor, brand new; wooden step ladder; 1 3/8"-2" wrench set; 3/4" drive socket set; Stihl 029 super chainsaw; Stihl MS181C chainsaw; Stihl 032 AV chainsaw; 2 Poulan Pro chainsaws; older McCulloch chainsaw; house jacks; cement mixer; Speedway grinder

**Sporting Goods:** 4 live traps; Martin house;

There will be many more items at this auction too numerous to mention.

**SCOTT'S AUCTION SERVICE**  
Scotty Kuntz 573-356-4405  
Michael Cunningham 660-651-2288 • Paxton Pittman 918-316-7500

WWW.SCOTTSAUCTIONSERVICE.COM

FOR SALE: 2012 GMC Sierra, 117,000 miles, 4 door, 6 speed transmission, 20" wheels, all leather, heated and cooled electric seats. Best model bed liner, bed rails, running boards, backup camera, white in color, \$22,000. Lentner, MO 660-699-3741.

NATIVE PLANTS for butterfly gardens, rain gardens, hard to mow banks, and restoration. Peckosh Landscaping 23198 Hwy H/Boundary St. Kirksville, MO. Just north of the Troy Mills store. Call Claire at 660-349-0061.

ARE YOU COVERED? Accidents and illnesses occur without warning. Let us help you make sure you, your family and/or employees are covered. Health, Cancer, Accident, Hospital, Critical Illness, Short Term Disability, Dental, Vision, Life. Linda 660-537-5177 linda\_buchmann@us.aflac.com Denise 314-465-5611 denise@healthinsuranceagt.com

FOR SALE: Smooth mouth mare \$600; also small bales of straw \$5.00; 4x5 net wrapped hay, \$45. 660-342-5314

FOR SALE: Mayrath 10" x 65' auger, Swing hopper dyd lift, \$1250; Westfield 8"x61' swing hopper, \$650; Kewanee 8"x 60', \$350; other Auger disks, disk chisels. 217-658-4761

WANTED TO BUY: Sports Card Collections & Accumulations. Unopened Boxes, Cases, Sets, Etc. 319-470-2786

FOR SALE: 10 Week old AKC American Brittany puppies, born 6/27/21, 8 available, 2 females, 6 males. Located in Lewistown MO Call or text 573-248-6895

Logan Agri-Service, Inc. of LaBelle, MO is growing and looking to add members to its team. We are currently looking for someone to operate a sprayer and/or fertilizer spreader. We are also looking for someone who can drive application support equipment (nurse/tender truck). We will train the right person. If you are interested in joining the Logan team, contact Luke Lay, LaBelle Plant Manager, at 660-342-6424

SCHMUCKER PRODUCE: Nice canning tomatoes by 1/2 box. Also, cucumber, onion, zucchini squash. Also tomatoes by the pound. Pumpkins, also specialty squash, 6 for \$10. 7 miles N of Kirksville to Ft. Madison Way, then East 1/2 mile.

FOR SALE: Pristine Deer Rifle, Remington model 7400, 270 cal, semi-automatic, scope, sling, w/ box of 270 cal ammunition, rifle like new, \$750 for all Kirksville 660-342-4287

DEER SEASON is almost here, Mossberg, Patriot & Savage rifles 243, 6.5 Creedmoor, 30-06 available, \$475 each. All new in the box. 217-577-9538

FOR SALE: JD 750 15' no till drill, dolly wheels, w/grass seeder; GP 1500 drill w/center pivot no till caddie,

FOR SALE: Red Angus bull, 2 years old, great EPD's. Semen tested and vaccinated. Double H Red Angus. Call 660-216-3301 or 660-216-1437.

FOR SALE: John Deere 4020 Tractor, straight off farm, ft wts, rear wts, 38" tires, 11,000 hrs, roll bar/canopy, runs good, \$13,500. Call 573-881-3557





**FOR SALE:** Silver Lab puppies, 5 weeks old, silver males and females big healthy pups up to date on shots and wormer ready to go Sept 1, farm raised, top quality \$250 660-988-1163

**WHITETAIL INSTITUTE** Food plot seeds, archery supplies, optics, and more. Whitetail Seed and Supply 14136 State Hwy 3 LaPlata MO 63549

**TRUE MODULARS** 30 to 60 day delivery available, 3 and 4 bedroom. 573-657-7040 chateauhomes.net

**NEW SKID** Loader attachments: bale spears, buckets etc., 4200 lb 42" forks, triple blade rotary cutters 74" or 80" grass/brush or tree. NO Sunday Calls 660-988-7385

**AVAILABLE STOCK MOBILE HOMES** immediately, double wide and single, 3 and 4 bedroom. 573-499-9993 columbiadiscountshomes.com

**FOR SALE:** 1991 GMC Grain Truck \$4000, 366 fuel injected gas engine, 5 speed manual transmission with splitter 15' grain bed. Call or text 660-216-3219

**FOR SALE:** 7 Fall-Calving Red Angus Cross Cows, calving now, ages 3-7. Retirement Dispersal, \$1250 each take all. Sutter IL 217-658-3951

**FOR SALE:** Suffolk and Hamp meat type Rams, Ewes and Ewe Lambs. Hindman Breeding 660-341-6625

**LABS, LABS, LABS!!** Male chocolate Lab 2 year old, will make great stud dog or pet \$200. Black female pups 5 months old, \$50 each, black male & female pups 10 weeks old, \$200. All up to date on shots and wormer. Call 660-342-2520

**FOR SALE:** Boer Spanish Cross & Spanish Nannies, some kidding now, prospects for next year. 641-919-0824 Packwood Iowa

**FOR SALE:** Agco 3000 630 Ch, elect stipper plates, single point hookup, w/meter corn reel; Drago 830 ch., self adj stripper plates; JD FBB w/grass clutch lift, \$750. 217-658-4761

**FOR SALE:** John Deere 7220 Tractor, MFWD, CAH, power shift, 9000 one owner hrs, \$49,500. Call 573-881-3557

**HUNTING EQUIPMENT** sale, 35+ box, bow, hay bale, ladder stands, hog trap, deer and turkey feeders, deer and goose decoys. All used, great condition. 641-208-7353


**FOR SALE:** Wholesale Southern Yellow Pine. Shelby Supply 660-299-0615

**HOUSE FOR SALE:** Macon MO, fixer upper 500 feet from the School and 300 feet from the park. 660-676-5531

**SCOTT HUSKEY'S HOME SERVICE** R-10 Foundation Enclosure Systems for manufactured, modular, & site built homes. Saves on utilities and prevents freeze ups. General maintenance and repairs since 1972 573-696-3468 "GO DAWGS"

**FOR SALE:** Fish for stocking ponds - Catfish, Grass Carp, Crappie, Blue Gills, Red Ear, Bass, and Minnows. Heindselman Family Farms, Call Greg 660-341-5692

**CLARK COUNTY, MO VIRTUAL ONLINE LAND AUCTION**  
**FRIDAY, OCTOBER 15, 2021 @ 10:00 A.M.**



LAND IS LOCATED IN SECTION 28, T65N•R6W, DES MOINES TOWNSHIP, CLARK COUNTY, MISSOURI.  
 HARD TO FIND SMALL RECREATIONAL PROPERTY WITH INCOME PRODUCING TILLABLE ACRES.

**CESSFORD CONSTRUCTION CO.**  
 CLOSING & TITLE WORK BY: OAK HILLS TITLE CO.  
 307 LEWIS STREET | CANTON, MO | (573) 288-4461

AUCTION MANAGER: Bill Fretwell (660) 341-7735  
 SULLIVAN AUCTIONEERS, LLC • TOLL FREE (844) 847-2161  
 www.SullivanAuctioneers.com • IL Lic. #444000107

**SULLIVAN AUCTIONEERS, LLC**  
 A FAMILY OWNED BUSINESS SINCE 1979



Headquartered in Hamilton, Illinois, Sullivan Auctioneers, LLC is one of the largest Real Estate and Farm Machinery Auctioneers in the nation.  
 For more than 40 years we have been conducting professional auctions. We connect our sellers with thousands of interested buyers around the world.

**Considering an Auction?**  
 CALL OR EMAIL TODAY FOR A NO OBLIGATION CONSULTATION!  
 Toll Free (844) 847-2161 | Sold@SullivanAuctioneers.com  
 www.SullivanAuctioneers.com | Lic. #444000107

**CENTURY 21 FARM & RANCH**  
 Lifetime Realty



A community member for over 26 years, Elizabeth is a real estate professional connecting sellers in Northeast Missouri to buyers across our great country.

Considering selling a farm or home? Call on a local expert who knows you, and who is committed to helping you get the most for your property.

Serving Knox, Macon, Adair, Sullivan, Linn, Putnam and Shelby Counties.

Elizabeth Gregory, Realtor  
 Lic. # 2021008017

**LISTING A PROPERTY?**  
 CALL OR EMAIL ELIZABETH FOR A NO OBLIGATION CONSULTATION  
 660.621.2136 | egregory.c21@gmail.com  
**farmandhome.c21.com**  
 Century21 Lifetime Realty | 660.665.5678

**IT'S FREE!**  
**EVERY FRIDAY** The NEMO Trader




CALL US FOR ADVERTISING QUOTES | 660.665.8500

**L & S Nemo Auction**  
**MERCHANDISE AUCTION**  
 Every Friday at 6pm  
 22486 Michigan Trail Kirksville MO  
 63501. Can call to set up consignments at 660-988-3818. Ask Lee Miller



KM-70KDE453

**VIRTUAL ONLINE • KNOX COUNTY, MO LAND AUCTION**  
**THURSDAY, OCTOBER 7, 2021 @ 10:00 A.M.**



Property is located in Sections 23 & 24, T60N R13W, Salt River Township, Knox County, Missouri. Property is located approximately 6.5 miles from Novelty, MO or 11 miles from LaPlata, MO.

**THIS IS A TREMENDOUS INVESTMENT OPPORTUNITY AS THIS FARM REPRESENTS HIGHLY PRODUCTIVE TILLABLE CROPLAND IN KNOX COUNTY, MO.**

**PAUL BRITTON TRUST**  
 CLOSING & TITLE WORK BY: OAK HILLS TITLE CO.  
 307 LEWIS STREET | CANTON, MO | (573) 288-4461

AUCTION MANAGER: Bill Fretwell (660) 341-7735  
 SULLIVAN AUCTIONEERS, LLC • TOLL FREE (844) 847-2161  
 www.SullivanAuctioneers.com • IL Lic. #444000107

KM-70KDE426

**HUGE 1 DAY LIVE AUCTION!!**

**THE GARY & CAROL ELLIS COLLECTION**  
 IMAN AUCTION CENTER | 34614 HWY 24 - SALISBURY, MO  
**FRIDAY, OCTOBER 1, 2021 @ 9 AM**

Early and Primitive American Furniture - Handmade Pieces - Pie Safes - Corner Cabinets - Jelly Cupboards - Indian Artifacts - Old Iroquois Beadwork - Vintage Southwestern Pottery - Rugs and Papago Baskets - US Land Grants - Postcards - Tintypes & Daguerreotypes - Old Photo Albums - Paper Ephemera & Books - Tramp Art - Folk Art & "Make-Do Items" - Stoneware - W.S. Dickey Clay - Pottery - Face Jugs, Bennington - Gold & Silver - Apothecary Jars - Early Bottles and Country Store Canisters - MUCH, MUCH MORE!!! See ImanAuction.com For Full Listing & Terms



**IMAN AUCTION COMPANY**  
 660-788-4298 | 660-414-7830 | 660-388-6235

KM-70KDE440



The

# NEMO

*Trader*

IS NOW A

**PROUD MEMBER**

OF THE

**PHILLIPS MEDIA GROUP  
NEWSPAPER FAMILY**

*Watch for exciting changes  
coming soon!*



FOR SALE: Farmhand XL 740 Loader, QT, 7' bucket, good paint, \$3,750. Call 573-881-3557

HIGH QUALITY Hay for sale \$45 per bale. 217-653-4762

FOR SALE: Gehl 600 2 row chopper; Fox 2250 2 row corn, hay pickup fox 3000 2 row; Fox w/1 row hd; H&S silage wagon WT gears; Gehl silage wagon; silage wagon. 217-658-4761

ATTENTION HUNTERS: Whitetail Institute Products, CenterPoint Archery, Rage, Muzzy, Wac'em, G5 Broad heads, Carbon Express arrows, Nocturnal Lighted Nocks, Block Targets, Scent Thief Scent killer Products, Adam Hayes Moon Guides, Tinks Lures, IQ Bow Sights, Ghost blinds, Leopold & Vortex Optics, Chippewa Wedge-Loc Tree Stands, and more at Whitetail Seed and Supply 14136 State Hwy 3 LaPlata MO 63549

FOR SALE: 2 Killer Instinct Cross Bows, brand new, comes with everything, \$350 each; 2 Marlin 30-30, excellent condition, \$675 each. 217-577-9538

Wevers Outside Wood Furnaces a dealer for Heatmor Stainless Steel Outside Furnaces, have an assortment of parts, line, and etc. Taking orders for new outside wood furnaces. Call 660-423-5242, cell 660-216-9885. Open 6pm-9pm Monday-Friday, Saturday anytime, call first.

# LANCASTER LUMBER INC.

Lancaster, MO.

1-800-424-5071

LAN-DOW BUILDINGS

www.lancasterlumber.com



## DAVIS COUNTY, IOWA LAND & PERSONAL PROPERTY AUCTION

TUESDAY, SEPTEMBER 28, 2021

Virtual Online Land Auction at 10:00 A.M.  
Timed Online Personal Property Auction at 12:00 Noon

Mark your calendars now for this upcoming Davis County, Iowa land auction for the late Billy Lee Luko. Tract 1 features a single story 3 bedroom home that was built in 2016 and several very usable outbuildings. Tracts 2 & 3 offer productive tillable farmland and improved pastureland. If you are looking for a small farm or acreage, make plans now to participate in this auction.

**Personal Property Highlights:** 1967 JD 4020 2wd diesel tractor; 1971 International 1466 2wd tractor; JD 275 3-pt. 9' rotary disc mower; JD 347 square baler; JD 510 baler; JD 350 elevator; 10 wheel V-rake on hyd. cart; 12' pull type disc; 6'x10' barge wagon w/ gear & hyd. hoist; J&M 225 bu. gravity wagon w/ JD gear; 7'x16' hayrack on gear; Westendorf gear; 10' 3-pt. chisel plow; Kewanee 7' 3-pt. adjustable blade; Hyd. log splitter w/ Briggs & Stratton 18 hp eng.; Shop built pallet forks for JD 148 loader; 3-pt. bale mover; JD 148 loader bale spear; 3-pt. bale spear; EZ Haul inline 6 bale hay trailer; New Idea 213 manure spreader; Farmhand 815 Feedmaster grinder mixer; 2 ton portable double sided creep feeder; (2) Hastings double side creep feeders; 48" walk through pipe gate; (4) bale rings; 34"x8' wooden feed bunk; (2) 2'x10' wooden feed bunks; (4) 16' cattle panels; (10) 10' portable corral panels; (6) 12' portable corral panels; Quantity of steel fence posts; 110 gallon poly water tanks; Smaller steel homemade feed bunk; 2001 Elite 28' flatbed trailer; 1991 Blair 7'x22' livestock trailer; Rice 7'x10'6" trailer; 5'x8' trailer; 2004 Polaris Sportsman 500 HO 4wd ATV; 16' Lowe Alum. Lo-Line flat bottom boat; Lowe 16' Big John boat; 8'x16' pontoon boat on trailer; Pelican ice fishing sled; Sun Dolphin Aruba 10' poly kayak; Mercury outboard motor; Tools & Shop Items.



80 ACRES±  
3 TRACTS



## BILLY LEE LUKO ESTATE

Representing Attorney:  
Paul Zingg  
Deneff, Gardner & Zingg, P.C.  
104 S. Court St., PO Box 493  
Ottumwa, IA • (641) 683-1626

AUCTION MANAGER: JOHN PROBASCO (641) 856-7355  
SULLIVAN AUCTIONEERS, LLC • (844) 847-2161  
www.SullivanAuctioneers.com • IL Lic. #444000107

# VIRTUAL ONLINE • KNOX COUNTY, MO LAND AUCTION

THURSDAY, OCTOBER 7, 2021 @ 11:00 A.M.



51.7 SURVEYED ACRES  
1 TRACT

Land is located in Section 23, T60N•R13W, Salt River Township, Knox County, MO.

LAND REPRESENTS A VERY NICE TIMBER TRACT WITH MULTIPLE FOODPLOT LOCATIONS SURROUNDED BY TILLABLE ACREAGE WHICH OFFERS OUTSTANDING HUNTING/RECREATIONAL ACREAGE.

## JEREMY TOUBL

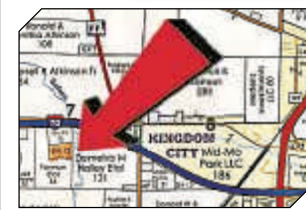
CLOSING & TITLE WORK BY: KNOX COUNTY ABSTRACT  
103 S. FIRST STREET | EDINA, MO | (660) 397-3259

AUCTION MANAGER: Bill Fretwell (660) 341-7735  
SULLIVAN AUCTIONEERS, LLC • TOLL FREE (844) 847-2161  
www.SullivanAuctioneers.com • IL Lic. #444000107

# JOHNSTON AUCTION & REAL ESTATE

ESTATE • LAND & PROPERTY AUCTION  
Sat., Sept. 25<sup>th</sup> • 10:00 am  
Location: 4930 Jade Rd., Kingdom City, MO

REAL ESTATE TO BE SOLD AT NOON



LOCATION: from Kingdom City jct of I-70 & Hwy 54, take S 3/4 mile, turn W on Rd 220, go 3/4 mile to Rd 210, then 2 mile N to site.  
OPEN HOUSE Wed. Sept 15 & 22 - 5-7 pm or by appointment.  
Property offered in two tracts:  
TRACT #1: 7.67 Acres (MOL) of pasture and woods.  
TRACT #2: 5 Acres (MOL) with a 3 bedroom, 1 bath, 1,248 sq. ft. home with a 960 sq. ft. basement. Included is a 36' x 100' shop, an 18' x 44' shop, and a 10' x 12' shed.



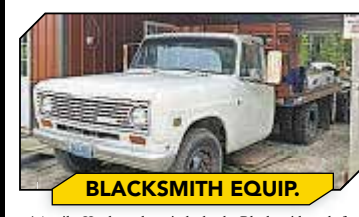
## EQUIPMENT

1980 Agco Allis 6670 2WD; 1966 Oliver 1550, 3pt; IH Farmall 560; AC D-15 Series II; 1978 Caterpillar 12F Road Grader; John Deere Model A; Case 12' disc; visit jamesjohnstonauction.com for photos



## VEHICLES/TRAILERS

1974 International Truck 200; 1979 Int 238 Detroit; 1990 Holden 35T Lowboy; 16' Utility Trailer; EZ Vac Wagon and much more!



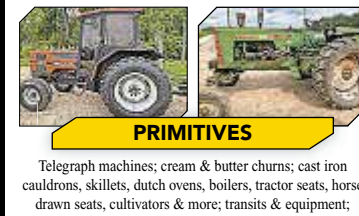
## BLACKSMITH EQUIP.

4 Anvils; Hardy tools; grind wheels; Blacksmith tools for all kinds; too numerous to mention.



## TOOLS

Shop Smith multi tools; Mastershop multi tools; Gene manual forklift; Central Machinery drill press; Del Saw planer; radial planer; MTD yard blower; Echo; Husquavarna & more chainsaws; Shop Fox lathe; hydraulic press; Craftsman radial arm saw; Ellis mitre band saw; Clausing drill press; Craftsman drill press; bottle jack press; Miller and Lincoln welders; Chest on chest tool boxes; tool boxes; hand tools; power tools; many more items too numerous to mention.



## PRIMITIVES

Telegraph machines; cream & butter churns; cast iron cauldrons, skillets, dutch ovens, boilers, tractor seats, horse drawn seats, cultivators & more; transits & equipment; antique snow shoes; steam pressure gauges; bull horns; much, much more.



## HORSE & TACK

Lots of saddles; horse and tack equipment; many more items too numerous to mention.



## SEWING EQUIPMENT

Several industrial Singer & Durkopp electrical and treadle sewing machines, clothing and leather; lots of accessories and equipment and more.



## SCRAP IRON

Tons of good angle iron, scrap iron, sheet metal. A welder & builder's dream come true; will be sold by the pallet and more.



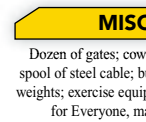
## LUMBER/BLDG. SUPPLIES

Lumber and building materials of all types!!



## MOTORS

Vintage boat motors and electric motors by the dozens; too numerous to mention!



## MISCELLANEOUS

Dozen of gates; cow panels; hog houses; pallet racking; spool of steel cable; bumper cattle guard; bale rings; wheel weights; exercise equipment; much, much more! Something for Everyone, make plans to attend this auction!



# JOHNSTON AUCTION & REAL ESTATE

Terms: Cash or Good Check • Photo ID Required for Bidder Number Not Responsible for Accidents, Lost or Stolen Items. Announcements day of auction take precedence over all advertisements.

James L. Johnston, Licensed Broker & Auctioneer  
Jeffrey JJ Johnston, Auctioneer  
Robert Cook, Jr • Kinney Shirey • Josh Bright, Associate Auctioneers  
573-473-4904 • 573-239-6056  
660-291-5921

jamesjohnstonauction.com

Items from: Million Estate

# ESTATE

## James & May Stoker

### ONLINE ONLY LAND AUCTION

22523 Timber Ave. Bloomfield, Iowa  
Located just North of Pulaski, Iowa

Bids close at noon on October 15th

TRACT 1 < 39 Acres M/L

The home on this property was built in 1949. It consists of 865 sq ft. with 2 bedrooms 1 bath, full unfinished basement, newer furnace and central air. Out buildings include a 32x60 pole barn and 36 x 40 barn. Rural water and electricity located on the property.

54 Acres M/L > TRACT 2

Very unique timber parcel with mature trees and trails for access, just over a acre foodplot area located on the southern border located just east of a small pond. Utilities nearby.

THIS IS WILL BE ONLINE ONLY TIMED AUCTION WITH BOTH TRACTS SELLING SIMULTANEOUSLY. LAND WILL BE SOLD ON A PRICE PER ACRE BASIS TIMES THE ACRE AMOUNT LISTED. 10% WILL BE DUE DOWN THE DAY OF THE AUCTION. BUYER RESPONSIBLE FOR ANY SEPTIC UPDATES AS THE ESTATE IS EXEMPT FROM REPAIRS OR REPLACEMENT.

QUESTIONS?  
LINCOLN LYNCH 641.208.3649

# LYNCH BOYS AUCTION SERVICE

www.lynchboys.com

Download on the App Store

OPEN HOUSE  
OCTOBER 4TH  
4:30 - 6:00 PM

NEOMO TRADER • Advertise with us TODAY! • Phone: 660.665.8500  
PO BOX 190 • KIRKSVILLE, MO 63501



## Democratic Club Fall Picnic

Sunday Sept. 26, 6-8pm

Brashear Park, Kirksville  
Hear from State Candidates

Details and register at

<https://www.facebook.com/AdairDemsMO/>

Paid for by Adair County Democratic Club, Barbara Smith-Mandell, Treasurer



KM-70KDE383

## The Estate of Bob & Betty Chenoweth

### Online Auction



Begins closing Sept. 27th @ 6:00pm

### Important Information:

Due to a very quick turnover of the real estate, The following will be sold using the Online Auction Method of Marketing. Bidding & Details can be found at [mwauctions.bid](http://mwauctions.bid)

#### Furniture:

Several furnishing items including bed frames, dressers, mirrors, one solid wood entertainment center, microfiber couch, kitchen table, dining table, wrought iron patio set (very nice condition, all weather wicker patio set).

#### Entertainment:

samsung 36" flat screen tv, char-broil grill, several boxes full of games & nativity sets. several decorative golf decorations. a small kitchen tv. & more too numerous to mention.

#### Tools & exterior decor:

sets of sockets, & wrenches, Truck Air Battery charger, weed eater, metal shelving unit, wheel barrow & much more, also a stone bird bath, 2 wood & metal decorative benches, & much more.

#### Auctioneers Notes:

Since selling Bob & Bettys home, the Chenoweths' have decided to sell the listed items at public auction. due to a very fast closing timeline, the auction will be sold using the online only method of marketing. there will be a 10% buyer premium attached to this auction.



**mwauctions.bid**  
660-654-2084

follow us on



**Live Auctions Online Auctions**

Auction Manager: Mike Witten 660-654-2084

**Bidding & Details @ [mwauctions.bid](http://mwauctions.bid)**

KM-70KDE421

## ESTATE AUCTION

Saturday, October 2nd - 10:00 AM

**Location:** 11430 Hwy AB Green Castle, MO (11.8 miles North of Green City on Hwy 129 to RT. AB, 1.8 miles)

**Household:** Frigidaire 21 cubic Ft. refrigerator (like New), 42 inch flat screen TV (1 yr. old), microwave & stand, 7 pc. Dining set, 3 cushion sofa, small appliances, Cosco Step stool, book shelves, pots, pans, & dishes, dehumidifier, bedding & linen, clocks & wall hangings, Magic chef dehydrator, GE Automatic washer (like new), electric dryer, twin bed, fruit jars, misc. household, large pet taxi, fans

**Vintage and Collectible:** fiddle and case, guitar parts, Epiphone PR650 N guitar & case (nice), banjo, oil lamps, stone jar, wire milk crates, wooden block & tackle, large saw blade, galvanizes buckets & sprinkler can,

**Tools & Shop:** floor jack, tool boxes, planes, nuts & bolts, organizer, carpenter tools, lots of hand tools & socket sets, (2) Bill Gossett Series 100water pump (new), power hand tools, air compressor, 225 amp Lincoln welder & supplies, gas cans, shovels & yard tools, wheelbarrow, binder straps, ext. cords, bench vise, fishing items, pipe wrenches, bench grinder, garden sprayers, sewer tapes, air pig, shop supplies, fencing tools, 3 ft. snow blade, large, single plow (yard tractor, weed eater, p/u tool box, auto ramps, 2-Wheel dolly, ladders, Rise H.D. trailer hitch w/equalizer, 10 drawer tool box chest & base Cabinet,

**Trailers:** homemade flatbed trailer, 18 Ft. camper trailer (salvage only)

\*Large stack used cedar siding (20 ft. lengths, good condition-stored inside)

Owner  
Charles Rouse Estate

#### Auctioneers:

Jerry McMair  
Rhea Golden

**Kirksville MO**  
**Ph. 660-665-9380**  
**[www.mcmainauctionservice.com](http://www.mcmainauctionservice.com)**

Heat/cool Lunch Counter Restrooms Seated

KM-70KDE424

FOR SALE: Registered AKC Labrador Retriever puppies, yellow. Farm-raised and loved! MO Health Certificate. Dam and Sire on farm. Ready to go now! Lay's Labs - LaBelle, MO 660-956-2482.

FOR SALE: Mums \$8 a piece, also have large combo's \$20; large variety of colors. Pumpkins and fall decorations. Kauffman Produce 11538 Iceberg Ave La Plata MO 63549

FOR SALE: Rossi 4 Basket Tedder, field ready, \$3,250. Call 573-881-3557

FOR SALE: 5 X 51/2 big round bales of mixed grass hay, Bailed dry no rain fertilized lab tested surface wrapped. Call 660-341-4031 Watson hay sales

FOR SALE: Gleaner 800 25' lateral tilt hyd for & aft; Gleaner 520 20'; Gleaner 830hugger H' Gleaner 3000 630, w/corn head. 217-658-4761

FOR SALE: New 3 pt. tillers, heavy duty, gear driven, 7' to 10' starting at \$3050. 660-874-4455

PASTURE AND HAY GROUND Needed around Adair & Knox County. Please Contact 660-216-5887 or 417-773-2507

FOR SALE: 2010 Case 8120 Combine, 2975 HR -2097 HR, NO DEF, RWA, DIF Lock, 620 Drive Tires, 28 Steer Tires, luxury cab, clean machine, \$85,000. 641-895-8014

**BigIron**  
AUCTIONS

UNRESERVED ONLINE AUCTION

WEDNESDAY, SEPTEMBER 29, 2021

[www.bigiron.com](http://www.bigiron.com)

LOT ID# GM9343

Location: Baring, MO

Owner Contact:  
Leon James -- 660-341-7612



LOT ID# GM9340

Location: Monroe City, MO

Owner Contact:  
Nathan Miller -- 573-470-1448



LOT ID# GM9334  
(GLEANER F3 DIESEL)

Location: Novinger, MO

Owner Contact:  
Troy Smith -- 660-341-5253  
Todd Smith -- 660-341-5252



LOT ID# GM9333

Location: Knox City, MO

Owner Contact:  
Jared Peavler -- 660-342-7685



LOT ID# GM9342

Location: Kirksville, MO

Owner Contact:  
Jack Snelling -- 660-341-6911



LOT ID# GM9344

Location: Baring, MO

Owner Contact:  
AJ James -- 660-342-1002



LOT ID# GM9336

Location: Edina, MO

Owner Contact:  
Matt Clark -- 660-341-0800



LOT ID# GM9346  
(PALLET OF 500)

Location: Lewistown, MO

Owner Contact:  
Fleer Feed -- 573-215-2200  
Caleb Fleer -- 217-242-1468



CLARK FARMS

Location: Edina, MO

Owner Contact:  
Matt Clark -- 660-341-0800



Sales Representative:

**DEREK ENGLAND**  
660-956-6424

Visit [www.bigiron.com](http://www.bigiron.com) to view all photos and descriptions.

Rural Connections | Respected Values | Real Deals

Sell your equipment on BigIron. Call today! 1-800-937-3558

No Buyer Fees  
Auctions Every Wednesday



KM-70KDE450



**HANDYMAN:** Install interior and exterior doors and windows, siding, decks, showers and toilets, flooring and drywall, roofs and dirt work. 660-956-2189.

**WANTED TO BUY:** 12'-15' Brush Hog in new or good condition; also good used pickup truck. 660-676-9199

**FOR SALE:** NH 973 20' flex; NH 973 25' flex; NH 974 630 corn head; MF 1163 corn head; MF 1144 corn head; Gleaner 630 LM or R; Gleaner 830 corn head LM or R. 217-658-4761

**FOR SALE:** John Deere 2950 MFWD Tractor, w/Farmhand XL 740 Loader, 6000 hrs, average condition, \$24,950. Call 573-881-3557

**FOR SALE:** 2 Killer Instinct Cross Bows, brand new, comes with everything, \$350 each; 2 Marlin 30-30, excellent condition, \$675 each. 217-577-9538

**FOR SALE:** 20" rims Verde 5 bolt, GM, nice condition, 2 Falcon 275/45R20 tires, usable tread included, \$850, make offer. 660-956-5306.

**FOR SALE:** Side by side refrigerator/freezer, works good, \$150. Argyle, IA 319-410-0277.

**FOR SALE:** Heider Auger Wagon, 100 bushel , 540 PTO, boards on each side, manual auger swing either side, shedded, clean solid wagon, \$750. 217-257-1385 anytime

**WANTED TO BUY:** Farm Machinery and Estates. Call James L. Johnston. 573-473-4904

**STOCK MOBILE HOMES AVAILABLE:** We gottem, single and double 3 and 4 bedroom! Call Tuffy 573-657-2176 amegamobilehomes.com

**WANTED TO BUY:** Harley Davidson's, any year, any condition, cash money. Days 660-263-1356 or 660-537-0068

**The Ultimate Wood Heat.**



- **More Comfort** - Thermostatically controlled wood heat.
- **Peace of Mind** - Keep the fire outside and eliminate the dangers associated with indoor wood heating.
- **Save Money** - Wood is a renewable, inexpensive and often free energy source.

**CAMPEN**  
Heating & Air Conditioning  
573-288-8966  
Canton, MO  
**CentralBoiler.com**

**Real Estate, Antique and Personal Property Auction**

Thursday, September 30, 2021 at 5:00 p.m.  
**Estate of Beverly Blodgett**  
2511 South Jameson Street, Kirksville, MO 63501

**Directions:** 2511 South Jameson Street, Kirksville, Missouri, 63501. From U.S. Highway 63 in Kirksville, turn East on State Highway 11 for approximately 0.6 miles, then turn North on South Jameson Street for approximately 0.3 miles. Watch for signs the day of the sale.

**Real Estate:** What a great location! You must see this home sitting on a large 1.44 acre corner lot with several mature shade trees, an attached 1 car garage, a 22' x18' detached garage and a 10'x 12' storage shed. The 2 bedroom, 1 bath home has vinyl siding, a large dining room, plenty of cupboards in the kitchen and a spacious living room. It includes a Rudd gas furnace and an approximately 10' x 12' concrete floor basement.

The real estate will sell promptly at six o'clock. If you would like to schedule your personal showing, please call Scotty at 573-356-4405.

\*See Terms and Conditions for Purchase of Real Estate below.

**DOWN PAYMENT:** 10% of the contract purchase price will be due upon acceptance of the Sales Contract. Personal or Cashier's Checks will be accepted. This is "AS IS, WHERE IS" and is non-refundable. **CLOSING:** Closing shall be within 30 days of the auction date.

**Vehicles:** 1996 Chevy 4x4, extended cab with 200,000 miles; 2005 Dodge Caravan mini van 200,000 miles

**Antiques and Collectibles:** Antique oak wash stand; maple hutch; antique China hutch; hen on nest; antique oak chest of drawers; antique type writer; Planter's Peanuts jar; Carnation Malted Milk glass container; Dazey churn jar (no mixer); drop front secretary with glass front display; antique chest of drawers and glove boxes; oak square table; antique oak rocking chair; #5 Blue Ribbon crock jug; antique barn lantern; miscellaneous jars; old garden cultivator; old buck saw; galvanized boiler; Grey Round Red wagon

**Household Items:** Chef dorm size refrigerator; miscellaneous mixing bowls; plastic organizer; HYL A air and room cleaning system, like new vacuum; Vizio flat screen TV; dresser with mirror; costume jewelry; Kenmore 220 window air conditioner

**Outdoor and Sporting Goods:** Trex 820 bicycle; Schwinn Sidewinder bicycle; dog steps; bird cage; Miscellaneous hand tools

There will be more items at this auction too numerous to mention

\*\*GO TO WEBSITE FOR FULL LISTINGS\*\*



Scotty Kuntz 573-356-4405  
Michael Cunningham 660-651-2208 • Paxton Pittman 918-316-7500  
**WWW.SCOTTYSAUCTIONSERVICE.COM**

**2 Day Auction Richard Neubauer**  
**October 2nd & October 9th, 2021**  
36750 300th Ave, Leon, Iowa 50144  
**Driving directions: 8 miles NW of Lineville, IA on the Leon- Linveville Road then 1/4 mi. north on 300th Ave. 2 rings to run on October 2nd, starting at 9am**

**Ring #1**  
Modern tools to include, many sets of end wrenches to include S & K, Thorson, Craftsman and others; Stihl chain saws in cases; barn heaters; drill bits; barn and shop fans; 3/4 drive sets; tap and die sets; tool boxes; large crescent and pipe wrenches; hack saws; hitch pins; large ratchets and sockets; high lift jacks; oil and grease; Lincoln welder; gas powered Onan electric plant, 120 volt generator; ladders; (2) L.B.  
White heaters; large bolt bin w/ bolts; extension cords; nails and screws; fishing poles; steel ammo boxes; and many many items too numerous to mention  
Family member consigning  
Small shop full of never used or seldom used USA made tools; to include crescent, S&K and Thorson; Milwaukee and DeWalt battery tools; DeWalt table saw and other high end tools, cases, etc.

**Ring 2**  
Several loads of farm primitives to include hay hooks, hay knives; hay scythes; meat hooks to include Armor; Swift and Co., CM & SP, Wilson and others; shoe lasts; picks; pulleys; galvanized buckets and such; sad irons; (100) horse bits m/l; stirrups; ice tones; hams; single trees; neck yokes; bull blinders; barbwire assortment; waffle tree; (5) hand corn planters; hay forks and hay fork cars; RR dollies; stove mover; (50) m/l saws all shapes and sizes; lightning rods; iron and metal seats; scale beams; calf weaners; corn and coffee grinders; etc. etc.  
Noon, One ring, Live and Simulcast Live, go to our Wagner-Dent App to see full listings, descriptions, and photographs  
1996 Mercury Marquis, 103k miles, Red, 4.6 V/8, all bells and whistles; 1998 Dodge extended cab pickup, 151k miles, black, V10, auto, 4x4, layover ball, air gates; 1997 Chevy Pickup, 240k miles, 350 V/8, 2.7, auto, 4x4, rough body; 1999 Jeep Grand Cherokee limited, 175k miles, 4.7 V/8, gray, new tires and battery; 2006 Ford Crown Vic, 140k miles, maroon, 4.6 V/8; 1998 Holiday Rambler Andover motor home, 69k miles, 460 V/10, central air and vac, generator, dual air, 21" TV, awning, receiver hitch; 1990 F250 Ford pickup, 351 V/8 4x4, not running; 1135 Massey Ferguson tractor, second owner, 4 sp., hi/lo, multi -power, heavy front truck tires; 2004 Kawasaki, 700 Prairie, 4x4; Steadman G.N. 2 horse trailer, no title; 1984 Coose Gooseneck livestock trailer, 72.5" tall, 20' long, bridge plank floor; EZ flow wagons; hayrack on JD gear; rubber tired four cart; JD steel wheel manure spreader, rebuilt; Fisher and Trenton anvils; barbwire christmas tree; 30+ saddles: Buck Stener, Veach Rosebud, Bonna Allen, Sikes and Pots Special Longhorn saddles, Heiser highback, Ralph Shimon and several other unmarked saddles; Collectables; (30) collectable saddles; large amounts of tack; ropes; saddle pads; saddle stands; (25) horse collars and collar pads; (75) m/l bridal and bit sets; 1135 MF tractor, 34' Holiday Rambler V-8 gas motorhome; After the online portion finish the day with feed bunks; bale rings; stall feeders; water tanks; (4) large heavy steel calf shelters; several hundred steel posts; used galvanized steel roofing; used lumber; (20) m/l excellent cattle panels; (34) m/l second cutting net wrapped big bales of grass, tree foil, and clover hay;

**Day #2 Saturday October 9th, 2021, 9am same location**  
Approx. (20) well pumps to include Red Jacket Cedar Rapids, Dempster Mill Beatrice Nebraska, WMCO Fairbury Nebraska, F.B. Myers and Brothers Ashland Ohio, Beckman Brothers Des Moines, IA; (50) m/l steel wheels all sizes; harpoon hay forks; hay fork, track, car, and rope from the Morris Rockhold barn; furniture from grandparents, parents and family homes from 2 generations; toys; seasonal decor; platform scales; pots and pans; milk cans, (one from Sinclair Refining co.); kids bicycles; love seat w/ matching chair; flour and grain sacks; wicker picnic basket; red wicker picnic basket w/ metal handles, picnic ware included; brass bell; glass green and white insulators; numerous older country albums; records; (5) chicken water bases; (50) m/l Longaberger baskets;

**11 AM Online and Simulcast Live, go to our App to see 100 m/l listings and descriptions of this part of the auction**

**Wagner-DentAuction.com**

Find us on "Wagner-Dent Auctions"  
1026 40th Street, Humeston, IA 50123  
Don Wagner 641-931-6832 donaldwagner44@gmail.com  
Jason Dent 515-231-5176 imaginerodeo@gmail.com

**THE NEMO TRADER**  
**CLASSIFIED COUPON**

Clip This Coupon Out of This Week's NEMO Trader and run  
**2 CLASSIFIEDADS FOR \$5.00**  
**Picture Ads Not Included with Coupon! Call For Pricing!**  
**(Each Ad Must Be 20 Words or Less.)**  
**~20¢ per word over 20 words~**

**Cash NOT ACCEPTED Check or Money Order Only**

**Ad No. 1: (20 words or less)**


**Ad No. 2: (20 words or less)**


**YOUR CLASSIFIED AD WILL BE READ IN OVER 19 COUNTIES, IN 3 STATES!**  
**BY COUNTLESS BUYERS!!!**

**TO RECEIVE THIS RATE: COUPON MUST BE MAILED IN**  
**ALONG WITH YOUR PAYMENT!**  
**THE NEMO TRADER, P.O. BOX 190**  
**KIRKSVILLE, MO. 63501 ~ 660-665-8500**



# Farm Consignment

## LINEVILLE, IA

# AUCTION

Saturday, October 2, 2021 ★ 10:00 A.M.

### MISCELLANEOUS FARM EQUIPMENT AND OTHER ITEMS

- 2015 Polaris Ranger 900XP, 1726 hours, enclosed cab, electric windows, radio
- New Holland 455 sickle mower, 9', new parts
- 87 Mack Econodyne grain truck, 350 Mack, tranny 9sp, 18' box, 22.5 on back, 29.5 front, good rubber, new brake drums
- 150 small squares and possibly 100 more off farm, 2nd cutting last year, good, dry hay
- Blair gooseneck trailer with gravity box and auger
- For-most model 150 portable chute and headgate
- JD loader and bucket, no cylinders or mounting brackets
- B Farmall, new tires, new rings, new paint, 2 seater, fenders, new muffler, new battery
- Farmall Super C rubber weather cracked but hold air, new paint
- 14' JD231 disc, some new blades and scrapers, nice condition, new rubber
- 16' gooseneck stock, all lights work, good condition, good rubber, spare tire, good floor, nice trailer
- work tub and corrals
- IH 1300 3pt mower
- Brush hog 9ft pull type rotary mower
- Case IH 96 rake
- New Holland 36 rake
- Barge wagon
- 225 bushel gravity flow wagon
- 6 bale hay trailer
- 3pt 8ft blade
- Brush hog 7ft pull type rotary mower
- New skid loader, grapple
- Misc trailer items
- 300 5 1/2 T post
- 8 bale hay trailer
- JD 261A disk mower
- Tonutti 8 wheel fold up rake
- 16ft field cultivator
- 16 ton bulk bin
- 3 quick hitches
- 3pt stabber
- Vermeer 605 F baler
- Old anhydrous tank
- Homemade fuel trailer
- Brady model B144 stalk chopper
- Clark nurse tank on wheels
- Ferguson tractor with loader - salvage
- 3pt anhydrous toolbar
- Sidewinder 7ft pull type brush cutter
- Homemade 3pt carry all
- Square bale feeder
- Nurse tank on wheels
- Dakon gravity box on westendorf running gear
- Danuser F7 3pt post hole digger w/3 bits
- Numerous different corral panels and gates
- Hesston 12 wheel rake missing 2 front rake wheels
- 2 Sidewinder 15ft brush cutters - not running
- International 710 plow
- Carmaco bale unroller for pickup
- 3pt anhydrous toolbar
- 3pt anhydrous toolbar
- Farmall H - salvage
- 2 round bale rings
- 2 prong 3pt stabber
- 2 prong 3pt stabber
- Pull type 3pt equipment caddy
- Apple feed bunks
- 3pt 8ft blade
- Pickup bale stabber
- Creep feeder
- Kewanee 20ft cultivator
- Cox creep feeder with gates
- WW corral panels
- 6 bar corral panels
- 6 bar corral panels
- 5ft sidewinder brush cutter
- 3pt bale unroller
- Kinze 400 grain cart
- Palpation cage
- Several hay rack items
- Clark nurse tank on wheels
- Farmall H tractor - salvage
- Rome 10ft disk
- Jet post pounder
- International 560 plow
- L shaped fuel tank
- Priefert corral set 19 pieces
- Noble 3pt 8 row cultivator

AUCTIONEER NOTE: More items to come. Trailer items will sell first.

#### Lineville, IA

Auction held at Former FINA station lot, SE corner of Lineville Square. Watch for signs day of sale

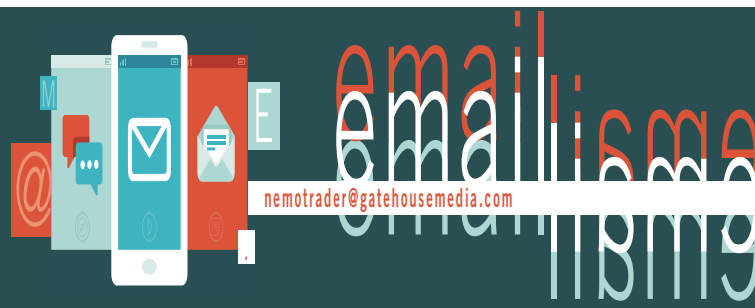
For Full Listings & Photos go to [www.auctionzip.com](http://www.auctionzip.com) ID # 38454 or [www.shomemoreauctions.com](http://www.shomemoreauctions.com)

★ Lunch Served on Site ★

Terms: Cash, check with proper ID. Nothing removed until settled for. Not responsible for theft, accident or inadvertent error in advertising. Statements made day of sale take precedence over printed material. We have the right to refuse bids and/or bidder.

**ALLEN AUCTION SERVICE**  
Princeton, MO  
Jerry Allen, Owner/Auctioneer • Cell (660) 953-0346

KM-70KDE419



## Shelbina Commercial Real Estate Auction

Tuesday, October 5, 2021 at 5:00 p.m.

Former Church Building Auction

202 W Walnut Street, Shelbina, MO 634681

**Directions:** 202 W Walnut Street, Shelbina, Missouri. From US Highway 36 at Shelbina, follow Highway 15 (North Center Street) South for 0.3 miles, turn right on Walnut Street and the property will be on your right. Watch for signs the day of the sale.

**Real Estate:** This large brick church building has 3 levels above ground, a large balcony with pews, a lot of original woodwork, hardwood flooring throughout the majority of the building including the sanctuary, large pocket doors, 6 stained glass windows, ornate original crown molding, multiple classrooms or office areas, five restrooms with commodes and sinks, a large working kitchen, a handicap accessible entrance. Included are all pews, the sound system, the pipe organ and piping, shelving that can be removed or left stationary, numerous folding chairs and tables, several pianos and numerous hymnals. The building has not been operational as a church for approximately 2 years. It could be used for that purpose or easily converted for other uses. This is an absolute auction and the property will be sold on this day.

The real estate will sell promptly at five o'clock. If you would like to schedule your personal showing, please call Scotty at 573-356-4405.

\*See Terms and Conditions for Purchase of Real Estate below.

**DOWN PAYMENT:** 10% of the contract purchase price will be due upon acceptance of the Sales Contract. Personal or Cashier's Checks will be accepted. This is "AS IS, WHERE IS" and is non-refundable.

**CLOSING:** Closing shall be within 30 days of the auction date.



Scotty Kuntz 573-356-4405

Michael Cunningham 660-651-2288 • Paxton Pittman 918-316-7500

[WWW.SCOTTSAUCTIONSERVICE.COM](http://WWW.SCOTTSAUCTIONSERVICE.COM)

FOR SALE: New 3 pt. tillers, heavy duty, gear driven, 7' to 10' starting at \$3050. 660-874-4455

HANDYMAN: Install interior and exterior doors and windows, siding, decks, showers and toilets, flooring and drywall, roofs and dirt work. 660-956-2189.

FOR SALE: International 674 diesel with Quick Tach hydraulic bucket loader, power steering, good tires & paint, \$9700. 660-341-8089

FOR SALE: Progressive 1300 12K NH3 WT on M&W dual no till coulters raven coolers monitor markers, for strip till; DMI 4200 NH3 WT on M&W raven 440M 14K no till. 217-658-4761

FOR SALE: John Deere 2040 Tractor, sharp, 90% rubber, 5565 hrs, hydr valve, Loader available, \$9,750. Call 573-881-3557

FOR SALE: 2012 GMC Sierra, 117,000 miles, 4 door, 6 speed transmission, 20" wheels, all leather, heated and cooled electric seats. Best model bed liner, bed rails, running boards, backup camera, white in color, \$22,000. Lentner, MO 660-699-3741.

NATIVE PLANTS for butterfly gardens, rain gardens, hard to mow banks, and restoration. Peckosh Landscaping 23198 Hwy H/Boundary St. Kirksville, MO. Just north of the Troy Mills store. Call Claire at 660-349-0061.

# SCOTT ROY AUCTION

Saturday Oct. 2, 2021 9:30 AM

Bob and Kathy Cusick, 6876 LIV 532 Chillicothe, MO



**Highlights to include:** a 2001 JD 4600 FWA HST, 539 hrs., full set front weights w/72" JD belly mower – super clean, Woodworth 18ft HD trailer – 7000# axles, eXmark Lazer

Z commercial grade mower, 56" deck, 185 hrs, Gossen small bale chopper, 1971 Case 580 CK backhoe (50 hrs on 2006 overhaul), 1965 150 MF gas wf, Reynolds 10 yrd dirt pan, Reynolds 14ft box blade, several pieces of light 3 pt. equipment, lots of misc. shop and farm, scrap iron, **Also selling:** furniture, household, antiques and collectibles, Coleman hot tub, lawn and garden items, etc. **This will be a large auction. May run two rings.**



For photos and listing - [scottroyauction.com](http://scottroyauction.com)  
Scott Roy Auction | Trenton, MO | 660-359-1455

KM-70KDE412



**ARE YOU COVERED?** Accidents and illnesses occur without warning. Let us help you make sure you, your family and/or employees are covered. Health, Cancer, Accident, Hospital, Critical Illness, Short Term Disability, Dental, Vision, Life. Linda 660-537-5177 linda\_buchmann@us.aflac.com Denise 314-465-5611 denise@healthinsuranceagt.com

**FOR SALE:** Smooth mouth mare \$600; also small bales of straw \$5.00; 4x5 net wrapped hay, \$45. 660-342-5314

**FOR SALE:** Mayrath 10" x 65' auger, Swing hopper dyd lift, \$1250; Westfield 8"x61' swing hopper, \$650; Kewanee 8"x 60', \$350; other Auger disks, disk chisels. 217-658-4761

**WANTED TO BUY:** Sports Card Collections & Accumulations. Unopened Boxes, Cases, Sets, Etc. 319-470-2786

**FOR SALE:** 10 Week old AKC American Brittany puppies, born 6/27/21, 8 available, 2 females, 6 males. Located in Lewistown MO Call or text 573-248-6895

Logan Agri-Service, Inc. of LaBelle, MO is growing and looking to add members to its team. We are currently looking for someone to operate a sprayer and/or fertilizer spreader. We are also looking for someone who can drive application support equipment (nurse/tender truck). We will train the right person. If you are interested in joining the Logan team, contact Luke Lay, LaBelle Plant Manager, at 660-342-6424

**FOR SALE:** New 3 pt. tillers, heavy duty, gear driven, 7' to 10' starting at \$3050. 660-874-4455

## Real Estate, Antique and Personal Property Auction

**Thursday, October 7, 2021 at 4:30 p.m.**  
**Macon Real Estate and Personal Property Auction;**  
 The Waller Family, 1308 N Rutherford Street, Macon, MO 63552

**Directions:** 1308 North Rutherford Street, Macon, Missouri. From US Highway 63 in Macon, turn West on Pace Street then South on Rutherford Street. The property will be on your left. Look for signs the day of the sale.

**Real Estate:** Located close to restaurants, shopping and schools, this 2 bedroom, 1 bath home with full unfinished basement will make a great home for your family. The home has vinyl siding and a 1 car detached garage. The car port will be sold separately.

The real estate will sell promptly at 5:00 p.m.. If you would like to schedule your personal showing, please call Scotty at 573-356-4405.

*\*See Terms and Conditions for Purchase of Real Estate below.*

**Down Payment:** 10% of the contract purchase price will be due upon acceptance of the Sales Contract. Personal or Cashier's Checks will be accepted. This is "AS IS, WHERE IS" and is non-refundable. CLOSING: Closing shall be within 30 days of the auction date.


**Car Port:** 15' x 20' metal carport

**Household Items:** Amana washer; GE electric dyer; glass front, 3 sided curio cabinet; tweed recliner; England Corsair sofa; maple 3 piece full size bedroom set; 3 piece blonde full size bedroom set; kitchen table; metal storage cabinet; Kitchen aide shop refrigerator; heavy duty metal shelving; metal wardrobe; bedroom furnishings;

**Antiques and Collectibles:** Antique wooden rocker; antique cane bottom chair; double pedestal child's desk; signed oil on canvas; size 42 leather motorcycle jacket; size 4x leather chaps; antique ladder back chairs; Craftsman wood rocker; antique metal lawn chair

**Outdoor and Tools:** Concrete flower planter; outdoor patio set; tool chest; miscellaneous tools; pancake air compressor; NAPA battery charger; bolt trays with lid x 7; long handled tools

There will be many more items at this auction too numerous to mention.



**SCOTTY'S AUCTION SERVICE**  
 Scotty Kuntz 573-356-4405  
 Michael Cunningham 660-651-2288 • Paxton Pittman 918-316-7500  
**WWW.SCOTTYSAUCTIONSERVICE.COM**



**MOSSY OAK PROPERTIES**  
**Boley Real Estate**  
*America's Land Specialist*  
 1480 S Clinton • Albia, IA 52531

# LAND AUCTION

**131 M/L TOTAL ACRES**

**SATURDAY, SEPT. 25, 2021**  
**10:00 AM AT THE WESTBRIDGE HOTEL**  
**CENTERVILLE, IA**

**www.boleystate.com • (641) 932-1234**



**535th St & 180th Ave • Centerville, IA**

Tract 1	Tract 2
<b>63 M/L ACRES</b> 45.61 FSA cropland acres * CSR2 49.5	<b>68 M/L ACRES</b> 46.68 FSA cropland acres * CSR2 37.4






**Broker - Tyler Boley**  
 641-799-7837  
 tboley@mossyoakproperties.com

**Auctioneer - Cory Behr**  
 641-425-8466  
 cbehr@mossyoakproperties.com




**McAfee/Hayes Auction Service, LLC**  
 375 S Johnson • Kahoka, MO  
 660-727-3796  
 www.mcafeeauctionservice.com

**TIMED ONLINE ONLY RESTAURANT EQUIPMENT AUCTION**

**LOTS START ENDING AT 1 PM ON THURSDAY SEPTEMBER 30<sup>TH</sup>**










As Steve & Anne have purchased a former restaurant and are renovating the property for a different purpose, they will be liquidating all the restaurant equipment from this structure.

**CHECK OUR WEBSITE FOR COMPLETE DETAILS**

**PREVIEW - MONDAY SEPT. 20TH 10 AM - NOON**  
**ITEMS LOCATED AT 461 N JOHNSON, KAHOKA, MO**


**STEVE & ANNE HOWELL, SELLERS**



**McAfee/Hayes Auction Service, LLC**  
 375 S Johnson • Kahoka, MO  
 660-727-3796  
 www.mcafeeauctionservice.com

**TIMED ONLINE ONLY HAY AUCTION**

**LOTS START ENDING AT 10 AM ON THURSDAY OCTOBER 28<sup>TH</sup>**



900 BALES

**Preview: 4 miles Northwest of Williamstown, MO on Rte. A.**  
**PICK UP BY APPOINTMENT ONLY**  
**CONTACT CLINT 660-341-3837 TO ARRANGE PICKUP**  
**BRISCOE FARMS/ CLINT BRISCOE, SELLER**

*Additional Details, Photos and Auctions Online*





**McAfee/Hayes Auction Service, LLC**

375 S Johnson • Kahoka, MO  
660-727-3796

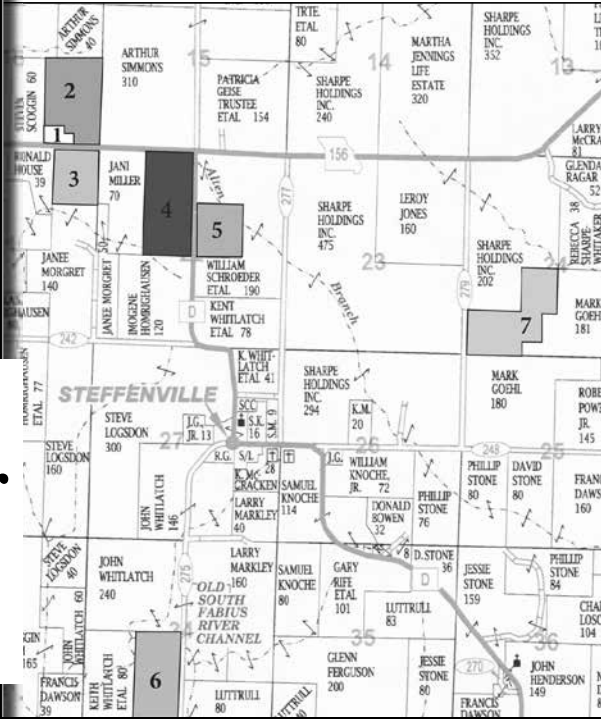
www.mcafeeauctionservice.com

# Lewis County, MO LAND AUCTION

Sale conducted at the Queen of Peace Hall  
103 W. Clow Ave. Ewing MO

**428 +/- ACRES/  
7 TRACTS**

**Productive  
Tillable  
Farmland,  
Pasture,  
Woodlands,  
Home, Pole  
Building**



**Tuesday,  
September  
28<sup>TH</sup>  
at 6 PM**

**THE FAMILY OF  
SAM & MARY MCCRACKEN**



**McAfee/Hayes Auction Service, LLC**

375 S Johnson • Kahoka, MO  
660-727-3796

www.mcafeeauctionservice.com

# Clark County, MO LAND AUCTION

Sale will be conducted at the Care Building located at  
451 N. Vine Street Kahoka, MO

**TUESDAY, OCTOBER 19<sup>TH</sup> - 6 PM**

**334 ACRES/ 5 TRACTS**



The Gares farms are lying South and Southeast of Kahoka, MO ranging from 2 miles to 4 3/4 miles from town. These tracts offer attractive combination farms with productive rowcrop acreage, pasture land with fencing, lake, ponds, several building sites and a homestead with several desirable outbuildings.

**THE FAMILY OF  
CLIFFORD & LOLA GARES, SELLER  
DENNIS W. SMITH, REP. ATTORNEY**



**McAfee/Hayes Auction Service, LLC**

375 S Johnson • Kahoka, MO  
660-727-3796

www.mcafeeauctionservice.com

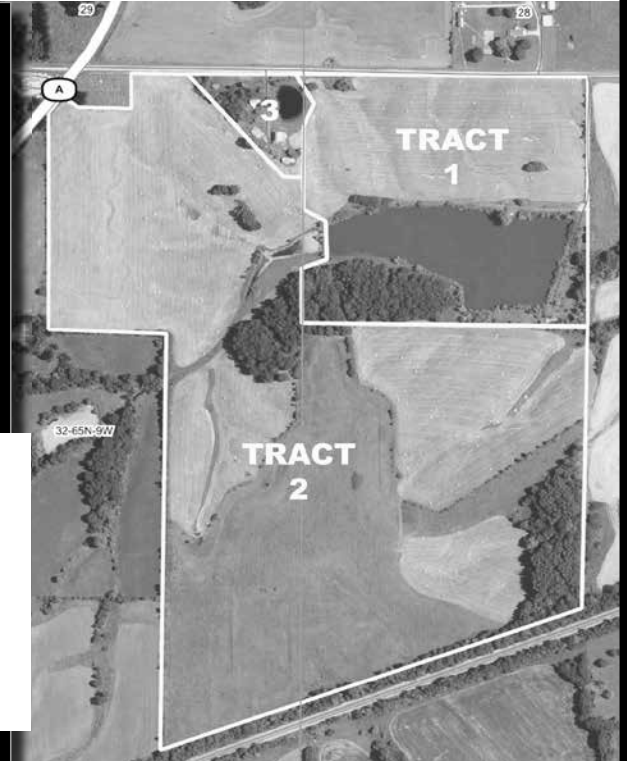
# Clark County, MO LAND AUCTION

Sale will be conducted at the Care Building located at  
451 N. Vine Street Kahoka, MO

**160 ACRES/ 3 TRACTS**

Tracts located 1/4 miles north of Wyaconda, MO on Hwy A.  
(Address : 11980 Co Rd 127-EW, Wyaconda MO)

**Productive  
Tillable  
Farmland,  
CRP Income,  
9.63 Acre Lake,  
Homestead/  
Out Buildings**



**Tuesday,  
October  
12<sup>TH</sup>  
at 6 PM**

**THE FAMILY OF GEORGE T. MARTIN**



**McAfee/Hayes Auction Service, LLC**

375 S Johnson • Kahoka, MO  
660-727-3796

www.mcafeeauctionservice.com

# Clark County, MO LAND AUCTION

Sale will be conducted at the Care Building located at  
451 N. Vine Street Kahoka, MO

**81 SURVEYED ACRES**

**68.83 +/-  
Acres of  
Highly  
Productive  
Tillable  
Cropland**

Lying in Sect. 15, Twp.64N, R6W



**Tuesday,  
October  
26<sup>TH</sup>  
at 6 PM**

**DARYL & DEANA EGLEY, ARLEN & BRIGITTE  
EGLEY & SCOTT & CARRIE JAMES, SELLERS**