

**FREE!**

NEW EDITION EVERY FRIDAY!  
VOL. 29 • NO. 36 • OCTOBER 1, 2021

# NEMO *Trader*

**THE NEMO TRADER**

PO BOX 190 • KIRKSVILLE, MO 63501

PHONE 660-665-8500

Web Site: [nemotrader.net](http://nemotrader.net)

Email: [nemotrader@gatehousemedia.com](mailto:nemotrader@gatehousemedia.com)

A WEEKLY ADVERTISER SERVING ALL OF NORTHEAST MISSOURI AND THE SURROUNDING AREA



*Your trusted source for quality Fish!*

*Harrison Fishery, Inc. is a family owned and operated business.*

*We stock most species freshwater, game & baitfish.*

**Contact us for price & delivery**

**[curtis@harrisonfishery.com](mailto:curtis@harrisonfishery.com)  
660-423-5482**

**Species Available**

Largemouth bass

Hybrid bluegill

Golden shiners

Bluegill

Redear sunfish

Black crappie

Fathead minnow

Walleye

Muskie

Catfish

*and More!*

*Time to gather up the  
little ones,  
get their fishing poles  
and go enjoy a  
day of fishing*



[www.harrisonfishery.com](http://www.harrisonfishery.com)

The **NEMO** *Trader* IS NOW A  
**PROUD MEMBER**  
OF THE  
**PHILLIPS MEDIA GROUP**  
**NEWSPAPER FAMILY**

*Watch for exciting changes coming soon!*

FOR SALE: John Deere 4230 Tractor, CAH, cold air, power shift, 6,800 hrs, JD 158 Loader, 18.4x38 95%, will separate, \$23,500. Call 573-881-3557

FOR SALE: NH 973 20' flex; NH 973 25' flex; NH 974 630 corn head; MF 1163 corn head; MF 1144 corn head; Gleaner 630 LM or R; Gleaner 830 corn head LM or R. 217-658-4761

FOR SALE: Fish for stocking ponds - Catfish, Grass Carp, Crappie, Blue Gills, Red Ear, Bass, and Minnows. Heindselman Family Farms, Call Greg 660-341-5692

FOR SALE: AKC Welsh Corgi puppy, red & white markers, born 07/19/21 UTD shots. Call 660-988-1806

PICKUP FOR SALE: 2018 GMC Sierra 1500 SLT, 4x4 heated and cooled leather, 4 door, eight speed trans., 5.3 V8, new tires & wheels, 54,000 miles, like new condition, loaded, black, \$37,500. 660-299-0781 Layne

FOR SALE: Approx. 200 Small bales mixed grass suitable for grinder mixing .75 cents a bale, you load, and you haul. 660-754-1250

HUNTING EQUIPMENT sale, 35+ box, bow, hay bale, ladder stands, hog trap, deer and turkey feeders, deer and goose decoys. All used, great condition. 641-208-7353

FOR SALE: Heider Auger Wagon, 100 bushel, 540 PTO, boards on each side, manual auger swing either side, shedded, clean solid wagon, \$750. 217-257-1385 anytime

FOR SALE: Gleaner R62 combine, CDF rotor, lateral tilt; MF 850 Diesel Hydro; NH TR96; IHC 1440 Diesel; MF 750 Diesel; 2 Kasten silage wagon. 217-658-4761

FOR SALE: John Deere 2950 MFWD Tractor, w/Farmhand XL 740 Loader, 6000 hrs, average condition, \$24,950. Call 573-881-3557

HIGH QUALITY Hay for sale \$45 per bale. 217-653-4762

Wevers Outside Wood Furnaces a dealer for Heatmor Stainless Steel Outside Furnaces, have an assortment of parts, line, and etc. Taking orders for new outside wood furnaces. Call 660-423-5242, cell 660-216-9885. Open 6pm-9pm Monday-Friday, Saturday anytime, call first.

WANTED TO BUY: 12'-15' Brush Hog in new or good condition; also good used pickup truck. 660-676-9199

FOR SALE: Fresh Local cooked Sorghum 2021 crop. Raymond Kauffman 25624 Hanover Street LaPlata MO 63549

TINY HOMES We gottem 573-881-3283

FOR SALE: IHC 983 corn head; IHC 883 corn head; Drago 830 corn head, adj deck plates; IHC 820 17 1/2' MF 830 for JD. 217-658-4761

WANTED TO BUY: Harley Davidson's, any year, any condition, cash money. Days 660-263-1356 or 660-537-0068

WANTED TO BUY: Farm Machinery and Estates. Call James L. Johnston. 573-473-4904

FOR SALE: New 3 pt. tillers, heavy duty, gear driven, 7' to 10' starting at \$3050. 660-874-4455

FOR SALE: John Deere 2040 Tractor, sharp, 90% rubber, 5565 hrs, hydr valve, Loader available, \$9,750. Call 573-881-3557

PASTURE AND HAY GROUND Needed around Adair & Knox County. Please Contact 660-216-5887 or 417-773-2507

FOR SALE: 2010 Case 8120 Combine, 2975 HR -2097 HR, NO DEF, RWA, DIF Lock, 620 Drive Tires, 28 Steer Tires, luxury cab, clean machine, \$85,000. 641-895-8014

FOR SALE: Registered AKC Labrador Retriever puppies, yellow. Farm-raised and loved! MO Health Certificate. Dam and Sire on farm. Ready to go now! Lay's Labs - LaBelle, MO 660-956-2482.

Landlord retirement sale: Tuesday 10/5 thru Saturday 10/9 11 AM to 5 PM daily. 30x50 building full and more 1 1/2 mi W Madison on Hwy 24 rain or shine. Lots of electric and cordless tools, fiberglass piece showers and tub/showers, tilt trailer, utility bed trailer, plumbing, electric, wood trim, siding, also dog kennel and lots of camper items.

FOR SALE: Ford 4000 D SU, power steering, Live PTO, excellent paint & sheet metal, new tires, \$5500. 660-341-8089

DIRT WORK All types of excavation, reclaiming overgrown fields, including CRP and WRP. Building site preparation, terrace and tiling maintaining and creating new trails and crossings, rock hauling, Food plot development and maintenance. Leveling and grading, wetland construction and maintenance. Pond and lake cleaning and construction. Call for quotes. 660-342-2701

FOR SALE: Mums \$8 a piece, also have large combo's \$20; large variety of colors. Pumpkins and fall decorations. Kauffman Produce 11538 Iceberg Ave La Plata MO 63549

FOR SALE: Farmhand XL 740 Loader, QT, 7' bucket, good paint, \$3,750. Call 573-881-3557

**Show Me Plumbing Services**

- \*General Mini Excavation & Skid Steer Work
- \*Livestock Watering
- \*Waterlines & Sewer Systems
- \*Residential Services & General Plumbing
- \*Utility Trenching

**Stan Schrock - 660-988-1163**  
**Greentop, MO. - 660-766-2636**

**Signature**  
Overhead Doors and Remodeling, LLC

**660-785-0248**

[www.signatureremodelingkv.com](http://www.signatureremodelingkv.com)

Residential and Commercial Installation and Service

**AZ LOGGING**  
Looking for Timber to Cut.  
Any Kind, Very Good Price.  
**CALL 660-342-2122**

The perfect fit for your farm.



New Holland T5 Series tractors are feature-packed, high-power 4WD tractors that'll fit right into your operation. Their compact design and turning radius make them easy to maneuver, so you can work in tighter places. An optional semi-powershift lets you find the perfect speed - make eight push-button powershifts without a shift lever range change. The T5's deluxe VisionView™ cab and Comfort Ride™ cab suspension offer ultimate comfort and visibility.

Stop by today to find the T5 Series tractor - from 93 to 99 PTO hp - that's the perfect fit for you.

Or visit [newholland.com](http://newholland.com) to learn more.

**NEW HOLLAND AGRICULTURE**

**-NEW TRACTORS-**

- NEW HOLLAND WORKMASTER 50 - 50HP, 4WD, 11X11 CLUTCH, 540 PTO, 1 REMOTE
- NEW HOLLAND WORKMASTER 55 - 55HP MFD CAB, HIVIS, 2 REMOTES, LOADER NSL SSL 72" BUCKET, 540 PTO
- NEW HOLLAND WORKMASTER 65 - 65HP, HIVIS, 3 REMOTES, NSL LOADER W/ 72" BUCKET, 540 PTO
- NEW HOLLAND WORKMASTER 75 - 75HP MFD CAB, HIVIS, 2 REMOTES, LOADER NSL SSL 72" BUCKET, 540 PTO
- NEW HOLLAND POWERSTAR 75 - 75HP, CAB, 4WD ELECTRO HYD LIM SLIP, LOADER 84" BUCKET, 540 PTO, 2 REMOTES, 12X12 POWERSHUTTLE
- NEW HOLLAND T5.120 - 100PTO HP AND 120ENG, HI LO, LOADER 84" BUCKET, EXTERNAL PTO & 3 POINT HITCH FENDER CONTROLS, 4WD, 540/1000 PTO

**-USED TRACTORS-**

- 2008 MASSEY FERGUSON 1529L - L100 LOADER WITH 60" PIN ON BUCKET, 8X8 SHUTTLE. 1146 HRS...\$14,900
- NEW HOLLAND T5060 - LOADER TRACTOR
- 2009 NEW HOLLAND T5050 - 3125 HOURS, CAB, LOADER...\$42,750
- NEW HOLLAND WORKMASTER 70 - 2WD
- 1992 FORD 4630 - 2738 HRS 2WD TRACTOR TURBO...\$13,900
- 1966 MASSEY FERGUSON 180 - DIESEL, LOADER, 2WD - WESTENDORF LOADER W/BUCKET & SPEAR...\$9,900
- MASSEY FERGUSON 1085 - WESTENDORF LOADER, BUCKET & BALE SPEAR, 3700 HRS, ONE OWNER...\$10,900

**-USED CARTS-**

- 1997 KINZE 840 - TARP, TIRES, ELECTRIC SCALES...\$22,500
- 2014 KILLBROS 1950...\$28,900
- KILLBROS 1400 - FRONT AUGER TUBE REPLACED OUT OF PIPELINE PIPE, NEW VERTICAL AUGERS LAST YEAR, NEEDS NEW LOWER AUGER 30.5L-32 DIAMOND TREAD - ROLL TARP...\$9,000
- UNVERFERTH 7200 - 30.5L-32 DIAMOND TREAD FIRESTONE TIRES, ADJUSTABLE SPOUT, SCALES WITH NO HEAD, NO TARP, GREEN...\$14,500
- FICKLIN CA15000 - 750 BUSHEL GRAIN CART ...\$11,500
- BRENT 420 ...\$6,900
- UHT 500 - ORANGE, 500 BUSHEL GRAIN CART, UNITED FARM TOOLS...\$4,750



833-774-1606  
[www.QuincyTractorLLC.com](http://www.QuincyTractorLLC.com)

**Buy with confidence. We have you covered.**



**100% Satisfaction™**



**ACCIDENT Protection Plan™**



**SERVICE Contract Plus™**



**PAY Your Way™**

For more information visit [car-mart.com/peace-of-mind](http://car-mart.com/peace-of-mind)



[car-mart.com](http://car-mart.com)

**660-956-4849 • 2015 North Baltimore • Kirksville**

• Peace of Mind Package

• Service Contract Plus

• Accident Protection Plan

• 100% Satisfaction

• Pay Your Way

• Low Down Payments

• Quality Used Vehicles

• Flexible Financing

• Hand Selected Vehicles

• Convenient Payment Options

• Start Your Approval Online

• Over 150 Locations

• 40 Years in Business

• We Buy Cars



**2013 NISSAN CUBE**  
FWD, 4 Cyl., Silver



**2006 DODGE RAM 1500 SLT**  
4WD, 8 Cyl., 4 doors, Red



**2013 FORD FIESTA**  
FWD, 4 Cyl., Silver



**2008 LEXUS ES350,**  
FWD, 6 Cyl., Red



**2017 FORD ESCAPE SE,**  
FWD, 4 Cyl., White



**2011 CHEVROLET SILVERADO 1500,**  
LT, 4WD, 8 Cyl., Blue



**2012 TOYOTA RAV4,**  
Base, 4WD, 4 Cyl., Black



**2010 Lexus RX350**  
AWD, 6 Cyl., Red



**2007 Ford F150**  
4 WD, 8 Cyl., Gray



**2007 Ford Fusion SE**  
FWD, 6 Cyl. Red



**2007 DODGE RAM 1500 SLT**  
4WD, 8 Cyl., Silver



**2015 KIA SOUL**  
FWD, 4 Cyl., Gray



**2010 CADILLAC ESCALADE,**  
AWD, 8 Cyl., Red



**2010 FORD FOCUS SEL**  
FWD, 4 Cyl., Red



**2008 SUBARU TRIBECA LIMITED,**  
AWD, 6 CYL., GRAY



**2008 MERCURY MOUNTAINEER PREMIER**  
RWD, 8 Cyl., White



**2012 RAM 1500 ST**  
4WD, 8 Cyl., Gray



**2009 KIA RONDO LX,**  
FWD, 4 Cyl., Black



**AMERICA'S CAR-MART**

*Keeping You on the Road*



**ELIZABETH WALTER**  
GENERAL MANAGER

FOR SALE: John Deere 4020 Tractor, straight off farm, ft wts, rear wts, 38" tires, 11,000 hrs, roll bar/canopy, runs good, \$13,500. Call 573-881-3557

FOR SALE: Gleaner 8000 30' SCH sickle, F&A; JD 930 poly dividers; JD 220 flex; JD 216 flex; IHC 1020 20'; IHC 1020 17 1/2' MF 918 217-658-4761

FOR SALE: 5 X 51/2 big round bales of mixed grass hay, Bailed dry no rain fertilized lab tested surface wrapped. Call 660-341-4031 Watson hay sales

HANDYMAN: Install interior and exterior doors and windows, siding, decks, showers and toilets, flooring and drywall, roofs and dirt work. 660-956-2189.

FOR SALE: Silver Lab puppies, 5 weeks old, silver males and females big healthy pups up to date on shots and wormer ready to go Sept 1, farm raised, top quality \$250 660-988-1163

WHITETAIL INSTITUTE Food plot seeds, archery supplies, optics, and more. Whitetail Seed and Supply 14136 State Hwy 3 LaPlata MO 63549

FOR SALE: 1991 GMC Grain Truck \$4000, 366 fuel injected gas engine, 5 speed manual transmission with splitter 15' grain bed. Call or text 660-216-3219

FOR SALE: John Deere 7220 Tractor, MFWD, CAH, power shift, 9000 one owner hrs, \$49,500. Call 573-881-3557

FOR SALE: Gleaner 800 25' lateral tilt hyd for & aft; Gleaner 520 20'; Gleaner 830hugger H' Gleaner 3000 630, w/corn head. 217-658-4761

AVAILABLE STOCK MOBILE HOMES immediately, double wide and single, 3 and 4 bedroom. 573-499-9993 columbiadiscountshomes.com

FOR SALE: 7 Fall-Calving Red Angus Cross Cows, calving now, ages 3-7. Retirement Dispersal, \$1250 each take all. Sutter IL 217-658-3951

FOR SALE: Factory made For-Most Doctor Chute for sheep, goats and small animals, just like new. Also Want to Buy good 22 Rifle, new or used. 660-676-9199

FOR SALE: Suffolk and Hamp meat type Rams, Ewes and Ewe Lambs. Hindman Breeding 660-341-6625

NEW SKID Loader attachments: bale spears, buckets etc., 4200 lb 42" forks, triple blade rotary cutters 74" or 80" grass/brush or tree. NO Sunday Calls 660-988-7385

LABS, LABS, LABS!! Male chocolate Lab 2 year old, will make great stud dog or pet \$200. Black female pups 5 months old, \$50 each, black male & female pups 10 weeks old, \$200. All up to date on shots and wormer. Call 660-342-2520

FOR SALE: Gehl 600 2 row chopper; Fox 2250 2 row corn, hay pickup fox 3000 2 row; Fox w/1 row hd; H&S silage wagon WT gears; Gehl silage wagon; silage wagon. 217-658-4761

FOR SALE: Boer Spanish Cross & Spanish Nannies, some kidding now, prospects for next year. 641-919-0824 Packwood Iowa

FOR SALE: Large and small pumpkins and gourds. Go East from Knox City to Finch Ave Verlin Tonnies

FOR SALE: Aerway Agriculture Generator 10' wide, excellent shape, \$4800 OBO. New Cambria 715-484-7711

FOR SALE: Generac 2900 psi pressure washer, used once, like new, \$275 each. 660-332-7520

WANTED TO RENT Farming land around La Plata & Atlanta MO. Call and ask for Dale 660-346-8496

FOR SALE: Chihuahua x Dachshund puppies out of Registered parents, fancy colors, \$200 each or OBO. 660-397-2342

FOR SALE: Agco 3000 630 Ch, elect stripper plates, single point hookup, w/meter corn reel; Drago 830 ch., self adj stripper plates; JD FBB w/grass clutch lift, \$750. 217-658-4761

WANTED: General electric large clock model 2915 or similar 15 inch across face, 17 1/2 across rear. 573-248-2043


FOR SALE: 2009 Kawasaki Concours 1400 CC, 1 owner adult ridden, make offer. Can be seen in Northeast Missouri 319-795-6804

FOR SALE: Rossi 4 Basket Tedder, field ready, \$3,250. Call 573-881-3557

FOR SALE: 12 Yearling Columbia Ewes. Nice open faced, well bred, big Ewes ready for breeding. 660-216-7031

FOR SALE: Wholesale Southern Yellow Pine. Shelby Supply 660-299-0615

HOUSE FOR SALE: Macon MO, fixer upper 500 feet from the School and 300 feet from the park. 660-676-5531



**Edina Livestock Sales**  
Edina, Missouri  
Weekly Sales Start @ 12:30pm

**Friday, October 1st -  
Special Feeder Calf Sale**

**Friday, October 8th- Special Feeder Calf Sale**

**Watch for upcoming Fall Calving Cow Sale**

To Consign For Any or All Sales or For Information Call:  
Owner - Kevin Strange • Cell: 660-341-9974  
Ryan Strange • Cell: 660-341-9721  
Sale Barn: 660-397-9999

Field Reps:	Mike Bronestine 660-341-9965	Jason Bischel 660-216-0373
Bill Tom HALL 660-342-5420	Trey Gashwiler 660-216-8751	John Powell 660-341-1717

**ATTENTION LAND OWNERS!**

**BUYER OF STANDING TIMBER  
OWNER /OPERATOR OF SAWMILL - BUY/CUT LOGS**

**CERTIFIED - BONDED - INSURED**



TRI STATE TIMBER L.L.C.  
PH. 660-341-4921 or 660-465-2975  
353 1/2 GRAND AVE. • MEMPHIS, MO 63555

**LANCASTER LUMBER INC.**

**Lancaster, MO.**

**1-800-424-5071**

**LAN-DOW BUILDINGS**



**www.lancasterlumber.com**

SPRING IS YOUR GO TIME.

**GET OUT THERE.**

You've been waiting all winter for this moment.



REBATES UP TO **\$1,000** ON 2020 MODELS

**POLARIS** SPRING SALES EVENT

TERMS AND CONDITIONS APPLY

[Explore Inventory >](#)

**Slayton**  
**POLARIS**

10456 State Route B, Downing, MO  
6 miles W. of Memphis, then 13 miles N. on B  
**660-328-6627**

VISIT [POLARIS.COM](http://POLARIS.COM) FOR MORE OFFERS



# WE SELL LAND

— PASSION DRIVEN EXPERTISE —

CONTACT YOUR LOCAL LAND SPECIALIST TO  
LEARN MORE ABOUT BUYING AND SELLING  
HUNTING, FARM, RANCH AND TIMBERLAND.

## JEFF PROPST

Northeast and North Central  
Missouri Land Specialist

**(636) 209-0362**

JEFF.PROPST@WHITETAILPROPERTIES.COM



**WHITETAIL PROPERTIES REAL ESTATE**

HUNTING | RANCH | FARM | TIMBER

**WHITETAILPROPERTIES.COM**

# For Your Equipment Needs!

**LOTS OF USED EQUIPMENT AVAILABLE**

**Vermeer 605 N Balers, Twin Rakes, Trailed Mowers, Disc Mowers, Tedders, Bale Processors-**

*Offer high capacity, speed, reliability, efficiency, fuel savings...*

**DeWeze Bale Beds-**

*Lift, load, transport and feed big, round bales...*

**Danuser Post-Hole Diggers-**

*Offer quality & reliability, outperforms the competition...*

## USED EQUIPMENT

BALERS

605 N Net  
605 L Net  
605 K Net

MOWERS

TM 1210  
8040  
7030  
Vicon 4000

RAKES

R2800  
R2300  
VR1224

TEDDERS

TD250

BALE PROCESSORS

BPX 9000  
BPX 9010

**STOCK MOBILE HOMES AVAILABLE:** We gottem, single and double 3 and 4 bedroom! Call Tuffy 573-657-2176 amegamobilehomes.com

**FOR SALE:** Registered 3 year old Black Angus, calving ease bull, \$3500. Raymond Kauffman 25624 Hanover Street LaPlata MO 63549

**FOR SALE:** New 3 pt. tillers, heavy duty, gear driven, 7' to 10' starting at \$3050. 660-874-4455

**FOR SALE:** Homemade Candies, Fresh Garlic, Regular and Wide Mouth Jar Lids, Jams & Jellies, Spices, Honey S.S. One Piece Dippers 1oz to 8 oz S.S. Kitchen Wares, Air Freshness, Gift Items, Kerosene Lamps and Parts, Some Aladdin Parts, Poly and Wooden Clothespins, Filter Disks, Wooden handles, Blankets and Throws, Pint Jars, Boxed Cards, Coloring Books. Train Track Candies & More 11538 Iceberg Ave, La Plata 3rd Lane to your Left.

**FOR SALE:** JD 750 15' no till drill, dolly wheels, w/grass seeder; GP 1500 drill w/center pivot no till caddie, \$11,500; ICH 5100 drill 21 hole, w/cylinder press wheels, \$2250. 217-658-4761

**FOR SALE:** John Deere 145 Loader, good bucket & control valve, all utility mounting brackets, \$2,750. Call 573-881-3557

**FOR SALE:** AKC Welsh Corgi puppy, red & white markers, born 07/19/21 UTD shots. Call 660-988-1806

**ATTENTION HUNTERS:** Whitetail Institute Products, CenterPoint Archery, Rage, Muzzy, Wac'em, G5 Broad heads, Carbon Express arrows, Nocturnal Lighted Nocks, Block Targets, Scent Thief Scent killer Products, Adam Hayes Moon Guides, Tinks Lures, IQ Bow Sights, Ghost blinds, Leopold & Vortex Optics, Chippewa Wedge-Loc Tree Stands, and more at Whitetail Seed and Supply 14136 State Hwy 3 LaPlata MO 63549

**SCOTT HUSKEY'S HOME SERVICE R-10 Foundation Enclosure Systems** for manufactured, modular, & site built homes. Saves on utilities and prevents freeze ups. General maintenance and repairs since 1972 573-696-3468 "GO DAWGS"

**FOR SALE:** 20 Black Angus heifers, 2nd & 3rd period pregnancy, bred to Angus bull; 12 Angus heifers & calves. All nice and gentle. 660-676-9199

**WANTED TO BUY:** Harley Davidson's, any year, any condition, cash money. Days 660-263-1356 or 660-537-0068

**TRUE MODULARS** 30 to 60 day delivery available, 3 and 4 bedroom. 573-657-7040 chateauhomes.net

**HANDYMAN:** Install interior and exterior doors and windows, siding, decks, showers and toilets, flooring and drywall, roofs and dirt work. 660-956-2189.

# Liebhart Sales, Inc.

**Call Today!!**

**17546 Lacey Drive - New Boston, MO. 63557 660-689-3406**

# MAIN CREEK REPAIR

**Larry Geiser**

23316 State Hwy H  
Kirksville, MO 63501

**(715) 415-1995**

**Bolts • Belts • Bearings  
Hydraulic Hoses • Steel  
Welding • Fabricating**

**Tractor & Equipment Repair**

# MAIN CREEK RENTALS

23316 State Hwy H  
Kirksville, MO 63501

**(660) 988-6917**

- Mini Excavator
- Dozer
- Skytrack
- Equipter (Shingle Buggy)
- Snorkle
- Grapple
- Post Hole Digger
- Man Basket

## HAY STORAGE SOLUTIONS AND MUCH MORE!



"Today, I checked with Joseph to see when he was planning to deliver and construct my second hoop building. Two years ago I purchased a 55'x98' hoop building from Skylight buildings. It was erected on my site on time and the building went up in two days.

I was concerned about the durability of a vinyl building compared to a metal sided structure. That was until I noticed that a rock from my Brush Hog 2715 had impelled itself into the metal building. The Skylight building would not have been damaged. Also, the name says a lot. I thought that I would wire in lights like my other buildings but to date I have not found the need.

The reason I thought I needed to build a large building was to store my hay inside. I knew I was losing hay quality due to weather damage but baling with 568 John Deere and net wrapping my hay I thought I was keeping my hay loss at a minimum. I found the first year that I had underestimated my losses. I was very pleased with the results of storing hay inside. It is most gratifying to put a bale into the hay ring and seeing that the previous bale was almost completely consumed by the cows or the feeder calves. I had a record amount of carry over from last year and it is safely stored inside ready to be used this winter! This will allow for hay sales this winter.

The construction of the building's frame is strong, the foundation supports are 24" and very deep. I am very satisfied and have ordered another 55' x 140' to be installed in a few weeks. This one will be used to store our small square bales and equipment.

Thank you Joseph for your service and this chance to recommend your buildings."

Wiley and Susan Hibbard, Perry, Missouri

20749 State Highway VV  
Ethel, MO 63539  
660-486-3250

**Skylight**  
Fabric Structures



For all your advertising needs email us at **nemotrader@gatehousemedia.com**

TO PLACE YOUR BUSINESS HERE, CALL  
**NEMO TRADER**

**660-665-8500**

NEMO TRADER BUSINESS SPOTLIGHT · NEMO TRADER BUSINESS SPOTLIGHT · NEMO TRADER BUSINESS SPOTLIGHT · NEMO TRADER BUSINESS SPOTLIGHT · NEMO TRADER BUSINESS SPOTLIGHT

NEMO TRADER BUSINESS SPOTLIGHT · NEMO TRADER BUSINESS SPOTLIGHT · NEMO TRADER BUSINESS SPOTLIGHT · NEMO TRADER BUSINESS SPOTLIGHT · NEMO TRADER BUSINESS SPOTLIGHT

**AW Metal LLC**  
 Metal Roofing Headquarters  
 641-664-3990

Buy Direct  
 Post Frame Building Kits  
[www.awmetal.net](http://www.awmetal.net)



**Play Bingo!!**  
 Where: Shrine Club, Kirksville, MO.  
 When: Every Wednesday  
 Doors Open at 5 pm.  
 Early Bird Games: 6:30 pm.  
 Bingo Starts at 7 pm.  
 2 Progressive Games -  
 Electronic Bingo Cards  
 Great Food & Family Fun!!!!  
 660-665-3312



Pull Tabs!

**Cantril Lumber**  
 Cantril, Ia. · Mon-Fri. 7-5 · Sat. 7-12  
 Ph: 319-397-2351 1-888-791-9273

Full Line of Building Materials · Check Out Our Metal Siding Price! We Sell Central States Metal

- OSB • Drywall • Insulation • Shingles • Plyco Doors
- Windows • Overhead Doors • All Colors of Metal Roofing and Siding
- Concrete Perma Columns • Treated Fence Posts • Metal Gates

See us for all your building needs!




**21 FARM & RANCH.**  
 ELIZABETH GREGORY  
 Cell: 660.621.2136  
[farmandhome.c21.com](http://farmandhome.c21.com)

**CENTURY21**  
 Lifetime Realty

1605 Baltimore, Suite A, Kirksville, MO 660.665.5678



**Oldham Monument, LLC.**  
 Monument, Markers & Vases On Display.  
 400 N. Kansas  
 Downtown Marceline, MO.  
 Phone: 660-376-2508  
 Ed & Amy Ewigman



VISA    MasterCard

**NEMO CPA'S L.L.C.**  
 LAURIE LOVE, CPA  
 202 E. Sanders Street • P.O. Box 25 • LaPlata, MO.  
 Phone: 660-332-7904  
 Fax: 660-332-4811  
 email: [llovecpa62@gmail.com](mailto:llovecpa62@gmail.com)

**EMAIL**

[nemotrader@gatehousemedia.com](mailto:nemotrader@gatehousemedia.com)

**TO PLACE YOUR AD HERE**



**Travis Funeral Chapel**  
 We have served the wonderful families of LaPlata and the surrounding communities for more than 30 years.

Randy & Michele Travis ·  
 Neil & Sherry Travis  
 LaPlata, MO. 660-332-7145



**WOODY'S TIRE AUTO & TOWING, LLC**

660-665-9017 • 1102 N. Green, Kirksville, MO  
[www.woodystireautoandtowing.com](http://www.woodystireautoandtowing.com) Like us on Facebook



Don't Cuss, Call Us



# IT'S FREE!

## EVERY FRIDAY

The NEMO Trader

CALL US FOR ADVERTISING QUOTES | 660.665.8500

FOR SALE: International 674 diesel with Quick Tach hydraulic bucket loader, power steering, good tires & paint, \$9700. 660-341-8089

FOR SALE: Big round bales, really good brome, and other mixed grass, baled dry, fertilized, net wrapped, some in barn, \$40-\$45 NEMO Kahoka Area 217-257-1385 anytime

FOR SALE: Mayrath 10" x 65' auger, Swing hopper dyl lift, \$1250; Westfield 8"x61' swing hopper, \$650; Kewanee 8"x 60', \$350; other Auger disks, disk chisels. 217-658-4761

FOR SALE: 2017 Honda Ruckus, only 200 miles; 2002 Kawasaki 650 Prairie, great condition; 2014 Yamaha F-25 HP tiller outboard, electric start, like new, excellent condition. 641-208-7353

FOR SALE: Approx. 200 Small bales mixed grass suitable for grinder mixing .75 cents a bale, you load, and you haul. 660-754-1250

FOR SALE: Fish for stocking ponds - Catfish, Grass Carp, Crappie, Blue Gills, Red Ear, Bass, and Minnows. Heindselman Family Farms, Call Greg 660-341-5692

CENTERPOINT CROSSBOWS In stock Axe 405 crossbow & more Whitetail Seed and Supply 14136 State Hwy 3 LaPlata MO 63549

FOR SALE: NH 973 20' flex; NH 973 25' flex; NH 974 630 corn head; MF 1163 corn head; MF 1144 corn head; Gleaner 630 LM or R; Gleaner 830 corn head LM or R. 217-658-4761

FOR SALE: Progressive 1300 12K NH3 WT on M&W dual no till coulters raven coolers monitor markers, for strip till; DMI 4200 NH3 WT on M&W raven 440M 14K no till. 217-658-4761

MCKAY SHEPHERDS & BORDER COLLIE Has several trained dogs for sale. 641-919-0824 Packwood Iowa

FOR SALE: Large and small pumpkins and gourds. Go East from Knox City to Finch Ave Verlin Tonnies

FOR SALE: Lincoln Town Car 1994 for parts or fix up, needs hood, fender, grill, best offer. New Cambria 715-484-7711

FOR SALE: Used Mirafount model 3360 cattle waterer, very good shape, \$350 cash. 660-332-7520

FOR SALE: Chiweeni puppies, very interesting colors, \$200 or best offer. 660-397-2342

FOR SALE: John Deere 285 Disc mower, 9', QH ready, low acres, \$6,500. Call 573-881-3557

WANTED: General electric large clock model 2915 or similar 15 inch across face, 17 1/2 across rear. 573-248-2043



John Deere 2840 D Tractor, dual hydr, 4700 hrs, 90% tires, with JD 148 Loader with QA Bucket & Bale Spear, \$13,500



John Deere 2750 Tractor, MFWD, open station, w/245 SL Loader, dual hydr, HiLo, wts, 5,000 hrs, \$22,500



20 Series JD Tractors, 3020. (2) 4020s late models, 4320 or 2940, all used, tested recently, \$12,950 choice or \$48,000 for all.



John Deere 5520 Tractor, MFWD and 511 SL Loader, new tires, reverser joystick, 5500 hrs, one owner, \$42,500.



John Deere 6145 M Tractor, MFWD, 2485 hrs, new rubber, 2 door, triple hydr, 16 speed, will trade, \$69,500

573-881-3557

# VICTORY

## Metals & Recycling

Kirkville, MO 660-665-8000

victorymetalrecycling.com

For current scrap prices call or visit our Facebook Page

### ★ Construction/Debris Recycling

Visit Kirkville's construction & debris recycling facility and save trips to the landfill! Take advantage of this service for solid waste removal by bringing your landfill items to Victory Metals C & D recycling facility located at 3602 N. Industrial Rd.

### ★ Roll-Off Container Service

10-20-30-40 Cubic Yard Dumpsters

3602 N. Industrial Rd.,  
Kirkville, MO 63501

djanesvmr@gmail.com

www.victorymetalrecycling.com



# Judd Motors

Call 660-457-3700  
Hwy 63 North, Lancaster, MO

- 2015 GMC 2500HD, SLT, 4x4, crew cab, shortbed, 6.0L, heat & cool leather, bed cover, 1 owner, only 113k miles, charcoal, very nice, new tires only \$35,900
- 2015 Equinox, All Wheel Drive, 1 owner, 129k, silver, nice, Remote start, only \$9995
- 2013 Impala, LTZ, leather, only 104k, charcoal, very nice \$9,250
- 2012 Chevy Captiva, LTZ, AWD, Leather, sunroof, 112K, maroon, \$8995
- 2008 Chevy Impala LT, Leather, Sunroof, 101k, white \$7,250
- 2005 GMC 2500HD, SLE, 2wd, 6.0L, ext cab, long bed, only 119k, silver, very nice, only \$9995
- 2005 Buick Lesabre, 3800 engine, 120k miles, very nice only \$1,995
- 2003 Ford F350, diesel, 4x4, crew cab, flatbed, 300k, runs good, brown, only \$7995
- 1996 Dodge Ram, crew cab, 3/4 T, 4x4, V6, 1 owner, red and run only \$1,995

**Cumberland Building Dealer**

www.juddmotors.com

In Business Over 75 Years  
Curly and Kevin Judd

## Golden Grain Bins

Grain Bins		Floors w/12" Supp. & Flashing	
18'x18'	4,195bu. \$ 7,398	18'....	\$2,065
27'x21'	11,265bu. \$14,851	21'....	\$2,824
42'x24'	32,245bu. \$34,616	27'....	\$4,710
		30'....	\$5,764
		36'....	\$8,211
		42'....	\$11,182



GMLS Industries, Inc.  
PH: 660-699-2179 or 620-983-2136  
www.gmlsindustries.com



**Brad's Welding Shop Is Your Newest Dealer For Arrowquip Cattle Handling Equipment.**

**15 YEAR UNLIMITED WARRANTY**



**Call Us For All Your Cattle Handling Needs!**

**BRAD'S WELDING SHOP**

12673 Almond Ave • 1158 Marceline, MO 64658 • 660-376-1158 • www.bradsweldingshop.com

**CENTURY 21 Lifetime Realty**



**401 W Knox St., Hurdland, MO**

An unbelievable find in Northeast Missouri. This 1890 sq. ft., 3 bedroom, 1.5 bath home located in Hurdland, MO sits on a large corner lot with 18 mature fruit trees including peach, apple and pear, along with grape vines. The property also has 2 attached insulated shop areas each with garage doors. This property comes with a 2nd sewer and water line, and separate electric that is perfect for 2nd home or to maintain your camper. Call Mark Hunolt at 660-341-0802 or Angela Hunolt at 660-341-0152 for your personal showing today. Realtor/Salespersons with Century 21 Lifetime Realty 660.665.5678.

**CENTURY 21 Lifetime Realty**  
 660.665.5678  
 1605 S. Baltimore St., Suite A, Kirksville, MO 63501  
 www.c21kirksville.com

Warranty • 319-696-2981 • Warranty • www.rsautosalesinc.com • Warranty • 319-696-2981 • Warranty • 319-696-2981

**R.S. AUTO INC.**  
 www.rsautosalesinc.com  
 Office (319) 696-2981  
 214 S. Center St  
 Lockridge, IA 52635  
 rsautobinc@yahoo.com

319-696-2981 Check our website for our wide variety on 4x4 Trucks - Cars - Mini Vans - Handicap Vans - SUV Motorhomes & Much More!

 <b>Handicap, 4x4</b> 79,390 Miles <b>\$39,900</b> '14 Ford Econoline E350 SD, 6.8L V10, 4x4, Auto, Gas, VMI Conversion Handicap Van, Vinyl Seats, Rust Free, Texas Van	 <b>Handicap Van</b> 76,649 Miles <b>\$18,900</b> '13 Dodge Grand Caravan SXT, 3.6L 6 Cyl, Gas, Auto, Handicap Van, Wheelchair Ramp, Cloth Interior, Pwr Sliding Doors	 105,824 Miles <b>\$18,900</b> '16 Chevy Express G3500 LS 6.0L V8, RWD, Flex Fuel, 15 Passenger Van, Auto, Vinyl Seats	 <b>Manual</b> 182K Miles <b>\$5,450</b> '11 Ford Fiesta SES 1.6L 4 Cyl FWD, Manual Transmission, Gas, Hatchback, Cloth Interior, Sharp!
 79,563 Miles <b>\$12,900</b> '16 Dodge Grand Caravan SXT 3.6L 6 Cyl, Auto, Stow-N-Go Seats, 7 Passenger, Black Cloth Interior	 100,937 Miles <b>\$5,900</b> '10 Dodge Grand Caravan SE 3.3L 6 Cyl, FWD, Auto, Gas, Stow-N-Go, 7 Pass, Gray Cloth, Normal Wear	 Local Trade <b>\$3,450</b> '08 Dodge Grand Caravan 3.8L 6 Cyl, FWD, Gas, Auto, Stow-N-Go, Cloth, Normal Wear	 Local Trade <b>\$10,900</b> '10 Ford Econoline E350 Super Duty, 5.4L V8, Auto, Gas, Cut-Away Box Truck, Dual Rear Wheels, Good Box Floor
 122,747 Miles <b>\$4,000</b> '10 Ford Econoline E250 4.6L V8 Auto, FWD, Cargo Van, Side Damage, Runs & Drives	 180K Miles <b>\$3,900</b> '06 Chevy Equinox LTZ 6 Cyl Engine, AWD, Auto, Gas, Sunroof, Leather, Local Trade	 195K Miles <b>\$6,900</b> '04 GMC Yukon 1500 5.3L V8, 4x4, Auto, Gas, 3rd Row Seating & Pass, Cloth Interior	 129,119 Miles <b>\$3,900</b> '06 Saturn Vue 2.2L 4 Cyl, FWD, Auto, Gas, Cloth Interior, Local Trade, Clean Title
 119,655 Miles <b>\$4,900</b> '07 Dodge Durango SLT 4.7L V8, 4x4, Auto, Gas, 3rd Row Seating, Leather Interior, Local Trade	 157,642 Miles <b>\$5,900</b> '08 Kia Sorento EX 3.8L V6, Auto, Gas, Cloth Interior, Normal Wear, Local Trade	 169,220 Miles <b>\$6,900</b> '06 GMC Envoy Denali 5.3L V8, 4x4, Auto, Sunroof, Leather, 3rd Row, 7 Passenger	 157,762 Miles <b>\$3,600</b> '06 Chevy HHR LT 2.4L 4 Cyl, FWD, Auto, Gas, Hatchback, Leather Interior, Extra Clean
 44,665 Miles <b>\$10,900</b> '15 Kia Soul + 1.6L 4 Cyl, FWD, Gas, Auto, Leather Interior, Rust Free, Extra Clean	 59,521 Miles <b>\$12,900</b> '15 Buick Encore Convenience 1.4L 4 Cyl, Auto, Camera, Leather, Remote Engine Start, OnStar	 120,520 Miles <b>\$7,900</b> '15 Honda FIT LX 1.5L 4 Cyl, Auto, Gas, Hatchback, Cloth Interior, Rust Free, Clean	 67,599 Miles <b>\$14,900</b> '15 Jeep Renegade Latitude 2.4L 4 Cyl, Auto, Gas, Camera, Leather Interior, Rust Free, Sharp!
 109,067 Miles <b>\$9,900</b> '13 GMC Terrain SLT 2.4L 4 Cyl, Auto, Gas, Camera, Leather, 7" Touch Screen, Loaded	 104,245 Miles <b>\$10,900</b> '12 GMC Terrain SLT 2.4L 4 Cyl, Gas, SUV, Camera, Heated Leather, OnStar, Phone, Sharp!	 109,953 Miles <b>\$9,450</b> '14 Chevy Cruze LTZ, RS Package, 1.4L 4 Cyl, FWD, Auto, Sunroof, Camera, Leather, Push-Button Start, Sharp!	 107,676 Miles <b>\$10,900</b> '14 Buick LaCrosse CXL 3.6L 6 Cyl, Gas, Auto, Camera, Leather, Touch Screen, Loaded
 75,548 Miles <b>\$6,900</b> '12 Ford Fusion SE 2.5L 4 Cyl, FWD, Auto, Gas, Keyless Entry, Cloth Interior, Local Trade	 94,266 Miles <b>\$5,900</b> '11 Chevy Impala LT 3.5L 6 Cyl, Auto, Gas, Cloth Interior, Normal Wear, Sharp!	 117,950 Miles <b>\$5,900</b> '11 Chevy Malibu 2LT 2.4 4 Cyl, Gas Engine, Auto, Cloth Interior, Heated Seats, Super Clean	 133,647 Miles <b>\$4,900</b> '08 Chevy Malibu LTZ 3.6L 6 Cyl, Auto, Gas, Sunroof, 2-Tone Leather, Nice
 126,824 Miles <b>\$7,900</b> '12 Nissan Altima SR 3.5L 6 Cyl, FWD, Auto, Gas, 2 Dr Coupe, Camera, Leather, Memory Seat, Sharp!	 61,822 Miles <b>\$6,900</b> '13 Ford Fiesta SE 1.6L 4 Cyl, FWD, Auto, Gas, Cloth Interior, Power Windows & Locks, Sharp	 118,636 Miles <b>\$5,900</b> '07 Pontiac G6 GTP 3.6L 6 Cyl, FWD, Auto, Coupe, Cloth Interior, Sunroof, Sharp!	 138,031 Miles <b>\$10,900</b> '13 Chevy Impala LTZ 3.6L 6 Cyl, FWD, Auto, Sunroof, Spoiler, Leather Interior, Sharp!
 Local Trade <b>\$2,900</b> '07 Chrysler Sebring Touring 2.7L Engine, FWD, Auto, Gas, Cloth Interior, Normal Wear, Runs & Drives	 Local Trade <b>\$2,450</b> '04 Pontiac Grand Prix GT 3.8L 6 Cyl, FWD, Auto, Cloth Interior, Extra Clean, Lady Owned, Normal Wear	 114,882 Miles <b>\$3,900</b> '05 Chevy Cobalt LS 2.2L 4 Cyl, FWD, Auto, 4 Dr Sedan, Gray Cloth, Excellent Shape	 163,042 Miles <b>\$3,900</b> '04 Volkswagen New Beetle 1.8L 4 Cyl, Auto, Sunroof, Leather Interior, Normal Wear, Nice
 132,587 Miles <b>\$5,450</b> '99 Ford Ranger Super Cab 3.0L 6 Cyl, 4x4, Auto, Gas, Cloth Interior, Extra Clean	 156,665 Miles <b>\$2,900</b> '98 Ford F150 XLT 4.6L V8 Triton, Auto, Gas, 2 Dr Reg Cab, Cloth Interior, Local Trade, Normal Wear	 94,725 Miles <b>\$8,450</b> '01 Ford Ranger XLT 4.0L V6, Auto, 4x4, Gas, Super Cab, Cloth Interior, Normal Wear	 174,587 Miles <b>\$4,900</b> '97 GMC K1500, 5.7L 8 Cyl, 4x4, Auto, Gas, Ext Cab, Cloth Interior, Power Windows & Locks, Normal Wear
 203K Miles <b>\$5,900</b> '00 Chevy Silverado K2500 6.0L V8, 4x4, Gas, Auto, Ext Cab, Leather, New Tires	 203K Miles <b>\$6,900</b> '03 Chevy Silverado K2500HD 6.0L V8, 4x4, Auto, Gas, Ext Cab, Cloth Interior, Excellent Shape	 160,581 Miles <b>\$7,900</b> '03 Dodge Ram 2500 SLT 5.7L Hemi Engine, 4x4, Auto, Quad Cab, Gas, Leather Interior	 171,670 Miles <b>\$13,900</b> '02 Ford F250 SD 7.3L Powerstroke Diesel, 4x4, Auto, Leather, Super Cab, California Truck
 49,660 Miles <b>\$14,900</b> '11 Ford Ranger XLT 4.0L V6, 4x4, 5 Spd Manual, Gas, 4 Dr Super Cab, Cloth Interior, Rust Free, Southern Truck	 159,822 Miles <b>\$13,900</b> '08 Chevy Silverado 1500 5.3L V8, 4x4, Auto, 4 Dr Ext Cab, Alum Flatbed, LED Lights, Cloth Interior	 161,939 Miles <b>\$12,900</b> '09 Chevy Avalanche LTZ 5.3L 4x4, Auto, Flex Fuel, Leather Interior, Sunroof, Loaded	 76,580 Miles <b>\$14,900</b> '07 Dodge Ram Mega Cab 5.7L V8 Hemi Engine, Auto, Mega Cab, Cloth Interior, Fender Flares, Sharp!
 127,615 Miles <b>\$8,900</b> '08 Ford Ranger 4.0L 6 Cyl, Auto, Gas, Cloth Interior, Flares, Rust Free, Normal Wear	 135,038 Miles <b>\$9,900</b> '08 Chevy Colorado LT 3.7L 5 Cyl, 4x4, Auto, Crew Cab, Cloth Interior, Power Mirrors & Windows	 33,076 Miles <b>\$42,900</b> '18 Ram 2500 Laramie 6.7L Cummins Diesel, 4x4, Auto, Longbed, Camera, Leather, Touch Screen	 170,532 Miles <b>\$27,900</b> '08 Dodge Ram 3500 ST, 6.7L Cummins Diesel, 4x4, 6 Spd Manual, Dually, Flatbed, 5th Wheel Hitch, Cloth, Southern Truck
 131,720 Miles <b>\$21,900</b> '07 Ram 3500 St 5.9L 6 Cyl, 4x4, Cummins Diesel, Auto, Dually, Cloth, Rust Free	 148K Miles <b>\$19,900</b> '06 Dodge Ram 3500 Laramie 5.9L Cummins Diesel, 2WD, Auto, Dually, Crew Cab, Leather, 5th Wheel Hitch	 Miles <b>\$28,900</b> '14 Toyota Hilux SR 3.0L V6 4x4, 5 Spd Manual, Turbo Diesel, Double Cab, Leather Interior, Rust Free, Excellent Shape	 Miles <b>\$14,900</b> '04 Cadillac Escalade EXT 6.0L V8, AWD, 4x4, Auto, Camera, Leather Interior, Park Assist Sensors, Nice

Warranty • 319-696-2981 • Warranty • www.rsautosalesinc.com • Warranty • 319-696-2981 • Warranty • 319-696-2981

# NEMO COWBOY CHURCH

First Thursday night of each month • Kirksville Livestock Market  
7:00 PM • Bring a friend and if you can't find one, bring your dog.  
We will worship through music with Gary Fagen and  
the Word will be preached by Tom Rowland.  
Mark your calendars and come join us

**"COME AS YOU ARE. LEAVE CHANGED."**

## CUSTOM CHOPPING

ALL TYPES OF FORAGES  
PRESERVATIVE AVAILABLE  
Devon Zimmerman 660.464.1324

FOR SALE: Approx. 200 Small bales mixed grass suitable for grinder mixing .75 cents a bale, you load, and you haul. 660-754-1250

FOR SALE: Factory made For-Most Doctor Chute for sheep, goats and small animals, just like new. Also Want to Buy good 22 Rifle, new or used. 660-676-9199

FOR SALE: Gleaner R62 combine, CDF rotor, lateral tilt; MF 850 Diesel Hydro; NH TR96; IHC 1440 Diesel; MF 750 Diesel; 2 Kasten silage wagon. 217-658-4761

FOR SALE: John Deere 4230 Tractor, CAH, cold air, power shift, 6,800 hrs, JD 158 Loader, 18.4x38 95%, will separate, \$23,500. Call 573-881-3557

FOR SALE: Fish for stocking ponds - Catfish, Grass Carp, Crappie, Blue Gills, Red Ear, Bass, and Minnows. Heindselman Family Farms, Call Greg 660-341-5692

FOR SALE: AKC Welsh Corgi puppy, red & white markers, born 07/19/21 UTD shots. Call 660-988-1806

HUNTING EQUIPMENT sale, 35+ box, bow, hay bale, ladder stands, hog trap, deer and turkey feeders, deer and goose decoys. All used, great condition. 641-208-7353

PICKUP FOR SALE: 2018 GMC Sierra 1500 SLT, 4x4 heated and cooled leather, 4 door, eight speed trans., 5.3 V8, new tires & wheels, 54,000 miles, like new condition, loaded, black, \$37,500. 660-299-0781 Layne

FOR SALE: Heider Auger Wagon, 100 bushel, 540 PTO, boards on each side, manual auger swing either side, shedded, clean solid wagon, \$750. 217-257-1385 anytime

FOR SALE: Gleaner R62 combine, CDF rotor, lateral tilt; MF 850 Diesel Hydro; NH TR96; IHC 1440 Diesel; MF 750 Diesel; 2 Kasten silage wagon. 217-658-4761

FOR SALE: John Deere 2950 MFWD Tractor, w/Farmhand XL 740 Loader, 6000 hrs, average condition, \$24,950. Call 573-881-3557

## MOOSE RUN REPAIR

8 YEARS EXPERIENCE

Tractor • Skid Steer • Combine • Air Conditioning  
Self-propelled Forage Harvester & General AG Repairs

*Specializing in John Deere*

Engine • Transmission • Hydraulics  
Power Shift/IVT Diagnosis & Repair  
Computer/Electronic System Diagnosis & Repair

660-988-3843  
DELVIN "MOOSE" STEINER • QUEEN CITY, MO

## FRONTLINE FENCING LLC

Steel Pipe Fencing.  
Custom Built Gates and Livestock Handling Equipment.  
Barbed Wire and Woven Wire Fence.  
Arrowquip Cattle Handling Equipment.  
Post Driver Rental.

29386 St Hwy T,  
Greentop, MO  
**660-956-2430**

## LAN-DOW BUILDINGS

"We Build To Suit Your Needs"  
"Custom Built"

Pole Barns • Garages • Utility Buildings  
"H" Don or Dick Middleton

**Memphis Lumber Co.**  
1-800-337-5858 • 660-465-8595  
Fax: 660-465-8596

# P-R DISTRIBUTORS

## GOLF CARTS

Sales – Service – Rentals – Customizing

573-693-8147  
29566 Lantern Road, Laplata, MO

Since 1914

## WE ARE HIRING!

**Loan Officer Position—Full time with benefits. Experience preferred but willing to train.**

**Loan Secretary—Full time with benefits. Previous secretarial and/or switchboard experience preferred. Must be friendly, outgoing and dependable with attention to detail.**

**Teller Positions—Full time with benefits. Prefer prior cash handling experience. Excellent customer service skills with friendly outgoing personality, good work ethics and dependability required.**

**Banking Career—Applicants must have strong communication & computer skills. Ability to multi-task & learn quickly. Qualified applicants should have two years prior banking experience or a degree in related field.**

Send resume to: Bank of Kirksville, P. O. Box 787, Kirksville, MO 63501. EOE

# Ed's Machinery LLC

quality machinery since 1997

**660•628•4454**

**edsmachinery.com**

## COMBINE SPECIAL!

- Free delivery within 500 Miles!
- Financing as low as 2.49%
- Third party inspection available!

STOCK#  
**35733**



**2011 JOHN DEERE 9870 STS**  
1660/1053 Hours, 4X4, 3  
Speed Trans.....**\$99,500**

STOCK#  
**35130**



**2013 JOHN DEERE S680**  
2385/1746 Hours, 2WD, Pro  
drive trans,.....**\$124,500**

STOCK#  
**35131**



**2012 JOHN DEERE S680**  
1,964/1,344 Hours, 2WD,  
Pro drive trans.....**\$129,500**

STOCK#  
**35912**



**2011 JOHN DEERE 9670 STS**  
2303/1651 Hours, 4X4, 3  
Spd Trans.....**\$94,500**

STOCK#  
**35791**



**2008 JOHN DEERE 9670 STS**  
3,389/2501 Hrs, 4X4, 3  
Speed Trans.....**\$72,500**

STOCK#  
**35945**



**2008 JOHN DEERE 9770 STS**  
2802/1812 Hours, 2WD, 3  
Spd Trans .....**\$89,500**

STOCK#  
**81203**



**2014 CASE IH 9230**  
2713 \2036 Hours, 36"  
Tracks, 4X4 ....**\$159,500**

STOCK#  
**36740**



**2013 CASE IH 8230**  
2867/2083 Hours, 4 WD, 4  
Spd Trans.....**\$137,500**

STOCK#  
**36722**



**2013 CASE IH 7230**  
1634/1323 Hours, CVT  
Drive, 4x4,..**\$115,000**

STOCK#  
**36754**



**2004 CASE IH 8010**  
3026/1996 Hours, 4 Spd  
Trans, Pro, 2 WD....**\$54,500**

STOCK#  
**36138**



**2009 NEW HOLLAND CR9060**  
2478/1630 Hours, 4X4,  
Contour Master.....**\$59,500**

STOCK#  
**35944**



**2015 CLAAS LEXION 740**  
1866/1179 Hours, 4X4,  
Ag-Leader Screen..**\$149,500**

**17920 US Hwy 136 • Memphis MO 63555**



HIGH QUALITY Hay for sale \$45 per bale. 217-653-4762

WANTED TO BUY: 12'-15' Brush Hog in new or good condition; also good used pickup truck. 660-676-9199

FOR SALE: Fresh Local cooked Sorghum 2021 crop. Raymond Kauffman 25624 Hanover Street LaPlata MO 63549

TINY HOMES We gottem 573-881-3283

FOR SALE: IHC 983 corn head; IHC 883 corn head; Drago 830 corn head, adj deck plates; IHC 820 17 1/2' MF 830 for JD. 217-658-4761

WANTED TO BUY: Harley Davidson's, any year, any condition, cash money. Days 660-263-1356 or 660-537-0068

WANTED TO BUY: Farm Machinery and Estates. Call James L. Johnston. 573-473-4904

FOR SALE: John Deere 2040 Tractor, sharp, 90% rubber, 5565 hrs, hydr valve, Loader available, \$9,750. Call 573-881-3557

FOR SALE: Silver Lab puppies, 5 weeks old, silver males and females big healthy pups up to date on shots and wormer ready to go Sept 1, farm raised, top quality \$250 660-988-1163

FOR SALE: 2010 Case 8120 Combine, 2975 HR -2097 HR, NO DEF, RWA, DIF Lock, 620 Drive Tires, 28 Steer Tires, luxury cab, clean machine, \$85,000. 641-895-8014

F PICKUP FOR SALE: 2018 GMC Sierra 1500 SLT, 4x4 heated and cooled leather, 4 door, eight speed trans., 5.3 V8, new tires & wheels, 54,000 miles, like new condition, loaded, black, \$37,500. 660-299-0781 Layne

OR SALE: John Deere 4020 Tractor, straight off farm, ft wts, rear wts, 38" tires, 11,000 hrs, roll bar/canopy, runs good, \$13,500. Call 573-881-3557

HANDYMAN: Install interior and exterior doors and windows, siding, decks, showers and toilets, flooring and drywall, roofs and dirt work. 660-956-2189.

Wevers Outside Wood Furnaces a dealer for Heatmor Stainless Steel Outside Furnaces, have an assortment of parts, line, and etc. Taking orders for new outside wood furnaces. Call 660-423-5242, cell 660-216-9885. Open 6pm-9pm Monday-Friday, Saturday anytime, call first.

WHITETAIL INSTITUTE Food plot seeds, archery supplies, optics, and more. Whitetail Seed and Supply 14136 State Hwy 3 LaPlata MO 63549

DIRT WORK All types of excavation, reclaiming overgrown fields, including CRP and WRP. Building site preparation, terrace and tiling maintaining and creating new trails and crossings, rock hauling, Food plot development and maintenance. Leveling and grading, wetland construction and maintenance. Pond and lake cleaning and construction. Call for quotes. 660-342-2701

FOR SALE: Registered AKC Labrador Retriever puppies, yellow. Farm-raised and loved! MO Health Certificate. Dam and Sire on farm. Ready to go now! Lay's Labs - LaBelle, MO 660-956-2482.

FOR SALE: Mums \$8 a piece, also have large combo's \$20; large variety of colors. Pumpkins and fall decorations. Kauffman Produce 11538 Iceberg Ave La Plata MO 63549

FOR SALE: Gleaner 8000 30' SCH sickle, F&A; JD 930 poly dividers; JD 220 flex; JD 216 flex; IHC 1020 20'; IHC 1020 17 1/2' MF 918 217-658-4761

FOR SALE: 5 X 51/2 big round bales of mixed grass hay, Bailed dry no rain fertilized lab tested surface wrapped. Call 660-341-4031 Watson hay sales

FOR SALE: Rossi 4 Basket Tedder, field ready, \$3,250. Call 573-881-3557

PASTURE AND HAY GROUND Needed around Adair & Knox County. Please Contact 660-216-5887 or 417-773-2507

**JOHNSTON AUCTION & REAL ESTATE**

**REAL ESTATE - COINS - ESTATE AUCTION**  
**FRI., OCT. 29 - 5:00 PM**

LOCATION OF AUCTION: AT THE JOHNSTON AUCTION CENTER, HWY 24, MADISON, MO

REAL ESTATE SELLING AT 6:00 PM—MONROE COUNTY TWP 55N, RNG 12W, IN SECT 4 & 5, 69 ACRE FARM WITH 3 BR HOME AT 26180 HWY 151, CLARENCE, MO;  
 ALSO SELLING OVER 300 LOTS OF COINS; OTHER ESTATE ITEMS.

see website jamesjohnstonauction.com  
 Flowers Trust & others, Sellers  
**JOHNSTON AUCTION & REAL ESTATE**  
 JAMES L. JOHNSTON, BROKER 573-473-4904 or 660-291-5921

**CLARK COUNTY, MO VIRTUAL ONLINE LAND AUCTION**  
**FRIDAY, OCTOBER 15, 2021 @ 10:00 A.M.**

**49± ACRES**  
 1 TRACT

LAND IS LOCATED IN SECTION 28, T65N•R6W, DES MOINES TOWNSHIP, CLARK COUNTY, MISSOURI.  
 HARD TO FIND SMALL RECREATIONAL PROPERTY WITH INCOME PRODUCING TILLABLE ACRES.

**CESSFORD CONSTRUCTION CO.**  
 CLOSING & TITLE WORK BY: OAK HILLS TITLE CO.  
 307 LEWIS STREET | CANTON, MO | (573) 288-4461

AUCTION MANAGER: Bill Fretwell (660) 341-7735  
 SULLIVAN AUCTIONEERS, LLC • TOLL FREE (844) 847-2161  
 www.SullivanAuctioneers.com • IL Lic. #444000107

**AUTO'S UNLIMITED** 660-665-8149 | 660-341-0965  
 No Sunday Calls!  
 17406 Bob Rd. Kirksville, MO

**FEATURED VEHICLES**

2016 Chrysler Town & County Touring  
  
 Excellent condition, metallic black, black leather interior, Loaded

2002 Jeep Liberty Sport 4x4  
  
 Great shape

ALL VEHICLES HAVE GONE THROUGH A 60 PT INSPECTION! STATE INSPECTED!  
 CALL FOR MORE INFO!

**VIRTUAL ONLINE • KNOX COUNTY, MO LAND AUCTION**  
**THURSDAY, OCTOBER 7, 2021 @ 10:00 A.M.**

**287± ACRES**  
 (Subject to Survey)  
 4 TRACTS

Property is located in Sections 23 & 24, T60N R13W, Salt River Township, Knox County, Missouri. Property is located approximately 6.5 miles from Novelty, MO or 11 miles from LaPlata, MO.

THIS IS A TREMENDOUS INVESTMENT OPPORTUNITY AS THIS FARM REPRESENTS HIGHLY PRODUCTIVE TILLABLE CROPLAND IN KNOX COUNTY, MO.

**PAUL BRITTON TRUST**  
 CLOSING & TITLE WORK BY: OAK HILLS TITLE CO.  
 307 LEWIS STREET | CANTON, MO | (573) 288-4461

AUCTION MANAGER: Bill Fretwell (660) 341-7735  
 SULLIVAN AUCTIONEERS, LLC • TOLL FREE (844) 847-2161  
 www.SullivanAuctioneers.com • IL Lic. #444000107

**HELP WANTED** NEED A CHANGE?? **HELP WANTED**

Due to our expanding business, we are accepting applications for

**AUTO TECHNICIAN**

Competitive Wages • Group Insurance  
 • Vacation Retirement Plan

Stop by to see Terry and Pick your application up TODAY!!  
 MUST HAVE TOOLS & DRIVERS LICENSE

 **Woody's Tire, Auto & Towing LLC**

1102 N. Green St., Kirksville, MO • 660-665-8617

**VIRTUAL ONLINE • MARION COUNTY, MO LAND AUCTION**  
**FRIDAY, OCTOBER 29, 2021 @ 1:00 P.M.**

**115± ACRES**  
 (Subject to Survey)  
 1 TRACT

LAND REPRESENTS HIGHLY PRODUCTIVE TILLABLE CROPLAND WITH STATE HIGHWAY 168 FRONTAGE.

Land is located 1 1/2 miles east of Philadelphia, MO along Hwy. 168 or 12 miles west of Palmyra, MO or 15 miles north of Monroe City, MO in Sections 7 & 8, T58N•R7W, Marion County, MO.

**MYRNA ELLIOTT TRUST - DAVID ELLIOTT, EXECUTOR**  
**SCOTT & JENNIFER BOGENER**  
 Closing & Title Work: Accurate Land Title Co.  
 218 Broadway | Hannibal, MO 63401 | (573) 221-1002

AUCTION MANAGER: BILL FRETWELL (660) 341-7735  
 SULLIVAN AUCTIONEERS, LLC • TOLL FREE (844) 847-2161  
 www.SullivanAuctioneers.com • IL Lic. #444000107

# MAST MEATS, LLC

## 660-766-2211

*USDA & Custom Slaughter & Processing*

**CALL OR STOP BY FOR SPECIALS**

Retail store hours • Mon-Fri 8-5 Sat 8:30-3  
mastmeatsllc.com • 405 US Hwy. 63, Queen City, MO 63561

## Affordable Quality Roof Restoration

- Have you got a metal building or roof that is starting to rust or leak?
- Would you like to have it leak proof? Shine for years?
- Would you like to save 70% over replacement?


If so give me a call at **641-722-3020**  
Free Estimates



**VIRTUAL ONLINE • SCOTLAND COUNTY, MO**  
**LAND AUCTION**

FRIDAY, OCTOBER 29, 2021 @ 10:00 A.M.

**119± ACRES**  
(Subject to Survey)  
2 TRACTS



OPEN HOUSE:  
SAT., OCTOBER 16  
12 NOON TO 2 PM

PHYSICAL ADDRESS:  
29258 STATE HWY 15 • BARING, MO 63531

Land is located approximately 5 miles north of Baring, MO, along Hwy. 15, or 11 miles north of Edina, MO or 11 miles south of Memphis, MO in Section 34, T64N•R12W, Scotland County, MO.

**LAND REPRESENTS WELL MAINTAINED FARMLAND CURRENTLY IN IMPROVED PASTURE WITH CATTLE FACILITIES, LARGE LAKE, PONDS, SEVERAL OUTBUILDINGS, AND A WELL LOCATED COUNTRY HOME JUST MINUTES FROM EDINA OR MEMPHIS, MO!**

## LARRY & DENISE HEAD

Closing & Title Work: Scotland County Abstract  
205 E. Monroe Street | Memphis, MO 63555 | (660) 465-7052

AUCTION MANAGER: BILL FRETWELL (660) 341-7735

**SULLIVAN AUCTIONEERS, LLC • TOLL FREE (844) 847-2161**  
[www.SullivanAuctioneers.com](http://www.SullivanAuctioneers.com) • IL Lic. #444000107




## FOR ALL YOUR FENCING NEEDS.

*Quality Cattle Equipment, too!*

**620-215-5770**      **KIRKSVILLE, MO**  
SPECIAL ORDERS AVAILABLE

Check out our current inventory at  
**Kirksville Livestock Sales.**



**SINGLE**  
**\$650**



**DOUBLE**  
**\$1,050**



**HEAVY-DUTY \$1,050**  
**REPLACEMENT BUMPERS**  
Dodge, Chevy, Ford & GMC



**HALF TUB**  
**\$2,900**



**FULL TUB**  
**\$3,800**



**MINERAL FEEDERS**  
**\$375**



**\$3,400**  
**ADJUSTABLE ALLEY**

**If you're looking to build a pipe fence or corral, wire fence, or need quality cattle equipment, WE'RE HERE TO SERVE YOU!**

**Gates • Continuous Panels • Tubs • Alleys • Posts • Pipe • Bumpers • Cattle Feeders**

## Machinery Consignment

# AUCTION

Saturday, November 27th, 2021

Location: Junction of Hwy 5 & 'U' north of Unionville, MO

**Live onsite, also online bidding with Equipmentfacts**

Taking consignments of farm machinery, shop and farm related items. Deadline for advertising is October 26th.

Contact Persons:  
Joel: 660.346.1448  
Allen Fox JR: 660.341.1453

J and R Fabrication  
12102 State Hwy UU  
Unionville, MO 63565

[jrgrain@ibifax.com](mailto:jrgrain@ibifax.com)  
[wesell@nemr.net](mailto:wesell@nemr.net)

**FOX AUCTION LLC**      JR. (ALLEN) FOX: 660-341-1453...WILSON FOX: 660-216-9227

**VIRTUAL ONLINE • SCOTLAND COUNTY, MO**  
**LAND AUCTION**

FRIDAY, OCTOBER 8, 2021 @ 10:00 A.M.

**86± ACRES**  
(Subject to Survey)  
2 TRACTS



Land is located in Sections 24 & 25, T64N•R12W, Scotland County, MO.

**LAND REPRESENTS PRODUCTIVE TILLABLE CROPLAND AND OFFERS PREMIERE WHITETAIL DEER & WILD TURKEY HUNTING ACREAGE.**

## EUREKA LAND COMPANY

ROBERT L. MOORE | RICHARD PAYNE | TOM CROLEY | SHARON S. PAYNE | E. RICHARD WEBBER

CLOSING & TITLE WORK BY: SCOTLAND COUNTY ABSTRACT  
205 E. MONROE STREET | MEMPHIS, MO | (660) 465-7052

AUCTION MANAGERS: Bill Fretwell (660) 341-7735 and Stan Prather (660) 341-5950

**SULLIVAN AUCTIONEERS, LLC • TOLL FREE (844) 847-2161**  
[www.SullivanAuctioneers.com](http://www.SullivanAuctioneers.com) • IL Lic. #444000107

# Troyer

## TARP MFG.

**660-486-3301**

**20264 State • Hwy. VV • Ethel, MO. 63539**



**Hoop Building Covers**

**FARM TARPS**

**TRUCK TARPS**

## WE GOT YOUR NEEDS COVERED!

**LOLLI BROS. LIVESTOCK MKT, INC.**  
 Macon, Mo  
**Special All Class Cattle Sale**  
**Tuesday, Oct 5 \*11am**  
 Special Calf & Yearling Sales Oct 12 & 26  
 Special Cow, Cow/Calf & Breeder Bull Sale Oct 19  
 Your Business Is Greatly Appreciated.

Cafe Open Lollibros Livestock Market, Inc. Cafe Open  
 704 Main st \* Macon, MO \* 660-385-2516 \* www.lollibros.com  
 Dominic 660-651-4024 \* Frankie 660-651-4040  
 Tim 660-651-3496 \* Joseph 660-346-9711 \* Cattle accepted on Sundays

**VIRTUAL LIVE ONLINE • PIKE COUNTY, IL**  
**LAND AUCTION**  
**THURSDAY, OCTOBER 21, 2021 AT 10:00 A.M.**

**334 ACRES±**  
**SUBJECT TO SURVEY**  
**4 TRACTS**

**OPEN HOUSE: SATURDAY, OCTOBER 9 FROM 10:00 A.M. - 12NOON**

The Thomas Hillebrenner Farm is located north of Pittsfield, IL across from Pittsfield Penstone Municipal Airport on Highway 54. The property is further described as being located in Section 7, Newburg Township, Pike County, IL. The farm contains 334 acres± (subject to survey) and will be sold in 4 tracts. Tracts 1-3 represent nearly all tillable cropland. Tract 4 has an attractive ranch-style home with several outbuildings and sits on a small acreage. The Hillebrenner farm is ideally located and offers opportunities for farmers, investors and home buyers.

**THOMAS HILLEBRENNER FARM**  
 SELLERS: WILLIAM HILLEBRENNER | LECIA HILLEBRENNER | STACY ROSEBERRY  
 Representing Attorney: Ronald K. Hoskin  
 130 S. Madison St., Pittsfield, IL 62363 | (217) 285-4822  
 AUCTION MANAGERS: JOHN BORROWMAN (217) 430-0645 & RODNEY BORROWMAN (630) 247-0667

**THURSDAY, OCTOBER 28, 2021 AT 1:00 P.M.**

**334 ACRES±**  
**SUBJECT TO SURVEY**  
**4 TRACTS**

The Graham farm contains a total of 404 acres± (subject to survey) and will be sold in 5 tracts. Tracts 1-4 are located on the east side of Kingston, IL, approximately 7 miles southeast of Liberty, IL, or 15 miles southeast of the Quincy, IL Regional Airport, or 10 miles southwest of Siloam Springs State Park, and along Highway 104. Tracts 1-4 are further described as being located in the South Half of Sections 7 & 8, Beverly Township, Adams County, IL. Tract 5 is located approximately 4 miles north of Kingston, IL, or 5 miles east of Liberty, IL along North 700 Ave. Tract 5 is further described as being located in the East Half of the Southeast Quarter of Section 25, Liberty Township, Adams County, IL. All 5 tracts offer several opportunities for farmers, hunters, investors and home builders with productive cropland, excellent hunting land and outstanding home building sites.

**PATRICK L. GRAHAM TRUST SELLERS**  
 Representing Attorney: Ronald K. Hoskin  
 130 S. Madison St., Pittsfield, IL 62363 | (217) 285-4822  
 AUCTION MANAGERS: JOHN BORROWMAN (217) 430-0645 & RODNEY BORROWMAN (630) 247-0667

**SULLIVAN AUCTIONEERS, LLC • TOLL FREE (844) 847-2161 •**  
**WWW.SULLIVANAUCIONEERS.COM • LIC #444000107**

**Farm Equipment and Personal Property Auction**

**Saturday, October 9, 2021 at 10:00 a.m.**  
**The Alvin A Clark Jr and Jean L Clark Trust**  
 19971 Auburn Place, Ethel, MO 63539

**Directions:** 19971 Auburn Place, Ethel, Missouri. From US Highway 36 at New Cambria, follow Highway 149 North, turn left on Route Z for 0.3 miles Take a slight right on to Route VV for 5.5 miles. Turn left on Aurora Street for 0.8 miles, continue straight on Auburn Place to auction location. Watch for signs the day of the sale.

**Building:** 12' x 16' metal storage shed

**Farm and Lawn Equipment:** 165 Massey Ferguson gas tractor; Polaris Sportsman 335, 514 miles; ATV trailer; Danuser post hole auger, 3 point with 8" bit; 8' x 4' farm trailer; Snapper SR 825 25" with bagger; Cub Cadet LT 1045 46", 352 hours; Toro GTS5 600 push mower; Lawnboy Goldpro series push mower; small lawn cart; new 48" roll woven wire; aluminum loading ramps; rolls of cable; rolls of new electric fence wire; 3' galvanized oval water tank; miscellaneous lumper; 10'7" bridge plank loading ramps; 3 point carry-all; Earthway garden seeder; hand push garden plow; Earthquake front tine tiller; Haul Rite lawn trailer; Yardman rear tine tiller; 46" lawn sweeper; 8N Ford tractor jack; 3 point boom; Ford 401 sickle bar mower; 4'x6' 3 point carry all; 3 point fork lift; Ford 3 point 3 bottom plow; two 3 point dirt scoops; miscellaneous woven wire and barbed wire; miscellaneous hedge posts; 6' x 2' steel beams; 6' steel posts; 8' 3 point disc; 500 gallon fuel tank with stand; two wheel trailer; #9 wire; wagon box; red tip barbed wire; corrugated barn tin; 2 ton chain hoist; 10' sewer tape

**Household Items:** 2 porch swings; Sunbeam propane BBQ grill; folding picnic table and benches;

**Antiques and Collectibles:** Antique hog oiler cast iron; ice tongs; one man crosscut saw; antique buck saw; vintage metal cabinets; radio flyer pedal cart; iron wheels; barn siding; nail keg; vintage Bostrom transit and tripod, unknown certification date

**Outdoor Equipment and Tools:** Simplex handy man style jack miscellaneous hand tools; 6' wooden work bench; Craftsman 10" radial arm saw; Rockwell miter saw with bench; bolt bin with contents; bead breaker; wire spools; wood/coal burning stove; Pro life HD lawnmower jack; car ramp; Craftsman electric sander; Campbell Hausfield 110 air compressor; Porter Cable 155 PSI 60 gallon air compressor, brand new; wooden step ladder; 1 3/8"-2" wrench set; 3/4" drive socket set; Stihl 029 super chainsaw; Stihl MS181C chainsaw; Stihl 032 AV chainsaw; 2 Poulan Pro chainsaws; older McCulloch chainsaw; house jacks; cement mixer; Speedway grinder

**Sporting Goods:** 4 live traps; Martin house;

There will be many more items at this auction too numerous to mention.

**SCOTTYS AUCTION SERVICE**  
 Scotty Kuntz 573-356-4405  
 Michael Cunningham 660-651-2288 • Paxton Pittman 918-316-7500

**WWW.SCOTTYSAUCTIONSERVICE.COM**

**CELEBRATIONS! PARTY RENTAL**  
 KIRKSVILLE, MO

FOR RENT  
**TABLES - CHAIRS - TENTS - BOUNCE HOUSE**  
**& COTTON CANDY MACHINE...ECT.**

660-626-5162 or 660-665-9380

**LIVE ONLINE • CLARK CO, MISSOURI**  
**LAND AUCTION**  
**FRIDAY, OCTOBER 29, 2021 AT 3:00 P.M.**

**OPEN HOUSE: SAT., OCT. 9 FROM 10:00 A.M. - 11:00 A.M.**

**20.8 TAXABLE ACRES**

**PHYSICAL ADDRESS: 33278 STATE RTE. 81, CANTON, MO 63435**

Selling 20.8 taxable acres of Clark County, Missouri land which includes a home. The property is ideally located just west of St. Patrick, Missouri along Highway 81/County blacktop Z. The farm is further described as being located in the west half of Section 11 in Jackson (S) Township, Clark County, Missouri. The small village of St. Patrick, Missouri is located approximately 30 minutes NW of Quincy, Illinois, approximately 20 minutes SW of Keokuk, Iowa and approximately 20 minutes SE of Kahoka, Missouri.

Make plans to check out this hard to find property. The real estate will sell in 1 individual tract and includes a 3 bedroom, 2 full bath, single story, ranch style home with basement and attached garage. This property also has a large barn, a nice small pond and a large yard. The balance of the acres represent rolling hardwood timber. The property has public roads on 3 sides. The home does have public water and is located on a hard surface road.

**RAYMOND & DEBBIE ORWIG**  
 Closing Title Company: Oak Hills Title Company  
 309 Lewis Street | Canton, MO 63435 | (573) 288-4461  
 Auction Managers:  
 Bill Fretwell (660) 341-7735 & Joe Sullivan (217) 242-9287

**SULLIVAN AUCTIONEERS, LLC • (844) 847-2161 • SULLIVANAUCIONEERS.COM • LIC #444000107**

**Farm Machinery Consignment Auction**  
**Saturday, October 16th @10:00 AM**  
**Schachtele Auction Barn Keytesville, MO**

From Hwy 24 at Keytesville, take Hwy 5 North approx. 4 miles to site with a brown barn/green roof on the West side of the road, or from Hwy 36 at Marceline exit take Hwy 5 South, approx. 16 miles to site.

**Tractors & Skid Loader:**  
 J.D. 2350 w/J.D. 175 Loader showing 4460 hours -Runs good; IH 706 Gas New Paint-Good Tires; J.D 2440 Diesel Showing 2250 Hours-Good Rubber-Extremely Nice Tractor; IH 424 Gas w/Loader; Kubota L2650 w/Kubota LA450A Loader-Front-wheel Assist; Ferguson 30; J.D. 2440 Diesel w/J.D 146 Loader; Belarus ML50; Bobcat 7753 Skid Loader w/Bucket; 1650 Oliver Gas w/Loader;

**Skid Loader Attachments:**  
 New Brush Cutter; New Post Hole Digger; New Bale spear; New Pallet Forks; New Snow Pusher; New Fork Boom Extension; Plus Several New Different Size Grapple Buckets; New Root Bucket;

**Trailers & Vehicles:**  
 2004 F350 Dually V10 5speed w/9' Service Bed 177,000 Miles-Runs and Drives-Has Noise in Motor; 12' IMT 8' Service Body w/Tommylift; 16' Utility Trailer; 14' Single Axle PJ Utility Trailer w/ Ramp Gate 84" Wide; 2000 Ford Ranger 4x4 Extended Cab-Transmission Problems;

**Farm Equipment:**  
 217 New Idea Pto Manure Spreader; New Holland 327 Manure Spreader; New Idea Manure Spreader; J.D. 8' Pull-type drill; 4 Wheel Hay Wagon; Vermeer 605 K Round Baler Twine Only; 5' 3Pt Box Blade; 3pt 6' Blade; Woods 7' 3pt. Brush Hog; 3pt Post Driver; 3Bottom 3pt Plow; Snow Blade for pickup; 3pt Carryall; 3pt 7' BushHog Blade; 3pt KeenKutter 6' Disc; FieldMaster Post Hole Digger w/8" Auger; 4' Chain Drag Harrow; Post Hole Digger w/10" Auger; Hinke 8' Stainless Steel Salt Spreader w/Monitor; New Holland 450 3pt. Cycle Mower; J.D. 14 -T Square Baler; Massie Ferguson Grinder Mixer; Hesston 5500 Round Baler; BMI Gravity Wagon; J.D. 1508 Batwing mower 540Pto; J.D. 3Pt Cycle Mower; Bigox 8' 3pt Blade; 3pt Bale Spike; 2 Farm Wagons w/Hoist; Clark Electric Walk Behind Fork Lift w/Charger; Ford Hay Rake; New Holland running Gear; Grain-O-Vater Auger Wagon; IH 14' Disc; Rem 32' Pull-Type Pasture Harrow; Ford 138 12' Disc Chisel; Kewanee 3pt 9' Hyd. Blade; IH 3pt 6 Row Cultivator; 3pt Dirt Scoop; 3pt 5' Brush Hog; 10' pull-type Disc;

**Livestock & Fencing Equipment:**  
 Priefert Squeeze Chute w/PalPation Cage; WM Portable Squeeze Chute-Nice; Hyd. Bale Spear fits on a gooseneck Ball; Like new FlyNO-MO Cattle Oiler; 8Ton Portable Metal Self Feeder; 3-2Ton Portable Metal Self Feeders; 3-QLF Lick Tanks; Big Round Bale Feeders; 10-10' Corral Panels; 10-24' Heavy Freestanding Panels; 14-12' Corral Panels; Several Gates Various Lengths; Rolls Barb Wire; 2 Ton Bulk Bin; 56 - 6x8 new Wooden Treated Post; 20' Cattle Alley Way; 3 cattle Head Catches;

**Farm Related Miscellaneous Items:**  
 100' Rolls of 2x4 Wire 4', 5', 6'; 2- New 30'x20' Hoop Building in a box; New 85 gall. Water Tank; 18 & 30 gall. Water Tanks; 10 -Metal 50 gall. Barrels; Miller Aead-200 LE Portable Welder Generator-Gas Motor Electric Start; Miller Tig-Rig 56 Tig Welder 3phase; Diamond Plated L Shaped Fuel Tank-No pump; L Shaped Metal Fuel Tank W/pump; 200 Gal. Fuel Barrel on Stand; Delta Tool Box; Transmission Jack; TroyBilt Rear Tine Tiller; Old Wooden Seed Cleaner; Poland Chain Saw; New Metal Shooting Targets;

**Taking Consignments Daily-Expecting Much More by Sale Day**  
 Check Schachtele Auction Facebook Page for Pictures and Other Consignments.  
 Selling Farm Machinery, Farm Tools & Equipment & Many More Miscellaneous Items (No Household Items)  
 To Consign Early for Advertising or for More Information Call Tony: (660) 413-3250  
 We Appreciate All Consignments!  
 Terms Cash-Good Check with Proper ID. We are NOT Responsible for Accidents to Man, Woman, Child or Animal!

FOR SALE: New 3 pt. tillers, heavy duty, gear driven, 7' to 10' starting at \$3050. 660-874-4455

FOR SALE: Ford 4000 D SU, power steering, Live PTO, excellent paint & sheet metal, new tires, \$5500. 660-341-8089

FOR SALE: 1991 GMC Grain Truck \$4000, 366 fuel injected gas engine, 5 speed manual transmission with splitter 15' grain bed. Call or text 660-216-3219

FOR SALE: John Deere 7220 Tractor, MFWD, CAH, power shift, 9000 one owner hrs, \$49,500. Call 573-881-3557

FOR SALE: Gleaner 800 25' lateral tilt hyd for & aft; Gleaner 520 20'; Gleaner 830hugger H' Gleaner 3000 630, w/corn head. 217-658-4761

AVAILABLE STOCK MOBILE HOMES immediately, double wide and single, 3 and 4 bedroom. 573-499-9993 columbiadiscounthomes.com

FOR SALE: 7 Fall-Calving Red Angus Cross Cows, calving now, ages 3-7. Retirement Dispersal, \$1250 each take all. Sutter IL 217-658-3951

FOR SALE: Factory made For-Most Doctor Chute for sheep, goats and small animals, just like new. Also Want to Buy good 22 Rifle, new or used. 660-676-9199

FOR SALE: Wholesale Southern Yellow Pine. Shelby Supply 660-299-0615

FOR SALE: Suffolk and Hamp meat type Rams, Ewes and Ewe Lambs. Hindman Breeding 660-341-6625

FOR SALE: Farmhand XL 740 Loader, QT, 7' bucket, good paint, \$3,750. Call 573-881-3557

LABS, LABS, LABS!! Male chocolate Lab 2 year old, will make great stud dog or pet \$200. Black female pups 5 months old, \$50 each, black male & female pups 10 weeks old, \$200. All up to date on shots and wormer. Call 660-342-2520

FOR SALE: Gehl 600 2 row chopper; Fox 2250 2 row corn, hay pickup fox 3000 2 row; Fox w/1 row hd; H&S silage wagon WT gears; Gehl silage wagon; silage wagon. 217-658-4761

FOR SALE: Boer Spanish Cross & Spanish Nannies, some kidding now, prospects for next year. 641-919-0824 Packwood Iowa

FOR SALE: Large and small pumpkins and gourds. Go East from Knox City to Finch Ave Verlin Tonnies

FOR SALE: Aerway Agriculture Generator 10' wide, excellent shape, \$4800 OBO. New Cambria 715-484-7711


FOR SALE: Generac 2900 psi pressure washer, used once, like new, \$275 each. 660-332-7520

WANTED TO RENT Farming land around La Plata & Atlanta MO. Call and ask for Dale 660-346-8496

FOR SALE: Chihuahua x Dachshund puppies out of Registered parents, fancy colors, \$200 each or OBO. 660-397-2342



**VIRTUAL ONLINE • KNOX COUNTY, MO**  
**LAND AUCTION**  
**THURSDAY, OCTOBER 7, 2021 @ 11:00 A.M.**



**51.7 SURVEYED ACRES**  
1 TRACT

Land is located in Section 23, T60N•R13W, Salt River Township, Knox County, MO.

LAND REPRESENTS A VERY NICE TIMBER TRACT WITH MULTIPLE FOODPLOT LOCATIONS SURROUNDED BY TILLABLE ACREAGE WHICH OFFERS OUTSTANDING HUNTING/RECREATIONAL ACREAGE.

**JEREMY TOUBL**  
 CLOSING & TITLE WORK BY: KNOX COUNTY ABSTRACT  
 103 S. FIRST STREET | EDINA, MO | (660) 397-3259

AUCTION MANAGER: Bill Fretwell (660) 341-7735  
 SULLIVAN AUCTIONEERS, LLC • TOLL FREE (844) 847-2161  
 www.SullivanAuctioneers.com • IL Lic. #444000107

**FOR SALE**  
**AI Sired Angus Bulls,**  
**14 & 18 Months Old.**  
**Harold Trump**  
**660-341-5730**

Buyer of Standing Timber Any Species.  
 Land Clearing and Clear Cutting Available. TSI Work.  
 Kline Dried Firewood For Sale. Bonded.  
**State Line Firewood**  
**641-898-2398**

FOR SALE: 12 Yearling Columbia Ewes. Nice open faced, well bred, big Ewes ready for breeding. 660-216-7031

FOR SALE: 20 Black Angus heifers, 2nd & 3rd period pregnancy, bred to Angus bull; 12 Angus heifers & calves. All nice and gentle. 660-676-9199

**ADAIR COUNTY, MISSOURI**  
**LAND AUCTION**  
 AUCTION TO BE HELD AT THE MOOSE LODGE • 2405 E. ILLINOIS ST. • KIRKSVILLE, MO

**TUESDAY, OCTOBER 26, 2021 @ 5:00 P.M.**

OPEN HOUSE: SAT., OCTOBER 16 • 11 AM TO 1 PM

**400± ACRES**  
(Subject to Survey)  
5 TRACTS



PHYSICAL ADDRESS:  
29107 BENTON WAY • KIRKSVILLE, MO

The Collop land is located approximately 8 miles NE of Kirksville, MO in Sections 17, 19 & 20, T63N•R14W, Clay Township, Adair County, MO.

LAND REPRESENTS WELL MAINTAINED PRODUCTIVE FARMLAND, CURRENTLY IN IMPROVED PASTURE & HAY PRODUCTION. FARM IS IMPROVED WITH A WELL LOCATED COUNTRY HOME & OUTBUILDINGS, JUST MINUTES TO KIRKSVILLE.

**COLLOP FARMS**

Representing Attorney: C. David Rouser  
 Rouser Law Office LLC  
 400 N. Franklin | Kirksville, MO 63501 | (660) 665-7515

Title Work By:  
 Pickell Abstract Company  
 115 S. Franklin | Kirksville, MO 63501 | (660) 665-8324

AUCTION MANAGER: BILL FRETWELL (660) 341-7735  
 SULLIVAN AUCTIONEERS, LLC • TOLL FREE (844) 847-2161  
 www.SullivanAuctioneers.com • IL Lic. #444000107

WANTED TO BUY: Harley Davidson's, any year, any condition, cash money. Days 660-263-1356 or 660-537-0068

FOR SALE: New 3 pt. tillers, heavy duty, gear driven, 7' to 10' starting at \$3050. 660-874-4455

HANDYMAN: Install interior and exterior doors and windows, siding, decks, showers and toilets, flooring and drywall, roofs and dirt work. 660-956-2189.

FOR SALE: Mayrath 10" x 65' auger, Swing hopper dyc lift, \$1250; Westfield 8"x61' swing hopper, \$650; Kewanee 8"x 60', \$350; other Auger disks, disk chisels. 217-658-4761

TRUE MODULARS 30 to 60 day delivery available, 3 and 4 bedroom. 573-657-7040 chateauhomes.net

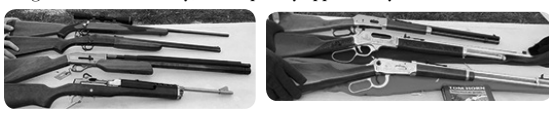
**High Retirement Auction Service, LLC**  
 Daniel and Margaret Gingerich  
 10417 CR 960 - Downing Mo. 63536 - 660.216.1500 VM

**Saturday, October 16, 2021 @ 9:00 A.M.**

Direction from Downing Mo: go North on Rt. N approx. 7 miles to CR 962 then East 2 mi. to CR 965 then North 1 mile to CR 960 then East to auction site. Watch for signs!

Guns - Ammo & Reloading (Selling after Livestock)  
 #87 Stevens 320 12 ga. shotgun - #90 Savage Axis 22-250 rifl e (new)  
 #79 Nova Benelli 12 ga. shotgun - #89 MP 3500 12 ga. Stoeger shotgun (camo)  
 #106 Marlin M. 39A .22 lever action (1948) - #112 Browning A bolt McDallion 270 rifl e  
 #100 Marlin model 75 .22 rifl e - #117 Remington model 514 .22 rifl e  
 #98 Savage model 99 300 lever action rifl e - #102 Winchester 1890 .22 short  
 #20 Winchester model 140 12 ga. w/ slug barrel - #135 Savage model 221 .22 rifl e  
 #136 Pepper Box revolver - #124 Remington mod. 572 Field Master .22 pump  
 #139 Ruger M77 Mark 11 30.06 rifl e - #69 Winchester model 140 12 ga. shotgun  
 #75 Winchester model 1300 12 ga. shotgun - #104 Seneca by air Venturi wing shot/50 cal.  
 #94 Marlin model 60 .22 rifl e - #86 Mossberg model 53512 ga. shotgun (camo)  
 #63 Savage 20 ga. shotgun - #127 Marlin model 783 .22 WMR  
 #56 Mossberg model 835 12 ga. shotgun - #85 Mossberg model 500A 12 ga. shotgun  
 #51 Remington model 870 Express 12 ga. shotgun - #116 Marlin model 81-DL .22 rifl e  
 #52 Winchester model 94 30-30 lever action - #83 Mossberg m. 835 12 ga. shotgun (camo)  
 #64 Mossberg m. 500 ATP 12 ga. w/ slug barrel - #72 Rem. m. 870 Wingmaster 12 ga.  
 #97 Mossberg model 500 AT 12 ga. shotgun - #8 Ruger M77 25-06 rifl e w/ bull barrel  
 #88 Stevens M. 67E Sires 12 ga. shotgun - #55 Remington mod. 870 12 ga. shotgun  
 #110 Savage mod. 1899 250-3000 - #82 Browning Belgium light twelve 12 ga. shotgun  
 #125 J Stevens mod. 235 BD1 12 ga. shotgun - #34 Ruger M77 243 rifl e  
 #111 Stevens Favorite M71 (new) - #5 Ruger Mark 11 M77 22-250 rifl e (SS) **Lunch on Grounds**  
 #53 Winchester model 94 30-30 lever action - #81 Remington M48 Sportsman 30 ga.  
 #48 Winchester XTR M70 Feather weight 30-06 rifl e - #71 Remington 7400 30-06 rifl e  
 #49 Ruger Mark 11 M77 7 MM rifl e - #133 Winchester model 94 30-30 lever action  
 #54 Old M100 Sears & Roebuck 30-30 (Ted Williams) - #129 Ruger mini 14 223 rifl e  
 #73 Remington 1100 mag 12 ga. semi-auto - #131 Iver Johnsons Champion 410 shotgun  
 #37 Browning 243 lever action (almost new) - #80 Rem. 552 Speedmaster .22 (almost new)  
 #130 Stevens M .22-410 over under - #7 Savage model 219B 30-30 rifl e  
 #108 Winchester model 1890 WRF - #109 Stevens Favorite mod. 1915  
 #107 Winchester model 1890 - #122 Stevens Favorite mod. 1915 .22  
 #123 Meriden mod. 15 .22 - #118 Rem. mod. 33 .22 - #119 J Stevens Favorite 1915 .22 LR  
 #120 J Stevens Favorite A&T Co. pat. 1794 32L - #28 Remington mod. 550 .22 rifl e  
 #24 Marlin 30-30 Carbine (short barrel) - #94 Marlin model 60 .22 rifl e  
 #66 Mossberg 270 bolt action (new) - #90 Savage Axis 22-250 rifl e (new)  
 #44 Ruger model 26973 6.5 Creedmoor - #77 Mossberg 500 20 ga. shotgun (NIB)  
 #59 Winchester 30-30 Canadian Centennial (NIB) - #57 Rossi 44 mag MR 92 (NIB)  
 #93 Mossberg 270 accu-trigger rifl e (NIB) - #91 Savage Axis 243 rifl e (NIB)  
 #92 Marlin 25-06 rifl e (NIB) - #68 Mossberg model 535 12 ga. shotgun  
 #141 Henry gold plated 200 yr. anniversary H010 B 45-70 octagon barrel 41 of 61 made NIB  
 #113 Win. m. 94 30-30 Tom Horn gold plated Centennial octagon barrel 61 of 100 made NIB  
 #115 Winchester 66 gold plated Centennial 30-30 octagon barrel NIB  
 #142 Browning made by Remington sportsman 16 ga. shotgun - #144 M100 308win rifl e Barnett crossbow - arrow heads - old hatchet - lots of knives, bowie, JD sets etc.  
 12 ga. reloaders, Lee, 2 Mees, Huls AA & others 12 ga. - new powder scales - scopes, rings Ammo. 38 special, 243, 22-250, 6.5 creedmoor, 6.5 Grendel, 270, 6.5 jap, 250.3000, 32 auto, 32 short, 12, 20, ga. slugs, 22 Rem ammo., 7MM, 20 ga. shot

As all auction proceeds will be handled by the Gingerich family, they requested that terms on the guns will be cash only, unless priorly approved by Daniel. 660.216.1500



**Metal & Leather Machines**  
 Several 100 pes.unused 40 yr. metal 8' to 30' lengths (handled)  
 American sewing machine - 3 Singer nylon patch machines  
 2 Champion leather sewing machines 1 narrow throat 1 long throat

**Machinery** - 273 NH baler - #7 cutter  
 (2) JD grain drills, 8' & 10' - (2) 999 planters  
 3 pt. 999 planter - Nolt's plastic layer, almost new  
 Sears & Roebuck wagon - JD parts rake - 2 sec. harrow JD #640 rake - McCorm. 1 row cultivator - 3 horse evener International rake - Pioneer forecart - III corn binder  
 #7 high gear mower - #9 reg. gear mower - scrap iron  
 8' Brilliant seeder - cane press & boiler - bale cart  
 NI manure spreader - Hostetler gear hay rack  
 JD tandem 7x8 disc - Wards wood fl are box  
 Wood Bros. thrashing machine, 24" working cond. MF tractor wts. - 27 ton Dirty Hands wood splitter  
 JD 999 plates & lots of parts - 999 dolly & frame  
 2 wheeled road cart w/top, 2 ways & blinkers 8' grain binder, good shape

**Horses - Cow & Ram** (sell at noon)  
 Team 5 & 6 yr. old Percheron mares full sisters broke to all farm machinery (selling open)  
 8 yr. old Black Percheron / Belgian mare (well broke) 1 yr. old Black Percheron / Belgian fi lly  
 1 yr. old Belgian stud colt pulling bred  
 SM Bay Standardbred gelding TSS  
 2 yr. old Sorrel stud pony (ride & drive)  
 5 yr. Gray & White paint quarter x gelding started 7 yr. old Jersey milk cow - 3 or 4 yr. Kahtadin Ram  
**Farm Misc.** - (2) 24" fi berglass ext. ladders 5' rolls of chicken netting - used door track  
 Lots of white metal screw, new - pcs. pex water line Partial rolls 1 1/2" & 2" gas line - blk. vented 12" soffi t  
 Lots of HM 270 white silicone caulk - mailboxes  
 Steel wheelbarrow wheel - asst. windows & doors  
 (12) new rolls plastic, 20'x100' - old galv. wash tubs  
 (5) 34x55 wooden windows - old windmill pump jack (3) S.S. milk vats - PVC milk bucket rack  
 Cable winch - lots of misc. bolts & nails  
 Myers 6" stroke pump jack - cherry picker winch  
 1 ton plastic bin - (2) Martin houses  
 8 ton bin, needs repairs - Bachtold weed mower  
 Lots of oak tomato stakes - Ashland shop stove  
 Mueller 300 gallon bulk tank compressor  
 Pro Max 34" DR brush mower  
 12' V bottom boat & trailer - **Traps & Stretches**  
 #3 Bridger traps - #175 North Woods - #175 Victors Dog Proof coon cuff s - #110 Muskrat traps  
 #3 jump traps - #4 New House traps - Sleepy Creek traps #2 Easy set coilspring - Blake & Lamb trap  
 Lots of wire and wood stretches - scraping knives  
**Household & Antiques** - Meat grinder, on stand Deluxe Ashland cookstove, almost new - pots & pans  
 Tumbreeze woodstove - gas lanterns - assort. dishes  
 2 hand crank sickle sharpeners - boxes old wooden plugs 6 old Stoux Falls corner drills, breast drills,  
 brace drills Old fi shing reels still in box - fi y fi shing rod & reel  
 4 III hand crank cream separators

Auctioneer's note: Due to health reasons, we will sell these items at auction. Something for everyone be sure to attend!! (possibly 2 rings)

High Auction Service LLC - Kris High 660.342.8634 | Randy High 660.216.0515  
 www.highauctionservice.com e-mail: highauctionservice@gmail.com  
 Cash or check with proper ID. Not responsible for accidents or theft. Announcements day of the sale take precedence over any advertising. KM-70KDE479

**SAYRE AUCTION, LLC**  
 Saturday October 9th 10am  
 American Legion  
 2 Livingston St, Bucklin, MO 64631  
 Watch for Sale Signs

**COINS:** 1826 ½ cent; 1864,1865,1868, 2cents; 1865,1867,1870,1873,1874, 3cents; Large cent pieces 1797 thru 1857; (less 1804&1815); flying eagles 2-1857,1858,3-1859's; 1860 thru1865 copper nickels; Indian head pennies 1865-1909, & 1909's; wheat pennies 1909's vbd,1909's, 1909 vbd,1931s, thru 1958, several unc. 1959-2009; shield nickels 1866 w/rays-2-1869; approx. 40 liberty head nickels; Buffalo nickels 1913-1938; rolls and books of Jefferson nickels; Barbara dimes; Mercury dimes 1921 and other key dates; tolls of mercury & Roosevelt dimes; Barber & standing liberty quarters several graded; Washington quarters; Barber ½ 1906-1908-1908D; standing liberties approx.40; 22-franklin ½'s; Kennedy ½'s approx. 100; Morgan dollars 1878 cc, 2-1878s; 1890cc; approx. 100 morgan's; Peace dollars approx. 50; approx. 20 IKE dollars; Susan B Anthony, Sacagawea gold dollars; 20- silver 1oz coins; Presidential coins; 100's of roll's of nickel's and pennies; coin books; 1899 large dollar bill; 1917 large dollar bill red seal; 1917 large two dollar bill; 4- 1923 large \$10nc dollar bill's; silver certificates; 1923 thru 1957 dollar bills several unc, from different banks and states, several with connective numbers.



**HEAD VASES-VASELINE GLASS-PRIMITIVES:**  
 Collection of several head vases; Vaseline dishes; and primitive dishes selling.

**OWNER:**  
 Estate of Gary Anders

**NOTE:** Folks this a coin sale you do not want to miss... Gary took pride in his coins, and spent the money to get a lot of these coins professionally graded. This is just a partial listing, there are too many coins for this printed sale bill. Go to our website for a full listing and more pictures. We do have 3 other estate coin collections in this auction. All items sell as is with no guarantee. Statements on sale day supersede printed material. Lunch will be served.

**SAYRE AUCTION, LLC**  
 "If It's For Sale We Can Sell It" • Family Owned & Operated Since 1978!  
 Shawn Sayre 660-734-8782 Jordan Sayre 660-413-3230 Bill Sayre 660-734-0827  
 www.sayreauction.com





**NEOMO TRADER • Advertise with us TODAY! • Phone: 660.665.8500**  
**PO BOX 190 • KIRKSVILLE, MO 63501**

**Country Corners Swap Meet and Hay Sale**  
**Saturday, October 9th at 8:00 A.M.**

Country Corners Swap Meet and Hay Sale  
**Saturday, October 9th at 8:00 A.M.**  
**AMISH COMMUNITY CENTER**  
 2802 210th Street, Seymour, Iowa  
 (South from Seymour on Highway S 60; West on Edison Road)  
 Small Animals \* Crafts \* Hunting Supplies \* Tools \* Tack  
 \*New and Used Items \*Books \* Housewares  
 \*FREE\* space for youth vendors 14 years old and younger  
 (Limited to 4' table space)  
**\$5.00 Vehicle Admission Fee**  
**Contract: Firman Miller 641-898-7686**  
 Hay Sale Starting at 1:00 p.m.  
**Contact Perry Miller 660-988-7932**  
 Hay Consignments Wanted, 8% commission fee  
 \*\*Amish ladies serving lunch ALL Day\*\*

KM-70KDE464

**Real Estate, Antique and**  
**Personal Property Auction**

**Holliday Real Estate and Personal Property Auction;**  
**Thursday, October 14, 2021 at 5:00 p.m.**

**Nellana and John Degraff**  
**106 Main Street, Holliday, MO 65258**

Directions: 106 Main Street, Holliday, Missouri. From Moberly, follow US Highway 24 East for 16.9 miles, turn left on State Highway A (Main Street). Property will be located on your left. Look for signs the day of the auction.

Real Estate: We will be selling at auction this well-cared for three bedroom, two bath, two story home setting on 0.837 acres. The home offers original hardwood floors, beautiful woodwork and plenty of space your family. It is very well maintained and is waiting for your personal touches.

The real estate will sell promptly at six o'clock. If you would like to schedule your personal showing, please call Scotty at 573-356-4405.

*\*See Terms and Conditions for Purchase of Real Estate below.*

**DOWN PAYMENT:** 10% of the contract purchase price will be due upon acceptance of the Sales Contract. Personal or Cashier's Checks will be accepted. This is "AS IS, WHERE IS" and is non-refundable. **CLOSING:** Closing shall be within 30 days of the auction date.

**Household Items & Mower:** 4 twin size beds; chest of drawers; micro fiber couch; leather ottoman; oak entertainment center; small Vizio flatscreen TV; Amana washer and dryer; Troy-Bilt riding lawn mower, 42" deck

**Antiques and Collectibles:** Iron day bed; antique side chair; retro furniture; wall reliant bookcases; 4 cane seat ladder back chairs; antique oak high chair; one cent candy machine; antique spice box; rice basket; olive basket; 4 wooden folding chairs; antique child's desk; primitive hoop skirt bench; oak rocking chairs; cigar mold; Standard Accident Insurance Company; saw dust doll; cast bank; Terri & Terri dolls with original letters; Sweet Sue walking doll; wire rack butler's cart; 2' Chef statue; Portugal dishes; miscellaneous advertising; framed prints; retro kitchen table with 2 leaves and 4 chairs; glass front kitchen cupboard; Belgium descovare; miscellaneous stemware; blue jars; some blue willow; full size iron bed; vintage African American art; crock water cooler; Mission oak bench; folding wood rocking chairs

*There will be many more items at this sale too numerous to mention.*



Scotty Kuntz 573-356-4405  
 Michael Cunningham 660-651-2288 • Paxton Pittman 918-316-7500  
 WWW.SCOTTYSAUCTIONSERVICE.COM

KM-70KDE483

**Estate Auction**

**Enyeart Auction Center, Keytesville, MO**  
**Friday, October 8th @ 4:00 p.m.**  
 Selling the Jean & Billy Brandt Estates of Brunswick & others.



**Online Bidding on select item through HiBid**

**Camper - UTVs - Duck Boat - Pickup :** 2011 V-Cross Camper, 27ft w/ tip-out, very nice!; Artic Cat Prowler 550 EFI, 2,771 mi w/ winch; Kawasaki Mule 2510 4x4, 335 hrs, Diff lock; 16' Pontoon Duck Blind 2002 Landau, trailer, 25h Nissan motor; 1997 F-250 Heavy Duty 4x4 Pickup w/ 117k mi; 5'x4.5' trailer & more.

**Shop Tools & Equip:** Honeywell 5500 generator, Delta scroll saw, Miter saw, port air tank, port hedge trimmer, power cleaner, Delta 10" bench saw, circular saw, craftsman elec drill set, soldering gun, Stanley roller drawer cabinet, new garage door opener, 2.5 gal. Shop vac, lot Reflectix insulation, battery charger, sewer tape, step ladder, many lots of assorted small hand tools, hammers, wrenches, screwdrivers, many newer, etc., & much more.

**Furniture - Antiques - Household:** 4.5'x6' Witte Hardware glass front case, 7.5' tall antique cabinet, misc. Furniture, vintage farm toys, 10 gal. Red wing crock, 2 & 3 gal. crocks, small elec fireplace, trunks, lot silver plate sets, fustoria, pyrex, Tupperware, glassware, kitchen supplies & small appliances, dishes, find China, crystal, vintage photos and paintings, reprod Starry Night, & much more. **We're still unpacking boxes; watch website for updated listing & photos.**

**www.EnyeartAuctionRealty.com**



Daniel: 660-651-1101 Clayton: 660-651-3396 Loren: 660-651-9889

**Premium Metal Roofing**



**The Ultimate Wood Heat.**



- **More Comfort** - Thermostatically controlled wood heat.
- **Peace of Mind** - Keep the fire outside and eliminate the dangers associated with indoor wood heating.
- **Save Money** - Wood is a renewable, inexpensive and often free energy source.

**CAMPEN**  
 Heating & Air Conditioning  
 573-288-8966  
 Canton, MO  
**CentralBoiler.com**

19-0102

**Macon Real Estate and Personal Property Auction**



**Thursday, October 7, 2021 at 4:30 p.m.**  
**The Waller Family**

**1308 N Rutherford Street, Macon, MO 63552**

**Directions:** 1308 North Rutherford Street, Macon, Missouri. From US Highway 63 in Macon, turn West on Pace Street then South on Rutherford Street. The property will be on your left. Look for signs the day of the sale.

**Real Estate:** Located close to restaurants, shopping and schools, this 2 bedroom, 1 bath home with full unfinished basement will make a great home for your family. The home has vinyl siding and a 1 car detached garage. The car port will be sold separately.

The real estate will sell promptly at 5:00 p.m.. If you would like to schedule your personal showing, please call Scotty at 573-356-4405.

*\*See Terms and Conditions for Purchase of Real Estate below.*

**DOWN PAYMENT:** 10% of the contract purchase price will be due upon acceptance of the Sales Contract. Personal or Cashier's Checks will be accepted. This is "AS IS, WHERE IS" and is non-refundable.

**CLOSING:** Closing shall be within 30 days of the auction date.

**Car Port:** 15' x 20' metal carport

**Household Items:** Amana washer; GE electric dyer; glass front, 3 sided curio cabinet; tweed recliner; England Corsair sofa; maple 3 piece full size bedroom set; More

**Antiques and Collectibles:** Antique wooden rocker; antique cane bottom chair; double pedestal child's desk; signed oil on canvas; size 42 leather motorcycle jacket; MORE

**Outdoor and Tools:** Concrete flower planter; outdoor patio set; tool chest; miscellaneous tools; pancake air compressor; NAPA battery charger; bolt trays with lid x 7; long handled tools

*There will be many more items at this auction too numerous to mention.*



Scotty Kuntz 573-356-4405

Michael Cunningham 660-651-2288 • Paxton Pittman 918-316-7500  
 WWW.SCOTTYSAUCTIONSERVICE.COM

**THE NEMO TRADER**  
**CLASSIFIED COUPON**

**Clip This Coupon Out of This Week's NEMO Trader and run**  
**2 CLASSIFIEDADS FOR \$5.00**

**Picture Ads Not Included with Coupon! Call For Pricing!**

**(Each Ad Must Be 20 Words or Less.)**

**~20¢ per word over 20 words~**

**Cash NOT ACCEPTED**

**Check or Money Order Only**

**Ad No. 1:** (20 words or less)


**Ad No. 2:** (20 words or less)


**YOUR CLASSIFIED AD WILL BE READ IN OVER 19 COUNTIES, IN 3 STATES!**  
**BY COUNTLESS BUYERS!!!**

**TO RECEIVE THIS RATE: COUPON MUST BE MAILED IN**  
**ALONG WITH YOUR PAYMENT!**  
**THE NEMO TRADER, P.O. BOX 190**  
**KIRKSVILLE, MO. 63501 ~ 660-665-8500**

**CENTURY 21 FARM & RANCH**  
Lifetime Realty



A community member for over 26 years, Elizabeth is a real estate professional connecting sellers in Northeast Missouri to buyers across our great country.

Considering selling a farm or home? Call on a local expert who knows you, and who is committed to helping you get the most for your property.

Serving Knox, Macon, Adair, Sullivan, Linn, Putnam and Shelby Counties.

Elizabeth Gregory, Realtor  
Lic. # 2021008017

**LISTING A PROPERTY?**  
CALL OR EMAIL ELIZABETH FOR A NO OBLIGATION CONSULTATION  
660.621.2136 | [egregory.c21@gmail.com](mailto:egregory.c21@gmail.com)  
[farmandhome.c21.com](http://farmandhome.c21.com)  
Century21 Lifetime Realty | 660.665.5678

**SULLIVAN AUCTIONEERS, LLC**  
A FAMILY OWNED BUSINESS SINCE 1979



Headquartered in Hamilton, Illinois, Sullivan Auctioneers, LLC is one of the largest Real Estate and Farm Machinery Auctioneers in the nation. For more than 40 years we have been conducting professional auctions. We connect our sellers with thousands of interested buyers around the world.

**Considering an Auction?**  
CALL OR EMAIL TODAY FOR A NO OBLIGATION CONSULTATION!  
Toll Free (844) 847-2161 | [Sold@SullivanAuctioneers.com](mailto:Sold@SullivanAuctioneers.com)  
[www.SullivanAuctioneers.com](http://www.SullivanAuctioneers.com) | Lic. #444000107

FOR SALE: International 674 diesel with Quick Tach hydraulic bucket loader, power steering, good tires & paint, \$9700. 660-341-8089

PICKUP FOR SALE: 2018 GMC Sierra 1500 SLT, 4x4 heated and cooled leather, 4 door, eight speed trans., 5.3 V8, new tires & wheels, 54,000 miles, like new condition, loaded, black, \$37,500. 660-299-0781 Layne

FOR SALE: 2017 Honda Ruckus, only 200 miles; 2002 Kawasaki 650 Prairie, great condition; 2014 Yamaha F-25 HP tiller outboard, electric start, like new, excellent condition. 641-208-7353

FOR SALE: Approx. 200 Small bales mixed grass suitable for grinder mixing .75 cents a bale, you load, and you haul. 660-754-1250

FOR SALE: AKC Welsh Corgi puppy, red & white markers, born 07/19/21 UTD shots. Call 660-988-1806

FOR SALE: Fish for stocking ponds - Catfish, Grass Carp, Crappie, Blue Gills, Red Ear, Bass, and Minnows. Heindselman Family Farms, Call Greg 660-341-5692

FOR SALE: New 3 pt. tillers, heavy duty, gear driven, 7' to 10' starting at \$3050. 660-874-4455

CENTERPOINT CROSSBOWS In stock Axe 405 crossbow & more Whitetail Seed and Supply 14136 State Hwy 3 LaPlata MO 63549

FOR SALE: John Deere 285 Disc mower, 9', QH ready, low acres, \$6,500. Call 573-881-3557

FOR SALE: Progressive 1300 12K NH3 WT on M&W dual no till coulters raven coolers monitor markers, for strip till; DMI 4200 NH3 WT on M&W raven 440M 14K no till. 217-658-4761

MCKAY SHEPHERDS & BORDER COLLIE Has several trained dogs for sale. 641-919-0824 Packwood Iowa

FOR SALE: Large and small pumpkins and gourds. Go East from Knox City to Finch Ave Verlin Tonnies

FOR SALE: Lincoln Town Car 1994 for parts or fix up, needs hood, fender, grill, best offer. New Cambria 715-484-7711

FOR SALE: Used Mirafount model 3360 cattle waterer, very good shape, \$350 cash. 660-332-7520

FOR SALE: Chiweeni puppies, very interesting colors, \$200 or best offer. 660-397-2342

WANTED: General electric large clock model 2915 or similar 15 inch across face, 17 1/2 across rear. 573-248-2043

FOR SALE: Factory made For-Most Doctor Chute for sheep, goats and small animals, just like new. Also Want to Buy good 22 Rifle, new or used. 660-676-9199

FOR SALE: Gleaner R62 combine, CDF rotor, lateral tilt; MF 850 Diesel Hydro; NH TR96; IHC 1440 Diesel; MF 750 Diesel; 2 Kasten silage wagon. 217-658-4761

FOR SALE: Big round bales, really good brome, and other mixed grass, baled dry, fertilized, net wrapped, some in barn, \$40-\$45 NEMO Kahoka Area 217-257-1385 anytime

# VEHICLES & EQUIPMENT AUCTION

**380+ ITEMS SELL NO RESERVE!**  
**WEDNESDAY, OCTOBER 6**



DK2463 '96 Bombardier Plus MP HS trail groomer



JQ9660 '09 Int'l 7500 ANFO bulk handling truck



KD9531 '07 GMC 5500 flatbed truck



IU9483 '08 Chevy C5500 utility/service truck



DL4996 '89 Kaiser Jeep M35A2 box truck



IU9484 '16 Dodge Ram 3500HD flatbed pickup



IU9470 '02 Ford Thunderbird convertible



IU9469 '65 Ford Fairlane



IN9639 '21 Polaris Ranger 570 utility vehicle



KX9380 '05 Friesen Trailers equipment trailer



**INVENTORY INCLUDES:** pickup trucks, flatbed trucks, skid steers, passenger vehicles, dump trucks, equipment trailers, SUVs, utility vehicles, RVs, campers, bucket trucks, classic vehicles, vans, box trucks, rollback trucks and more. All items are sold "AS IS." 10% buyers premium applies. 866.608.9283

**BID NOW! [purplewave.com](http://purplewave.com)**



# TIMED ONLINE • 2-DAY NO-RESERVE COLLECTOR CAR & MEMORABILIA AUCTION

**MON. & TUES., OCTOBER 18<sup>TH</sup> & 19<sup>TH</sup> @ 9:00 A.M. CST EACH DAY**

**7-DAY PREVIEW: MON., OCT. 11<sup>TH</sup> - SUN., OCT. 17<sup>TH</sup> • 9 A.M. - 3 P.M.**



'70 FORD BOSS 302



'65 VOLKSWAGEN

Online bidding will open on Friday, October 8th with the lots beginning to close on Monday, October 18th at 9:00 a.m. CST. Vehicles will sell on Monday the 18th with memorabilia & collector car parts selling on Tuesday the 19th. Unprecedented buyer friendly terms. Online bidders will settle for the HAMMER PRICE.

No buyer's premium!

Most vehicles and memorabilia offered at this 2 day event will be housed and available for pre-auction inspection at Sullivan's Carthage, IL facility, 1204 Buchanan Street. A few vehicles and memorabilia are located off site. Carthage, IL is located approximately 10 miles east of Sullivan Auctioneers Hamilton, IL facility on Hwy. 136. All items will be photographed and described for the online bidding catalog. Anyone wishing to inspect an item will need to contact us by phone or email. Our Carthage, IL facility will be open for viewing the entire week prior to the auction beginning on Monday, October 11th - Sunday, October 17th. Viewings will be from 9:00 a.m. - 3:00 p.m. each day. Phone (217) 847-2160.



'55 MERCURY 2 DOOR HT



'57 CHEVY BEL AIR



'68 BUICK GRAND SPORT



'74 DODGE CHARGER



'54 MERCURY WAGON



'81 TRANS AM



'71 CHEVELLE 2 DOOR HT



'67 CHEVY NOVA II



'72 MONTE CARLO



'65 MUSTANG COUPE



'50 FORD SHOW TRUCK



'59 IMPALA CONV.



'60 IMPALA 2 DOOR HT



'57 FORD FAIRLANE



'51 CHEVY



'66 DODGE CORONET



'72 CHEVY C10



'67 MUSTANG CONV.



'72 CHALLENGER



'55 OLDS SUPER 88



'72 BUICK GS



'64 1/2 MUSTANG



'57 CHEVY 3100



'74 BRONCO 4X4



'94 BRONCO 4X4



'70 BRONCO 4X4



'79 BRONCO 4X4



'69 BRONCO 4X4



'57 CHEVY BEL AIR



'79 CAMARO Z28



'79 TRANS AM



'56 CHEVY 150



'68 CAMARO RS/SS



'76 FIREBIRD



'64 GALAXIE



'69 EL CAMINO



'66 PONTIAC GTO



'64 SPORT FURY

- '70 FORD MUSTANG BOSS 302
- '65 VOLKSWAGEN BUS
- '55 MERCURY MONTCLAIR 2 HT
- '57 CHEVY BEL AIR 4 DOOR HT
- '68 BUICK CONVERTIBLE
- '74 DODGE CHARGER SE
- '54 MERCURY 2 DOOR WAGON
- '81 PONTIAC TRANS AM Y84
- '70 CHEVY CHEVELLE
- '67 CHEVY NOVA II
- '72 CHEVY MONTE CARLO
- '65 FORD MUSTANG
- '50 FORD SHOW TRUCK
- '59 CHEVY IMPALA CONV.
- '60 CHEVY IMPALA 2 DOOR HT
- '57 FORD FAIRLANE 55
- '51 CHEVY 5 WINDOW PICKUP
- '66 DODGE CORONET 500
- '72 CHEVY C10 PICKUP
- '67 FORD MUSTANG
- '72 DODGE CHALLENGER
- '55 OLDS SUPER 88 2 DOOR HT
- '72 BUICK GS CONV.
- '54 CADILLAC SERIES 62
- '65 CADILLAC DE VILLE
- '70 FORD BRONCO 4X4
- '79 FORD BRONCO 4X4
- '74 FORD BRONCO 4X4
- '95 FORD BRONCO 4X4
- '88 FORD BRONCO II 4X4
- '89 FORD BRONCO II 4X4
- '88 FORD BRONCO II 4X4
- '87 JEEP WRANGLER 4X4
- '64 1/2 FORD MUSTANG
- '07 MUSTANG GT
- '72 FORD MUSTANG CONV.
- '11 CHEVY CAMARO SS
- '57 CHEVY 3100 SHOW TRUCK
- '80 CHEVY CAMARO
- '72 CHEVY MONTE CARLO
- '77 MALIBU NASCAR TRIBUTE
- '79 CHEVY CAMARO
- '79 PONTIAC TRANS AM
- '56 CHEVY BEL AIR 2 DOOR
- '62 OLDS 88 2 DOOR HT
- '66 CHEVY C10
- '68 CHEVY CAMARO RS/SS
- '68 CHEVY IMPALA HT
- '47 FORD COUPE
- '76 PONTIAC FIREBIRD
- '33 CHEVY MASTER EAGLE
- '73 PLYMOUTH SATELLITE
- '69 CHEVY EL CAMINO
- '66 PONTIAC GTO
- '64 PLYMOUTH SPORT FURY
- '66 CHEVY C10
- '69 CHEVY EL CAMINO
- '70 FORD MUSTANG
- '96 CHEVY CAPRICE CLASSIC
- '96 CHEVY IMPALA SS
- '93 CHEVY CAPRICE CLASSIC LTZ
- '62 FORD THUNDERBIRD
- '88 MERCEDES BENZ
- '65 FORD MUSTANG 289
- '05 FORD THUNDERBIRD
- '16 FOREST RIVER CAMPER
- '25 STAR TOURING CAR
- '86 OLDS CUTLASS SUPREME
- '00 PONTIAC TRANS AM
- '71 CHEVY C10 STEPSIDE
- '07 CHRYSLER ASPEN
- '71 CHEVY CHEYENNE
- '80 PONTIAC FIREBIRD
- '98 CHEVY CAMARO
- '11 CHEVY CAMARO SS
- '06 CHEVY CREW CAB 2WD
- '73 CHEVY NOVA
- '87 CHEVY SILVERADO K10
- '78 GMC SIERRA CLASSIC K10
- '69 OLDS CUTLASS SUPREME
- '67 BUICK ELECTRA 225
- '03 BUICK LESABRE
- '98 BUICK PARK AVENUE
- '57 CHEVY SHOW TRUCK
- '13 FORD F150 CC PLATINUM
- '89 DODGE RAM 150
- '97 F250 EXT. CAB 4X4
- '79 LINCOLN TOWN CAR
- '84 MUSTANG GT 350
- '92 FORD MARK III VAN
- '02 LINCOLN TOWN CAR
- WILLYS TRUCK PROJECT
- '99 FORD D'ELEGANT VAN
- '81 MERCEDES BENZ 380 SLC
- '07 HARLEY SFXTN SOFTAIL
- '10 FORD RANGER EXT. CAB
- '79 FORD PINTO WAGON
- '12 DODGE GRAND CARAVAN
- '38 CHEVY PICKUP
- '03 HUMMER H2 4X4
- '00 ENCLOSED TRAILER
- '90 JEEP WRANGLER 4X4
- '70 YAMAHA BIKE
- '59 CHEVY BISCAYNE
- '55 FORD THUNDER
- '37 FORD PANEL WAGON
- '84 CADILLAC COUPE DE VILLE
- '03 CHEVY MONTE CARLO
- '93 CHEVY STEPSIDE LT1
- '11 SURE TRAC TILT TRAILER
- '73 CADILLAC CONVERTIBLE
- '46 CUSHMAN WALKTHRU
- '02 HARLEY FATBOY
- '63 DODGE 880 4 DOOR SEDAN
- '79 FIAT BERTONE X1/9
- '78 OLDS TORNADO
- '04 GMC YUKON XL 4X4
- '64 CHEVY IMPALA
- '92 CHEVY STEPSIDE
- '01 DODGE RAM 1500 LARAMIE
- '96 CHEVY 1500 SHORT BED
- '93 DODGE RAMPAGE
- '68 PLYMOUTH FURY
- '67 ROLLS ROYCE
- '70 CHEVY C20 FLEETSIDE
- '73 AIRSTREAM
- '99 LAND ROVER DISCOVERY
- '85 HONDA 125M 3 WHEELER
- '72 BUICK BOATTAIL RIVIERA
- '79 MG ROADSTER
- '77 FORD LTD TIME CAPSULE
- JOHN DEERE MODEL B
- '49 FARMALL CUB
- '93 MAZDA MIATA
- '18 JEEP RENEGADE
- '90 CADILLAC SEDAN DE VILLE
- '63 FORD ECONOLINE
- '63 MERCURY MONTEREY HT
- '93 DODGE PICKUP 2WD
- '70 CHEVY CAMARO
- '00 DODGE DURANGO
- '81 FORD THUNDERBIRD
- '76 CHEVY NOVA PROJECT
- '91 SEA-DOO WATERCRAFT
- '67 CHEVY MALIBU PROJECT
- '78 DODGE WINNEBAGO RV
- 500+ LOTS OF MEMORABILIA
- & MUCH, MUCH MORE!



**McAfee/Hayes Auction Service, LLC**

375 S Johnson • Kahoka, MO  
660-727-3796

www.mcafeeauctionservice.com

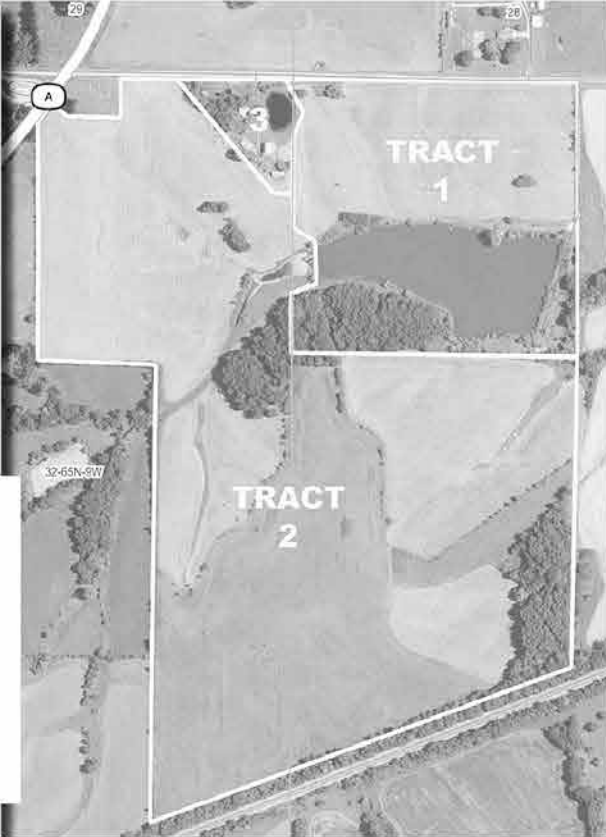
# Clark County, MO LAND AUCTION

Sale will be conducted at the Care Building located at  
451 N. Vine Street Kahoka, MO

## 160 ACRES/ 3 TRACTS

Tracts located 1/4 miles north of Wyaconda, MO on Hwy A.  
(Address : 11980 Co Rd 127-EW, Wyaconda MO)

**Productive  
Tillable  
Farmland,  
CRP Income,  
9.63 Acre Lake,  
Homestead/  
Out Buildings**



**Tuesday,  
October  
12<sup>TH</sup>  
at 6 PM**

**THE FAMILY OF GEORGE T. MARTIN**



**McAfee/Hayes Auction Service, LLC**

375 S Johnson • Kahoka, MO  
660-727-3796

www.mcafeeauctionservice.com

# TIMED ONLINE ONLY HAY AUCTION

**LOTS START ENDING AT 10 AM ON  
THURSDAY OCTOBER 28<sup>TH</sup>**



**900  
BALES**

Preview: 4 miles Northwest of Williamstown, MO on Rte. A.

**PICK UP BY APPOINTMENT ONLY**

**CONTACT CLINT 660-341-3837 TO ARRANGE PICKUP**

**BRISCOE FARMS/ CLINT BRISCOE, SELLER**



**McAfee/Hayes Auction Service, LLC**

375 S Johnson • Kahoka, MO  
660-727-3796

www.mcafeeauctionservice.com

# Clark County, MO LAND AUCTION

Sale will be conducted at the Care Building located at  
451 N. Vine Street Kahoka, MO

**TUESDAY, OCTOBER 19<sup>TH</sup> - 6 PM**

## 334 ACRES/ 5 TRACTS



**OPEN HOUSE: SATURDAY OCT 2<sup>ND</sup> 10 a.m.- Noon**

The Gares farms are lying South and Southeast of Kahoka, MO ranging from 2 miles to 4 3/4 miles from town. These tracts offer attractive combination farms with productive rowcrop acreage, pasture land with fencing, lake, ponds, several building sites and a homestead with several desirable outbuildings.

**THE FAMILY OF  
CLIFFORD & LOLA GARES, SELLER  
DENNIS W. SMITH, REP. ATTORNEY**



**McAfee/Hayes Auction Service, LLC**

375 S Johnson • Kahoka, MO  
660-727-3796

www.mcafeeauctionservice.com

# Clark County, MO LAND AUCTION

Sale will be conducted at the Care Building located at  
451 N. Vine Street Kahoka, MO

## 81 SURVEYED ACRES

**68.83 +/-  
Acres of  
Highly  
Productive  
Tillable  
Cropland**

Lying in Sect. 15, Twp.64N, R6W



**Tuesday,  
October  
26<sup>TH</sup>  
at 6 PM**

**DARYL & DEANA EGLEY, ARLEN & BRIGITTE  
EGLEY & SCOTT & CARRIE JAMES, SELLERS**