

**FREE!**

NEW EDITION EVERY FRIDAY!  
VOL. 29 • NO. 37 • OCTOBER 15, 2021

# NEMO *Trader*

**THE NEMO TRADER**

PO BOX 809 • KIRKSVILLE, MO 63501

PHONE 660-665-8500

Web Site: [nemotrader.net](http://nemotrader.net)

Email: [nemotrader@gatehousemedia.com](mailto:nemotrader@gatehousemedia.com)

A WEEKLY ADVERTISER SERVING ALL OF NORTHEAST MISSOURI AND THE SURROUNDING AREA

**1st Annual BULL AND FEMALE** ←

REGISTERED HORNED HEREFORD BULLS & HEIFERS | BLACK ANGUS HEIFERS

**OCTOBER 21** *Sale*

*Kirkville, MO*



LUNCH & DRINKS  
2PM VIEWING  
4PM SALE  
LiveAuctions.TV

Sale Held at:  
**KIRKSVILLE LIVESTOCK**  
24295 Benton Road | Kirkville, MO



**50 LINE 1 REGISTERED HORNED HEREFORD BULLS**  
10 yearling bulls, 35 18mo old bulls, 5 two-year old bulls

**25 BRED PUREBRED HEREFORD HEIFERS**  
AI'd to VAR Reserve, an ABS proven calving ease sire, and cleaned up 42 days with DL Dually sons, calving late March 2022

**25 BRED BLACK BALDY HEIFERS**  
AI'd to VAR Reserve, an ABS proven calving ease sire, for late March 2022

**150 BLACK & BLACK BALDY HOME-RAISED, 1ST CALF HEIFER PAIRS**  
50 Black Heifer Pairs with Deer Valley Growth Fund calves.  
40 Black Baldy Heifer Pairs with Tex Playbook calves.  
50 Black & Black Baldy Heifer Pairs with calves, sired by DL Dually & Conneally Consensus sons.

Contact: David Morehead 563-249-5319 or Luke West 620-215-5770. Catalog available on LiveAuctions.TV and [threehillsranch.com](http://threehillsranch.com)

The **NEMO** *Trader* IS NOW A  
**PROUD MEMBER**  
OF THE  
**PHILLIPS MEDIA GROUP**  
**NEWSPAPER FAMILY**

*Watch for exciting changes coming soon!*

FOR SALE: John Deere 5075E, MFWD, CAH, with JD H240 SL Loader, 940 hrs, new engine, same as new, \$42,500. Call 573-881-3557

FOR SALE: 2 Mossberg Patriot rifles camo 30-06 \$475 each; Remington Sportsman 30-06, nice wood, big scope, \$425. 217-577-9538

FOR SALE: NH 973 20' flex; NH 973 25' flex; NH 974 630 corn head; MF 1163 corn head; MF 1144 corn head; Gleaner 630 LM or R; Gleaner 830 corn head LM or R. 217-658-4761

WANTED: 14 or 15 wide x 34 double bevel rims with or without 16.9 or 18.4 tires, singles or pairs. 217-257-1385

WANTED TO BUY: 12'-15' Brush Hog in new or good condition; also good used pickup truck. 660-676-9199

HUNTING EQUIPMENT sale, 35+ box, bow, hay bale, ladder stands, hog trap, deer and turkey feeders, deer and goose decoys. All used, great condition. 641-208-7353

FOR SALE: Fish for stocking ponds - Catfish, Grass Carp, Crappie, Blue Gills, Red Ear, Bass, and Minnows. Heindselman Family Farms, Call Greg 660-341-5692

WANTED: Milking Shorthorn Cow or Heifer. 660-299-0744

BUYING Used Mobile Homes. Porter Homes 573-231-6667

FOR SALE: Registered 3 year old Black Angus, calving ease bull, \$3500. Raymond Kauffman 25624 Hanover Street LaPlata MO 63549

FOR SALE: Ford 8N \$1800, Brush Hog Available. 660-341-8089

STOCK MOBILE HOMES AVAILABLE: We gottem, single and double 3 and 4 bedroom! Call Tuffy 573-657-2176 amegamobilehomes.com

FOR SALE: IHC 983 corn head; IHC 883 corn head; Drago 830 corn head, adj deck plates; IHC 820 17 1/2' MF 830 for JD. 217-658-4761

FOR SALE: John Deere 3020-D Tractor, very straight, 90% tires, WF, \$9,750. Call 573-881-3557

WANTED TO BUY: Harley Davidson's, any year, any condition, cash money. Days 660-263-1356 or 660-537-0068

WANTED TO BUY: Farm Machinery and Estates. Call James L. Johnston. 573-473-4904

Wevers Outside Wood Furnaces a dealer for Heatmor Stainless Steel Outside Furnaces, have an assortment of parts, line, and etc. Taking orders for new outside wood furnaces. Call 660-423-5242, cell 660-216-9885. Open 6pm-9pm Monday-Friday, Saturday anytime, call first.

FOR SALE: New 3 pt. tillers, heavy duty, gear driven, 7' to 10' starting at \$3050. 660-874-4455

FOR SALE: International 560 manure spreader 540 PTO, 225 bushel, single, axle, good floor, metal sides, been shedded, solid spreader, \$3200. 217-257-1385

PASTURE AND HAY GROUND Needed around Adair & Knox County. Please Contact 660-216-5887 or 417-773-2507

FOR SALE: Gleaner 8000 30' SCH sickle, F&A; JD 930 poly dividers; JD 220 flex; JD 216 flex; IHC 1020 20'; IHC 1020 17 1/2' MF 918 217-658-4761

FOR SALE: 2010 Case 8120 Combine, 2975 HR -2097 HR, NO DEF, RWA, DIF Lock, 620 Drive Tires, 28 Steer Tires, luxury cab, clean machine, \$85,000. 641-895-8014

FOR SALE: John Deere 4230 Tractor, CAH, cold air, power shift, 6,800 hrs, 18.4x38 95%, \$19,500. Call 573-881-3557

HANDYMAN: Install interior and exterior doors and windows, siding, decks, showers and toilets, flooring and drywall, roofs and dirt work. 660-956-5135.

FOR SALE: Hatfield 12 gauge auto 3" new in the box, \$300; 2 Savage 6.5 Creedmoor black or camo, \$475 each. 217-577-9538

FOR SALE: Wholesale Southern Yellow Pine. Shelby Supply 660-299-0615

**LOLLI BROS. LIVESTOCK MKT, INC.**



Carol Phillips - Complete Dispersal - 25 Black Cows: 5-ss, 10 calves.

Barry Brothers - 19 Black Bred Heifers: 9 head AI bred to Front & Center, balance pasture bred to Galaxy Beef Angus Bulls for a 40 day calving period. All heifers received all breeding and calving shots.

Kevin Murphy - Complete Dispersal - 10 Black Cows: 4-9 years old, 6 with calves.

Jeff Spencer - 17 Black Bred Cows: 4-7 ss, 1300lbs, on mineral program, 16 bred 3rd period, 2 with calves, 1 open, 1 pair Registered Angus with heifer calf & bred back to a Registered Angus bull from Cattle Visions, super friendly.

Jim Hancock - 23 Black Cows: 19 calves.

Joe Petersheim - 12 Black Bred Cows: 6 years old, bred to black bulls for spring.

Nelson Hewgley - 8 Bred Cows: 2-4 years old, Registered Angus.

Black N Platinum Livestock - 2 Black Angus Bulls: yearlings, registered, semen tested and ready to go. Gentle, bucket/gator broke, UTD on shots, wormed & worked.

*This is only a partial listing, many more by sale date.*

Special Calf/Yearlings Sales - Oct 28 & Nov 2 @ 11am  
Catalog Horse Sale - Nov 6 @ 9am

Cafe Open Lollo Bros. Livestock Market, Inc. Cafe Open  
704 Main st \* Macon, MO \* 660-385-2516 \* www.lollibros.com  
Frankie 660-651-4040 - Tim 660-651-3496  
Joseph 660-346-9711 - Dominic 660-651-4024 Cattle accepted on Sundays

**FRONTLINE FENCING LLC**

Steel Pipe Fencing.  
Custom Built Gates and Livestock Handling Equipment.  
Barbed Wire and Woven Wire Fence.  
Arrowquip Cattle Handling Equipment.  
Post Driver Rental.

29386 St Hwy T,  
Greentop, MO  
**660-956-2430**

**FOR SALE**  
**AI Sired Angus Bulls,**  
**14 & 18 Months Old.**  
**Harold Trump**  
**660-341-5730**

Built for the way you work.

The new GENESIS® T8 with PLM Intelligence™ is the first tractor on the market to fully integrate New Holland's advanced Precision Land Management platform. So, no matter where you are, you're connected to real-time insights, information and support for maximum productivity. Available in eight models from 320 to 435 maximum horsepower, the GENESIS T8 with PLM Intelligence is built for the way you work.

Learn more at [GenesisT8.newholland.com](http://GenesisT8.newholland.com)

**NEW HOLLAND**  
AGRICULTURE

[newholland.com](http://newholland.com)

COMING IN

NEW HOLLAND T8.410 - TRACK, TRUE GROUND SPEED SENSOR, CAT IV DRAWBAR, HI FLOW HYD, 6 ELEC REMOTES, CLASS 5 WIDE SUSP AXLE, 420/85R38 & 24" TRACKS, 120" TRACK SPACING  
NEW HOLLAND T8.435 - TRACK, TRUE GROUND SPEED SENSOR, CAT IV DRAWBAR, HI FLOW HYD, 6 ELEC REMOTES, CLASS 5 WIDE SUSP AXLE, 420/85R38 & 24" TRACKS, 120" TRACK SPACING

NEW TRACTORS

NEW HOLLAND POWERSTAR 120 - 120 ENG, 90 PTO HP, DELUXE CAB, 4WD, LOADER BUCKET  
NEW HOLLAND WORKMASTER 120 - CAB, HVAC, 2 REMOTES, 632TL LOADER W/ 84" BUCKET, 540 PTO,  
NEW HOLLAND T6.180 - 6cyl, 145HP, 16X16 AUTOSHIFT, HD BAR STEEL MULTI DIFF REAR AXLE, CLASS 3 FRONT AXLE, 3 REAR REMOTES, LP RETURN  
NEW HOLLAND T7.230 - 85HP, MECH CAB SUSP, RR VIEW CAMERA, INTELLIVIEW PROTOUCH DISPLAY, GPS READY ONLY, ISO, HI CAP PUMP, 4 REAR REMOTES, 540/1000 PTO,  
NEW HOLLAND T8.435 - POWERSHIFT, 400HP, LUXURY TECH CAB, 1000 PTO  
NEW HOLLAND T9.435 - POWERSHIFT, 370HP, DELUXE CAB

USED TRACTORS

NEW HOLLAND T5050 - 3125 HOURS, CAB, LOADER...\$42,750  
NEW HOLLAND T7.235 - 1900 HRS, PFA, 46" REAR DUALS  
2018 VERSATILE 335 - HD DRAWBAR, AM/FM/CD/WB RADIO, GPS, LED LIGHTING, 500 HRS...\$179,500  
2013 NEW HOLLAND T8.330 - LUXURY CAB, 18F POWERSHIFT, CLASS 4.75 STD AXLE, HI FLOW, 5 ELEC REMOTES, 1000 PTO, HI CAP DRAWBAR, 3 PT HD HITCH W/ HYD TOP LINK  
NEW HOLLAND TG255 - 875TL LOADER, SUPERSTEER, BUCKET, 4 REMOTES, FRONT & REAR DUALS, QUICK HITCH, FULL SERVICE, 3PT CYL LEAKS...\$59,000  
2007 CASE IHSTX530 - LIKE NEW TRACKS, 5 REMOTES, PTO, 4580 HRS...\$189,500



833-774-1606

[www.QuincyTractorLLC.com](http://www.QuincyTractorLLC.com)

# Drive Away

# Cancer



We'll donate to local breast cancer organizations for every vehicle sold.

*up to \$10,000 total donation*



**660-956-4849 • 2015 North Baltimore • Kirksville**

• Peace of Mind Package

• Service Contract Plus

• Accident Protection Plan

• 100% Satisfaction

• Pay Your Way

• Low Down Payments

• Quality Used Vehicles

• Flexible Financing

• Hand Selected Vehicles

• Convenient Payment Options

• Start Your Approval Online

• Over 150 Locations

• 40 Years in Business

• We Buy Cars



**2013 NISSAN CUBE**  
FWE, 4cyl., silver



**2006 DODGE 1500 SLT**  
4WD, 8 cyl., 4 doors, Red



**2013 FORD FIESTA,**  
LT, 4WD., 8 Cyl., Blue



**2009 FORD FUSION SE**  
FWD, 4 Cyl. White



**2017 FORD ESCAPE SE,**  
FWD, 4 Cyl., White



**2011 CHEVROLET SILVERADO**  
**1500,**  
LT, 4WD., 8 Cyl., Blue



**2012 TOYOTA RAV4,**  
BASE, 4WD, 4 Cyl., Black



**2010 Lexus RX350**  
AWD, 6 Cyl., Red



**2007 Ford F150**  
4 WD, 8 Cyl., Gray



**2013 Dodge Dart,**  
FWD, 4 cyl., blue



**2007 DODGE RAM 1500 SLT,**  
4WD, 8 Cyl., SILVER



**2013 DODGE AVENGER,**  
FWD, 4 CYL., WHITE



**2010 CADILLAC ESCALADE,**  
AWD, 8 Cyl., RED



**2012 FORD EXPLORER**  
**XLT**  
4WD, 6 Cyl., Black



**2009 BUICK ENCLAVE CXL**  
FWD, 6 Cyl., Black



**2011 CHEVROLET SILVERADO**  
**1500 LT 4WD, 8 Cyl., Silver**



**2012 RAM 1500 ST**  
4WD, 8 Cyl., Gray



**2011 DODGE RAM 1500 LARAMIE ,**  
4WD, 8 Cyl., white



**AMERICA'S CAR-MART**

*Keeping You on the Road*



**ELIZABETH WALTER**  
GENERAL MANAGER

**DIRT WORK** All types of excavation, reclaiming overgrown fields, including CRP and WRP. Building site preparation, terrace and tiling maintaining and creating new trails and crossings, rock hauling, Food plot development and maintenance. Leveling and grading, wetland construction and maintenance. Pond and lake cleaning and construction. Call for quotes. 660-342-2701

**FOR SALE:** Registered AKC Labrador Retriever puppies, yellow. Farm-raised and loved! MO Health Certificate. Dam and Sire on farm. Ready to go now! Lay's Labs - LaBelle, MO 660-956-2482.

**FOR SALE:** Storage shed 8'x12', gable shingle roof, window, double doors front, solid floor, on skids, could use some paint, \$1500 217-257-1385

**FOR SALE:** 5 X 5 1/2 big round bales of mixed grass hay, Bailed dry no rain fertilized lab tested surface wrapped. Call 660-341-4031 Watson hay sales

**TINY HOMES** We gottem 573-881-3283

**FOR SALE:** John Deere 2950 MFWD Tractor, w/Farmhand XL 740 Loader, 6000 hrs, average condition, \$23,550. Call 573-881-3557

**FOR SALE:** Factory made For-Most Doctor Chute for sheep, goats and small animals, just like new. Also Want to Buy good 22 Rifle, new or used. 660-676-9199

**FOR SALE:** Homemade Candies, Fresh Garlic, Regular and Wide Mouth Jar Lids, Jams & Jellies, Spices, Honey S.S. One Piece Dippers 1oz to 8 oz S.S. Kitchen Wares, Air Freshness, Gift Items, Kerosene Lamps and Parts, Some Aladdin Parts, Poly and Wooden Clothespins, Filter Disks, Wooden handles, Blankets and Throws, Pint Jars, Boxed Cards, Coloring Books. Train Track Candies & More 11538 Iceberg Ave, La Plata 3rd Lane to your Left.

**FOR SALE:** Welsh Corgi x Mountain Cur puppies, family dog prospect. No Sunday Calls 573-934-0122

**FOR SALE:** Border Collie puppies, working parents PR Bobkat x Degus. No Sunday Calls 314-330-3474

**HOUSE FOR SALE:** Macon MO, fixer upper 500 feet from the School and 300 feet from the park. 660-676-5531

**FOR SALE:** Gehl 600 2 row chopper; Fox 2250 2 row corn, hay pickup fox 3000 2 row; Fox w/1 row hd; H&S silage wagon WT gears; Gehl silage wagon; silage wagon. 217-658-4761

**FOR SALE:** John Deere 4020 Tractor, straight off farm, ft wts, rear wts, 38" tires, 11,000 hrs, roll bar/canopy, runs good, \$13,500. Call 573-881-3557

**PICKUP FOR SALE:** 2018 GMC Sierra 1500 SLT, 4x4 heated and cooled leather, 4 door, eight speed trans., 5.3 V8, new tires & wheels, 54,000 miles, like new condition, loaded, black, \$37,500. 660-299-0781 Layne

**FOR SALE:** International 674 diesel with Quick Tach hydraulic bucket loader, power steering, good tires & paint, \$9700. 660-341-8089

HELP WANTED

**NEED A CHANGE??**

*Due to our expanding business, we are accepting applications for*

# AUTO TECHNICIAN

*Competitive Wages • Group Insurance*

*• Vacation Retirement Plan*

Stop by to see Terry and Pick your application up **TODAY!!**

MUST HAVE TOOLS & DRIVERS LICENSE

## Woody's Tire, Auto & Towing LLC

1102 N. Green St., Kirksville, MO • 660-665-8617

HELP WANTED



## AUTO'S UNLIMITED

660-665-8149  
660-341-0965  
*No Sunday Calls!*  
17406 Bob Rd • Kirksville, MO

### ★ FEATURED VEHICLES

2015 Town & Country Touring L



Excellent condition, loaded

2016 Town & Country Touring



Excellent condition, loaded

ALL VEHICLES HAVE GONE THROUGH A 60 PT INSPECTION! STATE INSPECTED! CALL FOR MORE INFO!

# Slayton

POLARIS



### THE POLARIS AGRICULTURAL ADVANTAGE PROGRAM

Exclusively for farmers and ranchers.

Polaris is committed to supporting the agriculture community through industry-leading vehicles, partnerships and programs for the community.

## 660-328-6627

10456 State Route B, Downing, Mo  
6 miles W. of Memphis, then 13 miles N. on B

VISIT POLARIS.COM FOR MORE OFFERS



## MAIN CREEK REPAIR

**Larry Geiser**

23316 State Hwy H  
Kirksville, MO 63501

**(715) 415-1995**

Bolts • Belts • Bearings  
Hydraulic Hoses • Steel  
Welding • Fabricating  
Tractor & Equipment Repair

---

## MAIN CREEK RENTALS

23316 State Hwy H  
Kirksville, MO 63501

**(660) 988-6917**

- Mini Excavator
- Dozer
- Skytrack

- Equipter (Shingle Buggy)
- Snorkle
- Grapple

- Post Hole Digger
- Man Basket



E

For all your advertising needs email us at

**nemotrader@gatehousemedia.com**

# Ramer Truck Sales

**Gorin, Missouri**  
**Monday-Saturday 8am-6pm**



Used  
 Zimmerman  
 Flat bed  
 Aluminum for  
 shortbed daullie  
 \$1,950



2019 Ford F350  
 Platinum, 4-door  
 longbed, 6.7L, auto,  
 4x4, white, 123k  
 miles, rebuilt title  
 \$55,000



2014 Ford F350  
 XLT, Xcab, 6.7L,  
 4x4, dually,  
 Rebuilt Title  
 225k miles  
 \$19,900

2016 Ford  
 Explorer  
 Limited, Black,  
 3.5, 4x4, 99k  
 miles, Rebuilt  
 title \$16,900



2018 Ford F250  
 Limited, 6.7L, 4x4,  
 4-door, shortbed,  
 Rebuilt title, 127k  
 miles, good rubber  
 \$46,500



Norstar ST  
 single wheel  
 longbed  
 w/toolboxes  
 Fully Line X  
 \$8950 installed



**www.ramertrucksales.com HOME: 660.282.1002 CELL: 660.341.6140 "NO SUNDAY CALLS!"** **Deweze**

**Warranty • 319-696-2981 • Warranty • www.rsautosalesinc.com • Warranty • 319-696-2981 • Warranty • 319-696-2981**

Warranty • 319-696-2981 • www.rsautosalesinc.com

**R.S. AUTO INC.**  
 www.rsautosalesinc.com  
 Office (319) 696-2981  
 214 S. Center St  
 Lockridge, IA 52635  
 rsautoinc@yahoo.com

**319-696-2981** Check Our website for our wide Variety on  
**4x4 Trucks - Cars - Mini Vans - Handicap Vans - SUV**  
**Motorhomes & Much More!**

Warranty • 319-696-2981 • www.rsautosalesinc.com

<p>108,985 Miles                  \$4,900                  '08 Ford Taurus SEL                  3.5L 6 Cyl, Gas, Auto, 4 Dr Sedan,                  Leather Interior, Extra Clean, Nice</p>	<p>138,062 Miles                  \$5,900                  '08 Buick LaCrosse Super Series                  5.3L V8 Gas Engine, Auto, Sunroof,                  Leather Interior, Sharp!</p>	<p>132,188 Miles                  \$7,900                  '12 Jeep Compass Latitude                  2.4L 4 Cyl, Gas, 4x4, Auto, Sunroof,                  Cloth Interior, Touch Screen, Loaded</p>	<p>98,755 Miles                  \$6,900                  '10 Chevy Equinox LS                  2.4L 4 Cyl, Gas Engine, Auto,                  Cloth Interior, Extra Clean, Rust Free</p>
<p>107,598 Miles                  \$9,900                  '06 Nissan Frontier LE                  4.0L 6 Cyl, Gas Engine, 4x4,                  Crew Cab, Cloth Interior</p>	<p>Local Trade                  \$2,900                  '02 Chevy Trailblazer LT                  4.2L Engine, Gas, 4x4, Auto, Sunroof,                  Leather Interior, Normal Wear</p>	<p>94,008 Miles                  \$3,450                  '97 Chrysler LHS                  3.5L 6 Cyl Gas, Auto, Leather Interior,                  Normal Wear, Local Trade</p>	<p>157,762 Miles                  \$3,600                  '06 Chevy HHR LT                  2.4L 4 Cyl, FWD, Auto, Gas, Hatchback,                  Leather Interior, Extra Clean</p>
<p>180K Miles                  \$3,900                  '06 Chevy Equinox LTZ                  6 Cyl Engine, AWD, Auto, Gas,                  Sunroof, Leather, Local Trade</p>	<p>129,119 Miles                  \$3,900                  '06 Saturn Vue                  2.2L 4 Cyl, FWD, Auto, Gas,                  Cloth Interior, Local Trade, Clean Title</p>	<p>169,220 Miles                  \$6,900                  '06 GMC Envoy Denali                  5.3L V8, 4x4, Auto, Sunroof,                  Leather, 3rd Row, 7 Passenger</p>	<p>195K Miles                  \$6,900                  '04 GMC Yukon 1500                  5.3L V8, 4x4, Auto, Gas,                  3rd Row Seating &amp; Pass, Cloth Interior</p>
<p>157,642 Miles                  \$5,900                  '08 Kia Sorento EX                  3.8L V6, Auto, Gas, Cloth Interior,                  Normal Wear, Local Trade</p>	<p>119,655 Miles                  \$4,900                  '07 Dodge Durango SLT                  4.7L V8, 4x4, Auto, Gas, 3rd Row Seating,                  Leather Interior, Local Trade</p>	<p>182K Miles                  \$5,450                  '11 Ford Fiesta SES                  1.6L 4 Cyl FWD, Manual Transmission,                  Gas, Hatchback, Cloth Interior, Sharp!</p>	<p>118,636 Miles                  \$5,900                  '07 Pontiac G6 GTP                  3.6L 6 Cyl, FWD, Auto, Coupe,                  Cloth Interior, Sunroof, Sharp!</p>
<p>94,266 Miles                  \$5,900                  '11 Chevy Impala LT                  3.5L 6 Cyl, Auto, Gas, Cloth Interior,                  Normal Wear, Sharp!</p>	<p>117,950 Miles                  \$5,900                  '11 Chevy Malibu 2LT                  2.4 4 Cyl, Gas Engine, Auto,                  Cloth Interior, Heated Seats, Super Clean</p>	<p>133,647 Miles                  \$5,450                  '08 Chevy Malibu LTZ                  3.6L 6 Cyl, Auto, Gas,                  Sunroof, 2-Tone Leather, Nice</p>	<p>75,548 Miles                  \$6,900                  '12 Ford Fusion SE                  2.5L 4 Cyl, FWD, Auto, Gas,                  Keyless Entry, Cloth Interior, Local Trade</p>
<p>96,771 Miles                  \$6,950                  '10 Ford Fusion SE                  3.5L V6, Auto, Sunroof, Leather,                  Park Assist Sensors, Excellent Shape</p>	<p>Local Trade                  \$2,900                  '07 Chrysler Sebring Touring                  2.7L Engine, FWD, Auto, Gas,                  Cloth Interior, Normal Wear, Runs &amp; Drives</p>	<p>109,853 Miles                  \$9,450                  '14 Chevy Cruze LTZ, RS Package,                  1.4L 4 Cyl, FWD, Auto, Sunroof, Camera,                  Leather, Push-Button Start, Sharp!</p>	<p>107,676 Miles                  \$10,900                  '14 Buick LaCrosse CXL                  3.6L 6 Cyl, Gas, Auto, Camera,                  Leather, Touch Screen, Loaded</p>
<p>138,031 Miles                  \$10,900                  '13 Chevy Impala LTZ                  3.6L 6 Cyl, FWD, Auto, Sunroof,                  Spoiler, Leather Interior, Sharp!</p>	<p>120,520 Miles                  \$7,900                  '15 Honda FIT LX                  1.5L 4 Cyl, Auto, Gas, Hatchback,                  Cloth Interior, Rust Free, Clean</p>	<p>114,882 Miles                  \$3,900                  '05 Chevy Cobalt LS                  2.2L 4 Cyl, FWD, Auto, 4 Dr Sedan,                  Gray Cloth, Excellent Shape</p>	<p>Local Trade                  \$2,450                  '04 Pontiac Grand Prix GT                  3.8L 6 Cyl, FWD, Auto, Cloth Interior,                  Extra Clean, Lady Owned, Normal Wear</p>
<p>44,665 Miles                  \$10,900                  '15 Kia Soul +                  1.6L 4 Cyl, FWD, Gas, Auto,                  Leather Interior, Rust Free, Extra Clean</p>	<p>59,521 Miles                  \$12,900                  '15 Buick Encore Convenience                  1.4L 4 Cyl, Auto, Camera, Leather,                  Remote Engine Start, OnStar</p>	<p>149,292 Miles                  \$13,900                  '14 GMC Acadia SLT                  3.6L 6 Cyl, Auto, Gas, 3rd Row,                  Camera, Leather, Touch Screen, DVD</p>	<p>109,067 Miles                  \$9,900                  '13 GMC Terrain SLT                  2.4L 4 Cyl, Auto, Gas, Camera,                  Leather, 7" Touch Screen, Loaded</p>
<p>104,245 Miles                  \$10,900                  '12 GMC Terrain SLT                  2.4L 4 Cyl, Gas, SUV, Camera,                  Heated Leather, OnStar, Phone, Sharp!</p>	<p>67,599 Miles                  \$14,900                  '15 Jeep Renegade Latitude                  2.4L 4 Cyl, Auto, Gas, Camera,                  Leather Interior, Rust Free, Sharp!</p>	<p>170,532 Miles                  \$28,900                  '14 Toyota Hilux SR, 3.0L V6 4x4, 5 Spd                  Manual, Turbo Diesel, Double Cab, Leather                  Interior, Rust Free, Excellent Shape</p>	<p>171,720 Miles                  \$27,900                  '08 Dodge Ram 3500 ST, 6.7L Cummins                  Diesel, 4x4, 6 Spd Manual, Dually, Flatbed,                  5th Wheel Hitch, Cloth, Southern Truck</p>
<p>148K Miles                  \$19,900                  '06 Dodge Ram 3500 Laramie                  5.9L Cummins Diesel, 2WD, Auto, Dually,                  Crew Cab, Leather, 5th Wheel Hitch</p>	<p>171,670 Miles                  \$13,900                  '02 Ford F250 SD                  7.3L Powerstroke Diesel, 4x4, Auto,                  Leather, Super Cab, California Truck</p>	<p>174,587 Miles                  \$4,900                  '97 GMC K1500, 5.7L 8 Cyl, 4x4,                  Auto, Gas, Ext Cab, Cloth Interior,                  Power Windows &amp; Locks, Normal Wear</p>	<p>49,660 Miles                  \$14,900                  '11 Ford Ranger XLT, 4.0L V6, 4x4,                  5 Spd Manual, Gas, 4 Dr Super Cab,                  Cloth Interior, Rust Free, Southern Truck</p>
<p>135,038 Miles                  \$9,900                  '08 Chevy Colorado LT                  3.7L 5 Cyl, 4x4, Auto, Crew Cab,                  Cloth Interior, Power Mirrors &amp; Windows</p>	<p>127,615 Miles                  \$8,900                  '08 Ford Ranger                  4.0L 6 Cyl, Auto, Gas, Cloth Interior,                  Flares, Rust Free, Normal Wear</p>	<p>67,258 Miles                  \$14,900                  '04 Cadillac Escalade EXT                  6.0L V8, AWD, Auto, Camera, Leather                  Interior, Park Assist Sensors, Nice</p>	<p>160,581 Miles                  \$7,900                  '03 Dodge Ram 2500 SLT                  5.7L Hemi Engine, 4x4, Auto,                  Quad Cab, Gas, Leather Interior</p>
<p>156,665 Miles                  \$2,900                  '98 Ford F150 XLT                  4.6L V8 Triton, Auto, Gas, 2 Dr Reg Cab,                  Cloth Interior, Local Trade, Normal Wear</p>	<p>203K Miles                  \$6,900                  '03 Chevy Silverado K2500HD                  6.0L V8, 4x4, Auto, Gas, Ext Cab,                  Cloth Interior, Excellent Shape</p>	<p>94,725 Miles                  \$8,450                  '01 Ford Ranger XLT                  4.0L V6, Auto, 4x4, Gas, Super Cab,                  Cloth Interior, Normal Wear</p>	<p>132,597 Miles                  \$5,450                  '99 Ford Ranger Super Cab                  3.0L 6 Cyl, 4x4, Auto, Gas,                  Cloth Interior, Extra Clean</p>
<p>76,580 Miles                  \$14,900                  '07 Dodge Ram Mega Cab                  5.7L V8 Hemi Engine, Auto, Mega Cab,                  Cloth Interior, Fender Flares, Sharp!</p>	<p>Local Trade                  \$10,900                  '10 Ford Econoline E350 Super Duty,                  5.4L V8, Auto, Gas, Cut-Away Box Truck,                  Dual Rear Wheels, Good Box Floor</p>	<p>79,390 Miles                  \$39,900                  '14 Ford Econoline E350 SD, 6.8L V10, 4x4,                  Auto, Gas, VMI Conversion Handicap Van,                  Vinyl Seats, Rust Free, Texas Van</p>	<p>76,649 Miles                  \$18,900                  '13 Dodge Grand Caravan SXT, 3.6L 6 Cyl,                  Gas, Auto, Handicap Van, Wheelchair                  Ramp, Cloth Interior, Pwr Sliding Doors</p>
<p>105,824 Miles                  \$18,900                  '16 Chevy Express G3500 LS                  6.0L V8, RWD, Flex Fuel,                  15 Passenger Van, Auto, Vinyl Seats</p>	<p>79,563 Miles                  \$12,900                  '16 Dodge Grand Caravan SXT                  3.6L 6 Cyl, Auto, Stow-N-Go Seats,                  7 Passenger, Black Cloth Interior</p>	<p>Local Trade                  \$3,450                  '08 Dodge Grand Caravan                  3.6L 6 Cyl, FWD, Gas, Auto,                  Stow-N-Go, Cloth, Normal Wear</p>	<p>122,747 Miles                  \$4,000                  '10 Ford Econoline E250                  4.6L V8 Auto, FWD, Cargo Van,                  Side Damage, Runs &amp; Drives</p>

**Warranty • 319-696-2981 • Warranty • www.rsautosalesinc.com • Warranty • 319-696-2981 • Warranty • 319-696-2981**

# BEAR CREEK TRAPPING SUPPLY ANNUAL OPEN HOUSE FISH FRY & BBQ



**FOOD STARTS AT  
10:30 AM - UNTIL GONE**

**OCT. 30th, 2021  
IN MILLARD, MO**

**STORE HOURS: 9am-6pm WEDNESDAY-SUNDAY  
660-216-3373**

CASADY-LUSCAN FUNERAL SOLUTIONS LLC: "Sensible pricing for practical people" Cremation \$1495.00 We're a full-service funeral provider, allowing you to celebrate the life of your loved one for just a fraction of the cost. 355 W Front Street Green Castle, MO 63544 660-265-6425 Howard & Casandra Luscan-Owners

FOR SALE: 2 Mossberg Patriot rifles camo 30-06 \$475 each; Remington Sportsman 30-06, nice wood, big scope, \$425. 217-577-9538

FOR SALE: Snow plow 7 1/2' with bat wings and lights, Western Brand, works good, \$800. Call 573-248-6111 Canton MO

FOR SALE: Agco 3000 630 Ch, elect stripper plates, single point hookup, w/meter corn reel; Drago 830 ch., self adj stripper plates; JD FBB w/grass clutch lift, \$750. 217-658-4761

FOR SALE: Kubota B7100 tractor 4wd 60"deck hydro diesel runs great \$3500; Savage Axis 30-06 with Bushnell scope great condition \$475. 660-659-2011

FOR SALE: 2004 Ford Taurus SE, recently serviced, new brakes & battery, working cold air, has rust & light hail, 226,000 miles, same owner last 14 years, come & drive it home, \$900. 217-257-1385

FOR SALE: Gleaner 800 25' lateral tilt hyd for & aft; Gleaner 520 20'; Gleaner 830hugger H' Gleaner 3000 630, w/corn head. 217-658-4761

TOMATOES, Zucchini, Cucumber, Squash & Pumpkin 7 for \$10, also Onion, Acorn, Green Beans, Radishes, Mums 3 for \$10. Schmucker Produce 7 mile North of Kirksville to Ft Madison Way

FOR SALE: Gehl Dynalift 3.9 Cummins telehandler, foam tires, starts good, runs good, \$14,300 OBO. No Sunday calls 660-639-2207

FOR SALE: Farmhand XL 740 Loader, QT, 7' bucket, good paint, \$3,750. Call 573-881-3557

ATTENTION: Want cash for that outdated refrigerator that is still in working condition?? NEEDING a used one, refer side by side. Freezer does not need to work. Memphis Area Call 660-299-0562

FOR SALE: I am selling my 2001 Buick Century Custom, automatic trans., 3.1 liter V6 180,000 miles, fuel gauge does not work, has typical rust under all 4 doors, paint starting to chip but overall it's a very clean reliable car, runs very well, asking \$2000 cash. Located in Kahoka, MO Contact me by phone 660-956-6072 if interested

**Ed's Machinery LLC**  
quality machinery since 1997

**660-628-4454**

[edsmachinery.com](http://edsmachinery.com)

## COMBINE SPECIAL!

- Free delivery within 500 Miles!
- Financing as low as 2.49%
- Third party inspection available!



**2012 JOHN DEERE S680**  
2226/1635 Hours, 4WD, Pro drive trans.....**\$149,500**



**2013 JOHN DEERE S680**  
2385/1746 Hours, 2WD, Pro drive trans.....**\$124,500**



**2011 JOHN DEERE 9870 STS**  
1660/1053 Hours, 4X4, 3 Speed Trans.....**\$99,500**



**2009 JOHN DEERE 9770 STS**  
4067/2815 Hours, 4X4, 3 Speed Trans.....**\$74,900**



**2008 JOHN DEERE 9670 STS**  
3,389/2501 Hrs, 4X4, 3 Speed Trans.....**\$72,500**



**2006 JOHN DEERE 9760 STS**  
3497/2218 Hours, 2 WD, 3 Speed Trans.....**\$52,500**



**2013 CASE IH 7230**  
1634/1323 Hours, CVT Drive, 4x4,..**\$115,000**



**2008 CASE IH 8120**  
2894/2343 Hours, 4X4, Flag Staff.....**\$74,900**



**2004 CASE IH 8010**  
3026/1996 Hours, 4 Spd Trans, Pro, 2 WD....**\$54,500**



**2009 NEW HOLLAND CR9060**  
2478/1630 Hours, 4X4, Contour Master.....**\$59,500**



**2015 CLAAS LEXION 740**  
1866/1179 Hours, 4X4, Ag-Leader Screen..**\$149,500**



**2000 CAT LEXION 480**  
2838 Hrs, 2 WD, Power Bin Ext, Single Point ....**\$26,500**

17920 US Hwy 136 • Memphis MO 63555



## MAST MEATS, LLC

**660-766-2211**

USDA & Custom Slaughter & Processing

**CALL OR STOP BY FOR SPECIALS**

Retail store hours • Mon-Fri 8-5 Sat 8:30-3  
[mastmeatsllc.com](http://mastmeatsllc.com) • 405 US Hwy. 63, Queen City, MO 63561

**For Your  
Equipment  
Needs!**

**LOTS OF  
USED EQUIPMENT  
AVAILABLE**

**Vermeer 605 N Balers, Twin Rakes,  
Trailed Mowers, Disc Mowers,  
Teddars, Bale Processors-**

*Offer high capacity, speed, reliability,  
efficiency, fuel savings...*

**DeWeze Bale Beds-**

*Lift, load, transport and feed big, round bales...*

**Danuser Post-Hole Diggers-**

*Offer quality & reliability, outperforms the competition...*

### USED EQUIPMENT

**BALERS**

605 N Net  
605 L Net  
605 K Net

**RAKES**

R2800  
R2300  
VR1224

**MOWERS**

TM 1210  
8040  
7030  
Vicon 4000

**TEDDERS**

TD250

**BALE PROCESSORS**

BPX 9000  
BPX 9010

**Liebhart Sales, Inc.**

**17546 Lacey Drive •  
New Boston, MO. 63557**

**660-689-3406**

**Call  
Today!!**

**JOIN US TO CELEBRATE OUR**  
*1st Anniversary & Open House*  
**OCTOBER 29-30**  
**2021**

Cheese Sampling!  
 Free Drinks & Snacks Both Days!

**KEIM'S KOUNTRY MARKET**



31941 MAHOGANY STREET, MACON, MO 63552

Spend \$100 or more and enter your name for a chance to win a 22 qt. Kulrz Cooler




**MFA OIL SERVICE TECHNICIAN**

If you're an excellent troubleshooter who is mechanically inclined, safety-minded and service-oriented, we want you! This position is located in Kirksville.


**JOB REQUIREMENTS:**

- High school diploma or equivalent
- Experience in truck and equipment maintenance
- Ability to lift 100 pounds
- Possess or obtain a current CDL with HAZMAT, Tanker and Air Brake endorsements
- Possess or obtain required propane certifications

*We offer competitive pay and a full range of benefit options. If you want to work for a family-oriented company that invests in employee development and offers opportunities for advancement, join the MFA Oil team today!*

Visit [www.mfaoil.com/careers](http://www.mfaoil.com/careers) to view full description & apply. Email: [hrrecruiter@mfaoil.com](mailto:hrrecruiter@mfaoil.com)


**MOOSE RUN REPAIR**  
 8 YEARS EXPERIENCE



Tractor • Skid Steer • Combine • Air Conditioning  
 Self-propelled Forage Harvester & General AG Repairs

**Specializing in John Deere**

Engine • Transmission • Hydraulics  
 Power Shift/IVT Diagnosis & Repair  
 Computer/Electronic System Diagnosis & Repair



**INTERSTATE BATTERIES** **TIGERLIGHTS**

660-988-3843  
 DELVIN "MOOSE" STEINER • QUEEN CITY, MO

**VICTORY**  
 Metals & Recycling  
 Kirksville, MO 660-665-8000  
[victorymetalrecycling.com](http://victorymetalrecycling.com)

For current scrap prices call or visit our **Facebook Page**


★ **Construction/Debris Recycling**  
 Visit Kirksville's construction & debris recycling facility and save trips to the landfill! Take advantage of this service for solid waste removal by bringing your landfill items to Victory Metals C & D recycling facility located at 3602 N. Industrial Rd.

★ **Roll-Off Container Service**  
 10-20-30-40 Cubic Yard Dumpsters

3602 N. Industrial Rd.,  
 Kirksville, MO 63501  
[djanesvmr@gmail.com](mailto:djanesvmr@gmail.com)  
[www.victorymetalrecycling.com](http://www.victorymetalrecycling.com)



**HAY STORAGE SOLUTIONS AND MUCH MORE!**



"Today, I checked with Joseph to see when he was planning to deliver and construct my second hoop building. Two years ago I purchased a 55'x98' hoop building from Skylight buildings. It was erected on my site on time and the building went up in two days.

I was concerned about the durability of a vinyl building compared to a metal sided structure. That was until I noticed that a rock from my Brush Hog 2715 had impelled itself into the metal building. The Skylight building would not have been damaged. Also, the name says a lot. I thought that I would wire in lights like my other buildings but to date I have not found the need.

The reason I thought I needed to build a large building was to store my hay inside. I knew I was losing hay quality due to weather damage but baling with 568 John Deere and net wrapping my hay I thought I was keeping my hay loss at a minimum. I found the first year that I had underestimated my losses. I was very pleased with the results of storing hay inside. It is most gratifying to put a bale into the hay ring and seeing that the previous bale was almost completely consumed by the cows or the feeder calves. I had a record amount of carry over from last year and it is safely stored inside ready to be used this winter! This will allow for hay sales this winter.

The construction of the building's frame is strong, the foundation supports are 24" and very deep. I am very satisfied and have ordered another 55' x 140' to be installed in a few weeks. This one will be used to store our small square bales and equipment.

Thank you Joseph for your service and this chance to recommend your buildings."

Wiley and Susan Hibbard, Perry, Missouri

20749 State Highway VV  
 Ethel, MO 63539  
 660-486-3250

**Skylight**  
 Fabric Structures

FOR SALE: 1989 XJS Jaguar V-12, new tires, leather interior, runs good, nice car, \$4250. 901-237-3079

FOR SALE: Federal 22 LR ammo, 1400 rounds 40 GR/RN/1200 fps and 100 rounds No. 12 bird shot, \$140/all 660-341-1944

FOR SALE: International 826, German diesel flat tops, WF, 3 pt., dual hyd., good TA, 75-80% Goodyear 18.4x34, 520 hours, runs good, \$7800. 217-257-1385

FOR SALE: Rossi 4 Basket Tedder, field ready, \$3,250. Call 573-881-3557

TRUE MODULARS 30 to 60 day delivery available, 3 and 4 bedroom. 573-657-7040 chateauhomes.net

FOR SALE: 20 Black Angus heifers, 2nd & 3rd period pregnancy, bred to Angus bull; 12 Angus heifers & calves. All nice and gentle. 660-676-9199

FOR SALE: JD 750 15' no till drill, dolly wheels, w/grass seeder; GP 1500 drill w/center pivot no till caddie, \$11,500; ICH 5100 drill 21 hole, w/cylinder press wheels, \$2250. 217-658-4761

FOR SALE: Hardinge Milling machine with new 110V 1 P.H. Motor, \$850 660-956-6826

HIGH QUALITY Hay for sale \$45 per bale. 217-653-4762

FOR SALE: Grass Hopper mower 725 D 52" deck, 183 hours, kept inside. 660-375-2408

FOR SALE: ISA Brown pullets are laying 50% already ready to go, \$9.50 each. 21564 St Hwy J Brashear MO

FOR SALE: Rifle bolt action Interarms 257 Roberts, Improved 3to9 scope, good condition, \$300, some ammo in brass. 573-209-3405

FOR SALE: Small fishing boat and trailer, lost titles to both, \$350 cash. 309-221-9181

FOR SALE: 1939 B Styled John Deere tractor to rebuild. 660-651-5602

FOR SALE: 2006 Westfield MK 10/61 Grain Auger, good condition, \$4500. 660-635-1664

FOR SALE: Mayrath 10" x 65' auger, Swing hopper dyc lift, \$1250; Westfield 8"x61' swing hopper, \$650; Kewanee 8"x 60', \$350; other Auger disks, disk chisels. 217-658-4761

FOR SALE: Cereal Rye seed, 85+% germination, bulk or mini-bulk bags, \$12.50/50lbs \*Very Clean\* bin run seed. Madison MO 660-676-7055

FOR SALE: 30 Katahdin Hair Sheep yearling, good stock, \$250 OBO. Glen High 660-216-3124

Logan Agri-Service, Inc. of LaBelle, MO is growing and looking to add members to its team. We are currently looking for someone to operate a sprayer and/or fertilizer spreader. We are also looking for someone who can drive application support equipment (nurse/tender truck). We will train the right person. If you are interested in joining the Logan team, contact Luke Lay, LaBelle Plant Manager, at 660-342-6424

FOR SALE: Fresh Local cooked Sorghum 2021 crop. Raymond Kauffman 25624 Hanover Street LaPlata MO 63549

FOR SALE: 5x5 1/2' Big round bales, mixed grass, baled dry, net wrapped, some in barn, \$40. NEMO Kahoka Area 217-257-1385 anytime

ATTENTION HUNTERS: Whitetail Institute Products, CenterPoint Archery, Rage, Muzzy, Wac'em, G5 Broad heads, Carbon Express arrows, Nocturnal Lighted Nocks, Block Targets, Scent Thief Scent killer Products, Adam Hayes Moon Guides, Tinks Lures, IQ Bow Sights, Ghost blinds, Leopold & Vortex Optics, Chippewa Wedge-Loc Tree Stands, and more at Whitetail Seed and Supply 14136 State Hwy 3 LaPlata MO 63549

FOR SALE: 1986 FXLR Harley, nice bike, always garaged, \$8000. 901-237-3079

FOR SALE: Progressive 1300 12K NH3 WT on M&W dual no till coulters raven coolers monitor markers, for strip till; DMI 4200 NH3 WT on M&W raven 440M 14K no till. 217-658-4761

FOR SALE: John Deere 285 Disc mower, 9', QH ready, low acres, \$6,500. Call 573-881-3557

WANTED TO BUY: Harley Davidson's, any year, any condition, cash money. Days 660-263-1356 or 660-537-0068

FOR SALE: New 3 pt. tillers, heavy duty, gear driven, 7' to 10' starting at \$3050. 660-874-4455

HANDYMAN: Install interior and exterior doors and windows, siding, decks, showers and toilets, flooring and drywall, roofs and dirt work. 660-956-5135.

SCOTT HUSKEY'S HOME SERVICE R-10 Foundation Enclosure Systems for manufactured, modular, & site built homes. Saves on utilities and prevents freeze ups. General maintenance and repairs since 1972 573-696-3468 "GO DAWGS"

FOR SALE: Fish for stocking ponds - Catfish, Grass Carp, Crappie, Blue Gills, Red Ear, Bass, and Minnows. Heindselman Family Farms, Call Greg 660-341-5692

FOR SALE: 2017 Honda Ruckus, only 200 miles; 2002 Kawasaki 650 Prairie, great condition; 2014 Yamaha F-25 HP tiller outboard, electric start, like new, excellent condition. 641-208-7353

FOR SALE: Hatfield 12 gauge auto 3" new in the box, \$300; 2 Savage 6.5 Creedmoor black or camo, \$475 each. 217-577-9538

FOR SALE: Factory made For-Most Doctor Chute for sheep, goats and small animals, just like new. Also Want to Buy good 22 Rifle, new or used. 660-676-9199

AVAILABLE STOCK MOBILE HOMES immediately, double wide and single, 3 and 4 bedroom. 573-499-9993 columbiadiscounthomes.com

FOR SALE: Gleaner R62 combine, CDF rotor, lateral tilt; MF 850 Diesel Hydro; NH TR96; IHC 1440 Diesel; MF 750 Diesel; 2 Kasten silage wagon. 217-658-4761

FOR SALE: Ford 5000 D, live PTO, power steering, good paint & sheet metal, good rubber, \$6500. 660-341-8089

FOR SALE: International 674 gas, gear drive, utility, 3 pt, with Great Bend 800 hyd bucket loader, runs good, has some hyd leaks, \$4700. 217-257-1385

PICKUP FOR SALE: 2018 GMC Sierra 1500 SLT, 4x4 heated and cooled leather, 4 door, eight speed trans., 5.3 V8, new tires & wheels, 54,000 miles, like new condition, loaded, black, \$37,500. 660-299-0781 Layne

FOR SALE: Snow plow 7 1/2' with bat wings and lights, Western Brand, works good, \$800. Call 573-248-6111 Canton MO

HIGH QUALITY Hay for sale \$45 per bale. 217-653-4762



*Your trusted source for quality Fish!*

*Harrison Fishery, Inc. is a family owned and operated business.*

*We stock most species freshwater, game & baitfish.*

**Contact us for price & delivery**

curtis@harrisonfishery.com  
660-423-5482

<b>Species Available</b>	Bluegill	Walleye
Largemouth bass	Redear sunfish	Muskie
Hybrid bluegill	Black crappie	Catfish
Golden shiners	Fathead minnow	<i>and More!</i>

*Time to gather up the little ones, get their fishing poles and go enjoy a day of fishing*



[www.harrisonfishery.com](http://www.harrisonfishery.com)

**L&S REPAIR**

FOR ALL YOUR AUTOMOTIVE AND SMALL ENGINE REPAIR

CALL or Text LEE  
**660-988-3818**

22486 Michigan Trail • Kirksville, MO 63501

**HOUSE FOR SALE**  
**708 N BALTIMORE IN KELLWOOD HILLS/ KIRKSVILLE, MO**

Nice 3-bedroom 2 bath one story house with attached two garage, brick exterior, hardwood floors, remodeled bathrooms, fireplace, ceiling fans, high efficiency gas furnace, new central air, den, kitchen with wood cabinets & island with dishwasher, stove, refrigerator, patio in back & located across from library & large 20-acre park with new indoor/outdoor swimming pool & within walking distance of Hy-Vee.

**LISTING PRICE \$159,900.**

**Call or text 660-341-5100**





**B of K**  
Since 1914

## WE ARE HIRING!

**Maintenance/Custodial**  
Full time position with benefits

**Banking Career** - Applicants must have strong communication & computer skills. Ability to multi-task & learn quickly. Qualified applicants should have two years prior banking experience or a degree in related field. Willing to train.


**Send resume to:** Bank of Kirksville,  
P O Box 787, Kirksville, MO 63501. EOE

Member FDIC

# HAY FOR SALE

- 163 MIXED BALES OF HAY
- 73 BALES OF ALFALFA MIXED
- 18 BALES OF ALFALFA MIXED 2ND CUTTING
- 86 BALES OF 3RD CUTTING GRASS HAY SMALL SQUARE

Call for more information  
**660-341-4031**  
**WATSON HAY SALES**





**LAN-DOW BUILDINGS**  
"We Build To Suit Your Needs"  
"Custom Built"

Pole Barns • Garages • Utility Buildings  
"H" Don or Dick Middleton

**Memphis Lumber Co.**  
1-800-337-5858 • 660-465-8595  
Fax: 660-465-8596

**Brad's Welding Shop Is Your Newest Dealer For Arrowquip Cattle Handling Equipment.**


15 YEAR  
UNLIMITED WARRANTY



**Call Us For All Your Cattle Handling Needs!**

**BRAD'S WELDING SHOP**

12673 Almond Ave • 1158 Marceline,  
MO 64658 • 660-376-1158 • www.bradsweldingshop.com




# Judd Motors

Call 660-457-3700  
*Hwy 63 North, Lancaster, MO*

- **2015 GMC 2500HD**, SLT, 4x4, crew cab, shortbed, 6.0L, heat & cool leather, bed cover, 1 owner, only 113k miles, charcoal, very nice, new tires only \$35,900
- **2015 Equinox**, All Wheel Drive, 1 owner, 129k, silver, nice, Remote start, only \$9995
- **2013 Impala**, LTZ, leather, only 104k, charcoal, very nice \$9,250
- **2012 Chevy Captiva**, LTZ, AWD, Leather, sunroof, 112K, maroon, \$8995

- **2008 Chevy Captiva**, LT, Leather, Sunroof, 112k, only \$7,250
- **2005 GMC 2500HD**, SLE, 2wd, 6.0L, ext cab, long bed, only 119k, silver, very nice, only \$9995
- **2003 Ford F350**, diesel, 4x4, crew cab, flatbed, 300k, runs good, brown, only \$7995



Cumberland  
Building Dealer

www.juddmotors.com

In Business Over 75 Years  
Curly and Kevin Judd

# NEMO

Trader



Come  
see us  
at our

NEW  
LOCATION

701 East LaHarpe St., Suite C  
P.O. Box 809  
Kirksville, MO 63501

660-665-8500 or  
660-988-6830

nemotrader@gatehousemedia.com

# Troyer

## TARP MFG.

660-486-3301

20264 State • Hwy. VV • Ethel, MO. 63539



Hoop Building Covers

FARM TARPS

TRUCK TARPS

**WE GOT YOUR NEEDS COVERED!**

### Golden Grain Bins

Grain Bins	Floors w/12" Supp. & Flashing
18'x18' 4,195bu. \$ 7,398	18'....\$2,065 30'....\$5,764
27'x21' 11,265bu. \$14,851	21'....\$2,824 36'....\$8,211
42'x24' 32,245bu. \$34,616	27'....\$4,710 42'....\$11,182



GMLS Industries, Inc.  
PH: 660-699-2179 or 620-983-2136  
www.gmlsindustries.com



**COME SEE US AT OUR NEW LOCATION!**

701 East LaHarpe St, Suite C,  
Kirksville, MO 63501 • P.O. BOX 809  
660-665-8500 or 660-988-6830  
nemotrader@gatehousemedia.com

### VIRTUAL ONLINE • MARION COUNTY, MO LAND AUCTION

FRIDAY, OCTOBER 29, 2021 @ 1:00 P.M.

115± ACRES  
(Subject to Survey)  
1 TRACT



LAND REPRESENTS HIGHLY PRODUCTIVE TILLABLE CROPLAND WITH STATE HIGHWAY 168 FRONTAGE.

Land is located 1 1/2 miles east of Philadelphia, MO along Hwy. 168 or 12 miles west of Palmyra, MO or 15 miles north of Monroe City, MO in Sections 7 & 8, T58N•R7W, Marion County, MO.

MYRNA ELLIOTT TRUST - DAVID ELLIOTT, EXECUTOR  
SCOTT & JENNIFER BOGENER

Closing & Title Work: Accurate Land Title Co.  
218 Broadway | Hannibal, MO 63401 | (573) 221-1002

AUCTION MANAGER: BILL FRETWELL (660) 341-7735

SULLIVAN AUCTIONEERS, LLC • TOLL FREE (844) 847-2161  
www.SullivanAuctioneers.com • IL Lic. #444000107

### VIRTUAL ONLINE • KNOX & MACON COUNTY, MO LAND AUCTION

FRIDAY, OCTOBER 22, 2021 @ 10:00 A.M.

290± ACRES  
(Subject to Survey)  
7 TRACTS



Land is located approximately 7 miles west of Novelty, MO or 10 miles east of LaPlata, MO in Sections 21 & 28, T60N•R13W, Johnson Township, Macon County, MO and Sections 22 & 27, T60N•R13W, Salt River Township, Knox County, MO.

LAND REPRESENTS PRODUCTIVE TILLABLE CROPLAND, PRIME HUNTING/RECREATIONAL ACREAGE AND A BEAUTIFUL COUNTRY HOME!

GEORGIA MANCHE

CLOSING & TITLE WORK BY: KNOX COUNTY ABSTRACT  
103 S. FIRST STREET | EDINA, MO 63537 | (660) 397-3259

AUCTION MANAGER: BILL FRETWELL (660) 341-7735

SULLIVAN AUCTIONEERS, LLC • TOLL FREE (844) 847-2161  
www.SullivanAuctioneers.com • IL Lic. #444000107

### VIRTUAL ONLINE • LEWIS COUNTY, MO LAND AUCTION

FRIDAY, OCTOBER 22, 2021 @ 1:00 P.M.

104± ACRES  
(Subject to Survey)  
2 TRACTS



Land is located in Section 28, T63N•R7W, Lewis County, MO.

PRODUCTIVE TILLABLE CROPLAND!  
EXCELLENT HUNTING & RECREATIONAL OPPORTUNITIES!

ARTKRAS FAMILY

CAROL INSALACO | KATHY POOLE | SUSAN ARTKRAS | STACY HAGNER

CLOSING & TITLE WORK BY: OAK HILLS TITLE CO.  
307 LEWIS STREET | CANTON, MO | (573) 288-4461

AUCTION MANAGER: BILL FRETWELL (660) 341-7735

SULLIVAN AUCTIONEERS, LLC • TOLL FREE (844) 847-2161  
www.SullivanAuctioneers.com • IL Lic. #444000107

## ROBERT ALDRIDGE DEER PROCESSING

### Youth Hunter Rifle Giveaway

Drawing will be November 1st @ 7pm

1st Prize: Savage .243 Bolt Action Rifle w/ Scope

2nd Prize: \$100 Cash • 3rd Prize: \$75 Cash

... Youth Hunters Ages 6-15 ...

Each deer you bring in for processing will enter you in the drawing for a Savage .243 Rifle!\*

October 30th & October 31st

\*Qualified Adult Must Register Rifle as Per FFA Rules

We Participate In The Share The Harvest Program!

## Robert Aldridge DEER PROCESSING

806 CEDAR ST., QUEEN CITY, MO  
(1 Block N. Of City Park)

660-766-2582  
CELL: 660-216-1337



WANTED 1420 in good condition; FOR SALE 1440 with 15' 820 header, salvage parts. No Sunday calls 660-639-2207

FOR SALE: Federal 22 LR ammo, 1400 rounds 40 GR/RN/1200 fps and 100 rounds No. 12 bird shot, \$140/all 660-341-1944

FOR SALE: Elevator hay or grain, \$250. 660-956-6826

FOR SALE: Grass Hopper 725D mower, 52" power fold deck, A1 shape, 183 hours. 660-375-2408

FOR SALE: ISA Brown pullets are laying 50% already ready to go, \$9.50 each. 21564 St Hwy J Brashear MO

FOR SALE: Rifle bolt action Interarms 257 Roberts, Improved 3to9 scope, good condition, \$300, some ammo in brass. 573-209-3405

FOR SALE: 9N Ford Ferguson tractor, new batter, starts and runs good. 660-651-5602

FOR SALE: Gleaner R62 combine, CDF rotor, lateral tilt; MF 850 Diesel Hydro; NH TR96; IHC 1440 Diesel; MF 750 Diesel; 2 Kasten silage wagon. 217-658-4761

FOR SALE: John Deere 5075E, MFWD, CAH, with JD H240 SL Loader, 940 hrs, new engine, same as new, \$42,500. Call 573-881-3557

FOR SALE: 2 Mossberg Patriot rifles camo 30-06 \$475 each; Remington Sportsman 30-06, nice wood, big scope, \$425. 217-577-9538

FOR SALE: NH 973 20' flex; NH 973 25' flex; NH 974 630 corn head; MF 1163 corn head; MF 1144 corn head; Gleaner 630 LM or R; Gleaner 830 corn head LM or R. 217-658-4761

WANTED: 14 or 15 wide x 34 double bevel rims with or without 16.9 or 18.4 tires, singles or pairs. 217-257-1385

WANTED TO BUY: 12'-15' Brush Hog in new or good condition; also good used pickup truck. 660-676-9199

FOR SALE: New 3 pt. tillers, heavy duty, gear driven, 7' to 10' starting at \$3050. 660-874-4455

HUNTING EQUIPMENT sale, 35+ box, bow, hay bale, ladder stands, hog trap, deer and turkey feeders, deer and goose decoys. All used, great condition. 641-208-7353

FOR SALE: Fish for stocking ponds - Catfish, Grass Carp, Crappie, Blue Gills, Red Ear, Bass, and Minnows. Heindselman Family Farms, Call Greg 660-341-5692

WANTED: Milking Shorthorn Cow or Heifer. 660-299-0744

BUYING Used Mobile Homes. Porter Homes 573-231-6667

FOR SALE: Registered 3 year old Black Angus, calving ease bull, \$3500. Raymond Kauffman 25624 Hanover Street LaPlata MO 63549

FOR SALE: Ford 8N \$1800, Brush Hog Available. 660-341-8089

STOCK MOBILE HOMES AVAILABLE: We gottem, single and double 3 and 4 bedroom! Call Tuffy 573-657-2176 amegamobilehomes.com

FOR SALE: IHC 983 corn head; IHC 883 corn head; Drago 830 corn head, adj deck plates; IHC 820 17 1/2' MF 830 for JD. 217-658-4761

FOR SALE: John Deere 3020-D Tractor, very straight, 90% tires, WF, \$9,750. Call 573-881-3557

WANTED TO BUY: Harley Davidson's, any year, any condition, cash money. Days 660-263-1356 or 660-537-0068

WANTED TO BUY: Farm Machinery and Estates. Call James L. Johnston. 573-473-4904

PASTURE AND HAY GROUND Needed around Adair & Knox County. Please Contact 660-216-5887 or 417-773-2507

Wevers Outside Wood Furnaces a dealer for Heatmor Stainless Steel Outside Furnaces, have an assortment of parts, line, and etc. Taking orders for new outside wood furnaces. Call 660-423-5242, cell 660-216-9885. Open 6pm-9pm Monday-Friday, Saturday anytime, call first.

FOR SALE: International 560 manure spreader 540 PTO, 225 bushel, single, axle, good floor, metal sides, been shedded, solid spreader, \$3200. 217-257-1385

FOR SALE: Gleaner 8000 30' SCH sickle, F&A; JD 930 poly dividers; JD 220 flex; JD 216 flex; IHC 1020 20'; IHC 1020 17 1/2' MF 918 217-658-4761

FOR SALE: Wholesale Southern Yellow Pine. Shelby Supply 660-299-0615

### The Ultimate Wood Heat.



- **More Comfort** - Thermostatically controlled wood heat.
- **Peace of Mind** - Keep the fire outside and eliminate the dangers associated with indoor wood heating.
- **Save Money** - Wood is a renewable, inexpensive and often free energy source.

#### CAMPEN

Heating & Air Conditioning  
573-288-8966  
Canton, MO  
CentralBoiler.com

## SEASONAL HELP WANTED

### Northeast MO Coop

Contact Chris 660-341-2387  
Edina, MO 63537

**ADAIR COUNTY, MISSOURI**

## LAND AUCTION

AUCTION TO BE HELD AT THE MOOSE LODGE • 2405 E. ILLINOIS ST. • KIRKSVILLE, MO

**TUESDAY, OCTOBER 26, 2021 @ 5:00 P.M.**

OPEN HOUSE: SAT., OCTOBER 16 • 11 AM TO 1 PM

PHYSICAL ADDRESS:  
29107 BENTON WAY • KIRKSVILLE, MO

400± ACRES  
(Subject to Survey)  
5 TRACTS

The Collop land is located approximately 8 miles NE of Kirksville, MO in Sections 17, 19 & 20, T63N•R14W, Clay Township, Adair County, MO.

LAND REPRESENTS WELL MAINTAINED PRODUCTIVE FARMLAND, CURRENTLY IN IMPROVED PASTURE & HAY PRODUCTION. FARM IS IMPROVED WITH A WELL LOCATED COUNTRY HOME & OUTBUILDINGS, JUST MINUTES TO KIRKSVILLE.

## COLLOP FARMS

Representing Attorney: C. David Rouser  
Rouser Law Office LLC  
400 N. Franklin | Kirksville, MO 63501 | (660) 665-7515

Title Work By:  
Pickell Abstract Company  
115 S. Franklin | Kirksville, MO 63501 | (660) 665-8324

AUCTION MANAGER: BILL FRETWELL (660) 341-7735  
**SULLIVAN AUCTIONEERS, LLC • TOLL FREE (844) 847-2161**  
[www.SullivanAuctioneers.com](http://www.SullivanAuctioneers.com) • IL Lic. #444000107

## AUCTION

Directions: From Bloomfield, IA go west on Hwy 2 for approximately 10 miles, then go north on Driftwood Blvd. to auction site.

### Saturday, October 30th, 2021 @ 9:30 am

**FARM MACHINERY:** IH UC-263 85hp International gas power unit on gear in good condition • Mercedes diesel 35hp PTO drive on 4 wheel field cart w/ hyd(field ready) • NI 2 row corn picker model 324 w/ husking bed model 313 • Gehl silage cutter C-40 extra knives • JD Big 4 6' mower, reconditioned & painted • JD Big 4 6' mower, field ready

**SHOP TOOLS & CHAIN SAWS:** various construction tools ect • air powered chop saw • rebuilt air nailers • 2 leveling transits • extension ladders • various material: metal, screws & nails • 18' wooden ladders • Little Tex 70 lb horse shoeing anvil

**LIVESTOCK, DAIRY & FARM RELATED ITEMS:** large cattle corral w/ head gate built by Countryside welding • 12 Calftel calf huts • 3 cattle feed bunks • sheep/goat feed bunks • drinking cups • calf creep feeder • SS kid feeder 4 w/ stand, 3 w/o stand

**Alvin M. & Ida Mae Mast**  
19982 Driftwood Blvd.  
Bloomfield, IA 52537

**HOUSEHOLD & FURNITURE:** 2 burner kerosene stove • propane double mantle lantern • gas light w/ stand and magazine rack • gas light • Hipolito kerosene mantle lantern

**HORSES, BUGGIES & HORSE RELATED ITEMS**

**GUNS:** Mossberg model 500 C 20 ga. w/ 26" accu choke barrel & 24" rifle bore barrel • Harrington Richardson model 98 410 w/ Topper JR 410 barrel

lots more items online at  
[www.foxauctionservice.com](http://www.foxauctionservice.com)

JR. (ALLEN) FOX: 660-341-1453  
WILSON FOX: 660-216-9227

## FOR RENT

Grain Bin, 48' 10 rings tall, approx capacity 55,000 bu.  
On blacktop road near Novelty.

For more info call 660-341-1520

Virtual Live Online Auction - Bid @ [www.SullivanAuctioneers.com](http://www.SullivanAuctioneers.com)

## LEWIS & CLARK COUNTY, MO LAND AUCTION

FRIDAY, NOVEMBER 12 @ 1:00 P.M.

260± ACRES  
(Subject to Survey)  
2 TRACTS

Land is located in Section 18, T63N•R5W, Clark County, MO and Section 19, T63N•R6W and Section 24, T63N•R7W, Lewis County, MO.  
Property is located 2 miles south of St. Patrick, MO and approximately 11 miles north of Canton, MO or 17 miles south of Kahoka, MO.

LAND REPRESENTS HIGHLY PRODUCTIVE TILLABLE CROPLAND AS WELL AS AN EXCELLENT HARDWOOD TIMBER AREA WITH 3 PONDS ON THE NORTH END OF TRACT 1. BOTH TRACTS HAVE HWY. 81 FRONTAGE.

### O'BRYANT FAMILY FARMS

TITLE WORK BY: OAK HILLS TITLE CO.  
307 LEWIS STREET • CANTON, MO • (573) 288-4461

AUCTION MANAGER: BILL FRETWELL (660) 341-7735

SULLIVAN AUCTIONEERS, LLC • TOLL FREE (844) 847-2161  
[www.SullivanAuctioneers.com](http://www.SullivanAuctioneers.com) • IL Lic. #444000107

## FOR ALL YOUR FENCING NEEDS.

Quality Cattle Equipment, too!

620-215-5770

KIRKSVILLE, MO  
SPECIAL ORDERS AVAILABLE

Check out our current inventory at  
Kirksville Livestock Sales.

SINGLE  
\$650

DOUBLE  
\$1,050

HEAVY-DUTY  
\$1,050

REPLACEMENT BUMPERS  
Dodge, Chevy, Ford & GMC

HALF TUB  
\$2,900

FULL TUB  
\$3,800

MINERAL FEEDERS  
\$375

\$3,400  
ADJUSTABLE ALLEY

If you're looking to build a pipe fence or corral, wire fence, or need quality cattle equipment,  
**WE'RE HERE TO SERVE YOU!**

The

# NEMO

*Trader*

IS NOW A

**PROUD MEMBER**

OF THE

**PHILLIPS MEDIA GROUP  
NEWSPAPER FAMILY**

*Watch for exciting changes  
coming soon!*

**FOR SALE:** 2010 Case 8120 Combine, 2975 HR -2097 HR, NO DEF, RWA, DIF Lock, 620 Drive Tires, 28 Steer Tires, luxury cab, clean machine, \$85,000. 641-895-8014

**FOR SALE:** John Deere 4230 Tractor, CAH, cold air, power shift, 6,800 hrs, 18.4x38 95%, \$19,500. Call 573-881-3557

**HANDYMAN:** Install interior and exterior doors and windows, siding, decks, showers and toilets, flooring and drywall, roofs and dirt work. 660-956-5135.

**FOR SALE:** Hatfield 12 gauge auto 3" new in the box, \$300; 2 Savage 6.5 Creedmoor black or camo, \$475 each. 217-577-9538

**DIRT WORK** All types of excavation, reclaiming overgrown fields, including CRP and WRP. Building site preparation, terrace and tiling maintaining and creating new trails and crossings, rock hauling, Food plot development and maintenance. Leveling and grading, wetland construction and maintenance. Pond and lake cleaning and construction. Call for quotes. 660-342-2701

**TINY HOMES** We gottem 573-881-3283

**FFOR SALE:** Homemade Candies, Fresh Garlic, Regular and Wide Mouth Jar Lids, Jams & Jellies, Spices, Honey S.S. One Piece Dippers 1oz to 8 oz S.S. Kitchen Wares, Air Freshness, Gift Items, Kerosene Lamps and Parts, Some Aladdin Parts, Poly and Wooden Clothespins, Filter Disks, Wooden handles, Blankets and Throws, Pint Jars, Boxed Cards, Coloring Books. Train Track Candies & More 11538 Iceberg Ave, La Plata 3rd Lane to your Left.

**OR SALE:** Registered AKC Labrador Retriever puppies, yellow. Farm-raised and loved! MO Health Certificate. Dam and Sire on farm. Ready to go now! Lay's Labs - LaBelle, MO 660-956-2482.

**FOR SALE:** Storage shed 8'x12', gable shingle roof, window, double doors front, solid floor, on skids, could use some paint, \$1500 217-257-1385

**FOR SALE:** 5 X 5 1/2 big round bales of mixed grass hay, Bailed dry no rain fertilized lab tested surface wrapped. Call 660-341-4031 Watson hay sales

**FOR SALE:** Welsh Corgi x Mountain Cur puppies, family dog prospect. No Sunday Calls 573-934-0122

**FOR SALE:** John Deere 2950 MFWD Tractor, w/Farmhand XL 740 Loader, 6000 hrs, average condition, \$23,550. Call 573-881-3557

**FOR SALE:** Factory made For-Most Doctor Chute for sheep, goats and small animals, just like new. Also Want to Buy good 22 Rifle, new or used. 660-676-9199

**FOR SALE:** Border Collie puppies, working parents PR Bobkat x Degus. No Sunday Calls 314-330-3474

**HOUSE FOR SALE:** Macon MO, fixer upper 500 feet from the School and 300 feet from the park. 660-676-5531

**FOR SALE:** Gehl 600 2 row chopper; Fox 2250 2 row corn, hay pickup fox 3000 2 row; Fox w/1 row hd; H&S silage wagon WT gears; Gehl silage wagon; silage wagon. 217-658-4761

**FOR SALE:** John Deere 4020 Tractor, straight off farm, ft wts, rear wts, 38" tires, 11,000 hrs, roll bar/canopy, runs good, \$13,500. Call 573-881-3557

**PICKUP FOR SALE:** 2018 GMC Sierra 1500 SLT, 4x4 heated and cooled leather, 4 door, eight speed trans., 5.3 V8, new tires & wheels, 54,000 miles, like new condition, loaded, black, \$37,500. 660-299-0781 Layne



John Deere 4440 Tractor, CAH, QR, triple hydr, 9000 hrs, one owner, factory duals, 80% rubber, clean, \$31,500



John Deere 2750 Tractor, MFWD, open station, w/245 SL Loader, dual hydr, HiLo, wts, 5,000 hrs, \$22,500



20 Series JD Tractors, (2) 4020s late models, 4320, all used, tested recently, \$12,950 choice.



John Deere 5520 Tractor, MFWD and 511 SL Loader, new tires, reverser joystick, 5500 hrs, one owner, \$41,500.



2018 Forrester River Silverback Edition 37MBH 5th Wheel Trailer, 42 ft long x 8 x wide, used very little by both previous owners, pulled less than 5000 miles, 4 slide-outs, sleeps 10, VIN 4X4F-CRN27JS220459, \$49,500.



1999 Dodge, 3500, 5 speed trans, 4x4, Cummins, Cab and chassis, 12' bale bed, extended cab, 70% tires, 297,000 miles, many recent repairs, \$6,500.

**573-881-3557**

**ONLINE ANTIQUE & TOY AUCTION**  
 IMAN AUCTION COMPANY \* 34614 HWY 24 WEST \* SALISBURY, MO  
**BIDDING CLOSSES: SUNDAY, OCTOBER 17, 2021 @ 7 PM**  
 Selling a great collection of antique tools from Raymond Polson of Mexico, MO \* Toy collections from Bruce Steding of Arrow Rock, MO & Bob Egesdal of Moberly, MO - Antiques from Tony Cordio of Macon, MO  
**AUCTION PREVIEW: FRIDAY, OCTOBER 15, 2021 | 1-5 PM**  
 100's of Tools by Winchester, Keen Cutter, Simmons & Shapleigh \* 250 Toys by Ertl, Tonka, Buddy L, Structo & More \* Allis Chalmers Collectibles \* Salt Glazed & Stoutsville Crocks \* Aladdin Lamps \* Cast Iron Items, Skillets & More \* Neat old Primitives \* Antique Furniture in Walnut, Oak & Paint \* Saddle \* NASCAR Collectibles \* And Many More!  
 IMAN AUCTION COMPANY | 660-788-4298 | ImanAuction.com

**VIRTUAL ONLINE • SCOTLAND COUNTY, MO LAND AUCTION**  
**FRIDAY, OCTOBER 29, 2021 @ 10:00 A.M.**  
**119± ACRES** (Subject to Survey) **2 TRACTS**  
 OPEN HOUSE: SAT., OCTOBER 16 12 NOON TO 2 PM  
 PHYSICAL ADDRESS: 29258 STATE HWY 15 • BARING, MO 63531  
 Land is located approximately 5 miles north of Baring, MO, along Hwy. 15, or 11 miles north of Edina, MO or 11 miles south of Memphis, MO in Section 34, T64N•R12W, Scotland County, MO.  
**LAND REPRESENTS WELL MAINTAINED FARMLAND CURRENTLY IN IMPROVED PASTURE WITH CATTLE FACILITIES, LARGE LAKE, PONDS, SEVERAL OUTBUILDINGS, AND A WELL LOCATED COUNTRY HOME JUST MINUTES FROM EDINA OR MEMPHIS, MO!**  
**LARRY & DENISE HEAD**  
 Closing & Title Work: Scotland County Abstract  
 205 E. Monroe Street | Memphis, MO 63555 | (660) 465-7052  
 AUCTION MANAGER: BILL FRETWELL (660) 341-7735  
**SULLIVAN AUCTIONEERS, LLC • TOLL FREE (844) 847-2161**  
**www.SullivanAuctioneers.com • IL Lic. #444000107**

**Signature**  
 Overhead Doors and Remodeling, LLC  
**660-785-0248**  
 www.signatureremodelingkv.com  
 Residential and Commercial Installation and Service

**LAND AUCTION**  
**ABSOLUTE AUCTION**  
**515 AC± | 7 TRACTS**  
**RALLS CO, MO**  
 AUCTION: LIVE AND ONLINE AT RANCHANDFARMAUCTIONS.COM  
**AUCTION DATE: 11/18/2021**  
**AUCTION TIME: 5:30 PM**  
**AUCTION LOCATION:**  
 NEW LONDON FIRE DEPARTMENT  
 212 CARSTARPHEN DR.  
 NEW LONDON, MO 63459  
**RANCH & FARM AUCTIONS, LLC**  
 AARON BENNETT, AGENT: 636.887.1022  
**RANCHANDFARMAUCTIONS.COM**  
IN COOPERATION WITH WHITETAIL PROPERTIES REAL ESTATE LLC (C00001803) | Dan Perez, Missouri Broker License #2008010771 | Joe Gladic, Director, Ranch & Farm Auctions, 217.299.0332 | Aaron Bennett, MO Land Specialist for Whitetail Properties Real Estate, LLC 636.887.1022 | Cody Lowderman, MO Auctioneer License 11037



**COME SEE US AT OUR NEW LOCATION!**  
 701 East LaHarpe St, Suite C,  
 Kirksville, MO 63501 • P.O. BOX 809  
 660-665-8500 or 660-988-6830  
 nemotrader@gatehousemedia.com

# SELLING SOMETHING?



## TAKE A PHOTO

**&** LET OUR DESIGNERS  
MAKE AN AD FOR YOU

Call for a quote  
**660.665.8500**

The NEMO Trader



A FAMILY OWNED BUSINESS SINCE 1979



Headquartered in Hamilton, Illinois, Sullivan Auctioneers, LLC is one of the largest Real Estate and Farm Machinery Auctioneers in the nation. For more than 40 years we have been conducting professional auctions. We connect our sellers with thousands of interested buyers around the world.

### Considering an Auction?

CALL OR EMAIL TODAY FOR A NO OBLIGATION CONSULTATION!  
Toll Free (844) 847-2161 | Sold@SullivanAuctioneers.com  
www.SullivanAuctioneers.com | Lic. #444000107

CENTURY 21  
Lifetime Realty

## FARM & RANCH

Elizabeth Gregory,  
Realtor  
L.C. # 2021008017



**ADAIR Investment Property** - 2 homes and a duplex on a city block in Kirksville. Well kept rentals in a high demand area close to Truman and ATSU.

**KNOX 10 acres M/L** - An opportunity to own 10 acres in the city limits of Edna with access to city utilities. Nice home site, great view!

**MACON 70 acres M/L** - Hunting ground and pasture with 1.2 acre pond and frost free waterer. Fully fenced on hard surface road with utilities available.

**ADAIR home** - Beautiful bungalow 1000 sq. ft. bungalow in Kirksville close to schools, shopping and hospitals. Move in ready.

**ADAIR home** - 3 Bed/1.5 Bath House on nice corner lot in quiet, centrally located Kirksville neighborhood.

**ADAIR 155 acres M/L** - hunting/investment property on State Hwy 8. Timber, utilities and multiple building sites. Fresh water stream, abundant with whitetail deer and turkey.

**ADAIR 80 acres M/L** - Hunting ground and pasture with pond and access to utilities, just out of CRP, 60 acres tillable.

**MACON city lot** - level city lot in La Plata ready for shop, building, home or tiny house. On hard surface road with city utilities.

**SHELBY home and 2 acres M/L** - High efficiency, high tech home with 40'x140' shop on State Highway H, Leonard. Well built, well kept home with many possibilities!

### LISTING A PROPERTY?

CALL OR EMAIL ELIZABETH FOR A NO OBLIGATION CONSULTATION  
660.621.2136 | egregory.c21@gmail.com  
farmandhome.c21.com  
Century21 Lifetime Realty | 660.665.5678



Edina, Missouri  
Weekly Sales Start @ 12:30pm

Friday, October 15th - Special Feeder Sale  
-Several yearlings consigned

Friday, October 22nd - Special Feeder Sale

ALL SALES TELEVISED ON DV AUCTION

To Consign For Any or All Sales or For Information Call:  
Owner - Kevin Strange • Cell: 660-341-9974  
Ryan Strange • Cell: 660-341-9721  
Sale Barn: 660-397-9999

Field Reps:	Mike Bronestine 660-341-9965	Jason Bischel 660-216-0373
Bill Tom Hall 660-342-5420	Trey Gashwiler 660-216-8751	John Powell 660-341-1717



**ATTENTION LAND OWNERS!**  
**BUYER OF STANDING TIMBER**  
**OWNER / OPERATOR OF SAWMILL - BUY/CUT LOGS**  
**CERTIFIED - BONDED - INSURED**



TRI STATE TIMBER L.L.C.  
 PH. 660-341-4921 or 660-465-2975  
 353 1/2 GRAND AVE. • MEMPHIS, MO 63555

**RETIREMENT AUCTION**  
**“After 55 Years In Building Construction”**  
**SATURDAY OCTOBER 16, 2021 9 AM**  
**Leon & Martha Thamke**  
**23799 508th St. • Centerville, Iowa**

(From the Intersection of Hwy 2 & 5, Go 1.7 Miles East on Hwy 2, Turn left on 240th Ave, Continue on 240th a short distance & The Road Turns Left ONTO 508th St, First Place on Left)

This will be a large Auction selling a large amount of Building Materials including Floor Joists, Drywall, Doors, Windows, Siding, Electrical/HVAC, Tools & Equipment of all kinds including Jacks, Pipe Threaders, Chain Saws, A Large amount of Good Power Tools, Ladders, Tow Straps, ALMOST ANYTHING NEEDED FOR THE CONSTRUCTION BUSINESS ! Antiques/Collectables to include Sulky Rake Teeth, Hurricane Kerosene Lamps, RR Lantern, Neon Lights as-is, + much more, also Selling some Household Items.

THIS IS JUST A SAMPLE OF THE LARGE AMOUNT OF BUILDING MATERIALS, TOOLS, AND SO MUCH MORE. PLAN TO SPEND THE DAY WITH US.

**DEMRY AUCTION, LLC**  
**HWY 5 & GREEN ST. • CENTERVILLE, IOWA**

<b>TOM DEMRY</b> 641-895-2508	<b>JANET DEMRY</b> 641-895-4310 • 641-856-6408
<b>KRISTY DEMRY</b> 641-895-2509	<b>JUNIOR LAWSON</b> 641-895-0037

**Edina Real Estate & Personal Property Auction**

**Thursday, October 21, 2021 at 4:00 p.m.**  
**Mose and Dawn Shetler**  
**60088 State Highway TT, Edina, Missouri**

**Directions:** 60088 State Highway TT, Edina, Missouri. From Edina follow Highway 15 South approximately 6 miles, turn left on State Highway TT approximately 2.8 miles. The property will be on your left. Look for signs the day of the sale.

**Real Estate:** Sitting on half an acre, this 2015 built, story and a half home offers 5 bedrooms, 3 bathrooms and a metal roof. The home has a crawl space that is mostly concrete for easy access to the home. The 24' x 36' two car, oversized garage is attached to the home by a 8' x 18' breezeway and includes air conditioning and a bathroom and has an enclosed 8' x 14' lean-to. The home includes a separate 200 amp service entrance for the garage and one for the home, a 50 gallon electric hot water heater, window air conditioning septic tank and outdoor wood stove from the Acme Furnace Company. This maintenance free home would make a great family home and includes a lifetime transferable warranty on the windows. It is located in the Knox County R-I School district just 9 miles from Edina.

The real estate will sell promptly at 5:00 p.m. If you would like to schedule your personal showing, please call Scotty at 573-356-4405.

*\*See Terms and Conditions for Purchase of Real Estate below.*

**DOWN PAYMENT:** 10% of the contract purchase price will be due upon acceptance of the Sales Contract. Personal or Cashier's Checks will be accepted. This is "AS IS, WHERE IS" and is non-refundable.


**CLOSING:** Closing shall be within 30 days of the auction date.

**Household Items:** GE washing mashing; White Westinghouse refrigerator/freezer; small wooden child's rocking horse; metal display rack; sewing supplies; several sewing machines (Sewmor, Singer, Brothers, Necchi); pet carrier; large canner; floor model home safe; toys; games; 2 escape ladders; canning items; large dining room table with 6 chairs.

**Antiques and Collectibles:** Miscellaneous old buttons; 1 gallon butter churn; Fiesta dishes; pink depression glass; blown glass; 3 piece Pyrex nesting bowl set; carnival glassware; Van briggle cut pottery; Pfaltzgraff dish set; numerous animal figurines; blue jars; green depression glass.

**Outdoor and Tools:** Honda self-propelled push mower (needs work); stainless steel truck tool box; miscellaneous bicycles; camping items.

*There will be many more items at this auction too numerous to mention.*



Scotty Kuntz 573-356-4405  
 Michael Cunningham 660-651-2288 • Paxton Pittman 918-316-7500  
**WWW.SCOTTYSAUCTIONSERVICE.COM**

a little ad covers a

# LARGE AREA



19 Counties

3 States

1 Publication

## The NEMO Trader

660.665.8500 P.O. Box 190  
 110 E. McPherson Kirksville, MO 63501

**VIRTUAL LIVE ONLINE • ADAMS COUNTY, IL**  
**LAND AUCTION**  
**MONDAY, NOVEMBER 1<sup>ST</sup> AT 1:00 P.M.**



**80.7 TAXABLE ACRES± • 1 TRACT**

The Junk, Barker & Gammon farm is located approx. 1 mile northeast of Clayton, IL in Section 23, T1N - R5W, Clayton Township, Adams County, IL.

**The farm represents nearly 100% productive tillable farmland which sells free & clear for the 2022 crop year!**

**JUNK, BARKER & GAMMON**

Representing Attorney: John N. Hauk • Hauk & Owens, LLC • 811 Maine St., Quincy, IL • (217) 214-2757

**AUCTION MANAGER: MICHAEL SULLIVAN (309) 333-0916**  
 Sullivan Auctioneers, LLC • Phone: (844) 847-2161  
 www.SullivanAuctioneers.com • IL Lic. #444000107

**High Retirement Auction Service, LLC**  
 Daniel and Margaret Gingerich  
 10417 CR 960 - Downing Mo. 63536 - 660.216.1500 VM

**Saturday, October 16, 2021 @ 9:00 A.M.**

Direction from Downing Mo: go North on Rt. N approx. 7 miles to CR 962 then East 2 mi. to CR 965 then North 1 mile to CR 960 then East to auction site. Watch for signs!

**Guns - Ammo & Reloading (Selling after Livestock)**  
 #87 Stevens 320 12 ga. shotgun - #90 Savage Axis 22-250 rifl e (new)  
 #79 Nova Benelli 12 ga. shotgun - #89 MP 3500 12 ga. Stoeeger shotgun (camo)  
 #106 Marlin M. 39A. 22 lever action (1948) - #112 Browning A bolt McDallion 270 rifl e  
 #100 Marlin model 75 .22 rifl e - #117 Remington model 514 .22 rifl e  
 #98 Savage model 99 300 lever action rifl e - #102 Winchester 1890 .22 short  
 #20 Winchester model 140 12 ga. w/ slug barrel - #135 Savage model 221 .22 rifl e  
 #97 Mossberg Box revolver - #124 Remington mod. 572 Field Master .22 pump  
 #139 Ruger M77 Mark 11 30.06 rifl e - #69 Winchester model 140 12 ga. shotgun  
 #75 Winchester model 1300 12 ga. shotgun - #104 Seneca by air Venturi wing shot/50 cal.  
 #94 Marlin model 60 .22 rifl e - #86 Mossberg model 53512 ga. shotgun (camo)  
 #63 Savage 20 ga. shotgun - #127 Marlin model 783 .22 WMR  
 #56 Mossberg model 835 12 ga. shotgun - #85 Mossberg model 500A 12 ga. shotgun  
 #51 Remington model 870 Express 12 ga. shotgun - #116 Marlin model 81-DL .22 rifl e  
 #52 Winchester model 94 30-30 lever action - #83 Mossberg m. 835 12 ga. shotgun (camo)  
 #64 Mossberg m. 500 ATP 12 ga. w/ slug barrel - #72 Rem. m. 870 Wingmaster 12 ga.  
 #97 Mossberg model 500 AT 12 ga. shotgun - #8 Ruger M77 25-06 rifl e w/ bull barrel  
 #88 Stevens M. 67E Sires 12 ga. shotgun - #55 Remington mod. 870 12 ga. shotgun  
 #110 Savage mod. 1899 250-3000 - #82 Browning Belgium light twelve 12 ga. shotgun  
 #125 J Stevens mod. 235 BD1 12 ga. shotgun - #34 Ruger M77 243 rifl e  
 #111 Stevens Favorite M71 (new) - #5 Ruger Mark 11 M77 22-250 rifl e (SS) **Lunch on Grounds**  
 #53 Winchester model 94 30-30 lever action - #81 Remington M48 Sportsman 20 ga.  
 #48 Winchester XTR M70 Feather weight 30-06 rifl e - #71 Remington 7400 30-06 rifl e  
 #49 Ruger Mark 11 M77 7 MM rifl e - #133 Winchester model 94 30-30 lever action  
 #54 Old M100 Sears & Roebuck 30-30 (Ted Williams) - #129 Ruger mini 14 223 rifl e  
 #73 Remington 1100 mag 12 ga. semi-auto - #131 Iver Johnsons Champion 410 shotgun  
 #37 Browning 243 lever action (almost new) - #80 Rem. 552 Speedmaster .22 (almost new)  
 #130 Stevens M. 22-410 over under - #7 Savage model 219B 30-30 rifl e  
 #108 Winchester model 1890 WRF - #109 Stevens Favorite mod. 1915  
 #107 Winchester model 1890 - #122 Stevens Favorite mod. 1915 .22  
 #123 Meriden mod. 15 .22 - #118 Rem. mod. 33 .22 - #119 J Stevens Favorite 1915 .22 LR  
 #120 J Stevens Favorite A&T Co. pat. 1794 32L - #28 Remington mod. 550 .22 rifl e  
 #24 Marlin 30-30 Carbine (short barrel) - #94 Marlin model 60 .22 rifl e  
 #66 Mossberg 270 bolt action (new) - #90 Savage Axis 22-250 rifl e (new)  
 #44 Ruger model 26973 6.5 Creedmoor - #77 Mossberg 500 20 ga. shotgun (NIB)  
 #59 Winchester 30-30 Canadian Centennial (NIB) - #57 Rossi 44 mag MR 92 (NIB)  
 #93 Mossberg 270 accu-trigger rifl e (NIB) - #91 Savage Axis 243 rifl e (NIB)  
 #92 Marlin 25-06 rifl e (NIB) - #68 Mossberg model 535 12 ga. shotgun  
**#141 Henry gold plated 200 yr. anniversary #1010 B 45-70 octagon barrel 41 of 61 made NIB**  
**#113 Win. m. 94 30-30 Tom Horn gold plated Centennial octagon barrel 61 of 100 made NIB**  
**#115 Winchester 66 gold plated Centennial 30-30 octagon barrel NIB**  
 #142 Browning made by Remington sportsman 16 ga. shotgun - #144 M100 308win rifl e Barnett  
 crossbow - arrow heads - old hatchet - lots of knives, bowie, JD sets etc.  
 12 ga. reloaders, Lee, 2 Mees, Hulss AA & others 12 ga. - new powder scales - scopes, rings Ammo. 38  
 special, 243, 22-250, 6.5 creedmoor, 6.5 Grendel, 270, 6.5 jap, 250,3000, 32 auto, 32 short, 12, 20, ga.  
 slugs, 22 Rem ammo., 7MM, 20 ga. shot  
 As all auction proceeds will be handled by the Gingerich family, they requested  
 that terms on the guns will be cash only, unless priorly approved by Daniel. 660.216.1500

**Metal & Leather Machines**  
 Several 100 pes.unused 40 yr. metal 8' to 30' lengths (handled)  
 American sewing machine - 3 Singer nylon patch machines  
 2 Champion leather sewing machines 1 narrow throat 1 long throat

**Machinery** - 273 NH baler - #7 cutter  
 (2) JD grain drills, 8' & 10' - (2) 999 planters  
 3 pt. 999 planter - Nolt's plastic layer, almost new  
 Sears & Roebuck wagon - JD parts rake - 2 sec. harrow JD #640 rake - McCorm. 1 row cultivator - 3  
 horse evener International rake - Pioneer forecart - III corn binder  
 #7 high gear mower - #9 reg. gear mower - scrap iron  
 8' Brilliant seeder - cane press & boiler - bale cart  
 NI manure spreader - Hostetler gear hay rack  
 JD tandem 7x8 disc - Wards wood fl are box  
 Wood Bros. thrashing machine, 24" working cond. MF tractor wts. - 27 ton Dirty Hands wood splitter  
 JD 999 plates & lots of parts - 999 dolly & frame  
 2 wheeled road cart w/top, 2 ways & blinkers 8' grain binder, good shape

**Horses - Cow & Ram** (sell at noon)  
 Team 5 & 6 yr. old Percheron mares full sisters broke to all farm machinery (selling open)  
 8 yr. old Black Percheron / Belgian mare (well broke) 1 yr. old Black Percheron / Belgian fi lly  
 1 yr. old Belgian stud colt pulling bred  
 SM Bay Standardbred gelding TSS  
 2 yr. old Sorrel stud pony (ride & drive)  
 5 yr. Gray & White paint quarter x gelding started 7 yr. old Jersey milk cow - 3 or 4 yr. Kahtadin Ram  
**Farm Misc.** - (2) 24' fi berglass ext. ladders 5' rolls of chicken netting - used door track  
 Lots of white metal screw, new - pes. pex water line Partial rolls 1 1/2" & 2" gas line - blk. vented 12"  
 soffi t Lots of HM 270 white silicone caulk - mailboxes  
 Steel wheelbarrow wheel - asst. windows & doors  
 (12) new rolls plastic, 20'x100' - old galv. wash tubs  
 (5) 34x55 wooden windows - old windmill pump jack (3) S.S. milk vats - PVC milk bucket rack  
 Cable winch - lots of misc. bolts & nails  
 Myers 6" stroke pump jack - cherry picker winch  
 1 ton plastic bin - (2) Martin houses  
 8 ton bin, needs repairs - Bacholdt weed mower  
 Lots of oak tomato stakes - Ashland shop stove  
 Mueller 300 gallon bulk tank compressor  
 Pro Max 34" DR brush mower  
 12' V bottom boat & trailer - **Traps & Stretches**  
 #3 Bridger traps - #175 North Woods - #175 Victors Dog Proof coon cuff s - #110 Muskrat traps  
 #3 jump traps - #4 New House traps - Sleepy Creek traps #2 Easy set coilspring - Blake & Lamb trap  
 Lots of wire and wood stretchers - scraping knives  
**Household & Antiques** - Meat grinder, on stand Deluxe Ashland cookstove, almost new - pots & pans  
 Tumbreeze woodstove - gas lanterns - assort. dishes  
 2 hand crank sickle sharpeners - boxes old wooden plugs 6 old Stoux Falls corner drills, breast drills,  
 brace drills Old fi shing reels still in box - fi y fi shing rod & reel  
 4 III hand crank cream separators

**Auctioneer's note:** Due to health reasons, we will sell these items at auction. Something for everyone be sure  
 to attend!! (possibly 2 rings)

High Auction Service LLC - Kris High 660.342.8634 | Randy High 660.216.0515  
 www.highauctionservice.com e-mail: highauctionservice@gmail.com  
 Cash or check with proper ID. Not responsible for accidents or theft. Announcements day of  
 the sale take precedence over any advertising. KM-70KDE479



**LAST FLEA MARKET OF THE SEASON!! DON'T MISS IT!!**

**OCTOBER 22-23, 2021**

**MINER HILL FLEA MARKET / SWAP MEET**

**LIVE COUNTRY MUSIC Friday & Saturday Evenings**

**2021 IS CUSTOMER APPRECIATION FREE PUBLIC ADMISSION!**

Lot Rentals Start at \$25  
 Lot rental per month or per season  
 Electric/Camper hookups Available.

Great Food  
 Sandwiches, French Fries,  
 Ice Cream Cones & More

**Antiques \* Guns \* RV & Auto Parts \* Baked Goods  
 Crafts \* Unique Junque \* Much More!!**

**50/50 DRAWING FRIDAY & SATURDAY**

Like us on Facebook  
 www.facebook.com/MinerHillLLC

**2022 DATES**  
**APRIL 22 & 23**  
**MAY 27 & 28**  
**JUNE 24 & 25**  
**JULY 22 & 23**  
**AUG 26 & 27**  
**SEPT 23 & 24**  
**OCT 28 & 29**

Contact Info  
**660-375-1212**  
 Email: minerhillllc@yahoo.com  
 Website: www.minerhill.com

1310 N. Missouri Ave  
 Marceline, MO 64658

**Estate Auction**

**SATURDAY, OCTOBER 23RD, 2021 @ 10AM**

The following will be sold at 1880 150th Ave. Donnellson, IA. Approx. one mile north of Donnellson, IA on Highway 218-61, then go west approx. three miles on Primrose Road, and then north approx. one mile on 150th Ave.

**HOUSEHOLD & GUNS**

Dorm size ref.; Large electric lift chair; Slim cycle exercise bike; Kitchen Aide mixer; Dresser; Misc. household and kitchen items; Plus more! Guns: Browning A5 12 guage auto. full choke, plain barrell, made in Belgium; Remington Model 11 12 guage auto.; Winchester Model 72 22 short 22cal. Rifle; Winchester Model 511 22 long 22cal. Rifle; Military Chicon 56 7.62mm Ser#11293229 w/bayonet!

**WOODSHOP EQUIPMENT, TOOLS & MISC.**

Grizzly 20" planer; Grizzly dust collector; Grizzly 14" wood band saw; Grizzly industrial 6" sander; Grizzly z series joiner; Grizzly 16" variable speed scroll saw; Craftsman professional 2HP wood lathe variable speed 38"; Rockler router w/ cabinet; Craftsman 10" table saw; Hitachi M 12VC 1/2HP router; Craftsman mitre saw; Craftsman 1HP radial variable speed drill press; DeWalt 4Glaire compressor; DeWalt Radio; Ryobi small bench grinder; Ryobi 9" band saw; Cal-Hawk1-8" belt/disc sander; Ryobi oscillating spindle sander; Hand power tools including new Milwaukee M12 hackzall; Several Milwaukee drills; Porta cable biscuit cutter; Belt sanders; Sanders; Makita 7 1/4 power saw; Plus More! Craftsman ball bearing roll-around tool chest w/top box; Rigid cut off saw; New 12V 2ton super wrench; Master Craft router bit set; Lathe tools; New bessey angle clamp; Large selection of various size wood clamps; several fans; hand tools; sand paper; Organizers; Set of gear wrench open and box end wrenches; Stihl 029 chain saw; Several HD Shelf units; Several new 2x6, 2x8 and rec. lumber; Plus More!

**TRUCK**

2005 Ext Cab Ford F150 XLT Triton, 4.6 Litre, Automatic, 8' Bed, Two-wheel drive, new tires, runs good.

**4-WHEELER**

350 Yamaha Big Bear, 4x4, Runs Good.

**FARM RELATED ITEMS & MAPLE SYRUP ITEMS**

Homemade approx. 6'x10' Trailer, Small two wheel trailer; Aprox. 4'x6' wooden wagon; 110GL poly tank; 70GL poly tank; 50GL poly tank; Aprox. 3'x5'x8' ss pan w/woodburning stove; ss cooker; Several ss pots; 5GL buckets and taps!

**WILLIAM "BILL" JEFFERS ESTATE**

**Auctioneer's Comment:** There is very little misc. This sale contains some very nice and well cared for tools. This will be a short sale so you may want to be on time.  
**Terms:** Cash or approved check. Positive ID required. Not responsible in case of accidents. Any announcement made day of sale holds precedence over the above ad.

**SALE CONDUCTED BY:**

**Sargent Auction**  
 TONY SARGENT  
 319.520.5340  
 DAVE CARROLL  
 319.795.1052

**FOR FURTHER LISTING & PICTURES, PLEASE VISIT EITHER:**  
 yourauctionpage.com OR yourauctionpage.com/sargent

**FOR SALE:** International 674 diesel with Quick Tach hydraulic bucket loader, power steering, good tires & paint, \$9700. 660-341-8089

**CASADY-LUSCAN FUNERAL SOLUTIONS LLC:** "Sensible pricing for practical people" Cremation \$1495.00 We're a full-service funeral provider, allowing you to celebrate the life of your loved one for just a fraction of the cost. 355 W Front Street Green Castle, MO 63544 660-265-6425 Howard & Casandra Luscan-Owners

**FOR SALE:** 2 Mossberg Patriot rifles camo 30-06 \$475 each; Remington Sportsman 30-06, nice wood, big scope, \$425. 217-577-9538

**FOR SALE:** Snow plow 7 1/2' with bat wings and lights, Western Brand, works good, \$800. Call 573-248-6111 Canton MO

**FOR SALE:** Agco 3000 630 Ch, elect stipper plates, single point hookup, w/meter corn reel; Drago 830 ch., self adj stripper plates; JD FBB w/grass clutch lift, \$750. 217-658-4761

**FOR SALE:** Kubota B7100 tractor 4wd 60"deck hydro diesel runs great \$3500; Savage Axis 30-06 with Bushnell scope great condition \$475. 660-659-2011

**FOR SALE:** 2004 Ford Taurus SE, recently serviced, new brakes & battery, working cold air, has rust & light hail, 226,000 miles, same owner last 14 years, come & drive it home, \$900. 217-257-1385

**FOR SALE:** Gleaner 800 25' lateral tilt hyd for & aft; Gleaner 520 20'; Gleaner 830hugger H' Gleaner 3000 630, w/corn head. 217-658-4761

**TOMATOES, Zucchini, Cucumber, Squash & Pumpkin 7 for \$10, also Onion, Acorn, Green Beans, Radishes, Mums 3 for \$10. Schmucker Produce 7 mile North of Kirksville to Ft Madison Way**

**FOR SALE:** Gehl Dynalift 3.9 Cummins telehandler, foam tires, starts good, runs good, \$14,300 OBO. No Sunday calls 660-639-2207

**FOR SALE:** Farmhand XL 740 Loader, QT, 7' bucket, good paint, \$3,750. Call 573-881-3557

**ATTENTION:** Want cash for that outdated refrigerator that is still in working condition?? **NEEDING** a used one, refer side by side. Freezer does not need to work. Memphis Area Call 660-299-0562

**FOR SALE:** 1989 XJS Jaguar V-12, new tires, leather interior, runs good, nice car, \$4250. 901-237-3079

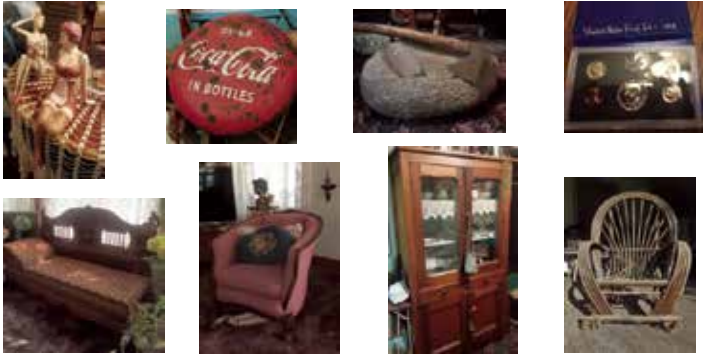
**Hunting Lease**  
 1 year@at time, \$20 per acre,  
 150 acre Farm located in LaPlata, MO.



# SCOTT ROY AUCTION

**2 Day Auction!**  
**Saturday Oct. 23, 2021 10:00 AM**  
**Sunday Oct. 24, 2021 1:30 PM**  
 Bill Heck – ANTIQUES & COLLECTIBLES  
 902 Oak St., Princeton, MO

**The rare, the eccentric, the traditional captures what you will find at this auction.**  
**Saturday – SMALL ANTIQUES & COLLECTIBLES**  
**Sunday – ANTIQUE & MODERN FURNITURE, LAWN & GARDEN, HOUSEHOLD**



**GO TO SCOTTROYAUCTION.com for photos and listing!**  
 Scott Roy Auction | Trenton, MO | 660-359-1455

## SELLING SOMETHING?



### TAKE A PHOTO

**& LET OUR DESIGNERS MAKE AN AD FOR YOU**

Call for a quote  
**660.665.8500**

The NEMO Trader

## Real Estate Auction

### Kirkville Real Estate Auction; Thursday, October 28, 2021 at 5:00 p.m.

**Directions:** 805 E Harrison Street, Kirkville, Missouri. From Business Route 63 in Kirkville (Baltimore Street), follow East Harrison Street west for 0.2 miles the property will be on your right. Look for signs the day of the auction.

**Real Estate:** This 2,551 square foot home in the Kirkville School District was built in 1939 and offers 3 bedrooms, 1 bath on a story and a half over a full basement. The current owner has owned the home since 1976 and has retained its authentic feel. The charming home has 9 foot ceilings, a large eat-in kitchen with solid wood cabinets, pantry space and a formal dining room. The hardwood flooring throughout, original French doors, original trim, crown molding and arched doorways add to the charm of the home. The full, partially finished, dry basement has a shaver sink, laundry, fireplace and laundry chute. It includes income potential in the form of a 1 bedroom upstairs apartment with a private entrance that could be converted back to a single family home if the buyer desires to do so. It has a gas furnace, central air, electric water heater. It includes a brick 2 car, detached garage on the 128' x 190' lot. The electrical service has been updated with two breaker boxes. The home is conveniently located to downtown, churches and schools.

The real estate will sell promptly at 5:00 p.m. If you would like to schedule your personal showing, please call Scotty at 573-356-4405.

**\*See Terms and Conditions for Purchase of Real Estate below.**

**DOWN PAYMENT:** 10% of the contract purchase price will be due upon acceptance of the Sales Contract. Personal or Cashier's Checks will be accepted. This is "AS IS, WHERE IS" and is non-refundable.

**CLOSING:** Closing shall be within 30 days of the auction date.

**Vehicles:** 1996 Chevy 4x4, extended cab with 200,000 miles; 2005 Dodge Caravan mini van 200,000 miles.

**Antiques and Collectibles:** Antique oak wash stand; maple hutch; antique China hutch; hen on nest; antique oak chest of drawers; antique type writer; Planter's Peanuts jar; Carnation Malted Milk glass container; Dazey churn jar (no mixer); drop front secretary with glass front display; antique chest of drawers and glove boxes; oak square table; antique oak rocking chair; #5 Blue Ribbon crock jug; antique barn lantern; miscellaneous jars; old garden cultivator; old buck saw; galvanized boiler; Grey Round Red wagon.

**Household Items:** Chef dorm size refrigerator; miscellaneous mixing bowls; plastic organizer; HYLEA air and room cleaning system, like new vacuum; Vizio flat screen TV; dresser with mirror; costume jewelry; Kenmore 220 window air conditioner.

**Outdoor and Sporting Goods:** Trex 820 bicycle; Schwinn Sidewinder bicycle; dog steps; bird cage; Miscellaneous hand tools.

*There will be many more items at this auction too numerous to mention.*



Scotty Kuntz 573-356-4405  
 Michael Cunningham 660-651-2288 • Paxton Pittman 918-316-7500  
 WWW.SCOTTSAUCTIONSERVICE.COM

## GREEN CITY LIVESTOCK MARKETING, LLC

19037 HWY 129 S. • GREEN CITY, MO 63545  
 (660) 874 - 4146 • www.greencitylivestock.com

### NEXT SALES:

~~Saturday, October 16th~~

~~Special Cow, Bred Heifer, & Breeding Bull Sale~~

~~\*\*NEXT COW SALE SATURDAY, NOV. 13TH\*\*~~

Wednesday, October 20th

Special Calf & Yearling Sale

1,458 head were sold at the October 6th Annual Angus & Angus Factored Calf & Yearling Sale. Compared to the extraordinary auction held Sept. 1st, factoring in lower futures, yearling cattle sold 2.00-4.00 lower. Slaughter cows & bulls were steady.

STEERS					
Josh & Rachael Hall	420 Ang	163.00	Jim Pfeiff 871 Mix 153.50		
James Kearns	452 Ang	190.00	Kenny Creason 937 BBWF 149.50		
Paul Boland	501 Ang	169.00	Kenny Sparks 950 Ang 147.85		
Hornaday Cattle Co.	528 BBWF	190.25	HEIFERS		
JD Wright	556 Mix	169.50	Daniels Bros.	545 Ang	138.50
George Almond	600 Ang	160.00	Russell Ogle	586 BBWF	156.50
Justin Hazen	605 Ang	150.00	Clifford Furnish	598 Mix	157.50
Jeremiah & Jessica Waltz	620 Ang	144.00	Mark Grgurich	602 Mix	157.50
Dale Niece	673 Ang	158.00	McClamroch Farms	636 Mix	157.75
Clifford Furnish	675 BBWF	167.25	O'Kane Ranch	653 Ang	164.00
Pat McCarty	678 RWF	140.50	Mark Grgurich	675 Mix	154.75
Jason Daniels	700 Ang	140.00	Gary Liebhart	681 Ang	156.25
Gerald Myers	732 Mix	155.50	Clifford Furnish	692 Mix	151.00
Gary Liebhart	737 Ang	163.25	Greg Fleshman	711 Ang	150.75
Gordon Campbell	748 Ang	143.00	Sattman Farms	733 Ang	143.50
Steve Campbell	750 Ang	140.50	Dan Ewigman	745 Ang	148.75
Todd Smith	757 Ang	157.50	Todd Smith	745 BBWF	150.00
Rance Shifflett	758 BBWF	159.50	Zane Klein	806 Ang	143.50
Sattman Farms	771 Ang	161.75	Michael Harden	825 Ang	138.50
Nelson Dinsmore	776 Ang	161.25	Rockin P	929 Ang	139.50
Phillips Farms	813 Xbred	135.00	Kent Farms	938 Ang	127.00
Fred Duncan	838 BBWF	152.50	Jones Bros.	938 Red Ang	130.00
Rance Shifflett	870 BBWF	154.50	Biggs Angus	955 Ang	140.50
			Kevin Jones	996 Ang	129.50
			Johnson & Johnson	997 Ang	137.75

WEBSITE: www.greencitylivestock.com • BARN: 660-874-4146

#### OWNERS

Darren Hodgen: 573-999-3252  
 Cody McClamroch: 660-349-6535  
 Operations Manager: Steve Evans, 660-375-2545

#### FIELD REPS

Chuck Daniels: 660-626-7621  
 Steve Frazier: 660-626-7066 • Jeff Gray: 660-956-8251  
 Justin Morgan: 660-216-9719

*\*We are your top market for all classes of cattle \*  
 We value and appreciate your business!*

## THE NEMO TRADER CLASSIFIED COUPON

Clip This Coupon Out of This Week's NEMO Trader and run  
**2 CLASSIFIED ADS FOR \$5.00**

**Picture Ads Not Included with Coupon! Call For Pricing!**

**(Each Ad Must Be 20 Words or Less.)**

*~20¢ per word over 20 words~*

**Cash NOT ACCEPTED**

*Check or Money Order Only*

**Ad No. 1:** (20 words or less)


**Ad No. 2:** (20 words or less)


**YOUR CLASSIFIED AD WILL BE READ IN OVER 19 COUNTIES, IN 3 STATES!  
 BY COUNTLESS BUYERS!!!**

**TO RECEIVE THIS RATE: COUPON MUST BE MAILED IN  
 ALONG WITH YOUR PAYMENT!**

**THE NEMO TRADER, P.O. BOX 809  
 KIRKSVILLE, MO. 63501 ~ 660-665-8500**

**CELEBRATIONS!** **PARTY RENTAL**  
KIRKSVILLE, MO

FOR RENT  
**TABLES - CHAIRS - TENTS - BOUNCE HOUSE  
& COTTON CANDY MACHINE...ECT.**

660-626-5162 or 660-665-9380

**Personal Property Auction**

**Saturday, October 23, 2021 at 10:00 a.m.**  
28251 US Highway 63 North, Macon, Missouri

**Directions:** 28251 US Highway 63 North, Macon, Missouri. From US Highway 36 travel approximately 2 miles North of Macon to Scotty's Auction Barn and Event Center on the West side of the road. Watch for signs the day of the sale.

**Tools and Outdoor Equipment:** Red jacket water pump; self-standing yard swing, needs canvas; carpenter's toolbox; aluminum ladder; picnic table; Remington electric pole saw; miscellaneous long handled tools; house jack; miscellaneous long handled tools; miscellaneous lumber; 6' 3-point brush hog; approximately 12' x 18' wooden shed; 500-gallon fuel tank.

**Household Items:** Maple kitchen table; maple full size bed; maple bedroom set; twin side hide-a-bed; maple dining table with multiple leaves and 6 chairs; maple buffet; like new lift chair; flower pattern couch; Sanyo 31" TV; modern child's rocking airplane; various lamps, end tables and coffee tables; Queen Anne style sofa table; wrought iron lounge; wooden Oyster box; electric ice cream maker; Recumbent bike Exerpeutic; lots of Christmas decor; large variety of canning jars.

**Antiques and Collectibles:** Authentic antique copper bathtub 64" x 27"(N.O. Nelson Manufacturing Company of St. Louis); hope chest; Singer treadle sewing machine; copper boiler; handmade bent arm rocking chair; Jadeite Aladdin lamp; Bavarian China ware; Haviland China ware; Thompson Francis China ware; crock bowls; Hull pottery; several hen on nests; chamber bowl & pitcher set; Brunswick and multiple records; various pictures and prints "Fox"; various signed pictures and prints; large variety of 60's and 70's country and contemporary vinyl records; antique oak hall tree; miscellaneous wooden boxes; fireplace cover; older walnut case mantle clock; New York Standard Watch Company pocket watch display; pocket watch display; claw and glass ball foot piano stool; antique oak wrap around bent arm rocker; cane bottom antique side chair; large collection of cat figurines; electric organ; small oak square table; dress forms iron stand; mink fur coat; vintage shawl, scarf and collar; oak library table; straight back antique rocker; 2006/2007 signed Truman State basketballs; antique wooden pulleys; 1800's wooden steamer trunk; antique tin toy truck; antique shoe shining stand; ceramic Dalmatian statue; miscellaneous milk glass; Noritake 9 place setting; matchbook collection; 1969-2007 Mother's Day plate collection; green depression glass; pink depression glass; miscellaneous cut glass; miscellaneous antique jewelry boxes; large variety of antique jewelry; Bolos ties from Kansas City American Royal; multiple quilts, both machine and hand stitched; antique bassinette and swaddle blankets; toy horses; Western figurines; antique cardboard dollhouse; vintage board games; Allstate electric train set in box; Singer electric sewing machine and stand; multiple craft items; 28" square claw and glass ball foot table; antique wooden machinist box; silver plate Rogers flatware set; Barbie Harley Davidson; blue and red enamel ware; Barbie airplane; leather top pine hope chest; large Oriental wall fan; wall hanging quilt rack; globe; WWII footlocker; antique glove box; handmade Afghans; handmade rugs, hand loomed; seasonal decor; Daisy #40 churn; handmade horse rocker; Tom & Jerry, Jack-in-the-box; antique glass candy jars; Standard Oil thermometer; various other thermometers; amber, brown, green and clear glass insulators; miscellaneous coin banks; plastic Army guys, cowboys and Indian toys; various oil lamps; cast iron squirrel bank; wax Doberman Pincher bust; vintage Jack Daniels decanters; German made violin Stradivarius, needs work; light blue vintage plaid furniture; vintage Kellogg hand crank telephone; pale yellow glass set for 10; clear glass set for 12; iron ice cream parlor table and 4 chairs from Blue Room at American Royal; green depression glass; vintage suitcases; sewing tabletop; vintage wooden bench; antique spring buggy seat; wooden primitive benches; Murano blown glass; Underwood antique typewriter; antique meat grinders; McCoy cookie jars; Sat iron collection; antique oak glider rocker; salt and pepper collection; various crocks; artisan 2 drawer spool cabinet; steamer chest/trunk; primitive jelly hutch 63" high, 23 1/2" wide, 17" deep; antique barn lanterns; antique ice skates; galvanized wash tubs (oval, square, round); ice tongs; two man cross-cut saw; one man cross-cut saw; antique metal step ladder; wooden nail kegs; Huntley Furniture chest of drawers; galvanized milk can; Structo toy camper; Tonka truck; Tonka car carrier and truck; Truescale toys; Tonka motor scraper; egg scale; license plates; vintage porch swing; antique commode; #7 Dutch oven; architectural salvage; antique croquet set; Buckeye tractor seat; Champion tractor seat; antique check stamps; antique metal lawn chairs; antique washboards; Macon creamery calendar; glass claw & ball piano stool; 2 man cross cut saw; car emblems; AJ Noll car license plate bracket; cast truck; antique utensils; various enamel ware pots & pans; milk can; footlocker with items/military; old pal tool box with contents; galvanized fish line well; wooden baskets; variety of wooden crates; wooden TNT box and a variety of other boxes; old barn pulleys; metal tractor seat; antique corn shellers; ice tongs; Emerson electric antique metal fan; antique quilting frame; antique wine roller; lard press; R&R spike hammer; nail keg; Old Tonka toys; Tonka scraper; Tonka road grader and dump truck; toy John Deere skidder; metal bind cage; antique buck saw; one man cross cut saws; Hame & Fuemer; metal chicken feeders; antique kitchen scales; antique tricycle; miscellaneous antique chairs; antique wooden traveler's trunk; antique pickup bed trailer; antique ground rods; antique lanterns; Wagner cast iron skillet; blow mold Santa; Matchbox carrier with cars; Imperial oil can; large Michelob sign; miscellaneous railroad blocks; ball & chain iron ball; baby wardrobe; waterfall style desk; Wayne gas station pump; metal glider; various iron wheels.

*There will be many more items at this auction too numerous to mention.*



Scotty Kuntz 573-356-4405  
Michael Cunningham 660-651-2288 • Paxton Pittman 918-316-7500  
WWW.SCOTTYSAUCTIONSERVICE.COM

**LANCASTER LUMBER INC.**  
**Lancaster, MO.**  
**1-800-424-5071**  
**LAN-DOW BUILDINGS**  
**www.lancasterlumber.com**



**Real Estate & Personal Property Auction**

**Saturday, November 6, 2021 at 10:00 a.m.**  
Keith Carlson

411 East Maple Street, Shelbina, Missouri

**Directions:** 411 East Maple Street, Shelbina, Missouri. From US Highway 36 turn South on North Center Street (State Highway 15) for 0.1 mile then turn left on East Maple Street (U.S. Business Highway 36). The property will be on your right. Watch for signs the day of the sale.

**Real Estate:** With C-1 zoning on 1.3 acres, this 2015 building offers endless possibilities. It is 44'x52' with a 14' x 52' and a 12' x 17' additions with a 16' roof. It includes one bedroom, a utility room, a 18' x 40' bay with 14' x 14' insulated door, a 12' x 52' bay with 10' x 10' insulated door with 12' roof, blown-in insulation, 2" x 6" insulated exterior walls, 200 amp service entrance and a RV box. The Red Iron Butler building is 28' x 40' with 10' x 8' insulated door and 54' x 30' with two 12' x 12'6" insulated doors, 2" x 6" insulated walls, concrete floor, blown-in insulation in the ceiling and 7' x 8' garage door. The real estate will sell promptly at noon. If you would like to schedule your personal showing, please call Scotty at 573-356-4405.

*\*See Terms and Conditions for Purchase of Real Estate below.*

**DOWN PAYMENT:** 10% of the contract purchase price will be due upon acceptance of the Sales Contract. Personal or Cashier's Checks will be accepted. This is "AS IS, WHERE IS" and is non-refundable. **CLOSING:** Closing shall be within 30 days of the auction date.

**Household Items:** Various furniture; luggage; 4 drawer file cabinet; Vermont Cast-iron propane grill; plastic patio set; GE mini fridge; 2 drawer file cabinet.

**Outdoor Equipment & Tools:** Wood work bench; 029 Stihl chainsaw; miscellaneous hand tools; electrical items; hand-held metal shears; large tow strap; Black & Decker metal chop saw; fence stretchers; 5/8 spade handle drill; sockets; ratchets; stainless steel tool chest; like-new trailer hitch; stabilizer and sway bars; safety chains; clevis; ratchet binder; transit outfit; 4 car dollies; Rubbermaid wheel barrow cart; North Star power washer needs work; gas 4 hp Pacific power washer, like new but hasn't been used for several years; 3 ton floor jack; come-a-long; small air compressor; bent Dollie; receiver hitch; lockable trunk; 9 boat buoys; ATV sprayer; Orscheln diamond tread tool box; 8 gallon shop vac; Port-a-mate saw horse; miscellaneous tool boxes.

**Sporting Goods & Equipment:** New right hand Sedona Golf clubs; Ruger P95 (mm; Colt King Cobra stainless 357; Colt 1911 9mm luger cal government model; Savage Arms 308 cal camouflaged synthetic stock, never fired; Ruger mini 14 223, never fired; Savage 93R17 17 HMR, red dot scope 4x12x40; Centurion 24" wide x 20" deep x 5' deep gun safe.

**Antiques & Collectibles:** 36 1 oz silver legacy of JFK; Canon Powershot G3 camera; John Deere precision toys; older crocks.

*There will be many more items at this auction too numerous to mention.*



Scotty Kuntz 573-356-4405  
Michael Cunningham 660-651-2288 • Paxton Pittman 918-316-7500  
WWW.SCOTTYSAUCTIONSERVICE.COM

**FOR SALE:** I am selling my 2001 Buick Century Custom, automatic trans., 3.1 liter V6 180,000 miles, fuel gauge does not work, has typical rust under all 4 doors, paint starting to chip but overall it's a very clean reliable car, runs very well, asking \$2000 cash. Located in Kahoka, MO Contact me by phone 660-956-6072 if interested

**FOR SALE:** Federal 22 LR ammo, 1400 rounds 40 GR/RN/1200 fps and 100 rounds No. 12 bird shot, \$140/all 660-341-1944

**FOR SALE:** International 826, German diesel flat tops, WF, 3 pt., dual hyd., good TA, 75-80% Goodyear 18.4x34, 520 hours, runs good, \$7800. 217-257-1385

**FOR SALE:** Rossi 4 Basket Tedder, field ready, \$3,250. Call 573-881-3557

**TRUE MODULARS 30 to 60 day delivery available, 3 and 4 bedroom. 573-657-7040 chateauhomes.net**

**FOR SALE:** 20 Black Angus heifers, 2nd & 3rd period pregnancy, bred to Angus bull; 12 Angus heifers & calves. All nice and gentle. 660-676-9199

**FOR SALE:** JD 750 15' no till drill, dolly wheels, w/grass seeder; GP 1500 drill w/center pivot no till caddie, \$11,500; ICH 5100 drill 21 hole, w/cylinder press wheels, \$2250. 217-658-4761

**FOR SALE:** Hardinge Milling machine with new 110V 1 P.H. Motor, \$850 660-956-6826

**FOR SALE:** Grass Hopper mower 725 D 52" deck, 183 hours, kept inside. 660-375-2408

**Premium Metal Roofing**

**AW Metal Inc.**  
Metal Roofing Headquarters  
641-664-3990 • awmetal.net

**Real Estate & Personal Property Auction**

**1123 Union St. • Unionville, MO**  
**October 23rd • 10 am**

Connie Sargent will be selling her home and personal property.

Real Estate to sell at 12 noon. Consists of an older 2 story home with a metal roof. Property sells with no reserve to the highest bidder. 10% down at sale and close in 30 days or sooner.

Personal property: Connie and her late husband were avid collectors of antiques and have had them stored away for years. There will be several unopened boxes as well as many native Indian items to include arrowheads, dolls, prints, special badges. Also fountain pens, large LP record collection, costume jewelry, bb gun, fishing pole, buttons, wood duck decoy, 2 phonograph record players, Griswold and other cast iron, mickey mouse phone, pocketknives, wood fruit boxes, hurricane lamps, jewelry boxes, dresser, fridge, DVD and VHS, tools, and more.



SEE OUR FACEBOOK PAGE FOR PHOTOS

**AAA**  
**ALTISER**  
AUCTION & APPRAISAL  
**KRIS ALTISER**  
660-626-4960

FOR SALE: ISA Brown pullets are laying 50% already ready to go, \$9.50 each. 21564 St Hwy J Brashear MO

FOR SALE: Rifle bolt action Interarms 257 Roberts, Improved 3to9 scope, good condition, \$300, some ammo in brass. 573-209-3405

FOR SALE: Small fishing boat and trailer, lost titles to both, \$350 cash. 309-221-9181

FOR SALE: 1939 B Styled John Deere tractor to rebuild. 660-651-5602

FOR SALE: 2006 Westfield MK 10/61 Grain Auger, good condition, \$4500. 660-635-1664

FOR SALE: Mayrath 10" x 65' auger, Swing hopper dyd lift, \$1250; Westfield 8"x61' swing hopper, \$650; Kewanee 8"x 60', \$350; other Auger disks, disk chisels. 217-658-4761

FOR SALE: Cereal Rye seed, 85+% germination, bulk or mini-bulk bags, \$12.50/50lbs \*Very Clean\* bin run seed. Madison MO 660-676-7055

FOR SALE: 30 Katahdin Hair Sheep yearling, good stock, \$250 OBO. Glen High 660-216-3124

Logan Agri-Service, Inc. of LaBelle, MO is growing and looking to add members to its team. We are currently looking for someone to operate a sprayer and/or fertilizer spreader. We are also looking for someone who can drive application support equipment (nurse/tender truck). We will train the right person. If you are interested in joining the Logan team, contact Luke Lay, LaBelle Plant Manager, at 660-342-6424

FOR SALE: Fresh Local cooked Sorghum 2021 crop. Raymond Kauffman 25624 Hanover Street LaPlata MO 63549

**AZ LOGGING**  
Looking for Timber to Cut.  
Any Kind, Very Good Price.  
**CALL 660-342-2122**

**Show Me Plumbing Services**

- \*General Mini Excavation & Skid Steer Work
- \*Livestock Watering
- \*Waterlines & Sewer Systems
- \* Residential Services & General Plumbing
- \*Utility Trenching

**Stan Schrock • 660-988-1163**  
**Greentop, MO. • 660-766-2636**

**SWEENEY TRUST AUCTION**  
704 SOUTH MAPLE AVENUE - SALISBURY, MO  
**FRIDAY, OCTOBER 22, 2021 @ 12 NOON**

Bob & Norma's wonderful home is full of great Mid Century Modern furnishings, fine silver & old family heirlooms \* Please join us on sale day for a very nice & exceptionally clean auction \* 1st Lt Robert Sweeney was a legendary WWII fighter pilot and flew over 60 treacherous missions while serving his country.

**REAL ESTATE:** 3 Bedroom, 2 1/2 bath, nice brick ranch home (2,608 sq ft upstairs) situated on large level lot (1 acre M/L) \* Yard beautifully landscaped w/ large shade trees that canopy the brick courtyard \* Kitchen w/ maple cabinets \* Formal dining & living rooms \* Additional great room w/ gas fireplace \* Home has 1 car garage \* Basement allows for additional storage & room to expand \* Home was built new by Mr. Sweeney \* Great chance to purchase a quality home in Salisbury, MO.

**CADILLAC CAR:** (2 PM) 1 Owner 2013 Cadillac CTS Luxury model, heated leather, only 40k miles, always garaged

**MID CENTURY MODERN FURNISHINGS:** 2 Herman Miller chairs w/ org cushions - 2 Eames style w/ original leather liners - Dental stool - Exceptional Lightolier Torchere floor lamp by Gerald Thurston - Berkeley designer coffee table - Baker Furniture Co. sofa, chairs & drum tables - Drexel table w/ Saloon type chairs - HH turquoise low back arm chairs - Pr of spindle back designer arm chairs - Dixie Furniture Co French Provincial bedroom suite - Designer upholstered chairs - Several nice Tole floral & hanging lamps - Adjustable table lamp - Flower basket lamp - Curio cabinet - Chair Craft designer chair - Retro stool - Fancy mirrors - Designer pictures - Wall sconces, plaques, candelabra's

**APPLIANCES & MODERN FURNITURE, HOUSEHOLD:** Kenmore black refrigerator - Crosley upright freezer, nice - Amana washer - Maytag dryer - Leather Kincad wing back recliner - Ultra Comfort lift chair - Clayton Marcus chairs, sofa & loveseat - Thomasville 4 pc fine dining set, large hutch, buffet & server - Thomasville vitrine cabinet - Stanley 5 pc king bedroom suite - Pr nice twin beds w/ dresser & n/s - Modern lamps - Sweeper - Vizio TV - Combination safe - Triple bookcase system - Computer desk & file cabinet - Metal file cabinets - Stereo - Radios - Nice cookware - Kitchen appliances - Tupperware - Coolers - Linens - Christmas decor - Bow Flex Motivator work out system - Aviation & War books - Cookbooks - Lots of other books

**STERLING FLATWARE & HOLLOWARE, SILVER PLATE:** 125 Piece set of Towel "Old Master" sterling flatware in case - Sterling wine goblets, sherbets, plates, candelabras, shakers, compote - Lancaster Rose Sp Tea service by Poole - Large Crescent Sp punch set - Several pieces of Poole Sp holloware, trays, Butter dish, etc - W&S Blackinton large tray - Chippendale by Wallace meat tray - Plato mirror

**ANTIQUES & COLLECTIBLES:** Lalique vase, dresser tray & others - Jeweled dresser sets, perfumes, etc - Hp Italian dresser tray - Cyma jeweled alarm clock, Swiss made - Cloisonne vase w/ stone flowers & Ginger jar - Russel Wright pitcher - Tiffany style artist signed paper wt - English bouquets - Pattern glass - Hp china - Set of Haviland china - Nice etched cut stems - Brass English Tea caddy - Excellent Flower Garden quilt - 2 Audubon prints - Nice selection of Rock N Roll albums, Doobie Bros, Steely Dan, FMC, Little River Band, Chicago, Earth Wind & Fire, Michael Jackson, Etc - Excellent Magnavox console stereo - KLH speakers - Closet full of fur coats, stoles - Designer purses - Oak jewelry cabinet - Nice costume jewelry - Pyrex bowls - Corning ware - Mikasa Intaglio dinnerware - Lots more neat finds

**OUTDOOR ITEMS, PATIO SETS:** Wrought iron patio settee & chairs - 2 Wire mesh metal patio sets - Step ladders - Lawn care items & more

**FULL LISTING, TERMS, & PHOTOS @ IMANAUCION.COM**  
**ROBERT & THE LATE NORMA SWEENEY, SELLERS**

**IMAN AUCTION COMPANY**  
660-788-4298 | 660-414-7830 | 660-388-6235

**COME SEE US AT OUR NEW LOCATION!**

701 East LaHarpe St, Suite C,  
Kirksville, MO 63501 • P.O. BOX 809  
660-665-8500 or 660-988-6830  
nemotrader@gatehousemedia.com

**Real Estate & Personal Property Auction**

**Saturday, October 30, 2021 at 10:00 a.m.**  
**The Estate of Lloyd Dale "L.D." Gladhill**  
32992 State Highway M, Atlanta, Missouri.

**Directions:** 32992 State Highway M, Atlanta, Missouri. From US Highway 63 at Atlanta, follow State Highway M East for 4 miles. The property will be located on your right. Look for signs the day of the sale.

**Real Estate:** Located in a picturesque, rural area with blacktop frontage, this 27' x 70' manufactured home is on a solid foundation with an 8' x 15' deck, block skirting and 10' x 10' covered back deck sitting on 1.1 acres. The home has 3 bedrooms and 2 bathrooms with an open floor plan. It includes a living room with a gas fireplace, a family room and a large kitchen. The property has rural water, a working well, an apple tree and mature shade trees.

The real estate will sell promptly at noon. If you would like to schedule your personal showing, please call Scotty at 573-356-4405.

\*See Terms and Conditions for Purchase of Real Estate below.

**DOWN PAYMENT:** 10% of the contract purchase price will be due upon acceptance of the Sales Contract. Personal or Cashier's Checks will be accepted. This is "AS IS, WHERE IS" and is non-refundable. **CLOSING:** Closing shall be within 30 days of the auction date.

**Buildings:** 18' x 21' carport with 92" peak; 8' x 10' storage shed on skids, wood siding; 6' x 10' wooden storage shed on skids; portable chicken coop with 4' x 10' run' galvanized hog hut.

**Vehicles & Trailers:** 1941 Chevrolet 2 door coupe; 1993 Ford Explorer Sport 2 door, automatic, 197,000 miles, electric windows, luggage rack; Chevy Impala LT, 210,000 miles, electric windows, power seat; 16' stock trailer, good floor; aluminum Reese hitch cargo carrier; 2 truck toppers.

**Farm Equipment and Supplies:** Allis Chalmers D17 series III, front end loader, 3 point, good tires, runs great; Honda Recon 250cc, 2 WD 4 wheeler; #10 John Deere lawn cart; John Deere CS Gator, 2WD, 2 seater, dump bed, golf cart series; Scotts 20HP, 48" riding lawnmower; John Deere L130, 48", 800 hrs, runs well; John Deere riding lawnmower 38"; Snapper rear tine tiller; full roll barbed wire; 6' tube gate; eight sheets brown metal sheeting 174" x 32"; 50 gallon gravity flow tank; Stihl FS75 string trimmer; Stihl 031 AV chainsaw; Stihl 020 AVP chainsaw; Clipper E60 2 wheel, pull type, rotary mower; 3 point bale spike; Arends front tine tiller.

**Household Items:** oak full-size bed; 3-piece maple queen bedroom set; Panasonic 46" flat screen TV; Phillips 65" flat screen TV; section 19' TV antenna tower; various kitchen ware; GE 37" x 22' x 32"; console style AirCare humidifier; Whirlpool heavy duty large capacity washer; Roper dryer.

**Antiques, and Collectibles:** 4 wheel antique buggy; one row walking plow; antique metal wheels, multiple sizes; ice picks; wire baskets; miscellaneous bridles and tack; glass display cabinet; two #2 dinner bell with posts and yokes; 1 row walking plow; multiple antique carts, various sizes; concrete horse head; railroad oil can; local stone birdbath; concrete planters; 2 horse weathervanes; miscellaneous deer and moose antlers; powder horn; many pieces of Western memorabilia and decor; cast iron coffee kettle; multiple large long horn mounts; Sleepy Eye Indian crock pitcher; Dazey #40 butter churn with screen; various milk bottles; large variety of crocks including Ruckel's #1, several Western #5's, Buckeye #8, Blue Ribbon #5 crock churn, Blue Ribbon #10, crock bean pot, acorn crock jars, #5 crock churn, brown glass jugs, #6 Western; pair of buggy lights; multiple hen on nests; glass jar in crate; claw & ball 45" table and 6 chairs; collection of horse figurines; cast elephant bank; 40"x30"x14" glass display cabinet with wood frame; buggy seat bench; glass ice bucket; milk can round table; leather Western poncho; small scale Budweiser horse and cart; Dale Case antique hand crank wall phone; Native American chainsaw carving; parking meter decor; Circle Y 15" saddle; wooden boot mantle clock; various cast banks; 13" child's pony saddle; older metal toys; older violin, maker unknown; small oak lawyers' bookcase 24"x38"x8"; large collection of hand bells; Louis Lamour books; 8' leather bull whip; knives; stag handled knives; Case 3; Old Timers; Western knives; bayonet; Cas XX4316 with box; antique US knife; long bayonet with sheath; Buck skinning knives; handmade stag handled knife; military knife; Imperial knife; Hesston belt buckles; unique treadle style sewing machine; multiple horse mantle clocks; four pillar mantle clock; camel back trunk; various pipes; John Deere pedal tractor; various kerosene lamps; pool que in case; antique glass front display cabinet; 706 diecast Farmall tractor; Ford diecast tractor; Tonka tractor; treadle sewing machine tables.

**Guns and Sporting Goods:** Remington bolt action 510 target master 22 S/LR; Marlin 60 22; Remington 514 22 S/LR bolt action; Harrington & Richardson 158 410 single shot; 12 gauge 2 3/4; Remington 341 Shop master 22 S/LR; Marlin lever action 30-30 with 3/9 Bushnell scope model 336; 22 with cowboy loop, stock has been replaced; Remington 700 youth 243 with center point scope; Champion shotgun 49" barrel (decor only); double barrel side by side shotgun (decor only); various fishing poles; long bows and arrows; BB guns.

**Tools and Equipment:** Generac GP5500, 6875 gas generator; Millermatic 120 wire welder; 5" Olympia vise; 2 wheel dolly cart; large variety of long handle tools; 10" Delta miter saw; 6" vise; solid metal welding table; several wheelbarrows; Kinze metal job box; aluminum ramps; Atlas bead breaker, tire changer; All Power 3.5 HP air compressor; metal tool cabinet; two Craftsman 2 tier tool chests; 10 amp battery charger; metal fuel cans; lots of miscellaneous hand tools including Craftsman; 3/4" drive socket set; various log chains, chain binders; various step ladders; appliance dolly.

There will be many more items at this auction too numerous to mention.



Scotty Kuntz 573-356-4405  
Michael Cunningham 660-651-2288 • Paxton Pittman 918-316-7500  
**WWW.SCOTTSAUCTIONSERVICE.COM**

**PUBLIC AUCTION**

We will sell the following items for Ron Heller and surplus items for Jepson Lumber Company located at **CHRISTY'S HOOP BUILDING, 206 SOUTH GEX STREET, LA PLATA, MO** on

**SATURDAY, OCTOBER 23RD, 2021 @ 10 A.M.**

**HOUSEHOLD:** White Whirlpool automatic washer & electric dryer - small white Kenmore refrigerator - microwave - large wooden oak dining table w/pull end leaves & five chairs - curved glass curio cabinet - two dressers w/mirrors - two pc. hutch - chest of drawers - king size headboard & frame - six gun cabinet w/glass door - round dining table - end tables - antique wicker doll buggy - antique hand accordion - plastic wicker loveseat & rocker - electric meat grinder - large set of China dishes - set of Community silverware - new air fryer - kerosene lamps - iron egg skillet - pink glassware - pictures - fruit jars - odd & end glassware - Christmas village & décor - lots of various other houseware items too numerous to mention. **GUNS & AMMUNITION** - Browning 20 ga. pump, 2 3/4" - 3" Field Model - American Arms Co., made in Spain, Silver 12 ga. over & under - Stevens Model 62 over 22 cal, LR only w/synthetic stock - 12 & 20 ga. shot gun shells - two rifle scopes - 7x50 binoculars - **FFL PAPERWORK WILL BE REQUIRED.**

**RIDING LAWN MOWER, TILLER, BOAT & FISHING ITEMS:** - Husqvarna 24 hp., hydrostat riding lawn mower w/48" cut & 520 hours - Troy-Bilt 5 hp rear tine garden tiller - 2-man water scamp boat - two small trolling motors - 12v filet - boat oars - fishing nets & tackle - life jackets - fishing poles - lots of various other items too numerous to mention.

**TOOLS & MISCELLANEOUS** - Toro electric snow blower - set of aluminum ramps - electric pressure washer - electric hand grinder w/case - 3T floor jack in case - Bar & C-clamps - electric hedge trimmer & blower - backpack hand sprayer - air pig - small bench vise - jack stand - pipe wrenches - drill bits - garden hose & reel - Craftsman double wheel barrow - 4 wheel garden bench - 6' fiberglass stepladder - gorilla folding aluminum ladder - open box end wrenches - sockets & ratchets - metal & plastic tool boxes - lawn & garden tools - lots of various items too numerous to mention. **JEPSON LUMBER SURPLUS SALE ITEMS:** Lumber of various sizes & lengths - several sheets of pole barn metal & trim - several sheets of USB & plywood of various thicknesses - vinyl windows of various sizes - composite decking - vinyl siding & fittings - cabinets - two ironing board cabinets - prehung & slab steel doors - interior trim - mirrored bifold doors - 200 linear ft. of shingle over ridge vent - car siding - kitchen counter & vanity tops (several are cultured marble) - shutters - pedestal sinks - stool parts, tanks & bowls - lots of various other items too numerous to mention. **AUCTIONEERS NOTE:** Please plan to attend this auction with most of the smaller items being located in the hoop building. DC - Cash/Check w/ID - Lunch on Grounds

**Christy's Auction Service**

La Plata, MO 63549 660-341-4531  
See Websites for Photos: [www.dchristyauctions.com](http://www.dchristyauctions.com)  
& Christy's Auction Service on Facebook  
Auctioneers - David Christy  
Jason Wood - 660-341-7884 Greg Smoot - 660-341-5175





**McAfee Auction Service, LLC**  
 375 S Johnson • Kahoka, MO  
 660-727-3796  
 www.mcafeeauctionservice.com

*Clark County, MO*  
**LAND AUCTION**

Sale will be conducted at the Care Building located at  
 451 N. Vine Street Kahoka, MO

**TUESDAY, OCTOBER 19<sup>TH</sup> - 6 PM**

**334 ACRES/ 5 TRACTS**



The Gares farms are lying South and Southeast of Kahoka, MO ranging from 2 miles to 4 3/4 miles from town. These tracts offer attractive combination farms with productive rowcrop acreage, pasture land with fencing, lake, ponds, several building sites and a homestead with several desirable outbuildings.

**THE FAMILY OF  
 CLIFFORD & LOLA GARES, SELLER**  
 DENNIS W. SMITH, REP. ATTORNEY



**McAfee Auction Service, LLC**  
 375 S Johnson • Kahoka, MO  
 660-727-3796  
 www.mcafeeauctionservice.com

*Clark County, MO*  
**LAND AUCTION**

Sale will be conducted at the Care Building located at  
 451 N. Vine Street Kahoka, MO

**81 SURVEYED ACRES**

**68.83 +/-  
 Acres of  
 Highly  
 Productive  
 Tillable  
 Cropland**

Lying in Sect. 15, Twp.64N, R6W



**Tuesday,  
 October  
 26<sup>TH</sup>  
 at 6 PM**

**DARYL & DEANA EGLEY, ARLEN & BRIGITTE  
 EGLEY & SCOTT & CARRIE JAMES, SELLERS**



**McAfee Auction Service, LLC**  
 375 S Johnson • Kahoka, MO  
 660-727-3796  
 www.mcafeeauctionservice.com

*Clark County, MO*  
**LAND AUCTION**

Sale will be conducted at the Care Building located at  
 451 N. Vine Street Kahoka, MO

**TUESDAY, NOVEMBER 23<sup>RD</sup> - 6 PM**

**414 ACRES/ 7 TRACTS**



The Hodges land offers productive tillable cropland, woods, hunting and building sites. Lying in Sections 13,14,15,22 & 23 TWP 64N, R8W, Clark County MO.

**WILLIAM WAYNE HODGES, ESTATE**  
 BRETT B. BOZARTH, REP. ATTNY.  
 OAK HILL TITLE COMPANY, CLOSING AGENT



**McAfee Auction Service, LLC**  
 375 S Johnson • Kahoka, MO  
 660-727-3796  
 www.mcafeeauctionservice.com

**TIMED ONLINE ONLY  
 HAY AUCTION**

**LOTS START ENDING AT 10 AM ON  
 THURSDAY OCTOBER 28<sup>TH</sup>**



**900  
 BALES**

*Preview: 4 miles Northwest of Williamstown, MO on Rte. A.*  
**PICK UP BY APPOINTMENT ONLY**  
**CONTACT CLINT 660-341-3837 TO ARRANGE PICKUP**  
**BRISCOE FARMS/ CLINT BRISCOE, SELLER**