

FREE!

NEW EDITION EVERY FRIDAY!
VOL. 29 • NO. 41 • NOVEMBER 19, 2021

NEMO *Trader*

THE NEMO TRADER

PO BOX 809 • KIRKSVILLE, MO 63501

PHONE 660-665-8500

Web Site: nemotrader.net

Email: sales@nemotrader.net

A WEEKLY ADVERTISER SERVING ALL OF NORTHEAST MISSOURI AND THE SURROUNDING AREA

LOTS OF CHRISTMAS DEALS AT:



18243 Iris Blvd. • Bloomfield, IA • VM: 641-664-1069 Ext. 1

PRIME
ARCHERY

2022 PRIME INLINE!

COMETEST DRIVE YOUR NEW BOW NOW!

Be one of the first to by
and get up to \$300 in
FREE accessories,
services or discounts.



Watch for the 2022 Bow Launch in
the coming weeks!

Good selection of new
and used in stock from
\$219.99 and up.

**11% OFF BOWS AND ACCESSORIES
THROUGH CHRISTMAS!**

BLACK EAGLE
ARROWS

- GREAT ARROWS
- GREAT SELECTION
- GREAT PRICES

**10% OFF
ALL IN
STOCK
ARROWS!**

WE'VE ONLY SCRATCHED THE SURFACE!!!

Hurry over for deals on all our other brands: Xpedition, Alpen, Muzzy, Rage, Real World, Wildlife Products, Scent Thief, Discovery, Gold Tip, Carbon Express, and MUCH MORE!

ATHLON
RIDICULOUSLY GOOD OPTICS

NEW FOR US: Check 'em out to see for yourself!

Range Finding Binoculars • Rifle Scopes
Range Finders • Binos • Spotting Scopes

DISCOUNTS? **YES! ASK!**



The

NEMO

Trader

IS NOW A

PROUD MEMBER

OF THE

PHILLIPS MEDIA GROUP

NEWSPAPER FAMILY

Watch for exciting changes coming soon!

FOR SALE: John Deere 5075 E, MFWD, CAH, with JD H240 SL Loader, 940 hrs, new engine, same as new, \$42,500. Call 573-881-3557

FOR SALE: 4 16" White spoke wheels, \$75 for all 319-470-0277 Argule IA

FOR SALE: NH 973 20' flex; NH 973 25' flex; NH 974 630 corn head; MF 1163 corn head; MF 1144 corn head; Gleaner 630 LM or R; Gleaner 830 corn head LM or R. 217-658-4761

FOR SALE: 18 Black Black/White face heifers, 2nd & 3rd period pregnancy; 3 Red Angus heifers, 2nd & 3rd period pregnancy, bred to Angus Black Bull; 8 Black Angus heifers and calves, all nice & gentle. 660-376-9199

NEW/USED Parts "Auto, Pickup, Semi's Farm/Construction Equipment, "Motors/Tranny's" Body parts matching your color "Warrantied/Delivered" 800-807-9612

FOR SALE: International 560 manure spreader 540 PTO, 225 bushel, single, axle, good floor, metal sides, been shedded, solid spreader, \$3200. 217-257-1385

FOR SALE: 2018 4710 Massey, open station, 270 hours, canopy, FWD loader, bale prong, deluxe model. Milan, MO 660-292-0471

FOR SALE: Q Catch Portable chute alley and tub, very good condition, \$13,500 Milan MO 660-292-0471

WANTED TO BUY: Harley Davidson's, any year, any condition, cash money. Days 660-263-1356 or 660-537-0068

WANTED TO BUY: Farm Machinery and Estates. Call James L. Johnston. 573-473-4904

Wevers Outside Wood Furnaces a dealer for Heatmor Stainless Steel Outside Furnaces, have an assortment of parts, line, and etc. Taking orders for new outside wood furnaces. Dealer for Heatmor Call 660-423-5242, cell 660-216-9885. Open 6pm-9pm Monday-Friday, Saturday anytime, call first.

FOR SALE: New 3 pt. tillers, heavy duty, gear driven, 7' to 10' starting at \$3050. 660-874-4455

FOR SALE: IHC 983 corn head; IHC 883 corn head; Drago 830 corn head, adj deck plates; IHC 820 17 1/2' MF 830 for JD. 217-658-4761

PASTURE AND HAY GROUND Needed around Adair & Knox County. Please Contact 660-216-5887 or 417-773-2507

HANDYMAN: Install interior and exterior doors and windows, siding, decks, showers and toilets, flooring and drywall, roofs and dirt work. 660-956-5135.

DIRT WORK All types of excavation, reclaiming overgrown fields, including CRP and WRP. Building site preparation, terrace and tiling maintaining and creating new trails and crossings, rock hauling, Food plot development and maintenance. Leveling and grading, wetland construction and maintenance. Pond and lake cleaning and construction. Call for quotes. 660-342-2701

FOR SALE: 5 X 5 1/2 big round bales of mixed grass hay, Bailed dry no rain fertilized lab tested surface wrapped. Call 660-341-4031 Watson hay sales

FOR SALE: International 674 diesel with Quick Tach hydraulic bucket loader, power steering, good tires & paint, \$9500. 660-341-8089

FOR SALE: 10% off Gloves from Nov. 15th to 30th Homemade Candies, fresh garlic, jams & jellies, spices, HONEY stainless steel kitchen wares, steam table pans and lids. Kerosene lamps and parts, some Aladdin parts. Poly and wooden clothes pins, Reg. and W.M. lids, glass jars, color books, boxed cards, children's books, Gift items, wooden handles - Puzzles. Train Track Candies & More 11538 Iceberg Ave, La Plata 3rd Lane to your Left.

FOR SALE: John Deere 3020-D Tractor, very straight, 90% tires, WF, \$9,750. Call 573-881-3557

FOR SALE: Registered AKC Labrador Retriever puppies; ready to go just in time for Christmas! Can leave Dec 22nd! Deposit is required. UTD puppy shots/wormers. MO health certificate from Vet. LAY'S LABS - LaBelle, MO 660-956-2482

FOR SALE: 2 265/65/18 Snow tires Bridgestone, good tread, \$60 pair. 319-470-0277

STOCK MOBILE HOMES AVAILABLE: We gottem, single and double 3 and 4 bedroom! Call Tuffy 573-657-2176 amegamobilehomes.com

AVAILABLE STOCK MOBILE HOMES immediately, double wide and single, 3 and 4 bedroom. 573-499-9993 columbiadiscountshomes.com

TRUE MODULARS 30 to 60 day delivery available, 3 and 4 bedroom. 573-657-7040 chateauhomes.net

FOR SALE: Gleaner 8000 30' SCH sickle, F&A; JD 930 poly dividers; JD 220 flex; JD 216 flex; IHC 1020 20'; IHC 1020 17 1/2' MF 918 217-658-4761

FOR SALE: Factory made For-Most Doctor Chute for sheep, goats and small animals, just like new. Also want to buy good pickup truck. 660-676-9199

TINY HOMES We gottem 573-881-3283

FOR SALE: 1998 Pontiac Grand AM SE, 2 door, power steering, air, 4 cyl., selling for parts. 660-342-5985

Organic Chicken Litter monthly NPK test, also high test calcium lime. Delivered in trailer loads, \$100T The Farmers Friend 800-807-9612

FOR SALE: 12 year old Palomino mare; Smooth Mouth gray mare, \$1500 pair; 4x5 Net wrapped hay \$45. 660-342-5314

FOR SALE: International 826, German diesel flat tops, WF, 3 pt., dual hyd., good TA, 75-80% Goodyear 18.4x34, 5280 hours, runs good, \$7500. 217-257-1385

TOMATOES, Green beans, Radish, Squash, 10 for \$10, acorn, zucchini and other vegetables. Schmucker Produce 7 Miles North Kirksville to Ft. Madison Way East 1/2 mile.

FOR SALE: 15' Boat trailer; 12' utility trailer; chipper yard roller; Troy Built tiller, front tine tiller 6'; Brush hog yard sweep. 660-695-3531

BLACK GOLD Dog food \$24.50 50lb bag, Showtime dog food, Tuffys Gold, Hunters Blend, Best Dog, Nutri Source Chicken and Rice formula, lighting mix Ole Jacks. Pine and Cedar shavings, best prices Feed Store 3 Miles West of LaPlata on 156

FOR SALE: Gleaner 800 25' lateral tilt hyd for & aft; Gleaner 520 20'; Gleaner 830hugger H' Gleaner 3000 630, w/corn head. 217-658-4761

FOR SALE: 3 Female Border Collie puppies, 3 months old, ready for new home, out of working parents. 660-327-4792

FOR SALE: Two bale carriers; Stihl chainsaw; several bale rings; two feed troughs, 100-150 square bales hay; 100 bales straw; two bale carrier; two row Ford Cultivator. 660-695-3531

FOR SALE: 17 Honda Rancher, new tires, runs good, ready to work, \$6250. 660-216-3845

FOR SALE: 5 3-5 Year old cow/calf pairs, one 5 year old Registered bred red Angus, one Registered Red Angus replacement heifer. 660-216-3301

WANTED: 46-60 Jeep Flat Fender pickup. 573-248-7825

FOR SALE: Square bales 2nd cutting grass/clover, wire tied, \$5.00 per bale. Novelty Area 660-216-0618

FOR SALE: John Deere 4230 Tractor, CAH, cold air, power shift, 6,800 hrs, 18.4x38 95%, \$19,500. Call 573-881-3557

FOR SALE: 100 large round bales of grass hay, near Kirksville, \$40. 913-626-1585

M BAR M Cattle Co. offering a powerful set of 14 month Angus Bulls. Sired by LD Capitalist, Werner Flat Top, SAV Bismarck, 5T Powerchip, Bulls are tested and ready to turn out! Contact Michael Montoya at 660-342-5343

FOR SALE: New Pulsar gas generator 2000 Watt used one-time \$200. Argyle IA 319-470-0277

FOR SALE: 2 8K Bu, 21' Dia., grain bins. 3.3 MI South of Kirksville, North of Old house at 26334 Underhill Lane. Call Tom 630-962-1825

Slayton POLARIS

THE POLARIS AGRICULTURAL ADVANTAGE PROGRAM

Exclusively for farmers and ranchers.

Polaris is committed to supporting the agriculture community through industry-leading vehicles, partnerships and programs for the community.

We will close for Thanksgiving at noon on Wed. the 24th and reopen on Monday the 29th.

660-328-6627

10456 State Route B, Downing, Mo
6 miles W. of Memphis, then 13 miles N. on B

VISIT POLARIS.COM FOR MORE OFFERS

POLARIS

HOLIDAY TOY DRIVE

\$499 DOWN
on select vehicles*

**When You Bring in 4 New,
Unwrapped Toys**
(MINIMUM \$10 VALUE FOR EACH)

 car-mart.com

* On retail vehicles priced at \$15,999 or less. With approved credit. See dealer for details. This offer cannot be combined with any other promotional offer. Example: \$499 down. 110 weekly payments of \$10.78 per \$1,000 financed at 16.5% APR.



660-956-4849 • 2015 North Baltimore • Kirksville

- Peace of Mind Package
- Service Contract Plus
- Accident Protection Plan
- 100% Satisfaction
- Pay Your Way
- Low Down Payments
- Quality Used Vehicles
- Flexible Financing
- Hand Selected Vehicles
- Convenient Payment Options
- Start Your Approval Online
- Over 150 Locations
- 40 Years in Business
- We Buy Cars



2011 FORD TAURUS UNLIMITED
FWD, 6 Cyl., Gold



2014 CHEVROLET SILVERADO
1500 LT, 4WD, 8 Cyl., Black



2008 FORD EDGE
4WD, 6 Cyl., Orange



2015 KIA SOUL
FWD, 4 Cyl., Red



2013 FORD EXPLORER XLT
FWD, 6 Cyl., Brown



2011 CHEVROLET SILVERADO
1500, LT, 4WD, 8 Cyl., Silver



2011 CHEVROLET SILVERADO
1500, LTZ, 4WD, 8 Cyl., Black



2015 JEEP PATRIOT SPORT
FWD, 4 Cyl., Gray



2013 DODGE DART
FWD, 4 Cyl., Blue



2006 FORD F150
4WD, 8 Cyl, Blue



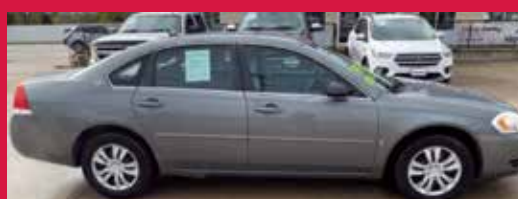
2010 CADILLAC ESCALADE
AWD, 8 Cyl., Red



2015 GMC TERRAIN
FWD, 4 Cyl., Black



2012 TOYOTA RAV4
BASE, 4WD, 4 Cyl., Black



2007 CHEVROLET IMPALA LS
FWD, 6 Cyl., Gray



2006 DODGE 1500 SLT
4WD, 8 Cyl., 4-door, Red



Keeping You on the Road



ELIZABETH WALTER
GENERAL MANAGER



The City of Mendon is accepting bids on a new roof, repairs on back door, lintel, brick, electrical, plumbing and interior on an old building.

If interested, please call Lesa Longfield, 660-412-3672 to make arrangements to view the site and receive the inspection report. Bids will need to be submitted with proof of insurance by December 10th.



WE ARE HIRING!

Maintenance/Custodial
Full time position with benefits

Banking Career - Applicants must have strong communication & computer skills. Ability to multi-task & learn quickly. Qualified applicants should have two years prior banking experience or a degree in related field. Willing to train.

Send resume to: *Bank of Kirksville, P O Box 787, Kirksville, MO 63501. EOE*

Member FDIC

NEMO
Trader

COME SEE US AT OUR NEW LOCATION!

701 East LaHarpe St, Suite C,
Kirksville, MO 63501
P.O. BOX 809
660-665-8500
or 660-988-6830
sales@nemotrader.net

WE ARE OPEN!

For Sale by Owner:



705 Ash Lane, Kirksville, MO,
\$265,000.00
Ranch style house, 3 Br, 2.5 Bath; Central Heat/Air;

Formal Dining room; Cathedral Ceiling in Family Room w/wood burning fireplace; 3/4 Basement, all appliances including GE Profile Double oven ceramic top range, GE Profile 3 door refrigerator, Front loading washer/dryer on pedestals, .27 acre corner lot, 3 apple trees, 16'x16' Deck, cca treated wood floor w/vinyl railing

WANTED

Motor Grader and Rock Truck Driver

Apply to LaPlata Special Road District
PO Box 56, LaPlata, MO 63549



LAN-DOW BUILDINGS

"We Build To Suit Your Needs"
"Custom Built"

Pole Barns • Garages • Utility Buildings
"H" Don or Dick Middleton

Memphis Lumber Co.
1-800-337-5858 • 660-465-8595
Fax: 660-465-8596

New Renovations 2021:
Roof
Vinyl Siding & Gutter/Downspouts

- Deck & Front Porch
 - Light Fixtures- Interior & Exterior
 - Doors & Knobs- Interior & Exterior
 - Flooring- Lifeproof Vinyl- Foyer, Kitchen, Dining Room & Baths upstairs.
 - Carpet & Pad - Family Room, Hal & Bedrooms.
- The above listed are the some of the bigger \$ items/highlights, this house was remodeled/updated summer/fall 2021.



For a showing appointment please call me @

660-988-5547

MOOSE RUN REPAIR

8 YEARS EXPERIENCE

Tractor • Skid Steer • Combine • Air Conditioning
Self-propelled Forage Harvester & General AG Repairs

Specializing in John Deere

Engine • Transmission • Hydraulics
Power Shift/IVT Diagnosis & Repair
Computer/Electronic System Diagnosis & Repair

INTERSTATE BATTERIES **TIGERLIGHTS**

660-988-3843
DELVIN "MOOSE" STEINER • QUEEN CITY, MO

KM-70KDE01742

BURKHOLDER



2017 Ford F-250 XLT FX4, 4x4
Crew Cab, 6.7 Diesel, Auto, Only 20k One-Owner Miles, Near New, Come See, Gray

\$59,900

Full line of accessories Outfit your truck here!

Edina 660-397-2551 51001 State Hwy 15 BurkholderTruckSales.com



\$43,900

2019 Ford F-250 XLT FX4, 4x4
Ext Cab 4dr, Longbed, 6.2V8, Auto, 74k One-Owner Mi, Local Truck, Nice, White



\$47,900

2019 Ford F-250 XLT, Crew, 6.2V8
Auto, Only 34k Miles, New Tires, Come See, Nice-Clean Texas Truck, Silver



\$52,900

2016 Ram 2500 Laramie, 4x4, Crew
6.7 Diesel, Auto, 98k Miles, Clean Carfax, Extra Clean-Nice, Must See, Black/Silver



\$32,900

2016 Chevy Silverado 3500HD WT
4x4, Double Cab, Long Bed, 6.0V8, Auto, 144k Mi, Clean Carfax, Nice-Clean, White



\$34,900

2015 GMC Sierra 2500HD SLE, 4x4
Crew, 6.0V8, Auto, 139k One-Owner Miles, Great Service Record, Nice-Clean, White



\$49,900

2015 Chevy Silverado 3500HD LTZ
Dually, 4x4, Crew, 6.6 Duramax, Allison, 133k Miles, Nice, Clean, Texas Truck, Red



\$32,900

2014 GMC Sierra 2500HD SLE, 4x4
Crew, 6.0V8, Auto, 146k One-Owner Mi, Great Service Record, Well Kept, Maroon



\$31,900

2013 Ford F-250 XLT FX4, Ext Cab
4dr, 6.2V8, Auto, 90k One-Owner Miles, Perfect Service Record, Must See, Silver



\$79,900

2019 Ford F-350 XL, 4x4, Crew
6.7 Diesel, Auto, 31k One-Owner Miles, Utility Bed w/ Liftmore Crane, Nice, White

Financing Options Available

THIS MONTH'S SPECIAL!!

\$100 OFF

Ranch Hand Legend Front Bumper

Come see us in Kirksville MO



A BURKHOLDER Company

Now Open!



Providing a full line of accessories, including wheels and tires.

M-T: 8 AM - 5 PM
Fridays: 8 AM - 7 PM
Sat: 9 AM - 3 PM

3705 N Baltimore St,
Kirksville, MO 63501



RANCH HAND
PROTECT YOUR TRUCK

AUTO & TRUCK SALES + ACCESSORIES





Judd Motors

Call 660-457-3700
Hwy 63 North, Lancaster, MO

- 2015 GMC 2500HD, SLT, 4x4, crew cab, shortbed, 6.0L, heat & cool leather, bed cover, 1 owner, 113k, charcoal, very nice, new tires, only \$35,900
- 2015 Equinox, All Wheel Drive, 1 owner, 100k miles, only \$9,250
- 2013 Impala, LTZ, leather, only 104k, charcoal, very nice, \$8,995
- 2013 Jeep Grand Cherokee Laredo, 4x4, 147k miles, only \$14,250
- 2012 Chevy Captiva, LTZ, leather, AWD, sunroof, 112k, maroon \$8,495
- 2003 Ford F350, diesel, 4x4, crew cab, flatbed, 300k, runs good, brown, only \$6,995
- 1998 Silverado 1500, ext cab, 2wd, V8, 200k miles, red, bed cover, looks and runs great, only \$3,995

Cumberland Building Dealer

www.juddmotors.com

In Business Over 75 Years
Curly and Kevin Judd

HAY STORAGE SOLUTIONS AND MUCH MORE!



"Today, I checked with Joseph to see when he was planning to deliver and construct my second hoop building. Two years ago I purchased a 55'x98' hoop building from Skylight buildings. It was erected on my site on time and the building went up in two days.

I was concerned about the durability of a vinyl building compared to a metal sided structure. That was until I noticed that a rock from my Brush Hog 2715 had impelled itself into the metal building. The Skylight building would not have been damaged. Also, the name says a lot. I thought that I would wire in lights like my other buildings but to date I have not found the need.

The reason I thought I needed to build a large building was to store my hay inside. I knew I was losing hay quality due to weather damage but baling with 568 John Deere and net wrapping my hay I thought I was keeping my hay loss at a minimum. I found the first year that I had underestimated my losses. I was very pleased with the results of storing hay inside. It is most gratifying to put a bale into the hay ring and seeing that the previous bale was almost completely consumed by the cows or the feeder calves. I had a record amount of carry over from last year and it is safely stored inside ready to be used this winter! This will allow for hay sales this winter.

The construction of the building's frame is strong, the foundation supports are 24" and very deep. I am very satisfied and have ordered another 55' x 140' to be installed in a few weeks. This one will be used to store our small square bales and equipment.

Thank you Joseph for your service and this chance to recommend your buildings."

Wiley and Susan Hibbard, Perry, Missouri

20749 State Highway VV
Ethel, MO 63539
660-486-3250

Skylight

Fabric Structures

FRONTLINE FENCING LLC

- Steel Pipe Fencing.
- Custom Built Gates and Livestock Handling Equipment.
- Barbed Wire and Woven Wire Fence.
- Arrowquip Cattle Handling Equipment.
- Post Driver Rental.



29386 St Hwy T,
Greentop, MO
660-956-2430

For Your Equipment Needs!

LOTS OF USED EQUIPMENT AVAILABLE

Vermeer 605 N Balers, Twin Rakes, Trailed Mowers, Disc Mowers, Tedders, Bale Processors-

Offer high capacity, speed, reliability, efficiency, fuel savings...

DeWeze Bale Beds-

Lift, load, transport and feed big, round bales...

Danuser Post-Hole Diggers-

Offer quality & reliability, outperforms the competition...

USED EQUIPMENT

BALERS

605 N Net
605 L Net
605 K Net

RAKES

R2800
R2300
VR1224

MOWERS

TM 1210
8040
7030
Vicon 4000

TEDDERS

TD250

BALE PROCESSORS

BPX 9000
BPX 9010

Liebhart Sales, Inc.

Call Today!!

17546 Lacey Drive -
New Boston, MO. 63557
660-689-3406



Edina, Missouri

Weekly Sales Start @ 12:30pm

**Friday, November 19th
Special Feeder Calf Sale**

Friday, November 26th No Sale

Saturday, November 27th at 1:00 p.m.

**23rd Annual Kevin & Beth Strange
Bred Heifer Sale
250 Black & BWF AI Bred Heifers**

To Consign For Any or All Sales or For Information Call:
Owner - Kevin Strange • Cell: 660-341-9974
Ryan Strange • Cell: 660-341-9721
Sale Barn: 660-397-9999

Field Reps:	Mike Bronestine 660-341-9965	Jason Bischel 660-216-0373
Bill Tom HALL 660-342-5420	Trey Gashwiler 660-216-8751	John Powell 660-341-1717

MISSOURI LIVESTOCK SYMPOSIUM

William Matthew Middle School

1515 S Cottage Grove • Kirksville, MO

Friday, December 3, 2021 • 4 to 10 p.m.

Saturday, December 4, 2021 • 8 a.m. to 5 p.m.

Featuring nationally-known speakers covering timely topics



Dr. Jimmy Henning
Professor & Forage Specialist
University of Kentucky



Dr. Scott Brown
Ag Economist
University of Missouri



Dennis Cappel
Cappel Horse Training and Shoeing, Silex, MO



Jordan Thomas
State Extension Beef Specialist, University of Missouri-Columbia



Shawn Quinn
Ruminant Consultant Services, Wisconsin



Tim Evans, DVM
Toxicology/Veterinarian
University of Missouri



Dr. Eric Bailey
State Extension Beef Specialist, University of Missouri-Columbia



Dr. Kelly Walter
Ag Science Professor
Truman State University
Kirksville, MO

- It's all FREE! No cost to attend! No registration needed!
- Nationally-known speakers covering timely topics on livestock production and more!
- FREE Trade Show!
- Something for everyone!

missourilivestock.com
666-665-9866

FRIDAY NIGHT KEYNOTE SPEAKER

Rethinking Methane: Animal Agriculture's Path to Climate Neutrality
Dr. Frank Mitloehner

University of California, Davis
Dr. Mitloehner's research activities focus on air quality, especially quantification of ammonia, dust and odor emissions in dairies, beef feedlots and poultry operations.



SCHEDULE OF EVENTS FOR FRIDAY, DECEMBER 3 (all events free)

4 p.m. - Trade Show Doors Open		6 p.m. - FREE co-sponsored Beef Dinner	
7:00 p.m.	Welcome - Andy Jackson, MC and Dr. Robert Webb, Superintendent, Kirksville R-III School District		
7:10 p.m.	Guest Welcomes-Dr. John Middleton, Assistant Vice Chancellor, MU; Chris Chinn, Missouri Department of Agriculture; Tom Vilsack, Secretary of Ag; Scott Edwards, USDA-NRCS State Conservationist.		
7:35 p.m.	Recognition of Important Guests	7:40 p.m.	Photo Contest Winner Announced
7:55 p.m.	Presentation of Missouri Livestock Achievement Award - Dr. David Patterson, MU Extension State Beef Specialist		
8:15 p.m.	Keynote Speaker- Dr. Frank Mitloehner: <i>Rethinking Methane: Animal Agriculture's Path to Climate Neutrality</i>		

Missouri Livestock Symposium
UNIVERSITY OF MISSOURI
Extension
Complete info at www.missourilivestock.com

SCHEDULE OF EVENTS FOR SATURDAY, DECEMBER 4 (all events free)

Trade Show Open 8 a.m. - 5 p.m.		Coffee and Donuts provided by FCS Financial				Trade Show Open 8 a.m. - 5 p.m.		
	BEEF CATTLE	FORAGES	HORSE	SHEEP	MEAT GOATS	MORE BEEF/STOCK DOGS	MISCELLANEOUS/HORTICULTURE	FARM MANAGEMENT
9 a.m.	<i>Livestock Market Update with Brownfield Ag News.</i> Dr. Scott Brown, Ag Economist, MU	<i>Managing Soil Fertility in Uncertain Times.</i> Dr. Jimmy Henning, Forage Specialist, Univ. of Kentucky	<i>Stem Cell Use in Regenerative Medicine.</i> Larry Letner, DVM, Harris, MO	<i>Liver Flukes and Clostridial Disease in Northern Missouri</i> Craig Payne, DVM, MU Extension Veterinarian	<i>Meat Goat Feeding Systems & Marketing Options.</i> Shawn Quinn, Ruminant Consultant Services	<i>Real Beef vs. Plant-based Beef Alternatives.</i> Mark Russell, Missouri Beef Industry Council	<i>Raising Chickens for Eggs.</i> Tatjana Fisher, PhD, Lincoln University	<i>Carbon Markets in Agriculture: Coal or Diamonds?</i> Dr. Ray Massey, Extension Ag Economics, MU
10 a.m.	<i>If It Wasn't Lightning, or the Neighbor, What Killed My Cow?</i> Tim Evans, DVM, Toxicology, MU	<i>Custom Grazing Arrangements.</i> Dr. Eric Bailey, State Extension Beef Specialist, MU	<i>Balanced Shoeing.</i> Dennis Cappel, Cappel Horse Training and Shoeing, Silex, MO	<i>Preparing for Lambing & Colostrum Mgmt.</i> Dr. Kelly Froehlich, Small Ruminant Production, South Dakota State Univ.	<i>Intensive Housing Systems for Meat Goats.</i> Shawn Quinn Ruminant Consultant Services, Verona, WI	<i>Show-Me-Beef.</i> Jarrod Ellis, cattle buyer, NextGen Beef Company	<i>Tools for Women.</i> Dr. Marcia Shannon, Extension Swine Specialist, MU	<i>Pond Management</i> Curtis Harrison, Harrison Fish Farm, Hurdland, MO
11 a.m.	<i>Liver Flukes and Clostridial Disease in Northern Missouri.</i> Craig Payne, DVM, MU Extension Veterinarian	<i>How Much Clover is Enough?</i> Dr. Jimmy Henning, Forage Specialist, University of Kentucky	<i>The Value of a Pre-purchase Exam.</i> Larry Letner, DVM, Harris, MO	<i>Sheep Feeding Systems and Programs.</i> Shawn Quinn Ruminant Consultant Services, Verona, WI	<i>Scrapie Update and Causes of Abortion.</i> Steve Strubberg, DVM, State Veterinarian, MDA, Jefferson City, MO	<i>Beef Recipes for the Holidays!</i> Luella Gregory for the Missouri Beef Industry Council	<i>Raising Chickens for Meat.</i> Tatjana Fisher, PhD, Lincoln University, Jefferson City	<i>Succession Planning: Have You Given Your Children the Best Chance to be Successful?</i> Wesley Tucker, Ag Business Specialist, Bolivar
<p>Visit the Trade Show 12 - 2 p.m. - Free Governor's Style Luncheon Hosted by Missouri's finest commodity groups and co-sponsored by your Missouri Department of Agriculture Visit the Trade Show</p>								
2 p.m.	<i>Key Metrics of Success in Cattle Feeding.</i> Dr. Eric Bailey, State Extension Beef Specialist, MU	<i>Managing Pasture for Soil Health and Improved Production.</i> Drexel Atkisson, Soil Health Specialist, NRCS	<i>Ranch Horse Versatility.</i> Dennis Cappel, Cappel Horse Training and Shoeing, Silex, MO	<i>Intensive Housing Systems for Sheep.</i> Shawn Quinn Ruminant Consultant Services, Verona, WI	<i>Footrot and Hoof Disease Management in Goats.</i> Tumen Wuliji, PhD, Lincoln University	<i>Selecting a Pup.</i> Myra Bradford, dog trainer, Mountain Home, AR	<i>Q&A Session with Jennifer Schutter, MU Extension Horticulture and Yvette Amerman, MDC Forester</i>	<i>Basic Estate Planning-Plan to Use All the Tools in Your Toolkit.</i> Wesley Tucker, Ag Business Specialist, Bolivar, MO
3 p.m.	<i>Genomics for Commercial Cattlemen.</i> Nick Hammett NEOGEN	<i>Bovine Intoxications Involving Forages.</i> Dr. Tim Evans, Toxicology, MU	<i>Managing Your Mare for a Successful Breeding Season.</i> Dr. Kelly Walter, Truman State Univ.	<i>Brucella Opus in Missouri.</i> Steve Strubberg, DVM, State Veterinarian, MDA, Jefferson City	<i>Meat Quality in Small Ruminants.</i> Dr. Beth Walker, Prof. of Animal Science, Missouri State Univ.	<i>Starting Your Young Dog.</i> Myra Bradford, dog trainer, Mountain Home, AR	<i>Holiday Flower Arranging.</i> Jennifer Schutter, MU Extension Horticulture Specialist	<i>Fence Law Q&A.</i> Joe Koencen, MU Extension Ag Business Specialist, Unionville, MO
4 p.m.	<i>Avoiding the "Silent Killer" of Profitability: Cow Depreciation Costs</i> - Dr. Jordan Thomas, State Extension Beef Specialist, MU	<i>Native Warm Season Grass: The Good, Bad and There is No Ugly.</i> Drexel Atkisson, Soil Health Specialist, NRCS	<i>Halter Breaking Cattle.</i> Dennis Cappel, Cappel Horse Training and Shoeing, Silex, MO	<i>Footrot and Hoof Disease Management in Sheep.</i> Tumen Wuliji, PhD, Lincoln University	<i>Selling Goat Carcasses.</i> Dr. Beth Walker, Professor of Animal Science, Missouri State University	<i>Finishing Your Stock Dog.</i> Myra Bradford, dog trainer, Mountain Home, AR		<i>Grain Bin Safety.</i> Karen Funkenbush, Director, Missouri AgrAbility Project, MU

FOR SALE: Agco 3000 630 Ch, elect stripper plates, single point hookup, w/meter corn reel; Drago 830 ch., self adj stripper plates; JD FBB w/grass clutch lift, \$750. 217-658-4761

FOR SALE: 970 CRP bales 5x6 \$35 lots of Brome/Treefoil East of Kirksville 1450 lbs. net wrap. 573-881-4905

FOR SALE: Red Angus Bull, 2 Year old proven breeder, retirement dispersal, \$1800. Sutter, IL 217-658-3951

FOR SALE: Antique manure spreader with steel wheels, all mechanisms are there and operate when put in gear. 660-216-7031

FOR SALE: 4 Big Stout Purebred Angus Cows, 4 years old, bred to Registered Angus Bull, good disposition, 3rd period. 660-341-6911

NEED a Notary Public now? Email 24/7 for service curbside delivery or at our Kirksville office. nemonotary@icloud.com

FOR SALE: 18 Black Black/White face heifers, 2nd & 3rd period pregnancy; 3 Red Angus heifers, 2nd & 3rd period pregnancy, bred to Angus Black Bull; 8 Black Angus heifers and calves, all nice & gentle. 660-376-9199

FOR SALE: Set of P185/75 R14 tires, hardly used, mounted on Cavalier wheels, \$1000 for the set. 660-342-5436

FOR SALE: 2 Like new P265/70 R17 Snow tires, \$200 for pair. Argyle IA 319-470-0277

DON'T get caught in the meat shortage Home Grown Choice Beaves and Heritage Hogs Whole/ Halves delivered to locker. 800-807-9612

FOR SALE: Hand gun Hi-Point model JCP 40S&W, plus two clips, fired only 1/2 clip, \$450. 309-333-8015

FOR SALE: Case 855D track loader, recent new motor, 80% undercarriage, good machine, \$25,000; 2000 JLG 40' Boomlift, \$16,000. Call or text 660-216-0076

FOR SALE: Storage shed 8'x12', gable shingle roof, window, double doors front, solid floor, on skids, could use some paint, \$1400 217-257-1385

FOR SALE: JD 750 15' no till drill, dolly wheels, w/grass seeder; GP 1500 drill w/center pivot no till caddie, \$11,500; Krause 30' disc \$2000 & disk chisel. 217-658-4761

ATTENTION HUNTERS: Whitetail Institute Products, CenterPoint Archery, Rage, Muzzy, Wac'em, G5 Broad heads, Carbon Express arrows, Nocturnal Lighted Nocks, Block Targets, Scent Thief Scent killer Products, Adam Hayes Moon Guides, Tinks Lures, IQ Bow Sights, Ghost blinds, Leopold & Vortex Optics, Chippewa Wedge-Loc Tree Stands, and more at Whitetail Seed and Supply 14136 State Hwy 3 LaPlata MO 63549

FOR SALE: John Deere 560 M Baler, net, kicker, 11,000 bales, big tires, shedded, \$25,500. Call 573-881-3557

FOR SALE: Two Angus Yearling bulls sired by TC Total. Dams by Consensus. Thick, wide based, ultra gentle, semen tested. VanWye Lancaster 309-212-4838

FOR SALE: 3 Antique 9' Brunswick tables, 2 Snooker tables, 1 Pool table, 1 Snooker and 1 Pool table has been restored. 573-248-0942

HELP WANTED

NEED A CHANGE??

Due to our expanding business, we are accepting applications for

AUTO TECHNICIAN

HELP WANTED

Competitive Wages • Group Insurance • Vacation Retirement Plan

Stop by to see Terry and Pick your application up TODAY!!

MUST HAVE TOOLS & DRIVERS LICENSE



Woody's Tire, Auto & Towing LLC

1102 N. Green St., Kirksville, MO • 660-665-8617



HORSES WANTED

- PASTURE BOARDING
- REASONABLE RATES

At the Edge of Kirksville
660-341-9522

LANCASTER LUMBER INC.

Lancaster, MO.

1-800-424-5071

LAN-DOW BUILDINGS

www.lancasterlumber.com



Troyer

TARP MFG.

660-486-3301

20264 State • Hwy. VV • Ethel, MO. 63539



Hoop Building Covers

FARM TARPS

TRUCK TARPS

WE GOT YOUR NEEDS COVERED!

MAIN CREEK REPAIR

Larry Geiser

23316 State Hwy H
Kirksville, MO 63501

(715) 415-1995

Bolts • Belts • Bearings
Hydraulic Hoses • Steel
Welding • Fabricating
Tractor & Equipment Repair

MAIN CREEK RENTALS

23316 State Hwy H
Kirksville, MO 63501

(660) 988-6917

- Mini Excavator
- Dozer
- Skytrack

- Equipter (Shingle Buggy)
- Snorkle
- Grapple

- Post Hole Digger
- Man Basket

Show Me Plumbing Services



- *General Mini Excavation & Skid Steer Work
- *Livestock Watering
- *Waterlines & Sewer Systems
- *Residential Services & General Plumbing
- *Utility Trenching

Stan Schrock • 660-988-1163
Greentop, MO. • 660-766-2636



Signature

Overhead Doors and Remodeling, LLC

660-785-0248

www.signatureremodelingkv.com

Residential and Commercial Installation and Service

ATTENTION LAND OWNERS!

**BUYER OF STANDING TIMBER
OWNER /OPERATOR OF SAWMILL - BUY/CUT LOGS**

CERTIFIED - BONDED - INSURED



TRI STATE TIMBER L.L.C.
PH. 660-341-4921 or 660-465-2975
353 1/2 GRAND AVE. • MEMPHIS, MO 63555

CELEBRATIONS! PARTY RENTAL

KIRKSVILLE, MO

FOR RENT
**TABLES - CHAIRS - TENTS - BOUNCE HOUSE
& COTTON CANDY MACHINE...ECT.**

660-626-5162 or 660-665-9380

MAST MEATS, LLC

660-766-2211

USDA & Custom Slaughter & Processing

CALL OR STOP BY FOR SPECIALS

Retail store hours • Mon-Fri 8-5 Sat 8:30-3
mastmeatsllc.com • 405 US Hwy. 63, Queen City, MO 63561

AUTO'S UNLIMITED

660-665-8149
660-341-0965
No Sunday Calls!
17406 Bob Rd • Kirksville, MO

FEATURED VEHICLES

 <p>2015 Town & Country Touring L</p> <p>\$11,900</p> <p>Gray leather, absolutely loaded</p>	 <p>2016 Town & Country Touring</p> <p>\$12,900</p> <p>Excellent condition, black leather, loaded</p>
 <p>2008 Chevrolet Aveo LS</p> <p>\$5,500</p> <p>42k miles, very nice, great MPG</p>	 <p>2005 Ford Focus ZX3</p> <p>\$4,350</p> <p>SES, low miles, excellent condition</p>

ALL VEHICLES HAVE GONE THROUGH A 60 PT INSPECTION! STATE INSPECTED!
CALL FOR MORE INFO!

Dutch Garden Nursery

Poinsettias starting to bloom!

Christmas Cactus Are In!



NEW SHIPMENT OF AIR PLANTS!
CHECK OUT OUR UNIQUE TOYS!

We have Fall Flower Bulbs. Plant all thru Nov. and Dec. for Spring Blooms

**10% off Gift Cards
FRI. and SAT., Nov. 19th & 20th**

Winter Hours Monday - Saturday 8:30 - 5:00

MEMPHIS LOCATION (beside Country View Store): 660-883-5650
EDINA LOCATION (Home Base): 660-397-4115
www.dutchgardennursery.com



FOR ALL YOUR FENCING NEEDS.

Quality Cattle Equipment, too!

620-215-5770 KIRKSVILLE, MO
SPECIAL ORDERS AVAILABLE

Check out our current inventory at
Kirksville Livestock Sales.

 <p>SINGLE \$650</p>	 <p>DOUBLE \$1,050</p>	 <p>HEAVY-DUTY \$1,050 REPLACEMENT BUMPERS Dodge, Chevy, Ford & GMC</p>	 <p>HALF TUB \$2,900</p>
 <p>MINERAL FEEDERS \$375</p>	 <p>\$3,400 ADJUSTABLE ALLEY</p>	 <p>FULL TUB \$3,800</p>	<p>If you're looking to build a pipe fence or corral, wire fence, or need quality cattle equipment, WE'RE HERE TO SERVE YOU!</p>

Gates • Continuous Panels • Tubs • Alleys • Posts • Pipe • Bumpers • Cattle Feeders

VICTORY

Metals & Recycling

Kirksville, MO 660-665-8000
victorymetalrecycling.com

For current scrap prices call or visit our **Facebook Page**

- ★ **Construction/Debris Recycling**
Visit Kirksville's construction & debris recycling facility and save trips to the landfill! Take advantage of this service for solid waste removal by bringing your landfill items to Victory Metals C & D recycling facility located at 3602 N. Industrial Rd.
- ★ **Roll-Off Container Service**
10-20-30-40 Cubic Yard Dumpsters

3602 N. Industrial Rd.,
Kirksville, MO 63501
djanesvmr@gmail.com
www.victorymetalrecycling.com



Premium Metal Roofing



A W Metal Inc.
Metal Roofing Headquarters
641-664-3990 • awmetal.net

The Ultimate Wood Heat.



CLASSIC EDGE
TITANIUM HD SERIES
Outdoor Wood Furnace

- **More Comfort** - Thermostatically controlled wood heat.
- **Peace of Mind** - Keep the fire outside and eliminate the dangers associated with indoor wood heating.
- **Save Money** - Wood is a renewable, inexpensive and often free energy source.

CAMPEN
Heating & Air Conditioning
573-288-8966
Canton, MO
CentralBoiler.com




John Deere 4440 Tractor, CAH, QR, triple hydr, 9000 hrs, one owner, factory duals, 80% rubber, clean, \$31,500



John Deere 5520 Tractor, MFWD and 511 SL Loader, new tires, reverser joystick, 5500 hrs, one owner, \$41,500



2018 Forrester River Silverback Edition 37MBH 5th Wheel Trailer, 42 ft long x 8 x wide, used very little by both previous owners, pulled less than 5000 miles, 4 slide-outs, sleeps 10, VIN 4X4FCRN27JS220459, \$47,500



John Deere 4455 Tractor, QR, 8,000 hrs, one owner, four new Firestones, factory duals, triple hydr, strong running, \$39,5000



Red Angus/Charolais Crossbred Bulls, 16-18 months old, guaranteed, sound, \$2,500 choice.

573-881-3557

Logan Agri-Service, Inc. of LaBelle, MO is growing and looking to add members to its team. We are currently looking for someone to operate a sprayer and/or fertilizer spreader. We are also looking for someone who can drive application support equipment (nurse/tender truck). We will train the right person. If you are interested in joining the Logan team, contact Luke Lay, LaBelle Plant Manager, at 660-342-6424

FOR SALE: 18-4-38 Firestone tractor, dual tires & rims, fits case 1070, good tires \$250 OBO. Call anytime Brashear 660-323-5629

FOR SALE: Frigidaire Chest Freezer 20 cubic feet, \$225; Kerosene Heater 23,500 BTU, \$40. 660-342-5757

FOR SALE: 4 Tires P275/55 R20 3rd of Rubber left. La Plata Area 785-822-8482

FOR SALE: Mayrath 10" x 65" auger, Swing hopper dyd lift, \$1250; Westfield 8"x61" swing hopper, \$650; Kewanee 8"x 60", \$350; other Auger disks, disk chisels. 217-658-4761

"HIGHLY VISIABLE STORE FRONT" located in Beautiful Historic Downtown LaPlata Missouri!! "City of Silver"!! Vast indoor operating space available for Business, warehouse, Etc.!! Owner pays partial utilities!! Must See!! 660-341-9081

ATTENTION TRAPPERS and Hunters I am buying furs, coon, coyote, muskrat, bobcat, squirrel, and more call Andrew 660-486-3207

FOR SALE: 1994 M Farmall wide-front power steering, runs and starts good, \$2000 OBO. 660-665-3919

FOR SALE: Firewood \$65 Truck Load. Call 716-294-1248 or leave message

WANTED Small corn crib in working condition; Diamant or similar mill for wheat; Homestead Handy Man once weekly, resourceful and familiar with horse equipment. East La Plata 660-332-4026

FOR SALE: 12 year old mini roan mare 34" \$600; 12 year old paint pony stands 45" \$800; 12 year old palomino mare about 14.1 \$1100. 660-342-5314

FOR SALE: Angus and Balancer bulls, Rugged, ready for work. Calving ease and performance. Neese Angus Rutledge, MO 641-344-4565

HIGH QUALITY Hay for sale \$45 per bale. 217-653-4762

FOR SALE: Progressive 1300 12K NH3 WT on M&W dual no till coulters raven coolers monitor markers, for strip till; DMI 4200 NH3 WT on M&W raven 440M 14K no till. 217-658-4761

DRY Fertilizer straight product or blends trailer load lots, we are the farmer's friend saving you money. 800-807-9612

WANTED TO BUY: Harley Davidson's, any year, any condition, cash money. Days 660-263-1356 or 660-537-0068

FOR SALE: New 3 pt. tillers, heavy duty, gear driven, 7' to 10' starting at \$3050. 660-874-4455


FOR SALE: Rossi 4 Basket Tedder, field ready, \$3,250. Call 573-881-3557

HANDYMAN: Install interior and exterior doors and windows, siding, decks, showers and toilets, flooring and drywall, roofs and dirt work. 660-956-5135.

Virtual Live Online Auction - Bid @ www.SullivanAuctioneers.com

SULLIVAN COUNTY, MISSOURI LAND AUCTION 200± ACRES selling in 2 TRACTS

WEDNESDAY, DECEMBER 1 @ 1:00 P.M.



The Childers Farm is located in Sections 21, 22 & 28, T63N-R18W, Sullivan County, MO. 2 miles southeast of Green City, MO (Green City, MO is located 20 miles west of Kirksville, MO).

Mark your calendars now for this upcoming Sullivan County, Mo land auction. These farms offer productive tillable farmland and will sell with full farming rights for the 2022 crop year. Tract 1 is improved with a very nice pond and includes timber draws in the western portion offering attractive recreational acreage. Tract 2 is improved with several terraces with drainage tile inlets and will have hog manure applied to it prior to the auction. We urge you to take a look at these well-maintained farms located southeast of Green City, MO.

DOUG & TAMRA CHILDERS
Title Work By: Sullivan County Title, LLC • 102 N Main St, Milan, MO 63556 • (660) 265-3744

AUCTION MANAGERS: JOHN PROBASCO (641) 856-7355, BILL FRETWELL (660) 341-7735 & JENNIFER WOOD (217) 257-8812
SULLIVAN AUCTIONEERS, LLC • TOLL FREE (844) 847-2161
www.SullivanAuctioneers.com • IL Lic. #444000107

TIMED ONLINE • NO-RESERVE COLLECTOR TRACTOR AUCTION

BIDDING CLOSURES: MONDAY, DECEMBER 6TH STARTING AT 10:00 A.M.

PHYSICAL ADDRESS: 1403 SOUTH C STREET, ALBIA IOWA 52531
EQUIPMENT INSPECTION: TUESDAY, NOVEMBER 30TH FROM 9:00 A.M. - 2:00 P.M.

HIGHLIGHTS INCLUDE: 1929 John Deere D tractor; 1929 John Deere GP tractor; 1946 John Deere H tractor; 1952 John Deere G tractor; 1936 John Deere A tractor; 1955 John Deere 60 tractor; 1959 John Deere 630 tractor; 1956 John Deere 620 tractor; 1947 John Deere M tractor; 1972 John Deere 820 tractor; 1956 John Deere 50 tractor; 1959 John Deere 530 tractor; John Deere 730 tractor; 1944 John Deere LA tractor; 1940 John Deere H tractor; 1945 John Deere H tractor; 1938 John Deere B tractor; 1953 John Deere 40 tractor; AC G tractor, sells complete w/ cultivator and single bottom plow; Caterpillar DE dozer; 1951 Kaizer/Frazer Henry J 2 door coupe, very solid, body sells with extra parts; 1979 GMC Sierra 7000 rollback truck; 1989 Great Dane 48ft van trailer; Large selection of new in the box Ertl 1/16 scale toys, some Precision models; Other toys to include John Deere bicycle, pedal tractor, pedal car and other collectible toys; Also selling signs and memorabilia, tractor parts, tools and shop items, antique mowers, implements, parts implements and tires

BILL & NORMA HENDERSON • (641) 932-5571

AUCTION MANAGER: JOHN PROBASCO (641) 856-7355
SULLIVAN AUCTIONEERS, LLC • TOLL FREE (844) 847-2161
www.SullivanAuctioneers.com • IL Lic. #444000107

Machinery Consignment

Fox Auction LLC AUCTION 660-341-1453

Location: Junction of Hwy 5 & U 6 miles north of Unionville, MO

Saturday, November 27th 2021 @ 10:00 am

MACHINERY: Kinzie 3000 6/11 planter, 2015 model, 50th anniversary, one owner • JD 568 round baler (42,000 bales) • JD 535 round baler • Krone 6 basket hay tedder • Vermeer VR20 rake • NI 5410 disc mower • Vermeer 7030 disc mower • Chandler litter spreader with heavy duty drive • Willmar 600 fertilizer buggy • Westfield WC1335 belt conveyor • JD 216 flex platform head • JD 215 rigid platform head • JD 220 19" disk with 9" spacing • Bushog 16" disk • AG Chem 502 pull type sprayer with 60' booms • JD 700 grinder mixer • 500 gal trailer type fuel tank with 20 gpm pump

SHOP ITEMS: Vermeer transit • 3/4" 600 lb torque wrench • large wheel/pulley pullers • floor jack • handyman jack • screw jack • shovels ect • hand tools

New 72" Jeld Wen bay window

FARM & LIVESTOCK ITEMS: 4x8 2 wheel trailer • portable cattle chute with head gate • head gate • 500 gal fuel tank • rear semi axles • bale ring • tire sidewall cover weights for bunkers ect (over 200) • used trusses • roof metal

J and R Fabricating
12102 State Hwy UU
Unionville, MO 63565
Contact Persons: Joel: 660.346.1448

lots more items online at www.foxauctionservice.com

FOX AUCTION LLC
JR(ALLEN)FOX: 660-341-1453 • WILSON FOX: 660-216-9227

TIMED ONLINE • NO-RESERVE FARM EQUIPMENT AUCTION

BIDDING CLOSURES: TUESDAY, DECEMBER 7TH STARTING AT 10:00 A.M.

PHYSICAL ADDRESS: 22474 CAMBRIDGE LN., LA PLATA, MO
EQUIPMENT INSPECTION: MONDAY, NOVEMBER 29TH 9:00 A.M. - 4:00 P.M.



HIGHLIGHTS INCLUDE: 2007 John Deere 7230 Premium MFWD tractor, sells complete w/JD H360 loader, 5,101 hours; John Deere 4630 2wd tractor; Kinze 3500 8/15 planter; John Deere 637 29" disc harrow, 20" blades; Krause 4126 26' field cultivator; Friesen 240 seed express; F-10 10' pull-type hyd. adjust box blade; 2014 F-350 4wd dually truck, 94,095 miles; 2001 Featherlite STL 20' livestock trailer; 2013 Polaris Ranger 800 EFI 4X4 UTV, 7,705 miles, 985 hours; Honda Rubicon ES 4x4 ATV, 3,162 miles, 453 hours; Can-Am 90 ATV; Can-Am 90 ATV; Scag Freedom Z zero turn lawn mower, 61" deck, 287 hours; Cub Cadet RZT S zero turn lawn mower, 54" deck; Husqvarna 900 DRT tiller, 17" dual rotating tines; 25 gallon utv sprayer with wand; Fore-most 450 portable chute; Poly feed bunks; Cattle panels; Corral panels; Continuous panels; Misc. fencing supplies; Balemaster 44" hay spears; Frontier 48" pallet forks; 3pt. 42" bale spears; 3pt. hyd. bale unroller; Powerstroke 6000-watt generator; Craftsman table saw; Torch kit; Ryobi 10" miter saw w/Rigid stand; Craftsman 25-gallon portable air compressor; Dewalt 3,400 psi power washer; Stihl 180c chainsaw; Stihl 250 chainsaw; Large assortment of shop tools

DANIEL P. & LAURA M. CLARKSON

AUCTION MANAGER: CODY HOLST (217) 242-8747
Sullivan Auctioneers, LLC • (844) 847-2161 • www.SullivanAuctioneers.com • IL Lic. #444000107

Smithfield WE'RE HIRING

General Production Workers – Milan, MO

Good food. Responsibly.®

Smithfieldfoods.com/milan -- Starting Pay -- \$18.00 / hr

New Hire Bonus -- \$3,000



FOR SALE: Ford 4000 SU diesel, power steering, live PTO, excellent paint and good sheet metal, new tires, \$5500. 660-341-8089

SCOTT HUSKEY'S HOME SERVICE R-10 Foundation Enclosure Systems for manufactured, modular, & site built homes. Saves on utilities and prevents freeze ups. General maintenance and repairs since 1972 573-696-3468 "GO DAWGS"

TOMATOES, Green beans, Radish, Squash, 10 for \$10, acorn, zucchini and other vegetables. Schmucker Produce 7 Miles North Kirksville to Ft. Madison Way East ½ mile.

FOR SALE: Gleaner R62 combine, CDF rotor, lateral tilt; MF 850 Diesel Hydro; NH TR96; IHC 1440 Diesel; MF 750 Diesel; 2 Kasten silage wagon. 217-658-4761

FOR SALE: 10 ½' IH wheeled disc, AC, 316 snap couple plow, Deere Model B grain drill, 14 drops air compressor. 660-695-3531

CATTLE FEED, Horse Feed 3-way, All-stock, corn, Hog feed, Rabbit feed, Chicken layer, Egg Maker, ADM cattle minerals and horse feeds, Cattle tubs, sheet and goat feed and mineral. D&P Horse feed and lots more at the Feed Store 25951 State Hwy 156 LaPlata MO 63549

FOR SALE: 3 Female Border Collie puppies, 3 months old, ready for new home, out of working parents. 660-327-4792

FOR SALE: Two bale carriers; Stihl chainsaw; several bale rings; two feed troughs, 100-150 square bales hay; 100 bales straw; two bale carrier; two row Ford Cultivator. 660-695-3531

FOR SALE: 5 3-5 Year old cow/calf pairs, one 5 year old Registered bred red Angus, one Registered Red Angus replacement heifer. 660-216-3301

24/7 MOBILE Notary now serving the Kirksville and surrounding areas. \$2 per stamp Call Autumn at 660-909-0900

FOR SALE: 225/65 R17 tires good tread, \$100 Call 660-342-5436

FOR SALE: Heider Auger Wagon 100 bushel, 540 PTO, Auger Swing either side, always shedded, real good, \$700. 217-257-1385

FOR SALE: Hand gun Hi-Point model JCP 40S&W, plus two clips, fired only ½ clip, \$450. 309-333-8015

FOR SALE: Skyjack SJ7127 All Terrain Scissor lift, \$7500; Skyjack 3226 and Skyjack 3224 Electric Scissor \$2500 choice. Call or text 660-216-0076

FOR SALE: 20' Triple axel flatbed trailer used to haul hay on; 7x14' Hay wagon with grain sides and hoist; Flare box wagon with hoist, steel sides & floor. 573-795-3387

FOR SALE: 18-4-38 Firestone tractor tires, duel tractor tires on rims, fit 1070 case, good tires \$250 OBO, good tires. Call anytime Brashear 660-323-5629

FOR SALE: Feed bunks, \$75; HD bale unroller 3 pt. \$1050; Gravity flow wagon, \$500; bale rings, \$200 Milan MO. 660-265-0471



Saturday, November 20th • 10am

Starting Outside on the Big Items.

John Deere 115 Blade; 8N Ford Tractor;
Polaris Ranger 650 side x side, fuel injected;
1991 Ford Ranger 4x4, runs good; 4x5 trailer;
Antique Furniture; Collectibles; Coins & Misc. Items.

SPARKS AUCTION

204 East Ried • Edina, Mo

573-406-8787



Go to sparksauctionservice.com
or like us on Facebook for pics

Small Animal Auction

To be held at the

Schachtele Auction Barn - Keytesville, MO

From Hwy 24 at Keytesville, take Hwy 5 approx 4 miles to site w/ brown barn/green roof on the West side of the road, or from Hwy 36 at Marceline exit take Hwy 5 South, approx. 16 miles to site. Follow Auction signs!

Saturday, November 27, 2021 • Starting @ 11:30 am

We will start with Misc. Items Outside & Follow with Small Animals approximately 12:00 Noon.

We are expecting 60 Head Exposed Hair Ewes 2-5yrs old,
12 Boer X Nannys, 35 Lambs 50-60 lb,
Expecting 400-500 Head Sheep & Goats by Sale Time

We are NOT accepting any Hogs! All Out of state Animals to be Sold MUST Have Proper Health Papers!

Lunch Served • Call for More Details!

Tony Schachtele 660-413-3250

We Appreciate All Consignments!

Terms Cash - good Check with Proper ID

We are **NOT** Responsible for Accidents to Man, Woman, Child, or Animal.
We are **NOT** Responsible for Lost, Stolen, or Damaged Articles or Property.



A FAMILY OWNED BUSINESS SINCE 1979

 MATT	 MICHAEL	 LUKE	 JOHN
 DAN	 JOE	 JIM	 BILL

Headquartered in Hamilton, Illinois, Sullivan Auctioneers, LLC is one of the largest Real Estate and Farm Machinery Auctioneers in the nation.

For more than 40 years we have been conducting professional auctions. We connect our sellers with thousands of interested buyers around the world.

Considering an Auction?

CALL OR EMAIL TODAY FOR A NO OBLIGATION CONSULTATION!
Toll Free (844) 847-2161 | Sold@SullivanAuctioneers.com
www.SullivanAuctioneers.com | Lic. #444000107

Public Auction

Property of MARKOS FOODS

19485 Dottie Lane • Princeton, MO 64673

Saturday, December 11, 2021 10:00 A.M.

REAL ESTATE

5200 sq ft on 12m/l acres, office space, 3 bay dock with freezer 20' x 30' and cooler 14' x 20'. For 50 years this has been meat processing and food distribution business. Could be used in many different ways with a lot of space. 10% down non refundable with closing due in 30 days.

OTHER ITEMS:

Office, Meat Processing, Supplies, and Miscellaneous

• For more information and showing call Jerry Allen: 660-953-0346 or Mike Ormsby: 660-748-5813

Full listing for this auction can be found on www.auctionzip.com ID#38454 or shomemoreauctions.com



ALLEN AUCTION SERVICE
Princeton, MO
Jerry Allen, Owner/Auctioneer • Cell (660) 953-0346
Ryder Allen, Auctioneer



Semi-Annual Consignment Sale

Saturday, December 4, 2021 at 10:00 a.m.

28251 US Highway 63 North, Macon, Missouri

Directions: 28251 US Highway 63 North, Macon, Missouri. From US Highway 36 travel approximately 2 miles North of Macon to Scotty's Auction Barn and Event Center on the West side of the road. Watch for signs the day of the sale.

Equipment for Sale: We are currently accepting consignments for our semi-annual consignment sale. The earlier you consign the more your items will be advertised. Please contact us at 573-356-4405 to consign your items!

Consigned Items: Case 2390, dual hydraulic 3 point, 20.8 x 38, 4,800 hours; 3 point Sidewinder PTO tiller 12'; 3 point PTO soil stabilizer; Allis Chalmers snap coupler disk; Fiat Allis FL9 street pads, hydraulics recently worked over, 2010 GMC Sierra 1500 4x4 added or replaced: Front Upper Control Arm Tie Rod Sway Bar Replacement - 12pc Set, evap purge solenoid, oil cooler adapter gasket, Standard Ignition 2 Terminal Vapor Canister Vent Solenoid, Programmed Tire Pressure Monitoring System Sensor (TPMS) replace two have two spares, 3 in Front and 2 in Rear Leveling lift kit, Tyger Auto TG-FF8G4158 for 2007-2013 GMC Sierra 1500 Paintable Smooth Matte Black Pocket Bolt-Riveted Style Fender Flare Set of 4 one has been put on truck but 3 brand new ones come with the truck and Rough Country Front & Rear Neoprene Seat Covers and the recall on airbag for this truck



Scotty Kuntz 573-356-4405
Michael Cunningham 660-651-2288 • Paxton Pittman 918-316-7
WWW.SCOTTSAUCTIONSERVICE.COM

CALL 573-356-4405 TO CONSIGN YOUR ITEMS TODAY!!



Lifetime Realty

Missouri Land for Sale

<p>SULLIVAN 23 acres M/L and house - hunting ground/pasture on Highway with 2 ponds and stock fencing. SOLD</p> <p>MACON 70 acres M/L - Hunting ground and pasture with 1.2 acre pond and frost free waterer. Fully fenced on hard surface road with utilities available.</p> <p>KNOX 32.2 acres M/L - 15 tillable, the rest timber on a state highway with utilities available and building site. SOLD</p> <p>MACON 80 acres M/L on State Hwy 156, La Plata. Hunting ground and pasture with multiple building sites on hard surface road. UNDER CONTRACT</p> <p>KNOX 10 acres M/L - property with city utilities and nice building site in city limits of Edina. New livestock fencing and frost free waterer.</p>	<p>ADAIR 155 acres M/L - hunting/investment property on State Hwy 6. Timber, utilities and multiple building sites. Fresh water stream, abundant with whitetail deer and turkey.</p> <p>ADAIR 80 acres M/L - Hunting ground and pasture with pond and access to utilities, just out of CRP, 60 acres tillable.</p> <p>ADAIR 80 acres M/L - with 1000 sq ft primitive single family home and outbuilding. SOLD</p> <p>COMMERCIAL PROPERTIES:</p> <p>ADAIR RV Park, Bar & Grill - 22 spot RV Park complete with fully furnished restaurant on the Chariton River close to public hunting ground.</p> <p>ADAIR 2.7 acres of Highway 63 frontage - brick ranch home and 2.7 acres on Highway 63 four lane in Millard. High traffic, close to the Kirksville Airport.</p>
--	---



Elizabeth Gregory, Realtor
660.621.2136
farmandhome.c21.com

1605 Baltimore Street, Suite A
Kirksville, MO 63501
660.665.5678

Golden Grain Bins-Winter Discount

Grain Bins	Floors w/12"Supp. & Flashing
18'x18' 4,195bu. \$ 7,029	18'....\$1,962 30'....\$ 5,476
27'x21' 11,265bu. \$14,108	21'....\$2,682 36'....\$ 7,801
42'x24' 32,245bu. \$32,886	27'....\$4,474 42'....\$10,623



GMLS Industries, Inc.
 PH: 660-699-2179 or 620-983-2136
 www.gmlsindustries.com

VIRTUAL LIVE ONLINE
LEWIS COUNTY, MISSOURI
LAND AUCTION
 TUESDAY, NOVEMBER 23, 2021 AT 3:00 P.M. CST

120.1 SURVEYED ACRES
 1 Tract

✓ **HIGHLY PRODUCTIVE TILLABLE CROPLAND!**
 ✓ **NEARLY 100% TILLABLE!** ✓ **PATTERN TILED!**
 ✓ **CLOSE PROXIMITY TO MAJOR GRAIN TERMINALS!**

Land is located approximately 2.5 miles north of US Hwy. 24 between Taylor, MO and West Quincy, MO in Section 19, T60N•R5W and Section 24, T60N•R6W, Union Township. From Taylor, MO take US Hwy. 24 east approximately 1 mile to County Road 351 (344th Ave.), then north approximately 2 miles, property on west side of road.

GLOBAL INVESTMENT PROPERTIES, LLC
 TITLE WORK BY: OAK HILLS TITLE CO.
 309 LEWIS STREET | CANTON, MO 63435 | (573) 288-4461

AUCTION MANAGERS:
 BILL FRETWELL (660) 341-7735 & JENNIFER WOOD (217) 257-8812

SULLIVAN AUCTIONEERS, LLC • TOLL FREE (844) 847-2161
 www.SullivanAuctioneers.com • IL Lic. #444000107

LOLLI BROS. LIVESTOCK MKT, INC.

Special All Class Cattle Sale
 Tuesday, Nov 23 *11am

Cows Following Feeder Calves

JESSE PRATT - 22 Bred Cows: 5 years -ss: some with calves. 20 yearling bulls & heifers, heifers possibly bred.
DONET MAIN - 20 Bred Angus Cows: 6-aged, some with calves.
RICK PRENGER - 15 Bred Blk/Bwf Cows: 6-aged, calving in March.
GERALD DICK - 9 Blk Cows: 3 years old: fall calves by side.
ELI YODER - 4 Cow/Calf pairs, 10 Bred Cows: 2-4 years old, B/Bwf.

This is only a partial listing, many more by sale date.

Special Calf/Yearling Sales: Nov 30, Dec 14 & 21
Special Cow, Cow/Calf, Breeding Bulls Sale: Thurs, Dec. 16
Alternative Livestock & Taxidermy Auction: Dec 8-10

Cafe Open Lollo Bros. Livestock Market, Inc. Cafe Open
 704 Main st * Macon, MO * 660-385-2516 * www.lollibros.com
 Frankie 660-651-4040 * Tim 660-651-3496
 Joseph 660-346-9711 * Dominic 660-651-4024 * Cattle accepted on Sundays

VIRTUAL LIVE ONLINE
MARION COUNTY, MISSOURI
LAND AUCTION
 FRIDAY, DECEMBER 3, 2021 AT 1:00 P.M. CST

307± ACRES
 (SUBJECT TO SURVEY)
 1 Tract

LAND REPRESENTS NEARLY 100% HIGHLY PRODUCTIVE TILLABLE CROPLAND!

Property is located approximately 6 miles north of Palmyra, MO and 6 miles south of Taylor, MO. Land is located in Sections 31 & 32 T59N•5W, Fabius Township, Marion County, MO.
 From Palmyra, take Hwy 61 north approximately 4 miles, then turn east onto CR 336, go 1.5 mi then turn north onto CR 344, farm ahead on east side of road. From Taylor, take Hwy 61 south approximately 4 miles then turn east on CR 338, go 1.5 mi then turn south onto CR 344, farm ahead on east side of road.

DONALD LOCKE TRUST
 CLOSING & TITLE WORK BY: ACCURATE LAND TITLE CO.
 218 BROADWAY | HANNIBAL, MO | (573) 221-1002

AUCTION MANAGERS:
 BILL FRETWELL (660) 341-7735 & JENNIFER WOOD (217) 257-8812

SULLIVAN AUCTIONEERS, LLC • TOLL FREE (844) 847-2161
 www.SullivanAuctioneers.com • IL Lic. #444000107

WAYNE COUNTY, IOWA & HARRISON, MERCER & SULLIVAN COUNTIES, MISSOURI

LIVE ONSITE & VIRTUAL LIVE ONLINE
MAJOR IOWA & MISSOURI
LAND AUCTION
 THURSDAY, DECEMBER 2, 2021 AT 10:00 A.M. CT

2,058.704 SURVEYED ACRES
 SELLING IN 20 TRACTS

AUCTION VENUE: RAGAN-HICKMAN POST #477
 (FORMERLY KNOWN AS THE MERCER COMMUNITY BUILDING)
 14443 STATE STREET, MERCER, MO 64661

The farm land of Ryder Farms, Inc. & the Estate of Alfred K. Ryder is located in south central IA and north central MO close to the MO/IA border line.

Tracts 1 - 6 are located just northeast and west of Lineville, IA, or 35 miles south of Chariton, IA, and contain a total of 671 acres (subject to survey). These tracts are further described as being located in Sections 14, 15, 19 and 22, T67N-R23W, Grand River Township, Wayne County, IA.

Tracts 7 - 14B are located just north and east of Mount Moriah, MO or 15 miles northeast of Bethany, MO, and contain a total of 904.123 surveyed acres. These tracts are further described as being located in Sections 3, 10, 11, 12, 13, 14 and 24, T64N-R26W, Trail Creek Township, Harrison County, MO.

Tracts 15 - 18 are located 5 miles northeast of Mercer, MO or 10 miles north of Princeton, MO, and contain a total of 383.270 surveyed acres. These tracts are further described as being located in Sections 3, 4, 33 & 34, T667N-R23W, Marion & Somerset Townships, Mercer County, MO.

Tract 19 is located just south of Newtown, MO or 20 miles northwest of Milan, MO, and contains 100.311 surveyed acres. Tract 19 is further described as being located in Section 11, T64N-R22W, Clay Township, Sullivan County, MO.

INSPECTION: SATURDAY, NOVEMBER 13TH, 10:00 A.M. - 12:00 NOON AT THE RAGAN-HICKMAN POST #477

RYDER FARMS, INC. & THE ESTATE OF ALFRED K. RYDER

REPRESENTING ATTORNEYS:
THOMAS J. MAGEE
 HEPLERBROOM LLC
 211 N Broadway Suite 2700
 St. Louis, MO 63102 | (314) 480-4212

EDWARD E. COX
 CRAVER, GROTHE & COX, LLP
 303 W State Street Centerville, IA 52544
 (641) 856-2244

AUCTION MANAGERS:
IOWA
 John Probasco (641) 856-7355
 & Jim Huff (319) 931-9292

MISSOURI
 Bill Fretwell (660) 341-7735
 & Jennifer Wood (217) 257-8812

DETAILS, MAPS, PHOTOS & BIDDING: SULLIVANAUCIONEERS.COM
 SULLIVAN AUCTIONEERS, LLC | (844) 847-2161 | LIC. #444000107

GREEN CITY LIVESTOCK MARKETING, LLC

19037 HWY 129 S. • GREEN CITY, MO 63545
 (660) 874 - 4146 • www.greencitylivestock.com

NEXT SALES:
TUESDAY, NOVEMBER 23rd
 Special Thanksgiving Yearling Sale
FRIDAY, NOVEMBER 26th
 Special Thanksgiving Calf Sale

1346 head were sold at the November 10th Special Calf & Yearling Sale. Compared to the sale last week, steers & heifers sold lower, but there weren't many cattle on offer to test. Slaughter cows were 1.00 to 3.00 lower.

STEERS			HEIFERS		
Larry Bennett	356 Ang	180.00	Dennis Snyder	615 BWF	155.00
Chris Barto	407 Ang	177.50	McDonald & Sanders	618 Red Ang	150.00
Jim Jackson	413 Ang	168.00	David Tribble	646 BWF	162.25
Jeff Eddy	418 BBWF	175.00	Rufener Farms	664 Ang	166.25
Donna Hulett	440 Ang	174.00	Kary Hoerrmann	672 Ang	156.50
Tom Daugherty	527 Ang	155.00	Hepler Farms	723 BWF	150.00
Harold & Bill Scott	534 Ang	174.00	Brad Bohle	756 Ang	144.50
Benji & Carroll Walker	545 Ang	178.00	HEIFERS		
Norman Duncan	548 Ang	154.00	Guffey Farms	506 Mix	150.50
Phillip & Rhonda Vanbuskirk	550 BBWF	156.50	Craig & Larry Peacock	506 Mix	150.25
Peavler & Carr	552 Ang	170.00	Peavler & Carr	516 Ang	151.25
Shelby County	552 BBWF	163.50	Janis Collins	519 Mix	145.50
Janis Collins	576 Mix	150.00	Doug Snyder	520 Ang	142.50
Harold Moore	578 Ang	170.00	Kary Hoerrmann	525 Ang	150.00
Russell Snyder	579 BBWF	164.00	Phillip & Rhonda Vanbuskirk	528 BBWF	150.00
Guffey Farms	582 Mix	168.25	Gail Claybrook	546 BBWF	150.00
Oscar Mensa	600 Ang	169.75	Harold Moore	550 BBWF	149.00
Craig & Larry Peacock	600 Mix	150.00	Rufener Farms	597 Ang	150.00
Snyder Farms	602 Ang	152.50	Guffey Farms	600 BBWF	149.00
Gail Claybrook	608 Ang	160.00	Oscar Mensa	635 Ang	153.00
Slaughter Farms	608 Ang	145.00	David Tribble	746 BWF	143.50

WEBSITE: www.greencitylivestock.com • BARN: 660-874-4146

OWNERS
 Darren Hodgen: 573-999-3252
 Cody McClamroch: 660-349-6535
 Operations Manager: Steve Evans, 660-375-2545

FIELD REPS
 Chuck Daniels: 660-626-7621
 Steve Frazier: 660-626-7066 • Jeff Gray: 660-956-8251
 Justin Morgan: 660-216-9719

*We are your top market for all classes of cattle *
 We value and appreciate your business!

FOR SALE: 46 10' corral panels, 8 bar galvanized HD \$120 each; 10' Bow gates, \$250. Milan 660-292-0471

ATTENTION TRAPPERS and Hunters I am buying furs, coon, coyote, muskrat, bobcat, squirrel, and more call Andrew 660-486-3207

FOR SALE: John Deere 285 Disc mower, 9', QH ready, low acres, \$6,250. Call 573-881-3557

TAKING ORDERS dressed beef ready February 2022 grass and grain fed all natural diet. 660-665-3919

FOR SALE: Angus and Balancer bulls, Rugged, ready for work. Calving ease and performance. Neese Angus Rutledge, MO 641-344-4565

FOR SALE: Factory made For-Most Doctor Chute for sheep, goats and small animals, just like new. Also want to buy good pickup truck. 660-676-9199

FOR SALE: GP 3000 30' Turbo-till 2, wet kit, rolling hill, rolling basket, \$25,000; McFarland RD 4030 30', 7" spacing, rolling baskets, \$15,000. 217-658-4761

FOR SALE: John Deere 5075 E, MFWD, CAH, with JD H240 SL Loader, 940 hrs, new engine, same as new, \$42,500. Call 573-881-3557

FOR SALE: 4 16" White spoke wheels, \$75 for all 319-470-0277 Argule IA

FOR SALE: NH 973 20' flex; NH 973 25' flex; NH 974 630 corn head; MF 1163 corn head; MF 1144 corn head; Gleaner 630 LM or R; Gleaner 830 corn head LM or R. 217-658-4761

FOR SALE: 18 Black Black/White face heifers, 2nd & 3rd period pregnancy; 3 Red Angus heifers, 2nd & 3rd period pregnancy, bred to Angus Black Bull; 8 Black Angus heifers and calves, all nice & gentle. 660-376-9199

NEW/USED Parts "Auto, Pickup, Semi's Farm/Construction Equipment, "Motors/Tranny's" Body parts matching your color "Warrantied/Delivered" 800-807-9612

FOR SALE: International 560 manure spreader 540 PTO, 225 bushel, single, axle, good floor, metal sides, been shedded, solid spreader, \$3200. 217-257-1385

FOR SALE: 2018 4710 Massey, open station, 270 hours, canopy, FWD loader, bale prong, deluxe model. Milan, MO 660-292-0471

FOR SALE: Q Catch Portable chute alley and tub, very good condition, \$13,500 Milan MO 660-292-0471

WANTED TO BUY: Harley Davidson's, any year, any condition, cash money. Days 660-263-1356 or 660-537-0068

WANTED TO BUY: Farm Machinery and Estates. Call James L. Johnston. 573-473-4904

Wevers Outside Wood Furnaces a dealer for Heatmor Stainless Steel Outside Furnaces, have an assortment of parts, line, and etc. Taking orders for new outside wood furnaces. Dealer for Heatmor Call 660-423-5242, cell 660-216-9885. Open 6pm-9pm Monday-Friday, Saturday anytime, call first.

CLIP & SAVE • AD ONLY RUNS ONE TIME

AUCTION

VANDERLINDEN FAMILY

SATURDAY, NOVEMBER 27, 2021 • 10 AM

Location: Auction Building

1916 S. 18th St (Hwy 5 South) Centerville, Ia

Make your plans to attend this Nice Clean Auction.

Tractor Collectors you don't want to miss this one! 1956 Minneapolis Moline Model 445 Tractor, WF, Gas, Good Condition; Dewalt Power Tools and Other Power Tools, Werner Alum Ext. Ladder, Hand Tools, Garden Tools, Air Compressor; JD SX 95 Riding Mower as-is; Wheel Barrow; BBQ Grill; and other garage items.

ANTIQUES & COLLECTIBLES: Series of 8 State Fair Building Prints; Signed Seymour School Print; Other nice Prints/Pictures; 15 Centerville Metal Street Signs; 7 Metal and other Farm Related Signs, some local names (Fowler Elev., Leonard Jondle); 2 JD Planter Boxes; Planter Plates; GE Refrigerator; Old Saddle; Double Tree's etc; 2 Wooden Wagon Wheels; Barn Pulley's; Child's Chair; Nice Oak Commode; Glider Rocker; Willow Tree Collectables; 2 Cl Floor Registers; Sad irons; Dolls; Blonde Lane Upright Cedar Chest; Metal Bed Frame; and other collectables.

HOUSEHOLD ETC: King Size Bed; Other Bed Frames; Recliners; Futon; Dining Room Table/leaves as-is; Nice Hutch; Nice Dressers/Chests; Office Chairs; Lawn Chairs; Desks; and more furniture in good condition; Christmas Items including Set of Dishes; Large set of White Ironstone Dishes; Linens; Bedding; Books; Games; Necchi Sewing Machine; Home Décor; Kitchen Items, & More.

PICTURES ON Website: demryauction.com OR on FB: Demry Auction LLC

Demry Auction, LLC Centerville, Iowa

Tom Demry 641-895-2508

Janet Demry 641-895-4310 641-856-6408

Kristy Demry 641-895-2509 * Junior Lawson 641-895-0037



Macon Real Estate and Personal Property Auction

Thursday, December 2 at 4:00 p.m.

Marvin and Mary Stuck Living Trust

28284 Lariat Avenue, Macon, Missouri

Directions: 28284 Lariat Avenue, Macon, Missouri. From the US Highway 63, US Highway 36 intersection at Macon, proceed East approximately 2.6 miles, turn North on Lariat Avenue for approximately 1.5 miles. The property will be on your right. Look for signs the day of the sale.

REAL ESTATE: Tract 1: Includes a brick, ranch style, home and is ideally located close to town on 11.7 acres more or less in a rural setting. The main level features an open kitchen, dining and living room, 3 bedrooms, 1 3/4 bathrooms, an enclosed back porch, and a utility/laundry room. The living room has a wood fireplace with an insert. The kitchen includes a built in dishwasher, oven, in counter electric range top and an island with storage. There is a full, partially finished basement with a small kitchen, bedroom, bathroom, large game/family room, and a walkout. The home has 200 amp service entrance, a 50 gallon electric hot water heater and a 2 car attached garage. There is also a nice pole barn on the property.

Tract 2: Includes a pond and 10.2 acres more or less of gently rolling hills with timber and hay ground bordering Lariat Avenue.

Tract 3: 10.2 acres more or less of gently rolling hills with timber and hay ground bordering Lariat Avenue.

Tract 4: 10.2 acres more or less of gently rolling hills with timber and hay ground bordering Lariat Avenue.

Tract 5: 14.82 acres more or less of gently rolling hills with timber and hay ground bordering both Lariat Avenue and Melody Avenue.

The real estate will sell promptly at 5:00 p.m.. The home and 11.7 acres more or less will sell first followed by choice of the remaining tracts by the winning bidder. If you would like to schedule your personal showing, please call Scotty at 573-356-4405.

*See Terms and Conditions for Purchase of Real Estate below.

DOWN PAYMENT: 10% of the contract purchase price will be due upon acceptance of the Sales Contract. Personal or Cashier's Checks will be accepted. This is "AS IS, WHERE IS" and is non-refundable. **CLOSING:** Closing shall be within 30 days of the auction date.

Household Items: Waterfall double pedestal desk; cedar chest (needs work); Imperial heavy duty upright deep freeze.

Antiques and Collectibles: 3 drawer antique chest; 4 milk cans; #10 crock; Busch pool table light; vintage CB equipment; erector set; antique railroad lantern; butter churn; antique wood stove; yard dart game; blue jars; wooden wall clock; large glass curved curio cabinet; tri front curio cabinet; 2 tall stools and wood table; antique oak square table.

Outdoor and Tools: Troy-Bilt wood chipper; Stihl 211C chainsaw; Poulan Pro 42cc chainsaw; older horizontal compressor; Stihl 028WB chainsaw; Troy-Bilt rear tine tiller; John Deere 425 all wheel steer, 1,400 hours; John Deere MC 519 bagger; 3 hp trash pump; miscellaneous lumber; aluminum ladder; window step ladder; Stihl F545 curved shaft weed eater; Brinley lawn seep; garden hose reel; snow blade for John Deere lawn mower; Mall chain-saw; wheelbarrow; miscellaneous hand held tools; long handle tools; small battery charger; car ramps; Craftsman 3 drawer bottom box; 4 drawer Craftsman top box; Butcher Boy meat band saw.

There will be many more items at this auction too numerous to mention.



Scotty Kuntz 573-356-4405

Michael Cunningham 660-651-2288 • Paxton Pittman 918-316-7500

WWW.SCOTTSAUCTIONSERVICE.COM

FOR SALE
All Sired Angus Bulls,
14 & 18 Months Old.
Harold Trump
660-341-5730

Joatmon Enterprises
Harold Quint

Garage Doors, operators,
springs, parts

Kirksville MO • 660-341-4465



NEMO
Trader

**COME SEE US AT OUR
NEW LOCATION!**

701 East LaHarpe St, Suite C,
Kirksville, MO 63501

P.O. BOX 809

660-665-8500

or 660-988-6830

sales@nemotrader.net

**WE ARE
OPEN!**

ABSOLUTE SHELBY COUNTY Real Estate Auction

MONDAY, NOVEMBER 29, 2021 AT 10 AM

**AUCTION LOCATION: American Legion Hall
520 East Maple Street in Shelbina, MO 63468**

PROPERTY LOCATION: From Shelbyville, MO take Highway 168 east 7 miles to Highway W, turn left, go north 6 miles to Tract 1 and 2 on the right. To get to Tract 3, continue on Hwy. W north 2.5 miles to County Road 179, turn left, go about 100 yards to County Road 158, turn and go west 3/4 mile to farm on the left, at the end of county road maintenance

**SELLING 261 +/- ACRES IN THREE TRACTS
LOCATED IN TOWNSHIP 59N, RANGE 9W,
SECTIONS 17 AND 28 IN SHELBY COUNTY, MO**

TRACT 1: Consists of 60 +/- Acres that has Highway W road frontage all along the west side of the tract. The tract is all wooded except for a small open area in the northeast corner of the tract. Rural water is approximately 1/2 mile south of the tract on Highway W.

TRACT 2: Consists of 140 +/- Acres with approximately 49 acres open and tillable according to the Shelby County FSA Office, the tillable acreage is currently in soybeans. The balance of the tract is wooded and there is a Tiger Fork Creek running along the east side of the tract. This tract will be accessed off Highway W in the northwest corner of the tract. Rural water comes to within 1/2 mile of this tract on the south along Highway W.

TRACT 3: Consists of 61 +/- Acres with 27.02 acres open and tillable according to the Shelby County FSA Office, the balance of the tract is wooded and there is a creek running across the south end of the tract. This tract will be accessed off County Road 158 that runs along the north side of the tract. Rural water is available at the end of where County Road 158 is maintained.

SELLERS: MARY DOUGLAS & WISEMAN TRUST

Visit wheelerauctions.com for more information!

Wheeler
AUCTIONS & REAL ESTATE
23101 HWY. 24, PARIS, MO 65275 | 660-327-5890
WWW.WHEELERAUCTIONS.COM

FOR MORE INFORMATION CALL
CHARLIE NORDWALD | 636-795-4552
WHEELER AUCTIONS | 660-327-5890
WWW.WHEELERAUCTIONS.COM

THE NEMO TRADER CLASSIFIED COUPON

Clip This Coupon Out of This Week's NEMO Trader and run
2 CLASSIFIED ADS FOR \$5.00

Picture Ads Not Included with Coupon! Call For Pricing!

(Each Ad Must Be 20 Words or Less.)

~20¢ per word over 20 words~

Cash NOT ACCEPTED

Check or Money Order Only

Ad No. 1: (20 words or less)

Ad No. 2: (20 words or less)

YOUR CLASSIFIED AD WILL BE READ IN OVER 19 COUNTIES, IN 3 STATES!

BY COUNTLESS BUYERS!!!

**TO RECEIVE THIS RATE: COUPON MUST BE MAILED IN
ALONG WITH YOUR PAYMENT!**

THE NEMO TRADER, P.O. BOX 809

KIRKSVILLE, MO. 63501 ~ 660-665-8500



McAfee Auction Service, LLC

375 S Johnson • Kahoka, MO
660-727-3796
www.mcafeeauctionservice.com

**LIVE ONSITE ONLY
2 PARTY AUCTION**

SATURDAY NOV 27TH - 10 AM

Sale conducted at the Clark Co fairgrounds
East Main St Kahoka, MO.



ANTIQUES & COLLECTIBLES

Oak drop front secretary, oak knock down wardrobe, 5 drawer chest of drawers, oak washstand with towel bar, camel back trunk, 4 drawer stand, Conoco gas pump globe (only one glass), red jacket well pump, cream can, (2) bracket wall oil lamp - one with reflector, Childs iron with trivet, Western #5 crock with stencil, stoneware bowls and jug, few pcs collectible pottery, hand held teachers bell, triangle dinner bell, nice selection handmade doilies and other fancy work, pink depression, EAPG and other collectible glassware & china.

SALAD MASTER SET - HOUSEHOLD

Like new 8pc Salad Master pan set to include large stock pot and other assorted size pans & flat griddle. Also selling a Salad Master electric skillet and Salad Master food cutters, NuWave infrared oven, Presto 16 qt pressure canner, Sharp Microwave and various other small kitchen appliances and kitchen related items, seasonal decor, various common household and other useful items.

FURNITURE

Nice queen size bed with iron headboard, nice queen size bed with bookcase headboard, night stand, floor model jewelry chest, ceramic top coffee table with matching side table, large 3pc entertainment center, Frigidaire refrigerator, Berlin leather power recliner with massage, oversize sofa, 7pc rust color sectional, sofa table, nice Howard Miller Grandfather clock, large dining room table with 6 chairs and 3 leaves, large china hutch, large buffet, dining room table with 8 chairs & 2 leaves, student desk with hutch, roll top desk, (2) marble top side stands, 3 drawer dresser, coffee table-round, bakers rack with wine rack, 5 drawer and 2 drawer file cabinets, air hockey table, ping pong table and other useful items.

LAWN RELATED & MISC.

5pc metal patio table, 4 pc patio table, free standing patio umbrella, 4 pc patio set, gazing ball, Stihl 55MM mini cultivator, Craftsman push mower, portable air tank, few garden tools, pitching horse shoe set, saw horses, Warner 17' aluminum extension ladder, Genesis GX bike and other bike, turkey fryer and other items.



Consigned by the Estate
of William Wayne Hodges
2009 Cadillac DTS,
leather interior, 4 door,
138,000 miles

**JERRY J & ESTHER A PLOWMAN TRUST
AND JUDITH & THE LATE JERRY GRIFFITT , SELLERS**

**ADDITIONAL DETAILS, PHOTOS &
AUCTIONS ON OUR WEBSITE
WWW.MCAFEEAUCTIONSERVICE.COM**



McAfee Auction Service, LLC

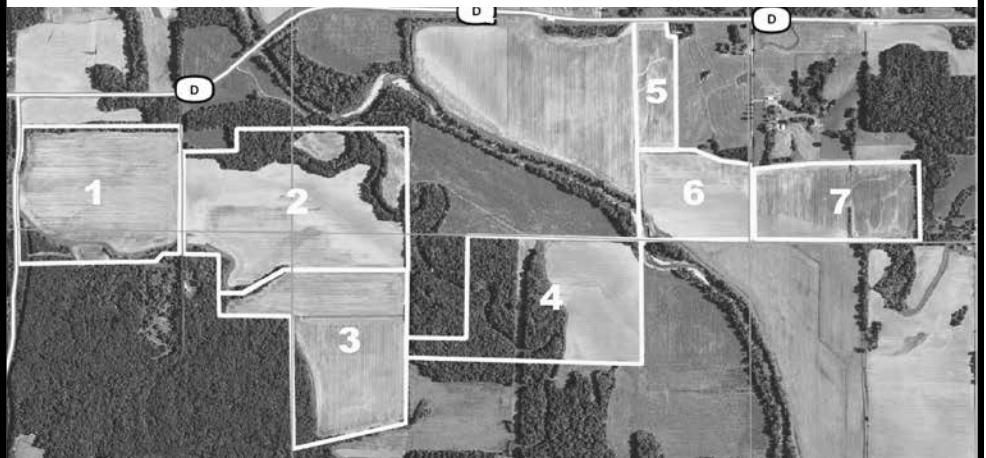
375 S Johnson • Kahoka, MO
660-727-3796
www.mcafeeauctionservice.com

Clark County, MO
LAND AUCTION

Sale will be conducted at the Care Building located at
451 N. Vine Street Kahoka, MO

TUESDAY, NOVEMBER 23RD - 6 PM

414 ACRES/ 7 TRACTS



The Hodges land offers productive tillable cropland, woods,
hunting and building sites. Lying in Sections 13,14,15,22 & 23
TWP 64N, R8W, Clark County MO.

**WILLIAM WAYNE HODGES, ESTATE
BRETT B. BOZARTH, REP. ATTNY.
OAK HILL TITLE COMPANY, CLOSING AGENT**



McAfee Auction Service, LLC

375 S Johnson • Kahoka, MO
660-727-3796

www.mcafeeauctionservice.com

**2 DAY TIMED ONLINE ONLY
FARMER RETIREMENT AUCTION**

**LOTS START ENDING AT 10 AM ON
TUES DEC 14TH & WED DEC 15TH**

34650 HWY. M, WILLIAMSTOWN, MO 63473



**DETAILS
ONLINE!**



**KEITH AND SUE LOGSDON, SELLERS
www.mcafeeauctionservice.com**

WE SELL LAND

Adair Co, MO - 29.3+/- acres
 Adair Co, MO - 74+/- acres
 Adair Co, MO - 77+/- acres
 Adair Co, MO - 80+/- acres
 Adair Co, MO - 93.4+/- acres
 Adair Co, MO - 100+/- acres
 Adair Co, MO - 103+/- acres
 Adair Co, MO - 106+/- acres
 Adair Co, MO - 109+/- acres
 Adair Co, MO - 110+/- acres
 Adair Co, MO - 120+/- acres
 Adair Co, MO - 132.4+/- acres
 Adair Co, MO - 155+/- acres
 Adair Co, MO - 220+/- acres
 Adair Co, MO - 232+/- acres
 Adair Co, MO - 272+/- acres
 Adair Co, MO - 280+/- acres
 Adair Co, MO - 280+/- acres
 Adair Co, MO - 437+/- acres
 Adair/Putnam Co, MO - 610+/- acres
 Adair/Putnam Co, MO - 720+/- acres
 Clark Co, MO - 20+/- acres
 Clark Co, MO - 31+/- acres
 Clark Co, MO - 32+/- acres
 Clark Co, MO - 40+/- acres
 Clark Co, MO - 40+/- acres
 Clark Co, MO - 15+/- acres
 Clark Co, MO - 34+/- acres
 Clark Co, MO - 40+/- acres
 Clark Co, MO - 40+/- acres
 Clark Co, MO - 47+/- acres
 Clark Co, MO - 53+/- acres
 Clark Co, MO - 60+/- acres
 Clark Co, MO - 60+/- acres
 Clark Co, MO - 74.9+/- acres
 Clark Co, MO - 78+/- acres
 Clark Co, MO - 93.6+/- acres
 Clark Co, MO - 95.12+/- acres
 Clark Co, MO - 126+/- acres
 Clark Co, MO - 134+/- acres
 Clark Co, MO - 143+/- acres
 Clark Co, MO - 164+/- acres
 Clark Co, MO - 200+/- acres
 Clark Co, MO - 202.1+/- acres
 Clark Co, MO - 462.7+/- acres
 Knox Co, MO - 20+/- acres
 Knox Co, MO - 310+/- acres
 Lewis Co, MO - 29.4+/- acres
 Lewis Co, MO - 37+/- acres
 Lewis Co, MO - 54+/- acres
 Lewis Co, MO - 56+/- acres
 Lewis Co, MO - 70.7+/- acres
 Lewis Co, MO - 79+/- acres
 Lewis Co, MO - 79.07+/- acres
 Lewis Co, MO - 80+/- acres
 Lewis Co, MO - 80+/- acres
 Lewis Co, MO - 81+/- acres
 Lewis Co, MO - 93+/- acres
 Lewis Co, MO - 96.7+/- acres
 Lewis Co, MO - 184.82+/- acres
 Lewis Co, MO - 202+/- acres

Lewis Co, MO - 240+/- acres
 Lewis Co, MO - 260+/- acres
 Linn Co, MO - 72.2+/- acres
 Linn Co, MO - 78+/- acres
 Linn Co, MO - 92+/- acres
 Linn Co, MO - 105+/- acres
 Linn Co, MO - 262+/- acres
 Mercer Co, MO - 20+/- acres
 Mercer Co, MO - 30+/- acres
 Mercer Co, MO - 35+/- acres
 Mercer Co, MO - 40+/- acres
 Mercer Co, MO - 46+/- acres
 Mercer Co, MO - 46+/- acres
 Mercer Co, MO - 75+/- acres
 Mercer Co, MO - 117+/- acres
 Mercer Co, MO - 120+/- acres
 Mercer Co, MO - 151+/- acres
 Mercer Co, MO - 158+/- acres
 Mercer Co, MO - 160+/- acres
 Mercer Co, MO - 205+/- acres
 Mercer Co, MO - 294+/- acres
 Mercer Co, MO - 294+/- acres
 Mercer Co, MO - 333+/- acres
 Mercer Co, MO - 350+/- acres
 Mercer Co, MO - 609+/- acres
 Mercer Co, MO - 823+/- acres
 Putnam Co, MO - 15+/- acres
 Putnam Co, MO - 34+/- acres
 Putnam Co, MO - 40+/- acres
 Putnam Co, MO - 40+/- acres
 Putnam Co, MO - 47+/- acres
 Putnam Co, MO - 53+/- acres
 Putnam Co, MO - 60+/- acres
 Putnam Co, MO - 60+/- acres
 Putnam Co, MO - 74.9+/- acres
 Putnam Co, MO - 76+/- acres
 Putnam Co, MO - 80+/- acres
 Putnam Co, MO - 82+/- acres
 Putnam Co, MO - 86+/- acres
 Putnam Co, MO - 97+/- acres
 Putnam Co, MO - 99+/- acres
 Putnam Co, MO - 100+/- acres
 Putnam Co, MO - 105+/- acres
 Putnam Co, MO - 108+/- acres
 Putnam Co, MO - 108+/- acres
 Putnam Co, MO - 120+/- acres
 Putnam Co, MO - 120+/- acres
 Putnam Co, MO - 120+/- acres
 Putnam Co, MO - 130+/- acres
 Putnam Co, MO - 140+/- acres
 Putnam Co, MO - 140+/- acres
 Putnam Co, MO - 160+/- acres
 Putnam Co, MO - 160+/- acres
 Putnam Co, MO - 169+/- acres
 Putnam Co, MO - 170+/- acres
 Putnam Co, MO - 177+/- acres
 Putnam Co, MO - 185+/- acres
 Putnam Co, MO - 202+/- acres
 Putnam Co, MO - 218+/- acres
 Putnam Co, MO - 235+/- acres
 Putnam Co, MO - 341+/- acres
 Putnam Co, MO - 341.07+/- acres

Putnam Co, MO - 360+/- acres
 Putnam Co, MO - 440+/- acres
 Putnam Co, MO - 515+/- acres
 Putnam Co, MO - 614+/- acres
 Putnam Co, MO - 1034+/- acres
 Putnam/Sullivan Co, MO - 139+/- acres
 Schuyler Co, MO - 16+/- acres
 Schuyler Co, MO - 19.69+/- acres
 Schuyler Co, MO - 20+/- acres
 Schuyler Co, MO - 38.2+/- acres
 Schuyler Co, MO - 40+/- acres
 Schuyler Co, MO - 50+/- acres
 Schuyler Co, MO - 80+/- acres
 Schuyler Co, MO - 94+/- acres
 Schuyler Co, MO - 101+/- acres
 Schuyler Co, MO - 119+/- acres
 Schuyler Co, MO - 141+/- acres
 Schuyler Co, MO - 160+/- acres
 Schuyler Co, MO - 198+/- acres
 Schuyler Co, MO - 300+/- acres
 Schuyler Co, MO - 700+/- acres
 Scotland Co, MO - 37+/- acres
 Scotland Co, MO - 37+/- acres
 Scotland Co, MO - 78+/- acres
 Scotland Co, MO - 82+/- acres
 Scotland Co, MO - 116+/- acres
 Scotland Co, MO - 127+/- acres
 Scotland Co, MO - 137+/- acres
 Scotland Co, MO - 141+/- acres
 Scotland Co, MO - 141+/- acres
 Scotland Co, MO - 141+/- acres
 Scotland Co, MO - 141+/- acres
 Sullivan Co, MO - 148+/- acres
 Sullivan Co, MO - 159+/- acres
 Sullivan Co, MO - 40+/- acres
 Sullivan Co, MO - 60.8+/- acres
 Sullivan Co, MO - 64.2+/- acres
 Sullivan Co, MO - 73+/- acres
 Sullivan Co, MO - 82.8+/- acres
 Sullivan Co, MO - 100+/- acres
 Sullivan Co, MO - 112.05+/- acres
 Sullivan Co, MO - 112.05+/- acres
 Sullivan Co, MO - 120+/- acres
 Sullivan Co, MO - 120+/- acres
 Sullivan Co, MO - 132+/- acres
 Sullivan Co, MO - 132.7+/- acres
 Sullivan Co, MO - 148+/- acres
 Sullivan Co, MO - 155+/- acres
 Sullivan Co, MO - 160+/- acres
 Sullivan Co, MO - 161+/- acres
 Sullivan Co, MO - 163+/- acres
 Sullivan Co, MO - 193+/- acres
 Sullivan Co, MO - 220+/- acres
 Sullivan Co, MO - 248+/- acres
 Sullivan Co, MO - 277+/- acres
 Sullivan Co, MO - 280+/- acres
 Sullivan Co, MO - 290+/- acres
 Sullivan Co, MO - 300+/- acres
 Sullivan Co, MO - 303+/- acres
 Sullivan Co, MO - 389+/- acres

SOLD

JEFF PROPST
 Northeast and North Central Missouri Land Specialist
 (636) 209-0362
 JEFF.PROPST@WHITETAILPROPERTIES.COM

WHITETAIL PROPERTIES REAL ESTATE
 HUNTING | RANCH | FARM | TIMBER
WHITETAILPROPERTIES.COM

Whitetail Properties Real Estate, LLC DBA Whitetail Properties. In the States of Nebraska & North Dakota DBA Whitetail Trophy Properties Real Estate LLC. Licensed in IL, MO, IA, KS, KY, NE & OK - Dan Perez, Broker. Licensed in AR, CO, GA, MN, ND, SD, TN & WI - Jeff Evans, Broker. Licensed in FL, OH & PA - Jefferson Kirk Gilbert, Broker. Licensed in TX & NM - Joey Bellington, Broker. Licensed in IN - Bill Minor, Broker. Licensed in AL, GA, LA, & MS - Sybil Stewart, Broker. Licensed in TN - Tim Burnette, Broker. Licensed in AR - Bobby Powers, Broker. Licensed in AR - Anthony Chrisco, Broker. Licensed in NC, SC, VA - Chip Camp, Broker. Licensed in NC - Rich Baugh, Broker. Licensed in MI - Edmund Joel Nogaski, Broker. Licensed in MD, WV - Debbie S. Laux, Broker. Licensed in MT, ID, UT, WY, OR - Aaron Milliken, Broker. Licensed in NY - John Myers, Real Estate Broker.

2012-2020 BEST BROKERAGES