

FREE!

NEW EDITION EVERY FRIDAY!
VOL. 29 • NO. 43 • NOVEMBER 26, 2021

NEMO *Trader*

THE NEMO TRADER

PO BOX 809 • KIRKSVILLE, MO 63501

PHONE 660-665-8500

Web Site: nemotrader.net

Email: sales@nemotrader.net

A WEEKLY ADVERTISER SERVING ALL OF NORTHEAST MISSOURI AND THE SURROUNDING AREA



701 E. Laharpe Street • Kirksville, Mo 63501
sales@nemotrader.net • 660-665-8500

The **NEMO** *Trader* IS NOW A
PROUD MEMBER
OF THE
PHILLIPS MEDIA GROUP
NEWSPAPER FAMILY

Watch for exciting changes coming soon!

FOR SALE: International 560 manure spreader 540 PTO, 225 bushel, single axle, good floor, metal sides, been shedded, solid spreader, \$3,200. 217-257-1385

FOR SALE: John Deere 3020-D Tractor, very straight, 90% tires, WF, \$9,750. Call 573-881-3557

FOR SALE: Factory made For-Most Doctor Chute for sheep, goats and small animals, just like new. Also want to buy good pickup truck. 660-676-9199

FOR SALE: 8' x 7' Garage door, complete with all parts, \$500; 36" x 80" new entry door, white, \$200. 660-216-8865 jimjan@gmx.com

FOR SALE: Angus and Balancer bulls, Rugged, ready for work. Calving ease and performance. Neese Angus Rutledge, MO 641-344-4565

FOR SALE: 1994 M Farmall wide-front power steering, runs and starts good, \$2000 OBO. 660-665-3919

ATTENTION TRAPPERS and Hunters I am buying furs, coon, coyote, muskrat, bobcat, squirrel, and more call Andrew 660-486-3207

FOR SALE: Feed bunks, \$75; HD bale unroller 3 pt. \$1050; Gravity flow wagon, \$500; bale rings, \$200 Milan MO. 660-265-0471

FOR SALE: 18-4-38 Firestone tractor, duel tires & rims, fits case 1070, good tires \$250 OBO. Call anytime Brashear 660-323-5629

NEW/USED Parts "Auto, Pickup, Semi's Farm/Construction Equipment, "Motors/Tranny's" Body parts matching your color "Warrantied/Delivered" 800-807-9612

FOR SALE: Firewood \$65 Truck Load. Call 716-294-1248 or leave message

FOR SALE: International 826, German diesel flat tops, WF, 3 pt., dual hyd., good TA, 75-80% Goodyear 18.4x34, 5,280 hours, runs good, \$7,500. 217-257-1385

FOR SALE: John Deere 5075 E, MFWD, CAH, with JD H240 SL Loader, 940 hrs, new engine, same as new, \$42,500. Call 573-881-3557

WANTED TO BUY: Harley Davidson's, any year, any condition, cash money. Days 660-263-1356 or 660-537-0068

FOR SALE: New 3 pt. tillers, heavy duty, gear driven, 7' to 10' starting at \$3050. 660-874-4455

HANDYMAN: Install interior and exterior doors and windows, siding, decks, showers and toilets, flooring and drywall, roofs and dirt work. 660-956-5135.

FOR SALE: International 674 diesel with Quick Tach hydraulic bucket loader, power steering, good tires & paint, \$9500. 660-341-8089

ATTENTION HUNTERS: Whitetail Institute Products, CenterPoint Archery, Rage, Muzzy, Wac'em, G5 Broad heads, Carbon Express arrows, Nocturnal Lighted Nocks, Block Targets, Scent Thief Scent killer Products, Adam Hayes Moon Guides, Tinks Lures, IQ Bow Sights, Ghost blinds, Leopold & Vortex Optics, Chippewa Wedge-Loc Tree Stands, and more at Whitetail Seed and Supply 14136 State Hwy 3 LaPlata MO 63549

FOR SALE: Two Angus Yearling bulls sired by TC Total. Dams by Consensus. Thick, wide based, ultra gentle, semen tested. VanWye Lancaster 309-212-4838

FOR SALE: 3 Antique 9' Brunswick tables, 2 Snooker tables, 1 Pool table, 1 Snooker and 1 Pool table has been restored. 573-248-0942

FOR SALE: Storage shed 8'x12', gable shingle roof, window, double doors front, solid floor, on skids, could use some paint, \$1,400 217-257-1385

FOR SALE: John Deere 4230 Tractor, CAH, cold air, power shift, 6,800 hrs, 18.4x38 95%, \$19,500. Call 573-881-3557

FOR SALE: 2018 4710 Massey, open station, 270 hours, canopy, FWD loader, bale prong, deluxe model. Milan, MO 660-292-0471

FOR SALE: 4 Tires P275/55 R20 3rd of Rubber left. La Plata Area 785-822-8482

"HIGHLY VISIABLE STORE FRONT" located in Beautiful Historic Downtown LaPlata Missouri!! "City of Silver"!! Vast indoor operating space available for Business, warehouse, Etc.!! Owner pays partial utilities!! Must See!! 660-341-9081

DRY Fertilizer straight product or blends trailer load lots, we are the farmer's friend saving you money. 800-807-9612

FOR SALE: 18 Black Black/White face heifers, 2nd & 3rd period pregnancy; 3 Red Angus heifers, 2nd & 3rd period pregnancy, bred to Angus Black Bull; 8 Black Angus heifers and calves, all nice & gentle. 660-376-9199

FOR SALE: Frigidaire Chest Freezer 20 cubic feet, \$225; Kerosene Heater 23,500 BTU, \$40. 660-342-5757

FOR SALE: Pride power chair TSS300, like new, new batteries, \$600. 660-216-8865 jimjan@gmx.com

FOR SALE: Angus and Balancer bulls, Rugged, ready for work. Calving ease and performance. Neese Angus Rutledge, MO 641-344-4565

BUYING Used Mobile Homes. Porter Homes 573-231-6667

FOR SALE: Welsh Corgi x Mountain Cur puppies, family dog prospect. No Sunday Calls 573-934-0122

FOR SALE: Heider Auger Wagon 100 bushel, 540 PTO, Auger Swing either side, always shedded, real good, \$700. 217-257-1385

FOR SALE: John Deere 2840 Tractor, 1979, 5000 hrs, 148 Loader, shedded, well maintained, \$14,500. Call 573-881-3557

FOR SALE: Square bales 2nd cutting grass/clover, wire tied, \$5.00 per bale. Novelty Area 660-216-0618

WANTED: 46-60 Flat fender Jeep Pickup. 573-248-7825

TAKING ORDERS dressed beef ready February 2022 grass and grain fed all natural diet. 660-665-3919

HIGH QUALITY Hay for sale \$45 per bale. 217-653-4762

ATTENTION TRAPPERS and Hunters I am buying furs, coon, coyote, muskrat, bobcat, squirrel, and more call Andrew 660-486-3207

WANTED Small corn crib in working condition; Diamant or similar mill for wheat; Homestead Handy Man once weekly, resourceful and familiar with horse equipment. East La Plata 660-332-4026

FOR SALE: Q Catch Portable chute alley and tub, very good condition, \$13,500 Milan MO 660-292-0471

FOR SALE: 12 year old mini roan mare 34" \$600; 12 year old paint pony stands 45" \$800; 12 year old palomino mare about 14.1 \$1100. 660-342-5314

FOR SALE: manure fork tine attachment for 6' bucket, \$125. 217-257-1385

FOR SALE: John Deere 5400 Tractor, MFWD, 5500 hrs, 541 Loader, new tires, joystick, \$22,500. Call 573-881-3557

SCOTT HUSKEY'S HOME SERVICE R-10 Foundation Enclosure Systems for manufactured, modular, & site built homes. Saves on utilities and prevents freeze ups. General maintenance and repairs since 1972 573-696-3468 "GO DAWGS"

FOR SALE: 18-4-38 Firestone tractor tires, duel tractor tires on rims, fit 1070 case, good tires \$250 OBO, good tires. Call anytime Brashear 660-323-5629

STOCK MOBILE HOMES AVAILABLE: We gottem, single and double 3 and 4 bedroom! Call Tuffy 573-657-2176 amegamobilehomes.com

AVAILABLE STOCK MOBILE HOMES immediately, double wide and single, 3 and 4 bedroom. 573-499-9993 columbiadiscounthomes.com

DON'T get caught in the meat shortage Home Grown Choice Beaves and Heritage Hogs Whole/ Halves delivered to locker. 800-807-9612

TRUE MODULARS 30 to 60 day delivery available, 3 and 4 bedroom. 573-657-7040 chateauhomes.net

gallon L shaped fuel tank with Gasboy pump, \$350; 2 Gray 14' steel 7 bar 1.75 tube gates, new never hung, \$135 each. 217-257-1385

FOR SALE: John Deere 285 Disc mower, 9', QH ready, low acres, \$6,250. Call 573-881-3557



THE POLARIS AGRICULTURAL ADVANTAGE PROGRAM

Exclusively for farmers and ranchers.

Polaris is committed to supporting the agriculture community through industry-leading vehicles, partnerships and programs for the community.

We will close for Thanksgiving at noon on Wed. the 24th and reopen on Monday the 29th.

660-328-6627

10456 State Route B, Downing, Mo
6 miles W. of Memphis, then 13 miles N. on B

VISIT POLARIS.COM FOR MORE OFFERS



MISSOURI LIVESTOCK SYMPOSIUM

William Matthew Middle School

1515 S Cottage Grove • Kirksville, MO

Friday, December 3, 2021 • 4 to 10 p.m.

Saturday, December 4, 2021 • 8 a.m. to 5 p.m.

Featuring nationally-known speakers covering timely topics



Dr. Jimmy Henning
Professor & Forage Specialist
University of Kentucky



Dr. Scott Brown
Ag Economist
University of Missouri



Dennis Cappel
Cappel Horse Training and Shoeing, Silex, MO



Jordan Thomas
State Extension Beef Specialist, University of Missouri-Columbia



Shawn Quinn
Ruminant Consultant Services, Wisconsin



Tim Evans, DVM
Toxicology/Veterinarian
University of Missouri



Dr. Eric Bailey
State Extension Beef Specialist, University of Missouri-Columbia



Dr. Kelly Walter
Ag Science Professor
Truman State University
Kirksville, MO

- It's all FREE! No cost to attend! No registration needed!
- Nationally-known speakers covering timely topics on livestock production and more!
- FREE Trade Show!
- Something for everyone!

missourilivestock.com
666-665-9866

FRIDAY NIGHT KEYNOTE SPEAKER

Rethinking Methane: Animal Agriculture's Path to Climate Neutrality
Dr. Frank Mitloehner

University of California, Davis
Dr. Mitloehner's research activities focus on air quality, especially quantification of ammonia, dust and odor emissions in dairies, beef feedlots and poultry operations.



SCHEDULE OF EVENTS FOR FRIDAY, DECEMBER 3 (all events free)

4 p.m. - Trade Show Doors Open		6 p.m. - FREE co-sponsored Beef Dinner	
7:00 p.m.	Welcome - Andy Jackson, MC and Dr. Robert Webb, Superintendent, Kirksville R-III School District		
7:10 p.m.	Guest Welcomes-Dr. John Middleton, Assistant Vice Chancellor, MU; Chris Chinn, Missouri Department of Agriculture; Tom Vilsack, Secretary of Ag; Scott Edwards, USDA-NRCS State Conservationist.		
7:35 p.m.	Recognition of Important Guests	7:40 p.m.	Photo Contest Winner Announced
7:55 p.m.	Presentation of Missouri Livestock Achievement Award - Dr. David Patterson, MU Extension State Beef Specialist		
8:15 p.m.	Keynote Speaker- Dr. Frank Mitloehner: <i>Rethinking Methane: Animal Agriculture's Path to Climate Neutrality</i>		

Missouri Livestock Symposium
UNIVERSITY OF MISSOURI
Extension
Complete info at
www.missourilivestock.com

SCHEDULE OF EVENTS FOR SATURDAY, DECEMBER 4 (all events free)

Trade Show Open 8 a.m. - 5 p.m. Coffee and Donuts provided by FCS Financial Trade Show Open 8 a.m. - 5 p.m.

	BEEF CATTLE	FORAGES	HORSE	SHEEP	MEAT GOATS	MORE BEEF/STOCK DOGS	MISCELLANEOUS/HORTICULTURE	FARM MANAGEMENT
9 a.m.	<i>Livestock Market Update with Brownfield Ag News.</i> Dr. Scott Brown, Ag Economist, MU	<i>Managing Soil Fertility in Uncertain Times.</i> Dr. Jimmy Henning, Forage Specialist, Univ. of Kentucky	<i>Stem Cell Use in Regenerative Medicine.</i> Larry Letner, DVM, Harris, MO	<i>Liver Flukes and Clostridial Disease in Northern Missouri</i> Craig Payne, DVM, MU Extension Veterinarian	<i>Meat Goat Feeding Systems & Marketing Options.</i> Shawn Quinn, Ruminant Consultant Services	<i>Real Beef vs. Plant-based Beef Alternatives.</i> Mark Russell, Missouri Beef Industry Council	<i>Raising Chickens for Eggs.</i> Tatjana Fisher, PhD, Lincoln University	<i>Carbon Markets in Agriculture: Coal or Diamonds?</i> Dr. Ray Massey, Extension Ag Economics, MU
10 a.m.	<i>If It Wasn't Lightning, or the Neighbor, What Killed My Cow?</i> Tim Evans, DVM, Toxicology, MU	<i>Custom Grazing Arrangements.</i> Dr. Eric Bailey, State Extension Beef Specialist, MU	<i>Balanced Shoeing.</i> Dennis Cappel, Cappel Horse Training and Shoeing, Silex, MO	<i>Preparing for Lambing & Colostrum Mgmt.</i> Dr. Kelly Froehlich, Small Ruminant Production, South Dakota State Univ.	<i>Intensive Housing Systems for Meat Goats.</i> Shawn Quinn Ruminant Consultant Services, Verona, WI	<i>Show-Me-Beef.</i> Jarrod Ellis, cattle buyer, NextGen Beef Company	<i>Tools for Women.</i> Dr. Marcia Shannon, Extension Swine Specialist, MU	<i>Pond Management</i> Curtis Harrison, Harrison Fish Farm, Hurdland, MO
11 a.m.	<i>Liver Flukes and Clostridial Disease in Northern Missouri.</i> Craig Payne, DVM, MU Extension Veterinarian	<i>How Much Clover is Enough?</i> Dr. Jimmy Henning, Forage Specialist, University of Kentucky	<i>The Value of a Pre-purchase Exam.</i> Larry Letner, DVM, Harris, MO	<i>Sheep Feeding Systems and Programs.</i> Shawn Quinn Ruminant Consultant Services, Verona, WI	<i>Scrapie Update and Causes of Abortion.</i> Steve Strubberg, DVM, State Veterinarian, MDA, Jefferson City, MO	<i>Beef Recipes for the Holidays!</i> Luella Gregory for the Missouri Beef Industry Council	<i>Raising Chickens for Meat.</i> Tatjana Fisher, PhD, Lincoln University, Jefferson City	<i>Succession Planning: Have You Given Your Children the Best Chance to be Successful?</i> Wesley Tucker, Ag Business Specialist, Bolivar

Visit the Trade Show 12 - 2 p.m. - Free Governor's Style Luncheon Hosted by Missouri's finest commodity groups and co-sponsored by your Missouri Department of Agriculture Visit the Trade Show

2 p.m.	<i>Key Metrics of Success in Cattle Feeding.</i> Dr. Eric Bailey, State Extension Beef Specialist, MU	<i>Managing Pasture for Soil Health and Improved Production.</i> Drexel Atkisson, Soil Health Specialist, NRCS	<i>Ranch Horse Versatility.</i> Dennis Cappel, Cappel Horse Training and Shoeing, Silex, MO	<i>Intensive Housing Systems for Sheep.</i> Shawn Quinn Ruminant Consultant Services, Verona, WI	<i>Footrot and Hoof Disease Management in Goats.</i> Tumen Wuliji, PhD, Lincoln University	<i>Selecting a Pup.</i> Myra Bradford, dog trainer, Mountain Home, AR	<i>Q&A Session with Jennifer Schutter, MU Extension Horticulture and Yvette Amerman, MDC Forester</i>	<i>Basic Estate Planning-Plan to Use All the Tools in Your Toolkit.</i> Wesley Tucker, Ag Business Specialist, Bolivar, MO
3 p.m.	<i>Genomics for Commercial Cattlemen.</i> Nick Hammett NEOGEN	<i>Bovine Intoxications Involving Forages.</i> Dr. Tim Evans, Toxicology, MU	<i>Managing Your Mare for a Successful Breeding Season.</i> Dr. Kelly Walter, Truman State Univ.	<i>Brucella Opus in Missouri.</i> Steve Strubberg, DVM, State Veterinarian, MDA, Jefferson City	<i>Meat Quality in Small Ruminants.</i> Dr. Beth Walker, Prof. of Animal Science, Missouri State Univ.	<i>Starting Your Young Dog.</i> Myra Bradford, dog trainer, Mountain Home, AR	<i>Holiday Flower Arranging.</i> Jennifer Schutter, MU Extension Horticulture Specialist	<i>Fence Law Q&A.</i> Joe Koencen, MU Extension Ag Business Specialist, Unionville, MO
4 p.m.	<i>Avoiding the "Silent Killer" of Profitability: Cow Depreciation Costs</i> - Dr. Jordan Thomas, State Extension Beef Specialist, MU	<i>Native Warm Season Grass: The Good, Bad and There is No Ugly.</i> Drexel Atkisson, Soil Health Specialist, NRCS	<i>Halter Breaking Cattle.</i> Dennis Cappel, Cappel Horse Training and Shoeing, Silex, MO	<i>Footrot and Hoof Disease Management in Sheep.</i> Tumen Wuliji, PhD, Lincoln University	<i>Selling Goat Carcasses.</i> Dr. Beth Walker, Professor of Animal Science, Missouri State University	<i>Finishing Your Stock Dog.</i> Myra Bradford, dog trainer, Mountain Home, AR		<i>Grain Bin Safety.</i> Karen Funkenbush, Director, Missouri AgrAbility Project, MU



Call 660-457-3700
Hwy 63 North, Lancaster, MO

- 2015 GMC 2500HD, SLT, 4x4, crew cab, shortbed, 6.0L, heat & cool leather, bed cover, 1 owner, 119k, charcoal, very nice, new tires, only \$34,900
- 2013 Impala, LTZ, leather, only 104k, charcoal, very nice, \$8,495

- 2012 Chevy Captiva, LTZ, leather, AWD, sunroof, 112k maroon \$8,495
- 2003 Ford F350, diesel, 4x4, crew cab, flatbed, 300k, runs good, brown, only \$6500
- 1998 Silverado 1500, ext cab, 2wd, V8, 200k miles, red, bed cover, looks and runs great, only \$3,995

Cumberland Building Dealer

www.juddmotors.com

In Business Over 75 Years
Curly and Kevin Judd

HAY STORAGE SOLUTIONS AND MUCH MORE!



"Today, I checked with Joseph to see when he was planning to deliver and construct my second hoop building. Two years ago I purchased a 55'x98' hoop building from Skylight buildings. It was erected on my site on time and the building went up in two days.

I was concerned about the durability of a vinyl building compared to a metal sided structure. That was until I noticed that a rock from my Brush Hog 2715 had impelled itself into the metal building. The Skylight building would not have been damaged. Also, the name says a lot. I thought that I would wire in lights like my other buildings but to date I have not found the need.

The reason I thought I needed to build a large building was to store my hay inside. I knew I was losing hay quality due to weather damage but baling with 568 John Deere and net wrapping my hay I thought I was keeping my hay loss at a minimum. I found the first year that I had underestimated my losses. I was very pleased with the results of storing hay inside. It is most gratifying to put a bale into the hay ring and seeing that the previous bale was almost completely consumed by the cows or the feeder calves. I had a record amount of carry over from last year and it is safely stored inside ready to be used this winter! This will allow for hay sales this winter.

The construction of the building's frame is strong, the foundation supports are 24" and very deep. I am very satisfied and have ordered another 55' x 140' to be installed in a few weeks. This one will be used to store our small square bales and equipment.

Thank you Joseph for your service and this chance to recommend your buildings."

Wiley and Susan Hibbard, Perry, Missouri

20749 State Highway VV
Ethel, MO 63539
660-486-3250

Skylight
Fabric Structures

Golden Grain Bins-Winter Discount

Grain Bins	Floors w/12"Supp. & Flashing
18'x18' 4,195bu. \$ 7,029	18'....\$1,962 30'....\$ 5,476
27'x21' 11,265bu. \$14,108	21'....\$2,682 36'....\$ 7,801
42'x24' 32,245bu. \$32,886	27'....\$4,474 42'....\$10,623



GMLS Industries, Inc.
PH: 660-699-2179 or 620-983-2136
www.gmlsindustries.com



McAfee Auction Service, LLC

375 S Johnson • Kahoka, MO
660-727-3796

www.mcafeeauctionservice.com

**2 DAY TIMED ONLINE ONLY
FARMER RETIREMENT AUCTION
LOTS START ENDING AT 10 AM ON
TUES DEC 14TH & WED DEC 15TH**

34650 HWY. M, WILLIAMSTOWN, MO 63473



**DETAILS
ONLINE!**

KEITH AND SUE LOGSDON, SELLERS
www.mcafeeauctionservice.com

**MAIN CREEK
REPAIR**

Larry Geiser

23316 State Hwy H
Kirksville, MO 63501

(715) 415-1995

Bolts • Belts • Bearings
Hydraulic Hoses • Steel
Welding • Fabricating
Tractor & Equipment Repair

**MAIN CREEK
RENTALS**

23316 State Hwy H
Kirksville, MO 63501

(660) 988-6917

- Mini Excavator
- Dozer
- Skytrack
- Equipter (Shingle Buggy)
- Snorkle
- Grapple
- Post Hole Digger
- Man Basket

HOLIDAY TOY DRIVE

\$499 DOWN
on select vehicles*

When You Bring in 4 New, Unwrapped Toys
(MINIMUM \$10 VALUE FOR EACH)

 car-mart.com

* On retail vehicles priced at \$15,999 or less. With approved credit. See dealer for details. This offer cannot be combined with any other promotional offer. Example: \$499 down. 110 weekly payments of \$10.78 per \$1,000 financed at 16.5% APR.



AMERICA'S CAR-MART

660-956-4849 • 2015 North Baltimore • Kirksville

- Peace of Mind Package
- Service Contract Plus
- Accident Protection Plan
- 100% Satisfaction
- Pay Your Way
- Low Down Payments
- Quality Used Vehicles
- Flexible Financing
- Hand Selected Vehicles
- Convenient Payment Options
- Start Your Approval Online
- Over 150 Locations
- 40 Years in Business
- We Buy Cars



2011 FORD TAURUS UNLIMITED
FWD, 6 Cyl., Gold



2014 CHEVROLET SILVERADO
1500 LT, 4WD, 8 Cyl., Black



2008 FORD EDGE
4WD, 6 Cyl., Orange



2015 KIA SOUL
FWD, 4 Cyl., Red



2013 FORD EXPLORER XLT
FWD, 6 Cyl., Brown



2011 CHEVROLET SILVERADO
1500, LT, 4WD, 8 Cyl., Silver



2011 CHEVROLET SILVERADO
1500, LTZ, 4WD, 8 Cyl., Black



2015 JEEP PATRIOT SPORT
FWD, 4 Cyl., Gray



2013 DODGE DART
FWD, 4 Cyl., Blue



2010 PONTIAC G6
FWD, 6 Cyl., Red



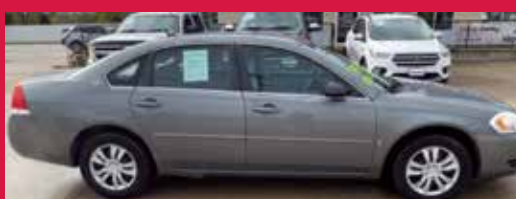
2010 CADILLAC ESCALADE
AWD, 8 Cyl., Red



2011 MAZDA CX-7
FWD, 4 Cyl., Silver



2012 TOYOTA RAV4
BASE, 4WD, 4 Cyl., Black



2007 CHEVROLET IMPALA LS
FWD, 6 Cyl., Gray



2010 CHEVROLET TRAVERSE LT
FWD, 6 Cyl., Red



Keeping You on the Road



ELIZABETH WALTER
GENERAL MANAGER



IT'S FREE!
EVERY FRIDAY The NEMO Trader

CALL US FOR ADVERTISING QUOTES | 660.665.8500

VICTORY

Metals & Recycling

Kirkville, MO 660-665-8000

victorymetalrecycling.com

For current scrap prices call or visit our *Facebook Page*

★ Construction/Debris Recycling

Visit Kirkville's construction & debris recycling facility and save trips to the landfill! Take advantage of this service for solid waste removal by bringing your landfill items to Victory Metals C & D recycling facility located at 3602 N. Industrial Rd.

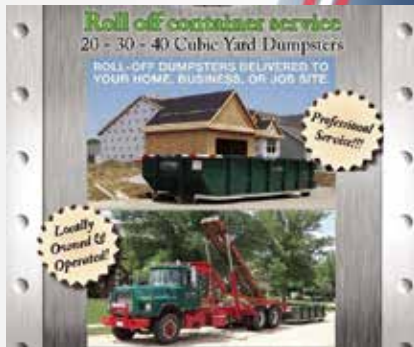
★ Roll-Off Container Service

10-20-30-40 Cubic Yard Dumpsters

3602 N. Industrial Rd.,
 Kirkville, MO 63501

djanesvmr@gmail.com

www.victorymetalrecycling.com



WE ARE HIRING!

Maintenance/Custodial
 Full time position with benefits

Banking Career - Applicants must have strong communication & computer skills. Ability to multi-task & learn quickly. Qualified applicants should have two years prior banking experience or a degree in related field. Willing to train.

Send resume to: *Bank of Kirkville, P O Box 787, Kirkville, MO 63501. EOE*

Member FDIC



MOOSE RUN REPAIR

8 YEARS EXPERIENCE

Tractor • Skid Steer • Combine • Air Conditioning
 Self-propelled Forage Harvester & General AG Repairs

Specializing in John Deere

Engine • Transmission • Hydraulics
 Power Shift/IVT Diagnosis & Repair
 Computer/Electronic System Diagnosis & Repair



660-988-3843

DELVIN "MOOSE" STEINER • QUEEN CITY, MO

KM-70KDE01742

Troyer

TARP MFG.

660-486-3301

20264 State • Hwy. VV • Ethel, MO. 63539



Hoop Building Covers

FARM TARPS

TRUCK TARPS

WE GOT YOUR NEEDS COVERED!

For Your Equipment Needs!

LOTS OF USED EQUIPMENT AVAILABLE

Vermeer 605 N Balers, Twin Rakes, Trailed Mowers, Disc Mowers, Tedders, Bale Processors-

Offer high capacity, speed, reliability, efficiency, fuel savings...

DeWeze Bale Beds-

Lift, load, transport and feed big, round bales...

Danuser Post-Hole Diggers-

Offer quality & reliability, outperforms the competition...

USED EQUIPMENT

BALERS

605 N Net
 605 L Net
 605 K Net

RAKES

R2800
 R2300
 VR1224

MOWERS

TM 1210
 8040
 7030
 Vicon 4000

TEDDERS

TD250

BALE PROCESSORS

BPX 9000
 BPX 9010

Liebhart Sales, Inc.

17546 Lacey Drive •
 New Boston, MO. 63557

660-689-3406

Call Today!!

NEMO COWBOY CHURCH

First Thursday night of each month • Kirksville Livestock Market at 7:00PM
Bring a friend and if you can't find one, bring your dog.
We will worship through music with Gary Fagen and the Word will be preached by Tom Rowland. Mark your calendars and come join us.

"COME AS YOU ARE. LEAVE CHANGED."

Premium Metal Roofing

A/W Metal Inc.
Metal Roofing Headquarters
641-664-3990 • awmetal.net

CELEBRATIONS! PARTY RENTAL

KIRKSVILLE, MO

FOR RENT
TABLES - CHAIRS - TENTS - BOUNCE HOUSE & COTTON CANDY MACHINE...ECT.

660-626-5162 or 660-665-9380

Brad's Welding Shop Is Your Newest Dealer For Arrowquip Cattle Handling Equipment.

15 YEAR UNLIMITED WARRANTY

Call Us For All Your Cattle Handling Needs!

HELP WANTED

NEED A CHANGE??
Due to our expanding business, we are accepting applications for

AUTO TECHNICIAN

Competitive Wages • Group Insurance
• Vacation Retirement Plan

Stop by to see Terry and Pick your application up TODAY!!
MUST HAVE TOOLS & DRIVERS LICENSE

Woody's Tire, Auto & Towing LLC

1102 N. Green St., Kirksville, MO • 660-665-8617

BRAD'S WELDING SHOP

12673 Almond Ave • 1158 Marceline,
MO 64658 • 660-376-1158 • www.bradsweldingshop.com

FOR ALL YOUR FENCING NEEDS.
Quality Cattle Equipment, too!

620-215-5770 KIRKSVILLE, MO
SPECIAL ORDERS AVAILABLE

TIMBERLINE PET RANCH

Home away from home

We are a small facility focused on individualized care and around the clock supervision.

Timberline Pet Ranch is your pets home away from home for...

- * Grooming
- * Boarding
- * Daycare

Mention this ad to get \$5 off of your next visit!

660.665.PAWS

Conveniently located just 1 mile outside of Kirksville at 24252 State Highway 11 West.

Check out our current inventory at Kirksville Livestock Sales.

 SINGLE \$650 HEAVY DUTY HAY FEEDERS	 DOUBLE \$1,050 HEAVY DUTY HAY FEEDERS	 HEAVY-DUTY \$1,050 REPLACEMENT BUMPERS Dodge, Chevy, Ford & GMC	 HALF TUB \$2,900	 FULL TUB \$3,800
--	--	---	--------------------------------	--------------------------------

MINERAL FEEDERS
\$375

\$3,400
ADJUSTABLE ALLEY

If you're looking to build a pipe fence or corral, wire fence, or need quality cattle equipment, **WE'RE HERE TO SERVE YOU!**

Gates • Continuous Panels • Tubs • Alleys • Posts • Pipe • Bumpers • Cattle Feeders

FOR SALE
AI Sired Angus Bulls,
14 & 18 Months Old.
Harold Trump
660-341-5730

New Hire Bonus -- \$3,000

Smithfield

WE'RE HIRING
General Production Workers – Milan, MO

Good food. Responsibly.

Smithfieldfoods.com/milan -- Starting Pay -- \$18.00 / hr

COME SEE US AT OUR NEW LOCATION!
701 East LaHarpe St, Suite C,
Kirksville, MO 63501
P.O. BOX 809
660-665-8500
or 660-988-6830
sales@nemotrader.net

WE ARE OPEN!

The

NEMO

Trader

IS NOW A

PROUD MEMBER

OF THE

**PHILLIPS MEDIA GROUP
NEWSPAPER FAMILY**

*Watch for exciting changes
coming soon!*

TINY HOMES We gottem 573-881-3283

FOR SALE: Older 100 WANTED TO BUY: Harley Davidson's, any year, any condition, cash money. Days 660-263-1356 or 660-537-0068

FOR SALE: New 3 pt. tillers, heavy duty, gear driven, 7' to 10' starting at \$3050. 660-874-4455

FOR SALE: Factory made For-Most Doctor Chute for sheep, goats and small animals, just like new. Also want to buy good pickup truck. 660-676-9199

WANTED TO BUY: Farm Machinery and Estates. Call James L. Johnston. 573-473-4904

Wevers Outside Wood Furnaces a dealer for Heatmor Stainless Steel Outside Furnaces, have an assortment of parts, line, and etc. Taking orders for new outside wood furnaces. Dealer for Heatmor Call 660-423-5242, cell 660-216-9885. Open 6pm-9pm Monday-Friday, Saturday anytime, call first.

PASTURE AND HAY GROUND Needed around Adair & Knox County. Please Contact 660-216-5887 or 417-773-2507

HANDYMAN: Install interior and exterior doors and windows, siding, decks, showers and toilets, flooring and drywall, roofs and dirt work. 660-956-5135.

DIRT WORK All types of excavation, reclaiming overgrown fields, including CRP and WRP. Building site preparation, terrace and tiling maintaining and creating new trails and crossings, rock hauling, Food plot development and maintenance. Leveling and grading, wetland construction and maintenance. Pond and lake cleaning and construction. Call for quotes. 660-342-2701

FOR SALE: 5 X 5 1/2 big round bales of mixed grass hay, Bailed dry no rain fertilized lab tested surface wrapped. Call 660-341-4031 Watson hay sales

FOR SALE: Stihl 029 chainsaw with case and owner's manual, \$275; 2 16.9x 34 mismatched tires. 217-257-1385

FOR SALE: Red Angus/Charolais Crossbred Bulls, 16-18 months old, guaranteed, sound, \$2,500 choice. Call 573-881-3557

10% off Gloves from Nov. 15th to 30th Homemade Candies, fresh garlic, jams & jellies, spices, HONEY stainless steel kitchen wares, steam table pans and lids. Kerosene lamps and parts, some Aladdin parts. Poly and wooden clothes pins, Reg. and W.M. lids, glass jars, color books, boxed cards, children's books, Gift items, wooden handles - Puzzles. Train Track Candies & More 11538 Iceberg Ave, La Plata 3rd Lane to your Left.

FOR SALE: Farmall 560 gas, 1961, Schwartz wide front, fast hitch, fenders, uses no oil, owned for 17 years, runs good, \$2400. 217-257-1385

FOR SALE: Registered AKC Labrador Retriever puppies; ready to go just in time for Christmas! Can leave Dec 22nd! Deposit is required. UTD puppy shots/wormers. MO health certificate from Vet. LAY'S LABS - LaBelle, MO 660-956-2482



Signature
Overhead Doors and Remodeling, LLC

660-785-0248

www.signatureremodelingkv.com

Residential and Commercial Installation and Service

LANCASTER LUMBER INC.
Lancaster, MO.
1-800-424-5071
LAN-DOW BUILDINGS
www.lancasterlumber.com



John Deere 4440 Tractor, CAH, QR, triple hydr, 9000 hrs, one owner, factory duals, 80% rubber, clean, \$31,500



John Deere 5520 Tractor, MFWD and 511 SL Loader, new tires, reverser joystick, 5500 hrs, one owner, \$41,500



2018 Forrester River Silverback Edition 37MBH 5th Wheel Trailer, 42 ft long x 8 x wide, used very little by both previous owners, pulled less than 5000 miles, 4 slide-outs, sleeps 10, VIN 4X4FCRN27JS220459, \$47,500



John Deere 4455 Tractor, QR, 8,000 hrs, one owner, four new Firestones, factory duals, triple hydr, strong running, \$39,5000



John Deere 6145 M Tractor, MFWD, 3300 hrs, new rubber, 2 door, triple hydr, 16 speed, will trade, \$72,500



Several nice 30/40/50 Series Row Crop Tractors, all field tested and good.

573-881-3557

Show Me Plumbing Services

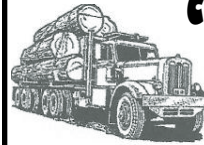


- *General Mini Excavation & Skid Steer Work
- *Livestock Watering
- *Waterlines & Sewer Systems
- * Residential Services & General Plumbing
- *Utility Trenching

Stan Schrock • 660-988-1163
Greentop, MO. • 660-766-2636

ATTENTION LAND OWNERS!

**BUYER OF STANDING TIMBER
OWNER /OPERATOR OF SAWMILL - BUY/CUT LOGS
CERTIFIED - BONDED - INSURED**



TRI STATE TIMBER L.L.C.
PH. 660-341-4921 or 660-465-2975
353 1/2 GRAND AVE. • MEMPHIS, MO 63555

TGI **Friday**

TGI **Free**

TGI **Full**
OF GREAT ADS

NEMO
Trader

Phone:
660.665.8500

Address:
701 E. Laharpe Street • Kirksville, Mo 63501

ADVERTISE with us TODAY!



... This item list is subject to change ...

•ED'S MACHINERY INVENTORY:

Tractors:

- '16 JD 8370R MFWD E23, 2,400 Hr.
- '14 JD 1025R, 54" Deck, w\Loader, 141 Hr.
- '13 JD 9460R 4WD, 1,258 Hr. PTO.
- '09 JD 6230 MFWD w\Loader, 3,340 Hr.
- '07 JD 6615, 10,000 Hr.
- '05 JD 7820 MFWD, 8,977 Hr.
- '95 JD 6400, 2WD, 10,022 Hr.
- '93 JD 6400 MFWD, 11,988 Hr.
- 86 JD 4850, 2WD, 8,000 Hr.
- '79 JD 4040 2WD, 9,800 Hr.
- '67 JD 4020 w\ Loader Showing 4,550 Hr.
- JD 9120 4WD, 5,086 Hr.
- JD 6320L MFWD w\ 640 Loader 5,296 Hr.
- JD 4755 MFWD, 8,965 Hr.
- JD 4640 w\ Duals, Showing 282 Hr.
- JD 4630, 3,378 Hr.
- JD 2555, 2WD, 8,941 Hr.
- JD 2030 Gas 2WD, 230 Hr.
- JD 1120, 2WD w\ 145 Loader
- '06 CIH STX375HD 4WD, 9,224 Hr.
- CIH MXM190 MFWD, 6,415 Hr.
- IH 1586 2WD, 7,417 Hr.
- IH 1586 2WD, 3,896 Hr.
- IH 1486 MFWD, 5,877 Hr.
- '12 NH T9.560 4WD, 2,862 Hr.
- '95 NH 9280 4WD, 4,726 Hr.
- '90 Ford 876 4WD, 7,995 Hr.
- '13 MF 4610 MFWD, 1,712 Hr.
- '99 MF 8270 MFWD, 4,368 Hr.
- '07 Challenger MT765B Track, 3,060 Hr.
- '03 McCormick MT175 MFWD, 6,195 Hr.
- '95 Versatile 836 4WD 7,812 Hr.
- '91 Agco Allis 6690 w\ Loader 4,786 Hr.



Combines:

- '98 JD 9510 Combine 4WD, 5,072/3,488 Hr.
- '90 JD 9400 Combine, 5,262/3,503 Hr.
- '08 CIH 8120 4WD Combine, 2,894/2,343 Hr.
- '99 CIH 2388 2WD Combine, 5,188/3484 Hr.
- '99 CIH 2388, 4WD Combine, 3,670/2,640 Hr.
- '91 CIH 1660 2WD Combine, 4,200 Hr.

Support Items:

- Polaris Ranger 570, 4x4, 9,268 Mi.
- Toro Z580D Z Master Lawn Mower, 3,331 Hr.
- Bad Boy K27 Pro 60" Lawnmower, 706 Hr.
- Yetter Ripper\Drill Caddy
- Degelman R550 Rock Picker
- Industrias America 2418, 7' Offset Disk
- Industrias America 2232, 12' Disk
- Industrias America 2428, 12' Offset Disk
- '95 Rhino 1500 10' Blade
- Rhino 1540, 10' Blade
- Farm Hand 258 Loader w\ Grapple
- Leon 790 Quick Attach Loader
- Post Pounder 3Pt.
- Case 90" Loader Bucket
- Custom 3 Prong Bale Fork For Loader
- Shop Built Head Cart 18'



TRI-ANNUAL CONSIGNMENT AUCTION

Friday, December 10th, 9:00 AM.



WWW.EDSMACHINERY.COM
(660) 883-5501

ABSOLUTE NO RESERVE AUCTION

Grain Handling:

- '93 Kinze 1040 Grain Cart
- Brent 472 Grain Cart
- JD 500 Grain Cart
- DMI 250 Gravity Wagon
- Killbros 375 Gravity Wagon w\Auger
- BBI Gravity Wagon
- Super-Air VP300P Grain Vac, 3,956 Hr.
- Rem 552 Grain Vac
- Westfield WR80-61 Auger

Planting Equipment:

- '11 JD 1770NT Bulk Fill 16 Row Planter
- '97 JD 1780 12/23 Planter
- JD 7000 8 Row Planter
- Kinze Twinling 1223 Planter
- White 6342 12/13 Rows Planter
- JD 8200 10' Grain Drill
- JD 750, 15' Drill
- Great Plains 3000 Drill
- '06 Haulall 250 Seed Tender
- Friesen Titan 4, Seed Tender

Mechanic's Specials:

- '05 JD MX10 Brushcutter (Gear Box Problem)
- Stanley MB 256 Skidsteer Jackhammer (Needs Recharged)

Hay & Forage Equipment:

- '19 JD 460M Round Baler
- '17 JD 569 Round Baler
- '15 JD 569 Round Baler
- JD 569 Round Baler
- '02 JD 457 Round Baler
- '97 JD 566 Round Baler
- '93 JD 535 Baler
- CIH 8465, 5X6' Baler
- CIH 3650 Round Baler
- '15 NH RB560 Round Baler
- NH 855 Round Baler
- '07 Vermeer 604M Round Baler
- Hesston 4600 Small Sq. Baler
- '09 JD 3975 Pull Type Chopper
- JD Chopper Head, 2 Row, Off JD 3950
- JD 935, 12' Mower
- '05 Challenger SP115B Swather, 1330 Hr.
- '99 IH 8330 9' Haybine
- NI 5409, 9' Disc Mower
- Vermeer 8030, 10' Disc Mower
- '15 Vermeer VR1224 Rake
- '01 Vermeer R23A Rake
- Vermeer R24A Rake
- Hesston 3983, 12 Wheel Rake
- Hesston V8, 8 Wheel Rake

Livestock Equipment:

- '20 Meyers M350 Manure Spreader
- '17 H&S 430 Manure Spreader
- JD 7 80 Manure Spreader
- Gehl 533 Manure Spreader
- Nuhn 35"x8" Manure Load Stand
- NI 3936 Manure Spreader

Tillage Equipment

- '16 JD 2620, 30' Disk
- JD 10' Tandem Disk
- JD 726, 33' Disk
- CIH 6500 10' Shank Disk Chisel Disk
- CIH Disk 23'
- Miller 25' Disk
- Kewanee 1020, 20' Disk
- Krause Disk
- '08 JD 2210, 27' Cultivator
- JD 980 26' Cultivator
- CIH Tigermate II 52' Cultivator
- CIH 4800, 24' Cultivator
- Krause 4226HR, 26' Cultivator
- '08 JD 2310, 45' Finisher
- JD 910 3 Pt. Ripper
- JD 915 Ripper
- IH 55, 11 Shank Ripper
- M&W 1165, 5 Shank Ripper
- Yetter 1000, 5 Shank Ripper
- Yetter 6300 5 Shank Ripper
- JD 1250, 3 Bottom Plow
- '07 CIH 5800, 28' Chisel Plow
- White 508, 5 Bottom Plow
- Brillion 12' Cultimulcher

Construction Equipment:

- '16 NH L230 Skidsteer, 1060 Hr.
- '05 Case 450 Skidloader 3,500 Hr.
- Cat 246 Skidloader
- '15 Liebherr 528 Wheel Loader, 3,391 Hr.
- '02 Case 580SM Backhoe, 3,855 Hr.
- '99 Case 570L XT Loader, 11,962 Hr.
- '06 Pal Finger PX9501 Crane Knuckle Boom

Corn Heads:

- '10 JD 608C Corn Head
- JD 643, 6 Row Corn Head
- '12 CIH 3408 Corn Head
- IH 983 6 Row Corn Head
- '99 NH 996N8 Corn Head
- '11 Fantini LH2, 8 Row Corn Head
- Lexion 8 Row Corn Head

Rotary Mowers:

- JD 15' Brushcutter
- JD 1508, 15' Bat-Wing Mower

Feeding Equipment:

- JD 700 Grinder Mixer
- NH 355 Grinder Mixer
- Gehl MX135 Grinder Mixer
- '08 Patz 1100 Series 500 TMR Mixer
- '07 Patz 420 Feeder Wagon
- Dew CZE Bale Slicer
- '03 Jiffy 900 Bale Processor
- Highline CFR650 Bale Grinder

Platform Heads:

- '08 JD 630F Bean Head
- '98 JD 930F Bean Head
- CIH 1020, 25' Flex Head
- CIH 1020, 22.5' Flex Head
- CIH 1020, 25' Bean Head
- '13 JD 630D, 30' Bean Head

Trucks:

- '89 KW T800 Dump Truck, 437,457 Mi.
- '13 Freightliner Cascadia 113 Semi, 950,066 Mi.
- '09 IH Durastar 4400 Truck
- '90 IH 4600 Water Truck
- Chevy C-70, gas, w\ 14' Feed Box
- '92 Maxwell Bumper Hitch 16' Flatbed Trailer
- Maxwell Custom trailer 16

•CONSIGNED ITEMS:

Heritage Tractor (417) 340-5743

- '02 Vermeer 605XL Baler
- 'JD 1760, 12 Row Planter
- NH 648 Round Baler

7R Farms (660) 342-0432

- '07 Wilson Hopper Bottom Trailer

Burkholder Truck Sales (660) 397-2551

- '18 Cat 259D Skidsteer. 102 Hr

Raymond Burkholder JR. (660) 341-4013

- CIH 7120 Combine, 3,658/2,860 Hr.
- Meyers VB750 Vertical Beater Spreader
- Farm king 1272 Auger

Vernon Oberholtzer (660) 341-0332

- IH 863 Corn Head
- CIH 1020 Grain Head

Ryan Vangendren (660) 216-8978

- JD 1770 16 Row Planter
- Chisel Plow

Dan Goehl (573) 288-3817

- Bale Bed For Flat Bed
- Finishing Mower 3Pt. 4'
- Meyer V-Max 3245 Manure Spreader

Willam Lauderback (641) 208-5946

- '16 Unverferth HT 25 Head Trailer
- EZ Trail 400 Bu. Gravity Wagon
- Westfield WR80-31 PTO Truck Auger

Farm Credit Services (660) 883-5501

- CIH 3950 Disk
- CIH 5500 Drill

Wayne Hursh

- Bobcat T190 Skidsteer (Runs But Does Not Drive!)

James Musser (641) 208-5667

- '05 Bobcat S185 Skidsteer, 7,000 Hr.
- 84" Tire Scraper

Marcus Good (660) 341-6218

- IH 766 Diesel Tractor

Gary Dean (660) 216-0797

- Westfield 81' Auger
- Brandt 31"x8" Auger

Nora Fox - Tommy PH.(660) 342-5129

- 6' 3 Pt. Brushcutter
- 2 Bottom Plow
- Sickle Bar Mower

Theodore D Grimwood (573) 767-5465

- '90 Ford NH 7710 II MFWD Tractor

Leslie Zimmerman (660) 216-0938

- (3) - 420-85.34 Tires

Doug Florea (660) 341-2492

- Blue Stock Trailer

Larry Anderson (641) 919-3713

- Plastic Tank on Frame

Kent Lock (309) 368-8401

- JD 925 Mower

JJ Nichting (319) 469-4461

- CIH 900, 12 Row Planter

Oberholtzer Farm Supply (660) 341-8234

- Knight 5042 Vertimax

John T Jesaitis (660) 349-7635

- Sunflower 5331 Cultivator

Richard Rockhold (660) 956-2962

- NI Corn Picker 2 Row

Blake Smith (319) 457-6655

- JD 5.5' Mower
- JD Row Cultivator

Dan Gayle (573) 406-2758

- '94 Stock Trailer 24'

Eddie Bryant (660) 341-8434

- Sprayer Application System AS1000 60'

Jerry Foreman (660) 342-5985

- IH 300 Utility Gas Tractor w\ Loader
- IH 300 Utility Gas Tractor

PLEASE NOTE:

- This an "live on-site auction" . Online bidding available on Equipmentfacts.com
- Every item sells with no reserve to the highest bidder
- No on-site buyer's premium
- 3% Online Buyer's Premium with \$1,000 per item max
- Consignments are arriving daily - please follow our website for updates: www.EdsMachinery.com

•17920 US Hwy 136 • Memphis, MO
1 Mile West of Memphis on Hwy 136

West Valley (625) 586-3151

- Grader Blade 140R
- Tilt Box Blade F10
- Tilt Box Blade F12
- Tilt Box Blade F08
- Fuel Trailer 500 Gal.
- Bucket w\ Grapple

Glen Oberholtzer Jr. (660) 216-0393

- Fuel Tank for back of Truck 200 Gal.

Jacob Kuhns (641) 664-1061

- Patz V350 TMR Mixer

Scott Jansen (660) 341-7403

- Landoll 7431 VT 33'
- CIH PTX300 Chisel 26'
- CIH 5800 Chisel 25'

Adam Lyons (660) 342-0799

- JD 8410T Tractor, 5,400Hr.
- JD 1000 Cultivator 28'
- JD 946 MOCO Mower
- Vermeer R2300 Rake
- 40' Pasture Harrow

Clinton Jerome (660) 342-7842

- Maurer Grain Tank Ext. for JD 5760

Nolan Nolt (660) 988-1624

- 14"x30' Belt Conveyor

Curvin Nolt (660) 397-4011

- 3 Pt. Mist Sprayer

John Ballanger (641) 895-0152

- Westfied Auger MK100-61

Kenneth Roberts (660) 342-1556

- McFarlane HDL 30' Harrow

Albert Horst (660) 341-2712

- Knight 8030 Manure Spreader (Mechanical Special)

H. Gene Brown (641) 777-7770

- NH 519 Manure Spreader

Allen Dale Yoder (217) 259-6191

- CIH 1083, 8 Row 30" Corn Head

Richard Good (660) 216-9341

- JD 568 Baler

More coming daily!



NEMO
Trader

***Come
see us
at our***

**WE ARE
OPEN!**

**Come see us at our
new location!**



***NEW
LOCATION***

**701 East LaHarpe St,
Suite C,
Kirksville,
MO 63501**

**We also have a
NEW P.O. BOX!
P.O. BOX 809**

**660-665-8500 or
660-988-6830**

sales@nemotrader.net

FOR SALE: John Deere 560 M Baler, net, kicker, 11,000 bales, big tires, shedded, \$25,500. Call 573-881-3557

FOR SALE: Ford 4000 SU diesel, power steering, live PTO, excellent paint and good sheet metal, new tires, \$5500. 660-341-8089

Organic Chicken Litter monthly NPK test, also high test calcium lime. Delivered in trailer loads, \$100T The Farmers Friend 800-807-9612

FOR SALE: 46 10' corral panels, 8 bar galvanized HD \$120 each; 10' Bow gates, \$250. Milan 660-292-0471

FOR SALE: 18 Black Black/White face heifers, 2nd & 3rd period pregnancy; 3 Red Angus heifers, 2nd & 3rd period pregnancy, bred to Angus Black Bull; 8 Black Angus heifers and calves, all nice & gentle. 660-376-9199

FOR SALE: 2 18.4 x 38 tires mismatched mounted on 9 bolt rims, last on 1086, \$350; 1 piece IH rear weights, \$100 set. 217-257-1385

FOR SALE: Rossi 4 Basket Tedder, field ready, \$3,250. Call 573-881-3557

FOR SALE: International 560 manure spreader 540 PTO, 225 bushel, single axle, good floor, metal sides, been shedded, solid spreader, \$3,200. 217-257-1385

FOR SALE: John Deere 3020-D Tractor, very straight, 90% tires, WF, \$9,750. Call 573-881-3557

FOR SALE: Factory made For-Most Doctor Chute for sheep, goats and small animals, just like new. Also want to buy good pickup truck. 660-676-9199

FOR SALE: 8' x 7' Garage door, complete with all parts, \$500; 36" x 80" new entry door, white, \$200. 660-216-8865 jimjan@gmx.com

FOR SALE: 1994 M Farmall wide-front power steering, runs and starts good, \$2000 OBO. 660-665-3919

ATTENTION TRAPPERS and Hunters I am buying furs, coon, coyote, muskrat, bobcat, squirrel, and more call Andrew 660-486-3207

FOR SALE: Feed bunks, \$75; HD bale unroller 3 pt. \$1050; Gravity flow wagon, \$500; bale rings, \$200 Milan MO. 660-265-0471



LAN-DOW BUILDINGS
"We Build To Suit Your Needs"
"Custom Built"
 Pole Barns • Garages • Utility Buildings
 "H" Don or Dick Middleton
Memphis Lumber Co.
 1-800-337-5858 • 660-465-8595
 Fax: 660-465-8596

JOHNSTON FALL CONSIGNMENT AUCTION
& REAL ESTATE Sat., Dec. 11th @ 10 AM
 Location: Johnston Auction Center, Hwy 24, Madison, MO
 JAMES - 573-473-4904
 JEFFREY - 573-239-6056

****MACHINERY****
 Tractors - Implements - Trailers
 3 PT Attachments - Wagons

**** ESTATES ****
 The Barn Is FULL!!
 Furniture - Antiques
 Collectibles & More
 Call now to consign
 James • 573-473-4904
 Jeffrey • 573-239-6056

JOHNSTON AUCTION & REAL ESTATE
 - Madison, MO -
 jamesjohnstonauction.com

TIMED ONLINE • NO-RESERVE COLLECTOR TRACTOR AUCTION
 BIDDING CLOSES: MONDAY, DECEMBER 6TH STARTING AT 10:00 A.M.
 PHYSICAL ADDRESS: 1403 SOUTH C STREET, ALBIA IOWA 52531
 EQUIPMENT INSPECTION: TUESDAY, NOVEMBER 30TH FROM 9:00 A.M. - 2:00 P.M.

HIGHLIGHTS INCLUDE: 1929 John Deere D tractor; 1929 John Deere GP tractor; 1946 John Deere H tractor; 1952 John Deere G tractor; 1936 John Deere A tractor; 1955 John Deere 60 tractor; 1959 John Deere 630 tractor; 1956 John Deere 620 tractor; 1947 John Deere M tractor; 1972 John Deere 820 tractor; 1956 John Deere 50 tractor; 1959 John Deere 530 tractor; John Deere 730 tractor; 1944 John Deere LA tractor; 1940 John Deere H tractor; 1945 John Deere H tractor; 1938 John Deere B tractor; 1953 John Deere 40 tractor; AC G tractor, sells complete w/ cultivator and single bottom plow; Caterpillar DE dozer; 1951 Kaizer/Frazer Henry J 2 door coupe, very solid, body sells with extra parts; 1979 GMC Sierra 7000 rollback truck; 1989 Great Dane 48ft van trailer; Large selection of new in the box Ertl 1/16 scale toys, some Precision models; Other toys to include John Deere bicycle, pedal tractor, pedal car and other collectible toys; Also selling signs and memorabilia, tractor parts, tools and shop items, antique mowers, implements, parts implements and tires

BILL & NORMA HENDERSON • (641) 932-5571
 AUCTION MANAGER: JOHN PROBASCO (641) 856-7355
 SULLIVAN AUCTIONEERS, LLC • TOLL FREE (844) 847-2161
 www.SullivanAuctioneers.com • IL Lic. #444000107

FRONTLINE FENCING LLC

Steel Pipe Fencing.
 Custom Built Gates and Livestock Handling Equipment.
 Barbed Wire and Woven Wire Fence.
 Arrowquip Cattle Handling Equipment.
 Post Driver Rental.



29386 St Hwy T,
 Greentop, MO
660-956-2430

email@nemo-trader.com
 sales@nemo-trader.com

The Ultimate Wood Heat.



CENTRAL BOILER CLASSIC EDGE
 TITANIUM HD SERIES
 Outdoor Wood Furnace

- **More Comfort** - Thermostatically controlled wood heat.
- **Peace of Mind** - Keep the fire outside and eliminate the dangers associated with indoor wood heating.
- **Save Money** - Wood is a renewable, inexpensive and often free energy source.

CAMPEN
 Heating & Air Conditioning
 573-288-8966
 Canton, MO
CentralBoiler.com

MAST MEATS, LLC
660-766-2211
 USDA & Custom Slaughter & Processing
CALL OR STOP BY FOR SPECIALS
 Retail store hours • Mon-Fri 8-5 Sat 8:30-3
 mastmeatsllc.com • 405 US Hwy. 63, Queen City, MO 63561

MoDOT

Be Part of the MoDOT Team!

MoDOT'S NORTHEAST DISTRICT IS NOW HIRING CONSTRUCTION & MATERIALS ADMINISTRATIVE TECHNICIANS

The Missouri Department of Transportation is currently seeking qualified individuals to perform specialized clerical functions of advanced difficulty and complexity to support highway construction work at MoDOT's Construction Project Offices located in Hannibal and Macon.

Qualified applicants will have a HS Diploma or GED/HiSET and two years of advanced clerical experience, good organizational skills and be proficient in computer software programs such as Microsoft Word, Excel, etc. Positive communication/interpersonal skills are also a must. These are full-time benefit-eligible positions with a salary range of \$30,192 - \$37,044.

Employment applications are available on-line at www.modot.org and must be submitted by December 2, 2021 to be considered for this vacancy.

Drug Free Work Environment • Equal Employment Opportunity/Affirmative Action Employer M/F/D/V

JOHNSTON AUCTION & REAL ESTATE
 MADISON, MO
 James • 573-473-4904
 Jeffrey • 573-239-6056

FARM RETIREMENT AUCTION
 Wed., Dec. 8th @ 10 AM
 Location: 27862 145TH ST., CANTON, MO

Robert Hartwig Farm Liquidation





- 5 Tractors • Dozer • Combine
- Implements • Mowers
- 3 Trucks • Hay Equipment
- Tools • Household & More

jamesjohnstonauction.com

LOLLI BROS. LIVESTOCK MKT, INC.

Special All Class Cattle Sale
 Tuesday, Nov 23 * 11am
 Cows Following Feeder Calves

JESSE PRATT - 22 Bred Cows: 5 years -ss: some with calves. 20 yearling bulls & heifers, heifers possibly bred.
DONET MAIN - 20 Bred Angus Cows: 6-aged, some with calves.
RICK PRENGER - 15 Bred Blk/Bwf Cows: 6-aged, calving in March.
GERALD DICK - 9 Blk Cows: 3 years old: fall calves by side.
ELI YODER - 4 Cow/Calf pairs, 10 Bred Cows: 2-4 years old, B/Bwf.
RANDY BRITT - 32 Bred Cows: 4-7 years old, Blk/Bwf.

2 LOADS: 1 load str, 1 load hfrs. 700lbs
 12 str/hfrs, 600-700lbs
 10 str/hfrs: 800-1200lbs
 20 str/hfrs: 400-500lbs

Happy Thanksgiving!

This is only a partial listing, many more by sale date.

Special Calf/Yearling Sales: Nov 30, Dec 14 & 21
 Special Cow, Cow/Calf, Breeding Bulls Sale: Thurs, Dec. 16
 Alternative Livestock & Taxidermy Auction: Dec 8-10

Cafe Open Lolli Bros. Livestock Market, Inc. Cafe Open
 704 Main st * Macon, MO * 660-385-2516 * www.lolibros.com
 Frankie 660-651-4040 * Tim 660-651-3496
 Joseph 660-346-9711 * Dominic 660-651-4024 * Cattle accepted on Sundays

WANTED

Motor Grader and Rock Truck Driver

**Apply to LaPlata Special Road District
PO Box 56, LaPlata, MO 63549**

Kirkville, Missouri
KIRKSVILLE LIVESTOCK LLC

Kirkville, Missouri | Special Feeder Sale
Monday, November 29 | 11:00 a.m.

Jeff Brawner - 85 BBWF hfrs, 2nd round shots, 120 days weaned, 625-675#
Keaton Farnsworth - 64 BBWF (few color) strs, 2nd round shots, 800-825#
Roger Turner - 70 BBWF & Red strs & hfrs, 2nd round shots, 450-550#
Daniel Troyer - 12 Blk strs & hfrs, 1 round shots, 400-500#
Tyler White - 9 Blk strs & hfrs, 1 round shots, 45 days weaned, 450-525#


Special Breeding Stock Sale
Friday, December 3 | 6:00 p.m.

Whitworth Farms - 100 Blk cows, 6 to s/s, bred to Bennett & Ross Angus bulls, to start calving Feb 20 for 60 days
Junior Ross - 40 BBWF & Red cows, 3 to 6 years old, mated to Blk bulls for mid Feb calving
David & Judy Kittle - 15 BWF & RWF cows, 3 to s/s, mated to Hereford bull with "Batchler" bloodlines and Red Angus bull with "Durango" bloodlines, for a Mar 1 calving start
Greiner Farms - Complete Dispersal - 60 Blk few Red fall pairs, 3 to 6 yrs old, Sept & Oct calves, Sired by Angus bulls, not exposed back
Ted Elder - 35 Blk 2 year old hfrs, start calving Mar 10


Many more listing by sale day

Check website for updated listings:
www.kirksvillivelivestock.com

We are open on Sunday to Receive Your Livestock
"Your Business is Very Much Appreciated"



Phone For Information:
Patty Foster, Office: 660-665-9804
Chuck Ambrosia: 660-342-3530
Caleb Randolph: 641-919-8539
Mark Herbold: 515-720-8667



Al Ashmead: 660-216-8730 Doug Fleshman: 660-626-7148
Daniel Smith: 660-341-8396 Jeremy Jarman 660-341-9879
Karol Kirkpatrick 641-777-3403



Edina Livestock Sales
Edina, Missouri
Weekly Sales Start @ 12:30pm

Friday, November 26th No Sale

Saturday, November 27th at 1:00 p.m.

- 23rd Annual Kevin & Beth Strange
- Bred Heifer Sale
- 250 Black & BWF AI Bred Heifers

Friday, December 3rd Special Feeder Calf Sale

To Consign For Any or All Sales or For Information Call:
Owner - Kevin Strange • Cell: 660-341-9974
Ryan Strange • Cell: 660-341-9721
Sale Barn: 660-397-9999

Field Reps:	Mike Bronestine 660-341-9965	Jason Bischel 660-216-0373
Bill Tom HALL 660-342-5420	Trey Gashwiler 660-216-8751	John Powell 660-341-1717



Semi-Annual Consignment Sale

Saturday, December 4, 2021 at 10:00 a.m.
28251 US Highway 63 North, Macon, Missouri

Directions: 28251 US Highway 63 North, Macon, Missouri. From US Highway 36 travel approximately 2 miles North of Macon to Scotty's Auction Barn and Event Center on the West side of the road. Watch for signs the day of the sale.

Equipment for Sale: We are currently accepting consignments for our semi-annual consignment sale. The earlier you consign the more your items will be advertised. Please contact us at 573-356-4405 to consign your items!

Consigned Items: Case 2390, dual hydraulic 3 point, 20.8 x 38, 4,800 hours; 3 point Sidewinder PTO tiller 12'; 3 point PTO soil stabilizer; Allis Chalmers snap coupler disk; Fiat Allis FL9 street pads, hydraulics recently worked over, 2010 GMC Sierra 1500 4x4 added or replaced: Front Upper Control Arm Tie Rod Sway Bar Replacement - 12pc Set, evap purge selenoid, oil cooler adapter gasket, Standard Ignition 2 Terminal Vapor Canister Vent Solenoid, Programmed Tire Pressure Monitoring System Sensor (TPMS) replace two have two spares, 3 in Front and 2 in Rear Leveling lift kit, Tyger Auto TG-FF8G4158 for 2007-2013 GMC Sierra 1500 Paintable Smooth Matte Black Pocket Bolt-Riveted Style Fender Flare Set of 4 one has been put on truck but 3 brand new ones come with the truck and Rough Country Front & Rear Neoprene Seat Covers and the recall on airbag for this truck

**CALL
573-356-4405
TO CONSIGN YOUR
ITEMS TODAY!!**



Scotty Kuntz 573-356-4405
Michael Cunningham 660-651-2288 • Paxton Pittman 918-316-7
WWW.SCOTTYSAUCTIONSERVICE.COM

FOR SALE: Angus and Balancer bulls, Rugged, ready for work. Calving ease and performance. Neese Angus Rutledge, MO 641-344-4565

FOR SALE: 18-4-38 Firestone tractor, duel tires & rims, fits case 1070, good tires \$250 OBO. Call anytime Brashear 660-323-5629

NEW/USED Parts "Auto, Pickup, Semi's Farm/Construction Equipment, "Motors/Tranny's" Body parts matching your color "Warrantied/Delivered" 800-807-9612

FOR SALE: International 826, German diesel flat tops, WF, 3 pt., dual hyd., good TA, 75-80% Goodyear 18.4x34, 5,280 hours, runs good, \$7,500. 217-257-1385

FOR SALE: John Deere 5075 E, MFWD, CAH, with JD H240 SL Loader, 940 hrs, new engine, same as new, \$42,500. Call 573-881-3557

WANTED TO BUY: Harley Davidson's, any year, any condition, cash money. Days 660-263-1356 or 660-537-0068

FOR SALE: New 3 pt. tillers, heavy duty, gear driven, 7' to 10' starting at \$3050. 660-874-4455

HANDYMAN: Install interior and exterior doors and windows, siding, decks, showers and toilets, flooring and drywall, roofs and dirt work. 660-956-5135.

FOR SALE: International 674 diesel with Quick Tach hydraulic bucket loader, power steering, good tires & paint, \$9500. 660-341-8089

ATTENTION HUNTERS: Whitetail Institute Products, CenterPoint Archery, Rage, Muzzy, Wac'em, G5 Broad heads, Carbon Express arrows, Nocturnal Lighted Nocks, Block Targets, Scent Thief Scent killer Products, Adam Hayes Moon Guides, Tinks Lures, IQ Bow Sights, Ghost blinds, Leopold & Vortex Optics, Chippewa Wedge-Loc Tree Stands, and more at Whitetail Seed and Supply 14136 State Hwy 3 LaPlata MO 63549

FOR SALE: Two Angus Yearling bulls sired by TC Total. Dams by Consensus. Thick, wide based, ultra gentle, semen tested. VanWye Lancaster 309-212-4838

FOR SALE: 3 Antique 9' Brunswick tables, 2 Snooker tables, 1 Pool table, 1 Snooker and 1 Pool table has been restored. 573-248-0942

FOR SALE: Firewood \$65 Truck Load. Call 716-294-1248 or leave message

FOR SALE: Storage shed 8'x12', gable shingle roof, window, double doors front, solid floor, on skids, could use some paint, \$1,400 217-257-1385

FOR SALE: John Deere 4230 Tractor, CAH, cold air, power shift, 6,800 hrs, 18.4x38 95%, \$19,500. Call 573-881-3557

FOR SALE: 2018 4710 Massey, open station, 270 hours, canopy, FWD loader, bale prong, deluxe model. Milan, MO 660-292-0471

"HIGHLY VISIABLE STORE FRONT" located in Beautiful Historic Downtown LaPlata Missouri!! "City of Silver"!! Vast indoor operating space available for Business, warehouse, Etc.!! Owner pays partial utilities!! Must See!! 660-341-9081



SULLIVAN

AUCTIONEERS, LLC

A FAMILY OWNED BUSINESS SINCE 1979



MATT



MICHAEL



LUKE



JOHN



DAN



JOE



JIM



BILL

Headquartered in Hamilton, Illinois, Sullivan Auctioneers, LLC is one of the largest Real Estate and Farm Machinery Auctioneers in the nation.

For more than 40 years we have been conducting professional auctions. We connect our sellers with thousands of interested buyers around the world.

Considering an Auction?
CALL OR EMAIL TODAY FOR A NO OBLIGATION CONSULTATION!
Toll Free (844) 847-2161 | Sold@SullivanAuctioneers.com
www.SullivanAuctioneers.com | Lic. #444000107



CENTURY 21

FARM & RANCH.

Lifetime Realty

Missouri Land for Sale

SULLIVAN 23 acres M/L and house - hunting ground/pasture - State Highway with 2 ponds and livestock fencing.

MACON 70 acres M/L - Hunting ground and pasture with 1.2 acre pond and frost free waterer. Fully fenced on hard surface road with utilities available.

KNOX 32.2 acres M/L - 15 tillable, the rest timber on a state highway with utilities available and building site

MACON 80 acres M/L - State Hwy 156, La Plata. Hunting ground and pasture with multiple building sites on hard surface road.

KNOX 10 acres M/L - property with city utilities and nice building site in city limits of Edina. New livestock fencing and frost free waterer.

ADAIR 155 acres M/L - hunting/investment property on State Hwy 6. Timber, utilities and multiple building sites. Fresh water stream, abundant with whitetail deer and turkey.

ADAIR 80 acres M/L - Hunting ground and pasture with pond and access to utilities, just out of CRP, 60 acres tillable.

ADAIR 80 acres M/L - with 1000 sq ft primitive single family home and outbuilding

COMMERCIAL PROPERTIES:
ADAIR RV Park, Bar & Grill - 22 spot RV Park complete with fully furnished restaurant on the Chariton River close to public hunting ground.

ADAIR 2.7 acres of Highway 63 frontage - brick ranch home and 2.7 acres on Highway 63 four lane in Millard. High traffic, close to the Kirkville Airport.



Elizabeth Gregory, Realtor
660.621.2136
farmandhome.c21.com

1605 Baltimore Street, Suite A
Kirkville, MO 63501
660.665.5678

DRY Fertilizer straight product or blends trailer load lots, we are the farmer's friend saving you money. 800-807-9612

FOR SALE: 18 Black Black/White face heifers, 2nd & 3rd period pregnancy; 3 Red Angus heifers, 2nd & 3rd period pregnancy, bred to Angus Black Bull; 8 Black Angus heifers and calves, all nice & gentle. 660-376-9199

FOR SALE: Frigidaire Chest Freezer 20 cubic feet, \$225; Kerosene Heater 23,500 BTU, \$40. 660-342-5757

FOR SALE: Pride power chair TSS300, like new, new batteries, \$600. 660-216-8865 jimjan@gmx.com

BUYING Used Mobile Homes. Porter Homes 573-231-6667

FOR SALE: Welsh Corgi x Mountain Cur puppies, family dog prospect. No Sunday Calls 573-934-0122

FOR SALE: Angus and Balancer bulls, Rugged, ready for work. Calving ease and performance. Neese Angus Rutledge, MO 641-344-4565

FOR SALE: Heider Auger Wagon 100 bushel, 540 PTO, Auger Swing either side, always shedded, real good, \$700. 217-257-1385

FOR SALE: John Deere 2840 Tractor, 1979, 5000 hrs, 148 Loader, shedded, well maintained, \$14,500. Call 573-881-3557

FOR SALE: Square bales 2nd cutting grass/clover, wire tied, \$5.00 per bale. Novelty Area 660-216-0618

WANTED: 46-60 Flat fender Jeep Pickup. 573-248-7825

TAKING ORDERS dressed beef ready February 2022 grass and grain fed all natural diet. 660-665-3919

HIGH QUALITY Hay for sale \$45 per bale. 217-653-4762

ATTENTION TRAPPERS and Hunters I am buying furs, coon, coyote, muskrat, bobcat, squirrel, and more call Andrew 660-486-3207

WANTED Small corn crib in working condition; Diamant or similar mill for wheat; Homestead Handy Man once weekly, resourceful and familiar with horse equipment. East La Plata 660-332-4026

FOR SALE: Q Catch Portable chute alley and tub, very good condition, \$13,500 Milan MO 660-292-0471

FOR SALE: 12 year old mini roan mare 34" \$600; 12 year old paint pony stands 45" \$800; 12 year old palomino mare about 14.1 \$1100. 660-342-5314

FOR SALE: manure fork tine attachment for 6' bucket, \$125. 217-257-1385

FOR SALE: John Deere 5400 Tractor, MFWD, 5500 hrs, 541 Loader, new tires, joystick, \$22,500. Call 573-881-3557

SCOTT HUSKEY'S HOME SERVICE R-10 Foundation Enclosure Systems for manufactured, modular, & site built homes. Saves on utilities and prevents freeze ups. General maintenance and repairs since 1972 573-696-3468 "GO DAWGS"

TIMED ONLINE • NO-RESERVE FARM EQUIPMENT AUCTION
BIDDING CLOSING: TUES., NOV. 30TH STARTING AT 9:00 A.M.
 PHYSICAL ADDRESS: 2479 YEW AVE., LOCKRIDGE, IA
EQUIPMENT INSPECTION: SAT., NOV. 27TH • 9 A.M. - 3 P.M.



HIGHLIGHTS INCLUDE: 2019 John Deere 6155R MFWD tractor, 1,480 hours; 2020 Case-IH Maxxum 115 MFWD tractor w/ Case-IH L105 loader, 939 hours; Case-IH 2096 2wd tractor w/ Westendorf WL-42 loader, 9,970 hours; 1984 IH 5088 MFWD tractor, 10,000 plus hours; 1988 Deutz-Allis 7085 2wd tractor w/ Deutz-Allis 466 loader, 5,576 hours; 1988 Deutz-Allis 7085 2wd tractor, 10,249 hours; Deutz D13006 2wd tractor, 7,564 hours; Deutz D100-06 2wd tractor, 4,979 hours; Deutz D80-06 2wd tractor, 8,700 hours; John Deere 2630 display; John Deere StarFire 3000 receiver; 2009 Case-IH 5088 2wd combine, 1,417 eng./ 1,055 sep. hours; 2005 Case-IH 2208 8 row 30" corn head; 2013 Case-IH Terra Flex 3020 30' platform; DuoLift Head Hauler DL25 25' head cart; Unverferth HT30 30' head cart; 2001 John Deere 6650 4wd forage chopper, 2,580 hours; John Deere 6610 2wd forage chopper; (5) Meyer 4518 18' silage wagons; 2018 Ag-Bag G66170 ag bagger; 2013 John Deere 1760 12 row 30" planter; 2000 John Deere 1780 15 row 15" planter; 2000 John Deere 1560 20' grain drill; Great Plains 1800TM 18' Turbo Max vertical tillage tool w/ applicator; IH 496 25' disc; Glencoe 12' 9 shank "Soil Saver" disc chisel; John Deere 400 rotary hoe; Kewanee 14' cultimulcher; 2019 John Deere 956 14' moco; Vermeer TE170 4 basket hay tedder; Kuhn SR112 Speedrake; John Deere 704 10 wheel hay rake; Kinze 640 grain cart; (2) Brent 644 gravity wagons; (3) Mayrath 10' x 71' augers; Kuhn Knight "Slinger" SLC 132 manure spreader; Kuhn Knight RA 142 "Reel Auggie" feed wagon; Haybuster H-1000 rotary bale processor; Skid loader 68" x 104" pen bedder; Gridley Welding Shop 9 yd. dirt scraper; Sprayer Specialties XLRD1000 1,000 gal. pull type sprayer; Chandler 6 ton SS fertilizer spreader; Land Pride BH2585 3-pt. backhoe; Large selection of skid steer & loader attachments; 2020 Chevrolet 3500HD 4wd dually pickup, single cab, Duramax engine, Zimmerman 11' flatbed, 13,714 miles; 2004 Chevrolet 1500 4wd ext. cab pickup, 61,067 miles; 2018 Featherlite 34' aluminum livestock trailer; 2015 Featherlite 26' aluminum livestock trailer; 2004 Delta 32' gooseneck flatbed trailer; 2012 John Deere 825i 4wd UTV, 1,860 miles; John Deere X304 4-wheel steer lawn mower; Kawasaki Prairie 4wd ATV; Yamaha Terraport 2wd ATV w/ Yamaha FM-48 48" finish mower; (2) Arctic Cat Z570 snowmobiles; Nice selection of shop tools & other farm related items!

JENNIFER & THE LATE NELSON ANDERSON ANDERSON LIVESTOCK LTD.
 AUCTION MANAGERS: JIM HUFF (319) 931-9292 & JEFF HOYER (319) 759-4320
 SULLIVAN AUCTIONEERS, LLC • TOLL FREE (844) 847-2161
 www.SullivanAuctioneers.com • IL Lic. #444000107

Macon Real Estate and Personal Property Auction

Thursday, December 2 at 4:00 p.m.
Marvin and Mary Stuck Living Trust
 28284 Lariat Avenue, Macon, Missouri

Directions: 28284 Lariat Avenue, Macon, Missouri. From the US Highway 63, US Highway 36 intersection at Macon, proceed East approximately 2.6 miles, turn North on Lariat Avenue for approximately 1.5 miles. The property will be on your right. Look for signs the day of the sale.

REAL ESTATE: Tract 1: Includes a brick, ranch style, home and is ideally located close to town on 11.7 acres more or less in a rural setting. The main level features an open kitchen, dining and living room, 3 bedrooms, 1 3/4 bathrooms, an enclosed back porch, and a utility/laundry room. The living room has a wood fireplace with an insert. The kitchen includes a built in dishwasher, oven, in counter electric range top and an island with storage. There is a full, partially finished basement with a small kitchen, bedroom, bathroom, large game/family room, and a walkout. The home has 200 amp service entrance, a 50 gallon electric hot water heater and a 2 car attached garage. There is also a nice pole barn on the property.

Tract 2: Includes a pond and 10.2 acres more or less of gently rolling hills with timber and hay ground bordering Lariat Avenue.

Tract 3: 10.2 acres more or less of gently rolling hills with timber and hay ground bordering Lariat Avenue.

Tract 4: 10.2 acres more or less of gently rolling hills with timber and hay ground bordering Lariat Avenue.

Tract 5: 14.82 acres more or less of gently rolling hills with timber and hay ground bordering both Lariat Avenue and Melody Avenue.

The real estate will sell promptly at 5:00 p.m.. The home and 11.7 acres more or less will sell first followed by choice of the remaining tracts by the winning bidder. If you would like to schedule your personal showing, please call Scotty at 573-356-4405.

**See Terms and Conditions for Purchase of Real Estate below.*


DOWN PAYMENT: 10% of the contract purchase price will be due upon acceptance of the Sales Contract. Personal or Cashier's Checks will be accepted. This is "AS IS, WHERE IS" and is non-refundable. **CLOSING:** Closing shall be within 30 days of the auction date.

Household Items: Waterfall double pedestal desk; cedar chest (needs work); Imperial heavy duty upright deep freeze.

Antiques and Collectibles: 3 drawer antique chest; 4 milk cans; #10 crock; Busch pool table light; vintage CB equipment; erector set; antique railroad lantern; butter churn; antique wood stove; yard dart game; blue jars; wooden wall clock; large glass curved curio cabinet; tri front curio cabinet; 2 tall stools and wood table; antique oak square table.

Outdoor and Tools: Troy-Bilt wood chipper; Stihl 211C chainsaw; Poulan Pro 42cc chainsaw; older horizontal compressor; Stihl 028WB chainsaw; Troy-Bilt rear tine tiller; John Deere 425 all wheel steer, 1,400 hours; John Deere MC 519 bagger; 3 hp trash pump; miscellaneous lumber; aluminum ladder; window step ladder; Stihl F545 curved shaft weed eater; Brinley lawn seep; garden hose reel; snow blade for John Deere lawn mower; Mall chain-saw; wheelbarrow; miscellaneous hand held tools; long handle tools; small battery charger; car ramps; Craftsman 3 drawer bottom box; 4 drawer Craftsman top box; Butcher Boy meat band saw.

There will be many more items at this auction too numerous to mention.



Scotty Kuntz 573-356-4405
 Michael Cunningham 660-651-2288 • Paxton Pittman 918-316-7500
WWW.SCOTTSAUCTIONSERVICE.COM

WAYNE COUNTY, IOWA & HARRISON, MERCER & SULLIVAN COUNTIES, MISSOURI

LIVE ONSITE & VIRTUAL LIVE ONLINE MAJOR IOWA & MISSOURI LAND AUCTION

THURSDAY, DECEMBER 2, 2021 AT 10:00 A.M.^{CT}

2,058.704 SURVEYED ACRES SELLING IN 20 TRACTS

AUCTION VENUE: RAGAN-HICKMAN POST #477 (FORMERLY KNOWN AS THE MERCER COMMUNITY BUILDING) 14443 STATE STREET, MERCER, MO 64661

The farm land of Ryder Farms, Inc. & the Estate of Alfred K. Ryder is located in south central IA and north central MO close to the MO/IA border line.

Tracts 1 - 6 are located just northeast and west of Lineville, IA, or 35 miles south of Chariton, IA, and contain a total of 671 acres (subject to survey). These tracts are further described as being located in Sections 14, 15, 19 and 22, T67N-R23W, Grand River Township, Wayne County, IA.

Tracts 7 - 14B are located just north and east of Mount Moriah, MO or 15 miles northeast of Bethany, MO, and contain a total of 904.123 surveyed acres. These tracts are further described as being located in Sections 3, 10, 11, 12, 13, 14 and 24, T64N-R26W, Trail Creek Township, Harrison County, MO.

Tracts 15 - 18 are located 5 miles northeast of Mercer, MO or 10 miles north of Princeton, MO, and contain a total of 383.270 surveyed acres. These tracts are further described as being located in Sections 3, 4, 33 & 34, T66N-R23W, Marion & Somerset Townships, Mercer County, MO.

Tract 19 is located just south of Newtown, MO or 20 miles northwest of Milan, MO, and contains 100.311 surveyed acres. Tract 19 is further described as being located in Section 11, T64N-R22W, Clay Township, Sullivan County, MO.

INSPECTION: SATURDAY, NOVEMBER 13TH, 10:00 A.M. - 12:00 NOON AT THE RAGAN-HICKMAN POST #477

RYDER FARMS, INC. & THE ESTATE OF ALFRED K. RYDER

REPRESENTING ATTORNEYS:

THOMAS J. MAGEE HEPLERBROOM LLC
 211 N Broadway Suite 2700
 St. Louis, MO 63102 | (314) 480-4212

EDWARD E. COX CRAVER, GROTHE & COX, LLP
 303 W State Street Centerville, IA 52544
 (641) 856-2244

AUCTION MANAGERS:

IOWA
 John Probasco (641) 856-7355 & Jim Huff (319) 931-9292

MISSOURI
 Bill Fretwell (660) 341-7735 & Jennifer Wood (217) 257-8812

DETAILS, MAPS, PHOTOS & BIDDING: SULLIVANAUCIONEERS.COM
 SULLIVAN AUCTIONEERS, LLC | (844) 847-2161 | LIC. #444000107

COWBOY JOHN ESTATE AUCTION

SATURDAY, DECEMBER 4TH • 10AM
23686 324TH STREET • DAVIS CITY, IOWA 50065

Driving Directions: East of Lamoni on Hwy 69 to Davis City, turn south on Dale Miller rd. (south side of Davis City) to Pleasanton stop sign. Then south a 1/16 mi. to Abby rd. (Iowa 324th st) turn right or west to the first driveway on the north or right. Follow auction flags starting at Davis City.

MOTORCYCLE & SKID STEER

2017 Indian Roadmaster, touring motorcycle, 51830cc, model N17TRAAAX, thunder black, ivory cream color, 37G waterproof storage, 111 Thunder Stroke engine, ABS braking, chrome head dress, LED lighting, heated leather seat, heated hand grips, stereo, keyless ignition, cruise control, 5.5 gallon tank, 25 degree rake, 26,800 miles, VIN 56KTRAA2H3346345; fiberglass motorcycle trailer; 2018 T650 compact skid steer track loader, 950 hrs., 75 hp, 2570 lb. lift, 4 aux hydraulics, quick attach. hydraulic wedges, iso/h, foot and hand throttle, 2 sp., heat and air, 18" tracks; Bobcat 74" bucket; pallet forks; bale spears/trailer ball; Bobcat grapple; Dymax shear; Bobcat brush mower; Kubota grabber; Danuser hydraulic post hole digger; Shaver post pounder, Grand Slam Model, HD12SS; extra bits;

TRACTORS, TRUCKS & TRAILERS

JD 6300 tractor, 6460 hrs., MFWD, 12 speed, 3 remotes, 540 PTO, 3 pt, open station; JD 4430, Serial #012691R, model 4430P, hours unknown, rear and front weights, 2 remotes, 540/1000 PTO, 8 sp. power shift, 18.4x34, 11.00x16, good rubber; JD 4010, Serial #52666, model #21T, sells with front and rear weights; Farmall SM, will run; JD 4010 Diesel parts tractor; 2 Farmall SM parts tractors; 2000 Intl. 4900 DT with 466E Diesel Engine, 220k miles, 7sp., cruise, dump truck, VIN 1HTSDAAN6YH249948; 2001 power stroke 7.3L diesel, 4x4, lockout hubs, manual transfer case, 5 sp, regular cab dually pickup, Crossfire flatbed, power locks, power windows, brake controller, 262k miles, VIN 1FTWF33F51ED77227; 2006 Titan 24' stock trailer, 2 divider gates, 1 w/ slider, 4 hinge back gate w/ slider, wood floor; PJ Pintle hitch deck trailer, 8'x18'; PJ 8'x25' gooseneck flatbed deck trailer, tandem dually's, oil bath axel's, rear receiver, heavy ramps; 6 bale hay trailer; 4 bale pup trailer; (6) hay racks, various gears, various lengths;

EQUIPMENT, TOOLS & LIVESTOCK HANDLING

565T Hestson round baler, twine tie; WR-20A Vermeer wheel rake; JD 336 square baler; JD 24T square baler; Kuhn 9' GMD 700-GIIHD disc mower; Woods 1210-2 brush cutter; JD 16' disc; 20' 6 section harrow cart; barge box wood wagon; post pusher; (2) pto wire roller; small ground driven manure spreader; JD 4 row planter; gas powered hole digger; tons of chains, chain binders, ratchet straps; steel pickup flatbed trailer; Kelly Ryan elevator; hay stack mover; Danuser 3 pt. post hole digger; (2) 250 oxg. bottle (2) act. tanks; torch gauges, heads, and hoses; electric impact; comalongs; fence stretchers; bolt cutters; hydraulic jack; socket sets; gas cans; Craftsman portable electric air compressor; caution cones; Stihl quick saw; Stihl chainsaws; DeWalt impact; DeWalt grinder; DeWalt drills; end wrenches; screw drivers; crescent wrenches; hammers; tool boxes; bits; grinders; anvils; vice; flatbed truck boxes; bolt cutter; tin snips; pliers; ladders; cream cans; shovels; tools too numerous to mention; 2019 Foremost chute; corral panels w/cart; calving pen; maternity pen; new T posts; bale rings; gates; feeders; Sure weigh livestock scale; anchors; insulators; fiberglass posts; clips; wire; braces; solar powered fencers; electric fencers; electric fence wire; plastic posts; tension springs; stays;

1026 40th Street, Humeston, IA 50123
 Don Wagner 641-931-6832 donaldwagner44@gmail.com Find us on f
 Jason Dent 515-231-5176 imaginerodeo@gmail.com "Wagner-Dent Auctions"

TIMED ONLINE • NO-RESERVE COLLECTOR TRACTOR AUCTION
BIDDING CLOSSES: MONDAY, DECEMBER 6TH STARTING AT 10:00 A.M.
 PHYSICAL ADDRESS: 1403 SOUTH C STREET, ALBIA IOWA 52531
 EQUIPMENT INSPECTION: TUESDAY, NOVEMBER 30TH FROM 9:00 A.M. - 2:00 P.M.

HIGHLIGHTS INCLUDE: 1929 John Deere D tractor; 1929 John Deere GP tractor; 1946 John Deere H tractor; 1952 John Deere G tractor; 1936 John Deere A tractor; 1955 John Deere 60 tractor; 1959 John Deere 630 tractor; 1956 John Deere 620 tractor; 1947 John Deere M tractor; 1972 John Deere 820 tractor; 1956 John Deere 50 tractor; 1959 John Deere 530 tractor; John Deere 730 tractor; 1944 John Deere LA tractor; 1940 John Deere H tractor; 1945 John Deere H tractor; 1938 John Deere B tractor; 1953 John Deere 40 tractor; AC G tractor, sells complete w/ cultivator and single bottom plow; Caterpillar DE dozer; 1951 Kaizer/Frazer Henry J 2 door coupe, very solid, body sells with extra parts; 1979 GMC Sierra 7000 rollback truck; 1989 Great Dane 48ft van trailer; Large selection of new in the box Ertl 1/16 scale toys, some Precision models; Other toys to include John Deere bicycle, pedal tractor, pedal car and other collectible toys; Also selling signs and memorabilia, tractor parts, tools and shop items, antique mowers, implements, parts implements and tires

BILL & NORMA HENDERSON • (641) 932-5571
 AUCTION MANAGER: JOHN PROBASCO (641) 856-7355
 SULLIVAN AUCTIONEERS, LLC • TOLL FREE (844) 847-2161
 www.SullivanAuctioneers.com • IL Lic. #444000107

NEMO Trader

COME SEE US AT OUR NEW LOCATION!
 701 East LaHarpe St, Suite C, Kirksville, MO 63501
 P.O. BOX 809
 660-665-8500 or 660-988-6830
 sales@nemotrader.net

WE ARE OPEN!

Allen Auction & REAL ESTATE SERVICE LLC
 www.allenauction.net

ANNUAL THANKSGIVING CONSIGNMENT AUCTION
SATURDAY NOVEMBER 27, 2021 @ 9:00 AM
 ALLEN AUCTION SALE'S LOT, 490 S. HWY 47, HAWK POINT, MO, 63349
 Directions: Allen Auction Sale's Lot. From Hawk Point, MO, Take Hwy 47 South 2.5 miles, Auction on Left Side. Watch for Signs Day of Auction

COMBINES & HEADS	LIVESTOCK EQUIPMENT & SUPPLIES
TRACTORS	GUNS
FARM EQUIPMENT	LIFETIME TOY COLLECTION
VEHICLES	RECREATION - ATV'S & 4 WHEELERS
CONSTRUCTION	LAWN & GARDEN
NEW SKID LOADER EQUIPMENT	SHOP EQUIPMENT & TOOLS
HAY EQUIPMENT	MISCELLANEOUS
TRAILERS & WAGONS	

GO TO WEBSITE FOR FULL LIST, UPDATES AND PHOTOS
 Directions: Allen Auction Sale's Lot. From Hawk Point, MO, Take Hwy 47 South 2.5 miles, Auction on Left Side. Watch for Signs Day of Auction

ALLEN AUCTION & REAL ESTATE SERVICE LLC
 Hawk Point, MO • Phone: 636.338.4805 • Fax: 636.338.4823
 Nick Allen: 636.358.2900 • Kyle Allen: 636.23632344 • Tec Parr: 636.661.5775
 Elden Foster: 573.239.6745 • E-mail: sandy@allenauction.net
 For updates on list & photos check our website:
WWW.ALLENAUCTION.NET

FARRELL ESTATE AUCTION
 406 CALHOUN ST. - CHILLICOTHE, MO
WEDNESDAY, DECEMBER 1 • 11:00 A.M.

Directions: Due to the death of Maurice Farrell, the following real estate and personal property will be sold at the home located 406 Calhoun St., Chillicothe, MO. From Washington Street, go east on Polk Street for six blocks to Easton Street. Turn right on Easton Street and go two blocks to Calhoun Street, then right to sale location.



REAL ESTATE: Owners say, "sell it". This charming 3-bedroom, 1.5-bathroom home has a living room, kitchen, single car attached garage, full basement, and nice deck looking over a fenced back yard. This frame home was constructed in 1976, featuring 960 sq. ft., situated on a nice, shaded lot.

Home has good roof, vinyl siding, forced air, natural gas furnace (2010), 50-gallon natural gas water heater, and has laundry located on the main floor. Needs some "updating" but appears to be "rock solid". This may just be the "beauty" you have been looking for. Real estate will sell at 12:00 noon. Terms: \$2,500 deposit down day of sale as a non-refundable down payment, payable to Staton Abstract & Title Co., which shall hold the money in escrow until closing with balance due within approximately 30 days (or less). 2021 R.E. taxes will be paid by the Seller. Real Estate contracts signed sale day, be there with financing in order and be ready to bid at 12:00 noon. Great location! Great Potential! Contact the auction firm for viewing.

VEHICLE, TOOLS, YARD RELATED

Like NEW 2020 Buick Encore GX, only 4,525 miles! 1.2L Turbo 3 cyl. engine, leather interior, warranty, GREAT gas milage, VIN: KL4MMFS25LB126302 (car will sell immediately after real estate); metal patio table w/ chairs; Bolens 21" push mower; CharBroil electric grill (new); wooden step ladders (4', 6'); garden hose and hose reel; garden tools (shovels, rakes, broom, more); electric hedge trimmers; Worx 20v weed eater, blower, trimmer; Yard Vac; 2x6x16 (x5) - 4x4x16 lumber; Clean Shot 2050psi pressure washer; camping chairs; Shop Vac; shelving; other misc items scattered throughout.



HOUSEHOLD, COLLECTIBLES, COINS

Whirlpool Ultimate II Washer; Amana heavy duty elec. dryer; small Holiday chest freezer; Amana 18 refrigerator; Frigidaire 8-bottle wine cooler; Whirlpool 30" electric stove; wooden folding chairs, table; lat screen tv's (LG, Vizio); Bose radio; vcr and movies; sectional sofa; Lazy Boy recliner; computer desk, Oak roll top office desk; office chair; GE microwave; small run of kitchen pots, pans, and utensils; books; luggage; 4 pc. bedroom suite (full sized bed frame, double dresser, chest of drawers, night stand); carpet shampoo machine; Orrick, Fantom vacuums; brass lamp table; chest of drawers; kitchen step stool; GE microwave; golf clubs, bag (Cobra irons and misc clubs including Calloway, Adams, etc); plastic shelving; fans; cuisinart, GE dorm fridges; dehumidifier; Missouri University LED wall light: and more!
 Beautiful Engle's Custom 5pc Knife set (Must see! Bowie, Fillet, Buck, others): 1950's Hubley No. 500 tractor with loader; 1950's Tonka No.5 Suburban Pumper fire truck; balance scale with marble top; Lone Ranger record player; 25 US Mint sets (1960's - 2000's); 18 US Proof sets (1970-2003); Other US and foreign coins; and more!

LISTING & PHOTOS AT WWW.TETERAUCTION.COM



TETER AUCTION COMPANY, LLC
 FOR ADDITIONAL INFORMATION, CONTACT:
 Joshua Teter: (660) 963-2461
 David May: (660) 973-9523
www.teterauction.com

AUCTION
SATURDAY, DECEMBER 4, 2021 10:00 AM
118 S. McLEAN STREET, OTTUMWA, IOWA
 Corner of McLean & East Main Street, just West of the Post Office

EQUIPMENT: Bobcat 763 skidloader, diesel, 2,021 hours; Bobcat 453 skidloader, diesel, 690 hours, needs repair; Bobcat 763, diesel, disassembled, assembly required; IHI 38J rubber-track hoe, 2,400 hours; Nana 7J rubber-track mini-hoe, w/blade & approx. 5,300 hours; IHI 35J track mini-hoe w/4,000 hours; Daewoo forklift, 2-stage, LP gas, 1,500 hours; Hyster 50 forklift, 5,000 lbs, LP gas, 2-stage, Vermeer 252 stump grinder w/trailer; Power Tech stump grinder w/14hp gas engine; Vermeer 625 grinder/shredder; Upright AB38N upright manlift, electric; Upright TL49 electric 2-person manlift; Upright MX 2-man battery scissors lift; Upright all-terrain SL300 4WD manlift w/speed level; 4'x8' 3-stage scissors lift; Interior scissors lift, needs repair; (2) Ingersoll Rand 185 4-cyl. diesel port. air compressor; Ingersoll 600 compressor unit w/6-cyl. diesel engine; Barreto 918 commercial tiller, w/2-wheel trailer; Pars T120 trencher w/Briggs engine; Barreto 1824-TK trencher, self-propelled, walk-behind, on tracks; Frontier SP2000 soil rake/pulverizer; Small self-contained tree spade; Fiberglass 2-wheel cement mixer; Portable concrete mixer w/gas engine, on trailer; Commercial yard vac; 2,000-lb. drop-deck single-axle trailer; 5'x10' tilt-bed trailer w/end gate; 16' Lift-a-Load drop-down gooseneck tandem-axle flat-bed trailer, heavy-duty; 4'x8' 2-wheel trailer; 5'x8' 2-wheel trailer; 4'x8' single-axle trailer; Gas-powered 2-wheel posthole digger; Several 2 & 4-man post augers w/gas engines; Gas-powered lawn seeder; 3-pt. seeder; (2) Billy Goat walk-behind brush cutters; Giant Vac walk-behind brush cutter w/gas engine; Billy Goat lawn vac; 3-pt. 4' roto-tiller; EZ Air lawn aerator w/Honda engine; (2) Makita power tampers; Manual sod cutter; Danco pull-type sprayer; Land Pride 3-pt. 4' brush cutter; Bachtold fence-row mower; (5) Electric jack hammers; Air jack hammers; Large asst. of chisels; Whiteman 3' power trowel; Robin 4' F46 power trowel; Target concrete saw; (2) Heavy-duty trash pumps; (3) Engine cranes; Rex Model 6790 pipe threader/cutter; Bluebird gas-powered lawn edger; Bluebird pull-type lawn flail; Several power washers - MTI-N 2400psi, Power Liner gas-powered pressure washer; MTM 5,000-lb. pressure washer, 5-gal. a minute; Mighty M 2,000 psi hot-water power washer; Sioux hot water power washer; Several other gas-powered pressure washers; Several port. air compressors, incl. 5-1/2 hp.

SKIDLOADER ATTACHMENTS: Mighty Ax tree puller; Several skidloader buckets; Pallet forks; Root rake; Forklift brush; Set of skidloader tires; Fork extensions; Basket lift for loader; Approx. 60 Reece draw-tight hitches; House jacks; Appliance dollies; Several barricades; Concrete vibrators; Lawn rollers; Pipe vise; Alum. loading ramps; (5) 12' concrete chutes; MG 2300 gas-powered generator; Winco Industrial 9500 gas-powered generator; Robin generator; Winco 6,000-watt generator; Mini-Camp 3600 generator; Force insulation machine; Blast heaters; Sewer cleanout w/3" & 6" cable; 2-wheel gas tote.

SCAFFOLDING & SHELVING: Large asst. of tube & clamp scaffolding; Asst. of sectional scaffolding & attachments; Pallet racking; Load control jacks; (8) Roof ladders; Alum. extension ladders; Fiberglass ladders; Large asst. of gondola-style single & double shelving; Drywall scaffolding; Jacks; Hose reels; Tile saw; Stands; Wheelbarrows; Asst. of roller conveyor; Several fans; (2) Port-a-coolers, like new; Heaters; (2) Drywall texturing machines; (4) Dry-East dehumidifiers; (4) Windsor wind blower fans; Several lawn mowers; Roto-tiller; Lawn spreaders; Hand tools; Stihl chain-saw sharpener; (2) 100-gal. fuel tanks & pumps.

PICKUP & SNOW PLOW: 1996 Chev. 1T. single-wheel pickup, 4x4, V8, auto, needs repair; Western 8' pickup snow blade.

AUCTIONEER'S NOTE: Voss Equipment Rental has been in business in Ottumwa for over two generations. This will be the first of two sales, with this sale consisting of mostly outdoor equipment. There will be many unadvertised items. Be sure & attend this auction. Go to our website for pictures - www.almartinauctions.com.

TERMS: CASH/ GOOD CHECK POSITIVE ID REQUIRED **MASTERCARD/VISA DEBIT/CREDIT CARDS**

All property must be settled for before removal - All items sold as is where is - Not responsible in case of accidents.
 Announcements made day of sale take precedence over any advertising.

VOSS EQUIPMENT RENTAL, OWNER
AL MARTIN REAL ESTATE & AUCTION CO., INC.
 307 Church St., Ottumwa, IA 52501
 Phone: 641-682-5465 Website: www.almartinauctions.com

AUTO'S UNLIMITED

660-665-8149
660-341-0965

No Sunday Calls!
17406 Bob Rd • Kirksville, MO

FEATURED VEHICLES

2015 Town & Country Touring L
\$11,900

Gray leather, absolutely loaded

2008 Chevrolet Aveo LS

2005 Ford Focus ZX3



\$5,500

42k miles, very nice, great MPG



\$4,350

SES, low miles, excellent condition

ALL VEHICLES HAVE GONE THROUGH A 60 PT INSPECTION! STATE INSPECTED! CALL FOR MORE INFO!

AUCTION

SATURDAY, NOVEMBER 27, 2021 10:00 AM

SALE TO BE CONDUCTED AT THE PROPERTY LOCATED
2697 - 23RD STREET, ELDON, IOWA

OR 2 Blocks South of the Gothic House in Eldon
Auction Signs Will Be Posted

ANTIQUE CARS, UTV & TRAILERS: 1929 Model A Phantom, runs and drives like new, always stored inside, magnificent show car, has alternator & wolf whistle; 1926 Ford Model T coupe, new interior, new top, good paint, 2-spd. rear end, wood spoke wheels, Rocky Mountain brakes, ready for the road, drives great; 2017 Cub Cadet Challenger 550 side-by-side, front winch, 4x4, full cab, w/front snow blade, 279 miles; 2010 Sure Track tandem-axle bumper-hitch car trailer w/ramps; 2017 5'x12' single-axle trailer w/ramp gate; Husky 25hp tractor-style riding lawn mower, hydro, 50" deck; Troy-bilt Horse roto-tiller; 21" lawn mower.

MODEL A & MODEL T PARTS: Richard restored and rebuilt many Model A & Model T autos, and maintained a vast array of new and used parts for those vehicles incl. -- Several windshields; Model A & Model T frames; Front & rear fenders; Rear-ends; Gas tanks; Side shields; Bumpers; Wheels; Tires, some new; Rear-end housings; Front axles; Hub caps; Side curtains; Dashes & cowls; Exhaust systems - mufflers & tail pipes; Manifolds; Carburetors; Several seats; Luggage carriers for Model T's; Engine oil pans; Air cleaners; U joints; Gauges; Heaters; Headlights; Set of (5) 29" rims & tires; Steering sectors; Steering wheels; Flywheels; Transmissions; Heads; Blocks; Radiators; Springs; Asst. of starters & generators; Gaskets; Horns; Crank shafts; 1924-25 Model T turtle deck; Tire covers; Coils; Wood replacement spokes; Several Model A & Model T engines, some complete & running, some incomplete; Ford V8 flathead engine, complete; Stationary Model T engine & stand.

TOOLS & EQUIPMENT: Near new drive-on 4-post elec. car lift; 5hp 80-gal. 2-stage upright 220 air compressor; Campbell-Hausfield 2,000 psi pressure washer; Campbell-Hausfield 5hp twin-cyl. 60-gal. upright air compressor; Snap-On FM140A 110v. wire welder; Oxyacetylene torch set; (2) Pittsburg engine hoists; Engine stands; Sandblaster; Oil drain unit; Toolbox base cabinet; 3T. floor jack; Old railroad jack; Bench grinder; Tap & die sets; Large asst. of hand tools incl. end wrenches, pipe wrenches, socket sets, air impact tools; Air buffer; Air impact; Penncraft machinist's toolbox; Log chains; Shop lights; Parts washer; Black & Decker table saw; Rechargeable drills; Bits; Clamps; Fiberglass 10' stepladder; Creepers; Grease guns; Blast heater; Battery charger; Heavy-duty vise; Hoes, rakes, shovels; Extremely large asst. of single-sided metal gondola shelving; Old Tunger wall-hung battery charger; Johnson 6hp outboard motor; Evinrude 15hp outboard motor; Wheelbarrow.

APPLIANCES, FURNITURE & PERSONAL PROPERTY: Whirlpool side-by-side refrigerator/freezer w/bottom freezer, stainless steel; Maytag refrigerator/freezer; Amana 22 cu. ft. chest-type deep freeze; Maytag auto. washer; GE gas dryer; Maytag port. dishwasher; Hobart commercial meat grinder; Elec. meat tenderizer; BBQ grill; Cream cans; Hanging scales; Porch swing; Newer 3-piece bedroom suite w/queen-size bed; Computer desk; Pride 3-wheel invalid scooter.

SLOT MACHINE & GUNS: Digi flush electronic slot machine, commercial size, works good; Remington Model 11 20-ga. w/regular barrel & slug barrel, 2-3/4" w/scope; Winchester Model 61 22 rifle; Winchester 22 WRF Model 1890 rifle; Winchester 22 Model 1906 rifle; Winchester Model 03 22 semi-auto. rifle; Winchester 1897 12-ga. pump shotgun; Ruger 1022 22-cal. rifle w/ scope; Savage over & under 410, 3" bore & 22 long rifle; J. Stevens A & T Co. 22 rifle; Savage Model 342 Hornet 22; US Springfield Armory Model 1903 30-06; German Mauser Model 98 8mm w/scope; Belgium-made 32-cal. rifle. GUN PERMIT REQUIRED FOR THE SALE OF ALL FIREARMS.

AUCTIONEER'S NOTE: Richard has sold his home and is moving to a retirement community, due to health reasons. He had an extremely large 6 double-bay garage, full of tools and car parts. If you are interested in Model A & Model T parts, be here with us on sale day. Go to our website for pictures - www.almartinauctions.com.

TERMS: CASH/ GOOD CHECK POSITIVE ID REQUIRED **MASTERCARD/VISA DEBIT/CREDIT CARDS**

All property must be settled for before removal -
All items sold as is where is - Not responsible in case of accidents.
Announcements made day of sale take precedence over any advertising.

MR. RICHARD HEMM, OWNER

AL MARTIN REAL ESTATE & AUCTION CO., INC.
307 Church Street, Ottumwa, IA 52501
Phone: 641-682-5465 www.almartinauctions.com

PUBLIC AUCTION

We will sell the following items for THE LATE TOM PHILLIPS located at **CHRISTY'S AUCTION BARN, 126 EAST SANDERS STREET, LA PLATA, MO** on

SAT., DECEMBER 4TH, 2021 @ 10 A.M.

86 GUNS TO BE SOLD AT 12:30 P.M. WITH FFL PAPERWORK TO BE DONE THAT DAY @ \$10 PER GUN PURCHASED - GUNS WILL NOT BE ON DISPLAY UNTIL MORNING OF AUCTION - Includes forty-six (46) Winchester shotguns & rifles - twelve (12) are Model 12's of various gauges - guns of various gauges including Remington, Browning, Franchi, Ithaca, Stevens Arms, Chatham Arms, Wards Hercules, Mossberg, Sears & Roebuck, Colt, High Standard, Browning hand guns, two 12-410's, two (2) 12-20 (one is 28-410 ga., Browning barrel inserts. For a complete listing visit www.dchristyauctions.com, Christy's Auction Service on Facebook, or contact auction company. **SALES TAX WILL BE CHARGED ON GUNS.**

AMMUNITION - Several boxes of 12, 16, 20, 28, 410 ga. shotgun shells of various shot - 22, 30-30, 5.56mm, 32-40, 25-35, 264, 380, 7mm, 38 special & various other caliber - rounds of rifle shells - 12 ga, 1 1/8 oz reloader - & reloading supplies. **GUN SAFES & MISCELLANEOUS** - Two (2) 24-gun metal gun safes - cloth gun cases - gun accessories - rifle scopes - two (2) boxes of clay targets - two (2) trail cameras - metal ammo can - other items too numerous to mention. **ANTIQUES & COLLECTIBLES** - Southern Comfort metal mechanical bank - Winchester memorabilia such as hatchet, ice skates, two (2) flashlights (one is in box), battery display, metal signs, new pocket knives, old metal advertising oil cans such as Outboard, Maytag, Wizard, Mobil, Sinclair & Pennzoil, Imperial glass oil jug, 1955 Lester Dent farming certificate, Falstaff metal cooler, clocks & lights, Squirt, Coca-Cola, 7-Up & Pepsi memorabilia, Busch & Budlight pictures, Bird Dog whiskey memorabilia, Camel, Salem, & Winston thermometers, wildlife prints, Keen Kutter silverware in wooden case, Remington BBQ set in case, La Plata Picture, 1971 Macon County directory, lanterns, Boy Scout items, Ray-O-Vac flashlight display, metal Rainbow bread sign, Miller, Busch & Griesedieck metal trays, watches #4, #5, & #6 stone crocks, Remington calendars, & other items too numerous to mention.

AUCTIONEER'S NOTE: PLEASE PLAN TO ATTEND THIS VERY LARGE & INTERESTING SIT-DOWN AUCTION WHICH IS #3 OF MANY AS TOM WAS A WELL-KNOWN COLLECTOR FOR MANY YEARS. **TERMS: Cash/Check w/ID - Lunch on Grounds**

Christy's Auction Service



La Plata, MO 63549 660-341-4531
See Websites for Photos: www.dchristyauctions.com
& Christy's Auction Service on Facebook
Auctioneers - David Christy 660-341-4531
Jason Wood - 660-341-7884 Greg Smoot - 660-341-5175



THE NEMO TRADER

CLASSIFIED COUPON

Clip This Coupon Out of This Week's NEMO Trader and run
2 CLASSIFIED ADS FOR \$5.00

Picture Ads Not Included with Coupon! Call For Pricing!

(Each Ad Must Be 20 Words or Less.)

~20¢ per word over 20 words~

Cash NOT ACCEPTED

Check or Money Order Only

Ad No. 1: (20 words or less)

Ad No. 2: (20 words or less)

**YOUR CLASSIFIED AD WILL BE READ IN OVER 19 COUNTIES, IN 3 STATES!
BY COUNTLESS BUYERS!!!**

**TO RECEIVE THIS RATE: COUPON MUST BE MAILED IN
ALONG WITH YOUR PAYMENT!**

**THE NEMO TRADER, P.O. Box 809
KIRKSVILLE, MO. 63501 ~ 660-665-8500**

VEHICLES & EQUIPMENT AUCTION

**480+ ITEMS SELL
NO RESERVE!
WEDNESDAY,
DECEMBER 1**



ID9561 '04 Int'l 4300 utility/service truck



DD2507 '17 GMC Sierra 1500 Crew Cab pickup



ID9151 '16 Chevy Silverado 1500 Double Cab pickup



IV9505 '20 Chevy Tahoe Police SUV



IV9557 '14 Dodge Ram 5500HD flatbed truck



IX9507 '00 Ford F450 SD utility /service truck



DL6131 '79 Chevy Blazer SUV



DA5338 '01 Freightliner MB American Flyer trolley



KQ9091 '16 Ford Explorer SUV



JS9225 '12 Keystone Cougar camper



IC9580 '14 Polaris RZR1000 utility vehicle



JT9496 '12 Trail King TK110 HDG533 lowboy equip. tr.



INVENTORY INCLUDES: pickup trucks, SUVs, flatbed trucks, equipment trailers, passenger vehicles, box trucks, fire trucks, livestock trailers, utility vehicles, campers, ATVs, service trucks, trolley, vans and more. *All items are sold "AS IS." 10% buyers premium applies. 866.608.9283*

BID NOW! purplewave.com

FOR SALE: 4 Tires P275/55 R20 3rd of Rubber left. La Plata Area 785-822-8482

FOR SALE: 18-4-38 Firestone tractor tires, duel tractor tires on rims, fit 1070 case, good tires \$250 OBO, good tires. Call anytime Brashear 660-323-5629

STOCK MOBILE HOMES AVAILABLE: We gottem, single and double 3 and 4 bedroom! Call Tuffy 573-657-2176 amegamobilehomes.com

AVAILABLE STOCK MOBILE HOMES immediately, double wide and single, 3 and 4 bedroom. 573-499-9993 columbiadiscountshomes.com

DON'T get caught in the meat shortage Home Grown Choice Beaves and Heritage Hogs Whole/ Halves delivered to locker. 800-807-9612

TRUE MODULARS 30 to 60 day delivery available, 3 and 4 bedroom. 573-657-7040 chateauhomes.net

TINY HOMES We gottem 573-881-3283

FOR SALE: Older 100 gallon L shaped fuel tank with Gasboy pump, \$350; 2 Gray 14' steel 7 bar 1.75 tube gates, new never hung, \$135 each. 217-257-1385

FOR SALE: John Deere 285 Disc mower, 9', QH ready, low acres, \$6,250. Call 573-881-3557

WANTED TO BUY: Harley Davidson's, any year, any condition, cash money. Days 660-263-1356 or 660-537-0068

WANTED TO BUY: Farm Machinery and Estates. Call James L. Johnston. 573-473-4904

Wevers Outside Wood Furnaces a dealer for Heatmor Stainless Steel Outside Furnaces, have an assortment of parts, line, and etc. Taking orders for new outside wood furnaces. Dealer for Heatmor Call 660-423-5242, cell 660-216-9885. Open 6pm-9pm Monday-Friday, Saturday anytime, call first.

HARDY AUCTION

661 CR 102 - FAYETTE, MO (HARRISBURG/FAYETTE AREAS)

FRIDAY, DECEMBER 3, 2021 @ 10 AM

On Hwy 124 (Located halfway in between Fayette and Harrisburg) take CR 109 north 1 1/2 miles to CR 102, then east to 1/2 mile to auction. * This auction is absolutely loaded with tools, several large rolling tool chests, Shotguns and Rifles, and a 40' Shipping Container!! Be prepared for a long day! Lunch by Rae!



40' SHIPPING CONTAINER - 2007 30' AEROLITE CAMPER - GUNS - BOATS AND KAYAKS - HUNTING ITEMS - TRACTOR & EQUIPMENT - 300 SHEETS OF BUILDING METAL - CONSTRUCTION MATERIALS AND LOTS OF LUMBER - HEAVY DUTY TOOL CABINETS & TOOLS - QUALITY DINING SET & ANTIQUES

SEE IMANAUCTION.COM FOR FULL LISTING



JOE HARDY, SELLER

IMAN AUCTION COMPANY
660-788-4298 | 660-414-7830 | 660-388-6235

Public Auction

Property of **MARKOS FOODS**
19485 Dottie Lane • Princeton, MO 64673
Saturday, December 11, 2021 10:00 A.M.

REAL ESTATE

5200 sq ft on 12m/l acres, office space, 3 bay dock with freezer 20' x 30' and cooler 14' x 20'. For 50 years this has been meat processing and food distribution business. Could be used in many different ways with a lot of space. 10% down non refundable with closing due in 30 days.

OTHER ITEMS:

Office, Meat Processing, Supplies, and Miscellaneous

• For more information and showing call Jerry Allen: 660-953-0346 or Mike Ormsby: 660-748-5813

Full listing for this auction can be found on www.auctionzip.com ID#38454 or shomemoreauctions.com



ALLEN AUCTION SERVICE

Princeton, MO
Jerry Allen, Owner/Auctioneer • Cell (660) 953-0346
Ryder Allen, Auctioneer



2021 Winter Consignment AUCTION

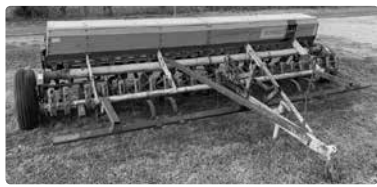
Auction held at 15970 Kelso Avenue
1 mile West of Downing, MO. on Hwy 136

Friday, December 3, 2021 @ 9:00 A.M.

.....Accepting consignments until December 1.....

Early Consignments include.....

- Machinery-** IH 3588 2+2 tractor, approx. 4000 hrs, duals
- Kinze 16 row rear fold planter, no till coultors, good cond.
- IH 2544 Industrial gas tractor w/ IH 2000 loader, 2370 hrs, 3 pt, PTO
- IH 464 gas utility tractor, 3286 hrs, 3 pt, PTO
- Westfield W80-31 transport auger w/ Honda engine
- 2012 NH Boomer 25 utility tractor w/ loader, 747 hrs
- Vermeer C round baler, works good - JD 702 10 wheel rake
- Woods 121 10' pull type brush cutter - IH #60 3 bottom plow
- Krone AM 322 3 pt disc mower - 10' tandem disc
- 8' snow pusher - Melroe 244 drill, good condition
- Tractor boom mower - Coop 5 ton fertilizer spreader
- JF SB2800 9' 3pt disc mower - Skidsteer brush cutter
- Skidsteer grapple buckets & rock buckets
- Misc. -** Hedge posts - propane tank - ladder rack - fuel tank w/ pump
- Roof tar paper - misc. metal trim - Aspen glass door wood stove
- Vinyl fence posts & planks - livestock gates - t-posts
- Triple head ice cream freezer - old barn boards



Auctioneers Note: This is a brief listing and we will be selling lots of unlisted items, so expect surprises! Loader & personnel available on auction day. Make plans to attend!! Thanks, Randy

High Auction Service LLC - Kris High 660.342.8634 | Randy High 660.216.0515

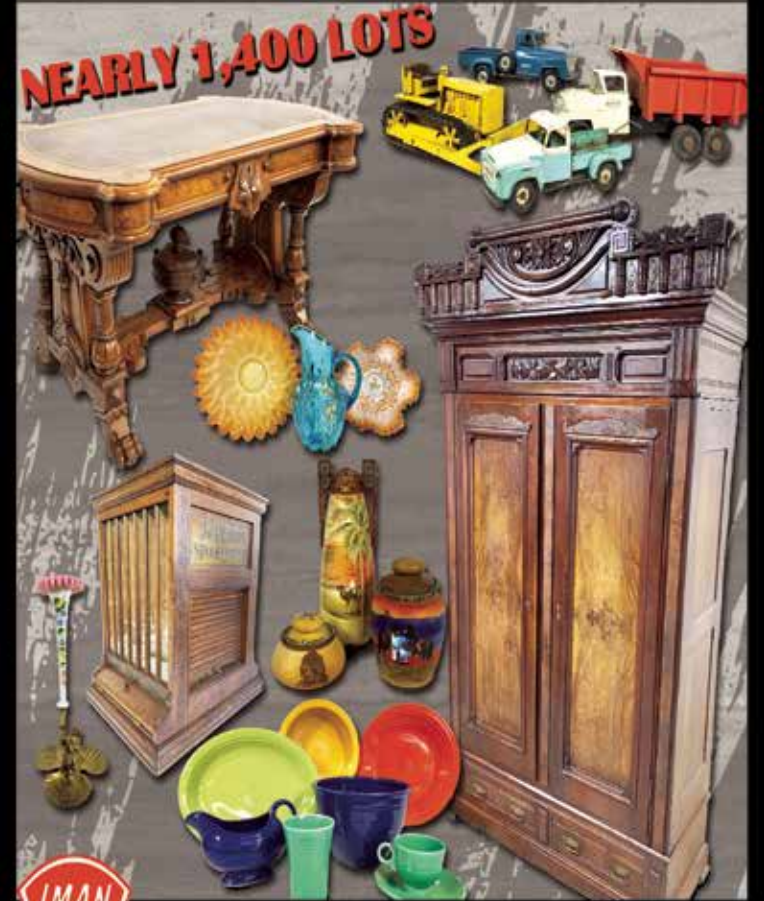
BID NOW @ IMANAUCTION.COM

ONLINE ANTIQUE AUCTION

IMAN AUCTION CENTER - 34614 HWY 24, SALISBURY, MO

FIRST LOT CLOSING SUNDAY, NOVEMBER 28, 2021 @ 6 PM

AUCTION PREVIEW | Wednesday, November 24 2021 - 12-5 PM



IMAN AUCTION COMPANY

660-788-4298 | 660-414-7830 | 660-388-6235



JOHN DEERE



SYDENSTRICKER NOBBE

COME GET YOUR PHOTOS WITH **SANTA & SHOP!**



SATURDAY, DEC. 4TH | 9AM-12PM

20% OFF

TOYS & LICENSED MERCHANDISE

DEC. 4TH - DEC. 23RD

Peg Perrygo 6 & 12 Volt Ride-On Toys are excluded.

ALSIEN, IL
618-445-3676
BENTON, IL
618-433-4430
CHILICOTHE, MO
650-648-5493
COLUMBIA, MO
673-476-0730
CURRYVILLE, MO
573-594-6493

DUZOW, MO
636-433-2256
FARMINGTON, MO
573-796-2088
FLORA, IL
618-622-4844
HERMANN, MO
573-488-3204

JERSEYVILLE, IL
618-496-5504
KIRKSVILLE, MO
660-855-1500
MACON, MO
660-385-2177
MARRON, IL
618-993-8546

MEXICO, MO
573-681-5900
MOSCOW MILLS, MO
616-366-9400
NORRIS CITY, IL
618-378-2194
PALMYRA, MO
573-789-2112

ROCHEPORT, MO
573-448-3030
SALISBURY, MO
660-388-6165
SCOTT CITY, MO
573-335-0192
ST. CHARLES, MO
620-493-0288

STE. GENEVIEVE, MO
573-883-5703
STEELEVILLE, IL
618-265-3475
TIPTON, MO
660-433-5596
WATERLOO, IL
618-939-6717
WAYNE CITY, IL
618-895-3130

SOME RESTRICTIONS APPLY. SEE DEALER FOR DETAILS.

SNPartners.com