

FREE

NEW EDITION EVERY FRIDAY!
VOL. 29 • NO. 53 • FEBRUARY 04, 2022

NEMO Trader

THE NEMO TRADER

PO BOX 809 • KIRKSVILLE, MO 63501 • PHONE 660-665-8500

Web Site: nemotrader.net • Email: sales@nemotrader.net

A WEEKLY ADVERTISER SERVING ALL OF NORTHEAST MISSOURI AND THE SURROUNDING AREA

Open House February 18 & 19 2022

8am to 5pm • Refreshments, drawings

***Best prices on all NEW units Guaranteed!! only Feb 18 and 19

Bevier RV Center

"Where Family Fun Begins"

Sale • Service • Parts

Campground • Event Center

Jay Livingston-General Manager

955 N. Macon Street, Bevier, Mo 63532 • 660-773-5313

bevierrvcenter.com • email: bevierrvcenter@cvalley.net

992/69



JOHN DEERE



SYDENSTRICKER
NOBBE

FINAL DAYS

SCHEDULE YOUR WINTER SERVICE

NOW!

VALID ON MOWERS, GATORS & 1-5 SERIES COMPACT TRACTORS

VISIT SNPARTNERS.COM/SERVICE

TO SCHEDULE NOW FOR **FREE PICKUP AND DELIVERY!***

CUSTOMER

APPRECIATION

Week

SAVINGS ON PARTS & ATTACHMENTS

FEB. 7-12, 2022

ALL WEEK!

* OFFER VALID ON JOHN DEERE 1-5 SERIES COMPACT UTILITY TRACTORS, MOWERS AND GATORS. FREE PICKUP AND DELIVERY WITHIN 50 MILES OF AN SNPARTNERS LOCATION AND MUST BE SCHEDULED BY 2/12/22. SOME EXCLUSIONS APPLY. SEE DEALER FOR DETAILS.

KIRKSVILLE, MO
660-665-1500

MACON, MO
660-385-2177

CHILLICOTHE, MO
660-646-5493

PALMYRA, MO
573-769-2112


SALISBURY, MO
660-388-6166

MEXICO, MO
573-581-5900

SNPartners.com

638/759

17 Ewe lambs
ready for breeding will
sell at Kirksville Livestock
Sale Barn on Feb 7, 2022.
White wool, 10-12 months
old. Call Schaefer Sheep
660-626-7527
for more info.



FOR SALE
AI Sired Angus Bulls,
14 & 18 Months Old.
Harold Trump
660-341-5730

Cattle

21 outstanding Simmental and Sim-Angus cows. Bred to top bulls of the breed. To start calving 2-15-22. Average age - coming 6 years. Pregnancy checked in 3rd stage. 1400 pounds. Papers available. Drake Simmental, Centerville, IA. Phone 660-895-9422.

Equipment & Supplies

2615 Legend Bush Hog, 15', laminated tires, chain guards, 540 PTO, very low use, was in storage 9 yrs, \$11,950. Call 573-881-3557

3 point bale unroller, used very little, \$1100.00 or best offer. Stone calf puller, \$200.00, Milan, Mo. 660-292-4571.

Two John Deere third links, two category 3 point bale spear, fits back or front of tractor. Good condition. 660-665-9199.

John Deere 285 Disc mower, 10', like new, \$6,250. Call 573-881-3557



John Deere
4320 Row Crop
Tractor, shows
8100 hrs, fairly
straight, dual
hydr, runs out
really good,
\$39,500



John Deere 5520
Tractor,
MFWD and 511
SL Loader, new
tires, reverser
joystick, 5500
hrs, one owner,
\$41,500



Several Nice
30/40/50 Series,
all field tested
and good

573-881-3557

HAY STORAGE SOLUTIONS AND MUCH MORE!



"Today, I checked with Joseph to see when he was planning to deliver and construct my second hoop building. Two years ago I purchased a 55'x98' hoop building from Skylight buildings. It was erected on my site on time and the building went up in two days.

I was concerned about the durability of a vinyl building compared to a metal sided structure. That was until I noticed that a rock from my Brush Hog 2715 had impelled itself into the metal building. The Skylight building would not have been damaged. Also, the name says a lot. I thought that I would wire in lights like my other buildings but to date I have not found the need.

The reason I thought I needed to build a large building was to store my hay inside. I knew I was losing hay quality due to weather damage but baling with 568 John Deere and net wrapping my hay I thought I was keeping my hay loss at a minimum. I found the first year that I had underestimated my losses. I was very pleased with the results of storing hay inside. It is most gratifying to put a bale into the hay ring and seeing that the previous bale was almost completely consumed by the cows or the feeder calves. I had a record amount of carry over from last year and it is safely stored inside ready to be used this winter! This will allow for hay sales this winter.

The construction of the building's frame is strong, the foundation supports are 24" and very deep. I am very satisfied and have ordered another 55' x 140' to be installed in a few weeks. This one will be used to store our small square bales and equipment.

Thank you Joseph for your service and this chance to recommend your buildings."

Wiley and Susan Hibbard, Perry, Missouri

20749 State Highway VV
Ethel, MO 63539
660-486-3250

Skylight
Fabric Structures

Edina Livestock Sales
Edina, Missouri

Friday, February 4th
Special Cow Sale

Jason Bichsel 25 7-8 year old Bred Cows calving in March
Jason Legg 13 3 year old Cows calving in March
Gary Kittle 25 Bred Heifers calving in March
Steve Miller 40 4-8 year Open Cows with Dec Calves Non exposed
Craig Todd 5 Big, Fancy Bred Heifers

Friday, February 11th Special Calf Sale

To Consign For Any or All Sales or For
Information Call:
Owner - Kevin Strange • Cell: 660-341-9974
Ryan Strange • Cell: 660-341-9721
Sale Barn: 660-397-9999

Field Reps:
Bill Tom Hall 660-342-5420 Jason Legg 573-822-8847
Jason Bichsel 660-216-0373 John Powell 660-341-1717

NEW CAMBRIA LIVESTOCK MARKET, LLC
Larry & Nancy Duncan - Owners
29262 State Hwy 149, Box 147 New Cambria, MO 63558

SPECIAL BRED HEIFER, BRED COW & COW-CALF PAIR & BREEDING BULL SALE
SATURDAY, FEBRUARY 12, 2022
Starting at 11:00 AM

Complete Dispersal of Laroy Quinn:

- 50 Black & BWF 3 year old bred to Black Angus Bulls
- 125 Black & BWF Cows 4 year old - Short & Solids bred to Horned Hereford Bulls, start calving March 1st for 65 days
- 40 Black & BWF Heifers bred to low birth weight Black Angus Bulls, start calving March 1st for 60 days
- 150 Fall pairs 3 year old - Short & Solids, running with Hereford Bulls, calves worked November 22nd

80 Black Cows 4 year old - Short & Solids, bred to Black Bulls, start calving March 4th for 90 days - Complete Dispersal of John Burns
45 Black Cows, consisting of: 25 Black 3 year old, remainder 4-6 year old, bred to Brockmere Bulls to start calving March 1st - Complete Dispersal Brockman Farms
50 Black Bred Heifers bred to Black bulls, start calving March 1st for 45 days - Brian Pemberton
30 Black Angus Heifers bull bred, the bulls have a +12 on calving ease, start March 25th for 75 days - Lavelock Brothers
17 Black Angus Heifers AI'd to Herbster Black Bulls, calving March 1st & 8 Black Angus Heifers bull bred start calving March 25th for 75 days - Eric Lavelock
29 Red Angus Cows 3-5 year old, 14 are pairs rest P2 & P3 - Artie Simmon
20 Black Cows Running Ages, some with calves by side, bred to Black Bulls, - Jim Bixenman
10 Black Bred Heifers, bred to Perry easy calving Bull start calving March 1st - May 10th - Lance & Alan Trenhaile
30 Bred Cows Short & Solids - Aged - Germann
3 2 year old Hereford Bulls - Willy Solomon

Office (660)226-5222 • Larry Duncan (660)384-2182
Lavon Moore (660)384-2008 • Doug Lack (660)641-3898
Randy Nute (660)651-5389

To view our latest market reports and cattle listings visit
Our website at: www.newcambrialivestock.com

NEMO TRADER • Advertise with us TODAY!
Phone: 660.665.8500 • PO BOX 809
701 East LaHarpe St, Suite C, KIRKSVILLE, MO 63501

Equipment & Supplies

ED'S MACHINERY LLC
QUALITY MACHINERY SINCE 1997

Have equipment to sell? Consign today!
Absolute Auction, No Reserve.

Consignments accepted until Wednesday, March 9th, at 5:00 P.M.
Print advertising deadline: February 11th, 2022

EXCHANGE YOUR EQUIPMENT FOR CASH!

660-883-5501

WWW.EDSMACHINERY.COM

Equipment & Supplies

Equipment & Supplies

FRONTLINE FENCING LLC

Steel Pipe Fencing.
Custom Built Gates and Livestock.
Handling Equipment.
Barbed Wire and Woven Wire Fence.
Arrowquip Cattle Handling Equipment.
Post Driver Rental.

29386 St. Hwy. T
Greentop MO
660-956-2430

Equipment & Supplies

Golden Grain Bins-Winter Discount

Grain Bins	Floors w/12"Supp. & Flashing
18'x18' 4,195bu. \$ 7,029	18'....\$1,962 30'....\$ 5,476
27'x21' 11,265bu. \$14,108	21'....\$2,682 36'....\$ 7,801
42'x24' 32,245bu. \$32,886	27'....\$4,474 42'....\$10,623

Golden Grain

GMLS Industries, Inc.
PH: 660-699-2179 or 620-983-2136
www.gmlsindustries.com

Equipment & Supplies

CONSIGNMENT AUCTION
Live on site & Online
March 11th, 2022 @ 9:00 AM



17920 US Hwy 136 • Memphis, MO
- 1 Mile West of Memphis on Hwy 136 -

WE GOT YOUR NEEDS COVERED!



**FARM TARPS TRUCK TARPS
HOOP BUILDING COVERS**

Troyer

TARP MFG.

660-486-3301

20264 STATE HWY. VV • ETHEL, MO 63539

For Your Equipment Needs!

LOTS OF USED EQUIPMENT AVAILABLE

Vermeer 605 N Balers, Twin Bales, Tralled Mowers, Disc Mowers, Tedders, Bale Processors-

Offer high capacity, speed, reliability, efficiency, fuel savings...

DeWeze Bale Beds-

Lift, load, transport and feed big, round bales...

Danuser Post-Hole Diggers-

Offer quality & reliability, outperforms the competition...

USED EQUIPMENT

BALLERS

605 N Net

605 L Net

605 K Net

Rakes

R2800

R2300

VR1224

MOWERS

TM 1210

8040

7030

Vicon 4000

TEDDERS

TD250

BALE PROCESSORS

BPX 9000

BPX 9010

Liebhart Sales, Inc.

Call Today!! 17546 Lacey Drive - New Boston, MO. 63557
660-689-3406

Equipment & Supplies

JohnDeere 7600 tractor, 2WD, 5400 one owner hours, power quad, Firestone's, clean, \$42,500. Call 573-881-3557

Two Red Angus/Charolais Crossbred Bulls, 16-18 months old, guaranteed, sound, \$2,500 choice. Call 573-881-3557

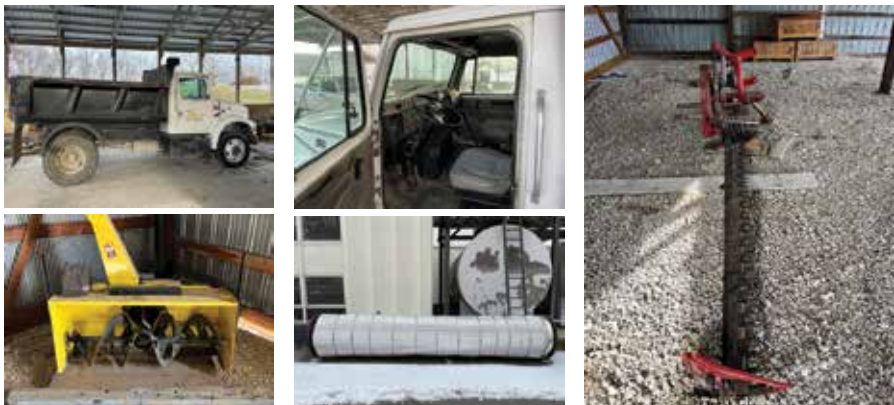
Equipment & Supplies

WANTED TO BUY: Farm Machinery and Estates. Call James L. Johnston. 573-473-4904

Hay/Feed/Seed

Big round bales mixed grass hay, net wrapped. Delivery available. Bob Campbell, Memphis, MO. 660-341-9054

- NOW ACCEPTING BIDS -



Macon Municipal Utilities is accepting bids for the purchase of the following items:

- 2005 International 4300 Dump Truck 256477 miles 7578 hours
- Enorossi Sickle Bar Mower 2013 9' cut
- 32" Steel Pipe Approximately 17'6" long 1/4" thick
- John Deere 4 ft. Snow Blower fits a F900 or F1145 series front deck mower

Sealed bids may be mailed or hand delivered to **MMU at 106 W. Bourke Street, Macon, MO. 63552** and must be received no later than **Wednesday, February 9, 2022 at 1:00 pm.**

Contact Bryce Butner with any questions at 660.651.1593

ALL ITEMS SOLD AS IS

Macon Municipal Utilities reserve the right to accept or reject any or all bids.



Work Wanted

Work Wanted

Work Wanted



HIRING TIRE TECHNICIAN

STOP BY AND TALK WITH TERRY TODAY!!

1102 GREEN STREET.
KIRKSVILLE • 660-665-9017

Notices

Notices

Pets & Supplies

CHILLICOTHE ELKS LODGE

20th Annual GUN & KNIFE SPORTS SHOW
February 11-13th, 2022

Buy ~ Sell ~ Trade

With emphasis on Shooting and Sportsmen. Featuring an exciting mix of Guns, Knives, Ammo & Accessories.

Gun Shows

Friday 5 pm to 8 pm
Saturday 9 am to 6 pm
Sunday 9 am to 2 pm

Gun Raffle

Prizes for \$500, \$250, \$100, \$50
Winners get choice of 2nd prize

ADMISSION
\$7 PER DAY

24 Hour Security Provided

Food and Drinks available
Home style pizza & desserts!

Contact us in: 219 South Hill Street, P.O. Box 277, Chillicothe, MO 64601
Phone: 660-665-9017
www.elkschillicothe.org
or Text: Jim DeWitt 660-665-9017
j.dewitt@elkschillicothe.org

Proceeds benefit Area Youth & Veteran Activities 637401cb

Agriculture

Agriculture

Rabbits for Sale

Holland Lops
Polish & Florida
White breeds
Pets, Show 4-H, FFA,
ARBA & meat breeders
Call Kay 660-349-9166



638274ch

MERCHANDISE

Lawn & Garden

Craftsman Pro Series garden tractor, 42" deck, 22 HP, costs over 2,000. will sell for \$500. engine froze up. turn tight, best mower I ever had when running. Call 660-933-4750

Pets & Supplies

AKC Labrador Retriever puppies, all yellow. DOB 10-27-2021. Up to date puppy shots and wormers; vet checked. Lay's Labs-LaBelle, MO 660-956-2482

Healer/Terrier puppies, \$30.00 each or best offer. Memphis, Mo, 660-216-5337

Sales

Pets & Supplies

Puppies for sale: AKC Standard Poodles, APRI Boxer, Golden Doodles, all up to date on vaccinations and de-worming. 660-216-4222

Siberian Husky Pups For sale

APR Registered, 1st shots, Black & White with blue eyes.

\$500.00

319.572.2542



639131cb

Sales

Sales

JOIN OUR TEAM



ADVERTISING AND MARKETING SALESPERSON

Are you a people person looking for a new career opportunity? The Kirksville Daily Express/Nemo Trader, with a long history of success in Northeast Missouri, is looking for its next full-time Advertising and Marketing Salesperson.

Our sales staff help current and prospective customers with their advertising and marketing needs. This is the chance for you to get creative and help bring a client's vision to life. Knowledge of the Kirksville area is a plus.

Our ideal candidate is self-motivated and independent. You need to be focused on developing new business as well as maintaining current customers. You also need to be organized and have computer skills. We expect enthusiastic, goal driven people. We offer excellent training and advancement opportunities, plenty of support and the latest in research and marketing tools.

Applicants must have a valid driver's license with a good driving record and a reliable, insured vehicle in order to travel within your territory. No overnight travel is required.

No previous sales experience required, although previous sales experience in any industry is a plus. Kirksville Daily Express/Nemo Trader is known for quality training and support. We offer a base salary, commissions and bonuses.

Our benefit package includes vacation and sick time, health, dental, vision and life insurance, 401K, expense reimbursement, reimbursed mileage and cellphone. Send cover letter and resume to:

Kirksville Daily Express/Nemo Trader

Attn: Nicole Stevens/Human Resources
130 South 5th Street | Quincy, IL 62301
or email to: nstevens@whig.com

KIRKSVILLE
Daily Express

NEMO
Trader

Managing Editor

The Kirksville Daily Express is looking for an eager, aggressive journalist willing to step into newsroom leadership. The managing editor is the No. 1 position in the newsroom and oversees The Kirksville Daily Express' daily coverage, as well as various special sections and magazines. The managing editor will mentor reporters and provide feedback on their reporting and writing.

The ideal candidate has a strong nose for news and stays informed about the state and the world from multiple sources. The news editor also seeks out new ways to report and deliver the news to our readers, using the latest metrics to guide their decisions. Have a mind for data? We want you.

The Kirksville Daily Express publishes every Wednesday and Saturday and is part of a growing company dedicated to the communities it serves.

The Kirksville Daily Express offers a comprehensive employee benefits package with everything you expect and more. The Kirksville Daily Express is an equal opportunity employer.

If you think you have what it takes to be our next news editor, please send a resume, samples of your work and a letter outlining how you would approach the job to:

Nicole Stevens/Human Resources
The Kirksville Daily Express, 130 South 5th Street, Quincy, IL 62301
or by email to nstevens@whig.com

Learn more about The Kirksville Daily Express at www.kirksvilledailyexpress.com and about Phillips Media Group, our parent company, at www.phillipsmedia.com

KIRKSVILLE
Daily Express



Industry

Industry

Industry

Industry



Drop In Interviews Daily

Smithfield
Good food. Responsibly.

WE'RE HIRING
General Production Workers - Milan, MO

Smithfieldfoods.com/milan -- Starting Pay -- \$18.00 / hr

Smithfield is an EOE, Including Disability/Vets

634289J

Building Supplies

Building Supplies

Building Supplies

Building Supplies



LAN-DOW BUILDINGS

"We Build To Suit Your Needs"
"Custom Built"

Pole Barns • Garages • Utility Buildings
"H" Don or Dick Middleton

Memphis Lumber Co.

1-800-337-5858 • 660-465-8595

Fax: 660-465-8596

631134s

LANCASTER LUMBER INC.

Lancaster, MO.

1-800-424-5071

LAN-DOW BUILDINGS

www.lancasterlumber.com

631220cb

Wood & Accessories

Wevers Outside Wood Furnaces, have an assortment of parts, line, and etc. Call 660-423-5242, cell 660-216-9885. Open 6 p.m. - 9 p.m. Monday - Friday, Saturday anytime, call first.

REAL ESTATE SALES

Other-RE Sales

Buying used mobile homes. Porter Homes 573-231-6667

Mobile Homes For Sale

AVAILABLE stock mobile homes immediately, double wide and single, 3 and 4 bedroom. 573-499-9993 columbiadiscountohomes.com

Stock mobile homes available: We gottem, single and doublewide 3 and 4 bedroom! Call Tuffy 573-657-2176 amegamobilehomes.com

True modulars 30 to 60 day delivery available, 3 and 4 bedroom. 573-657-7040 chateauhomes.net

Need something? Let us help you. You can advertise that you are looking for a special item. Call 660-665-8500 for more information.

RECREATION

Accessories-Recreation

6 horse power outboard motor. Looks and runs like new, \$200.00 firm. Argyle, IA. 319-470-0277.

Air Conditioning/Heating

The Ultimate Wood Heat.



CLASSIC EDGE
TITANIUM HD SERIES
Outdoor Wood Furnace

- **More Comfort** - Thermostatically controlled wood heat.
- **Peace of Mind** - Keep the fire outside and eliminate the dangers associated with indoor wood heating.
- **Save Money** - Wood is a renewable, inexpensive and often free energy source.

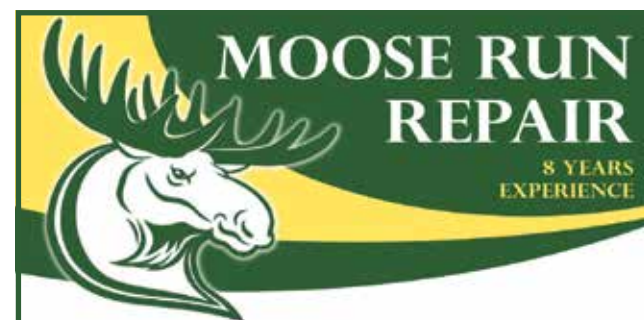
CAMPEN
Heating & Air Conditioning
573-288-8966
Canton, MO

CentralBoiler.com

631217fm

Auto Repair

Auto Repair



Tractor • Skid Steer • Combine • Air Conditioning
Self-propelled Forage Harvester & General AG Repairs

Specializing in John Deere

Engine • Transmission • Hydraulics
Power Shift/IVT Diagnosis & Repair

Computer/Electronic System Diagnosis & Repair



660-988-3843

DELVIN "MOOSE" STEINER
QUEEN CITY, MO

63107df

Backhoe/Bulldozer

Backhoe/Bulldozer

Show Me Plumbing Services



Stan Schrock 660-988-1163
Greentop, MO 660-766-2636

631226s

- General Mini Excavation & Skid Steer Work
- Livestock Watering
- Waterlines & Sewer Systems
- Residential Services & General Plumbing
- Utility Trenching

RECREATION

Motorcycles

WANTED TO BUY: Harley Davidson's, any year, any condition, cash money. Days 660-263-1356 or 660-537-0068

Let us help you with all your advertising needs. Don't know what to say? Call us we can help! 660-665-8500.

Home Services

RECREATION

Wanted

WANTED TO BUY: Harley Davidson's, any year, any condition, cash money. Days 660-263-1356 or 660-537-0068

Please place your classified ads on the NEMO website. Our web address is nemotrader.net

Home Services



660-785-0248

www.signatureremodelingkv.com

Residential and Commercial Installation and Service

631283s

Bush Hogging

Bush Hogging

ATTENTION LAND OWNERS!

BUYER OF STANDING TIMBER
OWNER / OPERATOR OF SAWMILL - BUY/CUT LOGS
CERTIFIED - BONDED - INSURED



TRI STATE TIMBER L.L.C.
PH. 660-341-4921 or 660-465-2975

353 1/2 GRAND AVE. • MEMPHIS, MO 63555

631484ma

Acresages & Lots-Sales

Acresages & Lots-Sales

Fox Run Farms

NEXT WEEK - 02.08.2022

LIVE Multi-Par Auction @ 1pm

1,225 ac m/l - sold in 9 tracts

Audrain & Monroe Counties, MO



LIVE AUCTION



United Country Real Estate

Missouri Land & Home

Contact Kurt Hollenberg, Owner/Broker
573-220-6155
kurth@missourilandandhome.com
800-895-4430 | MissouriLandAndHome.com
3516 I-70 Dr. SE, Ste. A, Columbia, MO 65201

MissouriLandandHome.com/Auctions

636761s

Chat/Dirt/Gravel

DIRT WORK All types of excavation, reclaiming overgrown fields, including CRP and WRP. Building site preparation, creating new trails and crossings, Food plot development and maintenance. Leveling and grading, wetland construction and maintenance. Pond and lake cleaning and construction. Call for quotes. 660-342-2701

Cleaning

Community Opportunities Sheltered Workshop-best car detailing (quality and pricing). Call us today at 660-665-5768. Gift certificates available for valentines, birthday and anniversary's!

New 3 pt. tillers, heavy duty, gear driven, 7' to 10' starting at \$3,050. 660-874-4455.

Miscellaneous

Homemade Candies, fresh garlic, honey (local) jams and jellies, spices, garden seeds, kitchen wares, kerosene lamps and parts, Rayo and Aladdin chimneys, poly and wooden clothes pins, regular and wide mouth jar lids, regular pint jars, boxed greeting cards, wooden handles. Train Track Candies & More 11538 Iceberg Ave, La Plata 3rd Lane to your Left.

Need something? Let us help you. You can advertise that you are looking for a special item. Call 660-665-8500 for more information.

NEMO COWBOY CHURCH

First Thursday night of each month
Kirksville Livestock Market at 7:00PM

Bring a friend and if you can't find one, bring your dog.

We will worship through music with Gary Fagen and the Word will be preached by Tom Rowland. Mark your calendars and come join us.

631177J

"COME AS YOU ARE. LEAVE CHANGED."

MAST MEATS LLC

660-766-2211

USDA & Custom Slaughter & Processing

CALL OR STOP BY FOR SPECIALS

Retail store hours • Mon-Fri 8-5, Sat. 8:30-3
mastmeatllc.com • 405 US Hwy. 63, Queen City, MO 63561

631160S

Woody's Tire Auto & Towing, Inc

660-665-9017 • 1102 N. Green, Kirksville, Mo
www.woodystireautoandtowing.com

631274S

Dutch Garden Nursery

• Wind Chimes with Verses
• Fresh Cut Flowers
WE DELIVER! CALL: 660-883-5650

Black Oil Sunflowers - Cardinal Nut & Berry Blend - Nyger

BIRD SEED

• Pest Control Supplies
• Mouse Baits & More

Lots of succulents Beautiful and Easy Indoors or Outdoors

Grass Seed • Cover Crop • Straw Pales

Hours: Monday - Saturday 8 AM to 5:30 PM
MEMPHIS LOCATION (beside Country View Store): 660-883-5650
EDINA LOCATION (Home Base): 660-397-4115
www.dutchgardennursery.com

631272J

FARM & RANCH.

ELIZABETH GREGORY
660.621.2136
farmandhome.c21.com

CENTURY21 Lifetime Realty

1605 Baltimore, Suite A
Kirksville
660.665.5678

631264S

Play Bingo!!

Where: Shrine Club, Kirksville, MO
When: Every Wednesday
Doors Open at 5 pm

Early Bird Games: 6:30 pm
Bingo Starts at 7 pm
2 Progressive Games
Electronic Bingo Cards
Great Food & Family Fun!!!!
660-665-3312

631260S

Beilstein CAMPER SALES

573-655-2254

28248 327th Ave. • LaGrange, MO • Hwy 61 South, 4 Miles South of LaGrange, MO

#010629

\$36,995

2022 Salem FSX 270RTK MAX
Toy Hauler, Large Garage, Fiberglass

#22181RT

\$23,995

2022 Salem FSX 181RT
Toy Hauler, Light Weight Easy to Tow

#072974

\$25,995

2022 Salem FSX 178BHSK
Slide-Out, Double over Double Bunks

#WP16TS

\$19,995

2020 Cherokee Wolf Pup 16TS
Light Weight, Queen Bed

#106050

\$38,995

2022 Keystone Springdale 293RK
Super Slide-Out, Rear Kitchen

#2020QB

\$21,995

2018 Springdale Summerland
Queen Bed, Rear Dinette

Beilstein Camper Sales
www.beilsteincampersales.com

Since 1956, family owned Beilstein Camper Sales has provided exceptional value and service to our customers. We feature a wide selection of new RVs from Forest River, Heartland and Keystone. We're on the Avenue of the Saints along side Highway 61, four miles south of La Grange, Missouri. Stop by today to get a great deal!

SPACE AVAILABLE

Ask about our affordable, out-of-this-world advertising rates that fit any budget!

TO PLACE YOUR BUSINESS HERE, CALL

NEMO TRADER

660-665-8500

Cantril LUMBER and HARDWARE

Full Line of Building Materials • Check Out Our Metal Siding Price!
We Sell Central States Metal • OSB • Drywall • Insulation
• Shingles • Plyco Doors • Windows • Overhead Doors
• All Colors of Metal Roofing and Siding • Concrete Perma Columns
• Treated Fence Posts • Metal Gates
See us for all your building needs

319-397-2351 • 1-888-791-9273
Cantril, IA • Mon. - Fri. 7-5 • Sat. 7-12

631261S

Travis Funeral Chapel

We have served the wonderful people of LaPlata and the surrounding communities for over 30 years.

Randy & Michele Travis -
Neil & Sherry Travis
LaPlata, MO. 660-332-7145

631262M

Oldham MONUMENT

Monument, Markers & Vases On Display.

400 N. Kansas, Downtown Marceline, MO
660-376-2508 • Ed & Amy Ewigman

631256S

AW Metal LLC

Metal Roofing Headquarters

BUY DIRECT

Post Frame Building Kits
www.awmetal.net
641-664-3990



YODER'S PROCESSING

PORK - DEER - BEEF

Quality Cuts Plus

Beef & Pork processing available

NOW!!

- Patties
- Cure & Smoke
- Vacuum Seal
- Summer Sausage

- Snack Sticks
- Jerky
- Fast Turnaround on Deer

SCHEDULE YOURS TODAY

660-486-3221

(Closed Sundays)

NEW FACILITY!
10+ Years Experience

637159cb

13736 Beechnut Street, Ethel, MO 63539 | Don't have your own Animal to Process, No Problem, Call Us!

VICTORY

Metals & Recycling

Kirkville, MO 660-665-8000

victorymetalrecycling.com

For current scrap prices call or visit our Facebook Page

★ Construction/ Debris Recycling

Visit Kirkville's construction & debris recycling facility and save trips to the landfill! Take advantage of this service for solid waste removal by bringing your landfill items to Victory Metals C & D recycling facility located at 3602 N. Industrial Rd.

★ Roll-Off Container Service

10-20-30-40 Cubic Yard Dumpsters



3602 N. Industrial Rd.,
Kirkville, MO 63501
djanestmr@gmail.com
www.victorymetalrecycling.com



660-385-5726

29105 State Hwy. AX
Macon, Mo. 63552

JAGUAR LUMBER

Attn: Land Owners



Buyer of Timber
*All species also Select yard
Trees/Logs over 40" diameter,
*Trees are selectively cut
to insure optimal Forest
Regeneration.

Certified & Bonded | Lavon Gingerich 641-664-2080

NEMO TRADER • Advertise with us TODAY!

Phone: 660.665.8500 • PO BOX 809

701 East LaHarpe St, Suite C, KIRKSVILLE, MO 63501

TRANSPORTATION

Parts & Services

Parts for vehicles, pickups, farm and construction equipment, semis, tranny's and motors, body parts matching your paint. 99% will have. 800-807-9612.

Chevy tailgate 2000-2007, driver left hand door for 1998 Chevy 3/4 ton. All in good condition. 660-676-9199.

SMALL ADS WITH **BIG** RESULTS!

Small ads produce big results. Ask about our advertising rates to fit any budget.

TRANSPORTATION

Trucks, 4x4's, SUV's


2007 Chevy Duramax 3500 Crew Cab with Hydra-Bed very good condition. Original bed stored inside, like new. 222,000 miles, new Allison Transmission with warranty. 660-216-9501

2008GMC pickup, high miles, but runs like new, \$4000.00. Argyle, IA. 319-470-0277.

FIND THE
PERFECT PET
FOR THE
PERFECT PRICE
IN THE
PERFECT PLACE
FOR DEALS

Find your next fluffy, feathered or furry friend in your local newspaper classifieds!





Judd Motors Call 660-457-3700
Hwy 63 North, Lancaster, MO

- 2002 Chevy 1500, 4WD, 5.3L, Ext. Cab, Cloth, white, Nice, 147K, \$7,995
- 2003 Ford F350, diesel, 4x4, crew cab, flatbed, 319k, runs good, brown, only \$4,995
- 2013 Impala, LTZ, leather, only 104k, charcoal, very nice, \$7,995
- 2014 Grand Cherokee, 4WD, V6, Cloth, Charcoal, very nice, 131K, \$15,900
- 2015 GMC 2500HD, SLT, 4x4, crew cab, shortbed, 6.0L, heat & cool leather, bed cover, 1 owner, 119k, charcoal, very nice, new tires, only \$34,900

Cumberland Building Dealer

www.juddmotors.com | In Business Over 75 Years
Curly and Kevin Judd

AUTO'S UNLIMITED 660-665-8149 | 660-341-0965 | No Sunday Calls!
17406 Bob Rd • Kirksville, MO

FEATURED VEHICLES

- 2010 Honda CRV 4WD, excellent condition, GPS, backup camera, Loaded Call for more info. **\$7,000**
- 2009 Dodge Journey RT **\$5,600**
- 2015 Town & Country Touring L **\$10,995**

ALL VEHICLES HAVE GONE THROUGH A 60 PT INSPECTION! STATE INSPECTED! CALL FOR MORE INFO!

CLASSIFIEDS

IF YOU ADVERTISE, THEY WILL COME...

Stretch your budget with classified ads. Call today about our affordable advertising rates to fit any budget!

Buy with confidence. We have you covered.



- 100% Satisfaction**
- ACCIDENT Protection Plan**
- SERVICE Contract Plus**
- PAY Your Way**

For more information visit car-mart.com/peace-of-mind

f @ t v i n i car-mart.com

660.956.4849 | 2015 NORTH BALTIMORE KIRKSVILLE

660-956-4849 • 2015 North Baltimore • Kirksville

- Peace of Mind Package
- Service Contract Plus
- Accident Protection Plan
- 100% Satisfaction
- Pay Your Way
- Low Down Payments
- Quality Used Vehicles
- Flexible Financing
- Hand Selected Vehicles
- Convenient Payment Options
- Start Your Approval Online
- Over 150 Locations
- 40 Years in Business
- We Buy Cars



2015 KIA OPTIMA
FWD, 4 Cyl., Silver



2013 CHEVROLET IMPALA
FWD, 6 CYL., SILVER



2012 FORD FOCUS
FWD, 4 Cyl., Blue



2013 DODGE AVENGER
FWD, 4 Cyl., White



2003 FORD WINDSTAR VAN
FWD, 6 Cyl., Silver



2015 CHEVROLET TRAVERSE
FWD, 6 Cyl, Silver



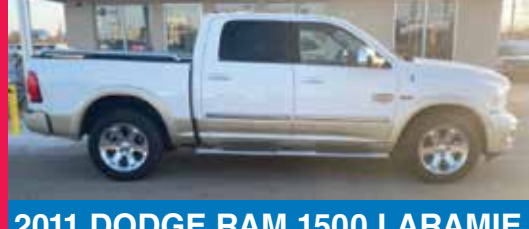
2013 NISSAN SENTRA
FWD, 4 Cyl., Gray



2010 FORD F150
4WD, 8 Cyl., Gold



2012 JEEP LIBERTY SPORT
4WD, 6 Cyl., Silver



2011 DODGE RAM 1500 LARAMIE
4WD, 8 Cyl., White



2008 FORD FUSION
FWD, 6 CYL., MAROON



2013 FORD FOCUS
FWD, 4 Cyl., Silver



2010 FORD F150
FWD, 8 Cyl., Red



2012 CHRYSLER TOWN & COUNTRY
FWD, 6 CYL.



2013 NISSAN SENTRA
FWD, 4 Cyl., Gray



2016 HYUNDAI ELANTRA
FWD, 4 Cyl., Blue



2010 NISSAN TITAN
PRO-4X, 4WD, 8 Cyl., Red



2004 CHEVROLET TRAILBLAZER
4WD, Cyl., White



AMERICA'S CAR-MART
Keeping You on the Road



ELIZABETH WALTER
GENERAL MANAGER

NEMO

Trader

Our circulation is 11,000 with a 20 county coverage area in Missouri, Iowa and Illinois. Our paper is a free paper and is distributed to restaurants, convenience stores and other businesses in the area for individuals to pick up. We have a new issue every Friday.



**Now offering Inserts
Call Cindy @
660-665-8500 for rates**

TOWN	STATE	COUNTY	TOWN	STATE	COUNTY	
Quincy	Illinois	Adams	•	Marceline	Missouri	Linn
Carthage	Illinois	Hancock	•	Purden	Missouri	Linn
Hamilton	Illinois	Hancock	•	Browning	Missouri	Linn/Sullivan
Centerville	Iowa	Appanoose	•	Atlanta	Missouri	Macon
Cincinnati	Iowa	Appanoose	•	Bevier	Missouri	Macon
Moravia	Iowa	Appanoose	•	Callao	Missouri	Macon
Unionville	Iowa	Appanoose	•	LaPlata	Missouri	Macon
Bloomfield	Iowa	Davis	•	Macon	Missouri	Macon
Drakesville	Iowa	Davis	•	New Cambria	Missouri	Macon
Ft. Madison	Iowa	Lee	•	Hannibal	Missouri	Marion
Hwy 2	Iowa	Lee	•	Palmyra	Missouri	Marion
Keokuk	Iowa	Lee	•	Taylor	Missouri	Marion
Montrose	Iowa	Lee	•	West Quincy	Missouri	Marion
Brashear	Missouri	Adair	•	Madison	Missouri	Monroe
Kirksville	Missouri	Adair	•	Monroe City	Missouri	Monroe
Novinger	Missouri	Adair	•	Pais	Missouri	Monroe
Alexandra	Missouri	Clark	•	Livonia	Missouri	Putnam
Kahoka	Missouri	Clark	•	Unionville	Missouri	Putnam
Wayland	Missouri	Clark	•	Moberly	Missouri	Randolph
Galt	Missouri	Grundy	•	Downing	Missouri	Schuyler
Laredo	Missouri	Grundy	•	Lancaster	Missouri	Schuyler
Trenton	Missouri	Grundy	•	Queen City	Missouri	Schuyler
Baring	Missouri	Knox	•	Arbela	Missouri	Scotland
Edina	Missouri	Knox	•	Memphis	Missouri	Scotland
Knox City	Missouri	Knox	•	Rutledge	Missouri	Scotland
Canton	Missouri	Lewis	•	Clarence	Missouri	Shelby
Ewing	Missouri	Lewis	•	Hunneywell	Missouri	Shelby
Labelle	Missouri	Lewis	•	Shelbina	Missouri	Shelby
Lewistown	Missouri	Lewis	•	Green City	Missouri	Sullivan
Brookfield	Missouri	Linn	•	Milan	Missouri	Sullivan
Bucklin	Missouri	Linn	•			
Linneus	Missouri	Linn	•			



R.S. AUTO INC. Office (319) 696-2981
 214 S. Center St
 Lockridge, IA 52635
 rsautosalesinc@yahoo.com

www.rsautosalesinc.com Auto Sales
 319 696 2981

Check Our website for our wide variety on
**4x4 Trucks - Cars - Mini Vans - Handicap Vans - SUV
 Motorhomes & Much More!**

 <p>Handicap, 4x4 79,890 Miles \$39,900</p> <p>*14 Ford Econoline E350 SD, 6.8L V10, 4x4, Auto, Gas, VMI Conversion Handicap Van, Vinyl Seats, Rust Free, Texas Van</p>	 <p>Handicap Van 78,649 Miles \$18,900</p> <p>*13 Dodge Grand Caravan SXT, 3.6L 6 Cyl, Gas, Auto, Handicap Van, Wheelchair Ramp, Cloth Interior, Pwr Sliding Doors</p>	 <p>California Van 28,955 Miles \$27,900</p> <p>*10 Chevy Express G3500 LT, 6.0L V8, Auto, Gas, 12 Passenger, Cloth Interior, California Van</p>	 <p>AUG 319 696 2981 156,974 Miles \$19,900</p> <p>*17 Chevrolet Express G3500 LT, V8 Engine, Flex Fuel, Auto, 15 Passenger, Cloth Interior, Missing Rear Seats</p>		
 <p>4x4, Diesel 87,677 Miles \$42,900</p> <p>*18 Dodge Ram 2500HD, 6.7L Cummins Turbo Diesel, 4x4, Camera, Leather, Touchscreen, Super Loaded</p>	 <p>4x4, Diesel 144,242 Miles \$35,900 REDUCED \$31,900</p> <p>*13 GMC Sierra K3500 Denali HD, 6.6L Duramax Diesel, 4x4, Allison Trans, Auto, Dually, Crew Cab, Camera, Sunroof, Leather</p>	 <p>4x4, Diesel 85,521 Miles \$35,900</p> <p>*13 GMC Sierra 2500HD Denali, 6.6L Duramax Turbo Diesel, 4x4, Allison Trans, Camera, Sunroof, Leather, DVD</p>	 <p>California Vehicle 43,104 Miles \$25,900</p> <p>*14 Ford Econoline E350 SD, 4x4, Auto, Gas, Flex Fuel, 15 Passenger, Cloth Interior</p>	 <p>AUG 319 696 2981 105,824 Miles \$19,900</p> <p>*16 Chevy Express G3500 LS, 6.0L V8, RWD, Flex Fuel, 15 Passenger Van, Auto, Vinyl Seats</p>	 <p>AUG 319 696 2981 79,563 Miles \$12,900</p> <p>*16 Dodge Grand Caravan SXT, 3.6L 6 Cyl, Auto, Stow-N-Go Seats, 7 Passenger, Black Cloth Interior</p>
 <p>Diesel, 4x4, 5 Spd Miles \$28,900</p> <p>*13 Toyota Hilux SR, 3.0L V6 4x4, 5 Spd Manual, Turbo Diesel, Double Cab, Leather Interior, Rust Free, Excellent Shape</p>	 <p>Auto 319 696 2981 176,101 Miles \$19,900</p> <p>*06 Dodge Ram 3500 Laramie, 5.9L Cummins Diesel, 4x4, Allison Trans, Crew Cab, Leather, 5th Wheel Hitch</p>	 <p>Auto 319 696 2981 85,521 Miles \$7,900</p> <p>*03 Chevy Silverado 2500HD, 6.6L V8 Duramax Diesel, 4x4, Allison Trans, Ext Cab, Leather Interior, Normal Wear</p>	 <p>Auto 319 696 2981 161,939 Miles \$12,900</p> <p>*09 Chevy Avalanche LTZ, 5.3L Engine, 4x4, Auto, Sunroof, Heated Leather, Park Assist Sensors, Remote Start</p>	 <p>Auto 319 696 2981 159,822 Miles \$13,900</p> <p>*08 Chevy Silverado 1500, 5.3L Engine, 4x4, Auto, Ext Cab, Aluminum Flatbed, w/LED Lights, Cloth Interior</p>	 <p>Auto 319 696 2981 66,239 Miles \$15,900</p> <p>*05 Toyota Tundra SR5, 4.7L V8, 4x4, Auto, Double Cab, Cloth Interior, Rust Free</p>
 <p>5.7L Hemi, 4x4 78,580 Miles \$15,900</p> <p>*07 Dodge Ram Mega Cab, 5.7L V8 Hemi Engine, Auto, Mega Cab, Cloth Interior, Fender Flares, Sharp!</p>	 <p>Auto 319 696 2981 107,598 Miles \$9,900</p> <p>*06 Nissan Frontier LE, 4.0L 6 Cyl, Gas Engine, 4x4, Crew Cab, Cloth Interior</p>	 <p>Auto 319 696 2981 127,615 Miles \$8,900</p> <p>*08 Ford Ranger, 4.0L 6 Cyl, Auto, Gas, Cloth Interior, Flares, Rust Free, Normal Wear</p>	 <p>Auto 319 696 2981 120,520 Miles \$7,900</p> <p>*15 Honda FIT LX, 1.5L 4 Cyl, Auto, Gas, Hatchback, Cloth Interior, Rust Free, Clean</p>	 <p>Auto 319 696 2981 41,950 Miles \$8,900</p> <p>*15 Nissan Versa Note, 1.6L Engine, FWD, Auto, Hatchback, Cloth Interior</p>	 <p>Auto 319 696 2981 44,985 Miles \$10,900</p> <p>*15 Kia Soul +, 1.6L 4 Cyl, FWD, Gas, Auto, Leather Interior, Rust Free, Extra Clean</p>
 <p>Auto 319 696 2981 67,599 Miles \$14,900</p> <p>*15 Jeep Renegade Latitude, 2.4L 4 Cyl, Auto, Gas, Camera, Leather Interior, Rust Free, Sharp!</p>	 <p>Auto 319 696 2981 149,292 Miles \$13,900</p> <p>*14 GMC Acadia SLT, 3.6L 6 Cyl, Auto, Gas, 3rd Row, Camera, Leather, Touch Screen, DVD</p>	 <p>Auto 319 696 2981 111,028 Miles \$9,900</p> <p>*13 Buick Enclave, 3.6L AWD, Auto, Gas, Sunroof, Leather, 3rd Row Seating, Camera, Touchscreen, Excellent Condition, Super Clean</p>	 <p>Auto 319 696 2981 143,146 Miles \$16,900</p> <p>*12 GMC Yukon XL Denali, 6.2L AWD, Auto, Gas, Sunroof, Camera, Leather, Rear Entertainment, Loaded!</p>	 <p>Auto 319 696 2981 59,184 Miles \$13,900</p> <p>*12 Jeep Liberty Jet Ltd, 3.7L V6, 4x4, Auto, Sunroof, Heated Leather, Touch Screen, Navigation, Loaded</p>	 <p>Auto 319 696 2981 188,735 Miles \$12,900</p> <p>*11 Jeep Wrangler Unltd Rubicon, 3.8L 4x4, Auto, 4 Dr Unltd, Cloth Interior, Destructive Title, Runs & Drives</p>
 <p>Auto 319 696 2981 114,280 Miles \$9,900</p> <p>*11 Dodge Nitro Heat, 3.7L 6 Cyl, Auto, Sunroof, Cloth Interior, Sirius XM, Bluetooth, Sharp!</p>	 <p>Auto 319 696 2981 103,148 Miles \$9,900</p> <p>*10 Jeep Liberty Ltd, 3.7L 6 Cyl, 4x4, Auto, DVD Player, Navigation, Touchscreen, Sunroof, Leather</p>	 <p>Auto 319 696 2981 111,028 Miles \$9,900</p> <p>*10 Chevy Equinox LS, 2.4L 4 Cyl, AWD, Auto, Cloth Interior, Remote Engine Start, Arizona Vehicle, Rust Free</p>	 <p>Auto 319 696 2981 94,096 Miles \$9,900</p> <p>*08 Ford Explorer Eddie Bauer, 4.0L AWD, Auto, 3rd Row, Sunroof, Leather, Rear Entertainment, Rust Free</p>	 <p>Auto 319 696 2981 148,152 Miles \$4,900</p> <p>*08 Chevy Equinox LS, 3.4L 6 Cyl, FWD, Auto, Gas, Pwr Windows & Locks, Normal Wear, Local Trade</p>	 <p>Auto 319 696 2981 182K Miles \$5,450</p> <p>*11 Ford Fiesta SES, 1.6L 4 Cyl FWD, Manual Transmission, Gas, Hatchback, Cloth Interior, Sharp!</p>
 <p>Auto 319 696 2981 119,540 Miles \$7,900</p> <p>*08 Dodge Nitro SLT, 3.7L 6 Cyl, AWD, Auto, Leather Interior, Sharp!</p>	 <p>Auto 319 696 2981 169,720 Miles \$6,900</p> <p>*06 GMC Envoy Denali, 5.3L V8, 4x4, Auto, Sunroof, Leather, 3rd Row, 7 Passenger</p>	 <p>Auto 319 696 2981 149,521 Miles \$5,900</p> <p>*07 Nissan Murano SL, 3.5L 6 Cyl, AWD, Gas, Leather, Camera, Sunroof, Sharp!</p>	 <p>Auto 319 696 2981 129,119 Miles \$3,900</p> <p>*06 Saturn Vue, 2.2L 4 Cyl, FWD, Auto, Gas, Cloth Interior, Local Trade, Clean Title</p>	 <p>Auto 319 696 2981 195K Miles \$6,900</p> <p>*04 GMC Yukon 1500, 5.3L V8, 4x4, Auto, Gas, 3rd Row Seating & Pass, Cloth Interior</p>	 <p>Auto 319 696 2981 96,086 Miles \$5,900</p> <p>*05 Nissan Murano SL, 3.5L 6 Cyl, AWD, Gas, Auto, Sunroof, Cloth Interior, Steering Wheel Controls</p>
 <p>Auto 319 696 2981 107,876 Miles \$10,900</p> <p>*14 Buick LaCrosse CXL, 3.6L 6 Cyl, Gas, Auto, Camera, Leather, Touch Screen, Loaded</p>	 <p>Auto 319 696 2981 109,853 Miles \$9,450</p> <p>*14 Chevy Cruze LTZ, RS Package, 1.4L 4 Cyl, FWD, Auto, Sunroof, Camera, Leather, Push-Button Start, Sharp!</p>	 <p>Auto 319 696 2981 83,479 Miles \$8,900</p> <p>*14 Nissan Sentra SV, 1.8L Engine, Auto, Sedan, Cloth Interior, Eco & Sport Mode System, Extra Clean</p>	 <p>Auto 319 696 2981 86,148 Miles \$9,900</p> <p>*15 Nissan Sentra SR, 1.8L 4 Cyl, Gas Engine, Auto, Cloth Interior, Extra Clean, Rust Free</p>	 <p>Auto 319 696 2981 138,031 Miles \$7,900</p> <p>*13 Chevy Impala LTZ, 3.6L 6 Cyl, FWD, Auto, Sunroof, Spoiler, Leather Interior, Sharp!</p>	 <p>Auto 319 696 2981 127,104 Miles \$6,900</p> <p>*12 Chevy Malibu LTZ, 2.4L 4 Cyl, FWD, Auto, Sunroof, Leather, Super Clean, Nice</p>
 <p>Auto 319 696 2981 115,272 Miles \$7,900</p> <p>*11 Buick LaCrosse CXL, 3.6L V6, FWD, Auto, Gas, Leather, Rear Park Assist, Memory, Extra Clean</p>	 <p>Auto 319 696 2981 138,062 Miles \$5,900</p> <p>*08 Buick LaCrosse Super Series, 5.3L V8 Gas Engine, Auto, Sunroof, Leather Interior, Sharp!</p>	 <p>Auto 319 696 2981 118,630 Miles \$5,900</p> <p>*07 Pontiac G6 GTP, 3.6L 6 Cyl, FWD, Auto, Coupe, Cloth Interior, Sunroof, Sharp!</p>	 <p>Auto 319 696 2981 148,272 Miles \$4,450</p> <p>*07 Dodge Caliber SXT, 2.0L 4 Cyl, Auto, FWD, Gas, Station Wagon, Normal Wear</p>	 <p>Auto 319 696 2981 157,762 Miles \$3,600</p> <p>*06 Chevy HHR LT, 2.4L 4 Cyl, FWD, Auto, Gas, Hatchback, Leather Interior, Extra Clean</p>	 <p>Auto 319 696 2981 134K Miles \$4,900</p> <p>*04 Subaru Legacy Outback AWP, 2.5L 4 Cyl, AWD, Auto, Gas, Hatchback, Cloth Interior</p>
 <p>Auto 319 696 2981 94,008 Miles \$3,450</p> <p>*97 Chrysler LHS, 3.5L 6 Cyl, Gas, Auto, Leather Interior, Normal Wear, Local Trade</p>	 <p>Auto 319 696 2981 109,853 Miles \$2,900</p> <p>*07 Chrysler Sebring Touring, 2.7L Engine, FWD, Auto, Gas, Cloth Interior, Normal Wear, Runs & Drives</p>	 <p>Auto 319 696 2981 100,720 Miles \$3,900</p> <p>*06 Chevy Trailblazer XL, Auto, Gas, 4x4, 3rd Row Seating, Cloth Interior, Runs & Drives</p>	 <p>Auto 319 696 2981 100,720 Miles \$4,450</p> <p>*00 Pontiac Sunfire GT, 2.4L Engine, Auto, 2 Dr Convertible Soft Top, Cloth Interior, Excellent Shape</p>	 <p>Auto 319 696 2981 128,063 Miles \$15,900</p> <p>*11 GMC Canyon SLE, 3.7L 5 Cyl, FWD, 4x4, Crew Cab, Auto, Cloth Interior, Southern Truck, Rust Free</p>	 <p>Auto 319 696 2981 Clear Title \$19,900</p> <p>*05 Ram 2500HD, 5.9L Cummins Diesel, 4x4, Auto, Quad Longbed, NEW ENGINE & TRANSMISSION</p>

Auction Sales Auction Sales Auction Sales Auction Sales Auction Sales Auction Sales

BID NOW @ IMANAUCTION.COM

ONLINE ANTIQUE AUCTION

IMAN AUCTION CENTER - 34614 HWY 24 WEST, SALISBURY, MO

FIRST LOT CLOSES: SUNDAY, FEBRUARY 6, 2022 @ 6 PM

Selling a Lifetime collection from Jim & the late Norma McLean of Moberly, MO * Missouri Stoneware * Crocks * Aladdin Lamps * 1,000 Pieces of Depression Glass * Jadeite * Fire King * Antique Signs * Billy Cook & Other Saddles * Chaps * Cowboy Hats * Keen Kutter Items * 100 Pieces Roseville & Hull Pottery * Beer Collectibles, Wooden Boxes, Coolers, A.H. Busch Light * Furniture * Lady Head Planters * Antique Tools * Cookie Jars * 50 Barbie Dolls * Advertising Items * Very Interesting Collection w/ Over 1,300 lots!

Dozens of Pieces of Roseville Art Pottery



Well Over 1,000 Pieces of Depression Glass



75+ Pieces of Jadeite



Missouri Stoneware
J.L. Cluskey, D.F. Huggins & Calhoun



Regional Beer & Vintage Advertising
Muehlebach, Quincy Beer, Royal Crown & More!



Billy Cook Saddle



Retro Kitchenware
Fire-King, Pyrex, Anchor Hocking, Hall & More!



IMAN AUCTION COMPANY | 660-388-6235 | ImanAuction.com

LINN COUNTY, MISSOURI LAND & EQUIPMENT AUCTION

SATURDAY, MARCH 5 • 10:30 A.M.

AUCTION TO BE HELD ONSITE: 28709 JEWELL RD., ST. CATHARINE, MO



**81
ACRES±
Selling In
2 TRACTS**

FARM REPRESENTS IMPROVED PASTURELAND, 2-BD, 1BA COUNTRY HOME, PREMIER HUNTING

The Bradley farm is located approximately 5.5 miles northeast of Brookfield, MO in Section 22 T58N-R19W of Yellow Creek Township, Linn County, MO. From Brookfield, MO take Highway 11 north approximately 2.5 miles to Jewell Road, then head north on Jewell Road for 3 miles to farm.

Mark your calendars now for this upcoming Linn County, Missouri land and equipment auction. Located just outside of Brookfield, Missouri sits this nice 81 acre ± farm. Only a handful of times a year does a tract this size show up on the open market with this much diversity. Perfect acreage to start your hobby farm, country living, recreation, deer and turkey habitat, incredible build site options, a flowing creek bottom on the property and stocked ponds. We look forward to your participation in this upcoming Linn County, MO land and equipment auction.

EQUIPMENT HIGHLIGHTS: *14 Massey Ferguson 4610 tractor, MFWD, cab, heat, air, 678 hrs., w/ DL260 loader; Rhino TS12 Stealth Flex-Wing Rotary Cutter, 540 pto; Rhino PT207 hay tedder; 6' tandem disc; 5 ton creep feeder w/ gates; Rhino H300 hyd. auger; Powder River head gate; 500 gal. propane tank; livestock equipment, steel, shop tools, and much more!

**ADDITIONAL DETAILS, MAPS, & PHOTOS ONLINE AT:
www.TeterAuction.com**

RODGER & CATHERINE BRADLEY



**TETER
AUCTION COMPANY**

TETER AUCTION COMPANY, LLC
 FOR ADDITIONAL INFORMATION, CONTACT:
 Joshua Teter: (660) 963-2461
 David May: (660) 973-9523
www.teterauction.com

Guns, Coins, Jewelry & Sporting Goods
February 19 @ 8am
 Located at Lolli Livestock Mkt • Macon, Mo

8am - Sporting Goods • 11am - Coins
 12pm - Guns, including Pre 1898, Curio & Relics, Modern and Military.
ALL FFL Requirements apply.
 Online bidding will be offered beginning at 10.30 am through
 Auctionzip.com.
 Guns and coins can be viewed by clicking the specified links
 on the homepage of our website Lollibros.com

EAST FORK GUNS & COLLECTIBLES, CO.
 704 Main st • Macon, MO
 660-385-2516 OFFICE or 660-651-3496 TIM
 www.lollibros.com * email: lollibros@lollibros.com

SPARKS
Auction SERVICE

We can help you with all your auction needs

Land 1%
Real Estate 3%
Household 25% your site
Household 35% our site
Machinery 5-15%
Value & volume

Start planning today.
 We do auctions on site at your place or at
 our facility. Let us market your merchandise.

We have over 20 years
 experience auctioneering.
 Call Jesse @ 573-406-8787
 204 East Reid Street Edina, Mo 63537

Machinery Auction
Thursday, March 24 * 10a.m.

Selling Farm & Commercial Equipment:
 Tractors, trailers, trucks, skid loaders, construction
 equipment/supplies, lawn & garden, ATVs,
 hay & tillage equipment, livestock equipment,
 fencing supplies and much more.
CONSIGN NOW
WHILE THE MARKET IS STRONG!
 Call the barn or Frankie at 660-651-4040

Consignor checks printed the day of the sale.
 Trucking Available.

Lolli Livestock Market, Inc.
Macon, Mo 660-385-2516

**Kirksville Real Estate &
 Personal Property Auction**

Thursday, February 10, 2022 at 4:00 p.m.

Directions to auction location: 304 Hillcrest Drive, Kirksville, Missouri. From South Baltimore Street in Kirksville, turn West on East La Harpe Street for 0.6 miles, turn right on South 1st Street for 0.3 miles then turn right on Hillcrest Drive. The property will be on your right. Look for signs the day of the sale.

Real Estate: We will be selling at auction this 3 bedroom, 1 bath, ranch style home located on a quiet street. The home offers hardwood floors throughout, central air conditioning, propane heat and a one car attached garage. The real estate will sell promptly at 5:00 p.m.. If you would like to schedule your personal showing, please call Scotty at 573-356-4405.

**See Terms and Conditions for Purchase of Real Estate below.*

DOWN PAYMENT: 10% of the contract purchase price will be due upon acceptance of the Sales Contract. Personal or Cashier's Checks will be accepted. This is "AS IS, WHERE IS" and is non-refundable.

CLOSING: Closing shall be within 30 days of the auction date.

Vehicles: 1996 Ford Contour Sport, 121,000 miles; 1995 Oldsmobile Sierra SL, 141,000 miles, runs but needs battery

Antiques and Collectibles: Amber Aladdin lamp; collection of Avon decanters; ceramic dog; desk lamp with leaded shade; costume jewelry; antique mantle clock; leaded, lighted peacock; miscellaneous collector plates; large leaded lamp; vinyl records; miscellaneous glassware; barn lantern; new in box Santa and Mrs. Claus; lawn decorations; metal glider

There will be many more items at this auction too numerous to mention.

SCOTTY'S
 AUCTION SERVICE
 573-356-4405

Michael Cunningham 660-651-2288 • Paxton Pittman 660-346-1956
 WWW.SCOTTYSAUCTIONSERVICE.COM

SULLIVAN
 AUCTIONEERS, LLC

A FAMILY OWNED BUSINESS SINCE 1979

MATT MICHAEL LUKE JOHN
 DAN JOE JIM BILL

Headquartered in Hamilton, Illinois, Sullivan Auctioneers, LLC is one of the largest Real Estate and Farm Machinery Auctioneers in the nation.

For more than 40 years we have been conducting professional auctions. We connect our sellers with thousands of interested buyers around the world.

Considering an Auction?
 CALL OR EMAIL TODAY FOR A NO OBLIGATION CONSULTATION!
 Toll Free (844) 847-2161 | Sold@SullivanAuctioneers.com
 www.SullivanAuctioneers.com | Lic. #444000107

PERSONAL PROPERTY AUCTION
SATURDAY, FEBRUARY 19, 2022 • 10AM
108 NORTH MCCOY, KNOX CITY, MO

TRUCK, ANTIQUES/PRIMITIVES,
 COLLECTOR ITEMS, FURNITURE, TOOLS,
 HORSE/SHEEP/COW SUPPLIES

This auction will be in a heated
 building. Truck will sale at (12pm) noon.

SELLER: BOB & KAREN HUFFMAN
 More pictures and information at:
 www.hammondwatsonauctionservice.com

Hammond & Watson
 AUCTION SERVICE
 Lionel Hammond & Kirk Watson
 573-406-3877
 PALMYRA MO

Like us on FB
 Look us up on Auction Zip

IT'S FREE EVERY FRIDAY

NEMO
Trader

701 East LaHarpe St, Suite C,
 Kirksville, MO 63501 • P.O. BOX 809
 660-665-8500 or 660-988-6830
 Our New Email: sales@nemotrader.net

CALL US FOR YOUR ADVERTISING NEEDS

LARGE PUBLIC AUCTION
SATURDAY 10 A.M. FEBRUARY 26 2022
 30006 HWY 129 New Cambria MO 63558

As we have sold the ranch we will sell the following at Public Auction. AUCTIONEERS NOTE: Very nice selection of farm and cattle equipment along with very nice log furnishings and antiques from the lodge check out missouriandfarm.com for photos. Lots of unlisted items come see what we find!

TRACTORS, SKID LOADER, ATTACHMENTS: JD 7330 premium, MFWD, 2,800 hrs - JD 6125R, MFWD, H340 loader, 2,300 hrs - JD 1650, 3060 hrs, weights, canopy - Gehl RT 250 CAH, 775 hrs - Bobcat post-hole auger - HD tree shear w/ grapple - bucket w/grapple - **HAY TOOLS, MACHINERY:** Hesston WR 9860 swather, 885 head hrs, 1071 hrs - Vermeer BPX 9000 bale processor - JD 567 baler mega wide, cover edge - 1372 MF mower conditioner - Vermeer R2300 rake - Gehl 250 Manure spreader - 2 15' JD 750 Drills tandem hitch - JD 8300 drill w/seed - pasture harrow - NH 5 bar rake - Hesston 1007 disc mower - Danuser post hole digger - JD 709 shredder - Peaquea TT400 Tedder - Oswalt silage wagon - 2 bale unrollers - bale spears - Grain-o-vator auger wagon - Hutch master plowing disc - 4126 Krause Field Cult - Rayman loader, RM2810g - Sprayer specialties 60' boom **FEED TRUCKS:** 2015 F350, X-cab, 55,000 - Hydra bed w/Feeder, - 2005 F350, Hydra bed, 1 **HAY, FENCING, FARM RELATED:** 300 bales of hay +- JD hay fork for 740 loader - grain bin jacks - my-d-handly feeder - wire winders - selection of JUG waterers - lumber - selection of hand tools - Stihl 290 & 330 saw - generators - rr jack - JD hitches - UTV calf catcher - feed bunks - hay rings - creep feeders - wire and post - log splitter **ATVS/UTV, TRAILERS, WAGONS, MOWERS:** Bobcat 3400 utv, 4315 miles - Polaris 500 sportsman - other Yamaha 4 wheeler - JD EZ trac mower 60" cut - 20' skid steer trailer - 2 wheel trailer w/ramp - 4 wheel wagon w/hoist - 4 wheel wagon - gravity wagons w/ auger - **POOL TABLE, LOG FURNITURE, ANTIQUES, APPLIANCES, HOUSEHOLD, SAFES:** (Quality Furniture) Mission style AMF pool table (see to appreciate) - high quality poker table - w/chairs - nice King size Log bed w/select comfort mattress - Queen log bed - full log bed - 2 Twinn log beds - several log end tables - antler lamps - Mission style Oak full mirror - Oak cylinder desk - Oak step back cabinet - Oak bench - Antique cabinets - trunk - Large Oak table & chairs - Oak table @ chairs - antique churn - selection of older sofas - nice recliner - chest of drawers - several TVs flat screens - Amana W&D - refrigerators - ping pong table - bar w/ stools - Sentinel Gun safe - gun safe - grills - lots unlisted items

LAROY B. QUINN FARMS, SELLER
MISSOURI LAND AND FARM AUCTIONS
 DAVE ATKINSON 660-788-3333 JEFF QUINN 660-734-3925

VIRTUAL LIVE ONLINE
CLARK COUNTY, MISSOURI
LAND AUCTION
FRIDAY, FEBRUARY 25, 2022 AT 1:00 P.M.
"ELITE NORTHERN MISSOURI WHITETAIL DEER & WILD TURKEY HUNTING ACREAGE!"

426± ACRES
 (SUBJECT TO SURVEY)
2 Tracts

✓ **PRODUCTIVE TILLABLE CROPLAND!**
 ✓ **26.4 AC. SHARED LAKE!**

FARMS OFFER PRODUCTIVE TILLABLE CROPLAND, EXCEPTIONAL WHITETAIL DEER & WILD TURKEY HUNTING ACREAGE AND INCLUDES 26.4 AC. SHARED LAKE!

Tract 1 is located approximately 2.5 miles southwest of Fairmont, MO, in Section 31, T64N+9W, Washington Township, Clark County, MO. From Fairmont, take Hwy A west approximately 1/2 mi to CR 230, then left or south approximately 1.8 mi and the farm is on the south side of the road.

Tract 2 is located approximately 3.5 southwest of Fairmont, MO in Section 6, T63N+9W, Washington Township, Clark County, MO. From Fairmont, take Hwy A west approximately 1/2 to CR 230, then left or south approximately 1.2 mi to CR 206, then left or south approximately 1.6 mi and the farm will be on the west side of the road.

CLARK COUNTY FARM LLC
CLOSING & TITLE WORK BY: Oak Hills Title Co.
 307 Lewis Street | Canton, MO | (573) 288-4461

AUCTION MANAGERS:
 BILL FRETWELL (660) 341-7735 & JENNIFER WOOD (217) 257-8812
SULLIVAN AUCTIONEERS, LLC • TOLL FREE (844) 847-2161
 www.SullivanAuctioneers.com • IL Lic. #444000107

Virtual Online Auction - Bid @ www.SullivanAuctioneers.com
PIKE COUNTY, ILLINOIS
LAND AUCTION
THURSDAY, FEBRUARY 10, 2022 @ 1:00 P.M.

323.14 TAXABLE ACRES±
4 TRACTS

The Hopewell Prairie Farms & the World Giving Foundation property is located a short distance southeast of Hull, IL. Hull is located approximately 11 east of Hannibal, MO, or 20 miles southeast of Quincy, IL. Tracts 1 & 2 are located in Sections 33 & 34, Kinderhook Township, and Tracts 3 & 4 are located in Sections 12 & 13, Cincinnati Township, all in Pike County, Illinois. All 4 tracts represent highly productive, nearly all-tillable farmland. Farmers and investors, be sure to check out these investment quality farms.

RICHARD NELSON TRUST & KRIS NELSON TRUST (Tracts 1 & 2) & WORLD GIVING FOUNDATION (Tracts 3 & 4)
Attorney: Jenna Tucker | Rammskamp Bradney, P.C. | Jacksonville, IL | 217-245-6177

FOR ADDITIONAL INFORMATION, CONTACT AUCTION MANAGERS:
 Rodney Borrowman 630-247-0667 & John Borrowman 217-430-0645

SULLIVAN AUCTIONEERS, LLC • TOLL FREE (844) 847-2161
 www.SullivanAuctioneers.com • IL Lic. #444000107

SPACE AVAILABLE
 Ask about our affordable advertising rates that fit any budget!

FIND THE PERFECT PIECE FOR THE PERFECT PRICE

Find the stuff you want and sell the stuff you don't in the newspaper classifieds!

VIRTUAL LIVE ONLINE
LEWIS COUNTY, MISSOURI
LAND AUCTION
WEDNESDAY, FEBRUARY 23, 2022 AT 10:00 A.M.

188± ACRES
 (SUBJECT TO SURVEY)
2 Tracts

✓ **Exceptional location just off US Hwy 61!**
 ✓ **Tracts represent highly productive tillable cropland, prime hunting/recreational acreage as well as excellent building sites!**

Tracts are located approximately 7.5 miles north of Canton, MO, or approximately 13 mi south of Wayland, MO, just off Hwy 61 and in Sections 26 & 27, T63N+6W, Canton Township, Lewis County, MO.

WILLIAM & CAROL BAXTER REVOCABLE TRUST
CLOSING & TITLE WORK BY: Oak Hills Title Co.
 307 Lewis Street | Canton, MO | (573) 288-4461

AUCTION MANAGERS:
 BILL FRETWELL (660) 341-7735 & JENNIFER WOOD (217) 257-8812
SULLIVAN AUCTIONEERS, LLC • TOLL FREE (844) 847-2161
 www.SullivanAuctioneers.com • IL Lic. #444000107

VIRTUAL LIVE ONLINE
ADAIR COUNTY, MISSOURI
LAND AUCTION
WEDNESDAY, FEBRUARY 23, 2022 AT 11:00 A.M.

215± ACRES
 (SUBJECT TO SURVEY)
3 Tracts

EXCELLENT INVESTMENT OPPORTUNITY IN CLOSE PROXIMITY TO KIRKSVILLE, MO!

Land is located within 4 miles of Kirksville, MO. Tracts are located in Section 1, T61N+R16W, Walnut Township, Section 33, T62N+R15W, Benton Township, Sections 14 & 15, T63N+15W, Benton Township, all in Adair County, MO.

TRACTS OFFER AN EXCEPTIONAL COMBINATION OF TILLABLE CROPLAND, HARDWOOD TIMBER, AS WELL AS PREMIER WHITETAIL DEER & WILD TURKEY HUNTING ACREAGE ALL WITHIN MINUTES OF KIRKSVILLE, MO!

UMBARGER FARM INC.
CLOSING & TITLE WORK BY: Pickell Abstract Company
 115 S. Franklin Street | Kirksville, MO 63501 | (660) 665-8324

AUCTION MANAGERS:
 BILL FRETWELL (660) 341-7735 & JENNIFER WOOD (217) 257-8812
SULLIVAN AUCTIONEERS, LLC • TOLL FREE (844) 847-2161
 www.SullivanAuctioneers.com • IL Lic. #444000107

VIRTUAL LIVE ONLINE
LEWIS COUNTY, MISSOURI
LAND AUCTION
TUESDAY, FEBRUARY 15, 2022 AT 11:00 A.M.

157.8 SURVEYED ACRES
2 TRACTS

FARM REPRESENTS PRODUCTIVE TILLABLE CROPLAND AND IMPROVED PASTURELAND/HAY PRODUCTION!

Property is located approximately 3.5 mi southwest of LaBelle, MO, or approximately 7.5 mi southeast of Knox City, MO, in Section 18, T61N+R9W, LaBelle Township, Lewis County, MO.

CAROL LYNNE ROBERTSON
CLOSING & TITLE WORK BY: Oak Hills Title Co.
 307 Lewis Street | Canton, MO | (573) 288-4461

AUCTION MANAGERS:
 BILL FRETWELL (660) 341-7735 & JENNIFER WOOD (217) 257-8812
SULLIVAN AUCTIONEERS, LLC • TOLL FREE (844) 847-2161
 www.SullivanAuctioneers.com • IL Lic. #444000107

MAKE A SPLASH
 without wasting cash

Small ads produce big results. Ask about our advertising rates to fit any budget.

PUBLIC AUCTION

We will sell the following coin collection for the Late Tom Phillips Estate located at the **LA PLATA AMERICAN LEGION BUILDING, 128 E. SANDERS STREET, LA PLATA, MO** on **SAT., FEBRUARY 12TH, 2022 @ 10:30 A.M.**

COLLECTION INCLUDES: ½ cents - large cents - Flying Eagle cents - Indian cents - Lincoln cents - two cent pieces - three cent nickel pieces - three cent silver pieces - ½ dimes bust & seated, shield v-nickels - Buffalo WW II silver nickels - dimes bust, seated, Barber, mercury & Roosevelt - twenty cent piece - quarters seated, Barber, standing, & Washington - half dollars bust, seated, Barber, walking, Franklin, & Kennedy - 14 GSA Carson City Morgan dollars & many more Morgan & Peace dollars - gold coins - one dollar, two & half dollar, five dollar, ten dollar, twenty dollar - twelve or more gold coins - old paper money & proof sets - rare 1980 USSR silver set w/28 coins - platinum five coin set & many more coins too numerous to list. **FOR A COMPLETE LISTING VISIT OUR AUCTION WEBSITE OR CONTACT AUCTION COMPANY. TERMS: Cash/Check w/ID - Lunch on Grounds**

Christy's Auction Service
 La Plata, MO 63549 660-341-4531
 See Websites for Photos: www.dchristyauctions.com & Christy's Auction Service on Facebook
 Auctioneers - David Christy 660-341-4531
 Jason Wood - 660-341-7884 Greg Smoot - 660-341-5175

FIND THE RIGHT RIDE FOR THE RIGHT PRICE

Find the stuff you want. Sell the stuff you don't. Save time and money with the newspaper classifieds!



McAfee Auction Service, LLC
 375 S Johnson • Kahoka, MO
 660-727-3796
 www.mcafeeauctionservice.com

UPCOMING LAND AUCTIONS

KNOX COUNTY LAND AUCTION

96+/- Acres
 2 TRACTS
 LIVE ONSITE ONLY AUCTION
THUR, FEB 24TH - 1 PM
 CROPLAND • BUILDING SITES
 SALE CONDUCTED AT THE QUEEN OF PEACE HALL (103 W. CLOW AVE, EWING)
TONY AND TERRI JENNINGS, SELLERS

LEWIS COUNTY LAND AUCTION

40+/- Acres
 1 TRACT
 LIVE ONSITE ONLY AUCTION
THUR, FEB 24TH - 2 PM
 HIGHLY PRODUCTIVE CROPLAND
 SALE CONDUCTED AT THE QUEEN OF PEACE HALL (103 W. CLOW AVE, EWING)
DENNIS MCCUTCHAN, SELLER

CLARK COUNTY LAND AUCTION

49+/- Acres
 2 TRACTS
 LIVE ONSITE ONLY AUCTION
TUES, MARCH 1ST - 6 PM
 CROPLAND • TIMBER
 SALE CONDUCTED AT THE CARE BUILDING (451 N. VINE ST. KAHOKA)
CHAD AND ANGELA STRICKLER, SELLERS

LEWIS COUNTY LAND AUCTION

217+/- Acres
 2 TRACTS
 LIVE ONSITE ONLY AUCTION
TUES, MARCH 8TH - 6 PM
 CROPLAND • HUNTING
 SALE CONDUCTED AT THE CALDWELL BUILDING (30191 MO-16 CANTON)
JAMES & DARLENE SPENCER TRUST

CLARK COUNTY LAND AUCTION

194+/- Acres
 2 TRACTS
 LIVE ONSITE ONLY AUCTION
FRI, MARCH 18TH - 6 PM
 CROPLAND • TIMBER
 SALE CONDUCTED AT THE CARE BUILDING (451 N. VINE ST. KAHOKA)
THE FAMILY OF VINCENT J. BRIGGS, SELLERS

COMPLETE DETAILS ONLINE
WWW.MCAFEEAUCTIONSERVICE.COM



McAfee Auction Service, LLC
 375 S Johnson • Kahoka, MO
 660-727-3796
 www.mcafeeauctionservice.com

COMMERCIAL REAL ESTATE AUCTION

THURS FEB 24TH - 10 AM

Sale conducted onsite located at 100 South Washington Street, Monticello, MO



OPEN HOUSE: TUES FEB 8TH 10-11 AM & ONE HOUR PRIOR TO SALE DAY

This conveniently located 1542 sq' building sits across the street from the Lewis County Courthouse. The multi-purpose structure was built in 2002 and features a kitchenette/breakroom, bathroom, storeroom, utility room, and 2 spacious rooms. Building has a N.G. forced air furnace, central air, electric water heater, 250-amp electric service and conveys with a Cummins powered generator. Lot Size: 16,498 sq' surveyed tract (see survey online). Utilities: rural water, city sewer.

LEWIS COUNTY EMERGENCY 911, SELLERS



McAfee Auction Service, LLC
 375 S Johnson • Kahoka, MO
 660-727-3796
 www.mcafeeauctionservice.com

TIMED ONLINE ONLY ESTATE EQUIP, TOOL & GUN AUCTION

WEDNESDAY FEB 9TH LOTS START ENDING AT 10 AM



2004 CASE IH DX33 Compact Tractor w/ LX114 Hydraulic Loader, 881 hours; 3pt. Equipment and Farm Related; 2014 Tracker 10' Boat and Mercury 4 Stroke 2.5 Motor; Guns and Gun Safe; Tools and Shop Related; Lawn and Garden Equipment

DETAILS ONLINE

MARK WELLMAN ESTATE & OTHERS



McAfee Auction Service, LLC
 375 S Johnson • Kahoka, MO
 660-727-3796
 www.mcafeeauctionservice.com

TIMED ONLINE ONLY ANNUAL SPRING MACHINERY AUCTION

THURSDAY MARCH 22ND LOTS START ENDING AT 10 AM

CONSIGN NOW!

CONSIGNMENTS ACCEPTED NOW UNTIL SATURDAY, MARCH 12TH

NOW TAKING CONSIGNMENTS OF: TRACTORS, COMBINE, CONSTRUCTION EQUIP., PLANTING, HAY & TILLAGE EQUIP., SHORT LINE EQUIP, LIVESTOCK EQUIP., FARM SUPPORT ITEMS, TRUCKS, CARS, TRAILERS, RTVS, LAWN & GARDEN EQUIP.

CALL 660-727-3796

ITEMS WILL BE LOCATED AT THE CLARK COUNTY FAIRGROUNDS (KAHOKA, MO) FOR VIEWING CLOSER TO SALE DATE

ADDITIONAL DETAILS, PHOTOS & AUCTIONS AVAILABLE ONLINE! WWW.MCAFEEAUCTIONSERVICE.COM

THINKING OF SELLING LAND OR MACHINERY? LET OUR MOTIVATED STAFF WORK FOR YOU!

MONTY: 660-341-7412

OFFICE: 660-727-3796